



**HAL**  
open science

# On the Reconfiguration of Cable-Driven Parallel Robots with Multiple Mobile Cranes

Hor Tan, Latifah Nurahmi, Bambang Pramujati, Stéphane Caro

► **To cite this version:**

Hor Tan, Latifah Nurahmi, Bambang Pramujati, Stéphane Caro. On the Reconfiguration of Cable-Driven Parallel Robots with Multiple Mobile Cranes. The 5th International Conference on Robotics and Automation Engineering, Nov 2020, Singapore, Singapore. hal-03027651v1

**HAL Id: hal-03027651**

**<https://hal.science/hal-03027651v1>**

Submitted on 27 Nov 2020 (v1), last revised 27 Nov 2020 (v3)

**HAL** is a multi-disciplinary open access archive for the deposit and dissemination of scientific research documents, whether they are published or not. The documents may come from teaching and research institutions in France or abroad, or from public or private research centers.

L'archive ouverte pluridisciplinaire **HAL**, est destinée au dépôt et à la diffusion de documents scientifiques de niveau recherche, publiés ou non, émanant des établissements d'enseignement et de recherche français ou étrangers, des laboratoires publics ou privés.

# On the Reconfiguration of Cable-Driven Parallel Robots with Multiple Mobile Cranes

Hor Tan, Latifah Nurahmi, Bambang Pramujati

Department of Mechanical Engineering  
 Institut Teknologi Sepuluh Nopember  
 Sukolilo Surabaya 60111, Indonesia  
 e-mail: tanhor.19021@mhs.its.ac.id,  
 latifah.nurahmi@me.its.ac.id, pramujati@me.its.ac.id

Stéphane Caro

CNRS, Laboratoire des Sciences du Numérique de  
 Nantes, UMR CNRS 6004  
 1 Rue de la Noë 44321, Nantes, France  
 e-mail: Stephane.Caro@ls2n.fr

**Abstract**—This paper proposes a Cable-Driven Parallel Robot (CDPR) with three mobile cranes for search-and-rescue operations. Each mobile crane is composed of a reconfigurable telescopic boom which can be rotated. A cable is mounted from the tip of the telescopic boom to the end-effector. The locations of mobile cranes are fixed but the configuration of the telescopic boom can be adjusted to enlarge the workspace and to maintain the overall system in equilibrium. The static equilibrium of end-effector and mobile cranes is initially studied to determine the cable tension distribution and wrench-feasible-workspace. To guarantee all mobile cranes to be always in static equilibrium when executing a given task, the telescopic booms are reconfigured. Three case studies for the reconfigurable CDPR with multiple mobile cranes are presented to compare the tension distribution and workspace size.

**Keywords**—Cable-driven parallel robot, tension distribution, static equilibrium, zero-moment-point, reconfigurable, mobile cranes.

## I. INTRODUCTION

Cable-Driven Parallel Robot (CDPR) has been developed for both academic and industrial purposes [1]. Various applications of CDPR have been employed in the industrial field, or and some prototypes have been fabricated such as IPAnema [2]. Another type of suspended CDPR was developed in [4, 5] for a rapid-life scan. A set of cable arrangements was analyzed and pulleys orientation was reconfigured to adjust the tension value and to increase the manipulator workspace. The prototype has been developed with a cube base frame  $0.8m \times 0.8m \times 0.8m$  [6].

A mobile CDPR was developed in the framework of the ECHORD++ FASTKIT project for the industrial requirement with the fast pick-and-place operation [7-8]. A planar Mobile-CDPR (M-CDPR) was proposed in [9] by using two mobile bases and each mobile base has two cables. The mobile base must be stable during the moving platform movement; hence Zero Moment Point (ZMP) was applied to analyze mobile base stability [10].

Inverse Kinematics, static equilibrium, dynamics, stiffness, and the workspace of CDPR were investigated in [11]. The methodology to trace the Wrench-Feasible-

Workspace (WFW) based on Available-Wrench-Set (AWS) was proposed [12,13]. In [14], the distribution of cable tensions was shown along with a number of trajectories of the end-effector, for example, horizontal or spherical trajectories.

This paper aims to develop a CDPR with three mobile cranes for search-and-rescue operation. Distribution of cable tensions and mobile cranes stability during reconfiguration are the main focus of this paper. The workspace of the end-effector is considered as wrench feasible workspace (WFW).

## II. ROBOT ARCHITECTURE

The robot consists of three mobile cranes with mobile coordinate  $(u_j, v_j, w_j)$  attached at the origin  $O_j$  and its top view is shown in Fig. 1(a)-(b), respectively. Each mobile crane is located at the origin of the local coordinate  $(O_j)$  with distance  $\rho_j$  from the origin of the fixed frame and the angle  $\gamma_j$  that are measured counterclockwise from the X-axis as demonstrated in Fig. 1(b). The fixed coordinate frame  $\mathcal{F}$  of origin  $O$  and axes  $(X, Y, Z)$  is located at the ground center.  $r_j$  and  $\beta_j$  are the telescopic boom length and tilt angle of the mobile cranes  $(j = 1, 2, 3)$ , respectively. At the point  $B_j$ , the telescopic boom can rotate with an angle  $\alpha_j$  about the axis  $w_j$ . The end-effector is considered to be a point mass  $P$ , of cartesian coordinate vector  $\mathbf{p} = [x \ y \ z]^T$ . The exit point  $A_j$  is located at the tip of the telescopic boom and linked to point  $P$  by one cable. The vector  $\mathbf{a}_j^b$  of  $A_j$  is with respect to fixed coordinate.

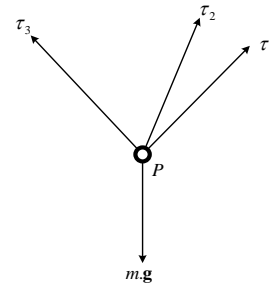


Figure 1. Free-body diagram of an end-effector

Point  $B_j$  is located at the base of the telescopic boom and it is a point connecting the mobile crane  $j$  to the

telescopic boom. Where  $b_j^z$  is the height of the mobile cranes. The cable length vector points from point  $P$  to point  $A_j$ , as:  $\mathbf{l}_j^b = \mathbf{a}_j^b - \mathbf{p}$ . Accordingly, the unit vector of each cable  $\mathbf{u}_j^b$  is computed as follows:

$$\mathbf{u}_j^b = \frac{\mathbf{l}_j^b}{\|\mathbf{l}_j^b\|} \quad (1)$$

### III. STATIC ANALYSIS

#### A. Static Analysis of End-effector

In this section, the cables are assumed to be non-elastic and massless. According to the free-body diagram of end-effector at point  $P$  shown in Fig. 2, the equation of static equilibrium at point  $P$  is expressed as:

$$\mathbf{W}\boldsymbol{\tau} + \mathbf{w}_e = 0 \quad (2)$$

where  $\boldsymbol{\tau} = [\tau_1 \ \tau_2 \ \tau_3]^T$  is the vector of cable tensions, and  $\mathbf{w}_e = [0, 0, -mg]^T$  is the gravitational force acting at point mass  $P$ . The gravity vector is denoted as  $\mathbf{g} = [0, 0, -g]^T$  and Wrench matrix is defined as following:

$$\mathbf{W} = [\mathbf{u}_1^b \ \mathbf{u}_2^b \ \mathbf{u}_3^b] \quad (3)$$

Since the wrench matrix  $\mathbf{W}$  is symmetric, then the cable tension can be computed as follows:  $\boldsymbol{\tau} = -\mathbf{W}^{-1}\mathbf{w}_e$ , as long as matrix  $\mathbf{W}$  is not singular. Then, the cable force  $\mathbf{f}_j$  can be expressed as:  $\mathbf{f}_j = -\mathbf{u}_j^b\tau_j$ . Each cable tension is maintained to be positive and greater than 1N all the time.

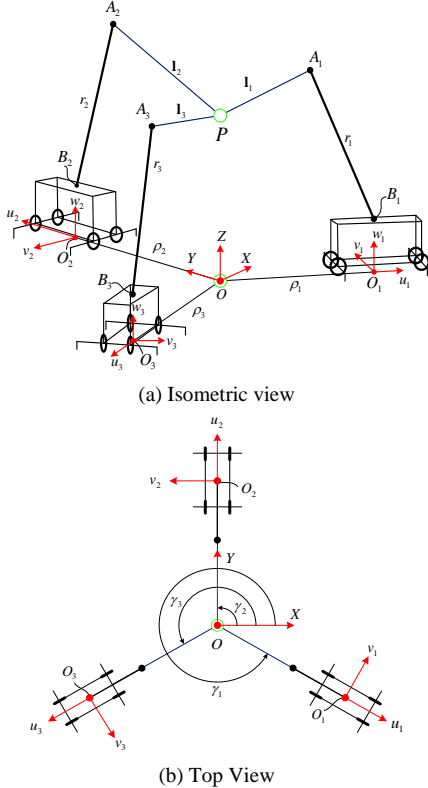


Figure 2. Schematic of CDPR with mobile cranes

#### B. Static Analysis of the Mobile Cranes

Three mobile cranes are fixed on the ground and they altogether should satisfy the condition of static equilibrium. The free-body diagram of the  $j$ -th mobile crane is illustrated in Fig. 3. Each mobile crane has four jack floats to lift the mobile cranes when the end-effector is performing some tasks. The jack floats have a contact point with the ground at points  $C_{1j}, C_{2j}, C_{3j}, C_{4j}$ . The reaction forces at these contact points  $\mathbf{f}_{r1j}, \mathbf{f}_{r2j}, \mathbf{f}_{r3j}, \mathbf{f}_{r4j}$  are the main role in the static analysis of the mobile cranes. As a consequence, the static equilibrium of the mobile cranes can be mathematically derived for two conditions, namely tipping and rolling. The mobile crane is said to be tipping if it turns over about the axis  $v_j$ . It occurs because the frontal reaction forces ( $\mathbf{f}_{r1j}$  and  $\mathbf{f}_{r4j}$ ) are very high and the rear reaction forces ( $\mathbf{f}_{r2j}$  and  $\mathbf{f}_{r3j}$ ) are null. The frontal and rear reaction forces can be written respectively, as follows:

$$\mathbf{f}_{fj} = \mathbf{f}_{r1j} + \mathbf{f}_{r4j} \quad (4)$$

$$\mathbf{f}_{rj} = \mathbf{f}_{r2j} + \mathbf{f}_{r3j} \quad (5)$$

By using Newton's first law of motion, the forces equilibrium and moment at point  $O$  are defined as follows:

$$\sum \mathbf{f} = 0 \quad (6)$$

$$\mathbf{f}_{fj} + \mathbf{f}_{rj} + m_j \mathbf{g} + m_{II} \mathbf{g} + \mathbf{f}_j = 0$$

$$\sum M_O = 0 \quad (7)$$

$$\mathbf{c}_{fj} \times \mathbf{f}_{fj} + \mathbf{c}_{rj} \times \mathbf{f}_{rj} + \mathbf{a}_j^b \times \mathbf{f}_j + m_I \mathbf{e}_j^b \times \mathbf{g} + m_{II} \mathbf{h}_j^b \times \mathbf{g} = 0$$

where  $m_I$  and  $m_{II}$  are masses of the telescopic boom and mobile crane and their gravitational forces are acting at points  $E$  and  $H$ , respectively, as shown in Fig. 3(a).  $\mathbf{h}_j^b$  and  $\mathbf{e}_j^b$  are the position vector of the center of gravity  $H$  and telescopic boom point  $E$ .  $\mathbf{c}_{fj}$  and  $\mathbf{c}_{rj}$  are the position vector from the origin  $O$  to the frontal and rear side of the mobile crane as shown in Fig. 3(b). The mobile crane is said to be rolling if it turns over about the axis  $u_j$ . It happens since the right reaction forces ( $\mathbf{f}_{r1j}$  and  $\mathbf{f}_{r2j}$ ) are very high and the left reaction forces ( $\mathbf{f}_{r3j}$  and  $\mathbf{f}_{r4j}$ ) are null or vice versa. Accordingly, the right and left reaction forces are respectively defined as follows:

$$\mathbf{f}_{rgj} = \mathbf{f}_{r1j} + \mathbf{f}_{r2j} \quad (8)$$

$$\mathbf{f}_{lj} = \mathbf{f}_{r3j} + \mathbf{f}_{r4j} \quad (9)$$

The forces equilibrium and moment at point  $O$  is written as:

$$\sum \mathbf{f} = 0 \quad (10)$$

$$\mathbf{f}_{rgj} + \mathbf{f}_{lj} + m_j \mathbf{g} + m_{II} \mathbf{g} + \mathbf{f}_j = 0$$

$$\sum M_O = 0 \quad (11)$$

$$\mathbf{c}_{rgj} \times \mathbf{f}_{rgj} + \mathbf{c}_{lj} \times \mathbf{f}_{lj} + \mathbf{a}_j^b \times \mathbf{f}_j + m_I \mathbf{e}_j^b \times \mathbf{g} + m_{II} \mathbf{h}_j^b \times \mathbf{g} = 0$$

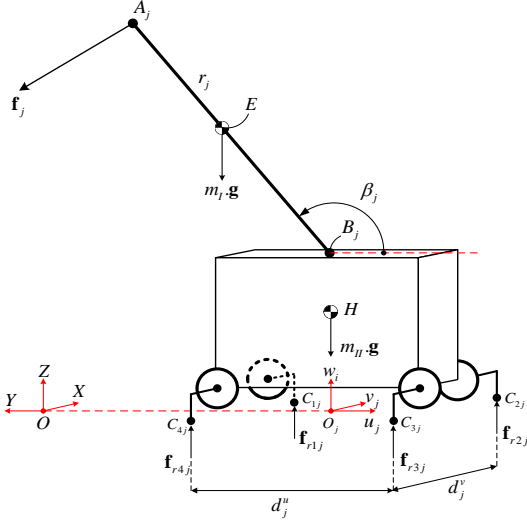
where  $\mathbf{c}_{l_{fj}}$  is the vector position from the origin  $O$  to the mid-point between points  $C_{3j}$  and  $C_{4j}$ . The vector position  $\mathbf{c}_{r_{gj}}$  measure from origin  $O$  to the mid-point between points  $C_{1j}$  and  $C_{2j}$  as shown in Fig. 3(b).

#### IV. ZERO MOMENT POINT

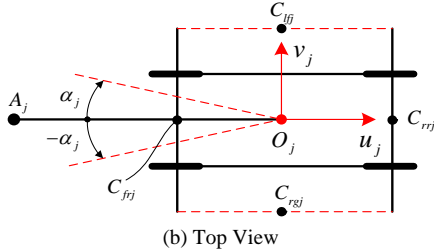
Zero Moment Point (ZMP) is a concept to evaluate the robot stability. When a mobile robot executing a given task, it much has a ground contact point that is tangent to the ground surface [20]. In this paper, ZMP is defined as a point within the mobile cranes where the sum of moments due to frontal and rear reaction forces are null for tipping; and the sum of moments due to right and left reaction forces are null for rolling. ZMP is computed in the mobile coordinate  $(u_j, v_j, w_j)$ , hence point  $A_j$  should be transformed into the mobile coordinate. As a result, the sum of moments at the point  $O_j$  can be formulated for tipping analysis, as follows:

$$M_{oj} + (\mathbf{f}_{frj} + \mathbf{f}_{rrj}) \times \mathbf{d}_j = 0 \quad (12)$$

where  $\mathbf{d}_j$  is the vector position from the origin  $O_j$  to the length and width of the mobile crane. The mobile crane will tip about the axis  $v_j$ , which means that ZMP will be within the points  $C_{1j}$  to  $C_{2j}$  or within the length  $d_j^u$  as shown in Fig. 3(a). By solving Eq. (17), the length  $d_j^u$  can be determined as:



(a) Isometric view



(b) Top View

Figure 3. Free-body diagram of a mobile crane

$$d_j^u = \frac{(a_j^w \cdot f_j^u) - (a_j^u \cdot f_j^w) - (m_r \cdot e_j^u \cdot g)}{f_{frj}^w + f_{rrj}^w} \quad (13)$$

The sum of the moment at point  $O$  can be formulated for rolling analysis, as follow:

$$M_{oj} + (\mathbf{f}_{l_{fj}} + \mathbf{f}_{r_{gj}}) \times \mathbf{d}_j = 0 \quad (14)$$

The mobile crane will roll about the axis  $u_j$ , which means that ZMP will be within the points  $C_{1j}$  and  $C_{4j}$  or within the length  $d_j^v$  as shown in Fig. 3(a). By solving Eq. (19), the length  $d_j^v$  can be determined as:

$$d_j^v = \frac{(a_j^v \cdot f_j^w) + (a_j^w \cdot f_j^v) - (m_r \cdot e_j^v \cdot g)}{f_{l_{fj}}^w + f_{r_{gj}}^w} \quad (15)$$

The lengths  $d_j^u$  and  $d_j^v$  are the dimension of the mobile cranes. Accordingly, the mobile cranes will be statically stable if and only if the lengths  $d_j^u$  and  $d_j^v$  are within the dimension of mobile cranes.

#### V. RECONFIGURATION PLANNING

Reconfiguration is conducted by extending/retracting the length of the telescopic boom ( $r_j$ ) and orientating pitch and/or yaw angles ( $\beta_j$  and  $\alpha_j$ ), as shown in Fig. 3. One non-reconfiguration case and three reconfiguration plans are proposed as follows:

- Plan 0:  $r_j = 1m, \alpha_j = 0, \beta_j = 105^\circ$
- Plan 1:  $\beta_j = 105^\circ, r_j$  and  $\alpha_j$  are reconfigured
- Plan 2:  $\alpha_j = 0, r_j$  and  $\beta_j$  are reconfigured
- Plan 3:  $r_j, \beta_j$  and  $\alpha_j$  are reconfigured.

Three mobile cranes are located symmetrically with respect to origin  $O$ . They form an equilateral triangle such that  $\gamma_1 = 330^\circ, \gamma_2 = 90^\circ$  and  $\gamma_3 = 210^\circ$  as shown in Fig. 1. The distance of each mobile crane to origin  $O$  is  $\rho_j = 3m$ .

The tracking of end-effector will be evaluated along the pick-and-place trajectory. The quadratic curve with two x-intercepts has been selected to be the trajectory and the equation is written as follows:

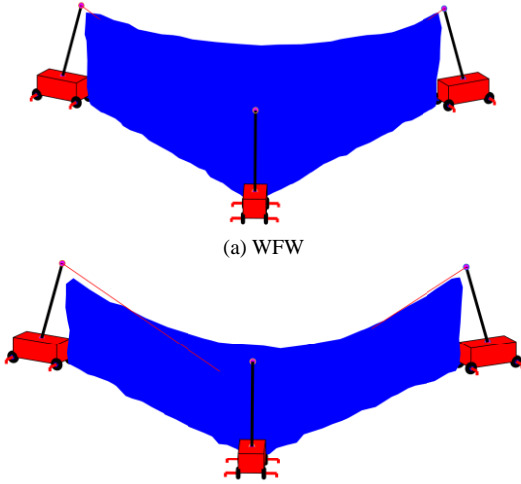
$$\begin{aligned} x &= x_A - x_B \\ y &= 0 \\ z &= 3(-x^2 + x_B x) \end{aligned} \quad (16)$$

For all plans, the end-effector starts from the initial point  $x_A = 0$  at point A with time  $t=0$  to the desired point  $x_B = 0.5m$  at point B with time  $t=10s$ .

#### VI. RESULTS AND DISCUSSIONS

WFW is said to be a set of poses of end-effector that can maintain the static equilibrium of the mobile cranes and positive cable tension under external force. The workspace of Plan 0 is shown in Fig. 4. By increasing the payload, the cable tension will also increase then the mobile cranes will

be unstable and the workspace is smaller as shown in Fig. 4(b). Base on the result of ZMP of Plan 0 in Table III, the mobile cranes cannot handle payload 5.5 kg, hence, the second mobile crane will be roll-over as shown in this link<sup>1</sup>. Therefore, the concept of reconfiguration is introduced and will be analyzed hereafter.



(a) WFW  
(b) Tipping/rolling-free workspace  
Figure 4. Workspace of Plan 0

TABLE I. TENSION DISTRIBUTION

Plan	Payload 4 kg	Payload 5.5 kg
0		
1		
2		

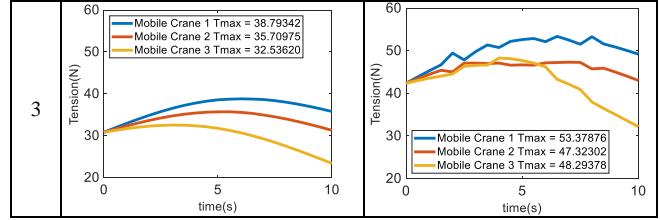


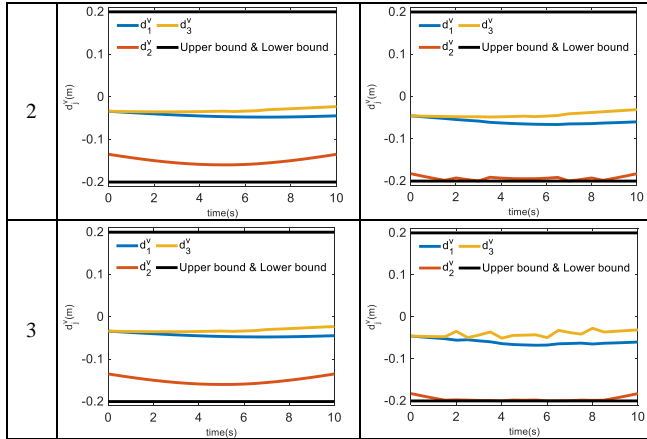
TABLE II. ZERO MOMENT POINT FOR TIPPING

Plan	Payload 4 kg	Payload 5.5 kg
0		
1		
2		
3		

TABLE III. ZERO MOMENT POINT FOR ROLLING

Plan	Payload 4 kg	Payload 5.5 kg
0		
1		

<sup>1</sup> Plan 0: [https://itsacid-my.sharepoint.com/:v/g/personal/210000011\\_staff\\_integra\\_its\\_ac\\_id/EVWC4CGKbF9Eu\\_tyhfw98nABjJPF5oLb\\_9VygImLJVHxg?e=u14yDk](https://itsacid-my.sharepoint.com/:v/g/personal/210000011_staff_integra_its_ac_id/EVWC4CGKbF9Eu_tyhfw98nABjJPF5oLb_9VygImLJVHxg?e=u14yDk)



As shown in Table I, the cable tensions begin at the initial point with the same value to the desired point for payload 4kg. However, if the payload is increased to be 5.5kg, mobile cranes of Plan 0 cannot handle great value of cable tensions and become unstable at  $t \sim 1s$ . Reconfigurable of the telescopic boom, the end-effector can follow the trajectory without turning over of the mobile cranes. For Plan 3 is the best plan. The maximum cable tension of first and second mobile crane is lower compared to Plan 1 and Plan 2. However, the third mobile crane is highest because  $r_j, \beta_j$  and  $\alpha_j$  is changed together when giving a task. The animation of the reconfigurable telescopic boom can be seen in these links: Plan 1<sup>2</sup> Plan 2<sup>3</sup> and Plan 3<sup>4</sup>.

ZMP analysis is illustrated in TABLE II for tipping and TABLE III for rolling. For Plan 0, We can recognize that the second mobile cranes will be rolling because  $d_2^v$  payload 5.5kg rapidly increases to the lower bound. The second mobile crane is not turned over because the value of  $d_2^v$  for reconfiguration telescopic boom is in the limitation of ZMP.

## VII. CONCLUSIONS

This paper proposed a mathematical model of CDRP with multiple mobile cranes. The reconfigurable telescopic boom is attached at the top of mobile cranes. The location of mobile crane is fixed, while the telescopic boom can be reconfigured. The end-effector and mobile crane are maintained in static equilibrium; hence WFW can be determined. The results showed that cable tension value of Plan 1 and Plan 2 are higher than Plan 3. The cable tension is also having a significant effect on the stability of the mobile cranes. ZMP defined the stability of mobile crane and we can

recognize that the mobile cranes will be tipping/rolling-over if payload is increased.

## ACKNOWLEDGMENT

This work is supported by the Ministry of Research and Higher Education of Indonesia, under the scheme of International Collaboration Research 2018-2020.

## REFERENCES

- [1] S. Qian, B. Zi, W. W. Shang, and Q. S. Xu, "A review on cable-driven parallel robots," *Chinese J. Mech. Eng. (English Ed.)*, vol. 31, no. 4, p. 66, 2018.
- [2] A. Pott, H. Mütterich, W. Kraus, V. Schmidt, P. Miermeister, and A. Verl, "IPAnema: a family of cable-driven parallel robots for industrial applications," in *Cable-Driven Parallel Robots*, Springer, 2013, pp. 119–134.
- [3] J. Hanafie, L. Nurahmi, S. Caro, and B. Pramujati, "Design optimization of spatial four cables suspended cable driven parallel robot for rapid life-scan," in *AIP Conference Proceedings*, 2018, vol. 1983, no. 1.
- [4] V. A. Handoyo, A. T. Syamlan, L. Nurahmi, B. Pramujati, M. N. Tamara, and U. Wasiwitono, "Cable Driven Parallel Robot with Big Interference-Free Workspace," in *Mechanism and Machine Science*, Springer, pp. 43–56.
- [5] A. T. Syamlan, L. Nurahmi, M. N. Tamara, and B. Pramujati, "Dynamic trajectory planning of reconfigurable suspended cable robot," *Int. J. Dyn. Control*, vol. 8, no. 3, pp. 887–897, 2020.
- [6] N. Pedemonte *et al.*, "Fastkit: A mobile cable-driven parallel robot for logistics," in *Advances in Robotics Research: From Lab to Market*, Springer, 2020, pp. 141–163.
- [7] T. Rasheed, P. Long, D. Marquez-Gamez, and S. Caro, "Kinematic modeling and twist feasibility of mobile cable-driven parallel robots," in *International Symposium on Advances in Robot Kinematics*, 2018, pp. 410–418.
- [8] T. Rasheed, P. Long, D. Marquez-Gamez, and S. Caro, "Tension distribution algorithm for planar mobile cable-driven parallel robots," in *Cable-Driven Parallel Robots*, Springer, 2018, pp. 268–279.
- [9] T. H. Lim, Y. S. Kim, J. Hwan, H. S. Lee, and S. Y. Yang, "Development of tipping-over rate computation system for hydraulic excavator having crane function," in *Proceedings. The 8th Russian-Korean International Symposium on Science and Technology, 2004. KORUS 2004.*, 2004, vol. 3, pp. 76–79 vol. 3.
- [10] F. Okoli, Y. Lang, O. Kermorgant, and S. Caro, "Cable-Driven Parallel Robot Simulation Using Gazebo and ROS," in *ROMANSY 22—Robot Design, Dynamics and Control*, Springer, 2019, pp. 288–295.
- [11] T. Rasheed, P. Long, D. Marquez-Gamez, and S. Caro, "Available wrench set for planar mobile cable-driven parallel robots," in *2018 IEEE International Conference on Robotics and Automation (ICRA)*, 2018, pp. 962–967.
- [12] T. Rasheed, P. Long, and S. Caro, "Wrench-Feasible Workspace of Mobile Cable-Driven Parallel Robots," *J. Mech. Robot.*, vol. 12, no. 3, 2020.
- [13] C. Gosselin, "Global planning of dynamically feasible trajectories for three-DOF spatial cable-suspended parallel robots," *Cable-Driven Parallel Robot.*, 2013.

<sup>2</sup> Plan 1: [https://itsacid-my.sharepoint.com/:v/g/personal/210000011\\_staff\\_integra\\_its\\_ac\\_id/Ee\\_d\\_Zzi4RREkF\\_0A53i8RQBeY1CmKnSh1o2XSHNP3jO7A?e=DWBB10](https://itsacid-my.sharepoint.com/:v/g/personal/210000011_staff_integra_its_ac_id/Ee_d_Zzi4RREkF_0A53i8RQBeY1CmKnSh1o2XSHNP3jO7A?e=DWBB10)

<sup>3</sup> Plan 2: [https://itsacid-my.sharepoint.com/:v/g/personal/210000011\\_staff\\_integra\\_its\\_ac\\_id/Eat0V2pJYZtFmTbmwLsHJ18BDn4oS0yeo2MmjmlQzpn81Q?e=sKHfuB](https://itsacid-my.sharepoint.com/:v/g/personal/210000011_staff_integra_its_ac_id/Eat0V2pJYZtFmTbmwLsHJ18BDn4oS0yeo2MmjmlQzpn81Q?e=sKHfuB)

<sup>4</sup> Plan 3: [https://itsacid-my.sharepoint.com/:v/g/personal/210000011\\_staff\\_integra\\_its\\_ac\\_id/EU44f3wvgnNqLyImzG\\_w1MBsLomKHZgaOTaRNOBp6P18w?e=xZVZTQ](https://itsacid-my.sharepoint.com/:v/g/personal/210000011_staff_integra_its_ac_id/EU44f3wvgnNqLyImzG_w1MBsLomKHZgaOTaRNOBp6P18w?e=xZVZTQ)