



**HAL**  
open science

## The LifeTime initiative: Towards cell-based medicine in Europe

Hans Clevers, Bart de Strooper, Angelika Eggert, Jan Ellenberg, Xosé Fernández, Marek Figlerowicz, Susan Gasser, Norbert Hubner, Jørgen Kjems, Jürgen Knoblich, et al.

### ► To cite this version:

Hans Clevers, Bart de Strooper, Angelika Eggert, Jan Ellenberg, Xosé Fernández, et al.. The Life-Time initiative: Towards cell-based medicine in Europe. *Nature*, 2020, 587 (7834), pp.377-386. 10.1038/s41586-020-2715-9 . hal-03027059

**HAL Id: hal-03027059**

**<https://hal.science/hal-03027059>**

Submitted on 27 Nov 2020

**HAL** is a multi-disciplinary open access archive for the deposit and dissemination of scientific research documents, whether they are published or not. The documents may come from teaching and research institutions in France or abroad, or from public or private research centers.

L'archive ouverte pluridisciplinaire **HAL**, est destinée au dépôt et à la diffusion de documents scientifiques de niveau recherche, publiés ou non, émanant des établissements d'enseignement et de recherche français ou étrangers, des laboratoires publics ou privés.

Copyright

1  
2  
3  
4  
5  
6  
7  
8  
9  
10  
11  
12  
13  
14  
15  
16  
17  
18  
19  
20  
21  
22  
23  
24  
25  
26  
27  
28  
29  
30  
31  
32  
33  
34  
35  
36  
37  
38  
39  
40  
41  
42

## The LifeTime initiative: Towards cell-based medicine in Europe

Nikolaus Rajewsky<sup>1,2,3,74,\*</sup>, Genevieve Almouzni<sup>4,74,\*</sup>, Stanislaw A. Gorski<sup>1,74,\*</sup>, Stein Aerts<sup>5,6</sup>, Ido Amit<sup>7</sup>, Michela G. Bertero<sup>8</sup>, Christoph Bock<sup>9,10,11</sup>, Annelien L. Bredenoord<sup>12</sup>, Giacomo Cavalli<sup>13</sup>, Susanna Chiocca<sup>14</sup>, Hans Clevers<sup>15,16,17,18</sup>, Bart De Strooper<sup>5,19,20</sup>, Angelika Eggert<sup>21,22</sup>, Jan Ellenberg<sup>23</sup>, Xose M. Fernandez<sup>24</sup>, Marek Figlerowicz<sup>25,26</sup>, Susan M. Gasser<sup>27,28</sup>, Norbert Hubner<sup>29,2,3,30</sup>, Jørgen Kjems<sup>31,32</sup>, Jürgen A. Knoblich<sup>33,34</sup>, Grietje Krabbe<sup>1</sup>, Peter Lichter<sup>35</sup>, Sten Linnarsson<sup>36,37</sup>, Jean-Christophe Marine<sup>38,39</sup>, John Marioni<sup>40,41,42</sup>, Marc A. Martini-Renom<sup>8,43,44,45</sup>, Mihai G. Netea<sup>46,47,48</sup>, Dörthe Nickel<sup>24</sup>, Marcelo Nollmann<sup>49</sup>, Halina R. Novak<sup>50</sup>, Helen Parkinson<sup>40</sup>, Stefano Piccolo<sup>51,52</sup>, Inês Pinheiro<sup>24</sup>, Ana Pombo<sup>1,53</sup>, Christian Popp<sup>1</sup>, Wolf Reik<sup>42,54,55</sup>, Sergio Roman-Roman<sup>56</sup>, Philip Rosenstiel<sup>57,58</sup>, Joachim L. Schultze<sup>48,59</sup>, Oliver Stegle<sup>60,61,40,42</sup>, Amos Tanay<sup>62</sup>, Giuseppe Testa<sup>63,64,65</sup>, Dimitris Thanos<sup>66</sup>, Fabian J. Theis<sup>67,68</sup>, Maria-Elena Torres-Padilla<sup>69,70</sup>, Alfonso Valencia<sup>71,45</sup>, Celine Vallot<sup>56,72</sup>, Alexander van Oudenaarden<sup>15,16,17</sup>, Marie Vidal<sup>1</sup>, Thierry Voet<sup>6,42</sup>, LifeTime Community<sup>73</sup>

43 <sup>1</sup> Berlin Institute for Medical Systems Biology, Max Delbrück Center for Molecular Medicine in the Helmholtz Association,  
44 Berlin, Germany. <sup>2</sup> Charité-Universitätsmedizin, 10117 Berlin, Germany. <sup>3</sup> Berlin Institute of Health (BIH), Berlin, Germany. <sup>4</sup>  
45 Institut Curie, CNRS, PSL Research University, Sorbonne Université, Nuclear Dynamics Unit, Equipe Labellisée Ligue contre le  
46 cancer, Paris, France. <sup>5</sup> Centre for Brain and Disease Research, Flanders Institute for Biotechnology (VIB), Leuven, Belgium.<sup>6</sup>  
47 Department of Human Genetics, KU Leuven, Leuven, Belgium. <sup>7</sup> Department of Immunology, Weizmann Institute of Science,  
48 Rehovot, Israel. <sup>8</sup> Centre for Genomic Regulation (CRG), Barcelona Institute of Science and Technology, Barcelona, Spain.<sup>9</sup>  
49 CeMM Research Center for Molecular Medicine of the Austrian Academy of Sciences, Vienna, Austria. <sup>10</sup> Department of  
50 Laboratory Medicine, Medical University of Vienna, Vienna, Austria. <sup>11</sup> Ludwig Boltzmann Institute for Rare and Undiagnosed  
51 Diseases, Vienna, Austria.<sup>12</sup> Department of Medical Humanities, Julius Center for Health Sciences and Primary Care, University  
52 Medical Center Utrecht, Utrecht, Netherlands. <sup>13</sup> Institute of Human Genetics, UMR 9002, CNRS and University of Montpellier,  
53 Montpellier, France. <sup>14</sup> Department of Experimental Oncology, IEO, European Institute of Oncology IRCCS, Milan, Italy. <sup>15</sup>  
54 Hubrecht Institute, Royal Netherlands Academy of Arts and Sciences (KNAW). <sup>16</sup> University Medical Center Utrecht, Utrecht,  
55 Netherlands. <sup>17</sup> Oncode Institute, Utrecht, The Netherlands. <sup>18</sup> The Princess Máxima Center for Pediatric Oncology, Utrecht,  
56 The Netherlands. <sup>19</sup> Department of Neurosciences and Leuven Brain Institute, KU Leuven, Leuven, Belgium. <sup>20</sup> UK Dementia  
57 Research Institute at UCL, University College London, London, UK. <sup>21</sup> Department of Pediatric Oncology/Hematology, Charité-  
58 Universitätsmedizin Berlin, Berlin, Germany. <sup>22</sup> Berlin Institute of Health (BIH), Berlin, Germany. <sup>23</sup> Cell Biology and Biophysics  
59 Unit, European Molecular Biology Laboratory, Heidelberg, Germany.<sup>24</sup> Institut Curie, PSL Research University, Paris, France.  
60 <sup>25</sup> Institute of Bioorganic Chemistry, Polish Academy of Sciences, Poznan, Poland. <sup>26</sup> Institute of Computing Science, Poznan  
61 University of Technology, Poznan, Poland. <sup>27</sup> Friedrich Miescher Institute for Biomedical Research, Basel, Switzerland. <sup>28</sup>  
62 University of Basel, Faculty of Natural Sciences, Basel, Switzerland. <sup>29</sup> Cardiovascular and Metabolic Sciences, Max Delbrück  
63 Center for Molecular Medicine in the Helmholtz Association (MDC), 13125 Berlin, Germany. <sup>30</sup> German Center for  
64 Cardiovascular Research (DKFZ), Partner Site Berlin, Berlin, Germany. <sup>31</sup> Department of Molecular Biology and Genetics  
65 (MBG), Aarhus University, Aarhus, Denmark. <sup>32</sup> Interdisciplinary Nanoscience Centre (iNANO), Aarhus University, Aarhus,  
66 Denmark. <sup>33</sup> Institute of Molecular Biotechnology of the Austrian Academy of Sciences (IMBA), Vienna. <sup>34</sup> Medical University  
67 of Vienna, Vienna, Austria. <sup>35</sup> Division of Molecular Genetics, German Cancer Research Center (DKFZ), Heidelberg, Germany.  
68 <sup>36</sup> Division of Molecular Neurobiology, Department of Medical Biochemistry and Biophysics, Karolinska Institutet, Stockholm,  
69 Sweden. <sup>37</sup> Science for Life Laboratory, Stockholm, Sweden. <sup>38</sup> Laboratory for Molecular Cancer Biology, VIB Center for Cancer  
70 Biology, KU Leuven, Leuven, Belgium. <sup>39</sup> Department of Oncology, KU Leuven, Leuven, Belgium. <sup>40</sup> European Molecular Biology  
71 Laboratory, European Bioinformatics Institute, Wellcome Genome Campus, Cambridge, UK. <sup>41</sup> Cancer Research UK Cambridge  
72 Institute, University of Cambridge, Cambridge, UK. <sup>42</sup> Wellcome Sanger Institute, Wellcome Genome Campus, Cambridge, UK.  
73 <sup>43</sup> CNAG-CRG, Centre for Genomic Regulation, Barcelona Institute of Science and Technology, Barcelona, Spain. <sup>44</sup> Universitat  
74 Pompeu Fabra, Barcelona, Spain. <sup>45</sup> ICREA, Barcelona, Spain. <sup>46</sup> Department of Internal Medicine and Radboud Center for  
75 Infectious Diseases, Radboud University Medical Center, Nijmegen, Netherlands. <sup>47</sup> Radboud Institute for Molecular Life  
76 Sciences, Radboud University Medical Center, Nijmegen, Netherlands. <sup>48</sup> Life and Medical Sciences Institute (LIMES),  
77 University of Bonn, Bonn, Germany. <sup>49</sup> Centre de Biochimie Structurale, CNRS UMR 5048, INSERM U1054, Université de  
78 Montpellier, Montpellier, France. <sup>50</sup> VIB Technology Watch, Gent, Belgium. <sup>51</sup> Department of Molecular Medicine, University  
79 of Padua School of Medicine, Padua, Italy. <sup>52</sup> IFOM, The FIRC Institute of Molecular Oncology, Padua, Italy. <sup>53</sup> Institute for  
80 Biology, Humboldt University of Berlin, Berlin, Germany. <sup>54</sup> Epigenetics Programme, Babraham Institute, Cambridge, UK. <sup>55</sup>  
81 Centre for Trophoblast Research, University of Cambridge, Cambridge, UK. <sup>56</sup> Department of Translational Research, Institut  
82 Curie, PSL Research University, Paris, France. <sup>57</sup> Institute of Clinical Molecular Biology, Kiel University, Kiel, Germany. <sup>58</sup>  
83 University Hospital Schleswig-Holstein, Campus Kiel, Kiel, Germany. <sup>59</sup> German Center for Neurodegenerative Diseases Bonn,  
84 Germany. <sup>60</sup> Division of Computational Genomics and Systems Genetics, German Cancer Research Center (DKFZ), 69120,  
85 Heidelberg, Germany. <sup>61</sup> Genome Biology Unit, European Molecular Biology Laboratory, Heidelberg, Germany. <sup>62</sup> Department  
86 of Computer Science and Applied Mathematics, Weizmann Institute of Science, Rehovot, Israel. <sup>63</sup> Laboratory of Stem Cell  
87 Epigenetics, IEO, European Institute of Oncology, IRCCS, Milan, Italy. <sup>64</sup> Department of Oncology and Hemato-oncology,  
88 University of Milan, Milan, Italy. <sup>65</sup> Human Technopole, Milan, Italy. <sup>66</sup> Biomedical Research Foundation, Academy of Athens,  
89 Athens, Greece. <sup>67</sup> Institute of Computational Biology, Helmholtz Zentrum München - German Research Center for  
90 Environmental Health, Neuherberg, Germany. <sup>68</sup> Department of Mathematics, Technical University of Munich, Munich,  
91 Germany. <sup>69</sup> Institute of Epigenetics and Stem Cells (IES), Helmholtz Zentrum München - German Research Center for  
92 Environmental Health, Munich, Germany. <sup>70</sup> Faculty of Biology, Ludwig-Maximilians Universität, Munich, Germany. <sup>71</sup>  
93 Barcelona Supercomputing Center (BSC), Barcelona, Spain. <sup>72</sup> CNRS UMR3244, Institut Curie, PSL University, Paris, France. <sup>73</sup>  
94 LifeTime working groups listed in Supplementary Information.

95 <sup>74</sup> These authors contributed equally

96

97 \*email: [rajewsky@mdc-berlin.de](mailto:rajewsky@mdc-berlin.de), [genevieve.almouzni@curie.fr](mailto:genevieve.almouzni@curie.fr), [stan.gorski@mdc-berlin.de](mailto:stan.gorski@mdc-berlin.de)

98

99 **LifeTime aims to understand the onset and progression of complex diseases and their**  
100 **response to therapy at single-cell resolution. This mission will be implemented through the**  
101 **development and integration of single-cell multi-omics and imaging, artificial intelligence**  
102 **and patient-derived experimental disease models during progression from health to**  
103 **disease. Analysis of such large molecular and clinical datasets will discover molecular**  
104 **mechanisms, create predictive computational models of disease progression, reveal new**  
105 **drug targets and therapies. Timely detection and interception of disease embedded in an**  
106 **ethical and patient-centered vision will be achieved through interactions across academia,**  
107 **hospitals, patient-associations, health data management systems and industry.**

108 While advances in medicine have led to spectacular progress in certain disease areas, most  
109 chronic disorders still partially or totally escape cure. This is mainly because diseases are  
110 detected too late, and/or the selected therapy is inappropriate for the individual concerned.  
111 Both can be remedied by a more complete mechanistic understanding of the molecular and  
112 cellular events that precede disease onset or that arise during treatment. More accurate  
113 cellular and molecular diagnostics will enable disease interception sufficiently early to prevent  
114 irreparable damage. To achieve this interceptive medicine (Fig 1), we need to invest in  
115 approaches that provide a detailed understanding of the basis of disease heterogeneity in  
116 tissues, with sufficient molecular, cellular and temporal resolution. This will enable the  
117 detection of disease-promoting events and identify the disease-initiating cells, pathways and  
118 target molecules. We must be able to evaluate treatments by quantifying their effects on  
119 pathological target cells on a cell-by-cell basis. This strategy has the potential to impact both  
120 diagnosis and treatment, improve health and quality of life dramatically and alleviate the  
121 societal burden of human diseases such as cancer, cardiovascular and metabolic disorders,  
122 chronic inflammation, infectious diseases, and neurological disorders.

123 The LifeTime Initiative, a pan-European community consisting of over 90 research institutions  
124 with the support from 80 companies, several funding agencies and national science  
125 academies, proposes a forward-looking Roadmap to transform the detection and treatment  
126 of complex diseases. Central to LifeTime's approach is the development and integration of  
127 novel technologies, such as single-cell multi-omics and high-content imaging, artificial  
128 intelligence (AI) and patient-derived experimental disease models. The development and  
129 application of these integrated approaches to both experimental and clinical workflows is  
130 expected to directly benefit patients. For example, appropriate single-cell based biomarkers  
131 will precociously alert physicians that a cell or tissue is entering a disease trajectory.  
132 Understanding disease heterogeneity at the cellular level and knowing the molecular  
133 aetiology of a disease will allow the systematic identification of drug targets, resistance  
134 mechanisms or define therapeutic approaches, based on a given disease's molecular or  
135 cellular vulnerability. This strategy differs significantly from the classical approaches in drug  
136 discovery<sup>1</sup>. The stratification of patients based on underlying disease mechanisms, assessed  
137 *in situ* within single cells, will help physicians select the most appropriate treatment(s) or  
138 employ combination therapies that are tailored to the individual. These will be used first to  
139 identify cells that are deviating from the healthy trajectory, to steer them away from disease,  
140 and later to reduce the threat of relapse (Fig 1). This transformative single-cell data-driven  
141 approach has the potential to increase the success rates of clinical trials and to increase the  
142 efficiency of novel therapeutic interventions in clinics over the next decade.

143

144

## 145 **Single-cell based medicine**

146 Cells develop and differentiate along many different specific lineage trajectories forming  
147 functionally distinct cell types and states <sup>2</sup>, which together with their neighbouring cells,  
148 underlie normal physiology (Fig 1, blue trajectory). However, even during healthy ageing, cells  
149 will accrue many molecular changes that lead to aberrant cellular and tissue states, generating  
150 conditions that may progress towards disease. This helps explain why ageing is the largest risk  
151 factor for many common diseases <sup>3</sup>. Currently, most diseases are only detected once gross  
152 physiological symptoms manifest, provoking a visit to the physician or hospital. However, by  
153 this time, tissues and organs have often undergone extensive or irreversible changes,  
154 precluding reversion to the original healthy state (Fig 1, red trajectory). At this stage, the  
155 choice of interventions is typically quite limited, and treatments often involve invasive or  
156 aggressive therapies of modest benefit to the patient.

157 Why is our ability to detect diseases earlier and intercept them before they progress so  
158 limited? For example, medical imaging technologies, developed over the last 20 years, have  
159 enabled the earlier detection of certain pathologies, such as metastatic cancer. Yet, the spatial  
160 resolution and sensitivity of these approaches is restricted. More recent technology-driven  
161 revolutions provide us with the means to probe a patient's physiology at the level of molecules  
162 and cells and place them in the context of tissues. Specifically, we are now able to link genetic  
163 variation and phenotypic manifestation to understand the molecular basis of disease <sup>4</sup> and  
164 create models that recapitulate various aspects of human disease <sup>5,6</sup>. Genetic information  
165 helps us elucidate the roles of specific pathways in disease progression <sup>4</sup>. Still, our detection  
166 and predictive power is limited, because in most cases our mechanistic understanding of  
167 disease is incomplete at the cellular level.

168 Timely detection and successful treatment of disease will depend crucially on our ability to  
169 understand and identify when cells deviate from their normal trajectory (Fig 1). The number  
170 of potential cellular states associated with disease is vast (Fig 1) and gaps in our knowledge  
171 stem from limitations in the approaches currently used to investigate complex disease  
172 landscapes. First, only recently have we been able to resolve cellular heterogeneity across  
173 space and time. We have an incomplete picture of cell types, cell states, and cell-cell  
174 interactions in the body. We need to understand how cells transition between states as they  
175 respond to and generate local microenvironments during tissue formation. We must assess  
176 cellular heterogeneity and composition changes within tissues during normal physiology and  
177 disease progression, for example, the dynamic immune system responses in chronic  
178 inflammation or during infection. To address this, we need to understand the molecular  
179 mechanisms that define a cell's state, and control its function, fate and trajectory over time.  
180 Second, we have been unable to reconstruct a cell's history or predict its future. This is key to  
181 understanding how disease states progress or dynamically respond to therapeutic  
182 interventions. Overcoming these limitations requires a systematic and longitudinal profiling  
183 of samples from many patients to reconstruct and predict the complex molecular networks  
184 that drive cellular trajectories over time. Third, computational frameworks for integrating  
185 temporal data as well as patient profiles with large cohorts to identify regulatory changes and  
186 to dissect the causes and manifestations of disease remain elusive. Current attempts to model  
187 human disease have not succeeded in integrating the thousands of molecular phenotypes that  
188 are acquired from patients. Finally, we are limited by our lack of knowledge of the underlying  
189 causes of disease. Any given patient's response to a specific therapy may require testing or  
190 modifying cells from the patient in an experimental system, a challenge yet to be routinely  
191 implemented.

192 Below, we outline technologies at the heart of LifeTime’s approach and present a roadmap  
193 for their implementation with the aim of improving the detection and treatment of diseases.  
194 Building on related international initiatives that are paving the way by producing reference  
195 maps of healthy tissues in the body, such as the Human Cell Atlas (HCA) <sup>7</sup>, the NIH Human  
196 Biomolecular Atlas Program (HuBMAP) <sup>8</sup>, and in close collaboration with industry and patients,  
197 we foresee the possibility to apply novel technologies to clinical samples, to achieve the  
198 necessary molecular and cellular high-resolution view of disease.

199

## 200 **Technology development and integration**

201 Single-cell technologies, particularly transcriptomics, are generating the first reference cell  
202 atlases of healthy tissues and organs, revealing a previously hidden diversity of cell subtypes  
203 and functionally distinct cell states <sup>7</sup>. Application of single-cell approaches to patient’s samples  
204 are beginning to provide snap-shots of the changes in cell composition, states and pathways  
205 associated with diseases including cancer <sup>9-14</sup>, chronic inflammatory diseases <sup>15,16</sup>, Alzheimer’s  
206 disease <sup>17-19</sup> heart failure <sup>20</sup>, and sepsis <sup>21</sup>. Some studies already provide insight into the basis  
207 of early disease detection, by identifying the cells of origin <sup>22</sup>, or by showing how a chronic  
208 inflammatory environment can lead to tissue remodeling during the evolution of colorectal  
209 cancer <sup>23,24</sup>. Predicting the future course of a cell requires data from patients that are linked  
210 to clinical outcomes. Only then can we identify the cellular parameters that are permissive to  
211 a therapeutic response, for example during checkpoint blockade immunotherapy <sup>11,25,26</sup>,  
212 treatment of multiple myeloma <sup>10</sup>, anti-TNF therapy for Crohn’s disease <sup>27</sup>, or the evolution of  
213 chemo-resistance during treatment of triple-negative breast cancer <sup>28</sup>. If we can detect rare  
214 drug resistant cells that are present prior to <sup>10,28</sup> or that emerge during treatment <sup>29</sup>, we can  
215 adapt therapeutic regimens and employ combinatorial treatments to improve outcome.

216 Since pathophysiological processes within individual cells can occur on different molecular  
217 levels, understanding the underlying mechanisms requires integration of current single-cell  
218 approaches, such as RNA-seq, (Fig. 2), with methodologies that provide additional information  
219 on chromatin accessibility, DNA methylation, histone modifications, 3D genome organization,  
220 and genomic mutations <sup>30-32</sup>. Future developments in instrumentation promise to couple  
221 these genomics approaches with single-cell proteomes, lipidomes, and metabolomes, adding  
222 crucial insight into different cellular states and their roles in health and disease. In addition to  
223 specific cell subtypes and the role of cellular heterogeneity, it is crucial to investigate the  
224 surrounding tissue context and organ environment. This is becoming possible through the  
225 development of new spatial multi-omics approaches, particularly spatial transcriptomics, that  
226 include information on the location of diseased cells with respect to each other as an integral  
227 part of the data <sup>33-38</sup>. Novel advanced imaging approaches also now enable systematic spatial  
228 mapping of molecular components, *in situ*, within cells and cells within tissues <sup>34,39-43</sup>. The  
229 cellular context with respect to different immune and stromal cell types, extracellular  
230 components and signaling molecules that contribute to disease progression will help identify  
231 the roles of specific cell types and interactions in diseases <sup>38,44-46</sup>. The implementation of cell  
232 lineage tracing approaches <sup>47</sup>, which link cellular genealogies with phenotypic information of  
233 the same cells, may help us understand how populations of cells develop dynamically to form  
234 the specific architecture of a healthy or a diseased tissue.

235 The LifeTime initiative proposes to develop necessary single-cell methodologies and end-to-  
236 end pipelines (Fig 2), that will be integrated into robust, standardized multi-omics and imaging  
237 approaches, and scaled to be able to profile and map hundreds of thousands of patients’ cells.

238 This will be done in close collaboration with health care providers, to enable an in-depth  
239 analysis of longitudinal human samples obtained from patients and cohorts (Fig 3). Handling  
240 these large molecular datasets will require sophisticated and distributed computational and  
241 bioinformatics infrastructures, (see Implementation and Infrastructure), as well as the  
242 development of tools to integrate and ensure interoperability of different data types,  
243 including single-cell multi-omics, medical information and electronic health records. This will  
244 allow the development of advanced personalized models of disease. To be able to implement  
245 routine longitudinal sampling of patients, we will need to develop methods for sampling small  
246 biopsies, including liquid biopsies that will detect individual cells or cell-free DNA released  
247 from pathological cells before and during therapy <sup>48</sup>. Multi-dimensional descriptors of cell  
248 states from patients taken from different stages of disease or therapy will be used to derive  
249 new biomarker sets or enhance current panels. Collaboration with ongoing atlas projects,  
250 industrial partners and regulatory authorities, will be key for benchmarking and deriving the  
251 new standards that will enable us to deploy these new methods in the clinic. This will hopefully  
252 achieve earlier disease detection and guide the appropriate selection of drug targets and  
253 therapies (Fig 3).

254 Unlocking the potential of unprecedented amounts of integrated digital information requires  
255 AI, in particular machine learning approaches that can identify meaningful molecular patterns  
256 in the datasets <sup>49,50</sup>. Although such approaches have proven very useful when applied to  
257 medical imaging data and have enabled the identification of subtle disease-associated  
258 changes <sup>51</sup>, medical imaging cannot capture the full complexity of human physiology nor the  
259 status of the disease at the single-cell level. Machine learning will be key to fully exploiting the  
260 high-quality, petabyte scale data generated by LifeTime, by delivering true integration and  
261 systems that can "learn" and reason upon biology to identify disease-associated changes and  
262 patterns <sup>49,52</sup>. High-content imaging, together with gene expression profiling, chromatin  
263 states, protein and metabolic parameters will contribute to the stratification of disease  
264 phenotypes. Machine learning and advanced modelling approaches will be used to integrate  
265 and analyze the different layers of cellular activity, and generate multi-scale and causal models  
266 that will allow us to infer regulatory networks and predict present and future disease  
267 phenotypes at the cellular level <sup>49,52,53</sup> (Fig 2).

268 The deep integration of machine learning technologies with spatial multi-omics and imaging  
269 technologies and data has the potential to usher in a new age of digital pathology to aid the  
270 decision-making process of physicians (Fig 3). By considering not only anatomical,  
271 physiological and morphological aspects, but also multidimensional molecular and cellular  
272 data, it will be possible to provide a more granular representation of a patient's disease state  
273 to complement the pathologist's slides and bulk measurements in tissues (e.g. mRNA,  
274 metabolites). We envision as the final goal the incorporation of new AI-based decision-aiding  
275 systems that will integrate and interpret available molecular, cellular, individual disease  
276 trajectory and imaging information. Importantly, interpretable and accountable AI systems  
277 will also provide the basis for the predictive models and clinical recommendations. Integration  
278 of cellular information should lead to a more precise description of a patient's molecular and  
279 physiological history, and will guide early detection, allow predictive prognosis, and guide  
280 recommendations for therapeutic interventions to deliver more precise and effective  
281 treatments (Fig 3).

282 Understanding the cellular origin and aetiology of disease from a patient-centered perspective  
283 requires systems that faithfully recapitulate key aspects of a patient's pathophysiology, and  
284 render them experimentally tractable. Organoids are an emerging experimental system that

285 allow modelling aspects of organ development, regeneration and pathophysiology <sup>5,6,54</sup> (Fig  
286 2). Derived from adult or pluripotent human stem cells, organoids can capture individual  
287 features that are unique to each patient and can be interrogated molecularly in space and  
288 time. Importantly, by comparing organoid models from diseased and healthy individuals,  
289 unique disease features can be extracted even without knowing the specific genetic cause of  
290 the disease. Therefore, organoid models offer a unique tool for achieving some of the main  
291 goals of LifeTime, especially in cases where repeated access to patient tissues is limited or  
292 impossible, for instance for neurological disorders.

293 Organoids have received great attention, both in the scientific and wider community as a tool  
294 for modelling disease <sup>55-57</sup>. Yet they still require significant development to harness their full  
295 potential (Fig. 2). While current organoid models contain multiple organ cell types, more  
296 complex extracellular matrices and chemical gradients are required to capture the full degree  
297 of cellular heterogeneity as well as tissue-specific structural and metabolic conditions <sup>58</sup>. The  
298 next generation of models will need to incorporate key physiological aspects, such as immune  
299 response, vascularization or innervation. Because complex interactions between multiple  
300 tissues and organs are involved in many diseases, it will be necessary to develop novel tissue  
301 engineering principles that combine multiple organoids in pathophysiologically relevant  
302 crosstalk (organoid-on-a-chip). To harness their full translational potential, LifeTime will  
303 engage in standardizing, automating and scaling organoid approaches, allowing for systematic  
304 derivation, propagation and banking. Such industrialization is also needed for large scale  
305 chemical or genetic perturbations (e.g. CRISPR-Cas screens), and for elucidating the genetic  
306 basis for disease variability and drug response at population-relevant scales, in both the  
307 preclinical and clinical context (Fig 3). The resulting mechanistic dissection enabled by large-  
308 scale perturbations will be used to validate corresponding AI models of disease interception  
309 and progression. This approach is enabled by iterative rounds of reinforcement learning that  
310 continuously improve these models of human disease.

311 In addition to organoids, *in vivo* model systems are necessary to translate the science from  
312 bench to humans. A complex biological system is required to study the myriad of host-disease  
313 and pathogen interactions associated with complex diseases, such as infectious diseases,  
314 cancer or Alzheimer's disease. The use of animal models is important for understanding the  
315 very complex temporal relationships that occur in disease such as those involving the  
316 vasculature and blood brain barrier, the resident microbiota, the immune system and  
317 pathogens as well as neuronal networks in the brain. LifeTime will therefore make use of  
318 models in which patient-derived tissues can be integrated into *in vivo* models <sup>59-63</sup>. This  
319 initiative is identifying opportunities and challenges for improving existing *in vivo* models, as  
320 well as the technological developments needed to improve their clinical relevance and render  
321 them suitable for studying dynamics of cellular heterogeneity in space and time.

322 LifeTime, as a community, has the capacity to develop and integrate these technologies, that  
323 often require expertise and specialized instrumentation located in distinct laboratories. A  
324 coordinated effort will leverage individual expertise and perform the required benchmarking  
325 and standardization of technologies, workflows and pipelines. This will also ensure that the  
326 data, software and models generated adhere to Findable, Accessible, Interoperable, and  
327 Reusable (FAIR) principles <sup>64</sup> (see infrastructure below), are available across national borders,  
328 and are in full compliance with international legislations such as the General Data Protection  
329 Regulation (GDPR) in the EU. Moreover, LifeTime will ensure that technologies, including AI  
330 and organoids, will be developed in an ethically responsible way in collaboration with patients,  
331 putting the patients at the centre. (see Ethical and Legal Issues).



## 332 **LifeTime disease Launchpad to identify priorities**

333 The Launchpad mechanism is an innovative platform that allows LifeTime to identify disease  
334 areas where the application of these integrated technologies is expected to have direct impact  
335 on patient care. Initially, the focus has been on five disease areas that are a significant burden  
336 to society: cancer, cardiovascular and metabolic disorders, chronic inflammatory and other  
337 autoimmune diseases, infectious diseases, and neurological disorders. Importantly, other  
338 disease areas will be continuously monitored. The LifeTime Launchpad has initiated the  
339 identification of clinical challenges in each disease area, and is evaluating specific diseases,  
340 groups of diseases or pathomechanisms on which research needs to focus. The criteria used  
341 to evaluate the proposed applications include: societal impact (including incidence and  
342 prevalence, disease severity, economic impact and the pressing need for new and more  
343 efficient clinical treatments and early detection), evidence for cellular heterogeneity that  
344 limits current clinical avenues, availability of samples from biobanks, relevant preclinical  
345 models, existence of patient cohorts including those enabling longitudinal studies, clinical  
346 feasibility and ethical considerations, as well as alignment with national and EU funding  
347 priorities. A working group will ensure that sex and gender aspects are fully incorporated  
348 during the process.

349 The LifeTime Launchpad is currently identifying the impact that the initiative can have in each  
350 disease area, to determine common and disease-specific challenges in the early detection of  
351 disease onset, or in tailoring therapeutic selection for each patient. For example, in  
352 neurodevelopmental and neurodegenerative diseases, a major challenge is to understand the  
353 molecular and cellular basis for disease onset and progression, as this would enable the  
354 stratification of patients based on molecular subtypes, and would enable the redesigning of  
355 clinical trials based on disease mechanism subgroups. Great potential exists for developing  
356 new preclinical models based on patient-derived cells, to understand disease processes and  
357 mechanisms, as well as for testing new drugs and therapies. A similar scenario exists for  
358 understanding the cellular and molecular mechanisms that lead to sepsis and heart failure.  
359 The role of cellular heterogeneity in the pathology of cancer and chronic inflammatory  
360 diseases is only beginning to be revealed <sup>65,66</sup>. There is an urgent need to explore and  
361 understand how this relates to the predicted course of disease such as dissemination,  
362 response of a patient to one of the numerous available therapies and the development of  
363 therapy resistance.

364 The Launchpad process is also identifying themes that span disease areas and will benefit from  
365 coordinated research. For example, inflammation-based mechanisms and the role of  
366 metabolism in disease, as well as links between infection/inflammation and cardiovascular  
367 diseases, cancer or neurological disorders.

368

## 369 **Implementation and Infrastructure**

370 The scale of the data that will be generated and analyzed, the cross-disciplinary and  
371 international structure combined with the ambition of LifeTime to pioneer novel analytics  
372 using AI, places LifeTime in an excellent position to shape the next generation of European  
373 medical and biological data computational infrastructure. This will require close interaction  
374 with and evolution of the established European infrastructure (Fig 4), such as the European  
375 Open Science Cloud (EOSC) and high-performance computing infrastructures through  
376 EuroHPC. LifeTime will also interact with related European Research Infrastructures including

377 ELIXIR, Euro-Bioimaging, EU-OPENSOURCE, ECRIN, EATRIS and BBMRI and their cluster  
378 initiative EOSC-Life to create added value and to avoid duplication of efforts in strategies and  
379 tools for sharing and accessing data, development and application of standards. As medicine  
380 is inherently decentralized, LifeTime will also contribute to connecting EU medical systems  
381 and large centralized European data infrastructures.

382 To implement LifeTime successfully, fragmentation of research across borders, disciplines and  
383 timeframes needs to be overcome. LifeTime data generation and technology development  
384 will be harmonized across expert groups and centres, allowing results to be quickly picked up  
385 and applied in clinics. This relies on a coordinated approach that integrates the  
386 multidisciplinary expertise of single-cell technologies, data science, AI/machine learning, and  
387 organoids across Europe. It must also engage clinicians and patients to achieve major medical  
388 impact. The LifeTime strategy envisions a multidisciplinary network of LifeTime Centres (Fig 4)  
389 with different complementary thematic clusters across Europe, each working in close  
390 association with hospitals. These connected, but geographically distributed, flexible  
391 innovation nodes will share resources, gather the necessary critical mass for global  
392 competitiveness, and be open for collaboration with the entire scientific community.  
393 Importantly, LifeTime Centres should deliver a number of key functions:

- 394 • Serve as platforms for the development and advancement of breakthrough  
395 technologies for single-cell research in omics and imaging, AI/machine learning and  
396 experimental/computational disease models.
- 397 • Closely and actively collaborate with patients, clinicians, hospitals and healthcare  
398 systems, in some cases with a specific disease focus.
- 399 • Set standards in data generation, standardization and management implementing  
400 FAIR principles.
- 401 • Set standards in ELSI programs (ethical, legal and societal issues) by working together  
402 in multidisciplinary teams aimed at responsible research and innovation.
- 403 • Offer opportunities to collaborate, test and benchmark new methodologies and  
404 analysis methods e.g. in adaptive experimental design.
- 405 • Offer unique opportunities to industry to translate recent knowledge and novel  
406 technologies from the laboratory to the market.
- 407 • Provide an early access programme to new technologies developed by companies.
- 408 • Function as open, interconnected education hubs, delivering training in the new  
409 technologies to researchers, scientific personnel and clinicians, as well as provide  
410 engagement activities for patients and citizens.

411 A federated LifeTime data and computational network building on cloud technologies will  
412 provide the necessary capacities to enable federated analytics across the LifeTime centres and  
413 will provide a technical and legal framework for integrating core information structures, multi-  
414 omics assays, imaging, AI/machine learning technologies and health records (Fig 4). A joint  
415 Data Coordination Centre following a multi-level approach will ensure transparent data access  
416 control, compatibility and standardization and allow to establish a quality management  
417 programme including interlab quality assessments. Within this Framework LifeTime will also  
418 coordinate and pioneer open data sharing and reuse and collaboration, including access  
419 models prior to publication of data.

420 To start this cooperative LifeTime Centre network, the initiative can build on first efforts by  
421 LifeTime members in a number of European countries, examples are the VIB Single-cell  
422 Accelerator Programme in Belgium, Berlin Cell Hospital, the UK's Sanger/EBI/Babraham Single  
423 Cell Genomics Centre, or the LifeTime Single-Cell Centre in Poland, to name a few. To avoid  
424 duplication and lack of standardisation, the LifeTime Cell Centre network could be coordinated  
425 through an entity or framework that optimises coordination and support to achieve the  
426 LifeTime vision. Funding for specific research projects that involve one or more LifeTime  
427 Centres could come from a portfolio of private and public funding opportunities, both on the  
428 national and pan-European level. The network will closely interact with key European efforts  
429 and will contribute to EU strategies and programmes.

430

### 431 **Interaction with industry/innovation framework**

432 Collaborations with the private sector will be key for the successful translation and delivery of  
433 technologies, instrumentation, diagnostics and therapies (Fig 4). Currently 80 companies  
434 support LifeTime's vision to revolutionize healthcare. These span multiple sectors as well as  
435 industrial associations and networks such as the European Federation of Pharmaceutical  
436 Industries (EFPIA), which unites major pharmaceutical enterprises, and the Euro-BioImaging  
437 Industry Board (EBIB), which unites major European imaging ventures.

438 Discussions between academic and industry representatives have identified crucial steps for  
439 transforming breakthrough discoveries into solutions that will improve the health of European  
440 citizens. This includes creating a unifying framework that fosters and streamlines pre-  
441 competitive interactions between academia and industry at the interface of computer  
442 science, single-cell biology, -omics, imaging, patient-derived disease modelling and precision  
443 medicine. A large-scale collaboration platform across Europe should be developed that  
444 includes umbrella agreements, regular physical meetings, dual training of early-career  
445 scientists in academia and industry, as well as exchange programs. This will enable joint  
446 projects between public and private sectors spanning the entire biomedical innovation cycle  
447 from discovery research, technology development and implementation in hospitals and the  
448 healthcare industry.

449 Cross-sectoral collaborations between small, medium-size and large companies with different  
450 development timelines and distinct business models is crucial. These long-term networks will  
451 be open to academic institutions, hospitals and technology providers and provide flexible new  
452 modes of stimulating innovation. To expedite the identification, and investment in the  
453 emerging technologies developed in academic and industry laboratories, successful local  
454 initiatives such as the tech watch programs and accelerator schemes (e.g. the VIB Single-cell  
455 Accelerator) should be scaled and coordinated at the EU level. LifeTime aims to create a  
456 networking/match-making platform for individuals, academic and industry organizations that  
457 share the goal to develop and integrate breakthrough technologies and apply them in the  
458 clinic to benefit patients. Further measures could foster innovation and entrepreneurship  
459 within the LifeTime consortium. For example, a pre-seed, pre-incubator funding scheme based  
460 on competitive calls to support start-up or tech transfer ideas.

461 Creating a dedicated European ecosystem is essential since the path to innovation is not linear  
462 and includes several feedback loops. To this end, additional key measures such as the  
463 development of enabling digital environments, training, promotion of early disease  
464 interception with all necessary stakeholders (patients, regulators, payers, etc.) are essential

465 as described in the LifeTime call for action launched in December 2019 endorsed to date by  
466 both individuals and organizations ([https://lifetime-fetflagship.eu/index.php/make-eu-](https://lifetime-fetflagship.eu/index.php/make-eu-health-research-count/)  
467 [health-research-count/](https://lifetime-fetflagship.eu/index.php/make-eu-health-research-count/)).

468

## 469 **Ethical and Legal Issues**

470 The implementation of LifeTime’s vision triggers relevant ethical questions from all societal  
471 groups directly impacted by the project (patients, clinicians and scientists), and society in  
472 general. LifeTime aims to pioneer a real-time or parallel ELSI (ethical, legal and societal issues)  
473 program that will predict, identify, monitor and manage the ethical impact of the biomedical  
474 innovations that arise from research and technology development, ensuring that  
475 implementation follows ethical guidelines. LifeTime’s ELSI program can be used as a testing  
476 ground for other international interdisciplinary initiatives (Fig 4). Ethical issues will be  
477 identified and managed as early as possible and ensure that ethical and research integrity  
478 guidance is implemented throughout the entire research process to stimulate positive effects  
479 and mitigate negative ones. Ethics engagement can take different forms, from ad hoc  
480 consultation to an embedded ethicist or ethics team that works alongside the research team.  
481 LifeTime projects will adopt a prospective ethics mechanism that is more akin to the latter,  
482 rather than a retrospective ELSI team in order to be able to steer the development of LifeTime  
483 projects in a responsible manner <sup>67</sup>.

484 LifeTime partners and clinicians have initiated a partnership with specialists in bioethics,  
485 public engagement, ethics of technology and lawyers, that resulted in the identification of  
486 LifeTime’s ethical and societal priority areas. These include questions related to the  
487 derivation, storage and use of organoids, the use of AI, data ownership and management,  
488 anonymisation of data, equity of access to such revolutionary medical care, the definition of  
489 health and illness, and transparent science communication to society. Initiating a relationship  
490 of trust with citizens will include novel modes of communication and engagement, for  
491 example through art, gaming or citizen science, to promote individual and critical thinking.

492 With a patient-centred research program as a foundation, compliance with the GDPR is a  
493 priority for LifeTime. This is particularly challenging since GDPR implementation, as well as  
494 consent form schemes, are not uniform across Europe. LifeTime will therefore establish a  
495 team working towards a unified consent procedure to determine: i) who controls the data, ii)  
496 who is responsible for the control, and iii) who is liable in case of legal challenge. Moreover,  
497 one aspect of LifeTime is its close relationship with industrial partners, which can pose  
498 difficulties when obtaining patients’ consent to access data and/or samples. These legal  
499 matters are being addressed particularly with respect to data generated from human samples,  
500 prioritizing ethically-sound data sharing and data management policies that will ensure the  
501 protection of personal data. Our goal is to facilitate the exchange of materials and research  
502 data (e.g. through establishing expedited uniformized MTAs), while protecting the patient.

503

## 504 **Education and Training**

505 To ensure uptake and integration of the LifeTime approaches into common practice, it will  
506 require the creation of a LifeTime Academy, which will provide the comprehensive training  
507 programs that are necessary to ensure efficient implementation of new technologies and new  
508 medical approaches (Fig 4). Importantly, this will be done in an integrative scheme,  
509 intersecting the multiple LifeTime disciplines and areas of actions: disruptive technologies

510 applied to medical challenges, technology transfer and innovation, research integrity, data  
511 management and stewardship, ethical, integrity, legal and societal issues. The Academy will  
512 have an inclusive philosophy to ensure that it can provide training to the wide community,  
513 which includes researchers, clinicians, technical operators, managers and staff of technology  
514 platforms, as well as administrators, patients and the lay public.

515 Training activities will be conceived and organized by dedicated teams involving specialists  
516 with a scientific education. LifeTime Academy envisions the formulation of both short and  
517 longer courses over several days and weeks, respectively, providing the trainees with new sets  
518 of skills. Additionally, the LifeTime Academy will explore the establishment of Masters and  
519 PhD programs, as well as the creation of novel training themes such as “artificial intelligence  
520 and medicine”. The LifeTime Academy will therefore engage and inform society, and will train  
521 a new generation of highly skilled medical scientists and support staff, in order to foster  
522 scientific and medical excellence in an ethical, responsible and inclusive framework.

523

## 524 **Introduction and acceptance of interceptive medicine**

525 For many medical conditions, early treatment offers the potential to slow or even prevent an  
526 individual’s disease from progressing, and is the best situation from which to seek a cure. The  
527 concept of interceptive medicine refers to the development of drugs or other medical  
528 interventions that work at the earliest time points in the disease process, even before the  
529 manifestation of disease symptoms. This requires the availability of appropriate biomarkers.  
530 LifeTime aims to introduce interceptive medicine into clinical practice, which will require  
531 capacity building in health systems and significant technology deployment in the clinics. The  
532 role of a LifeTime Academy for training tomorrow’s physicians, researchers and nurses will be  
533 essential, not only in identifying the priorities and needs of the clinical workforce and in  
534 educating those involved in technology development, but also developing new professional  
535 curricula, for example, in health information counselling.

536 Our ability for early detection of disease may give rise to new concerns among patients and in  
537 the healthy population. Many citizens fear that their privacy, security or safety could be at  
538 risk. Thus, involvement of patient advocacy groups, public education and promoting critical  
539 thinking amongst citizens will be crucial for acceptance and participation in this new way of  
540 delivering medicine.

541

## 542 **Impact on medicine and healthcare.**

543 Medicine and healthcare are rapidly expanding pillars of our economy. EU countries  
544 collectively spend more than €1,400 billion per year on healthcare for their 500 million  
545 citizens. Given the dimensions and spiraling healthcare costs associated with an ageing  
546 population, these numbers will continue to increase unless we can mitigate the damaging  
547 effects of ageing. We expect that coupling the current health monitoring with early detection  
548 and disease interception, will have a major economic impact. In Europe, 20% of the population  
549 will soon be over 65, with an age distribution that will continue to change until 12% are over  
550 80 in 2080<sup>1</sup>. Given the prevalence and cost of caring for people with degenerative conditions  
551 and the increase in chronic lifestyle-induced diseases, the knowledge and technologies  
552 developed by LifeTime will allow us to detect them earlier, and avoid their worst

---

<sup>1</sup> People in the EU – population projections. (2015) <http://ec.europa.eu/eurostat/statistics-explained/index.php/>

553 manifestations. LifeTime would also have an impact in the era of unexpected pandemics such  
554 as COVID-19 by rapidly determining the cellular and molecular basis of the disease. This would  
555 identify potential therapeutic strategies for patient subgroups as well as starting point for the  
556 development of new efficient therapies.

557 It is within LifeTime's vision to work with companies from multiple sectors and healthcare  
558 systems, as well as European and national regulatory bodies and patients  
559 associations/platforms, to establish new frameworks for robust science-based health policies.  
560 These will integrate the newly developed tools and technologies into standard care, and make  
561 innovative early detection tools and novel therapies rapidly accessible to patients. The aim is  
562 to provide better value to healthcare payers through pricing schemes that include value-based  
563 pricing, based on real world data and healthcare economic comparisons.

564 One of healthcare's largest outstanding issues is that many patients do not respond to  
565 commonly prescribed treatments. Whereas well-controlled randomised clinical trials provide  
566 evidence for statistical utility of a given therapy, in actual practice often many patients must  
567 be treated before a single patient will show a measurable benefit. Other patients may not  
568 benefit at all or even be harmed<sup>68</sup> leading to an economic loss that is estimated to be in the  
569 hundreds of billions €/year. The variable therapeutic responses originating from the cellular  
570 and genetic heterogeneity that exists in cancer and other complex diseases, contributes not  
571 only to the failure of treatments, but also to the rising cost of drug development, which is  
572 currently estimated at ~€1-2 billion per drug. *In silico* models for disease trajectories  
573 generated by LifeTime will enable the integration of personal genetic and lifestyle information  
574 into predictive models of disease course. This will allow physicians to determine and  
575 implement optimal therapeutic strategies tailored to the individual (precision medicine) with  
576 sophisticated timing of disease interception. The knowledge gained will also contribute to a  
577 more appropriate selection of patients for clinical trials.

578

## 579 **Outlook summary**

580 Recent advances in key single-cell technologies, AI and patient-based experimental systems,  
581 such as iPSC and organoids, have set the stage for their integration and deployment to address  
582 important medical challenges. Patients will benefit from cell based medicine through the  
583 earlier detection of diseases at a stage where they can be effectively intercepted. The novel,  
584 integrated technologies will enable the selection, monitoring and, if necessary, modification  
585 of therapeutic strategies for an individual to improve clinical outcomes based on high-  
586 resolution cellular information. Within the next decade, the obtained molecular mechanistic  
587 information has the potential to revolutionize drug discovery processes, clinical trial design,  
588 and eventually be incorporated into clinician's daily decision-making processes. As the  
589 LifeTime community continues to grow and the needs of industry and hospital stakeholders  
590 are embraced, this platform will provide unprecedented opportunities to implement single-  
591 cell and data-driven medicine to address the growing burden of complex and chronic diseases.

592

## 593 **Acknowledgements**

594 We would like to acknowledge all participants that have attended and contributed to LifeTime  
595 meetings and workshops through many exciting presentations and discussions. LifeTime has  
596 received funding from the European Union's Horizon 2020 research and innovation  
597 framework programme under Grant agreement 820431.

598

599 **Competing Interests**

600 C.B. is an inventor on several patent applications in genome technology and cofounder of  
601 Aelian Biotechnology, a single-cell CRISPR screening company. H.C. is a non-executive board  
602 member of Roche Holding, Basel. A.P. holds European and US patents on “Genome  
603 Architecture Mapping” (EP 3230465 B1, US 10526639 B2). W.R. is a consultant and  
604 shareholder of Cambridge Epigenetix. T.V. is co-inventor on licensed patents  
605 WO/2011/157846 (Methods for haplotyping single cells), WO/2014/053664 (High-throughput  
606 genotyping by sequencing low amounts of genetic material), WO/2015/028576 (Haplotyping  
607 and copy number typing using polymorphic variant allelic frequencies).All other authors  
608 declare no competing interests.

609

610

611 **References**

- 612 1 Yofe, I., Dahan, R. & Amit, I. Single-cell genomic approaches for developing the next generation  
613 of immunotherapies. *Nat Med* **26**, 171-177, doi:10.1038/s41591-019-0736-4 (2020).
- 614 2 Tanay, A. & Regev, A. Scaling single-cell genomics from phenomenology to mechanism. *Nature*  
615 **541**, 331-338, doi:10.1038/nature21350 (2017).
- 616 3 Campisi, J. *et al.* From discoveries in ageing research to therapeutics for healthy ageing. *Nature*  
617 **571**, 183-192, doi:10.1038/s41586-019-1365-2 (2019).
- 618 4 Claussnitzer, M. *et al.* A brief history of human disease genetics. *Nature* **577**, 179-189,  
619 doi:10.1038/s41586-019-1879-7 (2020).
- 620 5 Clevers, H. Modeling Development and Disease with Organoids. *Cell* **165**, 1586-1597,  
621 doi:10.1016/j.cell.2016.05.082 (2016).
- 622 6 Lancaster, M. A. & Knoblich, J. A. Organogenesis in a dish: modeling development and disease  
623 using organoid technologies. *Science* **345**, 1247125, doi:10.1126/science.1247125 (2014).
- 624 7 Regev, A. *et al.* The Human Cell Atlas. *Elife* **6**, doi:10.7554/eLife.27041 (2017).
- 625 8 HuBmapConsortium. The human body at cellular resolution: the NIH Human Biomolecular  
626 Atlas Program. *Nature* **574**, 187-192, doi:10.1038/s41586-019-1629-x (2019).
- 627 9 Guo, X. *et al.* Global characterization of T cells in non-small-cell lung cancer by single-cell  
628 sequencing. *Nat Med* **24**, 978-985, doi:10.1038/s41591-018-0045-3 (2018).
- 629 10 Ledergor, G. *et al.* Single cell dissection of plasma cell heterogeneity in symptomatic and  
630 asymptomatic myeloma. *Nat Med* **24**, 1867-1876, doi:10.1038/s41591-018-0269-2 (2018).
- 631 11 Li, H. *et al.* Dysfunctional CD8 T Cells Form a Proliferative, Dynamically Regulated  
632 Compartment within Human Melanoma. *Cell* **176**, 775-789 e718,  
633 doi:10.1016/j.cell.2018.11.043 (2019).
- 634 12 Puram, S. V. *et al.* Single-Cell Transcriptomic Analysis of Primary and Metastatic Tumor  
635 Ecosystems in Head and Neck Cancer. *Cell* **171**, 1611-1624 e1624,  
636 doi:10.1016/j.cell.2017.10.044 (2017).
- 637 13 Tirosh, I. *et al.* Dissecting the multicellular ecosystem of metastatic melanoma by single-cell  
638 RNA-seq. *Science* **352**, 189-196, doi:10.1126/science.aad0501 (2016).
- 639 14 van Galen, P. *et al.* Single-Cell RNA-Seq Reveals AML Hierarchies Relevant to Disease  
640 Progression and Immunity. *Cell* **176**, 1265-1281 e1224, doi:10.1016/j.cell.2019.01.031 (2019).
- 641 15 Der, E. *et al.* Tubular cell and keratinocyte single-cell transcriptomics applied to lupus nephritis  
642 reveal type I IFN and fibrosis relevant pathways. *Nat Immunol* **20**, 915-927,  
643 doi:10.1038/s41590-019-0386-1 (2019).
- 644 16 Zhang, F. *et al.* Defining inflammatory cell states in rheumatoid arthritis joint synovial tissues  
645 by integrating single-cell transcriptomics and mass cytometry. *Nat Immunol* **20**, 928-942,  
646 doi:10.1038/s41590-019-0378-1 (2019).
- 647 17 Grubman, A. *et al.* A single-cell atlas of entorhinal cortex from individuals with Alzheimer's  
648 disease reveals cell-type-specific gene expression regulation. *Nat Neurosci* **22**, 2087-2097,  
649 doi:10.1038/s41593-019-0539-4 (2019).
- 650 18 Keren-Shaul, H. *et al.* A Unique Microglia Type Associated with Restricting Development of  
651 Alzheimer's Disease. *Cell* **169**, 1276-1290 e1217, doi:10.1016/j.cell.2017.05.018 (2017).
- 652 19 Mathys, H. *et al.* Single-cell transcriptomic analysis of Alzheimer's disease. *Nature* **570**, 332-  
653 337, doi:10.1038/s41586-019-1195-2 (2019).



- 654 20 Wang, L. *et al.* Single-cell reconstruction of the adult human heart during heart failure and  
655 recovery reveals the cellular landscape underlying cardiac function. *Nat Cell Biol* **22**, 108-119,  
656 doi:10.1038/s41556-019-0446-7 (2020).
- 657 21 Reyes, M. *et al.* An immune-cell signature of bacterial sepsis. *Nat Med*, doi:10.1038/s41591-  
658 020-0752-4 (2020).
- 659 22 Young, M. D. *et al.* Single-cell transcriptomes from human kidneys reveal the cellular identity  
660 of renal tumors. *Science* **361**, 594-599, doi:10.1126/science.aat1699 (2018).
- 661 23 Kakiuchi, N. *et al.* Frequent mutations that converge on the NFKBIZ pathway in ulcerative  
662 colitis. *Nature* **577**, 260-265, doi:10.1038/s41586-019-1856-1 (2020).
- 663 24 Nanki, K. *et al.* Somatic inflammatory gene mutations in human ulcerative colitis epithelium.  
664 *Nature* **577**, 254-259, doi:10.1038/s41586-019-1844-5 (2020).
- 665 25 Helmink, B. A. *et al.* B cells and tertiary lymphoid structures promote immunotherapy  
666 response. *Nature* **577**, 549-555, doi:10.1038/s41586-019-1922-8 (2020).
- 667 26 Krieg, C. *et al.* High-dimensional single-cell analysis predicts response to anti-PD-1  
668 immunotherapy. *Nat Med* **24**, 144-153, doi:10.1038/nm.4466 (2018).
- 669 27 Martin, J. C. *et al.* Single-Cell Analysis of Crohn's Disease Lesions Identifies a Pathogenic Cellular  
670 Module Associated with Resistance to Anti-TNF Therapy. *Cell* **178**, 1493-1508 e1420,  
671 doi:10.1016/j.cell.2019.08.008 (2019).
- 672 28 Kim, C. *et al.* Chemoresistance Evolution in Triple-Negative Breast Cancer Delineated by Single-  
673 Cell Sequencing. *Cell* **173**, 879-893 e813, doi:10.1016/j.cell.2018.03.041 (2018).
- 674 29 Rambow, F. *et al.* Toward Minimal Residual Disease-Directed Therapy in Melanoma. *Cell* **174**,  
675 843-855 e819, doi:10.1016/j.cell.2018.06.025 (2018).
- 676 30 Argelaguet, R. *et al.* Multi-omics profiling of mouse gastrulation at single-cell resolution.  
677 *Nature* **576**, 487-491, doi:10.1038/s41586-019-1825-8 (2019).
- 678 31 Clark, S. J. *et al.* scNMT-seq enables joint profiling of chromatin accessibility DNA methylation  
679 and transcription in single cells. *Nat Commun* **9**, 781, doi:10.1038/s41467-018-03149-4 (2018).
- 680 32 Rooijers, K. *et al.* Simultaneous quantification of protein-DNA contacts and transcriptomes in  
681 single cells. *Nat Biotechnol* **37**, 766-772, doi:10.1038/s41587-019-0150-y (2019).
- 682 33 Giladi, A. *et al.* Dissecting cellular crosstalk by sequencing physically interacting cells. *Nat*  
683 *Biotechnol*, doi:10.1038/s41587-020-0442-2 (2020).
- 684 34 Moffitt, J. R. *et al.* Molecular, spatial, and functional single-cell profiling of the hypothalamic  
685 preoptic region. *Science* **362**, doi:10.1126/science.aau5324 (2018).
- 686 35 Nitzan, M., Karaiskos, N., Friedman, N. & Rajewsky, N. Gene expression cartography. *Nature*  
687 **576**, 132-137, doi:10.1038/s41586-019-1773-3 (2019).
- 688 36 Stahl, P. L. *et al.* Visualization and analysis of gene expression in tissue sections by spatial  
689 transcriptomics. *Science* **353**, 78-82, doi:10.1126/science.aaf2403 (2016).
- 690 37 van den Brink, S. C. *et al.* Single-cell and spatial transcriptomics reveal somitogenesis in  
691 gastruloids. *Nature*, doi:10.1038/s41586-020-2024-3 (2020).
- 692 38 Vickovic, S. *et al.* High-definition spatial transcriptomics for in situ tissue profiling. *Nat Methods*  
693 **16**, 987-990, doi:10.1038/s41592-019-0548-y (2019).
- 694 39 Bintu, B. *et al.* Super-resolution chromatin tracing reveals domains and cooperative  
695 interactions in single cells. *Science* **362**, doi:10.1126/science.aau1783 (2018).

- 696 40 Cardozo Gizzi, A. M. *et al.* Microscopy-Based Chromosome Conformation Capture Enables  
697 Simultaneous Visualization of Genome Organization and Transcription in Intact Organisms.  
698 *Mol Cell* **74**, 212-222 e215, doi:10.1016/j.molcel.2019.01.011 (2019).
- 699 41 Chen, K. H., Boettiger, A. N., Moffitt, J. R., Wang, S. & Zhuang, X. RNA imaging. Spatially  
700 resolved, highly multiplexed RNA profiling in single cells. *Science* **348**, aaa6090,  
701 doi:10.1126/science.aaa6090 (2015).
- 702 42 Mateo, L. J. *et al.* Visualizing DNA folding and RNA in embryos at single-cell resolution. *Nature*  
703 **568**, 49-54, doi:10.1038/s41586-019-1035-4 (2019).
- 704 43 Medaglia, C. *et al.* Spatial reconstruction of immune niches by combining photoactivatable  
705 reporters and scRNA-seq. *Science* **358**, 1622-1626, doi:10.1126/science.aao4277 (2017).
- 706 44 Jackson, H. W. *et al.* The single-cell pathology landscape of breast cancer. *Nature*,  
707 doi:10.1038/s41586-019-1876-x (2020).
- 708 45 Keren, L. *et al.* A Structured Tumor-Immune Microenvironment in Triple Negative Breast  
709 Cancer Revealed by Multiplexed Ion Beam Imaging. *Cell* **174**, 1373-1387 e1319,  
710 doi:10.1016/j.cell.2018.08.039 (2018).
- 711 46 Maniatis, S. *et al.* Spatiotemporal dynamics of molecular pathology in amyotrophic lateral  
712 sclerosis. *Science* **364**, 89-93, doi:10.1126/science.aav9776 (2019).
- 713 47 Baron, C. S. & van Oudenaarden, A. Unravelling cellular relationships during development and  
714 regeneration using genetic lineage tracing. *Nat Rev Mol Cell Biol* **20**, 753-765,  
715 doi:10.1038/s41580-019-0186-3 (2019).
- 716 48 Corcoran, R. B. & Chabner, B. A. Application of Cell-free DNA Analysis to Cancer Treatment. *N*  
717 *Engl J Med* **379**, 1754-1765, doi:10.1056/NEJMra1706174 (2018).
- 718 49 Eraslan, G., Avsec, Z., Gagneur, J. & Theis, F. J. Deep learning: new computational modelling  
719 techniques for genomics. *Nat Rev Genet* **20**, 389-403, doi:10.1038/s41576-019-0122-6 (2019).
- 720 50 Lahnemann, D. *et al.* Eleven grand challenges in single-cell data science. *Genome Biol* **21**, 31,  
721 doi:10.1186/s13059-020-1926-6 (2020).
- 722 51 Topol, E. J. High-performance medicine: the convergence of human and artificial intelligence.  
723 *Nat Med* **25**, 44-56, doi:10.1038/s41591-018-0300-7 (2019).
- 724 52 Efremova, M. & Teichmann, S. A. Computational methods for single-cell omics across  
725 modalities. *Nat Methods* **17**, 14-17, doi:10.1038/s41592-019-0692-4 (2020).
- 726 53 Argelaguet, R. *et al.* Multi-Omics Factor Analysis—a framework for unsupervised integration of  
727 multi-omics data sets. *Mol Syst Biol* **14**, e8124, doi:10.15252/msb.20178124 (2018).
- 728 54 Amin, N. D. & Pasca, S. P. Building Models of Brain Disorders with Three-Dimensional  
729 Organoids. *Neuron* **100**, 389-405, doi:10.1016/j.neuron.2018.10.007 (2018).
- 730 55 Dekkers, J. F. *et al.* A functional CFTR assay using primary cystic fibrosis intestinal organoids.  
731 *Nat Med* **19**, 939-945, doi:10.1038/nm.3201 (2013).
- 732 56 Lancaster, M. A. *et al.* Cerebral organoids model human brain development and microcephaly.  
733 *Nature* **501**, 373-379, doi:10.1038/nature12517 (2013).
- 734 57 Sachs, N. & Clevers, H. Organoid cultures for the analysis of cancer phenotypes. *Curr Opin*  
735 *Genet Dev* **24**, 68-73, doi:10.1016/j.gde.2013.11.012 (2014).
- 736 58 Knoblich, J. A. Lab-Built Brains. *Sci Am* **316**, 26-31, doi:10.1038/scientificamerican0117-26  
737 (2016).
- 738 59 Bleijs, M., van de Wetering, M., Clevers, H. & Drost, J. Xenograft and organoid model systems  
739 in cancer research. *EMBO J* **38**, e101654, doi:10.15252/embj.2019101654 (2019).

740 60 Byrne, A. T. *et al.* Interrogating open issues in cancer precision medicine with patient-derived  
741 xenografts. *Nat Rev Cancer* **17**, 254-268, doi:10.1038/nrc.2016.140 (2017).

742 61 Espuny-Camacho, I. *et al.* Hallmarks of Alzheimer's Disease in Stem-Cell-Derived Human  
743 Neurons Transplanted into Mouse Brain. *Neuron* **93**, 1066-1081 e1068,  
744 doi:10.1016/j.neuron.2017.02.001 (2017).

745 62 Hasselmann, J. *et al.* Development of a Chimeric Model to Study and Manipulate Human  
746 Microglia In Vivo. *Neuron* **103**, 1016-1033 e1010, doi:10.1016/j.neuron.2019.07.002 (2019).

747 63 Mancuso, R. *et al.* Stem-cell-derived human microglia transplanted in mouse brain to study  
748 human disease. *Nat Neurosci* **22**, 2111-2116, doi:10.1038/s41593-019-0525-x (2019).

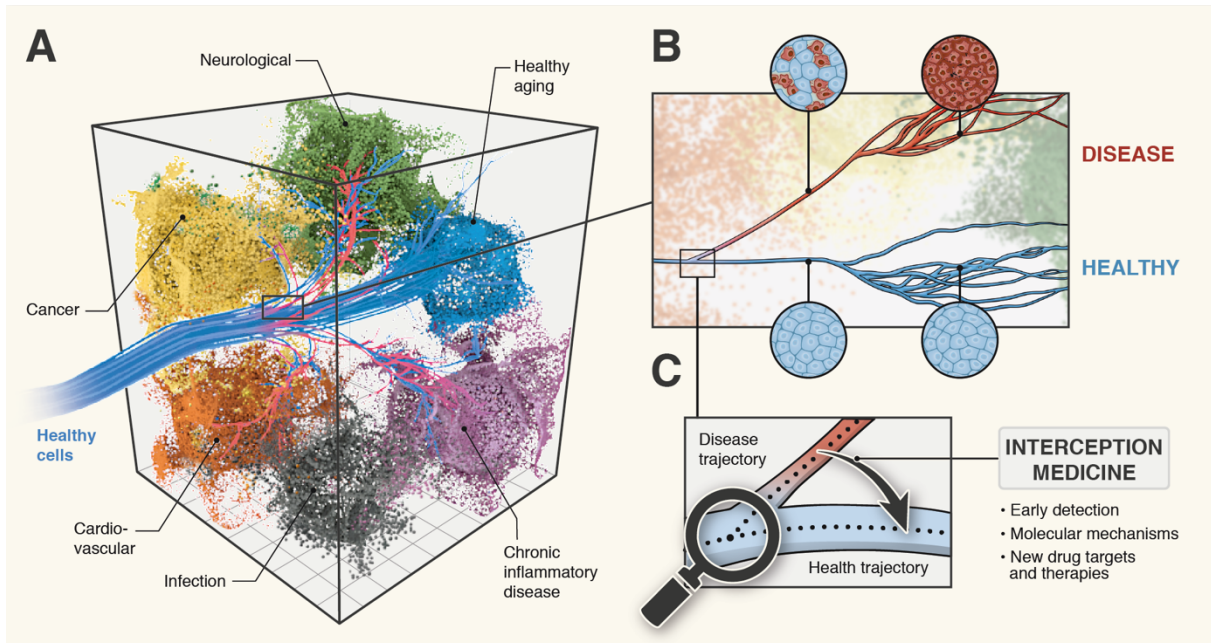
749 64 Wilkinson, M. D. *et al.* The FAIR Guiding Principles for scientific data management and  
750 stewardship. *Sci Data* **3**, 160018, doi:10.1038/sdata.2016.18 (2016).

751 65 Alizadeh, A. A. *et al.* Toward understanding and exploiting tumor heterogeneity. *Nat Med* **21**,  
752 846-853, doi:10.1038/nm.3915 (2015).

753 66 Schultze, J. L., consortium, S. & Rosenstiel, P. Systems Medicine in Chronic Inflammatory  
754 Diseases. *Immunity* **48**, 608-613, doi:10.1016/j.immuni.2018.03.022 (2018).

755 67 Sugarman, J. & Bredenoord, A. L. Real-time ethics engagement in biomedical research: Ethics  
756 from bench to bedside. *EMBO Rep* **21**, e49919, doi:10.15252/embr.201949919 (2020).

757 68 What happened to personalized medicine? *Nat Biotechnol* **30**, 1, doi:10.1038/nbt.2096 (2012).  
758  
759



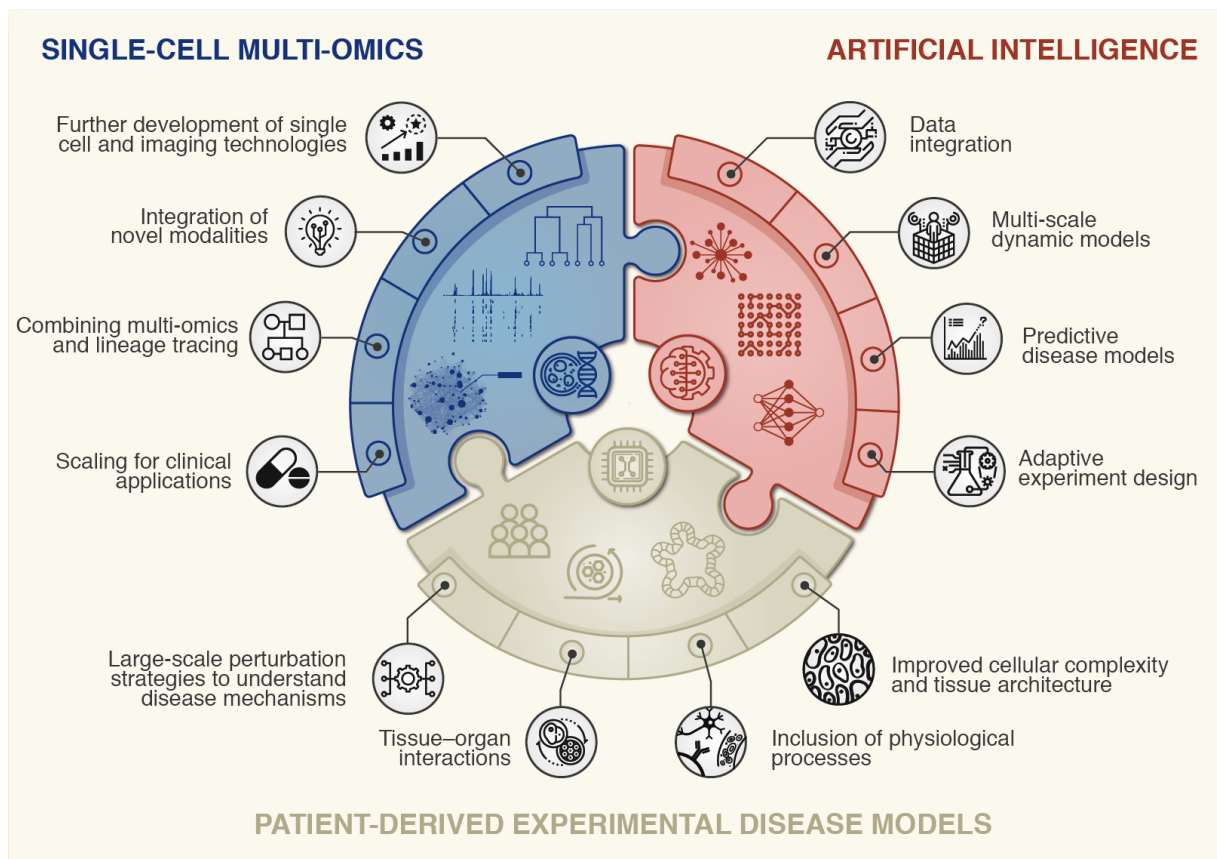
761  
762  
763  
764  
765  
766  
767  
768  
769  
770  
771  
772  
773  
774  
775  
776  
777  
778  
779  
780

**Figure 1. Early disease detection and interception by understanding and targeting cellular trajectories through time.**

(A) Cells are programmed to develop and differentiate along many different specific lineage trajectories (blue trajectories) to finally reach their functional state. When these normal lineage processes go awry, this can cause a cell to deviate from a healthy state and move towards a complex disease space (coloured manifolds defined by multi-dimensional molecular space – including gene expression, protein modifications, metabolism), as shown by red trajectories.

(B) Many diseases are only detected at a relatively late state with the onset of symptoms (red trajectory) and when pathophysiological changes can be at an advanced stage (red cells). At this point, cells, tissues and organs have undergone extensive and often irreversible molecular and physiological changes since the initial events that caused them to deviate from a healthy state. At this stage the choice of interventions may be limited and often require harsh or invasive procedures.

(C) Understanding the early molecular mechanisms that cause cells to deviate from a healthy to a disease trajectory will provide biomarkers for early detection of disease and new drug targets and innovative therapies to intercept diseases before onset of pathophysiology and manifestation of symptoms.



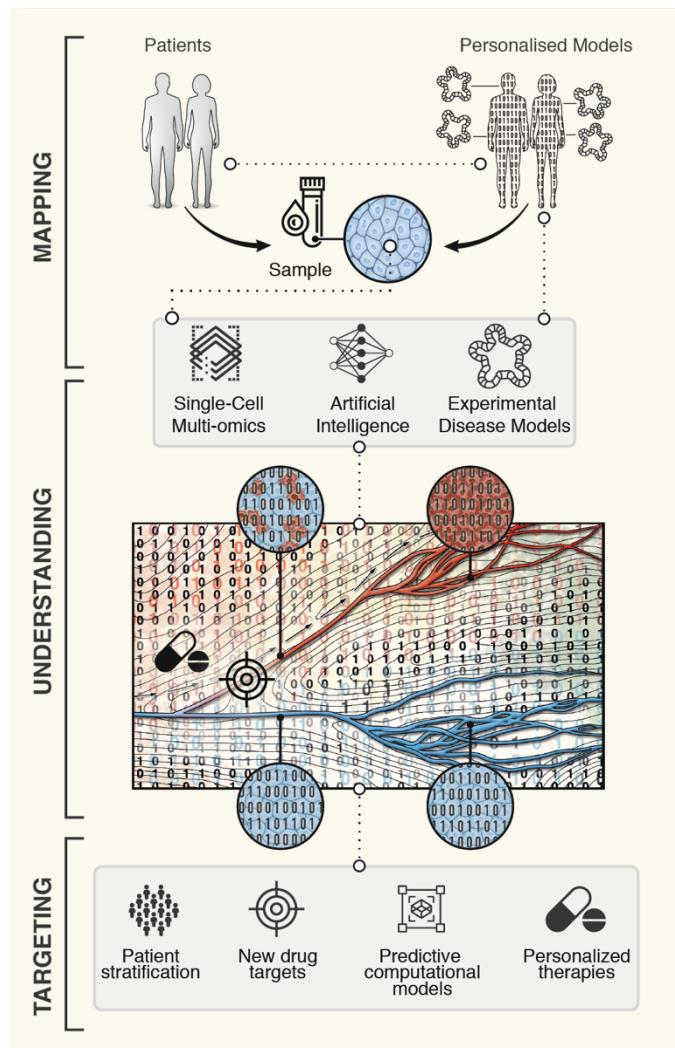
781  
 782  
 783  
 784  
 785  
 786  
 787  
 788  
 789  
 790  
 791  
 792  
 793  
 794  
 795  
 796  
 797  
 798  
 799  
 800  
 801  
 802

**Figure 2. Hallmarks of the LifeTime approach to disease interception and treatment.**

The scheme represents the development and integration of key technologies for investigating human diseases as envisioned by the LifeTime consortium. Single-cell multi-omics and imaging technologies will be developed for high throughput applications. Different modalities are combined to provide insight into underlying mechanisms based on coordinated changes between different regulatory molecular layers. To obtain insight into cellular genealogies and cellular dynamics requires the integration of lineage tracing tools. Technologies will also need to be scaled for deployment in the clinics.

Integration and analysis of large, longitudinal multi-omics and imaging datasets will require the development of new pipelines and machine learning tools. These include development of causal inference and interpretative machine learning approaches to create molecular networks for predictive and multiscale disease models.

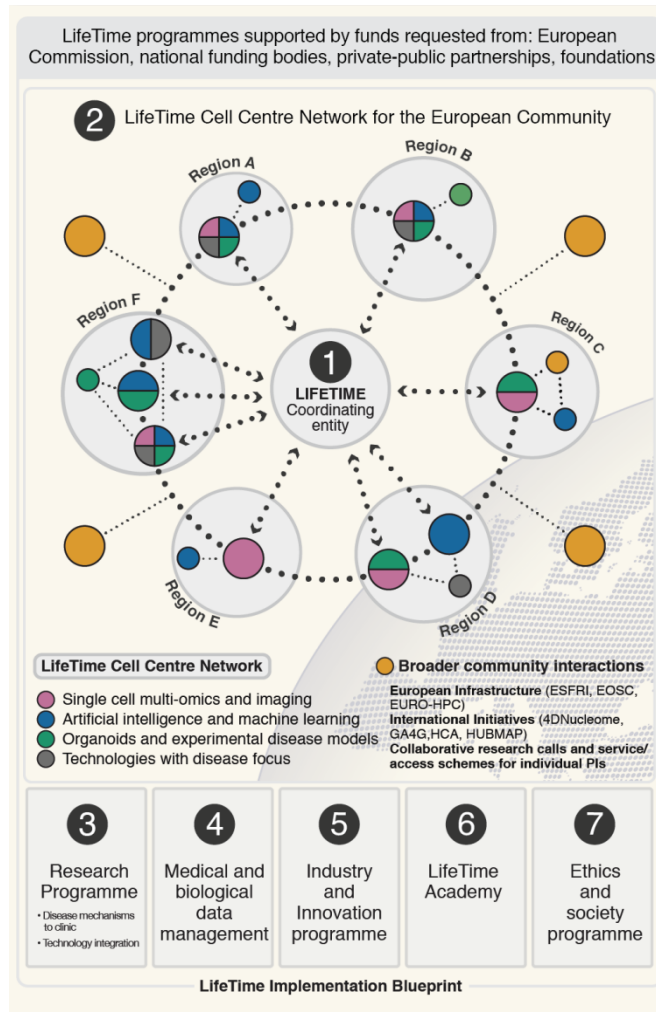
Patient-derived disease models such as organoids will be further developed to improve tissue architecture, incorporation of physiological processes, such as vasculature, nerve innervation and immune system to provide models that more faithfully recapitulate disease processes. Improved knowledge of disease mechanisms requires application of large scale perturbation tools to organoids. Tissue-tissue and organ-organ interactions will be recreated using microfluidics and organ-on-a-chip technologies to study key systemic interactions in diseases.



803  
 804  
 805  
 806  
 807  
 808  
 809  
 810  
 811  
 812

**Figure 3. Exploiting the LifeTime dimension to empower disease targeting.**

Multi-omics analysis of patient derived samples (blood or tissue) or personalised disease models (e.g. organoids, experimental disease models) will be profiled longitudinally to cover the different disease stages. Large-scale multidimensional datasets will be analysed using AI/machine learning to arrive at predictive models for disease trajectories providing single cell resolution and molecular mechanisms of disease onset and progression. Models will be validated using large-scale perturbation analysis and targeted functional studies in disease models, which will be used in an iterative process to improve both computational and disease models.



813  
814  
815  
816  
817  
818  
819  
820  
821  
822  
823  
824  
825  
826

**Figure 4. Blueprint of the LifeTime Initiative.**

LifeTime proposes a large-scale research initiative to coordinate national efforts, as well as foster collaboration and knowledge exchange between the public and private sector. LifeTime recommends the implementation of several programs. (1) Community Coordination structure to avoid duplication of efforts and increase effectiveness requires funding instruments for a central coordination body (2) Network of Cell Centres to support European Community. A network of interdisciplinary centres would complement each other’s strengths and expertise in the three LifeTime technology areas and operate in tight association with hospitals, and integrate technology development with clinical practice. The connected but geographically distributed nodes would serve both as innovation hubs with strong links to industry as well as open education and training centres. (3) LifeTime Research and technology integration program. (4) Medical and biological data management platform. (5) Programmes fostering industry and Innovation. (6) LifeTime Academy. (7) Societal engagement.