



**HAL**  
open science

## **Behavior of critical metals in metamorphosed Pb-Zn ore deposits: example from the Pyrenean Axial Zone**

Alexandre Cugerone, Bénédicte Cenki-Tok, Manuel Munoz, Kalin Kouzmanov, Emilien Oliot, Vincent Motto-Ros, Elisabeth Le Goff

### ► **To cite this version:**

Alexandre Cugerone, Bénédicte Cenki-Tok, Manuel Munoz, Kalin Kouzmanov, Emilien Oliot, et al.. Behavior of critical metals in metamorphosed Pb-Zn ore deposits: example from the Pyrenean Axial Zone. *Mineralium Deposita*, 2021, 56, <10.1007/s00126-020-01000-9>. <hal-03026573v4>

**HAL Id: hal-03026573**

**<https://hal.science/hal-03026573v4>**

Submitted on 8 Oct 2021

**HAL** is a multi-disciplinary open access archive for the deposit and dissemination of scientific research documents, whether they are published or not. The documents may come from teaching and research institutions in France or abroad, or from public or private research centers.

L'archive ouverte pluridisciplinaire **HAL**, est destinée au dépôt et à la diffusion de documents scientifiques de niveau recherche, publiés ou non, émanant des établissements d'enseignement et de recherche français ou étrangers, des laboratoires publics ou privés.



HAL Authorization

## **Behavior of critical metals in metamorphosed Pb-Zn ore deposits: example from the Pyrenean Axial Zone**

Alexandre Cugerone, Bénédicte Cenki-Tok, Manuel Munoz, Kalin Kouzmanov, Emilien Oliot, Vincent Motto-Ros, Elisabeth Le Goff

► **To cite this version:**

Alexandre Cugerone, Bénédicte Cenki-Tok, Manuel Munoz, Kalin Kouzmanov, Emilien Oliot, et al.. Behavior of critical metals in metamorphosed Pb-Zn ore deposits: example from the Pyrenean Axial Zone. Mineralium Deposita, Springer, In press, 10.1007/s00126-020-01000-9 . hal-03026573v4

**HAL Id: hal-03026573**

**<https://hal.archives-ouvertes.fr/hal-03026573v4>**

Submitted on 8 Oct 2021

**HAL** is a multi-disciplinary open access archive for the deposit and dissemination of scientific research documents, whether they are published or not. The documents may come from teaching and research institutions in France or abroad, or from public or private research centers.

L'archive ouverte pluridisciplinaire **HAL**, est destinée au dépôt et à la diffusion de documents scientifiques de niveau recherche, publiés ou non, émanant des établissements d'enseignement et de recherche français ou étrangers, des laboratoires publics ou privés.

# Behavior of critical metals in metamorphosed Pb-Zn ore deposits: example from the Pyrenean Axial Zone

Alexandre Cugerone<sup>1</sup> · Bénédicte Cenki-Tok<sup>1,2</sup> · Manuel Muñoz<sup>1</sup> · Kalin Kouzmanov<sup>3</sup> · Emilien Oliot<sup>1</sup> · Vincent Motto-Ros<sup>4</sup> · Elisabeth Le Goff<sup>5</sup>

Received: 27 July 2019 / Accepted: 15 June 2020  
© Springer-Verlag GmbH Germany, part of Springer Nature 2020

## Abstract

Rare metals (Ge, Ga, In, Cd) are key resources for the development of green technologies and are commonly found as trace elements in base-metal mineral deposits. Many of these deposits are in orogenic belts and the impact of recrystallization on rare metal content and distribution in sphalerite needs to be evaluated. Based on laser ablation inductively coupled plasma mass spectrometry (LA-ICP-MS) analyses, and micro-imaging techniques such as laser-induced breakdown spectroscopy (LIBS) and electron backscattered diffraction (EBSD), we investigate the minor and trace element composition related to sphalerite texture for three types of mineralization from the Pyrenean Axial Zone (PAZ). Vein mineralization (type 2b) appears significantly enriched in Ge and Ga compared to disseminated and stratabound mineralization (type 1 and type 2a, respectively). In vein mineralization, the partial recrystallization induced by deformation led to the remobilization of Ge, Ga, and Cu from the sphalerite crystal lattice into accessory minerals. We propose that the association of intragranular diffusion and fluid-rock reaction were likely responsible for the formation of patchy-oscillatory zoning in sphalerite, and the crystallization of Ge-rich accessory minerals. Chemical and textural heterogeneity is common in sphalerite from various world-class deposits and a full understanding of these heterogeneities is now crucial to assess the rare metal potential, and associated extraction processes of deformed base-metal ores.

## Introduction

Sphalerite (ZnS) commonly contains high amounts (up to a few 1000s of ppm) of rare metals such as germanium (Ge), indium

(In), gallium (Ga), or cadmium (Cd), which are currently extracted as by-products from zinc concentrates (Frenzel et al. 2014, 2016, 2017; Licht et al. 2015) and considered critical for the economy (European Commission 2017; U.S. Geological

Editorial handling: H. A. Gilg

**Electronic supplementary material** The online version of this article (<https://doi.org/10.1007/s00126-020-01000-9>) contains supplementary material, which is available to authorized users.

✉ Alexandre Cugerone  
alex.cugerone@gmail.com

Bénédicte Cenki-Tok  
benedicte.cenki-tok@umontpellier.fr

Manuel Muñoz  
manuel.munoz@umontpellier.fr

Kalin Kouzmanov  
Kalin.Kouzmanov@unige.ch

Emilien Oliot  
emilien.oliot@umontpellier.fr

Vincent Motto-Ros  
vincent.motto-ros@univ-lyon1.fr

Elisabeth Le Goff  
e.legoff@brgm.fr

<sup>1</sup> Géosciences Montpellier, Université de Montpellier, CNRS, Montpellier, France

<sup>2</sup> Earthbyte Research Group, School of Geosciences, University of Sydney, Sydney, NSW 2006, Australia

<sup>3</sup> Department of Earth Sciences, University of Geneva, Geneva, Switzerland

<sup>4</sup> Institut Lumière Matière Université Lyon 1, Villeurbanne, France

<sup>5</sup> BRGM, Bureau de Recherches Géologiques et Minières, Montpellier, France

33 Survey 2019). These high concentrations of trace elements are  
 34 generally related to undeformed sphalerite in the form of coarse  
 35 crystals originating from open-space crystallization or from  
 36 colloform-banded precipitates with fine-grained textures  
 37 (Cerny and Schroll 1995; Goffin et al. 2015; Henjes-Kunst  
 38 et al. 2017; Cugerone et al. 2018a). Undeformed sphalerite oc-  
 39 curs mainly in Mississippi Valley type (MVT) and polymetallic  
 40 vein deposits (Viets et al. 1992; Saini-Eidukat et al. 2009;  
 41 Murakami and Ishihara 2013; Belissont et al. 2014; Bonnet  
 42 2014; Bauer et al. 2018). However, the largest sphalerite de-  
 43 posits are found in orogenic domain (Lawrence 1973; Moore  
 44 et al. 1986; Kelley and Jennings 2004; Kampunzu et al. 2009;  
 45 Wilkinson 2013; Gibson et al. 2017). This reflects the fact that  
 46 the ores originally formed as sediment-hosted massive sulfide  
 47 (SHMS), volcanic-hosted massive sulfide (VHMS), or  
 48 carbonate-hosted deposits (Kipushi-type, more rarely MVT)  
 49 are more likely to have undergone metamorphism and recrystallization during an orogenic event (Bernstein and Cox 1986; Hughes 1987; Murphy 2004; Wagner and Monecke 2005; Huston et al. 2006; Melcher et al. 2006; Monteiro et al. 2006; Kamona and Friedrich 2007; Reiser et al. 2011; Ye et al. 2011).

49 In metamorphic environments, remobilization of minor and  
 50 trace elements related to dynamic recrystallization, annealing, or  
 51 even brecciation has been studied for various sulfide minerals.  
 52 The mobility of Au, As, Ni, Co, Pb, Bi, and Se has been exam-  
 53 ined in pyrite (Cook et al. 2009a; Large et al. 2009; Reddy and  
 54 Hough 2013; Velásquez et al. 2014; Dubosq et al. 2018;  
 55 Kampmann et al. 2018), arsenopyrite-löllingite (Tomkins and  
 56 Mavrogenes 2001; Wagner et al. 2007; Fougereuse et al. 2016)  
 57 and pyrrhotite (Vukmanovic et al. 2014). The dynamic recrystallization assisted by metamorphic fluids in gold systems releases invisible gold from the sulfide crystal lattice and subsequent crystallization of metallic gold (Fougereuse et al. 2016; Dubosq et al. 2018). Lockington et al. (2014) studied sphalerite mineralization from metamorphosed VHMS and SHMS deposits. Metamorphic recrystallization was shown to lead to remobilization of minor and trace elements resulting in a loss of compositional zoning, and homogenization of Cu distribution in the crystal lattice of sphalerite, possibly associated to a depletion in Pb, Bi, and Ag and an enrichment in Fe, Cd, Mn, and In. These data were acquired in various deposits of different metamorphic grade and the role of primary enrichment for these elements cannot be clearly established. In Neves-Corvos (Iberian Pyrite Belt, Carvalho et al. 2018), indium is primarily incorporated in high-temperature sphalerite and chalcopyrite, but was not lost during recrystallization associated to hydrothermal re-working and/or low-grade tectonometamorphic overprints (Relvas et al. 2006; Carvalho et al. 2018). Nonetheless, roquesite (CuInS<sub>2</sub>) locally occurs at sulfide grain boundaries. In sphalerite from Neves Corvo, Ge is reported below ~ 100 ppm Ge (Carvalho et al. 2018). In the Barrigão deposit (Iberian Pyrite Belt), Reiser et al. (2011) and Belissont et al. (2019) suggested late-stage remobilization of germanium associated to low-grade

metamorphism (260–300 °C) with germanium enrichments in  
 chalcopyrite and accessory phases localized in fractures.  
 Cugerone et al. (2019) showed evidence for redistribution of  
 Ge in partly recrystallized sphalerite from the Arre vein deposit (Pyrenean Axial Zone). Recrystallized sphalerite is Ge-depleted but correspond to textures where Ge minerals occur, compared to dark domains in coarser grains which still contain up to ~600 ppm Ge in the sphalerite lattice. Occurrences of rare metals such as Ge, Ga, In, and Cd within deformed/metamorphosed sphalerite ore remain poorly documented and their behavior in such systems needs to be evaluated.

Sphalerite is ductile at relatively low temperature in various experimental deformation studies (< 400 °C; Clark and Kelly 1973; Siemes and Borges 1979; Couderc et al. 1985; Cox 1987). No experimental study on the impact of sphalerite deformation on trace elements behavior is available.

Currently, the production of rare metals from base-metal deposits remains challenging. Germanium is generally extracted, for example, by hydrometallurgy followed by various mass transfer techniques (Ruiz et al. 2018). However, only a few percent of the total rare metal content in sphalerite (at ppm level) is recovered due to a negative effect which prevents the extraction of zinc (around ~ 3% of the Ge extracted; Ruiz et al. 2018; U.S. Geological Survey 2019). Chemical extraction from highly concentrated phases (with Ge contents > 1 wt%), previously separated by magnetic or mechanic techniques, could prove to be much more profitable (Cugerone et al. 2019).

This study aims to decipher the behavior of rare metals, mainly Ge, Ga, In, and Cd, in sphalerite from different Pb-Zn deposits and mineralization styles of the Pyrenean Axial Zone (PAZ). The Pb-Zn deposits of the PAZ contain sphalerite rich in rare metal (ppm level) and Ge-rich accessory minerals, such as brunogeierite GeFe<sub>2</sub>O<sub>4</sub>, briartite GeCu<sub>2</sub>(Fe, Zn)S<sub>4</sub>, carboirite GeFeAl<sub>2</sub>O<sub>5</sub>(OH)<sub>2</sub>, or argutite GeO<sub>2</sub> (Laforet et al. 1981; Johan et al. 1983; Bernstein 1985; Johan and Oudin 1986; Pouit and Bois 1986; Julliot et al. 1987; Cugerone et al. 2018a). We have investigated the textural and chemical composition of different types of sphalerite mineralization in the Pyrenees using an in situ quantitative analysis by LA-ICP-MS and micro-imaging techniques such as EBSD and LIBS mapping. We show a detailed genetic model at vein and granular scales for the partitioning of Ge and associated trace elements between sphalerite and accessory minerals. Finally, we present a comparison with other Ge-enriched Pb-Zn deposits worldwide.

## Sampling and analytical methods

Oriented ore samples were collected from underground mines or surface outcrops. We have studied polished sections (either 30 or 150 μm thick) from six Pb-Zn deposits of three mineralization types.

136 EBSD analysis is used to characterize the texture and the  
 137 grain size of the sphalerite. This technique requires a well-  
 138 polished surface. In order to eliminate surface defects, a last step  
 139 of polishing (0.25 μm) was performed using a Vibromet polisher  
 140 with 150 g of pressure on a polyurethane layer with colloidal  
 141 silica. During this process, cleaning the frozen colloidal silica  
 142 was necessary to avoid scratches on sphalerite. EBSD maps  
 143 were performed with a Camscan Crystal Probe X500FE SEM-  
 144 EBSD at Geosciences Montpellier (CNRS-University of  
 145 Montpellier, France). Operating conditions were 20 kV and  
 146 5 nA, with a working distance of 25 mm under 2 Pa low vacu-  
 147 um. Sample surfaces were positioned horizontally at 20° to the  
 148 incident electron beam to improve the collection of the  
 149 backscattered electrons. Element distribution maps and  
 150 backscattered electron (BSE) images were simultaneously ac-  
 151 quired by measuring X-ray fluorescence with an EDS (energy-  
 152 dispersive spectrometer). The step size for 2D imaging was  
 153 below 5 μm. EBSD mapping was preferentially performed on  
 154 sphalerite, indexed as a cubic crystal symmetry, while Ge min-  
 155 erals were localized by EDS maps. The EBSD indexation of  
 156 quartz, calcite, galena, and pyrite was also performed. Match  
 157 units used for sphalerite indexation were derived from published  
 158 crystallographic data from Villars and Calvert (1991). The lower  
 159 misorientation limit for grain boundary indexation is fixed at 20°  
 160 following careful investigation on misorientation boundary  
 161 maps superposed on orientation maps. Oxford Instruments soft-  
 162 wares AZtec and Channel 5 were used to generate maps using  
 163 the EDS (chemical maps) and EBSD (structural maps).

164 Electron probe micro-analyses were carried out using a  
 165 Cameca SX100 at the Service Inter-Régional Microsonde-  
 166 Sud (Montpellier, France). Major, minor, and trace elements  
 167 were measured with a beam current of 100 nA and accelerat-  
 168 ing voltage of 20 kV. The analytical procedure and detailed  
 169 settings for each elemental analysis are detailed in Cugerone  
 170 et al. (2018a). Zinc concentrations of sphalerite crystals were  
 171 used as an internal calibration for LA-ICP-MS analyses.

172 LA-ICP-MS was used to determine minor and trace ele-  
 173 ment concentrations in sphalerite. Type 1 sphalerite was ana-  
 174 lyzed in one sample from Bentaillou ( $n = 7$ ), type 2a sphalerite  
 175 in three samples from Bentaillou ( $n = 12$ ), Margalida ( $n = 9$ ),  
 176 and Victoria ( $n = 11$ ). Type 2b sphalerite was measured in  
 177 three samples from Arre ( $n = 36$ ), Anglas ( $n = 40$ ), and Pale  
 178 Bidau ( $n = 30$ ).

179 Analyses were carried out using an Excimer CompEx 102  
 180 coupled to a ThermoFinnigan Element XR at the OSU-  
 181 OREME AETE platform (University of Montpellier,  
 182 France). Laser ablation was performed using a constant 5 Hz  
 183 pulse rate at 140 mJ with a spot diameter of 26 μm. Each  
 184 analysis comprises 180 s of background measurement and  
 185 60 s of sample ablation (signal measurement), followed by a  
 186 60-s retention time to ensure a proper cell washout. Data were  
 187 processed using the Glitter 4.0 software package (Van  
 188 Achterbergh et al. 2001). The following isotopes were

measured: <sup>29</sup>Si, <sup>34</sup>S, <sup>55</sup>Mn, <sup>57</sup>Fe, <sup>59</sup>Co, <sup>61</sup>Ni, <sup>63</sup>Cu, <sup>64</sup>Zn, 189  
<sup>69</sup>Ga, <sup>74</sup>Ge, <sup>75</sup>As, <sup>77</sup>Se, <sup>95</sup>Mo, <sup>105</sup>Pd, <sup>107</sup>Ag, <sup>111</sup>Cd, <sup>115</sup>In, 190  
<sup>118</sup>Sn, <sup>121</sup>Sb, and <sup>208</sup>Pb. MASS-1 reference material (Wilson 191  
 et al. 2002) was used as an external standard with a corrected 192  
 $57 \pm 1.75$  ppm value for Ge (Dr. Stephen Wilson, personal 193  
 communication). NIST SRM 610 (Pearce et al. 1997) was 194  
 used as secondary external standard to identify possible instru- 195  
 mental drift. Concentrations for Ni, As, Mo, Se, Pd, and Si 196  
 were below detection limits in all measurements. Several 197  
 time-integrated LA-ICP-MS spectra are reported in the 198  
 electronical supplementary material (ESM 1), illustrating the 199  
 time intervals used for the measurements. One standard devi- 200  
 ation is systematically indicated for median values. 201

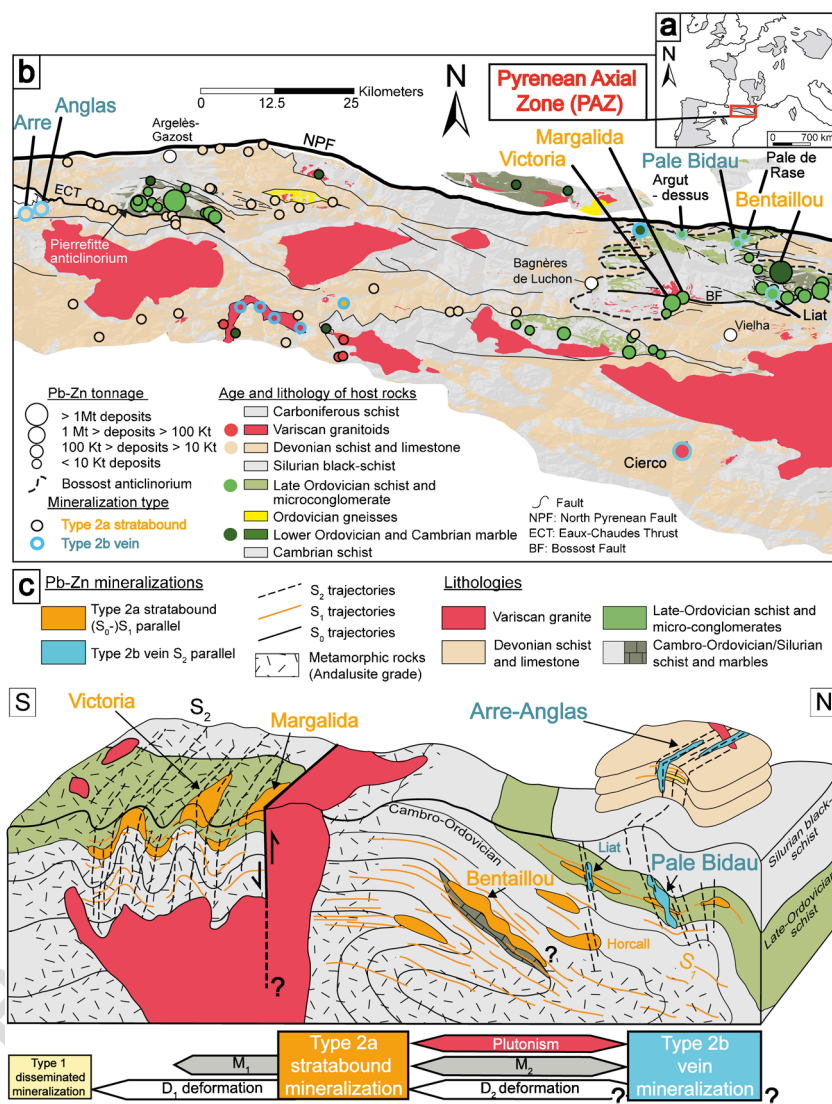
Laser-induced breakdown spectroscopy (LIBS) imaging 202  
 technique was used to highlight the distribution of Ge, Cu, 203  
 Ga, Zn, Si, Fe, Cd, Al, Mg, and Ti, in a highly zoned sphalerite 204  
 sample from Arre (ARR03 sample) to map metallic elements 205  
 at a micrometric spatial resolution, and with a sensitivity at the 206  
 ppm level (Sancey et al. 2014; Cáceres et al. 2017; Fabre et al. 207  
 2018). During the analysis, the sample surface is scanned, 208  
 through single laser pulses, in a pixel-by-pixel manner to in- 209  
 duce the breakdown of the material. The light radiation emit- 210  
 ted by the plasma is then collected by an optical system and 211  
 analyzed using a spectrometer. The sample was excited using 212  
 Nd:YAG laser with a pulse energy of about 600 μJ operating 213  
 at 100 Hz and a lateral resolution (i.e., distance between two 214  
 consecutive laser shots) of 13 μm. The surface analyzed is 215  
 about 6 cm<sup>2</sup> (3.6 megapixels) and was measured in 6 h. The 216  
 spectrometer was configured in the spectral range 250– 217  
 330 nm to detect Ge (265.1 nm), Cu (324.7 nm), and Ga 218  
 (294.4 nm). Due to an interference with Al, the Ge line at 219  
 269.1 nm was used in the aluminosilicate phases. 220

**Geological setting** 221

The Pb-Zn ore deposits are hosted in the Variscan PAZ 222  
 (Fig. 1a) and exhumed during the Paleogene collision between 223  
 the Iberia and Eurasian plates (Zwart 1979; Carreras and 224  
 Druguet 2014). The PAZ is composed of Paleozoic 225  
 metasediments intruded by Ordovician and Late-Variscan 226  
 granite (Fig. 1b; Kleinsmiede 1960; Zwart 1963; Denèle 227  
 et al. 2014). The Pb-Zn deposits are concentrated in pluri- 228  
 kilometeric structures such as the Bossost or Pierrefitte 229  
 anticlinoria (Fig. 1b). 230

The Pb-Zn district of the PAZ was exploited in twentieth 231  
 century. It has produced ca. 400 kt of Zn and 180 kt of Pb 232  
 (BRGM 1984; Ovejero Zappino 1991). Three types of Pb-Zn 233  
 mineralization are described in Cugerone et al. (2018b). Type 1 234  
 is minor, disseminated, and laminated mineralization, probably 235  
 associated to sedimentation during Cambro-Ordovician and 236  
 Devonian times (Fig. 1c). Type 2a is a structurally controlled 237  
 mineralization parallel to S<sub>0</sub>-S<sub>1</sub> (Fig. 1c), synchronous to 238

**Fig. 1** **a** Location of the Pyrenean Axial Zone in the Variscan belt of Western Europe. **b** Lithological and structural map of Central Pyrenean Axial Zone with location of Pb-Zn deposits (from Pouit 1985, Bureau de Recherches Géologiques et Minières [http://infoterre.brgm.fr], and Instituto Geológico y Minero de España [http://mapas.igme.es/Servicios/default.aspx]). **c** Structural 3D synthetic model with location of the studied Pb-Zn deposits in relation to lithology, structure, and metamorphic grade. Chronological interpretation from Cugerone et al. (2018b). Timing of mineralization for the type 2b vein mineralizations is unknown but deformation imprint is considered as Late-Variscan ( $D_2$ )



239 Variscan  $D_1/M_1$  regional deformation/metamorphism related to  
 240 crustal thickening (Zwart 1963, 1979; Mezger et al. 2004;  
 241 Laumonier et al. 2010) with a peak estimated at 580 °C and  
 242 0.55 GPa in the Bossost dome (Mezger et al. 2004). Type 2a  
 243 mineralization pre-dates Variscan  $M_2$  contact metamorphism,  
 244 culminating at ca. 525 °C and 0.2 GPa (Mezger and Passchier  
 245 2003; Mezger et al. 2004; de Hoÿm de Marien et al. 2019) in the  
 246 Victoria-Margalida area. In the field, type 2a mineralization ap-  
 247 pears in metric pull-apart type structures in Cambrian marble as  
 248 in Bentaillou (Fig. 1c) or folded by  $D_2$  deformation in Late-  
 249 Ordovician metasediments in Victoria (Fig. 1c). It can also be  
 250 associated to fault damaged zones in Late-Ordovician marble in  
 251 Margalida (Fig. 1b; Cugerone et al. 2018b).

252 Type 2b (Fig. 1) is epigenetic vein mineralization probably  
 253 late, or post-dating, the  $D_2/M_2$  deformation event (Cugerone  
 254 et al. 2018b). Pb-Zn mineralization is structurally controlled  
 255 and occurs as vertical decimetric-sized veins parallel to  $S_2$  cleav-  
 256 age, which locally intersect type 2a mineralization. No alteration

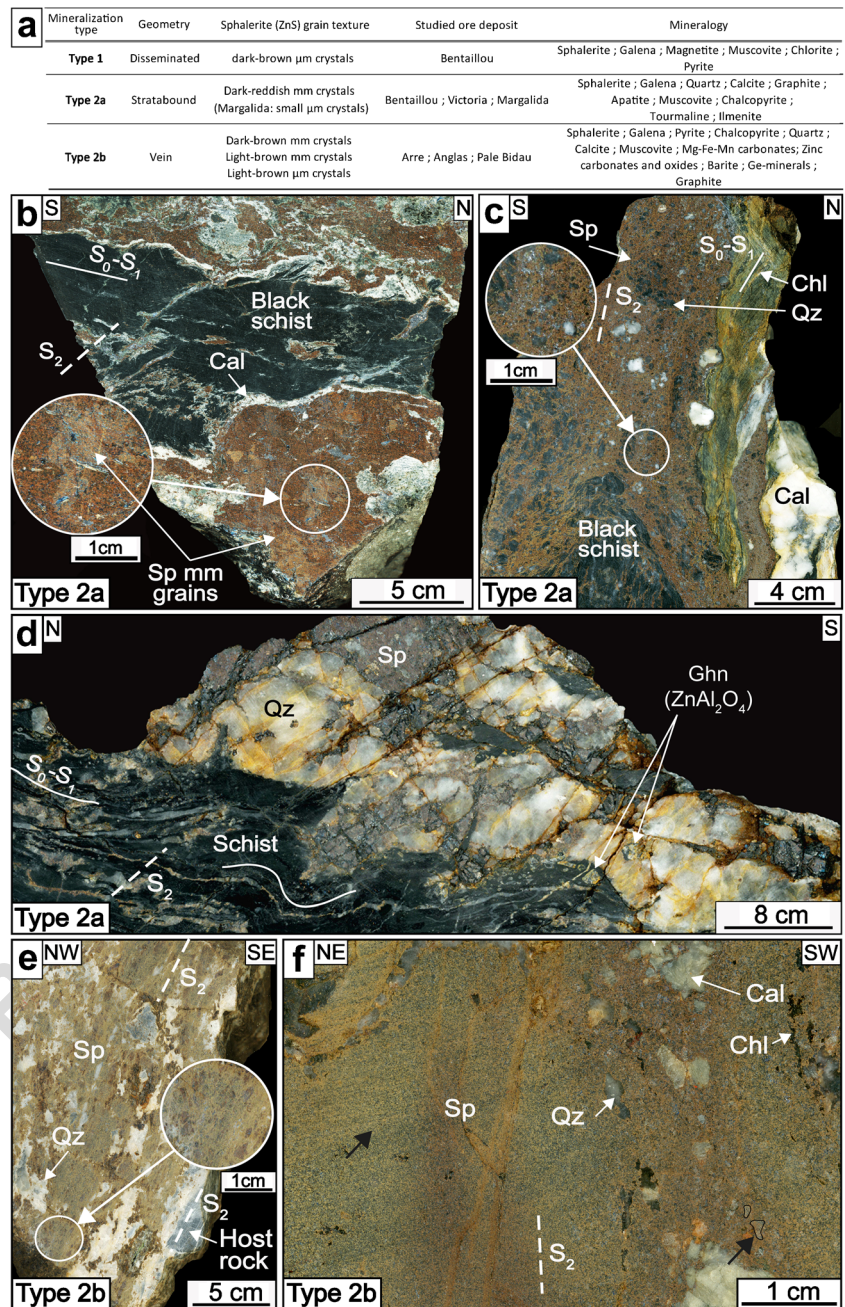
257 halo has been observed along the contact with the host-rock.  
 258 Type 2b mineralization cuts Late-Variscan aplitic intrusions  
 259 and is affected by a cleavage parallel to the Late-Variscan  $S_2$   
 260 cleavage in the host rock (Cugerone et al. 2018b). We have  
 261 studied samples from type 2b Pale Bidau, Arre, and Anglas  
 262 deposits hosted in calc-schists (Fig. 2b). A late  $D_3$  deformation  
 263 is reported in the literature (Carreras and Druguet 2014; Cochelin  
 264 et al. 2017) and corresponds to faults like the Bossost mylonitic  
 265 fault close to type 2a Margalida deposit.

266 **Results**

267 **Mineralization types and textures**

268 The three types of mineralization are mainly composed of  
 269 sphalerite and galena, with minor pyrite, chalcopyrite, arseno-  
 270 pyrite, and gangue of quartz-carbonate (Fig. 2a).

**Fig. 2** Polished samples of type 2a and type 2b mineralization (Cal: calcite; Chl: chlorite; Ghn: gahnite; Qz: quartz; Sp: sphalerite). **a** Characteristic of the three mineralization types: type 1, type 2a, and type 2b. **b** Sample with millimetric coarse-grained sphalerite (dark brown reddish), associated to calcite (white), and black-schist (Bentaillou deposit). **c** Pluri-micrometric small-grained sphalerite (dark brown reddish). A brecciated texture can be observed with clasts of quartz, calcite, and black-schist (Margalida deposit). **d** Folded ( $F_2$ ) coarse-grained sphalerite and quartz mineralization. Gahnite crystals are reported in schists and in the mineralization (Victoria deposit). **e** Light to dark brown zonation in sphalerite crystals associated to quartz and calc-schist host rock. Set shows coalescence of coarse millimetric and small micrometric crystals appear (Arre deposit). **f** Light to dark brown sphalerite associated to quartz, calcite, and chlorite. Dark brown vertical bands are visible on the sample. Sphalerite grains are locally visible as shown by the black arrow at bottom right (Pale Bidau deposit)



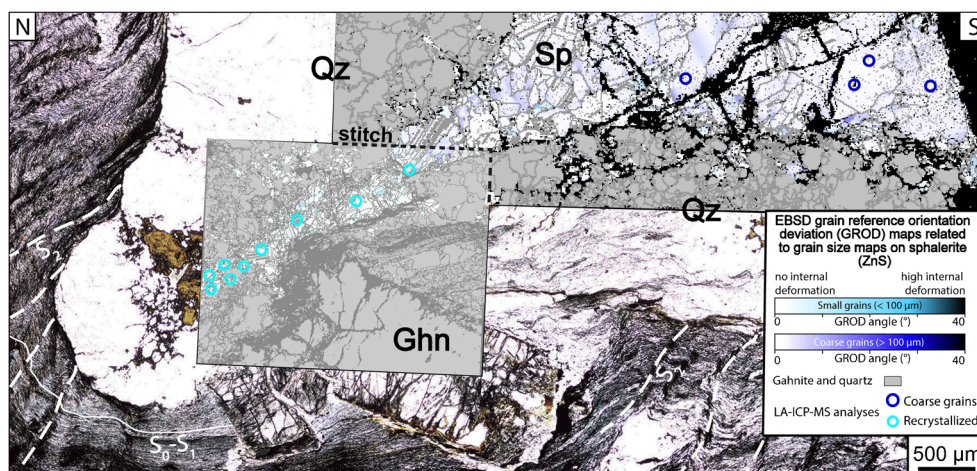
271 Type 1 is composed of micrometric-size disseminated sulfide  
272 crystals. This mineralization is crosscut by type 2a veins  
273 (Bentaillou deposit; Cugerone et al. 2018b). It consists of  
274 pluri-micrometric euhedral dark brown crystals.

275 Type 2a sphalerite shows undeformed millimeter-size  
276 twinned crystals and polygonal shape that is dark-red in  
277 polished slabs (Fig. 2b). The texture is different at Margalida  
278 (Fig. 2c), which presents micrometer-scale dark brown sphalerite  
279 grains and forming the matrix of a durchbewegung breccia  
280 composed of quartz, calcite, and schist clasts. Sphalerite is  
281 folded in Victoria (Fig. 2d) and cross-cuts metamorphic  
282 centimeter-scale gahnite (Fig. 3; Cugerone et al. 2018a).

Sphalerite exhibits recrystallized textures in  $F_2$  fold hinges  
(Fig. 3).

The mineral assemblages of types 2a and 2b veins  
(Cugerone et al. 2018b) are distinct with the presence of apatite,  
ilmenite, and tourmaline in type 2a and Ge-minerals, graphite,  
and Mg-Fe-Mn-Zn carbonates in type 2b. Sphalerite crystals of  
type 1, 2a, and 2b mineralizations do not contain chalcocopyrite  
inclusions.

Type 2b sphalerite is light to dark brown in transmitted-  
light and with heterogeneous grain size resulting from a  
superimposed cleavage (considered to be  $S_2$ ) parallel to the  
vein contact (Fig. 2e and f). In the Arre, Anglas, and Pale Bidau



**Fig. 3** EBSD-grain reference orientation deviation angle component (GROD) maps related to grain size superimposed onto a transmitted-light microphotograph of type 2a sphalerite-quartz mineralization hosted in schist deformed by  $F_2$  fold hinge from Victoria deposit. The GROD maps allow to visualize intragranular microstructures and represent the misorientation deviation for each pixel compared to the

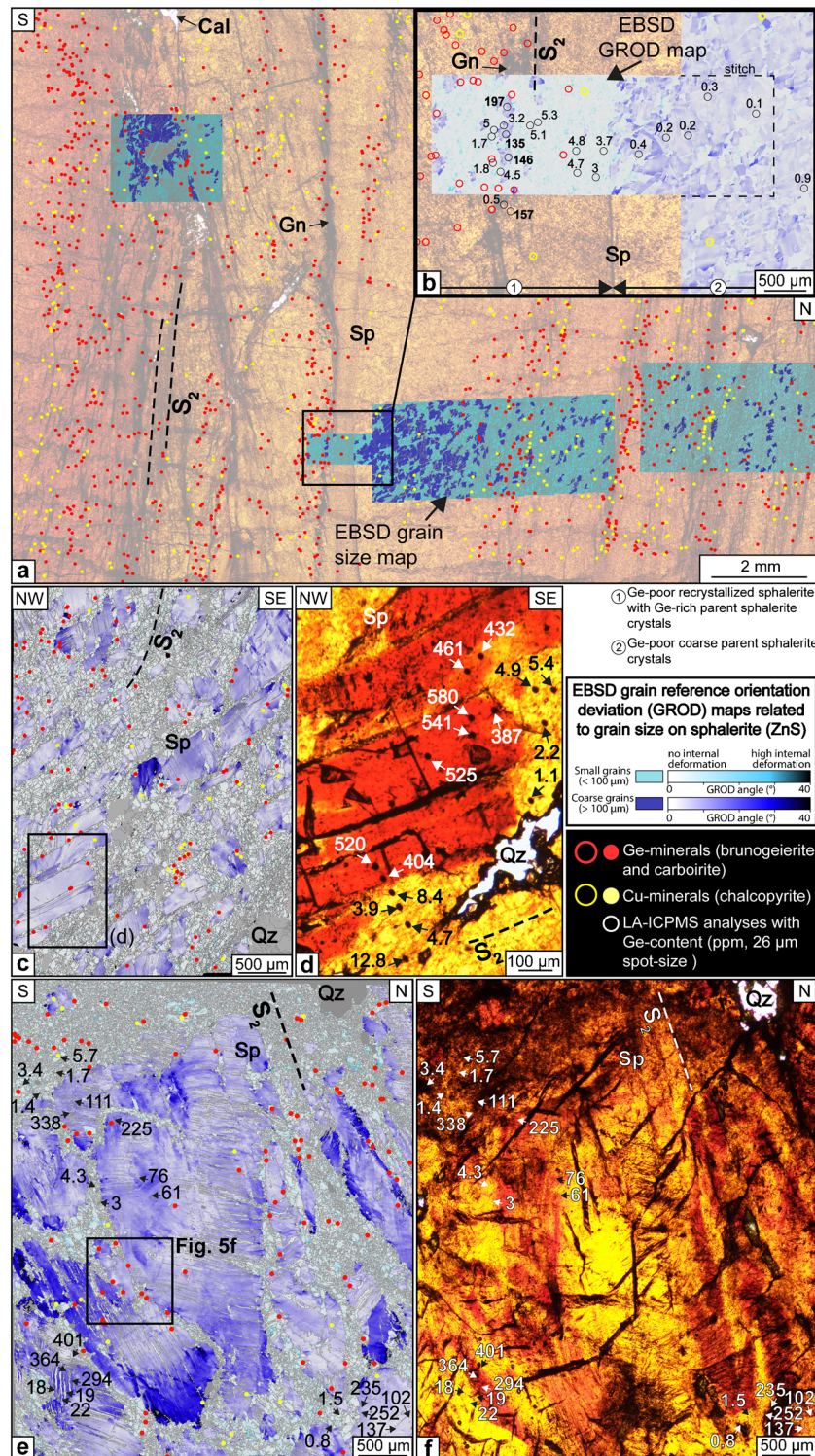
mean misorientation deviation of the entire sphalerite grain (steps of measurement of 4 and 10  $\mu\text{m}$  for the left and right EBSD maps respectively). In the GROD calculation, twin boundaries are considered as grain boundaries to exclude their large misorientation ( $55\text{--}60^\circ$ ) (Ghn: garnite; Qz: quartz; Sp: sphalerite). LA-ICP-MS spot analyses in type 2a coarse and recrystallized sphalerite are indicated

295 Bidau deposits, sphalerite crystals exhibit various colors from  
 296 dark brown zones in coarse, millimetric grains, to light-brown  
 297 zones in coarse millimetric, or fine micrometric, grain frac-  
 298 tions (Figs. 2e and 3f). Quartz and carbonate show comb tex-  
 299 tures with the occurrence of cockade breccia mainly in Arre  
 300 and Anglas type 2b veins. EBSD-grain reference orientation  
 301 deviation (GROD) maps and transmitted-light microphoto-  
 302 graphs are superposed in Fig. 4. Coarse grains ( $> 100 \mu\text{m}$ )  
 303 and small recrystallized grains ( $< 100 \mu\text{m}$ ) are colored in shad-  
 304 ed of dark and light blue, respectively. Blue colors are more  
 305 pronounced where internal deformation is more intense. Three  
 306 types of sphalerite textures appear in type 2b mineralization:  
 307 coarse grains with dark brown domains, coarse grains with  
 308 light-brown domains, and recrystallized light-brown crystals.  
 309 Sub-vertical fine recrystallized fraction domains appear most-  
 310 ly in white color in the GROD maps (Fig. 4a) which attests to  
 311 poor internal deformation and commonly mark the cleavage,  
 312 for example in PB (Fig. 4a and b). Coarse crystals ( $> 100 \mu\text{m}$ )  
 313 with color zones from light to dark brown are reported in the  
 314 Arre and Anglas samples (Fig. 4c–f) and commonly contain  
 315 ductile deformation attested by intense dark-blue color mainly  
 316 close to grain boundaries (Fig. 4e). In the EBSD-GROD and  
 317 the grain size maps, it is possible to discriminate between  
 318 recrystallized and light-brown coarse grains while these two  
 319 fractions show the same light-orange color in transmitted light  
 320 (Fig. 4). Sphalerite from the Pale Bidau deposit exhibits  
 321 blurred color domains with progressive variations from light  
 322 to dark brownish tints and no intragranular color zonation is  
 323 observed, especially in coarse grains.

324 Minerals in which Ge is a major element have been identified  
 325 by optical microscopy and EDS maps as brunogeierite  
 326 ( $\text{GeFe}_2\text{O}_4$ ), carboirite [ $\text{FeA}_{12}\text{GeO}_5(\text{OH})_2$ ], briartite [ $\text{Cu}_2(\text{Fe},$   
 327  $\text{Zn})\text{GeS}_4$ ], and argutite ( $\text{GeO}_2$ ). Briartite is the main Ge-

328 mineral in Arre sphalerite but is rare in Anglas and Pale Bidau  
 329 sphalerite. Carboirite, brunogeierite, and more rarely argutite are  
 330 the common Ge-minerals in the Anglas and Pale Bidau de-  
 331 posits. These minerals are preferentially hosted along grain  
 332 boundaries of recrystallized sphalerite grains. In Figs. 4 and 5,  
 333 Ge-minerals occur as small crystals ( $< 100 \mu\text{m}$ ; see yellow dots  
 334 in Fig. 4) and are preferentially aligned in the  $S_2$  cleavage.  
 335 Similarly, micrometric chalcopyrite is preferentially aligned in

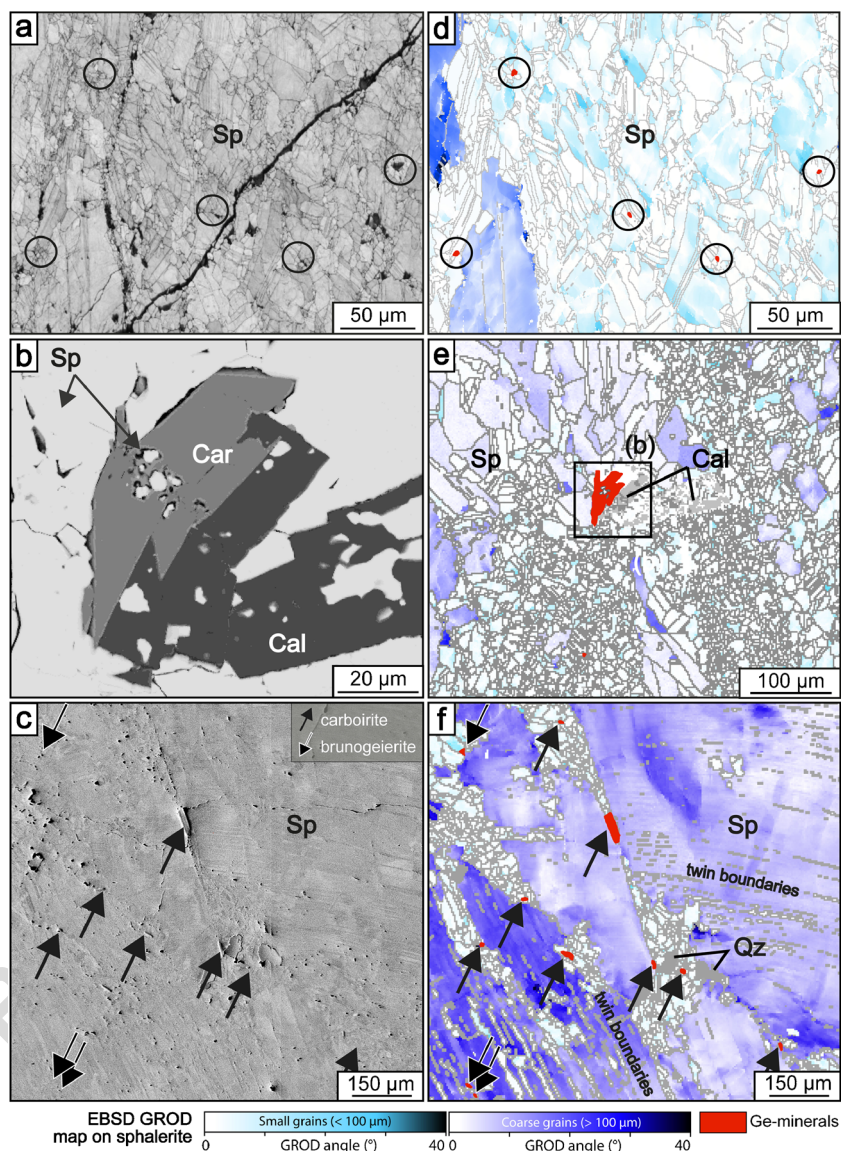
**Fig. 4** Microphotographs associated to EBSD-grain reference orientation deviation angle component (GROD) maps related to sphalerite grain size. The GROD maps allow to visualize intragranular microstructures. Small grains contain low internal misorientation compared to coarse grains, which confirm the presence of dynamic recrystallization. Grain boundaries are represented in all maps except in **b** and chemical contents acquired with LA-ICP-MS are reported (Gln: galena; Qz: quartz; Sph: sphalerite). **a** Scanned microphotograph of sphalerite with superposition of four EBSD-grain size maps (Pale Bidau deposit; step of measurements between 1.5 and 4  $\mu\text{m}$ ). Germanium and Cu minerals observed with EDS map are reported. Location of **b** is indicated. **b** Enlargement of **a** showing the location of LA-ICP-MS spot analyses with Ge contents essentially on two EBSD-GROD maps. Occurrence of Ge and Cu minerals are reported with empty yellow and blue circles to highlight relationships between Ge-Cu minerals and sphalerite (step of measurement of 1.5 and 4  $\mu\text{m}$  for the left and right EBSD maps respectively). **c** EBSD-GROD map with location of Ge- and Cu-rich phases (Arre deposit). These minerals are preferentially located in the recrystallized sphalerite domains. Location of **d** is represented (step of measurement of 2.5  $\mu\text{m}$ ). **d** Enlargement of **c** in transmitted-light with LA-ICP-MS spot analyses associated to Ge contents. Note that the color zonation correspond in part to variations in Ge content. **e** EBSD-GROD map with location of Ge- and Cu-rich minerals in recrystallized sphalerite (Anglas deposit). LA-ICP-MS spot analyses are located with their corresponding Ge contents (step of measurement of 3  $\mu\text{m}$ ). **f** Enlargement of **e** in transmitted-light (150  $\mu\text{m}$  of thickness) with color zonation between light and dark brown. LA-ICP-MS spots are indicated with black or white arrows corresponding to **e**



336 the same recrystallized areas (Fig. 4). These minerals are detected in all type 2b samples (Fig. 4c and e). Carboirite crystals are coarser (from 10 to 100 μm) compared to brunogeierite, argutite, and briartite (5 to 20 μm in size; Fig. 5). Figure 5a–c shows three representative examples of Ge-minerals occurrence characteristic of type 2b mineralization. Two sphalerite grain

size fractions (below and above 100 μm) are considered for the GROD maps (Fig. 5d–f). These maps show that Ge-minerals are only hosted between recrystallized sphalerite grains (< 100 μm, Fig. 5d and e) in areas with low GROD angle, at the contact or between coarse-grained sphalerite crystals or in twin boundaries (Fig. 5f).

**Fig. 5** Images of Ge-minerals hosted in the interstices between recrystallized sphalerite grains (Cal: calcite; Qz: quartz; Sp: sphalerite). **a** Five brunogeierite crystals from the Arre deposit (in the black circle; BSE image). **b** Carboirite crystals with in sphalerite and calcite from the Pale Bidau deposit (SEM image) **c** Nine Ge-minerals hosted between sphalerite grains from the Anglas deposit. **d–f** EBSD-GROD maps related to grain size for **a**, **b**, and **c**, respectively (step of measurement of 0.5, 3, and 3  $\mu\text{m}$  for the three EBSD maps, respectively)

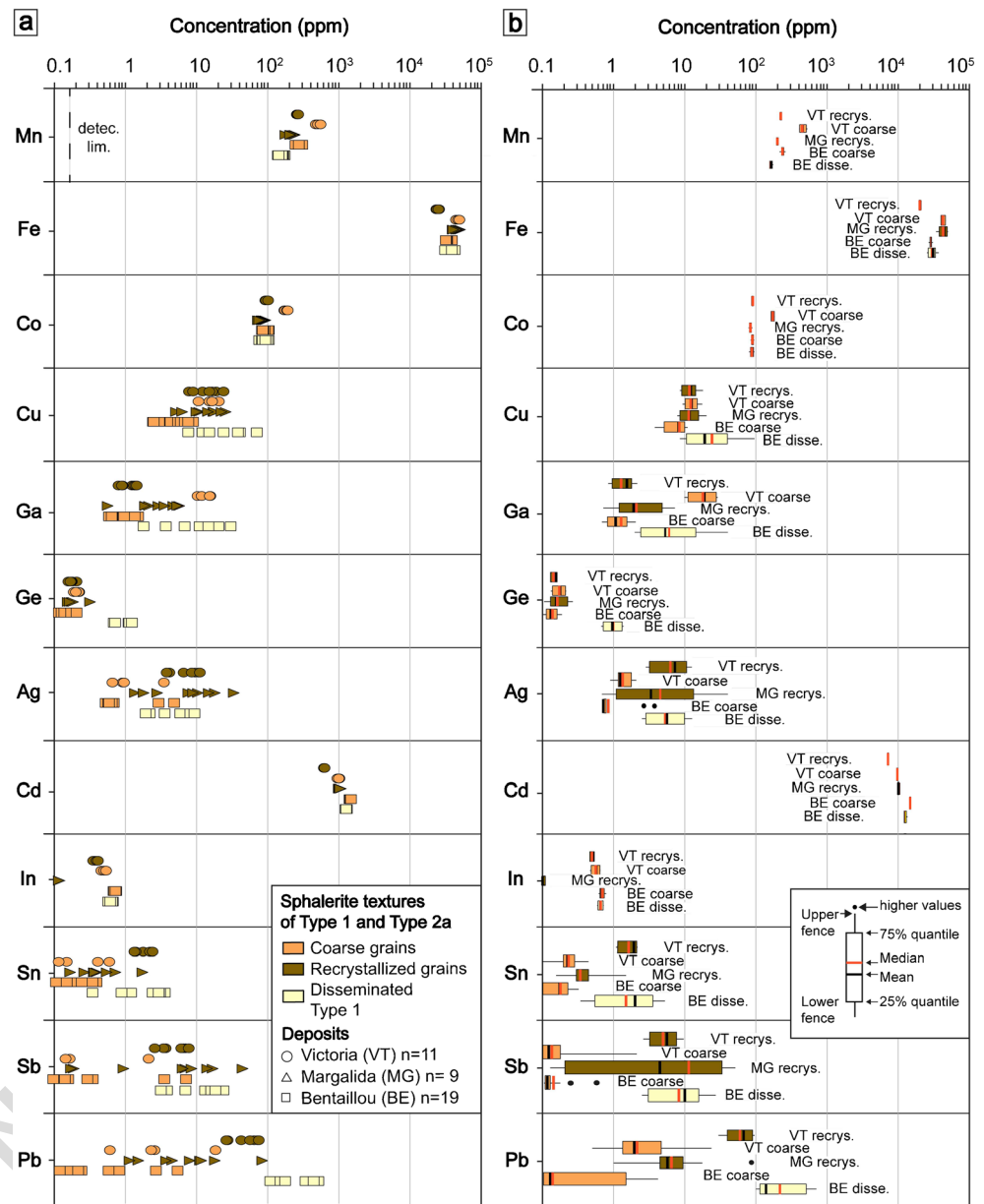


348 **Chemical composition of sphalerite**

349 The distribution of trace elements for type 1, 2a, and 2b mineralizations is plotted in the Figs. 6 and 7 (see dataset in ESM  
 350 1). The main characteristic of type 1 and type 2a sphalerite mineralizations is the small amount of Ge, mostly below  
 351 1 ppm (Fig. 6). In type 1 disseminated grains from Bentaillou, Fe median content is  $2.5 \pm 0.2$  ppm, and the concentrations of Cu and Ga are low with median values of  
 352  $24 \pm 22$  ppm and  $12 \pm 1$  ppm, respectively (Fig. 6). Variations in concentration are relatively large in Cu, Ga,  
 353 Ag, Sn, Sb, and Pb compared to Fe, Co, Ag, or Cd with only minor disparities (Fig. 6).  
 354  
 355  
 356  
 357  
 358  
 359

In type 2a, Fe median content is higher than that in type 1, with median value of  $5.4 \pm 0.5$  ppm. Copper and Ga contents are generally low with values below 70 and 30 ppm and median contents of  $11 \pm 13$  ppm and  $1.4 \pm 6$  ppm, respectively (Fig. 6). Recrystallized grains in Victoria type 2a mineralization show lower median contents in Mn, Fe, Co, Ga, and Cd but higher median values in Ag, Pb, Sb, and Sn, compared to coarse grains in the same sample from Victoria (Fig. 6; analyzed spot locations are reported in Fig. 3). Recrystallized grains from Victoria and Margalida have similar Mn, Co, and Cu contents (Fig. 6) but Fe and Cd median values are distinct with  $2.6 \pm 0.1$  wt% and  $952 \pm 20$  ppm for

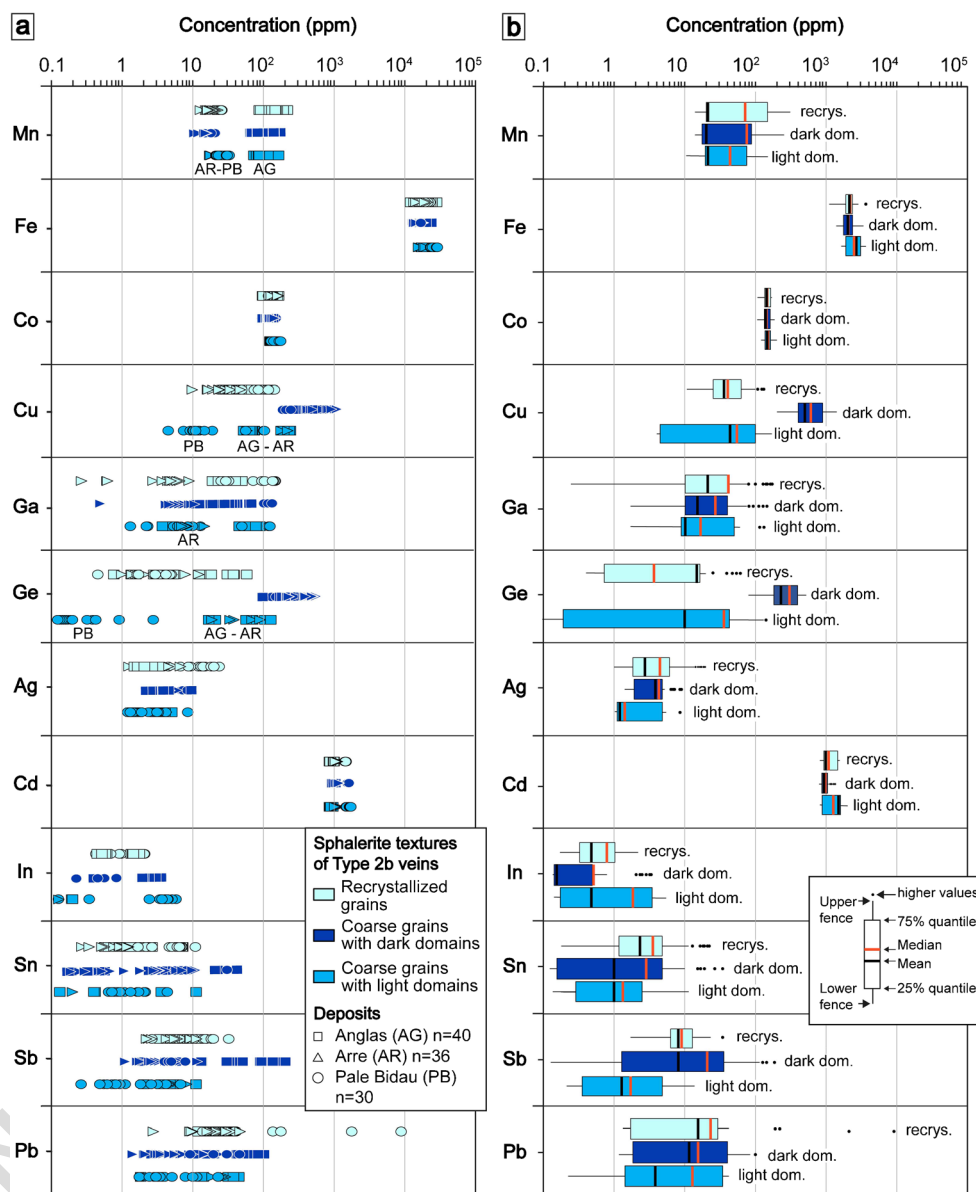
**Fig. 6** LA-ICP-MS data for type 1 and 2a sphalerite, showing trace element concentration in three different textures and for the Bentailou, Victoria, and Margalida deposits (dataset in ESM 1). **a** Individual analyses. **b** Box plots



373 Victoria recrystallized grains and  $5.0 \pm 0.4$  wt% and  
 374  $1946 \pm 42$  ppm for Margalida recrystallized grains (Fig.  
 375 6). Silver, Sn, Sb, and Pb concentrations are similar be-  
 376 tween Victoria and Bentailou coarse grains compared to  
 377 Mn, Co, Cu, Ga, and Cd contents that show large varia-  
 378 tions (Fig. 6). For Bentailou coarse grains, median  
 379 values are  $282 \pm 19$  ppm for Mn,  $3.8 \pm 0.2$  wt% for  
 380 Fe,  $94 \pm 7$  ppm for Co,  $1 \pm 0.3$  ppm for Ga, and  
 381  $2246 \pm 35$  ppm for Cd. Manganese content is generally  
 382 high in Victoria and Bentailou coarse grains (Fig. 6)  
 383 with median values of  $289 \pm 100$  ppm. Cobalt content

is high in Victoria coarse grains with a median value of  
 384  $172 \pm 10$  ppm compared to the grains analyzed in other  
 385 textural position that yield a median value of  
 386  $89 \pm 8$  ppm. Cadmium is highly variable according to  
 387 deposit and texture. Recrystallized Victoria coarse grains  
 388 show the lowest contents with a median value of  
 389  $956 \pm 20$  ppm (Fig. 6). Victoria coarse grains present  
 390 higher Cd content with  $1504 \pm 28$  ppm. But recrystal-  
 391 lized grains from Margalida contain similar Cd values  
 392 with median contents of  $1557 \pm 37$  ppm. Indium content  
 393 is generally below detection limit, when detected the  
 394

**Fig. 7** LA-ICP-MS data for type 2b vein sphalerite, showing trace element concentration in three different textures and for the Arre, Anglas, and Pale Bidau deposits (dataset in ESM 1). **a** Individual analyses. **b** Box plots



395 median value is  $0.8 \pm 0.4$  ppm. Silver, Sn, Sb, and Pb  
 396 contents are generally higher in recrystallized grains (and  
 397 in type 1 disseminated crystals) than in coarse grains  
 398 (Fig. 6). In addition, Ag contents are relatively low with  
 399 total median value of  $7 \pm 3$  ppm but locally, Ag can reach  
 400 43 ppm in Margalida sphalerite (Fig. 6). The same range  
 401 of concentrations is observed for Sb, with median value  
 402 of  $7 \pm 2$  ppm with contents up to  $45 \pm 15$  ppm. Tin  
 403 content is low with a median value of  $1 \pm 0.2$  ppm.  
 404 Lead is below 100 ppm for most of the studied sphalerite  
 405 types except for type 1 sphalerite which shows higher  
 406 content with a median value of  $267 \pm 37$  ppm.

In type 2b, Fe content ranges from 1.3 to 5 wt% Fe  
 but no systematic difference is observed between de-  
 posits or textures (Fig. 7). In Pale Bidau, a progressive  
 zonation in color is observed (Fig. 4a and b), and high  
 Fe contents are reported in dark brown sphalerite zones  
 with values up to 5 wt% Fe. High Mn median values are  
 reported for Anglas ( $151 \pm 10$  ppm), comparatively to  
 Pale Bidau and Arre ( $24 \pm 4$  ppm and  $18 \pm 2$  ppm, re-  
 spectively). Conversely, low median Cd values are pres-  
 ent in Anglas ( $970 \pm 38$  ppm) and higher median values  
 for Pale Bidau and Arre ( $1500 \pm 75$  ppm and  
 $1110 \pm 43$  ppm, respectively). No correlation between

419 grain size or color and the contents in Fe, Mn, or Cd has  
420 been established. Cobalt content is homogeneous be-  
421 tween the three textures (Fig. 7) with a median value  
422 of  $143 \pm 11$  ppm. Low In content is measured in these  
423 sphalerite types reaching a maximum of 6.2 ppm (Fig. 7)  
424 and median value below 1 ppm. Indium content is slight-  
425 ly higher light coarse grains from Pale Bidau with a  
426 median value of  $4.1 \pm 0.2$  ppm.

427 Gallium content is generally below 100 ppm in the sphal-  
428 erite samples (Fig. 7) but exhibits relative large dispersion in  
429 concentrations between 0.3 and 156 ppm Ga which is not  
430 clearly related either to the type of grain or the deposit.  
431 Silver, Sn, Sb, and Pb contents are commonly below  
432 100 ppm. Some Pb-(Sb-Sn-Ag) micrometric inclusions are  
433 recognized in LA-ICP-MS spectra (ESM 2) preferentially in  
434 recrystallized domains with Pb values reaching up to  
435 9420 ppm. Except for the presence of micro-inclusions, no  
436 clear difference between textures (Fig. 7) and deposits can  
437 be defined.

438 Germanium and Cu contents show generally large varia-  
439 tions from 102 to 580 ppm for Ge and from 209 to 1265 ppm  
440 for Cu. These contents correlate with the type of texture (Fig.  
441 4) and are detailed below.

442 In dark domains of coarser grains, Ge and Cu are typically  
443 high in the three deposits with median value of  $290 \pm 19$  ppm  
444 and  $610 \pm 61$  ppm, respectively (Fig. 7). In Pale Bidau, only  
445 few dark domain relicts ( $n = 4$ ) are reported and analyzed with  
446 median values of  $152 \pm 20$  ppm for Ge and  $233 \pm 45$  ppm for  
447 Cu. Arre samples show the highest Ge and Cu contents with  
448 median contents of  $433 \pm 21$  ppm and  $1012 \pm 75$  ppm,  
449 respectively.

450 In light domains of coarse grains, Ge and Cu contents are  
451 lower with median values of  $20 \pm 2$  and  $60 \pm 8$  ppm, respec-  
452 tively (Fig. 7). Pale Bidau shows the lowest median contents,  
453 with  $0.7 \pm 0.1$  ppm for Ge and  $29 \pm 4.5$  ppm for Cu compared  
454 to Arre and Anglas which show median contents of respec-  
455 tively  $38 \pm 1$  and  $61 \pm 3$  ppm for Ge, and  $102 \pm 7$  and  $191$   
456  $\pm 13$  ppm for Cu.

457 In recrystallized grains, Ge and Cu are systematically low  
458 like in light domains of coarse grains, with median contents of  
459  $4.3 \pm 1$  ppm and  $49 \pm 10$  ppm, respectively (Fig. 7). In Pale  
460 Bidau, recrystallized grains may contain similar or larger en-  
461 richment in Ge and Cu than in light color domains of coarse  
462 grains, with respectively  $4.1 \pm 0.5$  ppm and  $102 \pm 19$  ppm.

### 463 Spatial distribution of trace elements in sphalerite

464 Figure 8 shows Ge, Cu, and Ga spatial distribution obtained  
465 from LIBS mapping of Arre type 2b sphalerite. Sphalerite is  
466 zoned in color in transmitted-light (Fig. 8a), correlating with

467 the concentration of these trace elements. Germanium and Cu  
468 contents are heterogeneous in sphalerite, with patchy zoning,  
469 and locally oscillatory zoning (Fig. 8) with numerous Ge- and/  
470 or Cu-bearing minerals (Fig. 8b and c), some of them with Fe  
471 correspond to briartite  $\text{GeCu}_2(\text{Fe}, \text{Zn})\text{S}_4$  (ESM 2). Localized  
472 Ge-Cu minerals are preferentially found in sphalerite Ge-Cu-  
473 poor domains (ESM 2). Nonetheless, some of them occur in  
474 Ge and Cu-rich dark domains and are sub-parallel to  $\text{S}_2$  cleav-  
475 age (Fig. 8b and c).

476 Mass-balance calculations are performed, based on LIBS  
477 mapping (see dataset in ESM 1). The bulk Ge concentration  
478 hosted in the Ge-rich minerals is 4.72 wt% Ge, based on  
479 25 wt% Ge. Light and dark domains present 0.1 and  
480 2.07 wt% Ge, respectively, considering Ge-poor and Ge-rich  
481 sphalerite with 20 and 400 ppm Ge, respectively. Germanium  
482 mass fraction is two times higher in Ge minerals than in sphal-  
483 erite. The total Ge mass is equivalent to a sphalerite with  
484 690 ppm Ge uniformly distributed in the structure without  
485 Ge minerals.

486 Gallium in sphalerite shows zoned distribution on LIBS  
487 maps. Gallium-rich areas are located in dark domains in trans-  
488 mitted light, correlating with relatively high Cu and Ge con-  
489 tents (Fig. 8d and ESM 2). Gallium-bearing mineral phases  
490 have not been detected. Other elements such as Fe and Cd  
491 show a homogeneous distribution in sphalerite (ESM 2).

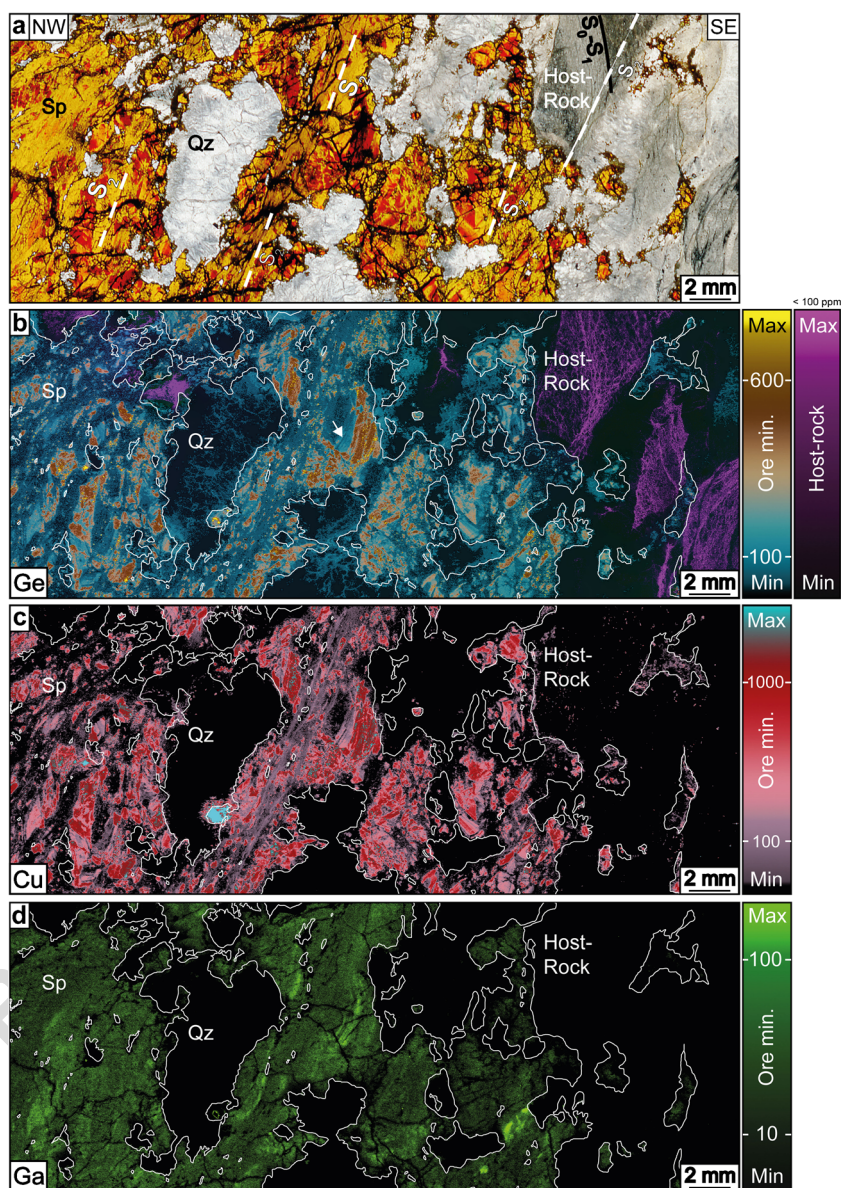
492 Trace element distribution in quartz spatially associated  
493 with sphalerite is reported in Fig. 8. Several areas in quartz  
494 show enrichment in Ge, up to  $\sim 75$  ppm (Fig. 8b). Copper and  
495 Ga have not been detected in quartz (Fig. 8c and d). In the host  
496 rock, a few Cu-bearing micrometer size grains are identified,  
497 and Ge is detected in structures parallel to  $\text{S}_0$ - $\text{S}_1$  or  $\text{S}_2$  (Fig. 8b)  
498 and correlate with the higher Al contents (ESM 2), which  
499 correspond to muscovite.

## 500 Discussion

### 501 Substitution mechanisms of rare metals in sphalerite

502 The mechanism of Ge incorporation in sphalerite has been  
503 studied by Cook et al. (2009b) who deduced from the  
504 apparent lack of correlation with other trace elements that  
505 Ge could be present in a divalent form and substitute for  
506 Zn in the sphalerite structure ( $\text{Zn}^{2+} \leftrightarrow \text{Ge}^{2+}$ ). Later, Cook  
507 et al. (2015) reported a XANES study performed on Tres  
508 Maria Ge-Fe rich acicular sphalerite, demonstrating  $\text{Ge}^{4+}$   
509 in sphalerite and proposed substitution of  $\text{Ge}^{4+}$  and a vac-  
510 ancy for  $\text{Zn}^{2+}$  or  $\text{Fe}^{2+}$  (i.e.,  $2\text{Zn}^{2+} \leftrightarrow \text{Ge}^{4+} + []$ ). In  
511 Central and East Tennessee, Bonnet et al. (2017) showed  
512  $\text{Ge}^{2+}$  and  $\text{Ge}^{4+}$  in the same sphalerite crystal, which was

**Fig. 8** LIBS mapping on Arre type 2b (abbreviations: Qz: quartz; Sp: sphalerite). **a** Microphotograph (thick section, transmitted-light) of Arre sphalerite associated to quartz and calc-schist host-rock. **b** Ge map in sphalerite, quartz, and host-rock. Ge is also shown in purple color in the host rock (calc-schist) because it is measured on a different spectral line due to Al interferences. White arrow indicates specific Ge zones. **c** Cu map in sphalerite, quartz, and host-rock. **d** Ga map in sphalerite, quartz, and host-rock

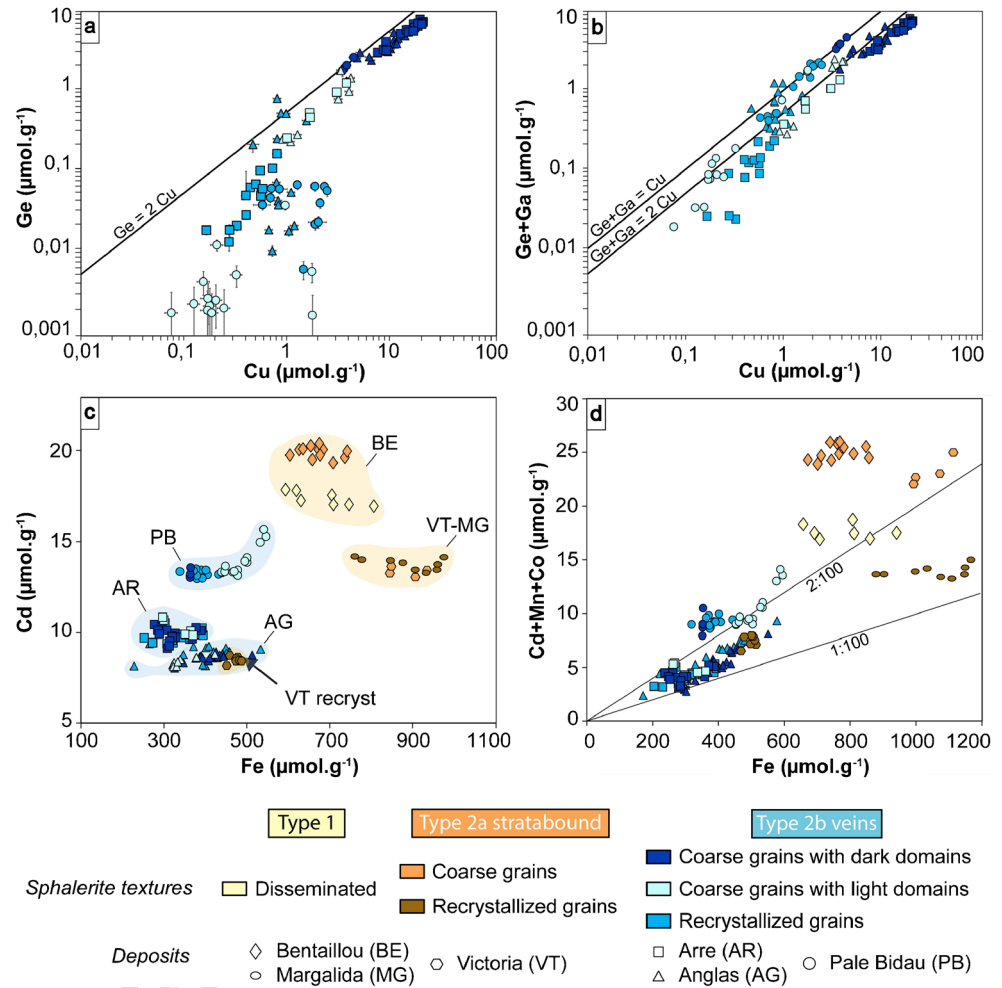


513 interpreted as due to a difference in  $S_2$  and  $O_2$  fugacities. 514 Bauer et al. (2018) demonstrated a coupled substitution 515 between  $Ge^{4+}$  and  $Ag^+$  in low-temperature ( $186 \pm 36$  °C) 516 Ge-rich sphalerite. Johan (1988) suggested a coupled substitution 517 between tetravalent Ge and combination of monovalent and divalent Cu (i.e.,  $4Zn^{2+} \leftrightarrow 2Cu^+ + Cu^{2+} + Ge^{4+}$ ) on low-temperature Ge- and Cu-rich sphalerite 518 from Saint-Salvy. Belissont et al. (2016)  $\mu$ -XANES study 519 on the same sphalerite confirmed the exclusive occurrence 520 of  $Ge^{4+}$  in sphalerite, showing correlation with monovalent 521  $Cu^+$ , supporting the hypothesis of a coupled substitution 522 mechanism involving monovalent copper. This substitution 523  $3Zn^{2+} \leftrightarrow 2Cu^+ + Ge^{4+}$  is consistent with the PAZ 524 525

sphalerite  $2Cu-Ge$  correlation in Fig. 9a. Coarse grains 526 follow this substitution mechanism; however, the recrystallized 527 grains as well as some of the coarse grains with light domains 528 do not plot along the correlation line. For these two Ge-poor 529 domains, such a deviation to the regression line may be explained 530 by the incorporation of Cu coupled to an additional substitution 531 involving Ga (Fig. 9b). Gallium in sphalerite is considered to be 532 trivalent (Cook et al. 2009b; George et al. 2016; Wei et al. 2018) 533 and its incorporation occurs following the coupled substitution 534  $2Zn^{2+} \leftrightarrow Cu^+ + Ga^{3+}$ . 535 536

Divalent cations such as  $Cd^{2+}$ ,  $Mn^{2+}$ ,  $Co^{2+}$ , or  $Fe^{2+}$  are 537 incorporated by direct substitution with  $Zn^{2+}$  ( $X^{2+} \leftrightarrow$  538

**Fig. 9** Content of elements for type 1, 2a, and 2b sphalerite. In coarse grains within dark domains, analyses are close to the Ge-2Cu line. **a** Ge vs Cu contents. Recrystallized grains and light domains in the coarse grains do not lie on the correlation line. Pale Bidau coarse grains within light domains contain very low Ge contents. **b** Ge + Ga vs Cu contents. All the points lie closely to the substitution Ge + Ga=1Cu or 2Cu depending on the dominant element in the sphalerite lattice (Ge or Ga). **c** Cd vs Fe contents. Note that each deposit forms a cluster. Recrystallized grain concentrations from Victoria deposit are close to Anglas deposit. **d** Cd + Mn + Co vs Fe contents. Note the correlated enrichment between Cd + Mn + Co and Fe contents. Recrystallized grains recompositions from Victoria deposit are close to Anglas deposit

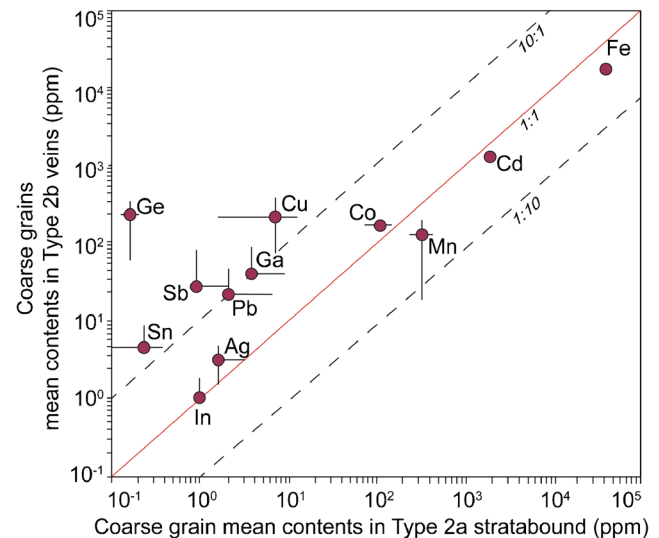


539  $Zn^{2+}$ , Cook et al. 2009b; George et al. 2016). No clear  
 540 correlation is observed between  $Cd^{2+}$  and  $Fe^{2+}$  (Fig. 9c),  
 541 but the Cd-Fe values are mainly varying according to the  
 542 deposit, indicating poor mobility during vein recrystalliza-  
 543 tion. In Fig. 9d, Fe is significantly correlated with Cd+  
 544 Mn+Co at low values, which attests for their coupled in-  
 545 corporation in sphalerite.

546 **Relationship between sphalerite texture, chemical**  
 547 **composition, and formation temperature**

548 Crystallization temperature of vein assemblages is diffi-  
 549 cult to assess, but we use relative field chronology to  
 550 place vein formation in the regional tectonometamorphic  
 551 framework.  $M_1$  peak is estimated at 580 °C and  
 552 0.55 GPa, and  $M_2$  peak at 525 °C and 0.2 GPa  
 553 (Mezger and Passchier 2003; Mezger et al. 2004). The  
 554 three sphalerite mineralization types show significant  
 555 differences in trace element signatures. Types 1 and 2a  
 556 have low Ge content (<0.5 ppm), as well as Cu, Ga,  
 557 and Ag, Sb, Sn, Pb but higher Fe, Mn, and Cd contents  
 558 (Fig. 10). Type 1 disseminated mineralization from

Bentailou is considered pre-metamorphic and has been 559  
 affected by Variscan  $M_1$  regional and  $M_2$  contact meta- 560  
 morphism (Cugerone et al. 2018b). 561



**Fig. 10** Trace element comparison of coarse sphalerite grains between type 2b and type 2a crystals

562 Type 2a sphalerite from Bentaillou, Victoria, and  
563 Margalida is syn- $M_1$  and prior to  $D_2$  associated with  $F_2$   
564 folds (Fig. 3) and  $M_2$  metamorphism. During metamor-  
565 phism, sphalerite can incorporate Fe, Mn, and Cd and in  
566 a lesser extent Pb, Bi, Ag, Sn, and Sb (Lockington et al.  
567 2014) during static recrystallization. Accordingly, type  
568 2a sphalerite that was statically (coarse-size fraction)  
569 and subsequently dynamically recrystallized (small-size  
570 fraction) in Victoria deposit shows respectively high  
571 and low Fe, Cd, and Mn contents (Figs. 6 and 8c, d).  
572 The geothermometer based on Ga-Ge-In-Mn-Fe concen-  
573 trations in sphalerite lattice (GGIMF, Frenzel et al. 2016)  
574 was applied for type 1 and 2a sphalerite (see dataset in  
575 ESM 1) and yields temperatures below 150 °C.  
576 Sphalerite underwent static recrystallization at tempera-  
577 tures, likely above 400 °C, and in some areas subsequent  
578 dynamic recrystallization, which affect the reliability of  
579 the GGIMF geothermometer (Frenzel et al. 2016), such  
580 that, this temperature is not that of mineralization or  
581 deformation.

582 The chemical composition of type 2b sphalerite from the  
583 Anglas and Arre deposits is heterogeneous. Germanium, Cu,  
584 and locally Ga are enriched in coarse grains with dark do-  
585 mains (Fig. 8) but depleted in recrystallized grains and coarse  
586 crystals with light domains (Cugerone et al. 2020). At Pale  
587 Bidau, no strong chemical zonation is observed in sphalerite,  
588 except some color bands that highlight contrasts in Fe contents  
589 (Cugerone et al. 2018a). However, Ge-poor coarse crystals  
590 can be found (Fig. 4b), the latter being interpreted as inherited  
591 Ge-poor domains.

592 Type 2b mineralization has low Cd and Fe contents.  
593 Variations in Cd content between the Arre-Anglas and  
594 Pale Bidau deposits might be linked to differences in  
595 the fluid source or in the bulk host rock composition.  
596 The Arre and Anglas deposits are hosted by similar  
597 Devonian sequences in the same mining district, contrary  
598 to Pale Bidau which is hosted by Late-Ordovician calc-  
599 schists (Cugerone et al. 2018b, Fig. 1). Cadmium content  
600 in type 2b mineralization is generally not affected by  
601 recrystallization. Nonetheless, type 2a recrystallized and  
602 coarse sphalerite grains from the Victoria deposit present  
603 differences in Cd concentrations, as well as in Fe, Mn,  
604 and Co. Recrystallized grains from Victoria have similar  
605 low Cd-Fe concentrations to type 2b sphalerite from the  
606 Anglas deposit. A likely hypothesis is that type 2b min-  
607 eralization resulted from remobilization of early type 2a  
608 mineralization in  $D_2$  structures, such as Victoria  $F_2$  fold  
609 hinge (Fig. 3). However, this hypothesis is restricted by  
610 the lack of Ge minerals in recrystallized sphalerite and  
611 by the relatively low Ge, Cu, or Ga contents in the type

612 2a mineralization. Late Ge-Cu(-Ga)-rich fluids circulating  
613 in  $S_2$  cleavage plane during type 2b mineralizing event  
614 may have been the main Ge-carrier.

615 If type 2b primary sphalerite had the same chemical  
616 composition as coarse grains, the estimated temperature,  
617 using GGIMF, is about 250 °C, with large variations of  
618  $\pm 50$  °C due to chemical heterogeneity between dark and  
619 light domains. This geothermometer may be applied in  
620 dark domains of the coarse grains, if we consider no  
621 change in composition after the primary mineralizing  
622 stage. However, in light domains, composed of recrystal-  
623 lized grains and some part of the coarse grains, the tem-  
624 perature recorded is inconsistent. Deformation and re-  
625 crystallization of the sphalerite lattice have contributed  
626 to the redistribution of the elements used in GGIMF  
627 thermometry. Germanium-rich veins are commonly  
628 formed at low temperatures, below 200–250 °C (Munoz  
629 et al. 1994; Höll et al. 2007; Belissont et al. 2014;  
630 Frenzel et al. 2016; Bauer et al. 2018). There is no fluid  
631 inclusion study yet for the PAZ mineralization to com-  
632 pare with the GGIMF. Johnson et al. (1996) have inves-  
633 tigated fluid inclusions in the Cierco deposit where Pb-  
634 Zn veins similar to the PAZ type 2b veins appear (Fig.  
635 1b). At Cierco, some Ge-minerals have been identified in  
636 recrystallized sphalerite hosted in Late-Variscan granodi-  
637 orite. This likely indicates that at least a part of the  
638 mineralization, belongs to type 2b (Johnson et al.  
639 1996). Primary or pseudo-secondary fluid inclusion  
640 microthermometry in quartz and sphalerite yield temper-  
641 ature between 150° and 200 °C with salinities between 3  
642 and 29 wt% NaCl equivalent. Pressure is assumed to be  
643 negligible (Johnson et al. 1996). No clear petrographic  
644 relationship or evidences between fluid inclusions and  
645 host-minerals is described and their primary or pseudo-  
646 secondary origins are questionable in a largely deformed  
647 environment.

648 In our samples, pressure-temperature conditions of de-  
649 formation events, which are syn- or post-mineralization,  
650 are difficult to assess. Experimental studies on carboirite  
651 bracket its stability field between 340 and 600 °C and  
652 0.75 to 2 MPa whereas brunogeierite is reported above  
653 510 °C at 2 MPa (Julliot et al. 1987). Quartz crystals  
654 appear only slightly deformed, preserving original cock-  
655 ade textures and no alteration halo is observed along the  
656 vein contacts. Partial recrystallization of the Pyrenean  
657 sphalerite is localized in bands associated to a pro-  
658 nounced cleavage, parallel to the  $S_2$  cleavage of the host  
659 rock (Figs. 4 and 8). Such a partial recrystallization  
660 might occur at temperatures below 400 °C and low pres-  
661 sure in comparison with experimental studies on



713 fluids ( $20 \leq T \leq 450$  °C; Bazarkina et al. 2010) whereas hy- 761  
714 droxyl complexes generally transport Ge ( $[\text{GeOH}]_4$ ); 762  
715 Pokrovski and Schott 1998) and more rarely Cu ( $[\text{CuOH}]$ ); 763  
716 Hack and Mavrogenes 2006) at low pressure ( $< 500$  MPa). 764  
717 Hydroxyl complexes might be the main rare metal-bearing 765  
718 complexes in hydrothermal fluid during the remobilization 766  
719 stage. 767

720 Fields of stability of Ge in different minerals according to 768  
721  $f\text{O}_2$  and  $f\text{S}_2$  indicate potential  $f\text{O}_2$  increase during formation of 769  
722 Ge-minerals during the stage 2 (Fig. 11b). Increasing of  $f\text{O}_2$  770  
723 may enhance the release of Ge from sphalerite lattice by cir- 771  
724 culation of low-temperature fluids which significantly change 772  
725 and diversify the Ge-mineral paragenesis (silicates, oxides, 773  
726 hydroxides, sulfide). It is important to note that hydrothermal 774  
727 fluids responsible for Ge remobilization during deformation 775  
728 do not need to be rich in Ge, if we consider a primary sphal- 776  
729 erite with uniform  $\sim 700$  ppm Ge content (Fig. 11a and ESM 777  
730 1). These arguments allow to demonstrate that a primary Ge- 778  
731 rich sphalerite (and other sulfides) impacted by low-grade 779  
732 deformation below 400 °C with significant increase in  $f\text{O}_2$  780  
733 (Fig. 11b) are potential indicators of Ge-mineral rich deposit. 781

#### 734 Comparison with world-class Ge-rich deposits 782

735 Type 2b sphalerite vein mineralization from the PAZ present 783  
736 chemical and textural similarities with world-class Pb-Zn(- 784  
737 Ge) districts. In many SHMS, VMS, or other Pb-Zn(-Cu) 785  
738 deposits, metamorphism and deformation may have reworked 786  
739 the mineralization (Bodon 1998; Large et al. 2005; Huston 787  
740 et al. 2006; Wilkinson 2013; Vikentyev et al. 2016) as shown 788  
741 by partly dynamically recrystallized sphalerite at the world 789  
742 class George Fisher (Chapman 2004; Murphy 2004) or in 790  
743 the Currawong deposits (Bodon and Valenta 1995). 791  
744 However, too few chemical analyses of rare metals have been 792  
745 performed in these deposits. As an example, Fig. 12 reports a 793  
746 compilation of Ge and Cu contents in sphalerite analyzed in 794  
747 Pb-Zn(-Cu) deposits worldwide. These deposits are mostly 795  
748 related to low-temperature hydrothermal fluids ( $\sim 100$ – 796  
749  $250$  °C) with no- or only low-grade deformation. Numerous 797  
750 studies on Pb-Zn(-Cu) deposits deformed or metamorphosed 798  
751 at higher grades ( $> 400$  °C) do not report significant rare 799  
752 metals contents in sphalerite or in accessory Ge-minerals 800  
753 and may be related, in some cases, to insufficient textural 801  
754 and chemical investigation. Nonetheless, in all Pb-Zn deposits 802  
755 affected by high-grade metamorphism, Ge was lost from 803  
756 sphalerite during high-grade metamorphic processes ( $>$  804  
757  $400$  °C) and recrystallization has potentially concentrated Ge 805  
758 in accessory minerals. This assumption is likely for the gran- 806  
759 ulite facies Broken Hill deposit (Spry et al. 2008; George et al. 807  
760 2016) where Ge is not reported in sphalerite, while the Ga and 808

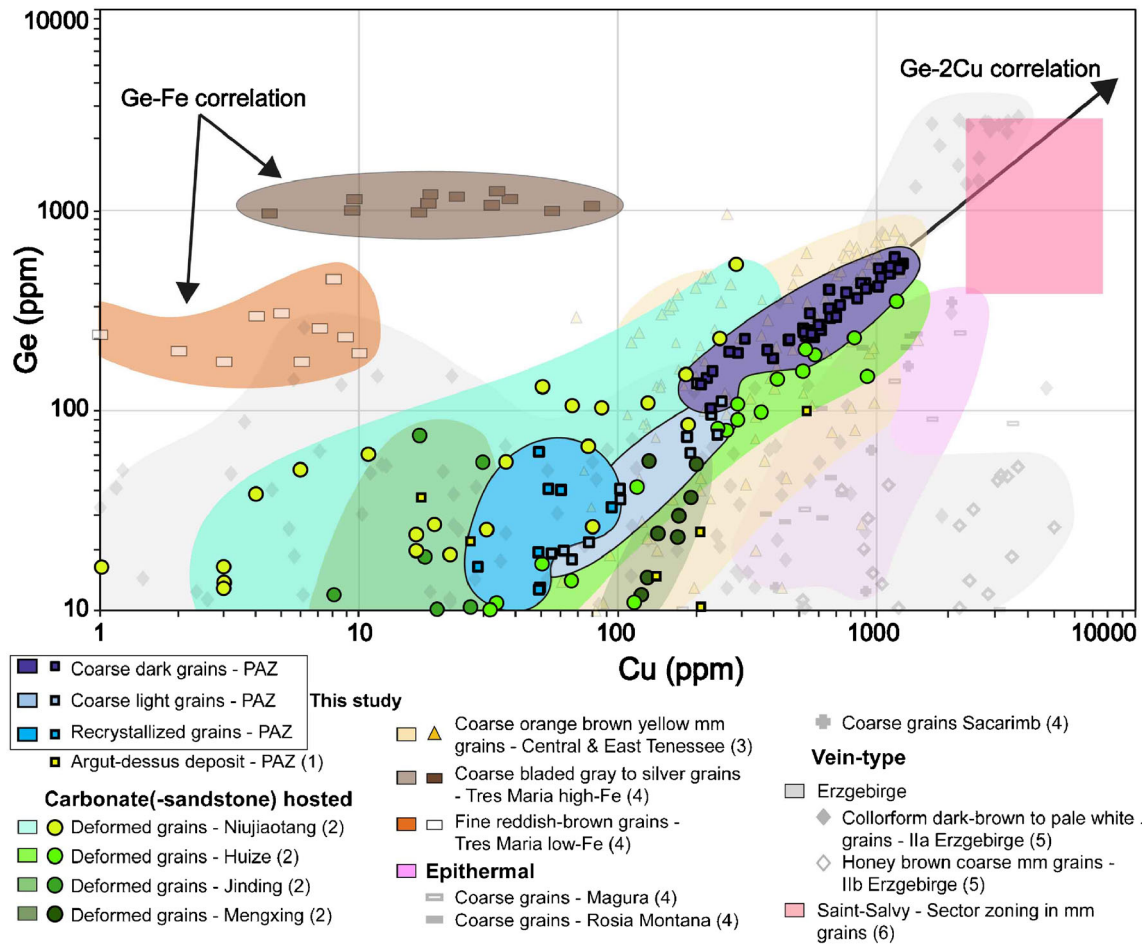
761 In contents are low, suggesting that these rocks should be 762  
762 revisited for accessory minerals rich in rare metals. 763

764 Examples of Ge-rich sphalerite in the Saint-Salvy deposit, 765  
765 Montagne Noire (France), in the Erzgebirge district 766  
766 (Germany), and in MVT deposits from the Central and East 767  
767 Tennessee indicate that Ge is in bands within a single crystal 768  
768 (Bonnet 2014; Bauer et al. 2018) or in sector zones (Belissant 769  
769 et al. 2014) and may reach up to  $\sim 3000$  ppm Ge (Fig. 12) with 770  
770 no Ge minerals reported. 771

772 In Ge-rich sphalerite, a correlation between Ge and Cu is 773  
773 observed except with the Tres Maria deposit where Ge is 774  
774 mainly correlated to Fe (Fig. 12). Wurtzite, a non-cubic zinc 775  
775 sulfide, is inferred in the zinc ore at Tres Maria (type I miner- 776  
776 alization; Cook et al. 2009b, 2015; Saini-Eidukat et al. 2009) 777  
777 due to an acicular habit, similar to the wurtzite observed in the 778  
778 Kokanee range by Beaudoin (2000). 779

780 Rare elements (Ge, Ga, In, Cd) are reported in deformed 781  
781 sulfide deposits such as Barrigão, a remobilized Cu-rich 782  
782 VHMS deposit. Germanium-rich chalcopyrite with heteroge- 783  
783 neous contents and Sn-Ge-rich phases (Reiser et al. 2011) are 784  
784 probably a result of Ge remobilization during deformation 785  
785 (Belissant et al. 2019). In China, Pb-Zn deposits, considered 786  
786 to be deformed MVT deposits, contain abundant deformed 787  
787 sphalerite mineralization as in Huize (Han et al. 2006), 788  
788 Niujiaotang (Ye and Tiegeng 1999; Ye et al. 2012), 789  
789 Mengxing (Ye et al. 2011), Jinding (Xue et al. 2007) and 790  
790 Lehong (Wei et al. 2019). Germanium and Cu contents from 791  
791 these deposits are plotted in Fig. 12 and show that the chem- 792  
792 ical composition of these deposits is similar to that of the PAZ 793  
793 deposits, but with a wider dispersion along the Ge-Cu arrow. 794  
794 Wei et al. (2019), focusing on the carbonate-hosted Lehong 795  
795 deposit, described dark brown Ge-rich sphalerite and light- 796  
796 brown Ge-poor sphalerite with Ge content similar to 797  
797 Pyrenean vein mineralization with up to 536 ppm and 798  
798 118 ppm in dark and light-brown domains, respectively. 799  
799 However, no detail on the texture of these sphalerite grains 800  
800 is provided, and Ge-minerals are not reported. Another exam- 801  
801 ple of deformed sphalerite mineralization is reported by 802  
802 Monteiro et al. (2006) in the carbonate-hosted Fagundes Pb- 803  
803 Zn deposit, where large variations in Ge (up to 2390 ppm Ge) 804  
804 were measured. Based on similarities with our observations, 805  
805 this heterogeneity in Ge content may be related to differences 806  
806 in sphalerite texture such as type 2b sphalerite in the PAZ. 807

808 Germanium minerals were reported in the Kipushi-type 809  
809 deposits (Emslie 1960; Francotte et al. 1965; Ottemann and 810  
810 Nuber 1972). Belissant (2016) describes highly variable Ge 806  
806 contents, from 0.2 to 5930 ppm, in sphalerite from the Kipushi 807  
807 mine that presents evidence of dynamic recrystallization 808  
808 (Hughes 1987). At the Black Angel deposit, Greenland 809  
809 (Horn et al. 2018), sphalerite is depleted in Ge and Cu, and 810



**Fig. 12** Germanium vs copper contents comparison between Pyrenean sphalerite (including Argut-dessus deposit; Cugerone et al. 2018a) and others sphalerite in the world. A lower Ge limit of 10 ppm is set to compare Ge-rich sphalerite. Germanium and copper measurements generally follow the line Ge=2Cu when Ge is enriched in the sphalerite lattice, with the exception of the Tres Maria zinc sulfide. 1—Niujiaotang,

Huize, Jinding, and Mengxing deposits: 2—Ye et al. (2011); 3—Central and East Tennessee deposits: Bonnet (2014); 4—Tres Maria, Magura, Rosia Montana, Sacarimb deposit: Cook et al. (2009a, 2009b); 5—Erzgebirge deposits: Bauer et al. (2018); 6—Saint-Salvy deposit: Belissont et al. (2014)

811 the occurrence of briartite is reported. In the Eastern-Alpine  
 812 base-metal sulfide ores, a LA-ICP-MS study indicates Ge-rich  
 813 mineralization in carbonate-hosted Pb-Zn deposits (Melcher  
 814 and Onuk 2019). The analyses reveal that the Ge content in  
 815 sphalerite is highly variable (from < 1 up to 3700 ppm).  
 816 Moreover, renierite  $(Cu,Zn)_{11}(Ge,As)_2Fe_4S_{16}$  is reported as  
 817 inclusions in bornite from one of these deposits.

**818 Conclusions**

819 Type 2a stratabound mineralization in the PAZ was affected  
 820 by static recrystallization and local dynamic recrystallization  
 821 during  $M_2$  metamorphism. In such mineralization, sphalerite  
 822 is largely depleted in Ge, Cu, and Ga, but generally enriched

823 in Cd. However, Cd content has been found to be variable  
 824 depending on the type of deposit and the texture, with sub-  
 825 stantial depletion during dynamic recrystallization.

826 Type 2b mineralization, interpreted as dynamically recrystallized  
 827 Pb-Zn vein mineralization, shows chemical heterogeneity in  
 828 sphalerite, particularly in terms of Ge and Cu contents,  
 829 which are related to deformation at relatively low-temperature  
 830 (< 400 °C) associated with a possible increase in  $fO_2$ . Gallium  
 831 is depleted in the recrystallized fraction and recrystallization  
 832 does not have significant impact on Cd concentrations. The  
 833 interplay between diffusion and dissolution processes in  
 834 sphalerite may account for large variations in Ge and Cu con-  
 835 tents and the precipitation of Ge minerals.

836 Textural and chemical heterogeneity is frequent in Pb-Zn  
 837 deposits around the world. Understanding the coupling

838 between microstructures and chemistry has major implica-  
 839 tions on evaluating rare element potential of deposits. In  
 840 this study, we show that exploration for rare and critical  
 841 metals (Ge, Ga, In) must integrate micro-textural and in  
 842 situ chemical analyses of sulfides. In cases of dynamic  
 843 recrystallization of sphalerite, we show in situ analysis by  
 844 LA-ICP-MS is not sufficient to provide a good screening of  
 845 critical metals. In such case, these elements will be accu-  
 846 mulated in discrete solid phases that can be found using  
 847 chemical maps. These small minerals can be often respon-  
 848 sible for the high dispersion of bulk and in situ chemical  
 849 data. Dynamic recrystallization of sphalerite appears to be  
 850 widespread in all orogenic fields. The recognition of these  
 851 textures is essential in a first stage to locate enrichment of  
 852 rare metals in specific mineral phases. Numerous deformed  
 853 Pb-Zn(-Cu) such as in SEDEX, MVTs, or Kipushi-type  
 854 deposits should be further explored for their contents of  
 855 rare metal.

856 **Acknowledgments** Bénédicte Cenko-Tok acknowledges funding from  
 857 the European Union's Horizon 2020 Research and Innovation Program  
 858 under grant agreement no. 793978. The authors gratefully acknowledge  
 859 Christophe Nevado and Doriane Delmas for the exceptional thin sections  
 860 preparation, Olivier Bruguiet for his involvement in LA-ICP-MS analy-  
 861 ses, and Fabrice Barou for the acquisition of the EBSD analyses. The  
 862 authors are thankful to Prof. Hans Albert Gilg and Prof. Georges  
 863 Beaudoin for the editorial handling and to Prof. Steven Reddy and Dr.  
 864 Max Frenzel for their highly constructive comments.

865 **Funding information** This study was funded through the French national  
 866 program "Référentiel Géologique de France" (RGF-Pyrénées) of the  
 867 French Geological Survey (Bureau de Recherches Géologiques et  
 868 Minières; BRGM) and through the INSU-CNRS Tellus CESSUR  
 869 program.

871

Q3 872 **References**

873 Bauer ME, Burisch M, Ostendorf J, Krause J, Frenzel M, Seifert T,  
 874 Gutzmer J (2018) Trace element geochemistry of sphalerite in con-  
 875 trasting hydrothermal fluid systems of the Freiberg district,  
 876 Germany: insights from LA-ICP-MS analysis, near-infrared light  
 877 microthermometry of sphalerite-hosted fluid inclusions, and sulfur  
 878 isotope geochemi. *Mineral Deposits* 54:237–262  
 879 Bazarkina EF, Pokrovski GS, Zotov AV, Hazemann JL (2010) Structure  
 880 and stability of cadmium chloride complexes in hydrothermal fluids.  
 881 *Chem Geol* 276:1–17. <https://doi.org/10.1016/j.chemgeo.2010.03.006>  
 882 006  
 883 Beaudoin G (2000) Acicular sphalerite enriched in Ag, Sb, and Cu em-  
 884 bedded within color-banded sphalerite from the Kokanee Range,  
 885 British Columbia, Canada. *Can Mineral* 38:1387–1398. <https://doi.org/10.2113/gscanmin.38.6.1387>  
 886

Belissant R (2016) Germanium and related elements in sulphide min- 887  
 erals: crystal chemistry, incorporation and isotope fractionation. Ph 888  
 D Thesis Univ Lorraine-Georessources-CRPG p210 889  
 Belissant R, Boiron M-C, Luais B, Cathelineau M (2014) LA-ICP-MS 890  
 analyses of minor and trace elements and bulk Ge isotopes in zoned 891  
 Ge-rich sphalerites from the Noailhac - Saint-Salvy deposit 892  
 (France): insights into incorporation mechanisms and ore deposition 893  
 processes. *Geochim Cosmochim Acta* 126:518–540. <https://doi.org/10.1016/j.gca.2013.10.052> 894  
 10.1016/j.gca.2013.10.052 895  
 Belissant R, Munoz M, Boiron M-C, Luais B, Mathon O (2016) 896  
 Distribution and oxidation state of Ge, Cu and Fe in sphalerite by 897  
 $\mu$ -XRF and K-edge  $\mu$ -XANES: insights into Ge incorporation, 898  
 partitioning and isotopic fractionation. *Geochim Cosmochim Acta* 899  
 177:298–314. <https://doi.org/10.1016/j.gca.2016.01.001> 900  
 Belissant R, Munoz M, Boiron M-C, Luais B, Mathon O (2019) 901  
 Germanium crystal chemistry in Cu-bearing sulfides from micro- 902  
 XRF mapping and micro-XANES spectroscopy. *Minerals* 9:1–12. 903  
<https://doi.org/10.3390/min9040227> 904  
 Bernstein LR (1985) Germanium geochemistry and mineralogy. 905  
*Geochim Cosmochim Acta* 49:2409–2422. [https://doi.org/10.1016/0016-7037\(85\)90241-8](https://doi.org/10.1016/0016-7037(85)90241-8) 906  
 1016/0016-7037(85)90241-8 907  
 Bernstein LR, Cox DP (1986) Geology and sulfide mineralogy of the 908  
 Number One Orebody, Ruby Creek copper deposit, Alaska. 909  
*Geology* 81:1675–1689 910  
 Bodon SB (1998) Paragenetic relationships and their implications for ore 911  
 genesis at the Cannington. *Econ Geol* 93:1463–1488 912  
 Bodon SB, Valenta RK (1995) Primary and tectonic features of the 913  
 Currawong Zn-Cu-Pb(-Au) massive sulfide deposit, Benambra, 914  
 Victoria: implications for ore genesis. *Econ Geol* 90:1694–1721 915  
 Bonnet J (2014) Distribution et contrôle cristallographique des éléments 916  
 Ge, Ga et Cd dans les sphalérites des gisements de type Mississippi 917  
 Valley dans les districts de Central et East Tennessee, USA Ph D 918  
 Thesis Univ Lorraine-Georessources 204 919  
 Bonnet J, Cauzid J, Testemale D, Kieffer I, Proux O, Lecomte A, Bailly L 920  
 (2017) Characterization of germanium speciation in sphalerite (ZnS) 921  
 from Central and Eastern Tennessee, USA, by X-ray absorption 922  
 spectroscopy. *Minerals* 7:1–16. <https://doi.org/10.3390/min7050079> 923  
 min7050079 924  
 BRGM (1984) Les gisements de Pb-Zn français (situation en 1977). 925  
 BRGM Intern Rep:1–278 926  
 Cáceres JO, Pelascini F, Motto-Ros V, Moncayo S, Trichard F, Panczer 927  
 G, Marín-Roldán A, Cruz JA, Coronado I, Martín-Chivelet J (2017) 928  
 Megapixel multi-elemental imaging by laser-induced breakdown 929  
 spectroscopy, a technology with considerable potential for 930  
 paleoclimate studies. *Sci Rep* 7:1–11. <https://doi.org/10.1038/s41598-017-05437-3> 931  
 s41598-017-05437-3 932  
 Carreras J, Druguet E (2014) Framing the tectonic regime of the NE 933  
 Iberian Variscan segment. Schulmann, K, al, eds, Variscan 934  
 Orogeny Extent, Timescale Form Eur Crust Geol Soc London, 935  
 Spec Publ 405:249–264. <https://doi.org/10.1144/SP405.7> 936  
 Carvalho JRS, Relvas JMRS, Pinto AMM, Frenzel M, Krause J, Gutzmer 937  
 J, Pacheco N, Fonseca R, Santos S, Caetano P, Reis T, Gonçalves M 938  
 (2018) Indium and selenium distribution in the Neves-Corvo depos- 939  
 it, Iberian Pyrite Belt, Portugal. *Mineral Mag* 82:S5–S41. <https://doi.org/10.1180/minmag.2017.081.079> 940  
 org/10.1180/minmag.2017.081.079 941  
 Castroviejo Bolibar R, Serrano FM (1983) Estructura y metalogenia del 942  
 campo filoniano de Cierco (Pb-Zn-Ag), en el Pirineo de Lérida. *Bol* 943  
*Geol Min* 1983:291–320 944  
 Cerny I, Schroll E (1995) Heimische Vorräte an Spezialmetallen (Ga, In, 945  
 Tl, Ge, Se, Te und Cd) in Blei-Zink- und anderen Erzen. *Arch für* 946  
*Lagerstättenforsch der Geol Bundesanstalt* 18:5–33 947

- 948 Chapman LH (2004) Geology and mineralization styles of the George  
949 Fisher Zn-Pb-Ag deposit, Mount Isa, Australia. *Econ Geol* 99:233–  
950 255. <https://doi.org/10.2113/gsecongeo.40.7.431>
- 951 Clark BR, Kelly WC (1973) Sulfide deformation studies; I, experimental  
952 deformation of pyrrhotite and sphalerite to 2,000 bars and 500 de-  
953 grees C. *Econ Geol* 68:332–352. <https://doi.org/10.2113/gsecongeo.68.3.332>
- 954 Cochelin B, Lemirre B, Denèle Y, De Saint BM, Lahfid A, Duchêne S  
955 (2017) Structural inheritance in the Central Pyrenees: the Variscan  
956 to Alpine tectonometamorphic evolution of the Axial Zone. *J Geol  
957 Soc Lond* 175:336–351. <https://doi.org/10.1144/jgs2017-066>
- 958 Cook NJ, Ciobanu CL, Mao J (2009a) Textural control on gold distribu-  
959 tion in As-free pyrite from the Dongping, Huangtuliang and Hougou  
960 gold deposits, North China Craton. *Chem Geol* 264:101–121.  
961 <https://doi.org/10.1016/j.chemgeo.2009.02.020>
- 962 Cook NJ, Ciobanu CL, Pring A, Skinner W, Shimizu M, Danyushevsky  
963 L, Saini-Eidukat B, Melcher F (2009b) Trace and minor elements in  
964 sphalerite: a LA-ICPMS study. *Geochim Cosmochim Acta* 73:  
965 4761–4791. <https://doi.org/10.1016/j.gca.2009.05.045>
- 966 Cook N, Etschmann B, Ciobanu C, Geraki K, Howard D, Williams T,  
967 Rae N, Pring A, Chen G, Johannessen B, Brugger J (2015)  
968 Distribution and substitution mechanism of Ge in a Ge-(Fe)-bearing  
969 sphalerite. *Minerals* 5:117–132. [https://doi.org/10.3390/  
970 min5020117](https://doi.org/10.3390/min5020117)
- 971 Couderc JJ, Dudouit I, Hennig-Michaeli C, Levade C (1985) The inter-  
972 action between slip and twinning systems in natural sphalerite ex-  
973 perimentally deformed. *Phys Status Solidi* 90:581–593. [https://doi.  
974 org/10.1002/pssa.2210900222](https://doi.org/10.1002/pssa.2210900222)
- 975 Cox SF (1987) Flow mechanisms in sulphide minerals. *Ore Geol Rev* 2:  
976 133–171
- 977 Cugerone A, Cenki-Tok B, Chauvet A, Le Goff E, Bailly L, Alard O,  
978 Allard M (2018a) Relationships between the occurrence of accesso-  
979 ry Ge-minerals and sphalerite in Variscan Pb-Zn deposits of the  
980 Bossost anticlinorium, French Pyrenean Axial Zone: chemistry, mi-  
981 crostructures and ore-deposit setting. *Ore Geol Rev* 95:1–19. [https://  
982 doi.org/10.1016/j.oregeorev.2018.02.016](https://doi.org/10.1016/j.oregeorev.2018.02.016)
- 983 Cugerone A, Oliot E, Chauvet A, Gavalda J, Le Goff E (2018b) Structural  
984 control on the formation of Pb-Zn deposits: an example from the  
985 Pyrenean Axial Zone. *Minerals* 8:1–20. [https://doi.org/10.3390/  
986 min8110489](https://doi.org/10.3390/min8110489)
- 987 Cugerone A, Cenki-tok B, Oliot E, Muñoz M, Barou F, Motto-Ros V, Le  
988 Goff E (2019) Redistribution of germanium during dynamic recryst-  
989 tallization of sphalerite. *Geology* 48:236–241. [https://doi.org/10.  
990 1130/G46791.1](https://doi.org/10.1130/G46791.1)
- 991 de Hoÿm de Marien L, Le Bayon B, Pitra P, Van Den Driessche J, Poujol  
992 M, Cagnard F (2019) Two-stage Variscan metamorphism in the  
993 Canigou massif: evidence for crustal thickening in the Pyrenees. *J  
994 Metamorph Geol* 37:1–26. <https://doi.org/10.1111/jmg.12487>
- 995 Denèle Y, Laumonier B, Paquette J-L, Olivier P, Gleizes G, Barbey P  
996 (2014) Timing of granite emplacement, crustal flow and gneiss  
997 dome formation in the Variscan segment of the Pyrenees. Schulmann, K, al, eds, *Variscan Orogeny Extent, Timescale Form  
998 Eur Crust Geol Soc London, Spec Publ* 405:265–287. [https://doi.  
999 org/10.1144/SP405.5](https://doi.org/10.1144/SP405.5)
- 1000 Dubosq R, Lawley CJM, Rogowitz A, Schneider DA, Jackson S (2018)  
1001 Pyrite deformation and connections to gold mobility: insight from  
1002 micro-structural analysis and trace element mapping. *Lithos* 310–  
1003 311:86–104. <https://doi.org/10.1016/j.lithos.2018.03.024>
- 1004 Emslie DP (1960) The mineralogy and geochemistry of the copper, lead,  
1005 and zinc sulphides of the Otavi Mountainland. *Rep Natl Inst Metall:*  
1006 1–52
- European Commission (2017) Study on the review of the list of critical  
1007 raw materials criticality assessments. *Eur Comm - Final Rep:*1–93  
1008
- Fabre C, Devismes D, Moncayo S, Pelascini F, Trichard F, Lecomte A,  
1009 Bousquet B, Cauzid J, Motto-Ros V (2018) Elemental imaging by  
1010 laser-induced breakdown spectroscopy for the geological character-  
1011 ization of minerals. *J Anal At Spectrom R Soc Chem:*1–9. [https://  
1012 doi.org/10.1039/c8ja00048d](https://doi.org/10.1039/c8ja00048d)
- Fougerouse D, Micklethwaite S, Tomkins AG, Mei Y, Kilburn M,  
1013 Guagliardo P, Fisher LA, Halfpenny A, Gee M, Paterson D,  
1014 Howard DL (2016) Gold remobilisation and formation of high grade  
1015 ore shoots driven by dissolution-reprecipitation replacement and Ni  
1016 substitution into auriferous arsenopyrite. *Geochim Cosmochim Acta*  
1017 178:143–159. <https://doi.org/10.1016/j.gca.2016.01.040>
- 1018 Francotte J, Moreau J, Ottenburgs R, Levy C (1965) La briartite, une  
1019 nouvelle espèce minérale. *Bull Soc Fr Minéral Cristallogr* 88:432–  
1020 437
- Frenzel M, Ketris MP, Gutzmer J (2014) On the geological availability of  
1021 germanium. *Mineral Deposits* 49:471–486. [https://doi.org/10.1007/  
1022 s00126-013-0506-z](https://doi.org/10.1007/s00126-013-0506-z)
- Frenzel M, Hirsch T, Gutzmer J (2016) Gallium, germanium, indium, and  
1023 other trace and minor elements in sphalerite as a function of deposit  
1024 type - a meta-analysis. *Ore Geol Rev* 76:52–78. [https://doi.org/10.  
1025 1016/j.oregeorev.2015.12.017](https://doi.org/10.1016/j.oregeorev.2015.12.017)
- Frenzel M, Mikolajczak C, Reuter MA, Gutzmer J (2017) Quantifying  
1026 the relative availability of high-tech by-product metals – the cases of  
1027 gallium, germanium and indium. *Res Policy* 52:327–335. [https://  
1028 doi.org/10.1016/j.resourpol.2017.04.008](https://doi.org/10.1016/j.resourpol.2017.04.008)
- George LL, Cook NJ, Ciobanu CL (2016) Partitioning of trace elements  
1029 in co-crystallized sphalerite-galena-chalcocopyrite hydrothermal ores.  
1030 *Ore Geol Rev* 77:97–116. [https://doi.org/10.1016/j.oregeorev.2016.  
1031 02.009](https://doi.org/10.1016/j.oregeorev.2016.02.009)
- Gibson GM, Hutton LJ, Holzschuh J (2017) Basin inversion and super-  
1032 continent assembly as drivers of sediment-hosted Pb–Zn minerali-  
1033 zation in the Mount Isa region, northern Australia. *J Geol Soc Lond*  
1034 174:jgs2016–jgs2105. <https://doi.org/10.1144/jgs2016-105>
- Goffin V, Evrard M, Pirard E (2015) Critical metals in sphalerites from  
1035 Belgian MVT deposits. *Proc 13th SGA Bienn Meet* 1–4  
1036
- Hack AC, Mavrogenes JA (2006) A synthetic fluid inclusion study of  
1037 copper solubility in hydrothermal brines from 525 to 725 °C and 0.3  
1038 to 1.7 GPa. *Geochim Cosmochim Acta* 70:3970–3985. [https://doi.  
1039 org/10.1016/j.gca.2006.04.035](https://doi.org/10.1016/j.gca.2006.04.035)
- Han R-S, Liu C-Q, Huang Z-L, Chen J, Ma D-Y, Lei L, Ma G-S (2006)  
1040 Geological features and origin of the Huize carbonate-hosted Zn–  
1041 Pb–(Ag) District, Yunnan, South China. *Ore Geol Rev* 31:360–383.  
1042 <https://doi.org/10.1016/j.oregeorev.2006.03.003>
- Henjes-Kunst E, Raith JG, Boyce AJ (2017) Micro-scale sulfur isotope  
1043 and chemical variations in sphalerite from the Bleiberg Pb-Zn de-  
1044 posit, Eastern Alps, Austria. *Ore Geol Rev* 90:52–62. [https://doi.  
1045 org/10.1016/j.oregeorev.2017.10.020](https://doi.org/10.1016/j.oregeorev.2017.10.020)
- Höll R, Kling M, Schroll E (2007) Metallogenesis of germanium—a re-  
1046 view. *Ore Geol Rev* 30:145–180. [https://doi.org/10.1016/j.  
1047 oregeorev.2005.07.034](https://doi.org/10.1016/j.oregeorev.2005.07.034)
- Horn S, Dziggel A, Kolb J, Sindern S (2018) Textural characteristics and  
1048 trace element distribution in carbonate-hosted Zn-Pb-Ag ores at the  
1049 Paleoproterozoic Black Angel deposit, central West Greenland. *Mineral Deposits* 54:507–524. [https://doi.org/10.1007/s00126-  
1050 018-0821-5](https://doi.org/10.1007/s00126-018-0821-5)
- Hughes MJ (1987) The Tsumeb ore body, Namibia, and related  
1051 dolostone-hosted base metal ore deposits of Central Africa. Ph D  
1052 Thesis Univ Witwatersrand, Johannesburg p448  
1053
- Huston DL, Stevens B, Southgate PN, Muhling P, Wyborn L (2006)  
1054 Australian Zn-Pb-Ag ore-forming systems: a review and analysis. 1070

- 1071 Econ Geol 101:1117–1157. <https://doi.org/10.2113/gsecongeo.101.6.1117>
- 1072
- 1073 Johan Z (1988) Indium and germanium in the structure of sphalerite: an  
 1074 example of coupled substitution with copper. *Mineral Petrol* 39:  
 1075 211–229. <https://doi.org/10.1007/BF01163036>
- 1076 Johan Z, Oudin E (1986) Présence de grenats, Ca<sub>3</sub> Ga (GeO<sub>4</sub>)<sub>3</sub>, Ca<sub>3</sub> Al<sub>2</sub>  
 1077 [(Ge,Si)O<sub>4</sub>]<sub>3</sub> et d'un équivalent ferrifère, germanifère et gallifère de  
 1078 la sapphirine, Fe<sub>4</sub> (Ga,Sn,Fe)<sub>4</sub> (Ga,Ge)<sub>6</sub> O<sub>20</sub>, dans la blende des  
 1079 gisements de la zone axiale pyrénéenne. *Conditions de formation*  
 1080 *des. CR Acad Sc Paris* 9:811–816
- 1081 Johan Z, Oudin E, Picot P (1983) Analogues germanifères et gallifères  
 1082 des silicates et oxydes dans les gisements de zinc des Pyrénées  
 1083 centrales, France; argutite et carboirite, deux nouvelles espèces  
 1084 minérales. *TMPM Tschermaks Mineral und Petrogr Mitteilungen*  
 1085 31:97–119. <https://doi.org/10.1007/BF01084764>
- 1086 Johnson CA, Cardellach E, Tritlla J, Hanan BB (1996) Cierco Pb-Zn-Ag  
 1087 vein deposits: isotopic and fluid inclusion evidence for formation  
 1088 during the mesozoic extension in the pyrenees of Spain. *Econ Geol*  
 1089 91:497–506. <https://doi.org/10.5962/bhl.title.18736>
- 1090 Julliot JY, Volfinger M, Robert JL (1987) Mineralogy petrology exper-  
 1091 imental study of carboirite and related phases in the system GeO<sub>2</sub>-  
 1092 SiO<sub>2</sub>-Al<sub>2</sub>O<sub>3</sub>-FeO-H<sub>2</sub>O at P up to 2 kbar. *Mineral Petrol* 36:51–69
- 1093 Kamona AF, Friedrich GH (2007) Geology, mineralogy and stable iso-  
 1094 tope geochemistry of the Kabwe carbonate-hosted Pb-Zn deposit,  
 1095 Central Zambia. *Ore Geol Rev* 30:217–243. <https://doi.org/10.1016/j.oregeorev.2006.02.003>
- 1096
- 1097 Kampmann TC, Jansson NF, Stephens MB, Olin PH, Gilbert S,  
 1098 Wanhainen C (2018) Syn-tectonic sulphide remobilization and trace  
 1099 element redistribution at the Falun pyritic Zn-Pb-Cu-(Au-Ag) sul-  
 1100 phide deposit, Bergslagen, Sweden. *Ore Geol Rev* 96:48–71. <https://doi.org/10.1016/j.oregeorev.2018.04.010>
- 1101
- 1102 Kampunzu AB, Cailteux JLH, Kamona AF, Intiomale MM, Melcher F  
 1103 (2009) Sediment-hosted Zn-Pb-Cu deposits in the Central African  
 1104 Copperbelt. *Ore Geol Rev* 35:263–297. <https://doi.org/10.1016/j.oregeorev.2009.02.003>
- 1105
- 1106 Kelley KD, Jennings S (2004) A special issue devoted to barite and Zn-  
 1107 Pb-Ag deposits in the Red Dog district, Western Brooks Range,  
 1108 northern Alaska. *Econ Geol* 99:1267–1280. <https://doi.org/10.2113/gsecongeo.99.7.1267>
- 1109
- 1110 Kleinsmiede WFJ (1960) Geology of the Valle de Aran (Central Pyrenees  
 1111 ). *Leidse Geol Meded* 25:129–245
- 1112 Klinger L, Rabkin E (1999) Beyond the Fisher model of grain boundary  
 1113 diffusion: effect of structural inhomogeneity in the bulk. *Acta Mater*  
 1114 47:725–734. [https://doi.org/10.1016/S1359-6454\(98\)00420-0](https://doi.org/10.1016/S1359-6454(98)00420-0)
- 1115 Laforet C, Oudin E, Picot P, Pierrot R, Pillard F (1981) Métallogénie  
 1116 régionale: Utilisation des paragenèses minéralogiques et des  
 1117 minéraux traceurs. *Bur Rech Geol Minieres Rapp* 80 SGN175:33p
- 1118 Large RR, Bull SW, McGoldrick PJ, Walters S, Derrick GM, Carr GR  
 1119 (2005) Stratiform and strata-bound Zn-Pb-Ag deposits in proterozoic  
 1120 sedimentary basins, Northern Australia. *Econ Geol* 100th Anniv  
 1121 Vol 931–963
- 1122 Large RR, Danyushevsky L, Hollit C, Maslennikov V, Meffre S, Gilbert  
 1123 S, Bull S, Scott R, Emsbo P, Thomas H, Singh B, Foster J (2009)  
 1124 Gold and trace element zonation in pyrite using a laser imaging  
 1125 technique: implications for the timing of gold in orogenic and  
 1126 carlin-style sediment-hosted deposits. *Econ Geol* 104:635–668
- 1127 Laumonier B, Marignac C, Kister P (2010) Polymétamorphisme et  
 1128 évolution crustale dans les Pyrénées orientales pendant l'orogénèse  
 1129 varisque au Carbonifère supérieur. *Bull la Société géologique Fr*  
 1130 181:411–428
- 1131 Lawrence LJ (1973) Polymetamorphism of the sulphide ores of Broken  
 1132 Hill, NSW, Australia. *Mineral Deposits* 8:211–236
- Licht C, Peiró LT, Villalba G (2015) Global substance flow analysis of  
 gallium, germanium, and indium: quantification of extraction, uses,  
 and dissipative losses within their anthropogenic cycles. *J Ind Ecol*  
 19:890–903. <https://doi.org/10.1111/jieec.12287>
- Lockington JA, Cook NJ, Ciobanu CL (2014) Trace and minor elements  
 in sphalerite from metamorphosed sulphide deposits. *Mineral Petrol*  
 108:873–890. <https://doi.org/10.1007/s00710-014-0346-2>
- Melcher F, Onuk P (2019) Potential of critical high-technology metals in  
 eastern alpine base metal sulfide ores. *Berg- und Hüttenmännische  
 Monatshefte* 164:1–6. <https://doi.org/10.1007/s00501-018-0818-5>
- Melcher F, Oberthür T, Rammelmair D (2006) Geochemical and mineral-  
 ogical distribution of germanium in the Khusib Springs Cu-Zn-Pb-  
 Ag sulfide deposit, Otavi Mountain Land, Namibia. *Ore Geol Rev*  
 28:32–56. <https://doi.org/10.1016/j.oregeorev.2005.04.006>
- Mezger JE, Passchier CW (2003) Polymetamorphism and ductile defor-  
 mation of staurolite-cordierite schist of the Bossost dome: indica-  
 tion for Variscan extension in the Axial Zone of the central  
 Pyrenees. *Geol Mag* 140:595–612. <https://doi.org/10.1017/S0016756803008112>
- Mezger JE, Passchier CW, Rognier J-L (2004) Metastable staurolite-  
 cordierite assemblage of the Bossost dome: late Variscan decom-  
 pression and polyphase metamorphism in the Axial Zone of the  
 central Pyrenees. *Compt Rendus Geosci* 336:827–837. <https://doi.org/10.1016/j.crte.2003.12.024>
- Monteiro SLV, Bettencourt SJ, Juliani C, de Oliveira TF (2006) Geology,  
 petrography, and mineral chemistry of the Vazante non-sulfide and  
 Ambrosia and Fagundes sulfide-rich carbonate-hosted Zn-(Pb) de-  
 posits, Minas Gerais, Brazil. *Ore Geol Rev* 28:201–234. <https://doi.org/10.1016/j.oregeorev.2005.03.005>
- Moore DW, Young LE, Modene JS, Plahuta JT (1986) Geologic setting  
 and genesis of the Red Dog zinc-lead-silver deposit, western Brooks  
 Range, Alaska. *Econ Geol* 81:1696–1727. <https://doi.org/10.2113/gsecongeo.81.7.1696>
- Munoz M, Boyce AJ, Courjault-Rade P, Fallick AE, Tollon F (1994)  
 Multi-stage fluid incursion in the Palaeozoic basement-hosted  
 Saint-Salvy ore deposit (NW Montagne Noire, southern France).  
*Appl Geochem* 9:609–626. [https://doi.org/10.1016/0883-2927\(94\)90022-1](https://doi.org/10.1016/0883-2927(94)90022-1)
- Murakami H, Ishihara S (2013) Trace elements of indium-bearing sphal-  
 erite from tin-polymetallic deposits in Bolivia, China and Japan: a  
 femto-second LA-ICPMS study. *Ore Geol Rev* 53:223–243. <https://doi.org/10.1016/j.oregeorev.2013.01.010>
- Murphy TE (2004) Structural and stratigraphic controls on mineralization  
 at the George Fisher Zn-Pb-Ag deposit, Northwest Queensland,  
 Australia. *Ph D Thesis, James Cook Univ* 1–423
- Oliveira JT, Pereira Z, Carvalho P, Pacheco N, Korn D (2004)  
 Stratigraphy of the tectonically imbricated lithological succession  
 of the Neves Corvo mine area, Iberian Pyrite Belt, Portugal. *Mineral  
 Deposits* 39:422–436. <https://doi.org/10.1007/s00126-004-0415-2>
- Ostendorf J, Henjes-Kunst F, Schneider J, Melcher F, Gutzmer J (2017)  
 Genesis of the carbonate-hosted Tres Marias Zn-Pb-(Ge) deposit,  
 Mexico: constraints from Rb-Sr sphalerite geochronology and Pb  
 isotopes. *Econ Geol* 112:1075–1087. <https://doi.org/10.5382/econgeo.2017.4502>
- Ottemann VJ, Nuber B (1972) Brunogeierit, ein Germanium-Ferrit-spinell  
 von Tsumeb. *Neues Jahrb Mineral Monatshefte*:263–267
- Ovejero Zappino G (1991) Mineralizaciones Zn-Pb ordovicicas del  
 anticlinorio de Bossost. *Yacimientos de Liat y Victoria. Valle de  
 Arán. Pirineo (España). Bol Geol Min* 102–3:356–377
- Pearce NJG, Perkins WT, Westgate JA, Jackson SE, Neal CR, Chenery  
 SP, Gorton MP (1997) A compilation of new and published major

- 1195 and trace element data for NIST SRM 610 and NIST SRM 612 glass  
1196 reference materials. *Geostand Newslett* 21:1–30
- 1197 Plümper O, King HE, Vollmer C, Ramasse Q, Jung H, Austrheim H  
1198 (2012) The legacy of crystal-plastic deformation in olivine: high-  
1199 diffusivity pathways during serpentinization. *Contrib Mineral Petrol*  
1200 163:701–724. <https://doi.org/10.1007/s00410-011-0695-3>
- 1201 Pokrovski GS, Schott J (1998) Thermodynamic properties of aqueous  
1202 Ge(IV) hydroxide complexes from 25 to 350°C: implications for  
1203 the behavior of germanium and the Ge/Si ratio in hydrothermal  
1204 fluids. *Geochim Cosmochim Acta* 62:1631–1642
- 1205 Pokrovski GS, Roux J, Hazemann JL, Testemale D (2005) An X-ray  
1206 absorption spectroscopy study of argutite solubility and aqueous  
1207 Ge(IV) speciation in hydrothermal fluids to 500 °C and 400 bar.  
1208 *Chem Geol* 217:127–145. <https://doi.org/10.1016/j.chemgeo.2005.01.006>
- 1209 Pouit G (1985) Les minéralisations Zn (Pb) Ba du Paléozoïque des  
1210 Pyrénées Centrales : Une mise au point et un compte rendu des  
1211 missions 1984. *Bur Rech Géologiques Minières Rapp* 85  
1212 DAM037:72
- 1214 Pouit G, Bois JP (1986) Arrens Zn (Pb), Ba Devonian deposit, Pyrénées,  
1215 France: an exhalative-sedimentary-type deposit similar to Meggen.  
1216 *Mineral Deposits* 21:181–189
- 1217 Reddy SM, Hough RM (2013) Microstructural evolution and trace ele-  
1218 ment mobility in Witwatersrand pyrite. *Contrib Mineral Petrol* 166:  
1219 1269–1284. <https://doi.org/10.1007/s00410-013-0925-y>
- 1220 Reddy SM, Timms NE, Pantleon W, Trimby P (2007) Quantitative char-  
1221 acterization of plastic deformation of zircon and geological implica-  
1222 tions. *Contrib Mineral Petrol* 153:625–645. <https://doi.org/10.1007/s00410-006-0174-4>
- 1224 Reiser FKM, Rosa DRN, Pinto ÁMM, Carvalho JRS, Matos JX,  
1225 Guimarães FMG, Alves LC, de Oliveira DPS (2011) Mineralogy  
1226 and geochemistry of tin- and germanium-bearing copper ore,  
1227 Barrigao re-mobilized vein deposit, Iberian Pyrite Belt, Portugal.  
1228 *Int Geol Rev* 53:1212–1238. <https://doi.org/10.1080/00206811003683168>
- 1230 Relvas JMRS, Barriga FJAS, Longstaffe FJ (2006) Hydrothermal alter-  
1231 ation and mineralization in the Neves-Corvo volcanic-hosted mas-  
1232 sive sulfide deposit, Portugal. II. Oxygen, hydrogen, and carbon  
1233 isotopes. *Econ Geol* 101:791–804. <https://doi.org/10.2113/gsecongeo.101.4.791>
- 1234 Ruiz AG, Sola PC, Palmerola NM (2018) Germanium: current and novel  
1235 recovery processes. Lee, S, ed, *Adv Mater Device Appl with Ger*  
1236 London, IntechOpen Ltd Chapter 2:p.9–29. <https://doi.org/10.5772/INTECHOPEN.77997>
- 1239 Sahlström F, Arribas A, Dirks P, Corral I, Chang Z (2017) Mineralogical  
1240 distribution of germanium, gallium and indium at the Mt Carlton  
1241 high-sulfidation epithermal deposit, NE Australia, and comparison  
1242 with similar deposits worldwide. *Minerals* 7:213. <https://doi.org/10.3390/min7110213>
- 1243 Saini-Eidukat B, Melcher F, Lodziak J (2009) Zinc-germanium ores of  
1244 the Tres Marias Mine, Chihuahua, Mexico. *Mineral Deposits* 44:  
1245 363–370. <https://doi.org/10.1007/s00126-008-0222-2>
- 1247 Sancey L, Motto-Ros V, Busser B, Kotb S, Benoit JM, Piednoir A, Lux F,  
1248 Tillement O, Panczer G, Yu J (2014) Laser spectrometry for multi-  
1249 elemental imaging of biological tissues. *Sci Rep* 4:1–8. <https://doi.org/10.1038/srep06065>
- 1250 Shannon R (1976) Revised effective ionic radii and systematic studies of  
1251 interatomic distances in Halides and Chalcogenides. *Acta Cryst* 32:  
1252 751–767
- 1254 Siemes H, Borges B (1979) Experimental deformation of sphalerite single  
1255 crystals under confining pressures of 3000 and 5000 bars at temper-  
1256 atures between 25°C and 450°C. *N Jb Miner Abb* 134:288–304
- Spry PG, Plimer IR, Teale GS (2008) Did the giant Broken Hill  
(Australia) Zn-Pb-Ag deposit melt? *Ore Geol Rev* 34:223–241. <https://doi.org/10.1016/j.oregeorev.2007.11.001>
- Tomkins AG, Mavrogenes JA (2001) Redistribution of gold within arse-  
nopyrite and löllingite during pro- and retrograde metamorphism:  
application to timing of mineralization. *Econ Geol* 96:525–534. <https://doi.org/10.2113/gsecongeo.96.3.525>
- U.S. Geological Survey (2019) Mineral commodity summaries 2019
- Van Achterbergh E, Ryan CG, Griffin WL (2001) Glitter! User's manual  
on-line interact data reduct LA-ICPMS microprobe 1–72
- Velásquez G, Béziat D, Salvi S, Siebenaller L, Borisova AY, Pokrovski  
GS, De Parseval P (2014) Formation and deformation of pyrite and  
implications for gold mineralization in the El Callao District,  
Venezuela. *Econ Geol* 109:457–486. <https://doi.org/10.2113/econgeo.109.2.457>
- Viets J, Hopkins R, Miller B (1992) Variations in minor and trace metals  
in sphalerite from Mississippi Valley-type deposits of the Ozark re-  
gion: genetic implications. *Econ Geol* 87:1897–1905
- Vikentyev IV, Belogub EV, Novoselov KA, Moloshag VP (2016) Meta-  
morphism of volcanogenic massive sulphide deposits in the  
Urals. *Ore Geol Rev* 34:30–63. <https://doi.org/10.1016/j.oregeorev.2016.10.032>
- Villars P, Calvert LD (1991) Pearson's handbook of crystallographic data  
for intermetallic phases
- Vukmanovic Z, Reddy SM, Godel B, Barnes SJ, Fiorentini ML, Barnes  
SJ, Kilburn MR (2014) Relationship between microstructures and  
grain-scale trace element distribution in komatiite-hosted magmatic  
sulphide ores. *Lithos* 184–187:42–61. <https://doi.org/10.1016/j.lithos.2013.10.037>
- Wagner T, Monecke T (2005) Germanium-bearing colusite from the  
Waterloo volcanic-rock-hosted massive sulfide deposit, Australia:  
crystal chemistry and formation of colusite-group minerals. *Can  
Mineral* 43:655–669. <https://doi.org/10.2113/gscanmin.43.2.655>
- Wagner T, Klemd R, Wenzel T, Mattsson B (2007) Gold upgrading in  
metamorphosed massive sulfide ore deposits: direct evidence from  
laser-ablation-inductively coupled plasma-mass spectrometry anal-  
ysis of invisible gold. *Geology* 35:775–778. <https://doi.org/10.1130/G23739A.1>
- Wei C, Huang Z, Yan Z, Hu Y, Ye L (2018) Trace element contents in  
sphalerite from the Nayongzhi Zn-Pb deposit, northwestern  
Guizhou, China: insights into incorporation mechanisms,  
metallogenic temperature and ore genesis. *Minerals* 8:490. <https://doi.org/10.3390/min8110490>
- Wei C, Ye L, Hu Y, Danyushevskiy L, Li Z, Huang Z (2019) Distribution  
and occurrence of Ge and related trace elements in sphalerite from  
the Lehong carbonate-hosted Zn-Pb deposit, northeastern Yunnan,  
China: insights from SEM and LA-ICP-MS studies. *Ore Geol Rev*  
115:103175. <https://doi.org/10.1016/j.oregeorev.2019.103175>
- Wilkinson JJ (2013) Sediment-hosted zinc-lead mineralization: processes  
and perspectives, treatise on geochemistry, Second Edition.  
Elsevier, H Holland, K Turekian (ed), Amsterdam, Netherlands  
219–249. <https://doi.org/10.1016/B978-0-08-095975-7.01109-8>
- Wilson SA, Ridley WI, Koenig AE (2002) Development of sulfide cali-  
bration standards for the laser ablation inductively-coupled plasma  
mass spectrometry technique. *J Anal At Spectrom* 17:406–409. <https://doi.org/10.1039/b108787h>
- Xue C, Zeng R, Liu S, Chi G, Qing H, Chen Y, Yang J, Wang D (2007)  
Geologic, fluid inclusion and isotopic characteristics of the Jinding  
Zn-Pb deposit, western Yunnan, South China: a review. *Ore Geol  
Rev* 31:337–359. <https://doi.org/10.1016/j.oregeorev.2005.04.007>
- Ye L, Tiegeng L (1999) Sphalerite chemistry, Niujiaotang Cd-rich zinc  
deposit, Guizhou, Southwest China. *Chin J Geochem* 18:62–68

<p>1319 1320 1321 1322 1323 1324 1325 1326 1327 1328 1335</p>	<p>Ye L, Cook NJ, Ciobanu CL, Yuping L, Qian Z, Tiegeng L, Wei G, Yulong Y, Danyushevskiy L (2011) Trace and minor elements in sphalerite from base metal deposits in South China: a LA-ICPMS study. <i>Ore Geol Rev</i> 39:188–217. <a href="https://doi.org/10.1016/j.oregeorev.2011.03.001">https://doi.org/10.1016/j.oregeorev.2011.03.001</a></p> <p>Ye L, Cook NJ, Liu T, Ciobanu CL, Gao W, Yang Y (2012) The Niujaotang Cd-rich zinc deposit, Duyun, Guizhou province, Southwest China: ore genesis and mechanisms of cadmium concentration. <i>Mineral Deposits</i> 47:683–700. <a href="https://doi.org/10.1007/s00126-011-0386-z">https://doi.org/10.1007/s00126-011-0386-z</a></p>	<p>Zwart HJ (1963) Metamorphic history of the Central Pyrenees, part II, Valle de Aran. <i>Leidse Geol Meded</i> 28:321–376</p> <p>Zwart HJ (1979) The geology of the Central Pyrenees. <i>Leidse Geol Meded</i> 50:1–74</p> <p><b>Publisher's note</b> Springer Nature remains neutral with regard to jurisdictional claims in published maps and institutional affiliations.</p>	<p>1329 1330 1331 1332 1333 1334</p>
---	--	--	--

UNCORRECTED PROOF

## AUTHOR QUERIES

### **AUTHOR PLEASE ANSWER ALL QUERIES.**

- Q1. Please check if the provided cities in affiliations 1, 3, and 4 are correct.
- Q2. Ref. "Cugerone et al. (2020)" is cited in the body but its bibliographic information is missing. Kindly provide its bibliographic information in the list.
- Q3. References [Castroviejo Bolibar & Serrano, 1983, Oliveira et al, 2004, Ostendorf et al, 2017] were provided in the reference list; however, this was not mentioned or cited in the manuscript. As a rule, all references given in the list of references should be cited in the main body. Please provide its citation in the body text.

UNCORRECTED PROOF