

COMPUTER AIDED SURGERY: APPLICATION TO AORTIC DISSECTION

Wenyang Pan¹, Pascale Kulisa², Benyebka Bou-Saïd¹, Marine Menut³

¹LaMCoS, INSA Lyon, UMR5259, University of Lyon, Villeurbanne, France, 69100

²Univ Lyon, INSA de Lyon, Ecole Centrale de Lyon, UCBL1, CNRS, LMFA, UMR 5509, F-69621, Villeurbanne, France

³CISTEN, 66 Bd. Niels Bohr, 69603 Villeurbanne, France

Courriel : benyebka.bou-said@insa-lyon.fr

Téléphone : 06 04 67 20 08

Abstract

Cardiovascular diseases are the leading cause of mortality in the industrialized world. Among these diseases, aortic dissection is relatively unknown and difficult to treat, with a survival rate for most severe cases not exceeding 10%. This pathology occurs when an injury leads to a localized tear of the innermost layer of the aorta (Figure 1a), called the entry port. It allows blood to flow between the layers of the aortic wall, forcing the layers apart and creating a false lumen. The dissection of these layers may extend over a long portion of the thoracic and abdominal aorta. While type A (Figure 1b) dissection is a clinical emergency and associated with a high mortality, type B (Figure b) dissection differs in that the surgeons must choose the method of intervention. This type is more conducive to endovascular treatment, which seeks to obliterate the entrance to the false lumen with a stent. Poor redistribution of flow can be harmful for the health of the patient and the implementation of a stent in the aortic cross region has significant technical difficulties due to the angulation and the extent of the diseased area. Surgical planning for this procedure is based on medical imaging carried out before the intervention. Therefore, it does not consider the deformation of the vascular structure during the operation, which can lead to both a bad sizing but also poor positioning of the stent. The objective of this research project is to develop a numerical tool to predict the consequences of these changes in terms of flow, hence to provide assistance to the surgical planning process.

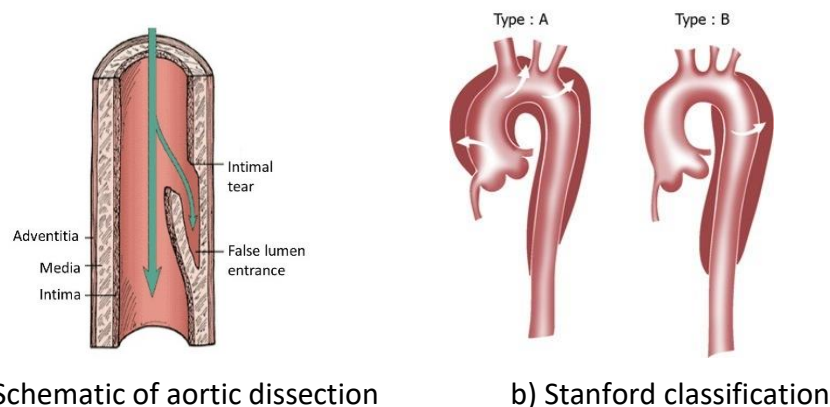


Figure 1: Aortic dissection and Stanford Classification

Computational Fluid Dynamic simulations of blood flow in a type B aortic dissection were performed. Navier-Stokes equations for an incompressible fluid were solved using the Foam-extend solver. Fluid structure interactions and laminar flow were considered in a first step. The Windkessel model was applied to account for flow resistance encountered by the blood

and a Poiseuille velocity profile at the inlet was based on a patient pulsatile flow rate. Following figure shows a Fluid/Structure Interaction simulation for given data.



Figure 2: FSI simulation at systolic phase (Left: streamlines colored by velocity magnitude; Right: wall shear stress).

The characterization of blood behavior with the deformability of the arterial wall is a first step into the surgical procedure simulation. Numerical predictions will allow the surgical team to make an appropriate choice of surgical tools and stent and to identify its most suitable positioning for each patient. In addition, we are working on the numerical simulation for the stent deployment to compare with the clinical images for a validation of our simulations.