



**HAL**  
open science

## Saturable plasmonic metasurfaces for laser mode locking

Jiyong Wang, Aurelien Coillet, Olivier Demichel, Zhiqiang Wang, Davi Rego,  
Alexandre Bouhelier, Philippe Grelu, Benoit Cluzel

► **To cite this version:**

Jiyong Wang, Aurelien Coillet, Olivier Demichel, Zhiqiang Wang, Davi Rego, et al.. Saturable plasmonic metasurfaces for laser mode locking. *Light: Science and Applications*, 2020, 9, 10.1038/s41377-020-0291-2 . hal-03025720

**HAL Id: hal-03025720**

**<https://hal.science/hal-03025720v1>**

Submitted on 26 Nov 2020

**HAL** is a multi-disciplinary open access archive for the deposit and dissemination of scientific research documents, whether they are published or not. The documents may come from teaching and research institutions in France or abroad, or from public or private research centers.

L'archive ouverte pluridisciplinaire **HAL**, est destinée au dépôt et à la diffusion de documents scientifiques de niveau recherche, publiés ou non, émanant des établissements d'enseignement et de recherche français ou étrangers, des laboratoires publics ou privés.

ARTICLE

Open Access

# Saturable plasmonic metasurfaces for laser mode locking

Jiyong Wang<sup>1,2,3</sup>, Aurelien Coillet<sup>1</sup>, Olivier Demichel<sup>1</sup>, Zhiqiang Wang<sup>1</sup>, Davi Rego<sup>1,4</sup>, Alexandre Bouhelier<sup>1</sup>, Philippe Grelu<sup>1</sup> and Benoit Cluzel<sup>1</sup>

## Abstract

Metamaterials are artificial materials made of subwavelength elementary cells that give rise to unexpected wave properties that do not exist naturally. However, these properties are generally achieved due to 3D patterning, which is hardly feasible at short wavelengths in the visible and near-infrared regions targeted by most photonic applications. To overcome this limitation, metasurfaces, which are the 2D counterparts of metamaterials, have emerged as promising platforms that are compatible with planar nanotechnologies and thus mass production, which platforms the properties of a metamaterial into a 2D sheet. In the linear regime, wavefront manipulation for lensing, holography, and polarization control has been achieved recently. Interest in metasurfaces operating in the nonlinear regime has also increased due to the ability of metasurfaces to efficiently convert incident light into harmonic frequencies with unusual polarization properties. However, to date, the nonlinear absorption of metasurfaces has been mostly ignored. Here, we demonstrate that plasmonic metasurfaces behave as saturable absorbers with modulation performances superior to the modulation performance of other 2D materials and exhibit unusual polarimetric nonlinear transfer functions. We quantify the link between saturable absorption, the plasmonic resonances of the unit cell and their distribution in a 2D metasurface, and finally provide a practical implementation by integrating the metasurfaces into a fiber laser cavity operating in pulsed regimes driven by the metasurface properties. As such, this work provides new perspectives on ultrathin nonlinear saturable absorbers for applications where tunable nonlinear transfer functions are needed, such as in ultrafast lasers or neuromorphic circuits.

## Introduction

Plasmonic metasurfaces are artificial 2D sheets of plasmonic unit cells that repeat in a subwavelength array<sup>1–3</sup>. In such metasurfaces, the plasmon resonance of the unit cell improves the interaction of the impinging light through an enhanced absorption cross-section<sup>4–6</sup>. Plasmon resonance allows metasurfaces to be much thinner than the wavelength, whereas the spatial distribution and orientation of the unit cell determine the amplitude and phase distribution of the light scattered in

the far field<sup>7</sup>. Such properties, which originate from the generalized Snell–Descartes law, have paved the way toward the concept of flat optics, which aims to develop ultrathin sheets of metasurfaces mimicking the properties of traditional bulky optical elements<sup>3,8,9</sup>. Flat lenses<sup>10</sup>, polarizers<sup>11,12</sup>, holograms, and collimators<sup>13,14</sup> to name a few have been successfully implemented for practical applications<sup>15</sup>. In parallel to these works on waveshaping, Moreau et al.<sup>5</sup> evidenced that light absorption can also be greatly enhanced in plasmonic metasurfaces. In this field, quasi-perfect absorbers have been extensively studied due to their potential applications in filtering<sup>16</sup>, photosensing<sup>17</sup>, or photovoltaics<sup>18</sup>. However, from the perspective of practical applications, little attention has been paid to metasurfaces under pulsed laser illumination, in which optical nonlinearities become significant. To the best of

Correspondence: Benoit Cluzel ([benoit.cluzel@u-bourgogne.fr](mailto:benoit.cluzel@u-bourgogne.fr))

<sup>1</sup>Laboratoire Interdisciplinaire Carnot de Bourgogne, Université Bourgogne Franche-Comté, 9 avenue Alain Savary, 21078 Dijon, France

<sup>2</sup>Key Laboratory of 3D Micro/Nano Fabrication and Characterization of Zhejiang Province, School of Engineering, Westlake University, 18 Shilongshan Road, 310024 Hangzhou, Zhejiang Province, China

Full list of author information is available at the end of the article

© The Author(s) 2020



**Open Access** This article is licensed under a Creative Commons Attribution 4.0 International License, which permits use, sharing, adaptation, distribution and reproduction in any medium or format, as long as you give appropriate credit to the original author(s) and the source, provide a link to the Creative Commons license, and indicate if changes were made. The images or other third party material in this article are included in the article's Creative Commons license, unless indicated otherwise in a credit line to the material. If material is not included in the article's Creative Commons license and your intended use is not permitted by statutory regulation or exceeds the permitted use, you will need to obtain permission directly from the copyright holder. To view a copy of this license, visit <http://creativecommons.org/licenses/by/4.0/>.

our knowledge, frequency conversion effects in nonlinear metasurfaces, such as subwavelength hole arrays, splitting resonators, and fishnet structures, have mainly been considered, and a remarkably high frequency conversion efficiency and unusual polarization properties have been reported<sup>19</sup>.

For 20 years, the nonlinear absorption of plasmonic devices has also attracted much interest as it leads to a complex cascade of electronic processes involving hot electrons, which are of particular interest for many applications<sup>20–22</sup> ranging from photochemistry to ultrafast photodetectors<sup>23,24</sup>. Indeed, the nonlinear absorption of gold plasmonic devices leads to the excitation of a hot-electron cloud relaxing at a sub-picosecond timescale, which can be used to seed another physical or chemical process<sup>25–28</sup>. In this ultrafast electronic excitation regime, the reduction in the occupation of the electronic states well below the gold Fermi level when the electron distribution becomes athermal leads to transient absorption related to a change in the metal dielectric function<sup>25,29</sup>. It has finally been shown that gold absorption can be saturated under intense optical pumping<sup>30</sup>, which can be helpful for achieving pulsed regimes in laser architectures<sup>31,32</sup>. Indeed, to generate stable ultrashort pulses through mode locking, the laser cavity requires the action of a saturable absorber with an ultrafast relaxation time, a significant contrast in the nonlinear transfer function, and a high damage threshold<sup>33–35</sup>. Several saturable absorber 2D materials have been developed during the past two decades, aiming to achieve convenient integration in fiber laser and waveguide laser platforms. Single-walled carbon nanotubes<sup>36</sup>, graphene<sup>37</sup>, topological insulators<sup>38</sup>, and black phosphorus<sup>39</sup> are among the most investigated low-dimensional materials in this respect, although their nonlinear contrast is limited at the level of a few percent. Considering the pioneering works using plasmonic nanoparticles as saturable absorbers in fiber lasers<sup>31,32,34,35</sup>, only colloidal solutions of gold nanoparticles with dispersed sizes and random orientations have been used. Therefore, the optical properties behave more like averaged properties or closer to the bulk material effects, and the conclusions drawn have been poorly linked to the plasmonic landscape.

In this work, we employ planar technologies to fabricate 2D plasmonic metasurfaces with a precisely defined size, gap, and orientation, and thus a well-controlled plasmonic mode that synthesized counterparts can barely handle. The nonlinear properties of such metasurfaces, specifically their saturable absorption when exposed to intense laser pumping, are systematically investigated. The link between the input polarization and the geometric parameters of plasmonic metasurfaces is highlighted. In particular, the efficiency of saturable metasurfaces for laser mode locking is further validated by integrating the

metasurfaces in a fiber laser cavity architecture to promote stable self-starting soliton mode locking.

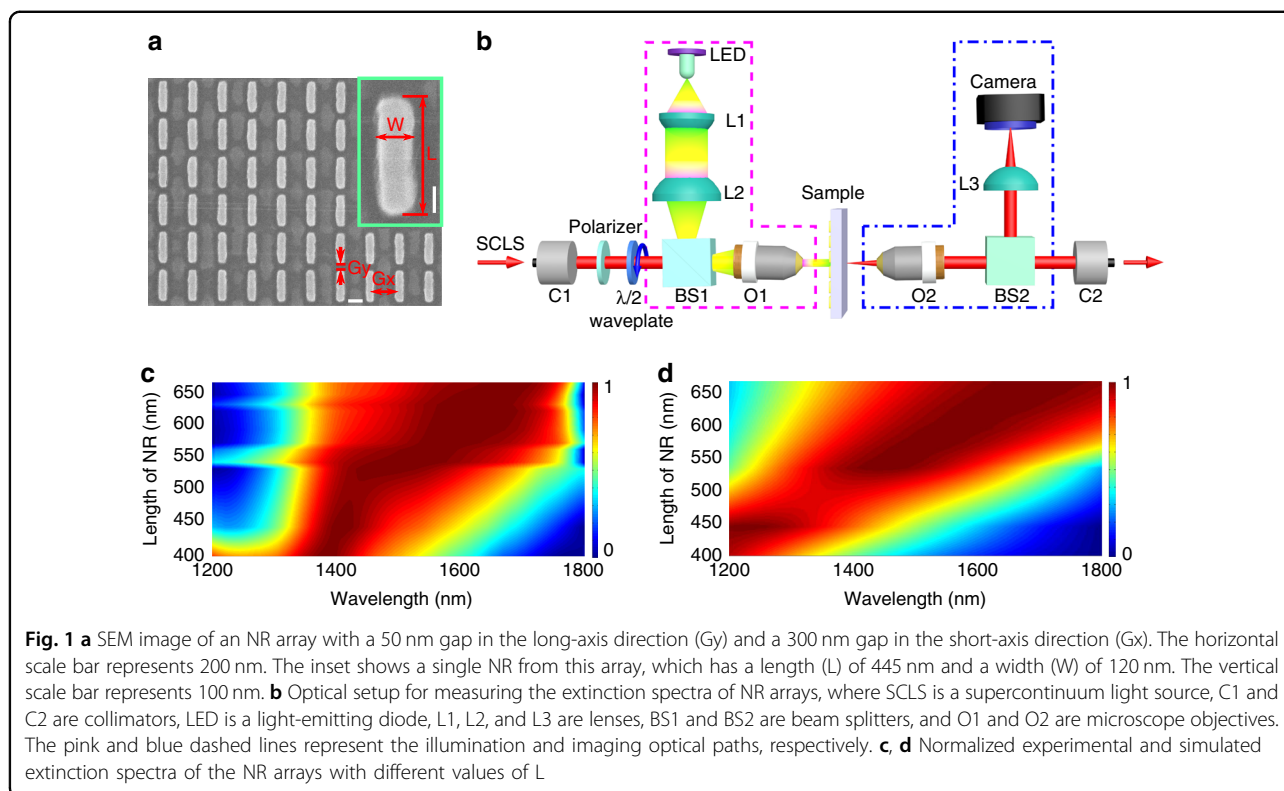
## Results

### Linear characterization

Plasmonic metasurfaces made of gold nanorods (NRs) for which plasmonic properties are well established are first designed and fabricated. In total, 50  $\mu\text{m}$  by 50- $\mu\text{m}$  arrays of NRs with various lengths are fabricated on glass slides using electron-beam lithography followed by evaporation of a 50-nm gold film and lift-off. The length ( $L$ ) of a single NR is varied from 400 nm to 670 nm, with a width ( $W$ ) of 120 nm for the two shortest lengths and 150 nm for the other lengths. A detailed description of the fabrication procedure can be found in the “Supporting Information”. All of the fabricated arrays are characterized by scanning electron microscopy (SEM) after all of the optical measurements are performed. Figure 1a shows an example of an NR array with  $L = 445$  nm and  $W = 120$  nm. The two adjacent NRs have a 50 nm gap in the long-axis direction ( $G_y$ ), and a 300 nm gap in the short-axis direction ( $G_x$ ). The inset shows a single NR in the array.

The linear properties of the plasmonic NRs are characterized in a home-built extinction microscope operating in the near-infrared region. As depicted in Fig. 1b, the sample is sandwiched between two confocal objectives (O1 and O2, NA of 0.3, focus diameter  $< 10$   $\mu\text{m}$ ), which are conjugated on both sides with fiber optics collimators (C1 and C2). Köhler illumination is implemented with a visible LED on one side (pink dashed lines), and a CCD camera allows for sample visualization on the other side (blue dashed lines). To measure the transmission of the samples, a supercontinuum light source (SCLS) emitting in the 1–2  $\mu\text{m}$  spectral range is focused on the sample and combined with the illumination using a beam splitter (BS1). A polarizer and a half-waveplate control the polarization axis of the incident SCLS, and a second beam splitter (BS2) separates the transmitted light for sample imaging and transmittance measurements. BS1 and BS2 are mounted on magnetic holders so that one can easily switch from imaging to optical measurements.

The extinction spectrum of the  $i$ th NR array, which denotes the fingerprint of plasmonic resonance, is defined as  $\text{Ext}_i(\lambda) = [T_{\text{ref}}(\lambda) - T_{\text{nr},i}(\lambda)]/T_{\text{ref}}(\lambda)$ , where  $T_{\text{ref}}(\lambda)$  is the transmission outside the NR array,  $T_{\text{nr},i}(\lambda)$  is the transmission of the  $i$ th NR array, and  $\lambda$  is the wavelength. Theoretical extinction spectra are calculated by using commercial finite-element software, taking the periodical condition into account. The numerical simulations show that the plasmonic landscape of the reported metasurfaces is mainly dominated by the dipolar resonances of the individual nanoantenna. Indeed, the role of periodicity remains very weak since the periods used here are



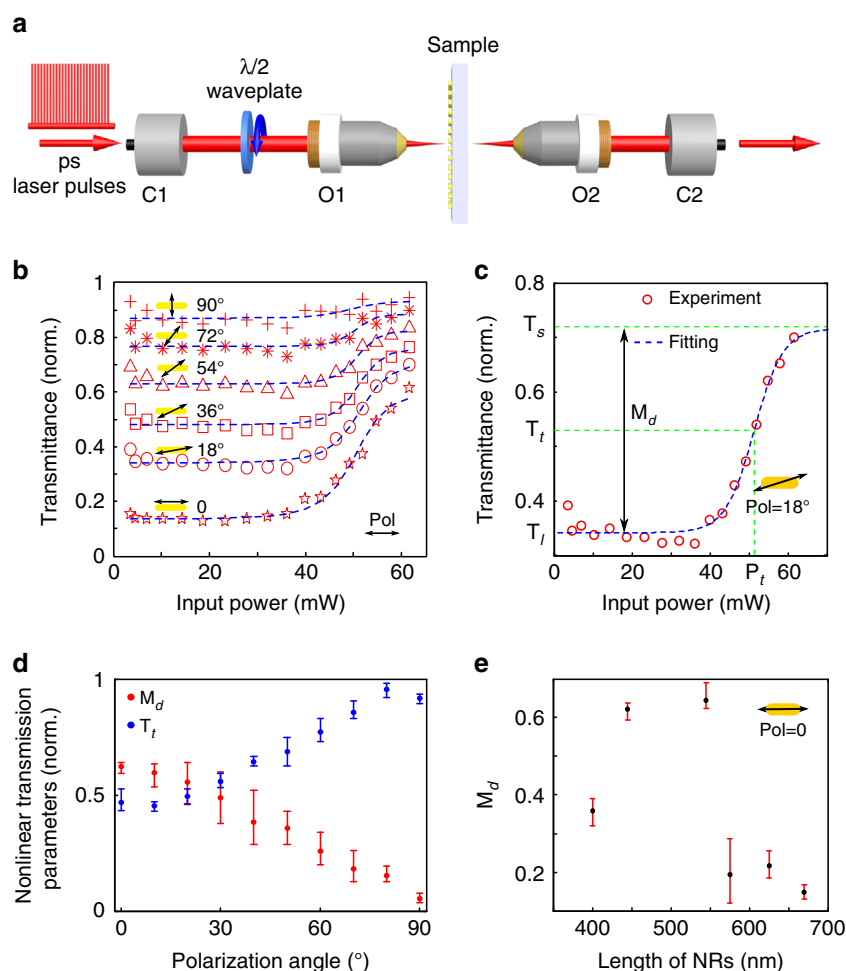
sufficiently lower than the wavelength to prevent a far-field effect, but large enough to significantly reduce the near-field coupling between individual nanoantennas (see “Supporting Information” for the details)<sup>40,41</sup>. The experimental and theoretical extinction spectra of different NR arrays are shown in Fig. 1c, d for an incident polarization parallel to the NR axis. As can be seen from the comparison with the numerical extinction spectra in Fig. 1d, the calculations generally agree very well with the experimental results, apart from a slightly larger peak wavelength shift and broader spectral linewidths. More importantly, the experiments confirm that plasmonic resonances can be obtained at 1550 nm for NR lengths of  $\sim 500$  nm, which allows for their nonlinear characterization using a standard laser and detectors at telecom wavelengths.

### Nonlinear characterization

Following the linear optical characterization, the nonlinear transmittance of the plasmonic NR metasurfaces is recorded using the same setup mentioned previously, apart from the light source, as shown in Fig. 2a. To saturate the absorption of the NR array, we use a home-built pulsed laser with a pulse duration of 500 ps and a repetition rate of 100 kHz. The maximum average output power of the laser is 100 mW, corresponding to a peak power of 2 kW (see “Supporting Information” for details). The laser wavelength is 1555 nm, and its polarization is

linear, such that a half-waveplate can be used to tune the polarization axis with respect to the NR orientation. Using this laser, we record the transmission of each NR array, and use the transmission of the nearby blank glass slide as a reference.

The experimental results of the transmission of an NR array with  $L = 445$  nm are plotted in Fig. 2b for different polarization angles, ranging from  $0^\circ$  and  $90^\circ$  with respect to the long axis of the NRs. One can first note that the “S”-shaped profile of these curves clearly reveals the nonlinear transmission of the fabricated metasurfaces. At low power, the transmission of the NR array remains linear with a transmission coefficient  $T_l$ , which depends on the polarization of the input laser.  $T_l$  is inversely proportional to the absorption cross-section of the NR, which becomes maximal when the incident polarization matches the long axis of the NRs<sup>42</sup>. Above a typical power  $P_D$ , the transmission increases in a nonlinear fashion until it reaches a saturated value  $T_s$ , showing the saturation of the metasurface absorption. The parameters  $P_D$ ,  $T_l$ , and  $T_s$  are illustrated in Fig. 2c, which shows the nonlinear transmission for an incident polarization of  $18^\circ$ .  $P_t$  refers to the excitation power corresponding to the typical transmission level  $T_t = (T_s + T_l)/2$ . Given the “S”-shaped profile, the experimental data are fitted using a sigmoid function (blue dashed lines in Fig. 2b, c), from which the parameters  $T_l$ ,  $T_s$ ,  $P_D$ , and  $T_t$  used hereafter are extracted.

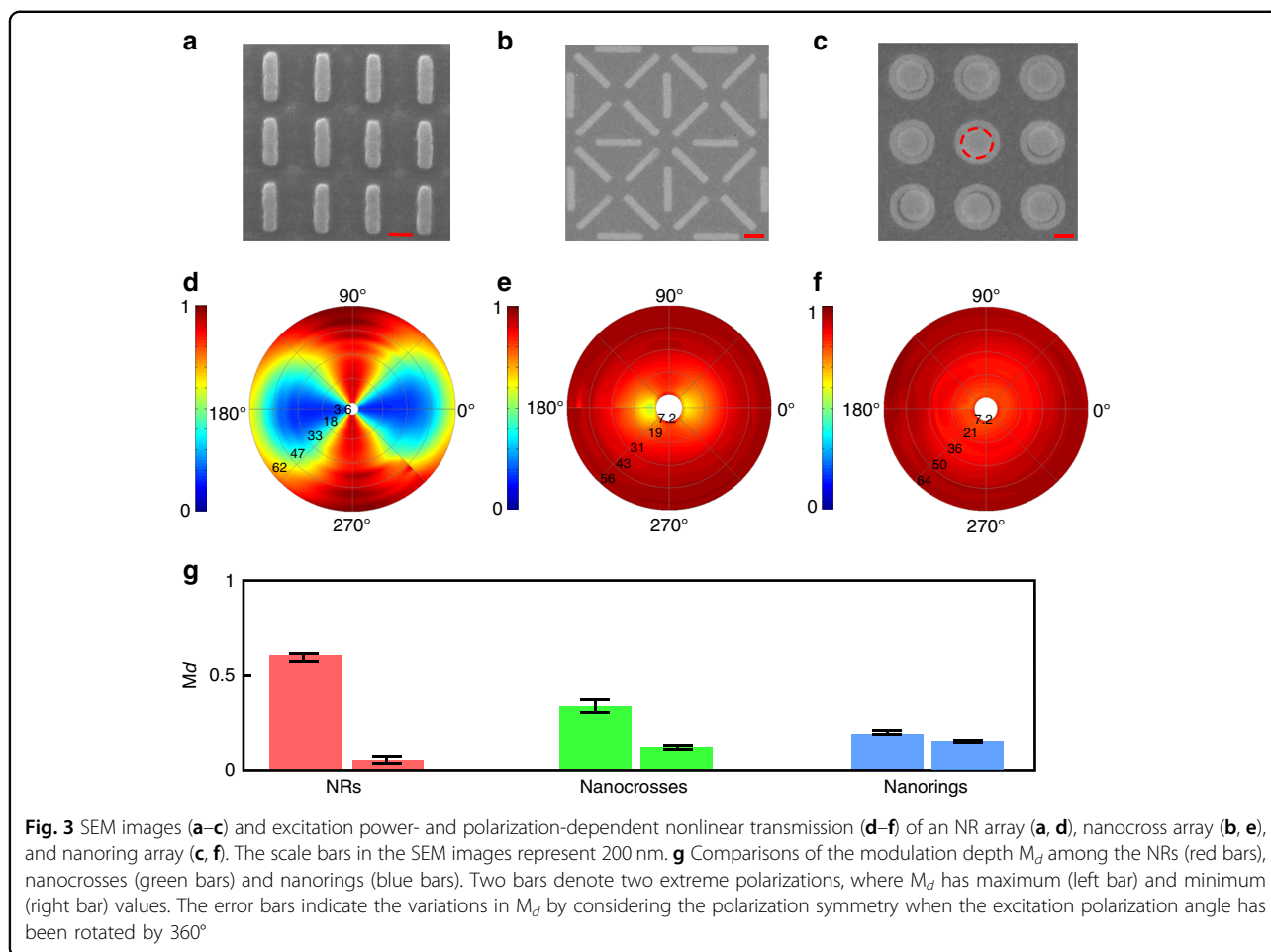


**Fig. 2** **a** Optical setup for measuring the nonlinear transmission of NR arrays. **b** The experimental transmission of the NR array as a function of the input power for different excitation polarizations (from  $0^\circ$  to  $90^\circ$  with steps of  $18^\circ$  with respect to the long axis of the NR). The experimental data (red symbols) are fitted by using a generalized sigmoid function (blue curves). **c** The experimental transmission (red circles) of the NR array as a function of the input power with an excitation polarization of  $18^\circ$  with respect to the long axis of the NR. The modulation depth  $M_d$  and typical transmission  $T_t$  are defined from the corresponding fittings (blue curve). The transmission of each NR array in (**a**–**c**) is normalized to the value of the nearby blank glass slide. **d** Experimental modulation depth  $M_d$  and typical transmission  $T_t$  as functions of the excitation polarization angle. **e** Experimental modulation depth  $M_d$  as a function of the length of NRs when the excitation polarization is along the long axis of the NRs. The error bars in (**d**) and (**e**) indicate the variations in  $M_d$  and  $T_m$  considering the polarization symmetry when the polarization angle has been rotated by a whole revolution ( $360^\circ$ )

The typical transmission  $T_t$  and the modulation depth of the saturable absorption  $M_d = T_s - T_l$  strongly depend on the polarization of the input laser. Indeed, the transmittance of NRs perpendicular to the input light polarization remains high regardless of the input power, while strong absorption occurs due to collective plasmonic resonances when the input polarization matches the long axis of the NRs. In the latter case, the plasmonic absorption becomes saturated at high powers, and the resulting modulation depth can reach values as high as  $M_d = 60\%$  as shown in Fig. 2d. Such high modulation depths are uncommon, especially for thin metasurfaces: a comparison between 2D saturable absorbers shows that

the maximum modulation depth reported is less than 11%<sup>43</sup>, and a similar study with colloidal gold NRs reports an  $M_d$  of 5.46%<sup>44</sup>. For a comparison, a typical semiconductor saturable absorber mirror (SESAM) can achieve an  $M_d$  of 30%, but in a much thicker device<sup>45</sup>.

To cross-check the relationship between the plasmon resonances of the metasurfaces and the saturable absorption, the effect of the NR length on the modulation depth of the saturable absorption is also investigated. The results presented in Fig. 2e correspond to the case where the polarization of the incident light is parallel to the long axis of the NRs, for which the modulation depth is the highest. The measurements clearly show that the



modulation depth reaches a maximum for lengths of  $\sim 500$  nm, as the plasmonic resonance matches the laser wavelength used in the experiment. As such, this result strengthens the conclusion that the nonlinear absorption is directly linked to the plasmonic resonances of the NR arrays.

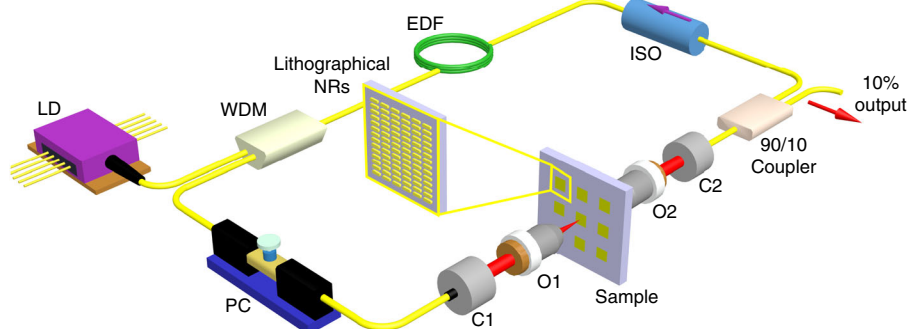
### Polarimetric saturable absorption

The previous results show a large dependence of the nonlinear absorption of the NR arrays on the input polarization. Due to the versatility of our approach, new structures referred to as “nanocrosses” and “nanorings” are designed and fabricated to change this polarization dependence. Figure 3b, c shows the SEM images of these two structures, arranged in arrays, similar to the previous case of the NRs shown in Fig. 3a.

Figure 3b shows four unit cells of nanocrosses, with each consisting of eight NRs. The long axes of the pairs of NRs are rotated by  $0^\circ$ ,  $90^\circ$ ,  $45^\circ$ , and  $-45^\circ$  so that the polarization dependence is largely reduced compared with that of a single orientation NR array. All of the NRs have the same width of 90 nm and the same length of 480 nm,

which corresponds to maximum absorption at  $\sim 1550$  nm. Figure 3c shows the SEM image of nanorings, which have an inner diameter of 320 nm and an outer diameter of 500 nm. Here, we notice that the central parts of the nanorings, marked as dashed circles in the figure, are filled with conductive polymer (Electra 92 from ALLRE-SIST GmbH) for SEM observations. For such dimensions, the theoretical dipolar plasmon mode is calculated with a finite-element method, and a resonance is found at  $\sim 1550$  nm (see “Supporting Information” for details). Due to the symmetry, the nanorings almost do not show any polarization-dependent resonances.

After the fabrication, the two samples of nanocrosses and nanorings are optically tested using the same setup presented earlier, both in the linear and nonlinear regimes. To better visualize the experimental behavior of the different structures, a polar pseudocolor representation is used, where the polar coordinates ( $P$ ,  $\theta$ ) represent the input power and the input polarization, and the colormap represents the transmission level of the array. With this representation, the saturable absorption along the long axis of the NR array (Fig. 3d) clearly



**Fig. 4** Scheme of a home-built ultrafast fiber laser that integrates lithographical NRs as a saturable absorber, where LD represents the laser diode, WDM is the wavelength-division multiplexer, EDF is the erbium-doped fiber, ISO is the optical isolator, PC is the polarization controller, C1 and C2 are the collimators, and O1 and O2 are the objectives

appears, while the polarization dependence is strongly reduced in the case of the nanocrosses (Fig. 3e) and almost entirely disappears for the nanorings (Fig. 3f). This reduction in the polarization dependence also occurs with a decrease in the modulation depth  $M_d$  to 33% at the maximum in the case of the nanocrosses and as low as 19% for the nanorings, as shown in Fig. 3g. These results show that one can tailor the polarization dependence of the nonlinear absorption of the metasurfaces but at the expense of the modulation depth, although a polarization-insensitive metasurface still displays remarkable saturable absorption features.

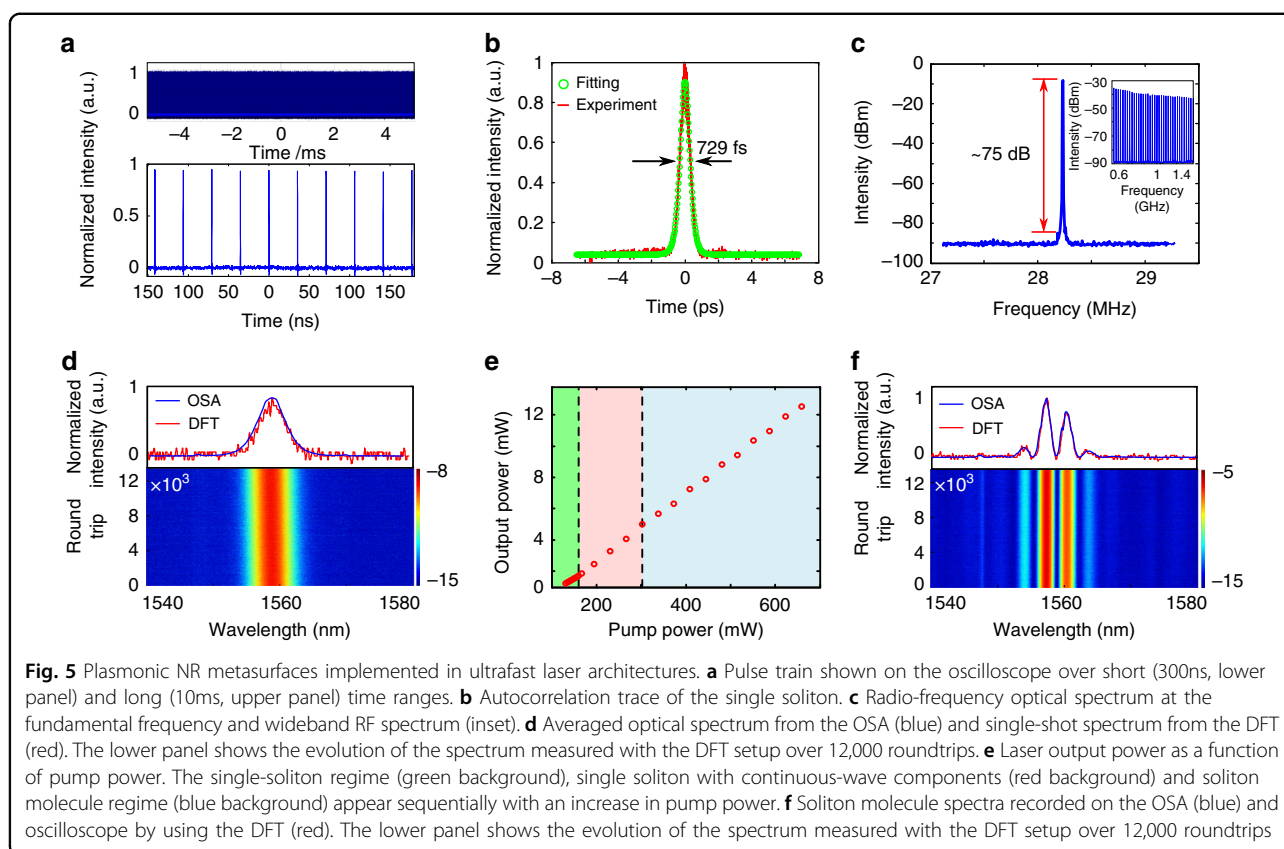
#### Ultrafast fiber laser architecture

In order to further test the fabricated samples and provide a practical demonstration of the saturable metasurface application for ultrashort laser pulse generation, we finally integrated the metasurfaces into a fiber laser cavity. In a laser cavity, the saturable absorption of the plasmonic arrays is expected to lead to the formation of ultrashort pulses, ultimately reaching passively mode-locked regimes. To test whether the plasmonic metasurfaces shown earlier can act as the mode-locking element of a fiber laser, we build the fiber cavity shown in Fig. 4, which includes a 980 nm pump diode (LD, maximum pump power of 1 W), a 980/1550 nm wavelength multiplexer (WDM), 0.5 m of erbium-doped fiber (EDF), a polarization-insensitive isolator (ISO), a polarization controller (PC), and an output coupler. The free-space setup from Fig. 1b, without the polarizer and half-waveplate, completes the cavity, allowing for the integration of the NR arrays. Note that the sample has to be tilted at a slight angle, below  $10^\circ$ , to avoid back reflections that would perturb the normal operation of the laser. The overall length of the cavity is 7.5 m with anomalous net chromatic dispersion, and all of the fiber connections are made with standard single-mode silica fibers. The total loss of the plasmonic metasurfaces plus the free-space

optical elements integrated in the laser cavity, as shown in Fig. 4, is usually below 3 dB, and can be as low as 2 dB.

The output of the laser is taken from the 10% output of the fiber coupler and sent to our detection setup, which includes a fast photodiode connected to a 6-GHz real-time oscilloscope or an electrical spectrum analyzer, a time-averaged optical spectrum analyzer (OSA), a multi-shot optical autocorrelator, and a real-time optical spectrum measurement line. The latter employs dispersive Fourier transform (DFT), which maps the spectrum of each output pulse onto a temporal waveform by stretching the laser output within a long dispersive fiber link<sup>46,47</sup>. Precisely, our DFT setup consists of a 6-km-long dispersion compensating fiber that provides a total accumulated dispersion of 686 ps/nm and a 14-GHz photodiode connected to the 6-GHz oscilloscope. This configuration therefore leads to an electronic-limited spectral resolution of 0.03 THz (0.24 nm).

When an NR array is placed in the fiber laser cavity, stable mode locking is achieved by increasing the pump power and tuning the polarization controller. It should be noted that the blank glass slide without the NR array does not lead to the generation of pulses within the cavity, only continuous-wave emission, regardless of the pumping power and polarization controller orientation. Thus, it unambiguously confirms the role of the plasmonic metasurface as the mode-locking element of the cavity. The characterization of a typical mode-locked regime achieved with the NR array is presented in Fig. 5. Figure 5a presents an oscilloscope time trace showing that a stable pulse train with a repetition rate of 28.2 MHz is achieved, in relationship with the fundamental roundtrip time of the 7.5-m-long fiber cavity. The intensity autocorrelation trace from Fig. 5b indicates that a single soliton is generated inside the cavity, and that its duration is 729 fs when fitted with a hyperbolic-secant profile. The pulse train stability is assessed by sending the photo-detected signal to a radio-frequency spectrum analyzer,

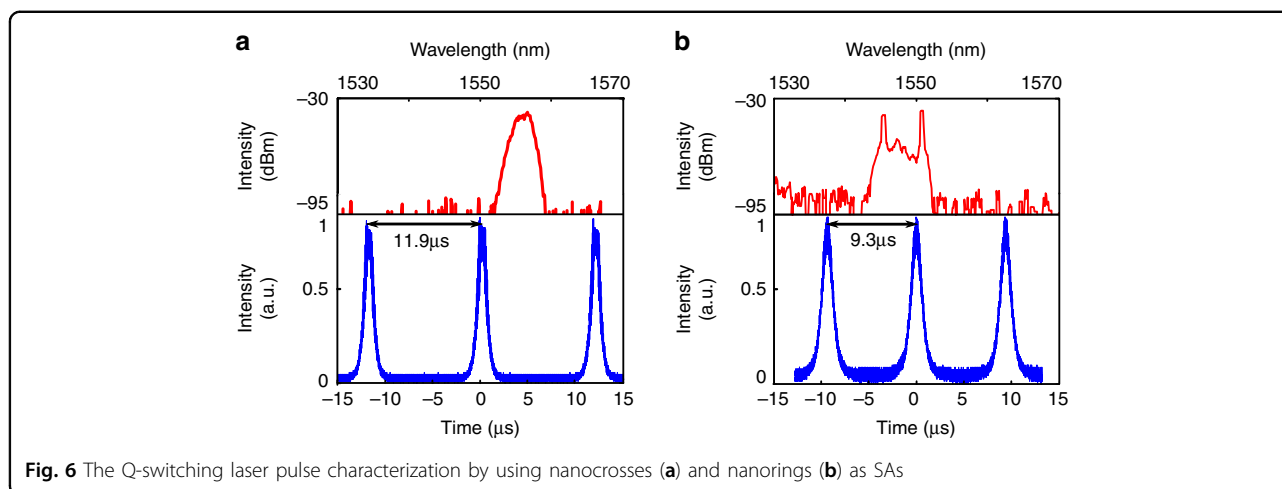


resulting in the measurements of Fig. 5c. The signal reveals a very pure signal at 28.2 MHz and its harmonics, with a large signal-to-noise ratio of 75 dB, which demonstrates the remarkably high stability of the pulse train for such a cavity laser scheme with some free-space elements<sup>48</sup>. The time-averaged pulse spectrum recorded on the OSA is shown in Fig. 5d, and compares well with a single-shot DFT spectrum. The central wavelength is located at 1558 nm, and the full-width at half-maximum (FWHM) of the spectrum is 5 nm. Compared with the Fourier transform-limited FWHM spectral width (3.5 nm for a hyperbolic-secant profile or 4.8 nm for a Gaussian profile), this result shows the generation of a pulse with a low amount of frequency chirping, which is a convenient feature for most applications. Using a long recording of the DFT signal, we can follow the evolution of the spectrum over a large number of successive roundtrips, 12,000 in this case, as shown in the lower part of Fig. 5d. The virtually unchanged shape of the spectrum once again confirms the very high stability of the mode-locked regime.

When the pump power is increased, the laser output goes through several regimes: at first, the laser operates in a quasi-continuous-wave regime, with only a few spectral lines. When the pump power increases sufficiently such that the random fluctuations of the intensity within the

laser cavity approach the threshold power  $P_t$  of the saturable absorber, the highest fluctuation is amplified and shaped into an ultrashort pulse within a few hundred roundtrips. At the laser output, the soliton pulse has a fixed duration and peak power, which depends on the cavity dispersive and dissipative parameters that globally determine a dissipative soliton attractor<sup>49</sup>. In the present cavity architecture, the peak power is mostly fixed by the saturable absorber features, whereas the pulse duration is approximately determined by the interplay between the anomalous cavity dispersion and the Kerr nonlinearity (i.e., soliton pulse shaping). Therefore, a further increase in the pump power will hardly change the pulse energy. Rather, most of the additional energy introduced in the cavity transfers into the build-up of dispersive waves and a quasi-continuous background until eventually a second, identical, soliton is generated. These steps are summarized in Fig. 5e with the corresponding output power from the mode-locked laser. In the high-pumping regime where two solitons coexist in the laser cavity, these two solitons interact to form a soliton molecule. Soliton molecules are ubiquitous in ultrafast laser dynamics<sup>47</sup> and consist of two solitons stably bound at a close distance, generally of a few pulse widths, by virtue of a specific attractor<sup>49</sup>. The time interval between both pulses, which is 2.4 ps, is inferred from the high-contrast interference pattern appearing in





the optical spectrum featuring a 3.3 nm period, as seen in Fig. 5f. The stability of the observed soliton molecule is also remarkable. It is also worth noting that no visible thermal damage is observed from such NR saturable absorbers during ultrafast pulse generation in the mode-locked regime even at the maximal pump power (1 W), indicating that plasmonic metasurfaces indeed exhibit good thermal conductivity and stability against optical damage (see “Supporting Information” for details).

If the NR array is replaced by either a nanocross or a nanoring array, we do not obtain stable mode-locked operation, such as in the previous case, but we obtain periodic bursts of pulses, as shown in the oscilloscope traces of Fig. 6a, b, respectively. This Q-switching operation, which is weakly dependent on the polarization controller orientation, has a period in the microsecond range, corresponding to the relaxation oscillations of the gain medium. Compared with an NR array, this change in behavior can be explained either by the lower modulation depth  $M_d$  of the metasurface or by the strong polarization dependence of the NRs. Indeed, the latter is expected to assist the saturable absorber action of the NRs in the array configuration through the nonlinear evolution of the polarization that occurs in the optical fibers<sup>50</sup>.

## Discussion

In summary, we demonstrate here that plasmonic gold metasurfaces are saturable absorbers with ultrahigh modulation performances and unusual polarization properties that can be fully controlled by the design. In particular, we quantify the link between gold saturable absorption, the plasmonic resonances of the unit cell and their distribution in a 2D metasurface. Finally, a practical implementation of the saturable metasurfaces is demonstrated by integrating the fabricated metasurfaces into a fiber laser cavity, which leads to the generation of pulse trains. In the case of NR arrays inserted in the laser cavity,

we obtain highly stable mode-locked regimes generating either ultrashort soliton or soliton molecules. Compared with the properties of other 2D or semiconductor materials, the remarkable properties reported here mainly originate from the plasmonic nature of the metasurfaces themselves. Indeed, metasurfaces combine the high extinction coefficient of gold, which exceeds the extinction coefficient of other materials by at least one to two orders of magnitude, plasmonic resonances, whose wavelength and polarimetric properties can be tuned by design, and the carrier relaxation dynamics in gold, which lie on the sub-picosecond scale. It is also expected that the saturable metasurfaces reported here could benefit from recent developments in epsilon-near-zero materials to further increase the modulation depth and reduce its saturation threshold<sup>51</sup>. As such, saturable plasmonic metasurfaces offer all of the ingredients and degrees of freedom needed to design novel ultrathin and efficient saturable absorbers with unusual polarimetric properties that could find applications where complex nonlinear transfer functions are needed, such as in ultrafast laser architectures or neuromorphic circuits.

## Materials and methods

All of the details about the nanofabrication, extinction simulations, home-built nanosecond pulsed laser, and damage threshold tests on the plasmonic metasurfaces are provided in the Supplementary Material.

## Acknowledgements

This work has been supported by the EIPHI Graduate School (contract “ANR-17-EURE-0002”), the COMUSIM (contract “ANR-17-CE24-0010-01”) and RANDOM (contract “ANR-19-CE24-0014”) projects and the FEDER Program. The sample preparation was realized at the technological platform ARCEM Carnot with the support of the Région de Bourgogne and the Direction Régionale à la Recherche et à la Technologie (DRRT). J.W. acknowledges the financial support from the National Natural Science Foundation of China (NSFC, No. 61905200). D.R. acknowledges the Coordenação de Aperfeiçoamento de Pessoal de Nível Superior (Brasil–CAPES–Finance Code 001) for financial support.

**Author details**

<sup>1</sup>Laboratoire Interdisciplinaire Carnot de Bourgogne, Université Bourgogne Franche-Comté, 9 avenue Alain Savary, 21078 Dijon, France. <sup>2</sup>Key Laboratory of 3D Micro/Nano Fabrication and Characterization of Zhejiang Province, School of Engineering, Westlake University, 18 Shilongshan Road, 310024 Hangzhou, Zhejiang Province, China. <sup>3</sup>Institute of Advanced Technology, Westlake Institute for Advanced Study, 18 Shilongshan Road, 310024 Hangzhou, Zhejiang Province, China. <sup>4</sup>Department of Electrotechnology, Federal Institute of Bahia, R. Emidio dos Santos, 40301015 Salvador, Brazil

**Author contributions**

All of the authors contributed extensively to the work presented in this paper. P.G. and B.C. conceived and supervised the study. J.W. and A.B. prepared the sample. J.W., A.C., and Z.W. performed the optical experiments. J.W., O.D., and D.R. contributed to the theoretical calculation. All of the authors contributed to the discussions and the writing of the paper.

**Conflict of interest**

The authors declare that they have no conflict of interest.

**Supplementary information** is available for this paper at <https://doi.org/10.1038/s41377-020-0291-2>.

Received: 16 September 2019 Revised: 2 March 2020 Accepted: 13 March 2020

Published online: 31 March 2020

**References**

- Shelby, R. A., Smith, D. R. & Schultz, S. Experimental verification of a negative index of refraction. *Science* **292**, 77–79 (2001).
- Schurig, D. et al. Metamaterial electromagnetic cloak at microwave frequencies. *Science* **314**, 977–980 (2006).
- Yu, N. F. & Capasso, F. Flat optics with designer metasurfaces. *Nat. Mater.* **13**, 139–150 (2014).
- Liu, N. et al. Infrared perfect absorber and its application as plasmonic sensor. *Nano Lett.* **10**, 2342–2348 (2010).
- Moreau, A. et al. Controlled-reflectance surfaces with film-coupled colloidal nanoantennas. *Nature* **492**, 86–89 (2012).
- Watts, C. W., Liu, X. L. & Padilla, W. J. Metamaterial electromagnetic wave absorbers. *Adv. Mater.* **24**, OP98–OP120 (2012).
- Wang, J. Y. et al. Direct comparison of second harmonic generation and two-photon photoluminescence from single connected gold nanodimers. *J. Phys. Chem. C* **120**, 17699–17710 (2016).
- Kildishev, A. V., Boltasseva, A. & Shalaev, V. M. Planar photonics with metasurfaces. *Science* **339**, 1232009 (2013).
- Yu, N. F. et al. Light propagation with phase discontinuities: generalized laws of reflection and refraction. *Science* **334**, 333–337 (2011).
- Aieta, F. et al. Multiwavelength achromatic metasurfaces by dispersive phase compensation. *Science* **347**, 1342–1345 (2015).
- Zhao, Y. & Alù, A. Manipulating light polarization with ultrathin plasmonic metasurfaces. *Phys. Rev. B* **84**, 205428 (2011).
- Yu, N. F. et al. A broadband, background-free quarter-wave plate based on plasmonic metasurfaces. *Nano Lett.* **12**, 6328–6333 (2012).
- Huang, Y. W. et al. Aluminum plasmonic multicolor meta-hologram. *Nano Lett.* **15**, 3122–3127 (2015).
- Wang, L. et al. Grayscale transparent metasurface holograms. *Optica* **3**, 1504–1505 (2016).
- Yu, N. F. & Capasso, F. Optical metasurfaces and prospect of their applications including fiber optics. *J. Lightwave Technol.* **33**, 2344–2358 (2015).
- Cheng, F. et al. Structural color printing based on plasmonic metasurfaces of perfect light absorption. *Sci. Rep.* **5**, 11045 (2015).
- Li, W. & Valentine, J. Metamaterial perfect absorber based hot electron photodetection. *Nano Lett.* **14**, 3510–3514 (2014).
- Azad, A. K. et al. Metasurface broadband solar absorber. *Sci. Rep.* **6**, 20347 (2016).
- Minovich, A. E. et al. Functional and nonlinear optical metasurfaces. *Laser Photonics Rev.* **9**, 195–213 (2015).
- Kauranen, M. & Zayats, A. V. Nonlinear plasmonics. *Nat. Photonics* **6**, 737–748 (2012).
- Krasnok, A., Tymchenko, M. & Alù, A. Nonlinear metasurfaces: a paradigm shift in nonlinear optics. *Materialstoday* **21**, 8–21 (2018).
- Brongersma, M. L., Halas, N. J. & Nordlander, P. Plasmon-induced hot carrier science and technology. *Nat. Nanotechnol.* **10**, 25–34 (2015).
- Mukherjee, S. et al. Hot electrons do the impossible: plasmon-induced dissociation of H<sub>2</sub> on Au. *Nano Lett.* **13**, 240–247 (2013).
- Salamin, Y. et al. 100 GHz Plasmonic photodetector. *ACS Photonics* **5**, 3291–3297 (2018).
- Baida, H. et al. Ultrafast nonlinear optical response of a single gold nanorod near its surface plasmon resonance. *Phys. Rev. Lett.* **107**, 057402 (2011).
- Biagioni, P. et al. Dynamics of four-photon photoluminescence in gold nanoantennas. *Nano Lett.* **12**, 2941–2947 (2012).
- Demichel, O. et al. Dynamics, efficiency, and energy distribution of nonlinear plasmon-assisted generation of hot carriers. *ACS Photonics* **3**, 791–795 (2016).
- Wang, J. Y. et al. Carrier recombination and plasmonic emission channels in metallic photoluminescence. *Nanoscale* **10**, 8240–8245 (2018).
- Del Fatti, N. et al. Nonequilibrium electron dynamics in noble metals. *Phys. Rev. B* **61**, 16956–16966 (2000).
- Elim, H. I. et al. Observation of saturable and reverse-saturable absorption at longitudinal surface plasmon resonance in gold nanorods. *Appl. Phys. Lett.* **88**, 083107 (2006).
- Kang, Z. et al. Passively mode-locking induced by gold nanorods in erbium-doped fiber lasers. *Appl. Phys. Lett.* **103**, 041105 (2013).
- Wang, X. D. et al. Microfiber-based gold nanorods as saturable absorber for femtosecond pulse generation in a fiber laser. *Appl. Phys. Lett.* **105**, 161107 (2014).
- Muhammad, A. R. et al. Pure gold saturable absorber for generating Q-switching pulses at 2 μm in thulium-doped fiber laser cavity. *Optical Fiber Technol.* **50**, 23–30 (2019).
- Kang, Z. et al. Microfiber coated with gold nanorods as saturable absorbers for 2 μm femtosecond fiber lasers. *Optical Mater. Express* **8**, 3841–3850 (2018).
- Shu, Y. Q. et al. Gold nanorods as saturable absorber for harmonic soliton molecules generation. *Front. Chem.* **7**, 715 (2019).
- Set, S. Y. et al. Laser mode locking using a saturable absorber incorporating carbon nanotubes. *J. Lightwave Technol.* **22**, 51–56 (2004).
- Sun, Z. P. et al. Graphene mode-locked ultrafast laser. *ACS Nano* **4**, 803–810 (2010).
- Jung, M. et al. A femtosecond pulse fiber laser at 1935 nm using a bulk-structured Bi<sub>2</sub>Te<sub>3</sub> topological insulator. *Opt. Express* **22**, 7865–7874 (2014).
- Sotor, J. et al. Ultrafast thulium-doped fiber laser mode locked with black phosphorus. *Opt. Lett.* **40**, 3885–3888 (2015).
- Zhao, L. L., Kelly, K. L. & Schatz, G. C. The extinction spectra of silver nanoparticle arrays: influence of array structure on Plasmon resonance wavelength and width. *J. Phys. Chem. B* **107**, 7343–7350 (2003).
- Bouhelier, A. et al. Electromagnetic interactions in plasmonic nanoparticle arrays. *J. Phys. Chem. B* **109**, 3195–3198 (2005).
- Muskens, O. L. et al. Quantitative absorption spectroscopy of a single gold nanorod. *J. Phys. Chem. C* **112**, 8917–8921 (2008).
- Jhon, Y. I. et al. Metallic MXene saturable absorber for femtosecond mode-locked lasers. *Adv. Mater.* **29**, 1702496 (2017).
- Wang, X. D. et al. A microfiber-based gold nanorod saturable absorber with evanescent field interaction for multi-soliton patterns in a fiber laser. *Laser Phys.* **26**, 065105 (2016).
- Cabasse, A., Martel, G. & Oudar, J. L. High power dissipative soliton in an Erbium-doped fiber laser mode-locked with a high modulation depth saturable absorber mirror. *Opt. Express* **17**, 9537–9542 (2009).
- Goda, K. & Jalali, B. Dispersive fourier transformation for fast continuous single-shot measurements. *Nat. Photonics* **7**, 102–112 (2013).
- Krupa, K. et al. Real-time observation of internal motion within ultrafast dissipative optical soliton molecules. *Phys. Rev. Lett.* **118**, 243901 (2017).
- Hänsel, W. et al. All polarization-maintaining fiber laser architecture for robust femtosecond pulse generation. *Appl. Phys. B* **123**, 41 (2017).
- Grelu, P. & Akhmediev, N. Dissipative solitons for mode-locked lasers. *Nat. Photonics* **6**, 84–92 (2012).
- Noske, D. U., Pandit, N. & Taylor, J. R. Subpicosecond soliton pulse formation from self-mode-locked erbium fibre laser using intensity dependent polarisation rotation. *Electron. Lett.* **28**, 2185–2186 (1992).
- Alam, M. Z. et al. Large optical nonlinearity of nanoantennas coupled to an epsilon-near-zero material. *Nat. Photonics* **12**, 79–83 (2018).