



HAL
open science

Hybrid KTP-plasmonic nanostructures for enhanced nonlinear optics at the nanoscale

Nicolas Chauvet, Maeliss Ethis de Corny, Mathieu Jeannin, Guillaume Laurent, Serge Huant, Thierry Gacoin, Geraldine Dantelle, Gilles Nogues, Guillaume Bachelier

► To cite this version:

Nicolas Chauvet, Maeliss Ethis de Corny, Mathieu Jeannin, Guillaume Laurent, Serge Huant, et al.. Hybrid KTP-plasmonic nanostructures for enhanced nonlinear optics at the nanoscale. *ACS photonics*, 2020, 7 (3), pp.665-672. <10.1021/acsp Photonics.9b01484>. <hal-03021031>

HAL Id: hal-03021031

<https://hal.science/hal-03021031v1>

Submitted on 24 Nov 2020

HAL is a multi-disciplinary open access archive for the deposit and dissemination of scientific research documents, whether they are published or not. The documents may come from teaching and research institutions in France or abroad, or from public or private research centers.

L'archive ouverte pluridisciplinaire **HAL**, est destinée au dépôt et à la diffusion de documents scientifiques de niveau recherche, publiés ou non, émanant des établissements d'enseignement et de recherche français ou étrangers, des laboratoires publics ou privés.



HAL Authorization

Hybrid KTP-plasmonic nanostructures for enhanced nonlinear optics at the nanoscale

Nicolas Chauvet,^{†,¶} Maeliss Ethis de Corny,[†] Matthieu Jeannin,[†] Guillaume Laurent,[†] Serge Huant,[†] Thierry Gacoin,[‡] Géraldine Dantelle,[†] Gilles Nogues,[†] and Guillaume Bachelier^{*,†}

[†]*Institut Néel, Univ. Grenoble Alpes, CNRS, Institut Néel*

[‡]*Laboratoire de Physique de la Matière condensée, École polytechnique*

[¶]*Department of Information Physics and Computing, University of Tokyo*

E-mail: guillaume.bachelier@neel.cnrs.fr

Abstract

The search for miniaturized components for nonlinear optical processes needs a way to overcome the efficiency loss due to the effective size reduction of the active medium. We investigate here a combination of a nanosized nonlinear dielectric crystal and metallic nanoantennas that benefits from both the intrinsic nonlinear conversion efficiency of the nonlinear medium and the local-field enhancement of plasmonic resonances in metallic nanostructures. Careful comparison between experiments and numerical simulations reveals that the observed 10 to 1000 fold enhancement in Second Harmonic Generation intensity between isolated elements and their hybrid structure can be attributed unequivocally to the field enhancement effect of plasmonic resonances on the nonlinear crystal for gold - crystal structures, while the enhancement observed in aluminum-based hybrid structures is attributed to linear dielectric effect on the plasmonic antennas.

Keywords

Second Harmonic Generation, Plasmonics, Hybrid nanostructure, Second Order Nonlinear Optics, Single Particle

Introduction

Nonlinear optical phenomena are at the core of many applications ranging from secure communication cryptography^{1,2} to frequency conversion^{3,4} and quantum computing.⁵⁻⁷ Recent research works have focused on miniaturizing core elements, searching for ways to compensate the efficiency drop when the active medium reaches a sub-micron scale, such as waveguides⁸ or plasmonic structures.⁹ This kind of object uses local field enhancement effects of plasmonic resonances in a nanoparticle to magnify nonlinear efficiency and far-field coupling within a dielectric material placed in its vicinity. By tailoring the shape and size of the plasmonic nanostructure, it is possible to obtain resonant behavior at several wavelengths simultaneously,¹⁰ theoretically improving even more the conversion efficiency of frequency conversion processes (sum-frequency generation or down-conversion alike).

Several experiments have been reported in the last decades, which apply this principle to so-called hybrid structures, associating the intrinsic nonlinear efficiency of dielectric materials with the resonant behavior of plasmonic structures. These include gold dimer plasmonic antennas with (centrosymmetric) ITO particle^{11,12} for Third Harmonic Generation enhancement. In these studies, ensemble measurements show maximum enhancement of a factor 2 with respect to bare antennas signal, attributed to dielectric environment change around the antennas,¹¹ while individual measurements show a 16-fold enhancement with respect to the antennas and 10⁶-fold versus the bare ITO particle, this time attributed to the local field enhancement inside the ITO particle.¹² Regarding second-order nonlinear processes, experiments include core-shell particles,^{13,14} dielectric nanowires and plasmonic particle arrays,¹⁵ or controlled successive deposition of colloidal particles into an array of nano-holes

on a substrate.¹⁶ However, although these structures have indeed shown an improved non-linear efficiency with respect to an isolated plasmonic or a dielectric nano-object, doubts have been expressed on the actual origin of this enhancement, with some results indicating that nonlinear effects within plasmonic structures alone actually overcome those of dielectric materials.^{17,18}

In this work we experimentally identify the origin of Second Harmonic Generation (SHG) efficiency enhancement within individual hybrid nanostructures by carefully comparing the response of each sub-component to that of the hybrid systems, for two different plasmonic materials, gold or aluminum. Unique fabrication method as well as versatile, computer-controlled experimental setup have been developed to get as controlled and reproducible experimental conditions as possible. Quantitative numerical simulations based on Finite Element Method (FEM) enable us to compare the nonlinear contribution of each component separately without any adjusting parameter, thus helping to interpret the experimental data and to pinpoint the exact role of each nano-object on the nonlinear behavior of the whole hybrid system.

Results and discussion

Metallic films and nanoparticles have been known to have a second order nonlinear response since the discovery of laser light.^{19,20} Because metals have a centrosymmetric structure, classical bulk description of second order nonlinear effects cannot be applied, and other explanations have to be found for the origin of their nonlinearity. Two main contributions to the nonlinear polarisation have been identified,²¹ one being the breaking of centrosymmetry at the surface of metals, which gives rise to a surface nonlinear polarisation $\vec{P}_{surf,\perp}(\vec{r}, 2\omega)$ under an electromagnetic excitation $\vec{E}(\vec{r}, \omega)$ of the form:

$$\vec{P}_{surf,\perp}(\vec{r}, 2\omega) = \chi_{\perp\perp\perp} E_{\perp}(\vec{r}, \omega) E_{\perp}(\vec{r}, \omega) \vec{n} \quad (1)$$

where \vec{n} is the unitary vector normal to the surface at point \vec{r} and E_{\perp} is the projection of \vec{E} along this direction. The second one can be found by using a hydrodynamic model for the equation of motion of a conduction electron in the metal,²² which leads to another term of nonlinear polarisation within the bulk of the metal:

$$\vec{P}_{bulk}(\vec{r}, 2\omega) = \gamma_{bulk} \nabla \cdot [\vec{E}(\vec{r}, \omega) \cdot \vec{E}(\vec{r}, \omega)] \quad (2)$$

Here, \vec{E} and \vec{P}_{bulk} are evaluated inside the metal, while $\vec{P}_{surf,\perp}$ is evaluated just outside the metal. Following the treatment of Sipe et al.,²² the nonlinear coefficients $\chi_{\perp\perp\perp}$ and γ_{bulk} are defined in our model and simulations by:²¹

$$\chi_{\perp\perp\perp} = -\frac{a}{4} [\varepsilon_r(\omega) - 1] \frac{e\varepsilon_0}{m\omega^2} \quad (3)$$

$$\gamma_{bulk} = -\frac{d}{8} [\varepsilon_r(\omega) - 1] \frac{e\varepsilon_0}{m\omega^2} \quad (4)$$

where ε_0 is the vacuum permittivity, ε_r the relative permittivity of the metal, m and e the mass and charge of the electron respectively, and a and d the adimensional Rudnick and Stern parameters.²³ We use values of these parameters taken from the literature^{24,25} in order to get quantitative predictions in terms of photons/s that can then be directly compared with experiments without any adjustable free parameter. This enables us to discriminate the effect of different contributions, in order to verify which one dominates in a given metallic nanostructure and to predict (double) resonant behavior.¹⁰ As such, surface contribution (coefficient a) has been shown to dominate in aluminum structures, whereas bulk contribution (coefficient d) dominates in gold lithographed films.²⁵ In this study, only the dominant nonlinear contribution is considered for each metal (Al, Au), which can then be compared directly with other nonlinear sources.

At this stage, several fabrication strategies have been proposed and tried in the literature to make hybrid systems. Among them, the most commonly used is electron beam lithography, especially for linear or third-order nonlinear effects with Indium Tin Oxide¹² or

Silicium.²⁶ However, to the best of our knowledge, no second order materials can be grown by epitaxy or sputtering on a substrate, although a technique using a patterned substrate of nonlinear material (gallium arsenide²⁷ or lithium niobate²⁸) has been demonstrated to make gold ring filled with the active medium, with the drawback of an optically active substrate. Colloidal systems have also been developed and studied with spherical particles, for example with gold and BaTiO₃.¹⁶ Another way is to manipulate nanoparticles with a metal-coated AFM tip under a Scanning Electron Microscope,²⁹ though a conducting substrate and non-electrosensitive material are then required. Finally, one technique consists in defining holes in a resist layer on top of a substrate with pre-existing plasmonic structures, after which nonlinear crystals are dispersed on the sample before resist removal, such that only the crystals inside the holes remain.¹⁸ The main drawback is that the orientation of these crystals is not known, even though it is critical to give an estimate of the enhancement factor. Our approach is the opposite of the last method: instead of putting the crystal between pre-existing plasmonic antennas, we study each nonlinear particle before adding a plasmonic structure around it with optimal parameters (gap, size) according to simulations.

In the structures investigated here, a single nanocrystal made of nonlinear material is inserted between two antennas with the same design, either in gold or aluminum. [ADD JUSTIFICATION ON THE CHOICE OF DIMER?] The crystal itself has to meet several criteria to be used in our experiments. For this study, we have chosen potassium titanyl-phosphate (KTP) nano-sized crystals^{30,31} ($\sim 80 \pm 20$ nm in diameter), mainly because of their transparency range including the near UV, their high nonlinear efficiency and robustness against high temperature, hygrometry, optical power and electron beams.^{3,32} Under an incoming electromagnetic excitation \vec{E} at frequency ω , a non-centrosymmetric material shows a second order nonlinear polarization of the form:

$$P_i^{(2)}(2\omega; \omega, \omega, \vec{r}) = \varepsilon_0 \sum_{j,k} \chi_{ijk}^{(2)}(2\omega; \omega, \omega) E_j(\omega, \vec{r}) E_k(\omega, \vec{r}) \quad (5)$$

where i, j, k represent the polarization directions following the crystallographic axes (x', y', z') . Like most nonlinear materials, KTP has an anisotropic nonlinear response that is best stimulated if the incoming light is polarized along a specific crystallographic direction, in this case the z' axis. In order to make a hybrid structure optimized for SHG, it is then necessary to determine the 3-dimensional crystallographic orientation to obtain the highest possible nonlinear response. Other studies have been made on individual KTP nanocrystals in SHG, including a technique based on far-field polarization measurement³¹ to determine the orientation of the nonlinear susceptibility tensor of any crystal in the laboratory referential frame through its Euler angles. Figure 1 represents the typical different steps carried out on each nanocrystal with a pulsed 850 nm laser excitation beam focused through an immersion oil objective onto the sample (see Experimental section for details). The excitation cartography in Figure 1(a) is obtained by scanning the sample with respect to the optical axis of the laser and collecting the emitted nonlinear intensity in the far-field through the same objective. The high numerical aperture (NA=1.3) of the objective yields a resolution of about 330 nm in excitation and half of it at the harmonic wavelength, which guarantees observations at the single particle level.

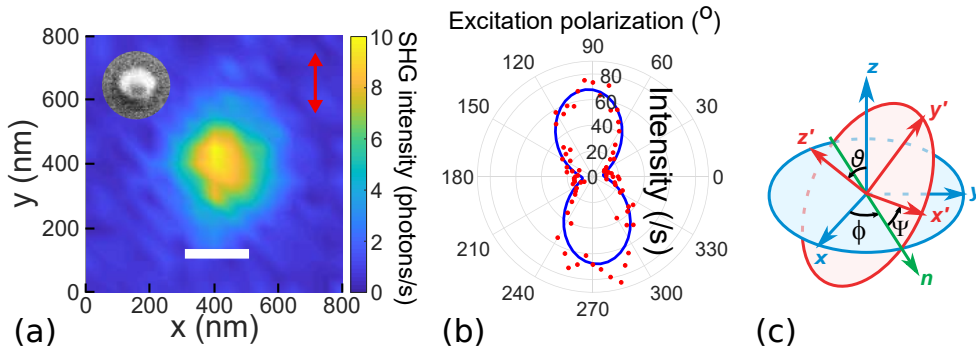


Figure 1: Single KTP nanocrystal analysis in SHG following previous works.^{31,33} (a) SHG excitation cartography of an individual crystal whose SEM image is shown in insert (scale bar: 200 nm for both images). (b) SHG response in photons/s (with 100 μ W of average excitation power) with respect to the linear excitation polarization angle from x axis, which can be used to find its 3 dimensional crystalline orientation through its Euler angles defined in (c); in the displayed case, most fitting simulation has $(\vartheta, \phi, \psi)=(50^\circ, 130^\circ, 20^\circ)$ in the laboratory reference frame.

Following the method developed in³³ and already applied to KTP,³¹ we plot in Figure 1(b) an analysis of the SHG response as a function of the excitation polarization. In addition, analytic simulations have been run for many combinations of Euler angles, taking into account the full nonlinear tensor of KTP as well as the strong focusing and dielectric effects; the normalized simulation which is the closest to the data then gives each crystal Euler angles as defined in (c) (see Supporting Information 1). This information can then be integrated into numerical simulations to find the orientation of plasmonic antennas that optimizes the nonlinear efficiency of the hybrid system.

In accordance with our objective to compare the nonlinear response of each component of the hybrid structure taken individually, we adopted a step-by-step approach: after performing SHG polarization analysis on 122 individual crystals, optimized plasmonic antennas are fabricated in the vicinity of each of them with the required angle and geometry by electron beam lithography (see Experimental section). Scanning Electronic Microscopy (SEM) realignment technique enables us to get an alignment precision of the order of 20-30 nm on the absolute position of the antennas, thus allowing for embedding a single nanocrystal in the gap between two Al or Au antennas.

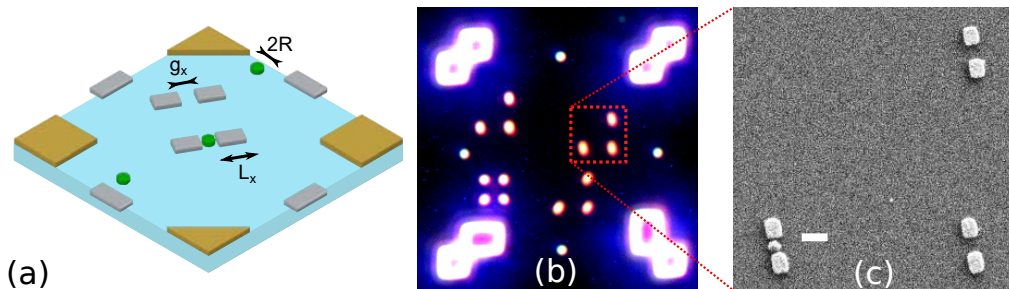


Figure 2: (a) Scheme of the sample design with relevant parameters referenced in the text. Gold reference marks are in brown, aluminum antennas in grey and KTP nanocrystals in green. (b) Dark field optical image of a sample after e-beam lithography with visible reference structures for nanofabrication quality check, with (c) a detailed SEM view of an hybrid gold-KTP structure (bottom-left corner). Scale bar: 200 nm.

The design of the sample is represented on the scheme of figure 2(a). Au alignment marks were fabricated along a 10- μ m stepped grid during a first lithography step to serve

as reference points for SEM realignment, after which KTP nanocrystals were spin-coated before SHG study and SEM imaging of more than 100 individual nanocrystals to get their coordinates in the sample frame. After this thorough step, another electronic lithography step was used to fabricate the plasmonic antennas with desired parameters (angle, size, gap, position) around the crystal. During this step, plasmonic antennas with the same design were also realized nearby to get a nonlinear intensity reference without the crystal in the gap. Figure 2(b) shows dark-field optical image of the obtained sample, where Au antennas have been lithographed between alignment marks, while figure 2(c) shows a higher resolution SEM image. The hybrid structure is clearly seen at the bottom left of the SEM image, while replicas with identical fabrication parameters are located on the right without crystal.

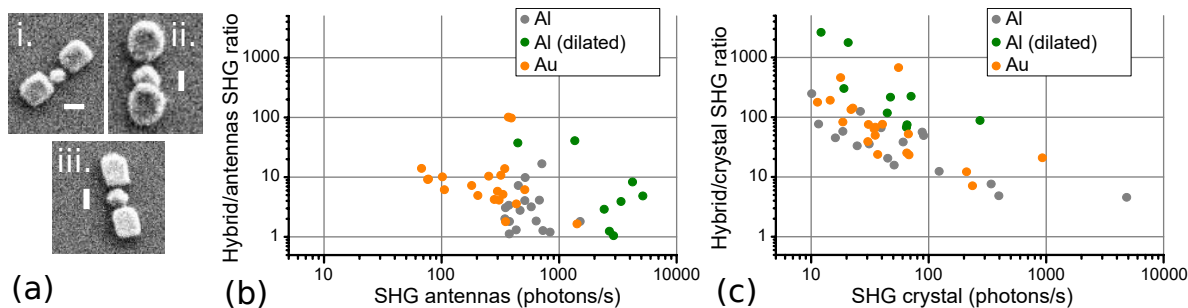


Figure 3: (a) SEM images of i. Al-KTP hybrid, ii. Al-KTP hybrid made with unfocused e-beam, iii. Au-KTP hybrid. Scale bar: 100 nm. (b) Ratio between the SHG of the hybrid structures and of the bare antennas with respect to the latter. (c) Statistics of the SHG enhancement ratio between hybrid and its bare crystal for different kinds of structures with respect to the bare crystal intensity.

The antenna parameters are determined from SEM images of the hybrid structures. Three sets of systems have been realized as shown in figure 3(a): **i.** Al-KTP structures in close agreement with the targeted geometry, **ii.** Al-KTP with elliptical antennas due to an unfocussed e-beam and **iii.** Au-KTP structures also close to the targeted geometry. An average 110 nm width and 145 nm length have been measured for the antennas of the sets **i.** and **iii.**, while corresponding total gap distances are of the order of the diameter of the crystal plus 20 nm. In the case of set **ii.**, the aluminum antennas have more elliptical shapes closer to 140 nm width by 190 nm length. Their gap distance is closer to the crystal

diameter, sometimes even with an overlap with the crystal.

For each hybrid structure, we compare the maximum SHG intensity experimentally measured on the single crystal (from the polarization analysis before the electronic lithography), the bare plasmonic antennas and the hybrid itself under identical experimental conditions (configuration, laser wavelength, power, and input polarization). All 80 studied hybrid systems have higher SHG signals than individual components. In particular, Figure 3(b) shows the ratio between the SHG intensities from the hybrid structures and the corresponding bare antennas as a function of maximum intensity from the antenna system, for hybrid antenna sets **i.** in grey (regular Al antennas), **ii.** in green (elongated Al antennas) and **iii.** in orange (regular Au antennas). To estimate uncertainties, systematic SHG observation has been run on 183 doubly resonant aluminum antennas with the same fabrication parameters (220 nm long, 100 nm wide, 35 nm thick), which found 25% standard deviation on the SHG intensity. Since the ratio between hybrid structures and bare antennas is calculated with the respect to the maximum SHG intensity among the 2 antennas of the plasmonic dimer, this gives 18% uncertainty on the measured ratios.

SHG signal collected from the bare antennas is higher for aluminum antennas compared to gold, especially for set **ii.** In addition, the average SHG enhancement factor between bare plasmonic antennas and hybrid structures is about 11 for set **i.**, 4 for set **ii.** and 16 for set **iii.**. On the other hand, Figure 3(c) presents the ratio between the SHG intensities from the hybrid structure and the corresponding nanocrystal as a function of the nanocrystal SHG intensity. We observe that the intensity distribution of bare crystals covers nearly 3 orders of magnitude (due to size dispersion) while it is narrower for each set of bare antennas (for which the dimension is controlled by lithography). Enhancement factors reach several hundreds, even in the case of Au antennas which do not have plasmonic resonance at SHG wavelength. The best enhancement is clearly obtained for set **ii.**, indicating that the shape and gap size play an important role on the hybrid structure efficiency. Note that enhancement factors are by construction larger for smaller nanocrystal sizes (and therefore smaller intensities).

To understand the influence of the hybrid system parameters on its nonlinear efficiency, quantitative FEM numeric simulations^{10,21,34} were used and compared to experimental data. Figures 4 (a) and (b) show the simulated SHG intensity enhancement between a single 84 nm-wide, 25 nm-thick cylindrical KTP crystal, and the corresponding hybrid structure of (a) gold and (b) aluminum. Antenna width and thickness are fixed to 118 and 35 nm respectively while their length L_x and gap g_x are varied. The simulations use the crystallographic orientation of an observed crystal as determined by the method described before with $(\vartheta, \phi, \psi)=(130^\circ, 0^\circ, 20^\circ)$, assuming that the antenna main axis is aligned with the projection of the crystallographic z axis in the xy plane of the laboratory frame (or equivalently, $\phi = 0^\circ$). Maximum enhancement factors with respect to the bare crystal are predicted at 860 for Al and 200 for Au, which are within the range of experimental values of Figure 3(c) for the sets **ii.** (elongated Al) and **iii.** (Au). They occur for different antenna lengths (210 and 150 nm respectively) but always with a minimal antenna gap. This confirms that the near-field coupling between antennas and crystal is essential to explain the predicted nonlinear enhancement effect. Besides, this also explains why set **i.** (regular Al antennas) shows inferior values to set **ii.**, since the elongated antennas are both closer to the crystals (or even in contact) and with lengths closer to 210 nm. Figure 4 (c) and (d) are absorption spectra obtained for the conditions indicated by the red circles respectively on (a) and (b), on which the excitation and collection wavelengths are indicated by red and blue lines respectively. As one can see, the hybrid structures indeed correspond to resonant conditions at the fundamental and/or harmonic wavelengths.

Let us now focus on the question of the origin of the measured enhancement. Two (non-exclusive) hypotheses can be made: either (**H1**) the nonlinear response of the antennas themselves is increased because of the dielectric environment change induced by the crystal placed in the antenna gap, or (**H2**) the response of the crystal itself is enhanced by the plasmon resonances of the antennas (linear response). So far, both hypotheses have received supporting data from the literature, with Linnenbank et al¹⁷ explaining their observed 2-

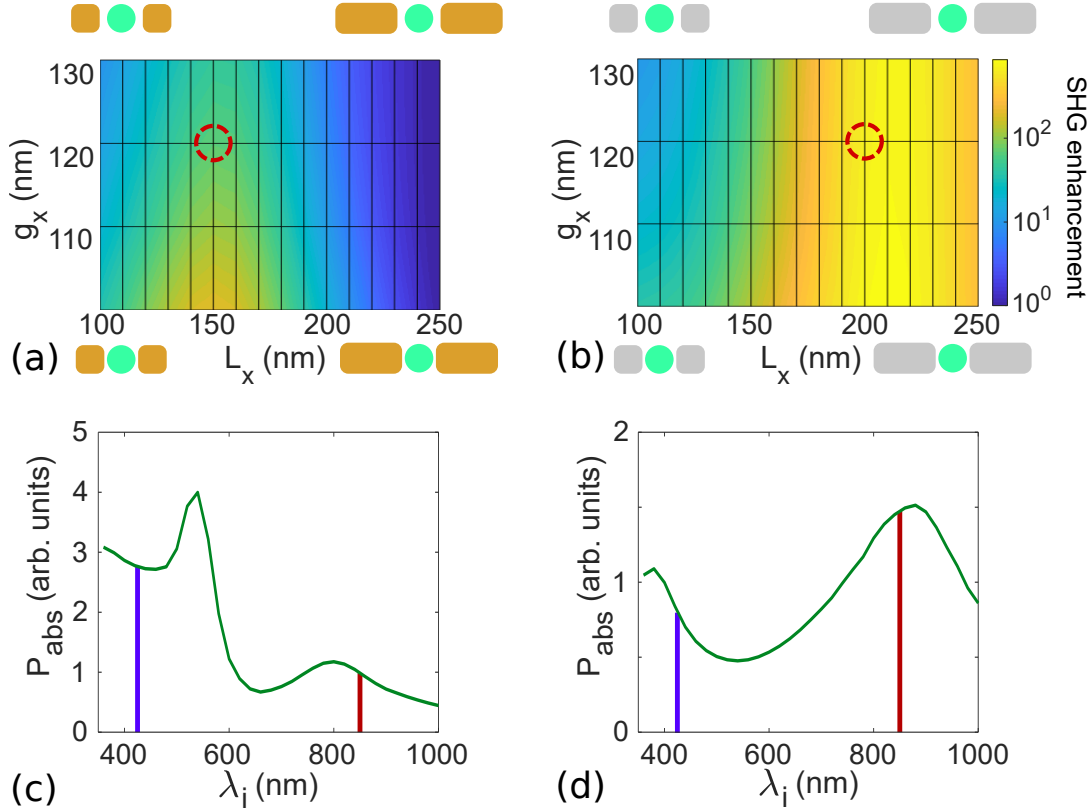


Figure 4: Numerical simulations of the predicted SHG enhancement in logarithmic scale with respect to the bare crystal for (a) Au-KTP or (b) Al-KTP hybrid structure, as a function of the length L_x of both antennas and their edge-to-edge distance g_x along their main axis. Width is fixed at 118 nm, thickness at 35 nm for the antennas, while crystal is 84 nm wide by 25 nm thick. (c) and (d) are absorption spectra obtained with antenna gap and length indicated by the red circles on (a) and (b), respectively. Color lines indicate excitation (red) and collection (violet) wavelengths.

fold enhancement by **(H1)**, Zhou et al³⁵ and Utikal et al³⁶ by **(H2)** whereas Hentschel et al¹⁸ conclude that both effects are present simultaneously and cannot be ignored from each other. As a consequence, careful comparison has to be made with respect to simulations where contributions from both the nonlinear crystal and the plasmonic antennas can be taken into account simultaneously or separately. To this end, we compare in Figure 5 the experimental SHG response on excitation cartography for (a) the individual crystal (before hybrid structure fabrication), (b) the hybrid structure with the same crystal, and (c) Au antennas with the same drawing pattern fabricated nearby without crystal. The red arrow indicates the linear polarization of the incident light. As indicated, a 46-fold enhancement is observed for the hybrid structure compared to the crystal, while antennas have a 6 times lower SHG intensity than the hybrid. These numbers, which are in the range between the reported 15-fold enhancement from colloidal single hybrid dimers¹⁶ and the 500-fold increase in core-shell Au-BaTiO₃ particles,¹³ are covered by the scatter plot in graphs of Figure 5(b) and (c), thus showing good agreement with previous results in the literature for similar systems.

In order to identify the origin of the nonlinear efficiency increase and rule out one hypothesis or the other, we have run simulations corresponding to each of the experimental cases, respectively represented on Figures 5(d), (f) and (h) for gold-KTP structures. Predicted intensities, expressed with respect to simulated hybrid structure intensity, show the correct orders of magnitude in enhancements (see the multiplication factors in each panel). The cartography maps are also in fair agreement. The slight differences can also be interpreted as the result of shape differences between the real structure and the simulated one (size, form and gap), as evidenced by the large influence of these parameters as shown in Figure 5(a). Further information is obtained by simulating the hybrid structure without nonlinear response either from the antennas or from the crystal, while still keeping the linear properties of each material. Figures 5(e) and (g) show the corresponding maps: removing the nonlinearity of the plasmonic antennas does not change the overall SHG intensity nor the

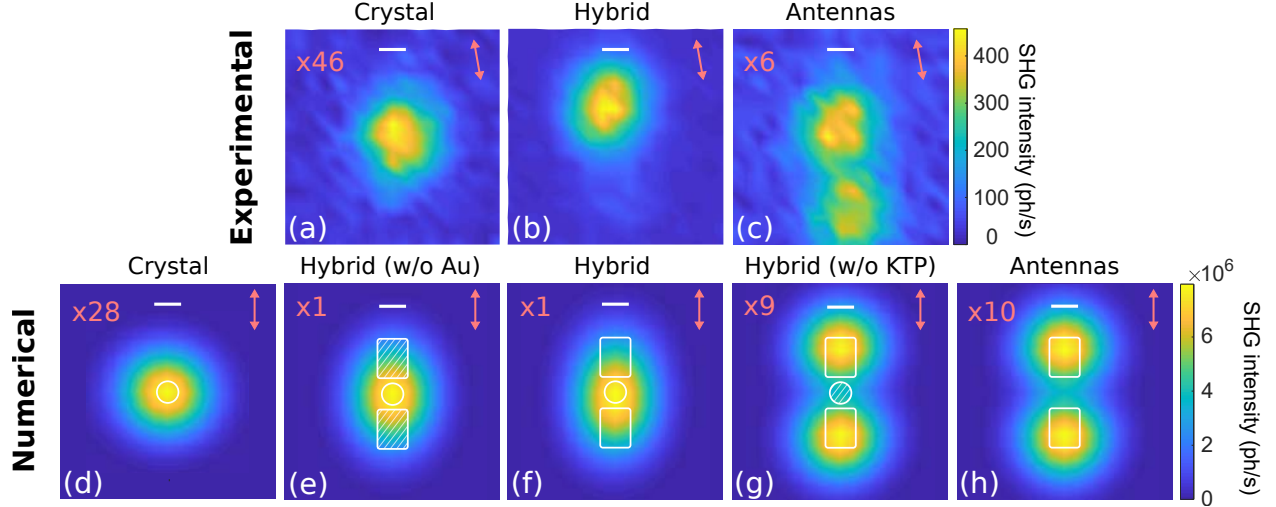


Figure 5: (a-c) Normalized experimental and (d-h) numerical SHG excitation cartographies of (a,d) a bare KTP crystal, (c,h) bare gold antennas and (b,f) hybrid Au-KTP structure. Parameters in simulation are from SEM images. (e) Hybrid SHG intensity without the nonlinear response of antennas, and (g) without the one from the crystal. Colorbars are the same for experimental and numerical data, respectively, with each normalization factors indicated. Scale bar: 100 nm.

cartography shape, whereas keeping only linear dielectric properties for the crystal reduces the SHG intensity by a factor of 9 and changes dramatically the SHG excitation map from 1 lobe to 2 lobes. In accordance with the experimental data, these results show undoubtedly that the SHG enhancement observed in single hybrid structures made of KTP nanocrystal and Au dimer is attributed to the presence of resonant antennas near the nonlinear crystal according to hypothesis **(H2)**.

The case of aluminum based hybrid structures is drastically different. Indeed, while bulk contribution d in equation 4 is of the order of 1 in gold, the value of the surface contribution a of equation 3 in aluminum is -22 according to experimental data by Murphy *et al.*²⁴ This effect, combined with double resonant conditions achievable in aluminum antennas,¹⁰ explains why simulations predict a stronger nonlinear contribution from plasmonic antennas. As a result, the same analysis as in Figure 5, presented in the Supporting informations, tends to show that in an optimized aluminum-KTP structure, the main contribution to the SHG comes from the plasmonic antennas themselves, in accordance with hypothesis **H1**, since

removing the nonlinearity from the KTP crystal does not significantly change the total SHG intensity. This also means that the enhancement factor between bare antennas and hybrid structure is of the order of 1, thus limiting the interest of hybrid structure design in terms of efficiency magnification for the case of aluminum. Still, aluminum-based design shows higher nonlinear conversion efficiency under our experimental conditions as compared with gold-based structures.

Conclusion

We have demonstrated that plasmonic hybrid structures coupling a plasmonic antenna and a SHG emitting nanoparticle can lead to an enhancement of the SHG emission with respect to the one of each component. On the one hand, for gold dimer and KTP crystal combination, comparison with simulations attribute unequivocally the origin of this enhancement to the plasmonic resonance in the antenna, which, when placed in the vicinity of a nonlinear crystal, increases the intrinsic response of the latter and helps it couple to the far-field. On the other hand, the same comparison between experiment and numerical simulations for aluminum-KTP structures show that the nonlinear contribution of the plasmonic antennas is superior to the enhancement effect on the crystal in this case, due to both stronger intrinsic nonlinear susceptibility of aluminum and double resonant conditions in nanodimers. These results rely on the optimization of each parameter of the structure thanks to far-field crystallographic analysis and FEM simulation tools that successfully predict the nonlinear response of each component quantitatively, without any free parameter. This work introduces a general framework that can be used for different geometries, materials or phenomena. One particular finding is that the closer the crystal from the antenna(s), the larger the enhancement factor. Therefore, configurations such as patch antennas where the crystal is on top or under a plasmonic antenna, could be particularly interesting to study. In addition, more systematic fabrication methods developed in recent years can turn the fabrication protocol

presented here into a systematic approach, paving the way to rigorous study of different parameters on the performances of hybrid structures. Finally, the obtained results can be transferred to other nonlinear optical phenomena such as non-degenerate Sum Frequency Generation, or the reverse phenomenon, namely Spontaneous Parametric Down Conversion which has not yet been observed in hybrid structures.

Experimental section

In order to reach the single particle level in nonlinear optical studies, the experimental setup needs to reach diffraction-limited spatial resolution, nanometer positioning precision, high light sensitivity and low optical noise level. Each part of the setup used in this study has been designed to meet these goals. The laser source is a Ti:Sapphire working on a 100-femtosecond pulsed mode with a repetition rate of 80 MHz and a central wavelength of 850 nm. The average optical power for SHG experiments is set at 100 μ W by using variable neutral density filters in order to avoid optical damage for plasmonic structures. We use an immersion oil microscope objective (x100, 1.3 numerical aperture) for the focusing of the laser beam as well as the collection of signals in reflexion mode, providing diffraction-limited spot size of 330 and 165 nm respectively at the excitation (fundamental) and harmonic frequencies. SHG photons are separated from the input beam optical axis by using 685 nm single-edge dichroic beamsplitter (DeltaMicroscopy FF685-Di02). To compensate for chromatic aberrations from the microscope objective, remote-controlled telescopes are used so as to make both excitation and signal wavelength focal planes overlapping at the surface of the sample. Regarding nano-positioning of the sample, closed-loop piezoelectric translation stages are set under it to provide lateral scanning capabilities with nanometer precision with respect to the laser beam focal spot. Coupled with a tracking algorithm, the full computer control of the setup automatically optimizes the optical signal by tuning the positioning and chromatic aberration compensation before each set of measurements, thus providing

optimized and reproducible experimental conditions. The collected light is then spectrally selected by a monochromator with 150 g/mm grating and analyzed through a polarizing beam-splitter coupled to two low-noise Avalanche Photodiode modules (PerkinElmer SPCM-AQR-16). An ultra-fast acquisition card (Fast ComTec MCS6A) is synchronized with the laser pulses to discriminate between time-correlated SHG signals and ambient or dark-noise, reducing average dark count rates to a few Hz for each module.

KTP nanocrystals were synthesized using a procedure previously reported in.³¹ Briefly, titanium butoxide was mixed with HCl in distilled water. A solution of KH_2PO_4 in distilled water was then added. After pH adjustment at 6 and stirring for 24 hours, the precipitate was centrifuged and dried at 100°C . It was then annealed at 700°C for 2 hours, allowing the crystallization of the KTiOPO_4 (KTP) phase. Thanks to the presence of excess KCl, further removed by dissolution in water, the crystallization is limited, leading to nanosized KTP crystals.

The sample used in our experiments consists in a $170\ \mu\text{m}$ -thick glass substrate (Zeiss 1.5 coverslip). The plasmonic structures are fabricated using standard electron beam lithography, using exactly the same protocol for aluminum and gold structures. After cleaning with acetone in an ultrasound bath and rinsed with isopropanol and deionized water, a 3-minutes oxygen plasma cleaning removes any organic residue on the surface. After this, a 3% PMMA layer is deposited and spin-coated on the surface before 180°C baking for 5 minutes. A 15-nm thick gold layer is deposited on the resist by electron-gun evaporation to evacuate charges during electronic lithography, because of the dielectric nature of the substrate. After lithography, the gold layer is chemically removed using KI/I_2 solution. The resist is then developed in a 0°C isopropanol-deionized water (3:1) solution before isopropanol rinsing. Finally, a 35-nm thick metallic layer (gold or aluminum) is deposited onto the sample using electron-gun evaporation, before N-methyl-2-pyrrolidone lift-off at 80°C . All measurements performed on nanocrystals and plasmonic structures have been realized using scanning electron microscopy (SEM), with a typical precision of $\pm 3\ \text{nm}$ on the values (determined by successive measure-

ment performed on the same structures), while thickness has been determined using atomic force microscopy.

Once the realignment gold structures have been realized on the glass substrate by electron beam lithography, deposition of the crystals is made by spin-coating an aqueous solution containing the nanocrystals onto the substrate at room temperature and at a speed of 6000 rpm for 30 seconds, after oxygen plasma exposition of the substrate to make it more hydrophilic. After this, SEM imaging enables us to localize areas of interest containing enough crystals to get many potential hybrid structures, while not too densely to avoid several-crystals agglomerates that are not useful for our purpose. In total, 122 crystals have been observed in 4 areas and studied using SHG polarization analysis, from which 122 hybrid structures have been realized, including 80 exploitable ones. The other ones either had their crystal "disappear" on SEM images after fabrication (probably being under the plasmonic antennas), or were in an area where the lift-off step failed.

Numerical simulations are based on a four step procedure. First, the local excitation fields at the fundamental frequency are evaluated using analytic methods accounting for the tight focusing by the microscope objective, the presence of immersion oil as well as the refraction induced by the glass substrate.³⁷ Then, Maxwell's equations are numerically solved at the fundamental frequency within the scattered field formulation to determine the electric field in the vicinity of the nanostructure. The linear optical properties of the latter are described using tensorial dielectric functions, in agreement with the crystal anisotropy. In the third step, the nonlinear source current are computed using either the Rudnick and Stern parameters^{21,23,38,39} for the plasmonic antennas or the nonlinear susceptibility tensor for the nonlinear crystal.⁴⁰ This allows solving Maxwell's equations at the harmonic frequency using here a soft formulation to properly include the nonlinear currents, avoiding thereby continuity issues for surface contributions. Finally, the fourth step consists in analytically propagating the harmonic electric field back through the substrate and collection microscope objective (using a Green's tensor framework) and focusing it onto the detector³⁷ in order to

quantitatively evaluate the measured SHG signal. Note that there is no adjustable parameter in these simulations as the dielectric functions and nonlinear susceptibilities are taken from tabulated values and the antenna parameters are deduced from AFM (height) or SEM (length and width) images. The experimental transmission through the entire optical setup as well as the detector efficiency are not included in order to provide a general validity to the presented simulations.

Acknowledgement

The authors acknowledge the financial support of the Agence Nationale de la Recherche (Grant ANR-14-CE26-0001-01-TWIN), the Chaire IUA awarded to Guillaume Bachelier by the Université Grenoble Alpes and the Ph.D. grant to Nicolas Chauvet from the Laboratoire d'excellence LANEF (ANR-10-LABX-51-01). The authors thank the Nanofab team at Institut Neel for the nanofabrication platform and their strong support.

Supporting Information Available

The following files are available free of charge.

- Supporting information to: Hybrid KTP-plasmonic nanostructures for enhanced non-linear optics at the nanoscale

References

- (1) Gisin, N.; Thew, R. Quantum communication. *Nature Photonics* **2007**, *1*, 165–171.
- (2) Lo, H.-K.; Curty, M.; Tamaki, K. Secure Quantum Key Distribution. *Nature Photonics* **2014**, *8*, 595.
- (3) EATON, D. F. Nonlinear Optical Materials. *Science* **1991**, *253*, 281–287.

- (4) Boyd, R. W.; Masters, B. R. Nonlinear Optics, Third Edition. *Journal of Biomedical Optics* **2009**, *14*, 029902.
- (5) Kwiat, P. G.; Mattle, K.; Weinfurter, H.; Zeilinger, A.; Sergienko, A. V.; Shih, Y. New High-Intensity Source of Polarization-Entangled Photon Pairs. *Physical Review Letters* **1995**, *75*, 4337–4341.
- (6) Horodecki, R.; Horodecki, P.; Horodecki, M.; Horodecki, K. Quantum entanglement. *Reviews of Modern Physics* **2009**, *81*, 865–942.
- (7) Barz, S. Quantum computing with photons: Introduction to the circuit model, the one-way quantum computer, and the fundamental principles of photonic experiments. *Journal of Physics B: Atomic, Molecular and Optical Physics* **2015**, *48*, 083001.
- (8) Cowan, A. R.; Young, J. F. Mode matching for second-harmonic generation in photonic crystal waveguides. *Physical Review B* **2002**, *65*, 085106.
- (9) Rako, J. G.; Quail, J. C.; Simon, H. J. Optical second-harmonic generation with surface plasmons in noncentrosymmetric crystals. *Physical Review B* **1984**, *30*, 5552–5559.
- (10) Ethis De Corny, M. M.; Chauvet, N.; Laurent, G.; Jeannin, M.; Olgeirsson, L.; Drezet, A. A.; Huant, S.; Dantelle, G. G.; Nogues, G.; Bachelier, G. Wave-Mixing Origin and Optimization in Single and Compact Aluminum Nanoantennas. *ACS Photonics* **2016**, *3*, 1840–1846.
- (11) Metzger, B.; Hentschel, M.; Schumacher, T.; Lippitz, M.; Ye, X.; Murray, C. B.; Knabe, B.; Buse, K.; Giessen, H. Doubling the efficiency of third harmonic generation by positioning ITO nanocrystals into the hot-spot of plasmonic gap-antennas. *Nano Letters* **2014**, *14*, 2867–2872.
- (12) Aouani, H.; Rahmani, M.; Navarro-Cía, M.; Maier, S. A. Third-harmonic-upconversion

- enhancement from a single semiconductor nanoparticle coupled to a plasmonic antenna. *Nature Nanotechnology* **2014**, *9*, 290–294.
- (13) Pu, Y.; Grange, R.; Hsieh, C. L.; Psaltis, D. Nonlinear optical properties of core-shell nanocavities for enhanced second-harmonic generation. *Physical Review Letters* **2010**, *104*, 1–4.
- (14) Ren, M.-L.; Liu, S.-Y.; Wang, B.-L.; Chen, B.-Q.; Li, J.; Li, Z.-Y. Giant enhancement of second harmonic generation by engineering double plasmonic resonances at nanoscale. *Optics Express* **2014**, *22*, 28653.
- (15) Grinblat, G.; Rahmani, M.; Cortés, E.; Caldarola, M.; Comedi, D.; Maier, S. A.; Bragas, A. V. High-efficiency second harmonic generation from a single hybrid ZnO nanowire/au plasmonic nano-oligomer. *Nano Letters* **2014**, *14*, 6660–6665.
- (16) Timpu, F.; Hendricks, N. R.; Petrov, M.; Ni, S.; Renaut, C.; Wolf, H.; Isa, L.; Kivshar, Y.; Grange, R. Enhanced Second-Harmonic Generation from Sequential Capillarity-Assisted Particle Assembly of Hybrid Nanodimers. *Nano Letters* **2017**, *17*, 5381–5388.
- (17) Linnenbank, H.; Grynko, Y.; Förstner, J.; Linden, S. Second harmonic generation spectroscopy on hybrid plasmonic/dielectric nanoantennas. *Light: Science & Applications* **2016**, *5*, e16013.
- (18) Hentschel, M.; Metzger, B.; Knabe, B.; Buse, K.; Giessen, H. Linear and nonlinear optical properties of hybrid metallic-dielectric plasmonic nanoantennas. *Beilstein Journal of Nanotechnology* **2016**, *7*, 111–120.
- (19) Bloembergen, N.; Pershan, P. S. Light Waves at the Boundary of Nonlinear X P —. *Physical Review* **1962**, *128*, 606–622.

- (20) Jha, S. S. Theory of Optical Harmonic Generation at a Metal Surface. *Physical Review* **1965**, *140*, A2020–A2030.
- (21) Bachelier, G.; Butet, J.; Russier-Antoine, I.; Jonin, C.; Benichou, E.; Brevet, P. F. Origin of optical second-harmonic generation in spherical gold nanoparticles: Local surface and nonlocal bulk contributions. *Physical Review B - Condensed Matter and Materials Physics* **2010**, *82*, 1–5.
- (22) Sipe, J. E.; So, V. C.; Fukui, M.; Stegeman, G. I. Analysis of second-harmonic generation at metal surfaces. *Physical Review B* **1980**, *21*, 4389–4402.
- (23) Rudnick, J.; Stern, E. A. Second-harmonic radiation from metal surfaces. *Physical Review B* **1971**, *4*, 4274–4290.
- (24) Murphy, R. (Physics Department, U. o. P.; Yeganeh, M. (Physics Department, U. O. P.; Song, K. J. (Physics Department, U. O. P.; Plummer E. W. (Physics Department, U. O. P. Second-Harmonic Generation from the Surface of a Simple Metal, Al. 1989.
- (25) Wang, F. X.; Rodríguez, F. J.; Albers, W. M.; Ahorinta, R.; Sipe, J. E.; Kauranen, M. Surface and bulk contributions to the second-order nonlinear optical response of a gold film. *Physical Review B* **2009**, *80*, 233402.
- (26) Shibanuma, T.; Grinblat, G.; Albella, P.; Maier, S. A. Efficient Third Harmonic Generation from Metal-Dielectric Hybrid Nanoantennas. *Nano Letters* **2017**, *17*, 2647–2651.
- (27) Fan, W.; Zhang, S.; Panoiu, N. C.; Abdenour, A.; Krishna, S.; Osgood, R. M.; Malloy, K. J.; Brueck, S. R. Second harmonic generation from a nanopatterned isotropic nonlinear material. *Nano Letters* **2006**, *6*, 1027–1030.
- (28) Lehr, D.; Reinhold, J.; Thiele, I.; Hartung, H.; Dietrich, K.; Menzel, C.; Pertsch, T.; Kley, E. B.; Tännemann, A. Enhancing second harmonic generation in gold nanoring resonators filled with lithium niobate. *Nano Letters* **2015**, *15*, 1025–1030.

- (29) Denisyuk, A. I.; Komissarenko, F. E.; Mukhin, I. S. Electrostatic pick-and-place micro/nanomanipulation under the electron beam. *Microelectronic Engineering* **2014**, *121*, 15–18.
- (30) Biswas, S. K.; Pathak, A.; Pramanik, P. Synthesis of Nanocrystalline KTiOPO₄ Powder by Chemical Method. *Journal of the American Ceramic Society* **2007**, *90*, 1071–1076.
- (31) Mayer, L.; Slablab, A.; Dantelle, G.; Jacques, V.; Lepagnol-Bestel, A.-M.; Perruchas, S.; Spinicelli, P.; Thomas, A.; Chauvat, D.; Simonneau, M.; Gacoin, T.; Roch, J.-F. Single KTP nanocrystals as second-harmonic generation biolabels in cortical neurons. *Nanoscale* **2013**, *5*, 8466–71.
- (32) Zumsteg, F. C.; Bierlein, J. D.; Gier, T. E. K_xRb_{1-x}TiOPO₄: A new nonlinear optical material. *Journal of Applied Physics* **1976**, *47*, 4980–4985.
- (33) Brasselet, S.; FloC'H, V. L.; Treussart, F.; Roch, J. F.; Zyss, J.; Botzung-Appert, E.; Ibanez, A. In situ diagnostics of the crystalline nature of single organic nanocrystals by nonlinear microscopy. *Physical Review Letters* **2004**, *92*, 207401–1.
- (34) Bachelier, G.; Russier-antoine, I.; Benichou, E.; Jonin, C.; Brevet, P.-f. Multipolar second-harmonic generation in noble metal nanoparticles. *Journal of Optical society of America B* **2008**, *25*, 955–960.
- (35) Zhou, F.; Liu, Y.; Li, Z.-Y.; Xia, Y. Analytical model for optical bistability in nonlinear metal nano-antennae involving Kerr materials. *Optics Express* **2010**, *18*, 13337.
- (36) Utikal, T.; Zentgraf, T.; Paul, T.; Rockstuhl, C.; Lederer, F.; Lippitz, M.; Giessen, H. Towards the origin of the nonlinear response in hybrid plasmonic systems. *Physical Review Letters* **2011**, *106*, 1–4.
- (37) Novotny, L.; Hecht, B. *IEEE Transactions on Geoscience and Remote Sensing*; Cambridge University Press: Cambridge, 2012; Vol. 42.

- (38) Teplin, C. W.; Rogers, C. T. Experimental example of isotropic surface second-harmonic generation: Dc-sputtered air-exposed aluminum thin films. *Physical Review B - Condensed Matter and Materials Physics* **2002**, *65*, 1–11.
- (39) Kauranen, M.; Zayats, A. V. Nonlinear plasmonics. *Nature Photonics* **2012**, *6*, 737–748.
- (40) Pack, M. V.; Armstrong, D. J.; Smith, A. V. Measurement of the chi2 tensors of KTiOPO4, KTiOAsO4, RbTiOPO4, and RbTiOAsO4 crystals. *Applied Optics* **2004**, *43*, 3319–3323.