



HAL
open science

Physical activity level and association with behavioral factors in knee osteoarthritis.

Chloe Gay, Candy Guiguet-Auclair, Charline Mourgues, Laurent Gerbaud, Emmanuel Coudeyre

► **To cite this version:**

Chloe Gay, Candy Guiguet-Auclair, Charline Mourgues, Laurent Gerbaud, Emmanuel Coudeyre. Physical activity level and association with behavioral factors in knee osteoarthritis.. *Annals of Physical and Rehabilitation Medicine*, 2019, 62 (1), pp.14-20. 10.1016/j.rehab.2018.09.005 . hal-03020393

HAL Id: hal-03020393

<https://hal.science/hal-03020393>

Submitted on 21 Oct 2021

HAL is a multi-disciplinary open access archive for the deposit and dissemination of scientific research documents, whether they are published or not. The documents may come from teaching and research institutions in France or abroad, or from public or private research centers.

L'archive ouverte pluridisciplinaire **HAL**, est destinée au dépôt et à la diffusion de documents scientifiques de niveau recherche, publiés ou non, émanant des établissements d'enseignement et de recherche français ou étrangers, des laboratoires publics ou privés.



Distributed under a Creative Commons Attribution - NonCommercial - NoDerivatives 4.0 International License

1 **Physical activity level and association with behavioral factors in knee**
2 **osteoarthritis**

3 Chloe Gay¹, Candy Guiguet-Auclair², Charline Mourgues³, Laurent Gerbaud²,
4 Emmanuel Coudeyre¹

5

6 ¹ Service de Médecine Physique et de Réadaptation, CHU de Clermont Ferrand, INRA,
7 Université Clermont Auvergne, Clermont Ferrand, France

8 ² Service de Santé Publique, CHU de Clermont Ferrand, PEPRADE, Université
9 Clermont Auvergne, Clermont Ferrand, France

10 ³ Délégation Recherche Clinique et Innovation, CHU de Clermont Ferrand, Université
11 Clermont Auvergne, Clermont Ferrand, France

12

13 [ClinicalTrials.gov: NCT02681133](https://clinicaltrials.gov/ct2/show/study/NCT02681133)

14

15 **Correspondence to:**

16 Emmanuel Coudeyre
17 CHU Clermont-Ferrand, Hôpital Nord
18 61 Rue de Chateaugay
19 BP 30056, 63118 Cébazat, France
20 ecoudeyre@chu-clermontferrand.fr
21 Tél : +33 4 73 750 900

22

23 **Abstract**

24

25 **Background.** The effects of physical activity (PA) in disease prevention and therapy
26 have well-known effects on lower-limb osteoarthritis (OA), decreasing pain and
27 improving function.

28 **Objective.** We aimed to describe the level and factors affecting PA practices of people
29 with knee OA.

30 **Design.** Prospective epidemiological study.

31 **Setting.** 548 people with knee OA were interviewed by use of self-administered
32 anonymous questionnaires.

33 **Main Outcome Measurement** The main outcome was physical activity level evaluated
34 by the International Physical Activity Questionnaire (IPAQ) (short version). Secondary
35 outcomes included sociodemographic and clinical data, comorbidities, and barriers to
36 and facilitators of practicing regular PA evaluated by 24 specific elements.

37 **Results.** The mean (SD) age of the study population was 67.6 (7.9) years; 73.9% were
38 women and 30.9% had obesity (mean [SD] body mass index [BMI] 28.2 [5.7] kg/m²).
39 Multi-joint OA affected 92% of the population, and 71.6% had comorbidities. The
40 mean (SD) visual analog scale score for pain intensity was 4.5/10 (2.5), which was
41 51.4% better than the Patient Acceptable Symptom State (PASS). The mean (SD)
42 Western Ontario and McMaster Universities Osteoarthritis Index function score was
43 36.6/100 (20.7), which was 57.5% better than the PASS. In total, 67% of patients used
44 analgesics, half of them at least once a week. According to the IPAQ, 42.6% of patients
45 reported high, 38.6% moderate, and 18.8% low PA level; the median IPAQ total
46 activity score was 2,628 metabolic equivalent of task (MET)-min/week and time spent
47 sitting was 257.1 min/day. Only one third of participants received non-pharmacological
48 treatment corresponding to the latest recommendations. Variables significantly related
49 to inactive or minimally active PA levels were BMI ($p=0.0294$), sex ($p=0.0008$), and
50 biomedical barriers, related to self-efficacy ($p=0.0118$).

51 **Conclusions.** The OA study population was less active, more sedentary, and had more
52 comorbidities and more barriers to PA practice than the overall population.

53

54 **Key words:** knee osteoarthritis, physical activity, exercise, epidemiology, behavior

55

56 **Introduction**

57

58 Osteoarthritis (OA) is the most common joint disease today, affecting 17% of the
59 population, 35% with OA of the knee (1). Guidelines for managing lower-limb OA
60 recommend non-pharmacological treatment, and no curative treatment is available,
61 except prosthetic surgery (2). These therapies combine exercise programs, self-
62 management, and education, along with weight loss when necessary (3). Exercise
63 programs include specific exercises (strength training, aerobic activity, adjunctive
64 range of motion, and stretching exercises) and increasing physical activity (PA) level
65 (4).

66 The effects of PA and specific exercise in disease prevention and therapy have
67 well-known effects on lower-limb OA, decreasing pain and improving function.
68 Symptomatic lower-limb OA affects function, causing loss of autonomy (5), and
69 reduces activity in older people (6).

70 The relevance of monitoring PA levels in different populations appears essential
71 (7), but no studies have specifically investigated people with knee OA. According to
72 several authors, people with OA have lower PA levels than the general population; 37%
73 are actually inactive. Sedentary living is associated with age, education level, functional
74 limitations, sports hall availability and anxiety and depression disorders (8). It may also
75 depend on sex and body mass index (BMI) (9). Sitting for more than 6 hr/day increases
76 mortality risk (10). Furthermore, sitting for more than 6 hr/day was found associated
77 with PA <1470 metabolic equivalent of task (MET)-min/week, thus increasing
78 cardiovascular disease mortality risk (10). Qualitative studies are under way to analyze
79 factors affecting regular PA habits in people with knee OA (11).

80 This epidemiological study primarily sought to determine PA level by using the
81 short-form international physical activity questionnaire (IPAQ) score (12) in people

82 with knee OA. Secondary objectives were to explore the association between PA level
83 and anthropometric, sociodemographic, and clinical variables as well as barriers to and
84 facilitators of regular PA, along with fears and beliefs about knee OA (13).

85

86 **Methods**

87 *Subjects*

88 For this cross-sectional study, a total of 548 people with knee pain related to knee OA
89 in at least one knee were recruited on a volunteer basis in 9 conventional spa therapy
90 locations in the center of France (Bourbon Lancy, Bourbon l'Archambault, Chatel
91 Guyon, Chaudes Aigues, Evaux les Bains, Le Mont Dore, Nérís les Bains, Royat,
92 Vichy). Patients were recruited between during a 2-month period between September
93 24 and November 19, 2014. OA diagnosis was confirmed by the physician in charge of
94 the patient during the spa therapy period. Patients with behavioral and comprehension
95 disorders and thus not able to be assessed or with bilateral total knee replacement were
96 excluded.

97 The study protocol was approved by the ethics committee of the university
98 hospital of Clermont Ferrand (medical ethics committee of South-East France Sud-Est
99 6; authorization no. 2015/CE38) and registered on ClinicalTrials.gov (NCT02681133).
100 This study was conducted in compliance with both Good Clinical Practices and the
101 Declaration of Helsinki. In accordance with French law, the ethics committee of South-
102 East France (Sud-Est 6) and the study protocol, all participants provided their verbal
103 consent to participate in the study after being informed about the study procedures. The
104 verbal consent was reported in the medical file; it was sufficient for research in routine
105 care. This study was conducted in accordance with the STrengthening the Reporting of
106 OBservational studies in Epidemiology (STROBE) statement.

107

108 **Data collection**

109 Data were collected by use of an anonymous self-administered questionnaire. An
110 average of 15 min was needed to complete the questionnaire. People were eligible if
111 they gave their oral consent to participate and had symptomatic knee OA according to
112 the criteria of the American College of Rheumatology (ACR) (15), confirmed by
113 physical examination.

114 Data were collected on sociodemographic variables (sex, age, educational level,
115 and working situation), clinical variables (OA duration, painful joints, joint
116 replacement, pain during the last day and most intense pain during the last month on a
117 visual analog scale [VAS], and pain medication) and comorbidities (obesity, diabetes,
118 hypertension, renal failure, gastrointestinal bleeding, anxiety/depression, physical
119 impairment limiting activity, and cardiovascular disease) by declarative information
120 based on Osteoarthritis Research Society International guidelines (14). To avoid any
121 misdeclaration, we considered the pharmacological treatment of participants.

122 To assess PA, the short-form IPAQ was used (16). This form includes 7 items,
123 divided into frequency, intensity, and duration of PA at low (walking), moderate, and
124 vigorous levels, in addition to total PA per week. It also included an item about sitting
125 time, expressed as minutes per day, measuring sedentary lifestyle. Data are expressed
126 as continuous data, in MET-min/week, and as categorical scores (inactive, minimally
127 active, and Health-Enhancing Physical Activity [HEPA] active). A category labeled
128 HEPA active indicated levels exceeding the minimum public-health PA
129 recommendation, believed to induce greater health benefits (12). The IPAQ Research
130 Committee proposes a measure equal to approximately “at least 1 hr per day or more,
131 of at least moderate-intensity activity above the basal level of PA”. This level amounts

132 to 12,500 steps/day. The minimally active category was more than the minimum level
133 of activity recommended for adults in current public health recommendations, as
134 preventive measures and for a good general state of health. This level was equivalent to
135 “half an hour of at least moderate-intensity PA on most days”. The inactive category
136 defined insufficiently active individuals who did not meet the criteria of the other
137 categories. The scoring protocol is available at <http://www.ipaq.ik.se>. According to the
138 scoring instructions, vigorous-intensity PA was assigned a value of 8.0 METs,
139 moderate PA a value of 4.0 METs, and walking a value of 3.3 METs. PA was
140 calculated as the time dedicated to each activity multiplied by the specific MET for that
141 activity (12).

142 The Western Ontario and McMaster Universities Osteoarthritis Index
143 (WOMAC) was used to assess physical disability. We used only the function sub-scale
144 score, normalized to a 0-100 score. Higher scores indicated more severe impairment
145 (17).

146 The patient acceptable symptom state (PASS) is the minimum value for patient
147 well-being. For knee OA patients, the PASS consists of a VAS pain score cut-off of \leq
148 3.23 mm, with a WOMAC function score cut-off of \leq 31 mm (18).

149 Fears and beliefs concerning knee OA were assessed by the 11-item Knee
150 Osteoarthritis Fears and Beliefs Questionnaire (KOFBeQ) (ecomponent). One total (0-
151 99) and 4 sub-scores were computed (daily living activities, physician, disease, and
152 sports or leisure activity scores). Higher scores indicate substantial fears and beliefs
153 (13).

154 The barriers to and facilitators of regular PA practice were assessed by 24
155 independent and specific items from a qualitative study (19) designed for the study in

156 the absence of any reference scale. Responses to each item ranged from 0 (strongly
157 disagree) to 4 (strongly agree).

158

159 **Statistical analysis**

160 Statistical analysis involved using SAS v9.4. Statistical significance was defined as p
161 <0.05 (two-sided). Continuous variables are presented as mean (SD) or median
162 (interquartile range [IQR]), as recommended for analysis of IPAQ data
163 (www.ipaq.ki.se/scoring.pdf), and categorical data are presented as number (%). First,
164 participants were described in terms of sociodemographic and clinical characteristics.
165 Participants with and without comorbidities were compared by Mann-Whitney non-
166 parametric test for quantitative variables or chi-square or Fisher exact test for
167 categorical variables. The PA level was described by IPAQ categorical and continuous
168 scores (in MET-min/week). Univariate associations between the categorical IPAQ
169 score (inactive, minimally active, HEPA active) and variables were tested by Kruskal-
170 Wallis non-parametric test or chi-square or Fisher's exact test. Univariate associations
171 between IPAQ continuous MET scores and variables were tested by Spearman
172 correlation coefficients or Mann-Whitney/Kruskal-Wallis non-parametric test (because
173 IPAQ continuous MET scores were not normally distributed). Multinomial logistic
174 regression was performed with a forward-variable selection model to test independent
175 associations of factors with PA level. The first dependent variable was the categorical
176 IPAQ score (the model respected the proportional-odds assumption) to characterize
177 people with a low PA level, then the total activity IPAQ score, dichotomized as <3000
178 and ≥ 3000 MET-min/week. The short-form IPAQ score enabled evaluation of PA
179 level, with the graphic determination of the 3,000 MET-min/week threshold enabling
180 correlations to be determined between continuous (MET-min/week) and categorical

181 scores. Among participants with categorical inactive or minimally active IPAQ scores,
182 for 96.8%, total continuous IPAQ scores were <3000 MET-min/week. Among
183 participants with HEPA active categorical IPAQ scores, for 96.4%, total continuous
184 IPAQ scores were ≥ 3000 MET-min/week.

185

186 **Results**

187 **Participants**

188 The characteristics of the 548 participants are in Table 1.

189 **Pain and medication**

190 The mean (SD) pain score on the VAS during the last 24 hr was 4.5/10 (2.5), and the
191 mean (SD) intense pain during the last month was 6.5/10 (2.4). For 51.4% and 79.0%
192 of participants, pain score on the VAS over the last 24 hr and during the last month,
193 respectively, was greater than the PASS. Pain was correlated with type of pain
194 medication: 67.1% were taking painkillers, 42.9% on a daily basis, 29.1% several times
195 per week, and 27.9% less than once a week. In total, 30.8% of participants were
196 undergoing physiotherapy, 14.1% weight management, and 21.9% complementary
197 medicine; 5.8% wore knee braces and 29.2% orthopedic insoles. A total of 36.7% of
198 participants took no other treatments, 35.6% took one, 18.8% two, and 7.3% three.

199

200 **Function and fears and beliefs**

201 The mean (SD) physical function score on the WOMAC function subscale was
202 36.6/100 (20.7). For 57.5% of patients, the WOMAC function subscale score was
203 greater than the PASS score for OA. The mean (SD) fear and belief score on the
204 KOFBeQ was 42.8/99 (23.0).

205 **OA phenotypes**

206 Stratification into sub-phenotypes followed the OARSI guidelines (14), with the
207 following 4 sub-phenotypes shown to have prevalence for multi-joint OA: knee-only
208 OA with or without co-morbidities (5.5% vs 2.2%) and multiple-joint OA with or
209 without co-morbidities (67.2% vs 25.2%). Among the 92.3% of participants with
210 multiple-joint OA, 19.2% had bilateral-knee OA. Symptomatic knee OA was
211 accompanied by OA of the lumbar spine in 67.2%, cervical spine in 58.2%, shoulders
212 in 49.3%, hands in 48.5%, and hips in 33.6%. Only 19% of participants underwent joint
213 replacement (hip/knee). Family history of OA was reported by 66.7% of participants,
214 and 23.9% reported not knowing this information. History of knee injury or surgery
215 was reported by 44.1% of participants.

216

217 **Comorbidities**

218 In total, 72.6% of participants had at least one pertinent comorbid health concern
219 (Table 2). Patients with and without comorbidities did not differ in sociodemographic
220 data. BMI was higher, pain was more severe and frequency of medication,
221 predominantly higher painkiller intake, was higher for participants with than without
222 co-morbidities. Total score and all KOFBeQ sub-scales for fears and beliefs were
223 higher with than without comorbidities and the mean physical functioning score on the
224 WOMAC function was higher. Participants with comorbidities more frequently needed
225 walking aids.

226

227 *Physical activity level*

228 **PA level measured by IPAQ categorical and continuous scores**

229 For IPAQ categorical score, 42.6% of participants were classified as HEPA active,
230 38.6% minimally active, and 18.8% inactive (Table 3). For IPAQ continuous score, the

231 median PA level score was 2,628 (IQR 1,386-4,758) MET-min/week, and the time
232 spent sitting was 257.1 (IQR 180-360) min/day.

233

234 *Factors associated with PA level measured by categorical IPAQ score*

235 In total, 54.3% of men versus 38.2% of women were classified as HEPA active. On
236 univariate analysis factors associated with PA level measured by IPAQ categorical
237 score (HEPA active, minimally active, inactive) were sex, the only sociodemographic
238 characteristic ($p=0.0012$), and BMI, the only clinical factor ($p=0.0044$) (supplemental
239 file 1). PA level was lower for obese participants (BMI >30 kg/m²) than others; 33.3%
240 obese participants were HEPA active versus 46.6% of non-obese participants.

241 PA level was not significantly correlated with mean pain score over the last 24
242 hr or last month ($p=0.8674$ and $p=0.7804$, respectively), regardless of comorbidities
243 ($p=0.8294$), physical functioning ($p=0.6140$), or fears and beliefs.

244 PA level was lower for patients reporting barriers to PA practice that were
245 intrinsic (lack of motivation) and linked to self-efficacy (very uncertain, tired) but was
246 higher for patients with facilitators (psychological benefits).

247 On multivariable analysis, categorical IPAQ score remained associated with sex
248 ($p=0.0008$), BMI ($p=0.0294$), and self-efficacy ($p=0.0118$).

249

250 *Factors associated with PA level measured by continuous IPAQ scores*

251 The following factors were associated with PA level measured by vigorous-intensity
252 activities, moderate-intensity activities, total physical activity in MET-min/week,
253 walking, and sitting time.

254 Patients living in urban areas practiced significantly less vigorous-intensity
255 activities than others (mean [SD] 2,592.3 [2,223.1] vs 3,420.3 [2,601.7] MET-

256 min/week) ($p=0.0475$). Furthermore, living environment (near or far from sports
257 facilities) was linked to vigorous-intensity activities ($p=0.0370$). No factors were linked
258 with moderate-intensity activities.

259 Total IPAQ scores for PA were higher for men than women (mean [SD] 4,081.2
260 [3,314.0] vs 3,246.4 [2,782.6] MET-min/week) ($p=0.0074$) and were lower for obese
261 than non-obese participants (mean [SD] 2,842.0 [2,417.3] vs 3,727.1 [3,068.5] MET-
262 min/week) ($p=0.0015$). Total IPAQ scores for PA were higher for people in a couple
263 relationship than single people (mean [SD] 3,605.3 [2,944.8] vs 3,156.3 [2,966.1]
264 MET-min/week) ($p=0.0418$) and were higher with less barriers to PA practice, intrinsic
265 attitudes (motivation) ($p=0.0479$) or self-efficacy (very uncertain) ($p=0.0448$), and less
266 fatigue ($p=0.0225$). To be in good spirits when performing PA was a facilitator of high
267 total PA scores ($p=0.0306$).

268 Walking scores were lower for obese than non-obese participants (mean [SD]
269 1,222.6 [1,195.0] vs 1,489.1 [1,205.4] MET-min/week) ($p=0.0039$).

270 Sitting time was less for women than men (mean [SD] 274.5 [140.6] vs 308.2
271 [148.1] min/day) ($p=0.0137$) and was longer for obese than non-obese participants
272 (mean [SD] 308.2 [157.2] vs 274.5 [135.5] min/day) ($p=0.0554$). Patients with
273 cardiovascular disease spent significantly more time sitting than others (mean [SD]
274 324.5 [159.4] vs 275.6 [138.7] min/day) ($p=0.0069$). Sitting time was longer for
275 participants with than without walking aids (mean [SD] 333.6 [184] vs 279.1 [134.2]
276 min/day) ($p=0.0574$). Beliefs that PA enables one to meet other people ($p=0.0454$), and
277 that the living environment (proximity to sports facility) enables regular PA practice
278 ($p=0.0125$) was a facilitator for reducing sitting time. Patients with intrinsic
279 (motivation) barriers ($p=0.0136$) and deteriorating OA ($p=0.0417$) spent more time
280 sitting.

281

282 *Factors associated with PA level measured by total continuous IPAQ score: <3000*
283 *versus ≥3000 MET-min/week*

284 Patient characteristics were compared between 2 groups: total PA continuous IPAQ
285 score <3000 MET-min/week and ≥3000 MET-min/week (supplemental file 2). On
286 univariate analysis, total continuous IPAQ score <3000 MET-min/week was associated
287 with female sex ($p=0.0032$), increased BMI ($p=0.0005$), and agreeing with “Today, I
288 am very uncertain of being able to practice PA” ($p=0.0535$) and “I am too tired to
289 practice PA” ($p=0.0317$). Total continuous IPAQ score ≥3000 MET-min/week was
290 associated with participants agreeing with “to be in good spirit when I do PA”
291 ($p=0.0317$). On multivariable analysis, the factors remaining independently associated
292 with total continuous IPAQ score <3000 MET-min/week were sex ($p=0.0038$), BMI
293 ($p=0.0003$), living in an urban area ($p=0.0396$), and agreeing with “I am too old to do
294 sport!” ($p=0.0384$).

295

296 **Discussion**

297 We aimed to describe the level and factors affecting PA practices of people with knee
298 OA. Multi-joint OA affected 92% of the population, and 71.6% had comorbidities. The
299 mean (SD) VAS score for pain intensity was 4.5/10 (2.5) and the mean (SD) WOMAC
300 function score was 36.6/100 (20.7). The median IPAQ total activity score was 2,628
301 MET-min/week and time spent sitting was 257.1 min/day. Variables significantly
302 associated with inactive or minimally active PA levels were BMI, sex, and biomedical
303 barriers, related to self-efficacy.

304 Women represented the majority of this patient population. Two-thirds of
305 patients had comorbidities, nearly one third were obese, and more than two thirds had a

306 BMI >25 kg/m². The participants' OA dated back to 15 years, affecting several joints
307 for most. Over half of the study population regularly took analgesics to relieve their OA
308 pain. Pain and function scores were higher than the PASS for 50% of participants. The
309 baseline characteristics of participants with knee OA studied by the PASS (18) were in
310 accordance with age, BMI, sex, VAS, and WOMAC values of our study population.

311 Less than half of our participants practiced a sufficient PA level to provide
312 enhanced health benefits (16) or ≥ 3,000 MET-min/week; the median MET-min/week
313 score was 2,628; however, they spent < 6 hr/day sitting (10). PA level significantly
314 affected or was affected by anthropometric data (sex, BMI, and obesity), disease
315 management (walking aids), extrinsic factors (living area, family, and social situation),
316 and intrinsic factors (motivation, well-being, self-efficacy, fatigue, ageing, and fearing
317 to make OA injury worse).

318 The results of the short-form categorical IPAQ suggest that less than half of the
319 participants had an HEPA active PA level. Even if we cannot directly compare studies
320 because of different study designs, 82% of the 1,180 adult patients studied in “the
321 original activity 12-country validation study of the IPAQ”, selected from the general
322 population, had an HEPA active PA level. However, our total median continuous IPAQ
323 score was similar: 2,514 and 2,628 MET-min/week [our study] (12). In contrast, the
324 European PA surveillance system (EUPASS) reported a total median continuous IPAQ
325 score of 3,826 MET-min/week (20), with 51.8% classified as HEPA active (French
326 population n=550). These studies were conducted in the general population. More
327 specifically, Jurakic et al. demonstrated that 55- to 64-year-old individuals achieved the
328 highest median IPAQ score (4,320 MET-min/week, long-form IPAQ), with people
329 older than 64 years old having the second highest score (4,026 MET-min/week) (20).
330 These results suggest that our population was less active than the general population.

331 However, very few studies have assessed the PA level of the OA population by using
332 the IPAQ survey.

333 A 2003 review assessed the PA level of OA patients by classifying them into 3
334 groups: inactive (30.6%), insufficiently active (44.9%), and in accordance with
335 recommendations (24.55%) (similar to minimally active IPAQ). These authors
336 demonstrated that the OA population was less active than the general population (7).
337 Roseman et al. confirmed this finding with their category-based IPAQ scores: 52.75%
338 inactive, 38.5% minimally active, and 8.6% HEPA active, for a mean total continuous
339 IPAQ score of 2,830.7 MET-min/week (21). These results were considerably lower
340 than in our study (mean 3,470.9 MET-min/week) and in the general adult population.
341 Roseman et al.'s patients with knee or hip OA were recruited from 75 general
342 practitioners (baseline Praxart project) who received the questionnaires.

343 The IPAQ score for time spent sitting revealed that OA patients were relatively
344 sedentary, with this value differing by sex. Jacobi et al. analyzed a French-population
345 cohort, recording a median of 143 min/day for men (vs 300 min/day per day in our
346 study) and 120 min/day for women (vs 240 min/day in our study) (22). Roseman et al.
347 (21) reported results different from ours for time spent sitting, recording 306 min/day
348 for men and 351 min/day for women.

349 Knee OA patients are an under-represented OA population, as in our study.
350 Only 7.8% (7.7% in our population) of multi-joint symptomatic individuals had knee
351 OA only (23). For this reason, we chose multi-joint OA, with or without comorbidities.
352 As for McAlindon et al. (14), the best-available evidence for efficacy and safety in knee
353 OA was evaluated for all considered treatments, rather than for their real clinical signs.

354 BMI, pain, medication, fears and beliefs (KOFBeQ), function (WOMAC), and
355 barriers to PA practice were all important for patients with at least one comorbidity

356 (24,25). If obesity is considered a comorbidity, PA levels were significantly correlated
357 with comorbidity presence. The NUGENOB study revealed that 17% of obese
358 individuals had an HEPA active IPAQ score as compared with 33% of obese OA
359 participants in our study (26). These findings were well below those obtained for
360 normal-weight and overweight individuals in both analyses.

361 Some limitations were observed in this study. In fact, even if the EUPASS
362 declared the IPAQ to be a reference tool in measuring a population's PA level (20), this
363 measure remains subjective and declarative. In a comparison study of the IPAQ survey
364 with the Behavioral Risk Factor Surveillance System, the findings showed that the
365 IPAQ score overestimates the assessment of PA level (27), with Naal et al. (28)
366 reporting the same in their study. In addition, the IPAQ score can vary depending on
367 the season. Scores collected in winter are lower than those of summer, when outside
368 practice is easier (19). A systematic review reported a mean overvaluation of
369 approximately 86% for data surveys versus accelerometer measurement (16). However,
370 for sitting time, the authors noted the contrary, with data survey underestimating
371 sedentary time (3.5 times less) than accelerometer measurement (22). We can conclude
372 that patients are eager to show themselves to be more active than they really are. Thus,
373 accelerometer measurement is more relevant than data survey but requires substantial
374 financial resources.

375 Our study contributes to better defining PA phenotypes for people with knee
376 OA regarding sociodemographic, medical and fears and beliefs data. These data could
377 help to provide tailored educational strategies taking in count the PA profile of
378 individuals, which could be individual or group sessions, aerobic or strengthening
379 programs (29).

380 **Conclusions**

381 This study provides new data in addition to existing literature on OA while highlighting
382 new elements regarding PA in OA. The OA study population was less active, more
383 sedentary, and had more comorbidities and more barriers to PA practice than the
384 overall population. This study could help better adapt healthcare measures, while
385 accounting for individuals' overall status, including symptoms of OA pathology and
386 comorbidities, providing tailored educational strategies with respect to PA.

387
388 **Availability of data and material.** The technical appendix, statistical code, and dataset
389 are available from Candy Guiguet-Auclair: caclair@chu-clermontferrand.fr »

390
391 **Conflict of interest.** None declared

392

393 **Acknowledgments.** We thank C. Flouzat, Cluster Innovatherm and B. Pereira, CHU–
394 Clermont Ferrand, for help with the analysis of the results.

395

396 **Funding statement.** This work was financially supported by the “Innovatherm cluster”
397 and “Clermont-Ferrand Communauté”. The “Auvergne region” for the “Cluster
398 network research grant” allowed us to recruit a PhD student to carry out this study.

399

400 **Figure Legend**

401 **Figure 1: Flow of participants in the study.**

402

403 **References**

- 404 1. Günther KP, Stürmer T, Sauerland S, Zeissig I, Sun Y, Kessler S, et al. Prevalence
405 of generalised osteoarthritis in patients with advanced hip and knee osteoarthritis:
406 the Ulm Osteoarthritis Study. *Ann Rheum Dis.* 1998 ;57:717–23.
- 407 2. Bruyère O, Cooper C, Pelletier J-P, Branco J, Luisa Brandi M, Guillemin F, et al.
408 An algorithm recommendation for the management of knee osteoarthritis in

- 409 Europe and internationally: A report from a task force of the European Society for
410 Clinical and Economic Aspects of Osteoporosis and Osteoarthritis (ESCEO).
411 *Semin Arthritis Rheum.* 2014 ;44:253–63.
- 412 3. Gay C, Chabaud A, Guilley E, Coudeyre E. Educating patients about the benefits
413 of physical activity and exercise for their hip and knee osteoarthritis. Systematic
414 literature review. *Ann Phys Rehabil Med.* 2016 ;59:174–83.
- 415 4. Fernandes L, Hagen KB, Bijlsma JWJ, Andreassen O, Christensen P, Conaghan
416 PG, et al. EULAR recommendations for the non-pharmacological core
417 management of hip and knee osteoarthritis. *Ann Rheum Dis.* 2013 ;72:1125–35.
- 418 5. Peat G, McCarney R, Croft P. Knee pain and osteoarthritis in older adults: a
419 review of community burden and current use of primary health care. *Ann Rheum*
420 *Dis.* 2001 ;60:91–7.
- 421 6. Palazzo C, Nguyen C, Lefevre-Colau MM, Rannou F, Poiraudau S. Risk factors
422 and burden of osteoarthritis. *Ann Phys Rehabil Med.* 2016 Jun;59(3):134-8. doi:
423 10.1016/j.rehab.2016.01.006.
- 424 7. Hootman JM, Macera CA, Ham SA, Helmick CG, Sniezek JE. Physical activity
425 levels among the general US adult population and in adults with and without
426 arthritis. *Arthritis Rheum.* 2003 ;49:129–35.
- 427 8. Shih M, Hootman JM, Kruger J, Helmick CG. Physical activity in men and
428 women with arthritis National Health Interview Survey, 2002. *Am J Prev Med.*
429 2006 ;30:385–93.
- 430 9. Petursdottir U, Arnadottir SA, Halldorsdottir S. Facilitators and barriers to
431 exercising among people with osteoarthritis: a phenomenological study. *Phys*
432 *Ther.* 2010 ;90:1014–25.
- 433 10. Patel AV, Bernstein L, Deka A, Feigelson HS, Campbell PT, Gapstur SM, et al.
434 Leisure time spent sitting in relation to total mortality in a prospective cohort of
435 US adults. *Am J Epidemiol.* 2010 ;172:419–29.
- 436 11. Hendry M, Williams NH, Markland D, Wilkinson C, Maddison P. Why should we
437 exercise when our knees hurt? A qualitative study of primary care patients with
438 osteoarthritis of the knee. *Fam Pract.* 2006 ;23:558–67.
- 439 12. Craig CL, Marshall AL, Sjöström M, Bauman AE, Booth ML, Ainsworth BE, et
440 al. International physical activity questionnaire: 12-country reliability and validity.
441 *Med Sci Sports Exerc.* 2003 ;35:1381–95.
- 442 13. Benhamou M, Baron G, Dalichampt M, Boutron I, Alami S, Rannou F, et al.
443 Development and validation of a questionnaire assessing fears and beliefs of
444 patients with knee osteoarthritis: the Knee Osteoarthritis Fears and Beliefs
445 Questionnaire (KOFBeQ). *PloS One.* 2013;8(1):e53886.
- 446 14. McAlindon TE, Bannuru RR, Sullivan MC, Arden NK, Berenbaum F, Bierma-
447 Zeinstra SM, et al. OARSI guidelines for the non-surgical management of knee
448 osteoarthritis. *Osteoarthritis Cartilage.* 2014 ;22:363–88.

- 449 15. Altman R, Asch E, Bloch D, Bole G, Borenstein D, Brandt K, et al. Development
450 of criteria for the classification and reporting of osteoarthritis. Classification of
451 osteoarthritis of the knee. Diagnostic and Therapeutic Criteria Committee of the
452 American Rheumatism Association. *Arthritis Rheum.* 1986 ;29:1039–49.
- 453 16. Lee PH, Macfarlane DJ, Lam TH, Stewart SM. Validity of the International
454 Physical Activity Questionnaire Short Form (IPAQ-SF): a systematic review. *Int J*
455 *Behav Nutr Phys Act.* 2011;8:115.
- 456 17. Bellamy N, Buchanan WW, Goldsmith CH, Campbell J, Stitt LW. Validation
457 study of WOMAC: a health status instrument for measuring clinically important
458 patient relevant outcomes to antirheumatic drug therapy in patients with
459 osteoarthritis of the hip or knee. *J Rheumatol.* 1988 ;15:1833–40.
- 460 18. Tubach F, Ravaud P, Baron G, Falissard B, Logeart I, Bellamy N, et al.
461 Evaluation of clinically relevant states in patient reported outcomes in knee and
462 hip osteoarthritis: the patient acceptable symptom state. *Ann Rheum Dis.*
463 2005 ;64:34–7.
- 464 19. Gay C, Eschalièr B, Levyckyj C, Bonnin A, Coudeyre E. Motivators for and
465 barriers to physical activity in people with knee osteoarthritis: A qualitative study.
466 *Joint Bone Spine.* 2018 Jul;85(4):481-486. doi: 10.1016/j.jbspin.2017.07.007.
- 467 20. Jurakić D, Pedišić Ž, Andrijašević M. Physical Activity of Croatian Population:
468 Cross-sectional Study Using International Physical Activity Questionnaire. *Croat*
469 *Med J.* 2009 ;50:165–73.
- 470 21. Rosemann T, Kuehleïn T, Laux G, Szecsenyi J. Factors associated with physical
471 activity of patients with osteoarthritis of the lower limb. *J Eval Clin Pract.*
472 2008 ;14:288–93.
- 473 22. Jacobi D, Charles M-A, Tafflet M, Lommez A, Borys J-M, Oppert J-M.
474 Relationships of self-reported physical activity domains with accelerometry
475 recordings in French adults. *Eur J Epidemiol.* 2009;24:171–9.
- 476 23. Nelson AE, Golightly YM, Renner JB, Schwartz TA, Kraus VB, Helmick CG, et
477 al. Differences in Multi-joint Symptomatic Osteoarthritis Phenotypes by Race and
478 Gender: The Johnston County Osteoarthritis Project. *Arthritis Rheum.*
479 2013 ;65:373–7.
- 480 24. Kadam UT, Jordan K, Croft PR. Clinical comorbidity in patients with
481 osteoarthritis: a case-control study of general practice consultants in England and
482 Wales. *Ann Rheum Dis.* 2004 ;63:408–14.
- 483 25. Reeuwijk KG, de Rooij M, van Dijk GM, Veenhof C, Steultjens MP, Dekker J.
484 Osteoarthritis of the hip or knee: which coexisting disorders are disabling? *Clin*
485 *Rheumatol.* 2010 ;29:739–47.
- 486 26. Tehard B, Saris WHM, Astrup A, Martinez JA, Taylor MA, Barbe P, et al.
487 Comparison of two physical activity questionnaires in obese subjects: the
488 NUGENOB study. *Med Sci Sports Exerc.* 2005 ;37:1535–41.

- 489 27. Ainsworth BE, Macera CA, Jones DA, Reis JP, Addy CL, Bowles HR, et al.
490 Comparison of the 2001 BRFSS and the IPAQ Physical Activity Questionnaires.
491 *Med Sci Sports Exerc.* 2006 ;38:1584–92.
- 492 28. Naal FD, Impellizzeri FM, Loibl M, Huber M, Rippstein PF. Habitual physical
493 activity and sports participation after total ankle arthroplasty. *Am J Sports Med.*
494 2009 ;37:95–102.
- 495 29. Coudeyre E, Gay C, Bareyre L, Coste N, Chérillat MS. [Osteoarthritis and patient
496 therapeutic education, learning to move more]. *Rev Infirm.* 2016;223:28-30. doi:
497 10.1016/j.revinf.2016.06.006.
- 498

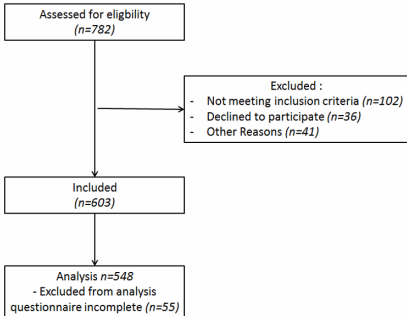


Table 1. Patient characteristics.

Characteristic	Category	All participants (n=548)
Sex	Men	143 (26.1)
	Women	404 (73.9)
Age (years), mean (SD)		67.6 (7.9)
Body mass index (kg/m²), mean (SD)		28.2 (5.7)
Body mass index (kg/m²)	≤30	375 (69.1)
	>30	168 (30.9)
Marital status	Single	160 (29.3)
	Couple	386 (70.7)
Education	Less than high school	317 (59.3)
	High school or higher	218 (40.7)
Residence	Urban	249 (50.3)
	Rural	246 (49.7)
Occupation	Active	62 (11.3)
	Retired	458 (83.6)
	Disabled	38 (6.9)
Osteoarthritis duration (years)		12.9 (10.9)
Walking device	Yes	73 (14.0)
	No	447 (86.0)
Pain (VAS, 0/10), mean (SD)	Intensity over the last 24 hr	4.5 (2.5)
	Higher intensity over the last month	6.5 (2.4)
Treatment for pain due to osteoarthritis	Yes	349 (67.1)
	No	171 (32.9)
If treatment, frequency	Every day	146 (42.9)
	Several times per week	99 (29.1)
	Less than one time per week	95 (27.9)
WOMAC (0/100), mean (SD)	Function score	36.6 (20.7)
KOFBeQ (0/99), mean (SD)	Total score	42.8 (23.0)

Data are expressed as mean (SD) or n (%).

VAS, visual analog scale; WOMAC, Western Ontario and McMaster Universities

Osteoarthritis Index; KOFBeQ, Knee Osteoarthritis Fears and Beliefs Questionnaire

Table 2. Characteristics of participants with and without comorbidity.

Characteristic	No comorbidities (n=150)	At least one comorbidity (n=398)	p-value
Body mass index (kg/m ²), mean (SD)	24.9 (2.9)	29.4 (5.9)	<0.0001
Pain (VAS 0/10)			
Intensity over the last 24 hr, mean (SD)	4.1 (2.3)	4.7 (2.6)	0.0198
Higher intensity over the last month, mean (SD)	5.9 (2.3)	6.7 (2.5)	0.0004
Treatment for pain due to osteoarthritis			
Yes	76 (54.3)	273 (71.8)	0.0002
No	64 (45.7)	107 (28.2)	
If treatment, frequency			
Every day	20 (27.4)	126 (47.2)	0.0058
Several times per week	24 (32.9)	75 (28.1)	
Less than once per week	29 (39.7)	66 (24.7)	
KOFBeQ score, mean (SD)			
Daily living activity score	7.2 (7.3)	10.0 (8.2)	0.0007
Physician score	16.2 (10.7)	18.6 (10.8)	0.0250
Disease score	6.1 (5.9)	7.5 (6.0)	0.0184
Sports and leisure activity score	7.5 (6.0)	9.1 (6.3)	0.0091
KOFBeQ total score (0/99), mean (SD)	37.0 (21.9)	44.9 (23.1)	0.0010
WOMAC function score (0/100), mean (SD)	32.4 (18.6)	38.3 (21.3)	0.0089
Walking device, yes	6 (4.2)	67 (17.8)	<0.0001

Data are expressed as n (%) unless indicated.

Table 3. Physical activity level measured by International Physical Activity Questionnaire (short form).

Characteristic	Category	All participants (n = 548)
Physical activity level	Low	99 (18.8)
	Moderate	203 (38.6)
	High	224 (42.6)
IPAQ score (MET-min/week), mean (SD)	Vigorous activity	2931.7 (2445.1) [2160 (1020–4080)]
	Moderate activity	1694.9 (1404.5) [1200 (600–2400)]
	Walking	1413.3 (1205.5) [990 (594–1782)]
	Total activity	3470.9 (2951.1) [2628 (1386–4758)]
Time spent sitting (min/week), mean (SD)		283.6 (143.2) [257.1 (180–360)]
Time spent sitting (min/week)	<180	89 (17.5)
	180–359	280 (55.0)
	≥360	140 (27.5)

Data are expressed as n (%) unless indicated.