



HAL
open science

Impact of the hydrological regime and forestry operations on the fluxes of suspended sediment and bedload of a small middle-mountain catchment

Solenn Cotel, Daniel Viville, Sylvain Benarioumlil, Philippe Ackerer, Marie-Claire Pierret

► To cite this version:

Solenn Cotel, Daniel Viville, Sylvain Benarioumlil, Philippe Ackerer, Marie-Claire Pierret. Impact of the hydrological regime and forestry operations on the fluxes of suspended sediment and bedload of a small middle-mountain catchment. *Science of the Total Environment*, 2020, 743, pp.140228. 10.1016/j.scitotenv.2020.140228 . hal-03017880

HAL Id: hal-03017880

<https://hal.science/hal-03017880>

Submitted on 4 Jan 2021

HAL is a multi-disciplinary open access archive for the deposit and dissemination of scientific research documents, whether they are published or not. The documents may come from teaching and research institutions in France or abroad, or from public or private research centers.

L'archive ouverte pluridisciplinaire **HAL**, est destinée au dépôt et à la diffusion de documents scientifiques de niveau recherche, publiés ou non, émanant des établissements d'enseignement et de recherche français ou étrangers, des laboratoires publics ou privés.

Impact of the hydrological regime and forestry operations on the fluxes of suspended sediment and bedload of a small middle-mountain catchment

S. Cotel, D. Viville, S. Benarioumlil, P. Ackerer, M.C. Pierret



PII: S0048-9697(20)33749-9

DOI: <https://doi.org/10.1016/j.scitotenv.2020.140228>

Reference: STOTEN 140228

To appear in: *Science of the Total Environment*

Received date: 8 February 2020

Revised date: 29 May 2020

Accepted date: 13 June 2020

Please cite this article as: S. Cotel, D. Viville, S. Benarioumlil, et al., Impact of the hydrological regime and forestry operations on the fluxes of suspended sediment and bedload of a small middle-mountain catchment, *Science of the Total Environment* (2020), <https://doi.org/10.1016/j.scitotenv.2020.140228>

This is a PDF file of an article that has undergone enhancements after acceptance, such as the addition of a cover page and metadata, and formatting for readability, but it is not yet the definitive version of record. This version will undergo additional copyediting, typesetting and review before it is published in its final form, but we are providing this version to give early visibility of the article. Please note that, during the production process, errors may be discovered which could affect the content, and all legal disclaimers that apply to the journal pertain.

sediment and bedload of a small middle-mountain catchment

S. Cotel^{1*}, D. Viville¹, S. Benarioumlil¹, P. Ackerer¹, M.C. Pierret¹

¹ *Laboratoire d'Hydrologie et de Géochimie de Strasbourg (LHyGeS), UMR 7517, Université de Strasbourg - Centre National de la Recherche Scientifique (CNRS) - École Nationale du Génie de l'Eau et de l'Environnement de Strasbourg (ENGEES), 1 rue Blessig, 67084 Strasbourg, France*

*E-mail addresses: *cotel@unistra.fr (S. Cotel) / diville@unistra.fr (D. Viville) / sylvain@unistra.fr (S. Benarioumlil) / ackerer@unistra.fr (P. Ackerer) / marie-claire.pierret@unistra.fr (M.C. Pierret)*

Journal Pre-proof

Mechanical erosive processes play a key role in the global landscape structure and the evolution of terrestrial continental surfaces (Tucker, 2015). They generate sediments (bedload and suspended matter), which will be mainly transported by rivers with potential sedimentation, storage, or remobilization phases. The characteristics of the solid transport may impact our environment and human activities (agricultural soil losses, silting of lakes, estuaries, dams or harbors, and clogging of river beds). In addition, the suspended sediments (SS) are an important vector for many elements, including pollutants (pesticides, heavy metals, and radionuclides; Cánovas et al., 2012; He et al., 2015; Iwagami et al., 2016) and nutrients (Martínez-Carreras et al., 2012). At the watershed scale, the annual export flux of SS generally represents more than two-thirds of the annual solid flux (Serrat, 1999; Mathys, 2006; Lenzi et al., 2003; Vericat and Batalla, 2006; Pratt-Sitaula et al., 2007) and more than the annual dissolved flux adjusted for atmospheric inputs (Serrat, 1999; Millot et al., 2002; Viville et al., 2012). The accurate quantification of SS fluxes and the knowledge of their intra- and inter-annual dynamics at the watershed scale are, therefore, essential for understanding the biogeochemical functioning of ecosystems.

The natural SS flux of a river can be explained by several parameters related to the characteristics of the watershed (area, slope, geology, soil type, and land cover; Mueller and Pitlick, 2013; Bywater-Reyes et al., 2017) and climatic conditions (rainfall, snow, temperature, and solar radiation; Syvitski and Milliman, 2007). The SS concentration typically shows considerable temporal variability, and a large portion of the annual SS flux is often carried during some major thunderstorm events (Coynel et al., 2004; Moatar et al., 2006; Mano et al., 2009; Duvert et al., 2011). Furthermore, natural SS flux in rivers can be disturbed by anthropogenic activities (Tarolli and Sofia, 2016), including urbanization, mining, agriculture (Glendell and Brazier, 2014), forestry (Gomi et al., 2005), and, more generally, land use planning (Mueller et al., 2009). Among them, forest management can affect and significantly increase SS concentrations due to tree cutting but also to the building of forest roads, skid trails, and stream crossings (Grant and Wolff, 1991; Karwan et al., 2007; Bywater-Reyes et al., 2017; Cristan et al., 2016). For example, Motha et al. (2003) found that the harvested areas contribute 1.2 to 5 times more to SS flux than undisturbed forest plots, and unsealed forest roads generate 20 to 60 times more SS export than undisturbed forests. Even if forest road and skid trail areas often constitute less than 10% of the catchment area, their contribution to SS flux is not negligible (Grayson et al., 1993; Cornish, 2001; Jordan, 2006). Indeed, deforestation reduces vegetal transpiration and precipitation interception with the loss of foliage, and it enhances snowfall and

2003; Schelker et al., 2013). These elements contribute to an increase in surface runoff, peak discharges, annual stream discharge, and thus in the sediment carrying capability of the hydrosystem (Martin et al., 2000; Hotta et al., 2007). Furthermore, mechanized tree harvesting increases the natural proportion of bare and unconsolidated soil, which increases the proportion of easily exported materials by surface runoff during rain or snowmelt events. Forest roads and skid trails create more compact and less permeable surfaces with less tortuous paths for flow, increasing surface runoff and thus erosion and sediment transport during rainy periods. When the silvicultural access network is hydraulically connected with brooks by stream crossings, it has a disproportionally higher potential to introduce sediments into those brooks (Taylor et al., 1999; Cornish, 2001; Aust et al., 2011; Brown et al., 2013; Lang et al., 2018).

In contrast to large regional catchments, the undisturbed SS flux of small watersheds ($< 10 \text{ km}^2$) has been studied to a lesser extent (Vanmaercke et al., 2011; Merchán et al., 2019) and its dynamics are still poorly understood (Vansickle and Beschta, 1983). Furthermore, the hydrology of some small watersheds is complex with bimodal hydrographs. They are the catchment's response to significant precipitation where the first peak coincides to the rain event, and the second peak is broader and lagged in time (Martinez-Carreras et al., 2016). To our knowledge, few studies address the impact of this type of hydrological functioning on the dynamics of the solid export flux. Besides, these studies were conducted on a limited number of storm or snowmelt events (Heathwaite et al., 1989; Hattanji and Onda, 2004; Langlois et al., 2005). Furthermore, the impact of forestry operations on the dynamics of SS production and export is often estimated with a low sampling frequency (weekly or less; Grayson et al., 1993; Cornish, 2001; Nisbet et al., 2002; Webb et al., 2012; Guevara et al., 2015; Witt et al., 2016; Hancock et al., 2017) and/or with samples taken only during some (not necessarily the most relevant) high-flow events (Grayson et al., 1993; Cornish, 2001; Motha et al., 2003; Hotta et al., 2007; Webb et al., 2012; Witt et al., 2016; Hancock et al., 2017). This may reduce the accuracy of the annual SS flux estimation and thus limit the scope of the studies.

In this context, the main objectives of this work are to estimate the impact of i) the hydrological regime and ii) forestry operations on the solid exports of a headwater catchment, based on an accurate monitoring of SS concentration and exported bedload quantity over several years. The watershed is located in a temperate middle-mountain region with managed forests for several centuries. The hydrological functioning of this catchment includes frequent single-peak hydrographs and some double-peak hydrographs mainly occurring during the

phases of partial forest harvesting occurred in the lower part of the catchment. The small-scale forestry operations consisted of mechanized clear-cutting on steep plots and required the setup of skid trails and stream crossings.

In detail, this study will seek to highlight the major role of delayed-flow events including snowmelt in the solid export dynamics at the outlet of the catchment and to identify and characterize the potential impacts of the forestry operations on those exports. The first step was to develop a protocol to accurately estimate SS concentrations and fluxes at the hydrological event and year scale.

2. Materials and methods

2.1. Site description

The Strengbach catchment is the study site of the Observatoire Hydro-Géochimique de l'Environnement (OHGE; <http://ohge.unistra.fr/>). It was selected in 1986 to study and understand the impact of acid rain on the forested ecosystem (Probst et al., 1990; Pierret et al., 2019). Then, it was progressively and extensively used to understand the main hydrobiogeochemical processes occurring in this type of ecosystem, using a large diversity of geochemical tracing and geochronological approaches (Pierret et al., 2014; Schmitt et al., 2017 and 2018; Prunier et al., 2015; Chabaux et al., 2017 and 2019) and, more recently, hydrogeochemical modeling (Beaulieu et al., 2016; Weill et al., 2017; Maquin et al., 2017; Belfort et al., 2018; Ackerer et al., 2018; Weill et al., 2019). Labeled in 2007 by the Institut National des Sciences de l'Univers (INSU) of the Centre National de la Recherche Scientifique (CNRS) as a national observatory, the Strengbach catchment is currently one of the reference observatories of the French network of critical zone observatories (OZCAR; <http://www.ozcar-ri.org>). For almost 35 years, meteorological and hydrological data have been monitored continuously (for recent reviews on the catchment, see Viville et al., 2017; Pierret et al., 2018).

The Strengbach catchment is a small watershed (0.8 km²) located on the eastern side of the Vosges massif (France) at elevations between 883 m and 1,146 m with rather important slopes (mean slope is 15°). Between 1987 and 2016, the mean annual temperature was 6 °C (mean monthly temperature ranged from -2 °C to 14 °C), and the mean annual precipitation was 1,385 mm, with in average 19% snow. The mean annual runoff was

during the snowmelt period and low water fluxes during the summer season. A variable saturated area (between 0.25% and 3% of the catchment area) is located in the valley bottom close to the outlet and connected to the stream. This saturated area plays an essential hydrological and geochemical role (Idir et al., 1999; Ladouche et al., 2001; Pierret et al., 2014; see Sect. 3.1.1).

The catchment bedrock is Brézouard granite, a Ca- and Mg-poor granite formed 332 ± 2 Ma ago (Boutin et al., 1995). This granite was fractured and hydrothermally altered with a stronger degree of hydrothermal overprinting in the northern part than in the southern part of the catchment (Fichter et al., 1998; Pierret et al., 2014). The soils, of the acid brown to ochreous podzolic series, have an average depth of 1 m.

The whole catchment is a commercially managed forest, and the plantation ages range between 50 and 170 years. Before spring 2012, the forest covered 83% of the catchment and was composed of 80% spruces (*Piceas abies*) and 20% beeches (*Fagus sylvatica*). Forest roads (2%) and natural openings (15%) occupied the remaining 17%. The majority of these natural openings, formerly wooded, is due to windfall and sometimes tree cuts following insect epidemics. Another type of natural opening exists in the bottom of the catchment in the frequently saturated area where no woody species can grow, and the soil is covered with small plants adapted to wetlands such as sphagnum mosses, rush (*Juncus effuses*), and herb (*Scirpus sylvaticus*).

The open-field precipitation was measured in a clearing at the top of the catchment (Fig. 1) using a tipping bucket gauge connected to a data logger (Campbell model CR10x) at a 10-minute time step. The open-field precipitation at the catchment scale was obtained by the spatialization of local measurements as detailed in previous studies (Pierret et al., 2019). At the catchment outlet, an H-flume hydraulically linked to a stilling well equipped with an immersed ultrasonic probe connected to a data logger (Alcyr model Cyr2) enabled a high-frequency record of the stream water stage. The acquisition frequency of the water stage data was 30 measurements per hour. The discharge was computed using an established stage-discharge relationship.

The SS and the bedload fluxes were evaluated according to various methodologies (different methods and frequencies).

2.2. Outlet SS flux estimation

a former methodology allowed an estimation of the SS fluxes since 2005 based on fortnightly manual sampling (Viville et al., 2012). Notice that the year, for example 2013, refers to the sampling year beginning on December 8, 2012 (the starting day of the high-frequency SS flux study) and ending on December 8, 2013.

2.2.1. Field sampling and measurements

Beginning January 2004, 2 L water were sampled manually every two weeks at the catchment outlet (see Fig. 1) to measure the SS concentration. Collected in a stream section with well-mixed waters, these manual samples are considered representative of the brook water.

Beginning December 8, 2012, two automatic water samplers (Isco models 3700 and 2900) were installed for both regular and flood events sampling to improve the SS flux estimation. The high-flow sampler was managed by the Alcyr data logger and activated by a predetermined threshold overrun-causing taking of samples on the rising and falling limbs of the hydrograph. The chosen time step for the high-flow sampler ranged from one sample per 10 min for thunderstorm events to one sample per 4 or 8 hr for long-lasting events. The regular sampler had a sampling frequency of 16 hr in accordance with a fortnight sampling capacity. The volumes of the samples were 1 L and 0.5 L for regular and high-flow samplers, respectively, related to the higher SS concentrations expected during flood events.

SS measurements have to address some specific characteristics for small middle-mountain catchments such as frequent low-water levels and long periods of frost in winter. For those catchments, accurate monitoring of the SS flux with automatic water sampling requires i) the minimization of the analytical uncertainty by means of a suitable laboratory method, ii) a good representativeness of the automatic samples in all hydrological conditions, and iii) the protection of the water sampling systems from cold winter temperatures. An evaluation of the selected sampling method following these three items is given in the supplementary information A.1, A.2, and A.3. In the last months of the first study year, the sampling method was improved. The main problems of the initial sampling configuration were the overestimation of the stream SS concentration using automatic samples, especially during low-water periods, and the significant number of missing samples during the cold season. The changes in the sampling configuration (use of new sampling strainers and attachment system, reduction of the stream bed width, and heating of the sampling pipes) led to a significant improvement in the representativeness

Indeed, for discharges of less than $9 \text{ L}\cdot\text{s}^{-1}$, the weighted least-squared errors between the measured concentrations by automatic sampling and the measured concentrations by manual sampling were 14.6 for the first year and 0.07 for the following 3 years. Similarly, the number of missing 16-hr samples during the cold season (December 1-March 31) decreased from 41 (the first year) to an average of 2 (the following 3 years) although the numbers of frost days were quite the same for each year.

2.2.2. SS concentration measurement protocol

Water samples were filtered through a nitrocellulose membrane (Millipore) with a $0.45 \mu\text{m}$ pore diameter. Each filter was previously dried in an oven at $60 \text{ }^\circ\text{C}$ during 24 hr and then weighed on a precision scale. After filtration, the filter was similarly dried and weighed. The SS concentration was calculated according to the following formula:

$$C(t) = \frac{m_F - m_N}{V(t)} \quad [1]$$

where $C(t) \text{ (g}\cdot\text{L}^{-1}\text{)}$ is the SS concentration in the water sample at sampling time t , m_F and $m_N \text{ (g)}$ are the dry filter mass after and before filtration, respectively, and $V(t) \text{ (L)}$ is the collected water sample volume.

The uncertainty in SS concentration was estimated experimentally and includes the analytical error and the sampling error linked to the SS concentration variability in all stream cross-sections. This variability is, of course, unknown when a single water sample is carried out per section. This uncertainty was evaluated under high-flow and low-water conditions using two different strategies, which are detailed in supplementary information A.4. The global experimental uncertainty was 8.0% and 11.2% for, respectively, high-flow and low-water conditions.

2.2.3. Data quality check and dataset processing

collected automatically (16-hr sampling and high-flow sampling) during the 4 studied years.

Before calculating the annual SS fluxes, the dataset consisting of SS concentration values was verified to eliminate and, if possible, substitute outliers. Then, this dataset was processed to obtain as complete as possible an SS concentration time series, which is required for an accurate estimation of the exported SS flux. Before any correction or processing, the raw dataset contained 2,064 (16-hr sampling) and 712 (high-flow sampling) values of SS concentration.

Excluding single outliers, the representativeness of the automatic water samples collected between November 2013 and December 2016 is very relevant regardless of the stream water height. For the automatic water samples collected between December 2012 and October 2013, their representativeness is very good for high-flow conditions but poor for low-water conditions with frequent overestimations (see explanations in Sect. 2.2.1 and supplementary information A.2). In order to avoid fluxes overestimation, the SS concentration of each automatic 16-hr sample collected during 2013 low-water periods was substituted by the concentration measured in the corresponding manual sample. We noticed the low fluctuation of the SS concentration in the manual water samples during those periods (minimum and maximum SS concentrations of 2.7 mg.L^{-1} and 5.0 mg.L^{-1} , respectively, measured on September 3 and July 23, 2013) and the relatively small contribution of the low-water periods to the annual SS fluxes. Except during the low-flow periods of the 2013 sampling year, very few outliers were detected in the dataset. The 22 single SS concentrations considered abnormal were either deleted (high-flow sampling) or substituted by the mean concentration of the water samples collected 16 hr before and 16 hr after the problematic sample (16-hr sampling). Those outliers are due to problems that occurred during water sample filtration at the laboratory or to short disturbances of the SS export caused, for example, by game or hikers crossing the stream.

The processing of the dataset allowed us to address the lack of some automatic 16-hr samples and to limit SS flux overestimation at the beginning of the sampled high-flow events.

During the 4 studied years, 5.8% of the automatic 16-hr samples were missing, sometimes because of the water freezing in the sampling pipe (37% of the missing samples). Other explanations included power cuts (25% of the missing samples) related to thunderstorms, battery troubles, or other technical problems (38% of the missing samples) such as sampling pipes attacked by rodents. When too many 16-hr samples were missing, the SS concentration of the missing samples was evaluated as the mean concentration of the 4 previous 16-hr samples

discharge and the time lapse between the collection of those samples. Note that no major quick-flow event was ongoing when a 16-hr sample was missing.

When a high-flow event is sampled, the SS flux between the previous 16-hr sample and the first high-flow sample can be strongly overestimated using the flux calculation formula (see Sect. 2.2.4). This overestimation is all the more important when the time lapse between those 2 samples and the SS concentration of the first high-flow sample is large. Taking into account the SS concentration value just before the beginning of the flood is vital to an accurate estimation of the SS flux exported during the event. To limit this overestimation, just before each sampled flood, the stream SS concentration was considered equal to the SS concentration of the previous 16-hr sample. If the high-flow sampler collected the vast majority of the flood events, the major thunderstorm event of May 29, 2016, at 2 p.m. (highest peak discharge measured between 2013 and 2016), could not be sampled because the sampler was already full with water from the previous events of May 28, 2016, at 1 p.m., and May 29, 2016, at 2 a.m. For this specific and unique event, the SS flux was estimated equal to the highest value observed for a thunderstorm event. It is, of course, an underestimation of the actual value.

For the 4 studied years, after the data processing, the dataset contained 2,192 SS concentration values from 16-hr sampling (compared to 2,064 in the raw dataset) and 804 values from high-flow sampling (compared to 712).

2.2.4. Outlet SS flux and experimental uncertainty

For all stream sections, by neglecting the variation in water speed and concentration over the section, the annual export flux of SS calculated between times t_1 and t_2 can be expressed as follows:

$$F_{S_{t_2-t_1}} = \frac{1}{t_2 - t_1} \int_{t_1}^{t_2} (C(t) \times Q(t)) dt \quad [2]$$

where $F_{S_{t_2-t_1}}$ ($T.yr^{-1}$) is the annual SS flux calculated between times t_1 and t_2 (yr), $C(t)$ ($T.m^{-3}$) is the mean SS concentration on a stream section at time t , and $Q(t)$ ($m^3.yr^{-1}$) is the instantaneous discharge at time t .

developed to estimate SS fluxes based on discrete measurements (Littlewood, 1995; Phillips et al., 1999). In this study, the concentration at time t , $C(t)$, was assimilated to the mean concentration, $\overline{C_{t',t'+1}}$, between 2 successive times for which the SS concentration is known, t' and $t'+1$. With the objective of determining the most accurate export flux estimation depending on the available measures for the Strengbach catchment, the variation in discharge between those successive times was taken into account (Littlewood, 1995). At the catchment outlet, the annual export flux of SS between times t_1 and t_2 was calculated using the following approximations:

$$F_{S_{t_2-t_1}} = \frac{1}{t_2 - t_1} \sum_{t'=t_1}^{t_2} \left(\int_{t'}^{t'+1} (C(t) \times Q(t)). dt \right) \approx \frac{1}{t_2 - t_1} \sum_{t'=t_1}^{t_2} \left(\overline{C_{t',t'+1}} \times \int_{t'}^{t'+1} Q(t). dt \right) \quad [3]$$

where $\overline{C_{t',t'+1}}$ ($T.m^{-3}$) is the mean SS concentration between times t' and $t'+1$ (yr).

Stemming from expression [3] and detailed in supplementary information B.1, a mean experimental uncertainty in the outlet SS flux of 10.2% was established. This experimental uncertainty takes into account the errors in SS concentration and stream discharge, which are relevant to an average of 90% and 10%, respectively, of the experimental uncertainty in the SS flux.

2.3. Outlet bedload flux estimation

The bedload fluxes were estimated for 7 years since 2010.

2.3.1. Field sampling and measurements

At the catchment outlet (see Fig. 1), the relatively large flume dimensions (1.4 m wide and 3.1 m long) compared to the mean stream discharge and the very low slope of this apparatus make it a sedimentation area where the bedload carried during floods accumulates. A complementary sediment trap located downstream of the flume, close to the outlet, collects bedload when the flume storage capacity is reached. The total amount of bedload accumulated in the flume and the trap is considered to be an accurate estimation of the amount of

in those two apparatuses was removed, and the volume of the sediment was measured using a 15 L container.

2.3.2. Outlet bedload flux and experimental uncertainty

At the catchment outlet, the annual export flux of bedload was estimated using the volume of annually accumulated sediment in the flume and trap and the apparent density of the bedload by means of the following expression:

$$F_{B_{t_2-t_1}} = \frac{d}{t_2 - t_1} \sum_{t'=t_1}^{t_2} (V_F(t') + V_T(t')) \quad [4]$$

where $F_{B_{t_2-t_1}}$ ($T.yr^{-1}$) is the annual bedload flux calculated between times t_1 and t_2 (yr), d ($T.m^{-3}$) is the bedload apparent density, and $V_F(t')$ and $V_T(t')$ (m^3) are the sediment volumes accumulated in the flume and the trap, respectively, between times t_1 and t_2 .

The apparent density of the bedload was experimentally determined on 6 samples of 15 L of Strengbach sediment exported during the snowmelt events of March 2017 and the important thunderstorm of May 12, 2017, to take into account the different types of sediments. The mean apparent density of those bedload samples was $1.54 \text{ kg.L}^{-1} \pm 6.2\%$. The uncertainty in this parameter is due to the non-homogenous filling of the 15-L containers during the sample collection produced by the different particle sizes of the exported sediments and by a slightly different sediment compaction in the 15-L containers. As the mean apparent density of the 3 bedload samples related to the snowmelt events was similar to the mean apparent density of the 3 bedload samples related to the thunderstorm (the discrepancy between the mean density values was 4.2%), the mean apparent density of those 6 bedload samples was considered to be representative of the apparent density of the sediments exported at the catchment outlet. The estimation error was set to 8.2% the bedload fluxes (see supplementary information B.2 for more details).

2.4. Solid fluxes estimation at the catchment scale

The erosion flux was estimated for 4 years since 2013.

Four springs (called CS1, CS2, CS3, and CS4; see Fig. 1) were gathered in a spring collector, and the major part of this water was taken as drinking water. This export represented, on average, 7.6% of the annual total runoff of the Strengbach catchment between 1987 and 2016 (Pierret et al., 2018).

In order to evaluate the contribution of this uptake to the global erosion flux, the solid exports were also analyzed at the collected springs. No bedload passed by the springs. Using 2-L samples, the SS concentrations in each 4 springs were evaluated 6 times under different hydrological conditions (outlet discharge between $4.3 \text{ L}\cdot\text{s}^{-1}$ and $95 \text{ L}\cdot\text{s}^{-1}$). The maximum SS concentration measured was $0.5 \text{ mg}\cdot\text{L}^{-1}\pm 48\%$, which is negligible compared to the SS concentrations in the stream. The solid fluxes evaluated at the outlet were then considered as the unique solid fluxes exported at the Strengbach catchment scale. In addition, as atmospheric inputs to the SS and bedload are negligible or null, the solid fluxes exported at the outlet were considered to be representative of the overall (physical) erosion flux of the Strengbach catchment.

3. Results and discussion

3.1. Catchment hydrology

3.1.1. Hydrological functioning of the catchment

The hydrological functioning of a watershed plays a key role in the dynamics of its solid exports. The time series of the spatialized precipitation and discharge at the catchment outlet are shown in Fig. 2 for the 4 years concerned by the high-frequency SS flux study (2013-2016).

Actually, the hydrological response of the Strengbach catchment to rainfall events is often rapid. Usual transfer times between the center of mass of the rain distribution and the corresponding discharge peak range between 10 and 30 min. For those quick-flow events, the outlet water flux during the discharge peak corresponds to less than 4% of the associated precipitation. Quick-flow peaks are due to saturation-excess overland flows originating from the saturated area located at the bottom of the small valley near the Strengbach outlet (Ladouche et al., 2001). This type of hydrological functioning has been observed, for example for two forested

catchments (McNamara et al., 1998), a sub-humid catchment in Africa (Masiyandima et al., 2003), and an alpine catchment (Zillgens et al., 2007). However, in some cases, a delayed response to precipitation can occur. For those delayed-flow events, the transfer time ranges between 1 and 2.5 days, and the outlet discharge peak can reach 60% of the associated precipitation such as for the major snowmelt event beginning at the end of December 2012. Delayed-flow peaks, which are only observed when the water storage capacity of the Strengbach catchment has been exceeded, can be attributed to lateral subsurface flows coming from the hillslopes in the upper part of the site (Viville and Gaumel, 2004). A threshold beyond which a delayed response occurs has been identified. This threshold includes the stored water in the soil and fractured aquifer before the precipitation and the water provided by the precipitation itself, and it corresponds to approximately 180 mm for our catchment. This delayed response can be due to very high precipitation but also to snowmelt often caused, in the middle-mountain context, by a significant amount of rain falling on a preexisting snowpack. Thus, most of the delayed-flow events are preceded by a quick-flow event producing double-peak hydrographs. This type of bimodal hydrological response to precipitation has also been observed in a small number of watersheds (recent examples include Haga et al., 2005; Onda et al., 2006; Birkinshaw, 2008; Graeff et al., 2009; Westhoff et al., 2011; Padilla et al., 2015; Martinez-Carreras et al., 2016). The majority of those catchments are headwater catchments with predominantly steep slopes and shallow soils, and in many cases with periglacial slope deposits (Angermann et al. 2017). In Fig. 2, to illustrate the relative importance of the two types of delayed-flow events in the Strengbach hydrology, the snowmelt events and the other major events are highlighted in grey and blue, respectively. Furthermore, some delayed-flow events are also disturbed by significant quick-flow events caused by new rainfalls. In such cases, those quick-flow events were not considered in the calculation of the parameters of the delayed-flow events as water and SS fluxes.

In a middle-mountain context, successive major snowmelt events can occur during each winter season. The frequency of the delayed-flow peak events is quite important for the Strengbach catchment (6 events per year on average), notably because of snowmelt events. Furthermore, the discharges reached during this type of event are on the same order of magnitude as the discharges reached during quick-flow events. In addition, the mean duration (and more specifically, high-discharge mean duration) of the flood peak is much greater for delayed flows than it is for quick flows. A usual delayed-flow event lasts a few weeks, whereas a quick-flow event often lasts a few hours. For this catchment, delayed-flow peaks are the key component of the discharge

flow event of the studied period discharged 150,000 m³ of water between December 22, 2012, and January 19, 2013, while only 1,700 m³ of water was discharged during the largest quick-flow event (May 29, 2016, between 1:50 p.m. and 6:10 p.m.). A major contribution of the delayed-flow peaks to runoff has already been observed for other catchments in other geological and/or hydrological contexts (Pearce et al., 1984; McDonnell and Taylor, 1987; Masiyandima et al., 2003; Zillgens et al., 2007).

3.1.2. Hydrological characteristics of the studied years

The main hydrological characteristics (annual open-field precipitation, runoff, and water quantity extracted for water supply) of the 7 years concerned by the bedload flux study (2010-2016) are summarized in Table 1.

The 7 studied years were highly hydrologically contrasted. With rainfalls exceeding the past 30-year mean annual precipitation by 20% and 21%, 2012 and 2013 were wet years. Conversely, 2011 and 2014 were rather dry years with precipitation deficits of 12% and 11%, respectively. In 2010, 2015, and 2016, the annual precipitation was close to the long-term average value (deviations less than $\pm 7\%$). For comparison, the annual runoff was particularly high in 2013 and low in 2014 (deviations of +34% and -30%, respectively). The ratio between the annual total runoff and annual precipitation followed this same trend (ratios of 0.65 and 0.46 for wet and dry years, respectively). These differences are mainly due to the frequency and intensity of snowmelt events (high frequency and intensity in 2013 and very low frequency and intensity in 2014). Actually, in the study site, snowmelt mainly occurs in the early and late winter and early spring when evapotranspiration is the lowest. In contrast, 2012 was characterized by a substantial amount of precipitation falling as thunderstorms, explaining a lower ratio than that for the year 2013, despite similar amounts of snow precipitation. In particular, stormy precipitation occurs in late spring or summer when evapotranspiration is high.

3.2. Impact of the hydrological regime on the solid export dynamics

The time series of processed SS concentration is shown in Fig. 3a, b, c, and d for the 4 years concerned by the high-frequency SS flux study (2013-2016). In this figure, a vertical gray dot line marks the beginning of each

lasting events sampled for more than one day (corresponding to events with a delayed-flow peak).

Among the flood events that occurred during the 4 studied years, 85 were collected with the high-flow sampler, including all the major long-lasting events. Some short events could not be sampled because the sampler was already filled by water from previous flood events. However, the majority and the variety of flood events are present in our processed dataset of SS concentrations. Among the 25 major events sampled, 14 correspond to widespread snowmelt at the catchment scale, 7 are due to significant thunderstorms inducing substantial rain intensities (maximum precipitation intensity of more than 5 mm in 10 min), and 4 are due to other major atmospheric disturbances providing large amounts of rain (more than 60 mm in a few days).

The highest SS concentrations were measured during thunderstorm events (for instance, on the afternoon of April 26, 2015), when the increase in stream discharge and energy was extremely rapid, inducing a quasi-simultaneous mobilization of particles of very different sizes at each point of the brook. In contrast, lower SS concentrations were measured during long-lasting events such as snowmelt (for instance, at the end of December 2012). Indeed, the slow increase in discharge during this type of event induced slow and successive suspension of the different sizes of particles at each point of the brook.

The mean SS concentration measured in the stream at the catchment outlet was 31 mg.L^{-1} for the 4 studied years. This concentration, ranging from 0 to $2.7 \text{ g.L}^{-1} \pm 8.0\%$, showed significant variability. This substantial temporal variability in the SS concentration and SS flux is specific to small mountainous catchments (Maneux et al., 1999; Coynel et al., 2004; Mathys, 2006). The maximum SS concentration measured before the second recent forestry operation beginning in July 2014 was $0.61 \text{ g.L}^{-1} \pm 8.0\%$, already underlining its strong impact on SS concentrations. The effects of forest management on SS exports are discussed in Sect. 3.3.2 and 3.3.4. The runoff-weighted mean SS concentration was 12.3 mg.L^{-1} for the 4 studied years, which is higher than the data previously published for the same catchment. Indeed, for the 6 hydrological years between 2005 and 2010, the weighted mean SS concentration was equal to 4.1 mg.L^{-1} (Viville et al., 2012). This difference can be explained by i) a lower frequency of the sampling before December 2012 (26 samples per year compared to approximately 700 samples per year in this study), leading to a less accurate estimation of the annual SS export flux (Phillips et al., 1999; Coynel et al., 2004; Moatar et al., 2006; Mano et al., 2009), ii) the lack of major forest harvesting, which could substantially disturb solid exports between 2005 and 2010 (Megahan and Kidd, 1972; Motha et al., 2003), and iii) the inter-annual variability in the solid exports.

concerned by the high-frequency SS flux study (2013-2016). These solid fluxes are based on the processed SS concentration time series (SS flux - see Sect. 2.2.3 and 2.2.4) and the volume of fortnightly accumulated sediment (bedload flux - see Sect. 2.3.1 and 2.3.2).

For the 4 studied years, the mean solid fluxes exported fortnightly from the catchment were 0.27 T for the SS and 0.13 T for the bedload (for details on uncertainties of SS and bedload fluxes, see supplementary information B.1 and B.2). The fortnightly SS flux ranged from 0.0088 T \pm 15% (October 2016) to 2.8 T \pm 8.9% (December 2012) whereas the fortnightly bedload flux ranged from 0 to 0.98 T \pm 8.2% (October 2013). During the 4 studied years, within the 104 evaluated flux values, the fortnightly bedload flux equaled zero 36 times, that is, 35% of the time. Note that a bedload flux of less than 3 kg per fortnight is considered non-significant. The fortnights with negligible bedload flux correspond to low-water periods (mean stream discharge of 7.0 L.s⁻¹) when brook competence is insufficient to transport its coarse sediments. Furthermore, the proportion of the fortnightly solid flux exported as bedload varied between 0% and 68% (January 2013). Solid fluxes and their partitioning between the bedload and SS showed large scatter in the case of the Strengbach catchment. The high proportions of bedload exported appear to be more prevalent at the end of long-lasting flood events when discharges have already significantly decreased (for example, the 3rd and 5th fortnights of the sampling year 2013 or the 4th and 7th fortnights of the sampling year 2015). Indeed, during significant long-lasting events, the proportion of the exported bedload first increases with rising fortnightly mean discharge and then often increases again with falling mean discharge at the end of the events. This first increase is due to the absence of bedload transport before the flood. The second increase can be due to the small amount of SS exported when the discharge decreases and the exportable SS supply strongly depletes, while the stream still has the hydraulic capacity to transport a non-negligible bedload amount. However, the low frequency of the bedload flux measurements compared to the short duration of most high-flow events in the small Strengbach catchment prevented us from going further in the study of the change in the solid flux portion exported as bedload over the studied years.

The periods contributing the most to the annual SS and bedload export fluxes are frequently the snowmelt periods and, more generally, the periods concerned by hydrological events with delayed-flow. The contribution of those events (see selected events in Fig. 2) to the solid exports is shown in Table 2 for the 4 years concerned by the high-frequency SS flux study (2013-2016).

and between 44% and 57% to the annual bedload flux. Over those same years, as a whole, the major events with delayed-flow contributed between 67% and 73% to the annual SS flux and between 69% and 83% to the annual bedload flux. With less than 10% of the solid exports during the snowmelt period, the SS and bedload transport dynamics of the year 2014 differ significantly from the solid transport dynamics of the other years. This can be explained by i) the small amount of snow precipitation (see Table 1), providing only minor snowmelt events, but mostly by ii) the forestry operation occurring in summer 2014, strongly disturbing the solid export dynamics. Year 2014 was also a dry year, including no major event with delayed-flow apart from the winter period. Without considering this year, the major events with delayed-flow contributed, on average, 70% of the annual SS flux and 75% of the annual bedload flux, while the period concerned by those events constituted, on average, only 37% of the year. In particular, the snowmelt events are responsible for carrying out, on average, half of the annual erosion flux. This high contribution of snowmelt events to the annual solid fluxes may seem surprising for a middle-mountain catchment with a mean of only 19% of the precipitation falling as snow.

This highlights the strong role of events with delayed-flow in the solid export dynamics of the Strengbach catchment. Indeed, as mentioned in Sect. 3.1.1, the delayed-flow events generate much more runoff than the quick-flow events due to i) similar peak discharge, ii) the high discharge mean duration of the flood peak being disproportionately larger for delayed flows than for quick flows, and iii) the non-negligible frequency of occurrence of the delayed-flow events. Even if the maximum SS concentration is significantly larger during the major quick-flow events due to a faster increase in the discharge, the total SS flux exported during this type of event is unlikely to reach the SS flux exported during the major delayed-flow events. Indeed, larger SS concentrations during quick-flow events do not compensate for the larger water fluxes at the outlet caused by delayed-flow events. As an illustration, similar discharges were achieved during 2 flood events in spring 2015. The quick-flow event of the afternoon of April 26 was responsible for exporting 0.25 T of SS, while the next delayed-flow event occurring a few days later between April 30 and May 13 generated a 1.0 T SS export. The SS exports were 4 times larger for the delayed-flow event than for the quick-flow event despite higher peak discharge during the quick-flow event and the lower amount of SS immediately exportable by the delayed-flow event due to the numerous flood events of the previous days.

The contribution of the delayed-flow events to the annual solid fluxes was greater for the bedload than for the SS. Indeed, if an SS transport subsisted during low-water periods, no bedload transport was detectable at

10 events during the studied period), the bedload transport during quick-flow events was unquantifiable because it was too weak while the SS flux regularly reached approximately 50 kg for the same events. This difference in the solid export dynamics mainly exists because i) the stream water needs to have sufficient hydraulic energy for carrying the coarse sediments, ii) the mean motion speed is much lower for the bedload than for the SS, and iii) the exportable supply is much more limited for the SS than for the bedload at any given time.

For the Strengbach catchment, the solid export dynamics are mainly driven by the dynamics of the delayed-flow events, which are often due to snowmelt. This type of hydrological functioning is unusual. Indeed, for most of the studied catchments, a large portion of the annual SS flux is carried during some major short-storm events (Coynel et al., 2004; Moatar et al., 2006; Mano et al., 2009; Duvert et al., 2011). However, for catchments with heavy snowfalls, the amount of sediment carried during the snowmelt period can be significant. Thus, for the Ferrand and Romanche watersheds (France), respectively, 38% and 31% of the annual SS flux is transferred during no-rainfall days in the period of snowmelt and ice melt (Mano et al., 2009). Furthermore, for the Lake Tahoe forested watershed (Nevada) where 90% of the annual precipitation falls as snow, the greatest SS fluxes are measured during the snowmelt period (Langlois et al., 2005).

3.3. Impact of the forest harvesting operations on the solid fluxes

3.3.1. Description of the forest harvesting operations

In May-June 2012 and July-August 2014, two forestry operation phases occurred in the lower part of the Strengbach catchment (see Fig. 1). The concerned plots were entirely planted with mature spruces from 40 to 52 years old. The forestry operations consisted of mechanized clear-cutting on steep plots (mean slope of 38%). A single-grip harvester carried out the tree delimiting at the felling place. Then, a forwarder carried the logs to the nearest forest road, which involved the implementation of skid trails.

In the 2012 forestry operation, spruces within 15 m of the stream were not cut, and soil close to the stream was never disturbed as in the case of tree harvesting with the preservation of riparian buffers. Due to the log extraction using the forest road located at the top of the plots, there was no forestry machine traffic in the brook and thus no disturbance of the stream channel.

using forestry machines. As a result, the forest floor adjacent to the stream was significantly disturbed, including a complete bare soil exposure over a distance of approximately 150 m along the watercourse. Two crossings were also implemented to allow machine traffic in the stream, directly connecting the skid trail network to the stream channel. Due to the log extraction using the forest road located at the bottom of the plots across the brook, the crossings were used very frequently. Those stream crossings included a crossing located close to the catchment outlet (80 m from the outlet). In this last forestry operation, the skid trails created in 2012 were reused.

During the two forestry operations in the Strengbach catchment, no effort was made to control the implementation of skid trails and stream crossings, which were located and designed by loggers. Thus, no watercourse protection measures (for example, well-designed bridges or culverts to cross the stream, branch mats, or open-top culverts for skid trails) were implemented to mitigate anthropogenic sediment delivery to the brook. The crossings consisted of some small unsaleable logs placed longitudinally in the stream bed, forcing stream water to leave the stream bed to bypass the logs. Only bare soil covered the skid trails, and the slopes of their sections immediately adjacent to the log crossings were often steep (slope average was 17% with a minimum of 10% and maximum of 24%). Furthermore, at the completion of the 2014 forestry operation, logs constituting the crossings were removed from the stream channel. At the end of all forestry operations, even if the cutting residues (i.e., branches, twigs, and needles) were left on site to allow them to degrade naturally, mainly bare soil covered the deforested areas.

The area affected by all the forestry operations was relatively small and corresponded to less than 5% of the catchment area (2.3% for each forestry operation). Furthermore, the total area of the skid trails was comparatively large and accounted for 24% of the catchment areas deforested in 2012 and 2014.

In detail, the 2014 forestry operation included the following major steps: July 3 - implementation of stream crossings and major skid trails; July 7-August 8 - tree harvesting and extension of the skid trails; and August 11 - completion of the forestry operation, including the removal of logs constituting the stream crossings and the end of all machine traffic outside the few forest roads in the study site located far from the brook.

3.3.2. Impact of the 2012 forestry operation on the solid fluxes

of the stream bed and the soil surface within their riparian areas (for example, in accordance with forestry best management practices (BMPs; Cristan et al., 2016), the solid fluxes often remain minimally affected (Wynn et al., 2000; Lakel et al., 2010; Nisbet et al., 2002; Clinton, 2011; Witt et al., 2016; Hatten et al., 2018). However, indirectly, in the case of large harvested areas, the erosion flux can significantly increase because of the reduction in evapotranspiration resulting in an increase in the outlet water flux and thus of the solid fluxes (Rodgers et al., 2011; Webb et al., 2012). In view of the features of the spring 2012 forestry operation - a small harvested area and no disturbance of the stream bed and its riparian zone - it is reasonable to assume that this forest harvesting had no impact on the solid exports at the catchment scale. In addition, in the Strengbach catchment, following the 2012 forestry operation, no sediment delivery pathway, such as a gully or sediment plume (and then no direct connection), was detected between the harvested areas or skid trails and the watercourse.

Furthermore, the high-frequency study of the SS flux exported from this catchment using automatic sampling began in December 2012, so the spring 2012 forestry operation impact cannot be studied using this SS flux estimation method. However, since 2005, SS flux can be estimated based on low-frequency manual sampling (26 samples per year; Viville et al., 2012). Due to the small number of considered samples, this former flux estimation method remains imprecise. However, it is the only one suitable for an evaluation of the impact of the 2012 forestry operation. Fig. 5 shows the annual solid fluxes (SS and bedload) between 2005 and 2016 with SS flux estimation based on manual samples.

In this erosion flux time series, no significant increase in the SS and bedload fluxes was observed for the sampling year 2012. Therefore, the fluxes of the years prior to the summer 2014 can be considered undisturbed fluxes.

3.3.3. Undisturbed solid fluxes

The annual solid fluxes are shown in Table 3 for 7 years for the bedload (2010-2016) and for 4 years for the SS (2013-2016). Notice that only SS flux estimations based on high-frequency sampling are presented in this table.

important variability ranging from $5.9 \text{ T.km}^{-2}.\text{yr}^{-1} \pm 10.4\%$ to $10.5 \text{ T.km}^{-2}.\text{yr}^{-1} \pm 10.3\%$ with a mean of $8.8 \text{ T.km}^{-2}.\text{yr}^{-1}$ for the SS, and $1.8 \text{ T.km}^{-2}.\text{yr}^{-1} \pm 8.2\%$ to $6.8 \text{ T.km}^{-2}.\text{yr}^{-1} \pm 8.2\%$ with a mean of $3.5 \text{ T.km}^{-2}.\text{yr}^{-1}$ for the bedload.

Before the summer 2014 forestry operation, the area-weighted annual solid flux of our study site was $14.4 \text{ T.km}^{-2}.\text{yr}^{-1} \pm 9.4\%$ (estimated for the sampling year 2013). Comparison with the mean values of the area-weighted annual erosion flux reported for various granitoid catchments shows that the solid flux exported from the Strengbach catchment is quite low. Only approximately 10 solid flux values lower than the erosion flux of our study site have been observed (Martin and Hornbeck, 1994; Martin et al., 2000; Millot et al., 2002; Riebe et al., 2004; West et al., 2005). The values of those fluxes range between $3 \text{ T.km}^{-2}.\text{yr}^{-1}$ and $14 \text{ T.km}^{-2}.\text{yr}^{-1}$. Most of the erosion flux values reported are far more important than the solid flux exported from our study site (Bhutiyani, 2000; Millot et al., 2002; Riebe et al., 2001 and 2004; West et al., 2005; Gabet et al., 2010; Zhang et al., 2017; Dannhaus et al., 2018). The values of those fluxes range between $15 \text{ T.km}^{-2}.\text{yr}^{-1}$ and $1540 \text{ T.km}^{-2}.\text{yr}^{-1}$. Except for strongly anthropogenically impacted catchments, basins with very high values of erosion flux are mostly high mountainous catchments with areas covered by glaciers and/or very steep slopes prone to landslides (Bhutiyani, 2000; Gabet et al., 2010) or humid tropical climate catchments with large amounts of precipitation (West et al., 2005). The relatively low solid flux exported from the Strengbach catchment before the 2014 forestry operation can be explained by the lack of surface runoff during rainfall events (except on the few forest roads), lack of very steep slopes, an almost total forest cover, mean-scale annual precipitation, very few hydrological events with extreme rainfall intensity, and the absence of major anthropogenic disturbance at the basin scale. The absence of very steep slopes and the large forest cover limit landslide hazards in this middle-mountain catchment.

A wide range of values for the portion of the annual solid flux exported as bedload can be found in the literature. Long-term average partitioning is a function of the catchment area and its geology and perhaps of the fraction of the catchment covered by glaciers or forests (Turowski et al., 2010). Thus, the portion of bedload exported generally increases with decreasing drainage area and increasing bedrock strength. In the literature, a few times, a portion of the annual solid flux exported as bedload of approximately 10% was assumed or quantified (Grant and Wolff, 1991; Meybeck et al., 2003; Coynel et al., 2004; Hancock et al., 2017). Low values of this proportion, on the order of 1%, have been measured in some gravel-bed rivers draining very large catchments (McLean et al., 1999; Vericat and Batalla, 2006). Numerous high values of this proportion, between 23% and 33%, have been observed (Grant and Wolff, 1991; Mathys, 2006; Schmidt and Morche, 2006; Lenzi et al.,

except in the case of small catchments (Mathys, 2006; Turowski et al., 2010). It is interesting to note that a very high value of this proportion (i.e., 80%) was found for the small granitic catchments of the Hubbard Brook experimental forest in the United States (Martin and Hornbeck, 1994; Martin et al., 2000). For the small granitic Strengbach catchment, solid exports are dominated by SS transport, but bedload transport is not negligible with an annual solid flux divided into 67% SS and 33% bedload before the 2014 forestry operation.

The annual solid flux estimated for the Strengbach catchment is also higher than the annual erosion flux previously published for the same catchment. Indeed, for the hydrological year 2010, an annual solid flux of $5.0 \text{ T.km}^{-2}.\text{yr}^{-1} \pm 20\%$ was determined (Viville et al., 2012). This difference can be explained by a higher uncertainty in the estimation of the annual SS export flux before December 2012 and by the inter-annual variability in solid exports. Large natural variability in the annual bedload flux has already been observed for the catchments of the Hubbard Brook experimental forest with area-weighted flux ranging from $0.13 \text{ T.km}^{-2}.\text{yr}^{-1}$ to $12 \text{ T.km}^{-2}.\text{yr}^{-1}$ for one of the undisturbed basins (Martin et al., 2000). For the Strengbach catchment, before the 2014 forestry operation, the area-weighted annual flux of the bedload ranged from $2.1 \text{ T.km}^{-2}.\text{yr}^{-1} \pm 8.2\%$ to $4.8 \text{ T.km}^{-2}.\text{yr}^{-1} \pm 8.2\%$, showing a significantly smaller variability than in the case of the undisturbed Hubbard Brook basin. Furthermore, over this period, the highest annual bedload flux was measured for the sampling year 2013, which also has the highest annual outlet water flux (see Table 1). For the Strengbach catchment, the year-to-year variability in the bedload flux appears to be at least partially linked to the inter-annual variability in the outlet runoff. Before the 2014 forestry operation perturbation, the correlation of the annual bedload flux with the annual outlet runoff gave an r^2 coefficient value of 0.61. It seems that the annual solid flux is controlled by the annual outlet runoff, as already observed by Jordan (2006) for two basins located in British Columbia. Similarly, annual chemical fluxes at the Strengbach catchment outlet since 1987 are also significantly correlated with the annual outlet runoff, with r^2 ranging from 0.65 to 1 (Pierret et al., 2018). Between 2010 and 2016, the annual outlet runoff ranged from 510 mm.yr^{-1} to 947 mm.yr^{-1} , giving a ratio between extreme water fluxes of almost 2. To isolate the 2014 forestry operation as a controlling factor, the annual solid fluxes were normalized according to the annual outlet water flux (see Fig. 6) as already proposed by Gabet et al. (2010).

3.3.4. Impact of the 2014 forestry operation on the solid fluxes

concerned by the bedload flux study, helping to quantify the impact of the summer 2014 forestry operation on the annual export fluxes. Before this forestry operation, the ratio between the annual bedload flux and the annual outlet runoff was significantly less variable than the annual bedload flux (see Fig. 5).

Starting in the first days of July and ending mid-August 2014, the forestry operation resulted in a significant and quasi-immediate impact on the SS concentration (see Fig. 3) and fortnightly SS flux (see Fig. 4).

Outside any high-flow period, in the 16th fortnight of the sampling year 2014 (July 9-July 22), the mean SS concentration of the stream was 129 mg.L⁻¹ whereas in the 14th fortnight (June 10-June 24), the mean SS concentration was 6.2 mg.L⁻¹. The mean concentration in the samples collected before the beginning of the 2014 forestry operation was in the range of the SS concentrations usually measured at the Strengbach catchment outlet during summer low-water periods. The highest impact of the forestry operation on the stream water quality occurred when tree harvesting was ongoing with measured SS concentrations up to 1.18 g.L⁻¹±8.0% in low-water conditions. This maximum concentration corresponds to approximately 190 times the mean SS concentration measured in the stream before the forestry operation began, but it was also 2 times the maximum SS concentration ever measured before July 2014 (i.e., 0.61 g.L⁻¹±8.0% measured on August 27, 2013), showing the large impact of the forestry operation on the low-water SS concentrations. Unexpectedly, we did not detect any impact of stream crossing implementation on July 3 with a stream SS concentration varying between 5.2 mg.L⁻¹±11.2% on July 2 at 5 p.m., 6.3 mg.L⁻¹±11.2% on July 3 at 9 a.m., and 2.5 mg.L⁻¹±11.2% on July 4 at 1 a.m. Between the 17th (July 22-August 5) and 20th (September 2-September 16) fortnights of the sampling year 2014, the mean SS concentration outside any high-flow period decreased from 53 mg.L⁻¹ to 7.5 mg.L⁻¹, converging toward the concentration level measured in the stream before the forestry operation began. Thereafter, we no longer measured fortnightly mean concentrations under low-water conditions of more than 7.6 mg.L⁻¹. Assuming experimental uncertainty, we can consider that the 19th (August 19-September 2) fortnight of the sampling year 2014 was the last period where the SS concentration outside flood events was disturbed by the forestry operation. Thus, a month after the completion of the 2014 forestry operation, its impact on stream SS concentration was no longer detectable under low-water conditions. Furthermore, during the tree harvesting period, outside flood events, the mean SS concentrations of the water samples collected at 9 a.m., 5 p.m., and 1 a.m. were 145 mg.L⁻¹, 64 mg.L⁻¹, and 27 mg.L⁻¹, respectively, reflecting the strong immediate but rapidly

working days (typically 7 a.m.-3 p.m.).

The impact of the forestry operation on SS exports was also significant during flood events with SS concentrations up to $2.7 \text{ g.L}^{-1} \pm 8.0\%$ measured for a modest stream discharge of 45 L.s^{-1} on July 25, 2014, at 2:51 p.m. This concentration represents 4 times the maximum SS concentration ever measured in the stream before July 2014 for a range of sampled discharges up to 202 L.s^{-1} . If outside the flood periods, only a month after completion of the forestry operation, the stream SS concentration seems to have already recovered this level before the anthropogenic disturbance; this was not the case during high-flow periods. For example, during the 23rd fortnight of the sampling year 2014 (October 14-October 28), two middle-scale flood events generated much larger SS fluxes than expected. In comparison, during the 14th fortnight of the sampling year 2016 (June 7-June 21), two similar high-flow events were responsible for the export of an 85% lower fortnightly SS flux than that in the 23rd fortnight. Based on the knowledge of the solid export dynamics during similar hydrological events prior to the 2014 tree harvesting operation, it was possible to determine the last hydrological event impacted by this forestry work and to estimate the extent of its impact on the solid fluxes. The last certain impact on SS exports occurred during middle-scale snowmelt events from late December 2014 to late January 2015. A stronger impact of forestry operations on the SS fluxes during the snowmelt months has already been reported by Karwan et al. (2007). Thus, 6 months after completion of the forestry operation, following the first snowmelt events of the next sampling year, the tree harvesting impact on the SS flux was no longer noticeable in high-flow periods. This longer-term impact of the forestry operation during high-flow events resulted in larger annual SS fluxes for not only the year of the works but also the next year (see Fig. 6). For the Strengbach catchment, a 5-month gap existed between the recovery times in the low-water and high-flow conditions. Indeed, at the completion of the forestry operation, a large amount of anthropogenic SS had been introduced into the Strengbach watercourse mainly due to machine traffic on stream crossings during adverse weather conditions. In low-water periods, except for the natural SS flux, only the amount of anthropogenic SS introduced during the forestry work could be exported from the catchment. Once this amount was exhausted, the SS flux returned to an unaffected value. In our study, this exhaustion was relatively rapid due to the numerous successive flood events occurring between mid-July and late August 2014. During rain events, due to surface runoff on the skid trails, new amounts of anthropogenic SS were introduced into the watercourse. Once delivered to the short Strengbach stream, those anthropogenic SS were quickly exported outside the catchment, likely at the scale of a unique hydrological event.

fortnightly SS fluxes than that expected when the works were ongoing and to approximately 2 and 1.5 times larger annually exported SS fluxes for the sampling years 2014 and 2015, respectively. Overall, a post-logging recovery time of 6 months can be considered for SS exports at the Strengbach catchment scale.

No clear influence of the forest harvesting operation on the fortnightly bedload flux could be observed during the sampling year 2014, including when the works were ongoing. The impact on the bedload flux was not significant at the scale of this year. Conversely, during the following sampling year, the annual bedload flux was approximately 2 times larger than expected, reflecting a delay in the tree harvesting impact on the coarse sediment exports. At the fortnight scale, we clearly observed a notable impact during all events with a delayed-flow peak (snowmelt events and spring events due to large amounts of rain) between late December 2014 and mid-May 2015. This type of delayed impact of forest harvesting on bedload exports of a catchment has already been reported by Martin and Hornbeck (1994). Indeed, if SS transport is continuous and quick, bedload transport is discontinuous and slow, and time is needed to carry anthropogenic source coarse sediments from their areas of production and introduction into the watercourse to the catchment outlet. In addition, in our study, when the works were ongoing, the trapping of sediment upstream of the small logs constituting stream crossings could restrict bedload transport along the watercourse (Ryan et al., 2014). The smaller transport speed for coarse sediments leads to longer recovery time for bedload exports than for SS exports. Quicker recovery to pre-logging flux for SS than for bedload was already observed by Grant and Wolff (1991). A post-logging recovery time of 10 months can be considered for bedload exports at the Strengbach catchment scale.

Overall, a post-logging recovery time of approximately 10 months can be assumed for the solid exports following the 2014 forestry operation in the Strengbach catchment. This recovery time (and also the extent of the solid export disturbance) relies not only on forestry operation conditions and on topographical and geological characteristics of the catchment but also on site hydrology during and after the tree harvesting (i.e., soil moisture, number and duration of flood events, and discharges reached during high-flow events).

Furthermore, we notice that the annual SS and bedload fluxes in the sampling years with an assumed non-disturbed solid transport (i.e., 2013 and 2016) are on the same order of magnitude (see Table 3). However, the solid exports in the sampling year 2016 are significantly smaller than the erosion flux in the sampling year 2013, which is consistent with a smaller annual outlet runoff in the last year of this study. In addition, the proportion of the annual solid flux exported as bedload is also very close for those two years; namely, a solid flux

catchment, a mean undisturbed annual solid flux of $11.9 \text{ T.km}^{-2}.\text{yr}^{-1}$ composed of 35% bedload and 65% SS was estimated using the data of the sampling years 2013 and 2016. Between those 2 years, due to forest harvesting, the composition of the annual solid flux changed significantly with a rather low bedload proportion of 15% in 2014 and a rather high bedload proportion of 43% in 2015. Turowski et al. (2010) already noticed a likely impact of the extent of forest cover on the solid flux partitioning between bedload and SS.

Compared with other studies about the impact of forestry operations on solid fluxes, the disturbance extent and the post-logging recovery time are medium and rather short, respectively, in the case of the 2014 forestry operation in the Strengbach catchment. For example, Gomi et al. (2005) compiled data from studies of approximately 20 small catchments impacted by tree harvesting operations in the western United States. Among the studied sites, half suffered a lower harvesting disturbance than the Strengbach catchment with an increase in post-logging annual SS flux ranging from 0% to 89%, and half suffered a greater harvesting impact with an increase in post-logging annual SS flux ranging from 100% to 1000%. However, for all sites with disturbed solid fluxes, the post-logging recovery time was equal to or longer than that in the case of the Strengbach catchment with recovery time for SS exports ranging from one year to over 10 years. In other studies, the recovery time could have exceeded 12 years for the solid fluxes (North Fork watershed in California; Keppeler et al., 2003) and 15 years for bedload flux (Coweeta Hydrologic Laboratory in North Carolina; Swank et al., 2001). Those long-term increases in solid fluxes involved major disturbances that occurred far from the outlet. In the first study, the gullying and bank erosion strongly increased following logging and/or burning in headwater streams. In the second study, due to exceptional storms, a large amount of sediment was introduced into the headwater streams from a new forestry road.

This medium-sized and short-term impact of the 2014 forestry operation on the solid fluxes of the Strengbach catchment is consistent with previous studies emphasizing a lower SS flux increase after forest harvesting and a greater resilience to this increase in the case of catchments underlain by resistant lithology such as intrusive rocks (Bywater-Reyes et al., 2017). However, most of the time, the proportion of the catchment having suffered from tree harvesting is far greater than the 2.3% of the Strengbach catchment harvested or managed in 2014. Related to the deforested portion of the catchment, the tree harvesting impact on solid exports becomes considerably larger in our study than in the majority of the previous studies. This may be explained by the implementation of the poorly designed stream crossings and adjacent skid trails and the proximity of some of

forestry operation (representing an increase of 100% above the 30-year average) and the mechanized removal of bank trees. In addition, to date, we have not observed any major landslides due to this forestry operation, which prevented the tree harvesting impact on solid fluxes from being substantially greater and longer (Grant and Wolff, 1991; Jordan, 2006; Walsh et al., 2011).

Skid trail approaches to stream crossings represent an important and continuing source of bedload and SS (Cornish, 2001). Because they are highly compacted by forestry machines during construction and subsequent use during logging operations, skid trail infiltration capacity is very low. Thus, even low- or moderate-intensity rains generate surface runoff on those skid trails and convey sediments toward the streams (Sosa-Pérez and MacDonald, 2017). Without any protection, stream crossings represent direct pathways for sediment delivery to stream channels (Taylor et al., 1999; Brown et al., 2013; Lang et al., 2018). In our catchment, field observations emphasized the large competence of runoff to move superficial particles on the site skid trails. Indeed, at the end of the 2014 forestry operation, the skid trails near stream crossings were entirely covered by fine particles of soil (originating from the shallow horizon enriched in clays and organic matter), which were no longer visible after the snowmelt events of spring 2015. The amount of anthropogenic bedload and SS delivered at a stream crossing is mainly influenced by i) the characteristics of the skid trails near the crossing, including slope (Megahan et al., 2001), length (Luce and Black, 1999), cover type, texture, and permeability of soil (Grace et al., 1998; Sheridan and Noske, 2007), ii) the type of stream crossing, and iii) the extent of forestry traffic on the crossing (Reid and Dunne, 1984). It also depends on the intensity and amount of precipitation (Sosa-Pérez and MacDonald, 2017) and the application level of forestry BMPs for crossings (Lang et al., 2018). Among stream crossing types, bridges were found to have the lowest impact on stream water quality (Aust et al., 2011; Morris et al., 2016), and log crossings are generally never recommended (Taylor et al., 1999). Among other influential characteristics, steep, bare, and long skid trail approaches to stream crossings, heavily used crossings, tree harvesting during a rainy period, and the lack of watercourse protection measures on skid trails (such as branch mats or regular open-top culverts) are known to considerably increase the impact of forestry operations on solid fluxes. Most of those elements were present during the 2014 forestry operation in the Strengbach catchment.

Note that, in our study, the large but short impact of the forestry operation cannot be fully explained by the export of superficial particles by surface runoff from the tree harvesting areas. Indeed, if these deforested areas are the major contributors to the anthropogenic solid fluxes, the forestry operation impact typically lasts 2

the skid trails; this was not the case in the tree harvesting areas. This difference in behavior may be explained by greater use by forestry machines and thus higher soil compaction on skid trails than in the deforested areas.

Tree logging without riparian buffers (usually strips with preserved forest floor and retained full or partial crown cover including no forestry machine traffic) increases the detrimental impact of harvesting on solid exports (Keim and Schoenholtz, 1999; Ward and Jackson, 2004; Lakel et al., 2010; Hatten et al., 2018). Indeed, mechanized removal of riparian trees generates i) forest soil exposure and high erosion potential, ii) loss of undergrowth plant cover and disappearance of the filtration capacity of the surface runoff, and iii) disturbance of stream banks and future morphological changes toward a new equilibrium profile.

In general, to minimize the impact of harvesting on water quality, forestry BMPs recommend i) avoiding stream crossings and, if necessary, protecting brooks from direct sediment inputs, ii) cutting trees exclusively in dry weather, iii) implementing riparian buffers around streams, and iv) building skid trails and forest roads on low slopes. Those recommendations are valid for all stream types, even small or temporary brooks, and for any scale of forestry operation. In all forestry operation contexts, not following these recommendations exposes the environment to serious damage. In the case of the studied forestry operation, if delaying harvesting because of poor weather conditions appears economically difficult, planning for the extraction of cut trees by using the forest road located at the top of the plots (as in the 2012 forestry operation) would probably have greatly reduced the impact of harvesting on the solid fluxes without greatly increasing the operating costs.

4. Conclusions

Based on monitoring of SS concentration and exported bedload quantity, erosion fluxes at the outlet of the small Strengbach catchment were studied over 7 years with a high-sampling frequency during the last 4 years. The study of the evolution in SS and bedload fluxes during those years has emphasized i) the key role of the specific hydrological regime of the catchment (including double-peak hydrographs) in solid export dynamics, and ii) the impact of two types of small-scale forestry operations on those dynamics. This accurate and detailed monitoring highlights the high complexity of the processes involved in SS and bedload transport. It also provides new data for the improvement of solid transport modeling in small catchments with and without anthropogenic activities.

events corresponding to very high precipitation or significant amount of rain falling on a preexisting snowpack. In particular, snowmelt events are responsible for conveying, on average, half of the annual erosion flux, which demonstrates the importance of climatic conditions in solid export dynamics. Therefore, modifications of precipitation patterns and increases of temperature due to climate change will reduce snow quantity and might decrease the long-term average of solid fluxes for middle-mountainous catchments. Conversely, if the catchment is subject to more frequent extreme thunderstorm events, the reduction of the solid fluxes due to delayed-flow events can be compensated by an increase in erosion flux due to quick-flow events.

The 2012 forest harvesting operation, including no tree cutting and no forestry machine traffic in the riparian area, had no impact on solid fluxes exported from the catchment. On the contrary, the 2014 forestry operation significantly and lastingly disturbed the SS and bedload fluxes. The impact on the SS concentrations was immediate but was delayed for the exported bedload quantities with no detectable detrimental effect the year of the forestry operation. In addition, after completion of the forestry operation, the impact on the low-water SS fluxes lasted only one month while the impact on the high-flow fluxes remained measurable for 6 months. Overall, forestry operation resulted in approximately 2 times larger annual SS and bedload fluxes and a post-logging recovery time of approximately ten months for solid exports. Related to the deforested portion of the catchment, the 2014 tree harvesting impact on the solid exports becomes considerably larger in our study than that in the majority of the previous studies, probably due to i) the poorly designed stream crossings and adjacent skid trails, their proximity to the catchment outlet, and ii) the large amount of rainfall during this forestry operation. Other explanations include the mechanized removal of bank trees. Small-scale forestry operations located near watercourses can generate significant environmental disturbances when tree harvesting is conducted without any measures to protect the streams and their riparian areas, and they should be performed in accordance with forestry BMPs to avoid risking a serious and lasting impact on surface water quality. All forestry operations must be planned to limit their environmental impacts: delaying tree harvesting or skid trail construction during rainy periods, mitigating surface runoff on forest roads and skid trails (i.e., using branch mats or regular open-top culverts and limiting the slopes of roads and trails), minimizing any soil surface disturbance in riparian areas, avoiding stream crossings, and, if crossings are absolutely required, protecting watercourses (for example, with culverts or bridges). Due to the increasing global need for wood, forest management and especially tree harvesting have become increasingly challenging for the sustainability of forest ecosystems.

5. Acknowledgments

The authors acknowledge P. Friedmann for his important technical support during most of the sampling campaigns of those past years in the Strengbach catchment. The OHGE is part of the French Network of Critical Zone Observatories (OZCAR) and is financially supported by INSU and CNRS. This work has been partly funded by ANR (Agence Nationale de la Recherche) project HYDROCRIZSTO (2015-2020) and is an EOST (École et Observatoire des Sciences de la Terre) contribution.

6. References

- Ackerer, J., Chabaux, F., Lucas, Y., Clément, A., Fritz, B., Beaulieu, E., Viville, D., Pierret, M.C., Gangloff, S., & Négrel, P. (2018). Monitoring and reactive-transport modeling of the spatial and temporal variations of the Strengbach spring hydrochemistry. *Geochimica et Cosmochimica Acta*, 225, 17-35.
- Angermann, L., Jackisch, C., Allroggen, N., Sprenger, M., Zehe, E., Tronicke, J., Weiler, M., & Blume, T. (2017). Form and function in hillslope hydrology: Characterization of subsurface flow based on response observations. *Hydrology and Earth System Sciences*, 21(7), 3727-3748.
- Aust, W. M., Carroll, M. B., Bolding, M. C., & Dolloff, C. A. (2011). Operational forest stream crossings effects on water quality in the Virginia Piedmont. *Southern Journal of Applied Forestry*, 35(3), 123-130.
- Beaulieu, E., Lucas, Y., Viville, D., Chabaux, F., Ackerer, P., Goddérès, Y., & Pierret, M. C. (2016). Hydrological and vegetation response to climate change in a forested mountainous catchment. *Modeling Earth Systems and Environment*, 2(4), 1-15.
- Belfort, B., Toloni, I., Ackerer, P., Cotel, S., Viville, D., & Lehmann, F. (2018). Vadose zone modeling in a small forested catchment: Impact of water pressure head sampling frequency on 1D-Model calibration. *Geosciences*, 8(2), 72.
- Birkinshaw, S. J. (2008). Physically-based modelling of double-peak discharge responses at Slapton Wood catchment. *Hydrological Processes*, 22(10), 1419-1430.

- magmatisme des Vosges. Comparaison avec les massifs varisques avoisinants. *Géologie de la France*, 1, 3-25.
- Bhutiyani, M. R. (2000). Sediment load characteristics of a proglacial stream of Siachen Glacier and the erosion rate in Nubra valley in the Karakoram Himalayas, India. *Journal of Hydrology*, 227(1-4), 84-92.
- Brown, K. R., Aust, W. M., & McGuire, K. J. (2013). Sediment delivery from bare and graveled forest road stream crossing approaches in the Virginia Piedmont. *Forest Ecology and Management*, 310, 836-846.
- Bywater-Reyes, S., Segura, C., & Bladon, K. D. (2017). Geology and geomorphology control suspended sediment yield and modulate increases following timber harvest in temperate headwater streams. *Journal of Hydrology*, 548, 754-769.
- Cánovas, C. R., Olías, M., Sarmiento, A. M., Nieto, J. M., & Galván, L. (2012). Pollutant transport processes in the Odiel River (SW Spain) during rain events. *Water Resources Research*, 48(6).
- Chabaux, F., Viville, D., Lucas, Y., Ackerer, J., Ranchoux, C., Bosia, C., Pierret, M. C., Labasque, T., Aquilina, L., Wyns, R., Lerouge, C., Dezaye, C., & Négrel, P. (2017). Geochemical tracing and modeling of surface and deep water-rock interactions in elementary granitic watersheds (Strengbach and Ringelbach CZOs, France). *Acta Geochimica*, 36(3), 363-366.
- Chabaux, F., Stille, P., Prunier, J., Gangloff, S., Lemarchand, D., Morvan, G., Négrel, J., Pelt, E., Pierret, M. C., Rihs, S., Schmitt, A. D., Trémolières, M., & Viville, D. (2019). Plant-soil-water interactions: Implications from U-Th-Ra isotope analysis in soils, soil solutions and vegetation (Strengbach CZO, France). *Geochimica et Cosmochimica Acta*, 259, 188-210.
- Clinton, B. D. (2011). Stream water responses to timber harvest: Riparian buffer width effectiveness. *Forest Ecology and Management*, 261(6), 979-988.
- Cornish, P. M. (2001). The effects of roading, harvesting and forest regeneration on streamwater turbidity levels in a moist eucalypt forest. *Forest Ecology and Management*, 152(1-3), 293-312.
- Coyne, A., Schäfer, J., Hurtrez, J. E., Dumas, J., Etcheber, H., & Blanc, G. (2004). Sampling frequency and accuracy of SPM flux estimates in two contrasted drainage basins. *Science of the Total Environment*, 330(1-3), 233-247.

- best management practices in the United States: Literature review. *Forest Ecology and Management*, 360, 133-151.
- Dannhaus, N., Wittmann, H., Krám, P., Christl, M., & Von Blanckenburg, F. (2018). Catchment-wide weathering and erosion rates of mafic, ultramafic, and granitic rock from cosmogenic meteoric $^{10}\text{Be}/^{9}\text{Be}$ ratios. *Geochimica et Cosmochimica Acta*, 222, 618-641.
- Duvert, C., Gratiot, N., Némery, J., Burgos, A., & Navratil, O. (2011). Sub-daily variability of suspended sediment fluxes in small mountainous catchments - implications for community-based river monitoring. *Hydrology and Earth System Sciences*, 15(3), 703-713.
- Fichter, J., Dambrine, E., Turpault, M. P., & Ranger, J. (1998). Base cation supply in spruce and beech ecosystems of the Strengbach catchment (Vosges mountains, NE France). *Water, Air, and Soil Pollution*, 104(1-2), 125-148.
- Gabet, E. J., Burbank, D. W., Pratt-Sitaula, B., Putkonen, J., & Bookhagen, B. (2008). Modern erosion rates in the High Himalayas of Nepal. *Earth and Planetary Science Letters*, 267(3-4), 482-494.
- Gabet, E. J., Wolff-Boenisch, D., Langner, H., Burbank, D. W., & Putkonen, J. (2010). Geomorphic and climatic controls on chemical weathering in the High Himalayas of Nepal. *Geomorphology*, 122(1-2), 205-210.
- Glendell, M., & Brazier, R. E. (2014). Accelerated export of sediment and carbon from a landscape under intensive agriculture. *Science of the Total Environment*, 476, 643-656.
- Gomi, T., Dan Moore, R., & Hassan, M. A. (2005). Suspended sediment dynamics in small forest streams of the Pacific Northwest. *Journal of the American Water Resources Association*, 41(4), 877-898.
- Grace III, J. M., Rummer, B., Stokes, B. J., & Wilhoit, J. (1998). Evaluation of erosion control techniques on forest roads. *Transactions of the ASAE*, 41(2), 383.
- Graeff, T., Zehe, E., Reusser, D., Lück, E., Schröder, B., Wenk, G., John, H., & Bronstert, A. (2009). Process identification through rejection of model structures in a mid-mountainous rural catchment: observations of rainfall-runoff response, geophysical conditions and model inter-comparison. *Hydrological Processes*, 23(5), 702-718.

- Cascade Mountains, Oregon, USA. *Proceedings of the Vienna symposium*, August 1991, 203, 31-40.
- Grayson, R. B., Haydon, S. R., Jayasuriya, M. D. A., & Finlayson, B. L. (1993). Water quality in mountain ash forests—separating the impacts of roads from those of logging operations. *Journal of Hydrology*, 150(2-4), 459-480.
- Guevara, G., Godoy, R., Boeckx, P., Jara, C., & Oyarzún, C. (2015). Effects of riparian forest management on Chilean mountain in-stream characteristics. *Ecohydrology and Hydrobiology*, 15(3), 160-170.
- Haga, H., Matsumoto, Y., Matsutani, J., Fujita, M., Nishida, K., & Sakamoto, Y. (2005). Flow paths, rainfall properties, and antecedent soil moisture controlling lags to peak discharge in a granitic unchanneled catchment. *Water Resources Research*, 41(12).
- Hancock, G. R., Hugo, J., Webb, A. A., & Turner, L. (2017). Sediment transport in steep forested catchments—An assessment of scale and disturbance. *Journal of hydrology*, 547, 613-622.
- Hatten, J. A., Segura, C., Bladon, K. D., Hale, V. C., Ice, G. G., & Stednick, J. D. (2018). Effects of contemporary forest harvesting on suspended sediment in the Oregon Coast Range: Alsea Watershed Study Revisited. *Forest Ecology and Management*, 408, 238-248.
- Hattanji, T., & Onda, Y. (2004). Coupling of runoff processes and sediment transport in mountainous watersheds underlain by different sedimentary rocks. *Hydrological Processes*, 18(4), 623-636.
- He, Q. S., Wang, Q. M., Wang, Y., He, W., Qin, N., Kong, X. Z., Liu, W. X., Yang, B., & Xu, F. L. (2015). Temporal and spatial variations of organochlorine pesticides in the suspended particulate matter from Lake Chaohu, China. *Ecological Engineering*, 80, 214-222.
- Heathwaite, A. L., Burt, T. P., & Trudgill, S. T. (1989). Runoff, sediment, and solute delivery in agricultural drainage basins: a scale-dependent approach. *International Association of Hydrological Sciences Publication*, 182, 175-191.
- Hotta, N., Kayama, T., & Suzuki, M. (2007). Analysis of suspended sediment yields after low impact forest harvesting. *Hydrological Processes*, 21(26), 3565-3575.

- d'eau et d'éléments exportés en période de crue: traçage à l'aide du carbone organique dissous et de la silice. Cas du petit bassin versant du Strengbach (Vosges, France). *Comptes Rendus de l'Académie des Sciences-Series IIA-Earth and Planetary Science*, 328(2), 89-96.
- Iwagami, S., Onda, Y., Tsujimura, M., & Abe, Y. (2017). Contribution of radioactive ¹³⁷Cs discharge by suspended sediment, coarse organic matter, and dissolved fraction from a headwater catchment in Fukushima after the Fukushima Dai-ichi Nuclear Power Plant accident. *Journal of Environmental Radioactivity*, 166, 466-474.
- Jordan, P. (2006). The use of sediment budget concepts to assess the impact on watersheds of forestry operations in the southern interior of British Columbia. *Geomorphology*, 79(1-2), 27-44.
- Karwan, D. L., Gravelle, J. A., & Hubbart, J. A. (2007). Effects of timber harvest on suspended sediment loads in Mica Creek, Idaho. *Forest Science*, 53(2), 181-188.
- Keim, R. F., & Schoenholtz, S. H. (1999). Functions and effectiveness of silvicultural streamside management zones in loessial bluff forests. *Forest Ecology and Management*, 118(1-3), 197-209.
- Keppeler, E. T., Lewis, J., & Lisle, T. E. (2003). Effects of forest management on streamflow, sediment yield, and erosion, Caspar Creek experimental watersheds. *Proceedings of the first interagency conference on research in the watersheds*, 27-30th October 2003, Benson, AZ, US, 77-82.
- Ladouche, B., Probst, A., Viville, D., Idir, S., Baqué, D., Loubet, M., Probst, J. L., & Bariac, T. (2001). Hydrograph separation using isotopic, chemical and hydrological approaches (Strengbach catchment, France). *Journal of Hydrology*, 242(3-4), 255-274.
- Lakel III, W. A., Aust, W. M., Bolding, M. C., Dolloff, C. A., Keyser, P., & Feldt, R. (2010). Sediment trapping by streamside management zones of various widths after forest harvest and site preparation. *Forest Science*, 56(6), 541-551.
- Lang, A. J., Aust, W. M., Bolding, M. C., McGuire, K. J., & Schilling, E. B. (2018). Best management practices influence sediment delivery from road stream crossings to mountain and piedmont streams. *Forest Science*, 64(6), 682-695.

- runoff in a small mountain stream of Lake Tahoe (Nevada). *Hydrological Processes*, 19(18), 3569-3580.
- Lenzi, M. A., Mao, L., & Comiti, F. (2003). Interannual variation of suspended sediment load and sediment yield in an alpine catchment. *Hydrological Sciences Journal*, 48(6), 899-915.
- Littlewood, I. G. (1995). Hydrological regimes, sampling strategies, and assessment of errors in mass load estimates for United Kingdom rivers. *Environment International*, 21(2), 211-220.
- Luce, C. H., & Black, T. A. (1999). Sediment production from forest roads in western Oregon. *Water Resources Research*, 35(8), 2561-2570.
- Macdonald, J. S., Beaudry, P. G., MacIsaac, E. A., & Herunter, H. E. (2003). The effects of forest harvesting and best management practices on streamflow and suspended sediment concentrations during snowmelt in headwater streams in sub-boreal forests of British Columbia, Canada. *Canadian Journal of Forest Research*, 33(8), 1397-1407.
- Maneux, E., Dumas, J., Clément, O., Etcheber, H., Charriton, X., Etchart, J., Veyssy, E., & Rimmelin, P. (1999). Assessment of suspended matter input into the oceans by small mountainous coastal rivers: the case of the Bay of Biscay. *Comptes Rendus de l'Académie des Sciences-Series IIA-Earth and Planetary Science*, 329(6), 413-420.
- Mano, V., Nemery, J., Belleudy, P., & Poirel, A. (2009). Assessment of suspended sediment transport in four alpine watersheds (France): influence of the climatic regime. *Hydrological Processes*, 23(5), 777-792.
- Maquin M., Mouche E., Mugler C., Pierret M. C., & Viville D. (2017). A water table-soil-vegetation column model for predicting hillslope hydrology. *Water Resource Research*, 53, 5877-5898.
- Martin, C. W., & Hornbeck, J. W. (1994). Logging in New England need not cause sedimentation of streams. *Northern Journal of Applied Forestry*, 11(1), 17-23.
- Martin, C. W., Hornbeck, J. W., Likens, G. E., & Buso, D. C. (2000). Impacts of intensive harvesting on hydrology and nutrient dynamics of northern hardwood forests. *Canadian Journal of Fisheries and Aquatic Sciences*, 57(S2), 19-29.

- The influence of sediment sources and hydrologic events on the nutrient and metal content of fine-grained sediments (Attert river basin, Luxembourg). *Water, Air, & Soil Pollution*, 223(9), 5685-5705.
- Martínez-Carreras, N., Hissler, C., Gourdol, L., Klaus, J., Juilleret, J., Iffly, J. F., & Pfister, L. (2016). Storage controls on the generation of double peak hydrographs in a forested headwater catchment. *Journal of Hydrology*, 543, 255-269.
- Masiyandima, M. C., van de Giesen, N., Diatta, S., Windmeijer, P. N., & Steenhuis, T. S. (2003). The hydrology of inland valleys in the sub-humid zone of West Africa: rainfall-runoff processes in the M'bé experimental watershed. *Hydrological Processes*, 17(6), 1213-1225.
- Mathys, N. (2006). Analyse et modélisation à différentes échelles des mécanismes d'érosion et de transport de matériaux solides: cas des petits bassins versants de montagne sur marne (Draix, Alpes-de-Haute-Provence). *PhD thesis*, Institut National Polytechnique de Grenoble, France, 341.
- McDonnell, J. J., & Taylor, C. H. (1987). Surface and subsurface water contributions during snowmelt in a small Precambrian Shield watershed, Muskoka, Ontario. *Atmosphere-Ocean*, 25(3), 251-266.
- McLean, D. G., Church, M., & Tassone, B. (1999). Sediment transport along lower Fraser River: 1. Measurements and hydraulic computations. *Water Resources Research*, 35(8), 2533-2548.
- McNamara, J. P., Kane, D. L., & Hinzman, L. D. (1998). An analysis of streamflow hydrology in the Kuparuk River Basin, Arctic Alaska: a nested watershed approach. *Journal of Hydrology*, 206(1-2), 39-57.
- Megahan, W. F., & Kidd, W. J. (1972). Effects of logging and logging roads on erosion and sediment deposition from steep terrain. *Journal of Forestry*, 70(3), 136-141.
- Megahan, W. F., Wilson, M., & Monsen, S. B. (2001). Sediment production from granitic cutslopes on forest roads in Idaho, USA. *Earth Surface Processes and Landforms*, 26(2), 153-163.
- Merchán, D., Luquin, E., Hernández-García, I., Campo-Bescós, M. A., Giménez, R., Casalí, J., & de Lersundi, J. D. V. (2019). Dissolved solids and suspended sediment dynamics from five small agricultural watersheds in Navarre, Spain: A 10-year study. *Catena*, 173, 114-130.

- and their fluxes in rivers. *Global and Planetary Change*, 39(1-2), 65-93.
- Millot, R., Gaillardet, J., Dupré, B., & Allègre, C. J. (2002). The global control of silicate weathering rates and the coupling with physical erosion: new insights from rivers of the Canadian Shield. *Earth and Planetary Science Letters*, 196(1-2), 83-98.
- Moatar, F., Person, G., Meybeck, M., Coynel, A., Etcheber, H., & Crouzet, P. (2006). The influence of contrasting suspended particulate matter transport regimes on the bias and precision of flux estimates. *Science of the Total Environment*, 370(2-3), 515-531.
- Morris, B., Bolding, M., Aust, W., McGuire, K., Schilling, E., & Sullivan, J. (2016). Differing levels of forestry best management practices at stream crossing structures affect sediment delivery and installation costs. *Water*, 8(3), 92.
- Motha, J. A., Wallbrink, P. J., Hairsine, P. B., & Grayson, R. B. (2003). Determining the sources of suspended sediment in a forested catchment in southeastern Australia. *Water Resources Research*, 39(3), 1056-1069.
- Mueller, E. N., Francke, T., Batalla, R. J., & Bronstert, A. (2009). Modelling the effects of land-use change on runoff and sediment yield for a meso-scale catchment in the Southern Pyrenees. *Catena*, 79(3), 288-296.
- Mueller, E. R., & Pitlick, J. (2013). Sediment supply and channel morphology in mountain river systems: 1. Relative importance of lithology, topography, and climate. *Journal of Geophysical Research: Earth Surface*, 118(4), 2325-2342.
- Nisbet, T. R., Welch, D., & Doughty, R. (2002). The role of forest management in controlling diffuse pollution from the afforestation and clearfelling of two public water supply catchments in Argyll, West Scotland. *Forest Ecology and Management*, 158(1-3), 141-154.
- Onda, Y., Tsujimura, M., Fujihara, J. I., & Ito, J. (2006). Runoff generation mechanisms in high-relief mountainous watersheds with different underlying geology. *Journal of hydrology*, 331(3-4), 659-673.
- Padilla, C., Onda, Y., & Iida, T. (2015). Interaction between runoff–bedrock groundwater in a steep headwater catchment underlain by sedimentary bedrock fractured by gravitational deformation. *Hydrological Processes*, 29(20), 4398-4412.

- Water balance, flow duration and storm runoff. *Journal of Hydrology (New Zealand)*, 23, 60-72.
- Phillips, J. M., Webb, B. W., Walling, D. E., & Leeks, G. J. L. (1999). Estimating the suspended sediment loads of rivers in the LOIS study area using infrequent samples. *Hydrological Processes*, 13(7), 1035-1050.
- Pierret, M. C., Stille, P., Prunier, J., Viville, D., & Chabaux, F. (2014). Chemical and U-Sr isotopic variations in stream and source waters of the Strengbach watershed (Vosges mountains, France). *Hydrology and Earth System Sciences*, 18(10), 3969.
- Pierret, M. C., Cotel, S., Ackerer, P., Beaulieu, E., Benarioumlil, S., Boucher, M., Boutin, R., Chabaux, F., Delay, F., Fournet, C., Friedmann, P., Fritz, B., Gangloff, S., Girard, J. F., Legtchenko, A., Viville, D., Weill, S., & Probst, A. (2018). The Strengbach catchment: A multidisciplinary environmental sentry for 30 years. *Vadose Zone Journal*, 17.
- Pierret, M. C., Viville, D., Dambrine, E., Cotel, S., & Probst, A. (2019). Twenty-five year record of chemicals in open field precipitation and throughfall from a medium-altitude forest catchment (Strengbach-NE France): an obvious response to atmospheric pollution trends. *Atmospheric Environment*, 202, 296-314.
- Pratt-Sitaula, B., Garde, M., Burbank, D. W., Oskin, M., Heimsath, A., & Gabet, E. (2007). Bedload-to-suspended load ratio and rapid bedrock incision from Himalayan landslide-dam lake record. *Quaternary Research*, 68(1), 111-120.
- Probst, A., Dambrine, E., Viville, D., & Fritz, B. (1990). Influence of acid atmospheric inputs on surface water chemistry and mineral fluxes in a declining spruce stand within a small granitic catchment (Vosges massif, France). *Journal of Hydrology*, 116(1-4), 101-124.
- Prunier, J., Chabaux, F., Stille, P., Gangloff, S., Pierret, M. C., Viville, D., & Aubert, A. (2015). Geochemical and isotopic (Sr, U) monitoring of soil solutions from the Strengbach catchment (Vosges mountains, France): Evidence for recent weathering evolution. *Chemical Geology*, 417, 289-305.
- Reid, L. M., & Dunne, T. (1984). Sediment production from forest road surfaces. *Water Resources Research*, 20(11), 1753-1761.

- long-term chemical weathering rates. *Geology*, 29(6), 511-514.
- Riebe, C. S., Kirchner, J. W., & Finkel, R. C. (2004). Erosional and climatic effects on long-term chemical weathering rates in granitic landscapes spanning diverse climate regimes. *Earth and Planetary Science Letters*, 224(3-4), 547-562.
- Rodgers, M., O'connor, M., Robinson, M., Muller, M., Poole, R., & Xiao, L. (2011). Suspended solid yield from forest harvesting on upland blanket peat. *Hydrological Processes*, 25(2), 207-216.
- Ryan, S. E., Bishop, E. L., & Daniels, J. M. (2014). Influence of large wood on channel morphology and sediment storage in headwater mountain streams, Fraser Experimental Forest, Colorado. *Geomorphology*, 217, 73-88.
- Schelker, J., Kuglerová, L., Eklöf, K., Bishop, K., & Laudon, H. (2013). Hydrological effects of clear-cutting in a boreal forest-Snowpack dynamics, snowmelt and streamflow responses. *Journal of Hydrology*, 484, 105-114.
- Schmidt, K. H., & Morche, D. (2006). Sediment output and effective discharge in two small high mountain catchments in the Bavarian Alps, Germany. *Geomorphology*, 80(1-2), 131-145.
- Schmitt, A. D., Gangloff, S., Labolle, F., Chabaux, F., & Stille, P. (2017). Calcium biogeochemical cycle at the beech tree-soil solution interface from the Strengbach CZO (NE France): insights from stable Ca and radiogenic Sr isotopes. *Geochimica et Cosmochimica Acta*, 213, 91-109.
- Schmitt, A. D., Borrelli, N., Ertlen, D., Gangloff, S., Chabaux, F., & Osterrieth, M. (2018). Stable calcium isotope speciation and calcium oxalate production within beech tree (*Fagus sylvatica* L.) organs. *Biogeochemistry*, 137(1-2), 197-217.
- Serrat, P. (1999). Dynamique sédimentaire actuelle d'un système fluvial méditerranéen: l'Agly (France): Present sediment yield from a Mediterranean fluvial system: the Agly river (France). *Comptes Rendus de l'Académie des Sciences-Series IIA-Earth and Planetary Science*, 329(3), 189-196.
- Sheridan, G. J., & Noske, P. J. (2007). A quantitative study of sediment delivery and stream pollution from different forest road types. *Hydrological Processes*, 21(3), 387-398.

- concentrations and estimated loads of suspended sediment in a Norwegian river: implications for water management. *Science of the Total Environment*, 433, 462-471.
- Sosa-Pérez, G., & MacDonald, L. H. (2017). Reductions in road sediment production and road-stream connectivity from two decommissioning treatments. *Forest Ecology and Management*, 398, 116-129.
- Swank, W. T., Vose, J. M., & Elliott, K. J. (2001). Long-term hydrologic and water quality responses following commercial clearcutting of mixed hardwoods on a southern Appalachian catchment. *Forest Ecology and Management*, 143(1-3), 163-178.
- Syvitski, J. P., & Milliman, J. D. (2007). Geology, geography, and humans battle for dominance over the delivery of fluvial sediment to the coastal ocean. *The Journal of Geology*, 115(1), 1-19.
- Tarolli, P., & Sofia, G. (2016). Human topographic signatures and derived geomorphic processes across landscapes. *Geomorphology*, 255, 140-161.
- Taylor, S. E., Rummer, R. B., Yoo, K. H., Welch, R. A., & Thompson, J. D. (1999). What we know and don't know about water quality at stream crossings. *Journal of Forestry*, 97(8), 12-17.
- Tucker, G. E. (2015). Landscape Evolution. In: *Treatise in Geophysics*, 2nd edition, G. Schubert, editor, Elsevier
- Turowski, J. M., Rickenmann, D., & Dadson, S. J. (2010). The partitioning of the total sediment load of a river into suspended load and bedload: a review of empirical data. *Sedimentology*, 57(4), 1126-1146.
- Vanmaercke, M., Poesen, J., Verstraeten, G., de Vente, J., & Ocakoglu, F. (2011). Sediment yield in Europe: spatial patterns and scale dependency. *Geomorphology*, 130(3-4), 142-161.
- VanSickle, J., & Beschta, R. L. (1983). Supply-based models of suspended sediment transport in streams. *Water Resources Research*, 19(3), 768-778.
- Vericat, D., & Batalla, R. J. (2006). Sediment transport in a large impounded river: The lower Ebro, NE Iberian Peninsula. *Geomorphology*, 79(1-2), 72-92.
- Viville, D., & Gaumel, S. (2004). Generation of delayed peak flows in the small Strengbach catchment (Vosges massif, France). *Proceedings of the 10th ERB Conference*, Turin, Italy, 13-17th October 2004, 89-94.

- basins: the example of the Strengbach catchment (Vosges massif, eastern France). *Catena*, 92, 122-129.
- Viville, D., Chabaux, F., Pierret, M. C., Gangloff, S., Cotel, S., Probst, A., Dambrine, E., Fritz, B., & Ambroise, B. (2017). L'Observatoire Hydro-Géochimique de l'Environnement (OHGE) : 30 années d'observations scientifiques sur le bassin versant du Strengbach (massif des Vosges - France). *Géologues*, 195, 120-125.
- Walsh, R. P. D., Bidin, K., Blake, W. H., Chappell, N. A., Clarke, M. A., Douglas, I., Ghazali, R., Sayer, A. M., Suhaimi, J., & Annammala, K. V. (2011). Long-term responses of rainforest erosional systems at different spatial scales to selective logging and climatic change. *Philosophical Transactions of the Royal Society B: Biological Sciences*, 366(1582), 3340-3353.
- Ward, J. M., & Jackson, C. R. (2004). Sediment trapping within forestry streamside management zones: Georgia Piedmont, USA. *Journal of the American Water Resources Association*, 40(6), 1421-1431.
- Webb, A. A., Dragovich, D., & Jamshidi, R. (2012). Temporary increases in suspended sediment yields following selective eucalypt forest harvesting. *Forest Ecology and Management*, 283, 96-105.
- Weill, S., Delay, F., Pan, Y., & Ackerer, P. (2017). A low-dimensional subsurface model for saturated and unsaturated flow processes: ability to address heterogeneity. *Computational Geosciences*, 21(2), 301-314.
- Weill, S., Lesparre, N., Jeannot, B., & Delay, F. (2019). Variability of Water Transit Time Distributions at the Strengbach Catchment (Vosges Mountains, France) Inferred Through Integrated Hydrological Modeling and Particle Tracking Algorithms. *Water*, 11(12), 2637.
- West, A. J., Galy, A., & Bickle, M. (2005). Tectonic and climatic controls on silicate weathering. *Earth and Planetary Science Letters*, 235(1-2), 211-228.
- Westhoff, M., Bogaard, T. A., & Savenije, H. H. G. (2011). Quantifying spatial and temporal discharge dynamics of an event in a first order stream, using distributed temperature sensing. *Hydrology and Earth System Sciences*, 15(6), 1945-1957.
- Witt, E. L., Barton, C. D., Stringer, J. W., Kolka, R. K., & Cherry, M. A. (2016). Influence of variable streamside management zone configurations on water quality after forest harvest. *Journal of Forestry*, 114(1), 41-51.

harvesting best management practices on surface water quality in the Virginia coastal plain. *Transactions of the ASAE*, 43(4), 927.

Zhang, Y., Long, Y., Li, B., Xu, S., Wang, X., & Liao, J. (2017). Use of reservoir deposits to reconstruct the recent changes in sediment yields from a small granite catchment in the Yimeng Mountain region, China. *Geomorphology*, 293, 167-177.

Zillgens, B., Merz, B., Kirnbauer, R., & Tilch, N. (2007). Analysis of the runoff response of an alpine catchment at different scales. *Hydrology and Earth System Sciences*, 11(4), 1441-1454.

Journal Pre-proof

We have no conflicts of interest to declare.

Journal Pre-proof

Credit author statement

S. Cotel: Conceptualization, Methodology, Investigation, Supervision, Writing - original draft; Writing - review & editing

D. Viville: Data curation

S. Benarioumlil: Investigation, Methodology

P. Ackerer: Conceptualization, Writing - review & editing

M.C. Pierret: Data Curation, Funding acquisition, Writing - review & editing

Journal Pre-proof

Fig. 1. Map of the Strengbach catchment with the location of tree harvesting areas, skid trails, and stream crossings developed during forestry operations in 2012 and 2014

Fig. 2. Daily spatialized precipitation, instantaneous discharge, and major delayed-flow events for the sampling years between 2013 and 2016

Fig. 3. SS concentration, instantaneous discharge, major delayed-flow events and forestry operations for the sampling years a) 2013, b) 2014, c) 2015, and d) 2016

Fig. 4. Fortnightly solid fluxes (SS and bedload), instantaneous discharge, major delayed-flow events and forestry operations for the sampling years a) 2013, b) 2014, c) 2015, and d) 2016

Fig. 5. Annual solid fluxes (SS and bedload) for the sampling years between 2005 and 2016 based on fortnightly manual sampling for SS flux estimation

Fig. 6. Ratio between the annual solid fluxes (SS and bedload) and annual outlet runoff for the sampling years between 2010 and 2016 based on high-frequency automatic sampling for SS flux estimation

Sampling year	<i>Thirty-year average^a</i>	2010	2011	2012	2013	2014	2015	2016
Annual total precipitation ($mm.yr^{-1}$)	1,385	1,472	1,220	1,658	1,673	1,237	1,341	1,481
Snow/Rain ($mm.yr^{-1}$)	257/1,128	413/1,059	187/1,033	410/1,248	374/1,299	120/1,117	269/1,072	404/1,077
Annual outlet runoff ($mm.yr^{-1}$)	747	673	535	764	947	510	609	756
Annual drinking water supply ^b ($mm.yr^{-1}$)	62	104	78	118	138	54	86	116
Annual total runoff ^c ($mm.yr^{-1}$)	809	777	613	882	1,085	564	695	872

^a between hydrological years 1987 and 2016

^b Annual drinking water supply = Water flux annually extracted by Aubure village through a spring collector located in the studied site

^c Annual total runoff = Annual outlet runoff + Annual drinking water supply

Table 2: Contribution of major hydrological events with delayed-flow to the annual solid fluxes for the sampling years between 2013 and 2016

Sampling year	Contribution to the annual SS flux (%)			Contribution to the annual bedload flux (%)		
	Snowmelt events	Other major delayed-flow events ^a	All major delayed-flow events	Snowmelt events	Other major delayed-flow events ^a	All major delayed-flow events
2013	57 ^b	13 ^f	70 ^{b+f}	57 ^b	26 ^f	83 ^{b+f}
2014	7 ^c	No major event	7 ^c	8 ^c	No major event	8 ^c
2015	39 ^d	34 ^g	73 ^{d+g}	44 ^d	29 ^g	73 ^{d+g}
2016	53 ^e	14 ^h	67 ^{e+h}	49 ^e	20 ^h	69 ^{e+h}

^a peak discharge (delayed-flow event) > 48 L.s⁻¹

^b period: December 14, 2012, at 8 a.m. - April 26, 2013, at 4 p.m.

^c period: December 10, 2013, at 4 p.m. - March 15, 2014, at 8 a.m.

^d period: December 13, 2014, at 4 p.m. - March 10, 2015, at 8 a.m.

^e period: January 7, 2016, at 12 a.m. - April 14, 2016, at 4 p.m.

^f period: October 16, 2013, at 8 a.m. - October 27, 2013, at 12 a.m.

^g period: March 31, 2015, at 12 a.m. - April 26, 2015, at 4 p.m. and April 28, 2015, at 4 p.m. - May 13, 2015, at 8 a.m.

^h period: May 1, 2016, at 8 a.m. - May 12, 2016, at 12 a.m., May 30, 2016, at 12 a.m. - June 11, 2016, at 12 a.m. and June 11, 2016, at 4 p.m. - June 25, 2016, at 12 a.m.

Table 3: Annual area-weighted solid and water fluxes for the sampling years between 2010 and 2016 based on high-frequency automatic sampling for SS flux estimation

Sampling year	Average	Before 2014 forestry operation				During/after 2014 forestry operation			
		2010	2011	2012	2013	2014	2015	2016	
Annual outlet runoff ($mm.yr^{-1}$)	747^a	673	535	764	947	510	609	756	
Annual area-weighted SS flux ($T.km^{-2}.yr^{-1}$)	8.8^b	-	-	-	9.6±10.0%	10.5±10.3%	9.1±10.0%	5.9±10.4%	
Annual area-weighted bedload flux ($T.km^{-2}.yr^{-1}$)	3.5^c	2.1±8.2%	2.8±8.2%	2.8±8.2%	4.8±8.2%	1.8±8.2%	6.8±8.2%	3.4±8.2%	
Annual area-weighted solid flux ($T.km^{-2}.yr^{-1}$)	-	-	-	-	14.4±9.4%	12.3±10.0%	15.9±9.2%	9.3±9.6%	

^a betw

^b between sampling years 2013 and 2016

^c between sampling years 2010 and 2016

Journal Pre-proof

Highlights

- Accurate monitoring of solid exports to estimate erosion flux
- Major role of delayed-flow events in solid export dynamics
- Small forestry operations with no protection measures can significantly disturb solid fluxes
- Immediate tree harvesting impact on the suspended sediment flux and delayed impact on the bedload flux

Journal Pre-proof

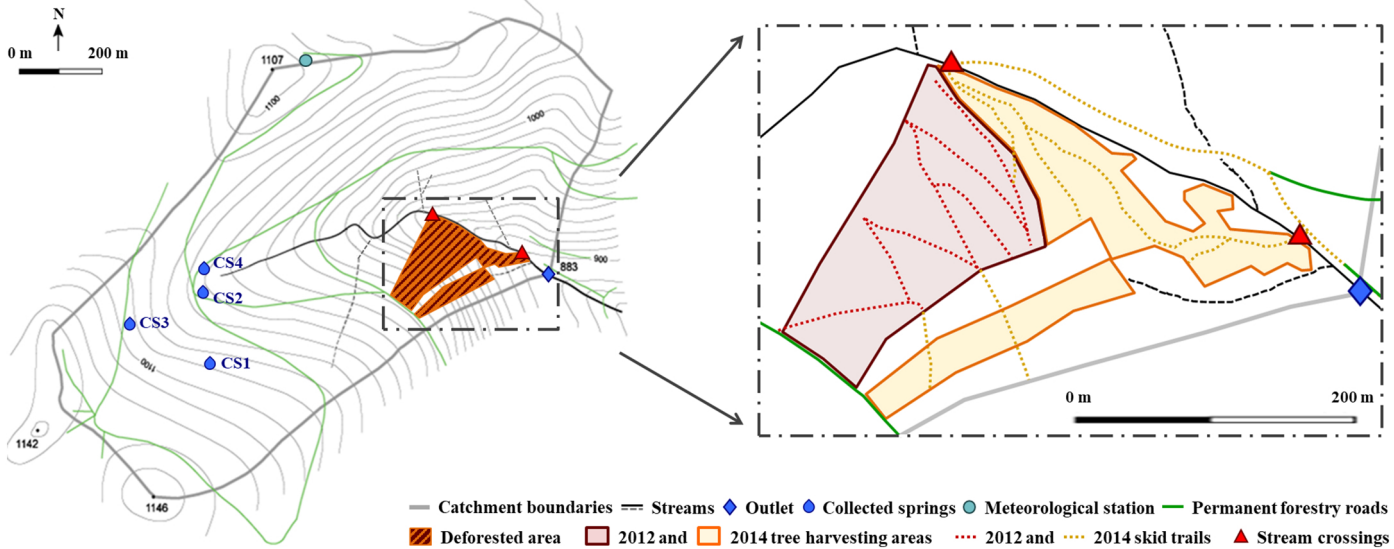


Figure 1

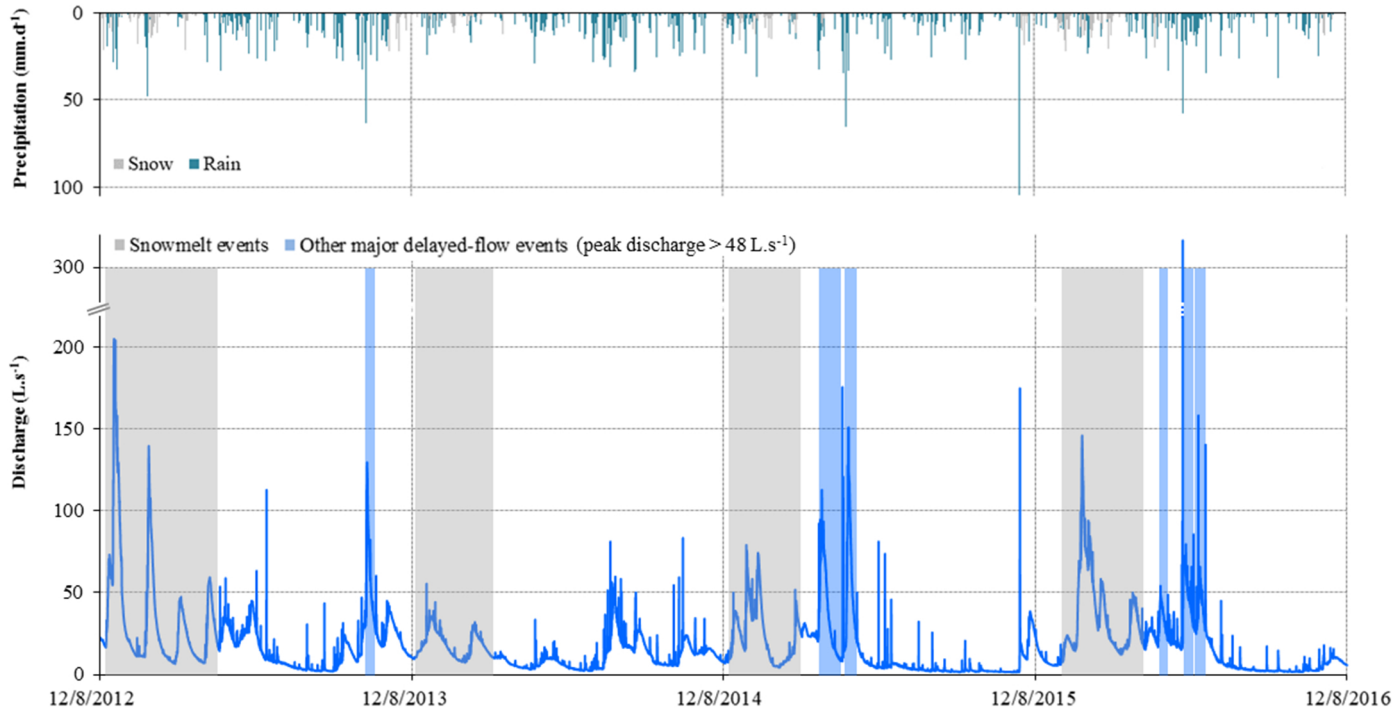


Figure 2

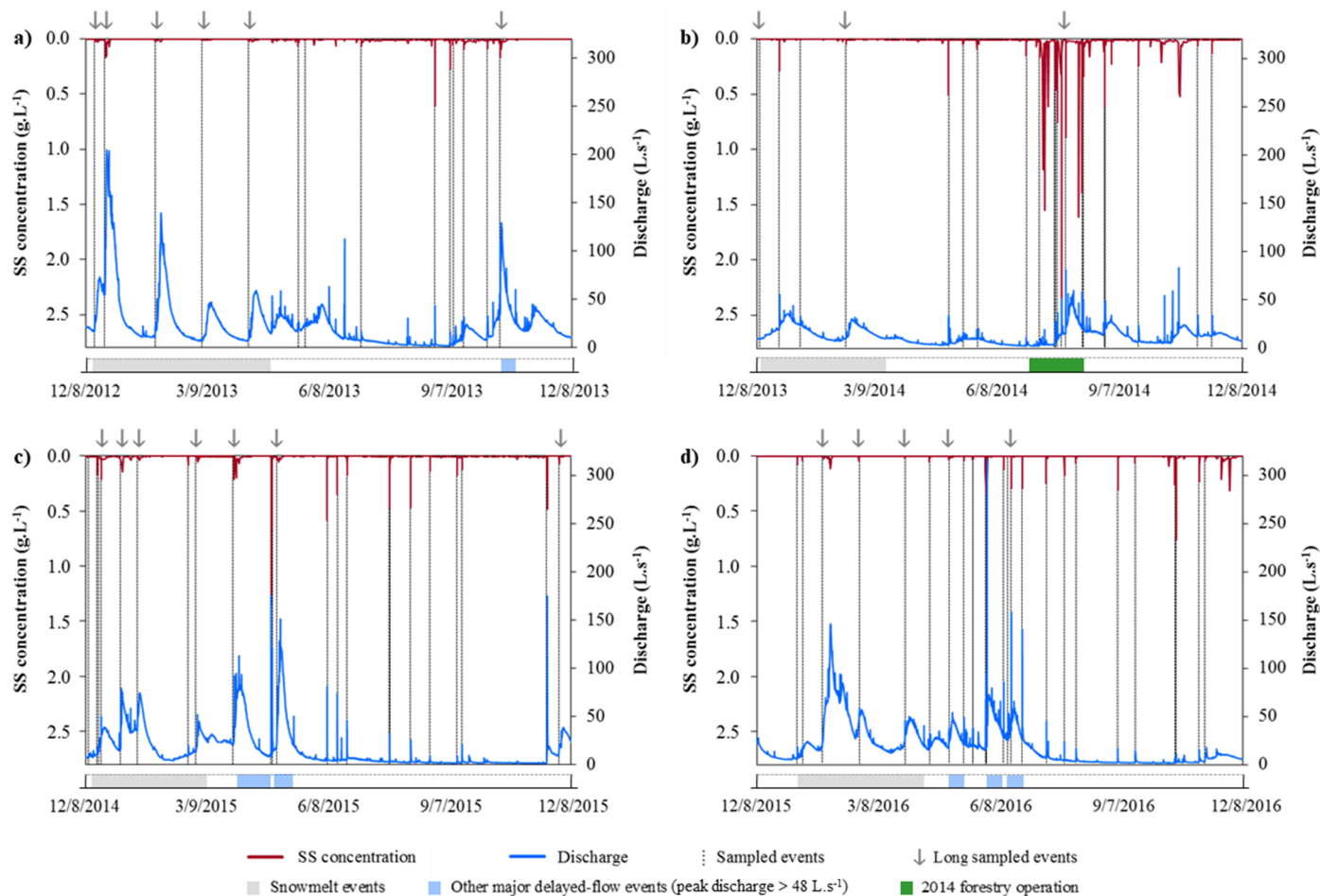


Figure 3

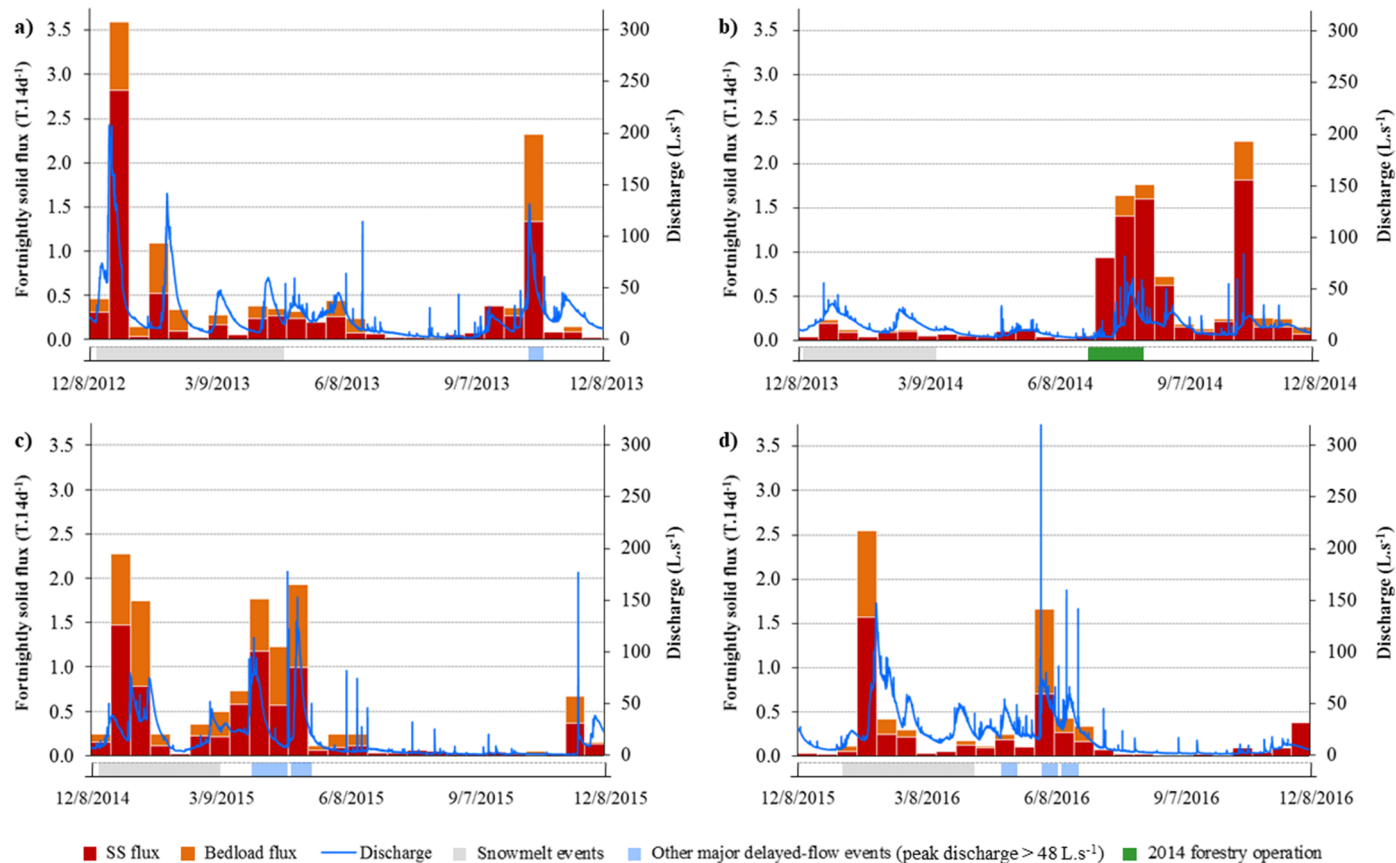


Figure 4

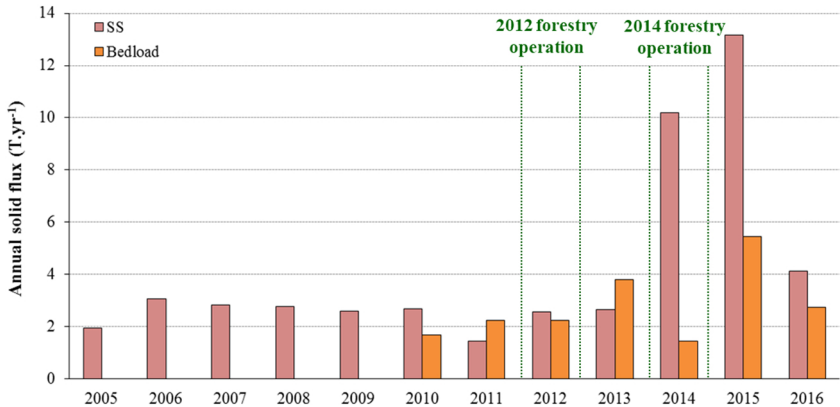


Figure 5

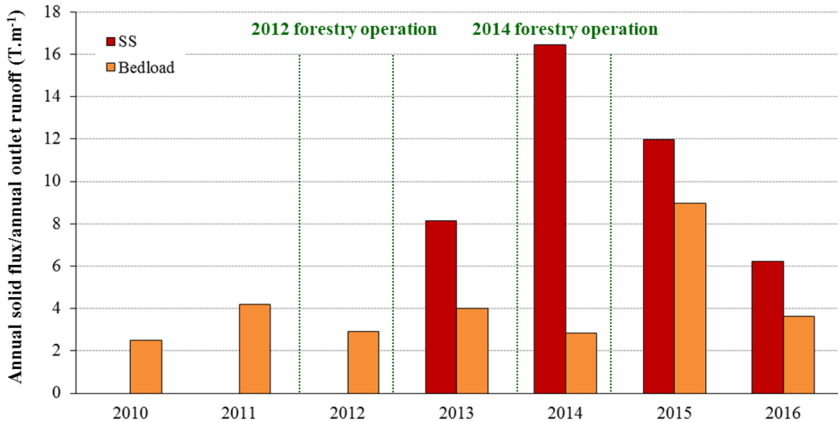


Figure 6