



HAL
open science

The role of GPCR signaling in cardiac Epithelial to Mesenchymal Transformation (EMT)

Canan G Nebigil, Laurent Désaubry

► **To cite this version:**

Canan G Nebigil, Laurent Désaubry. The role of GPCR signaling in cardiac Epithelial to Mesenchymal Transformation (EMT). Trends in Cardiovascular Medicine, 2019, 29 (4), pp.200-204. <10.1016/j.tcm.2018.08.007>. <hal-03014893>

HAL Id: hal-03014893

<https://hal.science/hal-03014893v1>

Submitted on 1 Jan 2021

HAL is a multi-disciplinary open access archive for the deposit and dissemination of scientific research documents, whether they are published or not. The documents may come from teaching and research institutions in France or abroad, or from public or private research centers.

L'archive ouverte pluridisciplinaire HAL, est destinée au dépôt et à la diffusion de documents scientifiques de niveau recherche, publiés ou non, émanant des établissements d'enseignement et de recherche français ou étrangers, des laboratoires publics ou privés.



HAL Authorization

Accepted Manuscript

The role of GPCR signaling in cardiac epithelial to mesenchymal transformation (EMT)

Canan G. Nebigil , Laurent Désaubry

PII: S1050-1738(18)30170-1
DOI: <https://doi.org/10.1016/j.tcm.2018.08.007>
Reference: TCM 6562



To appear in: *Trends in Cardiovascular Medicine*

Received date: 9 July 2018
Revised date: 9 August 2018
Accepted date: 14 August 2018

Please cite this article as: Canan G. Nebigil , Laurent Désaubry , The role of GPCR signaling in cardiac epithelial to mesenchymal transformation (EMT), *Trends in Cardiovascular Medicine* (2018), doi: <https://doi.org/10.1016/j.tcm.2018.08.007>

This is a PDF file of an unedited manuscript that has been accepted for publication. As a service to our customers we are providing this early version of the manuscript. The manuscript will undergo copyediting, typesetting, and review of the resulting proof before it is published in its final form. Please note that during the production process errors may be discovered which could affect the content, and all legal disclaimers that apply to the journal pertain.

The role of GPCR signaling in cardiac epithelial to mesenchymal transformation (EMT)

Canan G. Nebigil^{*}, Laurent Désaubry

CNRS/Université de Strasbourg, Laboratory of Biomolécules (UMR7203), Sorbonne University–CNRS, Paris, France

^{*}Corresponding Author. Canan G. Nebigil, CNRS/Université de Strasbourg ESBS Pole API 300 boulevard Sébastien Brant, CS 10413, F - 67412 ILLKIRCH France

The publication was made possible by grants from ERA-NET, ERA-CVD, French government managed by Agence Nationale de la Recherche (ANR) Centre National de la Recherche Scientifique.

Abstract

Congenital heart disease is the most common birth defect, affecting 1.35 million newborns every year. Heart failure is a primary cause of late morbidity and mortality after myocardial infarction. Heart development is involved in several rounds of epithelial-to-mesenchymal transition (EMT) and mesenchymal-to-epithelial transition (MET). Errors in these processes contribute to congenital heart disease, and exert deleterious effects on the heart and circulation after myocardial infarction. The identification of factors that are involved in heart development and disease, and the development of new approaches for the treatment of these disorders are of great interest. G protein coupled receptors (GPCRs) comprise 40% of clinically used drug targets, and their signaling are vital components of the heart during development, cardiac repair and in cardiac disease pathogenesis. This review focuses on the importance of EMT program in the heart, and outlines the newly identified GPCRs as potential therapeutic targets of reprogramming EMT to support cardiac cell fate during heart development and after myocardial infarction. More specifically we discuss prokineticin, serotonin, sphingosine-1-phosphate and apelin receptors in heart development and diseases. Further understanding of the regulation of EMT/MET by GPCRs during development and in the adult hearts can provide the following clinical exploitation of these pathways.

KeyWords

Congenital heart disease; heart development; heart failure; GPCR; epithelial to mesenchymal transformation (EMT); cardiac progenitor cells, cardiac stem cells; prokineticin; apelin, serotonin; sphingosine-1-phosphate

EMT during Heart Development and diseases

Epicardial-to-mesenchymal transition (EMT) plays a critical role in cardiac development [1]. The down-regulation of intercellular adhesion junctions and the expression of EMT-inducing transcription factors are the two key events in the EMT process (Fig. 1). All cells in the heart arise from one or more rounds of endocardial-EMT and epicardial-EMT. Endocardial-EMT plays a key role for formation of the cardiac valves and for complete cardiac septation. The early developing heart consists of an endocardial layer surrounded by a myocardial layer. These layers are separated by extracellular matrix, also known as cardiac jelly. The endocardial cushions become visible in the midgestation embryos. These cushions later develop into the atrioventricular (AV) and outflow tract (OFT) valves [2; 3]. Endocardial cells that line the AV cushions undergo EMT in the midgestation embryos to populate them with mesenchymal cells, thus contributing to precursors of the future valve interstitial cells. OFT cushion development also involves endocardial EMT in a similar manner as that of AV but occurs later in development [2; 3] (Fig. 2).

Epicardial-EMT is a physiological process in developing heart, such as myocardial differentiation, development of coronary vascular network, fibrous annulus and valves. Epicardium originates as proepicardium, a cluster of coelomic cells at the caudal end of the developing heart (E9.0 to E9.5 in the mouse). The formation of most nonmyocardial cells starts with the development of the proepicardium [4]. Proepicardial cells are transferred to the myocardial surface, where they attach and spread, forming a continuous monolayered patch of epithelial cells, called epicardium [5]. Epicardial cells are important for both myocardium and coronary development (Fig. 2). During formation of the epicardial epithelium, EMT is

initiated, allowing epicardial-epithelial cells to transform into a population of highly invasive, mesothelial epicardium-derived cells (EPDCs) [6]. The EPDCs formed via EMT invade the sub-epicardial matrix and migrate into the myocardium, where they differentiate into several cardiac lineages, including coronary smooth muscle cells [7], and perivascular and cardiac interstitial fibroblasts [8], coronary endothelial cells [9], possibly cardiomyocytes [10; 11] and adipocytes [12]. Importantly, reactivated epicardial cells after heart injury proliferate and undergo EMT or mesenchymal-to-epithelial transition (MET), and subsequently differentiate into cardiac cells to contribute to cardiac repair, or protect cardiomyocytes via paracrine interaction [13; 14].

The impact of errors in EMT on the heart

Several studies have suggested that EMT is essential for proper embryogenesis, without which developmental defects or embryonic lethality can occur [1]. In the adult heart, disease-mediated activation of EMT may contribute to degenerative valve disease, cardiac fibrosis, and the myocardial injury response [3]. Valve diseases lead to significant morbidity and mortality. Valve diseases are described by expression of mesenchymal markers, such as vimentin (VIM) and smooth muscle actin in the valvular interstitial cells [15]. During development, progenitor cells derived from endocardial-EMT also express these markers indicating that potential reactivation of endocardial-EMT occurs in valve disease. In accord with these findings, enhanced valve endocardial-EMT has been shown to contribute to pathological changes in diseased leaflets in animal models and patients [16]. Endocardial-EMT forms valve progenitor cells that can be differentiated towards osteogenic or chondrogenic phenotypes, therefore contributing to valve calcification a hallmark of adult valve disease [3].

The disturbance in epicardial-EMT not only causes non-compaction cardiomyopathies, but also early coronary vascular diseases [17]. Defective epicardial outgrowth leads to lack of annulus fibrosis formation with electrophysiological evidence of the Wolff-Parkinson-White (WPW) syndrome [18]. An Ebstein-like valve phenotype could be related to impaired homing of EPDCs to valves [17]. Myocardial infarction reactivates endogenous epicardium which re-expresses embryonic markers, such as WT1, raldh2, Tbx18, tcf21 [10; 19]. Injection of human EPDCs (hEPDCs) into the infarcted myocardium preserves cardiac function and reduces remodeling after the onset of infarction [20].

Cardiac fibrosis is also defined as an abnormal thickening of the heart valves due to an inappropriate number of fibroblasts. Fibroblast plasticity occurs either by replication of the resident myocardial fibroblasts, migration and transformation of circulating bone marrow cell-derived fibroblast precursor cells (fibrocytes), or transformation of resident non-fibroblast cells such as endothelial and perivascular cells into fibroblasts and myofibroblasts [21; 22]. However, the epicardium is the major source of cardiac fibroblasts, and reactivated by epicardial-EMT during pathologic fibrogenesis after myocardial infarction [23]. Indeed, cardiac adaptive fibrosis is necessary to maintain the cardiac structural integrity and pressure-generating capacity of the heart. However, transforming into myofibroblasts by pathological stress, cardiac fibrosis leads to the progression to heart failure [3]. Fibrogenesis also contribute to arrhythmogenesis by increasing ventricular stiffness.

After the myocardial infarction, epicardial-EMT increases number of fibroblast that can be differentiated into adipocytes to generate epicardial adipose tissue (EAT) [12]. Formation of EAT, myofibroblasts and vasculogenic cells are regulated by EMT and MET in epicardial cells (Fig. 3). EAT plays a key role in the association between obesity and coronary artery disease (CAD). Although anatomically EAT may provide mechanical support for the coronary arteries, adipokines produced by EAT play key

roles in the development of atherosclerotic plaque [24]. Since adipogenesis is a mesenchymal developmental process, the suppression of spontaneous EMT and retention of mesothelial cells at the epithelial stage reduces EAT formation in response to adipogenic stimuli [25].

Although reactivation of epicardial-EMT process contributes to disease pathogenesis, redirection of disease-related epicardial-EMT stimulates cardiac regeneration. G protein-coupled receptor (GPCR) signaling controls EMT during heart development, and may redirect EMT after myocardial infarction to regenerate heart.

GPCR signaling

Another aspect strongly associated with cardiac development and defects is G protein-coupled receptors (GPCRs) that are also called seven transmembrane helical (7TM) receptors [26]. GPCRs transduce extracellular signals from endogenous hormones and neurotransmitters or from exogenous factors, such as photons of light, odorants, and tastants (chemosensory receptors). GPCRs are classified into 6 subgroups based on the sequence homology [26]. These subgroups are Class A (rhodopsin-like receptors), Class B (secretin receptor family), Class C (metabotropic, glutamate receptors), Class D (pheromone receptors), Class E (cyclic AMP receptors) and Class F (frizzled receptors). Among the GPCRs, circulating catecholamines (Class A) play an important role in the control of cardiovascular function, via their adrenergic receptors, by mediating the actions of sympathetic nervous system activation. In cardiovascular diseases, the most used GPCR-targeted drugs are the blockers of β -adrenergic (β -AR) and angiotensin (AngII) receptors. AngII receptor blockers have been used for the treatment of hypertension and cardiovascular disorders [27]. During heart failure, β 1-ARs are hyper-stimulated, which induces a cardiotoxic effect. However, β 2-ARs exert cardioprotective roles,

counteracting the deleterious effects of chronic sympathetic stimulation in failing hearts. Thus, β 1-specific ARs antagonist together with β 2-AR agonist have been used for treatment of heart failure [28]. Some of the GPCRs are involved in heart development such as prokineticin receptor-1 (PKR1), sphingosine-1-phosphate (S1P) 1 receptor (S1P₁R) and serotonin (5-HT)-2B receptors (Fig. 4). Here we discuss mainly these 3 GPCRs that are involved in heart development and diseases.

Prokineticin receptors in heart development and disease

Prokineticins as angiogenic and anorectic hormones, exert their biological activity by binding to their cognate GPCRs; namely, PKR1 and PKR2 [29]. A critical role of epicardial-PKR1 signaling during cardiac development has been recently demonstrated. Mice lacking PKR1 in their Wt1⁺ epicardial cells showed partial embryonic lethality, due to impaired EMT in their hearts [30]. PKR1 signaling promotes the proliferation and EMT of epicardial cells of the Wt1⁺ lineage and their subsequent differentiation into endothelial and vascular smooth muscle cells during heart development. PKR1 activation or overexpression induces changes in embryonic epicardial cell morphology, actin cytoskeleton remodeling, and EMT-gene expression profile [30].

PKR1 orchestrates epicardial-cardiomyocyte interactions in the developing heart. In mice, inactivation of PKR1 in epicardial-derived cells also causes epicardial detachment and a reduction of the adjacent myocardium compact zone, impairing myocardial growth [30]. Although myocardial expression of PKR1 induces coronary vessel formation by a paracrine process [31], a reciprocal interaction between the epicardium and cardiomyocytes via PKR1 signaling has also been shown to be involved in EPDC function and myocardial development and function [30].

EMT/MET plays important roles in stem cell differentiation and de-differentiation or reprogramming [32]. Prokineticin-2/PKR1 signaling in hEPDCs

controls a switch between formation of EAT and vasculogenesis via inhibiting EMT (Fig. 3). Prokineticin/PKR1-mediated inhibition of EMT allows the regaining of epithelial features with self-renewal and rapid generation of vascular precursors [25]. A newly described epigenetic route involving histone modifications by KDM6A overcomes the intrinsic limitations of differentiating hEPDCs into vasculogenic cells. Activation of KDM6A by PKR1 signaling plays a key role in the demethylation of H3K27me3, leading to promoter derepression and induction of lineage-specific marker expression for endothelial cells and smooth muscle [25]. Prokineticin-2/PKR1-mediated KDM6A activity is also essential for the inhibition of adipogenesis in response to adipocyte induction in hEPDCs, by inhibiting EMT, and stabilizing cytosolic β -catenin levels, thereby blocking PPAR γ activity.

Supporting these *in vitro* findings, epicardial-specific PKR1 knockout mice have been shown to have an imbalance between adipogenic and vasculogenic transformation following exposure to a high-fat diet (HFD), leading to systolic and diastolic left ventricular dysfunction and severe arrhythmia [30]. Mice lacking PKR1 in their *tcf21*⁺ cardiac fibroblast progenitors displayed low capillary formation. However, such mice fed a high fat diet exhibited an increased epicardial adipose tissue (EAT) and a severe regression of blood vessels, leading to cardiac dysfunction [33]. Overall, these data show that PK2/PKR1 signaling plays an important role in regulating epicardial fate via epigenetic control from adipogenesis towards vasculogenesis *in vitro* and *in vivo*. Thus, the control of epicardial-EMT/MET program is a potentially valuable target for future applications in cardiac tissue engineering.

Sphingosine-1-phosphate (S1P) receptor signaling in heart development and disease

S1P is a lysophospholipid that uses GPCRs to promote cellular differentiation, proliferation, migration, cytoskeletal reorganization, and apoptosis [34]. S1P

receptors (S1PRs) are composed of five subtypes, S1P₁R to S1P₅R [35]. The deletion of the S1P₁R in mice (S1P₁R^{-/-}) leads to embryonic lethality between embryonic days E13.5 and E14.5 due to several defects in the developing heart. These defects are atrioventricular canal cushion and vascular maturation defects, and malformed myocardium [36]. The heart condition in S1P₁R^{-/-} hearts may also be due to the disruption of fibronectin (FN) in the epicardium due to altered EMT [37]. This disrupted epicardial layer due to impaired EMT may explain the disorganized myocardium observed in the compact layer of S1P₁R^{-/-} hearts. Further analysis of the role of S1P₁R signaling during epicardial development is needed to confirm this possibility.

Serotonin receptor signaling in heart development and disease

The serotonin (5-hydroxytryptamine, 5-HT) regulates cardiovascular functions during embryogenesis and adulthood [38]. There are at least 15 receptor subtypes that belong to four populations namely, 5-HT_{1/5}, 5-HT₂, 5-HT₃, and 5-HT_{4/6/7} subtypes. The 5-HT₂ receptors are composed of three subunits: 5-HT_{2A}, 5-HT_{2B}, and 5-HT_{2C} [39]. The serotonin 2B receptor and serotonin uptake inhibitors are involved in heart development and diseases. Inactivation of 5-HT_{2B} receptor leads to embryonic midgestation lethality due to a lack of trabeculae in the heart [40; 41]. All surviving newborn mice display a severe ventricular hypoplasia caused by impaired proliferative capacity of myocytes, leading to neonatal lethality [42]. This phenotype is similar to defective EMT-mediated heart malformations. A selective serotonin reuptake inhibitor (SSRIs) fluoxetine used for treatment of gestational depression. It causes dramatic postnatal mortality of the offspring with severe heart failure due to dilated cardiomyopathy in rodents [43]. This suggests that the 5-HT system is involved in heart development and that fluoxetine treatment during fetal development

affects the heart, resulting in dilated cardiomyopathy. Major cardiac malformations have also been associated with prenatal SSRIs in human practice, although most of the cardiac malformations were observed after prenatal SSRI treatment [44]. Moreover, a meta-analysis of clinical trials has shown that prenatal SSRIs significantly increased the risk for spontaneous abortion, which is also observed in mice [44]. Nevertheless, more research is necessary to confirm the effects of SSRI and serotonin receptor ligands on cardiac development- and diseases-related EMTs.

Other GPCRs that regulate heart development and disease

A chemokine, Apelin, and its receptor, Agtr1b (Angiotensin II receptor-like 1 receptor) has been found to regulate blood pressure [45] and to induce a positive inotropic effect in humans [46]. Apelin has also been shown to be required for normal vascular development in frog embryos [47]. The loss of Agtr1b in mice leads to embryonic lethality due to growth retardation and cardiac malformations similar to that observed in mice having defective EMT [48]. The earliest ligand for Agtr1b called ELABELA promotes endoderm differentiation and subsequent cardiogenesis. Loss of ELABELA causes a rudimentary heart or no heart in embryos [49].

Several orphan GPCRs have emerged as novel therapeutic targets to treat heart failure. Two such candidates, GPR37L1 (downregulated in cardiovascular diseases) and GPR35 (upregulated in myocardial infarction), were identified by correlating gene expression with clinical parameters, such as pulmonary artery pressure, left ventricular ejection fraction, and brain natriuretic peptide mRNA levels [50]. However their role in heart development and disease-related EMT have not been studied yet.

Concluding Remarks and Future Perspectives

EMT is a key player for heart development during embryogenesis and after

the cardiac injury, however, without EMT heart defects and impaired cardiac regeneration occur. Targeting cardiac EMT/MET could hold a great potential to redirect the fate of cardiac stem/progenitor cells. Tracking EMT/MET *in vivo* in humans by imaging techniques could be a new approach to delineate the disease stage. In animals it would be useful for cell tracing studies. The therapeutic manipulation of EMT/MET can also be a therapeutic approach for treatment of heart diseases.

GPCRs are the largest family of signaling receptors and the major targets of new and approved pharmaceuticals. Indeed, GPCR-targeted drug discovery still successfully continues. Newly approved 19% of therapeutics target GPCRs, including the antithrombotic drug (Plavix) that targets platelet P2Y₁₂ adenosine receptors, the antidepressant drugs that are selective serotonin reuptake inhibitors (SSRIs) and act agonists or antagonists of serotonin receptors, and the anti-insomnia drug (Tasimelteon) that is a melatonin receptor agonist.

GPCRs can be a valid target for redirecting and epigenetic reprogramming EMT/MET to stimulate regeneration in the injured heart. Given the central role of the GPCR signaling pathways in both health and disease, their role in tissue engineering and modeling needs to be further explored. The efforts in discovering and developing compounds such as antibodies, allosteric modulators and biased agonists that modulate GPCRs may open a new possibility to more precisely controlling receptor signaling and ultimately therapeutic effects. Recently, the sequencing of the human genome revealed new members of the GPCR family, which brings new opportunities for developing novel therapeutics targeting these new GPCRs.

Disclosure

Authors declared no conflict of interest.

We the undersigned declare that this manuscript is original, has not been published before and is not currently being considered for publication elsewhere.

We confirm that the manuscript has been read and approved by all named authors and that there are no other persons who satisfied the criteria for authorship but are not listed. We further confirm that the order of authors listed in the manuscript has been approved by all of us.

We confirm that all authors are responsible for the content and have read and approved the

manuscript; and that the manuscript conforms to the Uniform Requirements for Manuscripts Submitted to Biomedical Journals published in *Annals in Internal Medicine*. We understand that the Corresponding Author is the sole contact for the Editorial process. He/she is responsible for communicating with the other authors about progress, submissions of revisions and final approval of proofs.

Signed by all authors as follows:

Canan G. Nebigil

Laurent Désaubry

Acknowledgements

We would like to thank to all members of our team who contributed to this work.

References

- [1] J.P. Thiery
Epithelial-mesenchymal transitions in tumour progression. *Nat Rev Cancer*, 2 (2002), pp. 442-54.
- [2] S. Viragh, and C.E. Challice
The development of the conduction system in the mouse embryo heart. I. The first embryonic A-V conduction pathway. *Dev Biol*, 56 (1977), pp. 382-96.
Epicardium and myocardium separate from a common precursor pool by crosstalk between bone morphogenetic protein- and fibroblast growth factor-signaling pathways. *Circulation research*, 105 (2009), pp. 431-41.
- [5] J. Manner, J.M. Perez-Pomares, D. Macias, and R. Munoz-Chapuli
The origin, formation and developmental significance of the epicardium: a review. *Cells, tissues, organs*, 169 (2001), pp. 89-103.
- [6] A. Ruiz-Villalba, A. Ziogas, M. Ehrbar, and J.M. Perez-Pomares
Characterization of epicardial-derived cardiac interstitial cells: differentiation and mobilization of heart fibroblast progenitors. *PLoS One*, 8 (2013), p. e53694.
- [7] N.A. Bax, A.A. van Oorschot, S. Maas, J. Braun, J. van Tuyn, A.A. de Vries *et al.*
In vitro epithelial-to-mesenchymal transformation in human adult epicardial cells is regulated by TGFbeta-signaling and WT1. *Basic Res Cardiol*, 106 (2011), pp. 829-47.
- [8] J. van Tuyn, D.E. Atsma, E.M. Winter, I. van der Velde-van Dijke, D.A. Pijnappels, N.A. Bax *et al.*
Epicardial cells of human adults can undergo an epithelial-to-mesenchymal transition and obtain characteristics of smooth muscle cells in vitro. *Stem cells*, 25 (2007), pp. 271-8.
- [9] L. Zangi, K.O. Lui, A. von Gise, Q. Ma, W. Ebina, L.M. Ptaszek *et al.*
Modified mRNA directs the fate of heart progenitor cells and induces vascular regeneration after myocardial infarction. *Nat Biotechnol*, 31 (2013), pp. 898-907.
- [10] F.C. Simoes, and P.R. Riley

- The ontogeny, activation and function of the epicardium during heart development and regeneration. *Development*, 145 (2018).
- [11] T. Kennedy-Lydon, and N. Rosenthal
Cardiac regeneration: epicardial mediated repair. *Proc Biol Sci*, 282 (2015), pp. 20152147.
- [12] Y. Yamaguchi, S. Cavallero, M. Patterson, H. Shen, J. Xu, S.R. Kumar et al.
Adipogenesis and epicardial adipose tissue: a novel fate of the epicardium induced by mesenchymal transformation and PPARgamma activation. *Proc Natl Acad Sci U S A*, 112 (2015), pp. 2070-5.
- [13] J.N. Blom, and Q. Feng
Cardiac repair by epicardial EMT: Current targets and a potential role for the primary cilium. *Pharmacol Ther*, 186 (2018), pp. 114-129.
- [14] A.M. Smits, E. Dronkers, and M.J. Goumans
The epicardium as a source of multipotent adult cardiac progenitor cells: Their origin, role and fate. *Pharmacol Res*, 127 (2018), pp. 129-140.
- [15] A.C. Liu, V.R. Joag, and A.I. Gotlieb
The emerging role of valve interstitial cell phenotypes in regulating heart valve pathobiology. *Am J Pathol*, 171 (2007), pp. 1407-18.
- [16] D. MacGrogan, G. Luxan, A. Driessen-Mol, C. Bouten, F. Baaijens, and J.L. de la Pompa
How to make a heart valve: from embryonic development to bioengineering of living valve substitutes. *Cold Spring Harb Perspect Med*, 4 (2014), p. a013912.
- [17] H. Lie-Venema, N.M.S. van den Akker, N.A.M. Bax, E.M. Winter, S. Maas, T. Kekarainen *et al.*
Origin, fate, and function of epicardium-derived cells (EPDCs) in normal and abnormal cardiac development. *The scientific world journal* 7 (2007), pp. 1777-1798.
- [18] D.P. Kolditz, M.C.E.F. Wijffels, A. Van der Laarse, R.R. Markwald, A.C. Gittenberger-De Groot, and M.J. Schalij
Epicardium-Derived-Cells in annulus fibrosis development and persistence of accessory atrioventricular pathways. *Eur Heart J*, 28 (2007), pp. 103-103.
- [19] A.C. Gittenberger-de Groot, E.M. Winter, and R.E. Poelmann
Epicardium-derived cells (EPDCs) in development, cardiac disease and repair of ischemia. *J Cell Mol Med*, 14 (2010), pp. 1056-60.
- [20] E.M. Winter, R.W. Grauss, B. Hogers, J. van Tuyn, R. van der Geest, H. Lie-Venema *et al.*
Preservation of left ventricular function and attenuation of remodeling after transplantation of human epicardium-derived cells into the infarcted mouse heart. *Circulation*, 116 (2007), pp. 917-27.
- [21] D. Fan, A. Takawale, J. Lee, and Z. Kassiri
Cardiac fibroblasts, fibrosis and extracellular matrix remodeling in heart disease. *Fibrogenesis Tissue Repair*, 5 (2012), p. 15.
- [22] J. Xu, S.C. Lin, J. Chen, Y. Miao, G.E. Taffet, M.L. Entman *et al.*
CCR2 mediates the uptake of bone marrow-derived fibroblast precursors in angiotensin II-induced cardiac fibrosis. *Am J Physiol Heart Circ Physiol*, 301 (2011), pp. H538-47.
- [23] M. Fang, F.L. Xiang, C.M. Braitsch, and K.E. Yutzey
Epicardium-derived fibroblasts in heart development and disease. *Journal of Molecular and Cellular Cardiology*, 91 (2016), pp. 23-27.
- [24] J. Salazar, E. Luzardo, J.C. Mejias, J. Rojas, A. Ferreira, J.R. Rivas-Rios *et al.*

- Epicardial Fat: Physiological, Pathological, and Therapeutic Implications. *Cardiol Res Pract*, 2016 (2016), pp. 1291537.
- [25] R. Qureshi, M. Kindo, M. Boulberdaa, J.J. von Hunolstein, M. Steenman, and C.G. Nebigil
A prokineticin-driven epigenetic switch regulates human epicardial cell stemness and fate. *Stem Cells*, (2018).
- [26] V.V. Gurevich, and E.V. Gurevich
GPCRs and Signal Transducers: Interaction Stoichiometry. *Trends Pharmacol Sci*, 39 (2018), pp. 672-684.
- [27] D. Devost, R. Sleno, D. Petrin, A. Zhang, Y. Shinjo, R. Okde, J. Aoki, A. Inoue, and T.E. Hebert, Conformational Profiling of the AT1 Angiotensin II Receptor Reflects Biased Agonism, G Protein Coupling, and Cellular Context. *J Biol Chem*, 292 (2017), pp. 5443-5456.
- [28] A.Y. Woo, Y. Song, R.P. Xiao, and W. Zhu, Biased beta2-adrenoceptor signalling in heart failure: pathophysiology and drug discovery. *Br J Pharmacol*, 172 (2015), pp. 5444-56.
- [29] C.G. Nebigil
Prokineticin receptors in cardiovascular function: foe or friend? *Trends Cardiovasc Med*, 19 (2009), pp. 55-60.
- [30] H. Arora, M. Boulberdaa, R. Qureshi, V. Bitirim, A. Gasser, N. Messaddeq *et al.* Prokineticin receptor-1 signaling promotes Epicardial to Mesenchymal Transition during heart development. *Sci Rep*, 6 (2016), p. 25541.
- [31] K. Urayama, C. Guilini, G. Turkeri, S. Takir, H. Kurose, N. Messaddeq *et al.* Prokineticin receptor-1 induces neovascularization and epicardial-derived progenitor cell differentiation. *Arterioscler Thromb Vasc Biol*, 28 (2008), pp. 841-9.
- [32] T. Chen, Y. You, H. Jiang, and Z.Z. Wang, Epithelial-mesenchymal transition (EMT): A biological process in the development, stem cell differentiation, and tumorigenesis. *J Cell Physiol*, 232 (2017), pp. 3261-3272.
- [33] R. Qureshi, M. Kindo, H. Arora, M. Boulberdaa, M. Steenman, and C.G. Nebigil, Prokineticin receptor-1-dependent paracrine and autocrine pathways control cardiac tcf21+ fibroblast progenitor cell transformation into adipocytes and vascular cells. *Sci Rep*, 7 (2017), p. 12804.
- [34] C.A. Tamminga, C.B. Nemeroff, R.D. Blakely, L. Brady, C.S. Carter, K.L. Davis, R *et al.*
Developing novel treatments for mood disorders: accelerating discovery. *Biological psychiatry*, 52 (2002), pp. 589-609.
- [35] Y. Kihara, M. Maceyka, S. Spiegel, and J. Chun, Lysophospholipid receptor nomenclature review: IUPHAR Review 8. *Br J Pharmacol*, 171 (2014), pp. 3575-94.
- [36] Y.H. Liu, X.P. Yang, D. Mehta, M. Bulagannawar, G.M. Scicli, and O.A. Carretero, Role of kinins in chronic heart failure and in the therapeutic effect of ACE inhibitors in kininogen-deficient rats. *Am J Physiol Heart Circ Physiol*, 278 (2000), pp. H507-14.
- [37] Y. Kono, T. Nishiuma, Y. Nishimura, Y. Kotani, T. Okada, S. Nakamura *et al.* Sphingosine kinase 1 regulates differentiation of human and mouse lung fibroblasts mediated by TGF-beta1. *Am J Respir Cell Mol Biol*, 37 (2007), pp.395-404.

- [38] C.G. Nebigil, N. Etienne, B. Schaerlinger, P. Hickel, J.M. Launay, and L. Maroteaux Developmentally regulated serotonin 5-HT_{2B} receptors. *Int J Dev Neurosci.* 19 (2001), pp. 365-72.
- [39] C.G. Nebigil, and L. Maroteaux, A novel role for serotonin in heart. *Trends Cardiovasc Med*, 11 (2001), pp. 329-35.
- [40] C.G. Nebigil, N. Etienne, N. Messaddeq, and L. Maroteaux Serotonin is a novel survival factor of cardiomyocytes: mitochondria as a target of 5-HT_{2B} receptor signaling. *FASEB J*, 17 (2003), 1373-5.
- [41] C.G. Nebigil, D.S. Choi, A. Dierich, P. Hickel, M. Le Meur, N. Messaddeq *et al.* Serotonin 2B receptor is required for heart development. *Proc Natl Acad Sci U S A*, 97 (2000), pp. 9508-13.
- [42] C.G. Nebigil, and L. Maroteaux Functional consequence of serotonin/5-HT_{2B} receptor signaling in heart: role of mitochondria in transition between hypertrophy and heart failure? *Circulation*, 108 (2003), pp. 902-8.
- [43] C.W. Noorlander, F.F. Ververs, P.G. Nikkels, C.J. van Echteld, G.H. Visser, and M.P. Smidt Modulation of serotonin transporter function during fetal development causes dilated heart cardiomyopathy and lifelong behavioral abnormalities. *PLoS One*, 3 (2008), p. e2782.
- [44] J.Z. Cuzzell Paroxetine may increase risk for congenital malformations. *Dermatol Nurs*, 18 (2006), p. 68.
- [45] K. Tatemoto, K. Takayama, M.X. Zou, I. Kumaki, W. Zhang, K. Kumano *et al.* The novel peptide apelin lowers blood pressure via a nitric oxide-dependent mechanism. *Regul Peptides*, 99 (2001), pp. 87-92.
- [46] M.F. Berry, T.J. Pirolli, V. Jayasankar, J. Burdick, K.J. Morine, T.J. Gardner *et al.* Apelin has in vivo inotropic effects on normal and failing hearts. *Circulation*, 110 (2004), pp. li187-li193.
- [47] M. Inui, and M. Asashima Xenopus apelin and msr are required for cardiovascular development. *Mech Develop*, 122 (2005), pp; S62-S62.
- [48] X.X.I. Zeng, T.P. Wilm, D.S. Sepich, and L. Solnica-Krezel Apelin and its receptor control heart field formation during zebrafish gastrulation. *Dev Cell*, 12 (2007), pp. 391-402.
- [49] S.C. Chng, L.N. Ho, J. Tian, and B. Reversade ELABELA: A Hormone Essential for Heart Development Signals via the Apelin Receptor. *Dev Cell*, 27 (2013), pp. 672-680.
- [50] K.D. Min, M. Asakura, Y.L. Liao, K. Nakamaru, H. Okazaki, T. Takahashi *et al.* Identification of genes related to heart failure using global gene expression profiling of human failing myocardium. *Biochem Bioph Res Co*, 393 (2010), pp. 55-60.

Fig 1. EMT activating signals and gene expression define epithelial and mesenchymal phenotypes.

Fig 2. EMT-mediated events during heart development. Endocardial-EMT leads to development of endocardial cushion and valves. Several epicardial-EMT and MET is involved in coronary arteriogenesis and primary cardiomyocyte proliferation (trabeculation).

Fig 3. EMT and MET-mediated biological events in adult hearts. Epicardium undergoes EMT to form mesoepithelial EPDCs that can be differentiated into adipocytes or myofibroblasts, thereby inducing arrhythmia and scars. EPDCs can undergo MET leading to the formation of epithelial progenitor cells and vascular and epithelial/endothelial precursors that can further differentiate into vasculogenic cells, thereby contributing to regeneration of heart.

Fig 4. GPCRs in heart development and diseases. β 1-adrenergic receptor via G α s activates adenylate cyclase (AC), however β 2-adrenergic (β 2-AR) and Spingosine-1 phosphate (S1P₁R) receptors couple to G α i, and inhibit AC. Angiotensin receptor (ATR1) serotonin (5-HT₂B) and prokineticin (PKR1) receptors uses G α q/11 to activate phosphor lipase C (PLC) and phospho inositol 3 kinase (PI3K). These receptors are involved in heart development, regulation of contractility, survival and hypertrophic pathways.

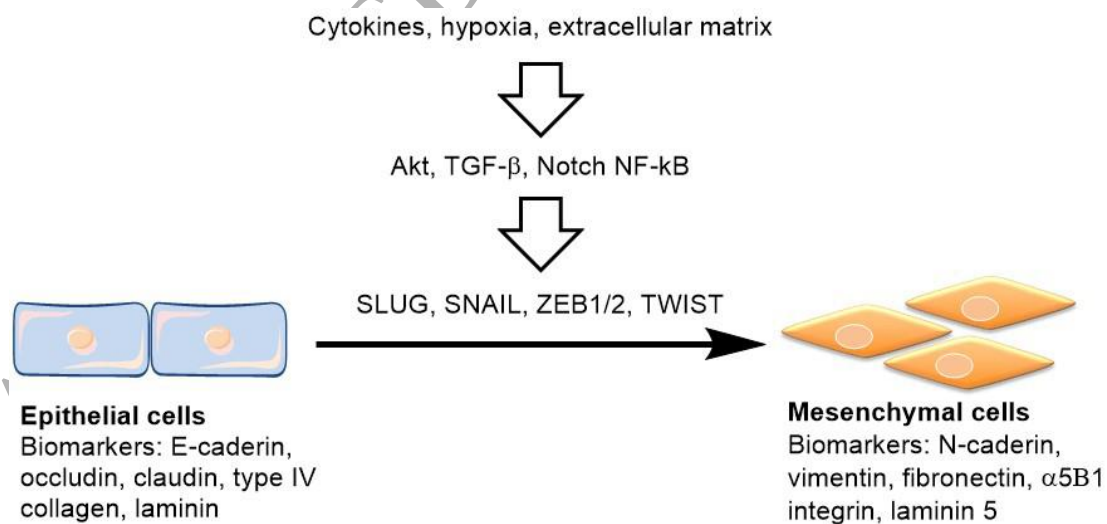


Fig 1. EMT activating signals and gene expression define epithelial and mesenchymal phenotypes.

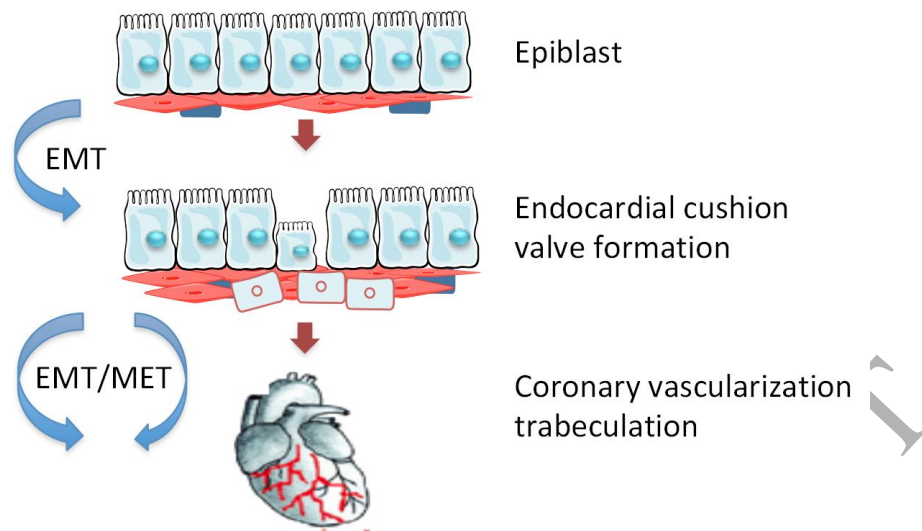


Fig 2. EMT-mediated events during heart development. Endocardial-EMT leads to development of endocardial cushion and valves. Several epicardial-EMT and MET is involved in coronary arteriogenesis and primary cardiomyocyte proliferation (trabeculation).

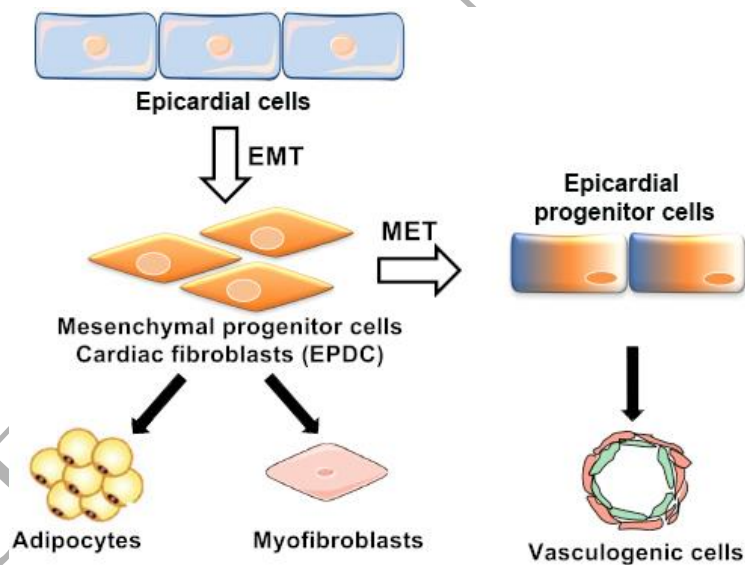


Fig 3. EMT and MET-mediated biological events in adult hearts. Epicardium undergoes EMT to form mesoepithelial EPDCs that can be differentiated into adipocytes or myofibroblasts, thereby inducing arrhythmia and scars. EPDCs can undergo MET leading to the formation of epithelial progenitor cells and vascular and epithelial/endothelial precursors that can further differentiate into vasculogenic cells, thereby contributing to regeneration of heart.

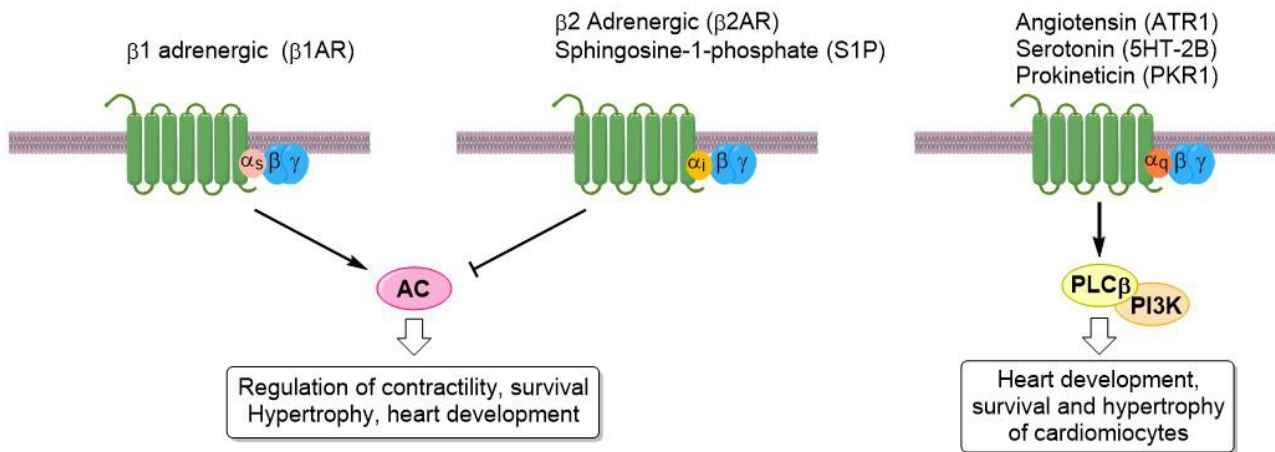


Fig 4. GPCRs in heart development and diseases. β 1-adrenergic receptor via $G_{\alpha s}$ activates adenylate cyclase (AC), however β 2-adrenergic (β 2-AR) and Spingosine-1 phosphate ($S1P_1R$) receptors couple to $G_{\alpha i}$, and inhibit AC. Angiotensin receptor (ATR1) serotonin (5-HT2B) and prokineticin (PKR1) receptors uses $G_{\alpha q/11}$ to activate phosphor lipase C (PLC) and phospho inositol 3 kinase (PI3K). These receptors are involved in heart development, regulation of contractility, survival and hypertrophic pathways.