



HAL
open science

Numerical response of predators to large variations of grassland vole abundance and long-term community changes

Patrick Giraudoux, Aurélien Levret, Eve Afonso, Michael Coeurdassier,
Geoffroy Couval

► **To cite this version:**

Patrick Giraudoux, Aurélien Levret, Eve Afonso, Michael Coeurdassier, Geoffroy Couval. Numerical response of predators to large variations of grassland vole abundance and long-term community changes. *Ecology and Evolution*, 2020, 10 (24), pp.14221-14246. 10.1002/ece3.7020 . hal-03011763

HAL Id: hal-03011763

<https://hal.science/hal-03011763v1>



Submitted on 16 Oct 2024

HAL is a multi-disciplinary open access archive for the deposit and dissemination of scientific research documents, whether they are published or not. The documents may come from teaching and research institutions in France or abroad, or from public or private research centers.

L'archive ouverte pluridisciplinaire **HAL**, est destinée au dépôt et à la diffusion de documents scientifiques de niveau recherche, publiés ou non, émanant des établissements d'enseignement et de recherche français ou étrangers, des laboratoires publics ou privés.

ORIGINAL RESEARCH

Numerical response of predators to large variations of grassland vole abundance and long-term community changes

Patrick Giraudoux¹  | Aurélien Levret² | Eve Afonso¹  | Michael Coeurdassier¹  | Geoffroy Couval^{1,2}

¹Chrono-Environnement, Université de Bourgogne Franche-Comté/CNRS usc INRA, Besançon Cedex, France

²FREDON Bourgogne Franche-Comté, Ecole-Valentin, France

Correspondence

Patrick Giraudoux, Chrono-environnement, Université de Bourgogne Franche-Comté/CNRS usc INRA, 25030, Besançon Cedex, France.

Email: patrick.giraudoux@univ-fcomte.fr

Funding information

Ministry of Agriculture; Région de Franche-Comté

Abstract

Voles can reach high densities with multiannual population fluctuations of large amplitude, and they are at the base of predator communities in Northern Eurasia and Northern America. This status places them at the heart of management conflicts wherein crop protection and health concerns are often raised against conservation issues. Here, a 20-year survey describes the effects of large variations in grassland vole populations on the densities and the daily theoretical food intakes (TFI) of vole predators based on roadside counts. Our results show how the predator community responded to prey variations of large amplitude and how it reorganized with the increase in a dominant predator, here the red fox, which likely negatively impacted hare, European wildcat, and domestic cat populations. This population increase did not lead to an increase in the average number of predators present in the study area, suggesting compensations among resident species due to intraguild predation or competition. Large variations in vole predator number could be clearly attributed to the temporary increase in the populations of mobile birds of prey in response to grassland vole outbreaks. Our study provides empirical support for more timely and better focused actions in wildlife management and vole population control, and it supports an evidence-based and constructive dialogue about management targets and options between all stakeholders of such socio-ecosystems.

1 | INTRODUCTION

The relationship between people and rodents is an old one. Early accounts clearly show that rodents were a destructive agent for crops and a source of disease for many ancient and current societies (Huitu et al., 2009; Krebs, 2013; Villette, 2018). Voles can reach high densities with multiannual population fluctuations of large amplitude, and they are often considered as pests in temperate farmland (Giraudoux et al., 1997; Jacob et al., 2020). However persecuted for this reason (Delibes-Mateos et al., 2011; Jacob et al., 2020), their effects on biodiversity are crucial. They are

at the base of food webs maintaining communities of predators in Northern Eurasia and Northern America, as well as modifying nutrient cycling, soil aeration, micro-organism, and plant assemblages (Giraudoux et al., 2019; Nicod et al., 2020). This status places them at the heart of management conflicts where crop protection and health concerns are often raised against conservation issues (Delibes-Mateos et al., 2011). Moreover, poisoning when using chemicals for rodent pest control can depress populations of predators that are able to contribute to the regulation of rodent populations (Coeurdassier et al., 2014; Jacquot et al., 2013). A better understanding of the links between grassland vole population

This is an open access article under the terms of the Creative Commons Attribution License, which permits use, distribution and reproduction in any medium, provided the original work is properly cited.

© 2020 The Authors. *Ecology and Evolution* published by John Wiley & Sons Ltd.

variations and predator responses will allow more timely and better focused management actions for all stakeholders in multifunctional socio-ecosystems.

Predation has been suggested to be one of the main drivers of rodent population fluctuations. Theory predicts that specialist predators that feed on one or a few kinds of prey can destabilize prey populations because they exert delayed and direct density-dependent mortality on their prey populations, while generalist predators, which feed on a wide variety of prey species, have direct density-dependent mortality and therefore stabilize prey populations (Andersson & Erlinge, 1977). However, experimental tests on this prediction (e.g., predator removal) and observational field studies have provided evidence and indications both supporting and rejecting this hypothesis. The approach principles (experimental versus observational) and the space scale at which they were carried out have led to much controversy still going on (Krebs, 2013). However, studies in the Arctic and Fennoscandia on small mammal population cycles have accumulated support for the predation hypothesis (Hanski et al., 2002). For instance, in Northwest Territories, Canada, predation was manipulated using exclosures, and this study demonstrated that predation depresses peak and minimum densities of the collared lemming, *Dicrostonyx groenlandicus*, and further shapes the population cycle by extending the duration of the decline (Wilson et al., 1999). In the tundra of Greenland, observational studies indicate that the numerical response of the stoat (*Mustela erminea*) might drive the population dynamics of the collared lemming by a 1-year delay. These dynamics are concurrently stabilized by strongly density-dependent predation of three generalist predators, the arctic fox (*Vulpes lagopus*), the snowy owl (*Bubo scandiacus*), and the long-tailed skua (*Stercorarius longicaudus*) (Gilg et al., 2003, 2006). In boreal areas, experimental studies based on predator removal have demonstrated that only the reduction of all main predators was sufficient to prevent the summer decline of the field vole, *Microtus agrestis*, the sibling vole, *M. rossiaemeridionalis*, and the bank vole, *Myodes glareolus* (Korpimäki & Norrdahl, 1998). This also increased the autumn density of voles fourfold in the low phase, accelerated the increase twofold, increased the autumn density of voles twofold in the peak phase, and retarded the initiation of decline of the vole cycle (Korpimäki et al., 2002).

Population dynamic patterns of the common vole (*Microtus arvalis*) in intensive agricultural landscapes of southwest France are largely consistent with five of six patterns that characterize rodent cycles in Fennoscandia and can be explained by the predation hypothesis (Lambin et al., 2006). Hence, it is likely that predation, in combination with other factors, plays a role in regulating small mammal population dynamics also in temperate ecosystems like in boreal and the arctic. However, in such ecosystems the multiplicity of prey resources and the large number of predator species combined with landscape diversity (e.g., the spatial arrangements of optimal and suboptimal habitats for prey and predators) (Lidicker, 1995; Lidicker, 2000) make the disentangling of the detailed processes and the role of each species and factors involved a challenge (Krebs, 2013). For instance, based on a 20-year survey of the effects

of an epidemic of sarcoptic mange that decreased fox populations in Scandinavia, Lindström et al. (1994) revealed that red fox (*Vulpes vulpes*) predation was a crucial factor in conveying the 3- to 4-year fluctuations of voles (both bank and field voles (*Myodes glareolus* and *Microtus agrestis*)) to small game, for example, periodically limiting the populations of hare (*Lepus europeus*), tetraonids (*Tetrao urogallus*, *Tetrao tetrax*, *Bonasia bonasia*), and rowdeer fawns (*Capreolus capreolus*). The importance of such prey switchings on prey population dynamics has also been reported for a long period in Newfoundland, where lynx (*Lynx lynx*), prey on snowshoe hares (*Lepus americanus*), until the hare population crashes. Then, lynx switch to caribou calves (*Rangifer tarandus*), and the cycle continues (Bergerud, 1983). As a whole, those multiple and complex interactions can hardly be investigated in depth by simple modeling (Baudrot et al., 2016) or by small-scale experiments that cannot technically take into account all the relevant space-time scales and species communities involved in the real world and, thus, be generalized.

However, stakeholders in such systems are often protagonists of endless debates about regulation adoption and management decisions, which each of them advocating the control of one among many possible population targets and subsequent options for management. This debating is the case in the Jura mountains where massive outbreaks of a grassland vole species, the montane water vole, *Arvicola amphibius* (formerly *A. terrestris* (Chevret et al., 2020)), occur with 5- to 6-year cycles and population densities exceeding 500–1,000 ind.ha⁻¹. High-density peaks propagate over grasslands under the form of a traveling wave (Berthier et al., 2014; Giraudoux, 1997). In the same area, outbreaks of the common vole (>1,000 ind.ha⁻¹), another grassland vole, also occur; however, they are noncyclic in this area (Giraudoux et al., 2019). Previous studies have shown that the population dynamics of the two species are shaped by landscape features, with hedgerow networks and wood patches dampening the population dynamics and by contrast open grassland landscapes amplifying the outbreaks (Delattre et al., 1996; Duhamel et al., 2000; Foltête et al., 2016; Foltête & Giraudoux, 2012; Giraudoux et al., 1997; Morilhat et al., 2008). Those outbreaks provide regularly massive quantities (up to >80 kg.ha⁻¹) of prey for many species of carnivorous mammals and birds in grassland and by contrast low densities of secondary prey resources that are less accessible (vegetation and/or antipredation behavior) such as forest, marsh and fallow small mammals (maximum about 3 kg.ha⁻¹) (e.g., bank vole, wood mice, *Apodemus* sp., field vole, etc.), with periodic (5–6 years) concomitant low densities in every habitats.

The variation in this predator community structure over the time span of large fluctuations of prey abundance has not been documented yet in this system, limiting both comparisons with ecosystems described in other part of the world where small mammal outbreaks occur (Jacob et al., 2020) or with more simple food webs of northern ecosystems. Moreover, a large-scale inadvertent experiment was offered by chemical control of vole populations in the 1990s, leading to a dramatic decrease in the fox population due to secondary poisoning, and its gradual recovery the following years after a shift in vole control practices (Jacquot et al., 2013).

The aim of this 20-year study is to describe the effects of large variations of grassland vole populations on their predator communities and of the long-term increase in the fox population in such system. The aims were to (a) describe how a predator community responds to prey variations of large amplitude, (b) describe how this community reorganizes over the long term with increases in a dominant predator, here the red fox, (c) attempt to quantify the prey consumption of this predator community.

2 | MATERIAL AND METHODS

2.1 | Study area

The study was carried out around the Pissenavache hamlet (46.95°N, 6.29°E) in Franche-Comté, France, in an area of 3,425 ha (2,646 ha of farmland, 1,094 ha of forest, 167 ha of buildings), at an average altitude of 850–900 m above sea level (Figures 1 and 2). There, 100% of the farmland was permanent grassland used for pasture and (high grass) meadow for cattle feeding in winter (minimum of 5 months, November–March), with a productivity ranging from 5 to 6.5 tons of dry matter.ha⁻¹.year⁻¹ under the specifications of the European

Protected Geographical Indication of the locally produced Comté cheese. A KML file with the bounding box of the study area is provided with the data.

2.2 | Roadside counts

Predator and hare (*Lepus europeus*) populations have been monitored from June 1999 to September 2018 (20 years) using night and day roadside counts. Each sampling event consisted of driving a car with 4 people (the driver, a data recorder, and two observers) along a fixed track at less than 20 km/h. The length of the track was 18.6 km from 1999 to 2009 and then 19.6 km due to a slight variation in the itinerary (trail blocked by mud, see Figure 1). Observations were performed using 100-W spotlights at night and binoculars for species identification. Distinction between domestic cats (*Felis silvestris catus*) and European wildcats (*Felis silvestris silvestris*) was made visually considering phenotypic criteria (relative to pelage and morphology) without possible distinction of hybrid individuals. Double counting was unlikely because the trail was straight, visibility large (Figure 2), and observers were careful about animal movements. Sampling was carried out on 3 successive nights after sunset (4 when meteorological

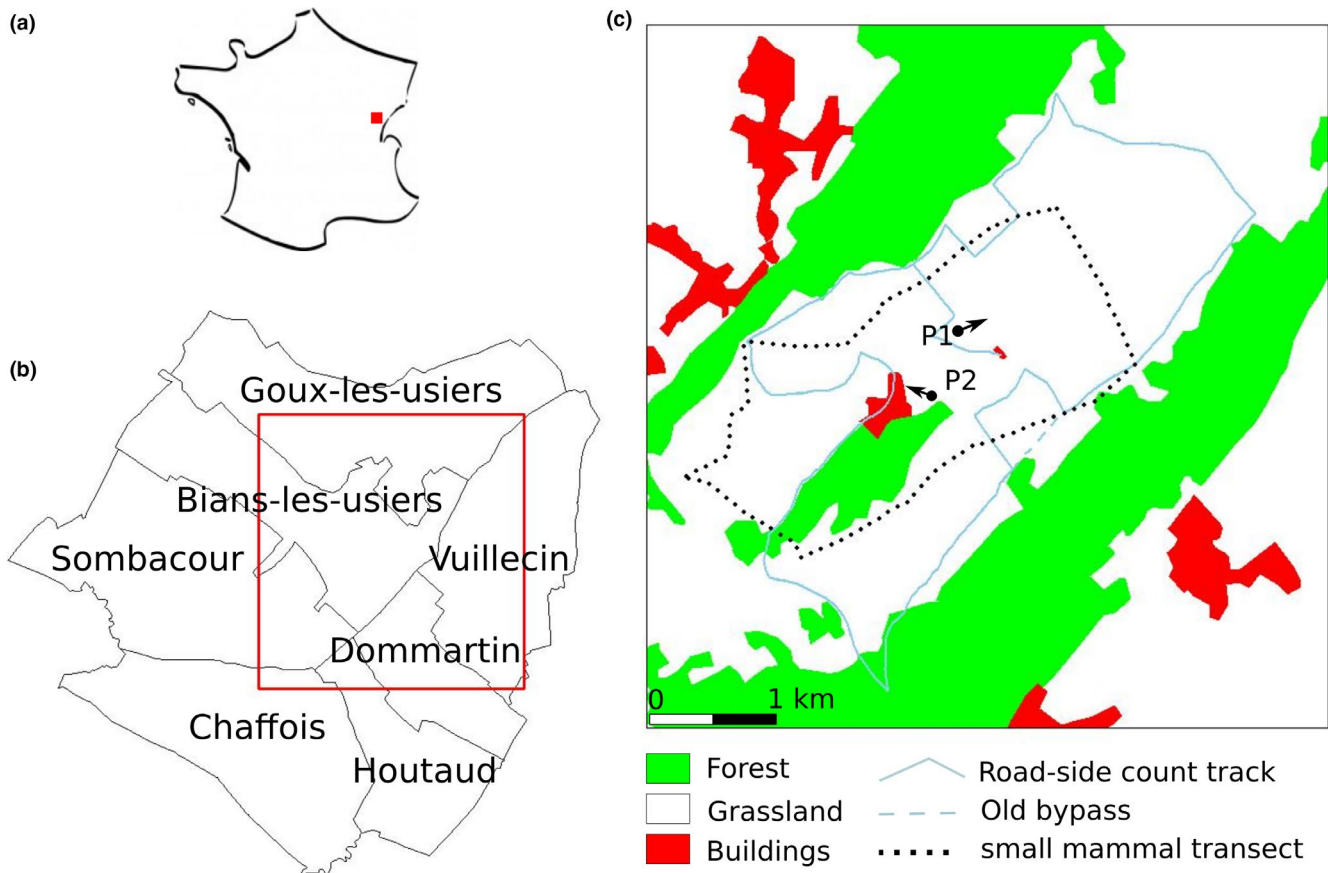


FIGURE 1 Location of the study area. (a) general location in France; (b) study area (red square) and communes it includes; (c) land cover, the roadside count track and the small mammal transect; P1 and P2 indicate the directions of Figure 2 photos. Until 2009, a roadside count segment was driven straight along the dotted line, but in 2010 mud prevented the use of this bypass and slightly changed the itinerary (n-shaped solid line around the dotted line). Commune boundaries were derived from OpenStreetMap and land use from 'BD Carto' provided freely for research by the Institut Géographique National, modified based on field observations



FIGURE 2 General views of the study area. Top, from the roadside count road at P1 (see Figure 1); bottom, from P2 with the Pissenavache hamlet, a segment of the roadside count road can be seen in the background (photos PG, 20/02/2020)

conditions prevented sampling) called a 'session'. The same track was also driven by daylight on another day in the early morning. Most often 3–4 sessions a year were carried out corresponding to seasons, but only 1 session in autumn since 2016. Day roadside counts were stopped in 2017. Each observation was recorded on a paper map (IGN 1/25000). A Kilometric Abundance Index (KAI) was calculated for each session as the maximum number of animals recorded per km (thus providing a lower limit for the number of animals present). For the 2001–2006 period, only the total counts without the localizations of observations were available. Thus, only the 1999–2000 and 2007–2018 observations could be georeferenced.

2.3 | Daily food intake

Theoretical daily food intakes (TFI) per predator species were computed following Crocker *et al.*'s method (2002) with small mammals considered as prey. The average body mass of predators, when missing in (Crocker *et al.*, 2002), was estimated based on the *Encyclopédie des carnivores de France* (Artois *et al.*, 2001; Henri *et al.*, 1988; Le *et al.*, 1989; Stahl *et al.*, 1992), the Handbook of Birds of Europe, the Middle East and North Africa (Cramp, 1994), and the Encyclopedia of Life (<https://eol.org>).

2.4 | Small mammal relative densities

2.4.1 | Transects

Small mammal (*A. amphibius*, *M. arvalis*, and *Talpa europea*) relative abundance was assessed using a transect method adapted from

(Delattre *et al.*, 1990; Giraudoux *et al.*, 1995; Quéré *et al.*, 2000); a 5-m-wide transect across the study area was divided into 10-m-long intervals and the proportion of intervals positive for fresh indices (tumuli, molehill, runway, feces, cut grass in holes) was considered an index of abundance. The total transect length was 11.6 km (Figure 1). Sampling was carried out once a year in April 2007 and then in August from 2008 to 2010, followed by at least twice a year generally in spring and autumn from 2011 to 2018.

2.4.2 | *A. amphibius* communal scores

To obtain abundance assessments on a larger space-time scale, abundance was also assessed at the commune-scale by technicians of the FREDON of Bourgogne Franche-Comté (a technical organization for plant pest prevention and control contracted by the Ministry of Agriculture (Légifrance, 2014), in the 7 communes crossed by the roadside count itinerary (Figure 1). Assessments were made in autumn since 1989. The FREDON assessment uses a ranking system that ranges from 0 to 5: 0—no *A. amphibius* sign in any parcel within the commune; 1—low or no *A. amphibius* tumuli, voles and moles (*T. europea*) cohabiting the same tunnel systems; 2—*A. amphibius* tumuli present in some parcels within the commune and mole burrow systems still present in some parcels; 3—*A. amphibius* tumuli present in some parcels within the commune, few, or no mole burrow systems present in the commune; 4—*A. amphibius* colonies established in the majority of meadows and within pastures; 5—all of the commune colonized by *A. amphibius*. The FREDON index not directly translates to transect-based indices, partly because it is applied at the commune-scale and not the parcel scale, but Giraudoux

et al. (1995) found that levels 0–1 correspond to densities < 100 voles.ha⁻¹, level 2 to 100–200 voles.ha⁻¹, and levels 3–5 to >200 voles.ha⁻¹. For a given year, the median score of the 7 communes was taken as a score of abundance.

2.4.3 | Grassland prey resource relative abundance

The dynamics of prey resource abundance in grassland have been estimated (a) over the time span when transects were carried out, summing the relative abundance of *A. amphibius* and *M. arvalis* divided by four, divided by the maximum of this sum over the series and (b) before this time span, when no transect was present, by dividing the FREDON score by the highest score recorded during the study (Giraudoux et al., 1997). This process took into account that the *M. arvalis* body mass is four times smaller than *A. amphibius*'s on average (Quéré & Le Louarn, 2011) and helped to better visualize grassland rodent populations variation on the same scale and fill the gap when transect data were lacking. The amplitude of the high-density phase is biased to an unknown extent with this method (e.g., arbitrarily summing weighted relative abundances, chained with standardized FREDON scores), but not the time locations of the low-density phases. Thus, the alternation between high-density and low-density phases, which are always very large (ranging from 0 to 1,000 voles.ha⁻¹), was robustly and correctly represented over the time series as an abundance index, in the best possible way given the data, for further comparisons.

2.5 | Rodenticide use

In France, bromadiolone, an anticoagulant rodenticide, has been used to control water vole populations since the 1980s, with deleterious effects on nontarget wildlife including vole predators (Coourdassier et al., 2014). In the early 2000s, the development of an integrated pest management (IPM) approach (Giraudoux et al., 2017) led to a dramatic decrease in the quantity of bromadiolone applied by farmers and their nonintentional effects (Coourdassier et al., 2014; Jacquot et al., 2013). By law, the delivery of bromadiolone baits for vole control to farmers is under strict FREDON supervision and compulsory usage declaration to ensure traceability (Legifrance, 2014). Data on bromadiolone quantities used in the 7 communes of the study area were provided by the FREDON of Bourgogne Franche-Comté.

2.6 | Statistical analyses

Statistical and spatial analyses were performed in R (version 3.6.2) (R Core Team, 2019) with the packages Distance (Thomas et al., 2010), pgirmess (Giraudoux, 2017), rgdal (Bivand et al., 2019a), rgeos (Bivand et al., 2019b), using QGIS 3.10 (QGIS Development Team, 2019) complementarily. Differences were considered statistically significant for $p(H_0) \leq .05$.

Grassland small mammal abundance. The standard errors of small mammal relative abundances assessed from transects were computed across 1,000 bootstrap replicates (Efron & Tibshirani, 1994). The grassland prey resource index corresponding to each roadside count was linearly interpolated over time between the two bracketing abundance index estimates.

Response of predators to prey abundance. We used generalized linear models with a Poisson error distribution of the form: $n = a_0 + a_1 \ln(x_1) + a_2 x_2 + a_3 x_3 + a_4 x_4 + \epsilon$, with n , the number of observations of a given species, x_1 , the length of the itinerary, x_2 , the time, x_3 , the season, x_4 , the prey abundance index, a_i , the model coefficients, and ϵ , the residuals. The linear trend on time was not kept if not found statistically significant. Interactions between seasons and prey abundance had been preliminarily explored but were not statistically significant. To avoid overestimation of the degrees of freedom from time series data (here irregular and intrinsically autocorrelated), statistical inference was computed using permutation tests.

Predator and hare spatial distribution. The shortest distance of observations to the roadside count itinerary, to the nearest forest, and to the nearest building was computed (Bivand et al., 2019a, 2019b) and their distribution examined. To test whether the proximity of some habitats might explain the observed distributions and their variations, the mean distance to forest and buildings was compared to the mean distances obtained from 1,000 simulations of the same number of random positions as the number of observations in the strip observed along the itinerary.

Predator and hare population density estimates. To obtain density estimates, the distance to the itinerary data was analyzed using conventional distance sampling with a truncation distance (Buckland et al., 2001, 2015; Thomas et al., 2010) including 90% of the observations for each species at the minimum. As avoidance behavior along the road was detected for most species, we used hazard-rate detection functions fitted to the data. This function type has a more pronounced shoulder that compensates for the bias due to avoidance (Thomas et al., 2010). Models with a seasonal effect as a covariate were compared with concurrent models with no covariate using the Akaike index criterion (Burnham & Anderson, 2002).

3 | RESULTS

3.1 | Small mammal density and prey resource variation

Figure 3a shows the cyclic variations of *A. amphibius* from 1989 to 2018. Predators communities have been monitored during the last four cycles, but the local population dynamics of small mammals during the last three cycles only (Figure 3b). Overall, five low-density periods could be identified (1999, 2007, 2010–2011, 2014 and 2017) alternating with four populations peaks reaching thousands of voles.ha⁻¹ in our area (Figure 3c).

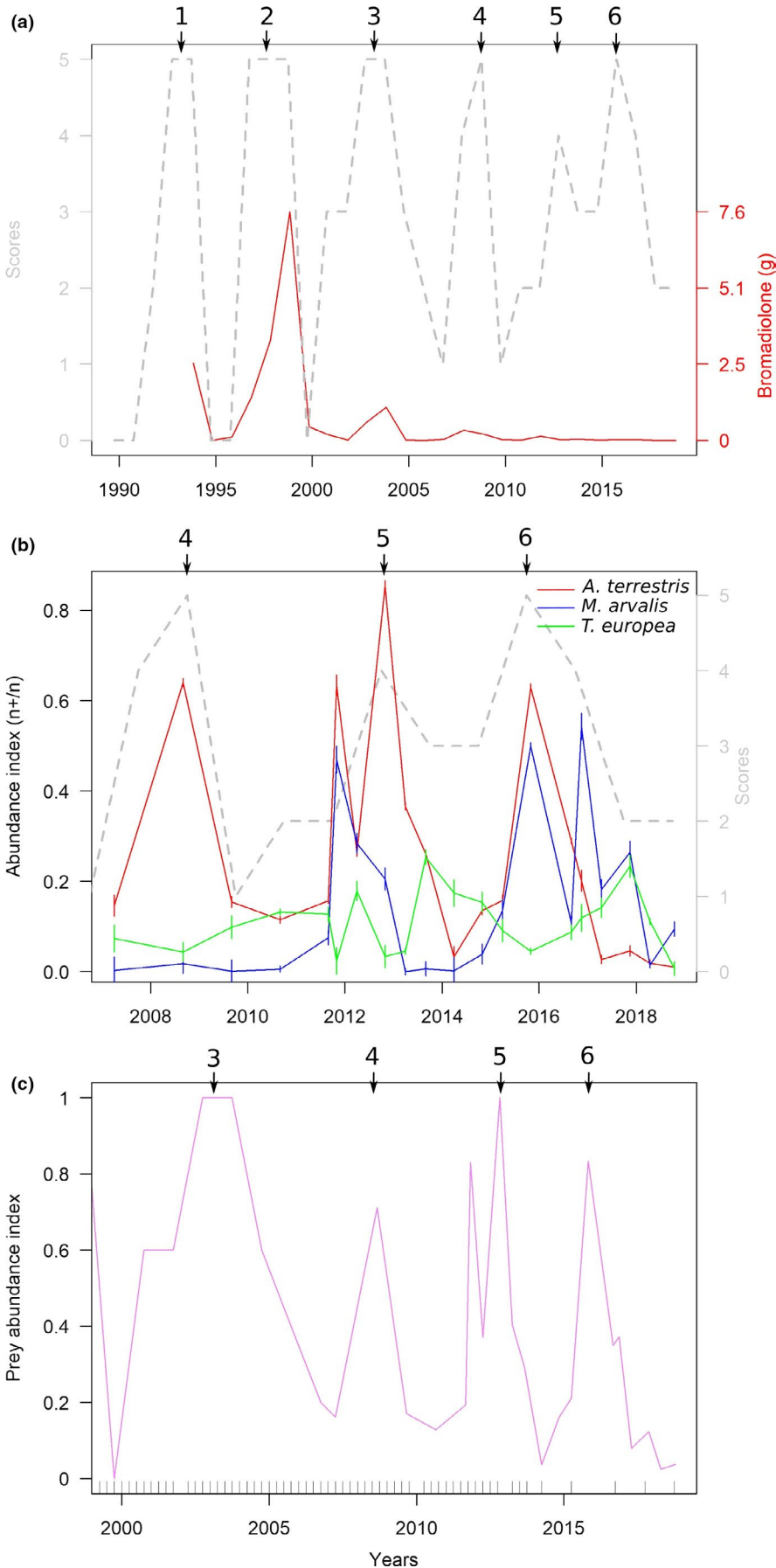


FIGURE 3 Small mammal population dynamics. Numbers with arrows indicate high-density peaks in the communes including the study area; a, dotted gray line, *A. amphibius* FREDON scores; red line and red scale, quantity of bromadiolone (g) applied for *A. amphibius* control in the communes of the study; (b) abundance index based on transects, vertical bars are 95% confidence intervals (gray scale and dotted line are related to the *A. amphibius* FREDON scores for comparison); (c) estimated variations of the grassland prey resource, the rug on the x-axis represents roadside count events

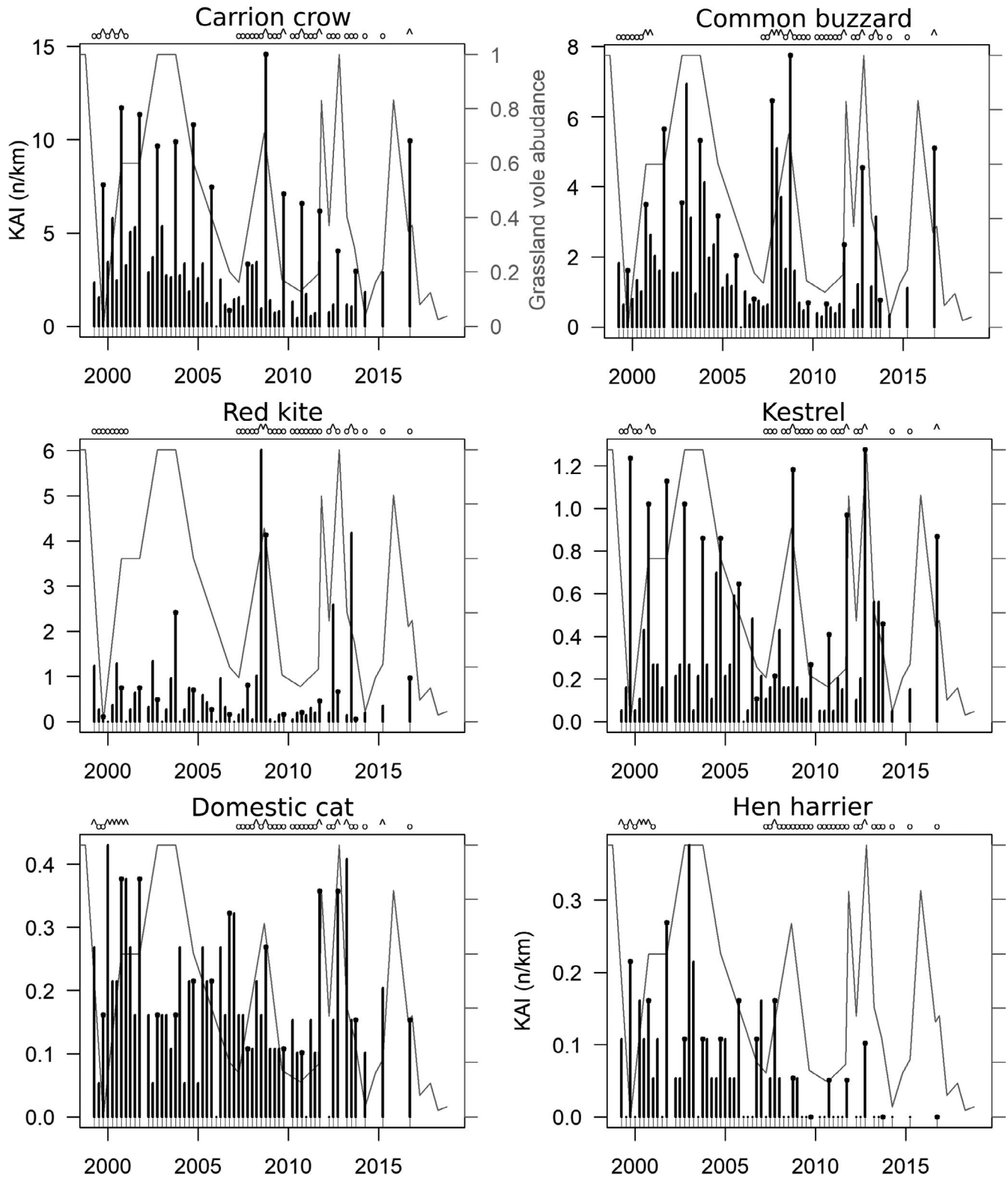


FIGURE 4 Day roadside counts. Black circles at the bar top identify autumn counts. The gray line in the background shows the variations of grassland prey abundance (the scale is the same in every plot). The letters above identify the sessions available and selected to estimate densities based on distance sampling during high (^) or low (o) abundance period

3.2 | Numerical responses to grassland prey variation, and hare relative abundance

3.2.1 | Time variations

Twenty-seven species for the day roadside counts and 24 for the night were observed, corresponding to 19,010 and 7,355 individual observations, respectively, and to 58 sessions for each count type (≈ 348 night or day counts in total). Among them, the following species were both observed frequently enough over time and considered of interest for this study: for day roadside counts, the carrion crow (*Corvus corone*), the common buzzard (*Buteo buteo*), the red kite (*Milvus milvus*), the kestrel (*Falco tinnunculus*), the domestic cat (*Felis silvestris catus*), the hen harrier (*Circus cyaneus*); for night roadside counts, the European hare (*Lepus europeus*), the red fox (*Vulpes vulpes*), the domestic cat (*Felis silvestris catus*), the European wildcat (*Felis silvestris silvestris*), the long-eared owl (*Asio otus*), the European badger (*Meles meles*). Some were occasional visitors and likely play a marginal role on vole prey (e.g., gray herons (*Ardea cinerea*) could regularly be observed preying on voles in grassland). Others, such as some mustelids (stoat (*Mustela erminea*), least weasel (*M. nivalis*), stone marten (*Martes foina*), pine marten (*M. martes*)), were elusive and hardly detected by roadside counts.

Figure 4 shows the dynamics of diurnal species. For each species, statistically significant KAI differences between seasons were found except the domestic cat (Table 1 and Figure 5).

For instance, common buzzard KAI was highly significantly correlated to grassland prey index, with KAI 2.2 times higher in autumn than that in spring. In spring, during the breeding season, KAI was 4.3 times larger in the peak phase than that in the low-density phase of grassland vole populations. Red kite's correlation p -value was equal to and kestrel's above but not far from the critical threshold generally accepted of $p(H_0) \leq .05$. This lack of significance for the kestrel held from one outlier, when prey estimates were derived

from the FREDON scores on a communal scale only. Dropping this observation from the data set would lead to reject H_0 at $p = .02$ and to conclude formally on a correlation between the number of observations of this species and grassland prey abundance.

Figure 6 shows the dynamics of nocturnal species. We did not detect statistically significant correlation between red fox, badger, and long-eared owl abundance and grassland prey index and seasons. Domestic cat did not correlate to grassland prey index but to seasons, with lower counts in winter. Hare and wildcat KAIs were significantly correlated to grassland prey index but seasonal variations could not be detected (Table 1 and Figure 7). Fox and hare KAIs were highly and negatively correlated to each other ($p < .001$). Furthermore, a model of hare abundance as response variable including grassland prey index and fox KAI as independent variables showed that controlling for grassland prey, hare abundance did not significantly correlate to fox KAI at a probability ≤ 0.05 (however with an observed p -value of .07).

Red fox and badger showed significantly higher abundance in average in the last half of the time series, and hare, wild and domestic cat, long-eared owl, and hen harrier significantly lower (one-tailed permutation tests on mean, $p < .001$) (Figures 4 and 6).

3.2.2 | Spatial variations

Observations were truncated at a distance of 300 m and 350 m from the track for night and day roadside counts, respectively, accounting for 92% and 93% of their total number. Among all species in the open grassland strip along the itinerary, only the common buzzard with regard to forest and buildings, and the red fox with regard to buildings were randomly distributed. Carrion crow, red kite, kestrel, and hare were observed at a greater distance to forest than expected from a random distribution; hen harrier, red fox, wildcat, long-eared owl, badger at a smaller distance; wildcat, long-eared owl, and badger at a

Count type	Species	Time	Season	Prey abundance	r^2
Day	Carrion crow	—	<0.001	0.12	.67
	Common buzzard	—	0.001	0.001	.55
	Red kite	—	0.02	0.05	.43
	Kestrel	—	<0.001	0.08 (0.02)	.62 (0.65)
	Domestic cat	—	0.15	0.58	—
	Hen harrier	0.03	0.005	0.12	.53
Night	Hare	<0.001	0.95	0.006	.66
	Red fox	0.04	0.79	0.43	—
	Domestic cat	—	<0.001	0.21	.53
	Wildcat	0.04	0.37	<0.001	.44
	Long-eared owl	—	0.18	0.98	—
	European badger	—	0.09	0.87	—

TABLE 1 Statistical significance ($p(H_0)$) of the model coefficients obtained by permutations, and model r -squared

Note: Numbers between parentheses are values when one outlier is dropped (see results). Model coefficients are provided in Table A1.

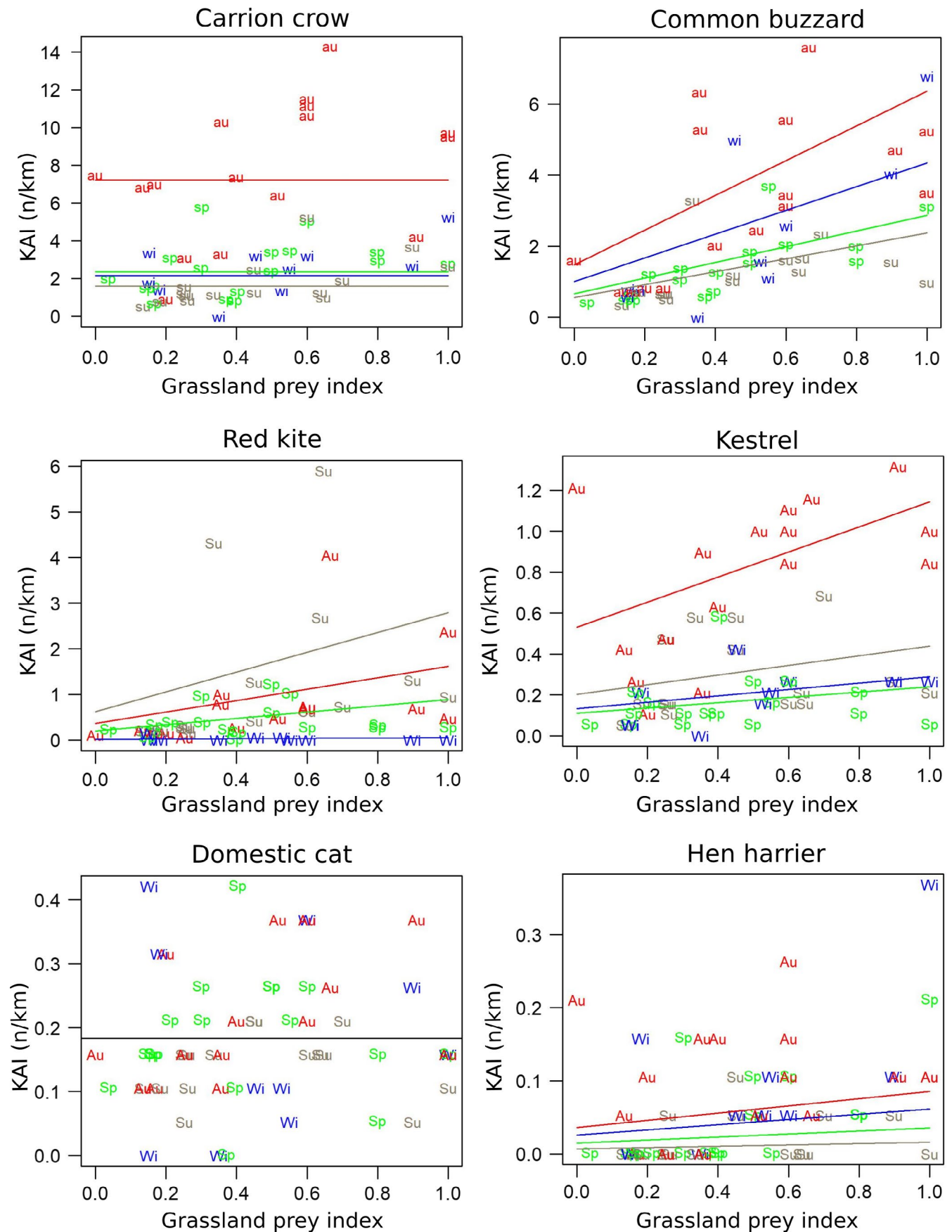


FIGURE 5 Biplots of diurnal KAI as a function of grassland prey index. sp (green), spring; su (dark wheat), summer; au (red), autumn; wi (blue), winter. Lines correspond to the prediction of the Poisson model for each season. When a linear trend over time was detected, model predictions were computed for the average time

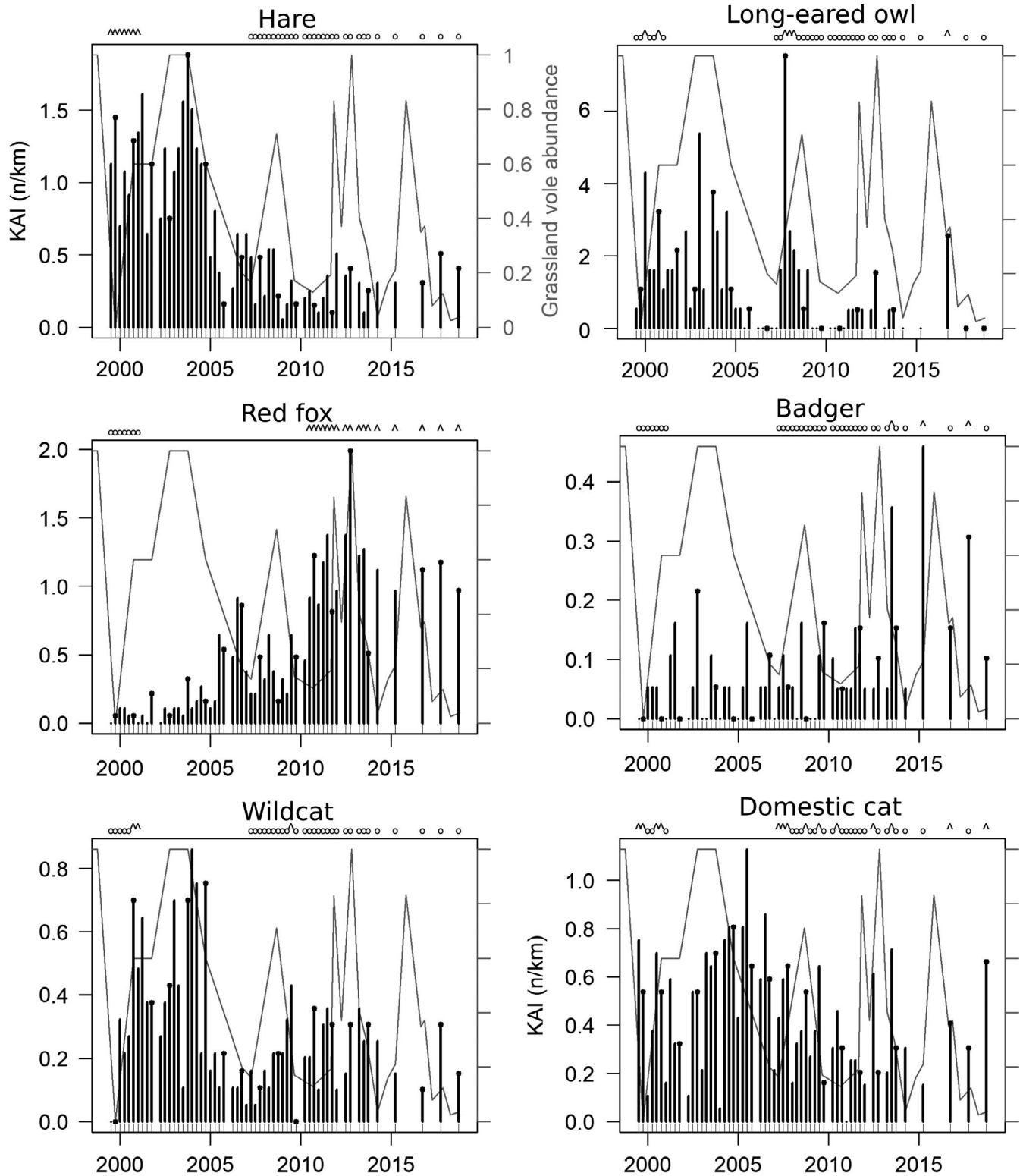
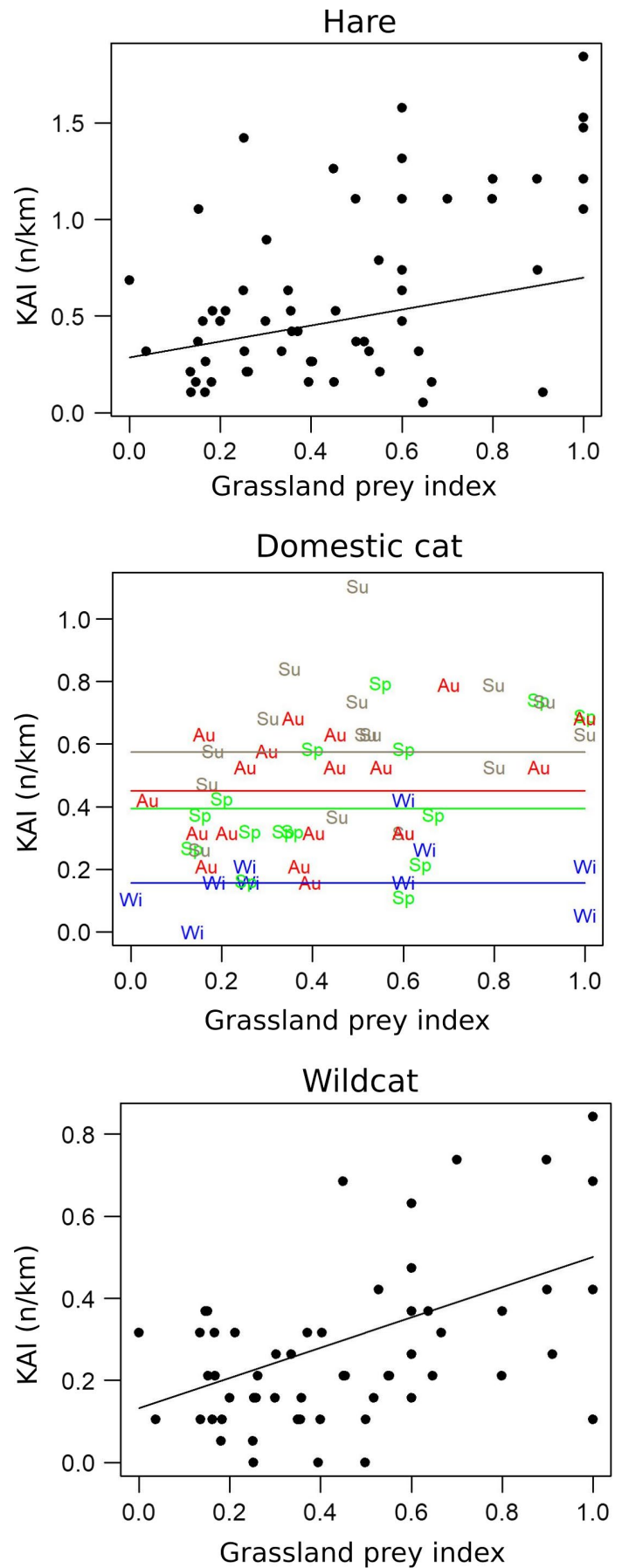


FIGURE 6 Night roadside counts. Black circles at the bar top identify autumn counts. The gray line in the background shows the variations of grassland prey abundance (the scale is the same in every plot). The letters above identify the sessions available and selected to estimate densities based on distance sampling during high (^) or low (o) abundance period

greater distance to buildings; carrion crow, red kite, kestrel, domestic cat, hen harrier at a smaller distance (see Table A2 for details). Seventy-five percent of the observations of domestic cat were made

at less than 500 m of buildings by night and at less than 250 m by day (Figure 8). No change in any of those patterns was observed between the first and the second half of the time series.

FIGURE 7 Biplots of nocturnal KAIs as a function of grassland prey index. sp (green) spring; su (dark wheat), summer; au (red), autumn; wi (blue), winter. Biplots in black have no seasonal effect. Lines correspond to the prediction of the Poisson model for each season. When a linear trend over time was detected, model predictions were computed for the average time



3.3 | Predator population density variations and daily food intake

Comparing detection models with 'season' as covariate with models with no covariates led us to reject the hypothesis of a seasonal effect on the detection function for every species (detection functions are presented in Figures A1 and A2). Based on the visual examination of KAI dynamics, for each species, we identified periods when the indices could be considered similarly high or similarly low with regard to the amplitude of variations and categorize them as subsamples of 'low' or 'high' densities (see Figures 4 and 6). Table 2 shows conversion coefficients from KAI to densities, presents the maximum density values observed, and summarizes the estimations obtained using distance sampling by density categories ('low' or 'high'). Considering the relative aggregation of the domestic cat close to buildings, we provide one density estimate for the entire study area, and another for a buffer of 300 m (night) or 250 m (day) around buildings.

Figure 9 shows the population density variations of the predator community during the study period for all species when both day and night roadside counts were available. Biomass and TFI variations are provided in Figures A3 and A4.

The main features of the dynamics retained the importance of the carrion crow (range from 4.4%–56.9% of the total TFI), the common buzzard (range from 4.7%–48.6% of the total TFI), and the red kite (0%–54.5% of the total TFI) over the entire time span, as well as the gradual increase in the red fox from 1999 to 2010 (Figure 9). With the numerical importance of the carrion crow apart, three key periods could be identified: (a) 1999–2004 with an extremely low red fox density not exceeding 0.2 ind.km^{-2} , where the community was numerically dominated by cats (domestic and wild) and common buzzards, (b) 2005–2009 with an increasing density of foxes, and (c) 2010–2016 with higher fox densities stabilized at an average of 2.7 ind.km^{-2} . Foxes represented only 5.5% of the predator biomass (2.8% of the total TFI) in 1999–2004 but reached 29.5% (31.4% of the TFI) in 2010–2016. Regardless of the period and relative densities of species, the average TFI in the three periods was close to 4 ($3.8\text{--}4.2 \text{ kg.km}^{-2}.\text{day}^{-1}$). The largest predator densities were reached during the high-density peaks of grassland vole populations, with a

maximum observed in autumn 2008, with 60 ind.km^{-2} (carrion crow making 48% of this total) and a daily TFI of $10.7 \text{ kg.km}^{-2}.\text{day}^{-1}$ (39.3% from carrion crow).

Table 3 summarizes the results at the grassland vole population peaks in the autumns 2003, 2008, and 2012, and in the low-density phases of autumn 1999, spring 2007, autumn 2010, and spring 2014. In autumn 1999, the first 4 species totaling 91% of the TFI were the carrion crow, common buzzard, domestic cat (night), and kestrel. The common buzzard was still among those first four species in the next low-density phase (spring 2007), but the proportion of TFI from birds of prey still decreased, and it was preceded by the fox, carrion crow, domestic cat, and wildcat in autumn 2010 and spring 2014, with these species together making up 86% and 84% of the TFI. However, in areas with a large proportion of domestic cats roaming less than 500 m from the buildings, far from villages where domestic cats are virtually absent, fox, carrion crow, and wildcat alone made up 86% of the TFI. During the first two high-density phases, the carrion crow, common buzzard, red kite, and domestic cat (night) made up 81% and 91% of the TFI, and in autumn 2012 during the third high-density phase, the fox, common buzzard, carrion crow and domestic cat (day) alone made up 81% of the TFI. Table 3 also shows that the TFI ranged from 1.5 to $2.7 \text{ kg.km}^{-2}.\text{day}^{-1}$ in the low-density phases and from 6.9 to $10.7 \text{ kg.km}^{-2}.\text{day}^{-1}$ in the high-density peaks. Thus, the TFI was multiplied by 7.1 at the maximum, while the grassland small mammal population biomass was multiplied by thousands.

4 | DISCUSSION

4.1 | Response to grassland vole population variations

Among the 11 species monitored, 4 (maybe 5, if the kestrel is included) showed a numerical response to the large variations of grassland prey observed over the 20 years of monitoring, namely, the common buzzard, red kite, wildcat, and hare, as well as possibly the kestrel. However, responses were modulated by population trends on a larger scale. This modulation was the case for the hen

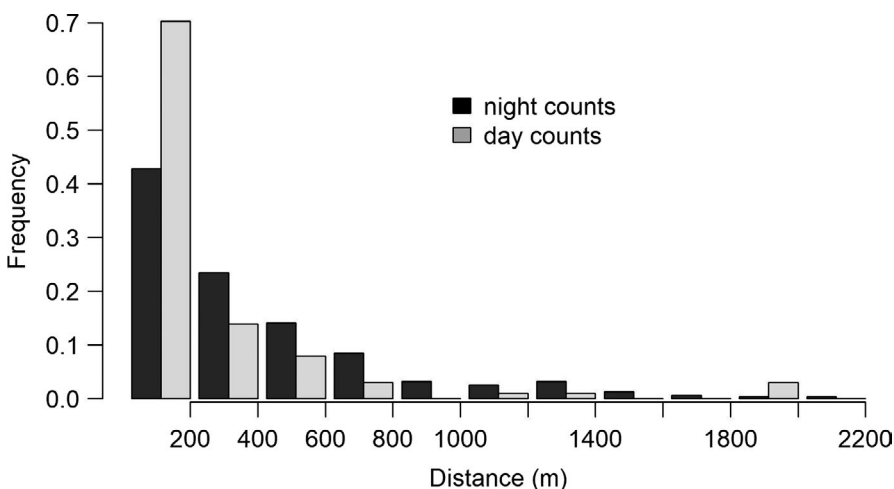


FIGURE 8 Distance to buildings of domestic cats for the night and day roadside counts ($n_{\text{obs}} = 320$ and $n_{\text{obs}} = 101$, respectively)

TABLE 2 Comparison of density estimates ($n \cdot \text{km}^{-2}$) derived from all species data and distance sampling

Count type	Species	Coef	Max (D)	Lower densities				Upper densities			
				n	D	CI 95%		n	D	CI 95%	
						Lower limit	Upper limit			Lower limit	Upper limit
Day	Carrion crow	2.0	28.2	27	3.3	2.6	4.2	8	16.4	12.0	22.5
	Common buzzard	2.1	15.7	25	1.6	1.3	2.0	10	8.5	6.0	12.0
	Red kite	2.1	9.2	31	0.6	0.4	0.9	4	7.4	5.4	10.1
	Kestrel	2.3	3.0	23	0.3	0.2	0.4	6	2.4	2.1	2.9
	Domestic cat	3.3	1.4	23	0.4	0.3	0.5	12	1.0	0.8	1.3
	Domestic cat*	—	18.8	—	3.4	2.5	4.5	—	9.1	6.8	12
	Hen harrier	1.9	0.3	28	0.03	0.01	0.1	7	0.2	0.1	0.3
Night	Hare	2.4	3.2	29	0.7	0.5	0.8	7	2.0	1.3	3.0
	Red fox	2.5	4.8	7	0.1	0.01	0.3	17	2.6	2.2	3.2
	Domestic cat	2.9	2.1	22	0.7	0.6	0.9	14	1.7	1.4	2.0
	Domestic cat**	—	7.4	—	2.4	1.9	3.1	—	5.9	4.9	7.0
	Wildcat	2.3	1.1	33	0.4	0.3	0.5	3	0.9	0.7	1.2
	Long-eared owl	2.5	1.9	30	0.1	0.07	0.2	6	0.8	0.4	1.7
	European badger	2.3	0.9	33	0.1	0.1	0.2	3	0.8	0.6	1.1

Note: Lower and upper densities correspond to estimations during low- or high-density period (see Figures 4 and 6).

Abbreviations: CI 95%, 95% confidence interval; coef., conversion coefficient from KAI ($n \cdot \text{km}^{-1}$) into density ($n \cdot \text{km}^{-2}$); max(D), maximum density observed; n, number of sessions; D, density estimate. Domestic cat densities in a 250 m (day)* or 500 m (night)** buffer around buildings (including 75% of domestic cat observations, see results).

harrier and long-eared owl, with populations decreasing over time in the study area reflecting the general decrease of those species in Franche-Comté and nearby Switzerland (LPO Franche-Comté (collectif), 2018). Those variations were also seasonal with generally larger populations in autumn, or in summer for the red kite, corresponding to dispersal and postbreeding migration. The numerical response of the hare, an herbivore, to the grassland vole density variations is more surprising (but see next section). A similar pattern has been observed nearby at a 30 km distance from the study area, from 1976 to 1995, for the capercaillie (*Tetrao urogallus*), in the Massif du Risoux, where the number of fledglings per hen was positively correlated to the cyclic abundance of *A. amphibius* populations (Leclercq et al., 1997). This response was interpreted as being the result of predation switches during the decline phase of the voles, with a supposed relaxation of the predation pressure on the capercaillie during the high-density peak, that is well documented, for example, in Scandinavian ecosystems (Angelstam et al., 1985; Lindström et al., 1994; Marcström et al., 1988).

The variations in the populations of other species were independent of the grassland vole populations over the study time span.

4.2 | Long-term changes in the predator community structure

A striking feature of the population dynamics observed was the increase in the fox population from the beginning of the study to

autumn 2010, independently of the vole population variations. This increase can be attributed to changes in grassland small mammal control practices by farmers who shifted from late-rodenticide-only to early-integrated control in the early 2000s (Giraudoux et al., 2017), dividing by more than forty-four the quantity of anticoagulant rodenticide used during the 2010–2018 cycles compared with 1996–2000 (Figure 3a). Massive use of anticoagulant rodenticide, here bromadiolone, is known for its deleterious side effects on vole predators (Coeurdassier et al., 2014), with a canid sensitivity that is more than 3 times higher than that of felids (Erickson & Urban, 2004). This effect has been proven to have drastically decreased the fox population in the area at the end of the 1990s (Raoul et al., 2003) until the beginning of our study. This difference in sensitivity might explain simultaneously relatively large cat populations due to extremely limited effects of poisoning.

Furthermore, Jacquot et al. (2013) have shown how the fox population has recovered on a regional scale after the change in rodent control practices. In our study, the predator community shifted from a very low fox density of $0.1 \text{ ind} \cdot \text{km}^{-2}$ (CI 95% 0.01–0.3) foraging in grassland up to a much larger fox abundance of $2.6 \text{ ind} \cdot \text{km}^{-2}$ (CI 95% 2.2–3.2), with a peak at $4.9 \text{ ind} \cdot \text{km}^{-2}$ in autumn 2012 (followed by a stabilization or a slight decrease with an epidemic of sarcoptic mange, which is still ongoing). This value is one of the highest population densities reported in rural landscapes of Europe (Demirbaş, 2015; Ruetter et al., 2015). This increase was concomitant with a sudden and dramatic decrease in the hare population during a low-density phase of the vole populations, and

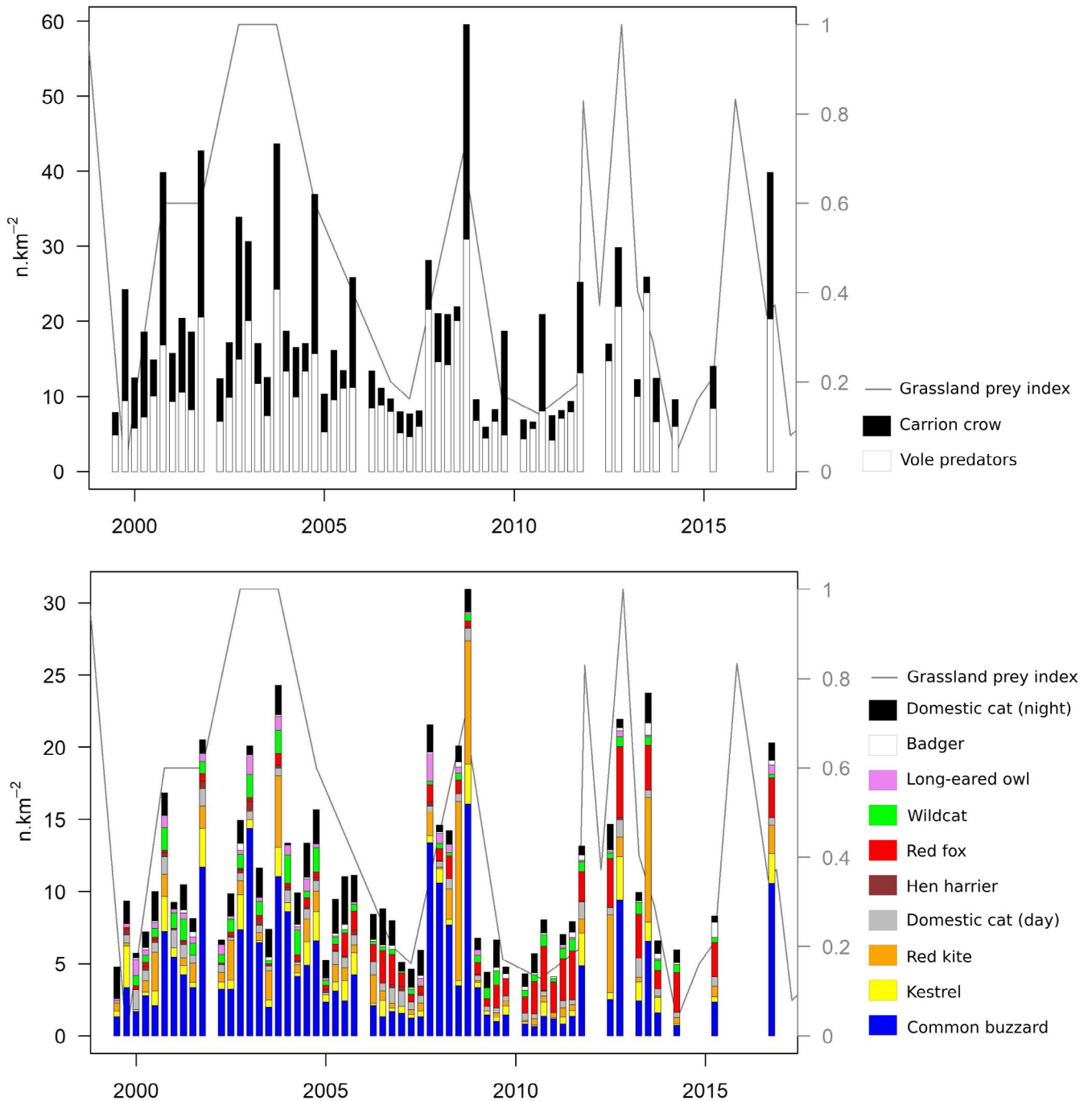


FIGURE 9 Variations in densities for each species (n.km^{-2}). Variations in biomass (kg.km^{-2}) and theoretical daily food intake ($\text{kg.km}^{-2} \text{day}^{-1}$) are presented in Figures A3 and A4

with a decrease in wild and domestic cats. This result strongly suggests that those declines might be the consequences of the increase in the fox population, possibly by direct predation or by creating a 'landscape of fear' (Bleicher, 2017; Laundre et al., 2010), thus limiting the distribution of the prey species to shelter areas where they could not be detected by roadside counts (houses, forest, etc), or both. In Australia, fox removal experiments showed in one study that cats foraged more in open habitats where foxes were removed (Molsher et al., 2017) and in two others that they

were more abundant (Marlow et al., 2015; Read & Bowen, 2001). Furthermore, in western Poland, the hare population during the same year had 1.7 times higher density in response to fox removal (Panek et al., 2006), and responded positively to sarcoptic mange epidemics that depressed the fox population in Scandinavia (Lindström et al., 1994). We did not observe changes in the spatial distribution of species between the first and second half of the study, making the 'landscape of fear' hypothesis less likely herein, thus suggesting a major role for direct predation.

TABLE 3 Density (ind.km⁻²) and theoretical daily food intake, TFI (kg.km⁻².day⁻¹) in the low (LD)- and high (HD)-density phases of grassland vole populations. Numbers between parentheses are percentages

Species	1999 (LD)	2003 (HD)	2007 (LD)	2008 (HD)	2010 (LD)	2012 (HD)	2014 (LD)
	Autumn	Autumn	Spring	Autumn	Autumn	Autumn	Spring
Density							
Carrion crow	14.9 (61.4)	19.4 (44.4)	3.1 (39.8)	28.6 (48)	12.9 (61.7)	7.9 (26.5)	3.6 (37.6)
Common buzzard	3.3 (13.8)	11 (25.3)	1.2 (16)	16.1 (27)	1.4 (6.6)	9.4 (31.5)	0.7 (7.7)
Red kite	2.9 (11.9)	2 (4.6)	0.3 (3.3)	2.8 (4.6)	1 (4.5)	3 (10)	0.1 (1.2)
Kestrel	0.2 (0.9)	5 (11.4)	0.3 (4.3)	8.5 (14.3)	0.4 (2)	1.4 (4.6)	0.4 (4.4)
Domestic cat (day)	0.5 (2.2)	0.5 (1.2)	0.5 (6.9)	0.9 (1.5)	0.3 (1.6)	1.2 (3.9)	0.3 (3.5)
Hen harrier	0.4 (1.7)	0.2 (0.5)	0 (0)	0.1 (0.2)	0.1 (0.5)	0.2 (0.6)	0 (0)
Red fox	0.1 (0.5)	0.8 (1.8)	0.5 (6.9)	0.4 (0.7)	3 (14.4)	4.9 (16.4)	2.8 (28.9)
Wildcat	0 (0)	1.6 (3.6)	0.4 (4.8)	0.5 (0.8)	0.8 (3.9)	0.7 (2.3)	0.6 (6)
Long-eared owl	0.3 (1.1)	1 (2.2)	0 (0)	0.1 (0.2)	0 (0)	0.4 (1.3)	0 (0)
Badger	0 (0)	0.1 (0.3)	0.1 (1.6)	0 (0)	0.1 (0.6)	0.2 (0.8)	0.1 (1.2)
Domestic cat (night)	1.6 (6.)	2.1 (4.7)	1.3 (16.5)	1.6 (2.7)	0.9 (4.3)	0.6 (2)	0.9 (9.4)
Total	24.3	43.7	7.7	59.5	20.9	29.9	9.6
Total without crow	9.4	24.3	4.6	30.9	8.0	22.0	6.0
TFI							
Carrion crow	2.2 (55.1)	2.9 (34.2)	0.4 (23.5)	4.2 (39.3)	1.9 (40.9)	1.2 (16.7)	0.5 (18.5)
Common buzzard	0.6 (15.3)	2 (24.1)	0.2 (11.7)	2.9 (27.4)	0.3 (5.4)	1.7 (24.7)	0.1 (4.7)
Kestrel	0.2 (5.7)	0.2 (1.9)	0 (1)	0.2 (2)	0.1 (1.6)	0.2 (3.4)	0 (0.3)
Red kite	0.1 (1.3)	1.2 (14.3)	0.1 (4.2)	2 (19.2)	0.1 (2.2)	0.3 (4.7)	0.1 (3.5)
Domestic cat (day)	0.2 (4.8)	0.2 (2.3)	0.2 (10)	0.3 (3)	0.1 (2.6)	0.4 (6.1)	0.1 (4.2)
Hen harrier	0 (1.2)	0 (0.3)	0 (0)	0 (0.1)	0 (0.2)	0 (0.3)	0 (0)
Red fox	0.1 (1.6)	0.4 (4.6)	0.3 (13.3)	0.2 (1.8)	1.5 (31.3)	2.4 (34)	1.3 (46.4)
Wildcat	0 (0)	0.6 (7.4)	0.1 (7.5)	0.2 (1.8)	0.3 (6.8)	0.3 (3.9)	0.2 (7.9)
Long-eared owl	0 (0.6)	0.1 (1)	0 (0)	0 (0.1)	0 (0)	0 (0.5)	0 (0)
Badger	0 (0)	0.1 (1.1)	0.1 (5)	0 (0)	0.1 (2)	0.2 (2.6)	0.1 (3.2)
Domestic cat (night)	0.6 (14.3)	0.7 (8.9)	0.5 (23.8)	0.6 (5.3)	0.3 (7)	0.2 (3.1)	0.3 (11.3)
Total	4.0	8.4	1.9	10.7	4.6	6.9	2.9
Total without crow	1.8	5.5	1.5	6.5	2.7	5.8	2.8

However, the long-term increase in the European badger population since the rabies vaccination in the early 1980s has been well documented in Europe (Holmala & Kauhala, 2006; Macdonald & Newman, 2002; Sobrino et al., 2009). In our study, the sudden increase since summer 2013 remains unexplained.

Excluding the stability of the carrion crow population in large numbers, a striking feature of our system is the change in predator community structure over the study period. In the early 2000s, the community was numerically dominated by the common buzzard and domestic and wildcats, and with the increase in the fox population, it became numerically dominated by the fox itself. However, foxes did not add their number to the other predators and this population increase did not lead to an increase in the average number of predators present in the study area. Large

variations in vole predator number could be clearly attributed to the temporary increase in the populations of mobile birds of prey (common buzzard, red kite, etc.) in response to grassland vole outbreaks. This stability in the average predator number observed (e.g., in the low-density phases of vole populations) suggests compensations among resident species due to intraguild predation or competition. Similar compensation has already been suspected in Fennoscandia, where experimental removal of avian predators to understand their role in vole population regulation led to least weasel density increase (Norrdahl & Korpimäki, 1995). In our study, the lack of data regarding *Mustela* sp. and *Martes* sp. does not permit us to determine whether those compensations observed in a community subset extend to the whole community of vole predators.

4.3 | Food consumption by predators

This is the first study, to our knowledge, to provide data on the variations in population densities and daily TFI of a large community of vole predators in a temperate ecosystem in response to large variations of cyclic grassland small mammals over 20 years (four *A. amphibius* population cycles). Limitations derive from the observation that the functional response of each species (the dietary variations as a function of available food resources) was not studied in parallel to the variations in population densities, thus limiting the interpretation of the variations in daily TFI and the evaluation of its impact on prey populations.

4.3.1 | Dietary issues

The carrion crow is mostly opportunistic and feeds principally on invertebrates, cereal grain but also small vertebrates, bird eggs, and carrion, in various proportions according to the place and season. At the extreme, vertebrates and eggs in particular can reach 86.6% of the dry weight of pellets in winter, for example, in southern Spain, and they are often observed to cooperate when killing small vertebrates in pairs or small groups, also commonly forcing other birds including raptors to drop prey (Cramp, 1994). Their behavior has not been systematically studied in our area, and the importance of small mammals in the diet is not yet known; however, all the behaviors mentioned above, including scavenging on dead animals, hunting voles, and forcing raptors, have been occasionally observed (Montaz et al., 2014). Thus, one can hardly infer conclusions about the impact of such an opportunistic species in this ecosystem, for example, on vole regulation. Mechanically, however, their number might have a chronic impact on species that are vulnerable to predation such as small game and bird nests.

The other species are more specialized toward small mammal prey. The detailed diet of the domestic cat is unknown in our area. However, in a similarly rural area of the Ardennes, rodents made up 55.9% of the dietary items found in 267 domestic cat feces (6% birds, 36.7% human-linked food), with little difference between outdoor cats (owned by people other than farmers) and farm cats (Forin-Wiart, 2014). Rodents (Murids and Cricetids) constitute the main prey of wildcats, and they can account for 97% of the diet composition (Condé et al., 1972), while lagomorphs and birds generally appear as alternative prey. However, when the availability of lagomorphs increases, wildcats can substantially shift their diet toward them (Malo et al., 2004).

In the area, the dietary response of the red fox to variations of grassland vole relative densities differed between *M. arvalis* (no response) and *A. amphibius* (Holling's type III-like) (Raoul et al., 2010). *M. arvalis* could make up to 60% of prey items in feces even at very low densities (range from 0%–80% of prey items over the whole range of vole densities), and *A. amphibius* showed a sigmoid increase that quickly reached a plateau (at 15% of the positive intervals of a transect -see material and methods) where it made up 40% of the

dietary items on average (range from 0%–80% of prey items). The description of the dietary response in this context where the two main prey abundances varied among several other alternative food resources is quite complex (Bernard et al., 2010; Dupuy et al., 2009; Giraudoux, 1991; Weber & Aubry, 1993). Comparisons of multispecies functional response (MSFR) models with empirical data on the red fox and barn owl showed that switching between prey depends on the proportion of the prey available among other prey (frequency dependence), as commonly thought, but also on the total amount of prey (density dependence), with a nonlinear frequency and density-dependent interactions (Baudrot et al., 2016).

4.3.2 | Predation and vole population abundance

In our study area, the population of the main prey species varied between 0 and approximately 1,000 ind.ha⁻¹ on a scale of tens of km² (Berthier et al., 2014; Giraudoux et al., 1997) and an amplitude 5–100 times larger than those observed on a similar scale in different areas worldwide (Dupuy et al., 2009; Erlinge, 1983; Gilg et al., 2006; Lambin et al., 2000). A similar amplitude has been reported locally for *M. arvalis* in alfalfa semi-permanent plots of some ha in an intensive agriculture matrix of plowed fields of western France (50–1,500 ind.ha⁻¹) (Pinot et al., 2016). In our study area, two species, *A. amphibius* and *M. arvalis*, had large fluctuations of similar amplitude against only one in the other systems. This ecosystem periodically offered (permanently on a large scale) an incredible biomass of several tens of kg.ha⁻¹ of voles easy to access in grassland, to a large number of predator species, but the TFI was multiplied by 7.1 at its maximum, while the grassland small mammal population biomass was multiplied by thousands. Although we have been unable to monitor mustelids and some species of owls such as the barn owl, *Tyto alba* (but see (Bernard et al., 2010)) and the tawny owl, *Strix aluco*, these numbers prompt the question of the magnitude of the impact of this subset of the predator community on the vole population declines.

Furthermore, our study documented that domestic cat populations could reach much higher densities of 2.4–9.1 ind.km⁻² up to more than 18 ind.km⁻² around villages within a 250–500 m radius, except during winter nights when they likely prefer to stay warmly at home. This can cause spatial heterogeneity in predation pressure. For instance, during small mammal low-density phases, their proportion varied between 5.9% (autumn 2010) and 23.4% (spring 2007) of the total number of predators counted. In south-central Sweden, Hansson (1988) observed that domestic cats, supplied with continuous alternate food, were able to dampen the population fluctuations of the field vole, compared to more or less cat-free areas. In villages at some kilometers from our study area, Delattre et al. (1996, 1999) reported a systematic decrease in the abundance of common vole colonies around villages during similar fluctuations of vole abundance, within an area extending 300–400 m from the village edge. This gradient persisted throughout a complete vole population fluctuation. They subsequently hypothesized that this lower density

of voles might be the result of cat predation around villages. Our observations provide evidence of the higher densities of domestic cats in and around villages within the same buffer, hence supporting Delattre et al.'s hypothesis.

5 | CONCLUSION

Overall, our results indicate that in such ecosystem with large variations of grassland prey, the structure of the predator community can change over the long term without changing its overall TFI variation pattern over a rodent cycle. Although the role of small and medium mustelid populations remains unknown, the higher predator densities observed during the grassland rodent peak were mostly due to mobile birds of prey that followed the rodent population increase. In such a system, the carrion crow was numerically the largest population with the largest TFI, but its impacts on the ecosystem could not be clearly assessed due to its eclectic diet. After a shift in rodent control practices and a much more moderate usage of anticoagulant rodenticides, the red fox population recovered and then stabilized at much larger densities, which likely negatively impacted hare, wildcat, and domestic cat populations. The domestic cat population was aggregated close to buildings, with a 400 m buffer where the vole population was generally lower.

From an applied viewpoint, in such a highly productive and connective grassland system favorable to grassland voles, it is believed that any means aiming at increasing the populations of predators during the low-density phase (e.g., hedgerow networks, roosts, cats around villages, etc.) should lead to better control of grassland small mammal populations (slowing down the increase phase) (Paz et al., 2013). However, the impacts of a management with large densities of cats around human settlements on other wildlife (Loss et al., 2013; Woods et al., 2003) and pathogen organism transmission (e.g., *Toxoplasma gondii*) (Gotteland et al., 2014; Lélou et al., 2010) should be considered. Moreover, in such systems and due to unavoidable prey switches some populations such as the European hare can be caught in a predation sink and can be sustained only at low density. Management options aimed at increasing these vulnerable populations by culling predators (e.g., the red fox, etc.) would conflict with the interests of other stakeholders interested in small mammal pest control. The prohibitive costs and manpower for culling a large number of predators over the long term and the ethical concerns associated with such management should prevent this approach, which has most often been shown to be unsuccessful (Comte et al., 2017; Jiguet, 2020; Letty et al., 2017; Morters et al., 2014) and not accepted socially (Delibes-Mateos et al., 2015). Other tactics should be sought, including adaptive hunting plans and demand, modification of habitats and landscapes favoring other equilibria in the community, which implies evidence-based and constructive dialogue about management targets and options between all stakeholders of such socio-ecosystems (Bretagnolle et al., 2019).

ACKNOWLEDGMENTS

This article is dedicated to Régis Defaut, who was deceased in 2008 and has been at the initiative and the true core of the ZELAC, a farmer group experimenting on environmentally friendly control of *A. amphibius* populations in the study area, including the roadside counts and transects used in this study since 1999. Special thanks are extended to Denis Truchetet and Philippe Guillemard, from the Ministry of Agriculture, who have provided support since the beginning, to Jean-Marie Curtil from the *Chambre Interdépartementale d'Agriculture Doubs-Territoire de Belfort* and Raphaël Bouquet who have provided data on the evolution of grass and milk production, to Clementine Fristch and Francis Raoul for helpful references about food intakes, to the *Maison des sciences de l'homme et de l'environnement Claude Nicolas Ledoux*, who provided technical assistance in the IGN data, and to the innumerable FREDON technicians, students, and volunteers who participated to the roadside counts for their technical assistance. Legal authorization for night roadside counts was provided by the *Direction Départementale des Territoires du Doubs*. This research was carried out in the *Zone atelier Arc jurassien* <https://zaaj.univ-fcomte.fr> and received financial support from the Ministry of Agriculture and from the Région de Franche-Comté.

CONFLICT OF INTERESTS

The authors declare to have no competing interests.

AUTHOR CONTRIBUTION

Patrick Giraudoux: Conceptualization (lead); Data curation (lead); Formal analysis (lead); Investigation (supporting); Methodology (lead); Software (lead); Supervision (equal); Writing-original draft (lead); Writing-review & editing (lead). **Aurélien Levret:** Data curation (equal); Investigation (equal). **Eve Afonso:** Writing-review & editing (supporting). **Michael Coeurdassier:** Writing-review & editing (supporting). **Geoffroy Couval:** Data curation (equal); Funding acquisition (lead); Investigation (equal); Project administration (lead); Supervision (lead).

DATA AVAILABILITY STATEMENT

Data are available as a zip file at <https://doi.org/10.5061/dryad.qz612jmd3>. It includes: S1 kml file. Location of the study area (can be dropped in a Google Earth window or read from a GIS). S2 Excel file. Road-side counts (sheet 1) and list of species observed (sheet 2). S3 Excel file. Small mammal data. S4 Excel file. Data for computing theoretical daily food intakes.

ORCID

Patrick Giraudoux  <https://orcid.org/0000-0003-2376-0136>

Eve Afonso  <https://orcid.org/0000-0001-5836-9909>

Michael Coeurdassier  <https://orcid.org/0000-0002-6260-311X>

REFERENCES

Andersson, M., & Erlinge, S. (1977). Influence of predation on rodent populations. *Oikos*, 29, 591–597. <https://doi.org/10.2307/3543597>

- Angelstam, P., Lindström, E., & Widén, P. (1985). Synchronous short-term population fluctuations of some birds and mammals in Fennoscandia – Occurrence and distribution. *Ecography*, 8(4), 285–298. <https://doi.org/10.1111/j.1600-0587.1985.tb01181.x>
- Artois, M., Duchene, M.-J., Pericard, J.-M., & Xemar, V. (2001). Le Chat domestique errant ou Haret (*Felis catus*, Linnaeus 1758). In M. Artois, & H. Maurin (Eds.), *Encyclopédie des carnivores de France* (p. 50). SFPEM.
- Baudrot, V., Perasso, A., Fritsch, C., Giraudoux, P., & Raoul, F. (2016). The adaptation of generalist predators' diet in a multi-prey context: Insights from new functional responses. *Ecology*, 97(7), 1832–1841. <https://doi.org/10.1890/15-0427.1>
- Bergerud, A. (1983). Prey switching in a simple ecosystem. *Scientific American*, 249(6), 130–141. <https://doi.org/10.1038/scientificamerican1283-130>
- Bernard, N., Michelat, D., Raoul, F., Quere, J. P., Delattre, P., & Giraudoux, P. (2010). Dietary response of Barn Owls (*Tyto alba*) to large variations in populations of common voles (*Microtus arvalis*) and European water voles (*Arvicola terrestris*). *Canadian Journal of Zoology*, 88(4), 416–426. <https://doi.org/10.1139/Z10-011>
- Berthier, K., Piry, S., Cosson, J. F., Giraudoux, P., Foltete, J. C., Defaut, R., Truchetet, D., & Lambin, X. (2014). Dispersal, landscape and travelling waves in cyclic vole populations. *Ecology Letters*, 17(1), 53–64. <https://doi.org/10.1111/ele.12207>
- Bivand, R., Keitt, T., & Rowlingson, B. (2019a). *rgdal: Bindings for the 'Geospatial' Data Abstraction Library* [Internet]. Retrieved from <https://CRAN.R-project.org/package=rgdal>
- Bivand, R., & Rundel, C. (2019b). *rgeos: Interface to Geometry Engine - Open Source ('GEOS')* [Internet]. Retrieved from <https://CRAN.R-project.org/package=rgeos>
- Bleicher, S. S. (2017). The landscape of fear conceptual framework: Definition and review of current applications and misuses. *PeerJ*, 12(5), e3772. <https://doi.org/10.7717/peerj.3772>
- Bretagnolle, V., Benoit, M., Bonnefond, M., Breton, V., Church, J., Gaba, S., Gilbert, D., Gillet, F., Glatron, S., Guerbois, C., Lamouroux, N., Lebouvier, M., Mazé, C., Mouchel, J.-M., Quin, A., Pays, O., Piscart, C., Ragueneau, O., Servain, S., ... Fritz, H. (2019). Action-orientated research and framework: Insights from the French long-term social-ecological research network. *Ecology and Society*, 24(3), 10. <https://doi.org/10.5751/ES-10989-240310>
- Buckland, S. T., Anderson, D. R., Burnham, K. P., Laake, J. L., Borchers, D. L., & Thomas, L. (2001). *Introduction to distance sampling: Estimating abundance of biological populations* (p. 448). Oxford University Press.
- Buckland, S. T., Rexstad, E. A., Marques, T. A., & Oedekoven, C. S. (2015). *Distance sampling: Methods and applications* [Internet]. Springer International Publishing.
- Burnham, K. P., & Anderson, D. R. (2002). *Model selection and multimodel inference. A practical information-theoretic approach*. Springer.
- Chevret, P., Renaud, S., Helvaci, Z., Ulrich, R. G., Quéré, J.-P., & Michaux, J. R. (2020). Genetic structure, ecological versatility, and skull shape differentiation in *Arvicola* water voles (Rodentia, Cricetidae). *Journal of Zoological Systematics and Evolutionary Research*, 58, 1323–1334.
- Coeurdassier, M., Riols, R., Decors, A., Mionnet, A., David, F., Quintaine, T., Truchetet, D., Scheffler, R., & Giraudoux, P. (2014). Unintentional wildlife poisoning and proposals for sustainable management of rodents. *Conservation Biology: The Journal of the Society for Conservation Biology*, 28(2), 315–321. <https://doi.org/10.1111/cobi.12230>
- Comte, S., Umhang, G., Raton, V., Raoul, F., Giraudoux, P., Combes, B., & Boué, F. (2017). *Echinococcus multilocularis* management by fox culling: An inappropriate paradigm. *Preventive Veterinary Medicine*, 1(147), 178–185. <https://doi.org/10.1016/j.prevetmed.2017.09.010>
- Condé, B., Nguyen-Thi-Thu-Cuc, V. F., & Schauenberg, P. (1972). Le régime alimentaire du chat forestier (*F. silvestris* Schr.) en France. *Mammalia*, 36(1), 112–119.
- Cramp, S. (Ed.) (1994). *Handbook of the birds of Europe, the Middle East and North Africa*. Oxford University Press.
- Crocker, D., Hart, A., Gurney, J., & McCoy, C. (2002). *Central Science Laboratory. Project PN0908: methods for estimating daily food intake of wild birds and mammals* (p. 22) [Internet]. : Department for Environment, Food and Rural Affairs. Retrieved from <http://sciencesearch.defra.gov.uk/Default.aspx?Menu=Menu&Module=More&Location=None&Completed=0&ProjectID=6619>
- Delattre, P., De Sousa, B., Fichet, E., Quéré, J. P., & Giraudoux, P. (1999). Vole outbreaks in a landscape context: Evidence from a six year study of *Microtus arvalis*. *Landscape Ecology*, 14, 401–412.
- Delattre, P., Giraudoux, P., Baudry, J., Quere, J. P., & Fichet, E. (1996). Effect of landscape structure on Common Vole (*Microtus arvalis*) distribution and abundance at several space scales. *Landscape Ecology*, 11(5), 279–288. <https://doi.org/10.1007/BF02059855>
- Delattre, P., Giraudoux, P., Damange, J. P., & Quere, J. P. (1990). Recherche d'un indicateur de la cinétique démographique des populations du Campagnol des champs (*Microtus arvalis*). *Revue D'écologie (Terre Vie)*, 45, 375–384.
- Delibes-Mateos, M., Mougeot, F., Arroyo, B., & Lambin, X. (2015). Hunted predators: Charisma confounds. *Science*, 349(6254), 1294. <https://doi.org/10.1126/science.349.6254.1294-a>
- Delibes-Mateos, M., Smith, A. T., Slobodchikoff, C. N., & Swenson, J. E. (2011). The paradox of keystone species persecuted as pests: A call for the conservation of abundant small mammals in their native range. *Biological Conservation*, 144(5), 1335–1346. <https://doi.org/10.1016/j.biocon.2011.02.012>
- Demirbaş, Y. (2015). Density of European Hare and Red Fox in Different Habitats of Kirikkale Province (Central Anatolia), with a Low Level in Hare Number and an Expected Correlation in Spring. *Acta Zoologica Bulgarica*, 1(67), 515–520.
- Duhamel, R., Quéré, J. P., Delattre, P., & Giraudoux, P. (2000). Landscape effects on the population dynamics of the fossorial form of the water vole (*Arvicola terrestris sherman*). *Landscape Ecology*, 15, 89–98.
- Dupuy, G., Giraudoux, P., & Delattre, P. (2009). Numerical and dietary responses of a predator community in a temperate zone of Europe. *Ecography*, 32(2), 277–290. <https://doi.org/10.1111/j.1600-0587.2008.04930.x>
- Efron, B., & Tibshirani, R. J. (1994). *An introduction to the bootstrap* [Internet]. Chapman and Hall/CRC. 456 p. (Monographs on Statistics and Applied Probability). Retrieved from <https://www.crcpress.com/An-Introduction-to-the-Bootstrap/Efron-Tibshirani/p/book/9780412042317>
- Erickson, W. A., & Urban, D. J. (2004). *Potential risks of nine rodenticides to birds and non target mammals: A comparative approach* [Internet] (230 p). : US Environmental Protection Agency, Office of Prevention, Pesticides and Toxic Substances. Retrieved from <http://www.fluoridealert.org/pesticides/EPA-HQ-OPP-2006-0955-0005.pdf>
- Erlinge, S. (1983). Demography and dynamics of a Stoat *Mustela erminea* population in a diverse community of vertebrates. *Journal of Animal Ecology*, 52(3), 705–726. <https://doi.org/10.2307/4449>
- Foltête, J.-C., Couval, G., Fontanier, M., Vuidel, G., & Giraudoux, P. (2016). A graph-based approach to defend agro-ecological systems against water vole outbreaks. *Ecological Indicators*, 1(71), 87–98. <https://doi.org/10.1016/j.ecolind.2016.06.033>
- Foltete, J. C., & Giraudoux, P. (2012). A graph-based approach to investigating the influence of the landscape on population spread processes. *Ecological Indicators*, 18, 684–692. <https://doi.org/10.1016/j.ecolind.2012.01.011>
- Forin-Wiart, M.-A. (2014). *Identification des facteurs de variation de la prédation exercée par les chats domestiques (Felis silvestris catus) en milieu rural* [Internet]. [thesis]. Reims. Retrieved from <http://www.theses.fr/2014REIMS032>
- Gilg, O., Hanski, I., & Sittler, B. (2003). Cyclic dynamics in a simple vertebrate predator-prey community. *Science*, 302(5646), 866–868. <https://doi.org/10.1126/science.1087509>

- Gilg, O., Sittler, B., Sabard, B., Hurstel, A., Sane, R., Delattre, P., & Hanski, I. (2006). Functional and numerical responses of four lemming predators in high arctic Greenland. *Oikos*, 113(2), 193–216. <https://doi.org/10.1111/j.2006.0030-1299.14125.x>
- Giraudoux, P. (1991). *Utilisation de l'espace par les hôtes du ténia multiloculaire (Echinococcus multilocularis): conséquences épidémiologiques* [Internet]. [dijon]: Université De Bourgogne. Retrieved from <https://tel.archives-ouvertes.fr/tel-00522886>
- Giraudoux, P. (1997). Gestion de l'espace et transmission de l'échinococcose alvéolaire. *Sciences Et Techniques*, 10, 12–16.
- Giraudoux, P. (2017). *pgirmess: Data analysis in ecology. R package version 1.6.8* [Internet]. Retrieved from <http://perso.orange.fr/giraudoux>
- Giraudoux, P., Couval, G., Levret, A., Mougin, D., & Delavelle, A. (2017). A long-term study of European water vole population outbreaks reveals that integrated control is possible. *Fourrages*, 230, 169–176.
- Giraudoux, P., Delattre, P., Habert, M., Quere, J. P., Deblay, S., Defaut, R., Duhamel, R., Moissenet, M. F., Salvi, D., & Truchetet, D. (1997). Population dynamics of fossorial water vole (*Arvicola terrestris* scherman): A land usage and landscape perspective. *Agriculture Ecosystems and Environment*, 66, 47–60.
- Giraudoux, P., Pradier, B., Delattre, P., Deblay, S., Salvi, D., & Defaut, R. (1995). Estimation of water vole abundance by using surface indices. *Acta Theriologica*, 40(1), 77–96. <https://doi.org/10.4098/AT.arch.95-9>
- Giraudoux, P., Villette, P., Quéré, J.-P., Damange, J.-P., & Delattre, P. (2019). Weather influences *M. arvalis* reproduction but not population dynamics in a 17-year time series. *Scientific Reports*, 9(1), 13942.
- Gotteland, C., Gilot-Fromont, E., Aubert, D., Poulle, M.-L., Dupuis, E., Dardé, M.-L., Forin-Wiart, M.-A., Rabilloud, M., Riche, B., & Villena, I. (2014). Spatial distribution of *Toxoplasma gondii* oocysts in soil in a rural area: Influence of cats and land use. *Veterinary Parasitology*, 205(3), 629–637. <https://doi.org/10.1016/j.vetpar.2014.08.003>
- Hanski, I., & Henttonen, H. (2002). Population cycles of small rodents in Fennoscandia. In A. Berryman (Ed.), *Population cycles: The case for trophic interactions* (pp. 44–68). Oxford University Press.
- Hansson, L. (1988). The domestic cat as a possible modifier of vole dynamics. *Mammalia*, 52(2), 159–164. <https://doi.org/10.1515/mamm.1988.52.2.159>
- Henri, C., Lafontaine, L., & Mouches, A. (1988). Le Blaireau (*Meles meles* Linnaeus, 1758). In M. Artois, & P. Delattre (Eds.), *Encyclopédie des carnivores de France* (p. 35). SFEPM.
- Holmala, K., & Kauhala, K. (2006). Ecology of wildlife rabies in Europe. *Mammal Review*, 36(1), 17–36. <https://doi.org/10.1111/j.1365-2907.2006.00078.x>
- Huitu, O., Kiljunen, N., Korpimäki, E., Koskela, E., Mappes, T., Pietiäinen, H., Pöysä, H., & Henttonen, H. (2009). Density-dependent vole damage in silviculture and associated economic losses at a nationwide scale. *Forest Ecology and Management*, 258(7), 1219–1224. <https://doi.org/10.1016/j.foreco.2009.06.013>
- Jacob, J., Imholt, C., Caminero-Saldaña, C., Couval, G., Giraudoux, P., Herrero-Cófreces, S., Horváth, G., Luque-Larena, J. J., Tkadlec, E., & Wymenga, E. (2020). Europe-wide outbreaks of common voles in 2019. *Journal of Pest Science*, 93(2), 703–709. <https://doi.org/10.1007/s10340-020-01200-2>
- Jacquot, M., Coeurdassier, M., Couval, G., Renaude, R., Pleydell, D., Truchetet, D., Raoul, F., & Giraudoux, P. (2013). Using long-term monitoring of red fox populations to assess changes in rodent control practices. *Journal of Applied Ecology*, 50(6), 1406–1414. <https://doi.org/10.1111/1365-2664.12151>
- Jiguet, F. (2020). The Fox and the Crow. A need to update pest control strategies. *Biological Conservation*, 1(248), 108693. <https://doi.org/10.1016/j.biocon.2020.108693>
- Korpimäki, E., & Norrdahl, K. (1998). Experimental reduction of predators reverses the crash phase of small-rodent cycles. *Ecology*, 79(7), 2448–2455.
- Korpimäki, E., Norrdahl, K., Klemola, T., Pettersen, T., & Stenseth, N. C. (2002). Dynamic effects of predators on cyclic voles: Field experimentation and model extrapolation. *Proceedings of the Royal Society B-Biological Sciences*, 269(1495), 991–997. <https://doi.org/10.1098/rspb.2002.1972>
- Krebs, C. J. (2013). *Population fluctuations in rodents* (p. 306). The University of Chicago Press.
- Lambin, X., Bretagnolle, V., & Yoccoz, N. G. (2006). Vole population cycles in northern and southern Europe: Is there a need for different explanations for single pattern? *Journal of Animal Ecology*, 75(2), 340–349. <https://doi.org/10.1111/j.1365-2656.2006.01051.x>
- Lambin, X., Petty, S., & Mackinnon, J. L. (2000). Cyclic dynamics in field vole populations and generalist predation. *Journal of Animal Ecology*, 69, 106–118. <https://doi.org/10.1046/j.1365-2656.2000.00380.x>
- Laundre, J. W., Hernandez, L., & Ripple, W. J. (2010). The landscape of fear: Ecological implications of being afraid. *Open Ecology Journal*, 3, 1–7.
- Le, A. M. (1989). Renard roux (*Vulpes vulpes* Linnaeus, 1758). In M. Artois, & P. Delattre (Eds.), *Encyclopédie des carnivores de France* (3rd ed, p. 90). SFEPM.
- Leclercq, B., Desbrosses, R., & Giraudoux, P. (1997). Cycles démographiques du campagnol terrestre (*Arvicola terrestris*), et reproduction et cinétique des *Tetraonidae* du massif du Risoux, Jura, France. *Gibier Et Faune Sauvage*, 14, 31–47.
- Légifrance (2014). *Arrêté du 31 mars 2014 portant reconnaissance des organismes à vocation sanitaire dans le domaine animal ou végétal* [Internet]. Retrieved from <https://www.legifrance.gouv.fr/affichTexte.do?cidTexte=JORFTEXT000028811750&dateTexte=20191231>
- Légifrance (2014). *Arrêté du 14 mai 2014 relatif au contrôle des populations de campagnols nuisibles aux cultures ainsi qu'aux conditions d'emploi des produits phytopharmaceutiques contenant de la bromadiolone* [Internet]. Retrieved from <https://www.legifrance.gouv.fr/affichTexte.do?cidTexte=JORFTEXT000029039908>
- Lélu, M., Langlais, M., Poulle, M.-L., & Gilot-Fromont, E. (2010). Transmission dynamics of *Toxoplasma gondii* along an urban–rural gradient. *Theoretical Population Biology*, 78(2), 139–147. <https://doi.org/10.1016/j.tpb.2010.05.005>
- Letty, J., Souchay, G., Baudoux, B., Bray, Y., Léonard, Y., Mauvy, B. et al (2017). Quel impact du renard sur la démographie du lièvre d'Europe? Distinguer les effets de la prédation par le renard des autres facteurs de l'environnement. *Faune Sauvage*, 317, 78–82.
- Lidicker, W. Z., Jr.(Ed.) (1995). *Landscape approaches in mammalian ecology and conservation* (p. 215). University of Minnesota Press.
- Lidicker, W. Z. (2000). A food web/landscape interaction model for microtine rodent density cycles. *Oikos*, 91, 435–445. <https://doi.org/10.1034/j.1600-0706.2000.910304.x>
- Lindström, E. R., Andren, H., Angelstam, P., Cederlund, G., Hornfeldt, B., Jaderberg, L., Lemnell, P.-A., Martinsson, B., Sköld, K., & Swenson, J. E. (1994). Disease reveals the predator: Sarcocystic mange, red fox predation, and prey populations. *Ecology*, 75(4), 1042–1049. <https://doi.org/10.2307/1939428>
- Loss, S. R., Will, T., & Marra, P. P. (2013). The impact of free-ranging domestic cats on wildlife of the United States. *Nature Communications*, 4(1), 1–8. <https://doi.org/10.1038/ncomms2380>
- LPO Franche-Comté (collectif) (2018). *Les oiseaux de Franche-Comté. Répartition, tendances et conservation* (p. 480). : Biotopie.
- Macdonald, D. W., & Newman, C. (2002). Population dynamics of badgers (*Meles meles*) in Oxfordshire, U.K.: Numbers, density and cohort life histories, and a possible role of climate change in population growth. *Journal of Zoology*, 256(1), 121–138. <https://doi.org/10.1017/S0952836902000158>
- Malo, A. F., Lozano, J., Huertas, D. L., & Virgós, E. (2004). A change of diet from rodents to rabbits (*Oryctolagus cuniculus*). Is the wildcat (*Felis silvestris*) a specialist predator? *Journal of Zoology*, 263(4), 401–407. <https://doi.org/10.1017/S0952836904005448>

- Marcström, V., Kenward, R. E., & Engren, E. (1988). The impact of predation on boreal tetraonids during vole cycles: An experimental study. *Journal of Animal Ecology*, 57, 859–872.
- Marlow, N. J., Thomas, N. D., Williams, A. A. E., Macmahon, B., Lawson, J., Hitchen, Y., Angus, J., & Berry, O. (2015). Cats (*Felis catus*) are more abundant and are the dominant predator of woylies (*Bettongia penicillata*) after sustained fox (*Vulpes vulpes*) control. *Australian Journal of Zoology*, 63(1), 18–27. <https://doi.org/10.1071/ZO14024>
- Molsher, R., Newsome, A. E., Newsome, T. M., & Dickman, C. R. (2017). Mesopredator management: Effects of red fox control on the abundance, diet and use of space by feral cats. *PLoS One*, 12(1), e0168460. <https://doi.org/10.1371/journal.pone.0168460>
- Montaz, J., Jacquot, M., & Coeurdassier, M. (2014). Scavenging of rodent carcasses following simulated mortality due to field applications of anticoagulant rodenticide. *Ecotoxicology*, 23(9), 1671–1680. <https://doi.org/10.1007/s10646-014-1306-7>
- Morilhat, C., Bernard, N., Foltete, J. C., & Giraudoux, P. (2008). Neighbourhood landscape effect on population kinetics of the fossorial water vole (*Arvicola terrestris scherman*). *Landscape Ecology*, 23(5), 569–579. <https://doi.org/10.1007/s10980-008-9216-9>
- Morters, M. K., Restif, O., Hampson, K., Cleaveland, S., Wood, J. L. N., & Conlan, A. J. K. (2014). Evidence-based control of canine rabies: A critical review of population density reduction. *Journal of Animal Ecology*, 2, 6–14. <https://doi.org/10.1111/j.1365-2656.2012.02033.x>
- Nicod, C., Couval, G., Giraudoux, P., & Gillet, F. (2020). Vole disturbances and plant community diversity in a productive hay meadow. *Acta Oecologica*, 1(106), 103585. <https://doi.org/10.1016/j.actao.2020.103585>
- Norrdahl, K., & Korpimäki, E. (1995). Effects of predator removal on vertebrate prey populations: Birds of prey and small mammals. *Oecologia*, 103(2), 241–248. <https://doi.org/10.1007/BF00329086>
- Panek, M., Kamieniarz, R., & Bresiński, W. (2006). The effect of experimental removal of red foxes *Vulpes vulpes* on spring density of brown hares *Lepus europaeus* in western Poland. *Acta Theriologica*, 51(2), 187–193. <https://doi.org/10.1007/BF03192670>
- Paz, A., Jareno, D., Arroyo, L., Vinuela, J., Arroyo, B., Mougeot, F. et al (2013). Avian predators as a biological control system of common vole (*Microtus arvalis*) populations in north-western Spain: Experimental set-up and preliminary results. *Pest Management Science*, 69(3), 444–450.
- Pinot, A., Barraquand, F., Tedesco, E., Lecoustre, V., Bretagnolle, V., & Gauffre, B. (2016). Density-dependent reproduction causes winter crashes in a common vole population. *Population Ecology*, 58(3), 395–405. <https://doi.org/10.1007/s10144-016-0552-3>
- QGIS Development Team (2019). QGIS Geographic Information System [Internet]. Retrieved from <http://www.qgis.org/>
- Quéré, J., & Le Louarn, H. (2011). *Les rongeurs de France. Faunistique et Biologie* (pp. 311). : Editions QUAE.
- Quéré, J. P., Raoul, F., Giraudoux, P., & Delattre, P. (2000). An index method applicable at landscape scale to estimate relative population densities of the common vole (*Microtus arvalis*). *Revue D'ecologie (Terre Et Vie)*, 55, 25–32.
- R Core Team (2019). *R: A language and environment for statistical computing*. [internet]. Retrieved from <https://www.R-project.org/><https://www.R-project.org/>
- Raoul, F., Deplazes, P., Rieffel, D., Lambert, J. C., & Giraudoux, P. (2010). Predator dietary response to prey density variation and consequences for cestode transmission. *Oecologia*, 164(1), 129–139. <https://doi.org/10.1007/s00442-010-1647-8>
- Raoul, F., Michelat, D., Ordinaire, M., Decote, Y., Aubert, M., Delattre, P., Deplazes, P., & Giraudoux, P. (2003). *Echinococcus multilocularis*: Secondary poisoning of fox population during a vole outbreak reduces environmental contamination in a high endemicity area. *International Journal for Parasitology*, 33(9), 945–954. [https://doi.org/10.1016/S0020-7519\(03\)00127-9](https://doi.org/10.1016/S0020-7519(03)00127-9)
- Read, J., & Bowen, Z. (2001). Population dynamics, diet and aspects of the biology of feral cats and foxes in arid South Australia. *Wildlife Research*, 28(2), 195–203. <https://doi.org/10.1071/WR99065>
- Ruette, S., Lieury, N., Albaret, M., Arnauduc, J.-P., & Devillard, S. (2015). Evolution des populations de renards en France. Analyse des suivis réalisés par comptage nocturne (2004–2013). *Faune Sauvage*, 306, 1–6.
- Sobrinho, R., Acevedo, P., Escudero, M. A., Marco, J., & Gortázar, C. (2009). Carnivore population trends in Spanish agrosystems after the reduction in food availability due to rabbit decline by rabbit haemorrhagic disease and improved waste management. *European Journal of Wildlife Research*, 55(2), 161–165. <https://doi.org/10.1007/s10344-008-0230-7>
- Stahl, P., & Léger, F. (1992). Le chat sauvage d'Europe (*Felis silvestris* Schreber, 1777). In M. Artois, & H. Maurin (Eds.), *Encyclopédie des carnivores de France* (p. 50). SFEPM.
- Thomas, L., Buckland, S. T., Rexstad, E. A., Laake, J. L., Strindberg, S., Hedley, S. L., Bishop, J. R. B., Marques, T. A., & Burnham, K. P. (2010). Distance software: Design and analysis of distance sampling surveys for estimating population size. *Journal of Applied Ecology*, 47(1), 5–14. <https://doi.org/10.1111/j.1365-2664.2009.01737.x>
- Villette, P. (2018). *Spatial and temporal characteristics of bacterial parasite communities in outbreaking fossorial Water Vole (Arvicola terrestris) Populations: Static uniformity or dynamic heterogeneity?* [Doctor]. Université De Franche-Comté.
- Weber, J. M., & Aubry, S. (1993). Predation by foxes, *Vulpes vulpes*, on the fossorial form of the water vole, *Arvicola terrestris scherman*, in western Switzerland. *Journal of Zoology, London*, 229, 553–559.
- Wilson, D. J., Krebs, C. J., & Sinclair, T. (1999). Limitation of collared lemming populations during a population cycle. *Oikos*, 87(2), 382–398. <https://doi.org/10.2307/3546754>
- Woods, M., McDonald, R., & Ris, S. (2003). Predation of wildlife by domestic cats *Felis catus* in Great Britain. *Mammal Review Blackwell Science*, 1(33), 174–188.

How to cite this article: Giraudoux P, Levret A, Afonso E, Coeurdassier M, Couval G. Numerical response of predators to large variations of grassland vole abundance and long-term community changes. *Ecol Evol*. 2020;10:14221–14246. <https://doi.org/10.1002/ece3.7020>

APPENDIX A

TABLE A1 Model coefficients used for Table 1. Permutation tests were based on ANOVA, thus provide global *p*-values for factors, and not individual *p*-values for each factor level

Day roadside counts				Night roadside counts			
Term	Estimate	Std.error	<i>p</i> value	Term	Estimate	Std.error	<i>p</i> value
Carrion crow				Hare			
(Intercept)	23.26	2.25	–	(Intercept)	–19.66	9.87	
log(length)	–6.71	0.76	.18	log(length)	7.70	3.38	<.001
Summer	–0.41	0.06	<.001	Time	–0.03	0.00	<.001
Autumn	1.09	0.04		Summer	–0.10	0.11	.95
Winter	–0.11	0.06		Autumn	0.08	0.10	
smmDensity	0.64	0.06	.12	Winter	–0.08	0.12	
				smmDensity	0.91	0.14	.006
Common buzzard				Red fox			
(Intercept)	8.61	3.13		(Intercept)	–34.12	8.82	
log(length)	–2.07	1.06	.16	log(length)	12.06	3.02	<.001
Summer	–0.19	0.07	.001	Time	0.02	0.00	.04
Autumn	0.80	0.06		Summer	0.34	0.12	.79
Winter	0.41	0.07		Autumn	0.01	0.11	
smmDensity	1.47	0.08	0.001	Winter	–0.10	0.15	
				smmDensity	–0.45	0.20	.43
Red kite				Domestic cat			
(Intercept)	–12.82	4.86		(Intercept)	21.65	6.47	
log(length)	4.81	1.64	.91	log(length)	–6.73	2.19	.02
summer	1.15	0.10	.02	summer	0.37	0.12	<.001
autumn	0.60	0.11		autumn	0.15	0.12	.21
winter	–2.76	0.46		winter	–0.92	0.20	
smmDensity	1.50	0.14	.05	smmDensity	0.36	0.18	
Kestrel				Wildcat			
(Intercept)	–7.60	6.40		(Intercept)	–45.85	13.84	
log(length)	2.83	2.17	.75	log(length)	16.14	4.74	.36
Summer	0.61	0.18	<.001	Time	–0.02	0.01	.04
Autumn	1.56	0.16		Summer	–0.43	0.17	.37
Winter	0.19	0.22		Autumn	0.12	0.15	<.001
smmdensity	0.77	0.18	.08	Winter	0.01	0.17	
				smmDensity	1.42	0.22	
Domestic cat				Long-eared owl			
(Intercept)	6.01	9.76		(Intercept)	69.34	16.27	
log(length)	–1.64	3.31	.57 .15	log(length)	–23.51	5.53	.07
Summer	–0.29	0.20		Summer	0.03	0.30	.18
Autumn	0.17	0.18		Autumn	0.72	0.26	.98
Winter	–0.07	0.22		Winter	0.80	0.28	
smmDensity	0.15	0.27	.58	smmDensity	–0.02	0.33	
Hen harrier				European badger			
(Intercept)	28.14	37.04		(Intercept)	–55.29	13.48	

(Continues)

TABLE A1 (Continued)

Day roadside counts				Night roadside counts			
Term	Estimate	Std.error	p value	Term	Estimate	Std.error	p value
Log(length)	-9.54	12.69	.001	Log(length)	18.86	4.54	<.001
Time	-0.03	0.01	.03	Summer	0.46	0.28	.09
Summer	-0.79	0.49	.004	Autumn	0.16	0.28	.87
Autumn	0.87	0.32		Winter	-1.09	0.55	
Winter	0.54	0.36		smmDensity	0.12	0.46	
smmDensity	0.87	0.41	.12				

TABLE A2 Mean distance (in meters) of observations to forest and buildings; random locations is the mean distance obtained from 1,000 random replicates of the same number of geographical coordinates as the observations in the observation strip; the permutation test being one-tailed, $p(H_0)$ is the number of random mean distance equal or above, or equal or below, the observed mean distance, divided by 1,000

Count type	Species	Forest			Buildings		
		Observed	$p(H_0)$	Effect	Observed	$p(H_0)$	Effect
Day	Carrion crow	319	<0.001	-	852	<0.001	+
	Common buzzard	n.s.	n.s.	=	n.s.	n.s.	=
	Red kite	304	0.02	-	894	<0.001	+
	Kestrel	327	<0.001	-	896	0.002	+
	Domestic cat	-	-	?	193	<0.001	++
	Hen harrier	236	<0.001	+	920	0.01	+
	Random locations	292			953		
Night	Hare	299	0.05	-	874	0.008	+
	Red fox	253	<0.001	+	n.s.	n.s.	=
	Domestic cat	-	-	?	354	<0.001	++
	Wildcat	248	0.002	+	1,113	<0.001	-
	Long-eared owl	229	0.003	+	1,043	0.03	-
	Badger	229	0.008	+	1,125	0.001	-
	Random locations	284			939		

Note: Forest effect could not be computed for the domestic cat due to its strong aggregation in and around villages.

n.s., not significant.

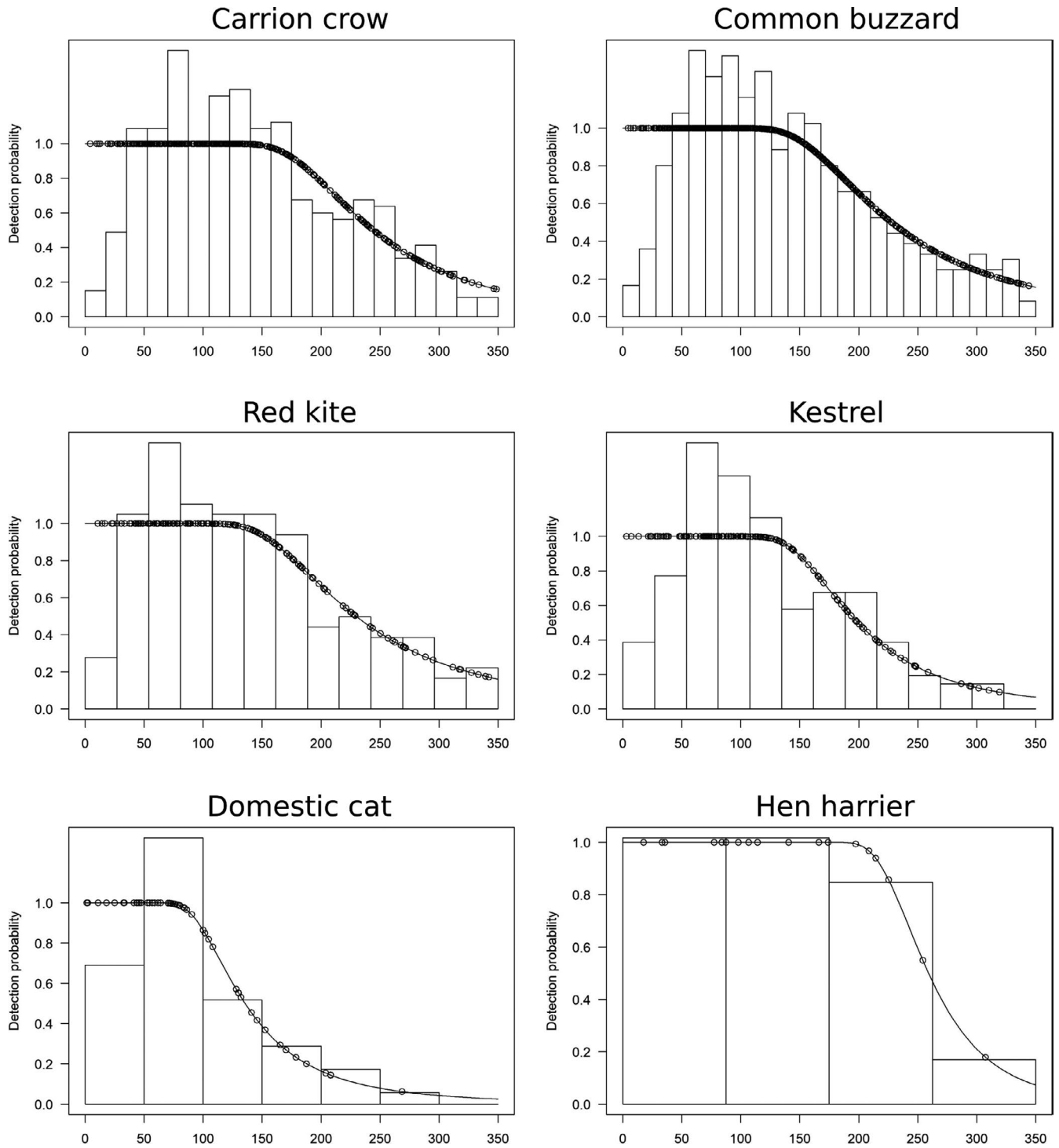


FIGURE A1 Fitted detection functions overlaid on the histogram of observed distances for diurnal species. Points indicate probability of detection for a given observation

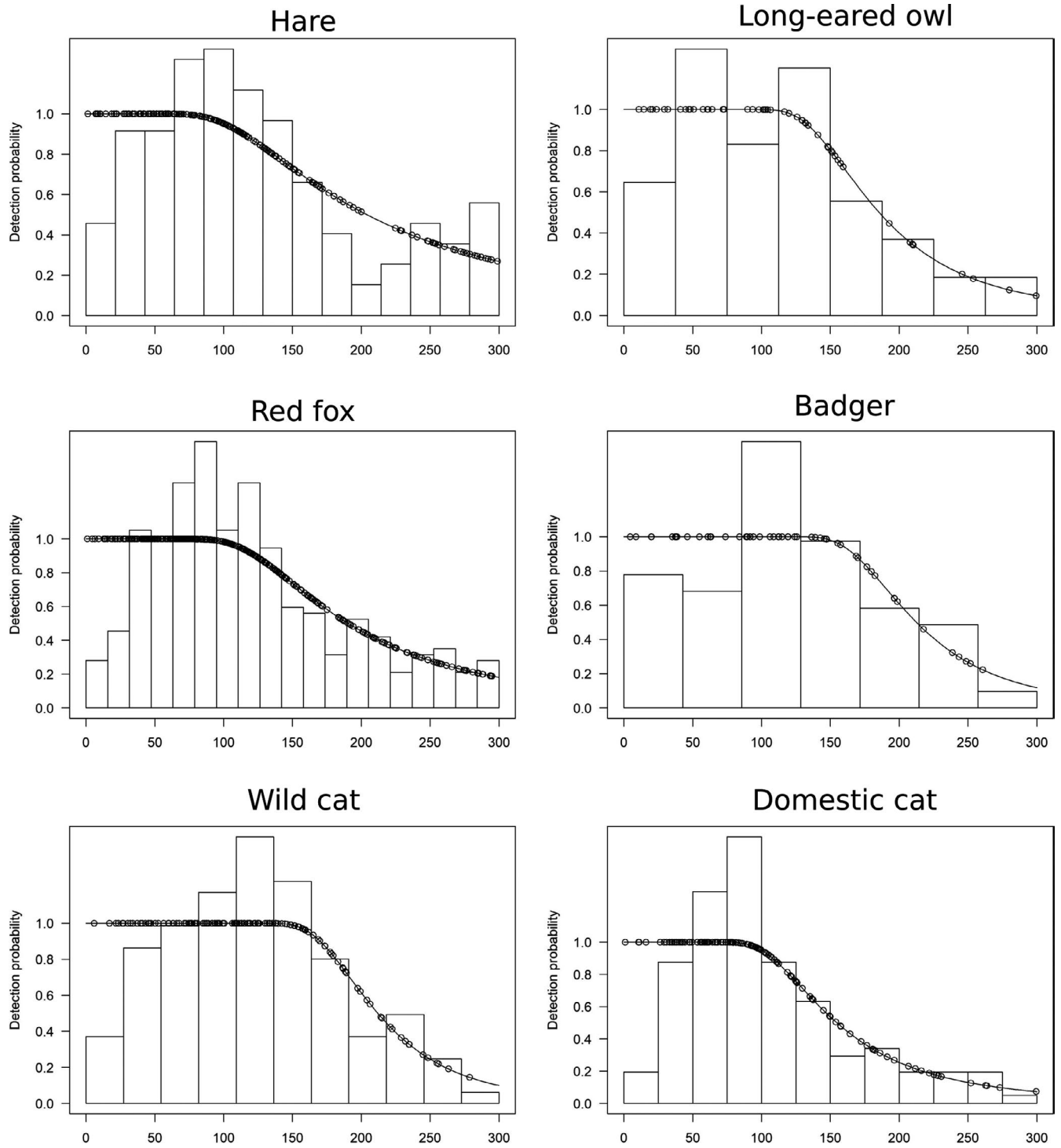


FIGURE A2 Fitted detection functions overlaid on the histogram of observed distances for nocturnal species. Points indicate probability of detection for a given observation

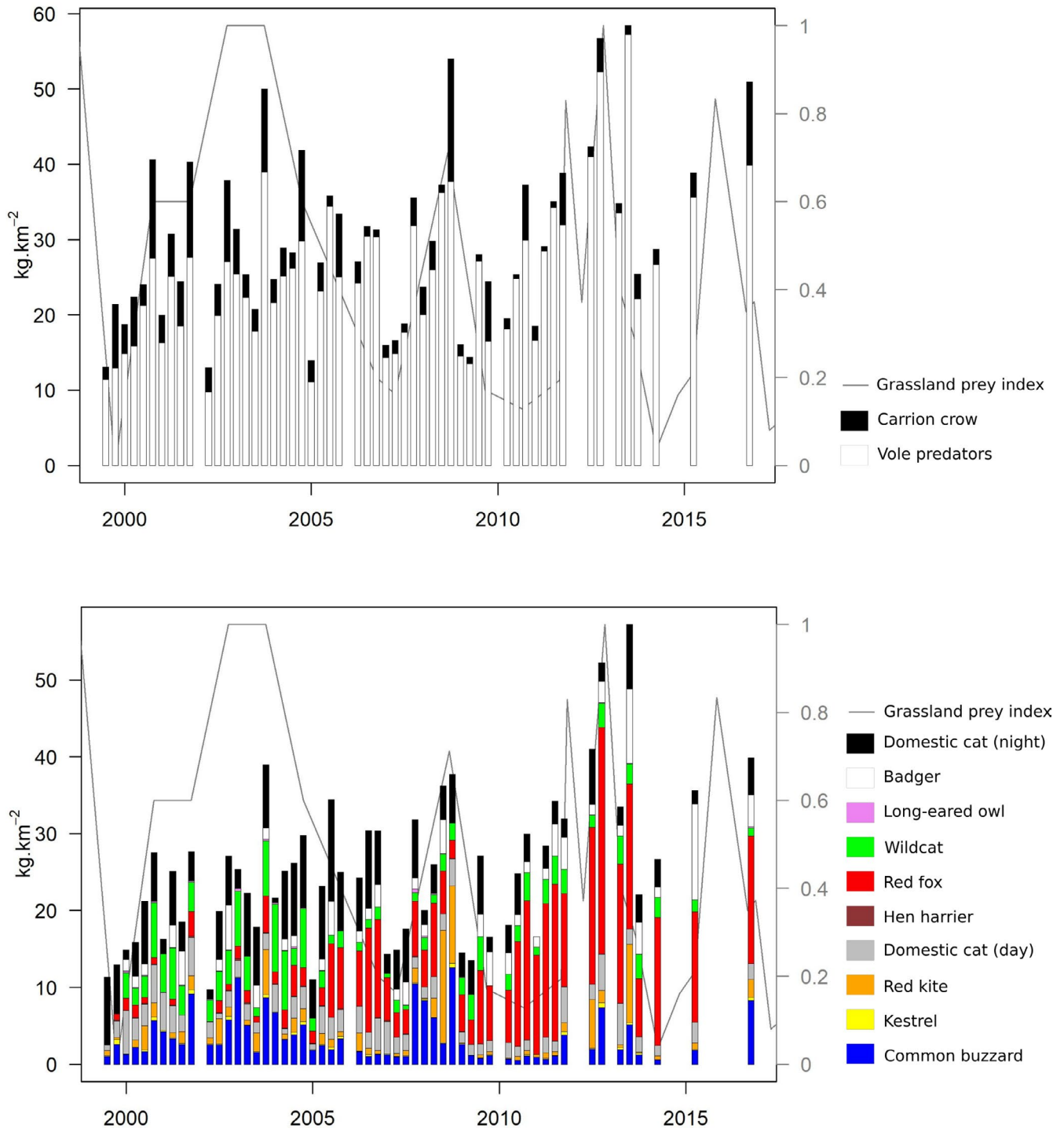


FIGURE A3 Variations in biomass (kg.km^{-2})

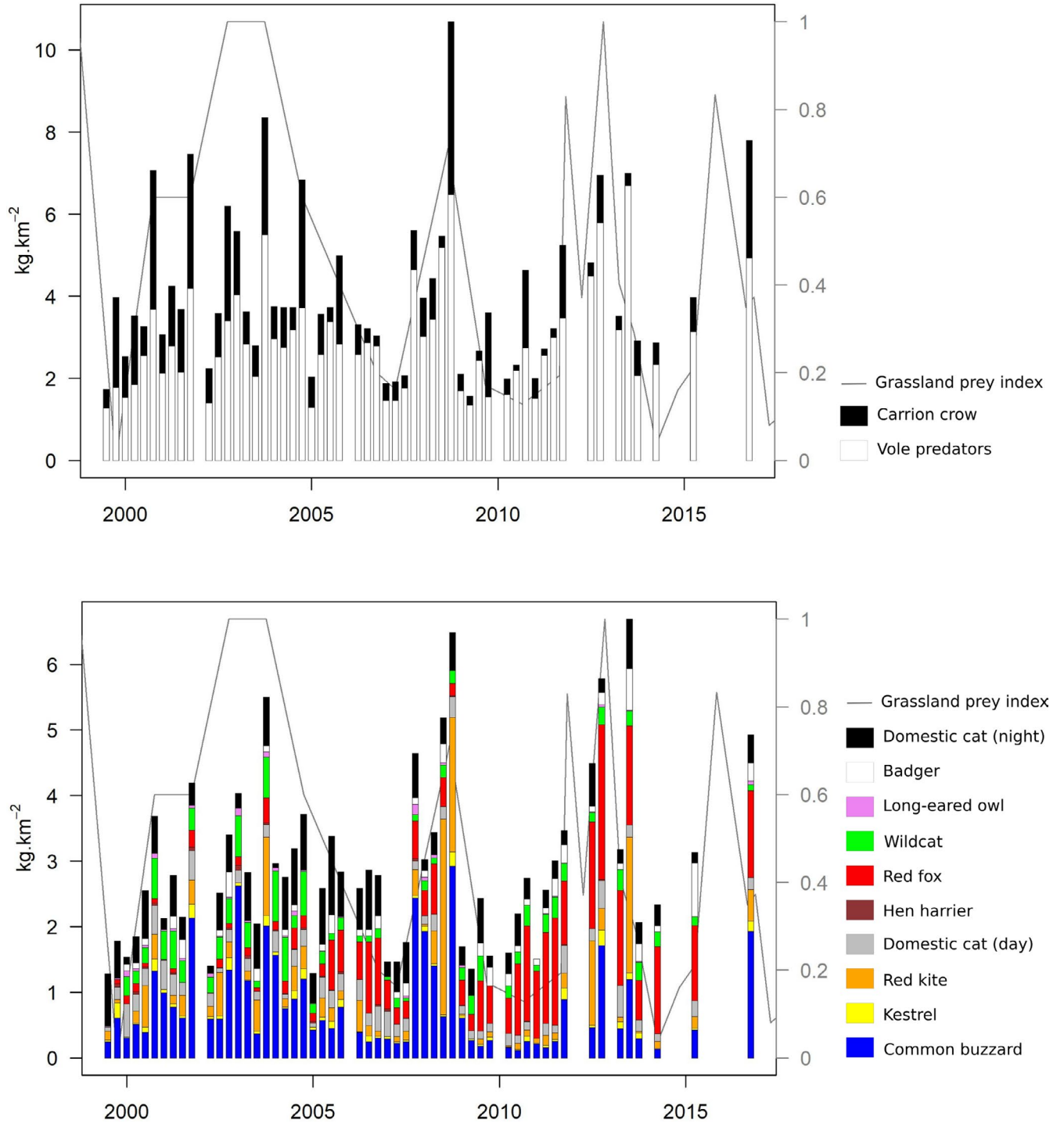


FIGURE A4 Variations in theoretical daily food intake ($\text{kg.km}^{-2}.\text{day}^{-1}$)