

Figure 7

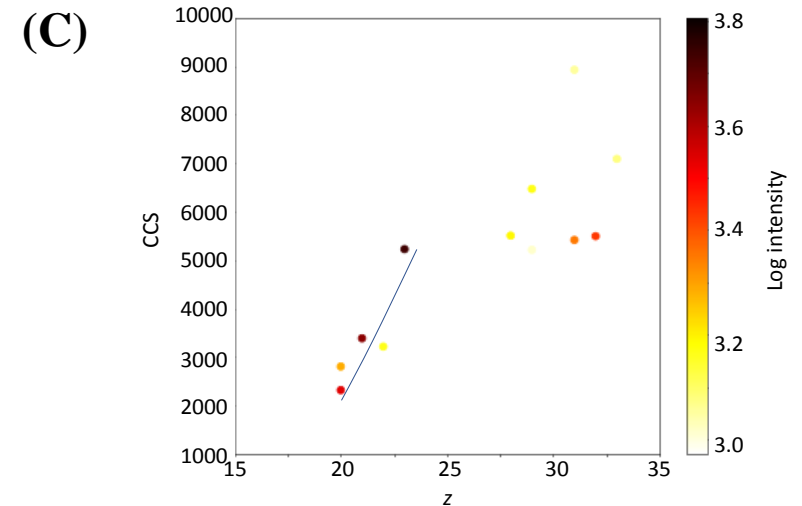
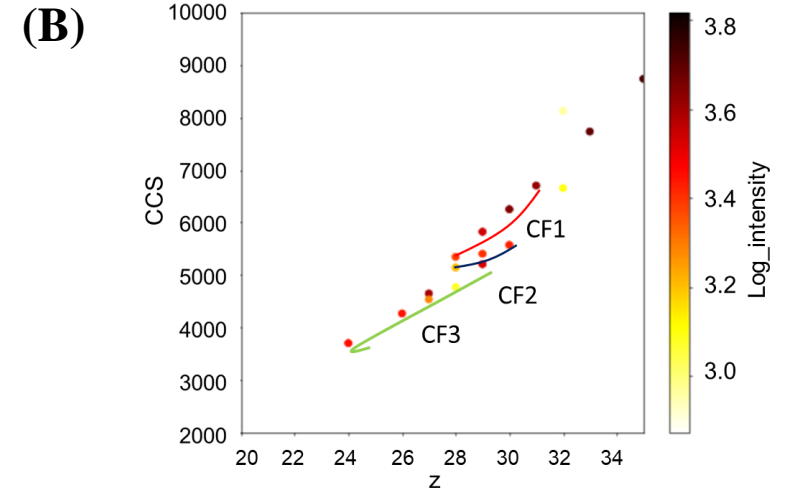
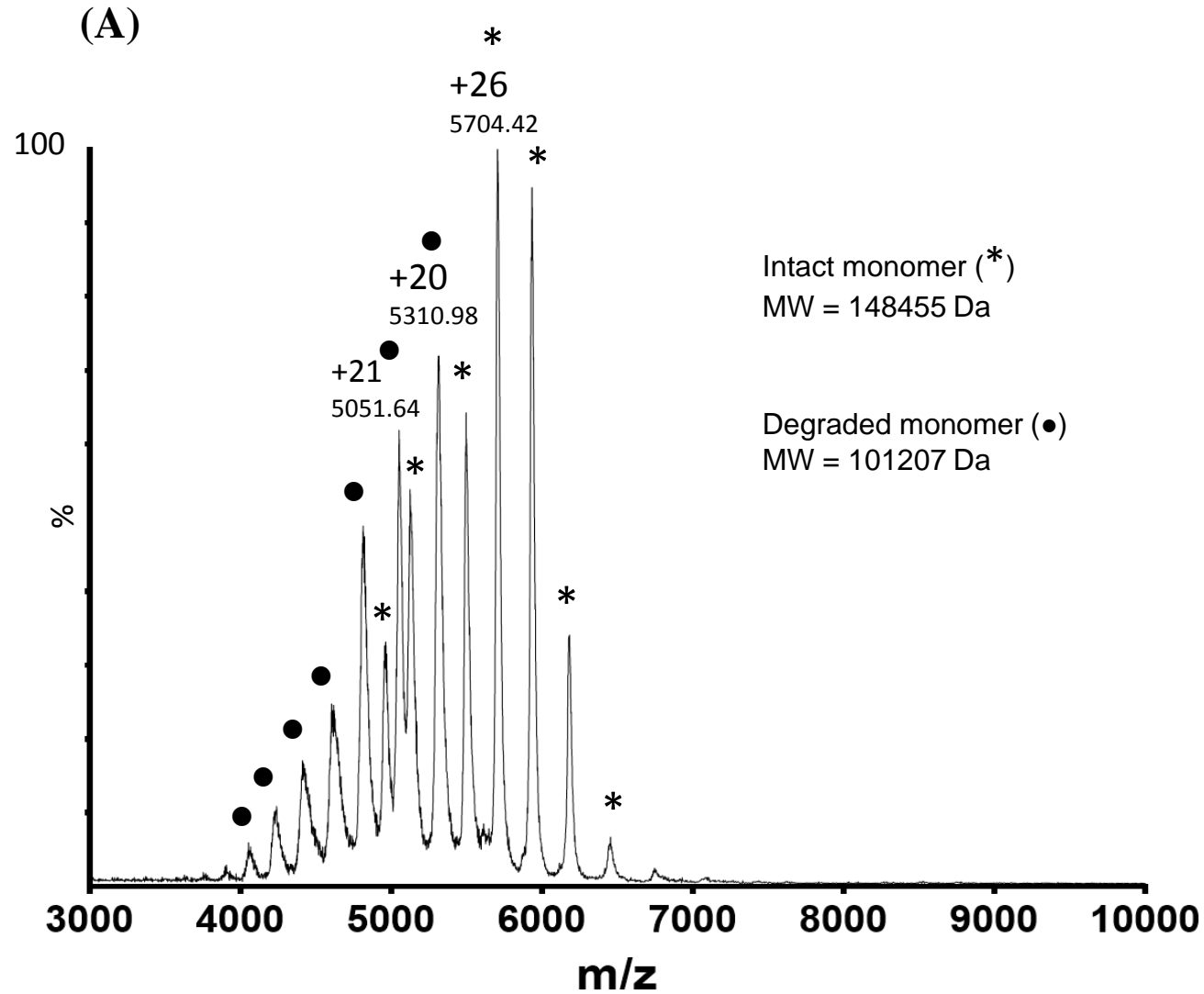


Figure 7: Trastuzumab sample (stressed) analyzed by SEC-IMS-MS, (A) Mass spectrum of the monomeric peak, (B) Collision cross section of the intact trastuzumab monomer depicted in Figure 7A. (C) Collision cross section of the degraded trastuzumab depicted in Figure 7A. Mobile phase conditions and column as mentioned in Figure 5. IM-MS conditions as mentioned in experimental section.