

Figure 6

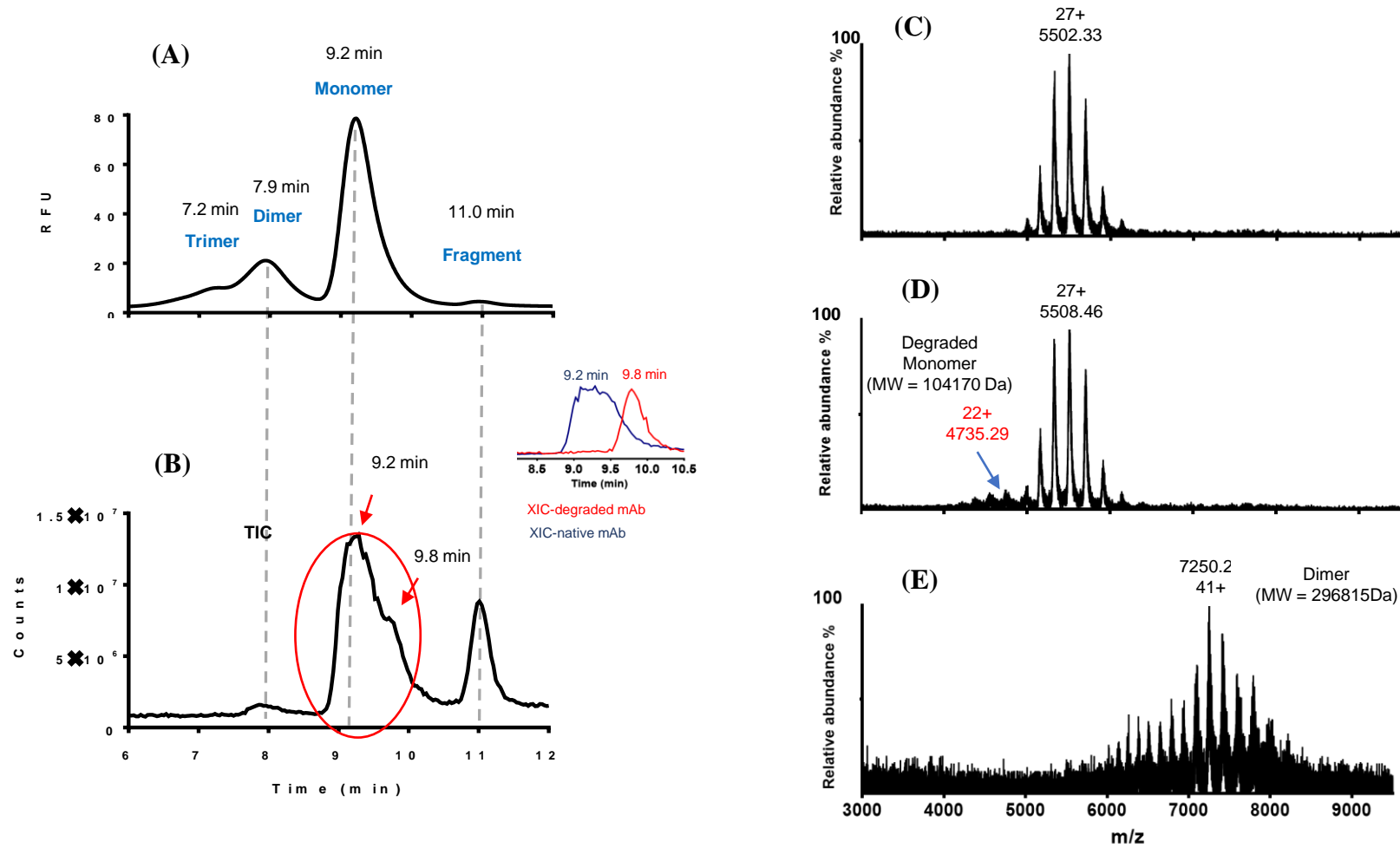


Figure 6 : On-line SEC-FLD/native MS analysis of stressed trastuzumab (long-term storage (4°C more than 6 months)). (A) Fluorescent chromatogram and (B) Total ion current (TIC) of stressed trastuzumab analysis, XIC profil corresponding to native trastuzumab (blue line), XIC profil corresponding to degraded trastuzumab (red line). (C) mass spectrum of fresh trastuzumab, (D) Mass spectrum of stressed trastuzumab (monomer), (E) Mass spectrum of stressed trastuzumab (dimer).

Experimental conditions as mentioned in Figure 5.