

**Figure 3**

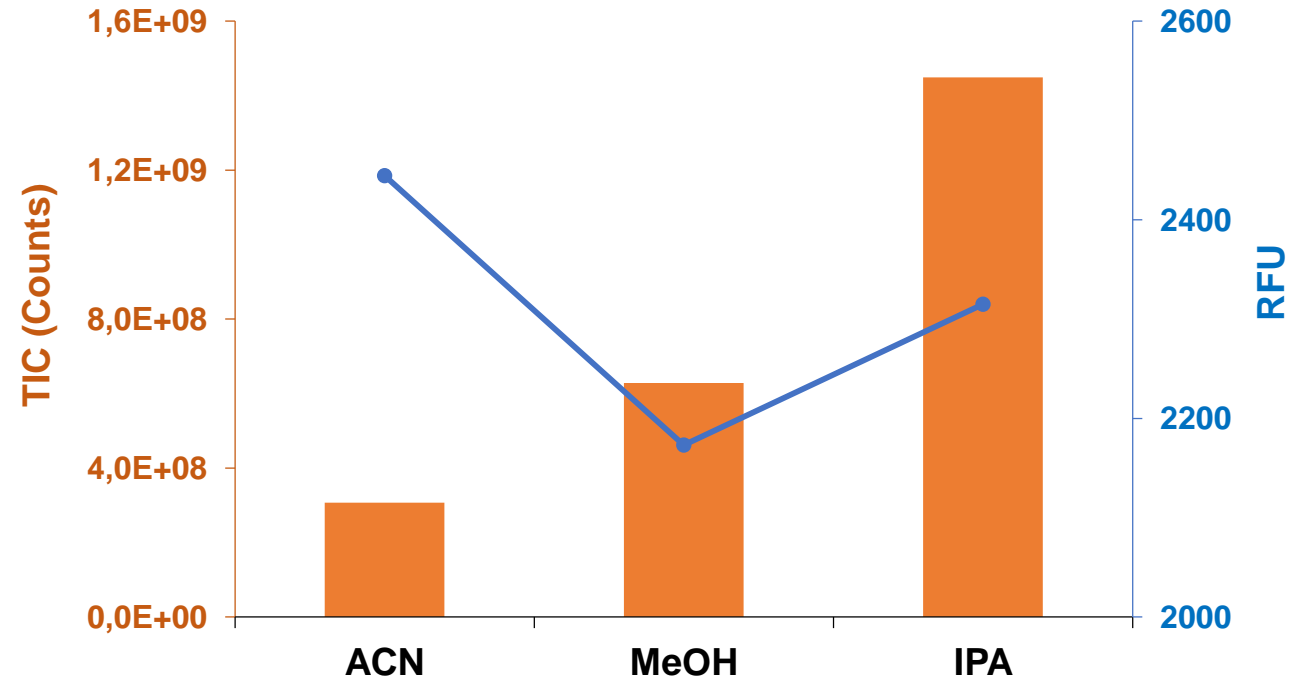


Figure 3: Comparison of different organic solvent influence in mobile phase, ACN, MeOH, IPA. Online SEC-FLD/native MS analysis of fresh infliximab with mobile phase containing 10% organic solvent: Mass spectra intensity (orange histogram) and peak area measured by FLD detector (blue trace) of Infliximab monomers.

Mobile phase: ammonium acetate 100 mM, pH = 6.0, 10 % organic solvent (v/v), other experimental conditions as mentioned in Figure 1.