

**Figure 2**

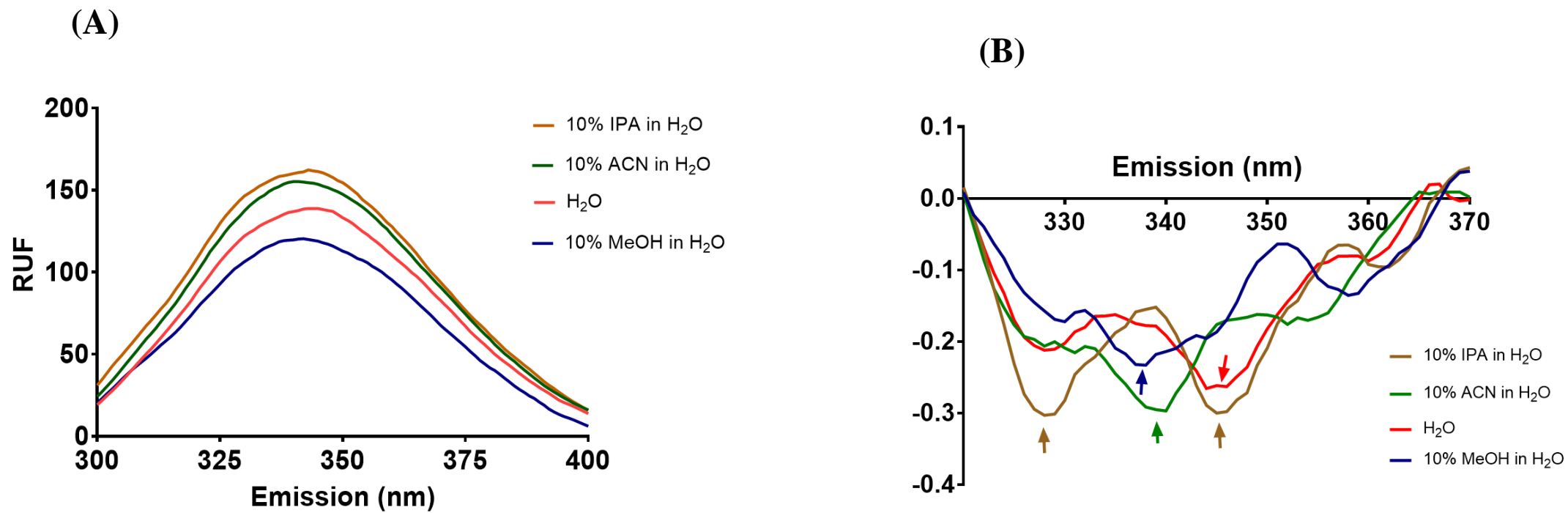


Figure 2: Fluorescent detection of compounded Infliximab with organic solvent ( $1 \text{ mg}\cdot\text{mL}^{-1}$ ); (A) Fluorescence emission spectra, (B) second derivative fluorescence spectra ( $\lambda_{\text{ex}} = 280 \text{ nm}$ ,  $\lambda_{\text{em}} = 295 - 450 \text{ nm}$ ).