

Figure 1

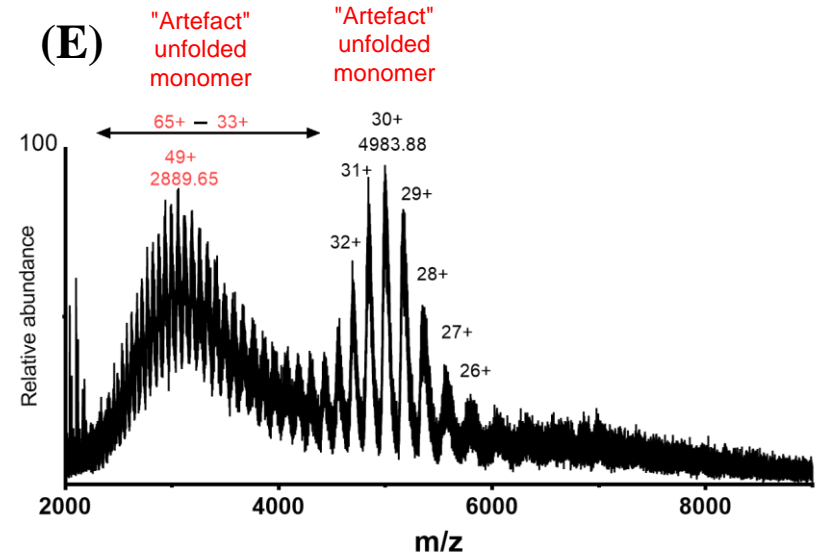
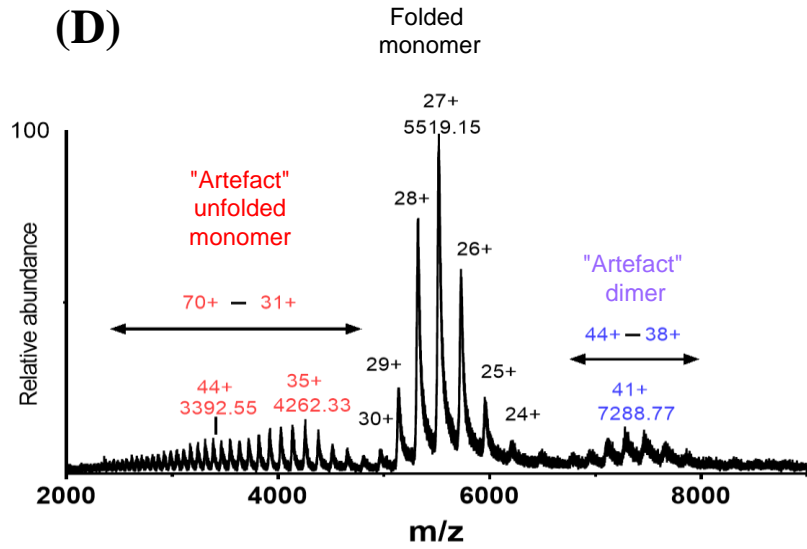
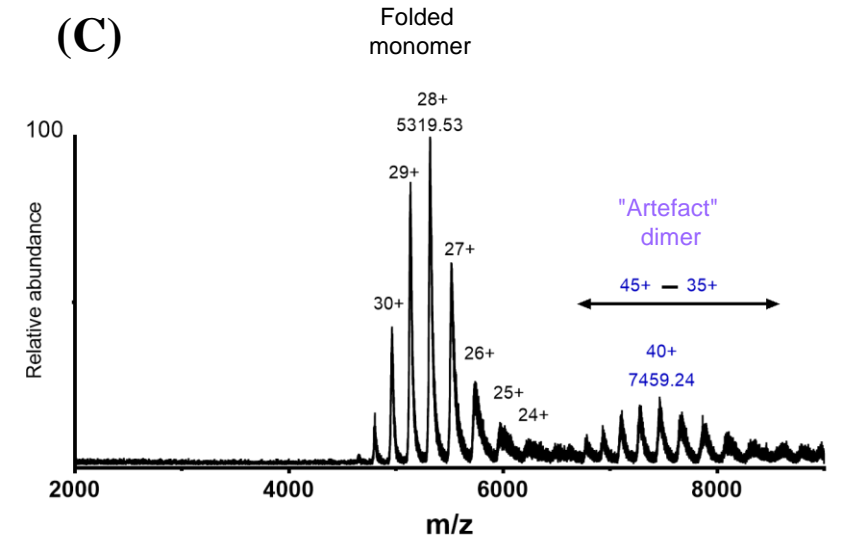
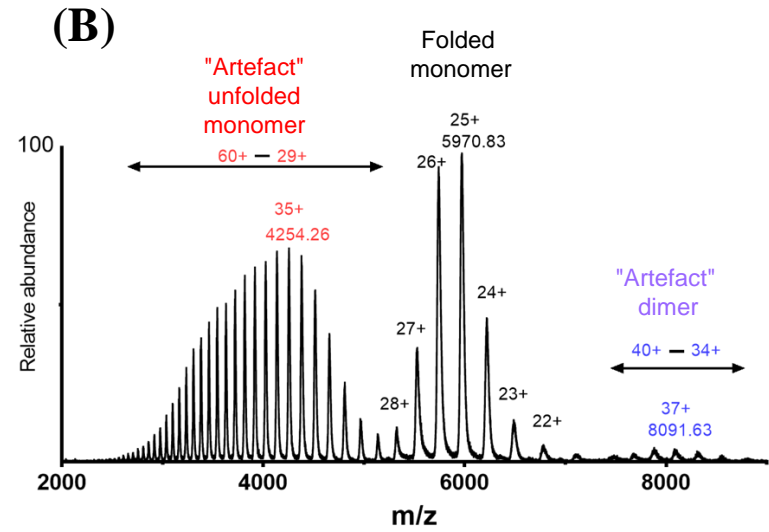
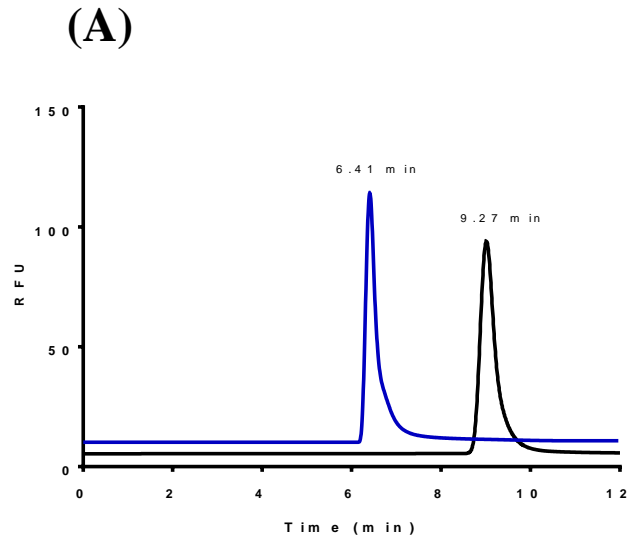


Figure 1: Online SEC-FLD/native MS analysis of Infliximab:

(A) SEC-LIF chromatogram using 100mM acetic acid pH 3.0 mobile phase (blue trace) and 100mM ammonium acetate pH 6.0 mobile phase (black trace). Mass spectra of monomeric Infliximab at different mobile phase (B) 100 mM acetic acid pH 3.0, (C) 100 mM ammonium acetate pH 6.0, (D) 100 mM ammonium formate pH 6.0, (E) 100 mM ammonium bicarbonate pH 6.0.

Column: BioSEC-3, (4.6 mm × 300 mm, 300 Å, particle diameter 3 μm); Flow rate: 300 μL.min⁻¹; LIF: λ_{ex} = 280 nm, λ_{em} = 350 nm. MS condition: drying gas. 250 °C – 6 L min⁻¹, sheath gas 200 °C – 6 L min⁻¹, nebulizer pressure 15 psig, transferred capillary, nozzle, fragmentor and skimmer voltages were set at 3500 V, 1500 V, 175 V and 65 V respectively