



HAL
open science

The M-current works in tandem with the persistent sodium current to set the speed of locomotion

Jérémy Verneuil, Cécile Brocard, Virginie Trouplin, Laurent Villard, Julie Peyronnet-Roux, Frédéric Brocard

► **To cite this version:**

Jérémy Verneuil, Cécile Brocard, Virginie Trouplin, Laurent Villard, Julie Peyronnet-Roux, et al.. The M-current works in tandem with the persistent sodium current to set the speed of locomotion. PLoS Biology, 2020, 18 (11), pp.e3000738. 10.1371/journal.pbio.3000738 . hal-03010771

HAL Id: hal-03010771

<https://hal.science/hal-03010771>

Submitted on 18 Nov 2020

HAL is a multi-disciplinary open access archive for the deposit and dissemination of scientific research documents, whether they are published or not. The documents may come from teaching and research institutions in France or abroad, or from public or private research centers.

L'archive ouverte pluridisciplinaire **HAL**, est destinée au dépôt et à la diffusion de documents scientifiques de niveau recherche, publiés ou non, émanant des établissements d'enseignement et de recherche français ou étrangers, des laboratoires publics ou privés.



Distributed under a Creative Commons Attribution 4.0 International License

RESEARCH ARTICLE

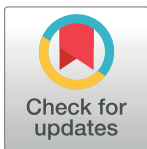
The M-current works in tandem with the persistent sodium current to set the speed of locomotion

Jérémy Verneuil¹, Cécile Brocard¹, Virginie Trouplin¹, Laurent Villard², Julie Peyronnet-Roux^{1‡}, Frédéric Brocard^{1‡*}

1 Institut de Neurosciences de la Timone, Aix-Marseille Université and Centre National de la Recherche Scientifique, Marseille, France, **2** Aix-Marseille Université, Inserm, MMG, Marseille, France

‡ These authors are joint senior authors on and contributed equally to this work.

* frederic.brocard@univ-amu.fr



OPEN ACCESS

Citation: Verneuil J, Brocard C, Trouplin V, Villard L, Peyronnet-Roux J, Brocard F (2020) The M-current works in tandem with the persistent sodium current to set the speed of locomotion. *PLoS Biol* 18(11): e3000738. <https://doi.org/10.1371/journal.pbio.3000738>

Academic Editor: Frederic Bretzner, Université Laval, CANADA

Received: April 8, 2020

Accepted: October 13, 2020

Published: November 13, 2020

Peer Review History: PLOS recognizes the benefits of transparency in the peer review process; therefore, we enable the publication of all of the content of peer review and author responses alongside final, published articles. The editorial history of this article is available here: <https://doi.org/10.1371/journal.pbio.3000738>

Copyright: © 2020 Verneuil et al. This is an open access article distributed under the terms of the [Creative Commons Attribution License](https://creativecommons.org/licenses/by/4.0/), which permits unrestricted use, distribution, and reproduction in any medium, provided the original author and source are credited.

Data Availability Statement: All relevant data are within the paper and its [Supporting information files](#).

Abstract

The central pattern generator (CPG) for locomotion is a set of pacemaker neurons endowed with inherent bursting driven by the persistent sodium current (I_{NaP}). How they proceed to regulate the locomotor rhythm remained unknown. Here, in neonatal rodents, we identified a persistent potassium current critical in regulating pacemakers and locomotion speed. This current recapitulates features of the M-current (I_M): a subthreshold noninactivating outward current blocked by 10,10-bis(4-pyridinylmethyl)-9(10H)-anthracenone dihydrochloride (XE991) and enhanced by *N*-(2-chloro-5-pyrimidinyl)-3,4-difluorobenzamide (ICA73). Immunostaining and mutant mice highlight an important role of Kv7.2-containing channels in mediating I_M . Pharmacological modulation of I_M regulates the emergence and the frequency regime of both pacemaker and CPG activities and controls the speed of locomotion. Computational models captured these results and showed how an interplay between I_M and I_{NaP} endows the locomotor CPG with rhythmogenic properties. Overall, this study provides fundamental insights into how I_M and I_{NaP} work in tandem to set the speed of locomotion.

Introduction

Locomotion requires a recurrent activation of muscles with variable rhythm to adapt speed of movements as circumstances demand. In mammals, rhythmicity appears to be ensured by a network mainly localized in the ventromedial gray matter of upper lumbar segments [1, 2]. The rhythm-generating network is a set of pacemaker cells endowed with intrinsic bursting activity in a frequency range similar to stepping rhythms [3, 4]. In exploring the ionic basis for rhythmogenesis, we identified the persistent sodium current (I_{NaP}) as a critical current in burst-generating mechanism [5–8]. The immediate assumption was that the locomotor rhythm may emerge from neurons incorporating I_{NaP} as a “pacemaker” current. In line with this concept, inhibition of I_{NaP} abolishes locomotor-like activity in rodents [3, 9–11] and salamanders [12] and disrupts locomotion in zebrafish [8, 13] and *Xenopus laevis* tadpoles [14]. Altogether, a picture emerges that the locomotor rhythm arises from a dynamic interplay

Funding: This research was financed by grants from French National Research Agency (CalpaSCI, ANR-16-CE16-0004; IMprove, ANR-19-CE17-0018) and the French Institut pour la Recherche sur la Moelle épinière et l'Encéphale (IRME). The funders had no role in study design, data collection and analysis, decision to publish, or preparation of the manuscript.

Competing interests: The authors have declared that no competing interests exist.

Abbreviations: aCSF, artificial cerebrospinal fluid; AIS, axonal initial segment; CHO, Chinese hamster ovary; CNS, central nervous system; CPG, central pattern generator; ES, embryonic stem; FBS, Fetal Bovine Serum; f-I, frequency–intensity relationship; GFP, green fluorescent protein; ICA73, *N*-(2-chloro-5-pyrimidinyl)-3,4-difluorobenzamide; IR-DIC, infrared differential interference contrast; *I*-*V*, current–voltage; mEPSC, miniature excitatory postsynaptic current; Na_v, voltage-gated sodium channel; NGS, Natural Goat Serum; NMA, *N*-methyl-DL aspartate; TEA, tetraethylammonium; TTX, tetrodotoxin; XE991, 10,10-bis(4-pyridinylmethyl)-9(10H)-anthracenone dihydrochloride; 5-HT, 5-hydroxytryptamine.

between circuit-based activity and pacemaker burst-generating mechanisms with a critical role of I_{NaP} for the initiation of bursts [4, 10].

Among general principles of rhythmogenesis, outward conductances are required to repolarize bursts [15]. In vertebrates, the Ca²⁺-activated K⁺ current (I_{KCa}) appears important in repolarizing bursts to regulate the locomotor rhythm [16–19], among other hyperpolarizing currents mediated by Kv1.2 [20] and A-type K⁺ channels [21] or Na⁺/K⁺ pumps [22–24]. Considering I_{NaP} as a subthreshold persistent conductance critically engaged in the burst initiation, it might be efficiently counteracted by a subthreshold persistent potassium current to end bursts of pacemakers and thereby to regulate the locomotor cycle. The Kv7 (KCNQ) channels mediate a unique subthreshold persistent outward current named I_M [25]. The Kv7 channels are widely expressed in the central nervous system (CNS), and several pieces of evidence reveal the existence of I_M in spinal motoneurons, presumably mediated by heteromeric Kv7.2/Kv7.3 channels [26–30]. However, their expression at the level of the locomotor central pattern generator (CPG) and their functional role in locomotion remain unexplored.

The present study characterizes the functional expression of I_M in locomotor-related interneurons and identifies Kv7.2-containing channels as its molecular constituent. We show that the modulation of I_M adjusts I_{NaP} amplitude and regulates the emergence of pacemaker properties, their burst repolarization, the frequency regime of the locomotor CPG, and the speed of locomotion. In sum, we provide the first description of I_M in a vertebrate motor CPG, to our knowledge, and describe its dynamic interplay with I_{NaP} as a fundamental mechanism in shaping bursting activity of neurons and networks that control rhythmic locomotor output.

Results

M-current regulates the speed of locomotion

To study the role of I_M in the locomotor behavior of juvenile rats (15–21 days old), potent and selective Kv7 channel modulators were injected intraperitoneally at a concentration commonly used for a systemic modulation of I_M [31–33]. The regular pattern of walking was captured with the CatWalk system before and after 30 min of drug administration (Fig 1). Control experiments with DMSO discarded potential effects of the vehicle ($P > 0.05$, in gray, Fig 1A–1C). Rats walked faster when the broad-spectrum activation of Kv7.2–Kv7.5 channels occurred by injecting retigabine (5 mg/kg; see [34]), which was related to a shorter stance phase ($P < 0.05$, in green, Fig 1A–1C). The broad-spectrum inhibition of Kv7 channels by linopirdine (3 mg/kg; [35]) had opposite effects, i.e., rats walked slower, attributable to a longer stance phase ($P < 0.05$, in yellow, Fig 1A–1C). A second set of experiments focused on the role of Kv7.2/3 subunits by means of more selective drugs. The potent Kv7.2/3 channel opener *N*-(2-chloro-5-pyrimidinyl)-3,4-difluorobenzamide (ICA73) (5 mg/kg; [36]) ($P < 0.05$, in blue, Fig 1A–1C) and the Kv7.2/3 channel blocker 10,10-bis(4-pyridinylmethyl)-9(10H)-anthracenone dihydrochloride (XE991) (5 mg/kg; [35]) ($P < 0.05$, in red, Fig 1A–1C) reproduced retigabine and linopirdine effects, respectively. Noteworthy, none of the Kv7 modulators affected the interlimb coordination or gait ($P > 0.05$; S1A–S1D Fig).

Modulation of the step cycle through systemic administration of drugs may involve changes in the excitability of midbrain circuits setting the speed of locomotion [37, 38]. To investigate a putative modulation of I_M at the level of the spinal locomotor CPG, the opener ICA73 (0.05 mg/kg) and the blocker XE991 (0.025 mg/kg) were injected intrathecally at the L1–L2 level in adult rats. The intrathecal delivery of drugs replicated the effects observed with an intraperitoneal injection. Specifically, rats walked faster with ICA73 ($P < 0.05$, in blue, Fig 1D–1F) and slower with XE991 ($P < 0.05$, in red, Fig 1D–1F) without affecting interlimb coordination or

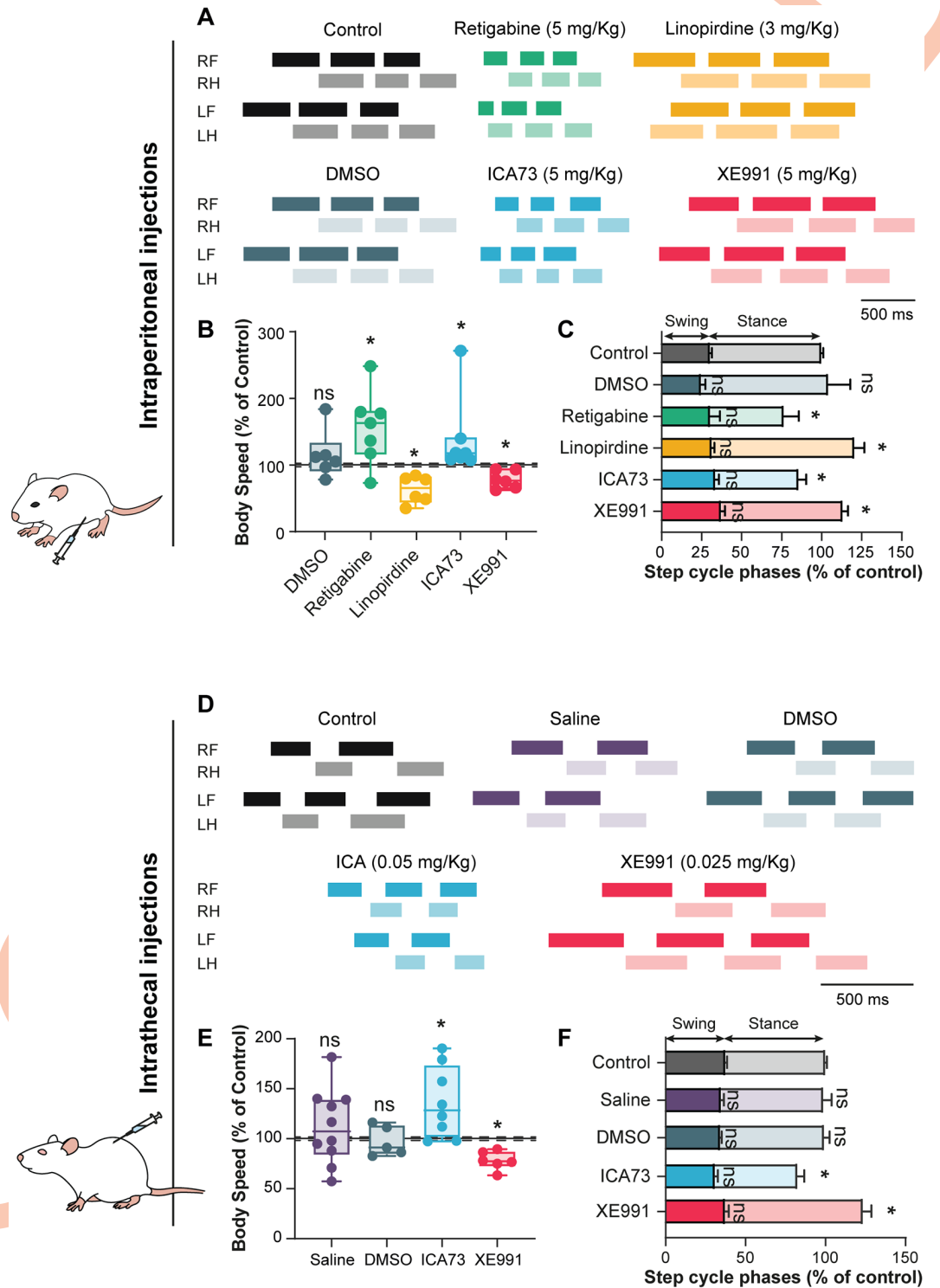


Fig 1. I_M sets the speed of locomotion. (A,D) Representative footfall diagrams during CatWalk locomotion of juvenile rats (A, 15–21 days old) before (black) and 30 min after acute i.p. administration of DMSO (gray, $n = 6$ rats), retigabine (5 mg/kg, green, $n = 7$ rats), linopirdine (3 mg/kg, yellow, $n = 6$ rats), ICA73 (5 mg/kg, blue, $n = 7$ rats), or XE991 (5 mg/kg, red, $n = 6$ rats) or in adult rats (D) before (black) and 5–10 min after acute i.t. administration at the L1–L2 level of saline (purple, $n = 10$ rats), DMSO (gray, $n = 5$ rats), ICA73 (0.05 mg/kg, blue, $n = 8$ rats), or XE991 (0.025 mg/kg, red, $n = 6$ rats). The stance phase is indicated by horizontal bars and the swing phase by open spaces. (B,E) Normalized changes of the body speed induced in juvenile (B) and adult (E) rats by the abovementioned drugs. Dotted lines indicate the 95% confidence intervals of control

values. * $P < 0.05$, comparing animals before and after drug administration; Wilcoxon paired test. (C,F) Normalized changes of swing and stance phases induced in juvenile (C) and adult (F) rats by the abovementioned drugs and expressed as a percentage of the total step cycle. * $P < 0.05$, comparing data collected before and after drug administration; Wilcoxon paired test. Data in C and F are mean \pm SEM. Underlying numerical values can be found in the [S1 Data](#). ICA73, *N*-(2-chloro-5-pyrimidinyl)-3,4-difluorobenzamide; i.p., intraperitoneal; i.t., intrathecal; LF, left forelimb; LH, left hindlimb; ns, not significant; RF, right forelimb; RH, right hindlimb; XE991, 10,10-bis(4-pyridinylmethyl)-9(10H)-anthracenone dihydrochloride.

<https://doi.org/10.1371/journal.pbio.3000738.g001>

gait ($P > 0.05$; [S1E–S1H Fig](#)). Note that control experiments with DMSO or saline discarded potential effects of vehicles ($P > 0.05$, in gray and in purple, [Fig 1D–1F](#)).

Altogether, these results support the concept that I_M , presumably mediated by Kv7.2 and/or Kv7.3 channels, is an important and physiologically relevant regulator of the spinal locomotor network without interfering with the dynamic postural control.

Ubiquitous expression of Kv7.2-containing channels in interneurons from the locomotor CPG region

We then studied the expression of Kv7.2/3 channels in ventromedial interneurons from upper lumbar segments (L1–L2), where components of the locomotor rhythm-generating network are located [1, 2]. Immunostaining substantiates the presence of Kv7.2 channels in the soma of all ventromedial interneurons and in the distal part of their axonal initial segments (AISs), identified by their expression of voltage-gated sodium (Na_v) channels ([Fig 2A–2C](#), [2G](#), and [2H](#)). A similar Kv7.2-immunostaining profile was observed in lumbar motoneurons ([S2A–S2C](#), [S2G](#), and [S2H Fig](#)). Conversely to Kv7.2, the Kv7.3 subunit was weakly expressed in the soma and virtually undetectable in AISs of most ventromedial interneurons ([Fig 2D–2G](#)). On the other hand, Kv7.3 immunostaining distinctively labeled the distal part of AISs in almost half of lumbar motoneurons ([S2D–S2H Fig](#)). In sum, L1–L2 ventromedial interneurons ubiquitously express Kv7.2-containing channels, suggestive of the existence of I_M in the locomotor CPG. Note that we validated the specificity the antibodies against Kv7.2 and Kv7.3 on Chinese hamster ovary (CHO) cells stably expressing Kv7.2 or Kv7.3 channels ([S3 Fig](#)).

Characterization of I_M in the rhythm-generating kernel for locomotion

To assess whether interneurons from the CPG region exhibit a functional I_M , we isolated I_M by whole-cell patch-clamp recordings under tetrodotoxin (TTX) (1 μM). By using the standard relaxation protocol, we measured I_M as the amplitude of the tail inward current evoked by stepping down voltage from -10 mV ([Fig 3A](#)). All L1–L2 ventromedial neurons displayed an electrophysiological signature of I_M [39]. From the current–voltage (I – V) relationship fitted with a standard Boltzmann function (in black, [Fig 3B](#)), the threshold for activation (V_T) was positive to -67.3 ± 1.9 mV, and its amplitude increased steeply (slope factor k : 4.4 ± 0.6) for larger voltage steps with a midpoint of activation ($V_{1/2}$) at -43.6 ± 1.5 mV and then plateaued above -30 mV. The peak amplitude of I_M was in the mean of 79.2 ± 7.4 pA. We further characterized I_M pharmacologically ([Fig 3C](#)). The I_M enhancer ICA73 (10 μM) increased the holding current and the magnitude of I_M and hyperpolarized its V_T and $V_{1/2}$ activation ($P < 0.05$, in blue, [Fig 3B–3D](#)). The I_M enhancer retigabine (100 nM) replicated the effects of ICA73 on I_M ([S4A–S4F Fig](#)). The I_M blocker XE991 (10 μM) markedly reduced the holding current and virtually abolished I_M ($P < 0.05$, in red, [Fig 3B–3D](#)). Note that similar biophysical properties of I_M , sensitive to XE991, were recorded from transgenic mice Hb9:green fluorescent protein (GFP)-positive ventromedial interneurons that are considered as components of the locomotor rhythm-generating circuit ([S5 Fig](#)) [40, 41]. Given the strong expression of Kv7.2 in interneurons, we evaluated the contribution of Kv7.2 to I_M with knock-in mice bearing the T274M

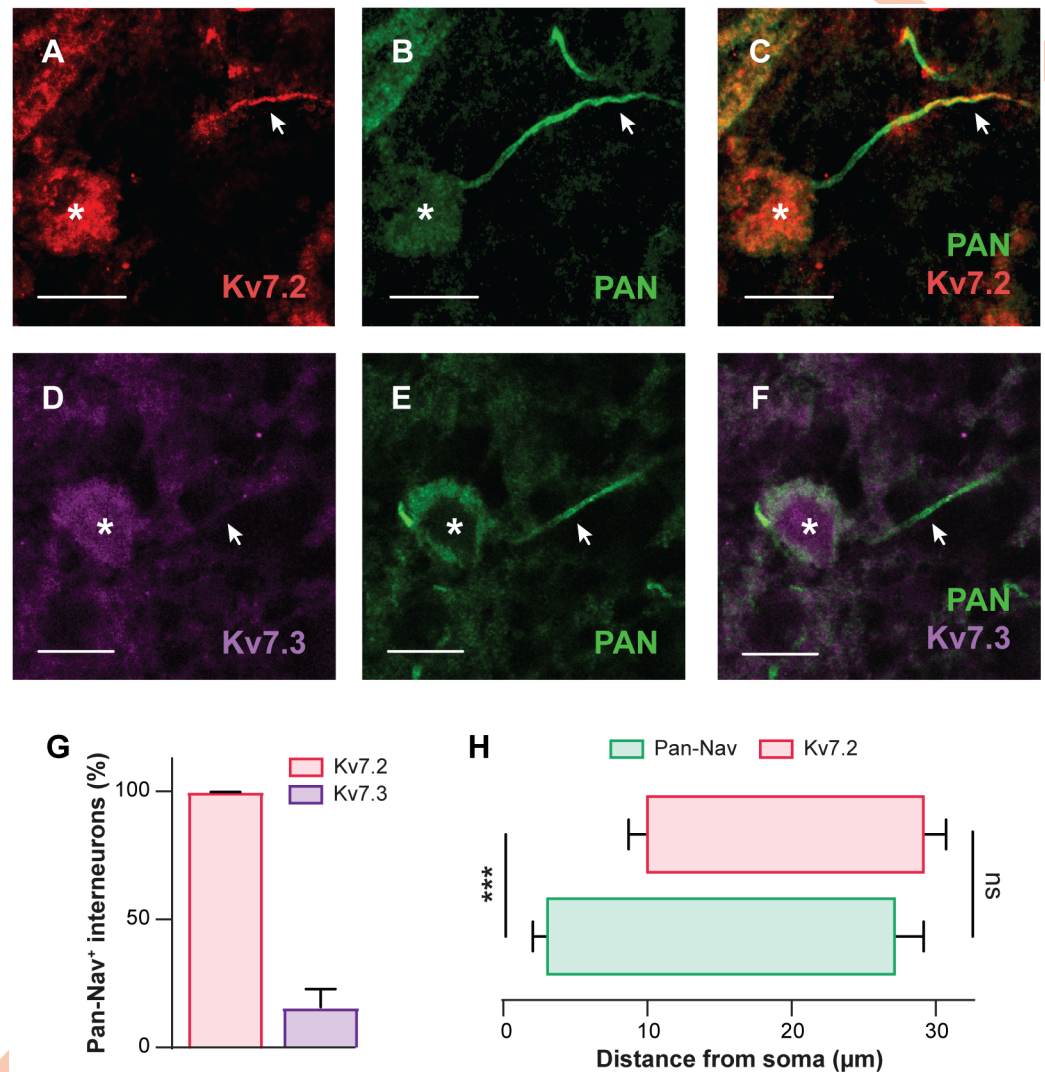


Fig 2. Lumbar interneurons within the locomotor CPG region ubiquitously express Kv7.2-containing channels. (A–F) Immunostaining of lumbar (L1–L2) ventromedial interneurons from juvenile rats ($n = 3$ rats) against Kv7.2 (A, $n = 216$ cells) or Kv7.3 (D, $n = 170$ cells) along the AIS labeled by the pan-Nav_v antibody (B,E). Kv7.2 and pan-Nav_v are merged in (C), and Kv7.3 and pan-Nav_v are merged in (F). Asterisks indicate the nucleus position and arrowheads the AIS. Scale bars = 10 μm. (G) Group means quantification of the proportion of pan-Nav_v positive interneurons expressing Kv7.2 or Kv7.3 channels. (H) Group means quantification of the start and end positions of pan-Nav_v and Kv7.2 immunolabeling along the axonal process from the soma ($n = 10$ cells). *** $P < 0.001$, comparing start or end positions between groups; Mann–Whitney test. Data are mean \pm SEM. Underlying numerical values can be found in the [S1 Data](#). AIS, axonal initial segment; CPG, central pattern generator; Nav_v, voltage-gated sodium channel.

<https://doi.org/10.1371/journal.pbio.3000738.g002>

Kv7.2 mutation associated with Ohtahara syndrome [42]. Because this mutation is homozygous lethal, we studied I_M on Kv7.2^{Thr274Met/+} animals. We found in heterozygous Kv7.2^{Thr274Met/+} mice that I_M was about halved in amplitude relative to Kv7.2^{+/+} littermates (Fig 3E). These results indicated that I_M was at least mediated by Kv7.2-containing channels. To further investigate which Kv7 subunits are involved, we exploited the differential sensitivity of Kv7 channels to tetraethylammonium (TEA) [43–46]. Thus, Kv7.2 homomers are almost fully blocked at 1 mM, whereas Kv7.3, Kv7.4, and Kv7.5 homomers are blocked with IC_{50} values of >200, approximately 3.0, and approximately 70 mM, respectively. Kv7.2/7.3 and Kv7.2/7.5

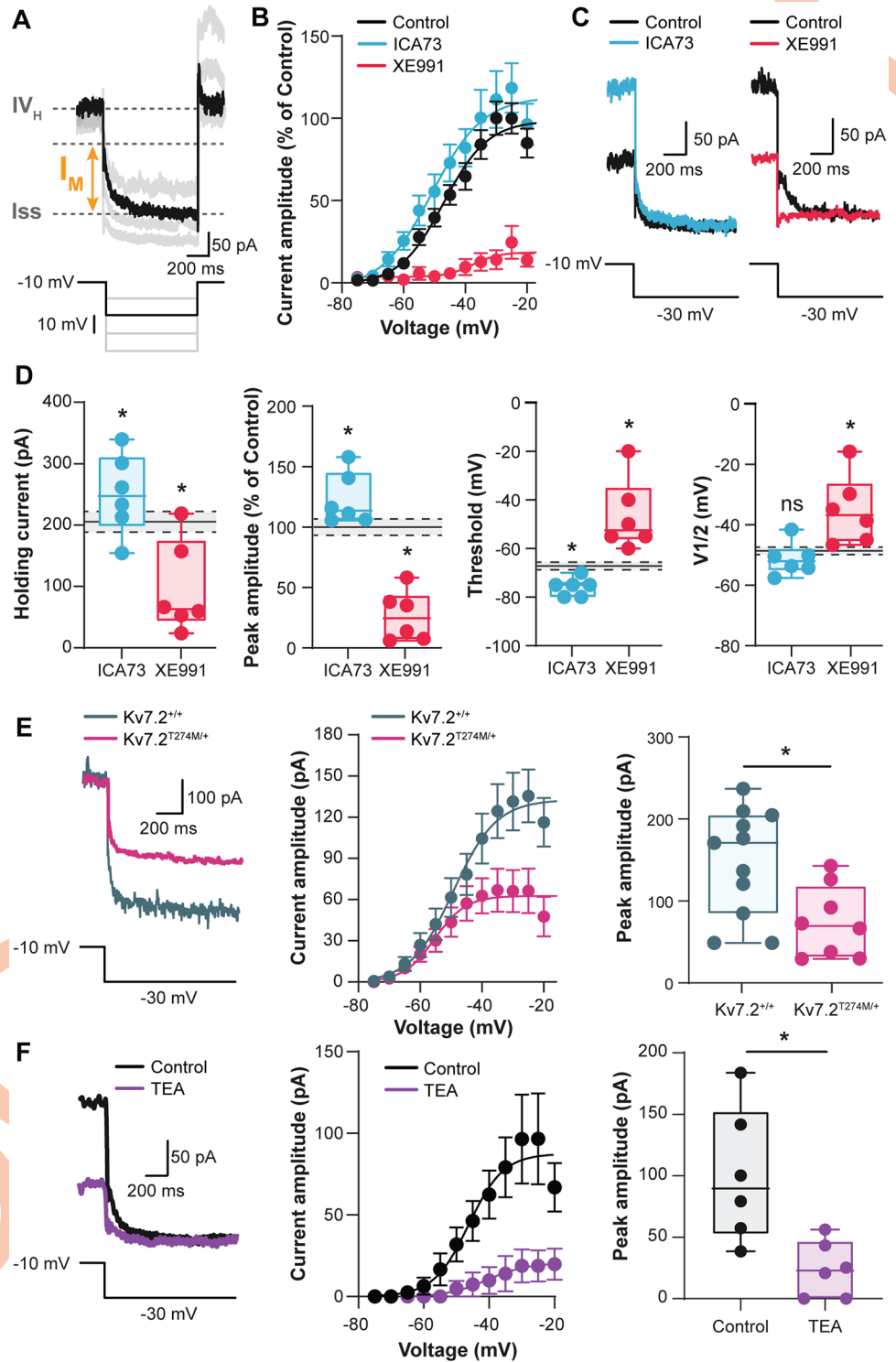


Fig 3. Characterization of I_M in interneurons of the locomotor CPG region. (A) Representative inward current relaxation recorded in L1–L2 ventromedial interneurons from neonatal rats and induced by the standard I_M deactivation voltage protocol. The current relaxation (I_M) was measured as the difference between the fast transient (I_{VH}) and the steady-state current (I_{SS}). (B) Boltzmann-fitted I – V relationships of I_M normalized to control (black) values and established before and after bath-applying XE991 (10 μ M, red) or ICA73 (10 μ M, blue). Error bars represent \pm SEM. (C) Representative deactivation of I_M before and after adding the abovementioned drugs. (D) Boxplots quantification of biophysical properties of I_M . ($n = 6$ cells). Dashed lines with gray shading indicate the 95%

confidence intervals of control values. * $P < 0.05$, *** $P < 0.001$, comparing data collected before and after adding the abovementioned drugs; Wilcoxon paired test. (E) Representative deactivation (left), Boltzmann-fitted $I-V$ relationships (middle), and amplitude (right) of I_M recorded in interneurons from wild-type ($n = 11$ cells, gray) and Kv7.2^{Thr274Met/+} mutant mice ($n = 8$ cells, purple). * $P < 0.05$; Mann-Whitney test. (F) Representative deactivation (left), Boltzmann-fitted $I-V$ relationships (middle), and amplitude (right) of I_M recorded in interneurons from neonatal rat before and after adding TEA (1 mM, $n = 6$ cells). * $P < 0.05$; Mann-Whitney test. Underlying numerical values can be found in the [S1 Data](#). CPG, central pattern generator; ICA73, *N*-(2-chloro-5-pyrimidinyl)-3,4-difluorobenzamide; $I-V$, current-voltage; TEA, tetraethylammonium; XE991, 10,10-bis(4-pyridinylmethyl)-9(10H)-anthracenone dihydrochloride.

<https://doi.org/10.1371/journal.pbio.3000738.g003>

heteromeric channels show intermediate sensitivities to TEA block with IC_{50} values near approximately 3 mM and approximately 200 mM. We found that bath application of 1 mM TEA blocked approximately 80% of I_M in L1-L2 ventromedial interneurons from neonatal rats ($P < 0.05$, in purple, [Fig 3F](#)).

Altogether, these results support the expression of a noninactivating K^+ current corresponding to I_M in the locomotor CPG, presumably carried by Kv7.2-containing channels mostly in a homomeric form.

M-current sets the neuronal excitability and gates pacemaker bursting mode

We characterized the role of I_m in membrane properties of L1-L2 ventromedial interneurons recorded from neonatal rats. As a first observation, the I_m enhancer ICA73 hyperpolarized cells (in blue, [S6A Fig](#); routinely compensated to -60 mV) along with a drop of the input resistance ($P < 0.05$ [Table 1](#)). Therefore, interneurons became less excitable (higher rheobase; $P < 0.05$, [Table 1](#)) and produced fewer spikes ($P < 0.05$, in blue, [Fig 4A](#)) without any changes in parameters of the action potential ($P > 0.05$, [Table 1](#)). The frequency-intensity ($f-I$) curve was thus shifted to the right ([Fig 4B](#)). The reversibility of these effects when the I_m blocker XE991 was applied emphasized the dependence of ICA73 on Kv7 channels ([S6A-S6D Fig](#)). Consistent with this, the Kv7 opener retigabine reproduced effects of ICA73 on electroresponsive properties ([S4G and S4H Fig](#) and [Table 1](#)). We further tested the functional implication of I_m by using the I_m blocker XE991 alone. The I_m blocker per se neither depolarized the resting membrane potential nor increased the neuronal excitability or the firing rate even 30 min after the bath application of the drug ($P > 0.05$, in red, [Fig 4A and 4B](#) and [Table 1](#)). Thus, the basal excitability was not affected by XE991. However, I_m blockers such as XE991 have the peculiarity to be voltage-dependent blockers, with higher affinity at positive potentials, and therefore

Table 1. Effects of drugs targeting Kv7 channels on passive and active membrane properties of interneurons.

	V_{rest} (mV)	Input Resistance (M Ω)	Rheobase (pA)	Spike Threshold (mV)	Spike Amplitude (mV)
Control	-57.8 ± 1.2	$1,147.3 \pm 121.3$	11.3 ± 1.4	-45.0 ± 1.1	55.5 ± 2.2
ICA73 ($n = 6$)	$-65.4 \pm 2.8^*$	$694.3 \pm 222.4^*$	$28.3 \pm 10.7^*$	-49.1 ± 1.4 (ns)	48.1 ± 2.6 (ns)
Retigabine ($n = 9$)	$-70.7 \pm 1.7^{**}$	$869.4 \pm 103.2^*$	$17.2 \pm 3.8^*$	-47.1 ± 1.9 (ns)	48.4 ± 1.8 (ns)
XE991 ($n = 7$)	-57.1 ± 1.8 (ns)	979.1 ± 150.8 (ns)	17.1 ± 2.6 (ns)	-43.7 ± 1.7 (ns)	57.9 ± 4.0 (ns)

Values are means \pm SEM; n , number of cells. Mean firing frequency was measured at 2-fold the rheobase.

* $P < 0.05$,

*** $P < 0.001$, comparing data collected before and after bath-applying drugs mentioned above; Wilcoxon paired test. Underlying numerical values can be found in the [S1 Data](#).

Abbreviations: ICA73, *N*-(2-chloro-5-pyrimidinyl)-3,4-difluorobenzamide; ns, not significant; XE991, 10,10-bis(4-pyridinylmethyl)-9(10H)-anthracenone dihydrochloride.

<https://doi.org/10.1371/journal.pbio.3000738.t001>

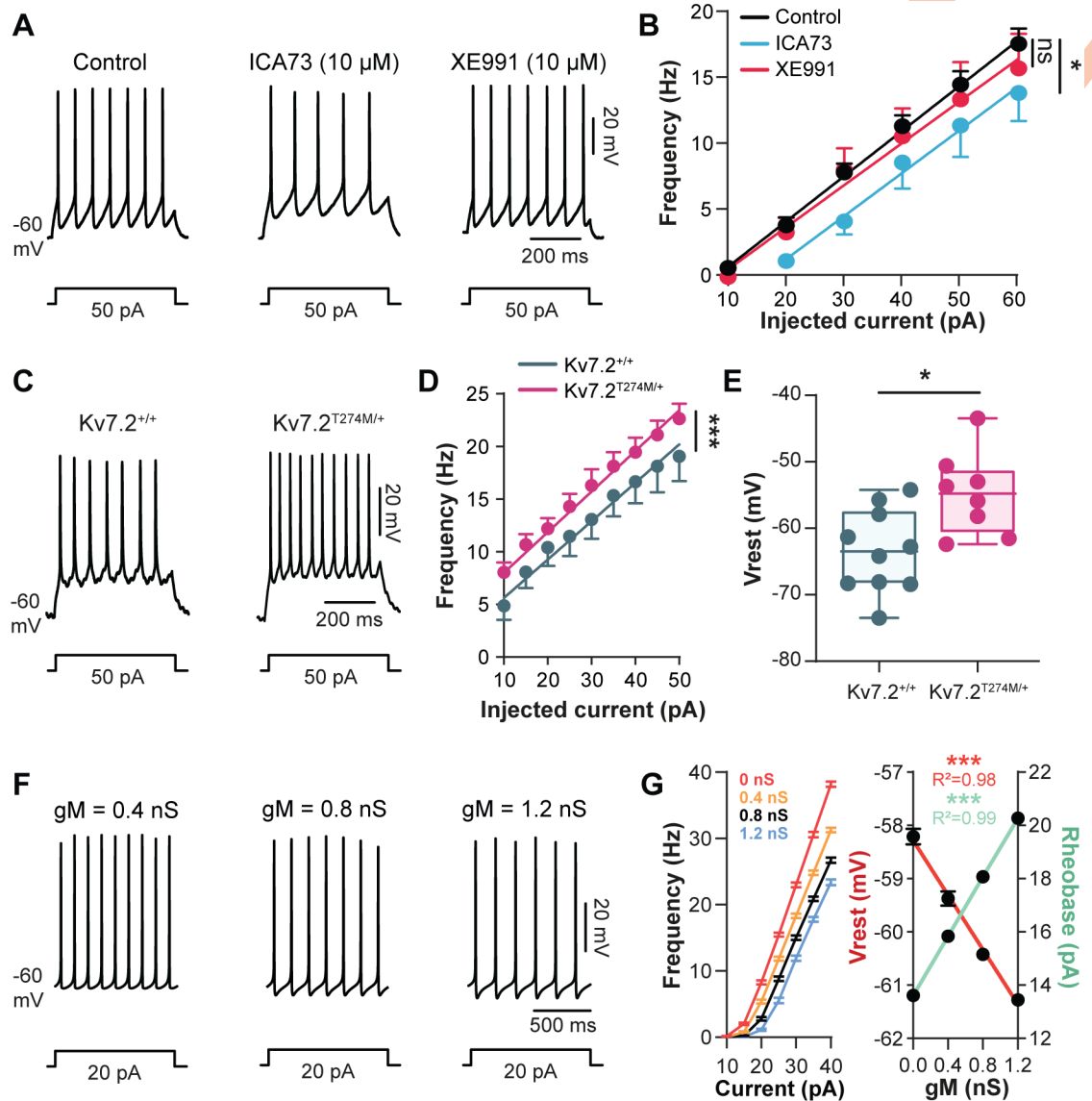


Fig 4. I_M mediated by Kv7.2-containing channels regulates both the excitability and the spiking activity of L1-L2 ventromedial interneurons. (A,B) Spiking activity of ventromedial interneurons (L1-L2) to a near-threshold depolarizing pulse (A) with its respective frequency-current relationships (B) before (black) and after bath-applying ICA73 (10 μM , $n = 7$ cells, blue) or XE991 (10 μM , $n = 7$ cells, red). Continuous lines represent the best-fitting linear regression. $***P < 0.001$ comparison of the fits before and after adding the abovementioned drugs. (C-E) Representative spiking activity (C), frequency-current relationships (D), and resting membrane potential (E) of ventromedial interneurons (L1-L2) recorded from wild-type ($n = 10$ cells) and Kv7.2^{Thr274Met/+} mutant mice ($n = 8$ cells). Continuous lines represent the best-fitting linear regression. $***P < 0.001$ comparison of the fits. $*P < 0.05$, comparing resting membrane potentials; Mann-Whitney test. (F) Spiking activity from a single-neuron model at 3 different values of g_M . The injected current pulses in A, C, and F are indicated below voltage traces. (G) Mean plots of the firing rate, rheobase, and resting membrane potential as function of g_M (in the heterogeneous population model of 50 neurons). The continuous line is the best-fitting linear regression. $***P < 0.001$, Spearman correlation test. R^2 indicates the correlation index. Data are mean \pm SEM. Underlying numerical values can be found in the [S1 Data](#). ICA73, *N*-(2-chloro-5-pyrimidinyl)-3,4-difluorobenzamide; XE991, 10,10-bis(4-pyridinylmethyl)-9(10H)-anthracenone dihydrochloride.

<https://doi.org/10.1371/journal.pbio.3000738.g004>

are very poor inhibitors at perithreshold potentials [47]. Furthermore, the inhibition develops slowly upon depolarization within a timescale of minutes [48]. To overcome this experimental limitation, we used the Kv7.2^{Thr274Met/+} mutant mice for which I_m was halved (see above). We showed that L1-L2 ventromedial interneurons from mutant mice displayed a higher spiking

frequency ($P < 0.001$, Fig 4C and 4D) and a more depolarized resting membrane potential ($P < 0.05$, Fig 4E).

We also studied the theoretical effect of I_m by modeling I_m in an Hb9 cell model that we previously used [10]. The model was supplemented by I_m derived from our voltage-clamp recordings. A population of 50 uncoupled interneurons was simulated with a randomized normal distribution of neuronal parameters (see [Materials and methods](#)). Simulated neurons reproduced key features of the biological responses to stepwise depolarizing currents with firing rate in the range of our experimental data (Fig 4F and 4G). The increase of the M-conductance (g_M) in the model qualitatively captured the modulation of neuronal excitability observed experimentally with I_m enhancers ICA73 or retigabine; firing rate decreased, the resting membrane potential hyperpolarized, and the rheobase increased ($P < 0.001$, Fig 4F and 4G). However, in contrast to our electrophysiological recordings with the I_m blocker XE991, decreasing g_M in the model predicted a depolarization of V_{rest} , whereas the firing rate and the rheobase would go up and down, respectively ($P < 0.001$, Fig 4F and 4G). On the other hand, these computational data were similar to those recorded in $Kv7.2^{Thr274Met/+}$ mutant mice, making them suitable to use as a tool to explore how I_m might shape the firing pattern of interneurons.

A remarkable effect of modeling a decrease of g_M was the gradual transfer to a bursting mode in a small proportion of neurons to reach 17% of bursters when g_M was switched off (Fig 5A and 5B). Bursts disappeared when I_{NaP} was zeroed (Fig 5A). To evaluate this computational prediction, we tested XE991 on cells intracellularly recorded and constantly depolarized with a suprathreshold current (Fig 5C). In this condition, XE991 caused a transition from tonic spiking to bursting in approximately 18% of the interneurons recorded (Fig 5C and 5D). Bursts were abolished by the I_{NaP} blocker riluzole (Fig 5C). The insensitivity of bursts to kynurenic acid (1.5 mM; blocker of the fast-glutamatergic transmission) and the lack of rhythmic currents in voltage-clamp recordings precluded a role of network inputs in the emergence of bursts (Fig 5C).

Overall, these data indicate an important role of I_M in setting the excitability and firing properties of interneurons within the locomotor CPG region, notably by impeding the initiation of bursts mediated by I_{NaP} .

Interneurons balance I_M and I_{NaP} to trigger pacemaker bursting mode

The emergence of I_{NaP} -dependent bursting cells when $Kv7$ channels are blocked suggests that I_M might counteract I_{NaP} to regulate pacemaker properties. To test this possibility, voltage-clamp recordings were performed to examine the degree of interaction between the 2 currents. In response to very slow voltage ramps, ventromedial interneurons from neonatal rats displayed a large inward current attributable to I_{NaP} (Fig 6A; see [5]). In the presence of I_M blocker XE991, I_{NaP} was higher in amplitude, whereas V_T and $V_{1/2}$ did not change ($P < 0.05$, Fig 6A and 6B). Similar results were obtained from $Kv7.2^{Thr274Met/+}$ mutant mice ($P < 0.05$, Fig 6C and 6D). These data show that biophysical properties of I_M are well-suited to counteract the depolarizing drive furnished by I_{NaP} . Here, we speculate that the combination of I_M and I_{NaP} currents is a possible mechanism in controlling bursting dynamics. We evaluated this assumption by varying the maximal conductance levels of g_M and g_{NaP} in the heterogeneous population model composed of 50 uncoupled Hb9-type interneurons (Fig 6E). None of the neurons exhibited bursting at base levels of g_M (0.8 nS) and g_{NaP} (0.4 nS). We found that a population bursting activity could be triggered by either a reduction of g_M or an increase of g_{NaP} in turn (Fig 6E). However, the striking observation was the synergistic effect of reducing g_M and increasing g_{NaP} conductance on the generation of bursts ($P < 0.001$, Fig 6F). Compared with

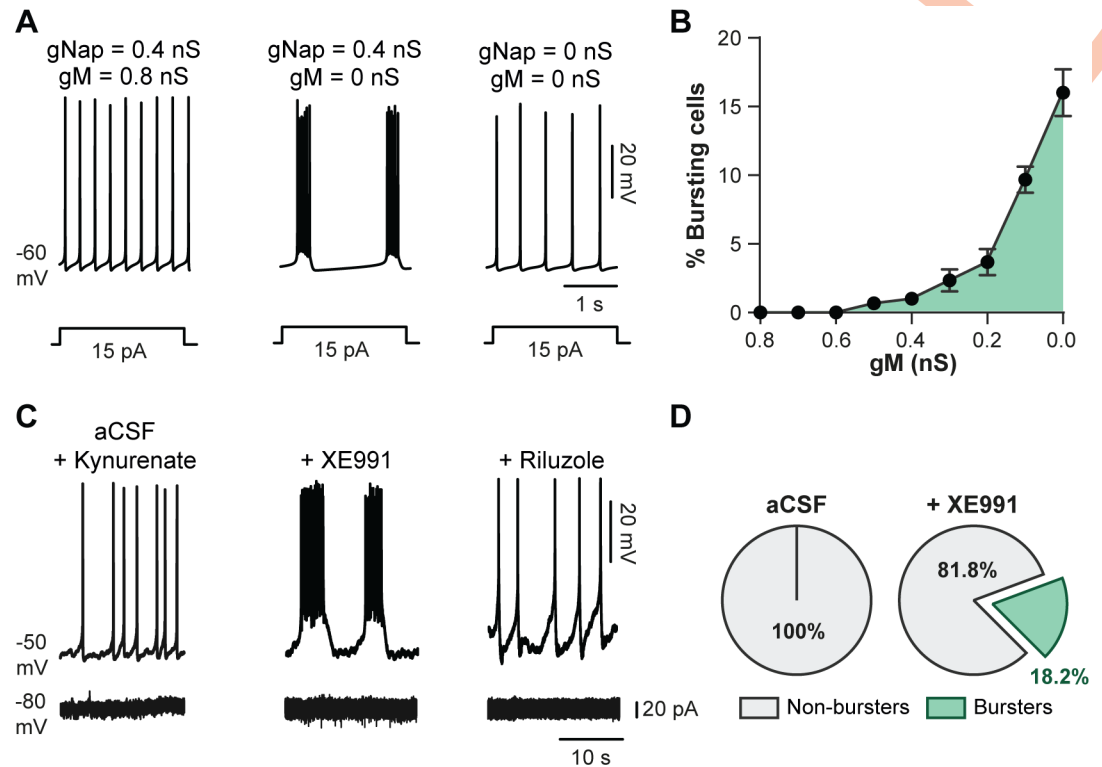


Fig 5. I_M regulates the firing pattern of L1–L2 ventromedial interneurons. (A) Typical switch of the firing pattern from spiking to bursting in a single-neuron model when g_M was switched “off”; simulated blockade of I_{NaP} ($g_{NaP} = 0$) abolished bursting activity. (B) Dependence of the percentage of bursting cells on g_M in the heterogeneous population model of 50 neurons. (C) On top, representative voltage traces of a ventromedial interneuron (L1–L2) intracellularly recorded in the presence of kynurenate (1.5 mM) before (left) and after (middle) bath-applying XE991 (10 μ M). A subsequent application of riluzole (5 μ M) abolished bursts (right). At bottom, current traces of the cell illustrated and voltage clamped at -80 mV. (D) Proportion of burster and nonburster interneurons before and after bath-applying XE991 ($n = 22$ cells). Data are mean \pm SEM. Underlying numerical values can be found in the [S1 Data](#). aCSF, artificial cerebrospinal fluid; XE991, 10,10-bis (4-pyridinylmethyl)-9(10H)-anthracene dihydrochloride.

<https://doi.org/10.1371/journal.pbio.3000738.g005>

nonbursters, bursters were distinguished by a more negative $V_{1/2}$ of I_{NaP} but displayed a similar $V_{1/2}$ of I_M ($P < 0.001$, [Fig 6G](#)).

Taken together, these results suggest that most CPG interneurons are endowed with the intrinsic ability to switch from spiking to bursting behavior through a sliding balance between I_{NaP} and I_M .

M-current controls bursting dynamics of pacemaker cells

Our modeling study, combined with electrophysiological data, supports fine modulation of g_M as a key mechanism for the emergence of pacemaker cells. Here, we used the model as a tool to delineate the role of I_M in bursting dynamics. To study the dependence of bursting characteristics on I_M , we simulated a negative-voltage shift of I_{NaP} activation ($V_{1/2} = -54$ mV) to convert a tonic cell into burster as a result of reducing $[Ca^{2+}]_o$ [10]. As previously described, the burst period and the burst duration decreased as the neuron was depolarized ([Fig 7A](#)). When g_M was omitted, the burst duration as well as the interburst interval increased ($P < 0.001$, [Fig 7B and 7C](#)). Opposite effects on burst timing were observed when g_M was increased ($P < 0.001$, [Fig 7C](#)). Notably, at high levels of g_m , a subset of bursting cells in the heterogeneous population model switched to tonic spiking ([S7A and S7B Fig](#)). To determine the dynamic contributions

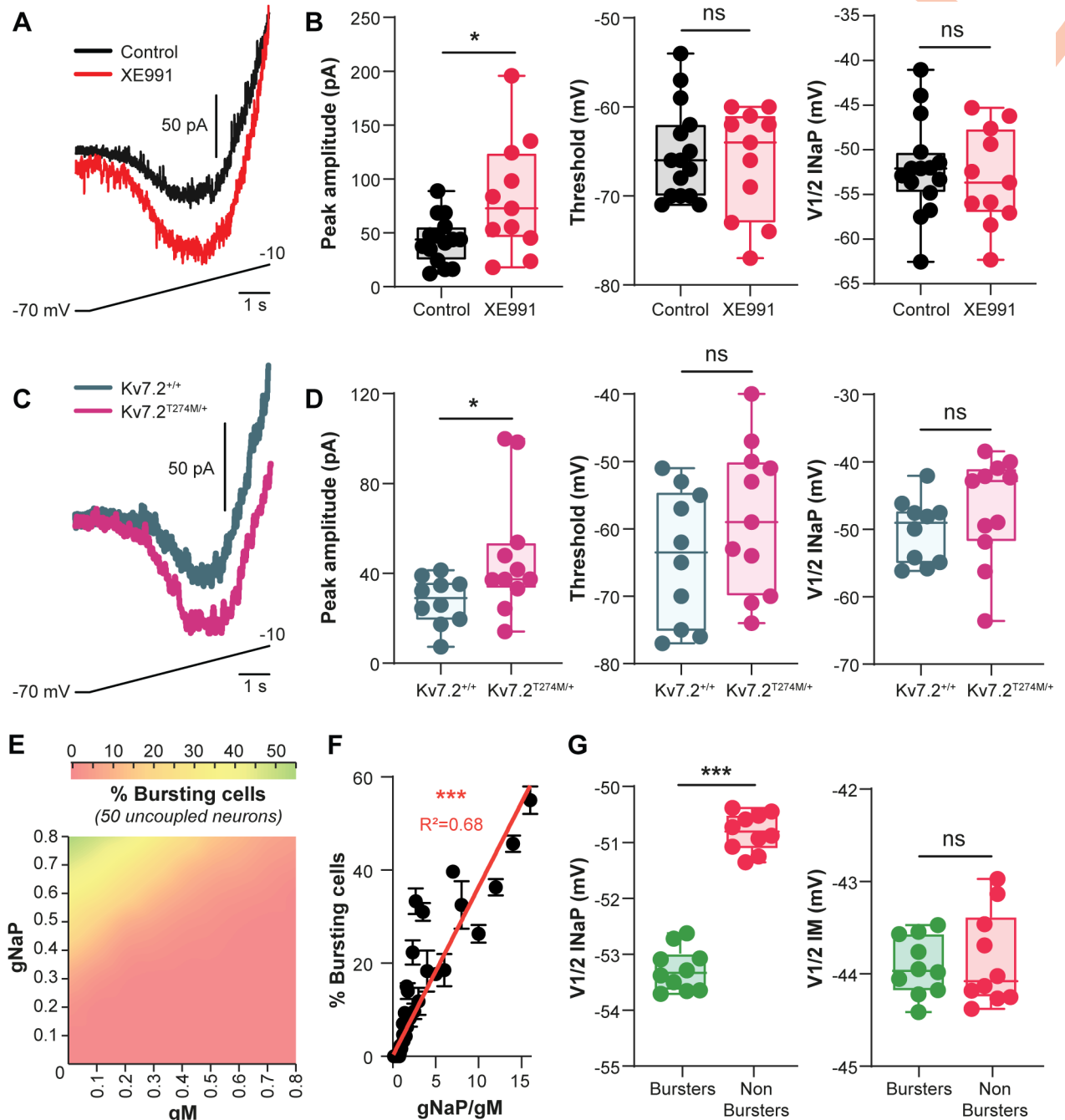


Fig 6. A balance of I_M and I_{NaP} gates bursting mode of CPG interneurons. (A,C) Raw traces of leak-subtracted persistent sodium current (I_{NaP}) evoked in L1–L2 ventromedial interneuron by a slow voltage ramp and recorded from neonatal rats (A) under control condition ($n = 15$ cells, black) or in the presence of XE991 ($10 \mu\text{M}$, $n = 11$ cells, red) or from neonatal mice (C) wild-type ($n = 10$ cells, gray) and $Kv7.2^{\text{Thr274Met/+}}$ mutant mice ($n = 11$ cells, pink). (B,D) Boxplot quantification of the biophysical properties of I_{NaP} . * $P < 0.05$; Mann–Whitney test. (E) Dependence of the percentage of bursting pacemaker cells on g_M and g_{NaP} in the heterogeneous population model of 50 neurons. Results are pooled from 10 simulations. (F) Percentage of bursting cells as function of the g_{NaP}/g_M ratio. Each dot represents average values of 10 simulations for a fixed g_{NaP}/g_M ratio. Continuous line is the best-fitting linear regression. *** $P < 0.001$, Spearman correlation test. R^2 indicates the correlation index. (G) Boxplot quantification of $V_{1/2}$ of I_{NaP} and I_M for burster and nonburster groups. Each dot represents 1 simulation in the heterogeneous population model of 50 neurons. Parameters values for g_{NaP} and g_M were set at 0.8 nS and 0.1 nS , respectively. *** $P < 0.001$; Mann–Whitney test. Underlying numerical values can be found in the [S1 Data](#). CPG, central pattern generator; XE991, 10,10-bis(4-pyridinylmethyl)-9(10H)-anthracenone dihydrochloride.

<https://doi.org/10.1371/journal.pbio.3000738.g006>

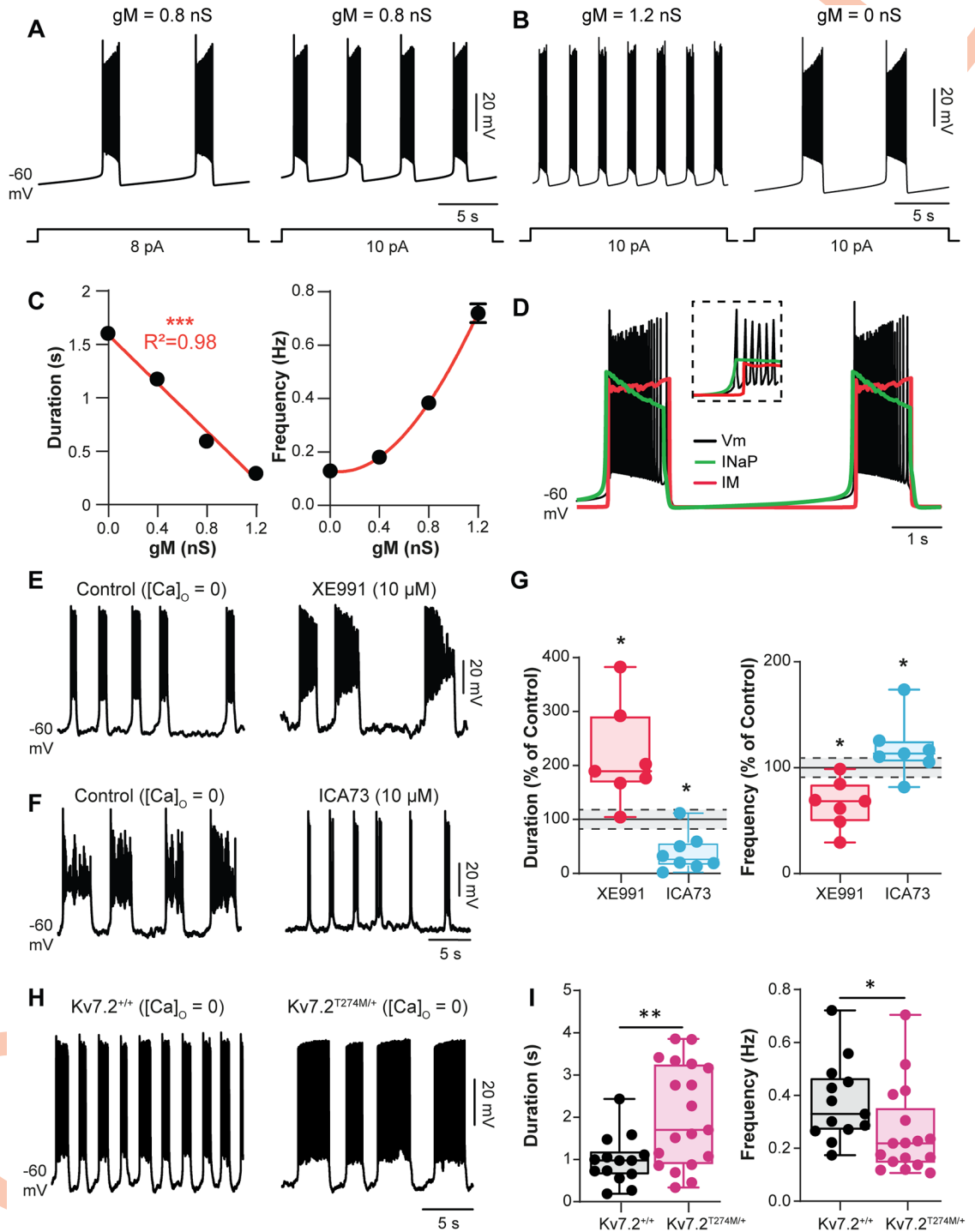


Fig 7. I_M controls burst dynamics. (A,B) Firing behavior from a bursting pacemaker neuron model in response to increasing depolarizing current injections (A) or for 2 different values of g_M (B). The injected current pulses are indicated below voltage traces $V_{1/2} I_{NaP} = -54 \text{ mV}$. (C) Duration and frequency of bursts as function of g_M in the heterogeneous population model of 50 neurons. Results are pooled from 10 simulations. R^2 indicates the correlation index. (D) Dynamics of the neuronal membrane potential (black), the I_{NaP} (green), and the I_M (red) during bursting activity of a single pacemaker neuron model. The broken-line box highlights dynamics of I_{NaP} and I_M at the onset of bursts. (E,F) $[Ca^{2+}]_o$ -free-saline-induced bursting activity recorded intracellularly from L1-L2 ventromedial interneurons before and after XE991 (10 μM , $n = 7$ cells) (E) or ICA73 (10 μM , $n = 7$ cells) (F). (G) Normalized changes of burst parameters. Dashed lines with gray shading indicate the 95% confidence intervals of control values. * $P < 0.05$, comparing data before and after the abovementioned drugs; Wilcoxon paired test. (H) $[Ca^{2+}]_o$ -free-saline-

induced bursting activity recorded intracellularly in L1–L2 ventromedial interneurons from wild-type ($n = 13$ cells) and Kv7.2^{Thr274Met/+} mutant mice ($n = 18$ cells). (I) Boxplot quantification of burst parameters. * $P < 0.05$, comparing wild-type versus mutant; Mann–Whitney test. Underlying numerical values can be found in the [S1 Data](#). ICA73, *N*-(2-chloro-5-pyrimidinyl)-3,4-difluorobenzamide; XE991, 10,10-bis(4-pyridinylmethyl)-9(10H)-anthracenone dihydrochloride.

<https://doi.org/10.1371/journal.pbio.3000738.g007>

of I_M and I_{NaP} to the bursting activity, we examined changes of g_M and g_{NaP} at specific time points during the burst itself and during interburst intervals (Fig 7D). During the beginning of each burst, g_{NaP} preceded the activation of g_m . Over the course of the burst, a slow decrease of g_{NaP} was observed, whereas g_m slightly increased. At the end of the burst, g_m and g_{NaP} relaxed to a baseline level over the duration of an interburst interval. Altogether, these results suggest a scenario in which I_{NaP} initiates the burst and I_m contributes to the normal oscillatory activity of pacemakers by counteracting I_{NaP} during the burst.

The above predictions were explicitly tested by means of intracellular recordings of pacemaker cells driven by I_{NaP} and triggered by removing the Ca^{2+} from extracellular solution [5, 10, 49]. In this recording condition, the burst termination did not involve I_{KCa} but engaged a K^+ current as the broad-spectrum K^+ channel blocker TEA strongly increased the duration of bursts until ultimately, a plateau-like depolarization developed ($P < 0.05$, S7C and S7D Fig). This result led us to consider the involvement of a noninactivating TEA-sensitive K^+ current such as I_M [44]. In line with computational predictions, the blockade of I_M by XE991 increased the duration and decreased the frequency of bursts ($P < 0.05$, Fig 7E and 7G). Similar results were obtained with linopirdine (S7E and S7F Fig). The ability of ICA73 to achieve the converse through the magnification of I_M was found ($P < 0.05$, Fig 7F and 7G). The effects of ICA73 on burst dynamics were reproduced with retigabine (S7G and S7H Fig). Interestingly, as predicted by the model, the enhancement of I_M by ICA73 converted rhythmic bursting into tonic spiking in a few cells (S7I and S7J Fig). Finally, to investigate the contribution of Kv7.2 channels, pacemaker cells were recorded from Kv7.2^{Thr274Met/+} mice in $[Ca^{2+}]_o$ -free saline. Pacemaker properties displayed long-lasting and low-frequency bursts relative to those recorded in Kv7.2^{+/+} littermates ($P < 0.05$, $P < 0.01$, Fig 7H and 7I).

Together, these data show that I_m , at least mediated by Kv7.2-containing channels, takes a significant part in the timing/intensity control of bursts to regulate dynamics of oscillatory properties in pacemakers.

M-current mediated by Kv7.2-containing channels controls the locomotor cycle

To investigate the role of I_M in networkwide rhythmogenesis, we examined its role in the operation of the locomotor rhythm-generating network by using in vitro spinal cord preparations from neonatal rats. Rostral lumbar segments (L1–L2) have a more powerful rhythmogenic capacity than the caudal ones in neonatal rats [1, 2]. A Vaseline barrier was built at the L2–L3 level to selectively superfuse the 2 compartments with different drug cocktails (Fig 8A). During bath application of *N*-methyl-DL aspartate (NMA)/5-hydroxytryptamine (5-HT) on both sides of the barrier to induce locomotor-like activities, the addition of XE991 (10 μ M) in the highly rhythmogenic L1–L2 compartment to decrease I_M led to an augmentation of the locomotor cycle period, burst duration, and burst amplitude ($P < 0.05$, Fig 8B). Also, when preincubated for 30 min before the application of NMA/5-HT, XE991 strongly decreased the latency for the emergence of fictive locomotion ($P < 0.05$, S8 Fig). By contrast, augmenting I_m with ICA73 sped up locomotor cycles and shortened burst duration without apparent effect on burst amplitude ($P < 0.05$, Fig 8C).

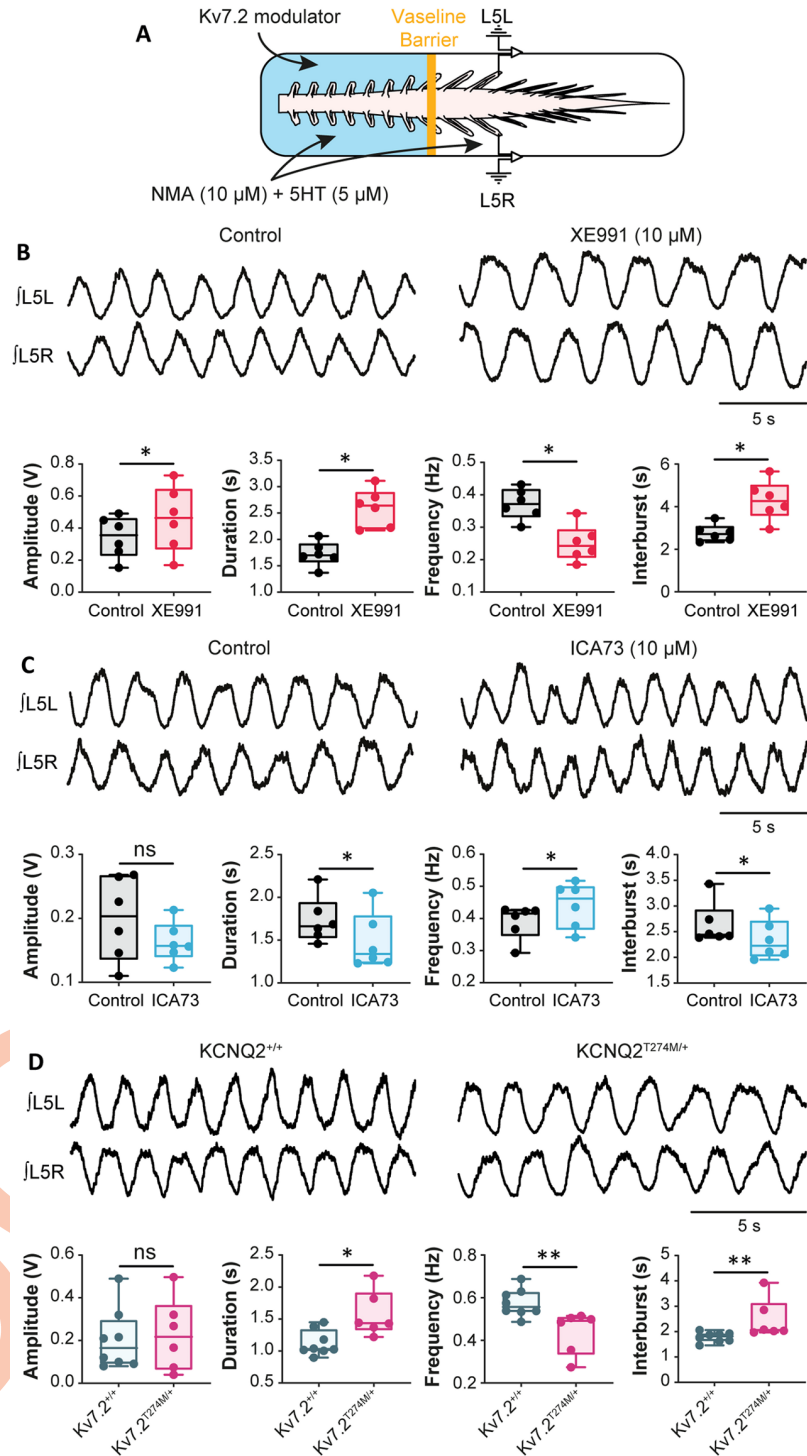


Fig 8. I_M mediated by Kv7.2-containing channels modulates the locomotor cycle at the level of the CPG. (A) Experimental setup. (B,C) Ventral-root recordings of NMA/5-HT-induced rhythmic activity generated before and after adding XE991 (10 μM, $n = 5$ spinal cords) (B) or ICA73 (10 μM, $n = 6$ spinal cords) (C) to rostral lumbar segments. Below traces, boxplot quantification of locomotor burst parameters. * $P < 0.05$, comparing data before and after the abovementioned drugs; Wilcoxon paired test. (D) Ventral-root recordings of NMA/5-HT-induced rhythmic activity generated in wild-type and Kv7.2^{Thr274Met/+} mice. Below traces, boxplot quantification of locomotor burst parameters. * $P < 0.05$, ** $P < 0.01$, comparing wild-type versus mutant; Mann-Whitney test. Underlying numerical values can be found in the [S1 Data](#). CPG, central pattern generator; ICA73, N-(2-chloro-5-pyrimidinyl)-

3,4-difluorobenzamide; NMA, N-methyl-DL aspartate; ns, not significant; XE991, 10,10-bis(4-pyridinylmethyl)-9 (10H)-anthracenone dihydrochloride; 5-HT, 5-hydroxytryptamine.

<https://doi.org/10.1371/journal.pbio.3000738.g008>

In some CNS neurons, M-channels have been reported to increase the glutamatergic release by acting at a presynaptic level [50, 51]. Because ionotropic glutamate receptors tune the locomotor network to perform at different speeds [52], we tested the possibility that XE991 and ICA93 affect central glutamatergic synaptic transmission at the CPG level. We analyzed miniature excitatory postsynaptic currents (mEPSCs) recorded from L1–L2 ventromedial interneurons in slice preparations ($P > 0.05$, S9 Fig). Neither the amplitudes nor the frequencies of mEPSCs were affected by Kv7 modulators.

To study the contribution of Kv7.2 channels, fictive locomotion was also induced in neonatal Kv7.2^{Thr274Met/+} mice. It appeared slower ($P < 0.05$), with longer burst duration ($P < 0.01$), compared with that induced in wild-type spinal cords (Fig 8D). However, when mice acquired a full-weight-bearing stepping, juvenile Kv7.2^{Thr274Met/+} mutant displayed quite normal locomotor performances (S10 Fig), suggesting a compensatory mechanism during development.

Discussion

We provide evidence of the expression of I_M in locomotor-related interneurons such as Hb9 cells and of its critical importance for the operation of the rhythm-generating mechanisms. In sum, I_M appears mainly mediated by Kv7.2-containing channels and acts in opposition to I_{NaP} by modulating both the emergence and frequency regime of pacemaker cells and thereby regulates the locomotor rhythm.

I_M has been previously characterized in sensory and motor neurons of the spinal cord [28, 29, 53, 54] with a significant role in dampening their excitability [27, 29] to prevent both nociception and myokymia [55, 56]. Here, we attempted to identify I_M at the core of the spinal rhythm-generating network for locomotion by recording L1–L2 ventromedial interneurons and Hb9⁺ cells [40, 41]. All of them display a persistent potassium current that shares many characteristics with I_M , including voltage dependence, kinetics, and pharmacology [43, 57–59]. It has been suggested that native I_M can be mediated by heteromeric assemblies of Kv7.2 and Kv7.3 subunits [43, 60] with an obligatory role of Kv7.2 channels [61]. A coexpression of both Kv7 subunits occurs in spinal dorsal root ganglia and motoneurons [30, 53]. On the other hand, our immunocytochemistry showed that most neurons within the CPG region are endowed with Kv7.2 subunits but weakly expressed Kv7.3 subunits. Although we cannot exclude the possibility of some contribution by Kv7.3 channels to I_M , the prevalent contribution by Kv7.2 channels is most likely. This is supported by the decrease of I_M in CPG cells recorded from KCNQ2^{T274M/+} mutant mice and the high sensitivity of I_M to low concentration of TEA. The data could be interpreted by assuming that most of the I_M in CPG neurons of neonatal rodents could be carried by homomeric Kv7.2 channels. However, it is worth considering that a developmental expression of Kv7.3 leading to a progressive switch towards heteromeric Kv7.2/7.3 in adulthood might occur [45, 62]. This developmental aspect may account for the compensatory mechanism observed in juvenile KCNQ2^{T274M/+} mutant mice, which display locomotor movements similar to wild-type animals. In line with the existence of a compensatory mechanism, Kv7.2^{Thr274Met/+} mutant mice displayed early epileptic seizures that were generally not observed when animals grew [42].

In our model, the omission of I_M depolarized the resting membrane potential, predicting a contribution of I_M in setting this parameter. Such a role, previously described for I_M in several neuronal systems [63–68], assumes a steady-state activation of the outward current at rest. This is in agreement with the threshold activation of I_M , which was found to be slightly more

negative than the resting membrane potential in ventromedial and Hb9 interneurons. On the other hand, the pharmacological inhibition of I_M did not affect its resting membrane potential. This discrepancy likely results from the inefficiency of Kv7 inhibitors to block I_M at membrane potentials close to the resting potential [47, 48]. In line with this assumption, interneurons from Kv7.2^{Thr274Met/+} mutant mice displayed a more depolarized resting membrane potential. The I_M did not appreciably alter the threshold or waveform of action potentials, probably because of the slow activation kinetics of Kv7 channels [43]. However, I_M dampens neuronal excitability of CPG cells by tuning the threshold current required to fire an action potential. In fact, as originally described in frog sympathetic neurons [39], I_M impacted neuronal excitability of CPG cells primarily by hyperpolarizing their membrane and reducing their input resistance. In sum, I_M appears to be an important player in controlling both the excitability and the firing frequency at which CPG cells are able to fire.

The present study supports a central role for I_M in shaping the firing pattern of CPG interneurons. In response to a sustained depolarization, a decrease of I_M converts a spiking pattern into a bursting mode in a subset of ventromedial spinal interneurons. Within both cortical and hippocampal pyramidal neurons in mammals, the prevalence of bursting also increases after a pharmacological [51, 64, 66, 67, 69] or a genetic alteration of I_M [61]. Therefore, a basal Kv7.2-containing channel activity acts as a “brake” in controlling the bursting behavior of CPG cells. This assumption accords with indirect evidence suggesting that the inhibition of an M-like current might regulate pacemaker bursting cells in spinal cord primary cultures [70].

Because I_{NaP} functions as the primary mechanism for oscillatory burst generation in CPG interneurons [3, 5, 9, 10], it is conceivable that I_M interacts with I_{NaP} to orchestrate bursting behavior. Several pieces of evidence support the existence of a dynamic interplay between I_M and I_{NaP} . First, our voltage-clamp recordings showed a facilitation of I_{NaP} once I_M is reduced. Thus, even if the activation of Kv7 channels is too slow to influence the transient sodium current associated with the spike generation (see above), I_M appears fast enough to interact with I_{NaP} . Second, according to our model that incorporates a heterogeneous distribution of I_{NaP} and I_M , the principal distinguishing property between bursting pacemaker versus nonpacemaker behaviors was the relative magnitude of I_{NaP} to I_M ; that is, bursting cells displayed a higher I_{NaP}/I_M ratio compared with nonbursting cells. Third, a coexpression between sodium and Kv7.2 channels was found in interneurons from the CPG region at the AIS, supposed to be the primary source for both I_M and I_{NaP} [66, 67, 71, 72]. Altogether, our data indicate that I_{NaP} and I_M are ubiquitously expressed in CPG neurons and that the core biophysical mechanism for oscillatory activities relies on the spatial and temporal dynamic interactions between the 2 conductances.

In addition to regulating the prevalence of bursting cells in the CPG, I_M predominantly influences bursting dynamics of pacemaker neurons. At the cellular level, the decrease of I_M delays the burst termination, suggesting that I_M helps to swing the membrane potential down. Another notable consequence was the increase in the interburst interval even though I_M appears negligible during this period. This paradox implies that I_M indirectly dictates the interburst interval and thus the rhythmic frequency of walking. The Na/K pump current has been linked to the rhythmogenic mechanism of the spinal locomotor CPG networks [22, 23, 73, 74]. Specifically, the activation of Na/K pumps in response to intracellular Na^+ accumulation during locomotion decelerates the frequency of locomotor rhythm by mediating a postburst hyperpolarization [23]. Because the decrease of I_M increases the duration of Na^+ (I_{NaP})-mediated bursts, we posit that in response to Na^+ accumulation, the subsequent postburst hyperpolarization mediated by the Na/K pump will be higher and therefore enable neuronal bursting and rhythmic frequency of walking at low frequencies. In sum, the indirect link between I_M

and the Na/K pump through the Na⁺ accumulation during locomotor bursts might finely tune the frequency of the rhythm by regulating the interburst duration.

Our data support that I_M is part of the burst-firing-activated outward current contributing to the burst termination. Rather than being exclusively controlled by I_M , the burst termination relies on complementary factors acting in concert. Consistent with this, the substantial increase in burst duration induced by TEA until ultimately reaching a depolarization block assumes the contribution of voltage-gated K⁺ currents other than I_M in the burst termination process. This observation is consistent with a previous report identifying at least 3 K⁺ conductances (I_A , I_{Kdr} , and I_{KCa}) controlling the activity of the bursting in cultured spinal neurons [75]. Note that in our recording conditions performed in [Ca²⁺]_o-free saline, no obvious role could be attributed to I_{KCa} . On the other hand, because bursting activities rely on I_{NaP} , outward currents coupled to Na⁺ accumulation such as the Na⁺/K⁺ pump current and Na⁺-dependent K⁺ current might be candidates for assisting burst termination. These 2 conductances have been shown to contribute to terminating inspiratory bursts in the context of respiratory rhythm generation [76]. In conclusion, we suggest that the burst repolarization in CPG cells is related to activation of multiple K⁺ currents including I_M .

Rhythmic motor systems are characterized by the ability to regulate the cycle frequency of the rhythm. Multiple outward currents contribute to modulating the locomotor rhythm [15, 16, 19, 21], but the involvement of I_M in the locomotor function has never been investigated. The specific modulation of the fictive locomotor rhythm following the selective application of Kv7 modulators over the CPG demonstrates that I_M represents a new ionic component by which the speed of locomotion can be tuned. The effects of I_M on the controllability of the locomotor rhythm in vivo lead us to conclude that I_M provides a mechanism to adapt speed of movements as circumstances demand. This investigation is the first direct evidence for the concept that I_M plays a key role in controlling rhythmogenesis in the spinal locomotor network. I_M is a well-established target for a range of modulators [77–80] and thus may offer a powerful means to regulate the rhythmicity of the spinal locomotor network. Regarding the initial characterization of I_M through its suppression by muscarinic receptor activation [39, 81], one obvious candidate is acetylcholine. Because the inhibition of I_M slowed down the locomotor rhythm, the cholinergic inhibition of I_M at the CPG level might play a key role in the dynamic reconfiguration of the locomotor network by changing the relative number of bursting pacemaker cells. [82]. In line with this notion, 1) the mammalian spinal cord contains several types of cholinergic neurons [83], 2) facilitation of the endogenous cholinergic system is capable of producing fictive locomotor activity in a slow speed range with a significant contribution of muscarinic receptors [84–87], 3) cholinergic cells mainly located in laminae VII and near the central canal are recruited during locomotion [88–91], and 4) a significant proportion of CPG neurons are responsive to acetylcholine in the form of intrinsic membrane potential oscillations [86, 92]. Altogether, the neuromodulation of I_M through muscarinic receptors may account, at least in part, for the cholinergic locomotor rhythm control. Monoamines such as serotonin also shape spinal motor patterns in mammals particularly by lengthening their locomotor rhythm [93]. Considering the ability of the monoaminergic system to interact with Kv7 channels [94] and of serotonin to promote burst firing through a decrease of I_M [95], it is conceivable that neuromodulation of I_M by monoamines dynamically reconfigures the firing pattern of locomotor CPG interneurons.

Aside from neuromodulation, we indicated that the propensity of a CPG neuron to burst also depends on the ionic composition of the milieu in which it is embedded [3–5, 10]. As a consequence of activity-dependent changes in extracellular calcium ([Ca²⁺]_o) and potassium ([K⁺]_o) concentrations during locomotion, a large number of CPG interneurons are converted from regular spiking into bursting through a concomitant up-regulation of I_{NaP} and reduction

of K^+ currents [10]. Thus, by modulating I_{NaP} and I_M , the respective changes in $[Ca^{2+}]_o$ and $[K^+]_o$ may represent a fast and powerful mechanism to regulate bursting pacemaker cells and thereby the operation of the locomotor CPG.

Overall, this study provides new, to our knowledge, insights into the operation of the locomotor network whereby I_M and I_{NaP} represent a functional set of subthreshold currents that endow the locomotor CPG with rhythmogenic properties, with a behavioral role of I_M in controlling the speed of locomotion.

Materials and methods

Ethics statement

We made all efforts to minimize animal suffering and the number of animals used. All animal care and use conformed to the French regulations (Décret 2010–118) and were approved by the local ethics committee (Comité d’Ethique en Neurosciences INT-Marseille, CE Nb A1301404, authorization Nb 2018110819197361). Experiments were performed on Wistar rats, Hb9:eGFP mice, and heterozygous $KCNQ2^{T274M/+}$ mutant mice.

Surgery and microinjections

A chronic lumbar intrathecal catheter was implanted in young adult rats using a lumbar approach. Briefly, rats received an indwelling intrathecal catheter under anesthesia for spinal drug delivery (intraperitoneal injection of ketamine at 50 mg/kg (Imalgen, MERIAL, Lyon, France) and medetomidine at 0.25 mg/kg (Domitor, Orion Pharma, Espoo, Finland). After an incision of the skin and muscles facing the vertebrae from T11 to L6, a laminectomy of the L3 vertebra was performed. A small needle was used to perforate the dura mater, and an intrathecal polyurethane catheter (32 Ga, C08PU-RIT1301, Phymep, Paris, France) was inserted in the rostral direction until it reached the position allowing a perfusion at the height of L1–L2 spinal cord. The catheter was secured to the superficial muscle of the back, and the external end of the catheter was tunneled subcutaneously and exited at in the dorsal neck region and plugged with a piece of steel wire. The skin was stitched back with 3–0 silk sutures, and the rats were placed in individual cages for recovery. Only animals with no evidence of neurological deficits after catheter insertion were studied. Behavioral testing occurred 7 days after intrathecal catheter implantation.

The $Kcnq2^{Thr274Met/+}$ mouse model

The $Kcnq2^{Thr274Met/+}$ mouse model was generated by homologous recombination in embryonic stem (ES) cells using a targeting vector containing regions homologous to the genomic *Kcnq2* sequences and the p.(Thr274Met) variant, a recurrent pathogenic variant identified in several patients suffering from developmental and epileptic encephalopathy. Correctly targeted 129Sv ES cell clones were injected into C57Bl/6N blastocysts implanted in pseudopregnant females. Chimerism rate was assessed in the progeny by coat color markers comparison, and the mice were bred with 129sv Cre-deleter mice to excise the neomycin selection cassette and to generate $Kcnq2^{Thr274Met/+}$ mice. Genotyping was performed using genomic DNA prepared from ear punch biopsies with the Direct DNA (Tail) (Viagen Biotech, Los Angeles, CA, USA). The $Kcnq2^{Thr274Met/+}$ animals were maintained and studied on the 129Sv genetic background. Wild-type and heterozygous knock-in animals express the same amount of *Kcnq2* transcript; both alleles are equally expressed. The characterization of the $Kcnq2^{Thr274Met/+}$ mouse reveals that it faithfully reproduces what is expected based on the human phenotype: no gross morphological brain alterations and no neurosensory alterations before the onset of seizures

occurring at P20, followed by a high rate of unexpected death in epilepsy and important cognitive difficulties [42].

Assessment of locomotor behaviors

Adults and juvenile animals (P15–P21) were tested when a mature pattern of locomotion occurred [96]. The CatWalkXT (v9.1, Noldus Information Technology, Wageningen, Netherlands) was employed to measure walking performance. Each animal walked freely through a corridor on a glass walkway illuminated with beams of light from below. A successful walking trial was defined as having the animal walk at a steady speed (no stopping, rearing, or grooming), and 3–5 successful trials were collected per animal. Experimental sessions typically lasted for 5–10 min. The footprints were recorded using a camera positioned below the walkway, and footprint classification was manually corrected to ensure accurate readings. The paw print parameters were then analyzed using the CatWalk software (see data analysis).

In vitro models

Details of the in vitro preparations have been previously described [97, 98] and are only summarized here. Experiments were performed on newborn rats or mice (1–5 days old). For the whole-spinal-cord preparation, the spinal cord was transected at T10, isolated, and transferred to the recording chamber perfused with oxygenated artificial cerebrospinal fluid (aCSF). For rats, the aCSF was composed of 120 mM NaCl, 4 mM KCl, 1.25 mM NaH₂PO₄, 1.3 mM MgSO₄, 1.2 mM CaCl₂, 25 mM NaHCO₃, 20 mM D-glucose (pH 7.4; 25°C–26°C). For mice, the aCSF was composed of 128 mM NaCl, 4 mM KCl, 0.5 mM NaH₂PO₄, 1 mM MgSO₄, 1.5 mM CaCl₂, 21 mM NaHCO₃, 30 mM D-Glucose (pH 7.4; 25°C–26°C). For the slice preparation, the lumbar spinal cord was isolated in ice-cold (<4°C) aCSF with the following composition: 232 mM sucrose, 3 mM KCl, 1.25 mM KH₂PO₄, 4 mM MgSO₄, 0.2 mM CaCl₂, 26 mM NaHCO₃, 25 mM D-glucose (pH 7.4). The lumbar spinal cord was then introduced into a 1% agar solution, quickly cooled, mounted in a vibrating microtome (Leica VT1000S; Leica Biosystems, Wetzlar, Germany), and sliced (350 μm) through lumbar segments. Slices were immediately transferred into the holding chamber filled with aCSF composed of 120 mM NaCl, 3 mM KCl, 1.25 mM NaH₂PO₄, 1.3 mM MgSO₄, 1.2 mM CaCl₂, 25 mM NaHCO₃, 20 mM D-glucose (pH 7.4; 32°C–34°C). Following a 1-h resting period, individual slices were transferred to a recording chamber that was continuously perfused with the same medium heated to approximately 27°C. Slices were visualized with epifluorescence and infrared differential interference contrast (IR-DIC) microscopy using a Nikon Eclipse E600FN upright microscope (Nikon, Tokyo, Japan) coupled with a 40× water immersion lens. The image was enhanced with an infrared-sensitive CCD camera and displayed on a video monitor. The temperature regulation was provided by the CL-100 bipolar temperature controller (Warner Instruments, Holliston, MA, USA).

In vitro recordings

For the whole-spinal-cord preparation, motor outputs were recorded from lumbar ventral roots (left/right L5) by means of glass suction electrodes connected to an AC-coupled amplifier. The ventral-root recordings were amplified (×2,000), high-pass filtered at 70 Hz, low-pass filtered at 3 kHz, and sampled at 10 kHz. Custom-built amplifiers enabled simultaneous online rectification and integration (100-ms time constant) of raw signals. Locomotor-like activity was induced by a bath application of NMA (10 μM) and 5-HT (5 μM). In some experiments, a Vaseline barrier was built at the L₂/L₃ level to superfuse the locomotor network located in the rostral lumbar cord independently from the more caudally located motoneurons. For the slice

preparation, whole-cell patch-clamp recordings were performed from L1–L2 interneurons using a Multiclamp 700B amplifier (Molecular Devices, San Jose, CA, USA). Interneurons located in the medial lamina VIII and adjacent to the central canal, a region proposed to contain a large part of the rhythm-generating locomotor network [2], were selected. In Hb9:eGFP transgenic mice, only GFP-positive interneurons compatible with the previously described electrophysiological profile of Hb9 interneurons—i.e., high input resistance, strong postinhibitory rebound, and absence of sag—were considered [99]. Motoneurons were visually identified as the largest cells located in layer IX. Patch electrodes (2–4 M Ω) were pulled from borosilicate glass capillaries (1.5 mm OD, 1.12 mm ID; World Precision Instruments, Sarasota, FL, USA) on a Sutter P-97 puller (Sutter Instruments Company, Novato, CA, USA) and filled with intracellular solution containing 140 mM K⁺-gluconate, 5 mM NaCl, 2 mM MgCl₂, 10 mM HEPES, 0.5 mM EGTA, 2 mM ATP, 0.4 mM GTP (pH 7.3; 280–290 mOsm). Pipette and neuronal capacitive currents were canceled, and after breakthrough, the series resistance was compensated and monitored. Recordings were digitized online and filtered at 10 kHz (Digidata 1322A, Molecular Devices). The main characterization of I_M was accomplished by holding the membrane potential at a relatively depolarized potential (V_H , –10 mV) to activate KCNQ channels and to inactivate many of the other K⁺ channels, notably Kv1.2 channels [20]. The membrane potential was then stepped down to more hyperpolarized potentials to deactivate the KCNQ channels giving rise to slow inward current relaxation. Stepping back to –10 mV led to the reactivation of the KCNQ channels to produce slow inward relaxations. All experiments were designed to gather data within a stable period (i.e., at least 5 min after establishing whole-cell access). Action-potential-independent mEPSCs were recorded in the presence of TTX (1 μ M) at a holding potential of –70 mV. NMDA and non-NMDA receptor-mediated mEPSCs were recorded with a K⁺-gluconate-based intracellular solution (see above) and pharmacologically isolated with a combination of bicuculline (20 μ M) and strychnine (1 μ M) to fast GABAergic and glycinergic synapses, respectively.

Stable CHO cell lines expressing Kv7.2 or Kv7.3

CHO cells (CHO-K1 CCL-61; LGC Standards, Teddington, UK) were cultured at 37°C in a humidified atmosphere with 5% CO₂ with a Gibco F-12 Nutrient Mixture (Life Technologies, Carlsbad, CA, USA) supplemented with 10% FBS (Fetal Bovine Serum) and 100 units/mL antibiotics/antimycotics (Life Technologies). 100,000 cells in suspension were transfected using the Neon Transfection System (Life Technologies) with 1 μ g of pcDNA3.1/Hygro plasmid encoding Kv7.2 or pcDNA3/Neo plasmid encoding Kv7.3. Stable cell lines were subsequently established using antibiotic selection and serial dilutions in 96-well plates.

Immunostaining

For the slice preparation, spinal cords were immersion-fixed for 1 h in 0.25% PFA, washed in PBS, and cryoprotected overnight at 4°C in 20% sucrose in PBS. Lumbar spinal cords (L1–L2) were then frozen in OCT medium (Tissue Tec, Dormagen, Germany), cryosectioned (20 μ m), and processed for immunohistochemistry. Slices were then (i) rehydrated in PBS at room temperature (15 min); (ii) permeated with 1% Bovin Serum Albumin (BSA), 2% Natural Goat Serum (NGS), and 0.2% Triton x-100 (1 h); (iii) incubated overnight at 4°C in the following affinity-purified rabbit Kv7.2 (PA1-929, residues 1–70; 1:1,000; Thermo Fisher Scientific, Waltham, MA, USA), Kv7.3 (APC-051, residues 668–686; 1:400; Alomone, Jerusalem, Israel)-specific polyclonal antibody, and mouse pan-Na_v (residues 932–1,043, 1:1,000; Sigma-Aldrich, St Louis, MO, USA)-specific monoclonal antibody; (iv) washed in PBS (3 \times 5 min); (v) incubated with fluorescent-conjugated secondary antibodies (Alexa 488- or 546-conjugated mouse- or

rabbit-specific antibodies [1:800 and 1:400; Life Technologies]) used for visualization of the mouse monoclonal or rabbit polyclonal antibodies, respectively, in a solution containing 1% BSA and 2% NGS (1.5 h); (vi) washed in PBS 3 × 5 min; and (vii) coverslipped with a gelatinous aqueous medium. In control experiments, the primary antiserum was replaced with negative control mouse or rabbit immunoglobulin fraction during the staining protocol. Sections were scanned using a laser scanning confocal microscope (Zeiss LSM700; Carl Zeiss, Oberkochen, Germany) in stacks of 0.3- to 1- μm -thick optical sections at $\times 63$ and/or $\times 20$ magnification, respectively, and processed with the Zen 12.0 software (Zeiss). Each optical section resulted from 2 scanning averages. Each figure corresponds to a projection image from a stack of optical sections. For CHO cells stably expressing Kv7.2 or Kv7.3, cells were fixed with 4% paraformaldehyde and blocked with permeabilization buffer (0.2% Triton-x100, 1% BSA, 2% normal goat serum in PBS) for 30 min at room temperature. CHO cells were incubated with the appropriate primary antibody diluted in permeabilized buffer for 60 min. After extensive PBS washing, CHO cells were incubated in blocking buffer (1% BSA, 2% normal goat serum in PBS) with secondary antibodies for 45 min at room temperature, washed, and mounted (fluorSave Reagent; Calbiochem, San Diego, CA, USA). The following antibody dilutions were used: Thermo Fisher Scientific rabbit anti-Kv7.2 PA1-929 (1:1,000), Alomone rabbit anti-Kv7.3 APC-051 (1:100), and Thermo Fisher Scientific donkey anti-rabbit Alexa Fluor 488 (1:500). Imaging was performed with a Zeiss Apotome.2 microscope using 25 \times oil immersion objective.

Validation of Kv7.2 and Kv7.3 antibodies on CHO cells

We established the specificity of the Kv7.2 and Kv7.3 antibodies on CHO cells stably expressing Kv7.2 or Kv7.3. The CHO cells stably expressing Kv7.2 were strongly immunostained with the Kv7.2 antibody, and no labeling above background level was observed with the Kv7.3 antibody (S2 Fig). The CHO cells stably expressing Kv7.3 were immunostained with the Kv7.3 antibody, and no labeling above background level was observed with the Kv7.2 antibody (S2 Fig). In sum, these data provide solid evidence of the specificity of the antibodies against Kv7.2 and Kv7.3 channels with no cross-reactivity. Note that the specificity of the Kv7.3 antibody has been validated previously [61].

Cell model

The model of the pacemaker neuron is a typical somatic single-compartment model developed in the Hodgkin–Huxley style and was based on our previous study on Hb9 cells [10]. The neuronal membrane potential V was dynamically defined by a set of membrane ionic currents.

The current balance equation is

$$C \cdot \frac{dV}{dt} = -I_{\text{Na}} - I_{\text{NaP}} - I_{\text{K}} - I_{\text{M}} - I_{\text{Pump}} - I_{\text{L}} + I_{\text{inj}},$$

where C is neuronal membrane capacitance (pF) and t is time (ms). The modeled neuron included the following ionic currents: transient sodium current (I_{Na} with the maximal conductance \bar{g}_{Na}), the persistent sodium current (I_{NaP} with the maximal conductance \bar{g}_{NaP}), the non-inactivating M-current (I_{M} with the maximal conductance \bar{g}_{M}), the delayed rectifier potassium current (I_{K} with the maximal conductance \bar{g}_{K}), the sodium-dependent pump (I_{Pump}), leakage (I_{L} with the conductance g_{L}), and depolarizing injected (I_{inj}) currents. These currents, except for I_{Pump} and I_{inj} , are described as follows:

$$I_{\text{Na}} = \bar{g}_{\text{Na}} \cdot m_{\text{Na}}^3 \cdot h_{\text{Na}} \cdot (V - E_{\text{Na}});$$

$$I_{NaP} = \bar{g}_{NaP} \cdot m_{NaP} \cdot h_{NaP} \cdot (V - E_{Na});$$

$$I_K = \bar{g}_K \cdot m_K^4 \cdot (V - E_K);$$

$$I_M = \bar{g}_M \cdot m_M \cdot (V - E_K);$$

$$I_L = g_L \cdot (V - E_L).$$

E_{Na} , E_K , and E_L are reversal potentials of the corresponding channels (in mV):

$$E_{Na} = 26.54 \cdot \ln([Na^+]_o/[Na^+]_i);$$

$$E_K = 26.54 \cdot \ln([K^+]_o/[K^+]_i);$$

$$E_L = 26.54 \cdot \ln\left(\frac{[K^+]_o + p_{Na/K} \cdot [Na^+]_o + p_{Cl/K} \cdot [Cl^-]_o}{[K^+]_i + p_{Na/K} \cdot [Na^+]_i + p_{Cl/K} \cdot [Cl^-]_i}\right).$$

$[Na^+]$, $[K^+]$, and $[Cl^-]$ represent concentrations of sodium, potassium, and chloride ions, respectively. Indexes “o” and “i” define the concentrations of these ions outside and inside a cell, respectively: $[Na^+]_o = 145$ mM, $[K^+]_o = 3$ mM, $[K^+]_i = 140$ mM, $[Cl^-]_i = 8$ mM, $[Cl^-]_o = 130$ mM, and $[Na^+]_i$ is considered variable. Parameters $p_{Na/K}$ and $p_{Cl/K}$ represent the relative permeability of sodium and chloride ions (with respect to potassium ions): $p_{Na/K} = 0.03$, $p_{Cl/K} = 0.1$.

In our model, the intracellular sodium concentration $[Na^+]_i$ is accumulating because of I_{Na} and I_{NaP} currents and is pumped out by I_{Pump} . The contributions of these components are defined by the corresponding coefficients (α_{Na} , α_{NaP} , and α_{Pump} , respectively):

$$\frac{d}{dt} [Na^+]_i = -\alpha_{Na} \cdot I_{Na} - \alpha_{NaP} \cdot I_{NaP} - \alpha_{Pump} \cdot 3 \cdot I_{Pump}$$

The pump current is described as $I_{Pump} = R_{Pump} \cdot (\phi([Na^+]_i) - \phi([Na^+]_{ibase}))$, where $\phi(y) = y^3/(y^3 + K_{Pump}^3)$, $[Na^+]_{ibase}$ is the base intracellular sodium concentration, and R_{Pump} and K_{Pump} are the I_{Pump} parameters. The following parameters were used for sodium dynamics and pump current: $\alpha_{Na} = \alpha_{NaP} = \alpha_{Pump} = 10^{-5}$ mM/fC, $R_{Pump} = 60$ pA, $[Na^+]_{ibase} = 15$ mM, and $K_{Pump} = 18$ mM.

The dynamics of the activation (m) or inactivation (h) variables for the above sodium and potassium channels are generally described by the differential equation $dx/dt = (x_\infty - x)/\tau_x$, $x = \{m, h\}$, where x_∞ is the voltage-dependent steady-state value and τ_x is the voltage-dependent time constant of the variable x , which are described in the following form:

$$x_\infty = 1/(1 + \exp(-(V - V_{x1/2})/k_x));$$

$$\tau_x = \tau_{xmax}/\cosh\left(\frac{-(V - V_{x1/2})}{k_{\tau_x}}\right).$$

$V_{x1/2}$ and k_x are the half-activation voltage and the slope for variable x , τ_{xmax} is the maximum value of its time constant, and k_τ defines the slope of this time constant. The activation of sodium currents (I_{Na} and I_{NaP}) is considered instant, i.e., $\tau_{mNa} = \tau_{mNaP} = 0$; thus, m_{Na} and m_{NaP} are considered equal to their steady-state values.

Table 2.

Current	Parameters
Fast Na ⁺	$g_{Na} = 110 \pm 11$ nS
	Act: $V_{mNa1/2} = -43.8$ mV; $k_{mNa} = 6$ mV
	Inact: $V_{hNa1/2} = -67.5$ mV; $k_{hNa} = -10.8$ mV; $\tau_{hNa\max} = 35.2$ ms; $k_{rhNa} = 12.8$ mV
Persistent Na ⁺	$g_{NaP} = 0.4 \pm 0.1$ nS
	Act: $V_{mNaP1/2\text{base}} = -52 \pm 1.5$ mV; $k_{mNaP} = 3$ mV
	Inact: $V_{hNaP1/2} = -59$ mV; $k_{hNaP} = -5.2$ mV; $\tau_{hNaP\max} = 20,000$ ms; $k_{rhNaP} = 10.4$ mV
K ⁺ delayed rectifier	$g_K = 60 \pm 6$ nS
	Act: $V_{mK1/2} = -34.5$ mV; $k_{mK} = 5$ mV; $\tau_{mK\max} = 4$ ms; $k_{rmK} = 30$ mV
M-current	$g_M = 0.8 \pm 0.1$ nS
	Act: $V_{mM1/2} = -44 \pm 1.5$ mV; $k_{mM} = 4.3$ mV; $\tau_{mM\max} = 7$ ms; $k_{rmM} = 25$ mV
Other	$C = 21.5$ pF; $g_L = 1 \pm 0.1$ nS

<https://doi.org/10.1371/journal.pbio.3000738.t002>

To reproduce our experimental finding, the half-activation voltage for I_{NaP} , $V_{mNaP1/2}$, is made dependent on the outside calcium concentration:

$$V_{mNaP1/2} = V_{mNaP1/2\text{base}} - \Delta V_{Ca} \cdot ([Ca^{2+}]_{\text{obase}} - [Ca^{2+}]_o),$$

where $V_{mNaP1/2\text{base}}$ corresponds to the half-activation voltage at $[Ca^{2+}]_o = [Ca^{2+}]_{\text{obase}} = 1.2$ mM and $\Delta V_{Ca} = 1$ mV/mM defines a shift in $V_{mNaP1/2}$ occurring with changes in $[Ca^{2+}]_o$.

In our simulations, we considered either a single neuron or a population of 50 uncoupled neurons. To provide a necessary heterogeneity in properties of neurons, we Gaussian-distributed the base values $V_{1/2}$ for I_M and I_{NaP} derived from our recordings. An additional heterogeneity was set by normal distribution of all conductances around appropriate base values (Table 2). Parameters for I_{Na} , I_K , and inactivation of I_{NaP} were taken from previous modeling studies with some modifications.

Simulations were performed using MATLAB R2019b (The MathWorks, Natick, MA, USA). Differential equations were solved using a variable-order multistep differential equation solver `ode15s` available in MATLAB. In each simulation, a settling period of 30 s was allowed before data were collected. For population, each simulation was repeated 10 times, and demonstrated qualitatively similar behavior for particular values of parameters within the standard deviations.

Data analysis

Quantitative gait analyses. The CatWalk XT software (v9.1, Noldus Information Technology) was used to measure a broad number of spatial and temporal gait parameters in several categories. These include i) dynamic parameters related to individual paw prints, such as duration of the step cycle with the respective duration of the swing and stance phases; ii) parameters related to the position of paw prints with respect to each other, for example, the stride length (distance between 2 consecutive placements of the same paw) and the base of support (the width between both the front and hind paws); and iii) parameters related to time-based relationships between paw pairs, as well as step patterns. These parameters were initially calculated for each run and for each paw, then averaged over the runs, and finally, the values for the front and hind paws were averaged. To determine which parameters were affected, data were normalized against basal values, which were settled as 100% in each parameter.

Electrophysiological data analyses. Clampfit 10.7 software (Molecular Devices) was used for analyzing electrophysiological data. Alternating activity between right/left L5 recordings

was taken to be indicative of fictive locomotion. To characterize locomotor burst parameters, raw extracellular recordings from ventral roots were rectified, integrated, and resampled. Peak amplitude of locomotor burst was measured, and the cycle period was calculated by measuring the time between the first 2 peaks of the autocorrelogram. The coupling between right/left L5 was estimated by measuring the correlation coefficient of the cross-correlogram at zero phase lag. The onset of a locomotor-like activity was determined when a clear rhythmic alternating activity was observed. Several basic criteria were set to ensure optimum quality of intracellular recordings. Only cells exhibiting a stable resting, holding membrane potential, access resistance (less than 20% variation), and an action potential amplitude larger than 40 mV were considered. All reported membrane potentials were corrected for liquid junction potentials. We determined input resistance by the slope of linear fits to small (<5 mV) voltage responses evoked by positive and negative current injections. Firing properties were measured from depolarizing current pulses of varying amplitudes. The rheobase was defined as the minimum step current intensity required to induce an action potential from the membrane potential held at -60 mV. Single-spike analysis was performed on the first spike elicited near the rheobase. Peak spike amplitude was measured from the threshold potential, and spike duration was defined as the time to fall to half-maximum peak. The instantaneous discharge frequency was determined as the inverse of interspike interval and plotted as a function of time. For a direct comparison of firing properties before and during the application of the drug, a bias current could be used to maintain the membrane potential at the holding potential fixed in the control condition. Voltage dependence and kinetics of I_M were analyzed from data normalized to the maximal current. The $I-V$ curves were fitted with a Boltzmann function. I_M amplitude was measured from deactivation relaxation at -50mV. mEPSCs were detected and analyzed using the MiniAnalysis Program (Synptosoftware, Decatur, GA, USA). Events were detected by setting the threshold value for detection at 3 times the level of the root mean-square noise (approximately 3–4 pA, meaning detection threshold at approximately 8–12 pA). The average values of mPSCs amplitude and frequency during the control period and 30 min after the drug application, were calculated over a 5-min time window.

Immunohistochemistry analysis. Neurons with AISs of obvious soma origin were imaged. Image stacks were converted into single maximum intensity z-axis projections and imported into MATLAB for analysis using a previously published MATLAB code [100] downloaded from the Grubb Lab (ais_z3.m from <http://grubblab.org/resources/>). Measurements were performed on initial segments from interneurons located in the ventromedial part of upper lumbar segments (L1–L2) near the central canal and from motoneurons identified as the biggest cells located in the ventral horn. Initial segments were identified as linear structures labeled by pan- Na_v -specific antibodies and for which the beginning and the end of the structure could be clearly determined, excluding nodes of Ranvier. We drew a line profile starting at the soma that extended down the axon, through and past the AIS. For quantifications of the start and end position of immunolabeling along the axonal process from the soma, axonal profiles were smoothed using an approximately 5 μm sliding mean and normalized to the maximum smoothed fluorescence. AIS start and end positions were identified as the points at which fluorescence intensities increased above and dropped below 33% of the maximum axonal fluorescence intensity, respectively, in line with previous reports [100].

Drug list and solutions

Normal aCSF was used in most cases for in vitro electrophysiological recordings. Ca^{2+} -free solution was made by removing Ca^{2+} chloride from the recording solution and replacing it with an equimolar concentration of magnesium chloride. All solutions were oxygenated with

95% O₂/5% CO₂. For whole-cell voltage-clamp recordings of I_M , the aCSF was supplemented with 1 μ M TTX. All salt compounds, TEA, kynurenic acid, strychnine, bicuculline, riluzole, NMA, and 5-HT were obtained from Sigma-Aldrich. Other drugs, including XE991 (IC₅₀ = 0.98 μ M [43]), 1,3-dihydro-1-phenyl-3,3-bis(4-pyridinylmethyl)-2H-indol-2-one dihydrochloride (linopirdine, IC₅₀ = 4.8 μ M [43]), ICA-069673 or ICA73 (EC₅₀ = 0.69 μ M [36]), ethyl [2-amino-4-[(4-fluorophenyl)methyl]amino]phenyl carbamate (retigabine, EC₅₀ = 0.6 μ M [34]), 2-amino-6-trifluoromethoxybenzothiazole hydrochloride (riluzole), and TTX were obtained from Tocris Bioscience (Nordenstadt, Germany). Riluzole, retigabine, and ICA73 were dissolved in DMSO and added to the aCSF (final concentration of DMSO: 0.05%). The other drugs were dissolved in water and added to the aCSF. Control experiments showed no effects of the vehicle.

Treatment design

Adult and juvenile rats (15–to 21 days old) were randomly treated with a single dose of linopirdine, retigabine, XE991, or ICA73 or its vehicle. The dose of drugs refers to previous reports [31–33]. All the drugs and their vehicle were administered intraperitoneally or intrathecally. The behavioral test was performed before drug treatment and 30 min after i.p. or 5–10 min after i.t. injection of drug or vehicle. The drugs i.t. administered were delivered in strict respect of a final injected volume of 50 μ L. The volume of ICA (0.05 mg/kg) and DMSO was 20 μ L followed by 30 μ L of saline, and that of XE991 was 10 μ L (0.025 mg/kg) followed by 40 μ L of saline.

Statistics

No statistical method was used to predetermine sample size. Group measurements were expressed as means \pm SEM. We used Mann–Whitney test or Wilcoxon matched pairs test to compare 2 groups. For all statistical analyses, the data met the assumptions of the test, and the variance between the statistically compared groups was similar. The level of significance was set at $P < 0.05$. Statistical analyses were performed using Prism 5.0 software (GraphPad). Box-plots in figures show the distribution extremes (horizontal bars), 25th and 75th percentiles (box height), and median (center bar).

Supporting information

S1 Fig. I_M does not affect interlimb coordination and gait. (A–H) Normalized changes of the stride length (A,E), the base of support (B,F), the number of normal step sequence patterns (C,G), and regularity index of paw placements (D,H) during CatWalk locomotion of juvenile rats (A–D) before and 30 min after acute i.p. administration of DMSO (gray, $n = 6$ rats), retigabine (5 mg/kg, green, $n = 7$ rats), linopirdine (3 mg/kg, yellow, $n = 6$ rats), ICA73 (5 mg/kg, blue, $n = 7$ rats), or XE991 (5 mg/kg, red, $n = 6$ rats) and of adult rats (E–H) before and 5–10 min after acute i.t. administration at the L1–L2 level of saline (purple, $n = 10$ rats), DMSO (gray, $n = 5$ rats), ICA73 (0.05 mg/kg, blue, $n = 8$ rats), or XE991 (0.025 mg/kg, red, $n = 6$ rats). Dashed lines with gray shading indicate the 95% confidence intervals of control values. ns, $P > 0.05$, comparing data collected before and after drug administration; Wilcoxon paired test. Underlying numerical values can be found in the [S1 Data](#). ICA73, *N*-(2-chloro-5-pyrimidinyl)-3,4-difluorobenzamide; i.p., intraperitoneal; i.t., intrathecal; ns, not significant; XE991, 10,10-bis(4-pyridinylmethyl)-9(10H)-anthracenone dihydrochloride. (TIF)

S2 Fig. Lumbar motoneurons express Kv7.2-containing channels. (A–F) Immunostaining of lumbar (L1–L2) motoneurons from juvenile rats ($n = 3$ rats) against Kv7.2 (A, $n = 85$ cells)

or Kv7.3 (D, $n = 104$ cells) along the AIS labeled by the pan- Na_v antibody (B,E). Kv7.2 and pan- Na_v are merged in (C), and Kv7.3 and pan- Na_v are merged in (F). Asterisks indicate the nucleus position and arrowheads the AIS. Scale bars = 20 μm . (G) Group means quantification of the proportion of pan- Na_v positive motoneurons expressing Kv7.2 or Kv7.3 channels. (H) Group means quantification of the start and end positions of pan- Na_v , Kv7.2, and Kv7.3 immunolabeling along the axonal process from the soma ($n = 10$ cells). * $P < 0.05$, ** $P < 0.01$, comparing start or end positions between groups; Mann-Whitney test. Data are mean \pm SEM. Underlying numerical values can be found in the [S1 Data](#). AIS, axonal initial segment; Na_v , voltage-gated sodium channel.

(TIF)

S3 Fig. Antibodies against Kv7.2 or Kv7.3 are specific and do not cross-react. Immunostaining of Kv7.2-expressing (*top*) or Kv7.3-expressing (*bottom*) CHO cells in the presence of the Kv7.2 (*left*) or Kv7.3 (*right*) antibody. Scale bar: 50 μm . CHO, Chinese hamster ovary.

(TIF)

S4 Fig. The I_M enhancer retigabine replicates the effect of ICA73 on electroresponsive properties of L1–L2 ventromedial interneurons. (A) Representative deactivation of I_M . (B) Boltzmann-fitted I – V relationships of I_M . (C–F) Boxplot quantification of the amplitude (C), holding current (D), threshold (E), and $V_{1/2}$ (F) of I_M recorded in interneurons ($n = 7$ cells) before (black) and after bath-applying retigabine (100 nM, green). * $P < 0.05$; Wilcoxon paired test. (G, H) Typical spiking activity of ventromedial interneurons (L1–L2) to a near-threshold depolarizing pulse (G) with the respective frequency–current relationship (H) before (black) and after bath-applying retigabine (100 nM, green). The continuous line is the best-fitting linear regression. *** $P < 0.001$, comparison of the fits. Underlying numerical values can be found in the [S1 Data](#). ICA73, *N*-(2-chloro-5-pyrimidinyl)-3,4-difluorobenzamide; I – V , current–voltage.

(TIF)

S5 Fig. Characterization of I_M in Hb9 locomotor-related interneurons. (A–C) Representative deactivation (A), Boltzmann-fitted I – V relationships (B), and amplitude (C) of I_M recorded in Hb9⁺ interneurons from Hb9:eGFP transgenic neonatal mice under control conditions ($n = 8$ cells, black) or in the presence of XE991 (10 μM , $n = 6$ cells, red). * $P < 0.05$; Mann-Whitney test. Data are mean \pm SEM. Underlying numerical values can be found in the [S1 Data](#). eGFP, enhanced green fluorescent protein; I – V , current–voltage; XE991, 10,10-bis(4-pyridinylmethyl)-9(10H)-anthracenone dihydrochloride.

(TIF)

S6 Fig. The I_M -blocker XE991 antagonizes the effect of ICA73 on electroresponsive properties of L1–L2 ventromedial interneurons. (A) Membrane potential changes in response to bath application of ICA73 (10 μM) before (light blue) and after (dark blue) pretreatment with XE991 (10 μM). (B,C) Representative spiking activity to a near-threshold depolarizing step (B) and frequency–current relationship (C) recorded under XE991 before (red) and after bath-applying ICA73 ($n = 5$ cells, dark blue). Continuous lines are the best-fitting linear regression. ns, $P > 0.05$ comparison of the fits. (D) Boxplot quantification of the rheobase. ns, $P > 0.05$; Wilcoxon paired test. Underlying numerical values can be found in [S1 Data](#). ICA73, *N*-(2-chloro-5-pyrimidinyl)-3,4-difluorobenzamide; ns, not significant; XE991, 10,10-bis(4-pyridinylmethyl)-9(10H)-anthracenone dihydrochloride.

(TIF)

S7 Fig. I_M controls burst dynamics. (A) Firing behavior from a bursting pacemaker neuron model in response to 2 different values of g_M . (B) Dependence of the percentage of bursting

cells on g_M in the heterogeneous population model of 50 neurons. In A and B. $V_{1/2} I_{NaP} = -54$ mV. (C,E,G,I) $[Ca^{2+}]_o$ -free-saline-induced bursting activity recorded intracellularly in L1–L2 ventromedial interneurons before and after TEA (10 mM, $n = 7$ cells) (C), linopirdine (10 μ M, $n = 10$ cells) (E), retigabine (100 nM, $n = 6$ cells) (G), or ICA73 (10 μ M, $n = 9$ cells) (I). (D,F,H) Boxplot quantification of the duration and frequency of bursts. $*P < 0.05$, $**P < 0.01$, comparing data before and after the abovementioned drugs; Wilcoxon paired test. (J) Proportion of burster and nonburster interneurons before and after bath-applying ICA73 ($n = 9$ cells). Underlying numerical values can be found in the [S1 Data](#). ICA73, *N*-(2-chloro-5-pyrimidinyl)-3,4-difluorobenzamide; TEA, tetraethylammonium.

S8 Fig. Down-regulation of I_M facilitates the emergence of locomotor-like activity. (A, B) Ventral-root recordings of NMA/5-HT-induced rhythmic activity generated without ($n = 9$ spinal cords) (A) and with ($n = 6$ spinal cords) a 45-min preincubation of XE991 (10 μ M) (B). Broken-line boxes indicate the parts of the recordings that are enlarged in insets to visualize the onset of locomotor-like activity (rhythmic alternating activity). (C) Boxplot quantification of the delay between the start of the bath application of NMA/5-HT and the onset of the fictive locomotion. $*P < 0.05$; Mann–Whitney test. Underlying numerical values can be found in the [S1 Data](#). NMA, *N*-methyl-DL aspartate; XE991, 10,10-bis(4-pyridinylmethyl)-9(10H)-anthracenone dihydrochloride; 5-HT, 5-hydroxytryptamine.

S9 Fig. I_M has no effect on glutamatergic synaptic transmission. (A) Representative current traces of continuously recorded mEPSCs in a ventromedial interneuron voltage clamped at -60 mV. mEPSCs recorded before and 30 min after adding XE991 (10 μ M, $n = 6$ cells) or ICA73 (10 μ M, $n = 6$ cells) were pharmacologically isolated in the presence of TTX (0.5 μ M), strychnine (1 μ M), and bicuculline (20 μ M). (B) Averaged mEPSCs recorded before (black) and 30 min after adding XE991 (red) or ICA73 (blue). (C) Boxplot quantification of the mean frequency and amplitude of mEPSCs before and 30 min after XE991 or ICA73 was bath-applied. Dotted lines indicate the 95% confidence intervals of control values. ns, $P > 0.05$, comparing data collected before and after bath-applying the abovementioned drugs; Wilcoxon paired test. Underlying numerical values can be found in the [S1 Data](#). ICA73, *N*-(2-chloro-5-pyrimidinyl)-3,4-difluorobenzamide; mEPSC, miniature excitatory postsynaptic current; ns, not significant; TTX, tetrodotoxin; XE991, 10,10-bis(4-pyridinylmethyl)-9(10H)-anthracenone dihydrochloride.

S10 Fig. Juvenile $Kv7.2^{Thr274Met/+}$ mutant mice display normal locomotor movements. (A) Representative footfall diagrams during CatWalk locomotion of juvenile wild-type (gray, $n = 7$ mice) or $Kv7.2^{Thr274Met/+}$ mutant mice (pink, $n = 6$ mice). The stance phase is indicated by horizontal bars and the swing phase by open spaces. (B) Boxplot quantification of the body speed. ns, $P > 0.05$, comparing wild-type versus $Kv7.2^{Thr274Met/+}$ mutant mice; Mann–Whitney test. (C) Quantification of swing and stance phases. ns, $P > 0.05$, comparing wild-type versus $Kv7.2^{Thr274Met/+}$ mutant mice Mann–Whitney test. Data in C are mean \pm SEM. Underlying numerical values can be found in the [S1 Data](#). LF, left forelimb; LH, left hindlimb; ns, not significant; RF, right forelimb; RH, right hindlimb.

S1 Data. Raw data used in this study.
(XLSX)

Acknowledgments

We are grateful to the lab members for their critical reading of the manuscript and Anne Duhoux for animal care. We thank the company NSrepair headed by Philippe Marino for performing intrathecal surgery and postoperative care.

Author Contributions

Conceptualization: Frédéric Brocard.

Formal analysis: Jérémy Verneuil, Cécile Brocard.

Funding acquisition: Frédéric Brocard.

Investigation: Jérémy Verneuil, Cécile Brocard, Laurent Villard, Julie Peyronnet-Roux, Frédéric Brocard.

Methodology: Virginie Trouplin.

Resources: Laurent Villard.

Supervision: Julie Peyronnet-Roux, Frédéric Brocard.

Validation: Frédéric Brocard.

Writing – original draft: Jérémy Verneuil.

Writing – review & editing: Frédéric Brocard.

References

1. Cazalets JR, Borde M, Clarac F. Localization and organization of the central pattern generator for hindlimb locomotion in newborn rat. *Journal of Neuroscience*. 1995; 15(7):4943–51. PMID: [7623124](#)
2. Kjaerulff O, Kiehn O. Distribution of Networks Generating and Coordinating Locomotor Activity in the Neonatal Rat Spinal Cord In Vitro: A Lesion Study. *Journal of Neuroscience*. 1996; 16(18):5777–94. PMID: [8795632](#)
3. Brocard F, Tazerart S, Vinay L. Do pacemakers drive the central pattern generator for locomotion in mammals? *Neuroscientist*. 2010; 16(2):139–55. <https://doi.org/10.1177/1073858409346339> PMID: [20400712](#)
4. Brocard F. New channel lineup in spinal circuits governing locomotion. *Current opinion in Physiology*. 2019; 8: 14–22. <https://doi.org/10.1016/j.cophys.2018.11.009>.
5. Tazerart S, Vinay L, Brocard F. The persistent sodium current generates pacemaker activities in the central pattern generator for locomotion and regulates the locomotor rhythm. *J Neurosci*. 2008; 28(34):8577–89. <https://doi.org/10.1523/JNEUROSCI.1437-08.2008> PMID: [18716217](#)
6. Ziskind-Conhaim L, Wu L, Wiesner EP. Persistent sodium current contributes to induced voltage oscillations in locomotor-related hb9 interneurons in the mouse spinal cord. *J Neurophysiol*. 2008; 100(4):2254–64. <https://doi.org/10.1152/jn.90437.2008> PMID: [18667543](#)
7. Plantier V, Sanchez-Brualla I, Dingu N, Brocard C, Liabeuf S, Gackiere F, et al. Calpain fosters the hyperexcitability of motoneurons after spinal cord injury and leads to spasticity. *Elife*. 2019; 8: e51404. <https://doi.org/10.7554/eLife.51404> PMID: [31815668](#)
8. Song J, Pallucchi I, Ausborn J, Ampatzis K, Bertuzzi M, Fontanel P, et al. Multiple Rhythm-Generating Circuits Act in Tandem with Pacemaker Properties to Control the Start and Speed of Locomotion. *Neuron*. 2020; 105(6): 1048–1061.e4. <https://doi.org/10.1016/j.neuron.2019.12.030> PMID: [31982322](#).
9. Tazerart S, Viemari JC, Darbon P, Vinay L, Brocard F. Contribution of Persistent Sodium Current to Locomotor Pattern Generation in Neonatal Rats. *Journal of Neurophysiology*. 2007; 98(2):613–28. <https://doi.org/10.1152/jn.00316.2007> PMID: [17567773](#)
10. Brocard F, Shevtsova NA, Bouhadfane M, Tazerart S, Heinemann U, Rybak IA, et al. Activity-dependent changes in extracellular ca(2+) and k(+) reveal pacemakers in the spinal locomotor-related network. *Neuron*. 2013; 77(6):1047–54. <https://doi.org/10.1016/j.neuron.2013.01.026> PMID: [23522041](#)

11. Zhong G, Masino MA, Harris-Warrick RM. Persistent sodium currents participate in fictive locomotion generation in neonatal mouse spinal cord. *J Neurosci*. 2007; 27(17):4507–18. <https://doi.org/10.1523/JNEUROSCI.0124-07.2007> PMID: 17460064
12. Ryczko D, Charrier V, Ijspeert A, Cabelguen JM. Segmental oscillators in axial motor circuits of the salamander: distribution and bursting mechanisms. *J Neurophysiol*. 2010; 104(5):2677–92. <https://doi.org/10.1152/jn.00479.2010> PMID: 20810687
13. Tong H, McDearmid JR. Pacemaker and plateau potentials shape output of a developing locomotor network. *Curr Biol*. 2012; 22(24):2285–93. <https://doi.org/10.1016/j.cub.2012.10.025> PMID: 23142042
14. Svensson E, Jeffreys H, Li WC. The modulation of two motor behaviors by persistent sodium currents in *Xenopus laevis* tadpoles. *J Neurophysiol*. 2017; 118(1):121–30. <https://doi.org/10.1152/jn.00755.2016> PMID: 28331009
15. Harris-Warrick RM. General principles of rhythmogenesis in central pattern generator networks. *Prog Brain Res*. 2010; 187:213–22. <https://doi.org/10.1016/B978-0-444-53613-6.00014-9> PMID: 21111210
16. el Manira A, Tegner J, Grillner S. Calcium-dependent potassium channels play a critical role for burst termination in the locomotor network in lamprey. *J Neurophysiol*. 1994; 72(4):1852–61. <https://doi.org/10.1152/jn.1994.72.4.1852> PMID: 7823105
17. Hill R, Matsushima T, Schotland J, Grillner S. Apamin blocks the slow AHP in lamprey and delays termination of locomotor bursts. *Neuroreport*. 1992; 3(10):943–5. <https://doi.org/10.1097/00001756-199210000-00032> PMID: 1421104
18. Wall MJ, Dale N. A slowly activating Ca(2+)-dependent K⁺ current that plays a role in termination of swimming in *Xenopus* embryos. *J Physiol*. 1995; 487(Pt 3): 557–72. <https://doi.org/10.1113/jphysiol.1995.sp020900> PMID: 8544121
19. Cazalets JR, Sqalli-Houssaini Y, Magoul R. Differential effects of potassium channel blockers on the activity of the locomotor network in neonatal rat. *Brain Res*. 1999; 827(1–2):185–97. [https://doi.org/10.1016/S0006-8993\(99\)01342-6](https://doi.org/10.1016/S0006-8993(99)01342-6) PMID: 10320708
20. Bos R, Harris-Warrick RM, Brocard C, Demianenko LE, Manuel M, Zytnicki D, et al. Kv1.2 Channels Promote Nonlinear Spiking Motoneurons for Powering Up Locomotion. *Cell Rep*. 2018; 22(12):3315–27. <https://doi.org/10.1016/j.celrep.2018.02.093> PMID: 29562186
21. Hess D, El Manira A. Characterization of a high-voltage-activated IA current with a role in spike timing and locomotor pattern generation. *Proc Natl Acad Sci U S A*. 2001; 98(9):5276–81. <https://doi.org/10.1073/pnas.091096198> PMID: 11309504
22. Darbon P, Tschertner A, Yvon C, Streit J. Role of the electrogenic Na/K pump in disinhibition-induced bursting in cultured spinal networks. *J Neurophysiol*. 2003; 90(5):3119–29. <https://doi.org/10.1152/jn.00579.2003> PMID: 12890799
23. Picton LD, Nascimento F, Broadhead MJ, Sillar KT, Miles GB. Sodium Pumps Mediate Activity-Dependent Changes in Mammalian Motor Networks. *J Neurosci*. 2017; 37(4):906–21. <https://doi.org/10.1523/JNEUROSCI.2005-16.2016> PMID: 28123025
24. Picton LD, Zhang H, Sillar KT. Sodium pump regulation of locomotor control circuits. *J Neurophysiol*. 2017; 118(2): 1070–81. <https://doi.org/10.1152/jn.00066.2017> PMID: 28539392
25. Brown DA, Passmore GM. Neural KCNQ (Kv7) channels. *Br J Pharmacol*. 2009; 156(8): 1185–95. <https://doi.org/10.1111/j.1476-5381.2009.00111.x> PMID: 19298256
26. Devaux JJ, Kleopa KA, Cooper EC, Scherer SS. KCNQ2 is a nodal K⁺ channel. *J Neurosci*. 2004; 24(5):1236–44. <https://doi.org/10.1523/JNEUROSCI.4512-03.2004> PMID: 14762142
27. Rivera-Arconada I, Lopez-Garcia JA. Effects of M-current modulators on the excitability of immature rat spinal sensory and motor neurones. *Eur J Neurosci*. 2005; 22(12):3091–8. <https://doi.org/10.1111/j.1460-9568.2005.04507.x> PMID: 16367775
28. Alaburda A, Perrier JF, Hounsgaard J. An M-like outward current regulates the excitability of spinal motoneurons in the adult turtle. *J Physiol*. 2002; 540(Pt 3):875–81. <https://doi.org/10.1113/jphysiol.2001.015982> PMID: 11986376
29. Lombardo J, Harrington MA. Nonreciprocal mechanisms in up- and downregulation of spinal motoneuron excitability by modulators of KCNQ/Kv7 channels. *J Neurophysiol*. 2016; 116(5): 2114–24. <https://doi.org/10.1152/jn.00446.2016> PMID: 27512022
30. Pan Z, Kao T, Horvath Z, Lemos J, Sul JY, Cranstoun SD, et al. A common ankyrin-G-based mechanism retains KCNQ and NaV channels at electrically active domains of the axon. *J Neurosci*. 2006; 26(10): 2599–613. <https://doi.org/10.1523/JNEUROSCI.4314-05.2006> PMID: 16525039
31. Kapfhamer D, Berger KH, Hopf FW, Seif T, Kharazia V, Bonci A, et al. Protein Phosphatase 2a and glycogen synthase kinase 3 signaling modulate prepulse inhibition of the acoustic startle response by altering cortical M-Type potassium channel activity. *J Neurosci*. 2010; 30(26): 8830–40. <https://doi.org/10.1523/JNEUROSCI.1292-10.2010> PMID: 20592205

32. Zhang F, Liu Y, Zhang D, Fan X, Shao D, Li H. Suppression of KCNQ/M Potassium Channel in Dorsal Root Ganglia Neurons Contributes to the Development of Osteoarthritic Pain. *Pharmacology*. 2019; 103(5–6):257–62. <https://doi.org/10.1159/000496422> PMID: 30759446.
33. Kristensen LV, Sandager-Nielsen K, Hansen HH. K(v) 7 (KCNQ) channel openers normalize central 2-deoxyglucose uptake in a mouse model of mania and increase prefrontal cortical and hippocampal serine-9 phosphorylation levels of GSK3beta. *J Neurochem*. 2012; 121(3): 373–382. <https://doi.org/10.1111/j.1471-4159.2012.07704.x> PMID: 22356228.
34. Gunthorpe MJ, Large CH, Sankar R. The mechanism of action of retigabine (ezogabine), a first-in-class K⁺ channel opener for the treatment of epilepsy. *Epilepsia*. 2012; 53(3):412–24. <https://doi.org/10.1111/j.1528-1167.2011.03365.x> PMID: 22220513.
35. Robbins J. KCNQ potassium channels: physiology, pathophysiology, and pharmacology. *Pharmacol Ther*. 2001; 90(1): 1–19. [https://doi.org/10.1016/s0163-7258\(01\)00116-4](https://doi.org/10.1016/s0163-7258(01)00116-4) PMID: 11448722.
36. Amato G, Roeloffs R, Rigdon GC, Antonio B, Mersch T, McNaughton-Smith G, et al. N-Pyridyl and Pyrimidine Benzamides as KCNQ2/Q3 Potassium Channel Openers for the Treatment of Epilepsy. *ACS Med Chem Lett*. 2011; 2(6): 481–484. <https://doi.org/10.1021/ml200053x> PMID: 24900334
37. Caggiano V, Leiras R, Goni-Erro H, Masini D, Bellardita C, Bouvier J, et al. Midbrain circuits that set locomotor speed and gait selection. *Nature*. 2018; 553(7689):455–60. <https://doi.org/10.1038/nature25448> PMID: 29342142
38. Dubuc R, Brocard F, Antri M, Fenelon K, Gariépy JF, Smetana R, et al. Initiation of locomotion in lampreys. *Brain Research Reviews*. 2008; 57(1):172–82. <https://doi.org/10.1016/j.brainresrev.2007.07.016> PMID: 17916380
39. Brown DA, Adams PR. Muscarinic suppression of a novel voltage-sensitive K⁺ current in a vertebrate neurone. *Nature*. 1980; 283(5748):673–6. <https://doi.org/10.1038/283673a0> PMID: 6965523.
40. Caldeira V, Dougherty KJ, Borgius L, Kiehn O. Spinal Hb9::Cre-derived excitatory interneurons contribute to rhythm generation in the mouse. *Sci Rep*. 2017; 7: 41369. <https://doi.org/10.1038/srep41369> PMID: 28128321
41. Brownstone RM, Wilson JM. Strategies for delineating spinal locomotor rhythm-generating networks and the possible role of Hb9 interneurons in rhythmogenesis. *Brain Res Rev*. 2008; 57(1):64–76. <https://doi.org/10.1016/j.brainresrev.2007.06.025> PMID: 17905441
42. Milh M, Roubertoux P, Biba N, Chavany J, Spiga Ghata A, Fulachier C, et al. A knock-in mouse model for KCNQ2-related epileptic encephalopathy displays spontaneous generalized seizures and cognitive impairment. *Epilepsia*. 2020; 61(5): 868–878. <https://doi.org/10.1111/epi.16494> PMID: 32239694.
43. Wang HS, Pan Z, Shi W, Brown BS, Wymore RS, Cohen IS, et al. KCNQ2 and KCNQ3 potassium channel subunits: molecular correlates of the M-channel. *Science*. 1998; 282(5395):1890–3. <https://doi.org/10.1126/science.282.5395.1890> PMID: 9836639
44. Hadley JK, Noda M, Selyanko AA, Wood IC, Abogadie FC, Brown DA. Differential tetraethylammonium sensitivity of KCNQ1–4 potassium channels. *Br J Pharmacol*. 2000; 129(3):413–5. <https://doi.org/10.1038/sj.bjp.0703086> PMID: 10711337
45. Hadley JK, Passmore GM, Tatulian L, Al-Qatari M, Ye F, Wickenden AD, et al. Stoichiometry of expressed KCNQ2/KCNQ3 potassium channels and subunit composition of native ganglionic M channels deduced from block by tetraethylammonium. *J Neurosci*. 2003; 23(12):5012–9. PMID: 12832524
46. Shapiro MS, Roche JP, Kaftan EJ, Cruzblanca H, Mackie K, Hille B. Reconstitution of muscarinic modulation of the KCNQ2/KCNQ3 K(+) channels that underlie the neuronal M current. *J Neurosci*. 2000; 20(5):1710–21. PMID: 10684873
47. Greene DL, Kang S, Hoshi N. XE991 and Linopirdine Are State-Dependent Inhibitors for Kv7/KCNQ Channels that Favor Activated Single Subunits. *J Pharmacol Exp Ther*. 2017; 362(1):177–85. <https://doi.org/10.1124/jpet.117.241679> PMID: 28483800
48. Romero M, Reboreda A, Sanchez E, Lamas JA. Newly developed blockers of the M-current do not reduce spike frequency adaptation in cultured mouse sympathetic neurons. *Eur J Neurosci*. 2004; 19(10):2693–702. <https://doi.org/10.1111/j.1460-9568.2004.03363.x> PMID: 15147303.
49. Brocard F, Verdier D, Arsenault I, Lund JP, Kolta A. Emergence of Intrinsic Bursting in Trigeminal Sensory Neurons Parallels the Acquisition of Mastication in Weanling Rats. *Journal of Neurophysiology*. 2006; 96(5):2410–24. <https://doi.org/10.1152/jn.00352.2006> PMID: 16914618
50. Sun J, Kapur J. M-type potassium channels modulate Schaffer collateral-CA1 glutamatergic synaptic transmission. *J Physiol*. 2012; 590(16):3953–64. <https://doi.org/10.1113/jphysiol.2012.235820> PMID: 22674722
51. Vervaeke K, Gu N, Agdestein C, Hu H, Storm JF. Kv7/KCNQ/M-channels in rat glutamatergic hippocampal axons and their role in regulation of excitability and transmitter release. *J Physiol*. 2006; 576(Pt 1): 235–56. <https://doi.org/10.1113/jphysiol.2006.111336> PMID: 16840518

52. Talpalar AE, Kiehn O. Glutamatergic mechanisms for speed control and network operation in the rodent locomotor CpG. *Front Neural Circuits*. 2010; 4: 19. <https://doi.org/10.3389/fncir.2010.00019> PMID: 20844601
53. Passmore GM, Selyanko AA, Mistry M, Al-Qatari M, Marsh SJ, Matthews EA, et al. KCNQ/M currents in sensory neurons: significance for pain therapy. *J Neurosci*. 2003; 23(18):7227–36. PMID: 12904483
54. Ray S, Salzer I, Kronschlager MT, Boehm S. The paracetamol metabolite N-acetyl-p-benzoquinone imine reduces excitability in first- and second-order neurons of the pain pathway through actions on KV7 channels. *Pain*. 2019; 160(4):954–64. <https://doi.org/10.1097/j.pain.0000000000001474> PMID: 30601242
55. Cai J, Fang D, Liu XD, Li S, Ren J, Xing GG. Suppression of KCNQ/M (Kv7) potassium channels in the spinal cord contributes to the sensitization of dorsal horn WDR neurons and pain hypersensitivity in a rat model of bone cancer pain. *Oncol Rep*. 2015; 33(3):1540–50. <https://doi.org/10.3892/or.2015.3718> PMID: 25592230.
56. Dedek K, Kunath B, Kananura C, Reuner U, Jentsch TJ, Steinlein OK. Myokymia and neonatal epilepsy caused by a mutation in the voltage sensor of the KCNQ2 K+ channel. *Proc Natl Acad Sci U S A*. 2001; 98(21):12272–7. <https://doi.org/10.1073/pnas.211431298> PMID: 11572947
57. Adams PR, Brown DA, Constanti A. Pharmacological inhibition of the M-current. *J Physiol*. 1982; 332:223–62. <https://doi.org/10.1113/jphysiol.1982.sp014411> PMID: 6760380
58. Selyanko AA, Hadley JK, Brown DA. Properties of single M-type KCNQ2/KCNQ3 potassium channels expressed in mammalian cells. *J Physiol*. 2001; 534(Pt 1):15–24. <https://doi.org/10.1111/j.1469-7793.2001.00015.x> PMID: 11432988
59. Miceli F, Soldovieri MV, Ambrosino P, Manocchio L, Mosca I, Tagliatela M. Pharmacological Targeting of Neuronal Kv7.2/3 Channels: A Focus on Chemotypes and Receptor Sites. *Curr Med Chem*. 2018; 25(23):2637–60. <https://doi.org/10.2174/0929867324666171012122852> PMID: 29022505.
60. Yang WP, Levesque PC, Little WA, Conder ML, Ramakrishnan P, Neubauer MG, et al. Functional expression of two KvLQT1-related potassium channels responsible for an inherited idiopathic epilepsy. *J Biol Chem*. 1998; 273(31):19419–23. <https://doi.org/10.1074/jbc.273.31.19419> PMID: 9677360.
61. Soh H, Pant R, LoTurco JJ, Tzingounis AV. Conditional deletions of epilepsy-associated KCNQ2 and KCNQ3 channels from cerebral cortex cause differential effects on neuronal excitability. *J Neurosci*. 2014; 34(15):5311–21. <https://doi.org/10.1523/JNEUROSCI.3919-13.2014> PMID: 24719109
62. Tinel N, Lauritzen I, Chouabe C, Lazdunski M, Borsotto M. The KCNQ2 potassium channel: splice variants, functional and developmental expression. Brain localization and comparison with KCNQ3. *FEBS Lett*. 1998; 438(3):171–6. [https://doi.org/10.1016/s0014-5793\(98\)01296-4](https://doi.org/10.1016/s0014-5793(98)01296-4) PMID: 9827540.
63. Aiken SP, Lampe BJ, Murphy PA, Brown BS. Reduction of spike frequency adaptation and blockade of M-current in rat CA1 pyramidal neurons by linopirdine (DuP 996), a neurotransmitter release enhancer. *Br J Pharmacol*. 1995; 115(7):1163–8. <https://doi.org/10.1111/j.1476-5381.1995.tb15019.x> PMID: 7582539
64. Yue C, Yaari Y. KCNQ/M Channels Control Spike Afterdepolarization and Burst Generation in Hippocampal Neurons. *Journal of Neuroscience*. 2004; 24(19):4614–24. <https://doi.org/10.1523/JNEUROSCI.0765-04.2004> PMID: 15140933
65. Wladyka CL, Kunze DL. KCNQ/M-currents contribute to the resting membrane potential in rat visceral sensory neurons. *J Physiol*. 2006; 575(Pt 1):175–89. <https://doi.org/10.1113/jphysiol.2006.113308> PMID: 16777937
66. Shah MM, Migliore M, Valencia I, Cooper EC, Brown DA. Functional significance of axonal Kv7 channels in hippocampal pyramidal neurons. *Proc Natl Acad Sci U S A*. 2008; 105(22): 7869–7874. <https://doi.org/10.1073/pnas.0802805105> PMID: 18515424
67. Battefeld A, Tran BT, Gavrilis J, Cooper EC, Kole MH. Heteromeric Kv7.2/7.3 channels differentially regulate action potential initiation and conduction in neocortical myelinated axons. *J Neurosci*. 2014; 34(10):3719–32. <https://doi.org/10.1523/JNEUROSCI.4206-13.2014> PMID: 24599470
68. Du X, Hao H, Gigout S, Huang D, Yang Y, Li L, et al. Control of somatic membrane potential in nociceptive neurons and its implications for peripheral nociceptive transmission. *Pain*. 2014; 155(11):2306–22. <https://doi.org/10.1016/j.pain.2014.08.025> PMID: 25168672
69. Golomb D, Yue C, Yaari Y. Contribution of persistent Na+ current and M-type K+ current to somatic bursting in CA1 pyramidal cells: combined experimental and modeling study. *J Neurophysiol*. 2006; 96(4):1912–26. <https://doi.org/10.1152/jn.00205.2006> PMID: 16807352.
70. Legendre P, Dupouy B, Vincent JD. Excitatory effect of noradrenaline on pacemaker cells in spinal cord primary cultures. *Neuroscience*. 1988; 24(2):647–58. [https://doi.org/10.1016/0306-4522\(88\)90358-2](https://doi.org/10.1016/0306-4522(88)90358-2) PMID: 2452379.

71. Astman N, Gutnick MJ, Fleidervish IA. Persistent Sodium Current in Layer 5 Neocortical Neurons Is Primarily Generated in the Proximal Axon. *Journal of Neuroscience*. 2006; 26(13):3465–73. <https://doi.org/10.1523/JNEUROSCI.4907-05.2006> PMID: 16571753
72. Hu W, Bean BP. Differential Control of Axonal and Somatic Resting Potential by Voltage-Dependent Conductances in Cortical Layer 5 Pyramidal Neurons. *Neuron*. 2018; 97(6): 1315–1326.e3. <https://doi.org/10.1016/j.neuron.2018.02.016> PMID: 29526554
73. Zhang HY, Sillar KT. Short-term memory of motor network performance via activity-dependent potentiation of Na⁺/K⁺ pump function. *Curr Biol*. 2012; 22(6):526–31. <https://doi.org/10.1016/j.cub.2012.01.058> PMID: 22405867
74. Kueh D, Barnett WH, Cymbalyuk GS, Calabrese RL. Na⁺(+)/K⁺(+) pump interacts with the h-current to control bursting activity in central pattern generator neurons of leeches. *Elife*. 2016; 5: e19322. <https://doi.org/10.7554/eLife.19322> PMID: 27588351
75. Legendre P, McKenzie JS, Dupouy B, Vincent JD. Evidence for bursting pacemaker neurones in cultured spinal cord cells. *Neuroscience*. 1985; 16(4):753–67. [https://doi.org/10.1016/0306-4522\(85\)90092-2](https://doi.org/10.1016/0306-4522(85)90092-2) PMID: 2419789.
76. Krey RA, Goodreau AM, Arnold TB, Del Negro CA. Outward Currents Contributing to Inspiratory Burst Termination in preBotzinger Complex Neurons of Neonatal Mice Studied in Vitro. *Front Neural Circuits*. 2010; 4: 124. <https://doi.org/10.3389/fncir.2010.00124> PMID: 21151816
77. Delmas P, Brown DA. Pathways modulating neural KCNQ/M (Kv7) potassium channels. *Nat Rev Neurosci*. 2005; 6(11):850–62. <https://doi.org/10.1038/nrn1785> PMID: 16261179.
78. Marrion NV. Control of M-current. *Annu Rev Physiol*. 1997; 59:483–504. <https://doi.org/10.1146/annurev.physiol.59.1.483> PMID: 9074774
79. Selyanko AA, Hadley JK, Wood IC, Abogadie FC, Jentsch TJ, Brown DA. Inhibition of KCNQ1–4 potassium channels expressed in mammalian cells via M1 muscarinic acetylcholine receptors. *J Physiol*. 2000; 522 (Pt 3): 349–355. <https://doi.org/10.1111/j.1469-7793.2000.t01-2-00349.x> PMID: 10713961
80. Greene DL, Hoshi N. Modulation of Kv7 channels and excitability in the brain. *Cell Mol Life Sci*. 2017; 74(3): 495–508. Epub 2016 Sept 19. <https://doi.org/10.1007/s00018-016-2359-y> PMID: 27645822
81. Adams PR, Brown DA. Synaptic inhibition of the M-current: slow excitatory post-synaptic potential mechanism in bullfrog sympathetic neurones. *J Physiol*. 1982; 332: 263–272. <https://doi.org/10.1113/jphysiol.1982.sp014412> PMID: 6984074
82. Purvis LK, Smith JC, Koizumi H, Butera RJ. Intrinsic bursters increase the robustness of rhythm generation in an excitatory network. *J Neurophysiol*. 2007; 97(2):1515–26. <https://doi.org/10.1152/jn.00908.2006> PMID: 17167061
83. Barber RP, Phelps PE, Houser CR, Crawford GD, Salvaterra PM, Vaughn JE. The morphology and distribution of neurons containing choline acetyltransferase in the adult rat spinal cord: an immunocytochemical study. *J Comp Neurol*. 1984; 229(3): 329–346. <https://doi.org/10.1002/cne.902290305> PMID: 6389613.
84. Anglister L, Etlin A, Finkel E, Durrant AR, Lev-Tov A. Cholinesterases in development and disease. *Chem Biol Interact*. 2008; 175(1–3): 92–100. <https://doi.org/10.1016/j.cbi.2008.04.046> PMID: 18571632.
85. Etlin A, Finkel E, Cherniak M, Lev-Tov A, Anglister L. The motor output of hindlimb innervating segments of the spinal cord is modulated by cholinergic activation of rostrally projecting sacral relay neurons. *J Mol Neurosci*. 2014; 53(3): 517–524. <https://doi.org/10.1007/s12031-014-0351-2> PMID: 24973872.
86. Kiehn O, Johnson BR, Raastad M. Plateau properties in mammalian spinal interneurons during transmitter-induced locomotor activity. *Neuroscience*. 1996; 75(1): 263–273. [https://doi.org/10.1016/0306-4522\(96\)00250-3](https://doi.org/10.1016/0306-4522(96)00250-3) PMID: 8923540
87. Jordan LM, McVagh JR, Noga BR, Cabaj AM, Majczynski H, Slawinska U, et al. Cholinergic mechanisms in spinal locomotion-potential target for rehabilitation approaches. *Front Neural Circuits*. 2014; 8: 132. <https://doi.org/10.3389/fncir.2014.00132> PMID: 25414645
88. Tillakaratne NJ, Duru P, Fujino H, Zhong H, Xiao MS, Edgerton VR, et al. Identification of interneurons activated at different inclines during treadmill locomotion in adult rats. *J Neurosci Res*. 2014; 92(12):1714–22. <https://doi.org/10.1002/jnr.23437> PMID: 24975393.
89. Zagoraiou L, Akay T, Martin JF, Brownstone RM, Jessell TM, Miles GB. A cluster of cholinergic premotor interneurons modulates mouse locomotor activity. *Neuron*. 2009; 64(5): 645–662. <https://doi.org/10.1016/j.neuron.2009.10.017> PMID: 20005822
90. Huang A, Noga BR, Carr PA, Fedirchuk B, Jordan LM. Spinal cholinergic neurons activated during locomotion: localization and electrophysiological characterization. *J Neurophysiol*. 2000; 83(6):3537–47. <https://doi.org/10.1152/jn.2000.83.6.3537> PMID: 10848569.

91. Miles GB, Hartley R, Todd AJ, Brownstone RM. Spinal cholinergic interneurons regulate the excitability of motoneurons during locomotion. *Proc Natl Acad Sci U S A*. 2007; 104(7): 2448–2453. <https://doi.org/10.1073/pnas.0611134104> PMID: 17287343
92. Carlin KP, Dai Y, Jordan LM. Cholinergic and Serotonergic Excitation of Ascending Commissural Neurons in the Thoraco-Lumbar Spinal Cord of the Neonatal Mouse. *Journal of Neurophysiology*. 2006; 95(2):1278–84. <https://doi.org/10.1152/jn.00963.2005> PMID: 16221745
93. Pearlstein E. Role of descending aminergic pathways in the development of locomotion. *Curr Pharm Des*. 2013; 19(24):4332–40. <https://doi.org/10.2174/1381612811319240002> PMID: 23360267.
94. Hansen HH, Waroux O, Seutin V, Jentsch TJ, Aznar S, Mikkelsen JD. Kv7 channels: interaction with dopaminergic and serotonergic neurotransmission in the CNS. *J Physiol*. 2008; 586(7): 1823–1832. <https://doi.org/10.1113/jphysiol.2007.149450> PMID: 18174210
95. Deemyad T, Maler L, Chacron MJ. Inhibition of SK and M channel-mediated currents by 5-HT enables parallel processing by bursts and isolated spikes. *J Neurophysiol*. 2011; 105(3):1276–94. <https://doi.org/10.1152/jn.00792.2010> PMID: 21209357
96. Westerga J, Gramsbergen A. The development of locomotion in the rat. *Brain Res Dev Brain Res*. 1990; 57(2):163–74. [https://doi.org/10.1016/0165-3806\(90\)90042-w](https://doi.org/10.1016/0165-3806(90)90042-w) PMID: 2073717
97. Vinay L, Brocard F, Fellippa-Marques S, Clarac F. Antidromic discharges of dorsal root afferents in the neonatal rat. *J Physiol Paris*. 1999; 93(4):359–67. [https://doi.org/10.1016/s0928-4257\(00\)80063-7](https://doi.org/10.1016/s0928-4257(00)80063-7) PMID: 10574124
98. Bouhadfane M, Kaszas A, Rozsa B, Harris-Warrick RM, Vinay L, Brocard F. Sensitization of neonatal rat lumbar motoneuron by the inflammatory pain mediator bradykinin. *Elife*. 2015; 4:e06195. <https://doi.org/10.7554/eLife.06195> PMID: 25781633
99. Wilson JM, Hartley R, Maxwell DJ, Todd AJ, Lieberam I, Kaltschmidt JA, et al. Conditional Rhythmicity of Ventral Spinal Interneurons Defined by Expression of the Hb9 Homeodomain Protein. *Journal of Neuroscience*. 2005; 25(24):5710–9. <https://doi.org/10.1523/JNEUROSCI.0274-05.2005> PMID: 15958737
100. Grubb MS, Burrone J. Activity-dependent relocation of the axon initial segment fine-tunes neuronal excitability. *Nature*. 2010; 465(7301):1070–4. <https://doi.org/10.1038/nature09160> PMID: 20543823