



**HAL**  
open science

# Conulariids from the Lower Ordovician of the southern Montagne Noire, France

Heyo van Iten, Bertrand Lefebvre

► **To cite this version:**

Heyo van Iten, Bertrand Lefebvre. Conulariids from the Lower Ordovician of the southern Montagne Noire, France. *Acta Palaeontologica Polonica*, 2020, 65, pp.629-639. 10.4202/app.00728.2020 . hal-03005091

**HAL Id: hal-03005091**

**<https://hal.science/hal-03005091>**

Submitted on 13 Nov 2020

**HAL** is a multi-disciplinary open access archive for the deposit and dissemination of scientific research documents, whether they are published or not. The documents may come from teaching and research institutions in France or abroad, or from public or private research centers.

L'archive ouverte pluridisciplinaire **HAL**, est destinée au dépôt et à la diffusion de documents scientifiques de niveau recherche, publiés ou non, émanant des établissements d'enseignement et de recherche français ou étrangers, des laboratoires publics ou privés.

---

# Conulariids from the Lower Ordovician of the southern Montagne Noire, France

---

**Type:**

Article

---

**Running head:**

Lower Ordovician conulariids of the Montagne Noire (France)

---

**Abstract:**

The Lower Ordovician (Tremadocian—Floian) Saint-Chinian, La Maurerie, and Landeyran formations of the southern Montagne Noire (France) collectively contain at least two species of conulariids, namely *Archeoconularia* cf. *insignis* and *Conularia azaisi*, the latter herein designated as the type species of the new genus, *Galliconularia*. *A. insignis* may also occur in the Lower Ordovician Fezouata Shale of southern Morocco, and an indeterminate species of this genus probably occurs in the Lower Ordovician Tonggao Formation of South China. *Galliconularia azaisi* differs from all other conulariids in having a raised facial midline and very fine, trochoidal transverse ribs which cross the midline ridge without interruption or diminution. In specimens preserving the outermost peridermal lamellae, the transverse ribs bear sub-microscopic nodes, and the broad interspaces are crossed by very slender interspace ridges. Finally, even though the Montagne Noire was part of the western Gondwanan passive margin during Cambro-Ordovician times, *G. azaisi* remains unknown outside of France.

---

**Keywords:**

Cnidaria, Scyphozoa, Conulariida, Paleozoic, Gondwana, Europe

# Conulariids from the Lower Ordovician of the southern Montagne Noire, France

HEYO VAN ITEN and BERTRAND LEFEBVRE

The Lower Ordovician (Tremadocian—Floian) Saint-Chinian, La Maurerie, and Landeyran formations of the southern Montagne Noire (France) collectively contain at least two species of conulariids, namely *Archaeoconularia* cf. *insignis* and *Conularia azaisi*, the latter herein designated as the type species of the new genus, *Galliconularia*. *A. insignis* may also occur in the Lower Ordovician Fezouata Shale of southern Morocco, and an indeterminate species of this genus probably occurs in the Lower Ordovician Tonggao Formation of South China. *Galliconularia azaisi* differs from all other conulariids in having a raised facial midline and very fine, trochoidal transverse ribs which cross the midline ridge without interruption or diminution. In specimens preserving the outermost peridermal lamellae, the transverse ribs bear sub-microscopic nodes, and the broad interspaces are crossed by very slender interspace ridges. Finally, even though the Montagne Noire was part of the western Gondwanan passive margin during Cambro-Ordovician times, *G. azaisi* remains unknown outside of France.

Key words: Cnidaria, Scyphozoa, Conulariida, Paleozoic, Gondwana, Europe

Heyo Van Iten [vaniten@hanover.edu], Department of Geology, Hanover College,  
Hanover, Indiana 47243, USA and Research Associate, Cincinnati Museum Center,  
Department of Invertebrate Paleontology, 1301 Western Avenue, Cincinnati, Ohio 45203,  
USA.

Bertrand Lefebvre [bertrand.lefebvre@univ-lyon1.fr], CNRS, UMR 5276 LGLTPE,  
Université Claude Bernard Lyon 1, 2 rue Dubois, F-69622 Villeurbanne, France.

## Introduction

Current knowledge of the fossil record of conulariids, coupled with the results of cladistic analyses of the phylogenetic relationships among genera within this extinct group of medusozoan cnidarians, imply that at least some of these genera diverged from each other during the Neoproterozoic Era (Van Iten et al. 2014, 2016a, b). However, the first appearance of diverse conulariids occurs within strata of the Lower Ordovician Series. In contrast to the underlying Cambrian System, which thus far has yielded only one genus of definite conulariid (Hughes et al. 2000, Van Iten et al. 2006; see however Guo et al. in press for a mention of *Conulariella* Bouček, 1928 from the Cambrian Fortunian Stage of China), Tremadocian–Floian strata collectively contain at least five genera, namely *Archaeoconularia* Bouček, 1928 (= *Exoconularia* Sinclair, 1952; Van Iten et al. in press), *Conularia* Miller in Sowerby, 1821, *Conulariella*, *Eoconularia* Sinclair, 1943, and *Teresconularia* Leme, Heredia, Rodrigues, Simões, Aceñolaza, and Milana, 2003 (Van Iten et al. 2016a). Most of the currently known occurrences of these genera are in Core Gondwana (Argentina and Morocco) or in peri-Gondwanan areas (Bohemia, South China, and Wales). Additionally, Lower Ordovician strata in the southern Montagne

Noire (France; Fig. 1), which was then part of the Gondwanan passive margin at high southern latitudes (Matte 2001, Nysaether et al. 2002, Ballèvre et al. 2009, Álvaro et al. 2013), have yielded rare specimens of a conulariid originally named *Conularia azaisi* Thoral, 1935. Subsequently, this species was variously assigned to the genera *Eoconularia* (e.g. Capéra et al. 1978, Vizcaïno et al. 2001) or *Paraconularia* Sinclair, 1940 (Leme et al. 2003). Most recently, Van Iten et al. (2016a) argued that *C. azaisi* probably belongs to a separate yet undescribed genus.

In the present paper we erect the new, monotypic genus, *Galliconularia*, with the type species *Conularia azaisi*, to accommodate specimens previously named *C. azaisi*, *E. azaisi*, or *P. azaisi*. Along with this material our paradigm also includes specimens originally labelled as *Conularia* sp. indeterminate or ?*Eoconularia* sp. and reposit in the palaeontological collections of Lyon and Montpellier universities, France (see below). In addition to erecting a new taxon, we describe *Archaeoconularia* cf. *insignis* (Barrande, 1867) from the late Floian Landeyran Formation, which has also yielded the medusozoan genus *Sphenothallus* (Van Iten et al. 2016a). This is the first report of *Archaeoconularia* in the Montagne Noire. This genus was previously known from the Lower Ordovician of Core Gondwana, Avalonia, and Perunica (Van Iten et al. 2016a).

*Institutional abbreviations.*—MNHN, Muséum National d'Histoire Naturelle, Paris, France; UCBL-FSL, Lyon 1 University, Villeurbanne, France; UM-ACI, Montpellier University, France.

*Nomenclatural acts.*—This published work and the nomenclatural acts it contains have been registered in ZooBank:

urn:lsid:zoobank.org:act:F7CBF965-787C-4414-89A3-8CFE1F228C63.

## Geological context

The small amount of available material of *Galliconularia azaisi* (just 32 specimens collected since the mid 19<sup>th</sup> century) suggests that it is a relatively rare fossil in the Lower Ordovician of the Montagne Noire. The locality details and stratigraphic positions of most specimens collected between 1850 and 1930 (Azaïs, Lignièrès, and Villebrun collections) are not known precisely (‘Lower Ordovician of Saint-Chinian area’; see Appendix). However, the lithologic features of the rocks in which they are preserved make it possible to assign all of them relatively confidently either to the late Tremadocian Saint-Chinian Formation or to the lower part of the early Floian La Maurerie Formation (i.e., the *Euloma filacovi* and *Taihungshania miqueli* trilobite zones; Fig. 2). In contrast, the localities and stratigraphic positions of all specimens of *G. azaisi* collected between 1980 and 2015 (Monceret and Vizcaïno collections) are known precisely (see Appendix; Fig. 1). This new material confirms that *G. azaisi* occurs mainly in the Saint-Chinian Formation (mostly in the *E. filacovi* Zone) and that it is far less common in the overlying La Maurerie Formation (Fig. 2). In both rock units, specimens of *G. azaisi* are preserved in dark shale or siliceous concretions.

The stratigraphy and palaeontology of the two formations yielding *G. azaisi* have been thoroughly investigated and regularly updated since the early 20<sup>th</sup> century (see e.g., Miquel 1912, Thoral 1935, Capéra et al. 1978, Courtessole et al. 1981, 1983, 1985,

Vizcaïno et al. 2001, Vizcaïno and Álvaro 2003, Tortello et al. 2006, Serpagli et al. 2007). The Saint-Chinian Formation measures ~ 600 m thick and consists mostly of claystone and siltstone with thin beds of sandstone, abundant trace fossils, and numerous fossiliferous concretions. This formation has yielded particularly abundant and diverse invertebrate assemblages dominated by trilobites but also containing various brachiopods, echinoderms, graptolites, hyolithids, machaeridians, and molluscs (Thoral 1935, Capéra et al. 1978, Babin et al. 1982, Courtessole et al. 1983, Vidal 1996, Vizcaïno and Lefebvre 1999, Vizcaïno et al. 2001, Vizcaïno and Álvaro 2003, Kröger and Evans 2011). The Saint-Chinian Formation is generally interpreted as consisting of relatively deep shelf deposits that were formed at or slightly below storm-wave base (Vidal 1996, Vizcaïno and Lefebvre 1999, Vizcaïno et al. 2001, Lefebvre 2007).

The overlying La Maurerie Formation is ~ 400 meters thick and consists of numerous thick sandstone beds intercalated within shales bearing fossiliferous concretions. This unit has yielded abundant fossil remains, though these are less diverse than those in the Saint-Chinian Formation. Assemblages are dominated by molluscs and trilobites associated with various brachiopods, echinoderms, graptolites, and machaeridians (Thoral 1935, Capéra et al. 1978, Babin et al. 1982, Courtessole et al. 1983, Vizcaïno et al. 2001, Vizcaïno and Álvaro 2003, Kröger and Evans 2011). Strata of the La Maurerie Formation are generally interpreted as shallower in origin than those of the Saint-Chinian Formation, having been deposited at or slightly above storm-wave base (Noffke and Nitsch 1994, Vizcaïno and Lefebvre 1999, Vizcaïno et al. 2001, Vizcaïno and Álvaro 2003, Kröger and Evans 2011). No conulariid remains have been reported so far

from the overlying Setso, Cluse de l'Orb, and Foulon formations (Fig. 2; Vizcaïno et al. 2001), all characterized by shallower, storm-dominated deposits (Courtessole et al. 1985).

The occurrence of conulariids referred to *Conularia* cf. *azaisi* in the lower part of the Landeyran Formation (*Apatokephalus incisus* Zone, late Floian) has been regularly mentioned in the literature since its first report by Dean (1966) in a faunal list (see e.g., Capéra et al. 1978, Vizcaïno et al. 2001, Van Iten et al. 2016a). New specimens collected in the 2000s (Kundura collection) confirm the occurrence of conulariids in the lower part of the Landeyran Formation and also extend their stratigraphic range into the upper part of the same unit (*Hangchunolithus primitivus* Zone, late Floian). Their geographic origin and stratigraphic position are known precisely (see Appendix). However, all specimens collected in the Landeyran Formation are assigned herein to *Archaeoconularia* cf. *insignis*. Their limited number, in spite of intensive quarrying in Dean's original sections during the past 50 years, suggests that they were originally relatively uncommon members of the faunal assemblages.

The Landeyran Formation is a 200- to 400-meter-thick lithostratigraphic unit consisting of concretion-bearing dark shale conformably overlying the sandstone and shaly sandstone of the underlying Foulon Formation (Capéra et al. 1978, Vizcaïno et al. 2001). The Landeyran Formation has yielded particularly abundant and diverse faunal assemblages dominated by trilobites but also comprising annelids, brachiopods, echinoderms, graptolites, hyolithids, molluscs, and ostracods (Dean 1966, Capéra et al. 1978, Babin et al. 1982, Courtessole et al. 1983, Vizcaïno and Lefebvre 1999, Vizcaïno et al. 2001, Vizcaïno and Álvaro 2003). These assemblages are characterized by the re-occurrence of various taxa (e.g., raphiophorid trilobites and stylophoran echinoderms)



133 which are absent in the underlying Cluse de l'Orb and Foulon formations but are present  
134 in the Saint-Chinian and La Maurerie formations (Courtessole et al. 1991, Henry and  
135 Vizcaïno 1996, Vizcaïno and Lefebvre 1999). This pattern, which is also exhibited by the  
136 conulariids, is in good agreement with the interpretation of the Landeyran Formation as a  
137 transgressive unit consisting of relatively distal facies deposited at or below storm-wave  
138 base and thus comparable in origin to the Saint-Chinian and La Maurerie formations  
139 (Vizcaïno et al. 2001, Vizcaïno and Álvaro 2003, Bonin et al. 2007).

## 140 Material and methods

141 The present report is based on examination of 32 specimens of *Galliconularia azaisi* and  
142 four specimens of *Archaeoconularia cf. insignis* collectively deposited in the  
143 palaeontological collections of Lyon 1 University (France), Montpellier University  
144 (France), and the Muséum National d'Histoire Naturelle, Paris (France). The Montpellier  
145 specimens were collected in the late 19<sup>th</sup> and early 20<sup>th</sup> centuries (Azaïs and Villebrun  
146 collections) and correspond to the original material described by Thoral (1935). The Lyon  
147 material includes some samples from 'old' collections (Lignières and Villebrun  
148 collections) but is mostly composed of specimens collected in the late 20<sup>th</sup> and early 21<sup>st</sup>  
149 centuries (Monceret and Vizcaïno collections). The Paris material consists entirely of  
150 specimens collected in the 2000s (Kundura collection).

151 All of the specimen photographs in this paper are of high-resolution latex casts  
152 whitened with ammonium chloride. The photographs were taken with a Canon 5DSR  
153 camera mounted with an MP-E 65mm or 100mm macro lens.

In addition to examining the material from the southern Montagne Noire, the senior author also examined specimens of *Archaeoconularia* from the Ordovician of Bohemia and repositied in the paleontological collections of the National Museum of Natural History of the Czech Republic in Prague.

## Systematic palaeontology

Phylum Cnidaria Verrill, 1865

Subphylum Medusozoa Peterson, 1979

Class Scyphozoa Götte, 1887

Order Conulariida Miller and Gurley, 1896

Genus *Archaeoconularia* Bouček, 1939

*Archaeoconularia* cf. *insignis* (Barrande, 1867)

Fig. 3.

1966 *Eoconularia?* cf. *azaisi* (Thoral, 1935); Dean 1966: 271

1978 *Eoconularia* cf. *azaisi* (Thoral, 1935); Capéra et al. 1978: 75

2001 *Eoconularia* cf. *azaisi* (Thoral, 1935); Vizcaïno et al. 2001: 219, fig. 3

2016 *Conularia* cf. *azaisi* Thoral, 1935; Van Iten et al. 2016a: 171, table 1

*Material*.—Four specimens from the late Floian Landeyran Formation. Three are from the *Apatokephalus incisus* Zone; les Sources du Foulon, Cessenon, Hérault (MNHN.F.A71848a-b, MNHN.F.A71849, and MNHN.F.A71850). One is from the

175 *Hangchungolithus primitivus* Zone; les Rocs Nègres, Causses-et-Veyran, Hérault  
176 (MNHN.F.A71851a-b).

177 *Description.*—Most complete specimen (MNHN.F.A71851a-b; Fig. 3 A, B) flattened,  
178 lacking the apertural margin but terminating at the apical end in a crumpled schott (apical  
179 wall; Fig. 3 C), measuring approximately 31 mm in length, with a maximum single face  
180 width of approximately 10 mm and a minimum single face width of approximately 0.5  
181 mm. Faces approximately equal in width, with the corners bounding a given face  
182 diverging from each other at approximately 20°. Midline sulcus appears to be deeper than  
183 the corner sulcus; both the midline sulcus and the corner sulcus simple (without internal  
184 carina or other thickening). Minute, circular to subcircular nodes (Fig. 3 D) on the faces  
185 arranged in gently arching, bell-curve-shaped transverse rows and less distinct  
186 longitudinal files, with approximately 15 to 20 transverse rows per mm and  
187 approximately 15 longitudinal files per mm.

188 *Remarks.*—Of all previously described species of *Archaeoconularia* (Barrande 1867;  
189 Slater 1907; Bouček 1928, 1939; Reed, 1933; Sinclair 1943, Sayar 1964; Van Iten et al. in  
190 press), the four incomplete specimens here described from the Landeyran Formation  
191 appear to be most similar to *A. insignis*, a species with relatively small nodes (12-30 per  
192 mm; Bouček 1928) that occurs in the Lower Ordovician (late Tremadocian) Mílina  
193 Formation of Perunica (Czech Republic; Van Iten et al. 2016a). Both the French  
194 specimens and *A. insignis* are also similar to specimens identified as *Archaeoconularia*  
195 sp. from the Lower Ordovician (late Tremadocian-mid Floian) Fezouata Shale of  
196 southern Morocco (Van Iten et al. 2016a) and may be conspecific with them. Like the  
197 material from the Landeyran Formation, the Fezouata Shale specimens occur in pale

green-brown or pale gray-green mudstone. Additionally, a single specimen illustrated by Van Iten et al. (2013, fig. 3b) from pale green-grey shale in the early Floian (Lower Ordovician) Tonggao Formation of South China, and identified by these authors (Van Iten et al. 2013, p. 719) as ‘Conulariid sp. and gen. indeterminate’, closely resembles deeply exfoliated specimens of *A. exquisita* from the Middle or Upper Ordovician of Bohemia (see in particular Bouček 1928: pl. 2: 7); therefore it is probably a specimen of *Archeoconularia*. In sum, then, *A. insignis* or a species closely related to it appears to be present both in the Lower Ordovician of Morocco and the southern Montagne Noire (Gondwana), and *Archeoconularia* is also present in the Lower Ordovician of Perunica, Avalonia, and, probably, South China. Collectively, these five Early Ordovician areas spanned a broad range of palaeolatitudes extending from near the South Pole to the southern subtropics (see Van Iten et al. 2013, fig. 5).

### Genus *Galliconularia* nov.

*Zoobank LSID:* urn:lsid:zoobank.org:act:F7CBF965-787C-4414-89A3-8CFE1F228C63.

*Type species:* *Conularia azaisi* Thoral, 1935, by monotypy see below.

*Etymology:* From the Latin *Gallicus*, meaning of or pertaining to Gaul or France, and *Conularia*.

*Diagnosis.*—As for the type species by monotypy.

*Remarks.*—*Galliconularia* is a highly distinctive genus, the most conspicuous characteristic of which is the presence of a broadly elevated facial midline together with very fine, trochoidal transverse ribs which are continuous across this feature. Only three previously described genera, *Climacoconus* Sinclair, 1942, *Pseudoconularia* Bouček,

1928, and *Reticulaconularia* Babcock and Feldmann, 1986, share with *Galliconularia* the presence of an external midline ridge (see e.g., Van Iten et al. 2000, in press). Unlike *Galliconularia*, however, *Pseudoconularia* lacks transverse ribs and its nodes are elongate and coarse, and the transverse ribs of *Climacoconus* and *Reticulaconularia* are coarse and usually alternate along the facial midline (see e.g., Sinclair 1942: pl. 3: 7). Moreover, no other genus exhibits trochoidal transverse ribs as fine as those of *Galliconularia*. Superficially, specimens of *G. azaisi* exhibiting narrow longitudinal ridges or furrows ('filets'; Thorl 1935: 160) coupled with adapical recurvature (scalloping) of the transverse ribs (Fig. 4 F) resemble the faces of *Glyptoconularia* Sinclair, 1952, which bears a distinctive ornament consisting of longitudinal files of short, straight, or adaperturally arching transverse ridges collectively resembling chain mail (Van Iten 1994). Again, the fine longitudinal ridges are also similar to the 'accessory longitudinal lines' (Sinclair 1952: 139) commonly seen in specimens in the genus *Archeoconularia*. Owing in part to deformation of available specimens of *Galliconularia*, it is difficult to discern details of the anatomy of the corner sulcus. Nevertheless, it appears that like *Conularina* Sinclair, 1942, *Eoconularia*, and *Glyptoconularia*, *Galliconularia* exhibits termination or severe diminution of the transverse facial ornament in or near the corner sulcus. Importantly, Van Iten et al. (2016a: 1) interpreted this similarity as a non-homoplastic synapomorphy uniting these four taxa in a single, monophyletic group that excludes other conulariids. *G. azaisi* (shown in the cladogram of Van Iten et al. 2016a as '*Eoconularia*' *azaisi*) is the basalmost taxon of this fully resolved clade. According to the phylogenetic analysis of Van Iten et al. (2016a), the midline ridge was derived independently in *Galliconularia* (coded as

246 *Conularia azaisi*), *Pseudoconularia*, and the minor clade consisting of *Climacoconus* and  
 247 *Reticulaconularia*. Trochoidal transverse ribs, a primitive feature present in  
 248 *Galliconularia*, *Conulariella*, and many other conulariids, were lost in at least two  
 249 lineages, including the lineage leading to the most recent common ancestor of  
 250 *Conularina* and *Eoconularia*. However, Van Iten et al. (2016a) also scored *G. azaisi* as  
 251 lacking nodes and interspace ridges, features which were detected in two specimens  
 252 assigned to this species in the present study. Therefore, the phylogenetic relationships of  
 253 *G. azaisi* to other conulariids should be reanalyzed based on the new anatomical data  
 254 revealed by the present study.

255 *Galliconularia azaisi* (Thoral, 1935) comb. nov.

256 Fig. 4.

257 1912 *Conularia nova* sp.; Miquel 1912: 20

258 1935 *Conularia azaisi* Thoral, 1935; Thoral 1935: 159, pl. 11: 7–9, pl. 15: 11a–b

259 non 1966 *Eoconularia?* cf. *azaisi* (Thoral, 1935); Dean 1966: 271

260 1978 *Eoconularia azaisi* (Thoral, 1935); Capéra et al. 1978: 73

261 non 1978 *Eoconularia* cf. *azaisi* (Thoral, 1935); Capéra et al. 1978: 75

262 2001 *Eoconularia azaisi* (Thoral, 1935); Vizcaïno et al. 2001: 219, fig. 3

263 non 2001 *Eoconularia* cf. *azaisi* (Thoral, 1935); Vizcaïno et al. 2001: 219, fig. 3

264 non 2001 *Eoconularia azaisi* (Thoral, 1935); Álvaro et al. 2001: 228

265 2004 *Eoconularia azaisi* (Thoral, 1935); Van Iten and Vhylasová 2004: 122

266 2008 *Paraconularia azaisi* (Thoral, 1935); Leme et al. 2008: 270, fig. 5

267 2016 *Conularia azaisi* Thoral, 1935; Van Iten et al. 2016a: 171, table 1

269 *non* 2016 *Conularia* cf. *azaisi* Thoral, 1935; Van Iten et al. 2016a: 171, table 1  
270 *Type Material*.—Thoral's (1935) four syntypes: UM.ACI.416 (Thoral, 1935: pl. 15:  
271 11a-b), UM.ACI.645 (Thoral, 1935: pl. 11: 7), UM.ACI.646 (Thoral, 1935: pl. 11: 9), and  
272 UM.ACI.647 (Thoral, 1935: pl. 11: 8). A specimen deposited in the palaeontological  
273 collections of western Brittany, Brest, France (LPB 10777) was erroneously mentioned as  
274 the holotype of *Eoconularia azaisi* by Álvaro et al. (2001). This specimen is instead a  
275 bivalve [*Eopteria crassa* (Thoral, 1935)] from the Lower Ordovician of the Montagne  
276 Noire (Muriel Vidal, personal communication 2018).

277 *Additional material*.—UM.ACI.654–656 and UM.ACI.658; UCBL-FSL 133604-133610,  
278 UCBL-FSL 712799, UCBL-FSL 713214-713229 (total of 28 specimens).

279 *Diagnosis*.—Raised facial midline marked by a low, rounded (transv.), continuous  
280 external ridge. Exterior-most lamellae of the faces exhibit very fine, aperturally gently  
281 arching, trochoidal (long.) transverse ribs bearing submicroscopic, circular to sub-circular  
282 nodes; transverse ribs cross the midline ridge without interruption or diminution,  
283 terminating or greatly diminished in height in the narrow corner sulcus. Exterior-most  
284 lamellae of the interspaces exhibit very slender interspace ridges that terminate at their  
285 apertural end in a node. Deeper lamellae exhibit fine longitudinal ridges or grooves.

286 *Description*.—Specimens incomplete, variably deformed and exfoliated, with the largest  
287 specimen measuring approximately 58 mm in length; apex unknown, schott (apical wall)  
288 not observed, apertural margin gently arcuate but without evidence of inward folding  
289 (apertural lappets). Transverse cross section slightly rectangular; corners and facial  
290 midline un-thickened and lacking internal carina(e). Angle of divergence of the corners  
291 bounding a given face ranges from approximately 10 to 50°. Corners sulcate; corner

293 sulcus narrow (Fig. 4 A, D). Periderm along the facial midline outwardly folded to form a  
294 low, rounded (transv.), continuous ridge that is wider than the corner sulcus (Fig. 4 A, B,  
295 D-F). On the faces, the exterior-most lamellae exhibit very fine, gently arched  
296 (adaperturally), trochoidal (long.) transverse ribs that number from 2 to 11 per mm and  
297 parallel the apertural margin; in two specimens, the transverse ribs exhibit closely spaced,  
298 sub-microscopic nodes (approximately 14 to 18 per mm; Fig. 4 B); transverse ribs cross  
299 the midline ridge without interruption or diminution (Fig. 4 B), terminating or greatly  
300 diminished in height in the corner sulcus. Interspaces wider than the transverse ribs, in  
301 the two node-bearing specimens exhibiting very slender interspace ridges that extend  
302 from a node on the transverse rib nearest the aperture to the gap between two nodes on  
303 the transverse rib nearest the apex (Fig. 4 B). Faces of many specimens exhibit coarse,  
304 irregular folds and/or broadly sinusoidal, gently arched transverse folds that may be  
305 artifacts of deformation (Fig. 4 D, E). Transverse ribs may be scalloped or jagged,  
306 especially in completely flattened specimens preserved in shale (Fig. 4 F). Many  
307 specimens show multiple fine, commonly discontinuous, longitudinal folds or grooves  
308 ('filets'; Thorl 1935: 160) that number about 2 per mm (transv.) and along which the  
309 transverse ribs may be recurved adapically.

310 *Remarks.*—The foregoing description is based on Thorl's (1935) original material (total  
311 of 12 specimens) plus 20 additional specimens. Though longer and more complete than  
312 that of Thorl (1935), the present description is generally in close agreement with  
313 equivalent portions of Thorl's (1935) text. The most significant difference between the  
314 two descriptions is that Thorl (1935) did not note the presence of minute nodes and  
315 interspace ridges. Such features appear to be absent in Thorl's (1935) material (e.g., Fig.



4 D, E), but they are present in at least two of the additional specimens (UCBL-FSL 713215 and UCBL-FSL 713229) examined by the present authors. In all other respects, the node-bearing specimens are similar to those examined by Thoral (1935), exhibiting for example the same broadly rounded midline ridge and thread-like transverse ribs which cross the midline ridge without diminution or disruption.

As is true for many other conulariids, the appearance of a given specimen of *G. azaisi* depends in part on the depth or level within the finely lamellar periderm at which the specimen is being examined. This in turn depends on the preservation of the periderm (whether complete or exfoliated) as well as on whether the periderm was split along one or more internal lamellae during extraction from the host rock matrix. The very fine, nodose transverse ribs and interspace ridges appear to be restricted to the outermost lamellae, which in many specimens are either missing (owing, we believe, to exfoliation) or covered by rock matrix, which can only be removed through mechanical preparation (which may destroy delicate external surface features). The fine longitudinal ridges or furrows, which are similar to and possible homologous with those which occur within the periderm of many specimens of *Archaeoconularia* (see e.g., Bouček 1928: pl. 1: 17), occur in lamellae beneath those bearing the very fine transverse ornament and interspace ridges. In short, then, we do not believe that the two node-bearing specimens and the more numerous specimens that do not exhibit nodes should be assigned to separate species in the new genus. However, if future discoveries should prove this conclusion to be incorrect, then the diagnosis of *Galliconularia* will have to be emended accordingly.

Another factor affecting the appearance of specimens of *G. azaisi* is tectonic deformation, more specifically shearing of flattened specimens preserved in shale (Fig. 4

F). In addition to being strongly compressed, such specimens differ from more or less three-dimensional specimens preserved in siliceous nodules in having the transverse ribs scalloped or jagged. But even in specimens preserved in siliceous nodules, deformation expressed as very fine wrinkling of the periderm may be present in the interspaces (Fig. 4 B).

Subsequent to the publication of Thoral's (1935) description, Vizcaïno et al. (2001) listed *Galliconularia azaisi* as *Eoconularia azaisi*. This assignment apparently was based on the presence in certain specimens of relatively coarse, sinusoidal transverse folds that follow the course of the very fine, adaperturally arching transverse ribs. Such folds resemble the sinusoidal transverse ribs of species such as *E. amoena* Sinclair, 1944 and *E. loculata* (Wiman, 1895). However, because most specimens of *G. azaisi* are deformed, we are inclined to agree with Thoral's (1935) suggestion that the transverse folds in this conulariid are artifacts of directed stress sustained after final burial. In this connection it should be noted that Thoral (1935: 160) grouped the 12 specimens of *G. azaisi* he examined in two 'distinct series'. The first series consisted of specimens having broad faces, large apical angles, poorly defined transverse ribs, and numerous, clearly defined, narrow longitudinal furrows or ridges ('filets'). Thoral did not list the registration numbers of these specimens. The second series consisted of larger and narrower specimens, again unspecified, that were further characterized by well-defined transverse ribs but only a few, widely spaced and discontinuous longitudinal lines. Thoral (1935) provisionally interpreted his two series as consisting, respectively, of the apical (first series) and more distal regions (second series) of an originally more elongate periderm having high apical angles in the apical region and much lower apical angles

365 closer to the apertural end of the periderm. Owing to distortion and incomplete  
366 preservation of the faces, we think that determination of apical angles in *G. azaisi* is more  
367 difficult than implied by Thoral (1935); however, at this point we cannot rule out his  
368 hypothesis that the two series represent different portions of the periderm of a single  
369 species.

370 *Stratigraphic and geographic range.*—Late Tremadocian Saint Chinian Formation and  
371 early Floian La Maurerie Formation, Lower Ordovician of the southern Montagne Noire,  
372 France. See Appendix for detailed geographic and stratigraphic information on each  
373 specimen.

## 374 Concluding remarks

375 The genus *Archaeoconularia*, previously known from the Lower Ordovician of Avalonia  
376 (Wales) and Perunica, is now documented from two distinct regions of Core Gondwana:  
377 the Anti-Atlas (Morocco) and the southern Montagne Noire (France). The same genus  
378 probably also occurs in the Lower Ordovician of South China. The new, monospecific  
379 genus *Galliconularia* is currently known only from the Lower Ordovician of the  
380 Montagne Noire. This fact is interesting given that during this time interval, this region  
381 was part of the passive margin of Gondwana and, based on palaeogeographic  
382 reconstructions (see e.g., Fortey and Cocks 2003, Torsvik and Cocks 2013), was situated  
383 close to several other peri-Gondwanan areas from which conulariids have been described  
384 (e.g., the Anti-Atlas, Argentina, Bohemia, and Wales; Leme et al. 2003, Van Iten and  
385 Vhylasová 2004, Van Iten et al. 2016a).

The diversity pattern observed for conulariids in the Montagne Noire (Fig. 2) is identical to those described for most other invertebrates, in particular echinoderms and trilobites (Vizcaïno and Lefebvre 1999, Vizcaïno et al. 2001, Vizcaïno and Álvaro 2003): thus, diversity peaks in the late Tremadocian (Saint-Chinian Formation) before decreasing in the early Floian (La Maurerie Formation) and even more dramatically during the mid Floian (Cluse de l'Orb and Foulon formations). This diversity trend mostly follows large-scale environmental changes, with the Saint-Chinian Formation corresponding to deeper settings (transgressive interval) and the early-mid Floian units recording shallowing conditions (regressive interval).

Not surprisingly, endemism is particularly reduced during the late Tremadocian transgressive interval, with most invertebrate taxa reported from the Saint-Chinian Formation also occurring in other peri-Gondwanan areas, in particular Argentina and Morocco (Vizcaïno and Lefebvre 1999, Vizcaïno et al. 2001, Vizcaïno and Álvaro 2003, Lefebvre et al. 2016; Martin et al. 2016). In short, then, we predict that the genus *Galliconularia* probably also occurs in other peri-Gondwanan areas, possibly as one or more new species distinct from *G. azaisi*.

## Acknowledgements

This paper is a contribution to the International Geoscience Programme (IGCP) Project 653 – The onset of the Great Ordovician Biodiversification Event. The authors thank Jean-Paul and Marie-Hélène Kundura (Epinay-sous-Sénart, France), Eric Monceret, and Daniel Vizcaïno (Carcassonne, France) for making available and donating their specimens of conulariids from the Montagne Noire to public palaeontological collections

(Lyon 1 University and the Muséum National d'Histoire Naturelle, Paris, France), as well as for providing useful information on localities and stratigraphy. Suzanne Jiquel (Montpellier University, France) provided access to the original conulariid material of Thoral, and both Vincent Perrier and Emmanuel Robert (Lyon 1 University, France) are acknowledged for taking photographs of these specimens. Jean-Michel Pacaud and Peggy Vincent (Muséum National d'Histoire Naturelle, Paris) facilitated access to material deposited in their institution. The authors are also grateful to Muriel Vidal (Brest University, France) for her assistance with Montagne Noire specimens deposited in the collections of the University of Western Brittany, Brest, France. The constructive comments of reviewer Graham Young (Manitoba Museum, Winnipeg, Canada) are greatly appreciated. Finally, the senior author thanks Petr Kraft and Jana Bruthansová for assistance in examining specimens of *Archaeoconularia* in the paleontological collections of the National Museum of Natural History of the Czech Republic in Prague.

## References

- Álvaro, J.J. and Vizcaïno, D. 2001. The southern Montagne Noire: a key region for the research on Lower Paleozoic paleontology. *Annales de la Société Géologique du Nord* 8: 185–189.
- Álvaro, J.J., Lefebvre, B., and Vizcaïno, D. 2001. Catalogue of the fossil species defined in the Lower Paleozoic of the Southern Montagne Noire. *Annales de la Société Géologique du Nord* 8: 227–232.

- 431 Álvaro, J.J., Zamora, S., Clausen, S., Vizcaïno, D., and Smith, A.B. 2013. The role of  
432 abiotic factors in the Cambrian Substrate Revolution: benthic community  
433 replacements of West Gondwana. *Earth-Science Reviews* 118: 69–82.
- 434 Babcock, L.E., and Feldmann, R.M. 1986. Devonian and Mississippian conulariids of  
435 North America. Part B. *Paraconularia*, *Reticulaconularia*, new genus, and  
436 organisms rejected from Conulariida. *Annals of Carnegie Museum* 55: 411–479.
- 437 Babin, C., Courtessole, R., Mélou, M., Pillet, J., Vizcaïno, D, and Yochelson, E.L. 1982.  
438 Brachiopodes (Articulés) et Mollusques (Bivalves, Rostroconches,  
439 Monoplacophores, Gastropodes) de l'Ordovicien inférieur  
440 (Trémadocien-Arenigien) de la Montagne Noire (France Méridionale). *Société des*  
441 *Études Scientifiques de l'Aude, Carcassonne*, 63 pp.
- 442 Ballèvre, M., Bosse, V., Ducassou, C., and Pitra, P. 2009. Palaeozoic history of the  
443 Armorican Massif: models for the tectonic evolution of the suture zones.  
444 *Comptes-Rendus Geoscience* 341: 174–201.
- 445 Barrande, J. 1867. *Système Silurien du centre de la Bohême. Première Partie, Tome 3.*  
446 *Classe des Mollusques, Ordre des Ptéropodes*. Prague et Paris. xv + 179 pp, 16  
447 pl.
- 448 Bonin, A., Nardin, E., Vennin, E., and Vizcaïno, D. 2007. Brachiopod coquinas of the  
449 Upper Arenig, Montagne Noire, France. *Publications Scientifiques du Muséum*  
450 195: 91–93.
- 451 Bouček, B. 1928. Révision des Conulaires paléozoïques de la Bohême.  
452 *Palaeontographica Bohemiae*, 11: 1–108.

- 454 Bouček, B. 1939. Conularida, A113-A131. In, O.H. Schindewolf (ed.), *Handbuch der*  
455 *Paläozoologie, Band 2A*, Gebruder Borntraeger, Berlin.
- 456 Capéra, J.C., Courtessole, R., and Pillet, J. 1978. Contribution à l'étude de l'Ordovicien  
457 inférieur de la Montagne Noire. Biostratigraphie et révision des Agnostida.  
458 *Annales de la Société Géologique du Nord* 98: 67–88.
- 459 Courtessole, R., Pillet, J., and Vizcaïno, D. 1981. *Nouvelles Données sur la*  
460 *Biostratigraphie de l'Ordovicien Inférieur de la Montagne Noire. Révision des*  
461 *Taihungshaniidae, de Megistaspis (Ekeraspis) et d'Asaphopsoides (Trilobites).*  
462 Société des Études Scientifiques de l'Aude, Carcassonne, 32 pp.
- 463 Courtessole, R., Marek, L., Pillet, J., Ubaghs, G., and Vizcaïno, D. 1983. *Calymenina,*  
464 *Echinodermata et Hyolitha de l'Ordovicien Inférieur de la Montagne Noire*  
465 *(France Méridionale).* Société des Études Scientifiques de l'Aude, Carcassonne,  
466 162 pp.
- 467 Courtessole, R., Pillet, J., Vizcaïno, D., and Eschard, R. 1985. *Étude Biostratigraphique*  
468 *et Sédimentologique des Formations Arénacées de l'Arenigien du*  
469 *Saint-Chinianais Oriental (Hérault) Versant Sud de la Montagne Noire (France*  
470 *Méridionale).* Société des Études Scientifiques de l'Aude, Carcassonne, 99 pp.
- 471 Courtessole, R., Henry, J.L., and Vizcaïno, D. 1991. Quelques Calymenidae (Trilobita)  
472 de l'Ordovicien inférieur (Arenig) de la Montagne Noire, France: systématique,  
473 évolution et paléoenvironnements. *Palaeontographica Abteilung A* 218: 1–15.
- 474 Dean, W.T. 1966. The Lower Ordovician stratigraphy and trilobites of the Landeyran  
475 valley and the neighbouring district of the Montagne Noire, south-western France.  
476 *Bulletin of the British Museum (Natural History) Geology* 12: 247–353.

- 478 Fortey, R.A., and Cocks, L.R.M. 2003. Palaeontological evidence bearing on global  
479 Ordovician–Silurian continental reconstructions. *Earth-Sciences Reviews* 61:  
480 245–307.
- 481 Götte, A. 1887. Entwicklungs Geschichte der *Aurelia aurita* und *Cotylorhiza tuberculata*.  
482 *Abhandlungen der Entwicklungsgeschichte der Tiere*, 4: 1–79.
- 483 Guérangé-Lozes, J. and Burg, J.M. 1990. Les nappes varisques du sud-ouest du Massif  
484 Central. *Géologie de la France*, 1990 (3/4): 71–106.
- 485 Guo, J.F., Han, J., Van Iten, H., Song, Z.-C., Qiang, Y.Q., Wang, W.Z., Zhang, Z.F., Li,  
486 G.X., Sun, Y.F. and Sun, J. in press. A new tetradial olivoid (Medusozoa) from  
487 the Lower Cambrian (Stage 2) Yanjiahe Formation, South China. *Journal of*  
488 *Paleontology* in press.
- 489 Henry, J.L., and Vizcaïno, D. 1996. Le genre *Prionocheilus* Rouault 1847 (Trilobita)  
490 dans l'Ordovicien inférieur de la Montagne Noire, France: évolution et  
491 paléoenvironnements. *Neues Jahrbuch für Geologie und Paläontologie*,  
492 *Abhandlungen* 199: 49–64.
- 493 Hughes, N.C., Gunderson, G.O., and Weedon, M.J. 2000. Late Cambrian conulariids  
494 from Wisconsin and Minnesota. *Journal of Paleontology* 74: 828–838.
- 495 Kröger, B. and Evans, D.H. 2011. Review and palaeoecological analysis of the late  
496 Tremadocian-early Floian (Early Ordovician) cephalopod fauna of the Montagne  
497 Noire, France. *Fossil Record* 14: 5–34.
- 498 Lefebvre, B. 2007. Early Palaeozoic palaeobiogeography and palaeoecology of  
499 stylophoran echinoderms. *Palaeogeography, Palaeoclimatology, Palaeoecology*  
500 245: 156–199.



- Lefebvre, B., Allaire, N., Guensburg, T.E., Hunter, A.W., Kouraïss, K., Martin, E.L.O., Nardin, E., Noailles, F., Pittet, B., Sumrall, C.D., and Zamora, S. 2016. Palaeoecological aspects of the diversification of echinoderms in the Lower Ordovician of central Anti-Atlas, Morocco. *Palaeogeography, Palaeoclimatology, Palaeoecology* 460: 97-121.
- Leme, J.M., Heredia, S., Rodrigues, S.C., Simões, M.G., Aceñolaza, G.F., and Milana, J.P. 2003. *Teresconularia* gen. nov. from the Lower Ordovician of the Cordillera Oriental of Salta (NW Argentina): the oldest conulariid (Cnidaria) from South America. *Revista Española de Micropaleontología* 35: 265–273.
- Martin, E.L.O., Vidal, M., Vizcaïno, D., Vaucher, R., Sansjofre, P., Lefebvre, B., and Destombes, J. 2016. Biostratigraphic and palaeoenvironmental controls on the trilobite associations from the Lower Ordovician Fezouata Shale of the central Anti-Atlas, Morocco. *Palaeogeography, Palaeoclimatology, Palaeoecology* 460: 142–154.
- Matte, P. 2001. The Variscan collage and orogeny (480-290 Ma) and the tectonic definition of the Armorica microplate: a review. *Terra Nova* 13: 122–128.
- Miller, S.A. and Gurley, W.F.E. 1896. New species of Palaeozoic invertebrates from Illinois and other states. *Illinois State Museum of Natural History, Bulletin* 11, 1–50.
- Miquel, J. 1912. *Nouvel essai sur les terrains primaires du département de l'Hérault. Classification des terrains siluriens*. Imprimerie du Commerce, Béziers, 48 pp.
- Noffke, N., and Nitsch, E. 1994. Sedimentology of Lower Ordovician clastic shelf deposits, Montagne Noire (France). *Géologie de la France* 4: 3–19.

- 526 Nysaether, E., Torsvik, T.H., Feist, R., Walderhaug, H.J., and Eife, E.A. 2002.  
527 Ordovician palaeogeography with new palaeomagnetic data from the Montagne  
528 Noire (Southern France). *Earth and Planetary Science Letters* 203: 329–341.
- 529 Peterson, K.W. 1979. Development of coloniality in Hydrozoa. In: G. Larwood and B.R.  
530 Rosen (eds.), *Biology and Systematics of Colonial Organisms*, 105–139.  
531 Academic Press, New York.
- 532 Reed, F.R.C. 1933. Some new Ordovician species of *Conularia* from Girvan. *Geological*  
533 *Magazine* 70: 354–358.
- 534 Sayar, C. 1964. Ordovician conulariids from the Bosphorus area, Turkey. *Geological*  
535 *Magazine* 101: 193–197.
- 536 Serpagli, E., Ferretti, A., Vizcaïno, D., and Álvaro, J.J. 2007. A new Early Ordovician  
537 conodont genus from the southern Montagne Noire, France. *Palaeontology* 50:  
538 1447–1457.
- 539 Sinclair, G.W. 1940. The genotype of *Conularia*. *Canadian Field-Naturalist* 54: 72–74.
- 540 Sinclair, G.W. 1942. The Chazy conulariids and their congeners. *Annals of Carnegie*  
541 *Museum* 29: 219–240.
- 542 Sinclair, G.W. 1943. A new genus of conulariids. *Canadian Field-Naturalist* 57: 123.
- 543 Sinclair, G.W. 1944. Notes on the genera *Archaeoconularia* and *Eoconularia*. *Royal*  
544 *Society of Canada, Section IV, Transactions, series 3*, 38: 87–95.
- 545 Sinclair, G.W. 1952. A classification of the Conularida. *Fieldiana Geology* 10: 135–145.
- 546 Slater, I.L. 1907. A monograph of British Conulariae. *Palaeontographical Society*, 1-41.
- 547 Sowerby, J., 1821. *The Mineral Conchology of Great Britain; or Coloured Figures and*

549 *Descriptions of those Remains of Testaceous Animals or Shells, Which Have*  
550 *Been Preserved at Various Times, and Depths in the Earth.* W. Arding Co.,  
551 London, 194 pp.

552 Thoral, M. 1935. *Contribution à l'Étude paléontologique de l'Ordovicien inférieur de la*  
553 *Montagne Noire et Révision Sommaire de la Faune Cambrienne de la Montagne*  
554 *Noire.* Imprimerie de la Charité, Montpellier, 362 pp.

555 Torsvik, T.H., and Cocks, L.R.M. 2013. New global palaeogeographical reconstructions  
556 for the Early Palaeozoic and their generation. In, D.A.T. Harper and T. Servais  
557 (eds.), *Early Palaeozoic Biogeography and Palaeogeography.* Geological Society  
558 of London, *Memoirs* 38: 5–24.

559 Tortello, M.F., Vizcaïno, D., and Álvaro, J.J. 2006. Early Ordovician agnostoid trilobites  
560 from the southern Montagne Noire, France. *Journal of Paleontology* 80: 477–495.

561 Van Iten, H. 1994. Redescription of *Glyptoconularia* Sinclair, an Ordovician conulariid  
562 from North America. In, E. Landing (ed.), *Studies in Honor of Donald W. Fisher.*  
563 *New York State Museum & Geological Survey, Bulletin* 481: 363–366.

564 Van Iten, H., and Vhylasová, Z. 2004. Conulariids, 119-123. In, B.D. Webby, M.L.  
565 Droser, M.L., and F. Paris (eds), *The Great Ordovician Biodiversification Event.*  
566 Columbia University Press, New York.

567 Van Iten, H., Zhu, Z.-K., and Zhu, M.-Y. 2000. Anatomy and systematics of the  
568 Devonian conulariids *Changshaconus carinata* Zhu, 1985 and *Reticulaconularia*  
569 *Babcock and Feldmann*, 1986. *Acta Palaeontologica Sinica*, 39: 466–475.

570 Van Iten, H., Leme, J.M.L., and Simões, M.G. 2006. Additional observations on the  
571 gross morphology and microstructure of *Baccaconularia* Hughes, Gunderson et

Weedon, 2000, a Cambrian (Furongian) conulariid from the north-central USA.

*Palaeoworld* 15: 294-306.

Van Iten, H., Muir, L.A., Botting, J.P., Zhang Y.-D., and Li, J.-P. 2013. Conulariids and

*Sphenothallus* (Cnidaria, Medusozoa) from the Tonggao Formation (Lower

Ordovician, China). *Bulletin of Geosciences* 88:713–722.

Van Iten, H., Marques, A.C., Leme, J.M.L., and Simões, M.G. 2014. Origin and early

evolution of the phylum Cnidaria Verrill: major developments in the analysis of

the taxon's Proterozoic-Cambrian history. *Palaeontology* 3:1–14.

Van Iten, H., Muir, L., Simões, M.G., Leme, J.M.L., Marques, A.C., and Yoder, N.

2016a. Palaeobiogeography, palaeoecology and evolution of Lower Ordovician

conulariids and *Sphenothallus* (Medusozoa, Cnidaria), with emphasis on the

Fezouata Shale of southeastern Morocco. *Palaeogeography, Palaeoclimatology,*

*Palaeoecology* 460: 170–178.

Van Iten, H., Leme, J.M.L., Pacheco, M.L.A.F., Simões, M.G., Fairchild, T.R.,

Rodrigues, F., Galante, D., Boggiani, P.C., and Marques, A.C. 2016b. Origin and

early diversification of phylum Cnidaria: key macrofossils from the Ediacaran

System of North and South America, 31-40. In, S. Goffredo and Z. Dubinsky

(eds), *The Cnidaria, Past, Present and Future*. Springer International Publishing,

Switzerland.

Van Iten, H., Gutiérrez-Marco, J.C., Muir, L.A., Simões, M.G., and Leme, J.M. in press.

Ordovician conulariids (Scyphozoa), from the Upper Tiouririne Formation

(Katian), eastern Anti-Atlas Mountains, southern Morocco. *Geological Society*

*Special Publications*, 485 in press, doi.org/10.1016/j.palaeo.2016.03.008.

Verrill, A.E. 1865. Classification of polyps (extract condensed from Synopsis of the Polyps and Corals of the North Pacific Exploring Expedition under Commodore C. Ringgold and Captain John Rogers, U.S.N.). *Communications of the Essex Institute* 4: 145–152.

Vidal, M. 1996. Quelques Asaphidae (Trilobita) de la Formation de Saint-Chinian, Ordovicien inférieur, Montagne Noire (France): systématique et paléoenvironnements. *Geobios* 29: 725–744.

Vizcaïno, D. and Lefebvre, B. 1999. Les échinoderms du Paléozoïque inférieur de la Montagne Noire: biostratigraphie et paléodiversité. *Geobios* 32: 353–364.

Vizcaïno, D. and Álvaro, J.J. 2003. Adequacy of the Early Ordovician trilobite record in the southern Montagne Noire (France): biases for biodiversity documentation. *Transactions of the Royal Society of Edinburgh: Earth Sciences* 93: 393–401.

Vizcaïno, D., Álvaro, J.J., and Lefebvre, B. 2001. The Lower Ordovician of the southern Montagne Noire. *Annales de la Société Géologique du Nord* 8: 213–220.

Wiman, C. 1895. Paleontologische Notizen 1-2. *Conularia loculata* n. sp. *University of Uppsala, Geological Institution, Bulletin* 2: 113–117.

## Appendix

Locality and stratigraphic information for all available specimens of conulariids registered in the collections of Lyon 1 University (UCBL-FSL), Montpellier University (UM), and the Muséum National d’Histoire Naturelle, Paris (MNHN), France:

- 618 - Saint-Chinian Formation (trilobite zone unknown, late Tremadocian); locality  
619 unknown, Saint-Chinian area (Hérault): UM.ACI.416, 645, 658 (Azaïs coll.), and  
620 UM.ACI.646–647, 654–656, UCBL-FSL 133605–133606 (Villebrun coll.).
- 621 - Saint-Chinian Formation (*E. filacovi* Zone, late Tremadocian); Donnadiou,  
622 Babeau-Bouldoux (Hérault): UCBL-FSL 713218 (Monceret coll.), and  
623 UCBL-FSL 713224–713225 (Vizcaïno coll.); locality unknown,  
624 Félines-Minervois area (Hérault): UCBL-FSL 133609 (Lignières coll.); vallée du  
625 Merlaux, Félines-Minervois (Hérault): UCBL-FSL 133610 (Lignières coll.); Pech  
626 Tavernier, Prades-sur-Vernazobre (Hérault): UCBL-FSL 713216–713217, 713220  
627 (Monceret coll.), and UCBL-FSL 713221, 713228 (Vizcaïno coll.); SW of  
628 Prades-sur-Vernazobre (Hérault): UCBL-FSL 713222 (Vizcaïno coll.); locality  
629 unknown, Saint-Chinian area (Hérault): UCBL-FSL 133608 (Villebrun coll.);  
630 Canimals, Saint-Chinian (Hérault): UCBL-FSL 133604 (Villebrun coll.), and  
631 UCBL-FSL 712799, 713219 (Monceret coll.); Brama, Trausse (Aude):  
632 UCBL-FSL 713223 (Vizcaïno coll.).
- 633 - Saint-Chinian Formation (lower part of the *T. miqueli* Zone, late Tremadocian);  
634 ruisseau des Lavandières, Caunes-Minervois (Aude): UCBL-FSL 713226  
635 (Vizcaïno coll.); vallée de l'Ourdivieille, Caunes-Minervois (Aude): UCBL-FSL  
636 713227 (Vizcaïno coll.).

- La Maurerie Formation (upper part of the *T. miqueli* Zone, early Floian); la Rouvelane, Prades-sur-Vernazobre (Hérault): UCBL-FSL 713214-713215 (Monceret coll.), and UCBL-FSL 713229 (Vizcaïno coll.); Saint-Cels, Saint-Chinian (Hérault): UCBL-FSL 133607 (Villebrun coll.).
  
- Landeyran Formation (*A. incisus* Zone, late Floian); les sources du Foulon, Cessenon (Hérault): MNHN.F.A71848-A71850 (Kundura coll.).
  
- Landeyran Formation (*H. primitivus* Zone, late Floian); les Rocs Nègres, Causses-et-Veyran (Hérault): MNHN.F.A71851 (Kundura coll.).

## Figure captions

Fig. 1. Geology of the Montagne Noire with conulariid localities. A. Geologic sketch of the Montagne Noire. The dashed area corresponds to the Minervois and Pardailhan nappes. B. Geologic sketch of France showing the pre-Hercynian rocks and the location of the Montagne Noire. C. Simplified geological map of the Minervois and Pardailhan nappes, southern Montagne Noire, with the four main areas yielding Lower Ordovician conulariids (dashed square boxes); from W to E: western Minervois area, Aude (ruisseau des Lavandières, vallée de l'Ourdivieille); eastern Minervois area, Aude (Brama, vallée du Merlaux); western Saint-Chinianais area, Hérault (Canimals, Donnadiou, Saint-Cels); eastern Saint-Chinianais area, Hérault (Pech Tavernier, les Rocs Nègres, la Rouvelane, les Sources du Foulon). Maps redrawn and modified from Guérangé-Lozes and Burg (1990) and Álvaro and Vizcaïno (2001).

659 Fig. 2. Stratigraphic range of conulariids in the Lower Ordovician of the southern  
660 Montagne Noire. Stratigraphic column redrawn and modified from Courtessole et al.  
661 (1983). Stratigraphy based on Vizcaïno et al. (2001), Álvaro and Vizcaïno (2003),  
662 Tortello et al. (2006), and Serpagli et al. (2007).

663 Fig. 3. Conulariid scyphozoan *Archaeoconularia* cf. *insignis* (Barrande, 1867), late  
664 Floian, Landeyran Formation, Lower Ordovician; southern Montagne Noire, France.  
665 Specimens oriented with the apertural end directed toward the top of the page; arrows in  
666 A and B point to a facial midline. A. View of the two exposed faces of the part of the  
667 most complete specimen (MNHN.F.A71851a), which terminates in a crumpled schott. B.  
668 View of the counterpart of the specimen in A (MNHN.F.A71851b). C. Detail of the part,  
669 showing the crumpled terminal schott (arrow). D. Detail of the apertural region of the  
670 counterpart, showing the fine ornament including some of the most clearly defined nodes  
671 (arrows). Scale bars = 10 mm (A and B) and 1 mm (C and D).

672 Fig. 4. Conulariid scyphozoan *Galliconularia azaisi* (Thoral, 1935), late  
673 Tremadocian-early Floian, Saint Chinian and La Maurerie formations, Lower Ordovician;  
674 southern Montagne Noire, France. Specimens oriented with the apertural end directed  
675 toward the top of the page. A. View of the exterior surface of a single face of a relatively  
676 large specimen, parts of which preserves the sub-microscopic nodes and interspace ridges  
677 (UCBL-FSL 713229; midline ridge indicated by the arrow). B. Detail of the apertural  
678 region of the specimen in A, showing some of the sub-microscopic nodes and interspace



679  
680 ridges, which cross the broad midline ridge (central part of the photograph) without  
681 diminution or disruption. C. Close-up view of the central portion of a single face (corners  
682 bounding the face missing), showing at least six discontinuous, narrow longitudinal folds  
683 and furrows (arrows) (UM.ACI.645). D. Overall view of the external surface of the single  
684 fully exposed face and bounding corners of one the most complete specimens, which is  
685 preserved in a siliceous concretion (UCBL-FSL 712799A; midline ridge indicated by the  
686 left-pointing arrow, corner sulcus by the right-pointing arrow). E. View of the counterpart  
687 of the specimen in D (UCBL-FSL 712799B; midline ridge indicated by the arrow). F,  
688 View of the exterior surface of part of a single face of a flattened specimen, the very fine  
689 transverse ribs of which are slightly wavy (scalloped) owing, probably, to tectonic  
690 shearing and deformation (UM.ACI.646; specimen also figured in Thoral, 1935: pl. 11: 9;  
691 midline ridge indicated by the arrow). Scale bars = 10 mm (A, D, E, and F) and 0.1 mm  
692 (B and C).

## Figure 1

[Download source file \(41.39 MB\)](#)

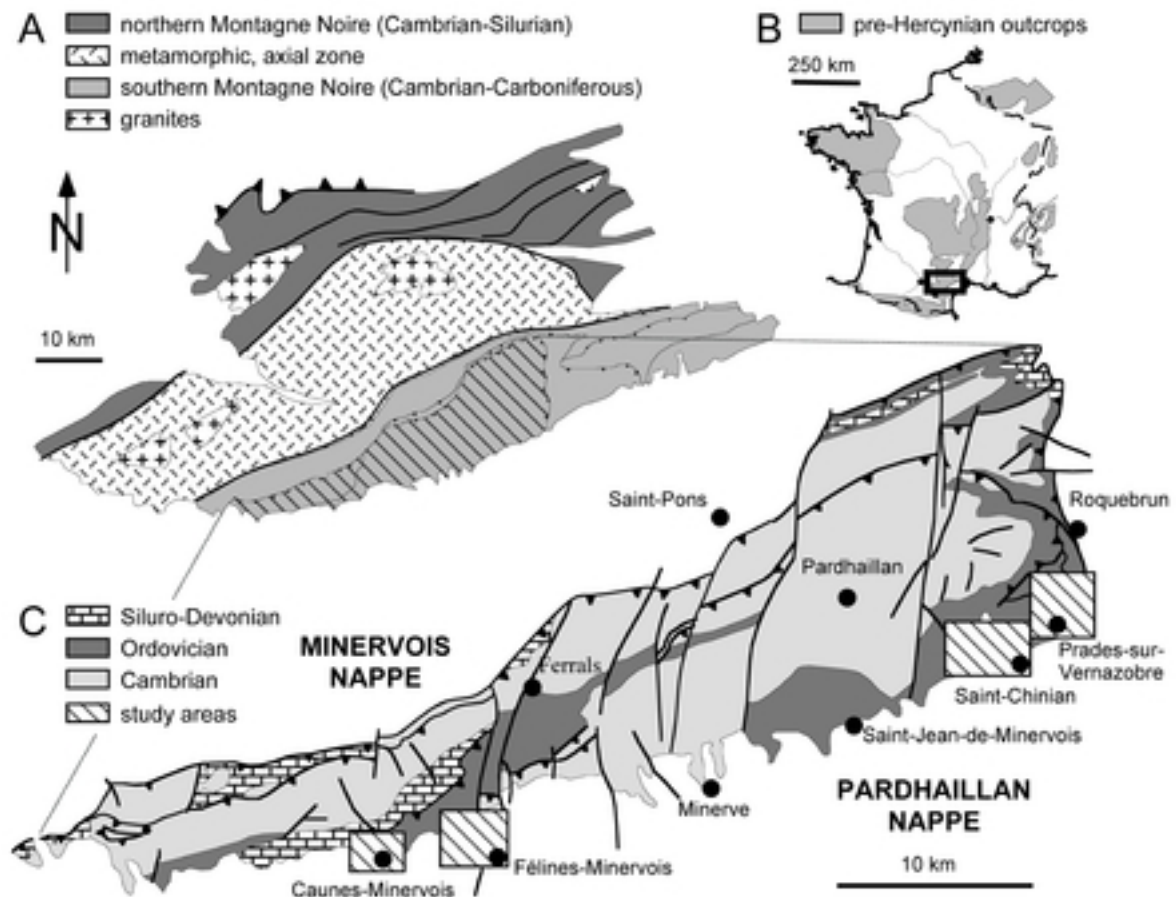


Fig. 1. Geology of the Montagne Noire with conulariid localities. A. Geologic sketch of the Montagne Noire. The dashed area corresponds to the Minervois and Pardailhan nappes. B. Geologic sketch of France showing the pre-Hercynian rocks and the location of the Montagne Noire. C. Simplified geological map of the Minervois and Pardailhan nappes, southern Montagne Noire, with the four main areas yielding Lower Ordovician conulariids (dashed square boxes); from W to E: western Minervois area, Aude (ruisseau des Lavandières, vallée de l'Ourdivieille); eastern Minervois area, Aude (Brama, vallée du Merlaux); western Saint-Chinianais area, Hérault (Canimals, Donnadiou, Saint-Cels); eastern Saint-Chinianais area, Hérault (Pech Tavernier, les Rocs Nègres, la Rouvelane, les Sources du Foulon). Maps redrawn and modified from Guérangé-Lozes and Burg (1990) and Álvaro and Vizcaïno (2001).

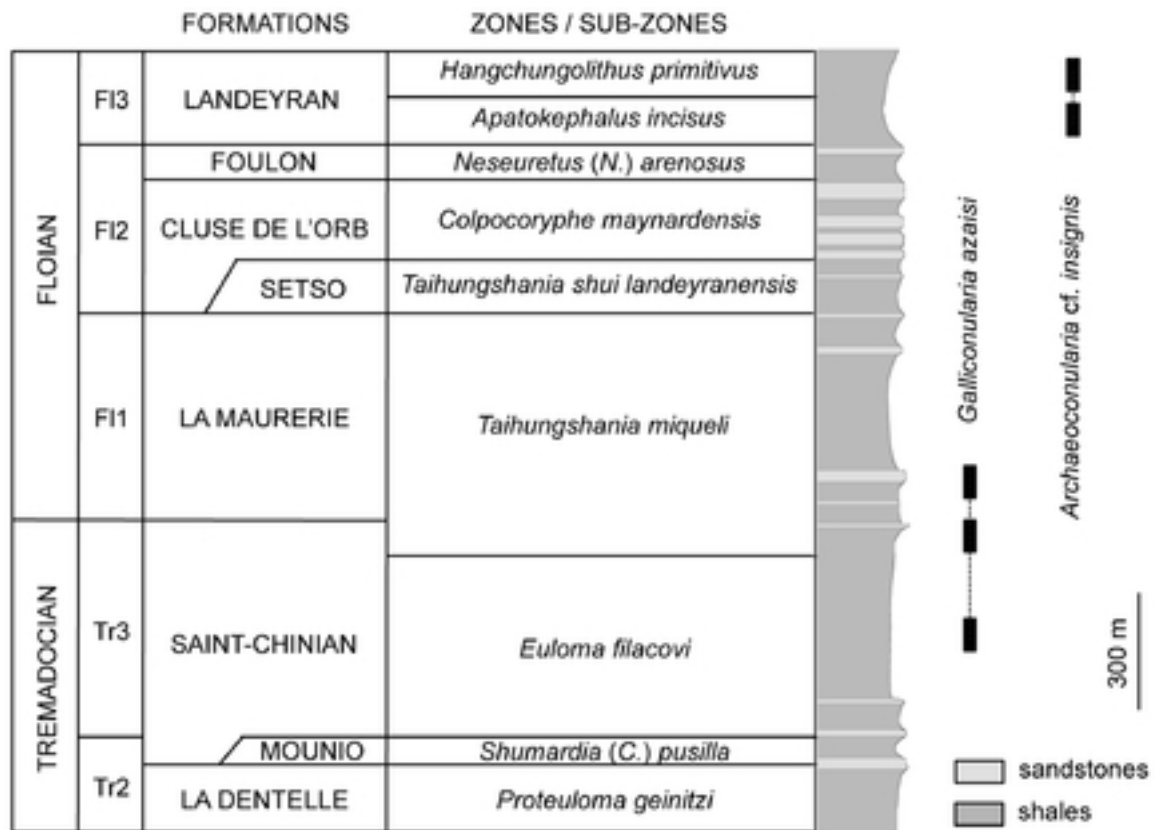


Fig. 2. Stratigraphic range of conulariids in the Lower Ordovician of the southern Montagne Noire. Stratigraphic column redrawn and modified from Courtessole et al. (1983). Stratigraphy based on Vizcaïno et al. (2001), Álvaro and Vizcaïno (2003), Tortello et al. (2006), and Serpagli et al. (2007).

### Figure 3

[Download source file \(31.66 MB\)](#)

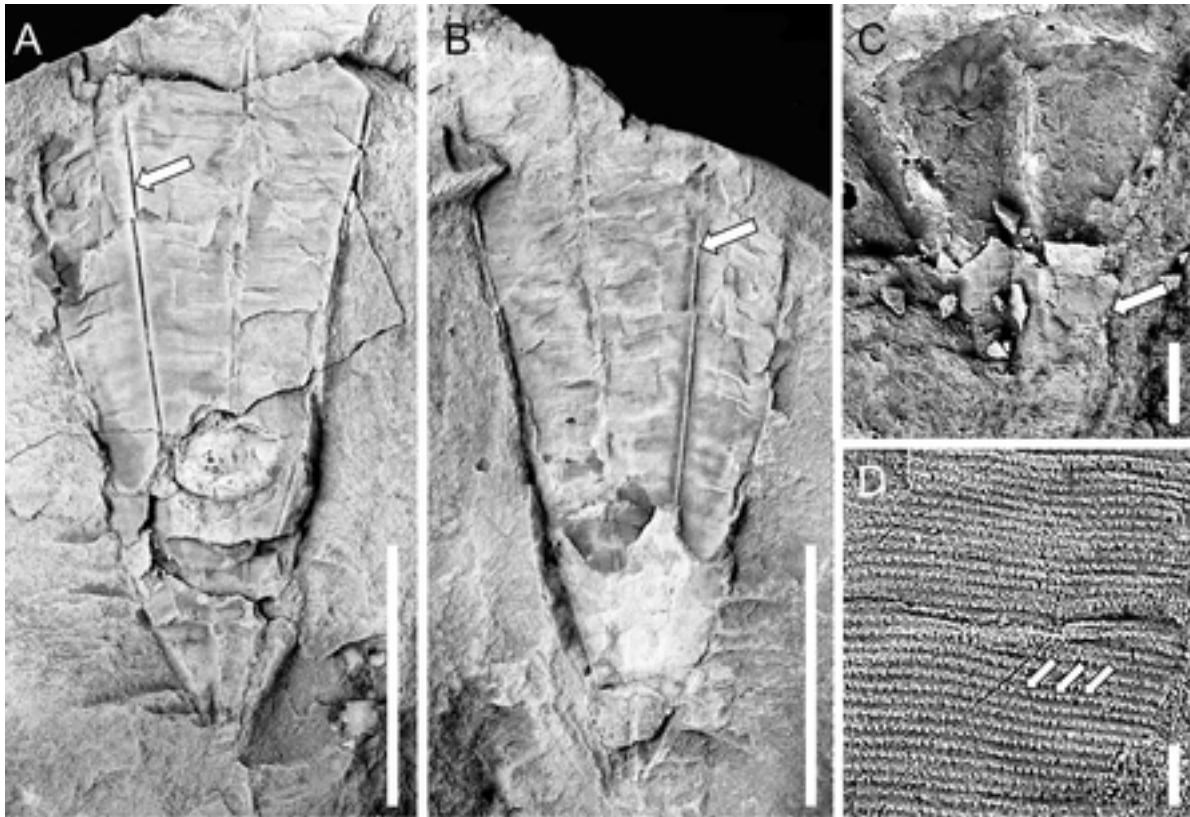


Fig. 3. Conulariid scyphozoan *Archaeoconularia cf. insignis* (Barrande, 1867), late Floian, Landeyran Formation, Lower Ordovician; southern Montagne Noire, France. Specimens oriented with the apertural end directed toward the top of the page; arrows in A and B point to a facial midline. A. View of the two exposed faces of the part of the most complete specimen (MNHN.F.A71851a), which terminates in a crumpled schott. B. View of the counterpart of the specimen in A (MNHN.F.A71851b). C. Detail of the part, showing the crumpled terminal schott (arrow). D. Detail of the apertural region of the counterpart, showing the fine ornament including some of the most clearly defined nodes (arrows). Scale bars = 10 mm (A and B) and 1 mm (C and D).



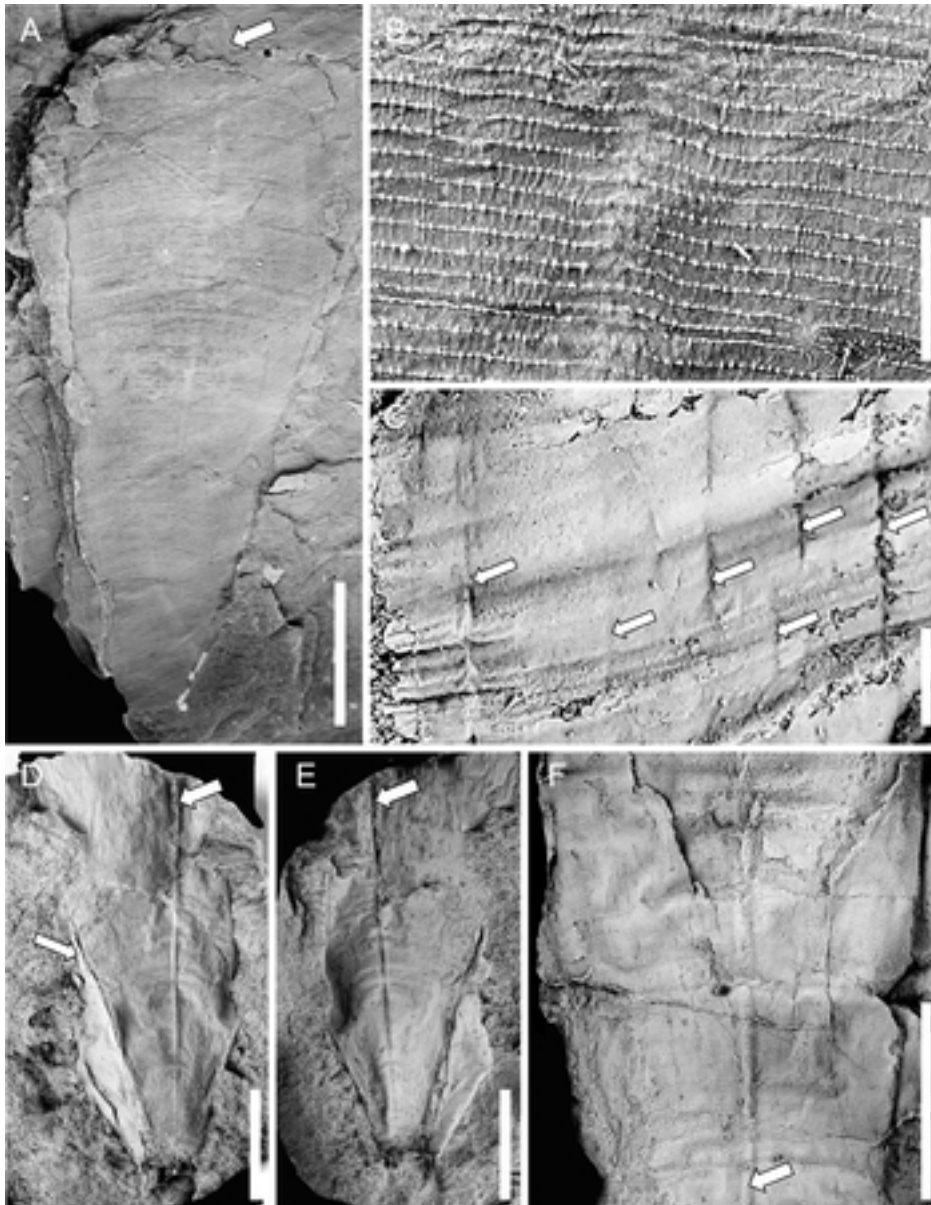


Fig. 4. Conulariid scyphozoan *Galliconularia azaisi* (Thoral, 1935), late Tremadocian-early Floian, Saint Chinian and La Maurerie formations, Lower Ordovician; southern Montagne Noire, France. Specimens oriented with the apertural end directed toward the top of the page. A. View of the exterior surface of a single face of a relatively large specimen, parts of which preserves the sub-microscopic nodes and interspace ridges (UCBL-FSL 713229; midline ridge indicated by the arrow). B. Detail of the apertural region of the specimen in A, showing some of the sub-microscopic nodes and interspace ridges, which cross the broad midline ridge (central part of the photograph) without diminution or disruption. C. Close-up view of the central portion of a single face (corners bounding the face missing), showing at least six discontinuous, narrow longitudinal folds and furrows (arrows) (UM.ACI.645). D. Overall view of the external surface of the single fully exposed face and bounding corners of one the most complete specimens, which is preserved in a siliceous concretion (UCBL-FSL 712799A; midline ridge indicated by the left-pointing arrow, corner sulcus by the right-pointing arrow). E. View of the counterpart of the specimen in D (UCBL-FSL 712799B; midline ridge indicated by the arrow). F. View of the exterior surface of part of a single face of a flattened specimen, the very fine transverse ribs of which are slightly wavy (scalloped) owing, probably, to tectonic shearing and deformation (UM.ACI.646; specimen also figured in Thoral, 1935: pl. 11: 9; midline ridge indicated by the arrow). Scale bars = 10 mm (A, D, E, and F) and 0.1 mm (B and C).

**Manuscript body**

File 1 - [Download source file \(64.11 kB\)](#)

**Figures**

Figure 1 - [Download source file \(41.39 MB\)](#)

Fig. 1. Geology of the Montagne Noire with conulariid localities. A. Geologic sketch of the Montagne Noire. The dashed area corresponds to the Minervois and Pardailhan nappes. B. Geologic sketch of France showing the pre-Hercynian rocks and the location of the Montagne Noire. C. Simplified geological map of the Minervois and Pardailhan nappes, southern Montagne Noire, with the four main areas yielding Lower Ordovician conulariids (dashed square boxes); from W to E: western Minervois area, Aude (ruisseau des Lavandières, vallée de l'Ourdivieille); eastern Minervois area, Aude (Brama, vallée du Merlaux); western Saint-Chinianais area, Hérault (Animals, Donnadiou, Saint-Cels); eastern Saint-Chinianais area, Hérault (Pech Tavernier, les Rocs Nègres, la Rouvelane, les Sources du Foulon). Maps redrawn and modified from Guérangé-Lozes and Burg (1990) and Álvaro and Vizcaíno (2001).

Figure 2 - [Download source file \(9.31 MB\)](#)

Fig. 2. Stratigraphic range of conulariids in the Lower Ordovician of the southern Montagne Noire. Stratigraphic column redrawn and modified from Courtessole et al. (1983). Stratigraphy based on Vizcaíno et al. (2001), Álvaro and Vizcaíno (2003), Tortello et al. (2006), and Serpagli et al. (2007).

Figure 3 - [Download source file \(31.66 MB\)](#)

Fig. 3. Conulariid scyphozoan *Archaeoconularia* cf. *insignis* (Barrande, 1867), late Floian, Landeyran Formation, Lower Ordovician; southern Montagne Noire, France. Specimens oriented with the apertural end directed toward the top of the page; arrows in A and B point to a facial midline. A. View of the two exposed faces of the part of the most complete specimen (MNHN.F.A71851a), which terminates in a crumpled schott. B. View of the counterpart of the specimen in A (MNHN.F.A71851b). C. Detail of the part, showing the crumpled terminal schott (arrow). D. Detail of the apertural region of the counterpart, showing the fine ornament including some of the most clearly defined nodes (arrows). Scale bars = 10 mm (A and B) and 1 mm (C and D).

Figure 4 - [Download source file \(30.59 MB\)](#)

Fig. 4. Conulariid scyphozoan *Galliconularia azaisi* (Thoral, 1935), late Tremadocian-early Floian, Saint Chinian and La Maurerie formations, Lower Ordovician; southern Montagne Noire, France. Specimens oriented with the apertural end directed toward the top of the page. A. View of the exterior surface of a single face of a relatively large specimen, parts of which preserves the sub-microscopic nodes and interspace ridges (UCBL-FSL 713229; midline ridge indicated by the arrow). B. Detail of the apertural region of the specimen in A, showing some of the sub-microscopic nodes and interspace ridges, which cross the broad midline ridge (central part of the photograph) without diminution or disruption. C. Close-up view of the central portion of a single face (corners bounding the face missing), showing at least six discontinuous, narrow longitudinal folds and furrows (arrows) (UM.ACI.645). D. Overall view of the external surface of the single fully exposed face and bounding corners of one the most complete specimens, which is preserved in a siliceous concretion (UCBL-FSL 712799A; midline ridge indicated by the left-pointing arrow, corner sulcus by the right-pointing arrow). E. View of the counterpart of the specimen in D (UCBL-FSL 712799B; midline ridge indicated by the arrow). F. View of the exterior surface of part of a single face of a flattened specimen, the very fine transverse ribs of which are slightly wavy (scalloped) owing, probably, to tectonic shearing and deformation (UM.ACI.646; specimen also figured in Thoral, 1935: pl. 11: 9; midline ridge indicated by the arrow). Scale bars = 10 mm (A, D, E, and F) and 0.1 mm (B and C).