



HAL
open science

The Mediodorsal Thalamus: An Essential Partner of the Prefrontal Cortex for Cognition

Sebastien Parnaudeau, Scott Bolkan, Christoph Kellendonk

► To cite this version:

Sebastien Parnaudeau, Scott Bolkan, Christoph Kellendonk. The Mediodorsal Thalamus: An Essential Partner of the Prefrontal Cortex for Cognition. *Biological Psychiatry*, 2018, 83 (8), pp.648-656. 10.1016/j.biopsych.2017.11.008 . hal-03003626

HAL Id: hal-03003626

<https://hal.science/hal-03003626v1>

Submitted on 19 Dec 2020

HAL is a multi-disciplinary open access archive for the deposit and dissemination of scientific research documents, whether they are published or not. The documents may come from teaching and research institutions in France or abroad, or from public or private research centers.

L'archive ouverte pluridisciplinaire **HAL**, est destinée au dépôt et à la diffusion de documents scientifiques de niveau recherche, publiés ou non, émanant des établissements d'enseignement et de recherche français ou étrangers, des laboratoires publics ou privés.

The Mediodorsal Thalamus: An Essential Partner of the Prefrontal Cortex for Cognition

021 **Sebastien** Parnaudeau, **Scott S. Bolkan**, and **Christoph Kellendonk**

ABSTRACT

Deficits in cognition are a core feature of many psychiatric conditions, including schizophrenia, where the severity of such deficits is a strong predictor of long-term outcome. Impairment in cognitive domains such as working memory and behavioral flexibility has typically been associated with prefrontal cortex (PFC) dysfunction. However, there is increasing evidence that the PFC cannot be dissociated from its main thalamic counterpart, the mediodorsal thalamus (MD). Since the causal relationships between MD-PFC abnormalities and cognitive impairment, as well as the neuronal mechanisms underlying them, are difficult to address in humans, animal models have been employed for mechanistic insight. In this review, we discuss anatomical, behavioral, and electrophysiological findings from animal studies that provide a new understanding on how MD-PFC circuits support higher-order cognitive function. We argue that the MD may be required for amplifying and sustaining cortical representations under different behavioral conditions. These findings advance a new framework for the broader involvement of distributed thalamo-frontal circuits in cognition and point to the MD as a potential therapeutic target for improving cognitive deficits in schizophrenia and other disorders.

Keywords: Behavioral flexibility, Mediodorsal thalamus, Prefrontal cortex, Schizophrenia, Thalamo-cortical connectivity, Working memory

<https://doi.org/10.1016/j.biopsych.2017.11.008>

The thalamus is a heterogeneous structure located deep in the brain that has been traditionally viewed as a simple gateway for relaying information from the sensory periphery to the cortical end station (1,2). This concept has roots in the 19th century, when neurologists used clinical or experimental brain lesions to map sensory and motor abilities onto cortical areas. Subsequently, histology and lesion-induced retrograde degeneration of cortical targets were employed to parcel the thalamus into subnuclei with distinct projection patterns to circumscribed cortical areas. Placed just several synapses from the sensory and motor periphery, and exhibiting a relatively homogenous cellular structure in comparison with the cortex, the computational power of the thalamus was considered limited (1,2).

While the effects of sensory and motor cortex lesions or stimulations were relatively easy to interpret, the consequences of frontal lobe ablations were more complicated to describe. In *Frontal Lobe Function and Dysfunction* (1), Levin *et al.* synthesized the decades of work that established what would eventually be termed the prefrontal cortex (PFC) as an important center for personality, emotion, and cognitive function. This classic work paved the way for the first reports that showed striking resemblance between the cognitive deficits observed in patients with frontal lesions and in those with schizophrenia (3,4). In the past 30 years, modern brain-imaging techniques confirmed the association between altered prefrontal function and cognitive deficits, leading to the influential

hypothesis that cognitive symptoms, especially those in the executive function domain, arise from a dysregulation of PFC activity (5–7).

Yet, just as with sensory and motor cortical areas, the PFC receives dense innervation from anatomically prescribed thalamic counterparts, most prominently from the mediodorsal thalamus (MD) (8). However, unlike sensory and motor thalamic nuclei, the MD exhibits minimal connectivity with either sensory or motor pathways and instead receives its driving input directly from various PFC areas. Moreover, lesions of the MD typically induce cognitive dysfunctions that are reminiscent of those observed following prefrontal lesions (9,10). These observations indicate that PFC function cannot be divorced from that of its interconnected thalamo-frontal circuitry. While it has been proposed on anatomical grounds that the MD serves as a relay station between distinct prefrontal areas (2,11), the unique contributions of the MD toward PFC-dependent cognition remain largely enigmatic.

An understanding of how MD-PFC circuitry contributes to cognition is of growing clinical interest. Recently, studies have reported MD dysfunction along with abnormal thalamo-frontal connectivity in several mental disorders, including schizophrenia (12,13). Thus, a clearer anatomical and functional understanding of thalamo-frontal circuitry appears essential to elucidate how its alteration may contribute to cognitive dysfunction in psychiatric conditions. Here we provide an overview of recent behavioral and electrophysiological findings

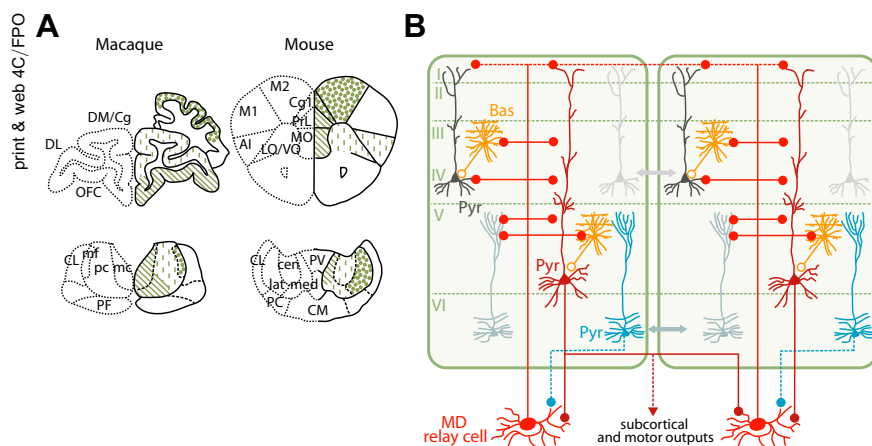


Figure 1. Thalamo-prefrontal circuitry in nonhuman primates and mice. **(A)** Schema of the topographic organization of mediodorsal thalamus (MD)-prefrontal cortex (PFC) circuits in (left panel) the macaque and (right panel) the mouse [based on Jones (2)]. In nonhuman primates, the medial magnocellular region is interconnected with the orbitofrontal cortex, the central parvocellular region with the dorsolateral PFC, and the lateral multifiform part with the premotor cortical area. In rodents, the medial segment of MD shares connections with the ventral-medial PFC (prelimbic and infralimbic cortices, medial orbitofrontal cortex). The central part of the MD is interconnected with the lateral orbitofrontal cortex, and the lateral MD with the dorsal-medial PFC (anterior cingulate and accessory motor cortices). **(B)** Schema of the ultrastructural organization of MD-PFC circuits. MD relay cells send widespread projection to cortical layer I and

topographic projections to layers II, III, V, and possibly VI [although see Kuramoto *et al.* (121)]. MD terminals make contacts with pyramidal projection neurons (Pyr) as well as inhibitory interneurons including parvalbumin-expressing basket cells (Bas) (122–125). In primates, most cortical input to the MD stems from layer VI pyramidal cells that send projections to topographically interconnected MD regions (126,127). In contrast, layer V pyramidal neurons, known as driving inputs, appear to innervate the MD in a nonreciprocal manner, with one prefrontal area innervating several MD subregions (128). Overall, this organization suggests that MD-PFC circuitry functions in intimately interconnected open loops rather than strictly parallel and independent units. AI, agranular insular; cen, central mediodorsal thalamus; Cg1, cingulate cortex 1; CL, central lateral thalamic nucleus; CM, centromedian thalamic nucleus; DL, dorsolateral prefrontal cortex; DM/Cg, dorsomedial/cingulate cortex; lat, lateral mediodorsal thalamus; LO, lateral orbitofrontal cortex; M1 and M2, primary and secondary motor cortex; mc, magnocellular mediodorsal thalamus; med, medial mediodorsal thalamus; mf, multifiform mediodorsal thalamus; MO, medial orbitofrontal cortex; OFC, orbitofrontal cortex; pc, parvocellular mediodorsal thalamus; PC, paracentral thalamic nucleus; PF, parafascicular nucleus; PrL, prelimbic cortex; PV, paraventricular thalamic nucleus; TRN, thalamic reticular nucleus; VO, ventral orbitofrontal cortex.

in primates and rodents, giving new insights on how MD-PFC circuits interact to support higher-order cognitive function. We then review the evidence for altered thalamo-frontal circuitry in mental disorders and discuss how these alterations may contribute to cognitive deficits.

ANATOMY OF MD-PFC CIRCUITS

Based on anatomical and functional data, dorsal thalamic nuclei have been categorized into two types (14). First-order thalamic nuclei are characterized by their functional response patterns to sensory stimuli or motor activity, consistent with their close connectivity with the sensory periphery and primary motor pathways. In contrast, higher-order thalamic nuclei receive few or no sensory inputs from the periphery but can be anatomically defined by its driving afferents from the cortex (14). These thalamic structures are thereby linked to the higher-order processing that has conventionally been attributed to the cortex alone. Higher-order thalamic nuclei include the MD, the pulvinar, and the posterior, intralaminar, and midline nuclei [but see Rovo *et al.* (15)]. In this review, we focus on the MD that displays a unique set of topographically organized interconnections with the PFC. Since excellent and detailed reviews of MD-PFC anatomy exist (2,16,17), we just depict in Figure 1 the main components of these circuits.

THALAMO-FRONTAL CIRCUITS AND WORKING MEMORY: BEHAVIORAL AND ELECTROPHYSIOLOGICAL STUDIES

Patients with thalamic lesions often exhibit amnesic syndromes similar to those observed in patients with hippocampal lesions, likely due to damage to the mammillothalamic tract or anterior thalamic nucleus (18,19). However, lesions more

circumscribed to the MD have been associated with deficits in executive functions, similar to those deficits observed in patients with frontal lobe dysfunction (19–21). Unfortunately, patients often exhibit damage to several thalamic areas, thus limiting inferences about the precise role of the MD. Therefore, research has turned to animal models in which MD function can be directly manipulated. Those studies implicate a role for the MD in working memory, behavioral flexibility, and goal-directed behavior (10).

Behavioral Evidence for a Role of MD-PFC Circuits in Working Memory

Working memory is defined as a transient holding, processing, and use of information on the scale of seconds. Baddeley and Hitch proposed an influential model of working memory based primarily on work in humans and defined by two independent subsystems—a visual-spatial sketch pad and a phonological loop—that are coordinated by a central executive controlling the flow of information between them (22). For obvious reasons, it is challenging to apply this model across species. In animal research, working memory can be defined as a delay-dependent short-term memory of an object, a stimulus, or a location that is used within a testing trial but not between trials, as opposed to reference memory, which is typically acquired with repeated training and persists for days (23).

Classic studies in primates have shown that MD lesions diminish performance in delayed-response tasks, a standard assay for working memory (24,25). Although findings are not consistent (26–32), rodent-study literature also supports a role for the MD in working memory. Rodent studies have typically employed spatially guided delayed-response tasks, in which the animal is required to retain a memory trace of a recently sampled maze location during a delay period and is then

The Role of the Mediodorsal Thalamus in Cognition

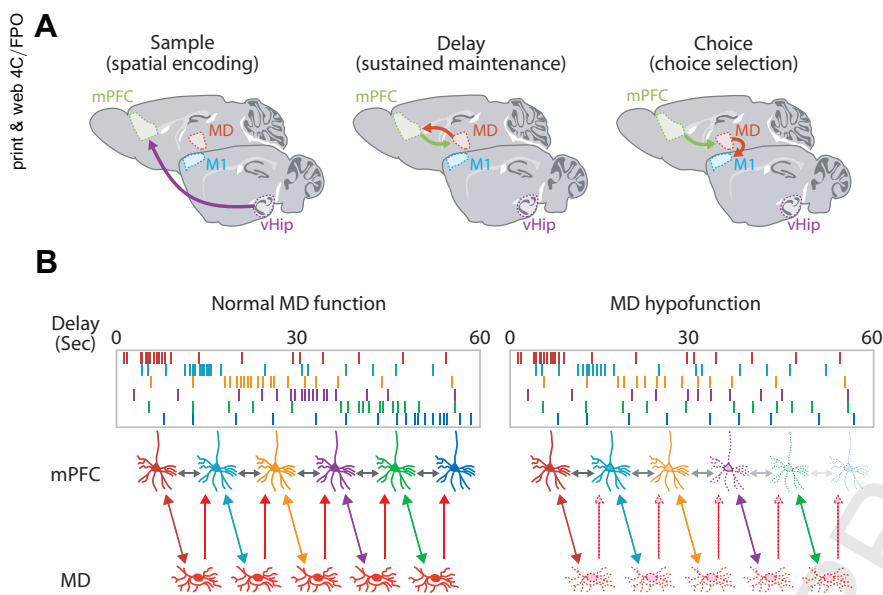


Figure 2. Thalamo-prefrontal interactions during working memory. (A) Schematic depictions of thalamo-prefrontal interactions during a delayed nonmatching-to-sample T-maze working memory task in the mouse. (Left panel) During the sample phase, spatial encoding is supported by inputs from the ventral hippocampus (vHip) to the medial prefrontal cortex (mPFC) [based on Spellman *et al.* (50)]. (Middle panel) On its recruitment by the mPFC, the mediodorsal thalamus (MD) is critical for amplifying and sustaining cortical activity during the delay, which is critical for task performance [based on Bolkan *et al.* (49)]. (Right panel) mPFC-to-MD projections participate in memory retrieval or choice selection [based on Bolkan *et al.* (49) and Schmitt *et al.* (56)] and may serve as a relay station to areas involved in motor function, such as the primary motor cortex (M1). (B) Sustained cortical activity during the working memory delay relies on cross talk between the MD and the mPFC. (Left panel) Schematic depiction of six mPFC neurons exhibiting sequential increased activity across the delay phase (0–60 seconds). (Right panel) Elevated activity is dependent on local cortical connectivity as well as on thalamo-cortical input. Inhibiting MD-to-mPFC projections reveals that local cortical circuits may not be sufficient to maintain mPFC neuronal activity across the entire delay period. This sustained activity of mPFC neurons across delay requires MD inputs. Sec, seconds.

cortical input. Inhibiting MD-to-mPFC projections reveals that local cortical circuits may not be sufficient to maintain mPFC neuronal activity across the entire delay period. This sustained activity of mPFC neurons across delay requires MD inputs. Sec, seconds.

prompted to select the opposite location to receive a reward (delayed nonmatching-to-sample [DNMS] task). Many studies have reported deficits after lesions or inhibition of the MD using variants of the DNMS task (33–41). Although in some of these studies lesions may have extended to adjacent regions, including the anterior thalamus (33–35), the MD, unlike the anterior thalamus, does not seem to play a role in spatial-reference memory (42). Moreover, deficits in DNMS working memory tasks following MD lesions have also been observed in operant settings, where spatial requirements are more limited (37,40,43–45). Several studies have also found that DNMS deficits were dependent on the length of the delay (37,41,44,45), suggesting that the MD may be particularly involved in the maintenance of representations critical for task performance as opposed to general task learning.

Q5

Spatial working memory in rodents is known to depend on medial PFC (mPFC) function (46–48). Analogous deficits observed following MD lesions could therefore be due to a disconnection of MD-mPFC circuitry (39), thus raising questions regarding the unique contributions of each structure to working memory processes. Using optogenetic tools, a recent study examined the involvement of MD-to-mPFC and reciprocal mPFC-to-MD pathways in a DNMS T-maze task (49). Inhibition of either pathway led to a decrease in performance in a delay-dependent manner, while inhibition of MD-to-lateral orbitofrontal cortex (OFC) projections had no impact on behavior. The temporal resolution of optogenetic inhibition further allowed assessing the significance of reciprocal MD-mPFC circuits during discrete phases of the DNMS spatial working memory task. While initial spatial sampling did not require MD-mPFC activity in either direction, spatial choice specifically required the mPFC-to-MD pathway but not the MD-to-mPFC pathway. In contrast, the delay period relied on reciprocal interactions across both structures (49). This

observation is strikingly circuit specific as inhibition of ventral hippocampal inputs to the mPFC during the sample phase, but not the delay phase, robustly impaired performance (49,50). Together, these data suggest that while the direct ventral hippocampal-to-mPFC pathway is involved in the encoding of the spatial location during the initial sample phase, reciprocal activity between the MD and the mPFC supports short-term maintenance of working memory during the delay. Moreover, top-down inputs from the mPFC-to-MD guide successful memory retrieval or choice selection (Figure 2A).

Thalamo-frontal Synchrony During Working Memory

The above data point to functional interactions between the MD and the PFC in working memory. But how do both structures interact at the physiological level? In the DNMS T-maze working memory task, MD-mPFC synchronous local field potential activity in the ranges of theta (4–12 Hz) and beta (13–20 Hz) frequencies increases hand in hand with task learning (41). Moreover, in trained mice, the spiking of individual MD neurons has been shown to synchronize with mPFC local field potentials in the beta range during the choice phase of the task when working memory demand is highest (41).

Two findings support the functional relevance of MD-mPFC beta synchrony in working memory processes. First, decreasing MD activity delays task acquisition as well as the increase of MD-mPFC synchrony. Second, decreasing MD activity disrupts the choice phase-specific enhancement of MD phase locking to mPFC beta oscillations (41). Interestingly, a more refined analysis specific to the task phase of MD-PFC beta synchrony suggests bidirectional information flow going from the MD to the mPFC during the delay and from mPFC to the MD during the choice phase (49). This dynamic shift in

directionality of MD-PFC synchrony suggests that choice-phase beta synchrony may serve the retrieval or selection of motor-related working memory information via mPFC-to-MD connections, consistent with the behavioral impact of inhibiting this projection.

Modulation of thalamo-frontal synchrony has also been observed in other cognitive tasks (51,52). In a two-alternative discrimination task in which rats must discriminate between two odors and use this information to guide subsequent decision making, synchronous activity between the MD and piriform cortex and MD-OFC circuits dynamically shifts according to task demands. During initial odor sampling, MD neurons exhibited enhanced phase locking to both piriform cortex and OFC theta oscillations, followed by a strikingly specific increase in phase locking to OFC beta oscillations immediately preceding the subsequent choice (53). These findings suggest that the MD, as has been proposed before, may be a critical subcortical node for linking cortical areas involved in processing cognitive information (11). The choice-specific modulation of MD-OFC beta synchrony is also reminiscent of the above described MD-mPFC beta synchrony during working memory-guided spatial selection, potentially indicating that thalamo-frontal beta synchrony is a general circuit mechanism supporting action selection guided by working memory.

The MD Sustains Delay-Elevated Activity in the mPFC

The fact that inhibiting MD inputs to the mPFC during the delay phase impairs later choice performance in the DNMS task suggests that mPFC activity during the delay carries, in an MD-dependent manner, information critical for the maintenance of short-term memory. Almost 50 years ago, Joaquin Fuster (54) proposed a potential neural correlate for the maintenance of short-term memory when he recorded, in the dorsolateral PFC (dlPFC) of monkeys, neurons whose activity remained elevated across the entire delay period of a delayed-response task. In a subsequent study, Alexander and Fuster (55) revealed the same neural signature in MD neurons. Employing PFC cooling, they further showed that delay activity in MD neurons, along with behavioral performance, depended on PFC activity. This pioneering article provided the first evidence of functional interactions between the two structures and led to the hypothesis that the maintenance of PFC activity during working memory requires reverberatory activity within the MD-PFC circuit (55).

Two recent rodent studies, by Bolkan *et al.* (49) and Schmitt *et al.* (56), examined the impact of MD inhibition on PFC delay-period activity in a two-alternative forced-choice task and the above-described DNMS T-maze task. Both studies uncovered populations of mPFC neurons with elevated spiking during the delay. Rather than being active during the entire delay, individual neurons exhibited brief bouts of elevated activity much shorter than the total delay length. As each neuron displayed elevated activity at distinct temporal offsets from the delay onset, the ordering of neurons according to peak time of firing within the delay revealed a sequential activation across the population that spanned the entire delay duration (49,56). This population-distributed delay activity, which has also been

observed in monkey and rodent models via several previous studies (57–61), is interpreted to reflect the encoding of memory in synaptically connected populations of neurons (59).

In the studies of Bolkan *et al.* (49) and Schmitt *et al.* (56), elevated mPFC activity indicated correct performance during the subsequent choice phase and was critically dependent on MD inputs for its sustained maintenance across the delay (49,56). Strikingly, the impact of MD inhibition on elevated mPFC delay activity was temporally specific in both studies. While mPFC neurons with elevated spiking during the early delay period were not impacted by manipulations of MD activity, mPFC neurons with peaks later in the delay were highly dependent on MD inputs (49,56). This finding suggests that delay-period activity is unlikely to derive from the MD. Instead, the MD may serve as a substrate for the amplification and maintenance of delay representations first generated in the PFC.

Findings from Schmitt *et al.* further support this model (56). First, temporally restricted inhibition of PFC activity at distinct delay time points equivalently disrupted behavioral performance, while inhibition of MD activity had diminished impact on behavior at early time points. In addition, similar to the PFC, MD neurons displayed elevated delay activity. However, MD delay activity was critically dependent on PFC activity even at early delay time points (56). Together these findings suggest that the MD, and perhaps other higher-order thalamic nuclei (62), may be recruited by the PFC to amplify or sustain cortical representations as memory decays across time or in particularly demanding cognitive tasks (Figure 2B). Indeed, both global MD inhibition and pathway-specific MD-to-mPFC inhibition impaired performance in the DNMS T-maze task only at longer delays, leaving behavior intact at shorter delays (41,49). Further supporting this hypothesis, broadly enhancing MD excitability not only improved performance in both the DNMS T-maze task and the two-alternative forced-choice tasks (49,56) but also enhanced the connectivity within local PFC circuits and increased PFC delay-period information in the two-alternative forced-choice task (56).

Although the above-discussed studies are broadly in agreement regarding this proposed model of thalamo-frontal interactions during working memory, there are still inconsistencies. For example, previous primate studies (63–66) observed explicit stimulus or spatial representations in thalamus delay-period activity, while Schmitt *et al.* (56) provide compelling evidence for MD representations that lack information content. The reasons for these inconsistencies are sure to be manifold, including species, subcircuit, and task-design differences. More studies, including MD single-unit studies along with cortical electrophysiological recordings during working memory tasks, will be required to clarify the role of thalamo-prefrontal interactions in working memory.

THE ROLE OF THE MD IN GOAL-DIRECTED AND FLEXIBLE BEHAVIORS

The Role of the MD in Behavioral Flexibility

Behavioral flexibility reflects the ability of an individual to respond and adjust to changes in the environment. It can be tested using reversal-learning or set-shifting tasks. Both

behaviors require adaptation by switching stimulus-outcome and/or response-outcome associations, yet both have been shown to depend on distinct prefrontal areas. Reversal learning has been linked to lateral OFC function. OFC lesions in primates and rodents (67–71) generally induce perseveration in reversal-learning tasks [though see Rudebeck *et al.* (72)], meaning that animals with lesions tend to stick to a previously learned rule or strategy that is no longer relevant. In contrast, set-shifting tasks requiring multiple associations within different sensory sets instead rely on the mPFC in rodents and on the dlPFC in primates (73).

Although the literature concerning the role of the MD in behavioral flexibility reports conflicting findings (24,26,74,75), one repeatedly reported finding is an increase in perseverative behavior following the introduction of lesions or manipulations of MD activity similar to that observed following an OFC lesion. Perseveration has been observed in many task contexts, including water-maze (76), strategy-reversal (28,77), and operant-reversal-learning tasks (41). The MD and the OFC may therefore work in concert to act on or update old strategies during reversal learning.

Of note, some studies reporting impairments in reversal learning did not attribute the deficit to perseverative behavior (78,79). In a probabilistic reward-guided task involving three different stimuli, monkeys with lesions of the magnocellular portion of the MD exhibited a maladaptive switching strategy on reversal in reward contingency. That is, monkeys did not perseverate in responding to the previously rewarded stimulus, but they instead shifted their selections across all stimuli and were unable to persist in selecting the best-rewarding option, unless they had an extended choice history on that option (79). These findings suggest that the magnocellular portion of the MD may support the representation of recent stimulus choices and thus facilitate rapid stimulus-outcome contingency learning.

In tasks involving multiple stimuli and outcomes, the ability to keep track of recent choices and their associated outcomes is crucial, especially during reversal, when a rapid update of stimulus-outcome is needed. In monkeys, some neurons in the magnocellular and parvocellular MD have been shown to increase firing when the animal was making cue-guided actions and when they were receiving feedback after response (65). Thus, in behavioral flexibility tasks, the MD may stabilize an online representation of stimuli-outcome associations within the cortex, possibly the OFC, similar to the findings described above involving MD-mPFC circuits in working memory. Future neurophysiological studies monitoring both MD and OFC activity during reversal-learning tasks combined with temporally precise optogenetic manipulations could directly test whether amplifying and sustaining cortical representations is a general principle by which the MD supports cognition.

The Role of the MD in Goal-Directed Behavior

Behavioral flexibility is not a unitary process; it involves several potentially dissociable cognitive components. For example, flexible behavior often requires an animal to integrate the relationship or contingency between actions and their outcomes, which additionally entails an accurate representation of the outcome value. The sensitivity to changes in

action-outcome contingencies can be tested in contingency-degradation tasks during which the outcome is presented independent of the action. The representation of the outcome value, on the other hand, can be tested in outcome-devaluation tasks, in which action-outcome associations remain intact while only the value of the outcome is diminished (80–83). In rodents there is strong evidence for deficits in contingency-degradation tasks following MD manipulations, suggesting that the MD is important for the representation of action-outcome associations and/or the updating of such representations following changes in the environment (84–86).

Whether the MD also supports an accurate representation of the outcome value is still unsettled. Some studies in rats and in monkeys reported deficits in outcome-devaluation tasks when the MD was lesioned before learning the action-outcome contingency but not when it was ablated just before devaluation of the outcome (84,87,88). However, several studies failed to find any deficit following MD lesion or inhibition (86,89). These discrepancies are likely due to the different task designs and MD-manipulation methods. Further work will therefore be needed to determine whether the MD and its related networks support outcome-value representation.

Associative learning and flexible adaptation frequently also involve environmental stimuli that need to be associated with the outcome. The ability of environmental stimuli to influence action can be tested in a pavlovian-to-instrumental transfer (PIT) paradigm. PIT includes three phases: 1) pavlovian training in which stimuli are associated with specific outcomes, 2) instrumental training in which the same outcomes are associated with specific responses, and 3) a PIT in which the conditioned stimulus is tested for its ability to trigger the action that shares the same outcome. Pharmacogenetic inhibition of the MD in mice that were restricted to the PIT testing phase did not impair instrumental transfer (86), suggesting that the MD is not involved in retrieval of stimulus-outcome or action-outcome associations [but see Ostlund and Balleine (87)]. Strikingly, inhibition of the MD restricted to the pavlovian training phase did not affect learning of the association between the stimuli and the outcomes, yet it later impaired instrumental transfer (86). MD activity during pavlovian training may therefore be important for assigning incentive properties to the conditioned stimulus, which is later required to bridge the learned stimulus-outcome association across contexts. Such a role has been hypothesized for the basolateral amygdala, which shares, as the MD does, reciprocal projections with the PFC (90–92).

DISTINCT MD-PFC CIRCUITS FOR DISTINCT COGNITIVE FUNCTIONS

Overall, work over the past 15 years demonstrates a role for the MD in distinct cognitive behaviors that rely on different prefrontal regions. As such, we described above that in rodents, MD inhibition alters both working memory and reversal learning, functions that are supported by the mPFC and the OFC, respectively. Based on the predominately parallel nature of thalamo-frontal circuits, it may be inferred that OFC function is tightly linked to the central MD (magnocellular MD in monkey), dorsal mPFC function is tightly linked to the lateral MD, and ventral mPFC function is tightly linked to the medial

MD (parvocellular MD in monkeys) (Figure 1A). Different thalamo-cortical circuits may therefore regulate different behaviors.

Nevertheless, a key question to resolve is the extent to which these parallel thalamic circuits support an overarching, common function, such as sustaining cortical representations, for instance, or whether their processing is more singular to the cognitive processing carried out by their cortical partners. Future studies with refined targeting of individual MD sub-regions will be needed to address this question. Moreover, it is still unclear which cortical layers and cortico-thalamic projections are critical for these different behaviors. **Is a closed-loop, deep-layer MD circuitry** sufficient for amplifying and sustaining cortical representations or is there a requirement of additional processing through superficial layers? Layer-specific targeting of inhibitory opsins using transgenic Cre mouse lines in combination with layer-specific imaging or in vivo physiology will be able to address such questions.

RELEVANCE FOR CLINICAL RESEARCH

Numerous studies have found anatomical and/or functional abnormalities in either the thalamus or thalamo-cortical circuits of patients with psychiatric disorders **such as major depressive disorder (93,94), obsessive-compulsive disorder (95), eating disorders (96), posttraumatic stress disorder (97), bipolar disorders, and schizophrenia (13,98).** Cognitive dysfunction is a common feature of most if not all psychiatric diseases (99).

In schizophrenia, cognitive symptoms are considered core to the disease and have been linked to the functional outcome of patients (100). While in healthy persons, the MD is activated during cognitive testing in tasks that involve working memory and attention (101,102), this activation has been shown to be decreased in patients with schizophrenia (103–106). However, localizing thalamic dysfunction to thalamic nuclei such as the MD using imaging methodologies is challenging due to a lack of contrast and resolution.

More recent evidence also suggests abnormal functional connectivity between the MD and its prefrontal counterparts in patients with schizophrenia. Decreased correlation in MD and dlPFC activity has been measured under resting conditions, an observation also made in individuals at risk for psychosis (98,107–109). Strikingly, the decrease in functional connectivity was most prominent in those persons who later converted to full-blown illness, suggesting a role in the pathogenesis of the disease (108,110). Of note, decreased functional connectivity may have a structural basis (110–112); however, the exact relationship between the alterations in functional and anatomical connectivity still needs to be clarified.

Decreased functional MD-PFC connectivity has also been measured in patients during cognitive testing (106,113,114). In this context, Marenco *et al.* recently described that thalamo-frontal white matter connectivity was reduced in patients, and this reduction correlated with the level of dlPFC functional activation and performance in a working memory task (111) [see also Giraldo-Chica *et al.* (115)]. This finding may so far be the strongest evidence for an involvement of decreased anatomical connectivity in cognitive deficits.

Thalamo-cortical disturbances in schizophrenia likely extend beyond a simple MD-PFC dysconnectivity. Indeed,

reduced thalamo-prefrontal connectivity has been associated with thalamic hyperconnectivity to sensory and motor cortices, raising the possibility of a general dysfunction of thalamo-cortical circuits (98,108). In addition, the thalamic reticular nucleus, which is a key inhibitory node for the entire thalamo-cortical system, has also been implicated in schizophrenia (116–118). Since imaging studies are largely correlative, it is difficult to determine the origin of these circuit abnormalities. Future longitudinal clinical studies tracking functional and structural connectivity in high-risk individuals will provide insight into the primary structure(s) involved in the pathogenesis of thalamo-cortical abnormalities. Furthermore, animal studies will be critical for establishing causality and could address questions such as whether decreased MD-mPFC connectivity induced during development triggers hyperconnectivity to sensory cortices.

Regardless of the proximal causes of thalamo-frontal dysconnectivity, the animal studies described here suggest its possible involvement in cognitive deficits. Enhancing MD function may stabilize cortical representations critical for working memory and other cognitive functions and thus be a promising therapeutic approach for improving cognition in mental disorders. New technologies aimed at localized or circuit-specific interventions such as blood-brain barrier opening induced by focused ultrasound (119) and noninvasive deep brain stimulation (120) could offer an opportunity to achieve this goal in humans.

ACKNOWLEDGMENTS AND DISCLOSURES

This work was supported by the Centre National de Recherche Scientifique (SP), Institut National de la Santé et de la Recherche Médicale (SP), the University Pierre et Marie Curie (SP), and the Agence Nationale pour la Recherche (PsyCoStress) (SP); the National Institute of Mental Health (Grant No. NIMH F31 MH102041 to SSB); and the Irma T. Hirsch Foundation (Grant No. DA044329 to CK). The authors report no biomedical financial interests or potential conflicts of interest.

ARTICLE INFORMATION

From the Sorbonne Universités, Université Pierre et Marie Curie Paris 06, Institut de Biologie Paris Seine UM119, Neuroscience Paris Seine, Centre National de la Recherche Scientifique UMR8246, Institut National de la Santé et de la Recherche Médicale U1130, Paris, France (SP), and the Graduate Program in Neurobiology and Behavior (SSB) and Departments of Pharmacology and Psychiatry (CK), Columbia University, College of Physicians and Surgeons, and the Division of Molecular Therapeutics, New York State Psychiatric Institute (CK), New York, New York.

Address correspondence to Christoph Kellendonk, Ph.D., Department of Psychiatry, Columbia University, New York, NY 10032; E-mail: ck491@cumc.columbia.edu.

Received May 23, 2017; revised and accepted Nov 6, 2017.

REFERENCES

- Levin HS, Eisenberg HM, Benton AL, editors (1991): Frontal Lobe Function and Dysfunction. Oxford, UK: Oxford University Press.
- Jones EG (2007): The Thalamus, 2nd ed. New York: Cambridge University Press.
- Kraepelin EK (1919): Dementia Praecox and Paraphrenia. Barclay, RM, translator. Robertson, GM, editor. Edinburgh: E & S Livingstone.
- Kolb B, Whishaw IQ (1983): Performance of schizophrenic patients on tests sensitive to left or right frontal, temporal, or parietal function in neurological patients. *J Nerv Ment Dis* 171:435–443.

The Role of the Mediodorsal Thalamus in Cognition

- 719 5. Ingvar DH, Franzen G (1974): Abnormalities of cerebral blood flow
720 distribution in patients with chronic schizophrenia. *Acta Psychiatr*
721 *Scand* 50:425–462. 779
- 722 6. Weinberger DR, Berman KF (1996): Prefrontal function in schizo-
723 phrenia: confounds and controversies. *Philos Trans R Soc Lond B*
724 *Biol Sci* 351:1495–1503. 780
- 725 7. Karlsgodt KH, Sanz J, van Erp TG, Bearden CE, Nuechterlein KH,
726 Cannon TD (2009): Re-evaluating dorsolateral prefrontal cortex acti-
727 vation during working memory in schizophrenia. *Schizophr Res*
728 108:143–150. 781
- 729 8. Rose JE, Woolsey CN (1948): The orbitofrontal cortex and its con-
730 nections with the mediodorsal nucleus in rabbit, sheep and cat. *Res*
731 *Publ Assoc Res Nerv Ment Dis* 27:210–232. 782
- 732 9. Bradfield LA, Hart G, Balleine BW (2013): The role of the anterior,
733 mediodorsal, and parafascicular thalamus in instrumental condition-
734 ing. *Front Syst Neurosci* 7:51. 783
- 735 10. Mitchell AS, Chakraborty S (2013): What does the mediodorsal
736 thalamus do? *Front Syst Neurosci* 7:37. 784
- 737 11. Saalman YB (2014): Intralaminar and medial thalamic influence on
738 cortical synchrony, information transmission and cognition. *Front*
739 *Syst Neurosci* 8:83. 785
- 740 12. Peters SK, Dunlop K, Downar J (2016): Cortico-striatal-thalamic loop
741 circuits of the salience network: a central pathway in psychiatric
742 disease and treatment. *Front Syst Neurosci* 10:104. 786
- 743 13. Giraldo-Chica M, Woodward ND (2017): Review of thalamocortical
744 resting-state fMRI studies in schizophrenia. *Schizophr Res* 180:58–63. 787
- 745 14. Sherman SM, Guillery RW (2011): Distinct functions for direct and
746 transthalamic corticocortical connections. *J Neurophysiol* 106:
747 1068–1077. 788
- 748 15. Rovo Z, Ulbert I, Acsady L (2012): Drivers of the primate thalamus.
749 *J Neurosci* 32:17894–17908. 789
- 750 16. Mitchell AS (2015): The mediodorsal thalamus as a higher order
751 thalamic nucleus important for learning and decision-making. *Neurosci*
752 *Biobehav Rev* 54:76–88. 790
- 753 17. Vertes RP, Linley SB, Hoover WB (2015): Limbic circuitry of the
754 midline thalamus. *Neurosci Biobehav Rev* 54:89–107. 791
- 755 18. Von Cramon DY, Hebel N, Schuri U (1985): A contribution to the
756 anatomical basis of thalamic amnesia. *Brain* 108:993–1008. 792
- 757 19. Carlesimo GA, Lombardi MG, Caltagirone C (2011): Vascular thalamic
758 amnesia: A reappraisal. *Neuropsychologia* 49:777–789. 793
- 759 20. Van der Werf YD, Scheltens P, Lindeboom J, Witter MP, Uylings HB,
760 Jolles J (2003): Deficits of memory, executive functioning and
761 attention following infarction in the thalamus; a study of 22 cases with
762 localised lesions. *Neuropsychologia* 41:1330–1344. 794
- 763 21. Danet L, Barbeau EJ, Eustache P, Planton M, Raposo N, Sibon C,
764 *et al.* (2015): Thalamic amnesia after infarct: The role of the mam-
765 milothalamic tract and mediodorsal thalamus. *Neurology* 85:
766 2107–2115. 795
- 767 22. Baddeley AD, Hitch GJ (1974): Working memory. In: Bower GA,
768 editor. *The Psychology of Learning and Motivation: Advances in*
769 *Research and Theory*, vol. 8. New York: Academy Press, 47–89. 796
- 770 23. Dudchenko PA (2004): An overview of the tasks used to test working
771 memory in rodents. *Neurosci Biobehav Rev* 28:699–709. 797
- 772 24. Isseroff A, Rosvold HE, Galkin TW, Goldman-Rakic PS (1982): Spatial
773 memory impairments following damage to the mediodorsal nucleus
774 of the thalamus in rhesus monkeys. *Brain Res* 232:97–113. 798
- 775 25. Zola-Morgan S, Squire LR (1985): Amnesia in monkeys after lesions
776 of the mediodorsal nucleus of the thalamus. *Ann Neurol* 17:558–564. 799
- 777 26. Neave N, Sahgal A, Aggleton JP (1993): Lack of effect of dorsomedial
778 thalamic lesions on automated tests of spatial memory in the rat.
779 *Behav Brain Res* 55:39–49. 800
- 780 27. Burk JA, Mair RG (1998): Thalamic amnesia reconsidered: excitotoxic
781 lesions of the intralaminar nuclei, but not the mediodorsal nucleus,
782 disrupt place delayed matching-to-sample performance in rats
783 (*Rattus norvegicus*). *Behav Neurosci* 112:54–67. 801
- 784 28. Hunt PR, Aggleton JP (1998): Neurotoxic lesions of the dorsomedial
785 thalamus impair the acquisition but not the performance of delayed
786 matching to place by rats: A deficit in shifting response rules.
787 *J Neurosci* 18:10045–10052. 802
- 788 29. Hunt PR, Aggleton JP (1998): An examination of the spatial working
789 memory deficit following neurotoxic medial dorsal thalamic lesions in
790 rats. *Behav Brain Res* 97:129–141. 803
- 791 30. Zhang Y, Burk JA, Glode BM, Mair RG (1998): Effects of thalamic and
792 olfactory cortical lesions on continuous olfactory delayed
793 nonmatching-to-sample and olfactory discrimination in rats (*Rattus*
794 *norvegicus*). *Behav Neurosci* 112:39–53. 804
- 795 31. Alexinsky T (2001): Differential effect of thalamic and cortical lesions
796 on memory systems in the rat. *Behav Brain Res* 122:175–191. 805
- 797 32. Mitchell AS, Dalrymple-Alford JC (2005): Dissociable memory effects
798 after medial thalamus lesions in the rat. *Eur J Neurosci* 22:973–985. 806
- 799 33. Stokes KA, Best PJ (1990): Mediodorsal thalamic lesions impair
800 “reference” and “working” memory in rats. *Physiol Behav* 47:
801 471–476. 807
- 802 34. Stokes KA, Best PJ (1990): Response biases do not underlie the
803 radial maze deficit in rats with mediodorsal thalamus lesions. *Behav*
804 *Neural Biol* 53:334–345. 808
- 805 35. M'Harzi M, Jarrard LE, Willig F, Palacios A, Delacour J (1991): Se-
806 lective fimbria and thalamic lesions differentially impair forms of
807 working memory. *Behav Neural Biol* 56:221–239. 809
- 808 36. Hunt PR, Aggleton JP (1991): Medial dorsal thalamic lesions and
809 working memory in the rat. *Behav Neural Biol* 55:227–246. 810
- 810 37. Young HL, Stevens AA, Converse E, Mair RG (1996): A comparison of
811 temporal decay in place memory tasks in rats (*Rattus norvegicus*)
812 with lesions affecting thalamus, frontal cortex, or the hippocampal
813 system. *Behav Neurosci* 110:1244–1260. 814
- 814 38. Mumby DG, Pinel JP, Dastur FN (1993): Mediodorsal thalamic lesions
815 and object recognition in rats. *Psychobiology* 21:27–36. 815
- 815 39. Floresco SB, Braakma DN, Phillips AG (1999): Thalamic-cortical-
816 striatal circuitry subserves working memory during delayed
817 responding on a radial arm maze. *J Neurosci* 19:11061–11071. 816
- 816 40. Chauveau F, Célérier A, Ognard R, Pierard C, Beracochea D (2005):
817 Effect of ibotenic acid lesions of the mediodorsal thalamus on
818 memory: Relationship with emotional processes in mice. *Behav Brain*
819 *Res* 156:215–223. 817
- 819 41. Parnaudeau S, O'Neill PK, Bolkan SS, Ward RD, Abbas AI, Roth BL,
820 *et al.* (2013): Inhibition of mediodorsal thalamus disrupts thalamo-
821 connectivity and cognition. *Neuron* 77:1151–1162. 818
- 820 42. Wolff M, Alcaraz F, Marchand AR, Coutureau E (2015): Functional
821 heterogeneity of the limbic thalamus: From hippocampal to cortical
822 functions. *Neurosci Biobehav Rev* 54:120–130. 819
- 821 43. Peinado-Manzano MA, Pozo-Garcia R (1991): The role of different
822 nuclei of the thalamus in processing episodic information. *Behav*
823 *Brain Res* 45:17–27. 820
- 822 44. Peinado-Manzano MA, Pozo-Garcia R (1996): Retrograde amnesia
823 in rats with dorsomedial thalamic damage. *Behav Brain Res* 80:
824 177–184. 821
- 823 45. Bailey KR, Mair RG (2005): Lesions of specific and nonspecific
824 thalamic nuclei affect prefrontal cortex-dependent aspects of spatial
825 working memory. *Behav Neurosci* 119:410–419. 822
- 824 46. Dias R, Aggleton JP (2000): Effects of selective excitotoxic prefrontal
825 lesions on acquisition of nonmatching- and matching-to-place in the
826 T-maze in the rat: Differential involvement of the prelimbic-infralimbic
827 and anterior cingulate cortices in providing behavioural flexibility. *Eur*
828 *J Neurosci* 12:4457–4466. 823
- 827 47. Kellendonk C, Simpson EH, Polan HJ, Malleret G, Vronskaya S,
828 Winiger V, *et al.* (2006): Transient and selective overexpression of
829 dopamine D2 receptors in the striatum causes persistent abnormali-
830 ties in prefrontal cortex functioning. *Neuron* 49:603–615. 824
- 828 48. Yoon T, Okada J, Jung MW, Kim JJ (2008): Prefrontal cortex and
829 hippocampus subserve different components of working memory in
830 rats. *Learn Mem* 15:97–105. 825
- 829 49. Bolkan SS, Stujenske JM, Parnaudeau S, Spellman TJ,
830 Rauffenbart C, Abbas AI, *et al.* (2017): Thalamic projections sustain
831 prefrontal activity during working memory maintenance. *Nat Neurosci*
832 20:987–996. 826
- 830 50. Spellman T, Rigotti M, Ahmari SE, Fusi S, Gogos JA, Gordon JA
831 (2015): Hippocampal-prefrontal input supports spatial encoding in
832 working memory. *Nature* 522:309–314. 827

- 839 51. Courtiol E, Wilson DA (2014): Rhalloc olfaction: Characterizing odor
840 processing in the mediodorsal thalamus of the rat. *J Neurophysiol*
841 111:1274–1285. 900
- 842 52. Courtiol E, Wilson DA (2015): The olfactory thalamus: unanswered
843 questions about the role of mediodorsal thalamic nucleus in olfaction.
844 *Front Neural Circuits* 9:49. 901
- 845 53. Courtiol E, Wilson DA (2016): Neural representation of odor-guided
846 behavior in the rat olfactory thalamus. *J Neurosci* 36:5946–5960. 902
- 847 54. Fuster JM, Alexander GE (1971): Neuron activity related to short-term
848 memory. *Science* 173:652–654. 903
- 849 55. Alexander GE, Fuster JM (1973): Effects of cooling prefrontal cortex
850 on cell firing in the nucleus medialis dorsalis. *Brain Res* 61:93–105. 904
- 851 56. Schmitt IL, Wimmer RD, Nakajima M, Happ M, Mofakham S,
852 Halassa MM (2017): Thalamic amplification of cortical connectivity
853 sustains attentional control. *Nature* 545:219–223. 905
- 854 57. Baeg EH, Kim YB, Huh K, Mook-Jung I, Kim HT, Jung MW (2003):
855 Dynamics of population code for working memory in the prefrontal
856 cortex. *Neuron* 40:177–188. 906
- 857 58. Fujisawa S, Amarasingham A, Harrison MT, Buzsaki G (2008):
858 Behavior-dependent short-term assembly dynamics in the medial
859 prefrontal cortex. *Nat Neurosci* 11:823–833. 907
- 860 59. Harvey CD, Coen P, Tank DW (2012): Choice-specific sequences in
861 parietal cortex during a virtual-navigation decision task. *Nature*
862 484:62–68. 908
- 863 60. Lundqvist M, Rose J, Herman P, Brincat SL, Buschman TJ, Miller EK
864 (2016): Gamma and beta bursts underlie working memory. *Neuron*
865 90:152–164. 909
- 866 61. Akhlaghpour H, Wiskerke J, Choi JY, Taliaferro JP, Au J, Witten IB
867 (2016): Dissociated sequential activity and stimulus encoding in the
868 dorsomedial striatum during spatial working memory. *Elife* 5:e19507. 910
- 869 62. Guo ZV, Inagaki HK, Daie K, Druckmann S, Gerfen CR, Svoboda K
870 (2017): Maintenance of persistent activity in a frontal thalamocortical
871 loop. *Nature* 545:181–186. 911
- 872 63. Tanibuchi I, Goldman-Rakic PS (2003): Dissociation of spatial-, ob-
873 ject-, and sound coding neurons in the mediodorsal nucleus of the
874 primate thalamus. *J Neurophysiol* 89:1067–1077. 912
- 875 64. Watanabe Y, Funahashi S (2004): Neuronal activity throughout the
876 primate mediodorsal nucleus of the thalamus during oculomotor
877 delayed-responses. II. Activity encoding visual versus motor signal.
878 *J Neurophysiol* 92:1756–1769. 913
- 879 65. Watanabe Y, Funahashi S (2004): Neuronal activity throughout the
880 primate mediodorsal nucleus of the thalamus during oculomotor
881 delayed-responses. I. Cue-, delay-, and response-period activity.
882 *J Neurophysiol* 92:1738–1755. 914
- 883 66. Watanabe Y, Funahashi S (2012): Thalamic mediodorsal nucleus and
884 working memory. *Neurosci Biobehav Rev* 36:134–142. 915
- 885 67. Rolls ET, Hornak J, Wade D, McGrath J (1994): Emotion-related
886 learning in patients with social and emotional changes associated
887 with frontal lobe damage. *J Neurol Neurosurg Psychiatry* 57:
888 1518–1524. 916
- 889 68. Dias R, Robbins TW, Roberts AC (1996): Dissociation in prefrontal
890 cortex of affective and attentional shifts. *Nature* 380:69–72. 917
- 891 69. Schoenbaum G, Nugent SL, Saddoris MP, Setlow B (2002): Orbito-
892 frontal lesions in rats impair reversal but not acquisition of go, no-go
893 odor discriminations. *Neuroreport* 13:885–890. 918
- 894 70. Boulougouris V, Dalley JW, Robbins TW (2007): Effects of orbito-
895 frontal, infralimbic and prelimbic cortical lesions on serial spatial
896 reversal learning in the rat. *Behav Brain Res* 179:219–228. 919
- 897 71. Clarke HF, Robbins TW, Roberts AC (2008): Lesions of the medial
898 striatum in monkeys produce perseverative impairments during
899 reversal learning similar to those produced by lesions of the orbito-
900 frontal cortex. *J Neurosci* 28:10972–10982. 920
- 901 72. Rudebeck PH, Saunders RC, Prescott AT, Chau LS, Murray EA
902 (2013): Prefrontal mechanisms of behavioral flexibility, emotion
903 regulation and value updating. *Nat Neurosci* 16:1140–1150. 921
- 904 73. Floresco SB, Zhang Y, Enomoto T (2009): Neural circuits subserving
905 behavioral flexibility and their relevance to schizophrenia. *Behav*
906 *Brain Res* 204:396–409. 922
- 907 74. Beracochea DJ, Jaffard R, Jarrard LE (1989): Effects of anterior or
908 dorsomedial thalamic ibotenic lesions on learning and memory in
909 rats. *Behav Neural Biol* 51:364–376. 923
- 910 75. Parker A, Eacott MJ, Gaffan D (1997): The recognition memory deficit
911 caused by mediodorsal thalamic lesion in non-human primates: A
912 comparison with rhinal cortex lesion. *Eur J Neurosci* 10:3044–3057. 924
- 913 76. Dolleman-van der Weel MJ, Morris RG, Witter MP (2009): Neurotoxic
914 lesions of the thalamic reuniens or mediodorsal nucleus in rats affect
915 non-mnemonic aspect of watermaze learning. *Brain Struct Funct*
916 213:329–342. 925
- 917 77. Block AE, Dhanji H, Thompson-Tardif SF, Floresco SB (2007):
918 Thalamic-prefrontal cortical-ventral striatal circuitry mediates dis-
919 sociable components of strategy set shifting. *Cereb Cortex* 17:
920 1625–1636. 926
- 921 78. Chudasama Y, Bussey TJ, Muir JL (2001): Effects of selective
922 thalamic and prelimbic cortex lesions on two types of visual
923 discrimination and reversal learning. *Eur J Neurosci* 14:1009–1020. 927
- 924 79. Chakraborty S, Kolling N, Walton ME, Mitchell AS (2016): Critical role
925 for the mediodorsal thalamus in permitting rapid reward-guided
926 updating in stochastic reward environments. *Elife* 5:e13588. 928
- 927 80. Adams CD, Dickinson A (1981): Instrumental responding following
928 reinforcer devaluation. *Q J Exp Psychol* 33B:109–121. 929
- 929 81. Colwill RM, Rescorla RA (1985): Postconditioning devaluation of a
930 reinforcer affects instrumental responding. *J Exp Psychol Anim*
931 *Behav Process* 120–132. 932
- 932 82. Colwill RM, Rescorla RA (1986): Associative structures in instru-
933 mental learning. *Psychol Learn Motiv* 55–104. 933
- 933 83. Balleine BW, Dickinson A (1998): Goal-directed instrumental action:
934 contingency and incentive learning and their cortical substrates.
935 *Neuropharmacology* 37:407–419. 934
- 934 84. Corbit LH, Muir JL, Balleine BW (2003): Lesions of mediodorsal
935 thalamus and anterior thalamic nuclei produce dissociable effects on
936 instrumental conditioning in rats. *Eur J Neurosci* 18:1286–1294. 935
- 935 85. Ostlund SB, Balleine BW (2007): Orbitofrontal cortex mediates
936 outcome encoding in Pavlovian but not instrumental conditioning.
937 *J Neurosci* 27:4819–4825. 936
- 936 86. Parnaudeau S, Taylor K, Bolkan SS, Ward RD, Balsam PD,
937 Kellendonk C (2015): Mediodorsal thalamus hypofunction impairs
938 flexible goal-directed behavior. *Biol Psychiatry* 77:445–454. 937
- 937 87. Ostlund SB, Balleine BW (2008): Differential involvement of the
938 basolateral amygdala and mediodorsal thalamus in instrumental ac-
939 tion selection. *J Neurosci* 28:4398–4405. 938
- 938 88. Mitchell AS, Browning PG, Baxter MG (2007): Neurotoxic lesions of
939 the medial mediodorsal nucleus of the thalamus disrupt reinforcer
940 devaluation effects in rhesus monkeys. *J Neurosci* 27:11289–11295. 939
- 939 89. Pickens CL (2008): A limited role for mediodorsal thalamus in
940 devaluation tasks. *Behav Neurosci* 122:659–676. 940
- 940 90. McDonald AJ (1991): Organization of amygdaloid projections to the
941 prefrontal cortex and associated striatum in the rat. *Neuroscience*
942 44:1–14. 941
- 941 91. McDonald AJ, Mascagni F, Guo L (1996): Projections of the medial
942 and lateral prefrontal cortices to the amygdala: A *Phaseolus vulgaris*
943 leucoagglutinin study in the rat. *Neuroscience* 71:55–75. 942
- 942 92. Corbit LH, Balleine BW (2005): Double dissociation of basolateral and
943 central amygdala lesions on the general and outcome-specific forms
944 of Pavlovian-instrumental transfer. *J Neurosci* 25:962–970. 943
- 943 93. Osoba A, Hänggi J, Li M, Horn DI, Metzger C, Eckert U, *et al.* (2013):
944 Disease severity is correlated to tract specific changes of fractional
945 anisotropy in MD and CM thalamus: A DTI study in major depressive
946 disorder. *J Affect Disord* 149:116–128. 944
- 944 94. Brown EC, Clark DL, Hassel S, MacQueen G, Ramasubbu R (2017):
945 Thalamocortical connectivity in major depressive disorder. *J Affect*
946 *Disord* 217:125–131. 945
- 945 95. Rotge JY, Guehl D, Dilharguey B, Tignol J, Bioulac B, Allard M,
946 Burbaud P, Auquier B (2009): Meta-analysis of brain volume
947 changes in obsessive-compulsive disorder. *Biol Psychiatry* 65:75–83. 946
- 946 96. Biezonski D, Cha J, Steinglass J, Posner J (2016): Evidence for
947 thalamocortical circuit abnormalities and associated cognitive
948 958

The Role of the Mediodorsal Thalamus in Cognition

- dysfunctions in underweight individuals with anorexia nervosa. *Neuropsychopharmacology* 41:1560–1568.
97. Mueller SG, Ng P, Neylan T, Mackin S, Wolkowitz O, Mellon S, *et al.* (2015): Evidence for disrupted gray matter structural connectivity in posttraumatic stress disorder. *Psychiatry Res* 234:194–201.
98. Anticevic A, Cole MW, Repovs G, Murray JD, Brumbaugh MS, Winkler AM, *et al.* (2014): Characterizing thalamo-cortical disturbances in schizophrenia and bipolar illness. *Cereb Cortex* 24:3116–3130.
99. Millan MJ, Agid Y, Brune M, Bullmore ET, Carter CS, Clayton NS, *et al.* (2012): Cognitive dysfunction in psychiatric disorders: characteristics, causes and the quest for improved therapy. *Nat Rev Drug Discov* 11:141–168.
100. Green MF, Kern RS, Braff DL, Mintz J (2000): Neurocognitive deficits and functional outcome in schizophrenia: are we measuring the “right stuff”? *Schizophr Bull* 26:119–136.
101. Burgess PW, Scott SK, Frith CD (2003): The role of the rostral frontal cortex (area 10) in prospective memory: a lateral versus medial dissociation. *Neuropsychologia* 41:906–918.
102. Krasnow B, Tamm L, Greicius MD, Yang TT, Glover GH, Reiss AL, Menon V (2003): Comparison of fMRI activation at 3 and 1.5 T during perceptual, cognitive, and affective processing. *Neuroimage* 18:813–826.
103. Hazlett EA, Buchsbaum MS, Byne W, Wei TC, Spiegel-Cohen J, Genev C, *et al.* (1999): Three-dimensional analysis with MRI and PET of the size, shape, and function of the thalamus in the schizophrenia spectrum. *Am J Psychiatry* 156:1190–1199.
104. Hazlett EA, Buchsbaum MS, Kemether E, Bloom R, Platholi J, Brickman AM, *et al.* (2004): Abnormal glucose metabolism in the mediodorsal nucleus of the thalamus in schizophrenia. *Am J Psychiatry* 161:305–314.
105. Andrews J, Wang L, Csemansky JG, Gado MH, Barch DM (2006): Abnormalities of thalamic activation and cognition in schizophrenia. *Am J Psychiatry* 163:463–469.
106. Minzenberg MJ, Laird AR, Thelen S, Carter CS, Glahn DC (2009): Meta-analysis of 41 functional neuroimaging studies of executive function in schizophrenia. *Arch Gen Psychiatry* 66:811–822.
107. Woodward ND, Karbasforoushan H, Heckers S (2012): Thalamo-cortical dysconnectivity in schizophrenia. *Am J Psychiatry* 169:1092–1099.
108. Anticevic A, Haut K, Murray JD, Repovs G, Yang GJ, Diehl C, *et al.* (2015): Association of thalamic dysconnectivity and conversion to psychosis in youth and young adults at elevated clinical risk. *JAMA Psychiatry* 72:882–891.
109. Woodward ND, Heckers S (2016): Mapping thalamocortical functional connectivity in chronic and early stages of psychotic disorders. *Biol Psychiatry* 79:1016–1025.
110. Cho KI, Shenton ME, Kubicki M, Jung WH, Lee TY, Yun JY, *et al.* (2016): Altered thalamo-cortical white matter connectivity: probabilistic tractography study in clinical-high risk for psychosis and first-episode psychosis. *Schizophr Bull* 42:723–731.
111. Marengo S, Stein JL, Savostyanova AA, Sambataro F, Tan HY, Goldman AL, *et al.* (2012): Investigation of anatomical thalamo-cortical connectivity and FMRI activation in schizophrenia. *Neuropsychopharmacology* 37:499–507.
112. Kubota M, Miyata J, Sasamoto A, Sugihara G, Yoshida H, Kawada R, *et al.* (2013): Thalamocortical disconnection in the orbitofrontal region associated with cortical thinning in schizophrenia. *JAMA Psychiatry* 70:12–21.
113. Katz M, Buchsbaum MS, Siegel BV Jr, Wu J, Haier RJ, Bunney WE Jr (1996): Correlational patterns of cerebral glucose metabolism in never-medicated schizophrenics. *Neuropsychobiology* 33:1–11.
114. Mitelman SA, Byne W, Kemether EM, Hazlett EA, Buchsbaum MS (2005): Metabolic disconnection between the mediodorsal nucleus of the thalamus and cortical Brodmann’s areas of the left hemisphere in schizophrenia. *Am J Psychiatry* 162:1733–1735.
115. Giraldo-Chica M, Rogers BP, Damon SM, Landman BA, Woodward ND (2017): Prefrontal-thalamic anatomical connectivity and executive cognitive function in schizophrenia [published online ahead of print Sep 28]. *Biol Psychiatry*.
116. Pinault D, Deschênes M (1998): Projection and innervation patterns of individual thalamic reticular axons in the thalamus of the adult rat: A three-dimensional, graphic, and morphometric analysis. *J Comp Neurol* 391:180–203.
117. Ferrarelli F, Tononi G (2011): The thalamic reticular nucleus and schizophrenia. *Schizophr Bull* 37:306–315.
118. Halassa MM, Chen Z, Wimmer RD, Brunetti PM, Zhao S, Zikopoulos B, *et al.* (2014): State-dependent architecture of thalamic reticular subnetworks. *Cell* 158:808–821.
119. Downs ME, Buch A, Sierra C, Karakatsani ME, Teichert T, Chen S, *et al.* (2015): Long-term safety of repeated blood-brain barrier opening via focused ultrasound with microbubbles in non-human primates performing a cognitive task [published correction appears in *PLoS One* 2015;10:e0130860]. *PLoS One* 10:e0125911.
120. Grossman N, Bono D, Dedic N, Kodandaramaiah SB, Rudenko A, Suk HJ, *et al.* (2016): Noninvasive deep brain stimulation via temporally interfering electric fields. *Cell* 169:1029–1041.
121. Kuramoto E, Pan S, Furuta T, Tanaka YR, Iwai H, Yamanaka A, *et al.* (2016): Individual mediodorsal thalamic neurons project to multiple areas of the rat prefrontal cortex: A single neuron-tracing study using virus vectors. *J Comp Neurol* 525:166–185.
122. Kuroda M, Yokofujita J, Murakami K (1998): An ultrastructural study of the neural circuit between the prefrontal cortex and the mediodorsal nucleus of the thalamus. *Prog Neurobiol* 54:417–458.
123. Rotaru DC, Barrionuevo G, Sesack SR (2005): Mediodorsal thalamic afferents to layer III of the rat prefrontal cortex: Synaptic relationships to subclasses of interneurons. *J Comp Neurol* 490:220–238.
124. Delevich K, Tucciarone J, Huang ZJ, Li B (2012): The mediodorsal thalamus drives feedforward inhibition in the anterior cingulate cortex via parvalbumin interneurons. *J Neurosci* 35:5743–5753.
125. Cruikshank SJ, Ahmed OJ, Stevens TR, Patrick SL, Gonzalez AN, Elmaleh M, Connors BW (2012): Thalamic control of layer 1 circuits in prefrontal cortex. *J Neurosci* 32:17813–17823.
126. Zikopoulos B, Barbas H (2006): Prefrontal projections to the reticular nucleus form a unique circuit for attentional mechanisms. *J Neurosci* 26:7348–7361.
127. Xiao D, Zikopoulos B, Barbas H (2009): Laminar and modular organization of prefrontal projections to multiple thalamic nuclei. *Neuroscience* 161:1067–1081.
128. McFarland NR, Haber SN (2002): Thalamic relay nuclei of the basal ganglia form both reciprocal and nonreciprocal cortical connections, linking multiple frontal cortical areas. *J Neurosci* 22:8117–8132.