



**HAL**  
open science

# Structure and function of epipelagic mesozooplankton and their response to dust deposition events during the spring PEACETIME cruise in the Mediterranean Sea

Guillermo Feliú, Marc Pagano, Pamela Hidalgo, Francois Carlotti

► **To cite this version:**

Guillermo Feliú, Marc Pagano, Pamela Hidalgo, Francois Carlotti. Structure and function of epipelagic mesozooplankton and their response to dust deposition events during the spring PEACETIME cruise in the Mediterranean Sea. *Biogeosciences*, 2020, 17 (21), pp.5417-5441. 10.5194/bg-17-5417-2020 . hal-03002613

**HAL Id: hal-03002613**

**<https://hal.science/hal-03002613>**

Submitted on 16 Dec 2020

**HAL** is a multi-disciplinary open access archive for the deposit and dissemination of scientific research documents, whether they are published or not. The documents may come from teaching and research institutions in France or abroad, or from public or private research centers.

L'archive ouverte pluridisciplinaire **HAL**, est destinée au dépôt et à la diffusion de documents scientifiques de niveau recherche, publiés ou non, émanant des établissements d'enseignement et de recherche français ou étrangers, des laboratoires publics ou privés.



# Structure and function of epipelagic mesozooplankton and their response to dust deposition events during the spring PEACETIME cruise in the Mediterranean Sea

Guillermo Feliú<sup>1</sup>, Marc Pagano<sup>1</sup>, Pamela Hidalgo<sup>2</sup>, and François Carlotti<sup>1</sup>

<sup>1</sup>Aix Marseille Université, Université de Toulon, CNRS, IRD, MIO UM 110, 13288, Marseille, France

<sup>2</sup>Department of Oceanography and Millennium Institute of Oceanography, Faculty of Natural Science and Oceanography, University of Concepción, P.O. Box 160 C, Concepción, Chile

**Correspondence:** François Carlotti (francois.carlotti@mio.osupytheas.fr)

Received: 8 April 2020 – Discussion started: 4 May 2020

Revised: 21 August 2020 – Accepted: 31 August 2020 – Published: 12 November 2020

**Abstract.** The PEACETIME cruise (May–June 2017) was a basin-scale survey covering the Provencal, Algerian, Tyrrhenian, and Ionian basins during the post-spring bloom period and was dedicated to tracking the impact of Saharan dust deposition events on the Mediterranean Sea pelagic ecosystem. Two such events occurred during this period, and the cruise strategy allowed for the study of the initial phase of the ecosystem response to one dust event in the Algerian Basin (during 5 d at the so-called “FAST long-duration station”) as well as the study of a latter response to another dust event in the Tyrrhenian Basin (by sampling from 5 to 12 d after the deposition). This paper documents the structural and functional patterns of the zooplankton component during this survey, including their responses to these two dust events. The mesozooplankton were sampled at 12 stations using nets with two different mesh sizes (100 and 200  $\mu\text{m}$ ) that were mounted on a Bongo frame for vertical hauls within the depth layer from 0 to 300 m.

The Algerian and Tyrrhenian basins were found to be quite similar in terms of hydrological and biological variables, which clearly differentiated them from the northern Provencal Basin and the eastern Ionian Basin. In general, total mesozooplankton showed reduced variations in abundance and biomass values over the whole area, with a noticeable contribution from the small size fraction ( $<500 \mu\text{m}$ ) of up to 50 % with respect to abundance and 25 % with respect to biomass. This small size fraction makes a significant contribution (15 %–21 %) to the mesozooplankton fluxes (carbon demand, grazing pressure, respiration, and excretion), which is estimated using allometric relationships

to the mesozooplankton size spectrum at all stations. The taxonomic structure was dominated by copepods, mainly cyclopoid and calanoid copepods, and was completed by appendicularians, ostracods, and chaetognaths. Zooplankton taxa assemblages, analyzed using multivariate analysis and rank frequency diagrams, slightly differed between basins, which is in agreement with recently proposed Mediterranean regional patterns.

However, the strongest changes in the zooplankton community were linked to the abovementioned dust deposition events. A synoptic analysis of the two dust events observed in the Tyrrhenian and Algerian basins, based on the rank frequency diagrams and a derived index proposed by Mouillot and Lepretre (2000), delivered a conceptual model of a virtual time series of the zooplankton community responses after a dust deposition event. The initial phase before the deposition event (state 0) was dominated by small-sized cells consumed by their typical zooplankton filter feeders (small copepods and appendicularians). The disturbed phase during the first 5 d following the deposition event (state 1) then induced a strong increase in filter feeders and grazers of larger cells as well as the progressive attraction of carnivorous species, leading to a sharp increase in the zooplankton distribution index. Afterward, this index progressively decreased from day 5 to day 12 following the event, highlighting a diversification of the community (state 2). A 3-week delay was estimated for the index to return to its initial value, potentially indicating the recovery time of a Mediterranean zooplankton community after a dust event.

To our knowledge, PEACETIME is the first in situ study that has allowed for the observation of mesozooplankton responses before and soon after natural Saharan dust depositions. The change in the rank frequency diagrams of the zooplankton taxonomic structure is an interesting tool to highlight short-term responses of zooplankton to episodic dust deposition events. Obviously dust-stimulated pelagic productivity impacts up to mesozooplankton in terms of strong but short changes in taxa assemblages and trophic structure, with potential implications for oligotrophic systems such as the Mediterranean Sea.

## 1 Introduction

The Mediterranean Sea is a semi-enclosed basin connected to the Atlantic Ocean and the Black Sea. It is composed of two major subbasins, the eastern and western Mediterranean, which are connected by the Sicilian Strait (Skloris, 2014). Due to its characteristics, such as its unique thermohaline circulation pattern and deep-water formation process, the Mediterranean Sea can be considered as a model of the world's oceans (Bethoux et al., 1999; Lejeune et al., 2010). In addition, it is considered to be oligotrophic with an excess of carbon, a deficiency of phosphorus relative to nitrogen (Durrieu de Madron et al., 2011), and a decreasing west-east chlorophyll-*a* (Chl-*a*) gradient (i.e., Siokou-Frangou et al., 2010).

For the last 200 years, numerous investigations have documented the pelagic zooplankton community inhabiting the Mediterranean Sea (Saiz et al., 2014), including long-term time series (i.e., Fernández de Puelles et al., 2003; Mazzocchi et al., 2007; Molinero et al., 2008; García-Comas et al., 2011; Berline et al., 2012) and a succession of oceanographic surveys covering wide transects during different periods of the year (Kimor and Wood, 1975; Nowaczyk et al., 2011; Donoso et al., 2017; Siokou et al., 2019). The regular monitoring of the zooplankton community is essential when considering the high sensitivity of the Mediterranean Sea to anthropogenic and climate disturbance (Sazzini et al., 2014). Some of these disturbances may alter the structure and function of the pelagic ecosystem, and this is critical considering that marine ecosystems are being altered by anthropogenic climate change at an unprecedented rate (Chust et al., 2017).

Dust deposition is a major source of micro- and macronutrients (Wagener et al., 2010) that can stimulate primary production (Ridame et al., 2014), accelerate carbon sedimentation, and possibly accelerate the aggregation of marine particles (i.e., Neuer et al., 2004; Ternon et al., 2011; Bressac et al., 2014). Large amounts of Saharan dust can be transported in the atmosphere throughout the western and eastern Mediterranean Sea region and can then be deposited onto the sea surface by wet or dry deposition. The PEACETIME oceanographic cruise, carried out between 10 May and

11 June 2017, was designed to study the processes occurring in the Mediterranean Sea after atmospheric dust deposition in situ, including their impact on marine nutrient budget and fluxes and their effect on the biogeochemical function of the pelagic ecosystem. Thus, the survey strategy was designed to be flexible in order to be able to change the sampling area depending on atmospheric events (Guieu et al., 2020). Consequently, the survey sampling program realized consisted of 14 oceanographic stations in the central and western parts of the Mediterranean Sea.

The aims of the present contribution to the PEACETIME project are (1) to document the zooplankton abundance, biomass, and size distribution along the survey transect, paying special attention to small-sized zooplankton; (2) to analyze the relationship between zooplankton structure and environmental variability, including dust deposition; and (3) to estimate the bottom-up (nutrient regeneration) and the top-down (grazing) impact of zooplankton on phytoplankton stock and production by estimating its ingestion, respiration, and ammonium and phosphate excretions using allometric models.

These objectives will serve to test the following research questions:

1. Did the Saharan dust events impact the zooplankton community structure following deposition?
2. If the Saharan dust events did impact the zooplankton community structure, would the effect be immediately observable or would there be a lag time?
3. Would changes in zooplankton community structure driven by dust deposition exceed regional differences under oligotrophic conditions?

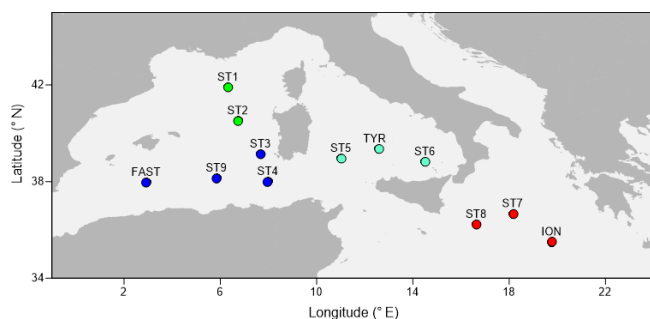
## 2 Material and methods

### 2.1 Study area and environmental variables

The PEACETIME cruise survey was conducted in May–June 2017 in the western Mediterranean Sea (Fig. 1) on-board the R/V *POURQUOI PAS?*. Among the 12 stations studied, 10 were sampled once for zooplankton (the short-duration stations ST1–ST9 and the long-duration station TYR), whereas two long-duration stations (ION and FAST, lasting 3 and 5 d, respectively) were sampled three times. The station positions along the transect were planned before the cruise in order to sample the principal ecoregions (see Fig. 4 in Guieu et al., 2020) with the exception of FAST, which was an opportunistic station to monitor a wet dust deposition event that occurred on 5 June – a few hours after the first sampling date (Table 1). A dust event occurred over a large area, including the southern Tyrrhenian Basin, starting on 10 May and could have impacted the samples at ST5, TYR, and ST6 which were sampled on 16, 19, and 22 May, respectively (Cécile Guieu, personal communication, 2020).

**Table 1.** Stations sampled during the PEACETIME survey: geographical information, date, and time of zooplankton net sampling. AB refers to the Algerian Basin, PB refers to the Provencal Basin, TB refers to the Tyrrhenian Basin, and IB refers to the Ionian Basin.

Station ID	Area	Lat (N)	Long (E)	Date (dd/mm/yyyy)	Time, GMT+01:00 (hh:mm)
ST1	PB	41°53′51	6°20′00	12/05/2017	11:30
ST2	PB	40°30′37	6°43′79	13/05/2017	09:30
ST3	AB	39°8′00	7°41′01	14/05/2017	09:15
ST4	AB	37°58′99	7°58′61	15/05/2017	09:15
ST5	TB	38°57′19	11°1′40	16/05/2017	07:05
TYR	TB	39°20′39	12°35′57	19/05/2017	23:00
ST6	TB	38°48′46	14°29′98	22/05/2017	10:15
ST7	IB	36°39′49	18°9′29	24/05/2017	02:00
ION1	IB	35°29′38	19°46′51	26/05/2017	21:59
ION2	IB	35°29′38	19°46′51	27/05/2017	08:50
ION3	IB	35°29′38	19°46′51	28/05/2017	08:45
ST8	IB	36°12′62	16°37′86	30/05/2017	09:05
ST9	AB	38°8′08	5°50′45	01/06/2007	23:00
FAST1	AB	37°56′81	2°54′99	04/06/2017	22:15
FAST2	AB	37°56′81	2°54′99	06/06/2017	09:50
FAST3	AB	37°56′81	2°54′99	08/06/2017	23:45

**Figure 1.** A map showing the sampling points during the PEACETIME cruise 2017. The colors of the points indicate the different areas considered over the course of the study: green dots denote the Provencal Basin (PB), dark blue dots denote the Algerian Basin (AB), light blue dots denote the Tyrrhenian Basin (TB), and red dots denote the Ionian Basin (IB).

Hydrological variables (temperature, density, and salinity) were measured on vertical profiles using a CTD (conductivity, temperature, and depth profiler). Dissolved oxygen was measured using a SBE43 sensor, and the Chl-*a* concentration was determined from Niskin bottle samples by high-performance liquid chromatography (HPLC), following the protocol of Ras et al. (2008), and with a fluorescence sensor coupled to the CTD. Primary production was measured using the  $^{14}\text{C}$ -uptake technique, following the methods detailed in Marañón et al. (2000). The mixing layer depth (MLD) was computed using the density difference criterion  $\Delta\sigma_\theta = 0.03\text{kg m}^{-3}$  defined in de Boyer Montégut et al. (2004).

## 2.2 Ancillary data on dust deposition events occurring during the PEACETIME survey

Guieu et al. (2020) detailed how they used three regional dust transport models to identify major dust events during the PEACETIME cruise. Two major wet dust events occurred during the study period (Table 2). The first event concerned the whole southern Tyrrhenian Basin, had a predicted flux of  $>1\text{ g m}^{-2}$  (Desboeufs et al., 2020), and started on May 10, several days before the arrival of the vessel in this area. The dust event was confirmed by aluminum, iron, and lithogenic Si measured in sediment traps at TYR station 6 to 9 d after the event and had a cumulative (4 d) lithogenic flux of  $153\text{ mg m}^{-2}$  at 200 m and  $207\text{ mg m}^{-2}$  at 1000 m (Bressac et al., 2020). The second event was located in the area between the Balearic Islands and the Algerian coast, occurred from 3 to 5 June, and had a predicted flux of  $0.5\text{ g m}^{-2}$  (Cécile Guieu, personal communication, 2020) after the arrival of the vessel in this area (FAST station). The dust event was confirmed by onboard atmospheric dust deposition samples (Desboeufs et al., 2020); water column observations, such as nutrients and trace metals, (Tovar-Sánchez et al., 2020); and tracers of dust deposition in sediment traps that had a cumulative (5 d) lithogenic flux of  $50\text{ mg m}^{-2}$  at 200 m and  $70\text{ mg m}^{-2}$  at 1000 m (Bressac et al., 2020). The lithogenic flux values at TYR and FAST are likely underestimated: considering that traps were placed with a time delay of 6 and 1 d following the dust event, the reported values could represent only a fraction of the total fluxes. The highest aerosol mass concentrations (around  $25\text{ }\mu\text{g m}^{-3}$ ) with the highest iron content ( $245\text{ ng m}^{-3}$ ) were measured at FAST between 1 and 5 June, and the highest trace metal concentrations in the sur-

**Table 2.** Overview of the main characteristics of the wet dust events occurring during PEACETIME. Zooplankton sampling was carried out very close to a CTD cast at all stations except FAST2: at FAST2, sampling was undertaken between two casts: 9 h after the first cast <sup>a</sup> and 16 h before the second cast <sup>b</sup>. <sup>\*\*\*</sup> denotes that the value was measured on 17 May 2017. DCM refers to deep chlorophyll maximum.

Stations impacted by dust and the cruise visit duration	Cruise strategy with respect to the dust events	Dates, geographical characteristics, and intensity of the dust events predicted by the model and by observations	Zooplankton sampling date (dd-mm-yyyy)	Iron in aerosol (ng m <sup>-3</sup> )	Nutrients below the nutricline: NO <sub>3</sub> (mmol L <sup>-1</sup> ); PO <sub>4</sub> (mmol L <sup>-1</sup> )	Surface primary production (mg C m <sup>-3</sup> d <sup>-1</sup> )	Water column average Chl- <i>a</i> concentration (mg m <sup>-3</sup> )	Depth range of the DCM strata (m)	Mean concentration of Chl- <i>a</i> on the DCM strata (mg m <sup>-3</sup> )	Fluorescence ratios for phytoplankton classes: <i>F<sub>ratio</sub></i> : <i>F<sub>ratio</sub></i> : <i>F<sub>ratio</sub></i> within the DCM strata
Wet dust event: Tyrrhenian, 16–22 May	TB stations were scheduled before the cruise. The model predicted a dust event 6 d before arrival.	Dust event took place from 10 to 12 May. The whole southern Tyrrhenian Basin area was impacted. The predicted flux from models was > 1 g m <sup>-2</sup> (Desboeufs et al., 2020). The dust event was confirmed by aluminum, iron, and lithogenic Si measured in sediment traps at TYR over 4 d. The cumulative lithogenic fluxes in sediment traps were 153 mg m <sup>-2</sup> at 200 m and 207 mg m <sup>-2</sup> at 1000 m (Bressac et al., 2020).	ST5: 16-05-2017	57.3	841; 148	1.68	0.12	70–80	0.55	* 21 : 48 : 30
Wet dust event, 2–8 June	The FAST station schedule and position were determined on-board according to the meteorological event.	Dust event took place from 3 to 5 June. The area between the Balearic Islands and the Algerian coast was impacted. The predicted flux from models was 0.5 g m <sup>-2</sup> (supplementary information figure S15 in Guieu et al., 2020). Onboard atmospheric dust deposition observations confirmed a weak wet dust deposition of 0.012 g m <sup>-2</sup> (Guieu et al., 2020). The cumulative lithogenic fluxes in sediment traps over 5 d were 50 mg m <sup>-2</sup> at 200 m and 70 mg m <sup>-2</sup> at 1000 m (Bressac et al., 2020). Water column observations, such as nutrients and trace metals (Van Wambeke et al., 2020; Tovar-Sánchez et al., 2020; Bressac et al., 2020), show a clear imprint of the atmospheric deposition.	FAST1: 04-06-2017	245.3	224; 246	2.44	0.12	60–90	0.42	* 27 : 45 : 28
			ST6: 22-05-2017	189.8	488; 136	1.66	0.07	70–80	0.36	* 7 : 44 : 49
			TYR: 19-05-2017	162.3	54*; 127	1.77	0.11	70–80	0.61	* 33 : 40 : 27
			FAST2: 06-06-2017	266.0	808; 239	2.85	0.14 <sup>a</sup> ; 0.18 <sup>b</sup>	60–100 <sup>a</sup> ; 70–90 <sup>b</sup>	0.38 <sup>a</sup> ; 0.86 <sup>b</sup>	25 : 43 : 32 <sup>a</sup> ; 50 : 30 : 20 <sup>b</sup>
			FAST3: 08-06-2017	44.9	135; 113	2.04	0.10	70–90	0.42	* 20 : 49 : 31
Data references	François Dulac (personal communication, 2020); Desboeufs et al. (2020); Guieu et al. (2020)	Desboeufs et al. (2020); Bressac et al. (2020); Tovar-Sánchez et al. (2020); van Wambeke et al. (2020)		Tovar-Sánchez et al. (2020)	Wambeke (personal communication, 2020)	Emilio Maranon and María Pérez-Lorenzo, personal communication, 2020	Julia Uitz and Céline Dimier, personal communication, 2020	Julia Uitz and Céline Dimier, personal communication, 2020	Céline Dimier, personal communication, 2020	Julia Uitz and Céline Dimier, personal communication, 2020

face micro-layer were measured on 4 June (Co concentration of 773.6 pM, Cu concentration of 20.1 nM, Fe concentration of 1433.3 nM, and Pb concentration of 1294.7 pM; Tovar-Sánchez et al., 2020). The chemical composition of rain samples at FAST confirmed the wet deposition of dust that reached a total particulate flux of  $0.012 \text{ g m}^{-2}$  (Fu et al., 2020). The Ionian Basin was the only southern area not impacted by dust deposition during the PEACETIME cruise; therefore, the results obtained at the long-duration ION station are considered (for comparison) to be results from an area that was not recently impacted.

### 2.3 Zooplankton sampling and sample processing

A total of 16 zooplankton samples were collected at 12 stations (Table 1) using a Bongo frame (double net ring of 60 cm mouth diameter) equipped with nets with a respective 100 and 200  $\mu\text{m}$  mesh size (referred to as  $N_{100}$  and  $N_{200}$  in the following, respectively) mounted with filtering cod ends. At all sampling stations, the Bongo frame was vertically towed from a depth of 300 m to the surface at a constant speed of  $1 \text{ ms}^{-1}$ . The sample volume was estimated based on the ring diameter and the towed cable length. The sampling was mostly performed during the morning, except at ST7, ST9, and TYR, and night tows were also performed for the long-duration stations FAST and ION. The samples were preserved in 4 % borax-buffered formalin immediately after the net was hauled back onto the deck.

The samples were processed using a FlowCAM (Yokogawa Fluid Imaging Technologies Inc. Series VS-IV, benchtop model) (Sieracki et al., 1998) and a ZOOSCAN (Gorsky et al., 2010). One of the goals of this study was to achieve the determination of the complete size structure of the zooplankton community by combining plankton nets with different mesh sizes as well as different analysis techniques (FlowCAM and ZOOSCAN) in order to optimize the observed size spectrum. The formalin-preserved samples were rinsed with tap water to remove the formalin. For net  $N_{100}$ , the sample was then split into three size fractions:  $<200 \mu\text{m}$  (referred to as  $N_{100}F_{<200}$  in the following),  $200\text{--}1000 \mu\text{m}$  (referred to as  $N_{100}F_{200/1000}$  in the following), and  $>1000 \mu\text{m}$  (referred to as  $N_{100}F_{>1000}$  in the following). For net  $N_{200}$ , the sample was split into two size fractions:  $<1000 \mu\text{m}$  (referred to as  $N_{200}F_{<1000}$  in the following) and  $>1000 \mu\text{m}$  (referred to as  $N_{200}F_{>1000}$  in the following).

To determine the complete size spectrum, different combinations of size fractions from the two nets and the two analytical techniques were tested using a two-way ANOVA. Taking the two mesh sizes ( $N_{100}$  and  $N_{200}$ ) into account, the limits of the size spectrum were defined from the  $N_{100}F_{<200}$  fraction for the lower limit and from the  $N_{200}F_{>1000}$  fraction for the upper limit. Considering that our FlowCAM does not detect particles larger than  $1200 \mu\text{m}$  equivalent spherical diameter (ESD) and our ZOOSCAN does not detect particles smaller than  $300 \mu\text{m}$  ESD,  $N_{100}F_{<200}$  was analyzed by Flow-

CAM and  $N_{200}F_{>1000}$  was analyzed by ZOOSCAN. The intermediate size fractions  $N_{100}F_{200/1000}$  and  $N_{200}F_{<1000}$  were analyzed with both ZOOSCAN and FlowCAM. These analyses delivered abundance and biomass values for successive ESD size classes:  $<200 \mu\text{m}$  (referred to as  $C_{<200}$ ),  $200\text{--}300 \mu\text{m}$  (referred to as  $C_{200\text{--}300}$ ),  $300\text{--}500 \mu\text{m}$  (referred to as  $C_{300\text{--}500}$ ),  $500\text{--}1000 \mu\text{m}$  (referred to as  $C_{500\text{--}1000}$ ),  $1000\text{--}2000 \mu\text{m}$  (referred to as  $C_{1000\text{--}2000}$ ), and  $>2000 \mu\text{m}$  (referred to as  $C_{>2000}$ ). The challenge was to choose the best net-analysis technique combination for the intermediate size fractions ( $C_{200\text{--}300}$ ,  $C_{300\text{--}500}$ , and  $C_{500\text{--}1000}$ ). The abundance of each class for the two nets and the two treatments was statistically compared. Parts of the spectrum corresponding to the  $C_{200\text{--}300}$  and  $C_{300\text{--}500}$  fractions from  $N_{100}$  measured with FlowCAM and to the  $C_{500\text{--}1000}$  fraction from  $N_{200}$  measured with the ZOOSCAN have significantly higher abundances than other net-analysis technique combinations ( $P < 0.000$ ). Consequently, we combined data from  $N_{100}F_{<200}$  and  $N_{100}F_{200\text{--}1000}$  measured with FlowCAM to compute ESD size classes  $<500 \mu\text{m}$  (Fig. 2a), and we combined data from  $N_{200}F_{<1000}$  and  $N_{200}F_{>1000}$  measured with ZOOSCAN to compute ESD size classes  $>500 \mu\text{m}$  (see Fig. 2b). The combination of these data enabled us to compute the final size spectrum (Fig. 2c) that was used to estimate abundance, biomass, and metabolic rates for each ESD size class as well as for the whole sample (sum of all of the size classes) and for the total mesozooplankton (sum of the size classes  $C_{200\text{--}300}$ ,  $C_{300\text{--}500}$ ,  $C_{500\text{--}1000}$ , and  $C_{1000\text{--}2000}$ ).

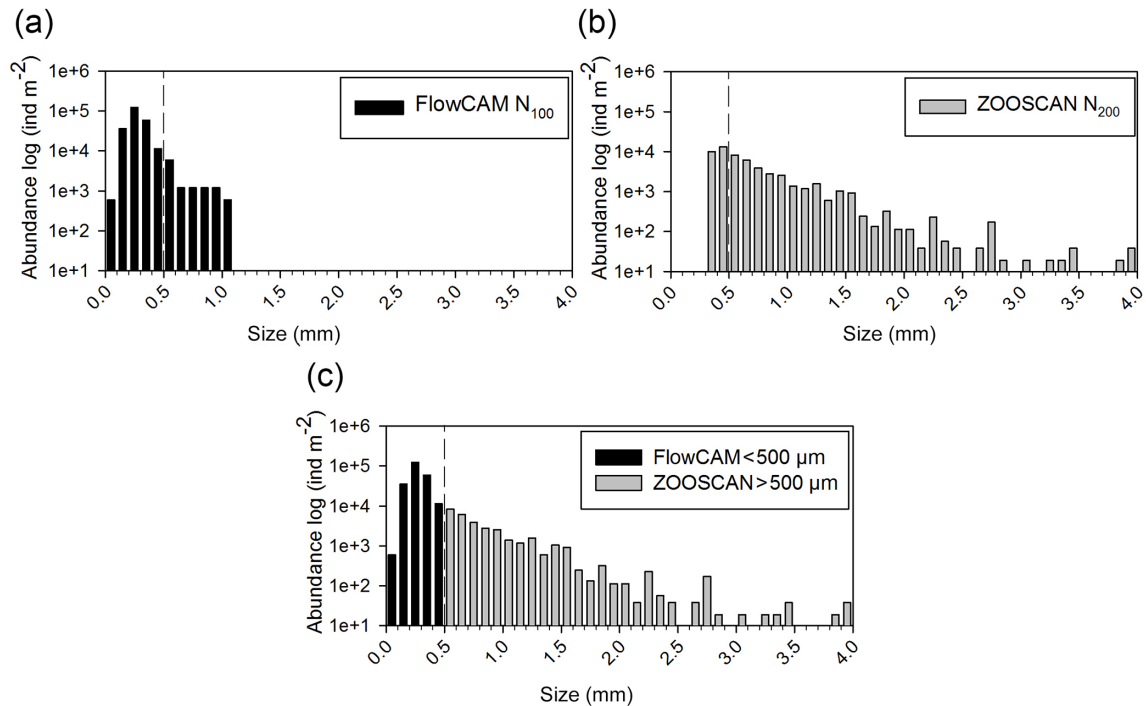
For the FlowCAM analyses, the sample was concentrated in a given water volume. An aliquot of each sample was then analyzed using FlowCAM in auto-image mode. For the  $N_{100}F_{<200}$  fraction, a  $4\times$  magnification and a  $300 \mu\text{m}$  field of view (FOV) flow cell were used, and the analysis was carried out up to 3000 counted particles. For the  $N_{100}F_{200\text{--}1000}$  fraction a  $2\times$  magnification and  $800 \mu\text{m}$  FOV flow cell were used, and the analysis was carried out up to 1500 counted particles.

The digitalized images were analyzed using the VisualSpreadsheets<sup>®</sup> software and were manually classified into taxonomic categories. The living organism groups considered for the FlowCAM data were copepods, nauplii, crustaceans, appendicularians, gelatinous, chaetognaths, and other diverse zooplankton groups (such as Polychaeta and Ostracods). Non-organism particles were classified as detritus, and duplicates and bubbles were deleted.

To calculate the number of particles in the sample, the following equation was used:

$$A = \frac{P_a \times V_c}{V_a \times V_s}, \quad (1)$$

where  $A$  is the abundance (individuals  $\text{m}^{-3}$ ),  $P_a$  is the number of particles in the analyzed aliquot,  $V_c$  is the given volume in the concentrated sample,  $V_a$  is the volume of the analyzed aliquot ( $\text{m}^3$ ), and  $V_s$  is the volume of sea water sampled by the zooplankton net ( $\text{m}^3$ ).



**Figure 2.** Size spectrum of ION1 (as an example) obtained by (a) FlowCAM ( $N_{100}$ ), (b) ZOOSCAN ( $N_{200}$ ), and (c) a combination of FlowCAM ( $N_{100}$  counting only zooplankton smaller than  $500\ \mu\text{m}$  ESD) and ZOOSCAN ( $N_{200}$  counting only zooplankton bigger than  $500\ \mu\text{m}$  ESD).

For the ZOOSCAN analyses, the sample was homogenized and split using a Motoda box until a minimum of 1000 particles were obtained. For the digitalization, the subsample was then placed onto the glass slide of the ZOOSCAN, and the organisms were manually separated using a wooden spike to avoid overlapping. After scanning, the images were processed with ZOOPROCESS (version 7.32) using the Image J image analysis software (Grosjean et al., 2004; Gorsky et al., 2010). Particles were automatically classified into taxonomic categories using the Plankton Identifier software ([http://www.obs-vlfr.fr/~gaspari/Plankton\\_Identifier/index.php](http://www.obs-vlfr.fr/~gaspari/Plankton_Identifier/index.php), last access: 27 October 2020). The classification was then manually verified to ensure that every vignette was in the correct category. The living groups of organisms considered for the ZOOSCAN were copepods, nauplii, crustaceans, appendicularians, gelatinous, chaetognaths, and diverse zooplankton (such as Polychaeta and Ostracods). Non-organism particles were classified as detritus, and blurs and bubbles were deleted.

## 2.4 Normalized biomass size spectrum

The size spectra were computed for each station using combined FlowCAM and ZOOSCAN data, following Suthers et al. (2006). The data were first classified into  $0.1\ \text{mm}$  ESD size categories from  $0.2$  to  $2.0\ \text{mm}$ . The zooplankton biovol-

ume ( $\text{mm}^3$ ) was estimated for each category using the following equation:

$$\text{biovolume} = \frac{1}{6} \times \pi \times (\text{ESD})^3, \quad (2)$$

with ESD expressed in millimeters. The  $x$  axis of the normalized biomass size spectrum (NBSS) was calculated by dividing the biovolume by the abundance of each category and was transformed into  $\text{Log}_{10}$ . For the  $y$  axis, the biovolume of each category was divided by the difference in biovolume between two consecutive categories and was transformed into  $\text{Log}_{10}$ . The NBSS slope and intercept were determined using a linear regression model. The slope of the NBSS reflects the balance between small and large individuals, with a steeper slope corresponding to a higher proportion of small individuals (bottom-up control) and a flatter slope corresponding to a higher proportion of large individuals (top-down control) (Donoso et al., 2017; Naito et al., 2019).

## 2.5 Zooplankton carbon demand, respiration, and excretion rates

The zooplankton carbon demand (ZCD, in  $\text{mg C m}^{-3} \text{d}^{-1}$ ) was computed based on estimates of biomass from ZOOSCAN and FlowCAM samples and on estimates of the growth rate:

$$\text{ZCD} = \text{ration} \times B_{\text{zoo}}, \quad (3)$$

where  $B_{z00}$  is the biomass of zooplankton (in  $\text{mg C m}^{-3}$ ), which is calculated using the area–weight relationships from Lehette and Hernández-León (2009) and converted to carbon assuming that carbon represents 40 % of the total body dry weight (Omori and Ikeda, 1984). The ration ( $\text{d}^{-1}$ ) is defined as the amount of food consumed per unit of biomass per day, and it is calculated as follows:

$$\text{ration} = g_z + \frac{r}{A}, \quad (4)$$

where  $g_z$  is the growth rate,  $r$  is the weight-specific respiration, and  $A$  is the assimilation efficiency.  $g_z$  was calculated following Zhou et al. (2010):

$$g_z(w, T, \text{Ca}) = 0.033 \left( \frac{\text{Ca}}{\text{Ca} + 205e^{-0.125T}} \right) e^{0.09T} w^{-0.06} \quad (5)$$

and is a function of sea water temperature ( $T$ ,  $^{\circ}\text{C}$ ); food availability ( $\text{Ca}$ ,  $\text{mg C m}^{-3}$ ), which is estimated from Chl  $a$ ; and the weight of individuals ( $w$ ,  $\text{mg C}$ ). Here, we consider that the food is phytoplankton, following Calbet et al. (1996). Following Alcaraz et al. (2007) and Nival et al. (1975), values of  $r$  and  $A$  were  $0.16 \text{ d}^{-1}$  and  $0.7$ , respectively. ZCD was compared to the phytoplankton stock (converted to carbon assuming a  $\text{C}/\text{Chl-}a$  ratio of  $50/1$ ) and to primary production in order to estimate the potential clearance of phytoplankton by zooplankton.

Ammonium and phosphorus excretion and oxygen consumption rates were estimated using the multiple regression model by Ikeda et al. (1985) with carbon body weight and temperature as independent variables:

$$\ln y = \alpha_0 + \alpha_1 \ln x_1 + \alpha_2 x_2, \quad (6)$$

where  $\ln y$  represent the ammonium excretion, phosphorus excretion, or oxygen consumption;  $\alpha_0$ ,  $\alpha_1$ , and  $\alpha_2$  are constants (see Ikeda et al., 1985);  $x_1$  is the body mass (dry weight, carbon, nitrogen, or phosphorus weight); and  $x_2$  is the habitat temperature ( $^{\circ}\text{C}$ ).

The contribution from zooplankton to nutrient regeneration was estimated using the values of primary production and was converted to nitrogen and phosphorus requirement using the Redfield ratio. Respiration was converted to respiratory carbon loss assuming a respiratory quotient for zooplankton of  $0.97$ , following Ikeda et al. (2000), and was used as the carbon requirement for zooplankton metabolism.

## 2.6 Data analysis

Spatial patterns of the environmental variables were explored using a principal component analysis (PCA). We considered temperature, salinity, dissolved oxygen, and Chl- $a$  values from a fluorescence sensor coupled to a CTD, using the mean values of the layer from  $0$  to  $300 \text{ m}$  as well as the estimated MLD. The data were normalized prior to the analyses, which were performed using PRIMER v7 software (Anderson et al., 2008).

Differences in zooplankton abundance and biomass between size classes and areas were tested using a two-way ANOVA. A one-way ANOVA with a Scheffé post hoc analysis was applied to compare mean values between areas for total zooplankton and within each size class. Data from prior analyses were log transformed and tested for homogeneity. Dunnett's test was used in case of inhomogeneity. Potential associations between univariate zooplankton and environmental data were tested using Spearman's rank correlations. These analyses were performed with Statistica 7 Software. The  $100 \mu\text{m}$  sample from station TYR was discarded from these analyses due to the poor preservation state of the sample.

In order to study the spatial patterns of zooplankton communities, a taxonomic group–station matrix was created using the abundance values and was square root transformed to estimate station similarity using Bray–Curtis similarity. The similarity matrix was then ordinated using nonmetric multidimensional scaling (NMDS). The contributions of significant taxa to the similarity or dissimilarity between stations and areas were tested using SIMPER. The BIOENV algorithm was then used to select the environmental variables that best explained the spatial pattern observed for the zooplankton communities. A PERMANOVA was utilized to test the differences between areas based on environmental or zooplankton multivariate data. All of these analyses were performed using PRIMER v7 software (Anderson et al., 2008).

The relationships between the biological and the environmental variables were also studied by coupling multivariate analyses of two datasets. The first dataset featured the abundances of all the zooplankton taxa identified from the  $200 \mu\text{m}$  net samples and the second dataset recorded environmental variables (the same as for the PCA analysis). A factorial correspondence analysis (FCA) and a principal component analysis (PCA) were performed on these two datasets, respectively. The results of the two analyses were then associated using a co-inertia analysis (Doledec and Chessel, 1994) that was performed using ADE-4 software (Thioulouse et al., 1997). Prior to the analyses, the data were log transformed to tend towards the normality of the distributions.

Rank frequency diagrams (RFD) were created using the data from  $N_{200}$  in order to visualize differences in taxonomic composition between the samples. To improve the interpretation of the RFDs, we first used a method derived from Saeedghalati et al. (2017) based on the ordination of the normalized rank abundance distribution. A rank abundance matrix was created in which the data were standardized by the total abundance. Resemblance was measured with Bray–Curtis similarity, and a cluster was created using the complete linkage criterion. Second, a rank abundance distribution index was estimated following Mouillot and Lepreire (2000). The RFD for each station was separated into two portions: first the ranks with relative abundance  $<0.5 \%$  were discarded (rare taxa, between  $0 \%$  and  $30 \%$  of the taxa according to all stations; by taking  $<1 \%$  we would discard be-



tween 18 % and 49 % of the taxa) and then the two parts were fitted with a linear regressions. One part comprised the four highest ranks (see Mouillot and Lepretre, 2000 for the justification), and the remaining portion comprised the following ranks (between 15 and 23 taxa, depending on the station). The slope for both the upper and lower RFD portions was calculated ( $p_1$  and  $p_2$ , respectively), and the  $p_1/p_2$  ratios were then estimated to quantify the differences between the RFDs of all of the stations.

### 3 Results

#### 3.1 Spatial patterns of environmental variables

The principle component analysis (PCA) on environmental data explains 90.3 % of the total variance on the first two axes and delivers three clusters of oceanographic areas plus two distinct stations (Fig. 3). The first axis (62 % of the variance) is mostly influenced by temperature and dissolved oxygen, as shown by their high correlations with the scores of the sampling points on this axis ( $r = 0.95$  with  $p = 0.000$  and  $r = 0.92$  with  $p = 0.000$ , respectively), whereas the second axis (28.3 %) is mostly influenced by MLD ( $r = -0.75$ ,  $p = 0.01$ ), salinity ( $r = -0.75$ ,  $p = 0.001$ ), and Chl-*a* ( $r = -0.57$ ,  $p = 0.022$ ; Table S1 in the Supplement).

The cluster of western stations in the Algerian Basin (AB) includes ST3, ST4, ST9, and FAST, which are characterized by low temperature, salinity, and MLD values. The cluster located in the Tyrrhenian Basin (TB) comprises ST5, ST6, and TYR and is very close to the first group but with lower Chl-*a* concentrations and higher temperature and salinity values. Eastern stations (ST7, ST8, and ION) located in the Ionian Basin (IB) are characterized by the highest temperature and salinity values and the lowest dissolved oxygen concentrations found during the survey. ST1 and ST2 in the Provencal Basin (PB) do not cluster with any of the other stations due to the deeper MLD and higher Chl-*a* concentrations.

#### 3.2 Spatial patterns of zooplankton structure

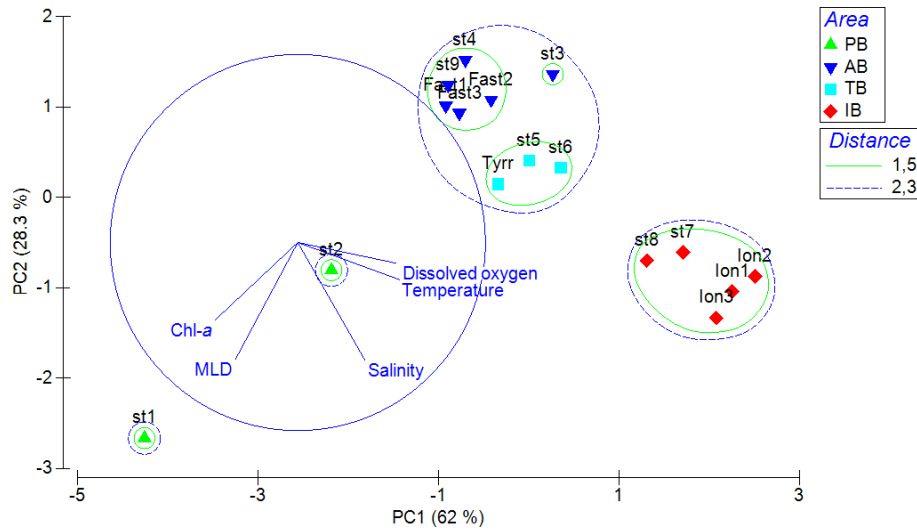
Zooplankton abundance (Fig. 4a) during the PEACETIME cruise ranges between  $265 \times 10^3$  and  $583 \times 10^3$  individuals  $m^{-2}$ , with an average of  $372 \times 10^3 \pm 84 \times 10^3$  individuals  $m^{-2}$ , and zooplankton biomass (Fig. 4b) ranges from 1160 to 2170 mg DW  $m^{-2}$ , with an average of  $1707 \pm 333$  mg DW  $m^{-2}$ . The highest abundances are found in PB and AB, and the highest biomass is found in AB. The averaged total biomass in PB is lower than in AB due to the very low contribution of the  $C_{1000-2000}$  and  $C_{>2000}$  size classes, but the size classes from  $C_{<200}$  to  $C_{500-1000}$  present higher biomass values than in AB. In TB, the total biomass values decrease between ST4 and ST6, with the latter presenting the lowest biomass value of the whole survey. Note that the biomass values at TYR are only obtained for the size classes above 500  $\mu m$  ESD,

and the corresponding abundance value is comparable to those obtained at ST5 and ST6 for these larger size classes. In IB, total biomass and abundance are lower than at AB and have low variability between stations. The detritus estimated by FlowCAM and ZOOSCAN for all analyzed classes represents between 14.6 % and 39.1 % of the total biomass. The  $C_{200-300}$  ESD size class has the highest average contribution (42.9 %) to the total zooplankton abundance, followed by  $C_{300-500}$  (28.5 %),  $C_{<200}$  (17.8 %),  $C_{500-1000}$  (8.9 %),  $C_{1000-2000}$  (1.7 %), and  $C_{>2000}$  (0.22 %). In terms of biomass,  $C_{500-1000}$  has the highest average contribution (25.3 %), followed by the  $C_{1000-2000}$  (23.8 %),  $C_{300-500}$  (21.3 %),  $C_{>2000}$  (15.5 %),  $C_{200-300}$  (11 %, 9 %), and  $C_{<200 \mu m}$  (2.1 %) fractions. There is no correlation between the total zooplankton abundance or biomass and the integrated Chl-*a*, but the  $C_{300-500}$  biomass is negatively correlated with Chl-*a* ( $r = -0.52$ ,  $p = 0.044$ ). The total abundance is negatively correlated with temperature ( $r = -0.67$ ,  $p = 0.006$ ; Table 3).

Copepods are the most abundant taxonomic group at all stations (Fig. 5), representing 40 % to 79 % of the abundance and 32 % to 85 % of the total biomass. The abundance of zooplankton smaller than 300  $\mu m$  is dominated by cyclopid and calanoid copepodites. In  $N_{200}$ , 51 taxonomic groups are found, 34 of which are copepod genera. The adult stages of the copepod community are dominated by the following genera: *Para/Clausocalanus* spp. (28.7 %), *Oithona* spp. (13.7 %), *Corycaeus* spp. (6.2 %), *Oncaea* spp. (4.1 %), and undefined calanoid copepods (7.0 %). The most abundant non-copepod groups are appendicularians (5.1 %), ostracods (4.8 %), and chaetognaths (3.6 %). The highest contributions of copepods to abundance and biomass are found in PB; this proportion then tends to decrease southwards as the abundance and biomass of the other groups such as chaetognaths and gelatinous zooplankton increase. The ratio between copepods with a length smaller than 1 mm and those larger than 1 mm (Fig. 5) ranges from 2.8 to 8.3 (5.1 on average), with the maximum mean values found in TB and the minimum values found in IB.

The two-way ANOVA shows that the PB is characterized by a significantly lower abundance and biomass in the upper size classes (1000–2000 and  $>2000 \mu m$ ) compared with the other areas ( $p < 0.05$ ). One-way ANOVA results show that both total zooplankton and mesozooplankton present a significantly higher abundance in PB than in IB, whereas their total biomass was not significantly different between the areas ( $p > 0.05$ ). Significant differences in abundance and biomass between areas were found in the  $C_{300-500}$ ,  $C_{1000-2000}$ , and  $C_{>2000}$  size classes and in the biomass for the  $C_{<200}$  class ( $P < 0.05$ ; Table 4 and Supplement Fig. S1).

The NBSS is calculated for each station, as shown in Fig. 6, using ION1 as an example. During the PEACETIME survey, the NBSS slopes (Fig. 7) range from  $-0.60$  to  $1.27$ , with an average value of  $-0.80$ . The most negative slopes are found in PB, whereas the IB area has the fewest negative



**Figure 3.** Principal component analysis (PCA) ordination of five environmental indicators: mixing layer depth (MLD), integrated values of the Chl-*a* concentration, and mean values in the upper 0 – 300 m for temperature, salinity, and dissolved oxygen. AB refers to the Algerian Basin, PB refers to the Provencal Basin, TB refers to the Tyrrhenian Basin, and IB refers to the Ionian Basin.

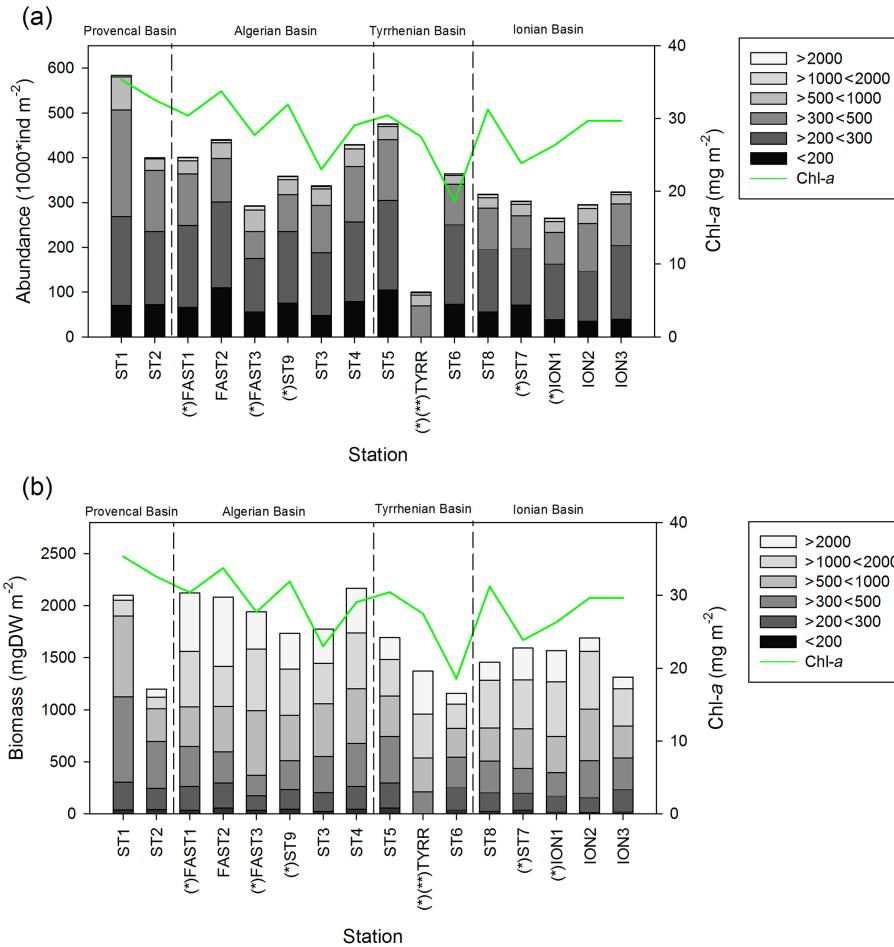
**Table 3.** Table summarizing the Spearman’s rank correlations.  $T^\circ$  represents temperature, Sal represents salinity, Chl-*a* represents chlorophyll, MLD represents the mixing layer depth, and PP represents primary production. Bold characters indicate a significant  $R_s$  value ( $p < 0.05$ ).

Abundance	Correlation coefficient					
	$T^\circ$	Sal	Chl- <i>a</i>	DO	MLD	PP
$C_{<200}$	-0.49	-0.43	0.32	<b>-0.61</b>	-0.16	-0.37
$C_{200-300}$	<b>-0.58</b>	-0.37	0.48	<b>-0.58</b>	0.08	-0.24
$C_{300-500}$	-0.51	-0.19	<b>0.52</b>	-0.45	0.21	-2.28
$C_{500-1000}$	<b>-0.56</b>	-0.50	0.23	-0.49	-0.06	0.05
$C_{1000-2000}$	0.29	0.01	-0.28	0.33	-0.34	0.35
$C_{>2000}$	<b>-0.12</b>	<b>-0.53</b>	-0.15	0.08	-0.50	-0.16
Total abundance	<b>-0.67</b>	-0.44	<b>0.56</b>	<b>-0.68</b>	0.08	-0.28
<b>Biomass</b>						
$C_{<200}$	<b>-0.61</b>	-0.48	0.42	<b>-0.71</b>	-0.08	-0.36
$C_{200-300}$	<b>-0.52</b>	-0.29	0.52	-0.51	0.12	-0.14
$C_{300-500}$	-0.49	-0.18	<b>-0.53</b>	-0.46	0.19	-0.27
$C_{500-1000}$	-0.45	-0.43	0.17	-0.41	-0.11	0.14
$C_{1000-2000}$	0.24	-0.05	-0.37	0.32	-0.39	0.30
$C_{>2000}$	-0.18	<b>-0.61</b>	-0.10	-0.02	<b>-0.53</b>	-0.10
Total biomass	<b>-0.58</b>	<b>-0.62</b>	0.24	-0.43	-0.27	0.08

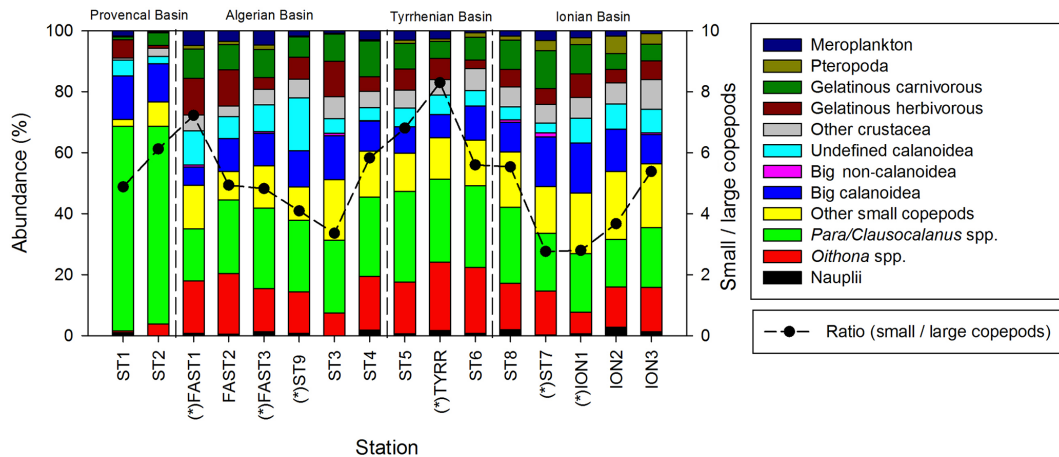
slopes. At the long-duration stations FAST and ION, strong variations in slope values appear depending on the sampling time, with the steeper slopes in the samples collected during the daytime indicating the higher contributions of small zooplankton compared with large zooplankton, which is potentially linked to the daily migration of larger forms to depths below 300 m.

The NMDS analysis (Fig. 8) on the mesozooplanktonic taxa abundances based on  $N_{200}$  delivers a distribution pat-

tern for the stations that is rather similar to that of the PCA on environmental variables. ST1 and ST2 in PB are the most dissimilar stations due to the higher abundance of copepods – especially the abundance of *Para/Clausocalanus* spp. at ST1, which is twice as high as at ST2 and between 5 and 13 times higher than the rest of the transect (Figs. 5, 8a). Similarly, the *Centropages* spp. abundance is 10 times higher at ST1 and ST2 than at other stations in the survey. In contrast, the abundances of *Oithona* spp. and *Corycaeus* spp. are



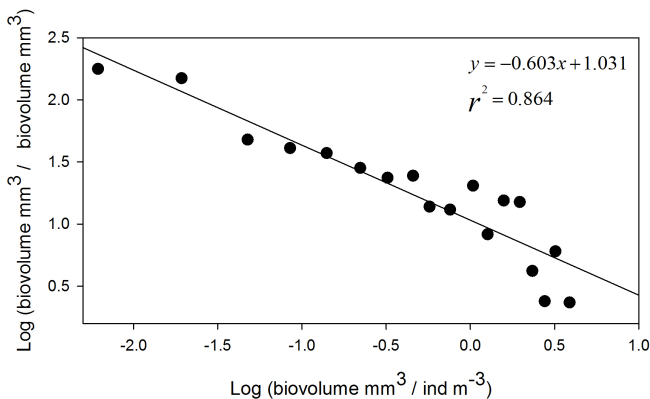
**Figure 4.** Values of zooplankton abundance (a) and biomass (b) cumulated by ESD size classes across different stations of the PEACETIME cruise. The green line shows the integrated Chl-a concentrations, “\*” denotes stations sampled during the night, and “\*\*\*” denotes that only the abundance and biomass values above 300 μm are presented for TYR.



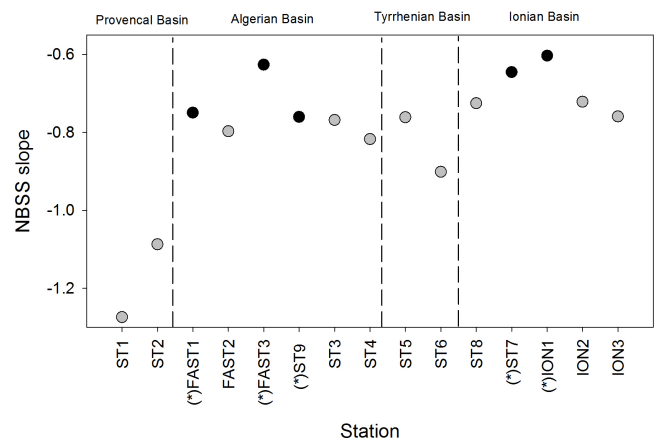
**Figure 5.** Spatial variation in taxonomic groups (bars) and the small (length < 1 mm)/large (length > 1 mm) copepod ratio (dashed line). “\*” denotes stations sampled during the night.

**Table 4.** Results of the one-way ANOVA tests performed to test differences between areas (PB, AB, IB, and TB) with respect to the abundance and biomass data for the different zooplankton size classes, for total zooplankton (all size classes), and for mesozooplankton (ESD between 200 and 2000 μm) between the areas. Significant differences (*p* value <0.05) are marked in bold. “ns” denotes no significant difference. Italic *F* and *p* values mark where a Dunnett’s test was used. In the post hoc analysis, the homogeneous groups with the lowest and highest values are noted using “a” and “b”, respectively. PB refers to Provencal Basin, AB refers to Algerian Basin, TB refers to Tyrrhenian Basin, and IB refers to Ionian Basin.

Size class	Abundance				Biomass							
	Sheffé post hoc				Sheffé post hoc							
	<i>F</i>	<i>p</i>	PB	AB	TB	IB	<i>F</i>	<i>p</i>	PB	AB	TB	IB
<i>C</i> <sub>200</sub>	3.19	0.067	ns	ns	ns	ns	3.64	<b>0.048</b>	ns	ns	ns	ns
<i>C</i> <sub>200–300</sub>	3.46	0.055	ns	ns	ns	ns	2.55	0.109	ns	ns	ns	ns
<i>C</i> <sub>300–500</sub>	4.4	<b>0.029</b>	b	ab	ab	a	5.03	<b>0.020</b>	b	a	ab	a
<i>C</i> <sub>500–1000</sub>	<i>3.01</i>	<i>0.076</i>	ns	ns	ns	ns	1.75	0.214	ns	ns	ns	ns
<i>C</i> <sub>1000–2000</sub>	14.77	<b>0.000</b>	a	b	ab	b	17.87	<b>0.000</b>	a	b	ab	b
<i>C</i> <sub>&gt;2000</sub>	9.25	<b>0.002</b>	a	b	ab	ab	11.63	<b>0.001</b>	a	b	a	a
Total	5.51	<b>0.015</b>	b	ab	ab	a	3.2	0.066	ns	ns	ns	ns
Total mesozooplankton (200–2000 μm)	5.03	<b>0.020</b>	b	ab	ab	a	1.06	0.405	ns	ns	ns	ns



**Figure 6.** Normalized biomass size spectrum (NBSS) of mesozooplankton at ION1. Black dots show the normalized biomass values in the successive size classes, and the straight line represents the linear regression, giving the slope value.

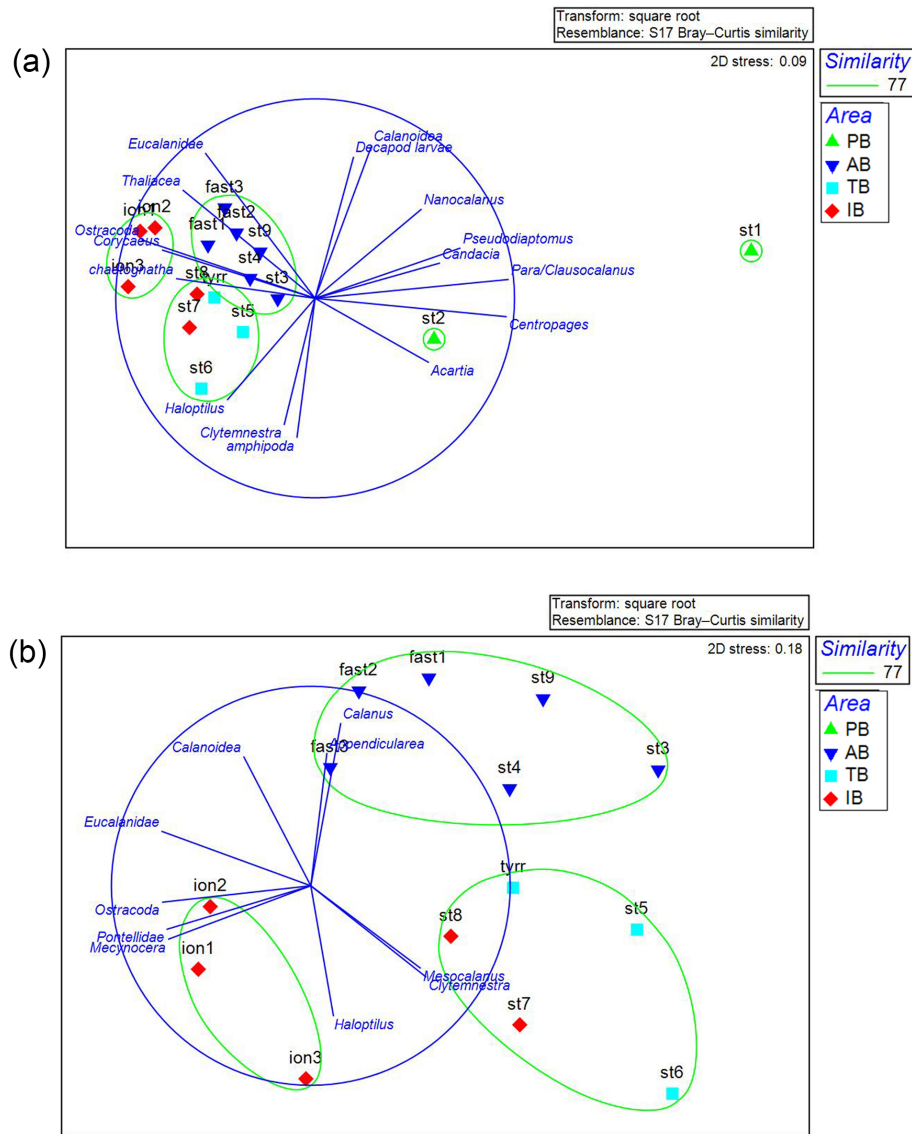


**Figure 7.** NBSS slope values of mesozooplankton obtained for all stations during the PEACETIME survey. Black dots represent night samples, and gray dots represent day samples.

6 and 10 times lower at ST1 and ST2, respectively, than at other stations. The zooplankton community in AB is slightly different from those in TB and IB due to appendicularians and unidentified calanoid copepods being more abundant in AB and due to *Haloptilus* spp. being more abundant in TB and IB. Within TB and IB, the three sampling dates (ION1, ION2, and ION3) at ION form a unique cluster, whereas ST7 and ST8 are grouped with station TB in another cluster. This differentiation of ST7 and ST8 from the ION sampling dates in the NMDS analysis is mainly due to differences in the relative abundance of *Mesocalanus* spp. (more abundant), ostracods (less abundant), *Clytemnestra* spp. (absent in ION), and Pontellidae. (absent at ST7 and ST8).

The SIMPER analysis shows that the lower average similarity between the stations (64.79 %) is mainly due to

*Para/Clausocalanus* spp. in PB. The rest of the basins share a higher internal similarity: 78.43 %, 79.79 %, and 78.03 % for AB, TB, and IB, respectively. Another interesting point highlighted in the SIMPER analysis is the lower average dissimilarity between TB and stations ST7 and ST8 (20.25 %). This dissimilarity increases when the comparison is made between TB and the rest of the stations included in IB (29.04 %); this finding is in agreement with the NMDS analysis (Fig. 8) that related ST7 and ST8 to TB rather than to the stations in their basin.



**Figure 8.** NMDS analysis of the zooplankton taxa for all stations (a) excluding ST 1 and ST 2. (b) A plot of the stations and the taxa correlated at  $>0.65$  with the axes. The color of the stations represents the areas identified by the PCA in the environmental analysis (see Fig. 2). This analysis was performed on the zooplankton collected with the data from  $N_{200}$ . PB refers to Provencal Basin, AB refers to Algerian Basin, TB refers to Tyrrhenian Basin, and IB refers to Ionian Basin.

### 3.3 Relationship between the environmental variables and the zooplankton community

Results of the PERMANOVA analysis on the environmental variables and on the diversity of taxa are summarized in Table 5. Interestingly, based on the zooplankton diversity of TB and IB, their difference is more significant when ST7 and ST8 are removed from IB and placed in TB (based on the NMDS cluster, Fig. 8), whereas this is not the case when considering environmental variables (see Table 5). This suggests that the similarity between ST7 and ST8 and the TB stations is not linked to the environmental context.

The BIOENV results show that salinity and chlorophyll were the environmental variables that best explained the overall spatial distribution of the zooplankton community (BIOENV;  $R_s = 0.657$ ).

The first factorial plane of the co-inertia analysis (Fig. 9) explained 96 % of the total variance, with 79 % due to the first axis. For both spaces (“Environment” and “Zooplankton”), the IB stations on the first axis are associated with high temperature and salinity values and several zooplankton taxa (namely echinoderm larvae and some copepod taxa, e.g., Pontellidae, *Rhincalanus* spp., *Haloptilus* spp., and *Phaena* spp.) and are separated from the PB and AB stations corre-

**Table 5.** PERMANOVA analysis on the environmental variables and on zooplankton taxa abundances: pair-wise tests with unrestricted permutation of raw data (number of permutations: 999) were used for the comparison between the zones. Resemblance worksheets are based on Euclidean distance. Significant  $p$  values ( $p < 0.05$ ) are marked in bold.

Groups	Environmental variables			Zooplankton taxa abundances		
	$t$	$p$ (perm)	Unique perms	$t$	$p$ (perm)	Unique perms
PB, AB	3.78	<b>0.044</b>	28	2.08	<b>0.049</b>	28
PB, TB	3.24	0.101	10	2.01	0.094	10
PB, IB	5.65	<b>0.043</b>	21	2.47	0.056	21
AB, TB	1.79	<b>0.014</b>	84	1.65	<b>0.008</b>	84
AB, IB	5.91	<b>0.001</b>	400	1.67	<b>0.004</b>	404
TB, IB	4.59	<b>0.016</b>	56	1.57	<b>0.045</b>	56
TB + ST7 and ST8. ION ST	1.65	0.159	56	1.90	<b>0.019</b>	56

lated with higher chlorophyll concentrations and with some copepod taxa (mainly *Pseudodiaptomus* spp., *Tortanus* spp., and *Pleuromamma* spp.). On this axis, TB stations have an intermediate position, close to the coordinate zero. The second axis opposes northern (ST1 and ST2 in PB) and southern (AB) stations sampled in the western Mediterranean Basin. On this axis, PB stations are characterized by higher chlorophyll and salinity values and a deeper MLD compared with AB and by the association with *Pseudodiaptomus* spp., whereas southern AB stations are associated with the copepods *Heterorhabdus* spp., *Labidocera* spp., and *Euterpina* spp. As in the preceding multivariate analyses, we note that ST8 and ST9 from the IB tend to be closer to the TB stations than to the ION station on the first factorial plane, particularly in the “Zooplankton system”. The association between the environmental context and the zooplankton community is high with good correlation between the normalized scores of the stations ( $R^2 = 0.844$  and  $R^2 = 0.820$  for the  $x_1$  and  $x_2$  axes, respectively) and with the positions of the plots of these stations close to the equality lines (i.e.,  $x_1$  Zooplankton =  $x_1$  Environment or  $x_2$  Zooplankton =  $x_2$  Environment).

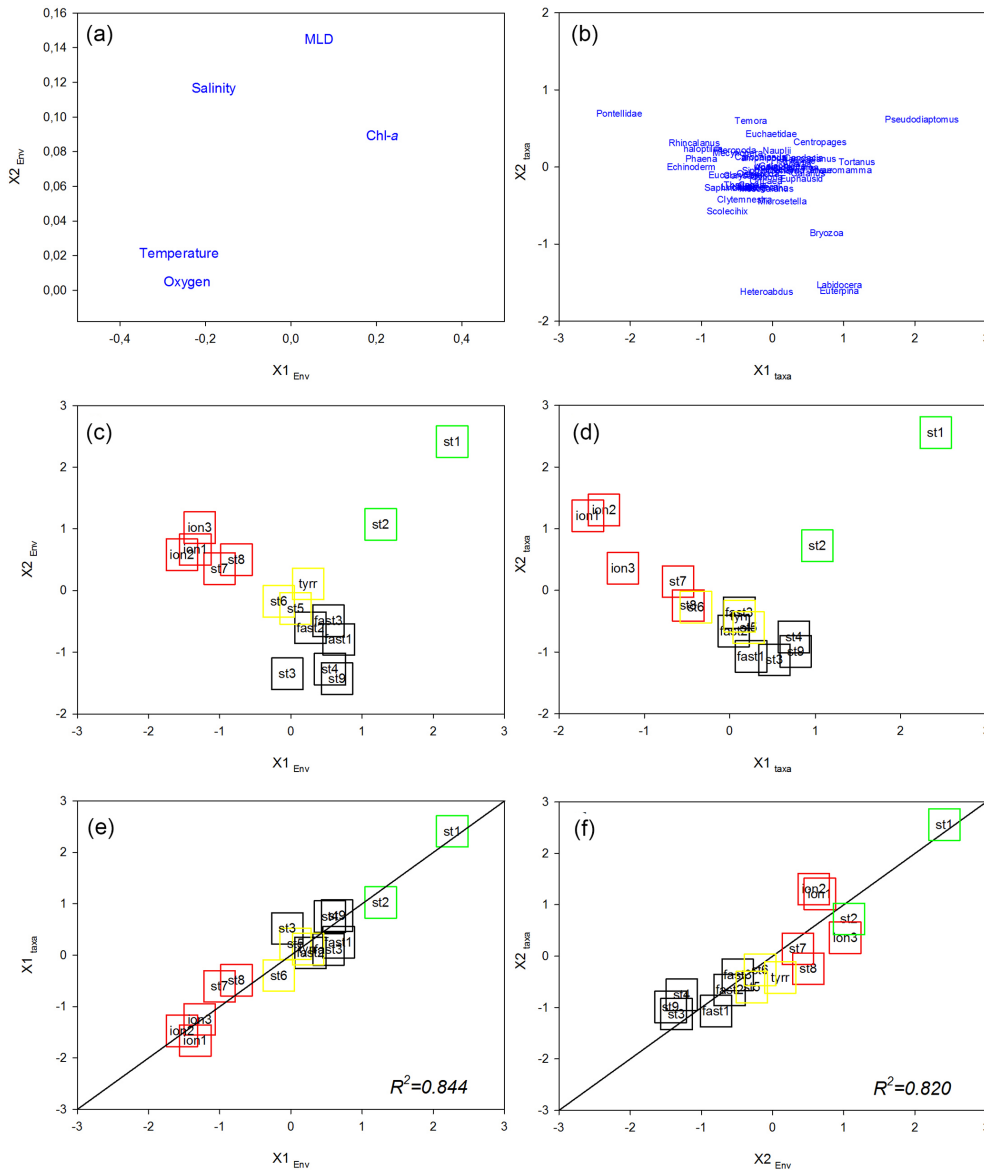
### 3.4 Zooplankton community changes linked to dust deposition events during the PEACETIME survey

The zooplankton community changes were analyzed using the variations in the RFDs between samplings. The RFDs for TYR, ST5, ST6, ION, and FAST are presented separately in Fig. 10a–d and are grouped in Fig. 10e and f. As only one sample was carried out at TYR, 9 d after a large dust deposition event in the southern Tyrrhenian Basin, the RFDs of ST5 and ST6 also sampled in TB (6 and 12 d after the dust event, respectively) are added for comparison (Fig. 10a, b). At all three TB stations, the RFDs are characterized by the high dominance of the filter-feeding zooplankton *Para/Clausocalanus* spp. and *Oithona* spp. in the first and second positions and a strong drop in abundance for the following ranked taxa (undefined calanoid copepods or *Corycaeus* spp.). Appendicularians drop from the fourth position at ST5 and TYR to the tenth position at ST6. The

shapes of the RFDs change more between ST5 and TYR than between TYR and ST6. At ION, which was not impacted by dust deposition, the RFD shapes are similar for both sampling dates (ION1 and ION3), and the community is dominated by *Para/Clausocalanus* spp. (Fig. 10c). *Corycaeus* spp. changes from the second position to the fourth, calanoid copepods change from the third position to the sixth, and *Oithona* spp. changes from the fourth position to the second. Appendicularians occupy a very similar position in both RFDs (sixth and seventh rank at ION1 and ION3, respectively). At FAST, the taxonomic composition is dominated by copepods (Fig. 10d), but the rank order of the most dominant species changes between the two sampling dates (FAST1 and FAST3). *Oithona* spp. and *Para/Clausocalanus* spp. have the first and second ranks during FAST1, but this order is reversed during FAST 3. The third place on both days is occupied by calanoid copepods. Appendicularians present one of the most significant changes, with their rank dropping from fourth to fourteenth between the two dates. It is remarkable that the RFDs change from a convex shape at FAST1 to a more concave one at FAST2, which is influenced by the high dominance of *Para/Clausocalanus* spp. at the first rank (Fig. 10d). The comparison of the standardized RFDs for all of the stations (Fig. 10e) highlights that the greatest change in shape is visible at FAST, whereas it remains moderate at ION and negligible at TB. Figure 10f is similar to Fig. 10e, except without ION, in order to visualize changes in the zooplankton community composition at different time lags after a dust event. This will be commented on in more detail in Sect. 4. The RFDs for all stations are shown in Fig. S2 in the Supplement.

### 3.5 Estimated zooplankton carbon demand, grazing pressure, respiration, and excretion rates

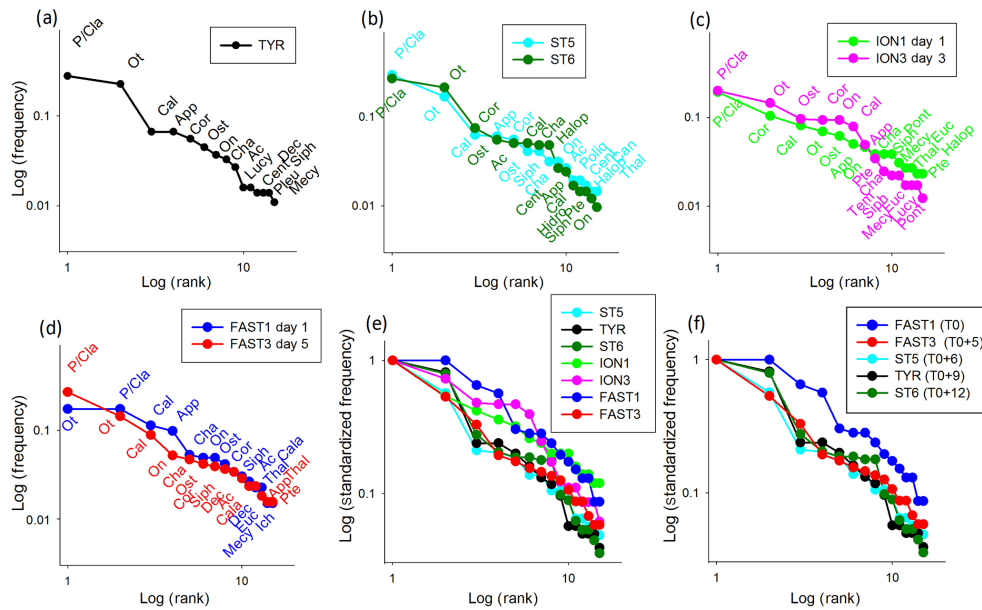
Zooplankton carbon demand ZCD (Table 6) varies between 145.9 and 280.1 mg C m<sup>-2</sup> d<sup>-1</sup> at ST6 and FAST1, respectively. Assuming that phytoplankton is the major food source, zooplankton consumption potentially represents 15 % of the phytoplankton stock on average per day and



**Figure 9.** Co-inertia analysis. Ordination on the plans (1, 2) of the environmental variables (a) and the abundance of the zooplankton taxa (b). Ordination on the plans (1, 2) of the stations in the “Environment system” (c) and in the “Zooplankton system” as well as plots of the stations on the first (c) and second (d) axes of the two systems. Lines represent the equality between the coordinates on the two systems. Colored squares identify the different regions: green denotes PB, black denotes AB, yellow denotes TB, and red denotes IB.

97 % of the primary production (see Table 6). ZCD follows the zooplankton biomass pattern with higher values in AB and lower values in TB, and it does not increase with primary production ( $r = -0.18$ ,  $p > 0.05$ ). The average respiration (mean of  $83.1 \text{ mg C m}^{-2} \text{ d}^{-1}$  and range between  $62.9$  and  $112.2 \text{ mg C m}^{-2} \text{ d}^{-1}$ ) corresponds to 36.4 % of the integrated primary production. Almost half of this zooplankton respiration is due to organisms smaller than  $500 \mu\text{m}$  ESD. Mean ammonium excretion is  $12.3 \text{ mg NH}_4 \text{ m}^{-2} \text{ d}^{-1}$  (range between  $9.1$  and  $17.7 \text{ mg NH}_4 \text{ m}^{-2} \text{ d}^{-1}$ ), and mean phosphate excretion is  $1.7 \text{ mg PO}_4 \text{ m}^{-2} \text{ d}^{-1}$  (range between  $1.3$

and  $2.3 \text{ mg PO}_4 \text{ m}^{-2} \text{ d}^{-1}$ ). The potential contributions of excreted nitrogen and phosphorus to primary production are 31.5 % (range between 19.9 % and 42.6 %) and 26.3 % (range between 19.9 % and 42.6 %), respectively. Zooplankton size classes smaller than  $500 \mu\text{m}$  ESD contribute 45 % and 47 % of the total ammonium and phosphate excretion, respectively. Estimated values for all zooplankton size classes for grazing, respiration, and excretion rates and for their impact on the phytoplankton stock and production along the PEACETIME survey transect are presented in Table S2 in the Supplement.



**Figure 10.** Rank frequency diagram at TYR (a), ST5 and ST6 (b), ION (c), FAST (d), and the Log-standardized frequency for all stations (e) and stations influenced by dust deposition (f). Ac denotes *Acartia* spp., Cal denotes calanoid copepods, Cala denotes *Calanus* spp., Cent denotes *Centropages* spp., Cor denotes *Corycaeus* spp., Euc denotes *Eucalanus* spp., Halop denotes *Haloptilus* spp., Luci denotes *Lucicutia* spp., Mecy denotes *Mecynocera* spp., On denotes *Oncaea* spp., Ot denotes *Oithona* spp., P/Cla denotes *Para/Clausocalanus* spp., Pleu denotes *Pleuromamma* spp., Pont denotes Pontellidae, Tem denotes *Temora* spp., App denotes Appendicularia, Cha denotes Chaetognatha, Dec denotes decapods, Hydro denotes hydrozoans, Ich denotes ichthyoplankton, Ost denotes ostracods, Poly denotes Polychaeta, Pte denotes pteropods, Siph denotes siphonophores, and Thal denotes thaliaceans.

## 4 Discussion

### 4.1 Methodological concerns and the importance of the small zooplankton fraction

The methodology used in this study – combining two nets ( $N_{100}$  and  $N_{200}$ ) and two sample treatments (FlowCAM and ZOOSCAN) – enables us to deliver a more accurate mesozooplankton community size spectrum (200–2000  $\mu\text{m}$ ), although the  $C_{<200}$  and  $C_{>2000}$  size classes at the edges of the spectrum range remain undersampled and require different equipment for proper sampling (bottles and a larger mesh size net, respectively). The length/width ratio of mesozooplankton organisms is quite variable and ranges from 1 for nearly spherical organisms, such as nauplii or cladoceran, to more than 10 for long organisms, such as chaetognaths (Pearre, 1982) or some copepods like *Macrosetella gracilis* (Böttger-Schnack, 1989), with an average value of between 3 and 4 for copepods (Mauchline, 1998). If we consider that organisms with a length/width ratio of 6 caught by the 200  $\mu\text{m}$  mesh size will present an ESD of at least 490  $\mu\text{m}$ , it is consistent that this net quite correctly samples organisms with an ESD above 500  $\mu\text{m}$ . For these organisms (>500  $\mu\text{m}$  ESD), ZOOSCAN is the most appropriate tool to deliver the size spectrum. Similarly, the 100  $\mu\text{m}$  mesh size net allows small organisms with a width just below 100  $\mu\text{m}$  to pass through; however, most of them might have an ESD of up to 200  $\mu\text{m}$

because the length/width ratio is mostly below 4 for these smaller sizes (Mauchline, 1998). Due to the threshold of ZOOSCAN at 300  $\mu\text{m}$  ESD, FlowCAM is the best tool to process organisms in the fraction below 500  $\mu\text{m}$ .

Several authors have already highlighted the limitation of the 200  $\mu\text{m}$  mesh size with respect to catching small zooplankton individuals. Comparisons of different zooplankton nets' mesh sizes between 60 and 330  $\mu\text{m}$  have systematically shown a decrease in plankton abundance with an increasing mesh size (Turner, 2004; Pasternak et al., 2008; Riccardi, 2010; Makabe et al., 2012; Altukhov et al., 2015). When the goal of the study is to achieve a full understanding of the complete mesozooplankton community structure and function, the size selectivity of the sampling nets is an important issue: clearly, a large fraction of organisms between 200 and 500  $\mu\text{m}$  ESD is undersampled using a single 200  $\mu\text{m}$  mesh size. Pasternak et al. (2008) reported that a 220  $\mu\text{m}$  mesh can lose up to 98 % of the abundance of *Oithona* spp. and 80 % of copepodite stages of *Calanus* spp. Riccardi (2010) found that a classical 200  $\mu\text{m}$  net catches only 11 % of the abundance and 54 % of the biomass compared with a 80  $\mu\text{m}$  mesh size, which, in that study, led to differences in the observed species composition in the Venice Lagoon. During the PEACETIME survey, the small size classes ( $C_{200-300}$  and  $C_{300-500}$ ) of mesozooplankton have been optimally sampled using a 100  $\mu\text{m}$  mesh size ( $N_{100}$ ). Consequently, these size



**Table 6.** Estimated grazing, respiration, and excretion rates of zooplankton based on allometric models (see Sect. 2) and their impact on the phytoplankton stock and production along the PEACETIME survey transect.

	Provencal Basin		Algerian Basin						Tyrrhenian Basin		Ionian Basin				
	ST1	ST2	FAST1	FAST2	FAST3	ST9	ST3	ST4	ST5	ST6	ST8	ST7	ION1	ION2	ION3
<b>Grazing impact</b>															
Phytoplankton stock (mg C m <sup>-2</sup> )	1749	1632	1554	1691	1412	1805	1161	1458	1526	933	1582	1212	1376	1587	1587
Primary production (mg C m <sup>-2</sup> d <sup>-1</sup> )	295	155	229	184	297	303	165	225	197	190	289	187	266	279	304
ZCD (mg C m <sup>-2</sup> d <sup>-1</sup> )	280	155	274	263	249	228	224	278	202	145	195	205	204	244	177
Grazing impact on phytoplankton stock (%)	16.0	9.5	17.7	15.6	17.7	12.7	19.3	19.1	13.3	15.6	12.4	17.0	14.8	15.4	11.2
Grazing impact on primary production (%)	94.8	99.9	119.7	143.3	83.9	75.4	135.6	123.7	102.5	76.7	67.6	109.7	76.5	87.6	58.3
<b>Respiration</b>															
Respiration (mg C m <sup>-2</sup> d <sup>-1</sup> )	112.2	64.3	95.3	90.1	86.2	81.3	83.8	100.2	78.7	62.9	75.6	77.0	72.4	94.7	71.6
Percentage of primary production respired by zooplankton	38.0	41.4	41.5	49.0	29.0	26.8	50.6	44.5	39.8	33.1	26.1	41.0	27.1	33.9	23.5
<b>NH<sub>4</sub> zooplankton contribution</b>															
Excretion (mg N-NH <sub>4</sub> m <sup>-2</sup> d <sup>-1</sup> )	17.7	9.2	13.6	12.9	12.3	16.2	12.0	14.3	11.3	9.1	10.9	11.0	10.4	13.6	10.3
Phytoplankton needs (mg N m <sup>-2</sup> d <sup>-1</sup> )	50.2	26.4	39.0	31.3	50.6	51.6	28.2	38.3	33.6	32.4	49.2	31.9	45.3	47.4	51.8
N demand (%)	35.2	34.9	34.9	41.1	24.3	31.5	42.6	37.4	33.6	28.0	22.1	34.6	22.9	28.8	19.9
<b>PO<sub>4</sub> zooplankton contribution</b>															
Excretion (mg P-PO <sub>4</sub> m <sup>-2</sup> d <sup>-1</sup> )	2.3	1.3	2.0	1.9	1.8	1.7	1.8	2.1	1.6	1.3	1.6	1.6	1.5	2.0	1.5
Phytoplankton needs (mg P m <sup>-2</sup> d <sup>-1</sup> )	8.6	4.5	6.7	5.3	8.6	8.8	4.8	6.5	5.7	5.5	8.4	5.4	7.7	8.1	8.8
P demand (%)	27.3	29.7	30.4	35.9	21.3	19.5	36.8	32.5	28.6	23.5	18.6	29.6	19.7	24.1	16.6

classes represent very large percentages of the total abundance (52.3 % and 34.8 %, respectively) and a significant contribution to the total biomass (14.5 % and 25.9 %, respectively). These reliable estimations have direct consequences for the estimated fluxes (see below).

#### 4.2 Differences in abundance, biomass, and zooplankton community structure in relation to regional environmental characteristics

A review of the most relevant information available on zooplankton biomass and abundance in different regions of the central and western Mediterranean Sea (Table 7) shows a wide range of variation that can be attributed to location, sampling seasons, and/or sampling methods (e.g., net mesh size and depth of tow). In general, the values from the PEACETIME survey are of the same order of magnitude as values from previous studies, although most of the other studies were performed with a 200 µm mesh size net and often over a shallower surface layer. However, during this post-bloom period, no clear regional patterns in abundance and biomass were found, unlike other descriptions showing

a north–south and west–east decrease in zooplankton stocks (Dolan et al., 2002; Siokou-Frangou, 2004). In PB, Donoso et al. (2017) and Nival et al. (1975) highlighted a strong variability that is consistent with the strong gradient found between ST1 and ST2 during PEACETIME (see Fig. 4). In AB, abundance and biomass values obtained during the survey are similar to those recorded in late spring by Nowaczyk et al. (2011), whereas Riandey et al. (2005) found lower abundance and higher biomass values. However, the latter study focused on the high resolution of a mesoscale eddy, highlighting an important fine-scale variability in abundance and biomass values. For TB, the data are difficult to compare due to the different sampling conditions (net mesh size, depth of tow, and sampling season). In IB, all biomass values presented in Table 7 are of the same order of magnitude, although abundances found by Mazzocchi et al. (2003, 2014) are 3 times lower than those observed during PEACETIME, which is probably due to the high contribution of  $C_{<200}$  and  $C_{200-300}$  obtained with  $N_{100}$  (see Fig. 4). In general, the better sampling of small size classes with  $N_{100}$  should lead to higher abundance values. However, the comparison of data

**Table 7.** Comparison of zooplankton biomass and abundance in different areas of the Mediterranean Sea. “\*” denotes the wet weight. NWMS refers to the northwestern Mediterranean Sea, and SWMS refers to the southwestern Mediterranean Sea.

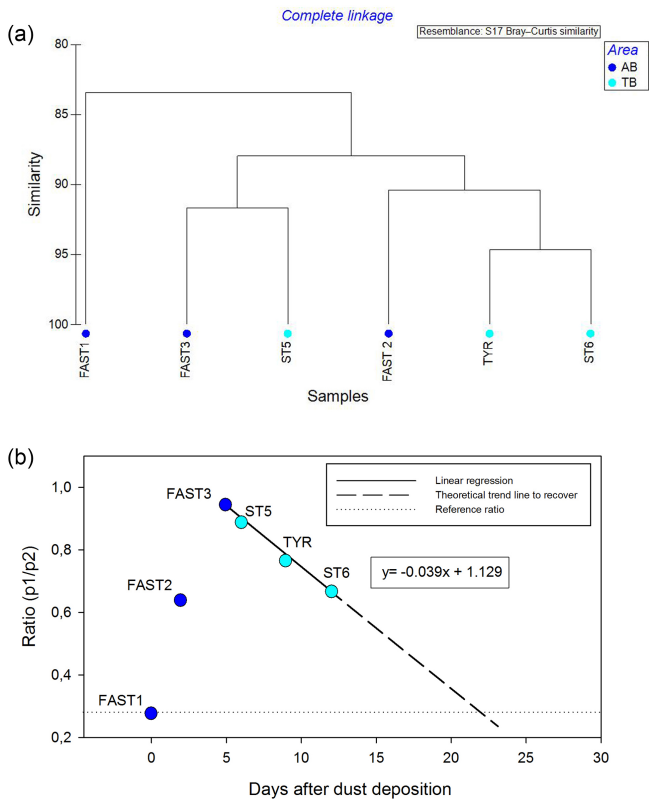
Area	Sampling period	Net mesh size ( $\mu\text{m}$ )	Layer (m)	Biomass ( $\text{mg m}^{-3}$ )	Abundance (individuals $\text{m}^{-3}$ )	Reference
NWMS – Provençal and Ligurian basins	Feb 2013	120	0–250	12.3 (1.9–42.3)	608 (21–2548)	Donoso et al. (2017)
NWMS – Provençal and Ligurian basins	Apr 2013	120	0–250	64.5 (13.9–197.8)	3668 (850–7205)	Donoso et al. (2017)
NWMS – Gulf of Lion shelf	Mar–Apr 1998	80–200	0–200	9.56 $\pm$ 4.73		Gaudy et al. (2003)
NWMS – Gulf of Lion shelf	Jan 1999	80–200	0–200	4.73 $\pm$ 2.53		Gaudy et al. (2003)
NWMS – Provençal Basin	Mar 1969	200	0–200	0.4–5.3		Nival et al. (1975)
NWMS – Provençal Basin	Apr 1969	200	0–200	10–210		Nival et al. (1975)
NWMS – Provençal Basin	Spring 2008	200	0–200	13.15 $\pm$ 2.5	1731	Mazzocchi et al. (2014)
NWMS – Provençal Basin	Jul 1999	200	0–300		383	Siokou et al. (2019)
NWMS – Provençal Basin	May–Jun 2017	100–200	0–300	5.5 $\pm$ 2.1	1638 $\pm$ 433	this study
SWMS – Algerian Basin	Jul–Aug 1997	200	0–200	8.2 (2.1–34.5)	370 (36–844)	Riandey et al. (2005)
SWMS – Algerian Basin	Jul 1999	200	0–300		197	Siokou et al. (2019)
SWMS – Algero–Provençal Basin	Jun–Jul 2008	200	0–200	5.4	1561 $\pm$ 205	Nowaczyk et al. (2011)
SWMS – Algerian Basin	May–Jun 2017	100–200	0–300	6.6 $\pm$ 0.6	1254 $\pm$ 191	This study
Tyrrhenian Basin	Autumn 1986	200	0–50	3.6–32		Fonda Umami and de Olazábal (1988)
Coastal Tyrrhenian Basin	1984–2006	200	0–50		1708	Mazzocchi et al. (2011)
Tyrrhenian Basin	Sep–Oct 1963	60–300	0–700	0.15–0.3		Cited from Champalbert (1996)
Tyrrhenian Basin	Jun–Jul 2008	200	0–200	3.2	1250	Nowaczyk et al. (2011)
Tyrrhenian Basin	Jun 1968	Not specified	0–200	5.8*		Cited from Kovalev et al. (2003)
Tyrrhenian Basin	May–Jun 2017	100–200	0–300	4.8 $\pm$ 1.1	1398 $\pm$ 108	This study
Ionian Basin	Apr–May 1999	200	0–100	6.0 $\pm$ 0.8 (eastern)		Mazzocchi et al. (2003)
Ionian Basin	Apr–May 1999	200	0–100	8.2 to 13.4 (western)		Mazzocchi et al. (2003)
Ionian Basin	Spring 1992	200	0–300		219	Mazzocchi et al. (2003)
Ionian Basin	Spring 1999	200	0–300		193	Mazzocchi et al. (2003)
Ionian Basin	Spring 2008	200	0–200	2.73	213	Mazzocchi et al. (2014)
Ionian Basin	Autumn 2008	200	0–200	3.25	338	Mazzocchi et al. (2014)
Ionian Basin	Jun–Jul 2008	200	0–200	8	1181 $\pm$ 630	Nowaczyk et al. (2011)
Ionian Basin	Jul 1999	200	0–300		146	Siokou et al. (2019)
Ionian Basin	May–Jun 2017	100–200	0–300	5.1 $\pm$ 0.5	1003 $\pm$ 76	This study

in Table 7 shows that the regional and temporal variability of these values partially masks this benefit.

In PEACETIME, clear regional differences are found both in terms of environmental variables and zooplankton taxonomic composition. ST1 and ST2 are clearly differentiated from all of the other stations by a deeper MLD, higher Chl-*a* concentrations, and a zooplankton community dominated by herbivorous copepods typical of the PB (e.g., *Centropages*, *Para/Clausocalanus*, and *Acartia*), as mentioned by Gaudy et al. (2003) and Donoso et al. (2017), and characterized by a scarcity of thaliaceans which normally occur in ephemeral and aperiodic patches (Deibel and Paffenhöfer, 2009). AB and TB are very closely related to each other in terms of hydrological features and Chl-*a*, but they are slightly differentiated with respect to salinity and zooplankton taxonomy, probably because they are both strongly influenced by the Modified Atlantic Water (MAW) and its associated mesoscale features (Millot and Taupier-Letage, 2005). In AB, 17 d separated the sampling of ST3 and ST4 from that of ST9 and FAST; however, despite this time gap, they are very close in terms of hydrological features, Chl-*a* level, and zooplankton community structure. IB is clearly differentiated from these groups in terms of environmental parameters (see Fig. 3) due to a higher salinity and a lower Chl-*a* concentration; however, in terms of zooplankton community, the western Ionian stations (ST7 and ST8) present more analogy with TB than with the ION (see Fig. 8). During PEACETIME, ION appears to be clearly separated from ST7 and ST8 that are located further westwards by a north–south jet (ADCP and MVP observations, Leo Berline,

personal communication, 2020), which might correspond to the “Mid-Mediterranean Jet” (Malanotte-Rizzoli et al., 2014, their Fig. 5). The location of ST7 and ST8 within the anti-cyclonic structures of the portion of the Modified Atlantic Water (MAW) flowing through the Strait of Sicily could explain their similarity to the TB stations in terms of zooplankton assemblages – as TB is directly influenced by the main part of the MAW flowing through the Sardinian Channel. Ayata et al. (2018) also classified the Tyrrhenian Basin as heterogeneous due to complex circulation patterns including transient hydrodynamic structures in the south, which could also explain the similarity of ST7 and ST8 to the TB stations in terms of zooplankton assemblages during PEACETIME. This area of the IB visited during PEACETIME certainly represents a transition area between the eastern and western Mediterranean basins (Siokou-Frangou et al., 2010; Mazzocchi et al., 2003).

These regional differences, highlighted both in terms of environmental characteristics and zooplankton taxa assemblages, are in agreement with the regionalization of the Mediterranean Basin by Ayata et al. (2018) based on historical biogeochemical, biological, and physical data of the epipelagic zone. For example, ST1 of PEACETIME, which is characterized by high Chl-*a*, high zooplankton abundance, and the dominance of small copepods, is clearly located in the “consensual Ligurian Sea Region” sensu Ayata et al. (2018), which has been identified as the most productive region of the Mediterranean due to intense deep convection events. Among the AB stations, ST3, ST4, and ST9 are clearly within the “consensual Algerian region” (Ayata et al.,



**Figure 11.** Cluster analysis on rank frequency diagrams (a) and changing trends in the  $p_1/p_2$  ratio (b) on the stations impacted by wet dust deposition.

2018), whereas FAST corresponds to the “western Algerian heterogeneous region”. Among the IB stations, ST7 and ST8 from the ION stations in terms of zooplankton communities and, to a lesser extent, environmental variables, also correspond to the distinction between the “consensual North Ionian” region and the western part of the “Ionian Sea region”, which is considered to be a heterogeneous region (Ayata et al., 2018).

### 4.3 Estimated zooplankton-mediated fluxes during the PEACETIME survey

By using allometric relationships relating zooplankton grazing and metabolic rates to size structure, zooplankton impacts (top-down vs. bottom-up impacts) on primary production have been investigated. We are aware that using constant conversion factors may limit the analysis of the spatial variation, as these factors may display temporal and geographical variations (Minutoli and Guglielmo, 2009). However, our sampling strategy based on a limited number of stations sampled did not enable us to consider temporal and spatial variations accurately, and our main goal was to roughly estimate the epipelagic zooplankton-mediated fluxes at the scale of the PEACETIME cruise.

ZCD estimations show that zooplankton required 15 % of the daily phytoplankton stock, with narrow variations over the whole area (between 9.5 and 19.3), which is twice as low as the values estimated by Donoso et al. (2017) during the spring bloom in the northwestern Mediterranean Sea. However, estimated grazing rates are of the same order as the estimated primary production, which corresponds to the highest range of the values summarized by Siokou-Frangou et al. (2010) for the whole Mediterranean Sea (from 14 % to 100 %). Estimating ZCD on the basis of mesozooplankton alone certainly leads to an overestimation of its top-down impact on phytoplankton. In the Mediterranean Sea, primary production is consumed by a “multivorous web” including microbial and zooplankton components (Siokou-Frangou et al., 2010). Mesozooplankton simultaneously grazes on phytoplankton and heterotrophic prey, such as heterotrophic dinoflagellates (Sherr and Sherr, 2007) or ciliates (Dolan et al., 2002), and might be quite flexible in its feeding strategy depending on the composition and size of prey as well as the environmental variables such as turbulence (Kleppel, 1993; Yang et al., 2010). On the one hand, a large part of the primary production can be consumed by ciliates (Dolan and Marrasé et al., 1995), but, on the other hand, mesozooplankton can consume almost the entire ciliate production (Pitta et al., 2001; Pérez et al., 1997; Zervoudaki et al., 2007), which potentially explains the wide variations in the ciliate standing stock over the Mediterranean Sea (Dolan et al., 1999; Pitta et al., 2001; Dolan et al., 2002). The extensively described east–west pattern of decreasing grazing impact (Siokou-Frangou et al., 2010) could not be observed during this study as only one station (ION) was typical of the eastern Mediterranean Sea.

Estimated  $\text{NH}_3$  and  $\text{PO}_4$  excretion rates by mesozooplankton during PEACETIME are consistent with the few observations collected in the Mediterranean Sea (Alcaraz, 1988; Alcaraz et al., 1994; Gaudy et al., 2003) and with those obtained at similar latitudes (see review in Hernández-León et al., 2008). From our estimation, zooplankton excretion would contribute to 21 %–44 % and 17 %–38 % of the N and P requirements for phytoplankton production, respectively. In the NWMS, Alcaraz et al. (1994) estimated a zooplankton nitrogen excretion contribution to primary production of >40 %, whereas Gaudy et al. (2003) reported 31 %–32 % and 10 %–100 % N and P contributions, respectively. This impact on phytoplankton production can be even greater in proximity to the DCM where zooplankton tend to aggregate, fueling regenerated production (Saiz and Alcaraz, 1990) and enhancing bacterial production (Christaki et al., 1998). Zooplankton grazing impact and nutrient contribution to primary production are higher in the western basin than in the Ionian Basing, which is mainly linked to variations in zooplankton biomass.

Mean carbon released through zooplankton respiration represents 36 % of the primary production during PEACETIME, which is higher than previous measurements in the NWMS (by Alcaraz, 1988; Gaudy et al., 2003) from on-

board incubation experiments on zooplankton collected with a 200  $\mu\text{m}$  mesh size net.

Metabolic estimations clearly show that the size fractions <500  $\mu\text{m}$  (optimally captured with the 100  $\mu\text{m}$  mesh size) make a significant contribution to the whole mesozooplankton estimated fluxes: 14.9 % of the ZCD is due to organisms <300  $\mu\text{m}$ , and this size class contributes 21 % and 20 % of the total ammonium and phosphate excretion, respectively.

#### 4.4 Impact of dust deposition on the zooplankton community

In the past, responses to Saharan dust inputs in marine systems have mostly been studied in microcosm and mesocosm experiments or, more rarely, observed in situ. Most studied responses to dust are focused on the microbial biota and are generally marked by an increase in metabolic rates rather than by standing stock changes, which is probably due to trophic transfer along the food web (Ternon et al., 2011; Guieu et al., 2014; Ridame et al., 2014; Herut et al., 2016). In mesocosms, changes in zooplankton stocks are strongly dependent on the initial conditions, and cannot really reflect what could occur in natural waters within the Mediterranean “multivorous planktonic food web” (Siokou-Frangou et al., 2010). Pitta et al. (2017) found an increase in mesozooplankton biomass 9 d after the beginning of a mesocosm experiment, probably as a result of an earlier increase in prey (flagellates, ciliates, and dinoflagellates). Tsagaraki et al. (2017) described an increase in productivity after an artificial dust deposition event that was transferred to higher trophic levels by the classical food web, resulting in an increase in copepod egg production 5 d after the beginning of the experiment. Very few in situ studies have documented mesozooplankton responses to Saharan dust. An increase in plankton abundance was observed by Thingstad et al. (2005) in the eastern Mediterranean Sea, and Hernández-León et al. (2004) also noted an increase in abundance in Atlantic waters close to the Canary Islands 1 week after dust deposition. In the latter area, Franchy et al. (2013) detected increases in zooplankton grazing and zooplankton biomass after another event. Thus, the PEACETIME survey, which was dedicated to the tracking of such events, was an opportunity to observe real in situ zooplankton responses in the epipelagic layer (0–300 m).

At FAST (an opportunistic station after a Saharan dust deposition event), an increase in nitrate (from 50 to 120 nM) and phosphate (from 8 to 16 nM) concentrations occurred in the mixed layer (Cécile Guieu, personal communication, 2020), which led to an increase in primary production from FAST1 to FAST3, although with no visible changes in phytoplankton biomass (see Table 2). For zooplankton, the total abundance slightly decreases, but the community composition presents obvious changes, mainly a decrease in appendicularians and an increase in *Para/Clausocalanus* spp. and carnivorous taxa (e.g., *Candacia* spp., chaetognaths, and siphonophores; see Fig. 10d). The sharp decrease in ap-

pendicularian abundance (4-fold decrease) and rank position (see Fig. 10d) could potentially be linked to either food limitation or predation. The size and species composition of the phytoplankton community in FAST suggest a change toward larger cells (Table 2) that are poorly ingested by appendicularians and induce filter clogging. There were also potential increases in food competition with *Para/Clausocalanus* spp. (Lombard et al., 2010) and/or in predation from chaetognaths and siphonophores (Purcell et al., 2005). Although the total zooplankton biomass remains relatively stable at FAST, the contribution of the  $C_{500-1000}$  and  $C_{1000-2000}$  size classes increase relative to the smaller size classes (see Fig. 4b), inducing variations on the NBSS slope from  $-0.76$  to  $-0.63$  (see Fig. 6). This 15 % increase in biomass is mainly due to large migrating taxa such as copepods (*Eucalanus* spp., *Rhincalanus* spp., and *Candacia* spp.), chaetognaths, and siphonophores. The daily observation of sediment traps at 200 and 500 m over 5 d between FAST1 and FAST3 (Cécile Guieu, personal communication, 2020) shows a relative increase in swimmers collected at 500 m vs. those collected at 200 m, which also suggests an increasing number of migrants. An obvious planktonic transition occurred during this period, but it is difficult to conclude which of the bottom-up (changes in primary producers) or top-down (increase in carnivorous migrants) effects was dominant. The change in the RFDs (Fig. 10d) from a convex shape at FAST1, indicating a more stable system with no dominance from the first taxonomic groups, to a more concave shape at FAST3, influenced by the high dominance of *Para/Clausocalanus* at the first rank, could reflect a disturbance effect (sensu Pinca and Dallot, 1997) on the zooplankton community due to dust deposition.

A synoptic analysis of the RFDs linked to the dust events observed in the Tyrrhenian Basin and at FAST offers a basis for proposing a conceptual model of a virtual time series of zooplankton community responses after a dust deposition event (Fig. 10f): the first sampling is carried out before the event (FAST1) and several other samplings are undertaken with a time lag of 5 d (FAST3), 6 d (ST5), 9 d (TYR), and 12 d (ST6) after the event. FAST1 represents an initial steady state (state 0) with no dominance in the first taxa ranks, whereas FAST3 and ST5 represent a disturbed state of the community (state 1) with strong dominance from the first taxa and the collapse of the following taxa. TYR and ST6 represent the beginning of recovery towards a stable system (state 2) as the second rank moves up. State 0, before the dust event, is characterized by oligotrophic conditions with low nutrients, a low phytoplankton concentration dominated by small-size cells, and their typical zooplankton grazers (e.g., appendicularians and thaliaceans), leading to a convex RFD shape (like FAST1; Fig. 10f) and reflecting a mature community (sensu Frontier, 1976). State 1 is characterized by a nutrient input linked to the dust event that stimulates larger phytoplankton cells and their herbivorous grazers (copepods) and attracts carnivorous migrants, leading to a more concave

RFD shape (like FAST3, ST5, and TYR; Fig. 10f) that is typical of a disturbed community (sensu Frontier, 1976). State 2 is characterized by the diversification of herbivorous taxa, leading to changes in the RFD towards a convex shape (like ST6; Fig. 10f).

The cluster analysis on the RFDs (Fig. 11a) is in agreement with this succession of the time series (Fig. 10f) by grouping the stations according to the impact level of the wet dust deposition. It separates the initial condition (FAST1) from the most disturbed state (FAST3 and ST6) and identifies a transition phase before (FAST2) and after (TYR and ST6) the peak disturbance. The changing trends in the  $p_1/p_2$  ratios (Fig. 11b) show an interesting development, with a sharp increase until day 5 after the dust deposition and a progressive decrease towards the end of the virtual time series. The linear regression suggests that the community structure will deliver a  $p_1/p_2$  ratio value similar to the initial value of the time series after 22 d. It is interesting to note that this delay corresponds to an average generation time of zooplankton organisms for this region. Cluster analysis on the RFDs and the  $p_1/p_2$  ratio for all stations are shown in Figs. S3 and S4, respectively. Interestingly, in the co-inertia analysis (see Fig. 9), the stations impacted by dust (FAST and TB) are grouped on the left side of the relationship between the  $x_2$  axis of environment and zooplankton. In addition, their succession in this graph is consistent with the sequence observed in the virtual time series of the RFD (with FAST1 as the initial station before dust deposition and TYR and ST6 corresponding to 9 and 12 d after the dust event, respectively) and shows the coupled impact of dust on both environment and zooplankton.

## 5 Conclusions

To our knowledge, PEACETIME was the first study in the Mediterranean Sea that managed to collect zooplankton samples before and soon after natural Saharan dust deposition events and to highlight in situ zooplankton responses in terms of community composition and size structure. Our study suggests that a complete understanding of the mesozooplankton community response to a single massive dust event would require continuous observation over 2 to 3 weeks – from an initial state just before the event to a complete process of zooplankton community succession after the event. To identify such a succession, the RFDs of the zooplankton taxonomic structure appear to be a more practical and sensitive index than observable changes in stock (abundance and biomass) or in metabolic rates, and they should be tested further. In particular, the changes in the  $p_1/p_2$  ratio might characterize the response of the zooplankton community to a pulse of dust (or any massive disturbance) and its resilience capacity after the forcing event.

This approach requires a complete overview of the mesozooplankton size spectrum and community composition

which was achieved in our study by combining data from two net mesh sizes (100 and 200  $\mu\text{m}$ ) and two analytical techniques (FlowCAM and ZOOSCAN). In our study, this strategy also enabled us to show the importance of small forms (<500  $\mu\text{m}$  ESD), both in terms of stocks and fluxes.

*Data availability.* All data from the PEACETIME cruise (<https://doi.org/10.17600/17000300>; Guieu and Desboeufs, 2017) are stored at the LEFE CYBER database (<http://www.obs-vlfr.fr/proof/php/PEACETIME/peacetime.php>, last access: 27 October 2020) and will be made freely available once all of the papers have been submitted to the PEACETIME special issue. In the meantime, data can be obtained upon request from François Carlotti.

*Supplement.* The supplement related to this article is available online at: <https://doi.org/10.5194/bg-17-5417-2020-supplement>.

*Author contributions.* GF, MP, and FC wrote the paper with contributions from PH. GF was responsible for the sample treatment. GF, FC, MP, and PH carried out the data analysis.

*Competing interests.* The authors declare that they have no conflict of interest.

*Special issue statement.* This article is part of the special issue “Atmospheric deposition in the low-nutrient–low-chlorophyll (LNLC) ocean: effects on marine life today and in the future (ACP/BG inter-journal SI)”. It is not associated with a conference.

*Acknowledgements.* This study is a contribution to the PEACETIME project (<http://peacetime-project.org>, last access: 27 October 2020), which is a joint initiative of the MERMEX and ChArMEX components supported by CNRS-INSU, IFREMER, CEA, and Météo-France as part of the MISTRALS program coordinated by INSU. The PEACETIME cruise (<https://doi.org/10.17600/17000300>) was managed by Cécile Guieu (LOV) and Karine Desboeufs (LISA). We thank the PEACETIME project coordinators and scientists, especially Nagib Bhairy, who carried out the zooplankton sampling. Zooplankton analyses were realized on the Microscopy and Imaging platform of MIO, which is partly funded by the European FEDER Fund (project no. 1166-39417). We thank Loïc Guilloux and Lucas Lhomond for initiation sessions to ZOOSCAN and FlowCAM, respectively.

The authors are grateful to Emilio Maranon and María Perez-Lorenzo for the primary productivity data and to Julia Uitz, Céline Dimier and the SAPIGH analytical service at the Institut de la Mer de Villefranche (IMEV) for onboard sampling and HPLC analysis. The authors also wish to thank Cécile Guieu, Elvira Pullido, France Van Wambeke, and Julia Uitz for critical reading and advice on the paper and Michael Paul for correcting the English. We would

also like to acknowledge the two reviewers for their constructive comments and suggestions that stimulated a substantial revision.

Guillermo Feliú was supported by a Becas-Chile PhD scholarship by the National Agency for Research and Development (ANID), Government of Chile.

*Financial support.* This research has been supported by the INSU–CNRS (France; France MISTRALS program) and the ANID (Chile; Becas-Chile PhD scholarship).

*Review statement.* This paper was edited by Cecile Guieu and reviewed by Tamar Guy-Haim and one anonymous referee.

## References

- Alcaraz, M.: Summer zooplankton metabolism and its relations to primary production in the Western Mediterranean, *Oceanol. Acta* SP 9, 185–191, 1988.
- Alcaraz, M., Calbet, A., Estrada, M., Marrasé, C., Saiz, E., and Trepát, I.: Physical control of zooplankton communities in the Catalan Sea, *Prog. Oceanogr.*, 74, 294–312, <https://doi.org/10.1016/j.pocean.2007.04.003>, 2007.
- Alcaraz, M., Saiz, E., and Estrada, M.: Excretion of ammonia by zooplankton and its potential contribution to nitrogen requirements for primary production in the Catalan Sea (NW Mediterranean), *Mar. Biol.*, 119, 69–76, <https://doi.org/10.1007/BF00350108>, 1994.
- Altukhov, D., Siokou, I., Pantazi, M., Stefanova, K., Timofte, F., Gubanov, A., Nikishina, A., and Arashkevich, E.: Intercomparison of five nets used for mesozooplankton sampling, *Mediterr. Mar. Sci.*, 16, 550–561, <https://doi.org/10.12681/mms.1100>, 2015.
- Anderson, M.J., Gorley, R.N., and Clarke, K.R.: PERMANOVA+ for PRIMER: Guide to Software and Statistical Methods, technical report, PRIMER-E, Plymouth, UK, 2008.
- Ayata, S. D., Irisson, J. O., Aubert, A., Berline, L., Dutay, J. C., Mayot, N., Nieblas, A., D'Ortenzio, F., Palmiéri, J., Reygondeau, G., Rossi, V., and Guieu C.: Regionalisation of the Mediterranean basin, a MERMEX synthesis, *Prog. Oceanogr.*, 163, 7–20, <https://doi.org/10.1016/j.pocean.2017.09.016>, 2018.
- Berline, L., Siokou-Frangou, I., Marasović, I., Vidjak, O., Fernández de Puellas, M. L., Mazzocchi, M. G., Assimakopoulou, G., Zervoudaki, S., Fonda-Umani, S., Conversi, A., Garcia-Comas, C., Ibanez, F., Gasparini, S., Stemmann, L., and Gorsky, G.: Intercomparison of six Mediterranean zooplankton time series, *Prog. Oceanogr.*, 97–100, 76–91, <https://doi.org/10.1016/j.pocean.2011.11.011>, 2012.
- Bethoux, J. P., Gentili, B., Morin, P., Nicolas, E., Pierre, C., and Ruiz-Pino, D.: The Mediterranean Sea: A miniature ocean for climatic and environmental studies and a key for the climatic functioning of the North Atlantic, *Prog. Oceanogr.*, 44, 131–146, [https://doi.org/10.1016/S0079-6611\(99\)00023-3](https://doi.org/10.1016/S0079-6611(99)00023-3), 1999.
- Böttger-Schnack, R.: Body length of female *Macrosetella gracilis* (Copepoda: Harpacticoida) from various depth zones in the Red Sea, *Mar. Ecol. Prog. Ser.*, 52, 33–37, 1989.
- Bressac, M., Guieu, C., Doxaran, D., Bourrin, F., Desboeufs, K., Leblond, N., and Ridame, C.: Quantification of the lithogenic carbon pump following a simulated dust-deposition event in large mesocosms, *Biogeosciences*, 11, 1007–1020, <https://doi.org/10.5194/bg-11-1007-2014>, 2014.
- Bressac, M., Wagener, T., Tovar-Sanchez, A., Ridame, C., Albani, S., Fu, F., Desboeufs, K., and Guieu, C.: Residence time of dissolved and particulate trace elements in the surface Mediterranean Sea (Peacetime cruise), in preparation, 2020.
- Calbet, A., Alcaraz, M., Saiz, E., Estrada, M., and Trepát, I.: Planktonic herbivorous food webs in the catalan Sea (NW Mediterranean): temporal variability and comparison of indices of phyto-zooplankton coupling based on state variables and rate processes, *J. Plankton Res.*, 18, 2329–2347, <https://doi.org/10.1093/plankt/18.12.2329>, 1996.
- Champalbert, G.: Characteristics of zooplankton standing stock and communities in the western Mediterranean: relation to hydrology, *Sci. Mar.*, 60, 97–113, 1996.
- Christaki, U., Dolan, J. R., Pelegri, S., and Rassoulzadegan, F.: Consumption of picoplankton-size particles by marine ciliates: Effects of physiological state of the ciliate and particle quality, *Limnol. Oceanogr.*, 43, 458–464, <https://doi.org/10.4319/lo.1998.43.3.0458>, 1998.
- Chust, G., Vogt, M., Benedetti, F., Nakov, T., Villéger, S., Aubert, A., Vallina, S. M., Righetti, D., Not, F., Biard, T., Bittner, L., Benoiston, A. S., Guidi, L., Villarino, E., Gaborit, C., Cornils, A., Buttay, L., Irisson, J. O., Chiarello, M., Vallim, A. L., Blanco-Bercial, L., Basconi, L., and Ayata, S. D.: Mare incognitum: A glimpse into future plankton diversity and ecology research, *Front. Mar. Sci.*, 4, 9, pp., <https://doi.org/10.3389/fmars.2017.00068>, 2017.
- de Boyer Monte gut, C., Madec, G., Fischer, A. S., Lazar, A., and Iudicone, D.: Mixed layer depth over the global ocean: An examination of profile data and a profile-based climatology, *J. Geophys. Res.*, 109, C12003, <https://doi.org/10.1029/2004JC002378>, 2004.
- Deibel, D. and Paffenhöfer, G. A.: Predictability of patches of neritic salps and doliolids (Tunicata, Thaliacea), *J. Plankton Res.*, 31, 1571–1579, <https://doi.org/10.1093/plankt/fbp091>, 2009.
- Desboeufs, K., Doussin, J.-F., Giorio, C., Triquet, S., Fu, F., Garcia-Nieto, D., Dulac, F., Féron, A., Formenti, P., Maisonneuve, F., Riffault, V., Saiz-Lopez, A., Siour, G., Zapf, P., and Guieu, C.: ProcEss studies at the Air-sEa Interface after dust deposition in the Mediterranean sea (PEAcEtIME) cruise: Atmospheric and FAST ACTION overview and illustrative observations, in preparation, 2020.
- Dolan, J. R. and Marrasé, C.: Planktonic ciliate distribution relative to a deep chlorophyll maximum: Catalan Sea, N.W. Mediterranean, June 1993, *Deep Sea Res. Part I Oceanogr. Res. Pap.*, 42, 1965–1987, [https://doi.org/10.1016/0967-0637\(95\)00092-5](https://doi.org/10.1016/0967-0637(95)00092-5), 1995.
- Dolan, J. R., Vidussi, F., and Claustre, H.: Planktonic ciliates in the Mediterranean Sea: Longitudinal trends, *Deep Sea Res. Part I Oceanogr. Res. Pap.*, 46, 2025–2039, [https://doi.org/10.1016/S0967-0637\(99\)00043-6](https://doi.org/10.1016/S0967-0637(99)00043-6), 1999.
- Dolan, J. R., Claustre, H., Carlotti, F., Plounevez, S., and Moutin, T.: Microzooplankton diversity: Relationships of tintinnid ciliates with resources, competitors and predators from the Atlantic Coast of Morocco to the Eastern Mediterranean,

- Deep Sea Res. Part I Oceanogr. Res. Pap., 49, 1217–1232, [https://doi.org/10.1016/S0967-0637\(02\)00021-3](https://doi.org/10.1016/S0967-0637(02)00021-3), 2002.
- Dolédéc, S. and Chessel, D.: Co-inertia analysis: an alternative method for studying species–environment relationships, *Freshwater Biol.*, 31, 277–294, <https://doi.org/10.1111/j.1365-2427.1994.tb01741.x>, 1994.
- Donoso, K., Carlotti, F., Pagano, M., Hunt, B. P. V., Escribano, R., and Berline, L.: Zooplankton community response to the winter 2013 deep convection process in the NW Mediterranean Sea, *J. Geophys. Res.-Oceans*, 122, 2319–2338, <https://doi.org/10.1002/2016JC012176>, 2017.
- Durrieu de Madron, X., Guieu, C., Sempéré, R., Conan, P., Cossa, D., D’Ortenzio, F., Estournel, C., Gazeau, F., Rabouille, C., Stemmann, L., Bonnet, S., Diaz, F., Koubbi, P., Radakovitch, O., Babin, M., Baklouti, M., Bancon-Montigny, C., Belviso, S., Bensoussan, N., Bonsang, B., Bouloubassi, I., Brunet, C., Cadiou, J. F., Carlotti, F., Chami, M., Charmasson, S., Charrière, B., Dachs, J., Doxaran, D., Dutay, J. C., Elbaz-Poulichet, F., Eléaume, M., Eyrolles, F., Fernandez, C., Fowler, S., Francour, P., Gaertner, J. C., Galzin, R., Gasparini, S., Ghiglione, J. F., Gonzalez, J. L., Goyet, C., Guidi, L., Guizien, K., Heimbürger, L. E., Jacquet, S. H. M., Jeffrey, W. H., Joux, F., Le Hir, P., Leblanc, K., Lefèvre, D., Lejeune, C., Lemé, R., Loye-Pilot, M. D., Mallet, M., Méjanelle, L., Mélin, F., Mellon, C., Mérigot, B., Merle, P. L., Mignon, C., Miller, W. L., Mortier, L., Mostajir, B., Mousseau, L., Moutin, T., Para, J., Pérez, T., Petrenko, A., Poggiale, J. C., Prieur, L., Pujo-Pay, M., Pulido-Villena, Raimbault, P., Rees, A. P., Ridame, C., Rontani, J. F., Ruiz Pino, D., Sicre, M. A., Taillandier, V., Tamburini, C., Tanaka, T., Taupier-Letage, I., Tedetti, M., Testor, P., Thébault, H., Thouvenin, B., Touratier, F., Tronczynski, J., Ulses, C., Van Wambeke, F., Vantrepotte, V., Vaz, S., and Verney, R.: Marine ecosystems’ responses to climatic and anthropogenic forcings in the Mediterranean, *Prog. Oceanogr.*, 91, 97–166, <https://doi.org/10.1016/j.pocean.2011.02.003>, 2011.
- Fernández De Puellas, M. L., Pinot, J. M., and Valencia, J.: Seasonal and interannual variability of zooplankton community in waters off Mallorca island (Balearic Sea, Western Mediterranean): 1994–1999, *Oceanol. Acta*, 26, 673–686, <https://doi.org/10.1016/j.oceact.2003.07.001>, 2003.
- Fonda Umani, S. and De Olazábal, A.: Tuscan Northern Tyrrhenian net zooplankton Autumn 1986, *Rapp. Comm. Int. Mer Médit.*, 31, 235, 1988.
- Franchy, G., Ojeda, A., López-Cancio, J., and Hernández-León, S.: Plankton community response to Saharan dust fertilization in subtropical waters off the Canary Islands, *Biogeosciences Discuss.*, 10, 17275–17307, <https://doi.org/10.5194/bgd-10-17275-2013>, 2013.
- Frontier, S.: Utilisation des diagrammes rang–fréquence dans l’analyse des écosystèmes. *J. Rech. Océanogr.*, 1, 35–48, 1976.
- Fu, F., Triquet, S., Tovar-Sánchez, A., Bressac, M., Doussin, J.-F., Giorio, C., Siour, G., and Desboeufs, K.: Characterization of wet deposition and its impact on the marine concentration of trace metals during PEACETIME cruise in the Mediterranean Sea, *Atmos. Chem. Phys. Discuss.*, in preparation, 2020.
- García-Comas, C., Stemmann, L., Ibanez, F., Berline, L., Maz-zocchi, M. G., Gasparini, S., Picheral, M., and Gorsky, G.: Zooplankton long-term changes in the NW Mediterranean Sea: Decadal periodicity forced by winter hydrographic conditions related to large-scale atmospheric changes?, *J. Marine Syst.*, 87, 216–226, <https://doi.org/10.1016/j.jmarsys.2011.04.003>, 2011.
- Gaudy, R., Youssara, F., Diaz, F., and Raimbault, P.: Biomass, metabolism and nutrition of zooplankton in the Gulf of Lions (NW Mediterranean), *Oceanol. Acta*, 26, 357–372, [https://doi.org/10.1016/S0399-1784\(03\)00016-1](https://doi.org/10.1016/S0399-1784(03)00016-1), 2003.
- Gorsky, G., Ohman, M. D., Picheral, M., Gasparini, S., Stemmann, L., Romagnan, J.-B., Cawood, A., Pesant, S., Garcia-Comas, C., and Prejger, F.: Digital zooplankton image analysis using the ZooScan integrated system, *J. Plankton Res.*, 32, 285–303, <https://doi.org/10.1093/plankt/fbp124>, 2010.
- Grosjean, P., Picheral, M., Warembourg, C., and Gorsky, G.: Enumeration, measurement, and identification of net zooplankton samples using the ZOOSCAN digital imaging system, *ICES J. Mar. Sci.*, 61, 518–525, <https://doi.org/10.1016/j.icesjms.2004.03.012>, 2004.
- Guieu, C. and Desboeufs, K.: Data from the PEACETIME cruise, <https://doi.org/10.17600/17000300>, 2017.
- Guieu, C., D’Ortenzio, F., Dulac, F., Taillandier, V., Doglioli, A., Petrenko, A., Barrillon, S., Mallet, M., Nabat, P., and Desboeufs, K.: Process studies at the air–sea interface after atmospheric deposition in the Mediterranean Sea: objectives and strategy of the PEACETIME oceanographic campaign (May–June 2017), *Biogeosciences Discuss.*, <https://doi.org/10.5194/bg-2020-44>, in review, 2020.
- Guieu, C., Ridame, C., Pulido-Villena, E., Bressac, M., Desboeufs, K., and Dulac, F.: Impact of dust deposition on carbon budget: a tentative assessment from a mesocosm approach, *Biogeosciences*, 11, 5621–5635, <https://doi.org/10.5194/bg-11-5621-2014>, 2014.
- Hernández-León, S., Almeida, C., Becognée, P., Yebra, L., and Arístegui, J.: Zooplankton biomass and indices of grazing and metabolism during a late winter bloom in subtropical waters, *Mar. Biol.*, 145, 1191–1200, 2004.
- Hernandez-Leon, S., Fraga, C., and Ikeda, T.: A global estimation of mesozooplankton ammonium excretion in the open ocean, *J. Plankton Res.*, 30, 577–585, <https://doi.org/10.1093/plankt/fbn021>, 2008.
- Herut, B., Rahav, E., Tsagaraki, T. M., Giannakourou, A., Tsiola, A., Psarra, S., Lagaria, A., Papageorgiou, N., Mihalopoulos, N., Theodosi, C. N., Violaki, K., Stathopoulou, E., Scoullou, M., Krom, M. D., Stockdale, A., Shi, Z., Berman-Frank, I., Meador, T. B., Tanaka, T., and Paraskevi, P.: The potential impact of Saharan dust and polluted aerosols on microbial populations in the East Mediterranean Sea, an overview of a mesocosm experimental approach, *Front. Mar. Sci.*, 3, 226, <https://doi.org/10.3389/fmars.2016.00226>, 2016.
- Ikeda, T.: Metabolic rates of epipelagic marine zooplankton as a function of body mass and temperature, *Mar. Biol.*, 85, 1–11, <https://doi.org/10.1007/BF00396409>, 1985.
- Ikeda, T., Torres, J. J., Hernández-León, S., and Geiger, S. P.: Metabolism, in: *ICES Zooplankton Methodology Manual*, edited by: Harris, R., Wiebe, P., Lenz, J., Skjoldal, H.-R., and Huntley, M., Academic Press, London, 455–532, ISBN 0-12-327645-4, 2000.
- Kimor, B. and Wood, E. J. F.: A plankton study in the eastern Mediterranean Sea, *Mar. Biol.*, 29, 321–333, <https://doi.org/10.1007/BF00388852>, 1975.

- Kleppel, G. S.: On the diets of calanoid copepods, *Mar. Ecol. Prog. Ser.*, 99, 183–195, <https://doi.org/10.3354/meps099183>, 1993.
- Kovalev, A., Mazzocchi, M. G., Kideys, A. E., Toklu, B., and Skryabin, V. A.: Seasonal Changes in the Composition and abundance of zooplankton in the seas of the Mediterranean basin, *Turk. J. Zool.*, 27, 205–219, 2003.
- Lehette, P. and Hernández-León, S.: Zooplankton biomass estimation from digitized images: a comparison between subtropical and Antarctic organisms, *Limnol. Oceanogr.-Meth.*, 7, 304–308, <https://doi.org/10.4319/lom.2009.7.304>, 2009.
- Lejeune, C., Chevaldonné, P., Pergent-Martini, C., Boudouresque, C. F., and Pérez, T.: Climate change effects on a miniature ocean: the highly diverse, highly impacted Mediterranean Sea, *Trends Ecol. Evol.*, 25, 250–260, <https://doi.org/10.1016/j.tree.2009.10.009>, 2010.
- Lombard, F., Eloire, D., Gobet, A., Stemann, L., Dolan, J. R., Sciandra, A., and Gorsky, G.: Experimental and modeling evidence of appendicularian-ciliate interactions, *Limnol. Oceanogr.*, 55, 77–90, <https://doi.org/10.4319/lo.2010.55.1.0077>, 2010.
- Makabe, R., Tanimura, A., and Fukuchi, M.: Comparison of mesh size effects on mesozooplankton collection efficiency in the Southern Ocean, *J. Plankton Res.*, 34, 432–436, <https://doi.org/10.1093/plankt/fbs014>, 2012.
- Malanotte-Rizzoli, P., Artale, V., Borzelli-Eusebi, G. L., Brenner, S., Crise, A., Gacic, M., Kress, N., Marullo, S., Ribera D'Alcalà, M., Sofianos, S., Tanhua, T., Theocharis, A., Alvarez, M., Ashkenazy, Y., Bergamasco, A., Cardin, V., Carniel, S., Civitarese, G., D'Ortenzio, F., Font, J., Garcia-Ladona, E., Garcia-Lafuente, J. M., Gogou, A., Gregoire, M., Hainbucher, D., Kontoyannis, H., Kovacevic, V., Kraskapoulou, E., Kroskos, G., Incarbona, A., Mazzocchi, M. G., Orlic, M., Ozsoy, E., Pascual, A., Poulain, P. M., Roether, W., Rubino, A., Schroeder, K., Siokou-Frangou, J., Souvermezoglou, E., Sprovieri, M., Tintoré, J., and Triantafyllou, G.: Physical forcing and physical/biochemical variability of the Mediterranean Sea: A review of unresolved issues and directions for future research, *Ocean Sci.*, 10, 281–322, <https://doi.org/10.5194/os-10-281-2014>, 2014.
- Marañón, E., Holligan, P. M., Varela, M., Mouriño, B., and Bale, A. J.: Basin-scale variability of phytoplankton biomass, production and growth in the Atlantic Ocean, *Deep Sea Res. Part I Oceanogr. Res. Pap.*, 47, 825–857, [https://doi.org/10.1016/S0967-0637\(99\)00087-4](https://doi.org/10.1016/S0967-0637(99)00087-4), 2000.
- Mauchline, J.: The biology of calanoid copepods, *Adv. Mar. Biol.*, 33, 710 pp, 1998.
- Mazzocchi, M. G., Nervegna, D., D'Elia, G., Di Capua, I., Aguzzi, L., and Boldrin, A.: Spring mesozooplankton communities in the epipelagic Ionian Sea in relation to the Eastern Mediterranean Transient, *J. Geophys. Res.*, 108, 8114, <https://doi.org/10.1029/2002JC001640>, 2003.
- Mazzocchi, M. G., Christou, E. D., Capua, I., Di, Fernández de Puelles, M. L., Fonda-Umani, S., Molinero, J. C., Nival, P., and Siokou-Frangou, I.: Temporal variability of Centropages typicus in the Mediterranean Sea over seasonal-to-decadal scales, *Prog. Oceanogr.*, 72, 214–232, <https://doi.org/10.1016/j.pocean.2007.01.004>, 2007.
- Mazzocchi, M. G., Licandro, P., Dubroca, L., Di Capua, I., and Saggiomo, V.: Zooplankton associations in a Mediterranean long-term time-series, *J. Plankton Res.*, 33, 1163–1161, <https://doi.org/10.1093/plankt/fbr017>, 2011.
- Mazzocchi, M. G., Siokou, I., Tirelli, V., Bandelj, V., Fernandez de Puelles, M. L., Ak Örek, Y., de Olazabal, A., Gubanova, A., Kress, N., Protopapa, M., Solidoro, C., Tagliatalata, S., and Terbiyik Kurt, T.: Regional and seasonal characteristics of epipelagic mesozooplankton in the Mediterranean Sea based on an artificial neural network analysis, *J. Marine Syst.*, 135, 64–80, <https://doi.org/10.1016/j.jmarsys.2013.04.009>, 2014.
- Millot, C. and Taupier-Letage, I.: Circulation in the Mediterranean Sea, in: *The Mediterranean Sea, The Handbook of Environmental Chemistry*, edited by: Saliot, A., Springer Berlin/Heidelberg, Germany, 29–66, ISBN 978-3-540-25018-0, 2005.
- Minutoli, R. and Guglielmo, L.: Zooplankton respiratory Electron Transport System (ETS) activity in the Mediterranean Sea: Spatial and diel variability, *Mar. Ecol. Prog. Ser.*, 381, 199–211, <https://doi.org/10.3354/meps07862>, 2009.
- Molinero, J. C., Ibañez, F., Souissi, S., Buecher, E., Dallot, S., and Nival, P.: Climate control on the long-term anomalous changes of zooplankton communities in the North western Mediterranean, *Glob. Change Biol.*, 14, 11–26, <https://doi.org/10.1111/j.1365-2486.2007.01469.x>, 2008.
- Mouillot, D. and Lepretre, A.: Introduction of relative abundance distribution (RAD) indices, estimated from the rank-frequency diagrams (RFD), to assess changes in community diversity, *Environ. Monit. Assess.*, 63, 279–295, <https://doi.org/10.1023/A:1006297211561>, 2000.
- Naito, A., Abe, Y., Matsuno, K., Nishizawa, B., Kanna, N., Sugiyama, S., and Yamaguchi, A.: Surface zooplankton size and taxonomic composition in Bowdoin Fjord, north-western Greenland: A comparison of ZooScan, OPC and microscopic analyses, *Polar Sci.*, 19, 120–129, <https://doi.org/10.1016/j.polar.2019.01.001>, 2019.
- Neuer, S., Torres-Padrón, M. E., Gelado-Caballero, M. D., Rueda, M. J., Hernández-Brito, J. J., Davenport, R., and Wefer, G.: Dust deposition pulses to the eastern subtropical North Atlantic gyre: Does ocean's biogeochemistry respond?, *Global Biogeochem. Cy.*, 18, GB4020, <https://doi.org/10.1029/2004GB002228>, 2004.
- Nival, P., Nival, S., and Thiriou, A.: Influence des conditions hivernales sur les productions phyto-et zooplanctoniques en Méditerranée Nord-Occidentale. V. Biomasse et production zooplanctonique - relations phyto-zooplancton, *Mar. Biol.*, 31, 249–270, <https://doi.org/10.1007/BF00387153>, 1975.
- Nowaczyk, A., Carlotti, F., Thibault-Botha, D., and Pagano, M.: Distribution of epipelagic metazooplankton across the Mediterranean Sea during the summer BOUM cruise, *Biogeosciences*, 8, 2159–2177, <https://doi.org/10.5194/bg-8-2159-2011>, 2011.
- Omori, M. and Ikeda, T.: *Methods in marine zooplankton ecology*, John Wiley, New York, 332pp, 1984.
- Pasternak, A., Arashkevich, E., Reigstad, M., Wassmann, P., and Falk-Petersen, S.: Dividing mesozooplankton into upper and lower size groups: Applications to the grazing impact in the Marginal Ice Zone of the Barents Sea, *Deep Sea Res. Part II Top. Stud. Oceanogr.*, 55, 2245–2256, <https://doi.org/10.1016/j.dsr2.2008.05.002>, 2008.
- Pearre, S.: Feeding by Chaetognatha: Aspects of Inter and Intra Specific predation, *Mar. Ecol. Prog. Ser.*, 7, 33–45, 1982.
- Pérez, M., Dolan, J., and Fukai, E.: Planktonic oligotrich ciliates in the NW Mediterranean: growth rates and consumption by copepods, *Mar. Ecol. Prog. Ser.*, 155, 89–101, 1997.



- Pinca, S. and Dallot, S.: Zooplankton community structure in the Western Mediterranean sea related to mesoscale hydrodynamics, *Hydrobiologia*, 356, 127–142, <https://doi.org/10.1023/A:1003151609682>, 1997.
- Pitta, P., Giannakourou, A., and Christaki, U.: Planktonic ciliates in the oligotrophic Mediterranean Sea: longitudinal trends of standing stocks, distributions and analysis of food vacuole contents, *Aquat. Microb. Ecol.*, 24, 297–311, 2001.
- Pitta, P., Kanakidou, M., Mihalopoulos, N., Christodoulaki, S., Dimitriou, P. D., Frangoulis, C., Giannakourou, A., Kagiorgi, M., Lagaria, A., Nikolaou, P., Papageorgiou, N., Psarra, S., Santi, I., Tsapakis, M., Tsiola, A., Violaki, K., and Petihakis, G.: Saharan Dust Deposition Effects on the Microbial Food Web in the Eastern Mediterranean: A Study Based on a Mesocosm Experiment, *Front. Mar. Sci.*, 4, 124–142, <https://doi.org/10.3389/fmars.2017.00117>, 2017.
- Purcell, J. E., Sturdevant, M. V., and Galt, C. P.: A review of appendicularians as prey of invertebrate and fish predators, in: Response of marine ecosystems to global change: ecological impact of appendicularians, edited by: Gorsky, G., Youngbluth, M. J., and Deibel, D., Éditions Scientifiques, Paris, 359–435, ISBN 2-8470-302-9-8, 2005.
- Ras, J., Claustre, H., and Uitz, J.: Spatial variability of phytoplankton pigment distributions in the Subtropical South Pacific Ocean: comparison between in situ and predicted data, *Biogeosciences*, 5, 353–369, <https://doi.org/10.5194/bg-5-353-2008>, 2008.
- Riandey, V., Champalbert, G., Carlotti, F., Taupier-Letage, I., and Thibault-Botha, D.: Zooplankton distribution related to the hydrodynamic features in the Algerian Basin (western Mediterranean Sea) in summer 1997, *Deep Sea Res. Part I Oceanogr. Res. Pap.*, 52, 2029–2048, <https://doi.org/10.1016/j.dsr.2005.06.004>, 2005.
- Riccardi, N.: Selectivity of plankton nets over mesozooplankton taxa: Implications for abundance, biomass and diversity estimation, *J. Limnol.*, 69, 287–296, <https://doi.org/10.3274/JL10-69-2-10>, 2010.
- Ridame, C., Dekaezemaeker, J., Guieu, C., Bonnet, S., L'Helguen, S., and Malien, F.: Contrasted Saharan dust events in LNLC environments: impact on nutrient dynamics and primary production, *Biogeosciences*, 11, 4783–4800, <https://doi.org/10.5194/bg-11-4783-2014>, 2014.
- Saiz, E. and Alcaraz, M.: Pigment gut contents of copepods and deep phytoplankton maximum in the Western Mediterranean, *J. Plankton Res.*, 12, 665–672, 1990.
- Saiz, E., Sabatés, A., and Gili, J-M.: The Zooplankton, in: The Mediterranean Sea: Its history and present challenges, edited by Goffredo, S. and Dubinsky, Z., Springer Science, Dordrecht, the Netherlands, 183–212, ISBN 978-94-007-6703-4, 2014.
- Saeedghalati, M., Farahpour, F., Budeus, B., Lange, A., Westendorf, A. M., Seifert, M., Küppers, R. and Hoffmann, D.: Quantitative Comparison of Abundance Structures of Generalized Communities: From B-Cell Receptor Repertoires to Microbiomes, *PLOS Comput. Biol.*, 13, 29 pp., <https://doi.org/10.1371/journal.pcbi.1005362>, 2017.
- Sazzini, M., Sarno, S and Luiselli, D.: The Mediterranean human population: An anthropological genetics perspective, in: The Mediterranean Sea: Its history and present challenges, edited by Goffredo, S. and Dubinsky, Z., Springer Science, Dordrecht, the Netherlands, 29–48, ISBN 978-94-007-6703-4, 2014.
- Sherr, E. and Sherr, B.: Heterotrophic dinoflagellates: a significant component of microzooplankton biomass and major grazers of diatoms in the sea, *Mar. Ecol. Prog. Ser.*, 352, 187–197, <https://doi.org/10.3354/meps07161>, 2007.
- Sieracki, C., Sieracki, M., and Yentsch, C.: An imaging-in-flow system for automated analysis of marine microplankton, *Mar. Ecol. Prog. Ser.*, 168, 285–296, <https://doi.org/10.3354/meps168285>, 1998.
- Siokou-Frangou, I.: Epipelagic mesozooplankton and copepod grazing along an east-west transect in the Mediterranean Sea, *Rapp. Comm. Int. Mer Médit.*, 37, 439, 2004.
- Siokou-Frangou, I., Christaki, U., Mazzocchi, M. G., Montresor, M., Ribera d'Alcalá, M., Vaqué, D., and Zingone, A.: Plankton in the open Mediterranean Sea: a review, *Biogeosciences*, 7, 1543–1586, <https://doi.org/10.5194/bg-7-1543-2010>, 2010.
- Siokou, I., Zervoudaki, S., Velaoras, D., Theocharis, A., Christou, E. D., Protopapa, M., and Pantazi, M.: Mesozooplankton vertical patterns along an east-west transect in the oligotrophic Mediterranean sea during early summer, *Deep Sea Res. Part II Top. Stud. Oceanogr.*, 164, 170–189, <https://doi.org/10.1016/j.dsr2.2019.02.006>, 2019.
- Skliris, R.: Past, present and future patterns of the thermohaline circulation and characteristic water masses of the Mediterranean Sea, in: The Mediterranean Sea: Its history and present challenges, edited by: Goffredo, S. and Dubinsky, Z., Springer Science, Dordrecht, the Netherlands, 29–48, ISBN 978-94-007-6703-4, 2014.
- Suthers, I., Taggart, C., Rissik, D., and Baird, M.: Day and night ichthyoplankton assemblages and zooplankton biomass size spectrum in a deep ocean island wake, *Mar. Ecol. Prog. Ser.*, 322, 225–238, <https://doi.org/10.3354/meps322225>, 2006.
- Ternon, E., Guieu, C., Ridame, C., L'Helguen, S., and Catala, P.: Longitudinal variability of the biogeochemical role of Mediterranean aerosols in the Mediterranean Sea, *Biogeosciences*, 8, 1067–1080, <https://doi.org/10.5194/bg-8-1067-2011>, 2011.
- Thingstad, T. F., Krom, M. D., Mantoura, R. F. C., Flaten, G. A. F., Groom, S., Herut, B., Kress, N., Law, C. S., Pasternak, A., Pitta, A., Psarra, S., Rassoulzadegan, F., Tanaka, T., Tselepidis, A., Wassman, P., Woodeard, E. M. S., Wexels Riser, C., Zodiatis, G., and Zohary, T.: Nature of phosphorus limitation in the ultraoligotrophic Eastern Mediterranean, *Science*, 309, 1068–1071, 2005.
- Thioulouse, J., Chessel, D., Dolédec, S., and Olivier, J. M.: ADE-4: A multivariate analysis and graphical display software, *Stat. Comput.*, 7, 75–83, <https://doi.org/10.1023/A:1018513530268>, 1997.
- Tovar-Sánchez, A., Rodríguez-Romero, A., Engel, A., Zäncker, B., Fu, F., Marañón, E., Pérez-Lorenzo, M., Bressac, M., Wagener, T., Triquet, S., Siour, G., Desboeufs, K., and Guieu, C.: Characterizing the surface microlayer in the Mediterranean Sea: trace metal concentrations and microbial plankton abundance, *Biogeosciences*, 17, 2349–2364, <https://doi.org/10.5194/bg-17-2349-2020>, 2020.
- Tsagaraki, T. M., Herut, B., Rahav, E., Berman Frank, I. R., Tsiola, A., Tsapakis, M., Giannakourou, A., Gogou, A., Panagiotopoulos, C., Violaki, K., Psarra, S., Lagaria, A., Christou, E. D., Papageorgiou, N., Zervoudaki, S., de Puellas, M. L. F., Nikoloudakis, N., Meador, T. B., Tanaka, T., Pedrotti, M. L., Krom, M. D., and Pitta, P.: Atmospheric deposition effects on plankton communities in the Eastern Mediterranean: A

- mesocosm experimental approach, *Front. Mar. Sci.*, 4, 210, <https://doi.org/10.3389/fmars.2017.00210>, 2017.
- Turner, J. T.: The importance of small planktonic copepods and their roles in pelagic marine food webs, *Zool. Stud.*, 43, 255–266, 2004.
- Van Wambeke F., Taillandier V., Desboeufs K., Pulido-Villena E., Dinasquet J., Engel A., Maranon E., and Guieu C.: Influence of atmospheric deposition on biogeochemical cycles in an oligotrophic ocean system, in preparation, 2020.
- Wagener, T., Guieu, C., and Leblond, N.: Effects of dust deposition on iron cycle in the surface Mediterranean Sea: results from a mesocosm seeding experiment, *Biogeosciences*, 7, 3769–3781, <https://doi.org/10.5194/bg-7-3769-2010>, 2010.
- Yang, E. J., Ju, S. J., and Choi, J. K.: Feeding activity of the copepod *Acartia hongii* on phytoplankton and micro-zooplankton in Gyeonggi Bay, Yellow Sea, *Estuar. Coast. Shelf S.*, 88, 292–301, <https://doi.org/10.1016/j.ecss.2010.04.005>, 2010.
- Zervoudaki, S., Christou, E. D., Nielsen, T. G., Siokou-Frangou, I., Assimakopoulou, G., Giannakourou, A., Maar, M., Pagou, K., Krasakopoulou, E., Christaki, U., and Moraitou-Apostolopoulou, M.: The importance of small-sized copepods in a frontal area of the Aegean Sea, *J. Plankton Res.*, 4, 317–338, [doi.org/10.1093/plankt/fbm018](https://doi.org/10.1093/plankt/fbm018), 2007.
- Zhou, M., Carlotti, F., and Zhu, Y.: A size-spectrum zooplankton closure model for ecosystem modelling, *J. Plankton Res.*, 32, 1147–1165, <https://doi.org/10.1093/plankt/fbq054>, 2010.