



**HAL**  
open science

## **HPV cervical infections and serological status in vaccinated and unvaccinated women**

Carmen Lia Murall, Bastien Reyné, Christian Selinger, Claire Bernat, Vanina Boué, Sophie Grasset, Soraya Groc, Massilva Rahmoun, Noemi Bender, Marine Bonneau, et al.

► **To cite this version:**

Carmen Lia Murall, Bastien Reyné, Christian Selinger, Claire Bernat, Vanina Boué, et al.. HPV cervical infections and serological status in vaccinated and unvaccinated women. *Vaccine*, 2020, 38 (51), pp.8167-8174. 10.1016/j.vaccine.2020.10.078 . hal-03001077v2

**HAL Id: hal-03001077**

**<https://hal.science/hal-03001077v2>**

Submitted on 28 Mar 2021

**HAL** is a multi-disciplinary open access archive for the deposit and dissemination of scientific research documents, whether they are published or not. The documents may come from teaching and research institutions in France or abroad, or from public or private research centers.

L'archive ouverte pluridisciplinaire **HAL**, est destinée au dépôt et à la diffusion de documents scientifiques de niveau recherche, publiés ou non, émanant des établissements d'enseignement et de recherche français ou étrangers, des laboratoires publics ou privés.

# HPV cervical infections and serological status in vaccinated and unvaccinated women

Carmen Lia Murall<sup>1,2</sup>, Bastien Reyné<sup>1</sup>, Christian Selinger<sup>1</sup>, Claire Bernat<sup>1</sup>, Vanina Boué<sup>1</sup>, Sophie Grasset<sup>1</sup>, Soraya Groc<sup>1</sup>, Massilva Rahmoun<sup>1</sup>, Noemi Bender<sup>3</sup>, Marine Bonneau<sup>4</sup>, Vincent Foulongne<sup>5</sup>, Christelle Graf<sup>4</sup>, Eric Picot<sup>6</sup>, Marie-Christine Picot<sup>7</sup>, Vincent Tributou<sup>6</sup>, Tim Waterboer<sup>3</sup>, Ignacio G Bravo<sup>1</sup>, Jacques Reynes<sup>8</sup>, Michel Segondy<sup>5</sup>, Nathalie Boule<sup>5</sup>, Samuel Alizon<sup>1,\*</sup>

<sup>1</sup> Laboratoire MIVEGEC (UMR CNRS 5290, IRD 224, UM), Montpellier, France

<sup>2</sup> Current address: Department of Biological Sciences, Université de Montréal, Montréal, Canada

<sup>3</sup> German Cancer Research Center (DKFZ), Infections and Cancer Epidemiology, Im Neuenheimer Feld 280, Heidelberg, Germany

<sup>4</sup> Department of Obstetrics and Gynaecology, Centre Hospitalier Universitaire de Montpellier, Montpellier, France

<sup>5</sup> Department of Biology & Pathology, Centre Hospitalier Universitaire de Montpellier, Montpellier, France

<sup>6</sup> Center for Free Information, Screening and Diagnosis (CeGIDD), Centre Hospitalier Universitaire de Montpellier, Montpellier, France

<sup>7</sup> Department of Medical Information (DIM), Centre Hospitalier Universitaire de Montpellier, Montpellier, France

<sup>8</sup> Department of Infectious and Tropical Diseases, Centre Hospitalier Universitaire de Montpellier, Montpellier, France

\* Corresponding author: samuel.alizon@cnrs.fr

## Abstract

Understanding genital infections by Human papillomaviruses (HPVs) remains a major public health issue, especially in countries where vaccine uptake is low. We investigate HPV prevalence and antibody status in 150 women (ages 18 to 25) in Montpellier, France. At inclusion and one month later, cervical swabs, blood samples and questionnaires (for demographics and behavioural variables) were collected. Oncogenic, non-vaccine genotypes HPV51, HPV66, HPV53, and HPV52 were the most frequently detected viral genotypes overall. Vaccination status, which was well-balanced in the cohort, showed the strongest (protective) effect against HPV infections, with an associated odds ratio for alphapapillomavirus detection of 0.45 (95% confidence interval: [0.22;0.58]). We also identified significant effects of age, number of partners, body mass index, and contraception status on HPV detection and on coinfections. Type-specific IgG serological status was also largely explained by the vaccination status. IgM seropositivity was best explained by HPV detection at inclusion only. Finally, we identify a strong significant effect of vaccination on genotype prevalence, with a striking under-representation of HPV51 in vaccinated women. Variations in HPV prevalence correlate with key demographic and behavioural variables. The cross-protective effect of the vaccine against HPV51 merits further investigation.

**Keywords:** HPV; vaccination; serology; cross-protection; acute infections; genital infections

## Introduction

Human papillomaviruses (HPVs) are the most oncogenic viruses known to infect humans [1]. This has motivated the development of safe and effective vaccines that are currently being used world-wide and target the most oncogenic genotypes (mainly HPV16 and HPV18), as well as genotypes that cause anogenital warts (HPV6 and HPV11) [2, 3]. Unfortunately, the public health burden imposed by HPVs is likely to remain high in the foreseeable future. First, in many countries, vaccine coverage is still very low (e.g. less than 25% in France in 2018 [4]). Second, as with any public health interventions against infectious diseases, it can be jeopardised by microbial diversity. In the case of HPVs, it has been argued that certain genotypes could indirectly benefit from the niches vacated following vaccination [5, 6].

Most infections by HPVs occur in young adults. However, since more than 90% of them clear within three years without having caused symptoms, they are generally considered to be benign [7, 8]. In general, we know more about the chronic and cancer stages of HPV infections than about the acute stages [9], even though the latter have implications for treating and preventing HPV-associated diseases [10]. Overall, continued surveillance of HPV genotypes and a general understanding of their natural history remain timely issues.

Within the PAPCLEAR clinical study [11], we performed an analysis of HPV infection and antibody status in women aged 18 to 25 in Montpellier, France ( $N = 149$ ). We analysed the studied population along with three key biological variables: HPV status by PCR-based detection and genotyping at inclusion and one month later, screening for cervical lesions at inclusion, and serological status of circulating anti-HPV antibodies at inclusion. Having more than a single time point allows us to distinguish infections from transient HPV carriage. That the two visits were spread one month apart is also more informative than six or twelve months intervals, which might miss short infections [7, 12].

We analysed these data in light of vaccination status and other demographic and behavioural variables. Focusing on the effect of HPV vaccination status, we show that differential prevalence of HPVs can be detected and that changes in genotype composition are consistent with results obtained in other countries.

## Results

### Study population

Table 1 highlights key demographic characteristics of the population studied. Vaccination status is well balanced in the cohort, with 73 women (49%) being vaccinated. Among these,  $n = 63$  (86%) received three doses, mostly with the tetravalent Gardasil vaccine ( $n = 62$ , 85%) at a median age of 15 years old. This vaccine coverage is high compared to the French national average in the corresponding cohorts, with estimates of 33.3%, 24.7%, and 5.4% for 14 years old girls born in 1993, 1994, and 1995, respectively [13]. However, most participants were students (86%) and had a high education level (40% have a BSc or a MSc), which has been reported to be associated with vaccine uptake [14].

The number of new sexual partners reported over the last twelve months was high compared to other studies [15]. However, this is consistent with the longitudinal cohort inclusion criteria that participants should report at least one new sexual partner over the last year [11]. Smoking status was in line with the national average, which is 35.3% in women between 18 and 25 years [16] and so was the contraception

method used, with twice as many hormonal than non-hormonal contraception users [17]. Finally, the median age at sexual debut was slightly lower than the national average, which is between 17 and 18 years [18]. The only factor that differed slightly between the vaccinated and unvaccinated populations, although non-significantly after a Bonferroni correction, was age at menarchy, which was slightly lower in the vaccinated group.

In the following, all variables listed in Table 1 are used as cofactors in the statistical tests but we only report significant effects in the main text (detailed analyses are shown in Appendix).

## Cytology

Women were screened for cervical lesions at the first visit using liquid cytology (see the Methods). In the analysis, following national recommendations, Atypical Squamous Cells of Undetermined Significance (ASCUS) were re-qualified as ‘normal’ if the sample was found to be HPV negative, and as Low-grade Squamous Intraepithelial Lesion (LSIL) if HPV positive. Twelve women (8.1%) were diagnosed with LSIL, which is consistent with French data [19], and none were found to have higher grade lesions.

The only factor associated with an increased risk of detection of a LSIL was the reported number of partners over the last twelve months (OR=1.35, 95% CI [1.02;1.81]). However, this effect could be related

Table 1: **Characteristics of the  $n = 149$  women included in the study stratified by vaccine status.** For quantitative variables, we show the median and the 0.25 and 0.75 quantiles. One participant did not disclose her age at sexual debut. The  $p$ -value corresponds to differences between both groups: for continuous variables, a Wilcoxon-Mann-Whitney was used; for categorical variables we used Fisher’s exact test.  $p$ -values were adjusted using the Bonferroni method for multiple testing comparisons.

Variable		All	Vaccinated $n = 73$ (49%)	unvaccinated $n = 76$ (51%)	$p$ -value
Age (years)		21.7 [20.1, 23.5]	22.0 [20.2, 23.4]	21.3 [19.8, 23.5]	1.00
Number of partners over the last 12 months		3 [2, 5]	2 [2, 5]	3 [2, 6]	1.00
Age at sexual debut		16.0 [15.0, 17.0]	16.0 [15.0, 17.0]	17.0 [15.0, 17.2]	1.00
Age at menarchy (years)		13.0 [12.0, 14.0]	12.0 [12.0, 13.2]	13.0 [12.0, 14.0]	0.27
Body Mass Index (BMI)		21.2 [19.8, 23.5]	21.9 [19.8, 24.5]	21.0 [19.8, 22.8]	0.93
Smoking	No	$n = 95$ (64%)	$n = 48$ (66%)	$n = 47$ (62%)	1.00
	Yes	$n = 54$ (36%)	$n = 25$ (34%)	$n = 29$ (38%)	
Recent chlamydia infection	No	$n = 142$ (95%)	$n = 70$ (96%)	$n = 72$ (95%)	1.00
	Yes	$n = 7$ (5%)	$n = 3$ (4%)	$n = 4$ (5%)	
Use of a contraception method	Hormonal	$n = 90$ (60%)	$n = 42$ (58%)	$n = 48$ (63%)	1.00
	Non-hormonal	$n = 44$ (30%)	$n = 25$ (34%)	$n = 19$ (25%)	
	None	$n = 15$ (10%)	$n = 6$ (8%)	$n = 9$ (12%)	

to our requalification of HPV positive-ASCUS as LSIL, since, as we will see, HPV detection is associated with this variable. Eight of the twelve women originally diagnosed with ASCUS were not vaccinated, but this effect was not significant (Supplementary Table S2).

### **Prevalence and genotypes of HPVs**

66% of the women were positive for alphapapillomavirus detection using the DEIA test in at least one of their two visits, and 47% were positive at the two visits one month apart (Table 2). This is high compared with estimates in many other countries (e.g. 24% for women less than 25 years old in [20]). However, since one of the inclusion criteria of the study was to report a new sexual partner over the last twelve months, this likely selects for a more sexually active and thus more exposed population. Vaccination status had the most significant effect on HPV detection with a strong protective effect, with an odds ratio (OR) of 0.45 and 95% confidence interval (CI) of [0.22;0.89]. The reported number of partners over the last twelve months and the participant's age at inclusion were also associated with increased HPV detection with OR of 1.23 (95% CI [1.08;1.44]) and 1.22 (95% CI [1.02;1.47]) respectively. Counter-intuitively, participants who reported no use of contraception presented a lower odds ratio for HPV detection, although their number of new sexual partners over the last twelve months was not significantly different from that of the other participants (p-value of 0.89).

**Table 2: Factors associated with HPV infection.** The first analysis is based on the results from the DEIA test for alphapapillomaviruses. The second analysis is based on the LiPA25 typing HPV test. The third analysis is also based on the LiPA25 results but focuses on coinfections. Overall,  $n = 144$  women were included with test results at the two visits (four women were lost to follow-up after inclusion and one refused to disclose her age at sexual debut). We use ordinal logistic regression or logistic regression, depending on the number of levels of the response for the analysis. We only show here variables that are significant (in bold font) for at least one of the analyses.

	DEIA				LiPA 25		Coinfections		
	No HPV detected	Single HPV detection (at V1 or V2)	Consecutive HPV detection	OR [95% CI]	No sustained infection	Sustained infection	No sustained coinfection	Has sustained coinfection	OR [95% CI]
	$n = 48$	$n = 28$	$n = 68$		$n = 80$	$n = 64$	$n = 126$	$n = 18$	
<b>Age (in years)</b>	Mean (sd)	22.0 (2.1)	22.0 (2.1)	<b>1.22</b> [1.02 ; 1.47]	21.6 (2.0)	22.0 (2.1)	21.8 (2.1)	21.5 (2.0)	0.92 [0.67 ; 1.23]
<b>Nb. of partners</b>	Mean (sd)	2.9 (2.2)	3.2 (2.1)	<b>1.23</b> [1.08 ; 1.44]	3.1 (2.3)	5.1 (3.9)	3.6 (3.1)	6.6 (3.4)	<b>1.30</b> [1.10 ; 1.56]
<b>BMI</b>	Mean (sd)	22.5 (3.2)	23.3 (4.7)	0.92 [0.83 ; 1.01]	22.7 (3.7)	21.6 (3.0)	22.4 (3.6)	20.8 (1.8)	<b>0.78</b> [0.58 ; 0.98]
<b>Contraception</b>	Hormonal	27 (56%)	17 (61%)	1.00 [Ref.]	46 (58%)	43 (67%)	76 (60%)	13 (72%)	1.00 [Ref.]
	Non hormonal	15 (31%)	7 (25%)	0.71 [0.32 ; 1.53]	24 (30%)	17 (27%)	37 (29%)	4 (22%)	0.29 [0.04 ; 1.36]
	<b>None</b>	6 (13%)	4 (14%)	<b>0.30</b> [0.09 ; 0.93]	10 (12%)	4 (6%)	13 (10%)	1 (6%)	0.52 [0.03 ; 3.52]
<b>Vaccinated</b>	No	17 (35%)	15 (54%)	1.00 [Ref.]	34 (43%)	40 (63%)	59 (47%)	15 (83%)	1.00 [Ref.]
	<b>Yes</b>	31 (65%)	13 (46%)	<b>0.45</b> [0.22 ; 0.89]	46 (57%)	24 (37%)	67 (53%)	3 (17%)	<b>0.18</b> [0.03 ; 0.65]

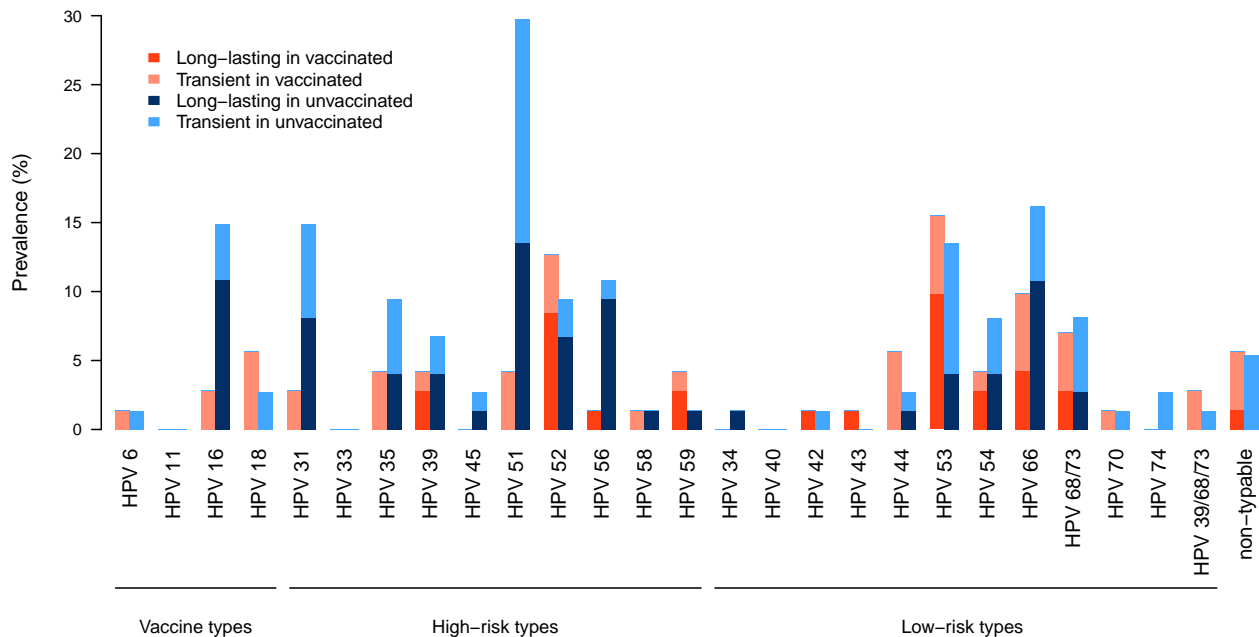


Figure 1: **HPV genotype relative prevalence at the two visits according to vaccination status.** Samples that were DEIA-positive but LiPA25-negative are indicated as non-typable. We also highlight differences between genotypes that were present at both visits (dark color) or at a single visit (light color). HPVs here classified as ‘high-risk’ belong into groups 1 and 2A in the IARC carcinogenicity scheme [21].

The most frequent genotypes in the study population were HPV51, HPV53, and HPV66 (Figure 1). Except for the conspicuously lower prevalence of HPV16, this is consistent with the most prevalent types in France in normal cytologies being HPV16, HPV51, HPV54, and HPV53, although across all ages [20].

Our testing scheme also allows to assess whether the same HPV is present in the two visits (at V1 and V2), which we refer to as ‘sustained’ infections, as opposed to ‘transient’, i.e. detected only once. As shown in Table 2, sustained infections were found in 64 women (that is 44% of the study population). This means that for most of the women who were positive twice for DEIA (94%), the repeated infection was a sustained infection. Note that for HPV18, all the infections detected were transient, whereas for HPV56 most infections were sustained. Reporting a higher number of partners over the last twelve months was associated with increased probability (OR=1.22, 95% CI [1.06;1.43]) of having a sustained infection. We also found a significant effect of Body Mass Index (BMI) towards lower probability of presenting a sustained infection (OR=0.87, 95% CI [0.76;0.98]). The effect of vaccination on presenting a sustained infection was only borderline significant with a 95% confidence interval of [0.23;1.04] for the odds ratio. However, when performing the same analysis only with oncogenic HPVs, the odds ratio for presenting a sustained infection in vaccinated women becomes 0.33 (95% CI [0.16;0.64]) (Supplementary Table S5). In this case, the odds ratio associated with the number of partners remains significant, but not the BMI effect.

Using HPV genotype information, we analysed coinfections, which we define as the detection of the same two (or more) HPV genotypes at the two visits spread one month apart. The prevalence of coinfections among all participants was 12.3%. The number of partners was positively associated with coinfection

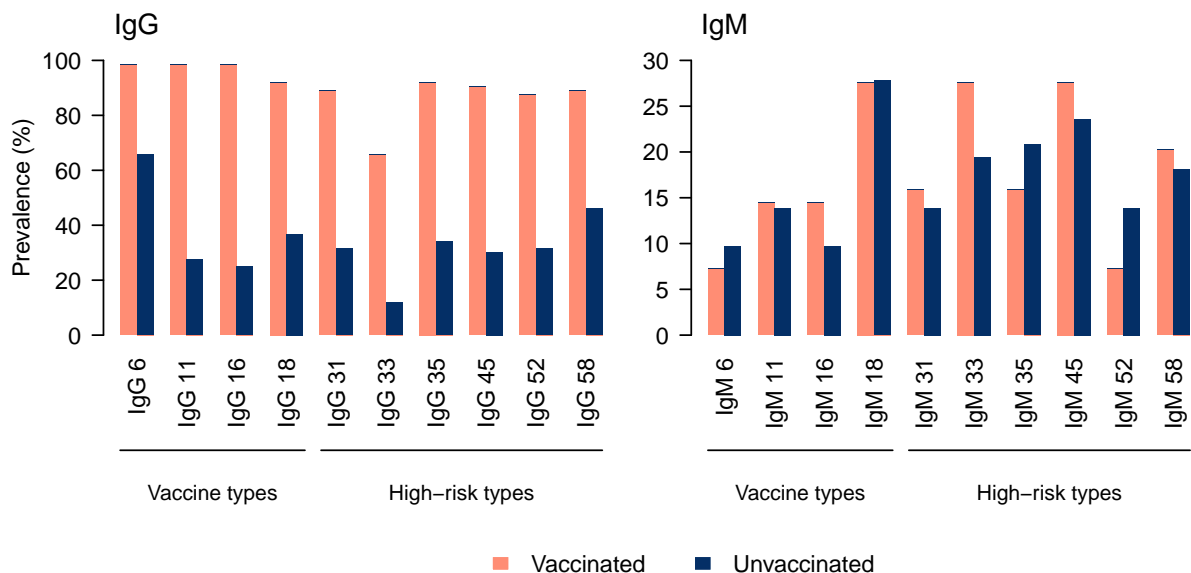


Figure 2: **Type-specific HPV seroprevalence at inclusion.** The panels show the IgG (left) and IgM (right) for vaccinated (red) and unvaccinated (blue) participants. Figures refer to the corresponding HPV, as in ‘IgG 6’ for HPV6. The antibodies detected target the L1 virus protein.

tions (OR=1.30, 95% CI [1.10;1.58]), while the BMI (OR=0.78, 95% CI [0.58;0.98]) and vaccination status (OR=0.18, 95% CI [0.03;0.65]) were negatively associated with coinfections (Table 2). This pattern is consistent with our results on HPV detection and sustained infections. The link with the number of partners is consistent with earlier results [15]. Note that contrary to single infections, the effect of vaccination is strongly significant without restricting the analysis to oncogenic HPVs.

### Type-specific serological status

We estimated IgM and IgG serological status specific for ten different HPVs at inclusion. As expected, IgG seropositivity was very strongly associated with vaccination status (Figure 2 and Table S8). This was true for the vaccine types but also for six other oncogenic HPVs (although to a lower extent for HPV33).

Some vaccinated participants were seronegative for the vaccine types. More precisely: one vaccinated woman presented no IgG against HPV16 and HPV18, but she only received one single dose of the vaccine at age 19; five women with a complete Gardasil vaccination schedule were seronegative for HPV18; and one woman vaccinated with Cervarix presented no immunity against HPV6 and HPV11 (which is expected given that these two types are not targeted by this vaccine). These results are consistent with the literature, especially with the lower antibody titers against HPV18 compared to those against HPV16.

To further analyse the results, we compared participants depending on the number of HPVs for which they were seropositive. For the whole population, vaccination was the only significant effect (Table S8). Focusing on unvaccinated participants, we found that participants who reported not using any contraception method were seropositive for a lower number of HPVs (Supplementary Table S9). This was consistent with these same participants having a lower risk of HPV detection (Table 2).



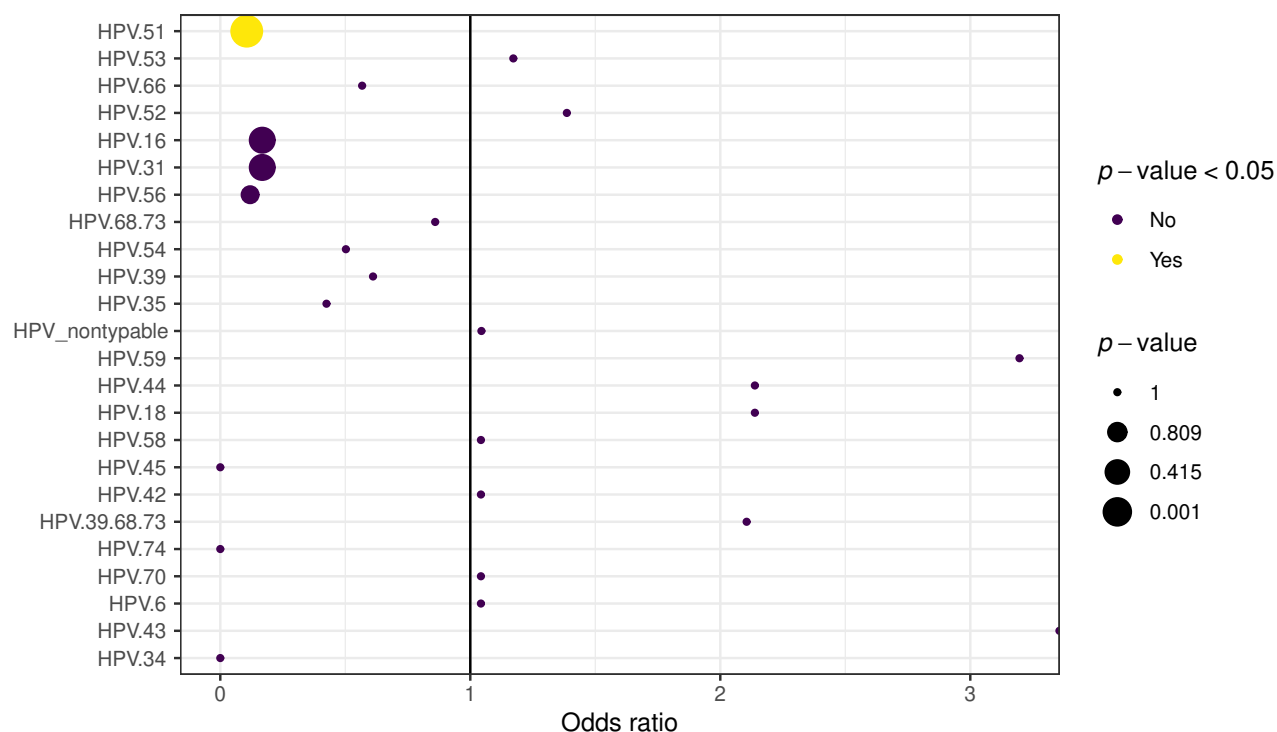


Figure 3: **How vaccination affects the risk of detecting specific HPV genotypes.** If  $OR=1$ , the HPV genotype is equally prevalent in vaccinated and unvaccinated women. If  $OR<1$ , the genotype is less prevalent in vaccinated women. Genotypes are ordered from the most often prevalent at the two visits (HPV51, on top) to the least prevalent. The size of the dot indicates the magnitude of the p-value. Significant p-values after the Bonferroni correction are in yellow.

For IgMs, the main factor associated with being seropositive to multiple types was HPV detection at the first visit and not at the second visit one month later (Table S10). Vaccination status did not affect IgM seroprevalence, which is consistent with earlier studies [22].

### Vaccination and HPV prevalence

We found that certain HPVs were disproportionately less often detected in vaccinated women. This is the case, as expected, for vaccine-genotypes such as HPV16 ( $OR = 0.17$ , although this difference was not significant after the Bonferroni correction on testing for 25 genotypes,  $p\text{-value} = 0.415$ ). We also found a similar protective effect against HPV31. Unexpectedly, the protective effect was most significant for HPV51 ( $OR=0.11$ ,  $p\text{-value}=0.001$ ). The result remained significant even when we ignored transient infections and restricted the data to sustained infections. Although this result was unexpected (HPV51 is not closely related genetically to any of the vaccine types), it echoes an earlier result found on the large international PATRICIA cohort study [23].

To rule out potential issues associated with the typing test, we performed an additional PCR analysis specific for HPV51 on all the 149 inclusion visits (V1) using another protocol [24] targeting the *E7* gene instead of the *L1* gene targeted by the DEIA and LiPA<sub>25</sub> assays [25]. We confirmed that vaccination status was associated with a lower prevalence of HPV51, with an odds ratio of 0.31 (95% CI [0.09,0.9],  $p\text{-value} = 0.023$  with Fisher’s exact test).

## Discussion

HPV vaccination ignited a debate regarding the risk of so-called ‘type replacement’ [5, 26]. Indeed, since the vaccines target a limited number of genotypes, it is theoretically possible that non-vaccine genotypes may rise in prevalence occupying the niche vacated by genotypes targeted by the vaccine, either directly or indirectly due to cross-protective effects. Though technically a challenge [27, 28], it is important in the post-vaccination era that studies continue to track genotype specific prevalences [29], especially given that current vaccination programs do not cover all oncogenic HPV genotypes.

One of the difficulties in analysing the consequences of vaccination is that in most of the literature participant follow-up visits tend to be six months apart, leaving open the possibility to miss short HPV infections [7]. Here, we detected and genotyped HPVs during two visits spread one month apart. This increase in sampling density allowed us to make sure that the HPV presence was not transient, while minimising the non-detection of true, short infections. We also combined broad HPV detection and specific genotyping of 25 HPVs with the multiplex quantification of antibodies specific to ten HPVs. Unfortunately, the most prevalent HPV genotypes that we found were not present in the multiplex serological assay.

We found that broad detection of alphapapillomaviruses positively correlated with vaccination status, as well as with other expected factors, such as age or number of partners [30, 31]. HPV genotyping allowed us to refine the identification of the positive correlation with number of partners, while also revealing a negative correlation between body mass index (BMI) and the presence of HPV sustained infections. BMI has previously been reported to be associated with HPV infections, with most studies reporting either non-significant [32] or negative associations [33, 34]. Comparing different subpopulations based on key variables using Mann–Whitney (non-parametric) tests, we found no BMI difference depending on vaccination (p-value = 0.12), contraception (p-value = 0.53), and smoking (p-value = 0.48) statuses. BMI was nevertheless positively correlated with age (see Figure S1), but both factors present opposite odds ratios for HPV detection. The decreased HPV detection risk in women with higher BMI is consistent with studies that show these individuals display stronger pro-inflammatory reactions, with positive correlations between BMI and immune cell counts [35]. A meta-analysis also showed a negative association between BMI and risk of death from acute respiratory and infectious disease [36]. Here, IgM seropositivity, quantified by the number of positive type-specific responses, had a borderline-significant positive association with BMI (OR=1.11, 95% CI [0.995,1.24], Supplementary Table S10). A higher base level of immunity associated with higher BMI could provide a protection against HPV infections, which would explain the observed prevalences.

By investigating an additional marker for HPV incidence, namely seropositivity for both IgG and IgM, we showed that as expected IgG seroprevalence was largely governed by vaccination status (Table S8). For IgMs, the strongest association was with being HPV positive at the first visit only. This association with transient infections is consistent with the assumption that the infection was recent. It is more challenging to explain why IgMs would be found in participants with transient infections (positive at the first visit only) and not in sustained infections (i.e. positive at the two visits). One possibility could be that sustained infections might have been established several weeks before the inclusion visit, whereas transient infections might have been established shortly before the inclusion.

There are several limitations to this study. The main limitation is the sample size. Most studies investigating the population consequences of HPV vaccination follow more women. However, the longitudinal

aspect of our cohort does give us additional power, e.g. to distinguish infections from transient HPV carriage. A second limitation is that we cannot separate primo-infections from reinfections because the serological status information is limited. This could be addressed by studying a younger population, as for instance in [12]. Finally, this study was conducted on a single site on a specific population. For instance the high education level could affect vaccination coverage [14].

These results have direct implications for the implementation of HPV vaccination. In France, few studies have investigated HPV prevalence since the onset of vaccination, where, unfortunately, coverage remains low. More generally, the strong protective effect conferred by the vaccines against HPV51, which has already been hinted at [23], warrants further investigation, especially because this genotype is only distantly related to the vaccine types [37] and cross-protective effects were expected only in closely related types. Analysing the interaction between HPVs and the immune response (e.g. cytokines, immune cells) via longitudinal follow-up may help understand this epidemiological finding [11].

## Methods

### Data

Data originates from the PAPCLEAR study, which investigates the kinetics and ecology of HPV genital infections in young women. Here, we analyse data from the inclusion visit (Visit 1) and the result visit (Visit 2) for  $N = 149$  participants (one was removed after realising she did not meet one of the inclusion criteria). The detailed protocol of the study is described elsewhere [11]. In short, participants were recruited through a social media page, and through posters and leaflets distributed at the universities in Montpellier and at the Montpellier STI screening centre. During the inclusion visit, a gynaecologist or mid-wife performed a cervical smear in PerservCyt medium for squamous intraepithelial screening via liquid cytology. The same sample was used to perform HPV detection and typing (see below). Self-sample vaginal swabs and blood samples were obtained with a nurse, respectively to test for other STIs and for anti-HPV antibody assays. Women come back one month later for a results visit, where another HPV detection test is performed. Patterns of positivity at the two visits as well as population sizes are shown in Figure 4.

### Protocols

For DNA extraction, we centrifuged 2mL of the cervical smear at 4000rpm for 5min. We then removed the supernatant and extracted DNA from the pellet using a QIAamp DNA Mini Kit (Qiagen51306).

For HPV detection and typing, we first tested for the presence of alphapapillomaviruses using the generic DEIA test [38]. We then used the LiPA25 typing [25] on DEIA-positive samples. Both tests are based on detecting the same amplicon of the *L1* viral gene. Total DNA in the sample was quantified using Qubit kit (Thermo Fisher Scientific). Samples that were DEIA-positive and LiPA25 negative were amplified using the PGMY PCR [39] and sequenced using Sanger sequencing. Samples for which the sequencing did not yield a clear sequence, most likely because of coinfections, are labelled as ‘non-typable’. For HPV51, we performed an additional PCR targeting the *E7* viral gene using already published primers and protocol [24].

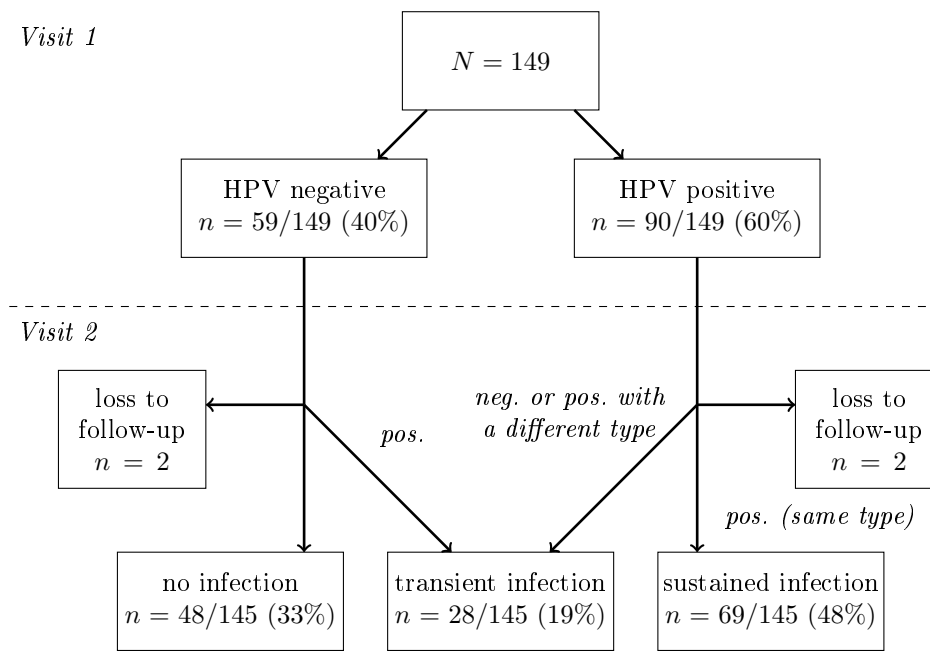


Figure 4: **Flowchart showing the visits and the outcome of the HPV detection and typing tests.**

### Protocols for circulating anti-HPV antibody

IgG and IgM antibodies against late (L1) proteins of high-risk HPV types 16, 18, 31, 33, 35, 45, 52 and 58, as well as low-risk HPV-types 6 and 11 were analysed with the multiplex serology assay using beads coated with recombinant glutathione s-transferase (GST) fusions proteins. The assay procedure has been previously described in detail [40]. Briefly, the samples were tested at a final serum dilution of 1:100 using an IgG and an IgM goat anti-Human secondary antibody. Seropositivity was defined based on standard definitions [41, 42].

### Epidemiological meta-data

Participants were asked to fill in questionnaires during the visit, and additional information was collected by the gynaecologist or mid-wife during the interview. Further details are available in the detailed protocol [11]. The variables included in this analysis are shown in Table 1.

### Statistics

We used either logistic regression or ordinal logistic regression models, depending on the number of levels of the response. For each model, we computed the odd ratios associated with each predictor along a 95% confidence interval. Note that while all variables were considered in our analyses, we only report the variables that are at least borderline significant.

For the difference in HPV genotype prevalence between the vaccinated and the unvaccinated populations, we used Fisher’s exact tests and applied a Bonferroni correction for multiple hypothesis testing.

All the analyses were performed in R. We used the `glm` function to conduct logistic regressions, and the `polr` function from the MASS package to perform ordinal logistic regressions. The proportional odds

assumption was verified using the `lrm` and `residuals.lrm` functions from the `rms` package, and this assumption was verified for each of our predictors except chlamydia on the HPV presence model (which was dropped). We used the `fisher.test` function to realize Fisher’s exact tests.

## **Ethics**

The PAPCLEAR trial is promoted by the Centre Hospitalier Universitaire de Montpellier and has been approved by the Comité de Protection des Personnes (CPP) Sud Méditerranée I on 11 May 2016 (CPP number 16 42, reference number ID RCB 2016-A00712-49); by the Comité Consultatif sur le Traitement de l’Information en matière de Recherche dans le domaine de la Santé on 12 July 2016 (reference number 16.504); and by the Commission Nationale Informatique et Libertés on 16 December 2016 (reference number MMS/ABD/AR1612278, decision number DR-2016–488). This trial was authorised by the Agence Nationale de Sécurité du Médicament et des Produits de Santé on 20 July 2016 (reference 20160072000007). The ClinicalTrials.gov identifier is NCT02946346. All participants provided written informed consent.

## **Financial support**

This work was supported by the European Research Council (ERC) under the European Union’s Horizon 2020 research and innovation programme [grant agreement No 648963 to SA]. The sponsor had no role in study design; in the collection, analysis and interpretation of data; in the writing of the report; and in the decision to submit the article for publication.

## **Potential conflicts of interest**

TW serves on advisory boards for MSD (Merck) Sharp & Dohme. All other authors report no potential conflicts.

## **Acknowledgements**

The authors thank all the participants of the PAPCLEAR study and the clinical staff and nurses for their help.

## References

- [1] Martyn Plummer, Catherine de Martel, Jerome Vignat, Jacques Ferlay, Freddie Bray and Silvia Franceschi. Global burden of cancers attributable to infections in 2012: a synthetic analysis. *Lancet Global Health* **2016**; 4:e609–e616. doi:10.1016/S2214-109X(16)30143-7.
- [2] Rolando Herrero, Paula González and Lauri E Markowitz. Present status of human papillomavirus vaccine development and implementation. *Lancet Oncol* **2015**; 16:e206–16. doi:10.1016/S1470-2045(14)70481-4.
- [3] Mélanie Drolet, élodie Bénard, Norma Pérez, Marc Brisson, Hammad Ali, Marie-Claude Boily, Vincenzo Baldo, Paul Brassard, Julia M. L. Brotherton, Denton Callander, Marta Checchi, Eric P. F. Chow, Silvia Cocchio, Tina Dalianis, Shelley L. Deeks, Christian Dehlendorff, Basil Donovan, Christopher K. Fairley, Elaine W. Flagg, Julia W. Gargano, Suzanne M. Garland, Nathalie Grün, Bo T. Hansen, Christopher Harrison, Eva Herweijer, Teresa M. Imburgia, Anne M. Johnson, Jessica A. Kahn, Kimberley Kavanagh, Susanne K. Kjaer, Erich V. Kliewer, Bette Liu, Dorothy A. Machalek, Lauri Markowitz, David Mesher, Christian Munk, Linda Niccolai, Mari Nygård, Gina Ogilvie, Jeannie Oliphant, Kevin G. Pollock, Maria Jesús Purriños-Hermida, Megan A. Smith, Marc Steben, Anna Söderlund-Strand, Pam Sonnenberg, Pär Sparen, Clare Tanton, Cosette M. Wheeler, Petra J. Woestenberg and Bo Nancy Yu. Population-level impact and herd effects following the introduction of human papillomavirus vaccination programmes: updated systematic review and meta-analysis. *The Lancet* **2019**; 394:497–509. doi:10.1016/S0140-6736(19)30298-3.
- [4] L Fonteneau, AS Barret and D Lévy-Bruhl. Évolution de la couverture vaccinale du vaccin contre le papillomavirus en France-2008-2018. *Revue de Biologie Médicale* **2019**; 354:424–430.
- [5] Matti Lehtinen and Jorma Paavonen. Vaccination against human papillomaviruses shows great promise. *The Lancet* **2004**; 364:1731–1732. doi:10.1016/S0140-6736(04)17410-2.
- [6] Carmen Lía Murall, Kevin S McCann and Chris T Bauch. Revising ecological assumptions about Human papillomavirus interactions and type replacement. *J Theor Biol* **2014**; 350:98–109. doi:10.1016/j.jtbi.2013.12.028.
- [7] Ralph P Insinga, Erik J Dasbach, Elamin H Elbasha, Kai-Li Liaw and Eliav Barr. Incidence and duration of cervical human papillomavirus 6, 11, 16, and 18 infections in young women: an evaluation from multiple analytic perspectives. *Cancer Epidemiol Biomarkers Prev* **2007**; 16:709–15. doi:10.1158/1055-9965.EPI-06-0846.
- [8] Mark Schiffman and Diane Solomon. Clinical practice. Cervical-cancer screening with human papillomavirus and cytologic cotesting. *N Engl J Med* **2013**; 369:2324–31. doi:10.1056/NEJMcp1210379.
- [9] Patti E. Gravitt. The known unknowns of HPV natural history. *J Clin Invest* **2011**; 121:4593–4599. doi:10.1172/JCI57149.
- [10] Samuel Alizon, Carmen Lia Murall and Ignacio G. Bravo. Why Human Papillomavirus Acute Infections Matter. *Viruses* **2017**; 9:293. doi:10.3390/v9100293.
- [11] Carmen Lía Murall, Massilva Rahmoun, Christian Selinger, Monique Baldellou, Claire Bernat, Marine Bonneau, Vanina Boué, Mathilde Buisson, Guillaume Christophe, Giuseppe D’Auria, Florence De Taroni, Vincent Foulongne, R Froissart, Christelle Graf, Sophie Grasset, Soraya Groc, Christophe Hirtz, Audrey Jaussent, Julie Lajoie, F Lorcy, Eric Picot, Marie-Christine Picot, Jacques Ravel, Jacques Reynes, T Rousset, Aziza Seddiki, Martine Teirlinck, Vincent Tribout, E Tuailon, Tim Waterboer, Nathalie Jacobs, Ignacio G. Bravo, Michel Segondy, Nathalie Boulle and Samuel Alizon. Natural history, dynamics, and ecology of human papillomaviruses in genital infections of young women: protocol of the PAPCLEAR cohort study. *BMJ Open* **2019**; 9. doi:10.1136/bmjopen-2018-025129.

- [12] Catherine F Houlihan, Kathy Baisley, Ignacio G Bravo, Saidi Kapiga, Silvia de Sanjosé, John Changalucha, David A Ross, Richard J Hayes and Deborah Watson-Jones. Rapid acquisition of HPV around the time of sexual debut in adolescent girls in Tanzania. *Int J Epidemiol* **2016**; 45:762–773. doi:10.1093/ije/dyv367.
- [13] Jean-Paul Fagot, Aurélie Boutrelle, Philippe Ricordeau, Alain Weill and Hubert Allemand. HPV vaccination in France: uptake, costs and issues for the National Health Insurance. *Vaccine* **2011**; 29:3610–6. doi:10.1016/j.vaccine.2011.02.064.
- [14] Laura A. V. Marlow, Gregory D. Zimet, Kirsten J. McCaffery, Remo Ostini and Jo Waller. Knowledge of human papillomavirus (HPV) and HPV vaccination: An international comparison. *Vaccine* **2013**; 31:763–769. doi:10.1016/j.vaccine.2012.11.083.
- [15] Anil K. Chaturvedi, Hormuzd A. Katki, Allan Hildesheim, Ana Cecilia Rodríguez, Wim Quint, Mark Schiffman, Leen-Jan Van Doorn, 2 Sholom Wacholder Carolina Porras, Paula Gonzalez, Mark E. Sherman, Rolando Herrero and the CVT Group. Human Papillomavirus Infection with Multiple Types: Pattern of Coinfection and Risk of Cervical Disease. *J Infect Dis* **2011**; 203:910–920. doi:10.1093/infdis/jiq139.
- [16] Santé Publique France. Tobacco consumption in France: preliminary results from the 2017 Health Barometer **2018**.
- [17] Contraception. Méthode contraceptive pour 100 femmes âgées de 18 à 44 ans., Ined - Institut national d'études démographiques **2018**.
- [18] N. Bajos, M. Bozon and N. Beltzer. Enquête sur la sexualité en France: Pratiques, genre et santé. La découverte **2008**.
- [19] J Monsonogo, L Zerat, K Syrjänen, J C Zerat, J S Smith and P Halfon. Prevalence of genotype-specific HPV infection among women in France: implications for screening and vaccination. *Gynecol Obstet Fertil* **2013**; 41:305–313. doi:10.1016/j.gyobfe.2013.03.003.
- [20] Laia Bruni, Mireia Diaz, Xavier Castellsagué, Elena Ferrer, F Xavier Bosch and Silvia de Sanjosé. Cervical human papillomavirus prevalence in 5 continents: meta-analysis of 1 million women with normal cytological findings. *J Infect Dis* **2010**; 202:1789–99. doi:10.1086/657321.
- [21] IARC Working Group on the Evaluation of Carcinogenic Risks to Humans. Biological Agents, Vol 100B of *IARC monographs on the evaluation of carcinogenic risks to humans*. Lyon, France: International Agency for Research on Cancer **2012**.
- [22] Margaret Stanley, Ligia A. Pinto and Connie Trimble. Human Papillomavirus Vaccines – Immune Responses. *Vaccine* **2012**; 30:F83–F87. doi:10.1016/j.vaccine.2012.04.106.
- [23] Cosette M. Wheeler, Xavier Castellsagué, Suzanne M. Garland, Anne Szarewski, Jorma Paavonen, Paulo Naud, Jorge Salmerón, Song-Nan Chow, Dan Apter, Henry Kitchener, Júlio C. Teixeira, S. Rachel Skinner, Unnop Jaisamrarn, Genara Limson, Barbara Romanowski, Fred Y. Aoki, Tino F. Schwarz, Willy A. J. Poppe, F. Xavier Bosch, Diane M. Harper, Warner Huh, Karin Hardt, Toufik Zahaf, Dominique Descamps, Frank Struyf, Gary Dubin and Matti Lehtinen. Cross-protective efficacy of HPV-16/18 AS04-adjuvanted vaccine against cervical infection and precancer caused by non-vaccine oncogenic HPV types: 4-year end-of-study analysis of the randomised, double-blind PATRICIA trial. *Lancet Oncol* **2012**; 13:100–110. doi:10.1016/S1470-2045(11)70287-X.
- [24] Isabel M Micalessi, Gaëlle A V Boulet, Johannes J Bogers, Ina H Benoy and Christophe E Depuydt. High-throughput detection, genotyping and quantification of the human papillomavirus using real-time PCR. *Clin Chem Lab Med* **2012**; 50:655–61. doi:10.1515/ccm.2011.835.

- [25] Daan T. Geraets, Linda Struijk, Bernhard Kleter, Anco Molijn, Leen-Jan van Doorn, Wim G. V. Quint and Brigitte Colau. The original SPF10 LiPA25 algorithm is more sensitive and suitable for epidemiologic HPV research than the SPF10 INNO-LiPA Extra. *J Virol Meth* **2015**; 215-216:22–29. doi:10.1016/j.jviromet.2015.01.001.
- [26] Carmen Lía Murall, Chris T. Bauch and Troy Day. Could the human papillomavirus vaccines drive virulence evolution? *Proc Biol Sci* **2015**; 282:20141069. doi:10.1098/rspb.2014.1069.
- [27] Yoon Hong Choi, Ruth Chapman, Nigel Gay and Mark Jit. Potential overestimation of HPV vaccine impact due to unmasking of non-vaccine types: Quantification using a multi-type mathematical model. *Vaccine* **2012**; 30:3383–3388. doi:10.1016/j.vaccine.2012.03.065.
- [28] Joseph E Tota, Agnihotram V Ramanakumar, Mengzhu Jiang, Joakim Dillner, Stephen D Walter, Jay S Kaufman, François Coutlée, Luisa L Villa and Eduardo L Franco. Epidemiologic approaches to evaluating the potential for human papillomavirus type replacement postvaccination. *Am J Epidemiol* **2013**; 178:625–34. doi:10.1093/aje/kwt018.
- [29] Penelope Gray, Hanna Kann, Ville N. Pimenoff, Indira Adhikari, Tiina Eriksson, Heljä-Marja Surcel, Simopekka Vänskä, Joakim Dillner, Helena Faust and Matti Lehtinen. Long-term follow-up of human papillomavirus (HPV) type replacement among young pregnant Finnish females before and after a community-randomised HPV vaccination trial with moderate coverage. *International Journal of Cancer* ; doi:10.1002/ijc.33169.
- [30] Janet G. Baseman and Laura A. Koutsky. The epidemiology of human papillomavirus infections. *Journal of Clinical Virology* **2005**; 32:16–24. doi:10.1016/j.jcv.2004.12.008.
- [31] Ann N. Burchell, Rachel L. Winer, Silvia de Sanjosé and Eduardo L. Franco. Chapter 6: Epidemiology and transmission dynamics of genital HPV infection. *Vaccine* **2006**; 24:S52–S61. doi:10.1016/j.vaccine.2006.05.031.
- [32] Sally N. Akarolo-Anthony, Ayo O. Famooto, Eileen O. Dareng, Olayinka B. Olaniyan, Richard Offiong, Cosette M. Wheeler and Clement A. Adebamowo. Age-specific prevalence of human papilloma virus infection among Nigerian women. *BMC Public Health* **2014**; 14:656. doi:10.1186/1471-2458-14-656.
- [33] Julia del Amo, Cristina González, Josefina Belda, Elisa Fernández, Rosario Martínez, Isabel Gómez, Montserrat Torres, Alfredo García Saiz and Marta Ortiz. Prevalence and Risk Factors of High-Risk Human Papillomavirus in Female Sex Workers in Spain: Differences by Geographical Origin. *Journal of Women's Health* **2009**; 18:2057–2064. doi:10.1089/jwh.2008.1293.
- [34] Myassa Dartell, Vibeke Rasch, Christian Munk, Crispin Kahesa, Julius Mwaiselage, Thomas Iftner and Susanne Krüger Kjaer. Risk Factors for High-Risk Human Papillomavirus Detection Among HIV-Negative and HIV-Positive Women From Tanzania. *Sexually Transmitted Diseases* **2013**; 40:737–743. doi:10.1097/OLQ.000000000000005.
- [35] Silvia Ilavská, Mira Horváthová, Michaela Szabová, Tomáš Nemessányi, Eva Jahnová, Jana Tulin-ská, Aurélia Líšková, Ladislava Wsolová, Marta Staruchová and Katarína Volkovová. Association between the human immune response and body mass index. *Human Immunology* **2012**; 73:480–485. doi:10.1016/j.humimm.2012.02.023.
- [36] Katherine M. Flegal, Barry I. Graubard, David F. Williamson and Mitchell H. Gail. Cause-Specific Excess Deaths Associated With Underweight, Overweight, and Obesity. *JAMA* **2007**; 298:2028–2037. doi:10.1001/jama.298.17.2028.



- [37] Johannes A. Bogaards, Pascal van der Weele, Petra J. Woestenbergh, Birgit H. B. van Benthem and Audrey J. King. Bivalent Human Papillomavirus (HPV) Vaccine Effectiveness Correlates With Phylogenetic Distance From HPV Vaccine Types 16 and 18. *The Journal of Infectious Diseases* **2019**; 220:1141–1146. doi:10.1093/infdis/jiz280.
- [38] Bernhard Kleter, Leen-Jan van Doorn, Jan ter Schegget, Lianne Schrauwen, Kees van Krimpen, Matthijsmode Burger, Bram ter Harmsel and Wim Quint. Novel Short-Fragment PCR Assay for Highly Sensitive Broad-Spectrum Detection of Anogenital Human Papillomaviruses. *Am J Pathol* **1998**; 153:1731–1739. doi:10.1016/S0002-9440(10)65688-X.
- [39] François Coutlée, Patti Gravitt, Janet Kornegay, Catherine Hankins, Harriet Richardson, Normand Lapointe, Hélène Voyer, The Canadian Women’s HIV Study Group and Eduardo Franco. Use of PGM1 Primers in L1 Consensus PCR Improves Detection of Human Papillomavirus DNA in Genital Samples. *J Clin Microbiol* **2002**; 40:902–907. doi:10.1128/JCM.40.3.902-907.2002.
- [40] Tim Waterboer, Peter Sehr, Kristina M. Michael, Silvia Franceschi, John D. Nieland, Thomas O. Joos, Markus F. Templin and Michael Pawlita. Multiplex Human Papillomavirus Serology Based on In Situ–Purified Glutathione S-Transferase Fusion Proteins. *Clin Chem* **2005**; 51:1845–1853. doi:10.1373/clinchem.2005.052381.
- [41] Gary M. Clifford, Hai-Rim Shin, Jin-Kyoung Oh, Tim Waterboer, Young-Hee Ju, Salvatore Vaccarella, Wim Quint, Michael Pawlita and Silvia Franceschi. Serologic Response to Oncogenic Human Papillomavirus Types in Male and Female University Students in Busan, South Korea. *Cancer Epidemiol Biomarkers Prev* **2007**; 16:1874–1879. doi:10.1158/1055-9965.EPI-07-0349.
- [42] Aimée R. Kreimer, Mattias Johansson, Tim Waterboer, Rudolf Kaaks, Jenny Chang-Claude, Dagmar Drogen, Anne Tjønneland, Kim Overvad, J. Ramón Quirós, Carlos A. González, Maria José Sánchez, Nerea Larrañaga, Carmen Navarro, Aurelio Barricarte, Ruth C. Travis, Kay-Tee Khaw, Nick Wareham, Antonia Trichopoulou, Pagona Lagiou, Dimitrios Trichopoulos, Petra H. M. Peeters, Salvatore Panico, Giovanna Masala, Sara Grioni, Rosario Tumino, Paolo Vineis, H. Bas Bueno-de Mesquita, Göran Laurell, Göran Hallmans, Jonas Manjer, Johanna Ekström, Guri Skeie, Eiliv Lund, Elisabete Weiderpass, Pietro Ferrari, Graham Byrnes, Isabelle Romieu, Elio Riboli, Allan Hildesheim, Heiner Boeing, Michael Pawlita and Paul Brennan. Evaluation of Human Papillomavirus Antibodies and Risk of Subsequent Head and Neck Cancer. *J Clin Oncol* **2013**; 31:2708–2715. doi:10.1200/JCO.2012.47.2738.

## Supplementary Figure

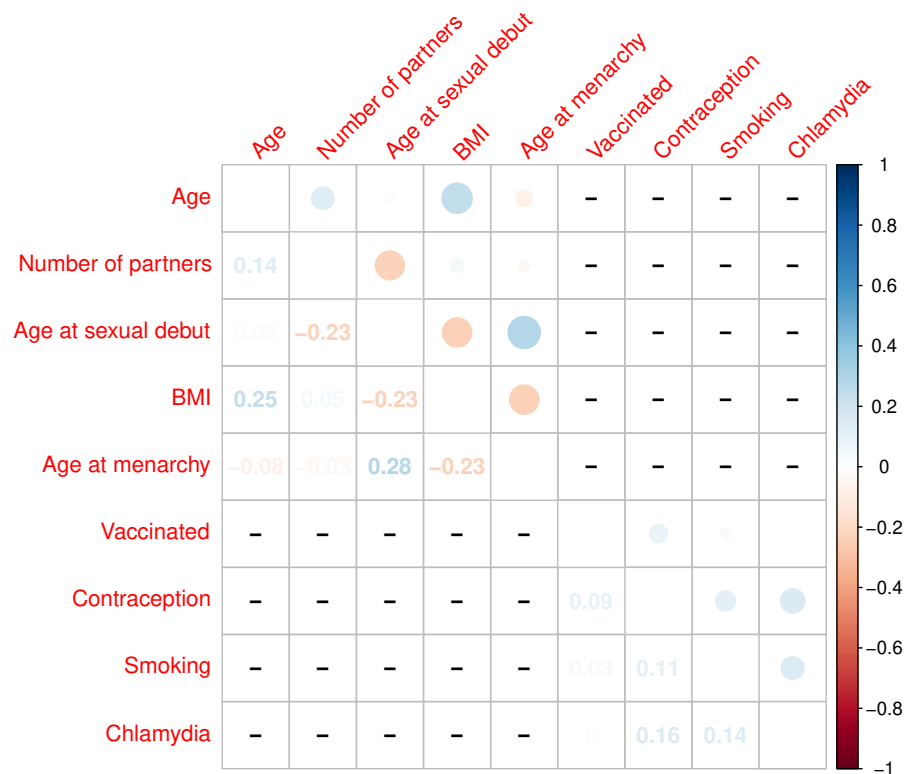


Figure S1: **Correlations between model variables.** We used Spearman's correlation coefficient between quantitative variables and Cramér's V to measure the association strength between two binary/category variables. For BMI, we did not find differences based on vaccine, contraception or smoking status.

## Supplementary Tables

Table S1: Summary of the main variables of the statistical analyses.

Variable			Type
Age	$q_{0.25}, q_{0.5}, q_{0.75}$	20.1, 21.7, 23.5	Continuous
Number of partners	$q_{0.25}, q_{0.5}, q_{0.75}$	2, 3, 5	Continuous
Age at sexual debut	$q_{0.25}, q_{0.5}, q_{0.75}$	15, 16, 17	Continuous
Age at menarchy	$q_{0.25}, q_{0.5}, q_{0.75}$	12, 13, 14	Continuous
BMI	$q_{0.25}, q_{0.5}, q_{0.75}$	19.8, 21.2, 23.5	Continuous
Smoking	No	$n = 95$	Logical
	Yes	$n = 54$	
Chlamydia	No	$n = 140$	Logical
	Yes	$n = 7$	
HPV vaccination	No	$n = 76$	Logical
	Yes	$n = 73$	
Number of vaccine doses	0, 1, 2, 3		Discrete
Number of years since vaccination			Continuous
Contraception	No	$n = 5$	Logical
	Yes	$n = 144$	
HPV presence	0	$n = 48$	Ordinale
	1	$n = 28$	
	2	$n = 69$	
Cytology	Normal	$n = 137$	Categorical
	LSIL	$n = 12$	
LiPA25 results	0		Ordinal
	1		
	2		
High-risk HPV	0	$n = 81$	Ordinal
	1	$n = 27$	
	2	$n = 41$	
Sustained HPV infection	No	$n = 80$	Logical
	Yes	$n = 65$	
Sustained HPV coinfection	No	$n = 127$	Logical
	Yes	$n = 18$	
IgG X	No		Logical
	Yes		
IgM X	No		Logical
	Yes		

Table S2: **Factors associated with liquid cytology results.**

		Normal <i>n</i> = 136	LSIL <i>n</i> = 12	OR [95% CI]
Age	Mean (sd)	21.8 (2.0)	21.6 (2.2)	1.04 [0.72 ; 1.49]
<b>Number of partners</b>	Mean (sd)	3.9 (3.3)	4.9 (1.9)	1.35 [1.02 ; 1.81]
Age at sexual debut	Mean (sd)	16.3 (1.8)	15.8 (1.3)	0.88 [0.52 ; 1.39]
Age at menarchy	Mean (sd)	12.8 (1.4)	12.8 (1.0)	0.78 [0.39 ; 1.43]
BMI	Mean (sd)	22.4 (3.4)	21.0 (4.2)	0.85 [0.63 ; 1.06]
Smoking	No	87 (65%)	8 (67%)	1.00 [Ref.]
	Yes	49 (35%)	4 (33%)	0.79 [0.16 ; 3.38]
Chlamydia	No	129 (95%)	12 (100%)	1.00 [Ref.]
	Yes	7 (5%)	0 (0%)	0 [0 ; +∞[
Contraception	Hormonal	82 (60%)	8 (67%)	1.00 [Ref.]
	Non hormonal	43 (32%)	0 (0%)	0 [0 ; +∞[
	None	11 (8%)	4 (33%)	4.03 [0.83 ; 18.36]
Vaccinated	No	68 (50%)	8 (67%)	1.00 [Ref.]
	Yes	68 (50%)	4 (33%)	0.46 [0.09 ; 1.85]

Table S3: **Factors associated with HPV detection.** This table is based on the results of the DEIA test.

		No HPV detected <i>n</i> = 48	HPV detected once at V1 or V2 <i>n</i> = 28	HPV detected twice at V1 and V2 <i>n</i> = 68	OR [95% CI]
<b>Age</b> (years)	Mean (sd)	21.3 (1.9)	22 (2.1)	22 (2.1)	<b>1.22</b> [1.02 ; 1.47]
<b>Number of partners</b>	Mean (sd)	2.9 (2.2)	3.2 (2.1)	5 (3.9)	<b>1.23</b> [1.08 ; 1.44]
Age at sexual debut	Mean (sd)	16.4 (2)	16.4 (1.7)	16.1 (1.7)	0.92 [0.74 ; 1.14]
Age at menarchy	Mean (sd)	12.6 (1.3)	12.8 (1.5)	13 (1.3)	1.11 [0.85 ; 1.45]
BMI	Mean (sd)	22.5 (3.2)	23.3 (4.7)	21.6 (2.9)	0.92 [0.83 ; 1.01]
Smoking	No	32 (67%)	20 (71%)	42 (62%)	1.00 [Ref.]
	Yes	16 (33%)	8 (29%)	26 (38%)	0.75 [0.35 ; 1.57]
<b>Contraception</b>	Hormonal	27 (56%)	17 (61%)	45 (66%)	1.00 [Ref.]
	Non hormonal	15 (31%)	7 (25%)	19 (28%)	0.71 [0.32 ; 1.53]
	None	6 (13%)	4 (14%)	4 (6%)	<b>0.3</b> [0.09 ; 0.93]
<b>Vaccinated</b>	No	17 (35%)	15 (54%)	42 (62%)	1.00 [Ref.]
	Yes	31 (65%)	13 (46%)	26 (38%)	<b>0.45</b> [0.22 ; 0.89]

Table S4: **Factors associated with HPV sustained infection.** This table is based on the results of the LiPa25 HPV genotyping test.

		No sustained HPV	Has sustained HPV	OR [95% CI]
		<i>n</i> = 80	<i>n</i> = 64	
Age	Mean (sd)	21.6 (2)	22 (2.1)	1.17 [0.97 ; 1.43]
<b>Number of partners</b>	Mean (sd)	3.1 (2.3)	5.1 (3.9)	<b>1.22</b> [1.06 ; 1.43]
Age at sexual debut	Mean (sd)	16.4 (1.8)	16 (1.7)	0.8 [0.61 ; 1.04]
Age at menarchy	Mean (sd)	12.7 (1.4)	13.1 (1.3)	1.27 [0.93 ; 1.75]
<b>BMI</b>	Mean (sd)	22.7 (3.7)	21.6 (3)	<b>0.87</b> [0.76 ; 0.98]
Smoking	No	54 (68%)	40 (62%)	1.00 [Ref.]
	Yes	26 (32%)	24 (38%)	0.75 [0.32 ; 1.71]
Chlamydia	No	78 (98%)	59 (92%)	1.00 [Ref.]
	Yes	2 (2%)	5 (8%)	3.22 [0.51 ; 27.93]
Contraception	Hormonal	46 (58%)	43 (67%)	1.00 [Ref.]
	Non hormonal	24 (30%)	17 (27%)	0.72 [0.28 ; 1.78]
	None	10 (12%)	4 (6%)	0.33 [0.08 ; 1.21]
Vaccinated	No	34 (43%)	40 (63%)	1.00 [Ref.]
	Yes	46 (57%)	24 (37%)	0.49 [0.23 ; 1.04]

Table S5: **Factors associated with sustained infection by high-risk HPVs.** This table is based on the results of the LiPa25 HPV genotyping test.

		No high-risk HPV detected	High-risk HPV detected once	Same high-risk HPV detected twice	OR [95% CI]
		<i>n</i> = 76	<i>n</i> = 27	<i>n</i> = 41	
Age	Mean (sd)	21.6 (2.0)	22.2 (2.3)	21.9 (2.0)	1.12 [0.95 ; 1.33]
<b>Number of partners</b>	Mean (sd)	3.5 (3.2)	3.5 (3.2)	5.1 (3.3)	<b>1.12</b> [1.003 ; 1.27]
Age at sexual debut	Mean (sd)	16.4 (1.9)	16.2 (1.7)	16.1 (1.6)	0.92 [0.74 ; 1.13]
Age at menarchy	Mean (sd)	12.8 (1.3)	12.6 (1.5)	13.2 (1.2)	1.07 [0.82 ; 1.41]
BMI	Mean (sd)	22.1 (3.3)	23.1 (4.3)	21.8 (3.0)	1 [0.9 ; 1.1]
Smoking	No	46 (61%)	21 (78%)	27 (66%)	1.00 [Ref.]
	Yes	30 (39%)	6 (22%)	14 (34%)	0.5 [0.23 ; 1.04]
Chlamydia	No	72 (95%)	26 (96%)	39 (95%)	1.00 [Ref.]
	Yes	4 (5%)	1 (4%)	2 (5%)	0.69 [0.12 ; 3.49]
Contraception	Hormonal	46 (60%)	15 (56%)	28 (69%)	1.00 [Ref.]
	Non hormonal	22 (29%)	9 (33%)	10 (24%)	0.72 [0.32 ; 1.6]
	None	8 (11%)	3 (11%)	3 (7%)	0.52 [0.15 ; 1.66]
<b>Vaccinated</b>	No	30 (39%)	14 (52%)	30 (73%)	1.00 [Ref.]
	<b>Yes</b>	46 (61%)	13 (48%)	11 (27%)	<b>0.33</b> [0.16 ; 0.64]

Table S6: **Factors associated with sustained HPV coinfection**

		No sustained coinfection <i>n</i> = 126	Has sustained coinfection <i>n</i> = 18	OR [95% CI]
Age	Mean (sd)	21.8 (2.1)	21.5 (2.0)	0.92 [0.67 ; 1.23]
<b>Number of partners</b>	Mean (sd)	3.6 (3.1)	6.6 (3.4)	<b>1.30</b> 1.3 [1.1 ; 1.56]
Age at sexual debut	Mean (sd)	16.3 (1.7)	15.9 (2.0)	0.88 [0.61 ; 1.25]
Age at menarchy	Mean (sd)	12.8 (1.3)	13.1 (1.5)	0.98 [0.57 ; 1.63]
<b>BMI</b>	Mean (sd)	22.4 (3.6)	20.8 (1.8)	<b>0.78</b> [0.58 ; 0.98]
Smoking	No	85 (67%)	9 (50%)	1.00 [Ref.]
	Yes	41 (33%)	9 (50%)	1.84 [0.55 ; 6.28]
Chlamydia	No	121 (96%)	16 (89%)	1.00 [Ref.]
	Yes	5 (4%)	2 (11%)	2.2 [0.18 ; 23.75]
Contraception	Hormonal	76 (60%)	13 (72%)	1.00 [Ref.]
	Non hormonal	37 (29%)	4 (22%)	0.29 [0.04 ; 1.36]
	None	13 (10%)	1 (6%)	0.52 [0.03 ; 3.52]
<b>Vaccinated</b>	No	59 (47%)	15 (83%)	1.00 [Ref.]
	Yes	67 (53%)	3 (17%)	<b>0.18</b> [0.03 ; 0.65]

Table S7: **Summary of the statistical analyses performed.**

<b>Response</b>	<b>Predictors used</b>	<b>Number of individuals</b>	<b>Model used</b>
HPV presence	Age, Number of partners, Age at sexual debut, Age at menarchy, Smoking, BMI, Contraception, Vaccination	$n = 144$	Ordinal logistic regression
Presence of sustained HPV infection	Age, Number of partners, Age at sexual debut, Age at menarchy, Contraception, Chlamydia, Smoking, BMI, Vaccination	$n = 144$	Logistic regression
Presence of high-risk HPV	Age, Number of partners, Age at sexual debut, Age at menarchy, Contraception, Chlamydia, Smoking, BMI, Vaccination	$n = 144$	Ordinal logistic regression
Cytology	Age, Number of partners, Age at sexual debut, Age at menarchy, BMI, Smoking, Chlamydia, Contraception, Vaccination	$n = 148$	Logistic regression
Presence of sustained coinfection	Age, Number of partners, Age at sexual debut, Age at menarchy, BMI, Smoking, Chlamydia, Contraception, Vaccination	$n = 144$	Logistic regression
Number of IgG detected	Age, Number of partners, Age at sexual debut, Age at menarchy, BMI, Smoking, Chlamydia, Contraception, Vaccination, HPV presence, Sustained HPV infection, Presence of high-risk HPV, Sustained HPV coinfection	$n = 144$	Ordinal logistic regression
Number of IgG detected	Age, Number of partners, Age at sexual debut, Age at menarchy, BMI, Smoking, Chlamydia, Contraception, Vaccination, HPV presence, Sustained HPV infection, Presence of high-risk HPV, Sustained coinfection	$n = 137$	Ordinal logistic regression

Table S8: Number of IgG above positivity threshold among all participants.

		0 up to 3 antibodies <i>n</i> = 49	4 to 9 antibodies <i>n</i> = 44	10 antibodies <i>n</i> = 51	OR [95% CI]
Age	Mean (sd)	21.2 (2.1)	22.2 (2)	22.1 (1.9)	1.18 [0.98 ; 1.43]
Nb. of partners	Mean (sd)	4.4 (3.4)	3.6 (3)	3.8 (3.4)	1.04 [0.91 ; 1.18]
Age at sexual debut	Mean (sd)	16.2 (1.7)	16.1 (1.8)	16.4 (1.8)	1.14 [0.91 ; 1.45]
Age at menarchy	Mean (sd)	13.1 (1.3)	12.7 (1.2)	12.6 (1.4)	0.87 [0.64 ; 1.17]
BMI	Mean (sd)	21.8 (3)	22.7 (3.8)	22.2 (3.6)	0.95 [0.85 ; 1.07]
Smoking	No	28 (57%)	32 (73%)	34 (67%)	1.00 [Réf.]
	Yes	21 (43%)	12 (27%)	17 (33%)	0.83 [0.37 ; 1.84]
Chlamydia	No	48 (98%)	41 (93%)	48 (94%)	1.00 [Réf.]
	Yes	1 (2%)	3 (7%)	3 (6%)	3.35 [0.56 ; 23.42]
Contraception	Hormonal	30 (61%)	26 (59%)	33 (65%)	1.00 [Réf.]
	Non hormonal	13 (27%)	16 (36%)	12 (24%)	0.49 [0.2 ; 1.17]
	None	6 (12%)	2 (5%)	6 (12%)	0.71 [0.19 ; 2.58]
<b>Vaccinated</b>	No	46 (94%)	22 (50%)	6 (12%)	1.00 [Réf.]
	Yes	3 (6%)	22 (50%)	45 (88%)	<b>33.26</b> [13.59 ; 90.14]
HPV presence	None	12 (24%)	16 (36%)	20 (39%)	1.00 [Réf.]
	Once	10 (20%)	7 (16%)	11 (22%)	0.64 [0.16 ; 2.43]
	Twice	27 (55%)	21 (48%)	20 (39%)	0.54 [0.17 ; 1.77]
High-risk types	None	21 (43%)	25 (57%)	30 (59%)	1.00 [Réf.]
	Not sustained	9 (18%)	7 (16%)	11 (22%)	1.9 [0.54 ; 7.04]
	Sustained	19 (39%)	12 (27%)	10 (20%)	1.68 [0.53 ; 5.51]
Sustained coinfection	No	39 (80%)	40 (91%)	47 (92%)	1.00 [Réf.]
	Yes	10 (20%)	4 (9%)	4 (8%)	0.9 [0.25 ; 3.16]
Cytology	Normal	44 (90%)	42 (95%)	46 (90%)	1.00 [Réf.]
	LSIL	5 (10%)	2 (5%)	5 (10%)	1.89 [0.46 ; 7.95]



Table S9: Number of IgG antibodies above positivity threshold among unvaccinated women.

		0 or 1 antibody <i>n</i> = 19	2 or 3 antibodies <i>n</i> = 27	4 up to 10 antibodies <i>n</i> = 28	OR [95% CI]
Age	Mean (sd)	21.1 (2)	21.3 (2.2)	22.3 (2)	1.23 [0.98 ; 1.55]
Nb. of partners	Mean (sd)	4.6 (4)	4.4 (3.2)	4.1 (3.2)	0.95 [0.79 ; 1.13]
Age at sexual debut	Mean (sd)	16.4 (2.1)	16 (1.4)	16.5 (1.9)	1.08 [0.79 ; 1.49]
Age at menarchy	Mean (sd)	13.1 (1.3)	13.3 (1.4)	12.9 (1)	0.84 [0.57 ; 1.22]
BMI	Mean (sd)	21.9 (3.4)	21.4 (2.6)	22.2 (4.1)	1.03 [0.89 ; 1.21]
Smoking	No	11 (58%)	16 (59%)	19 (68%)	1.00 [Réf.]
	Yes	8 (42%)	11 (41%)	9 (32%)	0.74 [0.27 ; 2]
Chlamydia	No	18 (95%)	27(100%)	25 (89%)	1.00 [Réf.]
	Yes	1 (5%)	0 (0%)	3 (11%)	4.51 [0.41 ; 115.3]
<b>Contraception</b>	Hormonal	10 (53%)	17 (63%)	21 (75%)	1.00 [Ref.]
	Non hormonal	5 (26%)	8 (30%)	5 (18%)	0.84 [0.26 ; 2.64]
	<b>None</b>	4 (21%)	2 (7%)	2 (7%)	<b>0.15</b> [0.02 ; 0.83]
HPV presence	None	8 (42%)	3 (11%)	6 (21%)	1.00 [Réf.]
	Once	3 (16%)	6 (22%)	6 (21%)	2.38 [0.41 ; 14.33]
	Twice	8 (42%)	18 (67%)	16 (57%)	0.9 [0.17 ; 4.95]
High-risk types	None	12 (63%)	8 (30%)	10 (36%)	1.00 [Réf.]
	Not sustained	3 (16%)	5 (19%)	6 (21%)	0.9 [0.18 ; 4.34]
	Sustained	4 (21%)	14 (52%)	12 (43%)	2.38 [0.55 ; 10.66]
Sustained coinfection	No	16 (84%)	20 (74%)	23 (82%)	1.00 [Réf.]
	Yes	3 (16%)	7 (26%)	5 (18%)	0.67 [0.16 ; 2.89]
Cytology	Normal	18 (95%)	23 (85%)	25 (89%)	1.00 [Réf.]
	LSIL	1 (5%)	4 (15%)	3 (11%)	1.63 [0.36 ; 7.66]

Table S10: Number of IgM antibodies above positivity threshold in all participants.

		0 antibodies <i>n</i> = 69	1 or 2 antibodies <i>n</i> = 35	3 up to 10 antibodies <i>n</i> = 32	OR [95% CI]
Age	Mean (sd)	21.9 (2)	21.7 (2.2)	21.6 (2.2)	0.87 [0.73 ; 1.04]
Number of partners	Mean (sd)	3.9 (3.2)	4.2 (3.7)	4.3 (3.1)	1.03 [0.92 ; 1.15]
Age at sexual debut	Mean (sd)	16.3 (1.8)	16.4 (1.8)	15.9 (1.4)	0.95 [0.76 ; 1.17]
Age at menarchy	Mean (sd)	12.6 (1.2)	12.9 (1.3)	12.9 (1.6)	1.19 [0.89 ; 1.58]
BMI	Mean (sd)	21.9 (3.2)	21.7 (2.7)	23.3 (4.5)	1.11 [0.995 ; 1.24]
Smoking	No	44 (64%)	22 (63%)	20 (62%)	1.00 [Ref.]
	Yes	25 (36%)	13 (37%)	12 (38%)	0.97 [0.46 ; 2.04]
Chlamydia	No	68 (99%)	32 (91%)	29 (91%)	1.00 [Ref.]
	Yes	1 (1%)	3 (9%)	3 (9%)	2.6 [0.57 ; 13.02]
Contraception	Hormonal	40 (58%)	21 (60%)	22 (69%)	1.00 [Ref.]
	Non hormonal	23 (33%)	10 (29%)	7 (22%)	0.68 [0.3 ; 1.54]
	None	6 (9%)	4 (11%)	3 (9%)	0.97 [0.3 ; 2.98]
Vaccinated	No	39 (57%)	16 (46%)	17 (53%)	1.00 [Ref.]
	Yes	30 (43%)	19 (54%)	15 (47%)	1.45 [0.71 ; 3.01]
<b>HPV presence</b>	Not V1 nor V2	25 (36%)	14 (40%)	5 (16%)	1.00 [Ref.]
	<b>Just V1</b>	7 (10%)	2 (6%)	9 (28%)	<b>4.9</b> [1.29 ; 19.94]
	Just V2	4 (6%)	2 (6%)	2 (6%)	2.87 [0.43 ; 18.53]
	Twice	33 (48%)	17 (49%)	16 (50%)	2.43 [0.79 ; 7.5]
High-risk HPV	None	36 (52%)	18 (51%)	17 (53%)	1.00 [Ref.]
	Not sustained	13 (19%)	4 (11%)	8 (25%)	0.53 [0.15 ; 1.8]
	Sustained	20 (29%)	13 (37%)	7 (22%)	0.58 [0.19 ; 1.78]
Sustained coinfection	No	60 (87%)	29 (83%)	29 (91%)	1.00 [Ref.]
	Yes	9 (13%)	6 (17%)	3 (9%)	0.78 [0.24 ; 2.42]