



HAL
open science

Validation of Pharmacological Protocols for Targeted Inhibition of Canalicular MRP2 Activity in Hepatocytes Using [99mTc]mebrofenin Imaging in Rats

Solène Marie, Irene Hernández-Lozano, Louise Breuil, Wadad Saba, Anthony Novell, Jean-Luc Gennisson, Oliver Langer, Charles Truillet, Nicolas Tournier

► **To cite this version:**

Solène Marie, Irene Hernández-Lozano, Louise Breuil, Wadad Saba, Anthony Novell, et al.. Validation of Pharmacological Protocols for Targeted Inhibition of Canalicular MRP2 Activity in Hepatocytes Using [99mTc]mebrofenin Imaging in Rats. *Pharmaceutics*, 2020, 12 (6), pp.486. 10.3390/pharmaceutics12060486 . hal-02998408

HAL Id: hal-02998408

<https://hal.science/hal-02998408>




Submitted on 26 Nov 2020

HAL is a multi-disciplinary open access archive for the deposit and dissemination of scientific research documents, whether they are published or not. The documents may come from teaching and research institutions in France or abroad, or from public or private research centers.

L'archive ouverte pluridisciplinaire **HAL**, est destinée au dépôt et à la diffusion de documents scientifiques de niveau recherche, publiés ou non, émanant des établissements d'enseignement et de recherche français ou étrangers, des laboratoires publics ou privés.

Article

Validation of Pharmacological Protocols for Targeted Inhibition of Canalicular MRP2 Activity in Hepatocytes Using [^{99m}Tc]mebrofenin Imaging in Rats

Solène Marie ^{1,2,3} , Irene Hernández-Lozano ⁴ , Louise Breuil ¹, Wadad Saba ¹, Anthony Novell ¹, Jean-Luc Gennisson ¹, Oliver Langer ^{4,5,6}, Charles Truillet ¹ and Nicolas Tournier ^{1,*} 

¹ Université Paris-Saclay, CEA, Inserm, CNRS, BioMaps, Service Hospitalier Frédéric Joliot, 4 place du Général Leclerc, 91401 Orsay, France; solene.marie@aphp.fr (S.M.); louise.breuil@cea.fr (L.B.); wadad.saba@cea.fr (W.S.); anthony.novell@universite-paris-saclay.fr (A.N.);

jean-luc.gennisson@universite-paris-saclay.fr (J.-L.G.); charles.truillet@cea.fr (C.T.)

² Département de Pharmacie Clinique, Faculté de Pharmacie, Université Paris-Saclay, 92296 Châtenay-Malabry, France

³ AP-HP, Université Paris-Saclay, Hôpital Bicêtre, Pharmacie Clinique, 94270 Le Kremlin Bicêtre, France

⁴ Department of Clinical Pharmacology, Medical University of Vienna, 1090 Vienna, Austria;

irene.hernandezlozano@meduniwien.ac.at (I.H.-L.); oliver.langer@ait.ac.at (O.L.)

⁵ Preclinical Molecular Imaging, AIT Austrian Institute of Technology GmbH, 2444 Seibersdorf, Austria

⁶ Division of Nuclear Medicine, Department of Biomedical Imaging und Image-guided Therapy, Medical University of Vienna, 1090 Vienna, Austria

* Correspondence: nicolas.tournier@cea.fr; Tel.: +33-169-867-712

Received: 4 May 2020; Accepted: 24 May 2020; Published: 27 May 2020



Abstract: The multidrug resistance-associated protein 2 (MRP2) mediates the biliary excretion of drugs and metabolites. [^{99m}Tc]mebrofenin may be employed as a probe for hepatic MRP2 activity because its biliary excretion is predominantly mediated by this transporter. As the liver uptake of [^{99m}Tc]mebrofenin depends on organic anion-transporting polypeptide (OATP) activity, a safe protocol for targeted inhibition of hepatic MRP2 is needed to study the intrinsic role of each transporter system. Diltiazem (DTZ) and cyclosporin A (CsA) were first confirmed to be potent MRP2 inhibitors *in vitro*. Dynamic acquisitions were performed in rats (*n* = 5–6 per group) to assess the kinetics of [^{99m}Tc]mebrofenin in the liver, intestine and heart-blood pool after increasing doses of inhibitors. Their impact on hepatic blood flow was assessed using Doppler ultrasound (*n* = 4). DTZ (s.c., 10 mg/kg) and low-dose CsA (i.v., 0.01 mg/kg) selectively decreased the transfer of [^{99m}Tc]mebrofenin from the liver to the bile (*k*₃). Higher doses of DTZ and CsA did not further decrease *k*₃ but dose-dependently decreased the uptake (*k*₁) and backflux (*k*₂) rate constants between blood and liver. High dose of DTZ (i.v., 3 mg/kg) but not CsA (i.v., 5 mg/kg) significantly decreased the blood flow in the portal vein and hepatic artery. Targeted pharmacological inhibition of hepatic MRP2 activity can be achieved *in vivo* without impacting OATP activity and liver blood flow. Clinical studies are warranted to validate [^{99m}Tc]mebrofenin in combination with low-dose CsA as a novel substrate/inhibitor pair to untangle the role of OATP and MRP2 activity in liver diseases.

Keywords: drug-induced liver injury; drug metabolism; imaging; liver; membrane transporter; pharmacokinetics

1. Introduction

The channeling of many drugs through hepatocytes is governed by membrane transporters that work together to control hepatic uptake and subsequent biliary elimination [1,2]. Transporters located at the sinusoidal membrane of hepatocytes (blood–liver interface) are responsible for the transfer of compounds between blood and hepatocytes. Transporters located at the canalicular interface (liver–bile interface) mediate the biliary excretion of drugs and/or their metabolites [3] (Figure 1).

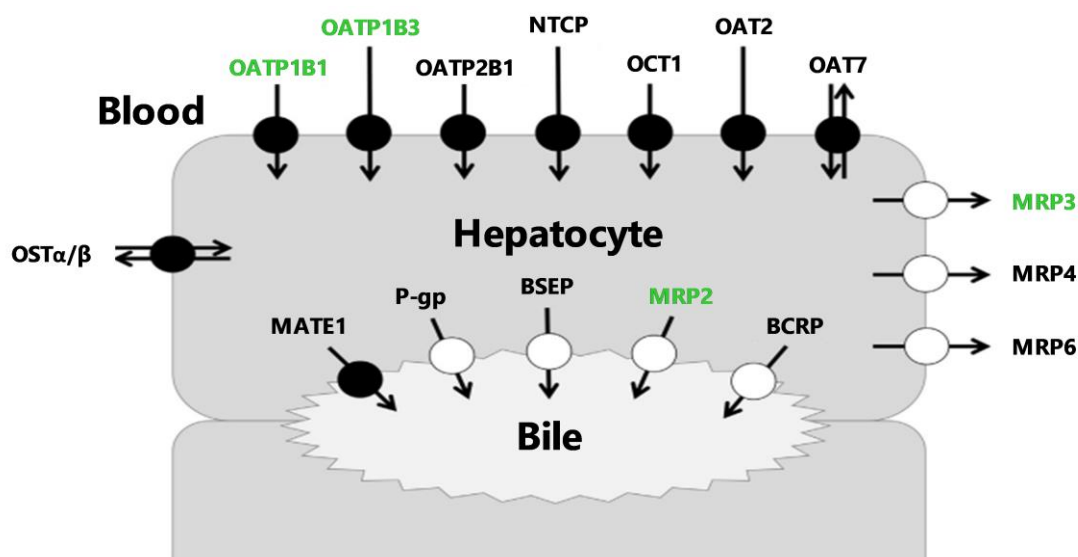


Figure 1. Membrane transporters expressed in hepatocytes. Transporters indicated in green have been described in the literature to transport [^{99m}Tc]mebrofenin. BCRP = Breast Cancer Resistance Protein, BSEP = Bile-Salt Export Pump, MATE1 = Multidrug And Toxin Extrusion Protein 1, MRP = Multidrug Resistance-Associated Protein, NTCP = Na⁺-taurocholate-cotransporting polypeptide, OAT = Organic Anion Transporter, OATP = Organic Anion-Transporting Polypeptide, OCT = Organic Cation Transporter, OST = Organic Solute Transporter, P-gp = P-glycoprotein.

Hepatocyte transporters are key determinants for pharmacokinetics (PK) since their altered activity may affect drug exposure, efficacy or safety [4]. Hepatobiliary transporter activity is increasingly considered as a mechanistic determinant for drug-induced liver injury (DILI), which has become a major challenge in drug development [4–6]. Many endogenous compounds and xenobiotics are substrates or inhibitors of multidrug resistance-associated protein 2 (MRP2), a major efflux transporter located at the canalicular pole of hepatocytes (Figure 1) [7,8]. MRP2 is the main driving force for bile salt-independent bile flow through canalicular excretion of reduced glutathion [9]. Prolonged depletion or inhibition of MRP2 activity can cause accumulation of harmful bile constituents resulting in cholestatic liver cell damage [9]. In addition, a decrease in MRP2 activity may lead to hepatic accumulation of MRP2-substrate drugs and cause idiosyncratic hepatotoxicity [4]. Selective determination of the individual transport capacity of MRP2 apart from other hepatocyte transporters is needed to address its functional role and regulation during patho-physiological conditions [10].

In vitro hepatocytes or in situ rodent liver perfusion have convincingly demonstrated the importance of canalicular MRP2 activity in controlling the liver-to-bile gradient [11,12]. Dynamic imaging methods using transporter probe substrates are being developed to study liver transporter activity in vivo [13,14]. Ideal imaging probes have to survive hepatic metabolism to avoid the generation of radiolabeled metabolites, which may confound the interpretation of the imaging data [14]. Moreover, sufficient initial liver uptake, which often involves uptake transport, is required to obtain a quantifiable imaging signal in the liver and bile. Radiolabeled compounds that fulfill these criteria are rare. [^{99m}Tc]mebrofenin is a readily available radiopharmaceutical used in nuclear medicine for hepatobiliary scintigraphy [15]. [^{99m}Tc]mebrofenin undergoes neither metabolism nor

conjugation [16–18] and has gained interest as a transporter imaging probe because its sinusoidal uptake is highly dependent on organic anion-transporting polypeptide (OATP) influx transporters [17,19,20] and its biliary excretion is predominantly mediated by MRP2 [21–23]. In vitro studies have shown that [^{99m}Tc]mebrofenin is also transported by the sinusoidal efflux transporter MRP3, which may impact its liver kinetics in vivo [17] (Figure 1). [^{99m}Tc]mebrofenin benefits from an extensive hepatic extraction and a fast blood clearance. However, fast clearance from the liver volume and rapid accumulation of radioactivity in the bile makes [^{99m}Tc]mebrofenin more suitable to assess biliary function rather than liver extraction [24].

The most effective way to study in vivo the activity of a transporter with a radiolabeled transporter substrate is the use of a specific transporter inhibitor [25,26]. The difference in pharmacokinetic parameters from scans acquired in the presence or absence of a transporter inhibitor unveils transport capacity. An example is the combination of OATP substrate radiotracers (such as [¹¹C]dehydropravastatin) with the OATP inhibitor rifampicin (RIF) to study OATP activity in the liver [27]. The possibility of following a similar approach for the imaging of MRP2 activity in the liver using [^{99m}Tc]mebrofenin critically depends on the availability of a clinically applicable MRP2 inhibitor which shows negligible interaction with sinusoidal uptake transporters.

There are limited data regarding the impact of transporter inhibitors on the liver kinetics of [^{99m}Tc]mebrofenin in vivo. RIF is a potent in vitro inhibitor of OATP [28], MRP2 [8] and MRP3 [29]. In vivo experiments in rats and mice showed that RIF inhibited both the liver uptake and canalicular efflux of [^{99m}Tc]mebrofenin to a similar extent [21,30]. Diltiazem (DTZ) is a potent in vitro inhibitor of MRP2 [8], but not of OATP1B1 and OATP1B3 [28]. Cyclosporin (CsA) is a potent in vitro inhibitor of MRP2 [8] and MRP3 [31] but is also known to inhibit OATP [28]. The aim of the present study was to test different doses of DTZ and CsA in rats to come up with an effective and safe imaging protocol, which can be potentially applied in a clinical setting to selectively assess MRP2 activity in the liver with [^{99m}Tc]mebrofenin.

2. Materials and Methods

2.1. Chemicals and Radiochemicals

For in vitro assays, calcein-AM, RIF, DTZ and CsA were obtained from Sigma-Aldrich. For in vivo experiments, commercial drugs were used for RIF (Rifadine[®], Sanofi, France), DTZ (Tildiem[®], Sanofi, France) and CsA (Sandimmun[®], Novartis, France). Commercial kits of mebrofenin (Cholediam[®]) were a gift from Mediam (France). Each kit was labeled with a sodium [^{99m}Tc]pertechnetate (Na [^{99m}Tc]TcO₄) eluate (750 MBq/mL) obtained from a sterile [⁹⁹Mo]/[^{99m}Tc] generator (Drytec[®] and Tekcis[®], GE Healthcare, France) followed by quality control according to the manufacturer's recommendations.

2.2. Animals

[^{99m}Tc]mebrofenin imaging experiments were performed in a total of 54 male rats (Wistar, weight: 313 ± 74 g). Doppler ultrasound imaging was performed in an additional 12 male rats (Wistar, 346 ± 67 g). All animal experiments were in accordance with the recommendations of the European Community (2010/63/UE) and the French National Committees (law 2013-118) for the care and use of laboratory animals. The experimental protocol was approved by a local ethics committee for animal use (CETEA) and by the French ministry of agriculture (APAFIS#7466-20 1611 04 1 7049220 v2). Animals were housed in a controlled environment with access to food and water ad libitum.

2.3. In Vitro Inhibition Assays

We used an in vitro assay to compare the MRP2-inhibitory potency of RIF, DTZ and CsA. Stably transfected MDCK-II-MRP2 cells overexpressing human MRP2 were a kind gift from A. Schinkel (National Cancer Institute, The Netherlands). Cells were cultured in a controlled atmosphere at 37 °C, 5% CO₂. The culture medium was composed of DMEM Glutamax (Dulbecco's Modified

Eagle Medium, 4.5 g/L D-glucose, pyruvate) supplemented with 10% fetal bovine serum and 1% antibiotics (penicillin and streptomycin 5000 U/mL). MRP2-mediated transport was assessed using the calcein-AM assay [32]. Cells were seeded in 24-well plates (30,000 cells per well) in 500 μ L of culture medium. Three days later the medium was removed and replaced by the tested inhibitor (RIF, DTZ and CsA) at selected concentrations ranging from 0 (solvent, 1% DMSO) to 1 mM in 200 μ L of incubation buffer (10% HBSS (Hanks' Balanced Salt Solution) + CaCl₂ + MgCl₂, 1 mM pyruvate, 10 mM HEPES, 1 μ M calcein-AM). After 30 min at 37 °C, the incubation buffer was removed and cell monolayers were rapidly washed with 300 μ L of ice-cold buffer (Dulbecco's phosphate buffered saline + CaCl₂ + MgCl₂). Cells were then lysed by 10 min of incubation with 500 μ L of NaOH (10 mM). A total of 200 μ L was collected from each well ($n = 4$ wells per condition) and intracellular fluorescence was determined using a Mithras[®] detector (Berthold, France, wavelength excitation 485 nm/detection 535 nm). For each inhibitor, uptake data were normalized to describe the extent of inhibition from 0 to maximal (100%) inhibition. Nonlinear regression was performed to estimate the 50% inhibitory concentration (IC₅₀) of each inhibitor (GraphPad Prism software, version 8.4, San Diego, CA, USA).

2.4. [^{99m}Tc]mefenofen Scintigraphy

Rats were anesthetized with isoflurane (3.5% and 1.5–2% in oxygen for induction and maintenance, respectively). [^{99m}Tc]mefenofen scintigraphy was performed using a clinical SPECT-CT camera (Symbia[®], Siemens, Knoxville, TN, USA) with a Low Energy High Resolution (LEHR) collimator. In each session, 3 rats were placed in a row on the scanner bed and catheters were inserted in the caudal vein. Experiments were performed for control conditions or after injection of the different transporter inhibitors. RIF (40 mg/kg intravenously, i.v.) was injected immediately before [^{99m}Tc]mefenofen as previously described [33]. The PK of subcutaneously (s.c.) injected DTZ (20 mg/kg) has been reported in rats with plasma concentration > 10 μ g/mL (25 μ M) obtained 60 min after injection [34], consistent with the potency of DTZ to inhibit MRP2, assessed in vitro in the present study. A dose range of DTZ (10, 20 or 40 mg/kg s.c.) was therefore administered 60 min before [^{99m}Tc]mefenofen. CsA was injected i.v. 5 min before [^{99m}Tc]mefenofen, starting from a high clinical dose which was further decreased (5, 1, 0.5, 0.1, 0.01 mg/kg, i.v.). The number of rats used for each condition is reported in Table 1. Rats were injected with [^{99m}Tc]mefenofen (39 \pm 4 MBq, i.v.) followed by dynamic planar acquisitions. Acquisitions were terminated by a X-ray CT scan. Dynamic images were reconstructed as 20, 10, 20, and 4 frames with a duration of 15, 30, 60 and 120 s respectively, to provide time-activity curves (TACs) in selected organs.

2.5. Analysis of [^{99m}Tc]mefenofen Scintigraphy Data

Images were analyzed with PMOD[®] software (version 3.9, PMOD Technologies LLC). Regions of interest (ROI) were manually drawn on the liver, intestine, heart (= image-derived blood curve) and urinary bladder. Corresponding TACs were generated by plotting the mean radioactivity amount in each ROI normalized to the injected dose in each animal (cps/MBq) versus time. For descriptive pharmacokinetic analysis, the maximum total amount (X_{max} , cps/MBq), the time to reach X_{max} (T_{max} , min) and the area under the TAC from 0 to 30 min ($AUC_{0-30\text{ min}}$) were determined for each ROI. The distribution of [^{99m}Tc]mefenofen from blood to the liver was assessed by determining the liver to blood AUC ratio (AUCR) from 0 to 3 min ($AUCR_{liver/blood} = \frac{AUC_{liver,0-3\text{ min}}}{AUC_{blood,0-3\text{ min}}}$). The distribution of [^{99m}Tc]mefenofen from the liver to the intestine was assessed by calculating $AUCR_{intestine/liver}$ from 10 to 25 min ($AUCR_{intestine/liver} = \frac{AUC_{intestine,10-25\text{ min}}}{AUC_{liver,10-25\text{ min}}}$). The urinary clearance (CL_{urine}) of [^{99m}Tc]mefenofen was calculated using the equation $CL_{urine} = \frac{X_{bladder,30\text{ min}}}{AUC_{blood,0-30\text{ min}}}$ where $X_{bladder,30\text{ min}}$ represents the amount of [^{99m}Tc]mefenofen in the bladder at 30 min after the tracer injection.

2.6. Pharmacokinetic Modeling of [^{99m}Tc]mebrofenin Hepatobiliary Distribution and Elimination

The uptake clearance of [^{99m}Tc]mebrofenin from blood to the liver (CL_{uptake}) was estimated using the integration plot method [33,35] from 0 to 3 min (linear part) after [^{99m}Tc]mebrofenin injection using the following equation: $\frac{X_{\text{liver},t}}{C_{\text{blood},t}} = CL_{\text{uptake}} \times \left(\frac{AUC_{\text{blood},0-t}}{C_{\text{blood},t}} \right) + V_E$. $X_{\text{liver},t}$ represents the total amount of [^{99m}Tc]mebrofenin in the liver at the time t , $C_{\text{blood},t}$ represents the concentration of [^{99m}Tc]mebrofenin in the blood at time t (derived from the heart ROI). $C_{\text{blood},t}$ was calculated as the amount of [^{99m}Tc]mebrofenin in the blood ($X_{\text{blood},t}$) divided by the mean volume of the heart ROI (V_{heart}), which was measured on the X-ray CT scan ($V_{\text{heart}} = 2.55 \pm 0.36$ mL). $AUC_{\text{blood},0-t}$ represents the area under the blood TAC from time 0 to t . CL_{uptake} corresponds to the slope of the linear regression plot. V_E represents the initial distribution volume in the liver at time 0. The transfer of [^{99m}Tc]mebrofenin from liver to bile could not be estimated using integration plot analysis as plots were not linear at any time point of the kinetics.

A previously developed four-compartment model [36] was implemented in order to estimate the rate constants that describe the transfer of [^{99m}Tc]mebrofenin between blood and hepatocytes (k_1 , and k_2 , min^{-1}), from hepatocytes to intrahepatic bile ducts (k_3 , min^{-1}), and from the intrahepatic bile ducts to the intestine (k_5 , min^{-1}) (Figure S1). The processes defined by k_1 , k_2 , and k_3 may involve active transport through the basolateral or canalicular membranes of hepatocytes. The liver volume of interest defined in the model consists of well-mixed compartments of blood, hepatocytes and intrahepatic bile ducts. The additional compartment represents the extrahepatic bile ducts and intestines. Compartment volumes are estimated by hepatic anatomical characteristics and physiological processes as previously described [36,37]. In addition, the model includes a flow-weighted dual blood input function that accounts for the tracer delivery to the liver via both the hepatic artery and the portal vein. The radioactivity concentration in the hepatic artery corresponded to the image-derived TACs from the ROI in the heart-blood pool divided by V_{heart} , while the concentration in the portal vein was mathematically estimated from the arterial blood concentration and the liver and intestine TACs during the modeling process [36]. The final dual-input concentration was calculated as the flow-weighted input concentrations of hepatic artery and portal vein using a hepatic arterial flow fraction of 0.17 [38].

2.7. Assessment of Liver Perfusion with Doppler Ultrasound

The impact of inhibitors on the hepatic blood flow was assessed using Doppler ultrasound imaging (US). Flow measurements were performed in three hepatic vessels (portal vein, hepatic vein and hepatic artery). Rats were anesthetized with isoflurane (3.5% and 1.5–2% in oxygen for induction and maintenance, respectively) and Doppler US imaging was performed by using an ultrafast ultrasound device (Aixplorer Ultimate[®], V12.3, Supersonic Imagine). The US probe (SLH20-6[®], Supersonic Imagine) was positioned on the shaved abdomen of each rat. Flow in the three vessels was measured before (= baseline) and 5 min after injection of maximal dose of the tested inhibitors to allow for paired measurements, without moving the US probe, over a limited time period. Therefore, all three inhibitors, including DTZ, had to be injected i.v. to enable rapid detection of drug-induced changes in blood flow within a single session. RIF was administered 40 mg/kg i.v. ($n = 4$) and CsA was administered 5 mg/kg i.v. ($n = 4$). For DTZ, it was not technically possible to match the conditions used for [^{99m}Tc]mebrofenin scintigraphy and wait for 60 min after s.c. administration. Intravenous injection of 40 mg/kg dose of DTZ was lethal ($n = 3$). DTZ was therefore administered at the maximal i.v. dose reported in the literature in rats (3 mg/kg i.v.; $n = 4$) [39]. Blood flow in each vessel was estimated from the flow speed measured in Doppler, normalized to the size of each vessel.

2.8. Statistical Analysis

[^{99m}Tc]mebrofenin scintigraphy data are reported as mean \pm standard deviation (SD). Differences between multiple groups were analyzed by one-way ANOVA followed by a Bonferroni

multiple-comparison test and between two groups (Doppler US measurements) with a paired *t*-test. The level of statistical significance was set to a *p* value of less than 0.05.

3. Results

3.1. In Vitro Inhibition Assays

The calcein-AM assay was performed to compare the MRP2 inhibitory potency of selected compounds in vitro (Figure 2). Full MRP2 inhibition was achieved only using high concentrations of RIF (>500 μ M). The IC_{50} of RIF was 210 μ M (95% confidence interval: 175–254 μ M). The IC_{50} for DTZ and CsA was 4.4 μ M (95% confidence interval: 1.7–10.4 μ M) and 1.7 μ M (95% confidence interval: 1.0–2.7 μ M), respectively, suggesting a higher MRP2-inhibition potency. CsA appeared to be the most potent MRP2 inhibitor with the lowest IC_{50} . Concentrations of CsA > 30 μ M could not be tested due to cell toxicity.

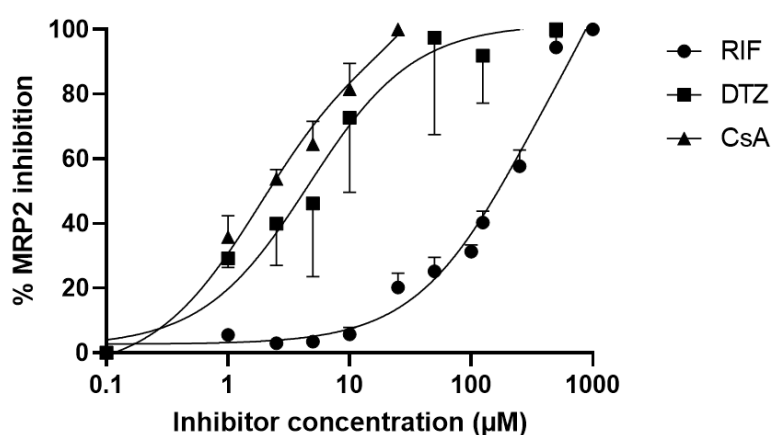


Figure 2. In vitro inhibition of MRP2 activity by rifampicin (RIF), diltiazem (DTZ) and cyclosporin (CsA). MRP2 activity was assessed with the calcein-AM efflux assay using MDCK-II-MRP2 cells incubated with increasing concentrations of tested inhibitors. Data are mean \pm S.D ($n = 4$) and lines show the nonlinear regression fit.

3.2. Impact of Inhibitors on the Kinetics of [99m Tc]mebrofenin In Vivo

[99m Tc]mebrofenin kinetics were first measured after treatment with the well-characterized OATP/MRP2 inhibitor RIF. Figure 3 shows representative planar images obtained in a control rat and a RIF-treated rat. Under control conditions, [99m Tc]mebrofenin was rapidly transferred to the liver within seconds and then gradually moved to the intestine. The liver uptake of [99m Tc]mebrofenin was markedly reduced by RIF with less radioactivity in the intestine at later time points.

Figure 4 shows the mean TACs obtained for each tested condition. Descriptive pharmacokinetic data are reported in Table 1. Unlike RIF, DTZ and CsA increased the liver $AUC_{0-30 \text{ min}}$ (with a maximum of +51% for 1 mg/kg CsA) while decreasing $AUC_{0-30 \text{ min}}$ in the intestine (from -23% to -47% with 0.01 and 0.1 mg/kg CsA, respectively). $X_{\max, \text{liver}}$ was significantly increased by the lowest dose of CsA (0.01 mg/kg) only and $T_{\max, \text{liver}}$ was significantly delayed by CsA in a dose-dependent manner (+4.8 min with CsA 5 mg/kg). AUC_{blood} showed a pronounced dose-dependent increase after CsA, suggesting lower plasma clearance. Radioactivity in the intestine was significantly decreased in all tested conditions except for the lowest dose of CsA (0.01 mg/kg, Table 1).

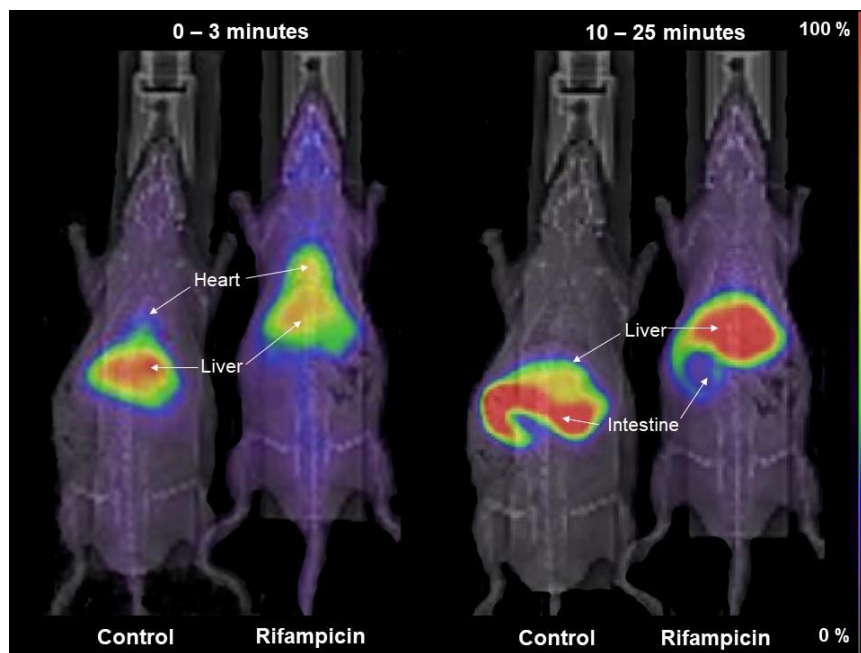


Figure 3. Representative planar scintigraphy images of the distribution of [^{99m}Tc]mebrofenin in a control and RIF-treated rat (40 mg/kg i.v.). Shown are summed frames from 0 to 3 min (to depict hepatic uptake) and summed frames from 10 to 25 min (to depict biliary excretion).

Table 1. Descriptive pharmacokinetic parameters of [^{99m}Tc]mebrofenin under each tested condition.

| Group | AUC _{0-30 min} Blood ((cps/MBq).min) | AUC _{0-30 min} Liver ((cps/MBq).min) | X _{max} Liver (cps/MBq) | T _{max} Live (min) | AUC _{0-30 min} Intestine ((cps/MBq).min) |
|------------------------------|--|--|----------------------------------|-----------------------------|--|
| Control (n = 5) | 51 ± 14 | 461 ± 109 | 26.5 ± 5.1 | 4.3 ± 1.7 | 424 ± 85 |
| RIF (n = 5) | 109 ± 12 * | 385 ± 28 | 16.0 ± 0.9 * | 9.6 ± 0.8 * | 223 ± 54 * |
| DTZ 10 mg/kg (n = 5) | 47 ± 4 | 520 ± 61 | 30.1 ± 3.2 | 4.3 ± 0.7 | 271 ± 30 * |
| DTZ 20 mg/kg (n = 5) | 72 ± 23 | 562 ± 96 | 31.1 ± 5.8 | 5.4 ± 1.6 | 286 ± 102 * |
| DTZ 40 mg/kg (n = 5) | 84 ± 30 * | 543 ± 95 | 24.3 ± 3.0 | 6.4 ± 0.8 | 238 ± 76 * |
| CsA 0.01 mg/kg (n = 6) | 71 ± 9 | 660 ± 61 * | 34.6 ± 3.0 * | 4.0 ± 0.6 | 327 ± 61 |
| CsA 0.1 mg/kg (n = 5) | 72 ± 11 | 601 ± 105 * | 27.9 ± 4.0 | 5.7 ± 1.9 | 223 ± 26 * |
| CsA 0.5 mg/kg (n = 6) | 97 ± 9 * | 668 ± 48 * | 28.9 ± 2.1 | 7.6 ± 2.1 * | 239 ± 64 * |
| CsA 1 mg/kg (n = 6) | 124 ± 9 * | 695 ± 40 * | 29.9 ± 2.5 | 7.4 ± 1.3 * | 275 ± 38 * |
| CsA 5 mg/kg (n = 6) | 188 ± 18 * | 648 ± 66 * | 27.6 ± 2.1 | 9.1 ± 1.3 * | 314 ± 30 * |

Data are given as mean ± SD (n = 5 for control, RIF, DTZ 10 mg/kg, DTZ 20 mg/kg, DTZ 40 mg/kg, CsA 0.1 mg/kg groups and n = 6 for CsA 0.01 mg/kg, CsA 0.5 mg/kg, CsA 1 mg/kg, CsA 5 mg/kg groups). Asterisk (*) indicates significant differences (p < 0.05) in animals treated by rifampicin (RIF), diltiazem (DTZ) or cyclosporin A (CsA) compared with the control group (one-way ANOVA with a Bonferroni multiple-comparison test).

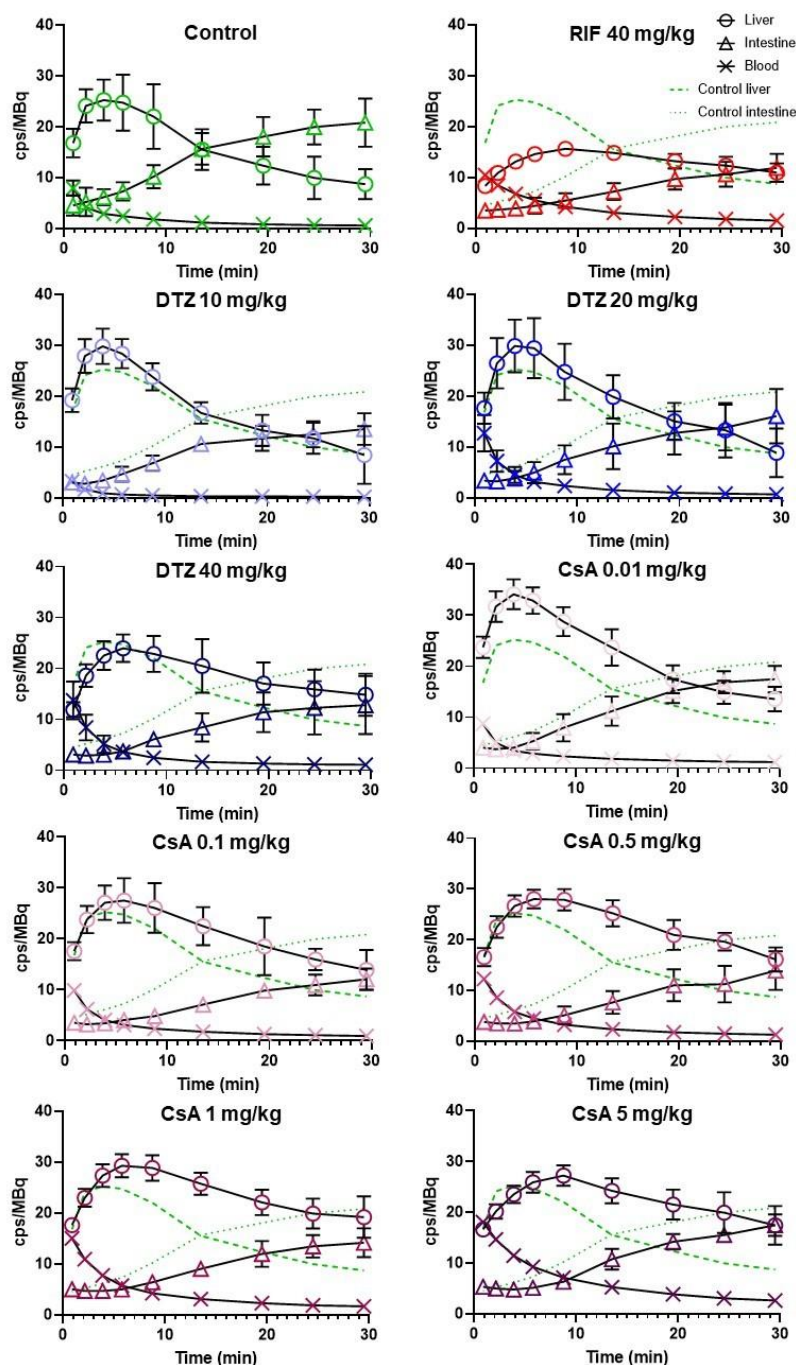


Figure 4. Mean (\pm SD) time-activity curves in the liver, intestine and blood for control animals and animals treated by rifampicin (RIF), diltiazem (DTZ) or cyclosporin A (CsA) with $n = 5$ for control, RIF, DTZ 10 mg/kg, DTZ 20 mg/kg, DTZ 40 mg/kg, CsA 0.1 mg/kg groups and $n = 6$ for CsA 0.01 mg/kg, CsA 0.5 mg/kg, CsA 1 mg/kg, CsA 5 mg/kg groups. Activity is expressed as the number of counts per second (cps) normalized to the injected dose (MBq).

The liver uptake of [^{99m}Tc]mebrofenin was estimated by $\text{AUCR}_{\text{liver/blood}}$ from 0 to 3 min (early uptake phase, Figure 5). Compared to the control group ($\text{AUCR}_{\text{liver/blood}} = 2.95 \pm 0.47$) there was a dose-dependent decrease in liver uptake with increasing doses of DTZ and CsA. The highest doses of DTZ and CsA induced an approximately 3-fold decrease in $\text{AUCR}_{\text{liver/blood}}$, reaching similar levels as in RIF-treated animals. The lowest doses of DTZ and CsA (10 mg/kg and 0.01 mg/kg, respectively) did not affect the initial liver uptake of [^{99m}Tc]mebrofenin. Biliary excretion was

estimated by calculating $AUCR_{\text{intestine/liver}}$. A time-frame from 10 to 25 min was selected for this analysis, which corresponds to the elimination phase observed in the TACs under all tested conditions. $AUCR_{\text{intestine/liver}}$ was significantly decreased in all tested conditions compared with the control group (Figure 5). Differences between tested conditions were not significant. Nevertheless, CsA appeared to be more potent than DTZ in decreasing $AUCR_{\text{intestine/liver}}$.

The urinary bladder could be observed on the [^{99m}Tc]mefbrofenin images with higher signals in animals which received the highest doses of the inhibitors. However, CL_{urine} values were not significantly different among all tested conditions (Figure 5).

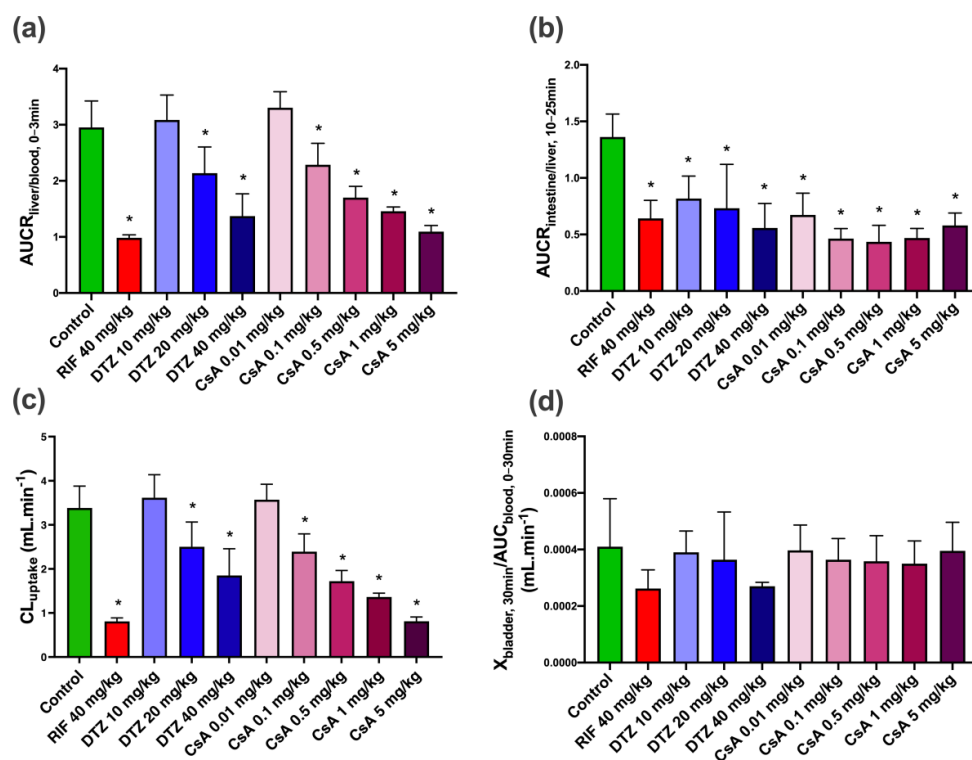


Figure 5. Mean descriptive pharmacokinetic parameters for control animals and animals treated by rifampicin (RIF), diltiazem (DTZ) and cyclosporin A (CsA). (a) $AUCR_{\text{liver/blood}, 0-3 \text{ min}}$ (indicative of uptake of [^{99m}Tc]mefbrofenin from blood into liver), (b) $AUCR_{\text{intestine/liver}, 10-25 \text{ min}}$ (indicative of excretion of [^{99m}Tc]mefbrofenin from the liver into the intestine), (c) CL_{uptake} values calculated from the integration plot analysis and (d) $X_{\text{bladder}, 30\text{min}} / AUC_{\text{blood}, 0-30\text{min}}$ (corresponding to CL_{urine}). Data are means with error bars representing SD ($n = 5$ for control, RIF, DTZ 10 mg/kg, DTZ 20 mg/kg, DTZ 40 mg/kg, CsA 0.1 mg/kg groups and $n = 6$ for CsA 0.01 mg/kg, CsA 0.5 mg/kg, CsA 1 mg/kg, CsA 5 mg/kg groups). *, $p < 0.05$ compared to control, one-way ANOVA with a Bonferroni multiple-comparison test.

3.3. Pharmacokinetic Modeling

The liver uptake of [^{99m}Tc]mefbrofenin was also estimated with integration plot analysis [33,35] (Figure S2). Compared to the control group ($CL_{\text{uptake}} = 3.38 \pm 0.49 \text{ mL}\cdot\text{min}^{-1}$), the potent OATP inhibitor RIF significantly decreased the liver uptake ($CL_{\text{uptake}} = 0.81 \pm 0.08 \text{ mL}\cdot\text{min}^{-1}$) (Figure 5). A dose-dependent decrease in CL_{uptake} was observed with increasing doses of DTZ and CsA. The maximal decrease was observed with 5 mg/kg CsA, reaching similar levels as in RIF-treated animals ($CL_{\text{uptake}} = 0.81 \pm 0.10 \text{ mL}\cdot\text{min}^{-1}$). The highest dose of DTZ only partially reduced CL_{uptake} ($1.85 \pm 0.60 \text{ mL}\cdot\text{min}^{-1}$ for 40 mg/kg DTZ). The lowest dose of DTZ (10 mg/kg) and CsA (0.01 mg/kg) did not decrease CL_{uptake} , suggesting a negligible impact on the liver extraction of [^{99m}Tc]mefbrofenin. The initial distribution volume in the liver (V_E) was similar across all tested conditions ($V_E = 1.64 \pm 0.38 \text{ mL}$) (Figure S2).

We used a previously developed four-compartment PK model which provided good fits (Figure S3) for both the liver and the intestine ROI. Precision of the obtained parameters was acceptable (low percentage coefficient of variation, %CV) in almost all the analyzed subjects (Table S1). Compartmental kinetic modeling showed that the transfer rate constant of [^{99m}Tc]mebrofenin from blood into hepatocytes k_1 (Figure S1) was significantly decreased by RIF ($k_1 = 0.89 \pm 0.09 \text{ min}^{-1}$) and, to a lesser extent, by the highest doses of DTZ ($k_1 = 2.76 \pm 0.89 \text{ min}^{-1}$) and CsA ($k_1 = 2.82 \pm 0.86 \text{ min}^{-1}$) as compared with the control group ($k_1 = 7.37 \pm 1.62 \text{ min}^{-1}$) (Figure 6). A dose-dependent decrease in k_1 was observed with increasing doses of DTZ and CsA, with no effect observed for 10 mg/kg DTZ and 0.01 mg/kg CsA. The backflux of [^{99m}Tc]mebrofenin from hepatocytes into blood k_2 (Figure S1) was dose-dependently decreased by DTZ and CsA (Figure 6). k_2 was not decreased by the lowest dose of DTZ and CsA. The transfer of [^{99m}Tc]mebrofenin from the hepatocyte into the intrahepatic bile ducts k_3 (Figure S1), which reflected MRP2-mediated excretion, was significantly decreased in all tested groups to a similar extent (Figure 6) except for animals receiving 5 mg/kg CsA, for whom a high variability in k_3 was observed ($k_3 = 0.15 \pm 0.08 \text{ min}^{-1}$). Statistically significant differences remained the same for k_2 and k_5 after excluding outlier data. However, the significance is lost in some of the groups when removing the outlier value for k_3 (0.29 min^{-1}) in the control group. In this situation, only the 20 mg/kg DTZ, and all the CsA groups except the 5 mg/kg group show a significant decrease in the k_3 value as compared to the control group. No differences between groups could be observed in the k_5 parameter, which describes the transfer of [^{99m}Tc]mebrofenin from the intrahepatic bile ducts into the intestine (Figure 6).

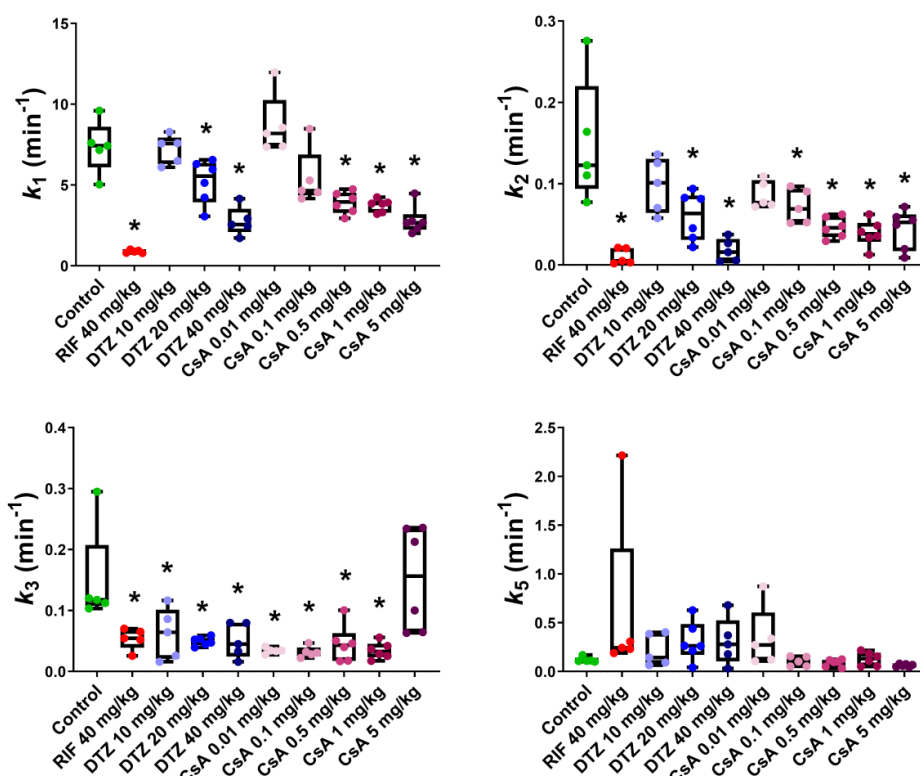


Figure 6. Outcome parameters for [^{99m}Tc]mebrofenin hepatobiliary distribution obtained with the four-compartment pharmacokinetic model for control animals and animals treated by rifampicin (RIF), diltiazem (DTZ) and cyclosporin A (CsA). k_1 represents the transfer of [^{99m}Tc]mebrofenin from blood into the hepatocytes, k_2 the backflux of [^{99m}Tc]mebrofenin from the hepatocytes into blood, k_3 the transfer from the hepatocytes into the intrahepatic bile ducts and k_5 from the intrahepatic bile duct to the intestine ($n = 5$ for control, RIF, DTZ 10 mg/kg, DTZ 20 mg/kg, DTZ 40 mg/kg, CsA 0.1 mg/kg groups and $n = 6$ for CsA 0.01 mg/kg, CsA 0.5 mg/kg, CsA 1 mg/kg, CsA 5 mg/kg groups). *, $p < 0.05$ compared to control, one-way ANOVA with a Bonferroni multiple-comparison test.

3.4. Assessment of Liver Perfusion with Doppler Ultrasound

Individual blood flow values measured in three hepatic vessels in rats before and after the i.v. injection of each inhibitor (40 mg/kg RIF, 3 mg/kg DTZ, 5 mg/kg CsA) are shown in Figure 7. Higher doses of DTZ than 3 mg/kg could not be tested due to poor tolerance. None of the tested inhibitors affected the hepatic vein blood flow. A significant decrease in the portal vein blood flow was observed after injection of RIF and DTZ. Moreover, a significant decrease in the hepatic artery blood flow was observed after injection of DTZ. CsA did not affect the blood flow in any hepatic vessel (Figure 7).

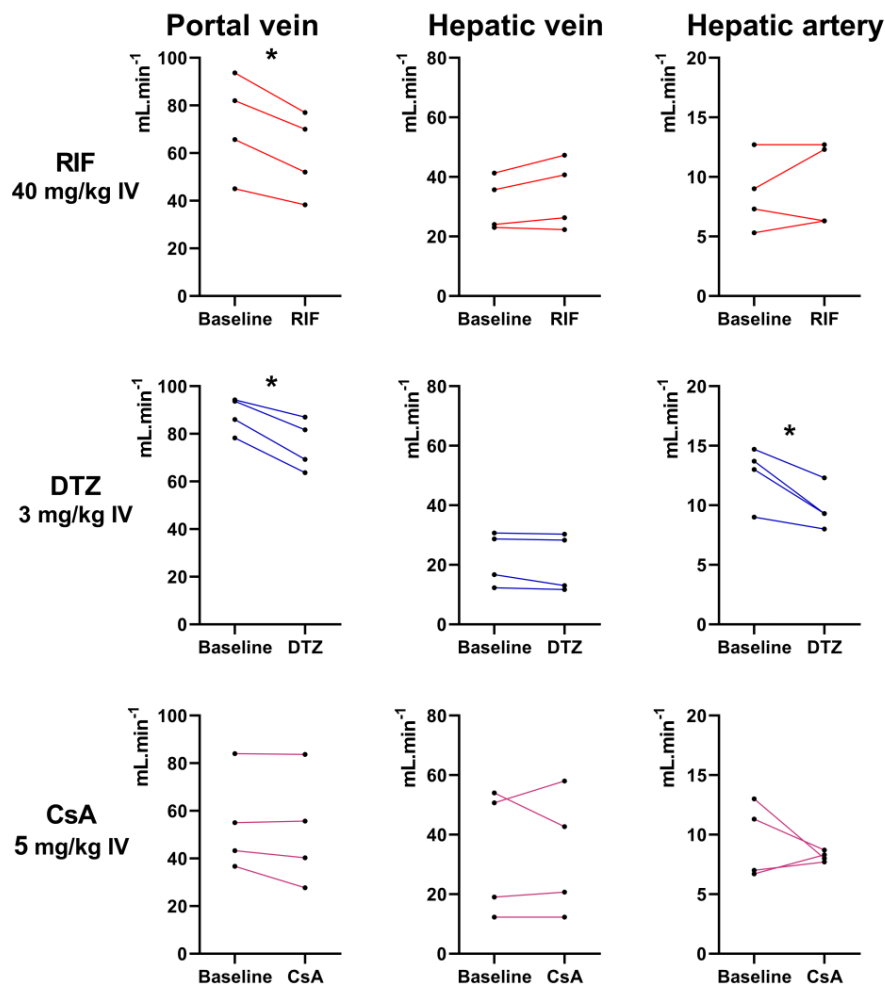


Figure 7. Blood flow (mL/min) of the portal vein, hepatic vein and hepatic artery measured with Doppler ultrasound in 4 rats before and after injection of rifampicin (RIF), diltiazem (DTZ) and cyclosporin A (CsA), respectively. *, $p < 0.05$, paired t -test.

4. Discussion

Hepatocyte transporters play a key role in the hepatobiliary clearance of many endogenous and exogenous compounds. Efforts are being made to develop imaging protocols for selective determination of the respective importance of each transporter system in vivo [40]. Several small-molecule probes for Positron Emission Tomography (PET) have been proposed to study OATP transporter activity and to assess the interplay between sinusoidal uptake and canalicular efflux in vivo [13,19,40]. However, imaging protocols for selective determination of MRP2 activity at the canalicular interface are currently not available. The availability of such an imaging protocol would be of high interest to predict MRP2-mediated DILI in drug development [41] and to study the effect of genetic polymorphisms or liver disease on hepatic MRP2 activity [42].

In vitro, [^{99m}Tc]mebrofenin is predominantly transported by sinusoidal OATP1B1 and OATP1B3 and by the efflux transporters MRP2 and MRP3 [17,19,20,22] (Figure 1). In vivo studies using either OATP- or MRP2-deficient mice provided evidence for the transport of [^{99m}Tc]mebrofenin by these transporters [30]. RIF is recommended as a prototypical OATP transporter inhibitor to investigate OATP-mediated drug–drug interactions in clinical pharmacokinetic studies [5,43]. RIF has also been used to characterize different OATP-imaging probes in animals and humans [19]. However, our rat data confirmed previous results obtained in mice showing that RIF inhibited both the OATP-mediated uptake and the MRP2-mediated biliary excretion of [^{99m}Tc]mebrofenin [30]. Neyt and colleagues have tested the impact of RIF on the liver kinetics of [^{99m}Tc]mebrofenin in mice [30]. The lowest tested dose (12.5 mg/kg i.v. followed by 3.12 mg/kg intraperitoneal) did not impact the liver uptake of [^{99m}Tc]mebrofenin, but only moderate inhibition of biliary excretion was observed (-25% in $\text{AUCR}_{\text{bile/liver}}$). Higher doses of RIF inhibited both the OATP-mediated uptake ($\text{AUCR}_{\text{liver/blood}}$) and the biliary excretion (-94% in $\text{AUCR}_{\text{bile/liver}}$). Of note, liver kinetics of [^{99m}Tc]mebrofenin in RIF-treated mice did not resemble those obtained in MRP2 deficient mice [30], suggesting that RIF inhibits liver OATPs and MRP2 to a similar extent. DTZ is a potent inhibitor in vitro of MRP2 [8], but not of OATP1B1 and OATP1B3 [28]. CsA is a potent MRP2 inhibitor [8] but is also known to inhibit OATPs in vitro [28]. We hypothesized that CsA may show substantially different potency to inhibit MRP2 versus OATP in vivo [21,28]. Our in vitro data (Figure 2) showed that the potency of DTZ and CsA to inhibit MRP2 was much higher than that of RIF.

Both DTZ and CsA induced a dose-dependent decrease in the liver uptake of [^{99m}Tc]mebrofenin. However, the lowest tested doses of DTZ (10 mg/kg) and CsA (0.01 mg/kg) did not impact the liver uptake of [^{99m}Tc]mebrofenin, estimated as $\text{AUCR}_{\text{liver/blood}}$, $\text{CL}_{\text{uptake}}$ or k_1 , suggesting that these doses did not affect liver OATP activity in vivo. All tested doses of DTZ and CsA inhibited biliary excretion (estimated as $\text{AUCR}_{\text{intestine/liver}}$ or k_3) to a similar extent, although DTZ appeared slightly less efficient than RIF and CsA.

DTZ is a calcium channel blocker and we hypothesized that the decrease in the liver uptake of [^{99m}Tc]mebrofenin induced by high-dose DTZ may reflect its impact on hepatic blood flow [36]. For technical reasons, it was not possible to test the impact of DTZ 40 mg/kg s.c. on liver perfusion. However, DTZ (3 mg/kg i.v.) was shown to induce a modest but significant decrease in blood flow in both the portal vein and hepatic artery (Figure 7). In contrast, the highest dose of CsA (5 mg/kg i.v.) did not impact the blood flow in any hepatic vessel, suggesting that the effects of CsA on hepatic [^{99m}Tc]mebrofenin kinetics reflected changes in transporter activity rather than changes in liver perfusion. We showed that high-dose RIF significantly reduced the blood flow in the portal vein, which is not likely to occur at the doses used in clinical studies (approximately 9 mg/kg) [44,45]. However, it cannot be excluded that changes in portal perfusion induced by high-dose RIF may have influenced to some extent the liver kinetics of [^{99m}Tc]mebrofenin in our experiments.

Different clinical imaging modalities have been used to study liver transporter activity in vivo, including magnetic resonance imaging, PET and gamma-scintigraphy [19]. In contrast to PET radioligands, [^{99m}Tc]mebrofenin is readily available at most nuclear medicine departments. [^{99m}Tc]mebrofenin imaging protocols typically involve dynamic planar acquisition for semi-quantitative estimation of the transfer of radioactivity between tissues [46]. We mimicked these clinical protocols in our set-up, which enabled us to perform compartmental pharmacokinetic modeling with our data. Results obtained for inhibitor-induced changes in the influx and efflux rate constants (k_1 and k_3) were consistent with results obtained for AUCR or $\text{CL}_{\text{uptake}}$. However, compartmental modeling provided additional information suggesting that the backflux (k_2) from the liver into the blood may influence the liver kinetics of [^{99m}Tc]mebrofenin. This could be due to transport of [^{99m}Tc]mebrofenin by the sinusoidal efflux transporter MRP3 [17] (Figure 1), consistent with the in vitro potency of RIF and CsA to inhibit MRP3 [29,31], although the impact of DTZ on MRP3 has not been reported to our knowledge. Inhibitors dose-dependently decreased k_2 , which suggests that the effects of high-dose RIF, DTZ and CsA may not only be restricted to OATP and MRP2 inhibition [8].

Dynamic in vivo data using a metabolically stable probe offers the possibility to investigate the pharmacokinetic impact of targeted MRP2 inhibition [47]. Interestingly, selective inhibition of the biliary excretion did not affect plasma exposure while increasing liver exposure (Table 1). This observation is consistent with the kinetics of [^{99m}Tc]mebrofenin obtained in MRP2-deficient mice [30]. This suggests that MRP2 activity is not a rate-limiting factor for the plasma clearance of this prototypical OATP/MRP2 substrate. MRP2 inhibition may thus drastically affect the liver exposure of MRP2 substrates with negligible impact on plasma kinetics, in agreement with the extended clearance concept [48]. Compared with non-treated rats ($\text{AUCR}_{\text{intestine/liver}} = 1.36 \pm 0.20$), the decrease in biliary excretion obtained using low-dose CsA ($\text{AUCR}_{\text{intestine/liver}} = 0.67 \pm 0.19$) was nearly maximal because higher doses and other tested MRP2 inhibitors did not further decrease it. It is noteworthy that the baseline biliary excretion of [^{99m}Tc]mebrofenin reported in mice was much higher (calculated $\text{AUCR}_{\text{bile/liver}} \sim 28$) [30]. The impact of MRP2-deficiency was consistently much more pronounced, with a ~ 10 -fold decrease in $\text{AUCR}_{\text{bile/liver}}$ [30]. This observation suggests a species difference in the importance of MRP2 in controlling the biliary excretion of [^{99m}Tc]mebrofenin between rats and mice. In rats, tested inhibitors did not influence the urinary clearance of [^{99m}Tc]mebrofenin, thus supporting the assumption that urinary elimination of [^{99m}Tc]mebrofenin does not involve carrier-mediated transport [17].

Clinical validation of in vivo inhibitors of membrane transporters is a cornerstone for translational pharmacokinetics [49–51]. In this framework, imaging techniques are useful to address the specificity and efficacy of compounds to inhibit drug transporters at certain biological interfaces. DTZ doses used to achieve selective MRP2 inhibition in the liver (10 mg/kg s.c.) were much higher than those clinically used in humans (0.3 mg/kg i.v.) and may additionally alter hepatic blood flow. In contrast, low-dose CsA (0.01 mg/kg), validated in this work, represents a much lower dose than clinical immunosuppressant doses of CsA (up to 15 mg/kg/day) and offers a readily available, simple and safe strategy to inhibit the MRP2-mediated biliary efflux of [^{99m}Tc]mebrofenin. Thus, low-dose CsA may be useful both for a selective determination of MRP2 activity and for an improved measurement of OATP activity. Low-dose CsA therefore enriches the toolbox of available inhibitors for pharmacokinetic studies [41].

From a nuclear medicine perspective, our data suggest that patients undergoing treatment with CsA may show substantial inhibition of the biliary excretion of [^{99m}Tc]mebrofenin, which may confound the estimation of biliary transporter activity for diagnostic purposes. On the other hand, low-dose CsA may be useful to enhance and prolong the [^{99m}Tc]mebrofenin signal in the liver and preferentially study the hepatic uptake activity rather than biliary excretion as a clinical index of liver function in patients.

5. Conclusions

This work shows for the first time that targeted inhibition of MRP2 activity with negligible impact on OATP activity in hepatocytes can be achieved in vivo. [^{99m}Tc]mebrofenin in combination with low-dose CsA provides a novel substrate/inhibitor pair to discriminate the canalicular transport capacity from the OATP-mediated uptake in vivo. Clinical studies are warranted to validate this protocol in humans and untangle the intrinsic role of OATP and MRP2 activity in different patho-physiological states and address consequences for PK and liver exposure.

Supplementary Materials: The following are available online at <http://www.mdpi.com/1999-4923/12/6/486/s1>, Figure S1: Four-compartment pharmacokinetic model: k_1 and k_2 describe the transfer of [^{99m}Tc]mebrofenin between blood and hepatocytes, k_3 from hepatocytes into the intrahepatic bile ducts and k_5 from the intrahepatic bile ducts to the intestine. ROI means Region of Interest, eBD means Extrahepatic bile duct. Figure S2: Integration plots for all investigated groups to estimate the uptake clearance of [^{99m}Tc]mebrofenin from blood into the liver for control animals and animals treated by rifampicin (RIF), diltiazem (DTZ) and cyclosporin A (CsA). $\text{CL}_{\text{uptake}}$ and V_E correspond to the slope of the linear regression line and the Y-interception respectively, Figure S3: Time activity curves (cps: counts per second) of observed and fitted data in one representative subject of each study group for control animals and animals treated by rifampicin (RIF), diltiazem (DTZ) and cyclosporin A (CsA), Table S1: Pharmacokinetic parameters obtained with the four-compartment model for the different study groups.

Author Contributions: Conceptualization, S.M. and N.T.; Methodology, S.M., N.T., I.H.-L., A.N. and J.-L.G.; Validation, N.T., O.L. and J.-L.G.; Formal Analysis, S.M., I.H.-L. and A.N.; Investigation, S.M., L.B., W.S., C.T. and A.N.; Resources, C.T. and N.T.; Data Curation, N.T.; Writing—Original Draft Preparation, S.M., N.T. and I.H.-L.; Writing—Review & Editing, S.M., N.T., O.L., I.H.-L., W.S., C.T., J.-L.G. and A.N. and; Supervision, N.T.; Project Administration, N.T.; Funding Acquisition, N.T. All authors have read and agreed to the published version of the manuscript.

Funding: This work was performed on a platform of *France Life Imaging* network partly funded by grant ANR-11-INBS-0006.

Acknowledgments: We thank Alfred Schinkel (The National Cancer Institute, NKI-AVL, The Netherlands) for providing MRP2-transfected cells and Mediam Pharma for providing kits to prepare [^{99m}Tc]mebrofenin. Maud Goislard provided helpful technical assistance for imaging experiments.

Conflicts of Interest: The authors declare no conflict of interest.

References

1. Patel, M.; Taskar, K.; Zamek-Gliszczyński, M. Importance of hepatic transporters in clinical disposition of drugs and their metabolites. *J. Clin. Pharmacol.* **2016**, *56*, S23–S39. [[CrossRef](#)]
2. Marin, J. Plasma membrane transporters in modern liver pharmacology. *Scientifica* **2012**, *2012*. [[CrossRef](#)]
3. Giacomini, K.; Galetin, A.; Huang, S. The international transporter consortium: Summarizing advances in the role of transporters in drug development. *Clin. Pharmacol. Ther.* **2018**, *104*, 766–771. [[CrossRef](#)]
4. Evers, R.; Piquette-Miller, M.; Polli, J.; Russel, F.; Sprowl, J.A.; Tohyama, K.; Ware, J.; de Wildt, S.; Xie, W.; Brouwer, K. Disease-associated changes in drug transporters may impact the pharmacokinetics and/or toxicity of drugs: A white paper from the international transporter consortium. *Clin. Pharmacol. Ther.* **2018**, *104*, 900–915. [[CrossRef](#)]
5. Kalliokoski, A.; Niemi, M. Impact of OATP transporters on pharmacokinetics. *Br. J. Pharmacol.* **2009**, *158*, 693–705. [[CrossRef](#)]
6. Zamek-Gliszczyński, M.; Taub, M.; Chothe, P.; Chu, X.; Giacomini, K.M.; Kim, R.; Ray, A.; Stocker, S.; Unadkat, J.; Wittwer, M.; et al. Transporters in drug development: 2018 ITC recommendations for transporters of emerging clinical importance. *Clin. Pharmacol. Ther.* **2018**, *104*, 890–899. [[CrossRef](#)]
7. Nishino, A.; Kato, Y.; Igarashi, T.; Sugiyama, Y. Both cMOAT/MRP2 and another unknown transporter(s) are responsible for the biliary excretion of glucuronide conjugate of the nonpeptide angiotensin II antagonist, telmisaltan. *Drug Metab. Dispos.* **2000**, *28*, 1146–1148.
8. Matsson, P.; Pedersen, J.; Norinder, U.; Bergström, C.; Artursson, P. Identification of novel specific and general inhibitors of the three major human ATP-binding cassette transporters P-gp, BCRP and MRP2 among registered drugs. *Pharm. Res.* **2009**, *26*, 1816–1831. [[CrossRef](#)]
9. Pauli-Magnus, C.; Meier, P. Hepatobiliary transporters and drug-induced cholestasis. *Hepatology* **2006**, *44*, 778–787. [[CrossRef](#)]
10. Thakkar, N.; Slizgi, J.; Brouwer, K. Effect of Liver disease on hepatic transporter expression and function. *J. Pharm. Sci.* **2017**, *106*, 2282–2294. [[CrossRef](#)]
11. Bonnaventure, P.; Pastor, C. Quantification of drug transport function across the multiple resistance-associated protein 2 (Mrp2) in rat livers. *Int. J. Mol. Sci.* **2015**, *16*, 135–147. [[CrossRef](#)] [[PubMed](#)]
12. Ghibellini, G.; Leslie, E.; Brouwer, K. Methods to evaluate biliary excretion of drugs in humans: An updated review. *Mol. Pharm.* **2006**, *3*, 198–211. [[CrossRef](#)] [[PubMed](#)]
13. Hernández Lozano, I.; Langer, O. Use of imaging to assess the activity of hepatic transporters. *Expert Opin. Drug Metab. Toxicol.* **2020**, *16*, 149–164. [[CrossRef](#)]
14. Tournier, N.; Stieger, B.; Langer, O. Imaging techniques to study drug transporter function in vivo. *Pharmacol. Ther.* **2018**, *189*, 104–122. [[CrossRef](#)]
15. Loberg, M.; Cooper, M.; Harvey, E.; Callery, P.; Faith, W. Development of new radiopharmaceuticals based on n-substitution of iminodiacetic acid. *J. Nucl. Med.* **1976**, *17*, 633–638.
16. Krishnamurthy, S.; Krishnamurthy, G. Technetium-99m-iminodiacetic acid organic anions: Review of biokinetics and clinical application in hepatology. *Hepatology* **1989**, *9*, 139–153. [[CrossRef](#)]
17. Ghibellini, G.; Leslie, E.; Pollack, G.; Brouwer, K. Use of Tc-99m mebrofenin as a clinical probe to assess altered hepatobiliary transport: Integration of in vitro, pharmacokinetic modeling, and simulation studies. *Pharm. Res.* **2008**, *25*, 1851. [[CrossRef](#)]

18. Ryan, J.; Cooper, M.; Loberg, M.; Harvey, E.; Sikorski, S. Technetium-99m-Labeled N-(2,6-Dimethylphenylcarbamoylmethyl) Iminodiacetic Acid (Tc-99m HIDA): A new radiopharmaceutical for hepatobiliary imaging studies. *J. Nucl. Med.* **1977**, *18*, 997–1004.
19. Marie, S.; Cisternino, S.; Buvat, I.; Declèves, X.; Tournier, N. Imaging probes and modalities for the study of solute carrier O (SLCO)-transport function in vivo. *J. Pharm. Sci.* **2017**, *106*, 2335–2344. [[CrossRef](#)]
20. de Graaf, W.; Häusler, S.; Heger, M.; van Ginhoven, T.; van Cappellen, G.; Bennink, R.; Kullak-Ublick, G.; Hesselmann, R.; van Gulik, T.; Stieger, B. Transporters involved in the hepatic uptake of 99mTc-mebrofenin and indocyanine green. *J. Hepatol.* **2011**, *54*, 738–745. [[CrossRef](#)]
21. Bhargava, K.; Joseph, B.; Ananthanarayanan, M.; Balasubramaniyan, N.; Tronco, G.; Palestro, C.; Gupta, S. Adenosine triphosphate-binding cassette subfamily c member 2 is the major transporter of the hepatobiliary imaging agent 99mTc-mebrofenin. *J. Nucl. Med.* **2009**, *50*, 1140–1146. [[CrossRef](#)] [[PubMed](#)]
22. Hendrikse, N.; Kuipers, F.; Meijer, C.; Havinga, R.; Bijleveld, C.; van der Graaf, W.; Vaalburg, W.; de Vries, E. In vivo imaging of hepatobiliary transport function mediated by multidrug resistance associated protein and P-glycoprotein. *Cancer Chemother. Pharmacol.* **2004**, *54*, 131–138. [[CrossRef](#)] [[PubMed](#)]
23. Hendrikse, N.H.; Franssen, E.J.F.; van der Graaf, W.T.A.; Vaalburg, W.; de Vries, E.G.E. Visualization of multidrug resistance in vivo. *Eur. J. Nucl. Med.* **1999**, *26*, 283–293. [[CrossRef](#)]
24. de Graaf, W.; Bennink, R.; Veteläinen, R.; van Gulik, T. Nuclear imaging techniques for the assessment of hepatic function in liver surgery and transplantation. *J. Nucl. Med.* **2010**, *51*, 742–752. [[CrossRef](#)]
25. Kannan, P.; John, C.; Zoghbi, S.S.; Halldin, C.; Gottesman, M.M.; Innis, R.B.; Hall, M.D. Imaging the function of P-Glycoprotein with radiotracers: Pharmacokinetics and in vivo applications. *Clin. Pharmacol. Ther.* **2009**, *86*, 368–377. [[CrossRef](#)]
26. Wanek, T.; Kuntner, C.; Bankstahl, J.; Bankstahl, M.; Stanek, J.; Sauberer, M.; Mairinger, S.; Strommer, S.; Wacheck, V.; Löscher, W.; et al. A comparative small-animal PET evaluation of [11C]tariquidar, [11C]elacridar and (R)-[11C]verapamil for detection of P-glycoprotein-expressing murine breast cancer. *Eur. J. Nucl. Med. Mol. Imaging* **2012**, *39*, 149–159. [[CrossRef](#)]
27. Kaneko, K.; Tanaka, M.; Ishii, A.; Katayama, Y.; Nakaoka, T.; Irie, S.; Kawahata, H.; Yamanaga, T.; Wada, Y.; Miyake, T.; et al. A clinical quantitative evaluation of hepatobiliary transport of [11C]Dehydropravastatin in humans using positron emission tomography. *Drug Metab. Dispos.* **2018**, *46*, 719–728. [[CrossRef](#)]
28. Karlgren, M.; Vildhede, A.; Norinder, U.; Wisniewski, J.; Kimoto, E.; Lai, Y.; Haglund, U.; Artursson, P. Classification of inhibitors of hepatic organic anion transporting polypeptides (OATPs): Influence of protein expression on drug–drug interactions. *J. Med. Chem.* **2012**, *55*, 4740–4763. [[CrossRef](#)]
29. Te Brake, L.; Russel, F.; van den Heuvel, J.; de Knecht, G.; de Steenwinkel, J.; Burger, D.; Aarnoutse, R.; Koenderink, J. Inhibitory potential of tuberculosis drugs on ATP-binding cassette drug transporters. *Tuberculosis* **2016**, *96*, 150–157. [[CrossRef](#)]
30. Neyt, S.; Huisman, M.; Vanhove, C.; Man, H.; Vliegen, M.; Moerman, L.; Dumolyn, C.; Mannens, G.; Vos, F. In vivo visualization and quantification of (disturbed) oatp-mediated hepatic uptake and mrp2-mediated biliary excretion of 99mTc-mebrofenin in mice. *J. Nucl. Med.* **2013**, *54*, 624–630. [[CrossRef](#)]
31. Köck, K.; Ferslew, B.; Netterberg, I.; Yang, K.; Urban, T.J.; Swaan, P.W.; Stewart, P.; Brouwer, K. Risk Factors for development of cholestatic drug-induced liver injury: Inhibition of hepatic basolateral bile acid transporters multidrug resistance-associated proteins 3 and 4. *Drug Metab. Dispos.* **2014**, *42*, 665–674. [[CrossRef](#)]
32. Wen, X.; Joy, M.; Aleksunes, L.M. In vitro transport activity and trafficking of MRP2/ABCC2 Polymorphic variants. *Pharm. Res.* **2017**, *34*, 1637–1647. [[CrossRef](#)]
33. Amor, D.; Goutal, S.; Marie, S.; Caillé, F.; Bauer, M.; Langer, O.; Auvity, S.; Tournier, N. Impact of rifampicin-inhibitable transport on the liver distribution and tissue kinetics of erlotinib assessed with PET imaging in rats. *EJNMMI Res.* **2018**, *8*, 81. [[CrossRef](#)]
34. Yeung, P.; Alcos, A.; Tang, J.; Tsui, B. Pharmacokinetics and metabolism of diltiazem in rats: Comparing single vs. repeated subcutaneous injections in vivo. *Biopharm. Drug Dispos.* **2007**, *28*, 403–407. [[CrossRef](#)]
35. Takashima, T.; Kitamura, S.; Wada, Y.; Tanaka, M.; Shigihara, Y.; Ishii, H.; Ijuin, R.; Shiomi, S.; Nakae, T.; Watanabe, Y.; et al. PET imaging-based evaluation of hepatobiliary transport in humans with (15R)-11C-TIC-Me. *J. Nucl. Med.* **2012**, *53*, 741–748. [[CrossRef](#)]
36. Hernández Lozano, I.; Karch, R.; Bauer, M.; Blaickner, M.; Matsuda, A.; Wulkersdorfer, B.; Hacker, M.; Zeitlinger, M.; Langer, O. Towards improved pharmacokinetic models for the analysis of transporter-mediated hepatic disposition of drug molecules with positron emission tomography. *AAPS J.* **2019**, *21*, 61. [[CrossRef](#)]

37. Ørntoft, N.; Munk, O.; Frisch, K.; Ott, P.; Keiding, S.; Sørensen, M. Hepatobiliary transport kinetics of the conjugated bile acid tracer ¹¹C-CSar quantified in healthy humans and patients by positron emission tomography. *J. Hepatol.* **2017**, *67*, 321–327. [[CrossRef](#)]
38. Davies, B.; Morris, T. Physiological parameters in laboratory animals and humans. *Pharm. Res.* **1993**, *10*, 1093–1095. [[CrossRef](#)]
39. Lee, Y.; Lee, M.; Shim, C. Pharmacokinetics of diltiazem and deacetyldiltiazem in rats. *Int. J. Pharm.* **1991**, *76*, 71–76. [[CrossRef](#)]
40. Kusahara, H. Imaging in the study of membrane transporters. *Clin. Pharmacol. Ther.* **2013**, *94*, 33–36. [[CrossRef](#)]
41. Kenna, J.; Waterton, J.; Baudy, A.; Galetin, A.; Hines, C.; Hockings, P.; Patel, M.; Scotcher, D.; Sourbron, S.; Ziemian, S.; et al. Noninvasive preclinical and clinical imaging of liver transporter function relevant to drug-induced liver injury. In *Drug-Induced Liver Toxicity*; Chen, M., Will, Y., Eds.; Methods in Pharmacology and Toxicology; Springer: New York, NY, USA, 2018; pp. 627–651. ISBN 978-1-4939-7677-5.
42. Woillard, J.; Debord, J.; Benz-de-Bretagne, I.; Saint-Marcoux, F.; Turlure, P.; Girault, S.; Abraham, J.; Choquet, S.; Marquet, P.; Barin-Le Guellec, C. A Time-dependent model describes methotrexate elimination and supports dynamic modification of MRP2/ABCC2 activity. *Ther. Drug Monit.* **2017**, *39*, 145–156. [[CrossRef](#)]
43. Giacomini, K.M.; Huang, S.-M.; Tweedie, D.J.; Benet, L.Z.; Brouwer, K.L.R.; Chu, X.; Dahlin, A.; Evers, R.; Fischer, V.; Hillgren, K.M.; et al. Membrane transporters in drug development. *Nat. Rev. Drug Discov.* **2010**, *9*, 215–236. [[CrossRef](#)]
44. Tournier, N.; Saba, W.; Cisternino, S.; Peyronneau, M.; Damont, A.; Goutal, S.; Dubois, A.; Dollé, F.; Scherrmann, J.; Valette, H.; et al. Effects of selected OATP and/or ABC transporter inhibitors on the brain and whole-body distribution of glyburide. *AAPS J.* **2013**, *15*, 1082–1090. [[CrossRef](#)]
45. He, J.; Yu, Y.; Prasad, B.; Link, J.; Miyaoka, R.; Chen, X.; Unadkat, J. PET imaging of oatp-mediated hepatobiliary transport of [¹¹C]rosuvastatin in the rat. *Mol. Pharm.* **2014**, *11*, 2745–2754. [[CrossRef](#)]
46. Doo, E.; Krishnamurthy, G.; Eklem, M.; Gilbert, S.; Brown, P. Quantification of hepatobiliary function as an integral part of imaging with technetium-99m-mebrofenin in health and disease. *J. Nucl. Med.* **1991**, *32*, 48–57.
47. König, J.; Müller, F.; Fromm, M. Transporters and drug-drug interactions: Important determinants of drug disposition and effects. *Pharmacol. Rev.* **2013**, *65*, 944–966. [[CrossRef](#)]
48. Patilea-Vrana, G.; Unadkat, J. Transport vs. metabolism: What determines the pharmacokinetics (PK) and pharmacodynamics (PD) of drugs? Insights from the extended clearance model. *Clin. Pharmacol. Ther.* **2016**, *100*, 413–418. [[CrossRef](#)]
49. Muzi, M.; Mankoff, D.A.; Link, J.M.; Shoner, S.; Collier, A.C.; Sasongko, L.; Unadkat, J.D. Imaging of cyclosporine inhibition of P-Glycoprotein activity using ¹¹C-verapamil in the brain: Studies of healthy humans. *J. Nucl. Med.* **2009**, *50*, 1267–1275. [[CrossRef](#)]
50. Kreisl, W.; Boellaard, R.; Morse, C.; Woock, A.; Zoghbi, S.; Shetty, H.; Pike, V.; Innis, R. Increased permeability-glycoprotein inhibition at the human blood-brain barrier can be safely achieved by performing PET during peak plasma concentrations of tariquidar. *J. Nucl. Med.* **2015**, *56*, 82–87. [[CrossRef](#)]
51. Tournier, N.; Bauer, M.; Pichler, V.; Nics, L.; Klebermass, E.-M.; Bamming, K.; Matzner, P.; Weber, M.; Karch, R.; Caille, F.; et al. Impact of P-glycoprotein function on the brain kinetics of the weak substrate ¹¹C-metoclopramide assessed with PET imaging in humans. *J. Nucl. Med.* **2019**, *60*, 985–991. [[CrossRef](#)]

