



**HAL**  
open science

## **Risk factors for Coronavirus Disease 2019 (COVID-19) severity and mortality among solid cancer patients and impact of the disease on anticancer treatment: A French nationwide cohort study (GCO-002 CACOVID-19).**

Astrid Lièvre, Anthony Turpin, Isabelle Ray-Coquard, Karine Le Malicot, Juliette Thariat, Guido Ahle, Cindy Neuzillet, Xavier Paoletti, Olivier Bouché, Kais Aldabbagh, et al.

### ► To cite this version:

Astrid Lièvre, Anthony Turpin, Isabelle Ray-Coquard, Karine Le Malicot, Juliette Thariat, et al.. Risk factors for Coronavirus Disease 2019 (COVID-19) severity and mortality among solid cancer patients and impact of the disease on anticancer treatment: A French nationwide cohort study (GCO-002 CACOVID-19).. *European Journal of Cancer*, 2020, 141, pp.62-81. 10.1016/j.ejca.2020.09.035 . hal-02998283

**HAL Id: hal-02998283**

**<https://hal.science/hal-02998283>**

Submitted on 19 Nov 2020

**HAL** is a multi-disciplinary open access archive for the deposit and dissemination of scientific research documents, whether they are published or not. The documents may come from teaching and research institutions in France or abroad, or from public or private research centers.

L'archive ouverte pluridisciplinaire **HAL**, est destinée au dépôt et à la diffusion de documents scientifiques de niveau recherche, publiés ou non, émanant des établissements d'enseignement et de recherche français ou étrangers, des laboratoires publics ou privés.

### **Author Contributions Section**

AL, AT, IRC, KLM, JT, OB, ACHB, DD, GZ and TA conceived and designed the study. AL and KLM designed the statistical analysis plan, analysed the data and developed the figures and tables. All authors except KLM and XP, coordinated data contributions at their respective sites and provided patients' data.

All authors contributed intellectual content during the drafting and revision of the work and approved the final version.

Journal Pre-proof

## **Risk factors for COVID-19 severity and mortality among solid cancer patients and its impact on anticancer treatment: a nationwide cohort study (GCO-002 CACOV1D-19)**

Astrid Lièvre<sup>1</sup>, Anthony Turpin<sup>2</sup>, Isabelle Ray-Coquard<sup>3</sup>, Karine Le Malicot<sup>4</sup>, Juliette Thariat<sup>5</sup>, Guido Ahle<sup>6</sup>, Cindy Neuzillet<sup>7</sup>, Xavier Paoletti<sup>7</sup>, Olivier Bouché<sup>8</sup>, Kais Aldabbagh<sup>9</sup>, Pierre Michel<sup>10</sup>, Didier Debieuvre<sup>11</sup>, Anthony Canellas<sup>12</sup>, Marie Wislez<sup>13</sup>, Lucie Laurent<sup>14</sup>, May Mabro<sup>15</sup>, Raphael Colle<sup>16</sup>, Anne-Claire Hardy-Bessard<sup>17</sup>, Laura Mansi<sup>18</sup>, Emeline Colomba<sup>19</sup>, Jean Bourhis<sup>20</sup>, Philippe Gorphe<sup>21</sup>, Yoann Pointreau<sup>22</sup>, Ahmed Idbaih<sup>23</sup>, Renata Ursu<sup>24</sup>, Anna Luisa Di Stefano<sup>25</sup>, Gérard Zalcman<sup>26\*</sup>, Thomas Aparicio<sup>\*27</sup> for the GCO-002 CACOV1D-19 collaborators/investigators #

### **\*equally contributed to the work**

1. Department of gastroenterology, University Hospital Pontchaillou, Rennes 1 University, INSERM U1242 "Chemistry Oncogenesis Stress Signaling", Rennes, FFCD, France
- 2 Univ. Lille, CNRS UMR9020, Inserm UMR-S 1277 - Canther - Cancer Heterogeneity, Plasticity and Resistance to Therapies, CHU Lille, Department of Medical Oncology, Lille, GERCOR, France
3. Department of medical oncology, Leon Bérard center, University Claude Bernard Lyon Est, Lyon, ARCAGY-GINECO, France
4. Fédération Francophone de Cancérologie Digestive (FFCD); EPICAD INSERM LNC-UMR 1231, University of Burgundy and Franche Comté, Dijon; France
5. Department of Radiation Oncology, Baclesse Cancer center, Caen, GORTEC/intergroupe ORL, France
6. Department of neurology, Colmar civil hospital, Colmar, ANOCEF-IGCNO, France
7. Department of medical oncology, Curie Institut, Saint-Cloud, France
8. Department of digestive oncology, CHU Reims, Reims, FFCD, France
9. Saint-Côme clinic, Compiègne, FFCD, France
10. Normandie Univ, UNIROUEN, Inserm 1245, IRON group, department of hepatogastroenterology, Rouen University Hospital, Rouen, FFCD, France
11. Pneumology Department, Emile Muller hospital, Mulhouse, IFCT France
12. Pneumology Department, Tenon hospital, Paris, IFCT, France
13. Thoracic oncology unit, Cochin hospital, Paris ; Paris-Descartes University, Paris, IFCT France
14. Department of gastroenterology and pancreatic, Beaujon hospital ; Paris 7 University, Clichy, GERCOR, France
15. Department of oncology, Foch hospital, Suresnes, GERCOR, France
16. Department Medical oncology - Saint-Antoine hospital, Paris, GERCOR, France
17. Armorican Center of Radiotherapy and Radiology, Plérin, ARCAGY-GINECO, France
18. INSERM, EFS BFC, UMR1098, RIGHT, University of Bourgogne Franche-Comté, Interactions Greffon-Hôte-Tumeur/Ingénierie Cellulaire et Génique, ; Department of Medical Oncology, University Hospital of Besancon, ARCAGY-GINECO, Besancon, France

19. Department of medical oncology, Gustave Roussy Cancerology Institute, Villejuif, ARCAGY-GINECO, France
20. Department of radiation oncology, Vaud University Hospital Center (CHUV), Lausanne, GORTEC/intergroupe ORL, Suisse
21. Department of Head and Neck Oncology, Gustave Roussy Cancerology Institute, Villejuif, GORTEC/intergroupe ORL, France
22. Cancerology Institut -Centre Jean Bernard-Clinique Le Mans, GORTEC/intergroupe ORL, France
23. Sorbonne Université, Inserm, CNRS, UMR S 1127, Institut du Cerveau et de la Moelle épinière, ICM, AP-HP, Hôpitaux Universitaires La Pitié Salpêtrière - Charles Foix, Service de Neurologie 2-Mazarin, Paris, ANOCEF-IGCNO, France
24. Department of Neurology, Saint Louis hospital, Assistance Publique-Hôpitaux de Paris (AP-HP.Nord); Paris University, ANOCEF-IGCNO, France.
25. Department of Neurology, Foch Hospital, Suresnes, ANOCEF-IGCNO, France
26. Service of thoracic oncology, Université de Paris, INSERM U830: Cancer, Heterogeneity, Instability and Plasticity, Hôpital Bichat-Claude Bernard, AP-HP, Intergroupe Francophone de Cancérologie Thoracique (IFCT), France
27. Department of Gastroenterology, Saint Louis hospital, APHP, Université de Paris, Paris, FFCD, France

# Please see the Appendix for a list of the GCO-002 CACOVID-19 collaborators/investigators

**Corresponding author:** Prof Astrid Lièvre  
Department of gastroenterology, University Hospital Pontchaillou  
2, rue Henri Le Guilloux 35033 Cedex 09, France  
e-mail : [astrid.lievre@chu-rennes.fr](mailto:astrid.lievre@chu-rennes.fr)

**Abstract**

**Background:** Cancer patients are thought to have an increased risk of developing severe Coronavirus Disease 2019 (COVID-19) infection and of dying from the disease. In this work, predictive factors for COVID-19 severity and mortality in cancer patients were investigated.

**Patients and Methods:** In this large nationwide retro-prospective cohort study, we collected data on patients with solid tumours and COVID-19 diagnosed between March 1 and June 11, 2020. The primary endpoint was all-cause mortality and COVID-19 severity, defined as admission to an intensive care unit (ICU) and/or mechanical ventilation and/or death, was one of the secondary endpoints.

**Results:** From April 4 to June 11, 2020, 1289 patients were analysed. The most frequent cancers were digestive and thoracic. Altogether, 424 (33%) patients had a severe form of COVID-19 and 370 (29%) patients died. In multivariate analysis, independent factors associated with death were male sex (odds ratio 1.73, 95%CI: 1.18-2.52), ECOG PS  $\geq 2$  (OR 3.23, 95%CI: 2.27-4.61), updated Charlson comorbidity index (OR 1.08, 95%CI: 1.01-1.16) and admission to ICU (OR 3.62, 95%CI 2.14-6.11). The same factors, age along with corticosteroids before COVID-19 diagnosis, and thoracic primary tumour site were independently associated with COVID-19 severity. None of the anticancer treatments administered within the previous 3 months had any effect on mortality or COVID-19 severity, except cytotoxic chemotherapy in the subgroup of patients with detectable SARS-CoV-2 by RT-PCR, which was associated with a slight increase of the risk of death (OR 1.53; 95%CI: 1.00-2.34;  $p = 0.05$ ). A total of 431 (39%) patients had their systemic anticancer treatment interrupted or stopped following diagnosis of COVID-19.

**Conclusions:** Mortality and COVID-19 severity in cancer patients are high and are associated with general characteristics of patients. We found no deleterious effects of recent anticancer treatments, except for cytotoxic chemotherapy in the RT-PCR-confirmed subgroup of patients. In almost 40% of patients, the systemic anticancer therapy was interrupted or stopped after COVID-19 diagnosis.

**Key words:** cancer, COVID-19, death, mortality, mechanical ventilation, intensive care unit, chemotherapy, radiotherapy, immunotherapy

## 1. Introduction

The COronaroVirus Disease 2019 (COVID-19) outbreak, caused by severe acute respiratory syndrome coronavirus (SARS-CoV-2), has spread rapidly around the world. Cancer patients were considered particularly vulnerable to this disease due to immunosuppression linked not only to the underlying malignancy and/or the anticancer treatments, but also to the advanced age, comorbidities and poor performance status or malnutrition frequently found in these patients. This vulnerability was suggested by small retrospective studies [1, 2], and a meta-analysis reported an overall pooled prevalence of cancer of 2% in patients with COVID-19 [3]. Other studies have suggested that patients with cancer have more severe forms of COVID-19 and higher mortality than do patients without cancer [2, 4-6]. However, given the discordant data currently available, the impact of anticancer treatments on COVID-19 severity remains unclear, and there is little in the way of evidence-based data to underpin changes in anticancer treatments made during the peak of the pandemic [1, 6-10]. It is therefore necessary to analyse large cohorts of cancer patients to better understand the course of COVID-19 and the factors likely to have an impact on its severity.

On April 3, 2020 and through the French national network of academic cooperative oncology groups in solid cancers, we set up a large nationwide cohort of solid-tumour cancer patients diagnosed with COVID-19 since March 1. The aims of this cohort study (named GCO-002 CACOVID-19) were to describe clinical and tumour characteristics as well as outcomes in cancer patients with COVID-19, to identify risk factors associated with severity and mortality, in particular concerning active anticancer treatment, and to determine the consequences of the COVID-19 pandemic on the management of cancer care.

## 2. Material and methods

### 2.1 Study design

The GCO-002 CACOVID cohort is a French observational nationwide multicentre cohort, set up by the Groupes Coopérateurs en Oncologie (GCO), a French consortium of academic cooperative groups in oncology, including ANOCEF-IGCNO (Association des Neuro-OnCologues d'Expression Française/InterGroupe Coopérateur de Neuro-Oncologie) for central nervous system (CNS) tumours, ARCAGY-GINECO (Association de Recherche sur les Cancers GYnecologiques-Groupes d'Investigateurs Nationaux pour l'étude des Cancers Ovariens et du Sein) for gynaecological and breast cancers, FFCD (Fédération Francophone de Cancérologie Digestive) for digestive cancers, GERCOR (Groupe Coopérateur

Multidisciplinaire en Oncologie), GORTEC (Groupe d'Oncologie Radiothérapie Tête et Cou) with the Intergroupe ORL for head and neck cancers (H&N) and IFCT (Intergroupe Francophone de Cancérologie Thoracique) for thoracic cancers.

The study was approved by the Research Ethics Committee of Caen Normandy University Hospital for all participating centres (Ref: 04/2020/MOR) and obtained the authorization of the National Commission for Data Protection and Liberties (Ref CNIL: MLD/MFI/AR204586). It was registered on ClinicalTrial.gov (NCT04397575). In accordance with French regulatory laws, all analysed patients were informed and those not agreeing for the use of their clinical data were excluded.

## **2.2 Patients**

The inclusion criteria were patients with a histologically confirmed solid malignant tumour and a diagnosis of COVID-19. Patients undergoing anticancer treatments or treated curatively more than five years previously were excluded. The diagnosis of COVID-19 was based on the confirmation of SARS-CoV-2 infection by quantitative RT-PCR on nasopharyngeal swabs, and/or imaging features consistent with COVID-19 pneumonia on CT-scan or based on highly suggestive symptoms combined with positive SARS-CoV-2 serology. Patients with suggestive symptoms of COVID-19 without a RT-PCR, CT-scan or serological confirmation during the study period were excluded from the analysis. Patients were included in the cohort on the basis of clinicians' reporting of all consecutive cases diagnosed at their center. The cut-off date for our study was June 12, 2020.

## **2.3 Data collection**

The following data were collected by clinicians on an electronic Case Report Form: age, sex, geographical location of patients' residences, smoking status, body mass index (BMI), comorbidities with the updated Charlson Comorbidity Index (uCCI) [11], usual medication, type and status of cancer, Eastern Cooperative Oncology Group (ECOG) performance status (PS), anticancer therapy in the 4 weeks and in the 3 months before the COVID-19 diagnosis respectively, the course of the COVID-19 infection, complications and treatment, especially admission to hospital and/or intensive care unit (ICU), the need for supplemental oxygen and mechanical ventilation and death.

## **2.4 Outcomes**

The primary endpoint was all-cause mortality following the diagnosis of COVID-19. Secondary outcomes were admission to hospital, admission to an ICU, the need for supplemental oxygen and the use of mechanical ventilation during the COVID-19, and the impact of COVID-19 on management of the cancer. The COVID-19 severity outcome was defined as admission to an ICU and/or use of mechanical ventilation and/or death.

### ***2.5 Statistical analysis***

Analyses compared patients who died with those still alive on June 11, 2020. Quantitative variables were described using the usual statistics:  $n$ , mean, standard deviation, median, interquartile range, minimum and maximum. Qualitative variables were described using numbers and percentages. Missing values were not counted for percentage calculations. For quantitative variables, groups were compared using a Student or Wilcoxon test and for qualitative variables, using a  $\chi^2$  test or a Fisher exact test.

Risk factors associated with death and their odds ratios (ORs) were analysed using a univariate logistic regression model. Multivariate regression was used to estimate ORs and 95% confidence intervals (CI) for each factor. Variables for the multivariate analysis were selected according to their significance in the univariate logistic regression ( $P < 0.05$ ). The same analyses were done for COVID-19 severity. We used SAS version 9.4 for the statistical analyses. The tests were all two-sided with a 5% type one error.

## **3. Results**

### ***3.1 Clinical characteristics of patients and impact of COVID-19 on cancer treatment***

From April 4 to June 11, 2020, 1,354 patients from 153 institutions were registered in the national cohort database. Among these patients, 1,289 met the inclusion criteria (Figure 1): 727 patients diagnosed with COVID-19 between March 1 and April 2 were included retrospectively; the remaining 562 patients were diagnosed after April 2 and included prospectively. The diagnosis of COVID-19 was made on the presence of detectable SARS-CoV-2 by RT-PCR on nasopharyngeal swabs in 952 (73.8%) patients (including 294 patients who also had images consistent with COVID-19 pneumonia on CT-scan), on only imaging features consistent with COVID-19 pneumonia on CT-scan in 317 (24.6%) patients and on history of highly suggestive symptoms combined with positive SARS-CoV-2 serology in 20 (1.6%) patients.



The participating institutions were spread over the entire country (Figure 2) and were general hospitals, university hospitals, private centres and comprehensive cancer centres, accounting for 31%, 28%, 25% and 16% of cases, respectively. The median follow-up from COVID-19 diagnosis was 34 days (95% CI: 32 –36).

Patient demographics are shown in Table 1. The median age was 67 years and 795 (62%) patients were male. Digestive cancers were the most common type of cancer (36%), followed by thoracic (24%) and breast (13%) cancers and 59% of patients had a metastatic disease. During the 3 months before the COVID-19 diagnosis, 755 (59%) patients had received a systemic anticancer treatment.

Eighty-two percent of patients experienced typical symptoms during the course of COVID-19. The most common symptoms were fever (52%), cough (37%) and fatigue (26%). Gastrointestinal symptoms were identified in 12%, anosmia or ageusia were present in only 4% and 3%, respectively. In total, 734 (65%) patients were admitted to hospital, of whom 110 (10%) were admitted to an ICU; 412 (42%) patients required oxygen and 49 (5%) mechanical ventilation.

In the overall cohort, only 107 (11%) patients had their anticancer treatment modified (drug withdrawal or change, modification of the time interval between drug administrations) preventively before the COVID-19 infection because of the pandemic context. However, the systemic anticancer treatment was interrupted or stopped following the diagnosis of COVID-19 in 431 (39%) patients (Table 2).

### ***3.2 Patient outcome and risk factors for death and COVID-19 severity***

With a median follow-up of 34 days, 370 (29%) patients had died. The death was attributable to COVID-19 in most patients (N = 322, 87%) and occurred after a median of 10 days (IQR: 5-24). As shown in Table 1, compared with survivors, patients who died were older, more likely to be male and to be current or former smokers, had more frequently comorbidities, long-term or recent corticosteroids (for another reason than COVID-19), angiotensin II antagonists (AIIA) or angiotensin converting enzyme inhibitor (CEI) and anticoagulant therapy as their usual medication. They also had a poorer ECOG PS and a higher proportion of metastatic disease, and were more likely to have undergone cytotoxic chemotherapy in the 4 weeks or 3 months before the COVID-19 diagnosis. The impact of immune checkpoint inhibitors or other anticancer treatment on the course of COVID-19 could not be analysed because of the relatively low percentage of patients given such treatments.

The association between prognostic parameters and all-cause mortality are shown in Supplementary Table 1 and Figure 3. In univariate analysis, age, sex, the ECOG PS, the updated Charlson comorbidity index, smoking status, thoracic primary tumour location, metastatic tumour stage, lung metastases, cytotoxic chemotherapy during the 3 months before the COVID-19 diagnosis, corticosteroids before the COVID-19 diagnosis, anticoagulant therapy, CEI or AIIA, and admission to an ICU were significantly associated with an increased risk of death. In the multivariate analysis sex, the ECOG PS, the uCCI and admission to an ICU remained statistically significant risk factors for death. Age, smoking status and corticosteroids before the COVID-19 diagnosis also showed a statistically non-significant increased risk of death. Importantly, the administration of cytotoxic chemotherapy in the 3 months before COVID-19 diagnosis was not associated with an increased risk of death.

Overall, 424 (33%) patients had a severe form of COVID-19 defined by admission to an ICU and/or mechanical ventilation and/or death but only 129 (9%) patients were admitted to ICU and/or had mechanical ventilation without death, that a majority of patients died without a previous admission to ICU or a mechanical ventilation. The association between prognostic parameters and COVID-19 severity are shown in Supplementary Table 2 and Figure 4. In univariate analysis, age, sex, the ECOG PS, the uCCI, smoking status, thoracic primary tumour location, metastatic tumour stage, lung metastases, cytotoxic chemotherapy during the 3 months before the COVID-19 diagnosis, corticosteroids before the COVID-19 diagnosis, anticoagulant therapy, and CEI or AIIA were significantly associated with COVID-19 severity. In the multivariate, sex, the ECOG PS, the uCCI, corticosteroids before the COVID-19 diagnosis and thoracic primary tumour location remained independent predictors of COVID-19 severity. Age was associated with a statistically non-significant increase in the risk of death either. Again, the administration of cytotoxic chemotherapy in the 3 months before COVID-19 diagnosis was not associated with COVID-19 severity.

When the multivariate analysis was restricted only to patients with RT-PCR-documented SARS-CoV-2 (n=952), ECOG PS, uCCI and ICU admission remained statistically significant risk factors for death, as were age, smoking status and cytotoxic chemotherapy administered within 3 months before the COVID-19 diagnosis (Supplementary Table 3). The ECOG PS and the uCCI were the only independent predictors of COVID-19 severity (Supplementary Table 4).

## **Discussion**

After starting in December 2019 in Wuhan, China, the COVID-19 epidemic quickly spread to Europe in March 2020 and then to the rest of the world with a speed that shook saturated healthcare systems unprepared for such a pandemic. In the wake of a small Chinese study suggesting that patients with cancer had a high risk of severe respiratory complications related to SARS-CoV-2 infection and that patients with the highest risk were those who had received chemotherapy or surgery in the month preceding the infection [1], the medical community began to modify various practices in the treatment of cancer during the COVID-19 pandemic. The main objectives of these changes were to avoid very high-risk situations such as surgery or intensive cytotoxic chemotherapy and to minimise patients' exposure to SARS-CoV-2-

For these reasons, in France, the French health authority published on March 11, 2020 guidelines to protect patients with cancer against SARS-CoV-2 infection [12]. Then, another study in Wuhan reported that cancer patients who had received their last anti-cancer treatment during the 14 days before the diagnosis of COVID-19 had an increased risk of experiencing severe events [13]. In this context, international and national panels recommended delaying or suspending anticancer treatments, when feasible, thereby raising the issue of potential cancer progression [14-22]. We created a national multicentre cohort in order to better understand the risk factors for mortality and severity of COVID-19, particularly the impact of various anticancer treatments, in order to determine the best practices and to help clinicians in their decision-making, and to assess the impact of COVID-19 on anticancer treatments.

First, our results show that the mortality rate in cancer patients with COVID-19 is far higher (29%) than that in COVID-19 patients overall [23, 24]. To date, all studies that have included a significant number of cancer patients with COVID-19 have reported a mortality rate > 10%. However, this rate is very variable between studies [4-9, 25-28], ranging from 11-12% [5, 25, 28] to 28% in two studies, including the UK Coronavirus Cancer Monitoring Project (UKCCMP) cohort that included 800 patients [4, 8]. Of note, the highest mortality rate published to date (33%) comes from the international cohort of patients with thoracic cancers and COVID-19 (TERAVOLT) [26]. In our cohort, the 311 patients with thoracic cancer had a mortality rate of 36%, which was the highest mortality rate of all tumour locations. The variations in mortality rates observed between studies could be explained, in part, by disparities in the proportions of patients with significant comorbidities or poor PS and in the proportions of the different types of tumours, as well as differences in the use of intensive care resources. It may also depend on hospital admission criteria to secondary care. In some countries, like in the US, a lower threshold is likely to exist and mild or asymptomatic patients might be admitted. A plausible explanation for the high mortality rate observed in our

cohort is both its larger size, and the 'selection bias', leading to a greater likelihood of registering patients with adverse COVID-19 outcomes, while cancer patients with less severe infections may not have been included in our cohort since not consulting-during this period of time. Thus, the patients included in the French cohort were mainly hospitalized patients with most often symptomatic COVID-19 and thus probably more severe. Similarly, it is possible that at the time of the analysis some information may have been missing, especially in cases of ambulatory care for diseases with a benign course. The relatively low rate of ICU transfer (10%) in our cancer patients compared to others studies [7, 9, 13, 27, 28] could be explained by a general ICU policy, since all ICU departments in areas of high COVID-19 incidence in France were overwhelmed at that period, with a lack of available ICU beds. Patients without severe comorbidities were thus prioritized for ICU admission, and cancer patients with their underlying comorbidities could have been excluded from intensive care. However similar rates of ICU transfer (7% and 10% respectively) have been reported in the UKCCMP and TERAVOLT studies [8, 26], probably for the same reasons. Retrospectively, the relevance of such triage strategy raises an ethical question and one can legitimately wonder whether these policies should continue in the event of a second wave, during which a better organization of intensive care access is to be hoped for.

We confirm the risk factors for death that have already been reported in previous studies, such as male sex, the ECOG PS or the presence of comorbidities, including cardiovascular disease, hypertension or COPD [4, 6-9]. One point that remains unclear is the impact of cancer treatments on the severity of COVID-19 and its mortality. According to our analysis, the recent administration of cytotoxic chemotherapy was not a significant risk factor for death in the overall cohort but slightly increased the risk of death in the sub-population of RT-PCR positive patients, at the limit of significance (OR = 1.53 95%CI: 1.00- 2.34;  $p = 0.05$ ). The results in the literature are very discordant in this regard. Two Chinese studies showed that recent cytotoxic chemotherapy was associated with increased mortality [6, 9]. However, more recent results from the two large cohorts of cancer patients in the UK and the US [7, 8] and from the TERAVOLT cohort of patients with thoracic cancers [26] concluded that chemotherapy had no effect on COVID-19-related mortality. Added to these last data, our results suggest that chemotherapy should be continued in confirmed SARS-CoV-2-negative patients during the pandemic, without significantly endangering the patient, but this would need to be confirmed on larger series, encouraging us to promote collaborative projects pooling data from different cohorts.

As recently reported in the two cohorts in the UK and US [7, 8], we found no association between mortality and the recent administration of non-cytotoxic systemic anticancer treatments, whether immunotherapy, targeted therapy or hormone therapy. Immunotherapy did not worsen outcomes for patients with COVID-19 in other studies, including two studies dedicated to patients with thoracic cancer [26-28]. However, the role of immunotherapy as a risk factor or not for COVID-19 severity or mortality remains to be clarified given the contradictory data from two previous Chinese studies reporting an increased risk of death or of severe disease with recent immunotherapy [6, 25]. Recent case reports have suggested that it is safe to maintain targeted therapy with ALK/ROS1 tyrosine kinase inhibitors in NSCLC patients with asymptomatic SARS-CoV-2 interstitial pneumonia. This is important as there is a high risk of a cancer flare-up following discontinuation of such a treatment, with a rapidly progressive adverse cancer course leading to death [29].

One of the objectives of our cohort was to analyse the impact of a COVID-19 diagnosis on cancer treatment. We found that COVID-19 was responsible for a temporary or definitive interruption of cytotoxic chemotherapy in 39% of patients and a change in the chemotherapy regimen in 5% of cases. We do not have sufficient hindsight to measure the consequences of these therapeutic modifications, but in the future, it will be essential to determine whether COVID-19-related changes in treatment were responsible for faster cancer progression and shorter survival.

The GCO-002 CACOVID cohort has some limitations. First, the diagnosis of COVID-19 was mainly made by RT-PCR and/or CT-scan. Due to their limited availability in France during the early phase of the pandemic, RT-PCR were reserved for patients with suggestive symptoms and therefore not carried out systematically throughout the country, even in vulnerable populations. This, added to the estimated 20-30% of false-negatives, probably contributed not only to an underestimation of the number of patients with COVID-19, as it was recently demonstrated [30], but also to an overestimation of the proportion of severe forms of COVID-19 since included patients were necessarily symptomatic and/or hospitalized. As the first part of the cohort was retrospective, some data were missing, but the database completion rate was  $\geq 85\%$  for the majority of the parameters. Finally, the study does not provide an estimate of COVID-19 prevalence in cancer patients since we do not yet have the total number of cancer patients followed during the study period.

Despite these weaknesses, the cohort has strengths. To our knowledge, it is the largest cohort of cancer patients with COVID-19 to date. It covers the entire national territory and perfectly reflects the epidemiology of SARS-CoV-2 infection in France since the geographic

distribution of cancer patients with COVID-19 is similar to that of all infected patients in the country, the most affected regions being Greater Paris, and the Northeast and Southeast of France.

In conclusion, this nationwide cohort indicates that mortality in cancer patients with COVID-19 is high and is associated with general characteristics of patients. Age Patients receiving corticosteroids before COVID-19 diagnosis and patients with thoracic cancers had also more severe COVID-19. We found no deleterious effects of recent cytotoxic chemotherapy, except in the subgroup of patients with PCR-detected SARS-CoV-2 RNA. This suggests that cytotoxic treatments should be continued in SARS-CoV-2-negative patients during the pandemic, without significantly endangering the patient although such recommendation deserves to be confirmed on larger series. In almost 40% of patients, the systemic anticancer therapy was interrupted or stopped after COVID-19 diagnosis. The impact of these interruptions on cancer evolution will be evaluated in the future, as well as the impact of social inequalities on the severity and management of COVID-19 infections.

## **Acknowledgments**

We would first like to thank the patients and their families. We thank the directors of the GCO: Maryline Vo (ANOCEF-IGCNO), Bénédicte Votan (ARCAGY-GINECO), Cécile Girault (FFCD), Christine Delpout (GERCOR), Franck Morin (IFCT) and the Operational team of the GCO-002 CACOVID-19 cohort: Charlène Barraux, Olayidé Boussari, Caroline Choine, Claire Dubois, Quentin Gautherot, Fadil Masskouri, Marie Moreau. Thanks also to Philip Bastable for proofreading the documents. Finally, we thank the other members of the GCO network: Alexandra Guerrier (ARCAGY-GINECO), Arthur Arraitz (ARCAGY-GINECO), Anna Koziol (ARCAGY-GINECO), Marie-Line Garcia-Larnicol (GERCOR), Camille Duranton (GERCOR), Natacha Colin-Bataillou (GORTEC), Marie-Hélène Girard-Calais (GORTEC), Camille Vidaud (GORTEC/Intergroupe ORL), Nathalie Archirel (IFCT), Pascale Missy (IFCT), (Mathieu Boone (ANOCEF-IGCNO), Khê Hoang-Xuan (ANOCEF-IGCNO) and Maud Pouwels (StARCC).

## **Funding support**

The study was funded and coordinated by the FFCD. ANOCEF-IGCNO, ARCAGY-GINECO, FFCD, GERCOR, GORTEC/intergroupe ORL, and IFCT were responsible for the study design, data collection, data interpretation, and writing the report. The FFCD was responsible for database management and the statistical analysis. The corresponding authors had full access to the data and had final responsibility for the decision to submit for publication.

## **Conflict of interest**

Pr Lièvre reports grants from Bayer Lilly, Merck and Novartis, personal fees from AAA, Amgen, Bayer, BMS, Celgene, HalioDx, Incyte, Ipsen, Lilly, Merck, Novartis, Pierre Fabre, Roche, Sandoz, Sanofi, Servier and non financial support from AAA, Amgen, bayer, Incite, Ipsen, Merck, Novartis, Pierre Fabre, Pfizer, Roche, Sandoz, Servier and Integragen outside of the submitted work.

Dr. Turpin reports personal fees from MYLAN, personal fees from MERCK SERONO, personal fees from AMGEN, non-financial support from MERCK-SERONO, non-financial support from SANOFI, non-financial support from PFIZER outside the submitted work; .

Dr. Ahle reports grants from Biogen, grants from Novartis, grants from Roche, grants from Sanofi, grants from Abbvie, outside the submitted work; .Dr Bouché reports personal fees from Merck KGaA, Roche Genentech, Bayer, Astra-Zeneca, Grunenthal, MSD, Amgen, Servier, and Pierre Fabre outside the submitted work;

Dr. Neuzillet reports personal fees from SERVIER, other from OSE Immunotherapeutic, grants from ROCHE, personal fees and other from AstraZeneca, personal fees and other from Bristol-Myers Squibb, personal fees from Amgen, personal fees from Merck, personal fees from MSD, personal fees from Novartis, personal fees from Incyte, personal fees from Mylan, personal fees from Baxter, personal fees from Nutricia, personal fees from Fresenius-Kabi, outside the submitted work; .

Pr Michel reports personal fees from Bayer, Servier, Amgen, Shire and Lilly and non-personal fees from Bayer, Merck, Amgen, Shire, Roche and Lilly outside the submitted work

Dr. Canellas reports personal fees from BMS, personal fees from Astra Zeneca, non-financial support from Boehringer Ingheleim , non-financial support from Roche, outside the submitted work; .

Dr. Wislez reports personal fees from Boeringher Ingelheim, personal fees and non-financial support from ROCHE, personal fees and non-financial support from MSD, personal fees from BMS, personal fees from Astra Zeneca, personal fees from Amgen, outside the submitted work.

Dr. Mansi reports personal fees from Roche, personal fees from Eisai, personal fees from Exact Science, personal fees from Novartis, outside the submitted work; .

Dr Colomba received personal fees from IPSEN, BMS, Pfizer, Sanofi, GSK outside the submitted work;

Pr. Idbaih reports grants and other from Carthera (septembre 2019), grants from Transgene, grants from Sanofi, grants from Air Liquide, other from Leo Pharma, grants from Nutritheragene, outside the submitted work;

Pr. Aparicio reports personal fees and non-financial support from Roche, personal fees from Ipsen, personal fees from Amgen, personal fees from Servier, personal fees from Sanofi, outside the submitted work;

All other authors declare no competing interests.

### **Role of the funding sources**

The funding sources had no role in the preparation and finalisation of the manuscript.



Journal Pre-proof

## References

1. Liang W, Guan W, Chen R, Wang W, Li J, Xu K et al. Cancer patients in SARS-CoV-2 infection: a nationwide analysis in China. *Lancet Oncol* 2020; 21: 335-337.
2. Yu J, Ouyang W, Chua MLK, Xie C. SARS-CoV-2 Transmission in Patients With Cancer at a Tertiary Care Hospital in Wuhan, China. *JAMA Oncol* 2020; 6:1108-1110.
3. Desai A, Sachdeva S, Parekh T, Desai R. COVID-19 and Cancer: Lessons From a Pooled Meta-Analysis. *JCO Glob Oncol* 2020; 6: 557-559.
4. Mehta V, Goel S, Kabarriti R, Cole D, Goldfinger M, Acuna-Villaorduna A et al. Case Fatality Rate of Cancer Patients with COVID-19 in a New York Hospital System. *Cancer Discov* 2020;10: 935-941.
5. Miyashita H, Mikami T, Chopra N, Yamada T, Chernyavsky S, Rizk D et al. Do patients with cancer have a poorer prognosis of COVID-19? An experience in New York City. *Ann Oncol* 2020; 31:1088-1089.
6. Tian J, Yuan X, Xiao J, Zhong Q, Yang C, Liu B et al. Clinical characteristics and risk factors associated with COVID-19 disease severity in patients with cancer in Wuhan, China: a multicentre, retrospective, cohort study. *Lancet Oncol* 2020; 21:893-903.
7. Kuderer NM, Choueiri TK, Shah DP, Shyr Y, Rubinstein SM, Rivera DR et al. Clinical impact of COVID-19 on patients with cancer (CCC19): a cohort study. *Lancet* 2020; 395:1907-1918.
8. Lee LYW, Cazier JB, Starkey T, Turnbull CD, Team UKCCMP et al. COVID-19 mortality in patients with cancer on chemotherapy or other anticancer treatments: a prospective cohort study. *Lancet* 2020; 395:1919-1926.
9. Yang K, Sheng Y, Huang C, Jin Y, Xiong N, Jiang K et al. Clinical characteristics, outcomes, and risk factors for mortality in patients with cancer and COVID-19 in Hubei, China: a multicentre, retrospective, cohort study. *Lancet Oncol* 2020;21(7):904-913.
10. Zhang H, Wang L, Chen Y, Wu Q, Chen G, Shen X et al. Outcomes of novel coronavirus disease 2019 (COVID-19) infection in 107 patients with cancer from Wuhan, China. *Cancer* 2020. <https://doi: 10.1002/cncr.33042>. Online ahead of print.
11. Quan H, Li B, Couris CM, Fushimi K, Graham P, Hider P et al. Updating and validating the Charlson comorbidity index and score for risk adjustment in hospital discharge abstracts using data from 6 countries. *Am J Epidemiol* 2011; 173: 676-682.
12. You B, Ravaut A, Canivet A, Ganem G, Giraud P, Guimbaud R et al. The official French guidelines to protect patients with cancer against SARS-CoV-2 infection. *Lancet Oncol* 2020; 21: 619-621.
13. Zhang L, Zhu F, Xie L, Wang C, Wang J, Chen R et al. Clinical characteristics of COVID-19-infected cancer patients: a retrospective case study in three hospitals within Wuhan, China. *Ann Oncol* 2020; 31: 894-901.
14. Hanna TP, Evans GA, Booth CM. Cancer, COVID-19 and the precautionary principle: prioritizing treatment during a global pandemic. *Nat Rev Clin Oncol* 2020; 17: 268-270.
15. What should medical oncologists know about COVID-19? *ESMO* 2020
16. Mehanna H, Hardman JC, Shenson JA, Abou-Foul AK, Topf MC, Alfalasi M et al. Recommendations for head and neck surgical oncology practice in a setting of acute severe resource constraint during the COVID-19 pandemic: an international consensus. *Lancet Oncol* 2020. [https://doi: 10.1016/S1470-2045\(20\)30334-X](https://doi: 10.1016/S1470-2045(20)30334-X). Epub 2020 Jun 11.
17. Classe JM, Dolivet G, Evrard S, Ferron G, Lecuru F, Leufflen L et al. [French Society for Surgical Oncology (SFCO) guidelines for the management of surgical oncology in the pandemic context of COVID 19]. *Bull Cancer* 2020; 107: 524-527.

18. Di Fiore F, Bouche O, Lepage C, Sefrioui D, Gangloff A, Schwarz L et al. COVID-19 epidemic: Proposed alternatives in the management of digestive cancers: A French intergroup clinical point of view (SNFGE, FFCD, GERCOR, UNICANCER, SFCD, SFED, SFRO, SFR). *Dig Liver Dis* 2020; 52: 597-603.
19. El Amrani M, Truant S, Turpin A. [COVID 19 and cancer: What are the consequences of the cancer care reorganization?]. *Bull Cancer* 2020; 107: 538-540.
20. Girard N, Greillier L, Zalcmann G, Cadranel J, Moro-Sibilot D, Mazières J et al. Proposals for managing patients with thoracic malignancies during COVID-19 pandemic. *Respir Med Res* 2020; 78: 100769. [https://doi: 10.1016/j.resmer.2020.100769](https://doi.org/10.1016/j.resmer.2020.100769). Online ahead of print.
21. Tuech JJ, Gangloff A, Di Fiore F, Michel P, Brigand C, Slim K et al. Strategy for the practice of digestive and oncological surgery during the Covid-19 epidemic. *J Visc Surg* 2020 ;157(3S1):S7-S12.
22. Fakhry N, Schultz P, Moriniere S, Breuskin I, Bozec A, Vergez S et al. French consensus on management of head and neck cancer surgery during COVID-19 pandemic. *Eur Ann Otorhinolaryngol Head Neck Dis* 2020; 137: 159-160.
23. Guan WJ, Ni ZY, Hu Y, Liang WH, Ou CQ, He JX et al. Clinical Characteristics of Coronavirus Disease 2019 in China. *N Engl J Med* 2020; 382: 1708-1720.
24. Onder G, Rezza G, Brusaferro S. Case-Fatality Rate and Characteristics of Patients Dying in Relation to COVID-19 in Italy. *JAMA* 2020. [https://doi: 10.1001/jama.2020.4683](https://doi.org/10.1001/jama.2020.4683). Online ahead of print.
25. Dai M, Liu D, Liu M, Zhou F, Li G, Chen Z et al. Patients with Cancer Appear More Vulnerable to SARS-CoV-2: A Multicenter Study during the COVID-19 Outbreak. *Cancer Discov* 2020; 10: 783-791.
26. Garassino MC, Whisenant JG, Huang LC, Trama A, Torri V, Agustoni F et al. COVID-19 in patients with thoracic malignancies (TERAVOLT): first results of an international, registry-based, cohort study. *Lancet Oncol* 2020 ;21:914-922.
27. Luo J, Rizvi H, Preeshagul IR, Egger JV, Hoyos D, Bandlamudi C et al. COVID-19 in patients with lung cancer. *Ann Oncol* 2020. [https://doi: 10.1016/j.annonc.2020.06.007](https://doi.org/10.1016/j.annonc.2020.06.007). Online ahead of print.
28. Robilotti EV, Babady NE, Mead PA, Rolling T, Perez-Johnston R, Bernardes M et al. Determinants of COVID-19 disease severity in patients with cancer. *Nat Med* 2020. [https://doi: 10.1038/s41591-020-0979-0](https://doi.org/10.1038/s41591-020-0979-0). Online ahead of print.
29. Leonetti A, Facchinetti F, Zielli T, Brianti E, Tiseo M. COVID-19 in lung cancer patients receiving ALK/ROS1 inhibitors. *Eur J Cancer* 2020; 132: 122-124.
30. Assaad S, Avrillon V, Fournier ML, Mastroianni B, Russias B, Swalduz A et al. High mortality rate in cancer patients with symptoms of COVID-19 with or without detectable SARS-COV-2 on RT-PCR. *Eur J Cancer* 2020; 135: 251-259.

**Figure legends**

**Figure 1: Consort diagram**

**Figure 2: Geographic distribution of cancer patients with COVID-19 and participating institutions**

**Figure 3: Forest plot of the multivariate analysis of factors associated with all-cause mortality in the overall cohort of 1289 cancer patients with COVID-19**

**Figure 4: Forest plot of the multivariate analysis of factors associated with COVID-19 severity outcome defined by admission to ICU and/or mechanical ventilation and/or death in the overall cohort of 1289 cancer patients with COVID-19**

**Appendix****List of investigators/Collaborators of GCO-002 CACOVID-19 cohort**

Dr MOULIN Solenne (SAINT GRÉGOIRE Clinique privée Saint Grégoire - Recherche clinique) ; Dr LELEU Olivier (ABBEVILLE CH THORAX) ; LEPARREE Sylvie (ABBEVILLE CH THORAX) ; Dr GOASDOUE Henri (ABBEVILLE CH) ; Dr PIPROT Christine (ABBEVILLE CH Service de Médecine B) ; Dr TOURNEUR Gerald (ABBEVILLE CH) ; Dr BAYART Vincent (ABBEVILLE CH) ; LIGNIER Delphine (AMIENS CHU HÔPITAL SUD) ; Dr LACHAÏER Emma (AMIENS CHU HÔPITAL SUD) ; KHAMARI Marwa (AMIENS CHU HÔPITAL SUD) ; Dr COUTTE Alexandre (AMIENS CHU HÔPITAL SUD) ; SIEMBIDA Nicolas (AMIENS CHU HOPITAL SUD - Service de chirurgie digestive) ; Dr HOUESSINON Aline (AMIENS CHU HÔPITAL SUD) ; Pr REGIMBEAU Jean Marc (AMIENS CHU HOPITAL SUD - Service de chirurgie digestive) ; Pr CHAUFFERT Bruno (AMIENS CHU HÔPITAL SUD - Service d'Oncologie médicale) ; Dr MOREIRA Aurélie (AMIENS CHU HÔPITAL SUD) ; Dr HAUTEFEUILLE Vincent (AMIENS CHU HÔPITAL SUD - Service d'Hépatogastro-entérologie) ; HEE Christine (AMIENS CHU HÔPITAL SUD) ; Dr BOONE Mathieu (AMIENS CHU HÔPITAL SUD) ; Dr BIHAN Céline (AMIENS CHU HÔPITAL SUD) ; CHIVE Emilie (AMIENS CHU HOPITAL SUD - Service de chirurgie digestive) ; POULET-POTRIQUIER Stéphane (AMIENS CHU HÔPITAL SUD) ; FAHEM Rachida (AMIENS CHU HÔPITAL SUD - Service d'Hépatogastro-entérologie) ; Dr LUET Dominique (ANGERS CHU HÔTEL DIEU - Service d'HGE) ; Dr ROQUIN Guillaume (ANGERS CHU HÔTEL DIEU - Service d'HGE) ; Dr VITELLIUS Carole (ANGERS CHU HÔTEL DIEU - Service d'HGE) ; CORNET-TRICHEREAU Nathanaëlle (ANGERS CHU HÔTEL DIEU - Service d'HGE) ; Pr CAROLI-BOSC François-Xavier (ANGERS CHU HÔTEL DIEU - Service d'HGE) ; Dr THIROT-BIDAULT Anne (ANTONY CH HOPITAL PRIVE - service d'Oncologie) ; Dr ROPERT Stanislas (ANTONY CH HOPITAL PRIVE - service d'Oncologie) ; Dr GACHET - MASSON Julie (ANTONY CH HOPITAL PRIVE - service d'Oncologie) ; DEHAIS Mélanie (ANTONY CH HOPITAL PRIVE - service d'Oncologie) ; Dr L'HELGOUALC'H Gwen-Ael (ANTONY CH HOPITAL PRIVE - service d'Oncologie) ; ALI-MAHAMADOU Ibrahim (ANTONY CH HOPITAL PRIVE - service d'Oncologie) ; TALFI Safia (ARGENTEUIL CH VICTOR DUPOUY - USRC Unité de Soutien à la Recherche Clinique) ; Dr BELMONT Laure (ARGENTEUIL CH VICTOR DUPOUY - USRC Unité de Soutien à la Recherche Clinique) ; BENREZZAK Nasro (ARGENTEUIL CH VICTOR DUPOUY) ; DUBIEF Emeline (ARGENTEUIL CH VICTOR DUPOUY - USRC Unité de Soutien à la Recherche Clinique) ; Dr CONROY Guillaume (ARS LAQUENEXY CH METZ THIONVILLE MERCY) ; Dr DELIQUE Laurence (ARS LAQUENEXY CH METZ THIONVILLE MERCY) ; BASSO Maud (AUCH CH Hôpital Général d'Auch) ; Dr PONS Isabelle (AUCH CH Hôpital Général d'Auch - Service d'Oncologie) ; Dr SALIGNON Karine (AUCH CH Hôpital Général d'Auch - Service d'Oncologie) ; Dr VILLING Anne-Laure (AUXERRE CH GHT UNYON AUXERRE - Service d'Oncologie) ; MOUGENOT Emmanuelle (AUXERRE CH GHT UNYON AUXERRE - Service d'Oncologie) ; POREBSKI Cassandra (AUXERRE CH GHT UNYON AUXERRE - Service d'Oncologie) ; GUIATNI Asma (AUXERRE CH GHT UNYON AUXERRE - Service d'Oncologie) ; Dr CLOAREC Nicolas (AVIGNON CH HENRI DUFFAUT - Service d'Onco-Hématologie) ; Dr MINEUR Laurent (AVIGNON Clinique privée SAINTE CATHERINE - Service d'Oncologie Médicale) ; BOUCHAUD Marie (AVIGNON Clinique privée SAINTE CATHERINE) ; Dr DAVID Céleste (AVIGNON Clinique privée SAINTE CATHERINE) ; Dr PEYTIER Annie (BAYEUX CH Service de Gastroentérologie) ; Dr GRELETTY Thomas (BAYONNE CH COTE BASQUE) ; Dr AUDEMAR Franck (BAYONNE CH CÔTE BASQUE -Service d'HGE) ; VIGNES Emanuelle (BAYONNE CH COTE BASQUE) ; Dr MINNE Floriane (BAYONNE CH COTE BASQUE) ; GOLDZAK Guillaume (BAYONNE CH COTE BASQUE) ; HUYSMAN Fabienne (BEAUVAIS CH Service d'Oncologie médicale) ; Dr HOCINE Fayçal (BEAUVAIS CH Service d'Oncologie médicale) ; Dr LAKKIS Zaher (BESANCON CHU JEAN MINJOZ) ; Dr MANSI Laura (BESANCON CHU JEAN MINJOZ) ; Dr MEYNARD Guillaume (BESANCON CHU JEAN MINJOZ) ; Dr ALMOTLAK Hamadi (BESANCON CHU JEAN MINJOZ - Service d'Oncologie) ; Dr KLAJER Elodie (BESANCON CHU JEAN MINJOZ - Service d'Oncologie) ; Dr SUN XU-SHAN (BESANCON CHU JEAN MINJOZ) ; Dr MANSI Laura (BESANCON Clinique privée FRANCHE COMTE) ; Dr WASSELIN Julie

(BETHUNE CH Germon et Gauthier - Service de Gastroentérologie) ; Dr CATALA Pascale (BETHUNE CH Germon et Gauthier - Service de Gastroentérologie) ; MAZUY Claire (BETHUNE CH Germon et Gauthier - Service de Gastroentérologie) ; Dr VANDAMME Hélène (BETHUNE CH Germon et Gauthier - Service de Gastroentérologie) ; Dr PREVOST Jean-Briac (BEUVRY Clinique privée CENTRE PIERRE CURIE) ; Dr FADIN Aurélie (BEUVRY Clinique privée CENTRE PIERRE CURIE) ; Dr BASSON Laurent (BEUVRY Clinique privée CENTRE PIERRE CURIE) ; HUGUET Jean-Baptiste (BEZIERS CH CH BEZIERS) ; DOS SANTOS Emmanuelle (BEZIERS CH CH BEZIERS) ; JANY Béangère (BEZIERS CH CH BEZIERS) ; Dr SAAD Alain (BEZIERS CH CH BEZIERS) ; Dr GOUTORBE Frédéric (BEZIERS CH CH BEZIERS) ; Dr OZIOL Eric (BEZIERS CH CH BEZIERS) ; Dr RAMDANI Mohamed (BEZIERS CH Service d'HGE) ; KADIRI Ouafae (BLOIS CH Service d'Onco-Hématologie) ; Dr GARBAY Delphine (BORDEAUX Clinique privée TIVOLI - Service Oncologie-Radiothérapie) ; HUET Clotilde (BORDEAUX Clinique privée TIVOLI) ; Dr GIROUX LEPRIEUR Etienne (BOULOGNE CHU AP-HP AMBROISE PARÉ) ; TENG Wen (BOULOGNE CHU AP-HP AMBROISE PARÉ) ; MONVOISIN Justine (BOULOGNE SUR MER CH DUCHENNE- Bâtiment Administratif) ; Dr ARNAUD COFFIN Patrick (BOURG EN BRESSE CH FLEYRIAT) ; ROUX Sylvie (BOURG EN BRESSE CH FLEYRIAT - UNITE RECHERCHE CLINIQUE) ; Dr ORFEUVRE Hubert (BOURG EN BRESSE CH FLEYRIAT) ; CHAGROS Mélanie (BOURG EN BRESSE CH FLEYRIAT) ; Dr PILLON Didier (BOURG EN BRESSE CH FLEYRIAT - Service d'HGE) ; RASSOUL Agathe (BREST CHU MORVAN) ; Dr POUREAU Pierre Guillaume (BREST CHU MORVAN - Institut de cancérologie) ; NOVELLO Cécile (BRON HCL PIERRE WERTHEIMER) ; Dr DUCRAY François (BRON HCL PIERRE WERTHEIMER) ; TROUBA Cécile (BRON HCL PIERRE WERTHEIMER) ; Dr BASTIT Vianney (CAEN CAC FRANÇOIS BACLESSE) ; Pr BABIN Emmanuel (CAEN CHU CÔTE DE NACRE) ; Dr THARIAT Juliette (CAEN CAC FRANCOIS BACLESSE - ORL) ; LEON Vincent (CAEN CHU CÔTE DE NACRE) ; Dr COURTECUISSÉ Anne-Catherine (CALAIS CH) ; VAMBRE Julie (CALAIS CH) ; Dr TACK Vincent (CALAIS CH) ; Dr DESAUW Christophe (CALAIS CH) ; Dr MENIAI Fatima (CALAIS CH) ; PERES Christina (CALAIS CH) ; Dr ESPARCIEUX Aurélie (CALUIRE ET CUIRE Clinique privée INFIRMERIE PROTESTANTE) ; PERRIER Hervé (CALUIRE ET CUIRE Clinique privée INFIRMERIE PROTESTANTE) ; DOUX Nathalie (CANNES CH Service Oncologie) ; Dr KAPHAN Régis (CANNES CH Service Oncologie) ; Dr ROQUES Bertrand (CHALLES LES EAUX Clinique privée MÉDIPOLE DE SAVOIE) ; Dr REBISCHUNG Christine (CHALLES LES EAUX Clinique privée MÉDIPOLE DE SAVOIE) ; Dr MILLE Dominique (CHALLES LES EAUX Clinique privée MÉDIPOLE DE SAVOIE) ; FERNANDES Gaëlle (CHALLES LES EAUX Clinique privée MÉDIPOLE DE SAVOIE) ; Dr ABDELLI Naceur (CHALONS EN CHAMPAGNE CH Service HGE) ; JOUSSET Natacha (CHAMBRAY LES TOURS Clinique privée POLE SANTE LEONARD DE VINCI) ; Dr COMBE Pierre (CHAMBRAY LES TOURS Clinique privée POLE SANTE LEONARD DE VINCI) ; Dr JONVEAUX Eric (CHARLEVILLE CH Service de Radiothérapie) ; Dr DUMONT Patrick (CHAUNY CHU Service d'oncologie) ; Dr KANAAN Marc (CHAUNY CHU Service d'oncologie) ; Berthelot Gras Corinne (CHAUNY CHU Service d'oncologie) ; PANIS Valérie (CHAUNY CHU Service d'oncologie) ; Dr KALUZINSKI Laure (CHERBOURG-EN-COTENTIN CH CHP DU COTENTIN - Service Oncologie Médicale) ; VENANT-VALÉRY Marjolène (CHERBOURG-EN-COTENTIN CH CHP DU COTENTIN- Département de recherche clinique) ; Dr LAM You-Heng (CHOLET CH Service Maladies de l'appareil digestif du Dr KAASIS) ; VALLEE Laura (CHOLET CH Service Maladies de l'appareil digestif du Dr KAASIS) ; Dr RIVIERE Frédéric (CLAMART Hopital militaire HIA PERCY - THORAX) ; DURAND Muriel (CLERMONT FERRAND CHU ESTAING) ; BENGHADID Dihya (CLERMONT FERRAND CHU ESTAING) ; VILLENEUVE Emilie (CLERMONT FERRAND CAC JEAN PERRIN) ; Dr HENTIC DHOME Olivia (CLICHY CHU AP-HP BEAUJON - Service d'HGE) ; Dr LAURENT Lucie (CLICHY CHU AP-HP BEAUJON) ; BOUNOUAR Zedjiga (CLICHY CHU AP-HP BEAUJON) ; Dr DE MESTIER Louis (CLICHY CHU AP-HP BEAUJON - Service de gastroentérologie) ; DUBOIS Jacqueline (COLMAR CH HOPITAUX CIVILS DE COLMAR) ; EYRIEY Magali (COLMAR CH HOPITAUX CIVILS DE COLMAR) ; Dr MOREAU Lionel (COLMAR CH HOPITAUX CIVILS DE COLMAR) ; Dr AHLE Guido (COLMAR CH HOPITAUX CIVILS DE COLMAR) ; Dr BELMONT Laure (COLOMBES CHU AP-HP LOUIS MOURIER) ; Dr DIB Baihas (COMPIEGNE Clinique privée POLYCLINIQUE

SAINT COME Service d'oncologie) ; Dr ALDABBAGH Kaïs (COMPIEGNE Clinique privée POLYCLINIQUE SAINT COME Service d'oncologie) ; DEGRIFFOLET Dominique (COMPIEGNE Clinique privée POLYCLINIQUE SAINT COME Service d'oncologie) ; Dr SEBBAGH Virginie (COMPIEGNE CH Service d'HGE) ; SEGHEZZI Jean-Christophe (COMPIEGNE CH Service d'HGE) ; Dr LOZACH-BRUGIRARD Marion (CORBEIL-ESSONNES CH SUD FRANCILIEN - Service Oncologie) ; MANDROU Julie (CORBEIL-ESSONNES CH SUD FRANCILIEN - Unité de Recherche Clinique) ; MAVIER Loubna (CORNEBARRIEU Clinique privée CÉDRES) ; HENNETIER Florence (COUDEKERQUE BRANCHE Clinique privée CLINIQUE DE FLANDRE) ; Dr WAGNER Jean-Philippe (COUDEKERQUE BRANCHE Clinique privée CLINIQUE DE FLANDRE) ; Dr CAROLA Elisabeth (CREIL CH GHPSO (Site de Creil) - Service d'oncologie) ; CHANDIRAKUMARAN Karthiga (CREIL CH GHPSO (Site de Creil) - Service d'oncologie) ; Dr LOUTSKI Sandrine (CREIL CH GHPSO Site de Creil) ; Dr COJEAN-ZELEK Isabelle (CRETEIL CH C.H.I.C - Service d'Oncologie-Radiothérapie) ; BOURAS Amina (CRETEIL CHU HENRI MONDOR - Service hépatologie) ; LACOUR Sandrine (CRETEIL CH C.H.I.C.) ; FROURA Fahem (CRETEIL CHU AP-HP HENRI MONDOR) ; BEN NADJI Hadjer (CRETEIL CHU AP-HP HENRI MONDOR) ; CATTELAINE Sophie (DECHY Clinique privée CENTRE LEONARD DE VINCI) ; Dr DARLOY Franck (DECHY Clinique privée CENTRE LEONARD DE VINCI) ; Dr JOLIMOY BOILLEAU Geneviève (DIJON Clinique privée Institut de cancérologie de Bourgogne GRReCC) ; MAISSIAT Cyrielle (DIJON Clinique privée Institut de cancérologie de Bourgogne GRReCC) ; Dr DARUT-JOUBE Ariane (DIJON Clinique privée Institut de cancérologie de Bourgogne GRReCC) ; Dr LORGIS Véronique (DIJON Clinique privée Institut de cancérologie de Bourgogne GRReCC) ; CHARIFI-ALAOUI Ikram (DIJON CAC GF LECLERC) ; Pr GHIRINGHELLI François (DIJON CAC Service Oncologie Médicale) ; Dr DROUILLARD Antoine (DIJON CHU François Mitterrand - Service d'HGE) ; Dr CHAIX MARIE (DIJON CHU François Mitterrand - Service d'HGE) ; Pr MANFREDI Sylvain (DIJON CHU François Mitterrand - Service d'HGE) ; Pr LEPAGE Côme (DIJON CHU François Mitterrand - Service d'HGE) ; Dr GAGNAIRE Alice (DIJON CHU François Mitterrand - Centre de Coordination en Cancérologie (3C)) ; Dr LATOURNERIE Marianne (DIJON CHU François Mitterrand - Service d'HGE) ; JOURDAN Sofia (DIJON CHU François Mitterrand - Service d'HGE) ; PERROT Nora (DIJON CHU François Mitterrand - Service d'HGE) ; Dr FOLIA Mireille (DIJON CHU Hôpital François Mitterrand) ; Dr MINELLO Anne (DIJON CHU François Mitterrand - Service d'HGE) ; Dr JOUVE Jean-Louis (DIJON CHU François Mitterrand - Service d'HGE) ; Dr MANSI Laura (DOLE CH LOUIS PASTEUR) ; FERY Marielle (DOUAI CH) ; Dr LANDAU Alain (DREUX CH VICTOR JOUSSELIN - Service d'HGE) ; TALFI Safia (ERMONT Clinique privée CLINIQUE CLAUDE BERNARD - THORAX) ; Dr BELMONT Laure (ERMONT Clinique privée CLINIQUE CLAUDE BERNARD) ; Dr EVRARD Diane (FEROLLES ATTILLY Hopital Privé FORCILLES) ; Dr VALENZA Bruno (FREJUS CH FREJUS ST RAPHAEL - Service d'Oncologie) ; Dr PAITEL Jean-François (FREJUS CH FREJUS ST RAPHAEL - Service d'Oncologie) ; CHABLAIS Laetitia (FREJUS CH FREJUS ST RAPHAEL - Service d'Oncologie) ; Dr KREITMANN Thomas (GRASSE CH) ; Dr LANCERY-LECOMTE Laurence (GRENOBLE Clinique privée GHM DANIEL HOLLARD - GYNECOLOGIQUE) ; MONARD Adrien (GRENOBLE Clinique privée GHM DANIEL HOLLARD - GYNECOLOGIQUE) ; Dr FAUGERAS Eve (GRENOBLE Clinique privée GHM DANIEL HOLLARD - UROLOGIE) ; BOUCHERET Paul (GRENOBLE Clinique privée GHM DANIEL HOLLARD - UROLOGIE) ; GLOMMEAU Cécile (GRENOBLE CHU GRENOBLE ALPES THORAX) ; TCHIKLADZE Christine (GRENOBLE CHU GRENOBLE ALPES THORAX) ; Dr GARNIER TIXIDRE Claire (GRENOBLE Clinique privée GHM DANIEL HOLLARD - GYNECOLOGIQUE) ; Dr LONG Jérôme (GRENOBLE Clinique privée GHM DANIEL HOLLARD - UROLOGIE) ; ZAIDI Manel (GRENOBLE CHU GRENOBLE ALPES THORAX) ; BOUCHERET Paul (GRENOBLE Clinique privée GHM DANIEL HOLLARD - GYNECOLOGIQUE) ; DELABARRE Véronique (GRENOBLE Clinique privée GHM DANIEL HOLLARD - UROLOGIE) ; MEYZENC Juliette (GRENOBLE CHU GRENOBLE ALPES THORAX) ; DELABARRE Véronique (GRENOBLE Clinique privée GHM DANIEL HOLLARD - GYNECOLOGIQUE) ; MONARD Adrien (GRENOBLE Clinique privée GHM DANIEL HOLLARD - UROLOGIE) ; FERRAND Loïc (GRENOBLE CHU GRENOBLE ALPES THORAX) ; Pr MORO-SIBILOT Denis (GRENOBLE CHU GRENOBLE ALPES THORAX) ; BOUHERET Paul (GRENOBLE Clinique privée GHM Institut DANIEL HOLLARD - Service d'Oncologie) ; Dr

LEYRONNAS Cécile (GRENOBLE Clinique privée GHM Institut DANIEL HOLLARD - Service d'Oncologie) ; MONARD Adrien (GRENOBLE Clinique privée GHM Institut DANIEL HOLLARD - Service d'Oncologie) ; Dr HERVE Camille (GRENOBLE Clinique privée GHM Institut DANIEL HOLLARD - Service d'Oncologie) ; DELABARRE Véronique (GRENOBLE Clinique privée GHM Institut DANIEL HOLLARD - Service d'Oncologie) ; THOOR Audrey (GRENOBLE CHU GRENOBLE ALPES - Service d'HGE) ; JACQUET Emanuelle (GRENOBLE CHU GRENOBLE ALPES - Service d'oncologie et d'Hématologie) ; Dr ROTH Gaël (GRENOBLE CHU GRENOBLE ALPES - Service d'HGE) ; MADAPATHAGE-SENANYAKE Videsheka (JOSSIGNY CH MARNE LA VALLEE/JOSSIGNY) ; CHUPEAU Peggy (LA ROCHE SUR YON CH CHD Vendée - Service Hématologie - Oncologie) ; BIEBER Elsa (LA ROCHE SUR YON CH CHD Vendée) ; ROSSO Maud (LA ROCHE SUR YON CH CHD Vendée - Service de Recherche) ; LEPAGE Isabelle (LA ROCHE SUR YON CH CHD Vendée) ; Dr PRIOU Frank (LA ROCHE SUR YON CH CHD Vendée - Service Hématologie - Oncologie) ; Dr LALY Margot (LA ROCHE SUR YON CH CHD Vendée - Service d'HGE) ; APRELON Sylvie (LE COUDRAY (CHARTRES) CH LOUIS PASTEUR) ; SOBOLAK Natacha (LE HAVRE Hopital Privé L'ESTUAIRE - Service d'oncologie) ; Dr HOMOKOS Helen (LE HAVRE Hopital Privé L'ESTUAIRE - Service d'oncologie) ; Dr POINTREAU Yoann (LE MANS Clinique privée CENTRE JEAN BERNARD) ; MAZUY Claire (LENS CH DOCTEUR SCHAFFNER - Service d'HGE) ; Dr WATELLE Fabienne (LENS CH DOCTEUR SCHAFFNER) ; Dr PHAM-BECKER Alice (LENS CH DOCTEUR SCHAFFNER) ; Dr LAURIDANT Géraldine (LIEVIN Clinique privée TEISSIER) ; FERY Marielle (LIEVIN Clinique privée TEISSIER) ; Dr TURPIN Anthony (LILLE CHU CLAUDE HURIEZ - Service d'oncologie médicale) ; DUJARDIN Charlotte (LILLE Hopital Privé LA LOUVIERE Institut de Cancérologie Lille Métropole) ; Dr TURPIN Anthony (LILLE Clinique privée BOIS) ; LENGLIN Etienne (LILLE Hopital Privé LA LOUVIERE Institut de Cancérologie Lille Métropole) ; NIENGUET TSOTA Aimée (LILLE CH SAINT VINCENT) ; Dr DOMINGUEZ Sophie (LILLE CH SAINT VINCENT - Service d'Oncologie et Hématologie) ; Dr FORESTIER Alexandra (LILLE CAC OSCAR LAMBRET) ; NOUVEL Franck (LILLE Clinique privée BOIS) ; LEROOY Justine (LILLE CHU CLAUDE HURIEZ - Service de chirurgie digestive et générale Est) ; RATAJCZAK Céline (LILLE CHU CLAUDE HURIEZ - Service chirurgie digestive et transplantation) ; RATAJCZAK Céline (LILLE Clinique privée BOIS) ; Dr TURPIN Anthony (LILLE CAC OSCAR LAMBRET) ; Dr ROMANO Olivier (LILLE Hopital Privé LA LOUVIERE Institut de Cancérologie Lille Métropole) ; BRZYSKI Dorothée (LILLE CH SAINT VINCENT - Centre de Recherche Clinique) ; BARRIERE Aurélien (LIMOGES Clinique privée FRANCOIS CHENIEUX - Service d'Oncologie) ; Dr GENET Dominique (LIMOGES Clinique privée FRANCOIS CHENIEUX - Service d'Oncologie) ; TISSE Julien (LIMOGES Clinique privée FRANCOIS CHENIEUX) ; Dr ZASADNY Xavier (LIMOGES Clinique privée FRANCOIS CHENIEUX) ; GRELET Adeline (LIMOGES Clinique privée FRANCOIS CHENIEUX) ; HENNION-IMBAULT Amélie (LIMOGES Clinique privée FRANCOIS CHENIEUX - Service d'Oncologie) ; Dr HAUSTRAETE Eglantine (LISIEUX CH ROBERT BISSON - THORAX) ; Dr LOUAFI Samy (LONGJUMEAU CH NORD ESSONNE LONGJUMEAU - Service Oncologie 6AB) ; ALI-MAHAMADOU Ibrahim (LONGJUMEAU CH GH Nord Essone) ; Dr AWAD Manal (LONGJUMEAU CH GH Nord Essone) ; ZEKRI Younes (LONGJUMEAU CH NORD ESSONNE LONGJUMEAU - Service Oncologie 6AB) ; Dr CHENEAU Caroline (LORIENT CH CHBS HOPITAL DU SCORFF) ; LEISSEN Nolwen (LORIENT CH CHBS - HOPITAL DU SCORFF - Service de Radiothérapie et Oncologie) ; Dr EGRETEAU Joëlle (LORIENT CH CHBS - HOPITAL DU SCORFF - Service de Radiothérapie et Oncologie) ; BREANT Alexandra (LORIENT CH CHBS HOPITAL DU SCORFF) ; Dr SARABI Matthieu (LYON CAC LÉON BERARD) ; LABONNE Stéphanie (LYON HCL EDOUARD HERRIOT - Service d'Oncologie Médicale) ; Dr FORESTIER Julien (LYON HCL EDOUARD HERRIOT - Service d'Oncologie Médicale) ; LECLERCQ Céline (LYON CHU LA CROIX ROUSSE - Service HGE) ; PRUNIER-BOSSION Florence (LYON Clinique privée LA SAUVEGARDE LYON - Recherche Clinique) ; Pr RAY COQUARD Isabelle (LYON CAC LÉON BERARD) ; Dr GUILLET Marielle (LYON CAC LÉON BERARD) ; THEILLAUMAS Aurélie (LYON HCL EDOUARD HERRIOT - Service d'Oncologie Médicale) ; PROMÉ Emilie (LYON HCL EDOUARD HERRIOT) ; Pr WALTER Thomas (LYON HCL EDOUARD HERRIOT - Service d'Oncologie Médicale) ; Dr PHILOUZE Pierre (LYON CHU LA CROIX ROUSSE - ORL) ; Dr GUILLET Marielle (LYON CHU LA CROIX ROUSSE - Service



HGE) ; LAWO Melody (LYON HCL EDOUARD HERRIOT - Service d'Oncologie Médicale) ; Dr DE TALHOUET Solène (LYON CHU LA CROIX ROUSSE - Service HGE) ; BEUVELOT Johanne (LYON Clinique privée LA SAUVEGARDE LYON) ; Dr MOLIN Yann (LYON Clinique privée LA SAUVEGARDE LYON) ; Dr BELLECOSTE MARTIN Marie (MACON CH LES CHANAUX - Service Gastroentérologie R3) ; SAUSSEREAU Maud (MARSEILLE CH LA CONCEPTION - ORL) ; NGAY Nelly (MARSEILLE CH SAINT JOSEPH) ; Dr PERRIER Hervé (MARSEILLE CH SAINT JOSEPH - Service d'Oncologie) ; AGNELLI Lauren (MARSEILLE CH LA CONCEPTION - ORL) ; Pr FAKHRY Nicolas (MARSEILLE CH LA CONCEPTION) ; LAPLACE Christophe (MARSEILLE CH SAINT JOSEPH - Service d'Oncologie) ; Dr NORGUET MONNEREAU Emmanuelle (MARSEILLE CHU AP-HM LA TIMONE - Service d'HGE et d'Oncologie Médicale) ; BOUCARD Céline (MARSEILLE CHU AP-HM LA TIMONE) ; DJENAD Kahina (MARSEILLE CHU AP-HM LA TIMONE) ; Dr FONTAINE Catherine (MARSEILLE CHU AP-HM LA TIMONE) ; Pr SEITZ Jean-François (MARSEILLE CHU AP-HM LA TIMONE - Service d'HGE et d'Oncologie Médicale) ; Pr DAHAN Laëtitia (MARSEILLE CHU AP-HM LA TIMONE - Service d'HGE et d'Oncologie Médicale) ; Dr SIGRAND Julie (MARSEILLE CHU AP-HM LA TIMONE - Service d'HGE et d'Oncologie Médicale) ; Dr DULUC Muriel (MARSEILLE CHU AP-HM LA TIMONE - Service d'HGE et d'Oncologie Médicale) ; Dr LOCHER Christophe (MEAUX CH GHI de l'Est Francilien - Service de gastroentérologie) ; FLEURY Marjory (MEAUX CH GHI de l'Est Francilien - Service de gastroentérologie) ; MADAPATHAGE-SENANYAKE Videsheka (MEAUX CH GHI de l'Est Francilien - Service de gastroentérologie) ; BROU Marie Ange (MEAUX CH GHI de l'Est Francilien - Service de gastroentérologie) ; BERKANE Ramdane (MEAUX CH GHI de l'Est Francilien - Service de gastroentérologie) ; POUPBLANC Séverine (MONT DE MARSAN CH LAYNÉ) ; Dr AUBY Dominique (MONT DE MARSAN CH LAYNÉ - Service d'HGE) ; Dr PETRAN Daniela (MONT DE MARSAN CH LAYNÉ) ; Dr TEXEREAU Patrick (MONT DE MARSAN CH LAYNÉ - Service d'HGE) ; GUERINEAU Elodie (MONT DE MARSAN CH LAYNÉ - Service Oncologie) ; Dr ANDRE Morgan (MONT DE MARSAN CH LAYNÉ - Service d'HGE) ; Dr MAHJOUBI Linda (MONT DE MARSAN CH LAYNÉ - Service Oncologie) ; Dr MANSI Laura (MONTBELIARD CH SITE DU MITTAN) ; SARRAZIN Fanny (MONTBELIARD CH SITE DU MITTAN) ; JEANSON Sonia (MONTELMAR CH Service d'Oncologie Radiothérapie) ; Dr GSCHWEND Anthony (MULHOUSE CH EMILE MULLER) ; BIRR Virginie (MULHOUSE CH EMILE MULLER) ; Dr DEBIEUVRE Didier (MULHOUSE CH EMILE MULLER) ; Dr FORE Mathieu (MULHOUSE CH EMILE MULLER) ; Dr NOIRCLERC Monique (MULHOUSE CH EMILE MULLER - Service de Radiothérapie) ; DAHOU Sihem (NANCY Clinique privée ONCOLOGIE GENTILLY) ; Dr SPAETH Dominique (NANCY Clinique privée ONCOLOGIE GENTILLY) ; LAMBOTIN Mélanie (NANCY Clinique privée ONCOLOGIE GENTILLY) ; LELU Thomas (NANCY Clinique privée ONCOLOGIE GENTILLY) ; Dr LINOT Benjamin (NANTES Hopital Privé CONFLUENT SAS - Service Oncologie Médicale) ; HUGON Nathalie (NANTES Hopital Privé CONFLUENT SAS - Service Oncologie Médicale) ; Dr ROUSSEAU Dominique (NANTES Hopital Privé CONFLUENT SAS) ; Dr CASTANIE Hélène (NANTES Hopital Privé CONFLUENT SAS - Service Oncologie Médicale) ; LENNE Carole (NANTES Hopital Privé CONFLUENT SAS - Centre de recherche clinique) ; Dr LORTHOLARY Alain (NANTES Hopital Privé CONFLUENT SAS - Service Oncologie Médicale) ; Dr CESSOT Anatole (NEUILLY SUR SEINE Clinique privée HARTMANN) ; MERZOUG Messaouda (NEUILLY SUR SEINE Clinique privée HARTMANN) ; NAUDIN Cécile (NEUILLY SUR SEINE Clinique privée HARTMANN) ; Dr VANNETZEL Jean-Michel (NEUILLY SUR SEINE Clinique privée HARTMANN) ; AZIZ Ghina (NEUILLY SUR SEINE Clinique privée HARTMANN) ; Dr HADJ ARAB Yacine (NEVERS CH PIERRE BEREGOVOY) ; PERNES Stéphanie (NEVERS CH PIERRE BEREGOVOY) ; Dr ROCHE-LACHAISE Isabelle (NEVERS CH PIERRE BEREGOVOY) ; Dr FITENI Frédéric (NIMES CHU CAREMEAU - Service de Radiothérapie et d'Oncologie) ; YAHIAOUI Hadjer (NIMES CHU CAREMEAU - Service de Radiothérapie et d'Oncologie) ; MAREL LOPEZ Gwendoline (NIMES CHU CAREMEAU - Service de Radiothérapie et d'Oncologie) ; ODDOZ Jeanne (NIORT CH Service d'Oncologie) ; PEIRA Fabienne (ORLEANS CH Centre Hospitalier Régional La Source) ; MICHEL Olivier (ORLEANS CH CHR La Source - Service Oncologie) ; Dr MEUNIER Jérôme (ORLEANS CH CHR La Source - Service d'Onco/Hématologie) ; OUAHRANI Brahim (ORLEANS CH CHR La Source - Service HGE) ; ROGER Antoine (PARIS CHU AP-HP HÔPITAL EUROPÉEN G POMPIDOU - THORAX) ;

BRANCO Sonia (PARIS CH Groupe Hospitalier Diaconesses Croix Saint Simon) ; NGUYEN Van (PARIS CH Groupe Hospitalier Diaconesses Croix Saint Simon) ; Dr GISSELBRECHT Mathilde (PARIS CHU AP-HP HÔPITAL EUROPÉEN G POMPIDOU - Service d'oncogériatrie) ; HAMMAD Ghania (PARIS CHU AP-HP HÔPITAL EUROPÉEN G POMPIDOU - Service d'HGE) ; Pr MORDANT Pierre (PARIS CHU AP-HP BICHAT - THORAX) ; STROKSZTEJN Magda (PARIS Hopital Privé MONTSOURIS) ; Pr POCARD Marc (PARIS CHU AP-HP LARIBOISIÈRE - Service de chirurgie digestive) ; NLO MEYENGUE Luc (PARIS CHU AP-HP HÔPITAL EUROPÉEN G POMPIDOU - Service d'oncogériatrie) ; Pr APARICIO Thomas (PARIS CHU AP-HP SAINT LOUIS - Service d'HGE) ; SACCO Emmanuelle (PARIS Hopital Privé SAINT JOSEPH - Service d'oncologie) ; SIMON Anne Sophie (PARIS CH Groupe Hospitalier Diaconesses-Croix Saint Simon - Service d'Oncologie) ; Dr FABRE-GUILLEVIN Elizabeth (PARIS CHU AP-HP HÔPITAL EUROPÉEN G POMPIDOU - THORAX) ; Dr WISLEZ Marie (PARIS CHU AP-HP COCHIN) ; Dr SLIM Marine (PARIS Hopital Privé MONTSOURIS - service oncologie) ; Dr ZANAN Aziz (PARIS CHU AP-HP HÔPITAL EUROPÉEN G POMPIDOU - Service d'HGE) ; Pr CADRANEL Jacques (PARIS CHU AP-HP TENON) ; Dr EVRARD Diane (PARIS CHU AP-HP BICHAT - ORL) ; Dr PLUVY Johan (PARIS CHU AP-HP BICHAT - THORAX) ; Dr URSU Rénata (PARIS CHU AP-HP SAINT LOUIS - SYSTEME NERVEUX CENTRAL) ; GERALDO Amyrath (PARIS CHU AP-HP HÔPITAL EUROPÉEN G POMPIDOU - Service d'HGE) ; LIHI Rime (PARIS CHU AP-HP COCHIN) ; VO Maryline (PARIS CHU AP-HP LA PITIÉ SALPÊTRIÈRE) ; BROUK Zohra (PARIS CHU AP-HP BICHAT - THORAX) ; Dr COLLE Raphaël (PARIS CHU AP-HP SAINT ANTOINE - Service d'Oncologie Médicale) ; Dr BENNAMOUN Mostefa (PARIS Hopital Privé MONTSOURIS) ; LACAN Fabrice (PARIS CHU AP-HP HÔPITAL EUROPÉEN G POMPIDOU - Service d'HGE) ; Pr LOUVET Christophe (PARIS Hopital Privé MONTSOURIS) ; Dr MEBARKI Soraya (PARIS CHU AP-HP HÔPITAL EUROPÉEN G POMPIDOU - Service d'oncogériatrie) ; Dr VEYRI Marianne (PARIS CHU AP-HP LA PITIÉ SALPÊTRIÈRE) ; Pr PAILLAUD Elena (PARIS CHU AP-HP HÔPITAL EUROPÉEN G POMPIDOU - Service d'oncogériatrie) ; LUCAS Christelle (PARIS Hopital Privé SAINT JOSEPH) ; Dr DUBREUIL Olivier (PARIS CH Groupe Hospitalier Diaconesses-Croix Saint Simon - Service d'Oncologie) ; Dr LYAMANI Jamila (PARIS CH Groupe Hospitalier Diaconesses-Croix Saint Simon - Service d'Oncologie) ; Dr IDBAIH Ahmed (PARIS CHU AP-HP LA PITIÉ SALPÊTRIÈRE) ; AGGUINI Hanane (PARIS CHU AP-HP SAINT LOUIS - SYSTEME NERVEUX CENTRAL) ; Dr SOULARUE Emilie (PARIS Hopital Privé MONTSOURIS - service oncologie) ; Dr CANELLAS Anthony (PARIS CHU AP-HP TENON) ; Dr ZALCMAN Gérard (PARIS CHU AP-HP BICHAT - THORAX) ; JOURDAINE Clément (PARIS CHU AP-HP LARIBOISIÈRE - ORL) ; Dr VERILLAUD Benjamin (PARIS CHU AP-HP LARIBOISIÈRE - ORL) ; HERZINE Hakima (PARIS CHU AP-HP HÔPITAL EUROPÉEN G POMPIDOU - Service d'HGE) ; Pr RAYMOND Eric (PARIS Hopital Privé SAINT JOSEPH - Service d'oncologie) ; MATHIOT Nathalie (PARIS CHU AP-HP COCHIN) ; Dr PALMIERI LOLA JADE (PARIS CHU AP-HP COCHIN - Service de Gastroentérologie) ; EPANYA Christian (PARIS Hopital Privé MONTSOURIS - service oncologie) ; Pr TAIEB Julien (PARIS CHU AP-HP HÔPITAL EUROPÉEN G POMPIDOU - Service d'HGE) ; BERTRAND Eliane (PARIS CHU AP-HP TENON) ; Dr GOUJON Gaël (PARIS CHU AP-HP BICHAT - Service d'HGE) ; NAMOUR Céline (PARIS CHU AP-HP BICHAT - THORAX) ; Dr GAZEAU Benoit (PARIS CHU AP-HP HÔPITAL EUROPÉEN G POMPIDOU - THORAX) ; ZAFIROVA Biljana (PARIS CHU AP-HP SAINT LOUIS - Service d'HGE) ; Pr MIRGHANI Haitham (PARIS CHU AP-HP HÔPITAL EUROPÉEN G POMPIDOU - ORL) ; Dr BELIN Catherine (PARIS CHU AP-HP SAINT LOUIS - SYSTEME NERVEUX CENTRAL) ; BELKHIR Kahina (PARIS CHU AP-HP LA PITIÉ SALPÊTRIÈRE) ; GHARIB Myriam (PARIS 13 CHU AP-HP LA PITIE SALPETRIERE - Service Oncologie médicale) ; Dr VOZY Aurore (PARIS 13 CHU AP-HP LA PITIE SALPETRIERE - Service Oncologie médicale) ; Dr AMRANE Karim (PARIS 13 CHU AP-HP LA PITIE SALPETRIERE - Service Oncologie médicale) ; Dr SPANO Jean-Philippe (PARIS 13 CHU AP-HP LA PITIE SALPETRIERE - Service Oncologie médicale) ; Dr WASSERMANN Johanna (PARIS 13 CHU AP-HP LA PITIE SALPETRIERE - Service Oncologie médicale) ; Dr FEUVRET LOIC (PARIS CHU AP-HP LA PITIÉ SALPÊTRIÈRE - Service de radiologie) ; Pr BACHET Jean-Baptiste (PARIS CHU AP-HP LA PITIÉ SALPÊTRIÈRE - Service d'HGE) ; Dr PHILONENKO Sara (PARIS CHU AP-HP LA PITIÉ SALPÊTRIÈRE - Service d'HGE) ; GUILLOT Laetitia (PARIS Hopital Privé Groupe Hospitalier Paris Saint-Joseph - Centre de

Recherche Clinique) ; ZABBE Marion (PERIGUEUX CH ) ; GIBIAT Stéphanie (PERIGUEUX CH ) ; Dr BAYLOT Camille (PERIGUEUX CH ) ; JOUINOT Aude (PERIGUEUX CH ) ; LEDUC Nicolas (PERPIGNAN Clinique privée CENTRE ONCOLOGIE CATALAN) ; VIEILLOT Sabine (PERPIGNAN Clinique privée CENTRE ONCOLOGIE CATALAN) ; JAMES Laurie (PERPIGNAN Clinique privée CENTRE ONCOLOGIE CATALAN) ; DUCERF Camille (PESSAC CHU HAUT LÉVÊQUE) ; Pr BLANC Jean-Frédéric (PESSAC CHU HAUT LÉVÊQUE) ; Dr GUILLET Marielle (PIERRE BENITE HCL LYON SUD) ; Pr FALANDRY LEGER Claire (PIERRE BENITE HCL LYON SUD) ; WAUTOT Virginie (PIERRE BENITE HCL LYON SUD - Service de Radiothérapie) ; Dr CHAUVENET Marion (PIERRE BENITE HCL LYON SUD - Service d'HGE) ; VINCENT Aude (PLERIN Clinique privée CENTRE CARIO - HPCA - service d'Oncologie - Association BEC 22) ; Pr TOUGERON David (POITIERS CHU LA MILETRIE - Service d'HGE) ; GOULVENT Sandrine (PONTOISE CH RENÉ DUBOS) ; MAVIER Loubna (QUINT FONSEGRIVES Clinique privée Clinique La Croix du Sud) ; Dr SUC Etienne (QUINT FONSEGRIVES Clinique privée Clinique La Croix du Sud) ; Dr LAURENTY Anne-Pascale (QUINT FONSEGRIVES Clinique privée Clinique La Croix du Sud) ; MARQUIS Eric (REIMS CHU ROBERT DEBRÉ - ORL) ; BONNAIRE Margaux (REIMS CHU ROBERT DEBRÉ - THORAX) ; Dr DEWOLF Maxime (REIMS CHU ROBERT DEBRÉ - THORAX) ; Dr BRENET Esteban (REIMS CHU ROBERT DEBRÉ - ORL) ; BILLARD Delphine (REIMS CHU ROBERT DEBRÉ - THORAX) ; Pr LITRE Claude-Fabien (REIMS Clinique privée Polyclinique Courlancy) ; Dr DUMAZET Antoine (REIMS CHU ROBERT DEBRÉ - THORAX) ; Dr BOTSEN Damien (REIMS CAC JEAN GODINOT) ; Dr BRENET Esteban (REIMS CHU ROBERT DEBRÉ - Unité de Médecine Ambulatoire) ; VAZEL Marion (REIMS CHU ROBERT DEBRÉ - Unité de Médecine Ambulatoire) ; Dr CARLIER Claire (REIMS CHU ROBERT DEBRÉ - Unité de Médecine Ambulatoire) ; MARQUIS Eric (REIMS CHU ROBERT DEBRÉ - Unité de Médecine Ambulatoire) ; BONNERAVE David (REIMS CAC JEAN GODINOT) ; Dr MARCHAND-CRETY Charles (REIMS CAC JEAN GODINOT) ; Pr BOUCHE Olivier (REIMS CHU ROBERT DEBRÉ - Unité de Médecine Ambulatoire) ; FOSSE Patricia (ROUEN CHU CHARLES NICOLLE - Service d'HGE) ; Dr SEFRIQUI David (ROUEN CHU CHARLES NICOLLE - Service d'HGE) ; Pr MICHEL Pierre (ROUEN CHU CHARLES NICOLLE - Service d'HGE) ; Dr WATSON Sarah (SAINT CLOUD CAC Institut Curie R. Huguenin) ; Dr NEUZILLET Cindy (SAINT CLOUD CAC Institut Curie R. Huguenin - Service d'Oncologie) ; TORCHE Fatah (SAINT ETIENNE Hopital Privé RAMSAY SANTE LOIRE) ; Dr MURON Thierry (SAINT ETIENNE Hopital Privé RAMSAY SANTE LOIRE) ; NATUR Stéphane (SAINT MALO CH SAINT MALO - Service Hépatogastro-entérologie) ; Dr DESGRIPPES Romain (SAINT MALO CH SAINT MALO - Service Hépatogastro-entérologie) ; BIHEL Véronique (SAINT MALO CH SAINT MALO - Service Hépatogastro-entérologie) ; Dr FERRAND François-Régis (SAINT MANDE Hopital militaire BEGIN) ; LEITERER Caroline (SAINT MANDE Hopital militaire BEGIN) ; LAVOLE Julie (SAINT MANDE Hopital militaire BEGIN) ; MOQUET Claire (SAINT NAZAIRE Clinique privée CLINIQUE MUTUALISTE DE L'ESTUAIRE) ; PRESSOIR Nathalie (SAINT NAZAIRE Clinique privée CLINIQUE MUTUALISTE DE L'ESTUAIRE) ; DZIUKALA Catherine (SAINT NAZAIRE Clinique privée CLINIQUE MUTUALISTE DE L'ESTUAIRE) ; Dr LIGEZA POISSON Catherine (SAINT NAZAIRE Clinique privée CLINIQUE MUTUALISTE DE L'ESTUAIRE - Service d'Oncologie Médicale) ; NAJI Abdelhalim (SAINT PRIEST EN JAREZ CHU Service d'HGE) ; Dr WILLIET Nicolas (SAINT PRIEST EN JAREZ CHU Service d'HGE) ; Pr PHELIP Jean-Marc (SAINT PRIEST EN JAREZ CHU Service d'HGE) ; DI PALMA Fabrice (SAINT PRIEST EN JAREZ CHU Service d'HGE) ; Dr KHERROUR MEHDI Amina (SAINT PRIEST EN JAREZ CHU Service d'HGE) ; Dr LANGRAND-ESQUIRE Julien (SAINT PRIEST EN JAREZ CHU INSTITUT CANCEROLOGIQUE LUCIEN NEUWIRTH - Service d'Oncologie et Radiothérapie) ; Dr FOURNEL Pierre (SAINT PRIEST EN JAREZ CHU INSTITUT CANCEROLOGIQUE LUCIEN NEUWIRTH - Service d'Oncologie Médicale) ; Dr PIGNE Grégoire (SAINT PRIEST EN JAREZ CHU INSTITUT CANCEROLOGIQUE LUCIEN NEUWIRTH - Service d'Oncologie et Radiothérapie) ; Dr SABAN-ROCHE Léa (SAINT PRIEST EN JAREZ CHU INSTITUT CANCEROLOGIQUE LUCIEN NEUWIRTH - Service d'Oncologie Médicale) ; Dr MAGNE Nicolas (SAINT PRIEST EN JAREZ CHU INSTITUT CANCEROLOGIQUE LUCIEN NEUWIRTH - Service d'Oncologie et Radiothérapie) ; Dr VASSAL Cécile (SAINT PRIEST EN JAREZ CHU INSTITUT CANCEROLOGIQUE LUCIEN NEUWIRTH - Service d'Oncologie Médicale) ; Dr

JACQUIN Jean-Philippe (SAINT PRIEST EN JAREZ CHU INSTITUT CANCEROLOGIQUE LUCIEN NEUWIRTH - Service d'Oncologie Médicale) ; Dr RAMIREZ Carole (SAINT PRIEST EN JAREZ CHU INSTITUT CANCEROLOGIQUE LUCIEN NEUWIRTH - Service d'Oncologie Médicale) ; Dr VALLARD Alexis (SAINT PRIEST EN JAREZ CHU INSTITUT CANCEROLOGIQUE LUCIEN NEUWIRTH - Service d'Oncologie et Radiothérapie) ; COLLARD Olivier (SAINT PRIEST EN JAREZ CHU INSTITUT CANCEROLOGIQUE LUCIEN NEUWIRTH - Service d'Oncologie Médicale) ; Dr MURON Thierry (SAINT PRIEST EN JAREZ CHU INSTITUT CANCEROLOGIQUE LUCIEN NEUWIRTH - Service d'Oncologie Médicale) ; Dr RIVOIRARD Romain (SAINT PRIEST EN JAREZ CHU INSTITUT CANCEROLOGIQUE LUCIEN NEUWIRTH - Service d'Oncologie Médicale) ; Dr GRABER Ivan (SAINTE COLOMBE LES VIENNE Clinique privée TRENEL) ; Dr TRAGER MAURY Stéphanie (STAINS Clinique privée ESTREE) ; DUBOISSET Elodie (STAINS Clinique privée ESTREE) ; Dr AYLON UGARTE Jorge (STAINS Clinique privée ESTREE) ; RAMI Dalilia (STAINS Clinique privée ESTREE) ; SALER Christine (STRASBOURG Clinique privée STRASBOURG ONCOLOGIE LIBERALE - Service HGE) ; REINBOLT Manon (STRASBOURG CAC ICAN STRASBOURG - Recherche Clinique) ; Dr LE FEVRE Clara (STRASBOURG CAC ICAN Institut de Cancérologie de Strasbourg Europe) ; Dr BEN ABDELGHANI Meher (STRASBOURG CAC ICAN Strasbourg - Service d'Oncologie) ; Dr DOURTHE Louis-Marie (STRASBOURG Clinique privée STRASBOURG ONCOLOGIE LIBERALE - Service HGE) ; PERRUISSEAU-CARRIER Joffrey (STRASBOURG CHU HAUTEPIERRE) ; Dr NGUIMPI-TAMBOU Marlène (STRASBOURG CHU HAUTEPIERRE - Service d'HGE) ; BARRET Flavie (SURESNES CH FOCH) ; Dr DI STEFANO Anna Luisa (SURESNES CH FOCH) ; BALTHAZARD Annie (SURESNES CH FOCH) ; Dr MABRO May (SURESNES CH FOCH - Service d'Oncologie) ; VASSORD-DANG Camille (SURESNES CH FOCH) ; LE MARCHAND Mathilde (SURESNES CH FOCH) ; Dr VERGNIOL Julien (TALENCE CH MAISON SANTÉ PROTESTANTE) ; Dr PRIPON Iulia (TARBES CH BIGORRE - Service d'HGE) ; Dr DAEMAEGDT Axelle (TARBES CH BIGORRE) ; LATRY Vanessa (TARBES CH BIGORRE) ; LARRIEU Muna (THONON LES BAINS CH LEMAN) ; LANDRY Gaëlle (THONON LES BAINS CH LEMAN) ; TOUIHRI MAXIMIN Laetitia (THONON LES BAINS CH LEMAN) ; Dr DEL PIANO Francesco (THONON LES BAINS CH LEMAN) ; BARLET Agnès (TOULON CH SAINTE MUSSE) ; VERNISSE Mylène (TOULON CH SAINTE MUSSE HOPITAL - SERVICE DAM/UNITE DE RECHERCHE CLINIQUE) ; LAFOND Sophie (TOULON CH SAINTE MUSSE) ; GENIN Charline (TOULON CH SAINTE MUSSE HOPITAL - SERVICE DAM/UNITE DE RECHERCHE CLINIQUE) ; Dr SIBERTIN-BLANC Camille (TOULON CH SAINTE MUSSE - Service d'oncologie) ; Dr CHABRILLAC Emilien (TOULOUSE CAC ONCOPOLE - ORL) ; GREGOIRE Caroline (TOULOUSE CHU RANGUEIL) ; Pr VERGEZ Sébastien (TOULOUSE CAC ONCOPOLE) ; PANOUILLE Quentin (TOULOUSE CHU RANGUEIL) ; Pr GUIMBAUD Rosine (TOULOUSE CHU RANGUEIL - Service d'oncologie digestive) ; RICHA Floriane (TOURCOING CH GUSTAVE DRON CH - Service d'oncologie) ; Dr LEBELLEC Loïc (TOURCOING CH GUSTAVE DRON CH - Service d'oncologie) ; GOUNIN Sophie (TOURS CHU BRETONNEAU - Service d'HGE) ; Dr BUIRET Guillaume (VALENCE CH) ; BAUDIN Marine (VALENCE CH Service d'Oncologie Médicale) ; Dr HAMON Hervé (VALENCE CH Service d'HGE) ; Dr DESHORGUE Anne-Claire (VALENCIENNES CH) ; FERY Marielle (VALENCIENNES CH) ; Dr BARRASCOUT Eduardo (VALENCIENNES CH) ; LEGRAND Stéphanie (VALENCIENNES CH) ; Dr LAURIDANT Géraldine (VALENCIENNES Clinique privée DENTELLIÈRES) ; HOULZE Morgane (VALENCIENNES Clinique privée DENTELLIÈRES) ; CAMBULA Linda (VALENCIENNES CH) ; Dr LOPEZ Anthony (VANDOEUVRE LES NANCY CHU BRABOIS - Service d'HGE) ; FOUQUET Guillaume (VANDOEUVRE LES NANCY CHU BRABOIS - Service d'HGE) ; TOUABI Kahina (VANDOEUVRE LES NANCY CHU BRABOIS - Service d'HGE) ; Pr GERMA In Adeline (VANDOEUVRE LES NANCY CHU BRABOIS - Service d'HGE) ; Dr GODBERT Benoît (VANTOUX Hopital Privé ROBERT SCHUMAN) ; VOIVRET Florence (VANTOUX Hopital Privé ROBERT SCHUMAN) ; Dr PERRIN Julie (VANTOUX Hopital Privé ROBERT SCHUMAN) ; Dr MANSI Laura (VESOUL CH PAUL MOREL) ; DA SILVA Rosa (VILLEJUIF CAC GUSTAVE ROUSSY) ; Dr BERNICHON Emilie (VILLEJUIF CAC GUSTAVE ROUSSY) ;

**Figure 1: Consort diagram**

**Figure 2: Geographic distribution of cancer patients with COVID-19 and participating institutions**

**Figure 3: Forest plot of the multivariate analysis of factors associated with all-cause mortality in the overall cohort of 1289 cancer patients with COVID-19**

**Figure 4: Forest plot of the multivariate analysis of factors associated with COVID-19 severity outcome defined by admission to ICU and/or mechanical ventilation and/or death in the overall cohort of 1289 cancer patients with COVID-19**

**Table 1:** Clinical features of the 1289 cancer patients with COVID-19

	All patients (N = 1289)	Patients who died (N = 370)	Patients who survived (N = 919)	<i>P</i> value
<b>PATIENTS' CHARACTERISTICS</b>				
<b>Age, years</b>				
Median (range)	67 (19-100)	70 (22-98)	66 (58-74)	<0.001
< 65	534 (42%)	121 (33%)	413 (45%)	<0.001
65-74	430 (33%)	137 (37%)	293 (32%)	
≥ 75	325 (25%)	112 (30%)	213 (23%)	
<b>Sex</b>				
Female	494 (38%)	113 (30%)	381 (41%)	<0.001
Male	795 (62%)	257 (70%)	538 (59%)	
<b>Region of patient's residence<sup>#</sup></b>	<b>N = 1261</b>	<b>N = 366</b>	<b>N = 895</b>	
Northeast	995 (79%)	286 (78%)	709 (79%)	0.13
Southeast	100 (8%)	28 (8%)	72 (8%)	
Northwest	69 (5%)	26 (7%)	43 (5%)	
Southwest	75 (6%)	24 (6%)	51 (6%)	
Centre	22 (2%)	2 (1%)	20 (2%)	
<b>BMI (kg/m<sup>2</sup>)</b>	<b>N = 1110</b>	<b>N = 347</b>	<b>N = 774</b>	
Median (range)	24.3 (12.1-52.7)	23.9 (13.0-43.6)	24.6 (12.1-52.7)	0.20
< 18.5	101 (9.1%)	38 (11%)	63 (8%)	0.24
18.5 ≤ BMI < 25	515 (46%)	167 (48%)	348 (45%)	
25 ≤ BMI < 30	311 (28%)	82 (23%)	229 (30%)	
30 ≤ BMI < 35	137 (12%)	41 (12%)	96 (12%)	
35 ≤ BMI < 40	32 (3%)	10 (3%)	22 (3%)	
≥ 40	14 (1%)	6 (2%)	8 (1%)	
<b>Obesity (BMI ≥ 30)</b>	183 (16%)	57 (17%)	126 (16%)	0.96
<b>Tobacco smoking status</b>	<b>N = 1079</b>	<b>N = 334</b>	<b>N = 745</b>	
Never smoked	515 (48%)	126 (38%)	389 (52%)	<0.001
Former smoker	393 (36%)	149 (44%)	244 (33%)	
Current smoker	171 (16%)	59 (18%)	112 (15%)	

<b>Comorbidities, n/total</b>				
Congestive heart failure	95/1151 (8%)	45/349 (13%)	50/802 (6%)	< 0.001
Coronary insufficiency	99/1019 (8%)	45/328 (14%)	54/691 (8%)	0.0029
Chronic obstructive pulmonary disease	124/1020 (12%)	55/328 (17%)	69/692 (10%)	0.0019
Diabetes	241/1151 (21%)	84/349 (24%)	157/796 (20%)	0.08
Hypertension	529/1151 (46%)	189/349 (54%)	340/802 (42%)	0.0002
<b>Number of comorbidities</b>	<b>N = 1289</b>	<b>N = 370</b>	<b>N = 919</b>	
0	175 (14%)	21 (6%)	154 (17%)	
1	280 (22%)	48 (13%)	232 (25%)	<0.001
2	294 (23%)	87 (23%)	207 (22%)	
3	216 (17%)	79 (21%)	137 (15%)	
≥ 4	324 (25%)	135 (36%)	189 (21%)	
<b>Updated Charlson comorbidity index</b>	<b>N = 932</b>	<b>N = 299</b>	<b>N = 633</b>	
0-3	284 (30%)	56 (19%)	228 (36%)	<0.001
≥ 4	648 (70%)	243 (81%)	405 (64%)	
<b>Usual medication*, N /total</b>				
Long-term corticosteroids	131/1141 (11%)	51/344 (15%)	80/797 (10%)	0.02
Transient corticosteroids (ongoing or ≤ 4 weeks)	46/1011 (4%)	24/323 (7%)	22/688 (3%)	0.003
NSAIDs	40/1142 (3%)	17/345 (4.9%)	23/797 (2.9%)	0.08
Immunosuppressive therapy	35/1012 (3%)	11/324 (3%)	24/688 (3%)	0.94
CEI or AIIA	222/1143 (19%)	81/346 (23%)	141/797 (18%)	0.02
Anticoagulant therapy	358/1140 (31%)	141/344 (41%)	217 (796 (27%)	<0.001
<b>HISTORY OF CANCER</b>				
<b>Cancer type</b>	<b>N = 1287</b>	<b>N = 370</b>	<b>N = 919</b>	
Digestive <sup>a</sup>	470 (36%)	146 (39%)	324 (35%)	<0.001
Thoracic <sup>b</sup>	311 (24%)	113 (30%)	198 (22%)	
Gynaecological	252 (20%)	44 (12%)	208 (22%)	
Breast Cancer	173 (68.7%)	26 (59.1%)	147 (70.7%)	
Other gynaecological <sup>c</sup>	79 (31.3%)	18 (40.9%)	61 (29.3%)	
Head and neck	104 (8%)	22 (6%)	82 (9%)	
Central nervous system	65 (5%)	19 (5%)	46 (5%)	
Genitourinary	65 (5%)	21 (6%)	44 (5%)	

Dermatological	14 (1%)	3 (1%)	11 (1%)	
Others	6 (<1%)	2 (<1%)	4 (<1%)	
<b>Cancer stage</b>	<b>N = 1285</b>	<b>N = 370</b>	<b>N = 915</b>	
Metastatic	758 (59%)	252 (68%)	506 (55%)	<0.001
Localised	527 (41%)	118 (32%)	409 (45%)	
<b>Time since cancer diagnosis</b>	<b>N = 1134</b>	<b>N = 343</b>	<b>N = 791</b>	
< 1 year	597 (53%)	176 (51%)	421 (53%)	0.79
1-3 years	290 (25%)	92 (27%)	198 (25%)	
≥ 3 years	247 (22%)	75 (22%)	172 (22%)	
<b>ECOG PS before COVID-19 diagnosis</b>	<b>N = 931</b>	<b>N = 294</b>	<b>N = 637</b>	
0	182 (20%)	20 (7%)	162 (25%)	<0.001
1	365 (39%)	88 (30%)	277 (44%)	
2	247 (26%)	104 (35%)	143 (22%)	
3-4	137 (15%)	82 (28%)	55 (9%)	
<b>Anticancer treatment during 4 weeks before COVID-19 diagnosis</b>				
<b>Systemic therapy</b>	<b>491 (38%)</b>	<b>151 (41%)</b>	<b>340 (37%)</b>	0.202
cytotoxic chemotherapy	385 (30%)	126 (34%)	259 (28%)	0.03
immunotherapy	62 (5%)	22 (6%)	40 (4%)	0.23
targeted therapy	114 (9%)	28 (8%)	86 (9%)	0.31
hormone therapy	27 (2%)	5 (1%)	22 (2%)	0.23
<b>local therapy, n/total</b>				
radiotherapy	95/1262 (7%)	30/357 (8%)	65/905 (7%)	0.45
surgery	56/1289 (4%)	12/370 (3%)	44/919 (5%)	0.61
<b>Anticancer treatment during 3 months before COVID-19 diagnosis</b>				
<b>Systemic therapy</b>	<b>755 (59%)</b>	<b>224 (61%)</b>	<b>531 (58%)</b>	0.36
cytotoxic chemotherapy	577 (45%)	183 (49%)	394 (43%)	0.03
immunotherapy	110 (8%)	40 (11%)	70 (8%)	0.06
targeted therapy	181 (14%)	42 (11%)	139 (15%)	0.08
hormone therapy	57 (4%)	10 (3%)	47 (5%)	0.06
<b>local therapy, N/total</b>				



radiotherapy	133/1289 (10%)	48/370 (13%)	85/919 (9.2%)	0.047
surgery	56/1289 (4%)	12/370 (3%)	44/919 (5%)	0.22
<b>COVID-19 TREATMENT</b>				
Admission to hospital	734/1125 (65%)	291/341 (85%)	443/784 (57%)	<0.001
Admission to ICU	110/1125 (10%)	62/341 (18%)	48/784 (6%)	<0.001
Oxygen therapy	412/984 (42%)	208/316 (66%)	204/668 (31%)	<0.001
Mechanical ventilation	49/989 (5%)	27/320 (8%)	22/669 (3%)	0.0005

<sup>a</sup> Digestive tumours: colorectal (N = 185, 14.3%), pancreas (N = 86, 6.7%), stomach (N = 50, 3.8%), esophagus (N = 42, 3.2%), liver (N = 34, 2.6%), others (digestive neuroendocrine, biliary tract, anus, peritoneum, small intestine, appendix, gastrointestinal stromal tumour, others) (N = 73, 5.7%).

<sup>b</sup> thoracic tumours: non-small cell lung carcinoma (N = 233, 18%), small cell lung carcinoma (N = 26, 1.9%), mesothelioma and others (N = 52, 4%)

<sup>c</sup> gynaecological tumours: ovary (N = 37, 2.8%), cervix (N = 17, 1.3%), endometrium (N = 15, 1.2%), others (N = 10, 0.7%)

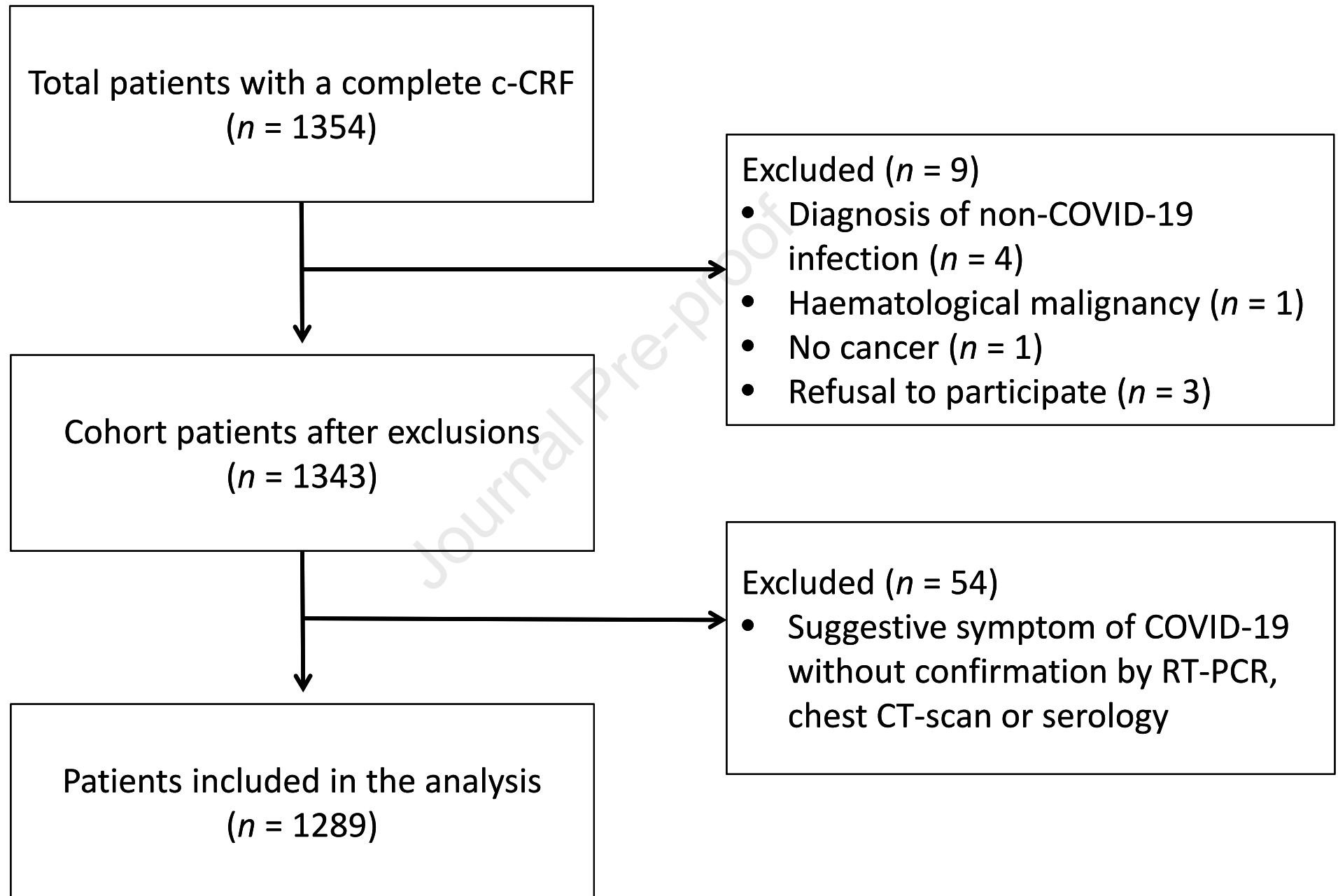
AIIA: angiotensin II antagonists, BMI: body mass index, CEI: converting enzyme inhibitor, NSAIDs: non-steroid anti inflammatory drugs, PS: performance status

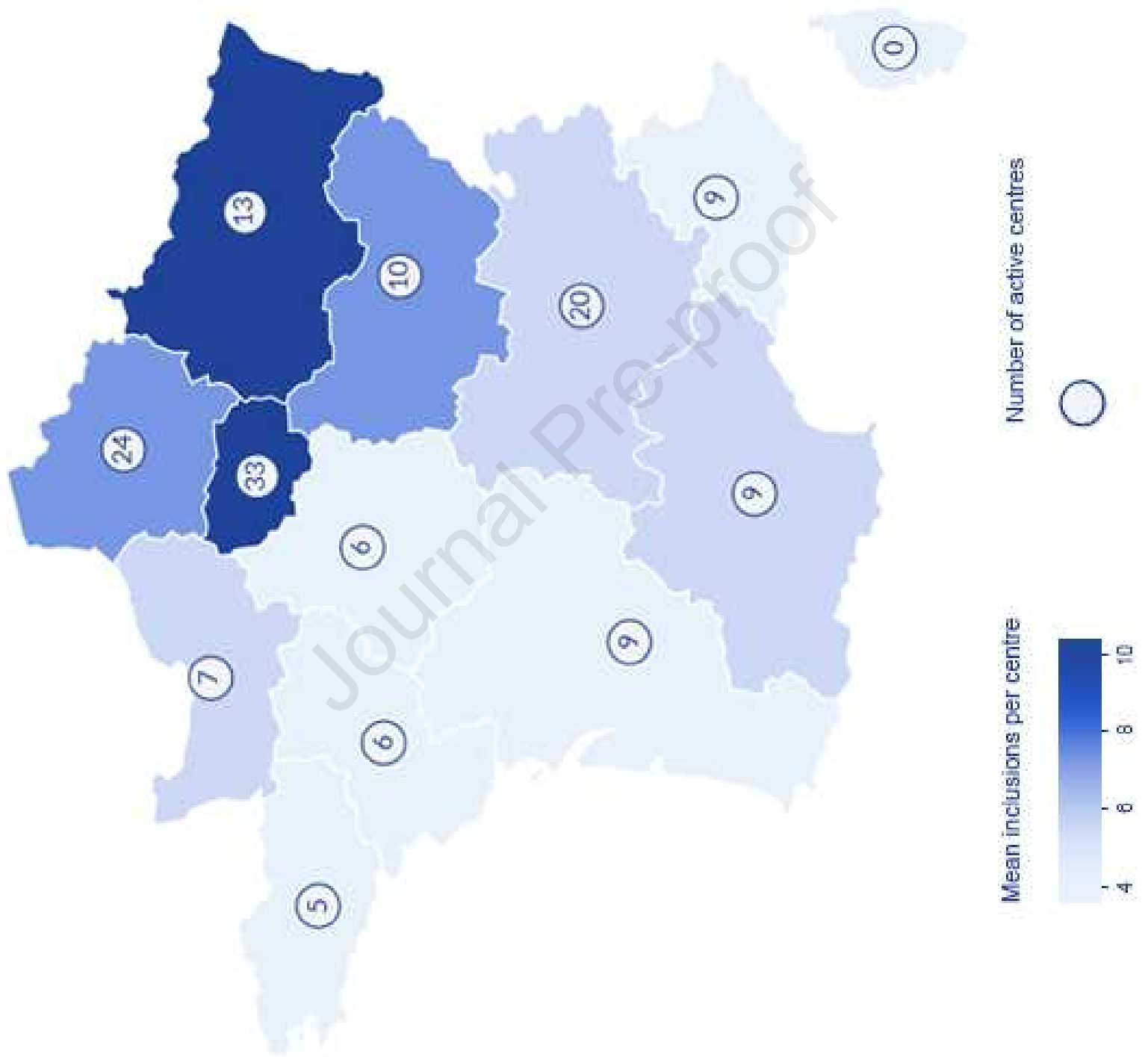
\* before COVID-19 diagnosis

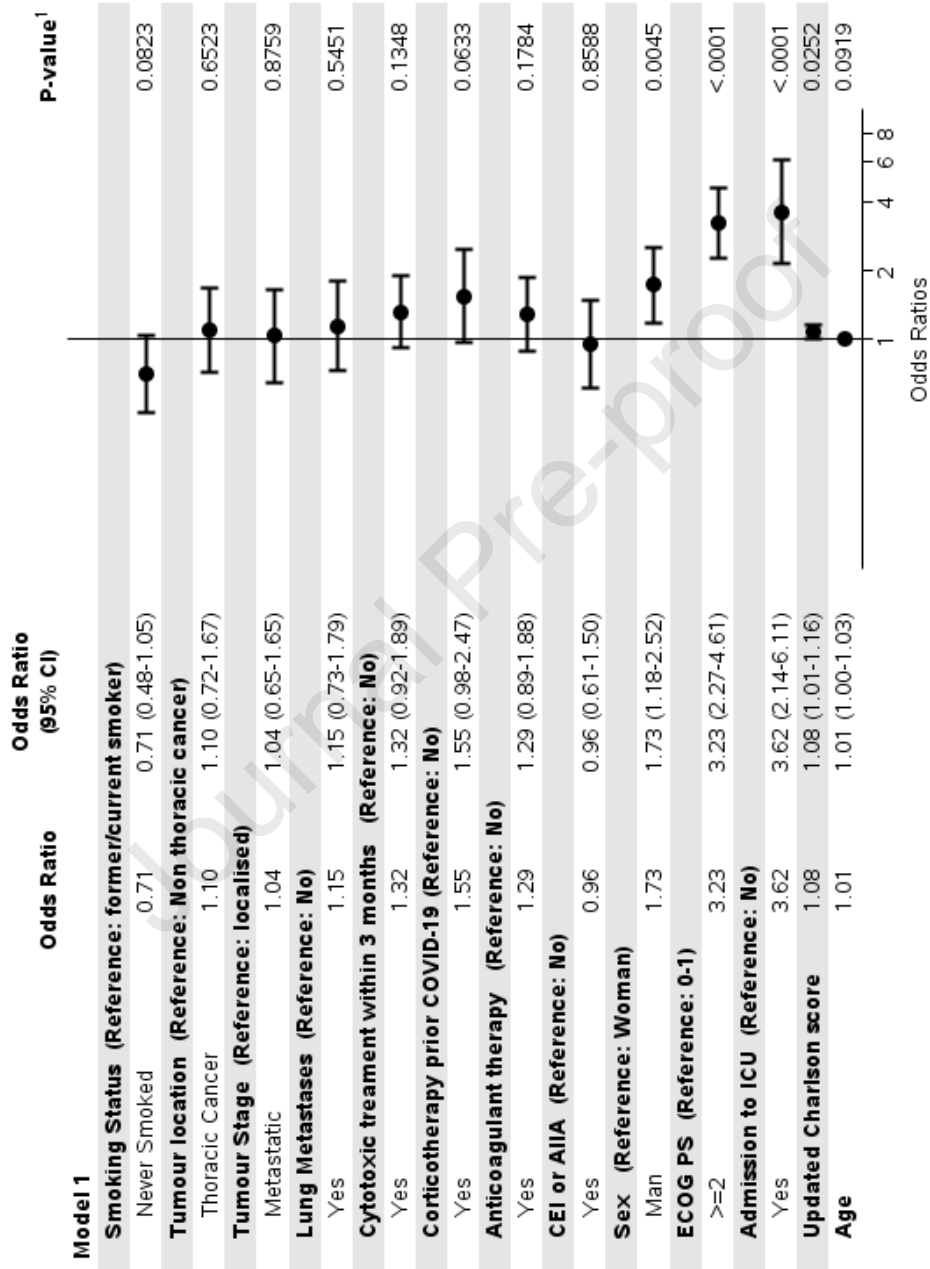
# Northeast: Hauts-de-France, Paris/île-de-France, Grand-Est, Bourgogne-France-Comté; Southeast: Auvergne-Rhône-Alpes, Provence-Alpes-Côte d'Azur; Northwest: Normandie, Bretagne, Pays de la Loire; Southwest: Nouvelle-Aquitaine, Occitanie ; Centre : Centre-Val de Loire

**Table 2:** Modification or interruption of anticancer treatments because of COVID-19 diagnosis

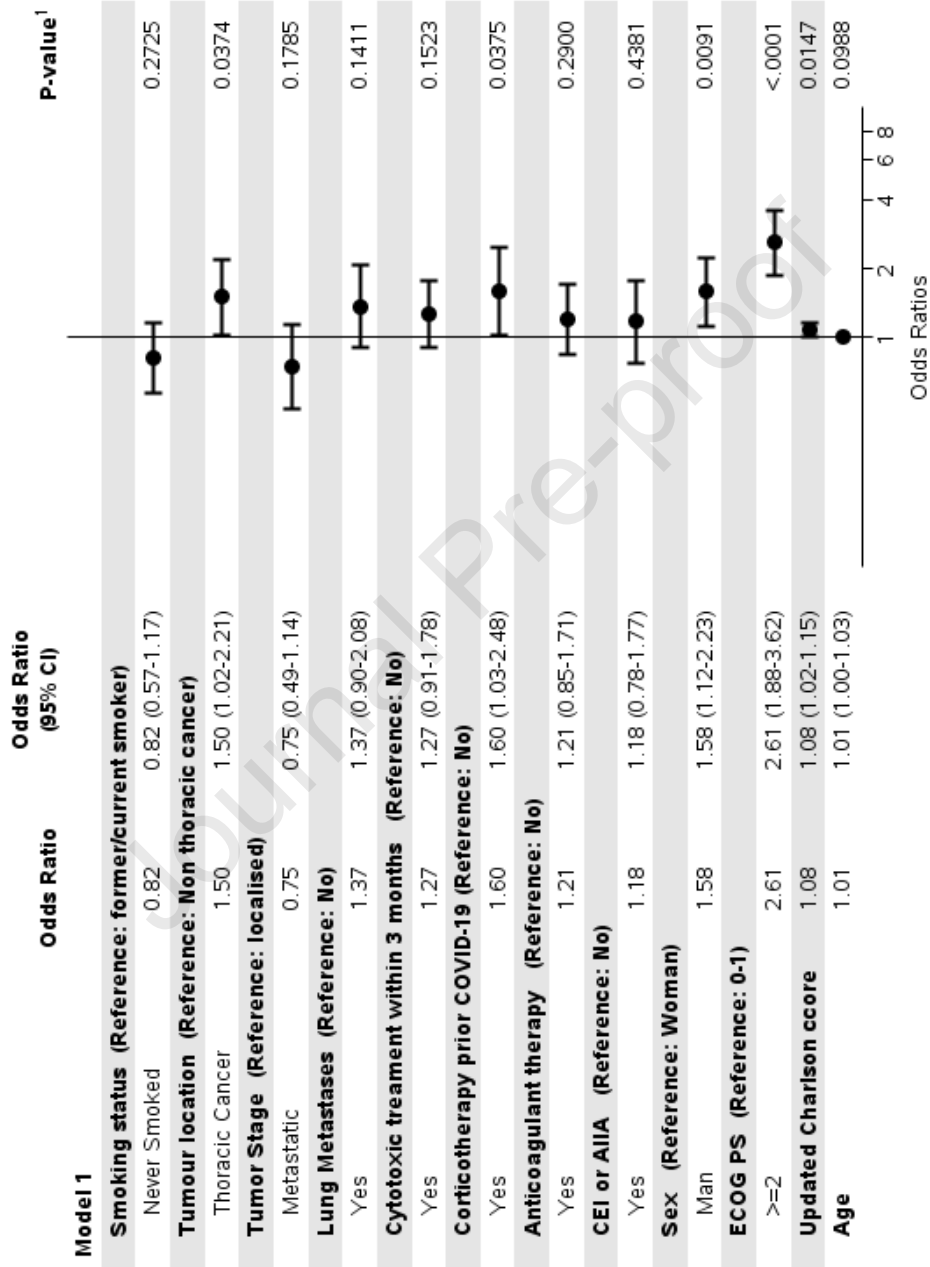
Anticancer treatment	Type of modification	Number (%)
Systemic therapy		<b>N = 1092</b>
	Modification of the regimen	53 (5%)
	Temporary interruption	321 (29%)
	Definitive interruption	110 (10%)
Radiotherapy		<b>N = 1093</b>
	Cancellation	1 (<1%)
	Modification of the radiation scheme	5 (<1%)
	Postponement	43 (4%)
	Definitive interruption	13 (1%)
Surgery		<b>N = 1095</b>
	Modification of the extent of surgery	1 (<1%)
	Cancellation	16 (2%)
	Postponement	24 (2%)
Interventional radiology		<b>N = 1095</b>
	Cancellation	2 (< 1%)
	Postponement	3 (<1%)







<sup>1</sup>Covariate Wald p-value;



<sup>1</sup>Covariate Wald p-value;

### **Highlights**

- A total of 1289 patients with solid tumours and COVID-19 were analysed
- Mortality and COVID-19 severity were mainly driven by patient general characteristics.
- Overall, we found no deleterious effects of recent anticancer treatments on mortality.
- Systemic anticancer treatment was interrupted or stopped in 39% of patients

Journal Pre-proof

**Declaration of interests**

The authors declare that they have no known competing financial interests or personal relationships that could have appeared to influence the work reported in this paper.

The authors declare the following financial interests/personal relationships which may be considered as potential competing interests:

Journal Pre-proof



Pr Lièvre reports grants from Bayer Lilly, Merck and Novartis, personal fees from AAA, Amgen, Bayer, BMS, Celgene, HaliDx, Incyte, Ipsen, Lilly, Merck, Novartis, Pierre Fabre, Roche, Sandoz, Sanofi, Servier and non financial support from AAA, Amgen, bayer, Incite, Ipsen, Merck, Novartis, Pierre Fabre, Pfizer, Roche, Sandoz, Servier and Integragen outside of the submitted work.

Dr. Turpin reports personal fees from MYLAN, personal fees from MERCK SERONO, personal fees from AMGEN, non-financial support from MERCK-SERONO, non-financial support from SANOFI, non-financial support from PFIZER outside the submitted work; .

Dr. Ahle reports grants from Biogen, grants from Novartis, grants from Roche, grants from Sanofi, grants from Abbvie, outside the submitted work; .Dr Bouché reports personal fees from Merck KGaA, Roche Genentech, Bayer, Astra-Zeneca, Grunenthal, MSD, Amgen, Servier, and Pierre Fabre outside the submitted work;

Dr. Neuzillet reports personal fees from SERVIER, other from OSE Immunotherapeutic, grants from ROCHE, personal fees and other from AstraZeneca, personal fees and other from Bristol-Myers Squibb, personal fees from Amgen, personal fees from Merck, personal fees from MSD, personal fees from Novartis, personal fees from Incyte, personal fees from Mylan, personal fees from Baxter, personal fees from Nutricia, personal fees from Fresenius-Kabi, outside the submitted work; .

Pr Michel reports personal fees from Bayer, Servier, Amgen, Shire and Lilly and non-personal fees from Bayer, Merck, Amgen, Shire, Roche and Lilly outside the submitted work

Dr. Canellas reports personal fees from BMS, personal fees from Astra Zeneca, non-financial support from Boehringer Ingheleim, non-financial support from Roche, outside the submitted work; .

Dr. Wislez reports personal fees from Boehringer Ingelheim, personal fees and non-financial support from ROCHE, personal fees and non-financial support from MSD, personal fees from BMS, personal fees from Astra Zeneca, personal fees from Amgen, outside the submitted work.

Dr. Mansi reports personal fees from Roche, personal fees from Eisai, personal fees from Exact Science, personal fees from Novartis, outside the submitted work; .

Dr Colomba received personal fees from IPSEN, BMS, Pfizer, Sanofi, GSK outside the submitted work;

Pr. Idbaih reports grants and other from Carthera (septembre 2019), grants from Transgene, grants from Sanofi, grants from Air Liquide, other from Leo Pharma, grants from Nutritheragene, outside the submitted work;

Pr. Aparicio reports personal fees and non-financial support from Roche, personal fees from Ipsen, personal fees from Amgen, personal fees from Servier, personal fees from Sanofi, outside the submitted work;

Journal Pre-proof