



HAL
open science

Electromagnetic Transient Analysis of Transmission line based on rational Krylov approximation

Amjad Mouhaidali, Damien Tromeur-Dervout, Olivier Chadebec, Jean-Michel Guichon, Sebastien Silvant

► **To cite this version:**

Amjad Mouhaidali, Damien Tromeur-Dervout, Olivier Chadebec, Jean-Michel Guichon, Sebastien Silvant. Electromagnetic Transient Analysis of Transmission line based on rational Krylov approximation. IEEE Transactions on Power Delivery, 2021, 36 (5), pp.2913-2920. 10.1109/TPWRD.2020.3029676 . hal-02995214

HAL Id: hal-02995214

<https://hal.science/hal-02995214>

Submitted on 9 Nov 2020

HAL is a multi-disciplinary open access archive for the deposit and dissemination of scientific research documents, whether they are published or not. The documents may come from teaching and research institutions in France or abroad, or from public or private research centers.

L'archive ouverte pluridisciplinaire **HAL**, est destinée au dépôt et à la diffusion de documents scientifiques de niveau recherche, publiés ou non, émanant des établissements d'enseignement et de recherche français ou étrangers, des laboratoires publics ou privés.

Electromagnetic Transient Analysis of Transmission line based on rational Krylov approximation

Amjad Mouhaidali, Damien Tromeur-Dervout, Olivier Chadebec, Jean-Michel Guichon, and Sebastien Silvant

Abstract—This paper shows a comparison between Vector fitting and rational Krylov fitting techniques for the determination of rational models concerning the fitting accuracy, the computational performances and the model order. Primarily, the mathematics behind the second technique are presented. It should be noted that rational Krylov fitting have never been used in transmission line modeling. A new procedure is proposed to use rational Krylov fitting instead of vector fitting in the universal line model (ULM). Furthermore, it is demonstrated that this procedure has several advantages over the traditional one. Two illustrative examples involving a transmission system are presented for validation of the new procedure.

Index Terms—Electromagnetic transient, frequency dependency, rational krylov approximation, Vector fitting, transmission line model, passivity.

I. INTRODUCTION

In the frequency domain and for electromagnetic transient studies, rational approximation is used to reproduce a given frequency behavior. This approximation leads to recursive convolution and fast computations in the time domain [1]. Examples of applications are the modeling of transmission lines and cables [2], power transformers at high frequencies and the Frequency-Dependent Network Equivalents (FDNE) [3]. A general rational representation of a frequency dependent function $f(s)$ has the form:

$$f(s) \approx r(s) = \sum_{m=1}^N \frac{c_m}{s - q_m} + d \quad (1)$$

where $s = j\omega$ in rad/s, the model order N ; the poles q_m and residues c_m are either real or come in complex conjugate pairs; d is a constant. In the case of cable modeling, the matrix f corresponds to the frequency dependent characteristic admittance $Y_c(s)$ or the propagation function $H(s)$.

The vector fitting VFIT [4], [5] technique is widely used by the engineering community for the achievement of rational models. VFIT has a relatively simple formulation, high computational efficiency and delivers high model accuracy. Recently, VFIT was combined with frequency partitioning and model order reduction via balanced realizations to approximate FDNE [6] or transmission lines and cables [7]. A novel approach is proposed in [8], where the Matrix Pencil Method (MPM) and the Loewner Matrix (LM) are incorporated into the VFIT technique.

A. Mouhaidali, D. Tromeur-Dervout and S. Silvant are with SuperGrid Institute, 23 rue Cyprian, 69628 Villeurbanne Cedex, France.

D. Tromeur-Dervout is with Univ Lyon, Universit Claude Bernard Lyon 1, CNRS UMR 5208, Institut Camille Jordan, F-69622 Villeurbanne, France.

O. Chadebec and J-M. Guichon are with Univ. Grenoble Alpes, CNRS, Grenoble INP, G2Elab, 38000 Grenoble, France.

A new rational approximation method has emerged recently and it is based on the Rational Krylov fitting RKFIT [9]. This method is based on Rational Arnoldi Decomposition (RAD) for poles relocation. The used orthonormal RADs deliver a well-conditioned basis for the numerical linear algebra problems, and a more robust and faster convergent algorithm. The main difference between VFIT and RKFIT is the poles relocation method. Both methods solve a Least Square (LS) problem at each iteration, however VFIT uses a projection space represented in the partial fraction basis and RKFIT uses a projection space represented in discrete-orthogonal rational functions.

In this paper, the advantages of RKFIT are highlighted regarding the automatic determination of the model order (N) with a built-in model order reduction technique, the fitting accuracy and the pole relocation convergence. It is proposed to use RKFIT in the implementation of the Universal Line Model (ULM) [2] instead of VFIT.

Unfortunately, RKFIT cannot guarantee the passivity of the model. If passivity violation is detected, post fitting passivity algorithms are necessary. Various passivity enforcement technique are presented in [10].

This paper is organized as follows. The rational Krylov algorithm is presented in Section II. Section III assess the numerical performances through different examples. Section IV demonstrate the application of the new approach for a single overhead line and an underground cable system.

II. RATIONAL KRYLOV FITTING ALGORITHM

A. Mathematical background of RKFIT

RKFIT is an iterative algorithm for solving nonlinear weighted rational least square problems [9]. Let's consider The following matrices and vector:

- $A = \text{diag}(s_i) \in \mathbb{C}^{N_s, N_s}$, where N_s is the number of frequency samples
- $F = \text{diag}(f_i) \in \mathbb{C}^{N_s, N_s}$ with $f_i = f(s_i)$
- $b \in \mathbb{C}^{N_s}$, where b is the starting vector.

The algorithm tries to approximate Fb as $r(A)b$, where r is a rational function of the form:

$$r = \frac{p_{m+k}}{q_m} \quad (2)$$

where p_{m+k} and q_m are polynomials of degree less or equal to $m+k$ and m respectively such that the relative error ε_{er} is minimal:

$$\varepsilon_{er} = \frac{\|Fb - r(A)b\|_2}{\|Fb\|_2} \rightarrow \min \quad (3)$$

The RKFIT algorithm is extended to approximate a family of matrices all sharing a common denominator q_m [9]. This feature fits all the element of $Y_c(s)$ with a common pole set.

The rational Krylov fitting is a fitting method based on Krylov space. We will provide a brief overview of the Krylov methods. A more exhaustive analysis can be found in [11], [12]. Given the matrix A and the vector b , the corresponding order- m Krylov subspace is defined as:

$$\mathcal{K}_{m+1}(A, b) \stackrel{def}{=} \text{span} \{b, Ab, \dots, A^m b\} \quad (4)$$

The starting point in the RKFIT algorithm is to consider a non zero polynomial $q_m \in P_m$ that has no roots in $\Lambda(A)$, the set of eigenvalues of A . The rational Krylov space of order m associated with (A, b, q_m) is defined as:

$$\mathcal{Q}_{m+1}(A, b, q_m) \stackrel{def}{=} q_m(A)^{-1} \mathcal{K}_{m+1}(A, b) \quad (5)$$

To extract information out of the rational Krylov space, the first step is to construct the rational Arnoldi decomposition of the space $\mathcal{Q}_{m+1}(A, b, q_m)$ as follows:

$$AV_{m+1}K_m = V_{m+1}H_m \quad (6)$$

where the columns of V_{m+1} are an orthogonal basis of $\mathcal{Q}_{m+1}(A, b, q_m)$. K_m and H_m are unreduced upper-Hessenberg $(m+1) \times m$ pencils such that $\{h_{j+1,j}/k_{j+1,j}\}_{j=1}^m$ are the root of q_m .

The rational approximation associated with the rational Arnoldi decomposition in (6) satisfies:

$$r(A)b = (V_{m+1}K_m) f \left(K_m^\dagger H_m \right) (V_{m+1}K_m)^\dagger b \quad (7)$$

B. Pole relocation process

The pole relocation process aims to find new poles that would provide a better approximation to Fb from previous ones. Two linear spaces in \mathbb{C}^{N_c} are used, where the search space is $\mathcal{S} = \mathcal{R}(V_{m+1}) = \mathcal{Q}_{m+1}(A, b, q_m)$ and the target space $\mathcal{T} = \mathcal{R}(\hat{V}_{m+k+1}) = \mathcal{Q}_{m+k+1}(A, b, q_m)$. Let's consider the orthogonal projection onto \mathcal{T} as $P_{\mathcal{T}} = \hat{V}_{m+k+1} \hat{V}_{m+k+1}^*$. Then we can write that $r(A)b$ should be the orthogonal projection of Fb onto the target space \mathcal{T} :

$$\begin{aligned} \|Fb - r(A)b\|_2 &= \|Fb - \hat{V}_{m+k+1} \hat{V}_{m+k+1}^* Fb\|_2 \\ &= \|(I - P_{\mathcal{T}})Fb\|_2 \end{aligned} \quad (8)$$

Then we search for vector $v \in \mathcal{S}$ such that:

$$v = \underset{\substack{\bar{v} \in \mathcal{S} \\ \|\bar{v}\|_2=1}}{\text{argmin}} \|(I - P_{\mathcal{T}})F\bar{v}\|_2 \quad (9)$$

Defining the matrix $S = FV_{m+1} - \hat{V}_{m+k+1}(\hat{V}_{m+k+1}^* FV_{m+1})$, a solution is given by $v = V_{m+1}\hat{c}$, where \hat{c} is the right singular vector of S associated to the smallest singular value σ_{min} . Let a nonzero polynomial $\bar{q}_m \in P_m$ that has no roots in $\Lambda(A)$, then:

$$\mathcal{Q}_{m+1}(A, b, q_m) = \mathcal{Q}_{m+1}(A, \bar{q}_m(A)q_m(A)^{-1}b, \bar{q}_m) \quad (10)$$

The pole relocation consists in finding the polynomial \bar{q}_m such that:

$$v = V_{m+1}c = \bar{q}_m(A)q_m(A)^{-1}b \quad (11)$$

C. Partial fraction basis calculation

The approximant r is calculated via a coefficient vector $c \in \mathbb{C}^{m+k+1}$ such that:

$$c = \frac{\hat{V}_{m+k+1}^*(Fb)}{\|b\|_2} \quad (12)$$

The computation of lead to the evaluation of the relative error and compared it to the desired approximation tolerance. The full development of the rational Krylov fitting process is proposed in [9], [13]. The high-level description of RKFIT is presented in Fig 1.

-
- 1: Takes initial q_m
 - 2: **repeat**
 - 3: Set search space $\mathcal{S} := \mathcal{Q}_{m+1}(A, b, q_m)$
 - 4: Set target space $\mathcal{T} := \mathcal{K}_{m+k+1}(A, q_m(A)^{-1}b)$
 - 5: Find $v = \underset{\substack{\bar{v} \in \mathcal{S} \\ \|\bar{v}\|_2=1}}{\text{argmin}} \|(I - P_{\mathcal{T}})F\bar{v}\|_2$
 - 6: Let $\bar{q}_m \in P_m$ such that $v = \bar{q}_m(A)q_m(A)^{-1}b$
 - 7: Set $q_m = \bar{q}_m$
 - 8: **until** stopping criteria satisfied
 - 9: construct approximant r
-

Fig. 1. High-level description of RKFIT

III. ACCURACY COMPARISON OF RKFIT AND VFIT

In [14] a selection of algorithms for rational approximation are discussed. Table I recapitulates the main RMS error values for various example and different model order studied in [14]. It was shown that RKFIT outperforms VFIT for rational approximation regarding the approximation accuracy.

TABLE I
RMS ERROR VALUES FOR ALL TESTED EXAMPLES IN [14]

Example	Model order	RMS error	
		VFIT	RKFIT
Matrix fitting	10	1.139×10^{-2}	6.246×10^{-3}
Toolbox [15]	20	6.069×10^{-3}	1.233×10^{-3}
CD player SLICOT	10	1.683×10^1	3.675×10^0
benchmark [16]	20	1.674×10^1	9.061×10^{-3}
ISS model SLICOT	10	6.729×10^{-4}	8.735×10^{-5}
benchmark [16]	20	3.016×10^{-4}	1.507×10^{-5}
Nonlinear eigenvalue,	10	1.476×10^{-4}	2.292×10^{-10}
buckling example [17]	20	1.270×10^{-11}	2.389×10^{-12}
ISS model with	10	5.557×10^{-1}	4.702×10^{-2}
additive normally	20	6.280×10^{-2}	3.798×10^{-2}
distributed noise [16]			

In this section, we will focus on the main differences of the two methods. First the model order determination, then the accuracy and pole convergence with weight, after that the choice of the starting poles and at the end the system passivity. An example from the literature used as benchmark for transmission line studies will be fitted with both methods. This case study is taken from [5] and represent the 6×6

admittance matrix of the distribution network of Fig. 2 measured from nodes **A** and **B**. The magnitude of the elements of the admittance matrix are plotted in Fig.3. We choose to fit only the first column of the admittance matrix. This case is challenging due to multiple resonance peaks. The fitting accuracy is examined by comparing the fitting RMS error calculated as:

$$RMS_{error} = \sqrt{\frac{\sum_{k=1}^{N_s} \sum_{n=1}^{N_c} |f_n^{fitted}(s_k) - f_n^{accurate}(s_k)|^2}{N_s N_c}} \quad (13)$$

The Pole relocation process can be monitored by computing so-called *Hausdorff distance* between the pole sets at two consecutive iterations [10]. The simulations are performed using a 16 GB RAM computer, i5-9600 3.10 GHz-processor with MATLAB 2019a.

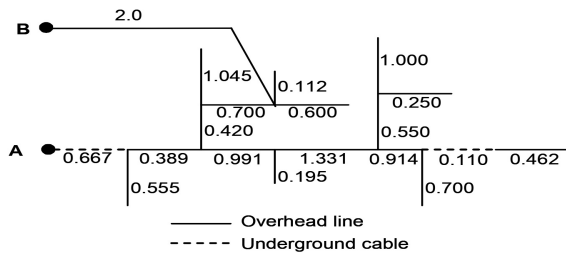


Fig. 2. Power system distribution system

The element of the vector are fitted using the relaxed nontriviality constraint of VFIT, provided in the function `vectfit3.m`, and the unstable poles are forced to be stable by flipping them.

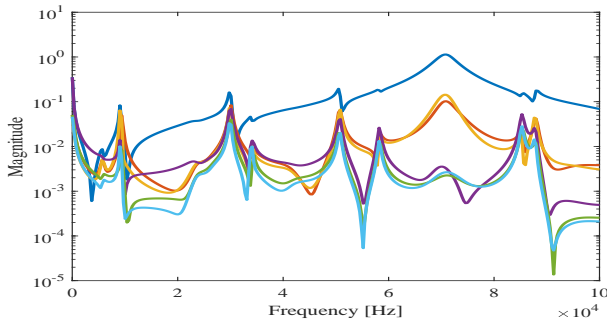


Fig. 3. Magnitude of admittance matrix of the power system

A. Model order determination and reduction technique

In the first iteration of RKFIT, the model order is chosen to be smaller than the number of frequency samples and high enough to approximate the function with a low deviation error. When RKFIT finds an adequately good approximation, it reduces the model order and tries not to degrade the approximation accuracy. The admittance matrix is fitted using RKFIT with reduction technique. The approximation error is presented in Figure 4 for two error tolerances. The maximal model order is fixed to 70 and the starting poles is chosen to be infinite.

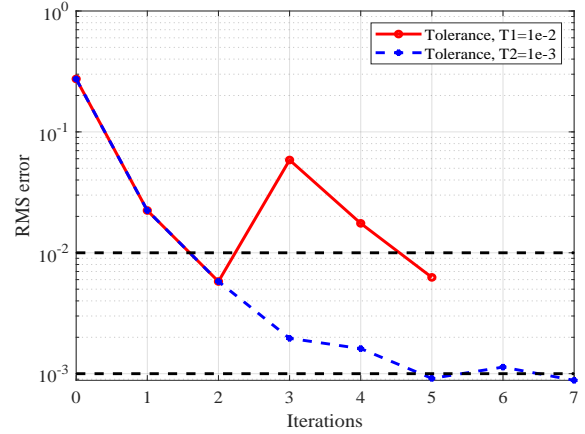


Fig. 4. Model order reduction with RKFIT

RKFIT achieve an RMS error below the tolerance at iterations 2 and 5, after which the degree reduction takes place. The denominator degree is reduced to $N = 33$ and $N = 49$ for tolerances $T1$ and $T2$ respectively. After 1 or 2 iterations of pole relocation, RKFIT reaches the fixed tolerance and the algorithm is stopped.

B. Fitting accuracy and pole convergence

In order to compare the fitting accuracy, The model order is fixed for RKFIT and VFIT. The fitting is done with three weighting schemes (no weight, strong inverse magnitude weight, and weak inverse magnitude weight). The weight is common for all the vectors elements. The initial poles are chosen to be complex and linearly spaced.

TABLE II
RELATIVE APPROXIMATION ERROR OF VFIT AND RKFIT

	Weight	Order	RMS error	CPU
VFIT	No weight	50	1.58×10^{-4}	0.87s
		70	1.55×10^{-8}	1.11s
	Strong inverse magnitude weight	50	1.00×10^{-3}	0.85s
		70	4.43×10^{-7}	1.14s
	Weak inverse magnitude weight	50	2.65×10^{-4}	0.78s
		70	1.19×10^{-8}	1.16s
RKFIT	No weight	50	9.88×10^{-5}	1.04s
		70	1.35×10^{-8}	1.43s
	Strong inverse magnitude weight	50	3.18×10^{-4}	1.00s
		70	3.08×10^{-8}	1.45s
	Weak inverse magnitude weight	50	2.02×10^{-4}	1.06s
		70	1.51×10^{-8}	1.44s

The RMS error obtained by fitting the admittance matrix through both methods for different fitting orders and weighting schemes is given in Table II. This table validates that RKFIT outperforms VFIT for different weighting schemes and orders regarding fitting accuracy except with the case with weak inverse magnitude weight and high model order. However, VFIT is slightly faster.

The convergence of the pole relocation process as function of the iteration count is shown in Fig.5. The model order is

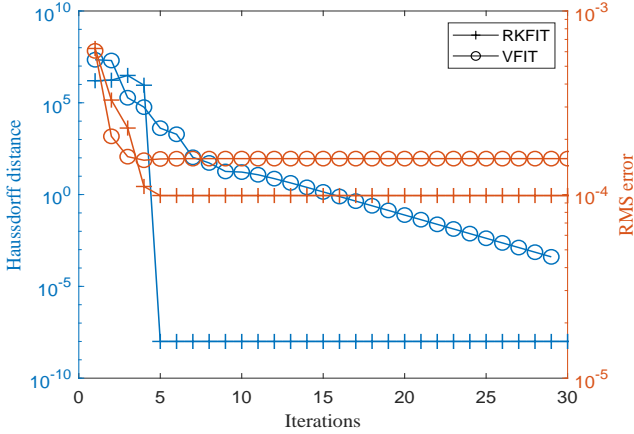


Fig. 5. Convergence of pole relocation process by RKFIT against VFIT

$N = 50$ and no weight scheme is applied. The Hausdorff distance is presented on the left side of the graph and the RMS error on the right side. It is chosen to restrict the lowest distance to 10^{-8} for illustration purpose. This graph shows that RKFIT converges faster than VFIT. After 5 iterations RKFIT reaches the set of poles that delivers the smallest RMS error and the distance becomes zero. For RKFIT, it is remarked the correlation between the distance and the RMS error. When the distance becomes zero, the RMS is at the lowest value. However for VFIT, the RMS error reaches the lowest value when the distance starts to decrease linearly. This observation can be used as the fitting stopping criteria.

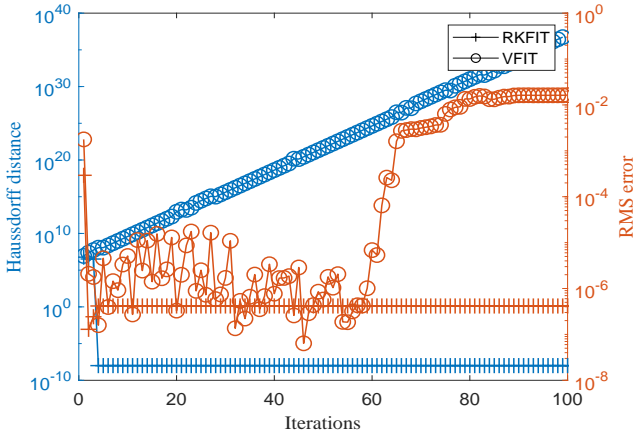


Fig. 6. Convergence of pole relocation process by RKFIT and VFIT

For the same previous example, if the model order is increased to $N = 100$, VFIT does not converge. Fig. 6 shows the convergence of the pole relocation process. RKFIT converges within 4 iterations while VFIT diverges, the Hausdorff distance rises linearly and the RMS error oscillates.

C. Choice of the starting poles

One of the main advantages of RKFIT is that the user requires no a priori knowledge of the initial poles location and distribution. Poles can be chosen to be infinite and RKFIT

will relocate them. Fig. 7 shows the convergence of the pole relocations for different initial pole distributions. This figure demonstrates that RKFIT converges faster than VFIT for different starting poles. It should be noted that the infinite value is fixed by the IEEE arithmetic representation for positive infinity in [18].

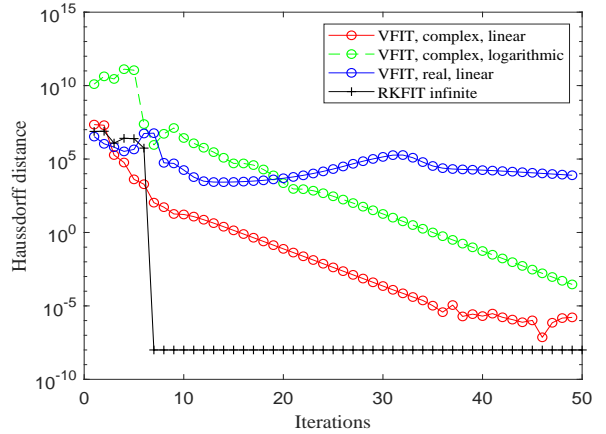


Fig. 7. Convergence of poles relocation process with different starting poles

D. passivity

For a multi-port electrical network, the passivity is guaranteed if and only if its transfer admittance matrix $Y_n(s)$ has a purely positive real part through the whole frequency range [10]. $Y_n(s)$ is positive definite if and only if its Hermitian part $Y_H(s)$ has only positive eigenvalues:

$$\text{eig}(Y_H(s)) = \text{eig}(Y_n(s) + Y_n^*(s)) \quad (14)$$

where $Y_n^T(s)$ is the conjugate transpose of Y_n . The admittance matrix is fitted with different model order to assess the passivity violation for RKFIT and VFIT. The model's passivity properties are assessed using the half singularity test developed in [19] via the main function driver **RPdriver.m** in [15].

TABLE III
PASSIVITY ASSESSMENT FOR DIFFERENT MODEL ORDER APPROXIMATION

Method	Model order	Passivity violation	Max passivity violation
RKFIT	50	No	None
	70	No	None
	90	Yes	-0.0005
VFIT	50	Yes	-8.63×10^{-5}
	70	No	None
	90	Yes	-0.0015

Table III illustrates the passivity assessment for different model order approximation. It is shown that RKFIT can deliver passive model for relatively optimal model order, However, for high order models passivity violation appears. Despite the fact that passivity violation cannot be anticipated, several passivity enforcement algorithm can solve this issue.

IV. UNIVERSAL LINE MODEL BASED ON RKFIT

In the ULM [2], the propagation function H and the characteristic admittance Y_c are approximated using VFIT [4]. The rational approximations are used for time domain implementation in EMTP-type simulation tools [20]. As outlined in the previous section, RKFIT gives more accurate results than VFIT. Accordingly, a fitting procedure for Y_c and H is proposed in this part using RKFIT instead of VFIT.

The proposed fitting approach has several advantages over the fitting approach implemented in the EMT-software:

- 1) The proposed approach delivers accurate fitting results with low RMS error and guarantees convergence of the algorithm.
- 2) The model order is automatically calculated by the RKFIT algorithm. The user only defines the RMS fitting error tolerance.
- 3) The user requires no a priori knowledge of the pole location. The poles can be equal to the IEEE arithmetic representation for positive infinity, represented in Matlab by the value **Inf**.

A. Rational approximation in the ULM with RKFIT

1) *Fitting the characteristic admittance:* The characteristic admittance Y_c is easily fitted since it doesn't have resonance peaks. All the elements of Y_c are fitted with the same set of poles expressed in the following form:

$$Y_c(s) \approx Y_{c_{fitted}} = \sum_{m=1}^N \frac{c_m}{s - q_m} + D \quad (15)$$

2) *Fitting the propagation function:* The approximation of the propagation function is more difficult since its elements contain propagation delays. The modal contributions of H are calculated and a proper delay is assigned to each mode. The delay is calculated using the optimization technique proposed in [21]. The criterion proposed in [22] is used to group repetitive or close delays. Time delays are removed from the modal components and then fitted using RKFIT. The propagation function is then fitted using the poles from the modal approximation. The only remaining unknowns are the residues, and H is approximated as:

$$H(s) \approx H_{fitted} = \sum_{i=1}^K \left(\sum_{m=1}^{N_i} \frac{R_{m,i}}{s - a_{m,i}} \right) e^{(-s\tau_i)} \quad (16)$$

where K is the number of grouped modes, τ_i are the collapsed time delay, $R_{m,i}$ is the matrix of residues calculated for the corresponding poles $a_{m,i}$ of the grouped modes and H_{fitted} stands for the rational approximation of H considering the grouped modes.

Time domain implementation is based on the equation developed in [23] to reduce integration and interpolations errors.

B. Numerical Results

The proposed method is used with different transmission line configurations and the calculated results are compared

with the corresponding results from VFIT. In all cases, the characteristic admittance and the propagation function matrices are calculated for the frequency range from 0.01Hz up to 1MHz with a sampling rate of logarithmically spaced 10 points/decade.

1) *Overhead Transmission Line:* Let's consider a 30km single conductor overhead line over a lossy ground as shown in Fig. 8 and presented in [21].

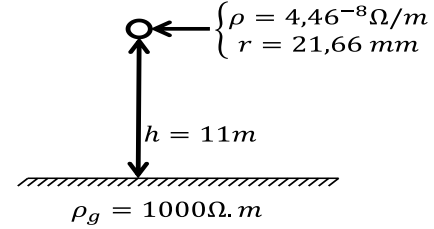


Fig. 8. single conductor overhead line

For the fitting of Y_c and H , the initial poles are chosen to be infinite and the maximum allowable RMS-error is 10^{-3} .

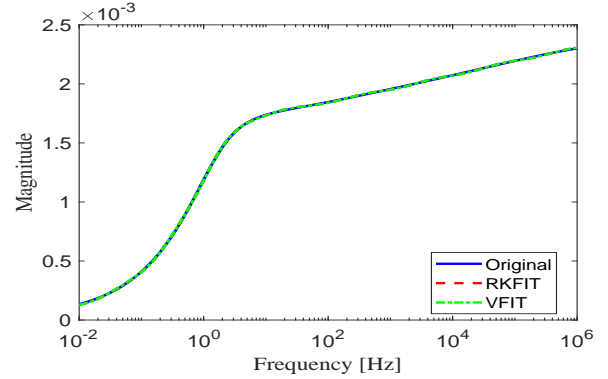


Fig. 9. Fitting of Y_c using RKFIT and VFIT

The magnitude function of Y_c is shown in Fig. 9. Fig 10 reports the RMS-error from the application of both methods. It is seen that RKFIT and VFIT reach the same RMS-error, however RKFIT converges faster. It is worth mentioning that both methods have the same number of poles at the end.

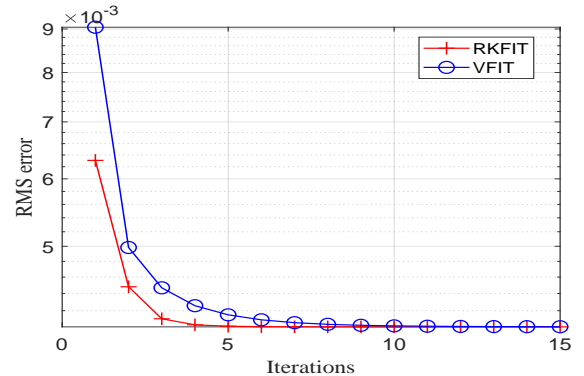


Fig. 10. RMS error as function of iteration number

As for the propagation function, the time delay is $\tau = 1.039 \times 10^{-4}\text{ sec}$. The magnitude of H is plotted in Fig 11. The

use of the proposed approach reduces the RMS error compared to VFIT and it can be seen on the magnitude plot specially at high frequencies.

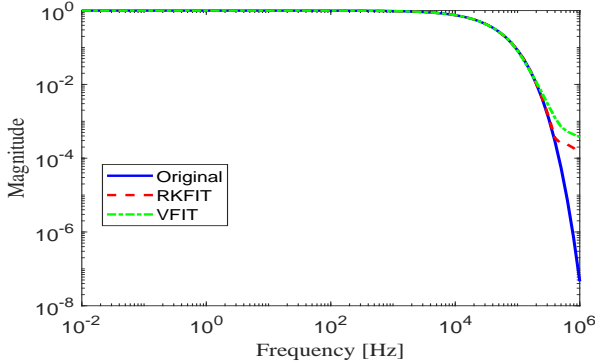


Fig. 11. Magnitude of the propagation function

2) *Underground cable system* : Let's consider the cable system in Fig. 12 with parameters given in Table IV. The resulting order for the fitting of Y_c is $N = 9$ for RKFIT and $N = 12$ for VFIT. Fig. 13 shows the rms error as a function of the iteration number. It is seen that RKFIT gives a faster convergence and a lower order of approximation, although the final result is quite similar.

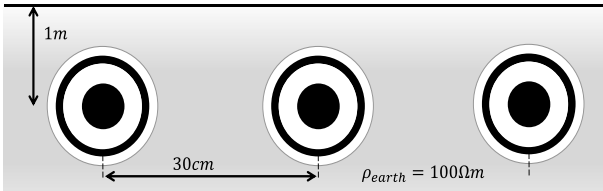


Fig. 12. Cross section of three phase 145kV underground cable

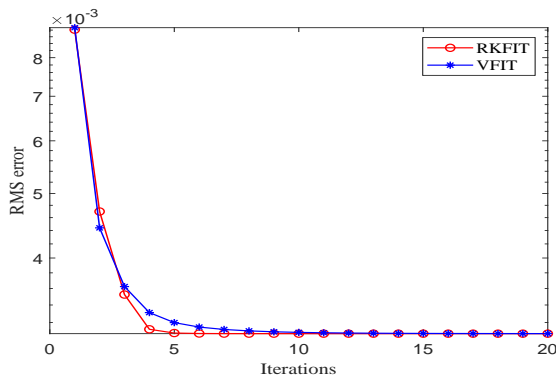


Fig. 13. RMS error as function of iteration number

TABLE IV
GEOMETRICAL AND MATERIAL PARAMETERS OF THE CABLES

Core	$r = 19.5\text{mm}, \rho = 3.365E - 8\Omega.m$
Insulation	$t = 18.25, \epsilon_r = 2.85$
Metallic sheath	$t = 0.22\text{mm}, \rho = 1.718E - 8\Omega.m$
Jacket	$t = 4.53, \epsilon_r = 2.51$

The time delays are calculated and presented in Table V. Three time delays are nearly equal. Then the six modes of propagation are lumped into four distinct modes, and then subjected to rational approximation. Table VI presents the fitting rms error of the modal propagation function using VFIT and RKFIT. The Table VI shows that a more accurate fitting is obtained with RKFIT using less number poles than VFIT.

TABLE V
CALCULATED TIME DELAYS (IN MILLISECOND)

0.803	1.945	6.414	1.684	1.684	1.684
-------	-------	-------	-------	-------	-------

TABLE VI
MODAL PROPAGATION FUNCTION APPROXIMATION USING RKFIT AND VFIT

Mode	RKFIT		VFIT	
	RMS error	Model order	RMS error	Model order
1	9.05×10^{-4}	10	1.06×10^{-3}	16
2	8.932×10^{-4}	17	1.16×10^{-3}	19
3	2.52×10^{-3}	20	2.58×10^{-3}	20
4	5.39×10^{-3}	6	4.73×10^{-3}	6

The propagation function H is fitted in the phase domain. Fig. 14 shows the deviation of the resulting fitting of the elements of H for VFIT and RKFIT. Clearly, a better accuracy is obtained using RKFIT than VFIT. The maximum residue/pole ratio for RKFIT is 355.5 and for VFIT is 42.27. The maximum residue/pole is lower than the critical threshold of 1000 [24].

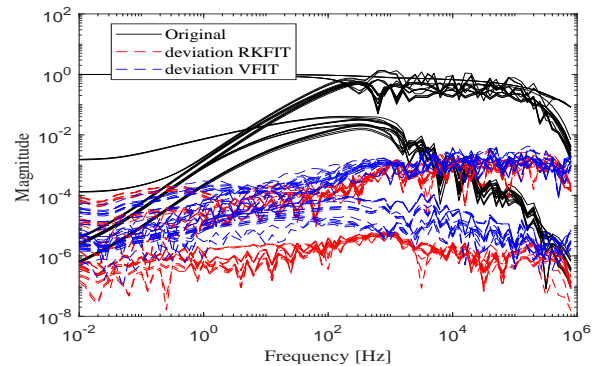


Fig. 14. Propagation function H

The transient simulation is performed using the obtained model via RKFIT. The step voltage excitation is presented in Fig. 15, where the first core is energized with a unit step voltage at $t = 0$. Fig. 16 shows the simulated receiving end voltage. The response is seen to be stable for the RKFIT model. The results are compared to accurate results obtained using the Numerical Inverse Laplace Transformation [25].

V. DISCUSSION

Till now, there are no comprehensive convergences analyses for VFIT and RKFIT. However, an example from [9], [26] was

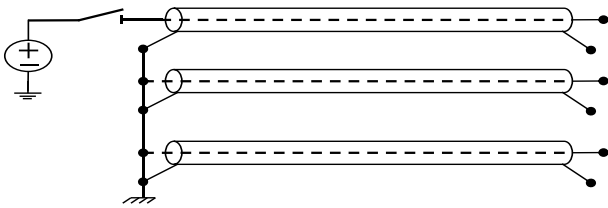


Fig. 15. Line energization by step voltage.

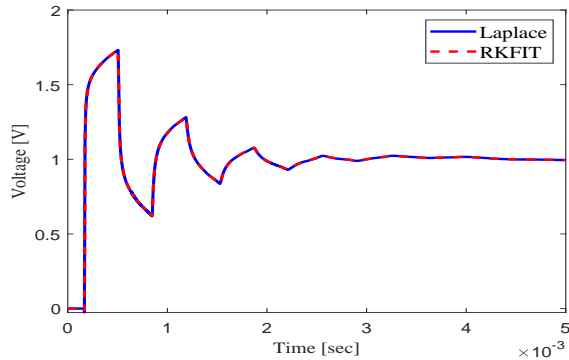


Fig. 16. Time domain simulation of unit step voltage response at the cable receiving end.

constructed where VFIT is repellent. Despite this example and Figure 6 in this work, VFIT is being successfully used for various problems. Nonetheless, RKFIT is based on a numerically well-defined computational scheme and have multiple advantages compared to VFIT. The proposed method determines the model order by itself and the reduction technique is implemented to reduce the model order if the fixed rms error allows it. The order reduction technique is not a post processing technique. It is one of the method proprieties and it is mathematically proven by theorem 6.1 in [9]. The final set of poles calculated by RKFIT is mathematically proven to be the optimal solution [9]. We observe this in the Hausdorff distance when it becomes equal to zero. However for VFIT, the Hausdorff distance decreases continuously and that means that the poles are slightly varying. The main drawback of RKFIT as VFIT is that they don't guarantee the passivity of the obtained model.

VI. CONCLUSION

A new method for the rational approximation is studied and compared to well-known vector fitting. The proposed method is applied to transmission line modeling and specially in the universal line model. It was shown that this method delivers more accurate results than VFIT in the frequency domain and stable results in the time domain. The distinct advantage of the proposed method is the ease of the use by the engineers regarding the model order and the starting poles.

REFERENCES

[1] Adam Semlyen and A Dabuleanu. Fast and accurate switching transient calculations on transmission lines with ground return using recursive

convolutions. *IEEE Transactions on Power Apparatus and Systems*, 94(2):561–571, 1975.

[2] Atef Morched, Bjorn Gustavsen, and Manoocher Tartibi. A universal model for accurate calculation of electromagnetic transients on overhead lines and underground cables. *IEEE Transactions on Power Delivery*, 14(3):1032–1038, 1999.

[3] Bjorn Gustavsen and Adam Semlyen. Simulation of transmission line transients using vector fitting and modal decomposition. *IEEE Transactions on Power Delivery*, 13(2):605–614, 1998.

[4] Bjorn Gustavsen and Adam Semlyen. Rational approximation of frequency domain responses by vector fitting. *IEEE Transactions on power delivery*, 14(3):1052–1061, 1999.

[5] Bjørn Gustavsen. Improving the pole relocating properties of vector fitting. *IEEE Transactions on Power Delivery*, 21(3):1587–1592, 2006.

[6] Abner Ramirez. Vector fitting-based calculation of frequency-dependent network equivalents by frequency partitioning and model-order reduction. *IEEE Transactions on Power Delivery*, 24(1):410–415, 2009.

[7] Miguel Cervantes Martinez, Ilhan Kocar, Jean Mahseredjian, and Abner Ramirez. Accurate and reduced order identification of propagation function for electromagnetic transient analysis of cables. *IEEE Transactions on Power Delivery*, 2019.

[8] Jesus Morales, Jean Mahseredjian, Abner Ramirez, Keyhan Sheshyekani, and Ilhan Kocar. A loewner/mpm-vf combined rational fitting approach. *IEEE Transactions on Power Delivery*, 2019.

[9] Mario Berljafa. *Rational Krylov Decompositions: Theory and Applications*. PhD thesis, The University of Manchester, 2017.

[10] Stefano Grivet-Talocia and Bjorn Gustavsen. *Passive macromodeling: Theory and applications*, volume 239. John Wiley & Sons, 2015.

[11] Jörg Liesen and Zdenek Strakos. *Krylov subspace methods: principles and analysis*. Oxford University Press, 2013.

[12] Yousef Saad. *Numerical methods for large eigenvalue problems: revised edition*, volume 66. Siam, 2011.

[13] Mario Berljafa and Stefan Güttel. Generalized rational krylov decompositions with an application to rational approximation. *SIAM Journal on Matrix Analysis and Applications*, 36(2):894–916, 2015.

[14] Ion Victor Gosea and Stefan Güttel. Algorithms for the rational approximation of matrix-valued functions. *arXiv preprint arXiv:2003.06410*, 2020.

[15] B Gustavsen. Matrix fitting toolbox. *Users guide and reference, SINTEF Energy Research*, 2009.

[16] Younes Chahlaoui and Paul Van Dooren. A collection of benchmark examples for model reduction of linear time invariant dynamical systems. 2002.

[17] Nicholas J Higham, Gian Maria Negri Porzio, and Francoise Tisseur. An updated set of nonlinear eigenvalue problems. 2019.

[18] IEEE standard for binary floating-point arithmetic. *ANSI/IEEE Std 754-1985*, pages 1–20, 1985.

[19] Adam Semlyen and Bjørn Gustavsen. A half-size singularity test matrix for fast and reliable passivity assessment of rational models. *IEEE Transactions on Power Delivery*, 24(1):345–351, 2008.

[20] Hermann W Dommel. *Electromagnetic Transients Program: Reference Manual:(EMTP theory book)*. Bonneville Power Administration, 1986.

[21] Bjørn Gustavsen. Optimal time delay extraction for transmission line modeling. *IEEE Transactions on Power Delivery*, 32(1):45–54, 2017.

[22] Ilhan Kocar and Jean Mahseredjian. New procedure for computation of time delays in propagation function fitting for transient modeling of cables. *IEEE Transactions on Power Delivery*, 31(2):613–621, 2016.

[23] Bjørn Gustavsen. Avoiding numerical instabilities in the universal line model by a two-segment interpolation scheme. *IEEE Transactions on Power Delivery*, 28(3):1643–1651, 2013.

[24] Ilhan Kocar, Jean Mahseredjian, and Guy Olivier. Improvement of numerical stability for the computation of transients in lines and cables. *IEEE Transactions on Power Delivery*, 25(2):1104–1111, 2010.

[25] Pablo Moreno and Abner Ramirez. Implementation of the numerical laplace transform: A review task force on frequency domain methods for emt studies, working group on modeling and analysis of system transients using digital simulation, general systems subcommittee, IEEE power engineering society. *IEEE Transactions on power delivery*, 23(4):2599–2609, 2008.

[26] Sanda Lefteriu and Athanasios C Antoulas. On the convergence of the vector-fitting algorithm. *IEEE transactions on microwave theory and techniques*, 61(4):1435–1443, 2013.



Amjad Mouhaidali has an electrical engineering diploma and the Ph.D. degree from Grenoble Alpes University (France) in 2015 and 2019, respectively. Currently, He is a research engineer based at Super-Grid institute, particularly in the HVDC cable systems and junctions research program. His research areas include the modeling of frequency-dependent and thermal effects in cable systems.



(without propagation).

Jean-Michel Guichon received the Diploma degree in electrical engineering and the Ph.D. degree from Grenoble Institute of Technology, Grenoble, France, in 1998 and 2001, respectively. He is an Associate Professor at the Université Grenoble Alpes. He has been with the Grenoble Electrical Engineering Laboratory (G2ELab), Grenoble, France, since 2003, working in the field of electromagnetic modeling for power electronics. He is focused in the development of numerical tools to compute the electromagnetic field and the electrical behavior in low frequency



Damien Tromeur-Dervout received the Ph.D. degree in applied mathematics from University of Paris VI and ONERA, France, in 1993. Since 1994, He is with University Lyon 1, working on research and development activities related to numerical analysis of methods for high performances computing. In september 2015, he joined supergrid institute, program 1: Supergrid Architecture & Systems, for developing numerical methods for the simulation of electrical networks.



Olivier Chadebec was born in 1973, Sens, France. He received the Diploma in Electrical Engineering from the Grenoble Institute of Technology and the Ph.D. degrees from the Univ. Grenoble Alpes, France, in 1997 and 2001, respectively. He is currently CNRS senior researcher (*directeur de recherche CNRS*) and leads the "Models, Methods and Methodologies Applied to Electrical Engineering" research group of G2ELab, Univ. Grenoble Alpes, France. He has been a visiting scientist at the Technology Centre of the Federal University of

Santa Catarina, Brasil, in 2012-2013. His research activities focus on computational electromagnetics (finite element and integral methods), equivalent magnetic sources identification by solving inverse problems and low magnetic fields measurements. He has co-authored more than 250 papers published in international journals and conference proceedings.



Sebastien Silvant graduated from the Ecole Polytechnique in Paris and from the EPFL in Lausanne in 2008. After leading innovation in high voltage circuit breakers, managing teams dedicated to numerical simulation software development, Sbastien has been responsible of a R&D group at Supergrid Institute, with the objective of developing models and applying real-time simulation to the control and protection of power systems and converters with a focus on HVDC.