



**HAL**  
open science

# Atomic Hydrogen Clues to the Formation of Counterrotating Stellar Discs

Lisa M Young, Davor Krajnović, Pierre-Alain Duc, Paolo Serra

► **To cite this version:**

Lisa M Young, Davor Krajnović, Pierre-Alain Duc, Paolo Serra. Atomic Hydrogen Clues to the Formation of Counterrotating Stellar Discs. *Monthly Notices of the Royal Astronomical Society: Letters*, 2020, 000 (1), pp.1 - 13. 10.1093/mnras/staa1265 . hal-02993440

**HAL Id: hal-02993440**

**<https://hal.science/hal-02993440>**

Submitted on 6 Nov 2020

**HAL** is a multi-disciplinary open access archive for the deposit and dissemination of scientific research documents, whether they are published or not. The documents may come from teaching and research institutions in France or abroad, or from public or private research centers.

L'archive ouverte pluridisciplinaire **HAL**, est destinée au dépôt et à la diffusion de documents scientifiques de niveau recherche, publiés ou non, émanant des établissements d'enseignement et de recherche français ou étrangers, des laboratoires publics ou privés.

# Atomic Hydrogen Clues to the Formation of Counterrotating Stellar Discs

Lisa M. Young,<sup>1,2\*</sup> Davor Krajnović,<sup>3</sup> Pierre-Alain Duc,<sup>4</sup> and Paolo Serra<sup>5</sup>

<sup>1</sup>*Physics Department, New Mexico Tech, 801 Leroy Place, Socorro, NM 87801 USA*

<sup>2</sup>*Adjunct Astronomer, National Radio Astronomy Observatory*

<sup>3</sup>*Leibniz-Institut für Astrophysik Potsdam (AIP), An der Sternwarte 16, D-14482 Potsdam, Germany*

<sup>4</sup>*Observatoire Astronomique de Strasbourg, Université de Strasbourg, CNRS, UMR 7550, 11 rue de l'Université, F-67000 Strasbourg, France*

<sup>5</sup>*INAF - Osservatorio Astronomico di Cagliari, Via della Scienza 5, I-09047 Selargius (CA), Italy*

Accepted 2020 May 4. Received 2020 April 17; in original form 2020 February 14

## ABSTRACT

We present interferometric HI observations of six double-disc stellar counterrotator (“ $2\sigma$ ”) galaxies from the ATLAS<sup>3D</sup> sample. Three are detected in HI emission; two of these are new detections. NGC 7710 shows a modestly asymmetric HI disc, and the atomic gas in PGC 056772 is centrally peaked but too poorly resolved to identify the direction of rotation. IC 0719, the most instructive system in this study, shows an extended, strongly warped disc of  $\sim 43$  kpc diameter, with a faint tail extending towards its neighbor IC 0718. The gas has likely been accreted from this external source during an encounter whose geometry directed the gas into misaligned retrograde orbits (with respect to the primary stellar body of IC 0719). In the interior, where dynamical time-scales are shorter, the HI has settled into the equatorial plane forming the retrograde secondary stellar disc. This is the first direct evidence that a double-disc stellar counterrotator could be formed through the accretion of retrograde gas. However, the dominant formation pathway for the formation of  $2\sigma$  galaxies is still unclear. The ATLAS<sup>3D</sup> sample shows some cases of the retrograde accretion scenario and also some cases in which a scenario based on an unusually well-aligned merger is more likely.

**Key words:** galaxies: elliptical and lenticular, cD — galaxies: evolution — galaxies: ISM — galaxies: structure — Radio lines: galaxies.

## 1 INTRODUCTION

Despite their relatively smooth and featureless appearances in shallow optical images, early-type galaxies (ellipticals and lenticulars, or slow- and fast-rotators) show an impressive diversity in their kinematic structures and frequent cases of internal misaligned substructures. For example, the ATLAS<sup>3D</sup> survey (Cappellari et al. 2011) found that 4% or 11 of 260 early-type galaxies actually consist of two dynamically cold, flattened stellar discs that are coplanar but counterrotating with respect to one another (Krajnović et al. 2011). Beyond these double-disc stellar counterrotators, an additional 7% of the ATLAS<sup>3D</sup> sample (19 of 260) host multiple co-located stellar populations whose angular momenta are misaligned (the kinematically decoupled cores). These might be examples of a similar phenomenon to the double-disc stellar coun-

terrotators. A further 6% (16 of 260) host two flattened discs whose specific angular momenta are aligned but they have different spatial distributions, so their velocity maps show local extrema both at small radii and again at larger radii, and these are prograde versions of the stellar counterrotators. Thus, the double-disc stellar counterrotators may be considered the most extreme versions of a more general phenomenon that is evident in nearly 20% of nearby early-type galaxies.

Furthermore, 35% of the fast rotators have their ionized gas kinematically misaligned with respect to their stellar rotation by more than  $40^\circ$  (Davis et al. 2011; Jin et al. 2016; Ene et al. 2018; Bryant et al. 2019), and a similar misalignment fraction is observed in HI (Serra et al. 2014). Misaligned substructures are evidently common in early-type galaxies, and a comprehensive picture of galaxy formation ought to be able to explain their incidence and properties.

Our goal in the present paper is to understand the

\* E-mail: lisa.young@nmt.edu

formation of the double-disc stellar counterrotators and to place them into the broader context of galaxy evolution. In general, having multiple kinematic components suggests that a galaxy may have experienced multiple episodes of assembly, and in particular for the double-disc stellar counterrotators (also called “two  $\sigma$ -peak” or “ $2\sigma$ ” galaxies), two classes of models have been discussed. One model involves an ordinary disc galaxy that accretes a large quantity of approximately retrograde cold gas, and after the gas has settled into the equatorial plane, it grows a retrograde stellar disc out of the accreted gas (e.g. Vergani et al. 2007; Coccato et al. 2015; Mitzkus et al. 2017). Algorry et al. (2014) describe a variant in which a galaxy at the intersection of two cosmic filaments could accrete gas first with one spin, from one dominant filament, and then with the opposite spin (from another filament). This scenario predicts that one of the stellar discs should be younger than the other, and any cold gas that remains should rotate like the younger disc.

Another class of models involves a major binary merger of two galaxies in a rather special geometry – the two galaxies and their mutual orbit are all nearly coplanar, and at least one of the incoming galaxy spins is antiparallel to the pair’s mutual orbital angular momentum (e.g. Bournaud et al. 2005; Crocker et al. 2009; Bois et al. 2011). Those simulations have shown that in this special aligned geometry, the stellar discs can survive the merger more or less intact, with some dynamical heating. The frequency of interactions with this special geometry is not well known. The prototypical NGC 4550 is believed to have been formed this way, based on its CO kinematics (Crocker et al. 2009). The two stellar discs have different scale heights, and the CO rotates like the *thicker* disc, which is the opposite to what one would expect for the accretion model (where the younger disc should also be dynamically colder). Understanding the relative importance of these two formation scenarios is necessary in order to check whether modern cosmological simulations of galaxy formation are correctly reproducing these galaxies.

As noted above in the case of NGC 4550, observations of the cold gas in double-disc stellar counterrotators can give crucial clues to their histories. HI is particularly valuable as it can often be traced to large radii and it is therefore more sensitive to interactions with other galaxies. As the dynamical time-scales at large radii are long, HI will retain those signatures of interactions for longer times than ionized or molecular gas tracers. Thus, we present HI observations of six “ $2\sigma$ ” (stellar counterrotator) galaxies; three are detected, and one shows strongly disturbed kinematics that clearly point to the gas accretion formation scenario discussed above. We discuss implications for the broader understanding of the formation of the  $2\sigma$  galaxies.

## 2 TARGET SELECTION

The ATLAS<sup>3D</sup> sample (Cappellari et al. 2011) is a volume-limited sample of 260 early-type galaxies closer than about 40 Mpc, with stellar masses greater than  $10^{9.9} M_{\odot}$ . The heart of the survey is optical IFU spectroscopy, giving two-dimensional maps of the galaxies’ stellar kinematics, stellar populations, ionized gas distribution and kinematics, and star formation history. And while similar optical data exist for other (generally more distant) surveys, the ATLAS<sup>3D</sup>

sample is the best studied volume-limited sample at this time, so it provides the largest and most homogeneous selection of  $2\sigma$  galaxies for study. It also has the most complete set of cold gas data, including observations of CO emission from all and HI from most (Young et al. 2011; Serra et al. 2012).

The eleven  $2\sigma$  galaxies in ATLAS<sup>3D</sup> (Table 1; Krajnović et al. 2011) are identified using a combination of their stellar velocity fields and velocity dispersions. The stellar discs have roughly comparable masses but slightly different scale heights and/or scale lengths, so they dominate the mean velocity field in different regions, and the sense of rotation in the velocity field switches at larger heights or radii. They also have unusually large off-nuclear peaks in the stellar velocity dispersion. Those peaks are located along the major axis where the two counterrotating discs contribute roughly equally to the line-of-sight velocity distribution, which is where the sense of mean rotation changes. This distinctive behavior in the velocity dispersions is responsible for the “two  $\sigma$ -peak” name. Their stellar kinematic maps can be seen in Figures C5 and C6 of Krajnović et al. (2011).

In addition to the eleven listed here, the ATLAS<sup>3D</sup> member NGC 0524 has also been studied as a double-disc stellar counterrotator (Katkov et al. 2011). The luminosity of its secondary disc is low, which makes it difficult to identify. For the purposes of homogeneity we do not discuss NGC 0524 here, though we note that it does have a relaxed CO disc (Crocker et al. 2011), and it serves as a reminder that more sensitive data may identify additional  $2\sigma$  galaxies in the ATLAS<sup>3D</sup> sample.

All eleven of the ATLAS<sup>3D</sup>  $2\sigma$  galaxies were searched for CO emission (Young et al. 2011) but not all of them were previously searched for HI emission, due to the Declination limitations of the WSRT (Serra et al. 2012). HI in NGC 4191 was discussed by Young et al. (2018). The present paper fills in HI observations of the remaining low-Dec galaxies not previously observed at WSRT, so that all eleven have sensitive CO searches and interferometric HI searches.

## 3 OBSERVATIONS

IC 0719, NGC 0448, NGC 4803, NGC 7710, and PGC 056772 were observed with the Karl G. Jansky Very Large Array (VLA) in September 2018, in project 18A-226, for a total of two hours each (and four hours on NGC 7710). These data were obtained in the D configuration, giving baselines from 0.2 to 5 k $\lambda$  and resolutions on the order of an arcminute. The native velocity resolution of the data is 3.3 km s<sup>-1</sup>. The flux, bandpass, and time-dependent gain calibrations were made following standard procedures, using 3C286 or 3C48 once per observing session as the primary flux and bandpass calibrator, and secondary gain calibrators were observed every 20 minutes. Calibration was performed using the eVLA scripted pipeline the CASA software package, version 5.3.0. The bootstrapped flux densities of the secondary gain calibrators are in good agreement with previous measurements in the VLA calibrator database and the NRAO VLA Sky Survey (Condon et al. 1998). An initial round of imaging revealed any bright line emission in the data, and the velocities of that emission combined with the known target velocities were used to select frequency ranges

**Table 1.** Cold gas data for  $2\sigma$  galaxies.

Name	$\log M_{\star}$ ( $M_{\odot}$ )	$\log M(\text{H}_2)$ ( $M_{\odot}$ )	$\log M(\text{HI})$ ( $M_{\odot}$ )	HI refs	Formation	Formation references
IC 0719	10.31	8.26 (0.04)	9.03 (0.02)	*	gas accretion	Katkov et al. (2013), Pizzella et al. (2018)
NGC 0448	10.43	< 7.74	< 7.38	*	merger	Katkov et al. (2016), Nedelchev et al. (2019)
NGC 3796	9.97	< 7.51	< 7.10	S12		
NGC 4191	10.47	< 7.94	9.57 (0.01)	Y18	gas accretion	Coccatto et al. (2015), Young et al. (2018)
NGC 4259	10.10	< 7.97	< 8.43	*		
NGC 4473	10.73	< 7.07	< 6.86	S12		
NGC 4528	10.05	< 7.15	< 7.18	S12		
NGC 4550	10.13	6.91 (0.08)	< 6.89	S12	merger	Crocker et al. (2009), Coccatto et al. (2013), Johnston et al. (2013)
NGC 4803	10.14	< 7.98	< 7.57	*		
NGC 7710	10.02	< 7.80	8.74 (0.02)	*	gas accretion?	*
PGC 056772	10.05	8.19 (0.05)	8.11 (0.06)	*	gas accretion?	*

Stellar masses are from (Cappellari et al. 2013).  $\text{H}_2$  masses are all from Young et al. (2011), except NGC 4550 from Crocker et al. (2009).

HI references: \* = This paper; S12 = Serra et al. (2012); Y18 = Young et al. (2018).

for estimating continuum levels. Continuum emission was subtracted using order 0 or 1 fits to the individual visibilities. We produce final data cubes using the ‘natural’ weighting scheme for maximum sensitivity. If line emission is present, we also produce cubes of several different channel widths using the Briggs robustness technique and some tapering in the  $uv$  plane to achieve better resolution and a rounder beam. Cubes are cleaned to a residual level equal to the rms noise level.

In addition, NGC 4259 was observed in project AT259 in 2001, in the VLA’s C configuration. General observing strategies, data reduction, and imaging are similar to those used for the newer data. The data give baselines from 0.3 to 16 k $\lambda$  but they have only 30 minutes on source, so they are higher resolution and lower sensitivity than the other data discussed in this paper. Furthermore, NGC 4259 is 8.7’ away from the pointing centre, but the offset is not a serious problem as the half-power radius of the VLA is 15’ and the antenna gain at the location of NGC 4259 is still a relatively high value of 0.82. Thus these C configuration observations are not ideal for very faint, diffuse emission, but they can rule out the presence of bright HI emission like that in IC 0719 or NGC 7710.

The sensitivity, final imaged velocity resolution and velocity coverage of these HI observations are indicated in Table 2. Following the discussion in S12, which uses data of similar sensitivity and resolution, we indicate the HI column density sensitivity as a  $5\sigma$  signal in one channel of width 16.5 km s $^{-1}$ . S12 also make a careful analysis of the typical angular sizes and velocity widths of detected HI features in the ATLAS<sup>3D</sup> survey. Based on this analysis, they adopt  $M(\text{HI})$  upper limits for the HI nondetections by calculating three times the statistical uncertainty in a sum over a data volume of 50 km s $^{-1}$  and six synthesized beam areas (typically  $1.2 \times 10^4$  square arcseconds or 110 kpc $^2$  to 450 kpc $^2$  at the distances of this sample). That procedure is also adopted here, using the appropriate number of beams to make the solid angle of  $1.2 \times 10^4$  square arcseconds.

## 4 RESULTS

We find HI emission in NGC 7710, PGC 056772, and IC 0719, but not in NGC 0448, NGC 4803, or NGC 4259 (Table 2). These results bring the HI detection rate in the ATLAS<sup>3D</sup>  $2\sigma$  galaxies to 4/11, comparable to the rate in ATLAS<sup>3D</sup> as a whole (S12). Here we note the nondetections briefly and describe the HI emission in NGC 7710, PGC 056772, and IC 0719.

### 4.1 Nondetections – NGC 4803, NGC 0448, NGC 4259

No HI emission is found towards NGC 4803. The VLA data for this field show some HI emission from UGC 08045 and possibly also from the vicinity of NGC 4795, but they are far away and there’s no sign of any emission towards NGC 4803 or between it and the other detections; more information is presented in the Appendix. No significant HI emission from any source is detected in the field of NGC 0448. And as noted in the previous section, the observations we are using for NGC 4259 were pointed at the spiral NGC 4273, 8.7’ away (94 kpc in projection); NGC 4273 is strongly detected and is shown in the Appendix, but NGC 4259 is not detected.

### 4.2 NGC 7710 and PGC 056772

NGC 7710 is unusual amongst the  $2\sigma$  galaxies in that its optical image (Figure 1) clearly shows multiple components: a thick spheroid and a very thin, nearly edge-on disc with an associated dust lane. HI emission in NGC 7710 shows the classic double-horned profile typical of galactic discs (Figure 2). The gas distribution and kinematics (Figures 1 and 3) show little sign of recent disturbance, though there is a mild asymmetry with approximately 30% more HI on the receding (southeast) side of the galaxy than the approaching side, and the gas is more extended on that side as well. It is important to note that the HI distribution is not resolved in the direction of the minor axis, so the distribution by itself offers no clues about whether the HI is associated with the thicker stellar spheroid or the thinner disc. We assume it is associated with the thinner disc, as that’s where the dust

**Table 2.** HI image properties for  $2\sigma$  galaxies.

Name	Distance (Mpc)	Vel. range (km s <sup>-1</sup> )	beam (")	beam (kpc)	rms (mJy/bm)	N(HI) lim (10 <sup>19</sup> cm <sup>-2</sup> )	S(HI) (Jy km s <sup>-1</sup> )	M(HI) (M <sub>⊙</sub> )
IC 0719	29.4	288 – 3376	111 × 57 82 × 65	15.8 × 8.1 11.7 × 9.3	0.85 1.20	1.23 1.21	5.30 ± 0.27	(1.08±0.06)×10 <sup>9</sup>
NGC 0448	29.5	366 – 3438	111 × 55	15.9 × 7.8	0.98	1.46	< 0.12	< 2.4×10 <sup>7</sup>
NGC 4803	39.4	1071 – 4226	109 × 50	20.8 × 9.5	0.83	1.39	< 0.10	< 3.7×10 <sup>7</sup>
NGC 7710	34.0	834 – 3898	68 × 56	11.3 × 9.2	0.59	1.41	2.00 ± 0.09	(5.45±0.24)×10 <sup>8</sup>
PGC 056772	39.5	1120 – 4154	76 × 58	14.5 × 11.1	0.66	1.36	0.35 ± 0.05	(1.30±0.19)×10 <sup>8</sup>
NGC 4259	37.2	1803 – 3080	19.6 × 15.7	3.5 × 2.8	1.47	54	< 0.83	< 2.7×10 <sup>8</sup>

Distances are taken from Cappellari et al. (2011). The velocity range in column 3 indicates the usable range covered by the data. The noise (rms) is quoted in a channel 16.5 km s<sup>-1</sup> wide, except for NGC 4259, where 20.6 km s<sup>-1</sup> is the native resolution of the data, and for the higher resolution image of IC 0719, which was made with 9.9 km s<sup>-1</sup> channels. The column density limit represents  $5\sigma$  in one channel. The integrated flux density limit for nondetections represents three times the statistical uncertainty in a sum over 50 km s<sup>-1</sup> and  $1.2\times 10^4$  square arcseconds, as in S12. For the new D configuration data that solid angle corresponds to  $\sim 2$  beams and for the C configuration data on NGC 4259 it is 34 beams.

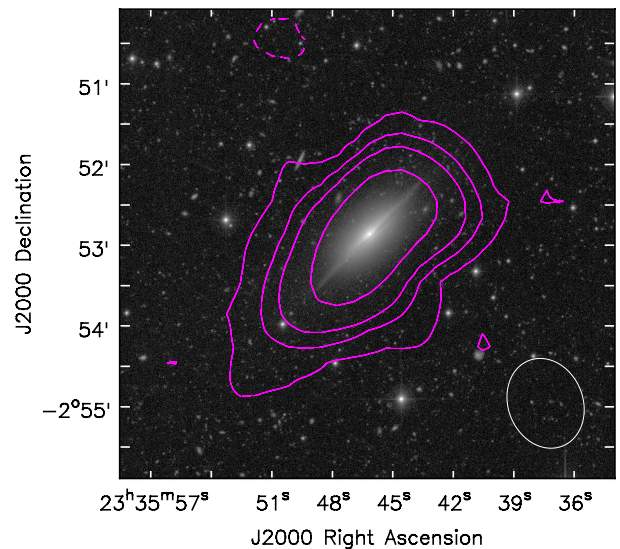
and the blue stellar populations are found. The HI rotates in the same direction as the ionized gas. That is also the same as the sense of rotation in the stellar velocity field at radii  $\gtrsim 4''$  (Figure 3; Krajnović et al. 2011).

PGC 056772, like most of the  $2\sigma$  galaxies, has a rather unremarkable optical image (Figure 4) and its multiple stellar components are much more obvious in the stellar kinematics (Krajnović et al. 2011) than in the optical surface brightness distribution. It also shows very faint HI emission (Figures 4 and 5). The galaxy has a 1.4 GHz continuum source with a flux density of  $4.7 \pm 0.4$  mJy, so the coincidence of the line source and the continuum source boosts the reliability of the line detection. The HI emission is not well resolved, so we have little kinematic information (Figure 6), and it is not yet possible to associate the HI emission with a specific stellar component. There is a hint of an extraplanar HI tail, stretching to the southeast, but it should be verified with data of higher sensitivity and resolution. Three dwarf galaxies in the field of PGC 056772 are also detected in HI emission and identified in the catalog of Habas et al. (2019), and they are discussed in the Appendix.

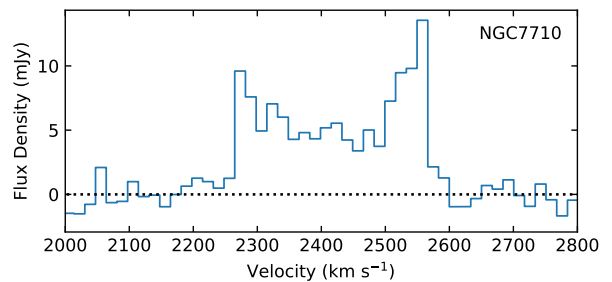
### 4.3 IC 0719

IC 0719 is relatively dusty and blue for an early-type galaxy (e.g. Krajnović et al. 2011; Alatalo et al. 2013). Its two stellar components are more obvious in the stellar velocity field than in the optical image, as is common, but in hindsight the stellar components can also be decomposed in an optical image (Katkov et al. 2013; Pizzella et al. 2018). IC 0719 is in a close pair (at 10' or 86 kpc in projection) with IC 0718, which has a similar velocity and a factor of 10 smaller stellar mass. IC 0718 is not a member of the ATLAS<sup>3D</sup> sample and is not known to be a  $2\sigma$  galaxy, but it is detected in HI emission in our data and we discuss it in the context of a probable interaction with IC 0719.

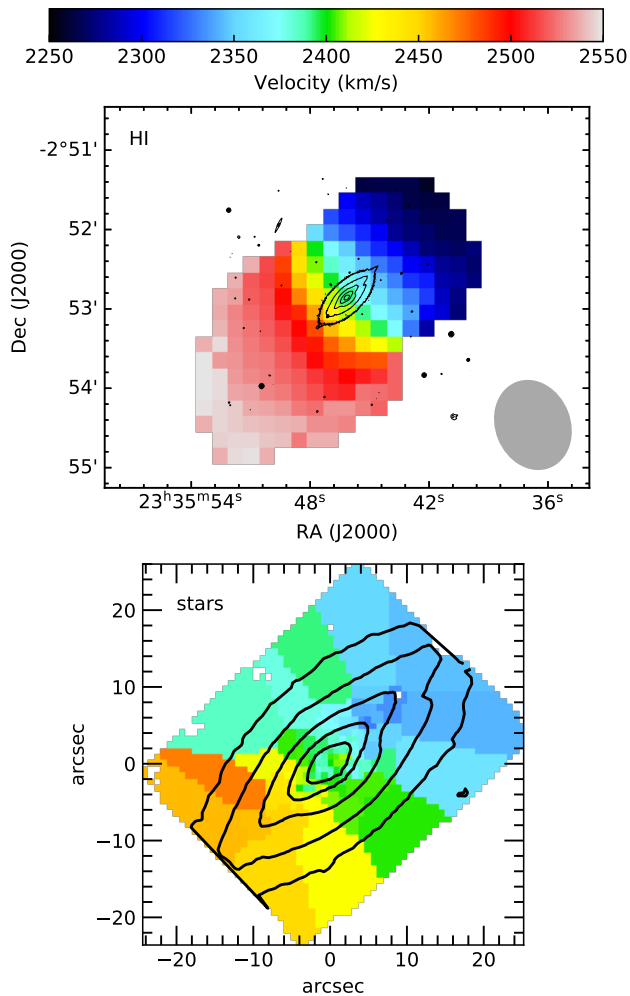
The total flux that we recover in IC 0719 is  $5.30 \pm 0.27$  Jy km s<sup>-1</sup>, or  $(1.08 \pm 0.06)\times 10^9$  M<sub>⊙</sub> of HI, which is consistent with the flux measured by Arecibo (Figure 7). To be specific, the flux recovered here is slightly larger than the values of  $4.65 \pm 0.12$  Jy km s<sup>-1</sup> and  $4.08 \pm 0.10$  Jy km s<sup>-1</sup> quoted by Haynes et al. (2018) and Grossi et al. (2009), most likely because the emission is somewhat more extended than the



**Figure 1.** HI integrated intensity in NGC 7710. The grayscale is the MATLAS *g* image from Duc et al. (2015), and the contours are the HI column density at levels of  $(-1, 1, 3, 5, 10, 30) \times 1.41 \times 10^{19}$  cm<sup>-2</sup>, where  $1.41 \times 10^{19}$  cm<sup>-2</sup> is the nominal sensitivity in these data (Table 2). The resolution of the HI data is indicated by the ellipse in the lower right corner.



**Figure 2.** HI spectrum of NGC 7710.

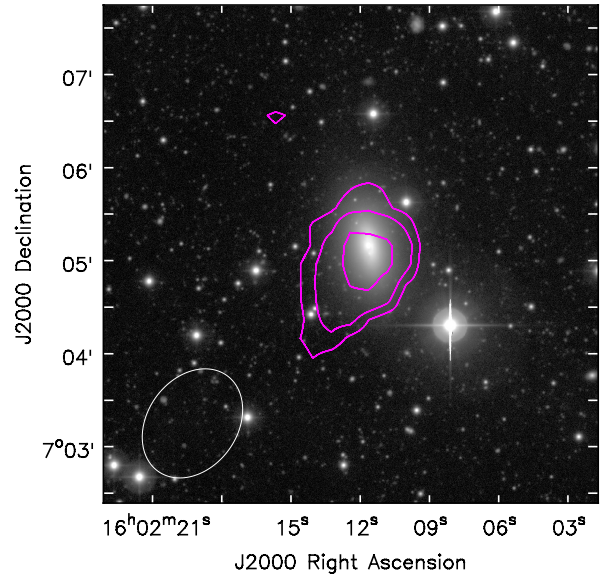


**Figure 3.** HI and stellar velocity fields of NGC 7710. In both panels, the black contours show the stellar isophotes. In the stellar velocity field, the counterrotating feature is visible inside the brightest contour, though it is more prominent in the stellar velocity dispersion data (Krajinović et al. 2011).

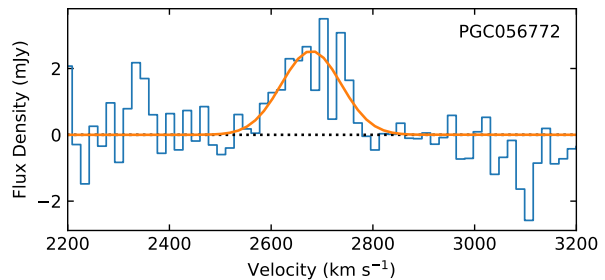
Arecibo beam. In IC 0718 we recover  $4.89 \pm 0.16$  Jy km s<sup>-1</sup>, which is 13% smaller than the Arecibo measurement of  $5.53 \pm 0.08$ . The difference between those measurements may be attributed to the fact that IC 0718 is 10' from the VLA's field centre, where the primary beam gain is 0.72. We have applied the primary beam correction, but the imaging quality is always degraded at large distances from the field centre, and extended smooth emission may be filtered out.

#### 4.3.1 Disturbed HI kinematics in IC 0719

IC 0719 has an irregular HI distribution roughly 5' (43 kpc) in diameter in the east-west direction and 4' north-south (Figure 8). A tail of faint HI emission at column density  $\sim 2 \times 10^{19}$  cm<sup>-2</sup> extends at least 4' (34 kpc) from the centre of IC 0719 in the direction of IC 0718. This tail is probably the same feature as the bridge shown between IC 0719 and IC 0718 in the Arecibo data of Grossi et al. (2009), and though those authors show the bridge to be complete, with



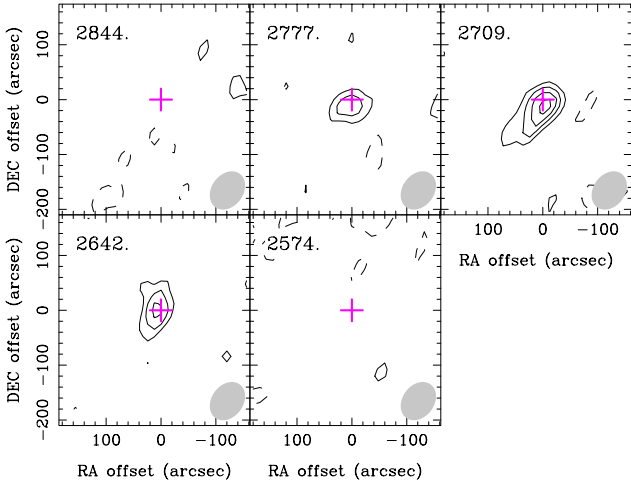
**Figure 4.** HI integrated intensity in PGC 056772. The grayscale is the MATLAS *g* image (Duc et al. 2015), and the contours are the HI column density at levels of  $(1, 2, 4) \times 1.36 \times 10^{19}$  cm<sup>-2</sup>, which is the nominal sensitivity in these data. The resolution of the HI data is indicated by the ellipse in the lower left corner.



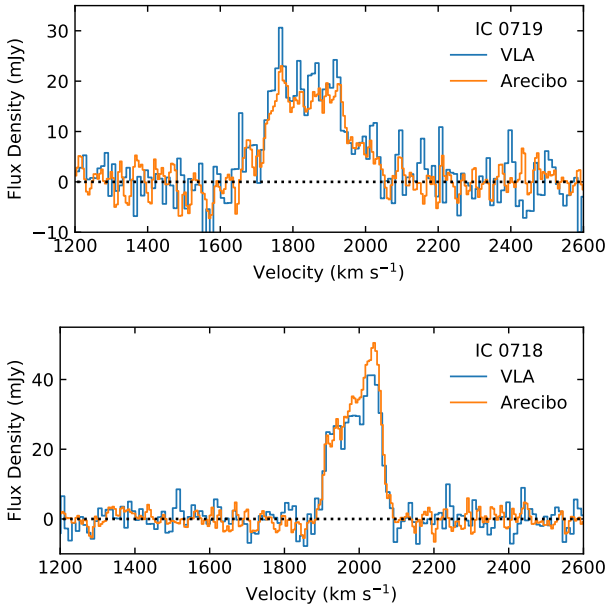
**Figure 5.** HI spectrum of PGC 056772, with a Gaussian fit overlaid.

no gaps, the VLA data do not show a full bridge (Figure 9). Grossi et al do not specify the peak HI column density in the bridge, indicating only that it is greater than  $6 \times 10^{18}$  cm<sup>-2</sup> in the  $\sim 4'$  Arecibo beam, and the nominal sensitivity in the present VLA data is  $1.2 \times 10^{19}$  cm<sup>-2</sup>. Therefore the two datasets are not in direct conflict, especially if the emission is spread over 50 km s<sup>-1</sup> or more. It is also worth noting that single dish images are usually not cleaned to account for the presence of sidelobes of the beam, and Grossi et al do not mention cleaning, so there is always the possibility that the column densities in the bridge between two bright emission sources could be enhanced by an unfortunate sidelobe. Deeper interferometric images would be the best way to probe the existence of a complete bridge in more detail.

The velocity fields and channel maps (Figures 10 and 11) show that in the inner body of the galaxy, the HI kinematics are aligned with the photometric major axis of the galaxy, which also aligns with the ionized gas and CO kinematics. The HI kinematic position angle at small radii is  $243^\circ \pm 3^\circ$ , compared to  $229^\circ \pm 3^\circ$  for the molecular gas and

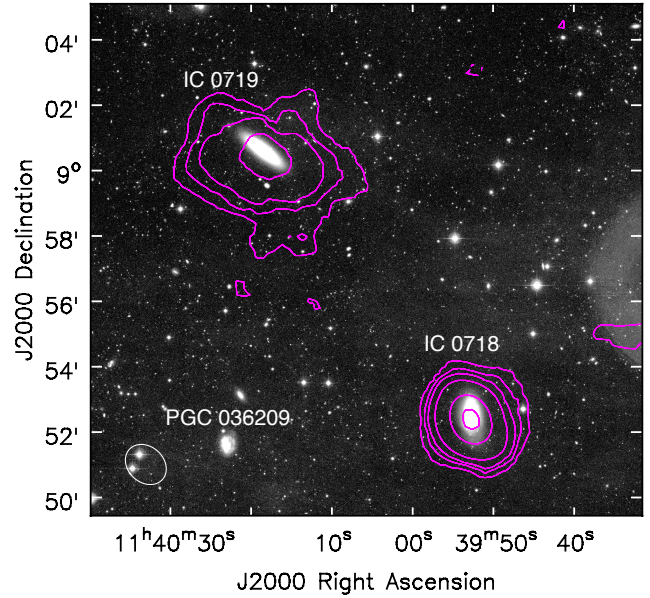


**Figure 6.** HI channel maps of PGC 056772. The ellipse illustrates the beam size; the magenta cross marks the optical centre of the galaxy, and the velocity of each channel is indicated in the top left corner. Contour levels are  $(-2, 2, 3, 4, 5)$  times the rms noise in this image cube ( $0.37 \text{ mJy beam}^{-1}$ ).

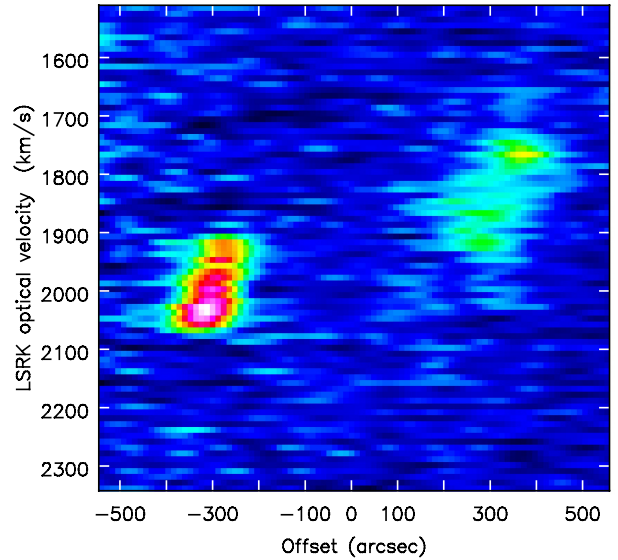


**Figure 7.** Integrated HI spectra of IC0719 and IC0718 from the VLA data and from Arecibo (Haynes et al. 2018).

$231.9^\circ \pm 0.1^\circ$  for the stellar photometric major axis (Davis et al. 2011; Krajnović et al. 2011). The sense of rotation of the HI matches that of the smaller, secondary stellar disc but is retrograde with respect to the bulk of the stars (Katkov et al. 2013; Pizzella et al. 2018). And though the mismatch between the HI and CO resolution is great, the channel maps show that the highest velocity HI emission in the galaxy forms a compact disc coincident with and co-rotating with the CO; the feature is most easily visible in the channel maps



**Figure 8.** HI in IC 0719 and IC 0718. The optical image is the MATLAS *r* image (Duc et al. 2015). Contours are  $(-1, 1, 3, 5, 10, 30, 50) \times 1.2 \times 10^{19} \text{ cm}^{-2}$ , where  $1.2 \times 10^{19} \text{ cm}^{-2}$  is the nominal sensitivity in this image (Table 2). PGC 036209 has a much higher velocity of  $6372 \text{ km s}^{-1}$  (Haynes et al. 2018) so it is a distant background object.



**Figure 9.** Position-velocity slice between IC 0718 (left) and IC 0719 (right). In this slice the emission is averaged over a region  $204''$  wide ( $\sim 2.5$  beams).

on the receding side at  $2032$  and  $1992 \text{ km s}^{-1}$  and on the approaching side at  $1712$  and  $1672 \text{ km s}^{-1}$ .

However, at radii  $> 1'$ , the kinematic position angle of the HI rotates to be  $288^\circ \pm 7^\circ$ . This outer kinematic position angle is strongly misaligned, as it is  $124^\circ (\pm 7^\circ)$  away from the kinematic position angle of the bulk of the stars. The large-scale HI disc is irregular and blobby, with a lower in-

clination than the inner HI and CO disc; it is visible in the channel maps between  $1952 \text{ km s}^{-1}$  and  $1752 \text{ km s}^{-1}$ . And since the resolution of the HI data is rather low, the radius of the warp in the HI kinematics is rather poorly constrained, but we note that the CO kinematics are quite regular. We infer that the warp occurs somewhere between the outer edge of the CO disc (radius  $15'' = 2.1 \text{ kpc}$ ) and  $1'$ .

#### 4.3.2 IC 0718 as the source of the gas in IC 0719

IC 0718, the companion, is a late-type galaxy and it also shows signs of an interaction. Its stellar distribution is asymmetric, with a relatively bright arm extending to the north and a stubby, faint tail extending to the south (Figures 8 and 12). The HI spectrum is also strongly asymmetric (Figure 7), suggesting the HI distribution is far from a relaxed equilibrium state; the brighter HI emission is on the south side of the galaxy, coinciding with the low surface brightness stellar tail. The velocity field (Figure 12) is mostly regular but that is probably a consequence of the relatively poor angular resolution in the HI data. These stellar and HI asymmetries demonstrate that the galaxy has been involved in a recent interaction and therefore it is most likely the source of the HI recently accreted onto IC 0719.

An hypothesized gas transfer from IC 0718 to IC 0719 suggests that IC 0718 should be HI-deficient for its stellar properties. The stellar mass of IC 0718 (Leroy et al. 2019) gives  $M_{\text{HI}}/M_{\star} = 0.58$ , and according to the analysis of Brown et al. (2015) this value is about a factor of 2.6 low for a galaxy of IC 0718's stellar mass and NUV-r color. By this measure IC 0718 is unusually HI-deficient, and its expected HI content could easily supply the gas we now detect in IC 0719.

Estimates of the HI size of IC 0718 give less conclusive answers to the question of whether its HI disc is truncated. From the centroids of the emission in the extreme channels we estimate an HI diameter of 10.6 kpc (we assume the same distance as for IC 0719). In contrast, a model fit to the HI image cube using the 3DBarolo code (Di Teodoro & Fraternali 2015) suggests that the HI diameter at a surface density of  $1 M_{\odot} \text{ pc}^{-2}$  is 19 kpc, and this latter value is entirely consistent with the HI mass-size relation of Wang et al. (2016). The extremely poor resolution in these HI data means that comparisons to the mass-size relation are probably less reliable than comparisons to the stellar mass.

For completeness we should also consider the possibility that the interaction between the two galaxies operates in the other direction, i.e. that IC 0719 had at least  $10^9 M_{\odot}$  of HI before its encounter, and the disturbed HI kinematics might have arisen not because the gas has recently fallen in but because the gas has recently been pulled out by tidal forces. That scenario is possible, but it is not the simplest scenario to explain all of the observed properties of the system because it does not address the counterrotating structures in IC 0719 or the HI deficiency in IC 0718. IC 0718 is also about a factor of 10 less massive than IC 0719, making it unlikely that IC 0718 could do serious damage to a pre-existing disc in IC 0719.

## 5 DISCUSSION

The primary new result of the HI observations of IC 0719 is that they demonstrate clear and convincing evidence supporting an accretion scenario for the formation of (some of) the  $2\sigma$  galaxies. The warped, irregular disc, which is relaxed into the equatorial plane at small radii, retrograde with respect to the bulk of the stars, and strongly misaligned at large radii, signals that new cold gas was accreted from some external source after the main stellar body was in place. The faint HI tail pointing towards IC 0718 suggests its identification as the external source. The angular momentum of the accreted gas was dominated by the geometry of the galaxy interaction and in this case it happened to be misaligned by about  $120^{\circ}$  to the rotation of the primary stellar component. The gas then settled into the equatorial plane in the “minimal torque” sense, becoming misaligned by  $180^{\circ}$  to the primary stellar component. As the atomic gas condensed into molecular gas, star formation began to form a secondary stellar disc that is counterrotating with respect to the primary stellar disc.

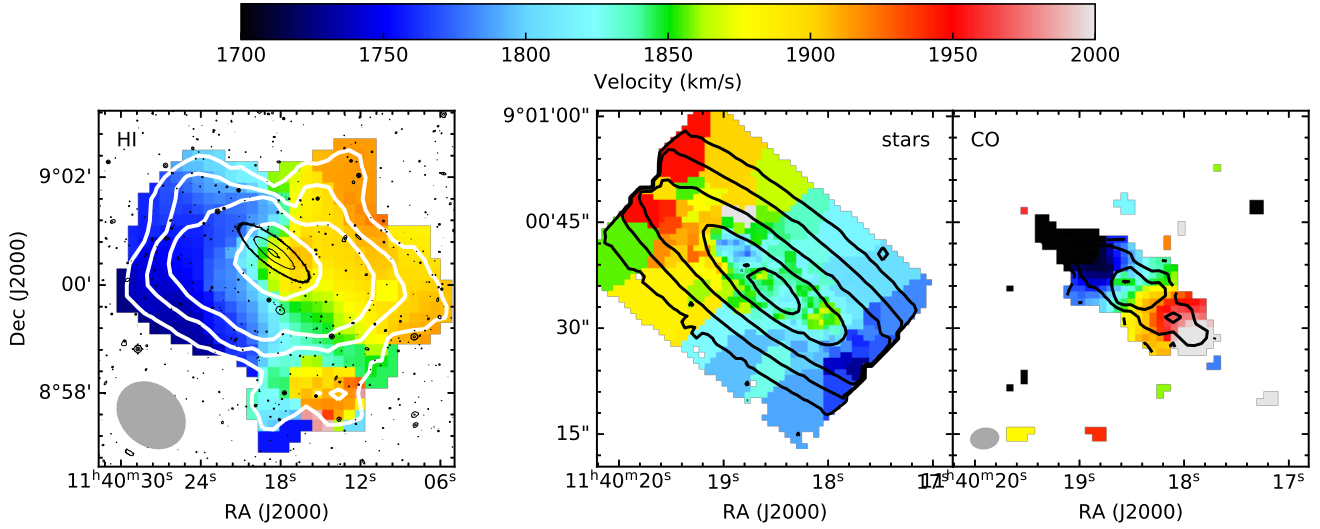
Katkov et al. (2013) and Pizzella et al. (2018) have conducted extensive optical spectroscopy with analysis of the ionized gas and stellar populations in IC 0719. They proposed this accretion scenario on the basis of observations such as (1) the primary stellar component is older and more metal rich, and it has a higher velocity dispersion; and (2) the secondary stellar component, the one that rotates like the gas, is younger, with lower metallicity and velocity dispersion. The fact that the younger stellar component has a lower metallicity clearly suggests the accretion of a large quantity of lower metallicity gas between the star formation episodes. The available information about the ionized gas metallicity is also consistent with this interpretation that IC 0719 acquired its gas from IC 0718. The MPA-JHU catalog (e.g. Tremonti et al. 2004), based on SDSS spectra, quotes  $12 + \log(\text{O}/\text{H}) = 8.61 \pm 0.06$  for the central regions of IC 0718, and the more detailed studies of Katkov et al. (2013) and Pizzella et al. (2018) quote values of roughly 8.4 to 8.6 for IC 0719. But without the new HI data presented here, there was no direct evidence of the warp that smoothly connects the HI bridge of Grossi et al. (2009) through to the dynamically relaxed but retrograde molecular gas on  $\sim \text{kpc}$  scales.

### 5.1 Evolutionary time-scales

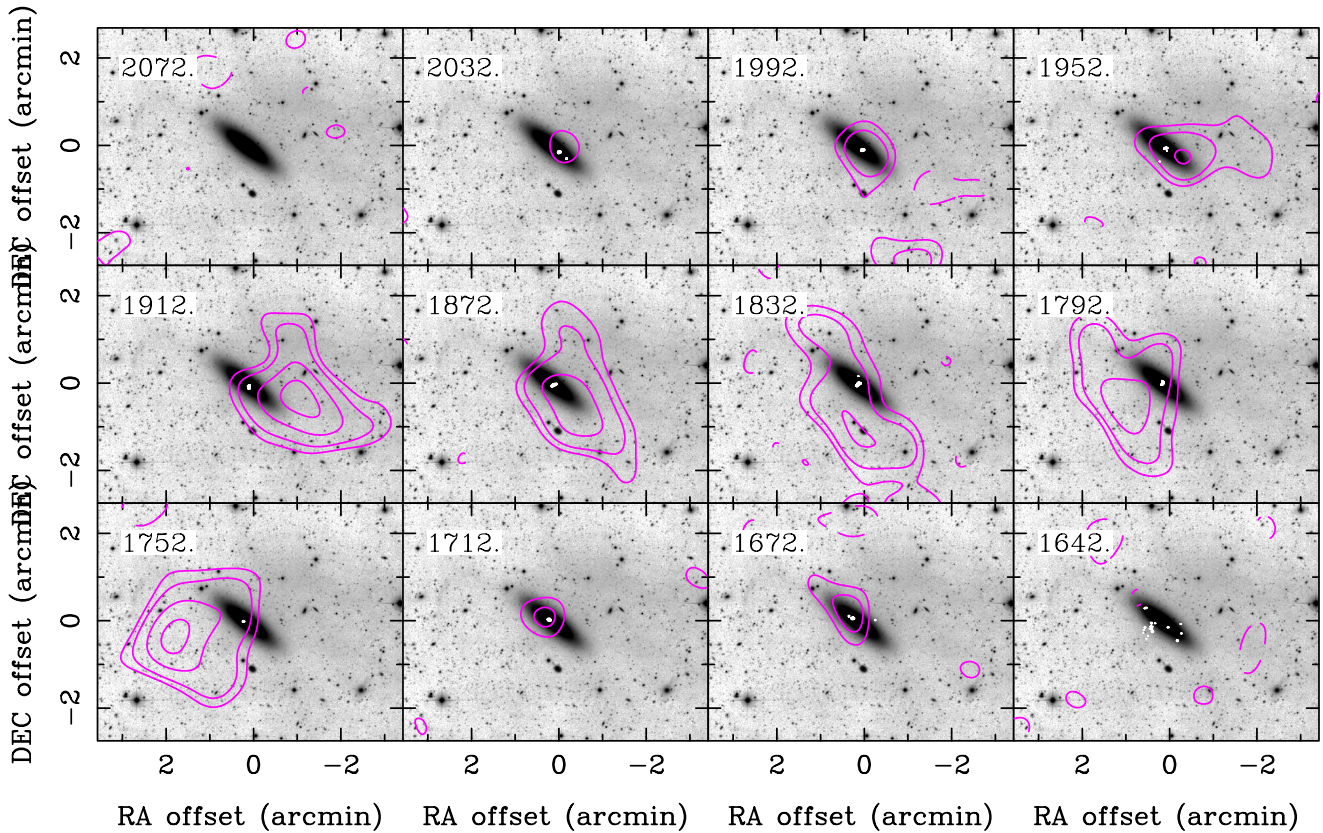
Of the eleven  $2\sigma$  galaxies that have been identified in the ATLAS<sup>3D</sup> survey, only five are currently known to contain large amounts of cold gas (Table 1). Of these five, IC 0719 has the most obvious signs of a misaligned gas disc that is still in the process of settling towards the equatorial plane of the galaxy. Thus, it is relatively rare to “catch” a  $2\sigma$  galaxy in this phase of its evolution.

Classically, the torques exerted on gas outside of the equatorial plane should cause the disc to precess and sink towards the equatorial plane in a few dynamical time-scales. Recent simulations by van de Voort et al. (2015) confirm this idea, with the caveat that one should begin measuring a few dynamical time-scales from the time the accretion of cold gas slows to a trickle, rather than the time that the accretion begins. During the period of rapid gas accretion, the

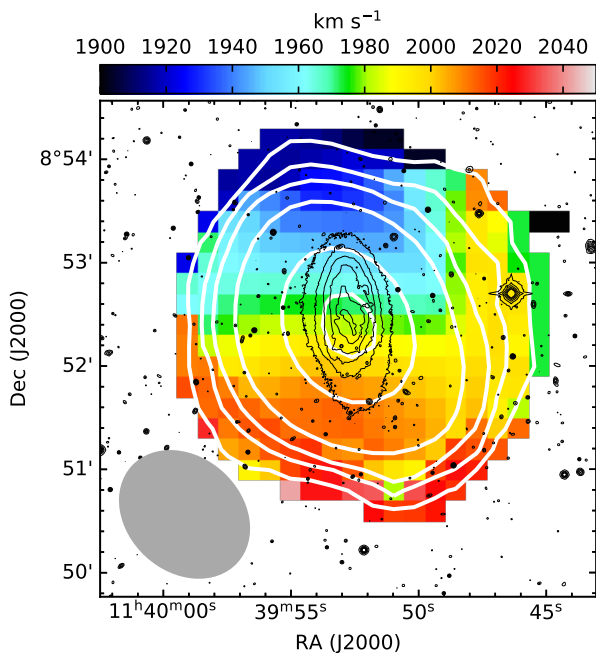




**Figure 10.** HI, stellar and CO velocity fields of IC 0719. For HI, the white contours show the column density as in Figure 8 and the black contours are from the optical image to show where the main stellar body of the galaxy is located. In the stellar velocities (centre panel), the black contours are again the stellar surface brightness. The primary stellar component defined by Pizzella et al. (2018) is receding on the northeast side of the galaxy; the secondary component is receding on the southwest side of the galaxy. The secondary component dominates the stellar velocity measurements in the annulus between the highest contour and the second-highest contour (radii 4'' to 10''); the primary component dominates both at smaller radii and at larger radii. In the CO field, black contours show the integrated CO surface brightness. Beam sizes are indicated by the ellipses.



**Figure 11.** Channel maps of IC 0719. The greyscale background is the MATLAS g image; pink contours are HI at levels of (-3, -2, 2, 3, 5, 7)  $\times 0.85$  mJy beam<sup>-1</sup>. The velocity of each channel is written in the top left corner. CO emission in the interior of the galaxy (Alatalo et al. 2013) is indicated in tiny white contours near the galaxy centre.



**Figure 12.** Velocity field of IC 0718 (neighbor to IC 0719). Thick white contours are the HI column density, as in Figure 8, and thin black contours are from the MATLAS  $g$  image. The beam size is indicated by the gray ellipse.

orbital dynamics of the inflowing gas dominate the angular momentum evolution, and it is only after the accretion shuts down that the torque-driven precession can dominate the evolution and develop a warp. (Bryant et al. 2019, and others, have additionally noted that gas can persist in polar orbits for many dynamical times because the torques are very small.)

For comparison, in section 4.3.1 we inferred that the warp in the HI disc of IC 0719 occurs somewhere in the range  $15'' \lesssim r \lesssim 1'$ . The dynamical time at the outer edge of the CO disc ( $r = 15''$ ) is roughly 70 Myr, at  $1'$  it is 280 Myr, and at the outer edge of the HI disc it is roughly 700 Myr. The simulations of van de Voort et al. (2015) thus suggest that the gas accretion onto IC 0719 shut down on the order of 0.5 to 2 Gyr ago (6 dynamical times), but not as long as  $\sim 4$  Gyr ago, or a larger portion of the HI disc would be aligned by now. Of course, this analysis assumes that the dark matter halo of IC 0719 is either spherical or well aligned with the stellar body of the galaxy (so that the outer parts of the HI disc are not in an equatorial plane in their current orientation). These time-scales are consistent with the finding of Pizzella et al. (2018) that the secondary stellar component has a luminosity-weighted mean age of 1.5 Gyr.

Curiously, there is also evidence from Katkov et al. (2013) and Pizzella et al. (2018) that there was a previous episode of gas accretion and star formation in IC 0719, beginning on the order of 4 Gyr ago, and also contributing to the growth of the counterrotating (secondary) stellar disc though not dominating its mass. The timing of that star formation episode is in tension with the timing we infer from the HI kinematics, so it is not clear whether it is connected

to the events we now find displayed in the HI properties of the system.

## 5.2 Gas and stellar masses

Based on its  $K_s$  luminosity, the stellar mass of IC 0719 is approximately  $2 \times 10^{10} M_\odot$ ; we find  $10^9 M_\odot$  of HI and  $2 \times 10^8 M_\odot$  of molecular gas (Table 1). Thus, the current masses of HI and  $H_2$  are not large enough to form stellar discs that are an appreciable fraction of the current stellar mass, and we infer that the total mass of accreted gas was much higher than the present-day remnants. Specifically, Pizzella et al. (2018) find that the secondary stellar component in IC 0719 contributes  $\sim 35\%$  of the galaxy's light; if it then contains 20% of the galaxy's stellar mass (because of being younger), its mass is  $4 \times 10^9 M_\odot$ . That is still a factor of two larger than the expected HI content of IC 0718 (Section 4.3.2). These considerations do not necessarily rule out IC 0718 as the source of the gas that built the secondary stellar disc, however, because of the unknown contribution of molecular gas, the significant scatter in the cold gas scaling relations (Catinella et al. 2018), and because the expected size of the gas reservoir would be galaxies' gas contents several Gyr ago rather than their gas contents today.

Similar comments about the necessity for large accreted masses also apply to NGC 4191, the other ATLAS<sup>3D</sup>  $2\sigma$  galaxy with a relatively large cold gas mass (Young et al. 2018). For comparison to IC 0719, NGC 4191 has a very large asymmetric HI disc, 110 kpc in diameter, with an internal twist or warp, and again it is clear that the secondary, younger stellar disc formed out of the counterrotating cold gas disc. Like IC 0719, NGC 4191 also has a gas-rich neighbor nearby in projection (NGC 4180, separated by 600 km  $s^{-1}$  and 160 kpc), but unlike IC 0719, NGC 4191 has no sign of any HI bridge or tail to its neighbor. Young et al. (2018) argued that the gas in NGC 4191 was accreted from an external source based on HI-stellar misalignments, and Coccato et al. (2015) used the stellar data to argue for an accretion model through filamentary cold flows. A filamentary cold flow model has the advantage that it could offer essentially limitless quantities of cold gas, easily explaining the large gas content of NGC 4191. In short, IC 0719 is similar to NGC 4191 in broad respects but the HI in IC 0719 has much more dramatically disturbed kinematics, perhaps because of being in an earlier dynamical stage or having a different source.

## 6 FORMATION SCENARIOS FOR THE ATLAS<sup>3D</sup> $2\sigma$ GALAXIES

As discussed by Katkov et al. (2016), one useful perspective on the formation of the discy stellar counterrotator  $2\sigma$  galaxies is that their multiple spin structures required multiple episodes of assembly, and the primary distinction between the various scenarios is how much of the new misaligned or counterrotating material was already in the form of stars when it joined its current host. In the merger scenario, most of the new material was already in the form of stellar discs; this scenario is rather restrictive in the sense that it requires a special geometry to avoid disrupting the discs during the merger, but it allows a wide variety of ages and velocity

dispersions in the final structures. [Bois et al. \(2011\)](#) show that appropriately aligned mergers with differing mass ratios can make remnants that look like slow rotators with kinematically decoupled cores as well as remnants that look like flattened double disc stellar counterrotators.

The gas accretion scenario accommodates a wider variety of initial geometries, but it makes more specific predictions that one of the discs must be younger and thinner than the other, and that the cold gas must be associated with the thin disc. This scenario appears to be prevalent in cosmological simulations. [Taylor et al. \(2018\)](#) studied a sample of 82 well-resolved simulated early-type galaxies and found 5 that could be the predecessors of our observed stellar counterrotators, and all of them formed via the accretion mechanism. [Starkenburger et al. \(2019\)](#) also identified the accretion mechanism as the source of long-lived counterrotating gas discs in the galaxies of the Illustris simulation.

IC 0719 is clearly an example of the gas accretion case, but the situation is less clear for the other galaxies observed here. If we assume that the HI is associated with the thin blue disc and the dust lane in NGC 7710, then NGC 7710 is probably another gas accretion case. It may be a more advanced version of the scenario in IC 0719, where the kinematic signatures of the accretion are more dissipated, warps have disappeared, and the modest lopsidedness of the HI disc is the only interaction signature remaining in the gas. But the interpretation of the stellar velocity field in NGC 7710 is not straightforward; if the stellar velocities at large distances above the midplane indicate the rotation of the thick stellar spheroid, then HI rotates like the thicker stellar component, and it's not clear whether that is also the same sense as the blue dusty disc. The HI certainly does not rotate like the stellar component visible at radii  $< 4''$  (Figure 3). This latter feature might be a sign of yet a third stellar component in NGC 7710, which complicates its interpretation. In PGC 056772 the angular resolution in the cold gas data is not good enough to associate the gas with a specific stellar disc, though an extraplanar tail would again suggest the accretion model. And in both of these cases, detailed decompositions of the stellar populations (like those done for IC 0719 by [Katkov et al](#) and [Pizzella et al](#)) would be helpful for understanding the relative ages and structural properties of the stellar populations.

Within the context of the accretion scenario, a further distinction might be made between accretion from another galaxy (as appears to be the case for IC 0719) and accretion from a misaligned filament of the cosmic web, as advocated by [Algorry et al. \(2014\)](#). If the suggested interaction partner (e.g. IC 0718) cannot be identified, it may be difficult to distinguish between these two types of accretion scenarios on the basis of kinematics alone, but measurements of the gas and stellar metallicities should be useful.

Table 1 summarizes the cold gas contents and proposed formation scenarios for the  $2\sigma$  galaxies in the ATLAS<sup>3D</sup> sample. We note that in the current data, only one of the eleven  $2\sigma$  galaxies shows dramatic cold gas signatures of interaction or accretion within the last few Gyr. However, amongst the  $2\sigma$  galaxies there are actually only four that are known to contain any HI at all. The time-scales discussed above might thus be consistent with the presence of one strongly warped HI disc. Six of the eleven are currently not detected in either HI or CO emission, and we speculate that

they experienced their merger/acquisition processes many Gyr ago and their cold gas has since dissipated.

Of the eleven ATLAS<sup>3D</sup>  $2\sigma$  galaxies, then, five are known to have cold gas; these five, plus an additional one without cold gas detections, have been studied in enough detail to suggest formation mechanisms. Four of them appear to have formed through a process of clearing out their original cold gas and then acquiring new, misaligned gas that settled into retrograde discs. The other two appear to have formed through the aligned merger mechanism. These numbers are, of course, still very small. More work should be done to develop this specific point of comparison between real galaxies and simulations, as it can be a test of the accuracy of the simulations' treatment of baryonic physics.

Beyond the cases that are presently observed to have two counterrotating stellar discs, the ATLAS<sup>3D</sup> sample contains a number of others with counterrotating molecular discs. Notable examples in [Davis et al. \(2013\)](#) include NGC 3032, NGC 3626, and NGC 4694. Still others with counterrotating ionized gas discs are noted in [Davis et al. \(2011\)](#), and they may have molecular gas below the detection limits of our CO survey. The counterrotating molecular disc in NGC 3032 is associated with a small, young counterrotating stellar core which can only be seen with sub-arcsecond stellar kinematic data ([McDermid et al. 2006a,b](#)), so it is clearly a less extreme version of the  $2\sigma$  galaxies, and the others with retrograde atomic and/or molecular discs might be as well. The HI survey in S14 also contains many dramatic examples of disturbed HI kinematics in early-type galaxies, and some of these are likely to be in the early stages of misaligned accretion, so they might develop small or faint counterrotating stellar discs in the future ([Yildiz et al. 2017, 2020](#)).

Thus, the overall importance of the accretion-driven multi-spin phenomenon is likely to be much higher than the  $\sim 4\%$  incidence of the  $2\sigma$  galaxies. This is especially true if one includes the additional 6% of early-types that are prograde versions of the same phenomenon, those with counterrotating gas, and possibly also some of the 7% that have kinematically decoupled cores.

These accretion processes should be expected in spirals as well. NGC 5719 is a prominent and unusual example of a spiral galaxy showing the double-disc stellar counterrotation phenomenon; it has a larger HI content than IC 0719, with more dramatic tails ([Vergani et al. 2007](#)), and it appears to be in an earlier stage of the process based on the stellar age measurements of [Coccatto et al. \(2011\)](#). The inevitable dissipational nature of HI has led authors such as [Coccatto et al](#) to suggest that the accretion-driven multi-spin phenomenon can only work in spirals if the mass of accreted gas overwhelms the pre-existing gas. Small quantities of accreted gas should simply be entrained into the pre-existing disc on short time-scales. Thus one might expect the accretion-driven multi-spin phenomenon to be somewhat easier or more common in early-type galaxies, where the pre-existing cold gas is less abundant. Along those lines, more general studies of gas-stellar kinematic misalignments in simulations have confirmed that significant gas loss is an important prior step to developing misalignment ([Duckworth et al. 2020](#); [Starkenburger et al. 2019](#)). Thus, the early-type galaxies are especially valuable for studying present-day gas accretion rates and their effects on their host galaxies.

## 7 SUMMARY

We present new VLA HI observations of five of the ATLAS<sup>3D</sup>  $2\sigma$  galaxies, plus archival VLA data on another. These data now complete the cold gas observations of the known  $2\sigma$  galaxies in ATLAS<sup>3D</sup> such that all of them have been searched for CO emission and all have interferometric HI data. The detection rate of HI in the  $2\sigma$  galaxies is 4/11, and the detection rate of cold gas (atomic or molecular) is 5/11, similar to that of the ATLAS<sup>3D</sup> sample as a whole (S12).

We find a small amount of HI in PGC 056772, and the emission is not well resolved so we have little information on its dynamical status. In NGC 7710 we find an HI disc that is largely relaxed though somewhat lopsided, with 30% more gas and a larger extent on one side than on the other. There is no sign of extraplanar gas in NGC 7710 at the current resolution.

IC 0719 shows a strongly warped HI distribution. The inner part of the HI disc neatly matches the CO distribution and kinematics, which also matches the rotation of the secondary stellar disc but counterrotates with respect to the bulk of the stars. The outer part of the HI forms an irregular, clumpy disc whose rotation axis is misaligned by about  $60^\circ$  from the symmetry axis of the galaxy (and whose kinematic position angle is  $120^\circ$  from the corresponding position angle of the primary stellar component). A faint HI extension to the south of IC 0719 is probably the bright and close inner portion of a tail connecting IC 0719 to IC 0718, as proposed by Grossi et al. (2009) based on Arecibo data. The full tail is evidently too faint to be detected in the present VLA data. IC 0718 shows asymmetric HI and stellar distributions, and a stellar tidal tail, and it is clearly implicated as the source of the HI in IC 0719. These data therefore confirm a gas accretion model (rather than a binary merger model) for the origin of the counterrotating stellar disc in IC 0719. The gas fell in along orbits closer to retrograde than to prograde, and as it settled into the symmetry plane it formed the secondary stellar disc. Estimates of the radius of the HI warp constrain the time-scale of the accretion event such that the heavy period of gas accretion slowed and/or ceased around 0.5 to 2 Gyr ago, in agreement with the stellar ages.

Six of the eleven  $2\sigma$  galaxies in ATLAS<sup>3D</sup> have now been studied in enough detail to make probable identifications of their formation mechanisms. Two appear to have been formed through the aligned merger process and four through retrograde gas accretion. Clarifying the physical processes that create the  $2\sigma$  galaxies and their cousins is important because large-scale cosmological simulations are now beginning to reproduce them, so that quantitative comparisons can be used to verify the simulations. Detailed examination of the ATLAS<sup>3D</sup> sample also suggests that the misalignment/counterrotation phenomenon is very common, with the  $2\sigma$  galaxies being just the most extreme examples of phenomena that are visible in the stars of nearly 20% of local early-type galaxies. Misaligned or counterrotating gas is even more common. These phenomena are not well preserved in spirals, so the early-type galaxies give useful perspectives for comparisons with simulations.

## ACKNOWLEDGMENTS

Thanks to Tim Davis for discussions about the metallicities of IC 0719 and IC 0718.

The National Radio Astronomy Observatory is a facility of the National Science Foundation operated under cooperative agreement by Associated Universities, Inc.

The Legacy Surveys consist of three individual and complementary projects: the Dark Energy Camera Legacy Survey (DECaLS; NOAO Proposal ID # 2014B-0404; PIs: David Schlegel and Arjun Dey), the Beijing-Arizona Sky Survey (BASS; NOAO Proposal ID # 2015A-0801; PIs: Zhou Xu and Xiaohui Fan), and the Mayall z-band Legacy Survey (MzLS; NOAO Proposal ID # 2016A-0453; PI: Arjun Dey). DECaLS, BASS and MzLS together include data obtained, respectively, at the Blanco telescope, Cerro Tololo Inter-American Observatory, National Optical Astronomy Observatory (NOAO); the Bok telescope, Steward Observatory, University of Arizona; and the Mayall telescope, Kitt Peak National Observatory, NOAO. The Legacy Surveys project is honored to be permitted to conduct astronomical research on Iolkam Du'ag (Kitt Peak), a mountain with particular significance to the Tohono O'odham Nation.

NOAO is operated by the Association of Universities for Research in Astronomy (AURA) under a cooperative agreement with the National Science Foundation.

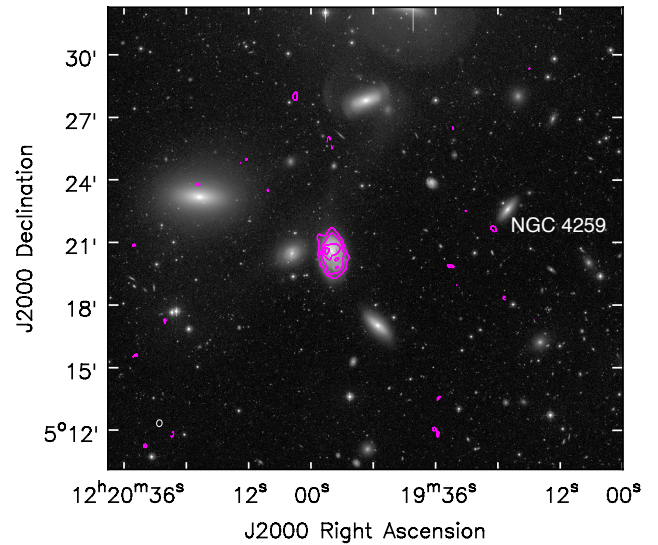
This project used data obtained with the Dark Energy Camera (DECam), which was constructed by the Dark Energy Survey (DES) collaboration. Funding for the DES Projects has been provided by the U.S. Department of Energy, the U.S. National Science Foundation, the Ministry of Science and Education of Spain, the Science and Technology Facilities Council of the United Kingdom, the Higher Education Funding Council for England, the National Center for Supercomputing Applications at the University of Illinois at Urbana-Champaign, the Kavli Institute of Cosmological Physics at the University of Chicago, Center for Cosmology and Astro-Particle Physics at the Ohio State University, the Mitchell Institute for Fundamental Physics and Astronomy at Texas A&M University, Financiadora de Estudos e Projetos, Fundacao Carlos Chagas Filho de Amparo, Financiadora de Estudos e Projetos, Fundacao Carlos Chagas Filho de Amparo a Pesquisa do Estado do Rio de Janeiro, Conselho Nacional de Desenvolvimento Cientifico e Tecnolico and the Ministerio da Ciencia, Tecnologia e Inovacao, the Deutsche Forschungsgemeinschaft and the Collaborating Institutions in the Dark Energy Survey. The Collaborating Institutions are Argonne National Laboratory, the University of California at Santa Cruz, the University of Cambridge, Centro de Investigaciones Energeticas, Medioambientales y Tecnologicas-Madrid, the University of Chicago, University College London, the DES-Brazil Consortium, the University of Edinburgh, the Eidgenossische Technische Hochschule (ETH) Zurich, Fermi National Accelerator Laboratory, the University of Illinois at Urbana-Champaign, the Institut de Ciencies de l'Espai (IEEC/CSIC), the Institut de Fisica d'Altes Energies, Lawrence Berkeley National Laboratory, the Ludwig-Maximilians Universitat Munchen and the associated Excellence Cluster Universe, the University of Michigan, the National Optical Astronomy Observatory, the University of Nottingham, the Ohio State University, the University of Pennsylvania, the University of Portsmouth,

SLAC National Accelerator Laboratory, Stanford University, the University of Sussex, and Texas A&M University.

The Legacy Surveys imaging of the DESI footprint is supported by the Director, Office of Science, Office of High Energy Physics of the U.S. Department of Energy under Contract No. DE-AC02-05CH1123, by the National Energy Research Scientific Computing Center, a DOE Office of Science User Facility under the same contract; and by the U.S. National Science Foundation, Division of Astronomical Sciences under Contract No. AST-0950945 to NOAO.

## REFERENCES

- Alatalo K., et al., 2013, *MNRAS*, **432**, 1796  
 Algorry D. G., Navarro J. F., Abadi M. G., Sales L. V., Steinmetz M., Piontek F., 2014, *MNRAS*, **437**, 3596  
 Bois M., et al., 2011, *MNRAS*, **416**, 1654  
 Bournaud F., Jog C. J., Combes F., 2005, *A&A*, **437**, 69  
 Brown T., Catinella B., Cortese L., Kilborn V., Haynes M. P., Giovanelli R., 2015, *MNRAS*, **452**, 2479  
 Bryant J. J., et al., 2019, *MNRAS*, **483**, 458  
 Cappellari M., et al., 2011, *MNRAS*, **413**, 813  
 Cappellari M., et al., 2013, *MNRAS*, **432**, 1709  
 Catinella B., et al., 2018, *MNRAS*, **476**, 875  
 Coccato L., Morelli L., Corsini E. M., Buson L., Pizzella A., Vergani D., Bertola F., 2011, *MNRAS*, **412**, L113  
 Coccato L., Morelli L., Pizzella A., Corsini E. M., Buson L. M., Dalla Bontà E., 2013, *A&A*, **549**, A3  
 Coccato L., et al., 2015, *A&A*, **581**, A65  
 Condon J. J., Cotton W. D., Greisen E. W., Yin Q. F., Perley R. A., Taylor G. B., Broderick J. J., 1998, *AJ*, **115**, 1693  
 Crocker A. F., Jeong H., Komugi S., Combes F., Bureau M., Young L. M., Yi S., 2009, *MNRAS*, **393**, 1255  
 Crocker A. F., Bureau M., Young L. M., Combes F., 2011, *MNRAS*, **410**, 1197  
 Davis T. A., et al., 2011, *MNRAS*, **417**, 882  
 Davis T. A., et al., 2013, *MNRAS*, **429**, 534  
 Di Teodoro E. M., Fraternali F., 2015, *MNRAS*, **451**, 3021  
 Duc P.-A., et al., 2015, *MNRAS*, **446**, 120  
 Duckworth C., Tojeiro R., Kraljic K., 2020, *MNRAS*, **492**, 1869  
 Ene I., et al., 2018, *MNRAS*, **479**, 2810  
 Grossi M., et al., 2009, *A&A*, **498**, 407  
 Habas R., et al., 2019, *MNRAS*, **p. 2656**  
 Haynes M. P., et al., 2018, *ApJ*, **861**, 49  
 Jin Y., et al., 2016, *MNRAS*, **463**, 913  
 Johnston E. J., Merrifield M. R., Aragón-Salamanca A., Cappellari M., 2013, *MNRAS*, **428**, 1296  
 Katkov I., Chilingarian I., Sil'chenko O., Zasov A., Afanasiev V., 2011, *Baltic Astronomy*, **20**, 453  
 Katkov I. Y., Sil'chenko O. K., Afanasiev V. L., 2013, *ApJ*, **769**, 105  
 Katkov I. Y., Sil'chenko O. K., Chilingarian I. V., Uklein R. I., Egorov O. V., 2016, *MNRAS*, **461**, 2068  
 Krajinović D., et al., 2011, *MNRAS*, **414**, 2923  
 Leroy A. K., et al., 2019, *ApJS*, **244**, 24  
 McDermid R. M., et al., 2006a, *New Astron. Rev.*, **49**, 521  
 McDermid R. M., et al., 2006b, *MNRAS*, **373**, 906  
 Mitzkus M., Cappellari M., Walcher C. J., 2017, *MNRAS*, **464**, 4789  
 Nedelchev B., et al., 2019, *A&A*, **623**, A87  
 Pizzella A., Morelli L., Coccato L., Corsini E. M., Dalla Bontà E., Fabricius M., Saglia R. P., 2018, *A&A*, **616**, A22  
 Serra P., et al., 2012, *MNRAS*, **422**, 1835  
 Serra P., et al., 2014, *MNRAS*, **444**, 3388  
 Starkenburg T. K., Sales L. V., Genel S., Manzano-King C., Canalizo G., Hernquist L., 2019, *ApJ*, **878**, 143



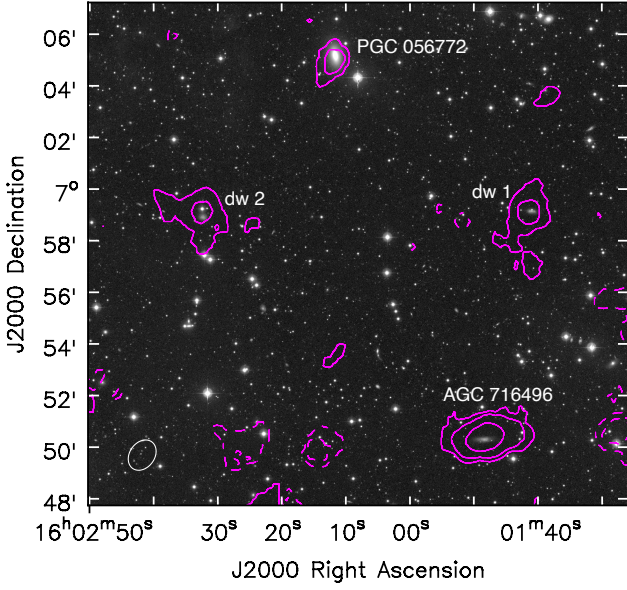
**Figure A1.** HI column density in the field of NGC 4273. The grayscale is the MATLAS *g* image (Duc et al. 2015). Contours are  $(-1, 1, 3, 5, 7) \times 5.4 \times 10^{20} \text{ cm}^{-2}$ , which is the nominal column density limit in these data. The resolution of the HI data is shown as a small white ellipse in the lower left corner.

- Taylor P., Federrath C., Kobayashi C., 2018, *MNRAS*, **479**, 141  
 Tremonti C. A., et al., 2004, *ApJ*, **613**, 898  
 Vergani D., Pizzella A., Corsini E. M., van Driel W., Buson L. M., Dettmar R. J., Bertola F., 2007, *A&A*, **463**, 883  
 Wang J., Koribalski B. S., Serra P., van der Hulst T., Roychowdhury S., Kamphuis P., Chengalur J. N., 2016, *MNRAS*, **460**, 2143  
 Yıldız M. K., Serra P., Peletier R. F., Oosterloo T. A., Duc P.-A., 2017, *MNRAS*, **464**, 329  
 Yıldız M. K., Peletier R. F., Duc P. A., Serra P., 2020, *A&A*, **636**, A8  
 Young L. M., et al., 2011, *MNRAS*, **414**, 940  
 Young L. M., Serra P., Krajinović D., Duc P.-A., 2018, *MNRAS*, **477**, 2741  
 van de Voort F., Davis T. A., Kereš D., Quataert E., Faucher-Giguère C.-A., Hopkins P. F., 2015, *MNRAS*, **451**, 3269

## APPENDIX A: COLLATERAL DETECTIONS

We find no other significant HI emission in the field of NGC 7710 or NGC 0448. In the field of NGC 4259 there is bright HI emission in the spiral NGC 4273 (Figure A1); we find  $16.8 \pm 0.8 \text{ Jy km s}^{-1}$  from NGC 4273, which is rather asymmetric both in HI and in optical emission, but kinematically mostly regular. Several other galaxies are also within the VLA field of view, but no other HI emission is detected and there are no optical indications that NGC 4259 has suffered a recent interaction.

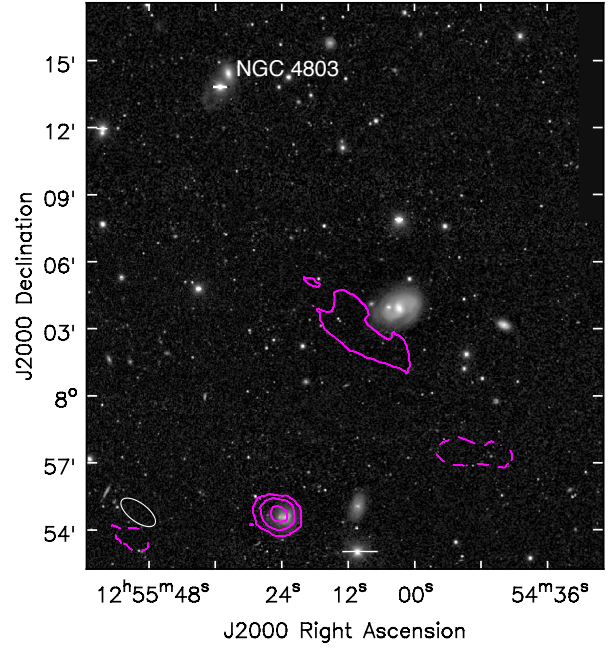
Our HI observations of PGC 056772 also show emission from three nearby dwarf galaxies (Figure A2). The source listed in the ALFALFA catalog as AGC 716496 (Haynes et al. 2018) has a total flux of  $1.20 \pm 0.1 \text{ Jy km s}^{-1}$  and is found in velocities from  $1700$  to  $1834 \text{ km s}^{-1}$ . It is  $16.2'$  from PGC 056772, near the half-power point of the primary beam. The source we have called “dwarf 1” has only  $0.32 \pm 0.06 \text{ Jy km s}^{-1}$  in HI, so it is too faint to be listed in



**Figure A2.** HI in the field of PGC 056772. The greyscale is the MATLAS *g* image; contours are  $(-3, -1, 1, 3, 10) \times 1.36 \times 10^{19} \text{ cm}^{-2}$ , which is the nominal column density limit towards the VLA pointing centre (PGC 056772). The resolution of the HI data is shown as a white ellipse in the lower left corner.

the ALFALFA catalog. It is found in velocities  $1480 - 1566 \text{ km s}^{-1}$ . The source we are calling “dwarf 2” has  $0.19 \pm 0.04 \text{ Jy km s}^{-1}$  and is also too faint for the ALFALFA catalog, and is found in velocities  $2693 - 2791 \text{ km s}^{-1}$ . Finally, in the field of NGC 4803 we find  $1.3 \pm 0.2 \text{ Jy km s}^{-1}$  of HI emission from UGC 08045, which is  $19.6'$  south of NGC 4803 (Figure A3).

This paper has been typeset from a  $\text{\TeX}/\text{\LaTeX}$  file prepared by the author.



**Figure A3.** HI in the field of NGC 4803. The greyscale is the DESI Legacy Survey *g* image; contours are  $(-2, 2, 5, 10) \times 1.4 \times 10^{19} \text{ cm}^{-2}$ , which is the nominal column density limit towards the VLA pointing centre (NGC 4803). An extended contour near the spiral NGC 4795, near the centre of this figure, may represent marginally significant HI emission but as it is near the half-power point of the primary beam, the quality of the imaging is not good. The resolution of the HI data is shown as a white ellipse in the lower left corner.