



HAL
open science

Oncogenic Properties of the EBV ZEBRA Protein

Diego Germini, Fatimata Bintou Sall, Anna Shmakova, Joëlle Wiels, Svetlana Dokudovskaya, Emmanuel Drouet, Yegor Vassetzky

► **To cite this version:**

Diego Germini, Fatimata Bintou Sall, Anna Shmakova, Joëlle Wiels, Svetlana Dokudovskaya, et al..
Oncogenic Properties of the EBV ZEBRA Protein. *Cancers*, 2020, 12 (6), pp.1479. 10.3390/cancers12061479 . hal-02988636

HAL Id: hal-02988636

<https://hal.science/hal-02988636>

Submitted on 6 Nov 2020

HAL is a multi-disciplinary open access archive for the deposit and dissemination of scientific research documents, whether they are published or not. The documents may come from teaching and research institutions in France or abroad, or from public or private research centers.

L'archive ouverte pluridisciplinaire **HAL**, est destinée au dépôt et à la diffusion de documents scientifiques de niveau recherche, publiés ou non, émanant des établissements d'enseignement et de recherche français ou étrangers, des laboratoires publics ou privés.

Review

Oncogenic Properties of the EBV ZEBRA Protein

Diego Germini ¹, Fatimata Bintou Sall ^{1,2,†}, Anna Shmakova ^{1,†}, Joëlle Wiels ¹,
Svetlana Dokudovskaya ¹, Emmanuel Drouet ³ and Yegor Vassetzky ^{1,4,*}

¹ CNRS UMR9018, Université Paris-Saclay, Institut Gustave Roussy, 94805 Villejuif, France; germinidiego@gmail.com (D.G.); fabisall3007@gmail.com (F.B.S.); anyashm@gmail.com (A.S.); wiels@igr.fr (J.W.); svetlana.dokudovskaya@gustaveroussy.fr (S.D.)

² Laboratory of Hematology, Aristide Le Dantec Hospital, Cheikh Anta Diop University, Dakar 12900, Senegal

³ CIBB-IBS UMR 5075 Université Grenoble Alpes, 38044 Grenoble, France; Emmanuel.Drouet@ibs.fr

⁴ Koltzov Institute of Developmental Biology, 117334 Moscow, Russia

* Correspondence: yegor.vassetzky@cnrs.fr

† These authors contributed equally to this work as co-second authors.

Received: 19 May 2020; Accepted: 4 June 2020; Published: 5 June 2020

Abstract: Epstein Barr Virus (EBV) is one of the most common human herpesviruses. After primary infection, it can persist in the host throughout their lifetime in a latent form, from which it can reactivate following specific stimuli. EBV reactivation is triggered by transcriptional transactivator proteins ZEBRA (also known as Z, EB-1, Zta or BZLF1) and RTA (also known as BRLF1). Here we discuss the structural and functional features of ZEBRA, its role in oncogenesis and its possible implication as a prognostic or diagnostic marker. Modulation of host gene expression by ZEBRA can deregulate the immune surveillance, allow the immune escape, and favor tumor progression. It also interacts with host proteins, thereby modifying their functions. ZEBRA is released into the bloodstream by infected cells and can potentially penetrate any cell through its cell-penetrating domain; therefore, it can also change the fate of non-infected cells. The features of ZEBRA described in this review outline its importance in EBV-related malignancies.

Keywords: EBV; ZEBRA; Zta; BZLF1; lytic cycle; viral-host interaction; oncogenesis; transcription; transactivation

1. Introduction

Epstein-Barr Virus (EBV) or Human Herpesvirus 4, is a γ -herpesvirus that predominantly infects B-lymphocytes, and, to a lesser extent, epithelial, T and Natural Killers (NK) cells [1]. Discovered in 1964 as the first human oncogenic virus, EBV is one of the most widespread human viruses, affecting nearly 90% of the world's population [2,3]. After an initial infection, it persists as an episome in B cells for the rest of the host's life. In the vast majority of cases, EBV infection is asymptomatic, but in some individuals, it causes infectious mononucleosis. Furthermore, EBV is associated with various types of malignancies, including Burkitt lymphoma (BL), Hodgkin lymphomas (HL), nasopharyngeal and gastric carcinoma, and post-transplant lymphoproliferative disorder (PTLD). Indeed, EBV was classified as a class I carcinogen by World Health Organization (WHO) [4] and the evidence for EBV-associated oncogenesis have been recently reviewed and updated [5]. The pathogenic and oncogenic effects of EBV are mediated by several EBV proteins and non-coding RNAs. Here we will describe the role of one of EBV immediate early (IE) proteins, ZEBRA, in the viral life cycle and in regulation of the host genome and the consequences thereof.

1.1. EBV Life Cycle

EBV life cycle involves a latency phase and a lytic cycle, each associated with specific gene transcription and translation programs. These phases are summarized in Figure 1.

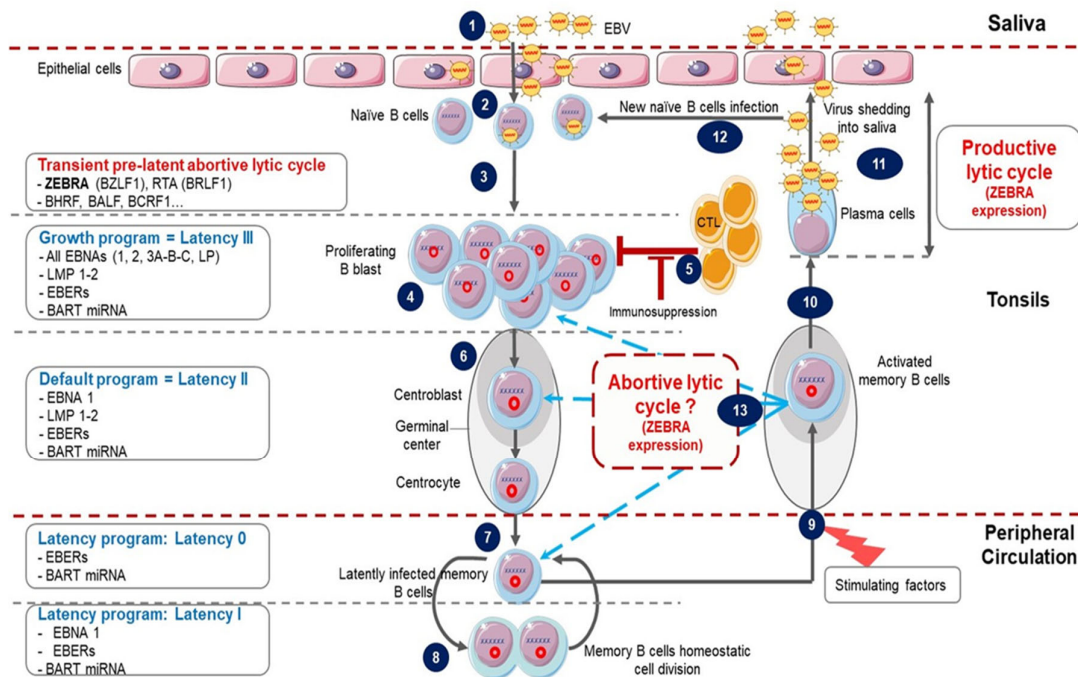


Figure 1. Epstein-Barr Virus (EBV) life cycle. (1) Infection occurs after the contact with an infected saliva. (2) After initial infection of oropharyngeal epithelial cells, the virus passes into the underlying lymphoid tissue where it infects naive B cells. (3) This immediately triggers the transient pre-latent lytic cycle with expression of ZEBRA and other lytic genes involved in resistance to apoptosis and evasion from the immune system. (4) Infected naive B cells become proliferating B blasts through the growth program (latency III) where all latency proteins are expressed. (5) Cytotoxic T lymphocytes (CTL) trigger a strong immune response (which is impaired during immunodeficiency) to eliminate EBV-infected B cells. (6) Proliferating B blasts migrate into the germinal center (GC) and activate the default transcription program (latency II) where latency protein expression is restricted to EBNA1, LMP1 and LMP2. They differentiate into centroblasts and then centrocytes. (7) Centrocytes leave the GC and differentiate into memory B cells circulating in peripheral blood. These cells have turned off the expression of all viral proteins (latency 0). (8) Occasionally, circulating EBV-positive memory B cells express EBNA1 during homeostatic cell division to ensure viral genome replication and segregation into daughter cells. (9) Following stimulation, latently infected memory B cells can be recruited into GC. (10) Activated EBV-positive memory B cells can differentiate into plasma cells, reactivate the virus and undergo productive lytic cycle that leads to (11) viral shedding into saliva and (12) new naive B cells infection. (13) Activated EBV-positive memory B cells reintegrate the pool of memory B cells. It is not clear whether in vivo stimulated EBV-positive memory B cells which have not differentiated into plasma cells undergo an abortive lytic cycle (ZEBRA and early gene expression without viral production) before reintegrating the pool of memory cells. It is also not clear whether these cells successively re-express different latency programs in the GC in vivo before reintegrating the pool of memory cells.

1.1.1. Latency

Following contamination via saliva, primary lytic infection occurs in the epithelial cells of the oropharynx [6] through virus binding to $\alpha\beta$ integrins and the ephrin A2 receptor [7,8]. EBV also infects naive B cells by interaction with complement receptors 1 and 2 (CR1/CD35 and CR2/CD21) as well as major histocompatibility complex (MHC) class II as a co-receptor [9,10]; this leads to latency

establishment and lifelong EBV persistence. Latency can be divided into three successive programs [6,11,12].

The first, called the “growth program” or latency III is characterized by the expression of nine latency proteins (six nuclear proteins: Epstein Barr Nuclear Antigen (EBNA) 1, 2, 3A, 3B, 3C and LP, and three membrane proteins: Latent Membran Protein (LMP) 1, 2A and 2B); two Epstein Barr virus-encoded small non-coding RNAs (EBER1 and 2), BHRF1 miRNA and BamHI-A fragment rightward transcript (BART) transcripts [13,14]. EBV-infected B cells are activated and differentiate into proliferating B blasts. This phase triggers a powerful immune T cell cytotoxic response; however, it is usually insufficient to eliminate all infected B cells [11].

Remaining B blasts migrate to the tonsil germinal center (GC) where the second program, called the “default program” or latency II, occurs. Infected cells turn off the expression of all latency proteins except EBNA1 and LMP1 and 2. These proteins are thought to promote B blasts differentiation into centroblasts and then centrocytes [15].

The last program is named the “latency program” or latency 0. Centrocytes differentiate into resting memory B cells which leave the GC and circulate in peripheral blood without any latency protein expression [16]. Finally, during latency I, cell division of infected memory B cells occurs, the weakly immunogenic EBNA1 is expressed to ensure latent viral genome replication and its persistence within daughter cells [17].

1.1.2. Lytic Cycle

Occasionally, following stimulation, infected memory B cells may be recruited into GC and then either reintegrate the memory cell reservoir or differentiate into plasma cells and reactivate the EBV lytic cycle. In healthy carriers, lytic reactivation is observed only in plasma cells [18]. It is characterized by sequential expression of lytic cycle proteins resulting in production of new infectious viruses and lysis of infected cells [6,12].

Studies of the defective EBV genome helped to identify a transcription factor encoded by the EBV *BZLF1* gene as the key actor in switching from latency to lytic phase [19]. This protein, named ZEBRA, Zta, Z, BZLF1 or EB-1, when expressed in latently infected cells, activates the entire EBV lytic cycle cascade [20]. ZEBRA also activates transcription of the second IE gene *BRLF1* coding for the RTA transcription factor. ZEBRA and RTA function synergistically to activate the early genes involved in metabolism and viral DNA replication and the late genes encoding for EBV structural proteins [3].

Thus, EBV has two tightly regulated latent and lytic phases characterized by specific gene expression patterns. However, there is evidence that both latent and lytic gene expression may be simultaneously present within the same cell. *BZLF1* expression in freshly infected B cells starts as early as 1.5 h post-infection and lasts for several days. In these cells, transcription of the late gene *BLLF1* was not detected suggesting a partial activation of the lytic cycle [21]. This stage, characterized by IE and early gene expression without production of new virions or cell lysis, is commonly referred to as an abortive lytic cycle [22,23] or transient pre-latent abortive lytic cycle when it occurs immediately after infection [24]. Only a minority of EBV-infected B lymphocytes from healthy carriers completes the lytic cycle after stimulation, the vast majority generating an abortive lytic cycle [25]. However, how this abortive lytic cycle takes place in vivo remains unclear.

1.2. EBV-Related Oncogenesis

Despite its asymptomatic persistence in most of the adult population worldwide, in a minority of individuals, EBV is strongly associated with several non-malignant diseases such as infectious mononucleosis, chronic active infection, hemophagocytic lymphohistiocytosis, oral hairy leukoplakia and autoimmune diseases [1,26]. The vast majority of EBV-associated diseases are however represented by cancers occurring both in immunocompetent hosts (Table I) and in patients with primary or acquired immunodeficiency (Table II). They are mostly B cell malignancies (BL, HL, PTL, diffuse large B cell lymphoma (DLBCL)), nasopharyngeal carcinoma (NPC) or, less frequently, T cell malignancies, gastric, breast and hepatocellular carcinomas, leiomyosarcoma and follicular

dendritic sarcoma [1,27]. Many mechanisms of EBV related oncogenesis have been proposed and a possible role for different EBV components has been described (reviewed in [6,26,28–31]). Nevertheless, even if great progress has been made in understanding the EBV links to cancers, many aspects of EBV-related oncogenesis are still unknown and represent a major challenge in cancer research.

Table I. EBV-associated malignancies in immunocompetent hosts and corresponding EBV association frequency and latent gene expression pattern.

Diseases	% EBV Association	Latency Type ^A
B-cells malignancies		
Burkitt Lymphoma		
• <i>Endemic BL</i>	>95%	I
• <i>Sporadic BL</i>	20–80%	I
Classical Hodgkin Lymphoma	20–90%	II
Diffuse Large B Cells Lymphoma (DLBCL)		
• <i>EBV+ DLBCL Not Otherwise Specified (NOS)</i>	100%	III
• <i>Pyothorax associated Lymphoma (PAL)</i>	100%	III
T/NK cells malignancies		
Extranodal NK/T-cell lymphoma, nasal type	>95%	I/II
Virus-associated hemophagocytic syndrome T-cell lymphoma	100%	I/II
Angioimmunoblastic T-cell Lymphoma (AITL) ^b	>80%	I/II
Hepatosplenic T-cell lymphoma		
Non-hepatosplenic $\gamma\delta$ T-cell lymphomas		
Enteropathy-type T-cell Lymphoma		
Epithelial malignancies		
Undifferentiated Nasopharyngeal carcinoma	100%	II
Gastric carcinoma	10%	II
Lymphoepithelioma-like carcinoma (salivary gland, tonsils, larynx, thymus, lungs, skin, uterus cervix, bladder, stomach)		
Breast carcinoma		
Hepatocellular carcinoma		
Mesenchymal malignancies		
Follicular dendritic cell sarcoma		

^a Latency type: Latency I = EBNA1, EBEB 1 and 2, BART miRNA; Latency II = EBNA1, LMP1, 2A and 2B, EBEB1 and 2, BART miRNA; Latency III = All EBNA, LMPs, EBEBs and BART miRNA. ^b In AITL there is no EBV in tumor cells but EBV is nearly always present in tumor B cells, suggesting an indirect role of EBV [1,5]. Blank spaces indicate the missing data.

Table II: EBV-associated malignancies in immunodeficient hosts and corresponding EBV association frequency and latent gene expression pattern.

Diseases	% EBV Association	Latency Type ^A
Acquired Immunodeficiency		
AIDS-associated B cell lymphomas		
• <i>BL</i>	30–50%	I
• <i>Hodgkin Lymphoma</i>	100%	II
• <i>DLBCL</i>		
○ Immunoblastic	70–100%	II/III
○ Non Immunoblastic	10–30%	II/III
○ Central Nervous System lymphoma (CNS)	>95%	II/III
○ Primary Effusion Lymphoma (PEL)	70–90%	I
○ Plasmablastic lymphoma	60–75%	I
Post-transplantation lymphoproliferative disorder	>90%	III
Lymphomatoid granulomatosis		
Methotrexate-associated B cell lymphoma		
Leiomyosarcoma		
Congenital immunodeficiency		
Severe combined immunodeficiency-associated B cell lymphoma		
Wiskott-Aldrich syndrome-associated B cell lymphomas		
X-linked lymphoproliferative disorder-associated B cell lymphomas		

^a Latency type: Latency I = EBNA1, EBEB 1 and 2, BART miRNA; Latency II = EBNA1, LMP1, 2A and 2B, EBEB1 and 2, BART miRNA; Latency III = All EBNAs, LMPs, EBEBs and BART miRNA. Blank spaces indicate the missing data.

EBV genome contains approximately a hundred genes coding for latency and lytic cycle proteins and many small non-coding RNAs expressed to ensure the normal life cycle of the virus. Expression of some proteins and RNAs have been correlated with development of EBV-associated malignancies. The oncogenic properties of each EBV latent protein has been extensively explored (reviewed in [1,1,6]); however the involvement of EBV lytic cycle in oncogenesis is no less important than the contribution of individual proteins. Even though the lytic cycle was long assumed to inhibit tumorigenesis due to final lysis of the infected cells, an increasing amount of data support its contribution to oncogenesis mainly at its initiation or through the abortive lytic cycle and/or autocrine or paracrine effects of EBV IE proteins [26,32,33]. ZEBRA could thus be seen as an important player in EBV-driven oncogenesis, in collaboration with other viral and cellular proteins since it induces the lytic cycle. Additionally, ZEBRA can exit EBV-infected cells either by secretion or after cell lysis and potentially penetrate other cells through its cell penetration domain (CPD) [34]. In EBV-infected cells, ZEBRA alone can switch EBV from latency to lytic cycle; therefore, it may transduce reactivation signals between infected cells. ZEBRA can also reactivate transcriptionally silent host genes due to its affinity to methylated promoters [35] and thus affect key cellular pathways implicated in oncogenesis, control of cell cycle, proliferation and apoptosis.

We will next discuss the structural and biological properties of ZEBRA to provide insights into its potential oncogenic activity and clinical applications.

2. ZEBRA Structure and Functions

2.1. ZEBRA Domain Organisation

ZEBRA is encoded by the EBV *BZLF1* gene, transcribed to a mRNA composed of three exons and translated into a 27 kDa protein containing 245 amino acids (Figure 2A).

ZEBRA belongs to the family of basic leucine zipper (bZIP) transcription factors. Its bZIP domain (residues 175–221) consists of the central basic DNA binding domain (DBD, residues 178–194) and the C-terminal coiled-coil dimerization domain (DD, residues 195–221) [36,37]. ZEBRA homodimer grasps DNA via its two long helices, with the DBD contacting the major groove and DD forming a coiled coil. A185 and S186 of ZEBRA directly interact with methylated cytosines in DNA [35].

Unlike eukaryotic bZIP factors, ZEBRA lacks a classical heptad repeat of the leucine zipper motif [38], but its bZIP domain is additionally stabilized by the C-terminal tail, which makes a turn and runs antiparallel to the coiled coil [37]. Residues 167–177 are considered as the “regulatory domain” and their phosphorylation can modulate ZEBRA activity [36,39].

In the N-terminal transactivation domain (TAD, residues 1–166), the residues 52–64 and 77–86 are rather unstructured and amorphous [40,41] (Figure 2A). The basic region within TAD (residues 157–161) is considered to be important for recognition and high affinity binding to methylated DNA [42].

ZEBRA can exit and enter cells and nuclei due to its CPD situated within the bZIP domain between residues 170 and 220 [34]. This CPD was successfully used to transduce human cells in vitro [34,43]. CPDs are short sequences with a composition that enables them (and the adjacent protein) to penetrate cells either via endocytotic entry followed by endosomal escape, or by directly penetrating the cell membrane. Their composition is usually either cationic (with a high number of positively charged residues) or amphipathic (with hydrophilic and hydrophobic regions of residues) [44]. ZEBRA CPD is rich in positively charged residues (seven lysines and seven arginines), mostly within DBD (basic region) (Figure S1 A in blue), whereas hydrophobic amino acids (one valine, five alanines, seven leucines) of CPD are mostly within DD (leucine zipper) (Figure S1 B in red) [34]. In another protein possessing the CPD, human immunodeficiency virus (HIV)-1 Tat, the CPD region is also multifunctional [45]. Presumably, the cationic part serves for interaction with the negatively charged phosphate groups of membrane phospholipids as well as on DNA, while hydrophobic residues interact with the hydrophobic part of the phospholipid membrane and participate in ZEBRA’s dimerization (Figure S1C).

When entering cells, ZEBRA is targeted to the nucleus and has a pan-nuclear localization, with the exception of the nucleolus [46]. Substitution of several amino acids within DBD can alter subnuclear localization from pan-nuclear to focal [47]. The bipartite nuclear localization sequence of ZEBRA is located within DBD (residues 178–194), but a small region within TAD (residues 157–162) is also important for the nuclear import [48].

To summarize, ZEBRA structure accounts for its important functions because the chromatin-binding capacity via its DBD and DD and its ability to act as a transcriptional activator thanks to its TAD allows it to regulate expression of both viral and host genes [34,49]. ZEBRA also possesses a CPD that allows it to penetrate into uninfected cells [34].

2.2. Posttranslational Modifications of ZEBRA

ZEBRA is prone to posttranslational modifications. It is constitutively phosphorylated in vivo at multiple sites mostly clustered within TAD and the regulatory domain [50]. Phosphorylation of S173 and to a lesser extent S167 within the regulatory domain is important for DNA binding [39,51]. Constitutive phosphorylation may also explain why ZEBRA’s apparent mass on gel electrophoresis is 35 kDa [38] instead of the predicted 27 kDa [52].

ZEBRA also has a sustained N-terminal M1 acetylation [53]. K12 of ZEBRA is a substrate of partial and reversible SUMOylation [54,55] that affects neither protein stability nor its subcellular localization but significantly decreases ZEBRA transactivation activity by inhibiting its binding to CBP (CREB-binding protein) (see below) [55,56]. SUMOylation is diminished in DD-deficient ZEBRA [55]; EBV-encoded protein kinase also reduces ZEBRA’s SUMOylation, and this effect is not related to S209 phosphorylation, conventional site of ZEBRA modification by this kinase [57].

Thus, ZEBRA is extensively and mostly constitutively modified after translation, presumably by certain viral and host enzymes. The regulation of posttranslational modifications, their role and possible regulatory potential for ZEBRA activity and the EBV status remain to be elucidated.

2.3. ZEBRA Functioning in Host Cells

ZEBRA functions in host cells rely on its capacity to bind specific DNA motifs and interact with other proteins. DBD of ZEBRA binds to heptamer DNA motifs, named ZEBRA response elements (ZREs). ZREs are present within both viral and host gene promoters. At present, two types of ZREs are identified: an activator protein 1 (AP-1)-like recognition elements (non-CpG-containing) [38] and CpG-containing recognition elements [58] (Figure 2B). Binding to CpG-ZREs depends on DNA methylation [58,59]. During latency, EBV genome becomes heavily methylated to suppress its transcription, however, ZEBRA binds methylated promoters with high affinity and activates gene transcription to initiate lytic cascade [42]. ZEBRA's selectivity and preference for methylated DNA is a key to hijacking host epigenetic silencing, which is important for EBV latency reversal, oncogenesis, control of cell cycle, proliferation and apoptosis [35]. Ten-eleven translocation methylcytosine dioxygenase that reduces ZEBRA binding to methylated promoters [35] can be considered as ZEBRA host restriction factor.

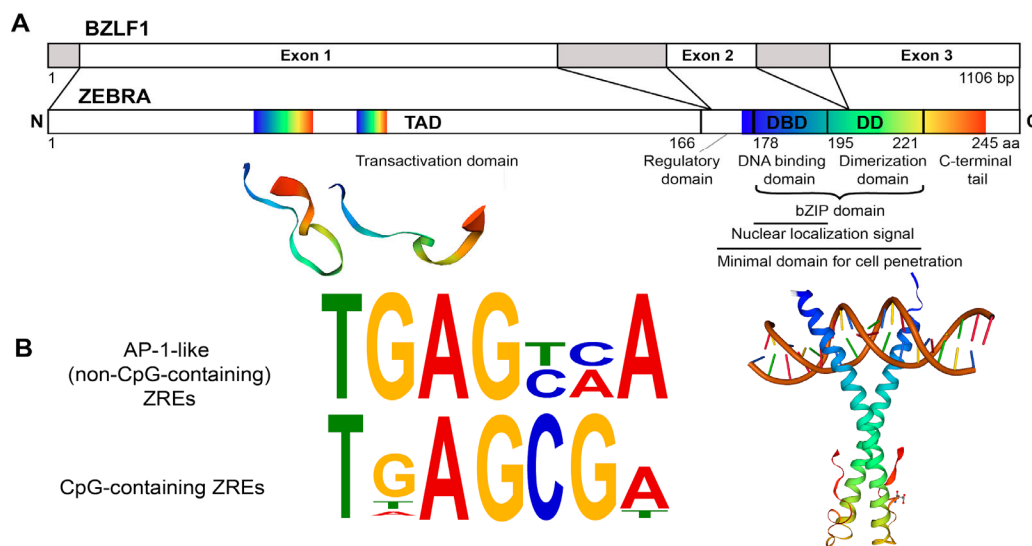


Figure 2. Structure of the ZEBRA protein. **(A)** ZEBRA structure. ZEBRA is encoded by the *BZLF1* gene containing three exons. ZEBRA protein has an N-terminal transactivation domain (TAD, residues 1–166), a regulatory domain (residues 167–177), a bZIP domain, which consists of a central basic DNA binding domain (DBD, residues 178–194) and a C-terminal coiled-coil dimerization domain (DD, residues 195–221). The minimal domain for cell penetration is located between residues 170–220. Three available partial 3D structures were imported from the SWISS-MODEL Repository [60] (accession number P03206) and are based on crystal structure data published by [37,40,41]. They are shown below the respective primary sequence. Rainbow color code is used to map approximate residue position concordance between primary and tertiary (or quaternary) structure. **(B)** ZEBRA-response elements (ZREs). Sequences of ZEBRA DNA binding sites (ZREs) of two types: AP-1-like (non-CpG-containing) ZREs and CpG-containing ZREs are depicted as sequence logos, adapted from [49,58].

2.3.1. Transcriptional Regulation

ZEBRA can both activate and downregulate transcription of viral and host genes. Transcriptomic analysis of B cells with ectopic expression of ZEBRA revealed 2263 deregulated genes (74% upregulated, 26% downregulated) [47]. Upregulated genes include those involved in cell adhesion, morphogenesis, projection and response to hormones, while downregulated genes are involved in the immune response, induction of apoptosis and lymphocyte activation [47]. In total, 12% of these genes (207 upregulated and 71 downregulated) are directly regulated by ZEBRA which binds to their promoters, as identified by chromatin immunoprecipitation followed by sequencing (ChIP-seq).

During activation of lytic cycle, ZEBRA binds promoters of early lytic viral genes and host genes and, via its TAD, interacts with basal transcription factors IID [61] and IIA [62] (TFIID and TFIIA); this leads to sequential recruitment of other basal transcription factors and RNA polymerase II (Figure 3A). In addition, ZEBRA binds the transcriptional coactivator and histone acetyltransferase CBP (CREB binding protein) which increases ZEBRA transactivation properties [63]. Direct binding to the Transducer of Regulated CREB coactivator enhances ZEBRA-mediated transcription [64].

Transcriptional repression by ZEBRA is related to its specific binding to cellular transcription factors mainly via its bZIP or TAD. In most cases, such interaction mutually impedes their function as transcription factors and results in repression of target genes for both ZEBRA and the associated transcription factors [65,66].

Direct binding to p53 [67,68], p65 [69] and c/EBP family of transcription factors [66] inhibits their transcriptional activity. ZEBRA directly binds B cell specific transcription factors Pax5 and Oct2 via bZIP domain; this inhibits ZEBRA activity, however, the reciprocal inhibition was proven only for Pax5 [70,71]. Unidirectional inactivation of the family of nuclear factor of activated T cells (NFAT) transcription factors, involved in calcium signal transduction, by direct interaction with ZEBRA was also reported [72]. Presumably, the same mechanism related to ZEBRA inhibitory binding to host transcriptional factor is involved in the class II transactivator (CIITA) repression, however, it involves the TAD and a transcriptional factor inhibited by ZEBRA was not identified [65]. ZEBRA also binds to interferon regulatory factor 7 (IRF-7) through its TAD, decreasing the transcription of interferon (*IFN*) $\alpha 4$, *IFN* β , and antigen presentation 2 (*Tap-2*) [73]. Finally, SUMOylation of ZEBRA appears to be important for transcriptional repression since it promotes recruitment of histone deacetylases to responsive promoters [55] (Figure 3B).

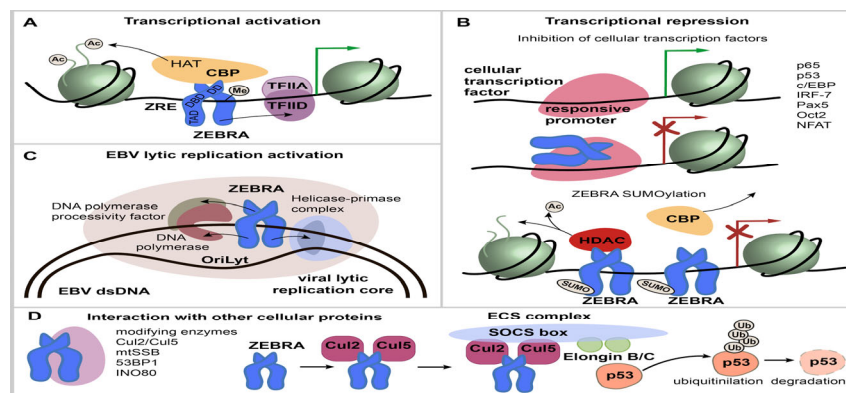


Figure 3. ZEBRA functions. (A) transcriptional activation by ZEBRA. ZEBRA is shown as a homodimer, relative positions of transactivation domain (TAD), DNA binding domain (DBD) and dimerization domain (DD) are indicated. ZEBRA binds to specific ZEBRA response elements (ZREs) within promoters of viral and host genes with a preference to methylated-CpG DNA. ZEBRA binding leads to sequential recruitment of basal transcription factors and RNA polymerase II. In addition, ZEBRA binds transcriptional coactivator CREB binding protein (CBP). (B) transcriptional repression via ZEBRA binding to cellular transcription factors and by SUMOylated ZEBRA. Transcription factors that interact directly with ZEBRA are listed. The interaction occurs mainly via ZEBRA's bZIP domain and mutually impedes the function of both ZEBRA and bound transcription factor and results in repression of targeted genes. SUMOylated ZEBRA has a low transactivation activity related to decreased CBP binding and the ability to recruit histone deacetylases (HDAC) to responsive promoters. (C) activation of EBV lytic replication. ZEBRA recognizes the EBV lytic origin (oriLyt), serves as the origin binding protein and recruits viral core replication enzymes to initiate lytic replication of EBV. (D) interaction with cellular proteins not directly involved in transcriptional regulation. ZEBRA interaction partners are listed. ZEBRA interaction with Cul2/Cul5 induces the formation of multimolecular ECS complex (Elongin B/C-Cul2/5-SOCS-box protein) with the ubiquitin ligase activity that targets p53 for proteasomal degradation.

2.3.2. Binding to the Replication Origin in EBV Lytic Replication

During the lytic cycle, ZEBRA binds EBV lytic origin (oriLyt) and recruits viral core replication enzymes to initiate replication [74,75] (Figure 3C). In contrast to latent replication, EBV lytic replication relies on virally encoded replication enzymes, whose expression is induced during the lytic cycle: helicase (*BBLF4*), primase (*BSLF1*), primase-associated factor (*BBLF2/3*), DNA polymerase (*BALF5*), DNA polymerase processivity factor (*BMRF1*), and single-stranded DNA binding protein (*BALF2*) [39]. This function is mediated by the TAD (residues 11–25), which interacts with the viral helicase, primase and DNA polymerase [76,77]; and by the bZIP domain which interacts with the DNA polymerase processivity factor [39]. S173 phosphorylation within the regulatory domain is essential for ZEBRA action as a replication factor [39].

2.3.3. Interaction with other Cellular Proteins

ZEBRA also interacts with proteins other than transcription factors (Figure 3D). For example, ZEBRA interaction with Cul2 and Cul5 induces the formation of the multimolecular ECS complex (Elongin B/C-Cul2/5-SOCS-box protein) that ubiquitinates p53 for proteasomal degradation [78].

Other ZEBRA cellular partners include mitochondrial single-stranded DNA binding protein (mtSSB) [79], nuclear protein 53BP1, a component of the ATM DNA damage response pathway [80], INO80 chromatin remodeler ATPase [81]; these interactions are important for EBV lytic cycle reactivation and replication.

In summary, ZEBRA binds specific DNA motifs and/or interacts with other proteins, either recruiting them to DNA binding sites or altering their activity. However, ZEBRA direct interactions with many other cellular proteins [72] are much less studied as compared to interaction with chromatin-binding proteins.

3. EBV-Related Diseases and Oncogenic Properties of ZEBRA

3.1. ZEBRA Implication in EBV-Related Malignancies

Increasing evidence supports that *BZLF1* gene expression could contribute, directly or indirectly, to EBV-induced tumorigenesis. ZEBRA protein and mRNA were detected in more than 80% of biopsies from 44 PTLD patients [82]. Lymphoblastoid cell lines (LCLs) derived with wild-type (WT) EBV are more prone to induce a lymphoproliferative disorder when injected into Severe Combined Immunodeficient (SCID) mice than LCLs derived with *BZLF1*-KO EBV [83]. Interestingly, the same results were observed after acyclovir treatment, which inhibits viral DNA replication but not *BZLF1* expression. These data suggest that ZEBRA, and not the production of infectious viral particles, is required for tumor formation in SCID mice [83]. These results were also confirmed in a humanized mouse model where both human fetal CD34+ hematopoietic stem cells and human thymus/liver tissues were transplanted. Indeed, in this model, the development of CD20+ DLBCL was more frequent in mice infected with WT EBV as compared to *BZLF1*-KO EBV [84]. Soluble ZEBRA can be detected in the serum of PTLD patients at concentrations up to 4 µg/mL and it is significantly higher in PTLD patients compared to transplanted patients without PTLD [85]. ZEBRA is also present in serum samples from immunocompromised humanized mice developing lymphoma, with a correlation with tumor mass [33]. The presence of ZEBRA protein or its mRNA was also reported in tumor cells or in tumor tissue biopsies in other types of EBV-induced lymphomas, such as HL, DLBCL and BL [86,87,88,89].

In some EBV-associated lymphoma, there is also evidence for indirect action of ZEBRA. *BHRF1* and *BALF1*, two EBV early lytic genes whose expression is induced by ZEBRA, are found highly expressed in DLBCL [87]. The products of these two genes are the viral Bcl-2 homologs required for B cells immortalization [90]. Moreover, EBV cofactors for endemic BL (*Plasmodium falciparum*, *Euphorbia tirucalli* and potentially Aflatoxin B1) are all able to reactivate EBV in vitro and in vivo [91,92,93].

High ZEBRA expression at mRNA or protein level was also reported in NPC biopsies [94,95] and in breast carcinoma [96]. High anti-ZEBRA IgG titers in sera correlate with poorer clinical outcome in patients [97,98]. The presence of anti-ZEBRA antibody has a high diagnostic accuracy for early-stage NPC [99]. More generally, EBV replication and expression of some early lytic cycle genes were detected in EBV-induced epithelial malignancies including NPC [100,101]. In addition, EBV-infected individuals with elevated titers of IgA antibodies against EBV lytic viral capsid antigen (VCA) have a higher risk of NPC [102]. A subset of EBV-associated gastric carcinoma and some NPC cells also express early lytic genes such as *BHRF1*, *BALF1*, *BARF1* and *BGLF5* [103,104,105,106]. A specific EBV strain isolated from NPC and gastric carcinoma has an enhanced capacity for spontaneous lytic replication and therefore ZEBRA expression [107,108].

3.2. ZEBRA Oncogenic Properties

In this section, we will discuss the mechanism by which ZEBRA contributes to acquisition of cancer hallmarks by cells (Figure 4).

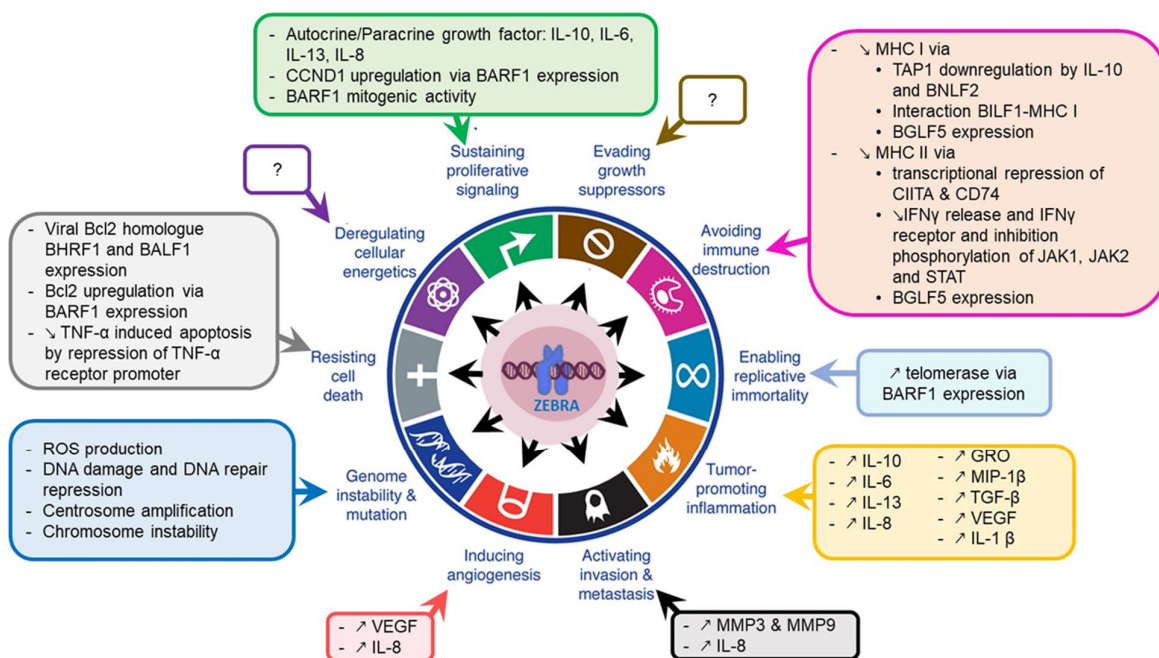


Figure 4. ZEBRA oncogenic properties. ZEBRA directly, or through its target genes, contributes to the acquisition of cancer hallmarks by cells including sustained proliferative signaling, evading or altering the immune response, resisting cell death, enabling replicative immortality, inducing angiogenesis and activating tumor invasion and metastasis. A part of these effects is mediated by genome instability and tumor-promoting inflammation that induce an environment favorable to cancer development and progression. Adapted from [109].

3.2.1. Genome Instability

Genome instability (GI), one of the major factors of oncogenic transformation, may result in random mutations and chromosomal rearrangements which can confer selective advantage to certain cells through oncogene activation, downregulation or loss of tumor suppressor genes [109]. GI can occur through different mechanisms: (1) DNA damage production with incapacity to detect damaged DNA; (2) DNA damage with defects in DNA repair; (3) defects in preventing the action of potential mutagens [110,111,112].

Although ZEBRA can interact with proteins implicated in DNA damage response (e.g., 53BP1, a component of the ATM pathway) [80], not much data exist in support of a direct relationship between GI and ZEBRA. However, some events such as oxidative stress that lead to GI occur

following EBV reactivation and can thus be related to ZEBRA expression [113,114]. Oxidative stress was also described in purified B cells and epithelial cells at an early stage of EBV infection when ZEBRA is expressed [115]. Furthermore, several early lytic proteins induced by ZEBRA may participate in GI. For example, BMRF1 induces centrosome amplification and chromosome instability in B cells in vitro and in vivo in a mouse model [116]. BGLF4 directly or indirectly induces DNA damage by retarding cellular S-phase progression or inducing premature chromosome condensation associated with a high risk of chromosomal breaks at common fragile sites [117–119]. EBV DNase was also found to induce GI in human epithelial cells through DNA damage induction and DNA repair repression [120]. BALF3 has also been linked to DNA strand breaks induction, resulting in copy number aberrations accumulation in NPC cells [121]. Recurrent chemical reactivation of EBV in NPC cells appears to induce GI [122]. EBV reactivation in LCLs induces global nuclear architecture remodeling that could enhance formation of chromosomal translocations [123].

3.2.2. Tumor-Promoting Inflammation

Inflammation favors tumor development and progression. This could be related to high levels of cytokines, chemokines and growth factors observed upon EBV reactivation, including interleukin (IL)-8, IL-10, IL-6, IL-13, Transforming Growth Factor-beta (TGF- β) [24]. ZEBRA can also directly transactivate *IL-8* promoter through its two ZREs, resulting in *IL-8* upregulation in NPC cells [124]. ZEBRA expression in NPC is also associated with upregulation of growth related oncogene and macrophage inflammatory protein-1 β [124].

ZEBRA can also bind directly to the human IL-10 (*hIL-10*) minimal promoter to induce transcription of *hIL-10* during the early phase of the lytic cycle in EBV-infected B cells [125]. IL-10 is upregulated in breast cancer and NPC [125–127]. A viral analog of the hIL-10 (vIL-10) encoded by the *BCRF1* gene can be produced during the lytic cycle [128].

Other interleukin genes contain ZREs in their promoters [24] and IL-6 and IL-13 production can be directly activated by ZEBRA in infected cells [129,130,131]. ZEBRA also increases expression of the genes coding for TGF- β [132] and the Vascular Endothelial Growth Factor (*VEGF*) [133] in B cells undergoing lytic cycle. Finally, ZEBRA can also induce inflammatory cytokines through expression of the early lytic gene *BLLF3*, which can activate NF- κ B and induce secretion of pro-inflammatory cytokines (tumor necrosis factor (TNF)- α , IL-1 β , IL-6, IL-8 and IL-10) in human monocyte-derived macrophages [134,135].

3.2.3. Immune Evasion

ZEBRA-induced viral and human IL-10 production protects infected cells from immune recognition and elimination. Indeed, IL-10 interferes with antiviral cytokines and NK/NKT cell-mediated lysis [128]. Moreover, IL-10 downregulates transporter proteins associated with TAP1 and consequently induces a reduction of surface MHC I molecules on infected B lymphocytes [136]. IL-10 also inhibits IFN γ release which plays a central role in resistance of the host to infection [137].

ZEBRA also promotes immune evasion by disrupting cell signaling pathways activated by IFN γ such as the JAK-STAT pathway. It decreases IFN γ receptor expression and inhibits phosphorylation of Jak1, Jak2 and STAT1 molecules consequently downregulating their downstream target genes, including *MHC II* [138]. ZEBRA can also directly thwart surface expression of MHC II molecules by transcriptional repression of *CIITA*, a main regulator of human leukocyte antigen (HLA) class II genes [139] and *CD74*, the invariant chain of MHC II that facilitates its transport to the cell surface [140].

The immunomodulatory effects can be induced by three EBV lytic cycle proteins called immunoevasins (*BILF1*, *BNLF2a* and *BGLF5*). They interfere with host antigen processing pathways and consequently allow EBV-infected cells to escape from immune system action. *BILF1* reduces MHC I molecules on the cell surface by physical interaction and inhibits CD8+ T cell recognition of endogenous target antigens [141,142]. *BNLF2a*, a TAP inhibitor, impairs peptide loading onto HLA class I molecules thus blocking antigen presentation to cytotoxic T cells [128,143]. *BGLF5*, the EBV alkaline exonuclease, downregulates HLA class I and II impairing antigen recognition by immune cells [144].

It is noteworthy that the described immunomodulatory effects induced by ZEBRA are associated not only with cancer progression but also with development of autoimmune diseases, e.g., systemic lupus erythematosus [145].

3.2.4. Cell Proliferation and Growth

ZEBRA-induced IL-10 enhances the viability of resting B lymphocytes and supports growth and differentiation of EBV-infected cells [125,137]. Both IL-6 and IL-13 promote proliferation of EBV-infected cells and long term growth of LCLs [129,131]. In agreement with this, growth of both LCLs and EBV-induced B cells after primary infection can be inhibited by treatment with an anti-IL-13 antibody [131]. Treatment with an anti-IL-6 antibody led to remission of B-lymphoproliferative disorder in eight out of 12 patients studied [146].

ZEBRA-induced IL-8 may be used by some tumor cells as an autocrine growth factor [147]. The early lytic gene *BARF1* also possesses an autocrine mitogenic activity and is an in vivo growth factor [148]. *BARF1* is associated with Cyclin D1 overexpression in EBV-associated gastric cancer [149].

3.2.5. Resistance to Cell Death

The most common anti-apoptotic effect following ZEBRA expression is through activation of the two viral Bcl-2 homologs *BHRF1* and *BALF1*. Another EBV early lytic gene, *BARF1*, can activate the cellular anti-apoptotic protein Bcl-2 in fibroblasts [150]. *BARF1* expression leads to an increased Bcl-2 and Bax ratio and decreased PARP cleavage in gastric carcinoma cells [151].

BZLF1-KO LCLs showed a significant increase in the percentage of dead cells, reversible after *BZLF1* expression, whereas no difference was observed between *BZLF1*-KO and WT LCLs, thus suggesting a direct ZEBRA-mediated anti-apoptotic effect [83]. ZEBRA also downregulates the expression of tumor necrosis factor receptor 1 (TNFR1) by direct binding to its promoter [66,152]. This prevents TNF- α activation and consequently TNF- α induced apoptosis.

3.2.6. Other Oncogenic Effects

ZEBRA can positively affect tumor progression by inducing the expression of *VEGF* and *IL-8*, both associated with angiogenesis, tumor development, metastasis and resistance to chemotherapy [133,153,154]. Moreover, expression of ZEBRA by tumor cells from NPC patients correlates with advanced lymph node metastasis, and this effect has been related to direct transactivation of the Matrix Metalloproteinase (*MMP9*) promoter by ZEBRA [155]. In addition to *MMP9*, ZEBRA can also induce *MMP3* upregulation in epithelial cells by binding to the ZRE in the *MMP3* promoter. Both *MMP3* and *MMP9* act in synergy to promote tumor invasion and metastasis [156]. The oncogenic early lytic gene *BARF1* enables replicative immortality through induced activation of telomerase in primary epithelial cells [157].

ZEBRA, through its bZIP domain, can also directly interact with cancer-associated transcription factors: p53, RAR, CBP, and C/EBP α [158–161]. These interactions have a functional importance for EBV life cycle, but a direct demonstration for their role in human disease is still lacking even if these ZEBRA targets are often deregulated in cancers [162,163].

Interestingly, ZEBRA has a functional homology with another viral protein: the HIV-1 transactivator protein Tat. Like ZEBRA, Tat can be secreted into the bloodstream by HIV-1 infected T cells and, through its cell penetration domain, can enter uninfected cells, including B cells. Tat protein is potentially oncogenic in B cells since it induces a relocation in the nuclear space of the *MYC* locus close to the *IGH* gene in circulating B-cells [164] and an overexpression of the *AICDA* gene coding for the Activation-induced Deaminase (AID) [165]. These two events promote formation of BL-specific translocations and could at least partly account for the high frequency of BL in HIV-infected patients. Tat also promotes mitochondrial production of reactive oxygen species (ROS) and thus DNA damage and genome instability in B cells [166]. Interestingly, ZEBRA and Tat can be present in a cell at the same time in the blood of HIV-infected individuals and possibly interact. This hypothetical interaction could have an antagonistic or synergistic effect on their oncogenic activity.

4. ZEBRA in Diagnosis and Therapy

Many articles report the presence of EBV lytic cycle in tumor cells from HL [167], NPC [97,168–172], in transplant patients [173], and in breast tumors [96]. Clinical studies on EBV lytic proteins including ZEBRA in patients with PTLD or HIV-associated non-Hodgkin lymphoma NHL are mostly related to the role of these proteins in neoplastic tissues [82,87,174,175]. Both high EBV copy number and strong *BZLF1* mRNA expression in the peripheral blood lymphocytes (PBL) of patients are sensitive markers of EBV-related PTLD [176]. ZEBRA was expressed in 5% of whole peripheral blood mononuclear cells from a patient with a lymphoproliferative disease who underwent non-myeloablative allogeneic stem cell transplantation [177]. Moreover, the number of EBV-infected cells in the peripheral blood increases after immunosuppression: on average, 1.6 latently-infected cells per 10^4 B lymphocytes [178] vs. 12.5 per 10^6 B cells in persistently infected healthy individuals [179].

Soluble ZEBRA concentrations of >100 ng/mL detected by an enzyme-linked immunosorbent assay (ELISA) in serum of patients after solid organ or hematopoietic stem cell transplant were predictive of PTLD in 80% of the cases within three weeks [85]. Interestingly, the circulating ZEBRA could be detected during periods in which the viral DNA was not detectable by qPCR. For example, in two patients, ZEBRA was detected at 2 and 6 weeks, respectively, prior to the PTLD episode and before an increase in qPCR signals. Thus, ZEBRA testing in serum could help identify patients likely to develop severe outcomes during the critical posttransplant period and serve as a potential diagnostic marker for EBV follow-up in immunocompromised patients.

The relevance of EBV lytic cycle to human pathology prompted researchers to target certain lytic proteins with therapeutic aims. Adenovirus vectors expressing *BZLF1* or *BRLF1* were used to treat EBV-positive tumors [180]. On the other hand, Food and Drug Administration (FDA)-approved leflunomide, which targets EBV replication, was shown to inhibit the earliest step of lytic EBV reactivation (*BZLF1* and *BMRF1* expression) and prevented the development of EBV-induced lymphomas in both a humanized mouse model and a xenograft model [181]. More recently, duvelisib (a molecule inhibiting the PI3K/AKT signaling pathway, and B cell receptor (BCR) signaling) was shown to reduce cell growth and expression of EBV lytic genes *BZLF1* and *gp350/220* in EBV-positive cell lines [182]. The histone deacetylase (HDAC) and DNA methyltransferase inhibitors are also possible avenues to suppress the ZEBRA expression and the entire lytic cascade [183].

Immunotherapeutic approaches, such as vaccination against IE proteins or IE-specific therapeutic monoclonal antibodies also represent a promising approach. A recent study demonstrated that vaccination of hu-PBL-SCID mice against ZEBRA could enhance specific cellular immunity and significantly delay the development of the lethal EBV-related lymphoproliferative disease [184].

5. Conclusions and Remaining Questions

The role of ZEBRA in EBV infection, lytic cycle and oncogenesis has been extensively studied, but numerous questions remain:

Abortive lytic cycle: ZEBRA can affect host cells by inducing the abortive lytic cycle in B cells (production of early EBV lytic proteins without cell lysis); however the fate of these cells remains unclear: they may reintegrate the memory cell reservoir after the abortive lytic cycle, return to latency 0 profile or restart the latency cycle as for the primary infection (Figure 1). Another remaining question is whether some stimuli are more prone than others to specifically induce the abortive lytic cycle. *In vitro*, EBV reactivation stimuli such as stress inducing agents, ROS, anticancer drugs or hypoxia [13,185] directly reactivate the virus in EBV-positive cell lines. Thus, *in vivo*, the abortive lytic cycle may occur after stimulation by these stress-induced agents, instead of an immunological stimulation which mainly leads to a productive lytic cycle in plasma cells.

A role of ZEBRA in oncogenesis: ZEBRA upregulates the transcription of host cell genes coding for cytokines involved in inflammation, angiogenesis, metastasis and cell proliferation. ZEBRA downregulates the expression of MHC II class genes thus promoting the immune evasion and genes related to apoptosis thus inducing cell death resistance. ZEBRA also interacts with cancer-related cellular proteins altering their activity. The net cellular effect of these interactions is quite complex

and depends on protein localization, concentration, nuclear architecture, nature of promoters involved. Indeed, for p53 signaling pathway, both inhibitory and stimulatory effects of ZEBRA have been described [67,162,163]. This activity of ZEBRA needs additional studies.

A role of ZEBRA in non-infected cells: ZEBRA is released into the bloodstream by infected cells and, due to its CPD, can potentially penetrate into uninfected cells and alter their transcriptional program either directly or via interaction with cellular proteins. These potentially oncogenic effects of ZEBRA in non-infected cells are worth investigating and could link EBV to other as yet unidentified pathologies, independently of EBV presence in cells, thus potentially expanding the spectrum of EBV-associated diseases.

ZEBRA interaction with other proteins: the cellular interactome of ZEBRA needs further investigation to explain the functional significance of ZEBRA interaction network [72]. ZEBRA is extensively modified in vivo [50], however, the enzymes (viral and cellular) and signaling pathways involved in its post-translational modifications are largely unknown, as well as the effect of these modifications on ZEBRA activity. A splicing variant of ZEBRA was also described but its functional role is poorly understood [186]. Some EBV strains as well as sequence variations in the *BZLF1* gene may have an enhanced ability to reactivate the lytic cycle [107,108,187]. A better characterization of the variations in the structure of the ZEBRA protein produced by these different virus strains could be relevant.

The relevance of the lytic cycle and the role of ZEBRA in lymphomagenesis is a new paradigm pertaining to the prevention and treatment strategies for EBV-associated cancers. It is therefore important to investigate the lytic EBV infection in immunocompromised patients, such as organ transplant recipients, who are highly prone to developing EBV-associated malignancies. More efforts should be invested to examine the potential of drugs that target EBV lytic proteins, including ZEBRA.

ZEBRA as a biomarker (mRNA, anti-ZEBRA IgG and soluble ZEBRA concentration in blood) has mainly been studied in PTLD. It would be important to test whether circulating ZEBRA could serve as a biomarker for other EBV-associated diseases, especially those with the lytic cycle involvement, e.g., endemic BL.

A better understanding of the mechanisms underlying ZEBRA activity in cells will shed light on its role in oncogenesis and open perspectives in early diagnosis and treatment of EBV-related cancers.

Supplementary Materials: The following are available online at www.mdpi.com/2072-6694/12/6/1479/s1, Figure S1: ZEBRA cell penetration domain

Acknowledgments: The work in the laboratory was supported by INCa, ANRS, INSERM (ENVIBURKITT), the Presidium of RAS and the state program of fundamental scientific research of IDB RAS.

Conflicts of Interest: The authors declare no conflict of interest

Abbreviations

AID	activation-induced deaminase
AIDS	acute immunodeficiency syndrome
AITL	angioimmunoblastic T cell lymphoma
AP-1	activator protein 1
ATM	ataxia telangiectasia mutated
BALF	BamHI-A fragment leftward open reading frame
BARF	BamHI-A fragment rightward open reading frame
BART	BamHI-A fragment rightward transcript
BGLF	BamHI-G fragment leftward open reading frame
BHRF	BamHI-H fragment rightward open reading frame
BILF	BamHI-I fragment leftward open reading frame
BL	Burkitt's lymphoma
BLLF	BamHI-L fragment leftward open reading frame
BMRF	BamHI-M fragment rightward open reading frame

BNLF	BamHI-N fragment leftward open reading frame
bZIP	basic leucine zipper
BRLF	BamHI-R fragment leftward open reading frame
BZLF	BamHI-Z fragment leftward open reading frame
CNS	central nervous system
CPB	CREB binding protein
CPD	cell penetration domain
CR	complement receptors
DBD	DNA binding domain of ZEBRA
DD	dimerization domain of ZEBRA
DLBCL	diffuse large B cell lymphoma
EBER	EBV-encoded small RNA
eBL	endemic Burkitt's lymphoma
EBNA	EBV nuclear antigen
EBV	Epstein-Barr Virus
ECS	Elongin B/C-Cul2/5-SOCS-box protein
GC	germinal center
GI	genome instability
HDAC	histone deacetylases
hIL	human interleukin
HIV	human immunodeficiency virus
HL	Hodgkin lymphoma
HLA	human leukocyte antigen
IARC	international agency for research on cancer
IE	immediate early
IFN	interferon
IGH	immunoglobulin heavy chain
IL	interleukin
LCL	lymphoblastoid cell lines
LMP	latent membrane protein
MHC	major histocompatibility complex
MMP	matrix metalloproteinase
MYC	myelocytoma
NF- κ B	nuclear factor kappa B
NFAT	nuclear factor activated T cells
NHL	non-hodgkin lymphoma
NK	natural killers
NLS	nuclear localization sequence
NOS	DLBCL not otherwise specified
NPC	nasopharyngeal carcinoma
PAL	pyothorax associated lymphoma
PBL	peripheral blood lymphocytes
PEL	primary effusion lymphoma
PTLD	post-transplant lymphoproliferative disorders
ROS	reactive oxygen species
SCID	severe combined immunodeficiency
SUMO-1	small ubiquitin-related modifier 1
TAD	transactivation domain of ZEBRA
TAP	transporter associated with antigen processing
TGF- β	tumor growth factor β
TNF	tumor necrosis factor
TNFR	tumor necrosis factor receptor

VEGF	vascular endothelial growth factor
vIL	viral interleukin
WT	wild type
ZRE	ZEBRA response elements

References

- Kutok, J.L.; Wang, F. Spectrum of Epstein-Barr Virus–Associated Diseases. *Annu. Rev. Pathol. Mech. Dis.* **2006**, *1*, 375–404, doi:10.1146/annurev.pathol.1.110304.100209.
- Cohen, J.I. Epstein-Barr virus infection. *N. Engl. J. Med.* **2000**, *343*, 481–492, doi:10.1056/NEJM200008173430707.
- Tsurumi, T.; Fujita, M.; Kudoh, A. Latent and lytic Epstein-Barr virus replication strategies. *Rev. Med. Virol.* **2005**, *15*, 3–15, doi:10.1002/rmv.441.
- IARC. Proceedings of the IARC Working Group on the Evaluation of Carcinogenic Risks to Humans. Epstein-Barr Virus and Kaposi’s Sarcoma Herpesvirus/Human Herpesvirus 8. Lyon, France, 17–24 June 1997. *IARC Monogr. Eval. Carcinog. Risks Hum.* **1997**, *70*, 1–492.
- International Agency for Research on Cancer, Weltgesundheitsorganisation (Eds) *IARC Monographs on the Evaluation of Carcinogenic Risks to Humans, Volume 100 B, Biological Agents: This Publication Represents The Views And Expert Opinions of an IARC Working Group on the Evaluation of Carcinogenic Risks to Humans, Which Met in Lyon, 24 February–03 March 2009*; IARC: Lyon, France, 2012; ISBN 978-92-832-1319-2.
- Saha, A.; Robertson, E.S. Mechanisms of B-Cell Oncogenesis Induced by Epstein-Barr Virus. *J. Virol.* **2019**, *93*, doi:10.1128/JVI.00238-19.
- Hutt-Fletcher, L.M. The Long and Complicated Relationship between Epstein-Barr Virus and Epithelial Cells. *J. Virol.* **2017**, *91*, doi:10.1128/JVI.01677-16.
- Zhang, H.; Li, Y.; Wang, H.-B.; Zhang, A.; Chen, M.-L.; Fang, Z.-X.; Dong, X.-D.; Li, S.-B.; Du, Y.; Xiong, D.; et al. Author Correction: Ephrin receptor A2 is an epithelial cell receptor for Epstein-Barr virus entry. *Nat. Microbiol.* **2018**, *3*, 1075, doi:10.1038/s41564-018-0155-1.
- Hutt-Fletcher, L.M. Epstein-Barr Virus Entry. *J. Virol.* **2007**, *81*, 7825–7832, doi:10.1128/JVI.00445-07.
- Haan, K.M.; Kwok, W.W.; Longnecker, R.; Speck, P. Epstein-Barr Virus Entry Utilizing HLA-DP or HLA-DQ as a Coreceptor. *J. Virol.* **2000**, *74*, 2451–2454, doi:10.1128/JVI.74.5.2451-2454.2000.
- Nijland, M.; Kersten, M.J.; Pals, S.; Bemelman, F.; ten Berge, I. Epstein-Barr Virus–Positive Posttransplant Lymphoproliferative Disease After Solid Organ Transplantation: Pathogenesis, Clinical Manifestations, Diagnosis, and Management. *Transplant. Direct* **2016**, *2*, e48, doi:10.1097/TXD.0000000000000557.
- Thorley-Lawson, D.A.; Gross, A. Persistence of the Epstein-Barr virus and the origins of associated lymphomas. *N. Engl. J. Med.* **2004**, *350*, 1328–1337, doi:10.1056/NEJMra032015.
- Thorley-Lawson, D.A. EBV Persistence—Introducing the Virus. *Curr. Top. Microbiol. Immunol.* **2015**, *390*, 151–209, doi:10.1007/978-3-319-22822-8_8.
- Xing, L.; Kieff, E. Epstein-Barr Virus BHRF1 Micro- and Stable RNAs during Latency III and after Induction of Replication. *J. Virol.* **2007**, *81*, 9967–9975, doi:10.1128/JVI.02244-06.
- Babcock, G.J.; Hochberg, D.; Thorley-Lawson, A.D. The expression pattern of Epstein-Barr virus latent genes in vivo is dependent upon the differentiation stage of the infected B cell. *Immunity* **2000**, *13*, 497–506, doi:10.1016/s1074-7613(00)00049-2.
- Babcock, G.J.; Decker, L.L.; Volk, M.; Thorley-Lawson, D.A. EBV persistence in memory B cells in vivo. *Immunity* **1998**, *9*, 395–404, doi:10.1016/s1074-7613(00)80622-6.
- Hochberg, D.; Middeldorp, J.M.; Catalina, M.; Sullivan, J.L.; Luzuriaga, K.; Thorley-Lawson, D.A. Demonstration of the Burkitt’s lymphoma Epstein-Barr virus phenotype in dividing latently infected memory cells in vivo. *Proc. Natl. Acad. Sci. USA* **2004**, *101*, 239–244, doi:10.1073/pnas.2237267100.
- Laichalk, L.L.; Thorley-Lawson, D.A. Terminal differentiation into plasma cells initiates the replicative cycle of Epstein-Barr virus in vivo. *J. Virol.* **2005**, *79*, 1296–1307, doi:10.1128/JVI.79.2.1296-1307.2005.
- Countryman, J.; Miller, G. Activation of expression of latent Epstein-Barr herpesvirus after gene transfer with a small cloned subfragment of heterogeneous viral DNA. *Proc. Natl. Acad. Sci. USA* **1985**, *82*, 4085–4089, doi:10.1073/pnas.82.12.4085.
- Grogan, E.; Jenson, H.; Countryman, J.; Heston, L.; Gradoville, L.; Miller, G. Transfection of a rearranged viral DNA fragment, WZhet, stably converts latent Epstein-Barr viral infection to productive infection in lymphoid cells. *Proc. Natl. Acad. Sci. USA* **1987**, *84*, 1332–1336, doi:10.1073/pnas.84.5.1332.

21. Wen, W.; Iwakiri, D.; Yamamoto, K.; Maruo, S.; Kanda, T.; Takada, K. Epstein-Barr virus BZLF1 gene, a switch from latency to lytic infection, is expressed as an immediate-early gene after primary infection of B lymphocytes. *J. Virol.* **2007**, *81*, 1037–1042, doi:10.1128/JVI.01416-06.
22. Chiu, Y.-F.; Sugden, B. Epstein-Barr Virus: The Path from Latent to Productive Infection. *Annu. Rev. Virol.* **2016**, *3*, 359–372, doi:10.1146/annurev-virology-110615-042358.
23. Ersing, I.; Nobre, L.; Wang, L.W.; Soday, L.; Ma, Y.; Paulo, J.A.; Narita, Y.; Ashbaugh, C.W.; Jiang, C.; Grayson, N.E.; et al. A Temporal Proteomic Map of Epstein-Barr Virus Lytic Replication in B Cells. *Cell Rep.* **2017**, *19*, 1479–1493, doi:10.1016/j.celrep.2017.04.062.
24. Morales-Sánchez, A.; Fuentes-Panana, E. The Immunomodulatory Capacity of an Epstein-Barr Virus Abortive Lytic Cycle: Potential Contribution to Viral Tumorigenesis. *Cancers* **2018**, *10*, 98, doi:10.3390/cancers10040098.
25. Al Tabaa, Y.; Tuaille, E.; Bollore, K.; Foulongne, V.; Petitjean, G.; Seigneurin, J.-M.; Duperray, C.; Desgranges, C.; Vendrell, J.-P. Functional Epstein-Barr virus reservoir in plasma cells derived from infected peripheral blood memory B cells. *Blood* **2009**, *113*, 604–611, doi:10.1182/blood-2008-02-136903.
26. Münz, C. Latency and Lytic Replication in Epstein-Barr Virus-Associated Oncogenesis. *Nat. Rev. Microbiol.* **2019**, *17*, doi:10.1038/s41579-019-0249-7.
27. Shannon-Lowe, C.; Rickinson, A.B.; Bell, A.I. Epstein-Barr virus-associated lymphomas. *Philos. Trans. R. Soc. Lond. B. Biol. Sci.* **2017**, *372*, doi:10.1098/rstb.2016.0271.
28. Yin, H.; Qu, J.; Peng, Q.; Gan, R. Molecular mechanisms of EBV-driven cell cycle progression and oncogenesis. *Med. Microbiol. Immunol. Berl.* **2019**, *208*, 573–583, doi:10.1007/s00430-018-0570-1.
29. Raab-Traub, N. Novel mechanisms of EBV-induced oncogenesis. *Curr. Opin. Virol.* **2012**, *2*, 453–458, doi:10.1016/j.coviro.2012.07.001.
30. Jha, H.C.; Pei, Y.; Robertson, E.S. Epstein-Barr Virus: Diseases Linked to Infection and Transformation. *Front. Microbiol.* **2016**, *7*, doi:10.3389/fmicb.2016.01602.
31. El-Sharkawy, A.; Al Zaidan, L.; Malki, A. Epstein-Barr Virus-Associated Malignancies: Roles of Viral Oncoproteins in Carcinogenesis. *Front. Oncol.* **2018**, *8*, 265, doi:10.3389/fonc.2018.00265.
- Zhou, Y.; Attygalle, A.D.; Chuang, S.-S.; Diss, T.; Ye, H.; Liu, H.; Hamoudi, R.A.; Munson, P.; Bacon, C.M.; Dogan, A.; et al. Angioimmunoblastic T-cell lymphoma: Histological progression associates with EBV and HHV6B viral load. *Br. J. Haematol.* **2007**, *138*, 44–53, doi:10.1111/j.1365-2141.2007.06620.x.
- Drouet, E. The Role of the Epstein-Barr Virus Lytic Cycle in Tumor Progression: Consequences in Diagnosis and Therapy. In *Human Herpesvirus Infection—Biological Features, Transmission, Symptoms, Diagnosis and Treatment*; Luis Thomasini, R., Ed.; IntechOpen: London, UK, 2020; ISBN 978-1-83881-158-7.
33. Ma, S.-D.; Yu, X.; Mertz, J.E.; Gumperz, J.E.; Reinheim, E.; Zhou, Y.; Tang, W.; Burlingham, W.J.; Gulley, M.L.; Kenney, S.C. An Epstein-Barr Virus (EBV) Mutant with Enhanced BZLF1 Expression Causes Lymphomas with Abortive Lytic EBV Infection in a Humanized Mouse Model. *J. Virol.* **2012**, *86*, 7976–7987, doi:10.1128/JVI.00770-12.
34. Rothe, R.; Liguori, L.; Villegas-Mendez, A.; Marques, B.; Grunwald, D.; Drouet, E.; Lenormand, J.L. Characterization of the cell-penetrating properties of the Epstein-Barr virus ZEBRA trans-activator. *J. Biol. Chem.* **2010**, *285*, 20224–20233, doi:10.1074/jbc.M110.101550.
35. Hong, S.; Wang, D.; Horton, J.R.; Zhang, X.; Speck, S.H.; Blumenthal, R.M.; Cheng, X. Methyl-dependent and spatial-specific DNA recognition by the orthologous transcription factors human AP-1 and Epstein-Barr virus Zta. *Nucleic Acids Res.* **2017**, *45*, 2503–2515, doi:10.1093/nar/gkx057.
36. Heston, L.; El-Guindy, A.; Countryman, J.; Dela Cruz, C.; Delecluse, H.-J.; Miller, G. Amino Acids in the Basic Domain of Epstein-Barr Virus ZEBRA Protein Play Distinct Roles in DNA Binding, Activation of Early Lytic Gene Expression, and Promotion of Viral DNA Replication. *J. Virol.* **2006**, *80*, 9115–9133, doi:10.1128/jvi.00909-06.
37. Petosa, C.; Morand, P.; Baudin, F.; Moulin, M.; Artero, J.B.; Müller, C.W. Structural basis of lytic cycle activation by the Epstein-Barr virus ZEBRA protein. *Mol. Cell* **2006**, *21*, 565–572, doi:10.1016/j.molcel.2006.01.006.
38. Chang, Y.N.; Dong, D.L.; Hayward, G.S.; Hayward, S.D. The Epstein-Barr virus Zta transactivator: A member of the bZIP family with unique DNA-binding specificity and a dimerization domain that lacks the characteristic heptad leucine zipper motif. *J. Virol.* **1990**, *64*, 3358–3369, doi:10.1128/jvi.64.7.3358-3369.1990.

39. El-Guindy, A.S.; Heston, L.; Delecluse, H.-J.; Miller, G. Phosphoacceptor Site S173 in the Regulatory Domain of Epstein-Barr Virus ZEBRA Protein Is Required for Lytic DNA Replication but Not for Activation of Viral Early Genes. *J. Virol.* **2007**, *81*, 3303–3316, doi:10.1128/jvi.02445-06.
40. Liu, Y.C.; Chen, Z.; Burrows, S.R.; Purcell, A.W.; McCluskeys, J.; Rossjohn, J.; Gras, S. The energetic basis underpinning T-cell receptor recognition of a super-bulged peptide bound to a major histocompatibility complex class I molecule. *J. Biol. Chem.* **2012**, *287*, 12267–12276, doi:10.1074/jbc.M112.344689.
41. Tynan, F.E.; Elhassen, D.; Purcell, A.W.; Burrows, J.M.; Borg, N.A.; Miles, J.J.; Williamson, N.A.; Green, K.J.; Tellam, J.; Kjer-Nielsen, L.; et al. The immunogenicity of a viral cytotoxic T cell epitope is controlled by its MHC-bound conformation. *J. Exp. Med.* **2005**, *202*, 1249–1260, doi:10.1084/jem.20050864.
42. Weber, E.; Buzovetsky, O.; Heston, L.; Yu, K.-P.; Knecht, K.M.; El-Guindy, A.; Miller, G.; Xiong, Y. A Noncanonical Basic Motif of Epstein-Barr Virus ZEBRA Protein Facilitates Recognition of Methylated DNA, High-Affinity DNA Binding, and Lytic Activation. *J. Virol.* **2019**, *93*, doi:10.1128/JVI.00724-19.
43. Mahot, S.; Fender, P.; Vivès, R.R.; Caron, C.; Perrissin, M.; Gruffat, H.; Sergeant, A.; Drouet, E. Cellular uptake of the EBV transcription factor EB1/Zta. *Virus Res.* **2005**, *110*, 187–193, doi:10.1016/j.virusres.2005.01.014.
44. Váňová, J.; Hejtmánková, A.; Kalbáčová, M.H.; Španielová, H. The Utilization of Cell-Penetrating Peptides in the Intracellular Delivery of Viral Nanoparticles. *Materials* **2019**, *12*, doi:10.3390/ma12172671.
45. Kurnaeva, M.A.; Sheval, E.V.; Musinova, Y.R.; Vassetzky, Y.S. Tat basic domain: A “Swiss army knife” of HIV-1 Tat? *Rev. Med. Virol.* **2019**, doi:10.1002/rmv.2031.
46. Cai, M.; Liao, Z.; Chen, T.; Wang, P.; Zou, X.; Wang, Y.; Xu, Z.; Jiang, S.; Huang, J.; Chen, D.; et al. Characterization of the subcellular localization of Epstein-Barr virus encoded proteins in live cells. *Oncotarget* **2017**, *8*, 70006–70034, doi:10.18632/oncotarget.19549.
47. Park, R.; Heston, L.; Shedd, D.; Delecluse, H.J.; Miller, G. Mutations of amino acids in the DNA-recognition domain of Epstein-Barr virus ZEBRA protein alter its sub-nuclear localization and affect formation of replication compartments. *Virology* **2008**, *382*, 145–162, doi:10.1016/j.virol.2008.09.009.
48. Mikaélian, I.; Drouet, E.; Marechal, V.; Denoyel, G.; Nicolas, J.C.; Sergeant, A. The DNA-binding domain of two bZIP transcription factors, the Epstein-Barr virus switch gene product EB1 and Jun, is a bipartite nuclear targeting sequence. *J. Virol.* **1993**, *67*, 734–742.
49. Ramasubramanian, S.; Osborn, K.; Al-Mohammad, R.; Naranjo Perez-Fernandez, I.B.; Zuo, J.; Balan, N.; Godfrey, A.; Patel, H.; Peters, G.; Rowe, M.; et al. Epstein-Barr virus transcription factor Zta acts through distal regulatory elements to directly control cellular gene expression. *Nucleic Acids Res.* **2015**, *43*, 3563–3577, doi:10.1093/nar/gkv212.
50. El-Guindy, A.S.; So, Y.P.; Countryman, J.; Miller, G. Identification of constitutive phosphorylation sites on the Epstein-Barr virus ZEBRA protein. *J. Biol. Chem.* **2006**, *281*, 3085–3095, doi:10.1074/jbc.M506076200.
51. Kolman, J.L.; Taylor, N.; Marshak, D.R.; Miller, G. Serine-173 of the Epstein-Barr virus ZEBRA protein is required for DNA binding and is a target for casein kinase II phosphorylation. *Proc. Natl. Acad. Sci. USA* **1993**, *90*, 10115–10119, doi:10.1073/pnas.90.21.10115.
52. Kinoshita, E.; Kinoshita-Kikuta, E.; Koike, T. Phosphate-Affinity Gel Electrophoresis Using a Phos-Tag Molecule for Phosphoproteome Study. *Curr. Proteom.* **2012**, *6*, 104–121, doi:10.2174/157016409788680965.
53. Traylen, C.; Ramasubramanian, S.; Zuo, J.; Rowe, M.; Almohammad, R.; Heesom, K.; Sweet, S.M.M.; Matthews, D.A.; Sinclair, A.J. Identification of Epstein-Barr virus replication proteins in Burkitt’s lymphoma cells. *Pathogens* **2015**, *4*, 739–751, doi:10.3390/pathogens4040739.
54. Adamson, A.L. Effects of SUMO-1 upon Epstein-Barr virus BZLF1 function and BMRF1 expression. *Biochem. Biophys. Res. Commun.* **2005**, *336*, 22–28, doi:10.1016/j.bbrc.2005.08.036.
55. Murata, T.; Hotta, N.; Toyama, S.; Nakayama, S.; Chiba, S.; Isomura, H.; Ohshima, T.; Kanda, T.; Tsurumi, T. Transcriptional repression by sumoylation of Epstein-Barr virus BZLF1 protein correlates with association of histone deacetylase. *J. Biol. Chem.* **2010**, *285*, 23925–23935, doi:10.1074/jbc.M109.095356.
56. Adamson, A.L.; Kenney, S. Epstein-Barr Virus Immediate-Early Protein BZLF1 Is SUMO-1 Modified and Disrupts Promyelocytic Leukemia Bodies. *J. Virol.* **2001**, *75*, 2388–2399, doi:10.1128/jvi.75.5.2388-2399.2001.
57. Hagemeyer, S.R.; Dickerson, S.J.; Meng, Q.; Yu, X.; Mertz, J.E.; Kenney, S.C. Sumoylation of the Epstein-Barr Virus BZLF1 Protein Inhibits Its Transcriptional Activity and Is Regulated by the Virus-Encoded Protein Kinase. *J. Virol.* **2010**, *84*, 4383–4394, doi:10.1128/JVI.02369-09.

58. Flower, K.; Thomas, D.; Heather, J.; Ramasubramanian, S.; Jones, S. Epigenetic Control of Viral Life-Cycle by a DNA-Methylation Dependent Transcription Factor. *PLoS ONE* **2011**, *6*, 25922, doi:10.1371/journal.pone.0025922.
59. Dickerson, S.J.; Xing, Y.; Robinson, A.R.; Seaman, W.T.; Gruffat, H.; Kenney, S.C. Methylation-dependent binding of the Epstein-Barr virus BZLF1 protein to viral promoters. *PLoS Pathog.* **2009**, *5*, doi:10.1371/journal.ppat.1000356.
60. Bienert, S.; Waterhouse, A.; de Beer, T.; Tauriello, G.; Studer, G.; Bordoli, L.; Schwede, T. The SWISS-MODEL Repository: New features and functionalities. *Nucleic Acids Res.* **2017**, *45*, D313–D319, doi:10.1093/nar/gkj056.
61. Lieberman, P.M.; Berk, A.J. The Zta trans-activator protein stabilizes TFIID association with promoter DNA by direct protein-protein interaction. *Genes Dev.* **1991**, *5*, 2441–2454, doi:10.1101/gad.5.12b.2441.
62. Lieberman, P.M.; Ozer, J.; Gürsel, D.B. Requirement for transcription factor IIA (TFIIA)-TFIID recruitment by an activator depends on promoter structure and template competition. *Mol. Cell. Biol.* **1997**, *17*, 6624–6632, doi:10.1128/mcb.17.11.6624.
63. Chen, C.J.; Deng, Z.; Kim, A.Y.; Blobel, G.A.; Lieberman, P.M. Stimulation of CREB binding protein nucleosomal histone acetyltransferase activity by a class of transcriptional activators. *Mol. Cell. Biol.* **2001**, *21*, 476–487, doi:10.1128/MCB.21.2.476-487.2001.
64. Murata, T.; Sato, Y.; Nakayama, S.; Kudoh, A.; Iwahori, S.; Isomura, H.; Tajima, M.; Hishiki, T.; Ohshima, T.; Hijikata, M.; et al. TORC2, a Coactivator of cAMP-response Element-binding Protein, Promotes Epstein-Barr Virus Reactivation from Latency through Interaction with Viral BZLF1 Protein. *J. Biol. Chem.* **2009**, *284*, 8033–8041, doi:10.1074/jbc.M808466200.
65. Balan, N.; Osborn, K.; Sinclair, A.J. Repression of CIITA by the Epstein-Barr virus transcription factor Zta is independent of its dimerization and DNA binding. *J. Gen. Virol.* **2016**, *97*, 725–732, doi:10.1099/jgv.0.000369.
66. Bristol, J.A.; Robinson, A.R.; Barlow, E.A.; Kenney, S.C. The Epstein-Barr Virus BZLF1 Protein Inhibits Tumor Necrosis Factor Receptor 1 Expression through Effects on Cellular C/EBP Proteins. *J. Virol.* **2010**, *84*, 12362–12374, doi:10.1128/JVI.00712-10.
67. Dreyfus, D.H.; Nagasawa, M.; Kelleher, C.A.; Gelfand, E.W. Stable expression of Epstein-Barr virus BZLF1-encoded ZEBRA protein activates p53-dependent transcription in human Jurkat T-lymphoblastoid cells. *Blood* **2000**, *96*, 625–634.
68. Sato, Y.; Shirata, N.; Kudoh, A.; Iwahori, S.; Nakayama, S.; Murata, T.; Isomura, H.; Nishiyama, Y.; Tsurumi, T. Expression of Epstein-Barr virus BZLF1 immediate-early protein induces p53 degradation independent of MDM2, leading to repression of p53-mediated transcription. *Virology* **2009**, *388*, 204–211, doi:10.1016/j.virol.2009.03.017.
69. Morrison, T.E.; Kenney, S.C. BZLF1, an Epstein-Barr virus immediate-early protein, induces p65 nuclear translocation while inhibiting p65 transcriptional function. *Virology* **2004**, *328*, 219–232, doi:10.1016/j.virol.2004.07.020.
70. Raver, R.M.; Panfil, A.R.; Hagemeyer, S.R.; Kenney, S.C. The B-Cell-Specific Transcription Factor and Master Regulator Pax5 Promotes Epstein-Barr Virus Latency by Negatively Regulating the Viral Immediate Early Protein BZLF1. *J. Virol.* **2013**, *87*, 8053–8063, doi:10.1128/JVI.00546-13.
71. Robinson, A.R.; Kwek, S.S.; Kenney, S.C. The B-Cell Specific Transcription Factor, Oct-2, Promotes Epstein-Barr Virus Latency by Inhibiting the Viral Immediate-Early Protein, BZLF1. *PLoS Pathog.* **2012**, *8*, doi:10.1371/journal.ppat.1002516.
72. Zhou, Y.; Heesom, K.; Osborn, K.; AlMohammed, R.; Sweet, S.M.; Sinclair, A.J. Identifying the Cellular Interactome of Epstein-Barr Virus Lytic Regulator Zta Reveals Cellular Targets Contributing to Viral Replication. *J. Virol.* **2020**, *94*, doi:10.1128/JVI.00927-19.
73. Hahn, A.M.; Huye, L.E.; Ning, S.; Webster-Cyriaque, J.; Pagano, J.S. Interferon regulatory factor 7 is negatively regulated by the Epstein-Barr virus immediate-early gene, BZLF-1. *J. Virol.* **2005**, *79*, 10040–10052, doi:10.1128/JVI.79.15.10040-10052.2005.
74. Gao, Z.; Krithivas, A.; Finan, J.E.; Semmes, O.J.; Zhou, S.; Wang, Y.; Hayward, S.D. The Epstein-Barr virus lytic transactivator Zta interacts with the helicase-primase replication proteins. *J. Virol.* **1998**, *72*, 8559–8567.
75. Rennekamp, A.J.; Wang, P.; Lieberman, P.M. Evidence for DNA Hairpin Recognition by Zta at the Epstein-Barr Virus Origin of Lytic Replication. *J. Virol.* **2010**, *84*, 7073–7082, doi:10.1128/JVI.02666-09.

76. Sarisky, R.T.; Gao, Z.; Lieberman, P.M.; Fixman, E.D.; Hayward, G.S.; Hayward, S.D. A replication function associated with the activation domain of the Epstein-Barr virus Zta transactivator. *J. Virol.* **1996**, *70*, 8340–8347.
77. Schepers, A.; Pich, D.; Hammerschmidt, W. Activation of oriLyt, the lytic origin of DNA replication of Epstein-Barr virus, by BZLF1. *Virology* **1996**, *220*, 367–376, doi:10.1006/viro.1996.0325.
78. Sato, Y.; Kamura, T.; Shirata, N.; Murata, T.; Kudoh, A.; Iwahori, S.; Nakayama, S.; Isomura, H.; Nishiyama, Y.; Tsurumi, T. Degradation of Phosphorylated p53 by Viral Protein-ECS E3 Ligase Complex. *PLoS Pathog.* **2009**, *5*, e1000530, doi:10.1371/journal.ppat.1000530.
79. Wiedmer, A.; Wang, P.; Zhou, J.; Rennekamp, A.J.; Tiranti, V.; Zeviani, M.; Lieberman, P.M. Epstein-Barr virus immediate-early protein Zta co-opts mitochondrial single-stranded DNA binding protein to promote viral and inhibit mitochondrial DNA replication. *J. Virol.* **2008**, *82*, 4647–4655, doi:10.1128/JVI.02198-07.
80. Bailey, S.G.; Verrall, E.; Schelcher, C.; Rhie, A.; Doherty, A.J.; Sinclair, A.J. Functional interaction between Epstein-Barr virus replication protein Zta and host DNA damage response protein 53BP1. *J. Virol.* **2009**, *83*, 11116–11122, doi:10.1128/JVI.00512-09.
81. Schaeffner, M.; Mrozek-Gorska, P.; Buschle, A.; Woellmer, A.; Tagawa, T.; Cernilogar, F.M.; Schotta, G.; Krietenstein, N.; Lieleg, C.; Korber, P.; et al. BZLF1 interacts with chromatin remodelers promoting escape from latent infections with EBV. *Life Sci. Alliance* **2019**, *2*, doi:10.26508/lsa.201800108.
82. Montone, K.T.; Hodinka, R.L.; Salhany, K.E.; Lavi, E.; Rostami, A.; Tomaszewski, J.E. Identification of Epstein-Barr virus lytic activity in post-transplantation lymphoproliferative disease. *Mod. Pathol. Off. J. U. S. Can. Acad. Pathol. Inc* **1996**, *9*, 621–630.
83. Hong, G.K.; Gulley, M.L.; Feng, W.-H.; Delecluse, H.-J.; Holley-Guthrie, E.; Kenney, S.C. Epstein-Barr virus lytic infection contributes to lymphoproliferative disease in a SCID mouse model. *J. Virol.* **2005**, *79*, 13993–14003, doi:10.1128/JVI.79.22.13993-14003.2005.
84. Ma, S.-D.; Hegde, S.; Young, K.H.; Sullivan, R.; Rajesh, D.; Zhou, Y.; Jankowska-Gan, E.; Burlingham, W.J.; Sun, X.; Gulley, M.L.; et al. A New Model of Epstein-Barr Virus Infection Reveals an Important Role for Early Lytic Viral Protein Expression in the Development of Lymphomas. *J. Virol.* **2011**, *85*, 165–177, doi:10.1128/JVI.01512-10.
85. Habib, M.; Buisson, M.; Lupo, J.; Agbalika, F.; Socié, G.; Germi, R.; Baccard, M.; Imbert-Marcille, B.-M.; Dantal, J.; Morand, P.; et al. Lytic EBV infection investigated by detection of Soluble Epstein-Barr virus ZEBRA in the serum of patients with PTLD. *Sci. Rep.* **2017**, *7*, 10479, doi:10.1038/s41598-017-09798-7.
86. Brousset, P.; Knecht, H.; Rubin, B.; Drouet, E.; Chittal, S.; Meggetto, F.; Saati, T.A.; Bachmann, E.; Denoyel, G.; Sergeant, A. Demonstration of Epstein-Barr virus replication in Reed-Sternberg cells of Hodgkin's disease. *Blood* **1993**, *82*, 872–876.
87. Cohen, M.; Vistarop, A.G.; Huaman, F.; Narbaitz, M.; Metrebian, F.; De Matteo, E.; Preciado, M.V.; Chabay, P.A. Epstein-Barr virus lytic cycle involvement in diffuse large B cell lymphoma. *Hematol. Oncol.* **2018**, *36*, 98–103, doi:10.1002/hon.2465.
88. Xue, S.; Labrecque, L.G.; Lu, Q.-L.; Ong, S.K.; Lampert, I.A.; Kazembe, P.; Molyneux, E.; Broadhead, R.L.; Borgstein, E.; Griffin, B.E. Promiscuous expression of Epstein-Barr virus genes in Burkitt's lymphoma from the central African country Malawi. *Int. J. Cancer* **2002**, *99*, 635–643, doi:10.1002/ijc.10372.
89. Xue, S.A.; Lu, Q.L.; Poulson, R.; Karran, L.; Jones, M.D.; Griffin, B.E. Expression of two related viral early genes in Epstein-Barr virus-associated tumors. *J. Virol.* **2000**, *74*, 2793–2803, doi:10.1128/jvi.74.6.2793-2803.2000.
90. Altmann, M.; Hammerschmidt, W. Epstein-Barr virus provides a new paradigm: A requirement for the immediate inhibition of apoptosis. *PLoS Biol.* **2005**, *3*, e404, doi:10.1371/journal.pbio.0030404.
91. Accardi, R.; Gruffat, H.; Sirand, C.; Fusil, F.; Gheit, T.; Hernandez-Vargas, H.; Le Calvez-Kelm, F.; Traverse-Glehen, A.; Cosset, F.L.; Manet, E.; et al. The mycotoxin aflatoxin B1 stimulates Epstein-Barr virus-induced B-cell transformation in in vitro and in vivo experimental models. *Carcinogenesis* **2015**, *36*, 1440–1451, doi:10.1093/carcin/bgv142.
92. Chêne, A.; Donati, D.; Guerreiro-Cacais, A.O.; Levitsky, V.; Chen, Q.; Falk, K.I.; Orem, J.; Kironde, F.; Wahlgren, M.; Bejarano, M.T. A molecular link between malaria and Epstein-Barr virus reactivation. *PLoS Pathog.* **2007**, *3*, 0826–0834, doi:10.1371/journal.ppat.0030080.
93. Mannucci, S.; Luzzi, A.; Carugi, A.; Gozzetti, A.; Lazzi, S.; Malagnino, V.; Simmonds, M.; Cusi, M.G.; Leoncini, L.; Van Den Bosch, C.A.; et al. EBV reactivation and chromosomal polysomies: Euphorbia tirucalli as a possible cofactor in endemic Burkitt lymphoma. *Adv. Hematol.* **2012**, doi:10.1155/2012/149780.

94. Martel-Renoir, D.; Grunewald, V.; Touitou, R.; Schwaab, G.; Joab, I. Qualitative analysis of the expression of Epstein-Barr virus lytic genes in nasopharyngeal carcinoma biopsies. *J. Gen. Virol.* **1995**, *76*, 1401–1408, doi:10.1099/0022-1317-76-6-1401.
95. Ramayanti, O.; Juwana, H.; Verkuijlen, S.A.M.W.; Adham, M.; Pegtel, M.D.; Greijer, A.E.; Middeldorp, J.M. Epstein-Barr virus mRNA profiles and viral DNA methylation status in nasopharyngeal brushings from nasopharyngeal carcinoma patients reflect tumor origin. *Int. J. Cancer* **2017**, *140*, 149–162, doi:10.1002/ijc.30418.
96. Huang, J.; Chen, H.; Hutt-Fletcher, L.; Ambinder, R.F.; Hayward, S.D. Lytic viral replication as a contributor to the detection of Epstein-Barr virus in breast cancer. *J. Virol.* **2003**, *77*, 13267–13274, doi:10.1128/jvi.77.24.13267-13274.2003.
97. Dardari, R.; Menezes, J.; Drouet, E.; Joab, I.; Benider, A.; Bakkali, H.; Kanouni, L.; Jouhadi, H.; Benjaafar, N.; El Gueddari, B.; et al. Analyses of the prognostic significance of the Epstein-Barr virus transactivator ZEBRA protein and diagnostic value of its two synthetic peptides in nasopharyngeal carcinoma. *J. Clin. Virol.* **2008**, *41*, 96–103, doi:10.1016/j.jcv.2007.09.010.
98. Marrão, G.; Habib, M.; Paiva, A.; Bicout, D.; Fallecker, C.; Franco, S.; Fafi-Kremer, S.; Simões da Silva, T.; Morand, P.; Freire de Oliveira, C.; et al. Epstein-Barr virus infection and clinical outcome in breast cancer patients correlate with immune cell TNF- α /IFN- γ response. *BMC Cancer* **2014**, *14*, 665, doi:10.1186/1471-2407-14-665.
99. Zhang, G.; Li, Z.; Zhou, Q. Utility of Serum EB Virus Zta Antibody in the Diagnostic of Nasopharyngeal Carcinoma: Evidences From 2126 Cases and 15,644 Controls. *Front. Oncol.* **2019**, *9*, 1391, doi:10.3389/fonc.2019.01391.
100. Trumper, P.A.; Epstein, M.A.; Giovanella, B.C.; Finerty, S. Isolation of infectious EB virus from the epithelial tumour cells of nasopharyngeal carcinoma. *Int. J. Cancer* **1977**, *20*, 655–662, doi:10.1002/ijc.2910200503.
101. Henle, G.; Henle, W. Epstein-Barr virus-specific IgA serum antibodies as an outstanding feature of nasopharyngeal carcinoma. *Int. J. Cancer* **1976**, *17*, 1–7, doi:10.1002/ijc.2910170102.
102. Chien, Y.C.; Chen, J.Y.; Liu, M.Y.; Yang, H.I.; Hsu, M.M.; Chen, C.J.; Yang, C.S. Serologic markers of Epstein-Barr virus infection and nasopharyngeal carcinoma in Taiwanese men. *N. Engl. J. Med.* **2001**, *345*, 1877–1882, doi:10.1056/NEJMoa011610.
103. Borozan, I.; Zapatka, M.; Frappier, L.; Ferretti, V. Analysis of Epstein-Barr Virus Genomes and Expression Profiles in Gastric Adenocarcinoma. *J. Virol.* **2018**, *92*, doi:10.1128/JVI.01239-17.
104. Sbih-Lammali, F.; Berger, F.; Busson, P.; Ooka, T. Expression of the DNase encoded by the BGLF5 gene of Epstein-Barr virus in nasopharyngeal carcinoma epithelial cells. *Virology* **1996**, *222*, 64–74, doi:10.1006/viro.1996.0398.
105. Seto, E.; Yang, L.; Middeldorp, J.; Sheen, T.-S.; Chen, J.-Y.; Fukayama, M.; Eizuru, Y.; Ooka, T.; Takada, K. Epstein-Barr virus (EBV)-encoded BARF1 gene is expressed in nasopharyngeal carcinoma and EBV-associated gastric carcinoma tissues in the absence of lytic gene expression. *J. Med. Virol.* **2005**, *76*, 82–88, doi:10.1002/jmv.20327.
106. Zur Hausen, A.; Brink, A.A.; Craanen, M.E.; Middeldorp, J.M.; Meijer, C.J.; van den Brule, A.J. Unique transcription pattern of Epstein-Barr virus (EBV) in EBV-carrying gastric adenocarcinomas: Expression of the transforming BARF1 gene. *Cancer Res.* **2000**, *60*, 2745–2748.
107. Tsai, M.-H.; Raykova, A.; Klinke, O.; Bernhardt, K.; Gärtner, K.; Leung, C.S.; Geletneky, K.; Sertel, S.; Münz, C.; Feederle, R.; et al. Spontaneous Lytic Replication and Epitheliotropism Define an Epstein-Barr Virus Strain Found in Carcinomas. *Cell Rep.* **2013**, *5*, 458–470, doi:10.1016/j.celrep.2013.09.012.
108. Tsai, M.-H.; Lin, X.; Shumilov, A.; Bernhardt, K.; Feederle, R.; Poirey, R.; Kopp-Schneider, A.; Pereira, B.; Almeida, R.; Delecluse, H.-J. The biological properties of different Epstein-Barr virus strains explain their association with various types of cancers. *Oncotarget* **2017**, *8*, 10238–10254, doi:10.18632/oncotarget.14380.
109. Hanahan, D.; Weinberg, R.A. Hallmarks of Cancer: The Next Generation. *Cell* **2011**, *144*, 646–674, doi:10.1016/j.cell.2011.02.013.
110. Chatterjee, N.; Walker, G.C. Mechanisms of DNA damage, repair, and mutagenesis: DNA Damage and Repair. *Environ. Mol. Mutagen.* **2017**, *58*, 235–263, doi:10.1002/em.22087.
111. Friedberg, E.C.; Aguilera, A.; Gellert, M.; Hanawalt, P.C.; Hays, J.B.; Lehmann, A.R.; Lindahl, T.; Lowndes, N.; Sarasin, A.; Wood, R.D. DNA repair: From molecular mechanism to human disease. *DNA Repair* **2006**, *5*, 986–996, doi:10.1016/j.dnarep.2006.05.005.

112. Ciccia, A.; Elledge, S.J. The DNA Damage Response: Making It Safe to Play with Knives. *Mol. Cell* **2010**, *40*, 179–204, doi:10.1016/j.molcel.2010.09.019.
113. Gargouri, B.; Van Pelt, J.; El Feki, A.E.F.; Attia, H.; Lassoued, S. Induction of Epstein-Barr virus (EBV) lytic cycle in vitro causes oxidative stress in lymphoblastoid B cell lines. *Mol. Cell. Biochem.* **2009**, *324*, 55–63, doi:10.1007/s11010-008-9984-1.
114. Gargouri, B.; Nasr, R.; ben Mansour, R.; Lassoued, S.; Mseddi, M.; Attia, H.; El Feki, A.e.F.; Van Pelt, J. Reactive Oxygen Species Production and Antioxidant Enzyme Expression after Epstein-Barr Virus Lytic Cycle Induction in Raji Cell Line. *Biol. Trace Elem. Res.* **2011**, *144*, 1449–1457, doi:10.1007/s12011-011-9135-5.
115. Lassoued, S.; Ben Ameer, R.; Ayadi, W.; Gargouri, B.; Ben Mansour, R.; Attia, H. Epstein-Barr virus induces an oxidative stress during the early stages of infection in B lymphocytes, epithelial, and lymphoblastoid cell lines. *Mol. Cell. Biochem.* **2008**, *313*, 179–186, doi:10.1007/s11010-008-9755-z.
116. Shumilov, A.; Tsai, M.-H.; Schlosser, Y.T.; Kratz, A.-S.; Bernhardt, K.; Fink, S.; Mizani, T.; Lin, X.; Jauch, A.; Mautner, J.; et al. Epstein-Barr virus particles induce centrosome amplification and chromosomal instability. *Nat. Commun.* **2017**, *8*, 14257, doi:10.1038/ncomms14257.
117. Lee, C.-P.; Chen, J.-Y.; Wang, J.-T.; Kimura, K.; Takemoto, A.; Lu, C.-C.; Chen, M.-R. Epstein-Barr virus BGLF4 kinase induces premature chromosome condensation through activation of condensin and topoisomerase II. *J. Virol.* **2007**, *81*, 5166–5180, doi:10.1128/JVI.00120-07.
118. Moquin, S.A.; Thomas, S.; Whalen, S.; Warburton, A.; Fernandez, S.G.; McBride, A.A.; Pollard, K.S.; Miranda, J.L. The Epstein-Barr Virus Episome Maneuvers between Nuclear Chromatin Compartments during Reactivation. *J. Virol.* **2018**, *92*, doi:10.1128/JVI.01413-17.
119. Chang, Y.-H.; Lee, C.-P.; Su, M.-T.; Wang, J.-T.; Chen, J.-Y.; Lin, S.-F.; Tsai, C.-H.; Hsieh, M.-J.; Takada, K.; Chen, M.-R. Epstein-Barr virus BGLF4 kinase retards cellular S-phase progression and induces chromosomal abnormality. *PLoS ONE* **2012**, *7*, e39217, doi:10.1371/journal.pone.0039217.
120. Wu, C.-C.; Liu, M.-T.; Chang, Y.-T.; Fang, C.-Y.; Chou, S.-P.; Liao, H.-W.; Kuo, K.-L.; Hsu, S.-L.; Chen, Y.-R.; Wang, P.-W.; et al. Epstein-Barr virus DNase (BGLF5) induces genomic instability in human epithelial cells. *Nucleic Acids Res.* **2010**, *38*, 1932–1949, doi:10.1093/nar/gkp1169.
121. Chiu, S.-H.; Wu, C.-C.; Fang, C.-Y.; Yu, S.-L.; Hsu, H.-Y.; Chow, Y.-H.; Chen, J.-Y. Epstein-Barr virus BALF3 mediates genomic instability and progressive malignancy in nasopharyngeal carcinoma. *Oncotarget* **2014**, *5*, 8583–8601, doi:10.18632/oncotarget.2323.
122. Fang, C.-Y.; Lee, C.-H.; Wu, C.-C.; Chang, Y.-T.; Yu, S.-L.; Chou, S.-P.; Huang, P.-T.; Chen, C.-L.; Hou, J.-W.; Chang, Y.; et al. Recurrent chemical reactivations of EBV promotes genome instability and enhances tumor progression of nasopharyngeal carcinoma cells. *Int. J. Cancer* **2009**, *124*, 2016–2025, doi:10.1002/ijc.24179.
123. Sall, F.B.; Germini, D.; Shmakova, A.; Diouf, P.M.D.; Wiels, J.; Ndour, M.; Touré, A.O.; Vassetzky, Y. Role of Epstein-Barr Virus Zebra protein in induction of t(8;14) translocation. *Biopolym. Cell* **2019**, *35*, 230–231, doi:10.7124/bc.0009F6.
124. Hsu, M.; Wu, S.-Y.; Chang, S.-S.; Su, I.-J.; Tsai, C.-H.; Lai, S.-J.; Shiau, A.-L.; Takada, K.; Chang, Y. Epstein-Barr virus lytic transactivator Zta enhances chemotactic activity through induction of interleukin-8 in nasopharyngeal carcinoma cells. *J. Virol.* **2008**, *82*, 3679–3688, doi:10.1128/JVI.02301-07.
125. Mahot, S.; Sergeant, A.; Drouet, E.; Gruffat, H. A novel function for the Epstein-Barr virus transcription factor EB1/Zta: Induction of transcription of the hIL-10 gene. *J. Gen. Virol.* **2003**, *84*, 965–974, doi:10.1099/vir.0.18845-0.
126. Lee, C.-H.; Yeh, T.-H.; Lai, H.-C.; Wu, S.-Y.; Su, I.-J.; Takada, K.; Chang, Y. Epstein-Barr virus Zta-induced immunomodulators from nasopharyngeal carcinoma cells upregulate interleukin-10 production from monocytes. *J. Virol.* **2011**, *85*, 7333–7342, doi:10.1128/JVI.00182-11.
127. Sheikhpour, E.; Noorbakhsh, P.; Foroughi, E.; Farahnak, S.; Nasiri, R.; Neamatzadeh, H. A Survey on the Role of Interleukin-10 in Breast Cancer: A Narrative. *Rep. Biochem. Mol. Biol.* **2018**, *7*, 30–37.
128. Jochum, S.; Moosmann, A.; Lang, S.; Hammerschmidt, W.; Zeidler, R. The EBV immunoevasins vIL-10 and BNLF2a protect newly infected B cells from immune recognition and elimination. *PLoS Pathog.* **2012**, *8*, e1002704, doi:10.1371/journal.ppat.1002704.
129. Jones, R.J.; Seaman, W.T.; Feng, W.-H.; Barlow, E.; Dickerson, S.; Delecluse, H.-J.; Kenney, S.C. Roles of lytic viral infection and IL-6 in early versus late passage lymphoblastoid cell lines and EBV-associated lymphoproliferative disease. *Int. J. Cancer* **2007**, *121*, 1274–1281, doi:10.1002/ijc.22839.

130. Katsumura, K.R.; Maruo, S.; Takada, K. EBV lytic infection enhances transformation of B-lymphocytes infected with EBV in the presence of T-lymphocytes. *J. Med. Virol.* **2012**, *84*, 504–510, doi:10.1002/jmv.23208.
131. Tsai, S.-C.; Lin, S.-J.; Chen, P.-W.; Luo, W.-Y.; Yeh, T.-H.; Wang, H.-W.; Chen, C.-J.; Tsai, C.-H. EBV Zta protein induces the expression of interleukin-13, promoting the proliferation of EBV-infected B cells and lymphoblastoid cell lines. *Blood* **2009**, *114*, 109–118, doi:10.1182/blood-2008-12-193375.
132. Cayrol, C.; Flemington, E.K. Identification of cellular target genes of the Epstein-Barr virus transactivator Zta: Activation of transforming growth factor beta 1 (TGF-beta 1). *J. Virol.* **1995**, *69*, 4206–4212.
133. Hong, G.K.; Kumar, P.; Wang, L.; Damania, B.; Gulley, M.L.; Delecluse, H.-J.; Polverini, P.J.; Kenney, S.C. Epstein-Barr virus lytic infection is required for efficient production of the angiogenesis factor vascular endothelial growth factor in lymphoblastoid cell lines. *J. Virol.* **2005**, *79*, 13984–13992, doi:10.1128/JVI.79.22.13984-13992.2005.
134. Ariza, M.-E.; Glaser, R.; Kaumaya, P.T.P.; Jones, C.; Williams, M.V. The EBV-encoded dUTPase activates NF-kappa B through the TLR2 and MyD88-dependent signaling pathway. *J. Immunol. Baltim. Md. 1950* **2009**, *182*, 851–859, doi:10.4049/jimmunol.182.2.851.
135. Waldman, W.J.; Williams, M.V.; Lemeshow, S.; Binkley, P.; Guttridge, D.; Kiecolt-Glaser, J.K.; Knight, D.A.; Ladner, K.J.; Glaser, R. Epstein-Barr virus-encoded dUTPase enhances proinflammatory cytokine production by macrophages in contact with endothelial cells: Evidence for depression-induced atherosclerotic risk. *Brain Behav. Immun.* **2008**, *22*, 215–223, doi:10.1016/j.bbi.2007.07.007.
136. Zeidler, R.; Eissner, G.; Meissner, P.; Uebel, S.; Tampé, R.; Lazis, S.; Hammerschmidt, W. Downregulation of TAP1 in B lymphocytes by cellular and Epstein-Barr virus-encoded interleukin-10. *Blood* **1997**, *90*, 2390–2397.
137. Swaminathan, S.; Hesselton, R.; Sullivan, J.; Kieff, E. Epstein-Barr virus recombinants with specifically mutated BCRF1 genes. *J. Virol.* **1993**, *67*, 7406–7413.
138. Morrison, T.E.; Mauser, A.; Wong, A.; Ting, J.P.; Kenney, S.C. Inhibition of IFN-gamma signaling by an Epstein-Barr virus immediate-early protein. *Immunity* **2001**, *15*, 787–799, doi:10.1016/s1074-7613(01)00226-6.
139. Li, D.; Qian, L.; Chen, C.; Shi, M.; Yu, M.; Hu, M.; Song, L.; Shen, B.; Guo, N. Down-regulation of MHC class II expression through inhibition of CIITA transcription by lytic transactivator Zta during Epstein-Barr virus reactivation. *J. Immunol.* **2009**, *182*, 1799–1809, doi:10.4049/jimmunol.0802686.
140. Zuo, J.; Thomas, W.A.; Haigh, T.A.; Fitzsimmons, L.; Long, H.M.; Hislop, A.D.; Taylor, G.S.; Rowe, M. Epstein-Barr virus evades CD4+ T cell responses in lytic cycle through BZLF1-mediated downregulation of CD74 and the cooperation of vBcl-2. *PLoS Pathog.* **2011**, *7*, e1002455, doi:10.1371/journal.ppat.1002455.
141. Zuo, J.; Currin, A.; Griffin, B.D.; Shannon-Lowe, C.; Thomas, W.A.; Rensing, M.E.; Wiertz, E.J.H.J.; Rowe, M. The Epstein-Barr virus G-protein-coupled receptor contributes to immune evasion by targeting MHC class I molecules for degradation. *PLoS Pathog.* **2009**, *5*, e1000255, doi:10.1371/journal.ppat.1000255.
142. Zuo, J.; Quinn, L.L.; Tamblyn, J.; Thomas, W.A.; Feederle, R.; Delecluse, H.-J.; Hislop, A.D.; Rowe, M. The Epstein-Barr virus-encoded BILF1 protein modulates immune recognition of endogenously processed antigen by targeting major histocompatibility complex class I molecules trafficking on both the exocytic and endocytic pathways. *J. Virol.* **2011**, *85*, 1604–1614, doi:10.1128/JVI.01608-10.
143. Horst, D.; van Leeuwen, D.; Croft, N.P.; Garstka, M.A.; Hislop, A.D.; Kremmer, E.; Rickinson, A.B.; Wiertz, E.J.H.J.; Rensing, M.E. Specific targeting of the EBV lytic phase protein BNLF2a to the transporter associated with antigen processing results in impairment of HLA class I-restricted antigen presentation. *J. Immunol. Baltim. Md. 1950* **2009**, *182*, 2313–2324, doi:10.4049/jimmunol.0803218.
144. Zuo, J.; Thomas, W.; van Leeuwen, D.; Middeldorp, J.M.; Wiertz, E.J.H.J.; Rensing, M.E.; Rowe, M. The DNase of gammaherpesviruses impairs recognition by virus-specific CD8+ T cells through an additional host shutoff function. *J. Virol.* **2008**, *82*, 2385–2393, doi:10.1128/JVI.01946-07.
145. Draborg, A.H.; Duus, K.; Houen, G. Epstein-Barr Virus in Systemic Autoimmune Diseases. *Clin. Dev. Immunol.* **2013**, *2013*, 1–9, doi:10.1155/2013/535738.
146. Haddad, E.; Paczesny, S.; Leblond, V.; Seigneurin, J.M.; Stern, M.; Achkar, A.; Bauwens, M.; Delwail, V.; Debray, D.; Duvoux, C.; et al. Treatment of B-lymphoproliferative disorder with a monoclonal anti-interleukin-6 antibody in 12 patients: A multicenter phase 1-2 clinical trial. *Blood* **2001**, *97*, 1590–1597, doi:10.1182/blood.v97.6.1590.

147. Masood, R.; Cai, J.; Tulpule, A.; Zheng, T.; Hamilton, A.; Sharma, S.; Espina, B.M.; Smith, D.L.; Gill, P.S. Interleukin 8 is an autocrine growth factor and a surrogate marker for Kaposi's sarcoma. *Clin. Cancer Res. Off. J. Am. Assoc. Cancer Res.* **2001**, *7*, 2693–2702.
148. Sall, A.; Caserta, S.; Jolicoeur, P.; Franqueville, L.; de Turenne-Tessier, M.; Ooka, T. Mitogenic activity of Epstein-Barr virus-encoded BARP1 protein. *Oncogene* **2004**, *23*, 4938–4944, doi:10.1038/sj.onc.1207607.
149. Wiech, T.; Nikolopoulos, E.; Lassman, S.; Heidt, T.; Schöpflin, A.; Sarbia, M.; Werner, M.; Shimizu, Y.; Sakka, E.; Ooka, T.; et al. Cyclin D1 expression is induced by viral BARP1 and is overexpressed in EBV-associated gastric cancer. *Virchows Arch. Int. J. Pathol.* **2008**, *452*, 621–627, doi:10.1007/s00428-008-0594-9.
150. Sheng, W.; Decaussin, G.; Sumner, S.; Ooka, T. N-terminal domain of BARP1 gene encoded by Epstein-Barr virus is essential for malignant transformation of rodent fibroblasts and activation of BCL-2. *Oncogene* **2001**, *20*, 1176–1185, doi:10.1038/sj.onc.1204217.
151. Wang, Q.; Tsao, S.W.; Ooka, T.; Nicholls, J.M.; Cheung, H.W.; Fu, S.; Wong, Y.C.; Wang, X. Anti-apoptotic role of BARP1 in gastric cancer cells. *Cancer Lett.* **2006**, *238*, 90–103, doi:10.1016/j.canlet.2005.06.023.
152. Morrison, T.E.; Mauser, A.; Klingelutz, A.; Kenney, S.C. Epstein-Barr virus immediate-early protein BZLF1 inhibits tumor necrosis factor alpha-induced signaling and apoptosis by downregulating tumor necrosis factor receptor 1. *J. Virol* **2004**, *78*, 544–549, doi:10.1128/jvi.78.1.544-549.2004.
153. Waugh, D.J.J.; Wilson, C. The Interleukin-8 Pathway in Cancer. *Clin. Cancer Res.* **2008**, *14*, 6735–6741, doi:10.1158/1078-0432.CCR-07-4843.
154. Duffy, A.M.; Bouchier-Hayes, D.J.; Harmey, J.H. Vascular Endothelial Growth Factor (VEGF) and Its Role in Non-Endothelial Cells: Autocrine Signalling by VEGF. In *VEGF and Cancer*; Springer US: Boston, MA, USA, 2004; pp. 133–144, ISBN 978-1-4613-4810-8.
155. Yoshizaki, T.; Sato, H.; Murono, S.; Pagano, J.S.; Furukawa, M. Matrix metalloproteinase 9 is induced by the Epstein-Barr virus BZLF1 transactivator. *Clin. Exp. Metastasis* **1999**, *17*, 431–436, doi:10.1023/a:1006699003525.
156. Lan, Y.-Y.; Yeh, T.-H.; Lin, W.-H.; Wu, S.-Y.; Lai, H.-C.; Chang, F.-H.; Takada, K.; Chang, Y. Epstein-Barr Virus Zta Upregulates Matrix Metalloproteinases 3 and 9 That Synergistically Promote Cell Invasion In Vitro. *PLoS ONE* **2013**, *8*, doi:10.1371/journal.pone.0056121.
157. Jiang, R.; Cabras, G.; Sheng, W.; Zeng, Y.; Ooka, T. Synergism of BARP1 with Ras Induces Malignant Transformation in Primary Primate Epithelial Cells and Human Nasopharyngeal Epithelial Cells. *Neoplasia* **2009**, *11*, 964–973, doi:10.1593/neo.09706.
158. Sista, N.D.; Barry, C.; Sampson, K.; Pagano, J. Physical and functional interaction of the Epstein-Barr virus BZLF1 transactivator with the retinoic acid receptors RAR alpha and RXR alpha. *Nucleic Acids Res.* **1995**, *23*, 1729–1736, doi:10.1093/nar/23.10.1729.
159. Wu, F.Y.; Chen, H.; Wang, S.E.; apRhys, C.M.J.; Liao, G.; Fujimuro, M.; Farrell, C.J.; Huang, J.; Hayward, S.D.; Hayward, G.S. CCAAT/Enhancer Binding Protein Interacts with ZTA and Mediates ZTA-Induced p21CIP-1 Accumulation and G1 Cell Cycle Arrest during the Epstein-Barr Virus Lytic Cycle. *J. Virol.* **2003**, *77*, 1481–1500, doi:10.1128/jvi.77.2.1481-1500.2003.
160. Zerby, D.; Chen, C.J.; Poon, E.; Lee, D.; Shiekhattar, R.; Lieberman, P.M. The amino-terminal C/H1 domain of CREB binding protein mediates zta transcriptional activation of latent Epstein-Barr virus. *Mol. Cell Biol.* **1999**, *19*, 1617–1626, doi:10.1128/mcb.19.3.1617.
161. Zhang, Q.; Gutsch, D.; Kenney, S. Functional and physical interaction between p53 and BZLF1: Implications for Epstein-Barr virus latency. *Mol. Cell Biol.* **1994**, *14*, 1929–1938, doi:10.1128/mcb.14.3.1929.
162. Cayrol, C.; Flemington, E.K. The Epstein-Barr virus bZIP transcription factor Zta causes G0/G1 cell cycle arrest through induction of cyclin-dependent kinase inhibitors. *EMBO J.* **1996**, *15*, 2748–2759.
163. Mauser, A.; Saito, S.; Appella, E.; Anderson, C.W.; Seaman, W.T.; Kenney, S. The Epstein-Barr Virus Immediate-Early Protein BZLF1 Regulates p53 Function through Multiple Mechanisms. *J. Virol.* **2002**, *76*, 12503–12512, doi:10.1128/JVI.76.24.12503-12512.2002.
164. Germini, D.; Tsfasman, T.; Klibi, M.; El-Amine, R.; Pichugin, A.; Iarovaia, O.V.; Billhou-Nabera, C.; Subra, F.; Bou Saada, Y.; Sukhanova, A.; et al. HIV Tat induces a prolonged MYC relocalization next to IGH in circulating B-cells. *Leukemia* **2017**, *31*, 2515–2522, doi:10.1038/leu.2017.106.
165. Sall, F.B.; El Amine, R.; Markozashvili, D.; Tsfasman, T.; Oksenhendler, E.; Lipinski, M.; Vassetzky, Y.; Germini, D. HIV-1 Tat protein induces aberrant activation of AICDA in human B-lymphocytes from peripheral blood. *J. Cell. Physiol.* **2019**, doi:10.1002/jcp.28219.

166. El-Amine, R.; Germini, D.; Zakharova, V.V.; Tsfasman, T.; Sheval, E.V.; Louzada, R.A.N.; Dupuy, C.; Billhou-Nabera, C.; Hamade, A.; Najjar, F.; et al. HIV-1 Tat protein induces DNA damage in human peripheral blood B-lymphocytes via mitochondrial ROS production. *Redox Biol.* **2018**, *15*, 97–108, doi:10.1016/j.redox.2017.11.024.
167. Drouet, E.; Brousset, P.; Fares, F.; Icart, J.; Verniol, C.; Meggetto, F.; Schlaifer, D.; Desmorat-Coat, H.; Rigal-Huguet, F.; Niveleau, A.; et al. High Epstein-Barr virus serum load and elevated titers of anti-ZEBRA antibodies in patients with EBV-harboring tumor cells of Hodgkin's disease. *J. Med. Virol.* **1999**, *57*, 383–389, doi:10.1002/(sici)1096-9071(199904)57:4<383::aid-jmv10>3.0.co;2-3.
168. Chan, K.H.; Gu, Y.L.; Ng, F.; Ng, P.S.P.; Seto, W.H.; Sham, J.S.T.; Chua, D.; Wei, W.; Chen, Y.L.; Luk, W.; et al. EBV specific antibody-based and DNA-based assays in serologic diagnosis of nasopharyngeal carcinoma. *Int. J. Cancer* **2003**, *105*, 706–709, doi:10.1002/ijc.11130.
169. Dardari, R.; Hinderer, W.; Lang, D.; Benider, A.; El Gueddari, B.; Joab, I.; Benslimane, A.; Khyatti, M. Antibody responses to recombinant Epstein-Barr virus antigens in nasopharyngeal carcinoma patients: Complementary test of ZEBRA protein and early antigens p54 and p138. *J. Clin. Microbiol.* **2001**, *39*, 3164–3170, doi:10.1128/jcm.39.9.3164-3170.2001.
170. Joab, I.; Nicolas, J.C.; Schwaab, G.; de-Thé, G.; Clausse, B.; Perricaudet, M.; Zeng, Y. Detection of anti-Epstein-Barr-virus transactivator (ZEBRA) antibodies in sera from patients with nasopharyngeal carcinoma. *Int. J. Cancer* **1991**, *48*, 647–649, doi:10.1002/ijc.2910480503.
171. Mathew, A.; Cheng, H.M.; Sam, C.K.; Joab, I.; Prasad, U.; Cochet, C. A high incidence of serum IgG antibodies to the Epstein-Barr virus replication activator protein in nasopharyngeal carcinoma. *Cancer Immunol. Immunother. CII* **1994**, *38*, 68–70, doi:10.1007/bf01517172.
172. Yip, T.T.; Ngan, R.K.; Lau, W.H.; Poon, Y.F.; Joab, I.; Cochet, C.; Cheng, A.K. A possible prognostic role of immunoglobulin-G antibody against recombinant Epstein-Barr virus BZLF-1 transactivator protein ZEBRA in patients with nasopharyngeal carcinoma. *Cancer* **1994**, *74*, 2414–2424, doi:10.1002/1097-0142(19941101)74:9<2414::aid-cnrcr2820740905>3.0.co;2-8.
173. Drouet, E.B.; Chapuis-Cellier, C.; Garnier, J.L.; Touraine, J.L. Early detection of EBV infection and meaning in transplant patients. In *Cancer in Transplantation: Prevention and Treatment*; Touraine, J.L., Traeger, J., Bétuel, H., Dubernard, J.M., Revillard, J.P., Dupuy, C., Eds.; Springer Netherlands: Dordrecht, The Netherlands, 1996; pp. 201–207, ISBN 978-94-010-6563-4.
174. Fink, S.E.K.; Gandhi, M.K.; Nourse, J.P.; Keane, C.; Jones, K.; Crooks, P.; Jöhrens, K.; Korfel, A.; Schmidt, H.; Neumann, S.; et al. A comprehensive analysis of the cellular and EBV-specific microRNAome in primary CNS PTLD identifies different patterns among EBV-associated tumors. *Am. J. Transplant. Off. J. Am. Soc. Transplant. Am. Soc. Transpl. Surg.* **2014**, *14*, 2577–2587, doi:10.1111/ajt.12858.
175. Rea, D.; Fourcade, C.; Leblond, V.; Rowe, M.; Joab, I.; Edelman, L.; Bitker, M.O.; Gandjbakhch, I.; Suberbielle, C.; Farcet, J.P. Patterns of Epstein-Barr virus latent and replicative gene expression in Epstein-Barr virus B cell lymphoproliferative disorders after organ transplantation. *Transplantation* **1994**, *58*, 317–324.
176. Vajro, P.; Lucariello, S.; Migliaro, F.; Sokal, E.; Gridelli, B.; Vegnente, A.; Iorio, R.; Smets, F.; Quinto, I.; Scala, G. Predictive value of Epstein-Barr virus genome copy number and BZLF1 expression in blood lymphocytes of transplant recipients at risk for lymphoproliferative disease. *J. Infect. Dis.* **2000**, *181*, 2050–2054, doi:10.1086/315495.
177. Imbert-Marcille, B.M.; Coste-Burel, M.; Robillard, N.; Foucaud-Gamen, J.; Billaudel, S.; Drouet, E. Sequential use of paraformaldehyde and methanol as optimal conditions for the direct quantification of ZEBRA and rta antigens by flow cytometry. *Clin. Diagn. Lab. Immunol.* **2000**, *7*, 206–211, doi:10.1128/cdli.7.2.206-211.2000.
178. Babcock, G.J.; Decker, L.L.; Freeman, R.B.; Thorley-Lawson, D.A. Epstein-barr virus-infected resting memory B cells, not proliferating lymphoblasts, accumulate in the peripheral blood of immunosuppressed patients. *J. Exp. Med.* **1999**, *190*, 567–576, doi:10.1084/jem.190.4.567.
179. Miyashita, E.M.; Yang, B.; Lam, K.M.; Crawford, D.H.; Thorley-Lawson, D.A. A novel form of Epstein-Barr virus latency in normal B cells in vivo. *Cell* **1995**, *80*, 593–601, doi:10.1016/0092-8674(95)90513-8.
180. Feng, W.; Westphal, E.; Mauser, A.; Raab-Traub, N.; Gulley, M.L.; Busson, P.; Kenney, S.C. Use of adenovirus vectors expressing Epstein-Barr virus (EBV) immediate-early protein BZLF1 or BRLF1 to treat EBV-positive tumors. *J. Virol.* **2002**, *76*, 10951–10959, doi:10.1128/jvi.76.21.10951-10959.2002.

181. Bilger, A.; Plowshay, J.; Ma, S.; Nawandar, D.; Barlow, E.A.; Romero-Masters, J.C.; Bristol, J.A.; Li, Z.; Tsai, M.-H.; Delecluse, H.-J.; et al. Leflunomide/teriflunomide inhibit Epstein-Barr virus (EBV)- induced lymphoproliferative disease and lytic viral replication. *Oncotarget* **2017**, *8*, 44266–44280, doi:10.18632/oncotarget.17863.
182. Kawada, J.-I.; Ando, S.; Torii, Y.; Watanabe, T.; Sato, Y.; Ito, Y.; Kimura, H. Antitumor effects of duvelisib on Epstein-Barr virus-associated lymphoma cells. *Cancer Med.* **2018**, *7*, 1275–1284, doi:10.1002/cam4.1311.
183. Daskalogianni, C.; Pyndiah, S.; Apcher, S.; Mazars, A.; Manoury, B.; Ammari, N.; Nylander, K.; Voisset, C.; Blondel, M.; Fåhraeus, R. Epstein-Barr virus-encoded EBNA1 and ZEBRA: Targets for therapeutic strategies against EBV-carrying cancers. *J. Pathol.* **2015**, *235*, 334–341, doi:10.1002/path.4431.
184. Hartlage, A.S.; Liu, T.; Patton, J.T.; Garman, S.L.; Zhang, X.; Kurt, H.; Lozanski, G.; Lustberg, M.E.; Caligiuri, M.A.; Baiocchi, R.A. The Epstein-Barr Virus Lytic Protein BZLF1 as a Candidate Target Antigen for Vaccine Development. *Cancer Immunol. Res.* **2015**, *3*, 787–794, doi:10.1158/2326-6066.CIR-14-0242.
185. Kenney, S.C.; Mertz, J.E. Regulation of the latent-lytic switch in Epstein-Barr virus. *Semin. Cancer Biol.* **2014**, *26*, 60–68, doi:10.1016/j.semcancer.2014.01.002.
186. Needham, J.; Adamson, A.L. BZLF1 transcript variants in Epstein-Barr virus-positive epithelial cell lines. *Virus Genes* **2019**, *55*, 779–785, doi:10.1007/s11262-019-01705-8.
187. Bristol, J.A.; Djavadian, R.; Albright, E.R.; Coleman, C.B.; Ohashi, M.; Hayes, M.; Romero-Masters, J.C.; Barlow, E.A.; Farrell, P.J.; Rochford, R.; et al. A cancer-associated Epstein-Barr virus BZLF1 promoter variant enhances lytic infection. *PLoS Pathog.* **2018**, *14*, e1007179, doi:10.1371/journal.ppat.1007179.



© 2020 by the authors. Licensee MDPI, Basel, Switzerland. This article is an open access article distributed under the terms and conditions of the Creative Commons Attribution (CC BY) license (<http://creativecommons.org/licenses/by/4.0/>).