



HAL
open science

Dual lysine and N-terminal acetyltransferases reveal the complexity underpinning protein acetylation

Willy V. Bienvenut, Annika Brünje, Jean-Baptiste Boyer, Jens Mühlenbeck, Gautier Bernal, Ines Lassowskat, Cyril Dian, Eric Linster, Trinh Dinh, Minna Koskela, et al.

► To cite this version:

Willy V. Bienvenut, Annika Brünje, Jean-Baptiste Boyer, Jens Mühlenbeck, Gautier Bernal, et al.. Dual lysine and N-terminal acetyltransferases reveal the complexity underpinning protein acetylation. *Molecular Systems Biology*, 2020, 16 (7), pp.e9464. 10.15252/msb.20209464 . hal-02988633

HAL Id: hal-02988633

<https://hal.science/hal-02988633>

Submitted on 10 Nov 2020

HAL is a multi-disciplinary open access archive for the deposit and dissemination of scientific research documents, whether they are published or not. The documents may come from teaching and research institutions in France or abroad, or from public or private research centers.

L'archive ouverte pluridisciplinaire **HAL**, est destinée au dépôt et à la diffusion de documents scientifiques de niveau recherche, publiés ou non, émanant des établissements d'enseignement et de recherche français ou étrangers, des laboratoires publics ou privés.



Distributed under a Creative Commons Attribution 4.0 International License

Dual lysine and N-terminal acetyltransferases reveal the complexity underpinning protein acetylation

Willy V Bienvenu^{1,†,‡} , Annika Brünje^{2,†} , Jean-Baptiste Boyer¹ , Jens S Mühlenbeck² , Gautier Bernal^{1,§} , Ines Lassowskat² , Cyril Dian¹ , Eric Linster³ , Trinh V Dinh³ , Minna M Koskela^{4,¶} , Vincent Jung^{1,††} , Julian Seidel⁵ , Laura K Schyrba² , Aiste Ivanauskaite⁴ , Jürgen Eirich² , Rüdiger Hell³ , Dirk Schwarzer⁵ , Paula Mulo⁴ , Markus Wirtz³ , Thierry Meinzel¹ , Carmela Giglione^{1,*}  & Iris Finkemeier^{2,**} 

Abstract

Protein acetylation is a highly frequent protein modification. However, comparatively little is known about its enzymatic machinery. N- α -acetylation (NTA) and ϵ -lysine acetylation (KA) are known to be catalyzed by distinct families of enzymes (NATs and KATs, respectively), although the possibility that the same GCN5-related N-acetyltransferase (GNAT) can perform both functions has been debated. Here, we discovered a new family of plastid-localized GNATs, which possess a dual specificity. All characterized GNAT family members display a number of unique features. Quantitative mass spectrometry analyses revealed that these enzymes exhibit both distinct KA and relaxed NTA specificities. Furthermore, inactivation of GNAT2 leads to significant NTA or KA decreases of several plastid proteins, while proteins of other compartments were unaffected. The data indicate that these enzymes have specific protein targets and likely display partly redundant selectivity, increasing the robustness of the acetylation process *in vivo*. In summary, this study revealed a new layer of complexity in the machinery controlling this prevalent modification and suggests that other eukaryotic GNATs may also possess these previously underappreciated broader enzymatic activities.

Keywords acetylome; acetyltransferase; co- and post-translational modifications; plastid; quantitative proteomics

Subject Categories Plant Biology; Post-translational Modifications & Proteolysis; Proteomics

DOI 10.15252/msb.20209464 | Received 20 January 2020 | Revised 18 May 2020 | Accepted 20 May 2020

Mol Syst Biol. (2020) 16: e9464

Introduction

Each single genome gives rise to myriads of dynamic proteomes. Protein modifications are mainly responsible for expanding the proteome inventory, playing countless functions important to guarantee full protein functionality (for reviews see Friso & van Wijk, 2015; Giglione *et al*, 2015; Aebersold & Mann, 2016). Among protein modifications, acetylation is one of the most common and intriguing. Two major types of protein acetylations have been identified thus far: N- α - and ϵ -lysine acetylation. Both modifications involve the transfer of an acetyl moiety from acetyl-coenzyme A (Ac-CoA), either to the α -amino group of the protein N-terminal amino acid or to the ϵ -amino group of lysines. However, N-terminal acetylation (NTA) and ϵ -lysine acetylation (KA) display a number of distinctive features. KA is a tightly regulated, reversible post-translational modification, whereas NTA is considered to be irreversible and to take place mainly co-translationally. In a few cases, this latter modification occurs post-translationally such as on actin by NAA80/NatH, on transmembrane proteins by NAA60/NatF, on hormone

1 Université Paris-Saclay, CEA, CNRS, Institute for Integrative Biology of the Cell (I2BC), Gif-sur-Yvette, France

2 Plant Physiology, Institute of Plant Biology and Biotechnology, University of Muenster, Muenster, Germany

3 Centre for Organismal Studies Heidelberg, University of Heidelberg, Heidelberg, Germany

4 Department of Biochemistry, Molecular Plant Biology, University of Turku, Turku, Finland

5 Interfaculty Institute of Biochemistry, University of Tübingen, Tübingen, Germany

*Corresponding author. Tel: +33 169829844; E-mail: carmel.giglione@i2bc.paris-saclay.fr

**Corresponding author. Tel: +49 251 8323805; E-mail: iris.finkemeier@uni-muenster.de

†These authors contributed equally to this work

‡Present address: Génétique Quantitative et Évolution, Gif-sur-Yvette, France

§Present address: Institute of Plant Sciences Paris-Saclay, Gif-sur-Yvette, France

¶Present address: Institute of Microbiology, Třeboň, Czech Republic

††Present address: Institute IMAGINE, Paris, France

peptides or in the maturation of exported proteins during plasmodium infection as well as in plastids of plants (Chang *et al*, 2008; Dinh *et al*, 2015 and references in Drazic *et al*, 2016; Aksnes *et al*, 2019). Both modifications are observed in all kingdoms of life. However, KA and NTA affect separately only 3–20% of all soluble proteins in prokaryotes and it was surmised that the frequency of these modifications increases with the complexity of the organism (Drazic *et al*, 2016). In multicellular organisms, KA occurs in the nucleus, cytosol, endoplasmic reticulum, mitochondria, and plastids much more frequently than NTA, which is mostly associated with cytoplasmic proteins (Varland *et al*, 2015; Linster & Wirtz, 2018). Nonetheless, several reports showed that NTA, together with KA (Hartl *et al*, 2017), is a widespread modification in chloroplasts, which occurs co-translationally on plastid-encoded proteins as well as post-translationally on a significant fraction of imported nuclear-encoded proteins after the cleavage of their transit peptides (Zybailov *et al*, 2008; Bienvenut *et al*, 2011, 2012; Bischof *et al*, 2011; Huesgen *et al*, 2013). Although the number of experimentally characterized N- and/or K-acetylated (NTAed and KAed) proteins is continuously increasing, many features of the acetyltransferases that catalyze KA and NTA are much less understood, particularly those that originate from prokaryotes and specifically operate in organelles such as mitochondria and chloroplasts.

All known N-terminal- α -acetyltransferases (NATs) belong to the superfamily of general control non-repressible 5 (GCN5)-related N-acetyltransferases (GNAT), whereas the identified lysine acetyltransferases (KATs) are grouped in at least three families: GNAT, MYST, and p300/CBP (Friedmann & Marmorstein, 2013; Montgomery *et al*, 2015; Drazic *et al*, 2016).

GNAT proteins are characterized by a low overall sequence homology (3–23%) but they display conserved secondary and 3D structures (Vetting *et al*, 2005). Although the GNAT domain has largely diverged, a general profile has been developed and used to identify proteins belonging to the GNAT superfamily, including NATs and KATs (Vetting *et al*, 2005; Hulo *et al*, 2008; Rathore *et al*, 2016; Salah Ud-Din *et al*, 2016).

In eukaryotes, several cytosolic NAT and KAT complexes are known with distinct substrate specificities, which are conserved throughout eukaryotic evolution (Drazic *et al*, 2016). The NAT specificity is generally defined by the first two amino acids of the substrates, despite the observed negative influence of distant residues (i.e., the K and P inhibitory effects within positions P'2–P'10) (Arnesen *et al*, 2009b; Hole *et al*, 2011; Van Damme *et al*, 2011). This is different to the identified prokaryotic NATs, which are composed of only a catalytic subunit, and which display restricted or extended substrate specificities in eubacteria and archaea, respectively (Giglione *et al*, 2015). In contrast to eukaryotic proteins and recent results (Christensen *et al*, 2018; Reverdy *et al*, 2018; Carabetta *et al*, 2019), it was believed that prokaryotic KA played only a minor role and not much attention has been given to the corresponding KAT machinery (for review, see (Christensen *et al*, 2019a,b)).

The consensual knowledge favors distinct enzymes for the acetylation of protein N-termini and lysine residues (Liszczyk *et al*, 2011; Magin *et al*, 2016). The cytosolic acetyltransferases NAA40, NAA50, and NAA60 have been shown to display weak KA and strong NTA activities (Evjenth *et al*, 2009; Liu *et al*, 2009; Chu *et al*, 2011; Yang *et al*, 2011; Stove *et al*, 2016; Armbruster *et al*, 2020; Linster *et al*, 2020). However, there still is controversy on whether or not NAA10

might catalyze both reactions (Friedmann & Marmorstein, 2013; Magin *et al*, 2016). Indeed, several reports suggest that the catalytic subunit of the human and yeast NatA complex (Ard1/NAA10) is able to have both NTA and KA activities on specific substrates (Jeong *et al*, 2002; Arnesen *et al*, 2009a,b; Evjenth *et al*, 2009; Shin *et al*, 2009; Yoon *et al*, 2014). However, KA failed to be further confirmed for some of these substrates (Arnesen *et al*, 2005; Murray-Rust *et al*, 2006) and *in vitro* KA of other substrates was shown to be enzyme-independent and simply promoted by increasing concentrations of Ac-CoA (Magin *et al*, 2016; Aksnes *et al*, 2019). These studies argued against a role for NAA10 in KA and leave open the question of a double KAT/NAT activity for the same acetyltransferase. Interestingly, a new acetyltransferase has been described in the chloroplast of the model plant *Arabidopsis thaliana*, and, surprisingly, this enzyme displayed auto-KAT activity in addition to unusual promiscuous NAT activity (Dinh *et al*, 2015). Besides this first report and the recent identification of the plastid lysine acetyltransferase NSI in the chloroplast (Koskela *et al*, 2018), the plastid NAT and KAT machineries remain uncharacterized thus far.

In the current study, we sought to identify putative *Arabidopsis* NAT and/or KAT candidates using the PROSITE GNAT-associated profiles and the plastid subcellular localization prediction. Such investigation revealed 10 putative *Arabidopsis* GNAT proteins. Subcellular localization analyses in *Arabidopsis* protoplasts confirmed a plastid or plastid-associated localization for only eight of the 10 putative GNATs. Furthermore, by using the recently developed global acetylome profiling approach (Dinh *et al*, 2015), as well as a quantitative mass spectrometry-based lysine acetylome analysis (Lassowskat *et al*, 2017), we discovered that six of the eight GNATs display significant dual NAT and KAT activities. The remaining two candidates showed only weak KAT as well as NAT activities on a few substrates. All of the GNATs displaying an NTA activity exhibited extended NAT substrate specificities compared to the cytosolic ones. Proof of concept of the dual activity borne by one member was demonstrated in one of the GNAT knockout mutants where deficit of either acetylation levels was observed on plastid proteins. Altogether, this work identifies a new and widespread dual function for the acetyltransferases, which overturns conventional knowledge in this area, and therefore may have far-reaching implications for the study of acetylation in eukaryotic organisms.

Results

In silico analyses of the *Arabidopsis* genome revealed 10 GNAT enzymes with putative plastid localization

To identify new acetyltransferases responsible for protein acetylation in plastids, we searched the *Arabidopsis* genome for proteins, which possess both a GCN5-related N-acetyltransferases (GNAT) domain and a predicted organellar N-terminal transit peptide. Our final database search for putative NATs and KATs converged to 10 candidate proteins (Table EV1 and Dataset EV1). Two of these proteins have recently been identified in plastids of *Arabidopsis* as NAT (NAA70) and as KAT (NSI) enzymes, respectively (Dinh *et al*, 2015; Koskela *et al*, 2018).

Because the catalytic activity of these proteins (i.e., whether they transfer acetyl groups to protein N-termini, to internal lysine

residues of proteins, or to metabolites) cannot be predicted only from their amino acid sequence, we called these enzymes GNAT1–10 (Fig 1, Table EV1). To get some more insights into the

relationship between these diverse types of acetyltransferases, we constructed a phylogenetic distance tree including known GNAT proteins from *Arabidopsis*, yeast, and *Escherichia coli* (Figs 1A and

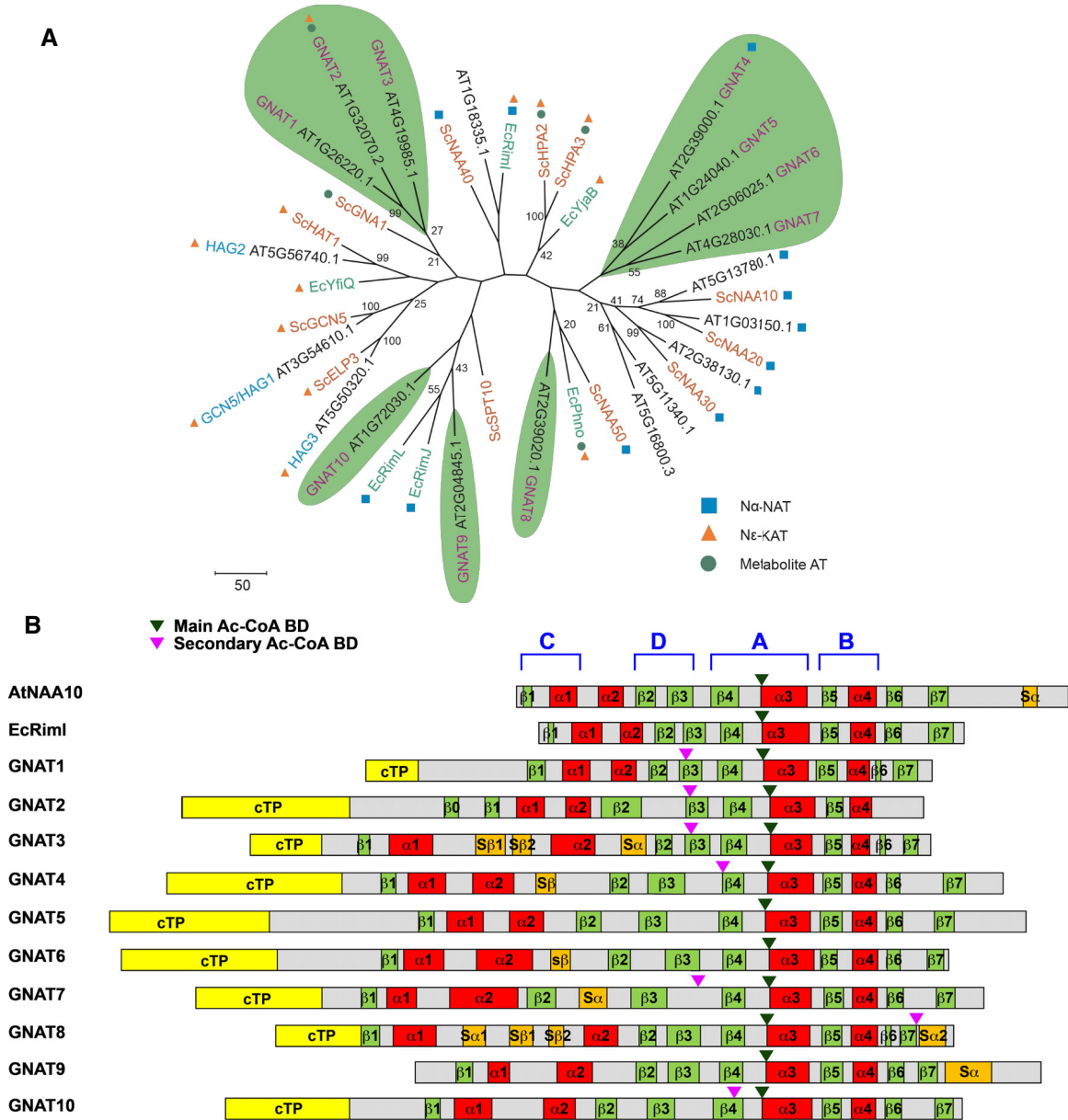


Figure 1. Putative organellar KAT and NAT genes from *Arabidopsis*.

A Phylogenetic tree of GNAT candidates from *Arabidopsis thaliana* (black letters), *Saccharomyces cerevisiae* (orange letters), and *Escherichia coli* (green letters) containing the acetyltransferase Pfam domains (PF0058, PF13302, PF13508, PF13673) (Finn et al, 2006). GNAT family sequences were aligned with ClustalW, and a phylogenetic tree was designed by applying the neighbor-joining method. Bootstrap analysis was performed using 2,000 replicates, whereby the resulting bootstrap values (values ≥ 20) are indicated next to the corresponding branches. The tree-specific topology was tested by maximum parsimony analysis. GNAT candidates with a putative organellar localization (TargetP1.1) were highlighted with a green background and named as GNAT1 to GNAT10 in relation to their position in the phylogenetic tree. Squares, triangles, and circles describe the specific acetylation activity, which was reported in literature. The metabolic activity of GNAT2 corresponds to serotonin acetyltransferase (Lee et al, 2014).

B Schematic overview of organellar GNATs' secondary structure organization (including AtNAA and EcRimI for comparison). Secondary structural elements of the GNAT candidates were determined using Jpred tools in combination with structure homology models (Swiss-model) and are displayed in red (α -helices), green (β -strands), and orange (supplementary secondary elements). All candidates were predicted with a mitochondrial or a chloroplast transit peptide (cTP) using TargetP. The mature form of these candidates is released after the excision of this cTP. Positions of main and secondary Acyl-CoA binding domain (Ac-CoA BD) are shown. C, D, A, and B design the four conserved motifs comprising what is referred as the N-acetyltransferase domain (Dyda et al, 2000).

EV1). *Arabidopsis* GNAT1–3 cluster together with known histone acetyltransferase (HAT) proteins from *Arabidopsis* and yeast (Fig 1A) and defined a first subtype of GNAT-related sequences (subtype 1, Fig EV1). GNAT4, 5, 6, 7, and 10 are located on a distinct branch (subtype 2, Fig EV1) and finally GNAT8 and GNAT9 group into a third subtype (Fig EV1).

Proteins of the GNAT superfamily have an overall low primary sequence similarity. However, all GNAT members display a conserved core of six to seven β -sheets and four α -helices ordered as $\beta 0$ – $\beta 1$ – $\alpha 1$ – $\alpha 2$ – $\beta 2$ – $\beta 3$ – $\beta 4$ – $\alpha 3$ – $\beta 5$ – $\alpha 4$ – $\beta 6$ (Salah Ud-Din *et al*, 2016). These secondary structural elements arrange in four conserved motifs (A–D; Fig 1B). The A and B domains are involved in Ac-CoA interaction and acceptor substrate binding, respectively. The C and D domains are involved in protein stability (see for review Salah Ud-Din *et al*, 2016). Although this pattern fits to most of the members of the GNAT superfamily, some deviations were identified such as the missing $\alpha 2$ -helix in the HATs, or additional elements, e.g., the additional α -helix between $\beta 1$ and $\beta 2$, in the *Enterococcus faecalis* aminoglycoside 6'-N-acetyltransferase (Wybenga-Groot *et al*, 1999).

The JPred tools (Drozdetskiy *et al*, 2015) together with homology models obtained from Swiss-model were used to predict the secondary structural elements of the 10 selected GNATs (Fig 1B). All candidates exhibit the typical GNAT topology with several clear primary sequence divergences from the cytosolic catalytic NAT enzymes (Dataset EV1). Particularly, both $\beta 1$ and $\beta 2$ strands are poorly conserved in their sequences. Moreover, the length, number, and position of the α -helices between the N-terminal $\beta 1$ and $\beta 2$ strands reveal some dissimilarities among the different GNATs (Fig 1B and Dataset EV1). Because variation in this region can reflect differences in substrate specificity (i.e., allowing the formation of different acceptor substrate binding sites), we anticipated a different substrate specificity for our candidates. In addition, a poor sequence conservation was also retrieved among the different GNATs at the level of the secondary elements forming the binding site for the acceptor substrate (loop between $\beta 1$ - and $\beta 2$ -strands, $\alpha 4$ -helix and $\beta 7$ -strand), similar to other members of the GNAT superfamily (Salah Ud-Din *et al*, 2016). Still a number of residues were found remarkably conserved across all selected GNATs (Dataset EV1).

The GNAT Ac-CoA binding domain (BD) is generally located at the N-terminal side of the $\alpha 3$ -helix. This specific and crucial domain for the acetyltransferase activity shares sequence homology over species with some similarity to the ATP-BD P-loop. For GNATs, the proposed conserved “P-loop like” sequence is [QR]-x-x-G-x-[GA] (Salah Ud-Din *et al*, 2016), where x could be any amino acid. An enlarged version of this pattern, including L at position 9, was proposed ([QR]-x-x-G-x-[GA]-x-x-L) for eukaryotic NATs (Rathore *et al*, 2016) and also observed in *Staphylococcus aureus* GNAT superfamily members (Srivastava *et al*, 2014). Surprisingly, Cort and co-workers (Cort *et al*, 2008) reported a major variation for one of the *S. aureus* GNAT superfamily (SA_{COL2532}) with a G instead of the expected Q/R residue at position 1. A similar variability was observed by Rathore *et al* (2016), suggesting possible divergences at position 4. Investigation of the consensus “P-loop like” in the putative GNATs clearly showed unique features with a slight degeneration of the conserved sequence for few of them (Table EV2). To verify whether the divergences observed in the Ac-CoA BD were only species-specific, we performed a larger scale orthologue

investigation. This approach confirmed the previously mentioned divergences and highlighted some new conserved sites (Table EV2). It appears that the residue at position 5 and 10 retains some specificity associated with hydrophobic residues including L/I/M/V. From this investigation, we could establish an Ac-CoA BD consensus pattern for each of the putative GNATs and a new enlarged version of this pattern corresponding to [RQ]xxG[LIMV][AG]xx[LIMVF][LIMV] (Table EV2).

We also observed that seven of the GNAT candidates possess more than one Ac-CoA BD (Table EV2 and Fig 1B). These duplicated “P-loop like” sequences display a degenerated pattern on the residues at positions 5, 9, and 10 (Table EV2) and are extremely rare in cytoplasmic NATs. Out of these multiple Ac-CoA BD, the most conserved ones (labeled as main Ac-CoA BD) were usually located at the N-terminus of the $\alpha 3$ -helix as reported for other GNATs (Fig 1B).

Several residues previously shown to be involved in substrate binding and specificity in cytosolic NATs (Liszczak *et al*, 2011, 2013) were also found to be conserved in some of the GNATs (Dataset EV1). For instance, in HsNAA50 the two catalytic residues Y73 in $\beta 4$ strand and H112 residue in $\beta 5$ strand, which are representative of the general base positions in GNAT enzymes (Liszczak *et al*, 2013), are found in GNAT4, 5, 6, and 7 and, to a lesser extent in GNAT9 and 10, in which the equivalent H112 is replaced by E and Y residues, respectively. Similarly, GNAT8 displays a catalytic dyad equivalent to HsNAA30 at these same positions (Y283 in $\beta 4$ strand and E321 residue in $\beta 5$ strand). Interestingly, the $\beta 4/\beta 5$ catalytic dyad is not conserved in GNAT1, 2, and 3. Indeed, Y73 was replaced by I in GNAT1, T in GNAT2, and S in GNAT3, whereas H112 is replaced by F in GNAT2 and by Y in GNAT1 and 3 suggesting that the catalytic dyads in these GNATs are either different or positioned differently on the strands. Finally, several other highly conserved residues especially in $\alpha 4$ helix, such as the Y124 residue of HsNAA50, are found in all N- α acetyltransferases except for GNAT3 and 9, where the Y is replaced by F (Dataset EV1).

Seven of the 10 predicted *Arabidopsis* GNATs are localized within plastids

To confirm the predicted plastid localization (Table EV1), all GNAT candidate proteins were expressed in *Arabidopsis* protoplasts as fusion proteins with a C-terminal GFP-tag under a 35S-promoter (Fig EV2). An overlapping GFP and chlorophyll autofluorescence confirmed plastid localizations of GNAT1, 2, 3, 4, 5, 7, and 10. The GNAT6-GFP showed a spotted fluorescence pattern, which was found either associated with chloroplasts or confined within the nuclear envelope (Figs EV2 and EV3A–C). Mitotracker staining revealed no overlap of the GNAT6-GFP fluorescence with mitochondria (Fig EV3D). The fluorescence signal of GNAT8- and 9-GFP expressing protoplasts was similar to those of the free GFP, which indicates cytosolic/nuclear localization. GENEVESTIGATOR publicly available gene expression data highlighted that all plastid-localized GNATs are mainly expressed in green tissues, GNAT6 is also expressed in roots, whereas GNAT8 and 9 cluster in a separate gene expression group and are expressed throughout the plant (Fig EV4). As GNAT8 and 9 showed a clear cytosolic and non-plastid-related localization, and considering their clustering to a different subtype (Fig EV1), we excluded them from further investigations.

Recombinant GNAT2 and GNAT10 display both KA and NTA activities *in vitro*

Sequence and structural analyses of the plastid or plastid-associated GNATs and previous studies (Dinh *et al*, 2015; Koskela *et al*, 2018) suggested that some of those GNATs might behave as NATs or/and KATs, despite a number of peculiarities observed in these members. Therefore, to assess whether they could display acetyltransferase activities, we selected one member of each of the two subtypes (Fig EV1). GNAT2 as archetype of subtype 1 and GNAT10 as the archetype of subtype 2 could be obtained as soluble and stable fusion proteins with a N-terminal His-tag, and including a maltose-binding protein, from *E. coli* extracts. We used a HPLC-based enzyme assay taking advantage of a series of designed peptides as substrates. These peptides are derived from an established acetylation enzyme assay (Seidel *et al*, 2016; Koskela *et al*, 2018) and display either a free amino group (A, G, S, T, V, M, or L) at the N-terminus followed by the sequence AQQAK(ac)AA-R or alternatively an acetylated N-terminus and a free ϵ -amino group on the internal lysine side chain. These modifications allowed to unambiguously assay either NTA or KA activity. To compare the activities of both enzymes with the different peptides, we used fixed substrate and protein concentrations in the enzyme assay (Table 1). Both purified enzymes unambiguously catalyzed dual KA and NTA activities, demonstrating that both GNATs were sufficient to carry out the two acetylation activities and that they do not require a further regulatory subunit. In addition, our peptide series with varying amino acid at position 1, even if not exhaustive, suggested that both GNATs have relaxed substrate specificities for NTA. However, GNAT2 showed a NTA preference for V and T as substrate, while GNAT10 showed a one order of magnitude higher NTA activity on the alpha-amino group of L, M, and V compared to A. These conclusions with GNAT10 are fully consistent with those we previously obtained with GNAT4, another member of GNAT subtype 2 (see Supplemental figure 3 in Dinh *et al*, 2015). Additionally, these data indicate that

the chemical properties of the N-terminal amino acid have an impact on the NTA activity of the two GNATs.

To unravel the preferred substrates for KA and NTA of the entire plastid GNAT family in an unbiased manner, we designed an assay using the *E. coli* proteome as random putative substrates when one of the eight selected GNATs was expressed. The results are detailed in the two paragraphs below.

Plastid GNATs possess large-spectrum KA activity

To fully characterize the KA activities of all plastid and plastid-associated GNATs, we undertook a global K-acetylome analysis. First, we expressed all eight GNAT proteins without their predicted target sequences, but with an N-terminal His-tag and a maltose-binding protein, under a T7 promoter in *E. coli*. All proteins were clearly overexpressed after induction of transcription with IPTG (Fig 2A). To assess whether the recombinant proteins can act as KAT enzymes, we first used an anti-acetyllysine antibody to detect acetylated proteins in the *E. coli* extracts (Fig 2A). Under non-induced conditions, a clear pattern of KA on *E. coli* proteins was observed in the Western blot analysis, similar to those from other reports (Christensen *et al*, 2018). Upon induction of the GNAT expression, we observed a K-hyperacetylation in almost all GNAT recombinant proteins (Fig 2A). A clear and strong hyperacetylation of *E. coli* proteins was detected when GNAT4 was overexpressed. This is interesting as a NTA activity was previously reported for GNAT4, in addition to some autoacetylation activity on internal lysine residues (Dinh *et al*, 2015). Since the Western blot analysis with the anti-acetyllysine antibody is not very sensitive and does not reveal the identity of the acetylated proteins and sites, we determined the KA proteins before and after induction of the respective GNATs with quantitative mass spectrometry (Dataset EV2). From around 3,000 quantified KA sites in the *E. coli* extracts from two biological replicates for each GNAT transgenic strain (Dataset EV2A), eight to 201 new KA sites were detected only upon overexpression of the respective *Arabidopsis* GNATs and not

Table 1. GNAT2 and GNAT10 exhibit dual KA and NTA activities *in vitro*.

Acetylation type	Residue or group at positions 1 or 6 in peptide ^a X ₁ AQQAK ₆ AA ^b		Enzyme-catalyzed N-acetylation position assayed	NTA activity (nmol[NTAed-peptide]·min ⁻¹ ·μmol [GNAT] ⁻¹) ^c	
	1	6		GNAT2	GNAT10
NTA	A	Ac-K	1	11.6 ± 0.4	17.2 ± 0.1
	G	Ac-K	1	18.4 ± 0.5	38.4 ± 0.4
	S	Ac-K	1	21.2 ± 0.4	40.1 ± 0.2
	T	Ac-K	1	31.8 ± 1.3	92.5 ± 0.3
	V	Ac-K	1	34.4 ± 5.3	185.8 ± 0.3
	M	Ac-K	1	11.8 ± 2.3	192.4 ± 0.5
	L	Ac-K	1	7.9 ± 5.6	324.3 ± 0.2
KA	Ac	K	6	7.0 ± 0.1	3.0 ± 0.1

^aPeptide concentration was 50 μM.

^bFull peptide sequence is given in Materials and Methods. Ac is for N-acetyl.

^cEnzyme catalysis was started by the addition of 100 μM acetyl-CoA to the reaction mixture already containing the indicated GNAT (5 μM). Incubation was for 45 min at 30°C. NTA was assessed by reverse-phase HPLC ($n = 3, \pm$ SD).

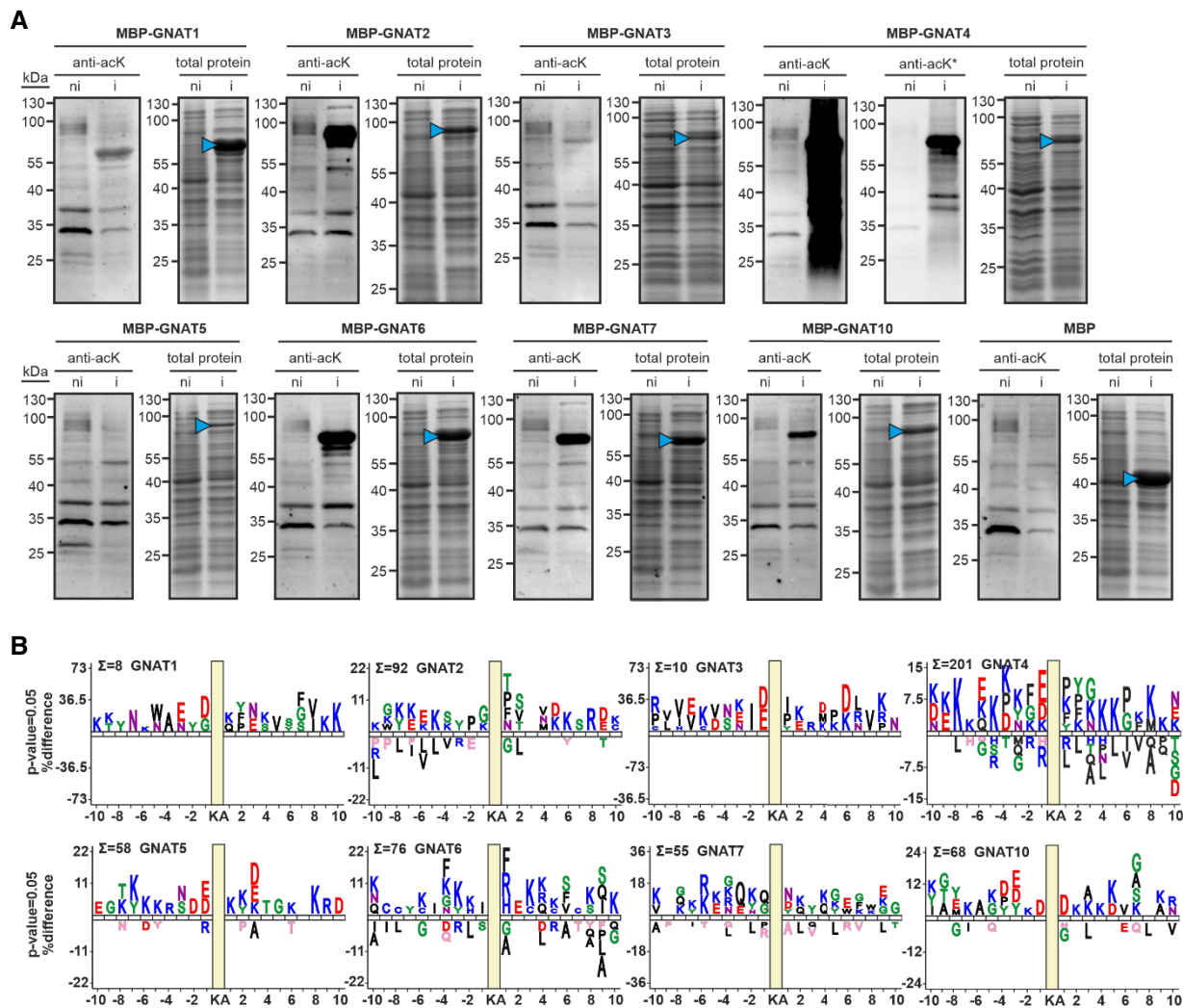


Figure 2. Lysine acetylation is induced in *Escherichia coli* extracts upon *Arabidopsis* GNAT expression.

- A** Anti-acetyllysine Western blot analyses and total protein stains of *E. coli* cell extracts. Cellular protein extracts before and after induction of His6-MBP-GNAT expression were separated on 12% acrylamide gels and immunoblotted by using an anti-acetyllysine antibody or stained with Coomassie dye. GNAT1, 2, 5, 6, 7, and 10 as well as His6-MBP control were expressed in *E. coli* BL21(DE3)pLysS. GNAT3 and 4 were expressed in Rosetta(DE3). In the total protein stains, recombinant GNAT protein constructs were highlighted by blue arrowheads. Protein expression before (ni) and after (i) induction with IPTG is indicated. The luminescence signal, indicating acetylated proteins, was usually recorded after 40–120 s. Since MBP-GNAT4 expression resulted in a saturated signal, the luminescence was additionally recorded for 10 s (indicated by an asterisk).
- B** Sequence logos of all unique lysine acetylation sites after GNAT expression in *E. coli*. Uniprot *E. coli* protein sequences were used as background population (sequence logos were generated using iceLogo (Maddelein et al, 2015)).

in the empty vector expressing strains as control (Fig 2B, Dataset EV2B–Q). These newly acetylated proteins were either proteins from *E. coli* or the recombinant GNAT proteins themselves. Especially the MBP-tag was highly acetylated on most of the fusion proteins, which might be due to the unusually high abundance of MBP during overexpression. In general, the GNAT induced KA of the endogenous *E. coli* proteins did not affect the overall abundance of most of these proteins, except for a few cases (Fig EV5). For example, the *E. coli* transketolase (P33570) was acetylated by GNAT5, 7, and 10 at K396, which coincided with a more than two-fold increase in protein abundance in all three strains (Dataset EV2). From the global K-acetylome profiling, we can conclude that

all GNATs have a KA activity on *E. coli* proteins, although GNAT1 and 3 showed the least number of protein substrates. In agreement with the Western blot analysis, GNAT4 overexpression resulted in the highest number of new KA sites on the *E. coli* proteome in comparison with all other tested GNATs (Figs 2 and EV5 and Dataset EV2). Interestingly, the GNATs showed very distinct substrate specificities, since there was not much overlap in the identity of the target proteins between the GNATs, nor in the 10 amino acids surrounding the acetylated lysine residues (Dataset EV2 and Fig 2B). Similar to the previously reported sequence logo from the lysine-acetylated peptides identified on chloroplast proteins of *Arabidopsis* (Hartl et al, 2017), only GNAT 1, 3, 4, 5,

and 10 preferred to some extent acidic amino acids in the -1 position next to the KA residue.

Global N- α -acetylome profiling unravels the relaxed NTA substrate specificity of plastid GNATs

To complete the characterization of this new GNAT family, we assessed their potential NTA activity and substrate specificity. This investigation was performed using the Global Acetylation Profiling (GAP) assay (Dinh *et al*, 2015) based on the recombinant expression of the GNATs in *E. coli*. Similar to the K-acetylome profiling analysis, this *in cellulo* approach provides the NTA characterization of the *E. coli* protein N-termini exclusively dependent on the putative expressed protein (Bienvenut *et al*, 2017a,b). This approach has been previously validated, confirming for instance the substrate specificity of the cytosolic AtNAA10 (Dinh *et al*, 2015; Linster *et al*, 2015) for N-terminal residues such as A, T, S, G, or V, unmasked after the removal of the first M by MetAP enzymes (Giglione *et al*, 2015). The GAP assay is very sensitive especially as the natural prevalence of NAT is very low in *E. coli*, with only few significantly acetylated proteins. These endogenously acetylated proteins are duly cataloged (Bienvenut *et al*, 2015; Schmidt *et al*, 2016) and were excluded from the analysis below (see Dataset EV3).

The complete list of 397 protein N-termini revealed by the GAP assay for the eight GNATs is compiled in Dataset EV3. As shown in Fig 3A, six out of the eight GNATs were able to significantly and specifically increase the number of NTAed substrates in the *E. coli* proteome. Only very few substrates were retrieved mostly with GNAT1 but also with GNAT3 (Fig 3A). In addition, because the few substrates of GNAT3 were only moderately N-acetylated (mainly below 20%, Fig 3A), GNAT1 and GNAT3 do not appear to be efficient for protein NTA and KA. Both GNATs most likely act only either (i) on a restricted number of specific plastid substrates, which are absent from the *E. coli* proteome, or (ii) they require plant-specific accessory proteins, like cytosolic NATs, to improve their activity. In contrast, GNAT4, 6, and 7 provided the largest number of modified N-termini (Fig 3A). Furthermore, an important fraction of the characterized substrates (55, 58, and 54%, respectively) could be quantified with an increase of the NTA yield higher than 20% (Fig 3A). GNAT2, 5, and 10 defined a second rank for the number of characterized substrates, with GNAT10 providing the lowest numbers and the lower NTA yield increase

(Fig 3A). Note that the relative expression level of each GNAT does not influence the NTA and KA activity as indicated in Fig 3A. For instance, GNAT1 is the best expressed GNAT in the assay but it modifies the lowest number of proteins with high efficiency (see dashed line in Fig 3A); this is in contrast to GNAT5.

Unlike cytosolic NATs, all GNAT candidates displayed a relaxed NTA substrate specificity but with significant differences in terms of favored substrates (Figs 3B and 4 and Dataset EV3). For instance, all of the six most active plastid-associated GNATs were very efficient for N-termini starting with an initiator methionine (iMet), but with clear differences induced by the amino acid at position 2 (Figs 3B and EV6). Additionally, GNAT2, 4, 5, and 7 were more efficient to act on NatA-like substrates (i.e., A, S, T, etc.) in comparison with GNAT10, which in turn seemed to prefer NatC/E/F- and to a lesser extent NatB-like substrates (M starting proteins; Figs 3B and EV6). Finally, GNAT6 was found to be almost equally active on NatA-, NatB-, and NatC/E/-like substrates (Figs 3B and EV6). Besides, the analysis of all GAP data (Dataset EV3) revealed that despite a few sequence motifs that were NTAed by all GNATs, some other sequences were only recognized by one GNAT and not by the others, while some others were recognized by several GNATs (Fig 4A and Dataset EV3). Finally, building a logo representation of specific GNAT2 substrates, over that of the other seven GNATs, revealed that its substrate specificity is not only based on the first amino acid but also on the following residues with preference for neutral and small amino acids (Fig 4B, and next paragraph).

GNAT2 knockout lines identify NTAed and KAed plastid targets demonstrating dual acetylation activity *in vivo*

As a proof of concept that a GNAT of this family does display both NTA and KA activities *in planta*, we anticipated that gene disruption of one of the members might lead to lower acetylation yields of both types of targets. Interestingly, in a previous study, we have shown that GNAT2 (NSI) knockout in two independent backgrounds (*nsi-1* and *nsi-2*) led to a clear phenotype with defective state transitions in the chloroplast (Koskela *et al*, 2018). Lysine acetylome analysis revealed a decreased KA status of several components of the photosynthetic apparatus, while the overall protein abundance was unchanged (Koskela *et al*, 2018). From these data, it appeared that

Figure 3. Global acetylome profiling reveals relaxed NTA specificity of six out of the eight GNATs.

Qualitative and quantitative MS-based analysis was performed with the GAP assay as described previously (Dinh *et al*, 2015). NTA yields were quantified as previously reported (Bienvenut *et al*, 2017b). Expression of each GNAT was ensured from a plasmid vector. A subset of thirty-two proteins naturally NTAed (i.e., > 20%) in the various samples and expressing the empty vector was disregarded (see Bienvenut *et al*, 2015 for details of such a dataset).

- A Number of characterized substrates with significant increases of NTA yields. The NTA yields of all retrieved N-termini upon a given GNAT expression were divided into four categories and each column is the result of the sum of all categories: 50–100%, dark green; 20–50%, light green; 10–20%, orange; 5–10%, red. The number of protein occurrence with a yield higher than 30% is also displayed to visualize the most significant acetylation status of each GNAT. The respective overexpression level of each GNAT as assessed from gel electrophoresis displayed in Fig 2A is indicated below (++++ is for very high expression, +++ for high, ++ for medium, + for intermediate).
- B Overview of GNAT substrate specificities. The number of NTAed substrates with each of the six major active GNATs is displayed in a pie chart according to the N-terminal pattern retrieved. The dataset is identical to that of panel A. N-terminal residues of proteins starting with Met are displayed in dark and light orange while all the other likely resulting from NME are colored with a blue pallet. Very similar pictures are obtained if only N-termini with NTA yields over 50% are figured. The starting, acetylated amino acid is indicated and labeled with the cytosolic Nat-type substrate specificity (i.e., NatA-F) according to the classic distribution available in Aksnes *et al* (2016). Details of the fraction of N-termini starting with M are given in Fig EV6.

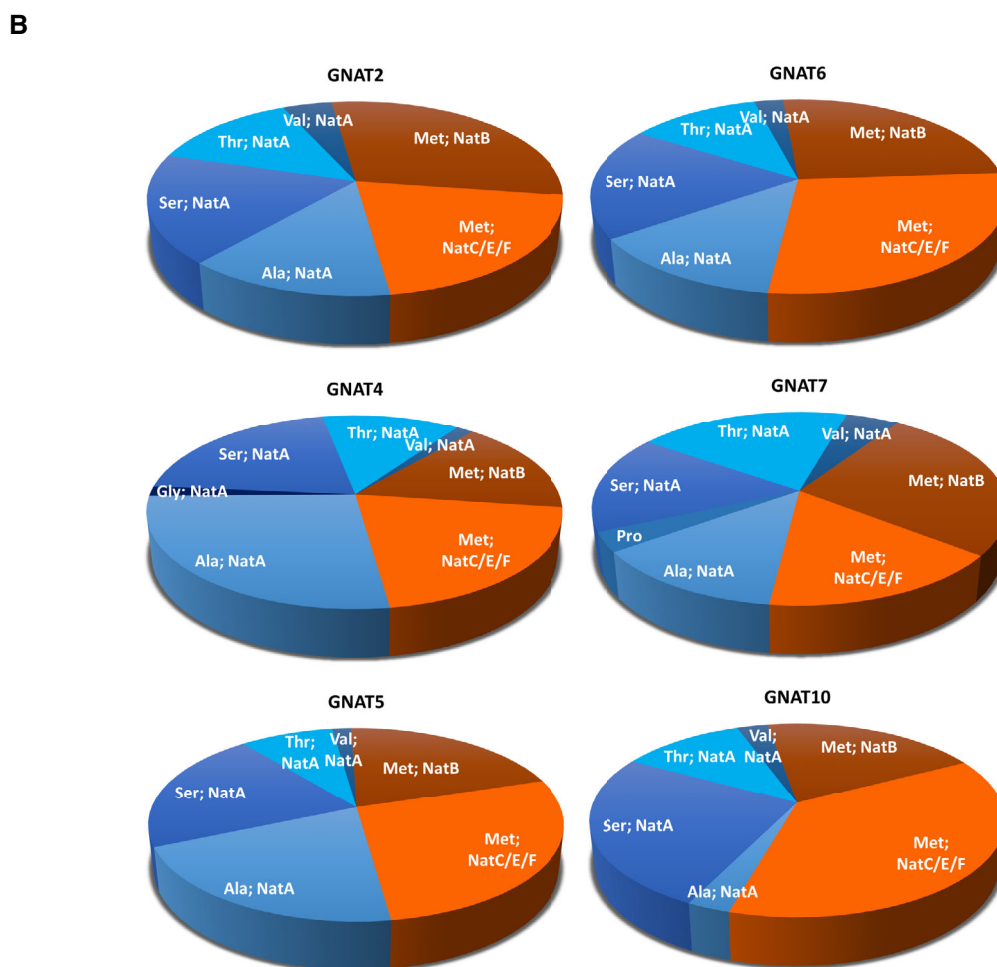
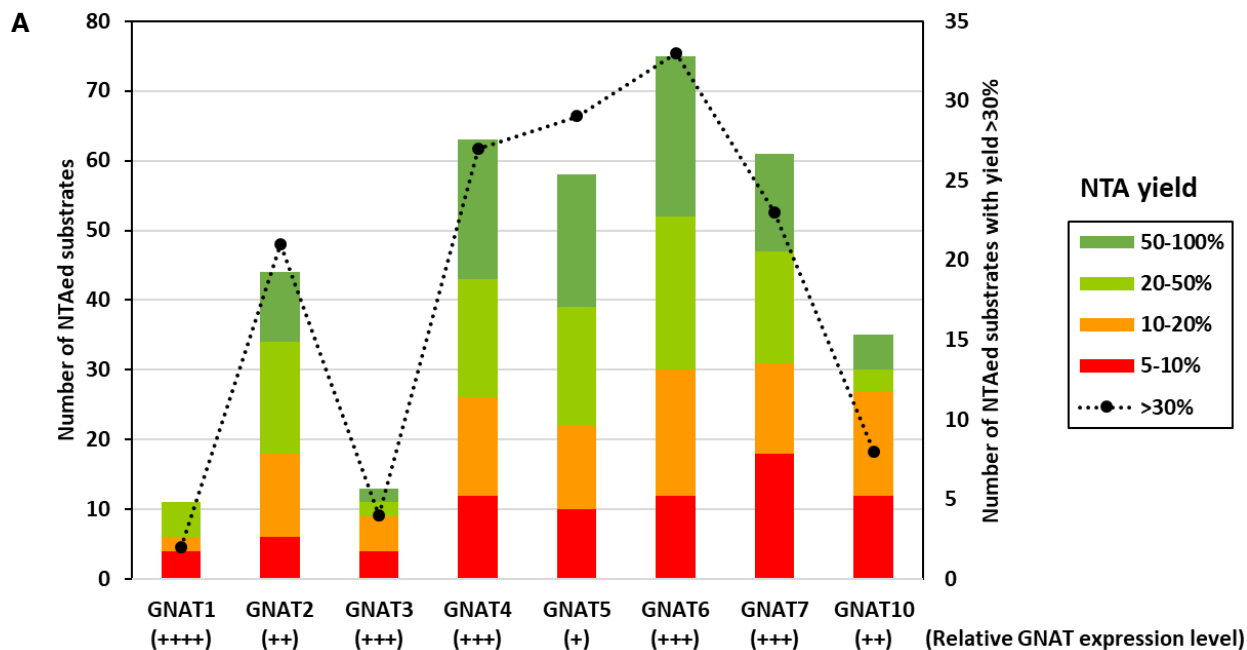


Figure 3.

at least GNAT2 displayed a unique KA substrate specificity, which could not be compensated by the other GNAT members. Because of the discovered dual KA and NTA activity, we therefore investigated whether NSI-defective plant lines were also affected in their overall NTA status using tissue from the same growth conditions as analyzed before (Koskela *et al*, 2018). Hence, we performed a global NTA quantitative analysis on WT and mutant lines using the SILProNAQ procedure as described previously (Linster *et al*, 2015; Frottin *et al*, 2016; Huber *et al*, 2020). We characterized almost 2,000 N-termini in various samples and could quantify half of them in four replicates of each line (Fig 5A and B and Dataset EV4).

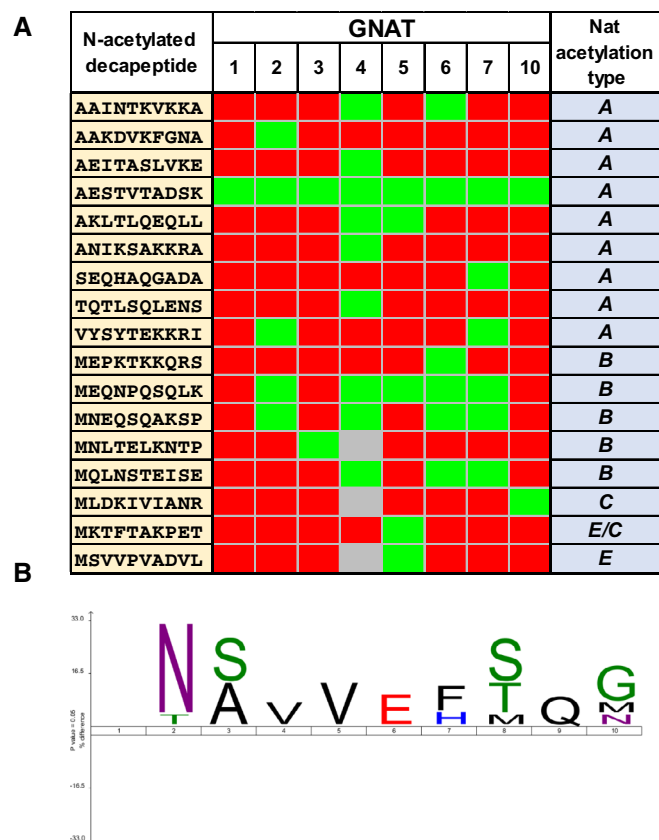


Figure 4. GNAT2, like all plastid GNATs, has redundant and specific selectivity profiles.

- A** Table showing examples of the selectivity of all plastid GNATs on a selection of retrieved N-termini. The table is extracted from Dataset EV3 to illustrate the concept and is not exhaustive. The 10 first amino acids of the N- α -acetylated proteins are indicated. The color code is green, positive; red, negative; gray means that the data are missing, i.e., that the peptide was not quantified.
- B** IceLogo representation (Colaert *et al*, 2009) of the N-termini substrates of GNAT2 vs all that of other GNATs. To construct the dataset, all GNAT2 substrates with NTA yield threshold > 30% were selected in the positive set. The negative set corresponded to the compilation of all substrates with a threshold > 30% of all other seven GNATs. The color symbol is associated with the default choice, which the software proposes for each class of amino acid: green is for the class of small hydrophilic uncharged residues including S, T, G. Acidic residues including D or E are colored in red. Positively charged residues including K, R, and H are displayed in blue. N or Q is in purple. Hydrophobic residues (A, I, M, V, L, W, Y, F, P) are shown in black.

Because identical overall results were observed with the two NSI-defective lines, we decided to merge the quantitative data for further statistical analysis and compared them to the wild type (WT). We first analyzed the data from NTA of residues 1 and 2, which almost exclusively arose from cytosolic proteins (Fig 5C). As we observed no difference, we concluded that the *nsi* knockout did not impact cytosolic NTA. We next focused on NTA occurring downstream from residue 2, usually as a result of leader peptide excision (Fig 5D). We observed a strong decrease in this subset, which contained a majority of plastid proteins. In agreement, when focusing exclusively on plastid-localized proteins (Fig 5E), the decrease was more pronounced and indicated that decreased NTA, due to inactivation of GNAT2, occurred specifically in this organelle. In addition, when focusing on the most affected proteins among all quantified N-termini, we retrieved only nuclear-encoded plastid proteins (Fig 5F). We next checked, which of the plastid proteins were affected in their NTA yield. The six major target proteins corresponded to AT2G24820 (TIC55), AT4G24830 (ASSY), AT3G54050 (F16P1), AT1G16080 (unknown protein), AT4G27440 (PORB), and AT1G03630 (PORC; Table 2 and Dataset EV4).

We next investigated whether GNAT2 has a broad activity on plastid proteins as suggested from our aforementioned GAP assay. The N-terminal sequence of the proteins featuring decreasing NTA yield in *nsi* mutant lines, in comparison with those that were unchanged, is displayed in Fig 5G. In agreement with the GAP analysis (Fig 5C, left-hand side), we also did not observe a specificity for the N-terminal residue (position 1) for GNAT2 in the *in vivo* data. In addition, the iceLogo analysis revealed that GNAT2 prefers small residues at downstream positions. These data are in agreement with the specificity derived from the GAP assay reported in Fig 4B. An interesting observation was made for fructose-1,6-bisphosphatase (F16P1), which was identified with two distinct neo-N-termini at positions Ala60 and Val61. This is not an unusual situation, since multiple N-termini have been observed for plastid-imported proteins before (Bienvenut *et al*, 2012; Rowland *et al*, 2015). In both cases, a strongly reduced acetylation of both N-termini was observed (44 \rightarrow < 1% and 87 \rightarrow 28%, respectively), although Val61 was less strongly affected than Ala60. This indicates that other plastid GNATs are able to acetylate F16P1 (at least at one of the two N-termini) in the absence of GNAT2. Furthermore, the data suggest that some substrate specificity, possibly arising from long-distance contacts, might exist between GNAT2 and protein targets allowing proteins displaying sequence similarity but with distinct N-termini to be modified by GNAT2. This could also explain why PORB and PORC are strongly affected while displaying rather distinct N-termini. Because the impact on F16P1 is incomplete with Val61 but complete with Ala60, this indicates that several plastid GNATs may contribute to NTA of the same site, leading to a compensation and partial acetylation if one is absent. Finally, we noticed that most affected KAed and NTAed targets of GNAT2 are of different identity, suggesting that recognition modes differ for either acetylation mode (Table 2).

Altogether, these data demonstrate that (i) GNAT2 has a predominant impact on plastid-imported proteins, therefore acting as a post-translational acetylase, (ii) GNAT2 displays both KA and NTA activity *in planta*, and (iii) about 5% (9/143 with NTA > 10%) of the plastid proteins rely on GNAT2 to achieve their own NTA. This number is consistent with a family of eight members, each

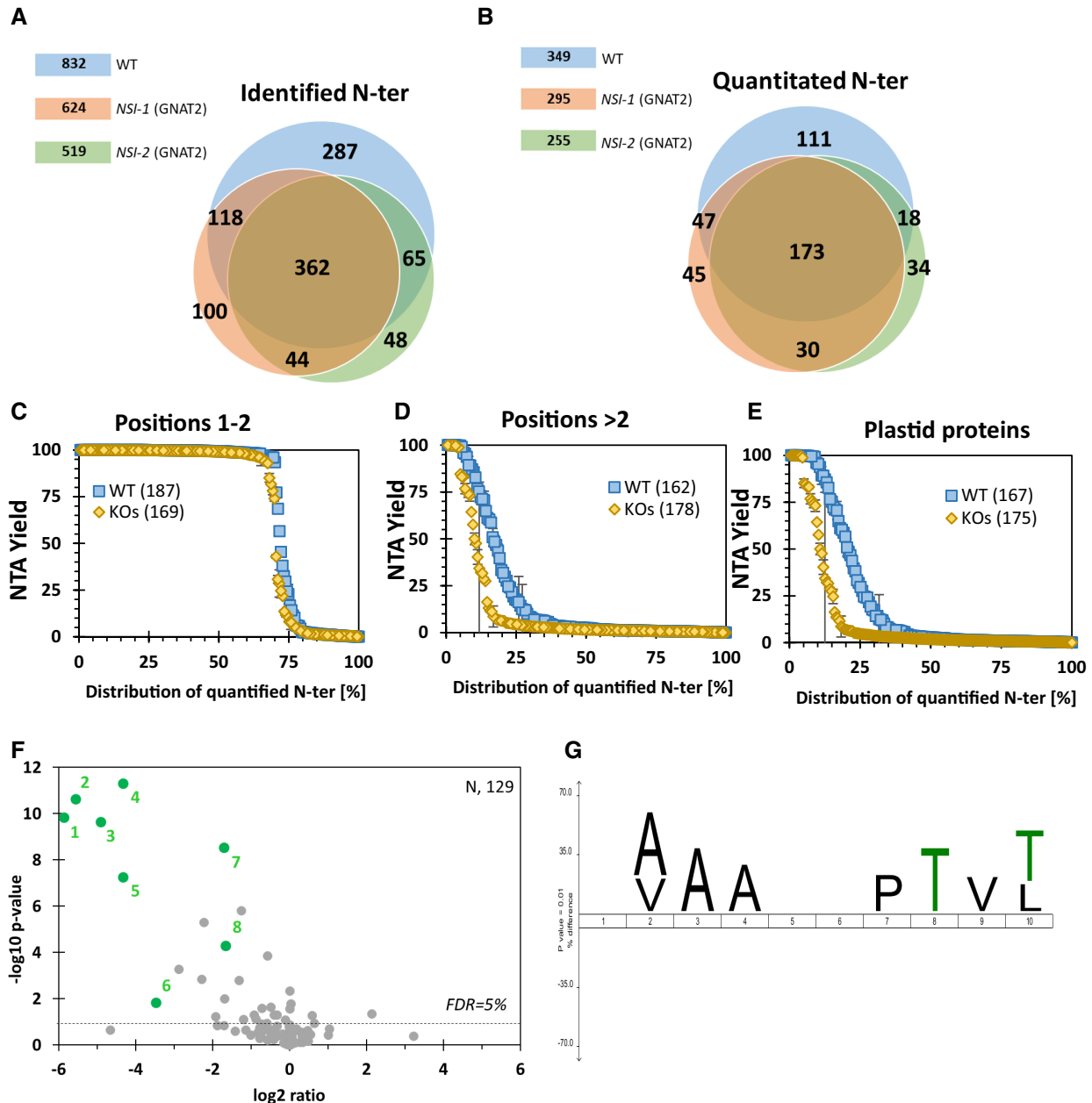


Figure 5. Inactivation of GNAT2 (NSI) unveils dual KA and NTA activity in planta and distinct targets for both acetylations.

- A** Venn diagram representing the overlap between the N-termini sets identified in wild-type and *nsi* mutant lines. N-termini from four replicates of *Arabidopsis* wild-type and two independent *nsi* knockout lines (*nsi-1* and *nsi-2*) were retrieved as previously reported (Koskela *et al*, 2018) and compared. More than 300 N-termini could be retrieved in all samples (Linster *et al*, 2015; Huber *et al*, 2020)
- B** Venn diagram of quantitated NTAed proteins. Half of the retrieved N-termini could be quantified and 173 were common to all samples.
- C** Comparison of NTA yield of retrieved N-termini of proteins starting at position 1 or 2. The majority of these proteins, corresponding mostly to cytosolic components, undergoing or not to N-terminal methionine excision, were not affected by inactivation of GNAT2. For statistical analyses, *nsi-1* and *nsi-2* were pooled and compared to the wild type. Two independent technical replicates of four biological replicates for each of the WT, *nsi-1*, and *nsi-2* samples were analyzed. Error bars are \pm SD.
- D** Comparison of NTA yield of retrieved N-termini of proteins starting at positions > 2. Clear alteration of NTA yield was observed in *nsi* mutant lines in the pool of nuclear-encoded plastid proteins. *nsi-1* and *nsi-2* samples were treated as in (C). Error bars are \pm SD (see details of sampling in panel C).
- E** Comparison of NTA yields of retrieved N-termini in plastid proteins. Similar variation (as in panel (D)) was observed when NTA of only plastid proteins was analyzed. Error bars are \pm SD (see details of sampling in panel C).
- F** Volcano plot representing NTA analyses of *nsi* knockout lines (treated together) and wild type. For this analysis, the *P*-value was calculated using Excel's two-tailed t-test function, for two-sample with equal variance. The most impacted proteins are shown in green. See Table 2 for correspondence. N is related to the number of quantified N-termini.
- G** IceLogo representation (Colaert *et al*, 2009) of the protein N-termini with modified NTA yield vs proteins with unmodified NTA yield. The color symbol associated with each residue is detailed in the legend to Fig 4B. Black is aliphatic; green is small hydrophilic.

Table 2. Comparison of the most affected NTAed and KAed substrates resulting from GNAT2 inactivation.

Spot #	Accession ARAPORT-11	Subcellular localization	Protein ID	Acetylation position	NTA Ratio (KO/WT)	KA Ratio (KO/WT)	Protein expression
1	AT2G24820	Plastid	TIC55	51 (Nt)	0.02	<i>n.i.</i>	+
2	AT3G54050	Plastid	F16P1	60 (Nt); 323 (K)	0.02	0.97	+
3	AT1G16080	Plastid	Q9S9M7	45 (Nt); 275 (K)	0.03	1.31	+
4	AT4G27440	Plastid	PORB	68 (Nt)	0.05	<i>n.i.</i>	+
5	AT1G03630	Plastid	PORC	69 (Nt); 334 (K)	0.05	1.08	+
6	AT4G34290	Plastid	Q9SYZ4	50 (Nt)	0.09	<i>n.i.</i>	<i>n.i.</i>
7	AT4G24830	Plastid	ASSY	75 (Nt)	0.31	<i>n.i.</i>	+
8	AT3G54050	Plastid	F16P1	61 (Nt); 323 (K)	0.32	0.97	+
1*	AT1G01790	Plastid	KEA1	168 (K)	<i>n.i.</i>	0.02	+
2*	AT2G05310	Plastid	Q9SJ31	62 (K)	<i>n.i.</i>	0.20	+
3*	AT5G01600	Plastid	FRI1	134 (K)	<i>n.i.</i>	0.65	+
*	AT1G06680	Plastid	PSBP1	41 (Nt); 88 (K)	1.17	0.08	+
*	AT2G34430	Plastid	Q39142	40 (K)	<i>n.i.</i>	0.81	+
*	AT1G52230	Plastid	PSAH2	138 (K)	<i>n.i.</i>	0.82	+

Proteins with a significant decrease in acetylation according to a FDR < 5% in the NTA experiment (1–8, see also Fig 5F) or in the KA experiment (*, see Fig 2 and Supplemental Dataset 1 of Koskela et al, 2018); *n.i.*: protein not identified in the experiment; + : protein expression found stable in the global quantitation experiment.

contributing to 10–20% of the overall plastid NTA capacity and with likely partial redundancy.

Discussion

Acetylations are among the most abundant and essential protein modifications, which can occur on the amino group of N-termini and internal K residues of proteins, respectively. Both acetylation mechanisms involve the transfer of an acetyl moiety from acetyl-coenzyme A (Ac-CoA) to the N α - or N ϵ -lysine amino group of an acceptor amino acid by the action of NATs or KATs, respectively. In a given proteoform, there is only one N α and an average of 32 N ϵ -K acceptors (preprint: Agoni, 2015; Kozłowski, 2016). Most of the published knowledge on NTA arises from yeast and human studies on the cytosolic NAT isoforms. The cytosol of these organisms contains an increasing number of NATs often assembled in complexes (seven as to the year 2020, named NatA/B/C/D/E/F/NAA80), which either act co- or post-translationally. All cytosolic NATs characterized so far display different, narrow substrate specificities. For instance, the NatA complex modifies all proteins having lost their iMet as a result of the essential N-terminal methionine excision process (NME) ensured by methionine aminopeptidases (MetAP enzymes). MetAPs are able to cleave iMet only if amino acid at position two displays a short lateral chain (i.e., A, G, S, and T), representing almost half of the cytosol isoforms (Giglione et al, 2015; Aksnes et al, 2016; Breiman et al, 2016). In contrast, NatB and NatC modify proteins retaining their iMet, and their specificity depends on the nature of the amino acid at position P2'. The other cytosolic isoforms acetylate a well-defined set of proteins (Drazic et al, 2018). The plant cytosolic NTA machinery arises from the characterization of N-termini from many photosynthetic organisms (Martinez et al, 2008; Zybailov et al, 2008; Liu et al, 2013; Linster & Wirtz, 2018). Characterization of *A. thaliana* NatA shows

conservation with metazoan NATs (Linster et al, 2015; Xu et al, 2015). Previous studies tend to favor separated enzymes for the modification of the protein N-termini and K residues (Liszczak et al, 2011; Magin et al, 2016).

Although the number of experimentally characterized NTAed and/or KAed proteins is continuously increasing, many features of the enzymes that catalyze these modifications are still unknown, especially in prokaryotic cells and organelles such as mitochondria and chloroplasts. Chloroplasts evolved from engulfed prokaryotes, most likely ancient cyanobacteria that once lived as independent organisms, and therefore these organelles resemble bacteria in certain aspects. Nonetheless, the new cellular resident evolved acquiring unique features with a simultaneous reduction of the genome size due to relocation of genes to the nucleus. In case of higher plant plastids, this genome reduction resulted in only about one hundred protein-coding genes remaining in the plastome. Recently, an unexpected feature of chloroplasts has been highlighted and concerns both KA and NTA. Although these modifications affect only a minority (between three and 10%) of soluble proteins in bacteria, KA and particularly NTA have been found on more than 30% of plastid proteins in *Arabidopsis*, including those encoded by the plastid genome (Finkemeier et al, 2011; Wu et al, 2011; Bienvenut et al, 2012; Rowland et al, 2015; Hartl et al, 2017).

Despite the recent identification of NAA70/GNAT4 as a plastidial NAT enzyme, and NSI/GNAT2 as a KAT enzyme (Dinh et al, 2015; Koskela et al, 2018), it was unclear so far if other KAT and NAT enzymes were present in plastids, especially since only a limited number of protein substrates were revealed for NSI/GNAT2 (Koskela et al, 2018). In the case of KA, acetylation might also occur non-enzymatically in the chloroplast stroma during active photosynthesis, when the pH is rising to about eight (Hohner et al, 2016). Hence, the question to what extent KA is enzymatically or non-enzymatically controlled in chloroplasts is still unanswered, especially since it is expected to occur mainly non-enzymatically in

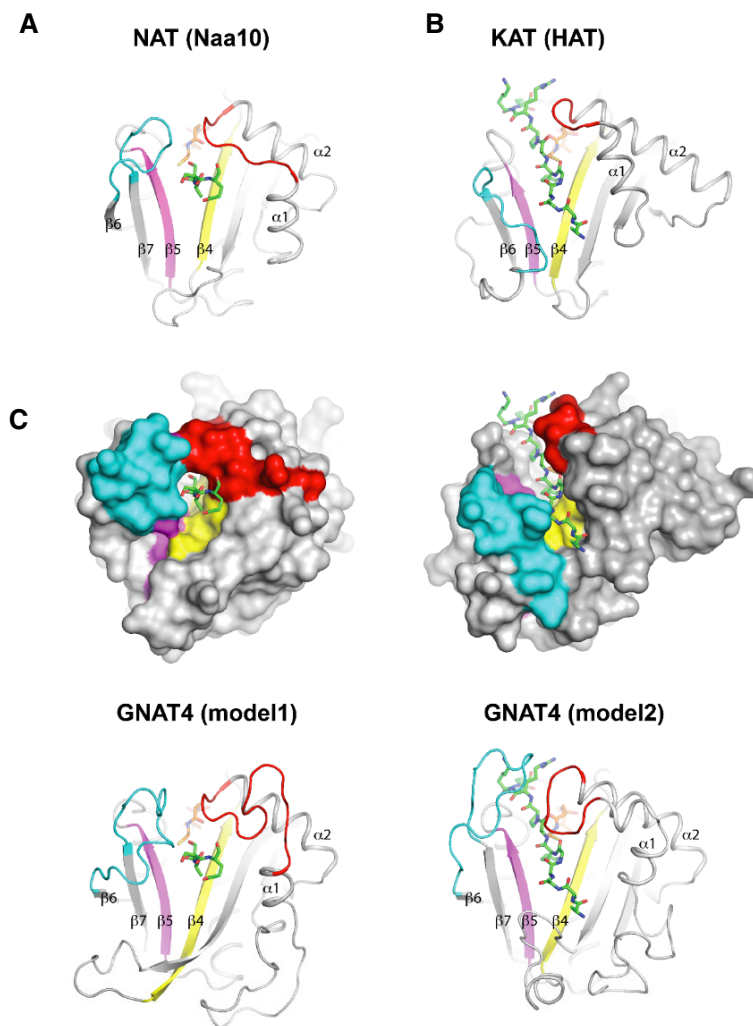


Figure 6. NAT and KAT activities of plastid GNATs suggest a dual conformation of both $\alpha 1\alpha 2$ and $\beta 6\beta 7$ loops.

Specific NAT or KAT activity of GNAT members was previously suggested to be dependent on the GNAT-fold (Magin *et al.*, 2016).

- A Crystal structure of the catalytic subunit of NatA from yeast complexed with a bisubstrate inhibitor (PDB code 4KVM). The interaction of the $\alpha 1\alpha 2$ and $\beta 6\beta 7$ loops restricts access to the binding site of the peptide promoting *N*- α acetylation of substrate peptide.
- B Crystal structure of the HAT domain of *Tetrahymena* GCN5 bound with both peptide ligand and CoA (PDB code 1QSN). The absence of a $\beta 7$ strand and the different C terminus creates an accessible groove at the surface of the HAT protein promoting internal *N*- ϵ lysine acetylation of the substrate peptide. The main chain (top) and solvent accessibility (bottom) of both proteins are displayed as gray ribbon or gray surface, respectively. $\alpha 1\alpha 2$ loop, $\beta 4$ strand, $\beta 5$ strand are colored in red, yellow, and pink. $\beta 6\beta 7$ loop in A and $\beta 6\alpha 4$ loop in B are colored in cyan. Peptides and the CoA moiety are displayed as green and orange sticks, respectively.
- C Models of GNAT4 obtained from structure homology-modeling server SWISS-model using the pdb codes of two GCN5-related *N*-Acetyltransferases ($2 \times 7b$, left/model 1; 4H89, right/model 2) as template. The GNAT4 models show different $\alpha 1\alpha 2$ and $\beta 6\beta 7$ loop conformation, suggesting a mobile loop allowing GNAT4 to ensure a KA/NTA dual activity.

mitochondria (König *et al.*, 2014). However, KA has recently been identified also in non-green plastids of roots (Uhrig *et al.*, 2019), which provides support to the enzymatically regulated KA. The identification of the enzymes responsible for KA or NTA has been hampered by the low sequence homology shared by these proteins. All known NATs belong to the superfamily of GNATs, as do most identified KATs (Montgomery *et al.*, 2015; Drazic *et al.*, 2016). GNAT Prosite motifs, associated with the main eukaryotic cytosolic NATs or KATs, are generally used for the search of these enzymes in different genomes where they have not been annotated so far. However, this type of search does not allow to discriminate between

the activities of the different types of GNATs. Our parallel and multi-layered strategies in the search of putative plastid NATs or KATs revealed a common pool of proteins with a number of unique features, both at the level of conserved motifs (e.g., the Ac-CoA BD) as well as their activities. This was never before observed together in known NATs and KATs. Indeed, the majority of plastid GNATs, in contrast to their cytosolic counterparts, possess two Ac-CoA BDs, with the most conserved one located at the N-terminus of the $\alpha 3$ -helix and displaying the following specific pattern: [RQ]xxG[LIMV] [AG]xx[LIMVF][LIMV]. The second, more degenerated Ac-CoA BD, was often found upstream of the main one. In addition to

chloroplast GNATs, our investigation revealed a secondary Ac-CoA BD only on human NAA30 and *Arabidopsis* NAA40. Why the majority of plastid GNATs display a secondary Ac-CoA BD is still unknown. However, the additional observation that the different plastid GNATs separately share conserved residues, previously shown to be involved in substrate binding and specificity in all cytosolic NAA, suggests that those plastid GNATs might have specific and unique substrate specificities. Our global N- α -acetylome profiling, indeed, reveals that the substrate specificity of all plastid GNATs is more similar to that of archaeal NATs (Liszczyk & Marmorstein, 2013) than to any other NAT described so far in eukaryotes or bacteria. Surprisingly, all identified GNATs display a clear dual KAT and NAT activities. The comparison between cytosolic NatA catalytic subunit (NAT) and nuclear HAT bound with their cognate peptide substrates reveals that the conformation of $\alpha 1\alpha 2$ and $\beta 6\beta 7$ loops may be the determinant for their different activities, as previously suggested (Magin et al, 2016) (Fig 6A and B). In NAA10, $\alpha 1\alpha 2$ and $\beta 6\beta 7$ loops interact with each other to constrain the access to the active site favoring N-terminal peptide recognition (Fig 6A). In contrast, the absence of $\beta 6\beta 7$ strands in HAT leads to a different organization of $\alpha 1\alpha 2$ loop and the C terminus, resulting in a large catalytic groove suitable for internal lysine-peptide recognition (Fig 6B). Interestingly, all identified GNATs show either insertions of structural elements in $\alpha 1\alpha 2$ loop and/or missing $\beta 6\beta 7$ loops that may explain their dual activities. Homology models of GNAT4, displaying both KAT and NAT activities, suggest that longer predicted $\alpha 1\alpha 2$ and $\beta 6\beta 7$ loops could adopt two different conformations compatible with either NTA or KA activities (Fig 6C). In line with this observation, it has recently been proposed that hydroxylation of W38 of human NAA10 widens the substrate gate of the enzyme enabling it to acquire a KA activity (Kang et al, 2018).

How can we explain the diversification of the plastid GNAT compared to the cytosolic or bacterial counterpart? We can expect that these unique proteins underwent diversification through evolution to cope with specific plastid functions. In this context, we can hypothesize that while KA affects the activity of several photosynthetic enzymes, including RuBisCO (Finkemeier et al, 2011; Gao et al, 2016), NTA might affect the protein stability and might be a part of a plastidial N-degron pathway (Bouchnak & van Wijk, 2019) as previously suggested (Bienvenut et al, 2011; Hoshiyasu et al, 2013), or it might be involved in other not yet uncovered functions. In addition, the different substrate specificities and in particular the

low activities observed for GNAT1 and 3 suggest that each of these proteins works in a specific subcompartment of the plastid or on specific plastid protein families. Deletion of the enzyme GNAT2 (NSI) had no effect on plant phenotype under constant light, but resulted in a strong reduction in growth when plants were subjected to fluctuating light conditions (Koskela et al, 2018, 2020). Intriguingly, the *nsi* plants were not able to respond to changes in light conditions by balancing the absorbed light energy between the photosystems (PS) through state transitions and the *nsi* plants were locked in state 1, referring to the association of LHCII to PSII (Koskela et al, 2018). Association of LHCII to PSI (state 2) occurs via interaction of the LHCII trimer with the PSI docking site comprised of PSAH/L/O in a process determined by phosphorylation status of LHCII (Lunde et al, 2000; Crepin & Caffarri, 2015; Longoni et al, 2015). In *nsi* plants, however, no defects in LHCII phosphorylation could be detected, but instead KA of PSAH as well as LHCB1.4 was decreased, which might hinder the binding of LHCII to PSI. It is also possible that loss of GNAT2/NSI may have other downstream effects on thylakoid dynamics and thereby on state transitions. In *nsi*, several chloroplast proteins showed a decrease in NTA as well. However, none of these proteins were involved in light reactions of photosynthesis, and thus, direct involvement of NTA in the regulation of light harvesting through state transitions is unlikely. Nevertheless, an interesting recent study showed extensive light-independent NTA of stroma-exposed N-terminal loops of many of the PSII-LHCII proteins. This suggests that NTA may play a role in the formation of grana stacks via PSII-LHCII supercomplex interaction through the stromal gaps (Albanese et al, 2020) and thus be involved in organization of thylakoid protein complexes.

Taken together, our results show that NSI/GNAT2 displays an additional NTA activity *in vivo* next to its KA activity, and that the acetylation recognition mode of GNAT2 differs between KA and NTA. Thus, GNAT enzymes may have unexpected impacts on the regulation of photosynthesis and chloroplast metabolism in general. Characterization of the novel chloroplast GNAT family has revealed a new layer of complexity in the enzymatic machinery responsible for acetylation and suggests that other eukaryotic GNATs may also have these unforeseen broader enzymatic activities. Such properties were most recently also reported for a N-myristoyltransferase, a GNAT involved in acyl transfer to the N-termini of proteins (Castrec et al, 2018; Dian et al, 2020; Kosciuk et al, 2020; Meinel et al, 2020).

Materials and Methods

Reagents and Tools table

Reagent/resource	Reference or source	Identifier or catalog number
Experimental models		
<i>Escherichia coli</i> Rosetta TM (DE3)	Merck	
<i>Escherichia coli</i> BL21(DE3)pLysS	Thermo Fisher	
<i>Arabidopsis thaliana</i> (Col-0)		
<i>Arabidopsis thaliana</i> (Col-0) <i>nsi-1</i> (SALK_033944)	Koskela et al (2018)	
<i>Arabidopsis thaliana</i> (Col-0) <i>nsi-2</i> (SALK_020577)	Koskela et al (2018)	

Reagent and Tools table (continued)

Reagent/resource	Reference or source	Identifier or catalog number
<i>Arabidopsis thaliana</i> Col-0, 35S:GNAT1-GFP	This study	
<i>Arabidopsis thaliana</i> Col-0, 35S:GNAT2-GFP	This study	
<i>Arabidopsis thaliana</i> Col-0, 35S:GNAT3-GFP	This study	
<i>Arabidopsis thaliana</i> Col-0, 35S:GNAT4-GFP	This study	
<i>Arabidopsis thaliana</i> Col-0, 35S:GNAT5-GFP	This study	
<i>Arabidopsis thaliana</i> Col-0, 35S:GNAT6-GFP	This study	
<i>Arabidopsis thaliana</i> Col-0, 35S:GNAT7-GFP	This study	
<i>Arabidopsis thaliana</i> Col-0, 35S:GNAT8-GFP	This study	
<i>Arabidopsis thaliana</i> Col-0, 35S:GNAT9-GFP	This study	
<i>Arabidopsis thaliana</i> Col-0, 35S:GNAT10-GFP	This study	
Recombinant DNA		
Oligonucleotides and sequence-based reagents	This study	Table EV3 and EV4
Antibodies		
Acetylslysine antibody, for Western blot analysis, anti-rabbit	ImmuneChem	ICP0380
Acetylslysine antibody, immobilized to beaded agarose	ImmuneChem	ICP0388
Secondary HRP-conjugated antibody, goat anti-rabbit	Agrisera	AS09602
Chemicals, enzymes, and other reagents		
Acetic anhydride-d6, 99 atom % D	Sigma-Aldrich	175641
Acetone, for HPLC, ≥ 99.9%	Sigma-Aldrich	270725
Acetonitrile, for HPLC, ≥ 99.9%	Sigma-Aldrich	34851
Ammonium bicarbonate, BioUltra, ≥ 99.5% (T)	Sigma-Aldrich	09830
Complete™ protease inhibitor cocktail tablets	Sigma-Aldrich	11697498001
Dimethyl sulfoxide, anhydrous, ≥ 99.9%	Sigma-Aldrich	276855
Dipotassium hydrogenophosphate (K ₂ HPO ₄), ≥ 98%	Sigma-Aldrich	P9791
Disodium hydrogen phosphate, water free, ≥ 99% p.a.	Roth	P030
Dithiothreitol, ≥ 98%	Sigma-Aldrich	D9779
EGTA, ≥ 97%	Sigma-Aldrich	E4378
Formaldehyde solution, 36.5–38% in H ₂ O	Sigma-Aldrich	F8775
Formaldehyde-D2 (D, 98%; ~ 20% w/w IN D ₂ O)	Cambridge Isotope Laboratories	DLM-805-20
Formic acid, ≥ 95%	Sigma-Aldrich	F0507
Guanidine hydrochloride, ≥ 99%	Sigma-Aldrich	369080
Glycerol, ≥ 99%	Sigma-Aldrich	G5516
HEPES, ≥ 99.5%	Sigma-Aldrich	H3375
N-hexane, anhydrous, 95%	Sigma-Aldrich	296090
Hydrochloric acid, 37%	Sigma-Aldrich	258148
Hydroxylamine solution, 50 wt.% in H ₂ O	Sigma-Aldrich	438227
N-hydroxysuccinimide, 98%	Sigma-Aldrich	130672
Iodoacetamide, ≥ 99%	Sigma-Aldrich	I6125
Lysozyme, lyophilized	Roth	8259
Methanol for HPLC/MS	Fisher Scientific	M406215
Magnesium chloride (MgCl ₂) anhydrous, ≥ 98%	Sigma-Aldrich	M8266
Phenylmethanesulfonyl fluoride (PMSF), ≥ 99% (T)	Sigma-Aldrich	78830
Pierce™ 660 nm Protein Assay Reagent	Thermo Fisher	22660
Potassium chloride, ≥ 99%	Sigma-Aldrich	P9333
Potassium hydroxide, 90%	Sigma-Aldrich	484016

Reagent and Tools table (continued)

Reagent/resource	Reference or source	Identifier or catalog number
Sodium chloride, $\geq 99.5\%$	Sigma-Aldrich	S7653
Sodium cyanotrihydridoborate, $\geq 95\%$	Sigma-Aldrich	156159
Sodium dihydrogen phosphate, monohydrate, $\geq 98\%$ p.a.	Roth	K300
Sodium hydroxide, $\geq 98\%$	Sigma-Aldrich	S8045
SuperSignal™ West Dura Extended Duration ECL substrate	Thermo Fisher	10220294
Thiourea, $\geq 99\%$	Sigma-Aldrich	T7875
Trifluoroacetic acid, $\geq 99\%$	Sigma-Aldrich	302031
Triton X-100	Sigma-Aldrich	×100
Tris hydrochloride, $\geq 99\%$	Sigma-Aldrich	T3253
Trypsin (lyophilized) from bovine or porcine pancreas, TPCK Treated, $\geq 10,000$ BAEE units/mg protein	Sigma-Aldrich	T1426
Urea, $\geq 99.5\%$ p.a	Roth	2317
Water, for UHPLC, for mass spectrometry	Sigma-Aldrich	900682
ARAPORT-11 protein database (fasta file)		
ClustalW	Larkin <i>et al</i> , 2007	http://www.clustal.org/
EnCOUNTER v1.0	In-house software Bienvenut <i>et al</i> (2017b)	
<i>Escherichia coli</i> (strain K12) database (Proteome ID: UP000000625)		https://www.uniprot.org/
IceLogo	Colaert <i>et al</i> (2009)	https://iomics.ugent.be/icelogsolver/
Mascot 2.4	Matrix Science	
Mascot Distiller 2.5.1	Matrix Science	
MaxQuant version 1.5.2.8	Cox and Mann (2008), Tyanova <i>et al</i> (2016a)	http://www.maxquant.org/
Mega-X	Kumar <i>et al</i> (2018)	
Perseus version 1.5.5.3	Tyanova <i>et al</i> (2016b)	
Python 2.7		
R 3.3.1	R Core Team (2016)	https://www.r-project.org/
TargetP1.1	Emanuelsson <i>et al</i> (2007)	
Material and other consumables		
17-cm frit-less silica emitters, 0.75- μ m inner diameter	New Objective	N.A.
Benchtop centrifuge (able to reach 12,000 g)	Eppendorf	N.A.
ChemiDoc™ gel imaging system	Bio-Rad	N.A.
Centrifuge 5427R	Eppendorf	N.A.
Centrifuge 5804R	Eppendorf	N.A.
Dionex UltiMate 3000 RSLC, with diode array detector	Thermo Scientific	N.A.
EASY-nLC 1200 system	Thermo Fisher	N.A.
Easy-nLC-II system	Thermo Scientific	N.A.
Empore™ Styrene Divinyl Benzene (SDB-RPS) Extraction Disks	Supelco	66886-U
Iron beads, 3 and 5 mm diameters	N.A.	N.A.
Liquid nitrogen	N.A.	N.A.
LTQ-Orbitrap Velos mass spectrometer	Thermo Scientific	N.A.
Mixer mill	Retsch (or equivalent)	N.A.
Polysulfoethyl A column (200 × 2.1 mm, 5 μ m, 200 Å)	PolyLC	202SE0502
Q Exactive HF mass spectrometer	Thermo Fisher	N.A.

Reagent and Tools table (continued)

Reagent/resource	Reference or source	Identifier or catalog number
ReproSil-Pur 120 C18-AQ, 1.9 μm	Dr. Maisch	r119.aq.001
Reverse-phase C18 analytical nano-column (75 μm \times 120 mm, 3 μm)	Nikko Technos	NTCC-360/75-3
Reverse-phase C18 nano-pre-column (75 μm \times 20 mm, 3 μm)	NanoSeparation	NS-MP-11
Sep-Paks C18 plus short columns	Waters	WAT020515
Sep-Pak tC18 SPE cartridges (1 ml phase volume)	Waters	WAT054960
Sonicator UIS250V with Sonotrode LS24d3	Hielscher	N.A.
SpeedVac/concentrator, with vacuum < 1 torr	N.A.	N.A.

Methods and Protocols

In silico searches for putative *Arabidopsis* plastid NAT and KAT genes

In the search of putative plastid NAT and KAT genes, we combined two parallel strategies. The first one aimed to identify putative chloroplast (Cp) NATs based on their GNAT profile combined with the subcellular localization. In this context, a first pre-list of candidates was obtained using the GNAT PROSITE motif (Sigrist *et al*, 2013) (i.e., PS51186, associated with the main eukaryotes cytosolic NAT catalytic subunits such as NAA10, NAA20, NAA30, NAA40, NAA50, and NAA60, ssArd1 but also *EcRimI*) against the *A. thaliana* open reading frames. This step provides 49 potential GNAT candidates (101 including all possible gene translated versions). This initial list was submitted to TargetP (Emanuelsson *et al*, 2007) to determine the subcellular localization of the candidates. Since this tool encounters frequent erroneous predictions between mitochondrial (Mt) and Cp localizations, both Cp and Mt predicted candidates were considered. Thus, 16 gene products (33 possible translated products) remained at this stage. Few of these candidates appear to be HATs, nuclear transcription-associated proteins or involved in amino acid synthesis in the chloroplast. Finally, a list of 10 potential Cp NATs (seven predicted at the Cp and three at the Mt) was retained.

The second strategy aiming to identify putative Cp KATs involved the analysis of the GNAT-related acetyltransferases by searching the *Arabidopsis* genome for proteins containing the acetyltransferase domain 1 (GNAT, PF00583), which includes the classical yeast nuclear general control non-repressed 5 (GCN5) HAT (Brownell *et al*, 1996) that is also present in the *Arabidopsis* genome (At3g54610). This search resulted in a list of 35 *Arabidopsis* candidate proteins, of which 10 contained a putative organellar targeting peptide according to the Suba2 database (Heazlewood *et al*, 2007). Both strategies converged to the same list of genes (Table EV1).

GFP fusion and plant transformation

The open reading frames of all GNATs were amplified without stop codon from *Arabidopsis* (Col-0) cDNA using the primers listed in Table EV3. In case of GNAT3, 8, and 9, entry clones were generated with the pENTR™/D-TOPO™ kit (Thermo Fisher). For entering the destination vector system pK7FWG2 (Karimi *et al*, 2007), LR recombination reactions were performed. GNAT1, 2, 4, 5, 6, 7, and 10 coding sequences were cloned into the pGWR8 vector (Rozhon *et al*, 2010) before being transferred to pK7FWG2 by type II endonuclease restriction and subsequent DNA ligation. Vector constructs were

verified by sequencing and used for transient or stable expression in *Arabidopsis* (Col-0) plants. Agrobacterium-mediated, stable transformation was performed as previously described (Clough & Bent, 1998).

Protoplast isolation, protoplast transformation, and confocal laser scanning microscopy

Arabidopsis wild-type Col-0 as well as stable overexpressor plants were grown for six weeks in 8-h light/16-h darkness conditions prior to the preparation of leaf protoplasts. Protoplast isolation was performed according to the tape-sandwich method (Wu *et al*, 2009). For transient transformation, wild-type protoplast suspensions were processed by the polyethylene glycol method (Damm *et al*, 1989; Frank *et al*, 2008). Transfected protoplasts were incubated in buffer W1 (4 mM MES-KOH pH 5.7, 0.5 M mannitol, 20 mM KCl) for 8–24 h under constant agitation and application of low light intensity (25 $\mu\text{mol}\cdot\text{m}^{-2}\cdot\text{s}^{-1}$ photosynthetic photon flux) prior to imaging. Confocal laser scanning microscopy (CLSM) was performed by using a Leica SP5 imaging systems (Leica Microsystems) in combination with the water immersion objective lens HCX PL APO lambda blue 63.0 \times 1.20 WATER UV and an argon laser source for eGFP detection. eGFP fluorescence was measured at 490–520 nm by applying an excitation wavelength of 488 nm. In case of GNAT6-GFP localization, additional CLSM approaches were performed (Fig EV3) and protoplasts were co-transformed with an inner nucleus membrane (INM) marker coding plasmid (SUN1-ONP, Rips *et al*, 2017) or treated with reagents to enable nucleus (Hoechst 33342, Thermo Fisher) or mitochondria (MitoTracker Orange CMTMRos, Invitrogen) detection. In these cases, fluorescence signals were recorded at excitation/emission wavelengths of 561/590–620 (ONP), 405/440–480 (Hoechst 33342), or 514/560–590 (MitoTracker Orange CMTMRos).

Cloning and expression of GNATs in *E. coli*

GNAT open reading frames were amplified from *Arabidopsis* (Col-0) cDNA using the following primers (Table EV4), which excluded the coding region for the transit peptide but included the stop codon of the CDS. The PCR product was cloned in pETM-41 that allows expression and purification of the recombinant GNAT protein N-terminally fused to an His₆-maltose-binding protein (MBP) protein construct. As control, a pETM-41 empty-vector construct was designed enabling the expression of His₆-MBP only. The resulting plasmids were verified by sequencing. For heterologous overexpression, *E. coli* BL21(DE3)pLysS (Thermo Fisher) or *E. coli* Rosetta™(DE3) cells (Merck) were transformed with the expression plasmid constructs. BL21(DE3)pLysS expression cultures were

incubated at 37°C until a cell density of $OD_{600} = 0.6$ was reached, followed by the addition of the deacetylase inhibitor nicotinamide at a concentration of 50 mM (in case of lysine acetylation analyses) as well as of 1 mM IPTG. During protein expression, cell cultures were incubated overnight at room temperature at 180 rpm. Transformed Rosetta™(DE3) cells were cultivated at 37°C to a cell density of $OD_{600} = 0.6$ and supplemented with 50 mM nicotinamide (in case of lysine acetylation analyses). After induction of protein expression by 1 mM IPTG, expression cultures were incubated for 3 h at 37°C and 180 rpm. The cells were harvested by centrifugation (15 min, 4,000 g) and pellets frozen at -80°C .

Western blot analysis

Protein extracts of *E. coli* were separated on 12% SDS–polyacrylamide gels. Gels were either stained with Coomassie dye (3% (w/v) Coomassie G-250, 10% (v/v) ethanol, 2% (v/v) orthophosphoric acid, 190 mM ammonium sulfate) or used for blotting of proteins onto nitrocellulose membrane. Protein lysine acetylation was monitored by using an anti-acetyl-lysine primary antibody (anti-rabbit, ImmuneChem), which was incubated on the membrane overnight at 4°C. The secondary HRP-conjugated antibody (goat anti-rabbit IgG, Agrisera) was applied in a 1:10,000 dilution and detected by the ChemiDoc™ gel imaging system (Bio-Rad) by using the SuperSignal™ West Dura Extended Duration ECL substrate (Thermo Fisher).

Purification of recombinant GNAT2 and GNAT10 proteins

The His₆-MBP-GNAT protein constructs were expressed in *E. coli* BL21(DE3)pLysS as described above. Afterward, cells were harvested, resuspended in buffer (50 mM Tris–HCl, pH 8, 500 mM NaCl, 5 mM MgCl₂, protease inhibitor cocktail [Sigma-Aldrich]), and disrupted using a French Press. The cell extract was then complemented with 5 mM DTT and 50 units of DNase (Roche), before being loaded on a Protino Ni-NTA affinity chromatography matrix (Macherey-Nagel). His₆-MBP-GNAT2 or His₆-MBP-GNAT10 was eluted with 500 mM imidazole and desalted by gel filtration using PD-10 columns (GE Healthcare). For storage, the protein preparations were buffered in 100 mM Tris–HCl (pH 8). Protein concentration was determined with the Pierce™ 660 nm Assay Reagent (Thermo Fisher).

Solid-phase peptide synthesis

Amino acid derivatives for solid-phase peptide synthesis (SPPS) were purchased from GL Biochem (Shanghai, China), except Fmoc-Ahx-OH, Fmoc-D-Arg-OH, and Fmoc-Lys(Dnp)-OH, which were bought from IRIS Biotech (Marktredwitz, Germany), and Fmoc-Lys(Ac)-OH which was obtained from Bachem (Bubendorf, Switzerland). HATU was bought from Fluorochem (Hadfield, UK). TentaGel S RAM resin was obtained from Rapp Polymere (Tübingen, Germany). Other chemicals were purchased from Sigma-Aldrich (Steinheim, Germany), Merck (Darmstadt, Germany), and Carl Roth (Karlsruhe, Germany). Solvents were obtained from J. T. Baker (Deventer, the Netherlands), VWR (Leuven, Belgium), Fisher Scientific (Loughborough, UK), Bio-solve (Valkenswaard, the Netherlands), and Th. Geyer (Renningen, Germany).

Peptides were synthesized by SPPS on a ResPep SL synthesizer (Intavis, Cologne, Germany) applying the Fmoc/tBu strategy. The scale was 2 μmol on TentaGel S RAM resin (capacity: 0.23 mmol·g⁻¹)

in 96-well plates. Amino acid side chains were protected as follows: D-Arg(Pbf), Gln(Trt), Lys(Boc), Ser(OtBu), Thr(tBu).

Coupling reactions of amino acid building blocks (5.25 eq) were performed with HATU (2-(7-aza-1*H*-benzotriazole-1-yl)-1,1,3,3-tetramethyluronium hexafluoro-phosphate) (4 eq) as activator and NMM (*N*-methylmorpholine) (10 eq) as base in DMF twice for 20 min. After each cycle unreacted, amino groups were capped by treatment with a solution of Ac₂O (5%) and 2,6-lutidine (6%) in DMF for 5 min. The Fmoc group was deprotected with piperidine (20% in DMF, 2× for a total of 15 min). Peptides with free alpha-amino group were Fmoc-deprotected after the last capping step and peptides with acetylated N-termini were Fmoc-deprotected before the final capping step. The resin was washed with DMF between each step.

Peptides were cleaved off the resin with a solution containing TFA, water, phenol, thioanisole, and 1,2-ethanedithiol (82.5:5:5:5:2.5, 600 μl per well) for 3 h in total. The solution was added in portions (1 × 200 μl and 3 × 100 μl) to each well, and the resin was incubated for 30 min after each addition, except the last one, after which it was incubated for 1.5 h. The resin was rinsed with additional cleavage solution (100 μl) and the solutions were then concentrated by evaporation under ambient conditions in a fume hood overnight. Cleaved peptides were precipitated in cold Et₂O (700 μl per well), centrifuged (2,500 g, 20 min, -4°C), washed with additional Et₂O (3×), dissolved in water/MeCN, and lyophilized. Peptides were analyzed by liquid chromatography–mass spectrometry (LC-MS), which was performed using a Shimadzu LC-MS 2020 device (Kyoto, Japan) equipped with a Kinetex 2.6 μm C18 100 Å (100 × 2.1 mm) column (Phenomenex, Aschaffenburg, Germany). Samples were prepared with LC-MS solvents A (0.1% formic acid in water) and B (80% MeCN, 0.1% formic acid in water). The analytical gradient was 5–95% B in 12.75 min with a flow rate of 0.2 ml·min⁻¹. Absorption was detected at 218 nm. The ESI-MS was operated in positive mode.

Acetyltransferase activity assay

To investigate the acetyltransferase activities of the recombinant His₆-MBP-GNAT2 and His₆-MBP-GNAT10 proteins, a HPLC-based peptide assay was used as previously reported with some modifications (Koskela et al, 2018). The recombinant protein (5 μM) was incubated with the KAT peptide substrate (free ε-lysine, 50 μM) or a variety of NAT peptide substrates (50 μM), with the following sequences: x-A-Q-G-A-K(ac/NH₂)-A-A-K(Dnp)-Ahx-r-r-r-NH₂, with x = free or acetylated α-M, α-A, α-G, α-S, α-T, α-V, or α-L, Ahx = 6-aminohexanoic acid as a spacer. The absorbance of the dinitrophenyl group (Dnp) of the peptides was recorded at 340 nm. The reaction buffer contained 150 mM HEPES (pH 8) and 30 mM KCl. The reaction was started by addition of 100 μM acetyl-CoA for 45 min in a thermoblock at 30°C. Twenty microliter samples were collected at indicated time points, and the reaction was stopped by addition of 180 μl trifluoroacetic acid (TFA, final concentration 2% (v/v)). For analysis of reaction products, a reversed-phase HPLC chromatograph (Shimadzu) equipped with CBM-20A controller, two LC-20AD pumps, a DGU-20A degasser, an SPD-20A detector, and an SIL-20AC autosampler was used. The separation of peptides was performed on a C18 Hypersil GOLD column (4.6 mm × 250 mm, 5-μm particle size; Thermo Fisher Scientific). A gradient program was set up consisting of solvent A (0.1% TFA (v/v) in distilled water)

and solvent B (95% acetonitrile and 0.1% TFA (v/v) in distilled water), which were applied at a flow rate of 1.0 ml·min⁻¹ as follows: 0–1 min, 5% B; 1–20 min, linear 5–100% B; 20–25 min, 100% B; 25–25.5 min, 100–5% B; 25.5–30 min, 5% B. Samples (100 µl) were injected, and the elution of reaction products was followed at detection wavelengths of 218 nm (peptide backbone) and 340 nm (Dnp). Enzymatic activity was calculated based on the peak area values that corresponded to the KAT/NAT substrates (elution in between 13.9 and 14.05 min) and the acetylated products (elution in between 14.5 and 14.65 min).

Protein extraction, peptide dimethyl labeling, and K-acetylated peptide enrichment

Escherichia coli cell pellets were resuspended in 2 ml of 50 mM sodium phosphate buffer pH 8.0, 300 mM NaCl. Cells were disrupted by three rounds of sonication (15 s per treatment with output of 70%), followed by addition of 10 units of lysozyme. Protein extracts were cleared by centrifugation (18,000 g, 4°C, 40 min), and proteins of the supernatant were precipitated by addition of 5 ml 100% (v/v) ice-cold acetone, incubation at –20°C for 2 h, and additional centrifugation (15 min, 14,000 g, 4°C). The protein pellets were dissolved in 500 µl of 6 M urea, 2 M thiourea, 10 mM HEPES, and protein concentration was determined using Pierce™ 660 nm Protein Assay Reagent (Thermo Fisher). Per sample, 5 mg of protein was further processed and diluted with 50 mM ammonium bicarbonate to adjust a final urea concentration of 2 M maximum. Proteins were digested by applying MS-grade trypsin (Serva) in a 1:100 ratio and incubation overnight at 37°C.

Digested peptides were dimethyl-labeled on C18 Sep-Pak plus short columns (Waters) as described previously (Lassowskat *et al*, 2017). Labeled peptide samples of GNAT overexpression cultures were combined in equal amounts with the corresponding control samples of labeled peptides prepared from *E. coli* cells expressing His₆-MBP only. Biological duplicates were measured for each sample, and a label swap was introduced (light label: dimethyl mass shift +28.0313 Da, heavy label: dimethyl mass shift +32.0564 Da). The combined peptide samples were dried in a vacuum centrifuge and resuspended in 1 ml TBS buffer (50 mM Tris–HCl pH 7.6, 150 mM NaCl). Fifteen microgram peptide was stored for whole-proteome analysis, while about 4 mg peptide was used for enrichment of lysine-acetylated peptide sites by loading the samples on agarose beads coupled to anti-acetyl-lysine antibody (Hartl *et al*, 2015). After immunoprecipitation, the enriched peptides were eluted, desalted, and fractionated in three steps by performing SDB-RPS Stage-Tipping (Kulak *et al*, 2014). At the same time, the samples stored for whole-proteome analysis were desalted and fractionated as well. The solvent was removed by vacuum centrifugation, and the dried pellets were stored at –20°C.

LC-MS/MS data acquisition for K-acetylation

Peptide pellets were redissolved in 8 µl of 2% ACN, 0.1% TFA for LC-MS/MS analysis. For whole-proteome analyses, a peptide concentration of 0.1 mg·ml⁻¹ was adjusted with 2% ACN, 0.1% TFA and 0.5 µg of peptides was loaded. Samples enriched for lysine-acetylated peptides (acetylome) were loaded entirely. Samples were analyzed using an EASY-nLC 1200 (Thermo Fisher) coupled to a Q Exactive HF mass spectrometer (Thermo Fisher).

Peptides were separated on 17-cm frit-less silica emitters (New Objective, 0.75 µm inner diameter), packed in-house with reversed-phase ReproSil-Pur C18 AQ 1.9-µm resin (Dr. Maisch). The column was kept in a column oven at 50°C. Following parameters were used in whole-proteome analysis, parameters for acetylome analysis are stated in brackets; if not stated separately, parameters were identical. Peptides were eluted for 115 (68) min using a segmented linear gradient of 0–98% solvent B (solvent A 0% ACN, 0.5% FA; solvent B 80% ACN, 0.5% FA) at a flow rate of 300 (250) nl·min⁻¹. Mass spectra were acquired in data-dependent acquisition mode with a TOP15 method. MS spectra were acquired in the Orbitrap analyzer with a mass range of 300–1,759 *m/z* at a resolution of 60,000 (120,000) FWHM, maximum IT of 55 ms, and a target value of 3 × 10⁶ ions. Precursors were selected with an isolation window of 1.3 (1.2) *m/z*. HCD fragmentation was performed at a normalized collision energy of 25. MS/MS spectra were acquired with a target value of 10⁵ (5 × 10⁴) ions at a resolution of 15,000 FWHM, maximum IT of 55 (150) ms, and a fixed first mass of *m/z* 100. Peptides with a charge of +1, > 6, or with unassigned charge state were excluded from fragmentation for MS2, dynamic exclusion for 30 s prevented repeated selection of precursors.

Data analysis for K-acetylation

Raw data were processed using the MaxQuant software (version 1.5.2.8, <http://www.maxquant.org/>) (Cox & Mann, 2008; Tyanova *et al*, 2016a). MS/MS spectra were searched against the Uniprot *E. coli* (strain K12) database (Proteome ID: UP000000625) including the sequences of all His₆-MBP-GNAT proteins. Sequences of 248 common contaminant proteins and decoy sequences were automatically added during the search. Trypsin specificity was required and a maximum of two (proteome) or four missed cleavages (acetylome) were allowed. Minimal peptide length was set to seven amino acids. Carbamidomethylation of cysteine residues was set as fixed, oxidation of methionine, and protein N-terminal acetylation as variable modifications. Acetylation of lysines was set as variable modification only for the acetylome analyses. Light and medium dimethylation of lysines and peptide N-termini was set as labels. Peptide-spectrum-matches and proteins were retained if they were below a false discovery rate of 1%, modified peptides were additionally filtered for a score ≥ 35 and a delta score of ≥ 6 to remove low-quality identifications. Match between runs was enabled. Downstream data analysis was performed using Perseus version 1.5.5.3 (Tyanova *et al*, 2016b). For proteome (protein groups table) and acetylome (modification specific table), reverse hits and contaminants were removed, the normalized site ratios were log₂-transformed, and label-swapped samples inverted. Plotting of the raw and the normalized site ratios confirmed that the automatic normalization procedure of MaxQuant worked reliably and normalized site ratios was used for all further analyses. For quantitative analyses, the acetylome sites were filtered for a localization probability of ≥ 0.75. Technical replicates were averaged and sites as well as protein groups displaying less than two ratios were removed.

Arabidopsis material for N-terminomics analysis

Arabidopsis thaliana wild-type (Col-0) and two independent *gnat2* mutant lines (*nsi-1*: SALK_033944 and *nsi-2*: SALK_020577) plants

were grown as previously reported (Koskela *et al*, 2018). Four-eight distinct rosettes for each plant line were collected in the middle of the 8-h light period and pooled for one biological replicate. Altogether, four distinct biological replicates per each plant line were used to characterize and quantify NTA following the protocol described below.

Identification and quantification of N-terminal protein acetylation

The following protocol was applied to perform both the GAP assay on *E. coli*, and the comparison between *Arabidopsis* WT and *gmat2 (nsi)* knockout mutants. The only difference will be the lysis method, depending on the biological source material. Note that all the solutions and buffers were freshly prepared. The only solution that needed to be prepared in advance was the d_3 -N-acetoxysuccinimide, used for the labeling of primary amines.

D_3 -N-acetoxysuccinimide preparation

- 1 Three hundred seventy-three milligram of N-hydroxysuccinimide and 1 g of acetic anhydride were mixed together.
- 2 The tube was heated to 35–40°C to ensure complete solubilization, then placed at room temperature, under slight agitation (200 rpm) for 12–15 h.
- 3 The crystals were collected and the excess of solvent removed using clean filter paper.
- 4 The crystals were washed with 200 μ l of anhydrous hexane, and clean filter paper was used to dry it. This step was repeated at least once.
- 5 The crystals were collected in clean PCR tubes and stored at –20°C.

Protein extraction

- 1 Same pellets of *E. coli* expressing or not the different plastid GNATs used for KA were resuspended in 1 ml of lysis buffer A (50 mM HEPES/NaOH pH 7.2; 1.5 mM $MgCl_2$; 1 mM EGTA; 10% glycerol; 1% Triton X-100; 2 mM PMSF; 1 protease inhibitor tablet per 50 ml) and sonicated on ice.
- 2 For the N-terminal analysis of the *A. thaliana* samples, the leaflets were transferred into clean 2-ml Eppendorf tubes, and then, two iron beads of 3 and 5 mm diameter were added. Samples were flash-frozen using liquid nitrogen then grinded by using a mixer mill at 30 Hz for 30 s repeated twice. One milliliter of freshly prepared lysis buffer A was added to the powdered samples.
- 3 Lysates were then incubated for 1 h at 4°C, under constant agitation followed by centrifugation of the samples at 12,000 g at 4°C for 30 min. Supernatant was collected and protein concentration determined using Bradford or other relevant techniques.

Sample preparation for N-terminal acetylation analysis

The GAP assay for each GNAT protein was performed as previously reported (Bienvenut *et al*, 2017a,b) and follows:

- 1 One milligram of total proteins was precipitated by adding four volumes of cold acetone, stirred vigorously, and placed at –20°C for at least 2 h or overnight. Samples were centrifuged at 17,000 g, –10°C or lower for 30 min. Supernatants were discarded, ensuring the removal as much acetone as possible.

- 2 The protein pellets were solubilized in 200 μ l freshly prepared denaturation solution (6 M guanidine hydrochloride, 4 mM DL-dithiothreitol, and 50 mM Tris buffered with HCl at pH 8) for 15 min at 95°C.
- 3 After the samples were cooled down, sulfhydryl groups of the cysteines were blocked adding iodoacetamide (50 mM final concentration) and incubating the samples for 1 h at room temperature in the dark.
- 4 After acetone cold precipitation (1 ml) at –20°C for at least 2 h or overnight, the samples were centrifuged at 17,000 g, –10°C or lower for 30 min and air dry to remove as much acetone as possible. Then, the pellets were resuspended in 200 μ l of phosphate buffer (50 mM KH_2PO_4 /KOH, pH 7.5) and further treated with 15 μ l of labeling solution (D_3 -N-acetoxysuccinimide 2 M in DMSO) followed by a 90-min incubation at 30°C to favor N-terminus and ϵ -amino group d_3 -acetylation. Potential O-acetylation of S, T, and Y side chains was reversed by adding 10 μ l of 50% (weight in water) of hydroxylamine and incubated for 20 min at room temperature, which also stopped the reaction.
- 5 The reactional mixture was acetone precipitated to remove chemical reagents, as described above, and resuspended in 300 μ l of NH_4HCO_3 pH8. Proteins were digested by the addition of 1 μ l of trypsin solution (10 μ g μ l⁻¹ in 1 mM HCl, pH 3) and 90-min incubation at 37°C. Another 1 μ l of trypsin solution was added to the mixture and incubation step repeated. The sample was acidified with formic acid to stop the reaction. After protein digestion, the peptide mixture was desalted using Sep-Pak tC_{18} cartridge as recommended by the manufacturer. Eluted peptide mixture/solution was dried down and suspended in the 5 mM KH_2PO_4 , 30% acetonitrile, 0.05% formic acid, and adjust at pH 3 with H_3PO_4 .
- 6 For N-termini enrichment, peptides were separated using a strong exchange chromatography (SCX) consisted of a polysulfethyl A column. Peptide was eluted from the SCX column using a gradient of 350 mM KCl, 5 mM KH_2PO_4 , 30% acetonitrile, and 0.05% formic acid at a flow rate of 0.2 ml \cdot min⁻¹. Fractions were collected every 2 min for 45 min, and the solvent was removed under vacuum until dryness.
- 7 In the case of *Arabidopsis* samples, fractions 2–5 and 6–11 were suspended, respectively, in 25 and 30 μ l of 5% acetonitrile and 0.1% trifluoroacetic acid in water. 10 microliter of each fraction was loaded at a maximum pressure of 220 bars onto a pre-column (NS-MP-10, NanoSeparation, the Netherlands) and separated along a 55-min multistep gradient of increasing percentage of 0.1% of formic acid in acetonitrile, followed by an analytical separation using a Nikkyo Technos capillary column (NTCC-360/100-5-153, Nikkyo Technos Co., Tokyo, Japan) on an Easy NanoLC-II system at a constant flow rate of 300 nl \cdot min⁻¹ coupled to an LTQ-Orbitrap™ Velos.
- 8 In the case of bacterial samples, fractions 2–5, 6–8, and 9–11, resuspended as *Arabidopsis* samples, were combined together and 18 μ l of the resulting mixtures was loaded onto a pre-column and separated along a 120-min multistep gradient of increasing percentage of 0.1% of formic acid in acetonitrile, followed by an analytical separation using the same capillary column on the Easy NanoLC-II system at a flow rate of

300 nl·min⁻¹ coupled to an LTQ-Orbitrap™ Velos. Each mixture was analyzed twice.

All mass spectrometry methods used were set to acquire a survey scan (MS1) in the Orbitrap section with a mass/charge (*m/z*) range of 400–2,000 Th at 60,000 FWHM resolution, using the lock mass for internal calibration. The fragments analyses (MS2) of the 20 most intense precursor ions were performed in the LTQ section, after being subjected to collision-induced dissociation (CID) fragmentation, with a 20 s exclusion time window for the acquired precursors. When analyzing individual fractions, and for the first analysis of the pooled fractions, all precursors, including singly charged ions, are allowed to trigger MS2 events. The second acquisition of the pooled fractions is performed considering only multi charged species for fragmentation

- 9 Protein identification and quantification for N-terminus peptides required the aid of Mascot Distiller software (version 2.5.1) linked to a MASCOT server (version 2.4). The raw data were processed and protein identification and co-/post-translational modifications characterized using the *E. coli* K12 strain reference proteome subset extracted from UniProtKB (version 112), which also included the sequence of the recombinant GNAT proteins. For *Arabidopsis* samples, the data obtained were processed using Mascot Distiller, searching against the Araport-11 protein database, with the parent and fragment mass tolerance, respectively, defined to 10 ppm and 0.5 Da. However, Mascot software is not able to provide distinct NTA yield for each peptide. The EnCOUNTER tool (version 1.0) (Bienvenut et al, 2017b) was used to reprocess the quantified values accessible from the Mascot Distiller xml export files and to supply a final list of the different peptides associated with their NTA yield if relevant data are available to perform the quantification. All further statistical analyses for the N-terminal acetylome were performed using available built-in tools in Microsoft Excel.

Data availability

Mass spectrometry proteomics data are deposited in the ProteomeXchange Consortium (<http://proteomecentral.proteomexchange.org>) via the JPOST repository (Deutsch et al, 2017) with the dataset identifier PXD015875 (<http://www.ebi.ac.uk/pride/archive/projects/PXD015875>) and PRIDE repository (<https://www.ebi.ac.uk/pride/>) with the dataset identifiers PXD016205 (<http://www.ebi.ac.uk/pride/archive/projects/PXD016205>) and PXD016496 (<http://www.ebi.ac.uk/pride/archive/projects/PXD016496>).

Expanded View for this article is available online.

Acknowledgements

We warmly thank D. Gibbs (Birmingham University) and T. Arnesen for discussions and critical reading of the manuscript. We thank M. Bilong for final preparation of GNAT samples for GAP analysis, M. Hartl for the initial KAT search in *Arabidopsis*, and P. Pieloch for technical assistance. This project was carried out within the ERA-CAPS Research Programme “KatNat” (IF, CG, PM, MW). The study was funded by the French Agence Nationale de la Recherche agency (ANR-13-BSV6-0004, ANR-17-CAPS-0001-01) to C.G.’s team, the

Deutsche Forschungsgemeinschaft (FI 1655/4-1, INST 211/744-1 FUGG) to I.F., and SFB 1036 TP13 to M.W. and R.H, the “Professorinnenprogramm” of the University of Muenster to I.F. and A.B., the Academy of Finland (330083, 307335, and 321616) to P.M., M.M.K., and A.I., and Doctoral Programme in Molecular Life Sciences at the University of Turku (M.M.K. and A.I.). CG team benefitted from the support of the Labex Saclay Plant Sciences-SPS (ANR-10-LABX-0040-SPS) and used the facilities and expertise of the I2BC proteomic platform SiCaPS, supported by IBISA, Ile de France Region, Plan Cancer, CNRS, and Paris-Saclay University.

Author contributions

IF and CG headed and supervised the research; WVB, AB, J-BB, CD, JE, IL, JSM, LKS, JS, DS, MMK, AI, EL, TVD, VJ, and GB performed research; WVB, AB, J-BB, IL, CD, IF, MW, RH, PM, TM, CG analyzed the data; CG, TM and IF wrote the paper with assistance of all co-authors.

Conflict of interest

The authors declare that they have no conflict of interest.

References

- Aebersold R, Mann M (2016) Mass-spectrometric exploration of proteome structure and function. *Nature* 537: 347–355
- Agoni V (2015) Could rare amino acids regulate enzymes abundance? *bioRxiv* <https://doi.org/10.1101/021295> [PREPRINT]
- Aksnes H, Drazic A, Marie M, Arnesen T (2016) First things first: vital protein marks by N-terminal acetyltransferases. *Trends Biochem Sci* 41: 746–760
- Aksnes H, Ree R, Arnesen T (2019) Co-translational, post-translational, and non-catalytic roles of N-terminal acetyltransferases. *Mol Cell* 73: 1097–1114
- Albanese P, Tamara S, Saracco G, Scheltema RA, Pagliano C (2020) How paired PSII-LHCII supercomplexes mediate the stacking of plant thylakoid membranes unveiled by structural mass-spectrometry. *Nat Commun* 11: 1361
- Armbruster L, Linster E, Boyer J-B, Brunje A, Eirich J, Stephan I, Bienvenut WV, Weidenhausen J, Meinel T, Hell R et al (2020) NAA50 is an enzymatically active N α -acetyltransferase that is crucial for the development and regulation of stress responses. *Plant Physiol* <https://doi.org/10.1104/pp.20.00222>
- Arnesen T, Anderson D, Baldersheim C, Lanotte M, Varhaug JE, Lillehaug JR (2005) Identification and characterization of the human ARD1-NATH protein acetyltransferase complex. *Biochem J* 386: 433–443
- Arnesen T, Gromyko D, Kagabo D, Betts MJ, Starheim KK, Varhaug JE, Anderson D, Lillehaug JR (2009a) A novel human NatA Nalpha-terminal acetyltransferase complex: hNaa16p-hNaa10p (hNat2-hARD1). *BMC Biochem* 10: 15
- Arnesen T, Van Damme P, Plevoda B, Helsens K, Evjenth R, Colaert N, Varhaug JE, Vandekerckhove J, Lillehaug JR, Sherman F et al (2009b) Proteomics analyses reveal the evolutionary conservation and divergence of N-terminal acetyltransferases from yeast and humans. *Proc Natl Acad Sci USA* 106: 8157–8162
- Bienvenut WV, Espagne C, Martinez A, Majeran W, Valot B, Zivy M, Vallon O, Adam Z, Meinel T, Giglione C (2011) Dynamics of post-translational modifications and protein stability in the stroma of *Chlamydomonas reinhardtii* chloroplasts. *Proteomics* 11: 1734–1750
- Bienvenut WV, Sumpton D, Martinez A, Lilla S, Espagne C, Meinel T, Giglione C (2012) Comparative large scale characterization of plant versus

- mammal proteins reveals similar and idiosyncratic N-alpha-acetylation features. *Mol Cell Proteomics* 11: M111.015131
- Bienvenut WV, Giglione C, Meinel T (2015) Proteome-wide analysis of the amino terminal status of *Escherichia coli* proteins at the steady-state and upon deacetylation inhibition. *Proteomics* 15: 2503–2518
- Bienvenut WV, Giglione C, Meinel T (2017a) SILProNAQ: a convenient approach for proteome-wide analysis of protein N-termini and N-terminal acetylation quantitation. *Methods Mol Biol* 1574: 17–34
- Bienvenut WV, Scarpelli JP, Dumestier J, Meinel T, Giglione C (2017b) EnCOUNTER: a parsing tool to uncover the mature N-terminus of organelle-targeted proteins in complex samples. *BMC Bioinformatics* 18: 182
- Bischof S, Baerenfaller K, Wildhaber T, Troesch R, Vidi PA, Roschitzki B, Hirsch-Hoffmann M, Hennig L, Kessler F, Gruissem W et al (2011) Plastid proteome assembly without Toc159: photosynthetic protein import and accumulation of N-acetylated plastid precursor proteins. *Plant Cell* 23: 3911–3928
- Bouchnak I, van Wijk KJ (2019) N-degron pathways in plastids. *Trends Plant Sci* 24: 917–926
- Breiman A, Feuillade S, Meinel T, Giglione C (2016) The intriguing realm of protein biogenesis: facing the green co-translational protein maturation networks. *Biochim Biophys Acta* 1864: 531–550
- Brownell JE, Zhou J, Ranalli T, Kobayashi R, Edmondson DG, Roth SY, Allis CD (1996) Tetrahymena histone acetyltransferase A: a homolog to yeast Gcn5p linking histone acetylation to gene activation. *Cell* 84: 843–851
- Carabetta VJ, Greco TM, Cristea IM, Dubnau D (2019) YfmK is an N(epsilon)-lysine acetyltransferase that directly acetylates the histone-like protein HBSu in *Bacillus subtilis*. *Proc Natl Acad Sci USA* 116: 3752–3757
- Castrec B, Dian C, Ciccone S, Ebert CL, Bienvenut WV, Le Caer JP, Steyaert JM, Giglione C, Meinel T (2018) Structural and genomic decoding of human and plant myristoylomes reveals a definitive recognition pattern. *Nat Chem Biol* 14: 671
- Chang HH, Falick AM, Carlton PM, Sedat JW, DeRisi JL, Marletta MA (2008) N-terminal processing of proteins exported by malaria parasites. *Mol Biochem Parasitol* 160: 107–115
- Christensen DG, Meyer JG, Baumgartner JT, D'Souza AK, Nelson WC, Payne SH, Kuhn ML, Schilling B, Wolfe AJ (2018) Identification of novel protein lysine acetyltransferases in *Escherichia coli*. *mBio* 9: e01905–e01918
- Christensen DG, Baumgartner JT, Xie X, Jew KM, Basisty N, Schilling B, Kuhn ML, Wolfe AJ (2019a) Mechanisms, detection, and relevance of protein acetylation in prokaryotes. *mBio* 10: e02708–18
- Christensen DG, Xie X, Basisty N, Byrnes J, McSweeney S, Schilling B, Wolfe AJ (2019b) Post-translational protein acetylation: an elegant mechanism for bacteria to dynamically regulate metabolic functions. *Front Microbiol* 10: 1604
- Chu CW, Hou FJ, Zhang JM, Phu L, Loktev AV, Kirkpatrick DS, Jackson PK, Zhao YM, Zou H (2011) A novel acetylation of beta-tubulin by San modulates microtubule polymerization via down-regulating tubulin incorporation. *Mol Biol Cell* 22: 448–456
- Clough SJ, Bent AF (1998) Floral dip: a simplified method for Agrobacterium-mediated transformation of *Arabidopsis thaliana*. *Plant J* 16: 735–743
- Colaert N, Helsens K, Martens L, Vandekerckhove J, Gevaert K (2009) Improved visualization of protein consensus sequences by iceLogo. *Nat Methods* 6: 786–787
- Cort JR, Ramelot TA, Murray D, Acton TB, Ma LC, Xiao R, Montelione GT, Kennedy MA (2008) Structure of an acetyl-CoA binding protein from *Staphylococcus aureus* representing a novel subfamily of GCN5-related N-acetyltransferase-like proteins. *J Struct Funct Genomics* 9: 7–20
- Cox J, Mann M (2008) MaxQuant enables high peptide identification rates, individualized p.p.b.-range mass accuracies and proteome-wide protein quantification. *Nat Biotechnol* 26: 1367–1372
- Crepin A, Caffarri S (2015) The specific localizations of phosphorylated Lhcb1 and Lhcb2 isoforms reveal the role of Lhcb2 in the formation of the PSI-LHCI supercomplex in *Arabidopsis* during state transitions. *Biochim Biophys Acta* 1847: 1539–1548
- Damm B, Schmidt R, Willmitzer L (1989) Efficient transformation of *Arabidopsis thaliana* using direct gene transfer to protoplasts. *Mol Gen Genet* 217: 6–12
- Deutsch EW, Csordas A, Sun Z, Jarnuczak A, Perez-Riverol Y, Ternent T, Campbell DS, Bernal-Llinares M, Okuda S, Kawano S et al (2017) The ProteomeXchange consortium in 2017: supporting the cultural change in proteomics public data deposition. *Nucleic Acids Res* 45: D1100–D1106
- Dian C, Perez-Dorado I, Riviere F, Asensio T, Legrand P, Ritzefeld M, Shen MJ, Cota E, Meinel T, Tate EW et al (2020) High-resolution snapshots of human N-myristoyltransferase in action illuminate a mechanism promoting N-terminal Lys and Gly myristoylation. *Nat Commun* 11: 1132
- Dinh TV, Bienvenut WV, Linster E, Feldman-Salit A, Jung VA, Meinel T, Hell R, Giglione C, Wirtz M (2015) Molecular identification and functional characterization of the first Nalpha-acetyltransferase in plastids by global acetylome profiling. *Proteomics* 15: 2426–2435
- Drazic A, Myklebust LM, Ree R, Arnesen T (2016) The world of protein acetylation. *Biochim Biophys Acta* 1864: 1372–1401
- Drazic A, Aksnes H, Marie M, Boczkowska M, Varland S, Timmerman E, Foy H, Glomnes N, Rebowski G, Impens F et al (2018) NAA80 is actin's N-terminal acetyltransferase and regulates cytoskeleton assembly and cell motility. *Proc Natl Acad Sci USA* 115: 4399–4404
- Drozdetskiy A, Cole C, Procter J, Barton GJ (2015) JPred4: a protein secondary structure prediction server. *Nucleic Acids Res* 43: W389–W394
- Dyda F, Klein DC, Hickman AB (2000) GCN5-related N-acetyltransferases: a structural overview. *Annu Rev Biophys Biomol Struct* 29: 81–103
- Emanuelsson O, Brunak S, von Heijne G, Nielsen H (2007) Locating proteins in the cell using TargetP, SignalP and related tools. *Nat Protoc* 2: 953–971
- Evjenth R, Hole K, Karlsen OA, Ziegler M, Arnesen T, Lillehaug JR (2009) Human Naa50p (Nat5/San) displays both protein N α - and N ϵ -acetyltransferase activity. *J Biol Chem* 284: 31122–31129
- Finkemeier I, Laxa M, Miguet L, Howden AJ, Sweetlove LJ (2011) Proteins of diverse function and subcellular location are lysine acetylated in *Arabidopsis*. *Plant Physiol* 155: 1779–1790
- Finn RD, Mistry J, Schuster-Bockler B, Griffiths-Jones S, Hollich V, Lassmann T, Moxon S, Marshall M, Khanna A, Durbin R et al (2006) Pfam: clans, web tools and services. *Nucleic Acids Res* 34: D247–D251
- Frank J, Kaulfurst-Soboll H, Rips S, Koiwa H, von Schaewen A (2008) Comparative analyses of *Arabidopsis* complex glycan1 mutants and genetic interaction with staurosporin and temperature sensitive3a. *Plant Physiol* 148: 1354–1367
- Friedmann DR, Marmorstein R (2013) Structure and mechanism of non-histone protein acetyltransferase enzymes. *FEBS J* 280: 5570–5581
- Friso G, van Wijk KJ (2015) Posttranslational protein modifications in plant metabolism. *Plant Physiol* 169: 1469–1487
- Frottin F, Bienvenut WV, Bignon J, Jacquet E, Vaca Jacome AS, Van Dorselaer A, Cianferani S, Carapito C, Meinel T, Giglione C (2016) MetAP1 and MetAP2 drive cell selectivity for a potent anti-cancer agent in synergy, by controlling glutathione redox state. *Oncotarget* 7: 63306–63323

- Gao X, Hong H, Li WC, Yang L, Huang J, Xiao YL, Chen XY, Chen GY (2016) Downregulation of rubisco activity by non-enzymatic acetylation of RbcL. *Mol Plant* 9: 1018–1027
- Giglione C, Feuillain S, Meinel T (2015) N-terminal protein modifications: bringing back into play the ribosome. *Biochimie* 114: 134–146
- Hartl M, König AC, Finkemeier I (2015) Identification of lysine-acetylated mitochondrial proteins and their acetylation sites. *Methods Mol Biol* 1305: 107–121
- Hartl M, Fussl M, Boersema PJ, Jost JO, Kramer K, Bakirbas A, Sindlinger J, Plochingner M, Leister D, Uhrig G et al (2017) Lysine acetylome profiling uncovers novel histone deacetylase substrate proteins in *Arabidopsis*. *Mol Syst Biol* 13: 949
- Heazlewood JL, Verboom RE, Tonti-Filippini J, Small I, Millar AH (2007) SUBA: the *Arabidopsis* subcellular database. *Nucleic Acids Res* 35: D213–D218
- Hohner R, Aboukila A, Kunz HH, Venema K (2016) Proton gradients and proton-dependent transport processes in the chloroplast. *Front Plant Sci* 7: 218
- Hole K, Van Damme P, Dalva M, Aksnes H, Glomnes N, Varhaug JE, Lillehaug JR, Gevaert K, Arnesen T (2011) The human N-alpha-acetyltransferase 40 (hNaa40p/hNatD) is conserved from yeast and N-terminally acetylates histones H2A and H4. *PLoS ONE* 6: e24713
- Hoshiyasu S, Kohzuma K, Yoshida K, Fujiwara M, Fukao Y, Yokota A, Akashi K (2013) Potential involvement of N-terminal acetylation in the quantitative regulation of the epsilon subunit of chloroplast ATP synthase under drought stress. *Biosci Biotechnol Biochem* 77: 998–1007
- Hruz T, Laule O, Szabo G, Wessendorp F, Bleuler S, Oertle L, Widmayer P, Gruissem W, Zimmermann P (2008) Genevestigator v3: a reference expression database for the meta-analysis of transcriptomes. *Adv Bioinformatics* 2008: 420747
- Huber M, Bienvenut WV, Linster E, Stephan I, Armbruster L, Sticht C, Layer DC, Lapouge K, Meinel T, Sinning I et al (2020) NatB-mediated N-terminal acetylation affects growth and abiotic stress responses. *Plant Physiol* 182: 792–806
- Huesgen PF, Alami M, Lange PF, Foster LJ, Schroder WP, Overall CM, Green BR (2013) Proteomic amino-terminal profiling reveals targeting information for protein import into complex plastids. *PLoS ONE* 8: e74483
- Hulo N, Bairoch A, Bulliard V, Cerutti L, Cuče BA, de Castro E, Lachaise C, Langendijk-Genevaux PS, Sigrist CJ (2008) The 20 years of PROSITE. *Nucleic Acids Res* 36: D245–D249
- Jeong JW, Bae MK, Ahn MY, Kim SH, Sohn TK, Bae MH, Yoo MA, Song EJ, Lee KJ, Kim KW (2002) Regulation and destabilization of HIF-1alpha by ARD1-mediated acetylation. *Cell* 111: 709–720
- Kang J, Chun YS, Huh J, Park JW (2018) FIH permits NAA10 to catalyze the oxygen-dependent lysyl-acetylation of HIF-1alpha. *Redox Biol* 19: 364–374
- Karimi M, Depicker A, Hilson P (2007) Recombinational cloning with plant gateway vectors. *Plant Physiol* 145: 1144–1154
- König AC, Hartl M, Boersema PJ, Mann M, Finkemeier I (2014) The mitochondrial lysine acetylome of *Arabidopsis*. *Mitochondrion* 19: 252–260
- Kosciuk T, Price IR, Zhang X, Zhu C, Johnson KN, Zhang S, Halaby SL, Komanićki GP, Yang M, DeHart CJ et al (2020) NMT1 and NMT2 are lysine myristoyltransferases regulating the ARF6 GTPase cycle. *Nat Commun* 11: 1067
- Koskela MM, Brünje A, Ivanauskaitė A, Grabsztunowicz M, Lassowskat I, Neumann U, Dinh TV, Sindlinger J, Schwarzer D, Wirtz M et al (2018) Chloroplast acetyltransferase NSI is required for state transitions in *Arabidopsis thaliana*. *Plant Cell* 30: 1695–1709
- Koskela MM, Brünje A, Ivanauskaitė A, Lopez LS, Schneider D, DeTar RA, Kunz H-H, Finkemeier I, Mulo P (2020) Comparative analysis of thylakoid protein complexes in state transition mutants nsi and stn7: focus on PSI and LHCII. *Photosynth Res* <https://doi.org/10.1007/s11120-020-00711-4>
- Kozłowski LP (2016) Proteome-pl: proteome isoelectric point database. *Nucleic Acids Res* 45: D1112–D1116
- Kulak NA, Pichler G, Paron I, Nagaraj N, Mann M (2014) Minimal, encapsulated proteomic-sample processing applied to copy-number estimation in eukaryotic cells. *Nat Methods* 11: 319–324
- Kumar S, Stecher G, Li M, Knyaz C, Tamura K (2018) MEGA X: molecular evolutionary genetics analysis across computing platforms. *Mol Biol Evol* 35: 1547–1549
- Larkin MA, Blackshields G, Brown NP, Chenna R, McGettigan PA, McWilliam H, Valentin F, Wallace IM, Wilm A, Lopez R et al (2007) Clustal W and clustal X version 2.0. *Bioinformatics* 23: 2947–2948
- Lassowskat I, Hartl M, Hosp F, Boersema PJ, Mann M, Finkemeier I (2017) Dimethyl-labeling-based quantification of the lysine acetylome and proteome of plants. *Methods Mol Biol* 1653: 65–81
- Lee HY, Byeon Y, Lee K, Lee H-J, Back K (2014) Cloning of *Arabidopsis* serotonin N-acetyltransferase and its role with caffeic acid O-methyltransferase in the biosynthesis of melatonin *in vitro* despite their different subcellular localizations. *J Pineal Res* 57: 418–426
- Linster E, Stephan I, Bienvenut WV, Maple-Grodem J, Myklebust LM, Huber M, Reichelt M, Sticht C, Geir Moller S, Meinel T et al (2015) Downregulation of N-terminal acetylation triggers ABA-mediated drought responses in *Arabidopsis*. *Nat Commun* 6: 7640
- Linster E, Wirtz M (2018) N-terminal acetylation: an essential protein modification emerges as an important regulator of stress responses. *J Exp Bot* 69: 4555–4568
- Linster E, Layer D, Bienvenut WV, Dinh TV, Weyer F, Leemhuis W, Brünje A, Hoffrichter M, Miklankova P, Sindlinger J et al (2020) Plants evolved a plasma membrane anchored N-acetyltransferase required for the adaption to high salt stress and post-translational acetylation of plasmodesmata-localized proteins. *New Phytol* <https://doi.org/10.1111/nph.16747>
- Liszczak G, Arnesen T, Marmorstein R (2011) Structure of a ternary Naa50p (NAT5/SAN) N-terminal acetyltransferase complex reveals the molecular basis for substrate-specific acetylation. *J Biol Chem* 286: 37002–37010
- Liszczak G, Goldberg JM, Foyn H, Petersson EJ, Arnesen T, Marmorstein R (2013) Molecular basis for N-terminal acetylation by the heterodimeric NatA complex. *Nat Struct Mol Biol* 20: 1098–1105
- Liszczak G, Marmorstein R (2013) Implications for the evolution of eukaryotic amino-terminal acetyltransferase (NAT) enzymes from the structure of an archaeal ortholog. *Proc Natl Acad Sci USA* 110: 14652–14657
- Liu Z, Liu Y, Wang HQ, Ge XJ, Jan QH, Ding GH, Hu YA, Zhou B, Chen ZJ, Ge XM et al (2009) Patt1, a novel protein acetyltransferase that is highly expressed in liver and downregulated in hepatocellular carcinoma, enhances apoptosis of hepatoma cells. *Int J Biochem Cell B* 41: 2528–2537
- Liu CC, Zhu HY, Dong XM, Ning DL, Wang HX, Li WH, Yang CP, Wang BC (2013) Identification and analysis of the acetylated status of poplar proteins reveals analogous N-terminal protein processing mechanisms with other eukaryotes. *PLoS ONE* 8: e58681
- Longoni P, Douchi D, Cariti F, Fucile G, Goldschmidt-Clermont M (2015) Phosphorylation of the light-harvesting complex II isoform Lhcb2 is central to state transitions. *Plant Physiol* 169: 2874–2883

- Lunde C, Jensen PE, Haldrup A, Knoetzel J, Scheller HV (2000) The PSI-H subunit of photosystem I is essential for state transitions in plant photosynthesis. *Nature* 408: 613–615
- Maddelein D, Colaert N, Buchanan I, Hulstaert N, Gevaert K, Martens L (2015) The iceLogo web server and SOAP service for determining protein consensus sequences. *Nucleic Acids Res* 43: W543–W546
- Magin RS, March ZM, Marmorstein R (2016) The N-terminal acetyltransferase Naa10/ARD1 does not acetylate lysine residues. *J Biol Chem* 291: 5270–5277
- Martinez A, Traverso JA, Valot B, Ferro M, Espagne C, Ephritikhine G, Zivy M, Giglione C, Meinnel T (2008) Extent of N-terminal modifications in cytosolic proteins from eukaryotes. *Proteomics* 8: 2809–2831
- Meinnel T, Dian C, Giglione C (2020) Myristoylation, an ancient protein modification mirroring eukaryogenesis and evolution. *Trends Biochem Sci* 45: 619–632
- Montgomery DC, Sorum AW, Meier JL (2015) Defining the orphan functions of lysine acetyltransferases. *ACS Chem Biol* 10: 85–94
- Murray-Rust TA, Oldham NJ, Hewitson KS, Schofield CJ (2006) Purified recombinant hARD1 does not catalyse acetylation of Lys532 of HIF-1 α fragments *in vitro*. *FEBS Lett* 580: 1911–1918
- R Core Team (2016) *R: A language and environment for statistical computing*. Vienna, Austria R Foundation for Statistical Computing
- Rathore OS, Faustino A, Prudencio P, Van Damme P, Cox CJ, Martinho RG (2016) Absence of N-terminal acetyltransferase diversification during evolution of eukaryotic organisms. *Sci Rep* 6: 21304
- Reverdy A, Chen Y, Hunter E, Gozzi K, Chai Y (2018) Protein lysine acetylation plays a regulatory role in *Bacillus subtilis* multicellularity. *PLoS ONE* 13: e0204687
- Rips S, Frank M, Elting A, Offenborn JN, von Schaewen A (2017) Golgi 1,4-fucosyltransferase of *Arabidopsis thaliana* partially localizes at the nuclear envelope. *Traffic* 18: 646–657
- Rowland E, Kim J, Bhuiyan NH, van Wijk KJ (2015) The *Arabidopsis* chloroplast stromal N-terminome: complexities of amino-terminal protein maturation and stability. *Plant Physiol* 169: 1881–1896
- Rozhon W, Mayerhofer J, Petutschnig E, Fujioka S, Jonak C (2010) ASKtheta, a group-III *Arabidopsis* GSK3, functions in the brassinosteroid signalling pathway. *Plant J* 62: 215–223
- Salah Ud-Din AI, Tikhomirova A, Roujeinikova A (2016) Structure and functional diversity of GCN5-related N-acetyltransferases (GNAT). *Int J Mol Sci* 17: E1018
- Schmidt A, Kochanowski K, Vedelaar S, Ahrné E, Volkmer B, Callipo L, Knoops K, Bauer M, Aebersold R, Heinemann M (2016) The quantitative and condition-dependent *Escherichia coli* proteome. *Nat Biotechnol* 34: 104–110
- Seidel J, Klockenbusch C, Schwarzer D (2016) Investigating deacetylase and deacylase activity of mammalian and bacterial sirtuins. *ChemBioChem* 17: 398–402
- Shin DH, Chun YS, Lee KH, Shin HW, Park JW (2009) Arrest defective-1 controls tumor cell behavior by acetylating myosin light chain kinase. *PLoS ONE* 4: e7451
- Sigrist CJ, de Castro E, Cerutti L, Cuče BA, Hulo N, Bridge A, Bouguérel L, Xenarios I (2013) New and continuing developments at PROSITE. *Nucleic Acids Res* 41: D344–D347
- Srivastava P, Khandokar YB, Swarbrick CM, Roman N, Himiari Z, Sarker S, Raidal SR, Forwood JK (2014) Structural characterization of a Gcn5-related N-acetyltransferase from *Staphylococcus aureus*. *PLoS ONE* 9: e102348
- Stove SI, Magin RS, Foyn H, Haug BE, Marmorstein R, Arnesen T (2016) Crystal structure of the golgi-associated human N alpha-acetyltransferase 60 reveals the molecular determinants for substrate-specific acetylation. *Structure* 24: 1044–1056
- Tyanova S, Temu T, Cox J (2016a) The MaxQuant computational platform for mass spectrometry-based shotgun proteomics. *Nat Protoc* 11: 2301–2319
- Tyanova S, Temu T, Sinitcyn P, Carlson A, Hein MY, Geiger T, Mann M, Cox J (2016b) The Perseus computational platform for comprehensive analysis of (pro)teomics data. *Nat Methods* 13: 731–740
- Uhrig RG, Schlapfer P, Roschitzki B, Hirsch-Hoffmann M, Gruissem W (2019) Diurnal changes in concerted plant protein phosphorylation and acetylation in *Arabidopsis* organs and seedlings. *Plant J* 99: 176–194
- Van Damme P, Hole K, Pimenta-Marques A, Helsen K, Vandekerckhove J, Martinho RG, Gevaert K, Arnesen T (2011) NatF contributes to an evolutionary shift in protein N-terminal acetylation and is important for normal chromosome segregation. *PLoS Genet* 7: e1002169
- Varland S, Osberg C, Arnesen T (2015) N-terminal modifications of cellular proteins: the enzymes involved, their substrate specificities and biological effects. *Proteomics* 15: 2385–2401
- Vetting MW, SdC LP, Yu M, Hegde SS, Magnet S, Roderick SL, Blanchard JS (2005) Structure and functions of the GNAT superfamily of acetyltransferases. *Arch Biochem Biophys* 433: 212–226
- Wu FH, Shen SC, Lee LY, Lee SH, Chan MT, Lin CS (2009) Tape-*Arabidopsis* Sandwich - a simpler *Arabidopsis* protoplast isolation method. *Plant Methods* 5: 16
- Wu X, Oh MH, Schwarz EM, Larue CT, Sivaguru M, Imai BS, Yau PM, Ort DR, Huber SC (2011) Lysine acetylation is a widespread protein modification for diverse proteins in *Arabidopsis*. *Plant Physiol* 155: 1769–1778
- Wybenga-Groot LE, Draker K, Wright GD, Berghuis AM (1999) Crystal structure of an aminoglycoside 6'-N-acetyltransferase: defining the GCN5-related N-acetyltransferase superfamily fold. *Structure* 7: 497–507
- Xu F, Huang Y, Li L, Gannon P, Linster E, Huber M, Kapos P, Bienvenut W, Polevoda B, Meinnel T et al (2015) Two N-terminal acetyltransferases antagonistically regulate the stability of a nod-like receptor in *Arabidopsis*. *Plant Cell* 27: 1547–1562
- Yang XH, Yu WH, Shi L, Sun LY, Liang J, Yi X, Li Q, Zhang Y, Yang F, Han X et al (2011) HAT4, a golgi apparatus-anchored B-type histone acetyltransferase, acetylates free histone H4 and facilitates chromatin assembly. *Mol Cell* 44: 39–50
- Yoon H, Kim HL, Chun YS, Shin DH, Lee KH, Shin CS, Lee DY, Kim HH, Lee ZH, Ryoo HM et al (2014) NAA10 controls osteoblast differentiation and bone formation as a feedback regulator of Runx2. *Nat Commun* 5: 5176
- Zybailov B, Rutschow H, Friso G, Rudella A, Emanuelsson O, Sun Q, van Wijk KJ (2008) Sorting signals, N-terminal modifications and abundance of the chloroplast proteome. *PLoS ONE* 3: e1994



License: This is an open access article under the terms of the Creative Commons Attribution 4.0 License, which permits use, distribution and reproduction in any medium, provided the original work is properly cited.