



**HAL**  
open science

## Body size and stable isotope composition of zooplankton in the western tropical Atlantic

Gabriela Guerra Araújo Abrantes De Figueiredo, Ralf Schwamborn, Arnaud Bertrand, Jean-Marie Munaron, François Le Loc'h

### ► To cite this version:

Gabriela Guerra Araújo Abrantes De Figueiredo, Ralf Schwamborn, Arnaud Bertrand, Jean-Marie Munaron, François Le Loc'h. Body size and stable isotope composition of zooplankton in the western tropical Atlantic. *Journal of Marine Systems*, 2020, 212, pp.103449. 10.1016/j.jmarsys.2020.103449 . hal-02986941

**HAL Id: hal-02986941**

**<https://hal.science/hal-02986941v1>**

Submitted on 11 Mar 2024

**HAL** is a multi-disciplinary open access archive for the deposit and dissemination of scientific research documents, whether they are published or not. The documents may come from teaching and research institutions in France or abroad, or from public or private research centers.

L'archive ouverte pluridisciplinaire **HAL**, est destinée au dépôt et à la diffusion de documents scientifiques de niveau recherche, publiés ou non, émanant des établissements d'enseignement et de recherche français ou étrangers, des laboratoires publics ou privés.

## Body size and stable isotope composition of zooplankton in the western tropical Atlantic

Guerra Araújo Abrantes De Figueiredo Gabriela <sup>1</sup>, Schwamborn Ralf <sup>1,\*</sup>, Bertrand Arnaud <sup>2,3</sup>, Munaron Jean-Marie <sup>4</sup>, Le Loch Francois <sup>4</sup>

<sup>1</sup> Department of Oceanography, Federal University of Pernambuco, Recife, Brazil

<sup>2</sup> Programa de pós-graduação em Ecologia, Universidade Federal Rural de Pernambuco, Recife, Brazil

<sup>3</sup> Institut de Recherche pour le Développement (IRD), MARBEC, Univ Montpellier, CNRS, Ifremer, IRD, Sète, France

<sup>4</sup> Institut de Recherche pour le Développement, Univ Brest, CNRS, IRD, Ifremer, LEMAR, IUEM, F-29280 Plouzané, France

\* Corresponding author : Ralf Schwamborn, email address : [ralf.schwamborn@ufpe.br](mailto:ralf.schwamborn@ufpe.br)

### Abstract :

Size-based approaches are paramount tools for the study of marine food webs. Here, we investigated the relationship between zooplankton body size, stable isotope composition and trophic level (TL) along a large-scale onshore-offshore gradient in the western tropical Atlantic. Samples were obtained on the Brazilian continental shelf, slope and in oceanic waters (off Fernando de Noronha archipelago and Rocas Atoll) in September and October 2015. Zooplankton was sieved into five size fractions. Zooplankton was dominated by copepods, except for the largest (>2000  $\mu\text{m}$ ) size fraction, that showed a high biovolume of chaetognaths, decapods, and fish larvae. Maximum zooplankton abundance and biovolume was found at the continental slope. POM showed consistently lower  $\delta^{13}\text{C}$  than zooplankton, indicating a selective use of  $^{13}\text{C}$ -rich primary food sources by zooplankton. Particulate organic matter (POM) was more  $^{13}\text{C}$ -enriched in shelf areas (average:  $-22.8$ ,  $-23.6$  and  $-24.3\text{‰}$  at the shelf, slope and oceanic islands, respectively), probably due to the higher abundance of diatoms nearshore. POM had  $\delta^{15}\text{N}$  values between  $2.5$  and  $6.9\text{‰}$  (average:  $4.0$ ,  $4.9$  and  $4.2\text{‰}$  at the shelf, slope and oceanic islands, respectively). Zooplankton  $\delta^{15}\text{N}$  and TL increased with body size. The  $\delta^{15}\text{N}$  of the  $200\text{--}500\ \mu\text{m}$  size fraction was used as baseline for TL estimation. Oceanic areas (average baseline  $\delta^{15}\text{N} = 5.8\text{‰} \pm 0.52$ ,  $n = 14$ ) showed a higher baseline  $\delta^{15}\text{N}$  than the shelf (average =  $3.9\text{‰} \pm 0.69$ ,  $n = 9$ ) and the slope areas (average =  $3.1\text{‰} \pm 0.93$ ,  $n = 9$ ). In spite of differing baselines, the  $\delta^{15}\text{N}$  data produced a consistent pattern of log-linear increase in TL with increasing size, in all areas. The choice of input trophic enrichment factor (TEF) values only slightly changed the  $\log_{10}$  (body size) vs TL slopes, but this choice had a considerable effect on the estimates of predator/prey size ratio (PPSR) and predator/prey mass ratio (PPMR). Using a TEF above 2.3 leads to unrealistic PPSR and PPMR estimates. Overall average slope was  $0.59 \pm 0.08\ \text{TL}\ \mu\text{m}^{-1}$  with  $\text{TEF} = 2.3$  and  $0.42 \pm 0.07\ \text{TL}\ \mu\text{m}^{-1}$  with  $\text{TEF} = 3.2$ .

---

## Highlights

► Maximum zooplankton abundance and biovolume was found at the continental slope. ► POM showed lower  $\delta^{13}\text{C}$  than zooplankton, indicating selective feeding. ► Zooplankton  $\delta^{15}\text{N}$  and trophic level increased with body size. ► Using a  $\delta^{15}\text{N}$  trophic enrichment factor above 2.3 leads to unrealistic estimates.

**Keywords** : Plankton,  $\delta^{13}\text{C}$ ,  $\delta^{15}\text{N}$ , Size classes, Trophic level, Predator / prey mass ratio

## 1. Introduction

A large number of factors influence the functioning of pelagic ecosystems, including the spatio-temporal variability of physical and chemical variables, as well as dynamic interactions between species. These processes shape species distribution and trophic structure. Body size, which is easily and quickly determined, is considered one of the most important determinants of ecosystem structure (Jennings et al., 2007; Petchey et al., 2008) since metabolic requirements, food selection, growth and reproductive capacity are related to body size. Size-based analyses are therefore paramount tools for studying marine food webs (Jennings et al., 2001; Bănaru et al., 2014; Hunt et al., 2015; Yang et al., 2016). In pelagic marine food webs, predators are generally larger than their prey (Cohen et al., 1993) and trophic level (TL) is almost exclusively size-based. Thus, pelagic marine ecosystems can be well described by a log-linear size spectrum, where abundance continuously decreases with size, due to the energy loss in trophic transfers (Plett and Denman, 1977; Fry and Quinones, 1994; Jennings et al., 2002; Hunt et al., 2015). This theory was reinforced by Fry and Quinones (1994), who estimated zooplankton TLs with stable carbon and nitrogen isotopes, and determined how TLs changed with body size. Their results supported the arguments that trophic organization and metabolism are important structuring forces. Analyses of pelagic organisms aggregating them by size, may contribute to the understanding of the functioning of pelagic ecosystems.

Stable isotope analysis (SIA) is widely used to elucidate trophic relationships in marine food webs (Post, 2002; Hunt et al., 2015). Nitrogen and carbon stable isotopes ( $\delta^{15}\text{N}$  and  $\delta^{13}\text{C}$ ) are natural tracers that incorporate information on trophic position and food source (Fry, 2006; Wang et al., 2013). For instance,  $\delta^{15}\text{N}$  increases with trophic

position (Post, 2002), i.e., predators are generally  $^{15}\text{N}$ -enriched in relation to their prey (Minagawa and Wada, 1984). Conversely, carbon stable isotopes ( $\delta^{13}\text{C}$ ) are incorporated by organisms with less modification between predators and prey (McConnaughey and McRoy, 1979). Since predator  $\delta^{13}\text{C}$  values do not differ too much from their food sources (Miller et al., 2008), they can be used as tracers of food sources or feeding areas.

Lower trophic levels, such as most plankton organisms, are important for SIA in marine environments, since they are very sensitive to physical processes that result in changes in hydrographic patterns (Bode et al., 2007; Mompéan et al., 2013; Espinasse et al., 2014). Zooplankton plays a key role in pelagic ecosystems by connecting primary producers to higher trophic levels (Saiz et al., 2007; Guidi et al., 2016; Gove et al., 2016). Understanding the structure and function of zooplankton communities is necessary to understand their role in marine ecosystems (Yang et al., 2017). SIA provides a tool to analyze zooplankton food webs and to measure trophic relationships between food web components (Yang et al., 2016). Combined with size-based approaches, SIA can provide comprehensive understanding of zooplankton food webs (Jennings et al., 2002; Båmter et al., 2014; Espinasse et al., 2014; Yang et al., 2016).

The western tropical Atlantic off northeastern Brazil is mostly dominated by the warm oligotrophic waters that are derived from the south equatorial current (SEC). This region comprehends the extension from the shelf, slope and slope, seamounts and oceanic islands, all with low levels of nutrient supply and productivity and high zooplankton diversity (Boltovskoy et al., 1999). Numerous studies have investigated zooplankton communities in this region, most of which focusing on community structure, abundance diversity (e.g., Neumann-Leitão et al., 1999; Diaz et al., 2009; Brandão et al., 2013; Lira et al., 2014; Santana et al., 2018), and size spectra (Marcolin

et al., 2013). In this region, the stable isotope composition ( $\delta^{13}\text{C}$  and  $\delta^{15}\text{N}$ ) of zooplankton and particulate organic matter (POM) has been investigated in mangrove estuaries, on the shelf and at the adjacent slope, revealing that any measurable estuarine influence was limited to the line of intertidal coastal reefs, approximately 10 km from the coast (Schwamborn et al., 1999, 2002).

In this study, we investigate the relationship between body size and stable isotope composition of zooplankton communities in the western tropical Atlantic, to understand the relationship between trophic levels and body size, and to test the hypothesis that there are differences in zooplankton trophic structure among different environments along a large-scale onshore-offshore gradient.

## **2. Methodology**

### *2.1 Sampling strategy*

Zooplankton and particulate organic matter (POM) were sampled on the continental shelf, at the slope, and in oceanic waters off northeastern Brazil (Figure 1). Two oceanic island systems were studied: Fernando de Noronha archipelago (FN) and Rocas Atoll (RA, Figure 1). Samples were collected between September 29 and October 21, 2015, during the Acoustic along the Brazilian coast cruise (ABRACOS, Bertrand, 2015) conducted on board R/V ANTEA.

At each station, vertical profiles of conductivity, temperature and chlorophyll *a* fluorescence were acquired using a Seabird SBE911+ CTD probe. Zooplankton sampling was conducted by towing a regular bongo frame with four nets fitted with mesh sizes of 64  $\mu\text{m}$  (30 cm mouth opening diameter), 120  $\mu\text{m}$  (30 cm diam.), 300  $\mu\text{m}$  (60 cm diam.) and

500  $\mu\text{m}$  (60 cm diam.). At each station, two oblique hauls were conducted between 200 meters and the surface or between 10 meters from the bottom to the surface at locations with less than 200 m of bottom depth. A total of 14 and 18 samples were collected during day night, respectively.

A Hydro-Bios flowmeters were fixed inside the net opening of each net to estimate filtered volume. Seawater samples for particulate organic matter (POM) were collected at the surface (3 m) and at the depth of maximum fluorescence using a CTD/rosette equipped with Niskin bottles. A total of 8 liters of water were filtered on a 47 mm diameter Whatman GF/F filter. In the laboratory, all filter samples were dried at 40°C during 36h.

## 2.2 Size spectra

Oblique bongo haul samples, taken simultaneously with 120  $\mu\text{m}$ , 300  $\mu\text{m}$  and 500  $\mu\text{m}$  meshes, were used to estimate zooplankton size spectra. They were preserved in 4% formaldehyde buffered with sodium tetraborate (0.5  $\text{g}\cdot\text{l}^{-1}$ , Newell and Newell, 1963). These formaldehyde-preserved samples were used for the size spectrum analysis under a stereo microscope (120  $\mu\text{m}$ ) and in the ZooScan system (300  $\mu\text{m}$ , 500  $\mu\text{m}$ ). For stereo microscope analyses (Zeiss Stemi 2000 – C), the samples were split in 1/2 to 1/256 to obtain at least 30 organisms per sample. The lengths and widths of 30 specimens for each taxonomic group were measured. If there were more than 30 individuals for each taxonomic group, they were counted for abundance analyses.

For ZooScan analyses, each zooplankton sample was separated into two fractions with a 1000  $\mu\text{m}$  mesh (Gorsky et al., 2010). Each size fraction was split by a Motoda splitter into 1/2 to 1/64 subsamples to obtain up to 2,000 objects in each scan. Large, rare organisms (> 1000  $\mu\text{m}$  size fraction) were scanned from 1/2 to 1/8 subsamples. For the more plentiful size fraction of small-sized organisms (< 1000  $\mu\text{m}$ ) a smaller

subsample (1/4 to 1/64) was scanned. Subsamples were digitalized by the ZooScan system and processed with the ZooProcess software, which isolates each object into one vignette and generates a range of quantitative descriptors (size, grey level distribution and shape parameters) for each vignette. A semi-automatic approach was used to classify the vignettes into pre-established taxonomic groups, using the Plankton Identifier software (Gorsky et al., 2010). After classification, all results were manually validated to correct any misclassifications.

Equivalent spherical diameter (ESD), abundance and biovolume were calculated for each organism. Zooplankton biovolume was estimated as the ellipsoidal volume:

$$Biovolume = \frac{4\pi}{3} \left( \frac{Major\ axis}{2} \right) \left( \frac{Minor\ axis}{2} \right)^2$$

where the major and minor axis of each zooplankton organism were measured by the ZooScan or under the stereo microscope. Zooplankton abundance and biovolume were classified into discrete size classes, based on their equivalent spherical diameter (ESD, calculated from the 2D area). Five ESD size classes (0-IV) were defined (0 < 200  $\mu\text{m}$ ; I 200 – 500  $\mu\text{m}$ ; II 500 – 1000  $\mu\text{m}$ ; III 1000 – 2000  $\mu\text{m}$  and IV >2000  $\mu\text{m}$ ).

### 2.3 Stable isotopes

Stable isotope analyses were conducted on particulate organic matter (POM) and on size-fractionated zooplankton samples that were obtained with a bongo net (additional subsurface hauls with 64  $\mu\text{m}$ , 120  $\mu\text{m}$ , 300  $\mu\text{m}$  and 500  $\mu\text{m}$  mesh). For each haul, all samples were pooled and sieved into five size fractions, using a multi-mesh array (0 < 200  $\mu\text{m}$ ; I: 200  $\mu\text{m}$  – 500  $\mu\text{m}$ ; II: 500  $\mu\text{m}$  – 1000  $\mu\text{m}$ ; III: 1000  $\mu\text{m}$  – 2000  $\mu\text{m}$  and IV >



2000  $\mu\text{m}$ ). Each size fraction sample was packed into previously calcined aluminum envelopes, and kept frozen at  $-20^{\circ}\text{C}$ .

In the laboratory, zooplankton samples were stored in Eppendorf micro tubes, and freeze dried during at least 24 hours. Once dried, each sample was homogenized to obtain a fine powder and weighed. In order to obtain unbiased values of  $\delta^{13}\text{C}$ , part of the samples was separated to remove the carbonates ( $\text{CaCO}_3$ ). These samples were acidified according to Fry (1988) by adding approximately 2 ml of  $0.5 \text{ mol.l}^{-1}$  hydrochloric acid (HCl). After this procedure, samples were re-dried at  $60^{\circ}\text{C}$  for 24 hours and homogenized. Water samples collected at subsurface ( $\sim 3 \text{ m}$ ) and at the depth of the chlorophyll a fluorescence maximum (Fmax) were used to obtain POM samples by using pre-combusted GFF filters. POM samples were acidified for extracting the carbonates. For this, the filters were exposed to hydrochloric acid (HCl) vapor. After 4 hours, the filters were left in an aluminum covered box and dried at  $40^{\circ}\text{C}$  during 36h.

Samples were analyzed using an elemental analyzer (Thermo Scientific Flash EA 2000) coupled to an Isotope Ratio Mass Spectrometer (Delta V+ mass) at the Pôle de Spectrométrie Océan (Plouzané, France). Results were expressed in standard  $\delta$  notation based on international standards (Vienna Pee Dee Belemnite for  $\delta^{13}\text{C}$  and  $\text{N}_2$  in air for  $\delta^{15}\text{N}$ ) following the equation:  $\delta X = [(R_{\text{sample}}/R_{\text{standard}}) - 1] \times 10^3$  (in ‰), where R is  $^{13}\text{C}/^{12}\text{C}$  or  $^{15}\text{N}/^{14}\text{N}$ . The standard values were reproduced into a confidence limit: IAEA-600 (certified values:  $-27.77 \pm 0.04\text{‰}$  for  $\delta^{13}\text{C}$  and  $1.00 \pm 0.20\text{‰}$  for  $\delta^{15}\text{N}$ ; measured value:  $-27.79 \pm 0.10\text{‰}$  for  $\delta^{13}\text{C}$  and  $1.09 \pm 0.06\text{‰}$  for  $\delta^{15}\text{N}$ ), IAEA-CH-6 (certified values:  $-10.45 \pm 0.08\text{‰}$  for  $\delta^{13}\text{C}$ ; measured value:  $-10.43 \pm 0.08\text{‰}$  for  $\delta^{13}\text{C}$ ), IAEA-N-1 (certified values:  $0.4 \pm 0.2\text{‰}$  for  $\delta^{15}\text{N}$ ; measured value:  $0.45 \pm 0.10\text{‰}$  for  $\delta^{15}\text{N}$ ) and IAEA-N-2 (certified values:  $20.3 \pm 0.2\text{‰}$  for  $\delta^{15}\text{N}$ ; measured value:  $20.24 \pm 0.12\text{‰}$  for

$\delta^{15}\text{N}$ ). One sample of a home standard (Thermo acetanilide) was analyzed for experimental precision, after every six samples.

#### 2.4 Trophic levels

Trophic level (TL) was calculated based on  $\delta^{15}\text{N}$  (Vander Zanden and Fetzer, 2007):

$$TL = \frac{(\delta^{15}\text{N}_{consumer} - \delta^{15}\text{N}_{baseline})}{TEF} + \lambda$$

where TEF is the trophic enrichment factor and  $\lambda$  is the trophic level of the baseline. Since isotopic values of phytoplankton (TL1) are based on POM, which may be influenced by the co-occurrence of detritus (Montoya et al., 2002) and microzooplankton in the water column (Post, 2002; Hunt et al., 2015; Yang et al., 2017), primary consumers were used to estimate the trophic level, once they are less influenced by small-scale spatial and temporal variation (Hunt et al. 2015). Small-sized zooplankton is classically used as a baseline (TL 2; e.g., Fry and Quinones, 1994; Kline and Pauly 1998, Montoya et al., 2002; Hauss et al., 2013, Hunt et al., 2015). In this study, we assume the size-class I (200 – 500  $\mu\text{m}$ ), to be closest to the primary consumer with TL 2. A TEF value of 3.2‰ per TL was applied to estimate relative TLs for each zooplankton size class and sampling area (Post, 2002; Ménard et al., 2014). For comparison, TLs were also estimated using a TEF of 2.3‰ per TL, as given by Schwamborn and Giarrizzo (2015).

Differences in trophic level, stable isotopes composition, abundance and biovolume of zooplankton between areas (shelf, slope and oceanic islands) and between size

classes were tested by non-parametric Kruskal-Wallis ANOVA ( $p_{crit} = 0.05$ ), since these data displayed non-normality and heteroscedasticity. Post-hoc comparisons between pairs of samples were conducted with Dunn's test ( $p_{crit} = 0.05$ ) (Zar, 1996).

Ordinary least squares linear regression was used to investigate the linear relationship between  $\log_{10}$ -transformed average body size (ESD,  $\mu\text{m}$ ) and trophic level (TL, estimated with TEF = 3.2 and 2.3). Body size (ESD) was  $\log_{10}$ -transformed to obtain linear relationships for analysis and to improve homoscedasticity. The slope of this linear regression model was used to estimate the average predator/ prey size ratio (PPSR) and predator/ prey mass ratio (PPMR), using the following equations:  $\text{PPSR} = 10^{(1/\text{slope})}$ , if  $\log_{10}$  is being used in the linear model (Hunt et al., 2015), and  $\text{PPMR} = \text{PPSR}^3$ , assuming isometry and size-invariant density (Lins et al., 2019). PPSR and PPMR estimates obtained with TEF = 3.2 and 2.3 were then compared to previously published estimates. All data are available at: [https://figshare.com/articles/dataset/Body\\_Size\\_Stable\\_Isotope\\_Figueiredo\\_et\\_al\\_Meta\\_data\\_csv/12620807](https://figshare.com/articles/dataset/Body_Size_Stable_Isotope_Figueiredo_et_al_Meta_data_csv/12620807).

### 3. Results

#### 3.1 Hydrography

Sea surface temperature was nearly homogeneous (median: 26.6°C) over the whole study area. Surface salinity ranged from 36.1 to 36.6, with higher values along the continental slope. The thermocline ranged between ~80 and ~180 m in the slope area

and ~90 and ~130 m around oceanic islands (Assunção et al., in press). The chlorophyll *a* fluorescence maximum was generally located at the upper limit of the thermocline.

### 3.2 Zooplankton abundance and biovolume size structure composition

A total of 15 taxonomic categories were identified: jellyfish, polychaetes, bivalves, gastropods, copepods, nauplii, euphausiids, mysids, decapods, salps, chaetognaths, appendicularians, fish eggs, fish larvae and "other zooplankton" (composed by organisms with less than 3% abundance).

No significant differences were detected between zooplankton abundance, biovolume, and stable isotope composition at both oceanic island areas, Fernando de Noronha and Rocas Atoll (K-W-ANOVA,  $p > 0.05$ ). Therefore, data from these two areas were pooled together as "oceanic islands" for subsequent analyses. Samples obtained from the shelf and from the slope were analyzed separately, since they were different regarding several parameters, especially stable isotope composition (Fig. 5).

Abundance and biovolume differed significantly between areas (K-W ANOVA,  $p < 0.05$ ; Table 1). Samples taken off oceanic islands had significantly lower abundances (mean:  $6.0 \text{ ind.m}^{-3} \pm 3.1$ ; Table 2) than those obtained from the shelf and from the slope (means:  $10.3 \text{ ind.m}^{-3} \pm 6.5$  and  $14.1 \text{ ind.m}^{-3} \pm 16.8$ , respectively). The slope presented significantly higher biovolume (mean:  $11.0 \pm 15.4 \text{ mm}^3.\text{m}^{-3}$ ) than oceanic islands (mean  $3.3 \pm 1.5 \text{ mm}^3.\text{m}^{-3}$ ) and the shelf (mean:  $3.7 \pm 3.3 \text{ mm}^3.\text{m}^{-3}$ , Figure 2).

Zooplankton composition varied considerably among size classes (Figure 3). Copepoda was the most abundant group for the three size fractions ranging between 200  $\mu\text{m}$  and 2000  $\mu\text{m}$  for all environments, and presented the largest contribution to biovolume. The taxonomic composition for the  $> 2000 \mu\text{m}$  class showed a higher

contribution of larger zooplankton organisms, such as Chaetognatha, Decapoda, and fish larvae, especially off oceanic islands (Figure 3).

### 3.3 Stable isotope composition of zooplankton and POM

Spatial patterns of stable isotope composition differed between POM and zooplankton. POM displayed consistently lower  $\delta^{13}\text{C}$  than zooplankton (Figure 4). Also,  $\delta^{13}\text{C}$  of POM showed a decreasing trend from the shelf towards offshore areas.  $\delta^{13}\text{C}$  of POM differed significantly between areas (Figure 5, Table 1, K-W ANOVA,  $p < 0.001$ ), with higher  $\delta^{13}\text{C}$  values in shelf areas, followed by the slope and oceanic islands (Figure 5). Conversely, zooplankton displayed an opposite pattern, with increasing values towards offshore areas (Figure 5, Table 2).  $\delta^{15}\text{N}$  and  $\delta^{13}\text{C}$  values of all zooplankton size classes differed significantly between areas (Table 1, K-W ANOVA,  $p < 0.05$ ), with higher values off oceanic islands (Figure 5; Table SM 1) varying from  $\sim 22$  to  $\sim 19\text{‰}$  for  $\delta^{13}\text{C}$  and from  $\sim 5$  to  $\sim 6\text{‰}$  for  $\delta^{15}\text{N}$ .

POM had  $\delta^{15}\text{N}$  values between 2.54 and 6.89‰ (mean at oceanic islands: 4.15‰, st. dev.: 1.2‰, mean at the shelf: 4.00‰, st. dev.: 0.59‰, mean at the slope: 4.86‰, st. dev.: 1.24‰). Within the meso- and macrozooplankton,  $\delta^{15}\text{N}$  generally increased with size, from the size fraction  $< 200$  to the size fraction  $> 2000 \mu\text{m}$  (Figure 4). At the shelf, small-sized mesozooplankton (size fraction 200 – 500  $\mu\text{m}$ ) presented significantly more depleted values than the largest size (Table 2, 1000 –  $> 2000 \mu\text{m}$ ,  $p < 0.05$ , K-W ANOVA). At the slope, the 200 – 500  $\mu\text{m}$  size fraction showed significantly lower  $\delta^{15}\text{N}$  values than the largest ( $> 2000 \mu\text{m}$ ) size fraction (Table 2,  $p < 0.05$ , K-W ANOVA).

$\delta^{13}\text{C}$  values were significantly different between  $> 2000 \mu\text{m}$  and  $500 - 1000 \mu\text{m}$  at the shelf (Figure 5,  $p < 0.01$ , non-parametric ANOVA) and between  $> 2000 \mu\text{m}$  and the other size fractions at oceanic islands (Table 2,  $p < 0.05$ , non-parametric ANOVA).

### 3.4 Trophic levels

To estimate trophic levels (TL), according to other studies (e.g., Fry and Quinones, 1994; Kline and Pauly, 1998, Montoya et al., 2002; Hausman et al., 2013, Hunt et al., 2015) we used the mean  $\delta^{15}\text{N}$  of the zooplankton sampled in the  $200 - 500 \mu\text{m}$  size class, from each region, as a baseline (TL = 2), since this size fraction was consistently dominated by copepods, and the fact that this size class had the lowest  $\delta^{15}\text{N}$  values. Oceanic areas (average baseline  $\delta^{15}\text{N} = 5.8\text{‰}$ ) had a higher baseline  $\delta^{15}\text{N}$  than the shelf (average =  $3.9\text{‰}$ ) and the slope (average =  $3.1\text{‰}$ ). In spite of differing baselines, the  $\delta^{15}\text{N}$  data produced a very consistent pattern of increase in trophic level with increasing size, in all regions (Figure 6). Assuming  $\text{TEF} = 3.2\text{‰ TL}^{-1}$ , the mean trophic level of the zooplankton was very similar with TL = 2.2, 2.3 and 2.1 for shelf, slope and oceanic islands, respectively. For  $\text{TEF} = 2.3\text{‰ TL}^{-1}$ , the mean were TL = 2.3, 2.5 and 2.2, in these sampling areas, respectively.

Linear regression analysis revealed a log-linear relationship between  $\log_{10}$  (body size and TL (Figure 6). Linear models were always highly significant ( $p < 0.001$ ), for shelf, slope and oceanic islands areas. Slopes of the log (body size) vs TL relationships (Table 3) were not significantly different among areas (ANCOVA,  $p = 0.07$ ). Overall average slope was  $0.59 \pm 0.08 \text{ TL } \mu\text{m}^{-1}$  with  $\text{TEF} = 2.3$  and  $0.42 \pm 0.59 \text{ TL } \mu\text{m}^{-1}$  with  $\text{TEF} = 3.2$ .

The choice of input TEF values only slightly changed the  $\log_{10}$  (body size) vs TL slopes, but this choice had a considerable effect on the estimates of predator/prey size ratio (PPSR) and predator/prey mass ratio (PPMR). For example, the estimate of PPMR at Oceanic Islands was 470 times lower when using TEF = 2.3 than when using TEF = 3.2. For TEF = 2.3, PPSR was 49, and PPMR was 121,547. For TEF = 3.2, these estimates were much higher, especially for PPMR. With TEF = 3.2, PPSR was 240, and an extremely high PPMR estimate of 13,894,955.

#### 4. Discussion

The present study revealed important variations in stable isotope ratios of zooplankton in the western tropical Atlantic that were conspicuously and significantly related to body size and geographical areas. Size-structured stable isotope analyses proved to be a useful approach to describe the structure and functioning of the systems (Fry and Quiñones, 1994; Monoya et al., 2002; Lee et al., 2013; Hunt et al., 2015). It is the first study analyzing size classes and stable isotope composition of a zooplankton community carried out in tropical shelf, slope and oceanic waters, providing several important new insights into these pelagic ecosystems. Also, our study showed that TEF choice has a profound effect on the resulting prey-predator mass and size ratios. Lower TEF values than those widely used, clearly lead to more realistic results for this zooplankton community.

##### *4.1 Variation of POM and zooplankton stable isotope composition*

In the present study, zooplankton presented higher  $\delta^{13}\text{C}$  and  $\delta^{15}\text{N}$  values off oceanic islands than in shelf and slope areas. Conversely,  $\delta^{13}\text{C}$  POM showed a clear coastal-offshore gradient, with  $^{13}\text{C}$ -enriched values at shelf areas, followed by slope and oceanic islands. Stable isotope composition of primary producers typically varies with spatio-temporal and physical features as a result of differences in biogeochemical processes that occur in each environment (Graham et al., 2010). Thus,  $\delta^{13}\text{C}$  values of POM followed an expected pattern, being more  $^{13}\text{C}$ -enriched in diatom-rich shelf environments than offshore, as observed in previous studies in the study area (Schwamborn et al., 1997; Schwamborn et al., 1999) and elsewhere (Fry and Wainright, 1991).

An unexpected result was observed in relation to zooplankton  $\delta^{13}\text{C}$  values, which were conspicuously and significantly different from simultaneously obtained POM  $\delta^{13}\text{C}$  values. This discrepancy between POM and zooplankton carbon isotope composition could be explained by two different phenomena. First, vertically migrating zooplankton may be feeding at depths that are not represented by the sampling of POM. Second, zooplankton generally display feeding selectivity (Sailley et al., 2015; Benedetti et al., 2016), which makes their isotope composition difficult to compare directly with POM values. POM encompasses a highly variable mixture of a diversity of living organisms and non-living particles, among which only few may be selectively ingested by zooplankton (Lee et al., 2004). Our results indicate a selective use of  $\delta^{13}\text{C}$ -rich food sources (e.g., diatoms) by zooplankton.

#### *4.2 Spatial patterns of zooplankton abundance, biovolume, composition, size and stable isotope ratios*



We observed higher zooplankton abundance and biovolume over the slope than the shelf and in offshore areas (Figure 2). These results contradict the typical coastal-oceanic gradient, previously found in the study area (Bueno et al., 2017; Campelo et al., 2018; Santana et al., 2018) and elsewhere (Dai et al., 2016; Giering et al., 2018). Indeed it is typically assumed that zooplankton abundance follows a continuous gradient with higher abundance nearshore (Neumann-Leitão et al., 2008; Marcolin et al., 2013; Leitão et al., 2019). This common pattern was mostly attributed to continental runoff, specifically the input of nutrients and organisms from large estuaries, and resuspension from shelf sediments (Schwamborn et al., 1999). Nutrient inputs boost the primary production and may consequently generate a coastal ocean gradient of zooplankton density with higher abundance of organisms in coastal environments than oligotrophic oceanic waters. The lower biomass values observed at the shelf than at the slope may occur because of a series of factors. First, during the sampling period (September to October), there was a low continental influence (low river runoff during the dry season), low wind intensities (little resuspension from shelf sediments). Also, sampling was conducted off the main reproductive season for most coastal invertebrates (low larval inputs from coastal ecosystems), which is generally from January to March, in the study area. In addition, physical processes like eddies may allow a higher retention of plankton at the continental slope, leading to higher zooplankton biomass and densities (Franco et al., 2006; Katsuragawa et al., 2014). Our stations with highest abundance were located in a region close to continental slope, with mixed layer depth and upper thermocline shallower than expected for the season (Assunção et al., 2020). This leads to a shallowing of the nutricline and likely an increase in primary productivity sustaining the higher density of zooplankton.

In this oligotrophic ecosystem we demonstrated the existence of zooplankton accumulation at the continental slope. The observed pattern also agrees with the finding that any direct estuarine influence in the study area is generally limited to approximately 10 km from the coast (Schwamborn et al., 1999, 2002). The shelf break is known to play an important role in transporting and retaining zooplankton (Genin, 2004; Zhu et al., 2009). Indeed, interactions between topography and currents aggregate zooplankton seaward of the shelf-break zone (e.g. Genin, 2004; Cotté and Simard, 2005; Swartzman et al., 2005). Also, the whole slope area, up to several km off the shelf break, is characterized by strong turbulence and current shear between the base of the mixed layer and the upper thermocline that can transport nutrients from deep water masses upwards into the euphotic layer. This shear and turbulence is caused by the strong North Brazil Undercurrent (NBUC) that flows northwards along the shelf break (Stramma et al., 1995; Schott, et al., 2005). Furthermore, significantly higher abundance and biovolume at the slope, as observed in this study, may be due to small-scale mechanisms that were hitherto ignored, e.g., upwelling at submarine canyons (Kämpf, 2007; Howatt and Allen, 2013), and zooplankton accumulations at fronts and eddies (Schwamborn et al., 2001, Maps et al., 2015).

Zooplankton composition differed drastically between size-classes. Early life stages, such as invertebrate (probably mostly copepod) eggs, copepod nauplii, and gastropods dominated the smallest size class ( $< 200 \mu\text{m}$ ), as found in many other regions, such as in the Mediterranean Sea (Bănaru et al., 2014). Similarly, in coastal areas of the Brazilian Northeast, Neumann Leitão et al. (2019) observed that nauplii and veliger larvae were the most frequent taxonomic groups in the microzooplankton (64 – 120  $\mu\text{m}$  mesh net samples). Mesh size effects have already been documented in numerous zooplankton community studies (Tseng et al., 2011; Tosetto et al., 2019),

which demonstrate that mesh size drastically affects the representation of the abundance, composition, and diversity of zooplankton communities.

Zooplankton composition in the size fraction from 500 to 2000  $\mu\text{m}$  is generally dominated by copepods (Mauchline, 1998), as observed by Neumann–Leitão et al. (2019) and Campelo et al. (2018) in coastal and oceanic waters of the western tropical Atlantic as well as in numerous other regions, such as in the south Atlantic (Boltovskoy, 1999), the Mediterranean (Bănară et al., 2014; Espinasse et al., 2014), the subtropical north Pacific (Dai et al., 2016), the western tropical north Pacific (Yang et al., 2016) and the eastern Atlantic (Marcolin et al., 2013).

Interestingly, in most cases,  $\delta^{13}\text{C}$  values did not vary significantly with size, indicating that, in contrast to other studies (e.g., Schwamborn and Giarrizzo, 2015), the primary carbon sources of zooplankton in these size classes were similar, and carbon isotopic fractionation was negligible.

Although most zooplankton size fractions were dominated by copepods, the largest size fraction ( $> 2000 \mu\text{m}$ ) showed the greatest richness in taxonomic groups, with many large-sized organisms such as fish larvae, euphausiids, mysids and many gelatinous organisms, such as siphonophores and chaetognaths. The higher abundance and biovolume of large-sized predators (e.g., fish larvae and chaetognaths) in the largest size class explains well why  $\delta^{15}\text{N}$  and TL increased with size, showing a good consistency within and between our data sets.

Taxonomic compositions of both data sets (measured size classes and taxonomy vs sieving and isotope analysis) were most likely very similar, since they were obtained concomitantly at each station. Also, the measured size has an obvious relation to the retention in sieves. Furthermore, the observed distributions of taxonomic groups within

size groups were as expected (e.g., copepods being dominant in the smaller size fractions). In addition, with the approach we used, the taxonomic composition does not need to be absolutely identical in both datasets (i.e., only the size distribution has to be similar). Taxonomic information is presented here for illustration and to aid in interpreting the stable isotope results. Most importantly, the increase in  $\delta^{15}\text{N}$  with size in this study was expected, since it agrees well with previous studies on zooplankton food webs in the southwestern subtropical Pacific (Hunt et al., 2015) and in the western tropical north Pacific (Yang et al., 2016).

#### *4.3 Body size as determinant of trophic level*

In previous trophic ecology studies, the size classes chosen to determine the baseline differed widely between authors, e.g., 175 – 250  $\mu\text{m}$  (Fry and Quinones, 1994), 200 – 500  $\mu\text{m}$  (Hauss et al., 2013) or 250 – 500  $\mu\text{m}$  (Montoya et al., 2002). Assuming a size-based food web structure, in our study, we choose the 200 – 500  $\mu\text{m}$  size fraction, once this size class was composed mainly by copepods, assumed to be mostly filter feeders and presented the smallest  $\delta^{15}\text{N}$  values. Thus, their isotopic composition should be close to primary consumer (1L2). In addition, copepods have better integrative properties than POM, since their turnover rate is much lower than most POM.

A positive relationship between  $\delta^{15}\text{N}$  and size class within the zooplankton community was also observed in the Mediterranean Sea by Koppelman et al (2009) and Bănarău et al. (2014), except for the largest size class ( $> 2000 \mu\text{m}$ ), which had lower  $\delta^{15}\text{N}$  values, probably due to the contribution of low-TL salps, in contrast to the dominance of high-TL chaetognaths in the present study. Their  $\delta^{15}\text{N}$  data for size-fractionated zooplankton were generally very similar to the present study except for the

largest zooplankton size class. A series of factors affect the trophic position and size of plankton. For example, variations in nutrient inputs regulate the size of primary producers (Kiørboe, 2008), thus strongly impacting species composition and size structure of herbivorous zooplankton and pelagic food webs.

#### *4.4 TEF choice and predator – prey size ratios*

The TEF is known to differ widely between groups of organisms (McCutchan et al., 2003; Vanderklift and Ponsard, 2003). Schwamborn and Giarrizzo (2015) found a lower ecosystem-wide TEF value and much lower TEFs for higher TLs, which may support criticism of the use of fixed fractionation factors. Here, we compared results for a TEF of 3.2 (Post, 2002; Ménard et al., 2014) and 2.3 (Schwamborn and Giarrizzo, 2015). A lower TEF in ecosystem-based studies such as in Schwamborn and Giarrizzo (2015), than in laboratory feeding studies (Post, 2002), is to be expected since growing and migrating animals in real ecosystems will be constantly shifting their diets and TLs. Thus, most organisms in natural ecosystems will not attain full equilibrium with their current food source. In most laboratory feeding experiments, only the final TEF (difference in isotope composition between diet and consumer), under perfect equilibrium, is reported. TEFs that occur in natural ecosystems will not represent this kind of situation. Thus, lower, ecosystem-based TEF values (e.g., 2.3‰ TL<sup>-1</sup>) may be more realistic for the use in zooplankton food web analyses (Schwamborn and Giarrizzo, 2015) than laboratory-derived TEF estimates. Our study showed that TEF choice has a huge influence on PPMR and that the use of TEF above 3 will lead to a gross overestimation of PPMR and subsequently underestimation of ecosystem trophic efficiency (TE). Hunt et al. (2015) obtained similar results for the meso-,

macrozooplankton and micronekton communities in the subtropical Pacific. They also concluded that a TEF of  $3.4\% \text{ TL}^{-1}$ , that they used, likely overestimated PPMR and underestimated TE.

#### *4.5 PPMR as a key parameter for food webs and size spectra analyses*

Our PPMR calculations assume isometry (i.e., size-invariant shape) and size-invariant density, which are hardly fulfilled in nature. In that sense, Lins et al. (2019) showed that on average, density is not significantly different from 1 in tropical zooplankton samples, and that these relationships do not change with biomass. We are therefore confident that our basic assumptions are sufficiently well fulfilled for an assessment of PPMR. However we acknowledge that the investigation of these important aspects deserves further efforts.

The large review by Hansen et al. (1994) reported typical PPSR values of 18 to 50 for mesozooplankton. In our study, extremely high PPSR and PPMR estimates obtained with  $\text{TEF} = 3.2$  (Table 4), may be considered unrealistic, since they were much higher than previously published estimates (except for the slope area, where the lowest PPSR was observed). Conversely, the application of  $\text{TEF} = 2.3$  produced realistic estimates for shelf and slope data, and for the overall mean. The zooplankton communities around oceanic islands had very high PPSR, being above the Hansen et al. (1994) range, with both TEF values ( $\text{TEF} = 2.3$  and  $3.2$ ). This high PPSR is consistent with our observation of very abundant large organisms, such as fish larvae and gelatinous predators, in the waters around oceanic islands.

When using  $\text{TEF} = 3.2$ , we would obtain an overall mean PPSR value of 240, which is far above any known estimates for mesozooplankton. Yet, when using  $\text{TEF} =$

2.3, our study indicates an overall mean PPSR value of 49, which is within the PPSR range given by Hansen et al. (1994). Similarly to the study of Hansen et al. (1994), we also used ESD to obtain PPSR estimates, so that both PPSR assessments seem well comparable, thus further strengthening the point for ESD as a standard measure of size in plankton research.

Community-wide PPSR above 1,000 should be considered extremely unlikely, such as those obtained with  $TEF = 3.2$ . This suggests that a realistic TEF for the zooplankton community sampled in this study would rather be close to 2.3, as observed by Schwamborn and Giarrizzo (2015). Since there are still very few studies available that attempt to estimate PPMR and PPSR based on stable isotopes and size-structured zooplankton sampling, our results may be used as a baseline for future studies.

## 5. Acknowledgements

We would like to thank the National Council for Scientific and Technological Development (CNPq, PhD fellowships awarded to the first author), the ABRACOS project (Acoustics along the Brazilian Coast), funded by Institut de Recherche pour le Développement, IRD), the crew of R/V ANTEA, the Brazilian National Institute of Science and Technology in Tropical Marine Environments (INCT-AmbTropic, CNPQ/CAPES/FAPESB) for the logistic and financial support, the Laboratoire des sciences de l'environnement Marin (LEMAR) for the stable isotope analyses support. RS and AB received support from the European Union's Horizon 2020 research and innovation program under Grant Agreement No 734271. Many thanks to the Brazilian Navy for permit (Portaria N° 178/EMA, 08/09/2015) and to the Brazilian Ministry of the Environment MMA / ICMBio for SISBIO permit no47270-4. This study is a contribution to the LMI TAPIOCA, the SMAC project (CAPES/COFECUB n° 88881.142689/2017-01) and to the PADDLE project, which has received funding from the European Union's Horizon 2020

research and innovation program under grant agreement No 73427. Many thanks to Simone M. A. Lira, Xiomara F.G. Díaz, Pedro A.M.C. Melo and Lucas Figueiredo, for the support in sampling during the cruise.

### Supplementary material

**Table MS1.** Zooplankton size classes stable isotope composition between the three areas  $\delta^{13}\text{C}$  and  $\delta^{15}\text{N}$  minimum, maximum mean and standard deviation values.

Size Classes	$\delta^{13}\text{C}$	$\delta^{13}\text{C}$	$\delta^{13}\text{C}$	$\delta^{13}\text{C}$	$\delta^{15}\text{N}$	$\delta^{15}\text{N}$	$\delta^{15}\text{N}$	$\delta^{15}\text{N}$
	Min	Max	Mean	sd	Min	Max	Mean	sd
	Coast							
< 200 $\mu\text{m}$	-23.23	-20.92	-22.08	1.63	3.17	4.20	3.69	0.73
200 – 500 $\mu\text{m}$	-21.49	-20.20	-21.08	0.38	2.87	5.09	3.91	0.69
500 – 1000 $\mu\text{m}$	-21.39	-20.32	-20.72	0.32	3.88	6.12	4.59	0.79
1000 – 2000 $\mu\text{m}$	-21.87	-20.43	-21.07	0.57	4.43	6.42	5.05	0.63
>2000 $\mu\text{m}$	-22.17	-20.79	-21.46	0.43	4.51	6.17	5.08	0.52
	Slope							
< 200 $\mu\text{m}$	-21.79	-21.71	-21.74	0.05	4.40	5.39	4.92	0.50
200 – 500 $\mu\text{m}$	-22.39	-20.48	-21.46	0.63	1.07	4.03	3.06	0.94
500 – 1000 $\mu\text{m}$	-21.76	-20.05	-21.14	0.48	2.24	5.25	4.03	0.92
1000 – 2000 $\mu\text{m}$	-23.21	-20.44	-21.58	0.86	2.54	5.26	4.13	0.79
>2000 $\mu\text{m}$	-22.76	-20.22	-21.75	0.66	3.28	6.92	5.04	1.09
	Oceanic Islands							
< 200 $\mu\text{m}$	-21.95	-20.23	-20.94	0.55	5.10	7.52	5.99	0.60
200 – 500 $\mu\text{m}$	-21.02	-20.29	-20.64	0.26	5.07	6.84	5.79	0.52
500 – 1000 $\mu\text{m}$	-21.75	-19.96	-20.72	0.43	5.54	6.91	6.00	0.38
1000 – 2000 $\mu\text{m}$	-21.22	-20.24	-20.62	0.26	5.88	8.25	6.52	0.62
>2000 $\mu\text{m}$	-20.65	-18.69	-20.02	0.50	5.88	8.89	6.67	0.68

### References

Assunção, R.V., Silva, A.C., Roy, A., Bourlès, B., Silva, C.H., Ternon, J.-F., Bertrand, A., 2020. 3D characterisation of the thermohaline structure in the southwestern tropical Atlantic derived from functional data analysis of in situ profiles. Prog. Oceanogr., in press.



- Bănaru, D., Carlotti, F., Barani, A., Grégori, G., Neffati, N., Harmelin-Vivien, M., 2014. Seasonal variation of stable isotope ratios of size-fractionated zooplankton in the Bay of Marseille (NW Mediterranean Sea). *J. Plankton Res.* 36, 145-156.
- Benedetti, F., Gasparini, S., Ayata, S.D., 2015. Identifying copepod functional groups from species functional traits. *J. Plankton Res.* 38, 159-166.
- Bertrand, A., 2015. ABRACOS cruise, RV Antea, <https://doi.org/10.17600/15005600>
- Bode, A., Alvarez-Ossorio, M.T., Cunha, M. E., Garrido, S., Peleteiro, J.B., Porteiro, C., Valdes, L., Varela, M., 2007. Stable nitrogen isotope studies of the pelagic food web on the Atlantic shelf of the Iberian Peninsula. *Prog. Oceanogr.* 74, 115–131.
- Boltovskoy, D., 1999. South Atlantic zooplankton. Leiden: Backhuys Publishers.
- Brandão, M.C., Koettker, A.G., Freire, A. J., 2013. Abundance and composition of decapod larvae at Saint Paul's Rocks (equatorial Atlantic). *J. Mar. Ecol.* 34, 171-185.
- Boltovskoy, D. (ed.) 1999. South Atlantic Zooplankton. Backhuys Publishers, Leiden.
- Bueno, M., Alberto, S.F., Carvalho, R., Costa, T.M., Ciotti, A.M., Christofolletti, R.A., 2017. Plankton in waters adjacent to the Laje de Santos state marine conservation park, Brazil: spatio-temporal distribution surveys. *Braz. J. Oceanogr.* 65, 564–575
- Campelo, R.P.S., Diaz, X.F.G., Santos, G., Melo, P.A.M.C., Melo Junior, M., Figueiredo, L.G.P., et al., 2018. Small-scale distribution of the mesozooplankton in a tropical insular system. *Braz. J. Oceanogr.* 66, 15–29.
- Cohen, J.E, Pimm, S.L, Yodzis P., Saldaña, J., 1993. Body sizes of animal predators and animal prey in food webs. *J. Anim. Ecol.* 62, 67–78.

- Cotté, C., Simard, Y., 2005. Formation of dense krill patches under tidal forcing at whale feeding hot spots in the St. Lawrence Estuary. *Mar. Ecol. Prog. Ser.* 288, 199-210.
- Dai, L., Li, C., Yang, G., Sun, X., 2016. Zooplankton abundance, biovolume and size spectra at western boundary currents in the subtropical North Pacific during winter 2012. *J. Mar. Syst.* 155, 73-83.
- Diaz, X.F.G., Gusmão, L.M.O., Neumann-Leitão, S., 2009. Biodiversidade e dinâmica espaço-temporal do zooplâncton. In: Viana, D.L., Hazin, F.M.V., Souza, M.A.C. 2009. O arquipélago de São Pedro e São Paulo: 10 anos de Estação Científica. Brasília: SECIRM, 128-137.
- Espinasse, B., Harmelin-Vivien, M., Tiano, M., Guilloux, L., Carlotti, F., 2014. Patterns of variations in C and N stable isotope ratios in size-fractionated zooplankton in the Gulf of Lion, NW Mediterranean Sea. *J. Plankton Res.* 36, 1204-1215.
- Franco, B.C., Muelbert, J.H., Mota, M.M., 2006. Mesoscale physical processes and the distribution and composition of ichthyoplankton on the Southern Brazilian shelf break. *Fish Oceanogr.* 15, 37-43.
- Fry, B., Wainright, S.C., 1991. Diatom sources of  $^{13}\text{C}$ -rich carbon in marine food webs. *Mar. Ecol. Progr. Ser.* 76, 149 - 157.
- Fry, B., 1988. Food web structure on Georges Bank from stable C, N, and S isotopic compositions. *Limn. Oceanogr.* 33, 1182-1190.
- Fry, B., 2006. Stable isotope ecology. New York: Springer.

Fry, B., Quinones, R.B., 1994. Biomass spectra and stable isotope indicators of trophic level in zooplankton of the northwest Atlantic. *Mar. Ecol. Prog. Ser.* 112, 201–204.

Genin, A., 2004. Bio-physical coupling in the formation of zooplankton and fish aggregations over abrupt topographies. *J. Mar. Syst.* 50, 3–20.

Giering, S.L., Wells, S.R., Mayers, K.M., Schuster, H., Cornwell, L., Fileman, E.S.,

Atkinson, A., Cool, K.B., Preece, C., Mayor, D.J., 2018. Seasonal variation of zooplankton community structure and trophic position in the Celtic Sea: a stable isotope and biovolume spectrum approach. *Prog. Oceanogr.* 177, 1019–43.

Gorsky, G., Ohman, M.D., Picheral, M., Gasparini, S., Stemmann, L., Romagnan, J.B., Cawood, A., Pesant, S., Garcia-Comas, C., Prejger, F., 2010. Digital zooplankton image analysis using the ZooScan integrated system. *J. Plankton Res.* 32, 285–303.

Gove, J.M., McManus, M.A., Neuheimer, A.B., Polovina, J.J., Drazen, J.C., Smith, C.R., Merrified, M.A., Friedlane, J.K., Ehses, A.S., Young, A.W., Dillon, A.K., Williams, G.J., 2016. Near-island biological hotspots in barren ocean basins. *Nat. Commun.* 7, 1058.

Graham, B.S., Koch, P.L., Newsome, S.D., McMahon, K.W., Aurioles, D., 2010. “Using isoscapes to trace the movements and foraging behavior of top predators in oceanic ecosystems,” in *Isoscapes: Understanding Movement, Pattern, and Process on Earth Through Isotope Mapping*, eds J. B. West, G. J. Bowen, T. E. Dawson, and K. P. Tu (Dordrecht: Springer), 299–318.

Guidi, L., Chaffron, S., Bittner, L., Eveillard, D., Larhlimi, A., Roux, S., Darzi, Y., Audic, S., Berline, L., Brum, J.R., Coelho, L.P., Espinoza, J.C.I., Malviya, S., Sunagawa, S., Dimier, C., Kandels-Lewis, S., Picheral, M., Poulain, J., Searson, S.,

- Coordinators, T.O.C., Stemmann, L., Not, F., Hingamp, P., Speich, S., Follows, M., Karp-Boss, L., Boss, E., Ogata, H., Pesant, S., Weissenbach, J., Wincker, P., Acinas, S.G., Bork, P., de Vargas, C., Iudicone, D., Sullivan, M.B., Raes, J., Karsenti, E., Bowler, C., Gorsky, G., 2016. Plankton networks driving carbon export in the oligotrophic ocean. *Nature*. 24, 165–180.
- Hansen, B., Bjornsen, P.K., Hansen, P.J., 1994. The size ratio between planktonic predators and their prey. *Limn. Oceanogr.* 39, 395-403.
- Hauss, H., Franz, J.M., Hansen, T., Struck, U., Sommer, U., 2013. Relative inputs of upwelled and atmospheric nitrogen to the eastern tropical North Atlantic food web: Spatial distribution of  $\delta^{15}\text{N}$  in mesozooplankton and relation to dissolved nutrient dynamics. *Deep Sea Res. Part I: Oceanogr. Res. Papers.* 75, 135-145.
- Howatt, T.M., & Allen, S.E., 2013. Impact of the continental shelf slope on upwelling through submarine canyons. *J. Geophys. Res. Oceans.* 118, 5814-5828.
- Hunt, B.P., Allain, V., Menkès, C., Lorrain, A., Graham, B., Rodier, M., Pagano, M., Carloti, F., 2015. A coupled stable isotope-size spectrum approach to understanding pelagic food-web dynamics: a case study from the southwest sub-tropical Pacific. *Deep Sea Res. Part II Top. Stud. Oceanogr.* 113, 208-224.
- Jennings, S., Oliveira, J.A.D., Warr, K.J., 2007. Measurement of body size and abundance in tests of macroecological and food web theory. *J. Anim. Eco.* 76, 72–82.
- Jennings, S., Warr, K.J., Mackinson, S., 2002. Use of size-based production and stable isotope analyses to predict trophic transfer efficiencies and predator-prey body mass ratios in food webs. *Mar. Ecol. Prog. Ser.* 240, 11–20.

- Kämpf, J., 2007. On the magnitude of upwelling fluxes in shelf-break canyons. *Cont. Shelf Res.* 27, 2211-2223.
- Katsuragawa M., Dias J.F., Harari, J., Namiki, C., Zani-Teixeira, M.L., 2014. Patterns in larval fish assemblages under the influence of the Brazil current. *Cont. Shelf Res.* 89, 103-117.
- Kjørboe, T., 2008. Optimal swimming strategies in mate-searching pelagic copepods. *Oecologia.* 155, 179-192.
- Kline, T.C., Pauly, D., 1998. Cross-validation of trophic level estimates from a mass-balance model of Prince William Sound using  $^{15}\text{N}/^{14}\text{N}$  data. p. 693-702. In: T.J. Quinn II, F. Funk. Heifetz, J.N., Ianelli, J.E., Powers, J.F., Schweigert, P.J, Sullivan, C.-I., Zhang (eds.) *Proceedings of the International Symposium on Fishery Stock Assessment Models.* Alaska Sea Grant College Program Report No. 98-01.
- Koppelman, R., Böttger-Schnack, R., Möbius, J., Weikert, H., 2009. Trophic relationships of zooplankton in the eastern Mediterranean based on stable isotope measurements. *J. Plankton Res.* 31, 669-686.
- Lee, C., Wakeham, S., Arnosti, C., 2004. Particulate organic matter in the sea: the composition conundrum. *AMBIO*, 33, 565-576.
- Lins Silva, N., Marcolin, C. R., Schwamborn, R., 2019. Using image analysis to assess the contributions of plankton and particles to tropical coastal ecosystems. *Est.Coast. Shelf Sci.* 219, 252-261.
- Lira, S.M.D.A., Teixeira, I.D.Á., Lima, C.D.M.D., Santos, G.D.S., Leitão, S.N., Schwamborn, R., 2014. Spatial and nycthemeral distribution of the zooneuston off Fernando de Noronha, Brazil. *Braz. J. Oceanog.* 62, 35-45.

- Maps, F., Plourde, S., McQuinn, I.H., St-Onge-Drouin, S., Lavoie, D., Chassé, J., Lesage, V., 2015. Linking acoustics and finite-time Lyapunov exponents reveals areas and mechanisms of krill aggregation within the Gulf of St. Lawrence, eastern Canada. *Limnol. Oceanogr.* 60, 1965-1975.
- Marcolin, C.R., Schultes, S., Jackson, G.A., Lopes, R.M., 2013. Plankton and seston size spectra estimated by the LOPC and ZooScan in the Abrolhos Bank ecosystem (SE Atlantic). *Cont. Shelf Res.* 70, 74-87.
- Mauchline, J., 1998. The biology of calanoid copepods. *Advances in marine biology*, Academic Press. 33.
- McConnaughey, T., McRoy, C.P., 1979. Food web structure and the fractionation of carbon isotopes in the Bering Sea. *Mar. Biol.* 53, 257-262.
- McCutchan Jr, J.H., Lewis Jr, W.M., Kendall, C., McGrath, C.C., 2003. Variation in trophic shift for stable isotope ratios of carbon, nitrogen, and sulfur. *Oikos*, 102, 378-390.
- Ménard, F., Benivary, H.D., Bodin, N., Coffineau, N., Le Loc'h, F., Mison, T., Richard, P., Potier, M., 2014. Stable isotope patterns in micronekton from the Mozambique Channel. *Deep Sea Res. Part II: Trop. Stud. Oceanogr.* 100, 153-163.
- Miller, T.W., Brodeur, R.D., Rau, H.G., 2008. Carbon stable isotopes reveal relative contribution of shelf-slope production to the Northern California Current pelagic community. *Limnol. Oceanogr.* 53, 1493–1503.
- Minagawa, M., Wada, E., 1984. Stepwise enrichment of  $^{15}\text{N}$  along food chains: further evidence and the relation between  $\delta^{15}\text{N}$  and animal age. *Geochim. Cosmochim. Acta.* 48, 1135–1140.

- Mompeán, C., Bode, A., Benítez-Barrios, V.M., Domínguez-Yanes, J.F., Escáñez, J., Fraile-Nuez, E., 2013. Spatial patterns of plankton biomass and stable isotopes reflect the influence of the nitrogen-fixer *Trichodesmium* along the subtropical North Atlantic. *J. Plankton Res.* 35, 513-525.
- Montoya, J.P., Carpenter, E.J., Capone, D.G., 2002. Nitrogen fixation and nitrogen isotope abundances in zooplankton of the oligotrophic North Atlantic. *Limnol. Oceanogr.* 47, 1617–1628.
- Neumann-Leitão, S., Gusmão, L.M.O., Silva, T.D.E.; Nascimento-Vieira, D.A., Silva, A.P., 1999. Mesozooplankton biomass and diversity in coastal and oceanic waters off North-Eastern Brazil. *Arch. Fish. Mar. Res.* 47, 153-165.
- Neumann-Leitao, S., Melo Junior, M., Neto, F., Figueiredo, F., Silva, A.P., Díaz, X.F.G., et al., 2019. Connectivity between coastal and oceanic zooplankton from Rio Grande do Norte in the tropical western Atlantic. *Front. Mar. Sci.* 6, 287.
- Neumann-Leitão, S., Sant'anna, E.M.E., Gusmão, L.M.D.O., Nascimento-Vieira, D.A., Paranaguá, M.N., Schwamborn, R., 2008. Diversity and distribution of the mesozooplankton in the tropical Southwestern Atlantic. *J. Plankton Res.* 30, 795-805.
- Newell, G.E., Newell, R.C., 1963. *Marine plankton: a practical guide*. London: Hutchlson Educational
- Petchey, O.L., Beckerman, A.P., Riede, J.O., Warren, P.H., 2008. Size, foraging, and food web structure. *Proc. Natl Acad. Sci. USA.* 105, 4191–4196.
- Platt, T., Denman, K., 1977. Organization in the pelagic ecosystem. *Helgolander Wiss. Meeresunters.* 30, 575-581

- Post, D.M., 2002. Using stable isotopes to estimate trophic position: models, methods, and assumptions. *Ecology*, 83, 703–718.
- Saiz, E., Calbet, A., Atienza, D., Alcaraz, M., 2007. Feeding and production of zooplankton in the Catalan Sea (NW Mediterranean). *Prog. Oceanogr.* 74, 313–328.
- Sailley, S.F., Polimene, L., Mitra, A., Atkinson, A., Allen, J.I., 2015. Impact of zooplankton food selectivity on plankton dynamics and nutrient cycling. *J. Plankton Res.* 37, 519-529.
- Santana, C.S.D., Schwamborn, R., Neumann-Leitão, S., Montes, M.D.J.F., Lira, S.M.D.A., 2018. Spatio-temporal variation of planktonic decapods along the leeward coast of the Fernando de Noronha archipelago, Brazil. *Braz. J. Oceanogr.* 66, 1-14.
- Schott, F.A., Dengler, M., Zantopp, R., Stramma, L., Fischer, J., Brandt, P., 2005. The Shallow and Deep Western Boundary Circulation of the South Atlantic at 5°–11°S. *J. Phys. Oceanogr.* 35, 2031–2053.
- Schwamborn, R., Neumann-Leitão, S., Silva, T.A., Silva, A.P., Saint-Paul, U., 2001. Distribution and dispersal of decapod crustacean larvae and other zooplankton in the Itamaracá estuarine system, Brazil. *Trop. Oceanogr.* 29, 1-18.
- Schwamborn, R., Ekau, W., Voss, M., Saint-Paul, U., 1999. Stable isotope composition of particulate organic matter and zooplankton in northeast Brazilian shelf waters. *Arc. Fish. Mar. Res.* 47, 201–210.
- Schwamborn, R., Giarrizzo, T., 2015. Stable isotope discrimination by consumers in a tropical mangrove food web: How important are variations in C/N ratio? *Estuar. Coast.* 38, 813-825.



Schwamborn, R., Voss, M., Ekau, W., Saint-Paul, U., 2002. How important are mangroves as carbon sources for decapod crustacean larvae in a tropical estuary? *Mar. Ecol. Prog. Ser.* 229, 195-205.

Stramma, L., Fischer, J., Reppin, J., 1995. The North Brazil Undercurrent. *Deep Sea Res. Part I: Oceanogr. Res. Papers.* 42, 773–795.

Swartzman, G., Hickey, B., Kosro, M., Wilson, C., 2005. Poleward and equatorward currents in the Pacific Eastern Boundary Current in summer 1995 and 1998 and their relationship to the distribution of euphausiids. *Deep Sea Res. Part II Top. Stud. Oceanogr.* 52, 73–88.

Tosetto, E.G., Neumann-Leitão, S., Júnior, M.N., 2012. Sampling planktonic cnidarians with paired nets: Implications of mesh size on community structure and abundance. *Estuar., Coast. Shelf Sci.* 20, 48-53.

Tseng, L.C., Dahms, H.U., Hung, J., Chen, Q.C., Hwang, J.S., 2011. Can different mesh sizes affect the results of copepod community studies? *J. Exp. Mar. Biol. Ecol.* 398, 47–55.

Vander Zanden, J.M., Fetter, W.W., 2007. Global patterns of aquatic food chain length. *Oikos* 116, 1378–1388.

Vanderklift, M.A., Ponsard, S., 2003. Sources of variation in consumer - diet  $\delta^{15}\text{N}$  enrichment: a meta- analysis. *Oecologia* 136, 169–182.

Wang, S.W., Budge, S.M., Gradinger, R.R., Iken, K., Wooller, M.J., 2014. Fatty acid and stable isotope characteristics of sea ice and pelagic particulate organic matter in the Bering Sea: tools for estimating sea ice algal contribution to Arctic food web production. *Oecologia*. 174, 699-712.

Yang, G., Li, C., Guilini, K., Wang, X., Wang, Y., 2017. Regional patterns of  $\delta^{13}\text{C}$  and  $\delta^{15}\text{N}$  stable isotopes of size-fractionated zooplankton in the western tropical North Pacific Ocean. *Deep Sea Res. Part I: Oceanogr. Res. Papers.* 120, 39-47.

Yang, G., Li, C.L., Guilini, K., Peng, Q., Wang, Y., Zhang, Y., Zhang, Y., 2016. Feeding strategies of four dominant copepod species in Prydz Bay, Antarctica: insights from a combined fatty acid biomarker and stable isotopic approach. *Deep Sea Res. Part I: Oceanogr. Res. Papers.* 114, 55–63.

Zar, J.H. *Biostatistical analysis*. 3.ed. Upper Saddle River: Prentice Hall International Editions, 1996. p. 662.

Zhu, Y., Tande, K., Zhou, M., 2009. Mesoscale physical processes and zooplankton transport–retention in the northern Norwegian shelf region. *Deep Sea Res. Part II Top. Stud. Oceanogr.* 56, 1922–1933.

### Figures and tables legends

**Figure 1.** Sampling stations in the tropical Atlantic off northeastern Brazil, in September and October 2015. Color codes indicate sampling stations on the continental shelf, at the slope, and off two oceanic islands (FR: Fernando de Noronha Archipelago and RA: Rocas Atoll).

**Figure 2.** Mean ( $\pm$  standard deviations) zooplankton abundance and biovolume between continental shelf, slope and oceanic islands in the tropical Atlantic off northeastern Brazil. All values shown represent the sum of all size classes

**Figure 3.** Relative abundance and biovolume of zooplankton classified within four size classes (0-IV). I: 200 – 500  $\mu\text{m}$ ; II: 500 – 1000  $\mu\text{m}$ ; III: 1000 – 2000  $\mu\text{m}$  and IV: > 2000  $\mu\text{m}$ . Samples were collected on the continental shelf, at the slope and off oceanic islands in the tropical Atlantic off northeastern Brazil.

**Figure 4.** Mean  $\delta^{13}\text{C}$  and  $\delta^{15}\text{N}$  ( $\pm$  standard deviation) of particulate organic matter (POM) and size-fractionated zooplankton sampled on the continental shelf, at the slope and off oceanic islands in the tropical Atlantic off northeastern Brazil.

**Figure 5:**  $\delta^{13}\text{C}$  and  $\delta^{15}\text{N}$  (in ‰) of particulate organic matter (POM) and zooplankton size fractions (0:  $< 200 \mu\text{m}$ ; I:  $200 - 500 \mu\text{m}$ ; II:  $500 - 1000 \mu\text{m}$ ; III:  $1000 - 2000 \mu\text{m}$ ; IV  $> 2000 \mu\text{m}$ ) on the shelf, at the slope and off oceanic islands in the western tropical Atlantic.

**Figure 6:** Trophic level (TL) and  $\log_{10}$  (mean ESD size,  $\mu\text{m}$ ) for each zooplankton size class in the western tropical Atlantic. TL was calculated from  $\delta^{15}\text{N}$ , assuming a trophic enrichment factor of 3.2 and 2.3‰  $\text{TL}^{-1}$ . Grey area: 95% confidence envelope for the linear regression slope.

**Table 1.** Results of Kruskal-Wallis ANOVA (p-values) and Dunn's post-hoc test on Particulate Organic Matter (POM), zooplankton  $\delta^{13}\text{C}$ ,  $\delta^{15}\text{N}$ , abundance and biovolume according to local (S: Shelf; SB: Slope and OI: Oceanic Islands) and size classes (0:  $< 200 \mu\text{m}$ ; I:  $200 - 500 \mu\text{m}$ ; II:  $500 - 1000 \mu\text{m}$ ; III:  $1000 - 2000 \mu\text{m}$ , IV  $> 2000 \mu\text{m}$ ). n.s: not significant (i.e.,  $p > 0.05$ ).

**Table 2.** Results of Kruskal-Wallis ANOVA and Dunns's post-hoc test with zooplankton  $\delta^{13}\text{C}$  and  $\delta^{15}\text{N}$ , classified into five size classes (0:  $< 200 \mu\text{m}$ ; I:  $200 - 500 \mu\text{m}$ ; II:  $500 - 1000 \mu\text{m}$ ; III:  $1000 - 2000 \mu\text{m}$ ; IV  $> 2000 \mu\text{m}$ ) for each area: Continental Shelf, Slope and Oceanic islands.

**Table 3.** Slope values of trophic level (TL) vs body size (ESD,  $\mu\text{m}$ ), testing two different trophic enrichment factors (TEF = 3.2 and 2.3), for each area ( $\pm$  standard errors).

**Table 4.** Predator/prey mass ratio (PPMR) and predator/prey size ratio (PPSR) testing two different trophic enrichment factors (TEF = 3.2 and 2.3), for each area.

### Supplementary material

**Table MS1.** Zooplankton size classes stable isotope composition between the three areas  $\delta^{13}\text{C}$  and  $\delta^{15}\text{N}$  minimum, maximum mean and standard deviation values.

## Tables

Table 1.

Response variable	Factor	<i>P</i>	<i>Post hoc</i>
$\delta^{13}\text{C}$ Zooplankton	Area	< 0.001	OI > S > SB
	Size class	n.s.	n.s
$\delta^{15}\text{N}$ Zooplankton	Area	< 0.001	OI > S = SB
	Size class	< 0.001	I > 0 = III = IV; I > IV
$\delta^{13}\text{C}$ POM	Area	< 0.001	S > SB > OI
$\delta^{15}\text{N}$ POM	Area	n.s.	n.s
Abundance	Area	< 0.01	SB = S > OI
Biovolume	Area	< 0.05	S = SB; S = OI; SB > OI

**Table 2.** Results of Kruskal -Wallis ANOVA and Dunns's post-hoc test with zooplankton  $\delta^{13}\text{C}$  and  $\delta^{15}\text{N}$ , classified into five size classes (0, < 200  $\mu\text{m}$ ; I: 200 – 500  $\mu\text{m}$ ; II: 500 – 1000  $\mu\text{m}$ ; III: 1000 – 2000  $\mu\text{m}$ ; IV > 2000  $\mu\text{m}$ ), for each area: Continental Shelf, Slope and Oceanic islands.

Response variable	<i>P</i> -value	<i>Post hoc</i>
Shelf		
$\delta^{13}\text{C}$	<0.01	II $\neq$ IV; II $\neq$ 0
$\delta^{15}\text{N}$	<0.01	I $\neq$ III = IV
Slope		
$\delta^{13}\text{C}$	>0.05	n.s
$\delta^{15}\text{N}$	<0.001	I $\neq$ 0; IV = II = III > I
Oceanic islands		
$\delta^{13}\text{C}$	<0.001	IV > 0 = I = II = III
$\delta^{15}\text{N}$	>0.05	n.s

**Table 3.** Slope values of trophic level (TL) vs body size (ESD,  $\mu\text{m}$ ), testing two different trophic enrichment factors (TEF = 3.2 and 2.3), for each area ( $\pm$  standard errors).

	Slope (TL $\log_{10}(\mu\text{m})^{-1}$ )	
	TEF 2.3	TEF 3.2
Shelf	$0.58 \pm 0.14$	$0.42 \pm 0.10$
Slope	$0.85 \pm 0.18$	$0.61 \pm 0.12$
Oceanic Islands	$0.44 \pm 0.08$	$0.31 \pm 0.05$
All	$0.59 \pm 0.08$	$0.42 \pm 0.09$

**Table 4.** Predator/prey mass ratio (PPMR) and predator/prey size ratio (PPSR) testing two different trophic enrichment factors (TEF = 3.2 and 2.3), for each area.

	TEF 2.3		TEF 3.2	
	PPMR	PPSR	PPMR	PPSR
Shelf	142,773	52	13,625,858	293
Slope	3,226	14	75,932	42
Oceanic Islands	6,417,294	185	3,021,138,554	1,445
All	121,547	49	13,894,955	240

## Highlights

- Maximum zooplankton abundance and biovolume was found at the continental slope.
- POM showed lower  $\delta^{13}\text{C}$  than zooplankton, indicating selective feeding.
- Zooplankton  $\delta^{15}\text{N}$  and trophic level increased with body size.
- Using a  $\delta^{15}\text{N}$  trophic enrichment factor above 2.3 leads to unrealistic estimates.

Figure 1

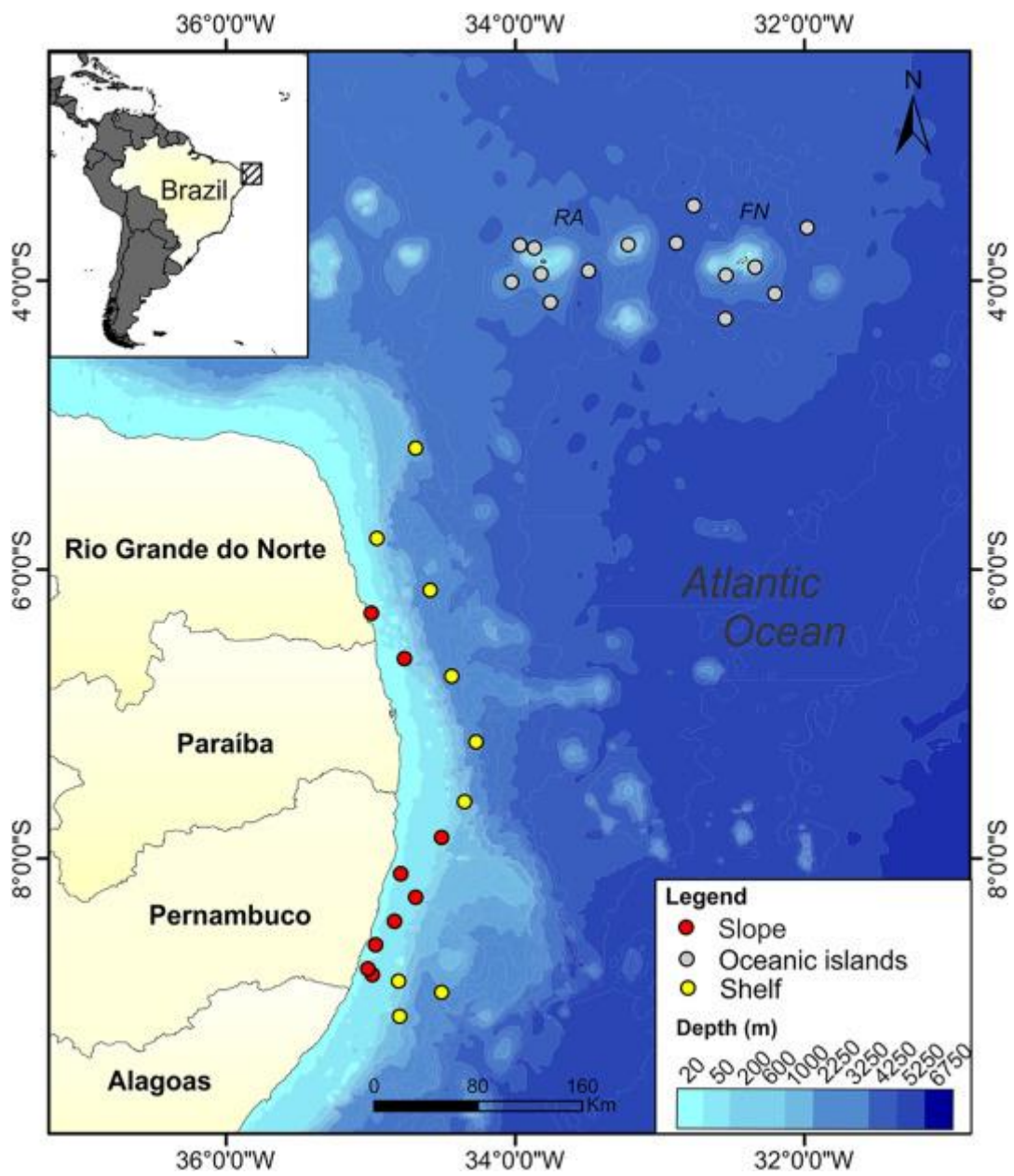


Figure 2

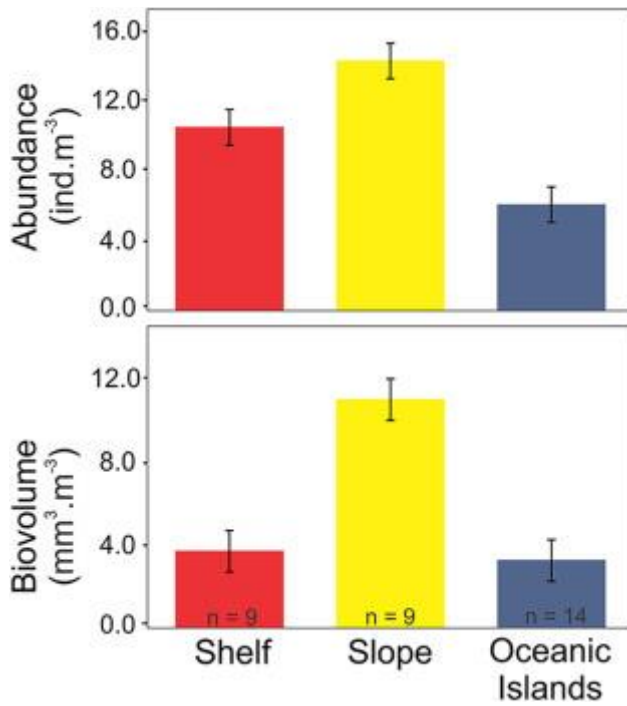


Figure 3

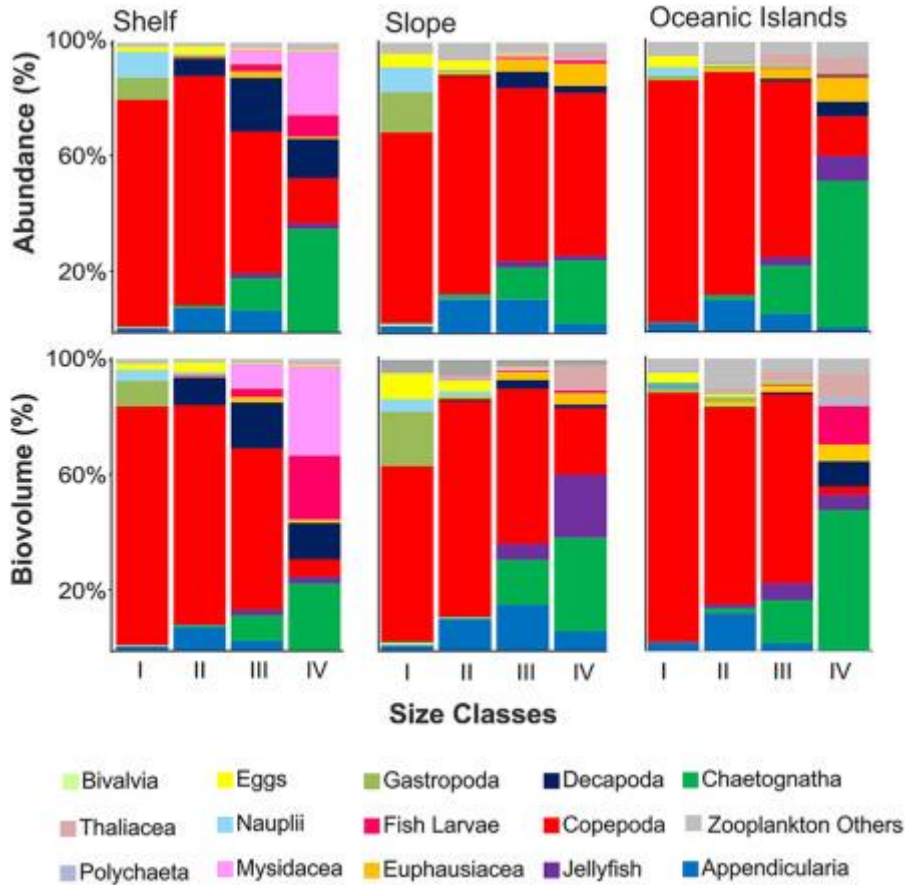




Figure 4

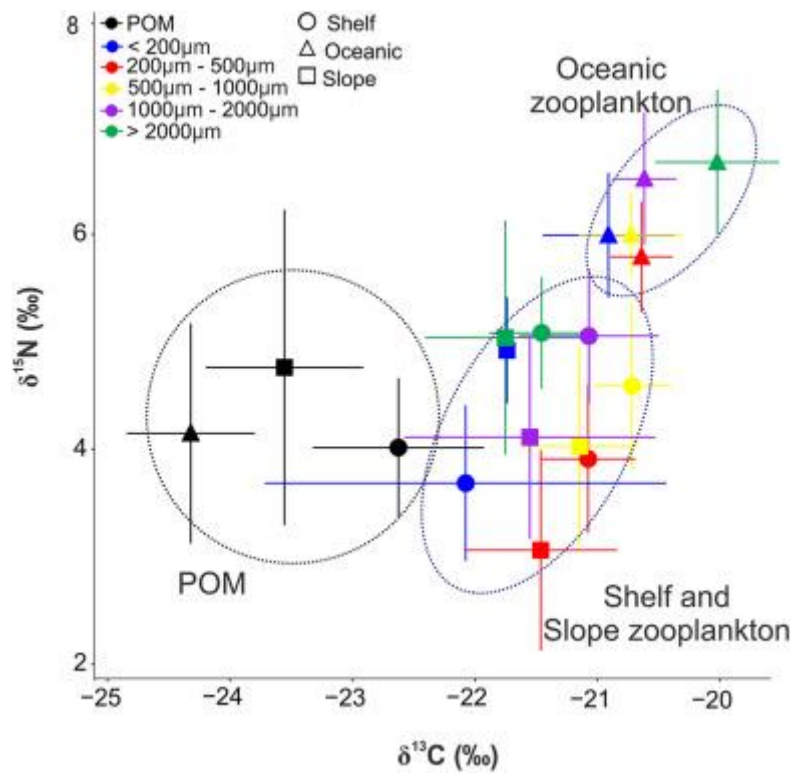


Figure 5

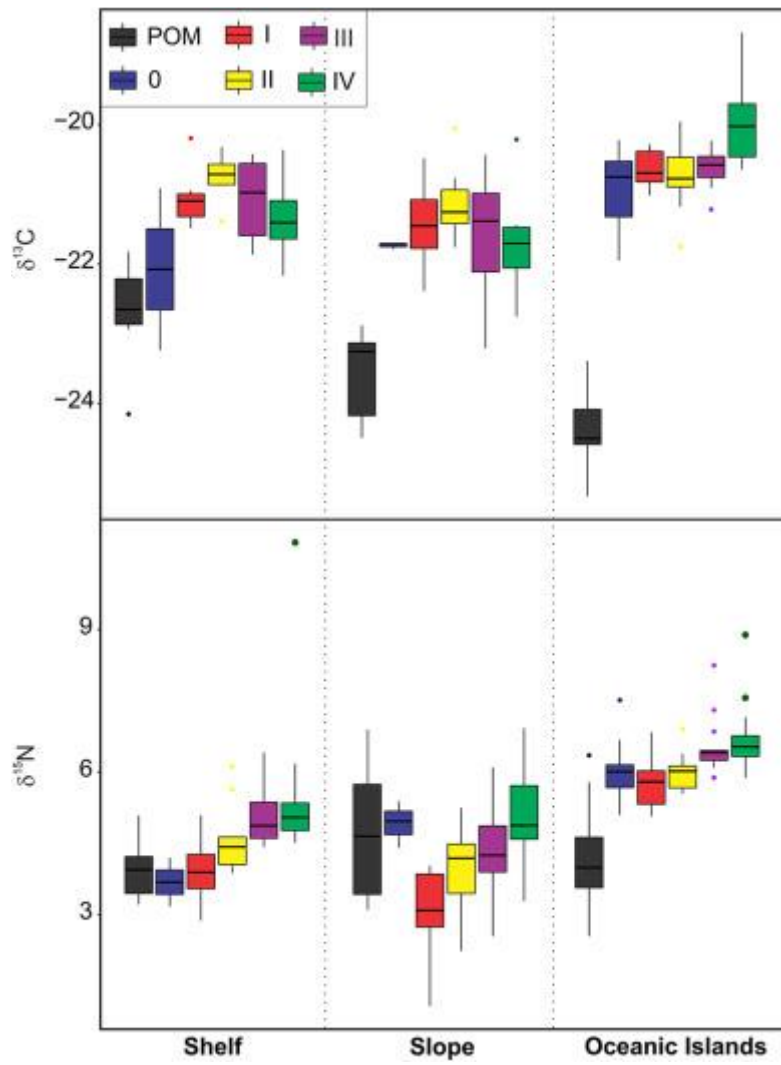


Figure 6

