



Microbial Communities and Sulfate-Reducing Microorganisms Abundance and Diversity in Municipal Anaerobic Sewage Sludge Digesters from a Wastewater Treatment Plant (Marrakech, Morocco)

Abdelaziz El Houari, Magali Ranchou-Peyruse, Anthony Ranchou-Peyruse, Rhizlane Bennisse, Radia Bouterfas, Marisol Goñi, Abdel-Ilah Qatibi, Rémy Guyoneaud

► To cite this version:

Abdelaziz El Houari, Magali Ranchou-Peyruse, Anthony Ranchou-Peyruse, Rhizlane Bennisse, Radia Bouterfas, et al.. Microbial Communities and Sulfate-Reducing Microorganisms Abundance and Diversity in Municipal Anaerobic Sewage Sludge Digesters from a Wastewater Treatment Plant (Marrakech, Morocco). Processes, 2020, Application of Microorganisms in Wastewater Treatment, 8 (10), pp.1284. 10.3390/pr8101284 . hal-04516929

HAL Id: hal-04516929

<https://hal.science/hal-04516929>

Submitted on 22 Mar 2024

HAL is a multi-disciplinary open access archive for the deposit and dissemination of scientific research documents, whether they are published or not. The documents may come from teaching and research institutions in France or abroad, or from public or private research centers.

L'archive ouverte pluridisciplinaire **HAL**, est destinée au dépôt et à la diffusion de documents scientifiques de niveau recherche, publiés ou non, émanant des établissements d'enseignement et de recherche français ou étrangers, des laboratoires publics ou privés.



Distributed under a Creative Commons Attribution 4.0 International License

Article

Microbial Communities and Sulfate-Reducing Microorganisms Abundance and Diversity in Municipal Anaerobic Sewage Sludge Digesters from a Wastewater Treatment Plant (Marrakech, Morocco)

Abdelaziz El Houari ^{1,2,*}, Magali Ranchou-Peyruse ¹, Anthony Ranchou-Peyruse ¹, Rhizlane Bennisse ², Radia Bouterfas ², Maria Soledad Goni Urriza ¹, Abdel-Ilah Qatibi ² and Rémy Guyoneaud ¹

¹ Environmental Microbiology, Université de Pau et des Pays de l'Adour, E2S UPPA, CNRS, IPREM UMR 5254, 64000 Pau, France; magali.ranchou-peyruse@univ-pau.fr (M.R.-P.); anthony.ranchou-peyruse@univ-pau.fr (A.R.-P.); marisol.goni@univ-pau.fr (M.S.G.U.); remy.guyoneaud@univ-pau.fr (R.G.)

² Water Biodiversity and Climate Change Laboratory, Semlalia-Sciences Faculty, Cadi Ayyad University, 40 000 Marrakech, Morocco; r.bennisse@uca.ma (R.B.); r.bouterfas@uca.ma (R.B.); a.qatibi@uca.ma (A.-I.Q.)

* Correspondence: a.elhouari@bangor.ac.uk; Tel.: +44-757-091-7348

† Present address: College of Environmental Sciences and Engineering School of Natural Sciences, Environment Centre Wales (ECW), Molecular Ecology Group, Bangor University, Deiniol Road, Bangor LL57 2UW, Gwynedd, Wales, UK.

Received: 15 August 2020; Accepted: 12 October 2020; Published: 14 October 2020



Abstract: Both molecular analyses and culture-dependent isolation were combined to investigate the diversity of sulfate-reducing prokaryotes and explore their role in sulfides production in full-scale anaerobic digesters (Marrakech, Morocco). At global scale, using 16S rRNA gene sequencing, *Proteobacteria*, *Bacteroidetes*, *Firmicutes*, *Actinobacteria*, *Synergistetes*, and *Euryarchaeota* were the most dominant phyla. The abundance of Archaea (3.1–5.7%) was linked with temperature. The *mcrA* gene ranged from 2.18×10^5 to 1.47×10^7 gene copies.g⁻¹ of sludge. The sulfate-reducing prokaryotes, representing 5% of total sequences, involved in sulfides production were *Peptococcaceae*, *Syntrophaceae*, *Desulfobulbaceae*, *Desulfovibrionaceae*, *Syntrophobacteraceae*, *Desulfurellaceae*, and *Desulfobacteraceae*. Furthermore, *dsrB* gene ranged from 2.18×10^5 to 1.92×10^7 gene copies.g⁻¹ of sludge. The results revealed that exploration of diversity and function of sulfate-reducing bacteria may play a key role in decreasing sulfide production, an undesirable by-product, during anaerobic digestion.

Keywords: anaerobic digestion; microbial diversity; sulfate-reducing bacteria; Archaea; sulfides; biogas

1. Introduction

Anaerobic digestion is an effective way of energy production through the decomposition of waste. This technology is applied in the treatment of not only domestic wastewater [1] allowing an important production of energy, recovered as biogas, composed of 50–75% methane, 25–50% carbon dioxide, 0–10% nitrogen, 0–3% hydrogen sulfide, and traces of other gases [2]. Because of the wide variety of starting materials, a complex set of microbial populations, with high functional redundancy, is involved in the process of anaerobic digestion [3,4]. This is one of the reasons for the robustness of this process [5,6]. Nowadays, the application of next-generation sequencing technologies provides increased resolution for the study of microbial communities in large-scale anaerobic digesters [7,8].

The overlapping of both molecular- and culture-dependent approaches could be complementary to each other to give a clear vision of the microbial community present in an ecosystem [9].

The anaerobic digesters may have operational troubleshooting that results in increased operational costs, among them foam and scum production, dewatering difficulties, loss of efficiency, acidification, and production of toxic sulfides [10]. Indeed, sulfide production is essentially related to the dissimilatory reduction [11,12] of various sulfur compounds present in the sewage sludge by a heterogeneous metabolic group of sulfate-reducing prokaryotes (SRP). They have the ability to use sulfate, as well as other oxidized sulfur compounds (elemental sulfur, thiosulfate, sulfite), as a terminal electron acceptor [12] for the oxidation of simple organic compounds or hydrogen, in a process leading to a sulfide production [13,14]. Sulfides can be an undesirable by-product during biogas production that may reach very high concentrations ranging from 500 ppmv to 20,000 ppmv (2% *v/v* of the biogas; [15]). Sulfides induced the corrosion of metal and concrete [16,17], significantly shorten the life of gas engines in cogeneration units [18] and the emission of strong, smelly [19], and toxic emanations [20]. In addition, combustion of biogas with high concentrations of hydrogen sulfide causes pollution due to excess of SO_x emissions. Furthermore, sulfide has an inhibitory effect on the anaerobic digestion process [21]. Indeed, for these reasons, the elimination of sulfides (purification of biogas) is a mandatory step before using biogas as a source of energy [15,21].

The wastewater treatment plant (WWTP) of Marrakech, Morocco brings an additional capacity of 33 million m³ of water reuse, mainly for irrigation. The sludge is treated by anaerobic digestion and produces 18,000 m³.day⁻¹ of biogas cogenerated into 30,000 KWh.day⁻¹ supplying 45% of electrical energy requirements of the station. The produced biogas (40–65%) contains an average of 4000 ppm of sulfides originating from sulfate-reducing microorganism activities that must be treated (desulfurized) before use. In Marrakech, the elimination of sulfide from biogas is carried out through Thiopaq technology [22], a cost-effective process. The current remediation technologies thus treat symptoms rather than causes, as their mode of action is to reduce the H₂S concentrations rather than decrease its production [15]. While major sulfidogenesis pathways have been well described, the microorganisms responsible for this metabolic activity in anaerobic digesters remain poorly characterized [23]. The critical step in elucidating the conditions that are favorable to H₂S production in an environment would be to characterize its inhabiting population of sulfate-reducing bacteria (SRB) [24].

In this context, the present study describes an investigation of anaerobic digesters treating domestic wastewater in order to gain more insight on the factors that may affect H₂S production and explore the potential involvement of SRB in this process. This study focuses on the diversity and abundance (through combination of molecular and culture dependent approaches) of the microbial communities found in the Marrakech WWTP. The high throughput sequencing analysis of the V4-V5 region of the 16S rRNA gene has been undertaken as well as quantitative PCR (qPCR) to reveal the distribution of Archaea and sulfate-reducing microorganisms during anaerobic digestion to evaluate their role in the production of methane and sulfides, respectively. In addition, some strains belonging to the sulfate-reducers have been isolated and eventually described [25] in order to gain a better view of the sulfate-reducing community, a group of economic interest for the WWTP from Marrakech.

2. Materials and Methods

2.1. Sampling Strategy and Operating Conditions

Sampling was carried out on 24 July 2015 from the municipal WWTP of Marrakech. Sludge samples were taken from the surface and the bottom of the four-anaerobic digesters designated DA, DB, D1 and D2, the primary sludge (PS, from primary decanters), and the flocculated sludge (FS, from thickeners). A total of 10 different samples were collected directly from the sampling valve into sterile-sampling vessels. To maintain anaerobic conditions of samples, the 120 mL sterile serum bottles were completely filled to displace air and then stored at 4 °C until further use. In addition, six

replicates from each sample were stored in cryotubes at $-80\text{ }^{\circ}\text{C}$ for molecular analyses (MiSeq and qPCR). All anaerobic digesters were operated at variable mesophilic temperature conditions (Table 1) and had each a working volume of 6400 m^3 . The treatment capacity of WWTP of Marrakech are summarized in Table S1, whereas the data for biogas digesters are given in Table 1.

Table 1. Physicochemical parameters of the four anaerobic digesters recorded on 24 July 2015.

	Organic Loading Rate (Kg VDM/day)	Temperature ($^{\circ}\text{C}$)	pH	VFAs ($\text{mg}\cdot\text{L}^{-1}$)	H_2S (ppm)	Alkalinity ($\text{g}\cdot\text{L}^{-1}$)
Digester A	6801 ± 931	29.7 ± 0.5	7.0 ± 0.1	183 ± 24	n.a	1.8 ± 0.3
Digester B	6193 ± 1035	32.1 ± 1.3	7.1 ± 0.1	227 ± 73	n.a	2.2 ± 0.3
Digester 1	6802 ± 951	41.1 ± 2.3	7.3 ± 0.1	620 ± 361	219	2.5 ± 0.4
Digester 2	5717 ± 960	35.5 ± 0.4	7.2 ± 0.1	276 ± 70	2.1	2.4 ± 0.4

The diameter of reactors was 24 m and the average hydraulic retention time was 21 days. Abbreviations: n.a, not available; VDM, volatile dry matter; VFAs, volatile fatty acids; H_2S , hydrogen sulfide.

2.2. Extraction of Genomic DNA and High Throughput Sequencing

Total DNA extractions were performed in triplicate using PowerSoil[®] DNA Isolation kit (MO BIO) following the manufacturer instructions. The DNA was stored at $-20\text{ }^{\circ}\text{C}$ until further use. The V4–V5 hypervariable region of the 16S rRNA gene targeting Bacteria and Archaea was amplified using the primers set 515F and 928R [26–28]. The amplifications of the 16S rRNA gene were performed in a final volume of $50\text{ }\mu\text{L}$ of PCR mixture with $0.2\text{ }\mu\text{M}$ of each primer, 0.2 mM of deoxynucleoside triphosphates (dNTPs), 1.25 U Taq polymerase (Amp Taq Gold 360), and its buffer. The amplification reactions are carried out according to the following program: 1 cycle of 10 min at $94\text{ }^{\circ}\text{C}$ (denaturation); 35 cycles of 3 steps: denaturation at $94\text{ }^{\circ}\text{C}$, hybridization at $65\text{ }^{\circ}\text{C}$, and elongation 40 s at $72\text{ }^{\circ}\text{C}$; final elongation cycle of 10 min at $72\text{ }^{\circ}\text{C}$. Amplification was conducted using a PCR thermal cycler Model PTC-100 (Bio-Rad, Richmond, CA). Forward and reverse primers contained the adapter sequences (5'GTGYCAGCMGCCGCGGTA) and (3'ACTYAAAKGAATTGRCGGGG), respectively, used in Illumina sequencing technology. The amplicons were sequenced using an Illumina MiSeq (250 bp paired-end reads) at the platform Genotoul Inc. (www.genotoul.fr, Toulouse, France).

Raw datasets of sequencing can be found into the NCBI Sequence Read Archive database (Bioproject accession number, PRJNA587578).

2.3. Processing of Sequencing Data and Statistical Analyses

The datasets from MiSeq sequencing were processed following the FROGS pipeline (Find, Rapidly, OTUs with Galaxy Solution) as described by Escudie et al., [29]. Operational taxonomic units (OTUs) were grouped at an identity threshold of 97%. From the taxonomic affiliation, a representative sequence of each OTU was extracted. Finally, a normalization of the abundances found for each OTU was carried out by the DESeq method [30]. Diversity and evenness indices [31] were calculated using the bacterial OTU data after normalization. The evolutionary history was inferred using the neighbor joining method [32]. An alignment was then carried out between OTUs; the alignment was used to build a phylogenetic tree with PhyML algorithm [33].

The statistical calculations and multivariate analyses were conducted using R software (<https://cran.r-project.org/>) with the following libraries: phyloseq, vegan, ape, Venn diagram, heatmap2, gclus, ggplot2, GUniFrac, grid, and optparse. A one-way analysis of variance (ANOVA) was used to compare the mean values with respect to sampling sites. Duncan's multiple range tests at $p = 0.05$ were employed to compare the means and to group them accordingly. Pearson correlation coefficients were calculated from pairs of variables within and between process and bacterial community data. A principal component analysis (PCA) was performed to evaluate the microbial community composition of the samples.

2.4. Growth, Isolation of Sulfate-Reducing Microorganisms and Phylogenetic Identification

Enrichment cultures were inoculated with samples using basal medium [25] and supplemented with 10 mM sulfate as an electron acceptor and 10 mM lactate for the *Desulfovibrio* and *Desulfomicrobium* genera isolation or 10 mM propionate for the *Desulfobulbus* genus isolation. After three sub-culturing, the isolation of strains was performed using repeated agar serial dilutions [34]. The colonies were transferred from the highest dilutions to liquid media. The purity of the strains was checked routinely by phase-contrast microscopy and by performing growth tests in basal medium containing 1% (*w/v*) glucose, 1% (*w/v*) casamino acid, 1% (*w/v*) peptone, 1% (*w/v*) yeast extract and 1% (*w/v*) biotrypticase under oxic and anoxic conditions.

All genomic DNA extractions from pure cultures were performed using a kit (UltraClean™ Soil DNA Kit insulation MOBIO Laboratories, Carlsbad, CA, USA) according to manufacturer's recommendations. The amplifications of the 16S rRNA gene was carried out as described by Dias et al., [35]. Sequencing with the 8F and 1492R primers of the amplicons obtained was performed (GATC Biotech-Konstanz, Germany). An alignment was then carried out between OTUs sequences, sulfate-reducing bacteria reference sequences obtained from the SILVA database (version 128) and the isolated strain sequences. The alignment was used to build a phylogenetic tree with MEGA6 software (Molecular Evolutionary Genetics Analysis software, Version 6.0, 2013). The evolutionary history was inferred using the neighbor joining method [32] and conducted in MEGA6 software [36].

2.5. Quantitative PCR

Primer sets and reaction conditions were performed as described by Geets et al., [37] and Steinberg and Regan [38] for both genes *dsrB* and *mcrA*, respectively. The quantifications were performed in triplicate on a Mx3005P™ real-time PCR machine (Stratagene) in a final volume of 20 µL containing 1 µL of template DNA, 0.4 µM of each primer and the enzyme mixture of SYBR® Green DyNAmo™ Color Flash qPCR Kit (Finnzymes). The amplifications started with an initial denaturation step (10 min at 95 °C.) and then 40 cycles of 1/denaturation (1 min, 95 °C.), 2/hybridization of the primers to the hybridization temperature (54 °C for *dsrB* gene and 57 °C for *mcrA* gene, 30 s) and 3/elongation (40 s, 72 °C). A melting curve of the PCR products obtained was carried out at the end of each amplification.

3. Results

3.1. Global Analysis of Microbial Communities

The total of 10 samples were analyzed in triplicates from the WWTP of Marrakech, including primary sludge (PS), flocculated sludge (FS), and the four anaerobic digesters (D1, D2, DA, DB) sampled at the surface (s) and the bottom (b). 1,243,519 sequences were founded in all the samples after MiSeq sequencing. 1,095,879 among them were retained, corresponding to 88.1% of the effective sequences obtained with a mean length of 250 bp. The number of OTUs found at 97% similarity was 984. The OTU number threshold for DB-s was significantly below all other anaerobic digester samples with values of 695 ± 13 OTU (Table 2), whereas, the number of OTUs for the two sludges PS and FS was 593 ± 43 and 566 ± 57 respectively. The diversity indexes listed in Table 2 were lower for the sample D1 (with the highest temperature), whatever the selected indexes. The low values found for exponential Shannon index, and reciprocal Simpson index, compared to Chao1 indicated a highly uneven distribution of the populations in the samples.

The comparison of the relative abundance of populations at surface and bottom of each digester showed that there was no significant difference between the percentages of the most abundant families. These findings were in accordance with by the Permanova test for analysis of variance using Bray–Curtis distance matrices showing no significant differences between surface and bottom of each digester (*p*-value: 0.001). These results were confirmed by the principal component analysis (Figure S1) based on the weighted UniFrac β-diversity metric showing that the triplicates for all samples as well as the surface and bottom samples for each anaerobic digester were closely grouped together. As a

result, from now on, the surface and bottom samples will be grouped and presented together (mean of six samples).

Table 2. Number of sequences, OTUs, and diversity indexes calculated for all the samples. Results for one sample are the mean of three replicates.

Samples	Sequences Number	OTUs	Chao1	Exponential (H-Shannon)	1/Simpson
FS	30,103 ± 13,365	566 ± 57	628.1	118.99	35.52
PS	24,177 ± 9086	593 ± 43	669.61	110.76	36.87
D1-b	41,212 ± 22,030	722 ± 72	785.64	56.05	11.81
D1-s	37,788 ± 15,262	744 ± 37	802.61	58.11	11.41
D2-b	45,925 ± 9174	771 ± 27	810.89	63.97	14.67
D2-s	40,254 ± 18,170	741 ± 74	812.35	58.55	12.89
DA-b	31,097 ± 11,116	748 ± 25	794.42	135.44	51.61
DA-s	40,134 ± 18,067	785 ± 36	819.27	133.28	45.44
DB-b	46,781 ± 7138	816 ± 13	854.7	105.12	26.73
DB-s	18,698 ± 472	695 ± 13	767.26	93.55	21.57

Abbreviations: FS, flocculated sludge; PS, primary Sludge; D1, digester 1; D2, digester 2; DA, digester A; DB, digester B; s, surface; b, bottom.

Considering all the samples, the FS samples could be separated from the other samples (PS and the four anaerobic digesters) along axis 1 explaining 49.68% of the difference (Figure S1a). The axis corresponds to a gradient of anaerobiosis (aerated FS separated from PS and anaerobic digesters). FS consists of limited representatives of the *Euryarchaeota* and *Synergistes* (Figure 1). The flocculated sludge is obtained after the activated sludge processes undertaken under highly aerated conditions to promote the growth of the aerobic microorganisms and discriminate anaerobic microorganisms such as *Euryarchaeota* and *Synergistes*. The profile of the most abundant microbial communities in PS was similar to the anaerobic digesters. This was consistent with the results of principal component analysis (Figure S1a). PS contain obligate anaerobes and *Firmicutes* (20.2%) compared to the FS (only 4.4% of *Firmicutes*).

Another principal Component analysis focused on the four anaerobic digesters (Figure S1b) revealed a clear separation along the first axis, explaining 41.28% of the difference. The four digesters were placed along this axis corresponding to a gradient of operating temperature in each digester (Table 1). According to the physico-chemical parameters obtained from the WWTP (Table 1), D1 had a higher temperature, a bit higher than the mesophilic conditions (average temperature in July 2015 of 41.1 °C, max value of 44.2 °C), whereas DA has the lower temperature (average temperature of 29.7 °C). These results were consistent with the richness analysis (Figure 2) shared between the four anaerobic digesters. The D1 presented 28 OTUs (representing 1.97% of cumulative relative abundance) that were unique for this digester as compares with less than 0.3% for all the others. Among these 28 OTUs, the most dominants belong to *Clostridia*. Moreover, D1 had higher relative contents of true thermophiles *Firmicutes* (OTU 1) represented by *Coprothermobacter* genus belonging to the *Thermodesulfobacteriaceae* family (Figure 3).

3.2. Microbial Communities in Anaerobic Digesters

To study the abundance of microbial communities in anaerobic digesters at the OTU level, a heatmap based on the 30 most abundant OTUs is presented (Figure 3). The 30 OTUs were grouped into eight different phyla based on their relative abundance. The *Proteobacteria* (ranged from 24.7% to 29.5%), the *Bacteroidetes* (16.1–21.2%), the *Firmicutes* (13.5–18.8%), the *Actinobacteria* (6.5–7.1%), the *Synergistetes* (5.6–6.1%) the *Euryarchaeota* (4.4–5.7%) and *Cloacimonetes* (0.33–1.02%) were the most dominant phyla. The OTU 1 corresponding to the class of *Thermodesulfobiaceae* (*Firmicutes*) was the most abundant in the different digesters D1, D2, DA, and DB, with relative abundances of 0.81%, 0.75%, 0.67%, and 0.75%, respectively. On the other hand, OTU 2 (*Cloacimonetes*; 0.72%, 0.79%, 0.52%, and 0.67%, respectively)

and OTU 3 (*Bacteroidetes*; 0.63%, 0.68%, 0.63%, 0.67%, respectively) were among the most abundant into the four digesters. The four anaerobic digesters were organized in three clusters: cluster 1 formed by D1 and D2 having a similar profile, followed by two different clusters 2 and 3 composed by DA and D1, respectively. This organization of the anaerobic digesters was in accordance with principal component analysis (Figure S1) showing separate clustering of D1.

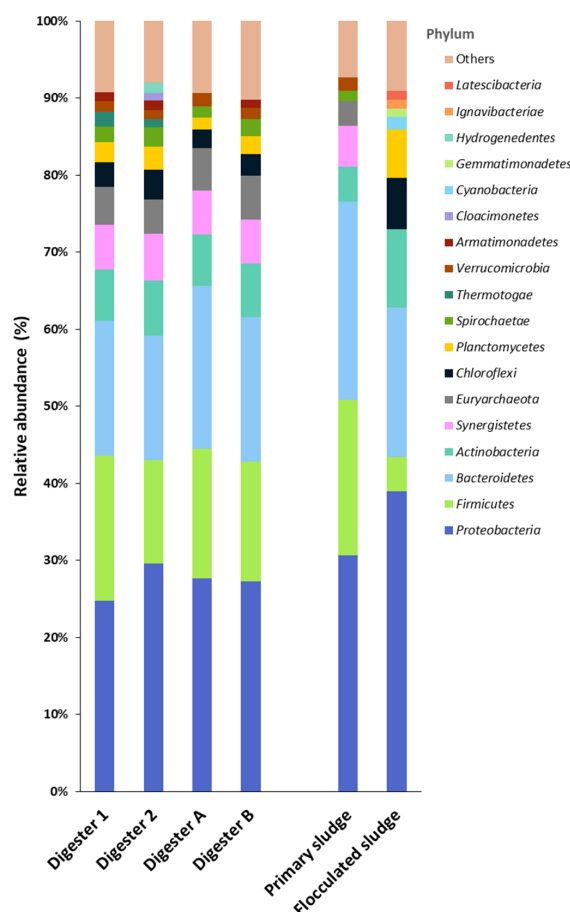


Figure 1. Histogram illustrating the relative abundance of prokaryotes of different phyla observed in all samples.

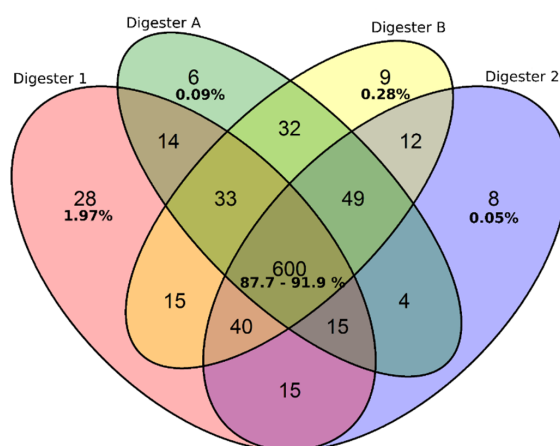


Figure 2. Venn diagram representing the OTUs richness shared between the four anaerobic digesters A, B, 1, and 2.

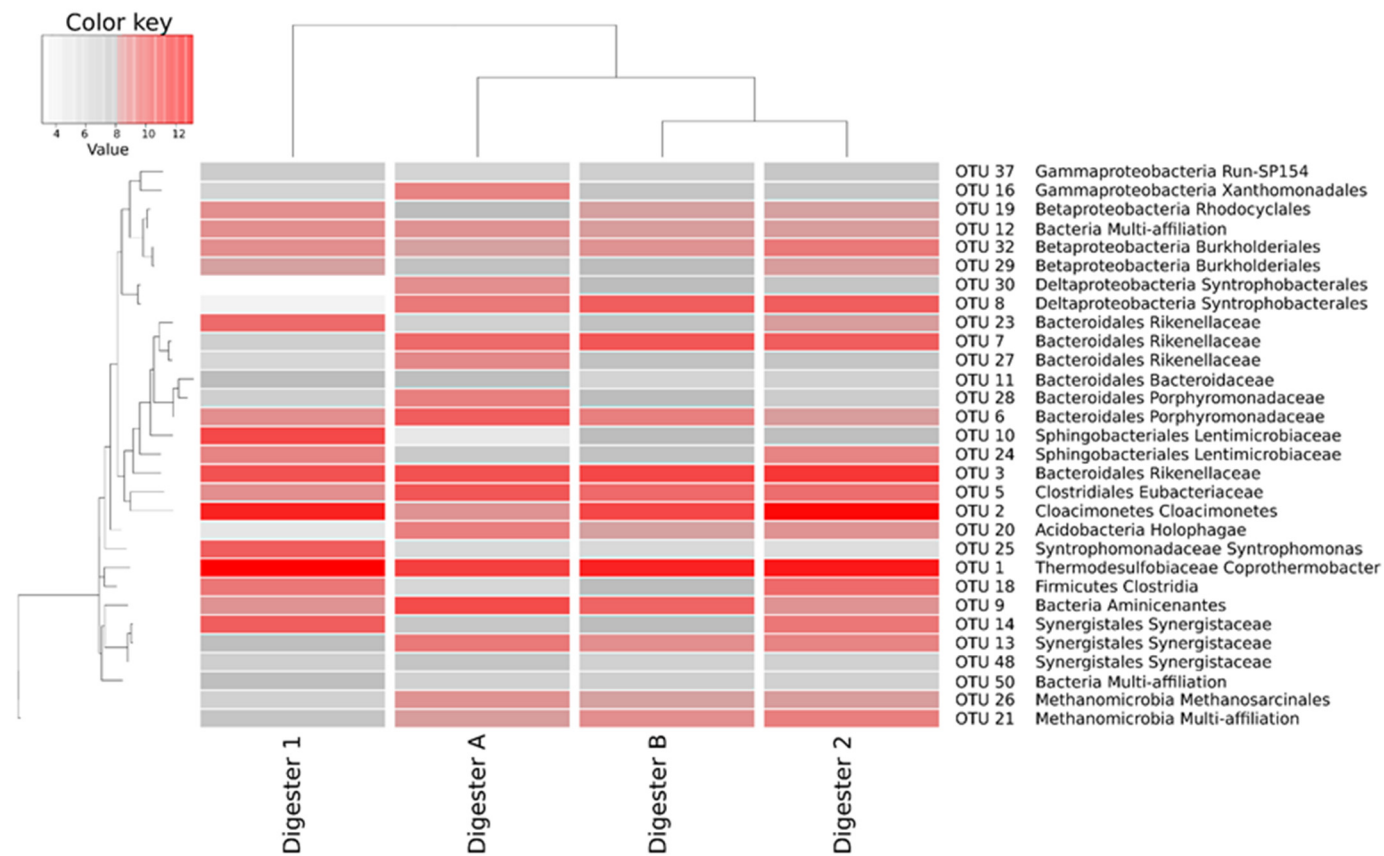


Figure 3. Heatmap of the 30 most abundant OTUs. Color key shows the relative abundances. The samples clusterization was on the top of the heatmap. Evolutionary dendrogram and taxonomic affiliation of each OTU were shown on left and right of the heatmap, respectively.

3.3. Methanogens Communities Structure in Anaerobic Sewage Sludge

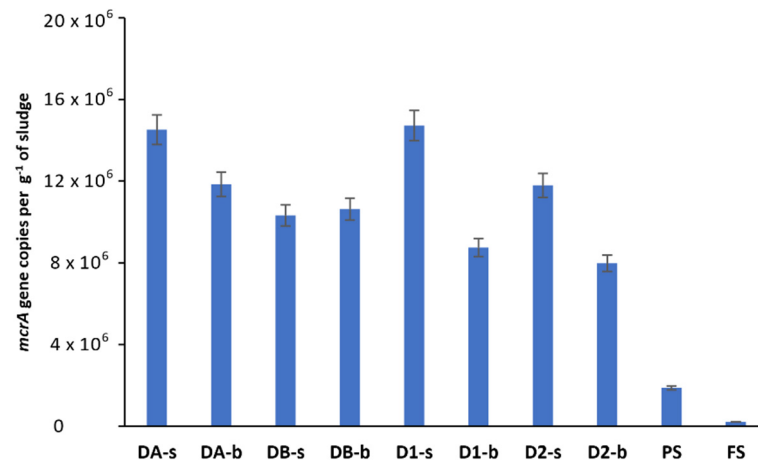
The domain Archaea was represented by only one phylum (Figure 1). Among 984 OTUs, 31 OTUs were assigned the *Euryarchaeota*. Sequences from *Euryarchaeota* accounted for 0.3%, 3.1%, 4.9, 4.4%, 5.4%, and 5.7% in FS, PS, D1, D2, DA, and DB, respectively. The passage from the primary sludge with an anoxic gradient towards the anaerobic digesters having strict anaerobic conditions makes it possible to favor and enrich the anaerobic communities of which the Archaea is a part. The methanogens found out in the four anaerobic digesters were classified into four well-established orders: *Methanobacteriales*, *Methanomicrobiales*, *Methanosarcinales*, and *Thermoplasmatales*. At the family level, the Archaeal OTUs could be classified into 7 different families that were detected present in the anaerobic digesters: *Methanomicrobiaceae*, *Methanospirillaceae*, *Methanocorpusculaceae*, *Methanoregulaceae*, *Methanosaetaceae*, *Methanosarcinaceae*, and *Thermoplasmatales Incertae Sedis*. The family of *Methanomicrobiaceae* represented by the OTU 42 (0.56%, 0.45%, 0.19%, 0.35%; D1, D2, DA, and DB, respectively) and *Methanospirillaceae* represented by OTU 68 (0.36%, 0.41%, 0.43%, 0.43%; D1, D2, DA, and DB, respectively) were more abundant into D1 compared to the other digesters (dominated by OTU 21 and OTU 26 belonging to the *Methanomicrobiaceae*). The study of the abundance of Archaea by quantification of *mcrA* gene in sewage sludges showed that *mcrA* gene ranged from 2.18×10^5 (FS) to 1.47×10^7 (D1-s) gene copies.g⁻¹ of sludge. The number of gene copies of Archaea is much higher in the anaerobic digesters as compared to PS and FS (Figure 4a). Based on qPCR analysis, it was also observed that the abundance of Archaea at the surface of all digesters (except DB) is greater than that at the bottom.

3.4. Diversity of Sulfate-Reducing Bacteria in Anaerobic Digesters

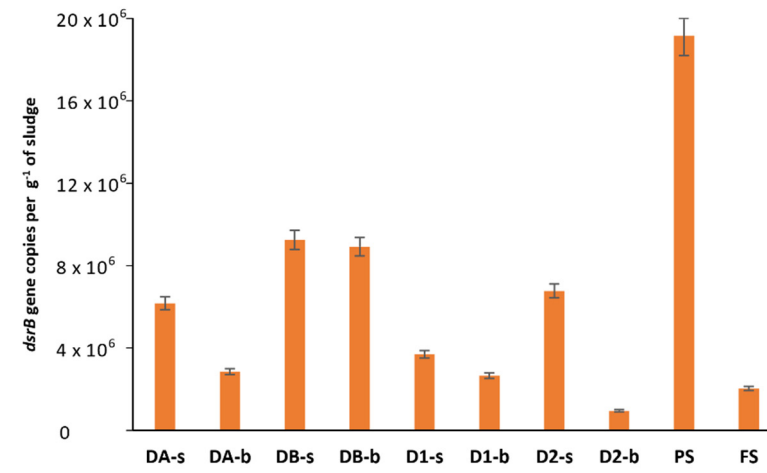
The OTUs that were identified and classified as sulfate-reducing are presented in a heatmap based on their abundance in the four digesters (Figure 5). The analysis of the relative abundance of SRP into the four anaerobic digesters at the family level showed that *Peptococcaceae*, *Desulfobacteraceae*, *Desulfobulbaceae*, *Desulfovibrionaceae*, *Desulfurellaceae*, *Syntrophaceae*, and *Syntrophobacteraceae* were the different widespread sulfate-reducing families. The taxonomic affiliation at the genus level of the dominant *Firmicutes* (OTU 1 and OTU 25) found out in the anaerobic digesters were affiliated to their respective genera *Coprothermobacter* and *Syntrophonas* that are reported as non-sulfate-reducers (Figure 3). However, the OTU 18 affiliated to *Desulfosporosinus* and genus member of the *Peptococcaceae* family was found out as the only of the sulfate-reducing candidate from *Firmicutes*.

The global profile of the relative abundances at OTUs level of SRP shown on the heatmap indicates that the D1 is different from the other digesters (Figure 5). As for Archaea, the abundance of the SRP was lower in D1 (operating in higher temperature) compared to the other digesters. The *Syntrophaceae* family (represented by OTU 176, OTU 55, OTU 711, OTU 1051, OTU 30, OTU 244, OTU 103, and OTU 688) was the most abundant in digester 2, B, and A. The OTU 30 was abundant in DA and DB (0.53% and 0.50%; respectively) followed by the OTU 55 abundant in digester 2 compared to the DB, DA and D1 (0.50%, 0.23%, 0.39%, and 0.31%; respectively). However, the D1 was dominated by the *Syntrophobacteraceae* family represented by OTU 283, followed by OTU 55 (0.34%, 0.31%; respectively).

The family *Desulfovibrionaceae* (represented by OTU 349, OTU 1164, OTU 888) was not abundant in different digesters compared to the other families. However, The *Desulfobulbaceae* family (represented by OTU 264, OTU 226, OTU 882, OTU 330, OTU 587, OTU 107, OTU 897, and OTU 325) was the most abundant in DA compared to the other digesters. The OTU 107 (*Desulfobulbaceae* family) was the most abundant with following respective relative abundances: 0.28%, 0.28%, 0.34%, and 0.32%; D1, D2, DA, DB. As for the Archaea, the SRP abundance was more important at the surface of each digester compared to the bottom (Figure 4b). In addition, a large amount of *dsrB* gene copies (1.92×10^7) was detected in the primary sludge compared to the other samples. The abundance of sulfate-reducing microorganisms (*dsrB* gene quantification) was ranged from 9.57×10^5 to 9.25×10^6 copies.g⁻¹ of sludge in anaerobic digesters.



(a)



(b)

Figure 4. Abundances of (a) *mcrA* gene of Archaea methanogens and (b) *dsrB* gene of sulfate-reducing prokaryotes in the anaerobic digesters (surface and bottom), primary sludge and flocculated sludge. Abundances are given in number of copies per g of sludge. Error bars represent the standard deviation (triplicates).

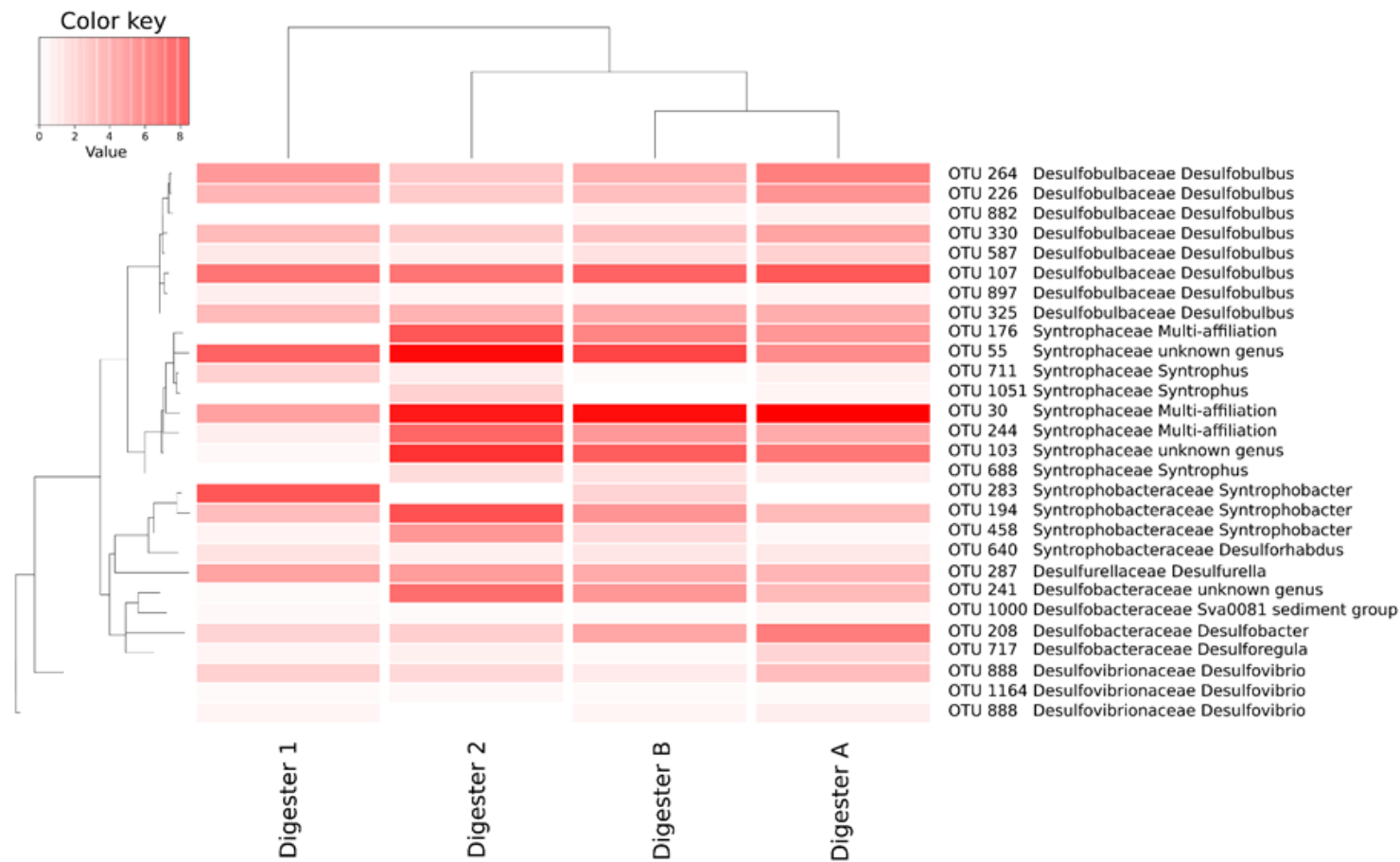


Figure 5. Heatmap based on the V4-V5 region of 16S rRNA gene of the sulfate-reducing prokaryotes families present into the four anaerobic digesters. The legend shows the relative abundances. Evolutionary dendrogram of SRP OTUs, taxonomic affiliation and samples clusterization were showed in the left, right, and top of heatmap, respectively.

3.5. Relationship of Sulfate-Reducing Communities in Anaerobic Digesters with Isolated Sulfate-Reducing Strains from Anaerobic Digesters Sludge

As an alternative approach to identifying active sulfate-reducing populations in anaerobic digesters, a phylogeny relationship was carried out between the OTU sequences founded in anaerobic sludge into all samples by high throughput sequencing, the sulfate-reducing bacteria reference sequences obtained from the SILVA database (version 128), and sequences of isolated sulfate-reducing strains from anaerobic digester sludge in this study (Figure 6). The enrichment and isolation on lactate and propionate as electron donors in the presence of sulfate as an electron acceptor has made it possible to target three different genera of sulfate-reducing bacteria. Enrichment on lactate allowed the isolation of 12 strains affiliated with the genus *Desulfovibrio* and 5 strain with the genus *Desulfomicrobium*. However, in the enrichment on propionate, 5 *Desulfobulbus* strains were isolated. *Desulfobulbus* strains (Prop1, Prop4, Prop6^T, C3P4-2, and C3P4-3) were affiliated to the *Desulfobulbus oligotrophicus* strain Prop6^T isolated and previously described as new species within the genus *Desulfobulbus*.

The isolated *Desulfobulbus* strains were related to the OTU 882 (97.6% of similarity to strain Prop6^T) which represents the *Desulfobulbaceae* family. The *Desulfobulbaceae* OTUs were assigned as follow: OTU 264 and OTU 226 were most related to *Desulfobulbus rhabdiformis* M16^T (98.4% of similarity each); OTU 587, OTU 882, and OTU 330 closely related to *Desulfobulbus elongatus* FP^T (98.7, 98.7, and 98.9 of % similarity, respectively). OTU 897, 107, and 325 were related to *Desulfobulbus propionicus* 1pr3^T (100, 97.8, 97% of similarity; respectively).

The 13 *Desulfovibrio* isolated strains were affiliated to *Desulfovibrionaceae* family. One of these strains (DZ1) was affiliated to *Desulfovibrio aminophilus* strain ALA-3^T and was most related to the OTU 349 (99.3% of similarity); three isolated strains PBS3, PBS4, and PBS5 were affiliated to *Desulfovibrio oxamicus* strain Montecillo 2^T; and the last 9 isolated strains were affiliated to *Desulfovibrio vulgaris* DP4^T. The isolated *Desulfomicrobium* strains (Halo1, Halo4, Halo6, DB4 and DB5) were affiliated to *Desulfomicrobium escambiens* esc1^T. However, no OTUs linked to the isolated *Desulfomicrobium* strains or *Desulfovibrio vulgaris* strains could be detected using molecular approaches.

The four *Desulfobacteraceae* OTUs were divided as follow: OTU 208 was closely related to *Desulfobacter postgatei* 2ac9^T (99.7% of similarity); OTU 241 was related to *Desulfatibacillum alkenivorans* PF2803^T (97% of similarity); OTU 717 related to *Desulforegula conservatrix* Mb1Pa^T (98.7% of similarity) and OTU 1000 affiliated to *Desulfonema magnum* 4be13^T (93.3% of similarity). The only OTU related to *Desulfurellaceae* family was closely related to *Desulfurella acetivorans* A63^T (100% of similarity). The *Syntrophobacteraceae* OTUs (OTU 640, 194, 283, 458) were related respectively to *Desulforhabdus amnigena* strain ASRB1^T (98.8% of similarity), *Syntrophobacter sulfatireducens* strain TB8106^T (95.8% of similarity), *Syntrophobacter pfennigii* strain KoProp^T (96.2% of similarity), and *Syntrophobacter fumaroxidans* strain MPOB^T (100% of similarity). However, The *Syntrophaceae* OTUs (55, 244, 711, 1051, 176, 688, 103, and 30) were most related to *Syntrophus gentianae* strain HQgoe1^T (92.4, 93.1, 95, 95.9, 95.3, 93.9, 95.1, 94.7% of similarity, respectively).

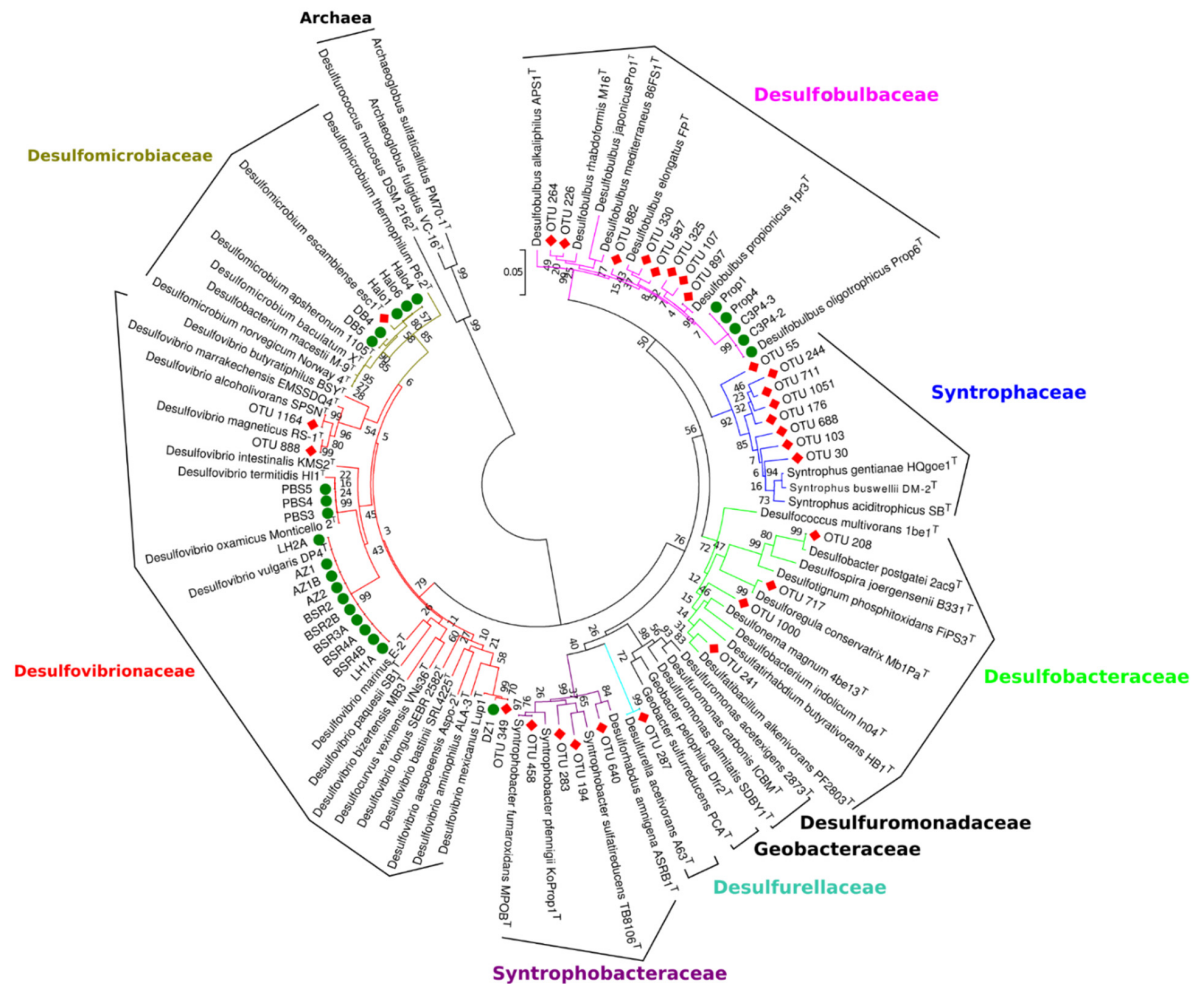


Figure 6. Evolutionary dendrogram constructed by the neighbor joining method showing the affiliation of isolates of sulfate-reducing bacteria and OTUs found in the samples with their closest relative reference sequences obtained from the SILVA database (version 128). The archaeal sulfate-reducing microorganisms were used as outgroup to root the tree. Bootstrap values are represented at nodes. Bar, 0.05 substitutions per site. The diamonds correspond to the OTU sequences; the isolated strains are represented by circles.

4. Discussion

Primary sludge (PS), flocculated sludge (FS), and the four anaerobic digesters (D1, D2, DA, DB) were analyzed from WWTP Marrakech using molecular and culture-dependent approaches. Using MiSeq sequencing, 984 OTUs were found out present in all samples. These results are in the range of those found by other studies carried out with the same primers (V4-V5 region of the 16S rRNA gene) [3,39,40]. The study of dynamics of microbial association networks in mesophilic continuous anaerobic digesters revealed the presence of a total of 908 OTUs [40]. An average of 1036 ± 219 OTUs were identified when studying the microbial community structure and diversity in a municipal solid waste landfill [39]. The Hill numbers [31] were lower for the sample D1 (with the highest temperature) reflecting the lowest richness. These results were in accordance with previous findings revealing that thermophilic reactors have a lower number of species than mesophilic [41,42].

The microbial community dynamics were revealed to be heavily influenced by agitation [43] affecting the distance between syntrophic microbes and therefore increase the diffusion distance between syntrophs [44]. The analysis of distribution of microbial populations in anaerobic digesters based on principal component analysis (Figure S1) and the Permanova test for analysis of variance using Bray–Curtis distance (p -value: 0.001) showed was no significant difference between the percentages of the most abundant families between surface and bottom samples for each digester. These results revealed that the mixing system applied in WWTP Marrakech digesters (agitation bay re-pumping biogas) works perfectly assuming a good distribution of microbial populations within bottom and surface of the digesters, the comparison of the relative abundance of the most abundant populations at surface and bottom of each digester based on the MiSeq sequencing showed that there was no significant difference between the percentages of the most abundant families between surface and bottom samples for each digester. The Permanova test for analysis of variance using Bray–Curtis distance matrices showed no significant differences between surface and bottom of each digester (p -value: 0.001). However, when considering all the samples, the FS samples were separated along axis 1 (Figure S1a) corresponding to a gradient of anaerobiosis and contained limited representatives of the *Euryarchaeota* and *Synergistes* (Figure 1), phyla known to contain exclusively obligate anaerobes [45]. PS has a similar profile closed to the anaerobic digesters (Figure S1a). The active *Bacteroidetes* and *Firmicutes* found out in PS and PS as well as anaerobic digesters intervene during the hydrolysis process of anaerobic digestion and were known to be involved in hydrolytic/acidogenic step in reactors operating under mesophilic and thermophilic conditions [46–48]. Previous studies reported that WWTPs was dominated by *Bacteroidetes* aerobic carbon degraders [49] dominant in aerated sludges [50]. Indeed, the FS samples contained a dominance of the *Proteobacteria* (38.9%), the *Bacteroidetes* (19.4%), The *Actinobacteria* (10.2%), the *Chloroflexi* (6.6%), and *Planctomycetes* (6.2%) as reported by [51].

The temperature and feeding substrate were the main driving forces of the anaerobic digestion microbiome diversification [52,53]. These results were in accordance with the richness analysis (Figure 2) shared between the four anaerobic digesters showing the unique separation of the thermophilic D1 dominated by the *Firmicutes* (*Thermodesulfobiaceae*) and reported to dominate in methanogenic reactors alongside the *Rikenellaceae* and the *Bacteroidia* [54–56]. The four anaerobic digesters revealed a clear separation (Figure S1b) depending on the gradient of operating temperature in each digester (Table 1) obtained from WWTP Marrakech.

The *Proteobacteria*, the *Bacteroidetes*, the *Firmicutes*, the *Actinobacteria*, the *Synergistes*, the *Euryarchaeota*, and *Cloacimonetes* were the dominant phyla in WWTP Marrakech. These data are similar to those previously obtained using marker gene-based analysis [39,40,52,53,55,57–59]. At the OTU level (Figure 3), OTU 1 (*Firmicutes*), OTU 2 (*Cloacimonetes*), and OTU 3 (*Bacteroidetes*) were the most abundant of the four digesters. The characterization of microbial community structure during continuous anaerobic digestion of straw and cow manure showing the *Firmicutes*, *Bacteroidetes*, and *Cloacimonetes* were identified as the three most dominant within the bacterial community [53,60]. Most of the members belonging to the *Firmicutes* phylum are syntrophic bacteria that can degrade various VFAs, which were often detected in both activated sludge systems and anaerobic digesters [61].

The *Firmicutes* were found as the most dominant phyla involved in polysaccharides degrading functions [53]. The *Cloacimonetes*, represented by OTU 2, has been suggested to be involved in the degradation of cellulose, in syntrophic propionate oxidation, and in the degradation of amino acid to acetate, carbon dioxide, and hydrogen, and thus depends on cooperation with hydrogen-consuming and/or acetate-utilizing partners such as Archaea [62,63].

The *Euryarchaeota* belonging to the *Methanobacteriales*, the *Methanomicrobiales*, the *Methanosarcinales*, and *Thermoplasmatales* were the main Archaea found out in the WWTP of Marrakech (Figure 1). The abundance of Archaea in anaerobic digesters was in concordance to those of previous studies [61,64,65] showed that Archaea was among the most abundant phyla in anaerobic digesters. The dissecting microbial community structure and methane-producing pathways, *Methanobacteriales*, *Methanococcales*, *Methanomicrobiales*, *Methanosarcinales*, and *Methanopyrales* were revealed to be present in a full-scale anaerobic reactor digesting activated sludge from wastewater treatment [64]. The study of the abundance of Archaea by quantification of *mcrA* gene (Figure 4) in sewage sludges of WWTP was similar to various types of sewage sludge, used in the continuous anaerobic digestion, and collected from eight WWTPs municipal domestic wastewater [66,67].

The analysis of the relative abundance of SRP at the family level showed that *Peptococcaceae*, *Desulfobacteraceae*, *Desulfobulbaceae*, *Desulfovibrionaceae*, *Desulfurellaceae*, *Syntrophaceae*, and *Syntrophobacteraceae* were the main sulfate-reducing microorganisms involved in sulfides production into the four anaerobic digesters (Figure 5). These results were consistent with a study investigating the SRB populations between cattle manure and digestate in the elucidation of H₂S production during anaerobic digestion of animal slurry [23]. The clone libraries analysis of *dsrAB* genes that revealed that the dominant genera among the biofilms from moving bed biofilm reactor wastewater treatment plants were *Desulfomonile* (*Syntrophaceae*), *Desulfomicrobium* (*Desulfomicrobiaceae*), *Desulfococcus* (*Desulfobacteraceae*), *Desulfobulbus* (*Desulfobulbaceae*), and *Desulforhopalus* (*Desulfobulbaceae*) [68].

The *Firmicutes* (OTU 1 and OTU 25) found out in the anaerobic digesters were affiliated to their respective genera *Coprothermobacter* and *Syntrophonas* that are reported as non-sulfate-reducers (Figure 3). However, the OTU 18 was affiliated to *Desulfosporosinus*, a genus member of the *Peptococcaceae* family, and reported to be a candidate of sulfate-reducing *Firmicutes* [13]. Most SRB have been described from the *Firmicutes* phylum (represented in this study by OTU 18), including *Desulfosporosinus acidiphilus*, *Desulfosporosinus acididurans*, and *Thermodesulfobium narugense* [13]. It was reported that some candidates from *Firmicutes* (*Desulfotomaculum* subclusters, *Moorella thermoacetica*, and *Ammonifex degensii*) acquired *dsrAB* gene from a deltaproteobacterial donor, a gene involved in the sulfate-reducing pathway [69,70]. According to the microbial community resilience and regarding sulfides production, *Syntrophobacter* and *Syntrophus* were the most abundant genera in laundry wastewater and domestic sewage pilot-scale [71]. D1 is separated from the other digesters and dominated by *Syntrophobacteraceae*. However, D2, DA, and DB were dominated by *Syntrophaceae*. Sulfate-removal from wastewaters can be performed by means of anaerobic bioreactors, which contain *Syntrophaceae* and *Desulfovibrionaceae* [72,73].

The family *Desulfovibrionaceae* was not abundant in different digesters compared to the other families (Figure 5). However, the *Desulfobulbaceae* family was abundant in DA compared to the other digesters. *Desulfovibrio*, *Desulfobulbus*, *Desulfomicrobium* were reported as the most widespread in the bioreactors of wastewater treatment plants [74]. *Desulfobulbus* sp. was the dominant member of the SRB community in all stages of biofilm growth [75,76], and were reported to grow on propionate and sulfate [25,77,78] and were able to survive under oxic conditions [79].

At a global aspect, the SRP as well as Archaea abundances were affected by high temperature (See Figures 3 and 5). Our results were consistent with another study showing that both methanogenesis and sulfidogenesis were largely suppressed under thermophilic relative to mesophilic conditions [80]. SRB were more abundant at the surface of each digester compared to the bottom (Figure 4b) and were most abundant in PS (1.92×10^7 *dsrB* gene copies). *Desulfobulbus* and *Desulfovibrio* species have been found to be the numerically important SRB in wastewater biofilms grown under oxic conditions [75,81] and activated sludge flocs [76,82]. The reason for the higher abundance and activity

of these SRB species is due to their tolerance to O₂ [83,84]. This may explain the large amount of SRB detected in the primary sludge compared to the other samples. These results were similar to the average number of *dsrA* gene copies in biofilm samples from full-scale municipal wastewater treatment plants using a moving bed biofilm anaerobic reactor. The 16S rRNA gene pyrosequencing data of putative SRB-identified *Desulforhopalus*, *Desulfomicrobium*, and *Desulfobacter* as dominant members of the community. The family *Syntrophaceae*, (genera *Desulfomonile*, *Desulfobacca*, and other, non-SRB organisms) was absent from the 16S rRNA gene dataset, which reaffirms the importance of *dsrAB* gene-based analyses to characterize SRB communities [68]. SRB in anaerobic wastewater treatment facilities can contribute via continuous H₂S formation to the production of undesired odorous volatile compounds [85]. Treatment of paper mill effluents involves an up-flow anaerobic sludge blanket reactor with active SRB participating in organic matter decomposition [21]. SRB of moving bed biofilm reactors possess a fixed biofilm and can be used in varying scales for the treatment of domestic and industrial waste [86].

The phylogeny relationship carried out between the OTU sequences, the sulfate-reducing bacteria reference sequences and sequences of isolated sulfate-reducing strains (obtained by culture-dependent approaches) were studied. From *Desulfobulbus* isolated strains (Figure 6), *Desulfobulbus oligotrophicus* Prop6^T was isolated and described as new species within the genus *Desulfobulbus* [25] and were related to the OTU 882. In the previous study comparing the diversities of these genera at the beginning of sampling and after cultivation. *Desulfovibrio*, *Desulfobulbus*, and *Desulfomicrobium* genus as dominant among sulfate-reducers in the bioreactors were detected [74,87–89]. *Desulfobulbus* genus can incompletely oxidize numerous organics including glucose, propionate, and pyruvate to acetate allowing the sulfidogenic anaerobic digestion of sulfate waste from anaerobic sludge [88]. It was reported that the *Desulfobulbus* are able to grow on propionate and sulfate [25,90,91]. However, in the absence of sulfate, they can ferment other organic acids and alcohols such as lactate, ethanol, and pyruvate [68].

The *Desulfovibrionaceae* family (represented by 13 *Desulfovibrio* isolated strains and affiliated to the OTU 349) was effective for sulfate removal and both hydrogen and sulfides production during anaerobic digestion [92]. Members of the completely oxidizing *Desulfobacteraceae* could be demonstrated by cultivation methods to dominate the SRB communities [93,94]. The *Desulfomicrobium* strains or *Desulfovibrio vulgaris* strains could not be detected using molecular approaches (no OTUs linked). However, the culture-dependent approaches allowed to isolate candidates from these both genera, showing the importance of the combination of molecular and culture-dependent approaches to gain more insight into the abundance of SRB. *Desulfomicrobium* and *Desulfovibrio* was widely discovered in natural environments and anaerobic reactors, which degraded lactic into acetate [95–97]. The *Desulfobacteraceae* and *Desulfurellaceae* OTUs found in anaerobic digesters were considered as key players in the carbon- and sulfur-cycling in organic carbon- and sulfate-rich reduction [98]. Their potential in treating industrial waste and drainage has been investigated under various settings [13]. The *Syntrophobacteraceae* OTUs were involved in the syntrophic degradation of propionate in an up-flow anaerobic sludge blanket (UASB) bioreactor granules [99]. Many other studies have shown that *Syntrophobacter* species are key organisms for the syntrophic oxidation of propionate in bio-granules [100–102].

5. Conclusions

Microbial sulfate-reduction is a process of great environmental and biogeochemical importance, which is associated with different environments because of their high levels of sulfate. Microbial sulfate-reduction initiates and supports the sulfur cycle and is one of the main biological processes. For these reasons, SRB play a key role in our understanding of the biogeochemical cycles of sulfur and carbon in different environments such as anaerobic digesters. The 16S rRNA high-throughput sequencing data, the qPCR quantification of *dsrB* and *mcrA* gene combined with the isolation approaches in this present study revealed a high diversity of microbial communities including SRB and methanogens

in the anaerobic sludge from municipal wastewater treatment plant from Marrakech. The classification of SRB and communities based on 16S rRNA gene and functional gene was analyzed and compared according to the results of a previous study [57]. Overall, the present study is one of the few studies combined molecular to culture-dependent approaches to provide more comprehensive information regarding the SRB and Archaea community characteristics and suggested the existence of an active sulfur cycle in anaerobic sludge. In the last few years, our knowledge regarding archaeal microorganisms has increased from both an ecological standpoint [27,103]. The qPCR method proposed is a useful tool for studying active methanogenic populations and their influence on the biogas production rate. Our results showed an important abundance of methanogens compared to the previous study [61,64,65]. On a global scale, the *Proteobacteria* (that include the sulfate-reducing microorganisms responsible for sulfides production), the *Bacteroidetes*, the *Firmicutes*, the *Actinobacteria*, the *Synergistetes*, and the *Euryarchaeota* (methanogens microorganisms) are the most widespread microbial communities. The molecular and culture-dependent approaches allowed detected the *Syntrophaceae*, the *Desulfobulbaceae*, the *Desulfovibrionaceae*, the *Syntrophobacteraceae*, the *Desulfurellaceae*, and the *Desulfobacteraceae* as the main families responsible for sulfides production in anaerobic digestion of WWTP of Marrakech. Real-time quantitative PCR of *dsrA* and *mcrA* genes was used to better understand the abundance of SRB and active methanogenic communities compared to other microorganisms in the anaerobic digesters. A considerable abundance of SRB and Archaea were detected in anaerobic sludge. The results show that the temperature was among the key operating conditions that may affect the rate of methane and sulfide production. In addition, these results give more insight to understand the diversity and function of SRP in order to investigate the key role that they may play to affect sulfides production, an undesirable by-product, during anaerobic digestion.

Supplementary Materials: The following are available online at <http://www.mdpi.com/2227-9717/8/10/1284/s1>.

Author Contributions: The authors participated in the preparation of the article as follows: Conceptualization, A.-I.Q., R.G.; data curation, A.E.H.; formal analysis, A.E.H.; funding acquisition, A.-I.Q., R.G.; investigation, A.E.H.; methodology, A.E.H., M.R.-P., A.R.-P., M.S.G.U., R.G., A.-I.Q.; resources, A.E.H.; software, A.E.H.; supervision, A.-I.Q., R.G.; Validation, R.G.; visualization, A.E.H.; writing—original draft, A.E.H.; writing—review & editing, A.E.H., M.R.-P., A.R.-P., R.B. (Rhizlane Bennisse), R.B. (Radia Bouterfas), M.S.G.U., A.-I.Q., R.G. All authors have read and agreed to the published version of the manuscript.

Funding: This work was supported by PHC Toubkal/15/19-32545NB French Moroccan project.

Acknowledgments: We are grateful to Campus France and the ‘Centre National de la Recherche Scientifique et Technique (CNRST) Rabat’, Morocco, for supporting the mobility of the researchers in this project. We thank Cyril Noel, bioinformatics engineer at French Research Institute for the Exploitation of the Sea, for his bioinformatics assistance. We also thank Mohamed Ichibane, Head of analysis laboratory of the municipal wastewater treatment plant Marrakech for his help in collecting sludge samples from sites.

Conflicts of Interest: The authors declare no conflict of interest.

References

1. Zeeman, G.; Lettinga, G. The role of anaerobic digestion of domestic sewage in closing the water and nutrient cycle at community level. *Water Sci. Technol.* **1999**, *39*, 187–194. [CrossRef]
2. Ward, A.J.; Hobbs, P.J.; Holliman, P.J.; Jones, D.L. Optimisation of the anaerobic digestion of agricultural resources. *Bioresour. Technol.* **2008**, *99*, 7928–7940. [CrossRef] [PubMed]
3. Narihiro, T.; Sekiguchi, Y. Microbial communities in anaerobic digestion processes for waste and wastewater treatment: A microbiological update. *Curr. Opin. Biotechnol.* **2007**, *18*, 273–278. [CrossRef] [PubMed]
4. Weiland, P. Biogas production: Current state and perspectives. *Appl. Microbiol. Biotechnol.* **2010**, *85*, 849–860. [CrossRef] [PubMed]
5. Fernández, A.; Huang, S.; Seston, S.; Xing, J.; Hickey, R.; Criddle, C.; Tiedje, J. How stable is stable? Function versus community composition. *Appl. Environ. Microbiol.* **1999**, *65*, 3697–3704. [CrossRef]
6. Zumstein, E.; Moletta, R.; Godon, J. Examination of two years of community dynamics in an anaerobic bioreactor using fluorescence polymerase chain reaction (PCR) single-strand conformation polymorphism analysis. *Environ. Microbiol.* **2000**, *2*, 69–78. [CrossRef]

7. Lee, S.H.; Kang, H.J.; Lee, Y.H.; Lee, T.J.; Han, K.; Choi, Y.; Park, H.D. Monitoring bacterial community structure and variability in time scale in full-scale anaerobic digesters. *J. Environ. Monit.* **2012**, *14*, 1893–1905. [\[CrossRef\]](#)
8. Werner, J.J.; Knights, D.; Garcia, M.L.; Scalfone, N.B.; Smith, S.; Yarasheski, K.; Cummings, A.T.; Beers, A.R.; Knight, B.; Angenent, L.T. Bacterial community structures are unique and resilient in full-scale bioenergy systems. *Proc. Natl. Acad. Sci. USA* **2011**, *108*, 4158–4163. [\[CrossRef\]](#)
9. Colin, Y.; Goñi-Urriza, M.; Caumette, P.; Guyoneaud, R. Combination of high throughput cultivation and dsr A sequencing for assessment of sulfate-reducing bacteria diversity in sediments. *FEMS Microbiol. Ecol.* **2012**, *83*, 26–37. [\[CrossRef\]](#)
10. Gerardi, M.H. *The Microbiology of Anaerobic Digesters*; John Wiley & Sons: Hoboken, NJ, USA, 2003.
11. Kushkevych, I.; Leščanová, O.; Dordević, D.; Jančíková, S.; Hošek, J.; Vítězová, M.; Buňková, L.; Drago, L. The Sulfate-Reducing Microbial Communities and Meta-Analysis of Their Occurrence during Diseases of Small–Large Intestine Axis. *J. Clin. Med.* **2019**, *8*, 1656. [\[CrossRef\]](#)
12. Kováč, J.; Vítězová, M.; Kushkevych, I. Metabolic activity of sulfate-reducing bacteria from rodents with colitis. *Open Med.* **2018**, *13*, 344–349. [\[CrossRef\]](#) [\[PubMed\]](#)
13. Rabus, R.; Venceslau, S.S.; Wöhlbrand, L.; Voordouw, G.; Wall, J.D.; Pereira, I.A. A Post-Genomic View of the Ecophysiology, Catabolism and Biotechnological Relevance of Sulphate-Reducing Prokaryotes. In *Advances in Microbial Physiology*; Elsevier: Amsterdam, The Netherlands, 2015; Volume 66, pp. 55–321.
14. Dordević, D.; Jančíková, S.; Vítězová, M.; Kushkevych, I. Hydrogen sulfide toxicity in the gut environment: Meta-analysis of sulfate-reducing and lactic acid bacteria in inflammatory processes. *J. Adv. Res. Mar.* **2020**. [\[CrossRef\]](#)
15. Pokorna, D.; Zabranska, J. Sulfur-oxidizing bacteria in environmental technology. *Biotechnol. Adv.* **2015**, *33*, 1246–1259. [\[CrossRef\]](#)
16. Okabe, S.; Odagiri, M.; Ito, T.; Satoh, H. Succession of sulfur-oxidizing bacteria in the microbial community on corroding concrete in sewer systems. *Appl. Environ. Microbiol.* **2007**, *73*, 971–980. [\[CrossRef\]](#)
17. Zhang, L.; de Schryver, P.; de Gussem, B.; de Muynck, W.; Boon, N.; Verstraete, W. Chemical and biological technologies for hydrogen sulfide emission control in sewer systems: A review. *Water Res.* **2008**, *42*, 1–12. [\[CrossRef\]](#) [\[PubMed\]](#)
18. Gayh, U.; Stooß, A.; Behrendt, J.; Otterpohl, R. Desulphurisation of biogas analysis, evaluation and optimization. In Proceedings of the Third International Symposium on Energy from Biomass and Waste, Venice, Italy, 8–11 November 2010; pp. 8–10.
19. Barton, L.L.; Fauque, G.D. Biochemistry, physiology and biotechnology of sulfate-reducing bacteria. *Adv. Appl. Microbiol.* **2009**, *68*, 41–98. [\[CrossRef\]](#) [\[PubMed\]](#)
20. Kushkevych, I.; Dordević, D.; Kollar, P.; Vítězová, M.; Drago, L. Hydrogen Sulfide as a Toxic Product in the Small–Large Intestine Axis and its Role in IBD Development. *J. Clin. Med.* **2019**, *8*, 1054. [\[CrossRef\]](#)
21. Janssen, A.J.; Lens, P.N.; Stams, A.J.; Plugge, C.M.; Sorokin, D.Y.; Muyzer, G.; Dijkman, H.; van Zessen, E.; Luimes, P.; Buisman, C.J. Application of bacteria involved in the biological sulfur cycle for paper mill effluent purification. *Sci. Total Environ.* **2009**, *407*, 1333–1343. [\[CrossRef\]](#)
22. Quijano, G.; Figueroa-González, I.; Buitrón, G. Fully aerobic two-step desulfurization process for purification of highly H₂S-laden biogas. *J. Chem. Technol. Biotechnol.* **2018**, *93*, 3553–3561. [\[CrossRef\]](#)
23. St-Pierre, B.; Wright, A.-D.G. Implications from distinct sulfate-reducing bacteria populations between cattle manure and digestate in the elucidation of H₂S production during anaerobic digestion of animal slurry. *Appl. Microbiol. Biotechnol.* **2017**, *101*, 5543–5556. [\[CrossRef\]](#)
24. Struk, M.; Vítězová, M.; Vítěz, T.; Bartoš, M.; Kushkevych, I. Modřice Plant Anaerobic Digester: Microbial Distribution and Biogas Production. *Water Air Soil Pollut.* **2019**, *230*, 240. [\[CrossRef\]](#)
25. El Houari, A.; Ranchou-Peyruse, M.; Ranchou-Peyruse, A.; Dakdaki, A.; Guignard, M.; Idouhammou, L.; Bennisse, R.; Bouterfass, R.; Guyoneaud, R.; Qatibi, A.-I. *Desulfobulbus oligotrophicus* sp. nov. a sulfate-reducing and propionate-oxidizing bacterium isolated from a municipal anaerobic sewage sludge digester. *Int. J. Syst. Evol. Microbiol.* **2017**, *67*, 275–281. [\[CrossRef\]](#)
26. Anderson, I.; Ulrich, L.E.; Lupa, B.; Susanti, D.; Porat, I.; Hooper, S.D.; Lapidus, A.; Sieprawska-Lupa, M.; Dharmarajan, L.; Goltsman, E.; et al. Genomic characterization of methanomicrobiales reveals three classes of methanogens. *PLoS ONE* **2009**, *4*, e5797. [\[CrossRef\]](#)

27. Liu, Y.; Whitman, W.B. Metabolic, phylogenetic, and ecological diversity of the methanogenic archaea. *Ann. N.Y. Acad. Sci.* **2008**, *1125*, 171–189. [[CrossRef](#)]
28. Wang, Y.; Qian, P.-Y. Conservative fragments in bacterial 16S rRNA genes and primer design for 16S ribosomal DNA amplicons in metagenomic studies. *PLoS ONE* **2009**, *4*, e7401. [[CrossRef](#)]
29. Escudié, F.; Auer, L.; Bernard, M.; Mariadassou, M.; Cauquil, L.; Vidal, K.; Maman, S.; Hernandez-Raquet, G.; Combes, S.; Pascal, G. FROGS: Find, rapidly, OTUs with galaxy solution. *Bioinformatics* **2018**, *34*, 1287–1294. [[CrossRef](#)]
30. Anders, S.; Reyes, A.; Huber, W. Detecting differential usage of exons from RNA-seq data. *Genome Res.* **2012**, *22*, 2008–2017. [[CrossRef](#)]
31. Chao, A.; Gotelli, N.J.; Hsieh, T.C.; Sander, E.L.; Ma, K.H.; Colwell, R.K.; Ellison, A.M. Rarefaction and extrapolation with Hill numbers: A framework for sampling and estimation in species diversity studies. *Ecol. Monogr.* **2014**, *84*, 45–67. [[CrossRef](#)]
32. Saitou, N.; Nei, M. The neighbor-joining method: A new method for reconstructing phylogenetic trees. *Mol. Biol. Evol.* **1987**, *4*, 406–425.
33. Guindon, S.; Dufayard, J.-F.; Lefort, V.; Anisimova, M.; Hordijk, W.; Gascuel, O. New algorithms and methods to estimate maximum-likelihood phylogenies: Assessing the performance of PhyML 3.0. *Syst. Biol.* **2010**, *59*, 307–321. [[CrossRef](#)]
34. Hungate, R. Chapter IV A Roll Tube Method for Cultivation of Strict Anaerobes. In *Methods in Microbiology*; Elsevier: Amsterdam, The Netherlands, 1969; Volume 3, pp. 117–132.
35. Dias, M.; Salgado, J.C.; Monperrus, M.; Caumette, P.; Amouroux, D.; Duran, R.; Guyoneaud, R. Characterization of *Desulfomicrobium salsuginis* sp. nov. and *Desulfomicrobium aestuarii* sp. nov. two new sulfate-reducing bacteria isolated from the Adour estuary (French Atlantic coast) with specific mercury methylation potentials. *Syst. Appl. Microbiol.* **2008**, *31*, 30–37. [[CrossRef](#)]
36. Tamura, K.; Stecher, G.; Peterson, D.; Filipski, A.; Kumar, S. MEGA6: Molecular evolutionary genetics analysis version 6.0. *Mol. Biol. Evol.* **2013**, *30*, 2725–2729. [[CrossRef](#)]
37. Geets, J.; Borremans, B.; Diels, L.; Springael, D.; Vangronsveld, J.; van der Lelie, D.; Vanbroekhoven, K. DsrB gene-based DGGE for community and diversity surveys of sulfate-reducing bacteria. *J. Microbiol. Methods* **2006**, *66*, 194–205. [[CrossRef](#)]
38. Steinberg, L.M.; Regan, J.M. Phylogenetic comparison of the methanogenic communities from an acidic, oligotrophic fen and an anaerobic digester treating municipal wastewater sludge. *Appl. Environ. Microbiol.* **2008**, *74*, 6663–6671. [[CrossRef](#)]
39. Wang, X.; Cao, A.; Zhao, G.; Zhou, C.; Xu, R. Microbial community structure and diversity in a municipal solid waste landfill. *Waste Manag.* **2017**, *66*, 79–87. [[CrossRef](#)]
40. Wu, L.; Yang, Y.; Chen, S.; Zhao, M.; Zhu, Z.; Yang, S.; Qu, Y.; Ma, Q.; He, Z.; Zhou, J.; et al. Long-term successional dynamics of microbial association networks in anaerobic digestion processes. *Water Res.* **2016**, *104*, 1–10. [[CrossRef](#)]
41. Treu, L.; Campanaro, S.; Kougias, P.G.; Sartori, C.; Bassani, I.; Angelidaki, I. Hydrogen-fueled microbial pathways in biogas upgrading systems revealed by genome-centric metagenomics. *Front. Microbiol.* **2018**, *9*, 1079. [[CrossRef](#)]
42. Ziels, R.M.; Svensson, B.H.; Sundberg, C.; Larsson, M.; Karlsson, A.; Yekta, S.S. Microbial rRNA gene expression and co-occurrence profiles associate with biokinetics and elemental composition in full-scale anaerobic digesters. *Microb. Biotechnol.* **2018**, *11*, 694–709. [[CrossRef](#)]
43. Tian, Z.; Cabrol, L.; Ruiz-Filippi, G.; Pullammanappallil, P. Microbial ecology in anaerobic digestion at agitated and non-agitated conditions. *PLoS ONE* **2014**, *9*, e109769. [[CrossRef](#)]
44. Jegede, A.O.; Zeeman, G.; Bruning, H. A review of mixing, design and loading conditions in household anaerobic digesters. *Crit. Rev. Environ. Sci. Technol.* **2019**, *49*, 2117–2153. [[CrossRef](#)]
45. Bhandari, V.; Gupta, R.S. Molecular signatures for the phylum Synergistetes and some of its subclades. *Antonie Van Leeuwenhoek* **2012**, *102*, 517–540. [[CrossRef](#)] [[PubMed](#)]
46. Cirne, D.; Lehtomäki, A.; Björnsson, L.; Blackall, L. Hydrolysis and microbial community analyses in two-stage anaerobic digestion of energy crops. *J. Appl. Microbiol.* **2007**, *103*, 516–527. [[CrossRef](#)] [[PubMed](#)]

47. O'Sullivan, C.A.; Burrell, P.C.; Clarke, W.P.; Blackall, L.L. Structure of a cellulose degrading bacterial community during anaerobic digestion. *Biotechnol. Bioeng.* **2005**, *92*, 871–878. [\[CrossRef\]](#) [\[PubMed\]](#)
48. Sträuber, H.; Schröder, M.; Kleinstüber, S. Metabolic and microbial community dynamics during the hydrolytic and acidogenic fermentation in a leach-bed process. *Energy Sustain. Soc.* **2012**, *2*, 13. [\[CrossRef\]](#)
49. Zhu, L.; Dai, X.; Zhou, J.; Xu, X. The stability of aerobic granular sludge under 4-chloroaniline shock in a sequential air-lift bioreactor (SABR). *Bioresour. Technol.* **2013**, *140*, 126–130. [\[CrossRef\]](#)
50. Mei, R.; Narihiro, T.; Nobu, M.K.; Kuroda, K.; Liu, W.-T. Evaluating digestion efficiency in full-scale anaerobic digesters by identifying active microbial populations through the lens of microbial activity. *Sci. Rep.* **2016**, *6*. [\[CrossRef\]](#)
51. Yang, Y.; Wang, L.; Xiang, F.; Zhao, L.; Qiao, Z. Activated Sludge Microbial Community and Treatment Performance of Wastewater Treatment Plants in Industrial and Municipal Zones. *Int. J. Environ. Res. Public Health* **2020**, *17*, 436. [\[CrossRef\]](#)
52. Calusinska, M.; Goux, X.; Fossépré, M.; Muller, E.E.; Wilmes, P.; Delfosse, P. A year of monitoring 20 mesophilic full-scale bioreactors reveals the existence of stable but different core microbiomes in bio-waste and wastewater anaerobic digestion systems. *Biotechnol. Biofuels* **2018**, *11*, 196. [\[CrossRef\]](#)
53. Campanaro, S.; Treu, L.; Rodriguez-R, L.M.; Kovalovszki, A.; Ziels, R.M.; Maus, I.; Zhu, X.; Kougias, P.G.; Basile, A.; Luo, G.; et al. New insights from the biogas microbiome by comprehensive genome-resolved metagenomics of nearly 1600 species originating from multiple anaerobic digesters. *Biotechnol. Biofuels* **2020**, *13*, 1–18. [\[CrossRef\]](#)
54. Mori, K.; Kim, H.; Kakegawa, T.; Hanada, S. A novel lineage of sulfate-reducing microorganisms: Thermodesulfobiaceae fam. nov. Thermodesulfobium narugense, gen. nov. sp. nov. a new thermophilic isolate from a hot spring. *Extremophiles* **2003**, *7*, 283–290. [\[CrossRef\]](#)
55. Moset, V.; Poulsen, M.; Wahid, R.; Højberg, O.; Møller, H.B. Mesophilic versus thermophilic anaerobic digestion of cattle manure: Methane productivity and microbial ecology. *Microb. Biotechnol.* **2015**, *8*, 787–800. [\[CrossRef\]](#)
56. Sasaki, D.; Hori, T.; Haruta, S.; Ueno, Y.; Ishii, M.; Igarashi, Y. Methanogenic pathway and community structure in a thermophilic anaerobic digestion process of organic solid waste. *J. Biosci. Bioeng.* **2011**, *111*, 41–46. [\[CrossRef\]](#) [\[PubMed\]](#)
57. Guo, J.; Peng, Y.; Ni, B.-J.; Han, X.; Fan, L.; Yuan, Z. Dissecting microbial community structure and methane-producing pathways of a full-scale anaerobic reactor digesting activated sludge from wastewater treatment by metagenomic sequencing. *Microb. Cell Factories* **2015**, *14*. [\[CrossRef\]](#) [\[PubMed\]](#)
58. Lavergne, C.; Bovio-Winkler, P.; Etchebehere, C.; García-Gen, S. Towards centralized biogas plants: Co-digestion of sewage sludge and pig manure maintains process performance and active microbiome diversity. *Bioresour. Technol.* **2020**, *297*, 122442. [\[CrossRef\]](#)
59. García-Lozano, M.; Lira, H.-D.; Omar, I.; Huber, D.H.; Balagurusamy, N. Spatial Variations of Bacterial Communities of an Anaerobic Lagoon-Type Biodigester Fed with Dairy Manure. *Processes* **2019**, *7*, 408. [\[CrossRef\]](#)
60. Sun, L.; Pope, P.B.; Eijssink, V.G.H.; Schnürer, A. Characterization of microbial community structure during continuous anaerobic digestion of straw and cow manure: Community structure during anaerobic digestion. *Microb. Biotechnol.* **2015**, *8*, 815–827. [\[CrossRef\]](#)
61. Li, A.; Chu, Y.N.; Wang, X.; Ren, L.; Yu, J.; Liu, X.; Yan, J.; Zhang, L.; Wu, S.; Li, S. A pyrosequencing-based metagenomic study of methane-producing microbial community in solid-state biogas reactor. *Biotechnol. Biofuels* **2013**, *6*, 3. [\[CrossRef\]](#)
62. Westerholm, M.; Liu, T.; Schnürer, A. Comparative study of industrial-scale high-solid biogas production from food waste: Process operation and microbiology. *Bioresour. Technol.* **2020**, *304*, 122981. [\[CrossRef\]](#)
63. Kushkevych, I.; Dordević, D.; Vítězová, M. Possible synergy effect of hydrogen sulfide and acetate produced by sulfate-reducing bacteria on inflammatory bowel disease development. *J. Adv. Res. Mar.* **2020**. [\[CrossRef\]](#)
64. Gao, J.; Liu, G.; Li, H.; Xu, L.; Du, L.; Yang, B. Predictive functional profiling using marker gene sequences and community diversity analyses of microbes in full-scale anaerobic sludge digesters. *Bioprocess Biosyst. Eng.* **2016**, *39*, 1115–1127. [\[CrossRef\]](#)

65. Yang, Y.; Yu, K.; Xia, Y.; Lau, F.T.; Tang, D.T.; Fung, W.C.; Fang, H.H.P.; Zhang, T. Metagenomic analysis of sludge from full-scale anaerobic digesters operated in municipal wastewater treatment plants. *Appl. Microbiol. Biotechnol.* **2014**, *98*, 5709–5718. [[CrossRef](#)] [[PubMed](#)]
66. Hidaka, T.; Tsushima, I.; Tsumori, J. Comparative analyses of microbial structures and gene copy numbers in the anaerobic digestion of various types of sewage sludge. *Bioresour. Technol.* **2018**, *253*, 315–322. [[CrossRef](#)] [[PubMed](#)]
67. Traversi, D.; Villa, S.; Lorenzi, E.; Degan, R.; Gilli, G. Application of a real-time qPCR method to measure the methanogen concentration during anaerobic digestion as an indicator of biogas production capacity. *J. Environ. Manag.* **2012**, *111*, 173–177. [[CrossRef](#)] [[PubMed](#)]
68. Biswas, K.; Taylor, M.W.; Turner, S.J. dsrAB-based analysis of sulphate-reducing bacteria in moving bed biofilm reactor (MBBR) wastewater treatment plants. *Appl. Microbiol. Biotechnol.* **2014**, *98*, 7211–7222. [[CrossRef](#)]
69. Klein, M.; Friedrich, M.; Roger, A.J.; Hugenholtz, P.; Fishbain, S.; Abicht, H.; Blackall, L.L.; Stahl, D.A.; Wagner, M. Multiple lateral transfers of dissimilatory sulfite reductase genes between major lineages of sulfate-reducing prokaryotes. *J. Bacteriol.* **2001**, *183*, 6028–6035. [[CrossRef](#)]
70. Stahl, D.A.; Loy, A.; Wagner, M.; Barton, L.; Hamilton, W. *Molecular Strategies for Studies of Natural Populations of Sulphate-Reducing Microorganisms*; Cambridge University Press: Cambridge, UK, 2007.
71. Moura AD, L.; Centurion, V.B.; Okada, D.Y.; Motteran, F.; Delforno, T.P.; Oliveira, V.M.; Varesche, M.B.A. Laundry wastewater and domestic sewage pilot-scale anaerobic treatment: Microbial community resilience regarding sulfide production. *J. Environ. Manag.* **2019**, *251*, 109495. [[CrossRef](#)]
72. Dar, S.A.; Yao, L.; van Dongen, U.; Kuenen, J.G.; Muyzer, G. Analysis of diversity and activity of sulfate-reducing bacterial communities in sulfidogenic bioreactors using 16S rRNA and dsrB genes as molecular markers. *Appl. Environ. Microbiol.* **2007**, *73*, 594–604. [[CrossRef](#)]
73. Dar, S.A.; Kleerebezem, R.; Stams, A.J.; Kuenen, J.G.; Muyzer, G. Competition and coexistence of sulfate-reducing bacteria, acetogens and methanogens in a lab-scale anaerobic bioreactor as affected by changing substrate to sulfate ratio. *Appl. Microbiol. Biotechnol.* **2008**, *78*, 1045–1055. [[CrossRef](#)]
74. Kushkevych, I.; Kováč, J.; Vítězová, M.; Vítěz, T.; Bartoš, M. The diversity of sulfate-reducing bacteria in the seven bioreactors. *Arch. Microbiol.* **2018**, *200*, 945–950. [[CrossRef](#)]
75. Santegoeds, C.M.; Ferdelman, T.G.; Muyzer, G.; de Beer, D. Structural and functional dynamics of sulfate-reducing populations in bacterial biofilms. *Appl. Environ. Microbiol.* **1998**, *64*, 3731–3739. [[CrossRef](#)]
76. Schramm, A.; Santegoeds, C.M.; Nielsen, H.K.; Ploug, H.; Wagner, M.; Pribyl, M.; Wanner, J.; Amann, R.; de Beer, D. On the occurrence of anoxic microniches, denitrification, and sulfate reduction in aerated activated sludge. *Appl. Environ. Microbiol.* **1999**, *65*, 4189–4196. [[CrossRef](#)] [[PubMed](#)]
77. Sass, A.; Rütters, H.; Cypionka, H.; Sass, H. *Desulfobulbus mediterraneus* sp. nov. a sulfate-reducing bacterium growing on mono- and disaccharides. *Arch. Microbiol.* **2002**, *177*, 468–474. [[CrossRef](#)] [[PubMed](#)]
78. Widdel, F.; Pfennig, N. Studies on dissimilatory sulfate-reducing bacteria that decompose fatty acids II. Incomplete oxidation of propionate by *Desulfobulbus propionicus* gen. nov. sp. nov. *Arch. Microbiol.* **1982**, *131*, 360–365. [[CrossRef](#)]
79. Dannenberg, S.; Kroder, M.; Dilling, W.; Cypionka, H. Oxidation of H₂, organic compounds and inorganic sulfur compounds coupled to reduction of O₂ or nitrate by sulfate-reducing bacteria. *Arch. Microbiol.* **1992**, *158*, 93–99. [[CrossRef](#)]
80. Jung, H.; Kim, J.; Lee, C. Temperature effects on methanogenesis and sulfidogenesis during anaerobic digestion of sulfur-rich macroalgal biomass in sequencing batch reactors. *Microorganisms* **2019**, *7*, 682. [[CrossRef](#)]
81. Ariesyady, H.D.; Ito, T.; Yoshiguchi, K.; Okabe, S. Phylogenetic and functional diversity of propionate-oxidizing bacteria in an anaerobic digester sludge. *Appl. Microbiol. Biotechnol.* **2007**, *75*, 673–683. [[CrossRef](#)]
82. Manz, W.; Eisenbrecher, M.; Neu, T.R.; Szewzyk, U. Abundance and spatial organization of Gram-negative sulfate-reducing bacteria in activated sludge investigated by in situ probing with specific 16S rRNA targeted oligonucleotides. *FEMS Microbiol. Ecol.* **1998**, *25*, 43–61. [[CrossRef](#)]

83. Cypionka, H.; Widdel, F.; Pfennig, N. Survival of sulfate-reducing bacteria after oxygen stress, and growth in sulfate-free oxygen-sulfide gradients. *FEMS Microbiol. Lett.* **1985**, *31*, 39–45. [\[CrossRef\]](#)
84. Marshall, C.; Frenzel, P.; Cypionka, H. Influence of oxygen on sulfate reduction and growth of sulfate-reducing bacteria. *Arch. Microbiol.* **1993**, *159*, 168–173. [\[CrossRef\]](#)
85. Burgess, J.E.; Parsons, S.A.; Stuetz, R.M. Developments in odour control and waste gas treatment biotechnology: A review. *Biotechnol. Adv.* **2001**, *19*, 35–63. [\[CrossRef\]](#)
86. Biswas, K.; Turner, S.J. Microbial community composition and dynamics of moving bed biofilm reactor systems treating municipal sewage. *Appl. Environ. Microbiol.* **2012**, *78*, 855–864. [\[CrossRef\]](#) [\[PubMed\]](#)
87. Jabari, L.; Gannoun, H.; Khelifi, E.; Cayol, J.L.; Godon, J.J.; Hamdi, M.; Fardeau, M.L. Bacterial ecology of abattoir wastewater treated by an anaerobic digester. *Braz. J. Microbiol.* **2016**, *47*, 73–84. [\[CrossRef\]](#) [\[PubMed\]](#)
88. Huang, H.; Biswal, B.K.; Chen, G.-H.; Wu, D. Sulfidogenic anaerobic digestion of sulfate-laden waste activated sludge: Evaluation on reactor performance and dynamics of microbial community. *Bioresour. Technol.* **2020**, *297*, 122396. [\[CrossRef\]](#) [\[PubMed\]](#)
89. Jantharadej, K.; Mhuantong, W.; Limpiyakorn, T.; Mongkolsuk, S.; Sirikanchana, K.; Suwannasilp, B.B. Identification of sulfate-reducing and methanogenic microbial taxa in anaerobic bioreactors from industrial wastewater treatment plants using next-generation sequencing and gene clone library analyses. *J. Environ. Sci. Health Part A* **2020**, 1–11. [\[CrossRef\]](#)
90. Isaksen, M.F.; Teske, A. *Desulforhopalus vacuolatus* gen. nov. sp. nov. a new moderately psychrophilic sulfate-reducing bacterium with gas vacuoles isolated from a temperate estuary. *Arch. Microbiol.* **1996**, *166*, 160–168. [\[CrossRef\]](#)
91. Kremer, D.; Hansen, T. Pathway of propionate degradation in *Desulfobulbus propionicus*. *FEMS Microbiol. Lett.* **1988**, *49*, 273–277. [\[CrossRef\]](#)
92. Promnuan, K.; Higuchi, T.; Imai, T.; Kongjan, P.; Reungsang, A.; Sompong, O. Simultaneous biohydrogen production and sulfate removal from rubber sheet wastewater by two-stage anaerobic digestion. *Int. J. Hydrog. Energy* **2020**, *45*, 263–274. [\[CrossRef\]](#)
93. Gittel, A.; Mußmann, M.; Sass, H.; Cypionka, H.; Könneke, M. Identity and abundance of active sulfate-reducing bacteria in deep tidal flat sediments determined by directed cultivation and CARD-FISH analysis. *Environ. Microbiol.* **2008**, *10*, 2645–2658. [\[CrossRef\]](#)
94. Leloup, J.; Fossing, H.; Kohls, K.; Holmkvist, L.; Borowski, C.; Jørgensen, B.B. Sulfate-reducing bacteria in marine sediment (Aarhus Bay, Denmark): Abundance and diversity related to geochemical zonation. *Environ. Microbiol.* **2009**, *11*, 1278–1291. [\[CrossRef\]](#)
95. Braga, J.K.; Motteran, F.; Silva, E.L.; Varesche, M.B.A. Evaluation of bacterial community from anaerobic fluidized bed reactor for the removal of linear alkylbenzene sulfonate from laundry wastewater by 454-pyrosequence. *Ecol. Eng.* **2015**, *82*, 231–240. [\[CrossRef\]](#)
96. Shi, X.; Zuo, J.; Li, B.; Yu, H. Two-stage anaerobic digestion of food waste coupled with in situ ammonia recovery using gas membrane absorption: Performance and microbial community. *Bioresour. Technol.* **2020**, *297*, 122458. [\[CrossRef\]](#) [\[PubMed\]](#)
97. Ito, T.; Okabe, S.; Satoh, H.; Watanabe, Y. Successional development of sulfate-reducing bacterial populations and their activities in a wastewater biofilm growing under microaerophilic conditions. *Appl. Environ. Microbiol.* **2002**, *68*, 1392–1402. [\[CrossRef\]](#) [\[PubMed\]](#)
98. Zhang, Y.; Wang, X.; Zhen, Y.; Mi, T.; He, H.; Yu, Z. Microbial Diversity and Community Structure of Sulfate-Reducing and Sulfur-Oxidizing Bacteria in Sediment Cores from the East China Sea. *Front. Microbiol.* **2017**, *8*, 2133. [\[CrossRef\]](#) [\[PubMed\]](#)
99. Jr, W.P.K.; Scholten, J.C.; Culley, D.; Hickey, R.; Zhang, W.; Brockman, F.J. Microbial dynamics in upflow anaerobic sludge blanket (UASB) bioreactor granules in response to short-term changes in substrate feed. *Microbiology* **2010**, *156*, 2418–2427.
100. Boone, D.R.; Bryant, M.P. Propionate-degrading bacterium, *Syntrophobacter wolinii* sp. nov. gen. nov. from methanogenic ecosystems. *Appl. Environ. Microbiol.* **1980**, *40*, 626–632. [\[CrossRef\]](#) [\[PubMed\]](#)
101. Harmsen, H.J.; van Kuijk, B.L.; Plugge, C.M.; Akkermans, A.D.; de Vos, W.M.; Stams, A.J. *Syntrophobacter fumaroxidans* sp. nov. a syntrophic propionate-degrading sulfate-reducing bacterium. *Int. J. Syst. Evol. Microbiol.* **1998**, *48*, 1383–1387. [\[CrossRef\]](#)

102. Wallrabenstein, C.; Hauschild, E.; Schink, B. Syntrophobacter pfennigii sp. nov. new syntrophically propionate-oxidizing anaerobe growing in pure culture with propionate and sulfate. *Arch. Microbiol.* **1995**, *164*, 346–352. [[CrossRef](#)]
103. Leigh, J.A.; Albers, S.-V.; Atomi, H.; Allers, T. Model organisms for genetics in the domain Archaea: Methanogens, halophiles, Thermococcales and Sulfolobales. *FEMS Microbiol. Rev.* **2011**, *35*, 577–608. [[CrossRef](#)]

Publisher’s Note: MDPI stays neutral with regard to jurisdictional claims in published maps and institutional affiliations.



© 2020 by the authors. Licensee MDPI, Basel, Switzerland. This article is an open access article distributed under the terms and conditions of the Creative Commons Attribution (CC BY) license (<http://creativecommons.org/licenses/by/4.0/>).