



HAL
open science

Tree growth forces and wood properties

Bernard Thibaut, Joseph Gril

► **To cite this version:**

| Bernard Thibaut, Joseph Gril. Tree growth forces and wood properties. 2020. hal-02984734v3

HAL Id: hal-02984734

<https://hal.science/hal-02984734v3>

Preprint submitted on 25 Jun 2021 (v3), last revised 8 Jul 2021 (v4)

HAL is a multi-disciplinary open access archive for the deposit and dissemination of scientific research documents, whether they are published or not. The documents may come from teaching and research institutions in France or abroad, or from public or private research centers.

L'archive ouverte pluridisciplinaire **HAL**, est destinée au dépôt et à la diffusion de documents scientifiques de niveau recherche, publiés ou non, émanant des établissements d'enseignement et de recherche français ou étrangers, des laboratoires publics ou privés.

Tree growth forces and wood properties

Bernard Thibaut ^(1,*), Joseph Gril ^(2,3)

⁽¹⁾ LMGC, Univ Montpellier, CNRS, Montpellier, France - bernard.thibaut@umontpellier.fr

⁽²⁾ Université Clermont Auvergne, CNRS, Institut Pascal, Clermont-Ferrand, France

⁽³⁾ Université Clermont Auvergne, INRAE, PIAF, Clermont Ferrand, France

^(*) Corresponding author

Highlight

Based on an experimental study of growth strains in trees restoring their verticality after accidental inclination, combined with measurements of wood properties at the same position, a method is proposed to reconstitute the history of growth force generation by the living wood.

Abstract

Living wood in the tree performs a “muscular” action by generating forces at the sapwood periphery and residual strains in dead sapwood fibres. Dissymmetric force generation around the tree trunk is the “motor” system allowing movement, posture control and tree reshaping after accidents. Rather young trees are able to restore the verticality of their trunk after accidental rotation of the soil-root system due to wind or landslide, leading to typically curved stems shape. The very high dissymmetry of forces for the “motor” action is associated with the occurrence of reaction wood on one side of the inclined stem during many successive years. A method to reconstitute this biomechanical history from observations after tree felling, on either green or dry wood, is discussed.

A selection of 17 trees from 15 different species (13 different families), tropical and temperate, hardwoods and softwoods, were selected and peripheral residual strains were measured in situ before felling, on 8 positions for each stem. Matched wooden rods were sawn and measured for their mechanical and physical properties in the green and dry states, allowing the estimation of tree growth stress, i.e., the force created by the living wood. It was possible to build easy-to-use conversion coefficients between the growth stress indicator (*GSI*), measured in situ by the single hole method, and growth strain and growth stress with the knowledge of basic density and green longitudinal elastic modulus.

Maturation strain, specific modulus (as a proxy of micro-fibril angle) and longitudinal shrinkage are properties independent from basic density, whose variation among species was very large. For the whole range of compression wood, normal wood and tension wood, strong relationships between these 3 properties were observed, but together no single model, based on cell-wall microfibril angle only, could be defined.

Growth forces are the product of 4 parameters: ring width, basic density, basic specific modulus and maturation strain, all of them being the result of wood formation. Thanks to the wide range of wood types and species, simple and highly significant formulas were obtained for the relationship between basic and dry density, green and dry longitudinal modulus of elasticity, basic and dry specific modulus. To estimate ring width in the green state from values in dry state, radial shrinkage needs to be measured afterwards on dry specimens. Maturation strains is less accurately linked to late measurements on dry wood, but longitudinal shrinkage

offers a rather good solution for an estimation provided that the wood type (softwood, hardwood with-G layer, hardwood without G-Layer) is known.

Keywords

Tree biomechanics; wood; force generation; growth strain; modulus of elasticity; shrinkage

Abbreviations and notations

A, A_d	surface area of a ring sector, value in dry state
CW	compression wood
D_g, BD, DD	green density, basic density, air-dry density (cf. ρ)
DP_x	distance to pith at angular position x
E, E_L	modulus of elasticity in L direction (cf. MOE)
E_g, E_d	green, air-dry MOE
$E_L/G_{TL}, E_L/G_{RL}$	anisotropy factors
E_L/ρ	Specific modulus (<i>SM</i>) in L direction
F	growth force
<i>FSP</i>	fibre saturation point
G, G_{TL}, G_{RL}	shear modulus, G in TL plane, G in RL plane
G_{TLg}, G_{RLg}	G_{TL}, G_{RL} in the green state
<i>GSI</i>	growth stress indicator
HW	hardwood
k	factor for shear contribution (5/6 for rectangular cross section)
L, L_k	longitudinal direction, L dimension for condition k
<i>LS</i>	total longitudinal shrinkage
M	mass
MC, MC_g, MC_d	wood moisture content, MC in green condition, MC in air-dry condition
<i>MFA</i>	mean microfibril angle relative to L direction
MOE	modulus of elasticity in L direction (cf. E or E_L)
NW, OW	normal wood, opposite wood
R, R_k	radial direction, R dimension for condition k
<i>RH</i>	relative humidity
<i>RS</i>	total radial shrinkage
RW	reaction wood
RW_g, RW_d	ring width in green, air-dry state
<i>SM</i>	specific modulus (MOE divided by density)
SM_b	basic specific modulus (MOE divided by basic density)
SW	softwood
T, T_k	tangential direction, T dimension for condition k
TW	tension wood
<i>VS</i>	total volumetric shrinkage
α_m	maturation strain
ϕ	conversion factor α_m / GSI
μstrain	$1/10^6$
ρ	density
σ_m	(initial, or peripheral) maturation stress
ψ	conversion factor σ_m / GSI

Introduction

During the beginning of this 21st century much has been done and written about the biomechanics of force and stress generation resulting from wood growth, following the 20th century more dedicated to large measuring campaigns of wood properties to encompass their very large variability. Wood tissues fulfil several functions in the tree: tree growth, sap ascent, mechanical resistance to external forces, storage of water and numerous organic or mineral components, transfer of material and information between tree parts and the roots. During tree life, wood growth and properties adapt to tree environment so as to regulate each function in conjunction with the others. Consequently, wood variability results both from genetic speciation and from physiological adaptation during the process of wood formation. Many studies dedicated to the hydraulic function link variations of wood structure and properties of different species to changes in water availability and, conversely, predict climatic variations using variations in wood structure and properties. Could the same be done with biomechanical functions? Assuming that they are successfully linked to wood growth, structure and property, would it be possible to read in wood specimens the trace of tree's biomechanical history?

Basics of tree biomechanics

The study of the residual stress resulting from tree growth started in the late 1920s. It was mostly measured at trunk periphery and its effects during the early stages of wood processing, such as end splitting of felled logs or warping of sawn timber, were described (Gril et al 2017). Models of stress distribution within a trunk were proposed (Archer 1986, Kubler 1987, Fournier et al 1991a, 1991b, Alméras et al 2018a).

Since the beginning of the 2000s the biological origin and function of large peripheral residual stress has been thoroughly investigated by experimental work at cell wall level together with biomechanical models of stress generation within wood fibres. From the mechanical viewpoint wood fulfils three basic functions in the tree: achievement of tree architecture (manufacturing), control of axis direction (posture control) and resistance to external forces (resistance) (Alméras et al 2009, Tocquard et al 2014, Thibaut 2019).

The following paragraphs give a synthetic overview of many results, often published in recent books or review articles cited in priority to avoid lengthy lists of references.

Wood growth in mass and volume

All wooden parts of a tree are slender beams (axis) clamped at the proximal end (junction). Such cantilever beams can be vertical (trunk), oblique or horizontal. Each axis is made of a succession of primary growth units (Barthélémy & Caraglio 2007), results of the division of stem cells in primary meristems (buds). A portion of growth unit, between junctions, has the shape of a multi-layered cylinder with an inner skeleton of mostly dead fibre cells and pipe elements, a thin layer of living cells, with a nucleus and a cytoplasm, and an outer bark layer (Fahn 1990).

Wood formation, its growth in volume and mass, occurs through a 3D manufacturing process taking place in the thin intermediate living layer. At the cellular level the process requires three steps: cell division, cell expansion until final geometry, cell-wall thickening (maturation) until programmed cell death and full cell-wall lignification (Thibaut 2019). At the plant level it consists in axis lengthening by addition of new growth units and thickening of existing parts

by addition of a new peripheral layer thickness. The mass increment all along the axis produce an increase of gravity forces and moments, together with an increase of sectional area and moment of inertia. The distribution of mechanical stress resulting from this manufacturing and the action of gravity (self-weight) is called support stress (Fournier et al 1991a). It vanishes at the periphery where the new wood has just been deposited.

The generation of maturation forces

During cell-wall thickening and maturation, the newly formed wood fibres generate growth forces (Alm eras & Clair 2016). The basic process of force generation is a small contraction or dilatation of the cell-wall polymer network. At the tissue level the resulting expansion is restrained by the rigid wood skeleton (Alm eras et al 2018a). When the maturation process is completed, the so-called maturation strain (α_m) has been produced, while the longitudinal elastic modulus has reached a stable level (E_L) and the initial maturation stress is set up as their product:

$$\sigma_m = E_L \cdot \alpha_m$$

Considering a layer portion of the newly formed wood of sectional area A, the growth force generated by the incremental wood growth in the longitudinal direction is:

$$F = A \cdot \sigma_m = A \cdot E_L \cdot \alpha_m$$

During each growth event, the local force generated by the cell maturation depends on ring width, wood elastic modulus and maturation strain. As a reaction to the effect of maturation in the newly formed wood layer, a counteracting stress is induced in the existing stem. The cumulative stress distribution resulting from the maturation process only, independently from gravity, is called the maturation stress.

Residual or growth stresses: pre-stressing of the skeleton

The total stress due to wood growth, called growth stress, is the sum of support stress and maturation stress (Fournier et al 1991b). The peripheral support stress being equal to zero, the peripheral stress equals the initial maturation stress σ_m . In an ideal tree growing with perfect symmetry, ring width, E_L and α_m are the same all around the circumference. Since wood strength in the longitudinal (L) direction is more than two times higher in tension than compression (Markwardt and Wilson 1935) the resulting uniform tensile pre-stressing at periphery enhances the resistance to bending (Gordon 1978, Gril et al 2017) which is the most dangerous situation for slender beams.

The growth stress can be estimated by different methods using strain gauges or strain transducers, measuring the strain associated to the stress release (Yoshida and Okuyama 2002, Yang et al 2005, Clair et al 2013, Gril et al 2017). It has been usually observed at the sapwood periphery of standing trees, at different angular position and a given height level, but measurements of the internal distribution of residual stress were also performed through successive cutting and strain acquisitions. To obtain the local maturation force generated by a portion of recently formed wood, the measurement of the area (e.g., ring width) and elastic modulus is also needed. Numerous measurements on many trees have been performed in different contexts (Sasaki et al 1978, Okuyama et al 1994, Huang et al 2001, Alm eras et al 2005b, Ruelle et al 2007, Jullien et al 2013). There is a clear difference between softwoods and hardwoods. For hardwoods, maturation strains are always associated with tensile maturation forces with a long tail of very high values, up to 5 times the most common value (Fig. 1). For

softwoods on the contrary there is a tail associated with compressive values (Fournier et al 1994). Mean standard strain values (around 0.05%) are associated to tensile stress for hardwoods (HW) and softwoods (SW).

Species is not a significant factor in the variations of α_m . The most important factor is always the angular position within a tree at a given height (Alméras et al 2005b, Jullien et al 2013). Tree slenderness is also a significant factor for the mean maturation strain between trees: very slender trees have a higher mean level within a species (Jullien et al 2013). These slender trees have also a higher elastic modulus (Waghorn et al 2007, Watt et al 2008, Moore et al 2015) so that slender trees exhibit much higher σ_m - but not always high F because of their narrow rings.

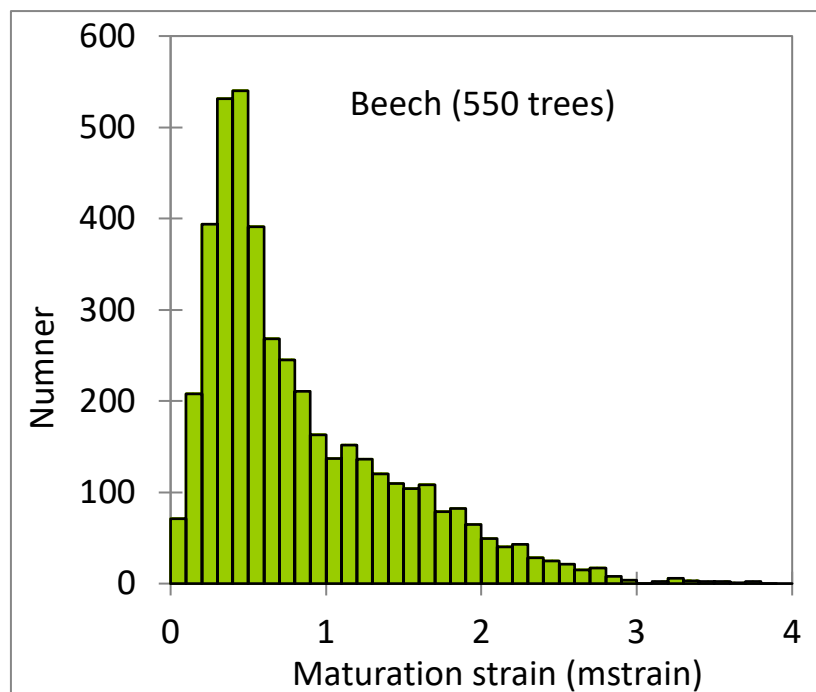


Fig. 1 - Distribution of maturation strains for 550 beech trees (Becker and Beimgraben 2001); mstrain: 1/1000.

Normal wood and reaction wood

Reaction wood (RW), either tension wood (TW) or compression wood (CW) were identified in the 1970s as the origin of the peculiar values of α_m , very high tensile or compressive, respectively (Boyd 1972, Trénard and Guéneau 1975, Timell 1986, Okuyama et al 1994, Bamber 2001). A slightly more recent book “Biology of reaction wood” (Gardiner et al 2014) gives a state of the art concerning tension and compression wood for anatomy (Ruelle 2014), cell-wall polymers (Fagerstedt et al 2014), molecular mechanisms of induction (Tocquard et al 2014), biomechanical action (Fournier et al 2014), physical and mechanical properties (Clair & Thibaut 2014). Most of recent developments were dedicated to TW. A new distinction is made between pure G-layer fibres, multi-layered G-fibres, late lignified G-fibres and no G-fibres (Ghislain & Clair 2017, Higaki et al 2020). Further observations and model were discussed about cellulose within the G-layer (Chang et al 2015, Alméras & Clair 2016, Gorshkova et al 2018) with a relative consensus about a lattice structure of cellulose microfibrils in the G-layer.

Each wood species has a given pattern (signature) in sapwood anatomy and chemistry of the cell wall polymers: percentage of each basic polymer (cellulose, lignin, different types of

hemicellulose) and H, G, S monomer proportions within the lignin. Normal wood (NW) is the most abundant wood type in a tree and both anatomy and chemistry have only small variations around the specific patterns. RW formation is triggered by specific genes and both their anatomical and chemical features differed markedly from the mean patterns (Table 1).

Associated variations in physical and mechanical properties differ between CW and TW as compared to NW. Basic density is always higher for CW in a given tree but the difference is often not significant for TW. Specific modulus of elasticity, which is very strongly linked to the microfibril angle (Cowdrey & Preston 1966, Cave & Hutt 1968), is always very low for CW and always high for TW, but for NW it can vary from very low for very juvenile wood to very high for resonant wood (Brémaud et al 2013). The total longitudinal shrinkage, always very low for NW (below 0.4%), is much higher for CW (up to 4%) and for TW (up to 1.5%).

Table 1 - Variations in structure and chemistry for normal and reaction wood

Wood type	Anatomy	MFA	Lignin chemistry	Cellulose chemistry	Hemicellulose chemistry
Normal wood (softwood)	Standard anatomy	5° - 40°	Lignin content 25%- 38%	40% - 60%	Low 6 carbon sugar % High 5 carbon sugars %
Normal wood (hardwood)	Standard anatomy	5° - 40°	16% - 41%	28% - 58%	High 5 carbon sugars % Low 6 carbon sugar %
Compression wood	Round tracheids	30° - 50°	5 to 10% higher high H/G	5 to 10% lower cellulose content, smaller fibril width	Higher galactose content
Tension wood	Often G-layer fibres	0° - 15°	5 to 10% lower high S/G	5 to 10% higher cellulose content, larger fibril width	Globally similar except for G-layer

MFA: mean microfibril angle

Posture control by maturation forces dissymmetry

The primary function of force generation is the motor action for posture control of the slender wooden stem (Mouliia et al 2019, Fournier et al 2013). Vertical growth is an unstable process: any small accidental rotation of the root system, or pruning of a lateral branch, results in a small trunk inclination and slightly oblique growth, that would rapidly diverge to high levels without a rapid counteracting action. Oblique growth, on the other hand, is very common for branches or the shoots of a coppice. Length and mass increase of the stem cause an increment of bending moment supported by the wooden cross section, leading to an increase of stem slope which needs to be actively counteracted through the generation of an opposite moment all along the stem (Almérás et al 2018a). This motor action is obtained by a dissymmetry of F between upper and lower part of the stem. In the case of an accidentally inclined trunk, a higher-than-usual motor action is needed until it recovers verticality (Coutand et al 2007, Mouliia & Fournier 2009). In this case, RW is used on one side of the stem during all the process of verticality restoration while the opposite wood (OW) formed on the other side is similar to NW (Table 2).

Nearly always, there is a kind of pseudo-sinusoidal variation of α_m around the periphery of the trunk (Almérás et al 2005b, Ruelle et al 2011, Jullien et al 2013), even when there is no

value indicating RW. In this case the difference between upper and lower face values is much lower (See **Annex 1** for beech and chestnut). When the active counter action needed for oblique growing is not too high (small trunk inclination), variations of α_m within NW, associated with eccentric growth, are enough: both “tensile” and “opposite” sides are NW. For oblique growing with higher inclination (as for many branches) and fast restoration of verticality, the use of RW is necessary (Yoshida et al 2000).

Table 2 - Maturation strain (in μ strain) for various trees restoring their verticality in French Guiana

Tree	Family	Genus	Species	α_m TW	α_m OW
1	Annonaceae	Guatteria	schomburgkiana	2130	1110
2	Annonaceae	Oxandra	asbeckii	1950	310
3	Apocynaceae	Lacmellea	aculeata	2580	120
4	Burseraceae	Protium	opacum	2090	410
5	Chrysobalanaceae	Licania	membranacea	3310	1180
6	Clusiaceae	Symphonia	globulifera	2158	584
7	Flacourtiaceae	Casearia	javitensis	3350	140
8	Goupiaceae	Goupia	glabra	2350	770
9	Hugoniaceae	Hebepetalum	humiriifolium	2890	650
10	Icacinaceae	Dendrobangia	boliviana	2210	120
11	Lauraceae	Ocotea	indirectinervia	2650	680
12	Lecythidaceae	Eschweilera	sagotiana	2970	680
13	Lecythidaceae	Lecythis	poiteaui	3000	760
14	Meliaceae	Trichilia	schomburgkii	2780	680
15	Mimosaceae	Inga	marginata	3010	680
16	Myrtaceae	Myrcia	decorticans	2020	680
17	Papilionaceae	Ormosia	bolivarensis	3260	1210
18	Papilionaceae	Ormosia	coutinhoi	2780	1400
19	Rhizophoraceae	Cassipourea	guianensis	2740	1220
20	Sapindaceae	Cupania	scrobiculata	2710	770
21	Sapindaceae	Talisia	simaboides	3470	1030
22	Caesalpiniaceae	Eperua	falcata	1312	429
23	Caesalpiniaceae	Eperua	falcata	2282	710
24	Caesalpiniaceae	Eperua	falcata	2122	582
25	Flacourtiaceae	Laetia	procera	2912	416
26	Flacourtiaceae	Laetia	procera	2701	666
27	Flacourtiaceae	Laetia	procera	1590	582
28	Simaroubaceae	Simarouba	amara	1648	426
29	Simaroubaceae	Simarouba	amara	3219	179
30	Simaroubaceae	Simarouba	amara	1616	502
31	Lauraceae	Ocotea	guyanensis	2097	399
32	Lauraceae	Sextonia	rubra	2362	328
33	Fabaceae	Inga	alba	2408	310
34	Fabaceae	Tachigali	melinonii	1488	480
35	Myristicaceae	Virola	michelii	1708	-45
36	Myristicaceae	Iryanthera	sagotiana	1485	-12
Mean	21 families	24 genera	30 species	2427	587
Max	22 families	25 genera	31 species	3470	1400
Min	23 families	26 genera	32 species	1312	-45

Tree 1 to 21: data from Clair et al 2006; tree 22 to 30: data from Ruelle et al 2011; tree 31 to 36: data from Chang et al 2009. Negative values correspond to compression stress

Material and methods

Selection of standing trees

On the basis of experimental campaigns conducted up to 2001 it appeared that the main source of variation of α_m was the mechanical adaptation of the tree to requirements of growth. Apart from the difference between softwoods and hardwoods for RW, no clear difference was found between species; however, the diversity of studied species was not so high. In order to observe a wider diversity of species, 11 trees were selected in a tropical rain forest of French Guiana with the help of the botanical expert M.F. Prévost, each from a different family - one tree per species and one species per family. Three poplar trees and three conifer trees (spruce and pines) from temperate forest in France and China were added to the sampling in order to widen the selection (Table 3). For the spruce tree, two logs, corresponding to two *GSI* measurement levels (see below), were used, at 1m distance from each other. The objective was not to obtain a mean value or a range of values per species or family for biomechanical parameters such as α_m , but to investigate the links between maturation forces and wood properties, with the hypothesis that each measurement point is representative of wood maturation.

Rather small diameter trees exhibiting a common type of bottom geometry with a basal curvature where chosen (Fig. 2). Small diameter trees are more efficient in restoring verticality; they have been selected to have a sufficient thickness (more than 25 mm) of reaction wood in the upper or lower part of the trunk, just above the curvature, in order to cut material for lab tests. The diameter at breast height of the 17 trees did not exceed 40cm and the mean was 26.4.

Table 3 - Trees used in the study

Family	Genus	Species	DBH	RW
Melastomataceae	Miconia	fragilis	23.6	GL
Meliaceae	Carapa	procera	23.4	GL.
Lecythidaceae	Eschweilera	decolorens	23.8	LGL
Vochysiaceae	Qualea	rosea	30.3	LGL
Cecropiaceae	Cecropia	sciadophylla	25.3	GL
Lauraceae	Ocotea	guyanensis	30.9	GL.
Flacouritaceae	Laetia	procera	29.4	GLc.
Bignonaceae	Jacaranda	copaia	21.7	NGL
Myristiceae	Virola	surinamensis	20.4	NGL.
Cesalpiniaceae	Eperua	falcata	27.9	GL.
Simaroubaceae	Simaruba	amara	27.7	NGL.
Salicaceae	Populus	hybrid	38.3	GL
Salicaceae	Populus	hybrid	34.8	GL
Salicaceae	Populus	hybrid	25.4	GL
Pinaceae	Picea	abies	24.9	CW
Pinaceae	Picea	abies	24.9	CW
Pinaceae	Pinus	pinaster	20.1	CW
Pinaceae	Pinus	sylvestris	23	CW
Mean			26.43	

DBH: diameter at breast height of the trees in cm; *RW*, reaction wood type (from Ghislain & Clair 2017): *GL*= tension wood (TW) with gelatinous layer; *LGL* = TW with a lignified G layer, *GLc*= TW with a multilayer G layer; *NGL*= TW with no G layer; *CW*= compression wood

In situ measurements of maturation strain

The single-hole method developed in CIRAD (<https://www.cirad.fr/>) was used. Two pins are inserted in the trunk surface in longitudinal alignment 45mm from each other (Jullien et al 2013). This distance is measured with a linear displacement transducer before and after drilling a hole of diameter 20mm and depth about 20mm in the middle between the two pins. The difference in μm between after and before drilling is called growth stress indicator (*GSI*); it is positive for a tension force and negative for a compression force. Eight *GSI* measurements are performed on each tree or tree level, equally spaced around the circumference, beginning on the top of the inclined trunk for hardwoods, where TW is expected, or on the bottom for softwoods, where CW is expected.

GSI is theoretically (Archer 1984) related to maturation strain (α_m) by the relationship:

$$\alpha_m = \phi \cdot GSI, \alpha_m \text{ in microstrain } (\mu\varepsilon = 10^{-6}), GSI \text{ in } \mu\text{m}, \phi \text{ in } \mu\varepsilon/\mu\text{m}$$

where the calibration factor ϕ is calculated by modelling the drilling of an anisotropic material occupying a half plane, though a complex equation using wood elastic constants and geometrical factors (distance between pins and hole diameter), see **Annex 2**.

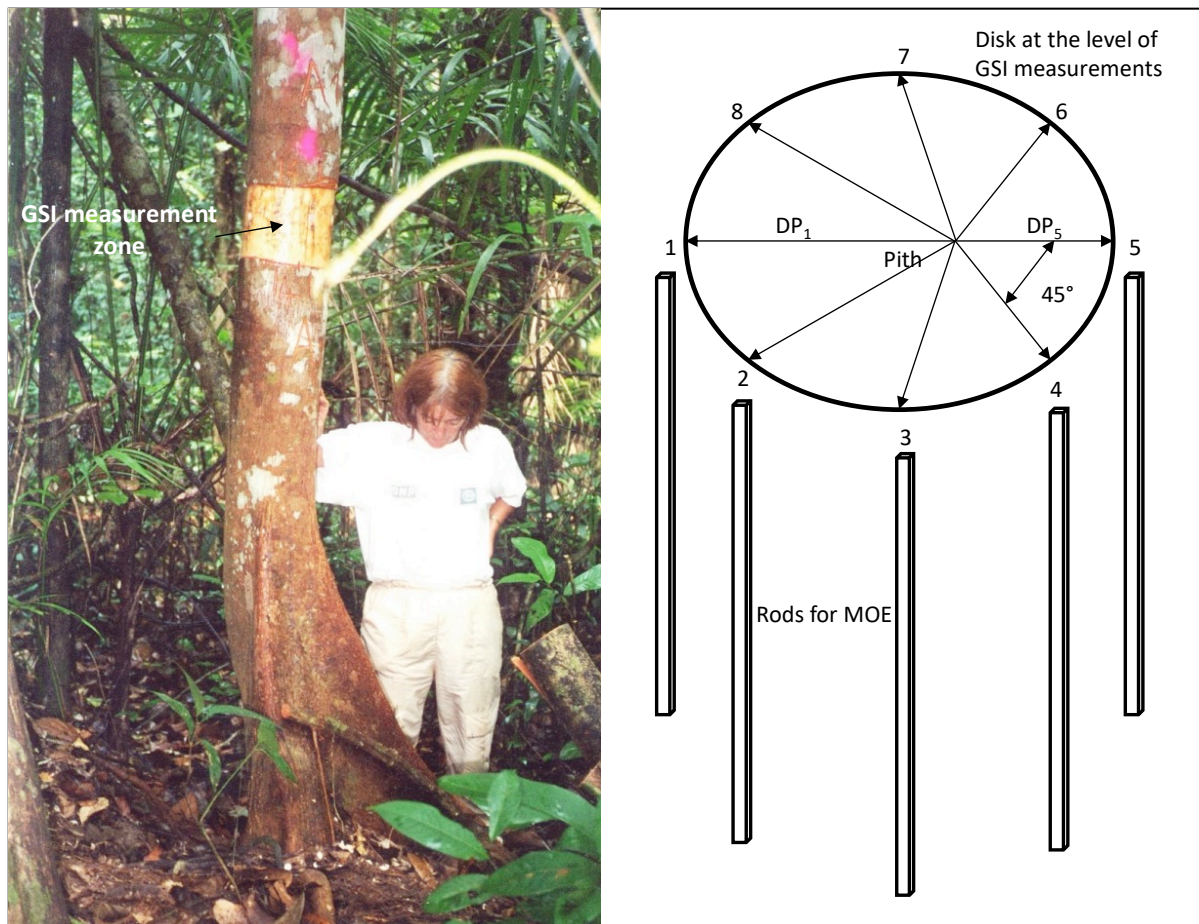


Fig. 2 - Tree measured in French Guiana, wooden disk and rods sawn for each tree
 DP_x : distance to pith from the x *GSI* point

Wood specimens for physical and mechanical properties measurements.

Just after cutting each tree, a disk (2cm thick) was crosscut at the level of *GSI* measurements (Fig. 2). Distance from pith to bark (DP_x) for each *GSI* measurement position was measured.

Eight longitudinally oriented rods were sawn just above the disk, at the 8 GSI positions, the closest possible to the bark, a few days after tree felling, in a local workshop. The dimensions of the rods were 500mm (L, longitudinal direction) x 25mm (R, radial direction) x 25mm (T, tangential direction) and they were kept in the green state, wrapped in food-grade transparent cellophane, until the measurement of green MOE (E_g). A total of 144 rods were prepared.

A smaller rod (50mm x 25 mm x 25 mm) was cut from these long rods for shrinkage measurement after E_g measurement.

The remaining long rods (430mm x 25 mm x 25mm) were air dried in the conditioning chamber at 65 % air relative humidity (RH) and 20°C temperature until equilibrium, corresponding to wood moisture content (MC) around 13%. The MOE was again measured on the air-dry rods as such, giving a “crude” air-dry MOE. Rods were then planed on all four sides to get standard air-dry rods (400mm x 20mm x 20mm) and standard air-dry MOE (E_d) was measured again.

Modulus of elasticity

The flexure free-free vibration method analysed with the Timoshenko model (Bordonné 1989, Brancheriau & Baillères 2002) was used for all measurements. Dimensions in the 3 directions (L, R, T) and mass (M) of the rods were measured with a high precision (at least 0.1%) using a precision balance and digital calipers. The rod was put on 2 thin wires at the positions of first vibration mode nodes and tapped at one end, successively on the radial (TL) and tangential (RL) face, corresponding to the RL and TL hitting plane, respectively. The resonant frequency f_i was measured for the three first vibration modes (f_1, f_2, f_3). Using the approximate solution of free vibration theory of Timoshenko, Bordonné (1989) proved that two useful variables x_i and y_i can be built from f_i frequencies, theoretically linked by the expression:

$$y_i = E/\rho - x_i \cdot E / (k.G)$$

where E is the longitudinal modulus of elasticity (MOE) of the rod, G the shear modulus in the hitting plane (G_{TL} or G_{RL} , depending on the orientation of the rod on the wires), ρ the rod density and k a fixed factor. The 3 frequencies (f_1, f_2, f_3) give 3 points of coordinates (x_i, y_i) allowing fitting of a straight line with a regression coefficient that should be very close to 1.0. The slope, the most sensitive to defects, and the intercept of the regression line are $-E/(k.G)$ and E/ρ , respectively. E/ρ is the specific modulus (SM) and equals the square of sound speed in the L direction (unit m^2/s^2) while the ratio E/G (E_L/G_{TL} or E_L/G_{RL}) describes elastic anisotropy and is useful for the calculation of ϕ . Density is calculated as mass to volume ratio $\rho = M/(L.R.T)$ and MOE by the formula $E = SM.\rho$. Then G can be derived from E and $E/k.G$, with $k=5/6$ for this geometry (Brancheriau & Baillères 2002). For some sample, measurements with a regression coefficient below 0.98, the values for G_{TL} or G_{RL} were not considered.

Due to the viscoelastic nature of wood and the smaller measurement times involved, the dynamic modulus obtained using vibration method is expected to be higher than the quasi-static modulus that would be more appropriate to analyse GSI measurements performed within a few minutes. It is, however, very well correlated and proportional to the quasi-static modulus obtained in 4 points bending, with a relative difference of only 4% (Brancheriau & Baillères 2002).

Maturation stresses

The peripheral maturation stresses (σ_m) is calculated as the product of α_m and green MOE (E_g).

Basic density and shrinkage measurements.

For each small rod, mass (M), volume (V) and longitudinal dimension (L) were measured in the green state (M_g, V_g, L_g) and in the anhydrous state (M_0, V_0, L_0). From these values basic density (BD), volumetric shrinkage (VS) and longitudinal shrinkage (LS) were calculated as follows:

$$BD = M_0 / V_g$$

$$VS = (V_g - V_0) / V_0$$

$$LS = (L_g - L_0) / L_0$$

Anatomical observations

On 2 selected positions on the two sides of the tree, anatomical observations were performed (Ruelle 2003). Anatomical sections (15 μm thickness) were cut on a microtome (Leitz, Oberkochen, Germany, model 1512, with feather knives) in the central zone of a shrinkage specimen. They were stained with a double coloration safranin/alcian-blue. Lignified cell walls have a red colour while pure cellulosic G-layers have a blue colour. Sections were observed with a light microscope (Olympus, Hamburg, Germany, BX60) and pictures were taken with a digital camera (Nikon, Tokyo, Japan, Coolpix 4500) with good definition (pixel density: 2272 x 1704) and a magnification factor of 100. A higher magnification factor (500) was used to measure micro-fibril angles for softwood species (Senft & Bendtsen 1985).

Results

Relationships between green and dry properties

Concerning the green state, MC_g was on average 89%, ranging from 38% to 182% (39% to 155% as a tree average) and was strongly dependent on wood density. The air-dry state, here, refers to the condition of the specimens after a long storage in a room controlled for temperature ($T = 20^\circ\text{C}$) and air relative humidity ($RH = 65\%$). The corresponding equilibrium MC (MC_d) ranged from 12% to 16% depending on the species and wood type within the species.

A proportional relationship, with a very high coefficient of determination, was observed between BD and air-dry density (DD) for this sampling (Fig. 3). The proportionality coefficient (BD/DD) had a mean of 0.826, very similar to the result of Vieilledent et al (2018) and ranged from 0.77 to 0.86. It depended mainly on the total volumetric shrinkage (VS) (Fig. 4).

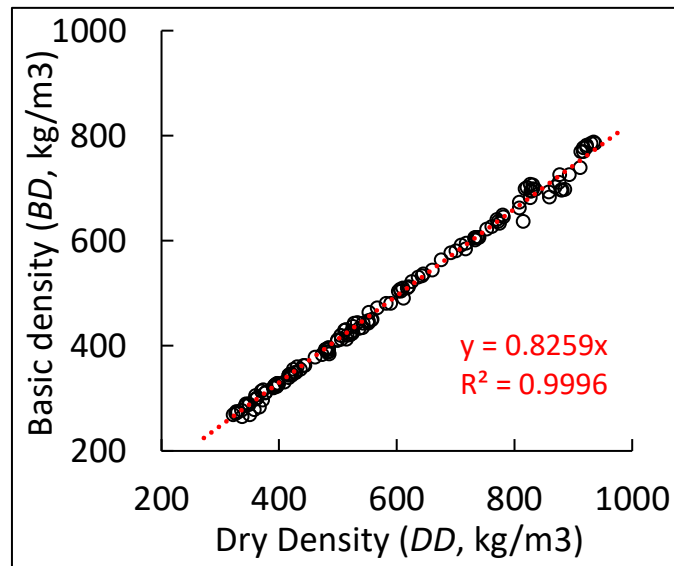


Fig. 3 - Proportional relationship between dry and basic density

For MOE (E), specific modulus (SM) and shear moduli (G_{TL} and G_{RL}), there are also proportional relationships between green and dry values. The determination coefficient (R^2) is very high for E and SM (Fig. 5) and the influence of MC is relatively small (around 10% decrease from air-dry to green state).

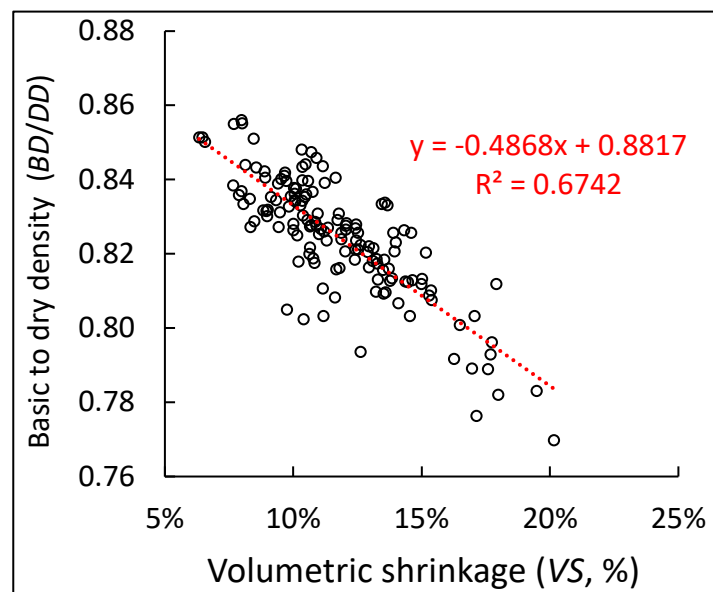


Fig. 4 - Dependence of the basic to dry density ratio on the total volumetric shrinkage.

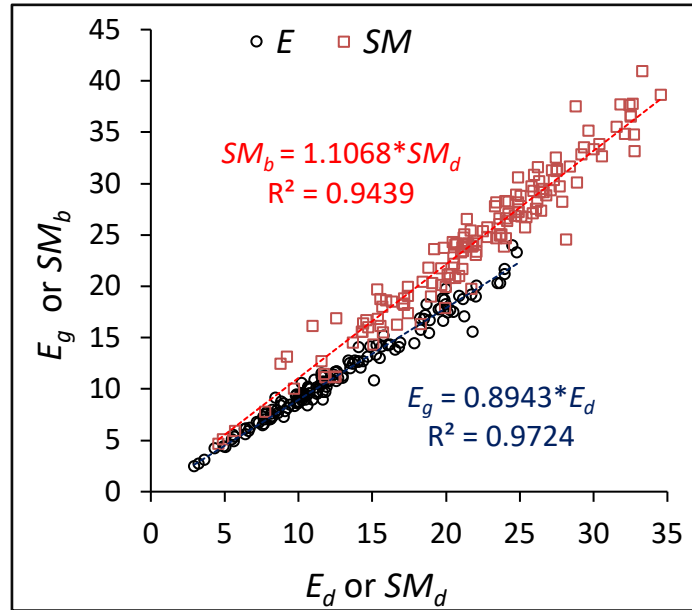


Fig. 5 - Proportional relationship between air-dry and green values for longitudinal MOE (E , GPa) and specific modulus (SM , Mm^2/s^2); E_g : green MOE; E_d : dry MOE; SM_b : basic SM ; SM_d : dry SM .

In the case of shear moduli, the proportional relationship is the same for the two directions (TL and RL) with a lower R^2 , mostly due to the much higher sensitivity of E/G (where G stands for either G_{TL} or G_{RL}) to small heterogeneities along the rod (Fig. 6). MC influence is higher (around 25% decrease from dry to green state).

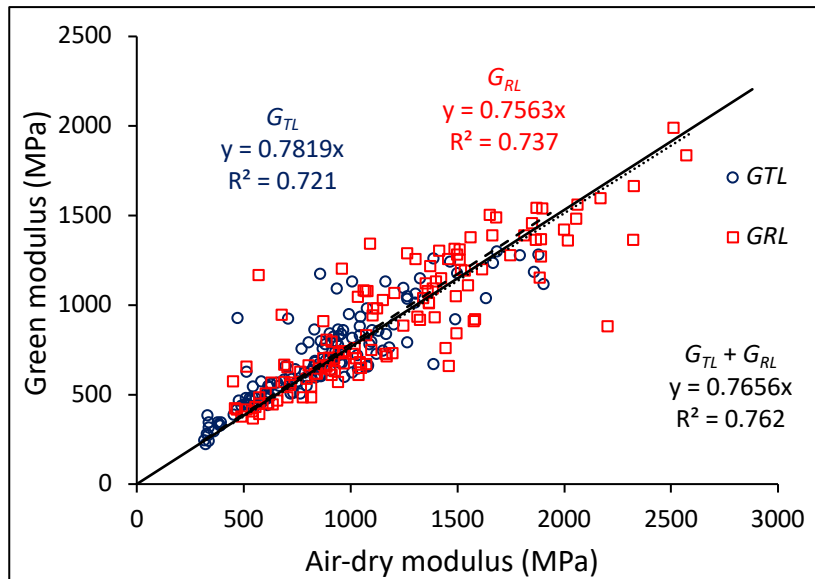


Fig. 6 - Proportional relationship between air-dry and green shear moduli

Calibration factor for maturation strains

The calibration factor ϕ can be calculated using the regression found in **Annex 2** for all positions where E_L/G_{TL} is available at the green state:

$$\phi = -7.57 \cdot \ln(E_{Lg}/G_{TLg}) + 34.665$$

There was a very good exponential relationship between E_L/G_{TL} and basic specific modulus (SM_b), for all positions (Fig. 7).

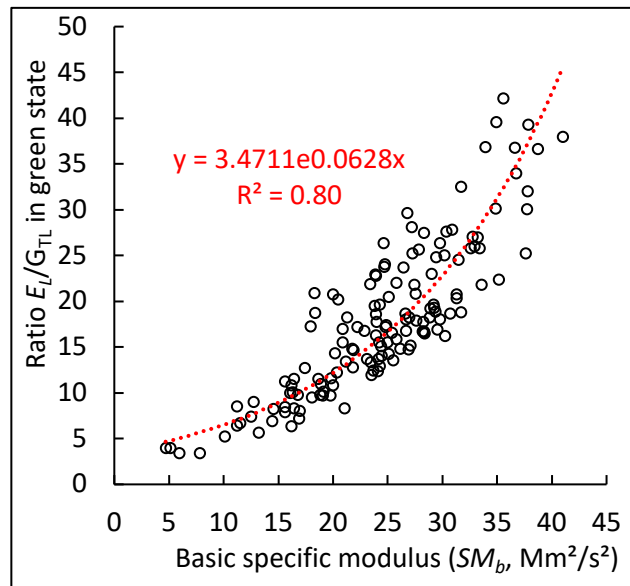


Fig. 7 - Relationship between E_L/G_{TL} and basic specific modulus (SM_b)

Using this exponential formula in the equation for the calibration factor ϕ , we find a linear relationship between ϕ and SM_b :

$$\phi(SM_b) = -0.475 \cdot SM_b + 25.24$$

with the same regression factor ($R^2 = 0.80$). Considering that SM_b is more easily and more precisely measured, we have decided to use this relationship for the calibration factor calculation in the data sheet.

Peripheral maturation stress and GSI within a tree

In the first sheet of the accompanying Excel file named "Data_growth_forces_Annex" (<https://zenodo.org/record/4695043#.YHigSmg694c>), tree-by-tree graphs are drawn showing the relationship between GSI and σ_m for each tree. For each tree there are 8 pairs of $GSI - \sigma_m$ measurements, yielding a proportional relationship with a very high R^2 level (all $R^2 > 0.97$ and 72% of R^2 values > 0.99). This result suggests that it is perfectly suitable to use GSI as a proxy for σ_m at tree level for biomechanics studies. The conversion factor $\psi = \sigma_m / GSI$ (in $MPa/\mu m$) ranged from 0.064 to 0.259 depending on the species (Table 4).

Force generation and longitudinal wood properties

The initial or peripheral maturation stress σ_m is the force created by the living wood per unit surface. It is the product of the maturation strain (α_m) and the green L MOE (E_g), itself the product of BD and SM_b . BD , SM_b and α_m are the parameters resulting from the development of the living wood until cell death

A correlation analysis (Table 5) shows that σ_m is mostly dependent on α_m ($R^2=88\%$) then on SM_b (22%) and on BD (8%). Moreover, the three parameters SM_b , E_g/G_{TLg} , E_g/G_{RLg} are very strongly correlated. They are all indicators of wood anisotropy.

Tree growth forces and wood properties

Table 4 - Mean values of parameters per tree

Genus	Species	BD	SM_b	E_g	ψ	R^2
Miconia	fragilis	0.71	26.92	19.0	0.232	0.9997
Carapa	procera	0.61	24.87	15.2	0.203	0.9941
Eschweilera	decolorens	0.78	25.92	20.2	0.259	0.9996
Qualea	rosea	0.56	21.29	12.1	0.199	0.9936
Cecropia	sciadophylla	0.35	34.95	12.3	0.107	0.9788
Ocotea	guyanensis	0.46	27.20	12.7	0.156	0.9903
Laetia	procera	0.66	21.97	14.4	0.218	0.9979
Jacaranda	copaia	0.42	22.14	9.2	0.132	0.9916
Virola	surinamensis	0.29	36.89	10.8	0.084	0.9954
Eperua	falcata	0.70	22.99	16.1	0.234	0.9975
Simaruba	amara	0.30	28.40	8.4	0.096	0.9976
Populus	hybrid	0.29	28.04	8.2	0.110	0.9724
Populus	hybrid	0.34	29.19	9.8	0.114	0.9903
Populus	hybrid	0.38	19.37	7.4	0.128	0.9823
Picea	abies	0.51	20.61	10.0	0.152	0.9933
Picea	abies	0.49	18.10	8.4	0.142	0.9989
Pinus	pinaster	0.42	10.68	11.4	0.064	0.9793
Pinus	sylvestris	0.45	15.88	4.1	0.108	0.9882

BD : basic density (Kg/dm^3); SM_b : basic specific modulus (Mm^2/s^2); E_g : green elastic modulus (GPa); ψ : conversion coefficient for maturation stress (in $\text{MPa}/\mu\text{m}$); R^2 regression coefficient of the proportional relationship between σ_m and GSI within the tree.

Table 5- Correlation (Spearman) coefficients between parameters.

	α_m	σ_m	BD	SM_b	LS	E_g	G_{TLg}	G_{RLg}	E_L/G_{TLg}	E_L/G_{RLg}
α_m	1	0.941	0.095	0.381	0.196	0.435	-0.049	-0.047	0.431	0.422
σ_m	***	1	0.290	0.467	0.137	0.685	0.059	0.058	0.559	0.495
BD		***	1	-0.346	0.196	0.593	0.790	0.783	-0.094	-0.178
SM_b	***	***	***	1	-0.189	0.500	-0.499	-0.508	0.843	0.828
LS	*		*	*	1	-0.074	0.271	0.277	-0.231	-0.175
E_g	***	***	***	***		1	0.289	0.255	0.619	0.534
G_{TLg}			***	***	**	***	1	0.866	-0.516	-0.473
G_{RLg}			***	***	**	**	***	1	-0.421	-0.587
E_L/G_{TLg}	***	***		***	**	***	***	***	1	0.877
E_L/G_{RLg}	***	***	*	***	*	***	***	***	***	1

Bold characters: correlation significant at 0.001

***: correlation significant at 0.001 **: correlation significant at 0.01

*: correlation significant at 0.05

α_m : maturation strain; σ_m : maturation stress; ϕ and ψ : conversion coefficients between GSI and maturation strain and stress, respectively; BD : basic density (anhydrous mass/green volume); LS : total longitudinal shrinkage; E_g : green longitudinal elastic modulus; G_{TLg} and G_{RLg} : green TL and RL shear modulus, respectively; SM_b : basic specific modulus (green longitudinal elastic modulus/basic density); E_g/G_{TLg} and E_g/G_{RLg} : anisotropy ratio in green condition in TL and RL plane, respectively.

The correlation between LS and α_m is weak when all species are considered. This is not true when separating hardwoods and softwoods (Fig. 8).

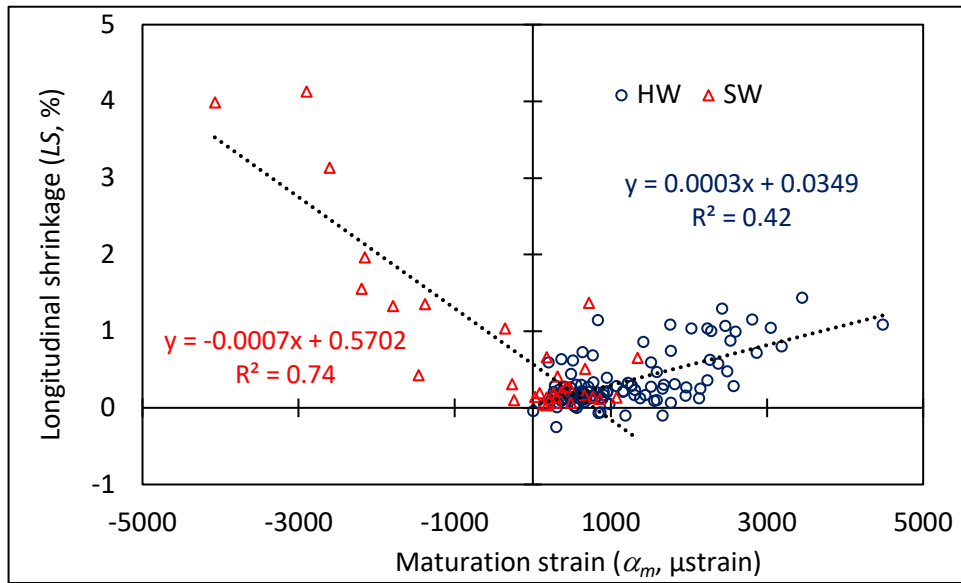


Fig. 8 - Relationships between longitudinal shrinkage (LS) and maturation strain (α_m)
HW: hardwoods; SW: softwoods

For each tree the angular variation around the perimeter of α_m and LS , in order to visualize their relationships at the same position, is also given in the Excel file (<https://zenodo.org/record/4695043#.YHigSmg694c>). Globally, there is a clear association between zones with high and low levels of each parameter. Tree by tree, the peak value (maximum in absolute value) is a rather narrow zone and there is often an angular shift between α_m and LS which are not exactly measured at the same position. This explains why, besides the high similarity between profiles of the two parameters, regression coefficients (R^2) are not so high (Fig. 8).

In order to have a global look on the parallelism between both variations, a “mean hardwood tree” and a “mean softwood tree” were calculated using the average of all hardwoods and all softwoods for α_m and LS (Fig. 9).

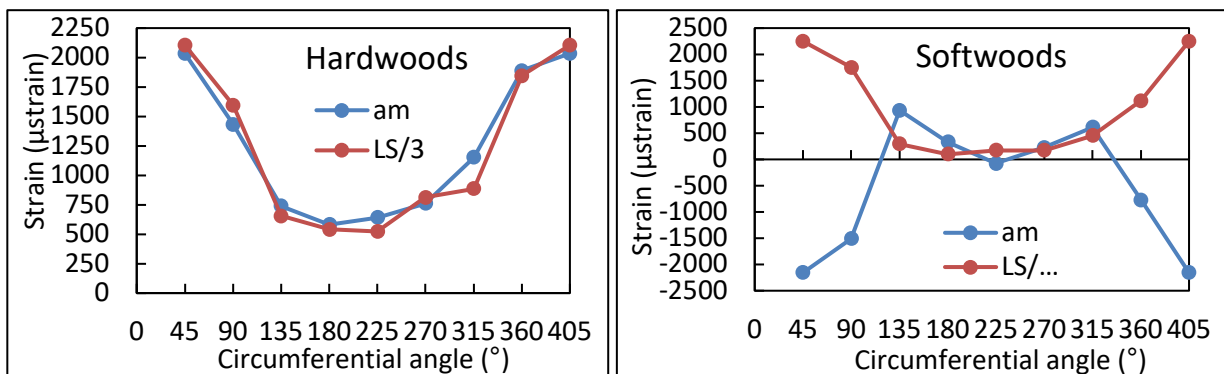


Fig. 9 - Circumferential variations for hardwoods (top) and softwoods (bottom): mean value for all trees around the circumference, of maturation strain (am) and longitudinal shrinkage (LS). Angle: angular position of the 8 measurements (degree). The angular position was shifted (+225°) in order to have the expected reaction wood position in the middle of the profile.

These figures highlight the great similarity between maturation shrinkage (α_m) and hygroscopic shrinkage in the L direction (LS) for hardwoods. For softwoods high shrinkage is associated with negative α_m . A very high similarity is found when using absolute values of α_m (Fig. 10). In these graphs, the same scale has been used for α_m and for LS divided by an ad-hoc value, both being given in μstrain .

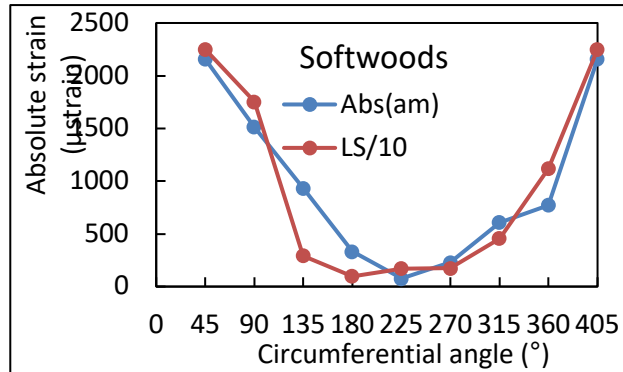


Fig. 10 - Circumferential variations for softwoods using absolute values for maturation strain. Same legend as Fig. 9

Specific behaviour of reaction wood

Maturation strain values, longitudinal shrinkage of the associated rods, together with visual observation of the wood disks for softwoods (Fig. 11), allowed allocation of a wood type to each tested specimen: 1=CW, 2=both CW and NW, 3=NW, 4=both NW and TW, 5=TW. Transverse sections 15 μm thick cut from two NW and two TW rods were used to examine wood anatomy (Fig. 12 and Fig.13).

The mean microfibril angle (MFA) was measured for the conifer specimens only (Brémaud et al 2013). It is always high for CW, and globally lower for NW but with some overlap around 30-35°. The 3 conifer trees were rather young (between 10 and 15 years old) so most of the NW can be considered as juvenile wood (Fig. 11).

Tree growth forces and wood properties

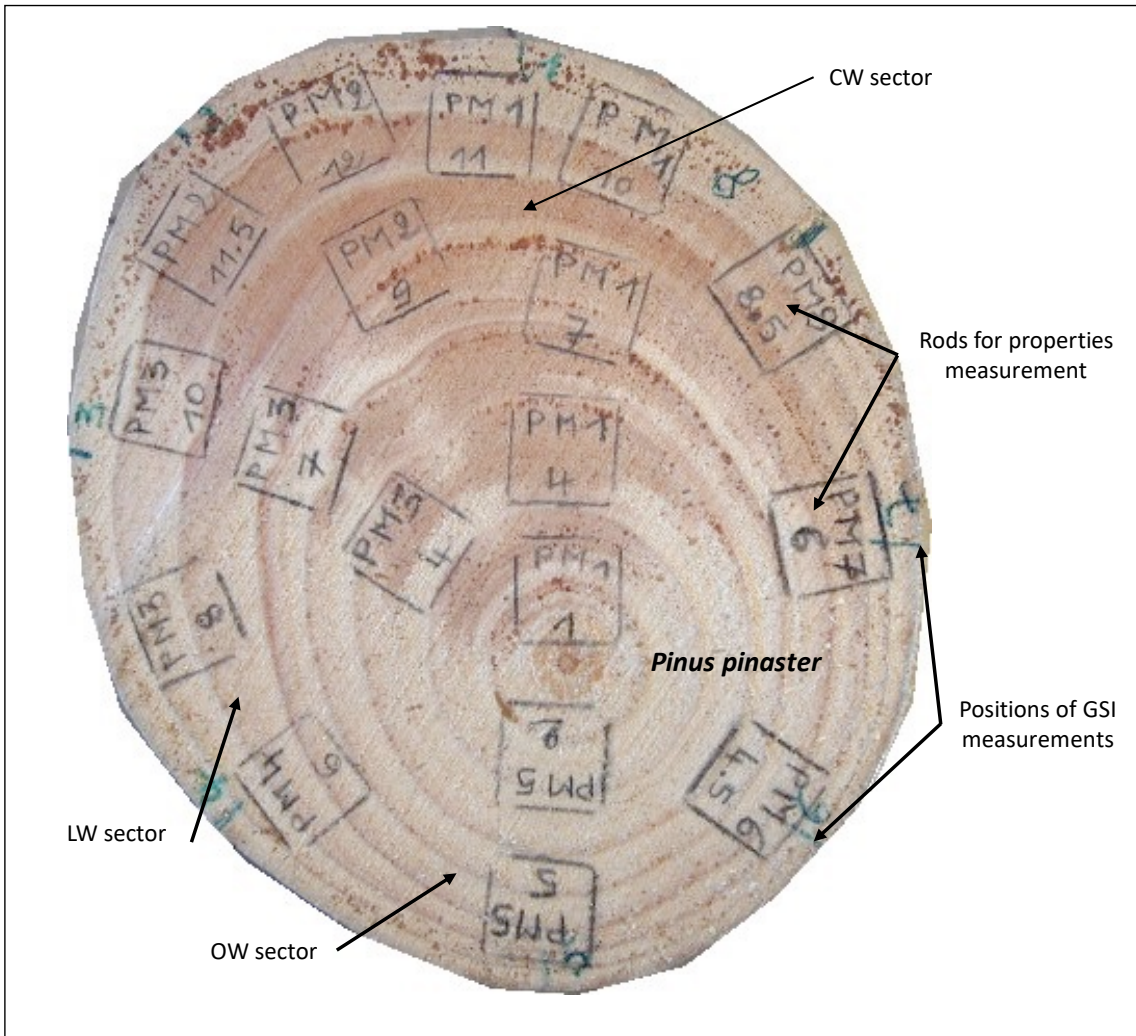


Fig. 11 - Image of the section of *Pinus pinaster* tree with the positions of measurements
CW: compression wood, OW: opposite wood, LW: lateral wood

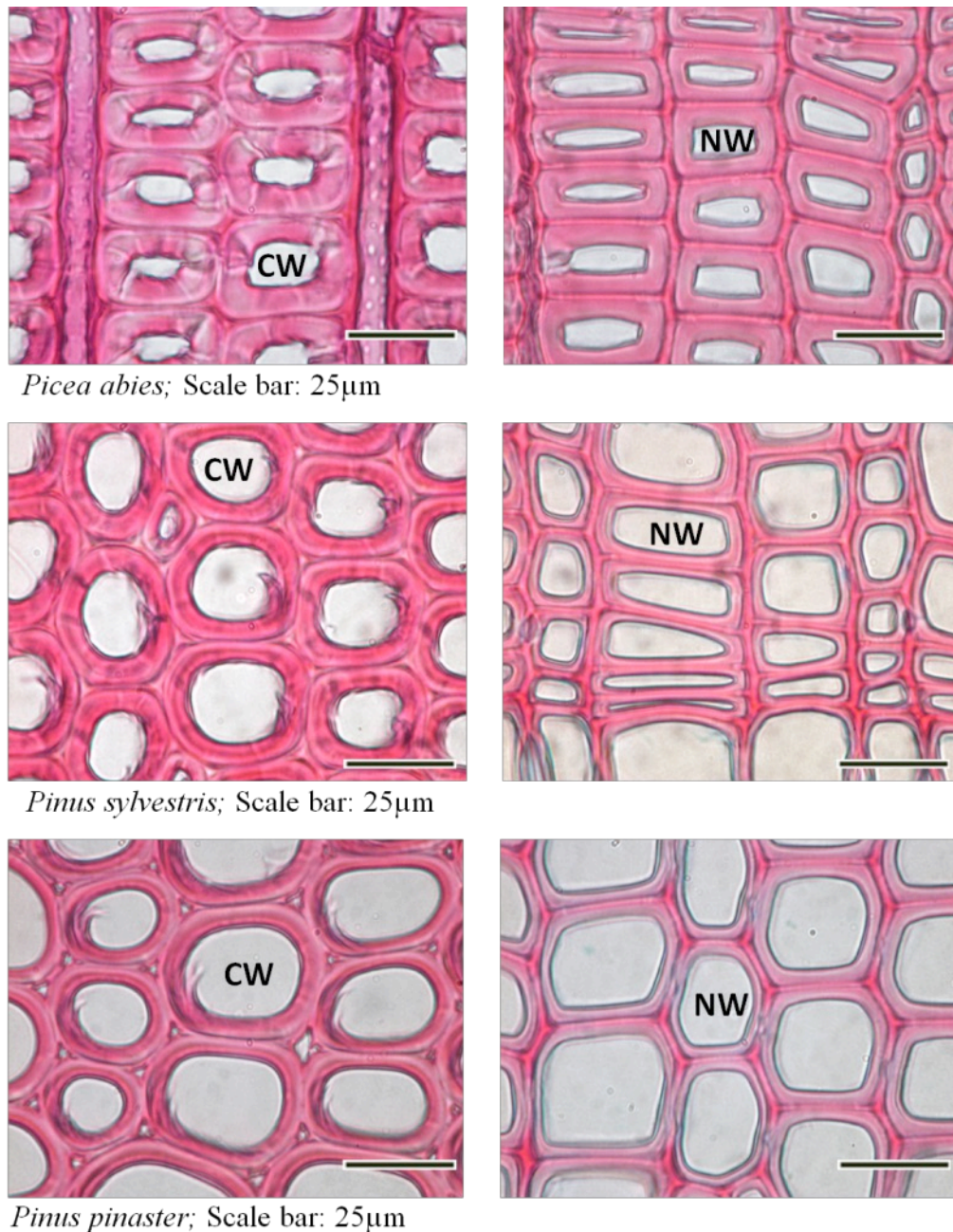


Fig. 12 - Comparative anatomy of compression wood (CW) and normal wood (NW) for the conifer species

For hardwoods, a majority of G-layer type TW (3 poplars, *Miconia*, *Carapa*, *Ocotea*, *Cecropia*, *Eperua*) were studied (Table 3), two species had a lignified G layer (*Eschweilera* & *Qualea*), one a peculiar multi-layered G layer (*Laetia*) and three no G layer fibre (*Jacaranda*, *Virola*, *Simarouba*), according to a recent classification based on 242 tropical species (Ghislain et al 2019). Measurement of *MFA* on the 3 species represented in Fig. 12 (Ruelle et al 2007) showed lower values for TW (2° to 14°) than for NW (10° to 35°), with some overlap around 10°-14°.

One clear indication within each tree is the much higher *LS* for both RW types as compared to NW (Table 6).

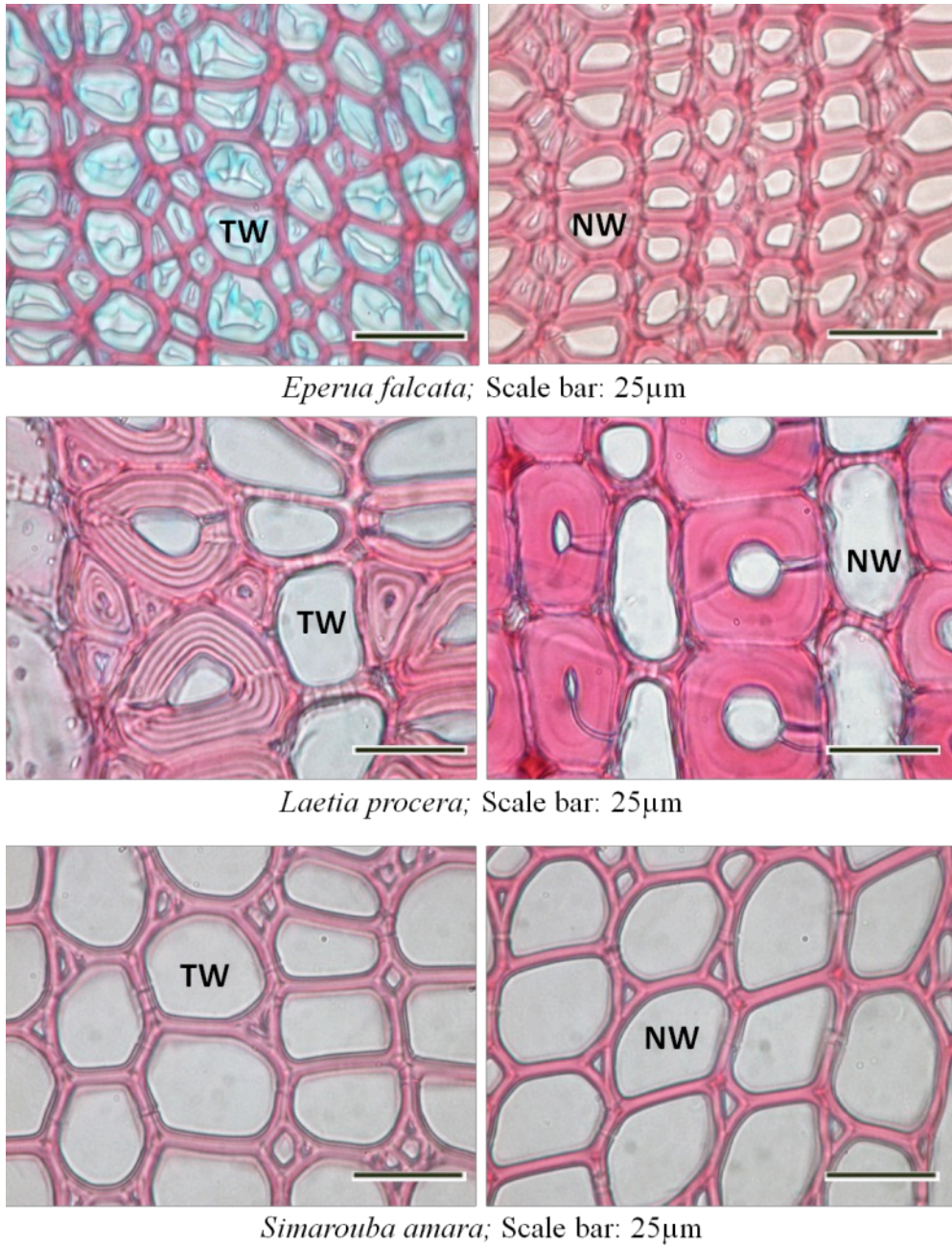


Fig. 13 - Comparative anatomy of tension wood (TW) and normal wood (NW) for 3 tropical species

Table 6 - Differences between normal and reaction wood

Type	α_m NW	α_m RW	RW/NW	LS NW	LS RW	RW/NW	SM_b NW	SM_b RW	RW/NW
SW	410	-2103	-5.1	0.15	2.10	14.4	21.08	9.01	0.43
HW	712	2334	3.3	0.15	0.75	5.0	25.20	28.85	1.15
HW GL	796	2255	2.8	0.17	0.89	5.3	25.48	28.42	1.12
HW GLc	522	3579	6.9	0.15	1.22	7.9	19.16	24.58	1.28
HW LGL	668	2174	3.3	0.17	0.53	3.0	22.95	29.21	1.27
HW NGL	637	1995	3.1	0.11	0.31	2.9	27.89	32.18	1.15

SW: Softwood; HW: hardwood; NW: normal wood; RW: reaction wood; GL: gelatinous layer; GLc: multi-layered GL; LGL: lignified GL; NGL: no GL; α_m : maturation strain; LS: longitudinal shrinkage; SM_b : basic specific modulus; RW/NW: ratio between RW and NW values

There is a clear distinction between wood types for the parameters describing force generation (Fig. 14) which confirms RW as force generator: compression (negative strain/stress) for CW, slight tension for NW, high tension for TW. Median α_m is very high, around 2200 μ strain (0.22%) in absolute value for both RWs, much lower (620 μ strain) for NW. Median σ_m are not so different, in absolute value, between CW (-9.5 MPa, compression) and NW (+6.6 MPa, tension), due to the low value of MOE (median 5.5 GPa) for CW (10.2 GPa for NW). The difference increases for TW (+31 MPa, tension) due to the higher median value of MOE (14.5 GPa), so tensile stress is nearly 5 times higher in TW as compared to NW. For a small new ring portion of 100mm² (50 mm wide, 2mm thick) the force created in the CW (around 1 kN) or TW (around 3 kN) sectors are very high.

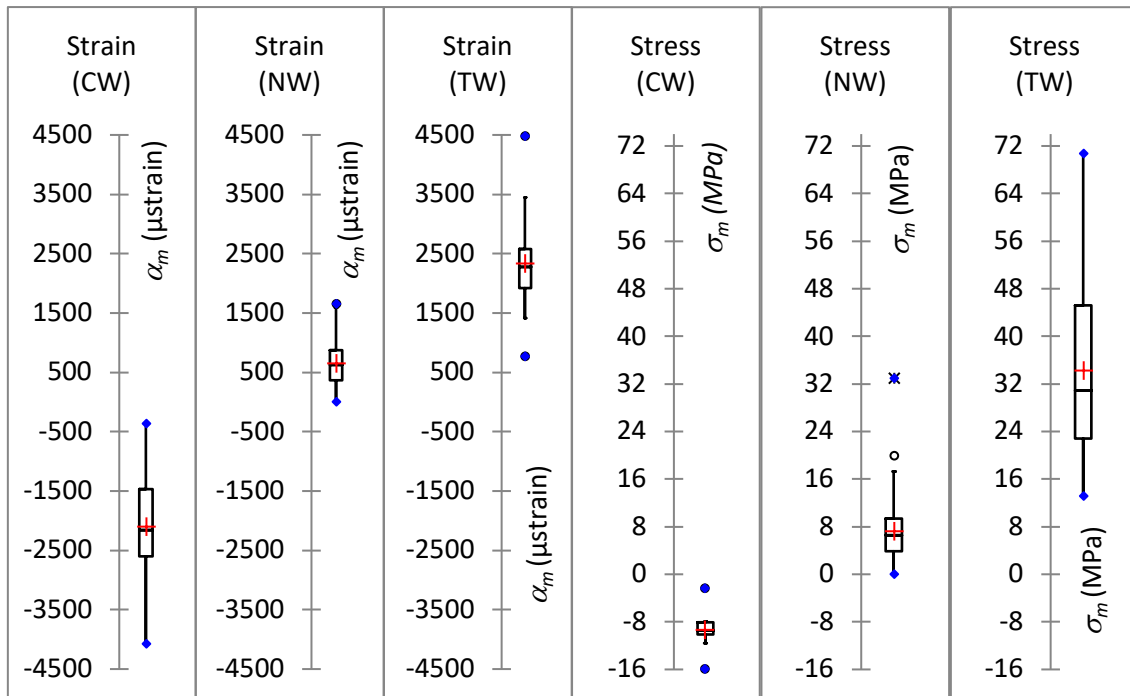


Fig. 14 - Distribution of maturation strain (α_m , μ strain) and initial maturation stress (σ_m , MPa) for different wood type. CW: compression wood; NW: normal wood; TW: tension wood

The parallel regular progression of values for SM_b in Fig. 15 reflects the fact that the MFA decreases from CW (up to 50°) to TW (near to 0°), with, however, a large overlap between NW and TW and a smaller one between NW and CW. This is not true for LS (Fig. 15 and Fig. 16): both RWs have a high LS while NW keeps a very low LS level (less than 0.4%).

The relationship between LS and α_m (Fig. 16), α_m and SM_b (Fig. 17) or LS and SM_b (Fig. 18) shows different patterns for NW, CW and TW. It should be noted that α_m and green wood properties (LS and SM_b) are not strictly measured on the same material and this contributes to lower correlations between them.

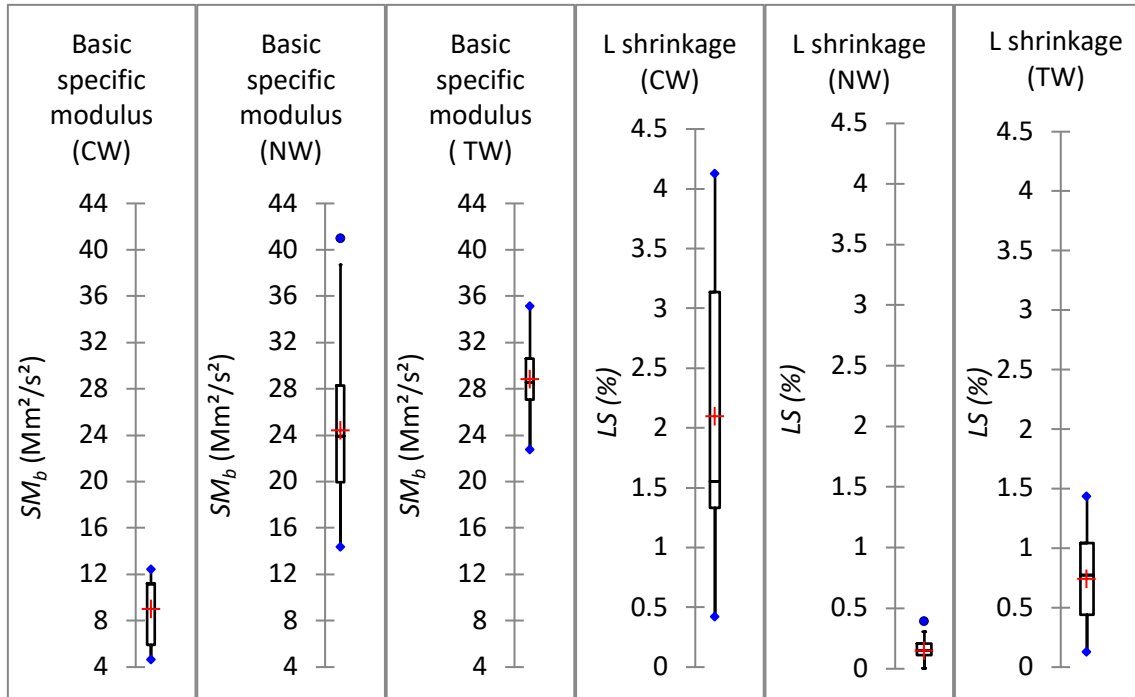


Fig. 15 - Distribution of longitudinal shrinkage (LS) and basic specific modulus (SM_b) for different wood types. Same legend as Fig. 14

Absolute value of α_m grows with LS (Fig. 16) for both RW types but there is no significant relationship for NW. Moreover, there are no significant difference for NW between softwoods and hardwoods. The high experimental measurement uncertainties for NW may be the reason for this lack of significant difference.

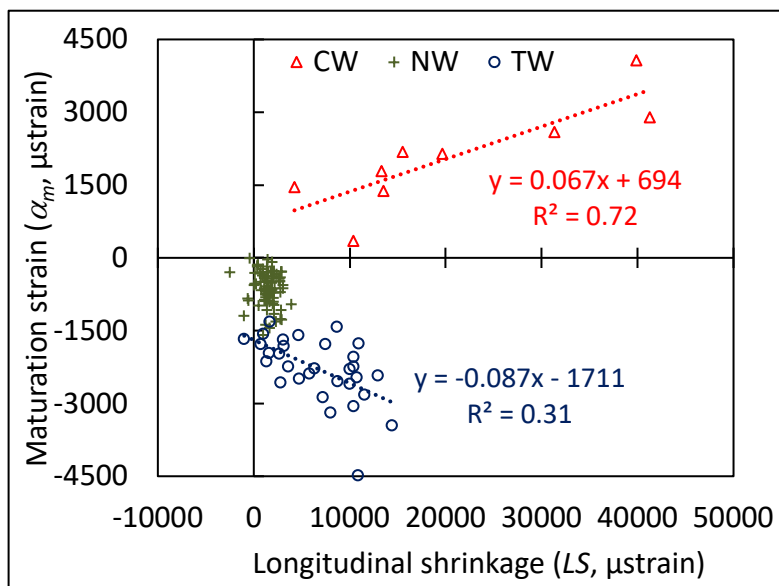


Fig. 16 - Evolution of maturation strain with longitudinal shrinkage

CW: compression wood; NW: normal wood for both softwoods and hardwoods (no significant difference); TW: tension wood; μstrain : micro deformation (10^{-6})

α_m decreases in absolute value for both TW and CW but there is no significant relationship for NW nor difference between softwoods and hardwoods for the same reason as above.

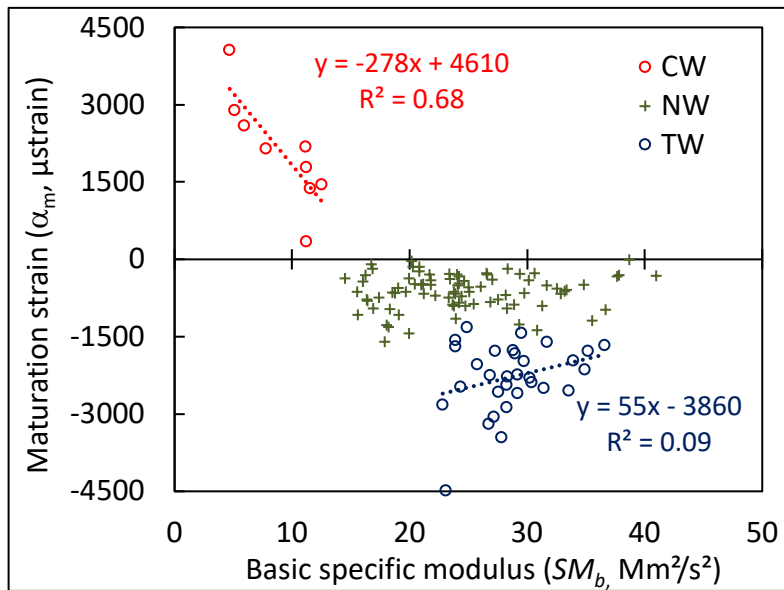


Fig. 17 - Evolution of longitudinal maturation strain with basic specific modulus; same legend as Fig. 16.

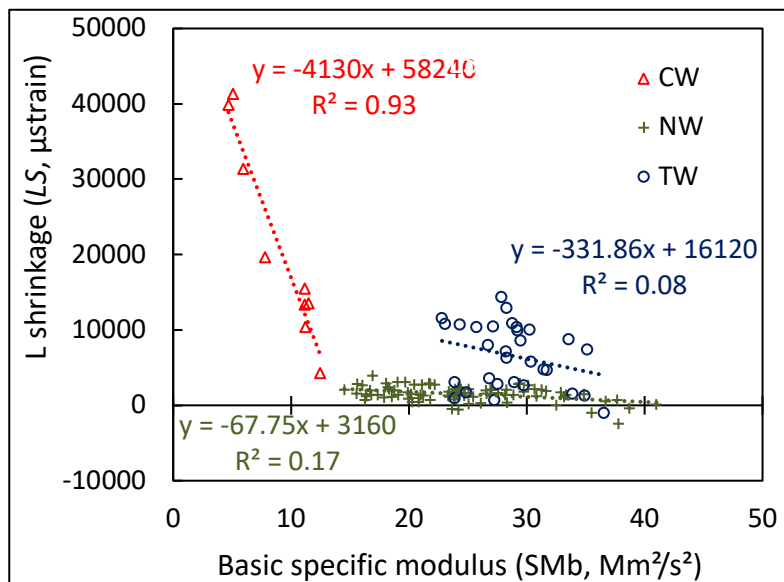


Fig. 18 - Evolution of longitudinal shrinkage with basic specific modulus; Same legend as Fig. 16

LS and SM_b are measured on the same rod so the experimental uncertainties are lower. For all wood types LS decreases significantly when SM_b increases (Fig. 18). But the evolution is very steep for CW while it is smooth for NW with no significant difference between softwoods and hardwoods. In the case of TW there seems to exist two different behaviours. A group of species known to possess G-layer fibres have higher LS , while the other behaves more like NW. It is interesting to note that the range of specific modulus is rather large for tension wood and is overlapped by the NW range. The higher values for α_m in TW (for G-layer fibre group) are associated with the lower specific modulus.

Based on these observations CW and TW cannot be considered as an extension of NW in a single model.

Conclusion and discussion

Improvements in the use of the single hole method.

A simple conversion coefficient (ϕ) was obtained between growth stress indicator (*GSI*) given by the single hole method and α_m using SM_b . The proportionality is true within a tree in all cases, hence *GSI* can be directly used for biomechanical studies at tree level.

Estimation of growth forces

The growth force at a given angular position depends on 4 parameters

$$F = A \cdot SM_b \cdot BD \cdot \alpha_m$$

A (section area) is directly proportional to ring width (be it annual or not, as in tropical species).

SM_b and BD needs the measurement of green wood volume (V_g), green wood mass (M_g), specific modulus in the green state (SM_g), green rod dimensions (L_g, T_g, R_g , for rods cut in the L, R, T directions), and anhydrous mass M_0 . Measurement at the same time of anhydrous wood rod volume (V_0) and rod L dimensions (L_0, T_0, R_0) add useful information like total volumetric shrinkage (VS), L shrinkage (LS), R shrinkage (RS), or cross-sectional shrinkage ($VS-LS$). Using the definition of the parameters, they can be calculated from these measurements in the green and anhydrous state:

$$BD = M_0 / V_g$$

$$SM_b = SM_g \cdot D_g / BD$$

$$VS = (V_g - V_0) / V_g$$

$$LS = (L_g - L_0) / L_g$$

$$RS = (R_g - R_0) / R_g$$

$$\alpha_m = \phi \cdot GSI$$

This calibration factor depends on elastic green wood properties and was found to be very well predicted by SM_b , over a very wide range of SM_b (5 to 40 Mm^2/s^2) using the linear equation:

$$\phi = -0.475 \cdot SM_b + 25.24$$

If α_m measurement (on standing tree) is not possible (or was not done) a small portion of trunk can be used in order to measure all parameters except for α_m . It appears that measurements of LS allow a rough estimate of α_m but only for CW and TW (Fig. 16).

For CW, a linear equation can be used to transform LS (in μstrain) into α_m (in μstrain):

$$\alpha_m = 0.067 \cdot LS + 694$$

For TW it can be:

$$\alpha_m = -0.087 \cdot LS - 1711$$

For NW, the only possibility is to use a constant mean value (Table 6):

$$\alpha_m = 410 \mu\text{strain for softwoods}$$

$$\alpha_m = 712 \mu\text{strain for hardwoods}$$

Very good proportional relationships were established for the relationship between green and air-dry state for density, specific modulus, MOE and shear modulus (G_{TL} and G_{RL}). Hence air-dry wood properties can be used whenever no data is available for green wood.

If there are only data on air-dry wood, including total shrinkage values (VS , RS , LS) the estimation of growth forces can still be done with reasonable validity. Very good proportional relationships were established between BD and DD , SM_b and SM_d :

$$BD = 0.826 \cdot DD ; SM_b = 1.11 \cdot SM_d$$

The conversion coefficient BD/DD can be corrected by the volumetric shrinkage, if necessary, using the equation:

$$BD/DD = -0.49 \cdot VS + 0.88$$

Green ring width (RW_g), needed for the calculation of the surface area A , can be related to dry ring width (RW_d) using radial shrinkage between green and air-dry state that can be roughly calculated as 4/10 of the total radial shrinkage (RS) assuming that standard air-dry moisture content is 12% and fibre saturation point (FSP) is 30%. If the studied wood portion does not include a whole ring, it is likely to have shrunk tangentially as well, so that the correction factor for A , to account the T shrinkage, should involve the cross-sectional shrinkage, given by 4/10 of VS - LS .

Further experiments should be done on species with different types of RW in order to assess the discrepancies between such simple rules and experimental measurements of F . In the discussion that follows, some suggestions for improvement will be made.

Maturation strain and hygroscopic shrinkage in the longitudinal direction

In a fibre composite, a physical action such as heating induces strains very different in a direction nearly parallel or perpendicular to fibre direction (Korb et al 1998, Sridhatra & Vilaseca 2020) and micromechanical models based on properties of matrix and fibre are effective in predicting this expansion or shrinkage (Cave 1972, Bowles & Tompkins 1988).

In the cell wall, we can imagine that during lignin deposition within existing porosity in the cellulose - hemicellulose network, strains should appear both in the matrix and in the cellulose network, generating maturation strains (Sugiyama et al 1993, Okuyama et al. 1994). In the same way, during drying, water molecules extraction from the nano-porosities within matrix, and the cellulose network causes hygrometric shrinkage (Harris & Meylan 1965, Watanabe & Norimoto 1996). The models used for the prediction of such strains are exactly the same (Yamamoto et al 1998, Yamamoto et al 2001, Alm eras et al 2005a) and are applied to the same matrix - cellulose network. As for specific modulus, due to the honeycomb structure of wood, the longitudinal strains should be the same at the cell wall and at the honeycomb level. This gives very good reasons for finding strong relationships between maturation and hygroscopic strains at the cell wall level, in the L direction.

Besides the complexity of the models, three main parameters are needed: micro-fibril angle, lignification or hygroscopic strains of the matrix, organization of the cellulosic nano-fibres within the micro-fibrils, with or without internal matrix occurrence (Chang et al 2015, Alm eras & Clair 2016, Gorshkova et al 2018) and associated lignification or hygroscopic strains. The most basic model assumes that lignification and hygroscopic strains are constant while MFA changes. The predicted tendency for NW seems to be rather good in the very large range of MFA values, but the uncertainty of experimental values is high for maturation strains.

Reaction wood versus normal wood

There is a debate about whether RW is a mere continuity of NW or a shift from one strategy to another. Most of the time RW alone is considered as “muscle” able to produce a motor action through force dissymmetry between the upper and lower faces of the inclined woody axis. But if we admit that a muscle action is basically generating forces, NW has also a muscle function, thanks to the behaviour of tracheids and fibres during their biological life (before cell death). Oblique growth of woody axes at low inclination angles (below 10°) is regulated by a motor action involving only NW. Triggering of RW formation is clearly triggered by genetic expression (Gardiner et al 2014) and seems to be used for severe posture reaction (high motor action) in case of oblique growth at steep angles (branches) or vertical restoration after accidental inclination. These are the situations mostly investigated for RW studies or posture control.

Maturation strain α_m provides a continuum of wood types from CW to TW through NW, but it is difficult to define a definitive range of values for each wood type within a species and to decide whether there is an overlap of α_m ranges at the frontier between NW and CW or TW. In the anatomical field, the frontier is clearer for softwoods. Despite differences between mild and severe CW, both exhibit all the attributes of CW, with gradations of parameters (lignin content, *MFA* and *LS*). The possibility to extend the models to CW seems possible using refinements in the model (Alméras et al 2005a) or a different swelling behaviour of the matrix for the compression wood (Yamamoto et al 1998).

For hardwoods, besides the regulation in pure NW there is a transition with wood containing a growing proportion of TW fibres (Trénard & Guéneau 1975, Fang et al 2008, Gardiner et al 2014). This is why, in this study, TW specimens were all 100% tension wood fibres (at least it was verified for G-layer TW). For TW the only consistent way to analyse experimental results is to imagine a complex cellulose network within the gelatinous layer (Alméras & Clair 2016, Gorshkova et al 2018) which could explain high α_m , high *LS* and rather low *SM* for steep *MFA*, as found in this experiment.

Moreover, rather large variations of α_m for NW are poorly related to large variation in *SM* (and to *MFA*). This can be an artefact of the use of trees with large sectors of RW. The same kind of experiment ought to be made on trees of the same species with low-angle oblique growth (such as coppice shoots) yielding large α_m variations with no RW occurrence. *LS* should be measured with a higher precision than in this study (using strain transducers for example).

The similarity between variation of α_m and *LS* was less obvious for NW in our experiment, but two explanations can be given for this poor correlation: i) the two properties were not measured at the exact same place in the tree and the angular variations of properties can be very sharp, ii) the relative accuracy of *LS* measurement was much lower than for α_m in NW. Lower angular gradients (oblique growth with no RW), better L shrinkage measurement accuracy together with better pairing of specimens (measuring maturation strains by glued strain gages before cutting the L shrinkage specimen at the same location) would be important improvements in the material and methods approach.

Although no single model seems to explain NW and RW, general trends of predictions by physical models yield an influence of *SM* on α_m and *LS* variations within a species that applies both to NW and RW. The models need also information about strains associated with lignification or water departure within each cell-wall component (cellulose micro-fibril, hemicelluloses and lignin).

For RW, large variations of α_m (and LS) are linked to great changes in chemical composition, e.g., the proportion of the main polymer such as lignin, but also changes in the distribution of:

- lignin monomers: ratio syringyl/guaiacyl for hardwood without G-layer (Baillères et al 1995), ratio hydroxyphenyl/guaiacyl for severe compared to mild CW (Nanayakkara et al 2009)
- hemicelluloses sugar origin: ratio galactose/arabinose (Brennan et al 2012)

Although the chemical variations are lower in NW, they may complement the influence of MFA on both α_m and LS . A single model for NW and RW will probably be rather simple using a few chemical indicators.

For TW there is a need for further investigation on different types of solution (microstructure and chemical composition) allowing very high α_m on one side of a tree. Using trees with clear TW sector (100% of TW fibres) for some species with the different types of TW, a study of the variations between severe and mild TW based on variations of high α_m and high LS should be done in conjunction with investigations into chemistry of the matrix and ultra-structure of cellulose.

Annex 1 Measurements on Beech and Chestnut

Large campaigns of in-situ maturation strain measurements using the CIRAD single hole method were performed on mature forest stands of beech and chestnut trees, in Europe. All data are available in the excel file called "Data_growth_forces_Annex" (<https://zenodo.org/record/4695043#.YHigSmg694c>).

For beech, ten different plots were selected in five European countries: Austria, Denmark, France, Germany and Switzerland (Becker & Beimgraben 2001, Jullien et al 2013). Trees (50 per plot) were all large-dimension mature trees ready for harvesting and processing in the sawing and veneer industry. Eight holes every 45° around the periphery were drilled at breast height and *GSI* was measured. Total height (*H*), *DBH* and slenderness (*H/DBH*) are reported in the data file accompanying this article.

The first hole position was positioned on the north face of the trunk. In order to obtain mean circumferential variations from groups of trees, the value 180° was ascribed to the hole where *GSI* was maximum for the tree (*Max*).

There is a very significant positive relationship (at the $p = 0.001$ level) between tree slenderness and all *GSI* values when they are arranged in the same manner. This is true also for minimum, difference between maximum and minimum (*Max-Min*) and mean per tree value. Slender trees have higher values of maturation strains.

For chestnut (Thibaut et al 1995), only mature coppice shoots were measured with the same protocol except that the first hole was on the upper part of the stem, where the maximum *GSI* value is expected. Most of the coppice shoots had an oblique grown, in order to develop a globally equilibrated crown for the whole stump. In order to keep this oblique posture at a rather small angle, a dissymmetry of *F* between upper and lower face of the shoot is necessary. There was a very significant positive correlation between shoot inclination (*TI* in %) and *GSI* dissymmetry whatever was used to measure this dissymmetry: maximum minus minimum (*Max-Min*), upper *GSI* minus lower *GSI* (*Max-180*), coefficient of variation (*CV*) of the 8 *GSI* measurements for a shoot (Fig. A1).

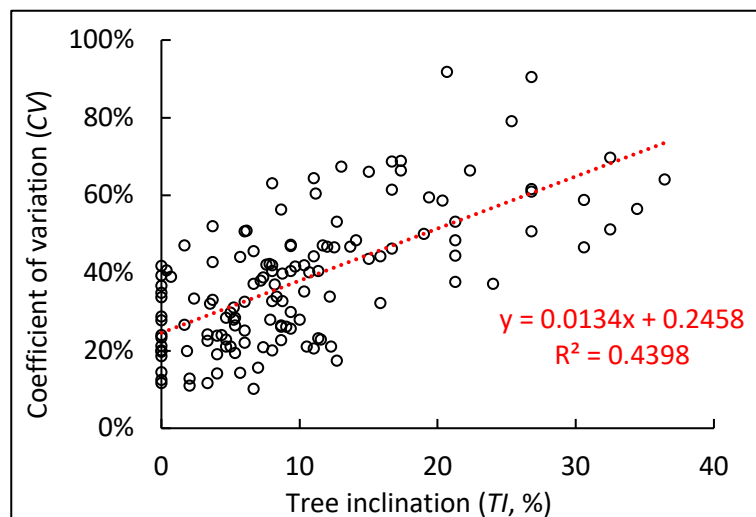
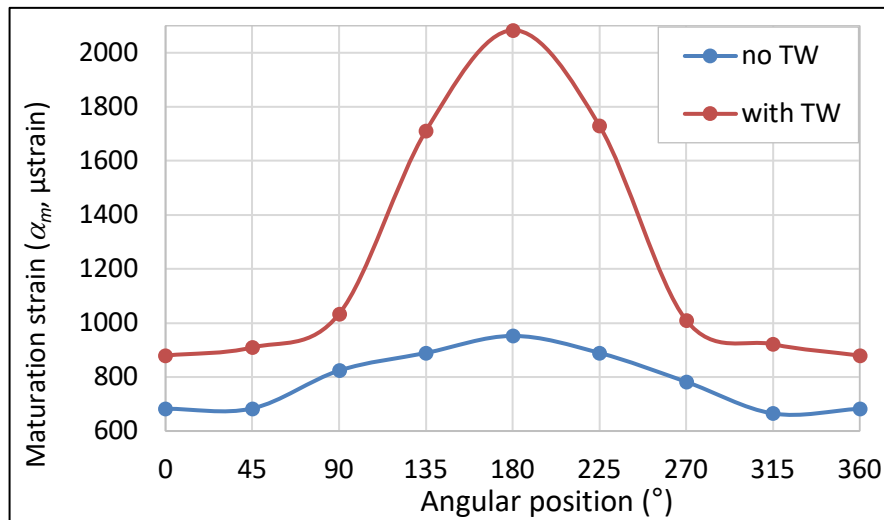


Fig. A1 - Relationship between trunk inclination (*TI*) and *GSI* dissymmetry for 161 chestnut shoots
CV coefficient of variation of the 8 maturation strains for each shoot

Tree growth forces and wood properties



Chestnut	Tree type	$Max \alpha_m$	Nb trees	$Max-Min$	TI
shoots	no TW	< 1400μstrain	68	596	6.38%
	TW	> 1800μstrain	69	1842	14.5%

Fig. A2 - Mean peripheral variations of maturation strain for two types of trees

No TW: trees without tension wood; with TW: trees with tension wood

180° is always positioned on the upper face (hypothesised to be in the maximum tensile state)

$Max \alpha_m$: mean value, for all the trees of the same type, at position 180°

Max : maximum value of the maturation strain within a tree

Min : minimum value of the maturation strain within a tree

$Max-Min$: mean value of the difference for all trees of the same type

TI : mean trunk inclination for all the trees of the same type

From literature and former measurements, GSI up to 110 μm (1400 $\mu strain$ for a conversion factor of 12.8 $\mu strain/\mu m$) relates to normal wood (NW) while GSI over 140 μm (1800 $\mu strain$) should be attributed to tension wood (TW). By sorting the chestnut shoots by $Max GSI$, it is possible to find 68 trees lower than 111 μm called “no TW” trees and 69 trees higher than 140 μm called “with TW”. A mean angular profile can be drawn for the two shoot types.

Shoots without TW have a smaller mean inclination (6.38%) than shoots with TW (14.5%) and consequently, the mean dissymmetry of α_m is smaller for no TW trees (596 $\mu strain$) than for trees with TW (1842 $\mu strain$).

Annex 2 Calculation of the conversion factor between GSI and α_m

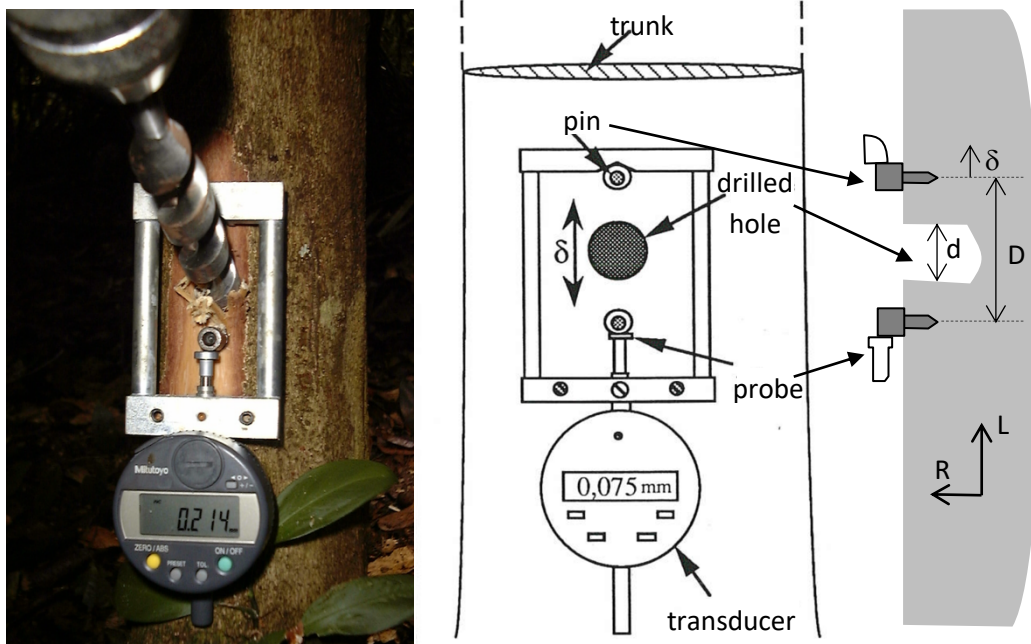


Fig A3 - Measurement of maturation strain with the single-hole method. (a) Hole drilling operation (photo Bruno Clair); (b) schematic view in the LT plane (Baillères 1994); (c) radial section drawing.

The growth stress indicator (GSI) given by the CIRAD single-hole method (Fig. A3) is the relative variation of distance δ between 2 points aligned in the direction L and distant from D , following the drilling of a central hole of diameter d . Based on the solution of Archer (1984) for the drilling of an anisotropic material occupying a half plane, the expression of δ is as follows:

$$\delta = \frac{D}{E_L} (\psi_L \sigma_L + \psi_T \sigma_T)$$

Here σ_L and σ_T are the components of the stress in the half plane, in L and T directions, respectively, and ψ_L , ψ_T are constants given by:

$$\begin{aligned} \psi_L &= (v_{LT} + \alpha_1) \frac{(1 - \gamma_1)^2 (1 - \gamma_2)}{4\gamma_1(\gamma_1 - \gamma_2)} \left(-1 + \sqrt{1 + \frac{4\gamma_1}{(1 - \gamma_1)^2} \frac{d^2}{D^2}} \right) \\ &\quad - (v_{LT} + \alpha_2) \frac{(1 - \gamma_1)(1 - \gamma_2)^2}{4\gamma_2(\gamma_1 - \gamma_2)} \left(-1 + \sqrt{1 + \frac{4\gamma_2}{(1 - \gamma_2)^2} \frac{d^2}{D^2}} \right) \\ \psi_T &= -(v_{LT} + \alpha_1) \frac{(1 - \gamma_1)^2 (1 + \gamma_2)}{4\gamma_1(\gamma_1 - \gamma_2)} \left(-1 + \sqrt{1 + \frac{4\gamma_1}{(1 - \gamma_1)^2} \frac{d^2}{D^2}} \right) \\ &\quad + (v_{LT} + \alpha_2) \frac{(1 + \gamma_1)(1 - \gamma_2)^2}{4\gamma_1(\gamma_1 - \gamma_2)} \left(-1 + \sqrt{1 + \frac{4\gamma_2}{(1 - \gamma_2)^2} \frac{d^2}{D^2}} \right) \end{aligned}$$

α_1, α_2 are the two solutions of the 2nd degree equation $\alpha^2 - s.\alpha + p = 0$ where s and p depend on the Young's moduli E_L, E_T in the L and T directions, respectively, the shear modulus G_{LT} in LT plane and the Poisson's ratio ν_{LT} :

$$s = \alpha_1 + \alpha_2 = E_L/E_T \quad ; \quad p = \alpha_1.\alpha_2 = E_L / G_{LT} - 2.\nu_{LT}$$

and : $\gamma_1 = (\sqrt{\alpha_1} - 1)/(\sqrt{\alpha_1} + 1) \quad ; \quad \gamma_2 = (\sqrt{\alpha_2} - 1)/(\sqrt{\alpha_2} + 1)$

Here the contribution of the tangential component of the stress was neglected, so that:

$$\delta \approx D.\psi_L.(\sigma_L/E_L)$$

δ expressed in μm is the growth stress indicator (GSI) and can be converted into maturation strain ($\alpha_m \approx \sigma_L/E_L$) using the conversion parameter ϕ :

$$\alpha_m = \phi . GSI, \alpha_m \text{ in } \mu\text{strain} = 10^{-6}, GSI \text{ in } \mu\text{m}, \phi = 1/(D.\psi_L) \text{ in } \mu\text{strain}/\mu\text{m}$$

Baillères in his PhD thesis (1994) used this calculation for 13 different species. Using elastic orthotropic constants coming from statistical models built by Guitard and El Amri (1987), he obtained ϕ values ranging from -9.1 to -14.9 $\mu\text{E}/\mu\text{m}$. However, special wood types such as RW were not considered. Besides, we do not have the 9 elastic constants for the different species and wood types (NW and RW) of this study. From Guitard & El Amri and other literature we have built a data collection of the 6 diagonal moduli ($E_L, E_T, E_R, G_{LT}, G_{LR}, G_{TR}$) for different species with known densities. We estimated the non-diagonal constants ($\nu_{LT}, \nu_{TL}, \nu_{LR}, \nu_{RL}, \nu_{RT}, \nu_{TR}$) using Guitard & El Amri's statistical models and then made the whole calculation of ϕ values for these 96 cases (Excel sheet "Conversion factor GSI" in the accompanying Excel file "Data_growth_forces_Annex" (<https://zenodo.org/record/4695043#.YHigSmg694c>)). In order to make that calculus, we have to find the 2 solutions of a second-degree equation, which is not possible if the determinant is negative. That happened for a few cases (8 with very low E/G values). There was a very high correlation level between ϕ and the ratio E_L/G_{TL} and a logarithmic equation gives a very high R^2 (Fig. A4):

$$\phi = -7.57 . \ln(E_L/G_{TL}) + 34.665$$

This equation can be used to calculate ϕ with only one anisotropic ratio.

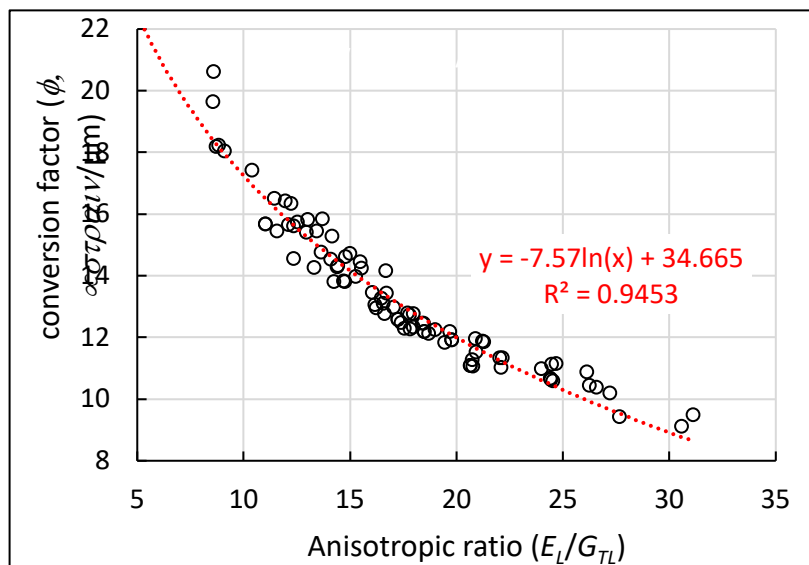


Fig. A4 - Link between conversion coefficient ϕ and anisotropy ratio

References

- Alméras T, Gril J, Yamamoto H.** 2005a. Modelling anisotropic maturation strains in wood in relation with fibre boundary conditions, microstructure and maturation kinetics. *Holzforschung* 59 (3), 347-353.
- Alméras T, Thibaut A, Gril J.** 2005b. Effect of circumferential heterogeneity of wood maturation strain, modulus of elasticity and radial growth on the regulation of stem orientation in trees. *Trees Structure and function* 19 (4), 457-467.
- Alméras T, Derycke M, Jaouen G, Beauchêne J, Fournier M.** 2009. Functional diversity in gravitropic reaction among tropical seedlings in relation to ecological and developmental traits. *Journal of Experimental Botany* 60, 4397-4410.
- Alméras T, Clair B.** 2016. Critical review on the mechanisms of maturation stress generation in trees. *Journal of The Royal Society Interface* 13 (122), 20160550.
- Alméras T, Jullien D, Gril J.** 2018a. Modelling, Evaluation and Biomechanical Consequences of growth stress profiles inside tree stems. in: *Plant Biomechanics, from Structure to Function at Multiple Scales*, Anja Geitmann, Joseph Gril (eds), Springer International Publishing, pp.21-48.
- Alméras T, Ghislain B, Clair B, Secerovic A, Pilate G, Fournier M.** 2018b. Quantifying the motor power of trees. *Trees* 32 (3), 689-702.
- Archer RR.** 1984. Application of a new method for the growth stress measurement for *Pinus Caribea*. IUFRO P5-01, Properties and utilisation of tropical woods, Manaus, Brasil, 19-23/11/1984.
- Archer RR.** 1986. Growth stresses and strains in trees. Springer, New York
- Baillères H.** 1994. Précontraintes de croissance et propriétés mécano-physiques de clones d'*Eucalyptus* (Pointe Noire, Congo): hétérogénéités, corrélations et interprétations histologiques. Thèse en sciences du bois, Université Bordeaux 1 (In French).
- Baillères H., Chanson B., Fournier M., Tollier MT., Monties B.** 1995. Structure, composition chimique et retraits de maturation du bois chez les clones d'*Eucalyptus*. *Annales des sciences forestières* 52 (2), 157-172.
- Bamber RK.** 2001. A general theory for the origin og growth stresses in reaction wood: how trees stay upright. *IAWA Journal*, Vol. 22, 205-212
- Barthélémy D, Caraglio Y.** 2007. Plant architecture: a dynamic, multilevel and comprehensive approach to plant form, structure and ontogeny. *Annals of Botany* 99, 375-407.
- Becker G, Beimgraben T.** 2001. Occurrence and relevance of growth stresses in Beech (*Fagus sylvatica* L.) in Central Europe, Final Report of FAIR-project CT 98-3606, Coordinator G. Becker, Institut für Forstbenutzung und forstliche Arbeitwissenschaft, Albert-Ludwigs Universität, Freiburg, Germany, 323 p.
- Bordonné P.A.** 1989. Module dynamique et frottement intérieur dans le bois : mesures sur poutres flottantes en vibrations naturelles. Thèse de Doctorat en Sciences du Bois, Institut National Polytechnique de Lorraine, Nancy.
- Bowles DE, Tompkins SS.** 1988. Prediction of Coefficients of Thermal Expansion for Unidirectional Composites. *Journal of composite materials* 23, 370-388

- Boyd JD.** 1972. Tree Growth Stresses -- Part V: Evidence of an Origin in Differentiation and Lignification. *Wood Science and Technology* 6, 251--262
- Brancheriau L., Baillères H.** 2002. Natural vibration analysis of clear wooden beams: a theoretical review. *Wood Science and Technology* 36, 347-365.
- Brémaud I, Ruelle J, Thibaut A, Thibaut B.** 2013. Changes in vibrational properties between compression and normal wood, roles of microfibril angle and of lignin. *Holzforschung* 67, 75-85.
- Brennan M, McLean JP, Altaner CM, Ralph J, Harris PJ.** 2012. Cellulose microfibril angles and cell-wall polymers in different wood types of *Pinus radiata*. *Cellulose* 19, 1385-1404.
- Cave ID.** 1972. A theory of the shrinkage of wood. *Wood Science and Technology* 6, 284-292.
- Cave ID., Hutt L.** 1968. Anisotropic elasticity of plant cell wall. *Wood Science & Technology* 2, 268-278.
- Chang SS, Clair B, Ruelle J, Beauchêne J, Di Renzo F, Quignard F, Zhao GJ, Yamamoto H, Gril J.** 2009. Mesoporosity as a new parameter in understanding of tension stress generation in trees. *Journal of Experimental Botany* 60, 3023-3030.
- Chang S S, Quignard F, Alméras T, Clair B.** 2015. Mesoporosity changes from cambium to mature tension wood: a new step toward the understanding of maturation stress generation in trees. *New Phytologist* 205, 1277-1287.
- Clair B, Ruelle J, Beauchêne J, Prévost MF, Fournier M.** 2006. Tension wood and opposite wood in 21 tropical rain forest species. 1. Occurrence and efficiency of the G-layer. *IAWA Journal* 27 (3), 329-338.
- Clair B, Alteyrac J, Gronvold A Espejo J, Chanson B, Alméras T.** 2013. Patterns of longitudinal and tangential maturation stresses in *Eucalyptus nitens* plantation trees. *Annals of Forest Science* 70, 801-811.
- Clair B., Thibaut B.** 2014. Physical and mechanical properties of reaction wood, Chapter 6, in: *The Biology of Reaction Wood*, Springer Series in Wood Science, B. Gardiner et al. (eds).
- Coutand C, Fournier M, Moulia B.** 2007. Gravitropic response of polar trunk: key roles of the regulation of wood restressing and of relative kinetics of cambial growth versus wood maturation. *Plant Physiology* 144, 1166-1180.
- Cowdrey DR, Preston RD.** 1966 Elasticity and microfibrillar angle in wood of Sitka spruce. *Proceedings of the Royal Society B* 166, 245-272.
- Fagerstedt KV, Mellerowicz E, Gorshkova T, Ruel K, Joseleau JP.** 2014. Cell Wall Polymers in Reaction Wood. Chapter 3, in: *The Biology of Reaction Wood*, B. Gardiner et al. (eds).
- Fahn A.** 2020. *Plant anatomy*. Fourth edition. Pergamon press
- Fang CH, Clair B, Gril J, Liu SQ.** 2008. Growth stresses are highly controlled by the amount of G-layer in poplar tension wood. *IAWA Journal* 29 (3), 237-246
- Fournier M, Chanson B, Guitard D, Thibaut B.** 1991a. Mechanics of standing trees: modeling a growing structure subjected to continuous and fluctuating loads. 1. Analysis of support stresses (in French). *Annales des Sciences Forestières* 48, 513-525.

- Fournier M, Chanson B, Thibaut B, Guitard D. 1991b.** Mechanics of standing trees: modelling a growing structure subjected to continuous and fluctuating loads. 2. Three-dimensional analysis of maturation stresses in a standard broadleaved tree. *Annales des Sciences Forestières* 48, 527-546 (in French).
- Fournier M, Chanson B, Thibaut B, Guitard D.** 1994. Measurements of residual growth strains at the stem surface observations on different species. *Annales des Sciences Forestières* 51, 249-266.
- Fournier M, Dlouha J, Jaouen G, Alméras T.** 2013. Integrative biomechanics for tree ecology: beyond wood density and strength. *Journal of Experimental Botany* 64 (15), 4793-4815
- Fournier M, Alméras T, Clair B, Gril J.** 2014. Biomechanical action and biological functions. Chapter 5, in: *The biology of reaction wood*. B Gardiner et al. (eds), pp. 139-170.
- Gardiner B, Barnett J, Saranpää P, Gril J.** 2014. *The biology of reaction wood*. Springer, Berlin, Heidelberg. DOI 10.1007/978-3-642-10814-3.
- Ghislain B, Clair B.** 2017. Diversity in the organisation and lignification of tension wood fibre walls—a review. *IAWA Journal* 38, 245-265.
- Ghislain B., Engel J., Clair B.** 2019. Diversity of anatomical structure of tension wood among 242 tropical tree species. *IAWA journal* 40(4) 765-784
- Gordon JE.** 1978. *Structures: Or Why Things Don't Fall Down*, Penguin books
- Gorshkova T, Chernova T, Mokshina N, Ageeva M, Mikshina P.** 2018. Plant “muscles”, fibers with a tertiary cell wall. *New Phytologist* 218 (1), 66-72.
- Gril J., Jullien D., Bardet S., Yamamoto H.** 2017. Tree growth stress and related problems. *Journal of Wood Science*, 63 (5), 411-432.
- Huang YS., Chen SS., Lin TP., Chen YS.** 2001. Growth stress distribution in leaning trunks of *Cryptomeria japonica*. *Tree Physiology* 21, 261-266.
- Jullien D, Widmann R, Loup C, Thibaut B.** 2013. Relationship between tree morphology and growth stress in mature European beech stands. *Annals of forest science* 70 (2), 133-142.
- Korb G, Korab J, Groboth G.** 1998. Thermal expansion behaviour of unidirectional carbon-fibre-reinforced copper-matrix composites. *Composites Part A*, 29A, 1563-1567
- Markwardt LJ, Wilson TRC.** 1935. Strength and related properties of woods grown in the United States. USDA technical bulletin N° 479, Washington D.C.
- Moore JR, Cown DJ, McKinley RB, Sabatia CO.** 2015. Effects of stand density and seedlot on three wood properties of young radiata pine grown at a dry-land site in New Zealand. *New Zealand Journal of Forestry Science* (2015) 45:4, DOI 10.1186/s40490-015-0035-x
- Mouliá B, Fournier M.** 2009. The power and control of gravitropic movements in plants: a biomechanical and system biology view. *Journal of Experimental Botany* 60, 461-486.
- Mouliá B, Bastien R, Chauvet-Thiry H and Leblanc-Fournier N.** 2019. Posture control in land plants: growth, position sensing, proprioception, balance, and elasticity. *Journal of Experimental Botany*, 70 (14), 3467-3494.
- Nanayakkara B., Manley-Harris M., Suckling I.D., Donaldson LA.** 2009. Quantitative chemical indicators to assess the gradation of compression wood. *Holzforschung* 63, 431-439.

- Okuyama T., Yamamoto H., Yoshida M., Hattori Y., Archer RR.** 1994. Growth stresses in tension wood, role of microfibrils and lignification. *Annals of forest science* 51, 291-300.
- Ruelle J.** 2003. Comparative anatomy normal wood / reaction wood and observation of structure / properties relationships (in French). MS Thesis, Université de Nancy.
- Ruelle J, Yamamoto H, Thibaut B.** 2007. Growth stresses and cellulose structural parameters intension and normal wood from three tropical rainforest angiosperm species. *Bioresources* 2 (2), 235-251.
- Ruelle J, Beauchêne J, Yamamoto H, Thibaut B.** 2011. Variations in physical and mechanical properties between tension and opposite wood from three tropical rainforest species. *Wood Science and Technology* 45, 339-357.
- Ruelle J.** 2014. Morphology, Anatomy and Ultrastructure of Reaction Wood. Chapter 2, in: B. The Biology of Reaction Wood, Springer Series in Wood Science, Gardiner et al. (eds).
- Sasaki Y, Okuyama T, Kikata Y.** 1978. The evolution process of the growth stress in the tree. The surface stress on the tree. *Mokuzai Gakkaishi* 29, 149-157
- Senft J F, Bendtsen BA.** 1985. Measuring microfibrillar angles using light microscopy. *Wood and fiber science* 17, 564-567.
- Sridhara PK, Vilaseca F.** 2020. Assessment of Fiber Orientation on the Mechanical Properties of PA6/Cellulose Composite. *Appl. Sci.* 10, 5565; doi:10.3390/app10165565
- Sugiyama K, Okuyama T, Yamamoyo H, Yoshida M.** 1993. Generation process of growth stresses in cell walls: Relation between longitudinal released strain and chemical composition. *Wood Science & Technology* 27, 257-262
- Thibaut B, Chanson B, Fournier M, Jullien D.** 1995. Valorisation du bois de châtaignier : prévoir et réduire les risques de roulure à la production, Rapport final contrat "Agriculture demain" MRT 91.G.0491, 12.95. (In French)
- Thibaut B.** 2019. Three-dimensional printing, muscles and skeleton: mechanical functions of living wood, *Journal of Experimental Botany* 70 (14), 3453-3466.
- Timell TE.** 1986. Compression wood in gymnosperms, 3 vol., Springer, Berlin, 2210 pp
- Tocquard K, Lopez D, Decourteix M, Thibaut B, Julien JL, Label P, Leblanc-Fournier N, Roeckel-Drevet P.** 2014. The Molecular Mechanisms of Reaction Wood Induction. Chapter 4, in: The biology of reaction wood. B Gardiner et al. (eds).
- Trénard Y, Guéneau P.** 1975. Relations entre Contraintes de Croissance Longitudinales et Bois de Tension, dans le Hêtre (*Fagus sylvatica* L.). *Holzforshung* 29, 217-223
- Vieilledent G, Fischer FJ, Chave J, Guibal D, Langbour P, Gérard J.** 2018. New formula and conversion factor to compute basic wood density of tree species using a global wood technology database. *American Journal of Botany* 105 (10), 1-9.
- Waghorn MJ, Mason EG, Watt MS.** (2007). Influence of tree morphology, genetics, and initial stand density on outerwood modulus of elasticity of 17-year-old *Pinus radiata*. *Forest Ecology and Management*, 244(1-3), 86-92
- Watanabe U., Norimoto M.** 1996. Shrinkage and elasticity of normal and compression wood in conifers. *Mokuzai Gakkaishi* 42, 651-658

- Watt MS, Clinton PW, Coker G, Davis MR, Simcock R, Parfitt RL, Dando J.** 2008. Modelling the influence of environment and stand characteristics on basic density and modulus of elasticity for young *Pinus radiata* and *Cupressus lusitanica*. *Forest Ecology and Management* 255 (2008) 1023-1033
- Yamamoto H., Okuyama T., Yoshida M.** 1998. Growth stress generation and microfibril angle in reaction wood. In: *Microfibril angle in wood*. International Association of Wood Anatomist, Christchurch, Butterfield BG (ed), pp 225-239.
- Yamamoto H., Sassus F., Ninomiya M, Gril J.** 2001. A model of anisotropic swelling and shrinking process of wood. Part 2. A simulation of shrinking wood. *Wood Science and Technology* 35, 167-181.
- Yang JL, Baillères H, Okuyama T, Muneri A, Downes G.** 2005. Measurement methods for longitudinal surface strain in trees, a review. *Australian Forestry* 68, 34-43.
- Yoshida M, Okuda T, Okuyama T.** 2000. Tension wood and growth stress induced by artificial inclination in *Liriodendron tulipifera* Linn. and *Prunus spachiana* Kitamura f. *ascendens* Kitamura. *Annals of forest science* 57 (8), 739-746.
- Yoshida M, Okuyama T.** 2002. Techniques for measuring growth stress on the xylem surface using strain and dial gauges. *Holzforschung* 56 (5), 461-467.