



Interconnection salt diapir-allochthonous salt sheet in northern Tunisia: The Lansarine-Baoula case study

Zayneb Amri, Chahreddine Naji, Amara Masrouhi, Olivier Bellier

► To cite this version:

Zayneb Amri, Chahreddine Naji, Amara Masrouhi, Olivier Bellier. Interconnection salt diapir-allochthonous salt sheet in northern Tunisia: The Lansarine-Baoula case study. *Journal of African Earth Sciences*, 2020, 170, pp.103876. 10.1016/j.jafrearsci.2020.103876 . hal-02979179

HAL Id: hal-02979179

<https://hal.science/hal-02979179>

Submitted on 31 Aug 2021

HAL is a multi-disciplinary open access archive for the deposit and dissemination of scientific research documents, whether they are published or not. The documents may come from teaching and research institutions in France or abroad, or from public or private research centers.

L'archive ouverte pluridisciplinaire **HAL**, est destinée au dépôt et à la diffusion de documents scientifiques de niveau recherche, publiés ou non, émanant des établissements d'enseignement et de recherche français ou étrangers, des laboratoires publics ou privés.

Journal Pre-proof

Interconnection salt diapir–allochthonous salt sheet in northern Tunisia: The Lansarine–Baoula case study

Zayneb Amri, Chahreddine Naji, Amara Masrouhi, Olivier Bellier



PII: S1464-343X(20)30127-8

DOI: <https://doi.org/10.1016/j.jafrearsci.2020.103876>

Reference: AES 103876

To appear in: *Journal of African Earth Sciences*

Received Date: 13 December 2019

Revised Date: 7 May 2020

Accepted Date: 7 May 2020

Please cite this article as: Amri, Z., Naji, C., Masrouhi, A., Bellier, O., Interconnection salt diapir–allochthonous salt sheet in northern Tunisia: The Lansarine–Baoula case study, *Journal of African Earth Sciences* (2020), doi: <https://doi.org/10.1016/j.jafrearsci.2020.103876>.

This is a PDF file of an article that has undergone enhancements after acceptance, such as the addition of a cover page and metadata, and formatting for readability, but it is not yet the definitive version of record. This version will undergo additional copyediting, typesetting and review before it is published in its final form, but we are providing this version to give early visibility of the article. Please note that, during the production process, errors may be discovered which could affect the content, and all legal disclaimers that apply to the journal pertain.

© 2020 Published by Elsevier Ltd.

Interconnection salt diapir–allochthonous salt sheet in Northern Tunisia: the Lansarine–Baoula case study

Zayneb AMRI^{a,*}, Chahreddine NAJI^a, Amara MASROUHI^b, Olivier BELLIER^c

^a Geo-Resources Laboratory, Water Researches and Technologies Center Borj-Cedria, Carthage University, Faculty of Sciences of Bizerte, Tunisia.

^b King Abdulaziz University, Faculty of Earth Sciences, Geo-exploration Techniques Department, Jeddah, Saudi Arabia.

^c Aix Marseille Univ, CNRS, IRD, INRAE, Coll France, CEREGE, Aix-en-Provence, France.

* Corresponding author: zayneb.amri.fsb@gmail.com

Abstract

Surface and subsurface data are used to illustrate the halokinetic style, structural evolution and kinematics of the Lansarine–Baoula salt structure in the Alpine domain of Tunisia. It corresponds to a salt structure showing a large salt canopy overhanging buried diapir. The salt structure is located along the main fault systems, inherited from the southern Tethyan passive margin periods. The Northern domain of Tunisia is undergoing diapirism, which has been recognized as active during the Upper Aptian and Lower Albian periods. Above the diapir apex, salt flows outward and spreads by gravity downslope. A minibasin has formed during this period of salt outward evacuation. The minibasin has a thickness practically correlated to the budget of salt evacuation toward the diapiric structure. During Cenozoic times, compressional deformation stages do not reflect active diapirism. The Lansarine–Baoula salt structure, consisting of connected salt sheets, was passively transported on the Southeast-verging major thrusts that are deeply rooted in the salt beneath the Mateur basin. The Northern Atlas of Tunisia reveals, as many others salt provinces, an interconnection of salt diapirs and significant laterally spreading allochthonous salt sheets (canopies?). In this domain, the inherited allochthonous Triassic salt sheets interlayered within recent series and connected to buried diapir have a significant role in the shallow structural complexity observed in the sedimentary cover during the subsequent contractional events.

Keys-words: North Tunisian Atlas; diapir; allochthonous salt sheets; mini-basin; thrust

1. Introduction

Rifts and continental margins are usually characterized by salt deposition followed by salt tectonics, which strongly influence their structural styles (e.g. Talbot et al., 1991; Weijermars et al., 1993; Jackson and Vendeville, 1994; Hudec and Jackson, 2007; Callot et al., 2012). Salt tectonics is currently recognized to have a crucial role in the deformation of several geologic systems around the world in both active and passive margins (e.g. Rowan et al., 2003; Hudec and Jackson, 2007; Alsop et al., 2015; Moragas et al., 2017). Rift and passive continental margins tectonic style and/or evolution were the subject of new tectonic concepts developed during the last 40 years (e.g. Bally, 1983; Allen and Allen, 1990; Brune et al., 2014). These geologic systems are commonly described as dominated by intra-basin growth listric normal faults in control of an asymmetrical seafloor that is characterized by repetitive depocenters. The intra-basin faults system is responsible for the basin's geometry that is characterized by hanging-wall rollovers, rafts, salt-related features and important thickness and facies variations of sedimentary sequences. These systems are frequently inverted and deformed by subsequent compressions hence the area is subject to tectonic inversion. The presence of salt is usually involved in the deformation of several inverted systems such as the Alpine orogens of Europe, the Betics, the Pyrenees, the North African alpine belts, Zagros (e.g. Canerot et al., 2005; Masrouhi and Koyi., 2012; Callot et al., 2014; Saura et al., 2015). The early interpretations of salt tectonics that predominated during the first half of the 20th century were also updated by the upsurge of the thrust tectonics models. This evolutionary trend has modernized salt tectonic concepts. Recent improvement in drilling and seismic technologies led to a surge of large allochthonous salt on deep water passive margin. Although salt structures are being recognized as having large overhangs (e.g. Jackson and Talbot, 1989; Talbot et al., 1991; Talbot, 1993), several hundreds of salt overhangs are known to exist now (e.g. Wu et al., 1990; Talbot, 1993; Fort and Brun, 2004; Hudec and Jackson, 2004, 2006, 2009) and are confined to only a few of the many sedimentary basins containing salt (Gulf Coast, Campos basin, Angola margin, Red Sea). Past salt overhangs are neglected in literature because they are usually comprised within orogens.

After a while, the interaction between salt diapir and salt sheets has been studied by several works in a large proportion of salt provinces: Australia (e.g. Hearon et al., 2015; Rowan et al., 2019), Iran (e.g. Heydarzadeh et al., 2020), Turkey (e.g. Kergaravat et al., 2016), Central Europe (e.g. Warsitzka et al., 2019), the Algarve Portuguese basin (e.g. Ramos et al., 2017), Mexico (e.g. Giles and Rowan, 2012), USA (e.g. Gradmann and Beaumont, 2017) and among others. Processes of mobilization of salt usually assists gravitationally driven deformation of rock mass associated with this growth. In passive margin setting,

during sedimentation a wide range of gravity driven structures in successive depositional events are generated along the slope. Salt is itself associated to this evolution in which the overburden moves with gravity spreading driven by the differential load of tectonic blocks (Alsop and Marco, 2014). The half-graben, which usually characterizes this growth, develops salt diapir in case of sufficient buried underlying salt budget. When the salt reaches the sea floor, the interaction of several parameters guides the evolution of the structure such as the rate of salt evacuation versus the sedimentation rate (Fernandez et al., 2020), the impact of base-salt relief on salt flow (Dooly et al., 2018), Extension versus sedimentation rate (Allen et al., 2020)...

The Maghreb exposes numerous salt structures and is described as one of the largest worldwide salt provinces. Salt structures are more abundant in the eastern part of this province which corresponds to the Northern Tunisian Atlas. This 10000 km² area exposes more than 40 structures, most of them are hundred square kilometers structures (Fig. 1). Salt structures in this region have been the subject of controversial geologic interpretations (e.g. Perthuisot et al., 1988; Vila et al., 1994; Masrouhi et al., 2014a). In this province, two different types have been proposed to explain the salt growth and configuration: (1) the salt pierces the overburden and the sequences' thickness is reduced in the limbs of the structure which define the diapir or dome model (Bolze 1950; Perthuisot 1978; Perthuisot et al. 1998; Jallouli et al. 2005; Benassi et al. 2006). This model corresponds to the means of 1970s ideas based on buoyancy-driven convection. Halokinetic movement was attributed to autonomous, isotactic rise of salt and vertical salt movement versus its overburden due to Rayleigh-Taylor instabilities. (2) Allochthonous salt interpretation (Ghanmi et al. 2001; Vila et al., 2002; Slama et al., 2009; Masrouhi and Koyi, 2012; Zouaghi et al., 2013) which suggests a setting with salt flowing at the sediment-water interface through a feeder frequently acknowledged as the normal faulting affecting the sedimentary cover over the Triassic salt. The normal synsedimentary faults, formed during the thin-skinned Cretaceous extension of the southern Tethyan passive margin, create a space for salt to reach the surface during their motion and then flows on the surface, thus defining a salt glacier structures. Although the interconnection between salt domes-salt glaciers is well documented in many passive margins, the interconnection between those two types of structures has never been identified in the Northeastern Maghreb salt province.

This study presents such an interconnection for the first time in this province and demonstrates a reappraisal of the structure and the diapirism growth style with significant allochthonous salt sheet (canopy?) spreading laterally from the diapir stem during the lower Cretaceous period. We present new

surface and subsurface data for both diapir growth and the salt sheet-related structures, which are now partially obliterated by subsequent Tertiary compressions that need to be considered in the study of salt tectonics in the Northern African area.

2. Geological setting

2.1. Structural framework

The Northern Tunisia Atlas is the eastern segment of the Maghreb folds-thrust belt known as the Maghrebides chain (Fig. 1). The Maghrebides is an Alpine belt; occupying the Northwestern African plate, which is related to the Africa–Eurasia convergence during Tertiary–present-day period. After a long Mesozoic extensional Tethyan period, the positive inversion of the basins in Tunisia is recognized to operate during Late Cretaceous (Guiraud and Bosworth, 1997; Masrouhi et al., 2008). During the Cenozoic compressional history, the first significant contractional event is dated as Middle-Late Eocene and accepted as the Atlassic compression (e.g. Vila et al., 1975; Frizon de Lamotte et al., 2000). The Atlassic event is well traced by regional unconformity on the entire Tunisian Atlas (Masrouhi et al., 2007; Gharbi et al., 2015). During the Oligocene–Lower Miocene period, the Atlas domain shows a post compressional tectonic quiescence stage. The Oligocene–Miocene sequences are deposited in distinguished sub-basins such as the Numidian Basin and the Medjedra basin. The tectonic setting seems to be well correlated to the West-Mediterranean geodynamic setting (Corsica–Sardinia and the Algerian–Provencal Miocene back-arc basin opening (e.g. Vergés and Sàbat, 1999; Frizon de Lamotte et al., 2009; Roure et al., 2012; Van Hinsbergen et al., 2014). The Oligocene–lower Miocene extension is caused at the scale of the margin by the retreat of the slab (e.g. Jolivet and Faccenna, 2000; Deverchère et al., 2005). In the Tunisian Northern Atlas, the paroxysmal compressional event is considered to have occurred during Middle Miocene to present-day times by several authors (e.g. Dlala, 1992; Chihi, 1992; El Ghali et al., 2003; Gharbi et al., 2014). All authors who worked in this region agree that this event is the major compressional tectonic event deforming the Atlassic domain of Tunisia (e.g. Gharbi et al., 2014; Bahrouni et al., 2014; Soumaya et al., 2015; Masrouhi et al., 2019). The main regional compression direction was identified by several studies as NW-trending during Miocene–Pliocene and N-trending during the Late Pliocene–Quaternary (e.g. Dlala and Hfaiedh, 1993; Billi et al., 2011; Gharbi et al., 2014; Soumaya et al., 2015). The northern Atlas of Tunisia shows major NE-trending thrust systems, with three most important traced fronts from North to South being (Fig. 1): the tell thrust range front, the Teboursouk Thrust Unit Front (TTUF) and the Zoughan-Ressas Thrust Unit Front (ZRTUF). The structural style of this belt has recently been identified as the result of the inversion of Mesozoic

inherited structures of the earlier passive margin basins and/or sub-basins along the south Tethyan margin (e.g. Jaillard et al., 2017; Naji et al., 2018a; Masrouhi et al., 2019).

The inherited system is well linked to the Jurassic and Cretaceous periods with the southern margin of the Tethys (Boughdiri et al., 2007; Frizon de Lamotte et al., 2013). The long Tethyan evolution generated major basins from Morocco to Tunisia during the Late Permian–Late Cretaceous (Roure et al., 2012; Moragas et al., 2016, 2017; Naji et al., 2018a). The long Mesozoic evolution began with Triassic basins from an epicontinental environment and characterized by evaporitic facies covering the entire Maghreb sub-basins (e.g. Soto et al., 2017). The Triassic sub-basins frequently display subordinate basalts preserved in several localities in Tunisia (Laaridhi-Ouazâa, 1994) that are interpreted as the result of rift-related magmatism (e.g. Mattoussi Kort et al., 2009). During the Jurassic period, a well-documented main N-trending regional extension was associated to the development of main basins (e.g. Boughdiri et al., 2007; Saura et al., 2014; Martin-Martin, 2017; Soussi et al., 2017; Moragas et al., 2018). These basins are subject to significant thickness and facies variations (Peybernes et al., 1994; Boughdiri et al., 2007). During Early Cretaceous a NE-SW regional tectonic extensional setting became dominant (e.g. Jaillard et al., 2017; Naji et al., 2018b). This evolution from E-W (present-coordinates) to NW-SE shape is well-matched to E-W transform faults of the Atlantic that change to NW-SE in the Alpine Tethys (e.g. Rosenbaum et al., 2002; Masrouhi et al., 2019). During the lower Cretaceous, a paleogeographic differentiation was established with a continental platform in the south and center and a deep domain in the north. This differentiation is associated with volcanic and salt structures, all of them characterized by a passive margin context (e.g. Mattoussi Kort et al., 2009; Masrouhi et al., 2013; Jaillard et al., 2017; Dhahri and Boukadi, 2017).

Halokinetic signature in the Maghreb domain has long been recognized and mostly interpreted as Cretaceous–related structures (Bolze, 1954; Perthuisot, 1988; Vila et al., 1994; Masrouhi et al., 2014b). This belt corresponds to one of the largest worldwide salt provinces in which a debate has been active for decades between two main interpretations i.e. “vertical” diapir structures [autochthonous emplacement] and salt sheets [allochthonous mobile evaporites emplaced at younger stratigraphic levels]. This paper presents new data of the LBSS to highlight a new model of relationship between the allochthonous salt canopy and the autochthonous diapir feeder, in which the relationship is partially obliterated by Tertiary compressions.

2.2. Lithostratigraphic successions

Mesozoic and Cenozoic series outcrop along the LBSS region and comprise sequences from Triassic to quaternary deposits.

The mainly evaporitic Triassic series shows a thickness that varies from 150 to 1000 m. The Jurassic series consist of classic limestones Oust, Zaghouan, Staa, Zaress and Beni klab Formations (Peybernes et al., 1996; Boughdiri et al., 2007). These series are reduced in the southern part of the LBSS compared to their southern equivalent outcropping in the Tunisian Dorsale (Soussi et al., 1999). They vary from 40 to 450 m in outcropping series near the LBSS and include stratigraphic gaps linked to the tilted block geometry characterizing this margin during Mesozoic times (Naji et al., 2018b). In the northern domain, the Jurassic reach a 1000m thickness in the Mateur – Ichkeul area (Alouani et al., 2006). In this area, the Jurassic sequences usually indicate the presence of siliceous radiolarites revealing an important oceanic depth (Cordey et al, 2005).

The Tithonian-Berriasian displays a facies made of debris-flow and mud-flow sandstones and siltstones sequences. The Valanginian–Hauterivian is made of siliciclastic carbonate usually covered by mixed shelf deposits that are dated as Hauterivian and defined as Seroula Formation (Peybernes et al., 1996). The Barremian sequences are described in this region to contain a lower tempestites unit followed by a thick carbonate unit and topped by storm deposits and black-shales parasequences (Khessibi, 1967, Souquet et al., 1997). In northern Tunisia, the Valanginian–Aptian series are defined as M'Cherga Formation (Buroillet, 1956; Ben Ferjani et al., 1990). The Aptian–Early Albian sequences are typically of deep-water environment made of gray to black marls. They also habitually contain abundant slumps and nodules features usually interpreted as related deep and irregular sea floor. This period (Aptian–Albian are the two longest epochs of the lower Cretaceous) is interpreted as displaying the maximum extensional rate of the Tethyan basin in northern Tunisia (Masrouhi et al., 2014b, Jaillard et al., 2017; Naji et al., 2018a). Moreover, more than 80% of the salt structures appeared to be active during Aptian–Albian (e.g. Perthuisot, 1988; Vila et al., 1994; Ghanmi et al., 2001; Masrouhi et al., 2014a).

After the lower Cretaceous deposition variation, the northern Tunisian domain shows a late Cretaceous homogenous facies cover the entire basin with no significant facies variation. The late Cretaceous basin is mainly consisting of pelagic to hemipelagic facies. The basin reflects a transgression that invaded and sealed the aforementioned lower Cretaceous configuration. This deposition of the top of former dislocation is attested by significant thickness variation along the entire basin. The thicknesses vary considerably from some meters to hundreds of meters for the same interval from an area to another.

This period is characterized by homogenous facies with shales, marls and limestones characteristic of post rift sedimentation (Fig. 2). The post rift sedimentation started in late Cretaceous times and smoothly sealed tilted blocks geometries, shaped and accentuated during Early Cretaceous by major syndimentary normal fault systems. This second cycle shows limestone and marl alternations at the base dated as Albian–Cenomanian and defined as Fahdene Formation. These sequences are topped by organic-rich limestones thinly laminated defined as Bahloul member. On the Fahdene Formation, the Turonian–Early Campanian Aleg Formation is formed by marl and shale with fine-grained limestones (Burolet, 1956). Upper Cretaceous sequences, defined as Abiod Formation, display Campanian–Maastrichtian chalky limestones deposits covering the entire basin of Tunisia (Burolet, 1956).

The Tertiary consists of the following sequences: marine black shale series dated as Paleocene and defined as the El Haria Formation. El Haria Formation is frequently overlain by the lower Eocene Formation made of limestones. Then, middle to upper Eocene thick series of marls and shales corresponding to the Souar Formation. Due to the tectonic history (large thrust systems), the upper Eocene does not outcrop in the Lansarine region. Oligocene sequences involve deltaic siliceous sandstones. The Neogene sediments are made of thick marine Aquitanian–Burdigalian formations. The upper Miocene–Pliocene sequences are continental strata recognized as the result of the large erosion during Cenozoic uplifting and cover unconformably the Neogene and Cretaceous Formations.

3. Field data and results

The structural analysis based on a study of detailed geologic maps, controlled by field cross-sections. Interpretations are based on the detailed geological map (1:25 000 scale) from existing data and data prepared for this study. Work consists also of the use of the existing detailed micropalaeontological data from the formations, in order to date the lithologies and illustrate the position of the Triassic salt relative to the surrounding Mesozoic and Cenozoic sequences. the characteristics and behavior of the contact between salt and other strata is detailed to draw back the nature of salt (vertical diapir and/or horizontal salt sheet). Fault kinematics analysis is conducted in some areas, to quantify the brittle deformation and the tectonic regime contemporaneous to the salt body evolution.

The ~ 360 km² LBSS corresponds to the second largest salt body in the north Tunisian salt province. In order to highlight the significant variations of the salt geometry in different areas, we will first discuss the salt contacts in key-zones and then present the structural style by segment.

In the northern part of the LBSS, all the southeast part of the Triassic salt body is in contact with Cretaceous strata. The Triassic salt overlies Albian sequences in the south (Wadi Maiou). In this region, lower Albian dips 45° to the NW under the Triassic units that are parallel to the Cretaceous layers and do not show an extrusive character (Fig. 4). The parallelism between salt contact and Albian layers was the subject of the most curious interpretations by former study of Bolze (1954) which attribute an Albian age to the Triassic salt. This parallel contact can be mapped along more than 2 km from Wadi Maiou to Wadi Tell and, regarding the ravinant character, was interpreted as a “conformable contact” between Triassic salt and Albian Sequences due to an extrusive flow of salt (Masrouhi et al., 2013). This terminology was used to qualify the bottom or the top contact of the salt sheet that flowed over the sea water-sediment interface or was covered by later deposition. This contact is genetically different from a sharp vertical diapiric contact. In the northwestern part, salt is joined in an anticline structure without the classical complication of salt (Fig. 4). The Jebel Bou Djebbah anticline structure shows once more a salt with conformable contact and a cretaceous series that plunges under the Triassic sequences. Northward, in the Wadi El Ahmer locality, an Aptian sequence crops out in the main salt structure. This outcropping Cretaceous series was initially described and dated by Masrouhi et al. (2013) as an upper Aptian sequence. For the first time in this region, a work highlighted a fold structure in which Triassic salt is incorporated in recent series. The Wadi El Ahmer locality shows a NNE-trending anticline structure including upper Aptian Triassic salt cover sequences (for dating see Masrouhi et al., 2013) without the typical salt folding. In the middle part of the large salt outcrop, an Aptian sequence was also identified as the bedrock of the Triassic evaporites (Fig. 4). This anticline shows a “conformable” Triassic contact (ravinant, glauconitic and reworked Triassic insoluble elements) at a dipping angle of 30° subparallel to the above Aptian sequences. Far northwest, the Lella Selilia offers an outcrop of salt sheet with a salt contact subparallel to its cover that is constituted by a normal stratigraphic succession from upper Aptian to Campanian sequences. In the northeastern part (the Sebaa Regoud) a “lower conformable contact” (with respect to the salt position) crops out in this entire region.

The central part of this structure shows the main salt body of Lansarine in contact with two cretaceous outcrops i.e. the Ain El Karma Locality and the Jebel Djedaria (Fig. 5): At Ain el Karma, the Triassic salt covers dark greenish clays with many nodules associated with slumps (a) themselves covering limestones (b). For 2 km from the south to the north, the base of the Triassic salt is in contact only on the term (a). This series has long been regarded as overturned middle Albian series by all authors (Jauzein, 1962; Zargouni, 1975; Perthuisot, 1978). Masrouhi et al. (2013) presents a detailed

micropaleontological association in which a distinction has been established with lower Albian in the base and middle Albian in the upper part, confirming a normal stratigraphic succession. The Jebel Djedaria shows the only southern outcrop of Cretaceous sequences under the tertiary complex configuration of the Jebel Lansarine. This locality offers an outcrop showing a reduced Cretaceous sequence (compared to their equivalents in northern Tunisia) covering Triassic salt. This section is formed by Upper Albian to Santonian sequences with normal lithostratigraphic polarity. Thickness and contact nature (glauconitic, transgressive and phosphatic) testify to a transgressive Cretaceous sequence on an existing submarine salt sheet that was extruded on a water–sediments interface. The interbedded position confirms a rapid salt spreading (1 to 2 Ma). Moreover, the Lansarine central part shows a 500m thick Triassic salt sequence in the East (Ain Karma) and 150 m thick sequences in the Jebel Kef Debba (Fig. 5), possibly indicating a northwestward thinning of salt and thus a possible northwestward spreading.

The LBSS corresponds to the second largest Triassic salt body in contact with only a few Mesozoic outcrops, making the interpretation of this structure difficult. The geologic maps and field data (Figs. 3-6) display evidences that the LBSS is a curved deformed zone bounded mainly by NE- to E-trending faults systems. Its northern side is affected by the 8-km long N40°E-trending Baouala fault. In the main salt body this fault is well identified by microfolding along the fault trace. Along the southeastern side of the Jebel Malouia this fault is confirmed as the main thrust in this region, delimiting a hanging-wall with Triassic salt and a footwall formed by Campanian to Miocene sequences. The offset is estimated to be between 1 and 2 km, regarding the salt position versus the Cretaceous sequences and Miocene sequences. This thrust bounds two varied domains in relation to the salt position: to the northwest the Triassic salt overlies upper Aptian (described afore in Wadi el Marir, Wadi Ahmer, Jebel Bou Djebbah and Sebbaa Regoud) and to the southwest salt overlies Albian sequences (Wadi Maiou). The folding curves and the related structures attest a post Miocene shortening. Three fault sites in this region were analyzed and display a major NW-SE Miocene to quaternary compression state. Using the fault diagram (Fig. 4), the first site (sf_1) indicates a compressional tectonic regime locally characterized by N337°-trending maximum stress axis (σ_1). The second site (sf_2) measured in the Campanian limestone forming the footwall of the Baouala thrust indicates a similar compressional tectonic regime locally characterized by N145°-trending maximum stress axis (σ_1). The third site (sf_3) measured in the Miocene limestones also indicates a compressional tectonic regime locally characterized by N343°-trending maximum stress axis (σ_1). These three sites are compatible with the majority of the tectonic studies in northern Tunisia illustrating a NW-trending Miocene to present day main compression (e.g.

Melki et al, 2011; Soumaya et al., 2015; Booth-Rea et al., 2018). The fault kinematics analysis is compatible with field data illustrating a southeast verging of the Baouala thrust.

The Lansarine region of northern Tunisia shows a plateau with horizontal Eocene sequences resting on a well-outcropping marine Miocene series on its southern side and overlapping a detritic series of the Fortuna formation commonly attributed to the Oligocene (Fig. 6). The Fig.6 shows the configuration and reproduces the geological history of this region. The Oligocene–lower Miocene sequences cover a Cretaceous unit of the Jebel Djedaria and show a moderate angular unconformity of about 15°. The Paleogene (Paleocene and Eocene) subhorizontal sequences of Lansarine consist of two units forming the so-called “Lansarine nappe” (Masrouhi et al., 2007). The previous mapping estimates a southeastward advance of about 10 km from the peel thrust of Mateur, themselves are displaced, which therefore constitutes a minimum estimation based on erosion limits. The thrust overlaps are well fossilized in the entire Lansarine plateau. The top of the Miocene sequences under the thrust was dated as Serrevalian. This implies that this configuration attests at least two tertiary compressional events. A first Eocene episode with a moderate folding which corresponds to the well-known Atlassic compressional event (Masrouhi et al., 2008) recognized on the overall scale of the Maghreb (Frizon de Lamotte et al., 2000; Dhahri and Boukadi, 2010). A second paroxysmal Tortonian compression (the Alpine phase) is responsible for the present structure and deformations observed along this region (Chihi, 1992; Bouaziz et al., 2002; Bahrouni et al., 2014; Gharbi et al., 2014; Ahmadi et al., 2019).

The second characteristic, well identified by maps and geometric relationships between entities, is the E-trending fault systems. This Atlassic domain shows active N110-120° E-trending faults systems involved in the tertiary deformation affecting all sediments including the Mio-Pliocene sequences, which confirms their recent activity. This system frequently displays a multiphase striation for which the first one is classically related to the Mesozoic extensional period. This system is usually associated to thickness variations, slump folds and conglomeratic horizons indicative of their early Mesozoic evolution. Using the fault diagram, we rotated the collected fault data (Fig. 7) to restore the bedding plane to its horizontal orientation. We also used the back-tilting fault kinematics analysis of Naji et al., (2018b) carried out in the northern Tunisian domain. The back-tilting result shows that these faults were normal faults predating the Cenozoic tilting (Fig. 7). Back-tilting of the measured lower Cretaceous fault population indicates a normal faulting that result from an extensional tectonic regime locally characterized by NE-SW minimum stress axis (Fig. 7). The back-tilting of the Aptian–Albian measured fault population indicates a normal faulting that result from an extensional tectonic regime locally

characterized by E-W to NE-SW minimum stress axis (Fig. 7). This phase is mainly characterized by NW-trending fault systems and associated sub-basins. This change from lower Cretaceous to Aptian-Albian periods, is interpreted in Tunisia as the translation from the Jurassic E-W (present-coordinates) dominant shape to Early Cretaceous NW-SE shape, which is concordant with the general E-W transform faults of the Atlantic that translate to NW-SE during the Alpine Tethys faults (Rosenbaum et al, 2002; Frizon de Lamotte et al., 2013; Masrouhi et al., 2019). The tectonic regime changes during the late Cretaceous post-Rift period. Locally, the Lansarine domain seems to be controlled by normal faults characterizing a NW-SE to N-S tectonic extension (Fig. 7).

4. Seismic interpretation

Three seismic profiles are used and interpreted, for which some of them are composite ones. The seismic sections were provided by ETAP Petroleum National Company and the Carthago Oil Company Tunisia. For some section the acquisition was carried out by Shell-Tunirex Company in 1983. Seismic profile data are used to correlate the fault systems and/or tectonic blocks with the above-described sedimentary sequences. These Seismic profiles were correlated by petroleum wells as well as the stratigraphic sequences and outcrops established by the present-study fieldwork.

In this section, seismic profile interpretation is used to document the presence of allochthonous salt sheets and a buried salt diapir in the study area. Three seismic profiles are used to highlight the geometry at depth, halokinetic type and entities relationship. The seismic section L18 is a composite section derived along the Lansarine–Baouala region (Fig. 8). The ~ 35 km long NW-SE L18 profile crosses the LBSS near the Baouala structure (Fig. 3). Furthermore, two seismic profiles are used to highlight the distribution and the relationship between entities that are respectively the NE-SW L05 profile in the northern part and the NE-SW L11 profile in the southern part (with respect to the salt structure). These seismic profiles were analyzed and interpreted using calibration from the W-1, W-2 and W-3 petroleum wells (see Fig. 3 for location). The internal geometry of the shallow portion of the profiles in the LBSS is calibrated by the surface observations of this study.

The seismic section L18 highlights the Teboursouk and the Baouala fault zone that is characterized by a deep north-dipping basement fault and shallow listric normal faults within inferred Triassic evaporites, which confirms previous results (Rigo et al., 1996; Masrouhi et al., 2013). This basement fault zone was mostly active as a normal fault during Mesozoic times, allowing the deposition of a thick sedimentary pile in this northern Tunisian domain, reaching up to a thickness of 6 km. This major basement normal

faulting controls Mesozoic basin with associated changes in thickness well observed for the Jurassic and lower Cretaceous sequences. Structurally, it is clear that the present tectonic style of the area is the result of a post Cretaceous structural inversion. In this zone, the thick sedimentary cover is deformed by thrusts and large-scale folding above the southeastward major thrusts connected in the interface basement-cover (Triassic salt?). Thrusts are superimposed on deep seated basement faults which were active during Mesozoic times as major normal deep faults. The diapir, detected at depth for the first time, seems to be a minor complicating factor in Tertiary shortening deformations. Geometry, thickness variations, together with Triassic evaporites associated to a major thrust, suggest that the basement-cover interface geometry of this domain is poorly deformed (Fig. 8). The profile shows major thrust systems developed beneath the Chougui basin at the base of the basement–cover interface. The far northern part shows an imbrication of southeast-verging thrusts and gently dipping asymmetric folds filled by Oligocene-Miocene series (Fig. 8). The absence of the lower Cretaceous series in the hanging-wall and the base of these minor thrusts suggest a Cenozoic development. They probably do not correspond to inverted faults. In between, major southeast verging thrust systems are developed and major normal fault between Baouala block and Mateur plain are preserved. This seismic section underlines a buried diapir at depth. This stem of the LBSS is revealed as a salt body now buried under the complex thrust configuration of the LBSS. The main information highlighted by this seismic section is the compatibility between surface and subsurface data showing the presence of allochthonous salt sheets detected on the surface and their thinning towards the north. The salt sheet is detached from its autochthonous original position. A salt sheet (canopy?) is interlayered between lower Cretaceous beds. This 8 to-10 km-long salt sheet is actually located in the hanging-wall of the main southeastward thrust. The seismic section also highlights that salt tectonics seems to be controlled by Mesozoic normal faulting associated with well-developed rim synclines (salt mini-basins?) in lower Cretaceous thick sequences around the main salt body. Salt mini-basins are actually well recognized as being associated to salt movement in many worldwide salt provinces (Hudec and Jackson, 2007; Callot et al., 2012; callot et al., 2016). Mini-basins were likely formed as the result of the synsedimentary upward movement of Triassic salt conducted by the differential sedimentation loading itself guided by the major normal faulting. At present, the absence (or thinning?) of salt under Mateur plain may be explained by the lateral flow of salt from the main stem during Mesozoic times. This phenomenon, called salt evacuation, is well known in many other salt provinces (e.g. Gulf of Mexico, Santos basin ...).

The seismic section L05 crosses the northern domain and mainly shows an extensional geologic setting in this area (Fig. 9). This section was interpreted by Booth-Rea et al., (2018) as one of the low angle fault

systems named the Ghezala fault characterizing the extensional late Miocene collapse of northern Tunisia. This work interprets the major low angle normal faults as associated to high-angle faults producing a geometry characterized by half-graben and hanging-wall syncline basins during the late Miocene times. This interpretation of extensional collapse in the Atlas system during the late Cenozoic African-Eurasian convergence setting was related to deep mantle tectonic mechanisms in the concomitant extension of Tyrrhenian basin to East. While we agree with the core interpretation of Booth-Rea et al., (2018), we enhance and add some details in this section. The Miocene extensional system appears to be connected down on a major normal fault system (affecting both basement and cover, Fig. 9) such faults are probably inherited from the former Mesozoic Tethyan extensional period later reactivated during late Miocene times. This section highlights a lower Miocene extensional period. This extension, which occurred after the short Eocene compression, is mainly accommodated by large extensional faults connected down on basement faults systems that seem to be inherited from the former Tethyan basin.

The NE-SW seismic line L11 is located in the front of the thrust systems of LBSS and shows a narrow basin filled by Mio-Plio-Quaternary sediments reaching a 3 km of thickness (Fig. 10). In opposition to the northern domain, this section mainly exhibits high-angle normal fault systems. This narrow basin is mainly recorded by Miocene syntectonic strata. Regarding the position (between the Baouala thrust and the major Teboursouk thrust), the connected high angle normal faults and the sequences in this narrow basin are all interpreted as an orthogonal extension in which the thrust strongly influences the development of normal faults. This section exhibits a strong variation in thickness associated to faults. In addition, the thickness variations are remarkable for Jurassic and lower Cretaceous sequences, which testifies that this fault is inherited from Mesozoic times.

The seismic data seems to be well correlated with gravity results recently presented by Sarsar et al. (2017). According to the superimposition of the Euler solutions to Bouguer Anomaly map used to present the distribution of anomalies and curved gravity lineaments about positive anomalies and also estimate the depth of those anomalies, Sarsar et al. (2017) suggest that the west of the LBSS corresponds to a fault concentric zone and provides the evidence of a pre-existing diapiric geometry body located at the depth between 1 and 2 Km and later buried by Mesozoic and Cenozoic sediments. The NW-trending of the main gravity contours reach a depth of 2 km and confirm the existence of the Teboursouk fault as a major thrust fault system. This system is probably inherited from Mesozoic times and acted as the main control in favor of diapir upward (for more details see Sarsar et al., 2017). The

concentric behavior in the west of the LBSS is probably connected downward to the Teboursouk thrust, which explains the presence of sub-Triassic structures in this belt.

5. Discussion

i. Previous interpretations: Several interpretations were made separately by several authors to explain the diapiric structure that may be summarized as follows: 1- Bolze (1954) suggests a salt move-up because of space creation via normal faulting, 2- Zargouni (1975) suggests a scenario in which salt intrudes forcefully into its overburden during Mesozoic and Eocene times, and 3- Perthuisot (1978) suggests a way in which salt intruded forcefully into its overburden during late Cretaceous-Eocene compression. This structure, called by all previous studies "the Lansarine diapir », was presented as a cylindrical, 45 km long and 15 km-wide vertical diapir. Our field mapping does not support this hypothesis of a single 15 km-wide vertical diapir. The structure and the salt budget do not permit to interpret it as one rooted salt structure. 4- Truillet and Delteil (1982) propose a large thrusting system. Based on the observation that the Triassic salt is interbedded and subparallel to the Cretaceous layers, this work propose that all this region corresponds to a large tectonic nappe and must be integrated to the front of the Numidian allochthonous zone. 5- Finally Masrouhi et al. (2013) propose a salt canopy model. This model proposes a scenario in which extension induces normal faults that provide routes to the salt to reach the surface and flow downslope.

ii. Field data discussion and tectono-sedimentary features: Field work, together with the interpretation of seismic profiles, shows that the present LBSS may result from a long-time polyphasic geological history. This 45 km-long and 15 to 5 km-wide salt structure was likely passively transported on major thrusts during the Atlasic and Alpine shortening. These main tectonics events are recognized to occur during the Late Eocene (Atlassic) and Miocene–to present-day for the alpine event (e.g. El Ghali et al., 2003; Masrouhi et al., 2008; Dhahri and Boukadi, 2010). The present structure is also the result of considerable erosion and probably dissolution during late Cretaceous and Cenozoic times. It likely covered a wider area during Mesozoic times. In this study we confirm by seismic examination the presence of a salt diapir body deeply buried under a complex thrust system which was absent in the previous interpretation. We also confirm by surface data that the outlines of the Triassic salt are commonly subparallel to the bedding of the adjoining rocks succession of the northern and southern parts. The contacts of the Triassic rocks are not discordant with them. Geologic map and field cross sections are consistent with an allochthonous sheet of Triassic salt emplaced over the Early Cretaceous successions. For the LBSS, field data emphasizes the absence of radial faulting that is usually associated

with diapirism growth well observed and documented in others salt province (e.g. Rowan et al., 2003; Yin et al., 2009). Based on field investigations, we therefore suggest (for the central and northern part) a composite salt sheet covering Early Cretaceous sediments. Established by seismic interpretation, a diapiric stem is detected under the LBSS large salt sheet. In the LBSS area, Early Cretaceous sediments are characterized by considerable variation in thickness and exhibit numerous sedimentary features (nodules reworking, slumps and conglomerates lenses) within an active extensional tectonic regime (Naji et al., 2018b). This created an irregular seafloor resulting from normal faulting. In the LBSS area, several preserved extensional structures as small-scale sealed normal faults constitute a useful marker for this tectonic activity. Structurally, the LBSS structure occupies a position in the intersection of the major faults systems i.e., the E-trending strike-slip and the NE-trending thrusts fault systems. Surface data together with the seismic profile interpretation highlight a general shallow north-dipping high-angle normal fault above a major deep listric one. Mechanically, this can explain the weakened overburden of the Triassic salt. The LBSS corresponds at present to a complex structure involving Triassic salt and bounded by north dipping fault systems (Figs. 7-10). It seems to be the stem of the LBSS diapir during Mesozoic time before the Atlasic shortening. This emplacement was likely driven by normal faulting, which affected both the cover and the basement, along with differential loading. This context fits with the southern Tethyan passive margin setting well documented by previous studies (e.g. Souquet et al., 1997; Jaillard et al., 2013; Soua, 2014; El Amari et al., 2016; Naji et al., 2018a).

iii. Diapirism style: Taking in account the overall structure, the LBSS shows strong similarities to those recently described by authors around many salt provinces (e.g. Saura et al., 2014; Alsop et al., 2015; Martin-Martin et al., 2017; Jaillard et al., 2017; Zucker et al., 2019). The halokinesis process was particularly active during the rifting stage, in which tilted block geometry was responsible for differential loading. During the Alpine compression, diapiric salt corresponds to weak surfaces used by the Alpine thrust systems. Structural analysis indicates that the LBSS emplacement was guided by a basement normal fault system related to the south Tethyan rifting. The general framework of this margin, together with similarities between the LBSS and recently published diapirs from other salt provinces, led to the proposal of polyphase diapirism history. Within the Maghreb framework (e.g. Soussi et al., 2017; Dhahri and Boukadi, 2017; Ahmadi et al., 2019), the Jurassic–Early Cretaceous extensional context of the south Tethyan margin in Tunisia allows a reactive mobilization of salt layers. This tectonic setting offers two conditions allowing salt to extrude onto the sea-floor. (1) The extension weakens the overburden by normal faulting creating space for salt to rise forming the diapir structure and (2) induces thickness variations leading to differential loading which initiate the salt movement (Fig. 11). During the Tethyan

462 rifting period, lower Cretaceous extensional tectonic regime induced thick depositional basin sediments
 463 controlled by major basement normal faults. Within this structural setting, well recorded in North
 464 Tunisia, the salt's overburden was weakened by faulting creating space, along with salt (acknowledged
 465 to be Newtonian fluid at depth) withdrawing from the weakened zone by faulting. Accumulation of thick
 466 salt overburden in subsiding area acts as a rapid differential loading that encourages salt flow from the
 467 diapir stem. This evolution corresponds to a reactive diapir (*sensu* Vendeville and Jackson, 1992b), which
 468 extruded along the main fault system (Fig. 11). Active diapirism would correspond to a short lower
 469 Cretaceous event, currently not observable because it has been overprinted by tectonic compressional
 470 deformations. The basement fault movement, salt withdrawal and growth of diapir itself; all of them
 471 may have induced a significant asymmetry creating salt mini-basins well recognized as associated to salt
 472 movement in many worldwide salt provinces. Above-mentioned observations indicate a structural
 473 configuration that led to lateral spreading onto the depositional surface over the LBSS diapiric stem (Fig.
 474 11). It corresponds to a well-known salt process that could be active both in submarine (Fletcher et al.,
 475 1995) and sub-aerial environments (Talbot, 1998).

476 **iv. Regional consideration:** The structural style of the LBSS seems to be very similar to other
 477 structures recognized as being the result of basement faults movement, on which extensional thin-
 478 skinned deformation is connected. The trigger mechanism of salt migration of the LBSS can be compared
 479 to other similar salt provinces: e.g., Pyrenean orogen (Canérot et al., 2005; Saura et al., 2016), the
 480 Eastern Betics (Roca et al., 2013; Rubinat et al., 2013), Nordkapp Basin (Koyi et al., 1995), or North Africa
 481 (Bouchouata et al., 1995; Saura et al., 2013, Masrouhi et al., 2014a, Moragas et al., 2017, 2019). The
 482 original criteria of the Salt structure is preserved likely because it was passively transported on major
 483 thrusts, superimposed on deep seated basement faults, during the Atlasic and Alpine shortening
 484 periods. The Northeastern Maghreb domain is one of the world's least-known areas in terms of salt
 485 tectonics (Hudec and Jackson, 2007). It appears similar to many others inverted salt provinces, for which
 486 it is difficult to interpret the original geometry and evolution of salt diapirs. In this domain, the
 487 buoyancy-driven halokinetic model has long been considered as the unique way of salt growth. This
 488 model postulated an autonomous isostatic rise of salt and piercement of the overburden due to the
 489 Rayleigh–Taylor instabilities. Based on this model, the diapirs of North Tunisia have been considered to
 490 expose only “vertical” diapir structures (Perthuisot, 1978; Perthuisot et al., 1998; Rouvier et al., 1998;
 491 Jallouli et al., 2005). Recently, an allochthonous salt model has been documented by Masrouhi et al.
 492 (2013) in the Alpine thrust front of Teboursouk (Teboursouk thrust unit, Fig. 1). The authors suggest a

scenario where salt broke out at the sediment–water interface or below a thin layer of marine sediments forming an allochthonous extrusion, similar to the present-day salt tectonics described in the deep–water Gulf of Mexico (Fletcher et al., 1995) or Angola margin (Fort et al., 2004; Ge et al., 2019). Later, the pre-existing allochthonous salt was deformed during Miocene–present day Alpine compressions that used the weakness of the salt sheet as thrust décollement. The interconnection between these two types (i.e. vertical diapir and large connected salt sheet) has never been described yet.

v. The LBSS style: The LBSS clearly shows asymmetric overhangs flowing northward (the subsiding area). The first part of the LBSS evolution for the sheet connected to the Lansarine salt diapir can be easily distinguished as an extrusive advance (*sensu* Hudec and Jackson, 2006), in which an exposed salt sheet spreads at the water–sediment interface without any roof. Above the apex of the diapir, that corresponds to the feeder, salt flows outward and spreads by gravity downslope (Fig. 11). The overburden on the salt may have formed a synclinal minibasin on top of the salt sheet (Fig. 11). In this case, the minibasin had a thickness usually determined by the salt evacuation budget forming in some cases a salt weld (e.g. Diegel et al., 1995; Schuster, 1995; Callot et al., 2012). In this domain, the low-amplitude syncline of Chouigui (Fig. 9) is likely the minibasin developed by evacuation of allochthonous Triassic salt during Mesozoic times (see Fig. 11). From late Cretaceous to Eocene time, the onset of the compressional Atlassic stage (e.g. Guiraud and Bosworth, 1997; Frizon de Lamotte et al., 2000) resulted in widespread shortening associated with the inversion of the normal faults and probably without significantly compressing the LBSS. The diapir was passively transported above the southeast-verging major thrust which is deeply rooted in the salt beneath the Mateur plain (Fig. 11). During this period, the LBSS was eroded due to fold-related uplifting.

6. Conclusion

Based on the results of detailed field work and seismic profiles' interpretation of the Lansarine-Baouala Salt Structure in the Northern Atlassic domain of Tunisia, the following conclusions can be made:

- Salt diapirism in Northern Tunisia appears to be contemporaneous with tectonic extension. The Jurassic–Early Cretaceous extensional tectonic context of the southern Tethyan margin induced thick depositional basin sediments controlled by major basement normal faults. The extension

weakens the overburden by normal faulting and the thickness variations leading to differential loading which allow a reactive mobilization of Triassic evaporites,

- During Mesozoic diapirism phase, a significant allochthonous salt spreads laterally from the diapir stem. Salt flows outward and spreads by gravity downslope highlighting an extrusive sheet advance. In this domain, the low-amplitude syncline of Chouigui seems to be a minibasin developed in conjunction with the evacuation of allochthonous Triassic salt during Mesozoic times,
- Compressional deformation stages do not reflect active diapirism. The Lansarine diapir and its connected salt sheet were passively transported on the southeast-verging major thrust deeply rooted in the salt beneath the Mateur plain during the Atlasic and Alpine shortening. In the north Tunisian domain, the identification of allochthonous Triassic salt sheets connected to buried diapir have a significant role in the shallow structural complexity observed in the sedimentary cover during the subsequent contractional events.

Acknowledgments

This work was financially supported by the Tunisian Ministry of Higher Education and Scientific Research (CERTe, Geo-resources Laboratory funding) and the French Ministry of Foreign Affairs grant through French Embassy in Tunisia (CMCU program). This work is a contribution to the program of the French National Research Agency (ANR) through the A*MIDEX OT-Med project (nANR-11-LABX-0061) funded by the French Government «Investissements d'Avenir» (n ANR-11-IDEX-0001-02). We are grateful to Franck Thomas for providing constructive help that substantially improved the structure of this paper. Authors are thankful to the Editor Mohamed G Abdelsalam as well as the reviewers for their constructive suggestions and comments.

References

- Ahmadi, R., Mercier, E., Trigui, H., Abdennaceur Ouali, J., 2019. Relationship between fractures patterns and fold kinematics; the case study of Jebel Sehib, a typical fault propagation fold of southern Tunisia, *Journal of African Earth Sciences*, 125, 23-35.
- Allen, J., Beaumont, C., Deptuck, M. E., 2020. Feedback between synrift lithospheric extension, sedimentation and salt tectonics on wide, weak continental margins. *Petroleum Geoscience*, 26 1, 16–35.
- Allen, P. A., Allen, J. R., 1990. *Basins analysis: Principles and Applications*, 2d: New York, Wiley–Backwell, 560 p.
- Alouani, R., Melki F., Tlig, S., Zargouni, F. 2006. Geologic map of Menzel Bourguiba 1:50000, sheet n°6. National Geological Survey. National Office of Mines, Tunisia.
- Alsop, G. I., Marco, S., 2014. Fold and fabric relationships in temporally and spatially evolving slump systems: A multi-cell flow model. *Journal of Structural Geology*, 63, 27–49.
- Alsop, G. I., Weinberger, R., Levi, T., Marco, S., 2015. Deformation within an exposed salt wall: Recumbent folding and extrusion of evaporites in the Dead Sea Basin. *Journal of Structural Geology* 70, 95-118.
- Bahrouni, N., Bouaziz, S., Soumaya, A., Ben Ayed, N., Attafi, K., Houla, Y., El Ghali, A., Rebai, N., 2014. Neotectonic and seismotectonic investigation of seismically active regions in Tunisia: A multidisciplinary approach. *Journal of Seismology*, 18, 2, 235-256.
- Bally, A.W., 1983. Seismic expression of structural styles. *AAPG Studies in Geology*, 15, 3, 29 p.
- Ben Ferjani, A., Burolet, P.F., Mejri, F., 1990. *Petroleum geology of Tunisia*, ETAP Memoir eds, 194 p.
- Benaouali-Mebarek, N., Frizon de Lamotte, D., Roca, E., Bracène, R., Faure, J. L., Sassi, W., Roure, F., 2006. Post-Cretaceous kinematics of the Atlas and Tell systems in central Algeria: Early foreland folding and subduction-related deformation, *C. R. Geosci.*, 338, 115-125.
- Benassi, R., Jallouli, Ch., Hammami, M., Turki, M. M., 2006. The structure of Jebel El Mourra, Tunisia: a diapiric structure causing a positive gravity anomaly. *Terra Nova*, 18, 432-439.
- Billi, A., Faccenna, C., Bellier, O., Minelli, L., Neri, G., Piromallo, C., Presti, D., Scrocca, D., Serpelloni, E., 2011. Recent tectonic reorganization of the Nubia–Eurasia convergent boundary heading for the closure of the western Mediterranean. *Bull. Soc. Geol. Fr*, 182, 279-303.
- Bolze, J., 1950. Diapirs triasiques et phases orogéniques dans les monts de Téboursouk (Tunisie septentrionale). *C. R. Acad. Sci. Paris*, t 231, n° 8, 480-482.
- Bolze, J., 1954. Ascension et percée des diapirs au Crétacé moyen dans les monts de Téboursouk (Tunisie septentrionale). *C. R. Somm. Soc. Géol. France*, 139-141.
- Booth-Rea, G., Gaidi, S., Melki, F., Marzougui, W., Azañón, J. M., Zargouni, F., Galvé, J. P., Pérez-Peña, J. V. 2018a. Late Miocene Extensional Collapse of Northern Tunisia, *Tectonics*, 37, 1626- 1647.
- Bouaziz, S., Barrier, E., Soussi, M. M., Turki, M.M., Zouari, H., 2002. Tectonic evolution of the northern African margin in Tunisia from paleostress data and sedimentary record. *Tectonophysics*, 357, 227-253.
- Bouchouata, A., Canerot, J., souhel, A., Almeras, Y., 1995. Stratigraphie séquentielle et évolution géodynamique du jurassique dans la région de Talmest-Tazoult (Haut Atlas central, Maroc), *C.R. Acad. Sci. Paris*, 320, 749-756.

- 586 Boughdiri, M., Cordey, F., Sallouhi, H., Maalaoui, K., Masrouhi, A., Soussi, M., 2007. Jurassic radiolarian-
587 bearing series of Tunisia: biostratigraphy and significance to western Tethys correlations. *Swiss J. Geosci*,
588 100, 431-441.
- 589 Brune, S., Heine, C., Perez-Gussinye, M., and Sobolev, S., V., 2014: Rift migration explains continental
590 margin asymmetry and crustal hyper-extension, *Nat. Commun.*, 5. Ncomms 5014, 2014.
- 591 Burollet, P.F., 1956. Contribution à l'étude stratigraphique de la Tunisie centrale. *Annales des Mines et*
592 *de la Géologie (Tunisie)*, vol. 18, 350 p.
- 593 Callot, J.P., Ribes, C., Kergaravat, C., Bonnel, C., Temiz, H., Poisson, A., Vrielynck, B., Ringenbach, J.C.,
594 2014. Salt tectonics in the Sivas Basin (Turkey), Walking across salt wall and minibasins. *Bull. Soc. Geol.*
595 *France*, 185, 1.
- 596 Callot, J.P., Salel, J.F., Letouzey, J., Daniel, J.M., Ringenbach, J.C., 2016. Three dimensional evolution of
597 salt-controlled minibasins: Interactions, folding, and megaflap development. *AAPG Bulletin* 100 (9):
598 1419-1442.
- 599 Callot, J.P., Trocmé, V., Letouzey, J., Albouyi, E., S. Jahani, S. Sherkati., 2012. Pre-existing salt structures
600 and the folding of the Zagros Mountain. *Geological Society, London, Special Publications*, 363, 545–561.
- 601 Canérot, J., Hudec, M.R., Rockenbach, K., 2005. Mesozoic diapirism in the Pyrenean orogen: salt
602 tectonics on a transform plate boundary. *American Association of Petroleum Geologists Bulletin* 89, 211-
603 229.
- 604 Chihi, L., 1992. Seismotectonic study in Central and Southern Tunisia. *Tectonophysics*, 209, 1-4, 175-178.
- 605 Cordey, F., Boughdiri, M., Sallouhi, H., 2005: First direct age determination from the Jurassic radiolarian-
606 bearing siliceous series (Jédid Formation) of northwestern Tunisia. *Comptes Rendus Geoscience Paris*
607 337, 777-785.
- 608 Deverchere, J., Yelles, K., Domzig, A., De Lepinay, M., B., Bouillin, J. P., Gaullier, V., Bracene, R., Calais, E.,
609 Savoye, B., Kherroubi, A., Le Roy, P., Pauc, H., Dan, G., 2005. Active thrust faulting offshore Boumerdes,
610 Algeria, and its relations to the 2003 Mw 6.9 earthquake. *Geophys. Res. Letters*, 32, L04311.
- 611 Dhahri, F., Boukadi, N., 2010. The evolution of pre-existing structures during the tectonic inversion
612 process of the Atlas chain of Tunisia. *Journal of African Earth Sciences*, 56, 139–149.
- 613 Dhahri, F., Boukadi, N., 2017. Triassic salt sheets of Mezzouna, central Tunisia: new comments on Late
614 Cretaceous halokinesis and geodynamic evolution of the Northern African margin. *Journal of African*
615 *Earth Sciences*, 129, 318-329.
- 616 Diegel, F. A., Karlo, J.F. Schuster, D.C. Shoup, R. C., Tauvers, P. R., 1995. Cenozoic structural evolution
617 and tectonostratigraphic framework of the northern Gulf Coast continental margin, In *Salt tectonics: A*
618 *global perspective* (eds. Jackson, M. P. A. Roberts, D. G., Snelson, S.) *American Association of Petroleum*
619 *Geologists Memoir*, 65, 109-151.
- 620 Dlala, M., 1992. Seismotectonic study in Northern Tunisia. *Tectonophysics*, 209, 1-4, 171-174.
- 621 Dlala, M., Hfaiedh, M., 1993. Le séisme du 7 novembre 1989 à Metlaoui (Tunisie méridionale): une
622 tectonique active en compression. *C. R. Acad. Sci. Paris Série II*, 317, 10, 1297-1302.
- 623 Dooly, T.P., Hudec, M.R., Pichel, L.M., Jackson, M.P.A., 2018. The impact of base-salt relief on salt flow
624 and suprasalt deformation patterns at the autochthonous, paraautochthonous and allochthonous level:
625 insights from physical models. In *Mc Clay, K. R. & Hammerstein, J. A. (eds) Passive Margins: Tectonics,*
626 *Sedimentation and Magmatism. Geological Society, London, Special Publications*, 476.

- El Amari, E.A., Gharbi, M., Youssef, M.B., Masrouhi, A., 2016. The structural style of the southern Atlasic foreland in northern Chotts range in Tunisia: field data from Bir Oum Ali structure. *Arab. J. Geosci.* 9, 389.
- El Ghali, A., Ben Ayed, N., Bobier, C., Zargouni, F., Krifa, A., 2003. Les manifestations tectoniques synsédimentaires associées à la compression éocène en Tunisie, implications paléogéographiques et structurales sur la marge Nord-Africaine, *C. R. Geoscience* 335, 763-771.
- Esput, N., Angrand, P., Teixell, A., Labaume, P., Ford, M., De Saint Blanquat, M., Chevrot, S., 2019. Crustal-scale balanced cross-section and restorations of the Central Pyrenean belt (Nestes-Cinca transect): Highlighting the structural control of Variscan belt and Permian-Mesozoic rift systems on mountain building. *Tectonophysics*, 764, 25-45.
- Fernandez, N., Hudec, M.R., Jackson, C.A.L., Dooley, T.P., Duffy, O.B., 2020. The competition for salt and kinematic interactions between minibasins during density-driven subsidence: observations from numerical models. *Petroleum Geoscience*, 26, 1, 3–15.
- Fletcher, R.C., Hudec, M. R., Watson, I. A. 1995. Salt glacier and composite sediment: salt glacier models for the emplacement and early burial of allochthonous salt sheets. In *Salt Tectonics: A Global Perspective* (eds. Jackson, M. P. A. Roberts, D. G., Snelson, S.). American Association of Petroleum Geologists Memoir, 65, 77-108.
- Fort, X., Brun, J.P., 2004. Compressional salt tectonics (Angolan Margin). *Tectonophysics*, 382(3) : 129-150.
- Fort, X., Brun, J.P., Chauvel, F., 2004. Salt tectonics on the Angolan margin, synsedimentary deformation processes. *Bulletin of the American Association of Petroleum Geologists*, 88, 1523-1544.
- Frizon de Lamotte, D., Leturmy, P., Missenard, Y., Khomsi, S., Ruiz, G., Saddiqi, O., Guillocheau, F., Michard, A., 2009. Mesozoic and Cenozoic vertical movements in the Atlas system (Algeria, Morocco, Tunisia): an overview. *Tectonophysics*, 475, 9-28.
- Frizon de Lamotte, D., Raulin, C., Mouchot, N., Wrobel-Daveau, J.C., Blanpied, C., Ringenbach, J.C., 2013. The southernmost margin of the Tethys Realm during the Mesozoic and Cenozoic: Initial geometry and timing of the inversion processes. *Tectonics*, 30, TC3002, 1-22.
- Frizon de Lamotte, D., Saint-Bezar, B., Bracene, R., Mercier, E., 2000. The two main steps of the Atlas building and geodynamics of the western Mediterranean. *Tectonics*, 19, 740-761.
- Ge Z, Gawthorpe, R.L., Rotevatn, A., Zijerveld, L., Jackson, A.L.C., Oluboyo, A., 2019. Minibasin depocentre migration during diachronous salt welding, offshore Angola. *Basin Res.* 2019, 00, 1–19.
- Ghanmi, M., Ben Youssef, M., Jouirou, M., Zargouni, F., Vila J. M., 2001. Halocinèse crétacée au Jebel Kebbouch (Nord-Ouest tunisien) : mise en place à fleur d'eau et évolution d'un « glacier de sel » albien, comparaisons. *Eclogae Geologicae Helvetiae*, 94, 153-160.
- Gharbi, M., Bellier, O., Masrouhi, A., Esput, N., 2014. Recent spatial and temporal changes in the stress regime along the southern Tunisian Atlas front and the Gulf of Gabes: New insights from fault kinematics analysis and seismic profiles. *Tectonophysics*, 626, 120-136.
- Gharbi, M., Esput, N., Masrouhi, A., Bellier, O., Amari, E.A. 2015. Style of Atlasic tectonic deformation and geodynamic evolution of the southern Tethyan margin, Tunisia. *Marine and Petroleum Geology*, 66, 801-816.
- Giles, K. A., Rowan, M. G., 2012. Concepts in halokinetic-sequence deformation and stratigraphy. In G. I. Alsop, S. G. Archer, A. J. Hartley, N. T. Grant, R. Hodgkinson (Eds.), *Geological Society of London Special*

- Publications: Vol. 363. Salt tectonics, sedimentation and prospectivity (pp. 7–31). London: The Geological Society.
- Guiraud, R., Bosworth, W., 1997. Senonian basin inversion and rejuvenation of rifting in Africa and Arabia: synthesis and implications to plate-scale tectonics. *Tectonophysics*, 282, 39-82.
- Hearon IV, T. E., Rowan, M. G., Giles, K. A., Kernén, R. A., Gannaway, C. E., Lawton, T. F., Fiduk, J. C., 2015. Allochthonous salt initiation and advance in the northern Flinders and eastern Willouran ranges, South Australia: Using outcrops to test subsurface-based models from the northern Gulf of Mexico. *AAPG Bulletin*, 99, 293–331.
- Heydarzadeh, K., Ruh, J. P., Vergés, J., Hajjalibeigi, H., Gharabeigli, G., 2020. Evolution of a structural basin: Numerical modelling applied to the Dehdasht Basin, Central Zagros, Iran. *Journal of Asian Earth Sciences*. 187 (2020) 104088.
- Hudec, M.R., Jackson, M.P.A., 2004. Regional restoration across the Kwanza Basin, Angola: salt tectonics triggered by repeated uplift of a metastable passive margin. *American Association of Petroleum Geologists Bulletin*, 88, 971-990.
- Hudec, M.R., Jackson, M.P.A., 2006. Advance of allochthonous salt sheets in passive margins and orogens. *American Association of Petroleum Geologists Bulletin*, 90, 1535-1564.
- Hudec, M.R., Jackson, M.P.A., 2007. Terra infirma: understanding salt tectonics. *Earth Science Reviews* 82, 1-28.
- Hudec, M.R., Jackson, M.P.A., 2009. Interaction between spreading salt canopies and their peripheral thrust systems. *Journal of structural geology*, 31, 1114-1129.
- Jackson, M., Hudec, M. (2017). Salt Sheets and Salt Canopies. In *Salt Tectonics: Principles and Practice*, 119–154. Cambridge: Cambridge University Press. Doi:10.1017/9781139003988.009.
- Jackson, M.P.A., Talbot, C.J., 1989. Anatomy of mushroom-shaped diapirs, *Journal of structural geology*, 11, 211-230
- Jackson, M.P.A., Vendeville, B.C., 1994. Regional extension as a geologic trigger for diapirism. *GSA Bulletin*, 106, 57-73.
- Jaillard, E., Bouillin, J. P., Ouali, J., Dumont, T., Latil, J. L., Chihaoui, A., 2017. Albian salt-tectonics in Central Tunisia: Evidences for an Atlantic-type passive margin. *Journal of African Earth Sciences*, 135, 220-234.
- Jaillard, E., Dumont, T., Ouali, J., Bouillin, J. P., Chihaoui, A., Latil, J. L., Arnaud, H., Arnaud-Vanneau, A., Zghal, I., 2013. The Albian tectonic “crisis ”in Central Tunisia: Nature and chronology of the deformations. *Journal of African Earth Sciences*, 85, 75-86
- Jallouli, C., Chikhaoui, M., Brahem, A., Turki, M. M., Mickus, K., Benassi R., 2005. Evidence for Triassic salt domes in the Tunisian Atlas from gravity and geological data. *Tectonophysics*, 396, 209-225.
- Jauzein, A., 1962. Contribution à l'étude géologique de la Tunisie septentrionale : les confins de la dorsale tunisienne (zone des dômes et sahels). Thèse Paris, Annales des Mines et de la géologie. Tunis n°22.
- Jolivet, L., Faccenna, C., 2000. Mediterranean extension and the Africa-Eurasia collision. *Tectonics*, 2000TC900018.
- Kergaravat, C., Ribes, C., Legeay E., Callot, J.-P., Kavak, K. S., Ringenbach, J.-C., 2016. Minibasins and salt canopy in foreland fold-and-thrust belts: The central Sivas Basin, Turkey, *Tectonics*, 35, 1342–1366.

- Khessibi, M., 1967. Etude stratigraphique et structurale des formations mésozoïques de Djédeida-beauvoir (Tunisie). Dipl. Et. Sup. Univ. Tunis. 80 p. (déposé au Service Géologique de Tunisie).
- Koyi, H., Talbot, C., Tørudbakken, B. 1995, salt tectonics in Northeastern nordkapp basin, Southwestern Barents Sea, In Salt tectonics: A global perspective (eds. Jackson, M. P. A. Roberts, D. G., Snelson, S.) pp. 437-447. American Association of Petroleum Geologists Memoir no. 65.
- Laaridhi-Ouazaa, N., 1994. Etude minéralogique et géochimique des épisodes magmatiques mésozoïques et miocènes de la Tunisie. Thèse Doc. Etat, University Tunis II, Tunisia, 466 p.
- Martin-Martin, J.D., Vergés, J., Saura, E., Moragas, M., Messenger, G., Baqués, V., Razin, P., Grélaud, C., Malaval, M., Joussiaume, R., Casciello, E., Cruz-Orosa, I., Hunt, D.W., 2017. Diapiric growth within an Early Jurassic rift basin: The Tazoult salt wall (central High Atlas, Morocco). *Tectonics*, 36, 1, 2-32.
- Masrouhi, A., 2006. Les appareils salifères des régions de Mateur, Tébourba et de Medjez-el-Bab (Tunisie du Nord). PhD thesis, department of Geology.Tunis-el-Manar University, 258 p, Published thesis.
- Masrouhi, A., Bellier, O., Koyi, H., 2014b. Geometry and structural evolution of Lorbeus diapir, northwestern Tunisia: polyphase diapirism of the North African inverted passive margin. *Int J Earth Sci (Geol Rundsch)*, 103, 881-900.
- Masrouhi, A., Bellier, O., Koyi, H., Vila, J. M., Ghanmi, M., 2013. The evolution of Lansarine-Baouala salt canopy in North African Cretaceous passive margin in Tunisia. *Geological Magazine*, 150 (5), 835-861.
- Masrouhi, A., Bellier, O., Youssef, M.B., Koyi, H., 2014a. Submarine allochthonous salt sheets: gravity-driven deformation of North African Cretaceous passive margin in Tunisia e Bled Dogra case study and nearby salt structures. *Journal of African Earth Sciences*, 97, 125-142.
- Masrouhi, A., Ghanmi, M., Ben Slama, M.M., Ben Youssef, M., Vila, J. M, Zargouni, F., 2008. New tectono-sedimentary evidence constraining the timing of the positive tectonic inversion and the Eocene Atlasic phase in northern Tunisia: Implication for the North African paleo-margin evolution. *C. R. Geosciences*, 340, 771-778.
- Masrouhi, A., Ghanmi, M., Ben Youssef, M., Vila, J. M, Zargouni, F., 2007. Definition of a thrust nappe with two Palaeogene units in the Lansarine plateau (northern Tunisia): A new structural element of the Tunisian Atlas and revaluation of the Tertiary compression phases. *C. R. Geosciences*, 339, 441-448.
- Masrouhi, A., Gharbi, M., Bellier, O., Ben Youssef, M., 2019. The Southern Atlas Front in Tunisia and its foreland basin: Structural style and regional-scale deformation. *Tectonophysics*, 764, 1-24.
- Masrouhi, A., Koyi, H., 2012. Submarine "salt glacier" kinematics of Northern Tunisia, a case of Triassic salt mobility in North African Cretaceous passive margin. In: Alsop, G.I., Archer, S.G., Hartley, A., Grant, N.T., Hodgkinson, R. (Eds.), *J. Geol. R. Salt Tectonics, Sediments and Prospectivity*. Geological Society, London, Special Publications, 363, 579-593.
- Mattoussi Kort, H., Gasquet, D., Ikenne, M., Laridhi Ouazaa, N., 2009. Cretaceous crustal thinning in North Africa: Implications for magmatic and thermal events in the Eastern Tunisian margin and the Pelagic Sea. *Journal of African Earth Sciences*, 55, 5, 257-264.
- Melki, F., Zouaghi, T., Harrab, S., Casas Sainz, A., Bédir, M., Zargouni, F., 2011. Structuring and evolution of Neogene transcurrent basins in the Tellian foreland domain, North-Eastern Tunisia. *Journal of Geodynamics*, 52, 57-69.

- 749 Moragas, M., Baqués, V., Travé, A., Martín-Martín, J.D., Saura, E., Messenger, G., Hunt, D., Vergés, J. 2019.
 750 Diagenetic evolution of lower Jurassic platform carbonates flanking the Tazoult salt wall (Central High
 751 Atlas, Morocco). *Basin Research*. In Press.
- 752 Moragas, M., Vergés, J., Nalpas, T., Saura, E., Martin-Martin, J.D., Messenger, G., Hunt, D.W., 2017. The
 753 impact of syn- and post-extension prograding sedimentation on the development of salt-related rift
 754 basins and their inversion: Clues from analogue modeling. *Marine and Petroleum Geology* 88, 985-1003.
- 755 Moragas, M., Vergés, J., Saura, E., Martín-Martín, J.D., Messenger, G., Merino Tomé, O., Suarez-Ruiz, I.,
 756 Razin, P., Grélaud, C., Malaval, M., Joussiaume, R., Hunt, D.W., 2016. Jurassic rifting to post-rift
 757 subsidence analysis in the Central High Atlas and its relation to salt diapirism. *Basin Res.* 1-27.
- 758 Moragas, M., Vergés, J., Saura, E., Martin-Martin, J.D., Messenger, G., Merino-Tomé, Ó., Suárez-Ruiz, I.,
 759 Razin, P., Grélaud, C., Malaval, M., Joussiaume, R., Hunt, D.W. 2018. Jurassic rifting to post-rift
 760 subsidence analysis in the central High Atlas and its relation to salt diapirism. *Basin Research*, 30, 336-
 761 362.
- 762 Naji, C., Gharbi, M., Amri, Z., Masrouhi, A., Bellier, O., 2018a. Temporal and spatial changes of the
 763 submarine Cretaceous paleoslope in Northern Tunisia, inferred from slump folds analysis. *Proceedings*
 764 *of the Geologist's Association* Volume 129, Issue 1, p. 40-56.
- 765 Naji, C., Masrouhi, A., Amri, Z., Gharbi, M., Bellier, O., 2018b. Cretaceous paleomargin tilted blocks
 766 geometry in northern Tunisia: stratigraphic consideration and fault kinematic analysis. *Arabian Journal*
 767 *of Geosciences*, 11, 583.
- 768 Perthuisot, V., Rouvier, H., Smati A., 1998. Style et importance des déformations anté-vraconniennes dans
 769 le Maghreb oriental: exemple du diapir du Jebel Sata. *Bulletin de la Société Géologique de France*, 8,
 770 389-398.
- 771 Perthuisot, V., Rouvier, H., Smati, A., 1988. Style et importance des déformations anté-vraconiennes
 772 dans le Maghreb oriental: exemple du diapir du Jebel Sata (Tunisie centrale). *Bull. Société géologique*
 773 *France*, 4 (8), 391-398.
- 774 Perthuisot., V. 1978. Dynamique et pétrogenèse des extrusions triasiques de Tunisie septentrionale.
 775 *Travaux du Laboratoire de Géologie* no.12. Presses de l'Ecole Normale Supérieure Paris, 312 p.
- 776 Peybernes, B., Kamoun, F., Durand Delga, M., Thierry, J., Faure, P., Dommergues, J.L., Vila, J.M., Cugny,
 777 P., Ben Youssef, M., 1996. Le Jurassique et le Crétacé basal de la Tunisie nord-occidentale : Essai de
 778 corrélations avec les séries de la dorsale tunisienne et de la « ride » Amar-Djédeida. *C. R. Acad. Sci.*,
 779 Paris, 323, IIa, 153-162.
- 780 Peybernes, B., Souquet, P., Vila, J.M., Ben Youssef, M., Durand Delga, M., Kamoun, F., Delvolvé, J.J.,
 781 Charrière, A., Ghanmi, M., Zarbout, M., Saadi, J., 1994. Les séries turbiditiques du Tithonien supérieur et
 782 du Crétacé basal (formations Maiana, Hamada et Sérouta) de la zone nord-atlasique à « schistosité » (NE
 783 de la Tunisie). *C. R. Acad. Sci.*, Paris, 319, II, 1535-1543.
- 784 Ramos, A., Fernández, O., Muñoz, J.A., Terrinha, P., 2017. Impact of basin structure and evaporite
 785 distribution on salt tectonics in the Algarve Basin, Southwest Iberian margin. *Marine and Petroleum*
 786 *Geology*, 88, 961-984.
- 787 Rigo, L., Garde, S., El Euch, H., Bandt, K., Tiffert, J., 1996. Mesozoic fractured reservoirs in a
 788 compressional structural model for north-eastern Tunisia atlasic zone, *Entreprise Tunisienne d'Activités*
 789 *Pétrolières*, 10, 233-355.

- Roca, E., Beamud, E., Rubinat, M., Soto, R., Ferrer, O., 2013. Paleomagnetic and inner diapiric structural constraints on the kinematic evolution of a salt-wall: The Bicorn-Quesa and northern Navarrés salt-wall segments case (Prebetic Zone, SE Iberia). *Journal of Structural Geology*, 52, 80-95.
- Rosenbaum, G., Lister, G. S., Duboz, C., 2002. Relative motions of Africa, Iberia and Europe during Alpine orogeny. *Tectonophysics*, 359, 117-129.
- Roure, F., Casero, P., Addoum, B., 2012. Alpine inversion of the North African margin and delamination of its continental lithosphere. *Tectonics*, 31, TC3006.
- Rouvier, H., Henry, B., Le Goff, M., Hatira, N., Laatar, E., Mansouri, A., Perthuisot, V., Smati, A., 1998. Preuves paléomagnétiques de la non-interstratification des évaporites du Trias dans l'Albien du Maghreb oriental. *Comptes Rendus de l'Académie des Sciences, Paris* 326 (IIa), 363-368.
- Rowan, M. G., Hearon, T. E., Kernen, R. A., Giles, K. A., Gannaway-Dalton, C. E., Williams, N. J., Fiduk, J. C., Lawton, T. F., Hannah, P. T., Fischer, M. P., (2019): A review of allochthonous salt tectonics in the Flinders and Willouran ranges, South Australia. *Australian Journal of Earth Sciences*, 1-27.
- Rowan, M. G., Lawton, T. F., Giles, K. A., Ratliff, R. A., 2003. Near-salt deformation in La Popa Basin, Mexico, and the northern Gulf of Mexico: A general model for passive diapirism. *American Association of Petroleum Geologists Bulletin*, 87, 733-756.
- Rubin, M., Roca, E., Escalas, M., Queralt, P., Ferrer, O., Ledo, J. J., 2013. The influence of basement structure on the evolution of the Bicorn-Quesa Diapir (eastern Betics, Iberian Peninsula): Contractive thin-skinned deformation above a pre-existing extensional basement fault. *International Journal of Earth Sciences*, 102, 1, 25-41.
- Sarsar Naouali, B., Guellala, R., Bey, S., Inoubli, M. H., 2017. Gravity Data Contribution for Petroleum Exploration Domain: Mateur Case Study (Saliferous Province, Northern Tunisia). *Arabian Journal for Science and Engineering*, 42, 339-352.
- Saura, E., Ardèvol i Oró, L., Teixell, A., Vergés, J., 2016. Rising and falling diapirs, shifting depocenters, and flap overturning in the Cretaceous Sopeira and Sant Gervàs subbasins (Ribagorça Basin, southern Pyrenees), *Tectonics*, 35, 638-662.
- Saura, E., Embry, J. C., Vergés, J., Hunt, D. W., Casciello, E., Homke, S., 2013. Growth fold controls on carbonate distribution in mixed foreland basins: Insights from the Amiran foreland basin (NW Zagros, Iran) and stratigraphic numerical modelling, *Basin Res.*, 25, 149-171.
- Saura, E., Garcia-Castellanos, D., Casciello, E., Parravano, V., Urruela, A., Vergés, J., 2015, Modeling the flexural evolution of the Amiran and Mesopotamian foreland basins of NW Zagros (Iran-Iraq), *Tectonics*, 34, 377-395.
- Saura, E., Vergés, J., Martín-Martín, J. D., G., M., Moragas, M., Razin, P., Grélaud, C., Joussiaume, R., Malaval, M., Homke, S., and Hunt, D., 2014. Syn- to post-rift diapirism and minibasins of the Central High Atlas (Morocco): the changing face of a mountain belt. *Journal of the Geological Society*, v. 171, no. 1, p. 97-105.
- Schuster, D. C., 1995. Deformation of allochthonous salt and evolution of related salt-structural systems, eastern Louisiana Gulf Coast, In *Salt tectonics: A global perspective* (eds. Jackson, M. P. A. Roberts, D. G., Snelson, S.) pp. 177-198. American Association of Petroleum Geologists Memoir no. 65.
- Slama, M.-M.B., Masrouhi, A., Ghanmi, M., Youssef, M.B., Zargouni, F., 2009. Albian extrusion evidences of the Triassic salt and clues of the beginning of the Eocene atlas phase from the example of the

- 831 Chitana-Ed Djebs structure (N.Tunisia): Implication in the North African Tethyan margin recorded events,
 832 comparisons. *Comptes Rendus - Geoscience*, 341, 7, 547-556.
- 833 Soto, J.I., Flinch, J.F., Tari, G., 2017. Permo-Triassic Basins and Tectonics in Europe, North Africa and the
 834 Atlantic Margins: A Synthesis. In *Permo-Triassic Salt Provinces of Europe, North Africa and the Atlantic*
 835 *Margins*, 3-41. Elsevier edition, 2017, 632.
- 836 Soua, M., 2014. Early Carnian anoxic event as recorded in the southern Tethyan margin, Tunisia.
 837 *International Geology Review*, v. 56, no. 15, p. 1884-1905.
- 838 Soumaya, A., Ben Ayed, N., Delvaux, D., Ghanmi, M., 2015. Spatial variation of present-day stress field
 839 and tectonic regime in Tunisia and surroundings from formal inversion of focal mechanisms:
 840 Geodynamic implications for central Mediterranean. *Tectonics*, 34, 6, 1154-1180.
- 841 Souquet, P., Peybernes, B., Saadi, J., Ben Youssef, M., Ghanmi, M., Zarbout, M., Chikhaoui, M., Kamoun,
 842 F., 1997. Séquences et cycles d'ordre 2 en régime extensif et transtensif : exemple du Crétacé inférieur
 843 de l'Atlas tunisien, *Bulletin de la Société Géologique de France*, 168, 373-386.
- 844 Soussi, M., Enay, R., Boughdiri, M., Mangold, C., Zaghib-Turki, D., 1999. Ammonitico Rosso (Zaress
 845 Formation) of the Tunisian Dorsale. *Comptes Rendus de l'Academie de Sciences - Serie IIa*: 329(4), 279-
 846 286.
- 847 Soussi, M., Niedźwiedzki, G., Tałanda, M., Drózd, D., Sulej, T., Boukhalfa, K., Mermer, J., Błazejowski, B.,
 848 2017. Middle Triassic (Anisian-Ladinian) Tejra red beds and Late Triassic (Carnian) carbonate
 849 sedimentary records of southern Tunisia, Saharan Platform: Biostratigraphy, sedimentology and
 850 implication on regional stratigraphic correlations. *Marine and Petroleum Geology*, 79, 222-256.
- 851 Talbot, C.J., 1993. Spreading of salt structures in the Gulf of Mexico: Tectonophysics, 228, 151-166.
- 852 Talbot, C.J., 1998. Extrusions of Hormuz salt in Iran, In *In the Past is the Key to the Present: (Eds Blundell,*
 853 *DJ., Scott, AC.)* pp. 315-334. Geological Society of London, Special Publications no 143.
- 854 Talbot, C.J., Rönnlund, P., Schmeling, H., Koyi, H., Jackson, M.P.A., 1991. Diapiric spoke patterns.
 855 *Tectonophysics*, 188, 187-201.
- 856 Truillet, R., Delteil, J., 1982. Allochtonie alpine de la « zone des diapirs » de Tunisie septentrionale et du
 857 Nord-Est algerien, *C. R. Acad. Sci., Ser. II* 294, 1143-1146.
- 858 Van Hinsbergen, D., Vissers, R., Spakman, W., 2014. Origin and consequences of western Mediterranean
 859 subduction, rollback, and slab segmentation. *Tectonics*, 33, 4, 393-419.
- 860 Vendeville, B.C., Jackson, M.P.A., 1992b. The fall of diapirs during thin-skinned extension. *Marine and*
 861 *Petroleum Geology*, 9, 354-371.
- 862 Vergés, J., Sàbat, F., 1999. Constraints on the Neogene Mediterranean kinematic evolution along a 1000
 863 km transect from Iberia to Africa. Geological Society, London, Special Publications, 156, 63-80.
- 864 Vila, J. M., 1995. Première étude de surface d'un grand 'glacier de sel' sous-marin: l'est de la structure
 865 Ouenza-Ladibel-Meridef (confins algéro-tunisiens). Proposition d'un scenario de mise en place et
 866 comparaisons. *Bulletin de la Société Géologique de France*, 166, 149-167.
- 867 Vila, J. M., Sigal, J., Coiffait, P. E., Lahondère, J. C., Quinif, Y., 1975. Sur l'allochtonie du Tell sétifien: La
 868 fenêtre de la Koudiat Touachra et la nappe de Djemila, *Bull. Soc. Geol. France*, 17, 1173-1175.
- 869 Vila, J.M., Ben Youssef, M., Charrière, A., Chikhaoui, M., Ghanmi, M., Kamoun, F., Peybernes, B., Saadi, J.,
 870 Souquet, P., Zarbout, M., 1994. Découverte en Tunisie, au SW du Kef, de matériel triasique interstratifié

- 871 dans l'Albien : extension du domaine à « glaciers de sel » sous-marins des confins algéro-tunisiens.
872 Comptes Rendus à l'Académie des Sci. Paris 318 (II), 1661-1667.
- 873 Vila, J.M., Ben Youssef, M., Chikhaoui, M., Ghanmi, M., 1996. Un grand 'glacier de sel' sous-marin albien
874 du Nord-Ouest tunisien (250 km²): le matériel salifère triasique du « diapir » de Ben Gasseur et de
875 l'anticlinal d'El Kef. Comptes Rendus de l'Académie des Sciences Paris, 322, 221-227.
- 876 Vila, J.M., Ghanmi, M., Ben Youssef, M., Jouirou, M., 2002. Les 'glaciers de sel' sous-marins des marges
877 continentales passives du nord-est du Maghreb (Algérie-Tunisie) et de la Gulf Coast (USA):
878 comparaisons, nouveau regard sur les 'glaciers de sel' composites, illustre par celui de Fedj el Adoum
879 (Nord-Ouest tunisien) et revue globale. *Eclogae Geologicae Helvetiae*, 95, 347–380.
- 880 Warsitzka, M., Jähne-Klingberg, F., Kley, J., Kukowski, N., 2019. The timing of salt structure growth in the
881 Southern Permian Basin (Central Europe) and implications for basin dynamics. *Basin Research*, *Basin*
882 *Res.*, 31, 337–360.
- 883 Weijermars, R., Jackson, M.P.A., Vendeville, B., 1993. Rheological and tectonic modeling of salt
884 provinces. *Tectonophysics*, 217, 143-174.
- 885 Wu, S., Bally, A.W., Cramez, C., 1990. Allochthonous salt, structure and stratigraphy of the north-eastern
886 Gulf of Mexico: Part II. Structure: *Marine and Petroleum Geology*, 7, 334-370.
- 887 Yin, H., Zhang, J., Meng, L., Liu, Y., Xu, S., 2009. Discrete element modeling of the faulting in the
888 sedimentary cover above an active salt diapir. *Journal of Structural Geology*, 31, 989-995.
- 889 Zargouni, F., 1975. Etude géologique de la chaîne de Lansarine (région de Tébourba, Atlas tunisien). PhD
890 thesis (Thèse 3ème cycle), Pierre-et-Marie-Curie University (Paris VI), 86 p. Published thesis.
- 891 Zouaghi, T., Bédir, M., Ayed-Khaled, A., Lazzez, M., Soua, M., Amri, A., Inoubli, M.H., 2013.
892 Autochthonous versus allochthonous upper triassic evaporites in the sbiba graben, central Tunisia.
893 *Journal of Structural Geology*, 52, 1, 163-182.
- 894 Zucker, E., Frumkin, A., Agnon, A., Weinberger, R., 2019. Internal deformation and uplift-rate of salt
895 walls detected by a displaced dissolution surface, Dead Sea basin. *Journal of Structural Geology*,
896 127,103870.

897

898

899 **Figure captions**

900 Figure 1: (a) Geodynamic setting of the Maghreb fold-thrust-belt and location of north Tunisian domain.
 901 (b) Simplified sketch of the Tunisian Atlas showing the major tectonic units, major thrust systems, main
 902 outcropping Triassic salt and the location of the LBSS.

903 Figure 2: Stratigraphy of the north Tunisian domain with indication of average thickness variation,
 904 lithostratigraphic short description, the average density of main units and the regional tectonic regime.

905 Figure 3: Detailed geological map of the LBSS and its surrounding areas showing the main units, their
 906 relationships, the Triassic salt shape, the location of the detailed maps of figs 4 and 5 and the location of
 907 seismic profiles of figs 8-10.

908 Figure 4: Detailed geological map of the northern part of the LBSS showing the salt contact, the main
 909 outcrops of Cretaceous that constitutes the bedrock of the large salt canopy, and fault kinematics
 910 analysis of few fault sites highlighting a major NW-SE Cenozoic compression.

911 Figure 5: Detailed geological map of the central part of the LBSS showing the salt contact, the main
 912 outcrops of Cretaceous that constitutes the bedrock of the large salt canopy (Ain el Karma) and the
 913 cover of the Triassic salt (Jebel Djedaria), under the thrust systems of the Lansarine structure.

914 Figure 6: Panoramic view looking northeastward of the Jebel Djedaria structure shows the configuration
 915 and reproduces the geological history of this region with (a) uninterpreted and (b) interpreted section.
 916 In the south, the Triassic is covered by normal polarity Cretaceous sequences, themselves
 917 unconformably covered by Oligocene–Lower Miocene (15-20° angular Atlassic unconformity). The
 918 Oligocene–Lower Miocene sequences are overthrust by southeast-verging the Lansarine nappe
 919 formed by Paleocene shale and Eocene limestone.

920 Figure 7: fault kinematics analysis of abundant meso-scale synsedimentary faults within the Cretaceous
 921 sequences. The Stereonets are back-tilted faults that indicate a NE-SW Aptian–Albian tectonic extension;
 922 E-W to NE-SW late Cretaceous tectonic extension; and Santonian NW-SE to N-S tectonic extension.

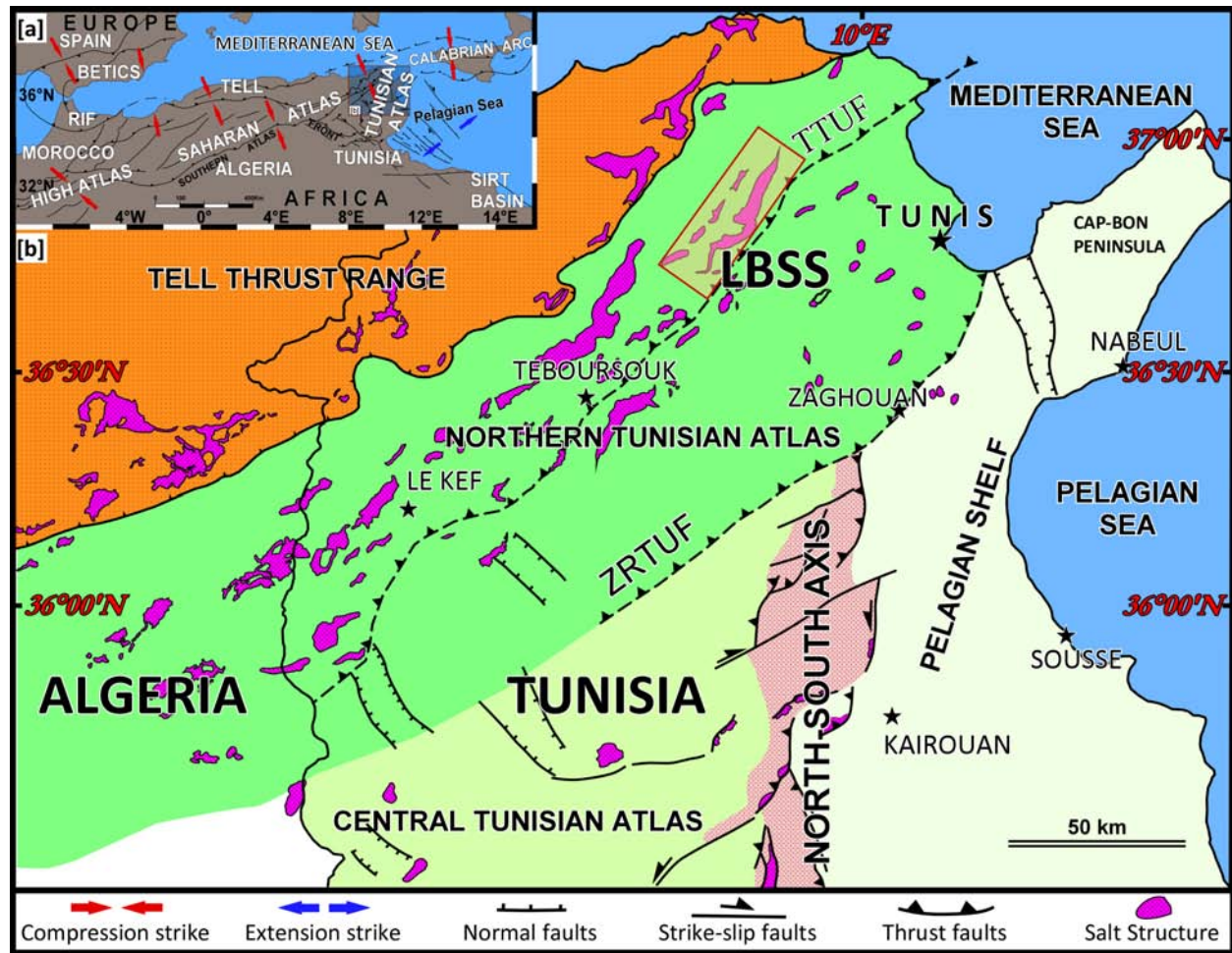
923 Figure 8: (a) Uninterpreted, migrated, depth-converted seismic reflection data from the LBSS area. (b)
 924 Interpreted seismic line of L18A and L18B showing the preserved extensional Chouigui mini-basin to the
 925 south associated with the major Teboursouk thrust fault. Note that the thrust fault systems are
 926 connected to intra-basement detachment normal fault. The salt sheet covers a Cretaceous sequences at

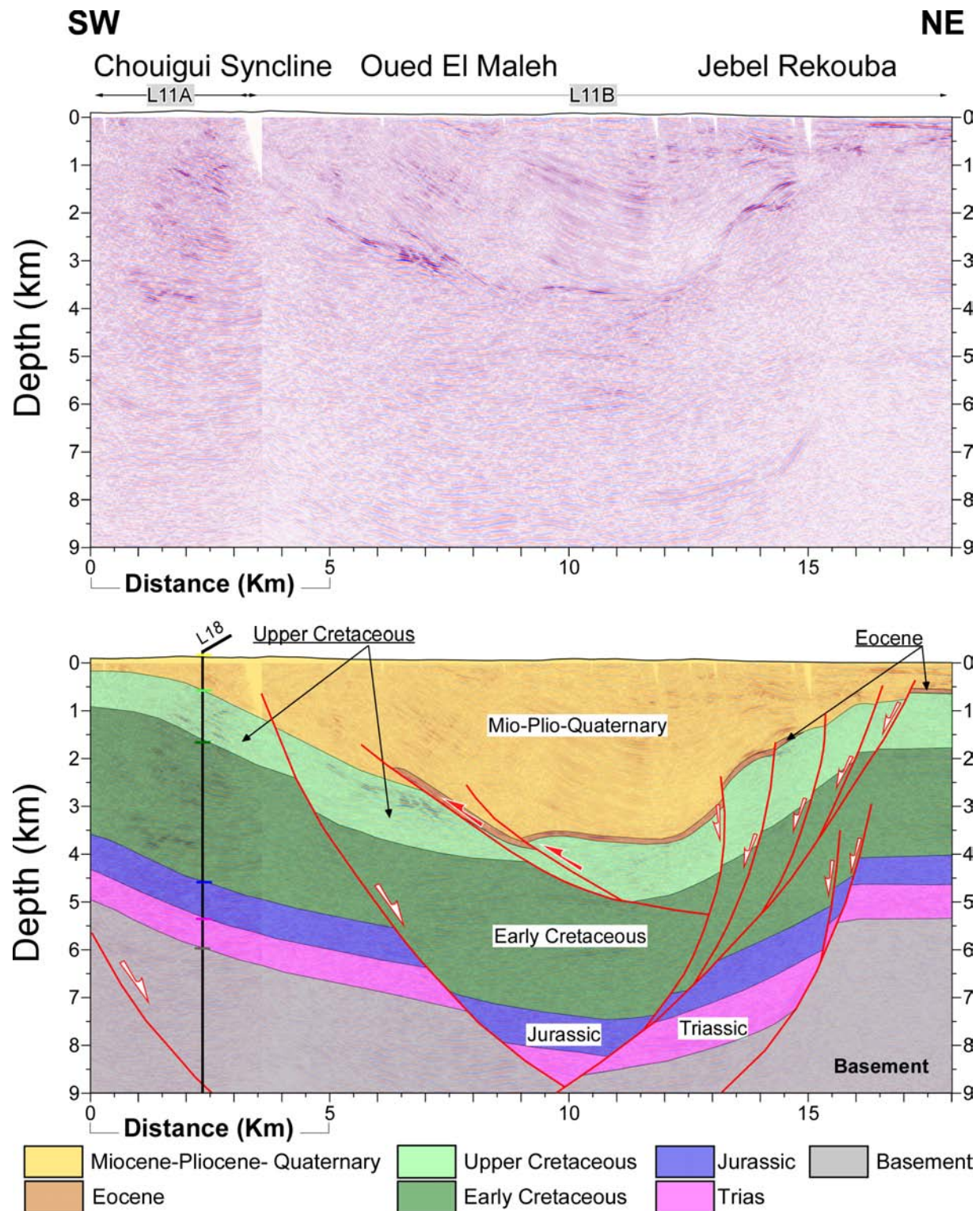
depth. Under Lansarine structure the velocity and the shape of reflectors seem to highlight a salt body (Lansarine diapir). The thrust fault is connected at depth to rollover anticline limited by the listric normal fault connected to the intra-basement detachment all of them are inverted structures.

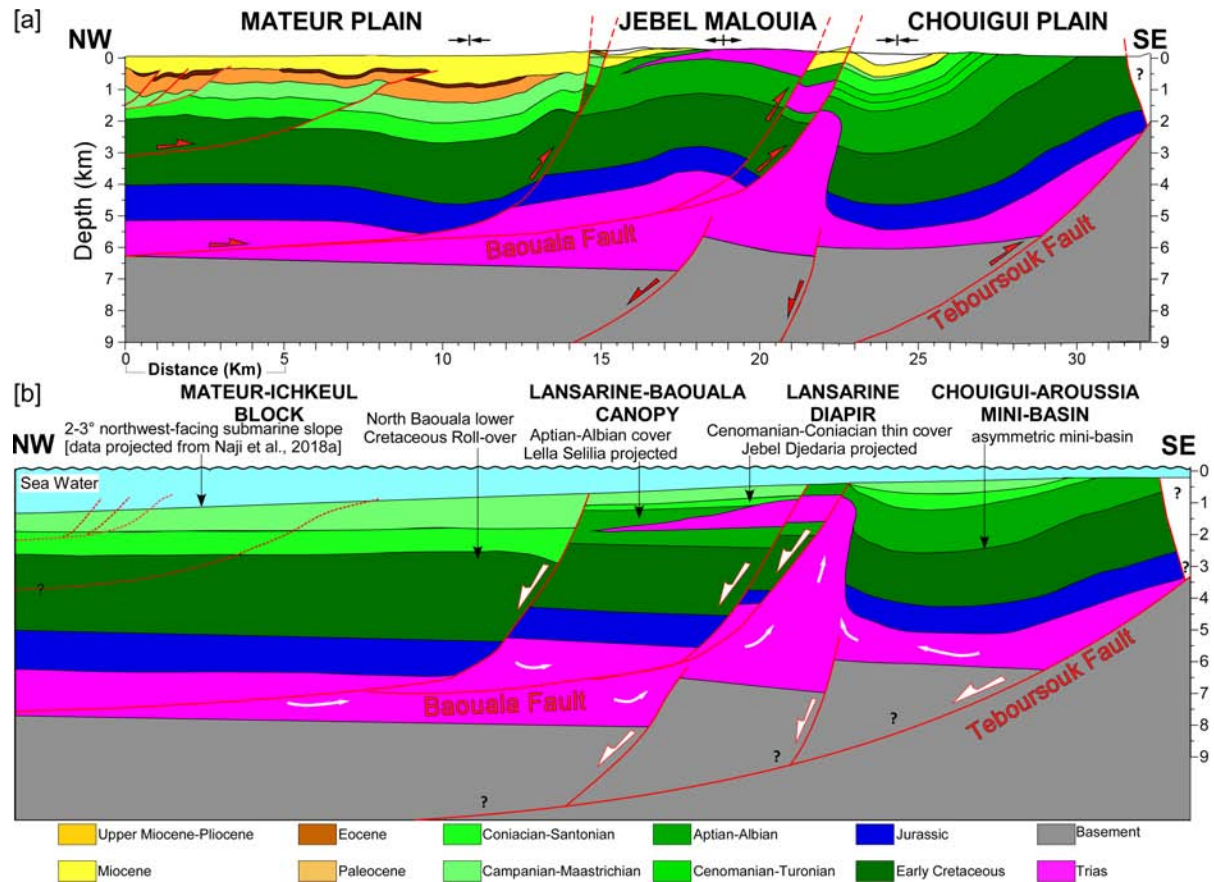
Figure 9: seismic section L05 crosses the northern domain. It mainly shows an extensional geologic setting in this area with the low angle fault systems characterizing the extensional late Miocene collapse associated to high-angle faults producing a geometry characterized by half-graben and hanging-wall syncline basins


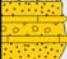

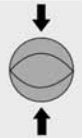



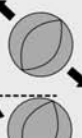







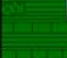
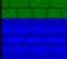
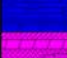






Figure 10: NE-SW seismic line L11 located in the front of the thrust systems of LBSS showing a narrow basin filled by Mio-Plio-Quaternary sediments reached a 3 km and mainly recorded by Miocene syntectonic strata. The high angle connected normal faults and the sequences in this narrow basin are interpreted as an orthogonal extension in which the thrust strongly influences the development of normal faults.

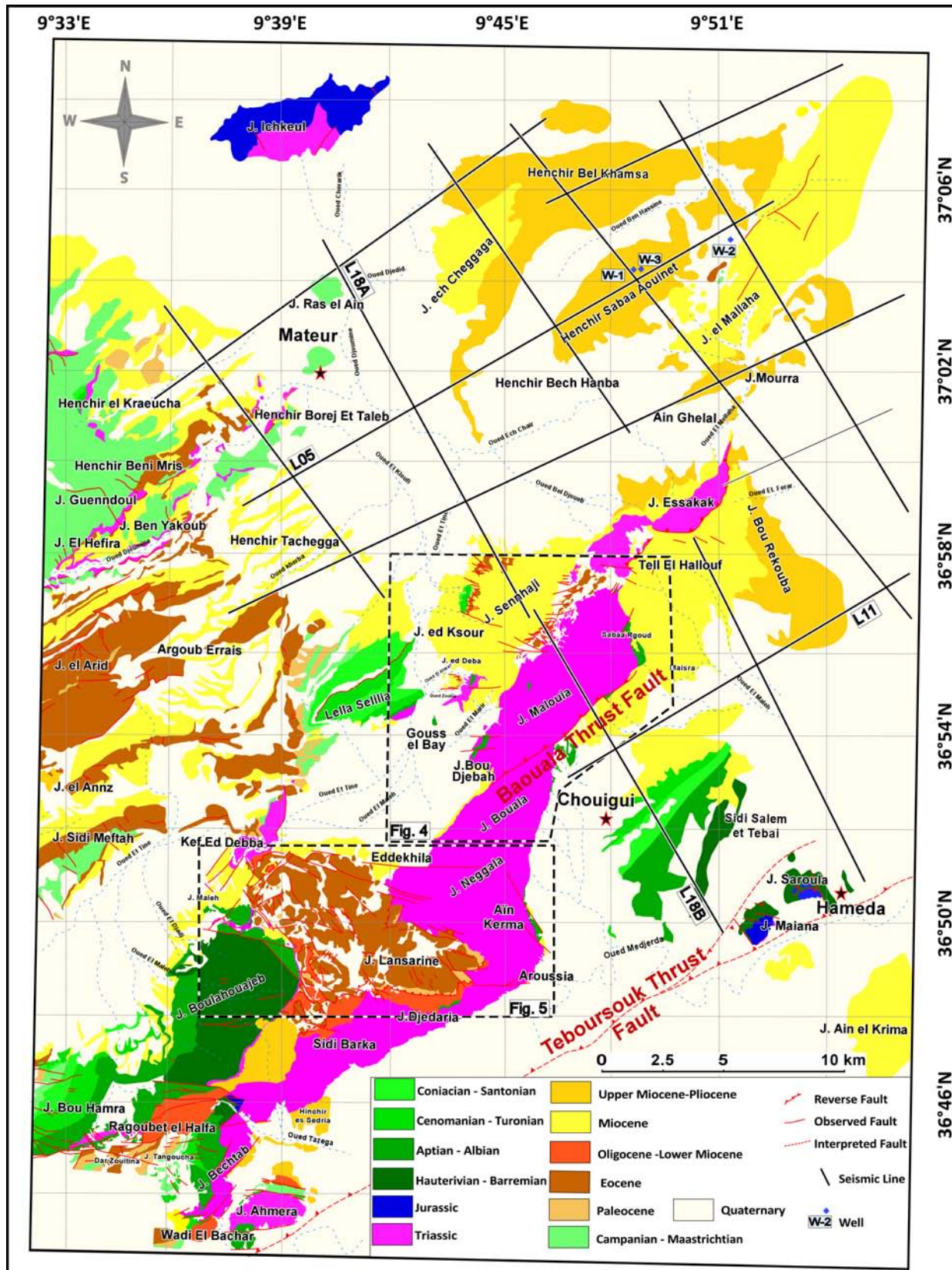
Figure 11: simplified Palinspastic stages reconstruction cross-section. (a) Present-day. (b) Late cretaceous state. Shortening amount is hypothesized to be ± 6.5 km ($\sim 17-18\%$). See text for detail on halotectonics stages and styles.

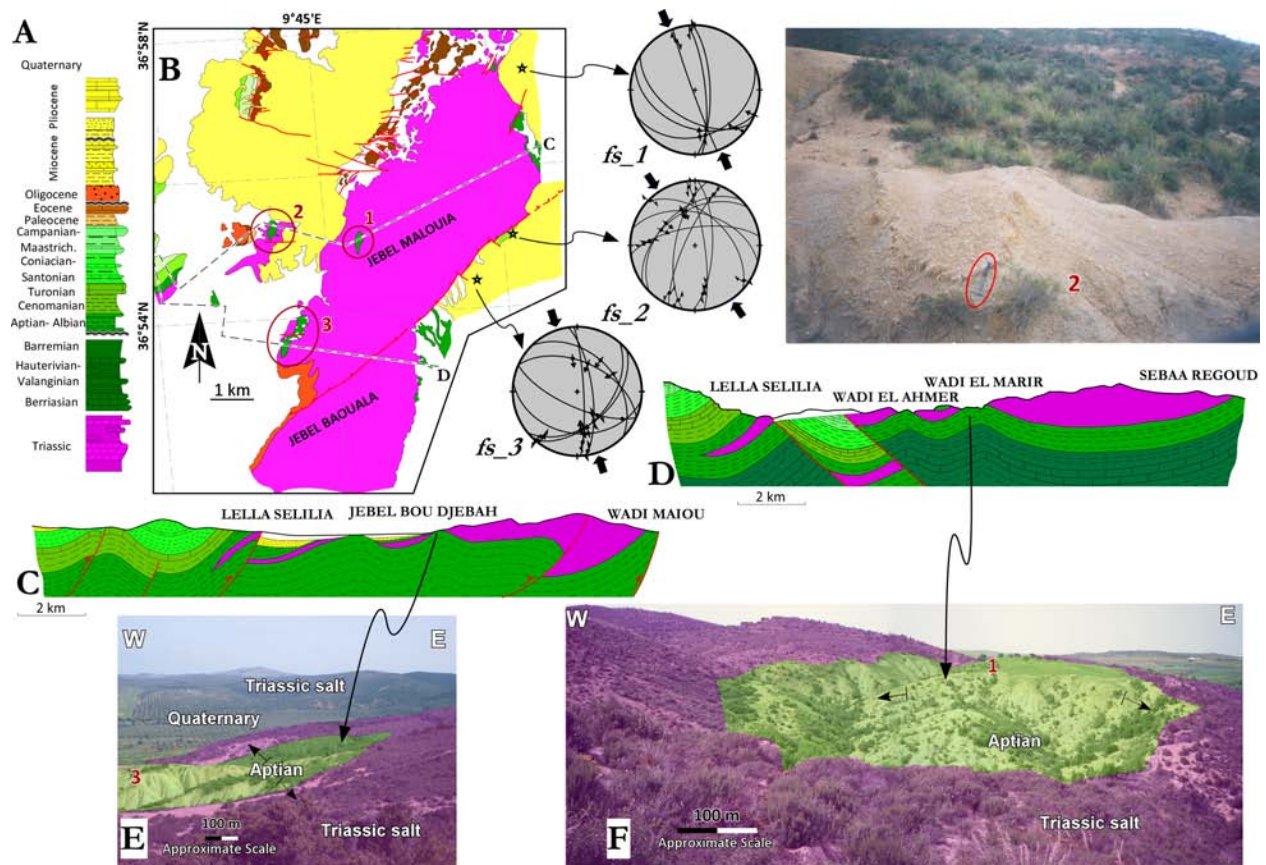


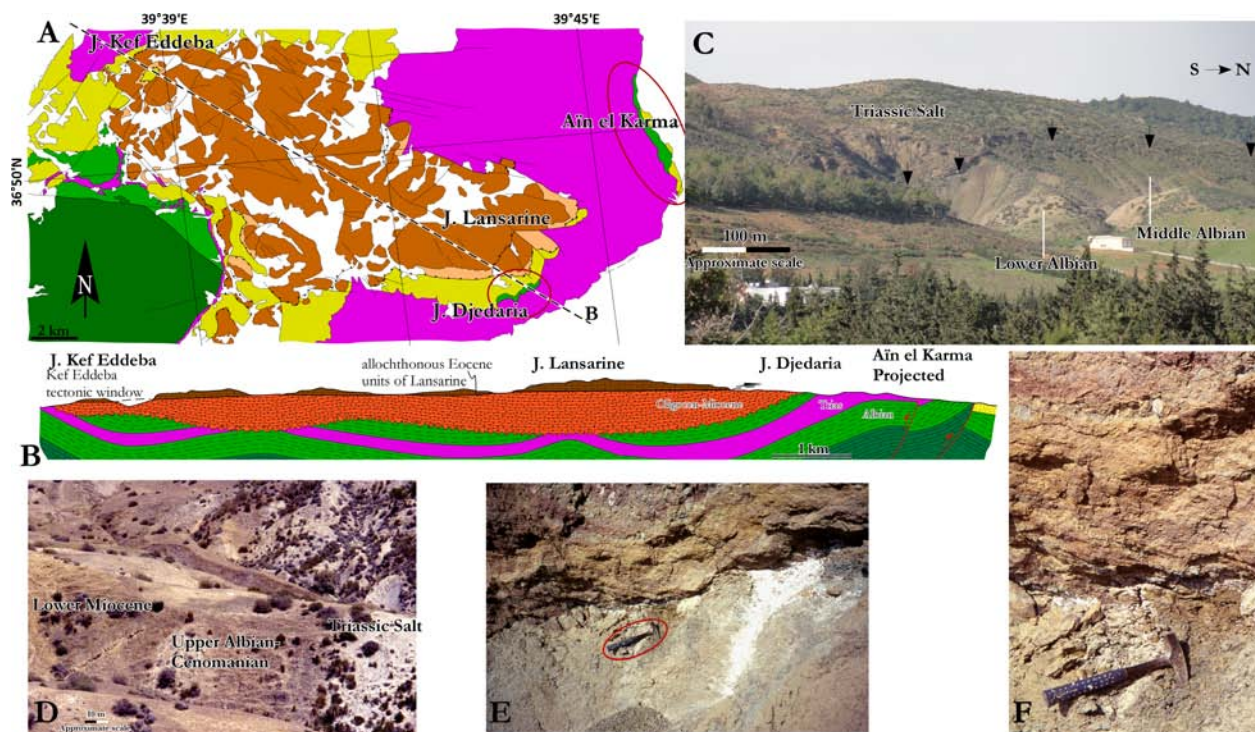


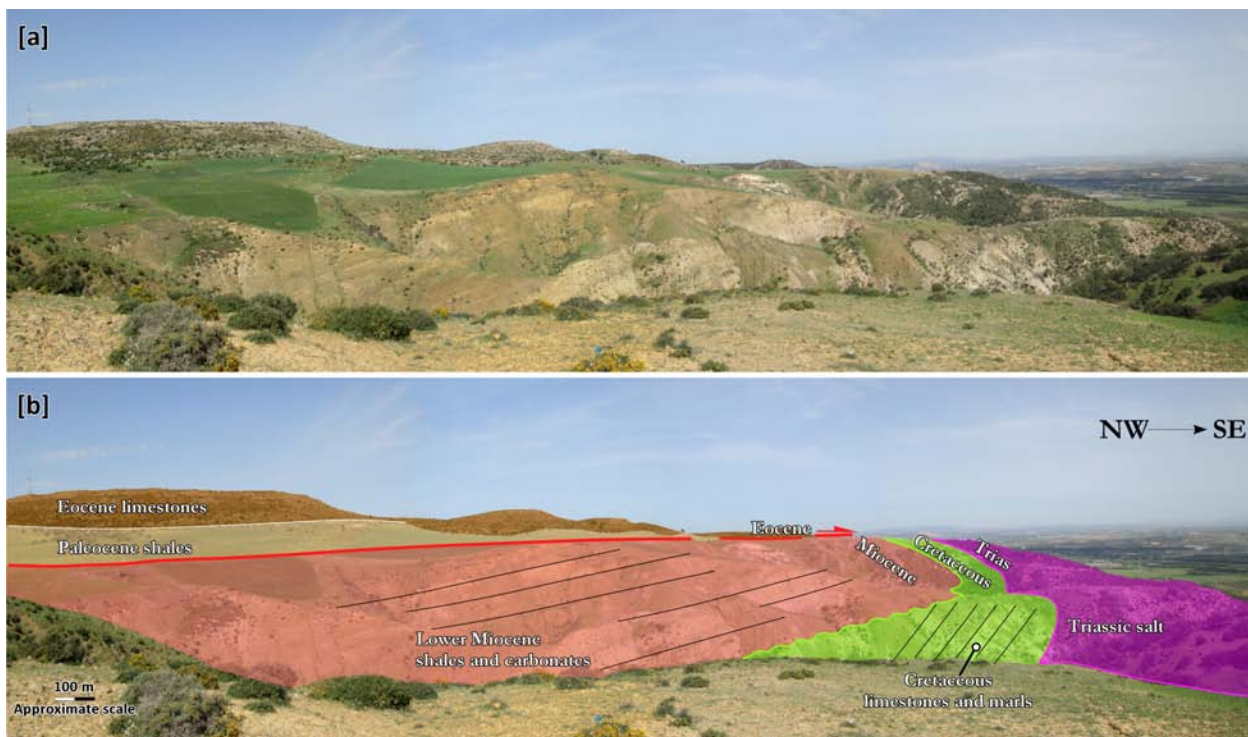


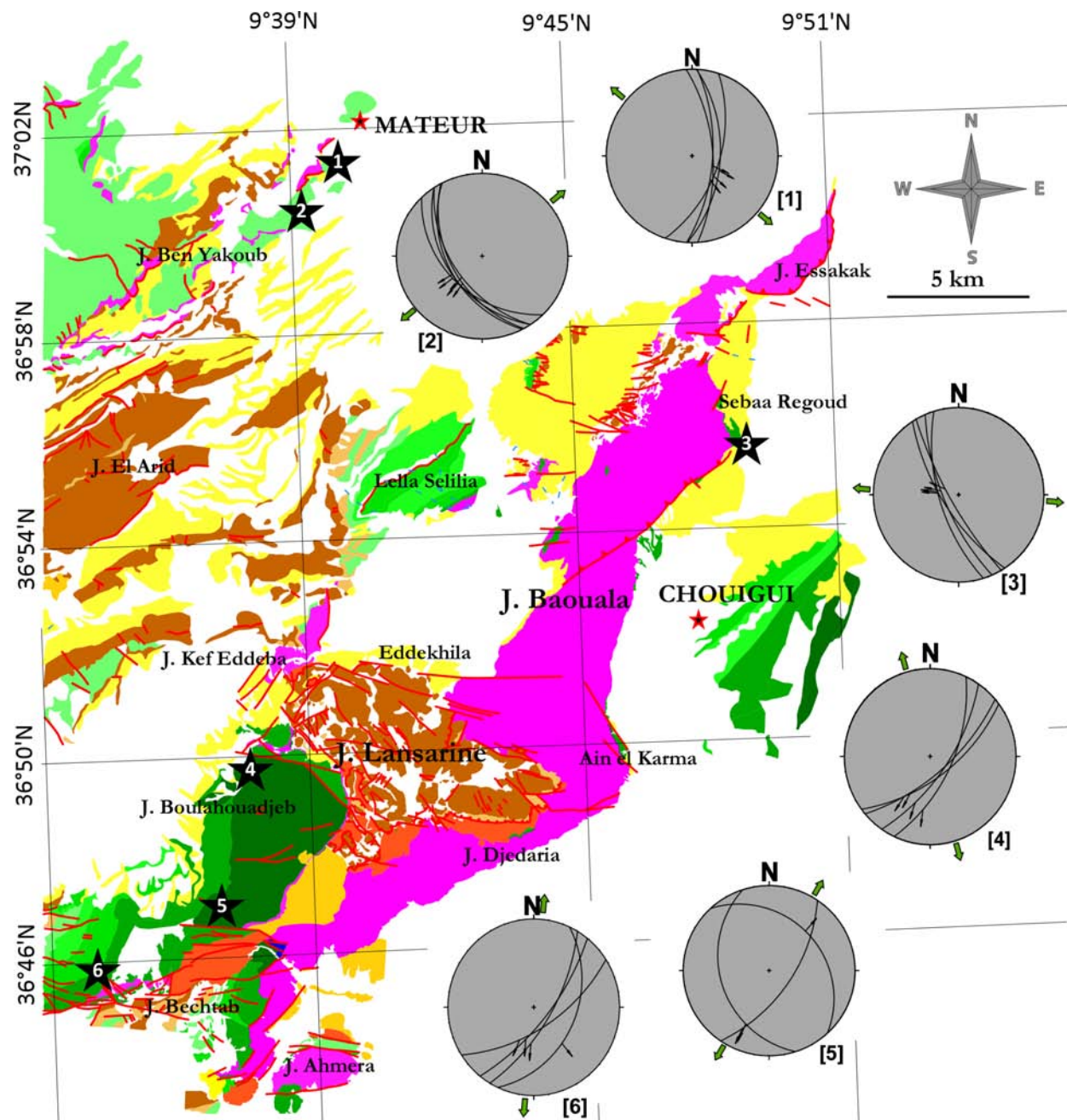
Age		Lithology and Density g/cm ³	Thickness variation	Lithostratigraphical description	Regional Tectonic
Quaternary			2.05	0–100 m	Soil
Pliocene			2.60	250–370 m	Sands and sandstones with rare clays intercalations
Miocene	Messinian		150–300 m	Black clays with lacustrine marls and gypsum	ALPINE COMPRESSIONS 
	Serrevalian- Tortonian		2.60	Gray clays and marls with rare sandy intercalation	
				Sandstones and sandy marls with evaporitic intercalation and gypsum sequences	
Paleogene	Oligocene		2.58	0–50 m	OLIGO-MIOCENE EXTENSION ATLASSIC COMPRESSION 
	Upper Eocene		2.62	50–100 m	
	Paleocene		2.62	800–1000 m	
Cretaceous	Campanian- Maastrichtian		2.53	60–160 m	POST RIFTING ATLANTIC OPENING 
	Coniacian- Santonian		2.52	350–900 m	
	Turonian		2.54	60–200 m	
	Cenomanian		2.54	60–200 m	
	Aptian- Albian		2.63	100–1000 m	
	Barremian		2.63	450–700 m	
	Hauterivian- Valanginian		2.62	130–800 m	
				Marls with limestones and frequents sandstones alternations	
	Berriasian		2.62	60 m	
			2.62	Carbonates composited of calcites and dolomites Dark carbonates with marble aspect and red to dark brown pelites with siliceous limestones beds	
Jurassic			2.58	40–440 m	TETHAN EXTENSION 
Triassic			2.17	150–1000 m	

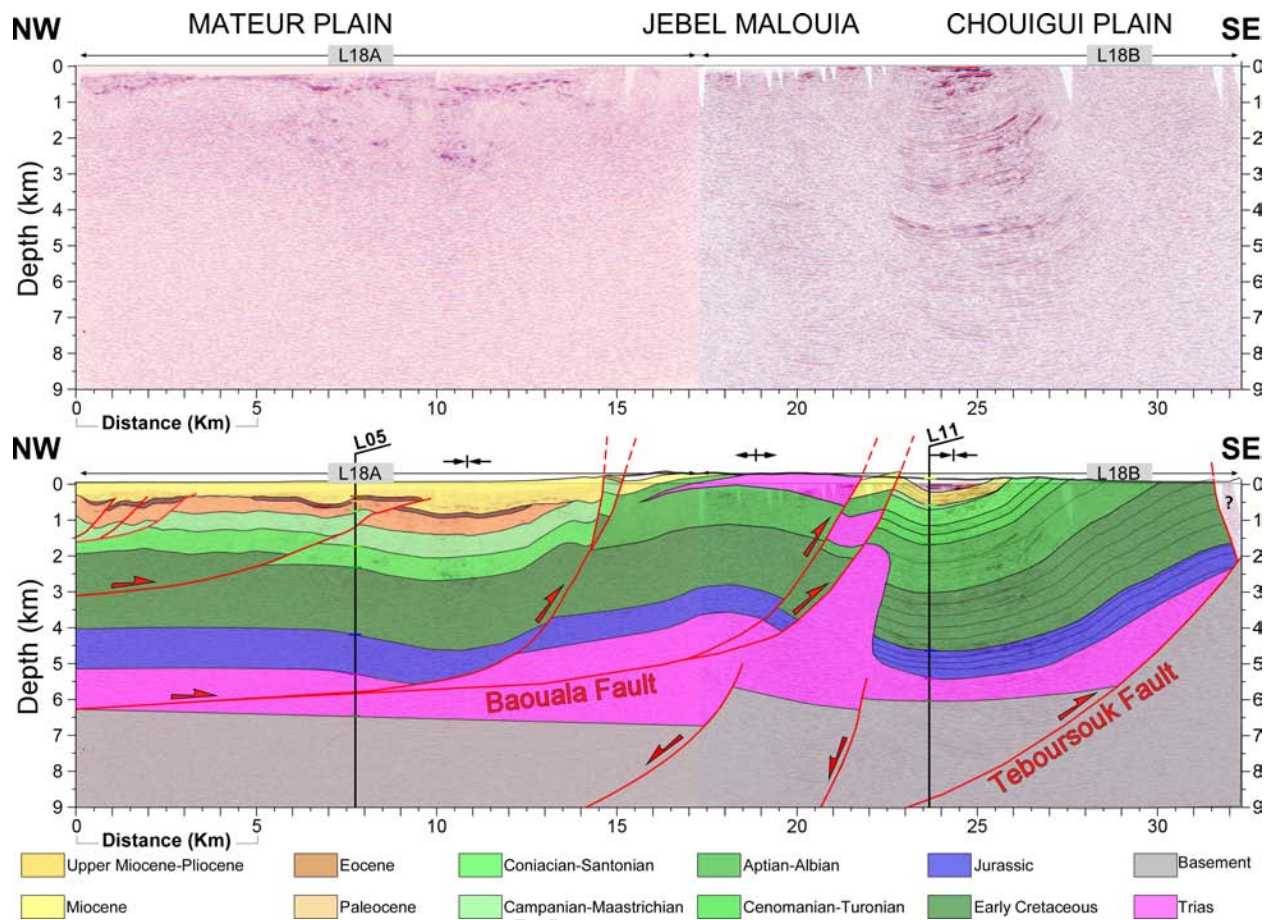


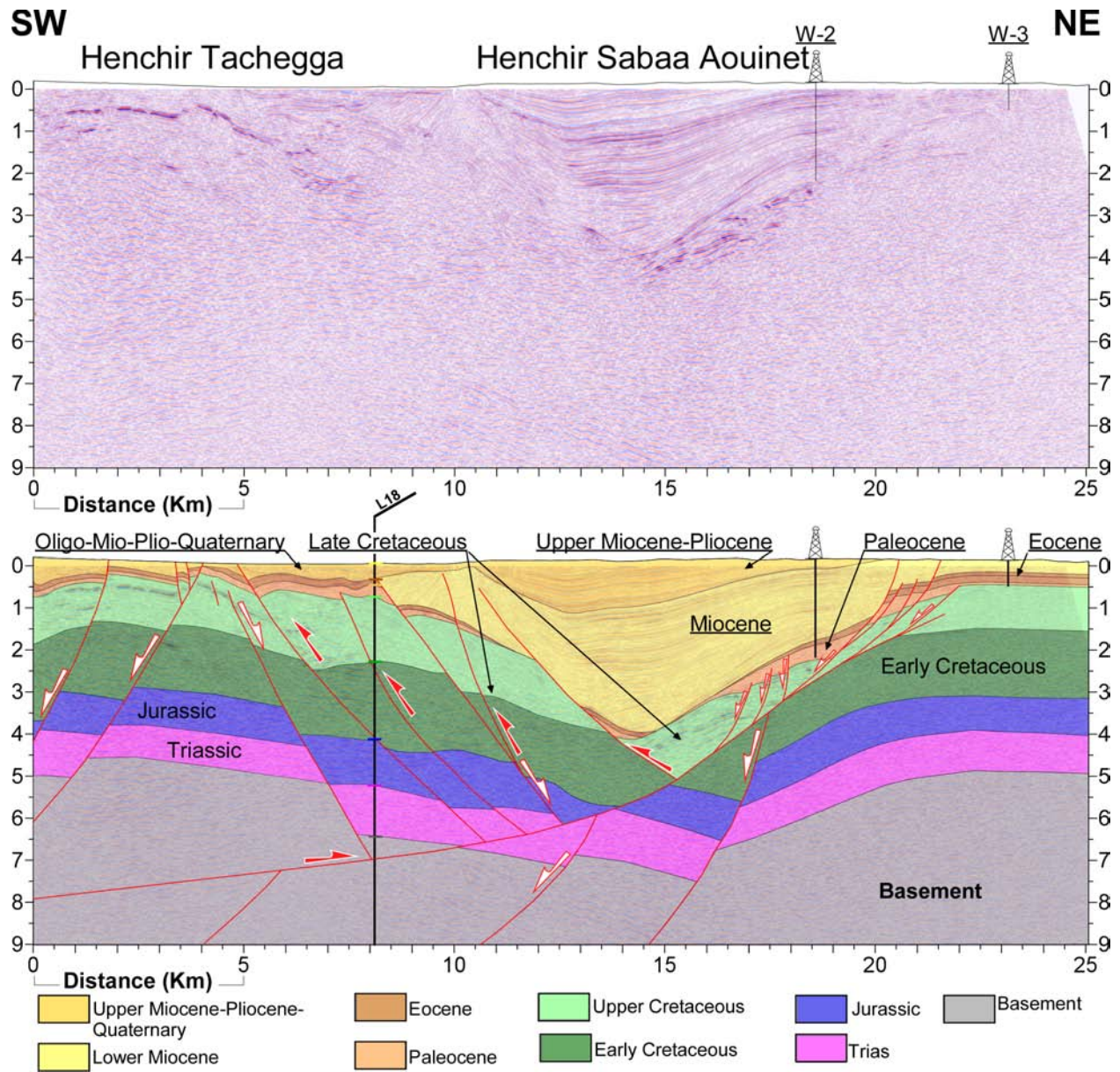












Highlights

Active Salt diapir developed during Tethyan Mesozoic extension in Northern Tunisia

Significance of allochthonous salt sheets spreading laterally from the diapir stem

During subsequent compressional stage diapir is squeezed and passively transported above major thrust