



HAL
open science

Emerging negative impact of warming on summer carbon uptake in northern ecosystems

Tao Wang, Dan Liu, Shilong Piao, Yilong Wang, Xiaoyi Wang, Hui Guo, Xu Lian, John Burkhart, Philippe Ciais, Mengtian Huang, et al.

► **To cite this version:**

Tao Wang, Dan Liu, Shilong Piao, Yilong Wang, Xiaoyi Wang, et al.. Emerging negative impact of warming on summer carbon uptake in northern ecosystems. *Nature Communications*, 2018, 9 (1), 10.1038/s41467-018-07813-7 . hal-02975867

HAL Id: hal-02975867

<https://hal.science/hal-02975867>

Submitted on 26 Oct 2020

HAL is a multi-disciplinary open access archive for the deposit and dissemination of scientific research documents, whether they are published or not. The documents may come from teaching and research institutions in France or abroad, or from public or private research centers.

L'archive ouverte pluridisciplinaire **HAL**, est destinée au dépôt et à la diffusion de documents scientifiques de niveau recherche, publiés ou non, émanant des établissements d'enseignement et de recherche français ou étrangers, des laboratoires publics ou privés.

ARTICLE

<https://doi.org/10.1038/s41467-018-07813-7>

OPEN

Emerging negative impact of warming on summer carbon uptake in northern ecosystems

Tao Wang^{1,2}, Dan Liu², Shilong Piao^{1,2,3}, Yilong Wang⁴, Xiaoyi Wang², Hui Guo², Xu Lian³, John F Burkhart⁵, Philippe Ciais⁴, Mengtian Huang³, Ivan Janssens⁶, Yue Li³, Yongwen Liu³, Josep Peñuelas^{7,8}, Shushi Peng³, Hui Yang³, Yitong Yao³, Yi Yin⁴ & Yutong Zhao²

Most studies of the northern hemisphere carbon cycle based on atmospheric CO₂ concentration have focused on spring and autumn, but the climate change impact on summer carbon cycle remains unclear. Here we used atmospheric CO₂ record from Point Barrow (Alaska) to show that summer CO₂ drawdown between July and August, a proxy of summer carbon uptake, is significantly negatively correlated with terrestrial temperature north of 50° N interannually during 1979–2012. However, a refined analysis at the decadal scale reveals strong differences between the earlier (1979–1995) and later (1996–2012) periods, with the significant negative correlation only in the later period. This emerging negative temperature response is due to the disappearance of the positive temperature response of summer vegetation activities that prevailed in the earlier period. Our finding, together with the reported weakening temperature control on spring carbon uptake, suggests a diminished positive effect of warming on high-latitude carbon uptake.

¹Center for Excellence in Tibetan Earth Science, Chinese Academy of Sciences, Beijing 100085, China. ²Key Laboratory of Alpine Ecology, Institute of Tibetan Plateau Research, Chinese Academy of Sciences, Beijing 100085, China. ³Sino-French Institute for Earth System Science, College of Urban and Environmental Sciences, Peking University, Beijing 100871, China. ⁴Laboratoire des Sciences du Climat et de l'Environnement, LSCE, Gif-sur-Yvette F-91191, France. ⁵Department of Geosciences, University of Oslo, Oslo 0371, Norway. ⁶Department of Biology, University of Antwerp, Universiteitsplein 1, 2610 Wilrijk, Belgium. ⁷CREAF, Cerdanyola del Valles, Barcelona 08193 Catalonia, Spain. ⁸CSIC, Global Ecology Unit CREAF-CEAB-CSIC-UAB, Cerdanyola del Valles, Barcelona 08193 Catalonia, Spain. Correspondence and requests for materials should be addressed to T.W. (email: twang@itpcas.ac.cn)

Arctic and boreal ecosystems play an important role in the global carbon cycle, and their carbon cycle responses to climate change become a major global concern^{1,2}. The relationship between the carbon cycle and temperature in these ecosystems has received increasing attention, because temperature plays a dominant role in controlling net primary productivity (NPP)³, respiration^{4,5}, and fire disturbances⁶ at these high latitudes. Numerous field studies in high-latitude ecosystems have been conducted in the summer^{7–15}, but the results of these local experiments are limited in extent and are difficult to scale-up to larger regions. Observations of atmospheric CO₂ concentration from atmospheric stations at high latitudes provide complementary monitoring of the dynamics of carbon exchange in northern ecosystems. But most of these studies have concentrated on the amplitude of the seasonal cycle or the spring and autumn boundaries of the growing season^{16–18}, little attention has been given to the summer. Summer has the highest vegetation productivity, strongly contributes to interannual variations in terrestrial carbon uptake¹⁹ and generally has the most favorable climatic conditions for CO₂ uptake.

Observations suggest that the rates of climate change on a decadal scale have varied in the last three decades²⁰, with still imperfectly known implications for changes in carbon cycling^{17,21,22}. Mounting evidence suggests that the response of the carbon cycle to temperature at high northern latitudes is not constant over time^{23,24}, but this evidence is restricted to studies of vegetation productivity proxies^{21,22} and spring carbon fluxes¹⁷. Much less is known about summer CO₂ uptake. Understanding temporal changes in the relationship between summer CO₂ uptake (an indicator of maximum CO₂ uptake capacity) and temperature is important for determining the contribution of future northern terrestrial carbon fluxes to accelerating or decelerating ongoing warming.

The aim of this study is to understand the effect of temperature on summer carbon uptake in northern ecosystems and its decadal variation. We used the long-term record of atmospheric CO₂ concentrations from the Barrow atmospheric CO₂ monitoring station (71°N, 157°W, Alaska)²⁵ to calculate the summer CO₂ drawdown (SCD), which was used as an indicator of summer carbon uptake. SCD was calculated as the difference in the CO₂ concentration between the first week of July and the last week of August in the detrended CO₂ record (see Methods, Supplementary Fig. 1). Here, with simultaneous use of multiple satellite-derived products^{26–28}, an ensemble of terrestrial carbon cycle models and simulations with an atmospheric transport model²⁹ (Methods), we show that there is a significant-negative inter-annual correlation between SCD with summer land temperature north of 50°N during 1979–2012, and such significant negative correlation only occurred during the earlier period (1979–1995) instead of during the later period (1996–2012). This emergent-negative relationship is primarily due to summer vegetation activities no longer positively responding to temperature.

Results

Emerging-negative temperature control on summer CO₂ drawdown. An analysis of the interannual correlation between SCD and terrestrial summer temperature north of 50°N ($R_{\text{SCD-T}}$), whereas controlling for the effects of other summer climatic variables such as precipitation and cloudiness (all variables detrended, see Methods), indicated a negative correlation of SCD with temperature ($R = -0.46$, $P < 0.01$) for the full length of the study period, 1979–2012. In other words, warmer years were associated with a lower carbon uptake. The sensitivity of SCD to the interannual variability of summer temperature ($\gamma_{\text{SCD-T}}$) was calculated as the slope of the regression line in a multiple regression of SCD against temperature, precipitation, and cloudiness in summer for 1979–2012 (Methods). The results of the regression tell us that

an increase of 1 °C in summer temperature leads to a reduced SCD of 1.45 ppm CO₂ at Barrow.

We further analyzed the decadal changes in $R_{\text{SCD-T}}$ and found strong differences between the earlier (1979–1995) and later (1996–2012) periods of the Barrow time series (Fig. 1a). $R_{\text{SCD-T}}$ was small and not statistically significant ($R = -0.40$, $P = 0.14$) in the earlier period, but became statistically significant and more negative ($R = -0.65$, $P < 0.01$) in the later period. The relationship between SCD and temperature during the later period was thus responsible for the negative impact of temperature on summer CO₂ drawdown during the whole record. We also found that $\gamma_{\text{SCD-T}}$ became more negative, decreasing from -1.23 ± 0.76 ppm year⁻¹ °C⁻¹ for 1979–1995 to -2.06 ± 0.46 ppm year⁻¹ °C⁻¹ for 1996–2012 (Supplementary Fig. 2). The amplitude of the seasonal CO₂ concentration at Barrow was found to lag behind temperature by about 2 years³⁰, and it was suggested that this lag was due to a lag in the response of net primary production to temperature. In contrast, SCD was not significantly correlated with summer temperature in the previous 2 years (or 1 year) for any of the study periods (1979–2012, or the two periods 1979–1995 and 1996–2012). This lack of lagged-correlation coincides with a non-significant lagged-response of summer productivity to temperature in the previous one or 2 years (Supplementary Fig. 3). This result does not contradict the result from Keeling et al.³⁰, but it shows that if there is a lagged response of the peak-to-peak CO₂ amplitude to temperature, it is not due to a lag of summer CO₂ uptake.

Robustness tests. We carried out a variety of tests to check the robustness of the shift in $R_{\text{SCD-T}}$ and its sensitivity to changes in the data and methods used. We first calculated $R_{\text{SCD-T}}$ using climatic variables spatially weighted with the footprint intensity over the flux footprint area of the CO₂ record of the Barrow station (Methods), because terrestrial carbon fluxes impacting the Barrow CO₂ concentration are not spatially uniform in the high-latitudes. The area of the summer flux footprint of the Barrow station calculated using the FLEXPART Lagrangian particle dispersion model³¹ was mainly restricted to the regions of Siberia and Alaska and the Chukchi and Beaufort Seas (Supplementary Fig. 4). A similar footprint area was found by a simulation of the sensitivity of the Barrow CO₂ measurements during the last week of August to terrestrial carbon fluxes 20 days before the measurements using the adjoint code of the Laboratoire de Météorologie Dynamique (LMDZ) atmospheric transport model (see Methods; Supplementary Fig. 5a–c). We also performed 40- and 60-day back-trajectory calculations using LMDZ and found that the footprint area for fluxes influencing the SCD did not change significantly compared to a 20 days influence (Supplementary Fig. 5). $R_{\text{SCD-T}}$ between the two study periods still decreased when calculated using temperature spatially weighted with the footprint intensity. $R_{\text{SCD-T}}$ shifted from a non-significant-positive value ($R = 0.01$, $P = 0.97$) to a significant-negative value ($R = -0.61$, $P < 0.05$) in this test (Fig. 1b). $R_{\text{SCD-T}}$ also shifted when the footprint was derived from 40- to 60-day back-trajectory calculations rather than with a value of 20 days (Supplementary Fig. 6).

To test whether the observed shift in $R_{\text{SCD-T}}$ is real or an artifact caused by extreme years, we analyzed the frequency distribution of $R_{\text{SCD-T}}$ obtained by randomly selecting 14 years for each period and found that $R_{\text{SCD-T}}$ decreased from -0.42 ± 0.09 during 1979–1995 to -0.64 ± 0.10 during 1996–2012 (Fig. 1a), suggesting that the presence of extreme years was not responsible for the shift in $R_{\text{SCD-T}}$. $R_{\text{SCD-T}}$ also shifted when we used a different climatic dataset (Supplementary Fig. 7) and weekly rather than daily Barrow CO₂ concentration data (Supplementary Fig. 8). $R_{\text{SCD-T}}$ again decreased significantly for 1979–2012 ($P < 0.01$) when calculated with a 15-year moving window (with both SCD and temperature detrended) (Supplementary Fig. 9).

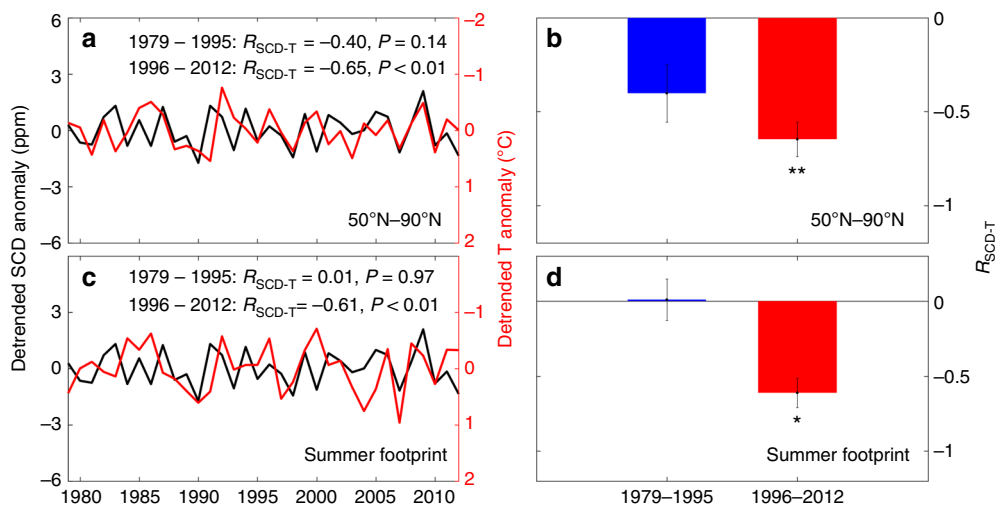


Fig. 1 Negative temperature control of summer CO₂ drawdown. **a–d** Time series of anomalies of summer CO₂ drawdown (SCD, black line) and summer temperature (T, red line) calculated as the average for July and August across ecosystems north of 50°N (**a**), the spatial average weighted by the potential emission sensitivities from FLEXPART over the vegetated land area within the multi-year mean summer footprint (**c**). The comparison of interannual partial-correlation coefficient between SCD and T ($R_{\text{SCD-T}}$) between the two periods (1979–1995 and 1996–2012) based on north of 50°N and summer footprint, respectively **b** and **d**. The interannual partial-correlation coefficient is calculated by statistically controlling for the effects of summer precipitation and cloudiness. We calculate $R_{\text{SCD-T}}$ through randomly selecting 14 of the 17 years in each corresponding period, and then take their standard deviation as the error bar. All variables were detrended for each period before the partial-correlation analysis. * and ** indicate that the partial-correlation coefficient is significant at $P < 0.05$ and $P < 0.01$, respectively. The figure was created using Matlab R2016a

We also explored the robustness of the result to the method used to calculate SCD. SCD was initially calculated as the difference in the CO₂ concentration between the first week of July and the last week of August in the detrended CO₂ record, but CO₂ uptake decreased briefly in August (Supplementary Fig. 1), which could conceivably impact the results. Therefore, we calculated SCD using alternative methods. We first set SCD as the difference in CO₂ concentration between the climatological day of the year when the detrended CO₂ concentration crossed its long-term mean downwards (climatological spring zero-crossing date) and the climatological day of the year when detrended CO₂ concentration reached its annual minimum (climatological trough date). $R_{\text{SCD-T}}$ calculated from this different definition of SCD varied from -0.28 ($P = 0.32$) during 1979–1995 to -0.67 ($P < 0.01$) during 1996–2012 (Supplementary Fig. 10), similar to the original SCD definition. The spring zero-crossing date and the trough date for 1979–2012 both advanced at rates of 0.22 and 0.21 day year⁻¹, respectively (Supplementary Fig. 11), so a fixed window for defining SCD using the climatological zero-crossing and trough dates may not be appropriate. We thus performed an additional analysis that allowed the spring zero-crossing and trough dates to vary interannually. In this additional analysis, we found that $R_{\text{SCD-T}}$ shifted from 0.42 ($P = 0.12$) during 1979–1995 to -0.52 ($P < 0.01$) during 1996–2012 (Supplementary Fig. 12). During the earlier period, $R_{\text{SCD-T}}$ becomes positive instead of staying negative as it does when using the interannually varying window to define SCD. But the significant-negative correlation between SCD and temperature still emerged in the later period leading to the main conclusion that this result is not affected by the method used to define SCD.

We further investigated whether the shift in $R_{\text{SCD-T}}$ may have been indirectly related to changes in the onset date of the Arctic sea-ice melt. The date of the onset of melting of sea ice advanced at rates around 2.8 day decade⁻¹ during 1979–2004 at Chukchi and Beaufort Seas³². Earlier melting could increase the air-sea CO₂ flux in the summer and potentially contribute to the variations of summer CO₂ concentration at Barrow. A possible

effect of Arctic sea-ice melt on the shift in $R_{\text{SCD-T}}$ was then investigated by using the partial-correlation between SCD and land temperature after controlling for the effects of cloudiness, precipitation, and summer Arctic sea-ice extent (SIE). $R_{\text{SCD-T}}$ shifted similarly to the original calculation (Supplementary Fig. 13), suggesting that the impact of earlier Arctic sea-ice melt on the shift in $R_{\text{SCD-T}}$ was limited.

Mechanisms. We propose two hypotheses for the shift in $R_{\text{SCD-T}}$ between the two study periods. Multiple lines of evidence indicate that plant productivity is a major driver affecting interannual variations in net carbon uptake in Arctic and boreal ecosystems^{30,33,34}, so our first hypothesis is that summer vegetation activities has become less positively responsive to temperature. Our second hypothesis is that the increased response of respiration to temperature, which is typically positive in Arctic and boreal ecosystems, produced the change in $R_{\text{SCD-T}}$.

We tested the first hypothesis by calculating the correlation coefficient ($R_{\text{NDVI-T}}$) of the interannual relationship between the summer Normalized Difference Vegetation Index (NDVI) (as a proxy for productivity) and terrestrial summer temperature for the two periods (see Methods). We found that NDVI and temperature across ecosystems north of 50°N were always significantly positively correlated during the earlier period ($R = 0.82 \pm 0.07$), but not the later period ($R = 0.08 \pm 0.19$) (Fig. 2a), supporting this hypothesis. A further analysis of the spatial pattern of changes in $R_{\text{NDVI-T}}$ indicated that the recent decrease in $R_{\text{NDVI-T}}$ occurred over a wide region comprising eastern Siberia and Alaska (Fig. 2d), which constitutes most of the summer footprint of the Barrow station (Supplementary Fig. 4). In addition, analysis of an extended solar-induced chlorophyll fluorescence (SIF) dataset³⁵ also showed that the partial correlation between SIF and temperature across ecosystems north of 50°N was not significant during the period 2001–2012 ($R_{\text{SIF-T}} = -0.19$, $P = 0.61$) (Supplementary Fig. 14). A 30-year global dataset of a satellite-derived NPP model²⁷, also based on NDVI (Fig. 2b, e) and of gross primary productivity (GPP) observation-based results for

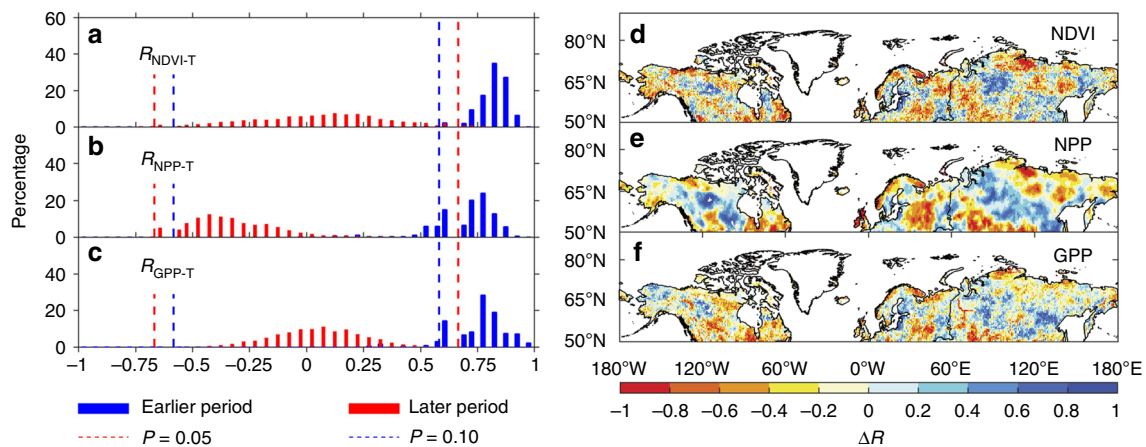


Fig. 2 Link between summer vegetation activities and summer temperature. **a–c** Frequency distributions of the partial-correlation coefficient of summer NDVI ($R_{\text{NDVI-T}}$) (**a**), satellite-derived net primary productivity ($R_{\text{NPP-T}}$) (**b**) and gross primary productivity based on flux-tower data ($R_{\text{GPP-T}}$) (**c**) with summer temperature (T) during the earlier and later periods. Significant partial-correlation coefficients (based on a sample size of 11) are identified as dashed lines (magenta, $P < 0.05$; blue, $P < 0.1$). All variables were detrended for each period before the partial-correlation analysis. **d–f** Spatial distribution of differences of $R_{\text{NDVI-T}}$, $R_{\text{NPP-T}}$, and $R_{\text{GPP-T}}$ between the earlier and later periods. The earlier period is 1982–1995, and the later periods are 1996–2012 for NDVI, 1996–2011 for NPP and 1996–2011 for GPP. The figure was created using Matlab R2016a

1982–2011 based on flux-tower data²⁸ (Fig. 2c, f) confirmed the loss of a positive correlation with summer temperature. By contrast, only two of nine terrestrial ecosystem models properly captured the loss of the positive correlation between NPP and temperature (Supplementary Fig. 15).

The decrease in $R_{\text{NDVI-T}}$ may have been due to an increase in the number of extreme warm days, because vegetation growth is reduced by heat stress during extremely warm days. The number of extreme warm days (defined as temperatures higher than the 90th percentile of the July and August temperature distribution for 1982–2012) increased during the later period (Supplementary Fig. 16a). The patterns of the changes of $R_{\text{NDVI-T}}$ were roughly consistent with those of the number of extreme warm days, particularly Alaska and eastern Siberia constituting the main footprint area of summer CO_2 changes at Barrow (Supplementary Fig. 4). NDVI in these areas had a significant-negative partial correlation with the number of extreme warm days when the data were statistically controlled for the effect of mean summer temperature (Supplementary Fig. 16b). The results are robust to the use of sub-daily temperature records in the definition of extreme warm temperatures (Supplementary Fig. 17). A lower $R_{\text{NDVI-T}}$ could also be due to a nonlinear response of photosynthesis to temperature, with summer temperatures exceeding the optimum and thereby decreasing photosynthesis³⁶ and thereby weakening the temperature-productivity correlation when warmer years become more common²¹.

The decrease in $R_{\text{NDVI-T}}$ may also have been caused by lower soil-moisture contents during the later study period. We investigated this possibility using the values of root-zone soil moisture from the observation-based model of land water budgets constrained by multiple satellite datasets, including surface soil moisture detected by microwave sensors^{37,38}. These values of soil moisture in summer were slightly higher during the later than the earlier period (Supplementary Fig. 18), suggesting that changes in soil moisture alone did not account for the decrease in $R_{\text{NDVI-T}}$. In addition, increased temperature could induce plant water stress, through increasing atmospheric deficits, to such a degree that plants either lose water at a faster rate or close stomata. We also analyzed changes in the atmospheric vapor pressure deficit (VPD), which is indicative of atmospheric demand for water, between the earlier and later period. Our results showed that

atmospheric demand for water generally increased over the main footprint area of summer CO_2 changes at Barrow (Supplementary Fig. 19a). But NDVI in these areas had either a positive or non-significant-negative partial correlation with VPD changes when the data were statistically controlled for the effect of mean summer temperature (Supplementary Fig. 19b). This result suggests that increased atmospheric demand for water has a relatively low probability of imposing water stress constraints on plant growth over high-latitude ecosystems. Therefore, change in VPD should not be the main cause of the observed decrease in $R_{\text{NDVI-T}}$.

In contrast to changes in vegetation productivity being indirectly monitored with remote sensing proxies, no satellite observations were available for use directly, or as proxies, to quantify changes in the response of terrestrial respiration to temperature. To test the hypothesis that the loss of temperature dependence of terrestrial respiration was responsible for the change in $R_{\text{SCD-T}}$, we used a global respiration dataset that integrates a global soil respiration database⁵ with a climate-driven empirical model of soil respiration³⁹. The interannual partial correlation of summer heterotrophic respiration (HR) with summer temperature ($R_{\text{HR-T}}$), while controlling for the effects of precipitation and cloudiness, was significant for both study periods. The coefficients are 0.85 ± 0.11 for 1979–1995 ($P < 0.01$) and 0.57 ± 0.16 for 1996–2012 ($P < 0.05$), respectively (Supplementary Fig. 20). Our analysis suggested that respiration continued to respond significantly positively to temperature in both study periods, and the response was not stronger during the later period, implying that the change in $R_{\text{SCD-T}}$ was not due to changes in the response of terrestrial respiration to temperature.

Discussion

We demonstrated that the effect of temperature on summer CO_2 drawdown has changed in the last 3 decades, implying a shift in the response of summer carbon uptake to warming in Arctic and boreal ecosystems. A significant-negative effect of temperature on summer CO_2 drawdown has recently emerged, that is, warmer years coincide with less summer uptake, which is most likely due to the reduced effect of temperature on summer vegetation activities. This evidence prompts us to re-examine the long-standing paradigm that vegetation activities in high-latitude

ecosystems is limited by temperature and that warming is therefore conducive to increased net carbon uptake^{10–12,14,15,40,41}. An earlier study reported that the strong positive correlation between temperature and spring CO₂ uptake³⁰ disappeared during 1996–2012¹⁷, due to a lower response of spring NPP to temperature. The effect of temperature on CO₂ drawdown during the summer carbon uptake period thus became negative in the later period. If extrapolated to future warming in the next decades, it leads us to hypothesize that further warming could fundamentally alter high-latitude terrestrial carbon balances, reducing ecosystems' capacity to sequester atmospheric CO₂ and ultimately accelerating climate change. In addition, the overall decline in the stimulating effect of temperature on carbon uptake in spring and summer suggested that the previously reported warming-induced increase in the duration of carbon uptake and then the seasonal CO₂ amplitude³⁰ would become weak, consistent with a recent study demonstrating that the increase in seasonal CO₂ amplitude was due much more to CO₂ fertilization than to climate change¹⁷.

Our finding will add further complexity to the estimation of the carbon balance over high-latitude ecosystems in a warming world. The large temperature-induced shift in carbon uptake during the main period of carbon uptake would reduce the positive effects of the gradual increasing atmospheric concentration of CO₂⁴², and increased nitrogen deposition⁴³ on net CO₂ uptake. Warming in these northern ecosystems, however, will continue and lead to the thawing of permafrost, triggering a substantial loss of permafrost carbon⁴⁴, further aggravating the negative impact of temperature on net CO₂ uptake during the main period of carbon uptake. Furthermore, most models of terrestrial ecosystems do not correctly identify the response of productivity to temperature variability over the last three decades, probably due to inaccurate model representations of the impact of extreme hot days and the nonlinear response of photosynthesis to temperature. Accurate model predictions of future feedbacks between the high-latitude carbon fluxes and the climate will require better parameterizations of the processes driving the response of Arctic and boreal ecosystems to warming.

We should stress that understanding of the emerging negative temperature control on summer carbon uptake and its mechanisms is still limited. It would be more straightforward to use net surface CO₂ flux data, instead of atmospheric CO₂ concentration data, in depicting the relationship between the carbon cycle and climate. But the availability of reliable long-term flux data is currently extremely limited by the sparsity of the in situ observing effort over arctic and boreal regions. Continued efforts are required to increase in situ carbon-cycle observations over these high-latitude ecosystems, to develop more mechanistic ecosystem models and to improve inverse models of assimilating CO₂ concentration, so as to provide a robust integrated estimate of net carbon exchange and its component processes (photosynthesis and respiration) over Arctic and boreal regions.

Methods

Summer CO₂ drawdown from the Barrow CO₂ data. We used daily records of in situ atmospheric CO₂ concentration at Barrow (71°N, 157°W, Alaska) for 1979–2012 archived by the National Oceanic and Atmospheric Administration (NOAA) Earth System Research Laboratory²⁵. We obtained the detrended seasonal CO₂ curve by separating the seasonal cycle from the long-term trend and short-term variations, fitting a function consisting of a quadratic polynomial for the long-term trend and four harmonics for the seasonal cycle to the daily data and then digitally filtering the residuals from the fitted function^{17,45}. A 1.5-month and a 390-day full-width half-maximum-value averaging filter were used for the digital filtering of residuals to remove the short-term variations and the long-term trend, respectively. Some unreliable CO₂ observations can strongly affect estimates of the seasonal cycle and therefore the net summer uptake, so any data lying outside five standard deviations of the residuals between the original data and the fit were discarded from the original daily time series¹⁷. We calculated summer CO₂ drawdown (SCD), which was adopted as an indicator of net summer CO₂ uptake in three ways. For the main analysis, SCD was calculated as the difference of CO₂ concentration between the first week of July and the last week of August. For the robustness tests, SCD was calculated as the difference of CO₂ concentration

between the climatological day of the year when CO₂ crossed its annual mean level (the climatological spring zero-crossing date) and the climatological day of the year of minimum atmospheric CO₂ concentration (the climatological trough date). We found that the climatological spring zero-crossing date at Barrow was around the 178th day of the year and the climatological trough date was around the 235th day of the year using the detrended seasonal CO₂ curve for 1979–2012 (Supplementary Fig. 1). The spring zero-crossing and trough dates could vary across years, so we also calculated SCD for testing the robustness using inter-annually varying values of the spring zero-crossing and trough dates. In addition, we used weekly records of atmospheric CO₂ concentration from the NOAA Earth System Research Laboratory⁴⁶ at Barrow to derive net summer CO₂ uptake. The same methods of fitting functions and digital filtering as used for the daily data were used for the weekly CO₂ data to obtain a detrended seasonal CO₂ curve; the only exception was that we did not need to remove the potential outliers, because they had already been excluded in the GLOBVIEW-CO₂ data.

Area of the summer CO₂ footprint for Barrow. The change in CO₂ concentration at Barrow is driven mainly by carbon exchanges in northern terrestrial ecosystems⁴⁷. We used two methods to define the specific regions that constitute the area of the summer footprint. We first used the Lagrangian particle dispersion model FLEXPART (version 8.2)³¹ with a driving wind field obtained from the European Centre for Medium-Range Weather Forecasts (ECMWF). FLEXPART simulations were available for 1985–2009 at a time resolution of three hours. A map of Potential Emission Sensitivity for Barrow was calculated by simulating the backwards-in-time transport of 40,000 infinitesimal air 'particles' for 20 days and integrating over time at the lowest model output layer (0–100 m) over the 20 days⁴⁸. We then averaged the Potential Emission Sensitivity for July and August for each year during 1985–2009 to obtain an average summer footprint area for each year.

The second method used to define the summer footprint area was based on the adjoint code of the LMDZ atmospheric transport model⁴⁹. The adjoint code calculates the partial derivatives of concentration measurements for fluxes at any time before a given CO₂ observation. We calculated the partial derivatives for the mean CO₂ measurements made at Barrow during the last week of August for fluxes at daily resolutions since the start of July, for all years of this study. Integrating the derivatives for a given number of days (Supplementary Fig. 5) within 1 year quantified the change in CO₂ concentration at Barrow per unit change in flux (kg C m⁻² h⁻¹) for all days before the measurement. We then averaged the derivatives for each year between 1979 and 2012 to obtain a multi-year mean area of the summer footprint.

Climatic and satellite-derived products. We used monthly climatic data (temperature, precipitation, and cloud cover) at a spatial resolution of 0.5° for 1901–2012 from the Climate Research Unit, University of East Anglia (CRU TS4.0 dataset)⁵⁰. Climatic observations at high latitudes are rare, so we also applied another climatic dataset, WATCH (WATER and global CHange) Forcing Data, to the ERA-Interim data (http://www.eu-watch.org/gfx_content/documents/README-WFDEL.pdf)⁵¹.

Satellite-derived NDVI, used as a proxy for vegetation productivity, was retrieved from the third-generation of the Advanced Very High Resolution Radiometer (AVHRR) developed by the Global Inventory Modeling and Mapping Studies (GIMMS) group²⁶. The GIMMS NDVI for 1981–2014 has a spatial resolution of one-twelfth of a degree (~8 km) and a 15-day interval (available at <https://ecocast.arc.nasa.gov/data/pub/gimms/3g.v1/>). Solar-induced chlorophyll fluorescence (SIF) that reflects photosynthetic signals from the molecular origin is increasingly used as a physiological-based proxy for gross primary productivity (GPP)^{52–55}. Here we used an extended satellite-derived SIF dataset for the period 2001–2012³⁵. This dataset is generated by a trained neural network that integrates surface reflectance from the Moderate-resolution Imaging Spectroradiometer (MODIS) and SIF from the Orbiting Carbon Observatory-2 (OCO-2). The extended SIF dataset, which is available for the all-sky condition, has a spatial resolution of 0.05 degrees and a temporal resolution of 4 days. Two other terrestrial productivity products were also used. The first was a 30-year global dataset of satellite-derived net primary productivity (NPP), which was calculated using the Moderate Resolution Imaging Spectroradiometer (MODIS) NPP algorithm driven by 30-year (1982–2011) GIMMS FPAR (the fraction of photosynthetically active radiation absorbed by the vegetation) and data for leaf area index (LAI)²⁷. The second was the GPP product (0.5° × 0.5°, monthly, 1982–2011) generated by integrating a global network of eddy covariance sites, satellite remote sensing, and meteorological data in a machine-learning algorithm²⁸. This global product has been widely adopted to aid the understanding of the spatiotemporal dynamics of the global carbon cycle⁵⁶ and to benchmark process-based terrestrial models^{28,57,58}. In addition, we used monthly data for root-zone soil moisture and evapotranspiration from the Global Land Evaporation Amsterdam Model (GLEAM) version 3.0a dataset at a spatial resolution of 0.25° × 0.25°³⁷. This dataset assimilates microwave observations of surface-soil moisture from the European Space Agency (ESA)–Climate Change Initiative (ESA–CCI) dataset in a multi-layer water-balance module³⁸. We also used the sea-ice extent data that are derived from the Sea Ice Index Version 3 dataset (<http://nsidc.org/data/G02135>).

Atmospheric CO₂ inversion system. We gathered estimates of monthly net biome production (NBP) from MACC (Monitoring Atmospheric Composition and Climate) (version v14r2, <http://copernicus-atmosphere.eu/>) for 1979–2011⁴⁹. The MACC CO₂ atmospheric-inversion system, based on the global tracer transport model LMDZ²⁹, adopts a variational inversion formulation to estimate optimized surface CO₂ fluxes from nearly 130 CO₂ observing stations, with a spatial resolution of 3.75° × 1.875° and a temporal resolution of 8 days, separately for daytime and nighttime.

Simulations of the terrestrial ecosystem models. We used simulated net primary productivity and heterotrophic respiration from nine process-based ecosystem models: Community land Model Version 4.5 (CLM4.5), Integrated Science Assessment Model (ISAM), the Joint UK Land Environment Simulator (JULES), Lund-Potsdam-Jena DGVM (LPJ), Lund-Postam-Jena General Ecosystem Simulator (LPJ-GUESS), the Land surface Processes and eXchanges (LPX-Bern), O-CN, Organizing Carbon and Hydrology In Dynamic Ecosystems (ORCHIDEE) and the Vegetation Integrative Simulator for Trace gases (VISIT). All models followed the protocol described by the historical climatic carbon-cycle model comparison project (Trendy) (http://dgvn.ceh.ac.uk/files/Trendy_protocol%20_Nov2011_0.pdf). All models used prescribed static vegetation maps. Each model was run from its pre-industrial equilibrium (assumed at the beginning of the 1900s) to 2012 and was forced by both observed historical climate changes and rising CO₂ concentrations.

The linkage between atmospheric CO₂ and surface CO₂ fluxes. Atmospheric CO₂ concentration and net carbon fluxes are two different parameters: atmospheric CO₂ concentrations integrate net carbon fluxes from different regions through atmospheric transport. To quantify the linkage between atmospheric CO₂ concentration and net surface CO₂ fluxes, we use the LMDZ atmospheric transport model to convert net CO₂ fluxes into an estimate of atmospheric CO₂ concentration at Barrow station. The transport model is nudged with winds from the European Centre for Medium-Range Weather Forecasts (ECMWF) reanalysis. We performed an ensemble of transport simulations for the period 1979–2012, using different NBP simulations from the terrestrial ecosystem models participating in the Trendy project and the NBP dataset from the MACC inversion system. Our results showed that simulated changes in SCD from the period 1996–2012 to 1979–1995 at Barrow station are strongly correlated with their corresponding summer NBP changes north of 50°N ($R^2 = 0.67$, $P < 0.01$) (Supplementary Fig. 21). Although atmospheric CO₂ concentration is not a direct measure of terrestrial net CO₂ fluxes, change in SCD at the Barrow station is a good indicator of change in net surface CO₂ fluxes north of 50°N.

We performed further transport simulations to estimate the linkage between SCD and net surface CO₂ fluxes based on perturbations of the fluxes. Specifically, for a given summer NBP map, we performed both control and perturbed simulations using the LMDZ transport model. In the perturbed case, we increased summer NBP by a scaling value so that summer NBP north of 50°N increased by 1 PgC for each year of the period 1979–2012. For a given year, the scaling value for each pixel north of 50°N is calculated as the ratio of summer NBP to one unit of PgC. The sensitivity of SCD change to NBP change is then computed as the difference in SCD between the control and perturbed simulations, relative to one unit increase of PgC in terrestrial NBP north of 50°N.

To understand the uncertainty related to the choice of different NBP maps, we considered different modeled NBP from the Trendy project and the NBP from the MACC inversion system. Our results show that, on average, one unit increase of PgC in terrestrial NBP north of 50°N can lead to an increase of 5.49 ± 2.70 ppm in SCD at the Barrow station (Supplementary Fig. 22). Note that averaging an ensemble of modeled results does not necessarily give the correct sensitivity. The accurate estimate of this sensitivity relies on the accuracies of the estimates of net surface CO₂ fluxes and the atmospheric transport model.

Statistical analyses. We quantified the decadal change in interannual correlations between summer (July and August) temperature and SCD by calculating partial-correlation coefficients between summer temperature and SCD ($R_{\text{SCD-T}}$) and controlling for the effects of summer precipitation and cloud cover (all variables detrended) during the earlier (1979–1995) and later (1996–2012) periods by randomly selecting 14 years from the corresponding period. Before performing the correlation analyses, we calculated the standard deviation of daily temperature between July and August for each year and found no significant change during the entire period (1979–2012) (Supplementary Fig. 23), suggesting that the temperature variance is relative stable. We also estimated the interannual sensitivity of SCD to summer temperature ($\gamma_{\text{SCD-T}}$) for each period as the slope of a multiple regression line of SCD against summer temperature, precipitation, and cloud cover (all variables detrended). A two-sample *t*-test was used to determine the significance of the differences in $R_{\text{SCD-T}}$ ($\gamma_{\text{SCD-T}}$) between the earlier and later periods. We also calculated the partial-correlation coefficients linking temperature to satellite-derived NDVI ($R_{\text{NDVI-T}}$), satellite-derived SIF ($R_{\text{SIF-T}}$), satellite-derived NPP ($R_{\text{NPP-T}}$), and GPP based on flux-tower data ($R_{\text{GPP-T}}$) using a similar method. The NDVI data began in 1982, so we randomly selected 11 years from 1982 to 1995 to calculate the frequency distribution of $R_{\text{NDVI-T}}$. All these analyses were first performed for north of 50°N and then for each pixel.

All climatic variables for the main analysis were calculated as spatial averages over the vegetated land north of 50°N. Vegetated land was defined as areas with a mean annual NDVI > 0.1 for 1982–2012. We also calculated the spatial averages of the climatic variables, as part of the robustness tests, by weighting the calculated sensitivities (potential emission sensitivity from FLEXPART and surface flux sensitivity from LMDZ) of different vegetated land areas within the multiple-year mean summer-footprint area. We did not set a cutoff value of sensitivities to select the summer footprint for the weighting, because a large fraction of the land surface had low sensitivity values. For example, values of potential emission sensitivity from FLEXPART above 0.1 s constituted 93.35% of the land-surface signal, and values above 1 s constituted 41.70% of the land-surface signal.

Data availability

The authors declare that ORCHIDEE-LMDZ transport simulation results are available from the corresponding author upon request. All other data supporting the findings of this study are available within the paper.

Received: 12 September 2017 Accepted: 31 October 2018

Published online: 19 December 2018

References

- McGuire, A. D. et al. Sensitivity of the carbon cycle in the Arctic to climate change. *Ecol. Monogr.* **79**, 523–555 (2009).
- McGuire, A. D. et al. An assessment of the carbon balance of Arctic tundra: comparisons among observations, process models, and atmospheric inversions. *Biogeosciences* **9**, 3185–3204 (2012).
- Nemani, R. R. et al. Climate-driven increases in global terrestrial net primary production from 1982 to 1999. *Science* **300**, 1560–1563 (2003).
- Davidson, E. A. & Janssens, I. A. Temperature sensitivity of soil carbon decomposition and feedbacks to climate change. *Nature* **440**, 165–173 (2006).
- Bond-Lamberty, B. & Thomson, A. Temperature-associated increases in the global soil respiration record. *Nature* **464**, 579–582 (2010).
- Hu, F. et al. Tundra burning in Alaska: linkages to climatic change and sea ice retreat. *J. Geophys. Res.* **115**, G04002 (2010).
- Coyne, P. I. & Kelly, J. J. CO₂ exchange over the Alaskan arctic tundra: meteorological assessment by an aerodynamic method. *J. Appl. Ecol.* **12**, 587–611 (1975).
- Coyne, P. I. & Kelly, J. J. Meteorological assessment of CO₂ exchange over an Alaskan arctic tundra. In *Vegetation and Production Ecology of an Alaskan Arctic Tundra* (ed Tieszen L. L.) 299–321 (Springer-Verlag, New York, 1978).
- Oechel, W. C. et al. Recent change of arctic tundra ecosystems from a net carbon dioxide sink to a source. *Nature* **361**, 520–523 (1993).
- Oechel, W. C. et al. Acclimation of ecosystem CO₂ exchange in the Alaskan Arctic in response to decadal climate warming. *Nature* **406**, 978–981 (2000).
- Vourlitis, G. L. & Oechel, W. C. Eddy covariance measurements of net CO₂ flux and energy balance of an Alaskan moist-tussocktundra ecosystem. *Ecology* **80**, 686–701 (1999).
- McFadden, J. P. et al. A regional study of the controls on water vapor and CO₂ exchange in arctic tundra. *Ecology* **84**, 2762–2776 (2003).
- Lafleur, P. M. & Humphreys, E. R. Spring warming and carbon dioxide exchange over low Arctic tundra in central Canada. *Glob. Change Biol.* **14**, 740–756 (2007).
- Lund, M. et al. Variability in exchange of CO₂ across 12 northern peatland and tundra sites. *Glob. Change Biol.* **16**, 2436–2448 (2010).
- Natali, S. M. et al. Effects of experimental warming of air, soil and permafrost on carbon balance in Alaskan tundra. *Glob. Change Biol.* **17**, 1394–1407 (2011).
- Randerson, J., Field, C., Fung, I. & Tans, P. Increases in early season ecosystem uptake explain recent changes in the seasonal cycle of atmospheric CO₂ at high northern latitudes. *Geophys. Res. Lett.* **26**, 2765–2768 (1999).
- Piao, S. et al. Weakening temperature control on the interannual variations of spring carbon uptake across northern lands. *Nat. Clim. Chang.* **7**, 359–363 (2017).
- Piao, S. L. et al. Net carbon dioxide losses of northern ecosystems in response to autumn warming. *Nature* **451**, 49–52 (2008).
- Welp, L. R. et al. Increasing summer net CO₂ uptake in high northern ecosystems inferred from atmospheric inversions and comparisons to remote-sensing NDVI. *Atmos. Chem. Phys.* **16**, 9047–9066 (2016).
- Stocker, T. F. et al. IPCC, 2013: Climate Change 2013: The Physical Science Basis. Contribution of Working Group I to the Fifth Assessment Report of the Intergovernmental Panel on Climate Change. (Cambridge University Press, Cambridge, UK, 2013).
- Piao, S. L. et al. Evidence for a weakening relationship between interannual temperature variability and northern vegetation activity. *Nat. Commun.* **5**, 5018 (2014).

22. Fu, Y. S. H. et al. Declining global warming effects on the phenology of spring leaf unfolding. *Nature* **526**, 104–107 (2015).
23. D'Arrigo, R. D. et al. Thresholds for warming-induced growth decline at elevational tree line in the Yukon Territory, Canada. *Glob. Biogeochem. Cy.* **18**, GB3021 (2004).
24. Angert, A. et al. Drier summers cancel out the CO₂ uptake enhancement induced by warmer springs. *Proc. Natl Acad. Sci. USA* **102**, 10823–10827 (2005).
25. Thoning, K. W., Kitzi, D. R. & Crotwell, A. Atmospheric Carbon Dioxide Dry Air Mole Fractions from Quasi-Continuous Measurements at Barrow, Alaska (NOAA ESRL Global Monitoring Division, 2014); ftp://aftp.cmdl.noaa.gov/data/trace_gases/co2/in-situ/surface/brw/co2_brw_surface-insitu_1_ccgg_DailyData.txt.
26. Tucker, C. J. et al. An extended AVHRR 8-km NDVI dataset compatible with MODIS and SPOT vegetation NDVI data. *Int. J. Remote Sens.* **26**, 4485–4498 (2005).
27. Smith, W. K. et al. Large divergence of satellite and Earth system model estimates of global terrestrial CO₂ fertilization. *Nat. Clim. Chang.* **6**, 306–310 (2016).
28. Jung, M. et al. Global patterns of land-atmosphere fluxes of carbon dioxide, latent heat, and sensible heat derived from eddy covariance, satellite, and meteorological observations. *J. Geophys. Res.* **116**, G00J07 (2011).
29. Hourdin, F. et al. The LMDZ4 general circulation model: climate performance and sensitivity to parametrized physics with emphasis on tropical convection. *Clim. Dyn.* **27**, 787–813 (2006).
30. Keeling, C. D., Chin, J. & Whorf, T. Increased activity of northern vegetation inferred from atmospheric CO₂ measurements. *Nature* **382**, 146–149 (1996).
31. Stohl, A., Forster, C., Frank, A., Seibert, P. & Wotawa, G. The Lagrangian particle dispersion model FLEXPART version 6.2. *Atmos. Chem. Phys.* **5**, 2461–2474 (2005).
32. Markus, T., Stroeve, J. C. & Miller, J. Recent changes in Arctic sea ice melt onset, freezeup, and melt season length. *J. Geophys. Res.* **144**, C12024 (2009).
33. Barichivich, J. et al. Large-scale variations in the vegetation growing season and annual cycle of atmospheric CO₂ at high northern latitudes from 1950 to 2011. *Glob. Chang. Biol.* **19**, 3167–3183 (2013).
34. Forkel, M. et al. Enhanced seasonal CO₂ exchange caused by amplified plant productivity in northern ecosystems. *Science* **351**, 696–699 (2016).
35. Zhang, Y. et al. A global spatially Continuous Solar Induced Fluorescence (CSIF) dataset using neural networks. *Biogeosci. Discuss.* <https://doi.org/10.5194/bg-2018-255> (2018).
36. Yamori, W., Hikosaka, K. & Way, D. A. Temperature response of photosynthesis in C₃, C₄, and CAM plants: temperature acclimation and temperature adaptation. *Photo. Res.* **119**, 101–117 (2014).
37. Miralles, D. G. et al. Global land-surface evaporation estimated from satellite-based observations. *Hydrol. Earth Syst. Sci.* **15**, 453–469 (2011).
38. Martens, B. et al. GLEAMv3: satellite-based land evaporation and root-zone soil moisture. *Geosci. Model Dev.* **10**, 1903–1925 (2017).
39. Hashimoto, S. et al. Global spatiotemporal distribution of soil respiration modeled using a global database. *Biogeosciences* **12**, 4121–4132 (2015).
40. Oechel, W. C., Vourlitis, G. L., Hastings, S. J. & Bochkarev, S. A. Change in Arctic CO₂ flux over two decades: effects of climate change at Barrow, Alaska. *Ecol. Appl.* **5**, 846–855 (1995).
41. Groendahl, L., Friberg, T. & Soegaard, H. Temperature and snow-melt controls on interannual variability in carbon exchange in the high Arctic. *Theor. Appl. Climatol.* **88**, 111–125 (2007).
42. Schimel, D., Stephens, B. B. & Fisher, J. B. Effect of increasing CO₂ on the terrestrial carbon cycle. *Proc. Natl Acad. Sci. USA* **112**, 436–441 (2015).
43. Galloway, J. N. et al. Nitrogen cycles: past, present, and future. *Biogeochemistry* **70**, 153–226 (2004).
44. Schuur, E. et al. Climate change and the permafrost carbon feedback. *Nature* **520**, 171–179 (2015).
45. Thoning, K. W., Tans, P. P. & Komhyr, W. D. Atmospheric carbon dioxide at Mauna Loa Observatory: 2. Analysis of the NOAA GMCC data, 1974–1985. *J. Geophys. Res.* **94**, 8549–8565 (1989).
46. Cooperative Global Atmospheric Data Integration Project *Multi-Laboratory Compilation of Synchronized and Gap-Filled Atmospheric Carbon Dioxide Records for the Period 1979–2012 (obspack_co2_1_GLOBALVIEW-CO2_2013_v1.0.4_2013-2-23)* (NOAA Global Monitoring Division, 2013); <https://doi.org/10.3334/OBSPACK/1002>.
47. Graven, H. D. et al. Enhanced Seasonal Exchange of CO₂ by Northern Ecosystems since 1960. *Science* **341**, 1085–1089 (2013).
48. Stohl, A. et al. A backward modeling study of intercontinental pollution transport using aircraft measurements. *J. Geophys. Res.* **108**, 4370 (2003).
49. Chevallier, F. et al. Inferring CO₂ sources and sinks from satellite observations: method and application to TOVS data. *J. Geophys. Res.* **110**, D24309 (2005).
50. Mitchell, T. D. & Jones, P. D. An improved method of constructing a database of monthly climate observations and associated high-resolution grids. *Int. J. Climatol.* **25**, 693–712 (2005).
51. Weedon, G. P. et al. The WFDEI meteorological forcing data set: WATCH Forcing Data methodology applied to ERA-Interim reanalysis data. *Water Resour. Res.* **50**, 7505–7514 (2014).
52. Daumard, F. et al. A field platform for continuous measurement of canopy fluorescence. *IEEE T. Geosci. Remote* **48**, 3358–3368 (2010).
53. Frankenberg, C. et al. New global observations of the terrestrial carbon cycle from GOSAT: patterns of plant fluorescence with gross primary productivity. *Geophys. Res. Lett.* **38**, L17706 (2011).
54. Sun, Y. et al. OCO-2 advances photosynthesis observation from space via solar-induced chlorophyll fluorescence. *Science* **358**, eaam5747 (2017).
55. Li, X. et al. Solar-induced chlorophyll fluorescence is strongly correlated with terrestrial photosynthesis for a wide variety of biomes: First global analysis based on OCO-2 and flux tower observations. *Glob. Change Biol.* **24**, 3990–4008 (2018).
56. Anav, A. et al. Spatiotemporal patterns of terrestrial gross primary production: a review. *Rev. Geophys.* **53**, 785–818 (2015).
57. Anav, A. et al. Evaluating the land and ocean components of global carbon cycle in the CMIP5 Earth System Models. *J. Clim.* **26**, 6801–6843 (2013).
58. Peng, S. S. et al. Benchmarking the seasonal cycle of CO₂ fluxes simulated by terrestrial ecosystem models. *Glob. Biogeochem. Cy.* **29**, 46–64 (2015).

Acknowledgements

This study was supported by the Strategic Priority Research Program (A) of the Chinese Academy of Sciences (grant XDA20050101, XDA19070303), the National Natural Science Foundation of China (41530528, 41871104), the 13th Five-year Informatization Plan of Chinese Academy of Sciences (Grant XXH13505-06) and the Thousand Youth Talents Plan project in China. P.C., I.J., and J.P. were funded by the European Research Council Synergy grant SyG-2013-610028 IMBALANCE-P. We thank the TRENDY modelling group for providing the model simulation data.

Author contributions

T.W. and S.L.P. designed the research, D.L. performed statistical analyses based on the Barrow CO₂ observations and gridded carbon fluxes, Y.L.W. and J.B. conducted the footprint analysis, T.W. drafted the paper, D.L., S.L.P., Y.L.W., J.B., P.C., J.P. and I.J. contributed to the writing, X.Y.W., H.G., X.L., M.H., Y.L., Y.W.L., S.S.P., H.Y., Y.T.Y., Y.Y. and Y.T.Z. contributed to the interpretation of the results.

Additional information

Supplementary Information accompanies this paper at <https://doi.org/10.1038/s41467-018-07813-7>.

Competing interests: The authors declare no competing interests.

Reprints and permission information is available online at <http://npg.nature.com/reprintsandpermissions/>

Publisher's note: Springer Nature remains neutral with regard to jurisdictional claims in published maps and institutional affiliations.



Open Access This article is licensed under a Creative Commons Attribution 4.0 International License, which permits use, sharing, adaptation, distribution and reproduction in any medium or format, as long as you give appropriate credit to the original author(s) and the source, provide a link to the Creative Commons license, and indicate if changes were made. The images or other third party material in this article are included in the article's Creative Commons license, unless indicated otherwise in a credit line to the material. If material is not included in the article's Creative Commons license and your intended use is not permitted by statutory regulation or exceeds the permitted use, you will need to obtain permission directly from the copyright holder. To view a copy of this license, visit <http://creativecommons.org/licenses/by/4.0/>.

© The Author(s) 2018