



HAL
open science

A quantitative demonstration that stellar feedback locally regulates galaxy growth

Javier Zaragoza-Cardiel, Jacopo Fritz, Itziar Aretxaga, Yalia D. Mayya, Daniel Rosa-González, John E. Beckman, Gustavo Bruzual, Stephane Charlot

► **To cite this version:**

Javier Zaragoza-Cardiel, Jacopo Fritz, Itziar Aretxaga, Yalia D. Mayya, Daniel Rosa-González, et al.. A quantitative demonstration that stellar feedback locally regulates galaxy growth. Monthly Notices of the Royal Astronomical Society, 2020, 499 (1), pp.1172-1187. 10.1093/mnras/staa2906 . hal-02973229

HAL Id: hal-02973229

<https://hal.science/hal-02973229>

Submitted on 22 May 2024

HAL is a multi-disciplinary open access archive for the deposit and dissemination of scientific research documents, whether they are published or not. The documents may come from teaching and research institutions in France or abroad, or from public or private research centers.

L'archive ouverte pluridisciplinaire **HAL**, est destinée au dépôt et à la diffusion de documents scientifiques de niveau recherche, publiés ou non, émanant des établissements d'enseignement et de recherche français ou étrangers, des laboratoires publics ou privés.

A quantitative demonstration that stellar feedback locally regulates galaxy growth

Javier Zaragoza-Cardiel ,^{1,2★} Jacopo Fritz ,³ Itziar Aretxaga,¹ Yalia D. Mayya,¹ Daniel Rosa-González ,¹ John E. Beckman,^{4,5,6} Gustavo Bruzual ³ and Stephane Charlot⁷

¹*Instituto Nacional de Astrofísica, Óptica y Electrónica (INAOE), Luis E. Erro 1, Tonantzintla, Puebla, CP 72840, Mexico*

²*Consejo Nacional de Ciencia y Tecnología, Av. Insurgentes Sur 1582, 03940 Ciudad de México, Mexico*

³*Instituto de Radioastronomía y Astrofísica, UNAM, Campus Morelia, 58089 Morelia, Mexico*

⁴*Instituto de Astrofísica de Canarias, C/ Vía Láctea s/n, E-38205 La Laguna, Tenerife, Spain*

⁵*Department of Astrophysics, University of La Laguna, E-38200 La Laguna, Tenerife, Spain*

⁶*CSIC, 28006 Madrid, Spain*

⁷*Sorbonne Université, CNRS, UMR7095, Institut d'Astrophysique de Paris, F-75014 Paris, France*

Accepted 2020 September 18. Received 2020 September 14; in original form 2020 June 25

ABSTRACT

We have applied stellar population synthesis to 500-pc-sized regions in a sample of 102 galaxy discs observed with the MUSE spectrograph. We derived the star formation history and analyse specifically the ‘recent’ (20 Myr) and ‘past’ (570 Myr) age bins. Using a star formation self-regulator model, we can derive local mass-loading factors, η for specific regions, and find that this factor depends on the local stellar mass surface density, Σ_* , in agreement with the predictions from hydrodynamical simulations including supernova feedback. We integrate the local η – Σ_* relation using the stellar mass surface density profiles from the Spitzer Survey of Stellar Structure in Galaxies (S4G) to derive global mass-loading factors, η_G , as a function of stellar mass, M_* . The η_G – M_* relation found is in very good agreement with hydrodynamical cosmological zoom-in galaxy simulations. The method developed here offers a powerful way of testing different implementations of stellar feedback, to check on how realistic are their predictions.

Key words: galaxies: evolution – galaxies: formation – galaxies: star formation – galaxies: stellar content.

1 INTRODUCTION

Understanding the global star formation process in galaxies is of key importance in the comprehension of galaxy formation and evolution. One of the biggest challenges faced by numerical models of galaxy formation derived directly from cosmological models is to explain why the stellar masses of galaxies are consistently lower than those expected from the simulations (Silk & Mamon 2012). This difference has been bridged by invoking internal mechanisms capable of regulating the star formation rate (SFR). Two regimes have been generally used: for massive galaxies their nuclear activity is found to be a mechanism, which acts in this way (Martín-Navarro et al. 2018). But for low-mass galaxies the star formation itself, through feedback, appears to offer a satisfactory mechanism to reduce the SFR, making star formation an inefficient process when comparing the stars which are formed with the availability of gas to form them (Bigiel et al. 2008; Hopkins et al. 2014; Kruijssen et al. 2019). Star formation self-regulates by expelling gas, and the amount of gas that flows out of any system is considered to depend on the mass of stars formed.

The models used to explain the consistently low mean SFR efficiency use sub-grid physics parametrized by a mass-loading factor, η , relating the mass outflow rate \dot{M}_{out} and the SFR by $\dot{M}_{\text{out}} = \eta \text{SFR}$ (Schaye et al. 2010; Vogelsberger et al. 2013; Somerville & Davé 2015; Hopkins et al. 2018).

This factor can be predicted by modelling the feedback process (Creasey, Theuns & Bower 2013; Muratov et al. 2015; Li, Bryan & Ostriker 2017), or inferred from observations (Kruijssen et al. 2019; McQuinn, van Zee & Skillman 2019; Schroetter et al. 2019; Roberts-Borsani et al. 2020). However, feedback modelling has many uncertainties, and the required observations are scarce and also subject to uncertainty. This paper marks a significant step in making up for the observational deficiencies.

In order to see whether the star formation at different epochs is correlated and to quantify it by estimating the mass-loading factor, we apply an empirical method based on stellar population synthesis and the self-regulator model of star formation, which has been presented previously (Zaragoza-Cardiel et al. 2019).

The star formation self-regulator model (Bouché et al. 2010; Lilly et al. 2013; Dekel & Mandelker 2014; Forbes et al. 2014; Ascasisbar et al. 2015) assumes mass conservation for a galaxy, which implies that the change per unit time of the gas mass, \dot{M}_{gas} , equals the inflow rate into the galaxy, \dot{M}_{in} , minus the gas that goes into star formation,

* E-mail: javier.zaragoza@inaoe.mx

SFR, and the gas which flows out of the galaxy, \dot{M}_{out} :

$$\dot{M}_{\text{gas}} = \dot{M}_{\text{in}} - \text{SFR}(1 - R + \eta), \quad (1)$$

where R is the fraction of the mass, which is returned to the interstellar medium from the stellar population.

The spatially resolved star formation self-regulator model applies to segments of a galaxy (Zaragoza-Cardiel et al. 2019), where by segment we mean any spatially resolved region of a galaxy. In these resolved regions, we also assume conservation of mass: The time change of the gas mass surface density in a segment, $\dot{\Sigma}_{\text{gas}}$, is equal to the surface density of the net gas flow rate, $\dot{\Sigma}_{\text{net flow}}$, minus the surface density of gas that goes into new stars through star formation, Σ_{SFR} , and minus the surface density of gas that is expelled from the segment by stellar processes, $\dot{\Sigma}_{\text{out}}$:

$$\dot{\Sigma}_{\text{gas}} = \dot{\Sigma}_{\text{net flow}} - \Sigma_{\text{SFR}}(1 - R + \eta), \quad (2)$$

where R is the fraction of the mass that is returned to the interstellar medium, and

$$\dot{\Sigma}_{\text{out}} = \eta \Sigma_{\text{SFR}}. \quad (3)$$

This model allows us to relate the SFR surface density in a segment, Σ_{SFR} , to the change in gas mass in that segment. The complex processes of stellar feedback are parametrized by the mass-loading factor: $\dot{\Sigma}_{\text{out}} = \eta \Sigma_{\text{SFR}}$.

We present the galaxy sample and the data in Section 2. In Section 3, we give the stellar population synthesis fits and also fit the observables to the star formation self-regulator model. In Section 4, we show the results obtained, and the variation of η , while in Section 5, we convert local values of η into global ones. We discuss our results in Section 6 and present our conclusions in Section 7.

2 GALAXY SAMPLE AND DATA

2.1 Galaxy sample

A significant number of galaxies have been observed with the MUSE instrument on the VLT in different surveys (Poggianti et al. 2017; Sánchez-Menguiano et al. 2018; Erroz-Ferrer et al. 2019; Kreckel et al. 2019; López-Cobá et al. 2020). To use these observations, we build our sample using the Hyperleda database (Makarov et al. 2014) and looking for them in the MUSE archive. To be able to apply the method for a given galaxy, we need to resolve the galaxy at a specific spatial scale. Based on results of NGC 628 (Zaragoza-Cardiel et al. 2019), we choose the 500 pc scale to study the star formation self-regulation so we are limited to galaxies closer than 100 Mpc to resolve 500 pc at 1 arcsec resolution. We also need enough (~ 16) resolution elements, so very nearby galaxies with a low number of 500 pc resolution elements are not useful. We will divide the MUSE field of view in squares, so we will need at least 4×4 500 pc squares per galaxy, limiting us to galaxies further away than 7 Mpc.

We need galaxies with recent star formation to study star formation self-regulation. To ensure that we will detect recent star formation, we just consider Sa or later types morphology (Hubble type $T \geq 1.0$ in Hyperleda). We discard edge-on galaxies ($i = 90^\circ$), galaxies classified as multiple, irregulars (Hubble type $T \geq 9$ in Hyperleda), and LIRGs (in NASA Ned). We just select galaxies with declination lower than 45°N to be observable from Paranal Observatory.

The SQL (Structured Query Language) search through Hyperleda¹ selects 13 636 galaxies, of which 164 have been observed with MUSE

on the VLT and have publicly available data with an exposure time at least of 1600 s. We also removed galaxies in Arp (Arp 1966), Vorontsov-Velyaminov (Vorontsov-Velyaminov 1959), and Hickson Compact Group (Hickson 1982) catalogues, to get rid out of strong external effects on the star formation history (SFH) and gas flows due to interactions. We have a total of 148 galaxies satisfying these conditions in the public MUSE archive. Of these, nine galaxies did not pass our requirements in a spectral inspection by eye, because of clear spectral artefacts, or not having enough $\text{H}\alpha$ emission in the pointing (MUSE has a square 1×1 arcmin² FOV). We initially analysed the single stellar populations (SSP's) of the remaining 139 galaxies, to apply the method described in this paper. Since the method requires enough regions to be included in the analysis, we set this limit to 16 (4×4). However, each of the 16 regions sampled per galaxy needs sufficient current SFR, sufficient signal-to-noise ratio (S/N), and that can be properly reproduced with stellar population synthesis models. Finally, only 102 galaxies satisfied all the conditions allowing us to estimate η . We present their parameters in Table 1.

2.2 Muse spectral data

We use the MUSE (Bacon et al. 2010) reduced publicly available data for the galaxies listed in Table 1, from the ESO archive.²

We first made a visual inspection to remove galaxies with no $\text{H}\alpha$ emission in the MUSE pointing, and thus to select MUSE fields where $\text{H}\alpha$ was observed, to be able to estimate recent star formation. After delimiting the regions with recent star formation, we divide each field into an integer number of observing squares, giving us squares with the closest (and larger than) size value to 500 pc. We show an example in Fig. 1, we do not use the squares outside the MUSE pointing. We choose 500 pc because it gives us a scale on which, from previous work, we expect to observe the self-regulation of star formation (Zaragoza-Cardiel et al. 2019), and it allows us to include galaxies at distances of up to 100 Mpc where 500 pc corresponds to 1 arcsec. We also need the foreground stars to be masked. We extract the spectrum for each defined region, correct it for Galactic extinction, and associate each with a redshift estimate, using the $\text{H}\alpha$ or $[\text{N II}]$ at 6583.4 Å if the later has a stronger peak than the former. We next estimate the $[\text{N II}]/\text{H}\alpha$ and the $[\text{O III}]/\text{H}\beta$ flux ratios, and remove the regions which are classified as Seyfert–LINER in the BPT diagram (Kewley et al. 2006).

3 STELLAR POPULATION SYNTHESIS AND MODEL FITS

3.1 Stellar population synthesis

We use SINOPSIS code³ (Fritz et al. 2007, 2017) to fit combinations of SSPs to the observed spectra. SINOPSIS fits equivalent widths of emission and absorption lines, as well as defined continuum bands. In this work, we use the $\text{H}\alpha$ and $\text{H}\beta$ equivalent widths, and the nine continuum bands shown in Fig. 2, where we show two observed spectra of the galaxy NGC 716 and the resulted fits as an example.

We use the updated version of the Bruzual & Charlot models (Werle et al. 2019). We used SSPs of three metallicities ($Z = 0.004, 0.02, \text{ and } 0.04$) in 12 age bins (2 Myr, 4 Myr, 7 Myr, 20 Myr,

²http://archive.eso.org/wdb/wdb/adp/phase3_spectral/form?collection_name=MUSE

³<https://www.itya.unam.mx/gente/j.fritz/JFhp/SINOPSIS.html>

¹<http://leda.univ-lyon1.fr/fullsql.html>

Table 1. Galaxy sample.

Galaxy identifier	PGC identifier ^d	D^b (Mpc)	z^c	Type ^d	i^e ($^\circ$)
pgc33816	PGC33816	23.6	0.005 187	7.0	19.9
eso184-g082	PGC63387	35.2	0.008 67	4.1	32.6
eso467-062	PGC68883	57.5	0.013 526	8.6	49.9
ugc272	PGC1713	55.6	0.012 993	6.5	70.7
ngc5584	PGC51344	23.1	0.005 464	5.9	42.4
eso319-g015	PGC34856	37.5	0.009 159	8.6	54.2
ugc11214	PGC61802	38.0	0.008 903	5.9	16.5
ngc6118	PGC57924	20.5	0.005 247	6.0	68.7
ic1158	PGC56723	24.5	0.006 428	5.1	62.2
ngc5468	PGC50323	30.0	0.009 48	6.0	21.1
eso325-g045	PGC50052	75.9	0.017 842	7.0	40.2
ngc1954	PGC17422	38.0	0.010 441	4.4	61.5
ic5332	PGC71775	9.9	0.002 338	6.8	18.6
ugc04729	PGC25309	57.0	0.013 009	6.0	35.2
ngc2104	PGC17822	16.4	0.003 873	8.5	83.6
eso316-g7	PGC28744	47.5	0.011 66	3.3	70.0
eso298-g28	PGC8871	70.1	0.016 895	3.8	64.4
mcg-01-57-021	PGC69448	30.6	0.009 907	4.0	52.2
pgc128348	PGC128348	61.1	0.014 827	5.0	36.7
pgc1167400	PGC1167400	60.0	0.013 34	4.0	30.5
ngc2835	PGC26259	10.1	0.002 955	5.0	56.2
ic2151	PGC18040	30.6	0.010 377	3.9	61.5
ngc988	PGC9843	17.3	0.005 037	5.9	69.1
ngc1483	PGC14022	16.8 ^h	0.003 833	4.0	37.3
ngc7421	PGC70083	24.2	0.005 979	3.7	36.2
fcc290	PGC13687	19.0	0.004 627	2.1	48.1
ic344	PGC13568	75.6	0.018 146	4.0	60.7
ngc3389	PGC32306	21.4	0.004 364	5.3	66.2
eso246-g21	PGC9544	76.6	0.018 513	3.0	52.4
pgc170248	PGC170248	85.1	0.019 163	4.7	76.4
ngc7329	PGC69453	45.7	0.010 847	3.6	42.7
ugc12859	PGC72995	78.3	0.018 029	4.0	72.8
ugc1395	PGC7164	74.1	0.017 405	3.1	55.1
ngc5339	PGC49388	27.0	0.009 126	1.3	37.5
ngc1591	PGC15276	55.8	0.013 719	2.0	56.8
pgc98793	PGC98793	55.2	0.012 92	5.0	0.0
ugc5378	PGC28949	56.5	0.013 88	3.1	64.1
ngc4806	PGC44116	29.0	0.008 032	4.9	32.9
ngc1087	PGC10496	14.4	0.005 06	5.2	54.1
ngc4980	PGC45596	16.9	0.004 767	1.1	71.5
ngc6902	PGC64632	46.6	0.009 326	2.3	40.2
ugc11001	PGC60957	63.3	0.014 06	8.1	78.7
ic217	PGC8673	27.0	0.006 304	5.8	82.6
eso506-g004	PGC39991	57.5	0.013 416	2.6	67.2
ic2160	PGC18092	64.7	0.015 809	4.6	62.7
ngc1385	PGC13368	22.7	0.005	5.9	52.3
mcg-01-33-034	PGC43690	32.0	0.008 526	2.1	56.6
ngc4603	PGC42510	33.1	0.008 647	5.0	44.8
ngc4535	PGC41812	15.8	0.006 551	5.0	23.8
ngc1762	PGC16654	76.5	0.015 854	5.1	51.5
ngc3451	PGC32754	26.1	0.004 45	6.5	62.7
ngc4790	PGC43972	15.3	0.004 483	4.8	58.8
ngc3244	PGC30594	42.7	0.009 211	5.6	49.3
ngc628	PGC5974	9.8	0.002 192	5.2	19.8
pgc30591	PGC30591	35.5	0.006 765	6.8	86.6
ngc5643	PGC51969	11.8	0.003 999	5.0	29.6
ngc1309	PGC12626	24.1	0.007 125	3.9	21.2
ngc1084	PGC10464	17.3	0.004 693	4.8	49.9
ngc7580	PGC70962	65.3	0.014 79	3.0	36.5
ngc692	PGC6642	87.9	0.021 181	4.1	45.2
eso462-g009	PGC64537	83.2	0.019 277	1.1	58.8
ic5273	PGC70184	14.7	0.004 312	5.6	50.8
pgc3140	PGC3140	81.3	0.019 029	1.4	62.7
ic1553	PGC1977	35.0	0.009 79	7.0	78.6

Table 1 – *continued*

Galaxy identifier	PGC identifier ^d	D^b (Mpc)	z^c	Type ^d	i^e ($^\circ$)
ugc11289	PGC62097	59.7	0.013 333	4.5	53.7
ic4582	PGC55967	37.3	0.007 155	3.8	83.1
ngc2466	PGC21714	73.1	0.017 722	5.0	16.0
eso443-21	PGC44663	41.9	0.009 404	5.7	79.0
ic4452	PGC51951	65.3	0.014 337	1.3	20.6
eso498-g5	PGC26671	40.7	0.008 049	4.3	41.8
eso552-g40	PGC16465	95.5	0.022 649	2.1	54.4
eso163-g11	PGC21453	33.0	0.009 413	3.0	70.9
ngc7582	PGC71001	18.7	0.005 254	2.1	68.0
ngc1620	PGC15638	39.6	0.011 715	4.5	81.2
ic1320	PGC64685	73.6	0.016 548	2.9	58.1
ngc3393	PGC32300	52.8	0.012 509	1.2	30.9
ngc2370	PGC20955	79.8	0.018 346	3.4	56.8
ngc4981	PGC45574	21.0	0.005 604	4.0	44.7
ngc3783	PGC36101	25.1	0.009 73	1.4	26.6
ngc1285	PGC12259	74.1	0.0174 75	3.4	59.3
ngc5806	PGC53578	26.2	0.0045 33	3.2	60.4
eso018-g018	PGC26840	71.1	0.0175 72	4.2	38.9
ngc6754	PGC62871	38.4	0.0108 64	3.2	61.0
ic2560	PGC29993	32.5	0.0097 57	3.4	65.6
ngc7140	PGC67532	36.0	0.0099 47	3.8	49.6
ngc3464	PGC833131	52.8	0.0124 62	4.9	50.8
mcg-02-13-38	PGC16605	55.2	0.0132 93	1.2	73.6
ngc1590	PGC15368	55.2	0.0129 99	5.0	27.9
pgc8822	PGC8822	74.1	0.0175 55	5.0	58.2
ngc7721	PGC72001	21.2	0.0067 21	4.9	81.4
pgc28308	PGC28308	43.0	0.009 07	6.7	85.5
ngc1137	PGC10942	42.8	0.0101 47	3.0	59.5
eso478-g006	PGC8223	74.8	0.0177 86	4.2	57.7
ngc1448	PGC13727	16.8	0.0038 96	6.0	86.4
ngc3278	PGC31068	42.7	0.0098 77	5.1	41.0
ngc4030	PGC37845	19.0	0.0048 87	4.0	47.0
ngc3363	PGC32089	85.1	0.0192 33	3.5	45.3
ngc7780	PGC72775	76.2	0.0171 95	2.0	61.2
ic1438	PGC68469	42.5	0.0086 59	1.2	23.8
ngc4666	PGC42975	15.7	0.0051 01	5.0	69.6
ngc7396	PGC69889	71.8	0.0165 61	1.0	59.5
ngc716	PGC6982	65.9	0.0152 04	1.1	75.9

Notes. ^aPrincipal General Catalogue of Galaxies identifier from HyperLeda database (Paturel et al. 2003). ^bDistance from the $z=0$ Multi-wavelength Galaxy Synthesis (z0MGS from Leroy et al. (2019), when available) and HyperLeda database best homogenized distances (Makarov et al. 2014). ^cRedshift, from Nasa Ned. ^dNumerical morphological type, from the HyperLeda database. ^eInclination from the HyperLeda database.

57 Myr, 200 Myr, 570 Myr, 1 Gyr, 3 Gyr, 5.75 Gyr, 10 Gyr, and 14 Gyr). We assume a free form of SFH, the Calzetti dust attenuation law (Calzetti et al. 2000), and the Chabrier (2003) IMF for stellar masses between 0.1 and 100 M_{\odot} . The emission lines for the SSPs younger than 20 Myr are computed using the photoionization code CLOUDY (Ferland 1993; Ferland et al. 1998, 2013), assuming case B recombination (Osterbrock 1989), an electron temperature of 10^4 K, an electron density of 100 cm^{-3} , and a gas cloud with an inner radius of 10^{-2} pc (Fritz et al. 2017).

SINOPSIS uses the degeneracies between age, metallicity, and dust attenuation, to compute the uncertainties in the derived parameters (Fritz et al. 2007).

We rebin the different age bins into four bins: at 20 Myr, 570 Myr, 5.7 Gyr, and 14 Gyr. Simulated and observed spectra have been used to prove the validity of using SINOPSIS to recover these four age bins (Fritz et al. 2007, 2011). Additionally, SINOPSIS and similar

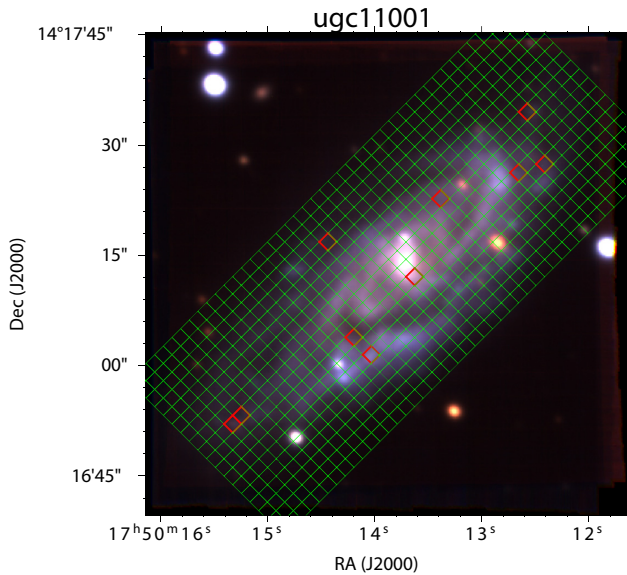


Figure 1. Colour composite RGB image recovered from MUSE data of one of the studied galaxies, UGC 11001. The red, green, and blue images used to create RGB are obtained by integrating MUSE spectra in the R , V , and B filters, respectively. In total, 500-pc wide regions where spectra were extracted are overlapped as green and the regions identified as those on the envelope (defined above in Section 4) are marked as red squares.

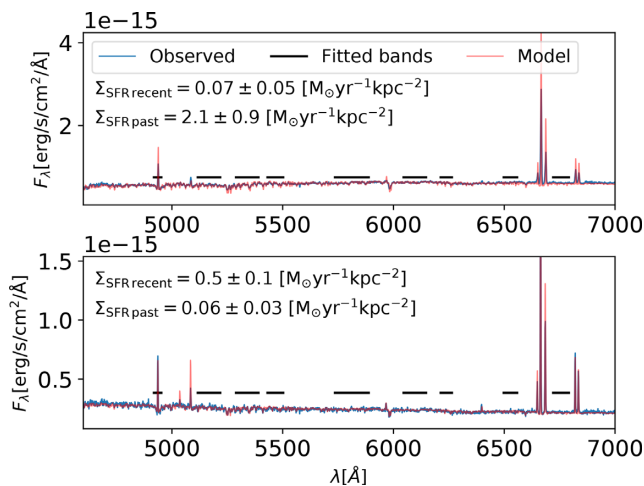


Figure 2. Two characteristic spectra for the galaxy NGC 716. Observed spectra are shown as blue lines. Top panel: The total star formation is dominated by the past star formation. Bottom panel: The total star formation is dominated by the recent star formation. The model spectrum that best fits the observed spectrum is shown as a red line. The continuum bands used to fit the observed spectrum to the combination of SSPs are shown as black lines.

codes have shown the reliability of recovering the SFH using the synthesis of SSPs in, at least, four age bins (Cid Fernandes et al. 2005; Fritz et al. 2007, 2011; Sánchez et al. 2016). However, since we are interested in the recent star formation variations, we consider only the two most recent age bins, 20 Myr, 570 Myr, and call them recent, and past age bins, respectively. In this way, we recover the recent, and the past SFR surface densities, $\Sigma_{\text{SFR recent}}$ and $\Sigma_{\text{SFR past}}$, which improves the confidence in the results presented in this work, since the two most recent age bins are better constrained than the oldest ones.

In order to use regions with a meaningful result, we take into account only regions with an S/N larger than 20 over the [5350–5420] Å range, and $\chi^2 < 3$. Due to IMF sampling effects, we also consider only regions where the recent SFR is larger than $10^{-3} M_{\odot} \text{ yr}^{-1}$ and the past SFR is larger than $10^{-3} M_{\odot} \text{ yr}^{-1}$.

Because we are limited to galaxies from Hubble Type Sa to Sdm, also excluding interacting galaxies and (U)LIRGs, the galaxy sample, by construction, is defined by galaxies that are probably on the star formation galaxy main sequence, and probably evolved via secular evolution in the studied age range (last 570 Myr), where by secular evolution we mean evolution dominated by slow processes (slower than many galaxy rotation periods, Kormendy & Kennicutt 2004). The galaxies probably evolved through more violent episodes in the past, but we are not affected by them in the studied age range. Nevertheless, individual zones such as the centres of the galaxies, might have evolved via rapid evolution due to high gas flows even in the studied age range. Because of this, we removed regions whose centres are at a distance of 500 pc or less from the centre of the galaxy, as well as regions having a very high recent SFR compared to the rest of the galaxy, specifically, we removed regions having $\Sigma_{\text{SFR recent}}$ larger than $\bar{\Sigma}_{\text{SFR recent}} + 3\sigma_{\Sigma_{\text{SFR recent}}}$ for each galaxy. We will discuss how the results affect the removal of very high recent SFR regions in the discussion Section 6.4.

3.2 Fitting data to the self-regulator model

We have made the same assumptions made in Zaragoza-Cardiel et al. (2019) in order to fit our observables to the self-regulator model. For completeness, we briefly describe them here.

The self-regulator model (equation 2) is valid for a star or a group of co-rotating stars in the galaxy such as a massive star cluster ($> 500 M_{\odot}$, Lada & Lada 2003). Assuming η constant, equation (2) is linear, so we can add up regions obeying that equation, and still obey the equation. In this context, the mass-loading factor would be representative of massive star clusters scales ($\sim \text{pc}$, Lada & Lada 2003). Although we find below that η varies (equation 6), the variation is smooth enough to consider it approximately constant here. Therefore, the group of stars which are massive enough to produce bound clusters can be considered as a whole, while the less massive ones are splitted into individual stars. Feedback between different regions is then not considered here. We assume that our 500-pc wide regions are made of individual smaller regions obeying equation (2), so we can rewrite equation (2) to be valid for our larger regions as the average of individual regions:

$$\dot{\Sigma}_{\text{gas}} = \dot{\Sigma}_{\text{net flow}} - \bar{\Sigma}_{\text{SFR}}(1 - R + \eta). \quad (4)$$

We already showed in Zaragoza-Cardiel et al. (2019) that the resulted mass-loading factor was independent of the chosen scale (from 87 pc to 1 kpc) in NGC 628. Hence, regions can be added up while equation (4) is still valid.

The value of the $\bar{\Sigma}_{\text{SFR past}}$ we are able to measure is a time average over 550 Myr. Since equation (4) is linear, we can substitute the time differentials by time average values over our age bin, and we will not be affected by possible bursts of the star formation, as long as the variation of η is small enough (as we do find below).

The net gas flow rate surface density, $\dot{\Sigma}_{\text{net flow}}$, is the change in gas density due to gas flows (independently of star formation), which can be negative, although in that case, the star formation is quenched (Zaragoza-Cardiel et al. 2019). This term, $\dot{\Sigma}_{\text{net flow}}$, also includes the possibility of gas return from different regions and the same region at a later epoque, an effect known as galactic fountains (Fraternali

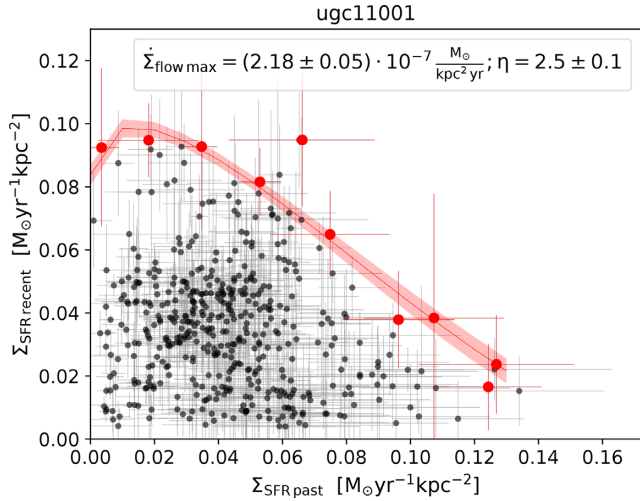


Figure 3. Recent SFR surface density, $\Sigma_{\text{SFR recent}}$, versus the past SFR surface density, $\Sigma_{\text{SFR past}}$, for the UGC 11001 galaxy. The red dots are the regions identified as those on the envelope. We plot the fit of equation (5) to the regions on the envelope as well as the result of the fit and the 1σ uncertainty range of the fit as shaded region.

2017). The observables are $\bar{\Sigma}_{\text{SFR recent}}$ and $\bar{\Sigma}_{\text{SFR past}}$. Let us assume that we can estimate $\bar{\Sigma}_{\text{gas}}$ from the star formation change considering the KS law, $\bar{\Sigma}_{\text{SFR}} = A \bar{\Sigma}_{\text{gas}}^N$, and rewrite equation (2):

$$\bar{\Sigma}_{\text{SFR recent}} = A \left\{ \left[\bar{\Sigma}_{\text{net flow}} - \bar{\Sigma}_{\text{SFR past}} (1 - R + \eta) \right] \Delta t + \left[\frac{\bar{\Sigma}_{\text{SFR past}}}{A} \right]^{\frac{1}{N}} \right\}^N, \quad (5)$$

where there is a relation between our two observables ($\bar{\Sigma}_{\text{SFR recent}}$ and $\bar{\Sigma}_{\text{SFR past}}$), $\bar{\Sigma}_{\text{net flow}}$, and η . We will use a simplistic approximation to estimate $\bar{\Sigma}_{\text{net flow}}$, since we do not observe it. As explained in Zaragoza-Cardiel et al. (2019), we assume that several regions have an approximate value close to the maximum value of $\bar{\Sigma}_{\text{net flow}}$, for a given galaxy. In the case of the estimation of η , although η could vary between regions, we will find that the variation is smooth enough (equation 6) to consider the existence of a representative value for specific regions. In the following, for simplicity, since we are only dealing with one type of regions, the 500 pc wide ones, we will be using the analysed terms (e.g. $\bar{\Sigma}_{\text{SFR recent}}$, $\bar{\Sigma}_{\text{SFR past}}$, $\bar{\Sigma}_{\text{net flow}}$) without the need of using the average symbols ($\Sigma_{\text{SFR recent}}$, $\Sigma_{\text{SFR past}}$, $\Sigma_{\text{net flow}}$). Therefore, when we present an average, the average will be for several 500 pc wide regions.

Assuming the instantaneous recycling approximation (Madau & Dickinson 2014) for stars more massive than $3M_{\odot}$ ($\tau_{\text{MS}} \sim 0.6$ Gyr, where τ_{MS} is the main-sequence lifetime), and a Chabrier IMF (Chabrier 2003), we obtain a value of $R = 0.27$. We use the values $A = 10^{-4.32} M_{\odot} \text{ kpc}^{-2} \text{ yr}^{-1}$, and $N = 1.56$ for the KS law (Kennicutt et al. 2007).

4 RESULTS

As an example, we plot the $\Sigma_{\text{SFR recent}}$ versus $\Sigma_{\text{SFR past}}$ diagram for one of the galaxies, UGC 11001, in Fig. 3. We plot the $\Sigma_{\text{SFR recent}}$ versus $\Sigma_{\text{SFR past}}$ diagrams for all of the galaxies in Fig. A1. Each

of the points in these plots can be seen as the relation between the $\Sigma_{\text{SFR recent}}$ and the $\Sigma_{\text{SFR past}}$ which depends on the value of $\bar{\Sigma}_{\text{net flow}}$, and η (equation 5).

We identify those regions having the maximum $\Sigma_{\text{SFR recent}}$, per bin of $\Sigma_{\text{SFR past}}$, as the regions on the envelope. We see the regions on the envelope as red dots in Fig. 3, and as red squares in the MUSE recovered false colour image of UGC 11001 in Fig. 1.

We can see in equation (5) that we need the value of $\bar{\Sigma}_{\text{net flow}}$ in combination with the $\Sigma_{\text{SFR recent}}$ and $\Sigma_{\text{SFR past}}$ values, in order to quantify η . For a given galaxy, there should be a maximum value for the net flow gas surface density term, $\bar{\Sigma}_{\text{flow max}}$. Although in principle $\bar{\Sigma}_{\text{flow max}}$ is unknown for us, if we assume that there are several segments where $\bar{\Sigma}_{\text{net flow}} \sim \bar{\Sigma}_{\text{flow max}}$, then these regions are those on the $\Sigma_{\text{SFR recent}}$ versus $\Sigma_{\text{SFR past}}$ diagram envelope.

Assuming $\bar{\Sigma}_{\text{net flow}}$ constant, we fit equation (5) to the regions on the envelope and estimate the mass-loading factor, representative of those specific regions. We have selected a galaxy sample mainly composed by galaxies on the main sequence of star formation, and remove segments having very high $\Sigma_{\text{SFR recent}}$ compared to the rest of the segments of a galaxy. Therefore, the galaxy sample, as well as the segments, have been chosen to assure the $\bar{\Sigma}_{\text{net flow}} \sim \bar{\Sigma}_{\text{flow max}}$ hypothesis for several regions. The regions below the envelope are due, to a greater extent, to regions having a smaller value of $\bar{\Sigma}_{\text{net flow}} < \bar{\Sigma}_{\text{flow max}}$, and to a much lesser extent, to regions having different η values.

We have fitted equation (5) to the envelopes of the 102 galaxies listed in Table 1 and show the results in Fig. 3 for UGC 11001, and in Fig. A1 for the rest of the galaxies, as a red line.

4.1 Variations of η

Although we have an η value for each galaxy, η is an average value representative only of the regions on the envelope, instead of the whole galaxy. We associate the estimated η for a given envelope with the average surface stellar mass density, Σ_{*} , of those regions on the envelope where we estimate η . Therefore, η is a local average value, representative only of the regions on the envelope, and their mean value of Σ_{*} . Although η value might vary through the regions on the envelope, we assume that the variation is smooth enough and associate the average stellar mass density, Σ_{*} and the standard deviation, to each envelope. The correlation found between η and Σ_{*} (equation 6 and Fig. 4) is in fact smooth enough to make the association between η and Σ_{*} for the regions on the envelope. We report η , $\bar{\Sigma}_{\text{flow max}}$, and Σ_{*} values in Table 2.

We plot in Fig. 4, η versus Σ_{*} , and find that the mass-loading factors strongly correlate with the local Σ_{*} measured on the envelope regions:

$$\log(\eta + 1) = (-0.32 \pm 0.03) \log(\Sigma_{*}) + (3.2 \pm 0.3). \quad (6)$$

This correlation means that the denser the region, the lower is the mass-loading factor, which means that the amount of outflowing gas mass per unit SFR depends inversely on the stellar mass surface density. This is so because the denser the region, the larger is the local gravitational pull, making it harder for the gas to be expelled. The local chemical enrichment of galaxies (Barrera-Ballesteros et al. 2018) also favours the gas regulator model and finds that the mass-loading factor depends on the local escape velocity. This new empirical η - Σ_{*} relation, can be used to check if stellar feedback implementations in numerical simulations (Creasey et al. 2013; Hopkins et al. 2014; Li et al. 2017) are realistic. In particular, we can compare our η - Σ_{*} relation with the η - Σ_{gas} relation from supernova explosion feedback simulations (Creasey et al. 2013; Li et al. 2017), using

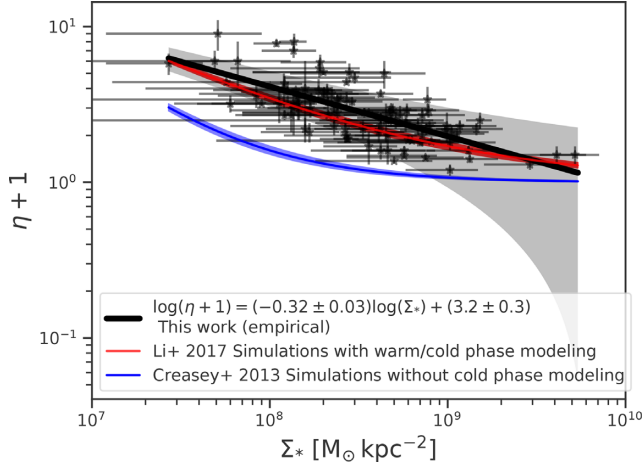


Figure 4. Local mass-loading factor, η , versus the average stellar mass surface density of the regions on the envelope for each galaxy, Σ_* , as black stars. We plot the linear fit to the empirically derived quantities and the 1σ uncertainty range of the fit as shaded regions. The blue line shows the η reported for supernova explosions hydrodynamical simulations (Creasey et al. 2013) with cut-off cooling modelling, and as blue line the η reported for supernova explosions hydrodynamical simulations (Li et al. 2017) with gas cold-phase modelling included.

the observed $\Sigma_* - \Sigma_{\text{gas}}$ relation (Barrera-Ballesteros et al. 2020). The inverse correlation between η and Σ_* is clear from observations and simulations. However, our empirical result supports that the radiative cooling below 10^4K is important. This is because when ignoring gas cooling below 10^4K , there is an excess of warm gas compared with the models including a multiphase cold/warm gas (Li et al. 2017). Thus, in the warm gas excess scenario, there is a layer of gas with higher ISM pressure which prevents the gas to be expelled from the supernova explosions.

5 LOCAL TO GLOBAL MASS-LOADING FACTORS

The mass-loading factor derived here is representative of local scales. However, other observational and theoretical studies report global mass-loading factors (Muratov et al. 2015; Rodríguez-Puebla et al. 2016; Hayward & Hopkins 2017; McQuinn et al. 2019; Schroetter et al. 2019). We estimate global mass-loading factors, η_G , from the empirical $\eta - \Sigma_*$ relation reported here (equation 6), integrating over observed stellar mass density profiles.

To convert η to η_G , we assume that we can estimate the total outflow due to stellar feedback, \dot{M}_{out} , by adding up $\dot{\Sigma}_{\text{out}}$ over each individual segment where stellar feedback acts. Since, we are interested in galaxy discs, we assume a radial characterization for the properties of interest, i.e. η , $\dot{\Sigma}_{\text{out}}$, Σ_{SFR} , and Σ_{SFR} depend on R , the radial distance to the centre of the disc:

$$\eta_G = \frac{\dot{M}_{\text{out}}}{\text{SFR}} = \frac{\int_0^\infty \dot{\Sigma}_{\text{out}}(R) R dR}{\int_0^\infty \Sigma_{\text{SFR}}(R) R dR} = \frac{\int_0^\infty \eta(R) \Sigma_{\text{SFR}}(R) R dR}{\int_0^\infty \Sigma_{\text{SFR}}(R) R dR}. \quad (7)$$

The conversion between η to η_G is an Σ_{SFR} weighted average of η . Stellar mass density profiles, $\Sigma_*(R)$, are better constrained than $\Sigma_{\text{SFR}}(R)$ profiles, so we decide to use the empirical relation between $\Sigma_{\text{SFR}} \propto \Sigma_*(R)^n$. For simplicity, we assume $n = 1$, which is consistent with the latest results of this relation for galaxy discs (Cano-Díaz et al. 2019), although we found that different n values close to 1 do not change the results significantly. Using our empirical relation

Table 2. Estimated mass-loading factors, η , maximum flow gas surface density term, $\dot{\Sigma}_{\text{flow max}}$, and the associated average stellar mass surface density for the regions on the envelope, Σ_* .

Galaxy identifier	η^a	$\dot{\Sigma}_{\text{flow max}}^b$ $10^{-8} M_\odot \text{ yr}^{-1} \text{ kpc}^{-2}$	Σ_*^c $10^6 M_\odot \text{ kpc}^{-2}$
pgc33816	4.8 ± 0.9	4.9 ± 0.9	27 ± 15
eso184-g082	5.0 ± 1.0	8.7 ± 0.6	49 ± 20
eso467-062	8.0 ± 2.0	14.0 ± 1.0	51 ± 39
ugc272	3.4 ± 0.2	6.9 ± 0.4	57 ± 44
ngc5584	2.2 ± 0.4	4.0 ± 1.0	60 ± 31
eso319-g015	5.0 ± 2.0	11.0 ± 3.0	66 ± 65
ugc11214	2.6 ± 0.6	9.0 ± 2.0	84 ± 33
ngc6118	2.19 ± 0.09	2.8 ± 0.3	90 ± 51
ic1158	6.8 ± 0.4	16.3 ± 0.3	109 ± 28
ngc5468	2.2 ± 0.8	23.0 ± 2.0	113 ± 66
eso325-g045	1.7 ± 0.2	12.0 ± 1.0	121 ± 57
ngc1954	3.3 ± 0.5	23.8 ± 0.8	121 ± 31
ic5332	3.0 ± 1.0	12.0 ± 2.0	120 ± 100
ugc04729	2.8 ± 0.6	7.0 ± 2.0	126 ± 57
ngc2104	1.7 ± 0.6	4.0 ± 2.0	132 ± 62
eso316-g7	2.0 ± 1.0	12.0 ± 6.0	136 ± 39
eso298-g28	6.0 ± 0.7	47.0 ± 2.0	136 ± 46
mcg-01-57-021	7.0 ± 1.0	17.0 ± 2.0	137 ± 24
pgc128348	2.9 ± 0.1	11.6 ± 0.7	140 ± 92
pgc1167400	2.3 ± 0.3	4.1 ± 0.8	141 ± 78
ngc2835	2.2 ± 0.7	7.0 ± 3.0	144 ± 40
ic2151	2.0 ± 0.5	5.0 ± 3.0	146 ± 61
ngc988	1.2 ± 0.4	1.0 ± 2.0	158 ± 63
ngc1483	3.0 ± 2.0	13.0 ± 5.0	158 ± 40
ngc7421	1.1 ± 0.3	1.0 ± 0.9	167 ± 78
fcc290	2.0 ± 0.4	3.0 ± 1.0	169 ± 42
ic344	2.5 ± 0.2	11.0 ± 1.0	171 ± 78
ngc3389	4.4 ± 0.7	32.4 ± 0.7	190 ± 130
eso246-g21	2.9 ± 0.7	7.0 ± 2.0	188 ± 67
pgc170248	4.9 ± 0.7	16.0 ± 1.0	192 ± 77
ngc7329	4.1 ± 0.2	7.8 ± 0.4	200 ± 120
ugc12859	2.8 ± 0.3	5.1 ± 0.9	202 ± 90
ugc1395	2.7 ± 0.3	8.0 ± 1.0	200 ± 160
ngc5339	2.9 ± 0.4	5.0 ± 1.0	210 ± 150
ngc1591	2.3 ± 0.7	19.0 ± 4.0	212 ± 93
pgc98793	1.7 ± 0.1	6.6 ± 0.8	214 ± 95
ugc5378	2.7 ± 0.4	10.0 ± 1.0	223 ± 93
ngc4806	1.9 ± 0.2	10.3 ± 0.9	230 ± 170
ngc1087	1.3 ± 0.3	14.0 ± 2.0	230 ± 170
ngc4980	1.8 ± 0.3	6.6 ± 0.9	240 ± 170
ngc6902	2.4 ± 0.3	8.0 ± 1.0	240 ± 13
ugc11001	2.5 ± 0.1	21.8 ± 0.5	250 ± 140
ic217	1.2 ± 0.4	3.0 ± 2.0	266 ± 88
eso506-g004	3.4 ± 0.2	13.9 ± 0.4	270 ± 170
ic2160	2.4 ± 0.4	12.0 ± 2.0	270 ± 260
ngc1385	0.9 ± 0.1	9.7 ± 0.9	272 ± 44
mcg-01-33-034	1.0 ± 0.09	7.9 ± 0.5	270 ± 150
ngc4603	0.9 ± 0.1	3.0 ± 1.0	276 ± 85
ngc4535	4.1 ± 0.7	15.0 ± 2.0	280 ± 200
ngc1762	2.3 ± 0.2	8.2 ± 0.7	290 ± 140
ngc3451	3.7 ± 0.4	11.0 ± 1.0	300 ± 180
ngc4790	1.2 ± 0.3	9.0 ± 2.0	334 ± 63
ngc3244	1.8 ± 0.2	8.0 ± 1.0	340 ± 270
ngc628	1.8 ± 0.1	19.0 ± 1.0	360 ± 170
pgc30591	0.7 ± 0.4	0.0 ± 2.0	360 ± 160
ngc5643	1.1 ± 0.3	3.0 ± 2.0	410 ± 160
ngc1309	1.3 ± 0.2	17.0 ± 2.0	420 ± 220
ngc1084	0.6 ± 0.2	13.0 ± 6.0	420 ± 170
ngc7580	1.6 ± 0.2	18.0 ± 1.0	420 ± 110
ngc692	2.7 ± 0.2	14.0 ± 1.0	420 ± 220
eso462-g009	4.0 ± 1.0	8.0 ± 2.0	440 ± 310

Table 2 – *continued*

Galaxy identifier	η^a	$\Sigma_{\text{flow max}}^b$ $10^{-8} M_{\odot} \text{ yr}^{-1} \text{ kpc}^{-2}$	Σ_*^c $10^6 M_{\odot} \text{ kpc}^{-2}$
ic5273	1.5 ± 0.7	9.0 ± 4.0	450 ± 220
pgc3140	1.0 ± 0.1	4.0 ± 1.0	460 ± 210
ic1553	0.6 ± 0.3	5.0 ± 2.0	460 ± 290
ugc11289	1.8 ± 0.3	8.0 ± 3.0	472 ± 46
ic4582	2.0 ± 0.1	9.1 ± 0.5	480 ± 280
ngc2466	1.5 ± 0.2	18.0 ± 2.0	480 ± 470
eso443-21	1.9 ± 0.3	94.0 ± 4.0	490 ± 180
ic4452	0.37 ± 0.05	5.2 ± 0.6	500 ± 320
eso498-g5	1.5 ± 0.3	20.0 ± 2.0	510 ± 320
eso552-g40	1.7 ± 0.4	12.0 ± 3.0	540 ± 280
eso163-g11	0.48 ± 0.06	1.0 ± 2.0	570 ± 300
ngc7582	0.6 ± 0.1	0.0 ± 2.0	570 ± 280
ngc1620	1.4 ± 0.3	8.0 ± 2.0	580 ± 400
ic1320	1.4 ± 0.1	4.6 ± 0.9	590 ± 270
ngc3393	1.9 ± 0.3	11.0 ± 1.0	590 ± 270
ngc2370	0.87 ± 0.08	4.0 ± 2.0	600 ± 310
ngc4981	0.85 ± 0.08	7.0 ± 1.0	630 ± 580
ngc3783	1.3 ± 0.3	12.0 ± 3.0	680 ± 170
ngc1285	0.8 ± 0.1	7.0 ± 2.0	700 ± 460
ngc5806	1.7 ± 0.3	17.0 ± 3.0	720 ± 530
eso018-g018	1.0 ± 0.3	13.0 ± 5.0	720 ± 420
ngc6754	0.44 ± 0.06	1.0 ± 1.0	750 ± 480
ic2560	1.2 ± 0.2	11.0 ± 1.0	760 ± 370
ngc7140	2.4 ± 0.7	13.0 ± 6.0	770 ± 210
ngc3464	1.9 ± 0.3	9.0 ± 3.0	780 ± 380
mcg-02-13-38	1.3 ± 0.1	20.0 ± 1.0	790 ± 450
ngc1590	0.83 ± 0.08	25.0 ± 3.0	810 ± 460
pgc8822	1.15 ± 0.09	4.0 ± 1.0	970 ± 430
ngc7721	1.3 ± 0.5	10 ± 10	990 ± 540
pgc28308	0.2 ± 0.1	0.0 ± 8.0	1030 ± 450
ngc1137	0.8 ± 0.2	1.0 ± 4.0	1030 ± 830
eso478-g006	1.1 ± 0.2	10.0 ± 4.0	1050 ± 650
ngc1448	1.05 ± 0.09	15.0 ± 2.0	1130 ± 480
ngc3278	1.3 ± 0.2	31.0 ± 3.0	1170 ± 710
ngc4030	0.6 ± 0.1	14.0 ± 3.0	1310 ± 550
ngc3363	0.41 ± 0.08	0.0 ± 0.9	1330 ± 590
ngc7780	1.2 ± 0.2	8.0 ± 3.0	1450 ± 590
ic1438	1.5 ± 0.3	11.0 ± 4.0	1520 ± 250
ngc4666	0.3 ± 0.1	10.0 ± 3.0	2900 ± 1300
ngc7396	0.5 ± 0.2	0.0 ± 4.0	4100 ± 1900
ngc716	0.5 ± 0.2	70 ± 10	5200 ± 1900

Note. ^aMass-loading factor derived in this work. ^bMaximum flow gas surface density term derived in this work. ^cStellar mass surface density for the regions on the envelope obtained in this work.

(equation 6), we rewrite equation (7):

$$\eta_G = \frac{\int_0^{\infty} \eta(R) \Sigma_*(R) R dR}{\int_0^{\infty} \Sigma_*(R) R dR} = \frac{10^{3.2} \int_0^{\infty} \Sigma_*(R)^{0.68} R dR}{\int_0^{\infty} \Sigma_*(R) R dR}. \quad (8)$$

The stellar mass surface density profile, $\Sigma_*(R)$, is therefore all we need to compute the global mass-loading factor. We use the deepest stellar mass surface density profiles from the Spitzer Survey of Stellar Structure in Galaxies (S4G) (Díaz-García, Salo & Laurikainen 2016) to compute the global mass-loading factor as a function of stellar mass. S4G stellar mass surface density profiles are divided into five mass bins: $[10^{8.5}-10^9]$, $[10^9-10^{9.5}]$, $[10^{9.5}-10^{10}]$, $[10^{10}-10^{10.5}]$, and $[10^{10.5}-10^{11}] M_{\odot}$. We used these five mass bins to compute the η_G shown in Fig. 5.

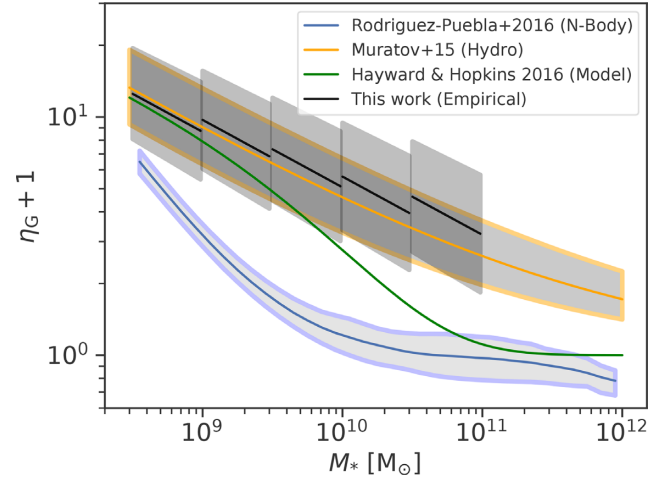


Figure 5. Global mass-loading factor, η_G , versus the stellar mass of the galaxy, M_* . The black lines show the empirical quantities, which have been derived combining the distribution of η as a function of stellar mass surface density (Fig. 4) with the stellar mass surface density profiles from S4G results (Díaz-García et al. 2016), where the shaded region is the corresponding uncertainty propagated from the 1σ uncertainty found in the η - Σ_* relation (equation 6). The discontinuity is due to the division in different parametrizations of the stellar mass surface density profiles in five mass bins reported by Díaz-García et al. (2016). The orange line shows the η_G reported for cosmological zoom-in galaxy hydrodynamical simulations (Muratov et al. 2015), the green line the shows an analytical feedback model (Hayward & Hopkins 2017), and the blue line shows the η_G reported using the N -body Bolshoi–Planck simulation (Rodríguez-Puebla et al. 2016).

5.1 Variations of η_G

We present our empirically derived global mass-loading factors as a function of stellar mass in Fig. 5 as black lines. The discontinuity is due to the division in different parametrizations of the stellar mass surface density profiles in five mass bins reported by Díaz-García et al. (2016). The most important feature, we find in Fig. 5 is that the smaller the stellar mass of the galaxy, the larger the mass-loading factor, as required to reconcile the ratio of halo to stellar mass in low-mass galaxies (Behroozi, Conroy & Wechsler 2010; Rodríguez-Puebla et al. 2016). We compare our empirical estimates with predictions based on N -body (Rodríguez-Puebla et al. 2016) and hydrodynamical simulations (Muratov et al. 2015), as well as with an analytical model (Hayward & Hopkins 2017).

Some simulations, as well as the analytic model we used to compare with, define the mass-loading factor using the outflowing mass that escapes the galaxy forever (Rodríguez-Puebla et al. 2016; Hayward & Hopkins 2017). Therefore, they do not consider the outflowing gas which returns to the galaxy at a later time which, depending on the outflow velocity, will result in smaller mass-loading factors. We define the mass-loading factor as the total mass ejected independently of velocity, and the mass can come back at a later time (outside the 550 Myr time range). There is a remarkable agreement between our empirical result and that from hydrodynamical simulations that define the mass-loading factor as independent of velocity (Muratov et al. 2015). In fact, for lower masses ($M_* < 10^{9.5} M_{\odot}$), where the stellar feedback is thought to be more important regulating galaxy stellar mass growth, and the escape velocity lower, the agreement with the analytic model is also remarkably good.

6 DISCUSSION

6.1 Comparison with other studies

The results reported here are slightly different when we compare them with recent observational studies reporting local (Kruijssen et al. 2019; Roberts-Borsani et al. 2020) and global (McQuinn et al. 2019; Schroetter et al. 2019) mass-loading factors.

The reported local mass-loading factors using the spatial de-correlation between star formation and molecular gas (Kruijssen et al. 2019) differ by less than 3σ from our reported values, and it might be due to the smaller time-scale of ~ 1.5 Myr for which they report efficient gas dispersal, while our reported time-scale is ~ 550 Myr. The previously reported local mass-loading factors using the Na D absorption (Roberts-Borsani et al. 2020) are consistent with ours within 1σ .

The use of Mg II absorption of the circumgalactic medium to derive global mass-loading factors gives no clear dependence on the total mass of the galaxy (Schroetter et al. 2019). However, the Mg II absorption method gives η_G with very high uncertainties, mainly due to the uncertainty when deriving the H I column density from the Mg II equivalent width (Schroetter et al. 2015). Due to these large uncertainties, their results are apparently consistent with our results within 1σ for most of their reported η_G 's.

The mass-loading factor estimates using deep H α imaging give smaller mass-loading factors compared to those reported here and give no correlation with the stellar mass of the galaxy (McQuinn et al. 2019). Nevertheless, the method using H α imaging derives the amount of outflowing gas from the H α surface brightness background, so it neglects H α emission stronger than this background emission. The estimated outflowing mass could be inferior to the real one since we already know that H α emission has a component due to expansive bubbles (Relaño & Beckman 2005; Camps-Fariña et al. 2015).

6.2 Discussion on envelope's shapes

Equation (5) depends on $\dot{\Sigma}_{\text{flow max}}$, η , $\Sigma_{\text{SFR recent}}$, and $\Sigma_{\text{SFR past}}$ values. The case shown in Fig. 3, where there is no high recent SFR for those regions where the past SFR was the highest, is a common case, but not the only one. For instance, there are cases where $\Sigma_{\text{SFR recent}}$ values are approximately constant through the regions on the envelope or even increase as $\Sigma_{\text{SFR past}}$ increase (e.g. NGC 988, NGC 7421, IC 217, IC 4452, PGC 28308 in Fig. A1).

Essentially, there are two terms depending on $\Sigma_{\text{SFR past}}$ in equation (5), one with a direct proportionality and the other with an inverse one. The latter dominates for larger η values meaning that the larger the mass-loading factor, the larger is the effect in reducing the amount of gas to form stars, as expected. However, for small enough η and $\Sigma_{\text{SFR past}}$ values, the directly dependent term can dominate producing a direct relation between $\Sigma_{\text{SFR recent}}$ and $\Sigma_{\text{SFR past}}$, as we see in some galaxies in Fig. A1 (e.g. IC 4452). The extrapolation of equation (5) to large enough values of $\Sigma_{\text{SFR past}}$ would give always a decrease in $\Sigma_{\text{SFR recent}}$, as long as $\eta > 0$, and that is the reason to observe some inverted U-shape envelopes (e.g. NGC 1084, PGC 3140).

Finally, for large enough $\dot{\Sigma}_{\text{flow max}}$ values, the directly $\Sigma_{\text{SFR past}}$ dependent term is almost negligible for small values of $\Sigma_{\text{SFR past}}$, and then the recent star formation depends on $\dot{\Sigma}_{\text{flow max}}$ for the low $\Sigma_{\text{SFR past}}$, while decreases proportionally with $\Sigma_{\text{SFR past}}$ depending on the mass-loading factor (e.g. UGC 5378, UGC 11001).

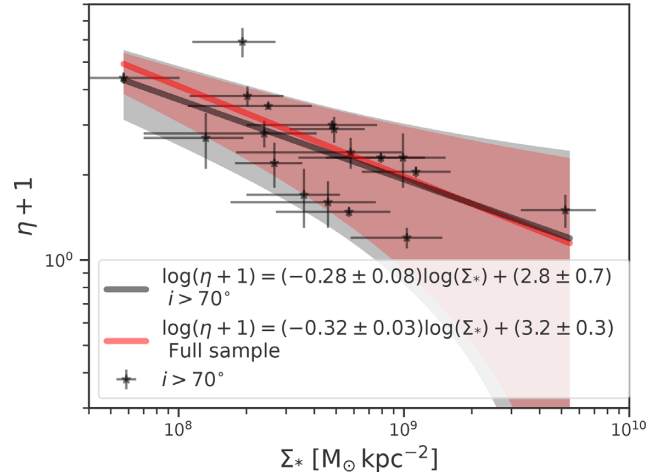


Figure 6. Local mass-loading factor, η , versus the average stellar mass surface density of the regions on the envelope for each galaxy, Σ_* , as black stars, for high-inclination galaxies. We plot, as a black line, the linear fit to the empirically derived quantities. We plot as a red line, the fit for the full sample (equation 6), and the 1σ uncertainty range of the fits as shaded regions.

Therefore, the combination of $\dot{\Sigma}_{\text{flow max}}$ and η variations, as well as the range covered by the past and recent SFR surface densities, is what gives the different envelope's shapes. The uncertainties obtained when fitting equation (5) show reliable estimates, except for one case, the PGC 30591 galaxy, which is the one having the highest inclination of our sample.

6.3 High-inclination galaxies

Although we have removed edge-on ($i = 90^\circ$) galaxies from our sample, high-inclination ($i > 70^\circ$) galaxies might not be good candidates to apply the method used in this study, as in the case of the PGC 30591 galaxy. In the case of edge-on and very high-inclination galaxies, two main effects can affect the pertinence of applying the method. First, one can have in the line of sight a large combination of different regions of the galaxy. Secondly, the higher the inclination, the smaller is the number of resolved regions, while the method relies on a large enough number of resolved regions.

Nevertheless, except for PGC 30591, we found reliable $\dot{\Sigma}_{\text{flow max}}$ and η estimates, even for high-inclination galaxies. Including or excluding high-inclination galaxies does not make any changes to the reported η - Σ_* relation presented here. We show in Fig. 6 the η - Σ_* observed and fitted relations for high-inclination galaxies, as star symbols and black line, respectively. When we compare the high-inclination galaxies results with the fit obtained using the full sample (equation 6), shown as a red line, both samples are compatible within 1σ .

6.4 Effects of very high recent SFR regions removal

We think is important to remove regions having very high values of $\Sigma_{\text{SFR recent}}$ compared to the rest of the galaxy, since these regions probably have a very high $\dot{\Sigma}_{\text{net flow}}$ value compared to the rest of the regions identified to be on the envelope. The effect of considering these high $\Sigma_{\text{SFR recent}}$ regions affects our assumption about the approximate equal value of $\dot{\Sigma}_{\text{net flow}}$ for the regions on the envelope.

However, in order to explore the effect of this removal in our results, we have performed the same analysis without removing any region based on its $\Sigma_{\text{SFR recent}}$ value. We plot the derived η versus

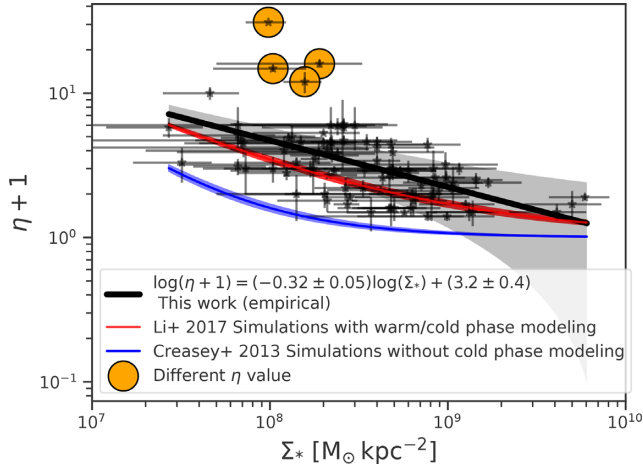


Figure 7. Local mass-loading factor, η , versus the average stellar mass surface density of the regions on the envelope for each galaxy, Σ_* , as black stars. Same plot as in Fig. 4, but this version of the plot has been done without removing any region based on its $\Sigma_{\text{SFR recent}}$ value. The four galaxies where we find a significant difference in the derived η value are marked as orange circles. We plot the linear fit to the empirically derived quantities and the 1σ uncertainty range of the fit as shaded regions. The blue line shows the η reported for supernova explosions hydrodynamical simulations (Creasey et al. 2013) with cut-off cooling modelling, and as blue line the η reported for supernova explosions hydrodynamical simulations (Li et al. 2017) with gas cold-phase modelling included.

the local Σ_* of the regions on the envelope for the whole sample of galaxies in Fig. 7. We also plot the resulted η - Σ_* fit to the observed data. We find a very similar correlation between η and the local Σ_* :

$$\log(\eta + 1) = (-0.32 \pm 0.05) \log(\Sigma_*) + (3.2 \pm 0.4). \quad (9)$$

There are only four galaxies where the η value significantly changes: IC 1158, NGC 3389, ESO 298-G28, and MCG 01-57-021. We marked these galaxies as orange circles in Fig. 7. However, the changes are not significant enough to change the resulted η - Σ_* relation, but just a slightly increase in the obtained uncertainties. Therefore, although the removal could be important for some specific individual galaxies, when compared with the full sample of galaxies we still find a consistent η - Σ_* relation.

7 CONCLUSIONS

We have used MUSE observations of a sample of 102 galaxy discs. We extracted the spectra of 500-pc wide regions and apply them stellar population synthesis using SINOPSIS code. We obtained the star formation histories of those regions and we analysed the recent and past SFR densities. We compared the $\Sigma_{\text{SFR recent}}$ with the $\Sigma_{\text{SFR past}}$ and found that, for each galaxy, there is an envelope of regions formed by those regions having the maximum $\Sigma_{\text{SFR recent}}$, per bin of $\Sigma_{\text{SFR past}}$. We fitted the resolved star formation self-regulator model (equation 5) to those regions on the envelope and quantify the mass-loading factor, η .

We find correlations locally between η and the stellar mass surface density, Σ_* , and globally between the averaged value of η for a galaxy, η_G , and the stellar mass of the galaxy, M_* , which are strong indications of how stellar feedback locally regulates the mass growth of galaxies, especially those of lower masses. The comparison between our empirical local η - Σ_* relation with that from hydrodynamical simulations of supernova explosions (Li et al. 2017) is remarkably in agreement. In the case of our empirical global η_G - M_* relation, the comparison with hydrodynamical cosmological

zoom-in galaxy simulations (Muratov et al. 2015) is also in excellent agreement.

We note that the value of η depends on the time-scale over which the feedback is analysed, and can be defined either including or excluding posterior gas return, so comparison with other observations and with theory must be done with care. These empirical relations offer excellent tools to confront with stellar feedback models which are crucial for understanding galaxy formation and evolution.

ACKNOWLEDGEMENTS

The authors thank the anonymous referee whose comments have led to significant improvements in the paper. The authors also thank Aldo Rodríguez-Puebla for sharing their stellar halo accretion rate coevolution models from Rodríguez-Puebla et al. (2016). JZ-C and IA's work is funded by a CONACYT grant through project FDC-2018-1848. DRG acknowledges financial support through CONACYT project A1-S-22784. GB acknowledges financial support through PAPIIT project IG100319 from DGAPA-UNAM. This research has made use of the services of the ESO Science Archive Facility, Astropy,⁴ a community-developed core PYTHON package for Astronomy (Astropy Collaboration 2013, 2018), APLpy, an open-source plotting package for PYTHON (Robitaille & Bressert 2012), Astroquery, a package that contains a collection of tools to access online Astronomical data (Ginsburg et al. 2019), and pyregion (<https://github.com/astropy/pyregion>), a PYTHON module to parse ds9 region files. We acknowledge the usage of the HyperLeda database (<http://leda.univ-lyon1.fr>). Based on observations collected at the European Southern Observatory under ESO programmes 095.D-0172(A), 196.B-0578(B), 096.D-0263(A), 097.D-0408(A), 095.B-0532(A), 096.D-0296(A), 60.A-9319(A), 1100.B-0651(B), 0102.B-0794(A), 098.B-0551(A), 0101.D-0748(A), 099.B-0397(A), 1100.B-0651(A), 0100.D-0341(A), 096.B-0309(A), 296.B-5054(A), 095.D-0091(B), 0101.D-0748(B), 095.D-0091(A), 097.B-0640(A), 096.B-0054(A), 1100.B-0651(C), 098.D-0115(A), 097.B-0165(A), 098.C-0484(A), 094.C-0623(A), 60.A-9339(A), 099.B-0242(A), 0102.A-0135(A), 097.B-0041(A), 095.B-0934(A), 099.D-0022(A), and 60.A-9329(A).

DATA AVAILABILITY

The data underlying this paper are available in the ESO archive, at <http://archive.eso.org/>. The data sets were derived for each source through the query form at http://archive.eso.org/wdb/wdb/adp/phases3_spectral/form?collection_name=MUSE.

REFERENCES

- Arp H., 1966, *ApJS*, 14, 1
 Ascasibar Y., Gavilán M., Pinto N., Casado J., Rosales-Ortega F., Díaz A. I., 2015, *MNRAS*, 448, 2126
 Astropy Collaboration, 2013, *A&A*, 558, A33
 Astropy Collaboration, 2018, *AJ*, 156, 123
 Bacon R. et al., 2010, in McLean I. S., Ramsay S. K., Takami H., eds, Proc. SPIE Conf. Ser. Vol. 7735, Ground-based and Airborne Instrumentation for Astronomy III. SPIE, Bellingham, p. 773508
 Barrera-Ballesteros J. K. et al., 2018, *ApJ*, 852, 74
 Barrera-Ballesteros J. K. et al., 2020, *MNRAS*, 492, 2651
 Behroozi P. S., Conroy C., Wechsler R. H., 2010, *ApJ*, 717, 379
 Bigiel F., Leroy A., Walter F., Brinks E., de Blok W. J. G., Madore B., Thornley M. D., 2008, *AJ*, 136, 2846

⁴<http://www.astropy.org>

- Bouché N. et al., 2010, *ApJ*, 718, 1001
- Calzetti D., Armus L., Bohlin R. C., Kinney A. L., Koornneef J., Storchi-Bergmann T., 2000, *ApJ*, 533, 682
- Camps-Fariña A., Zaragoza-Cardiel J., Beckman J. E., Font J., García-Lorenzo B., Erroz-Ferrer S., Amram P., 2015, *MNRAS*, 447, 3840
- Cano-Díaz M., Ávila-Reese V., Sánchez S. F., Hernández-Toledo H. M., Rodríguez-Puebla A., Boquien M., Ibarra-Medel H., 2019, *MNRAS*, 488, 3929
- Chabrier G., 2003, *PASP*, 115, 763
- Cid Fernandes R., Mateus A., Sodré L., Stasińska G., Gomes J. M., 2005, *MNRAS*, 358, 363
- Creasey P., Theuns T., Bower R. G., 2013, *MNRAS*, 429, 1922
- Dekel A., Mandelker N., 2014, *MNRAS*, 444, 2071
- Díaz-García S., Salo H., Laurikainen E., 2016, *A&A*, 596, A84
- Erroz-Ferrer S. et al., 2019, *MNRAS*, 484, 5009
- Ferland G. J., 1993, Hazy, A Brief Introduction to Cloudy 84. University of Kentucky, Internal Report 565
- Ferland G. J., Korista K. T., Verner D. A., Ferguson J. W., Kingdon J. B., Verner E. M., 1998, *PASP*, 110, 761
- Ferland G. J., Kisielius R., Keenan F. P., van Hoof P. A. M., Jonauskas V., Lykins M. L., Porter R. L., Williams R. J. R., 2013, *ApJ*, 767, 123
- Forbes J. C., Krumholz M. R., Burkert A., Dekel A., 2014, *MNRAS*, 443, 168
- Fraternali F., 2017, *Astrophysics and Space Science Library*, Vol. 430, Gas Accretion via Condensation and Fountains. Springer-Verlag, Berlin, p. 323
- Fritz J. et al., 2007, *A&A*, 470, 137
- Fritz J. et al., 2011, *A&A*, 526, A45
- Fritz J. et al., 2017, *ApJ*, 848, 132
- Ginsburg A. et al., 2019, *AJ*, 157, 98
- Hayward C. C., Hopkins P. F., 2017, *MNRAS*, 465, 1682
- Hickson P., 1982, *ApJ*, 255, 382
- Hopkins P. F., Kereš D., Oñorbe J., Faucher-Giguère C.-A., Quataert E., Murray N., Bullock J. S., 2014, *MNRAS*, 445, 581
- Hopkins P. F. et al., 2018, *MNRAS*, 480, 800
- Kennicutt Robert C. J. et al., 2007, *ApJ*, 671, 333
- Kewley L. J., Groves B., Kauffmann G., Heckman T., 2006, *MNRAS*, 372, 961
- Kormendy J., Kennicutt Robert C. J., 2004, *ARA&A*, 42, 603
- Kreckel K. et al., 2019, *ApJ*, 887, 80
- Krujissen J. M. D. et al., 2019, *Nature*, 569, 519
- Lada C. J., Lada E. A., 2003, *ARA&A*, 41, 57
- Leroy A. K. et al., 2019, *ApJS*, 244, 24
- Li M., Bryan G. L., Ostriker J. P., 2017, *ApJ*, 841, 101
- Lilly S. J., Carollo C. M., Pipino A., Renzini A., Peng Y., 2013, *ApJ*, 772, 119
- López-Cobá C. et al., 2020, *AJ*, 159, 167
- Madau P., Dickinson M., 2014, *ARA&A*, 52, 415
- Makarov D., Prugniel P., Terekhova N., Courtois H., Vauglin I., 2014, *A&A*, 570, A13
- Martín-Navarro I., Brodie J. P., Romanowsky A. J., Ruiz-Lara T., van de Ven G., 2018, *Nature*, 553, 307
- McQuinn K. B. W., van Zee L., Skillman E. D., 2019, *ApJ*, 886, 74
- Muratov A. L., Kereš D., Faucher-Giguère C.-A., Hopkins P. F., Quataert E., Murray N., 2015, *MNRAS*, 454, 2691
- Osterbrock D. E., 1989, *Astrophysics of Gaseous Nebulae and Active Galactic Nuclei*. University Science Books, Mill Valley, CA
- Paturel G., Petit C., Prugniel P., Theureau G., Rousseau J., Brouty M., Dubois P., Cambréys L., 2003, *A&A*, 412, 45
- Poggianti B. M. et al., 2017, *ApJ*, 844, 48
- Relaño M., Beckman J. E., 2005, *A&A*, 430, 911
- Roberts-Borsani G. W., Saintonge A., Masters K. L., Stark D. V., 2020, *MNRAS*, 493, 3081
- Robitaille T., Bressert E., 2012, *Astrophysics Source Code Library*, record ascl:1208.017
- Rodríguez-Puebla A., Primack J. R., Behroozi P., Faber S. M., 2016, *MNRAS*, 455, 2592
- Sánchez S. F. et al., 2016, *Rev. Mex. Astron. Astrofis.*, 52, 21
- Sánchez-Menguiano L. et al., 2018, *A&A*, 609, A119
- Schaye J. et al., 2010, *MNRAS*, 402, 1536
- Schroetter I. et al., 2019, *MNRAS*, 490, 4368
- Schroetter I., Bouché N., Péroux C., Murphy M. T., Contini T., Finley H., 2015, *ApJ*, 804, 83
- Silk J., Mamon G. A., 2012, *Res. Astron. Astrophys.*, 12, 917
- Somerville R. S., Davé R., 2015, *ARA&A*, 53, 51
- Vogelsberger M., Genel S., Sijacki D., Torrey P., Springel V., Hernquist L., 2013, *MNRAS*, 436, 3031
- Vorontsov-Velyaminov B. A., 1959, *Atlas and Catalog of Interacting Galaxies*. Sternberg Institute, Moscow State University, Moscow
- Werle A., Cid Fernandes R., Vale Asari N., Bruzual G., Charlot S., Gonzalez Delgado R., Herpich F. R., 2019, *MNRAS*, 483, 2382
- Zaragoza-Cardiel J. et al., 2019, *MNRAS*, 487, L61

APPENDIX A: SFR RECENT-PAST DIAGRAMS

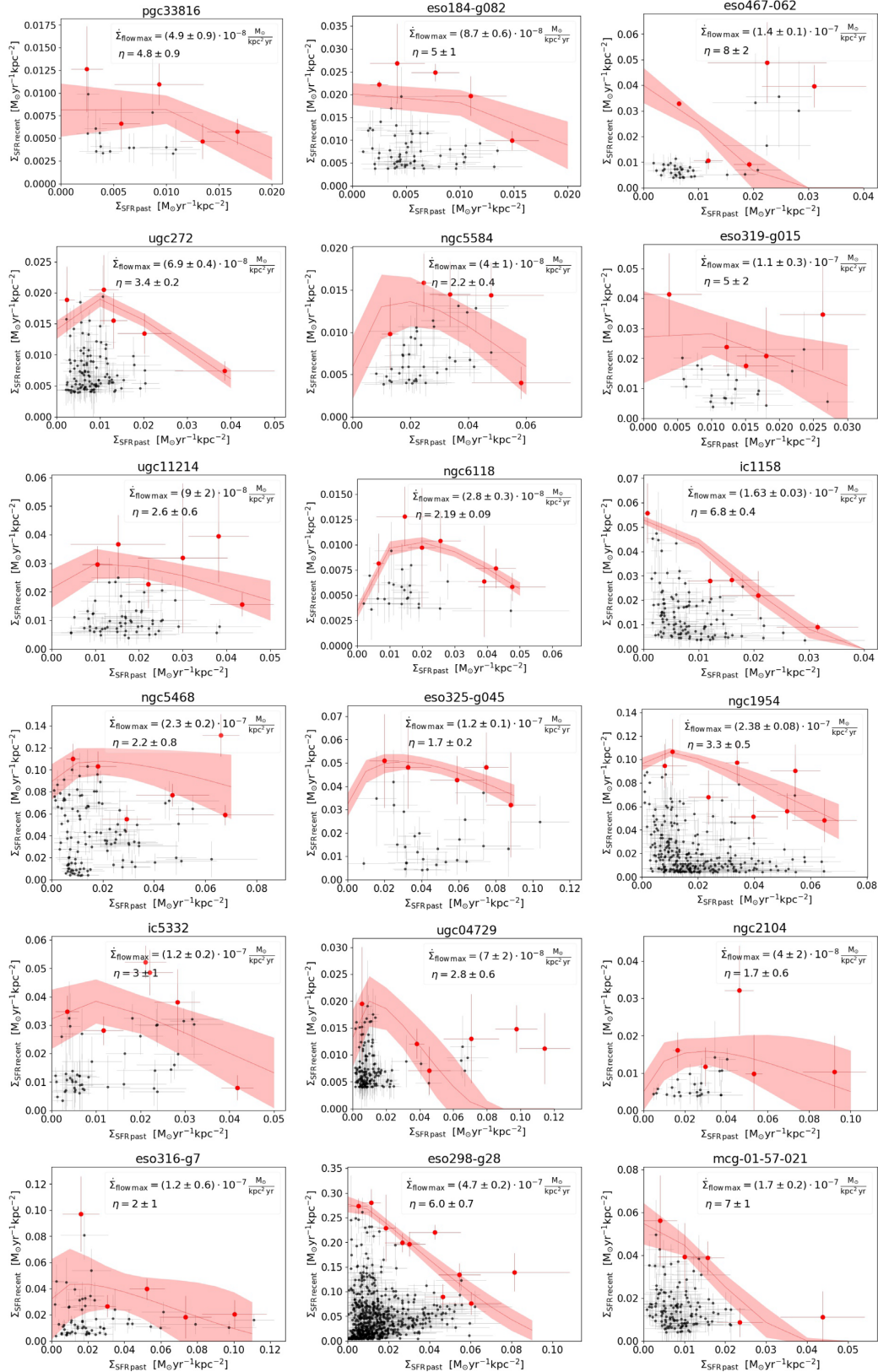


Figure A1. Recent star formation surface density, $\Sigma_{\text{SFR recent}}$, versus the past SFR surface density, $\Sigma_{\text{SFR past}}$, for each galaxy of the sample. The red dots are the regions identified as those on the envelope. We plot the fit of equation (5) to the regions on the envelope and the 1σ uncertainty range of the fit as shaded regions. We show the parameters of the fit, at the top of each panel.

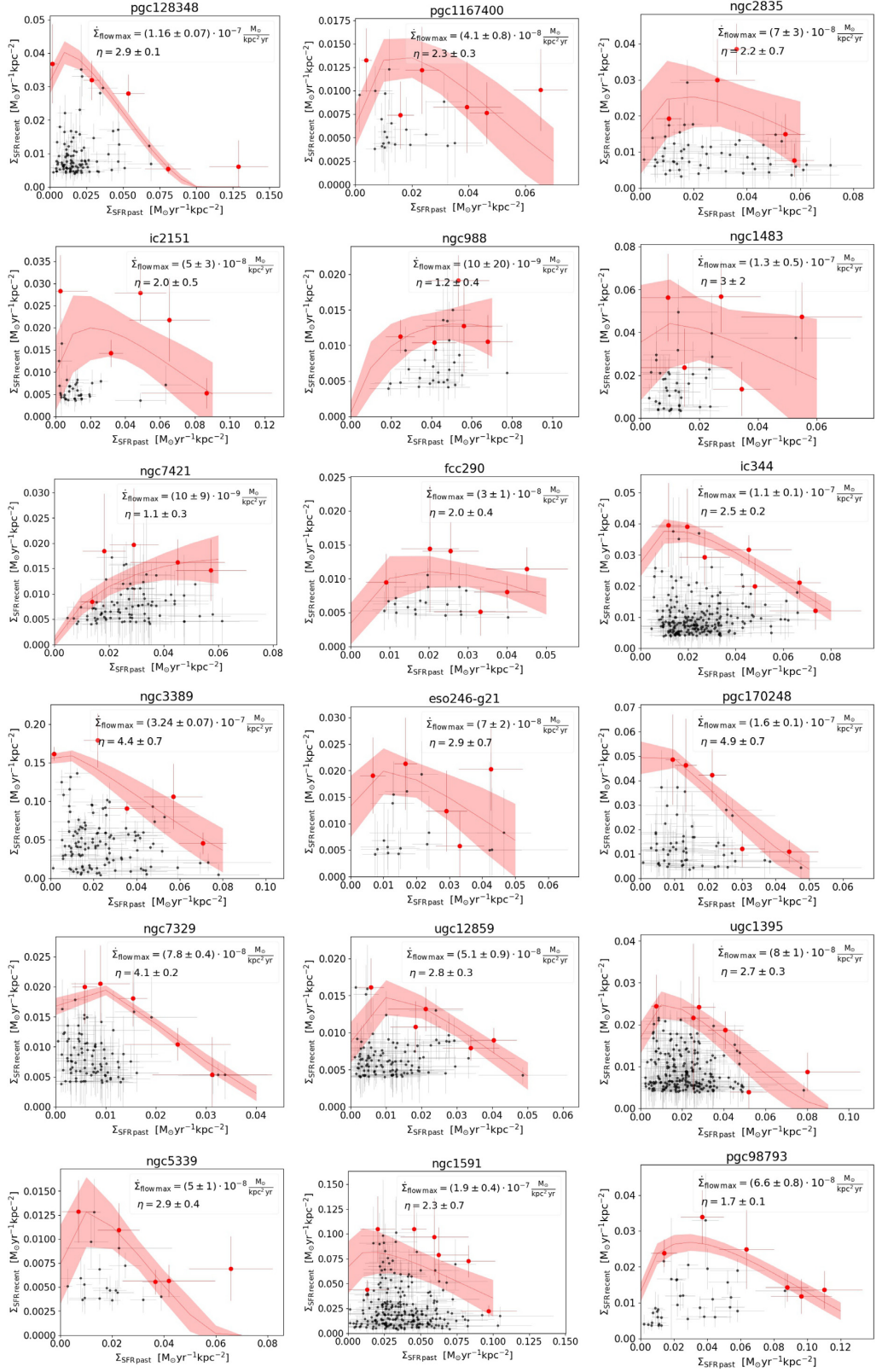


Figure A1 – continued

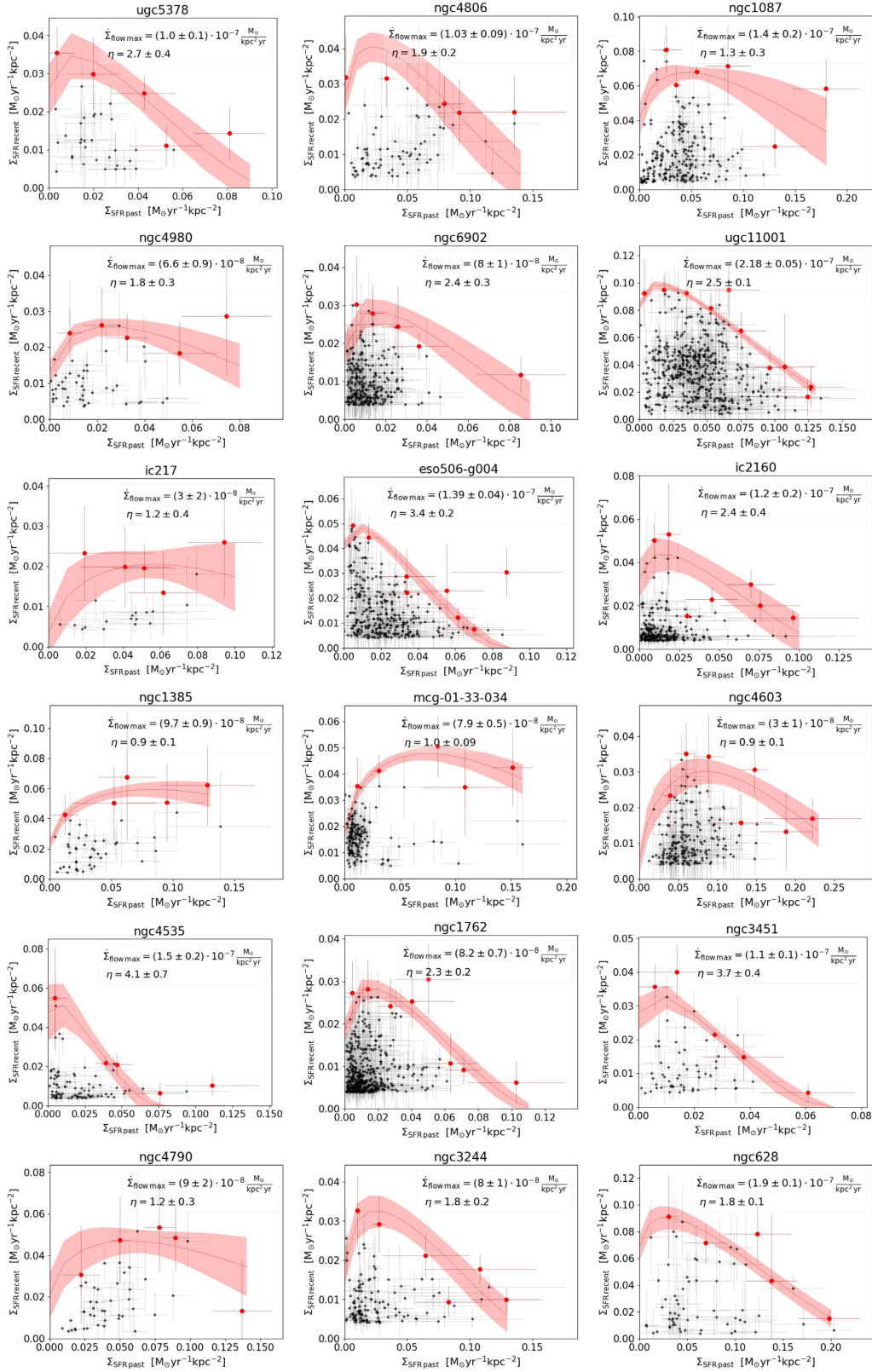


Figure A1 – continued

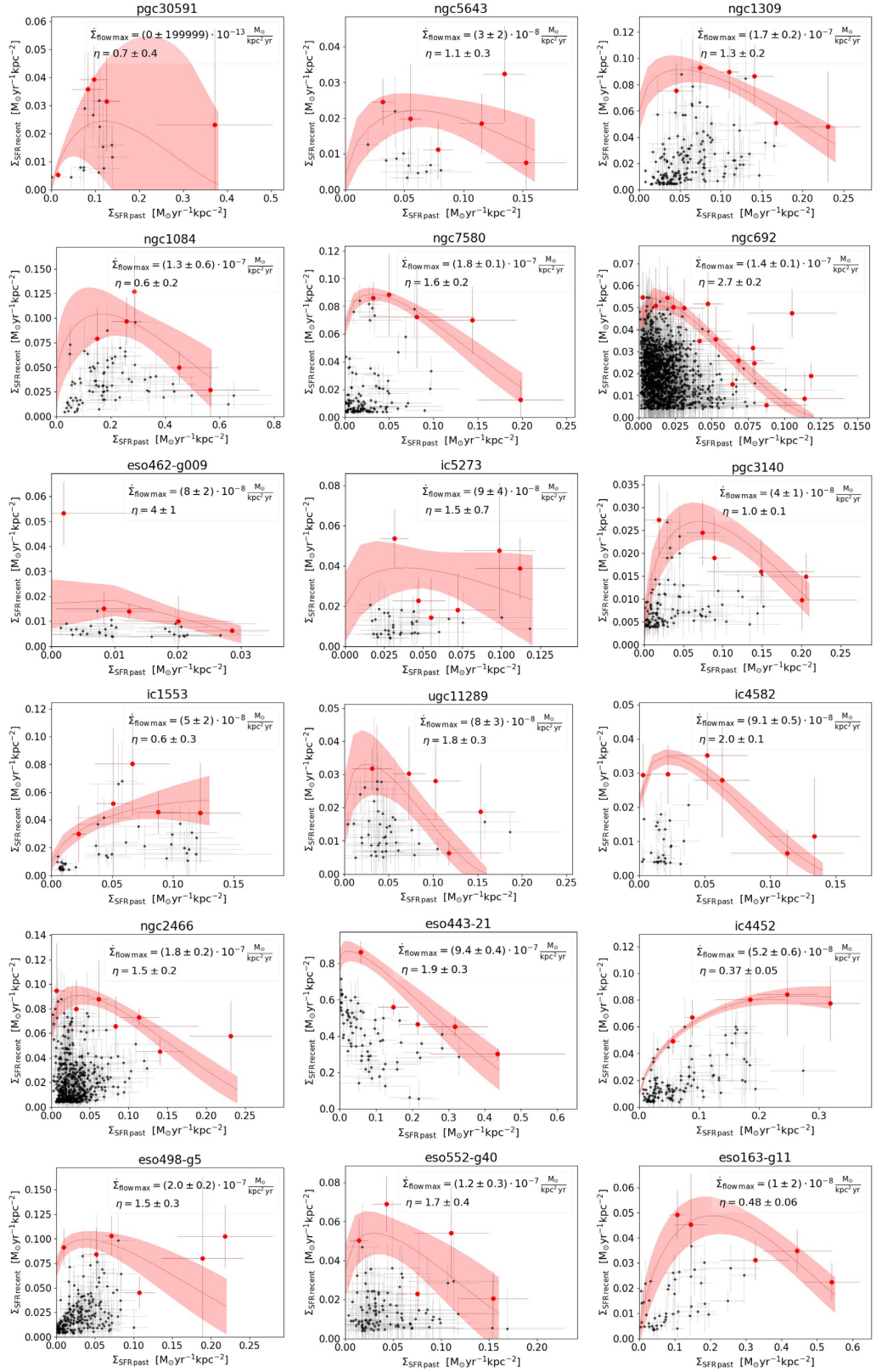


Figure A1 – continued

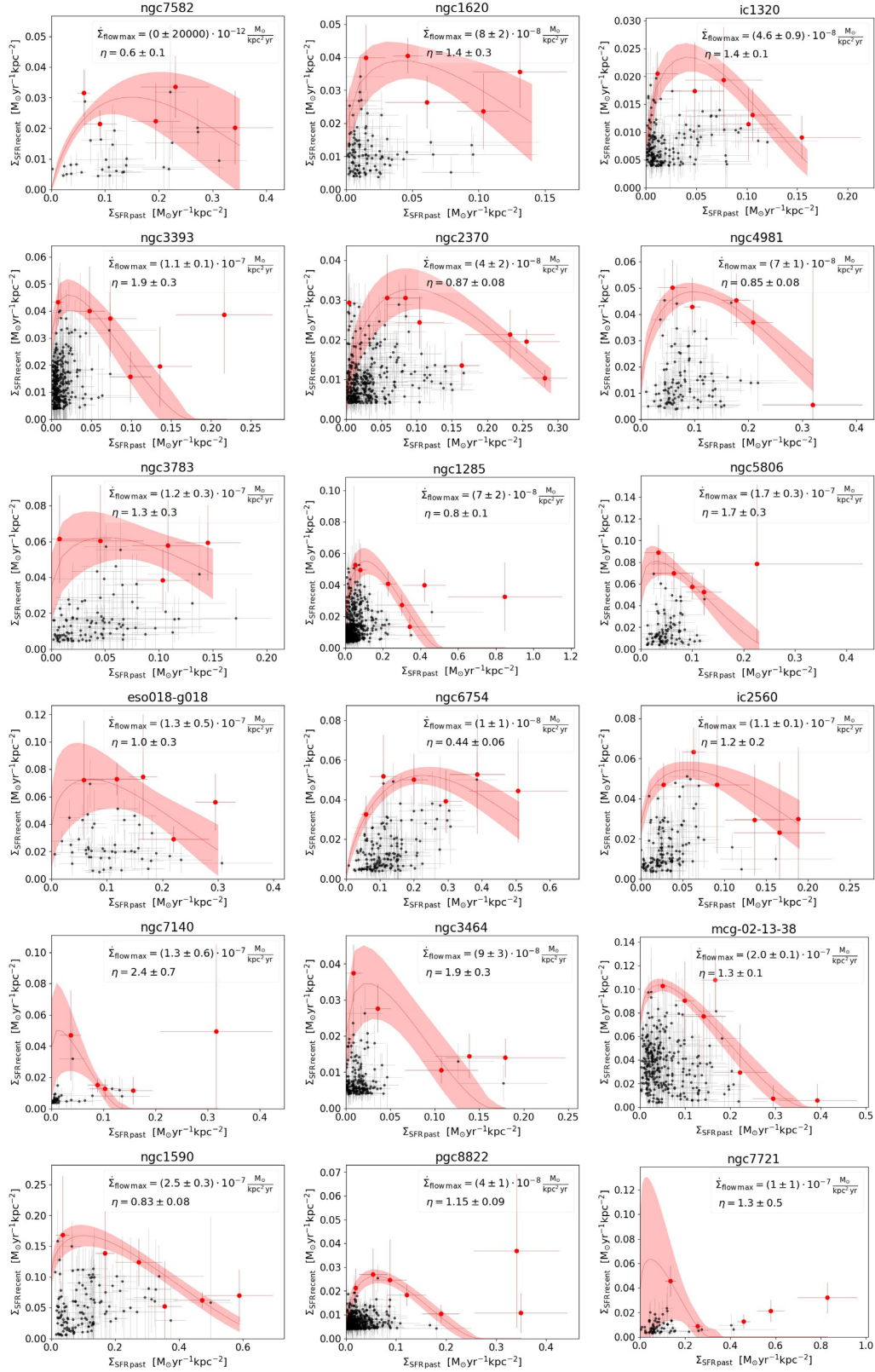


Figure A1 – continued

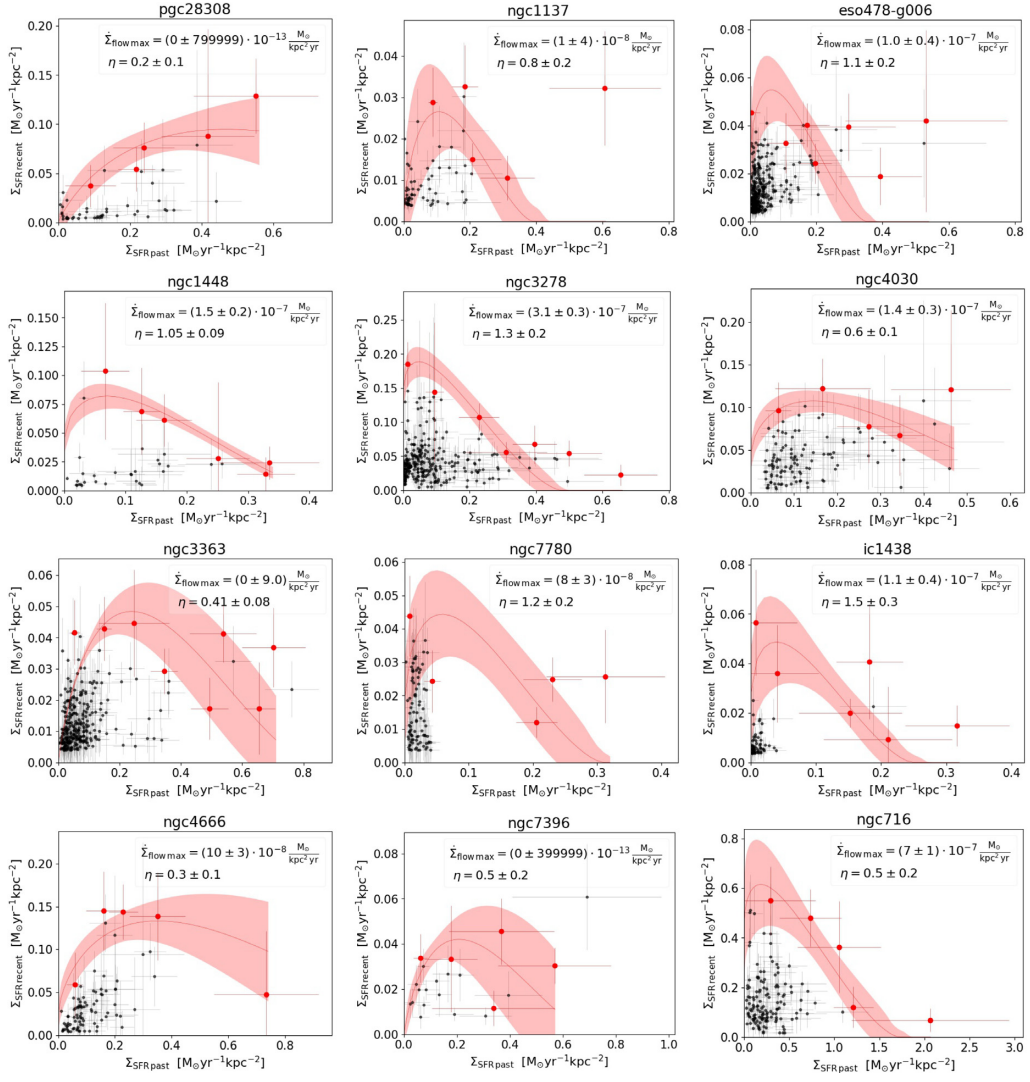


Figure A1 – continued

This paper has been typeset from a $\text{\TeX}/\text{\LaTeX}$ file prepared by the author.