



Overestimation of the effect of climatic warming on spring phenology due to misrepresentation of chilling

Huanjiong Wang, Chaoyang Wu, Philippe Ciais, Josep Penuelas, Junhu Dai,
Yongshuo Fu, Quansheng Ge

► To cite this version:

Huanjiong Wang, Chaoyang Wu, Philippe Ciais, Josep Penuelas, Junhu Dai, et al.. Overestimation of the effect of climatic warming on spring phenology due to misrepresentation of chilling. *Nature Communications*, 2020, 11 (1), 10.1038/s41467-020-18743-8 . hal-02970869

HAL Id: hal-02970869

<https://hal.science/hal-02970869>

Submitted on 19 Oct 2020

HAL is a multi-disciplinary open access archive for the deposit and dissemination of scientific research documents, whether they are published or not. The documents may come from teaching and research institutions in France or abroad, or from public or private research centers.

L'archive ouverte pluridisciplinaire **HAL**, est destinée au dépôt et à la diffusion de documents scientifiques de niveau recherche, publiés ou non, émanant des établissements d'enseignement et de recherche français ou étrangers, des laboratoires publics ou privés.

ARTICLE



<https://doi.org/10.1038/s41467-020-18743-8>

OPEN

Overestimation of the effect of climatic warming on spring phenology due to misrepresentation of chilling

Huanjiong Wang^{1,2}✉, Chaoyang Wu^{1,2}✉, Philippe Ciais³✉, Josep Peñuelas^{4,5}✉, Junhu Dai^{1,2}, Yongshuo Fu⁶ & Quansheng Ge^{1,2}✉

Spring warming substantially advances leaf unfolding and flowering time for perennials. Winter warming, however, decreases chilling accumulation (CA), which increases the heat requirement (HR) and acts to delay spring phenology. Whether or not this negative CA-HR relationship is correctly interpreted in ecosystem models remains unknown. Using leaf unfolding and flowering data for 30 perennials in Europe, here we show that more than half (7 of 12) of current chilling models are invalid since they show a positive CA-HR relationship. The possible reason is that they overlook the effect of freezing temperature on dormancy release. Overestimation of the advance in spring phenology by the end of this century by these invalid chilling models could be as large as 7.6 and 20.0 days under RCPs 4.5 and 8.5, respectively. Our results highlight the need for a better representation of chilling for the correct understanding of spring phenological responses to future climate change.

¹Key Laboratory of Land Surface Pattern and Simulation, Institute of Geographic Sciences and Natural Resources Research, Chinese Academy of Sciences, Beijing 100101, China. ²University of Chinese Academy of Sciences, Beijing 100049, China. ³Laboratoire des Sciences du Climat et de l'Environnement, IPSL-LSCE CEA CNRS UVSQ, 91191 Gif sur Yvette, France. ⁴CSIC, Global Ecology Unit CREAF-CSIC-UAB, Bellaterra, Barcelona 08193 Catalonia, Spain. ⁵CREAF, Cerdanyola del Valles, Barcelona 08193 Catalonia, Spain. ⁶College of Water Sciences, Beijing Normal University, Beijing 100875, China.

✉email: wanghj@igsnr.ac.cn; wucy@igsnr.ac.cn; geqs@igsnr.ac.cn

Spring phenology (e.g., budburst, leaf-out, and flowering) of perennials has advanced in recent decades around the middle and high latitudes (north of 30° N) of the Northern Hemisphere^{1–3}. Shifts in spring phenology have essential implications for ecosystems and the climatic system, ranging from interactions among plants and their herbivores^{4,5} to the balance among surface carbon, energy, and water^{6–8}. Projecting future phenological changes are thus increasingly important for assessing the impact of climate change on ecosystems. Phenological prediction, however, still has large uncertainties, because climatic warming has dual effects on spring phenology⁹. Spring warming (forcing temperature) advances spring phenological events¹⁰, but this effect is counteracted by the reduced chilling due to winter warming^{11,12}. Several forcing and chilling models have been developed based on controlled experiments or inverse modeling (calibrated the model with the observation data) to quantitatively describe the effects of temperature on spring phenology⁹. A widely used forcing model based on growing degree days (GDDs)¹³ calculates the accumulated number of degrees above a particular temperature threshold after a specific date. The generality of chilling models, however, limits operational applicability, because they were developed for specific species and climatic zones¹⁴.

The dual role of temperature in regulating the spring phenology of perennials can be described by a negative relationship between the heat requirement (HR, the accumulated forcing temperature required for a phenological event) and the chilling accumulation (CA, the amount of chilling received by plants during endodormancy) (see the references in Supplementary Table 1). Experimental evidence suggests that saplings and twigs need less time and fewer degree days to budburst if pre-burst chilling in natural or controlled environments is longer^{15,16}. Phenological observations also support this phenomenon when comparing HR with CA (based on several chilling models) in time and space^{12,17,18}. From a detailed literature survey, we found that among 95 perennials investigated, 91 (95.8%) belonging to 46 genera followed this relationship (Supplementary Fig. 1, Supplementary Table 2). These species involve many life forms (herbs, deciduous or evergreen coniferous trees, and deciduous broad-leaved trees or shrubs), and include the most dominant forest tree species in Europe (Supplementary Fig. 2). The negative correlation between CA and HR is therefore common among perennials and stable across studies, species, and locations (Fig. 1). The molecular basis of the control of budburst mediated by chilling was recently identified for aspen¹⁹. Chilling temperatures down-regulate the SVL and TCP18 genes, which are negative regulators of budburst, and promote budburst under subsequent forcing conditions¹⁹.

Many chilling models have been used to measure the amount of chilling by quantifying the rate of chilling in daily (or hourly) temperatures^{20,21}, but whether or not current chilling models can describe this physiological process is unclear. We use long-term in situ observations of leaf unfolding or flowering for 30 perennials at 15,533 phenological stations across central Europe (see the distribution of the stations in Supplementary Fig. 3 and the list of species in Supplementary Table 3) to compare long-term trends in CA and the relationship between CA and HR based on different chilling models. We aim to assess the ability of current chilling models to accurately simulate physiological processes and estimate uncertainties for predicting future changes in spring phenology. We show that 7 of 12 current chilling models fail to account for the correct relationship between CA and HR, leading to substantial overestimates of the advance of spring phenology under climate change. There is an urgent need to address the representation of phenological modeling, in this case specifically chilling models.

Results

Linear trends in CA. We assessed 12 chilling models coded as C₁–C₁₂ (see “Methods” for a full description). The linear trends in CA during winter to early spring (previous November to April) from 1951 to 2018 were calculated for each station based on all models and E-OBS gridded temperature data set. We expected that the accumulated chilling in Central Europe has progressively decreased as the winter temperature (Previous November to February) increased significantly by 0.25 °C/decade from 1951 to 2018. The trends in CA and its spatial pattern, however, varied among the models (Fig. 2). CA for Models C₁, C₂, C₄, C₅, and C₁₂ decreased significantly at >88% of the stations ($p < 0.05$) because the winter temperature exceeded the maximum effective temperature under climate warming (e.g., 5 °C for model C₁). The proportion of stations reporting a significant decrease in CA for the other models only ranged from 1.0% (Model C₈) to 61.5% (Model C₃). The increasing trends even dominated across Central Europe for models C₇–C₉, possibly because the freezing temperature became effective under climate warming in these models, and this effect of the increase was higher than the effect of decrease causing by the loss of maximum effective temperature. Pearson’s r between each pair of chilling models for each station (Supplementary Fig. 4) indicated that not all chilling models were positively correlated with each other. Some models were even negatively interrelated (e.g., Model C₁ and C₈), suggesting that the current chilling models could not reflect a consistent trend when measuring the change in the amount of chilling.

Relationship between CA and HR. We calculated CA (from 1 November in the previous year to the date of onset of spring events) for each species, station, and year using the 12 chilling models to determine if the models met the physiological assumption of Fig. 1. Also, HR was calculated based on a commonly used forcing model (integrating daily mean temperatures >0 °C from 1 January to the date of onset of spring events). The correlations between CA and HR varied among the chilling models for all species. Figure 3 shows an example of leaf-out for *Betula pendula*. Five chilling models (C₁, C₂, C₄, C₅, and C₁₂) that predicted decreasing trends in CA exhibited significant negative correlations between CA and HR, and the other models exhibited positive correlations. Twenty-nine of the 30 species had significantly negative Pearson’s r between HR and CA based on the above five models (Supplementary Fig. 5). We therefore classified models C₁, C₂, C₄, C₅, and C₁₂ as valid models, because they met the physiological assumption in Fig. 1. No or only a few species had negative CA–HR relationships in the other seven models (Supplementary Fig. 5), which were thus classified as invalid models. We also analyzed the station-level relationship between CA and HR for all stations with at least 15-years of records. Few stations (<10% for all species) had significantly negative Pearson’s r between CA and HR when using the invalid models, but >30% of the stations (for most of the species) had significantly negative r between CA and HR when using the valid models (Supplementary Fig. 6). Since we only used one forcing model (Model F₁, see the equations in “Methods”) to calculate HR, we further validated the chilling models by correlating them with HR based on the other seven forcing models (Models F₂–F₈). The percentage of stations with significantly negative Pearson’s r between CA and HR was larger for the valid than the invalid models, regardless of the forcing model chosen (Supplementary Fig. 7). Thus, the performance of the chilling models was not affected by the choice of forcing models. Although some of the invalid models were calibrated specifically for fruit and nut trees (e.g., Model C₇ and C₉), they still did not perform better than the valid models for *Prunus avium* (a fruit tree supplying edible cherry)

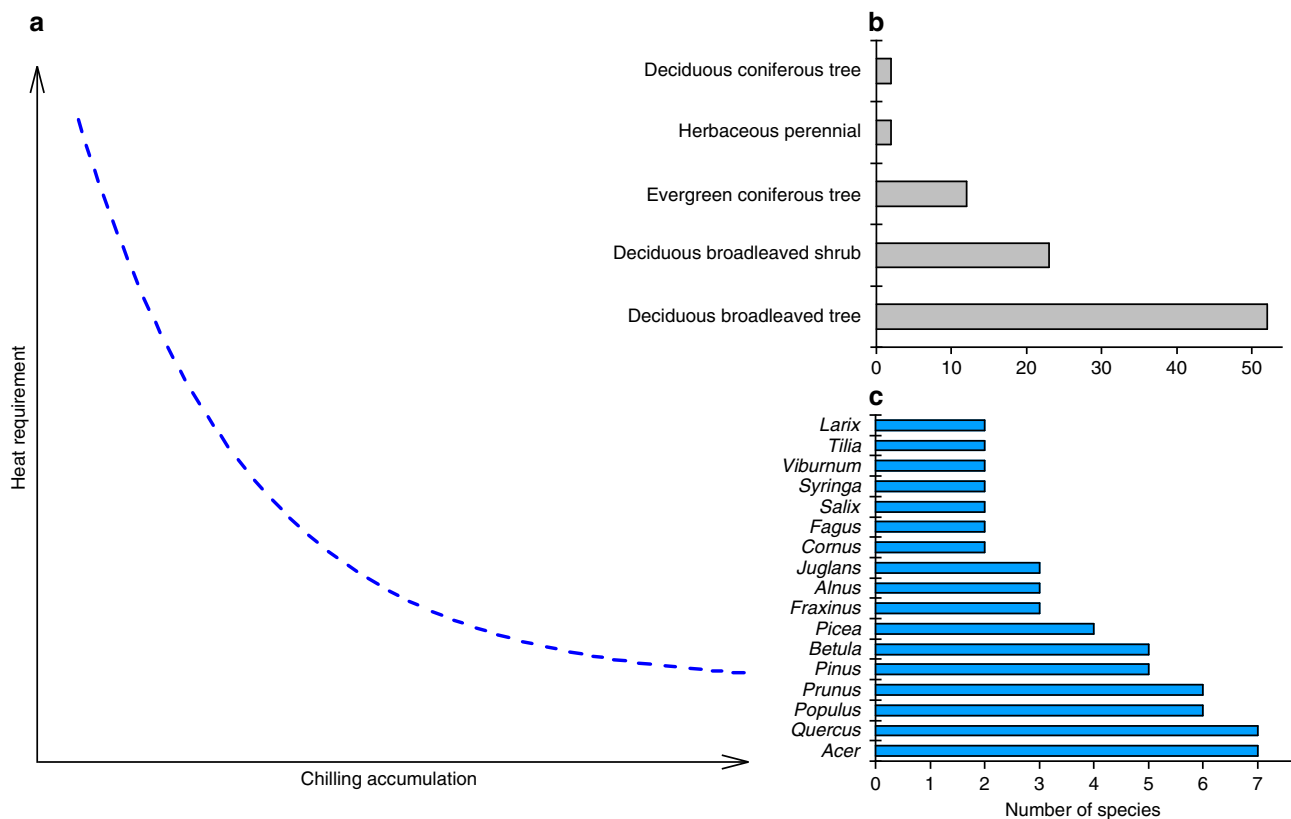


Fig. 1 Conceptual scheme of the relationship between HR and CA. Previous studies (Supplementary Table 1) found that saplings and twigs of 91 perennials need less heat for budburst (or leaf-out and flowering) if they receive more or longer chilling in natural or controlled environments. **a** Chilling accumulation (CA) is linearly or nonlinearly (the figure only shows a nonlinear relationship) negatively correlated with heat requirement (HR). The subplot shows the number of species exhibiting such a relationship for each life form (**b**) and genus (**c**). The CA–HR relationships for each species are shown in Supplementary Fig. 1.

and *Corylus avellana* (widely grown hazelnut plants for commercial nut production) (Supplementary Fig. 7).

In order to assess the scale effect caused by large grid size of E-OBS data set (about 10 km) and the non-uniform cover of plants and temperature in the grid cells, we compared the HR and CA based on E-OBS data set and a station-based Global Historical Climatology Network (GHCN) data set. The results showed that CA or HR calculated by these two data sets was significantly correlated, and the CA–HR relationship was stable among two data sets (see the example of *B. pendula* in Supplementary Fig. 8). Thus, the scale effect did not affect the relationship between CA and HR. We also evaluate the difference caused by the different starting dates of temperature accumulation. Compared to temperature accumulated since 1 January, the later starting date (15 January and 1 February) would result in less HR (based on Model F₁), especially for areas with a warm winter (see the example of *B. pendula* in Supplementary Fig. 9). Although the starting dates of heat accumulation altered the slope of HR against CA (based on Model C₁), the significantly negative correlation between HR and CA remained.

Phenological trends based on chilling models. We tested the impact of the choice of the chilling model on past and predicted future trends in spring phenology by developing a process-based model incorporating the relationship between CA and HR. First, we assessed whether different chilling models could reproduce spatial gradients of spring events across warm and cold regions in Europe. Most of the species showed a similar result, so here we only show an example of leaf out for *B. pendula* (Supplementary

Fig. 10). Across different locations, the simulated mean date correlated significantly with the observed mean dates with R^2 ranging from 0.65 and 0.72 ($p < 0.01$) for all the models. However, when comparing the root-mean-square error (RMSE), the valid models (RMSE = 4.2–6.9 days) were overall more accurate than the invalid model (RMSE = 6.5–10.7 days), because the invalid models produce an earlier leaf-out date than observation in cold regions but later leaf-out date in warm regions. Second, we assessed whether different chilling models could reproduce the observed temporal trends of spring events in Europe. Across all species and locations, the different models reproduced similar trends with the observed data from 1980 to 2018, but the invalid models simulated an earlier spring event compared to the observed data from the 1990s to the 2010s (Fig. 4a). Also, we compare the simulated and observed trends from 1980 to 2018 at different locations for the leaf out of *B. pendula* (Supplementary Fig. 11). For all models, the simulated and observed data exhibited consistently earlier trends at most locations. However, the valid model ($R^2 = 0.15$ – 0.17 , RMSE = 0.18–0.20 days year⁻¹) performed better than the invalid models ($R^2 = 0.02$ – 0.09 , RMSE = 0.22–0.34 days year⁻¹) when comparing the R^2 and RMSE between the simulated and observed trends. The invalid model seemed to overestimate the past earlier trends in the leaf-out date (Supplementary Fig. 11).

Based on the daily future climate data, the predicted advance in spring phenology during the 2020s to the 2090s was generally stronger for the invalid than the valid chilling models for all species in scenarios for Representative Concentration Pathways (RCPs) 4.5 and 8.5 (Supplementary Figs. 12 and 13). Averaged from all species, the date of onset of spring events gradually

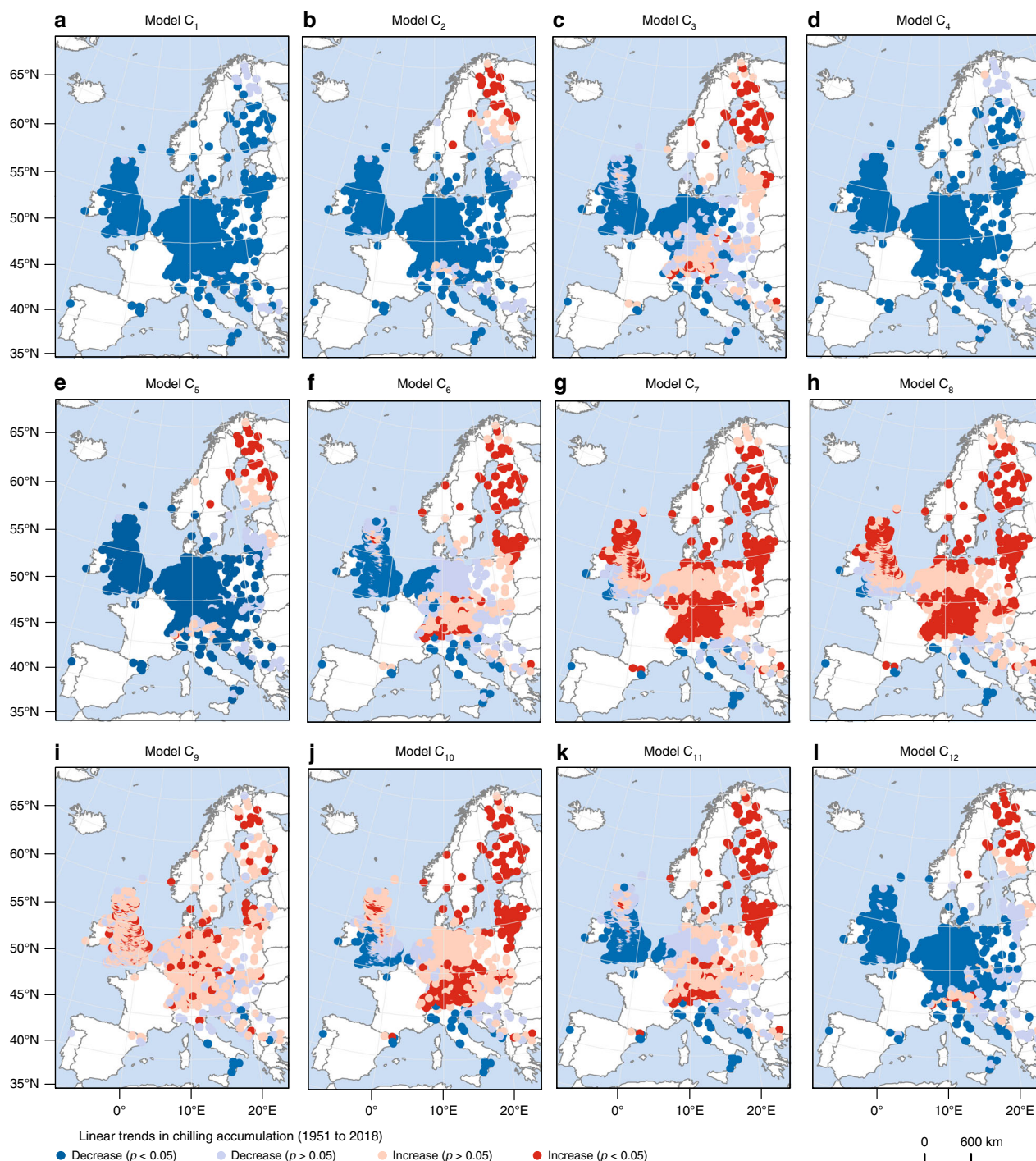


Fig. 2 Spatial patterns of the linear trends in chilling accumulation based on 12 chilling models. The chilling accumulation from 1 November to 30 April was calculated using the 12 chilling models. **a–l** Models C_1 – C_{12} . Dark blue circles, significant and negative slopes (two-sided F -test, $p < 0.01$, $n = 68$ years). Light blue circles, insignificant and negative slopes (two-sided F -test, $p > 0.05$, $n = 68$ years). Dark red circles, significant and positive slopes (two-sided F -test, $p < 0.05$, $n = 68$ years). Light red circles, insignificant and positive slopes (two-sided F -test, $p > 0.05$, $n = 68$ years).

advanced until the 2060s and then remains stable under RCP 4.5 but continuously advanced under RCP 8.5 (Fig. 4). The phenological change matched the warming trends of two climate scenarios (Supplementary Fig. 14). The advance in spring events under RCP 4.5 from the 2010s to the 2090s averaged for all species was 11.2–13.7 days for the valid models but 16.8–22.5 days for the invalid models (Fig. 4c). The advances in spring events under RCP 8.5 by the end of this century averaged 20.0 days larger for the invalid than the valid models (Fig. 4d).

Discussion

An earlier leaf-out date can increase the photosynthetic production of forests^{22,23}, so using an invalid chilling model to predict the start of the growing season would likely overestimate terrestrial photosynthesis and carbon uptake in spring. In addition to predicting future phenological change, the chilling models were used to estimate the chilling requirement of commercially important fruit and nut trees, such as apples, pears, and cherries^{24,25}. The cultivars selected based on the amount of winter

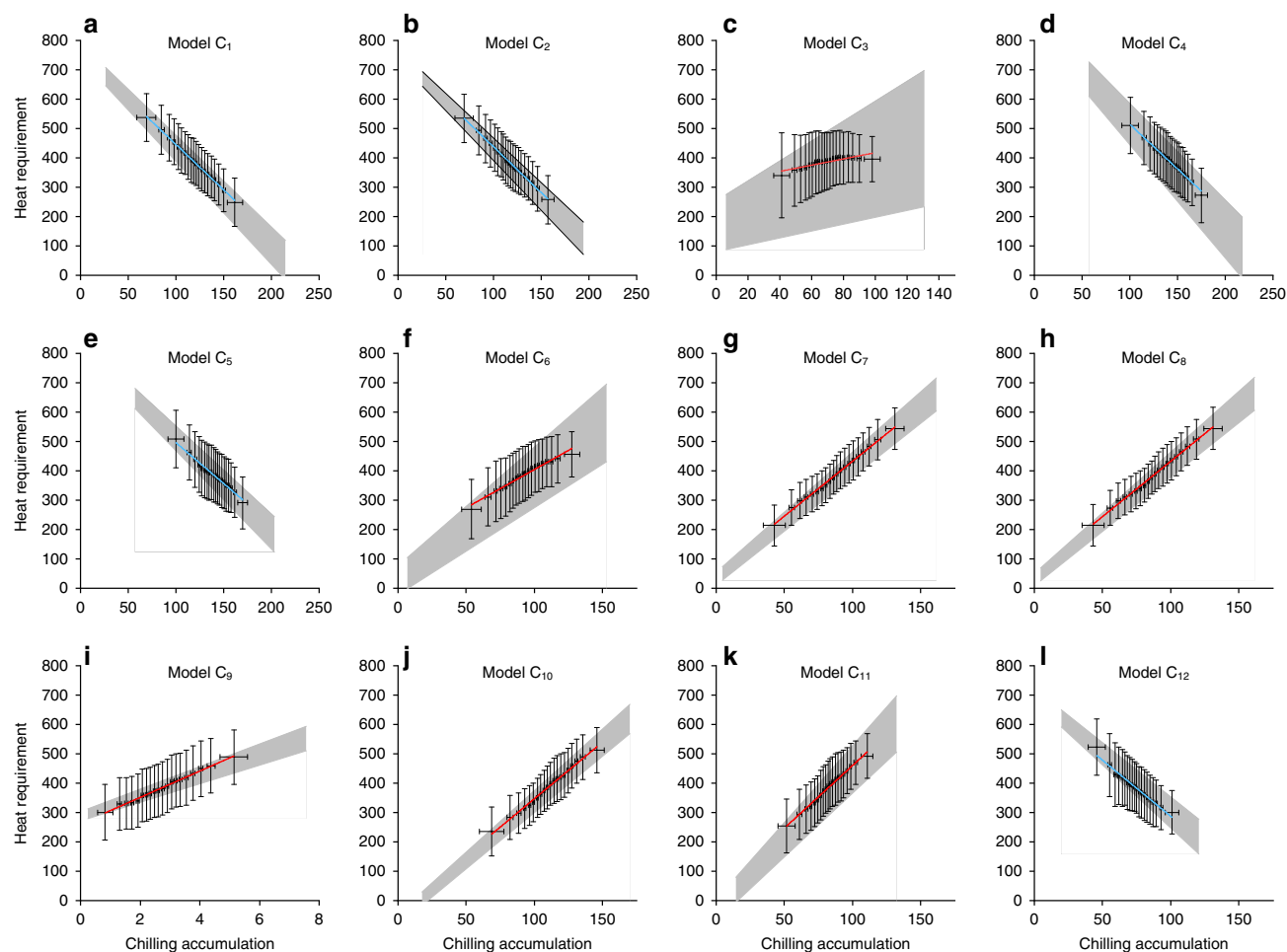


Fig. 3 Relationship between CA and HR for leaf-out of *Betula pendula*. Chilling accumulation (CA) from the previous 1 November to the leaf-out date was calculated using the 12 chilling models. Heat requirement (HR) was an integration of daily mean temperatures $>0^{\circ}\text{C}$ from 1 January to the leaf-out date. **a–l** Models C_1 – C_{12} . Data are divided into 20 groups with the same number of records. Error bars, mean values \pm SD of HR or CA within each group ($n = 6301$ records). The linear regression lines (blue for negative correlations and red for positive correlations) are shown for each model. The shaded area shows the uncertainties, which were estimated by using the 95% confidence interval for slope and interception of regression lines.

chilling at their production sites would likely fail to grow normally in another location if an invalid model was used to estimate the adaptative capacity of CA. In this study, the amount of chilling based on invalid models even increase at mid- and high latitudes under climatic warming (Fig. 2), possibly because in these areas the daily mean temperature during the coldest period of winter was below 0°C , which did not contribute to CA for most of the invalid chilling models (e.g., Model C_3 regarded that only the temperature between 0 and 5°C is effective). Due to winter warming, the number of days with temperature below 0°C reduced, causing an increase in the amount of chilling. If using the invalid models to estimate the amount of chilling, the increased trends in the amount of chilling would continue at mid- and high latitudes in scenarios of future climatic warming²⁶, so growers in these regions may miss the opportunity to adapt to climate change, e.g., by breeding tree cultivars for lower chilling requirements.

The effect of freezing temperatures is the most important structural difference between valid and invalid chilling models (Supplementary Fig. 15). The rate of chilling (the effectiveness of different temperatures on dormancy break) for the invalid models is zero or low for temperatures $<0^{\circ}\text{C}$. The rate of chilling for the valid models, however, is still effective even for temperatures $<-5^{\circ}\text{C}$. For example, if using Model C_1 (temperature $<5^{\circ}\text{C}$ is

effective) to measure the amount of chilling, winter warming would lead to more number of days with the daily mean temperature higher than 5°C , and thus decrease the CA. However, for Model C_3 (temperature between 0 and 5°C is effective), this effect would be counteracted by the increase in the number of days with temperature $>0^{\circ}\text{C}$. Considering the increased HR of spring phenology in Europe¹², Model C_1 would produce a negative relationship between CA and HR, but Model C_3 may produce an opposite result. Thus, our study suggested that the valid models, which considered the effect of freezing temperatures on breaking dormancy, could better explain the CA–HR mechanism. Further experiments, however, are necessary to confirm this assumption, such as giving saplings or twigs a treatment of different chilling temperatures of the same duration and then a test of regrowth under the same forcing conditions⁹. However, the effectiveness of temperatures $<0^{\circ}\text{C}$ is rarely tested before, because plants cannot survive if they are exposed to freezing temperatures immediately at the end of the growing season²⁷. Tolerance to freezing under natural conditions gradually increases with exposure to low temperatures (a process known as cold acclimation), which allows plants to survive winter conditions²⁸. Sudden exposure to freezing temperatures could extensively damage plant tissues due to the lack of cold acclimation (by frost cavitation). More complex experiments are

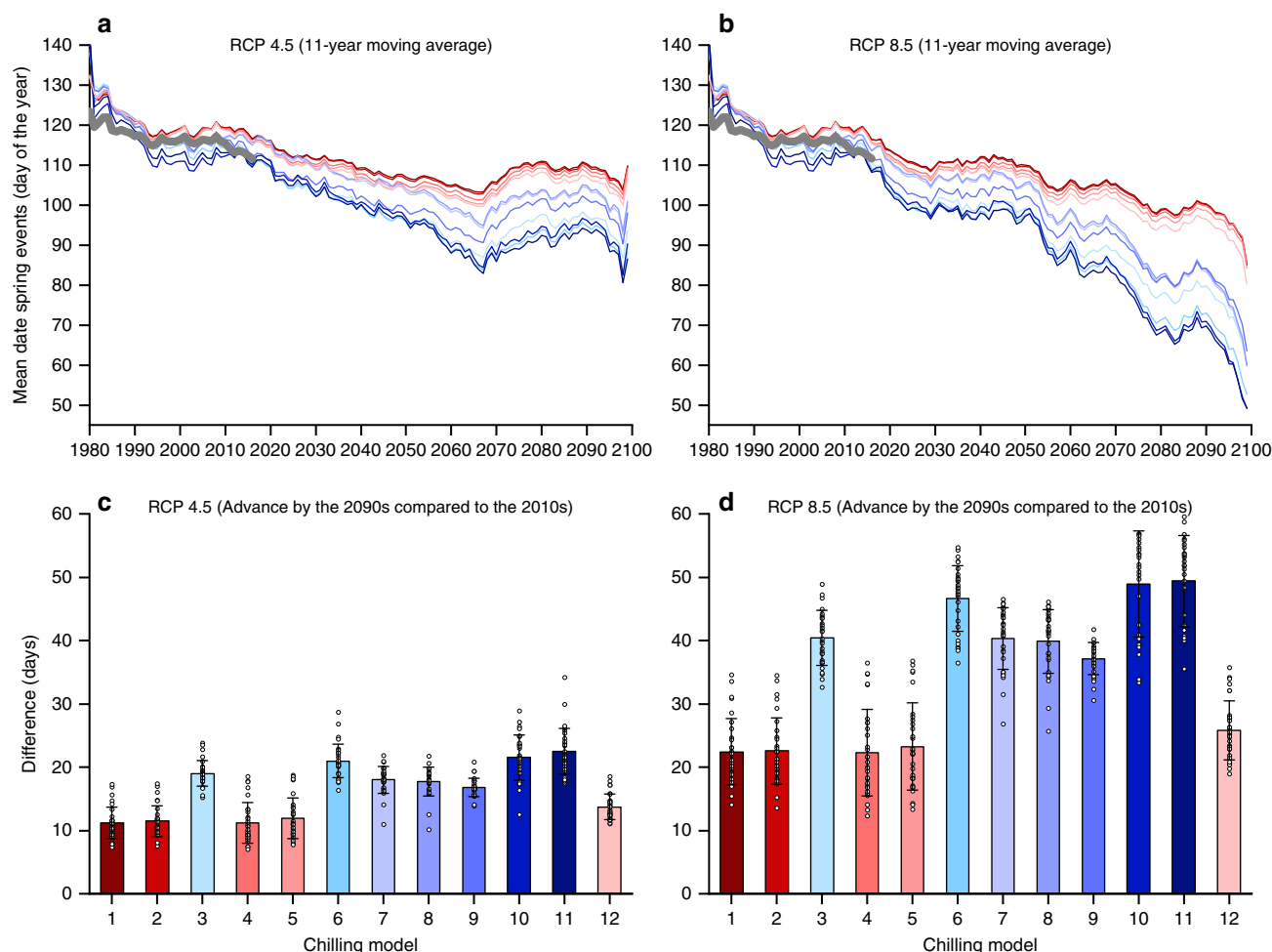


Fig. 4 Changes in spring phenology averaged for all species and stations for 2019–2099. Spring phenological events were simulated using linear regression between chilling accumulations based on the 12 chilling models (from 1 November to the onset of spring events) and the heat requirement (accumulated temperature $>0^{\circ}\text{C}$ from 1 January to the onset of spring events) for all records. The observed (thick gray line) and simulated trends across spring events of all species over 1980–2018 are shown. Red colors represent valid chilling models (C_1 , C_2 , C_4 , C_5 , and C_{12}), and blue colors represent invalid models. **a** An 11-year moving average of spring phenological events under Representative Concentration Pathways (RCP) 4.5. **b** An 11-year moving average of spring phenological events under RCP 8.5. **c** Advance in spring events by the 2090s compared to the 2010s under RCP 4.5. **d** Advance in spring events by the 2090s compared to the 2010s under RCP 8.5. Error bars in (**c**) and (**d**), mean values \pm SD ($n = 30$ species).

therefore necessary to confirm the effect of freezing temperatures on the rate of chilling, e.g., by using gradually decreasing temperatures to simulate cold acclimation in situ. Furthermore, acclimation in plants may alter the HR of plants. The acclimation could be accounted for by using different slopes and intercepts to describe the CA–HR relationship for individuals growing at different climatic conditions. However, when comparing the CA–HR relationship between low latitude (lower than 50.65°N) and high latitude (higher than 50.65°N), we did not find a significant difference in CA–HR relationship (Supplementary Fig. 16). Thus, we did not consider the impact of acclimation in this study.

Overall, the advance in budburst and leaf formation of perennials in recent decades were associated with spring warming. Due to the negative relationship between CA and HR, the reduced winter chilling slowed the spring phenological advance. We report that the majority of the current chilling models failed to represent the negative relationship between CA and HR, using 2,493,644 phenological records for 30 species from 1951 to 2018, potentially because these models were developed for limited species in specific geographic regions and did not consider the effectiveness of freezing temperature. If these invalid chilling

models are used to predict future phenological change, the advance in spring phenology at the end of this century would be twice as early as predicted using the valid models, and future spring terrestrial net carbon uptake would consequently be overestimated.

Methods

Phenological and climatic data. We used data from the Pan European Phenology Project (PEP725)²⁹, an open-access database with long-term plant phenological observations across 25 European countries (<http://www.pep725.eu/>). The regional/national network partners of PEP725 are following a consistent guideline for phenological observations³⁰ and prepare the data for submission to the PEP725 database curators²⁹. We selected 30 species for which sufficient observational data were available: 21 deciduous broadleaved trees or shrubs, 6 herbaceous perennials, 2 evergreen coniferous trees, and 1 deciduous coniferous tree (Supplementary Table 3). Particularly, our data set included one fruit tree (*Prunus avium*) and one nut tree (*Corylus avellana*) since some of the chilling models are specifically developed for fruit and nut trees. A total of 2,493,644 individual records from 15,533 phenological stations were used. The stations were mainly distributed in moderate climates in Central Europe (Supplementary Fig. 3). Four spring events based on the BBCH code were investigated: BBCH 10, 11, 60, and 69, representing first leaves separated, first leaves unfolded, first flowers open, and end of flowering, respectively³¹.

We used the E-OBS v19.0eHOM data set³² with a spatial resolution of $0.1 \times 0.1^{\circ}$ for 1950–2018 for calculating CA and HR of the in situ phenological records. This

data set is provided by the European Climate Assessment & Data set project and includes homogenized series of daily mean, minimum, and maximum temperatures. We also use the daily maximum and minimum temperature data from the GHCN data set³³ to assess the scale effect. The GHCN data set contains station-based measurements from over 90,000 land-based stations worldwide, but only parts of PEP725 stations match with the GHCN stations.

For future climatic data (2019–2099), we used daily minimum and maximum temperatures simulated by the HADGEM2-ES model (with a spatial resolution of $0.5 \times 0.5^\circ$) under two climatic scenarios (RCP 4.5 and RCP 8.5). These data have been bias-corrected by applying the method used in the Inter-Sectoral Impact Model Intercomparison Project (ISIMIP)³⁴, which were available on the ISIMIP server (<https://esg.pik-potsdam.de/projects/isimip2b/>).

Chilling models. We used 12 chilling models to measure the amount of chilling. One type of chilling model is based on several specific temperature thresholds. The most commonly used model, developed in the 1930s and 1940s for peach³⁵, calculates the number of hours or days with temperatures <7.2 or 7°C . Another commonly used upper-temperature threshold for chilling is 5°C ^{11,18}. Some studies, however, have suggested that subfreezing temperatures were effective^{36,37}, so we also tested chilling models using -10°C as the lower limit. Many studies have also assumed that freezing temperatures did not contribute to winter CA and only included temperatures $>0^\circ\text{C}$ for calculating CA^{11,38}. Models C_1 – C_6 were developed based on various combinations of the upper and lower temperature limits. The rate of chilling was 1 for daily temperatures $<5^\circ\text{C}$ for Model C_1 (Eq. (1)), between -10 and 5°C for Model C_2 (Eq. (2)), between 0 and 5°C for Model C_3 (Eq. (3)), $<7^\circ\text{C}$ for Model C_4 (Eq. (4)), between -10 and 7°C for Model C_5 (Eq. (5)), and between 0 and 7°C for Model C_6 (Eq. (6)). The equations for Models C_1 – C_6 are as follows:

$$CU_1 = \begin{cases} 1 & T \leq 5 \\ 0 & T > 5 \end{cases}, \quad (1)$$

$$CU_2 = \begin{cases} 1 & -10 \leq T \leq 5 \\ 0 & T > 5 \text{ or } T < -10 \end{cases}, \quad (2)$$

$$CU_3 = \begin{cases} 1 & 0 \leq T \leq 5 \\ 0 & T > 5 \text{ or } T < 0 \end{cases}, \quad (3)$$

$$CU_4 = \begin{cases} 1 & T \leq 7 \\ 0 & T > 7 \end{cases}, \quad (4)$$

$$CU_5 = \begin{cases} 1 & -10 \leq T \leq 7 \\ 0 & T > 7 \text{ or } T < -10 \end{cases}, \quad (5)$$

$$CU_6 = \begin{cases} 1 & 0 \leq T \leq 7 \\ 0 & T > 7 \text{ or } T < 0 \end{cases}, \quad (6)$$

where CU_i is the rate of chilling for Model C_i , and T is the daily mean temperature ($^\circ\text{C}$).

Model C_7 is also known as the Utah Model³⁹, which assigned different weights to different ranges of temperatures and was first used to measure the chilling requirements of peach (Eq. (7)). The Utah Model was modified to produce Model C_8 (Eq. (8)), which removed the negative contributions of warm temperatures to accumulated chilling²⁰.

$$CU_7 = \begin{cases} 0 & T \leq 1.4 \\ 0.5 & 1.4 < T \leq 2.4 \\ 1 & 2.4 < T \leq 9.1 \\ 0.5 & 9.1 < T \leq 12.4 \\ 0 & 12.4 < T \leq 15.9 \\ -0.5 & 15.9 < T \leq 18 \\ -1 & T > 18 \end{cases}, \quad (7)$$

$$CU_8 = \begin{cases} 0 & T \leq 1.4 \\ 0.5 & 1.4 < T \leq 2.4 \\ 1 & 2.4 < T \leq 9.1 \\ 0.5 & 9.1 < T \leq 12.4 \\ 0 & T > 12.4 \end{cases}, \quad (8)$$

where CU_i is the rate of chilling for Model C_i , and T is the daily mean temperature ($^\circ\text{C}$).

Model C_9 is a dynamic model developed for peach in Israel and South Africa^{40,41} and now adopted for apricot cultivars⁴². The most important characteristic of Model C_9 was that a previous intermediate product affected the rate of chilling in the current hour or day. We did not provide equations for Model C_9 for simplicity (see the equation in Luedeling et al.²⁰).

Harrington et al.⁴³ summarized published results for chilling units and constructed a chilling function based on a three-parameter Weibull distribution, coded as Model C_{10} (Eq. (9)). Model C_{11} has a triangular form, which was fitted by

Hänninen⁴⁴ using previous experimental results for Finnish birch seedlings (Eq. (10)). Zhang et al.⁴⁵ recently fitted observational data to the triangular model for 24 plant species and found that a mean optimal chilling temperature of 0.2°C and an upper limit of the chilling temperature of 6.9°C were most effective. Model C_{12} , therefore, uses the triangular form with parameters of 0.2 and 6.9°C (Eq. (11)).

$$CU_{10} = \begin{cases} 1 & 2.5 < T < 7.4 \\ 0 & T < -4.7 \text{ or } T > 16 \\ 3.13 \left(\frac{T+4.66}{10.93} \right)^{2.10} e^{-\left(\frac{T+4.66}{10.93} \right)^{3.10}} & \text{else} \end{cases}, \quad (9)$$

$$CU_{11} = \begin{cases} 0 & T \leq -3.4 \text{ or } T \geq 10.4 \\ \frac{T+3.4}{5+3.4} & -3.4 < T \leq 5 \\ \frac{T-10.4}{5-10.4} & 5 < T < 10.4 \end{cases}, \quad (10)$$

$$CU_{12} = \begin{cases} 0 & T \leq -6.5 \text{ or } T \geq 6.9 \\ \frac{T+6.5}{6.9-0.2} & -6.5 < T \leq 0.2 \\ \frac{6.9-T}{6.9-0.2} & 0.2 < T < 6.9 \end{cases}, \quad (11)$$

where CU_i is the rate of chilling for Model C_i , and T is the daily mean temperature in $^\circ\text{C}$.

Forcing models. Forcing models were used to measure HR for the spring events of plants. The GDD model is the most commonly used forcing model, which assumes that the rate of forcing is linearly correlated with temperature if the temperature is above a particular threshold. We mainly used Model F_1 (Eq. (12)), which adopts a temperature threshold of 0°C ^{46–48}, for examining the relationship between CA and HR:

$$FU_1 = \max(T, 0), \quad (12)$$

where FU_1 is the rate of forcing for Model F_1 , and T is the daily mean temperature ($^\circ\text{C}$).

We also validated the chilling models by correlating them with HR based on seven other forcing models to assess the impact of the choice of forcing model on the results. Model F_2 (Eq. (13)) is also a GDD model but has a temperature threshold of 5°C ^{12,18}:

$$FU_2 = \max(T - 5, 0), \quad (13)$$

where FU_2 is the rate of forcing for Model F_2 , and T is the daily mean temperature ($^\circ\text{C}$).

Piao et al.⁴⁸ found that leaf onset in the Northern Hemisphere was triggered more by daytime than nighttime temperature. They thus proposed a GDD model using maximum instead of mean temperature. Models F_3 (Eq. (14)) and F_4 (Eq. (15)) are based on maximum temperature with thresholds of 0 and 5°C , respectively.

$$FU_3 = \max(T_{\max}, 0), \quad (14)$$

$$FU_4 = \max(T_{\max} - 5, 0), \quad (15)$$

where FU_i is the rate of forcing for Model F_i , and T_{\max} is the daily maximum temperature ($^\circ\text{C}$).

A recent experiment demonstrated that the impact of daytime temperature on leaf unfolding for temperate trees was approximately threefold higher than the impact of nighttime temperature⁴⁹. Model F_5 (Eq. (16)) thus uses two parameters (0.75 and 0.25) to weigh the impact of daytime and nighttime temperatures on HR.

$$FU_5 = 0.75 \times \max(T_{\max} - 5, 0) + 0.25 \times \max(T_{\min} - 5, 0), \quad (16)$$

where FU_5 is the rate of forcing for Model F_5 . T_{\max} and T_{\min} are the daily maximum and minimum temperatures ($^\circ\text{C}$), respectively.

Many studies have suggested that the rate of forcing followed a logistic function of temperature^{44,50}. Model F_6 (Eq. (17)) uses a logistic function proposed by Hänninen⁴⁴, and Model F_7 (Eq. (18)) uses another logistic function proposed by Harrington et al.⁴³.

$$FU_6 = \begin{cases} \frac{28.4}{1+e^{-0.185(T-18.5)}} & T > 0 \\ 0 & \text{else} \end{cases}, \quad (17)$$

$$FU_7 = \frac{1}{1+e^{-0.47T+6.49}}, \quad (18)$$

where FU_i is the rate of forcing for Model F_i , and T is the daily mean temperature ($^\circ\text{C}$).

Model F_8 is a growing degree hour (GDH) model, where species have an optimum temperature for growth and where temperatures above or below that optimum have a smaller impact⁵¹. Model F_8 (Eq. (19)) was first designed for calculating HR at hourly intervals, but we applied it at a daily interval. The stress factor in the original GDH model was ignored, because we assumed that the plants

were not under other stresses.

$$FU_8 = \begin{cases} 0 & T < T_L \text{ or } T > T_c \\ \frac{T_u - T_L}{2} \left(1 + \cos\left(\pi + \pi \frac{T - T_L}{T_u - T_L}\right) \right) & T_L \geq T \geq T_u \\ (T_u - T_L) \left(1 + \cos\left(\frac{\pi}{2} + \pi \frac{T - T_u}{T_c - T_u}\right) \right) & T_u < T \leq T_c \end{cases}, \quad (19)$$

where FU_8 is the rate of forcing for Model F_8 , T is the daily mean temperature ($^{\circ}\text{C}$), $T_L = 4$, $T_u = 25$, and $T_c = 36$.

Analysis. We assessed the ability of each chilling model to represent long-term trends in the chilling conditions by calculating CA using each chilling model for each station for 1951–2018. CA was calculated as the sum of CU_i from 1 November in the previous year to 30 April. The trend of CA at each station was visualized as the slope of the linear regression of CA against year. We also calculated Pearson's r between each pair of chilling models for each station to determine if the chilling models were interrelated.

We calculated HR and CA of spring events for each species, station, and year to determine if the chilling models are consistent with the physiological assumption that the reduction in chilling would increase HR (Fig. 1). HR was calculated as the sum of FU_i from 1 January to the date of onset of spring events using Model F_1 , and the performances of the other forcing models (F_2 – F_8) were also tested. We also compared 1 January with the other two starting dates of temperature accumulation (15 January and 1 February) to test any potential difference causing by the date when temperature accumulation begins.

CA was calculated as the sum of CU_i from 1 November in the previous year to the date of onset of spring events. We chose 1 November as the start date for CA because the endodormancy of temperate trees began around 1 November⁵². We only tested the linear relationship because the data were better fitted by the linear regression than the exponential model (Fig. 3), even though CA was linearly or nonlinearly negatively correlated with HR¹⁷. Pearson's r between CA and HR for all records was calculated for each species, with a significantly negative Pearson's r ($p < 0.05$) indicating that the chilling model met the physiological assumption. We also analyzed the relationship between CA and HR at stations with at least 15-year records to determine if the results were robust at the station level.

The above analysis is based on the E-OBS data set. Given the large grid size of the E-OBS data set (about 10 km) and the non-uniform cover of plants and temperature in the grid cells, we assessed the scale effect by comparing the HR and CA based on E-OBS data set with GHCH data set. We only retained the phenological station where a corresponding meteorological station (distance and altitude difference should be less than 5 km and 100 m, respectively) existed in the GHCH data set and compared the HR, CA, and their relationship.

We developed an empirical model based on the linear regression function between CA and HR (e.g., the linear fitted line in Fig. 3) to simulate the past and future spring phenological change. We calculated CA (from the previous 1 November to the current date) and heat accumulation (from 1 January to the current date) for each species in each year using a daily step. HR for the current date was calculated using the predefined linear regression function between HR and CA. The day when heat accumulation began to be larger than HR was determined as the date of onset of spring events. Compared to our empirical models, in current terrestrial biosphere models, the simulation of leaf onset is usually only based on GDDs⁵³ (e.g., Model F_1 and F_2 in this study), while only one model (ORCHIDEE) consider the effect of chilling⁵⁴ (Model C_1 in this study). Thus, at least currently, the CA–HR mechanism has not been well represented in ecosystem models. Our modeling efforts could timely provide the basis for a better representation of vegetation phenology in terrestrial biosphere models.

We predicted the annual spring phenological change (2019–2099) for each species using the above process-based models under RCP 4.5 and RCP 8.5. To produce a consistent phenological time series from past to future, we simulated the past spring phenological change from 1980 to 2018 by using the E-OBS v19.0eHOM data set, which was resampled to the same spatial resolution ($0.5 \times 0.5^{\circ}$) with the climatic data projected by HADGEM2-ES. First, we assessed whether different chilling models could reproduce spatial gradients of spring events across warm and cold regions in Europe. For each species, the simulated mean date (1980–2018) was correlated to the observed mean dates across grids with the observation data. Second, we assessed whether different chilling models could reproduce temporal trends of spring events in Europe. For each grid with at least 15-year observation data, the simulated and observed trends were estimated as the slope of the linear regression of spring phenology against year. At last, we compared the simulated trends estimated by each chilling model with the observed trends.

Reporting summary. Further information on research design is available in the Nature Research Reporting Summary linked to this article.

Data availability

Phenological data can be accessed from <http://www.pep725.eu/>. E-OBS data set can be accessed from <https://www.ecad.eu/download/ensembles/download.php>. GHCH data set can be accessed from <https://www.ncdc.noaa.gov/data-access/land-based-station-data/>

land-based-datasets/global-historical-climatology-network-ghcn. Future climate data (2019–2099) were available on <https://esg.pik-potsdam.de/projects/isimp2b/>.

Code availability

All Matlab scripts, from the initial processing of data sets to final analyses, are archived online at <https://www.mathworks.cn/matlabcentral/fileexchange/74606-code-for-chilling-and-forcing-model>.

Received: 20 March 2020; Accepted: 26 August 2020;

Published online: 02 October 2020

References

- Ge, Q., Wang, H., Rutishauser, T. & Dai, J. Phenological response to climate change in China: A meta-analysis. *Glob. Change Biol.* **21**, 265–274 (2015).
- Piao, S. et al. Plant phenology and global climate change: current progresses and challenges. *Glob. Change Biol.* **25**, 1922–1940 (2019).
- Templ, B. et al. Phenological patterns of flowering across biogeographical regions of Europe. *Int. J. Biometeorol.* **61**, 1347–1358 (2017).
- Burke, L. A., Marlin, J. C. & Knight, T. M. Plant-pollinator interactions over 120 years: loss of species, co-occurrence, and function. *Science* **339**, 1611–1615 (2013).
- Renner, S. S. & Zohner, C. M. Climate change and phenological mismatch in trophic interactions among plants, insects, and vertebrates. *Annu. Rev. Ecol. Evol. Syst.* **49**, 165–182 (2018).
- Xia, J. et al. Joint control of terrestrial gross primary productivity by plant phenology and physiology. *Proc. Natl Acad. Sci. USA* **112**, 2788–2793 (2015).
- Peñuelas, J., Rutishauser, T. & Filella, I. Phenology feedbacks on climate change. *Science* **324**, 887–888 (2009).
- Piao, S. et al. Weakening temperature control on the interannual variations of spring carbon uptake across northern lands. *Nat. Clim. Change* **7**, 359 (2017).
- Hänninen, H. et al. Experiments are necessary in process-based tree phenology modelling. *Trends Plant Sci.* **24**, 199–209 (2019).
- Chaine, I., Morin, X. & Bugmann, H. Warming, photoperiods, and tree phenology. *Science* **329**, 277–278 (2010).
- Fu, Y. H. et al. Declining global warming effects on the phenology of spring leaf unfolding. *Nature* **526**, 104–107 (2015).
- Fu, Y. H. et al. Increased heat requirement for leaf flushing in temperate woody species over 1980–2012: effects of chilling, precipitation and insolation. *Glob. Change Biol.* **21**, 2687–2697 (2015).
- Cleland, E. E., Chuine, I., Menzel, A., Mooney, H. A. & Schwartz, M. D. Shifting plant phenology in response to global change. *Trends Ecol. Evol.* **22**, 357–365 (2007).
- Darbyshire, R., Webb, L., Goodwin, I. & Barlow, S. Winter chilling trends for deciduous fruit trees in Australia. *Agr. For. Meteorol.* **151**, 1074–1085 (2011).
- Laube, J. et al. Chilling outweighs photoperiod in preventing precocious spring development. *Glob. Change Biol.* **20**, 170–182 (2014).
- Flynn, D. F. B. & Wolkovich, E. M. Temperature and photoperiod drive spring phenology across all species in a temperate forest community. *New Phytol.* **219**, 1353–1362 (2018).
- Vitasse, Y. & Basler, D. What role for photoperiod in the bud burst phenology of European beech. *Eur. J. For. Res.* **132**, 1–8 (2013).
- Cannell, M. G. R. & Smith, R. I. Thermal time, chill days and prediction of budburst in *Picea sitchensis*. *J. Appl. Ecol.* **20**, 951–963 (1983).
- Singh, R. K. et al. A genetic network mediating the control of bud break in hybrid aspen. *Nat. Commun.* **9**, 4173 (2018).
- Luedeling, E., Zhang, M., Luedeling, V. & Girvetz, E. H. Sensitivity of winter chill models for fruit and nut trees to climatic changes expected in California's Central Valley. *Agr. Ecosyst. Environ.* **133**, 23–31 (2009).
- Campoy, J. A., Ruiz, D. & Egea, J. Dormancy in temperate fruit trees in a global warming context: A review. *Sci. Hortic.* **130**, 357–372 (2011).
- Piao, S., Friedlingstein, P., Ciais, P., Viovy, N. & Demarty, J. Growing season extension and its impact on terrestrial carbon cycle in the Northern Hemisphere over the past 2 decades. *Glob. Biogeochem. Cycles* **21**, B3018 (2007).
- Keenan, T. F. et al. Net carbon uptake has increased through warming-induced changes in temperate forest phenology. *Nat. Clim. Change* **4**, 598–604 (2014).
- Ghrab, M., Mimoun, M. B., Masmoudi, M. M. & Mechli, N. B. Chilling trends in a warm production area and their impact on flowering and fruiting of peach trees. *Sci. Hortic.* **178**, 87–94 (2014).
- Luedeling, E. Climate change impacts on winter chill for temperate fruit and nut production: A review. *Sci. Hortic.* **144**, 218–229 (2012).
- Luedeling, E., Girvetz, E. H., Semenov, M. A. & Brown, P. H. Climate change affects winter chill for temperate fruit and nut trees. *PLoS ONE* **6**, e20155 (2011).

27. Driessche, R. V. D. Survival of coastal and interior Douglas fir seedlings after storage at different temperatures, and effectiveness of cold storage in satisfying chilling requirements. *Can. J. For. Res.* **7**, 125–131 (1977).
28. Thomashow, M. F. So what's new in the field of plant cold acclimation? Lots! *Plant Physiol.* **125**, 89–93 (2001).
29. Templ, B. et al. Pan European phenological database (PEP725): a single point of access for European data. *Int. J. Biometeorol.* **62**, 1109–1113 (2018).
30. Koch, E. et al. *Guidelines For Plant Phenological Observations* (World Meteorological Organization, Geneva, 2009).
31. Meier, U. *Growth Stages of Mono- and Dicotyledonous Plants: BBCH Monograph*. 2nd edn (Federal Biological Research Centre for Agriculture and Forestry, Berlin, 2001).
32. Cornes, R. C., van der Schrier, G., van den Besselaar, E. J. M. & Jones, P. D. An ensemble version of the E-OBS temperature and precipitation data sets. *J. Geophys. Res. Atmos.* **123**, 9391–9409 (2018).
33. Menne, M. J., Durre, I., Vose, R. S., Gleason, B. E. & Houston, T. G. An overview of the Global Historical Climatology Network-Daily Database. *J. Atmos. Ocean. Technol.* **29**, 897–910 (2012).
34. Hempel, S., Frieler, K., Warszawski, L., Schewe, J. & Piontek, F. A trend-preserving bias correction – the ISI-MIP approach. *Earth Syst. Dynam.* **4**, 219–236 (2013).
35. Weinberger, J. H. Chilling requirements of peach varieties. *Proc. Am. Soc. Hortic. Sci.* **56**, 122–128 (1950).
36. Ritchie, G. A. Effect of freezer storage on bud dormancy release in douglas-fir seedlings. *Can. J. For. Res.* **14**, 186–190 (1984).
37. Omi, S. K., Rose, R. & Sabin, T. E. Effectiveness of freezer storage in fulfilling the chilling requirement of fall-lifted ponderosa pine seedlings. *N For.* **5**, 307–326 (1991).
38. Peaucelle, M. et al. Spatial variance of spring phenology in temperate deciduous forests is constrained by background climatic conditions. *Nat. Commun.* **10**, 5388 (2019).
39. Richardson, E. A., Seeley, S. D. & Walker, D. R. A model for estimating the completion of rest for Redhaven and Elberta peach trees. *Hortscience* **9**, 331–332 (1974).
40. Fishman, S., Erez, A. & Couvillon, G. A. The temperature-dependence of dormancy breaking in plants - mathematical-analysis of a 2-step model involving a cooperative transition. *J. Theor. Biol.* **124**, 473–483 (1987).
41. Fishman, S., Erez, A. & Couvillon, G. A. The temperature-dependence of dormancy breaking in plants - computer-simulation of processes studied under controlled temperatures. *J. Theor. Biol.* **126**, 309–321 (1987).
42. Ruiz, D., Campoy, J. A. & Egea, J. Chilling and heat requirements of apricot cultivars for flowering. *Environ. Exp. Bot.* **61**, 254–263 (2007).
43. Harrington, C. A., Gould, P. J. & St Clair, J. B. Modeling the effects of winter environment on dormancy release of Douglas-fir. *For. Ecol. Manag.* **259**, 798–808 (2010).
44. Hänninen, H. Modelling bud dormancy release in trees from cool and temperate regions. *Acta Forestalia Fennica* **213**, 1–47 (1990).
45. Zhang, H., Liu, S., Regnier, P. & Yuan, W. New insights on plant phenological response to temperature revealed from long-term widespread observations in China. *Glob. Change Biol.* **24**, 2066–2078 (2018).
46. Heide, O. M. Daylength and thermal time responses of budburst during dormancy release in some northern deciduous trees. *Physiol. Plant.* **88**, 531–540 (1993).
47. Basler, D. & Körner, C. Photoperiod sensitivity of bud burst in 14 temperate forest tree species. *Agr. For. Meteorol.* **165**, 73–81 (2012).
48. Piao, S. et al. Leaf onset in the northern hemisphere triggered by daytime temperature. *Nat. Commun.* **6**, 6911 (2015).
49. Fu, Y. et al. Three times greater weight of daytime than of night-time temperature on leaf unfolding phenology in temperate trees. *N Phytol.* **212**, 590–597 (2016).
50. Chuine, I., Cour, P. & Rousseau, D. D. Fitting models predicting dates of flowering of temperate-zone trees using simulated annealing. *Plant Cell Environ.* **21**, 455–466 (1998).
51. Anderson, J. L., Richardson, E. A. & Kesner, C. D. Validation of chill unit and flower bud phenology models for 'Montmorency' sour cherry. *Acta Hortic.* **184**, 71–78 (1986).
52. Chmielewski, F. & Götz, K. Identification and timing of dormant and ontogenetic phase for sweet cherries in Northeast Germany for modelling purposes. *J. Hortic.* **4**, 3 (2017).
53. Richardson, A. D. et al. Terrestrial biosphere models need better representation of vegetation phenology: results from the North American Carbon Program Site Synthesis. *Glob. Change Biol.* **18**, 566–584 (2012).
54. Krinner, G. et al. A dynamic global vegetation model for studies of the coupled atmosphere-biosphere system. *Glob. Biogeochem. Cycle* **19**, GB1015 (2005).

Acknowledgements

This work was funded by the National Key R&D Program of China (Grant No. 2018YFA0606102), National Natural Science Foundation of China (Grant No. 41871032), Youth Innovation Promotion Association, CAS (Grant No. 2018070), and Program for 'Kezhen' Excellent Talents in IGSNRR, CAS (Grant No. 2018RC101). PC and JP were supported by ERC Synergy grant ERC-SyG-2013-610028 IMBALANCE-P.

Author contributions

H.W., C.W., and Q.G. designed the research. H.W. analyzed the data and wrote the first draft of the paper. C.W., J.P., and P.C. extensively revised the writing. All the authors contributed to writing the paper.

Competing interests

The authors declare no competing interests.

Additional information

Supplementary information is available for this paper at <https://doi.org/10.1038/s41467-020-18743-8>.

Correspondence and requests for materials should be addressed to H.W., C.W. or Q.G.

Peer review information *Nature Communications* thanks the anonymous reviewers for their contributions to the peer review of this work. Peer review reports are available.

Reprints and permission information is available at <http://www.nature.com/reprints>

Publisher's note Springer Nature remains neutral with regard to jurisdictional claims in published maps and institutional affiliations.



Open Access This article is licensed under a Creative Commons Attribution 4.0 International License, which permits use, sharing, adaptation, distribution and reproduction in any medium or format, as long as you give appropriate credit to the original author(s) and the source, provide a link to the Creative Commons license, and indicate if changes were made. The images or other third party material in this article are included in the article's Creative Commons license, unless indicated otherwise in a credit line to the material. If material is not included in the article's Creative Commons license and your intended use is not permitted by statutory regulation or exceeds the permitted use, you will need to obtain permission directly from the copyright holder. To view a copy of this license, visit <http://creativecommons.org/licenses/by/4.0/>.

© The Author(s) 2020