



HAL
open science

Single-sulfur atom discrimination of polysulfides with a protein nanopore for improved batteries

Fanny Bétermier, Benjamin Cressiot, Giovanni Di Muccio, Nathalie Jarroux, Laurent Bacri, Blasco Morozzo Della Rocca, Mauro Chinappi, Juan Pelta, Jean-marie Tarascon

► To cite this version:

Fanny Bétermier, Benjamin Cressiot, Giovanni Di Muccio, Nathalie Jarroux, Laurent Bacri, et al.. Single-sulfur atom discrimination of polysulfides with a protein nanopore for improved batteries. *Communications Materials*, 2020, 1 (59), 10.1038/s43246-020-00056-4 . hal-02964596

HAL Id: hal-02964596

<https://hal.science/hal-02964596>

Submitted on 26 Oct 2020

HAL is a multi-disciplinary open access archive for the deposit and dissemination of scientific research documents, whether they are published or not. The documents may come from teaching and research institutions in France or abroad, or from public or private research centers.

L'archive ouverte pluridisciplinaire **HAL**, est destinée au dépôt et à la diffusion de documents scientifiques de niveau recherche, publiés ou non, émanant des établissements d'enseignement et de recherche français ou étrangers, des laboratoires publics ou privés.

Single-sulfur atom discrimination of polysulfides with a protein nanopore for improved batteries

Fanny Bétermier^{1,2,3,7}, Benjamin Cressiot^{2,4,7}, Giovanni Di Muccio⁵, Nathalie Jarroux^{2,3}, Laurent Bacri^{2,3}, Blasco Morozzo della Rocca⁶, Mauro Chinappi⁵, Juan Pelta^{2,3}✉ & Jean-Marie Tarascon^{1,2}✉

Research on batteries mostly focuses on electrodes and electrolytes while few activities regard separator membranes. However, they could be used as a toolbox for injecting chemical functionalities to capture unwanted species and enhance battery lifetime. Here, we report the use of biological membranes hosting a nanopore sensor for electrical single molecule detection and use aqueous sodium polysulfides encountered in sulfur-based batteries for proof of concept. By investigating the host-guest interaction between polysulfides of different chain-lengths and cyclodextrins, via combined chemical approaches and molecular docking simulations, and using a selective nanopore sensor inserted into a lipid membrane, we demonstrate that supramolecular polysulfide/cyclodextrin complexes only differing by one sulfur can be discriminated at the single molecule level. Our findings offer innovative perspectives to use nanopores as electrolyte sensors and chemically design membranes capable of selective speciation of parasitic molecules for battery applications and therefore pave the way towards smarter electrochemical storage systems.

¹ Collège de France, Chimie du Solide et de l'Énergie, UMR 8260, 75231 Paris, Cedex 05, France. ² Réseau sur le Stockage Electrochimique de l'Énergie (RS2E), FR CNRS 3459, 80039 Amiens, Cedex, France. ³ Université Paris-Saclay, Univ Evry, CNRS, LAMBE UMR 8587, 91025 Evry, France. ⁴ CY Cergy Paris Université, CNRS, LAMBE UMR 8587, 95000 Cergy, France. ⁵ Dipartimento di Ingegneria Industriale, Università di Roma Tor Vergata, Via del Politecnico 1, 00133 Roma, Italy. ⁶ Dipartimento di Biologia, Università di Roma Tor Vergata, Via della Ricerca Scientifica 1, 00133 Roma, Italy. ⁷ These authors contributed equally: Fanny Bétermier, Benjamin Cressiot. ✉email: juan.pelta@univ-evry.fr; jean-marie.tarascon@college-de-france.fr

Batteries, as one of the most versatile energy storage technologies, play a central role in the ongoing transition from fossil fuels to renewable energy¹. Among them, the Li-ion batteries are the technology of choice as they offer the largest energy density while their cost is continuously decreasing^{2,3}. Nevertheless, improvements are needed to increase their lifetime and sustainability. Hence the ongoing activities center on alternative technologies (Na-ion, Li-air, Li-S,...) but also in the quest of means to enhance present batteries lifespan, durability and reliability. The latter calls for the development of smart batteries embedded with intelligent sensing⁴ and curing chemical functionalities^{5,6}.

Great advances have been made over the last few years to either restore the electrode conductivity⁷ or at the electrolyte-membrane component to regulate species migration when injured⁸. Not surprisingly, most of the auto-repairing approaches are inspired by biological systems and benefit from the general strategies and formalisms well established for most living creatures. Following nature's strategy relying on the use of sacrificial weak bonds for self-repairing, battery scientists have developed materials based on bio-molecules or polymers, with auto-repairing properties⁶ relying on dynamic supramolecular self-assembly such as hydrogen bonding, ionic bonding or host-guest interaction^{5,7}.

Among supramolecular materials, cyclodextrins have been extensively studied because of their rich molecular recognition that is temperature dependent and their wide range of functionalization. Thus the feasibility to use the temperature as a stimulus⁹ to regulate on demand the uptake or release of trapped species within their cavities, offers an interesting auto-repairing function¹⁰. Such properties have already been widely exploited for thermal switches¹¹ and in medicine for drug delivery¹² or as a molecular adapter to identify the DNA nucleotides¹³, or small organic molecules¹⁴. Cyclodextrins have recently entered the field of batteries as well, as witnessed by the design of highly stretchable binders integrating sliding ring polyrotaxanes¹⁵, e.g., self-assembled architectures of cyclodextrins to auto-repair fractured Si electrodes. Such supramolecular structures were also used as ionic conducting polymer membrane in Li-ion batteries^{16,17} and cyclodextrins trapping properties were exploited by placing cyclodextrins polymers in S-based electrodes to address the redox shuttle issue in Li-S batteries, e.g., migration of soluble polysulfides Li_2S_n ($3 \leq n \leq 8$), intermediates back and forth between the two electrodes¹⁸. Alternatively, other strategies to tackle the polysulfide shuttle effect have focused on the separator to prevent $(\text{S}_n)^{2-}$ diffusion to the anode with either micro intrinsic porosity^{19,20} or using grafting chemistry to repeal $(\text{S}_n)^{2-}$ via repulsive electrostatic interactions²¹.

Up to now, existing analytical techniques to identify intermediate polysulfides and monitor Li-S batteries electrolyte composition, such as UV-vis, X-ray, mass spectrometry or cyclic voltammetry²² do not allow to detect and sequence at the single molecule level these parasitic redox species. Here, we focus on the high-resolution detection of sulfide-based species differing by one sulfur atom by using the nanopore technology. This powerful single molecule technique, based on electrical detection, is highly sensitive to the nature of the ion used, but more importantly to the size, conformation and chemical nature of molecules analyzed. Such single molecule approach using protein nanopores has already been successfully implemented for the ultrafast sequencing of nucleic acids²³ together with the high-resolution size discrimination of biomolecules^{24,25}, for biomarkers^{26,27} or pathogenic agent detection²⁸. These nanopore-based sensors are now employed for the detection of subtle chemical modifications^{29,30} or to read the sequence of biomolecules^{31,32}. Nanopores are also used to study protein conformational changes and transitions^{33,34}, epigenetics by detection of DNA

methylations^{35,36} or for metabolome analysis³⁷. Further pushing this technique to its limits researchers have recently identified the twenty amino acids³⁸, paving the way to protein sequencing. Thus, a burning question regards the implementation of this technique to the field of batteries.

Herein we report a protein channel, α -hemolysin (α -HL) nanopore, with a β -cyclodextrin adapter as a simplified model to understand the encapsulation of polysulfides by cyclodextrins to be extended to smart membrane design for Li-S batteries. As a proof of concept of both cyclodextrins affinity towards $(\text{S}_n)^{2-}$ and nanopore sensitivity, we have used Na-based polysulfide species Na_2S_n ($n = 3, 4, 5$) in aqueous media that can be found as catholyte in aqueous Na-ion/polysulfide batteries³⁹⁻⁴¹. In this contribution, the reversible equilibrium complexation between sodium polysulfides and cyclodextrins is demonstrated and their interaction characterized by complementary NMR spectroscopy, nanopore experiments and molecular docking calculations. Finally, we highlight the promising use of the nanopore technology as being able to detect and discriminate redox species at the single sulfur atom level.

Results

Cyclodextrins reversibly store and deliver polysulfides guest.

Monitoring the outcome of polysulfides species in aqueous or non-aqueous (Li, Na) metal batteries has been of paramount importance. Few approaches have been tried. They consist in targeting polysulfide migration by trapping them at the positive electrode via confinement (mesoporous carbons) or surface adsorption (oxides) means⁴², or by tuning the electrolyte⁴³ composition, or using chemically-grafted entangled separators^{20,21}. Because of the limited success of these approaches we have looked for an alternative with enhanced selectivity in their entrapping. In light of a recent work¹⁸ on the supramolecular interaction between β -cyclodextrin and sodium or lithium S_4 polysulfide, we further explore the cyclodextrin benefits towards polysulfide trapping. Our strategy consists in developing a methodology to quantify and understand the supramolecular interactions between different cyclodextrins (α , β , and γ) and different polysulfides chain lengths in aqueous media, which has not been achieved yet.

To do so, several aqueous polysulfides solutions were prepared in an aqueous buffer by mixing in stoichiometric ratio Na_2S with S under Argon atmosphere. The sulfur chain lengths were varied in order to get Na_2S_2 , Na_2S_3 , Na_2S_4 , Na_2S_5 via a solution process (see "Methods" section) and characterized by UV-vis spectroscopy as previously reported²² (Supplementary Fig. 1). The interaction between polysulfides and the different cyclodextrins was determined by ^1H NMR following the chemical shifts of the different protons of cyclodextrins in presence of polysulfides. Figure 1bi shows the ^1H NMR spectrum of β -cyclodextrin and Na_2S_5 in the deuterated buffer (red) with respect to the spectrum of β -cyclodextrin alone in the same buffer (blue). In addition, a 2D HSQC experiment was performed for signal attribution of the different protons of the cyclodextrins (Supplementary Fig. 2). The chemical shifts differences indicate the existence of a complexation equilibrium. As the exchange rate of this equilibrium is very fast compared to the NMR time scale, the peaks assigned to free and complexed cyclodextrin populations are merged and appear as the weight average chemical shift of both populations. It is worth noticing that the most shifted protons turn out to be the ones pointing inside the cavity of the host molecule such as H_3 (Fig. 1bii and Supplementary Fig. 3). In this way, the host-guest interaction through the inclusion of Na_2S_5 inside the β -cyclodextrin cavity can be hypothesized. Therefore, we mainly focused on H_3 to make the following quantitative analysis.

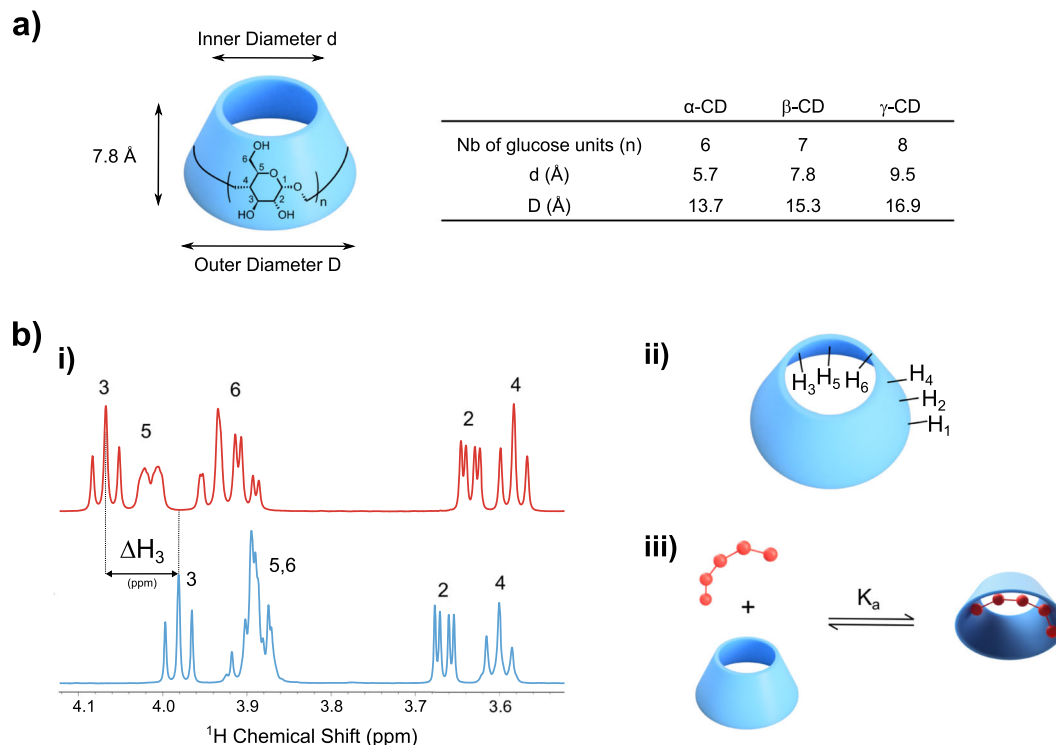


Fig. 1 ^1H NMR demonstration of host-guest complexation between cyclodextrin and polysulfides. **a** Chemical structures and geometric dimensions of α -cyclodextrins, β -cyclodextrins, and γ -cyclodextrins⁵². As macrocyclic ring molecules composed of, respectively, 6, 7, or 8 glucopyranoside units, α -cyclodextrins, β -cyclodextrins, or γ -cyclodextrins can adopt their cone-truncated conformation whose inner and outer diameters vary, respectively, from 5.7 to 9.5 Å and 13.7 to 16.9 Å⁵². The primary hydroxyl groups are located on the narrower rim of the molecule and the secondary ones are on the wider one. **b** (i) Selected region of the ^1H NMR spectra (600 MHz, D_2O , 298 K, pH 10, 25 mM NaHCO_3) of native β -cyclodextrin (10 mM, blue) and β -cyclodextrin in presence of Na_2S_5 (equimolar ratio 10 mM, red) illustrating the host-guest interaction. (ii) Schematic location in the cyclodextrins 3D-structures of the hydrogens shown in the NMR spectra. (iii) Schematic representation of the host-guest interaction equilibrium between β -cyclodextrin and Na_2S_5 (Na^+ counter ions were not represented for better readability).

Similarly, experiments with α -cyclodextrins and γ -cyclodextrins were performed and the existence of an equilibrium complexation was confirmed as well (Supplementary Figs. 2 and 3).

To go deeper in the characterization of the complex, continuous variation method, also known as Job's plot, was performed to determine the stoichiometry of the studied supramolecular complexes⁴⁴. Figure 2a shows the Job's experiments for the different cyclodextrins (α , β , γ) with Na_2S_5 . Thus, the (1:1) stoichiometry for the inclusion complexation which corresponds to the Σ ratio of 0.5 was validated. We also performed molecular docking calculations in order to support our findings. Docking results show that in all cases polysulfides bind inside the cyclodextrins cavities, as shown in Supplementary Fig. 4 and Fig. 3c for β -cyclodextrin. Furthermore, regarding α -cyclodextrins and β -cyclodextrins, there is room for only one polysulfide guest per cyclodextrin host (see Supplementary Fig. 5). This is in full agreement with the NMR experiments. It can be recalled that reversible supramolecular aggregation relies on weak bonds: here both the curvature of the Job's plots (Fig. 2a), indicative of weak binding, and the affinity scores evaluated in the docking runs (Supplementary Fig. 4) are consistent with this picture. At the same time these results, hinting strongly a one-to-one stoichiometry, provided us with a 2-states thermodynamic equilibrium model as illustrated in Fig. 1biii. Then we carried out ^1H NMR titration experiments (see "Methods" section) by fitting the H_3 NMR chemical shift of the different cyclodextrins with the corresponding binding isotherm model in order to calculate the different association constants for the complex formation of Na_2S_5 with α -cyclodextrins, β -cyclodextrins, and γ -cyclodextrins⁴⁴ (Fig. 2b). Comparable values to the previous reports⁴⁵ were found

and interestingly, β -cyclodextrin turns out to have the best affinity towards Na_2S_5 with an association constant of $K_{\beta 5} = 181 \pm 4 \text{ M}^{-1}$, almost three times larger than with α -cyclodextrins and γ -cyclodextrins, $K_{\alpha 5} = 62 \pm 11 \text{ M}^{-1}$ and $K_{\gamma 5} = 52 \pm 9 \text{ M}^{-1}$, respectively. Molecular docking affinity ranking over all the Na_2S_5 /cyclodextrin inclusion complexes led to the same result highlighting the stronger affinity for the β -cyclodextrin (Supplementary Fig. 4). Hence our experimental and numerical results confirm previous literature reports^{10,45}. Although the Van't Hoff plots are useful for spotting an exothermic complexation phenomenon, they fall short in sensing the difference in the strength of complexation of α -cyclodextrins or β -cyclodextrins towards Na_2S_5 (Supplementary Fig. 6). This does not come as a surprise in light of the different dynamical conformations of α -cyclodextrins or β -cyclodextrins in water, noted by our Molecular Dynamics simulations, as well as the geometrical complementarity issues, to name a few, which likely play a role in this complex phenomenon (Supplementary Figs. 7 and 8).

Tracking the most stable β -cyclodextrin inclusion complexes, we investigated different sizes of polysulfides. To do so, we coupled titration experiments with molecular docking calculations. As shown in Fig. 3a, a quite strong correlation is exhibited between the length of the sulfide chain and the corresponding association constants $K_{\beta 5} = 181 \pm 4 \text{ M}^{-1}$ and $K_{\beta 4} = 136 \pm 4 \text{ M}^{-1}$ for Na_2S_5 and Na_2S_4 , respectively, with β -cyclodextrin. $K_{\beta 3}$ could not be estimated with as high reliability ($152 \pm 14 \text{ M}^{-1}$) as the previous ones because of the uncertainties of the small H_3 chemical shifts measured. On the other hand, considering H_6 shifts validates the correlation hypothesis (Supplementary Fig. 9).

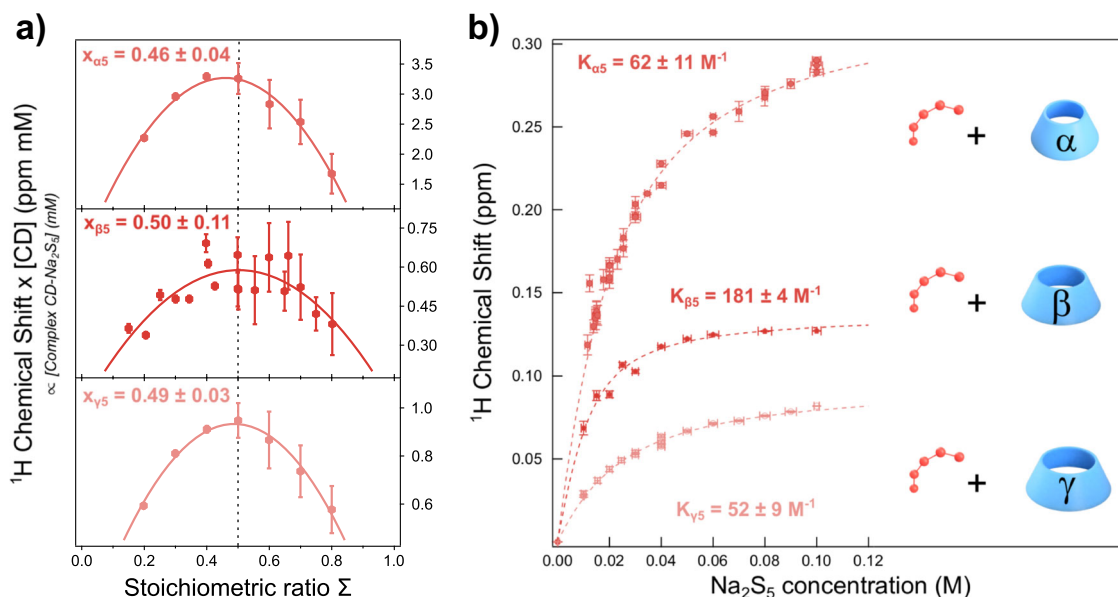


Fig. 2 Influence of the nature of cyclodextrin on the Na_2S_5 /cyclodextrin host-guest interaction. **a** Experimental Job's plot obtained following H_3 shift for α -cyclodextrins, β -cyclodextrins, and γ -cyclodextrins in presence of Na_2S_5 (respectively, top-down). Second order polynomial fitting whose maximum is obtained for the stoichiometric ratio, Σ , (see "Methods" section) matches with the stoichiometry of the complex. **b** ^1H NMR titration plots for the inclusion of Na_2S_5 in the different cyclodextrins cavities and fitted binding isotherms determined from H_3 signal for α -cyclodextrins, β -cyclodextrins, γ -cyclodextrin with indication of the resulting association constants $K_{\alpha 5}$, $K_{\beta 5}$, and $K_{\gamma 5}$ for the corresponding 1:1 inclusion complex. The statistic error relative to the chemical shift measurement was obtained by the calculation of the standard deviation of 10 similar and independent points and is estimated to 9%. The plotted error bars were calculated considering the uncertainties propagation (see "Methods" section).

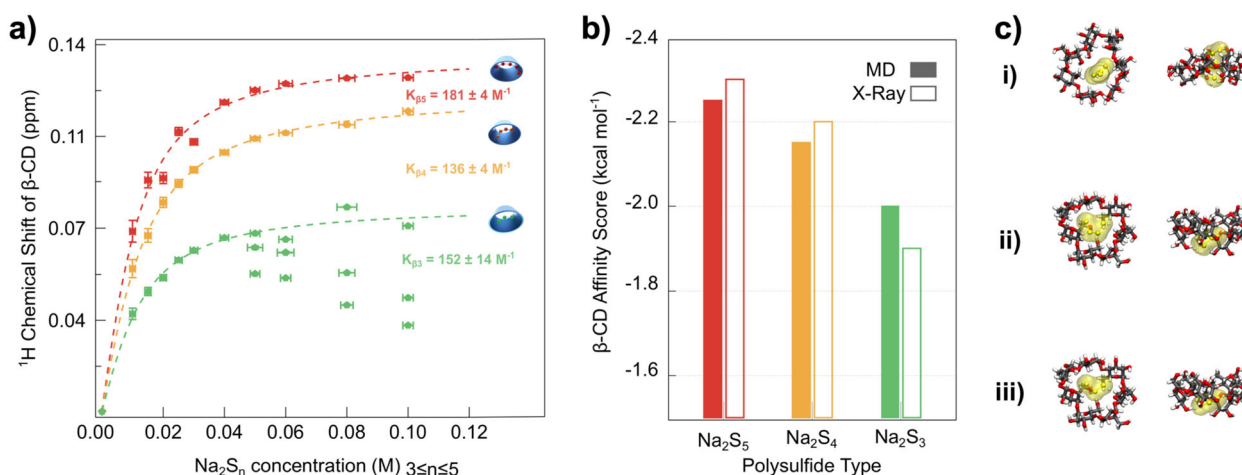


Fig. 3 Influence of polysulfides chain length on β -cyclodextrin complexation. **a** Experimental binding isotherms for β -cyclodextrin complexes with Na_2S_5 (red), Na_2S_4 (orange), Na_2S_3 (green), (See "Methods" section). The statistic error relative to the chemical shift measurement was obtained by the calculation of the standard deviation of 10 similar and independent points and is estimated to 9%. The plotted error bars were calculated considering the uncertainties propagation (see "Methods" section). **b** Best docking affinity scores (kcal mol $^{-1}$) over all the calculated β -cyclodextrin inclusion complexes with Na_2S_5 (red), Na_2S_4 (orange), and Na_2S_3 (green). The first set of calculations used the cyclodextrin structures extracted from PDB as receptors (empty bars) and the second set used the cyclodextrin structures generated by Molecular Dynamics simulations (full bars) (See "Methods" section and Supplementary Fig. 4). **c** Corresponding best docking poses for (i) Na_2S_5 / β -cyclodextrin, (ii) Na_2S_4 / β -cyclodextrin, and (iii) Na_2S_3 / β -cyclodextrin complexes. Receptors structures are those obtained from Molecular Dynamics simulations, top and side view; β -cyclodextrin in sticks, polysulfides in yellow space-fill representation, figure made with VMD⁶⁴.

This observation is consistent with the similar trend obtained by calculations (Fig. 3b), performed by docking the different polysulfides both on the cyclodextrin structures extracted from the Protein Data Bank⁴⁶ (PDB) and on the ones generated by Molecular Dynamics simulations, which may better represent the cyclodextrin behavior in solution (Supplementary Figs. 7 and 8). In all cases, the general trend is a (1:1) complex formation,

with $(\text{S}_n)^{2-}$ inside the cyclodextrin cavity (Fig. 3c). The calculated affinity scores increase with the length of the sulfide chain and thus confirm a weaker affinity for the Na_2S_3 / β -cyclodextrin complex, explaining the experimental noisy curve for this pair (Fig. 3a, green points). Therefore, the results indicate a non-specific complex formation but highlighted a polysulfide's size-dependent complexation towards β -cyclodextrin. Similar

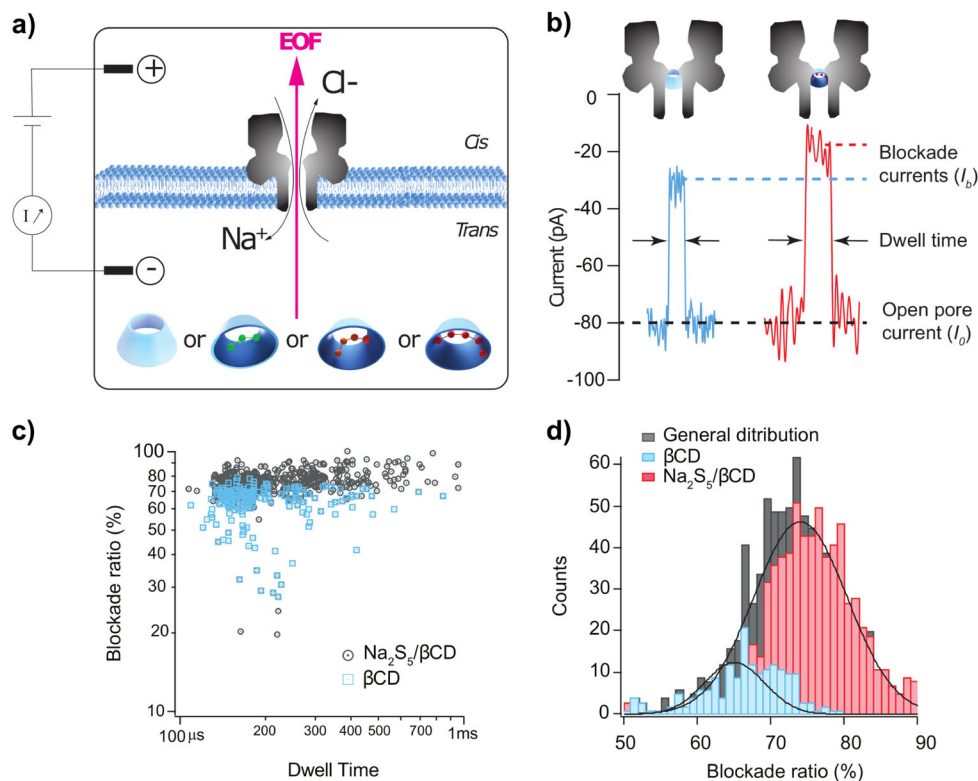


Fig. 4 Discrimination of $\text{Na}_2\text{S}_5/\beta$ -cyclodextrin complex versus β -cyclodextrin using an α -hemolysin (α -HL) nanopore. **a** Schematic of the ion–current measurement set-up. One protein nanopore is inserted into a suspended lipid bilayer. An electrical potential is applied via two Ag/AgCl electrodes, which induces an ionic current of Na^+ and Cl^- ions through the nanopore (1 M NaCl, 25 mM NaHCO_3 pH 10, under argon atmosphere). At pH 10, the α -HL is anion selective (see Supplementary Fig. 15), consequently, an electro-osmotic flux (EOF) directed from *trans* to *cis* sets in favoring the entry of β -cyclodextrin and $\text{Na}_2\text{S}_5/\beta$ -cyclodextrin into the stem part of the α -HL. **b** Detail of a part of current trace blockades arising from β -cyclodextrin (blue) and from $\text{Na}_2\text{S}_5/\beta$ -cyclodextrin complex (red) interaction with the pore at -100 mV. I_0 is the ionic open pore current and I_b the blockade current. **c** Scatter plots of blockade ratio, given by the relation $(I_0 - I_b)/I_0$, versus dwell time in presence of 1 mM β -cyclodextrin (blue, 225 events) and 1 mM $\text{Na}_2\text{S}_5/\beta$ -cyclodextrin complex solution (gray, 761 events) (5 independent experiments). **d** General distribution (gray) blockade ratio histogram in presence of 1 mM $\text{Na}_2\text{S}_5/\beta$ -cyclodextrin complex (945 events). Deconvolution of the general distribution showing two populations attributed to β -cyclodextrin (blue, $64.0 \pm 2.0\%$) and $\text{Na}_2\text{S}_5/\beta$ -cyclodextrin (red, $74.0 \pm 0.3\%$).

experiments performed with α -cyclodextrin exhibit the same trend (Supplementary Fig. 10). Thus, the number of sulfur atoms is supposed to play a major role in the host-guest interaction. Altogether, these experiments gather essential parameters pertaining to the β -cyclodextrin interactions with polysulfides that turn out to be the key to successfully implementing our nanopore sensing technique.

Detection of the different polysulfides species by nanopore.

In order to fine-tune the characterization of $\text{Na}_2\text{S}_5/\beta$ -cyclodextrin complex, we used the nanopore approach to detect and discriminate at the single molecule level each species. With this approach, two compartments (*cis* and *trans*) immersed with an electrolyte are separated by a protein channel, α -hemolysin (α -HL), inserted into a lipid bilayer (Fig. 4a). Applying a constant potential difference between the two electrodes in absence of any species enables the measurement of a stable pA ionic current flowing through the pore (Fig. 4b, open pore current). Species passing through the nanopore, or clogging the nanopore without translocating, partially block ion transport inducing a detectable decrease of the open pore ionic current. These current blockades are characteristic of the species size, sequence and chemical modifications^{13,24,25,38}. In the last years, β -cyclodextrins have been used to narrow the α -HL pore constriction to enhance the

capability of the pore to discriminate nucleotides¹³ and organic compounds¹⁴. For protein pores such as α -HL, the ion selectivity of the channel creates an electro-osmotic flux (EOF). The EOF is the net water flow and it is associated to the ion selectivity of the pore⁴⁷. Indeed, the selectivity results in an unbalance between positive and negative ion fluxes that gives rise to a net motion of water molecules. The EOF is known to affect the entrance of the neutral cyclodextrin through the stem of the nanopore and its lodging into the channel⁴⁸. The interaction of β -cyclodextrin with α -HL has been studied as a function of a wide range of pH (5 to 11), transmembrane potentials (mV) and nature of electrolyte salt, in order to control the entry and dwell times of cyclodextrins into the nanopore^{48,49}. We used this strategy to compare β -cyclodextrin and $\text{Na}_2\text{S}_5/\beta$ -cyclodextrin complex using an α -HL pore. We first tested the effect of pH 10 on the α -HL pore (Supplementary Fig. 11) and found similar currents as previously published⁴⁹. The solution pH alters the protonation state of exposed amino acids and, hence, it can affect ion selectivity. A previous study⁵⁰ indicates that α -HL selectivity inverts between pH 7.5 (anion selective) and pH 11 (cation selective). Here, we work at pH 10 where, to the best of our knowledge, no literature data provide information on the α -HL selectivity and on the direction of the EOF. In order to characterize the EOF, we hence performed a computational analysis via all-atom Molecular Dynamics simulation. We considered two different plausible titration states of α -HL at pH 10, a first one where only the

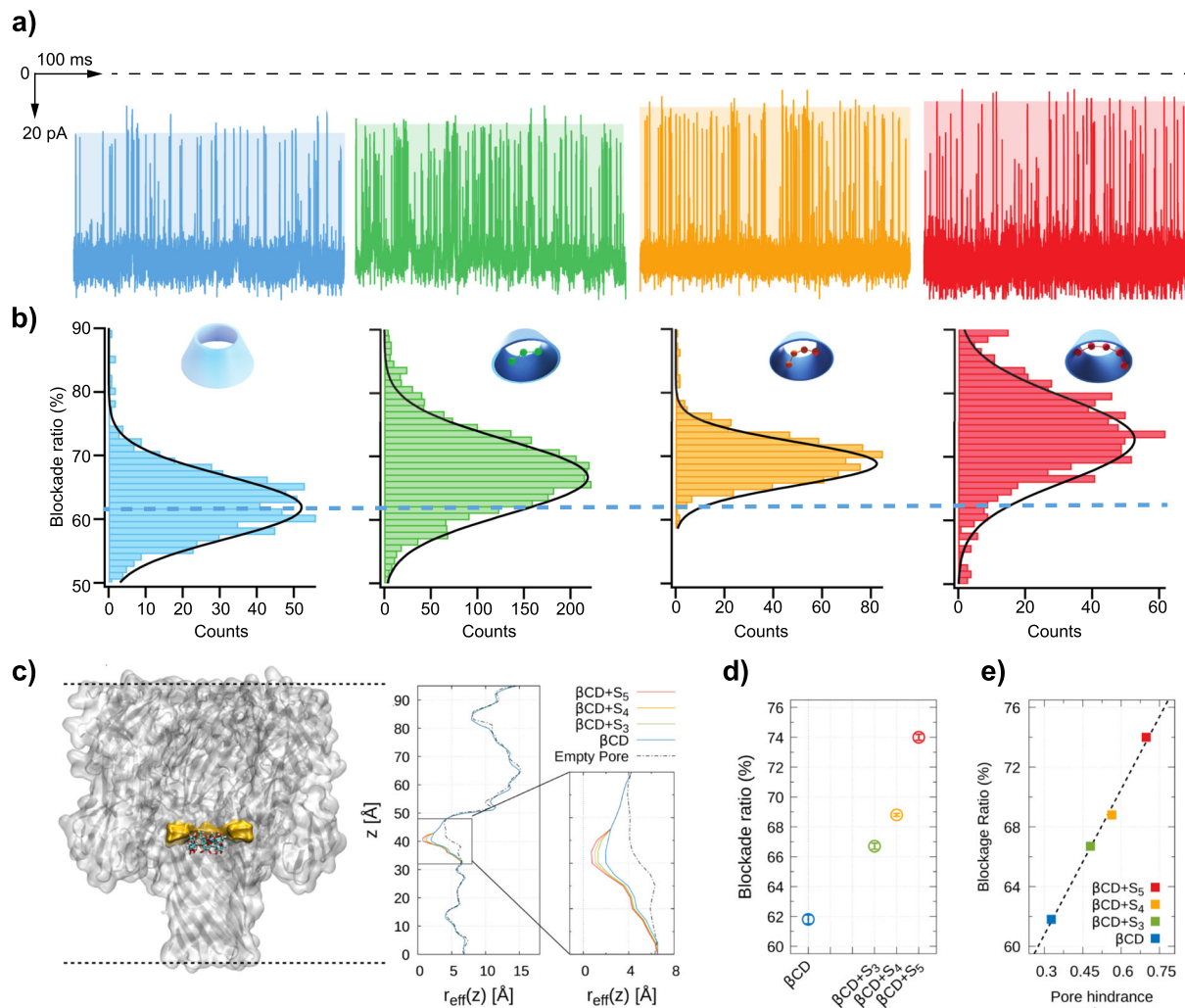


Fig. 5 Discrimination of $\text{Na}_2\text{S}_x/\beta$ -cyclodextrin complexes. **a** Part of current versus time traces of an α -HL pore at -100 mV, in the presence of 1 mM β -cyclodextrin (blue), $\text{Na}_2\text{S}_3/\beta$ -cyclodextrin (green), $\text{Na}_2\text{S}_4/\beta$ -cyclodextrin (orange), $\text{Na}_2\text{S}_5/\beta$ -cyclodextrin (red). All experiments are independent (6 in total), performed in 1 M NaCl, 25 mM NaHCO_3 pH 10, at -100 mV, in an Argon filled glovebox. **b** Histograms of blockade ratio for β -cyclodextrin (blue, $61.8 \pm 0.3\%$), $\text{Na}_2\text{S}_3/\beta$ -cyclodextrin (green, $66.7 \pm 0.2\%$), $\text{Na}_2\text{S}_4/\beta$ -cyclodextrin (orange, $68.8 \pm 0.1\%$), $\text{Na}_2\text{S}_5/\beta$ -cyclodextrin (red, $74.0 \pm 0.3\%$). **c** Accessible volume estimation from Molecular Dynamics simulations. α -HL constriction is highlighted in yellow, while β -cyclodextrin atoms are represented as balls-and-sticks. The plot reports the radius of the effective pore section available for ion passage. The effective pore section in the presence of β -cyclodextrin and $\text{Na}_2\text{S}_x/\beta$ -cyclodextrin are represented using the same color code of the other panels. **d** Experimental current blockades. Error bars are the confidence intervals of the average estimator (see “Methods” section). **e** Nanopore hindrance estimator calculated from atomistic model. Panel (c) was made using the VMD software.

seven N-Terminal (Ala1) are protonated and a second one where, in addition to Ala1, we also changed one (out of seven) Lys8 and one (out of seven) Tyr102, (Supplementary Fig. 12). For both cases, we explored transmembrane electric potentials ranging from -500 mV to 500 mV. We found that, in all the cases, the anion (Cl^-) flow is much larger than the cation (Na^+) flow and the electro-osmotic flux is directed as the anions (Supplementary Figs. 13 and 14). These results suggested us to perform experiments at a negative applied voltage so that the direction of negative ions and of the EOF is *trans-to-cis*, see Fig. 4a. In this condition, after addition of 1 mM β -cyclodextrin or $\text{Na}_2\text{S}_5/\beta$ -cyclodextrin complex into the trans compartment, we detected partial transient ionic current blockades (Fig. 5c, d) due to interactions of the molecules within the α -HL stem. It implies that ions, here Na^+ and Cl^- are still transported through the $\text{Na}_2\text{S}_5/\beta$ -cyclodextrin complex lodged in the α -HL while the complex cannot go through due to steric hindrance. In addition, we do not expect the polysulfides to cross the membrane via β -cyclodextrin constriction as well. This is based on the size of

the $(\text{S}_n)^{2-}$ species⁵¹, ~ 9.1 Å (S_3)²⁻ or ~ 11.7 Å (S_5)²⁻, which is greater than the narrower diameter (~ 7.8 Å) of the cone-like shape of cyclodextrin⁵². Nevertheless, when β -cyclodextrin or $\text{Na}_2\text{S}_5/\beta$ -cyclodextrin complex is added to the *cis* compartment, no such current blockades were observed (data not shown). This result is indicative of an EOF from trans to cis compartment preventing molecules to enter the α -HL.

The blockade ratio, given by the relation $(I_0 - I_b)/I_0$ where I_0 is the ionic open pore current and I_b is the blockade current, versus individual event dwell times scatter plots (Fig. 4c) shows two distinct event populations for free β -cyclodextrin molecules compared to $\text{Na}_2\text{S}_5/\beta$ -cyclodextrin complex. While dwell times cannot be used as a parameter for discrimination of β -cyclodextrin and $\text{Na}_2\text{S}_5/\beta$ -cyclodextrin complex (Supplementary Fig. 11), we found that the general distribution of current blockade ratios for $\text{Na}_2\text{S}_5/\beta$ -cyclodextrin complex can be deconvoluted (Fig. 4d) and shows two populations centered in $74.0 \pm 0.3\%$ and $64 \pm 2\%$. These populations were attributed to the

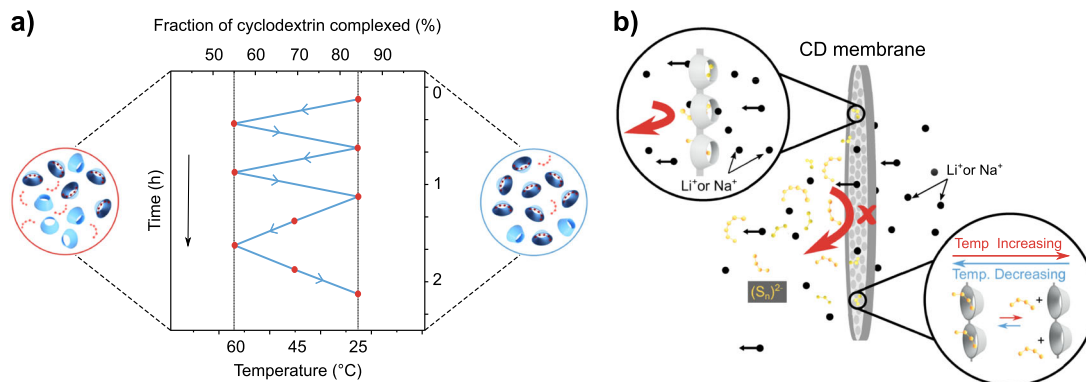


Fig. 6 Temperature-sensitive host-guest interaction between cyclodextrins and polysulfides. **a** ^1H NMR temperature cycling experiment (600 MHz, D_2O , 25 mM NaHCO_3 , pH 10) on α -cyclodextrin (10 mM) in presence of Na_2S_5 (100 mM). Fraction of α -cyclodextrin complexed, given by the relation of $\Delta\text{H}_3/\Delta\text{H}_{3\text{max}}$ (See “Methods” section), is represented as a function of temperature during heating up (60 °C, $55.1 \pm 0.1\%$) and cooling down (25 °C, $84.3 \pm 0.1\%$) cycles, where confidence intervals are calculated as reported in “Methods” section. Because of technical restriction of the NMR probe, we could not go to higher temperature. We expect an almost total dissociation of the complex being achieved increasing the temperature though. **b** Conceptual illustration of a thermo-responsive cyclodextrin material as an efficient regenerative Li-S battery separator.

$\text{Na}_2\text{S}_5/\beta$ -cyclodextrin complex ($74.0 \pm 0.3\%$) and the free β -cyclodextrin in solution ($64 \pm 2\%$), respectively. The ratio between number of events associated to the $\text{Na}_2\text{S}_5/\beta$ -cyclodextrin complex (red distribution) and the total number of events (gray distribution) is $81 \pm 2.5\%$. This is in very good agreement with the NMR calculated complexation fraction in the same conditions, namely $79 \pm 4\%$ (Supplementary Fig. 16).

We then characterized $\text{Na}_2\text{S}_5/\beta$ -cyclodextrin, $\text{Na}_2\text{S}_4/\beta$ -cyclodextrin, $\text{Na}_2\text{S}_3/\beta$ -cyclodextrin complexes and compared our results to free β -cyclodextrin molecules (Fig. 5). The current traces of each species show two kinds of current blockades associated with two types of events: (i) “bumping” events, characterized by brief, low-level current blockades, which arise due to diffusion of molecules close to the pore; and (ii) interaction events, characterized by larger current blockades of longer duration. In order to characterize the interaction of β -cyclodextrin and $\text{Na}_2\text{S}_x/\beta$ -cyclodextrin complex with α -HL, each current trace was statistically analyzed to determine the event current amplitude and to separate bumping events from interaction events (see “Methods” section, the reported data refer only to interaction events). We can observe a statistical decrease in the event current amplitudes correlated to a decrease of sulfur number for each complex (Fig. 5a). We find $74.0 \pm 0.3\%$, $68.8 \pm 0.1\%$, $66.7 \pm 0.2\%$ for $\text{Na}_2\text{S}_5/\beta$ -cyclodextrin, $\text{Na}_2\text{S}_4/\beta$ -cyclodextrin and $\text{Na}_2\text{S}_3/\beta$ -cyclodextrin complexes, respectively. Therefore, each complex is well discriminated from free β -cyclodextrin in solution with an average blockade ratio of $61.8 \pm 0.3\%$ (Fig. 5b). These results strongly suggest that polysulfide species are docked inside the β -cyclodextrin cavity and that we can discriminate each species at a single sulfur atom level. In order to support this finding, we also calculated from atomistic modeling the nanopore hindrance estimator introduced as a previous publication⁵³. The calculation is based on an approximated quasi-1D continuum description of the nanopore electric resistance. As a first step, we calculated from Molecular Dynamics simulations for each pore section the effective area available to the electrolyte passage for both the open α -HL and the α -HL with the β -cyclodextrin in the pore stem (Fig. 5c). Then, we subtracted from the effective area of the β -cyclodextrin case a section corresponding to the occupancy of the different sulfides. This allowed us to calculate the nanopore hindrance estimator as $b = 1 - R_0/R$ where R_0 and R are the quasi-1D resistance estimators for open pore and clogged pore. As already discussed⁵³, this method does not provide a

quantitative estimation of the current blockade. Indeed, it is based on several simplified assumptions not satisfied at the nanoscale, the main being: (i) it is a continuum method where atomistic details enter only via the effective area profile, (ii) it is a quasi-1D method that, in principle, is valid only for smoothly varying pore section and (iii) it neglects electrical double layer effects. Nevertheless, it allows to catch the qualitative trends of the current blockades as shown by the good correlation with the experimentally observed average current blocked (see Fig. 5e and Supplementary Fig. 17).

Discussion

Via the use of a protein nanopore sensor inserted into a lipid membrane we have demonstrated the feasibility to discriminate molecules that solely differ by a single sulfur atom. Indeed, the different polysulfide/ β -cyclodextrin complexes can be identified with great sensibility by a unique pattern of events in term of current blockade that increases with increasing the number of sulfur atoms, as intuitively expected. In addition, we could rationalize such an experimental work by molecular docking calculations and Molecular Dynamics simulations that provide evidence for the binding of the polysulfide inside the β -cyclodextrin cavity, as well as for the selective capture of the polysulfide/ β -cyclodextrin complexes by the α -HL nanopore. In the present process, the polysulfide/ β -cyclodextrin complexes formed in solution are specifically blocked by a nanopore embedded in a lipid membrane.

An extension of this work with respect to the Li-S technology is imminent and it enlists both the exploitation of cyclodextrin molecular recognition and its thermo-responsiveness⁹ for enhancing battery performances (Supplementary Figs. 18 and 19). To our knowledge, stimulus-responsive¹⁰ host-guest interaction properties have never been envisioned in batteries and we believe the described polysulfide/cyclodextrin interaction may offer some opportunities. At this stage with respect to practicality, we investigated the thermal stability of polysulfides/cyclodextrin complexes by ^1H NMR experiments rising the temperature (Supplementary Fig. 20) and through in-situ temperature cycling experiments (Fig. 6a). We found that the complexes can dissociate and form with a fast kinetic over a narrow temperature range in a neatly reversible way by increasing and decreasing the temperature, respectively. This suggests that temperature can be used as a stimulus to regulate the capture and release of

polysulfide species by cyclodextrins (Fig. 6). An envisioned scenario, as pictured in Fig. 6b, could be a separator membrane hosting cyclodextrins that could regulate polysulfides on demand. According to this scenario the diffusion of polysulfides intermediates towards the Li anode would be prevented while letting them participate in the redox process by thermal regeneration of the membrane.

Besides, in light of these results, the nanopore technology stands as being a powerful sensing tool to probe at the molecular level the sulfur speciation in aqueous Na-ion/polysulfide media^{39–41} and to test the hypothesis of manufacturing such membrane proposed in Fig. 6. Hence it may be envisioned as a novel in-situ probe of the unwanted polysulfide shuttle effect with a reliable identification of the intermediate species. However, we must admit that implementing our developed methodology to discriminate polysulfides in organic solvent would not be straightforward. It will call first for a thorough study of the polysulfide/cyclodextrin complexation equilibrium in organic electrolytes that differs from the one in water, because of the different dielectric constants between both media⁵⁴. Moreover, as non-aqueous electrolytes are not ideal for biological nanopores and lipid membranes, an alternative way to conduct nanopore sensing could consist, as being planned, in considering solid-state nanopores made of polymers or semi-conductors⁵⁵ mimicking biological ionic channels such as the α -HL. Such tailored membranes will offer a nice playground for molecule discrimination near real battery conditions because of their chemical stability in organic solvents. Independently of the approach to be pursued, it remains that this nanopore technique could provide an extra analytical tool to the battery community for discriminating at the molecular level, any parasitic redox products diffusing in the electrolyte. Bearing in mind that the formation of such products can poison the positive electrode, an obvious extension of this work regards the discrimination of the soluble alkyl carbonates species well known as troublemakers in some battery systems⁵⁶.

In summary, a comprehensive multidisciplinary approach combining spectroscopic and electrophysiological experiments was adopted to understand deeply and at the molecular level the host-guest complexation equilibrium between the cyclodextrins and polysulfides and this was complemented by Molecular Dynamics simulations and Docking calculations. We have used this rational strategy to enable single-molecule nanopore detection, and demonstrated this technique as being a powerful tool to discriminate in aqueous medium different polysulfides with a single sulfur atom resolution, hence specifically sequencing species migrating through a membrane. That perfectly fits with the need for increasing the selectivity of separators, which could completely prevent cross communication between two electrodes in various battery technologies. Finally, the thermally controlled polysulfide/cyclodextrin complex equilibrium offers opportunities to synthesize stimuli-responsive cyclodextrins materials for the development of novel regenerative separators. Although at its early stage and being aware that further developments are needed, we hope this work to pave the way towards smarter batteries with novel regenerative and sensing separators.

Methods

All materials were used as received without further purification step.

Preparation of sodium polysulfides solutions. Sodium polysulfides solutions (100 mM) were prepared according to a previously described method⁵⁷. In brief, they are formed by adding, Na_2S and S (purchased from Sigma-Aldrich) in stoichiometric ratios to a degassed aqueous solution buffered with 25 mM NaHCO_3 and set to pH 10 under continuous stirring for a week. All the preparations are done in an Argon filled glovebox.

The characterization of the different polysulfides solutions was performed by UV-vis absorbance spectroscopy through the calculation of the different molar

extinction coefficients (ϵ). Absorbance spectral profiles were measured over 200–1100 nm in a 1 cm airtight quartz cuvette for different diluted polysulfides solutions (0.3 mM to 1 mM) with a UV5 Bio Mettler Toledo spectrophotometer (Supplementary Fig. 1).

NMR titration experiments: polysulfide/cyclodextrin complexation. Both continuous variation method and titration experiments were performed as previously described⁴⁴. Association constants (K_a) for the inclusion polysulfides/cyclodextrin complexes were determined in sodium bicarbonate deuterated buffer D_2O (25 mM NaHCO_3 , pH 10) at 298 K by measuring the chemical shift variations in the ^1H NMR spectra (600 MHz) of a solution of the native cyclodextrin (10 mM) in the absence and in the presence of increasing amounts of polysulfides. Polysulfides solutions were prepared as previously mentioned but in a deuterated buffer. Different diluted solutions of polysulfides (from 10 mM to 100 mM) were mixed with pre-weighted cyclodextrin (± 1 mg) under Argon atmosphere. It is critically important to maintain a constant host concentration, pH and ionic strength throughout the titration experiment. Mixtures were vortexed for 1 min before acquisition of the ^1H NMR spectrum on a 600 MHz Bruker spectrometer. The chemical shifts of selected host protons resonances obtained at approximately 10 different host-guest concentration ratios with Top Spin 3.6 were plotted against the concentration of polysulfide. An iterative least-squares fitting procedure using a 1:1 stoichiometry binding model was performed with Igor Pro 6.37 to estimate for each polysulfides/cyclodextrin complex the association constant (K_a) and the maximum chemical shift (Δ_{max}) which is the chemical shift recorded if 100% complexation is achieved.

$$\frac{2 \times [\text{CD}] \times \Delta}{\Delta_{\text{max}}} = [\text{CD}] + [\text{Na}_2\text{S}_x] + \frac{1}{K_a} - \sqrt{\left([\text{CD}] + [\text{Na}_2\text{S}_x] + \frac{1}{K_a}\right)^2 - (4 \times [\text{CD}] \times [\text{Na}_2\text{S}_x])} \quad (1)$$

The one-to-one stoichiometry of the polysulfides/cyclodextrin complexes was determined using continuous variation method, also known as Job's plot. The mole fraction of polysulfide was varied while keeping the total concentration of the cyclodextrin and polysulfide constant, respectively, 50 mM, 16 mM, and 50 mM for α -cyclodextrins, β -cyclodextrins, and γ -cyclodextrins. The chemical shifts of selected host protons (H_3 essentially) resonances were obtained at approximately 8 different host-guest concentration ratios with Top Spin 3.6 and were plotted against the stoichiometric ratio:

$$\Sigma = \frac{[\text{CD}]}{[\text{Na}_2\text{S}_x] + [\text{CD}]} \quad (2)$$

According to the method, a second order polynomial fit was performed, and the stoichiometry of the studied complex was obtained from the x-coordinate at the maximum of the plot for which the concentration of the complexed cyclodextrin population is the highest.

The statistic error relative to the chemical shift measurement was obtained by the calculation of the standard deviation of 10 similar and independent points and is estimated to 9%. The plotted error bars were calculated considering the uncertainties propagation assuming the experimental errors (dilution and weighting) for each condition.

Electrical detection, data acquisition, and analysis. Membrane lipid bilayers were made according to previously described methods^{58,59}. In brief, a film of a 1% solution of diphytanoyl-phosphatidylcholine-lecithin (Avanti) in anhydrous decane (Sigma) was spread across a 150 μm diameter hole drilled in a polysulfone wall separating the two compartments of a chamber. Each compartment contained 900 μL of 1 M NaCl, 25 mM NaHCO_3 , pH 10 in an Argon filled glovebox. After thinning of the decane film and formation of a planar lipid bilayer, a single α -hemolysin (α -HL) pore is inserted by adding monomeric α -HL (Sigma) from a stock solution into the *cis* compartment. Insertion and orientation of the α -HL pore was systematically checked to ensure transport of β -cyclodextrin or $\text{Na}_2\text{S}_x/\beta$ -cyclodextrin complex into the stem part of the pore. 100 μL of 10 mM β -cyclodextrin or 10 mM $\text{Na}_2\text{S}_x/\beta$ -cyclodextrin complex was added to the *trans* compartment. Each data set was collected using independent experiments and different pores.

Data were collected using Chimera Instruments VC100 at a sampling rate of 4.17 MHz and low-pass filtered at 10 kHz. Data were analyzed with a homemade macro using Igor software (Wavemetrics). The event measurements were based on a statistical analysis of the current traces: 425, 3904, 1254, and 1178 events analyzed for β -cyclodextrin, $\text{Na}_2\text{S}_3/\beta$ -cyclodextrin, $\text{Na}_2\text{S}_4/\beta$ -cyclodextrin and $\text{Na}_2\text{S}_5/\beta$ -cyclodextrin, respectively. The statistical analysis of the current traces has been previously described⁶⁰. As the blockades shorter than 100 μs are attributed to bumpings of β -cyclodextrin or complexes at the entrance of the channel, we removed them from the scatter plot to obtain the Fig. 4c. Nevertheless, in this figure, blockades could be attributed both to β -cyclodextrin or complexes. In order to discriminate both blockade types, we took the blockade ratio into account (Fig. 4d), which depends on the nature, shape of the analyte. From the blockade ratio distribution, we removed the part attributed to the β -cyclodextrin, which was previously characterized in Fig. 5b, left (blue). Finally, we obtained the blockade ratio distribution attributed to the complexes (Fig. 5b). The center of each blockade ratio distribution was calculated from the average of results obtained from 5 different positions of the interval fits.

Atomistic simulation of the α -HL nanopore. Molecular Dynamics simulation set-up and production runs for estimating the ionic and electro-osmotic flows through the α -HL nanopore were performed as previously described⁶¹. In brief, we employed the H++ server⁶², version 3.2, to determine the probability that each titratable residue of the α -HL is protonated or not. This analysis allowed us to select two different plausible protonation states for the α -HL at pH 10, see Supplementary Figs. 12, 13, and 14 and Supplementary Note 2. For each of the α -HL protonation states, a triperiodic simulation box containing the α -HL nanopore embedded in a lipid membrane was assembled by using protocols described in previous works^{61,63}. The POPC lipid membrane, the water molecules and the ions were added using VMD⁶⁴. The system is neutralized and solvated at 1 M NaCl and then equilibrated ($T = 310$ K, $p = 1$ atm). The equilibrated configuration was used as initial condition for non-equilibrium runs where a uniform and constant external electric field was applied perpendicularly to the lipid bilayer, $\Delta V = E_z L_z$. Each simulation was run for 100 ns and frames were saved every 20 ps. Average currents and electroosmotic flow were calculated, similarly to previously reported^{61,63}, after discarding a 20 ns transient. Errors were estimated using block average protocol, with block length 5 ns. All the Molecular Dynamics simulations were performed using the NAMD software⁶⁵. The CHARMM36 force field⁶⁶ was employed for the lipids membrane and the α -HL nanopore, while TIP3P model was used for water⁶⁷. CUFIX corrections were applied to ions⁶⁸.

Nanopore hindrance estimator. The pore resistance can be written as an integral function of the electrolyte accessible area profile along the pore axis $A(z)$, as previously described⁵³. The $A(z)$ profiles for the empty pore, A_0 , and with the β -cyclodextrin inside the pore, $A_{\beta CD}$, were estimated using Molecular Dynamics simulations. A_0 was estimated through the simulation pH10a, discussed in Supplementary Note 2. $A_{\beta CD}$ was estimated through a second simulation, prepared locating a cyclodextrin molecule close to the α -HL constriction. The position of the cyclodextrin was chosen in accordance to the crystal structure of the M113F α -HL mutant complexed with β -cyclodextrin (PDB ID: 3M3R), by aligning the 3M3R α -HL structure upon the pre-equilibrated system pH10a. Alignment was performed minimizing the RMSD between the α -carbon of the protein. After alignment, the atom coordinates of the β -cyclodextrin were extracted from the 3M3R structure, and implemented into the pH10a system, deleting the overlapping water molecules. A first 1 ns NPT equilibration run was performed, keeping the cyclodextrin glycosidic oxygens (CHARMM type OG301) harmonically constrained ($k = 2.00$ kcal mol⁻¹ Å⁻¹) along the z -coordinates. Then, a second 16 ns NVT equilibration run was performed, with a constant electric field E_z applied along the z -axis, corresponding to a negative voltage of 0.5 V applied to the *trans*-side of the pore. Glycosidic oxygens of cyclodextrin, α -carbons of the protein and phosphorus of lipid heads were kept constrained ($k = 0.5$ kcal mol⁻¹ Å⁻¹). Finally, a 32-ns NVT production run were performed, letting the cyclodextrin free and keeping the other constrains same as the previous NVT. From the production run, the $A_{\beta CD}$ area profile was estimated. Regarding polysulfides, since, to the best of our knowledge, there was no reliable Molecular Dynamics force field to simulate the dynamical behavior of these molecules in our environment, we assumed in a first approximation that the volume of each single polysulfide (S_3 , S_4 , S_5) species is simply spread in a cylinder of length $L = 9$ Å. So, we subtracted a constant effective area for each polysulfide to the area profile $A_{\beta CD}$, from $z_0 = 36$ Å. The molecular volume of each polysulfide was calculated treating atoms as spheres and measuring how many points of a dense grid (0.1 Å³) were within a Van der Waals radius from each atom center. The volumetric occupancy map was computed using VMD's Volmap tool⁶⁴.

Atomistic simulation of cyclodextrins in a NaCl electrolyte solution. Molecular Dynamics simulations of the three types of cyclodextrin, (α -cyclodextrin, β -cyclodextrin, and γ -cyclodextrin) were performed to study the flexibility and characteristic conformations of these molecules in water. As initial cyclodextrin structures we used the eight medoids resulting from the cluster analysis of the crystallographic structures extracted from the Protein Data Bank⁴⁶ (see Supplementary Fig. 7 and Supplementary Note 1.1). For each medoid, we performed three independent Molecular Dynamics simulation replicas. Each simulation was composed of an ionized water box, 1 M NaCl, containing a single cyclodextrin molecule. The cyclodextrin molecules were modeled using the CHARMM General Force Field⁶⁹. The TIP3 model was used for the water molecules⁶⁷, and CUFIX corrections were used for ions⁶⁸. The initial dimensions of the cell are $50 \times 50 \times 50$ Å³. The system was first minimized for 100 steps with steepest descent gradient method and then equilibrated at constant pressure (1 atm) and temperature (300 K), for 2 ns. Then, a NVT production run of 160 ns was performed. Coordinates were sampled each 20 ps. Only the last 80 ns of each simulation were considered for the clustering analysis, resulting in a total of 4000 frames. All the simulations were performed with NAMD software⁶⁵. A structural clustering analysis, similar to the one above described for the selection of the PDB structures and fully detailed in Supplementary Note 1, was applied to extract the most representative cyclodextrin conformations. The medoids of the clustered structures, showed in Supplementary Fig. 8, were then taken as receptors in the docking calculations.

Molecular Docking of polysulfides with cyclodextrins. To provide molecular information on the association of the inclusion complexes formed by polysulfides S_3 , S_4 , S_5 and cyclodextrins, we performed a series of Molecular Docking calculations. In a first set of calculations we used as receptors all the cyclodextrins crystallographic structures extracted from the Protein Data Bank⁴⁶, as described in Supplementary Note 1. In a second set, we used as receptors the structures generated by Molecular Dynamics simulations. The structures of the polysulfides ligands S_3 , S_4 , S_5 were extracted from crystallized proteins in the Protein Data Bank⁴⁶, corresponding to the query ID P55, S4P and S3H, respectively. All the calculations were performed using Autodock Vina⁷⁰. Ligands input files were prepared as described in Supplementary Note 1.2. The center of the box was aligned with the center of cyclodextrin glycosidic oxygen while the search space is $20 \times 20 \times 20$ Å³. The results for each calculation are the affinity score (kcal mol⁻¹) values for each ligand conformation in its respective complex.

Data availability

The authors declare that the main data supporting the findings of this study are available within the article and its Supporting Information file. Extra data are available from the corresponding authors on reasonable request.

Code availability

All MD simulation trajectories were generated using the NAMD2 software package <http://www.ks.uiuc.edu/Research/namd>. Trajectory analysis are performed using the VMD software <https://www.ks.uiuc.edu/Research/vmd/>. Nanopore hindrance estimation was carried out using the method described in ref. 53; the FORTRAN code used to compute the area profiles is available at <https://github.com/giodimuccio/channelSearch>.

Received: 5 May 2020; Accepted: 26 June 2020;

Published online: 13 August 2020

References

- Larcher, D. & Tarascon, J.-M. Towards greener and more sustainable batteries for electrical energy storage. *Nat. Chem.* **7**, 19 (2015).
- Tarascon, J.-M. & Armand, M. *Materials for Sustainable Energy: A Collection of Peer-Reviewed Research and Review Articles from Nature Publishing Group*. 171–179 (World Scientific, 2011).
- Nitta, N., Wu, F., Lee, J. T. & Yushin, G. Li-ion battery materials: present and future. *Mater. Today* **18**, 252–264 (2015).
- Grey, C. & Tarascon, J. Sustainability and in situ monitoring in battery development. *Nat. Mater.* **16**, 45 (2017).
- Kwon, T.-W., Choi, J. W. & Coskun, A. Prospect for supramolecular chemistry in high-energy-density rechargeable batteries. *Joule* **3**, 662–682 (2019).
- Wang, H. et al. Recent advances on self-healing materials and batteries. *ChemElectroChem* **6**, 1605–1622 (2019).
- Kwon, T.-w., Choi, J. W. & Coskun, A. The emerging era of supramolecular polymeric binders in silicon anodes. *Chem. Soc. Rev.* **47**, 2145–2164 (2018).
- Zhao, Y. et al. A self-healing aqueous lithium-ion battery. *Angew. Chem. Int. Ed.* **55**, 14384–14388 (2016).
- Zheng, Y., Hashidzume, A., Takashima, Y., Yamaguchi, H. & Harada, A. Temperature-sensitive macroscopic assembly based on molecular recognition. *ACS Macro Lett.* **1**, 1083–1085 (2012).
- Harada, A., Takashima, Y. & Nakahata, M. Supramolecular polymeric materials via cyclodextrin–guest interactions. *Acc. Chem. Res.* **47**, 2128–2140 (2014).
- Inoue, Y. et al. Thermal and photochemical switching of conformation of poly(ethylene glycol)-substituted cyclodextrin with an azobenzene group at the chain end. *J. Am. Chem. Soc.* **129**, 6396–6397 (2007).
- Davis, M. E. & Brewster, M. E. Cyclodextrin-based pharmaceuticals: past, present and future. *Nat. Rev. Drug Discov.* **3**, 1023 (2004).
- Astier, Y., Braha, O. & Bayley, H. Toward single molecule DNA sequencing: direct identification of ribonucleoside and deoxyribonucleoside 5'-monophosphates by using an engineered protein nanopore equipped with a molecular adapter. *J. Am. Chem. Soc.* **128**, 1705–1710 (2006).
- Gu, L.-Q., Braha, O., Conlan, S., Cheley, S. & Bayley, H. Stochastic sensing of organic analytes by a pore-forming protein containing a molecular adapter. *Nature* **398**, 686 (1999).
- Choi, S., Kwon, T.-w., Coskun, A. & Choi, J. W. Highly elastic binders integrating polyrotaxanes for silicon microparticle anodes in lithium ion batteries. *Science* **357**, 279–283 (2017).
- Imholt, L. et al. Supramolecular self-assembly of methylated rotaxanes for solid polymer electrolyte application. *ACS Macro Lett.* **7**, 881–885 (2018).
- Imholt, L. et al. Grafted polyrotaxanes as highly conductive electrolytes for lithium metal batteries. *J. Power Sour.* **409**, 148–158 (2019).

18. Ni, L. et al. Supramolecular complexation of polysulfides by β -cyclodextrin polymer functionalized graphene hybrid cathode for high-performance lithium-sulfur batteries. *Energy Storage Mater.* **21**, 378–389 (2019).
19. Bai, S., Liu, X., Zhu, K., Wu, S. & Zhou, H. Metal-organic framework-based separator for lithium-sulfur batteries. *Nat. Energy* **1**, 16094 (2016).
20. Li, C. et al. Polysulfide-blocking microporous polymer membrane tailored for hybrid Li-sulfur flow batteries. *Nano Lett.* **15**, 5724–5729 (2015).
21. Vizintin, A. et al. Fluorinated reduced graphene oxide as an interlayer in Li-S batteries. *Chem. Mater.* **27**, 7070–7081 (2015).
22. Steudel, R. & Chivers, T. The role of polysulfide dianions and radical anions in the chemical, physical and biological sciences, including sulfur-based batteries. *Chem. Soc. Rev.* **48**, 3279–3319 (2019).
23. Branton, D. et al. The potential and challenges of nanopore sequencing. *Nat. Biotechnol.* **26**, 1146–1153 (2008).
24. Cao, C. et al. Discrimination of oligonucleotides of different lengths with a wild-type aerolysin nanopore. *Nat. Nanotechnol.* **11**, 713 (2016).
25. Piguat, F. et al. Identification of single amino acid differences in uniformly charged homopolymeric peptides with aerolysin nanopore. *Nat. Commun.* **9**, 966 (2018).
26. Wang, Y., Zheng, D., Tan, Q., Wang, M. X. & Gu, L.-Q. Nanopore-based detection of circulating microRNAs in lung cancer patients. *Nat. Nanotechnol.* **6**, 668 (2011).
27. Huang, G., Voet, A. & Maglia, G. FraC nanopores with adjustable diameter identify the mass of opposite-charge peptides with 44 dalton resolution. *Nat. Commun.* **10**, 1–10 (2019).
28. Quick, J. et al. Real-time, portable genome sequencing for Ebola surveillance. *Nature* **530**, 228 (2016).
29. Restrepo-Pérez, L. et al. Resolving chemical modifications to a single amino acid within a peptide using a biological nanopore. *ACS Nano* **13**, 13668–13676 (2019).
30. Ouldali, H. et al. Electrical recognition of the twenty proteinogenic amino acids using an aerolysin nanopore. *Nat. Biotechnol.* **38**, 176–181 (2020).
31. Restrepo-Pérez, L., Joo, C. & Dekker, C. Paving the way to single-molecule protein sequencing. *Nat. Nanotechnol.* **13**, 786–796 (2018).
32. Wanunu, M. Nanopores: a journey towards DNA sequencing. *Phys. Life Rev.* **9**, 125–158 (2012).
33. Galenkamp, N. S., Biesemans, A. & Maglia, G. Directional conformer exchange in dihydrofolate reductase revealed by single-molecule nanopore recordings. *Nat. Chem.* **12**, 1–8 (2020).
34. Merstorf, C. L. et al. Wild type, mutant protein unfolding and phase transition detected by single-nanopore recording. *ACS Chem. Biol.* **7**, 652–658 (2012).
35. Simpson, J. T. et al. Detecting DNA cytosine methylation using nanopore sequencing. *Nat. Methods* **14**, 407 (2017).
36. Yu, J., Cao, C. & Long, Y.-T. Selective and sensitive detection of methylcytosine by aerolysin nanopore under serum condition. *Anal. Chem.* **89**, 11685–11689 (2017).
37. Zernia, S., van der Heide, N. J., Galenkamp, N. S. P., Gouridis, G. & Maglia, G. Current blockades of proteins inside nanopores for real-time metabolome analysis. *ACS Nano* **14**, 2296–2307 (2020).
38. Ouldali, H. et al. Electrical recognition of the twenty proteinogenic amino acids using an aerolysin nanopore. *Nat. Biotechnol.* **38**, 1–6 (2019).
39. Tekin, B., Sevinc, S., Morcrette, M. & Demir-Cakan, R. A new sodium-based aqueous rechargeable battery system: the special case of Na0.44MnO2/dissolved sodium polysulfide. *Energy Technol.* **5**, 2182–2188 (2017).
40. Sevinc, S. et al. In-situ tracking of NaFePO4 formation in aqueous electrolytes and its electrochemical performances in Na-ion/polysulfide batteries. *J. Power Sour.* **412**, 55–62 (2019).
41. Gross, M. M. & Manthiram, A. Development of low-cost sodium-aqueous polysulfide hybrid batteries. *Energy Storage Mater.* **19**, 346–351 (2019).
42. Manthiram, A., Fu, Y. & Su, Y.-S. Challenges and prospects of lithium-sulfur batteries. *Acc. Chem. Res.* **46**, 1125–1134 (2012).
43. Xiong, S., Xie, K., Diao, Y. & Hong, X. Characterization of the solid electrolyte interphase on lithium anode for preventing the shuttle mechanism in lithium-sulfur batteries. *J. Power Sour.* **246**, 840–845 (2014).
44. Thordarson, P. Determining association constants from titration experiments in supramolecular chemistry. *Chem. Soc. Rev.* **40**, 1305–1323 (2011).
45. Rekharsky, M. V. & Inoue, Y. Complexation thermodynamics of cyclodextrins. *Chem. Rev.* **98**, 1875–1918 (1998).
46. Berman, H. M. et al. The protein data bank. *Nucleic Acids Res.* **28**, 235–242 (2000).
47. Bhamidimarri, S. P., Prajapati, J. D., van den Berg, B., Winterhalter, M. & Kleinekathöfer, U. Role of electroosmosis in the permeation of neutral molecules: CymA and cyclodextrin as an example. *Biophys. J.* **110**, 600–611 (2016).
48. Piguat, F. et al. Electroosmosis through α -hemolysin that depends on alkali cation type. *J. Phys. Chem. Lett.* **5**, 4362–4367 (2014).
49. Gu, L.-Q. & Bayley, H. Interaction of the noncovalent molecular adapter, β -cyclodextrin, with the staphylococcal α -hemolysin pore. *Biophys. J.* **79**, 1967–1975 (2000).
50. Gu, L.-Q., Cheley, S. & Bayley, H. Prolonged residence time of a noncovalent molecular adapter, β -cyclodextrin, within the lumen of mutant α -hemolysin pores. *J. General Physiol.* **118**, 481–494 (2001).
51. Tegman, R. The crystal structure of sodium tetrasulphide, Na2S4. *Acta Crystallogr. Sec. B* **29**, 1463–1469 (1973).
52. Szejtli, J. Introduction and general overview of cyclodextrin chemistry. *Chem. Rev.* **98**, 1743–1754 (1998).
53. Di Muccio, G., Rossini, A. E., Di Marino, D., Zollo, G. & Chinappi, M. Insights into protein sequencing with an α -Hemolysin nanopore by atomistic simulations. *Sci. Rep.* **9**, 6440 (2019).
54. Cuisinier, M., Hart, C., Balasubramanian, M., Garsuch, A. & Nazar, L. F. Radical or not radical: revisiting lithium-sulfur electrochemistry in nonaqueous electrolytes. *Adv. Energy Mater.* **5**, 1401801 (2015).
55. Lepoitevin, M., Ma, T., Bechelany, M., Janot, J.-M. & Balme, S. Functionalization of single solid state nanopores to mimic biological ion channels: a review. *Adv. Colloid Interface Sci.* **250**, 195–213 (2017).
56. Yan, G. et al. Assessment of the electrochemical stability of carbonate-based electrolytes in Na-ion batteries. *J. Electrochem. Soci.* **165**, A1222–A1230 (2018).
57. Pringle, D. L. *The Nature of the Polysulfide Anion.* (1967).
58. Gutsmann, T., Heimbürg, T., Keyser, U., Mahendran, K. R. & Winterhalter, M. Protein reconstitution into freestanding planar lipid membranes for electrophysiological characterization. *Nat. Protoc.* **10**, 188 (2015).
59. Montal, M. & Mueller, P. Formation of bimolecular membranes from lipid monolayers and a study of their electrical properties. *Proc. Natl Acad. Sci. USA* **69**, 3561–3566 (1972).
60. Cressiot, B. et al. Aerolysin, a powerful protein sensor for fundamental studies and development of upcoming applications. *ACS Sensors* **4**, 530–548 (2019).
61. Bonome, E. L., Ceconi, F. & Chinappi, M. Electroosmotic flow through an α -hemolysin nanopore. *Microfluid. Nanofluid.* **21**, 96 (2017).
62. Anandakrishnan, R., Aguilar, B. & Onufriev, A. V. H++ 3.0: automating pK prediction and the preparation of biomolecular structures for atomistic molecular modeling and simulations. *Nucleic Acids Res.* **40**, W537–W541 (2012).
63. Aksimentiev, A. & Schulten, K. Imaging α -hemolysin with molecular dynamics: ionic conductance, osmotic permeability, and the electrostatic potential map. *Biophys. J.* **88**, 3745–3761 (2005).
64. Humphrey, W., Dalke, A. & Schulten, K. VMD: visual molecular dynamics. *J. Mol. Graphics* **14**, 33–38 (1996).
65. Phillips, J. C. et al. Scalable molecular dynamics with NAMD. *J. Comput. Chem.* **26**, 1781–1802 (2005).
66. MacKerell, A. D. Jr. et al. All-atom empirical potential for molecular modeling and dynamics studies of proteins. *J. Phys. Chem. B* **102**, 3586–3616 (1998).
67. Jorgensen, W. L., Chandrasekhar, J., Madura, J. D., Impey, R. W. & Klein, M. L. Comparison of simple potential functions for simulating liquid water. *J. Chem. Phys.* **79**, 926–935 (1983).
68. Yoo, J. & Aksimentiev, A. Improved parameterization of amine-carboxylate and amine-phosphate interactions for molecular dynamics simulations using the CHARMM and AMBER force fields. *J. Chem. Theory Comput.* **12**, 430–443 (2015).
69. Vanommeslaeghe, K. et al. CHARMM general force field: a force field for drug-like molecules compatible with the CHARMM all-atom additive biological force fields. *J. Comput. Chem.* **31**, 671–690 (2010).
70. Trott, O. & Olson, A. J. AutoDock Vina: improving the speed and accuracy of docking with a new scoring function, efficient optimization, and multithreading. *J. Comput. Chem.* **31**, 455–461 (2010).

Acknowledgements

This work was supported by grant funding from the Region Ile-de-France in the framework of DIM ResPore and the Réseau sur le Stockage Electrochimique de l'Energie (RS2E) through F.B. PhD scholarship. F.B. and N.J. are grateful to the Conseil Regional d'Ile de France for the acquisition of the 600 MHz NMR spectrometer of University of Evry Val d'Essonne. J.-M.T. acknowledges the funding from the European Research Council (ERC) (FP/2014)/ERC Grant-Project 670116-ARPEMA. This research was supported by ANR-17-CE09-0044-02 (J.P., B.C., L.B.). We acknowledge support from Genopole for financing B.C. CSCS, the Swiss National Super-computing Centre, supported this work through the project ID s865 to M.C. and G.D.M.

Author contributions

F.B., N.J., and J.-M.T. conceived the experiments regarding the polysulfides-cyclodextrin interactions that F.B. carried out. B.C. and J.P. designed and conducted the nanopore sensing experiments while L.B., B.C., and J.P. analyzed and interpreted the nanopore data. G.D.M., B.M.D.R., and M.C. performed the molecular docking calculations and molecular dynamics simulations. Finally, J.-M.T., F.B., and J.P. wrote the first draft of the manuscript. All authors contributed to editing of the manuscript.

Competing interests

The authors declare no competing interests.

Additional information

Supplementary information is available for this paper at <https://doi.org/10.1038/s43246-020-00056-4>.

Correspondence and requests for materials should be addressed to J.P. or J.-M.T.

Reprints and permission information is available at <http://www.nature.com/reprints>

Publisher's note Springer Nature remains neutral with regard to jurisdictional claims in published maps and institutional affiliations.



Open Access This article is licensed under a Creative Commons Attribution 4.0 International License, which permits use, sharing, adaptation, distribution and reproduction in any medium or format, as long as you give appropriate credit to the original author(s) and the source, provide a link to the Creative Commons license, and indicate if changes were made. The images or other third party material in this article are included in the article's Creative Commons license, unless indicated otherwise in a credit line to the material. If material is not included in the article's Creative Commons license and your intended use is not permitted by statutory regulation or exceeds the permitted use, you will need to obtain permission directly from the copyright holder. To view a copy of this license, visit <http://creativecommons.org/licenses/by/4.0/>.

© The Author(s) 2020