



## Children were less frequently infected with SARS-CoV-2 than adults during 2020 COVID-19 pandemic in Warsaw, Poland

Ernest Kuchar, Andrzej Zaleski, Michal Wronowski, Dagny Krankowska, Edyta Podsiadly, Klaudia Brodaczewska, Aneta Lewicka, S Lewicki, Claudine Kieda, Andrzej Horban, et al.

### ► To cite this version:

Ernest Kuchar, Andrzej Zaleski, Michal Wronowski, Dagny Krankowska, Edyta Podsiadly, et al.. Children were less frequently infected with SARS-CoV-2 than adults during 2020 COVID-19 pandemic in Warsaw, Poland. *European Journal of Clinical Microbiology and Infectious Diseases*, 2021, 40 (3), pp.541-547. 10.1007/s10096-020-04038-9 . hal-02964204

**HAL Id: hal-02964204**

**<https://hal.science/hal-02964204>**

Submitted on 19 Nov 2020

**HAL** is a multi-disciplinary open access archive for the deposit and dissemination of scientific research documents, whether they are published or not. The documents may come from teaching and research institutions in France or abroad, or from public or private research centers.

L'archive ouverte pluridisciplinaire **HAL**, est destinée au dépôt et à la diffusion de documents scientifiques de niveau recherche, publiés ou non, émanant des établissements d'enseignement et de recherche français ou étrangers, des laboratoires publics ou privés.

# **Children were less frequently infected with SARS-CoV-2 than adults during 2020 COVID-19 pandemic in Warsaw, Poland**

Ernest Kuchar<sup>1</sup>, Andrzej Załęski<sup>2,3</sup>, Michał Wronowski<sup>1</sup>, Dagny Krankowska<sup>2,3</sup>, Edyta Podsiadły<sup>4</sup>, Klaudia Brodaczewska<sup>5</sup>, Aneta Lewicka<sup>6</sup>, Sławomir Lewicki<sup>7</sup>, Claudine Kieda<sup>5,8</sup>, Andrzej Horban<sup>3</sup>, Małgorzata Kloc<sup>9,10,11</sup>, Jacek Z. Kubiak<sup>\*,7,12</sup>

<sup>1</sup>Department of Paediatrics with Clinical Assessment Unit, Medical University of Warsaw, Poland

<sup>2</sup>Department of Infectious Diseases, Tropical Diseases and Hepatology, Medical University of Warsaw, Poland

<sup>3</sup>Hospital of Infectious Diseases, Warsaw, Poland

<sup>4</sup>Department of Laboratory Diagnostics and Clinical Immunology of Developmental Age, Public Paediatric Teaching Hospital, Warsaw, Poland.

<sup>5</sup>Laboratory of Molecular Oncology and Innovative Therapies, Military Institute of Medicine, Szaserów 128, 01-163 Warsaw, Poland

<sup>6</sup>Laboratory of Food and Nutrition Hygiene, Military Institute of Hygiene and Epidemiology (WIHE), Kozielska 4, 01-163 Warsaw, Poland

<sup>7</sup>Department of Regenerative Medicine and Cell Biology, Military Institute of Hygiene and Epidemiology (WIHE), Kozielska 4, Warsaw, Poland

<sup>8</sup>Centre for Molecular Biophysics, Cell Recognition and Glycobiology, UPR4301-CNRS, rue Charles Sadron, 45071 Orléans, France

<sup>9</sup>The Houston Methodist Research Institute, Houston, Texas, USA

<sup>10</sup>The Houston Methodist Hospital, Department of Surgery, Houston, Texas, USA

<sup>11</sup>The University of Texas, M.D. Anderson Cancer Center, Department of Genetics, Houston Texas, USA

<sup>12</sup>UnivRennes, UMR 6290, CNRS, Institute of Genetics and Development of Rennes, Cell Cycle Group, Faculty of Medicine, Rennes, France

\*Corresponding author

## Abstract

**Purpose:** Clinical data suggest that during the current COVID-19 pandemic children are less prone than adults to SARS-CoV-2 infection. Our purpose was to determine the frequency of SARS-CoV-2 in children vs. adults during the 2020 pandemic in Warsaw, Poland and to investigate whether RSV and/or influenza A/B infections were associated with SARS-CoV-2 infections.

**Methods:** We present results of RT-PCR tests for SARS-CoV-2 performed in Warsaw, Poland. Some of the pediatric subjects were also PCR-tested for RSV, and A and B influenza. We compared the test results from the four groups of symptomatic and asymptomatic subjects: 459 symptomatic pediatric patients (children 0-18 years old), 1774 symptomatic adults, 445 asymptomatic children, and 239 asymptomatic adults.

**Results:** 3.26% (15/459) of symptomatic pediatric patients were positive for SARS-CoV-2 in contrast to 5.58% (99/1774) of symptomatic adults ( $p=0.0448$ ). There were no SARS-CoV-2 positive cases in the group of asymptomatic children (0/445) and two positive cases in the group of asymptomatic adults (2/239), i.e. 0.83%. In the group of symptomatic pediatric patients 17.14% (6/35) ( $p=0.0002$ ) were positive for RSV, 8.16% (4/49) were positive for influenza A, and 2.04% (1/49), thus 10.20% (5/49) ( $p=0.0176$ ) for influenza A/B.

**Conclusion:** Children were less prone to SARS-CoV-2 infection than the adults during the COVID-19 pandemic in Warsaw. Higher percentage of symptomatic children was infected with RSV or influenza A/B than with SARS-CoV-2. This suggests a necessity for the testing for all these viruses for an early identification and isolation of SARS-CoV-2-positive patients for an ensuing 2020 autumn return of COVID-19.

**Key words:** COVID-19, SARS-CoV-2, 2020 pandemic, pediatric patients

## Introduction

Severe Acute Respiratory Syndrome coronavirus-2 or SARS-CoV-2 emerged in Wuhan in Hubei province in China in December 2019 and rapidly had propagated all over the world causing the COVID-19 pandemic, declared by WHO on March 11 (WHO Director-General's opening remarks at the media briefing on COVID-19 - 11 March 2020; <https://www.who.int/dg/speeches/detail/who-director-general-s-opening-remarks-at-the-media-briefing-on-covid-19---11-march-2020>). The pandemic and number of cases are still unfolding in many countries while we report this data. In Poland, the first case was reported on March 4<sup>th</sup>, 2020. During the first two weeks of the epidemic, the whole Masovia area, including the Polish capital, Warsaw, became one of the major infected areas in Poland, with 3581 cases by 1<sup>st</sup> June 2020.

There is a growing body of evidence from different countries with COVID-19 pandemic that children are less frequently infected with SARS-CoV-2. Children are mostly asymptomatic or experience much milder symptoms than the adults (Balasubramanian et al., 2020; Cristiani et al., 2020; Dong et al., 2020; Jiatong et al., 2020; Lee et al., 2020; Marraro and Spada, 2020; Morand et al., 2020; Zimmermann and Curtis, 2020), although a low percentage of the

infected children developed the pediatric multi-system inflammatory syndrome (Viner and Whittaker, 2020). Severe (2-3%) or critical illness (0.61%) have been reported in pediatric patients analyzed in two systematic reviews and meta-analysis of data from several countries (Liguoro et al., 2020; Dhir et al., 2020). The purpose of our study was to establish if a lower frequency of infection, and lesser severity in children were also true for the 2020 COVID-19 pandemic in Warsaw, Poland.

## Material and Methods

### *Patients*

Analyses were performed on two main groups of patients: children – from 1 month to 18 years old, and adults – over 18 years old. Patients from two Warsaw hospitals were enrolled: the Pediatric Teaching Clinical Hospital of Medical University of Warsaw and the Hospital for Infectious Diseases (Warsaw, Poland). Each of these two groups was divided into two subgroups: symptomatic (separately children and adults) and asymptomatic (separately children and adults). Patients presenting with fever, respiratory tract infection syndromes, gastrointestinal symptoms, dyspnea, cough, chest pain, and seizures were included in the symptomatic groups. Two asymptomatic groups were: 1. asymptomatic children who underwent screening for SARS-CoV-2 at the admission for planned hospitalisation unrelated to COVID-19, 2. asymptomatic legal guardians of the asymptomatic children and medical staff involved in contact tracing.

### *SARS-CoV-2 analysis*

Throat or nasopharynx swabs were obtained from the symptomatic and asymptomatic subjects. Immediately after collection, the swabs were placed in viral preservation medium, transported to laboratory in temperature 2-8°C and stored in such conditions until processing. Total RNA was extracted from 140 µl specimen with manual centrifuge column isolation kit (Viral RNA Isolation Kit, ZJ Bio-Tech C, China) according to manufacturer's instruction. Extraction volume of 60 µl was obtained for each sample. A 5 µl aliquot of RNA was used for real-time RT-PCR, which targeted simultaneously 3 genes specific for SARS-CoV-2: gene E, N, and ORF1ab (Liferiver Novel Coronavirus (2019-nCoV) Real Time Multiplex RT-PCR Kit, Shanghai ZJ Bio-Tech C, Shanghai, China). Real time PCR was performed upon CFX96™ Real-Time PCR Detection System (Bio-Rad, USA). The specificity of the test is 98.1 %, analytical sensitivity  $1 \times 10^3$  copies/ml. The protocol was performed according manufacturer's instruction. Real-time RT-PCR was performed under the following conditions: 45°C for 10 min and 95°C for 15 min, followed by 45 cycles of amplification at 95°C for 15 sec and 60°C for 1 min. Criteria for judging results: CT value < 43 positive; 43 ≤ CT value ≤ 45 suspicious positive and ≥ 45 negative. The positive should meet for all 3 genes tested. Internal control was added into extraction mixture on isolation stage to monitor the whole process. Positive and negative control was included in each run of amplification.

### *RSV and Influenza A/B analysis*

Selected samples of pediatric symptomatic patients were also tested for the presence of RSV and Influenza A/B virus with qualitative real-time PCR test Xpert® Xpress Flu/RSV (Cepheid, USA). 35 patients were tested for RSV and 49 patients for influenza A and B.

Nasopharyngeal specimen were collected from selected paediatric symptomatic patients. After collection the swab were placed in universal transport medium (UTM, Copan Diagnostics). The samples were tested immediately after collection with qualitative real-time PCR test Xpert® Xpress Flu/RSV (Cepheid, USA) according manufacturer's instruction on GeneXpert I apparatus. The volume of 300 µl was transferred to the cartridge. Isolation and amplification stage was done automatically by the instrument. Each test was equipped in internal control which monitored whole process. External positive and negative controls were tested with each new applied lot of Xpert Xpress Flu/RSV. The RT-PCR test targets few genes of examined viruses: genes encoding matrix protein, PB2 and PA for Flu A, genes encoding matrix protein and non-structural protein for fly B, genes encoding nucleocapsid of RSV A and RSV B. Sensitivity of the test is estimated on 99%, specificity on 98%. Results were presented as the percentage of all patients in the given group.

### *Statistical analysis*

The data from the adults and children, as well as RSV positive, and influenza A and B positive cases within the selected samples in the symptomatic children group, were analyzed by Chi-square test. The P-value <0.05 was considered as statistically significant. We also analyzed data using the Fisher test.

## **Results**

SARS-CoV-2 RT-PCR tests were performed in two centers in Warsaw, Poland, during 3 months between March and May 2020, which corresponded to the first three months of COVID-19 epidemics in Poland. Patients were divided into four groups.

1. symptomatic pediatric patients (n = 459),
2. symptomatic adult patients (n = 1774),
3. asymptomatic children (n = 445),
4. asymptomatic adults (n = 239).

The age strata in each group are showed in Suppl. Materials 1 section.

The tests showed 3.26% (15/459) positive cases among the symptomatic pediatric patients, 5.58% (99/1774) among the symptomatic adults, none in the the asymptomatic children (0/445), and 0.83% (2/239) in the asymptomatic adults.

The statistical analysis performed with the chi-square test has shown significantly ( $p=0.0448$ ) lower incidence of SARS-CoV-2 infection in the symptomatic pediatric population than in the symptomatic adults. This trend was also observed in the asymptomatic groups, however the result was not stiatistically significant ( $p=0.0533$ ) (Fig. 1). The Fisher test analysis gave similar results (Fig. 1 Suppl. Materials).

The age of 15 positive paediatric symptomatic patients, uniformly covering the whole period between 0.6 and 14.1 years of age, was as follows: 0.6; 0.6; 0.8; 1.0; 1.8; 4.2; 5.0; 7.3; 9.8; 10.0; 11.0; 11.3; 13.0; 14.0 and 14.1 years.

The analysis of the symptomatic non-SARS-CoV-2 patients showed that 17.14% (6/35) ( $p=0.0002$ ) of children were positive for RSV, 8.16% (4/49) for influenza A, and 2.04%

(1/49) for influenza B; thus 10.20% (5/49) ( $p=0.0176$ ) were positive for A and B influenza together (the same 49 patients were tested for influenza A and B). These data were also analyzed using two statistical tests: chi-square (Fig. 2) and the Fisher test (Fig. 2 Suppl. Materials). In other words, 17.14% of pediatric patients negative for SARS-CoV-2 were positive for RSV, and 10.20% for influenza A/B. Thus, statistically significantly higher number of pediatric symptomatic patients were positive for either RSV or influenza A/B than for SARS-CoV-2. There was also a single pediatric case of pertussis (whooping cough) diagnosed based on the clinical symptoms. These data show that during the first three months (March-May 2020) of the COVID-19 pandemic in Warsaw, Poland, significantly less pediatric patients were infected with SARS-CoV-2 than RSV and influenza together. Thus, children were more likely to be infected with RSV or influenza A/B than with SARS-CoV-2.

## Disussion

Our study showed that children presenting symptoms suggestive of COVID-19 and requiring hospitalisation or an emergency assessment, had significantly lower SARS-CoV-2 infection than hospitalised adults. This data are consistent with the previous studies from different countries during the 2020 COVID-19 pandemic. Asymptomatic, mild, and moderate symptoms were observed in more than 90% of all COVID-19 positive children, severe and critical cases were observed in 5.9% of children in comparison to 18.5% in adults (Dong et al., 2020). Cristiani et al. (2020) report that among the total number of 44,672 positive cases, the Chinese Centre of Disease Control and Prevention report showed only 416 pediatric cases in 0–9 years age group (0.9%) with no fatalities and 549 cases in 10–19 years age group (1.2%) with 1 fatality (0.2%). Brodin (2020) reports Korean data showing that 6.3% of all positive cases were children under 19 years of age. (reviewed also by Balasubramanian et al., 2020; Jiatong et al., 2020; Lee et al., 2020; Marraro and Spada, 2020; Morand et al., 2020; Zimmermann and Curtis, 2020).

Interestingly, SARS-CoV-1 infection rate during 2002-2003 epidemic had shown similar characteristics regarding children vs. adults in China, and other countries (Cao et al., 2020; Dong et al., 2020; Sørensen et al., 2006; Stockman et al., 2007; Zhao et al., 2006). Therefore, it seems that children are more resistant to both SARS-CoV-1 and SARS-CoV-2 infection.

There are several factors that might explain this phenomenon. First of all, children, because the milder symptoms of SARS-CoV-2 infection are tested less frequently than the adults. There may be also an input from the environmental/social factors. Children may be better protected and sheltered against the virus during the pandemic than the adults, and the rate of children infection may be influenced by the quality of the parental care (Zimmermann and Curtis, 2020).

Alternatively, some endogenous factors may play a role. They may include a different age-dependent expression and/or distribution of ACE2 receptor for SARS-CoV-1 and SARS-CoV-2 (suggested by Li et al., 2003; Lovren et al., 2008; Tai et al., 2020; Tipnis et al., 2000; Walls et al., 2020; Wysocki et al., 2010; Brodin, 2020; Miri et al., 2020; Xu et al., 2020). Indeed, a lower level of ACE2 expression in the nasal epithelial cells of children, especially the youngest children, was confirmed by a recent study of Bunyavanich (2020) suggesting

that this can be a reason for a lower infectability of children with SARS viruses. Nevertheless, the data about the impact of ACE2 expression pattern are still fragmentary.

One of the reasons for the severity of the COVID-19 is the over-reactivity of the immune response in the lungs, where the alveolar macrophages induce the cytokine storm (Merad and Martin 2020). In children, the immune system is immature (Kloc et al., 2020), thus aggressive cytokine response is rarely seen (Simon et al., 2015) resulting in milder COVID-19 symptoms. The severity of COVID-19 in children was recently reviewed by two meta-analyses (Liguoro et al., 2020; Dhir et al., 2020). Even though the reviews had large cohorts (7480, 4857 patients), the severity of illness was described only in 20-34% of all patients (1475 and 1666 respectively). In the review by Liguoro et al. (2020), 12% of neonates were severely ill. In the second review, neonates were not included in the study. The estimated reported mortality in these two studies was 0.08% and 0.1% of analyzed patients. Higher morbidity and mortality ratios were described by the ptbnet COVID-19 study Group who collected data from 25 European countries during the peak of the pandemic in Europe in April 2020 (Gotzinger et al., 2020). Out of 582 patients, 8% required ICU admission, and 4% required mechanical ventilation. The case fatality rate was 0.69%, and age younger than 1 month, male sex, signs or symptoms of lower respiratory tract infections at presentation, and the presence of pre-existing medical conditions were associated with ICU admission.

Another plausible explanation might be that the children who attend day-care, kindergarten, and school and are frequently exposed to the respiratory viruses, develop some basal level of the antibodies, which give cross protection against SARS-CoV-2 (Schuez-Havupalo et al., 2020).

In the case of newborns, and very young babies, a part of explanation can be that they are protected either by antibodies transferred during pregnancy through the placenta from mother (Jackson and Nazar, 2006; Palmeira et al., 2011, Brodin, 2020). or the compounds, such as the Lactoferrin, a globular glycoprotein present in the breast milk that have the antimicrobial and immunomodulatory roles in protecting the newborn from the various infections (Telang 2018), including the necrotizing enterocolitis (Sherman, 2013) and SARS (Lang et al., 2011).

A plausible hypothesis for a lower number of positive cases among children is that a high percentage of them might have been protected by the cross-immunity conferred by infections with other viruses including human coronaviruses (e.g. Brodin, 2020). Also, the vaccination against other infectious diseases may stimulate the cross-immunity. The young patients were probably better protected because of freshly acquired immune memory (Miri et al., 2020). Of special interest can be the so-called trained immunity caused by vaccinations with live viruses, such as OPV, anti-measles vaccine, or mycobacteria, including BCG (Netea et al., 2020; Chumakov et al., 2020). Moreover, the authors also hypothesized that if SARS-CoV-2 will mutate, and the specific vaccine will be weak or ineffective, the OPV may be the only real solution in the future (Chumakov et al., 2020). In this case, again, recent vaccination might give a better protective effect.

Interestingly, the PCR tests of children included in our study showed that, within the first three months of the COVID-19 pandemic in Warsaw, the children had significantly higher risk for RSV or influenza A/B than for SARS-CoV-2 infection. If this bias toward RSV and influenza A/B infection persists for the next seasonal peak of flu, and respiratory infections, the physicians in Masovia area should keep in mind that the common flu/respiratory infections

are much more frequent than COVID-19. However taking into account the risk of spreading COVID-19, authorities should perform a routine broad testing for all these viruses. The data from many countries show that an early detection of SARS-CoV-2 infection is one of the most effective strategies of pandemic control.

In addition, our study did not show any case of the co-infection between SARS-CoV-2 and other viruses tested, or between RSV and Influenza A/B. Reina and Dueñas (2019) showed that the RSV and influenza co-infection occurred in 4.8% of the total studied RSV cases. It is possible that the limited number of pediatric patients, which were tested for RSV and Influenza A/B in our study is responsible for this discrepancy. In contrast, some studies have reported the presence of coinfections with SARS-CoV-2 and other respiratory tract pathogens, both in children and adults. In most cases studied, the researchers have reported coinfection with others than SARS-CoV-2 coronaviruses (HKU1, NL63, 229E, OC43), influenza, and parainfluenza viruses, RSV, rhinoviruses-enteroviruses, human metapneumoviruses, adenoviruses, and *Mycoplasma pneumoniae*. Nevertheless, the coinfection rates were low and ranged between 0.1% - 3%, and the studies did not clearly assess whether they influenced the course of infection with SARS-CoV-2 or not. In general, the clinical course was mild, ending with full recovery (Nowak et al., 2020; Wee et al., 2020; Blasco et al., 2019).

We want to emphasize some limitations of our study. First, the number of examined patients was not very high. We wanted to present our results as quickly as possible to spread the information included in this article before the onset of the expected autumn/winter wave of the pandemic, and for this reason, we have chosen to describe the results of the first 3 months of the pandemic. It allows to draw conclusions, but further studies should be performed to verify whether the observed percentage of children vs. adults infections are similar during the whole period of the pandemic period without the anti-SARS-CoV-2 vaccination.

## Conclusions

The results of our study are consistent with the previous data showing that SARS-CoV-2 infection in children occurs less often than in the adults. Routine testing for SARS-CoV-2 is crucial for the control of the pandemic, and discerning between COVID-19 and common seasonal respiratory infections.

## Declarations:

## Funding

JZK was supported by Polish Ministry of National Defense "Kościuszko" # 5508/2017/DA grant while preparing this manuscript.

## Conflicts of interest/Competing interests

The authors declare no conflict of interest.

## Availability of data and material

All data and material is freely available.



## **Ethical Approval**

No ethical approval was obtained because this study did not involve a clinical evaluation, did not involve laboratory animals and invasive procedures.

## **Authors` contributions**

EK, AL, SL, MK and JZK designed the study. AZ, MW, DK performed tests, MK and JZK wrote the manuscript, EK, AZ, MW, DK, EP, KB, AL, SL, CK, AH and JZK analysed results, AL and SL performed the statistical analysis, EK, AZ, MW, DK, EP, AL, SL, CK, AH, MK and JZK edited the manuscript.

## **Acknowledgements**

We acknowledge the funding from the Polish Ministry of National Defense "Kościuszko" # 5508/2017/DA grant to JZK.

## **References**

- Balasubramanian S, Rao NM, Goenka A, Roderick M, Ramanan AV. (2020). Coronavirus Disease (COVID-19) in Children - What We Know So Far and What We Do Not? Indian Pediatr. 2020 Apr 9. pii: S097475591600159. [Epub ahead of print]
- Blasco, M. L., et al. Co-detection of respiratory pathogens in patients hospitalized with Coronavirus viral disease-2019 pneumonia. J Med Virol 2020 Apr 22. doi: 10.1002/jmv.25922. Online ahead of print.
- Brodin P (2020). Why is COVID-19 so mild in children? Acta Paediatr. 2020 Jun;109(6):1082-1083. doi: 10.1111/apa.15271.
- Bunyavanich S (2020). Nasal Gene Expression of Angiotensin-Converting Enzyme 2 in Children and Adults. JAMA. Published online May 20, 2020. doi:10.1001/jama.2020.8707
- Cao L, Wang TY, Chen HZ, Qian Y, Chen BW, Fang P, Sun YX, Zhu RN, Deng J, Zhao LQ, Mi J, Zhang T. (2004). [A preliminary investigation on the serological and epidemiological characteristics of severe acute respiratory syndrome in children]. [Article in Chinese]. Zhonghua Er Ke Za Zhi. 42(11):840-4
- Chumakov K, Benn CB, Aaby P, Kottlil S, Gallo R. (2020). Can existing live vaccines prevent COVID-19? Science 368 (6496): 1187-1188. doi: 10.1126 / science.abc4262.
- Cristiani L, Mancino E, Matera L, Nenna R, Pierangeli A, Scagnolari C and Midulla F. (2020). Will children reveal their secret? The coronavirus dilemma. Eur Respir J. 2020 Apr 2 : 2000749. doi: 10.1183/13993003.00749-2020 [Epub ahead of print]
- Dhir SK, Kumar J, Meena J, Kumar P. (2020). Clinical Features and Outcome of SARS-CoV-2 Infection in Neonates: A Systematic Review. J Trop Pediatr. 2020 Aug 28:fmaa059.
- Dong Y, Mo X, Hu Y, et al. (2020). Epidemiological characteristics of 2143 pediatric patients with 2019 coronavirus disease in China. Pediatrics. doi: 10.1542/peds.2020-0702

322 Göttinger F, Santiago-García B, Noguera-Julián A, Lanaspá M, Lancella L, Calò Carducci FI,  
323 Gabrovská N, Velizarova S, Prunk P, Osterman V, Krivec U, Lo Vecchio A, Shingadia D,  
324 Soriano-Arandes A, Melendo S, Lanari M, Pierantoni L, Wagner N, L'Huillier AG, Heininger  
325 U, Ritz N, Bandi S, Krajcar N, Roglić S, Santos M, Christiaens C, Creuven M, Buonsenso D,  
326 Welch SB, Bogyi M, Brinkmann F, Tebruegge M; ptbnet COVID-19 Study Group.(2020).  
327 COVID-19 in children and adolescents in Europe: a multinational, multicentre cohort study.  
328 Lancet Child Adolesc Health. 2020 Sep;4(9):653-661.

329 Jackson KM, Nazar AM. (2006). Breastfeeding, the Immune Response, and Long-term  
330 Health. The Journal of the American Osteopathic Association 106, 203-207.

331 Jiatong S, Lanqin L, Wenjun L. (2020). COVID-19 epidemic: disease characteristics in  
332 children. J Med Virol. 2020 Mar 31. doi: 10.1002/jmv.25807. [Epub ahead of print]

333 Kloc M, Ghobrial RM, Kuchar E, Lewicki S and Kubiak JZ (2020). Development of child  
334 immunity in the context of COVID-19 pandemic. Clinical Immunology (*in press*)

335 Lang J, Yang N, Deng J, Liu K, Yang P, Zhang G, Jiang C. (2011). Inhibition of SARS  
336 Pseudovirus Cell Entry by Lactoferrin Binding to Heparan Sulfate Proteoglycans. PLoS One.  
337 2011; 6(8): e23710.

338 Lee P, Hu YL, Chen PY, et al. . Are children less susceptible to COVID-19?. J Microbiol  
339 Immunol Infec 2020: S1684-1182(20)30039-6.

340 Li, W.; Moore, M.J.; Vasilieva, N.; Sui, J.; Wong, S.K.; Berne, M.A.; Somasundaran, M.;  
341 Sullivan, J.L.; Luzuriaga, K.; Greenough, T.C., et al. Angiotensin-converting enzyme 2 is a  
342 functional receptor for the sars coronavirus. Nature 2003, 426, 450-454.

343 Liguoro I, Pilotto C, Bonanni M, Ferrari ME, Pusiolo A, Nocerino A, Vidal E, Cogo P. (2020).  
344 SARS-CoV-2 infection in children and newborns: a systematic review. Eur J Pediatr.  
345 179(7):1029-1046.

346 Lovren, F.; Pan, Y.; Quan, A.; Teoh, H.; Wang, G.; Shukla, P.C.; Levitt, K.S.; Oudit, G.Y.;  
347 Al-Omran, M.; Stewart, D.J., et al. Angiotensin converting enzyme-2 confers endothelial  
348 protection and attenuates atherosclerosis. Am J Physiol Heart Circ Physiol 2008, 295, H1377-  
349 1384.

350 Marraro GA, Spada C. (2020). Consideration of the respiratory support strategy of severe  
351 acute respiratory failure caused by SARS-CoV-2 infection in children. Zhongguo Dang Dai  
352 Er Ke Za Zhi. 22(3):183-194.

353 Miri SM, Noorbakhsh F, Mohebbi SR, Ghaemi A. (2020). Higher prevalence of  
354 asymptomatic or mild COVID-19 in children, claims and clues. J Med Virol. 2020 May  
355 29;10.1002/jmv.26069.

356 Morand A, Fabre A, Minodier P, Boutin A, Vanel N, Bosdure E, Fournier PE. (2020).  
357 COVID-19 virus and children: What do we know? Arch Pediatr. 27(3):117-118. doi:  
358 10.1016/j.arcped.2020.03.001.

359 Netea MG, Giamarellos-Bourboulis EJ, Domínguez-Andrés J, Curtis N, van Crevel R, van de  
360 Veerdonk FL, Bonten M. (2020). Trained Immunity: a Tool for Reducing Susceptibility to  
361 and the Severity of SARS-CoV-2 Infection. Cell 181(5):969-977.

362 Nowak MD, Sordillo, EM, Gitman, MR, Paniz Mondolfi, AE. Co-infection in SARS-CoV-2  
 363 infected Patients: Where Are Influenza Virus and Rhinovirus/Enterovirus?, *J Med Virol*. 2020  
 364 Apr 30;10.1002/jmv.25953. doi: 10.1002/jmv.25953. Online ahead of print.

365 Palmeira P, Quinello C, Lúcia Silveira-Lessa A, Augusta Zago, Carneiro-Sampaio M. (2012).  
 366 IgG Placental Transfer in Healthy and Pathological Pregnancies, *Clin Dev Immunol*. 2012:  
 367 985646. Published online 2011 Oct 1. doi: 10.1155/2012/985646)

368 Reina J, Dueñas J. (2019). [Respiratory Co-Infections Between Influenza Viruses and  
 369 Respiratory Syncytial Virus (2014-2017)] [Article in Spanish]. *An Pediatr (Barc)*. 90(2):118-  
 370 119.

371 Schuez-Havupalo L, Toivonen L, Karppinen S, Kaljonen A, Peltola V (2020). Daycare  
 372 attendance and respiratory tract infections: a prospective birth cohort study. *BMJ Open*. 2017;  
 373 7(9): e014635

374 Sherman MP. (2013). Lactoferrin and Necrotizing Enterocolitis. *Clin Perinatol*. 40(1): 79–91.

375 Simon, A Katharina et al. “Evolution of the immune system in humans from infancy to old  
 376 age.” *Proceedings. Biological sciences* vol. 282,1821 (2015): 20143085.  
 377 doi:10.1098/rspb.2014.3085.

378 Sørensen MD, Sørensen B, Gonzalez-Dosal R, Melchjorsen CJ, Weibel J, Wang J, Jun CW,  
 379 Huanming Y, Kristensen P. (2006). Severe acute respiratory syndrome (SARS): development  
 380 of diagnostics and antivirals. *Ann N Y Acad Sci*. 1067:500-5;

381 Stockman LJ, Massoudi MS, Helfand R, Erdman D, Siwek AM, Anderson LJ, Parashar UD.  
 382 (2007). Severe acute respiratory syndrome in children. *Pediatr Infect Dis J*. 26(1):68-74).

383 Tai, W.; He, L.; Zhang, X.; Pu, J.; Voronin, D.; Jiang, S.; Zhou, Y.; Du, L. Characterization of  
 384 the receptor-binding domain (rbd) of 2019 novel coronavirus: Implication for development of  
 385 rbd protein as a viral attachment inhibitor and vaccine. *Cell Mol Immunol* 2020.

386 Telang S. (2018). Lactoferrin: A Critical Player in Neonatal Host Defense. *Nutrients*, 10(9),  
 387 1228. <https://doi.org/10.3390/nu10091228>

388 Tipnis, S.R.; Hooper, N.M.; Hyde, R.; Karran, E.; Christie, G.; Turner, A.J. A human  
 389 homolog of angiotensin-converting enzyme. Cloning and functional expression as a captopril-  
 390 insensitive carboxypeptidase. *J Biol Chem* 2000, 275, 33238-33243.

391 Viner RM, Whittaker E. Kawasaki-like disease: emerging complication during the COVID-19  
 392 pandemic [published online ahead of print, 2020 May 13]. *Lancet*. 2020;10.1016/S0140-  
 393 6736(20)31129-6. doi:10.1016/S0140-6736(20)31129-6

394 Walls, A.C.; Park, Y.J.; Tortorici, M.A.; Wall, A.; McGuire, A.T.; Veasler, D. Structure,  
 395 function, and antigenicity of the sars-cov-2 spike glycoprotein. *Cell* 2020.

396 Wee, L. E., et al. Community-acquired viral respiratory infections amongst hospitalized  
 397 inpatients during a COVID-19 outbreak in Singapore: co-infection and clinical outcomes. *J*  
 398 *Clin Virol* 2020;128:104436.

WHO Director-General's opening remarks at the media briefing on COVID-19 - 11 March 2020: <https://www.who.int/dg/speeches/detail/who-director-general-s-opening-remarks-at-the-media-briefing-on-covid-19---11-march-2020>

Wysocki, J.; Ye, M.; Rodriguez, E.; Gonzalez-Pacheco, F.R.; Barrios, C.; Evora, K.; Schuster, M.; Loibner, H.; Brosnihan, K.B.; Ferrario, C.M., et al. Targeting the degradation of angiotensin ii with recombinant angiotensin-converting enzyme 2: Prevention of angiotensin ii-dependent hypertension. *Hypertension* 2010, 55, 90-98.

Xu, H.; Zhong, L.; Deng, J.; Peng, J.; Dan, H.; Zeng, X.; Li, T.; Chen, Q. High expression of ace2 receptor of 2019-ncov on the epithelial cells of oral mucosa. *Int J Oral Sci* 2020, 12, 8.)

Zhao LQ, Qian Y, Zhu RN, Deng J, Wang F, Chen HZ, Cao L, Wang TY, Zhang T. (2006). [Serological analysis of SARS Coronavirus in children diagnosed clinically as severe acute respiratory syndrome cases during SARS epidemic in Beijing]. [Article in Chinese]. *Zhonghua Er Ke Za Zhi*. 44(4):262-6).

Zimmermann P and Curtis N (2020). Coronavirus Infections in Children Including COVID-19. An Overview of the Epidemiology, Clinical Features, Diagnosis, Treatment and Prevention Options in Children. *The Pediatric Infectious Disease Journal* 39(5): 355-368.

## Visualistaion of figures and their legends

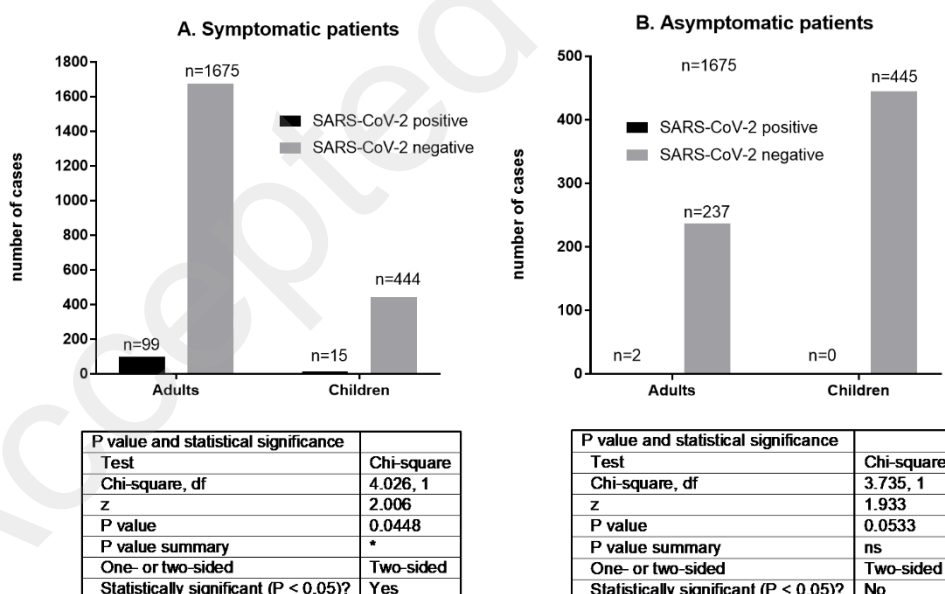
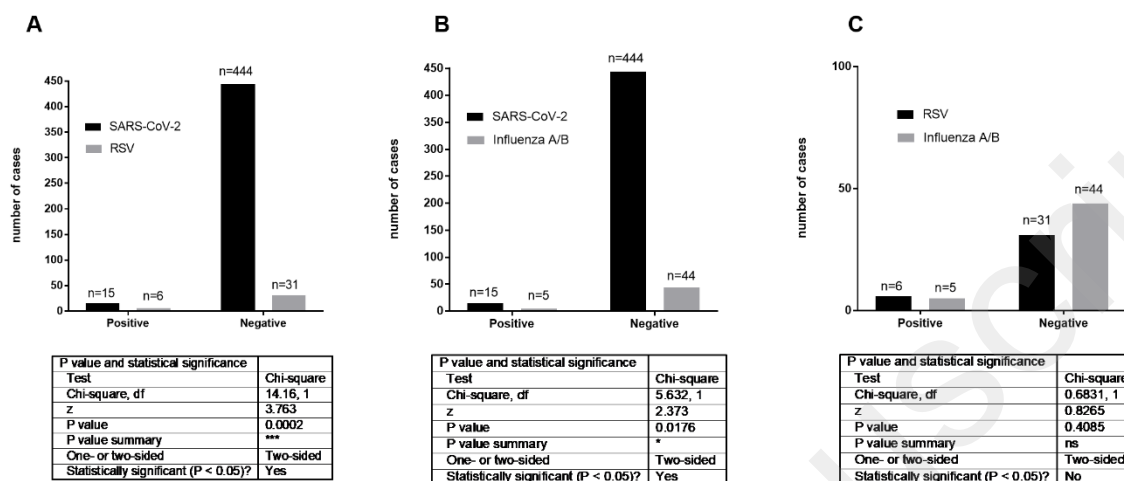


Fig. 1

The statistical analysis by chi-square test of the results obtained in: A – symptomatic patients, B – asyptomaptic patients.

Fig. 2



The statistical analysis by chi-square test of the results obtained in: A – SARS-CoV-2 vs. RSV tests; B – SARS-CoV-2 vs. influenza A/B; C- RSV vs. influenza A/B.

## Supplementary Materials 1

Age strata in the four groups of patients studied:

1. symptomatic pediatric patients (n = 459): 0-5 years: 37.6%; 5-10 years: 29.1%; 10-15 years: 29.1%; 15-18 years: 4.2%

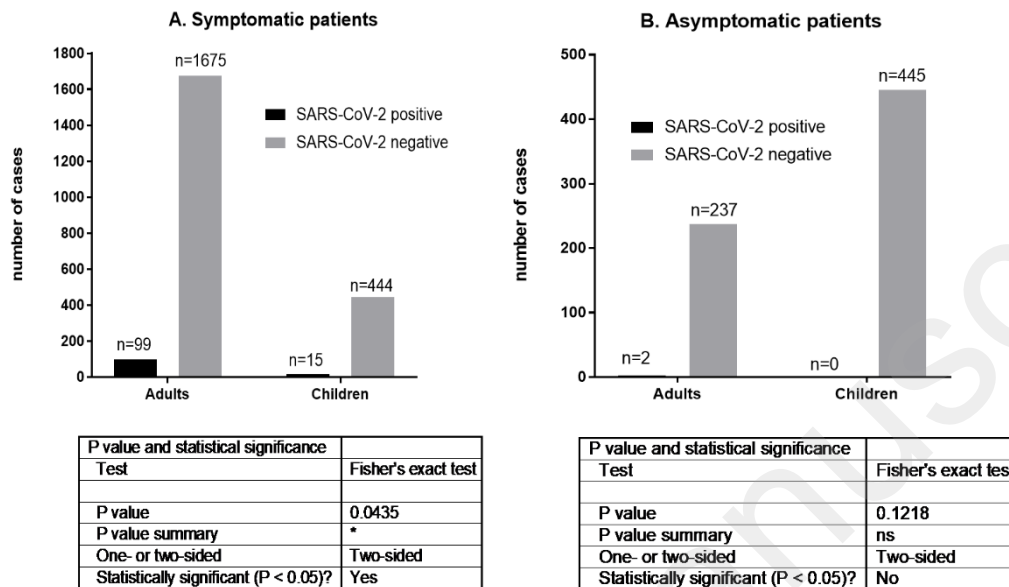
2. symptomatic adult patients (n = 1774): 18-30 years: 26.0%; 30-40 years: 21.0%; 40-50 years: 27.5%; 50-60 years: 7.5%; 60-70 years: 10.5%; 80 and more years: 7.5%.

3. asymptomatic children (n = 445): 0-5 years: 45.0%; 5-10 years: 25.0%; 10-15 years: 17.5%; 15-18 years: 12.5%

4. asymptomatic adults (n = 239): 18-30 years: 24.0%; 30-40 years: 15.0%; 40-50 years: 26.5%; 50-60 years: 17.5%; 60-70 years: 8.5%; 80 and more years: 8.5%.

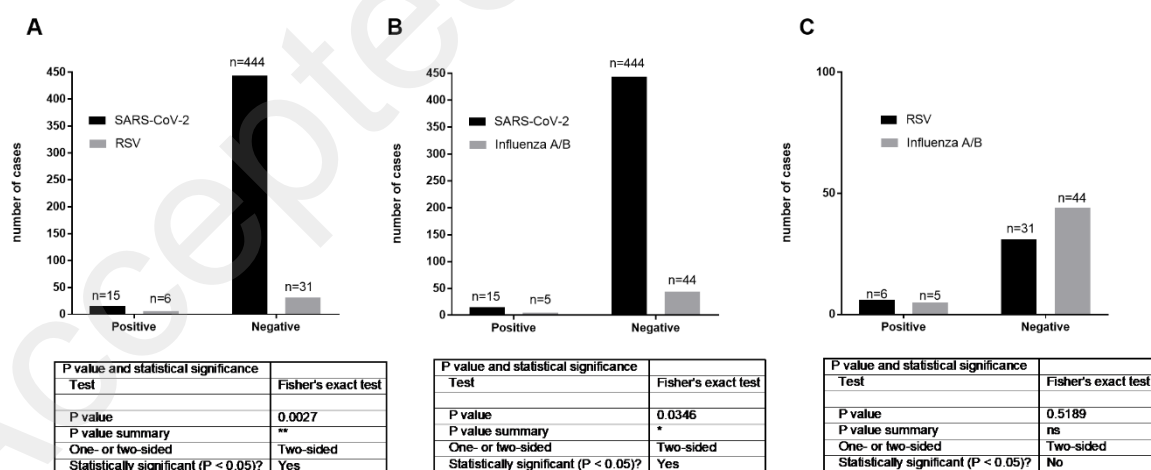
## Supplementary Materials 2

Fig. 1 Suppl. Materials



The statistical analysis by Fisher test of the results obtained in: A – symptomatic patients, B – asymptomatic patients.

Fig. 2 Suppl. Materials



The statistical analysis by Fisher test of the results obtained in: A – SARS-CoV-2 vs. RSV tests; B – SARS-CoV-2 vs. influenza A/B; C- RSV vs. influenza A/B.