



**HAL**  
open science

## Seasonal atmospheric transitions in the Caribbean basin and Central America

Isabelle Gouirand, Vincent Moron, Bernd Sing

► **To cite this version:**

Isabelle Gouirand, Vincent Moron, Bernd Sing. Seasonal atmospheric transitions in the Caribbean basin and Central America. *Climate Dynamics*, 2020, 55 (7-8), pp.1809-1828. 10.1007/s00382-020-05356-6 . hal-02962648

**HAL Id: hal-02962648**

**<https://hal.science/hal-02962648>**

Submitted on 31 Aug 2021

**HAL** is a multi-disciplinary open access archive for the deposit and dissemination of scientific research documents, whether they are published or not. The documents may come from teaching and research institutions in France or abroad, or from public or private research centers.

L'archive ouverte pluridisciplinaire **HAL**, est destinée au dépôt et à la diffusion de documents scientifiques de niveau recherche, publiés ou non, émanant des établissements d'enseignement et de recherche français ou étrangers, des laboratoires publics ou privés.

# Seasonal atmospheric transitions in the Caribbean basin and Central America

Isabelle Gouirand · Vincent Moron · Bernd Sing

Received: date / Accepted: date

**Abstract** The dates of the transition between winter and summer (W2S) and between summer and winter (S2W) regional-scale atmospheric regimes have been defined using daily weather types above and around the Caribbean basin from 1979 to 2017. The uncertainties due to either the use of two different reanalyses (i.e., NCEP-DOE and ERA-Interim) or the parametrization used for the definition of the transition dates have typically a small impact on the interannual variability of the seasonal transitions. When both reanalyses are considered together, the average W2S transition date occurs, on average, on May 13 (with a standard deviation of 9 days) while the S2W transition date occurs, on average, on October 26 (with a standard deviation of 12 days). The atmospheric characteristics associated with both transitions reveal asymmetries in the annual cycle. The W2S transition is rather abrupt and near-synchronous to a rather sharp increase of rainfall, propagating from Central America to the NE of the Caribbean basin,

---

*Corresponding author:* Isabelle Gouirand  
E-mail: isabelle.gouirand@cavehill.uwi.edu

---

Isabelle Gouirand  
The University of the West Indies  
Cave Hill, Barbados  
E-mail: isabelle.gouirand@cavehill.uwi.edu

Vincent Moron  
Aix-Marseille University, CNRS, IRD, INRAE, Collège de France, CEREGE  
Aix en Provence, France  
IRI, Columbia University  
Lamont-Doherty Earth Observatory  
Palisades, New York, USA  
E-mail: moron@cerege.fr

Bernd Sing  
The University of the West Indies  
Cave Hill, Barbados  
E-mail: bernd.sing@cavehill.uwi.edu

and a weakening of the Caribbean Low Level Jet. The W2S transition is also not preceded by any significant sea surface temperature (SST) anomalies either in the tropical North Atlantic or the Eastern Pacific. On the other hand, the S2W transition is overall smoother, and anomalously warm (cold) SST over the Caribbean Sea and Gulf of Mexico (Eastern Pacific) during the boreal summer are usually related to a delayed transition (and vice versa). The interannual variations of S2W and W2S transitions are mostly independent to each other. The potential and real-time predictability of the W2S transition is explored using a subseasonal-to-seasonal prediction ensemble (11 runs from 1998 to 2017) from the ECMWF model. Its skill is close to zero with a lead time longer than 15–20 days, confirming the weak impact of the antecedent SST upon the W2S transition. The skill suddenly increases from late April, 2–3 weeks only before the mean W2S transition date. It suggests that some atmospheric forcing, operating from synoptic to intra-seasonal time scale, plays a role, but it seems barely related to any occurrence, or sequence, of specific weather types.

**Keywords** weather type, annual cycle and predictability

## 1 Introduction

As for much of the tropics, the seasonality of the Caribbean basin rainfall broadly follows the seasonal march of the sun with the main rainy season in boreal summer. The rainy season is then synchronous to the seasonal northward shift of the inter-tropical convergence zone (Gu and Adler, 2006; Angeles et al., 2010; Gamble and Curtis, 2008) and of the North Atlantic High, the

weakening of the trade winds, the weakening of the Caribbean Low Level Jet (CLLJ) as well as the warming of the Western Hemispheric warm pool (Wang et al, 2007; Moron, Gouirand, and Taylor, 2015). All these interacting factors favor convective processes, and thus precipitation, over the Caribbean basin and Central America from April-May to October-November (Gamble and Curtis, 2008; Wang, 2007). The Caribbean rainy season is divided into an early (May-July) and a late (September-November) rainy season associated with the two maxima of rainfall (Chen and Taylor, 2002), separated by a relative minimum of rainfall occurring around July (i.e., the mid-summer drought, Magana et al (1999); Curtis and Gamble (2008); Gamble and Curtis (2008); Maldonado et al (2016)).

At inter-annual time scales, the amount of the rainfall is partly modulated by the sea surface temperature (SST) anomalies related to either the El Niño Southern Oscillation (ENSO), the tropical North Atlantic (TNA) SST, and possibly an SST gradient between the East equatorial Pacific (EEP) and the TNA (Giannini et al, 2001; Enfield and Alfaro, 1999; Chen and Taylor, 2002; Taylor et al, 2011; Gouirand et al, 2012, 2016). These past studies have shown that, during the development phase of a warm ENSO event, the late rainy season, in September-November, receives an anomalously low amount of rainfall. This could be related to a reduced number of tropical storms associated either with an increased vertical wind shear or with the warming of the middle and upper troposphere that produces a thermal inversion and inhibits the rainfall (Tang and Neelin, 2004). Conversely, the early rainy season, in April-June, following a warm ENSO event, receives an above normal amount of rainfall (Chen and Taylor, 2002) potentially associated with a warming of the TNA due to the wind-evaporation-sea surface temperature (WES) feedback suggested by Wang, Lee, and Enfield (2007) or to the Gill-type mechanism proposed recently by García-Serrano et al (2017). The regime of the Caribbean rainfall and the factors affecting the amount of rainfall have been summarized by Curtis and Gamble (2008). Ashby et al (2005) analyzed the predictability of the seasonal amount of rainfall for the early and the late rainy season over the Caribbean basin. Their results suggest that the Caribbean sea surface temperature and the sea level pressure over the TNA are influencing the Caribbean rainfall when the decadal signal is kept. The Pacific then has a larger influence at interannual time scales, for both the early and the late season. They have also shown that the factors controlling the early season are not necessary the same as the ones controlling the late season. Most of the researches shown a change in the

amount of rainfall but none have shown a change in the length of the rainy season.

However, despite the increased number of research papers on the Caribbean rainfall regime, little focus is placed on the analysis of the transition between seasons, namely from “winter” to “summer” and from “summer” to “winter”, and on the characteristics of these transitions. At a first guess, “summer” and “winter” may broadly refer to the wet (i.e., April-May to October-November) and dry regional-scale seasons, respectively, since the Caribbean basin is not associated with alternating low level winds as in “classical” monsoon climates. The triggers of these shifts are still unclear, although the annual cycle of the incoming solar radiation is potentially playing an important role. One way to analyze these transitions consists in estimating a regional-scale average date at which the atmospheric system shifts from the dry to the wet (and vice versa) local-scale season, as it has been already done for the onset of the monsoon in India (Moron and Robertson, 2014), in Indonesia (Moron et al, 2009), in West Africa (Marteau et al, 2009), and in South America (Kousky, 1988), (Marengo et al, 2001), (Gonzalez et al, 2002), (Liebmann et al, 2007), (da Silva and de Carvalho, 2007). Kousky (1988) also suggested that the onset of the rainy season over the Caribbean basin cannot be determined from the Outgoing Longwave Radiation (OLR) due to a lack of a clear seasonal change between the dry and wet seasons. Nevertheless, Mapes et al (2004) performing wavelet analysis on daily OLR dated the onset of the Caribbean rainfall approximately between May 1st and May 10th propagating northeastward from the Southwest of the Caribbean region to Florida (Fig. 6, Mapes et al (2004)). Mapes et al (2004) also highlighted that the beginning of rainfall over the Caribbean presents some similarities with a classical monsoonal climate, despite the lack of alternating near-surface winds. Moreover, Moron, Gouirand, and Taylor (2015) suggested that there is an abrupt transition between the winter and summer weather types in early May in good agreement with Magana et al (1999). This points to the possibility to determine a regional-scale average date of the transition between winter to summer (hereafter, W2S) and summer to winter (hereafter, S2W) atmospheric conditions over the Caribbean Region and Central America.

Recently, Moron, Gouirand, and Taylor (2015) have identified eight weather types (WT) summarizing the regional-scale daily atmospheric conditions from unfiltered NCEP-DOE 925hPa winds and interpolated OLR over the Caribbean region. Three out of these eight weather types (i.e., WTs 4, 5 and 6 referred to as “summer” WTs hereafter) show a clear increase of the deep

convection across the northern part of South America and Central America and have a larger frequency of occurrence from May to October, while the five other WTs (i.e., WTs 1, 2, 3 and 7, 8 referred to as "winter" WTs hereafter) show increased subsidence around  $12^{\circ}\text{N}$ – $28^{\circ}\text{N}$  and are more frequent from November to April, hence showing a strong phase locking with the annual cycle of the Caribbean rainfall. The WTs, based on unfiltered daily data, filter out small-scale features and emphasize recurrent and regional-scale atmospheric patterns, including the more or less gradual transitions related to the annual cycle. This offers the opportunity to estimate a regional-scale date of the W2S and S2W transitions instead of using the noisier rainfall which makes it difficult to identify a signal on this scale. Moreover, the estimate of a transition date will allow to determine the characteristics of the atmospheric and/or oceanic conditions during the W2S transition in boreal spring and the S2W transition in boreal fall over the Caribbean basin and Central America.

The objectives of this paper consist in ; (i) determining the date of the regional-scale shift between the seasons based on the transition of the WTs from winter to summer (and vice versa) atmospheric regimes ; (ii) estimating the sensitivity of the dates of the regional-scale shift to the criteria (i.e sequence of summer WT and winter WT during a certain number of days) used to determine the transition date of the WTs and to the use of two different sets of reanalyses (i.e., NCEP-DOE and ERA-Interim) ; (iii) analyzing the atmospheric and oceanic conditions associated with the transition periods ; (iv) evaluating the representativeness of the regional-scale date in subregional-scale rainfall and ; (v) assessing the potential and real-time predictability of the W2S transition.

The paper is structured as follows: the data and methodologies used in the analysis are detailed in Section 2. Section 3 includes the results related to the second, third and fourth objectives, while Section 4 assesses the seasonal and interannual predictability of the W2S transition. Section 5 closes the paper with the discussion.

## 2 Data and Methods

### 2.1 Rainfall and OLR

Daily precipitations have been extracted from the CHIRPS and PERSIAN-CDR data set over the Caribbean basin and Central America ( $5^{\circ}\text{N}$ – $30^{\circ}\text{N}$ ,  $50^{\circ}\text{W}$ – $100^{\circ}\text{W}$ ) to determine the change in precipitation prior and after the regional-scale W2S and S2W transitions over this region. The CHIRPS data set developed by the

University of Santa Barbara provides land precipitation with a  $0.25^{\circ}$  resolution for the period 1981 to 2017 (Funk et al, 2014) while PERSIAN-CDR provides land and sea precipitation with a  $0.25^{\circ}$  spatial resolution for the period 1983 to 2017 (Ashouri et al, 2015). Both data sets were used to gain an estimate of the independence of the results obtained from the data used to perform the analysis. Two indices representing spatial-averaged rainfall, one over the Caribbean basin ( $10^{\circ}\text{N}$ – $25^{\circ}\text{N}$ ,  $90^{\circ}\text{W}$ – $50^{\circ}\text{W}$ ) (hereafter, CarRC for CHIRPS and CarRP for PERSIAN-CDR) and the other one over the Amazon region ( $1^{\circ}\text{S}$ – $5^{\circ}\text{S}$ ,  $75^{\circ}\text{W}$ – $50^{\circ}\text{W}$ ) (hereafter, AmaR), have been calculated from these data sets to monitor the regional change of rainfall associated with the transitions.

The daily interpolated outgoing longwave radiation is extracted from the  $2.5^{\circ}$  data set by (Liebmann and Smith, 1996).

### 2.2 Atmospheric data

All atmospheric data are extracted from the second version of the NCEP reanalyses (i.e., NCEP-DOE, see Kanamitsu et al (2002)) for the period 1979–2017, within the region  $8.75^{\circ}\text{N}$ – $31.25^{\circ}\text{N}$ ,  $98.75^{\circ}\text{W}$ – $56.25^{\circ}\text{W}$  at an horizontal resolution of  $2.5^{\circ}$ . Zonal and meridional wind data at 925hPa are also extracted from ERA-Interim to update the time series of WTs from Moron, Gouirand, and Taylor (2015) (see section 2.5). The Caribbean Low Level Jet index (CLLJ, compare Amador (2018)) was calculated by averaging the 925hPa zonal wind over the area  $10^{\circ}\text{N}$ – $17.5^{\circ}\text{N}$ ,  $80^{\circ}\text{W}$ – $65^{\circ}\text{W}$ , and the Choco Jet (CJ, see Poveda and Mesa (2000)) was calculated by averaging the 925hPa zonal wind over the area  $5^{\circ}\text{S}$ – $7^{\circ}\text{N}$ ,  $85^{\circ}\text{W}$ – $75^{\circ}\text{W}$ , to determine their influence in the spring and fall transitions.

The precipitable water is used to estimate the amount of water available in the atmospheric column prior and after the W2S and S2W transitions in spring and fall. A spatially averaged index has then been created to represent the regional average of precipitable water (hereafter, CarPW) in the atmosphere over the Caribbean basin between  $10^{\circ}\text{N}$ – $25^{\circ}\text{N}$ ,  $90^{\circ}\text{W}$ – $50^{\circ}\text{W}$ . The dew point for the Caribbean basin was computed from pressure, temperature and specific humidity at 2 meters from Clausius - Clapeyron law. Then, the following equation  $T_d = T - ((100 - \text{RH})/5)$  is used to compute the dew point.

### 2.3 ECWMF S2S runs

An ensemble of 11 runs covering the period 1998–2017 have been extracted from the S2S database at the International Research Institute for Climate and Society (<https://iridl.ldeo.columbia.edu/SOURCES/.ECMWF/.S2S/>). The ECMWF forecasting system is referred to as Var-EPS-monthly, which is a merged 47 days (from day 0 to a lead time of 46 days) ensemble system updated twice (each Mondays and Thursdays) a week. We use two slightly different model configurations (CY43R23 for the starting dates before June 6 and CY45R1 thereafter) due to the fact that 20 years of retrospective forecasts are performed each time that a new version of the model is available (Moron and Robertson, 2020). The EPS integration uses an atmospheric model at Tco639 resolution (about 16km) up to day 15 and Tco319 (about 32km) after day 15.

The WTs for the ECMWF runs are computed on the ensemble of the 11 runs starting from March 29 to May 10, i.e., 13 different starting dates leading to a full set of 13 times 47 days times 11 runs times 20 years (thus, in total 134 420) days. The 925hPa zonal and meridional wind components have been extracted and linearly interpolated onto the 2.5° grid of ERA and NCEP. The Euclidean distances have been computed between the standardized anomalies (over the whole available time period, so keeping the annual cycle as in the reanalyses) of the zonal and meridional ECMWF 925hPa winds (OLR is not used at this step since it is not available in this S2S ensemble) and the centroids of the 8 WTs for 925hPa winds obtained from days consistent between both reanalyses. The smallest Euclidean distance attributes then each day of the 11 runs of the S2S ensemble to one of the 8 WTs.

### 2.4 Sea surface temperatures

The daily sea surface temperatures have been extracted from the NOAA OISST v2 high resolution data set. The OISST is available from 1981 to 2017 with a spatial resolution of 0.25° and has been selected for the region extending from 15°S to 45°N and from 100°W to 10°E (May et al, 1998; Reynolds et al, 2002). It is used to determine the average state of the sea surface temperature prior and following the date of the W2S and S2W regional-scale transitions. Five SST indices are computed: (i) the TNA index corresponding to the average of SST over the region 9°N–18°N and 80°W–60°W, (ii) the tropical East Pacific index (PAC) corresponding to the average of SST over the region 7°N–16°N and 110°W–85°W, (iii) the EEP index corresponding to the average of SST over the region 5°S–

5°N and 110°W–85°W, (iv) the Gulf of Mexico index (GMEX) corresponding to the average of SST over the region 18°N–25°N and 95°W–80°W, and (v) the Caribbean Sea index (CARS) corresponding to the average of SST over the region 9°N–18°N and 85°W–65°W.

### 2.5 The definition of W2S and S2W transition dates from the weather types

The WTs determined by Moron, Gouirand, and Taylor (2015) are based on the *k*-means dynamical clustering of the standardized unfiltered (i.e., the annual cycle is kept) anomalies of the 925hPa wind fields that provides a good description of low-level circulation and interpolated daily OLR. In this study the WTs from Moron, Gouirand, and Taylor (2015) have been updated till 2017 and re-computed using two different data sets: the NCEP-DOE and the ERA-Interim reanalyses (concatenated with the same interpolated OLR dataset) to evaluate the sensitivity of the cluster analysis to the reanalyses used to determine the WTs. A total of 92% of the days are clustered in the same WTs. Most of the discrepancies between both reanalyses appear around the 110th and 130th day of the year and around the 300th day, hence just before the early rainy season and at the end of the late rainy season (not show), respectively. The sensitivity of the estimation of the transition dates due to both reanalyses is evaluated below.

The W2S transition and S2W transition dates have been estimated from the daily sequence of WTs (Moron, Gouirand, and Taylor, 2015). The protocol is fairly similar to the one used to define an “agronomical” onset of rainfall (Bombardi et al, 2019). In this definition, the first (or last for the withdrawal) sequence of consecutive wet days receiving a significant amount of rainfall without a too long dry spell thereafter (or before for the withdrawal). We adapted this algorithm by replacing the daily rainfall by the daily 8 WTs coded into a binary vector either as “summer” (i.e., the WTs 4, 5, 6) or “winter” (i.e., the WTs 1, 2, 3, 7, 8) ones. The W2S transition date is defined as the initial sequence of consecutive “summer” WTs without a too long sequence of “winter” WTs thereafter while the S2W transition date is defined symmetrically as the last sequence of consecutive “summer” WTs without a too long sequence of “winter” WTs before.

Two sensitivities are evaluated in this study: (i) the sensitivity to the parametrization (i.e., to the length of the spell of winter and summer WTs), and (ii) the sensitivity of the date of transition to the reanalyses (NCEP-DOE vs. ERA-Interim). First, the length of the spell of consecutive days of seasonal WTs, followed (or not) by a spell of opposed WTs is always subjective.

Therefore a first probabilistic choice has been based on the combinations having a similar (40–60%) conditional probability to randomly occur (assuming independence and equal probability of summer and winter WTs to occur), thus excluding combinations with a too low probability. The parameters include the following combinations for W2S: a sequence of S (ranging from 3 to 10) consecutive days of summer WTs not followed by W consecutive days with winter WTs during a spell of P days following the last summer WTs of the initial sequence. Here, W equals 2 when P is between 4 and 5, 3 when P is between 8 and 12 and lastly 4 when P is between 17 and 27. This gave a total of 144 different combinations (i.e., 16 when W=2; 40 when W=3 and 88 when W=4). The criteria for the S2W transition are symmetrically reversed.

Secondly, the sensitivity of the transition date to the reanalyses has been estimated for four different “scenarios” based on the reanalysis used to determine the WTs: (1) In the “NCEP” scenario, the dates of transition are determined from the WT time series from NCEP-DOE only ; (2) In the “ERA” scenario, the dates of transition are determined from the WT time series from ERA-Interim only ; (3) In the “NCEP+ERA” scenario, a new daily WT time series corresponds to the WTs common to both NCEP-DOE and ERA-Interim based on the 8 WTs. The days having different WTs (amongst the 8 WTs) between both reanalyses are coded as missing value. The transition dates are then calculated based from this new daily WT time series ; (4) In the “NCEP+ERA1” scenario, the eight WTs are first coded into summer and winter categories. Then a new daily WTs timeseries is created based on the common daily WTs in both reanalyses, while the inconsistent days are coded as missing value. The average of the 144 requests from the NCEP+ERA1 scenario have been calculated and this average is then used as reference from section 3.2.

The criteria used to analyze the predictability of W2S transition dates (in Section 4) from the eleven ECMWF runs are reduced to seven requests out of the 144 described above. The seven requests used to determine the date of the shift between winter to summer WTs correspond the following criteria (with “S” representing the number of consecutive summer WTs, “W” the number of consecutive winter WTs and “P” the number of day following the last summer WTs in which we are looking for the “W” number of winter WTs): (i) S1=5; W1=3; P1=13; (ii) S2=6; W2=3; P2=16; (iii) S3=7; W3=3; P3=16; (iv) S4=6; W4=4; P4=27; (v) S5=5; W5=4; P5=24; (vi) S6=3; W6=4; P6=20; (vii) S7=5; W7=2; P7=9. The correlations between the 7 requests and the 137 other requests is, on average,

equal to 0.64, 0.72, 0.62, 0.78, 0.73, 0.77 and 0.62 respectively.

### 3 Results

#### 3.1 Sensitivity of the date of transition

The results indicate that a regional-scale W2S transition occurs around May 14, 13, 18 and 13, on average over the 39 years and the 144 requests for the NCEP, ERA, NCEP+ERA and NCEP+ERA1 scenarios. NCEP+ERA leads, as expected, to the latest average date since it is the most conservative choice by excluding the days classified differently in NCEP-DOE and ERA-Interim (amongst the 8 WTs). The intra-scenario variability (i.e., between the 144 requests of each scenario defined in section 3.5) is rather weak as suggested by the error bars of the NCEP+ERA1 scenario (Fig. 1a). The average correlations between the 144 requests equal 0.74, 0.77, 0.68 and 0.72 (significant according to a Monte Carlo test at 99% level) for NCEP, ERA, NCEP+ERA and NCEP+ERA1 scenario respectively. The average intra-scenario standard deviation (sd) amongst the 144 requests varies between 4.0 (NCEP), 3.2 (ERA), 5.7 (NCEP+ERA) and 4.0 (NCEP+ERA1) days, while the average interannual sd equals to 10.4 (NCEP), 9.2 (ERA), 11.4 (NCEP+ERA) and 9.3 (NCEP+ERA1) days. The percentage of common variance amongst the 144 requests for each scenario is also high with 74% (NCEP), 78% (ERA), 68% (NCEP+ERA) and 72% (NCEP+ERA1), respectively. Therefore, in each of the four scenarios, the interannual variability is larger than the intra-scenario spread between the 144 requests. These results thus indicate a weak sensitivity of the W2S transition date to the criteria selected for each request (i.e., criteria S, W and P presented in section 2.5).

The results for the S2W transition indicate an average date occurring around October 26 (NCEP), 26 (ERA), 22 (NCEP+ERA) and 26 (NCEP+ERA1). The average intra-scenario sd varies between 5 to 6 days, while the interannual average sd of each scenario equals 11.4 (NCEP), 12.0 (ERA), 13.1 (NCEP+ERA) and 11.6 (NCEP+ERA1) days. The variability amongst the 144 requests of NCEP+ERA1 scenario is small (see Fig. 1b), and the percentage of common variance between the 144 requests of each scenario equals to 66% (NCEP), 64% (ERA), 66% (NCEP+ERA) and 65% (NCEP+ERA1). This indicates that there is a small sensitivity of the S2W transition date to its parametrization. The S2W dates of regional-scale transition are neither sensitive to the requests nor to the reanalysis, as it is observed for the W2S transition.

Thus, on average, the regional-scale atmospheric shift from the wet to the dry season, the W2S transition, occurs on May 13 and the S2W transition occurs on October 26 implying that the duration of the wet season is 165–166 days. The correlations between the interannual W2S and S2W transition dates are weak and not significant ( $-0.14$  between W2S and S2W and  $0.13$  between S2W and W2S seven months after, respectively) for the period 1979–2017. This suggests that these transitions are statistically independent from each other. This result also suggests that the spring and fall shifts may be influenced by different factors such as the SST over the Tropical North Atlantic or over the Pacific as it has been observed for the rainfall amount received during the early and late seasons (Taylor et al, 2002; Ashby et al, 2005).

### 3.2 Regional-scale transition date vs. sub-regional rainfall

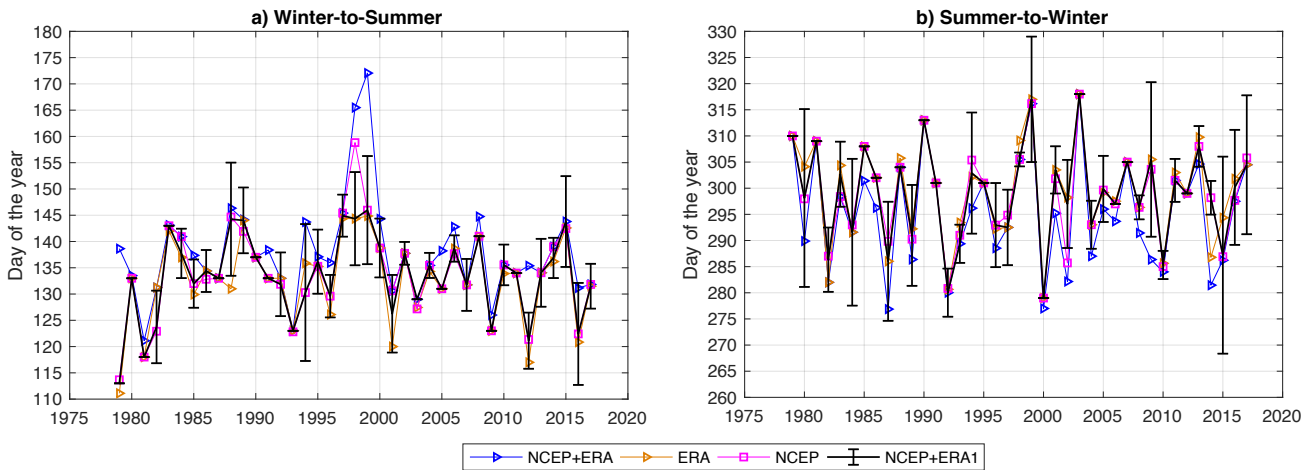
A cluster analysis has been performed on the standardized mean annual cycle of rainfall (i.e., climatological daily mean amounts are standardized to zero mean and unit standard deviation) using the CHIRPS data set (Funk et al, 2014). It aims to cluster the annual cycle of rainfall over the Caribbean region independently on the total annual amount of rainfall. Eight annual regimes have been retained. The annual cycle of each area has then been compared with the regional-scale W2S and S2W dates of transition previously defined (Fig. 2).

The eight regions highlighted by the classification are referred as follow: in the north, regions 1 and 2 correspond to South and North Florida, respectively (orange and yellow in Fig. 2). Region 3 includes the western and central part of Cuba, the northern Bahamas islands, Belize and the Pacific side of Central America (blue in Fig. 2), while region 4 aggregates the eastern part of Cuba, the southern Bahamas islands, Jamaica, Hispaniola and Puerto Rico (brown in Fig. 2). The lesser Antilles, Aruba, Bonaire and Curacao islands and the north of Honduras belong to region 5 (light blue) while region 6 (green in Fig. 2) associates the Caribbean side of Costa Rica, Honduras, the eastern part of Venezuela and the southern Windward Islands. In the south, Colombia, Panama and the Pacific side of Costa Rica constitute region 8 (red) and central part of Venezuela is defined as region 7 (dark blue in Fig. 2). Note that regions 3, 4 and 5 are similar to the clusters 1, 2 and 4 identified by Jury et al (2007) who only focused their study on the northern Caribbean Islands.

Four regions (2, 3, 4 and 8) present the classical annual cycle of the Caribbean region, i.e., a dry season from November to April and a wet season from May

to October with two maxima of rainfall separated by a reduced amount of rainfall usually associated to the mid-summer drought (Curtis and Gamble, 2008). These regions differ slightly from each other by the timing of the increase of rainfall and the date of the two rainfall maxima. Indeed, the rainfall starts first in regions 8 and 7, then in regions 4 and 3 following an almost northward progression. The sharp increase of rainfall in region 8 occurred before the average regional-scale W2S transition date. Regions 1, 2, 6 and 7 do not show a clear bi-modality of rainfall during the wet season. Region 7 presents a bell shape distribution of rainfall suggesting that the dry and wet season follow the annual solar cycle, while region 5 shows a progressive increase of rainfall from April to November with a maximum occurring in late September–October, possibly related to the tropical storm activity. Region 6 has two maxima of rainfall, one in July and the other in November, but the maxima of region 6 are delayed compared to the usual bi-modality of the rainy season associated with the Caribbean region. The delayed maximum in June seems to coincide with the maximum intensity of the CLLJ (Muñoz et al, 2008). Fig. 2 also points out that the mid-summer drought is not marked over the northern part of South America and the Eastern Antilles, the Caribbean side of Central America and Florida but is clear over the Pacific side of Central America and the north-western part of the Greater Antilles. The results obtained with this classification are relatively similar to the one from Martinez et al (2019) that did not include data over the northern part of South America. The main difference resides in the bundling of the southern part of Florida with the NW Caribbean while this classification separates them. This classification also highlights the difference in the mean annual cycle between the Pacific and Caribbean side of Central America suggesting that several factors are influencing the rainfall in these regions such as the contrast ocean-land.

The average W2S date of transition obtain from the WTs thus corresponds to an almost synchronous and abrupt increase of rainfall over the whole Caribbean and Central America region, especially for the regions forming a SW-NE band stretched from region 3 to region 4 (Fig. 2). The W2S transition date occurs after the increase in rainfall over Columbia and Panama and before the increase of rainfall in Florida where the increase starts approximately 20 days after the rest of the Caribbean, in agreement with Mapes et al (2004). This abrupt regional-scale increase detected even in a climatological time series averaging more than three decades suggests a strong solar forcing and is fully consistent with the rather reduced sd of the W2S transition at interannual time scale. Note that the Leeward Islands (re-



**Fig. 1** (a) Day of the W2S transition on the average of the 144 requests for the NCEP+ERA1 scenario (black line with error bars corresponding to  $\pm 1$  sd), for NCEP+ERA scenario (blue line with triangle), ERA scenario (orange line with triangle) and NCEP scenario (pink line with square); (b) same as (a) but for the S2W transition.

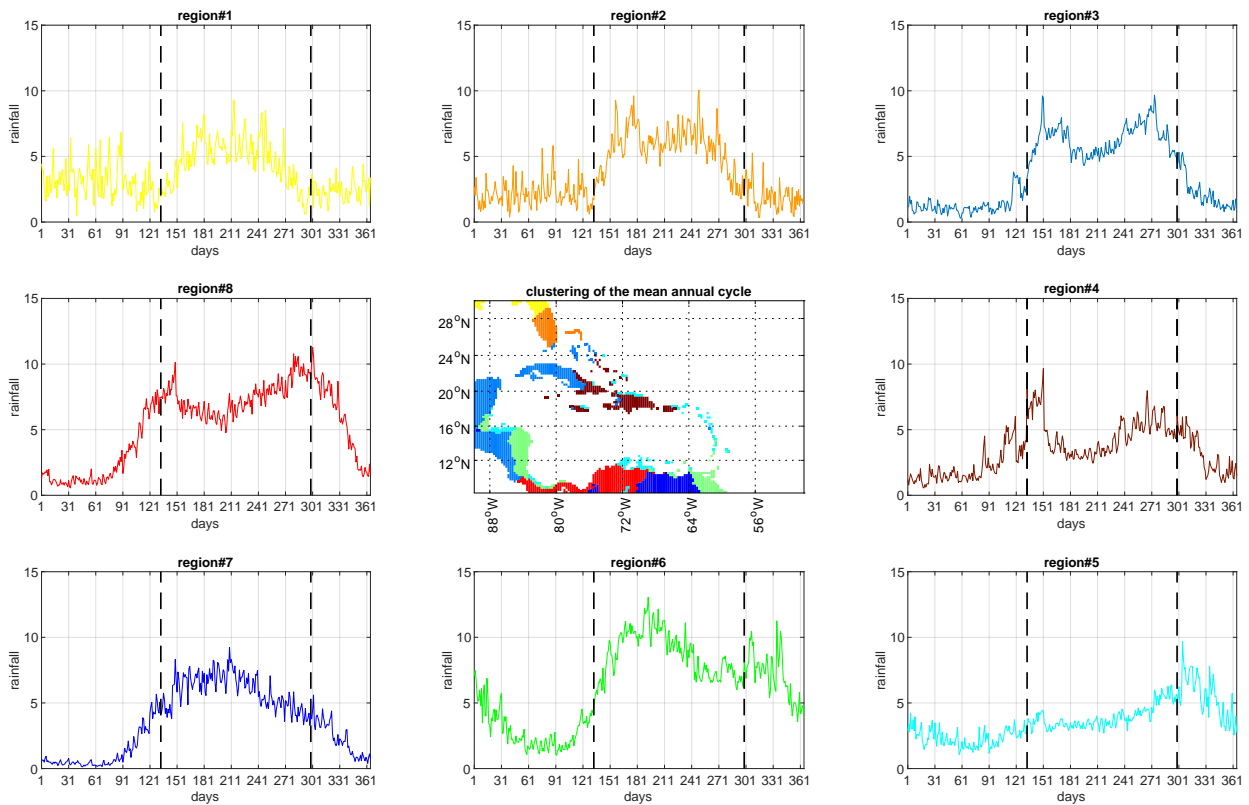
gion 5 on Fig. 2) show a gradual increase from the first week of April and thus differ slightly from the rest of the Caribbean. The other interesting note concerns region 6 (the Caribbean side of Central America) that presents a maximum of rainfall when a reduced amount of rainfall is observed over the other regions, especially in region 3 where the mid-summer drought has the strongest signal. This could be mostly related to the effect of the CLLJ on the rainfall pattern, an increased CLLJ promoting divergence over most of the Caribbean basin and thus reduced rainfall except on the windward side of the Central America isthmus where the rainfall then increases in mean. To summarize, the W2S transition seems to be first initiated over South America, Panama and Costa Rica, maybe due to the northward shift of the Pacific ITCZ, and then extends a few days later over the northern part of Central America and through the Caribbean basin. The results thus suggest that the average regional-scale W2S transition date represents a good estimate of the time at which the regime shifts from dry-to-wet season over most of the Caribbean and Central America region.

Overall, the wet-to-dry transition is smoother than the dry-to-wet one. The S2W transition shows a good agreement with the seasonal decrease of the rainfall in the northern regions and the Pacific side of Central America (regions 1, 2 and 3 on Fig. 2)), and over the NW Caribbean but not for the central and southern regions (regions 4, 5, 6, 7, and 8 on Fig. 2)).

### 3.3 Daily OLR, WTs and Caribbean rainfall vs. average date of transition

The climatology of the daily OLR, the daily WTs and the daily average of Caribbean rainfall have been plotted against the climatological W2S and S2W transition dates (Fig. 3). The OLR time-latitude diagram (Fig. 3), indicates a pulse of convection at  $15^{\circ}\text{N}$ – $20^{\circ}\text{N}$  shortly after the average date of the W2S transition, while the S2W transition seems to be smoother. Fig. 3a also highlights the northward migration of the convection over the northern part of South America. Nevertheless, the main deep convection center (i.e., the intertropical convergence zone) at these longitudes ( $80^{\circ}\text{W}$ – $60^{\circ}\text{W}$ ) never crosses  $10^{\circ}\text{N}$ . This emphasizes the importance of the land-sea contrast in keeping the convection locked inland over South America and suggests different mechanisms in action between South America and the Caribbean Sea. The cooler Caribbean sea surface temperature associated with coastal upwelling along the northern coast of South America combined with the mean anticyclonic circulation could indeed inhibit the further northward shift of the ITCZ while the vegetation over South America may contribute to the low level moisture and fuel, at least partly, the deep convection. The climatology of the SST superimposed with the climatological OLR (Fig. 3a) indicates a gradual increase of SST from  $26^{\circ}\text{C}$  to  $27^{\circ}\text{C}$  over the Caribbean Sea around the W2S (S2W) transition date. This suggests that the SST are not likely to trigger alone neither the W2S nor the S2W transition, although SST warmer than  $26^{\circ}\text{C}$  (Zhang, 1993) could still be a sine qua non condition for deep convection to occur at the W2S transition time.





**Fig. 2** Clustering of the mean annual cycle of daily rainfall. The daily rainfall are extracted from CHIRPS data set and the climatological daily mean on the whole period 1981–2017 is then standardized to zero mean and unit variance. The clustering is done on the leading 25 principal components explaining 75% of the total variance. The vertical dashed line refers to the mean S2W and W2S transition dates from the NCEP+ERA1 scenario (May 13 and October 26)

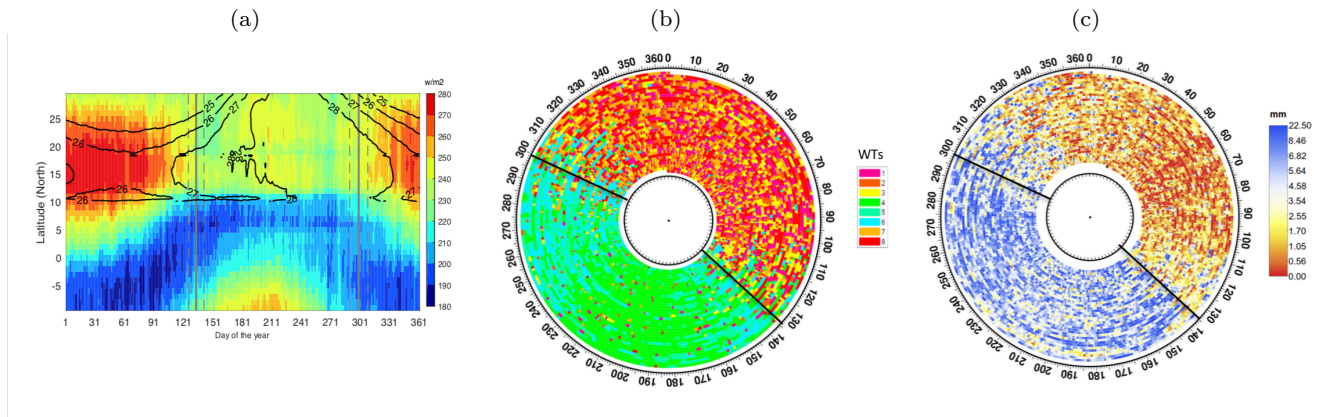
1 Fig. 3b,c presents the daily distribution of the WTs  
 2 and the spatially averaged daily rainfall over the Car-  
 3ibbean basin and Central America (i.e., region between  
 4  $5^{\circ}\text{N}$ – $30^{\circ}\text{N}$ ,  $50^{\circ}\text{W}$ – $100^{\circ}\text{W}$ ) from January 1st 1981 to De-  
 5 cember 31st 2017 from CHIRPS. The annual sequences  
 6 of WTs and spatially averaged daily rainfall are ob-  
 7 viously largely similar. The wintertime WTs (red and  
 8 orange colors on Fig. 3b) are clearly associated to drier  
 9 conditions while those occurring in summer (blue and  
 10 green colors on Fig. 3b) are associated to wetter con-  
 11 ditions. Both WTs and rainfall distribution show a rapid  
 12 W2S transition around the regional-scale transition  
 13 date, while the S2W transition is smoother in agree-  
 14 ment with the smaller representativeness of the S2W  
 15 date in subregional rainfall. Therefore Fig. 3b,c illus-  
 16 trates again clearly the strong seasonality in the WTs  
 17 and in the rainfall regime over the Caribbean basin  
 18 and Central America and supports the asymmetrical  
 19 behaviour of the spring and fall transition, W2S be-  
 20 ing abrupt and strongly locked to subregional rainfall  
 21 regimes while S2W is more gradual and less locked to  
 22 the subregional rainfall regimes. In consequence, the

S2W transition date has a lower accuracy as a region-  
 wide indicator of the shift of rainfall from wet to dry.

### 3.4 Rainfall anomalies vs. yearly transition dates

In order to further investigate the fingerprints of the  
 regional-scale W2S and S2W transitions on rainfall,  
 weekly amounts of rainfall have been calculated start-  
 ing 4 weeks before the yearly W2S and S2W transition  
 dates and up to two weeks thereafter. Note that the  
 weeks prior to the transition dates are identified with  
 (-1) ending the day before the transition day, while the  
 weeks after are identified with (+1) starting with the  
 transition day. First, the weekly average amount of rain-  
 fall for the fourth week (week4(-1)) before the W2S and  
 S2W transition dates has been calculated (Fig. 4a,g).  
 Then, the difference between week3(-1) and week4(-1)  
 is computed and so on till week2(+1) (Fig. 4b–f,h–l).

On average, the Caribbean region is receiving less  
 than 5 mm/day of rainfall a month before the W2S  
 transition date, with the exception of Panama and the  
 Costa Rica (4–6mm/day) located in the exit area of the

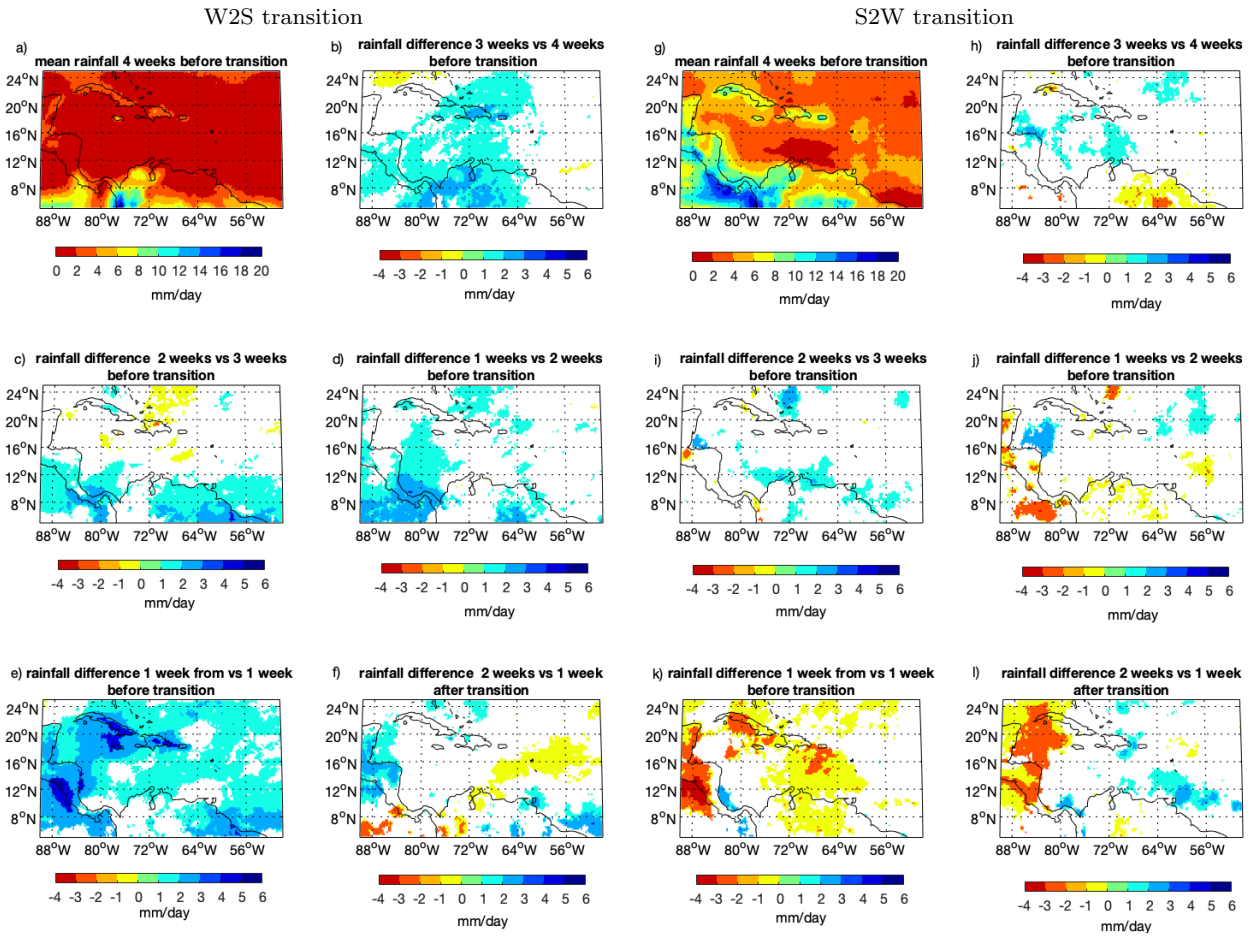


**Fig. 3** (a) Daily evolution of the OLR (shadings in  $W/m^2$ ) and SST (contours in degrees C) daily mean climatology for each latitude from  $10^\circ N$  to  $30^\circ N$  averaged between  $80^\circ W$ – $50^\circ W$ . (b) WTs from the 1st January 1981 (innermost circle) to the 31st of December 2017 (outermost circle). On the circle 0 represents all the January 1st and each complete circle represent one year; (c) same as (b) but for the daily rainfall spatially averaged over the Caribbean basin and Central America ( $5^\circ N$ – $30^\circ N$ ,  $50^\circ W$ – $100^\circ W$ , in mm). The radial lines on the circles indicated the W2S and S2W average transition dates.

1 CLLJ and part of Colombia affected by the CJ (com- 35  
 2 pare Fig. 4a). At week3(-1), the rainfall increases by 36  
 3 1mm/day with a SW-NE pattern from south of Central 37  
 4 America towards Hispaniola (Fig. 4b). From week3(- 38  
 5 1) to week2(-1), the weak change in rainfall is mainly 39  
 6 located over the east of South America and Central 40  
 7 America (Fig. 4c). One week before the W2S transition 41  
 8 (Fig. 4d), rainfall increases by 2mm/day mainly over 42  
 9 Costa Rica and Panama while the amount of rainfall 43  
 10 over the Caribbean islands remains the same as before. 44  
 11 Then, between week1(+1) and week1(-1), correspond- 45  
 12 ing to the difference in rainfall after vs. prior to the W2S 46  
 13 transition date, the daily rainfall shows a more than 47  
 14 3mm increase over the whole Caribbean basin and Cen- 48  
 15 tral America, with a maximum increase over the Pacific 49  
 16 side of Nicaragua and Salvador and stretching toward 50  
 17 the Greater Antilles (Fig. 4e). During week2(+1), the 51  
 18 rainfall still increases over the northern part of Cen- 52  
 19 tral America but remains rather constant over the Car- 53  
 20ibbean Islands (Fig. 4f). The increase in rainfall oc- 54  
 21curs earlier over the southern part of Central America 55  
 22(Costa Rica, Panama and Nicaragua) compared to the 56  
 23rest of the Caribbean basin in agreement with Fig. 2. 57  
 24These results support the abrupt shift in rainfall and 58  
 25the rather simultaneous change in the regime of rainfall 59  
 26over the whole Caribbean basin and Central America 60  
 27as well as the accuracy of the WT-transition W2S date 61  
 28(Moron, Gouirand, and Taylor, 2015) to, in fact, repre- 62  
 29sent the dry-to-wet transition in the Caribbean regime 63  
 30of rainfall.

31 Four weeks before the S2W transition, the Carib-  
 32bean basin and Central America are receiving more  
 33than 6mm/day of rainfall over the Greater Antilles and  
 3412mm/day over Central America (Fig. 4g). The rela-

tively dry conditions observed over the southern Carib- 35  
 36bean Sea may be firstly related to the regional-scale an- 37  
 38ticyclonic conditions under the Azores/Bermuda high, 38  
 39and cool SST due to the upwelling offshore of South 39  
 40America may reinforce the dry conditions there. The 40  
 41local-scale forced instability related to the island to- 41  
 42pography and sea/mountain breeze systems may be 42  
 43able to break up the trade inversion and increase rain- 43  
 44fall over most of the islands. In Central America, in- 44  
 45tense rainfall is also probably due to the close loca- 45  
 46tion of the Pacific and South America ITCZ. From 46  
 47week4(-1) until week1(-1), the amount of rainfall re- 47  
 48mains broadly similar (compare Fig. 4h–j). A decrease 48  
 49in daily rainfall is then observed between week1(-1) and 49  
 50week1(+1) (Fig. 4k). The western side of Cuba and the 50  
 51northern part of Central America observe a decrease of 51  
 52more than 2mm/day, while the eastern Caribbean only 52  
 53shows a decrease lower than 1mm/day in agreement 53  
 54with (Fig. 2k). At the same time, the rainfall amount 54  
 55increases over the Caribbean side of Central America 55  
 56suggesting a symmetric pattern similar to the one ob- 56  
 57served with a strong CLLJ. The decrease in rainfall thus 57  
 58persists two weeks after the transition date over the 58  
 59western part of the Caribbean Sea and Central America 59  
 60(Fig. 4(l)). Although the S2W shift is overall smoother 60  
 61over the Caribbean compare to the more abrupt W2S 61  
 62transition, the S2W transition date still represents a 62  
 63regional-scale change from wet-to-dry conditions over 63  
 the Caribbean basin and Central America.



**Fig. 4** Two left (right) panels correspond to the W2S (S2W) transition: (a),(g) average of rainfall (mm) over the Caribbean basin in the fourth week (week4(-1)) before the W2S (S2W) transition; (b),(h) difference between the amount of rainfall received on the third week (week3(-1)) before the transition minus the amount of rain in week4(-1); (c),(i) difference between the average amount of rainfall received on the second week (week2(-1)) before the transition minus the amount received during week3(-1); (d),(j) difference between the average amount of rainfall received on the first week (week1(-1)) before the transition minus the amount received during week2(-1); (e),(k) difference between the average amount of rainfall received on the first week (week1(+1)) after the transition minus the amount in week1(-1); and (f),(l) difference between the average amount of rainfall received on the second week (week2(+1)) after the transition minus week1(+1). Only the significant differences are shown based on a Monte Carlo test at level 95%. Both rainfall and rainfall differences are in mm/day.

### 1 3.5 Atmospheric and oceanic indices vs. transition 2 dates

3 Fig. 5a confirms the sudden rainfall change around the  
4 W2S transition date observed in Fig. 3. Indeed CarRC  
5 shows an increase of 3mm/day prior vs. after the date  
6 of transition while Fig. 4h-j) the average only increases  
7 from 2mm/day to more than 3mm/day in (Fig. 5(a)).  
8 At the time of the W2S transition, the amount of rain-  
9 fall for both CarRC and CarRP is close to the aver-  
10 age annual amount of rainfall with 4.1mm/day and  
11 2.4mm/day respectively. CarPW starts to increase 60  
12 days before the W2S transition date, but a sharp in-  
13 crease is observed from the W2S transition date, when  
14 it reaches more than 37kg/m<sup>2</sup> (which is a value close  
15 to the annual average of 37.6kg/m<sup>2</sup>) to 20 days after

when it reaches a maximum of 41kg/m<sup>2</sup> (Fig. 5(b)).  
This suggests an increased rate in the moisture sup-  
ply over the domain around the W2S transition date  
and a potential minimum level of precipitable water  
required to trigger regional-scale rainfall. The decrease in  
the amount of daily rainfall over the Amazon starts 10  
to 20 days before the W2S transition date but does not  
seem to be a potential indicator of a shift in the rainfall  
regime over the Caribbean basin (correlation between  
W2S and Amazon rainfall at the time of the transition  
is around 0.3, see Fig. 6).

None of the SST indices shows a rapid warming  
around the W2S transition date (Fig. 5d). Their grad-  
ual warming is likely associated with the seasonal in-  
crease of the amount of incoming solar radiation. Nev-  
ertheless, CARS, PAC and GMEX show temperature

above  $26.5^{\circ}\text{C}$  at the time of the W2S transition, a condition favorable to deep convection, while the EEP temperature cools down to  $26^{\circ}\text{C}$  leading to a  $1^{\circ}\text{C}$  gradient between EEP and the CARS (Fig. 5d). In summary, the changes in SST around the W2S transition date are broadly gradual and may not be the main (or unique) trigger of the abrupt change in the rainfall, except perhaps for a threshold effect related to SST crossing the  $26.5^{\circ}\text{C}$ – $27^{\circ}\text{C}$  temperature possibly combined with a certain amount of precipitable water around  $36\text{kg}/\text{m}^2$ . Prior to the W2S transition date, neither the CLLJ or the CJ are showing a significant decrease or increase. However, the intensity of the CLLJ decreases rapidly from the W2S transition date up to ten days after when it reaches its minimum annual value (Figs. 5e,f). On the other hand, the CJ veers to become eastward at the time of the W2S transition date suggesting a shift in the atmospheric circulation at that time. All the elements required for deep convection are thus present at the date of W2S transition (i.e., an SST greater than  $27^{\circ}\text{C}$ , precipitable water amount more than  $37\text{kg}/\text{m}^2$ , and a weak CLLJ). However, none of the variables exhibits the abrupt change noticed in local-scale rainfall around the W2S transition date (Fig. 3). At that time, all of the variables show an average annual value suggesting that the atmospheric and oceanic states reach a pseudo-balance (i.e., an average state of the system) with all the necessary conditions for convection being present).

At the date of the S2W transition (Fig. 5g–i), CarRC decreases more than  $6\text{mm}/\text{day}$  to  $4\text{mm}/\text{day}$ , and CarPR decreases  $5\text{mm}/\text{day}$  to less than  $4\text{mm}/\text{day}$ . CarPW also decreases, namely from  $42\text{kg}/\text{m}^2$  to less than  $40\text{kg}/\text{m}^2$  nine days after the S2W transition. On the other hand, SST indices are still warmer than  $27$ – $28^{\circ}\text{C}$  after the S2W transition date. Unlike the W2S transition, the SST indices still all have values above their annual average at the time of the S2W transition. The rainfall amount and precipitable water are still decreasing after the S2W transition date. It is possible that the Atlantic subtropical high has started its southward shift thus potentially inhibiting the deep convection despite ocean temperature warmer than  $27^{\circ}\text{C}$  (Fig. 5j). The CLLJ strengthens from  $5\text{m}/\text{s}$  to  $7\text{m}/\text{s}$  around the S2W transition date, along with the increase of rainfall over the Caribbean side of Central America (Fig. 4k), and then further strengthens toward a maximum forty days after the S2W transition (Fig. 5k). The CJ still blows eastward but weakens after the S2W transition date (Fig. 5l). All these features indicate a clear change, even if it is smoother than around the W2S transition, in the atmospheric circulation at the time of the S2W transition, while oceanic changes are

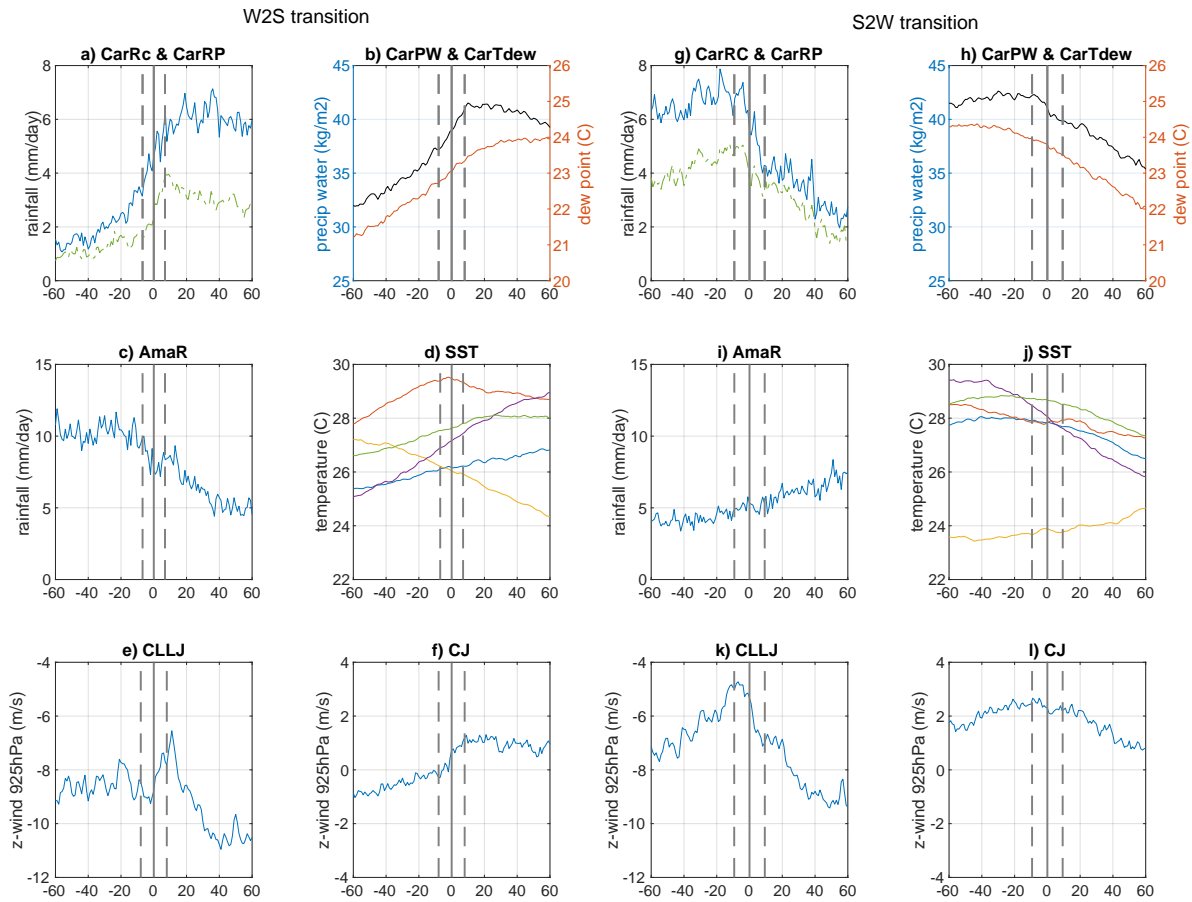
rather limited. These results suggest that despite the warm surface ocean, others factors could slowly inhibit the rainfall, such as the increase of the CLLJ (and its related shear) potentially linked to a increase of pressure gradient between Azores/Bermuda high and low pressure located over South America.

The correlations between the 31-day moving average indices and the interannual variations of the W2S transition dates are significant for the CarRC, CarRP and CarPW indices at the time of or just before it (Fig. 6). Fig. 6 also shows significant, albeit weak, correlations (i.e.,  $-0.3$ ) between the W2S transition date and the CLLJ and CJ speed around the time of the transition. Therefore an earlier (later) transition is associated, as expected, with a higher (lower) amount of rainfall and precipitable water and, with a weaker (stronger) CLLJ and a westward (eastward) anomaly of the CJ. The correlations between the W2S transition date with the antecedent SST indices are not significant, suggesting that the interannual variations of the SST are weakly influencing the date of transition in boreal spring.

The correlations between S2W transition and the rainfall and precipitable water suggest that when the transition occurs earlier (resp., later), the amount of rainfall and precipitable water are logically lower (resp., higher) than normal (here,  $r=0.6$ ). Fig. 6 also indicates that an earlier (resp., later) S2W shift tends to be preceded and accompanied by a cooler (resp. warmer) CARS and GMEX and a warmer (resp., cooler) EEP even if the correlations are mostly around  $0.3$ – $0.4$ , suggesting a weak to moderate seasonal predictability of S2W transitions associated with the boundary forcing of regional-scale SST. A westward (eastward) and stronger (weaker) CJ and a stronger CLLJ are also associated to an early (resp.,late) S2W transition with significant correlation at  $0.3$  at the time of the transition. It seems that the CJ anomaly related to the S2W transition is rather persistent during the whole rainy season.

#### 4 Predictability of the W2S Transition Dates

Fig. 7a shows the skill (i.e., the correlation between the average W2S transition date in ECMWF and the observed one in the NCEP+ERA1 scenario using the same parameterization) vs. the initialization date. The skill is close to zero until April 19, then suddenly increases to  $0.5$ – $0.6$  around April 24–25 and then stays at a constant level around  $0.7$  until May 10 close to the mean observed average W2S transition, for the best combinations (i.e., requests #1 and #7). The lack of any significant skill more than 3 weeks before the mean observed W2S transition date for all requests is fully consistent

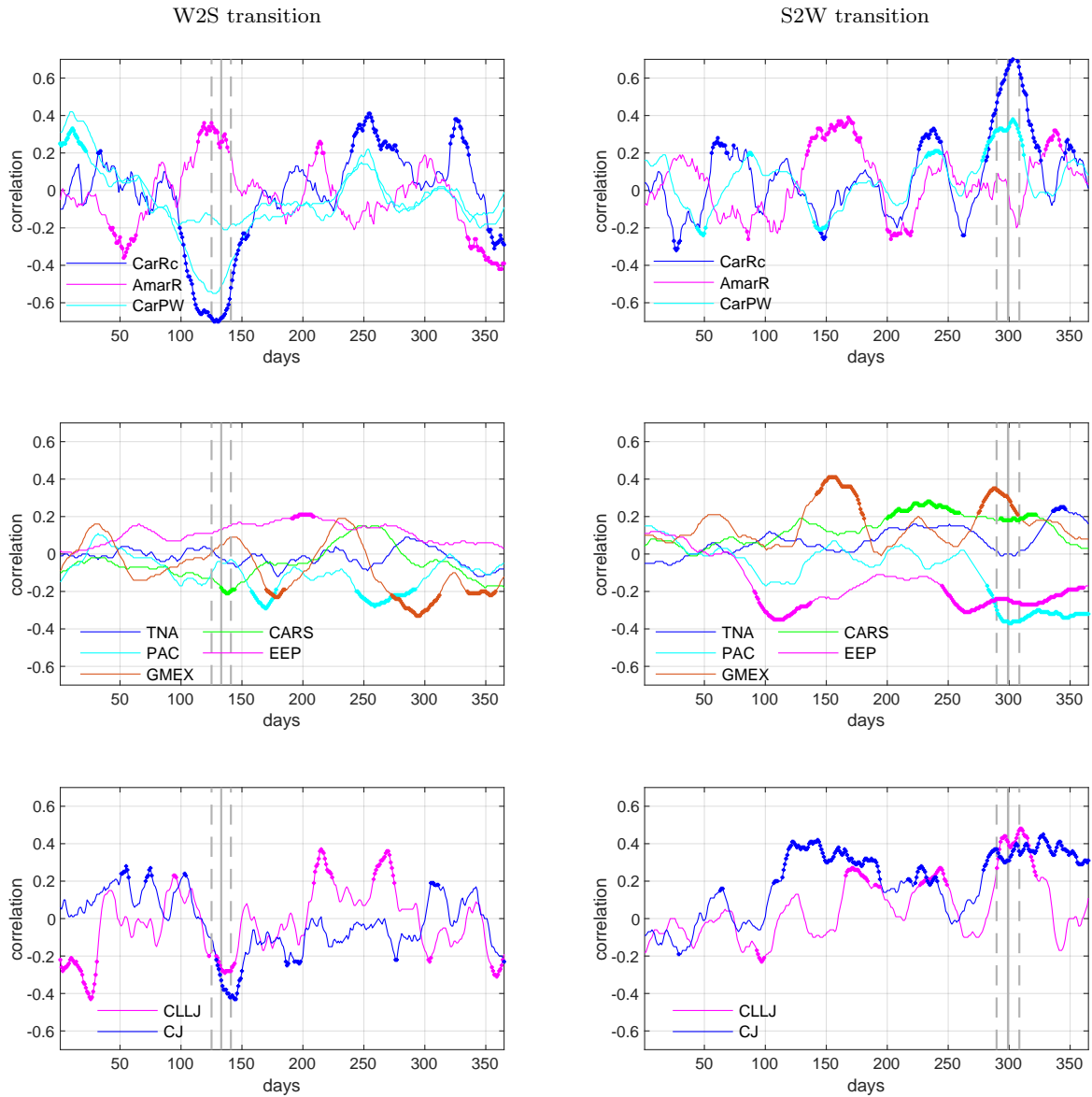


**Fig. 5** Average of the indices 60 days before and after the transition date denoted by zero on the x-axis. Indices for the W2S transition (a)–(f) and the S2W transition (g)–(l). (a),(g) rainfall CarRC (blue line), CarRP (green line) ( $10^{\circ}\text{N}$ – $25^{\circ}\text{N}$ ,  $90^{\circ}\text{W}$ – $50^{\circ}\text{W}$ ), and (b),(h) AmaR ( $1^{\circ}\text{S}$ – $5^{\circ}\text{S}$ ,  $75^{\circ}\text{W}$ – $50^{\circ}\text{W}$ ) in mm/day; (c),(i) precipitable water (CarPW) ( $10^{\circ}\text{N}$ – $25^{\circ}\text{N}$ ,  $80^{\circ}\text{W}$ – $60^{\circ}\text{W}$ ) in  $\text{kg}/\text{m}^2$ ; (d),(j) SST over PAC (red line) ( $7^{\circ}\text{N}$ – $16^{\circ}\text{N}$ ,  $110^{\circ}\text{W}$ – $85^{\circ}\text{W}$ ), EEP (yellow line) ( $5^{\circ}\text{S}$ – $5^{\circ}\text{N}$ ,  $110^{\circ}\text{W}$ – $80^{\circ}\text{W}$ ), TNA (blue line) ( $9^{\circ}\text{N}$ – $18^{\circ}\text{N}$ ,  $80^{\circ}\text{W}$ – $60^{\circ}\text{W}$ ), GMEX (purple line) ( $18^{\circ}\text{N}$ – $25^{\circ}\text{N}$ ,  $95^{\circ}\text{W}$ – $80^{\circ}\text{W}$ ), and CarS (green line) ( $9^{\circ}\text{N}$ – $18^{\circ}\text{N}$ ,  $85^{\circ}\text{W}$ – $60^{\circ}\text{W}$ ), in degree Celsius; (e),(k) CLLJ ( $10^{\circ}\text{N}$ – $17.5^{\circ}\text{N}$ ,  $65^{\circ}\text{W}$ – $80^{\circ}\text{W}$ ); and (f),(l) CJ ( $5^{\circ}\text{S}$ – $7^{\circ}\text{N}$ ,  $85^{\circ}\text{W}$ – $75^{\circ}\text{W}$ ) in m/s. The zero (vertical line) indicate the date of transition and the dotted lines represent  $\pm 1$  sd.

1 with the lack of sustained significant relationships between the observed transition dates and the SST indices shown in Fig. 6. This is also fully consistent with the weak variance explained by the logistic hindcast model of WT occurrence with SST indices at the start of the rainy season in Moron, Gouirand, and Taylor (2015).  
 2  
 3  
 4  
 5  
 6  
 7 On the contrary, the sudden increase of skill concentrated in one week, between April 19 and April 26, suggests the main implication of an atmospheric process, possibly superimposed on the mean annual cycle. The lower three panels of Fig. 7 show the observed and forecast transition date using the parametrization #7 for three starting dates, one (April 19) without any skill (Fig. 7b), and two others one (Fig. 7c) and two weeks (Fig. 7d) thereafter.  
 8  
 9  
 10  
 11  
 12  
 13  
 14  
 15

16 The issue raised by Fig. 7 is the nature of the atmospheric process(es) involved in the skill's increase after  
 17

mid-April. This is explored in Fig. 8. We extracted the 76 cases (out of a total 220 forecasts of transition date) where the average W2S transition date is accurately predicted on April 26 (with a tolerance of  $\pm 2$  days). Then, the sequences of predicted daily WTs before the corresponding average W2S transition dates are keyed to the simulated average W2S transition dates (Fig. 8a). This is compared with the climatological CDF, that is the full set of daily sequence of WTs from April 26 to the simulated (right or wrong) average W2S transition date (Fig. 8b). Both panels are rather noisy with the 8 WTs usually observed before the average W2S transition dates. Some differences are visible between the successful prediction and the climatological CDF, as for example the positive frequency of WT 3 (which is a “dry” WT over the middle Caribbean basin (Moron, Gouirand, and Taylor, 2015) in the 5 to 1 day before the  
 18  
 19  
 20  
 21  
 22  
 23  
 24  
 25  
 26  
 27  
 28  
 29  
 30  
 31  
 32  
 33  
 34

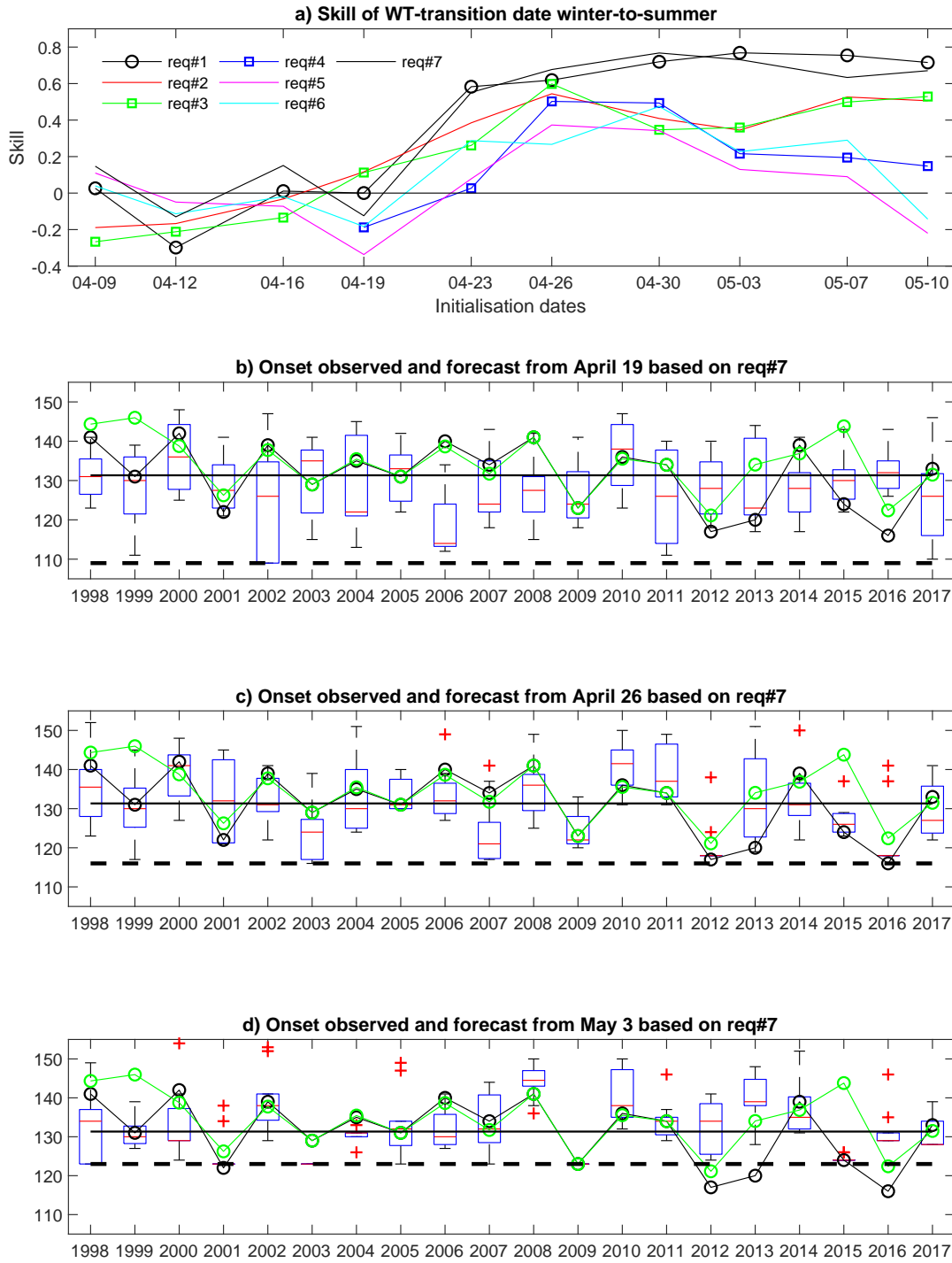


**Fig. 6** Correlation between the 31-day moving average indices and the average W2S and S2W transition date for the 1982–2017 period. W2S (S2W) located on the left (right) panel. Top panels: W2S (S2W) vs. CarRC (blue), AmaR (pink) and CarPW (cyan); middle panels: W2S (S2W) vs. SST indices for CARS (green), PAC (cyan), EEP (pink), TNA (blue) and GMEX (orange); bottom panel: W2S (S2W) vs. 925hPa zonal wind CLLJ (pink) and CJ (blue). The dots mark significant correlation at 90% level according to Monte Carlo test. The vertical line represents the average date of transition and the vertical dotted lines represent  $\pm 1$  sd.

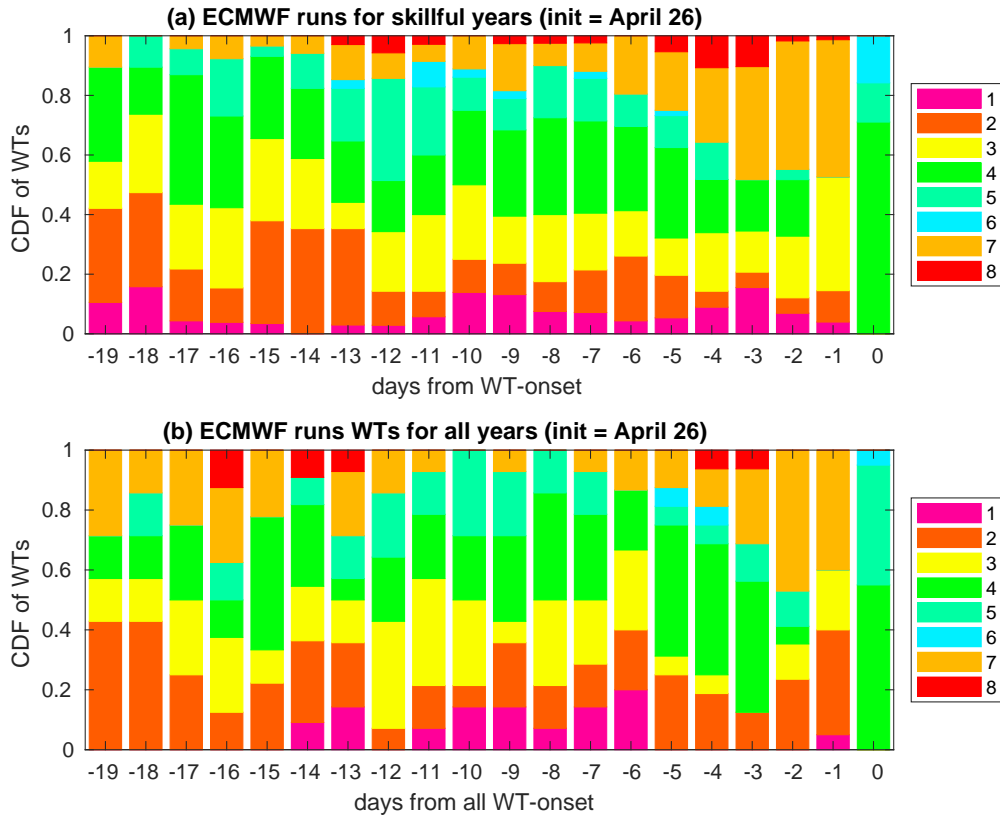
1 successful average W2S transition date, but no obvious  
 2 WT sequence is observed. It suggests that successful  
 3 transition is not related to either a single atmospheric  
 4 sequence or a single or few dominant sustained WTs.  
 5 In other words, the transition between wintertime (i.e.,  
 6 WT 1–3 and 7–8) and summertime (i.e., WT 4–6) at-  
 7 mospheric mode, revealed by the W2S transition date,  
 8 is barely associated with a specific transition amongst  
 9 the WTs.

The temporal modulation of the intensity of the  
 predictability is further explored on Fig. 9. The pre-  
 dictability of the regional-scale atmosphere is analyzed  
 from two complementary points of view. First a “de-  
 terministic” error (Fig. 9a) is estimated through the  
 root mean square error (RMSE) of zonal and merid-  
 ional components of 925hPa winds between the pre-  
 dictions and the observations (= initializations) from  
 the 13 starting dates (from March 29, approximately  
 1.5 months before the observed average W2S transition

10  
 11  
 12  
 13  
 14  
 15  
 16  
 17  
 18  
 19



**Fig. 7** (a) Skill of WT-transition in a 11-run ensemble of the ECMWF model vs. the initialization date. The x-axis shows the initialization dates and the different curves shows seven parametrizations of WT-transition (detailed in text). The observed WT-transition date occurring before the initialization dates are not used to compute the correlations between observed and the ensemble mean WT-transition. (b)–(d) Time series of observed transition dates based on the average of the 144 requests from NCEP+ERA1 (green circle), based on request #7 in the ECWFM (black circle) and the ECMWF (box plot with red line as median, upper and lower limit and upper and lower quartiles, red crosses as outliers) WT-transition for 3 initialization dates (April 19, April 26 and May 3). The WT-transition is defined using request #7 which uses the following criterion: 5 days of summer WTs not followed by 2 days of winter WTs in following 4 days after the last summer WT. The dashed horizontal line is the initialisation date and the full horizontal line is the mean of observed WT-transition.



**Fig. 8** (a) CDF of the ECMWF WT-transition occurring before the WT-transition (= 0 in the abscissa) for the 76 run-years when the observed WT-onset is accurately predicted (with a tolerance of  $\pm 2$  days) from April 26. The WT-transition is defined using the following parametrization (5 days of summer WTs not followed by 2 days of winter WTs in following 4 days after the last summer WT). (b) Same as (a) except for the whole set of 220 run-year.

date). For example, RMSE between the 5-day predictions from March 29 and the observed wind on April 2 is computed. This error is computed separately on each run and then averaged across years and runs. A second error is simply the standard deviations amongst the 11 runs across the same starting dates and lead times as before (Fig. 9b). This spread refers simply to the amount of variance due to initialization. Both errors are different empirical estimates of the same variance, i.e., the one related to chaotic unpredictable atmospheric dynamics. As expected, the error increases with lead time. It is also clear that errors at a lead time of 4–5 and 9 days are rather constant across the starting dates, while the errors for a lead time between 2 and 3 weeks clearly decrease from late March to early May. In other words, the regional-scale atmosphere becomes more and more predictable beyond the synoptic time scale as time goes by in April. It probably involves multiple “slow” coupled convective equatorial waves and any other processes slower than roughly 1 week.

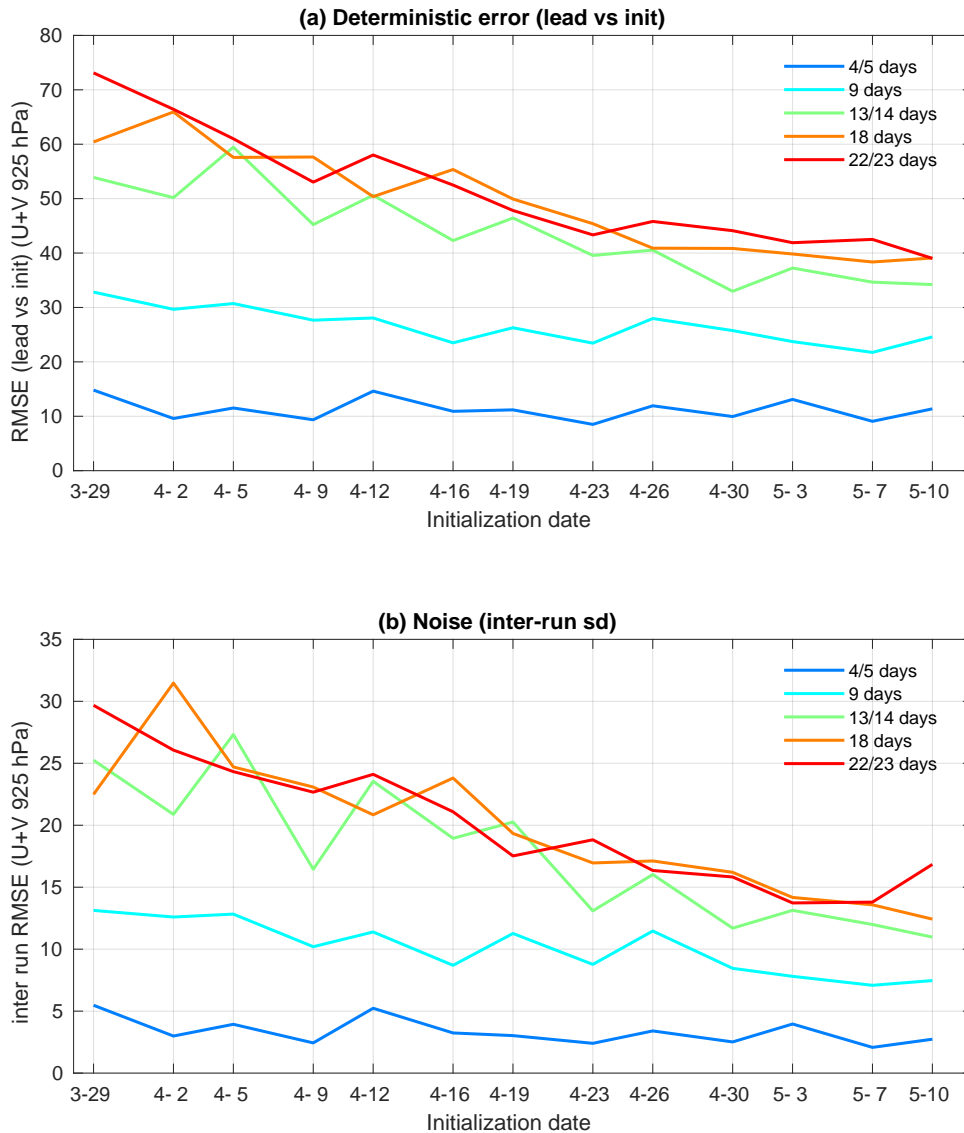
In summary, Figs. 8–9 suggest that the interannual variations of the W2S transition date are mostly forced

by multiple atmospheric processes. In other words, there are multiple ways to switch in few days/weeks from one to the other phase of the annual cycle and that the useful predictability (usually defined by a correlation between observation and forecast  $\geq 0.3$ – $0.4$ ) is limited to 2–3 weeks at most and related to any atmospheric process.

## 5 Discussion and Conclusion

The W2S and S2W regional-scale transition dates are identified from the same approach than the one used to determine the onset of rainfall based on cumulative amount of rainfall over a certain number of days or pentad. The cumulative daily amount of rainfall is substituted by a sequence of summer and winter WTs. Additionally, conditional probability, considering equiprobable combinations having a chance of 40–60% to occur, have been used to select the requests, thus reducing the subjectivity of the selection. The comparison of the results obtained from the four scenarios using





**Fig. 9** (a) Deterministic error (= RMSE) between predicted fields and initial state for successive initialization dates indicated in the abscissa and 5 lead time shown as colored curves. The RMSE is computed on U and V components at 925hPa of each run and each year and then averaged across the 11 runs and the 20 years; (b) inter-run error amongst the 11 runs for successive initialization dates indicated in the abscissa and 5 lead time shown as colored curves. It is computed as the standard deviations amongst the 11 runs averaged across the years.

1 two different reanalyses (NCEP, ERA, NCEP+ERA  
 2 and NCEP+ERA1) demonstrates that the results were  
 3 not too sensitive to the requests or to the reanaly-  
 4 ses. It also highlights the robustness of the W2S and  
 5 S2W transition dates obtained from the regional-scale  
 6 WTs compared to a transition date obtained with a  
 7 threshold of local-scale rainfall. Indeed, Kousky (1988)  
 8 suggested previously that the onset of the rainy sea-  
 9 son over the Caribbean cannot be determined from the  
 10 OLR alone, due to a lack of a clear cut between the dry

and the wet season. Marengo et al (2001) also men-  
 11 tioned a dependence of the onset over the Brazilian  
 12 Amazon region to the threshold of rainfall used to iden-  
 13 tify it. In consequence, the WTs approach appears as  
 14 an alternative method to determine a seasonal transi-  
 15 tion at regional-scale, especially when no abrupt change  
 16 in rainfall amount exists, as it is usually observed in  
 17 stricto-sensu monsoon climate.  
 18

The results show that the average date of the W2S  
 19 and S2W regional-scale seasonal transitions can indeed  
 20

1 be estimated from the switch between wintertime and  
2 summertime regional-scale WTs (and vice versa). The  
3 W2S transition date is near-synchronous with a rapid  
4 regional-scale increase in the daily amount of rainfall  
5 around early May, while the S2W transition is overall  
6 smoother around late October and less clearly keyed  
7 to an abrupt decrease of local-scale rainfall, especially  
8 over the south and east of the domain. Therefore, the  
9 average W2S transition date (less clearly for the S2W  
10 transition date) constitutes an indirect indicator of the  
11 average shift from dry-to-wet (wet-to-dry) season over  
12 the Caribbean basin and Central America. The average  
13 W2S date, over the 1979–2017 period, occurs on  
14 May 13 plus or minus 9 days, in agreement with Mapes  
15 et al (2004) that detected an onset date of the rain-  
16 fall around May 1st and May 10th. The S2W date oc-  
17 curs, on October 26 plus or minus 12 days. Thus, the  
18 “summertime” atmospheric regime (from a WT point  
19 of view) or regional-scale wet season lasts 165 days on  
20 average and no change in the length of the wet season  
21 has been noticed since 1979. The absence of significant  
22 correlation between the W2S and S2W and between  
23 S2W(0) and W2S(+1) transition dates suggests that  
24 the seasonal shifts are independent and influenced by  
25 different forcings. This is in agreement with Taylor et  
26 al (2002) and Taylor et al (2011) who have shown that  
27 the beginning of the rainy season is more influenced by  
28 the Atlantic Ocean while the end of the rainy season  
29 is more affected by the SST over the East Equatorial  
30 Pacific.

31 Moreover, the analysis of the SST indices also high-  
32 lights a main difference between both W2S and S2W  
33 transitions. Indeed, there are no significant correlations  
34 between antecedent variations of SST over the tropical  
35 Atlantic and Eastern Pacific and the W2S transition  
36 (and also the near-zero predictability beyond a 15–20  
37 day lead time in the S2S exercise), while the interan-  
38 nual variations of S2W is preceded by significant, albeit  
39 weak, SSTA in both basins. The first result is some-  
40 what in disagreement with other studies showing the  
41 influence of the tropical North Atlantic on the early  
42 Caribbean rainfall (Chen and Taylor, 2002; Giannini  
43 et al, 2000; Gouirand et al, 2016; Taylor et al, 2002).  
44 Nevertheless, these past studies shown a link between  
45 the Atlantic and the amount of rainfall during the early  
46 rainy season but that does not imply that the tropical  
47 North Atlantic is modulating the timing of the shift be-  
48 tween seasons. In contrast, the influence of the Eastern  
49 Pacific on the late rainy season was already shown by  
50 Taylor et al (2002, 2011); Moron, Gouirand, and Taylor  
51 (2015). This study thus adds that the Eastern Pacific  
52 could modulate the timing of the end of late rainy sea-  
53 son. Hence, a drier and early (resp., wetter and delayed)

ending of the late rainy season seems to be associated  
with a warmer (resp., colder) EEP added to an anoma-  
lously cold (resp. warm) TNA, CARS and GMEX.

The fluctuations of both the CJ and CLLJ seem to  
also play a role in the S2W transition. Several stud-  
ies have shown a relationships between the CLLJ and  
the Caribbean rainfall, a stronger CLLJ being associ-  
ated with lower rainfall except on the Caribbean side  
of Costa Rica (Wang and Lee, 2007). The relation-  
ships between CLLJ and rainfall were mainly studied  
in regard to the mid-summer drought but not with  
respect to the W2S and S2W transitions. Note that  
at the time of the W2S transition, the CLLJ weakens  
(Fig. 5), then slightly strengthens in July at the time  
of the mid-summer drought (Curtis and Gamble, 2008;  
Angeles et al., 2010; Cook and Vizy, 2010), weakens  
again in August-September before reaching its maxi-  
mum around and after the S2W transition (Cook and  
Vizy, 2010).

In consequence, the mean characteristics around  
both the W2S and the S2W transition dates reveal a  
major asymmetry in the annual cycle around the Carib-  
bean basin. The regional-scale W2S date is locked with  
an abrupt increase in the daily amount of rainfall start-  
ing from the southern part of Central America before  
propagating further north and east a few days later in  
agreement with Mapes et al (2004) and Moron, Frelat  
et al (2015), while the S2W date is far smoother. The  
rapid increase of the amount of rainfall during the W2S  
transition could be dependent on a tipping point (or a  
combination of) in any of the oceanic or atmospheric  
variables such as the SST threshold for the convection, a  
needed amount of precipitable water in the atmosphere,  
a weaker CLLJ or a combo of several oceanic and atmo-  
spheric factors. The W2S transition date occurs when  
the general atmospheric circulation is close to its annual  
average suggesting that, in boreal spring, the climate  
seems to be in “conditional stability”. Therefore, any  
atmospheric processes such as easterly waves, troughs,  
cold surge or the Madden Julian oscillation could desta-  
bilize the system and potentially trigger the W2S tran-  
sition and thus the start of the regional-scale summer  
(and main rainy) season. The S2W transition in boreal  
fall presents a slightly larger interannual variability and  
the shift is not synchronous to a regional-scale decrease  
of rainfall everywhere over the whole Caribbean basin  
and Central America. Indeed, the southern part of the  
Caribbean basin does not show a sharp decrease in rain-  
fall at the time of the S2W transition while the northern  
part of the basin shows a decrease in the daily amount  
of rainfall synchronous with it.

Additionally, the analysis of the predictability of the  
W2S transition dates have been investigated using ret-

1 respective forecast of an 11-run ensemble of ECWMF  
 2 S2S model. The skill of the model is nil up to April 19th  
 3 and increases rapidly after this date. This supports a  
 4 null-to-weak forcing of the sea surface temperature, but  
 5 also suggests a main influence of atmospheric processes,  
 6 possibly superimposed on the mean annual cycle of solar  
 7 radiation. Moreover, the analysis of the sequence of  
 8 the WTs associated with successfully predicted average  
 9 W2S date indicates that the transition is barely related  
 10 to a specific sequence of the WTs in agreement with  
 11 Moron, Gouirand, and Taylor (2015) showing that the  
 12 WTs type were occurring randomly, i.e., with no prefer-  
 13 ential sequences. Furthermore, the approach, consisting  
 14 in looking at (i) a “deterministic” error based on the  
 15 RMSE of zonal and meridional components of 925hPa  
 16 between the predictions and the initializations from the  
 17 starting dates from early April, and (ii) at the error  
 18 corresponding to the spread between the 11 run across  
 19 the same starting dates and lead time, shows that the  
 20 predictability of the regional-scale atmosphere increases  
 21 beyond the synoptic time scale when getting closer to  
 22 the end of April and the beginning of May. This sup-  
 23 ports the idea that multiple atmospheric processes are  
 24 forcing the W2S transition thus limiting its predictabil-  
 25 ity to 2–3 weeks at most, before the transition.

26 In conclusion, an approach using WTs could be used  
 27 to indirectly determine a regional-scale seasonal shift in  
 28 rainfall in regions where the change in rainfall amount is  
 29 not consequent enough to be accurately captured by the  
 30 agro-meteorological method. The method used in this  
 31 study could also be applied to estimate the start and  
 32 end of the mid-summer spell and to analyse the factors  
 33 involved in the reduced amount of rainfall observed in  
 34 the Caribbean basin and Central America in July.

## 35 References

36 Alexander MA, Bladé I, Newman M, Lazante  
 37 JR, Lau N-C, Scott JD (2002), The atmo-  
 38 spheric bridge: the influence of ENSO tele-  
 39 connections on air-sea interaction over global  
 40 oceans. *J Clim* 15:2205–2231. DOI: 10.1175/1520-  
 41 0442(2002)015<2205:TABTIO>2.0.CO;2  
 42 Allen T, Mapes BE (2017) The late spring Caribbean  
 43 rain-belt: Climatology and dynamics. *Int J Climatol*  
 44 37:4981–4993. DOI: 10.1002/joc.5136  
 45 Amador JA (2008) The intra-Americas sea low-level jet.  
 46 *Ann NY Acad Sci* 1146:153–188. DOI: 10.1196/an-  
 47 nals.1446.012  
 48 Angeles ME, González JE, Ramírez-Beltrán ND, Tep-  
 49 ley CA, Comarazamy DE (2010) Origins of the Car-  
 50ibbean rainfall bimodal behavior. *J Geophys Res*  
 51 115:D11106. DOI: 10.1029/2009jD012990

Ashby SA, Taylor MA, Chen AA (2005) Statisti- 52  
 cal models for predicting rainfall in the Caribbean. 53  
*Theor Appl Climatol* 82:65–80. DOI: 10.1007/s00704- 54  
 004-0118-8 55  
 Ashok K, Behera SK, Rao SA, Weng H, Yam- 56  
 agata T (2007), El Niño Modoki and its pos- 57  
 sible teleconnection. *J Geophys Res* 112:C11007. 58  
 DOI: 10.1029/2006JC003798 59  
 Ashouri H, Hsu K, Sorooshian S, Braithwaite DK, 60  
 Knapp KR, Cecil LD, Nelson BR, Prat OP (2015) 61  
 PERSIANN-CDR: Daily precipitation climate data 62  
 record from multisatellite observations for hydrologi- 63  
 cal and climate studies. *Bull Am Meteorol Soc* 96:69– 64  
 83. DOI: 10.1175/BAMS-D-13-00068.1 65  
 Blume H (1974) *The Caribbean Islands*. Longman, Lon- 66  
 don. ISBN: 978-0582481640 67  
 Bombardi RJ, Moron V, Goodnight JS (2019) Detec- 68  
 tion, variability, and predictability of monsoon onset 69  
 and withdrawal dates: A review. *Int J Climatol, in* 70  
*press*. DOI: 10.1002/joc.6264 71  
 Carlson TN, Prospero JM (1972) The large- 72  
 scale movement of Saharan air outbreaks 73  
 over the northern equatorial Atlantic. *J* 74  
*Appl Meteor* 11:283–297. DOI: 10.1175/1520- 75  
 0450(1972)011<0283:TLSMOS>2.0.CO;2 76  
 Chadee XT, Clarke RM (2015) Daily near-surface 77  
 large-scale atmospheric circulation patterns over 78  
 the wider Caribbean. *Clim Dyn* 44:2927–2946. 79  
 DOI: 10.1007/s00382-015-2621-2 80  
 Chen AA, Taylor MA (2002) Investigating the link 81  
 between early season Caribbean rainfall and the 82  
 El Niño + 1 year. *Int J Climatol* 22:87–106. 83  
 DOI: 10.1002/joc.711 84  
 Cook KH, Vizy EK (2010) Hydrodynamics of 85  
 the Caribbean low-level jet and its relation- 86  
 ship to precipitation. *J Clim* 23:1477–1494. 87  
 DOI: 10.1175/2009JCLI3210.1 88  
 Curtis S (2013) Daily precipitation distributions over 89  
 the intra-Americas sea and their interannual vari- 90  
 ability. *Atmósfera* 26:243–259. DOI: 10.1016/S0187- 91  
 6236(13)71074-9 92  
 Curtis S, Gamble DW (2008) Regional variations of the 93  
 Caribbean mid-summer drought. *Theor Appl Clima-* 94  
*tol* 94:25–34. DOI: 10.1007/s00704-007-0342-0 95  
 Diday E, Simon JC (1976) Clustering analysis. In: Fu 96  
 KS (ed) *Digital Pattern Recognition*. Communica- 97  
 tion and Cybernetics, vol 10. Springer, Berlin, pp 47– 98  
 94. DOI: 10.1007/978-3-642-96303-2\_3 99  
 Douglas MW, Maddox RA, Howard K, 100  
 Reyes S (1993) The Mexican monsoon. 101  
*J Clim* 6:1665–1677. DOI: 10.1175/1520- 102  
 0442(1993)006<1665:TMM>2.0.CO;2 103

- 1 Dunion JP (2011) Rewriting the climatology  
2 of the tropical North Atlantic and Carib-  
3 bean sea atmosphere. *J Clim* 24:893–908.  
4 DOI: 10.1175/2010JCLI3496.1
- 5 Enfield DB (1996) Relationships of inter-american  
6 rainfall to tropical Atlantic and Pacific SST  
7 variability. *Geophys Res Lett* 23:3305–3308.  
8 DOI: 10.1029/96GL03231
- 9 Enfield DB, Alfaro EJ (1999) The dependence  
10 of Caribbean rainfall on the interaction of  
11 the tropical Atlantic and Pacific Oceans.  
12 *J Clim* 12:2093–2103. DOI: 10.1175/1520-  
13 0442(1999)012<2093:TDOCRO>2.0.CO;2
- 14 Enfield DB, Mayer DA (1997) Tropical Atlantic sea sur-  
15 face temperature variability and its relation to El  
16 Niño-Southern Oscillation. *J Geophys Res* 102:929–  
17 945. DOI: 10.1029/96JC03296
- 18 Funk CC, Peterson PJ, Landsfeld MF, Pedreros DH,  
19 Verdin JP, Rowland JD, Romero BE, Husak GJ,  
20 Michaelsen JC, Verdin AP (2014) A quasi-global  
21 precipitation time series for drought monitoring.  
22 U.S. Geological Survey Data Series 832, 4 pages.  
23 DOI: 10.3133/ds832
- 24 Gamble DW, Curtis S (2008) Caribbean precipita-  
25 tion: Review, model and prospect. *Progress in Phys-  
26 ical Geography: Earth and Environment* 32:265–276.  
27 DOI: 10.1177/0309133308096027
- 28 García-Serrano J, Cassou C, Douville H, Giannini A,  
29 Doblás-Reyes FJ (2017) Revisiting the ENSO tele-  
30 connection to the tropical North Atlantic. *J Clim*  
31 30:6945–6957. DOI: 10.1175/JCLI-D-16-0641.1
- 32 Ghil M, Robertson AW (2002) “Waves” vs. “parti-  
33 cles” in the atmosphere’s phase space: A pathway  
34 to long-range forecasting? *Proc Natl Acad Sci U.S.A*  
35 99:2493–2500. DOI: 10.1073/pnas.012580899
- 36 Giannini A, Chiang JCH, Cane MA, Kushnir Y, Sea-  
37 ger R (2001) The ENSO teleconnection to the tropi-  
38 cal Atlantic ocean: Contributions of the remote  
39 and local SSTs to rainfall variability in the tropical  
40 Americas. *J Clim* 14:4530–4544. DOI: 10.1175/1520-  
41 0442(2001)014<4530:TETTTT>2.0.CO;2
- 42 Giannini A, Kushnir Y, Cane MA (2000) Interannual  
43 variability of Caribbean rainfall, ENSO and the At-  
44 lantic Ocean. *J Clim* 13:297–311. DOI: 10.1175/1520-  
45 0442(2000)013<0297:IVOCRE>2.0.CO;2
- 46 Gloneck GFV, McCullagh P (1995) Multivariate lo-  
47 gistic models. *J Royal Stat Soc B* 57:533–546.  
48 DOI: 10.1111/j.2517-6161.1995.tb02046.x
- 49 Gonzalez M, Barros V and Doyle, M (2002) Relation be-  
50 tween the onset and end of the South American sum-  
51 mer monsoon and rainfall in subtropical South Amer-  
52 ica. *Climate Res* 21:141–155. DOI: 10.3354/cr021141
- Gouirand I, Jury MR, and Sing B (2012) An analysis of  
low- and high-frequency summer climate variability  
around the Caribbean Antilles. *J Clim* 25:3942–3952.  
DOI: 10.1175/JCLI-D-11-00269.1
- Gouirand I, Moron V (2003) Variability of the impact  
of El Niño-Southern Oscillation on sea-level pres-  
sure anomalies over the North Atlantic in January  
to March (1874–1996). *Int J Climatol* 23:1549–1566.  
DOI: 10.1002/joc.963
- Gouirand I, Moron V, Hu Z-Z, Jha B (2014) Influence of  
warm pool and cold tongue El Niños on the following  
Caribbean rainy season rainfall. *Clim Dyn* 42:919–  
929. DOI: 10.1007/s00382-013-1753-5
- Gu G, Adler RF (2006) Interannual rainfall variabil-  
ity in the tropical Atlantic region. *J Geophys Res*  
111:D02106. DOI: 10.1029/2005JD005944
- Guanche Y, Mínguez R, Méndez FJ (2014) Au-  
toregressive logistic regression applied to atmo-  
spheric circulation patterns. *Clim Dyn* 42:537–552.  
DOI: 10.1007/s00382-013-1690-3
- Herrera E, Ault T (2017) Insights from a new  
high-resolution drought atlas for the Carib-  
bean spanning 1950–2016. *J Clim* 30:7801–7825.  
DOI: 10.1175/JCLI-D-16-0838.1
- Herrera E, Magaña V, Caetano E (2014) Air-sea inter-  
actions and dynamical processes associated with the  
midsummer drought. *Int J Climatol* 35:1569–1578.  
DOI: 10.1002/joc.4077
- Higgins RW, Yao Y, Wang XL (1997) Influe-  
nce of the North American monsoon sys-  
tem on the U.S. summer precipitation regime.  
*J Clim* 10:2600–2622. DOI: 10.1175/1520-  
0442(1997)010<2600:IOTNAM>2.0.CO;2
- Hu Z-Z, Kumar A, Huang B, Xue Y, Wang W,  
Jha B (2011) Persistent atmospheric and oceanic  
anomalies in the North Atlantic from summer  
2009 to summer 2010. *J Clim* 24:5812–5830.  
DOI: 10.1175/2011JCLI4213.1
- Huffman GJ, Adler RF, Boivin DT, Gu G (2009)  
Improving the global precipitation record:  
GPCP version 2.1. *Geophys Res Lett* 36:L17808.  
DOI: 10.1029/2009GL040000
- Huffman GJ, Adler RF, Morissey MM, Boivin DT,  
Curtis S, Joyce R, MacGavock B, Susskind J  
(2001) Global precipitation at one-degree daily  
resolution from multisatellite observations.  
*J Hydrometeor* 2:36–50. DOI: 10.1175/1525-  
7541(2001)002<0036:GPAODD>2.0.CO;2
- Inoue M, Handoh IC, Bigg GR (2002) Bimodal  
distribution of tropical cyclogenesis in the Car-  
ibbean: Characteristics and environmental fac-  
tors. *J Clim* 15:2897–2905. DOI: 10.1175/1520-  
0442(2002)015<2897:BDOTCI>2.0.CO;2

- 1 Janicot S, Moron V, Fontaine B (1996) Sahel droughts  
2 and ENSO dynamics. *Geophys Res Lett* 23:515–518.  
3 DOI: 10.1029/96GL00246
- 4 Jury MR (2009) An intercomparison of observational,  
5 reanalysis, satellite, and coupled model data on mean  
6 rainfall in the Caribbean. *J Hydrometeor* 10:413–430.  
7 DOI: 10.1175/2008JHM1054.1
- 8 Jury MR, Malmgren BA, Winter A (2007) Subre-  
9 gional precipitation climate of the Caribbean and  
10 relationships with ENSO and NAO. *J Geophys Res*  
11 112:D16107. DOI: 10.1029/2006JD007541
- 12 Kalnay E, Kanamitsu M, Kistler R, Collins W, Deaven  
13 D, Gandin L, Iredell M, Saha S, White G, Woollen  
14 J, Zhu Y, Chelliah M, Ebisuzaki W, Higgins W,  
15 Janowiak J, Mo KC, Ropelewski C, Wang J, Leet-  
16 maa A, Reynolds R, Jenne R, Joseph D (1996)  
17 The NCEP/NCAR 40-year reanalysis project. *Bull*  
18 *Amer Meteor Soc* 77:437–472. DOI: 10.1175/1520-  
19 0477(1996)077<0437:TNYRP>2.0.CO;2
- 20 Kanamitsu M, Ebisuzaki W, Woollen J, Yang S, Hnilo  
21 JJ, Fiorino M, Potter GL (2002) NCEP-DOE AMIP-  
22 II reanalysis (R-2). *Bull Amer Meteor Soc* 83:1631–  
23 1643. DOI: 10.1175/BAMS-83-11-1631
- 24 Karnauskas KB, Seager R, Giannini A, Busalac-  
25 chi AJ (2013) A simple mechanism for the cli-  
26 matological midsummer drought along the Pacific  
27 coast of Central America. *Atmósfera* 26:261–281.  
28 DOI: 10.1016/S0187-6236(13)71075-0
- 29 Kousky VE (1988) Pentad outgoing longwave radi-  
30 ation climatology for the south american sector.  
31 *Revista Brasileira de Meteorologia* 3:217–231.  
32 URL: [http://www.rbmet.org.br/port/revista/  
33 revista\\_artigo.php?id\\_artigo=394](http://www.rbmet.org.br/port/revista/revista_artigo.php?id_artigo=394).
- 34 Liebmann B, Smith CA (1996) Description of a  
35 complete (interpolated) outgoing longwave radi-  
36 ation dataset. *Bull Amer Meteor Soc* 77:1275–1277.  
37 DOI: 10.1175/1520-0477-77.6.1274
- 38 Liebmann B, Camargo SJ, Seth A, Marengo JA,  
39 Carvalho LMV, Allured D, Fu R, Vera CS (2007)  
40 Onset and end of the rainy season in South Amer-  
41 ica in observations and the ECHAM 4.5 atmo-  
42 spheric general circulation model. *J Clim* 20:2037–  
43 2050. DOI: 10.1175/JCLI4122.1
- 44 Magana V, Amador J, Medina S (1999) The mid-  
45 summer drought over Mexico and Central Amer-  
46 ica. *J Clim* 12:1577–1588. DOI: 10.1175/1520-  
47 0442(1999)012<1577:TMDOMA>2.0.CO;2
- 48 Maldonado T, Rutgersson A, Alfaro E, Amador J,  
49 Claremar B (2006) Interannual variability of the mid-  
50 summer drought in Central America and the con-  
51 nection with sea surface temperatures. *Adv Geosci*  
52 42:35–50. DOI: 10.5194/adgeo-42-35-2016
- Mapes BE, Buening N, Kang I-S, Kiladis 53  
GN, Schultz DM, Weickmann KM (2004) 54  
Strides, steps and stumbles in the march 55  
of the seasons. (unpublished manuscript); 56  
URL: [https://www.semanticscholar.org/paper/  
57 Strides,-steps-and-stumbles-in-the-march-of  
58 -the-Mapes -Buening/7696a2713a971d08f9abe4  
59 180a868d8ed5ff3a9c](https://www.semanticscholar.org/paper/Strides,-steps-and-stumbles-in-the-march-of-the-Mapes-Buening/7696a2713a971d08f9abe4180a868d8ed5ff3a9c). Accessed 22 December 2019 60
- Marengo JA, Liebman B, Kousky VE, Fili- 61  
zola NP, Wainer IC (2001) Onset and end 62  
of the rainy season in the Brazilian Amazon 63  
basin. *J Clim* 14:833–852. DOI: 10.1175/1520- 64  
0442(2001)014<0833:OAEOTR>2.0.CO;2 65
- Marteau R, Moron V, Philippon N (2009) Spa- 66  
tial coherence of monsoon onset over western and 67  
central Sahel (1950–2000). *J Clim* 22:1313–1324. 68  
DOI: 10.1175/2008JCLI2383.1 69
- Martinez C, Goddard L, Kushnir Y, Ting M (2019) 70  
Seasonal climatology and dynamical mechanisms of 71  
rainfall in the Caribbean. *Clim Dyn* 53:825–846. 72  
DOI: 10.1007/s00382-019-04616-4 73
- May DA, Parmeter MM, Olszewski DS, McKen- 74  
zie BD (1998) Operational processing of satel- 75  
lite sea surface temperature retrievals at the 76  
Naval Oceanographic Office. *Bull Am Me- 77  
teorol Soc* 79:397–407. DOI: 10.1175/1520- 78  
0477(1998)079<0397:OPOSSS>2.0.CO;2 79
- Mestas-Nuñez AM, Enfield DB, Zhang C (2007) Wa- 80  
ter vapor fluxes over the intra-Americas sea: seasonal 81  
and interannual variability and association with rain- 82  
fall. *J Clim* 20:1910–1922. DOI: 10.1175/JCLI4096.1. 83
- Michelangeli P-A, Vautard R, Legras B (1995) 84  
Weather regimes: Recurrence and quasi-stationarity. 85  
*J Atmos Sci* 52:1237–1256. DOI: 10.1175/1520- 86  
0469(1995)052<1237:WRRASQ>2.0.CO;2 87
- Moron V, Gouirand I (2003) Seasonal modulation of 88  
the El Niño southern oscillation relationship with sea 89  
level pressure anomalies over the North Atlantic in 90  
October–March 1873–1996. *Int J Climatol* 23:143– 91  
155. DOI: 10.1002/joc.868 92
- Moron V, Gouirand I, Taylor M (2015) Weather types 93  
across the Caribbean basin and their relationship 94  
with rainfall and sea surface temperature. *Clim Dyn* 95  
47:601–621. DOI: 10.1007/s00382-015-2858-9 96
- Moron V, Frelat R, Jean-Jeune PK, Gaucherel C 97  
(2015) Interannual and intra-annual variability of 98  
rainfall in Haiti (1905–2005). *Clim Dyn* 45:915–932. 99  
DOI: 10.1007/s00382-014-2326-y 100
- Moron V, Robertson AW (2014) Interannual vari- 101  
ability of Indian summer monsoon rainfall onset 102  
date at local scale. *Int J Climatol* 34:1050–1061. 103  
DOI: 10.1002/joc.3745 104

- 1 Moron V, Robertson AW (2020) Tropical seasonal-to-  
2 subseasonal predictability types. *npj Clim Atmos Sci*,  
3 3: 4. DOI: 10.1038/s41612-020-0107-3
- 4 Moron V, Robertson AW, Boer R (2009) Spa-  
5 tial coherence and seasonal predictability of mon-  
6 soon onset over Indonesia. *J Clim* 22:840–850.  
7 DOI: 10.1175/2008JCLI2435.1
- 8 Moron V, Robertson AW, Qian J-H (2010) Local versus  
9 regional-scale characteristics of monsoon onset and  
10 post-onset rainfall over Indonesia. *Clim Dyn* 34:281–  
11 299. DOI: 10.1007/s00382-009-0547-2
- 12 Muñoz E, Busalacchi AJ, Nigam S, Ruiz-Barradas  
13 A (2008), Winter and summer structure of the  
14 Caribbean low-level jet,. *J Clim* 21:1260–1276.  
15 DOI: 10.1175/2007JCLI1855.1
- 16 Peña M, Douglas MW (2002) Characteristics of  
17 wet and dry spells over the Pacific side of Cen-  
18 tral America during the rainy season. *Mon*  
19 *Wea Rev* 130:3054–3073. DOI: 10.1175/1520-  
20 0493(2002)130<3054:COWADS>2.0.CO;2
- 21 Poveda G, Mesa OJ (2000) On the existence of  
22 Lloró (the rainiest locality on Earth): En-  
23 hanced ocean-land-atmosphere interaction by  
24 low-level jet. *Geophys Res Lett* 27:1675–1678.  
25 DOI: 10.1029/1999GL006091
- 26 Pozo-Vázquez D, Esteben-Parra MJ, Rodrigo  
27 FS, Castro-Díez Y (2001) The association be-  
28 tween ENSO and winter atmospheric circula-  
29 tion and temperature in the North Atlantic  
30 region. *J Clim* 14:3408–3420. DOI: 10.1175/1520-  
31 0442(2001)014<3408:TABEAW>2.0.CO;2
- 32 Reynolds RW, Rayner NA, Smith TM, Stokes  
33 TC, Wang W (2002) An improved in situ  
34 and satellite SST analysis for climate. *J*  
35 *Clim* 15:1609–1625. DOI: 10.1175/1520-  
36 0442(2002)015<1609:AIISAS>2.0.CO;2
- 37 Sáenz F, Durán-Quesada AM (2015) A climatology of  
38 low level wind regimes over Central America using a  
39 weather type classification approach. *Front Earth Sci*  
40 3, 15 pages. DOI: 10.3389/feart.2015.00015
- 41 da Silva AE, de Carvalho LMV (2007) Large-scale index  
42 for South America monsoon (LISAM). *Atmosph Sci*  
43 *Lett* 8:51–57. DOI: 10.1002/asl.150
- 44 Small RJO, de Szoeko SP, Xie S-P (2007) The Cen-  
45 tral American midsummer drought: Regional as-  
46 pects and large-scale forcing. *J Clim* 20:4853–4873.  
47 DOI: 10.1175/JCLI4261.1
- 48 Spence JM, Taylor MA, Chen AA (2004) The effect of  
49 concurrent sea-surface temperature anomalies in the  
50 tropical Pacific and Atlantic on Caribbean rainfall.  
51 *Int J Climatol* 24:1531–1541. DOI: 10.1002/joc.1068
- 52 Stensrud DJ, Gall RL, Mullen SL, Howard KW  
53 (1995) Model climatology of the Mexican mon-  
soon. *J Clim* 8:1775–1794. DOI: 10.1175/1520-  
0442(1995)008<1775:MCOTMM>2.0.CO;2
- 54 Straus DM, Molteni F (2004) Circulation regimes  
55 and SST forcing: Results from large GCM en-  
56 sembles. *J Clim* 17:1641–1656. DOI: 10.1175/1520-  
57 0442(2004)017<1641:CRASFR>2.0.CO;2
- 58 Tang BH, Neelin JD (2004) ENSO influence on Atlantic  
59 hurricanes via tropospheric warming. *Geophys Res*  
60 *Lett* 31:L24204. DOI: 10.1029/2004GL021072
- 61 Taylor MA, Enfield DB, Chen AA (2002) Influence of  
62 the tropical Atlantic versus the tropical Pacific on  
63 Caribbean rainfall. *J Geophys Res Ocean* 107:3127.  
64 DOI: 10.1029/2001JC001097
- 65 Taylor MA, Stephenson TS, Owino A, Chen AA,  
66 Campbell JD (2011) Tropical gradient influences on  
67 the Caribbean rainfall. *J Geophys Res* 116:D00Q08.  
68 DOI: 10.1029/2010JD015580
- 69 Vautard R, Mo KC, Ghil M (1990) Statis-  
70 tical significance test for transition matri-  
71 ces of atmospheric Markov chains. *J At-  
72 mos Sci* 47:1926–1931. DOI: 10.1175/1520-  
73 0469(1990)047<1926:SSTFTM>2.0.CO;2
- 74 Wang C (2007) Variability of the Caribbean low-level  
75 jet and its relation to climate. *Clim Dyn* 29:411–422.  
76 DOI: 10.1007/s00382-007-0243-z
- 77 Wang C, Lee S-K (2007) Atlantic warm pool, Car-  
78ibbean low-level jet and their potential on At-  
79 lantic hurricanes. *Geophys Res Lett* 34:L02703.  
80 DOI: 10.1029/2006GL028579
- 81 Wang C, Lee S-K, Enfield DB (2007) Impact of  
82 the Atlantic warm pool on the summer climate  
83 of Western hemisphere. *J. Clim* 20:5021–5040.  
84 DOI: 10.1175/JCLI4304.1
- 85 Xie S-P (1999) A dynamic ocean-atmosphere  
86 model of the tropical Atlantic decadal vari-  
87 ability. *J Clim* 12:64–70. DOI: 10.1175/1520-  
88 0442(1999)012<0064:ADOAMO>2.0.CO;2
- 89 Xie S-P, Okumura Y, Miyama T, Timmermann T  
90 (2008) Influences of Atlantic climate change on the  
91 tropical Pacific via the Central American isthmus. *J*  
92 *Clim* 21:3914–3928. DOI: 10.1175/2008JCLI2231.1
- 93 Xie S-P, Philander SGH (1994) A coupled ocean-  
94 atmosphere model of relevance to the ITCZ  
95 in the eastern Pacific. *Tellus A* 46:340–350.  
96 DOI: 10.3402/tellusa.v46i4.15484
- 97 Xie S-P, Xu H, Kessler WS, Nonaka M (2005) Air-sea  
98 interaction over the Eastern Pacific warm pool: Gap  
99 winds, thermocline dome and atmospheric convec-  
100 tion. *J Clim* 18:5–20. DOI: 10.1175/JCLI-3249.1
- 101 Zhang C (1993) Large-scale variability of at-  
102 mospheric deep convection in relation to  
103 sea surface temperature in the tropics. *J*  
104 *Clim* 6:1898–1913. DOI: 10.1175/1520-  
105 0442(1993)006<1898:VLC>2.0.CO;2
- 106

1 0442(1993)006<1898:LSVOAD>2.0.CO;2