



HAL
open science

Global database of ratios of particulate organic carbon to thorium-234 in the ocean: improving estimates of the biological carbon pump

Viena Puigcorbé, Pere Masqué, Frédéric A.C. Le Moigne

► To cite this version:

Viena Puigcorbé, Pere Masqué, Frédéric A.C. Le Moigne. Global database of ratios of particulate organic carbon to thorium-234 in the ocean: improving estimates of the biological carbon pump. Earth System Science Data, 2020, 12 (2), pp.1267-1285. 10.5194/essd-12-1267-2020 . hal-02960687

HAL Id: hal-02960687

<https://hal.science/hal-02960687>

Submitted on 8 Oct 2020

HAL is a multi-disciplinary open access archive for the deposit and dissemination of scientific research documents, whether they are published or not. The documents may come from teaching and research institutions in France or abroad, or from public or private research centers.

L'archive ouverte pluridisciplinaire **HAL**, est destinée au dépôt et à la diffusion de documents scientifiques de niveau recherche, publiés ou non, émanant des établissements d'enseignement et de recherche français ou étrangers, des laboratoires publics ou privés.



Distributed under a Creative Commons Attribution - NoDerivatives 4.0 International License



Global database of ratios of particulate organic carbon to thorium-234 in the ocean: improving estimates of the biological carbon pump

Viena Puigcorbé¹, Pere Masqué^{1,2,a}, and Frédéric A. C. Le Moigne³

¹School of Science, Centre for Marine Ecosystems Research,
Edith Cowan University, Joondalup WA 6027, Australia

²Institut de Ciència i Tecnologia Ambientals and Departament de Física,
Universitat Autònoma de Barcelona, 08193 Cerdanyola del Vallès, Spain

³Mediterranean Institute of Oceanography, UM110 CNRS, Aix-Marseille Université,
IRD, 13288 Marseille, France

^acurrently at: International Atomic Energy Agency, 4a Quai Antoine 1er,
98000 Principality of Monaco, Monaco

Correspondence: Viena Puigcorbé (viena.puigcorbe@outlook.com)

Received: 16 January 2020 – Discussion started: 6 February 2020

Revised: 18 April 2020 – Accepted: 30 April 2020 – Published: 9 June 2020

Abstract. The ocean's biological carbon pump (BCP) plays a major role in the global carbon cycle. A fraction of the photosynthetically fixed organic carbon produced in surface waters is exported below the sunlit layer as settling particles (e.g., marine snow). Since the seminal works on the BCP, global estimates of the global strength of the BCP have improved but large uncertainties remain (from 5 to 20 Gt C yr⁻¹ exported below the euphotic zone or mixed-layer depth). The ²³⁴Th technique is widely used to measure the downward export of particulate organic carbon (POC). This technique has the advantage of allowing a downward flux to be determined by integrating the deficit of ²³⁴Th in the upper water column and coupling it to the POC/²³⁴Th ratio in sinking particles. However, the factors controlling the regional, temporal, and depth variations of POC/²³⁴Th ratios are poorly understood. We present a database of 9318 measurements of the POC/²³⁴Th ratio in the ocean, from the surface down to > 5500 m, sampled on three size fractions (~> 0.7 μm, ~ 1–50 μm, ~> 50 μm), collected with in situ pumps and bottles, and also from bulk particles collected with sediment traps. The dataset is archived in the data repository PANGAEA[®] under <https://doi.org/10.1594/PANGAEA.911424> (Puigcorbé, 2019). The samples presented in this dataset were collected between 1989 and 2018, and the data have been obtained from published papers and open datasets available online. Unpublished data have also been included. Multiple measurements can be found in most of the open ocean provinces. However, there is an uneven distribution of the data, with some areas highly sampled (e.g., China Sea, Bermuda Atlantic Time Series station) compared to some others that are not well represented, such as the southeastern Atlantic, the south Pacific, and the south Indian oceans. Some coastal areas, although in a much smaller number, are also included in this global compilation. Globally, based on different depth horizons and climate zones, the median POC/²³⁴Th ratios have a wide range, from 0.6 to 18 μmol dpm⁻¹.

1 Introduction

The vertical export of photosynthetically produced particulate organic carbon, from the surface waters to the deep ocean (i.e., biological carbon pump; Eppley and Peterson, 1979), has a strong impact in the global carbon cycle. Through this process, the ocean stores carbon dioxide (CO₂) away from the atmosphere and buffers the global climate system (Kwon et al., 2009). Indeed, estimates suggest that atmospheric CO₂ levels would be 200 ppm higher than current concentrations without the biological carbon pump (Parekh et al., 2006). However, quantifying the magnitude of the biological carbon pump at both the regional and global scales is challenging and current assessments vary widely, with estimates ranging from 5 to 20 GtC yr⁻¹ being exported below the euphotic zone or the mixed-layer depth (Guidi et al., 2015; Henson et al., 2011; Laws et al., 2011).

Downward export fluxes of organic carbon can be estimated using (i) indirect approaches derived from nutrient uptake (Le Moigne et al., 2013a; Pondaven et al., 2000; Sanders et al., 2005), radioisotopes (Cochran and Masqué, 2003), satellite empirical algorithms (Dunne et al., 2007; Henson et al., 2011; Laws et al., 2011), underwater video systems (Guidi et al., 2008), or (ii) direct measurements using various designs of sediment traps (Buesseler et al., 2007; Engel et al., 2017; Lampitt et al., 2008; Owens et al., 2013) or marine snow catchers (Cavan et al., 2015; Riley et al., 2012).

Here we focus on the use of radioisotopes, specifically, ²³⁴Th. The ²³⁴Th approach allows us to quantify an export flux from (i) a water profile of ²³⁴Th to obtain its deficit relative to ²³⁸U combined with (ii) an estimate of the ratio of POC concentration to ²³⁴Th activity (POC/Th ratio) in sinking matter (Buesseler et al., 1992). In reviewing POC/Th ratio variability using the data available at the time, Buesseler et al. (2006) found that the POC/Th ratios (i) increase or remain constant with increasing particle size and (ii) decrease with depth. Regionally, the POC/Th ratios vary largely between oceanic provinces and regimes (Puigcorbé et al., 2017a). The study of the biogeochemical behavior of ²³⁴Th with regards to marine particles has received significant attention (Maiti et al., 2010; Le Moigne et al., 2013c; Puigcorbé et al., 2015; Rosengard et al., 2015; Santschi et al., 2006), and the availability of ²³⁴Th-related data has been enhanced thanks to international and national programs such as GEOTRACES (Mawji et al., 2015; Schlitzer et al., 2018), JGOFS (Joint Global Ocean Flux Study) (Buesseler et al., 1998, 1995, 2001), or VERTIGO (Buesseler et al., 2008b), yet the factors controlling the variations in the POC/Th ratio as a function of region, time, particle size and type, and water column depth remain poorly understood. Assessing the influence of such factors on the POC/Th ratios will contribute to improve our modeling efforts and our capacity to predict the export and fate of the organic carbon produced in the surface layers. Indeed, the necessity to constrain the variability of the POC/Th was discussed and considered a priority at the tech-

nical meeting “The Application of Radionuclides in Studies of the Carbon Cycle and the Impact of Ocean Acidification” held at the International Atomic Energy Agency (IAEA) Environment Laboratories in Monaco in October 2016 (Morris et al., 2017).

Therefore, we compiled a database that comprises 9318 POC/Th ratios collected between 1989 and 2018 covering most oceanic provinces at depths ranging from 0 to > 5500 m. The particles were collected using collection bottles (i.e., Niskin), in situ pumps, or sediment traps, and they include bulk and size fractionated samples. This database significantly increases the pool of POC/Th ratio data available at the time of Buesseler et al. (2006) and enables us to test the influence of various factors on the variability of POC/Th ratios. Among other information, the influence of biogeochemical characteristics of the area (e.g., nutrient concentrations) together with the surface productivity levels, phytoplankton compositions, and zooplankton abundance could be examined through satellites products and/or global databases (e.g., Buitenhuis et al., 2013; Moriarty et al., 2013; Moriarty and O’Brien, 2013).

2 Data

2.1 The ²³⁴Th approach

The short-lived radionuclide thorium-234 (²³⁴Th, $t_{1/2} = 24.1$ d) is widely used to estimate the magnitude of POC that escapes the upper ocean layers (e.g., the euphotic zone) (Waples et al., 2006). ²³⁴Th is the decay product of uranium-238 (²³⁸U, $t_{1/2} = 4.47 \times 10^9$ yr). While uranium is conservative and proportional to salinity in well-oxygenated seawater (Chen et al., 1986; Ku et al., 1977; Owens et al., 2011), thorium is not soluble in seawater and it is scavenged by particles as they form and/or sink along the water column. As a consequence, a radioactive disequilibrium between ²³⁸U and ²³⁴Th can be observed, mainly in the upper layers of the water column, which at first approximation, is proportional to the numbers of particles exported and hence can be used to estimate particle and elemental export fluxes.

A one-box scavenging model (see review by Savoye et al., 2006, and references therein) is commonly applied to calculate ²³⁴Th export rates. Steady-state (SS) or non-steady-state (NSS) conditions are assumed depending on the conditions at the sampling time and the possibility to reoccupy locations within an adequate timescale. Le Moigne et al. (2013b) reported ²³⁴Th fluxes from both types of models in their database with flux integration depths spanning from the surface down to 300 m, although the most common integration depths were between 100 and 150 m. The choice of export depth when using the ²³⁴Th technique is not trivial. Rosengard et al. (2015) provide recommendations to the various manners of choosing the export depth in order to integrate the ²³⁴Th fluxes. Once the ²³⁴Th export flux is estimated, it is multiplied by the ratio of POC to particulate ²³⁴Th activ-

ity in sinking particles to obtain the POC flux. The sinking particles from which the ratio is measured should, ideally, be collected at the depth where the export has been estimated and represent the pool of particles that are driving the export of organic carbon.

2.2 The crux of the ²³⁴Th approach: POC/Th ratios of sinking particles

The determination of the POC/Th ratio has been historically attained by assuming that sinking carbon is driven by large particles, generally >50 µm in size (researchers also use 51, 53, or 70 µm, depending on the mesh supplier) whereas organic carbon within small particles is assumed to remain suspended and therefore not contribute to the export flux (Bishop et al., 1977; Fowler and Knauer, 1986). However, recent studies have shown that small particles can be significant players in the particle export and should not be disregarded (Alonso-González et al., 2010; Durkin et al., 2015; Le Gland et al., 2019; Puigcorbé et al., 2015; Richardson, 2019), particularly in oligotrophic regions. The most common methods to obtain the particulate fraction to measure the POC/Th ratio are (i) in situ pumps (ISPs), which can allow for sampling different particle sizes; (ii) collection bottles (CBs) such as Niskin bottles, providing bulk particles, i.e., > 0.7 or 1 µm particles; (iii) sediment traps (STs); and although less common (iv) marine snow catchers. In some instances various methods have been used in combination (Cai et al., 2010; Maiti et al., 2016; Puigcorbé et al., 2015).

Different sampling devices have been shown to provide differences in POC/Th ratios, usually within a factor of 2 to 4 (Buesseler et al., 2006). The differences can be related to the collection of different particle pools and/or the enhanced presence of swimmers. STs collect sinking particles and may suffer from hydrodynamic discrimination and undersample slow-sinking particles (Gustafsson et al., 2004). CBs sample both sinking and suspended particles similar to ISPs. ISPs filter large volumes of water and have been suggested to potentially undersample some of the fast-sinking particles (Lepore et al., 2009) and sample neutrally buoyant C-rich aggregates (i.e., non-sinking but with high POC/Th ratios) (Lalande et al., 2008). Biases due to washout of large particles when using ISPs (Bishop et al., 2012) or aggregate collapse induced by their high cross-filter pressure (Gardner et al., 2003) may further enhance these differences. The presence of swimmers can also be an important bias of POC/Th ratios when not thoroughly removed, since they skew measurements towards higher values because of their high POC proportion compared to ²³⁴Th (Buesseler et al., 1994; Coale, 1990).

2.3 POC/²³⁴Th ratio variability

Despite the significant body of literature available on POC/Th ratios, more than 10 years after the review by Bues-

seler et al. (2006) we still cannot explain the variability of the POC/Th ratios with depth, time, particle type and size, or sinking velocity easily or at a global level. Changes with size and depth have been the most extensively examined. The relation between POC/Th ratio and particle size has been assessed before, with results suggesting that there is not a direct relationship. Previous studies have reported increasing ratios with increasing particle size (Benitez-Nelson et al., 2001; Buesseler et al., 1998; Cochran et al., 2000), which has been interpreted as an effect of the volume-to-surface area ratio of the particles, due to ²³⁴Th being surface bound whereas C would be contained within the particles (Buesseler et al., 2006). Yet, a number of studies have reported the opposite trend (i.e., decreasing ratio with increasing particle size; Bacon et al., 1996; Hung et al., 2010; Planchon et al., 2013; Puigcorbé et al., 2015) or no clear change with size (Hung and Gong, 2010; Lepore et al., 2009; Speicher et al., 2006). Depth is another factor that has been considered when assessing the variability of POC/Th, since particles are produced in the surface layer and are remineralized on their transit along the water column (Martin et al., 1987). POC/Th ratios have been found to be attenuated with depth (Jacquet et al., 2011; Planchon et al., 2015; Puigcorbé et al., 2015). This is due to (in no order of importance) decreasing autotrophic production with increasing water depth, preferential C loss compared to ²³⁴Th through remineralization processes, changes in superficial binding ligands along the water column, and/or scavenging of ²³⁴Th during particle sinking resulting in enhanced particulate ²³⁴Th activities (Buesseler et al., 2006; Rutgers van der Loeff et al., 2002), leading to significant variability in the attenuation rates. Theoretically, high sinking velocities may limit the variations in POC/Th ratios with depth, owing to shorter residence times limiting the impacts of biotic and abiotic processes. However, using specifically designed STs that segregate particles according to their in situ sinking velocities, Szlosek et al. (2009) observed no consistent trend between POC/Th ratios and sinking velocities.

The truth is that numerous processes can impact the POC/Th ratios apart from particle size or depth, such as particle composition or aggregation–disaggregation processes mediated by physical or biological activity (Buesseler and Boyd, 2009; Burd et al., 2010; Maiti et al., 2010; Szlosek et al., 2009), which adds a level of complexity to the prediction of their variability in the ocean. Yet, due to the significance of the POC/Th ratios for the accuracy of the ²³⁴Th flux method, the effort should be made to constrain the factors that will impact its variability, and a number of environmental and biogeochemical parameters can be assessed with that goal at a global scale. Among others, surface productivity, phytoplankton composition, zooplankton abundance, mixed-layer depth, dust inputs to the surface ocean, and ice cover (Buitenhuis et al., 2013; Mahowald et al., 2009; Moriarty et al., 2013; Moriarty and O'Brien, 2013) are all poten-

tial candidates to test their global patterns against POC/Th ratio variability.

3 Results and discussion

3.1 Data classification

Our dataset is archived in the data repository PANGAEA® (<http://www.pangaea.de>), <https://doi.org/10.1594/PANGAEA.911424> (Puigcorbé, 2019). Latitude, longitude, and sampling dates are reported. When dates of the individual stations were not reported in the original publications, we allocated the midpoint of the sampling period as the sampling date. The same was done when the specific sampling coordinates were not available (see details in the comments related to the dataset; <https://doi.org/10.1594/PANGAEA.902103>; Puigcorbé, 2019). The database consists of 9318 measurements of POC/Th ratios in the ocean. Particles were collected using in situ pumps (ISPs), water collection bottles (CBs), and sediment traps (STs). We refer to “bulk” (BU) for particles sampled using CBs and ISPs with a pore size filter of 0.2–1 µm. For this group of samples, particles > 0.7 µm were collected using GFF filters and > 1 µm using QMA filters. In some particular cases other types of filters, with a different pore size (e.g., 0.2, 0.45, or 0.6 µm) might have been used (see database for details). Hereafter, we use > 1 µm for the bulk particles. We refer to “small particles” (SPs) for particles usually collected using ISPs on a 1–50 µm mesh size and “large particles” (LPs) for particles usually collected using ISPs on mesh size > 50 µm (see details on other size ranges also used in the database). Finally, some POC/Th ratios were measured in sinking particles sampled using sediment traps (STs). Figure 1 shows the global distribution of POC/Th ratios grouped by these four categories: BU, LP, SP, and ST. The POC/Th ratios were obtained from particles collected at various depths from the surface to > 5500 m (Fig. 2). All the information on locations, dates, depth, size fractions/device (BU, SP, LP, and ST), and references is included as metadata in the online database and presented in Table 1.

Our database covers POC/Th measurements sampled between 1989 and 2018, including unpublished data from our laboratories or graciously made available to us by colleagues and data available in online databases. Figure 3 shows the number of POC/Th measurements available per year. In the years 1997, 2004, 2005, 2008, 2010, 2011, and 2013, the number of POC/Th measurements was > 500. This highlights dedicated carbon export programs such as the Joint Global Ocean Flux Study (JGOFS) (Buesseler et al., 1998, 1992, 1995, 2001; Murray et al., 1996, 2005), the VERTIGO (Vertical Transport in the Global Ocean) voyages in the Pacific Ocean (Buesseler et al., 2008b), and the GEOTRACES program (Mawji et al., 2015; Schlitzer et al., 2018), as well as the maintained effort of the time series stations

(Kawakami et al., 2004, 2010, 2015; Kawakami and Honda, 2007). Sampling effort also varied depending on the month of the year (Fig. 3b), with late spring–summer months being the most highly sampled in both hemispheres. The Northern Hemisphere has been largely sampled in September, May, and June (49, 10, and 5 times more data than in the Southern Hemisphere, respectively), whereas the Southern Hemisphere has been more sampled in December and February (5 and 4 times more data than in the Northern Hemisphere, respectively), with no data available for the months of July and August and only five data points in September (austral winter). For the rest of the months, the Northern Hemisphere presents 1.4–1.8 times more data than the Southern Hemisphere. In the equatorial region (taken as the latitudes between –10 and 10° N) major sampling efforts took place in May, with no data collected in January and just eight data points available from December. The monthly distribution is, therefore, globally biased towards the warmer and more productive seasons, leaving the winter months largely under-sampled, particularly in the Southern Hemisphere.

3.2 Global variability: climate zones and depth horizons

The global variability of POC/Th ratios looking at six different depths horizons (50, 100, 200, 500, 1000, and > 1000 m) and grouped by climatic zones (polar > 66.5°, subpolar 66.5–50°, temperate 50–35°, subtropical 35–23.5°, and tropical 23.5° N–23.5° S) is presented in Fig. 4. A PERMANOVA analysis was conducted to examine the data, and the results indicate that all the depth horizons defined here were significantly different ($p < 0.05$). Significant differences were also found between climatic zones, except between the temperate and subtropical zones and between the subtropical and the tropical zones, when considering all the data together. Statistical differences between zones within a certain depth range are shown in Fig. 4.

In general, we observe a reduction in POC/Th ratios with depth, previously reported by others (Buesseler et al., 2006), and likely mainly due to the remineralization of carbon along the water column. The decrease is particularly marked in the upper 200 m, where biological processes affecting the ratios are more intense, and then it smoothes below that depth horizon as the strength of these processes is more limited below the euphotic zone. It is worth noticing that some studies, particularly in coastal areas, presented extremely large POC/Th ratios (> 100 µmol dpm⁻¹, not included in Fig. 4). These high ratios are not always discussed in the publications, but the presence of live zooplankton (Buesseler et al., 2009; Savoye et al., 2008; Trull et al., 2008), especially in BU, ST, and LP fractions, when not picked out can be the cause for those high values and should be considered with caution.

Regarding the climate zones, there is significant variability, but, in general, large POC/Th ratios occur more often in productive and high-latitude regions relative to low-latitude

Table 1. Sampling year; area; number of samples for large particles (LPs), small particles (SPs), bulk (BU) particles, and particles collected with sediment traps (STs); and reference of studies used in the database. Note the following references refer to data published in several papers: Stukel et al. CCE refers to data published in Stukel et al. (2011, 2015, 2017, 2019); Stukel et al. CRD refers to data from Stukel et al. (2015, 2016). Buesseler JGOFS dataset Arabian Sea refers to data published in Buesseler et al. (1998) and also available at <https://www.bco-dmo.org/project/2043> (last access: 3 June 2020). Buesseler JGOFS dataset Southern Ocean refers to data published in Buesseler et al. (2001) and also available at <https://www.bco-dmo.org/project/2044> (last access: 3 June 2020). Kawakami North Pacific time series data are available at <http://www.jamstec.go.jp/res/ress/kawakami/234Th.html> (last access: 3 June 2020) and have also been published in Kawakami (2009), Kawakami et al. (2004, 2010, 2015), Kawakami and Honda (2007), and Yang et al. (2004). Further details regarding particle size specifications or sampling device can be found in the database file <https://doi.org/10.1594/PANGAEA.902103>.

Sampling year	Area	LP <i>n</i>	SP <i>n</i>	ST <i>n</i>	BU <i>n</i>	Reference/investigator
1989	North Atlantic	–	–	6	12	Buesseler et al. (1992)
1991–1992	Buzzards Bay	–	–	–	7	Moran and Buesseler (1993)
1992	Equatorial Pacific	80	–	–	–	Bacon et al. (1996)
1992	Sargasso Sea	–	–	2	–	Buesseler et al. (1994)
1992	Equatorial Pacific	71	78	–	–	Buesseler et al. (1995)
1992	Atlantic sector of the Southern Ocean	–	–	–	31	Friedrich and Rutgers van der Loeff (2002)
1992	Central equatorial Pacific	–	–	124	–	Murray US JGOFS EqPac (Murray et al., 1996, 2005)
1992	Atlantic sector Southern Ocean	–	–	–	32	Rutgers van der Loeff et al. (1997)
1992	Bellingshausen Sea, Antarctica	–	–	–	3	Shimmield et al. (1995)
1992–1993	Northeast Water polynya, Greenland	–	–	–	11	Cochran et al. (1995)
1993	Middle Atlantic Bight	–	–	–	30	Santschi et al. (1999)
1993–1994	Station BATS, North Atlantic, and Gulf of Maine	–	–	–	4	Gustafsson et al. (1997)
1993–1996	Guaymas Basin	–	–	58	–	Smoak et al. (1999)
1994	Central Arctic Ocean	28	–	–	–	Moran et al. (1997)
1995	Arabian Sea	123	148	–	–	Buesseler JGOFS dataset Arabian Sea
1995	Wilkinson Basin and Jordan Basin	20	20	–	–	Charette et al. (2001)
1995	Beaufort Sea	–	–	–	22	Moran and Smith (2000)
1995	Atlantic sector Southern Ocean	–	–	–	80	Rutgers van der Loeff et al. (2002)
1995	NW Mediterranean Sea	–	–	3	15	Schmidt et al. (2002b)
1996	Subtropical and tropical Atlantic Ocean	25	22	–	–	Charette and Moran (1999)
1996–1997	Northeast Pacific Ocean	–	–	4	144	Charette et al. (1999)
1996–1997	Ross Sea	82	79	–	–	Cochran et al. (2000)
1996–1997	Gulf of Maine	–	–	–	7	Dai and Benitez-Nelson (2001)
1996–1997	Sargasso Sea	–	–	–	6	Kim and Church (2001)
1996–1998	Ross Sea	291	271	–	–	Buesseler JGOFS dataset Southern Ocean
1997	Southwestern Gulf of Maine	–	–	–	64	Benitez-Nelson et al. (2000)
1997	Sargasso Sea	–	–	3	–	Buesseler et al. (2000)
1997	Gulf of Lion	–	–	–	33	Giuliani et al. (2007)
1997	Northern Iberian Margin	–	–	–	22	Hall et al. (2000)
1997	Northern Adriatic Sea	–	–	–	23	Radakovitch et al. (2003)
1997–2000, 2002–2008	NW North Pacific	92	–	48	664	Kawakami North Pacific Time Series
1998	Arctic Ocean	–	–	–	19	Baskaran et al. (2003)
1998	Western Iberian Margin	–	–	–	12	Schmidt et al. (2002a)
1998–1999	North Water Polynya	15	–	45	–	Amiel et al. (2002)
1999	South China Sea	–	–	–	20	Cai et al. (2001)
1999	Canada Basin, Bering Sea	–	–	–	27	Chen et al. (2003)
1999	Barents Sea	–	–	5	25	Coppola et al. (2002)
1999	Crozet Basin	–	–	–	8	Coppola et al. (2005)
1999	Northern North Sea	–	–	–	24	Foster and Shimmield (2002)
1999	Labrador Sea	8	3	–	–	Moran et al. (2003)
1999–2000	North Pacific Subtropical Gyre	5	5	9	–	Benitez-Nelson et al. (2001)
2000	Gulf of Mexico	15	15	–	–	Guo et al. (2002)
2000	Canada Basin Arctic Ocean	–	–	–	25	Trimble and Baskaran (2005)
2000–2001	Gulf of Mexico	21	21	4	–	Hung et al. (2004)
2000–2002	Northern South China Sea	–	–	–	44	Chen et al. (2008)
2001	Subarctic Pacific	–	–	6	19	Aono et al. (2005)
2001	Gullmar fjord, Sweden	–	–	7	8	Gustafsson et al. (2006)

Table 1. Continued.

Sampling year	Area	LP <i>n</i>	SP <i>n</i>	ST <i>n</i>	BU <i>n</i>	Reference/investigator
2001	Arctic Ocean (marginal ice zone)	–	–	17	46	Gustafsson and Andersson (2012)
2001	Southern Ocean	38	36	–	–	Thomas Trull and Ken Buesseler (unpublished)
2002	Southern Ocean/south of the ACCF	39	40	–	–	Buesseler et al. (2005)
2002	Chukchi Sea	171	–	–	–	Moran et al. (2005)
2002	Bay of Biscay to Celtic Sea	–	–	–	24	Schmidt et al. (2013)
2003	Western Arctic Ocean	–	–	–	18	Ma et al. (2005)
2003	Southern Ocean	6	–	–	–	Rodriguez-Baena et al. (2008)
2003	NW Mediterranean Sea	4	–	20	–	Stewart et al. (2007)
2003	Western Arctic Ocean	–	–	–	32	Yu et al. (2010)
2003, 2005	Northern Barents Sea	24	–	24	–	Lalande et al. (2008)
2003–2006	Porcupine Abyssal Plain	7	–	5	–	Lampitt et al. (2008)
2004	Canadian Arctic Shelf	24	–	–	–	Amiel and Cochran (2008)
2004	South China Sea	–	–	–	169	Cai et al. (2008)
2004	Western Arctic Shelf Basin	38	–	45	–	Lalande et al. (2007)
2004	Western Arctic Ocean	206	–	–	–	Lepore et al. (2007)
2004	Sargasso Sea	–	–	2	–	Maiti et al. (2009)
2004	NW Mediterranean Sea	–	–	3	–	Schmidt et al. (2009)
2004	Southern Ocean	–	–	–	1	Smetacek et al. (2012)
2004	Eastern Mediterranean Sea	26	26	–	–	Speicher et al. (2006)
2004–2005	Tropical North Pacific (Hawaii)	103	115	8	–	Buesseler et al. (2008a)
2004–2005	North Pacific (ALOHA and K2)	35	97	–	–	Buesseler et al. (2009)
2004–2005	North Pacific Ocean	–	–	36	–	Lamborg et al. (2008)
2004–2005	Southern Ocean	20	–	–	–	Morris et al. (2007)
2005	South China Sea	16	15	–	–	Cai et al. (2006)
2005	Mediterranean Sea and NW Atlantic	37	32	15	–	Lepore et al. (2009)
2005	Tropical North Pacific (Hawaii)	13	13	2	–	Maiti et al. (2008)
2005	Kerguelen Plateau, Southern Ocean	26	–	–	–	Savoie et al. (2008)
2005	Ligurian Sea, NW Mediterranean Sea	–	–	22	–	Szlosek et al. (2009)
2005	Falkland Islands and Great Britain	10	10	–	82	Thomalla et al. (2006)
2005–2006, 2009	NW Gulf of Mexico and NW Pacific	35	34	25	–	Hung et al. (2010)
2006	Kuroshio Current	6	6	4	–	Hung and Gong (2007)
2006	Hung-Tsai Trough, southwestern Taiwan	–	–	–	30	Wei et al. (2009)
2006–2007	Sargasso Sea	20	20	12	–	Brew et al. (2009)
2006–2007	Sargasso Sea	9	9	9	–	Stewart et al. (2011)
2006–2008	Tsushima Basin, Sea of Japan	–	–	–	12	Kim et al. (2011)
2006–2008	South China Sea	–	–	17	–	Wei et al. (2011)
2006–2009, 2011–2012, 2014, 2016	California Current	47	–	60	–	Stukel et al. CCE
2007	Arctic Ocean	14	14	–	36	Cai et al. (2010)
2007	Southern Ocean	77	75	–	2	Jacquet et al. (2011)
2007	North Atlantic Ocean	20	–	–	–	Sanders et al. (2010)
2007	South China Sea	–	–	–	85	Zhou et al. (2013)
2008	Northwest Pacific	–	–	13	–	Hung et al. (2012)
2008	South China Sea	–	–	9	–	Hung and Gong (2010)
2008	Iceland Basin	–	–	9	–	Martin et al. (2011)
2008	Eastern Bering Sea	–	–	35	–	Moran et al. (2012)
2008	Southern Ocean	46	49	–	45	Planchon et al. (2013)
2008	Gulf of California and eastern tropical Pacific	83	83	8	–	Puigcorbé et al. (2015)
2008	Atlantic sector Southern Ocean	12	12	–	27	Rutgers van der Loeff et al. (2011)
2008	Chukchi Sea	–	–	–	79	Yu et al. (2012)
2008	Southern Ocean	–	–	–	146	Zhou et al. (2012)
2008–2009	West Antarctic Peninsula	1	1	4	–	Buesseler et al. (2010)
2008–2009	Southern Ocean and Sargasso Sea	–	26	–	–	Zhou et al. (2016)
2009	Porcupine Abyssal Plain	20	13	–	–	Le Moigne et al. (2013c)
2009	Southern Ocean	–	–	6	–	Martin et al. (2013)
2009	NW Mediterranean Sea	–	–	42	–	Viena Puigcorbé (unpublished) – FAMOSO
2009	Powell Basin of the Weddell Sea	–	–	5	6	Shaw et al. (2011)
2009	Cabo Verde archipelago	14	–	–	–	Turnewitsch et al. (2016)
2009–2010	Eastern Bering Sea	–	–	89	–	Baumann et al. (2013)

Table 1. Continued.

Sampling year	Area	LP <i>n</i>	SP <i>n</i>	ST <i>n</i>	BU <i>n</i>	Reference/investigator
2009–2011	South China Sea	–	–	–	777	Cai et al. (2015)
2009–2011	Saanich Inlet	–	–	–	76	Luo et al. (2014)
2010	Irminger Basin and Iceland Basin	–	–	8	–	Ceballos-Romero et al. (2016)
2010	Saronic Gulf	10	10	–	–	Evangelidou et al. (2013)
2010	North Atlantic Ocean	39	39	–	–	Le Moigne et al. (2012)
2010	NW Atlantic	11	–	–	–	Puigcorbé et al. (2017a)
2010	Costa Rica upwelling dome	13	–	10	–	Stukel et al. CRD
2010–2011	Southeastern Pacific	–	–	16	–	Haskell et al. (2013)
2010–2011	Atlantic Ocean	189	–	–	–	Owens et al. (2015)
2011	Tropical Atlantic	15	–	–	–	Pabortsava (2014)
2011	Kerguelen Plateau, Southern Ocean	48	52	–	–	Planchon et al. (2015)
2011–2012	Southern Ocean (Atlantic and Indian sectors)	27	–	–	–	Rosengard et al. (2015)
2012	Arctic Ocean	13	10	–	–	Le Moigne et al. (2015)
2012	Southeast of the Mississippi delta	39	38	11	–	Maiti et al. (2016)
2012	Atlantic sector Southern Ocean	8	–	2	–	Puigcorbé et al. (2017b)
2012	Eurasian Basin of the central Arctic	25	–	–	–	Roca-Martí et al. (2016)
2012	Atlantic sector Southern Ocean	19	–	22	–	Roca-Martí et al. (2017)
2013	Southeastern tropical Pacific	339	339	–	–	Black et al. (2018)
2013	Southern Ocean (South Georgia)	10	9	–	–	Elena Ceballos-Romero (unpublished)
2013	Southern Ocean	12	8	–	–	Le Moigne et al. (2016)
2013–2014	Arabian Sea and Bay of Bengal	–	–	–	4	Anand et al. (2018b)
2014	Bay of Bengal	–	–	–	13	Anand et al. (2017)
2014	Southern Indian Ocean to Arabian Sea	–	–	–	11	Anand et al. (2018a)
2014	North Atlantic Ocean	56	58	–	–	Lemaitre et al. (2018)
2014–2015	Tropical and subtropical North Pacific	53	49	5	–	Umhau et al. (2019)
2015	Arctic Ocean	17	17	–	28	Viena Puigcorbé (unpublished) – PS94
2016	Southern Ocean	21	22	–	36	Viena Puigcorbé (unpublished) – GP-Pr11
2017–2018	Levantine Basin (Mediterranean Sea)	–	–	3	19	Alkalay et al. (2020)
	Totals	3087	2039	947	3245	9318

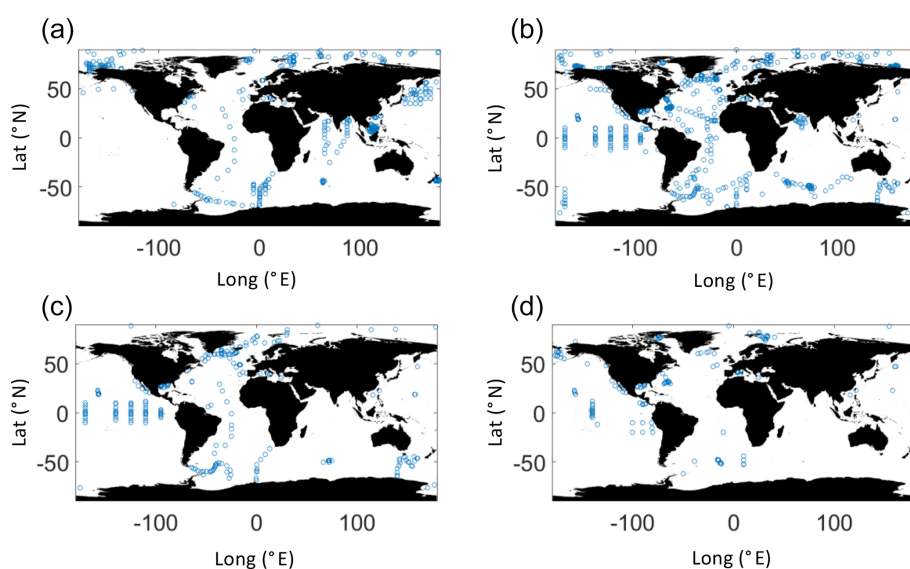


Figure 1. Maps showing the distribution of POC/Th ratios measured on (a) bulk particles, (b) large particles, (c) small particles, and (d) particles from sediment traps. See main text for details, Sect. 3.1 Data classification.

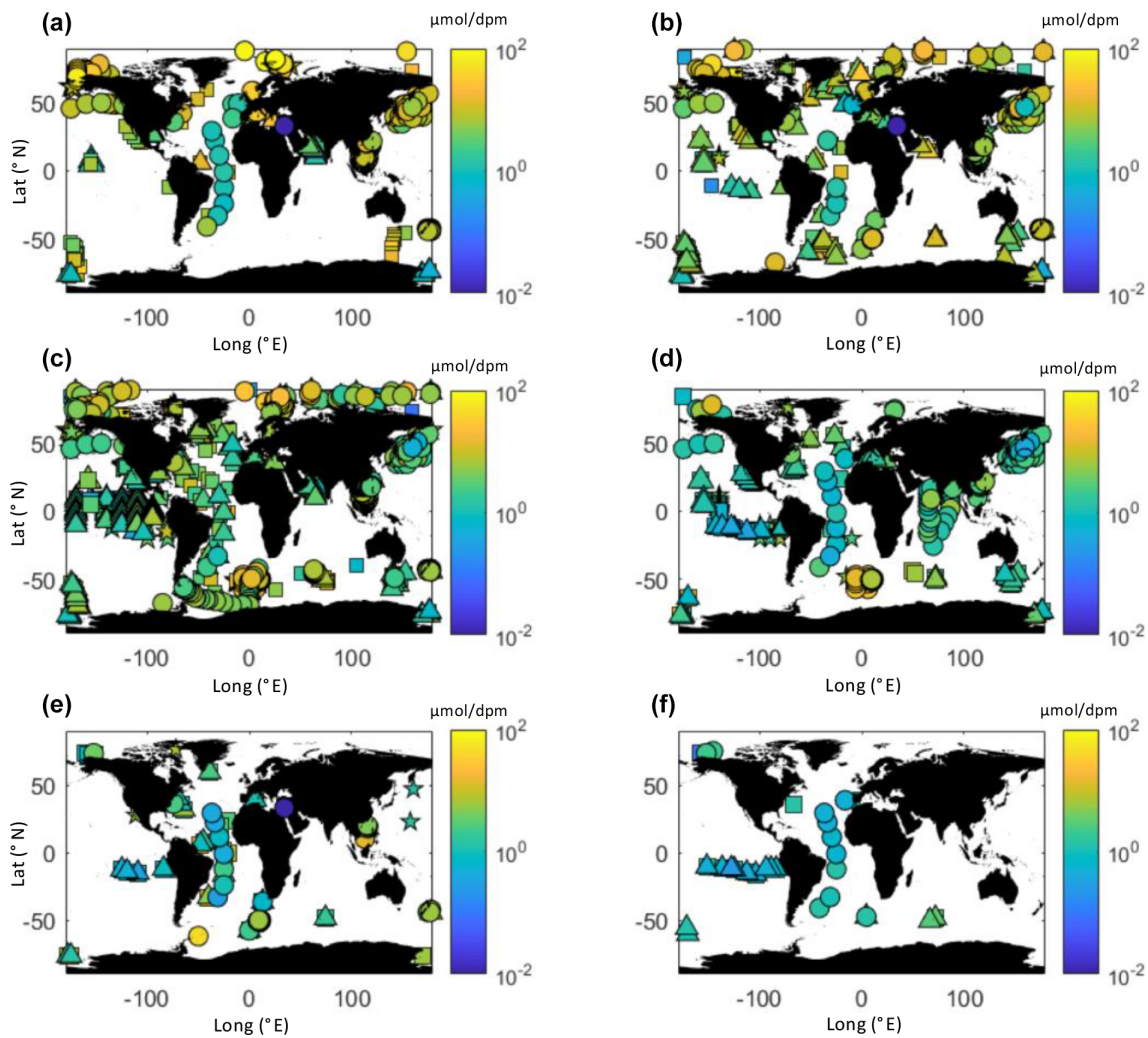


Figure 2. Global distribution of the POC/Th ratios ($< 100 \mu\text{mol dpm}^{-1}$) (a) in surface, (b) at 50 m, (c) at 100 m, (d) at 200 m, (e) at 500 m, and (f) at 1000 m. Circles represent BU, squares represent LP, triangles represent SP, and stars represent ST (see main text for details, Sect. 3.1 Data classification.). Data correspond to samples collected at depths at ± 5 m the nominal depth for all cases, except for panel (f) (± 50 m).

tropical areas, particularly in the upper 200 m (Fig. 4). When looking at the different types of sampling methods, the link between latitude and magnitude of the ratio seems to be clear for ST and BU but quite variable for LP and SP (Fig. 5). High POC/Th ratios are usually associated with the presence of large phytoplankton groups, such as diatoms, which are dominant in high-latitude areas with no nutrient limitations, or where zooplankton populations are large and there is a significant input of fecal pellets, which should also have high POC/Th ratios. Low ratios, on the other hand, are commonly observed in warm oligotrophic areas where productivity is limited and the main phytoplanktonic groups are picoplankton (Buesseler et al., 2006). Exceptions do exist, but they are usually found in coastal areas where other factors could be influencing the planktonic community (e.g., seasonal upwelling, continental influence, river inputs).

3.3 Contributing to global POC export estimates

The ²³⁴Th approach has been used to derive an export model at the global scale that uses sea surface temperatures and net primary productivity from satellite products (Henson et al., 2011). The parametrization for this model has large uncertainties in the cold regions (low sea surface temperature), which lead to a reduced estimate of the global biological carbon pump ($\sim 5 \text{ GtCyr}^{-1}$) compared to other satellite-derived export models ($9\text{--}13 \text{ GtCyr}^{-1}$; Dunne et al., 2007; Laws et al., 2011). A recent study by Puigcorbé et al. (2017a) estimated POC export fluxes in the North Atlantic using in situ data for the ²³⁴Th method and compared it to three different satellite-derived export models: Dunne et al. (2007), Henson et al. (2011), and Laws et al. (2011). The conclusion was that, overall, the geographical trends were captured by all the approaches, but the absolute values between them

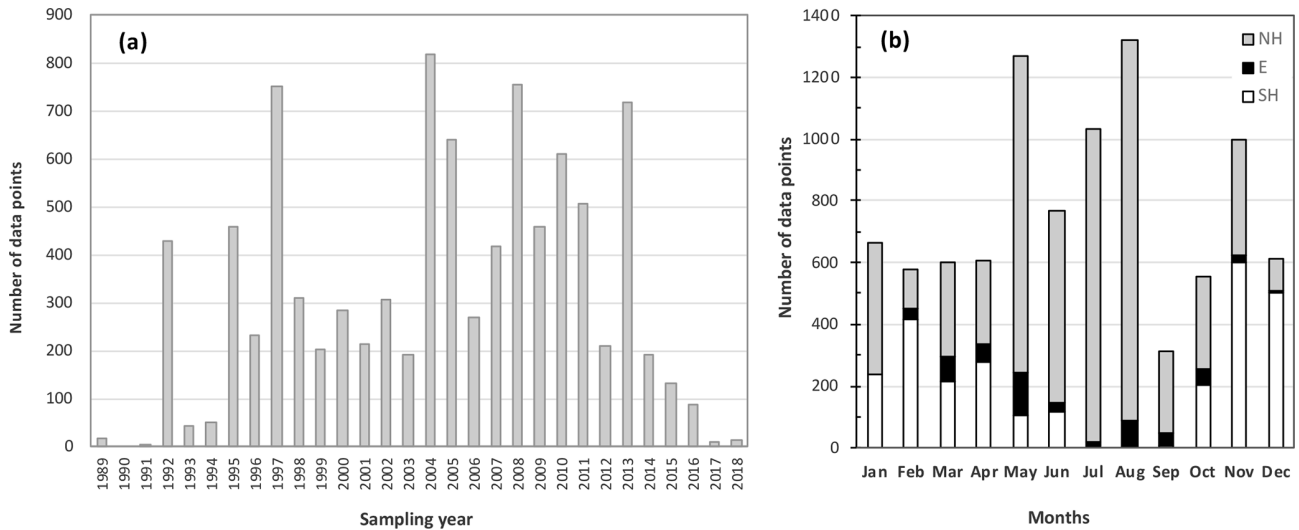


Figure 3. (a) Histogram of data sampled between 1989 and 2018. See Table 1 for details. (b) Number of samples per month of the year grouped as per sample collected in the Northern Hemisphere (NH; grey), in the Southern Hemisphere (SH; white), or at the Equator (E; –10 to 10° N; black).

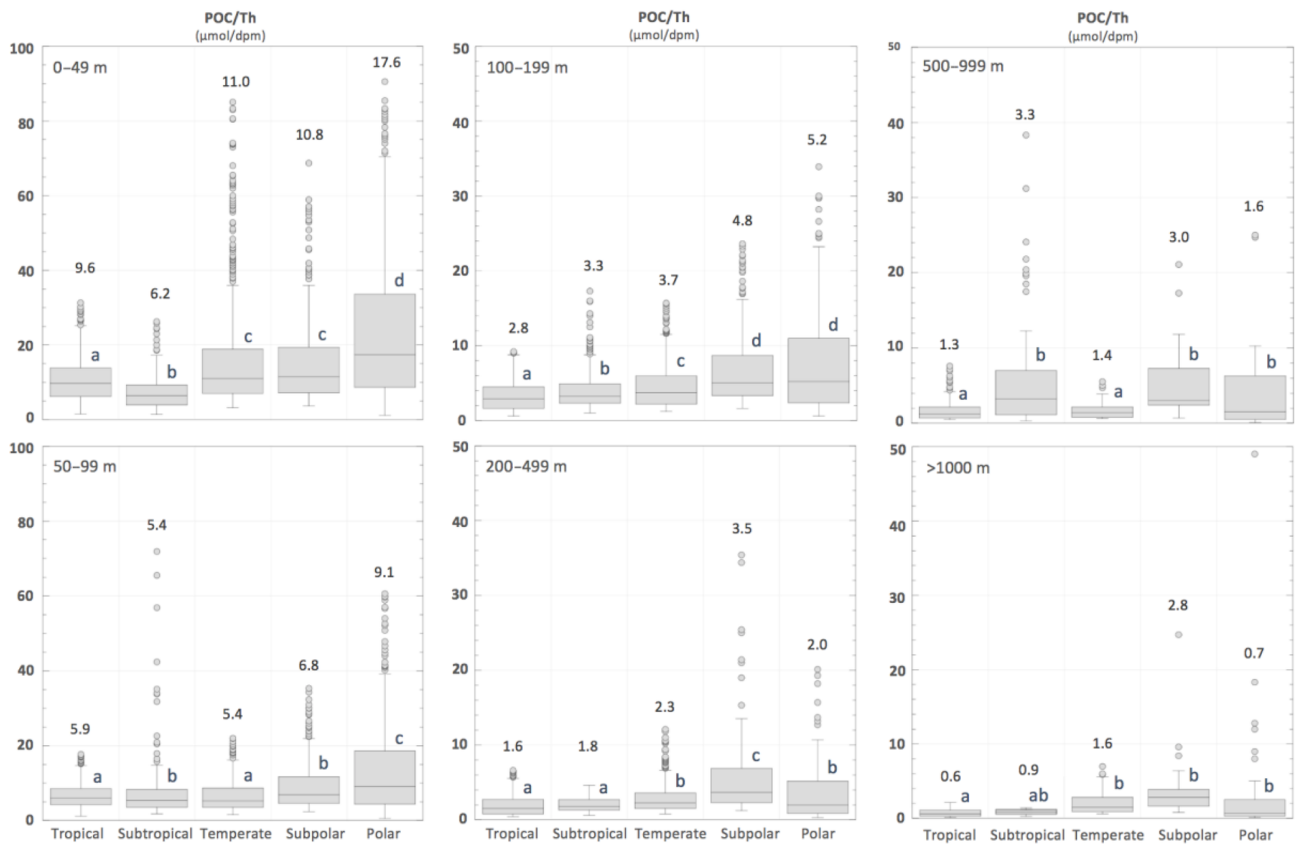


Figure 4. POC/Th ratio variability (box–whisker plots) of 90 % of the data sorted by climate zones and depth. The values shown on top of each box represent their median. Box plots within the same depth range (e.g., 0–49 m) sharing a letter are not significantly different. Note the different scale used between the 0 to 99 m and the 100 to > 1000 m plots.

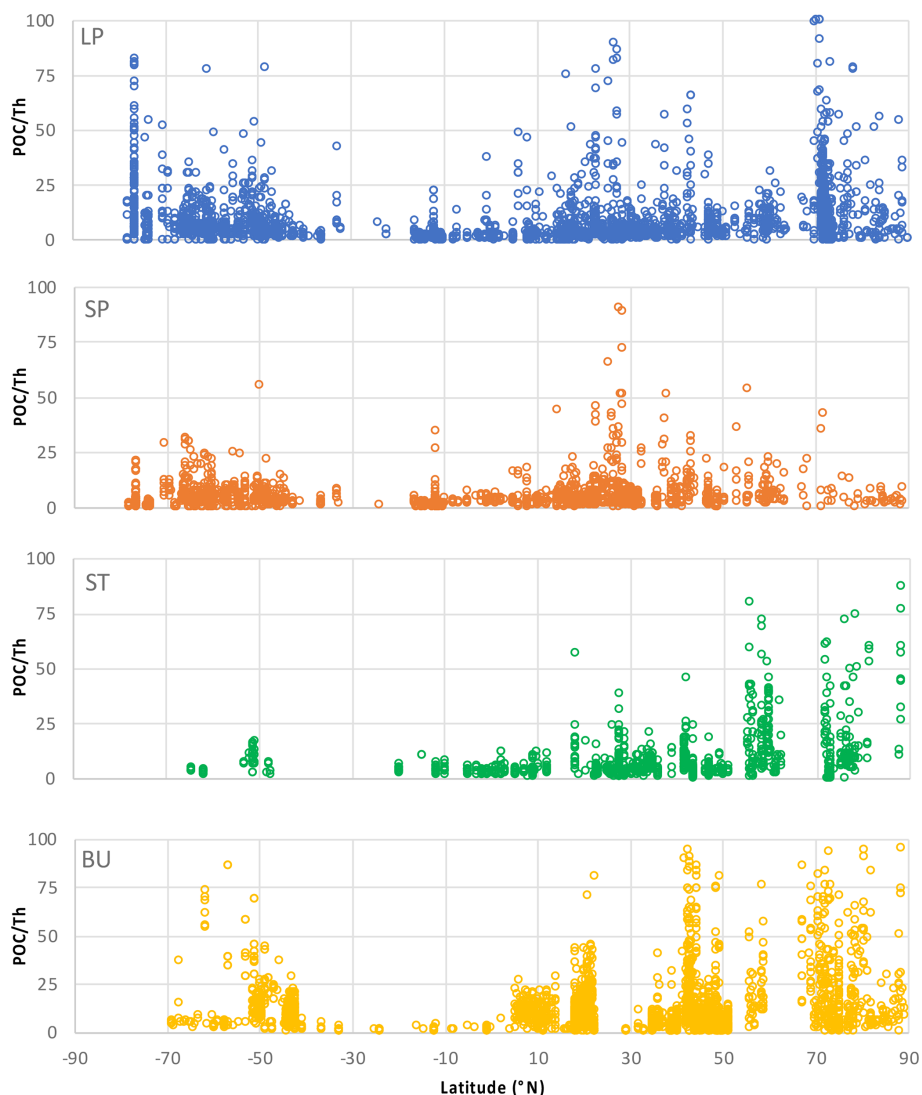


Figure 5. Latitudinal variability of the POC/Th ratios ($< 100 \mu\text{mol dpm}^{-1}$) grouped by large particles (LPs), small particles (SPs), sediment trap (ST) particles, and bulk (BU) particles.

could reach important discrepancies. In that study, the authors advised a revision of the parametrization of the models going beyond sea surface temperatures in order to adjust to specific ocean bioregions. This database sets a strong background to develop that parametrization and contribute to similar modeling efforts to constrain the global carbon export fluxes as done by Henson et al. (2011).

3.4 Significant gaps and recommendations

This database provides the global POC/Th ratios sampled from all the oceans up until 2018. The sampling coverage is significant but it is not evenly distributed. Areas such as the China Sea, Arabian Sea, northwestern Mediterranean Sea, central Pacific, and high latitudes of the Atlantic Ocean are well represented, whereas other areas, such as the olig-

otrophic gyres, west Pacific, or the Southern Ocean, present important gaps. The data are not evenly distributed between seasons either, with most of the sampling taking place during spring and summer in both hemispheres, which is also when the export fluxes are expected to be larger. High seasonality in undersampled areas could potentially bias our global view of the POC/Th ratios and have an impact on the Th-derived carbon export flux estimates.

It would be beneficial for future efforts to obtain data for those undersampled areas with high seasonality to better characterize the expected variability in the ratios within those areas and to cover a larger span of seasons in order to better understand the seasonality of POC/Th and thus be able to translate it more accurately to the global POC export estimates.

4 Data availability

Our dataset is archived in the data repository PANGAEA® (<http://www.pangaea.de>), under the following DOI: <https://doi.org/10.1594/PANGAEA.911424> (Puigcorbé, 2019).

5 Conclusion

Here we provide a global database of 9318 estimates of POC/Th ratios collected between 1989 and 2018 at various depths from below the surface to > 5500 m using in situ pumps, collection bottles, and sediment traps. The observed pattern of POC/Th ratios reflects a decrease with depth and a link with the latitude, with higher ratios usually observed in high-latitude areas. Some noteworthy gaps in the dataset are the Benguela system, the Mauritanian upwelling, the western and south Pacific, and the southern Indian Ocean. The fall–winter months in both hemispheres are also underrepresented. The temporal and spatial undersampling of some areas could bias the global view of the POC/Th ratios. Despite the gaps, this database is the largest compilation POC/Th ratios to date and could be used to better understand the factors controlling the variation in ratios on a global scale. This will help revise and provide improved estimates of the ocean's biological carbon pump.

Author contributions. VP and FACLM compiled the dataset and prepared and reviewed the manuscript. All the authors contributed to the review of the manuscript.

Competing interests. The authors declare that they have no conflict of interest.

Acknowledgements. We are very grateful to all of those who have provided data for this global database, especially to those authors who have provided unpublished data to make this database as complete as possible. We would also like to thank Elena Ceballos and Sian McNamara who helped during the preparation of the database. We also thank Daniela Ransby, from the PANGAEA Data Archiving & Publication team, for her support and efficiency during the data submission process. Viena Puigcorbé received funding from the School of Science at Edith Cowan University to compile the dataset and facilitate the collaboration with Frédéric A. C. Le Moigne (G1003879). This work is contributing to the ICTA “Unit of Excellence” (MinECo, MDM2015-0552). Thanks also to the Radioecology Laboratory of the IAEA for hosting the technical meeting “The Application of Radionuclides in Studies of the Carbon Cycle and the Impact of Ocean Acidification”, and in particular to Stephanie Morris and all the participants for the fruitful discussions.

Financial support. This research has been supported by the Edith Cowan University (grant no. G1003879).

Review statement. This paper was edited by David Carlson and reviewed by Erin Black and one anonymous referee.

References

- Alkalay, R., Zlatkin, O., Katz, T., Herut, B., Halicz, L., Berman-Frank, I., and Weinstein, Y.: Carbon export and drivers in the southeastern Levantine Basin, *Deep-Sea Res. Pt. II*, 171, 104713, doi:10.1016/j.dsr2.2019.104713, 2020.
- Alonso-González, I. J., Arístegui, J., Lee, C., Sanchez-Vidal, A., Calafat, A., Fabrés, J., Sangrá, P., Masqué, P., Hernández-Guerra, A., and Benítez-Barrios, V.: Role of slowly settling particles in the ocean carbon cycle, *Geophys. Res. Lett.*, 37, L13608, <https://doi.org/10.1029/2010GL043827>, 2010.
- Amiel, D. and Cochran, J. K.: Terrestrial and marine POC fluxes derived from ^{234}Th distributions and $\delta^{13}\text{C}$ measurements on the Mackenzie Shelf, *J. Geophys. Res.-Oceans*, 113, C03S06, <https://doi.org/10.1029/2007JC004260>, 2008.
- Amiel, D., Cochran, J. K., and Hirschberg, D. J.: $^{234}\text{Th}/^{238}\text{U}$ disequilibrium as an indicator of the seasonal export flux of particulate organic carbon in the North Water, *Deep-Sea Res. Pt. II*, 49, 5191–5209, 2002.
- Anand, S. S., Rengarajan, R., Sarma, V. V. S. S., Sudheer, A. K., Bhushan, R., and Singh, S. K.: Spatial variability of upper ocean POC export in the Bay of Bengal and the Indian Ocean determined using particle-reactive ^{234}Th , *J. Geophys. Res.-Oceans*, 122, 3753–3770, <https://doi.org/10.1002/2016JC012639>, 2017.
- Anand, S. S., Rengarajan, R., and Sarma, V. V. S. S.: ^{234}Th -Based Carbon Export Flux Along the Indian GEO-TRACES GI02 Section in the Arabian Sea and the Indian Ocean, *Global Biogeochem. Cycles*, 32, 1–20, <https://doi.org/10.1002/2017GB005847>, 2018a.
- Anand, S. S., Rengarajan, R., Shenoy, D., Gauns, M., and Naqvi, S. W. A.: POC export fluxes in the Arabian Sea and the Bay of Bengal: A simultaneous $^{234}\text{Th}/^{238}\text{U}$ and $^{210}\text{Po}/^{210}\text{Pb}$ study, *Mar. Chem.*, 198, 70–87, <https://doi.org/10.1016/j.marchem.2017.11.005>, 2018b.
- Aono, T., Yamada, M., Kudo, I., Imai, K., Nojiri, Y., and Tsuda, A.: Export fluxes of particulate organic carbon estimated from $^{234}\text{Th}/^{238}\text{U}$ disequilibrium during the Subarctic Pacific Iron Experiment for Ecosystem Dynamics Study (SEEDS 2001), *Prog. Oceanogr.*, 64, 263–282, <https://doi.org/10.1016/j.pocean.2005.02.013>, 2005.
- Bacon, M. P., Cochran, J. K., Hirschberg, D., Hammar, T. R., and Flier, A. P.: Export flux of carbon at the equator during the EqPac time-series cruises estimated from ^{234}Th measurements, *Deep-Sea Res. Pt. II*, 43, 1133–1153, [https://doi.org/10.1016/0967-0645\(96\)00016-1](https://doi.org/10.1016/0967-0645(96)00016-1), 1996.
- Baskaran, M., Swarzenski, P. W., and Porcelli, D.: Role of colloidal material in the removal of ^{234}Th in the Canada basin of the Arctic Ocean, *Deep-Sea Res. Pt. I*, 50, 1353–1373, [https://doi.org/10.1016/S0967-0637\(03\)00140-7](https://doi.org/10.1016/S0967-0637(03)00140-7), 2003.
- Baumann, M. S., Moran, S. B., Lomas, M. W., Kelly, R. P., and Bell, D. W.: Seasonal decoupling of particulate organic car-

- bon export and net primary production in relation to sea-ice at the shelf break of the eastern Bering Sea: Implications for off-shelf carbon export, *J. Geophys. Res.-Oceans*, 118, 1–19, <https://doi.org/10.1002/jgrc.20366>, 2013.
- Benitez-Nelson, C., Buesseler, K. O., Karl, D. M., and Andrews, J.: A time-series study of particulate matter export in the North Pacific Subtropical Gyre based on ²³⁴Th: ²³⁸U disequilibrium, *Deep-Sea Res. Pt. I*, 48, 2595–2611, [https://doi.org/10.1016/S0967-0637\(01\)00032-2](https://doi.org/10.1016/S0967-0637(01)00032-2), 2001.
- Benitez-Nelson, C. R., Buesseler, K. O., and Crossin, G.: Upper ocean carbon export, horizontal transport, and vertical eddy diffusivity in the southwestern Gulf of Maine, *Cont. Shelf Res.*, 20, 707–736, [https://doi.org/10.1016/S0278-4343\(99\)00093-X](https://doi.org/10.1016/S0278-4343(99)00093-X), 2000.
- Bishop, J. K. B., Edmond, J. M., Ketten, D. R., Bacon, M. P., and Silker, W. B.: The chemistry, biology, and vertical flux of particulate matter from the upper 400 m of the equatorial Atlantic Ocean, *Deep-Sea Res.*, 24, 511–548, [https://doi.org/10.1016/0146-6291\(77\)90526-4](https://doi.org/10.1016/0146-6291(77)90526-4), 1977.
- Bishop, J. K. B., Lam, P. J., and Wood, T. J.: Getting good particles: Accurate sampling of particles by large volume in-situ filtration, *Limnol. Oceanogr. Methods*, 10, 681–710, <https://doi.org/10.4319/lom.2012.10.681>, 2012.
- Black, E. E., Buesseler, K. O., Pike, S. M., and Lam, P. J.: ²³⁴Th as a tracer of particulate export and remineralization in the southeastern tropical Pacific, *Mar. Chem.*, 201, 35–50, <https://doi.org/10.1016/J.MARCHEM.2017.06.009>, 2018.
- Brew, H. S., Moran, S. B., Lomas, M. W., and Burd, A. B.: Plankton community composition, organic carbon and thorium-234 particle size distributions, and particle export in the Sargasso Sea, *J. Mar. Res.*, 67, 845–868, <https://doi.org/10.1357/002224009792006124>, 2009.
- Buesseler, K., Ball, L., Andrews, J., Benitez-Nelson, C., Belastock, R., Chai, F., and Chao, Y.: Upper ocean export of particulate organic carbon in the Arabian Sea derived from thorium-234, *Deep-Sea Res. Pt. II*, 45, 2461–2487, [https://doi.org/10.1016/S0967-0645\(98\)80022-2](https://doi.org/10.1016/S0967-0645(98)80022-2), 1998.
- Buesseler, K. O. and Boyd, P. W.: Shedding light on processes that control particle export and flux attenuation in the twilight zone of the open ocean, *Limnol. Oceanogr.*, 54, 1210–1232, <https://doi.org/10.4319/lo.2009.54.4.1210>, 2009.
- Buesseler, K. O., Bacon, M. P., Cochran, J. K., and Livingston, H. D.: Carbon and nitrogen export during the JGOFS North Atlantic Bloom Experiment estimated from ²³⁴Th: ²³⁸U disequilibria, *Deep-Sea Res.*, 39, 1115–1137, [https://doi.org/10.1016/0198-0149\(92\)90060-7](https://doi.org/10.1016/0198-0149(92)90060-7), 1992.
- Buesseler, K. O., Michaels, A. F., Siegel, D. A., and Knap, A. H.: A three dimensional time-dependent approach to calibrating sediment trap fluxes, *Global Biogeochem. Cycles*, 8, 179–193, <https://doi.org/10.1029/94GB00207>, 1994.
- Buesseler, K. O., Andrews, J. A., Hartman, M. C., Belastock, R., and Chai, F.: Regional estimates of the export flux of particulate organic carbon derived from thorium-234 during the JGOFS EqPac program, *Deep-Sea Res. Pt. II*, 42, 777–791, [https://doi.org/10.1016/0967-0645\(95\)00043-P](https://doi.org/10.1016/0967-0645(95)00043-P), 1995.
- Buesseler, K. O., Steinberg, D. K., Michaels, A. F., Johnson, R. J., Andrews, J. E., Valdes, J. R., and Price, J. F.: A comparison of the quantity and composition of material caught in a neutrally buoyant versus surface-tethered sediment trap, *Deep-Sea Res. Pt. I*, 47, 277–294, [https://doi.org/10.1016/S0967-0637\(99\)00056-4](https://doi.org/10.1016/S0967-0637(99)00056-4), 2000.
- Buesseler, K. O., Ball, L., Andrews, J., Cochran, J. K., Hirschberg, D. J., Bacon, M. P., Fler, A., and Brzezinski, M.: Upper ocean export of particulate organic carbon and biogenic silica in the Southern Ocean along 170 W, *Deep-Sea Res. Pt. II*, 48, 4275–4297, [https://doi.org/10.1016/S0967-0645\(01\)00089-3](https://doi.org/10.1016/S0967-0645(01)00089-3), 2001.
- Buesseler, K. O., Andrews, J. E., Pike, S. M., Charette, M. A., Goldson, L. E., Brzezinski, M. A., and Lance, V. P.: Particle export during the Southern Ocean Iron Experiment (SOFEX), *Limnol. Oceanogr.*, 50, 311–327, 2005.
- Buesseler, K. O., Benitez-Nelson, C. R., Moran, S. B., Burd, A., Charette, M., Cochran, J. K., Coppola, L., Fisher, N. S., Fowler, S. W., and Gardner, W. D.: An assessment of particulate organic carbon to thorium-234 ratios in the ocean and their impact on the application of ²³⁴Th as a POC flux proxy, *Mar. Chem.*, 100, 213–233, <https://doi.org/10.1016/j.marchem.2005.10.013>, 2006.
- Buesseler, K. O., Antia, A. N., Chen, M., Fowler, S. W., Gardner, W. D., Gustafsson, O., Harada, K., Michaels, A. F., Rutgers van der Loeff, M., and Sarin, M.: An assessment of the use of sediment traps for estimating upper ocean particle fluxes, *J. Mar. Res.*, 65, 345–416, 2007.
- Buesseler, K. O., Lamborg, C., Cai, P., Escube, R., Johnson, R., Pike, S., Masque, P., McGillicuddy, D., and Verdery, E.: Particle fluxes associated with mesoscale eddies in the Sargasso Sea, *Deep-Sea Res. Pt. II*, 55, 1426–1444, <https://doi.org/10.1016/j.dsr2.2008.02.007>, 2008a.
- Buesseler, K. O., Trull, T. W., Steinberg, D. K., Silver, M. W., Siegel, D. A., Saitoh, S.-I., Lamborg, C. H., Lam, P. J., Karl, D. M., Jiao, N. Z., Honda, M. C., Elskens, M., Dehairs, F., Brown, S. L., Boyd, P. W., Bishop, J. K. B., and Bidigare, R. R.: VERTIGO (VERTical Transport In the Global Ocean): A study of particle sources and flux attenuation in the North Pacific, *Deep-Sea Res. Pt. II*, 55, 1522–1539, <https://doi.org/10.1016/j.dsr2.2008.04.024>, 2008b.
- Buesseler, K. O., Pike, S., Maiti, K., Lamborg, C. H., Siegel, D. A., and Trull, T. W.: Thorium-234 as a tracer of spatial, temporal and vertical variability in particle flux in the North Pacific, *Deep-Sea Res. Pt. I*, 56, 1143–1167, <https://doi.org/10.1016/j.dsr.2009.04.001>, 2009.
- Buesseler, K. O., McDonnell, A. M. P., Schofield, O. M. E., Steinberg, D. K., and Ducklow, H. W.: High particle export over the continental shelf of the west Antarctic Peninsula, *Geophys. Res. Lett.*, 37, L22606, <https://doi.org/10.1029/2010GL045448>, 2010.
- Buitenhuis, E. T., Vogt, M., Moriarty, R., Bednaršek, N., Doney, S. C., Leblanc, K., Le Quéré, C., Luo, Y.-W., O'Brien, C., O'Brien, T., Peloquin, J., Schiebel, R., and Swan, C.: MAREDAT: towards a world atlas of MARine Ecosystem DATA, *Earth Syst. Sci. Data*, 5, 227–239, <https://doi.org/10.5194/essd-5-227-2013>, 2013.
- Burd, A. B., Hansell, D. A., Steinberg, D. K., Anderson, T. R., Aristegui, J., Baltar, F., Beupré, S. R., Buesseler, K. O., DeHairs, F., Jackson, G. A., Kadko, D. C., Koppelman, R., Lampitt, R. S., Nagata, T., Reinthaler, T., Robinson, C., Robison, B. H., Tamburini, C., and Tanaka, T.: Assessing the apparent imbalance between geochemical and biochemical indicators of meso- and bathypelagic biological activity: What the @#! is wrong with present calculations of carbon budgets?, *Deep-Sea Res. Pt. II*, 57, 1557–1571, <https://doi.org/10.1016/j.dsr2.2010.02.022>, 2010.

- Cai, P., Huang, Y., Chen, M., Liu, G., and Qiu, Y.: Export of particulate organic carbon estimated from ²³⁴Th-²³⁸U disequilibria and its temporal variation in the South China Sea, *Chinese Sci. Bull.*, 46, 1722–1726, <https://doi.org/10.1007/BF02900660>, 2001.
- Cai, P., Dai, M., Chen, W., Tang, T., and Zhou, K.: On the importance of the decay of ²³⁴Th in determining size-fractionated C/²³⁴Th ratio on marine particles, *Geophys. Res. Lett.*, 33, L23602, <https://doi.org/10.1029/2006GL027792>, 2006.
- Cai, P., Chen, W., Dai, M., Wan, Z., Wang, D., Li, Q., Tang, T., and Lv, D.: A high-resolution study of particle export in the southern South China Sea based on ²³⁴Th-²³⁸U disequilibrium, *J. Geophys. Res.-Oceans*, 113, C04019, <https://doi.org/10.1029/2007JC004268>, 2008.
- Cai, P., Rutgers van der Loeff, M., Stimac, I., Nöthig, E. M., Lepore, K., and Moran, S. B.: Low export flux of particulate organic carbon in the central Arctic Ocean as revealed by ²³⁴Th-²³⁸U disequilibrium, *J. Geophys. Res.*, 115, C10037, <https://doi.org/10.1029/2009JC005595>, 2010.
- Cai, P., Zhao, D., Wang, L., Huang, B., and Dai, M.: Role of particle stock and phytoplankton community structure in regulating particulate organic carbon export in a large marginal sea, *J. Geophys. Res.-Oceans*, 120, 2063–2095, <https://doi.org/10.1002/2014JC010432>, 2015.
- Cavan, E. L., Le Moigne, F. A. C., Poulton, A. J., Tarling, G. A., Ward, P., Daniels, C. J., Fragoso, G., and Sanders, R. J.: Attenuation of particulate organic carbon flux in the Scotia Sea, Southern Ocean, is controlled by zooplankton fecal pellets, *Geophys. Res. Lett.*, 42, 821–830, <https://doi.org/10.1002/2014GL062744>, 2015.
- Ceballos-Romero, E., Le Moigne, F. A. C., Henson, S., Marsay, C. M., Sanders, R. J., García-Tenorio, R., and Villa-Alfageme, M.: Influence of bloom dynamics on Particle Export Efficiency in the North Atlantic: a comparative study of radioanalytical techniques and sediment traps, *Mar. Chem.*, 186, 198–210, <https://doi.org/10.1016/j.marchem.2016.10.001>, 2016.
- Charette, M. A. and Moran, S. B.: Rates of particle scavenging and particulate organic carbon export estimated using ²³⁴Th as a tracer in the subtropical and equatorial Atlantic Ocean, *Deep-Sea Res. Pt. II*, 46, 885–906, [https://doi.org/10.1016/S0967-0645\(99\)00006-5](https://doi.org/10.1016/S0967-0645(99)00006-5), 1999.
- Charette, M. A., Moran, S. B., and Bishop, J. K. B.: ²³⁴Th as a tracer of particulate organic carbon export in the subarctic northeast Pacific Ocean, *Deep-Sea Res. Pt. II*, 46, 2833–2861, [https://doi.org/10.1016/S0967-0645\(99\)00085-5](https://doi.org/10.1016/S0967-0645(99)00085-5), 1999.
- Charette, M. A., Moran, S. B., Pike, S. M., and Smith, J. N.: Investigating the carbon cycle in the Gulf of Maine using the natural tracer thorium 234, *J. Geophys. Res.-Oceans*, 106, 11553–11579, <https://doi.org/10.1029/1999JC000277>, 2001.
- Chen, J. H., Lawrence Edwards, R., and Wasserburg, G. J.: ²³⁸U, ²³⁴U and ²³²Th in seawater, *Earth Planet. Sc. Lett.*, 80, 241–251, [https://doi.org/10.1016/0012-821X\(86\)90108-1](https://doi.org/10.1016/0012-821X(86)90108-1), 1986.
- Chen, M., Huang, Y., Cai, P., and Guo, L.: Particulate organic carbon export fluxes in the Canada Basin and Bering Sea as derived from ²³⁴Th/²³⁸U disequilibria, *Arctic*, 56, 32–44, 2003.
- Chen, W., Cai, P., Dai, M., and Wei, J.: ²³⁴Th/²³⁸U disequilibrium and particulate organic carbon export in the northern South China Sea, *J. Oceanogr.*, 64, 417–428, <https://doi.org/10.1007/s10872-008-0035-z>, 2008.
- Coale, K. H.: Labyrinth of doom: A device to minimize the “swimmer” component in sediment trap collections, *Limnol. Oceanogr.*, 35, 1376–1381, <https://doi.org/10.4319/lo.1990.35.6.1376>, 1990.
- Cochran, J. K. and Masqué, P.: Short-lived U/Th series radionuclides in the ocean: tracers for scavenging rates, export fluxes and particle dynamics, *Rev. Mineral. Geochemistry*, 52, 461–492, <https://doi.org/10.2113/0520461>, 2003.
- Cochran, J. K., Barnes, C., Achman, D., and Hirschberg, D. J.: Thorium-234/uranium-238 disequilibrium as an indicator of scavenging rates and particulate organic carbon fluxes in the Northeast Water Polynya, Greenland, *J. Geophys. Res.-Oceans*, 100, 4399–4410, <https://doi.org/10.1029/94JC01954>, 1995.
- Cochran, J. K., Buesseler, K. O., Bacon, M. P., Wang, H. W., Hirschberg, D. J., Ball, L., Andrews, J., Crossin, G., and Flier, A.: Short-lived thorium isotopes (²³⁴Th, ²²⁸Th) as indicators of POC export and particle cycling in the Ross Sea, Southern Ocean, *Deep-Sea Res. Pt. II*, 47, 3451–3490, [https://doi.org/10.1016/S0967-0645\(00\)00075-8](https://doi.org/10.1016/S0967-0645(00)00075-8), 2000.
- Coppola, L., Roy-Barman, M., Wassmann, P., Mulsow, S., and Jeandel, C.: Calibration of sediment traps and particulate organic carbon export using ²³⁴Th in the Barents Sea, *Mar. Chem.*, 80, 11–26, [https://doi.org/10.1016/S0304-4203\(02\)00071-3](https://doi.org/10.1016/S0304-4203(02)00071-3), 2002.
- Coppola, L., Roy-Barman, M., Mulsow, S., Povinec, P., and Jeandel, C.: Low particulate organic carbon export in the frontal zone of the Southern Ocean (Indian sector) revealed by ²³⁴Th, *Deep-Sea Res. Pt. I*, 52, 51–68, <https://doi.org/10.1016/j.dsr.2004.07.020>, 2005.
- Dai, M. H. and Benitez-Nelson, C. R.: Colloidal organic carbon and ²³⁴Th in the Gulf of Maine, *Mar. Chem.*, 74, 181–196, [https://doi.org/10.1016/S0304-4203\(01\)00012-3](https://doi.org/10.1016/S0304-4203(01)00012-3), 2001.
- Dunne, J. P., Sarmiento, J. L., and Gnanadesikan, A.: A synthesis of global particle export from the surface ocean and cycling through the ocean interior and on the seafloor, *Glob. Biogeochem. Cycles*, 21, GB4006, <https://doi.org/10.1029/2006GB002907>, 2007.
- Durkin, C. A., Estapa, M. L., and Buesseler, K. O.: Observations of carbon export by small sinking particles in the upper mesopelagic, *Mar. Chem.*, 175, 72–81, <https://doi.org/10.1016/j.marchem.2015.02.011>, 2015.
- Engel, A., Wagner, H., Le Moigne, F. A. C., and Wilson, S. T.: Particle export fluxes to the oxygen minimum zone of the eastern tropical North Atlantic, *Biogeosciences*, 14, 1825–1838, <https://doi.org/10.5194/bg-14-1825-2017>, 2017.
- Eppley, R. W. and Peterson, B. J.: Particulate organic matter flux and planktonic new production in the deep ocean, *Nature*, 282, 677–680, <https://doi.org/10.1038/282677a0>, 1979.
- Evangelou, N., Florou, H., and Psomiadou, C.: Size-fractionated particulate organic carbon (POC) export fluxes estimated using ²³⁴Th-²³⁸U disequilibria in the Saronikos Gulf (Greece) during winter bloom, *Fresenius Environ. Bull.*, 22, 1951–1961, 2013.
- Foster, J. M. and Shimmield, G. B.: ²³⁴Th as a tracer of particle flux and POC export in the northern North Sea during a coccolithophore bloom, *Deep-Sea Res. Pt. II*, 49, 2965–2977, [https://doi.org/10.1016/S0967-0645\(02\)00066-8](https://doi.org/10.1016/S0967-0645(02)00066-8), 2002.
- Fowler, S. W. and Knauer, G. A.: Role of large particles in the transport of elements and organic compounds through the oceanic water column, *Prog. Oceanogr.*, 16, 147–194, [https://doi.org/10.1016/0079-6611\(86\)90032-7](https://doi.org/10.1016/0079-6611(86)90032-7), 1986.

- Friedrich, J. and Rutgers van der Loeff, M.: A two-tracer (²¹⁰Po-²³⁴Th) approach to distinguish organic carbon and biogenic silica export flux in the Antarctic Circumpolar Current, *Deep-Sea Res. Pt. I*, 49, 101–120, [https://doi.org/10.1016/S0967-0637\(01\)00045-0](https://doi.org/10.1016/S0967-0637(01)00045-0), 2002.
- Gardner, W. D., Richardson, M. J., Carlson, C. A., Hansell, D., and Mishonov, A. V.: Determining true particulate organic carbon: bottles, pumps and methodologies, *Deep-Sea Res. Pt. II*, 50, 655–674, [https://doi.org/10.1016/S0967-0645\(02\)00589-1](https://doi.org/10.1016/S0967-0645(02)00589-1), 2003.
- Guidi, L., Jackson, G. A., Stemmann, L., Miquel, J. C., Picheral, M., and Gorsky, G.: Relationship between particle size distribution and flux in the mesopelagic zone, *Deep-Sea Res. Pt. I*, 55, 1364–1374, <https://doi.org/10.1016/j.dsr.2008.05.014>, 2008.
- Guidi, L., Legendre, L., Reygondeau, G., Uitz, J., Stemmann, L., and Henson, S. A.: A new look at ocean carbon remineralization for estimating deepwater sequestration, *Global Biogeochem. Cycles*, 29, 1044–1059, <https://doi.org/10.1002/2014GB005063>, 2015.
- Giuliani, S., Radakovitch, O., Frignani, M., and Bellucci, L. G.: Short time scale variations of ²³⁴Th/²³⁸U disequilibrium related to mesoscale variability on the continental slope of the Gulf of Lions (France), *Mar. Chem.*, 106, 403–418, <https://doi.org/10.1016/j.marchem.2007.03.007>, 2007.
- Guo, L., Hung, C. C., Santschi, P. H., and Walsh, I. D.: ²³⁴Th scavenging and its relationship to acid polysaccharide abundance in the Gulf of Mexico, *Mar. Chem.*, 78, 103–119, [https://doi.org/10.1016/S0304-4203\(02\)00012-9](https://doi.org/10.1016/S0304-4203(02)00012-9), 2002.
- Gustafsson, Ö. and Andersson, P. S.: ²³⁴Th-derived surface export fluxes of POC from the Northern Barents Sea and the Eurasian sector of the Central Arctic Ocean, *Deep-Sea Res. Pt. I*, 68, 1–11, <https://doi.org/10.1016/j.dsr.2012.05.014>, 2012.
- Gustafsson, Ö., Gschwend, P. M., and Buesseler, K. O.: Using ²³⁴Th disequilibria to estimate the vertical removal rates of polycyclic aromatic hydrocarbons from the surface ocean, *Mar. Chem.*, 57, 11–23, [https://doi.org/10.1016/S0304-4203\(97\)00011-X](https://doi.org/10.1016/S0304-4203(97)00011-X), 1997.
- Gustafsson, Ö., Andersson, P., Roos, P., Kukulska, Z., Broman, D., Larsson, U., Hajdu, S., and Ingri, J.: Evaluation of the collection efficiency of upper ocean sub-photoc-layer sediment traps: a 24-month in situ calibration in the open Baltic Sea using ²³⁴Th, *Limnol. Oceanogr. Methods*, 2, 62–74, <https://doi.org/10.4319/lom.2004.2.62>, 2004.
- Gustafsson, Ö., Larsson, J., Andersson, P., and Ingri, J.: The POC/²³⁴Th ratio of settling particles isolated using split flow-thin cell fractionation (SPLITT), *Mar. Chem.*, 100, 314–322, <https://doi.org/10.1016/j.marchem.2005.10.018>, 2006.
- Hall, I. R., Schmidt, S., McCave, I. N., and Reyss, J. L.: Particulate matter distribution and disequilibrium along the Northern Iberian Margin: implications for particulate organic carbon export, *Deep-Sea Res. Pt. I*, 47, 557–582, [https://doi.org/10.1016/S0967-0637\(99\)00065-5](https://doi.org/10.1016/S0967-0637(99)00065-5), 2000.
- Haskell II, W. Z., Berelson, W. M., Hammond, D. E., and Capone, D. G.: Particle sinking dynamics and POC fluxes in the Eastern Tropical South Pacific based on ²³⁴Th budgets and sediment trap deployments, *Deep-Sea Res. Pt. I*, 18, 1–13, <https://doi.org/10.1016/j.dsr.2013.07.001>, 2013.
- Henson, S. A., Sanders, R., Madsen, E., Morris, P. J., Le Moigne, F., and Quartly, G. D.: A reduced estimate of the strength of the ocean's biological carbon pump, *Geophys. Res. Lett.*, 38, L04606, <https://doi.org/10.1029/2011GL046735>, 2011.
- Hung, C.-C. and Gong, G.-C.: Export flux of POC in the main stream of the Kuroshio, *Geophys. Res. Lett.*, 34, L18606, <https://doi.org/10.1029/2007GL030236>, 2007.
- Hung, C. C. and Gong, G. C.: POC/²³⁴Th ratios in particles collected in sediment traps in the northern South China Sea, *Estuar. Coast. Shelf Sci.*, 88, 303–310, <https://doi.org/10.1016/j.ecss.2010.04.008>, 2010.
- Hung, C. C., Guo, L., Roberts, K. A., and Santschi, P. H.: Upper ocean carbon flux determined by the ²³⁴Th approach and sediment traps using size-fractionated POC and ²³⁴Th data from the Gulf of Mexico, *Geochem. J.*, 38, 601–611, <https://doi.org/10.2343/geochemj.38.601>, 2004.
- Hung, C. C., Xu, C., Santschi, P. H., Zhang, S. J., Schwehr, K. A., Quigg, A., Guo, L., Gong, G. C., Pinckney, J. L., and Long, R. A.: Comparative evaluation of sediment trap and ²³⁴Th-derived POC fluxes from the upper oligotrophic waters of the Gulf of Mexico and the subtropical northwestern Pacific Ocean, *Mar. Chem.*, 121, 132–144, <https://doi.org/10.1016/j.marchem.2010.03.011>, 2010.
- Hung, C. C., Gong, G. C., and Santschi, P. H.: ²³⁴Th in different size classes of sediment trap collected particles from the Northwestern Pacific Ocean, *Geochim. Cosmochim. Ac.*, 91, 60–74, <https://doi.org/10.1016/j.gca.2012.05.017>, 2012.
- Jacquet, S. H. M., Lam, P. J., Trull, T. W., and Dehairs, F.: Carbon export production in the subantarctic zone and polar front zone south of Tasmania, *Deep-Sea Res. Pt. II*, 58, 2277–2292, <https://doi.org/10.1016/j.dsr2.2011.05.035>, 2011.
- Kawakami, H.: Scavenging of ²¹⁰Po and ²³⁴Th by particulate organic carbon in the surface layer of the northwestern North Pacific Ocean, *Far East J. Ocean Res.*, 2, 67–82, 2009.
- Kawakami, H. and Honda, M. C.: Time-series observation of POC fluxes estimated from ²³⁴Th in the northwestern North Pacific, *Deep-Sea Res. Pt. I*, 54, 1070–1090, <https://doi.org/10.1016/j.dsr.2007.04.005>, 2007.
- Kawakami, H., Yang, Y.-L., Honda, M. C., and Kusakabe, M.: Particulate organic carbon fluxes estimated from ²³⁴Th deficiency in winters and springs in the northwestern North Pacific, *Geochem. J.*, 38, 581–592, <https://doi.org/10.2343/geochemj.38.581>, 2004.
- Kawakami, H., Honda, M. C., Matsumoto, K., Fujiki, T., and Watanabe, S.: East-west distribution of POC fluxes estimated from ²³⁴Th in the northern North Pacific in autumn, *J. Oceanogr.*, 66, 71–83, <https://doi.org/10.1007/s10872-010-0006-z>, 2010.
- Kawakami, H., Honda, M. C., Matsumoto, K., Wakita, M., Kitamura, M., Fujiki, T., and Watanabe, S.: POC fluxes estimated from ²³⁴Th in late spring–early summer in the western subarctic North Pacific, *J. Oceanogr.*, 71, 311–324, <https://doi.org/10.1007/s10872-015-0290-8>, 2015.
- Kim, D., Choi, M.-S., Oh, H.-Y., Song, Y.-H., Noh, J.-H., and Kim, K. H.: Seasonal export fluxes of particulate organic carbon from ²³⁴Th/²³⁸U disequilibrium measurements in the Ulleung Basin I (Tsushima Basin) of the East Sea (Sea of Japan), *J. Oceanogr.*, 67, 577, <https://doi.org/10.1007/s10872-011-0058-8>, 2011.
- Kim, G. and Church, T. M.: Seasonal biogeochemical fluxes of ²³⁴Th and ²¹⁰Po in the upper Sargasso Sea: Influence from atmospheric iron deposition, *Global Biogeochem. Cycles*, 15, 651–661, <https://doi.org/10.1029/2000GB001313>, 2001.

- Ku, T.-L., Knauss, K. G., and Mathieu, G. G.: Uranium in open ocean: concentration and isotopic composition, *Deep-Sea Res.*, 24, 1005–1017, [https://doi.org/10.1016/0146-6291\(77\)90571-9](https://doi.org/10.1016/0146-6291(77)90571-9), 1977.
- Kwon, E. Y., Primeau, F., and Sarmiento, J. L.: The impact of remineralization depth on the air–sea carbon balance, *Nat. Geosci.*, 2, 630, <https://doi.org/10.1038/ngeo612>, 2009.
- Lalande, C., Lepore, K., Cooper, L. W., Grebmeier, J. M., and Moran, S. B.: Export fluxes of particulate organic carbon in the Chukchi Sea: A comparative study using ²³⁴Th/²³⁸U disequilibria and drifting sediment traps, *Mar. Chem.*, 103, 185–196, 2007.
- Lalande, C., Moran, S. B., Wassmann, P., Grebmeier, J. M., and Cooper, L. W.: ²³⁴Th-derived particulate organic carbon fluxes in the northern Barents Sea with comparison to drifting sediment trap fluxes, *J. Mar. Syst.*, 73, 103–113, <https://doi.org/10.1016/j.jmarsys.2007.09.004>, 2008.
- Lamborg, C. H., Buesseler, K. O., Valdes, J., Bertrand, C. H., Bidigare, R., Manganini, S., Pike, S., Steinberg, D., Trull, T., and Wilson, S.: The flux of bio- and lithogenic material associated with sinking particles in the mesopelagic “twilight zone” of the northwest and North Central Pacific Ocean, *Deep-Sea Res. Pt. II*, 55, 1540–1563, <https://doi.org/10.1016/j.dsr2.2008.04.011>, 2008.
- Lampitt, R. S., Boorman, B., Brown, L., Lucas, M., Salter, I., Sanders, R., Saw, K., Seeyave, S., Thomalla, S. J., and Turnewitsch, R.: Particle export from the euphotic zone: Estimates using a novel drifting sediment trap, ²³⁴Th and new production, *Deep-Sea Res. Pt. I*, 55, 1484–1502, <https://doi.org/10.1016/j.dsr.2008.07.002>, 2008.
- Laws, E. A., D’Sa, E., and Naik, P.: Simple equations to estimate ratios of new or export production to total production from satellite-derived estimates of sea surface temperature and primary production, *Limnol. Oceanogr. Methods*, 9, 593–601, <https://doi.org/10.4319/lom.2011.9.593>, 2011.
- Le Gland, G., Aumont, O., and Mémerly, L.: An Estimate of Thorium 234 Partition Coefficients Through Global Inverse Modeling, *J. Geophys. Res.-Oceans*, 124, 3575–3606, <https://doi.org/10.1029/2018JC014668>, 2019.
- Lemaitre, N., Planchon, F., Planquette, H., Dehairs, F., Fonseca-Batista, D., Roukaerts, A., Deman, F., Tang, Y., Mariez, C., and Sarthou, G.: High variability of particulate organic carbon export along the North Atlantic GEOTRACES section GA01 as deduced from ²³⁴Th fluxes, *Biogeosciences*, 15, 6417–6437, <https://doi.org/10.5194/bg-15-6417-2018>, 2018.
- Le Moigne, F. A. C., Sanders, R. J., Villa-Alfageme, M., Martin, A. P., Pabortsava, K., Planquette, H., Morris, P. J., and Thomalla, S. J.: On the proportion of ballast versus non-ballast associated carbon export in the surface ocean, *Geophys. Res. Lett.*, 39, L15610, <https://doi.org/10.1029/2012GL052980>, 2012.
- Le Moigne, F. A. C., Boye, M., Masson, A., Corvaisier, R., Grossteffan, E., Guéneugues, A., and Pondaven, P.: Description of the biogeochemical features of the subtropical southeastern Atlantic and the Southern Ocean south of South Africa during the austral summer of the International Polar Year, *Biogeosciences*, 10, 281–295, <https://doi.org/10.5194/bg-10-281-2013>, 2013a.
- Le Moigne, F. A. C., Henson, S. A., Sanders, R. J., and Madsen, E.: Global database of surface ocean particulate organic carbon export fluxes diagnosed from the ²³⁴Th technique, *Earth Syst. Sci. Data*, 5, 295–304, <https://doi.org/10.5194/essd-5-295-2013>, 2013b.
- Le Moigne, F. A. C., Villa-Alfageme, M., Sanders, R. J., Marsay, C., Henson, S., and García-Tenorio, R.: Export of organic carbon and biominerals derived from ²³⁴Th and ²¹⁰Po at the Porcupine Abyssal Plain, *Deep-Sea Res. Pt. I*, 72, 88–101, 2013c.
- Le Moigne, F. A. C., Poulton, A. J., Henson, S. A., Daniels, C. J., Fragoso, G. M., Mitchell, E., Richier, S., Russell, B. C., Smith, H. E. K., Tarling, G. A., and Zubkov, M.: Carbon export efficiency and phytoplankton community composition in the Atlantic sector of the Arctic Ocean, *J. Geophys. Res.-Oceans*, 120, 3896–3912, <https://doi.org/10.1002/2015JC010700>, 2015.
- Le Moigne, F. A. C., Henson, S. A., Cavan, E., Georges, C., Pabortsava, K., Achterberg, E. P., Ceballos-Romero, E., Zubkov, M., and Sanders, R. J.: What causes the inverse relationship between primary production and export efficiency in the Southern Ocean?, *Geophys. Res. Lett.*, 43, 4457–4466, <https://doi.org/10.1002/2016GL068480>, 2016.
- Lepore, K., Moran, S. B., Grebmeier, J. M., Cooper, L. W., Lalande, C., Maslowski, W., Hill, V., Bates, N. R., Hansell, D. A., Mathis, J. T., and Kelly, R. P.: Seasonal and interannual changes in particulate organic carbon export and deposition in the Chukchi Sea, *J. Geophys. Res.-Oceans*, 112, C10024, <https://doi.org/10.1029/2006JC003555>, 2007.
- Lepore, K., Moran, S. B., Burd, A. B., Jackson, G. A., Smith, J. N., Kelly, R. P., Kaberi, H., Stavrakakis, S., and Assimakopoulou, G.: Sediment trap and in-situ pump size-fractionated POC/²³⁴Th ratios in the Mediterranean Sea and Northwest Atlantic: Implications for POC export, *Deep-Sea Res. Pt. I*, 56, 599–613, <https://doi.org/10.1016/j.dsr.2008.11.004>, 2009.
- Luo, Y., Miller, L. A., Baere, B. De, Soon, M., and Francois, R.: POC fluxes measured by sediment traps and ²³⁴Th : ²³⁸U disequilibrium in Saanich Inlet, British Columbia, *Mar. Chem.*, 162, 19–29, <https://doi.org/10.1016/j.marchem.2014.03.001>, 2014.
- Ma, Q., Chen, M., Qiu, Y., and Li, Y.: Regional estimates of POC export flux derived from thorium-234 in the western Arctic Ocean, *Acta Oceanol. Sin.*, 24, 97–108, 2005.
- Mahowald, N. M., Engelstaedter, S., Luo, C., Sealy, A., Artaxo, P., Benitez-Nelson, C., Bonnet, S., Chen, Y., Chuang, P. Y., Cohen, D. D., Dulac, F., Herut, B., Johansen, A. M., Kubilay, N., Losno, R., Maenhaut, W., Paytan, A., Prospero, J. M., Shank, L. M., and Siefert, R. L.: Atmospheric Iron Deposition: Global Distribution, Variability, and Human Perturbations, *Ann. Rev. Mar. Sci.*, 1, 245–278, <https://doi.org/10.1146/annurev.marine.010908.163727>, 2009.
- Maiti, K., Benitez-Nelson, C. R., Rii, Y., and Bidigare, R.: The influence of a mature cyclonic eddy on particle export in the lee of Hawaii, *Deep-Sea Res. Pt. II*, 55, 1445–1460, 2008.
- Maiti, K., Benitez-Nelson, C. R., Lomas, M. W., and Krause, J. W.: Biogeochemical responses to late-winter storms in the Sargasso Sea, III—Estimates of export production using ²³⁴Th : ²³⁸U disequilibria and sediment traps, *Deep-Sea Res. Pt. I*, 56, 875–891, <https://doi.org/10.1016/j.dsr.2009.01.008>, 2009.
- Maiti, K., Benitez-Nelson, C. R., and Buesseler, K. O.: Insights into particle formation and remineralization using the short-lived radionuclide, Thorium-234, *Geophys. Res. Lett.*, 37, L15608, <https://doi.org/10.1029/2010GL044063>, 2010.
- Maiti, K., Bosu, S., D’Sa, E. J., Adhikari, P. L., Sutor, M., and Longnecker, K.: Export fluxes in northern Gulf of Mexico – Comparative evaluation of direct, indi-

- rect and satellite-based estimates, *Mar. Chem.*, 184, 60–77, <https://doi.org/10.1016/j.marchem.2016.06.001>, 2016.
- Martin, J. H., Knauer, G. A., Karl, D. M., and Broenkow, W. W.: VERTEX: carbon cycling in the northeast Pacific, *Deep-Sea Res.*, 34, 267–285, [https://doi.org/10.1016/0198-0149\(87\)90086-0](https://doi.org/10.1016/0198-0149(87)90086-0), 1987.
- Martin, P., Lampitt, R. S., Jane Perry, M., Sanders, R., Lee, C., and D'Asaro, E.: Export and mesopelagic particle flux during a North Atlantic spring diatom bloom, *Deep-Sea Res. Pt. I*, 58, 338–349, <https://doi.org/10.1016/j.dsr.2011.01.006>, 2011.
- Martin, P., van der Loeff, M. R., Cassar, N., Vandromme, P., D'Ovidio, F., Stemmann, L., Rengarajan, R., Soares, M., González, H. E., Ebersbach, F., Lampitt, R. S., Sanders, R., Barnett, B. A., Smetacek, V., and Naqvi, S. W. A.: Iron fertilization enhanced net community production but not downward particle flux during the Southern Ocean iron fertilization experiment LOHAFEX, *Global Biogeochem. Cycles*, 27, 871–881, <https://doi.org/10.1002/gbc.20077>, 2013.
- Mawji, E., Schlitzer, R., Masferrer, E., Abadie, C., Abouchami, W., Anderson, R. F., Baars, O., Bakker, K., Baskaran, M., Bates, N. R., Bluhm, K., Bowie, A., Bown, J., Boye, M., Boyle, E. A., Branekke, P., Bruland, K. W., Brzezinski, M. A., Bucciarelli, E., Buesseler, K., Butler, E., Cai, P., Cardinal, D., Casciotti, K., Chaves, J., Cheng, H., Chever, F., Church, T. M., Colman, A. S., Conway, T. M., Croot, P. L., Cutter, G. A., de Baar, H. J. W., de Souza, G. F., Dehairs, F., Deng, F., Thi Dieu, H., Duquais, G., Echegoyen-Sanz, Y., Edwards, R. L., Fahrback, E., Fitzsimmons, J., Fleisher, M., Frank, M., Friedrich, J., Fripiat, F., Galer, S. J. G., Gamo, T., Garcia-Solsona, E., Gerringa, L. J. A., Godoy, J. M., Gonzalez, S., Grossteffan, E., Hatta, M., Hayes, C. T., Heller, M. I., Henderson, G., Huang, K.-F., Jeandel, C., Jenkins, W. J., John, S., Kenna, T. C., Klunder, M., Kretschmer, S., Kumamoto, Y., Laan, P., Labatut, M., Lacan, F., Lam, P. J., Lannuzel, D., Le Moigne, F., Lechtenfeld, O., Lohan, M. C., Lu, Y., Masqué, P., McClain, C. R., Measures, C., Middag, R., Moffett, J., Navidad, A., Nishioka, J., Noble, A., Obata, H., Ohnemus, D. C., Owens, S., Planchon, F., Pradoux, C., Puigcorbé, V., Quay, P., Radic, A., Rehkämper, M., Remenyi, T., Rijkenberg, M. J. A., Rintoul, S., Robinson, L. F., Roeske, T., Rosenberg, M., Rutgers van der Loeff, M., Ryabenko, E., Saito, M. A., Roshan, S., Salt, L., Sarthou, G., Schauer, U., Scott, P., Sedwick, P. N., Sha, L., Shiller, A. M., Sigman, D. M., Smethie, W., Smith, G. J., Sohrin, Y., Speich, S., Stichel, T., Stutsman, J., Swift, J. H., Tagliabue, A., Thomas, A., Tsunogai, U., Twining, B. S., van Aken, H. M., van Heuven, S., van Ooijen, J., van Weerlee, E., Venchiarutti, C., Voelker, A. H. L., Wake, B., Warner, M. J., Woodward, E. M. S., Wu, J., Wyatt, N., Yoshikawa, H., Zheng, X.-Y., Xue, Z., Zieringer, M., and Zimmer, L. A.: The GEO-TRACES Intermediate Data Product 2014, *Mar. Chem.*, 177, 1–8, <https://doi.org/10.1016/j.marchem.2015.04.005>, 2015.
- Moran, S. B. and Buesseler, K. O.: Size-fractionated ²³⁴Th in continental shelf waters off New England: Implications for the role of colloids in oceanic trace metal scavenging, *J. Mar. Res.*, 51, 893–922, <https://doi.org/10.1357/0022240933223936>, 1993.
- Moran, S. B. and Smith, J. N.: ²³⁴Th as a tracer of scavenging and particle export in the Beaufort Sea, *Cont. Shelf Res.*, 20, 153–167, [https://doi.org/10.1016/S0278-4343\(99\)00065-5](https://doi.org/10.1016/S0278-4343(99)00065-5), 2000.
- Moran, S. B., Ellis, K. M., and Smith, J. N.: ²³⁴Th/²³⁸U disequilibrium in the central Arctic Ocean: implications for particulate organic carbon export, *Deep-Sea Res. Pt. II*, 44, 1593–1606, [https://doi.org/10.1016/S0967-0645\(97\)00049-0](https://doi.org/10.1016/S0967-0645(97)00049-0), 1997.
- Moran, S. B., Weinstein, S. E., Edmonds, H. N., Smith, J. N., Kelly, R. P., Pilson, M. E. Q., and Harrison, W. G.: Does ²³⁴Th/²³⁸U disequilibrium provide an accurate record of the export flux of particulate organic carbon from the upper ocean?, *Limnol. Oceanogr.*, 48, 1018–1029, <https://doi.org/10.4319/lo.2003.48.3.1018>, 2003.
- Moran, S. B., Kelly, R. P., Hagstrom, K., Smith, J. N., Grebmeier, J. M., Cooper, L. W., Cota, G. F., Walsh, J. J., Bates, N. R., and Hansell, D. A.: Seasonal changes in POC export flux in the Chukchi Sea and implications for water column-benthic coupling in Arctic shelves, *Deep-Sea Res. Pt. II*, 52, 3427–3451, <https://doi.org/10.1016/j.dsr2.2005.09.011>, 2005.
- Moran, S. B., Lomas, M. W., Kelly, R. P., Gradinger, R., Iken, K., and Mathis, J. T.: Seasonal succession of net primary productivity, particulate organic carbon export, and autotrophic community composition in the eastern Bering Sea, *Deep-Sea Res. Pt. II*, 65–70, 84–97, <https://doi.org/10.1016/j.dsr2.2012.02.011>, 2012.
- Moriarty, R. and O'Brien, T. D.: Distribution of mesozooplankton biomass in the global ocean, *Earth Syst. Sci. Data*, 5, 45–55, <https://doi.org/10.5194/essd-5-45-2013>, 2013.
- Moriarty, R., Buitenhuis, E. T., Le Quééré, C., and Gosselin, M.-P.: Distribution of known macrozooplankton abundance and biomass in the global ocean, *Earth Syst. Sci. Data*, 5, 241–257, <https://doi.org/10.5194/essd-5-241-2013>, 2013.
- Morris, P. J., Sanders, R., Turnewitsch, R., and Thomalla, S.: ²³⁴Th-derived particulate organic carbon export from an island-induced phytoplankton bloom in the Southern Ocean, *Deep-Sea Res. Pt. II*, 54, 2208–2232, <https://doi.org/10.1016/j.dsr2.2007.06.002>, 2007.
- Morris, S. A., Hansman, R. L., and Miquel, J.-C.: Tracing carbon's fate in the ocean, *Eos*, 98, published online, <https://doi.org/10.1029/2017EO076681>, 2017.
- Murray, J. W., Young, J., Newton, J., Dunne, J., Chapin, T., Paul, B., and McCarthy, J. J.: Export flux of particulate organic carbon from the central equatorial Pacific determined using a combined drifting trap-²³⁴Th approach, *Deep-Sea Res. Pt. II*, 43, 1095–1132, [https://doi.org/10.1016/0967-0645\(96\)00036-7](https://doi.org/10.1016/0967-0645(96)00036-7), 1996.
- Murray, J. W., Paul, B., Dunne, J. P., and Chapin, T.: ²³⁴Th, ²¹⁰Pb, ²¹⁰Po and stable Pb in the central equatorial Pacific: Tracers for particle cycling, *Deep-Sea Res. Pt. I*, 52, 2109–2139, <https://doi.org/10.1016/j.dsr.2005.06.016>, 2005.
- Owens, S. A., Buesseler, K. O., and Sims, K. W. W.: Re-evaluating the ²³⁸U-salinity relationship in seawater: Implications for the ²³⁸U-²³⁴Th disequilibrium method, *Mar. Chem.*, 127, 31–39, <https://doi.org/10.1016/j.marchem.2011.07.005>, 2011.
- Owens, S. A., Buesseler, K. O., Lamborg, C. H., Valdes, J., Lomas, M. W., Johnson, R. J., Steinberg, D. K., and Siegel, D. A.: A new time series of particle export from neutrally buoyant sediments traps at the Bermuda Atlantic Time-series Study site, *Deep-Sea Res. Pt. I*, 72, 34–47, <https://doi.org/10.1016/j.dsr.2012.10.011>, 2013.
- Owens, S. A., Pike, S., and Buesseler, K. O.: Thorium-234 as a tracer of particle dynamics and upper ocean export in the Atlantic Ocean, *Deep-Sea Res. Pt. II*, 116, 42–59, <https://doi.org/10.1016/j.dsr2.2014.11.010>, 2015.
- Pabortsava, K.: Downward particle export and sequestration fluxes in the oligotrophic Atlantic Ocean, University of Southampton,

- available at: <https://eprints.soton.ac.uk/id/eprint/372493> (last access: 3 June 2020), 2014.
- Parekh, P., Dutkiewicz, S., Follows, M. J., and Ito, T.: Atmospheric carbon dioxide in a less dusty world, *Geophys. Res. Lett.*, 33, L03610, <https://doi.org/10.1029/2005GL025098>, 2006.
- Planchon, F., Cavagna, A.-J., Cardinal, D., André, L., and Dehairs, F.: Late summer particulate organic carbon export and twilight zone remineralisation in the Atlantic sector of the Southern Ocean, *Biogeosciences*, 10, 803–820, <https://doi.org/10.5194/bg-10-803-2013>, 2013.
- Planchon, F., Ballas, D., Cavagna, A.-J., Bowie, A. R., Davies, D., Trull, T., Laurenceau-Cornec, E. C., Van Der Merwe, P., and Dehairs, F.: Carbon export in the naturally iron-fertilized Kerguelen area of the Southern Ocean based on the ²³⁴Th approach, *Biogeosciences*, 12, 3831–3848, <https://doi.org/10.5194/bg-12-3831-2015>, 2015.
- Pondaven, P., Ragueneau, O., Tréguer, P., Hauvespre, A., Dezileau, L., and Reyss, J. L.: Resolving the “opal paradox” in the Southern Ocean, *Nature*, 405, 168–172, 2000.
- Puigcorbé, V.: Global database of oceanic particulate organic carbon to particulate ²³⁴Th ratios, PANGAEA, <https://doi.org/10.1594/PANGAEA.911424>, 2019.
- Puigcorbé, V., Benitez-Nelson, C. R., Masqué, P., Verdeny, E., White, A. E., Popp, B. N., Prahl, F. G., and Lam, P. J.: Small phytoplankton drive high summertime carbon and nutrient export in the Gulf of California and Eastern Tropical North Pacific, *Global Biogeochem. Cycles*, 29, 1309–1332, <https://doi.org/10.1002/2015GB005134>, 2015.
- Puigcorbé, V., Roca-Martí, M., Masqué, P., Benitez-Nelson, C., Rutgers van der Loeff, M., Bracher, A., and Moreau, S.: Latitudinal distributions of particulate carbon export across the North Western Atlantic Ocean, *Deep. Res. Part I*, 129, 116–130, <https://doi.org/10.1016/j.dsr.2017.08.016>, 2017a.
- Puigcorbé, V., Roca-Martí, M., Masqué, P., Benitez-Nelson, C. R., Rutgers v. d. Loeff, M., Laglera, L. M., Bracher, A., Cheah, W., Strass, V. H., Hoppema, M., Santos-Echeandía, J., Hunt, B. P. V., Pakhomov, E. A., and Klaas, C.: Particulate organic carbon export across the Antarctic Circumpolar Current at 10° E: Differences between north and south of the Antarctic Polar Front, *Deep-Sea Res. Pt. II*, 138, 86–101, <https://doi.org/10.1016/j.dsr2.2016.05.016>, 2017b.
- Radakovitch, O., Frignani, M., Giuliani, S. M., and Montanari, R.: Temporal variations of dissolved and particulate ²³⁴Th at a coastal station of the northern Adriatic Sea, *Estuar. Coast. Shelf Sci.*, 58, 813–824, 2003.
- Richardson, T. L.: Mechanisms and Pathways of Small-Phytoplankton Export from the Surface Ocean, *Ann. Rev. Mar. Sci.*, 11, 57–74, <https://doi.org/10.1146/annurev-marine-121916-063627>, 2019.
- Riley, J. S., Sanders, R., Marsay, C., Le Moigne, F. A. C., Achterberg, E. P., and Poulton, A. J.: The relative contribution of fast and slow sinking particles to ocean carbon export, *Global Biogeochem. Cycles*, 26, GB1026, <https://doi.org/10.1029/2011GB004085>, 2012.
- Roca-Martí, M., Puigcorbé, V., Rutgers van der Loeff, M. M., Katlein, C., Fernández-Méndez, M., Peeken, I., and Masqué, P.: Carbon export fluxes and export efficiency in the central Arctic during the record sea-ice minimum in 2012: a joint ²³⁴Th/²³⁸U and ²¹⁰Po/²¹⁰Pb study, *J. Geophys. Res.-Oceans*, 121, 5030–5049, <https://doi.org/10.1002/2016JC011816>, 2016.
- Roca-Martí, M., Puigcorbé, V., Iversen, M. H., van der Loeff, M. R., Klaas, C., Cheah, W., Bracher, A., and Masqué, P.: High particulate organic carbon export during the decline of a vast diatom bloom in the Atlantic sector of the Southern Ocean, *Deep-Sea Res. Pt. II*, 138, 102–115, <https://doi.org/10.1016/j.dsr2.2015.12.007>, 2017.
- Rodriguez-Baena, Y., Alessia, M., Boudjenoun, R., Fowler, S. W., Miquel, J. C., Masqué, P., Sanchez-Cabeza, J. A., and Warnau, M.: ²³⁴Th-based carbon export during an ice-edge bloom: Sea-ice algae as a likely bias in data interpretation, *Earth Planet. Sc. Lett.*, 269, 596–604, <https://doi.org/10.1016/j.epsl.2008.03.020>, 2008.
- Rosengard, S. Z., Lam, P. J., Balch, W. M., Auro, M. E., Pike, S., Drapeau, D., and Bowler, B.: Carbon export and transfer to depth across the Southern Ocean Great Calcite Belt, *Biogeosciences*, 12, 3953–3971, <https://doi.org/10.5194/bg-12-3953-2015>, 2015.
- Rutgers van der Loeff, M., Cai, P., Stimac, I., Bracher, A., Middag, R., Klunder, M., and van Heuven, S.: ²³⁴Th in surface waters: distribution of particle export flux across the Antarctic Circumpolar Current and in the Weddell Sea during the GEOTRACES expedition ZERO and DRAKE, *Deep-Sea Res. Pt. II*, 58, 2749–2766, <https://doi.org/10.1016/j.dsr2.2011.02.004>, 2011.
- Rutgers van der Loeff, M. M., Friedrich, J., and Bathmann, U. V.: Carbon export during the spring bloom at the Antarctic Polar Front, determined with the natural tracer ²³⁴Th, *Deep-Sea Res. Pt. II*, 44, 457–478, [https://doi.org/10.1016/S0967-0645\(96\)00067-7](https://doi.org/10.1016/S0967-0645(96)00067-7), 1997.
- Rutgers van der Loeff, M. M., Buesseler, K., Bathmann, U., Hense, I., and Andrews, J.: Comparison of carbon and opal export rates between summer and spring bloom periods in the region of the Antarctic Polar Front, SE Atlantic, *Deep-Sea Res. Pt. II*, 49, 3849–3869, [https://doi.org/10.1016/S0967-0645\(02\)00114-5](https://doi.org/10.1016/S0967-0645(02)00114-5), 2002.
- Sanders, R., Brown, L., Henson, S., and Lucas, M.: New production in the Irminger Basin during 2002, *J. Mar. Syst.*, 55, 291–310, <https://doi.org/10.1016/j.jmarsys.2004.09.002>, 2005.
- Sanders, R., Morris, P. J., Poulton, A. J., Stinchcombe, M. C., Charalampopoulou, A., Lucas, M. I., and Thomalla, S. J.: Does a ballast effect occur in the surface ocean?, *Geophys. Res. Lett.*, 37, L08602, <https://doi.org/10.1029/2010GL042574>, 2010.
- Santschi, P. H., Guo, L., Walsh, I. D., Quigley, M. S., and Baskaran, M.: Boundary exchange and scavenging of radionuclides in continental margin waters of the Middle Atlantic Bight: implications for organic carbon fluxes, *Cont. Shelf Res.*, 19, 609–636, [https://doi.org/10.1016/S0278-4343\(98\)00103-4](https://doi.org/10.1016/S0278-4343(98)00103-4), 1999.
- Santschi, P. H., Murray, J. W., Baskaran, M., Benitez-Nelson, C. R., Guo, L. D., Hung, C. C., Lamborg, C., Moran, S. B., Passow, U., and Roy-Barman, M.: Thorium speciation in seawater, *Mar. Chem.*, 100, 250–268, <https://doi.org/10.1016/j.marchem.2005.10.024>, 2006.
- Savoye, N., Benitez-Nelson, C., Burd, A. B., Cochran, J. K., Charette, M., Buesseler, K. O., Jackson, G. A., Roy-Barman, M., Schmidt, S., and Elskens, M.: ²³⁴Th sorption and export models in the water column: a review, *Mar. Chem.*, 100, 234–249, <https://doi.org/10.1016/j.marchem.2005.10.014>, 2006.
- Savoye, N., Trull, T. W., Jacquet, S. H. M., Navez, J., and Dehairs, F.: ²³⁴Th-based export fluxes during a natural iron fertiliza-

- tion experiment in the Southern Ocean (KEOPS), *Deep-Sea Res. Pt. II*, 55, 841–855, <https://doi.org/10.1016/j.dsr2.2007.12.036>, 2008.
- Schlitzer, R., Anderson, R. F., Dodas, E. M., Lohan, M., Geibert, W., Tagliabue, A., Bowie, A., Jeandel, C., Maldonado, M. T., Landing, W. M., Cockwell, D., Abadie, C., Abouchami, W., Achterberg, E. P., Agather, A., Aguliar-Islas, A., van Aken, H. M., Andersen, M., Archer, C., Auro, M., de Baar, H. J., Baars, O., Baker, A. R., Bakker, K., Basak, C., Baskaran, M., Bates, N. R., Bauch, D., van Beek, P., Behrens, M. K., Black, E., Bluhm, K., Bopp, L., Bouman, H., Bowman, K., Bown, J., Boyd, P., Boye, M., Boyle, E. A., Branellec, P., Bridgestock, L., Brissebrat, G., Browning, T., Bruland, K. W., Brumsack, H.-J., Brzezinski, M., Buck, C. S., Buck, K. N., Buesseler, K., Bull, A., Butler, E., Cai, P., Mor, P. C., Cardinal, D., Carlson, C., Carrasco, G., Casacuberta, N., Casciotti, K. L., Castrillejo, M., Chamizo, E., Chance, R., Charette, M. A., Chaves, J. E., Cheng, H., Chever, F., Christl, M., Church, T. M., Closset, I., Colman, A., Conway, T. M., Cossa, D., Croot, P., Cullen, J. T., Cutter, G. A., Daniels, C., Dehairs, F., Deng, F., Dieu, H. T., Duggan, B., Dulaquais, G., Dumousseaud, C., Echegoyen-Sanz, Y., Edwards, R. L., Ellwood, M., Fahrbach, E., Fitzsimmons, J. N., Russell Flegal, A., Fleisher, M. Q., van de Flierdt, T., Frank, M., Friedrich, J., Fripiat, F., Fröllje, H., Galer, S. J. G., Gamo, T., Ganeshram, R. S., Garcia-Orellana, J., Garcia-Solsona, E., Gault-Ringold, M., George, E., Gerringa, L. J. A., Gilbert, M., Godoy, J. M., Goldstein, S. L., Gonzalez, S. R., Grissom, K., Hammerschmidt, C., Hartman, A., Hassler, C. S., Hathorne, E. C., Hatta, M., Hawco, N., Hayes, C. T., Heimbürger, L. E., Helgoe, J., Heller, M., Henderson, G. M., Henderson, P. B., van Heuven, S., Ho, P., Horner, T. J., Hsieh, Y. T., Huang, K. F., Humphreys, M. P., Ishiki, K., Jacquot, J. E., Janssen, D. J., Jenkins, W. J., John, S., Jones, E. M., Jones, J. L., Kadko, D. C., Kayser, R., Kenna, T. C., Khondoker, R., Kim, T., Kipp, L., Klar, J. K., Klunder, M., Kretschmer, S., Kumamoto, Y., Laan, P., Labatut, M., Lacan, F., Lam, P. J., Lambelet, M., Lamborg, C. H., Le Moigne, F. A. C., Le Roy, E., Lechtenfeld, O. J., Lee, J. M., Lherminier, P., Little, S., López-Lora, M., Lu, Y., Masque, P., Mawji, E., McClain, C. R., Measures, C., Mehic, S., Barraqueta, J. L. M., van der Merwe, P., Middag, R., Mieruch, S., Milne, A., Minami, T., Mof-fett, J. W., Moncoiffe, G., Moore, W. S., Morris, P. J., Morton, P. L., Nakaguchi, Y., Nakayama, N., Niedermiller, J., Nishioka, J., Nishiuchi, A., Noble, A., Obata, H., Ober, S., Ohnemus, D. C., van Ooijen, J., O’Sullivan, J., Owens, S., Pahnke, K., Paul, M., Pavia, F., Pena, L. D., Peters, B., Planchon, F., Planquette, H., Pradoux, C., Puigcorbé, V., Quay, P., Queroue, F., Radic, A., Rauschenberg, S., Rehkämper, M., Rember, R., Remenyi, T., Resing, J. A., Rickli, J., Rigaud, S., Rijkenberg, M. J. A., Rintoul, S., Robinson, L. F., Roca-Martí, M., Rodellas, V., Roeske, T., Rolison, J. M., Rosenberg, M., Roshan, S., Rutgers van der Loeff, M. M., Ryabenko, E., Saito, M. A., Salt, L. A., Sanial, V., Sarthou, G., Schallenberg, C., Schauer, U., Scher, H., Schlosser, C., Schnetger, B., Scott, P., Sedwick, P. N., Semiletov, I., Shelley, R., Sherrell, R. M., Shiller, A. M., Sigman, D. M., Singh, S. K., Slagter, H. A., Slater, E., Smethie, W. M., Snaith, H., Sohrin, Y., Sohst, B., Sonke, J. E., Speich, S., Steinfeldt, R., Stewart, G., Stichel, T., Stirling, C. H., Stutsman, J., Swarr, G. J., Swift, J. H., Thomas, A., Thorne, K., Till, C. P., Till, R., Townsend, A. T., Townsend, E., Tuerena, R., Twining, B. S., Vance, D., Velazquez, S., Venchiarutti, C., Villa-Alfageme, M., Vivancos, S. M., Voelker, A. H. L., Wake, B., Warner, M. J., Watson, R., van Weerlee, E., Alexandra Weigand, M., Weinstein, Y., Weiss, D., Wisotzki, A., Woodward, E. M. S., Wu, J., Wu, Y., Wuttig, K., Wyatt, N., Xiang, Y., Xie, R. C., Xue, Z., Yoshikawa, H., Zhang, J., Zhang, P., Zhao, Y., Zheng, L., Zheng, X. Y., Zieringer, M., Zimmer, L. A., Ziveri, P., Zunino, P., and Zurbrück, C.: The GEO-TRACES Intermediate Data Product 2017, *Chem. Geol.*, 493, 210–223, <https://doi.org/10.1016/j.chemgeo.2018.05.040>, 2018.
- Schmidt, S., Andersen, V., Belviso, S., and Marty, J.-C.: Strong seasonality in particle dynamics of north-western Mediterranean surface waters as revealed by ²³⁴Th/²³⁸U, *Deep-Sea Res. Pt. I*, 49, 1507–1518, [https://doi.org/10.1016/S0967-0637\(02\)00039-0](https://doi.org/10.1016/S0967-0637(02)00039-0), 2002a.
- Schmidt, S., Chou, L., and Hall, I. R.: Particle residence times in surface waters over the north-western Iberian Margin: comparison of pre-upwelling and winter periods, *J. Mar. Syst.*, 32, 3–11, [https://doi.org/10.1016/S0924-7963\(02\)00027-1](https://doi.org/10.1016/S0924-7963(02)00027-1), 2002b.
- Schmidt, S., Goutx, M., Raimbault, P., Garcia, N., Guibert, P., and Andersen, V.: Th measured particle export from surface waters in north-western Mediterranean: comparison of spring and autumn periods, *Biogeosciences Discuss.*, 6, 143–161, <https://doi.org/10.5194/bgd-6-143-2009>, 2009.
- Schmidt, S., Harlay, J., Borges, A. V., Groom, S., Delille, B., Røevros, N., Christodoulou, S., and Chou, L.: Particle export during a bloom of *Emiliania huxleyi* in the North-West European continental margin, *J. Mar. Syst.*, 109–110, S182–S190, <https://doi.org/10.1016/j.jmarsys.2011.12.005>, 2013.
- Shaw, T. J., Smith, K. L., Hexel, C. R., Dudgeon, R., Sherman, A. D., Vernet, M., and Kaufmann, R. S.: ²³⁴Th-Based Carbon Export around Free-Drifting Icebergs in the Southern Ocean, *Deep-Sea Res. Pt. II*, 58, 1384–1391, <https://doi.org/10.1016/j.dsr2.2010.11.019>, 2011.
- Shimmield, G. B., Ritchie, G. D., and Fileman, T. W.: The impact of marginal ice zone processes on the distribution of ²¹⁰Pb, ²¹⁰Po and ²³⁴Th and implications for new production in the Belling-shausen Sea, Antarctica, *Deep-Sea Res. Pt. II*, 42, 1313–1335, [https://doi.org/10.1016/0967-0645\(95\)00071-W](https://doi.org/10.1016/0967-0645(95)00071-W), 1995.
- Smetacek, V., Klaas, C., Strass, V. H., Assmy, P., Montresor, M., Cisewski, B., Savoye, N., Webb, A., D’Ovidio, F., Arrieta, J. M., Bathmann, U., Bellerby, R., Berg, G. M., Croot, P., Gonzalez, S., Henjes, J., Herndl, G. J., Hoffmann, L. J., Leach, H., Losch, M., Mills Craig Neill, M. M., Peeken, I., Röttgers, R., Sachs, O., Sauter, E., Schmidt, M. M., Schwarz, J., Terbrüggen, A., and Wolf-Gladrow, D.: Deep carbon export from a Southern Ocean iron-fertilized diatom bloom, *Nature*, 487, 313–319, <https://doi.org/10.1038/nature11229>, 2012.
- Smoak, J. M., Moore, W. S., Thunell, R. C., and Shaw, T. J.: Comparison of ²³⁴Th, ²²⁸Th, and ²¹⁰Pb fluxes with fluxes of major sediment components in the Guaymas Basin, Gulf of California, *Mar. Chem.*, 65, 177–194, [https://doi.org/10.1016/S0304-4203\(98\)00095-4](https://doi.org/10.1016/S0304-4203(98)00095-4), 1999.
- Speicher, E. A., Moran, S. B., Burd, A. B., Delfanti, R., Kaberi, H., Kelly, R. P., Papucci, C., Smith, J. N., Stavrakakis, S., and Torricelli, L.: Particulate organic carbon export fluxes and size-fractionated POC/²³⁴Th ratios in the Ligurian, Tyrrhenian and Aegean Seas, *Deep-Sea Res. Pt. I*, 53, 1810–1830, <https://doi.org/10.1016/j.dsr.2006.08.005>, 2006.

- Stewart, G., Cochran, J. K., Miquel, J. C., Masqué, P., Szlosek, J., Rodriguez y Baena, A. M., Fowler, S. W., Gasser, B., and Hirschberg, D. J.: Comparing POC export from ²³⁴Th/²³⁸U and ²¹⁰Po/²¹⁰Pb disequilibria with estimates from sediment traps in the northwest Mediterranean, *Deep-Sea Res. Pt. I*, 54, 1549–1570, <https://doi.org/10.1016/j.dsr.2007.06.005>, 2007.
- Stewart, G., Moran, S. B., Lomas, M. W., and Kelly, R. P.: Direct comparison of ²¹⁰Po, ²³⁴Th and POC particle-size distributions and export fluxes at the Bermuda Atlantic Time-series Study (BATS) site, *J. Environ. Radioact.*, 102, 479–489, <https://doi.org/10.1016/j.jenvrad.2010.09.011>, 2011.
- Stukel, M. R., Landry, M. R., Benitez-Nelson, C. R., and Goericke, R.: Trophic cycling and carbon export relationships in the California Current Ecosystem, *Limnol. Oceanogr.*, 56, 1866–1878, <https://doi.org/10.4319/lo.2011.56.5.1866>, 2011.
- Stukel, M. R., Kahru, M., Benitez-Nelson, C. R., Décima, M., Goericke, R., Landry, M. R., and Ohman, M. D.: Using Lagrangian-based process studies to test satellite algorithms of vertical carbon flux in the eastern North Pacific Ocean, *J. Geophys. Res.-Oceans*, 120, 7208–7222, <https://doi.org/10.1002/2015JC011264>, 2015.
- Stukel, M. R., Benitez-Nelson, C. R., Décima, M., Taylor, A. G., Buchwald, C., and Landry, M. R.: The biological pump in the Costa Rica Dome: an open-ocean upwelling system with high new production and low export, *J. Plankton Res.*, 38, 348–365, <https://doi.org/10.1093/plankt/fbv097>, 2016.
- Stukel, M. R., Aluwihare, L. I., Barbeau, K. A., Chekalyuk, A. M., Goericke, R., Miller, A. J., Ohman, M. D., Ruacho, A., Song, H., Stephens, B. M., and Landry, M. R.: Mesoscale ocean fronts enhance carbon export due to gravitational sinking and subduction, *P. Natl. Acad. Sci. USA*, 114, 1252–1257, <https://doi.org/10.1073/pnas.1609435114>, 2017.
- Stukel, M. R., Kelly, T. B., Aluwihare, L. I., Barbeau, K. A., Goericke, R., Krause, J. W., Landry, M. R., and Ohman, M. D.: The Carbon:²³⁴Thorium ratios of sinking particles in the California current ecosystem I: relationships with plankton ecosystem dynamics, *Mar. Chem.*, 212, 1–15, <https://doi.org/10.1016/j.marchem.2019.01.003>, 2019.
- Szlosek, J., Cochran, J. K., Miquel, J. C., Masqué, P., Armstrong, R. A., Fowler, S. W., Gasser, B., and Hirschberg, D. J.: Particulate organic carbon–²³⁴Th relationships in particles separated by settling velocity in the northwest Mediterranean Sea, *Deep-Sea Res. Pt. II*, 56, 1519–1532, <https://doi.org/10.1016/j.dsr2.2008.12.017>, 2009.
- Thomalla, S. J., Turnewitsch, R., Lucas, M., and Poulton, A.: Particulate organic carbon export from the North and South Atlantic gyres: The ²³⁴Th/²³⁸U disequilibrium approach, *Deep-Sea Res. Pt. II*, 53, 1629–1648, <https://doi.org/10.1016/j.dsr2.2006.05.018>, 2006.
- Trimble, S. M. and Baskaran, M.: The role of suspended particulate matter in ²³⁴Th scavenging and ²³⁴Th-derived export fluxes of POC in the Canada Basin of the Arctic Ocean, *Mar. Chem.*, 96, 1–19, <https://doi.org/10.1016/j.marchem.2004.10.003>, 2005.
- Trull, T. W., Bray, S. G., Buesseler, K. O., Lamborg, C. H., Manganini, S., Moy, C., and Valdes, J.: In situ measurement of mesopelagic particle sinking rates and the control of carbon transfer to the ocean interior during the Vertical Flux in the Global Ocean (VERTIGO) voyages in the North Pacific, *Deep-Sea Res. Pt. II*, 55, 1684–1695, <https://doi.org/10.1016/j.dsr2.2008.04.021>, 2008.
- Turnewitsch, R., Dumont, M., Kiriakoulakis, K., Legg, S., Mohn, C., Peine, F., and Wolff, G.: Tidal influence on particulate organic carbon export fluxes around a tall seamount, *Prog. Oceanogr.*, 149, 189–213, <https://doi.org/10.1016/j.pocean.2016.10.009>, 2016.
- Umhau, B. P., Benitez-Nelson, C. R., Close, H. G., Hannides, C. C. S., Motta, L., Popp, B. N., Blum, J. D., and Drazen, J. C.: Seasonal and spatial changes in carbon and nitrogen fluxes estimated using ²³⁴Th:²³⁸U disequilibria in the North Pacific tropical and subtropical gyre, *Mar. Chem.*, 217, 103705, <https://doi.org/10.1016/j.marchem.2019.103705>, 2019.
- Waples, J. T., Benitez-Nelson, C., Savoye, N., Rutgers van der Loeff, M., Baskaran, M., and Gustafsson, Ö.: An introduction to the application and future use of ²³⁴Th in aquatic systems, *Mar. Chem.*, 100, 166–189, <https://doi.org/10.1016/j.marchem.2005.10.011>, 2006.
- Wei, C. L., Chou, L. H., Tsai, J. R., Wen, L. S., and Pai, S. C.: Comparative geochemistry of ²³⁴Th, ²¹⁰Pb, and ²¹⁰Po: A case study in the Hung-Tsai Trough off southwestern Taiwan, *Terr. Atmos. Ocean. Sci.*, 20, 411–423, [https://doi.org/10.3319/TAO.2008.01.09.01\(Oc\)](https://doi.org/10.3319/TAO.2008.01.09.01(Oc)), 2009.
- Wei, C.-L., Lin, S.-Y., Sheu, D. D.-D., Chou, W.-C., Yi, M.-C., Santschi, P. H., and Wen, L.-S.: Particle-reactive radionuclides (²³⁴Th, ²¹⁰Pb, ²¹⁰Po) as tracers for the estimation of export production in the South China Sea, *Biogeosciences*, 8, 3793–3808, <https://doi.org/10.5194/bg-8-3793-2011>, 2011.
- Yang, Y., Han, X., and Kusakabe, M.: POC fluxes from euphotic zone estimated from ²³⁴Th deficiency in winter in the northwestern North Pacific Ocean, *Acta Oceanol. Sin.*, 23, 135–148, 2004.
- Yu, W., Chen, L., Cheng, J., He, J., Yin, M., and Zeng, Z.: ²³⁴Th-derived particulate organic carbon export flux in the western Arctic Ocean, *Chinese J. Oceanol. Limnol.*, 28, 1146–1151, <https://doi.org/10.1007/s00343-010-9933-1>, 2010.
- Yu, W., He, J., Li, Y., Lin, W., and Chen, L.: Particulate organic carbon export fluxes and validation of steady state model of ²³⁴Th export in the Chukchi Sea, *Deep-Sea Res. Pt. II*, 81–84, 63–71, <https://doi.org/10.1016/j.dsr2.2012.03.003>, 2012.
- Zhou, K., Nodder, S. D., Dai, M., and Hall, J. A.: Insignificant enhancement of export flux in the highly productive subtropical front, east of New Zealand: a high resolution study of particle export fluxes based on ²³⁴Th:²³⁸U disequilibria, *Biogeosciences*, 9, 973–992, <https://doi.org/10.5194/bg-9-973-2012>, 2012.
- Zhou, K., Dai, M., Kao, S.-J., Wang, L., Xiu, P., Chai, F., Tian, J., and Liu, Y.: Apparent enhancement of ²³⁴Th-based particle export associated with anticyclonic eddies, *Earth Planet. Sci. Lett.*, 381, 198–209, <https://doi.org/10.1016/j.epsl.2013.07.039>, 2013.
- Zhou, K., Maiti, K., Dai, M., Kao, S.-J., and Buesseler, K.: Does adsorption of dissolved organic carbon and thorium onto membrane filters affect the carbon to thorium ratios, a primary parameter in estimating export carbon flux?, *Mar. Chem.*, 184, 1–10, <https://doi.org/10.1016/j.marchem.2016.06.004>, 2016.