



HAL
open science

Pharmacologic Approach to Sinoatrial Node Dysfunction

Pietro Mesirca, Vadim Fedorov, Thomas Hund, Angelo Torrente, Isabelle Bidaud, Peter Mohler, Matteo E. Mangoni

► To cite this version:

Pietro Mesirca, Vadim Fedorov, Thomas Hund, Angelo Torrente, Isabelle Bidaud, et al.. Pharmacologic Approach to Sinoatrial Node Dysfunction. *Annual Review of Pharmacology and Toxicology*, 2021, 61, pp.757-778. 10.1146/annurev-pharmtox-031120-115815 . hal-02960337

HAL Id: hal-02960337

<https://hal.science/hal-02960337>

Submitted on 17 Dec 2020

HAL is a multi-disciplinary open access archive for the deposit and dissemination of scientific research documents, whether they are published or not. The documents may come from teaching and research institutions in France or abroad, or from public or private research centers.

L'archive ouverte pluridisciplinaire **HAL**, est destinée au dépôt et à la diffusion de documents scientifiques de niveau recherche, publiés ou non, émanant des établissements d'enseignement et de recherche français ou étrangers, des laboratoires publics ou privés.

Pharmacologic Approach to SAN Dysfunction

Running title: SAN Dysfunction Pharmacology

Pietro Mesirca^{1,2} Vadim V. Fedorov^{3,4}, Thomas J. Hund^{3,5}, Angelo G. Torrente^{1,2}, Isabelle Bidaud^{1,2}, Peter J. Mohler^{3,4}, Matteo E. Mangoni^{1,2}

¹Institut de Génomique Fonctionnelle, Univ. Montpellier, CNRS, INSERM, Montpellier, France.

²LabEx Ion Channels Science and Therapeutics (ICST).

³Frick Center for Heart Failure and Arrhythmia at the Davis Heart and Lung Research Institute, The Ohio State University, Columbus, OH, USA

⁴Departments of Medicine and Physiology and Cell Biology, The Ohio State University College of Medicine, Wexner Medical Center

⁵Department of Biomedical Engineering, The Ohio State University, Columbus, OH, USA

ORCID:

Mesirca: <https://orcid.org/0000-0002-9538-3096>

Fedorov: <https://orcid.org/0000-0003-1035-4569>

Hund: <https://orcid.org/0000-0002-9957-7306>

Torrente: <https://orcid.org/0000-0003-1721-6564>

Bidaud: <https://orcid.org/0000-0002-1812-1447>

Mohler: <https://orcid.org/0000-0002-7977-8717>

Mangoni: <https://orcid.org/0000-0002-8892-3373>

Correspondence: Matteo E. Mangoni, PhD
Institut de Génomique Fonctionnelle
CNRS UMR 5203, Inserm U 1191
Université de Montpellier
141, rue de la Cardonille
34094 Montpellier, France
Phone +33 (0)4 34 35 92 46
Fax +33 (0)4 67 54 24 32
Email: matteo.mangoni@igf.cnrs.fr

Abstract

The spontaneous activity of the sinus node initiates the heartbeat. Sinus node dysfunction (SND), also referred to as 'sick-sinus-syndrome', is caused by failure to generate a normal sinus node action potential. In the clinical practice, SND is generally considered as an age-related pathology, secondary to degenerative fibrosis of the heart pacemaker tissue. However, other forms of SND exist, including idiopathic primary SND showing genetic legacy and forms that are secondary to cardiovascular or systemic disease. The incidence of SND in the general population is expected to increase over the next sixty years, boosting the needs for implantation of electronic pacemakers. During the last two decades, our knowledge of sinus node physiology and of the pathophysiological mechanisms underlying SND has advanced considerably. This review will summarize the current knowledge about SND mechanisms and discuss the possibility of introducing new pharmacologic therapies for handling SND.

Keywords: Sinus Node Dysfunction; SAN; G protein-activated K⁺ channels; Cav1.3; Ankyrin-B; Tertiapine-Q;

Introduction

The cardiac impulse is generated in the sinus node (SAN) by a highly-integrated mechanism involving ion channels, intracellular Ca^{2+} dynamics, membrane receptors and connexins (1; 2). Despite the intrinsic robustness of the pacemaker mechanism, SAN dysfunction (SND) constitutes a relatively common clinical condition, especially among the population over 65 (1/600, (3)). SND generally manifests as an insufficiency of the heart rate to meet the needs of the organism. SND may be differentiated into reversible (acute), or chronic symptomatic forms (4).

Acute SND is generally handled pharmacologically or by temporary transvenous or transoesophageal pacing (4; 5). In contrast, only a few options are currently available to treat chronic symptomatic SND, and to date permanent electronic pacing (PPM) by an implanted electronic pacemaker remains the primary and definitive therapy (4; 5). In this regard, symptomatic SND and heart block account for about half of the total pacemaker implantations in the U.S (6) and this is predicted to double over the next half century (7). In addition, clinical studies indicate an increasing necessity for implantation of complex electronic pacemakers (8).

In this review, we will discuss some of the most documented forms of primary and secondary SND, especially in relation to current pharmacologic management. Research over the last 20 years has considerably advanced our knowledge of SND aetiology. Several genes coding for ion channels (9-21), scaffolding proteins (22), cytoskeleton proteins (23), as well as connexins and proteins involved in cardiac development have been linked to previously unexplained forms of primary familial SND (24). Furthermore, development of animal models of primary and secondary SND, as well as *ex vivo* exploration of SANs from human hearts with history of SND have shed new light in the mechanisms of secondary forms of SND. These approaches have identified a host of novel targets for managing SND, including cardiac G protein-activated $I_{K_{ACb}/I_{Ado}}$ (GIRK1/GIRK4) (25-29) and Ca^{2+} -activated small conductance K^+ (SK) channels (30-32). The identification of GIRK channels as potential molecular targets for SND may extend the indication of pharmacologic approaches to chronic forms of SND. More generally, it is possible that innovative molecules targeting specific SND mechanism will help manage chronic SND, which is now handled only by PPM.

Clinical Definition of SAN Dysfunction

The diagnosis of SND is based on the correlation between the patient's symptoms and ECG hallmarks (see also Supplementary Appendix 1), which provide important criteria for PPM (4; 5; 33). Historically, SND patients have been identified as having one or more of the following ECG findings (34): (i) persistent, unexpected sinus bradycardia (**Figure 1**), (ii) short periods of sinus arrest during which atrial or junctional rhythms replace normal sinus rhythm, (iii) long periods of sinus arrest in the absence of junctional rhythms, resulting in cardiac standstill, and finally (iv) episodes of sinus exit block not related to drug therapy (34; 35). This early definition of SND remains in use in current clinical guidelines (4; 5; 36). Sinus bradycardia is generally defined as a heart rate below 50 bpm (4). Sinus pauses or sinus arrest are included in the current definition of SND, particularly when manifest as 'tachycardia-bradycardia syndromes', in which sinus bradycardia, pauses or arrest follow periods of abnormal atrial tachycardia, atrial fibrillation or flutter (37). In tachycardia-bradycardia syndromes, SND can manifest as poor or sluggish return of sinus rhythm following cardioversion (38) (**Supplementary Figure 1**). Another hallmark of SND is chronotropic incompetence, defined as the inability of heart rate to attain 80% of the expected heart rate during exercise (39). Symptomatic SND carries invalidating symptoms that can impact quality of life (36). One of the most common symptoms of SND is syncope, which is present in

about half of SND patients (5; 40). While asymptomatic bradycardia is not associated with adverse outcomes, patients with untreated symptomatic SND have high risk of deterioration to cardiovascular events including atrial fibrillation (41), heart failure (42) and systemic thromboembolism (5; 40). Age-dependent SND and chronotropic incompetence are associated with an increased risk of cardiovascular death and overall mortality (4).

SAN Pacemaking: general overview

The SAN is a highly-complex, heterogeneous tissue (1). Surprisingly, pacemaker cells do not constitute the predominant cell type in the SAN. Early studies of SAN tissue indicated that atrial myocytes (43) and fibroblasts (44) are important constituents of SAN structure and integrative properties. More recently, RNA sequencing indicates that the SAN is composed of atrial myocytes, adipocytes, epithelial cells, fibroblasts, vascular endothelial cells, macrophages and neurons (45). In addition to heterogeneous cellular composition, pacemaker cells within the SAN are poorly-coupled electrically (46). This low inter-cellular conductance is due to high expression of Cx45 and low or absent expression of Cx43 in pacemaker cells (46-48). Finally, the SAN region includes specific non-conductive structures and redundant impulse propagation pathways (29; 49) that help ensure proper intra-sinus and sinus-to-atria conduction (50; 51).

Normal pacemaking depends on a unique action potential (AP) profile of SAN pacemaker cells. Importantly, the SAN AP undergoes a spontaneous diastolic depolarization phase driving the membrane voltage from the end of the repolarization to the threshold of the following action potential (**Figure 2**). Catecholamines positively regulate the slope of the diastolic depolarization via activation of β -adrenergic receptors (β ARs). The adrenergic activation stimulates the synthesis of cAMP, that positively regulates the activity of several ion channels of the plasma membrane, and the intracellular ryanodine receptors/ Ca^{2+} -release channels (RyR2) embedded in the sarcoplasmic reticulum (SR) (2; 52) (**Figure 2**). In antagonism with β ARs, muscarinic type 2 receptors (M2Rs) and adenosine type 1 (A1Rs) receptors decrease pacemaking by promoting down-regulation of intracellular cAMP and by inducing opening of G protein activated K^+ channels (GIRK1/GIRK4) underlying the $I_{K_{ACb}} / I_{K_{Adb}}$ current (53). Current understanding of the generation of the heartbeat is best summarized by the “coupled-clock” model of pacemaking (52), stating that generation of diastolic depolarization is the result of a functional interplay between activity of ion channels at the plasma membrane and local diastolic RyR2-dependent Ca^{2+} release, which is coupled to the diastolic depolarization via activation of the $\text{Na}^+/\text{Ca}^{2+}$ exchanger (NCX1) (2; 52; 54). Different ion channels of the plasma membrane contribute to the generation and the regulation of the diastolic depolarization and will be discussed here briefly.

The hyperpolarization-activated “funny” current I_f is activated at the end of the repolarization phase of the action potential and supplies inward current throughout the range of the diastolic depolarization (55). Catecholamines shift I_f activation curve to more positive voltages, while acetylcholine induces a negative shift. These opposing effects are explained by the direct sensitivity of f-channels to cAMP (56), which increases the probability of channel opening at a given voltage (57). F- channels are encoded by the hyperpolarization activated cyclic nucleotide gated channel (HCN) family, which comprises four distinct isoforms HCN1-HCN4. However, in the SAN, the predominant isoform is HCN4, accounting for 80% of the total HCN mRNAs (58). Moreover, HCN1 protein is almost exclusively expressed in the human SAN rather than in atrial myocardium (59). Both T- and L-type Ca^{2+} channels are expressed in SAN pacemaker cells. Cav3.1 and Cav3.2 mRNAs are expressed in the SAN however, the predominant functional T-type isoform in the adult SAN is Cav3.1 (60). In spite of this low availability, Cav3.1 knockout mice (*Cav3.1^{-/-}*) present with moderate SAN rate reduction (-10%) and prolonged atrioventricular (PR) conduction interval (60). SAN pacemaker cells concomitantly express two distinct L-type Ca^{2+}

channel isoforms, Cav1.3 and Cav1.2 (61). Cav1.3-mediated I_{CaL} is characterized by a more negative threshold for activation than Cav1.2-mediated I_{CaL} (-45 mV for Cav1.3- vs -25 mV for Cav1.2-mediated I_{CaL} , respectively) (61). Under basal conditions, *Cav1.3*^{-/-} pacemaker cells show erratic generation of automaticity, a lack of the linear phase of the diastolic depolarization (62) and a strong reduction of the total inward diastolic current compared to control littermates (26; 62).

Voltage-gated “neuronal” (n)Nav Na⁺ channels underlying the sino-atrial TTX-sensitive Na⁺ current (I_{NaTTX}) have been shown to contribute to pacemaking and intra-nodal conduction in the mouse, rabbit and human SAN (63-66). Several nNav1 isoforms have been proposed to contribute to sino-atrial I_{NaTTX} . While nNav1.1 and nNav1.3 have been proposed to contribute to I_{NaTTX} in mouse and rabbit (63), nNav1.6 appears to play a dominant role in human intra-nodal conduction and SND (66). The “cardiac” (c)Nav1.5 isoform underlies the TTX-resistant I_{Na} in the mouse SAN, but its contribution to excitability may be limited to intra-nodal or nodal-atrial impulse conduction. Consistent with this hypothesis, mice haplo-insufficient for Nav1.5 present with atrio-ventricular and intra-ventricular conduction defects, rather than with SND.

Ion channels of the transient receptor potential channels family (TRP) contribute to SAN activity (67-69). TRPC channels contribute to store-operated Ca²⁺ entry in pacemaker cells (69). TRPM7 channels contribute to pacemaking by regulating HCN4 channels in the sinus and atrioventricular node (70). TRPM4 channels contribute to the basal beating rate of SAN pacemaker cells (67).

More recently, members of Ca²⁺ activated K⁺ channel family (K_{Ca}) have been linked to pacemaking in mouse and rabbit SAN. K_{Ca} have been subdivided into Big (71), Intermediate (31) and Small (32; 72) conductance K⁺ channels. These channels have differential sensitivity to Ca²⁺. Big K_{Ca} (BK) are primarily voltage-dependent with positive regulation by Ca²⁺ (73). In contrast, Intermediate and Small K_{Ca} (IK and SK, respectively) are voltage-independent and highly sensitive to Ca²⁺ (31). Such sensitivity to Ca²⁺ is mediated by the association with calmodulin (CaM) (73) and at least for SK channels coupling with L-type Ca²⁺ channels has been demonstrated (74; 75). SK isoforms have been identified with different sensitivity to the specific inhibitor apamin (SK1, SK2 and SK3) (73). All three SK isoforms are expressed in the SAN (32).

Familial Primary SAN Disease and Associated Conduction Defects

While SAN disease and SND are often associated with aging or with different cardiovascular pathologies such as heart failure (76; 77), work over the past two decades has identified familial forms of SND (24; 78). In fact, congenital forms of SAN disease have been instrumental in providing molecular insights into the critical and non-redundant molecular pathways underlying SAN automaticity and signaling. Multiple ion channels and ion channel subunits are now associated with SAN disease.

HCN4 gene (*HCN4*) variants are linked with human asymptomatic bradycardia or SAN disease (9-12). Mechanistically, variants have been associated with altered channel membrane targeting, aberrant ion channel activation (10) or conductance (12), as well as dysfunction in channel regulation by cyclic nucleotides (9; 13). Of note, human *HCN4* variants are linked with other forms of cardiovascular disease beyond the SAN demonstrating the key role of this ion channel (11). Beyond *HCN4*, human variants in *SCN5A* are linked with SND (79). Loss-of-function of the *SCN5A* gene encoding for Nav1.5 accounts for 5% of total incidence of primary conduction system dysfunction including SND in humans (21; 80). *SCN5A* variants are linked with familial SND, bradycardia, conduction disorders, as well as atrioventricular block (24; 78). However, similar to variants in other key cardiac ion channels, *SCN5A* variants are linked with other forms of atrial and ventricular arrhythmia.

While not as robustly expressed in the working myocardium as Cav1.2, Cav1.3 channels (*CACNA1D*) are highly expressed in the SAN (61; 81-83) (see also preceding section). While rare,

human *CACNA1D* variants that alter channel activity are linked with human SND (14; 15). Cav1.3 channels have been linked also to neonatal complete heart block related to lupus (84). Mechanistically, heart block has been explained by the presence of maternal auto-antibodies against Cav1.3 channels (85; 86). In addition to Cav1.3, T-type Cav3.1 channels (encoded by *CACNA1G*) have also been linked with human bradycardia and heart block related to neonatal lupus (84; 87).

TRPM4 (encoded by *TRPM4*), also called transient receptor potential cation channel subfamily M member 4, is a nonselective calcium-regulated channel expressed in the SAN and atria. *TRPM4* variants have been widely linked with a number of human cardiac phenotypes including sinus bradycardia likely through modulation of the SAN cell membrane potential (88; 89).

Alterations in a number of SAN and atrial accessory and calcium regulatory proteins have been associated with human SND. Ankyrin-B, encoded by *ANK2*, is a cytoskeletal adaptor protein that associates with a host of cardiac ion channels, transporters, signaling molecules, and structural proteins. Consistent with animal models lacking ankyrin-B, humans harboring specific variants in *ANK2* may display bradycardia and conduction defects (22). Mechanistically, ankyrin-B dysfunction alters multiple critical SAN proteins, including Cav1.3 and NCX1, resulting in aberrant diastolic depolarization. It is likely that specific genetic and environmental factors influence SND penetrance and severity in the human population based on the degree of ankyrin-B loss-of-function and potential secondary variants or environmental factors. Similar to ankyrin-B, cardiac caveolin-3 (*CAV3*) variants, while linked with ventricular arrhythmia, have also shown to be associated with bradycardia (90). Mechanistically, caveolin-3 variants may impact multiple ionic currents to influence SAN node automaticity.

More recently, an exciting set of papers have linked human variants in proteins that regulate heterotrimeric G proteins to SND. To date, both *GNB5* and *GNB2* variants are linked with sinus bradycardia/SND (17; 18). Similar to other genes outlined in this review, individuals harboring variants may display additional non-cardiac phenotypes including cognitive disorders. Mechanistically, these variants may impact the activity of I_{KACb} , inducing current gain-of-function and consequent sinus bradycardia and atrioventricular block. Consistent with this hypothesis, mutation in *KCNJ3* and *KCNJ5* inducing gain-of-function of GIRK1 and GIRK4 were shown to be linked with familial SAN disease (*KCNJ3* encodes GIRK1; *KCNJ5* encodes GIRK4) (16; 91).

Dysfunction in cardiac calcium regulatory proteins are linked with familial SND. Calsequestrin 2 (*CASQ2*) is a calcium-binding protein that also serves a critical role in regulating local calcium release and automaticity. The cardiac ryanodine receptor (*RYR2*) is a central regulatory node responsible for excitation-contraction coupling. Variants in either *RYR2* or *CASQ2* are associated with bradycardia and potentially fatal arrhythmias in response to catecholamines (92-94). In particular, catecholaminergic polymorphic ventricular tachycardia (CPVT) is a life threatening familial ventricular arrhythmia associated with mutations in *CASQ2* or *RYR2* (95). *RYR2*-associated CPVT is characterized by increased Ca^{2+} release from the SR at rest and under adrenergic activation (95). However, some CPVT patients carrying mutations in *RYR2* present also with moderate sinus bradycardia (96; 97). Bradycardia has been explained by tonic Ca^{2+} -dependent inactivation of I_{CaL} and reduction of basal SR Ca^{2+} load in SAN pacemaker cells (96; 97).

Additional forms of inherited SND involve a host of cardiac proteins with a range of functions in the myocyte. For example, human variants in *MYH6* that encodes cardiac muscle myosin are linked with SND (as well as other non-SAN electrical and structural phenotypes) (98). Like myosin, lamins A and C have multiple roles for cardiac function. Encoded by *LMNA*, lamin A variants are associated with sinus bradycardia and conduction system disorders (99). Finally, variants in a number of other genes including *SHOX2* (100), a transcription factor involved in differentiation of the SAN, have been linked with cardiac SAN and/or atrioventricular block phenotypes.

It is important to note that like other forms of familial human disease, penetrance and disease severity will depend on both secondary genetic, environment, and social factors. Thus,

caution should always be utilized when interpreting genetic information from individual variant carriers.

Genetic mouse models of primary SND

A wide variety of genetically modified mouse models have been generated to study SAN disease. Among the first mouse models of SND were those involving knockout of ion channels important for SAN membrane excitability. Early studies found that *Cav1.3*^{-/-} mice showed congenital deafness, bradycardia and irregular heart rate (101). Further work has shown that *Cav1.3*^{-/-} mice constitute a model of the SAN Dysfunction and Deafness (SANDD) syndrome, which is characterized by sinus bradycardia and atrioventricular conduction dysfunction (14). Indeed, *Cav1.3*^{-/-} mice have pronounced sinus bradycardia, associated with sinus pauses, atrial fibrillation and flutter, and 2nd-degree atrioventricular block (26; 61; 102). Global knockout of *Hcn4* prevents proper development of the SAN and conduction system resulting in embryonic lethality (103). Inducible *Hcn4* knockout mice have also been generated and found to have either mild SND with sinus pauses (104) or severe bradycardia and conduction system defects incompatible with life (105). Knockout of *Hcn1* induces bradycardia and SND in the mouse (106). Mice carrying genetically silenced *I_f* conductance show sinus bradycardia and SND associated with 2nd-degree atrioventricular block and ventricular arrhythmia (25). On the other hand, mice lacking cAMP-dependent regulation of HCN4 show moderate sinus bradycardia, consistently to what observed in individuals carrying cAMP regulation defective HCN4 (9; 13).

Consistent with the clinical findings, mice heterozygous for Nav1.5 display bradycardia, sinus exit block, and reduced excitability of pacemaker cells (107). Proteins important for intracellular ion homeostasis have also been explored using genetic mouse models. Atrial-specific knockout of the NCX1 (sarcolipin-Cre crossbred with NCX1 floxed mouse) display sinus arrest, burst pacemaking and junctional escape rhythm (108). In a similar vein, knockout of the SR Ca²⁺ buffer calsequestrin disrupted SAN Ca²⁺ handling leading to irregular pacemaking and SND, consistent with observations in patients (109).

There is a growing number of mouse models with SND and defects in unconventional ion channels and accessory proteins not typically invoked when discussing SAN pacemaking. For example, the background K⁺ channel TREK-1 has recently emerged as a novel determinant of SAN excitability and pacemaking. Specifically, mice with cardiac specific ablation of TREK-1 show bradycardia with frequent sinus pause (110). At the cell level, TREK-1-deficient SAN pacemaker cells show a depolarized maximum diastolic potential and altered firing rate. Similarly, several TREK-1 interacting partners have been linked to SND in mice, including the cytoskeletal protein β IV-spectrin (111) and members of the Popeye-domain containing (POPDC) family (112). Mouse models of TRPM4 related SND have been generated. Although the TRPM4 knockout (*TRPM4*^{-/-}) mouse shows no difference in heart rhythm compared to wild-type counterparts, pharmacological inhibition of TRPM4 slows spontaneous beating in wild-type but not *TRPM4*^{-/-} atria (113). Furthermore, TRPM4 mice show more frequent episodes of sinus pauses and prominent conduction block compared to wild-type counterparts (114). TRPM7 is a divalent channel-kinase abundantly expressed in mouse and human heart. Global as well as sinus/atrioventricular node-restricted knockout of TRPM7 slows the diastolic depolarization in pacemaker cells and induces bouts of sinus pause and conduction block (70). As discussed above, Ankyrin-B is an adapter protein important for proper membrane localization of multiple ion channels and transporters important for normal SAN excitability and pacemaking. Human variants in ANK2 have been linked to a complex arrhythmia syndrome including severe SND requiring pacemaker implantation (22). Consistent with the human phenotype, mice heterozygous for ankyrin-B display severe bradycardia and enhanced resting heart rate variability compared to wild-type littermates (22).

Mouse models have been instrumental in studying the link between dysregulation of gene expression and SND. Notably, mice deficient for the transcription factor *Tbx3* show defects in development of the SAN and of the conduction system. They show also SND characterized by bradycardia and sinus pause presenting in the embryonic stage (115). The cardiac homeobox transcription factor *Nkx2-5* has been studied using an atrial-specific knockout model, which shows hyperplasia of the working myocardium and conduction system, resulting in a broad spectrum of arrhythmias including bradycardia and conduction block and perinatal lethality (116). Mechanistically, *Nkx2-5* deficiency was shown to activate Notch signaling and enhance myocyte proliferation early in development. Interestingly, Notch signaling is also activated with injury and a genetic mouse model has been used to study effects of transient Notch activation in the atria with observations of reduced *SCN5A* expression and structural remodeling of the SAN, resulting in sinus bradycardia and sinus pause (117). Genetic mouse models have also elucidated a role for signaling through the multifunctional Ca^{2+} /calmodulin-dependent kinase II in SND in the setting of neurohumoral dysregulation. Specifically, transgenic mice overexpressing a CaMKII inhibitory peptide (AC3-I) were found to be resistant to development of fibrosis and sinus pause following chronic angiotensin II infusion (118). As new experimental models have been developed and applied to study SAN function and disease, so too have a host of computational models of pacemaker activity (See Supplementary Appendix 2). These models will prove important for understanding SND as the discovery of new mechanisms progresses.

Secondary forms of SND in humans and animal models

Secondary forms of SND account for the majority of patients. Indeed, the incidence of SND correlates with age, co-morbidities such as hypertension, diabetes, presence of cardiovascular disease and elevated plasma concentrations of cystatin-c and natriuretic peptide (7). However, current guidelines generally make distinction between secondary forms of SND associated with systemic disease, cardiovascular disease and drug intoxication (4). In relation to systemic conditions, SND can be a secondary manifestation of endocrine disease such as hypothyroidism and diabetes, inflammatory or rheumatologic disorders, plasma ionic imbalance and infectious disorders (4; 76).

Abnormal input of the autonomic nervous system is a potential cause underlying SND. In some patients, intrinsic SND can be worsened by autonomic nervous system imbalance (119). In addition, increased vagal input (hypervagotonia) has been proposed to constitute the direct cause of SND manifestations (119). Clinical studies have established a correlation between endurance athletic training and an increased risk of bradyarrhythmia, atrioventricular block (120) and atrial fibrillation (121), requiring PPM (122). Both hypervagotonia and intrinsic remodeling of SAN ion channels expression have been proposed as mechanisms of SND in endurance athletes. I_f current and HCN4 are downregulated in animal models of athletic training (123; 124). In addition, the heart rate of endurance athletes shows reduced sensitivity to the I_f blocker ivabradine, suggesting reduced HCN expression (123). It is thus possible that both changes in the sympathovagal balance and intrinsic remodeling of ion channels in SAN pacemaker cells contribute to bradyarrhythmia induced by athletic training.

Often SND secondary to cardiovascular disease is associated with atrial tachyarrhythmia and atrial fibrillation. In early studies, SND was present in 5% of patients affected by atrial fibrillation for less than one year. However, SND incidence increased up to 45% in patients suffering from atrial fibrillation for 10 years or more (38). Interestingly, in a canine model of atrial fibrillation induced by atrial tachypacing, SND was explained by a reduction in the expression of I_f -channels (125). This mechanism can account for SND associated with chronic or persistent atrial fibrillation. However, since a significant number of patients present with progressively worsening

SND, in which association with atrial fibrillation and conduction dysfunction constitute late comorbidities, it is an attractive hypothesis that early pharmacologic handling of SND may prevent associated arrhythmias. Ischemic disease can also lead to SND. Typical examples of ischemic conditions favoring SND are acute stenosis or thrombosis of the SAN artery (126) and myocardial infarction (127). As discussed above, heart failure is a major provider of secondary SND. Several mechanistic aspects of how myocardial heart failure leads to SND are still to be identified. However, in rabbit (128), canine (129) and mouse (130) models of heart failure, reduction of pacemaker activity has been attributed to down-regulation of I_f current and its predominant SAN isoform HCN4, with consequent SND.

Myocardial infarction can often degenerate into heart failure and consequently, bring secondary SND forms. A study combining myocardial infarction with diabetic condition showed an increase in oxidized CaMKII, apoptosis of pacemaker cells, SND and mortality in wild-type mice. These effects were prevented in knockin mice expressing oxidation-resistant CaMKII, in which paired methionines in the CaMKII regulatory domain mutated to valines (131). Oxidation of CaMKII could thus constitute an important mechanism in SND secondary to myocardial infarction and neurohumoral dysregulation potentially leading to heart failure (118).

To date, several mechanisms have been proposed to account for age-related SND. The reader can find a detailed discussion about age related SND in a recent review by Peters et al. (132). Interestingly, similar to other secondary forms of SND, decline of pacemaker activity with ageing is attributed to intrinsic remodeling of the SAN structure and expression of ion channels involved in automaticity. Decrease in the intrinsic electrical coupling due to progressive tissue fibrosis has been proposed as a primary factor in age-related SND (see Csepe et al. for review (133)). However, some individuals having high degree of SAN fibrosis can be under normal sinus rhythm (134). In addition, recent work demonstrated slowed intrinsic pacemaker activity and reduced densities in I_f , I_{CaL} and I_{CaT} in SAN pacemaker cells of bradycardic aged mice (135). It is thus possible that both structural and ionic factors contribute to age-related SND in a patient's dependent way.

Pharmacological approaches to SND in the current clinical practice

There is a wide panel of potentially usable drugs for acute bradycardia and SND however, the most widely used are catecholaminergic agonists like isoproterenol, atropine, aminophylline and theophylline. Isoproterenol is a β -selective agonist devoid of vasoconstrictional effects. Isoproterenol has shown some positive effects in ameliorating heart rate in patients with bradycardia. However, because isoproterenol administration can induce also supraventricular tachycardia (136), its use is recommended only for intra-hospital management of acute SND or electrophysiological evaluation of SND (4). Since β -adrenergic activation augments the myocardial oxygen demand accompanied by coronary vasoconstriction, its use is not indicated in SND associated with cardiac ischemic disease (4). Other catecholaminergic agonists such as epinephrine or dopamine present more complex effects because of their mixed α - and β - receptor activation (137). Use of catecholamines is thus indicated only under intra-hospital and haemodynamic monitoring conditions (4). Atropine is a well-known inhibitor of muscarinic receptors. Clinical studies have showed heart rate improvement in patients with acute bradycardia and SND, including secondary to myocardial infarction (138; 139). Atropine is also used for diagnostic evaluation of SND (140; 141). However, some adverse effects have been reported with atropine, including tachycardia and psychotic states (138; 141). Theophylline and aminophylline belong to the pharmaceutical class of methylxanthines. Theophylline in particular, is probably the most widely used drug to handle SND under out of hospital settings. The beneficial effect of methylxanthines

in improving heart rate is attributed to their blocking action on adenosine receptors (142), which could make these drugs suitable in handling bradycardia in post-transplantation hearts (143; 144) and following spinal cord injury (145). In a limited clinical study, theophylline has also showed improvement of heart rate, without significant adverse effects, which prevented PPM (146).

Drug intoxication constitutes an additional challenge for pharmacologic handling of bradycardia attributable to SND (4). Frontline treatment of SND following intoxication with β -blockers, Ca^{2+} channels blockers and digitalis (digoxin) exist. Intoxication with β -blockers can be handled by administration of glucagon, which stimulates hepatic adenylate cyclase leading to increased glycolysis. No systematic clinical studies including cohorts of patients is available to validate the use of glucagon for SND secondary to intoxication with β -blockers (147). However, available data support the concept of antagonizing the effect of β -blockers and Ca^{2+} channels blockers using glucagon or insulin to improve heart rate in patients' SND symptoms (148). Finally, intravenous bolus of calcium-gluconate can be used to oppose to the effects of Ca^{2+} channels blockers such as verapamil or amlodipine (4; 148). Digoxin intoxication induces complex arrhythmia pattern and bradyarrhythmia (149). Digoxin is a poorly dialyzable drug consequently, treatment of SND secondary to glycoside intoxication is applied using specific anti-digoxin antibodies (150). Immunotherapy against digoxin intoxication is effective in improving heart rate, with relative low associated mortality (151).

New pharmacologic targets to SND in animal models

Recently, it has also been possible to test new potential pharmacologic approaches to SND by targeting GIRK channels. Our group has tested this hypothesis by crossing *Girk4*^{-/-} mice with mice in which I_f conductance has been genetically silenced (25). Genetic ablation of I_{KACb} effectively rescued SND and atrioventricular dysfunction in these double-mutant mice and prevented also SND-associated ventricular arrhythmia (25). Interestingly, isoproterenol was effective in elevating the heart rate of these mice, but failed to correct SND hallmarks such as sinus pauses and atrioventricular dysfunction (25), suggesting that direct inhibition of I_{KACb} could be a more effective strategy than catecholaminergic stimulation. Furthermore, genetic ablation of I_{KACb} was effective in rescuing SND and atrioventricular dysfunction also in SANDD *Cav1.3*^{-/-} mice (26). Rescuing of SND is observed also by direct inhibition of I_{KACb} by tertiapine-Q (**Figure 3**). This phenomenon of “compensatory” genetic or pharmacologic targeting of I_{KACb} can provide new therapeutic option for SND in the future (26; 152) (see also Supplementary Appendix 3).

While no primary forms of SND linked to K_{Ca} channels have been described to date, evidence indicating that the activity of these channels can contribute to arrhythmia, atrioventricular dysfunction and SND exists. Global deletion of SK2 channels in mice is pro-arrhythmic and induces atrioventricular block (74; 153), thus suggesting that the alteration of SK current could lead to SND. Consistent with this hypothesis, it was shown that pharmacological inhibition of SK current recovers tachycardia-bradycardia syndrome in a model of Ca^{2+} overload caused by NCX1 deletion (32). Similarly, selective inhibition of the IK isoform SK4 was sufficient to reduce delayed afterdepolarizations and arrhythmic Ca^{2+} transients in a CPVT model (31). Mechanistically, hyperactivation of SK or IK channels in these models could lead to the hyperpolarization of SAN cells, as it has been shown in a model of neurons (154). Consistent with this hypothesis, selective inhibition of SK4 channels rescued SAN arrhythmia and SND, suggesting that the family of KCa channels could be an additional pharmacologic target to treat SND.

Human SAN as model of SND

The human SAN complex is a specialized and heterogeneous intramural 3D structure with multiple intranodal pacemakers and several specialized sinoatrial conduction pathways (SACPs), which are responsible for the transmission of electrical impulses to the right atrium (155; 156). The human SAN pacemaker-conduction complex relies heavily on a sophisticated machinery of multiple molecular pathways that communicate within the 3D structure in order to efficiently maintain physiologically relevant heart rate (**Figure 4**)(49; 66). However, there is a paucity of studies addressing mechanisms that contribute to automaticity and intranodal conduction directly in the human SAN complex at the molecular, cellular, and tissue levels (29).

Disease-induced remodeling of many of the molecular components critical to SAN function can lead to SND in humans (27; 156; 157). However, the majority of these molecular components critical to SAN function have been studied only in animal models, which may have significantly different functional and anatomical features compared to the human SAN, especially when studying aged and/or diseased human SAN with SND. The development of optimal treatments for SND will require in-depth knowledge of the mechanisms involved in robust human SAN rhythm regulation. However, substantial gaps exist in data on SAN functions obtained directly from the human SAN (157; 158), and considerable understanding is inferred from animal models, which may not reproduce the human clinical SND phenomena (156), or from clinical electrogram recordings that are restricted only to the atrial surface (155; 159).

Recent studies of the *ex vivo* human heart (49; 66; 160) directly address these limitations (**Figure 4 and Supplementary Figure 4**). These studies of the *ex-vivo* human heart (49; 161) provide a unique opportunity to reinvent the translational study of human cardiac disease by applying state-of-the-art intramural mapping techniques consisting of near-infrared optical mapping (27; 29; 66; 161), 3D structural imaging (49; 160), and molecular mapping (59) to resolve mechanisms of human SAN function in normal and diseased hearts which are not possible *in-vivo*. To establish the efficient use of explanted human hearts with intact SANs, a rigorous and robust state-of-the-art approach has been developed to investigate e human hearts (with and without arrhythmia including SND) with 3D integrative approaches under *ex vivo* physiological conditions. Explanted human chronic failing hearts are acquired alive from the OSU cardiac transplantation program. Donor hearts with and without cardiac diseases and comorbidities (e.g. hypertension, diabetes and history of chronic smoke and alcohol consumption/abuse) are collected from LifeLine of Ohio, local organ donation organization (161).

These multidisciplinary integrated approaches have identified that SND may be orchestrated by (i) heterogeneous fibrotic structural remodeling in SACPs (49; 133; 160), (ii) compartment specific molecular remodeling in I_f pacemaker channels (HCN1/HCN2/HCN4)(59) and/or (iii) adenosine A1 receptor and I_{KAdo} (GIRK1/GIRK4) (**Supplementary Figure 4**) (27; 29; 161) and/or (iv) neuronal (n)Nav (nNav1.6) and cNav1.5 isoforms in human SAN (66). Recent, optical mapping studies revealed that unlike cNav, nNav may predominantly contribute to SAN intranodal conduction, rather than atrial conduction. On the other hand, cNav play important roles in both SAN pacemaking and conduction, especially during adenosine or atrial pacing challenges to prevent intranodal conduction failure. Impairment of Nav can lead to SAN exit block, disorganized intranodal pacemakers, and SAN micro- and macro-reentry. Furthermore, these functional observations are supported by higher expression of nNav (Nav1.1 and Nav1.6) and lower expression of cNav1.5 in human SAN pacemaker cells versus the surrounding atrial myocardium. Importantly, several nNav transcripts were vulnerable to cardiac remodeling associated with heart failure, cardiac hypertrophy and modifying risk factors including history of chronic alcohol consumption, which could promote a substrate for SAN arrhythmias (66).

From a clinical perspective, *ex-vivo* human SAN studies (66) highlight limiting the use of drugs that may block nNav channels especially when vagal tone is high, or in heart failure (162) and atrial fibrillation (163) patients with high plasma levels of adenosine. Furthermore, the *ex-vivo* human studies also suggest that region-specific SAN disease remodeling, such as fibrotic infiltration (133), significantly contribute to the intrinsic region-specific SAN conduction abnormalities, and arrhythmias (**Figure 4**). Disease-induced structural remodeling may exacerbate region-specific conduction abnormalities induced by both Nav blockers (66) and adenosine through GIRK channels and predispose to SND (**Supplementary Figure 4**). As such specific GIRK4 channel blockers (e.g. Tertiapin-Q) can prevent SAN pacemaker arrest and exit block induced by adenosine and parasympathetic hyperactivity and eventually be used in patients with atrial fibrillation and SND (29).

In summary, integrative *ex-vivo* human SAN studies revealed that the availability of multiple redundant structural compartments (intranodal pacemakers and SACPs) and molecular components in the human SAN are important backup mechanisms to robustly protect SAN conduction and pacemaking, and prevent rhythm failure and SND, in the context of multiple disease-induced conduction impairments (29; 133; 160).

Conclusions and perspectives

The development of new pharmacologic and molecular strategies to handle chronic primary and secondary forms of SND has been complicated by a lack of knowledge about the mechanisms underlying this complex pathology. However, new and unexpected mechanisms of SND have been described during the last years using human genetics, animal models of SND, as well as *ex vivo* SAN from human hearts with history of secondary SND. These investigations have indicated potentially innovative pharmacologic targets to manage SND such as GIRK and SK channels. Furthermore, exploring animal models of SND and human SAN may help redirect the application of antiarrhythmic drugs and create innovative therapies for concomitant control of SND and associated arrhythmias. We expect that additional new SND mechanisms will be unraveled in the coming years with extensive functional genomics exploration of primary familial SND and development of new cellular and animal models of secondary forms of SND.

Acknowledgments

The IGF group is a member of the Laboratory of Excellence “Ion Channel Science and Therapeutics” supported by a grant from ANR (ANR-11-LABX-0015). Research supported by the *Fondation pour la Recherche Medicale* "Physiopathologie Cardiovasculaire" (DPC20171138970, M.E.M.), by the *Agence Nationale de la Recherche* (ANR-15-CE14-0004-01, M.E.M.). Work in Ohio State was supported by NIH HL115580 and HL135109 (VVF), HL135096 (TJH), HL134824 (TJH and PJM), HL135754 (PJM) and by funding from the Bob and Corrine Frick Center for Heart Failure and Arrhythmia Research. We thank the Lifeline of Ohio Organ Procurement Organization and the Division of Cardiac Surgery at The OSU Wexner Medical Center for providing the explanted hearts. We also thank the *Fondation Leducq* (TNE 19CVD03 to M.E.M and P.J.M.) for supporting the “Fighting Against Sinus Node Dysfunction and Associated Arrhythmias” (FANTASY) network.

Literature Cited

1. Boyett MR, Honjo H, Kodama I. 2000. The sinoatrial node, a heterogeneous pacemaker structure. *Cardiovasc Res* 47:658-87
2. Mangoni ME, Nargeot J. 2008. Genesis and regulation of the heart automaticity. *Physiol Rev* 88:919-82
3. Lamas GA, Lee K, Sweeney M, Leon A, Yee R, et al. 2000. The mode selection trial (MOST) in sinus node dysfunction: design, rationale, and baseline characteristics of the first 1000 patients. *Am Heart J* 140:541-51
4. Kusumoto FM, Schoenfeld MH, Barrett C, Edgerton JR, Ellenbogen KA, et al. 2018. 2018 ACC/AHA/HRS Guideline on the Evaluation and Management of Patients With Bradycardia and Cardiac Conduction Delay: Executive Summary: A Report of the American College of Cardiology/American Heart Association Task Force on Clinical Practice Guidelines, and the Heart Rhythm Society. *J Am Coll Cardiol*
5. Brignole M, Auricchio A, Baron-Esquivias G, Bordachar P, Boriani G, et al. 2013. 2013 ESC Guidelines on cardiac pacing and cardiac resynchronization therapy: the Task Force on cardiac pacing and resynchronization therapy of the European Society of Cardiology (ESC). Developed in collaboration with the European Heart Rhythm Association (EHRA). *Eur Heart J* 34:2281-329
6. Rodriguez RD, Schocken DD. 1990. Update on sick sinus syndrome, a cardiac disorder of aging. *Geriatrics* 45:26-30, 3-6
7. Jensen PN, Gronroos NN, Chen LY, Folsom AR, deFilippi C, et al. 2014. Incidence of and risk factors for sick sinus syndrome in the general population. *J Am Coll Cardiol* 64:531-8
8. Greenspon AJ, Patel JD, Lau E, Ochoa JA, Frisch DR, et al. 2012. Trends in permanent pacemaker implantation in the United States from 1993 to 2009: increasing complexity of patients and procedures. *J Am Coll Cardiol* 60:1540-5
9. Schulze-Bahr E, Neu A, Friederich P, Kaupp UB, Breithardt G, et al. 2003. Pacemaker channel dysfunction in a patient with sinus node disease. *J Clin Invest* 111:1537-45
10. Milanesi R, Baruscotti M, Gnecci-Ruscone T, DiFrancesco D. 2006. Familial sinus bradycardia associated with a mutation in the cardiac pacemaker channel. *N Engl J Med* 354:151-7
11. Milano A, Vermeer AM, Lodder EM, Barc J, Verkerk AO, et al. 2014. HCN4 mutations in multiple families with bradycardia and left ventricular noncompaction cardiomyopathy. *J Am Coll Cardiol* 64:745-56
12. Schweizer PA, Schroter J, Greiner S, Haas J, Yampolsky P, et al. 2014. The symptom complex of familial sinus node dysfunction and myocardial noncompaction is associated with mutations in the HCN4 channel. *J Am Coll Cardiol* 64:757-67
13. Schweizer PA, Duhme N, Thomas D, Becker R, Zehelein J, et al. 2010. cAMP sensitivity of HCN pacemaker channels determines basal heart rate but is not critical for autonomic rate control. *Circ Arrhythm Electrophysiol* 3:542-52
14. Baig SM, Koschak A, Lieb A, Gebhart M, Dafinger C, et al. 2011. Loss of Ca(v)1.3 (CACNA1D) function in a human channelopathy with bradycardia and congenital deafness. *Nat Neurosci* 14:77-84
15. Liaqat K, Schrauwen I, Raza SI, Lee K, Hussain S, et al. 2019. Identification of CACNA1D variants associated with sinoatrial node dysfunction and deafness in additional Pakistani families reveals a clinical significance. *J Hum Genet* 64:153-60
16. Kuss J, Stallmeyer B, Goldstein M, Rinne S, Pees C, et al. 2019. Familial Sinus Node Disease Caused by a Gain of GIRK (G-Protein Activated Inwardly Rectifying K(+) Channel) Channel Function. *Circ Genom Precis Med* 12:e002238

17. Stallmeyer B, Kuss J, Kotthoff S, Zumhagen S, Vowinkel K, et al. 2017. A Mutation in the G-Protein Gene GNB2 Causes Familial Sinus Node and Atrioventricular Conduction Dysfunction. *Circ Res* 120:e33-e44
18. Lodder EM, De Nittis P, Koopman CD, Wiszniewski W, Moura de Souza CF, et al. 2016. GNB5 Mutations Cause an Autosomal-Recessive Multisystem Syndrome with Sinus Bradycardia and Cognitive Disability. *Am J Hum Genet* 99:704-10
19. Veldkamp MW, Wilders R, Baartscheer A, Zegers JG, Bezzina CR, Wilde AA. 2003. Contribution of sodium channel mutations to bradycardia and sinus node dysfunction in LQT3 families. *Circ Res* 92:976-83
20. Smits JP, Koopmann TT, Wilders R, Veldkamp MW, Opthof T, et al. 2005. A mutation in the human cardiac sodium channel (E161K) contributes to sick sinus syndrome, conduction disease and Brugada syndrome in two families. *J Mol Cell Cardiol* 38:969-81
21. Ackerman MJ, Priori SG, Willems S, Berul C, Brugada R, et al. 2011. HRS/EHRA expert consensus statement on the state of genetic testing for the channelopathies and cardiomyopathies: this document was developed as a partnership between the Heart Rhythm Society (HRS) and the European Heart Rhythm Association (EHRA). *Europace* 13:1077-109
22. Le Scouarnec S, Bhasin N, Vieyres C, Hund TJ, Cunha SR, et al. 2008. Dysfunction in ankyrin-B-dependent ion channel and transporter targeting causes human sinus node disease. *Proc Natl Acad Sci U S A* 105:15617-22
23. Holm H, Gudbjartsson DF, Arnar DO, Thorleifsson G, Thorgeirsson G, et al. 2010. Several common variants modulate heart rate, PR interval and QRS duration. *Nat Genet* 42:117-22
24. Ishikawa T, Tsuji Y, Makita N. 2016. Inherited bradyarrhythmia: A diverse genetic background. *J Arrhythm* 32:352-8
25. Mesirca P, Alig J, Torrente AG, Muller JC, Marger L, et al. 2014. Cardiac arrhythmia induced by genetic silencing of 'funny' (f) channels is rescued by GIRK4 inactivation. *Nat Commun* 5:4664
26. Mesirca P, Bidaud I, Briec F, Evain S, Torrente AG, et al. 2016. G protein-gated IKACH channels as therapeutic targets for treatment of sick sinus syndrome and heart block. *Proc Natl Acad Sci U S A* 113:E932-41
27. Lou Q, Hansen BJ, Fedorenko O, Csepe TA, Kalyanasundaram A, et al. 2014. Upregulation of adenosine A1 receptors facilitates sinoatrial node dysfunction in chronic canine heart failure by exacerbating nodal conduction abnormalities revealed by novel dual-sided intramural optical mapping. *Circulation* 130:315-24
28. Long VP, 3rd, Bonilla IM, Baine S, Glynn P, Kumar S, et al. 2020. Chronic heart failure increases negative chronotropic effects of adenosine in canine sinoatrial cells via A1R stimulation and GIRK-mediated IKado. *Life Sci* 240:117068
29. Li N, Hansen BJ, Csepe TA, Zhao J, Ignozzi AJ, et al. 2017. Redundant and diverse intranodal pacemakers and conduction pathways protect the human sinoatrial node from failure. *Sci Transl Med* 9:eaam 5607
30. Weisbrod D, Peretz A, Ziskind A, Menaker N, Oz S, et al. 2013. SK4 Ca²⁺ activated K⁺ channel is a critical player in cardiac pacemaker derived from human embryonic stem cells. *Proc Natl Acad Sci U S A* 110:E1685-94
31. Haron-Khun S, Weisbrod D, Bueno H, Yadin D, Behar J, et al. 2017. SK4 K(+) channels are therapeutic targets for the treatment of cardiac arrhythmias. *EMBO Mol Med* 9:415-29
32. Torrente AG, Zhang R, Wang H, Zaini A, Kim B, et al. 2017. Contribution of small conductance K⁺ channels to sinoatrial node pacemaker activity: insights from atrial-specific Na⁺ /Ca²⁺ exchange knockout mice. *J Physiol*
33. Adan V, Crown LA. 2003. Diagnosis and treatment of sick sinus syndrome. *Am Fam Physician* 67:1725-32
34. Ferrer MI. 1968. The sick sinus syndrome in atrial disease. *JAMA* 206:645-6
35. Bigger JT, Jr., Reiffel JA. 1979. Sick sinus syndrome. *Annu Rev Med* 30:91-118
36. Mangrum JM, DiMarco JP. 2000. The evaluation and management of bradycardia. *N Engl J Med* 342:703-9
37. Page RL, Joglar JA, Caldwell MA, Calkins H, Conti JB, et al. 2016. 2015 ACC/AHA/HRS Guideline for the Management of Adult Patients With Supraventricular Tachycardia: A Report of the American College of Cardiology/American Heart Association Task Force on Clinical Practice Guidelines and the Heart Rhythm Society. *Circulation* 133:e506-74

38. Lown B. 1967. Electrical reversion of cardiac arrhythmias. *Br Heart J* 29:469-89
39. Brubaker PH, Kitzman DW. 2011. Chronotropic incompetence: causes, consequences, and management. *Circulation* 123:1010-20
40. Menozzi C, Brignole M, Alboni P, Boni L, Paparella N, et al. 1998. The natural course of untreated sick sinus syndrome and identification of the variables predictive of unfavorable outcome. *Am J Cardiol* 82:1205-9
41. John RM, Kumar S. 2016. Sinus Node and Atrial Arrhythmias. *Circulation* 133:1892-900
42. Alonso A, Jensen PN, Lopez FL, Chen LY, Psaty BM, et al. 2014. Association of sick sinus syndrome with incident cardiovascular disease and mortality: the Atherosclerosis Risk in Communities study and Cardiovascular Health Study. *PLoS One* 9:e109662
43. Verheijck EE, Wessels A, van Ginneken AC, Bourrier J, Markman MW, et al. 1998. Distribution of atrial and nodal cells within the rabbit sinoatrial node: models of sinoatrial transition. *Circulation* 97:1623-31
44. De Maziere AM, van Ginneken AC, Wilders R, Jongsma HJ, Bouman LN. 1992. Spatial and functional relationship between myocytes and fibroblasts in the rabbit sinoatrial node. *J Mol Cell Cardiol* 24:567-78
45. Linscheid N, Logantha S, Poulsen PC, Zhang S, Schrolkamp M, et al. 2019. Quantitative proteomics and single-nucleus transcriptomics of the sinus node elucidates the foundation of cardiac pacemaking. *Nat Commun* 10:2889
46. ten Velde I, de Jonge B, Verheijck EE, van Kempen MJ, Analbers L, et al. 1995. Spatial distribution of connexin43, the major cardiac gap junction protein, visualizes the cellular network for impulse propagation from sinoatrial node to atrium. *Circ Res* 76:802-11
47. Verheijck EE, van Kempen MJ, Veereschild M, Lurvink J, Jongsma HJ, Bouman LN. 2001. Electrophysiological features of the mouse sinoatrial node in relation to connexin distribution. *Cardiovasc Res* 52:40-50
48. Boyett MR, Inada S, Yoo S, Li J, Liu J, et al. 2006. Connexins in the sinoatrial and atrioventricular nodes. *Adv Cardiol* 42:175-97
49. Csepe TA, Zhao J, Hansen BJ, Li N, Sul LV, et al. 2016. Human sinoatrial node structure: 3D microanatomy of sinoatrial conduction pathways. *Prog Biophys Mol Biol* 120:164-78
50. Bouman LN, Duivenvoorden JJ, Bukauskas FF, Jongsma HJ. 1989. Anisotropy of electrotonus in the sinoatrial node of the rabbit heart. *J Mol Cell Cardiol* 21:407-18
51. Dobrzynski H, Li J, Tellez J, Greener ID, Nikolski VP, et al. 2005. Computer Three-Dimensional Reconstruction of the Sinoatrial Node. *Circulation*
52. Lakatta EG, Maltsev VA, Vinogradova TM. 2010. A coupled SYSTEM of intracellular Ca²⁺ clocks and surface membrane voltage clocks controls the timekeeping mechanism of the heart's pacemaker. *Circ Res* 106:659-73
53. Wickman K, Nemeč J, Gendler SJ, Clapham DE. 1998. Abnormal heart rate regulation in GIRK4 knockout mice. *Neuron* 20:103-14
54. Monfredi O, Maltsev VA, Lakatta EG. 2013. Modern concepts concerning the origin of the heartbeat. *Physiology (Bethesda)* 28:74-92
55. DiFrancesco D. 2010. The role of the funny current in pacemaker activity. *Circ Res* 106:434-46
56. DiFrancesco D, Tortora P. 1991. Direct activation of cardiac pacemaker channels by intracellular cyclic AMP. *Nature* 351:145-7
57. DiFrancesco D, Mangoni M. 1994. Modulation of single hyperpolarization-activated channels (i(f)) by cAMP in the rabbit sino-atrial node. *J Physiol* 474:473-82
58. Shi W, Wymore R, Yu H, Wu J, Wymore RT, et al. 1999. Distribution and prevalence of hyperpolarization-activated cation channel (HCN) mRNA expression in cardiac tissues. *Circ Res* 85:e1-6
59. Li N, Csepe TA, Hansen BJ, Dobrzynski H, Higgins RS, et al. 2015. Molecular Mapping of Sinoatrial Node HCN Channel Expression in the Human Heart. *Circ Arrhythm Electrophysiol* 8:1219-27
60. Mangoni ME, Traboulsie A, Leoni AL, Couette B, Marger L, et al. 2006. Bradycardia and slowing of the atrioventricular conduction in mice lacking Ca_v3.1/alpha1G T-type calcium channels. *Circ Res* 98:1422-30
61. Mangoni ME, Couette B, Bourinet E, Platzer J, Reimer D, et al. 2003. Functional role of L-type Cav1.3 Ca²⁺ channels in cardiac pacemaker activity. *Proc Natl Acad Sci U S A* 100:5543-8

62. Torrente AG, Mesirca P, Neco P, Rizzetto R, Dubel S, et al. 2016. L-type Cav1.3 channels regulate ryanodine receptor-dependent Ca²⁺ release during sino-atrial node pacemaker activity. *Cardiovasc Res* 109:451-61
63. Maier SK, Westenbroek RE, Yamanushi TT, Dobrzynski H, Boyett MR, et al. 2003. An unexpected requirement for brain-type sodium channels for control of heart rate in the mouse sinoatrial node. *Proc Natl Acad Sci U S A* 100:3507-12
64. Baruscotti M, DiFrancesco D, Robinson RB. 1996. A TTX-sensitive inward sodium current contributes to spontaneous activity in newborn rabbit sino-atrial node cells. *J Physiol* 492 (Pt 1):21-30
65. Lei M, Jones SA, Liu J, Lancaster MK, Fung SS, et al. 2004. Requirement of neuronal- and cardiac-type sodium channels for murine sinoatrial node pacemaking. *J Physiol* 559:835-48
66. Li N, Kalyanasundaram A, Hansen BJ, Artiga EJ, Sharma R, et al. 2020. Impaired neuronal sodium channels cause intranodal conduction failure and reentrant arrhythmias in human sinoatrial node. *Nat Commun* 11:512
67. Demion M, Bois P, Launay P, Guinamard R. 2007. TRPM4, a Ca(2+)-activated nonselective cation channel in mouse sino-atrial node cells. *Cardiovasc Res* 73:531-8
68. Sah R, Mesirca P, Van den Boogert M, Rosen J, Mably J, et al. 2013. Ion channel-kinase TRPM7 is required for maintaining cardiac automaticity. *Proc Natl Acad Sci U S A* 110:E3037-46
69. Ju YK, Chu Y, Chaulet H, Lai D, Gervasio OL, et al. 2007. Store-operated Ca²⁺ influx and expression of TRPC genes in mouse sinoatrial node. *Circ Res* 100:1605-14
70. Sah R, Mesirca P, Mason X, Gibson W, Bates-Withers C, et al. 2013. Timing of myocardial trpm7 deletion during cardiogenesis variably disrupts adult ventricular function, conduction, and repolarization. *Circulation* 128:101-14
71. Lai MH, Wu Y, Gao Z, Anderson ME, Dalziel JE, Meredith AL. 2014. BK channels regulate sinoatrial node firing rate and cardiac pacing in vivo. *Am J Physiol Heart Circ Physiol* 307:H1327-38
72. Chen WT, Chen YC, Lu YY, Kao YH, Huang JH, et al. 2013. Apamin modulates electrophysiological characteristics of the pulmonary vein and the Sinoatrial Node. *Eur J Clin Invest* 43:957-63
73. Gueguinou M, Chantome A, Fromont G, Bougnoux P, Vandier C, Potier-Cartereau M. 2014. KCa and Ca(2+) channels: the complex thought. *Biochim Biophys Acta* 1843:2322-33
74. Zhang Q, Timofeyev V, Lu L, Li N, Singapuri A, et al. 2008. Functional roles of a Ca²⁺-activated K⁺ channel in atrioventricular nodes. *Circ Res* 102:465-71
75. Zhang XD, Coulibaly ZA, Chen WC, Ledford HA, Lee JH, et al. 2018. Coupling of SK channels, L-type Ca(2+) channels, and ryanodine receptors in cardiomyocytes. *Sci Rep* 8:4670
76. Monfredi O, Boyett MR. 2015. Sick sinus syndrome and atrial fibrillation in older persons - A view from the sinoatrial nodal myocyte. *J Mol Cell Cardiol*
77. Monfredi O, Dobrzynski H, Mondal T, Boyett MR, Morris GM. 2010. The anatomy and physiology of the sinoatrial node--a contemporary review. *Pacing Clin Electrophysiol* 33:1392-406
78. Rezazadeh S, Duff HJ. 2017. Genetic Determinants of Hereditary Bradyarrhythmias: A Contemporary Review of a Diverse Group of Disorders. *Can J Cardiol* 33:758-67
79. Benson DW, Wang DW, Dymment M, Knilans TK, Fish FA, et al. 2003. Congenital sick sinus syndrome caused by recessive mutations in the cardiac sodium channel gene (SCN5A). *J Clin Invest* 112:1019-28
80. Wolf CM, Berul CI. 2006. Inherited conduction system abnormalities--one group of diseases, many genes. *J Cardiovasc Electrophysiol* 17:446-55
81. Zhang Q, Timofeyev V, Qiu H, Lu L, Li N, et al. 2011. Expression and roles of Cav1.3 (alpha1D) L-type Ca(2)+ channel in atrioventricular node automaticity. *J Mol Cell Cardiol* 50:194-202
82. Marger L, Mesirca P, Alig J, Torrente A, Dubel S, et al. 2011. Functional roles of Ca(v)1.3, Ca(v)3.1 and HCN channels in automaticity of mouse atrioventricular cells: insights into the atrioventricular pacemaker mechanism. *Channels (Austin)* 5:251-61
83. Zhang Z, He Y, Tuteja D, Xu D, Timofeyev V, et al. 2005. Functional roles of Cav1.3(alpha1D) calcium channels in atria: insights gained from gene-targeted null mutant mice. *Circulation* 112:1936-44
84. Boutjdir M. 2000. Molecular and ionic basis of congenital complete heart block. *Trends Cardiovasc Med* 10:114-22

85. Qu Y, Xiao GQ, Chen L, Boutjdir M. 2001. Autoantibodies from mothers of children with congenital heart block downregulate cardiac L-type Ca channels. *J Mol Cell Cardiol* 33:1153-63
86. Qu Y, Baroudi G, Yue Y, Boutjdir M. 2005. Novel molecular mechanism involving alpha1D (Cav1.3) L-type calcium channel in autoimmune-associated sinus bradycardia. *Circulation* 111:3034-41
87. Strandberg LS, Cui X, Rath A, Liu J, Silverman ED, et al. 2013. Congenital heart block maternal sera autoantibodies target an extracellular epitope on the alpha1G T-type calcium channel in human fetal hearts. *PLoS One* 8:e72668
88. Liu H, El Zein L, Kruse M, Guinamard R, Beckmann A, et al. 2010. Gain-of-function mutations in TRPM4 cause autosomal dominant isolated cardiac conduction disease. *Circ Cardiovasc Genet* 3:374-85
89. den Hoed M, Eijgelsheim M, Esko T, Brundel BJ, Peal DS, et al. 2013. Identification of heart rate-associated loci and their effects on cardiac conduction and rhythm disorders. *Nat Genet* 45:621-31
90. Vatta M, Ackerman MJ, Ye B, Makielski JC, Ughanze EE, et al. 2006. Mutant caveolin-3 induces persistent late sodium current and is associated with long-QT syndrome. *Circulation* 114:2104-12
91. Yamada N, Asano Y, Fujita M, Yamazaki S, Inanobe A, et al. 2019. Mutant KCNJ3 and KCNJ5 Potassium Channels as Novel Molecular Targets in Bradyarrhythmias and Atrial Fibrillation. *Circulation* 139:2157-69
92. Bhuiyan ZA, van den Berg MP, van Tintelen JP, Bink-Boelkens MT, Wiesfeld AC, et al. 2007. Expanding spectrum of human RYR2-related disease: new electrocardiographic, structural, and genetic features. *Circulation* 116:1569-76
93. Postma AV, Denjoy I, Hoorntje TM, Lupoglazoff JM, Da Costa A, et al. 2002. Absence of calsequestrin 2 causes severe forms of catecholaminergic polymorphic ventricular tachycardia. *Circ Res* 91:e21-6
94. Postma AV, Denjoy I, Kamblock J, Alders M, Lupoglazoff JM, et al. 2005. Catecholaminergic polymorphic ventricular tachycardia: RYR2 mutations, bradycardia, and follow up of the patients. *J Med Genet* 42:863-70
95. Bezzina CR, Lahrouchi N, Priori SG. 2015. Genetics of sudden cardiac death. *Circ Res* 116:1919-36
96. Neco P, Torrente AG, Mesirca P, Zorio E, Liu N, et al. 2012. Paradoxical effect of increased diastolic Ca²⁺ release and decreased sinoatrial node activity in a mouse model of catecholaminergic polymorphic ventricular tachycardia. *Circulation* 126:392-401
97. Wang YY, Mesirca P, Marques-Sule E, Zahradnikova A, Jr., Villejoubert O, et al. 2017. RyR2R420Q catecholaminergic polymorphic ventricular tachycardia mutation induces bradycardia by disturbing the coupled clock pacemaker mechanism. *JCI Insight* 2
98. Holm H, Gudbjartsson DF, Sulem P, Masson G, Helgadóttir HT, et al. 2011. A rare variant in MYH6 is associated with high risk of sick sinus syndrome. *Nat Genet* 43:316-20
99. van Berlo JH, de Voogt WG, van der Kooij AJ, van Tintelen JP, Bonne G, et al. 2005. Meta-analysis of clinical characteristics of 299 carriers of LMNA gene mutations: do lamin A/C mutations portend a high risk of sudden death? *J Mol Med (Berl)* 83:79-83
100. Hoffmann S, Paone C, Sumer SA, Diebold S, Weiss B, et al. 2019. Functional Characterization of Rare Variants in the SHOX2 Gene Identified in Sinus Node Dysfunction and Atrial Fibrillation. *Front Genet* 10:648
101. Platzer J, Engel J, Schrott-Fischer A, Stephan K, Bova S, et al. 2000. Congenital deafness and sinoatrial node dysfunction in mice lacking class D L-type Ca²⁺ channels. *Cell* 102:89-97
102. Zhang Z, Xu Y, Song H, Rodriguez J, Tuteja D, et al. 2002. Functional Roles of Ca(v)1.3 (alpha(1D)) calcium channel in sinoatrial nodes: insight gained using gene-targeted null mutant mice. *Circ Res* 90:981-7.
103. Stieber J, Herrmann S, Feil S, Loster J, Feil R, et al. 2003. The hyperpolarization-activated channel HCN4 is required for the generation of pacemaker action potentials in the embryonic heart. *Proc Natl Acad Sci U S A* 100:15235-40
104. Herrmann S, Stieber J, Stockl G, Hofmann F, Ludwig A. 2007. HCN4 provides a 'depolarization reserve' and is not required for heart rate acceleration in mice. *Embo J* 26:4423-32

105. Baruscotti M, Bucchi A, Viscomi C, Mandelli G, Consalez G, et al. 2011. Deep bradycardia and heart block caused by inducible cardiac-specific knockout of the pacemaker channel gene *Hcn4*. *Proc Natl Acad Sci U S A* 108:1705-10
106. Fenske S, Krause SC, Hassan SI, Becirovic E, Auer F, et al. 2013. Sick sinus syndrome in *HCN1*-deficient mice. *Circulation* 128:2585-94
107. Lei M, Goddard C, Liu J, Leoni AL, Royer A, et al. 2005. Sinus node dysfunction following targeted disruption of the murine cardiac sodium channel gene *Scn5a*. *J Physiol* 567:387-400
108. Torrente AG, Zhang R, Zaini A, Giani JF, Kang J, et al. 2015. Burst pacemaker activity of the sinoatrial node in sodium-calcium exchanger knockout mice. *Proc Natl Acad Sci U S A* 112:9769-74
109. Glukhov AV, Kalyanasundaram A, Lou Q, Hage LT, Hansen BJ, et al. 2015. Calsequestrin 2 deletion causes sinoatrial node dysfunction and atrial arrhythmias associated with altered sarcoplasmic reticulum calcium cycling and degenerative fibrosis within the mouse atrial pacemaker complex1. *Eur Heart J* 36:686-97
110. Unudurthi SD, Wu X, Qian L, Amari F, Onal B, et al. 2016. Two-Pore K⁺ Channel TREK-1 Regulates Sinoatrial Node Membrane Excitability. *J Am Heart Assoc* 5:e002865
111. Hund TJ, Snyder JS, Wu X, Glynn P, Koval OM, et al. 2014. beta(IV)-Spectrin regulates TREK-1 membrane targeting in the heart. *Cardiovasc Res* 102:166-75
112. Froese A, Breher SS, Waldeyer C, Schindler RF, Nikolaev VO, et al. 2012. Popeye domain containing proteins are essential for stress-mediated modulation of cardiac pacemaking in mice. *J Clin Invest* 122:1119-30
113. Hof T, Simard C, Rouet R, Salle L, Guinamard R. 2013. Implication of the TRPM4 nonselective cation channel in mammalian sinus rhythm. *Heart Rhythm* 10:1683-9
114. Demion M, Thireau J, Gueffier M, Finan A, Khoueiry Z, et al. 2014. *Trpm4* gene invalidation leads to cardiac hypertrophy and electrophysiological alterations. *PLoS One* 9:e115256
115. Frank DU, Carter KL, Thomas KR, Burr RM, Bakker ML, et al. 2012. Lethal arrhythmias in *Tbx3*-deficient mice reveal extreme dosage sensitivity of cardiac conduction system function and homeostasis. *Proc Natl Acad Sci U S A* 109:E154-63
116. Nakashima Y, Yanez DA, Touma M, Nakano H, Jaroszewicz A, et al. 2014. *Nkx2-5* suppresses the proliferation of atrial myocytes and conduction system. *Circ Res* 114:1103-13
117. Qiao Y, Lipovsky C, Hicks S, Bhatnagar S, Li G, et al. 2017. Transient Notch Activation Induces Long-Term Gene Expression Changes Leading to Sick Sinus Syndrome in Mice. *Circ Res* 121:549-63
118. Swaminathan PD, Purohit A, Soni S, Voigt N, Singh MV, et al. 2011. Oxidized CaMKII causes cardiac sinus node dysfunction in mice. *J Clin Invest* 121:3277-88
119. Desai JM, Scheinman MM, Strauss HC, Massie B, O'Young J. 1981. Electrophysiologic effects on combined autonomic blockade in patients with sinus node disease. *Circulation* 63:953-60
120. Stein R, Medeiros CM, Rosito GA, Zimmerman LI, Ribeiro JP. 2002. Intrinsic sinus and atrioventricular node electrophysiologic adaptations in endurance athletes. *J Am Coll Cardiol* 39:1033-8
121. Andersen K, Farahmand B, Ahlbom A, Held C, Ljunghall S, et al. 2013. Risk of arrhythmias in 52 755 long-distance cross-country skiers: a cohort study. *Eur Heart J* 34:3624-31
122. Northcote RJ, Canning GP, Ballantyne D. 1989. Electrocardiographic findings in male veteran endurance athletes. *Br Heart J* 61:155-60
123. D'Souza A, Pearman CM, Wang Y, Nakao S, Logantha S, et al. 2017. Targeting miR-423-5p Reverses Exercise Training-Induced *HCN4* Channel Remodeling and Sinus Bradycardia. *Circ Res* 121:1058-68
124. D'Souza A, Bucchi A, Johnsen AB, Logantha SJ, Monfredi O, et al. 2014. Exercise training reduces resting heart rate via downregulation of the funny channel *HCN4*. *Nat Commun* 5:3775
125. Yeh YH, Burstein B, Qi XY, Sakabe M, Chartier D, et al. 2009. Funny current downregulation and sinus node dysfunction associated with atrial tachyarrhythmia: a molecular basis for tachycardia-bradycardia syndrome. *Circulation* 119:1576-85
126. Alboni P, Baggioni GF, Scarfo S, Cappato R, Percoco GF, et al. 1991. Role of sinus node artery disease in sick sinus syndrome in inferior wall acute myocardial infarction. *Am J Cardiol* 67:1180-4
127. Rokseth R, Hatle L. 1971. Sinus arrest in acute myocardial infarction. *Br Heart J* 33:639-42

128. Verkerk AO, Wilders R, Coronel R, Ravesloot JH, Verheijck EE. 2003. Ionic remodeling of sinoatrial node cells by heart failure. *Circulation* 108:760-6
129. Zicha S, Fernandez-Velasco M, Lonardo G, L'Heureux N, Nattel S. 2005. Sinus node dysfunction and hyperpolarization-activated (HCN) channel subunit remodeling in a canine heart failure model. *Cardiovasc Res* 66:472-81
130. Mackasey M, Egom EE, Jansen HJ, Hua R, Moghtadaei M, et al. 2018. Natriuretic Peptide Receptor-C Protects Against Angiotensin II-Mediated Sinoatrial Node Disease in Mice. *JACC Basic Transl Sci* 3:824-43
131. Luo M, Guan X, Luczak ED, Lang D, Kutschke W, et al. 2013. Diabetes increases mortality after myocardial infarction by oxidizing CaMKII. *J Clin Invest* 123:1262-74
132. Peters CH, Sharpe EJ, Proenza C. 2020. Cardiac Pacemaker Activity and Aging. *Annu Rev Physiol* 82:21-43
133. Csepe TA, Kalyanasundaram A, Hansen BJ, Zhao J, Fedorov VV. 2015. Fibrosis: a structural modulator of sinoatrial node physiology and dysfunction. *Front Physiol* 6:37
134. Thery C, Gosselin B, Lekieffre J, Warembourg H. 1977. Pathology of sinoatrial node. Correlations with electrocardiographic findings in 111 patients. *Am Heart J* 93:735-40
135. Larson ED, St Clair JR, Sumner WA, Bannister RA, Proenza C. 2013. Depressed pacemaker activity of sinoatrial node myocytes contributes to the age-dependent decline in maximum heart rate. *Proc Natl Acad Sci U S A* 110:18011-6
136. Cossu SF, Rothman SA, Chmielewski IL, Hsia HH, Vogel RL, et al. 1997. The effects of isoproterenol on the cardiac conduction system: site-specific dose dependence. *J Cardiovasc Electrophysiol* 8:847-53
137. Tisdale JE, Patel RV, Webb CR, Borzak S, Zarowitz BJ. 1995. Proarrhythmic effects of intravenous vasopressors. *Ann Pharmacother* 29:269-81
138. Scheinman MM, Thorburn D, Abbott JA. 1975. Use of atropine in patients with acute myocardial infarction and sinus bradycardia. *Circulation* 52:627-33
139. Warren JV, Lewis RP. 1976. Beneficial effects of atropine in the pre-hospital phase of coronary care. *Am J Cardiol* 37:68-72
140. Strauss HC, Bigger JT, Saroff AL, Giardina EG. 1976. Electrophysiologic evaluation of sinus node function in patients with sinus node dysfunction. *Circulation* 53:763-76
141. Swart G, Brady WJ, Jr., DeBehnke DJ, Ma OJ, Aufderheide TP. 1999. Acute myocardial infarction complicated by hemodynamically unstable bradyarrhythmia: prehospital and ED treatment with atropine. *Am J Emerg Med* 17:647-52
142. Lou Q, Glukhov AV, Hansen B, Hage L, Vargas-Pinto P, et al. 2013. Tachy-brady arrhythmias: the critical role of adenosine-induced sinoatrial conduction block in post-tachycardia pauses. *Heart Rhythm* 10:110-8
143. Bertolet BD, Eagle DA, Conti JB, Mills RM, Belardinelli L. 1996. Bradycardia after heart transplantation: reversal with theophylline. *J Am Coll Cardiol* 28:396-9
144. Rothman SA, Jeevanandam V, Seeber CP, Pina IL, Hsia HH, et al. 1995. Electrophysiologic effects of intravenous aminophylline in heart transplant recipients with sinus node dysfunction. *J Heart Lung Transplant* 14:429-35
145. Schulz-Stubner S. 2005. The use of small-dose theophylline for the treatment of bradycardia in patients with spinal cord injury. *Anesth Analg* 101:1809-11
146. Pasnoori VR, Leesar MA. 2004. Use of aminophylline in the treatment of severe symptomatic bradycardia resistant to atropine. *Cardiol Rev* 12:65-8
147. St-Onge M, Dube PA, Gosselin S, Guimont C, Godwin J, et al. 2014. Treatment for calcium channel blocker poisoning: a systematic review. *Clin Toxicol (Phila)* 52:926-44
148. Graudins A, Lee HM, Druda D. 2016. Calcium channel antagonist and beta-blocker overdose: antidotes and adjunct therapies. *Br J Clin Pharmacol* 81:453-61
149. Ma G, Brady WJ, Pollack M, Chan TC. 2001. Electrocardiographic manifestations: digitalis toxicity. *J Emerg Med* 20:145-52
150. Smith TW, Butler VP, Jr., Haber E, Fozzard H, Marcus FI, et al. 1982. Treatment of life-threatening digitalis intoxication with digoxin-specific Fab antibody fragments: experience in 26 cases. *N Engl J Med* 307:1357-62
151. Lapostolle F, Borron SW, Verdier C, Taboulet P, Guerrier G, et al. 2008. Digoxin-specific Fab fragments as single first-line therapy in digitalis poisoning. *Crit Care Med* 36:3014-8

152. Mesirca P, Bidaud I, Mangoni ME. 2016. Rescuing cardiac automaticity in L-type Cav1.3 channelopathies and beyond. *J Physiol* 594:5869-79
153. Li N, Timofeyev V, Tuteja D, Xu D, Lu L, et al. 2009. Ablation of a Ca²⁺-activated K⁺ channel (SK2 channel) results in action potential prolongation in atrial myocytes and atrial fibrillation. *J Physiol* 587:1087-100
154. Engel J, Schultens HA, Schild D. 1999. Small conductance potassium channels cause an activity-dependent spike frequency adaptation and make the transfer function of neurons logarithmic. *Biophys J* 76:1310-9
155. Boineau JP, Canavan TE, Schuessler RB, Cain ME, Corr PB, Cox JL. 1988. Demonstration of a widely distributed atrial pacemaker complex in the human heart. *Circulation* 77:1221-37
156. Fedorov VV, Glukhov AV, Chang R. 2012. Conduction barriers and pathways of the sinoatrial pacemaker complex: their role in normal rhythm and atrial arrhythmias. *Am J Physiol Heart Circ Physiol* 302:H1773-83
157. Chandler NJ, Greener ID, Tellez JO, Inada S, Musa H, et al. 2009. Molecular architecture of the human sinus node: insights into the function of the cardiac pacemaker. *Circulation* 119:1562-75
158. Verkerk AO, Wilders R, van Borren MM, Peters RJ, Broekhuis E, et al. 2007. Pacemaker current (I_f) in the human sinoatrial node. *Eur Heart J* 28:2472-8
159. Gomes JA, Winters SL. 1987. The origins of the sinus node pacemaker complex in man: demonstration of dominant and subsidiary foci. *J Am Coll Cardiol* 9:45-52
160. Csepe TA, Zhao J, Sul LV, Wang Y, Hansen BJ, et al. 2017. Novel application of 3D contrast-enhanced CMR to define fibrotic structure of the human sinoatrial node in vivo. *Eur Heart J Cardiovasc Imaging* 18:862-9
161. Li N, Csepe TA, Hansen BJ, Sul LV, Kalyanasundaram A, et al. 2016. Adenosine-Induced Atrial Fibrillation: Localized Reentrant Drivers in Lateral Right Atria due to Heterogeneous Expression of Adenosine A1 Receptors and GIRK4 Subunits in the Human Heart. *Circulation* 134:486-98
162. Funaya H, Kitakaze M, Node K, Minamino T, Komamura K, Hori M. 1997. Plasma adenosine levels increase in patients with chronic heart failure. *Circulation* 95:1363-5
163. Maille B, Marlinge M, Vairo D, Mottola G, Koutbi L, et al. 2019. Adenosine plasma level in patients with paroxysmal or persistent atrial fibrillation and normal heart during ablation procedure and/or cardioversion. *Purinergic Signal* 15:45-52
164. Kharche S, Yu J, Lei M, Zhang H. 2011. A mathematical model of action potentials of mouse sinoatrial node cells with molecular bases. *Am J Physiol Heart Circ Physiol* 301:H945-63

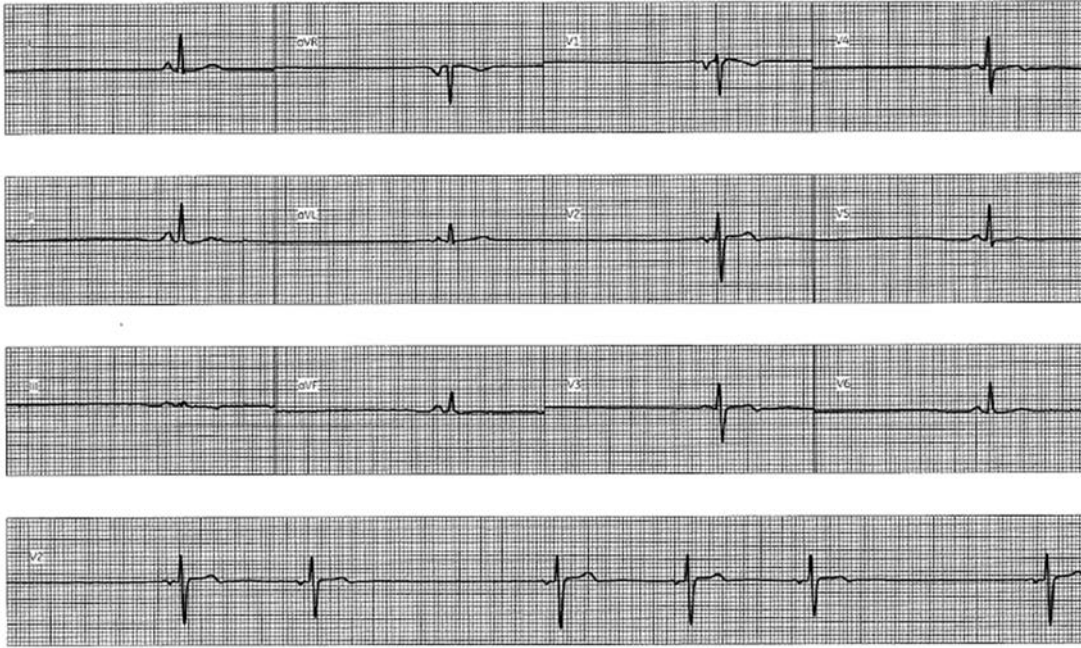


Figure 1. 12 lead ECG showing severe sinus bradycardia and rhythm strip showing sinus pauses as a manifestation of SND. Baseline heart rate was 45 bpm. Courtesy of Dr. Francis Marchlinski, University of Pennsylvania.

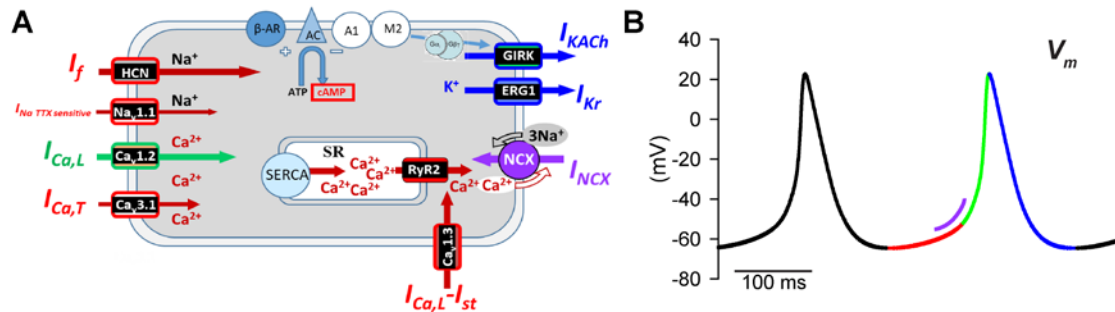


Figure 2. (A) Schematic of a sinoatrial node (SAN) pacemaker cell showing the main membrane bound receptors and ion channels together with RyR2, the SR calcium pump SERCA and the Na⁺/Ca²⁺ exchanger (NCX1). (B) Simulated transmembrane potential (V_m) during a spontaneous action potential (AP) generated by a computational model of the mouse SAN myocyte (164), with color-code corresponding to the major AP phases [colors also indicate corresponding underlying currents in (A)]: Diastolic depolarization (*red*), AP upstroke (*green*), repolarization (*blue*). See also the extended version of this Figure in the online Appendix (Supplementary Figure 2).

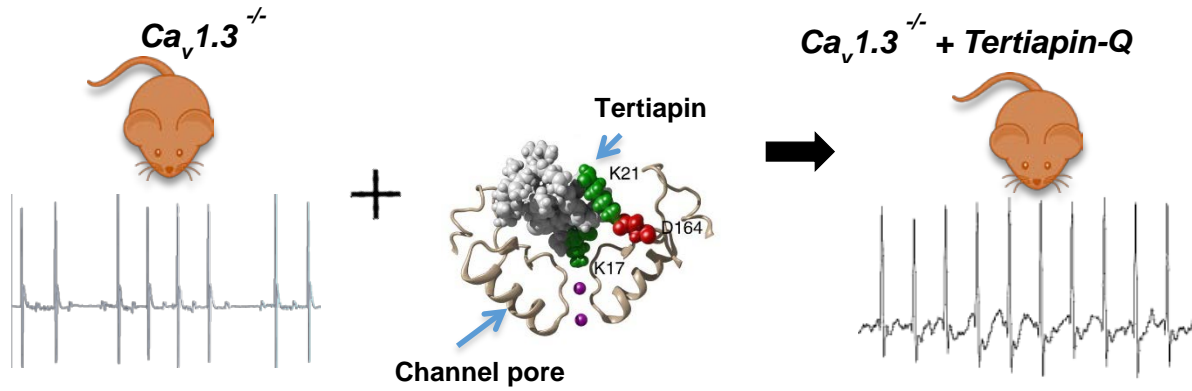
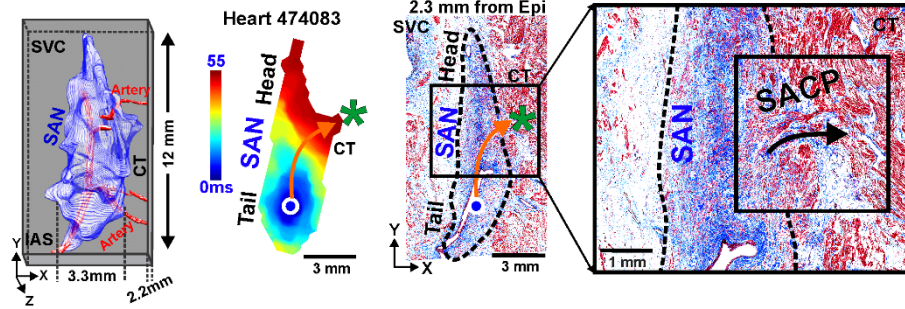


Figure 3. Rescuing of SND and atrioventricular dysfunction by I_{KACH} targeting. Tertiapine-Q rescues SND in $Ca_v1.3^{-/-}$ mice. Administration of the GIRK pore blocker tertiapin-Q (tertiapin, central panel) normalizes heart rate (right panel). The central panel shows a close up view of a structural model of tertiapin bound to the GIRK pore. K17 and D164 indicate residues important for peptide activity. Adapted from reference (35), with permission by Wiley and Son.

Non-Diseased SAN: Continuous SACPs Structure



SND SAN: Fibrotically Impaired SACPs and Exit Block

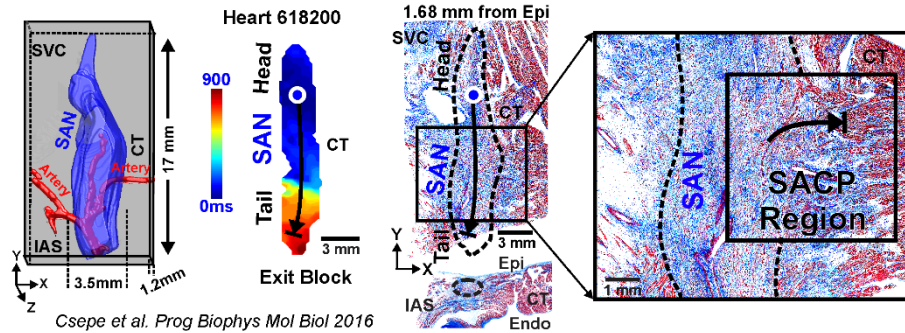


Figure 4. Functional and structural imaging of human SAN with history of SND

(Left to Right) 3D reconstruction of human SAN; SAN activation exciting atria (top, non-diseased) or exit block (bottom, SND); histology staining of SAN complex; magnified section of lateral middle SACP showing continuously coupled myocytes (top) or fibrotic disruptions (bottom). Epi-epicardium; Endo-endocardium. Region of intranodal conduction block coincided with strands of intranodal fibrosis and the SAN artery. CT-crista terminalis; IAS-interatrial septum; SAN-sinoatrial node; SANCP –SAN Conduction pathway; SVC-superior vena cava. *Adapted From Csepe et al., 2016. Progress in biophysics and molecular biology 120 (1-3), 164-178. (49)*