



HAL
open science

Metabarcoding: a powerful yet still underestimated approach for the comprehensive study of vector-borne pathogen transmission cycles and their dynamics

Anette Hernández-Andrade, Joel Moo-Millan, Nohemi Cigarroa-Toledo, Angel Ramos-Ligonio, Claudia Herrera, Bruno Bucheton, Jean-Mathieu Bart, Vincent Jamonneau, Anne-Laure Bañuls, Christophe Paupy, et al.

► **To cite this version:**

Anette Hernández-Andrade, Joel Moo-Millan, Nohemi Cigarroa-Toledo, Angel Ramos-Ligonio, Claudia Herrera, et al.. Metabarcoding: a powerful yet still underestimated approach for the comprehensive study of vector-borne pathogen transmission cycles and their dynamics. David Claborn; Sujit Bhattacharya; Syamal Roy. Vector-Borne Diseases - Recent Developments in Epidemiology and Control, IntechOpen, 2020, 978-1-83880-021-5. 10.5772/intechopen.89839 . hal-02958374

HAL Id: hal-02958374

<https://hal.science/hal-02958374>

Submitted on 19 Jan 2024

HAL is a multi-disciplinary open access archive for the deposit and dissemination of scientific research documents, whether they are published or not. The documents may come from teaching and research institutions in France or abroad, or from public or private research centers.

L'archive ouverte pluridisciplinaire **HAL**, est destinée au dépôt et à la diffusion de documents scientifiques de niveau recherche, publiés ou non, émanant des établissements d'enseignement et de recherche français ou étrangers, des laboratoires publics ou privés.

We are IntechOpen, the world's leading publisher of Open Access books Built by scientists, for scientists

6,700

Open access books available

182,000

International authors and editors

195M

Downloads

Our authors are among the

154

Countries delivered to

TOP 1%

most cited scientists

12.2%

Contributors from top 500 universities



WEB OF SCIENCE™

Selection of our books indexed in the Book Citation Index
in Web of Science™ Core Collection (BKCI)

Interested in publishing with us?
Contact book.department@intechopen.com

Numbers displayed above are based on latest data collected.
For more information visit www.intechopen.com



Chapter

Metabarcoding: A Powerful Yet Still Underestimated Approach for the Comprehensive Study of Vector-Borne Pathogen Transmission Cycles and Their Dynamics

Anette Hernández-Andrade, Joel Moo-Millan, Nohemi Cigarroa-Toledo, Angel Ramos-Ligonio, Claudia Herrera, Bruno Bucheton, Jean-Mathieu Bart, Vincent Jamonneau, Anne-Laure Bañuls, Christophe Paupy, David Roiz, Denis Sereno, Carlos N. Ibarra-Cerdeña, Carlos Machaín-Williams, Julián García-Rejón, Sébastien Gourbière, Christian Barnabé, Jenny Telleria, Bruno Oury, Frédérique Brenière, Frédéric Simard, Miguel Rosado, Philippe Solano, Eric Dumonteil and Etienne Waleckx

Abstract

The implementation of sustainable control strategies aimed at disrupting the transmission of vector-borne pathogens requires a comprehensive knowledge of the vector ecology in the different eco-epidemiological contexts, as well as the local pathogen transmission cycles and their dynamics. However, even when focusing only on one specific vector-borne disease, achieving this knowledge is highly challenging, as the pathogen may exhibit a high genetic diversity and multiple vector species or subspecies and host species may be involved. In addition, the development of the pathogen and the vectorial capacity of the vectors may be affected by their midgut and/or salivary gland microbiome. The recent advent of Next-Generation Sequencing (NGS) technologies has brought powerful tools that can allow for the simultaneous identification of all these essential components, although their potential is only just starting to be realized. We present a metabarcoding approach that can facilitate the description of comprehensive host-pathogen networks, integrate important microbiome and coinfection data, identify at-risk situations, and disentangle the transmission cycles of vector-borne pathogens.

This powerful approach should be generalized to unravel the transmission cycles of any pathogen and their dynamics, which in turn will help the design and implementation of sustainable, effective, and locally adapted control strategies.

Keywords: vector-borne diseases, transmission cycles, vector ecology, behavior, metabarcoding, next-generation sequencing (NGS), blood meals, microbiome, EcoHealth, One Health

1. Introduction

Vector-borne diseases affecting human health are caused by pathogens transmitted by “living organisms” between humans or from animals to humans. These “living organisms” are known as “vectors,” which generally are bloodsucking arthropods, such as mosquitoes, ticks, flies, sandflies, fleas, or triatomine bugs. These arthropods ingest disease-producing microorganisms during a blood meal from an infected host (human or animal) and later transmit it to a new host during their subsequent blood meals [1]. According to the World Health Organization (WHO), vector-borne diseases, such as malaria, dengue, human African trypanosomiasis, leishmaniasis, Chagas disease, yellow fever, Japanese encephalitis, or onchocerciasis, account for almost 20% of all infectious diseases worldwide. They cause more than 700,000 deaths annually, and more than half of the world’s population is estimated to be at risk of these diseases [1]. They are a major obstacle to development, and the poorest segments of societies and least-developed countries are the most affected. The most deadly vector-borne disease, malaria, causes more than 400,000 deaths annually, mainly children under 5 years. However, the world’s fastest-growing vector-borne disease is dengue, with a 30-fold increase in disease incidence over the last 50 years [1, 2]. Currently, there is an estimation of 96 million cases of dengue per year, and more than 3.9 billion people in over 128 countries are at risk of contracting this disease [1, 3]. Chagas disease, which is one of the primary study models of our research group and classified by the WHO within the group of Neglected Tropical Diseases (NTDs), is a major public health problem in Latin America where 6–7 million people are currently infected [4, 5].

The control of vector-borne diseases relies mainly on control programs targeted against the different vectors. Nevertheless, the efficiency of the different vector control strategies is highly linked to the local ecology of the vectors [6], which in turn defines local transmission cycles. Consequently, for the implementation of sustainable control strategies aimed at disrupting the transmission of vector-borne pathogens, comprehensive knowledge of the vector ecology and behavior in the different eco-epidemiological contexts, as well as the local transmission cycles of the pathogens and their dynamics, is an essential need. However, even when focusing only on one specific vector-borne disease, achieving this knowledge is challenging. Indeed, the pathogen may exhibit a high genetic diversity, and multiple vector species or subspecies and host species may be involved. In addition, the development of the pathogen and the vectorial capacity of the vectors may be affected by their midgut and/or salivary gland microbiome. Sometimes, many pathogen species can also be involved. For example, leishmaniasis are caused by more than 20 *Leishmania* species [7].

The recent advent of Next-Generation Sequencing (NGS) technologies has brought powerful tools, with enormous potential, allowing the simultaneous identification of all these components for the understanding of the eco-epidemiology of vector-borne diseases. Nevertheless, their potential is only just starting to be realized. Here, we present a metabarcoding approach based on NGS that can facilitate

the creation of comprehensive host-pathogen networks, integrate important microbiome and coinfection data, identify at-risk situations, and disentangle the transmission cycles of vector-borne pathogens.

2. Complexity of vector-borne pathogen transmission cycles and their dynamics

The transmission cycles of vector-borne pathogens are shaped by the ecology and behavior of hosts and vectors in their specific environments and defined by the specific interactions between the vectors, the pathogens, and their hosts (which also act as blood-feeding sources of the vectors) [8]. Consequently, the comprehensive identification of these interactions is critical to disentangle transmission cycles and understand their dynamics. In most cases, an extraordinary diversity of organisms is involved, making the identification of those interactions challenging. In the case of Chagas disease, for example, the causative agent, a protozoan parasite called *Trypanosoma cruzi*, presents a very high genetic diversity, which has been classified into seven discrete typing units (DTUs) [9]. These DTUs are transmitted by more than 140 triatomine species, which live in a very wide variety of ecotopes and bioclimatic conditions [10], to more than 180 mammalian species, including wild animals, domestic animals, and human [11, 12]. In parallel, triatomines also take blood meals upon animals which are refractory to *T. cruzi* infection, called incompetent hosts, such as birds, reptiles, and amphibians [13, 14] (Figure 1). Finally, the establishment and development of the parasite and the vectorial capacity of the triatomines could be affected by the composition of their midgut microbiome [15], as has been shown for other vectors. For example, the development of *Trypanosoma brucei*, the agent of African trypanosomiasis, in its tsetse fly vector, is directly influenced by a microbiome-regulated gut immune barrier [16]. In the same way,

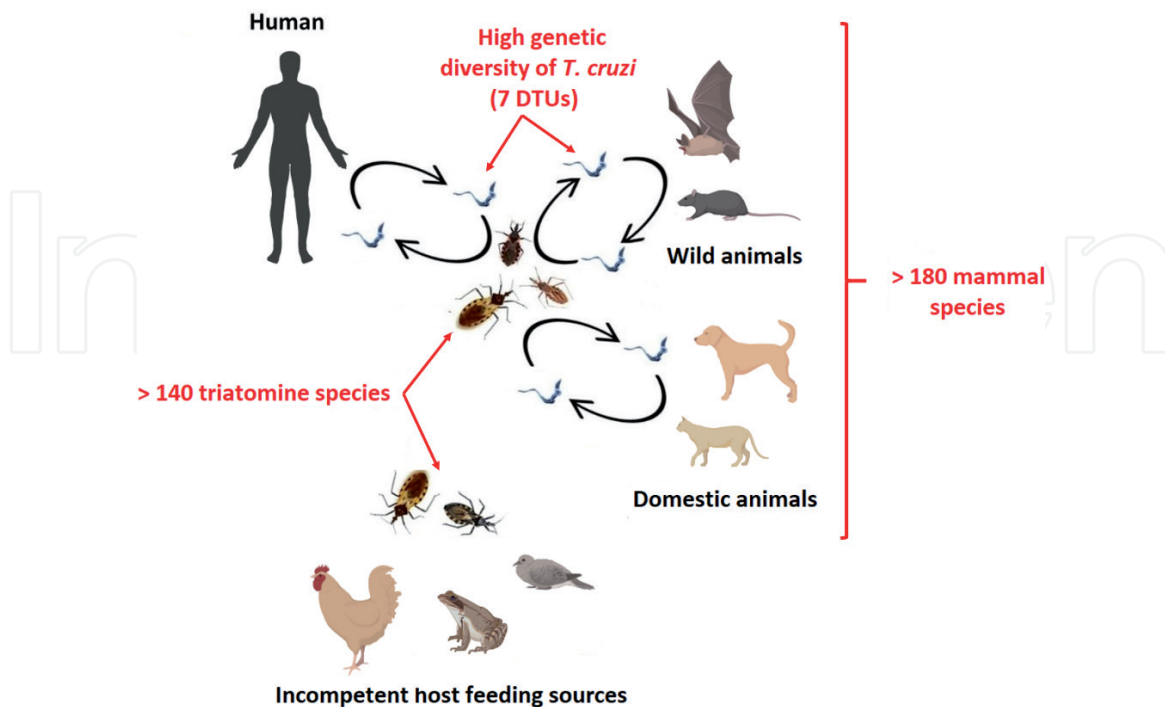


Figure 1.

Complexity of *T. cruzi* transmission cycles. The parasite is divided into seven genetic subgroups (DTUs), which are transmitted by more than 140 triatomine species to more than 180 mammalian species, including wild animals, domestic animals, and human. In parallel, triatomines also take blood meals upon animals which are refractory to *T. cruzi* infection (incompetent hosts). Figure adapted from [25].

the sand fly midgut microbiome is a critical factor for *Leishmania* growth and differentiation to its infective state prior to disease transmission [17]. Gut microbiome similarly modulates dengue virus infection in *Aedes aegypti* mosquitoes [18, 19], and microbiome manipulation may be used to control virus transmission [20, 21]. Similar observations exist for other vector/pathogen systems, such as ticks and the causative agent of Lyme disease [22], or malaria vectors [23], in which salivary gland microbiome may also play a role [24].

3. Metabarcoding: a highly sensitive and integrative approach to disentangle vector-borne pathogen transmission cycles

NGS technologies can generate millions of sequencing reads in parallel. This massive throughput sequencing capacity can produce sequence reads from fragmented libraries of a specific genome (i.e., genome sequencing) or from a pool of PCR products. Metabarcoding approaches rely on this technology where a large number of different amplicons of taxonomic informative genes (barcodes) can be sequenced. While metagenomics refers to the identification of all genomes within a particular ecosystem or sample, metabarcoding aims to identify only a subset of them (those that are of interest for a particular question) by sequencing of millions of different amplicons of these barcodes, without a necessity for cloning (i.e., sequences are obtained directly from a mix of different amplicons of different barcodes of interest) [26].

Consequently, in the case of vector-borne pathogens, starting only from the vectors as biological samples, it is possible to target and amplify well-chosen molecular markers (barcodes) of interest with universal primer sets to identify the different actors of transmission cycles (e.g., vertebrate blood sources, midgut microbiome, pathogen diversity, and vector diversity [27]). Other ecological interactions which are not directly involved in the transmission cycles but relevant for the understanding of the vector ecology and the dynamics of the transmission cycles (e.g., plant-feeding sources, sometimes required as a source of energy for routine activities such as flight, mating, and walking or a source of protein for maturation of eggs [28]) can also be identified. A schematic representation of the metabarcoding approach for the identification of ecological interactions of disease vectors is given in **Figure 2**. After purification of the total DNA (and RNA if working with RNA pathogens) contained in each vector midgut (and salivary glands, depending on the kind of vector) (1), molecular markers (barcodes) of interest are PCR amplified (after RT-PCR if working with RNA pathogens) (2). Then, to identify samples, a tag/index is added to each PCR product (amplicon). The same tag is used for all the amplicons obtained from a single sample (3). After high-throughput sequencing (4), the millions of reads (5) are sorted per sample thanks to the tags added to each amplicon (6).

Currently, the most common systems provide up to 384 different tags and 25 million reads per sequencing run. The depth (i.e., the number of reads or the number of sequences) obtained per molecular marker and sample depends on the number of labeled samples and the number of markers amplified per sample. For instance, if we amplify 10 molecular markers for 100 vector specimens and run at a depth of 25 million sequences, about 250,000 reads per vector specimen and 25,000 reads per marker and specimen will be theoretically obtained. This kind of multiplexing allows to considerably lower sequencing costs per sample. Downstream analyses with bioinformatics tools, such as those provided on the open access Galaxy platform [29], allows to obtain and identify the sequences corresponding to each targeted marker for each vector specimen. This approach is thus

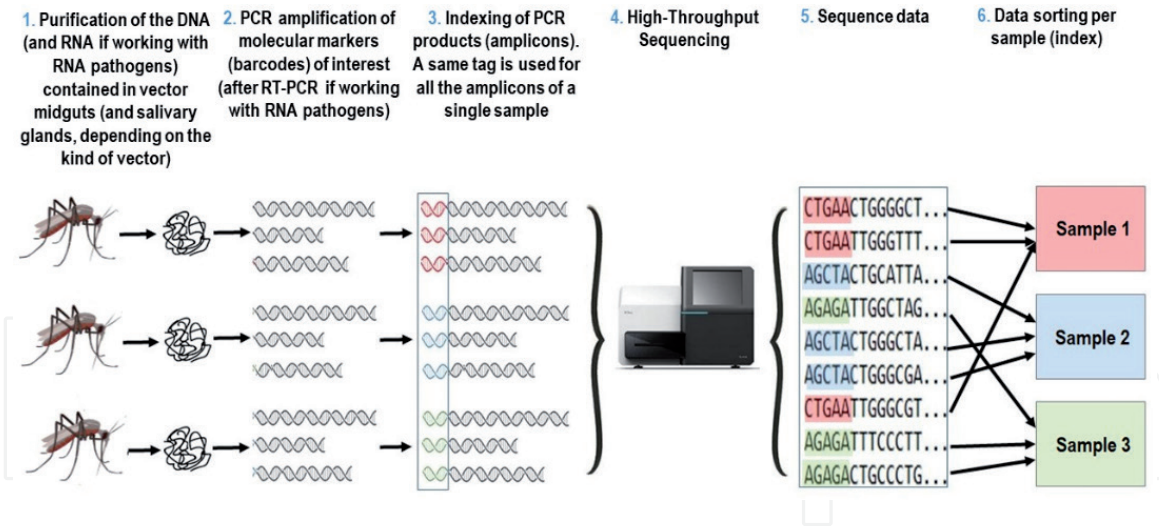


Figure 2. Schematic representation of the metabarcoding approach for the identification of ecological interactions of disease vectors. Figure adapted from [25].

extremely powerful to further reconstitute the pathogen transmission cycles and understand its dynamics, since it can reveal, after adequate analyses, all the existing ecological interactions thanks to the simultaneous identification and for each specimen of its species or subspecies, its blood-feeding source(s), the pathogen(s) of interest, the species or lineage(s) of the pathogen(s) of interest, the composition of its midgut microbiome, of its salivary gland microbiome, its plant-feeding source(s), mutations associated with insecticide resistance, etc.

4. Unraveling *T. cruzi* transmission cycles in the Yucatan peninsula (Mexico): an example of the metabarcoding approach use

As a proof of concept, we recently performed a pilot study of the metabarcoding approach presented above using Chagas disease in the Yucatan peninsula (Mexico) [27]. In this region, *T. dimidiata* is the main vector, and different genetic subgroups of this species [30–32] live in sympatry [33]. The different molecular markers we selected for our metabarcoding approach are described below: (i) to classify *T. dimidiata* in its different genetics subgroups, we used primers targeting the Internal Transcribed Spacer ITS-2 as previously described [34]; (ii) for blood-feeding source identification, we used vertebrate universal primers targeting the 12S rRNA gene [35]; (iii) for *T. cruzi*, we used primers targeting the mini-exon gene, allowing further classification of the parasite in its different DTUs [36]; and (iv) finally, we used universal primers targeting the bacterial 16S rRNA gene to identify bacterial microbiome composition [37]. This way, we aimed to determine if there were detectable interaction patterns between the genetic subgroups of *T. dimidiata*, their blood-feeding hosts, the infection with *T. cruzi*, the parasite DTUs, and the microbiome composition, allowing elucidating at finer scales the *T. cruzi* transmission cycles in the study area.

This study, which was based on 14 *T. dimidiata* bugs collected in wild as well as in domestic ecotopes, evidences the feasibility and high sensibility of the proposed approach [27]. For example, we identified an average number of blood-feeding species per bug of 4.9 ± 0.7 and up to 7 blood-feeding species and 11 blood-feeding individuals in a single bug. Contrastingly, current techniques based on direct sequencing of PCR products can only identify the dominant sequence/host in each sample [38], while the addition of a cloning step prior to sequencing generally

allows detecting up to three to five host species in some bugs [14, 39–41]. In the same way, we easily identified different DTUs infecting single bugs, while to date, most studies have relied on conventional Sanger sequencing approaches that are only capable of detecting the dominant genotype in biological samples, which almost precludes the possibility of detecting multiclonality. Based on this observation, NGS approaches capable of inventorying multiclonal infections are now being progressively adopted [42–46]. Regarding midgut microbiome, we were able to detect 23 bacterial orders and observed that its composition differed according to blood-feeding sources (**Figure 3**). Finally, all the 14 bugs belonged all to the same genetic subgroup.

To further assess potential transmission cycles of *T. cruzi* parasites by *T. dimidiata* among the identified blood source species, a feeding and parasite transmission network was constructed (**Figure 4**). Nodes of the network represent the species identified as blood meal sources, while the size of the corresponding node indicates feeding frequency on each species. Edges link species which are found together in multiple blood meals within individual bugs. Since birds cannot carry *T. cruzi* parasites, they only play a role as blood sources for triatomines, which is indicated by dotted edge connections between hosts. The solid lines between mammals indicate potential parasite transmission pathways. This network nicely highlights the mammals which would play the main role in *T. cruzi* transmission to human in the study area. Humans (*Homo sapiens* in **Figure 4**) may thus become infected by *T. cruzi* parasites originating from dogs (*Canis lupus*), cows (*Bos taurus*), and mice (*Mus musculus*), as well as from sylvatic hosts such as porcupines (*Coendou* spp.), squirrels (*Sciurus* spp.), and fruit bats (*Artibeus* spp.). Particularly, dogs appear as key actors which may favor parasite transmission to humans. This kind of networks is very informative, as it allows evidencing the animals that would play the main roles in the transmission of any pathogen to human (complementary studies focused directly on these animals may nevertheless be necessary) and that should be targeted as part of integrated control strategies aimed at disrupting parasite transmission. For example, management of the dogs and other peridomestic animals can be part of EcoHealth/One Health approaches [47]. The network presented is the result of a pilot study based on a limited sample and is only used here to illustrate the potential of the proposed metabarcoding approach. Increasing the sample size in a wide variety of ecotopes and integrating vector, microbiome and coinfection data will undoubtedly allow identifying at-risk situations and disentangling transmission cycles. It may also help to identify bacteria which are part of the normal microbiota of triatomine bugs, bacteria

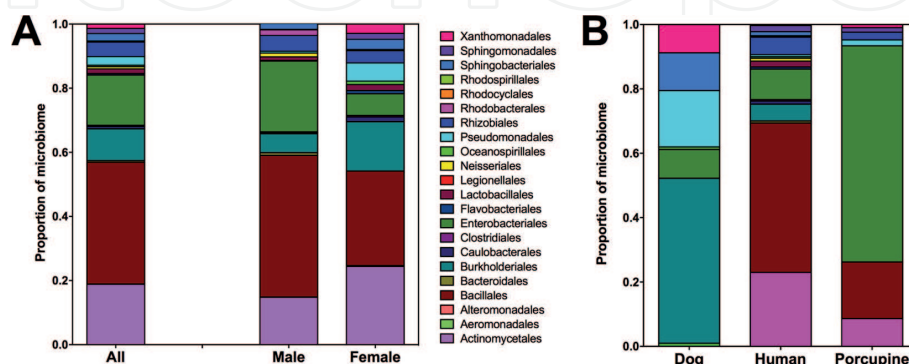


Figure 3.

Gut microbiome composition of *Triatoma dimidiata*. The average composition of the microbiome from 14 individuals is shown to the level of bacterial order (A). There are significant differences between male and female microbiomes, with females presenting a greater diversity of orders. (B) Microbiome composition is also significantly different depending on the dominant blood meal present in triatomine gut, which was identified by the analysis of 12 S rRNA vertebrate sequences. Figure taken from [27].

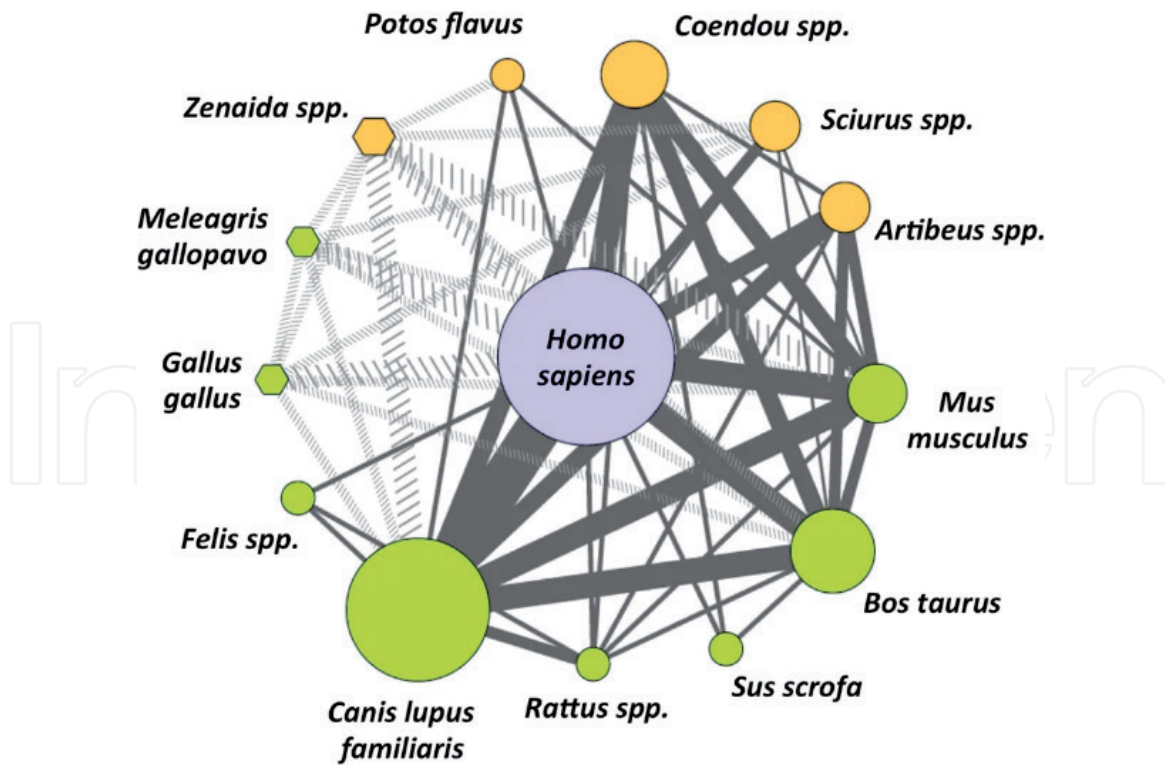


Figure 4. Feeding and possible parasite transmission network of *Triatoma dimidiata*. Blood source nodes correspond to domestic (green symbols) and sylvatic (orange symbols) host species, as well as humans (blue), with the size proportional to the feeding frequency on each host. Diamond-shaped nodes represent birds, which do not carry *Trypanosoma cruzi* parasites, and circles represent mammals, which can be infected by *T. cruzi*. Edges link species which are found together in multiple blood meals within individual bugs, and the width of the lines is proportional to the frequency of the association between species. Solid dark gray lines link mammalian species, among which *T. cruzi* may circulate, while dotted light gray lines involve bird species, which only serve as blood sources for the bugs. Humans may thus become infected by *T. cruzi* parasites originating from dogs, cows, and mice, as well as from sylvatic hosts such as porcupines, squirrels, and fruit bats. Dogs can play a key role as domestic host/reservoir favoring parasite transmission to humans. On the other hand, cats, rats, and pigs play a secondary role in parasite transmission. Figure taken from [27].

associated with the presence/absence of infection of the bugs with *T. cruzi*, or bacteria of vital importance to the bugs. This knowledge can have important applications for the development of innovative control strategies [48–50]. The information provided by the approach can also be used to feed models including the hosts involved in the transmission to help assessing the effects of different host community managements on *T. cruzi* transmission to human and understand transmission dynamics over time [51, 52]. Transmission models are becoming increasingly important in vector-borne disease control programs. They allow evaluating different control strategies or combinations of them and assessing their cost-effectiveness and likelihood of success [53].

Consequently, the approach presented here provides very high-value information that can be used in multiple ways for further design and implementation of sustainable, effective, and locally adapted control strategies and deserves to be extended to other eco-epidemiological contexts and to any vector-borne pathogen. To date, metabarcoding approaches for the study of human vector-borne diseases using natural populations of vectors are being progressively adopted, but they are still timidly used [54, 55]. Moreover, they are still generally focused only on one of the components of transmission cycles, such as blood-feeding hosts [56–59], plant-feeding hosts [28], microbiome composition [60, 61], or vector diversity [62] (Table 1), thus providing limited information, while the approach can be easily more integrative, as we illustrated here, to simultaneously identify the different actors involved in transmission.

Vector	Geographic origin	Target DNA	Main findings	Reference
Mosquitoes (<i>Anopheles punctulatus</i>)	Different villages in Papua New Guinea	Mammalian blood-feeding hosts	Unbiased characterization of mammalian blood-feeding hosts, including unsuspected hosts and mixed blood meals. Human, dog, and pig were the most common host-feeding sources. The approach can also be adapted to evaluate interindividual variations among human blood meals	[56]
Mosquitoes (<i>Culex</i> and <i>Anopheles</i> spp.)	Different sites in the coast of the Caspian Sea in northern Iran	Vertebrate blood-feeding hosts	The four most common mosquito species had similar host-feeding patterns. The most commonly detected hosts in these species were humans, cattle, and ducks	[57]
Mosquitoes and sand flies	Forest sites in French Guiana	Mammal blood-feeding hosts	Accuracy of the short 12S marker proposed for the identification of Amazonian mammals. The accuracy of taxonomic assignments highly depends on the comprehensiveness of the reference library	[58]
Triatomine bugs (<i>Rhodnius pallescens</i>)	Two sampling sites in Panama	Vertebrate blood-feeding hosts	Reliability of the metabarcoding approach proposed for the identification of vertebrate blood-feeding host	[59]
Phlebotomine sandflies (<i>Phlebotomus</i> and <i>Lutzomyia</i> spp.)	Different sampling sites in Brazil, Israel, and Ethiopia	Plant-feeding hosts	Sand flies preferentially feed on <i>Cannabis sativa</i> plants. Potential utility for sand fly control	[28]
Mosquitoes (<i>Aedes</i> and <i>Culex</i> spp.)	Different habitats across central Thailand	Bacterial and eukaryotic microbiome	Patterns of microbial composition and diversity that affect pathogen prevalence appeared to differ by both vector species and habitat for a given species. Microbial composition was less diverse in urban areas	[60]
Tse-tse flies (<i>Glossina palpalis palpalis</i>)	Two trypanosomiasis foci in Cameroon	Bacterial microbiome	Endosymbiont <i>Wigglesworthia</i> was highly prominent. Potential role for <i>Salmonella</i> and <i>Serratia</i> in fly refractoriness to trypanosome infection. V4 region of the small subunit of the 16S ribosomal RNA gene was more efficient than the V3V4 region at describing the totality of the bacterial diversity	[61]
Phlebotomine sand flies (<i>Lutzomyia</i> and <i>Brumptomyia</i> spp.)	Various locations in French Guiana	Sand flies	Efficiency of metabarcoding based on the mitochondrial 16S rRNA for identification of sand fly diversity in bulk samples	[62]

Vector	Geographic origin	Target DNA	Main findings	Reference
Mosquitoes and sand flies (various species)	3 sites along a gradient of anthropogenic pressure in French Guayana, area of Saint-Georges de l'Oyapock	Vectors and vertebrate blood-feeding hosts	Contrasting ecological features and feeding behavior among dipteran species, which allowed unveiling arboreal and terrestrial mammals, as well as birds, lizards, and amphibians. Lower vertebrate diversity was found in sites undergoing higher levels of human-induced perturbation	[54]
Triatomine bugs (<i>Triatoma dimidiata</i>)	Different habitats in rural Yucatan (Mexico)	Vertebrate blood-feeding hosts, <i>Trypanosoma cruzi</i> parasite, midgut bacterial microbiome, triatomine bug	Ecological associations of triatomines which shape <i>T. cruzi</i> transmission cycles. Different DTUs infecting single bugs. Identification of 14 blood-feeding species. Up to 7 blood-feeding species and 11 blood-feeding individuals identified in a single bug. Human, dog, cow, and mice were the most common host-feeding sources. Dog was highlighted as the main host involved in the pathway of <i>T. cruzi</i> transmission to human. Dynamic midgut microbiome, including 23 bacterial orders, which differed according to blood sources	[27]

Table 1.
 Metabarcoding approaches for the study of human vector-borne diseases using natural populations of vectors as biological samples.

5. Conclusions

In this chapter, we presented a metabarcoding approach to study vector-borne pathogen transmission cycles and their dynamics and illustrated the feasibility and high sensitivity of the proposed approach with a recent study performed using Chagas disease in the Yucatan peninsula (Mexico), as a study model. Currently, NGS technologies are quickly becoming more affordable and cost-effective. Moreover, many bioinformatics tools have allowed to greatly simplify analyses in the last years. Consequently, this powerful approach deserves to be generalized to other eco-epidemiological contexts to unravel the transmission cycles of any vector-borne pathogen and their dynamics, which in turn will help the implementation of sustainable, effective, and locally adapted control strategies of their transmission.

Acknowledgements

This work received financial support from CONACYT (National Council of Science and Technology, Mexico) Basic Science (Project ID: CB2015-258752) and National Problems (Project ID: PN2015-893) Programs. This work was also funded by the Louisiana Board of Regents through the Board of Regents Support Fund [# LESASF (2018-2021)-RD-A-19] and grant #632083 from Tulane University School of Public Health and Tropical Medicine.

Author details

Anette Hernández-Andrade¹, Joel Moo-Millan¹, Nohemi Cigarroa-Toledo¹, Angel Ramos-Ligonio^{2,3}, Claudia Herrera⁴, Bruno Bucheton⁵, Jean-Mathieu Bart⁵, Vincent Jamonneau⁵, Anne-Laure Bañuls⁶, Christophe Paupy⁶, David Roiz⁶, Denis Sereno⁵, Carlos N. Ibarra-Cerdeña⁷, Carlos Machaín-Williams¹, Julián García-Rejón¹, Sébastien Gourbière⁸, Christian Barnabé⁵, Jenny Telleria⁵, Bruno Oury⁵, Frédérique Brenière⁵, Frédéric Simard⁶, Miguel Rosado¹, Philippe Solano⁵, Eric Dumonteil⁴ and Etienne Waleckx^{1,3,5*}

1 Centro de Investigaciones Regionales “Dr Hideyo Noguchi”, Universidad Autónoma de Yucatán, Mérida, Yucatán, México

2 LADISER Inmunología y Biología Molecular, Facultad de Ciencias Químicas, Universidad Veracruzana, Orizaba, Veracruz, México

3 ACCyC, Asociación Chagas con Ciencia y Conocimiento, A. C

4 Department of Tropical Medicine, School of Public Health and Tropical Medicine, Vector-Borne and Infectious Diseases Research Center, Tulane University, New Orleans, LA, USA

5 Institut de Recherche pour le Développement, UMR INTERTRYP IRD, CIRAD, Université de Montpellier, Montpellier, France

6 Institut de Recherche pour le Développement, UMR MIVEGEC, IRD, CNRS, Université de Montpellier, Montpellier, France

7 Departamento de Ecología Humana, Centro de Investigación y de Estudios Avanzados del IPN (Cinvestav), Unidad Mérida, Mérida, Yucatán, México

8 UMR5096 ‘Laboratoire Génome et Développement des Plantes’, Université de Perpignan Via Domitia, Perpignan, France

*Address all correspondence to: etienne.waleckx@ird.fr;
etienne.waleckx@correo.uady.mx

IntechOpen

© 2019 The Author(s). Licensee IntechOpen. This chapter is distributed under the terms of the Creative Commons Attribution License (<http://creativecommons.org/licenses/by/3.0>), which permits unrestricted use, distribution, and reproduction in any medium, provided the original work is properly cited. 

References

- [1] WHO. Vector-borne Diseases – Key facts [Internet]. 2017. Available from: <http://www.who.int/news-room/fact-sheets/detail/vector-borne-diseases> [Accessed: 06 September 2019]
- [2] WHO. WHO global health days: about vector-borne diseases [Internet]. 2014. Available from: <https://www.who.int/campaigns/world-health-day/2014/vector-borne-diseases/en/> [Accessed: 06 September 2019]
- [3] Bhatt S, Gething PW, Brady OJ, Messina JP, Farlow AW, Moyes CL, et al. The global distribution and burden of dengue. *Nature*. 2013;**496**(7446):504-507. DOI: 10.1038/nature12060
- [4] Pérez-Molina JA, Molina I. Chagas disease. *Lancet*. 2018;**391**(10115):82-94. DOI: 10.1016/s0140-6736(17)31612-4
- [5] WHO. Chagas disease (American trypanosomiasis), Fact sheet N°340 [Internet]. 2019. Available from: <http://www.who.int/mediacentre/factsheets/fs340/en/> [Accessed: 06 September 2019]
- [6] Waleckx E, Gourbière S, Dumonteil E. Intrusive versus domiciliated triatomines and the challenge of adapting vector control practices against Chagas disease. *Memórias do Instituto Oswaldo Cruz*. 2015;**110**(3):324-338. DOI: 10.1590/0074-02760140409
- [7] Akhoundi M, Kuhls K, Cannet A, Votýpka J, Marty P, Delaunay P, et al. A historical overview of the classification, evolution, and dispersion of *Leishmania* parasites and sandflies. *PLoS Neglected Tropical Diseases*. 2016;**10**(3):e0004349. DOI: 10.1371/journal.pntd.0004349
- [8] Ibarra-Cerdeña CN, Valiente-Banuet L, Sanchez-Cordero V, Stephens CR, Ramsey JM. *Trypanosoma cruzi* reservoir-triatomine vector co-occurrence networks reveal meta-community effects by synanthropic mammals on geographic dispersal. *PeerJ*. 2017;**5**:e3152. DOI: 10.7717/peerj.3152
- [9] Brenière SF, Waleckx E, Barnabé C. Over six thousand *Trypanosoma cruzi* strains classified into discrete typing units (DTUs): Attempt at an inventory. *PLoS Neglected Tropical Diseases*. 2016;**10**(8):e0004792. DOI: 10.1371/journal.pntd.0004792
- [10] Brenière SF, Buitrago R, Waleckx E, Depickère S, Sosa V, Barnabé C, et al. Wild populations of *Triatoma infestans*: Compilation of positive sites and comparison of their ecological niche with domestic population niche. *Acta Tropica*. 2017;**176**:228-235. DOI: 10.1016/j.actatropica.2017.08.009
- [11] Noireau F, Diosque P, Jansen AM. *Trypanosoma cruzi*: Adaptation to its vectors and its hosts. *Veterinary Research*. 2009;**40**(2):26. DOI: 10.1051/vetres/2009009
- [12] Dorn PL, Justi S, Krafur ES, Lanzaro GC, Cornel AJ, Lee Y, et al. Genetics of major insect vectors. In: Tibayrenc M, editor. *Genetics and Evolution of Infectious Diseases*. 2nd ed. London: Elsevier; 2017. pp. 341-382. DOI: 10.1016/B978-0-12-799942-5.00015-9
- [13] Rabinovich JE, Kitron UD, Obed Y, Yoshioka M, Gottdenker N, Chaves LF. Ecological patterns of blood-feeding by kissing-bugs (Hemiptera: Reduviidae: Triatominae). *Memórias do Instituto Oswaldo Cruz*. 2011;**106**(4):479-494. DOI: 10.1590/s0074-02762011000400016
- [14] Waleckx E, Suarez J, Richards B, Dorn PL. *Triatoma sanguisuga* blood meals and potential for Chagas disease, Louisiana, USA. *Emerging Infectious*

Diseases. 2014;**20**(12):2141-2143. DOI: 10.3201/eid2012.131576

[15] Azambuja P, Garcia ES, Ratcliffe NA. Gut microbiota and parasite transmission by insect vectors. *Trends in Parasitology*. 2005;**21**(12):568-572. DOI: 10.1016/j.pt.2005.09.011

[16] Weiss BL, Wang J, Maltz MA, Wu Y, Aksoy S. Trypanosome infection establishment in the tsetse fly gut is influenced by microbiome-regulated host immune barriers. *PLoS Pathogens*. 2013;**9**(4):e1003318. DOI: 10.1371/journal.ppat.1003318

[17] Kelly PH, Bahr SM, Serafim TD, Ajami NJ, Petrosino JF, Meneses C, et al. The gut microbiome of the vector *Lutzomyia longipalpis* is essential for survival of *Leishmania infantum*. *MBio*. 2017;**8**(1):e01121-16. DOI: 10.1128/mBio.01121-16

[18] Ramirez JL, Souza-Neto J, Torres Cosme R, Rovira J, Ortiz A, Pascale JM, et al. Reciprocal tripartite interactions between the *Aedes aegypti* midgut microbiota, innate immune system and dengue virus influences vector competence. *PLoS Neglected Tropical Diseases*. 2012;**6**(3):e1561. DOI: 10.1371/journal.pntd.0001561

[19] Hill CL, Sharma A, Shouche Y, Severson DW. Dynamics of midgut microflora and dengue virus impact on life history traits in *Aedes aegypti*. *Acta Tropica*. 2014;**140**:151-157. DOI: 10.1016/j.actatropica.2014.07.015

[20] Flores HA, O'Neill SL. Controlling vector-borne diseases by releasing modified mosquitoes. *Nature Reviews Microbiology*. 2018;**16**(8):508-518. DOI: 10.1038/s41579-018-0025-0

[21] Jupatanakul N, Sim S, Dimopoulos G. The insect microbiome modulates vector competence for arboviruses. *Viruses*. 2014;**6**(11):4294-4313. DOI: 10.3390/v6114294

[22] Narasimhan S, Rajeevan N, Liu L, Zhao YO, Heisig J, Pan J, et al. Gut microbiota of the tick vector *Ixodes scapularis* modulate colonization of the Lyme disease spirochete. *Cell Host & Microbe*. 2014;**15**(1):58-71. DOI: 10.1016/j.chom.2013.12.001

[23] Boissière A, Tchioffo MT, Bachar D, Abate L, Marie A, Nsango SE, et al. Midgut microbiota of the malaria mosquito vector *Anopheles gambiae* and interactions with *Plasmodium falciparum* infection. *PLoS Pathogens*. 2012;**8**(5):e1002742. DOI: 10.1371/journal.ppat.1002742

[24] Tchioffo MT, Boissière A, Abate L, Nsango SE, Bayibéki AN, Awono-Ambéné PH, et al. Dynamics of bacterial community composition in the malaria mosquito's epithelia. *Frontiers in Microbiology*. 2016;**6**:1500. DOI: 10.3389/fmicb.2015.01500

[25] Waleckx E, Arnal A, Dumonteil E. Metabarcoding, un nuevo enfoque para el estudio de los ciclos de transmisión de la enfermedad de Chagas y la ecología de sus vectores. In: Zamora-Bustillos R, Sandoval-Gío JJ, editors. *Contribución de la Biotecnología al Desarrollo de la Península de Yucatán*. Mérida, Yucatán, México: TECNM; 2019. pp. 1052-1065

[26] Taberlet P, Coissac E, Pompanon F, Brochmann C, Willerslev E. Towards next-generation biodiversity assessment using DNA metabarcoding. *Molecular Ecology*. 2012;**21**(8):2045-2050. DOI: 10.1111/j.1365-294X.2012.05470.x

[27] Dumonteil E, Ramirez-Sierra MJ, Perez-Carrillo S, Teh-Poot C, Herrera C, Gourbiere S, et al. Detailed ecological associations of triatomines revealed by metabarcoding and next-generation sequencing: Implications for triatomine behavior and *Trypanosoma cruzi* transmission cycles. *Scientific Reports*. 2018;**8**(1):4140. DOI: 10.1038/s41598-018-22455-x

- [28] Abbasi I, Trancoso Lopo de Queiroz a, Kirstein OD, Nasereddin a, Horwitz BZ, Hailu a, et al. plant-feeding phlebotomine sand flies, vectors of leishmaniasis, prefer *Cannabis sativa*. Proceedings of the National Academy of Sciences of the United States of America. 2018;**115**(46):11790-11795. DOI: 10.1073/pnas.1810435115
- [29] Kosakovsky Pond S, Wadhawan S, Chiaromonte F, Ananda G, Chung WY, Taylor J, et al. Windshield splatter analysis with the galaxy metagenomic pipeline. Genome Research. 2009;**19**(11):2144-2153. DOI: 10.1101/gr.094508.109
- [30] Barges MD, Klisiowicz DR, Gonzalez-Candelas F, Ramsey JM, Monroy C, Ponce C, et al. Phylogeography and genetic variation of *Triatoma dimidiata*, the main Chagas disease vector in Central America, and its position within the genus *Triatoma*. PLoS Neglected Tropical Diseases. 2008;**2**(5):e233. DOI: 10.1371/journal.pntd.0000233
- [31] Justi SA, Cahan S, Stevens L, Monroy C, Lima-Cordon R, Dorn PL. Vectors of diversity: Genome wide diversity across the geographic range of the Chagas disease vector *Triatoma dimidiata* sensu lato (Hemiptera: Reduviidae). Molecular Phylogenetics and Evolution. 2018;**120**:144-150. DOI: 10.1016/j.ympev.2017.12.016
- [32] Monteiro FA, Peretolchina T, Lazoski C, Harris K, Dotson EM, Abad-Franch F, et al. Phylogeographic pattern and extensive mitochondrial DNA divergence disclose a species complex within the Chagas disease vector *Triatoma dimidiata*. PLoS One. 2013;**8**(8):e70974. DOI: 10.1371/journal.pone.0070974
- [33] Herrera-Aguilar M, Be-Barragan LA, Ramirez-Sierra MJ, Tripet F, Dorn P, Dumonteil E. Identification of a large hybrid zone between sympatric sibling species of *Triatoma dimidiata* in the Yucatan peninsula, Mexico and its epidemiological importance. Infection, Genetics and Evolution. 2009;**9**(6):1345-1351. DOI: 10.1016/j.meegid.2009.09.009
- [34] Richards B, Rua NM, Monroy C, Stevens L, Dorn PL. Novel polymerase chain reaction-restriction fragment length polymorphism assay to determine internal transcribed spacer-2 group in the Chagas disease vector, *Triatoma dimidiata* (Latreille, 1811). Memórias do Instituto Oswaldo Cruz. 2013;**108**(4):395-398. DOI: 10.1590/s0074-0276108042013001
- [35] Kitano T, Umetsu K, Tian W, Osawa M. Two universal primer sets for species identification among vertebrates. International Journal of Legal Medicine. 2007;**121**(5):423-427. DOI: 10.1007/s00414-006-0113-y
- [36] Zingales B, Andrade SG, Briones MR, Campbell DA, Chiari E, Fernandes O, et al. A new consensus for *Trypanosoma cruzi* intraspecific nomenclature: Second revision meeting recommends TcI to TcVI. Memórias do Instituto Oswaldo Cruz. 2009;**104**:1051-1054. DOI: 10.1590/S0074-02762009000700021
- [37] Baker GC, Smith JJ, Cowan DA. Review and re-analysis of domain-specific 16S primers. Journal of Microbiological Methods. 2003;**55**(3):541-555. DOI: 10.1016/j.mimet.2003.08.009
- [38] Gottdenker NL, Chaves LF, Calzada JE, Saldana A, Carroll CR. Host life history strategy, species diversity, and habitat influence *Trypanosoma cruzi* vector infection in changing landscapes. PLoS Neglected Tropical Diseases. 2012;**6**(11):e1884. DOI: 10.1371/journal.pntd.0001884
- [39] Gorchakov R, Trosclair LP, Wozniak EJ, Fera PT, Garcia MN, Gunter SM, et al. *Trypanosoma cruzi*

infection prevalence and bloodmeal analysis in triatomine vectors of Chagas disease from rural peridomestic locations in Texas, 2013-2014. *Journal of Medical Entomology*. 2016;**53**(4):911-918. DOI: 10.1093/jme/tjw040

[40] Stevens L, Monroy MC, Rodas AG, Dorn PL. Hunting, swimming, and worshipping: Human cultural practices illuminate the blood meal sources of cave dwelling Chagas vectors (*Triatoma dimidiata*) in Guatemala and Belize. *PLoS Neglected Tropical Diseases*. 2014;**8**(9):e3047. DOI: 10.1371/journal.pntd.0003047

[41] Moo-Millan J, Arnal A, Pérez-Carrillo S, Hernandez-Andrade A, Ramírez-Sierra MJ, Rosado-Vallado M, et al. Disentangling *Trypanosoma cruzi* transmission cycle dynamics through the identification of blood meal sources of natural populations of *Triatoma dimidiata* in Yucatán, Mexico. *Parasites and Vectors*. in press

[42] Pronovost H, Peterson AC, Chavez BG, Blum MJ, Dumonteil E, Herrera CP. Deep sequencing reveals multiclinality and new discrete typing units of *Trypanosoma cruzi* in rodents from the southern United States. *Journal of Microbiology, Immunology, and Infection*. 2018;**S1684-1182**(18):30097-30095. DOI: 10.1016/j.jmii.2018.12.004

[43] Herrera C, Majeau A, Didier P, Falkenstein KP, Dumonteil E. *Trypanosoma cruzi* diversity in naturally infected nonhuman primates in Louisiana assessed by deep sequencing of the mini-exon gene. *Transactions of the Royal Society of Tropical Medicine and Hygiene*. 2019;**113**(5):281-286. DOI: 10.1093/trstmh/try119

[44] Villanueva-Lizama L, Teh-Poot C, Majeau A, Herrera C, Dumonteil E. Molecular genotyping of *Trypanosoma cruzi* by next-generation sequencing of the mini-exon gene reveals infections

with multiple parasite discrete typing units in chagasic patients from Yucatan, Mexico. *The Journal of Infectious Diseases*. 2019;**219**(12):1980-1988. DOI: 10.1093/infdis/jiz047

[45] Majeau A, Herrera C, Dumonteil E. An improved approach to *Trypanosoma cruzi* molecular genotyping by next-generation sequencing of the mini-exon gene. *Methods in Molecular Biology*. 1955;**2019**:47-60. DOI: 10.1007/978-1-4939-9148-8_4

[46] Llewellyn MS, Messenger LA, Luquetti AO, Garcia L, Torrico F, Tavares SB, et al. Deep sequencing of the *Trypanosoma cruzi* GP63 surface proteases reveals diversity and diversifying selection among chronic and congenital Chagas disease patients. *PLoS Neglected Tropical Diseases*. 2015;**9**(4):e0003458. DOI: 10.1371/journal.pntd.0003458

[47] De Urioste-Stone SM, Pennington PM, Pellecer E, Aguilar TM, Samayoa G, Perdomo HD, et al. Development of a community-based intervention for the control of Chagas disease based on peridomestic animal management: An eco-bio-social perspective. *Transactions of the Royal Society of Tropical Medicine and Hygiene*. 2015;**109**(2):159-167. DOI: 10.1093/trstmh/tru202

[48] Beard CB, Dotson EM, Pennington PM, Eichler S, Cordon-Rosales C, Durvasula RV. Bacterial symbiosis and paratransgenic control of vector-borne Chagas disease. *International Journal for Parasitology*. 2001;**31**(5-6):621-627. DOI: 10.1016/s0020-7519(01)00165-5

[49] Sasser D, Epis S, Pajoro M, Bandi C. Microbial symbiosis and the control of vector-borne pathogens in tsetse flies, human lice, and triatomine bugs. *Pathogens and Global Health*. 2013;**107**(6):285-292. DOI: 10.1179/2047773213y.0000000109

- [50] Taracena ML, Oliveira PL, Almendares O, Umana C, Lowenberger C, Dotson EM, et al. Genetically modifying the insect gut microbiota to control Chagas disease vectors through systemic RNAi. *PLoS Neglected Tropical Diseases*. 2015;**9**(2):e0003358. DOI: 10.1371/journal.pntd.0003358
- [51] Flores-Ferrer A, Waleckx E, Rascalou G, Dumonteil E, Gourbière S. *Trypanosoma cruzi* transmission dynamics in a synanthropic and domesticated host community. *PLoS Neglected Tropical Diseases*. in press
- [52] Nouvellet P, Dumonteil E, Gourbière S. The improbable transmission of *Trypanosoma cruzi* to human: The missing link in the dynamics and control of Chagas disease. *PLoS Neglected Tropical Diseases*. 2013;**7**(11):e2505. DOI: 10.1371/journal.pntd.0002505
- [53] Hollingsworth TD, Adams ER, Anderson RM, Atkins K, Bartsch S, Basáñez MG, et al. Quantitative analyses and modelling to support achievement of the 2020 goals for nine neglected tropical diseases. *Parasites and Vectors*. 2015;**8**:630. DOI: 10.1186/s13071-015-1235-1
- [54] Kocher A, de Thoisy B, Catzefflis F, Valière S, Bañuls A-L, Murienne J. iDNA screening: Disease vectors as vertebrate samplers. *Molecular Ecology*. 2017;**26**(22):6478-6486. DOI: 10.1111/mec.14362
- [55] Titcomb GC, Jerde CL, Young HS. High-Throughput sequencing for understanding the ecology of emerging infectious diseases at the wildlife-human interface. *Frontiers in Ecology and Evolution*. 2019;**7**:126. DOI: 10.3389/fevo.2019.00126
- [56] Logue K, Keven JB, Cannon MV, Reimer L, Siba P, Walker ED, et al. Unbiased characterization of *Anopheles* mosquito blood meals by targeted high-throughput sequencing. *PLoS Neglected Tropical Diseases*. 2016;**10**(3):e0004512. DOI: 10.1371/journal.pntd.0004512
- [57] Shahhosseini N, Friedrich J, Moosa-Kazemi SH, Sedaghat MM, Kayedi MH, Tannich E, et al. Host-feeding patterns of *Culex* mosquitoes in Iran. *Parasites & Vectors*. 2018;**11**(1):669. DOI: 10.1186/s13071-018-3237-2
- [58] Kocher A, de Thoisy B, Catzefflis F, Huguin M, Valière S, Zinger L, et al. Evaluation of short mitochondrial metabarcodes for the identification of Amazonian mammals. *Methods in Ecology and Evolution*. 2017;**8**(10):1276-1283. DOI: 10.1111/2041-210x.12729
- [59] Kieran TJ, Gottdenker NL, Varian CP, Saldana A, Means N, Owens D, et al. Blood meal source characterization using Illumina sequencing in the chagas disease vector *Rhodnius pallescens* (Hemiptera: Reduviidae) in Panama. *Journal of Medical Entomology*. 2017;**54**(6):1786-1789. DOI: 10.1093/jme/tjx170
- [60] Thongsripong P, Chandler JA, Green AB, Kittayapong P, Wilcox BA, Kapan DD, et al. Mosquito vector-associated microbiota: Metabarcoding bacteria and eukaryotic symbionts across habitat types in Thailand endemic for dengue and other arthropod-borne diseases. *Ecology and Evolution*. 2018;**8**(2):1352-1368. DOI: 10.1002/ece3.3676
- [61] Tsagmo Ngoune JM, Reveillaud J, Sempere G, Njiokou F, Melachio TT, Abate L, et al. The composition and abundance of bacterial communities residing in the gut of *Glossina palpalis palpalis* captured in two sites of southern Cameroon. *Parasites and*

Vectors. 2019;**12**(1):151. DOI: 10.1186/s13071-019-3402-2

[62] Kocher A, Gantier JC, Gaborit P, Zinger L, Holota H, Valiere S, et al. Vector soup: High-throughput identification of Neotropical phlebotomine sand flies using metabarcoding. *Molecular Ecology Resources*. 2017;**17**(2):172-182. DOI: 10.1111/1755-0998.12556

IntechOpen