



HAL
open science

Seismic evidence for near solid-body rotation in two Kepler subgiants and implications for angular momentum transport

S. Deheuvels, J. Ballot, P. Eggenberger, F. Spada, A. Noll, J. W. den Hartogh

► To cite this version:

S. Deheuvels, J. Ballot, P. Eggenberger, F. Spada, A. Noll, et al.. Seismic evidence for near solid-body rotation in two Kepler subgiants and implications for angular momentum transport. *Astronomy and Astrophysics - A&A*, 2020, 641, pp.A117. 10.1051/0004-6361/202038578 . hal-02943315

HAL Id: hal-02943315

<https://hal.science/hal-02943315>

Submitted on 18 Sep 2020

HAL is a multi-disciplinary open access archive for the deposit and dissemination of scientific research documents, whether they are published or not. The documents may come from teaching and research institutions in France or abroad, or from public or private research centers.

L'archive ouverte pluridisciplinaire **HAL**, est destinée au dépôt et à la diffusion de documents scientifiques de niveau recherche, publiés ou non, émanant des établissements d'enseignement et de recherche français ou étrangers, des laboratoires publics ou privés.



Distributed under a Creative Commons Attribution 4.0 International License

Seismic evidence for near solid-body rotation in two *Kepler* subgiants and implications for angular momentum transport

S. Deheuvels¹, J. Ballot¹, P. Eggenberger², F. Spada³, A. Noll¹, and J. W. den Hartogh^{4,5}

¹ IRAP, Université de Toulouse, CNRS, CNES, UPS, Toulouse, France
e-mail: sebastien.deheuvels@irap.omp.eu

² Observatoire de Genève, Université de Genève, 51 Ch. des Maillettes, 1290 Sauverny, Switzerland

³ Max-Planck Institut für Sonnensystemforschung, Justus-von-Liebig Weg 3, 37077 Göttingen, Germany

⁴ Konkoly Observatory, Research Centre for Astronomy and Earth Sciences, Konkoly Thege 15-17, 1121 Budapest, Hungary

⁵ ELTE Eötvös Loránd University, Institute of Physics, Budapest, Hungary

Received 4 June 2020 / Accepted 1 July 2020

ABSTRACT

Context. Asteroseismic measurements of the internal rotation of subgiants and red giants all show the need for invoking a more efficient transport of angular momentum than theoretically predicted. Constraints on the core rotation rate are available starting from the base of the red giant branch (RGB) and we are still lacking information on the internal rotation of less evolved subgiants.

Aims. We identify two young *Kepler* subgiants, KIC 8524425 and KIC 5955122, whose mixed modes are clearly split by rotation. We aim to probe their internal rotation profile and assess the efficiency of the angular momentum transport during this phase of the evolution.

Methods. Using the full *Kepler* data set, we extracted the mode frequencies and rotational splittings for the two stars using a Bayesian approach. We then performed a detailed seismic modeling of both targets and used the rotational kernels to invert their internal rotation profiles using the MOLA inversion method. We thus obtained estimates of the average rotation rates in the g -mode cavity ($\langle\Omega\rangle_g$) and in the p -mode cavity ($\langle\Omega\rangle_p$).

Results. We found that both stars are rotating nearly as solid bodies, with core-envelope contrasts of $\langle\Omega\rangle_g/\langle\Omega\rangle_p = 0.68 \pm 0.47$ for KIC 8524425 and $\langle\Omega\rangle_g/\langle\Omega\rangle_p = 0.72 \pm 0.37$ for KIC 5955122. This result shows that the internal transport of angular momentum has to occur faster than the timescale at which differential rotation is forced in these stars (between 300 Myr and 600 Myr). By modeling the additional transport of angular momentum as a diffusive process with a constant viscosity ν_{add} , we found that values of $\nu_{\text{add}} > 5 \times 10^4 \text{ cm}^2 \text{ s}^{-1}$ are required to account for the internal rotation of KIC 8524425, and $\nu_{\text{add}} > 1.5 \times 10^3 \text{ cm}^2 \text{ s}^{-1}$ for KIC 5955122. These values are lower than or comparable to the efficiency of the core-envelope coupling during the main sequence, as given by the surface rotation of stars in open clusters. On the other hand, they are higher than the viscosity needed to reproduce the rotation of subgiants near the base of the RGB.

Conclusions. Our results yield further evidence that the efficiency of the internal redistribution of angular momentum decreases during the subgiant phase. We thus bring new constraints that will need to be accounted for by mechanisms that are proposed as candidates for angular momentum transport in subgiants and red giants.

Key words. asteroseismology – stars: rotation – stars: oscillations – stars: individual: KIC 8524425 – stars: individual: KIC 5955122

1. Introduction

Understanding how angular momentum (AM) is transported in stellar interiors is one of the main challenges faced by modern stellar astrophysics. Despite the important impact that rotation is known to have on stellar structure and evolution (see, e.g., [Maeder 2009](#)), the mechanisms responsible for the evolution of rotation inside stars remain poorly understood. Current stellar evolution models generally include a prescription for hydrodynamically-induced AM transport through meridional circulation and shear instabilities ([Zahn 1992](#); [Mathis & Zahn 2004](#); [Mathis et al. 2018](#)), but a growing body of evidence shows that they are far too inefficient at redistributing AM. They indeed fail to produce the nearly uniform rotation of the Sun, as revealed by helioseismology ([Schou et al. 1998](#); [Gough 2015](#)). They predict low coupling intensities between the core and the envelope of young stars, whereas short coupling timescales are needed to account for the surface rotation of stars in young clusters ([Denissenkov et al. 2010](#); [Gallet & Bouvier 2013](#)). These

models also drastically overestimate the core rotation rates of subgiants and red giants, as is detailed below.

Asteroseismology has given new momentum to this field by providing measurements of the internal rotation of stars of various masses, at different stages of their evolution. Most of them were obtained using the high-precision photometric data from the *Kepler* satellite ([Borucki et al. 2010](#)). In particular, asteroseismology has given us a rather clear view of how the internal rotation of low-mass stars ($M \lesssim 2 M_{\odot}$) varies along their evolution from the main sequence all the way to the core-helium-burning phase. Current observations seem to indicate that low-mass stars have only modest differential rotation during the main sequence. Beside the solar case, nearly uniform rotation was also found for solar-like main-sequence stars using *Kepler* data ([Benomar et al. 2015](#); [Nielsen et al. 2015](#)). Probing the rotation in the deep cores of main-sequence stars would require to detect g modes, which is notoriously challenging for stars with convective envelopes (see, e.g., [Appourchaux et al. 2010](#)). [Fossat et al. \(2017\)](#) recently claimed to have found

evidence for a fast rotating core in the Sun using a modulation of p modes that they interpret as caused by g modes. The validity of this result has however been questioned by several studies (Schunker et al. 2018; Appourchaux & Corbard 2019). After the end of the main sequence, the nonradial oscillation modes of subgiants and red giants develop a mixed character (they behave as p modes in the envelope and as g modes in the core). The detection of these modes with *Kepler* data has made it possible to precisely measure the core rotation. It was thus shown that the core spins up when stars reach the base of the red-giant-branch (RGB) and that a significant radial differential rotation develops (Deheuvels et al. 2014, hereafter D14). This behavior is expected, considering that the core contracts while the envelope expands during this phase, but the seismically measured core rotation rates are in fact much lower than would be predicted if the layers were conserving their specific AM. As stars ascend the RGB, the core rotation rate remains roughly constant (Beck et al. 2012; Deheuvels et al. 2012; Mosser et al. 2012; Gehan et al. 2018), despite the ongoing core contraction. All these observations point to the existence of an efficient redistribution of AM in subgiants and red giants.

The origin of the transport of AM in red giants remains a matter under much debate. It has been shown that purely hydrodynamical mechanisms of AM transport are much too inefficient to account for the core rotation of red giants (Eggenberger et al. 2012; Ceillier et al. 2013; Marques et al. 2013). Mathis et al. (2018) have proposed a revised modeling of the horizontal transport induced by shear instability, which is still too inefficient to reproduce asteroseismic observations. Other candidates have been considered for this additional transport of AM, such as internal gravity waves (IGW) excited at the bottom of the convective envelope either by turbulence (Fuller et al. 2014) or by plumes (Pinçon et al. 2016). The latter could account for the rotation of young red giants near the base of the RGB (Pinçon et al. 2017), but for more evolved red giants IGW are expected to damp before reaching the core and cannot produce the required coupling between the core and the envelope. Mixed modes themselves might efficiently transport AM for these stars (Belkacem et al. 2015). Another candidate for the transport of AM in red giants is magnetism. The core of red giants could indeed be the seat of magnetic fields, either of fossil origin or the remnants of fields induced by a dynamo process in the convective core during the main sequence. The interaction of these fields with differential rotation could produce an efficient transport of AM (Maeder & Meynet 2014; Kissin & Thompson 2015). A magnetic transport of AM could also be induced by turbulence associated with magnetohydrodynamic (MHD) instabilities (Rüdiger et al. 2015; Jouve et al. 2015; Fuller et al. 2019). So far, their impact on the rotation evolution of subgiants and red giants has been addressed only under the debated assumption of the Tayler-Spruit dynamo in radiative interiors (Spruit 2002), and its revision based on a different saturation process by Fuller et al. (2019). Comparisons with asteroseismic measurements have shown that this process is currently unable to correctly account for the internal rotation of subgiants and red giants (Cantiello et al. 2014; den Hartogh et al. 2019; Eggenberger et al. 2019a; den Hartogh et al. 2020).

So far, seismic measurements of the core rotation are available starting from the base of the RGB (D14), near the transition between subgiants and red giants (Mosser et al. 2014). We are still lacking observational constraints on the internal rotation of less evolved subgiants. Such measurements would be particularly helpful to understand the transition between the nearly-uniform rotation of main-sequence stars and the growing

core-envelope contrast at the base of the RGB. It is also important to stress that young subgiants undergo a strong forcing of differential rotation owing to the structural adjustment at the main sequence turnoff, especially for stars that had a convective core during the main sequence (Eggenberger et al. 2019b). Measuring their internal rotation can thus place strong constraints on the efficiency of AM transport during this phase. This is what we set out to do in this paper. In Sect. 2, we present two young subgiants observed with *Kepler*, for which we have been able to measure the rotational splittings of mixed modes. A seismic modeling of these targets is described in Sect. 3. In Sect. 4, we perform inversions of the rotation profiles of these stars. We then interpret our results to estimate the efficiency of the transport of AM during the subgiant phase in Sect. 5. Section 6 is dedicated to conclusions.

2. Signature of rotation in the oscillation spectra of two *Kepler* subgiants

2.1. Why measuring rotation in young subgiants is challenging

For several reasons, young subgiants are less suited to rotation inversions than their more evolved counterparts.

First, their oscillation spectra contain less g -dominated mixed modes. Owing to their lower core density, their Brunt-Väisälä frequency is lower, and so are the frequencies of their gravity modes. The oscillation spectra of subgiants after the main sequence turnoff result from the coupling of p modes with the lowest-order gravity modes ($n_g = 1, 2, 3, \dots$, where n_g is to the number of nodes of the mode eigenfunctions in the g -mode cavity). The frequency separation between consecutive-order g modes of low n_g is large and the oscillation spectra of subgiants thus contain only a few g -dominated modes. For this reason, we expect to measure the core rotation of subgiants less precisely than for red giants, which contain tens of g -dominated mixed modes.

Secondly, subgiants are hotter than red giants. It is now established from both observational and theoretical point of view that the damping of the oscillation modes increases very steeply with the effective temperature of the star (Appourchaux et al. 2012a; Belkacem et al. 2012). Consequently, the oscillation modes of subgiants have shorter lifetimes, and thus larger line widths in the oscillation spectra. This makes the measurement of the mode splittings more complicated and statistical tests are needed to establish the significance of the rotational splittings.

Finally, the oscillation modes excited in subgiants have frequencies well above the Nyquist frequency of the long-cadence data of *Kepler* (278 μHz) and short-cadence data (integration time of 58.84876 s) are thus required. This drastically limits the number of targets available in the *Kepler* catalog compared to the case of more evolved red giants.

2.2. Selection of targets

Among the subgiants observed with the *Kepler* satellite in short cadence, we searched for stars that are less evolved than the sample studied by D14 ($\log g > 3.85$) and for which the rotational splittings of mixed modes could be extracted with a high-enough significance level for rotation inversions. For this purpose, we selected stars among the catalog of Chaplin et al. (2014) with clear detection of mixed modes, duration of observations over one year (to ensure a good enough frequency

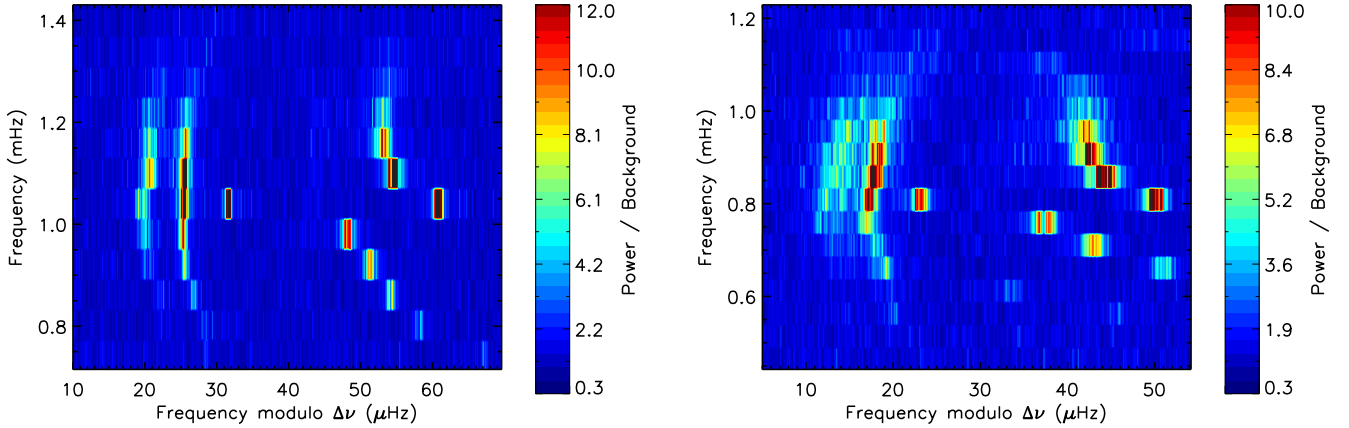


Fig. 1. Echelle diagrams of the power spectra of KIC 8524425 (*left panel*) and KIC 5955122 (*right panel*).

resolution to measure individual mode splittings) and $\log g > 3.85$. To identify interesting targets among this sample, we performed a preliminary measurement of the rotational splittings for nonradial modes using a maximum likelihood estimation technique and performing statistical tests to determine whether or not the rotational splittings of the modes are significant. This step follows directly the method described in Sect. 3.1 of Deheuvels et al. (2015). We thus identified two subgiants that provided enough significant rotational splittings to perform inversions (KIC 5955122, and KIC 8524425). The known properties of these targets are described below. We note that applying more advanced statistical studies to all subgiants in the Chaplin et al. (2014) catalog might lead to identify more targets of the same type.

2.2.1. KIC 5955122

KIC 5955122 is an F9 star observed with the *Kepler* satellite in short cadence during quarters Q1 and then Q5 through Q17 (1181 days overall). Spectroscopic observations were obtained for this star by Bruntt et al. (2012), who found $T_{\text{eff}} = 5865 \pm 70$ K, $[\text{Fe}/\text{H}] = -0.17 \pm 0.06$ dex, $\log g = 3.88 \pm 0.08$ and $v \sin i = 6.5 \text{ km s}^{-1}$. The *Kepler* light curve of KIC 5955122 shows clear signatures of spot modulations and the star is thus magnetically active. Bonanno et al. (2014) analyzed the light curve of the star and found that the lifetimes of spots range from 16.4 days to 27.7 days. They attributed these variations to latitudinal differential rotation at the surface of the star, which they estimated to 0.25 rad d^{-1} using spot modeling. García et al. (2014) found a rotation period of 19.13 ± 2.41 days for this star using the spot-modulation of the *Kepler* light curve, which is in agreement with the measurement by Bonanno et al. (2014).

Using adaptive optics at Subaru, Schonhut-Stasik et al. (2017) found that KIC 5955122 has an *M*-type companion source with a separation of $3.60 \pm 0.06''$. The *Gaia* DR2 indicates that this companion has a similar parallax as KIC 5955122 (5.53 ± 0.02 mas for KIC 5955122, 5.51 ± 0.05 mas for the companion, Gaia Collaboration 2018), which means that the two stars likely form a wide binary system. To estimate the star's luminosity, we combined the *Gaia* parallax with the magnitude $m_G = 9.24$ in the *Gaia* passband. The bolometric correction and the effects of reddening are estimated following Casagrande & Vandenberg (2018). Assuming a reddening of $E(B - V) = 0.03^{+0.02}_{-0.03}$ from the three-dimensional dust map of Green et al. (2018), we obtained a luminosity estimate of $L/L_{\odot} = 5.3 \pm 0.4$ for the star.

2.2.2. KIC 8524425

KIC 8524425 is a G2 target of the *Kepler* mission observed during quarter Q2 and then continuously during quarters Q5 through Q17. Using spectroscopy, Bruntt et al. (2012) found $T_{\text{eff}} = 5620 \pm 70$ K, $[\text{Fe}/\text{H}] = 0.14 \pm 0.06$ dex, $\log g = 4.03 \pm 0.08$ and $v \sin i = 2.3 \text{ km s}^{-1}$ for this star. Its *Gaia* parallax is $\pi = 5.78 \pm 0.02$ mas (Gaia Collaboration 2018), which means that its distance is 172.9 ± 0.7 pc. Using reddening from Green et al. (2018) ($E(B - V) = 0.03^{+0.02}_{-0.03}$) and a bolometric correction from Casagrande & Vandenberg (2018), we obtained $L/L_{\odot} = 3.1 \pm 0.2$ for this star. Spot modulations were found in the light curve of KIC 8524425 by García et al. (2014). Using those, they could derive a surface rotation period of 42.44 ± 3.44 days for the star.

2.3. Seismic analysis

A seismic analysis of the two targets has already been performed by Appourchaux et al. (2012b) using the *Kepler* data available at that time (quarters Q5–Q7, corresponding to 275 days of data). They applied statistical tests to detect oscillation modes and extracted their frequencies from the oscillation spectra. The frequency resolution at that time was not sufficient to measure individual rotational splittings of the modes. We here performed a new analysis of the oscillation spectra of the two stars using the complete *Kepler* dataset with the aim to (i) increase the precision of the mode frequency estimates compared to Appourchaux et al. (2012a) and (ii) to measure the rotational splittings of the mixed modes. The power spectra of the two stars are shown in the shape of échelle diagrams in Fig. 1. We followed the procedure that was described in Deheuvels et al. (2015), which is only briefly recalled here.

2.3.1. Fit of the background

The light curves of the two stars were processed using the *Kepler* pipeline developed by Jenkins et al. (2010). Corrections from outliers, occasional jumps, and drifts were applied following García et al. (2011). The power density spectra (PSD) were then obtained using the Lomb-Scargle periodogram (Lomb 1976; Scargle 1982). Prior to fitting individual oscillation modes, we fit the background of the PSD using a maximum-likelihood estimation (MLE) method. Our model of the background contains contributions from the granulation, the photon noise, and the oscillations. The contribution from the granulation was modeled by two Harvey profiles (Harvey 1985) with distinct

characteristic timescales, as advocated by Karoff et al. (2013) and Kallinger et al. (2014). We also added a white noise component to account for photon noise. The contribution from the oscillations was modeled as a Gaussian function. The background model was used to build the prior probability law for the background level when extracting the mode parameters. The central frequency of the Gaussian component gives an estimate of the frequency of maximum power of the oscillations ν_{\max} . We obtained $\nu_{\max} = 860 \pm 12 \mu\text{Hz}$ for KIC 5955122, and $\nu_{\max} = 1091 \pm 10 \mu\text{Hz}$ for KIC 8524425. These values were used when applying seismic scaling relations (see Sect. 3.1).

2.3.2. Modeling of the oscillation spectrum

Each oscillation mode was modeled as a Lorentzian function in the power spectrum, characterized by its central frequency $\nu_{n,l,m}$, its height H , and its full width at half maximum Γ . The height ratios of the m -components within multiplets (modes of same radial order n and degree l) depend on the stellar inclination angle i and their expressions were derived using the relations given by Gizon & Solanki (2003). The different m -components of the rotational multiplets were assumed to have a common line width Γ .

Owing to the slow rotation of subgiants and red giants, the rotational splittings can be expressed as a first-order perturbation to the mode frequencies. Previous rotation inversions performed for subgiants and red giants have all assumed that the rotation profile is spherically symmetric (e.g., Deheuvels et al. 2012; Di Mauro et al. 2016). However, the modulations in the light curve of KIC 5955122 due to spots suggest that its convective envelope shows latitudinal differential rotation (see Sect. 2.2.1). In this case, the symmetric rotational splittings defined as $S_{n,l,m} = (\nu_{n,l,m} - \nu_{n,l,-m})/(2m)$ are expected to vary with the azimuthal order m . This needs to be taken into account in order to reliably extract the rotational splittings of quadrupole multiplets.

We expressed the rotational splittings as a sum of orthogonal polynomials using the Clebsch-Gordon a -coefficient decomposition, as was done in helioseismology (Ritzwoller & Lavelly 1991) and more recently for main-sequence solar-like pulsators (Benomar et al. 2018). We then have

$$\nu_{n,l,m} = \nu_{n,l} + \sum_{i=1}^{2l+1} a_i^{(l)}(n) \mathcal{P}_i^{(l)}(m), \quad (1)$$

where the $\nu_{n,l}$ are the mode frequencies of the nonrotating star and the $\mathcal{P}_i^{(l)}(m)$ are orthogonal polynomials of degree i that are explicitly given by Pijpers (1997). Only the a_i coefficients with odd i need to be considered because of the symmetry properties of the splittings. Having access to modes with degrees $l \leq 2$, we can only measure a_1 and a_3 coefficients here. The symmetric rotational splittings are then given by

$$S_{n,1,1} = a_1^{(1)}(n) \quad (2)$$

$$S_{n,2,m} = a_1^{(2)}(n) + \frac{1}{3}(5m^2 - 17)a_3^{(2)}(n). \quad (3)$$

The advantage of this decomposition is that the a_1 coefficients probe the internal rotation, while the a_3 coefficients measure the latitudinal differential rotation.

The quality of our data is not sufficient to measure individual values of $S_{n,2,m}$ for the components of each quadrupole multiplets. We therefore had to make simplifications. We tested two different models:

1. *Model M_1* : It is well known that most $l = 2$ modes that are detected in subgiants and red giants are p -dominated because the coupling between the p - and g -cavities is weak. Our modeling of both subgiants in Sect. 3 confirms that the contribution from the core to the kinetic energy of the detected quadrupole modes is indeed very small. In these conditions, it is fair to assume that quadrupole modes probe only the rotation in the p -mode cavity. As for main-sequence solar-like pulsators, the rotational kernels of quadrupole modes with different radial orders have roughly the same sensitivity to the rotation profile. We thus chose to assume a common value of $a_1^{(2)}$ and $a_3^{(2)}$ for all quadrupole modes in order to make the fit more robust.
2. *Model M_2* : We measured individual rotational splittings for quadrupole modes, neglecting the effects of latitudinal rotation (that is, setting $a_3^{(2)} = 0$).

We note that we have here neglected the effects of near-degeneracies in the mode frequencies, which can in some cases create asymmetries in the rotational multiplets (Deheuvels et al. 2017). In practice, asymmetries arise when the frequency separation between consecutive mixed modes is comparable to the rotational splitting. This is not the case for our stars here (see Sect. 3.2), so we could safely neglect near-degeneracy effects.

2.3.3. Extraction of mode parameters

We then proceeded to fit the individual oscillation modes with a Bayesian approach (e.g., Benomar et al. 2009). We estimated the parameters θ for a spectrum model M_i (described in the Sect. 2.3.2) given a data set D and prior information I through posterior probability using Bayes theorem:

$$p(\theta|D, M_i, I) = \frac{p(\theta|M_i, I)p(D|\theta, M_i, I)}{p(D|M_i, I)}, \quad (4)$$

where $p(\theta|M_i, I)$ is a prior probability law, $p(D|\theta, M_i, I)$ is the likelihood and $p(D|M_i, I)$ the evidence of model M_i knowing the observation D , defined as the marginalization over the whole parameter space of the product of the likelihood and the prior. We assumed that the observed spectrum follows the distribution of a χ^2 with 2 degrees of freedom.

We performed semi-local fits. We defined small windows of $16 \mu\text{Hz}$ in the vicinity of each oscillation modes (the size of the windows was chosen such that the local background level can be efficiently estimated). When two or three modes are too close to be isolated, they have been fit together in a broader window. Thus, $l = 0$ and $l = 2$ modes have been fit together, and sometimes, a close-by $l = 1$ mode has also been included. For each box, we assumed a constant background B . All the windows have been simultaneously fit with a common value for the inclination angle i . When fitting model M_1 , we used a common value of $a_1^{(2)}$ and $a_3^{(2)}$ for all modes, as mentioned in Sect. 2.3.2.

The prior probability laws for the different free parameters we used are very similar to the ones we chose in Deheuvels et al. (2015). For the mode frequencies $\nu_{n,l}$, we used a uniform prior spanning an interval of $3 \mu\text{Hz}$. For the mode heights H , widths Γ and for the background level B , we used uniform priors for the parameters $\ln \Gamma$, $\ln(\pi H \Gamma / 2)$ and $\ln B$. This is the same as using Jeffreys prior for H , Γ , and B . We assumed an isotropic prior for the rotation axis orientation, and thus considered a uniform prior for $\cos i$ over $[0, 1]$. For the rotational splittings, we used a uniform prior for a_1 over $[0, 1 \mu\text{Hz}]$. For model M_1 , where splitting asymmetries are taken into account, we also used a uniform prior for the ratio $a_3^{(2)}/a_1^{(2)}$ over $[-0.15, 0.2]$. This is a very broad prior:

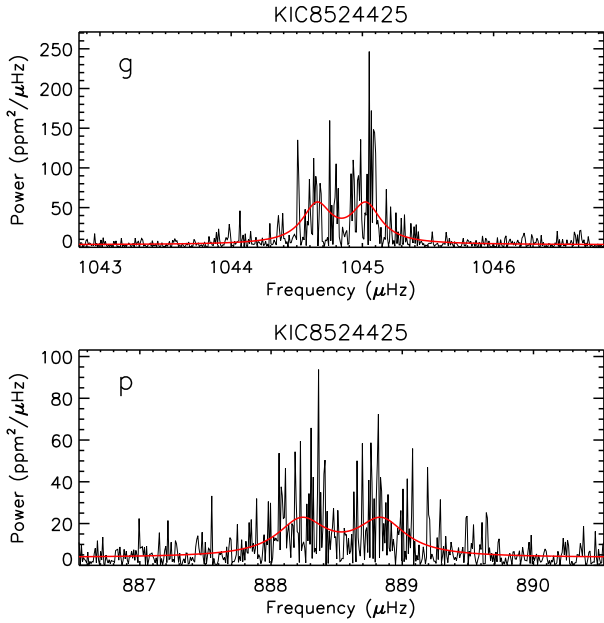


Fig. 2. Rotational multiplets of two dipolar mixed modes of KIC 8524425. The *top panel* shows a *g*-dominated mode and the *bottom panel*, a *p*-dominated mode (see Sect. 3.3). The red curve indicates the best fit to the data (see Sect. 2.3).

beyond these limits $m = \pm 1$ components can become degenerated with $m = \pm 2$ or $m = 0$ components.

Posterior distribution is sampled with a Markov Chain Monte Carlo. Our code is based on Metropolis-Hastings algorithm and is very similar to the one developed by [Benomar et al. \(2009\)](#). We use parallel tempering with 20 parallel chains to avoid the sampling being stuck in local maxima.

Using model M_1 , we obtained rather loose constraints on the a_3 coefficients. We found $a_3 = 16_{-25}^{+23}$ nHz for KIC 5955122, and $a_3 = 15_{-31}^{+20}$ nHz for KIC 8524425. We show in Appendix A that our measurement of the a_3 coefficient for KIC 5955122 is compatible with the photometric measurement of the latitudinal differential rotation obtained by [Bonanno et al. \(2014\)](#). For both stars, our measurements of a_3 are compatible with zero, which means that we can safely neglect the effects of latitudinal differential rotation, as was done for model M_2 . We thus retain only the results obtained with this model in the following sections. In this context, we no longer need to use the Clebsch-Gordon decomposition for the rotational splittings. We further denote the rotational splittings of the modes as $\delta\nu_s$.

Both stars were found to have a relatively high inclination angle ($i = 68_{-4.3}^{+6.1}$ for KIC 5955122, and $i = 78.1_{-7.9}^{+7.9}$ for KIC 8524425). This makes these targets favorable to measure the rotation splittings of dipole mode because the $m = 0$ components have a low visibility. Tables B.1 and B.2 give the extracted mode frequencies for the two stars. To ensure robust results, we retained only the rotational splitting estimates for which the posterior distribution has a negligible amplitude around zero. For each parameter, we provide the median of the marginalized posterior distribution with errors that correspond to the 68% probability interval. For illustration, Fig. 2 shows two dipolar mixed modes of KIC 8524425 that were found to be significantly split by rotation. The extracted mode frequencies for both stars are in good agreement with the recent estimates of [Li et al. \(2020a\)](#), who followed a similar approach.

Table 1. Global stellar parameters obtained from seismic scaling relations.

Starname	M/M_\odot	R/R_\odot	$\log g$
KIC 5955122	1.11 ± 0.07	2.00 ± 0.05	3.884 ± 0.020
KIC 8524425	1.07 ± 0.05	1.75 ± 0.03	3.978 ± 0.015

3. Seismic modeling

3.1. Seismic scaling relations

Preliminary hints of the masses, radii, and surface gravities of the two stars can be derived from seismic scaling relations using measurements of ν_{\max} and the asymptotic large separation of p modes $\Delta\nu$. Estimates of ν_{\max} have already been obtained in Sect. 2.3. To determine $\Delta\nu$, we fit a second-order asymptotic expression to the frequencies of the observed radial modes that were obtained in Sect. 2.3. The asymptotic expression of the radial modes was taken following [Mosser et al. \(2013\)](#),

$$\nu_{n,l=0} = \left[n + \varepsilon_p + \frac{\alpha}{2}(n - n_{\max})^2 \right] \Delta\nu, \quad (5)$$

where n_{\max} corresponds to the radial order that satisfies $\nu_{n,l=0} \approx \nu_{\max}$. An estimate of the asymptotic large separation $\Delta\nu_{\text{as}}$ was then obtained as $\Delta\nu_{\text{as}} = \Delta\nu(1 + n_{\max}\alpha/2)$ using Eq. (11) of [Mosser et al. \(2013\)](#). We thus obtained $\Delta\nu_{\text{as}} = 51.91 \pm 0.02 \mu\text{Hz}$ for KIC 5955122 and $\Delta\nu_{\text{as}} = 61.72 \pm 0.02 \mu\text{Hz}$ for KIC 8524425. By combining our estimates of $\Delta\nu_{\text{as}}$ and ν_{\max} with the measurements of T_{eff} given in Sects. 2.2.1 and 2.2.2, we applied seismic scaling relations to the two stars. The results are given in Table 1. These rough estimates were refined when performing a full seismic modeling of the two targets in Sect. 3.2.

3.2. Seismic modeling using individual mode frequencies

For red giants, the g modes that couple to the observed p modes have high radial orders n_g , so that the trapping of the modes can be estimated directly from the observed oscillation spectra, using the mode frequencies and asymptotic expressions ([Goupil et al. 2013](#)). For young subgiants such as KIC 5955122 and KIC 8524425, which have n_g of order unity, this is not possible and one has to compute a stellar model that matches reasonably well the observed mode frequencies.

For this purpose, we have used the MESA stellar evolution code (version 10108, [Paxton et al. 2015](#)). We used the OPAL 2005 equation of state ([Rogers & Nayfonov 2002](#)) and opacity tables. The nuclear reaction rates were computed using the NACRE compilation ([Angulo et al. 1999](#)), except for the $^{14}\text{N}(p, \gamma)^{15}\text{O}$ reaction where we adopted the revised LUNA rate ([Formicola et al. 2004](#)). The atmosphere was described by Eddington's gray law. We assumed the solar mixture of heavy elements of [Asplund et al. \(2009\)](#). Convection was described using the classical mixing length theory ([Böhm-Vitense 1958](#)) with an adjustable mixing length parameter α_{MLT} . Microscopic diffusion was included by solving the equations of [Burgers \(1969\)](#) at each time step. We have computed models with or without convective overshooting. For both stars, we found that models computed with a significant amount of overshooting led to similar or worse fits to the observations compared to models that do not include overshooting. Indeed, the masses of the two stars indicate that they had either a small convective core or a radiative core during the main sequence. In this mass range, low amounts of core

overshooting are expected (Deheuvels et al. 2016). The eigenfrequencies of the stellar models were calculated using the ADIPLS code (Christensen-Dalsgaard 2008). The mode frequencies were then corrected from near-surface effects using the parametrized correction advocated by Ball & Gizon (2014) (cubic term proportional to ν^3/\mathcal{I} , where ν is the mode frequency and \mathcal{I} is its inertia).

Modeling subgiants with mixed modes is notoriously difficult. The frequencies of g -dominated modes vary on timescales that are short compared to the evolution timescale, which is problematic for usual seismic modeling techniques. To model the two stars under study, we followed the method described by Deheuvels & Michel (2011). For a given set of input stellar parameters (initial helium and heavy element abundances, mixing-length parameter), the authors have shown that the frequencies of radial modes and the frequency of the most g -dominated mode can be used together to obtain very precise estimates of the stellar mass and age. For both stars, we have thus computed grids of models with varying Y_0 , $(Z/X)_0$, and α_{MLT} . For each grid point, we performed an optimization yielding the best-fit mass and age, as mentioned above. A traditional grid-based approach, where mass and age are considered as free parameters, would have required tiny steps in mass and age (and therefore a tremendous number of models) in order to catch the best-fit models.

For each model of the computed grids, we estimated the agreement with the observations by computing the χ^2 function defined as

$$\chi^2 = \sum_{i=1}^N \frac{(O_i^{\text{mod}} - O_i^{\text{obs}})^2}{\sigma_i^2}, \quad (6)$$

where O_i^{obs} , $i = 1, \dots, N$ are the N observables that were used to constrain the models, σ_i correspond to the associated uncertainties, and O_i^{mod} are the corresponding values in the computed stellar models. In this case, the observables include to the global surface parameters (T_{eff} , L , $\log g$, and $(Z/X)_{\text{surf}}$) and the frequencies of the $l = 0, 1$, and 2 modes given in Tables B.1 and B.2. The stellar parameters of the best-fit models are given in Table 2. As can be seen in Fig. 3 the mode eigenfrequencies of the optimal models (corrected from near-surface effects) show a very good visual agreement with the observations. The reduced χ^2 of these best-fit models are $\chi_{\text{red}}^2 = 2.0$ for KIC 5955122, and $\chi_{\text{red}}^2 = 5.1$ for KIC 5955122. For these two models, the χ^2 value is dominated by the contribution of a few mixed modes of degree $l = 1$ or 2 .

Seismic modelings of the two subgiants have also recently been performed by Li et al. (2020b), who worked with pre-computed grids of stellar models, using an interpolation of the mixed mode frequencies with age. Our best-fit models are significantly more massive than those of Li et al. (2020b), who found $M = 0.97 \pm 0.04 M_{\odot}$ for KIC 8524425 and $M = 1.12 \pm 0.05 M_{\odot}$ for KIC 5955122. However, we notice that the agreement with the observed mode frequencies, and in particular with the mixed dipole modes, is much better in the present study than for the best-fit models of Li et al. (2020b) (comparing Fig. 3 to the échelle diagrams in Appendix B of Li et al. 2020b). The authors attribute these large differences between models and observations to an imprecise modeling of the core. A more detailed analysis would be required to identify the source of this disagreement, but this could be related to the fact that they only considered models with core overshooting, while our best-fit models for both stars were found for negligible core overshooting. Microscopic diffusion, which was neglected in the

Table 2. Stellar parameters of the best-fit models of KIC 5955122 and KIC 8524425.

	KIC 5955122	KIC 8524425
Mass (M_{\odot})	1.218	1.113
Age (Gyr)	4.65	7.58
Radius (R_{\odot})	2.099	1.797
Luminosity (L_{\odot})	5.49	3.06
$(Z/X)_0$	0.0143	0.0266
Y_0	0.257	0.277
α_{MLT}	2.00	1.86
χ_{red}^2	2.0	5.1

study of Li et al. (2020b), could also account for part of this disagreement.

In practice, it has been shown that the results of rotation inversions does not depend critically on the choice of a best-fit model, provided the mode frequencies are fit reasonably well (Deheuvels et al. 2012). When inferring the internal rotation profile in Sect. 4, we have also checked that our conclusions are unchanged if we choose other models with comparable χ^2 values from the grid as reference models for our inversions. Figure 4 shows the evolutionary tracks of the optimal models for the two stars in an HR diagram, compared to those of the stars studied by D14. It is readily seen that KIC 8524425 and KIC 5955122 are indeed less evolved than the D14 sample.

Our optimal models for KIC 5955122 all have a convective core during the main sequence, while the core of KIC 8524425 was radiative. This is important to stress because stars that have a convective core during the main sequence experience a rapid core contraction outside of thermal equilibrium as the star adjusts to the stopping of nuclear reactions in the core. Without redistribution of AM, this contraction induces a sharp increase in the core rotation rate (Eggenberger et al. 2019b).

Finally, using our best-fit models for the two stars, we could estimate the minimum separation between consecutive mixed modes, in order to test whether asymmetries in rotational multiplets due to near-degeneracy effects are expected (Deheuvels et al. 2017). For KIC 8524425, we found minimum separations of $30.7 \mu\text{Hz}$ for $l = 1$ modes and $10.7 \mu\text{Hz}$ for $l = 2$ modes. For KIC 5955122, we obtained $25.1 \mu\text{Hz}$ for $l = 1$ modes and $5.5 \mu\text{Hz}$ for $l = 2$ modes. These separations are much larger than the measured rotational splittings, so we confirm that neglecting near-degeneracy effects, as was done in Sect. 2.3, is legitimate here.

3.3. Mode trapping vs rotational splittings

Using the optimal stellar models for the two stars, we could estimate the trapping of the observed modes. This is traditionally done using the ζ parameter, which measures the contribution of the g -mode cavity to the mode energy

$$\zeta = \frac{\int_{r_a}^{r_b} \rho r^2 (\xi_r^2 + L^2 \xi_h^2) dr}{\int_0^R \rho r^2 (\xi_r^2 + L^2 \xi_h^2) dr}, \quad (7)$$

where ξ_r and ξ_h are the radial and horizontal displacements of the mode, r_a and r_b are the turning points bounding the g -mode cavity, and $L^2 = l(l+1)$. We calculated ζ for all modes and we confirmed that the detected quadrupole modes are indeed p -dominated (we found $\zeta < 0.09$ for KIC 8524425 and $\zeta < 0.02$

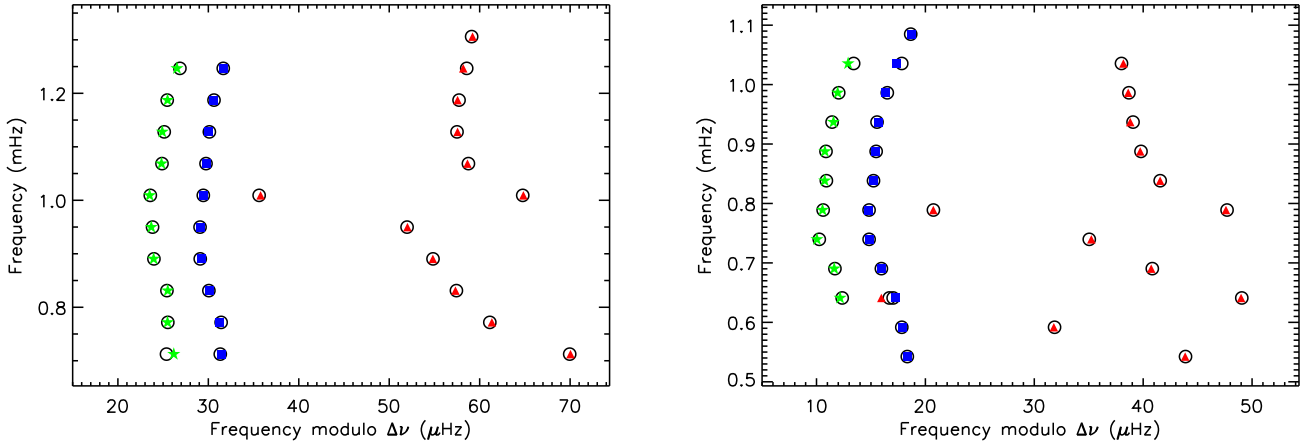


Fig. 3. Echelle diagrams of the best-fit model obtained for KIC 8524425 (*left panel*) and KIC 5955122 (*right panel*). The open circles correspond to observed mode frequencies and the filled symbols to the frequencies of the best-fit model (blue squares for $l = 0$ modes, red triangles for $l = 1$ modes, and green stars for $l = 2$ modes).

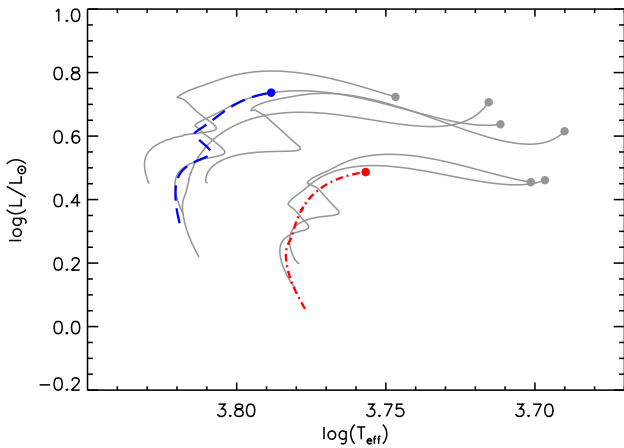


Fig. 4. Evolutionary tracks in the HR diagram of the optimal stellar models of KIC 5955122 (blue long-dashed curve) and KIC 8524425 (red dot-dashed curve). Also shown in gray are the evolutionary tracks of the stars whose rotation profiles were measured by D14.

for KIC 5955122). We note that for more evolved targets, estimates of ζ can be obtained directly from the mode frequencies using an asymptotic analysis (Goupil et al. 2013). However, in our case the low number of nodes of the modes in the g -mode cavity (n_g is order unity) prevents the use of an asymptotic treatment and ζ has to be calculated from a stellar model.

Goupil et al. (2013) showed that the splittings of dipole modes are expected to follow a linear trend with ζ . Their expression can easily be extended to modes of degree l , giving

$$\delta\nu_s \approx \frac{L^2 - 1}{L^2} \zeta \frac{\langle \Omega \rangle_g}{2\pi} + (1 - \zeta) \frac{\langle \Omega \rangle_p}{2\pi}, \quad (8)$$

where $\langle \Omega \rangle_p$ and $\langle \Omega \rangle_g$ are average rotation rates in the p - and g -mode cavities. The observed rotational splittings are plotted as a function of ζ in Fig. 5.

Dipole mode splittings are indeed found to vary roughly linearly with ζ . One striking observation is that in contrast with all previously studied subgiants and red giants, the splittings of p -dominated modes ($\zeta \rightarrow 0$) are larger than those of g -dominated modes ($\zeta \rightarrow 1$). This is already an indication that the core is not rotating much faster than the envelope in these two stars. Preliminary estimates of the core and envelope rotation rates were

obtained by fitting Eq. (8) to the observed splittings. We obtained $\langle \Omega \rangle_g / (2\pi) = 224 \pm 107$ nHz and $\langle \Omega \rangle_p / (2\pi) = 288 \pm 18$ nHz for KIC 8524425, and $\langle \Omega \rangle_g / (2\pi) = 535 \pm 272$ nHz and $\langle \Omega \rangle_p / (2\pi) = 656 \pm 34$ nHz for KIC 5955122. This suggests that both stars are compatible with a solid-body rotation profile. These first estimates were then refined using full seismic inversions in Sect. 4.

4. Rotation inversions

We then used the rotational kernels of the best-fit models to measure the internal rotation of the two stars. For this purpose, the optimally localized averages (OLA) inversion technique is particularly well suited. For a given location r_0 inside the star, it consists in building an averaging kernel $\mathcal{K}_{av}(r_0; r) = \sum_{i=1}^M c_i(r_0) K_i(r)$, where the functions $K_i(r)$, $i = 1, M$ correspond to the rotational kernels of the modes whose splittings have been measured (for modes of degrees $l = 1$ and 2), and the coefficients c_i are optimized so that $\mathcal{K}_{av}(r_0; r)$ is as localized as possible around r_0 . Different approaches have been proposed, whereby the averaging kernels are built to approximate at best a Dirac function (multiplicative optimally localized averages, or MOLA method) or another well chosen target function, such as a Gaussian function (subtractive optimally localized averages, or SOLA method).

4.1. Envelope rotation rate

Previous rotation inversions for subgiants and red giants have failed to build averaging kernels that resemble Dirac or Gaussian functions within the envelope. This is because the eigenfunctions of the observed modes in the p -mode cavity are too similar to one another to obtain localized information on the rotation profile in this region. The situation is in fact quite similar to that of main sequence solar-like pulsators, for which only an average rotation of the p -mode cavity can be obtained (e.g., Benomar et al. 2015). Thus, the MOLA and SOLA inversion methods are not directly suited to measure the envelope rotation.

To obtain an average rotation in the p -mode cavity, one needs to cancel at best the contribution of the g -mode cavity to the envelope averaging kernel. We thus propose a slight modification to the MOLA method. Instead of imposing a particular shape to the averaging kernel, we minimize the integral of $\mathcal{K}(r)^2$ below a radius r_c that is chosen within the evanescent region between the

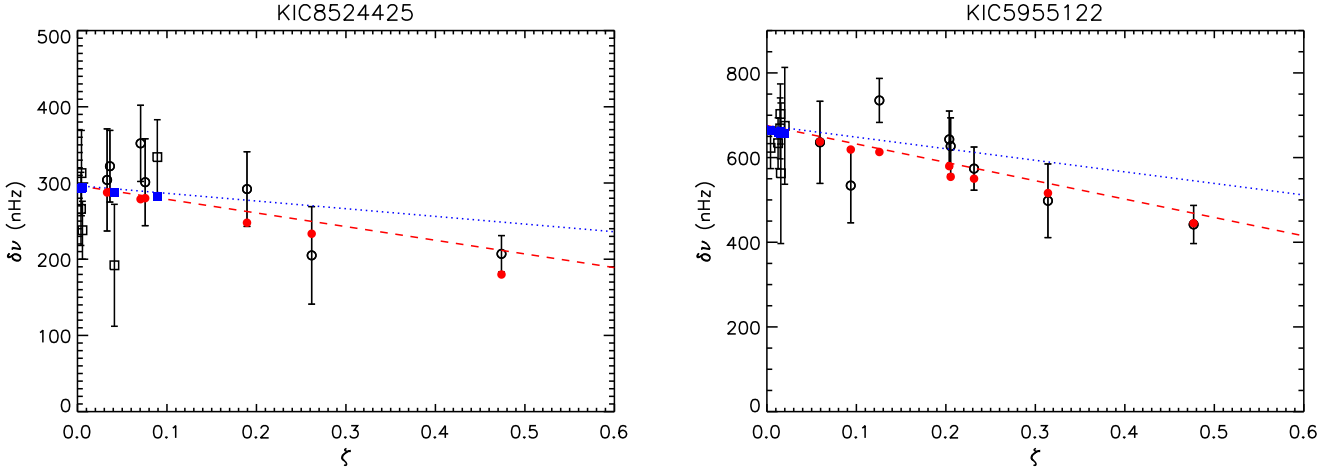


Fig. 5. Observed rotational splittings (open symbols) for modes of degrees $l = 1$ (circles) and $l = 2$ (squares) plotted as a function of the parameter ζ obtained from the best-fit stellar models (ζ measures the trapping of the modes, with $\zeta \rightarrow 0$ for p -dominated and $\zeta \rightarrow 1$ for g -dominated modes). The splittings obtained with the inverted values of $\langle \Omega \rangle_g$ and $\langle \Omega \rangle_p$ (see Sect. 4) are shown as filled symbols. The dashed and dotted lines show the expected rotational splittings for $l = 1$ and 2 modes, respectively, when fitting Eq. (8) to the observations.

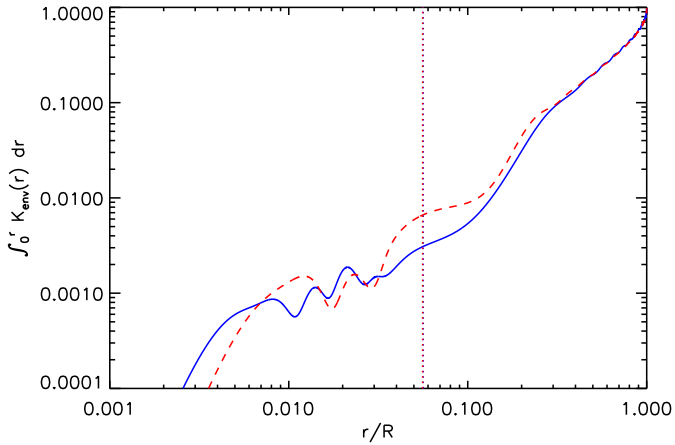


Fig. 6. Cumulative integral of the envelope averaging kernels obtained with the modified MOLA method (see text) for KIC 8524425 (red dashed line) and KIC 5955122 (solid blue line). The vertical dotted lines indicate the upper turning point of the g -mode cavity.

p - and g -mode cavities. We thus minimize the functional

$$S(\mathcal{K}) = \int_0^{r_c} \mathcal{K}(r)^2 dr + \lambda \sum_{i=1}^M c_i^2 \sigma_i^2, \quad (9)$$

where the second term corresponds to a regularization term. It limits the error magnification that can arise when the optimal coefficients c_i take on large values of opposite signs. The coefficient λ is a trade-off parameter. We performed tests of this inversion method using artificial input rotation profiles, from which we found that $\lambda \sim 10^{-2}$ provides a good compromise between the minimization of $\int_0^{r_c} \mathcal{K}(r)^2 dr$ and error magnification.

Figure 6 shows the cumulative integral of the envelope averaging kernels obtained by minimizing the function $S(\mathcal{K})$ for KIC 8524425 and KIC 5955122. As can be seen, the core contribution is below 1% in both cases. We found that the $l = 2$ rotational splittings are not crucial to obtain measurements of the average envelope rotation rate. Envelope averaging kernels with similar shapes as those shown in Fig. 6 can be obtained using $l = 1$ modes only. However, the rotational splittings of

$l = 2$ modes improve the precision on the measurements of the average envelope rotation by a factor of 1.5 (KIC 8524425) to 2 (KIC 5955122). We were thus able to derive average rotation rates in the p -mode cavity of both stars. The results are listed in Table 3. We obtained $\langle \Omega \rangle_p / (2\pi) = 298 \pm 20$ nHz for KIC 8524425 and $\langle \Omega \rangle_p / (2\pi) = 675 \pm 27$ nHz for KIC 5955122. This corresponds to periods of rotation of $\langle P \rangle_p = 38.8 \pm 2.6$ days for KIC 8524425 and $\langle P \rangle_p = 17.1 \pm 0.7$ days for KIC 5955122.

These rotation periods $\langle P \rangle_p$ agree within $1\text{-}\sigma$ errors with the surface rotation periods that were obtained by García et al. (2014) from the photometric signature of stellar activity (19.13 ± 2.41 days for KIC 5955122 and 42.44 ± 3.44 days for KIC 8524425). A surface rotation period can also be derived from the spectroscopic estimates of $v \sin i$ obtained by Bruntt et al. (2012) for the two stars. By combining the $v \sin i$ measurements with the inclination angles that we obtained from our analyses of the oscillation spectra (Sect. 2.3) and the stars' radii from our modeling (Sect. 3.2), we obtained rotation periods of 15.2 days for KIC 5955122 and 38.7 days for KIC 8524425 (no error bars are given for the $v \sin i$ in Bruntt et al. 2012). These values also agree well with our seismic measurement of the average rotation in the p -mode cavity.

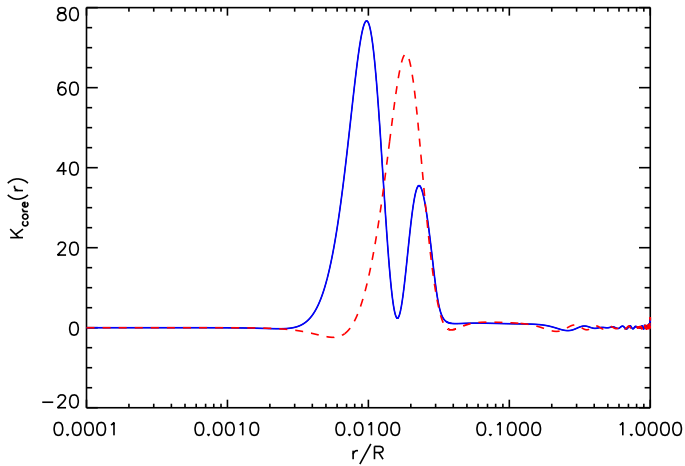
As can be seen in Fig. 6, seismic measurements mostly probe the rotation in the outer layers of the star but they are nonetheless also sensitive to the rotation in the bulk of the convective envelope and to a lesser extent in the radiative region below. The mean radius of sensitivity of the envelope averaging kernels can be computed as $x_{\text{env}} = \int_0^R x \mathcal{K}_{\text{env}}(r) dr$, where $x = r/R$ is the normalized radius. For both stars, one finds $x_{\text{env}} \approx 0.76$. The good agreement between the seismic measurement of the average rotation in the p -mode cavity and the surface rotation period suggests that there can only be a mild differential rotation within the envelope.

4.2. Core rotation rate

The rotation inversions performed so far on subgiants and red giants yielded very precise constraints on the core rotation rate (e.g., Deheuvels et al. 2012; Di Mauro et al. 2016). This was achieved thanks to the detection of a large number of g -dominated modes. In our case, young subgiants have only few g -dominated modes, so it is also more difficult to build

Table 3. Estimates of the mean rotation rates $\langle\Omega\rangle_g$, $\langle\Omega\rangle_p$, and the ratio between these quantities obtained from the coefficients of the $\delta\nu(\zeta)$ relation or rotation inversions.

Star	$\langle\Omega\rangle_g/(2\pi)$ (nHz)		$\langle\Omega\rangle_p/(2\pi)$ (nHz)		$\langle\Omega\rangle_g/\langle\Omega\rangle_p$	
	$\delta\nu(\zeta)$	Inversions	$\delta\nu(\zeta)$	OLA	$\delta\nu(\zeta)$	Inversions
KIC 8524425	224 ± 107	204 ± 134	288 ± 18	298 ± 20	0.78 ± 0.42	0.68 ± 0.47
KIC 5955122	535 ± 272	488 ± 227	656 ± 34	675 ± 27	0.82 ± 0.46	0.72 ± 0.37


Fig. 7. Core averaging kernels obtained with the modified MOLA method (see text) for KIC 8524425 (red dashed line) and KIC 5955122 (solid blue line).

averaging kernels that efficiently suppress the contribution from the envelope. By testing the inversion method on simulated data, we found that building core averaging kernels with negligible contribution from the envelope requires to measure the rotational splittings of several individual $l = 2$ modes.

We applied the same inversion technique as in Sect. 4.1 but this time we minimized the contribution from the envelope to the averaging kernel. The core averaging kernels $\mathcal{K}_{\text{core}}$ thus obtained are shown in Fig. 7. The contribution of the envelope is indeed efficiently canceled for both stars. Using these kernels, we obtained $\langle\Omega\rangle_g/(2\pi) = 204 \pm 134$ nHz for KIC 8524425 and $\langle\Omega\rangle_g/(2\pi) = 488 \pm 227$ nHz for KIC 5955122 (see Table 3). Contrary to rotation inversions performed on more evolved targets, the estimates of the core rotation rate for these two young subgiants are less precise than the measurement of the envelope rotation rate.

We used the values of $\langle\Omega\rangle_g$ and $\langle\Omega\rangle_p$ obtained from seismic inversions to calculate the corresponding rotational splittings as

$$\delta\nu_s \approx \langle\Omega\rangle_g \int_0^{r_c} K_{n,l}(r) dr + \langle\Omega\rangle_p \int_{r_c}^R K_{n,l}(r) dr. \quad (10)$$

The results are overplotted in Fig. 5. They match quite well the observed values of the a_1 coefficients, which brings further validation to our inversion results.

From the seismic measurements of $\langle\Omega\rangle_p$ and $\langle\Omega\rangle_g$, we could deduce estimates of the core-envelope contrast for the two stars. We obtained $\langle\Omega\rangle_g/\langle\Omega\rangle_p = 0.68 \pm 0.47$ for KIC 8524425 and $\langle\Omega\rangle_g/\langle\Omega\rangle_p = 0.72 \pm 0.37$ for KIC 5955122 (see Table 3). This confirms that the two stars are indeed consistent with a solid-body rotation within the entire interior.

5. Interpretation for the transport of AM

5.1. Forcing of differential rotation

After the end of the main sequence, stars experience structural changes that are expected to force differential rotation. Without internal redistribution of AM, the contraction of the most central layers should spin up the core and the expansion of the envelope should make it spin down. To quantify the forcing of differential rotation for the two stars under study, we used the stellar models obtained in Sect. 3.2 to calculate the theoretical variations in the mean rotation rate $\langle\Omega\rangle_g$ along the evolution, assuming that each layer conserves its specific AM. Under this hypothesis, we found that $\langle\Omega\rangle_g$ should have increased by a factor of about four compared to its value at the end of the main sequence for both stars. By then, the envelope has expanded and thus spun down, so that we expect a core-envelope rotation contrast between eight and nine for the two stars. Therefore, an efficient transport of AM must take place to enforce nearly solid-body rotation, as was found from seismology.

Eggenberger et al. (2019b) proposed to estimate the timescale of the forcing of differential rotation during the subgiant phase as $\tau_{\text{DR}} = (d \ln \langle\Omega\rangle_g / dt)^{-1}$, where $\langle\Omega\rangle_g$ is computed assuming conservation of the specific AM. The top panel of Fig. 8 shows the variations in τ_{DR} during the post main sequence evolution for both stars. Whatever mechanism redistributes AM in young subgiants has to operate on a timescale shorter than τ_{DR} to enforce solid-body rotation. Two different phases where differential rotation is strongly forced were identified by Eggenberger et al. (2019b). The first one takes place just after the turnoff for stars that had a convective core during the main sequence (this is the case for KIC 5955122, and Fig. 8 shows that τ_{DR} drops to about 200 Myr after the MS turnoff). The second phase coincides with the base of the RGB, where τ_{DR} decreases from about 3 Gyr to about 100 Myr for both stars. These rapid changes in τ_{DR} can be explained by departures from thermal equilibrium, which are measured by $\varepsilon_{\text{grav}} = -T \partial s / \partial t$. The bottom panel of Fig. 8 shows the variations in $\varepsilon_{\text{grav}}$ in the stellar core of both stars, which are clearly anti-correlated with the variations in τ_{DR} . The forcing of differential rotation is maximal at the peaks of $\varepsilon_{\text{grav}}$, that is when the core contracts on a thermal timescale.

The stars studied by D14 all lie after the peak of $\varepsilon_{\text{grav}}$ corresponding to the base of the RGB except for the least evolved one (star B), which lies precisely at the maximum of the peak (see Fig. 6 of Eggenberger et al. 2019b). As shown by Fig. 8, the evolutionary stage of KIC 8524425 and KIC 5955122 places them well before the maximum of $\varepsilon_{\text{grav}}$, which confirms that they are indeed less evolved than the sample of D14. The nearly solid-body rotation profiles that we obtained show that the internal redistribution of AM for these stars takes place on timescales lower than the current value of τ_{DR} (about 320 Myr for KIC 5955122 and 570 Myr for KIC 8524425).

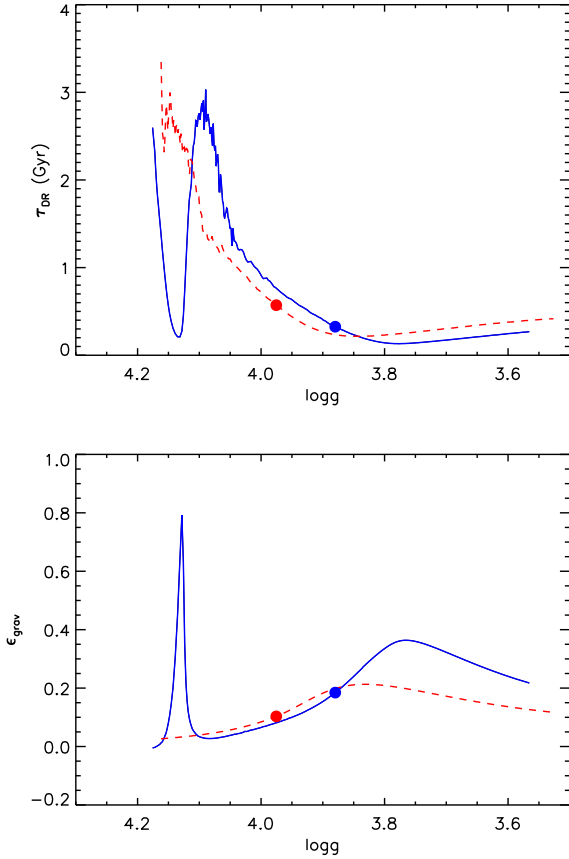


Fig. 8. Variations in the timescale τ_{DR} over which differential rotation is forced (*top panel*) and in $\varepsilon_{\text{grav}}$ (*bottom panel*) along the subgiant branch for our best-fit models of KIC 8524425 (red dashed line) and KIC 5955122 (solid blue line). The filled circles correspond to the stars at current age.

5.2. Efficiency of AM transport

To estimate the efficiency of the AM transport that is required to reproduce the observed rotation profiles, we computed rotating models for the two subgiants, including an additional constant viscosity ν_{add} in the equation for the transport of AM in radiative zones. This approach was already followed for instance by Eggenberger et al. (2012, 2019b), Spada et al. (2016), and den Hartogh et al. (2019), for more evolved subgiants and red giants. As already mentioned in these works, this is a very crude description of the AM transport in subgiants. Naturally, we do not expect whatever mechanism is at work to indeed operate like a diffusive process with constant viscosity. The main goal of this approach is to study how the mean efficiency of the unknown transport processes vary with stellar parameters, and in particular with evolution. It was shown by Eggenberger et al. (2019b) that the transport efficiency decreases during the late subgiant phase, near the base of the RGB, but must increase again as stars evolve along the RGB (Eggenberger et al. 2017). We here had the opportunity to estimate the efficiency of the transport closer to the MS turnoff and compare with its value on the MS.

5.2.1. Rotating models

We used two different stellar evolution codes: YREC (Demarque et al. 2008) and GENEC (Eggenberger et al. 2008). The two codes differ in their treatment of the rotation.

GENEC follows the assumption of shellular rotation advocated by Zahn (1992; see also Maeder & Zahn 1998). The evolution of the rotation profile is computed simultaneously to the evolution of the star, taking into account AM transport by meridional currents and the shear instability. In this context, the equation for AM transport that is solved in radiative regions is

$$\rho \frac{d}{dt} (r^2 \Omega)_m = \frac{1}{5r^2} \frac{\partial}{\partial r} [\rho r^4 \Omega U(r)] + \frac{1}{r^2} \frac{\partial}{\partial r} \left(\rho D_{\text{tot}} r^4 \frac{\partial \Omega}{\partial r} \right), \quad (11)$$

where $\rho(r)$ is the density at radius r , and $U(r)$ corresponds to the radial dependence of the meridional circulation velocity in the radial direction. An effective diffusion coefficient D_{tot} was introduced as $D_{\text{tot}} = D_{\text{shear}} + \nu_{\text{add}}$, where D_{shear} is the diffusion coefficient for AM transport by shear instability and ν_{add} is the additional viscosity introduced. Models that include the braking of the stellar surface by magnetized winds were computed with the braking law of Matt et al. (2015) with a braking constant fixed to its solar-calibrated value. The initial rotation rates of the stars were adjusted in order to reproduce their observed current surface rotation rates.

For YREC models, we neglected the AM transport by meridional circulation and shear instabilities. We considered only the effects of the unknown mechanism that transports AM in subgiants, assuming that it acts as a diffusion process, as was done in Spada et al. (2016). Thus, only the second term in the right-hand-side term of Eq. (11) was retained, and $D_{\text{tot}} = \nu_{\text{add}}$. We did not expect this difference of treatment to affect much the estimates of ν_{add} compared to the GENEC models because it has been shown that rotation-induced AM transport as it is currently understood is very inefficient in this phase of the evolution (e.g., Ceillier et al. 2013). The braking of the stellar surface through magnetized wind was included following the prescription of Kawaler (1988). The initial rotation period was chosen so that to the period at the age of 1 Myr is 8 days (this choice roughly coincides with the median of the observed period distribution of the Orion Nebula Cluster, Rebull 2001). The braking constant K of the wind model was then adjusted to match the surface rotation of the two stars.

5.2.2. Results

Using both evolution codes, ν_{add} was adjusted in order to reproduce the core to envelope rotation contrast obtained by seismology. Above a certain value of ν_{add} , the rotation profile is constant throughout the star. Since the rotation profiles of both subgiants were found to be consistent with solid-body rotation, we could only obtain a lower limit to the value of ν_{add} . Models computed with GENEC and YREC including magnetic braking during the MS yielded very similar results. They required $\nu_{\text{add}} > 8 \times 10^4 \text{ cm}^2 \text{ s}^{-1}$ for KIC 8524425 and $\nu_{\text{add}} > 2.5 \times 10^5 \text{ cm}^2 \text{ s}^{-1}$ for KIC 5955122 to reproduce $\langle \Omega \rangle_g / \langle \Omega \rangle_p$ within 1- σ errors (see Fig. 9).

We also investigated how these results depend on the assumptions made concerning the transport of AM during the MS. For this purpose, we computed an additional set of GENEC models in the (unrealistic) case where no magnetic braking is included during the MS. For these models, slower initial rotations are needed to reproduce the current envelope rotation rates of the two stars. Naturally, these models reach the end of the MS with a lower level of radial differential rotation than the models computed with magnetized winds. We found that additional viscosity required is then lowered to about $5 \times 10^4 \text{ cm}^2 \text{ s}^{-1}$ for KIC 8524425, and $1.5 \times 10^5 \text{ cm}^2 \text{ s}^{-1}$ for KIC 5955122. We thus

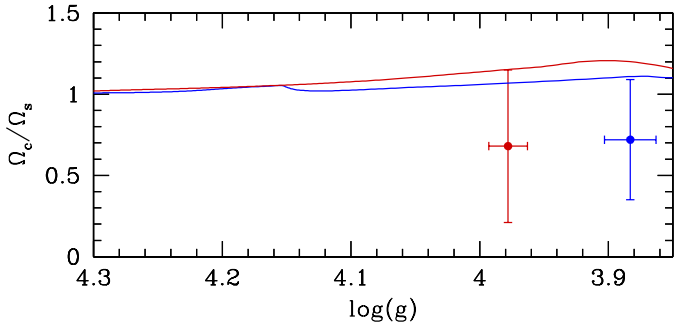


Fig. 9. Ratio between core and envelope rotation rates obtained with GENE models computed with an additional viscosity ν_{add} adjusted to match asteroseismic observations (see text). Filled circles indicate seismic measurements for KIC 5955122 (blue symbol) and for KIC 8524425 (red symbol).

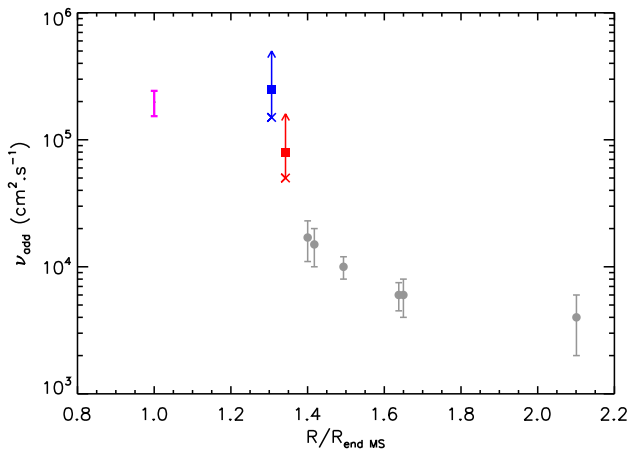


Fig. 10. Additional viscosity that is required to reproduce the seismic rotation profiles of subgiants as a function of the ratio between the current stellar radius and the radius at the end of the MS (proxy for evolutionary stage). Filled squares and vertical arrows indicate the lower limits on ν_{add} obtained for KIC 5955122 (blue) and KIC 8524425 (red) with magnetic braking in the MS and crosses show the lower limits obtained without wind. Gray circles correspond to the evolved subgiants studied by Eggenberger et al. (2019b). The thick purple bar shows the efficiency of the AM transport during the main sequence for stars with masses between 1.1 and 1.2 M_{\odot} obtained with open clusters (Spada & Lanzafame 2020).

found that, contrary to more evolved stars, the rotational properties of young subgiants are sensitive to the internal transport of AM on the MS (Eggenberger et al. 2019b).

5.2.3. Comparison with AM transport at other evolutionary stages

The additional viscosities required for the two subgiants are significantly larger than those needed for the more evolved subgiants studied by D14 and Eggenberger et al. (2019b) (whether or not we include magnetic braking during the main sequence). This confirms their findings, that the efficiency of the AM transport decreases during the subgiant phase. This is illustrated in Fig. 10, where we have used the ratio between the current stellar radius and the radius at the MS turnoff as a proxy for the evolutionary stage (updated version of Fig. 7 of Eggenberger et al. 2019b).

The obtained values of ν_{add} can also be compared to those obtained for MS stars using the surface rotation periods of stars

in Galactic open clusters. These measurements can yield estimates of the timescale of the coupling between the core and the envelope in terms of AM transport as a function of the stellar mass. Recently, Spada & Lanzafame (2020) updated these estimates using observations of the Praesepe and NGC 6811 clusters. For stars with masses $\lesssim 1.3 M_{\odot}$, they found that the coupling timescale τ_c varies as $\tau_{c,\odot}(M/M_{\odot})^{-\alpha}$, with $\tau_{c,\odot} = 22$ Myr and $\alpha = 5.6$. Using our mass estimates for KIC 5955122 and KIC 8524425 (see Table 2), this yields MS coupling timescales of 7 and 12 Myr, respectively. Denissenkov et al. (2010) showed that the two-zone model that was used by Spada & Lanzafame (2020) (among other authors) is equivalent to considering a diffusive transport of AM inside the star with a constant viscosity ν_{add} . They also provided an approximate correspondence between τ_c and ν_{add} . Using this relation, we found that the MS coupling timescales for both stars translate into values of ν_{add} in the range $(1.5\text{--}2.4) \times 10^5 \text{ cm}^2 \text{ s}^{-1}$. This interval is shown by the purple vertical bar in Fig. 10. This shows that the efficiency of the additional mechanism that transports AM in young subgiants is found to be intermediate between the efficiency needed on the MS for these stars and the efficiency required later in the subgiant phase. This is a potential indication that the mechanism that transports AM during the MS might persist for some time after the end of the MS and become increasingly inefficient near the base of the RGB.

5.2.4. Comparison with predictions from potential AM transport mechanisms

Internal gravity waves (IGW) excited at the bottom of the convective envelope were proposed as potential candidates for the transport of AM in subgiants. These waves propagate in the radiative interior, where they are damped and eventually dissipate. To produce a net transport of AM, a certain amount of radial differential rotation is needed. Indeed, with a flat rotation profile, the contributions from prograde and retrograde waves cancel each other out. Pinçon et al. (2017) considered IGW excited by the penetration of turbulent plumes at the base of the convective envelope. They calculated the threshold of differential rotation $\Delta\Omega_{\text{th}} = \Omega_{\text{core}} - \Omega_{\text{env}}$ above which the waves transport AM on a time scale shorter than the time scale of the core contraction. The authors suggested a self-regulating process, which imposes that the differential rotation stabilizes around the threshold value. Pinçon et al. (2017) provided first estimates of $\Delta\Omega_{\text{th}}$, which are in quite good agreement with the amount of differential rotation seismically inferred for young red giants by D14. Interestingly, Pinçon et al. (2017) also found that for some time after the end of the MS, even a negligible amount of differential rotation is enough to couple the core to the envelope. For a 1.15- M_{\odot} model (roughly matching the masses of our two subgiants), the radial differential rotation becomes detectable when $\log g \lesssim 3.93$ and this threshold in $\log g$ decreases with increasing stellar mass (see Fig. 6 of Pinçon et al. 2017). Thus, although more detailed calculations are clearly required, it seems that AM transport by IGW could account for the nearly solid-body rotation profiles of KIC 5955122 ($M \sim 1.22 M_{\odot}$ and $\log g \sim 3.88$) and KIC 8524425 ($M \sim 1.11 M_{\odot}$ and $\log g \sim 3.98$). In any case, we recall that IGW cannot account on their own for the rotational evolution of more evolved red giants because the increasingly large Brunt-Väisälä frequency in the core makes the transport of AM by waves more and more inefficient (Talon & Charbonnel 2008; Fuller et al. 2014).

Internal magnetic fields could also be responsible for the transport of AM in subgiants. Recently, Fuller et al. (2019)

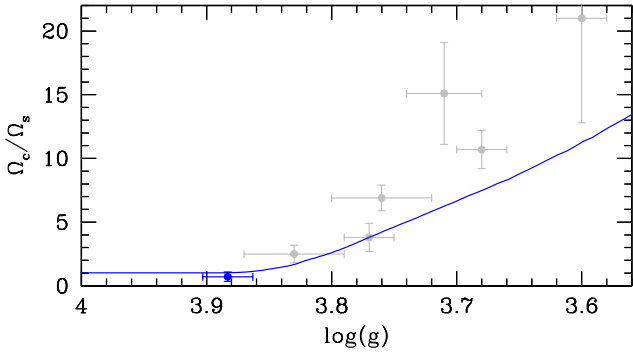


Fig. 11. Ratio between core and envelope rotation rates obtained with GENEC and the formalism of Fuller et al. (2019) with $\alpha = 0.6$ (blue line). The filled blue circle corresponds to the observed core-envelope contrasts for KIC 5955122. For visual comparison, the stars of D14 have been added to this plot (gray symbols). However, we note that evaluating the transport efficiency for these stars requires a dedicated modeling taking into account their masses and chemical compositions (see Fig. 3 of Eggenberger et al. 2019a).

proposed a revised prescription of the transport of AM by the Tayler instability. They considered an alternate saturation mechanism, which leads to larger magnetic field amplitudes at the saturation of the instability, and thus a more efficient transport of AM than the original prescription of Spruit (2002). They proposed revised expressions for the effective AM diffusivity linked to the Tayler instability and the minimum shear $q_{\min} = (-\partial \ln \Omega / \partial \ln r)_{\min}$ required to trigger the instability. They found that with this formalism, rigid rotation is expected to be maintained for some time after the end of the MS. The amount of differential rotation during the subgiant phase is essentially determined by the minimum shear q_{\min} , which depends on a dimensionless parameter $\alpha \sim 1$, according to the authors. Eggenberger et al. (2019a) showed that values of α significantly below unity ($\alpha \sim 0.5$) are needed to reproduce the internal rotation of the evolved subgiants studied by Deheuvels et al. (2014), while matching the core rotation of stars on the RGB requires $\alpha \sim 1.5$. Moreover, even higher values of α are needed to account for the internal rotation of intermediate mass stars in the core He burning phase (den Hartogh et al. 2020). To estimate the agreement of this formalism with the results of this study, we computed a model of KIC 5955122 including the prescription of Fuller et al. (2019) using the GENEC code. We found that values of $\alpha \gtrsim 0.6$ are required to have the star rotate rigidly at its current age (see Fig. 11). The second subgiant, KIC 8524425, is less constraining because it has a higher value of $\log g$, and so even relatively low values of α can produce near solid-body rotation for this star. This is consistent with the value inferred by Eggenberger et al. (2019a) for the least evolved stars of D14, but yields a too low degree of differential rotation to account for the most evolved ones of the sample.

6. Conclusion

In this study, we probed the internal rotation of two *Kepler* subgiants, KIC 8524425 and KIC 5955122, at an intermediate stage of evolution between the main sequence turnoff and the base of the red giant branch, where constraints on the core rotation were still lacking. We were able to measure eigenfrequencies and rotational splittings for dipole and quadrupole modes for these two stars. Through a detailed seismic modeling, we confirmed that the two subgiants are indeed closer to the main sequence turnoff than the stars studied by Deheuvels et al. (2014). We also

obtained rotational kernels for the detected modes and could therefore perform rotation inversions.

We obtained precise measurements of the average rotation period in the p -mode cavity (we found $\langle \Omega_p \rangle / (2\pi) = 298 \pm 20$ nHz for KIC 8524425 and 675 ± 27 nHz for KIC 5955122). These results are in very good agreement with the measurements of surface rotation rates obtained by García et al. (2014) and Bonanno et al. (2014) for these two stars (within $1-\sigma$ errors). The envelope rotation measured by seismology has a mean sensitivity around a normalized radius of 0.76 for both stars, that is very close to the bottom of the convective envelope for KIC 5955122 ($r_{\text{CE}}/R = 0.74$) and in the lower part of the convective envelope for KIC 8524425 ($r_{\text{CE}}/R = 0.65$). The close agreement between the seismic envelope rotation rate and the surface rotation rate thus shows that there can be only a mild radial differential rotation within the convective envelopes of these stars. This type of constraints could be helpful to investigate the nature of the mechanism that transports angular momentum (AM). Indeed, Kissin & Thompson (2015) have proposed that radial rotation gradients might be located within the convective envelope due to AM pumping, rather than in the radiative core. Measuring the rotation gradient in the convective envelope at various stages along the red giant evolution would enable us to test this statement.

Measuring the core rotation for the two subgiants was more challenging than for more evolved subgiants because we measured rotational splittings for few g -dominated modes. However, with the MOLA inversion technique, we were able to build averaging kernels that efficiently suppress the contribution from the envelope. We found $\langle \Omega_g \rangle / (2\pi) = 204 \pm 134$ nHz for KIC 8524425 and 488 ± 227 nHz for KIC 5955122. We thus derived core-envelope rotation ratios of 0.68 ± 0.46 and 0.72 ± 0.37 for KIC 8524425 and KIC 5955122, respectively. These results are consistent with a solid-body rotation for the two targets and they clearly show that the core cannot be rotating much faster than the envelope. Our results leave open the possibility that the core might be rotating slower than the envelope. Such a behavior has been reported before (Kurtz et al. 2014). It could not be produced by a mechanism of AM transport that would act to smooth out rotation gradients, such as a diffusion process. However, other mechanisms such as the transport of AM by internal gravity waves (IGW) can potentially lead to envelopes spinning faster than the core (Rogers et al. 2013).

The near solid-body rotation found for the two subgiants indicates that AM is transported faster than the timescale over which differential rotation is forced, which we found to be equal to about 320 Myr for KIC 5955122, and 570 Myr for KIC 8524425. To go further, we estimated the efficiency of the redistribution of AM by including an additional diffusivity of AM with a constant, adjustable viscosity ν_{add} . We found that values of $\nu_{\text{add}} > 5 \times 10^4 \text{ cm}^2 \text{ s}^{-1}$ and $\nu_{\text{add}} > 1.5 \times 10^5 \text{ cm}^2 \text{ s}^{-1}$ are needed to reproduce the core-envelope contrast of KIC 8524425 and KIC 5955122, respectively, within $1-\sigma$ errors. These values are higher than the additional viscosity that was required to account for the internal rotation of more evolved subgiants (Eggenberger et al. 2019b), which brings further support to the claim of these authors, that the efficiency of the AM transport is decreasing during the subgiant phase. Also, the efficiency of the AM transport that is required for the two subgiants is lower than or comparable to the efficiency needed during the main sequence for stars of equivalent masses (Spada & Lanzafame 2020). This might indicate that the mechanism that flattens the rotation profile during the main sequence persists for some time after the exhaustion of hydrogen in the core.

Different mechanisms of AM transport are currently being investigated as candidates to account for the internal rotation of subgiants and red giants. We compared our results to the only two studies that have provided predictions for the evolution of rotation during the subgiant phase. Pinçon et al. (2017) show that IGW excited by the penetration of plumes at the bottom of the convective envelope could produce efficient transport and they proposed that it might act as a self-regulating process. The near solid-body rotation of KIC 8524425 and KIC 5955122 seems to be roughly compatible with this scenario, although detailed calculations would be needed to check this. AM could also be transported through instabilities of an internal magnetic field. This possibility remains to be fully explored. Fuller et al. (2019) proposed a revised prescription of the so-called Tayler-Spruit dynamo, which depends on a dimensionless parameter α . Using their formalism, we found that the value of α that is required to match the core rotation of stars near the base of the RGB ($\alpha \sim 0.6$) is compatible with a solid-body rotation of our two subgiants. However, as shown by Eggenberger et al. (2019a) and den Hartogh et al. (2020), a higher value of α ($\gtrsim 1.5$) is needed to reproduce the rotation along the RGB and in the secondary clump.

In this work, we have bridged the gap between the (few) constraints that we have on the internal rotation during the main sequence of solar-like pulsators and the constraints available from the base of the RGB. These new observations will need to be accounted for by the candidates for AM transport in red giants.

Acknowledgements. We thank the anonymous referee for comments that improved the clarity of the paper. S. D. and J. B. acknowledge support from the project BEAMING ANR-18-CE31-0001 of the French National Research Agency (ANR) and from the Centre National d'Etudes Spatiales (CNES). P. E. has received funding from the European Research Council (ERC) under the European Union's Horizon 2020 research and innovation programme (Grant agreement No 833925, project STAREX). JdH acknowledges support by the European Research Council (ERC-2016-CO Grant 724560).

References

- Angulo, C., Arnould, M., Rayet, M., et al. 1999, *Nucl. Phys. A*, 656, 3
- Appourchaux, T., & Corbard, T. 2019, *A&A*, 624, A106
- Appourchaux, T., Belkacem, K., Broomhall, A.-M., et al. 2010, *A&ARv*, 18, 197
- Appourchaux, T., Benomar, O., Gruberbauer, M., et al. 2012a, *A&A*, 537, A134
- Appourchaux, T., Chaplin, W. J., García, R. A., et al. 2012b, *A&A*, 543, A54
- Asplund, M., Grevesse, N., Sauval, A. J., & Scott, P. 2009, *ARA&A*, 47, 481
- Ball, W. H., & Gizon, L. 2014, *A&A*, 568, A123
- Beck, P. G., Montalbán, J., Kallinger, T., et al. 2012, *Nature*, 481, 55
- Belkacem, K., Dupret, M. A., Baudin, F., et al. 2012, *A&A*, 540, L7
- Belkacem, K., Marques, J. P., Goupil, M. J., et al. 2015, *A&A*, 579, A31
- Benomar, O., Appourchaux, T., & Baudin, F. 2009, *A&A*, 506, 15
- Benomar, O., Takata, M., Shibahashi, H., Ceillier, T., & García, R. A. 2015, *MNRAS*, 452, 2654
- Benomar, O., Bazot, M., Nielsen, M. B., et al. 2018, *Science*, 361, 1231
- Böhm-Vitense, E. 1958, *Z. Astrophys.*, 46, 108
- Bonanno, A., Fröhlich, H.-E., Karoff, C., et al. 2014, *A&A*, 569, A113
- Borucki, W. J., Koch, D., Basri, G., et al. 2010, *Science*, 327, 977
- Bruntt, H., Basu, S., Smalley, B., et al. 2012, *MNRAS*, 423, 122
- Burgers, J. M. 1969, *Flow Equations for Composite Gases* (New York: Academic Press)
- Cantiello, M., Mankovich, C., Bildsten, L., Christensen-Dalsgaard, J., & Paxton, B. 2014, *ApJ*, 788, 93
- Casagrande, L., & VandenBerg, D. A. 2018, *MNRAS*, 475, 5023
- Ceillier, T., Eggenberger, P., García, R. A., & Mathis, S. 2013, *A&A*, 555, A54
- Chaplin, W. J., Basu, S., Huber, D., et al. 2014, *ApJS*, 210, 1
- Christensen-Dalsgaard, J. 2008, *Ap&SS*, 316, 113
- Deheuvels, S., & Michel, E. 2011, *A&A*, 535, A91
- Deheuvels, S., García, R. A., Chaplin, W. J., et al. 2012, *ApJ*, 756, 19
- Deheuvels, S., Doğan, G., Goupil, M. J., et al. 2014, *A&A*, 564, A27
- Deheuvels, S., Ballot, J., Beck, P. G., et al. 2015, *A&A*, 580, A96
- Deheuvels, S., Brandão, I., Silva Aguirre, V., et al. 2016, *A&A*, 589, A93
- Deheuvels, S., Ouazzani, R. M., & Basu, S. 2017, *A&A*, 605, A75
- Demarque, P., Guenther, D. B., Li, L. H., Mazumdar, A., & Straka, C. W. 2008, *Ap&SS*, 316, 31
- den Hartogh, J. W., Eggenberger, P., & Hirschi, R. 2019, *A&A*, 622, A187
- den Hartogh, J. W., Eggenberger, P., & Deheuvels, S. 2020, *A&A*, 634, L16
- Denissenkov, P. A., Pinsonneault, M., Terndrup, D. M., & Newsham, G. 2010, *ApJ*, 716, 1269
- Di Mauro, M. P., Ventura, R., Cardini, D., et al. 2016, *ApJ*, 817, 65
- Eggenberger, P., Meynet, G., Maeder, A., et al. 2008, *Ap&SS*, 316, 43
- Eggenberger, P., Montalbán, J., & Miglio, A. 2012, *A&A*, 544, L4
- Eggenberger, P., Lagarde, N., Miglio, A., et al. 2017, *A&A*, 599, A18
- Eggenberger, P., Deheuvels, S., Miglio, A., et al. 2019a, *A&A*, 621, A66
- Eggenberger, P., den Hartogh, J. W., Buldgen, G., et al. 2019b, *A&A*, 631, L6
- Formicola, A., Imbriani, G., Costantini, H., et al. 2004, *Phys. Lett. B*, 591, 61
- Fossat, E., Boumier, P., Corbard, T., et al. 2017, *A&A*, 604, A40
- Fuller, J., Lecoanet, D., Cantiello, M., & Brown, B. 2014, *ApJ*, 796, 17
- Fuller, J., Piro, A. L., & Jermyn, A. S. 2019, *MNRAS*, 485, 3661
- Gaia Collaboration (Brown, A. G. A., et al.) 2018, *A&A*, 616, A1
- Gallet, F., & Bouvier, J. 2013, *A&A*, 556, A36
- García, R. A., Hekker, S., Stello, D., et al. 2011, *MNRAS*, 414, L6
- García, R. A., Ceillier, T., Salabert, D., et al. 2014, *A&A*, 572, A34
- Gehan, C., Mosser, B., Michel, E., Samadi, R., & Kallinger, T. 2018, *A&A*, 616, A24
- Gizon, L., & Solanki, S. K. 2003, *ApJ*, 589, 1009
- Gizon, L., & Solanki, S. K. 2004, *Sol. Phys.*, 220, 169
- Gough, D. O. 2015, *Space Sci. Rev.*, 196, 15
- Goupil, M. J., Mosser, B., Marques, J. P., et al. 2013, *A&A*, 549, A75
- Green, G. M., Schlafly, E. F., Finkbeiner, D., et al. 2018, *MNRAS*, 478, 651
- Harvey, J. 1985, *ESA Spec. Pub.*, 235, 199
- Jenkins, J. M., Caldwell, D. A., Chandrasekaran, H., et al. 2010, *ApJ*, 713, L120
- Jouve, L., Gastine, T., & Lignières, F. 2015, *A&A*, 575, A106
- Kallinger, T., De Ridder, J., Hekker, S., et al. 2014, *A&A*, 570, A41
- Karoff, C., Campante, T. L., Ballot, J., et al. 2013, *ApJ*, 767, 34
- Kawaler, S. D. 1988, *ApJ*, 333, 236
- Kissin, Y., & Thompson, C. 2015, *ApJ*, 808, 35
- Kurtz, D. W., Saio, H., Takata, M., et al. 2014, *MNRAS*, 444, 102
- Li, T., Bedding, T. R., Christensen-Dalsgaard, J., et al. 2020a, *MNRAS*, 495, 3431
- Li, Y., Bedding, T. R., Li, T., et al. 2020b, *MNRAS*, 495, 2363
- Lomb, N. R. 1976, *Ap&SS*, 39, 447
- Maeder, A. 2009, *Physics, Formation and Evolution of Rotating Stars* (Berlin Heidelberg: Springer)
- Maeder, A., & Meynet, G. 2014, *ApJ*, 793, 123
- Maeder, A., & Zahn, J.-P. 1998, *A&A*, 334, 1000
- Marques, J. P., Goupil, M. J., Lebreton, Y., et al. 2013, *A&A*, 549, A74
- Mathis, S., & Zahn, J. 2004, *A&A*, 425, 229
- Mathis, S., Prat, V., Amard, L., et al. 2018, *A&A*, 620, A22
- Matt, S. P., Brun, A. S., Baraffe, I., Bouvier, J., & Chabrier, G. 2015, *ApJ*, 799, L23
- Mosser, B., Goupil, M. J., Belkacem, K., et al. 2012, *A&A*, 548, A10
- Mosser, B., Michel, E., Belkacem, K., et al. 2013, *A&A*, 550, A126
- Mosser, B., Benomar, O., Belkacem, K., et al. 2014, *A&A*, 572, L5
- Nielsen, M. B., Schunker, H., Gizon, L., & Ball, W. H. 2015, *A&A*, 582, A10
- Paxton, B., Marchant, P., Schwab, J., et al. 2015, *ApJS*, 220, 15
- Pijpers, F. P. 1997, *A&A*, 326, 1235
- Pinçon, C., Belkacem, K., & Goupil, M. J. 2016, *A&A*, 588, A122
- Pinçon, C., Belkacem, K., Goupil, M. J., & Marques, J. P. 2017, *A&A*, 605, A31
- Rebull, L. M. 2001, *AJ*, 121, 1676
- Ritzwoller, M. H., & Lavelly, E. M. 1991, *ApJ*, 369, 557
- Rogers, F. J., & Nayfonov, A. 2002, *ApJ*, 576, 1064
- Rogers, T. M., Lin, D. N. C., McElwaine, J. N., & Lau, H. H. B. 2013, *ApJ*, 772, 21
- Rüdiger, G., Gellert, M., Spada, F., & Tereshin, I. 2015, *A&A*, 573, A80
- Scharle, J. D. 1982, *ApJ*, 263, 835
- Schonhut-Stasik, J. S., Baranec, C., Huber, D., et al. 2017, *ApJ*, 847, 97
- Schou, J., Antia, H. M., Basu, S., et al. 1998, *ApJ*, 505, 390
- Schunker, H., Schou, J., Gaulme, P., & Gizon, L. 2018, *Sol. Phys.*, 293, 95
- Spada, F., & Lanzafame, A. C. 2020, *A&A*, 636, A76
- Spada, F., Gellert, M., Arlt, R., & Deheuvels, S. 2016, *A&A*, 589, A23
- Spruit, H. C. 2002, *A&A*, 381, 923
- Talon, S., & Charbonnel, C. 2008, *A&A*, 482, 597
- Zahn, J.-P. 1992, *A&A*, 265, 115

Appendix A: Effects of latitudinal differential rotation on the splittings of quadrupole modes

In Sect. 2.3, we could not find significant evidence for latitudinal differential rotation in the convective envelope of the two stars under study. However, we did obtain constraints on the a_3 coefficients. For KIC 5955122, we checked whether this measurement is consistent with the photometric estimates of the latitudinal differential rotation at the stellar surface obtained by Bonanno et al. (2014). These authors found an equatorial rotation period of 16.4 days and estimated the difference between the rotation rate at the pole Ω_{pole} and the rotation rate at the equator Ω_{eq} to $\Delta\Omega \equiv \Omega_{\text{pole}} - \Omega_{\text{eq}} = -0.25 \pm 0.02 \text{ rad d}^{-1}$.

To estimate the expected effect of latitudinal differential rotation on the mode splittings, we parametrized the rotation profile $\Omega(r, \theta)$ as

$$\Omega(r, \theta) = \Omega_0(r)\psi_0(\theta) + \Omega_1(r)\psi_1(\theta). \quad (\text{A.1})$$

The function $\Omega_0(r)$ gives a measurement of the radial differential rotation within the star, while $\Omega_1(r)$ measures the latitudinal differential rotation. We here assumed that the latitudinal differential rotation is restricted to the convective envelope and independent of the radius in this region. We thus chose

$$\Omega_1(r) = \begin{cases} \Omega_1 & \text{if } r \geq r_{\text{CE}} \\ 0 & \text{otherwise,} \end{cases} \quad (\text{A.2})$$

where r_{CE} is the radius of the bottom of the convective envelope. In this study, we found that KIC 5955122 has negligible radial differential rotation (see Sect. 4). Accordingly, we here considered Ω_0 to be constant throughout the star. The advantage of using orthogonal polynomials in the decomposition of Eq. (1) is that the functions $\Omega_s(r)$ can be determined from the coefficients $a_{2s+1}^{(l)(n)}$ alone when the $\psi_s(\theta)$ correspond to a well chosen set of polynomials. For $s = 0, 1$, (see, e.g., Gizon & Solanki 2004) they correspond to

$$\psi_0(\theta) = 1; \quad \psi_1(\theta) = \frac{3}{2}(5 \cos^2 \theta - 1). \quad (\text{A.3})$$

The values of Ω_0 and Ω_1 are determined in a unique way by the measurements of the surface rotation given by Bonanno et al. (2014), which yield

$$\Omega_0 = \Omega_{\text{eq}} + \frac{\Delta\Omega}{5} \quad (\text{A.4})$$

$$\Omega_1 = \frac{2}{15}\Delta\Omega. \quad (\text{A.5})$$

The $a_3^{(2)}$ coefficient is then given by

$$a_3^{(2)} = \frac{\Omega_1}{5} \int_{r_{\text{CE}}}^R \int_0^\pi [K_{n,2,2}(r, \theta) - K_{n,2,1}(r, \theta)]\psi_1(\theta) d\theta dr. \quad (\text{A.6})$$

The rotational kernels of the modes $K_{n,l,m}(r, \theta)$, whose expressions are given for instance by Gizon & Solanki (2004), were obtained using our best-fit model from Sect. 3.2. Using Eq. (A.6), we found that the measurements by Bonanno et al. (2014) correspond to an $a_3^{(2)}$ coefficient of about 16 nHz. This

value is consistent with our seismic measurement of $a_3^{(2)} = 16_{-25}^{+23}$ nHz for KIC 5955122.

Appendix B: Estimated mode frequencies and rotational splittings

Table B.1. Estimated mode frequencies and rotational splittings (only for modes that were found to be significantly split by rotation, see Sect. 2.3) for KIC 8524425.

l	ν (μHz)	$\delta\nu_s$ (μHz)
0	743.703 $^{+0.062}_{-0.052}$	n.a.
0	803.166 $^{+0.106}_{-0.106}$	n.a.
0	861.175 $^{+0.052}_{-0.053}$	n.a.
0	919.584 $^{+0.034}_{-0.033}$	n.a.
0	978.931 $^{+0.034}_{-0.034}$	n.a.
0	1038.655 $^{+0.027}_{-0.027}$	n.a.
0	1098.319 $^{+0.029}_{-0.029}$	n.a.
0	1158.056 $^{+0.050}_{-0.050}$	n.a.
0	1217.934 $^{+0.079}_{-0.080}$	n.a.
0	1278.321 $^{+0.167}_{-0.167}$	n.a.
1	782.339 $^{+0.055}_{-0.061}$	0.205 $^{+0.064}_{-0.107}$
1	832.875 $^{+0.052}_{-0.049}$	0.352 $^{+0.050}_{-0.054}$
1	888.544 $^{+0.039}_{-0.040}$	0.322 $^{+0.047}_{-0.051}$
1	945.322 $^{+0.040}_{-0.040}$	–
1	1001.819 $^{+0.037}_{-0.036}$	0.301 $^{+0.057}_{-0.072}$
1	1044.829 $^{+0.021}_{-0.019}$	0.207 $^{+0.024}_{-0.025}$
1	1073.973 $^{+0.026}_{-0.026}$	0.292 $^{+0.049}_{-0.041}$
1	1127.333 $^{+0.032}_{-0.031}$	0.304 $^{+0.067}_{-0.066}$
1	1185.438 $^{+0.053}_{-0.053}$	–
1	1245.027 $^{+0.072}_{-0.074}$	–
1	1305.243 $^{+0.155}_{-0.155}$	–
1	1365.151 $^{+0.219}_{-0.219}$	–
2	797.272 $^{+0.369}_{-0.324}$	–
2	856.537 $^{+0.109}_{-0.111}$	0.192 $^{+0.080}_{-0.091}$
2	914.464 $^{+0.071}_{-0.064}$	0.313 $^{+0.056}_{-0.046}$
2	973.679 $^{+0.069}_{-0.069}$	0.266 $^{+0.048}_{-0.047}$
2	1032.794 $^{+0.055}_{-0.048}$	0.334 $^{+0.049}_{-0.042}$
2	1093.455 $^{+0.042}_{-0.043}$	0.238 $^{+0.038}_{-0.035}$
2	1153.064 $^{+0.066}_{-0.064}$	–
2	1212.760 $^{+0.119}_{-0.111}$	–
2	1273.530 $^{+0.190}_{-0.197}$	–

Notes. n.a.: not applicable.

Tables B.1 and B.2 give the oscillation mode parameters that were obtained for KIC 8524425 and KIC 5955122, respectively, in Sect. 2.3.

Table B.2. Same as Table B.1 for KIC 5955122.

l	ν (μHz)	$\delta\nu_s$ (μHz)
0	$560.765^{+0.108}_{-0.115}$	n.a.
0	$609.570^{+0.140}_{-0.215}$	n.a.
0	$658.087^{+0.318}_{-0.321}$	n.a.
0	$706.319^{+0.100}_{-0.101}$	n.a.
0	$754.504^{+0.056}_{-0.058}$	n.a.
0	$803.811^{+0.044}_{-0.046}$	n.a.
0	$853.529^{+0.043}_{-0.044}$	n.a.
0	$903.083^{+0.065}_{-0.065}$	n.a.
0	$952.477^{+0.096}_{-0.095}$	n.a.
0	$1002.729^{+0.150}_{-0.165}$	n.a.
0	$1053.372^{+0.487}_{-0.515}$	n.a.
0	$1103.505^{+0.205}_{-0.107}$	n.a.
1	$586.316^{+0.143}_{-0.105}$	$0.498^{+0.087}_{-0.139}$
1	$623.600^{+0.077}_{-0.081}$	$0.643^{+0.067}_{-0.071}$
1	$657.738^{+0.338}_{-0.905}$	–
1	$690.107^{+0.057}_{-0.057}$	$0.627^{+0.067}_{-0.076}$
1	$731.201^{+0.053}_{-0.054}$	$0.534^{+0.088}_{-0.118}$
1	$774.722^{+0.045}_{-0.046}$	$0.735^{+0.052}_{-0.053}$
1	$809.721^{+0.037}_{-0.036}$	$0.442^{+0.045}_{-0.049}$
1	$836.690^{+0.040}_{-0.040}$	$0.574^{+0.051}_{-0.052}$
1	$879.858^{+0.053}_{-0.055}$	$0.636^{+0.097}_{-0.119}$
1	$927.408^{+0.054}_{-0.058}$	–
1	$975.989^{+0.078}_{-0.079}$	–
1	$1024.921^{+0.120}_{-0.121}$	–
1	$1073.550^{+0.182}_{-0.188}$	–
2	$653.409^{+0.317}_{-0.303}$	$0.563^{+0.166}_{-0.213}$
2	$702.052^{+0.270}_{-0.276}$	$0.675^{+0.138}_{-0.162}$
2	$749.926^{+0.106}_{-0.109}$	$0.634^{+0.060}_{-0.060}$
2	$799.594^{+0.101}_{-0.097}$	$0.703^{+0.071}_{-0.058}$
2	$849.202^{+0.086}_{-0.087}$	$0.623^{+0.049}_{-0.050}$
2	$898.478^{+0.122}_{-0.124}$	$0.669^{+0.072}_{-0.073}$
2	$948.349^{+0.130}_{-0.128}$	–
2	$998.270^{+0.209}_{-0.217}$	–
2	$1048.951^{+0.511}_{-0.518}$	–