



HAL
open science

Stress effects of the cerebrospinal pulsatile flow on the spinal cord by a 3D fluid-structure modeling

Patrice Sudres, Pierre-Jean Arnoux, Morgane Evin

► To cite this version:

Patrice Sudres, Pierre-Jean Arnoux, Morgane Evin. Stress effects of the cerebrospinal pulsatile flow on the spinal cord by a 3D fluid-structure modeling. 44th Congress of the Société de Biomécanique, Oct 2019, Poitiers, France. pp93-95, 10.1080/10255842.2020.1713493 . hal-02942185

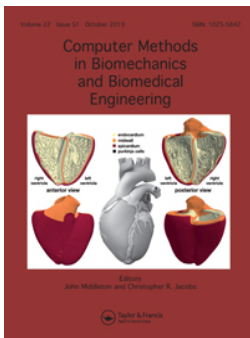
HAL Id: hal-02942185

<https://hal.science/hal-02942185>

Submitted on 17 Sep 2020

HAL is a multi-disciplinary open access archive for the deposit and dissemination of scientific research documents, whether they are published or not. The documents may come from teaching and research institutions in France or abroad, or from public or private research centers.

L'archive ouverte pluridisciplinaire **HAL**, est destinée au dépôt et à la diffusion de documents scientifiques de niveau recherche, publiés ou non, émanant des établissements d'enseignement et de recherche français ou étrangers, des laboratoires publics ou privés.



Stress effects of the cerebrospinal pulsatile flow on the spinal cord by a 3D fluid-structure modeling

P. Sudres, P. J. Arnoux & M. Evin

To cite this article: P. Sudres, P. J. Arnoux & M. Evin (2019) Stress effects of the cerebrospinal pulsatile flow on the spinal cord by a 3D fluid-structure modeling, Computer Methods in Biomechanics and Biomedical Engineering, 22:sup1, S93-S95, DOI: [10.1080/10255842.2020.1713493](https://doi.org/10.1080/10255842.2020.1713493)

To link to this article: <https://doi.org/10.1080/10255842.2020.1713493>



© 2020 The Author(s). Published by Informa UK Limited, trading as Taylor & Francis Group



Published online: 22 May 2020.



Submit your article to this journal [↗](#)



Article views: 45



View related articles [↗](#)



View Crossmark data [↗](#)

Stress effects of the cerebrospinal pulsatile flow on the spinal cord by a 3D fluid-structure modeling

P. Sudres^{a,b}, P. J. Arnoux^{a,b} and M. Evin^{a,b}

^aLaboratoire de Biomécanique Appliquée, UMRT24 AMU/IFSTTAR, Marseille, France; ^bLaboratoire International en Imagerie et Biomécanique du Rachis, iLab-Spine, Marseille & Montréal, France & Canada

1. Introduction

The mechanical phenomena which occur in the sub-arachnoid space have been studied either from a structural point of view particularly focusing on the spinal cord (SC) or from a fluid point of view focusing on the cerebrospinal fluid (CSF) flow.

Fluid-structure interaction (FSI) approaches provide new perspectives to numerically describe the physiological phenomenon. It has been showed that the CSF acts in a passively way on the central nervous system as shock absorber in compressive spinal cord injuries (Fradet et al. 2016). However, we are not aware of any study that provide stress values induced by the active physiological role of the pulsatile CSF flow profile on the spinal cord in 3D.

The purpose of this study is to quantify the maximum Von Mises stress generated in the spinal cord induced by an healthy pulsatile flow profile of the CSF.

2. Methods

2.1. FSI model: Geometry and material properties

The geometries and the meshes of the 3D model were done on the pre-processing software HyperMesh® (Altair Engineering, 1985). The spinal cord was considered as a cylinder surrounded by a layer representing the pia mater (diameter: 12 mm). The dura mater was designed as a cylinder and considered as the external layer of the subarachnoid space (diameter: 20 mm). The CSF fills the space between the dura and the pia mater with 1 mm offset between each of them. All components have a length of 140 mm (corresponding to the cervical spinal cord length) (Figure 1a).

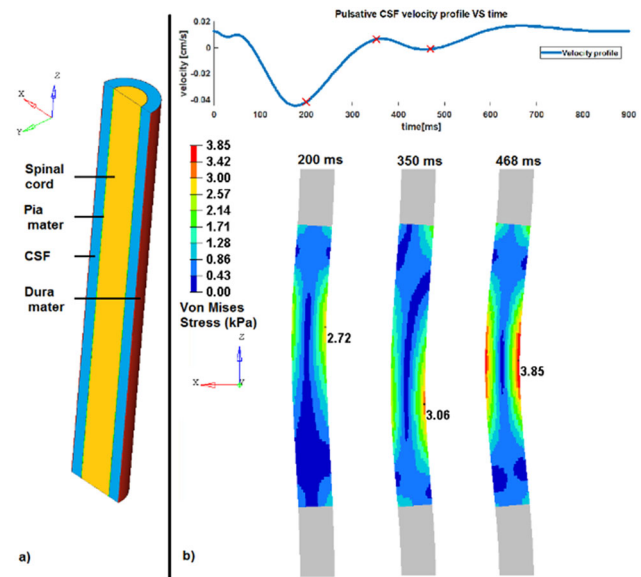


Figure 1. a) the different model parts (left). b) Von Mises stress (MPa) generated by the CSF flow (top) on the spinal cord at 3 different times (red markers on the velocity profile) corresponding to local maximum. The magnitude of the displacement is exaggerated by a factor 4 for visualization (right).

The material properties of these structures were chosen as linear elastic (Table 1). The CSF was described with the same properties than water by an hydrodynamical viscous fluid law (Table 1) following the Euler equations: conservation laws of mass (1), momentum (2) and energy (3):

$$\frac{\partial \rho}{\partial t} + \nabla \cdot (\rho \cdot V) = 0 \quad (1)$$

$$\frac{\partial (\rho \cdot V)}{\partial t} + \nabla \cdot (\rho \cdot V \cdot V) = -\nabla p + \rho \cdot g \quad (2)$$

$$\frac{\partial (\rho \cdot E)}{\partial t} + \nabla \cdot (\rho \cdot E \cdot V) = -\nabla \cdot (pV) + \rho \cdot g \cdot V \quad (3)$$

with ρ the density, V the velocity, p the pressure, g the gravity force, E the total energy.

The fluid stress tensor σ is described as:

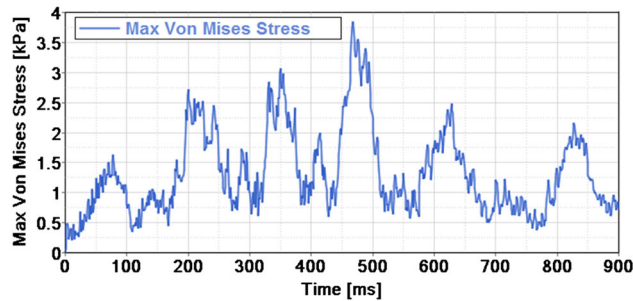
$$\sigma_{ij} = -p\delta_{ij} + \rho \cdot \nu \cdot \left(\frac{\partial V_i}{\partial x_j} + \frac{\partial V_j}{\partial x_i} \right) \quad (4)$$

with p the pressure, δ_{ij} the isotropic second order tensor, ν the kinematic viscosity.

The fluid pressure is defined as the following state law:

Table 1. Structure and fluid material properties.

Anatomical part	Dura mater	Pia mater	Spinal cord	Cerebrospinal fluid
Material properties	E = 80MPa; Poisson ratio = 0.4	E = 2.3 MPa; Poisson ratio = 0.4	E = 0.6 MPa; Poisson ratio = 0.45	C0 = 0.1; C1 = 2199; $\nu = 0.8 \cdot 10^{-3}$ MPa.ms; $\rho = 0.001$ g/mm ³

**Figure 2.** Von Mises stresses of the spinal cord over time (blue).

$$p = C0 + C1.y \quad (5)$$

with $y = \frac{\rho}{\rho_0} - 1$, ρ_0 the initial density, ρ the current density, C_i are the strain rate coefficients.

Pia and dura mater were meshed with 4-nodes quad shell elements (QPS), with one-point quadrature integration. The SC was meshed with brick (HA8) standard 8-nodes elements, 2x2x2 integration points representing each corner of the hexahedral element, no hourglass. The CSF fluid grid was meshed with brick (HA8) elements with ALE formulation (Donea et al. 2004). Two interfaces Type 1 (structure elements interact with ALE fluid elements) allows to simulate the transfers of forces and displacements between the structure and fluid elements. The total number of elements is 211,120.

2.2. Boundaries conditions

For the structural nodes and the fluid nodes (ALE grid), in longitudinal direction the upper and lower layers of nodes were constrained in the 3 translational degree of freedom and in the 3 rotations.

Full slip conditions are applied at the boundary between the two domains. The mean velocity profiles of healthy young male group in the cervical spinal canal (max velocity: -4.4 cm/s – cranio-caudal direction) (Daners et al. 2012) was imposed as inlet condition. Pressure was let free for the outlet condition.

The numerical simulation was performed on the explicit solver Radioss® (Altair Engineering, 1985) for one cardiac cycle duration (900 ms).

The computational time was 6 days and was performed on a Dell computer (20x Intel Xeon E5-2640v4 CPUs at 2.4 GHz). The elements corresponding to the first and last 30 mm of the spinal cord

were not considered to not take into account the edge effects for the post-processing.

3. Results and discussion

The velocity profile has three maximum peak of -4.4 cm/s, 0.7 cm/s and 1.65 cm/s corresponding respectively to the times 173 ms, 366 ms and 670 ms. The negative sign represents the cranio-caudal orientation.

Three main increasing local maximum peaks of Von Mises stresses can be noticed during the simulation. They reached 2.7, 3.1 and 3.8 kPa respectively at the time steps 200, 350 and 468 ms (Figure 1b). The first peak stress value logically corresponds to the first velocity peak profile with a phase shift of $+27$ ms. The second stress peak appears during a change direction and an increasing velocity in the caudo-cranial direction (from -4.4 cm/s to 0.7 cm/s). The last peak stress appears during the last phase of increasing velocity (from 0 cm/s to 1.65 cm/s), 132 ms before the last peak of velocity (Figure 2). The first shift seems induced by the edge effect and the initial condition effect due to the short simulation duration (one cardiac cycle).

The maximum Von Mises value (3.8 kPa) are respectively 5, 33 and 86 times less than the ones in a contusion, a distraction and a dislocation at the C4/C5 functional unit (Khuyagbaatar et al. 2016).

The limitations are the following: the initial effects will be limited in taking into account in modeling the flow for several cardiac cycles, insuring a sufficient number however this FSI approach has a high computational cost (900 ms modelled for a 6-days simulation). Then, a longer tube will be modeled in order to limit the impact of edge effects on the CSF flow modeling, increasing also the computational time. A more representative geometry will be modeled thanks to a current morphometric study of the subarachnoid space. Inlet boundary condition could then be defined from a 2D-phase contrast MRI flow acquisition in order to be subject-specific.

4. Conclusion

A FSI model of the cerebrospinal flow and a simplified central nervous system was built to quantify the stresses generated by the physiological flow on the spinal cord. This simulation provides new data on the

feasibility of this multi-physics approach and its interest to better understand physiological and biomechanical phenomenon into the central nervous system. To go further, a clinical application will be to model stenose in order to analyze the fluid flow changes and its impact on the spinal cord stresses and strains.

References

Daners MS, Knobloch V, Soellinger M, Boesiger P, Seifert B, Guzzella L, Kurtcuoglu V. 2012. Age-specific characteristics and coupling of cerebral arterial inflow and cerebrospinal fluid dynamics. *PLoS One*. 7:1932–6203.

Donea J, Huerta A, Ponthot J-P, Rodríguez Ferran A. 2004. Arbitrary Lagrangian–Eulerian methods. In: *Encyclopedia of computational mechanics*. Wiley.

Fradet L, Arnoux P-J, Callot V, Petit Y. 2016. Geometrical variations in white and gray matter affect the biomechanics of spinal cord injuries more than the arachnoid space. *Adv Mech Eng*. 8(8):168781401666470–168781401668140.

Khuyagbaatar B, Kim K, Man Park W, Hyuk Kim Y. 2016. Biomechanical behaviors in three types of spinal cord injury mechanisms. *J Biomech Eng*. 138: 81003–81007.

KEYWORDS Spinal cord; cerebrospinal flow; fluid-structure interaction; Von Mises stress

 patrice.sdrs@gmail.com