



HAL
open science

Implicit Modeling of the Impact of Adsorption on Solid Surfaces for Protein Mechanics and Activity with a Coarse-Grain Representation

Nicolas Bourassin, Marc Baaden, Elisabeth Lojou, Sophie Sacquin-Mora

► **To cite this version:**

Nicolas Bourassin, Marc Baaden, Elisabeth Lojou, Sophie Sacquin-Mora. Implicit Modeling of the Impact of Adsorption on Solid Surfaces for Protein Mechanics and Activity with a Coarse-Grain Representation. *Journal of Physical Chemistry B*, 2020, 15, 10.1021/acs.jpcc.0c05347 . hal-02939019

HAL Id: hal-02939019

<https://hal.science/hal-02939019>

Submitted on 18 Sep 2020

HAL is a multi-disciplinary open access archive for the deposit and dissemination of scientific research documents, whether they are published or not. The documents may come from teaching and research institutions in France or abroad, or from public or private research centers.

L'archive ouverte pluridisciplinaire **HAL**, est destinée au dépôt et à la diffusion de documents scientifiques de niveau recherche, publiés ou non, émanant des établissements d'enseignement et de recherche français ou étrangers, des laboratoires publics ou privés.

Implicit modeling of the impact of adsorption on solid surfaces for protein mechanics and activity with a coarse-grain representation

Nicolas Bourassin^{1,2}, Marc Baaden^{1,2}, Elisabeth Lojou³ and Sophie Sacquin-Mora^{1,2}*

¹CNRS, Université de Paris, UPR 9080, Laboratoire de Biochimie Théorique,
13 rue Pierre et Marie Curie, 75005 Paris, France

²Institut de Biologie Physico-Chimique-Fondation Edmond de Rothschild,
PSL Research University, Paris, France

³Aix Marseille Univ, CNRS, Bioénergétique et Ingénierie des Protéines, UMR 7281,
31, chemin Joseph Aiguier, CS 70071 13402 Marseille cedex 09, France

*Corresponding author e-mail: sacquin@ibpc.fr

Running title : A coarse-grain model for proteins on solid surfaces

Keywords: Protein mechanics, protein adsorption, coarse-grain simulations, elastic network model

A preliminary version of this work, was deposited in bioRxiv.

doi: <https://doi.org/10.1101/2020.03.30.015537>

Abstract

Surface immobilized enzymes play a key role in numerous biotechnological applications such as biosensors, biofuel cells or biocatalytic synthesis. As a consequence, the impact of adsorption on the enzyme structure, dynamics and function needs to be understood on the molecular level as it is critical for the improvement of these technologies. With this perspective in mind, we used a theoretical approach for investigating local protein flexibility on the residue scale that couples a simplified protein representation with an elastic network and Brownian Dynamics simulations. The impact of protein adsorption on a solid surface is implicitly modeled via additional external constraints between the residues in contact with the surface. We first performed calculations on a redox enzyme, bilirubin oxidase (BOD) from *M. verrucaria*, to study the impact of adsorption on its mechanical properties. The resulting rigidity profiles show that, in agreement with the available experimental data, the mechanical variations observed in the adsorbed BOD will depend on its orientation and its anchor residues (i.e. residues that are in contact with the functionalized surface). Additional calculations on ribonuclease A and nitroreductase shed light on how seemingly stable adsorbed enzymes can nonetheless display an important decrease in their catalytic activity resulting from a perturbation of their mechanics and internal dynamics.

1. Introduction

The interaction of proteins with solid surfaces is of crucial importance in the field of biomaterials¹, since it plays a key role in numerous applications, such as tissue engineering and regenerative medicine (where we need to know the cellular response to implanted materials), the optimization of surfaces for biosensors, the development of bioactive nanoparticles, biocatalysts or bioanalytical systems.

One of the main issues that are addressed when investigating protein/surface interaction, is the matter of protein orientation. Controlled adsorption with ordered proteins is essential for devices such as biosensors, where antibodies should be immobilized with a specific orientation favoring the following antibody-antigen binding², or for bioelectrocatalysis devices (biofuel cells or bioreactors for electrosynthesis), where a correct enzyme orientation is essential for direct electron transfer between the adsorbed protein and the electrode³⁻⁴. The adsorbed proteins' orientation depends on many factors, such as their charge, size or shape, the support properties, or external conditions like the temperature and pH⁵⁻⁷. Hence these devices require a specific functionalization of the surface, in order to fine tune its charge and physico-chemical properties, that can be achieved with self assembled monolayers (SAMs) for example. For both cases, the conservation of the adsorbed proteins' native conformation (and hence their biological function) is another key aspect that has to be taken into consideration. On the opposite end of the applications spectrum, the development of materials resisting protein adsorption has also drawn much attention, since it has practical uses, such as marine antifouling or antimicrobial coating for medical devices. In that case the challenge will be to design biomaterials where proteins will not adsorb⁸⁻¹⁰.

All these phenomena have now been under scrutiny for several decades, but reaching a detailed understanding of the molecular mechanisms associated with biomolecular adsorption on functionalized surfaces is far from being achieved. In particular, considerable experimental works have been conducted until now, such as atomic force microscopy, mass spectrometry and various spectroscopies¹¹⁻¹². However, the resolution of current experimental techniques is still insufficient to quantitatively determine the range of potential orientations and conformations of adsorbed proteins on the atomistic level. In that perspective, molecular simulations play an increasingly important role in revealing the mechanisms of chemical and biological processes taking place on the bio-nano interface, and designing new products. For over ten years, molecular simulation techniques have been developed to address these issues, using multiscale approaches combining all-atom and coarse-grain models¹³⁻¹⁵, and represent a promising tool for the biomaterials field¹⁶⁻¹⁸.

Numerous studies focus on the prediction of the adsorbed protein orientation and binding modes on the surface, which have to be controlled for example to ensure that an enzyme's catalytic site will remain accessible after adsorption; and on the impact of adsorption on protein structure, since conformational changes are indeed likely to perturb an enzyme's catalytic activity¹⁹⁻²². However, proteins are known for being flexible objects, and their internal dynamics play a central role for their biological function²³⁻²⁴. As a consequence, one also has to consider how surface binding will affect an enzyme's motions to determine whether it will remain functional in its adsorbed state. In that perspective, we used a coarse-grain, elastic network representation to implicitly model the impact of surface adsorption on protein mechanics. We first performed calculations on the redox enzyme bilirubin oxidase (BOD) from the fungus

Myrothecium verrucaria, to study the impact of adsorption on its mechanical properties. The resulting rigidity profiles show that, in agreement with the available experimental data, the mechanical variations observed in the adsorbed BOD will depend on its orientation and its anchor residues (that are in contact with the solid surface). Additional calculations on ribonuclease A and nitroreductase shed light on how seemingly stable adsorbed enzymes can nonetheless display an important decrease in their catalytic activity resulting from a perturbation of their mechanics.

2. Material and Methods

Brownian Dynamics simulations

Rigidity profile of a protein Coarse-grained Brownian Dynamics (BD) simulations were run using a modified version of the ProPHet (Probing Protein Heterogeneity, available online at <https://bioserv.rpbs.univ-paris-diderot.fr/services/ProPHet/>) program²⁵⁻²⁷, where additional external mechanical constraints can be applied between a set of residues defined by the user. In this approach, the protein is represented using an elastic network model (ENM)²⁸⁻²⁹. Unlike most common coarse-grained models where each residue is described by a single pseudoatom³⁰, ProPHet uses a more detailed representation³¹ that involves up to 3 pseudoatoms per residue and enables different amino acids to be distinguished. Pseudoatoms closer than the cutoff parameter $R_c = 9 \text{ \AA}$ are joined by Gaussian springs which all have identical spring constants of $\gamma^{\text{struct}} = 0.42 \text{ N.m}^{-1}$ ($0.6 \text{ kcal.mol}^{-1}.\text{\AA}^{-2}$). The springs are taken to be relaxed for the experimentally observed conformation of the protein. Note that the ENM used in this work is a two-parameters model, comprising the cutoff distance and the spring constant, which does not explicitly model electrostatic interactions. However, the elastic network is built

from the protein folded crystallographic structure, and therefore takes into account, in an implicit manner, all the interactions (electrostatic, or hydrogen bonds) which contribute to shape the protein in its final fold. Despite their apparent simplicity, ENMs have turned out over the years to be a remarkably efficient tool for linking a protein structure to its mechanic and dynamic properties³²⁻³⁸.

Following earlier studies which showed that ligands as large as a heme group actually had little influence on calculated force constants³⁹⁻⁴⁰, we chose not to include the prosthetic groups (such as metallic clusters) in the protein representation. The simulations use an implicit solvent representation via the diffusion and random displacement terms in the equation of motion⁴¹, and hydrodynamic interactions are included through the diffusion tensor⁴².

Mechanical properties are obtained from 200,000 BD steps at an interval of 10 fs and a temperature of 300 K. The simulations lead to deformations of roughly 1.5 Å root-mean-square deviation with respect to the protein starting conformation (which corresponds to the system's equilibrium state). The trajectories are analyzed in terms of the fluctuations of the mean distance between each pseudoatom belonging to a given amino acid and the pseudoatoms belonging to the remaining residues of the protein. The inverse of these fluctuations yields an effective force constant k_i describing the ease of moving a pseudoatom with respect to the overall protein structure.

$$k_i = \frac{3k_B T}{\langle (d_i - \langle d_i \rangle)^2 \rangle},$$

where $\langle \rangle$ denotes an average taken over the whole simulation and $d_i = \langle d_{ij} \rangle_{j^*}$ is the average distance from particle i to the other particles j in the protein (the sum over j^*

implies the exclusion of the pseudoatoms belonging to residue i). The distance between the C_α pseudoatom of residue i and the C_α pseudoatoms of the adjacent residues $i-1$ and $i+1$ are excluded since the corresponding distances are virtually constant. The force constant for each residue k is the average of the force constants for all its constituent pseudo atoms i . We will use the term *rigidity profile* to describe the ordered set of force constants for all the residues of the protein.

Applying external constraints on the protein While in early work on the green fluorescent protein⁴³, the external mechanical stress was modeled by applying a constant force between the C_α pseudoatoms of the residues under constraint, in this study we apply the methodology developed in ref. (44), where an external constraint is modeled by adding supplementary springs to the ENM representations. These are termed as *constraint springs*, in opposition to the structural springs resulting from the original conformation of the protein. This way we model the protein adsorption on a solid surface as a set of additional constraints that will lock the distance between protein residues which are in contact with the surface, and are termed as *anchor residues* for the rest of the manuscript. All constraint springs have the same constant $\gamma^{\text{const}} = 100 * \gamma^{\text{struct}} = 42.0 \text{ N.m}^{-1}$ and, as for the structural springs, their equilibrium length corresponds to the original distance observed for the anchor residues in the protein experimental conformation.

Principal component analysis of the coarse-grained trajectories Another useful way to investigate a protein's internal dynamics is to look at its collective modes of motions. The BD trajectories for the proteins with and without the application of an external constraint were analyzed using principal component analysis (PCA)⁴⁵⁻⁴⁷ with tools from

the Gromacs software package⁴⁸⁻⁵⁰ in order to obtain a full set of eigenvectors and eigenvalues. However, for the three proteins under study in this work, the internal dynamics are widely distributed with no dominating eigenvectors, since for all cases the 30 first eigenvectors only account for roughly 50-60% of the protein's total variance. Subsequently, our calculations showed no clear impact of the external constraints on the protein dynamics and this approach will not be further discussed in the manuscript.

3. Results and discussion

Mechanical variations in the adsorbed bilirubin oxidase

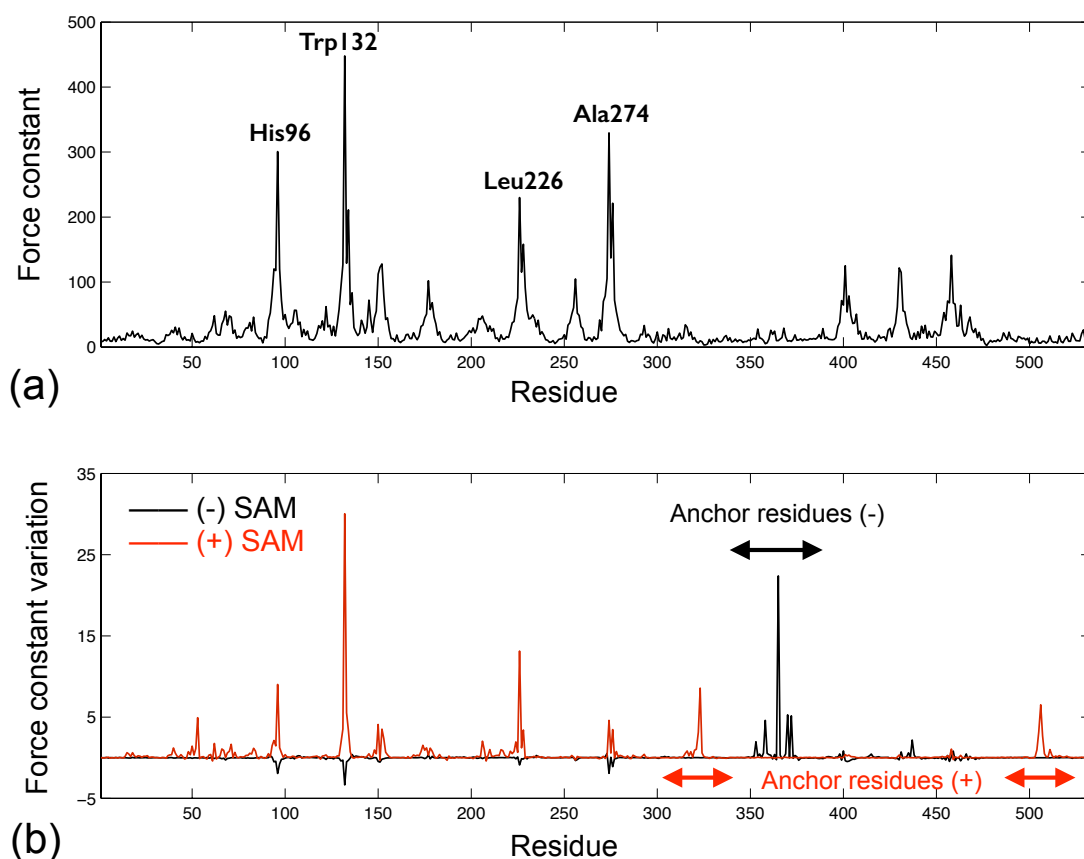


Figure 1: Rigidity profiles (in $\text{kcal.mol}^{-1}.\text{\AA}^{-2}$) for the BOD from *M. verrucaria*. (a) Protein with no external constraint, (b) Force constant variations when applying external constraints modeling the protein adsorption on negatively charged SAMs (black line) or on positively charged SAMs (red line). The arrows highlight the position of the anchor residues (where the external constraints are applied) along the sequence.

Bilirubin oxidase is a multicopper oxidase which catalyzes the reduction of O₂ to water and is considered as a promising alternative to platinum-based catalysts in enzymatic fuel cells⁵¹⁻⁵². Figure 1a shows the rigidity profile for the BOD from *M. verrucaria* (PDB entry 2xll) when no external constraint is applied. In agreement with earlier work on protein mechanics⁴⁰, the most rigid residues (shown in purple in Figure 2) are located in the protein core and lie in the vicinity of the enzyme catalytic site. Residues His96, Trp132, Leu226 and Ala274 in particular are involved in the binding site of the trinuclear copper cluster (TNC) and the channels leading from the TNC to the enzyme surface⁵³⁻⁵⁴.

To model the impact of protein adsorption on the rigidity profile, we selected as anchor residues the residues that were predicted to lie within 0.35 nm from the solid surface in

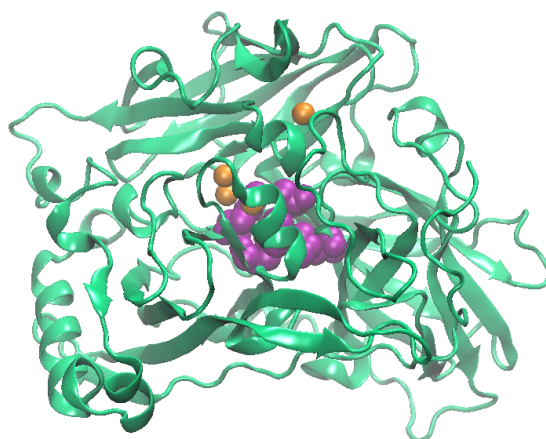


Figure 2: *Cartoon representation for the BOD from *M. verrucaria* with the copper atoms in orange and the most rigid residues (annotated in Figure 1a) shown as purple van der Waals spheres. The trinuclear copper cluster lies next to the rigid core, while the T1 copper site is closer to the protein surface. Figure 2, 3, 4a and 5a were prepared using Visual Molecular Dynamics⁶⁰.*

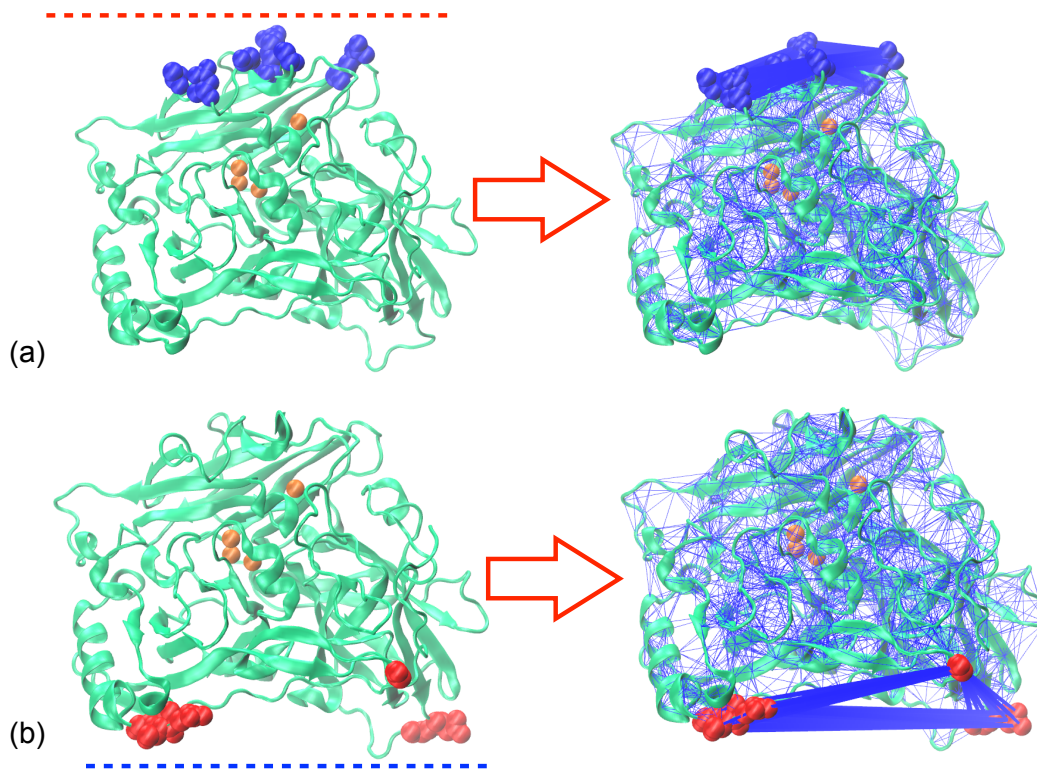


Figure 3: Elastic Network in our BOD CG model with the anchor residues (where additional constraint springs are added) highlighted as blue or red van der Waals spheres. (a) Anchor residues for the negatively charged SAMs, (b) Anchor residues for the positively charged SAMs. The dashed lines in panels (a) and (b) highlight the position of the negatively (resp. positively) charged surface on which the protein is adsorbed

the simulation work of Yang et al.⁵⁵. In this study, the authors used a combination of parallel tempering Monte Carlo and all-atom Molecular Dynamics simulations to predict the orientation of BOD adsorbed on a SAM functionalized surface. Amino (-NH₂) and carboxyl (-COOH) terminated SAMs were used to represent positively and negatively charged surfaces respectively, and led to different orientations of the enzyme with the following residues lying close to the surface (see Figure 3):

- Arg353, Gly358, Gly365, Asp370, Gln372 and Arg437 for the negatively charged surface. (Note that the negatively charged residue Asp370 generates a repulsion on the negatively charged SAM that is characterized and quantified in ref. 55)
- Asp53, Asp322, Asp323, Gln505, Ala506 and Gln507 for the positively charged surface.

The force constant variations resulting from the application of additional constraints on the anchor residues are shown on Figure 1b. For BOD oriented on the negatively charged surface (black curve in Figure 1b), the only residues that are impacted by the enzyme adsorption are the anchor residues themselves, which present an increase in their force constant, while the rest of the protein mechanics remains unchanged. In the case of a positively charged surface (red curve in Figure 1b), the protein adsorption will not only impact the anchor residues, but also residues from the central rigid core, which undergo an increase in their force constant.

In their work modeling BOD adsorption on SAMs⁵⁵, Yang et al. focused their analyses on the interaction sites between the enzyme and the surface, and on the conformational changes undergone by the protein upon adsorption. They show that the average rmsd observed for the adsorbed BOD trajectories, 3.7 Å for COOH-SAMs and 3.0 Å for NH₂-SAMs, are only slightly larger than the average rmsd observed for BOD in bulk water (2.9 Å). The observed BOD orientations on the surface are prone to favor direct electron transfer (DET) between the enzyme and negatively charged surfaces, since the T1 copper site lies closer to the electrode surface than when the enzyme is adsorbed on positively charged surfaces. However, their study concludes that the overall enzyme structure is well conserved, and does not comment on the impact of adsorption on the

protein catalytic activity, including the impact on the mediated electron transfer (MET) that can be additionally or alternatively observed between BOD and the electrode. Meanwhile, Hitaishi et al. investigated the activity of the same BOD from *M. verrucaria* adsorbed on similar surfaces, i.e. gold electrodes functionalized with -COOH or -NH₂ terminated SAMs, using cyclic voltammetry and spectrometric approaches (SPR, PMIRRAS and ellipsometry)⁵⁶. In agreement with the BOD orientations predicted by Yang et al., no DET could be observed when BOD was adsorbed on the positively charged SAMs. In the case of negatively charged-SAMs, DET could be observed, with a decrease of the electron transfer rate for BOD adsorbed on 6-Mercaptohexanoic acid (6-MHA) compared to BOD on 11-mercaptoundecanoic acid (11-MUA), as a consequence of the decrease of the electron tunneling rate with the length of the alkane chain⁵⁷. At pH = 6, the enzyme coverage was found to be similar on the negatively and positively charged surfaces, and the PMIRRAS spectra suggested that the protein general secondary structure is well conserved on both surfaces. However, the global ET rate (including both MET and DET currents) was much lower (by a factor of 4) for BOD adsorbed on the positively charged, 4-aminothiophenol (4-ATP) surface. This reduced catalytic activity for the enzyme concurs with the perturbations that we observed in the mechanical properties of the BOD adsorbed on positively charged surfaces, and which are likely to disrupt the protein function since they impact residues binding the central catalytic copper cluster. While leaving the global structure intact, the external constraints applied on anchor residues upon adsorption increase the rigidity of functional residues that lie between 20 and 25 Å away from them. Note that this long range effect of mechanical perturbations has already been observed in earlier studies on bacterial reaction centers⁵⁸⁻⁵⁹.

Adsorbed ribonuclease A

Ribonuclease A (RNase A) is a small (120 residues) enzyme that catalyzes the breakdown of the phosphodiester backbone in RNA. Its immobilization on solid surfaces is of interest for applications such as the purification of biopharmaceutical plasmid DNA⁶⁰, and it is also currently investigated as a potential anti tumoral agent that could be coupled to material surfaces in various drug delivery platforms⁶¹. In their experimental work⁶², Wei et al. investigated the enzymatic activity of RNase A adsorbed on three different surfaces, namely silica glass, high density polyethylene (HDPE) and poly(methyl-methacrylate) (PMMA). Adsorption caused RNase A to undergo a substantial degree of unfolding and to lose about 60% of its native-state catalytic activity, independently of the material it was adsorbed on. In their theoretical study using MD simulations, Liu et al. investigated the behavior of RNase A adsorbed on SAM-functionalized surfaces with opposite charges (thus leading to opposite enzyme orientations)⁶³. In both cases, they observed that the enzyme native conformation is preserved.

Here we modeled the impact of adsorption on RNase A mechanical properties for four different materials, using as starting point the high resolution crystal structure with the PDB id 7rsa, and as anchor residues those mentioned in the aforementioned studies (see Figure 4a):

- Negatively charged SAMs (SAM-)⁶³, Lys1, Lys7, Lys37, Asp38, Arg39, Lys66, Lys91. (One can note the only negatively charge residue, Asp38, which is pulled close to the surface by the two surrounding positively charged neighbors, Lys37 and Arg39⁶³)

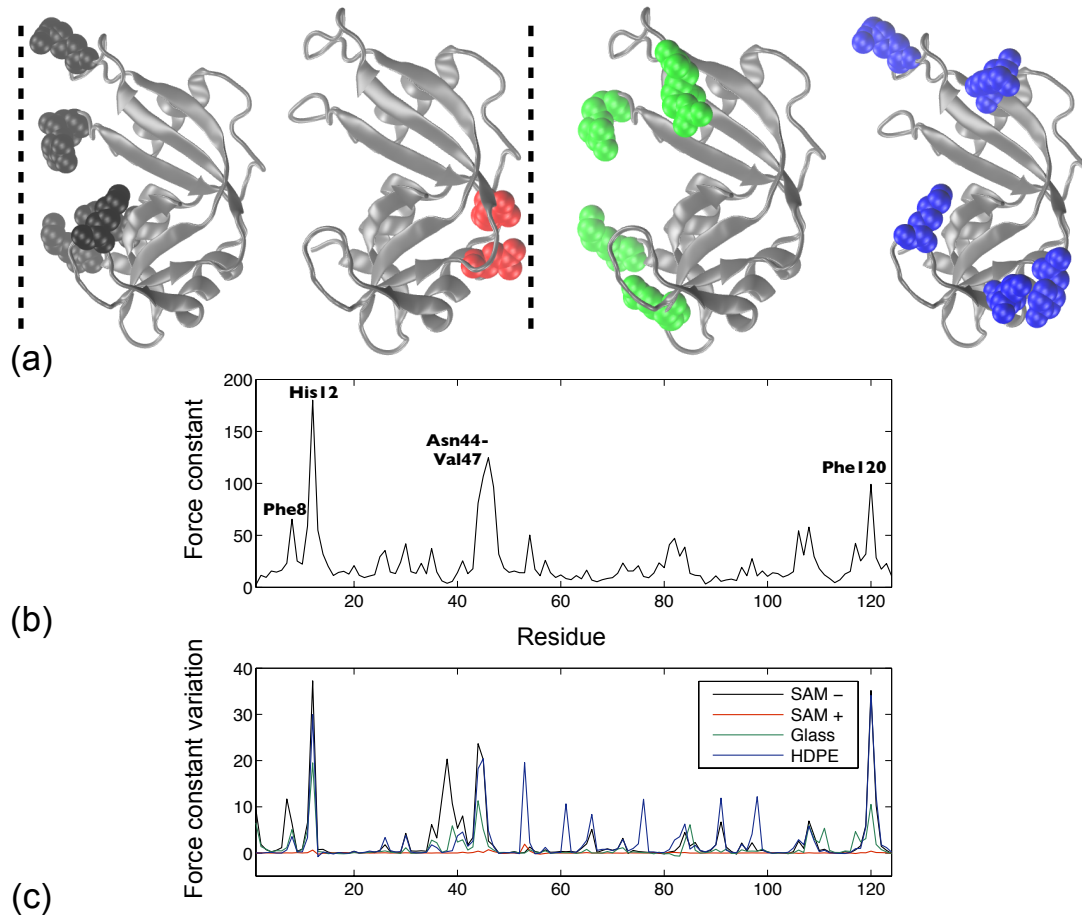


Figure 4: (a) Cartoon representation for RNase A (PDB id 7rsa) with the anchor residues shown as van der Waals spheres for different surfaces: Negatively charged SAMs (black), positively charged SAMs (red), glass (green) and HDPE (blue). (b) Rigidity profile (in $\text{kcal.mol}^{-1}.\text{\AA}^{-2}$) for the RNase A from *B. taurus* with no external constraints. (c) Force constant variation when applying external constraints modeling the protein adsorption with the anchor residues shown in panel (a) and with the same color code. The dashed lines in panel (a) highlight the position of the negatively (resp. positively) charged SAMs on which the protein is adsorbed.

- Positively charged SAMs (SAM⁺)⁶³, Glu49, Asp53
- Glass⁶², Lys1, Arg39, Arg85, Glu111 (leading to the same enzyme orientation as the SAM⁻ surface)

- HDPE (and also PMMA)⁶², Asp53, Lys61, Lys66, Tyr76, Lys91, Lys98

For the SAM+ orientation, where there are only two anchor residues which lie very close to each other, the adsorption has little to no impact on the enzyme rigidity profile (see the red line on Figure 4c). For all the other materials, adsorption induces a strong increase in the force constant of a limited set of residues. This set includes the anchor residues, as could be expected, but also residues from the enzyme catalytic site (His12 and Lys41)⁶⁴, and residues forming the protein folding nucleus (Phe8, Phe46, Val47 and Phe120)⁶⁵. Disrupting the dynamic properties of these to groups of residues is indeed likely to impact the catalytic activity of RNase A.

Adsorbed nitroreductase

Nitroreductase (NfsB) is a FMN-dependent homodimeric enzyme which catalyzes the reduction of a wide range of substrates containing nitro-groups. It is well characterized both structurally and functionally, and often serves as a model system to study how surface interactions will affect enzyme stability and activity⁶⁶⁻⁶⁹. Recently, Zou et al. investigated the impact of two-point surface attachment on protein function by producing NfsB mutants with neighboring tethering sites and using spectroscopic approaches to deduce their orientation and stability⁶⁹. Interestingly, two mutants, with the anchor residue positions (111, 423) and (247, 423), display better structural stability than any single-site immobilized enzyme. However, these mutants are also less active than the single-site ones thus suggesting that there is a trade-off between activity and stability.

These experimental results concur with our coarse grain simulations on NfsB from *E. coli* (PDB: 1ds7), where both two-sites constraints induce changes of the residues force

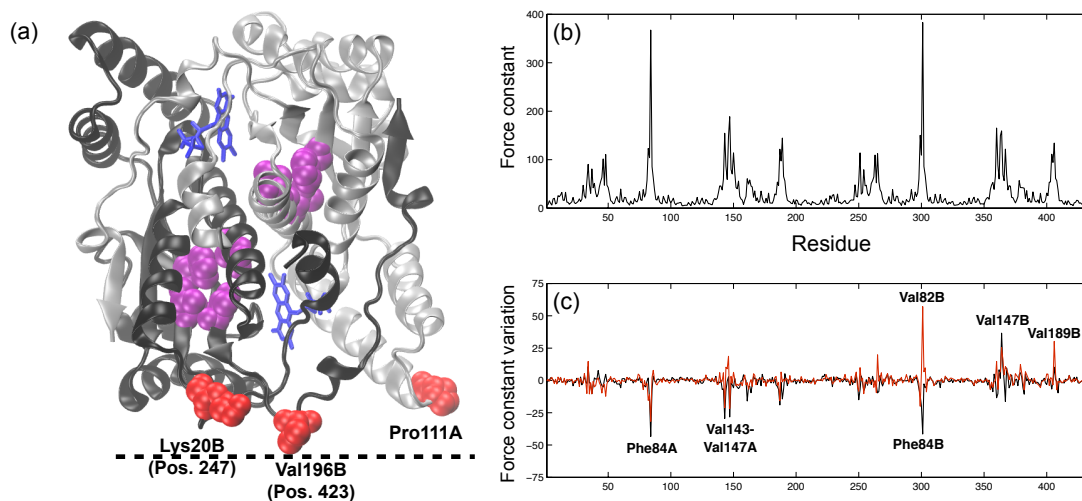


Figure 5: (a) Cartoon representation for the homodimeric NfsB (PDB id 1ds7) with FMN cofactors in blue. The anchor residues are shown as red van der Waals spheres, and the residues undergoing the largest force constant variations upon surface adsorption are in purple. (b) Rigidity profile (in $\text{kcal.mol}^{-1}.\text{\AA}^{-2}$) for the homodimeric NfsB with no external constraints. (c) Force constant variation when applying an external constraint between anchor positions (423,111), black line, or (423,247), red line. The dashed line in panel (a) highlights the position of the surface on which the protein is adsorbed.

constants in the protein rigid core, see Figure 5. On Figure 5c, we can see how applying an external constraint between anchor positions (111, 423) or (247, 423) disturbs the original periodicity observed in the rigidity profile of the unconstrained enzyme in Figure 5b (which reflects the protein homodimeric structure). Unlike the previous cases for BOD and RNase A where the additional constraints modeling protein adsorption would only induce an increase in the protein rigidity, the constraint between the anchor residues in NfsB leads to a mixed mechanical response, with residues from the central rigid core undergoing either a decrease or an increase of their force constant. The

disruption of the initial pattern observed in Figure 5b may be related to the decrease in activity observed experimentally in ref. (69).

4. Conclusion

Enzymes immobilized on solid surfaces appear in numerous devices that are currently developed for a wide range of applications, such as biocatalysis, biosensing or healthcare. However, the efficient integration of enzymes in nanomaterials is a complicated issue since it requires the simultaneous preservation of the enzyme structure, dynamics and catalytic site accessibility, a goal that remains difficult to achieve. In this study, we use a modified version of the ProPHet program, which combines a coarse-grain protein representation and Brownian Dynamics simulations, to investigate the impact of surface immobilization on protein mechanics. Using already available data from the literature (produced by both theoretical and experimental approaches) regarding the orientation of proteins adsorbed on solid surfaces and their anchor residues, protein adsorption is modeled in an implicit manner by adding supplementary constraints between the anchor residues, i. e. residues in contact with the solid surface, to the global elastic network. This permits to observe the mechanical impact of adsorption even though the protein structure remains intact during the process. The first calculations were done on a bilirubin oxidase, an enzyme involved in the development of biofuel cells, and they show that the mechanical perturbations resulting from these additional constraints depend on the enzyme's orientation on the surface and the resulting set of anchor residues. Furthermore, the rigidity increase observed in the protein following its adsorption on a positively charged surface not only concerns the anchor residues (as could be expected), but it can also be a long range

effect, and impact the force constants of residues located in the enzyme active site. This, in turn, is likely to be detrimental for the catalytic function, and our results concur with the experimental observations made by Hitaishi et al, who compared the electron transfer rates and conformation of BOD adsorbed on positively and negatively charged surfaces.

Further calculations on the enzymes RNase A and nitroreductase, for which experimental data regarding the impact of adsorption on function is available, lead to similar conclusions; i. e. the experimentally observed activity loss upon surface binding can be associated with mechanical perturbations of the catalytic residues.

Globally, our results highlight the fact that the structural integrity of surface immobilized enzymes is no guarantee that the enzyme will remain functional, and that the systems' internal dynamics should be specifically investigated before drawing any conclusions regarding the conservation of the catalytic activity. The mechanical perturbations obtained for RNase A grafted on various surfaces (and with various orientations) illustrate the stability-activity tradeoff that was recently observed by Weltz et al.⁷⁰ using single-molecule FRET imaging. Altogether our modeling approach provides a simple tool to help understand how protein adsorption might impact their dynamics and function, especially when one needs to achieve a delicate balance between an enzyme stability and its catalytic activity.

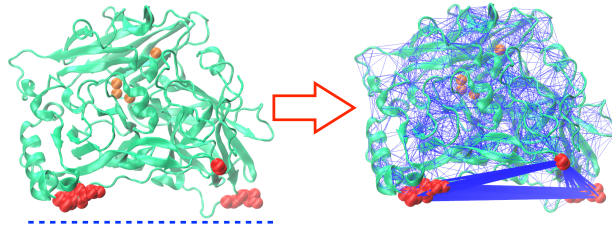
Acknowledgments: This work was supported by the ANR (ENZYMOR-ANR-16-CE05-0024) and by the “Initiative d’Excellence” program from the French State (Grant “DYNAMO”, ANR-11-LABX-0011-01).

References

1. Brancolini, G.; Bellucci, L.; Maschio, M. C.; Di Felice, R.; Corni, S., The interaction of peptides and proteins with nanostructures surfaces: a challenge for nanoscience. *Current Opinion in Colloid & Interface Science* **2019**, *41*, 86-94.
2. Bhakta, S. A.; Evans, E.; Benavidez, T. E.; Garcia, C. D., Protein adsorption onto nanomaterials for the development of biosensors and analytical devices: a review. *Anal. Chim. Acta* **2015**, *872*, 7-25.
3. Oteri, F.; Ciaccafava, A.; de Poulpiquet, A.; Baaden, M.; Lojou, E.; Sacquin-Mora, S., The weak, fluctuating, dipole moment of membrane-bound hydrogenase from *Aquifex aeolicus* accounts for its adaptability to charged electrodes. *Phys. Chem. Chem. Phys.* **2014**, *16* (23), 11318-22.
4. Hitaishi, V.; Clement, R.; Bourassin, N.; Baaden, M.; de Poulpiquet, A.; Sacquin-Mora, S.; Ciaccafava, A.; Lojou, E., Controlling Redox Enzyme Orientation at Planar Electrodes. *Catalysts* **2018**, *8* (5), 192.
5. Rabe, M.; Verdes, D.; Seeger, S., Understanding protein adsorption phenomena at solid surfaces. *Adv. Colloid Interface Sci.* **2011**, *162* (1-2), 87-106.
6. Mulheran, P. A.; Connell, D. J.; Kubiak-Ossowska, K., Steering protein adsorption at charged surfaces: electric fields and ionic screening. *Rsc Adv* **2016**, *6* (77), 73709-73716.
7. Kubiak-Ossowska, K.; Jachimska, B.; Al Qaraghuli, M.; Mulheran, P. A., Protein interactions with negatively charged inorganic surfaces. *Current Opinion in Colloid & Interface Science* **2019**, *41*, 104-117.
8. Jiang, S. Y.; Cao, Z. Q., Ultralow-Fouling, Functionalizable, and Hydrolyzable Zwitterionic Materials and Their Derivatives for Biological Applications. *Advanced Materials* **2010**, *22* (9), 920-932.
9. Su, L.; Li, Y.; Liu, Y.; An, Y.; Shi, L., Recent Advances and Future Prospects on Adaptive Biomaterials for Antimicrobial Applications. *Macromol Biosci* **2019**, *19* (12), e1900289.
10. Wei, T.; Yu, Q.; Chen, H., Responsive and Synergistic Antibacterial Coatings: Fighting against Bacteria in a Smart and Effective Way. *Advanced Healthcare Materials* **2019**, *8* (3).
11. Zhang, A. J.; Xie, Y.; Zhou, J., Experimental Control and Characterization of Protein Orientation on Surfaces. *Progress in Chemistry* **2009**, *21* (7-8), 1408-1417.
12. Rodriguez-Quijada, C.; Sanchez-Purra, M.; de Puig, H.; Hamad-Schifferli, K., Physical Properties of Biomolecules at the Nanomaterial Interface. *J Phys Chem B* **2018**, *122* (11), 2827-2840.
13. Oteri, F.; Baaden, M.; Lojou, E.; Sacquin-Mora, S., Multiscale simulations give insight into the hydrogen in and out pathways of [NiFe]-hydrogenases from *Aquifex aeolicus* and *Desulfovibrio fructosovorans*. *J Phys Chem B* **2014**, *118* (48), 13800-11.
14. Brancolini, G.; Tozzini, V., Multiscale modeling of proteins interaction with functionalized nanoparticles. *Current Opinion in Colloid & Interface Science* **2019**, *41*, 66-73.
15. Malaspina, D. C.; Perez-Fuentes, L.; Drummond, C.; Bastos-Gonzalez, D.; Faraudo, J., Protein-surface interactions at the nanoscale: Atomistic simulations with implicit solvent models. *Current Opinion in Colloid & Interface Science* **2019**, *41*, 40-49.
16. Latour, R. A., Molecular simulation of protein-surface interactions: benefits, problems, solutions, and future directions. *Biointerphases* **2008**, *3* (3), FC2-12.
17. Ozboyaci, M.; Kokh, D. B.; Corni, S.; Wade, R. C., Modeling and simulation of protein-surface interactions: achievements and challenges. *Q. Rev. Biophys.* **2016**, *49*, e4.
18. Quan, X. B.; Liu, J.; Zhou, J., Multiscale modeling and simulations of protein adsorption: progresses and perspectives. *Current Opinion in Colloid & Interface Science* **2019**, *41*, 74-85.
19. Bellion, M.; Santen, L.; Mantz, H.; Haehl, H.; Quinn, A.; Nagel, A.; Gilow, C.; Weitenberg, C.; Schmitt, Y.; Jacobs, K., Protein adsorption on tailored substrates: long-range forces and conformational changes. *Journal of Physics-Condensed Matter* **2008**, *20* (40).
20. Secundo, F., Conformational changes of enzymes upon immobilisation. *Chem. Soc. Rev.* **2013**, *42* (15), 6250-61.
21. Marruecos, D. F.; Schwartz, D. K.; Kaar, J. L., Impact of surface interactions on protein conformation. *Current Opinion in Colloid & Interface Science* **2018**, *38*, 45-55.
22. Bolivar, J. M.; Nidetzky, B., On the relationship between structure and catalytic effectiveness in solid surface-immobilized enzymes: Advances in methodology and the quest for a single-molecule perspective. *Biochim Biophys Acta Proteins Proteom* **2020**, *1868* (2), 140333.
23. Micheletti, C., Comparing proteins by their internal dynamics: exploring structure-function relationships beyond static structural alignments. *Phys Life Rev* **2013**, *10* (1), 1-26.
24. Orozco, M., A theoretical view of protein dynamics. *Chem. Soc. Rev.* **2014**, *43* (14), 5051-66.
25. Sacquin-Mora, S., Motions and mechanics: investigating conformational transitions in multi-domain proteins with coarse-grain simulations. *Mol. Simul.* **2014**, *40* (1-3), 229-236.
26. Sacquin-Mora, S., Bridging Enzymatic Structure Function via Mechanics: A Coarse-Grain Approach. *Methods Enzymol.* **2016**, *578*, 227-48.
27. Sacquin-Mora, S., Mechanical variations in proteins with large-scale motions highlight the formation of structural locks. *J Struct Biol* **2018**, *203* (3), 195-204.

28. Tirion, M. M., Large Amplitude Elastic Motions in Proteins from a Single-Parameter, Atomic Analysis. *Phys. Rev. Lett.* **1996**, *77* (9), 1905-1908.
29. Bahar, I.; Atilgan, A. R.; Erman, B., Direct evaluation of thermal fluctuations in proteins using a single-parameter harmonic potential. *Folding & design* **1997**, *2* (3), 173-81.
30. Tozzini, V., Coarse-grained models for proteins. *Curr. Opin. Struct. Biol.* **2005**, *15* (2), 144-50.
31. Zacharias, M., Protein-protein docking with a reduced protein model accounting for side-chain flexibility. *Protein Sci.* **2003**, *12* (6), 1271-82.
32. Hinsen, K.; Thomas, A.; Field, M. J., Analysis of domain motions in large proteins. *Proteins: Struct. Funct. Genet.* **1999**, *34* (3), 369-82.
33. Atilgan, A. R.; Durell, S. R.; Jernigan, R. L.; Demirel, M. C.; Keskin, O.; Bahar, I., Anisotropy of fluctuation dynamics of proteins with an elastic network model. *Biophys. J.* **2001**, *80* (1), 505-15.
34. Tama, F.; Wrighers, W.; Brooks, C. L., 3rd, Exploring global distortions of biological macromolecules and assemblies from low-resolution structural information and elastic network theory. *J. Mol. Biol.* **2002**, *321* (2), 297-305.
35. Yang, L.; Song, G.; Carriquiry, A.; Jernigan, R. L., Close correspondence between the motions from principal component analysis of multiple HIV-1 protease structures and elastic network modes. *Structure* **2008**, *16* (2), 321-330.
36. Yang, L.; Song, G.; Jernigan, R. L., Protein elastic network models and the ranges of cooperativity. *Proc. Nat. Acad. of Sci. USA* **2009**, *106* (30), 12347-12352.
37. Fuglebakk, E.; Tiwari, S. P.; Reuter, N., Comparing the intrinsic dynamics of multiple protein structures using elastic network models. *Biochim. Biophys. Acta* **2015**, *1850* (5), 911-922.
38. Lopez-Blanco, J. R.; Chacon, P., New generation of elastic network models. *Curr. Opin. Struct. Biol.* **2016**, *37*, 46-53.
39. Sacquin-Mora, S.; Lavery, R., Investigating the local flexibility of functional residues in hemoproteins. *Biophys. J.* **2006**, *90* (8), 2706-17.
40. Sacquin-Mora, S.; Laforet, E.; Lavery, R., Locating the active sites of enzymes using mechanical properties. *Proteins* **2007**, *67* (2), 350-9.
41. Ermak, D. L.; McCammon, J. A., Brownian dynamics with hydrodynamic interactions. *J. Chem. Phys.* **1978**, *69*, 1352-1360.
42. Pastor, R. W.; Venable, R.; Karplus, M., Brownian dynamics simulation of a lipid chain in a membrane bilayer. *J. Chem. Phys.* **1988**, *89*, 1112-1127.
43. Sacquin-Mora, S.; Lavery, R., Modeling the mechanical response of proteins to anisotropic deformation. *Chemphyschem* **2009**, *10* (1), 115-8.
44. Sacquin-Mora, S.; Delalande, O.; Baaden, M., Functional modes and residue flexibility control the anisotropic response of guanylate kinase to mechanical stress. *Biophys. J.* **2010**, *99* (10), 3412-9.
45. Garcia, A. E., Large-amplitude nonlinear motions in proteins. *Phys. Rev. Lett.* **1992**, *68* (17), 2696-2699.
46. Amadei, A.; Linssen, A. B. M.; Berendsen, H. J. C., Essential dynamics of proteins. *Proteins* **1993**, *17* (4), 412-425.
47. Amadei, A.; Linssen, A. B. M.; deGroot, B. L.; vanAalten, D. M. F.; Berendsen, H. J. C., An efficient method for sampling the essential subspace of proteins. *J. Biomol. Struct. Dyn.* **1996**, *13* (4), 615-625.
48. Berendsen, H. J. C.; Vandespoel, D.; Vandrunen, R., GROMACS - A message-passing parallel molecular-dynamics implementation. *Comput. Phys. Commun.* **1995**, *91* (1-3), 43-56.
49. Lindahl, E.; Hess, B.; van der Spoel, D., GROMACS 3.0: a package for molecular simulation and trajectory analysis. *J. Mol. Model.* **2001**, *7* (8), 306-317.
50. Pronk, S.; Pall, S.; Schulz, R.; Larsson, P.; Bjelkmar, P.; Apostolov, R.; Shirts, M. R.; Smith, J. C.; Kasson, P. M.; van der Spoel, D.; Hess, B.; Lindahl, E., GROMACS 4.5: a high-throughput and highly parallel open source molecular simulation toolkit. *Bioinformatics* **2013**, *29* (7), 845-54.
51. Tsujimura, S.; Tatsumi, B.; Ogawa, J.; Shimizu, S.; Kano, K.; Ikeda, T., Bioelectrocatalytic reduction of dioxygen to water at neutral pH using bilirubin oxidase as an enzyme and 2,2'-azinobis (3-ethylbenzothiazolin-6-sulfonate) as an electron transfer mediator. *J. Electroanal. Chem.* **2001**, *496* (1-2), 69-75.
52. Mazurenko, I.; Wang, X.; de Poulpique, A.; Lojou, E., H₂/O₂ enzymatic fuel cells: from proof-of-concept to powerful devices. *Sustainable Energy & Fuels* **2017**, *1* (7), 1475-1501.
53. Mizutani, K.; Toyoda, M.; Sagara, K.; Takahashi, N.; Sato, A.; Kamitaka, Y.; Tsujimura, S.; Nakanishi, Y.; Sugiura, T.; Yamaguchi, S.; Kano, K.; Mikami, B., X-ray analysis of bilirubin oxidase from *Myrothecium verrucaria* at 2.3 Å resolution using a twinned crystal. *Acta Crystallographica. Section F, Structural biology and crystallization communications* **2010**, *66* (Pt 7), 765-70.
54. Cracknell, J. A.; McNamara, T. P.; Lowe, E. D.; Blanford, C. F., Bilirubin oxidase from *Myrothecium verrucaria*: X-ray determination of the complete crystal structure and a rational surface modification for enhanced electrocatalytic O₂ reduction. *Dalton Trans* **2011**, *40* (25), 6668-75.

55. Yang, S.; Liu, J.; Quan, X.; Zhou, J., Bilirubin Oxidase Adsorption onto Charged Self-Assembled Monolayers: Insights from Multiscale Simulations. *Langmuir* **2018**, *34* (33), 9818-9828.
56. Hitaishi, V. P.; Mazurenko, I.; Harb, M.; Clement, R.; Taris, M.; Castano, S.; Duche, D.; Lecomte, S.; Ilbert, M.; de Poulpiquet, A.; Lojou, E., Electrostatic-Driven Activity, Loading, Dynamics, and Stability of a Redox Enzyme on Functionalized-Gold Electrodes for Bioelectrocatalysis. *ACS Catalysis* **2018**, *8* (12), 12004-12014.
57. Smalley, J. F.; Feldberg, S. W.; Chidsey, C. E. D.; Linford, M. R.; Newton, M. D.; Liu, Y. P., THE KINETICS OF ELECTRON-TRANSFER THROUGH FERROCENE-TERMINATED ALKANETHIOL MONOLAYERS ON GOLD. *J. Phys. Chem.* **1995**, *99* (35), 13141-13149.
58. Sacquin-Mora, S.; Sebban, P.; Derrien, V.; Frick, B.; Lavery, R.; Alba-Simionesco, C., Probing the flexibility of the bacterial reaction center: the wild-type protein is more rigid than two site-specific mutants. *Biochemistry* **2007**, *46* (51), 14960-8.
59. Francia, F.; Malferrari, M.; Sacquin-Mora, S.; Venturoli, G., Charge recombination kinetics and protein dynamics in wild type and carotenoid-less bacterial reaction centers: studies in trehalose glasses. *J. Phys Chem B* **2009**, *113* (30), 10389-98.
60. Cullen, S. P.; Liu, X.; Mandel, I. C.; Himpfel, F. J.; Gopalan, P., Polymeric brushes as functional templates for immobilizing ribonuclease A: study of binding kinetics and activity. *Langmuir* **2008**, *24* (3), 913-20.
61. Jordaan, S.; Akinrinmade, O. A.; Nachreiner, T.; Cremer, C.; Naran, K.; Chetty, S.; Barth, S., Updates in the Development of ImmunoRNases for the Selective Killing of Tumor Cells. *Biomedicines* **2018**, *6* (1).
62. Wei, Y.; Thyparambil, A. A.; Wu, Y.; Latour, R. A., Adsorption-induced changes in ribonuclease A structure and enzymatic activity on solid surfaces. *Langmuir* **2014**, *30* (49), 14849-58.
63. Liu, J.; Yu, G.; Zhou, J., Ribonuclease A adsorption onto charged self-assembled monolayers: A multiscale simulation study. *Chem. Eng. Sci.* **2015**, *121*, 331-339.
64. Camilloni, C.; Robustelli, P.; De Simone, A.; Cavalli, A.; Vendruscolo, M., Characterization of the conformational equilibrium between the two major substates of RNase A using NMR chemical shifts. *J. Am. Chem. Soc.* **2012**, *134* (9), 3968-71.
65. Sacquin-Mora, S., Fold and flexibility: what can proteins' mechanical properties tell us about their folding nucleus? *Journal of the Royal Society, Interface / the Royal Society* **2015**, *12* (112), 20150876.
66. Shen, L.; Schroeder, M.; Ogorzalek, T. L.; Yang, P.; Wu, F. G.; Marsh, E. N.; Chen, Z., Surface orientation control of site-specifically immobilized nitro-reductase (NfsB). *Langmuir* **2014**, *30* (20), 5930-8.
67. Schroeder, M. M.; Wang, Q.; Badiyan, S.; Chen, Z.; Marsh, E. N. G., Effect of Surface Crowding and Surface Hydrophilicity on the Activity, Stability and Molecular Orientation of a Covalently Tethered Enzyme. *Langmuir* **2017**, *33* (28), 7152-7159.
68. Kienle, D. F.; Falatach, R. M.; Kaar, J. L.; Schwartz, D. K., Correlating Structural and Functional Heterogeneity of Immobilized Enzymes. *ACS nano* **2018**, *12* (8), 8091-8103.
69. Zou, X.; Wei, S.; Badiyan, S.; Schroeder, M.; Jasensky, J.; Brooks, C. L., 3rd; Marsh, E. N. G.; Chen, Z., Investigating the Effect of Two-Point Surface Attachment on Enzyme Stability and Activity. *J. Am. Chem. Soc.* **2018**, *140* (48), 16560-16569.
70. Weltz, J. S.; Kienle, D. F.; Schwartz, D. K.; Kaar, J. L., Reduced Enzyme Dynamics upon Multipoint Covalent Immobilization Leads to Stability-Activity Trade-off. *J. Am. Chem. Soc.* **2020**, *142* (7), 3463-3471.
71. Humphrey, W.; Dalke, A.; Schulten, K., VMD: visual molecular dynamics. *J. Mol. Graph.* **1996**, *14* (1), 33-8, 27-8.



TOC image