



HAL
open science

GBA and APOE ϵ 4 associate with sporadic dementia with Lewy bodies in European genome wide association study

Arvid Rongve, Aree Witoelar, Agustín Ruiz, Lavinia Athanasiu, Carla Abdelnour, Jordi Clarimon, Stefanie Heilmann-Heimbach, Isabel Hernández, Sonia Moreno-Grau, Itziar de Rojas, et al.

► **To cite this version:**

Arvid Rongve, Aree Witoelar, Agustín Ruiz, Lavinia Athanasiu, Carla Abdelnour, et al.. GBA and APOE ϵ 4 associate with sporadic dementia with Lewy bodies in European genome wide association study. *Scientific Reports*, 2019, 9 (1), 10.1038/s41598-019-43458-2. hal-02935002

HAL Id: hal-02935002

<https://hal.science/hal-02935002>

Submitted on 9 Sep 2020

HAL is a multi-disciplinary open access archive for the deposit and dissemination of scientific research documents, whether they are published or not. The documents may come from teaching and research institutions in France or abroad, or from public or private research centers.

L'archive ouverte pluridisciplinaire **HAL**, est destinée au dépôt et à la diffusion de documents scientifiques de niveau recherche, publiés ou non, émanant des établissements d'enseignement et de recherche français ou étrangers, des laboratoires publics ou privés.



Distributed under a Creative Commons Attribution 4.0 International License

SCIENTIFIC REPORTS

Corrected: Author Correction

OPEN

GBA and *APOE* $\epsilon 4$ associate with sporadic dementia with Lewy bodies in European genome wide association study

Arvid Rongve^{1,2}, Aree Witoelar^{3,4}, Agustín Ruiz⁵, Lavinia Athanasiu^{3,4}, Carla Abdelnour⁵, Jordi Clarimon^{6,7}, Stefanie Heilmann-Heimbach^{8,9}, Isabel Hernández⁵, Sonia Moreno-Grau⁵, Itziar de Rojas⁵, Estrella Morenas-Rodríguez^{6,7}, Tormod Fladby^{10,11}, Sigrid B. Sando¹², Geir Bråthen¹³, Frédéric Blanc^{14,15}, Olivier Bousiges¹⁶, Afina W. Lemstra^{17,18}, Inger van Steenoven^{17,18}, Elisabet Londos¹⁹, Ina S. Almdahl^{11,25}, Lene Pålhaugen^{10,11}, Jon A. Eriksen^{3,4}, Srdjan Djurovic^{10,21}, Eystein Stordal^{11,22,23}, Ingvild Saltvedt^{12,24}, Ingun D. Ulstein^{4,25}, Francesco Bettella^{10,3}, Rahul S. Desikan²⁶, Ane-Victoria Idland^{27,28,29}, Mathias Toft^{10,4,30}, Lasse Pihlstrøm^{10,30}, Jon Snaedal³¹, Lluís Tàrraga⁵, Mercè Boada⁵, Alberto Lleó^{6,7}, Hreinn Stefánsson^{10,32}, Kári Stefánsson^{10,32}, Alfredo Ramírez^{10,33,34}, Dag Aarsland^{35,36} & Ole A. Andreassen^{3,4}

¹Haugesund Hospital, Helse Fonna, Department of Research and Innovation, Haugesund, Norway. ²The University of Bergen, Department of Clinical Medicine (K1), Bergen, Norway. ³NORMENT, KG Jebsen Centre for Psychosis Research, Division of Mental Health and Addiction, Oslo University Hospital, Oslo, Norway. ⁴Institute of Clinical Medicine, University of Oslo, Oslo, Norway. ⁵Memory Clinic and Research Center of Fundació ACE, Institut Català de Neurociències Aplicades, Universitat Internacional de Catalunya (UIC), Barcelona, Spain. ⁶Department of Neurology, IIB Sant Pau, Hospital de la Santa Creu i Sant Pau, Universitat Autònoma de Barcelona, Barcelona, Spain. ⁷Center for Networker Biomedical Research in Neurodegenerative Diseases (CIBERNED), Madrid and Barcelona, Spain. ⁸Institute of Human Genetics, University of Bonn, Bonn, Germany. ⁹Department of Genomics, Life & Brain Center, University of Bonn, Bonn, Germany. ¹⁰Department of Neurology, Akershus University Hospital, Lørenskog, Norway. ¹¹University of Oslo, AHUS Campus, Oslo, Norway. ¹²Department of Neuromedicine and Movement Science, Norwegian University of Science and Technology, Trondheim, Norway. ¹³Department of Neurology, St Olav's Hospital, Trondheim, Norway. ¹⁴University Hospital of Strasbourg, CMRR (Memory Resources and Research Centre), Geriatrics Department, Strasbourg, France. ¹⁵University of Strasbourg and CNRS, ICube laboratory and FMTS, team IMIS/Neurocrypto, Strasbourg, France. ¹⁶University Hospital of Strasbourg, CMRR (Memory Resources and Research Centre), Laboratory of Biochemistry and Molecular Biology, Strasbourg, France. ¹⁷University of Strasbourg and CNRS, Laboratoire de Neurosciences Cognitives et Adaptatives (LNCA), UMR7364, 67000, Strasbourg, France. ¹⁸Alzheimercenter & Department of Neurology VU University Medical Center, Amsterdam, the Netherlands. ¹⁹Lund University, Skane University Hospital, Institute of Clinical Sciences, Malmö, Sweden. ²⁰Department of Medical Genetics, Oslo University Hospital, Oslo, Norway. ²¹NORMENT, KG Jebsen Centre for Psychosis Research, Department of Clinical Science, University of Bergen, Bergen, Norway. ²²Department of Psychiatry, Namsos Hospital, Namsos, Norway. ²³Department of Mental Health, Norwegian University of Science and Technology, Trondheim, Norway. ²⁴Department of Geriatrics, St. Olav's Hospital, Trondheim, Norway. ²⁵Department of Geriatric Psychiatry, Oslo University Hospital, Oslo, Norway. ²⁶Departments of Radiology and Biomedical Imaging, Neurology and Pediatrics, UCSF, San Francisco, USA. ²⁷Oslo Delirium Research Group, Department of Geriatric Medicine, Institute of Clinical Medicine, University of Oslo, Oslo, Norway. ²⁸Research Group for Lifespan Changes in Brain and Cognition, Department of Psychology, University of Oslo, Oslo, Norway. ²⁹Institute of Basic Medical Sciences, University of Oslo, Oslo, Norway. ³⁰Department of Neurology, Oslo University Hospital, Oslo, Norway. ³¹Landspítali University Hospital, Reykjavik, Iceland. ³²DeCODE genetics, Reykjavik, Iceland. ³³Division for Neurogenetics and Molecular Psychiatry, Department of Psychiatry and Psychotherapy, Medical Faculty, University of Cologne, 50924, Cologne, Germany. ³⁴Department for Neurodegenerative Diseases and Geriatric Psychiatry, University of Bonn, 53127, Bonn, Germany. ³⁵Institute of Psychiatry, Psychology and Neuroscience, King's College London, London, UK. ³⁶Center for Age-Related Diseases, Stavanger University Hospital, Stavanger, Norway. Arvid Rongve and Aree Witoelar contributed equally. Correspondence and requests for materials should be addressed to A.R. (email: arvid.rongve@helse-fonna.no) or D.A. (email: daarsland@gmail.com) or O.A.A. (email: ole.andreassen@medisin.uio.no)

Dementia with Lewy Bodies (DLB) is a common neurodegenerative disorder with poor prognosis and mainly unknown pathophysiology. Heritability estimates exceed 30% but few genetic risk variants have been identified. Here we investigated common genetic variants associated with DLB in a large European multisite sample. We performed a genome wide association study in Norwegian and European cohorts of 720 DLB cases and 6490 controls and included 19 top-associated single-nucleotide polymorphisms in an additional cohort of 108 DLB cases and 75545 controls from Iceland. Overall the study included 828 DLB cases and 82035 controls. Variants in the *ASH1L/GBA* (Chr1q22) and *APOE ε4* (Chr19) loci were associated with DLB surpassing the genome-wide significance threshold ($p < 5 \times 10^{-8}$). One additional genetic locus previously linked to psychosis in Alzheimer's disease, *ZFPM1* (Chr16q24.2), showed suggestive association with DLB at p -value $< 1 \times 10^{-6}$. We report two susceptibility loci for DLB at genome-wide significance, providing insight into etiological factors. These findings highlight the complex relationship between the genetic architecture of DLB and other neurodegenerative disorders.

Dementia with Lewy Bodies (DLB) is the second most common type of neurodegenerative dementia, accounting for 15% of dementia patients. DLB overlaps clinically, pathologically and genetically with Alzheimer's disease (AD) and Parkinson's disease (PD). Clinically, DLB is characterized by cognitive impairment, parkinsonism, psychotic symptoms like visual hallucinations, fluctuating cognition with pronounced variations in attention and alertness and REM sleep behaviour disorder. Reduced uptake on CIT-SPECT or myocardial scintigraphy and polysomnography with confirmation of REM sleep without atonia have been included as indicative biomarkers in the diagnostic criteria¹. We have previously shown the clinical diagnostic criteria for probable DLB to be both sensitive (77%) and highly specific (94%) as compared to a pathological DLB diagnosis. Furthermore, we have found DLB to have higher costs, more neuropsychiatric symptoms, a more rapid cognitive decline, shorter time until nursing home admission, shorter survival and higher caregiver distress as compared to AD^{2–8}.

In some families, DLB occurs with autosomal dominant inheritance at an age of onset < 65 years. In these families, alpha-synuclein (*SNCA*) multiplications or point mutations have been described^{9,10}. DLB is however typically late onset (i.e. onset after 65 years of age) and sporadic, and the proportion of phenotypic variance that can be explained by $> 250,000$ SNPs on the NeuroX array has been estimated to 31% with substantial genetic overlap with both AD and PD¹¹. Indeed, previous genetic studies have suggested associations of *APOE*, *GBA*, *SNCA* and *SCARB2* with DLB in both neuropathologically and clinically diagnosed cases¹². Data from another GWAS of DLB were recently presented and confirmed *APOE ε4*, *SNCA* and *GBA*, and in addition suggested *CNTN1* to be associated with DLB¹³. Regarding *APOE*, the strongest genetic risk factor for AD, we showed that the *APOE ε4* allele increases and the *APOE ε2* allele decreases the risk of developing DLB¹⁴. *GBA*, the gene encoding the lysosomal enzyme glucocerebrosidase, is associated with PD risk and cognitive decline in PD^{15,16}. In DLB, *GBA* mutations have been reported in 7.8% of cases (odds ratio (OR) ~ 8), even up to 31% in Ashkenazi Jews, suggesting that *GBA* is a stronger risk factor for DLB than for PD¹⁷. Moreover, whole exome sequencing studies have identified rare and pathogenic variants in *GBA*, *PSEN1* or *APP* in 4.4–25% of patients with pathologically or clinically diagnosed DLB^{18,19}. However, none of the AD associated common variants identified in large genome-wide association studies (GWAS) have been associated to DLB besides *APOE*.

Notwithstanding these interesting results from early genetic studies, the individual genetic risk factors that specifically contribute to the common and sporadic late onset form of DLB have remained relatively unexplored compared to PD and AD, largely due to the lack of large sample series providing adequate statistical power for GWAS. In the current study, we collected DNA and genotyped samples from the Norwegian DemGene consortium and the European DLB consortium (E-DLB), and performed a GWAS applying a two-stage meta-analysis approach and follow-up in an independent cohort. We investigated whether common genetic variants are associated with DLB, aiming to elucidate the molecular mechanisms underlying the disease.

Methods

Participants. Three discovery cohorts were included in the study (Cohorts 1, 2 and 3). We collected samples from the Norwegian Dementia Genetics Network (DemGene) and from the European DLB consortium (E-DLB). Cohort 1 included DemGene and three European centres (Strasbourg, Amsterdam and Lund), and consisted of 478 cases and 1322 controls. An additional Norwegian population cohort of 4875 controls was added. Cohort 2 included two European centres both from Barcelona and consisted of 242 cases and 293 controls. Cohort 3 samples were collected in Iceland and consisted of 108 cases and 75545 controls. Altogether 828 DLB cases and 82110 controls were included in this study, see Supplementary material and Supplemental (S.) Table 1 for details. All research was performed in accordance with relevant guidelines/regulations, and informed consent was obtained from all participants and/or their legal guardians.

Genotyping. DNA was extracted from whole blood. We genotyped Cohort 1 on the Illumina Infinium Omni Express-24 v1.1 platform (Illumina Inc., San Diego, CA, USA) at deCODE Genetics (Reykjavik, Iceland) in concordance with the standard Illumina protocol. We genotyped Cohort 2 samples with the Illumina Infinium Omni Express Exome-8v1.3 chip. Cohort 3 samples were genotyped on Illumina's HumanHAP300, HumanHAP300-Duo and HumanCNV370 bead arrays. We conducted assignment of genotypes according to the standard Illumina protocol in GenomeStudio software V2011.1 version 1.9.4. We tested for plate effects and other batch effects by a number of association tests described in detail under supplementary methods. Markers exhibiting high rates of genotyping missingness (above 5%), minor allele frequency (MAF) below 1% or showing departure from Hardy Weinberg equilibrium ($p < 1 \times 10^{-4}$ calculated for controls) were excluded from the

analyses. Individuals showing high rates of genotyping missingness (above 5%), cryptic relatedness (pairwise Identity-By-Descent PI_HAT above 20%) or genome-wide heterozygosity (outside mean \pm 5 SD of the sample) were removed from the analyses. Further, sex-check was performed based on the homozygosity estimate of X chromosome markers implemented in PLINK.

Association analysis. We performed association analysis in two stages. Due to data regulations and ethical approvals regarding data sharing, we performed genome-wide association analyses on Cohorts 1 and 2 independently and combined the results through meta-analysis to obtain Stage 1 results. HRC imputation was not accessible for cohort 1 due to national regulations in Norway. To reduce possible genomic inflation or overcorrection, the results from the Stage 1 meta-analysis were corrected for genomic inflation before we performed meta-analysis with Cohort 3 to obtain Stage 2 results.

Genotypes from Cohort 1 samples were imputed onto the European reference haplotypes from the 1000 Genomes Project (GRCh37/hg19 assembly) Phase 3 using MACH (<http://www.sph.umich.edu/csg/abecasis/MACH>). We excluded variants with MAF lower than 0.01 or R-squared quality metric (INFO) > 0.5. We performed principal component analysis (PCA) on Cohort 1 pre-imputation data using PLINK 1.9 (<https://www.cog-genomics.org/plink2>) to account for population stratification. The association analysis by logistic regression on dosage data using PLINK 1.9 included gender, age and the two first principal components as covariates. Genomic inflation factors were calculated as the ratio of the median of the empirically observed distribution of the association chi-square statistic to the expected median²⁰.

Genotypes from Cohort 2 samples were imputed onto the GRCh37/hg19 assembly with ShapeIT & Minimac3 using the haplotype reference consortium HRC version r1.1 reference data at the imputation server of the University of Michigan. PCA was done independently for Cohort 2 because there was no relatedness to samples from Cohort 1. Logistic regression was performed using PLINK 1.9 using gender, age and the top two genetic principal components as covariates. The genomic inflation factor was calculated as previously described.

To obtain Stage 1 results, variants from Cohort 1 and Cohort 2 were mapped to each other using GRCh37/hg19 assembly. All variants with allele discrepancies across cohorts were discarded. We performed meta-analysis of Cohort 1 and Cohort 2 using PLINK 1.9 with fixed effects inverse-variance weighted effect sizes. Biases from different cohorts due to genotype array and imputation procedures are mitigated through correction on the inflation factor. The results were verified using METAL meta-analysis tool (<http://csg.sph.umich.edu/abecasis/Metal>). To identify independently associated loci, we used FUMA's SNP2GENE function to define lead SNPs and genomic risk loci²¹. Graphical representations including quantile-quantile plots and Manhattan plots were performed in R using the qqman package (<http://cran.r-project.org/web/packages/qqman>).

We selected variants with Stage 1 meta-analysis p-value < 1×10^{-6} for follow up in Cohort 3 (Iceland) and used the same approach described above to meta-analyse the results in Stage 2²².

Functional mapping and annotation (FUMA) of GWAS. We utilized FUMA to functionally annotate our Stage 1 results²¹. FUMA incorporates 18 biological data repositories such as the Genotype-Tissue Expression (GTEx), the Encyclopedia of DNA Elements (ENCODE), the Roadmap Epigenomics Project and chromatin interaction information. FUMA requires GWAS summary statistics and its outputs include multiple tables and figures containing extensive information on, e.g., functionality of SNPs in genomic risk loci, including protein-altering consequences, gene-expression influences, open-chromatin states as well as three-dimensional (3D) chromatin interactions. Functionally annotated variants are subsequently mapped to prioritized genes based on (i) physical position mapping on the genome, (ii) expression quantitative trait loci (eQTL) mapping and (iii) 3D chromatin interactions (chromatin interaction mapping). Biological information for each prioritized gene is provided to gain insight into previously associated diseases. On top of the single gene level analyses, FUMA also provides information on association overrepresentation in sets of differentially expressed genes (DEG) to identify tissue specificity of prioritized genes. We refer to the details of methods and repositories of FUMA in²¹.

Ethics committee approval. All cohorts and sites providing samples for this study have local ethics approval for DNA collection and data sharing, and the names of local ethics committees are provided in the in the supplemental materials. In Norway the joint study was approved by the Regional Committees for Medical and Health Research Ethics in Mid Norway.

Results

From Cohort 1, we obtained genotypes for 719,755 SNPs and performed imputation to obtain 7,769,477 high-quality variants. We performed association using 478 DLB cases and 1322 controls, see S. Table 1. After controlling for population stratification using PCA (S. Fig. 1A), the genomic inflation factor Lambda was 1.005 (S. Fig. 2A). We found genome-wide significance on rs2230288 (closest gene *GBA*, $p = 3.77 \times 10^{-8}$) and rs429358 (closest gene *APOE*, $p = 3.21 \times 10^{-9}$). The regional association plots for this locus is visualized in S. Fig. 3.

To increase the power of our study, we included additional Norwegian population controls in the study, see S. Table 1. Using two principal components (S. Fig. 1B), the addition of population controls increased inflation to a Lambda of 1.244, possibly due to inflation from the additional controls. We verified the inflation using LD Score Regression and found the intercept at 1.2094, consistent with Lambda. Quantile-quantile plots for Cohort 1 before and after genomic correction are given in S. Fig. 2. After correction, the strongest associations in Cohort 1 remain with rs2230288 ($p = 1.77 \times 10^{-10}$) and rs429358 ($p = 4.13 \times 10^{-9}$).

We found 45 SNPs associated to DLB at $p < 5 \times 10^{-6}$ with strong associations in Chromosomes 1 and 19; a summary of our findings from Cohort 1 is given in S. Table 2A.

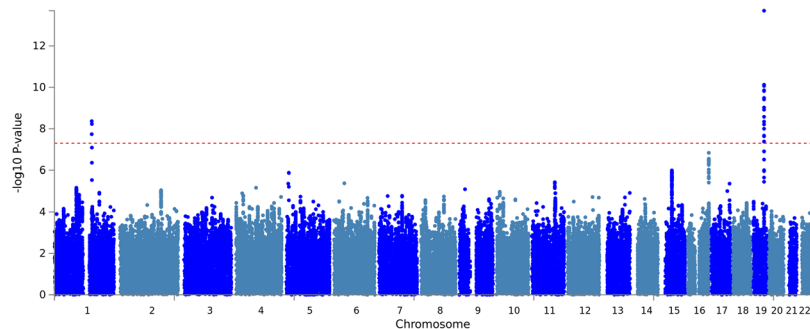


Figure 1. Manhattan plot of Stage 1 meta-analysis. Manhattan plot of meta-analysis of Cohorts 1 and 2 for genome-wide association with Dementia with Lewy Body (DLB). Genome-wide significant associations to DLB (threshold $P < 5 \times 10^{-8}$) are found in chromosomes 1 (*ASH1L/GBA*) and 19 (*APOE*), and a suggestive association to DLB at $P < 1 \times 10^{-6}$ is identified at chromosome 16 (*ZFPM1*). A comprehensive result of Stage 1 is presented in Supplementary Table 2.

From Cohort 2, we analysed 7,570,659 successfully imputed variants. The genomic inflation factor Lambda was 1.031. Quantile-quantile plots for Cohort 2 are given in S. Fig. 2. The Cohort 2 study revealed 9 SNPs associated to DLB at $p < 5 \times 10^{-6}$; also with strong associations in Chromosome 19, see S. Table 2B. After individual analyses of discovery Cohorts 1 and 2, we performed a Stage 1 meta-analysis of 6,963,063 variants (898 were discarded due to allele mismatches). The meta-analysis genomic inflation factor Lambda was 0.865, possibly due to overcorrection for the genomic inflation in Cohort 1. We corrected the chi-square statistics of the meta-analysis at fixed ORs, see the quantile-quantile plots in S. Fig. 2. Genome-wide Stage 1 results are visualized as a Manhattan plot in Fig. 1.

After correction, Stage 1 analysis revealed 108 SNPs associated with DLB at $p < 5 \times 10^{-6}$ (S. Table 2C). The statistical power of our study is estimated to be 0.085 (MAF = 0.05) to 0.395 (MAF = 0.1) to 0.823 (MAF = 0.2) for SNPs with genomic risk ratio GRR = 1.5 and GRR = 1.2, shown in S. Fig. 4. GRR values were chosen based on ORs of discoveries of earlier DLB studies¹³. We followed up on 18 of these SNPs, which were successfully analysed in an independent sample from Iceland (Cohort 3) and performed a Stage 2 meta-analysis. Because stage 2 meta-analysis included only 18 selected SNPs instead of a genome-wide analysis, this result was not corrected for genomic inflation.

From the Stage 2 meta-analysis, we found two susceptibility regions associated with DLB surpassing genome-wide significance, $p < 5 \times 10^{-8}$. We found *APOE* $\epsilon 4$ related SNPs at genome-wide significance, represented by rs429358 (OR = 2.28, $p = 6.15 \times 10^{-17}$, see Table 1 for details). A regional association plot of the *APOE* locus from Stage 1 meta-analysis is presented in S. Fig. 5A. From a recent large study, we found that this SNP is identical to the reported top hit (OR = 2.40, $p = 1.05 \times 10^{-48}$) in Guerreiro *et al.*¹³

We also discovered a DLB-associated locus on Chromosome 1, represented by rs12734374 (closest gene: *ASH1L*, OR = 4.31, $p = 1.33 \times 10^{-9}$, see Table 1 and regional association plots in S. Fig. 5B). This SNP is located in the same genomic region of rs2230288, the strongest hit in Cohort 1 which was not successfully imputed in Cohort 2, but had implicated *GBA*. Furthermore, in another study, we found that rs12734374 is in high LD ($R^2 = 0.79$) with a *GBA* hit, rs35749011 (OR = 2.27, $p = 6.57 \times 10^{-10}$ in)¹³. Both our *APOE* and *ASH1L/GBA* hits provide genome-wide significant confirmations of the findings from Guerreiro *et al.*¹³

Furthermore, we investigated SNPs with a suggestive association to DLB. From the Stage 1 meta-analysis, we noted 9 SNPs at $p < 1 \times 10^{-6}$ in chromosome 16, represented by rs12926163 (closest gene *ZFPM1*, OR = 1.68, $p = 1.45 \times 10^{-7}$). These SNPs were not successfully analysed in the Icelandic cohort, and therefore we present only the Stage 1 result of this locus in Table 1 and S. Fig. 5C.

Next, we analysed specific gene signals reported previously in DLB for their significance under locus-wide Bonferroni correction for each gene. Due to the small SNP coverage in the Stage 2 analysis, we used results from Stage 1. We extracted variant information for *SNCA* (GRCh37hg19 chr4: 90,645,250-90,759,466), *SCARB2* (chr4:77,079,886-77,155,689), *MAPT* (chr17:43,971,748-44,105,700) and *CNTN1* (chr12:41,086,244-41,466,220) with upstream and downstream flanking of 200kb. Regional plots of these candidate genes are shown in S. Fig. 5D–G.

Among the 1509 successfully imputed SNPs in the *SNCA* locus, the strongest association was with rs2301135 (chr4:90,758,389, $p = 5.68 \times 10^{-5}$, OR = 1.40, minor allele C) and remained nearly significant after correction (threshold $p < 3.3 \times 10^{-5}$) using conservative multiple test assumptions of independent SNPs. In the *SCARB2* locus, the strongest association among the 1600 SNPs was with rs34216031 (chr4:76,971,832, OR = 1.63, $p = 1.37 \times 10^{-2}$), but its significance did not survive correction (threshold $p < 3.1 \times 10^{-5}$). In the *MAPT* locus, 694 SNPs passed quality checks. Among these, the strongest association was with rs11652003 (chr17:44,132,659, OR = 0.75, $p = 1.89 \times 10^{-2}$) but did not withstand correction (threshold $p < 7.2 \times 10^{-5}$). Of note, coverage of *MAPT* is relatively poor in our genotyping and imputation procedure, see S. Fig. 5F. In the *CNTN1* locus, the strongest association was with rs56260639 (chr12:41122583, OR = 0.50, $p = 1.17 \times 10^{-2}$). Despite the strong OR, this association did not remain significant after correction (threshold $p < 2.1 \times 10^{-5}$).

Finally, we investigated the potential biological roles of the resulting list of genes in brain disorders. For this, we performed functional analysis with FUMA GWAS²¹. We summarized the independent genomic risk loci from

SNP	CHR:BP	Allele (min/maj)	MAF (1KG)	MAF Cohort 1	MAF Cohort 2	Gene	Meta Stage 1		Meta Stage 2	
							OR	P	OR	P
rs429358	19:45411941	C/T	0.155	0.143	0.153	<i>APOE e4</i>	2.79	2.00e-14	2.28	6.15e-17
rs12734374	1:155388851	T/A	0.023	0.022	0.012	<i>ASH1L/GBA</i>	4.29	4.29e-09	4.31	1.33e-09
rs12926163	16:88572056	C/T	0.311	0.252	0.323	<i>ZFPM1</i>	1.68	1.45e-07	—	—

Table 1. Genetic loci with significant and suggestive associations with DLB at meta-analysis Stage 1 and Stage 2. CHR:BP: Chromosome and Base pair location based on Build 37, Assembly Hg19. Allele (min/maj): Minor and major alleles; MAF: Minor Allele Frequency (on European 1000 G), Cohort 1 and Cohort 2. Gene: Nearest gene within 500 kb; OR, P: case-control odds-ratio and association P-values from Stage 1 combining Cohorts 1 and 2, and Stage 2 Meta-analysis combining Cohorts 1, 2 and 3.

Stage 1 with suggestive association $p < 1 \times 10^{-6}$ in S. Fig. 6. The strongest associations were close to *APOE* in Chromosome 19 and distributed in a relatively small region spanning only 41kb and 4 genes. The significant associations in Chromosome 1, within the large haploblock containing *GBA*, spanned 1.2MB and up to 64 genes (see S. Fig. 6). We computed gene-based P-value test for protein-coding genes by mapping SNPs to genes if SNPs were located within the genes. The chromosome 1 genes (*GBA*) did not surpass the significance threshold (S. Fig. 7), but the chromosome 19 genes (*APOE*, *APOC1*, *TOMM40*) remained significant. We also found significant results applying the gene-based test to the gene on chromosome 16 (*ZFPM1*), which was suggestive at the single variant level. Using MAGMA tissue expression analysis, we found the strongest expression in whole blood, substantia nigra and spinal cord cervical level c-1. (S. Fig. 8).

FUMA prioritized 65 genes (S. Table 3, S. Fig. 9) for further functional analyses; see Methods on how genes are prioritized. Of note, in Chromosome 1, *GBA* was prioritized based on eQTL analysis (S. Fig. 9), further strengthening the case that our top hit implicated not only *ASH1L* but also *GBA*. From the set of 65 genes, we looked up tissue specific expression patterns based on GTEx v6 RNA-seq data. These are visualized as a heatmap in S. Fig. 10²¹. Relative to other genes, we found *APOE* highly expressed in all tissues (S. Fig. 10A). *ASH1L* and *GBA* are moderately expressed and *ZFPM1* has a lower gene expression relative to other genes in all tissues. Next, we looked at the tissue specificity for each gene. We found *APOE* with moderately higher expression in brain tissue (S. Fig. 10B), while *ASH1L*, *GBA* and *ZFPM1* are not specific to brain tissues. Notably, we found higher expression in brain tissues for *PAQR6*, *CHRNA2*, *SYT11* and *APOC1* and conversely we found lower expression for *PVRL2*, *LMNA* and *SHC1* (S. Fig. 10B).

Besides the single gene level analyses, we also identified tissue specificity of prioritized genes by looking at overrepresentation in sets of differentially expressed genes (DEG), see S. Fig. 11. DEG for each tissue was calculated in FUMA. We found the spinal cord cervical level c-1 and amygdala being two of the top five tissues with the most DEG, however, none passed Bonferroni corrected significance. The finding of the spinal cord cervical level c-1 is consistent with the MAGMA analysis.

Discussion

We performed a genome-wide association study based on 828 clinically diagnosed DLB cases and a large sample of 82035 controls. We confirmed the *APOE e4* allele and a locus close to *ASH1L* and *GBA* (Chr1q22) as significantly associated with DLB. Furthermore, we nominate a novel genetic locus near *ZFPM1* as suggestively associated with DLB. Taken together with recent findings from another DLB GWAS¹³, the current results firmly establish *APOE e4*, *SNCA* and *GBA* as robust risk loci for DLB, which implicate novel disease mechanisms to be followed up in experimental studies.

The top-hit SNP at the 1q22 locus is located within the large haploblock containing the *GBA* (glucocerebrosidase gene), also recently identified by Guerreiro *et al.*¹³. We note that the strongest association was in SNPs with relatively high LD ($D' 0.66$) with rs2230288, referred to in the literature as the *GBA* E326K or 365 K polymorphism. E326K is a low frequency coding variant, which unlike the “neuropathic” *GBA* mutations does not cause Gaucher’s disease in the homozygous state. We recently demonstrated that this variant accounts for the *GBA* top-hit from a PD meta-GWAS²³. E326K has also been associated with worse cognitive outcomes in PD^{15,16}. We inspected the association results further and found that E326K showed the strongest of all associations at this locus in Cohort 1, yet was not successfully imputed in Cohort 2. We thus consider it likely that E326K is the functional variant underlying this signal. With an allele frequency of $>2\%$ in the population and a strong effect on susceptibility to both PD and DLB, this variant emerges as a major risk factor for the Lewy body disorders combined. From a functional perspective, the *GBA* association highlights the importance of lysosomal pathways in DLB pathogenesis. *GBA* was recently confirmed in the largest GWAS in DLB to date (1743 DLB patients included) as the third most strongly associated risk gene¹³. *SCARB2* (scavenger receptor class B member 2), encoding another lysosomal enzyme, has previously been associated with DLB¹². While *GBA* is probably the most plausible causative gene in the 1q22 locus, we cannot rule out other candidate gene such as *ASH1L* (Absent, Small or Homeotic discs 1-Like). The gene encodes a histone-lysine N-methyltransferase, a member of the trithorax transcriptional regulators which are essential for development, organ function and fertility.

We and others have previously reported *APOE* (Apolipoprotein E) $\epsilon 4$ (Chr19q13.32) as an important genetic risk factor for DLB. Guerreiro *et al.* found the locus highly significant¹³, and we reported an OR for carriers of one copy of the *APOE e4* allele to be 2.9 for developing DLB and 4.2 for developing AD. For carriers of two copies of the *APOE e4* alleles the OR for developing DLB increased to 5.9 while the OR for developing AD was as high as 15.2¹⁴. Bras and colleagues have reported *APOE* as the strongest associated risk gene in both clinically

and neuropathologically diagnosed DLB cases¹², and this was confirmed in an expanded cohort from the same group recently¹³. Guerreiro *et al.* estimated the DLB SNP-heritability based on the Illumina Neuro-X content to be 31%, with *APOE* accounting for about 9%¹¹. *APOE* $\epsilon 4$ has also been found to increase the risk of dementia in pure alpha-synucleinopathies in a study where its frequency was 38% in pathologically diagnosed pure AD, 40.6% in the mixed AD and DLB group, 31.9% in pure DLB, 19.1% in Parkinson's Disease Dementia (PDD) and 7.2% among healthy controls²⁴. In another AD GWAS, Lewy body pathology in the brain was associated with *APOE* variants²⁵. Most cases with clinically diagnosed DLB will contain both Lewy bodies and AD pathology in the brain⁷.

SNCA (*synuclein alpha*) is the strongest associated risk gene in PD and encodes α -synuclein, which is a major constituent of Lewy bodies, pathological hallmark for both DLB and PD/PDD. Accumulation of α -synuclein aggregates have been found to create synaptic dysfunction in DLB²⁶. The top associated variant in our data (rs2301135) is in LD with the *SNCA* signal reported as significant in the previous study by Bras *et al.* (r-squared 0.98 and D' 1.0 with rs894280 in 1000 genomes European population)¹² and the secondary signal from a large meta-analysis of PD GWAS (r-squared 0.98 and D' 1.0 with rs7681154)²⁷. Both p-value and effect size of the *SNCA* association observed here are equivalent to those found in the similarly sized DLB study by Bras *et al.*¹², and despite falling short of genome wide significance, we interpret this result as supportive for an *SNCA* association in DLB. Deviations from other studies with respect to the strongest SNP at the locus could well arise if key SNPs are not well imputed across all cohorts.

Together, the identified genetic loci could be involved in a common neurobiological disease pathway in DLB. The normal degradation of α -synuclein is highly dependent on lysosomal function and glucocerebrosidase is an important enzyme in this degradation. Impaired function of glucocerebrosidase due to coding variants like E326K will slow down the degradation of α -synuclein thus increasing the concentration of toxic oligomers and thereby driving the pathological process in DLB. Inhibition of lysosomal enzymes also results in $A\beta$ accumulation and aggregation. The apolipoproteins accelerate neuronal $A\beta$ uptake, lysosomal trafficking and degradation in an isoform-dependent manner with apolipoprotein E3 more efficiently facilitating $A\beta$ trafficking and degradation than apolipoprotein E4, a risk factor for AD and DLB²⁸, thus linking both *GBA*, *APOE* and *SNCA*.

The present findings of genetic loci suggestively associated with DLB indicate interesting pathological mechanisms. The chromosome 16 locus associated with DLB at $p = 1.45 \times 10^{-7}$ implicates *ZFPF1* (Zinc finger protein, FOG family member 1), which is expressed in human hematopoietic tissues and in the cerebellum and is involved in erythroid differentiation. In one study of AD and psychosis, duplications in this gene were associated with psychosis in AD, a symptom highly relevant in DLB, were visual hallucinations and related delusions are core symptoms of the disease²⁹. Our findings suggest other putative molecular mechanisms in DLB.

CNTN1 (contactin 1) is a glycosylphosphatidylinositol anchored neuronal membrane protein that functions as a cell-adhesion molecule with important roles in axonal function. It is located near the *LRKK2* locus and was associated to PD and reported as a suggestive hit in the largest GWAS of DLB to date¹³. We found no significant hits under correction in our study. Further, we found no genome-wide significant associations with *MAPT* (*microtubule associated protein tau*), the gene encoding tau, in our study. However, this gene was poorly covered in our genotyping and imputation procedure. *MAPT* is the second strongest associated risk gene in PD and is associated also with AD³⁰. It exists on two different haplotypes, H1 and H2. H1P has been associated with Parkinson's disease with dementia, whereas H1C has been associated with Alzheimer's disease. Thus, *MAPT* would be a plausible candidate gene also for DLB due to clinical and likely genetic overlap with AD and PD beyond *APOE*^{31,32}. The negative finding suggests that the role of *MAPT* variability might represent a genetic difference between DLB and PD, but this hypothesis needs to be further tested in larger cohorts, preferentially including both DLB and PD samples.

All cases included in our study were clinically diagnosed with common sporadic and late onset type of DLB. Cases solely diagnosed based on pathology might not always fulfil clinical diagnostic criteria during life, and therefore might include cases of PD and even early onset PD developing dementia in late stages. The clinically diagnosed DLB cases included in our study might therefore have a purer, less PD-like genetic profile than studies based on brain bank cases, a possible explanation for why we do not find the previously PD-associated risk loci like *MAPT* in our analysis. Diagnosing DLB clinically is challenging both because of the clinical heterogeneity and the overlapping AD pathology masking typical DLB core symptoms in many cases. Although diagnostic procedures differed among centres, nearly all centres are academic dementia research centres with high-level clinical expertise on DLB and used standardized and established procedures, including, in a subset of patients, biomarkers. Thus, we believe diagnoses were as accurate as can be achieved in a clinical setting, although pathological confirmation was available only in a subset. The clinical diagnostic criteria for probable DLB have been found to have high specificity and this was confirmed in a pathological study in one of the samples included in this study⁷. We therefore argue that only few cases with other diagnoses like AD can have been erroneously included in this sample. Adding biomarkers like (123)-FP-CIT-SPECT to the diagnostic procedure could increase diagnostic precision in DLB. AD-pathology could be detected by PET or CSF-biomarkers of amyloid and tau deposition³³. The recently published revised diagnostic criteria for DLB are slightly different from the previous¹. Whether this will impact on the genetic architecture of DLB cohorts is not known, however.

There are few other large cohorts diagnosed with DLB with well characterized patients, and although this is one of the largest studies in DLB to date – sample size is still small for a hypothesis-free GWAS approach. Consequently, we only had statistical power to detect signals with large effect sizes, such as *APOE* and *GBA*. We anticipate that GWAS with larger samples will detect more common genetic risk loci associated with DLB with effect sizes comparable to the vast majority of AD and PD GWAS loci. Current evidence further indicates that rare variants contribute significantly to the disorder, suggesting next generation sequencing approaches will also be important to further characterize the genetic architecture of DLB.

DLB is increasingly recognized as a specific clinical diagnosis distinct from AD and PD both clinically and genetically, and has a poor prognosis with no approved treatment. To detect more of the genetic risk loci contributing to DLB pathogenesis new methods like Bayesian statistics may prove useful. This notwithstanding, larger samples obtainable through international collaboration are needed in a future GWAS of DLB. We therefore plan to collaborate to increase sample size in a next step to increase the power to detect more common genetic variants with small effects associated with the risk of development of DLB.

Data Availability

Genotype datasets from the Norwegian DemGene network generated and analysed during the current study are not publicly available due to compliance to privacy. Summary statistics are available from the corresponding author on reasonable request.

References

- McKeith, I. G. *et al.* Diagnosis and management of dementia with Lewy bodies: Fourth consensus report of the DLB Consortium. *Neurology* **89**, 88–100, <https://doi.org/10.1212/WNL.0000000000004058> (2017).
- Svendsboe, E. *et al.* Caregiver burden in family carers of people with dementia with Lewy bodies and Alzheimer's disease. *Int J Geriatr Psychiatry* **31**, 1075–1083, <https://doi.org/10.1002/gps.4433> (2016).
- Bjoerke-Bertheussen, J., Ehrt, U., Rongve, A., Ballard, C. & Aarsland, D. Neuropsychiatric symptoms in mild dementia with Lewy bodies and Alzheimer's disease. *Dement Geriatr Cogn Disord* **34**, 1–6, <https://doi.org/10.1159/000339590> (2012).
- Oesterhus, R. *et al.* Long-term mortality in a cohort of home-dwelling elderly with mild Alzheimer's disease and Lewy body dementia. *Dement Geriatr Cogn Disord* **38**, 161–169, <https://doi.org/10.1159/000358051> (2014).
- Rongve, A., Vossius, C., Nore, S., Testad, I. & Aarsland, D. Time until nursing home admission in people with mild dementia: comparison of dementia with Lewy bodies and Alzheimer's dementia. *Int J Geriatr Psychiatry* **29**, 392–398, <https://doi.org/10.1002/gps.4015> (2014).
- Rongve, A. *et al.* Cognitive decline in dementia with Lewy bodies: a 5-year prospective cohort study. *BMJ open* **6**, e010357, <https://doi.org/10.1136/bmjopen-2015-010357> (2016).
- Skogseth, R. *et al.* Accuracy of Clinical Diagnosis of Dementia with Lewy Bodies versus Neuropathology. *J Alzheimers Dis* **59**, 1139–1152, <https://doi.org/10.3233/JAD-170274> (2017).
- Vossius, C., Rongve, A., Testad, I., Wimo, A. & Aarsland, D. The use and costs of formal care in newly diagnosed dementia: a three-year prospective follow-up study. *Am J Geriatr Psychiatry* **22**, 381–388, <https://doi.org/10.1016/j.jagp.2012.08.014> (2014).
- Brown, S. Aetiology of Parkinson's disease. *The New Zealand medical journal* **110**, 216–217 (1997).
- Farrer, M. *et al.* Comparison of kindreds with parkinsonism and alpha-synuclein genomic multiplications. *Ann Neurol* **55**, 174–179, <https://doi.org/10.1002/ana.10846> (2004).
- Guerreiro, R. *et al.* Genome-wide analysis of genetic correlation in dementia with Lewy bodies, Parkinson's and Alzheimer's diseases. *Neurobiol Aging* **38**, 214 e217–214 e210, <https://doi.org/10.1016/j.neurobiolaging.2015.10.028> (2016).
- Bras, J. *et al.* Genetic analysis implicates APOE, SNCA and suggests lysosomal dysfunction in the etiology of dementia with Lewy bodies. *Human molecular genetics* **23**, 6139–6146, <https://doi.org/10.1093/hmg/ddu334> (2014).
- Guerreiro, R. *et al.* Investigating the genetic architecture of dementia with Lewy bodies: a two-stage genome-wide association study. *The Lancet Neurology* **17**, 64–74 (2018).
- Berge, G., Sando, S. B., Rongve, A., Aarsland, D. & White, L. R. Apolipoprotein E epsilon2 genotype delays onset of dementia with Lewy bodies in a Norwegian cohort. *J Neurol Neurosurg Psychiatry* **85**, 1227–1231, <https://doi.org/10.1136/jnnp-2013-307228> (2014).
- Mata, I. F. *et al.* GBA Variants are associated with a distinct pattern of cognitive deficits in Parkinson's disease. *Movement Disorders* **31**, 95–102 (2016).
- Davis, M. Y. *et al.* Association of GBA Mutations and the E326K Polymorphism With Motor and Cognitive Progression in Parkinson Disease. *JAMA Neurol* **73**, 1217–1224, <https://doi.org/10.1001/jamaneurol.2016.2245> (2016).
- Nalls, M. A. *et al.* A multicenter study of glucocerebrosidase mutations in dementia with Lewy bodies. *JAMA Neurol* **70**, 727–735, <https://doi.org/10.1001/jamaneurol.2013.1925> (2013).
- Keogh, M. J. *et al.* Exome sequencing in dementia with Lewy bodies. *Transl Psychiatry* **6**, e728, <https://doi.org/10.1038/tp.2015.220> (2016).
- Geiger, J. T. *et al.* Next-generation sequencing reveals substantial genetic contribution to dementia with Lewy bodies. *Neurobiol Dis* **94**, 55–62, <https://doi.org/10.1016/j.nbd.2016.06.004> (2016).
- Devlin, B. & Roeder, K. Genomic control for association studies. *Biometrics* **55**, 997–1004 (1999).
- Watanabe, K., Taskesen, E., van Bochoven, A. & Posthuma, D. Functional mapping and annotation of genetic associations with FUMA. *Nat Commun* **8**, 1826, <https://doi.org/10.1038/s41467-017-01261-5> (2017).
- Begum, F., Ghosh, D., Tseng, G. C. & Feingold, E. Comprehensive literature review and statistical considerations for GWAS meta-analysis. *Nucleic Acids Res* **40**, 3777–3784, <https://doi.org/10.1093/nar/gkr1255> (2012).
- Berge-Seidl, V. *et al.* The GBA variant E326K is associated with Parkinson's disease and explains a genome-wide association signal. *Neuroscience Letters* **658**, 48–52, <https://doi.org/10.1016/j.neulet.2017.08.040> (2017).
- Tsuang, D. *et al.* APOE ε4 increases risk for dementia in pure synucleinopathies. *JAMA neurology* **70**, 223–228 (2013).
- Beecham, G. W. *et al.* Genome-wide association meta-analysis of neuropathologic features of Alzheimer's disease and related dementias. *PLoS Genet* **10**, e1004606, <https://doi.org/10.1371/journal.pgen.1004606> (2014).
- Kramer, M. L. & Schulz-Schaeffer, W. J. Presynaptic α-synuclein aggregates, not Lewy bodies, cause neurodegeneration in dementia with Lewy bodies. *Journal of Neuroscience* **27**, 1405–1410 (2007).
- Nalls, M. A. *et al.* Large-scale meta-analysis of genome-wide association data identifies six new risk loci for Parkinson's disease. *Nature genetics* **46**, 989 (2014).
- Li, J. *et al.* Differential regulation of amyloid-beta endocytic trafficking and lysosomal degradation by apolipoprotein E isoforms. *The Journal of biological chemistry* **287**, 44593–44601, <https://doi.org/10.1074/jbc.M112.420224> (2012).
- Zheng, X. *et al.* Genome-wide copy-number variation study of psychosis in Alzheimer's disease. *Translational psychiatry* **5**, e574 (2015).
- Desikan, R. *et al.* Genetic overlap between Alzheimer's disease and Parkinson's disease at the MAPT locus. *Molecular psychiatry* (2015).
- Myers, A. J. *et al.* The H1c haplotype at the MAPT locus is associated with Alzheimer's disease. *Human molecular genetics* **14**, 2399–2404, <https://doi.org/10.1093/hmg/ddi241> (2005).
- Seto-Salvia, N. *et al.* Dementia risk in Parkinson disease: disentangling the role of MAPT haplotypes. *Arch Neurol* **68**, 359–364, <https://doi.org/10.1001/archneurol.2011.17> (2011).
- Lemstra, A. W. *et al.* Concomitant AD pathology affects clinical manifestation and survival in dementia with Lewy bodies. *J Neurol Neurosurg Psychiatry* **88**, 113–118, <https://doi.org/10.1136/jnnp-2016-313775> (2017).

Acknowledgements

The authors would like to thank the Norwegian Dementia Genetics Network (DemGene), the European DLB Consortium (E-DLB), Dementia Genetics Spanish Consortium (DEGESCO) and Genomic Research at Fundació ACE (GR@ACE) Consortium. Fundació ACE would like to thank patients and controls who participated in this project. We are indebted to private donors for their support of Fundació ACE research programs. Fundació ACE collaborates with the Centro de Investigación Biomédica en Red sobre Enfermedades Neurodegenerativas (CIBERNED, Spain) and is one of the participating centers of the Dementia Genetics Spanish Consortium (DEGESCO). The study was founded by the Research Council of Norway, Norwegian Regional Health Authorities and Norwegian Health Association and 237250/EU/JPND (APGeM). The Cohort 2 results were generated with the assistance of financial support of grants PI13/02434 and PI16/01861. Acción Estratégica en Salud, integrated in the Spanish National R + D + I Plan and financed by ISCIII (Instituto de Salud Carlos III)-Subdirección General de Evaluación and the Fondo Europeo de Desarrollo Regional (FEDER- “Una manera de Hacer Europa”). GR@ACE project has been funded by Fundación bancaria “La Caixa”, Grifols SA, Fundació ACE. The funding sources did not in any way affect the results or presentation of the results.

Author Contributions

Arvid Rongve collected samples, initiated and planned the study, organized recruitment of cohorts, wrote the first draft and updated the manuscript based on input from all co-authors. Aree Witoelar conducted biostatistical analyses in Cohort 1 and combined analyses, and wrote the manuscript. Dag Aarsland and Ole A. Andreassen organized and planned the study, coordinated and supervised the work, and wrote the manuscript. Agustín Ruiz did the biostatistical analyzes in Cohort 2 and helped with writing the manuscript. Francesco Bettella and Jon A. Eriksen were involved in genotype quality control and parts of biostatistical analyses. Lavinia Athanasiu was involved in genotyping and data collection. Kári Stefánsson and Hreinn Stefánsson genotyped Cohort 1 and provided Cohort 3 samples. Stefanie Heilmann-Heimbach did the genotyping of Cohort 2. Lasse Pihlstrøm collected samples and contributed to writing the manuscript. Carla Abdelnour and Jordi Clarimon, Isabel Hernández, Sonia Moreno-Grau, Itziar de Rojas, Estrella Morenas-Rodríguez, Sigrid B. Sando, Geir Bråthen, Frédéric Blanc, Olivier Bousiges, Afina W. Lemstra, Inger van Steenoven, Elisabet Londos, Ina S. Almdahl, Lene Pålhaugen, Srdjan Djurovic, Eystein Stordal, Ingvild Saltvedt, Ingun D. Ulstein, Ane-Victoria Idland, Mathias Toft, Jon Snaedal, Lluís Tàrraga, Mercè Boada, Alberto Lleó and Alfredo Ramírez all organized and collected samples at different study sites. Tormod Fladby planned the study and coordinated Norwegian sites, and together with Rahul Desikan provided input to interpretation of the results. All co-authors read and approved the paper.

Additional Information

Supplementary information accompanies this paper at <https://doi.org/10.1038/s41598-019-43458-2>.

Competing Interests: Arvid Rongve, Aree Witoelar, Agustín Ruiz, Lavinia Athanasiu, Carla Abdelnour, Jordi Clarimon, Stefanie Heilmann-Heimbach, Isabel Hernández, Sonia Moreno-Grau, Itziar de Rojas, Estrella Morenas-Rodríguez, Tormod Fladby, Sigrid B. Sando, Geir Bråthen, Frédéric Blanc, Olivier Bousiges, Afina W. Lemstra, Inger van Steenoven, Elisabet Londos, Ina S. Almdahl, Lene Pålhaugen, Jon A. Eriksen, Srdjan Djurovic, Eystein Stordal, Ingvild Saltvedt, Ingun D. Ulstein, Francesco Bettella, Rahul S. Desikan, Ane-Victoria Idland, Mathias Toft, Lasse Pihlstrøm, Jon Snaedal, Lluís Tàrraga, Mercè Boada, Alberto Lleó and Alfredo Ramírez declare no competing interests. Kári Stefánsson and Hreinn Stefánsson are employees of deCODE Genetics, Iceland. Ole A. Andreassen has received speaker’s honorarium from Lundbeck and has a pending patent for biostatistical genetic methodology. Dr Aarsland has received research support and/or honoraria from Astra-Zeneca, H. Lundbeck, Novartis Pharmaceuticals and GE Health, and served as paid consultant for H. Lundbeck, Eisai, Heptares, Safnoi, Mentis Cura. Dag Aarsland is a Royal Society Wolfson Research Merit Award Holder and would like to thank the Wolfson Foundation and the Royal Society for their support.

Publisher’s note: Springer Nature remains neutral with regard to jurisdictional claims in published maps and institutional affiliations.



Open Access This article is licensed under a Creative Commons Attribution 4.0 International License, which permits use, sharing, adaptation, distribution and reproduction in any medium or format, as long as you give appropriate credit to the original author(s) and the source, provide a link to the Creative Commons license, and indicate if changes were made. The images or other third party material in this article are included in the article’s Creative Commons license, unless indicated otherwise in a credit line to the material. If material is not included in the article’s Creative Commons license and your intended use is not permitted by statutory regulation or exceeds the permitted use, you will need to obtain permission directly from the copyright holder. To view a copy of this license, visit <http://creativecommons.org/licenses/by/4.0/>.

© The Author(s) 2019