



Survive a Warming Climate: Insect Responses to Extreme High Temperatures

Chun-Sen Ma, Gang Ma, Sylvain Pincebourde

► To cite this version:

Chun-Sen Ma, Gang Ma, Sylvain Pincebourde. Survive a Warming Climate: Insect Responses to Extreme High Temperatures. Annual Review of Entomology, 2021, 66, pp.163-184. 10.1146/annurev-ento-041520-. hal-02931722

HAL Id: hal-02931722

<https://hal.science/hal-02931722>

Submitted on 5 Oct 2021

HAL is a multi-disciplinary open access archive for the deposit and dissemination of scientific research documents, whether they are published or not. The documents may come from teaching and research institutions in France or abroad, or from public or private research centers.

L'archive ouverte pluridisciplinaire **HAL**, est destinée au dépôt et à la diffusion de documents scientifiques de niveau recherche, publiés ou non, émanant des établissements d'enseignement et de recherche français ou étrangers, des laboratoires publics ou privés.

Survive a Warming Climate: Insect Responses to Extreme High Temperatures

Chun-Sen Ma^{1,*}, Gang Ma¹, Sylvain Pincebourde²

¹ Climate Change Biology Research Group, State Key Laboratory for Biology of Plant Diseases and Insect Pests, Institute of Plant Protection, Chinese Academy of Agricultural Sciences, No. 2 Yuanmingyuan West Road, Beijing, China

² Institut de Recherche sur la Biologie de l’Insecte, UMR 7261, CNRS, Université de Tours, 37200 Tours, France

*Corresponding author: Chun-Sen Ma

Email addresses and ORCID:

Chun-Sen Ma, machunsen@caas.cn, 0000-0002-0077-6349

Gang Ma, magang@caas.cn, 0000-0002-3378-9488

Sylvain Pincebourde, sylvain.pincebourde@univ-tours.fr, 0000-0001-7964-5861

Running title: Insect Responses to Heat Extremes

Abstract:

Global change includes a substantial increase in the frequency and intensity of extreme high temperatures (EHTs) which influence insects at almost all levels. The number of studies showing the ecological importance of EHTs has risen in recent years but the knowledge is rather dispersed in the contemporary literature. Here we reviewed the biological and ecological effects of EHTs actually experienced in the field, i.e. when coupled to fluctuating thermal regimes. First, we characterized EHTs in the field. Then, we summarized the impacts of EHTs on insects at various levels and the processes allowing insects to buffer EHTs. Finally, we argue that the mechanisms leading to positive or negative impacts of EHTs on insects can only be resolved from integrative approaches considering natural thermal regimes. Thermal extremes, perhaps more than the gradual increase in mean temperature, drive insect responses to climate change, with crucial impact on pest management and biodiversity conservation.

Keywords:

climate change, extreme climate, life history trait, demographics, heat tolerance, thermoregulation

1. INTRODUCTION

Temperature varies across temporal and spatial scales in terrestrial and aquatic ecosystems (65, 117). Most insect species experience thermal fluctuations that can involve sublethal or lethal extreme high temperatures (EHTs) which affect physiological processes (39) and ecological systems (34). Frequent EHTs may even lead to adaptive evolution in insects (65). For decades, however, most studies concerning thermal effects on insects concentrated on the response to mean temperature or to fluctuations within the tolerable range while ignoring variations in the characteristics of EHTs (89, 105). Recently, researchers realized the biological and ecological importance of fluctuating temperature regimes but little attention is paid to the impacts of ecologically-relevant EHTs (17).

Global climate change includes a substantial increase in the occurrence of EHTs (1, 60), and this increase will continue in the near future (96). By contrast, the occurrence of cold extremes (cold spells, cold nights) is largely decreasing (1, 34). Thus, in a warming world, insects will be challenged mostly by elevated body temperatures (65). Neglecting daily temperature extremes generates inaccurate predictions when modeling the impacts of climate warming on populations (89). The key role of EHTs in the response of insects to warming is now attracting more attention and there is an urgent need to synthesize the disparate works. Here, we provide an overview of how natural EHTs impact insect performance at individual, population and community levels, by considering that EHTs are filtered by microhabitats and buffered by insects through behavioral thermoregulation,

phenotypic plasticity (e.g., acclimation), ontogeny variation, adaptive evolution and the resilience of their network (Figure 1). Our synthesis complements previous works that focused on the effects of low temperatures (125), or increase in mean temperature (119) and fluctuation regimes (26), to finally provide a comprehensive understanding of the impact of climate change on insects.

2. HOW DO WE CHARACTERIZE THERMAL EXTREMES?

2.1. Definition and description of extreme high temperatures

Until recently, no unified definition of EHTs existed in an environmental perspective. Meteorologists define EHTs as the temperatures above the 90th, 95th or 99th percentile of temperature distributions (1, 60), and similar indices are used by ecologists (17). The definition of EHTs can also be based on their societal impacts. The historical heat wave that hit Europe in 2003 is often used as a reference (9). Finally, another definition comes from biology, with environmental temperature exceeding upper physiological thresholds of focal organisms (96). Overall, a hybrid definition for EHTs corresponds to an “episode where climate or climate-driven conditions trigger a negative threshold-like (non-linear) biological response” (6).

The variables used to characterize EHTs are highly variable among studies, resulting in difficulties to compare directly their results. Most studies on EHTs are opportunistic and usually lacking replication (126). Controlled field experiments often simulate a single level of a given climate extreme imposed at a small spatial scale (126). The lack of a clear description of characteristics of EHTs limits our understanding of how such irregular EHTs affect biological systems (46, 87, 92, 122).

Thus, resolving the main components of EHTs becomes more meaningful than a general definition for ecological research (Figure 2). Based on field temperature data including EHTs (87), we identified several important characteristics: daily maximum and minimum temperatures which define the daily amplitude during the EHT events; the frequency of EHT events over long temporal scale (typically the number of hot days during a given period); the time elapsed between each subsequent EHT event, defining the temporal variance of extreme events. By manipulating values of each variable and their combinations, experimental designs in laboratory, mesocosms or in the field can quantify the impacts of EHTs with varying intensity, frequency, duration and temporal variance on fitness-related life history traits and demography (Figure 2).

In the field, insects experience temperature cycles with a single or several successive hot days alternating with a few mild days (87, 148). Diurnal cycles also alternate several hot hours around mid-day with mild hours (89, 147). Thus, the effects of EHTs depend largely on their characteristics which are complex to describe and to simulate in the lab or mesocosms due to the stochastic nature of EHTs. Intensity, duration and frequency are often used to link ecological performance and EHTs (46, 92, 122), despite the high uncertainty in these metrics. Simple statistical characteristics of EHTs were designed to explore the impact of different temperatures during daytime (89) and nighttime (147), different frequencies of hot days (86, 145) and different amplitude of fluctuation (140). During hot events, insects can be injured by EHTs approaching their physiological thresholds but the mild temperatures between hot events allow insects to repair (5, 87). The temporal sequence of hot and

mild phases is therefore an important characteristic of EHTs (87, 148). The impact of EHTs should be a subtle balance between heat injury and recovery (5, 87, 148).

2.2. Thermal extreme vs. mean temperature

Thermal performance curves (TPCs) are often used to describe the response of biological performance to temperature based on constant temperature treatments (124). TPCs are asymmetrical and nonlinear, thereby generating Jensen's inequality (120) which is used to describe the biological effects of environmental variability (31). TPCs, combined with Jensen's inequality, are frequently used to compute insect performance under fluctuating/changing temperatures, feeding predictions of climate change impacts (15, 72, 105, 124, 134). Based on Jensen's inequality, the effects of temperature variation would be positive, small and dramatically negative at low, intermediate and high temperatures, respectively (31, 76). The left-skewed TPCs show that the thermal optimum (T_{opt}) is close to the critical thermal maximum (CT_{max}), meaning that even a small variation in mean temperature above T_{opt} can push insects over CT_{max} , leading to dramatic decline in performance and fitness (105).

By causing an increase in thermal variance and in the strength of the Jensen's inequality, EHTs negatively impact insect fitness even if mean temperature remains near the optimal range (87, 89, 105). Indeed, the impact of increasing variance on key traits related to fitness can be larger than an increase in mean temperature (89, 105, 140). Greater variance caused by EHTs can lead to decreased maximum performance, truncated thermal performance breadth and narrow thermal safety margin (105, 134). However, ambient temperature fluctuates usually with reasonable amplitude up to

sublethal daily maxima. Near-optimal temperature may occur during some parts of the day (e.g., morning, night) and thus provide an opportunity for insects to recover from heat injuries occurring around midday (87, 148). A better performance is therefore expected under variable regimes than under constant high temperatures. For example, temperature variation can improve rather than depress the development of aphids when the mean temperature is higher than the T_{opt} for development, thereby challenging the “Kaufmann effect” (147). Importantly, using TPCs derived from constant temperatures to predict insect fitness in field conditions contains the unrealistic assumption that performance is independent of thermal history, rates of temperature change and exposure times (124). More work on the thermal responses to the EHT characteristics will certainly help to design novel approaches to draw TPCs that could incorporate the influence of EHTs on insect performance and fitness.

2.3. The seasonal and diurnal patterns of EHTs

The amplitude of warming, including more frequent and intense extremes, is higher in spring, autumn and winter than in summer (1, 60). However, the biological impacts of EHTs in these seasons are relatively overlooked. EHTs in spring affect the phenological synchronization between plants and herbivore insects (77, 115) and parasitoids (37). EHTs in autumn may affect diapause induction, subsequent overwintering survival and spring population growth (132). EHTs in winter may influence survival during diapause and post-diapause development (11, 127). Individuals of univoltine species can experience EHTs across different seasons (118). Yet we have little information on seasonal stage-specific responses and their

consequences at the population level. Moreover, the amplitude of nighttime warming is higher than daytime warming (1, 60). Nighttime warming leads to contrasting effects on thermal performance and fitness, in contradiction with the predictions based on constant temperatures (147) or daytime warming (8, 89). To date, however, only few studies explored the specific effects of diurnal vs. nocturnal patterns of EHTs on insects (5, 8, 89, 147).

3. HOW DO INSECTS RESPOND TO THERMAL EXTREMES?

3.1. Physiological, biochemical and symbiont responses

3.1.1. Mechanisms underlying heat damage

Heat damage in insects involves a series of disorders at the molecular, biochemical and physiological levels (14, 25). Heat-induced changes in the fluidity of phospholipidic membranes and cellular homeostasis initiate heat damage (14). The OCLTT hypothesis (oxygen and capacity limitation of thermal tolerance) proposes that performance is constrained by the capacity for oxygen delivery relative to oxygen demand. The delivery of oxygen is the limiting factor during EHTs (35, 114). This hypothesis was confirmed in several aquatic species (135). However, it is not generally applicable to terrestrial insects since they are unlikely to become oxygen limited (14, 79), except if they live in close microenvironment such as plant galls (109). Finally, EHTs can disrupt the cellular ion balance (hyperkalemia), thereby impairing neurophysiological functions (103) and damaging mitochondria (14).

3.1.2. Physiological and molecular responses

Insects can produce and accumulate particular molecules to prevent protein denaturation or cell inactivation during EHTs. Polyols, e.g. mannitol in *Aphis gossypii* and sorbitol in *Bemisia argentifolii*, are accumulated to cope with daytime EHTs (54). Mannitol and sorbitol quantities were higher at noon than during early morning. Heat-shock proteins (Hsps) (39, 85) and cuticle proteins (102) are induced and/or accumulated to deal with EHTs. Apple maggots express Hsp increasingly from midday to peak in late afternoon, paralleling the dynamics of air and fruit temperature in summer (85). Locusts are more heat-tolerant at low- than at high-latitude as a result of their expression pattern of Hsp70 and Hsp90 (22). The potato aphid increases concentration of several exoskeletal proteins during heat stress (102).

3.1.3. Symbiont-mediated responses

Bacterial endosymbionts provide essential nutrients to their insect host. EHTs depress the diversity, abundance and activity of endosymbionts, decreasing heat tolerance and fitness of the host insect (38, 70). For example, EHTs decrease the quantity of symbiotic bacteria, lowering heat tolerance in ants (38) and aphid species (142), and altering fitness-related traits in stinkbugs (70). Nevertheless, endosymbiosis may assist insect hosts to adapt to natural EHTs. In aphids, clones with heat tolerant symbionts develop faster than clones without under EHTs (52). Mutants of the symbiont *Buchnera aphidicola* with lower expression of heat-shock gene *ibpA* decrease heat tolerance of pea aphids (142). In addition, facultative symbionts, e.g. *Serratia symbiotica* and *Acetobacter* can protect *B. aphidicola* from short-term heat shock, improving aphid fecundity and offspring survival under EHTs (100).

3.1.4. Morphological responses

EHTs can induce changes in body size of insects. High developmental temperature generally produces small individuals due to enhanced metabolism and fast development (4, 20, 131). This temperature-size rule arises due to phenotypic plasticity or selection for smaller body sizes (4, 41), although smaller individuals are more vulnerable to dehydration and overheating (44). However, small body size may facilitate heat damage in insect gut or gut symbionts, depriving nutrients and water (70). However, we know little about the growth trajectories under repeated EHTs and the underlying physiological mechanisms. For example, frequent heat exposure produces large individuals sometimes (123, 140). The selective advantage of smaller size might become disadvantageous under repeated EHTs (44).

3.2. Fitness-related life history traits and demography

3.2.1. Stage-specific responses

All stages of insects may experience EHTs. Meanwhile, different stages or instars often have different thermal sensitivities (13, 74, 146). Therefore, EHTs may produce stage-specific thermal responses. Generally, the thermal response of development, survival, reproduction and longevity varies with life stage (144) and adults are often more vulnerable to EHTs. For example, EHTs reduced more reproduction when they occurred closer to adulthood (141, 143). Both early and reproductive stages of *Sitobion avenae* (146) and *Plutella xylostella* (143) are the most sensitive to EHTs compared to mature larvae. Thus, the stage at which the insects are exposed to EHTs is an important component setting the impact of EHTs. Three potential mechanisms

may be involved in ontogenetic variations of thermal tolerance. 1) “Microclimate selection” hypothesis states that different stages live in and thus adapt to different thermal environments (74, 108, 139). 2) “Body size” hypothesis (75) explains why larger larvae are more heat tolerant than the smaller early life stages (86, 144, 146) which have faster increase of body temperature (3) and water loss (45), but it fails to explain the decreased tolerance at adult stage. 3) “Bogert effect” hypothesis suggests that the immobile stages (egg and pupa) should be more heat tolerant than mobile adult and larval stages due to their lower ability for behavioral thermoregulation (58), but this hypothesis has been rejected frequently (75).

3.2.2. Trait-dependent responses

Different life history traits differ in their thermal sensitivity (69). Among the main life history traits, reproduction has the narrowest thermal range, followed by development, while survival has the widest. Reproductive potential is expected to be the most vulnerable fitness-related life history traits to EHTs (136, 143). For example, a single hot event of few hours does not affect survival but decreases reproduction in the moths *Plutella xylostella* (145) and *Grapholitha molesta* (80). The optimal temperature for reproduction is lower than for development (89, 147), while the optimal temperature for immature survival is often a relatively wide range. When temperature increases continuously and surpasses the optimum, development would be restricted and soon mortality occurs (46, 63, 89), indicating slightly higher temperature thresholds for survival than for development. Thus, the critical upper thermal limits are: reproduction < development < survival (89, 147).

3.2.3. Immediate, cross-stage and transgenerational responses

The impact of EHTs occurs at various temporal scales across insect life cycles, leading to immediate impacts at the exposed stage (24, 86, 116, 140), permanent damage at later stages through carry-over effects (24, 75, 141, 144, 146), and transgenerational effects via parental effects (145). The immediate impacts incur all the molecular, physiological, and morphological mechanisms developed above and are reflected in heat death or delayed development during the events. EHTs in early life stages can influence performance of later stages or next generation depending on the intensity of EHTs, although this is still a matter of debate. Lifecycle modularity hypothesis and adaptive decoupling hypothesis (116) state that early life stress has no effects on adult performance, probably because the stressful temperatures are not extreme enough. However, there is evidence that extreme temperatures occurring in egg, larval or pupal stages can decrease survival (144) and fecundity (24, 75, 141, 146) of adults through carry-over effects, or even result in decreased offspring survival via transgenerational effects (145). Nevertheless, we still know little about the mechanisms underlying carry-over and transgenerational effects of extremes.

3.3. Population dynamics

3.3.1. Phenology and voltinism

Frequent EHTs increase overall mean temperature, advancing spring and postponing autumn in the calendar, and causing shorter winters and longer growing seasons (99). For non-diapausing insects, frequent EHTs may advance phenology in spring and postpone phenology in autumn, increasing thereby the number of annual generations

(2, 99). However, for insects with obligate diapause, the combination of longer summers and shorter/warmer winters delays adult emergence due to insufficient winter chilling for diapause termination and to the reduced ability to regulate the onset and termination of diapause (20). For insects with facultative diapause, winter warming leads to earlier diapause termination (127). Nevertheless, EHTs do not always significantly increase the overall mean temperature and their effects on phenology and voltinism remain largely unknown for most insects. Few consecutive hot days occurring in autumn or spring would potentially disturb diapause induction or post-diapause development, thereby altering the phenology of insects.

3.3.2. Abundance

Repeated EHTs generally depress insect survival, fecundity and abundance (20, 87, 89, 101, 122, 147). For example, the increase in daily maximum temperature dramatically reduces arthropod biomass in a rainforest (82). However, the effects of EHTs on insect abundance are complex due to the variations in the characteristics of EHTs, local baseline climates and habitat uses, species-specific thermal sensitivity of insects and the biotic interactions with other species. For instance, frequent EHTs depress abundance of heat sensitive species *Sitobion avenae* and *Schizaphis graminum* whereas they have null or even positive impacts on the heat tolerant species *Ropalosiphum padi* (92). Frequent EHTs reduce the abundance of *S. avenae* at the southern margin but not in the north (92). EHTs may also favor soil insects by enhancing their reproduction and abundance (81). Extremely warm winters occurring at high latitudes can increase insect abundance (48). However, EHTs in the Arctic

winter also accelerate snowmelt, decreasing indirectly insect abundance (11).

3.4. Biotic interactions and community structure

3.4.1. Changes in community composition and structure

Differences in thermal tolerance of insects at the same trophic level can alter the relative dominance and interspecific competition among species (11, 21, 46, 92), leading to EHT-driven changes in the composition of communities (130). For example, more frequent EHTs alter the structure of cereal aphid communities across large temporal and geographical scales (92). In this case, EHTs alter the dominant pest species in winter wheat crops (92). EHT during summer affects interspecific competition in Mediterranean ant communities by changing the circadian rhythm of foraging in subdominant ants but not for dominant species (21). Insects are usually at the intermediate or lower trophic levels in communities and ecosystems. The EHT-induced changes in the composition and structure of insect communities could potentially influence top-down and bottom-up processes in plant-insect herbivore-predator systems.

3.4.2. Cascading effects across multitrophic systems

Increasing frequency and intensity of EHTs enhances vulnerability of species at higher trophic levels (23, 101), although this rule cannot be generalized (42, 122). Thus, EHTs are likely to reduce predator diversity and disrupt ecosystem services such as natural biological control (7). Nevertheless, biodiverse multi-trophic assemblages are more resilient to EHTs (46, 61, 122). For simplified food-chains

including only two trophic levels such as plant-insect herbivore (46), prey-predator (101, 122) or parasitoid-hyperparasitoid systems (23), the species at higher trophic levels are more susceptible to EHTs. However, the overall effects of EHTs on tri-trophic systems such as plant-insect herbivore-predator/parasitoid are much less dramatic and often similar to patterns under normal climates (46, 122). Studies on the relationship between EHTs and the responses of each trophic level are helpful to clarify the resilience of ecological communities to changes in climate extremes.

3.5. Geographical distributions

Heat tolerance is weakly linked to latitude in insects, but tolerant species often are in warm microhabitats while heat vulnerable species remain mostly in cooler microhabitats (42, 110). Thermal safety margin, defined as the difference between the CT_{max} of insects and the ambient maximum temperature of the hottest month (66, 134), is frequently used to predict insect distribution following EHTs. Thermal extremes exceeding CT_{max} restrict the thermal performance range and influence the distribution across latitudes and altitudes and in heterogeneous landscapes (72, 104, 134), shaping thereby the distribution of insects worldwide (66, 94). EHTs can shift distributions through local extinction induced by mass mortality due to fitness decline, to mismatch in the phenology of insects and host plants (20, 97) or to interaction with landscape fragmentation (106). However, EHTs in winter or nighttime may release the constraint of low temperatures, leading to positive effects such as increased winter survival and dispersal abilities in insects (9, 10), resulting in range expansion. Prolonged heat waves lead to an increase in number of nights above the flight

threshold temperature, promoting the take-off behavior in *Thaumetopoea pityocampa* and causing a rapid distribution shift to higher altitudes in the Alps (9). Some species with higher adaptive potential in heat tolerance can expand their range to lower latitudes (56).

4. HOW DO INSECTS BUFFER AGAINST THERMAL EXTREMES?

4.1. Microhabitats as filters of thermal extremes

4.1.1. Mosaic of microclimates

Forecasting biological impacts of EHTs requires general understanding how microhabitats filter environmental fluctuations and whether the heterogeneity will allow insects to escape heat extremes (65, 113, 129). Living and non-living objects in the environment produce a complex mosaic of microclimates which depends on the nature of the objects and how the microhabitat transfers atmospheric variations (138). Little is known, however, on the dynamics of these microclimatic mosaics during thermal extremes (111). In the apple tentiform leaf miner, the location within the tree canopy mosaic of optimal, sub-optimal and lethal micro-environments can be totally reversed during EHTs (112). The temperature gradient at micro-scale matters much for arthropods to escape EHTs. For example, in the flat-rock spider in Australia, few centimeters below hot rocks are enough to change the temperature by 9°C (107). Similarly, the temperature heterogeneity on surface of leaves can be 6 to 12°C (121). Spider mites can fully exploit this heterogeneity by moving over few centimeters but

this possibility is restricted during EHTs (19). Aphids are more constrained for their feeding behavior and cannot really exploit this heterogeneity (18). EHTs are expected to alter these fine-scale temperature gradients (19), depending on the baseline buffering property of the microhabitat (138).

4.1.2. Buffering ability of microhabitats

EHTs are transmitted through microhabitat before they reach insects. Different microhabitats filter atmospheric conditions differently. For example, differences of $>5^{\circ}\text{C}$ in the maximal microclimate temperature were measured when comparing different habitats e.g. grassland, heathland and deciduous woodland (128). The understory of forests is probably the strongest buffer of EHTs (28), which is almost independent of the dominant tree species and of latitude (29). Insects would benefit from moving to these microhabitats during EHTs although a direct effect remains to be demonstrated. Nevertheless, some insect species are specialized to microhabitats at the top canopy and the potential for vertical zonation of herbivore insects across forest canopies is important (78). The temperature of leaves hit by solar radiation is higher than ambient air temperature in temperate and boreal latitudes (113), thus the leaf surface magnifies the amplitude of thermal extremes (138). The thermal limit of small herbivore arthropods living at the leaf surface is related to leaf temperature during EHTs (110). Therefore, these herbivores are already vulnerable to contemporary thermal extremes. Similarly, endophagous insects such as leaf miners and gall-inducing organisms are living in their structures (mines, galls) where temperature increases more than ambient air during thermal extremes (108, 109). By contrast,

aquatic systems buffer atmospheric temperature variations due to the thermal inertia of water bodies and geophysical processes (138). In general, we lack data on the temperature of most microhabitats to provide an exhaustive ranking from the best to the worse buffer of EHTs.

4.2. Thermoregulation

Behavioral thermoregulation across the mosaic of microclimates plays an important role in avoiding EHTs (95). Thermoregulatory behavior can directly increase survival during EHTs (12, 65, 138). Nevertheless, the availability of suitable microclimates is needed for thermoregulation (138), determining the efficacy of insect buffering against climate warming (19, 65). However, it is predicted that warming will reduce seasonal and diurnal temperature ranges (60), causing decreases in temperature heterogeneity across temporal and spatial scales (65) including microhabitats (19). Thus, behavioral thermoregulation alone may not be sufficient to buffer ongoing climate warming (19).

Behavioral thermoregulation can also bring costs and lead to ecological consequences.. More frequent EHTs increase occurrence of thermoregulatory behaviors (90, 137) and maintenance energy costs (65), and in turn decrease foraging activity, energy efficiency and reproduction (65, 87). For example, aphids leave their host plants by dropping off or walking downward to seek cooler microhabitats to escape EHTs (86, 90, 91, 102). Therefore, they may have to endure food and water deprivation and spend time and energy to find another suitable feeding site, thereby reducing reproduction opportunities (88). Moreover, behavioral thermoregulation may

also alter the microhabitat use of insects (7, 88). Differences in behavioral regulations and microhabitat use between species can change interspecific interaction and food web structure (7). Furthermore, thermoregulatory behavior may limit evolutionary adaptation by reducing or even eliminating the selection pressure of EHTs (58).

4.3. Ontogenetic variations and tradeoff between different traits

Insects evolved complex life cycles with multiple developmental stages differing in thermal sensitivity (13). However, the role of ontogenetic variation of thermal sensitivity in buffering EHTs has received little attention. Different stages/age cohorts can overlap in field populations, resulting in the coexistence of multiple life stages/age cohorts during growth season. When the mixed-stage population experiences EHTs, the most sensitive stages would be injured or die whereas the most tolerant may survive and develop to adult stage for reproduction during the following mild phases, thereby contributing to population recovery. Comparing to pupal and adult stage, medium and late larval stage can particularly resist heat stress in both immediate survival and subsequent reproduction (145) Larval stages may acquire sufficient nutrients and water to both resist EHTs and provide enough time to recover from heat injury, reducing thereby the carry-over effects of EHTs on adult reproduction.

The intrinsic rate of increase, a metric for fitness, integrates survival, development time and reproduction (87, 89). Different responses to EHTs and even trade-off between these traits may also help buffer impacts of EHTs. Temperatures above the optimum for reproduction reduce fecundity (eg, number of offspring) but can also

accelerate maturation and reproduction processes (143, 147). Then, when temperature surpasses the optimum for development, insects tend to invest more energy in heat tolerance to improve survival, generating costs that reduce reproduction output (146) and delay development at least temporally (116, 140). Thus, variations in thermal sensitivity of different traits may contribute to buffer heat stress in insects.

4.4. Phenotypic plasticity

Phenotypic plasticity is a non-genetic strategy to cope with environmental variation including thermal extremes (49, 57, 133). Most of the insect responses detailed above relate to phenotypic plasticity. Four types of plasticity in heat tolerance were identified based on the time scale and temperature intensity. “Rapid hardening/heat shock” corresponds to a short and harsh exposure to high temperature for a few minutes or hours (68, 133). The other types of thermal plasticity are all generated by exposure to moderately high temperatures for several hours to days for “acclimation” (laboratory) or “acclimatization” (field) (62, 68), days to weeks for “development acclimation/plasticity” (67, 68, 133) and weeks to months for “transgenerational acclimation” (62). In general, previous exposure to elevated temperatures increases heat tolerance both within and across generations.

Nevertheless, the potential to buffer against EHTs through plasticity may be limited. Quantitatively, there is limited scope for plasticity to increase heat tolerance significantly in many arthropod taxa (49, 57, 67, 133). For instance, the increases in CT_{max} of some *Drosophila* species and the moth *Manduca sexta* are limited to only 0.6~1.0 °C (67, 133) and 1~2 °C (73), respectively, via hardening and developmental

acclimation processes. In addition, increased heat tolerance brings a series of concurrent costs in other plastic traits that are related to fitness (36, 83, 133). These costs can generate considerable transgenerational consequences such as declined offspring size and survival (93).

4.5. Evolutionary adaptation

Frequent EHTs could induce evolution of thermal tolerance to buffer against high temperature impacts (16, 57). Thermal evolution occurs in small insects during artificial selections (40, 51). Long-term thermal selection is commonly found in local adaption, e.g. *Drosophila* and ants at different latitudes (32, 104), or beetles and butterflies at different altitudes (43, 55). Urban heat island also triggers thermal adaptation. Urban workers of ants evolved a CT_{max} 1°C higher than the rural populations (32). Local adaptation often results from a subtle interaction between generation time, heritability, covariance between phenotypes, phylogenetic inertia and the strength of selection (66).

However, rapid evolution of thermal traits hardly occurs under natural selection in insects. Higher feeding rates evolved only after decades in nature under more frequent EHTs in *Colias eurytheme* (55). EHTs imbedded in fluctuating patterns may constrain the evolution of thermal traits due to lower heritability under ramping temperature than artificial static temperature (98), slowing down the speed at which insects can track climate warming (51). Thermal selection can also modify fitness-related life history traits (59, 71). Thermal tolerance often incurs fitness costs due to antagonistic genetic interactions between traits (84). Thermal tolerance could also be shaped by

phylogenetic inertia rather than thermal selection in nature (66). To some extent, thermal evolution can be a way to buffer EHTs, but its mechanisms are still evasive.

5. KNOWLEDGE GAP AND FUTURE PERSPECTIVES

5.1. Ecological relevance of experimental designs

The biological impacts of complex EHTs are difficult to investigate experimentally because of their stochastic nature. Open top chambers, infrared irradiation and electronic heating systems are widely used to simulate climate warming including EHTs in the field (50). However, results from these studies are difficult to apply broadly because the mechanisms are not fully understood. The different statistical moments of EHTs (intensity, duration, and frequency) may have biological impacts differing in their direction and amplitude, and their interactive effects could generate counter-intuitive responses in insects. Simulated regimes of EHTs are highly diverse in the literature, including constant temperature for given periods or fluctuations with fixed cycles. Currently, these regimes do not include alternative patterns of EHTs and mild periods which allow stress recovery (87, 147). Here we call for experimental designs with enhanced ecological relevance in future studies by incorporating the complete statistics of EHTs despite the inherent logistic complexity of factoring several variables. In addition, the simulated temperature regimes should be based on microclimatic rather than macroclimatic patterns to improve the ecological relevance. Such level of complexity is mandatory to help us to draw the landscape of insect performances under EHTs in natural thermal conditions.

5.2. Enlarging our vision of extremes

EHTs are by climatological definition relatively infrequent but intense (eg, heat waves). The biological perspective is more conservative in the sense that the thermal events challenging the physiology of insects are likely frequent. Environmental conditions may become suddenly challenging for organisms when several normal events co-occur leading to environmental extremes (30). This shift in perspective was only rarely applied to insects but the methodology and the concepts exist (33). Insects are constrained by several factors in their microhabitats. Dryness aggravates the physiological stress during hot periods. Wind decreases body temperature in the short term, but it incurs higher water loss. The same set of environmental conditions may be extreme for individuals deprived of appropriate endosymbionts but near optimal for those that host these microorganisms. Entomological sciences need to embrace more original and innovative characterizations of extreme events, to be combined with the standard climatological view.

5.3. Rise of integrative approaches

The ultimate goal of global change biologists is to anticipate the future trend of biodiversity. This goal can only be achieved by comprehensive understanding of the mechanisms for organism-environment interactions, and predicting population dynamics and community structure across time/generations. It seems crucial to link physiological mechanisms of thermal stress and the demographic variables. Physiological and genomic approaches have been successfully integrated in studies to link physiological impacts of environmental changes and field patterns of thermal

stress. Intertidal ecologists probably led this vision for decades (53), but entomologists now are aligned (47). The next challenge is to integrate the ‘field ecophysiology’ of thermal stress, especially during EHTs, and the population dynamics. Given the importance of individual processes (e.g., carry-over effects, hardening of thermal tolerance, and more generally phenotypic plasticity), approaches including individual-based models (27) are promising candidates to interconnect these processes and link individual and population scales. In addition, microclimate models are needed (64, 111, 112) to simulate the heterogeneous environmental arena within which individuals and species are interacting. Nevertheless, all these processes need to be fine-scaled to incorporate cross-seasonal impacts of EHTs at given moment in the life cycle of insects. Intense collaborations between physiologists, ecologists, climatologists and modelers are key for successful developments.

6. CONCLUDING REMARKS

Thermal extremes are complex events that combine different statistical moments. This complexity adds up the difficulty of getting a comprehensive understanding of their impacts on biological processes. While thermal extremes are defined as rare events by climatologists, ecologists realized that thermal extremes are much more frequent once they are defined relative to the thermal biology of organisms. Nevertheless, the impacts of ongoing climate change on these “biologically-relevant thermal extremes” remain to be identified. In this context, the most studied biological models are *Drosophila* species (39, 51, 66) and other species with conservation importance (61, 82). The thermal ecology of most species with economic importance

for agriculture, horticulture and forestry remains largely unknown. Extreme absence
of knowledge is an important frontier limiting our ability to anticipate the ecological
consequences of extreme heat events.

SUMMARY POINTS

1. Thermal extremes are complex, multicomposite events. Despite a lack of unified definition of thermal extremes due to this complexity, we can describe natural temperature extremes with several variables related to both the environment and the species thermal biology, defining together the intensity, frequency and temporal variance of extreme high temperature events.
2. Classic thermal performance curves (TPCs) derived from constant temperature experiments cannot be used to estimate the biological impacts of thermal extremes. More sophisticated TPCs are needed to include the influence of the all statistical moments of thermal extremes.
3. Extreme high temperatures often, but not always affect insects at various levels, ranging from molecular and physiological responses, at individual to population scales, to community structure and functioning.
4. Thermal extremes can affect instantaneously survival. They can also produce long-lasting impacts on life history traits and demographics of insects. The magnitude of these effects depends mainly on thermal history, traits and life-cycle stage. Collectively, all these effects translate into population dynamics.
5. Insects may buffer partly or completely the thermal extremes via behavioral thermoregulation, phenotypic plasticity, ontogeny variations, trade-off between different traits and evolutionary adaptation. However, most of these buffering strategies probably have limited potential quantitatively, and they may incur costs for other fitness-related traits.

FUTURE ISSUES

1. Innovative, ecologically-relevant experimental designs are crucially needed to better understand the effects of realistic natural thermal extremes on insect populations, communities and ecosystems.
2. Beyond the instantaneous impacts of thermal extremes, the carry-over effects of heat stress and the stage-specific responses of insects deserve more comprehensive studies to better detail the consequences of thermal extremes.
3. We lack studies on the relative effects of the various strategies to buffer against thermal extremes, including physiological and behavioral thermoregulation, ontogenetic variation, phenotypic plasticity and adaptive evolution in insects. These buffering strategies may incur trade-offs with fitness-related traits, generating complex interactive effects that need to be identified to feed prediction models.
4. The mechanisms underlying heat injury and thermal recovery of insects at the molecular, physiological and ecological levels should be revealed to better comprehend the combined effects of alternating thermal extremes and mild periods.
5. The impacts of extreme high temperatures occurring in fall, winter and spring as well as at night on insect diapause, phenology, interspecific interactions and communities remain relatively understudied.
6. Microclimate models should be used more extensively to generate realistic thermal environments within which insects experience thermal extremes under field conditions in their microhabitats.
7. The thermal biology in context of thermal extremes of insect species of economic importance such as agricultural, horticultural and forestry pests, and their potential biological control agents, should be given priority to improve pest management and beneficial conservation worldwide.

DISCLOSURE STATEMENT

The authors are not aware of any affiliations, memberships, funding, or financial holdings that might be perceived as affecting the objectivity of this review.

ACKNOWLEDGMENTS

The work was supported by research grants of National Natural Science Foundation of China (31620103914 and 31772156) and National key R & D Program of China

2018YFD0201400.

LITERATURE CITED

1. Alexander LV, Zhang X, Peterson TC, Caesar J, Gleason BE, et al. 2006. Global observed changes in daily climate extremes of temperature and precipitation. *J. Geophys. Res.* 111:1–22
2. Altermatt F. 2010. Climatic warming increases voltinism in European butterflies and moths. *Proc. R. Soc. B* 277:1281–87
3. Angilletta MJ. 2009. Thermal Adaptation: A Theoretical and Empirical Synthesis. Oxford, UK: Oxford Univ. Press
4. Atkinson D. 1994. Temperature and organism size: a biological law for ectotherms? *Adv. Ecol. Res.* 25:1–58
5. Bai CM, Ma G, Cai WZ, Ma CS. 2019. Independent and combined effects of daytime heat stress and nighttime recovery determine thermal performance. *Biol. Open* 8:bio038141
6. Bailey LD, van de Pol M. 2016. Tackling extremes: challenges for ecological and evolutionary research on extreme climatic events. *J. Anim. Ecol.* 85:85–96
7. Barton BT, Schmitz OJ. 2009. Experimental warming transforms multiple predator effects in a grassland food web. *Ecol. Lett.* 12:1317–25
8. Barton BT, Schmitz OJ. 2018. Opposite effects of daytime and nighttime warming on top-down control of plant diversity. *Ecology* 99:13–20
9. Battisti A, Stastny M, Buffo E, Larsson S. 2006. A rapid altitudinal range expansion in the pine processionary moth produced by the 2003 climatic anomaly. *Glob. Change Biol.* 12:662–71
10. Battisti A, Stastny M, Netherer S, Robinet C, Schopf A, Roques A, Larsson S. 2005. Expansion of geographic range in the pine processionary moth caused by increased winter temperatures. *Ecol. Appl.* 15:2084–96
11. Bokhorst S, Phoenix GK, Bjerke JW, Callaghan TV, Huyerbrugman F, Berg MP. 2012. Extreme winter warming events more negatively impact small rather than large soil fauna: shift in community composition explained by traits not taxa. *Glob. Change Biol.* 18:1152–62
12. Bonebrake TC, Boggs CL, Stamberger JA, Deutsch C, Ehrlich PR. 2014. From global change to a butterfly flapping: biophysics and behaviour affect tropical climate change impacts. *Proc. R. Soc. B* 281:20141264
13. Bowler K, Terblanche JS. 2008. Insect thermal tolerance: what is the role of ontogeny, ageing and senescence? *Biol. Rev.* 83:339–55
14. Bowler K. 2018. Heat death in poikilotherms: Is there a common cause? *J. Therm. Biol.* 76:77–79
15. Bozinovic F, Bastías D A, Boher F, Clavijobaquet S, Estay SA, Angilletta MJ.

2011. The mean and variance of environmental temperature interact to determine physiological tolerance and fitness. *Physiol. Biochem. Zool.* 84:543–52
16. Buckley LB, Huey RB. 2016. How extreme temperatures impact organisms and the evolution of their thermal tolerance. *Integr. Comp. Biol.* 56:98–109
17. Buckley LB, Huey RB. 2016. Temperature extremes: geographic patterns, recent changes, and implications for organismal vulnerabilities. *Glob. Change Biol.* 22:3829–42
18. Cahon T, Caillon R, Pincebourde S. 2018. Do aphids alter leaf surface temperature patterns during early infestation? *Insects* 9:34
19. Caillon R, Suppo C, Casas J, Woods AH, Pincebourde S. 2014. Warming decreases thermal heterogeneity of leaf surfaces: implications for behavioural thermoregulation by arthropods. *Funct. Ecol.* 28:1449–58
20. CaraDonna PJ, Cunningham JL, Iler AM. 2018. Experimental warming in the field delays phenology and reduces body mass, fat content and survival: Implications for the persistence of a pollinator under climate change. *Funct. Ecol.* 32:2345–56
21. Cerda X, Retana J, Manzaneda A. 1998. The role of competition by dominants and temperature in the foraging of subordinate species in Mediterranean ant communities. *Oecologia* 117:404–12
22. Chen B, Feder ME, Kang L. 2018. Evolution of heat-shock protein expression underlying adaptive responses to environmental stress. *Mol. Ecol.* 27:3040–54
23. Chen C, Gols R, Biere A, Harvey JA. 2019. Differential effects of climate warming on reproduction and functional responses on insects in the fourth trophic level. *Funct. Ecol.* 33:693–702
24. Chen YY, Zhang W, Ma G, Ma CS. 2019. More stressful event does not always depress subsequent life performance. *J. Integr. Agr.* 18:2321–29
25. Chown SL, Nicolson SW. 2004. Insect Physiological Ecology: Mechanisms and Patterns. Oxford, UK: Oxford Univ. Press
26. Colinet H, Sinclair BJ, Vernon P, Renault D. 2015. Insects in fluctuating thermal environments. *Annu. Rev. Entomol.* 60:123–40
27. Crespo-Pérez V, Regniere J, Chuine I, Rebaudo F, Dangles O. 2015. Changes in the distribution of multispecies pest assemblages affect levels of crop damage in warming tropical Andes. *Glob. Chang Biol.* 21:82–96
28. De Frenne P, Rodriguez-Sanchez F, Coomes DA, Baeten L, Verstraeten G, et al. 2013. Microclimate moderates plant responses to macroclimate warming. *Proc. Natl. Acad. Sci. USA* 110:18561–65
29. De Frenne P, Zellweger F, Rodríguez-Sánchez F, Scheffers BR, Hylander K, et al. 2019. Global buffering of temperatures under forest canopies. *Nat. Ecol. Evol.*

- 3:744–49
30. Denny M, Hunt L, Miller L, Harley C. 2009. On the prediction of extreme ecological events. *Ecol. Monogr.* 79:397–421
 31. Denny M. 2017. The fallacy of the average: on the ubiquity, utility and continuing novelty of Jensen's inequality. *J. Exp. Biol.* 220:139–46
 32. Diamond SE. 2017. Evolutionary potential of upper thermal tolerance: biogeographic patterns and expectations under climate change. *Ann. NY Acad. Sci.* 1389:5–19
 33. Dowd WW, Denny MW. 2020. A series of unfortunate events: characterizing the contingent nature of physiological extremes using long-term environmental records. *Proc. R. Soc. B* 287:20192333
 34. Easterling DR, Meehl GA, Parmesan C, Changnon SA, Karl TR, Mearns LO. 2000. Climate extremes: observations, modeling, and impacts. *Science* 289:2068–74
 35. Ern R. 2019. A mechanistic oxygen- and temperature-limited metabolic niche framework. *Philos. Trans. R. Soc. B* 374:20180540
 36. Esperk T, Kjaersgaard A, Walters RJ, Berger D, Blanckenhorn WU. 2016. Plastic and evolutionary responses to heat stress in a temperate dung fly: negative correlation between basal and induced heat tolerance? *J. Evol. Biol.* 29:900–15
 37. Evans EW, Carlile NR, Innes MB, Pitigala N. 2013. Warm springs reduce parasitism of the cereal leaf beetle through phenological mismatch. *J. Appl. Entomol.* 137:383–91
 38. Fan YL, Wernegreen JJ. 2013. Can't take the heat: high temperature depletes bacterial endosymbionts of ants. *Microb. Ecol.* 66:727–33
 39. Feder ME, Blair NT, Figueras H. 1997. Natural thermal stress and heat-shock protein expression in *Drosophila* larvae and pupae. *Funct. Ecol.* 11:90–100
 40. Folk DG, Zwollo P, Rand DM, Gilchrist GW. 2006. Selection on knockdown performance in *Drosophila melanogaster* impacts thermotolerance and heat-shock response differently in females and males. *J. Exp. Biol.* 209:3964–73
 41. Forster J, Hirst AG, Atkinson D. 2012. Warming-induced reductions in body size are greater in aquatic than terrestrial species. *Proc. Natl. Acad. Sci. USA* 109:19310–14
 42. Franken O, Huizinga M, Ellers J, Berg MP. 2018. Heated communities: Large inter- and intraspecific variation in heat tolerance across trophic levels of a soil arthropod community. *Oecologia* 186:311–22
 43. García-Robledo C, Kuprewicz EK, Staines CL, Erwin TL, Kress WJ. 2016. Limited tolerance by insects to high temperatures across tropical elevational gradients and the implications of global warming for extinction. *Proc. Natl. Acad.*

- 656 *Sci. USA* 113:680–85
- 657 44. Gardner JL, Peters A, Kearney MR, Joseph L, Heinsohn R. 2011. Declining body
658 size: A third universal response to warming? *Trends Ecol. Evol.* 26:285–91
- 659 45. Gibbs AG, Louie AK, Ayala JA. 1998. Effects of temperature on cuticular lipids
660 and water balance in a desert *Drosophila*: is thermal acclimation beneficial? *J.*
661 *Exp. Biol.* 201:71–80
- 662 46. Gillespie DR, Nasreen A, Moffat CE, Clarke P, Roitberg BD. 2012. Effects of
663 simulated heat waves on an experimental community of pepper plants, green
664 peach aphids and two parasitoid species. *Oikos* 121:149–59
- 665 47. Giron D, Dubreuil G, Bennett A, Dedeine F, Dicke M, et al. 2018. Promises and
666 challenges in insect-plant interactions. *Entomol. Exp. Appl.* 166:319–43
- 667 48. Goodsman DW, Grosklos G, Aukema BH, Whitehouse C, Bleiker KP, et al. 2018.
668 The effect of warmer winters on the demography of an outbreak insect is hidden
669 by intraspecific competition. *Glob. Change Biol.* 24:3620–28
- 670 49. Gunderson AR, Stillman JH. 2015. Plasticity in thermal tolerance has limited
671 potential to buffer ectotherms from global warming. *Proc. R. Soc. B*
672 282:20150401
- 673 50. Halbritter AH, De Boeck HJ, Eycott AE, Reinsch S, Robinson DA, et al. 2020.
674 The handbook for standardized field and laboratory measurements in terrestrial
675 climate change experiments and observational studies (ClimEx). *Methods Ecol.*
676 *Evol.* 11:22–37
- 677 51. Hangartner S, Hoffmann AA. 2016. Evolutionary potential of multiple measures
678 of upper thermal tolerance in *Drosophila melanogaster*. *Funct. Ecol.* 30:442–52
- 679 52. Harmon JP, Moran NA, Ives AR. 2009. Species response to environmental
680 change: impacts of food web interactions and evolution. *Science* 323:1347–50
- 681 53. Helmuth B, Kingsolver JG, Carrington E. 2005. Biophysics, physiological
682 ecology, and climate change: Does mechanism matter? *Annu. Rev. Physiol.*
683 67:177–201
- 684 54. Hendrix DL, Salvucci ME. 1998. Polyol metabolism in homopterans at high
685 temperatures: accumulation of mannitol in aphids (Aphididae: Homoptera) and
686 sorbitol in whiteflies (Aleyrodidae: Homoptera). *Comp. Biochem. Physiol. A*
687 *Comp. Physiol.* 120:487–94
- 688 55. Higgins JK, MacLean HJ, Buckley LB, Kingsolver JG. 2014. Geographic
689 differences and microevolutionary changes in thermal sensitivity of butterfly
690 larvae in response to climate. *Funct. Ecol.* 28:982–89
- 691 56. Hill MP, Chown SL, Hoffmann AA. 2013. A predicted niche shift corresponds
692 with increased thermal resistance in an invasive mite, *Halotydeus destructor*.
693 *Glob. Ecol. Biogeogr.* 22:942–51

57. Hoffmann AA, Chown SL, Clusella-Trullas S. 2013. Upper thermal limits in terrestrial ectotherms: how constrained are they? *Funct. Ecol.* 27:934–49
58. Huey RB, Hertz PE, Sinervo B. 2003. Behavioral drive versus behavioral inertia in evolution: a null model approach. *Am. Nat.* 161:357–66
59. Huey RB, Kingsolver JG. 1989. Evolution of thermal sensitivity of ectotherm performance. *Trends Ecol. Evol.* 4:131–35
60. IPCC. Summary for policymakers. Climate Change 2013: The Physical Science Basis Contribution of Working Group I to the Fifth Assessment Report of the Intergovernmental Panel on Climate Change. Cambridge, UK: Cambridge Univ. Press
61. Isbell F, Craven D, Connolly J, Loreau M, Schmid B, et al. 2015. Biodiversity increases the resistance of ecosystem productivity to climate extremes. *Nature* 526:574–77
62. Jensen A, Alemu T, Alemneh T, Pertoldi C, Bahrndorff S, et al. 2019. Thermal acclimation and adaptation across populations in a broadly distributed soil arthropod. *Funct. Ecol.* 33:833–45
63. Karl I, Stoks R, De Block M, Janowitz SA, Fischer K. 2011. Temperature extremes and butterfly fitness: conflicting evidence from life history and immune function. *Glob. Change Biol.* 17:676–87
64. Kearney M, Porter WP. 2016. NicheMapR - an R package for biophysical modelling: the microclimate model. *Ecography* 40:664–74
65. Kearney M, Shine R, Porter WP. 2009. The potential for behavioral thermoregulation to buffer “cold-blooded” animals against climate warming. *Proc. Natl. Acad. Sci. USA* 106:3835–40
66. Kellermann V, Overgaard J, Hoffmann AA, Flojgaard C, Svenning JC, Loeschcke V. 2012. Upper thermal limits of *Drosophila* are linked to species distributions and strongly constrained phylogenetically. *Proc. Natl. Acad. Sci. USA* 109:16228–33
67. Kellermann V, Sgro CM. 2018. Evidence for lower plasticity in CTMAX at warmer developmental temperatures. *J. Evol. Biol.* 31:1300–12
68. Kellermann V, van Heerwaarden B, Sgro CM. 2017. How important is thermal history? Evidence for lasting effects of developmental temperature on upper thermal limits in *Drosophila melanogaster*. *Proc. R. Soc. B* 284:20170447
69. Kellermann V, van Heerwaarden B. 2019. Terrestrial insects and climate change: adaptive responses in key traits. *Physiol. Entomol.* 44:99–115
70. Kikuchi Y, Tada A, Musolin DL, Hari N, Hosokawa T, Fujisaki K, Fukatsu T. 2016. Collapse of insect gut symbiosis under simulated climate change. *MBio* 7:e01578-16

71. Kingsolver JG, Buckley LB. 2017. Quantifying thermal extremes and biological variation to predict evolutionary responses to changing climate. *Philos. Trans. R. Soc. B* 372:20160147.
72. Kingsolver JG, Diamond SE, Buckley LB. 2013. Heat stress and the fitness consequences of climate change for terrestrial ectotherms. *Funct. Ecol.* 27:1415–23
73. Kingsolver JG, Maclean HJ, Goddin SB, Augustine KE. 2016. Plasticity of upper thermal limits to acute and chronic temperature variation in *Manduca sexta* larvae. *J. Exp. Biol.* 219:1290–94
74. Kingsolver JG, Woods A, Buckley LB, Potter KA, Maclean HJ, Higgins JK. 2011 Complex life cycles and the responses of insects to climate change. *Integr. Comp. Biol.* 51:719–32
75. Klockmann M, Günter F, Fischer K. 2017. Heat resistance throughout ontogeny: body size constrains thermal tolerance. *Glob. Change Biol.* 23:686–96
76. Koussoroplis AM, Pincebourde S, Wacker A. 2017. Understanding and predicting physiological performance of organisms in fluctuating and multifactorial environments. *Ecol. Monogr.* 87:178–97
77. Kudo G, Ida TY. 2013. Early onset of spring increases the phenological mismatch between plants and pollinators. *Ecology* 94:2311–20
78. Lawton JH. 1983. Plant architecture and the diversity of phytophagous insects. *Annu. Rev. Entomol.* 28:23–29
79. Lehmann P, Javal M, Terblanche JS. 2019. Oxygen limitation is not the cause of death during lethal heat exposure in an insect. *Biol. Lett.* 15:20180701
80. Liang LN, Zhang W, Ma G, Hoffmann A, Ma CS. 2014. A single hot event stimulates adult performance but reduces egg survival in the oriental fruit moth, *Grapholitha molesta*. *PLoS ONE* 9:e116339
81. Lindo Z. 2015. Warming favours small-bodied organisms through enhanced reproduction and compositional shifts in belowground systems. *Soil Biol. Biochem.* 91:271–78
82. Lister BC, Garcia A. 2018. Climate-driven declines in arthropod abundance restructure a rainforest food web. *Proc. Natl. Acad. Sci. USA* 115:E10397–406
83. Loeschcke V, Hoffmann AA. 2007. Consequences of heat hardening on a field fitness component in *Drosophila* depend on environmental temperature. *Am. Nat.* 169:175–83
84. Loeschcke V, Krebs RA. 1996. Selection for heat-shock resistance in larval and in adult *Drosophila buzzatii*: comparing direct and indirect responses. *Evolution* 50:2354–59
85. Lopez-Martinez G, Denlinger DL. 2008. Regulation of heat shock proteins in the

770 apple maggot *Rhagoletis pomonella* during hot summer days and overwintering
771 diapause. *Physiol. Entomol.* 33:346–52

772 86. Ma CS, Hau B, Poehling HM. 2004. The effect of heat stress on the survival of
773 the rose grain aphid, *Metopolophium dirhodum* (Hemiptera: Aphididae). *Eur. J.*
774 *Entomol.* 101:327–31

775 87. Ma CS, Wang L, Zhang W, Rudolf V. 2018. Resolving biological impacts of
776 multiple heat waves: interaction of hot and recovery days. *Oikos* 127:622–33

777 88. Ma G, Bai CM, Wang XJ, Majeed MZ, Ma CS. 2018. Behavioural
778 thermoregulation alters microhabitat utilization and demographic rates in
779 ectothermic invertebrates. *Anim. Behav.* 142:49–57

780 89. Ma G, Hoffmann AA, Ma CS. 2015. Daily temperature extremes play an
781 important role in predicting thermal effects. *J. Exp. Biol.* 218:2289–96

782 90. Ma G, Ma CS. 2012. Climate warming may increase aphids' dropping
783 probabilities in response to high temperatures. *J. Insect Physiol.* 58:1456–62

784 91. Ma G, Ma CS. 2012. Effect of acclimation on heat-escape temperatures of two
785 aphid species: implications for estimating behavioral response of insect to climate
786 warming. *J. Insect Physiol.* 58:303–309

787 92. Ma G, Rudolf V, Ma CS. 2015. Extreme temperature events alter demographic
788 rates, relative fitness, and community structure. *Glob. Change Biol.*
789 21:1794–1808

790 93. Macagno ALM, Zattara EE, Ezeakudo O, Moczek AP, Ledonrettig C. 2018.
791 Adaptive maternal behavioral plasticity and developmental programming mitigate
792 the transgenerational effects of temperature in dung beetles. *Oikos* 127:1319–29

793 94. Martinet B, Lecocq T, Smet J, Rasmont P. 2015. A protocol to assess insect
794 resistance to heat waves, applied to bumblebees (*Bombus Latreille*, 1802). *PLoS*
795 *ONE* 10:e0118591

796 95. May ML. 1979. Insect thermoregulation. *Annu. Rev. Entomol.* 24:313–49

797 96. Meehl GA, Tebaldi C. 2004. More intense, more frequent, and longer lasting heat
798 waves in the 21st century. *Science* 305:994–97

799 97. Merrill RM, Gutierrez D, Lewis OT, Gutierrez J, Diez SB, Wilson RJ. 2008.
800 Combined effects of climate and biotic interactions on the elevational range of a
801 phytophagous insect. *J. Anim. Ecol.* 77:145–55

802 98. Mitchell KA, Hoffmann AA. 2010. Thermal ramping rate influences evolutionary
803 potential and species differences for upper thermal limits in *Drosophila*. *Funct.*
804 *Ecol.* 24:694–700

805 99. Mitton JB, Ferrenberg SM. 2012. Mountain pine beetle develops an
806 unprecedented summer generation in response to climate warming. *Am. Nat.*
807 179:163–71

100. Montllor CB, Maxmen A, Purcell AH. 2002. Facultative bacterial endosymbionts benefit pea aphids *Acyrtosiphon pisum* under heat stress. *Ecol. Entomol.* 27:189–95
101. Montserrat M, Guzman C, Sahun RM, Belda JE, Hormaza JI. 2013. Pollen supply promotes, but high temperatures demote, predatory mite abundance in avocado orchards. *Agric. Ecosyst. Environ.* 164:155–61
102. Nguyen TT, Michaud D, Cloutier C. 2009. A proteomic analysis of the aphid *Macrosiphum euphorbiae* under heat and radiation stress. *Insect Biochem. Mol. Biol.* 39:20–30
103. O’Sullivan J, Macmillan HA, Overgaard J. 2017. Heat stress is associated with disruption of ion balance in the migratory locust, *Locusta migratoria*. *J. Therm. Biol.* 68:177–85
104. Overgaard J, Kearney MR, Hoffmann AA. 2014. Sensitivity to thermal extremes in Australian *Drosophila* implies similar impacts of climate change on the distribution of widespread and tropical species. *Glob. Change Biol.* 20:1738–50
105. Paaijmans KP, Heinig RL, Seliga RA, Blanford JI, Blanford S, Murdock CC, Thomas MB. 2013. Temperature variation makes ectotherms more sensitive to climate change. *Glob. Change Biol.* 19:2373–80
106. Piessens K, Adriaens D, Jacquemyn H, Honnay O. 2009. Synergistic effects of an extreme weather event and habitat fragmentation on a specialised insect herbivore. *Oecologia* 159:117–26
107. Pike DA, Webb JK, Shine R. 2012. Hot mothers, cool eggs: nest-site selection by egg-guarding spiders accommodates conflicting thermal optima. *Funct. Ecol.* 26:469–75
108. Pincebourde S, Casas J. 2015. Warming tolerance across insect ontogeny: influence of joint shifts in microclimates and thermal limits. *Ecology* 96:986–97
109. Pincebourde S, Casas J. 2016. Hypoxia and hypercarbia in endophagous insects: Larval position in the plant gas exchange network is key. *J. Insect Physiol.* 84:137–53
110. Pincebourde S, Casas J. 2019. Narrow safety margin in the phyllosphere during thermal extremes. *Proc. Natl. Acad. Sci. USA* 116:5588–96
111. Pincebourde S, Murdock CC, Vickers M, Sears MW. 2016. Fine-scale microclimatic variation can shape the responses of organisms to global change in both natural and urban environments. *Integr. Comp. Biol.* 56:45–61
112. Pincebourde S, Sinoquet H, Combes D, Casas J. 2007. Regional climate modulates the canopy mosaic of favourable and risky microclimates for insects. *J. Anim. Ecol.* 76:424–38
113. Pincebourde S, Suppo C. 2016. The vulnerability of tropical ectotherms to

- warming is modulated by the microclimatic heterogeneity. *Integr. Comp. Biol.* 56:85–97
114. Portner H. 2001. Climate change and temperature-dependent biogeography: oxygen limitation of thermal tolerance in animals. *Naturwissenschaften* 88:137–46
115. Posledovich D, Toftegaard T, Wiklund C, Ehrlén J, Gotthard K. 2018. Phenological synchrony between a butterfly and its host plants: Experimental test of effects of spring temperature. *J. Anim. Ecol.* 87:150–61
116. Potter KA, Davidowitz G, Woods HA. 2011. Cross-stage consequences of egg temperature in the insect *Manduca sexta*. *Funct. Ecol.* 25:548–56
117. Potter KA, Woods A, Pincebourde S. 2013. Microclimatic challenges in global change biology. *Glob. Chang Biol.* 19:2932–39
118. Radchuk V, Turlure C, Schtickzelle N. 2013. Each life stage matters: the importance of assessing the response to climate change over the complete life cycle in butterflies. *J. Anim. Ecol.* 82:275–85
119. Robinet C, Roques A. 2010. Direct impacts of recent climate warming on insect populations. *Integr. Zool.* 5:132–42
120. Ruel JJ, Ayres MP. 1999. Jensen's inequality predicts effects of environmental variation. *Trends Ecol. Evol.* 14:361–66
121. Saudreau M, Ezanic A, Adam B, Caillon R, Walser P, Pincebourde S. 2017. Temperature heterogeneity over leaf surfaces: the contribution of the lamina microtopography. *Plant Cell Environ.* 40:2174–88
122. Sentis A, Hemptinne JL, Brodeur J. 2013. Effects of simulated heat waves on an experimental plant-herbivore-predator food chain. *Glob. Chang Biol.* 19:833–42
123. Sentis A, Hemptinne JL, Brodeur J. 2017. Non-additive effects of simulated heat waves and predators on prey phenotype and transgenerational phenotypic plasticity. *Glob. Chang Biol.* 23:4598–608
124. Sinclair BJ, Marshall KE, Sewell MA, Levesque DL, Willett CS, et al. 2016. Can we predict ectotherm responses to climate change using thermal performance curves and body temperatures? *Ecol. Lett.* 19:1372–85
125. Sinclair BJ, Vernon P, Klok CJ, Chown SL. 2003. Insects at low temperatures: an ecological perspective. *Trends Ecol. Evol.* 18:257–62
126. Smith MD. 2011. An ecological perspective on extreme climatic events: a synthetic definition and framework to guide future research. *J. Ecol.* 99:656–63
127. Stuhldreher G, Hermann G, Fartmann T. 2014. Cold-adapted species in a warming world—an explorative study on the impact of high winter temperatures on a continental butterfly. *Entomol. Exp. Appl.* 151:270–79
128. Suggitt AJ, Gillingham PK, Hill JK, Huntley B, Kunin WE, Roy DB, Thomas CD.

2011. Habitat microclimates drive fine-scale variation in extreme temperatures. *Oikos* 120:1–8
- 129.Sunday JM, Bates AE, Kearney MR, Colwell RK, Dulvy NK, Longino JT, Huey RB. 2014. Thermal-safety margins and the necessity of thermoregulatory behavior across latitude and elevation. *Proc. Natl. Acad. Sci. USA* 111:5610–15
- 130.Tougeron K, Damien M, Le Lann C, Brodeur J, van Baaren J. 2018. Rapid responses of winter aphid-parasitoid communities to climate warming. *Front. Ecol. Evol.* 6:173
- 131.Tseng M, Kaur K M, Pari SS, Sarai K, Chan D, et al. 2018. Decreases in beetle body size linked to climate change and warming temperatures. *J. Anim. Ecol.* 87:647–59
- 132.Vallières R, Rochefort S, Berthiaume R, Hébert C, Bause É. 2015. Effect of simulated fall heat waves on cold hardiness and winter survival of hemlock looper, *Lambdina fiscellaria* (Lepidoptera: Geometridae). *J. Insect Physiol.* 73:60–69
- 133.van Heerwaarden B, Kellermann V, Sgro CM. 2016. Limited scope for plasticity to increase upper thermal limits. *Funct. Ecol.* 30:1947–56
- 134.Vasseur DA, DeLong JP, Gilbert B, Greig HS, Harley CDG, et al. 2014. Increased temperature variation poses a greater risk to species than climate warming. *Proc. R. Soc. B* 281:20132016
- 135.Verberk WC, Bilton DT. 2013. Respiratory control in aquatic insects dictates their vulnerability to global warming. *Biol. Lett.* 9:20130473
- 136.Walsh BS, Parratt SR, Hoffmann AA, Atkinson D, Snook RR, Bretman A, Price TAR. 2019. The impact of climate change on fertility. *Trends Ecol. Evol.* 34:249–59
- 137.Wehner R, Wehner S. 2011. Parallel evolution of thermophilia: daily and seasonal foraging patterns of heat-adapted desert ants: *Cataglyphis* and *Ocymyrmex* species. *Physiol. Entomol.* 36:271–81
- 138.Woods HA, Dillon ME, Pincebourde S. 2015. The roles of microclimatic diversity and of behavior in mediating the responses of ectotherms to climate change. *J. Therm. Biol.* 54:86–97
- 139.Woods HA. 2013. Ontogenetic changes in the body temperature of an insect herbivore. *Funct. Ecol.* 27:1322–31
- 140.Xing K, Hoffmann A, Ma CS. 2014. Does thermal variability experienced at the egg stage influence life history traits across life cycle stages in a small invertebrate? *PLoS ONE* 9:e99500
- 141.Zani PA, Cohnstaedt LW, Corbin D, Bradshaw WE, Holzapfel CM. 2005. Reproductive value in a complex life cycle: heat tolerance of the pitcher-plant

- mosquito, *Wyeomyia smithii*. *J. Evol. Biol.* 18:101–105
142. Zhang B, Leonard SP, Li Y, Moran NA. 2019. Obligate bacterial endosymbionts limit thermal tolerance of insect host species. *Proc. Natl. Acad. Sci. USA* 116:24712–18
143. Zhang W, Chang XQ, Hoffmann AA, Zhang S, Ma CS. 2015. Impact of hot events at different developmental stages of a moth: the closer to adult stage, the less reproductive output. *Sci. Rep.* 5:10436
144. Zhang W, Rudolf V, Ma CS. 2015. Stage-specific heat effects: Timing and duration of heat waves alter demographic rates of a global insect pest. *Oecologia* 179:947–57
145. Zhang W, Zhao F, Hoffmann AA, Ma CS. 2013. A single hot event that does not affect survival but decreases reproduction in the diamondback moth, *Plutella xylostella*. *PLoS ONE* 8:e75923
146. Zhao F, Hoffmann AA, Xing K, Ma CS. 2017. Life stages of an aphid living under similar thermal conditions differ in thermal performance. *J. Insect Physiol.* 99:1–7
147. Zhao F, Zhang W, Hoffmann AA, Ma CS. 2014. Night warming on hot days produces novel impacts on development, survival and reproduction in a small arthropod. *J. Anim. Ecol.* 83:769–78
148. Zhu L, Wang L, Ma CS. 2019. Sporadic short temperature events cannot be neglected in predicting impacts of climate change on small insects. *J. Insect Physiol.* 112:48–56

RELATED RESOURCES

- Bale JS, Masters GJ, Hodkinson ID, Awmack C, Bezemer TM, et al. 2002. Herbivory in global climate change research: direct effects of rising temperature on insect herbivores. *Glob. Change Biol.* 8:1–16
- Grant PR, Grant BR, Huey RB, Johnson MTJ, Knoll AH, Schmitt J. 2017. Evolution caused by extreme events. *Philos. Trans. R. Soc. B* 372:20160146
- Hance T, van Baaren J, Vernon P, Boivin G. 2007. Impact of extreme temperatures on parasitoids in a climate change perspective. *Annu. Rev. Entomol.* 52:107–26
- Harris R, Beaumont LJ, Vance TR, Tozer CR, Remenyi TA, et al. 2018. Biological responses to the press and pulse of climate trends and extreme events. *Nat. Clim. Change* 8:579–87
- Sgrò CM, Terblanche JS, Hoffmann AA. 2016. What can plasticity contribute to insect responses to climate change? *Annu. Rev. Entomol.* 61:433–51
- Ummenhofer CC, Meehl GA. 2017. Extreme weather and climate events with

ecological relevance: a review. *Philos. Trans. R. Soc. B* 372:20160135
van de Pol M, Jenouvrier S, Cornelissen JH, Visser ME. 2017. Behavioural,
ecological and evolutionary responses to extreme climatic events: challenges and
directions. *Philos. Trans. R. Soc. B* 372:20160134
Vázquez DP, Gianoli E, Morris WF, Bozinovic F. 2017. Ecological and evolutionary
impacts of changing climatic variability. *Biol. Rev.* 92:22–42

Figure captions

Figure 1. Diagram illustrating how natural thermal extremes are filtered (often intensity is lowered) by microhabitats and buffered by insects through behavioral thermoregulation, phenotypic plasticity, ontogeny variations and adaptive evolution to ultimately increase survival to heat. Even after filtering and buffering, thermal extremes still impact insect performance at the individual, population and community levels within and across generations.

Figure 2. Characterizing Extreme High Temperatures (EHTs) in the field. (a) A temporal series of microclimatic temperature for a theoretical insect illustrates the different metrics used to describe the occurrence of EHTs (in *red*) and mild periods (in *blue*): their intensity (maximal and minimal temperatures of hot days (HT_{\max} and HT_{\min}) and mild days (MT_{\max} and MT_{\min}), respectively); frequency (the number of consecutive hot days and the frequency at which hot periods occur); temporal variance (the timing of occurrence of hot and mild phases); the biological threshold (temperature inducing thermal stress in a given organism, or CT_{\max}). The dichotomy between hot and mild events hides a large range of possibilities when designing experiments to simulate natural thermal extremes. (b–c) In particular, the maximum and minimum temperatures of mild and hot days vary within their own range. (d) These complex thermal extremes with a daily sub-unit are embedded in naturally fluctuating temperature regimes that can be described by their temporal variance of EHT occurrence and their frequency (eg, the number of consecutive hot or mild days).

Here, the temporal arrangement of hot and mild days varies across two axis defined by number of hot days during a period of 10 days (frequency) and the variance in the number of mild days between each hot day (temporal variance). Note that in panel *d*, the global mean and variance of temperature remain the same across all configurations at a given frequency of hot days.

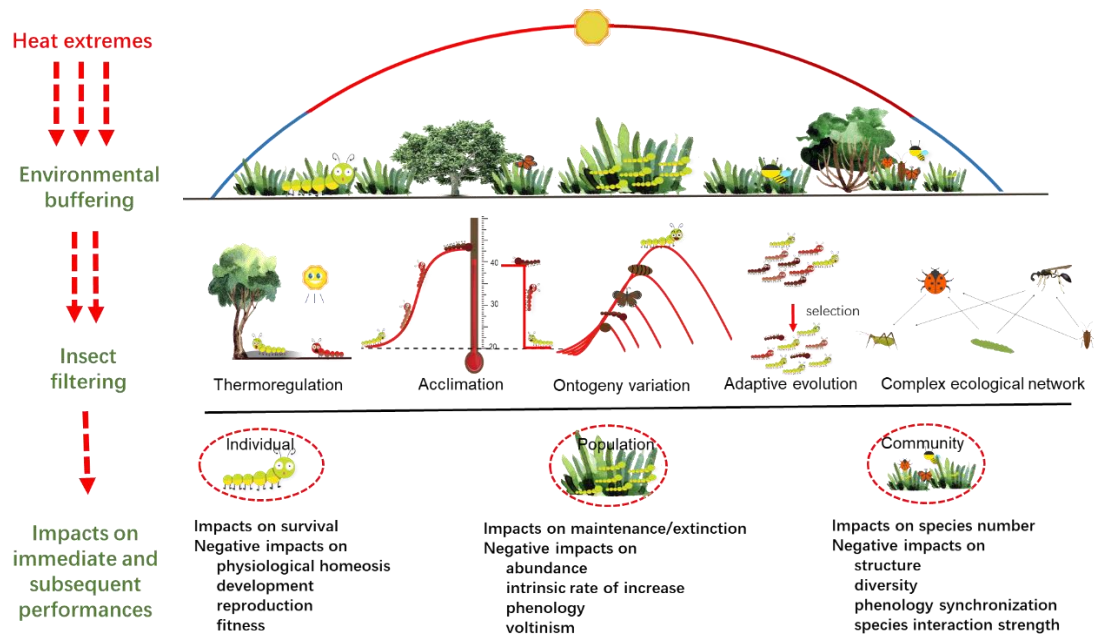


Figure 1

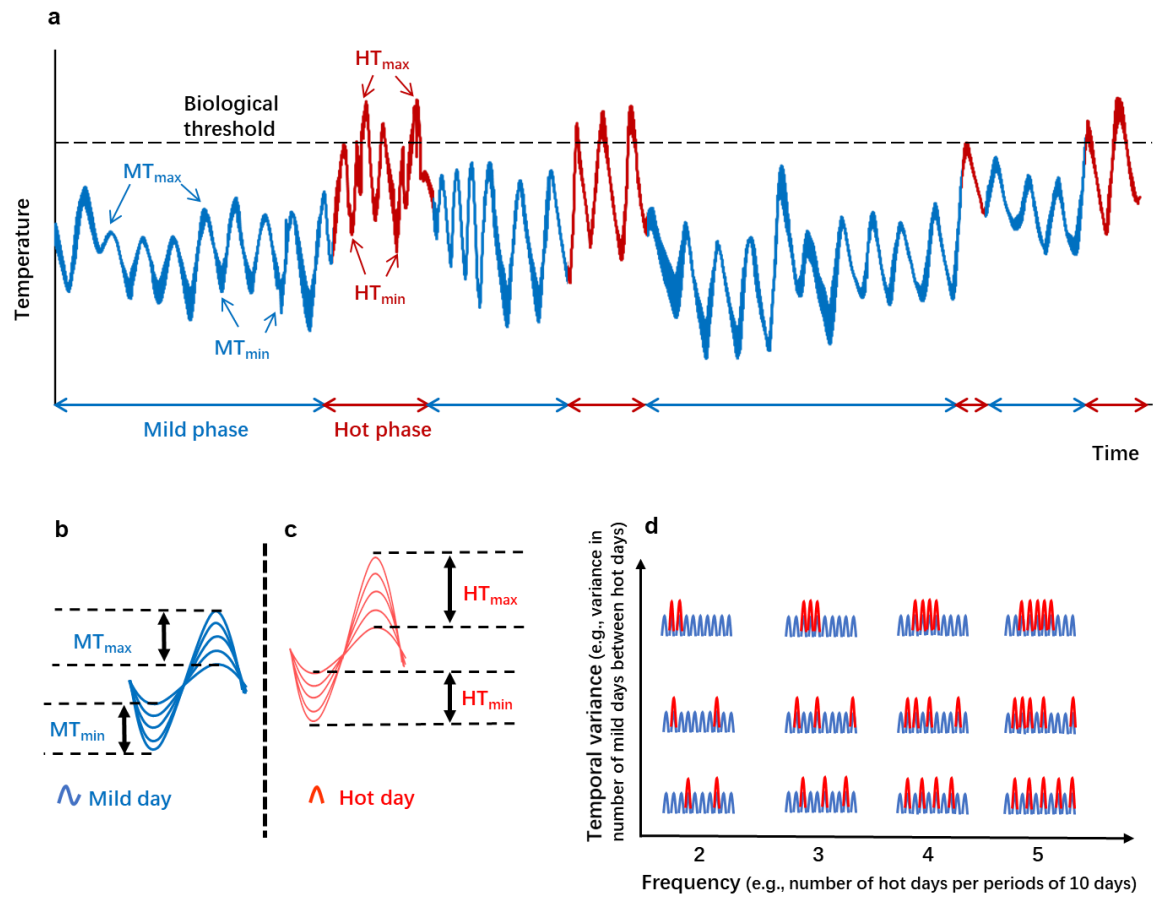


Figure 2