



HAL
open science

Denitrification and associated nitrous oxide and carbon dioxide emissions from the Amazonian wetlands

Jérémy Guilhen, Al Bitar Ahmad, Sabine Sauvage, Marie Parrens, Jean-Michel Martinez, Gwenaël Abril, Patricia Moreira-Turcq, Jose-Miguel Sanchez-Perez

► **To cite this version:**

Jérémy Guilhen, Al Bitar Ahmad, Sabine Sauvage, Marie Parrens, Jean-Michel Martinez, et al.. Denitrification and associated nitrous oxide and carbon dioxide emissions from the Amazonian wetlands. *Biogeosciences*, 2020, 17 (16), pp.4297-4311. <10.5194/bg-17-4297-2020>. <hal-02931529>

HAL Id: hal-02931529

<https://hal.science/hal-02931529v1>

Submitted on 7 Sep 2020

HAL is a multi-disciplinary open access archive for the deposit and dissemination of scientific research documents, whether they are published or not. The documents may come from teaching and research institutions in France or abroad, or from public or private research centers.

L'archive ouverte pluridisciplinaire **HAL**, est destinée au dépôt et à la diffusion de documents scientifiques de niveau recherche, publiés ou non, émanant des établissements d'enseignement et de recherche français ou étrangers, des laboratoires publics ou privés.



Distributed under a Creative Commons CC BY 4.0 - Attribution - International License



Denitrification and associated nitrous oxide and carbon dioxide emissions from the Amazonian wetlands

Jérémy Guilhen^{1,2}, Ahmad Al Bitar², Sabine Sauvage¹, Marie Parrens^{2,3}, Jean-Michel Martinez⁴, Gwenael Abril^{5,6}, Patricia Moreira-Turcq⁷, and José-Miguel Sánchez-Pérez¹

¹Laboratoire Écologie Fonctionnelle et Environnement, Institut national polytechnique de Toulouse (INPT), CNRS, Université de Toulouse (UPS), Toulouse, France

²Centre d'Etudes Spatiales de la Biosphère (CESBIO), CNES, Université de Toulouse (UPS), Toulouse, France

³Dynafor, Université de Toulouse, INRAE, INPT, INP-PURPAN, Castanet-Tolosan, France

⁴Géosciences Environnement Toulouse (GET), IRD–CNRS, Université Toulouse (UPS), Toulouse, France

⁵Biologie des Organismes et Ecosystèmes Aquatiques (BOREA), Muséum National d'Histoire Naturelle, Paris, France

⁶Programa de Geoquímica, Universidade Federal Fluminense, Outeiro São João Batista, Niterói, RJ, Brazil

⁷Institut de Recherche pour le Développement (IRD), Géosciences Environnement Toulouse (GET), UMR 5563, Lima, Peru

Correspondence: Jérémy Guilhen (jeremy.guilhen@gmail.com) and Sabine Sauvage (sabine.sauvage@univ-tlse3.fr)

Received: 9 January 2020 – Discussion started: 12 February 2020

Revised: 7 July 2020 – Accepted: 16 July 2020 – Published: 28 August 2020

Abstract. In this paper, we quantify the CO₂ and N₂O emissions from denitrification over the Amazonian wetlands. The study concerns the entire Amazonian wetland ecosystem with a specific focus on three floodplain (FP) locations: the Branco FP, the Madeira FP and the FP alongside the Amazon River. We adapted a simple denitrification model to the case of tropical wetlands and forced it by open water surface extent products from the Soil Moisture and Ocean Salinity (SMOS) satellite. A priori model parameters were provided by in situ observations and gauging stations from the HYBAM Observatory. Our results show that the denitrification and the trace gas emissions present a strong cyclic pattern linked to the inundation processes that can be divided into three distinct phases: activation, stabilization and deactivation. We quantify the average yearly denitrification and associated emissions of CO₂ and N₂O over the entire watershed at 17.8 kgN ha⁻¹ yr⁻¹, 0.37 gC-CO₂ m⁻² yr⁻¹ and 0.18 gN-N₂O m⁻² yr⁻¹ respectively for the period 2011–2015. When compared to local observations, it was found that the CO₂ emissions accounted for 0.01 % of the integrated ecosystem, which emphasizes the fact that minor changes to the land cover may induce strong impacts on the Amazonian carbon budget. Our results are consistent with the state of the art of global nitrogen models with a positive bias of 28 %.

When compared to other wetlands in different pedoclimatic environments we found that the Amazonian wetlands have similar emissions of N₂O with the Congo tropical wetlands and lower emissions than the temperate and tropical anthropogenic wetlands of the Garonne (France), the Rhine (Europe) and south-eastern Asia rice paddies. In summary our paper shows that a data-model-based approach can be successfully applied to quantify N₂O and CO₂ fluxes associated with denitrification over the Amazon basin. In the future, the use of higher-resolution remote sensing products from sensor fusion or new sensors like the Surface Water and Ocean Topography (SWOT) mission will permit the transposition of the approach to other large-scale watersheds in tropical environments.

1 Introduction

Inland waters play a crucial role in the carbon and nitrogen cycle. In particular, wetlands sequester atmospheric and fluvial carbon (Abril and Borges, 2019). This phenomenon is intimately linked to nitrous oxide (N₂O; Wu et al., 2009) and carbon dioxide (CO₂) emissions to the atmosphere (Borges et al., 2015). In wetlands, during inundation periods denitri-

fication processes nitrates (NO_3^-) into atmospheric dinitrogen (N_2). These processes are controlled by biogeochemical reactions linked to microorganism activity and pedoclimatic conditions (soil characteristics, nutrient availability and water content). Moreover, the alternations between dry and wet periods in wetlands promote carbon and nitrogen mineralization and denitrification in soils (Koschorreck and Darwich, 2003). Our understanding and capacity to quantify the mechanisms involved in N_2O and CO_2 emissions over wetlands are limited and lead to uncertainties in estimating them at large scales.

During the last decade, process-based models have become key tools in estimating carbon and nitrogen budgets in the context of global multi-source changes. Recent studies presenting a review of existing models capable of quantifying N_2O and CO_2 fluxes over continental ecosystems (Tian et al., 2018; Lauerwald et al., 2017) show that they are mainly used to characterize the part of greenhouse gas (GHG) emissions due to natural and anthropogenic–agricultural activities at different spatio-temporal scales. The estimation of N_2O emissions from natural sources is still subject to large uncertainties (Ciais et al., 2013), while N_2O emissions from anthropogenic activities are under investigation. Assessing the N_2O budget for wetlands at a large scale currently constitutes a knowledge gap. In terms of denitrification, the relatively sparse and short-term observations limit our capability to estimate the carbon and nitrogen recycling in terrestrial ecosystems, especially over wetlands. Since in situ measurements constitute the main source of data, few studies assess N_2O and CO_2 emissions from denitrification at a large scale and instead they are usually limited to field-scale or small-scale watersheds (Russell et al., 2019; Johnson et al., 2019; Korol et al., 2019).

In the case of the Amazon basin, the total amount of CO_2 emissions reaches 0.3 PgC yr^{-1} for both natural and agricultural sources. Scofield et al. (2016) pointed out that over the Amazonian wetlands disproportionately high CO_2 outgassing may be explained by the abundant amount of Podzols for the Negro basin. Podzols slow the organic matter decomposition and increase the leaching of humus. Over the Amazon basin, floodplain soils are mainly Gleysols (Legros, 2007) which are characterized by high microbiological activity. CO_2 emissions from the river are mainly due to organic matter respiration as well as exports from the wetland system. In wetlands, root respiration and microbial activities are a major source of CO_2 emissions (Abril et al., 2014). Ultimately CO_2 outgassed from the Amazon River is about $145 \pm 40 \text{ TgC yr}^{-1}$ (Rasera et al., 2008) and peaks at 470 TgC yr^{-1} when extrapolated to the whole basin (Richey et al., 2002). In regards to the carbon budget, some studies show that the Amazon basin is more or less in balance and even acts as a small sink of carbon at the amount of 1 GtC yr^{-1} (Lloyd et al., 2007).

Remote sensing has emerged as a major tool for GHG quantification, either via assimilation into physically based models (Engelen et al., 2009) or as a direct observation

(Bréon and Ciais, 2010). For wetlands, the monitoring of water extents is crucial for the denitrification processes. Water surface monitoring has been carried out with a variety of spectral bands (Martinez and Le Toan, 2007; Pekel et al., 2016; Birkett et al., 2002) in active and passive remote sensing. Recently L-band microwave remote sensing showed advanced capabilities to monitor water surfaces in tropical environments because of all-weather capabilities, providing a soil signal under vegetation (Parrens et al., 2017).

This study aims to deliver an enhanced understanding and quantification of the denitrification process over the Amazonian wetlands with their associated fluxes of N_2O and CO_2 using modelling and microwave remote sensing. We constrained and adapted a denitrification process-based set of equations by L-band microwave water surface extents from the Soil Moisture and Ocean Salinity (SMOS) satellite and a priori in situ information. The specific objectives of the study are to highlight the main key factors controlling the denitrification and to identify the hot spots and hot moments of denitrification over wetlands. A hot spot represents an area that shows disproportionately high reaction rates relative to the surrounding, and a hot moment corresponds to a short period of time with disproportionately high reaction rates relative to longer intervening time periods (McClain et al., 2003).

2 Materials and methods

2.1 Study area

The Amazon basin (Fig. 1) is the world's largest drainage basin with an area of $5.50 \times 10^6 \text{ km}^2$ and an average water discharge of $208\,000 \text{ m}^3 \text{ s}^{-1}$ (Callode et al., 2010) representing 20 % of all surface fresh water transported to the ocean. The watershed spans Bolivia, Colombia, Ecuador, French Guiana, Peru, Suriname and Guyana, and 68 % of the basin pertains to Brazil.

Devol et al. (1995) described the hydrology of the main stream as the aggregation of the water originating from Andean regions, from the main tributaries and from “local sources” corresponding to smaller streams draining local lowlands. The contribution of each water body differs in time. For example from November to May the contribution of Andean waters reaches 60 % and declines during the dry season to 30 %. Wetlands are essential in the watershed functioning: 30 % of the Amazon discharge has once passed through the floodplain distributed along a 2010 km reach between São Paulo de Olivença and Óbidos (Richey et al., 1990).

The Amazon basin contains several floodplains (FPs). Here we consider three main floodplains: the Branco FP in the northern part, the Madeira FP in the southern part, and the floodplain between Óbidos and Manaus which is called the Óbidos–Manaus floodplain (in the following O–M FP). The O–M FP covers an area of $2.50 \times 10^5 \text{ km}^2$, whereas

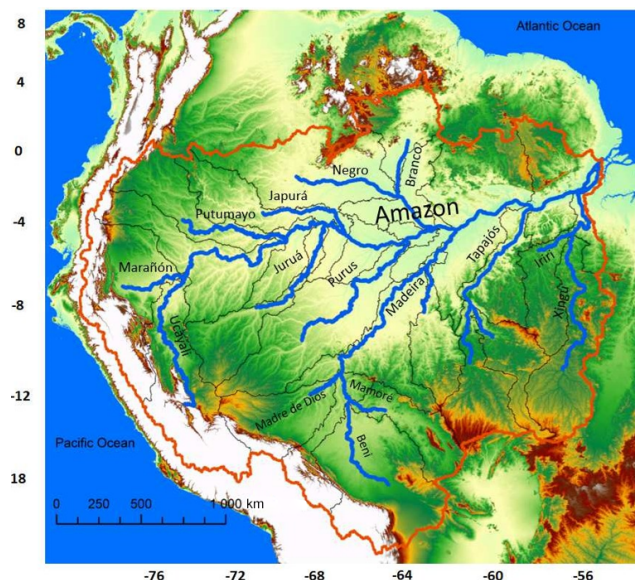


Figure 1. The Amazon River basin and its main tributaries mapped over the SRTM (Shuttle Radar Topography Mission – 500 m) digital elevation model.

the Madeira FP covers $3.70 \times 10^5 \text{ km}^2$. The Branco FP is the widest of the three floodplains with a covered area of $6.70 \times 10^5 \text{ km}^2$.

2.2 Materials

2.2.1 In situ data from the HYBAM Observatory

In situ data were obtained from the Hidro-geoquímica da Bacia Amazônica (HYBAM) long-term monitoring network that has maintained, in collaboration with the national stakeholders and local universities, 13 gauging stations in the Amazon catchment basin since 2003. For the Brazilian part of the basin, a network of eight local stations is maintained by the French Research Institute for Development (IRD) and the Federal University of Amazonas (UFAM). Geochemical, sedimentary and hydrological data are available freely at <https://www.so-hybam.org> (last access: 25 May 2018) for each gauging station. River discharge records are available daily, while geochemical data, including dissolved organic carbon (DOC), are available monthly. In our study, we extracted both the daily river discharges and the monthly DOC concentrations.

2.2.2 Water surface extents from L-band microwave radiometry

The soil water fraction (SWAF) retrieved from L-band microwave radiometry is used to determine the open water surfaces (Parrens et al., 2017). The SWAF is obtained using a contextual model on the SMOS angle-binned brightness temperatures (MIRCLF3TA) data (Al Bitar et al., 2017). SMOS

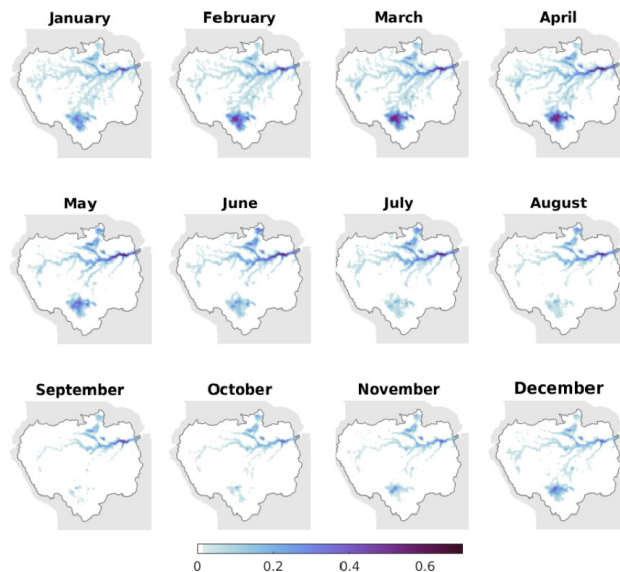


Figure 2. Monthly averages from 2011 to 2015 of the SWAF surface water fractions over the Amazon basin based on vertical polarization brightness temperatures (TB V) at 32.5° incidence angle acquired by the SMOS satellite.

was launched in November 2009 by the European Space Agency (ESA) and is the first satellite dedicated to map soil moisture. SMOS is a passive microwave 2-D interferometric radiometer operating in the L-band (1.413 GHz, 21 cm wavelength; Kerr et al., 2010). SMOS orbits at a 757 km altitude and provides the brightness temperature (TB) emitted from Earth over a range of incidence angles (0 to 55°) with a spatial resolution of 35 to 50 km. Parrens et al. (2017) showed the capability of SMOS to retrieve the water fraction under dense forests over the Amazon basin. One of the main upsides of SMOS is its sensitivity to the soil signal under vegetation in all-weather conditions thanks to the L-band frequency. The SWAF data were averaged each month over the sampling period (2011–2015) within the Amazon basin. The SMOS satellite observes the Earth surface at full polarization (horizontal – H, vertical – V and cross polarization – HV) at multi-incidence angles. In this paper, the SWAF product was generated from the SMOS TB data at 32.5° and V polarization. Figure 2 outlines the common hydrological patterns observed in the Amazon basin as well as the dynamic of the inundations for the different floodplains. The contrasted seasonal peaks in flooded areas between the northern and southern floodplains are well depicted.

2.3 Methods

2.3.1 Assessing denitrification and emissions

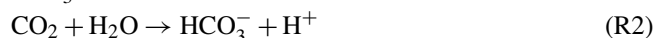
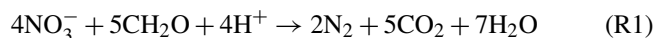
In this study, we modified the denitrification rate proposed by Peyrard et al. (2010) to fit tropical wetland conditions. Denitrification is the consumption of DOC, particulate organic

carbon (POC) and nitrate (NO_3^-) in the soil. This process is limited by oxygen (O_2) and ammonium (NH_4^+) availability. Denitrification occurs during flood events when the soil has low O_2 concentrations; thus O_2 concentration is not a limiting factor (Dodla et al., 2008). Furthermore, as there is only one long flood pulse in the Amazon watershed, we consider that all the NH_4^+ is processed into NO_3^- between two consecutive floods. We also consider that NH_4^+ is not a limiting factor. The fact that NO_3^- stocks are reconstituted by nitrification under aerobic conditions, e.g. when soils are no longer flooded, is a reasonable assumption in the case of the Amazon basin and more particularly for the wetland parts as shown by Sánchez-Pérez and Trémolières (2003) on the upper Rhine floodplain. In another work, on the groundwater of the alluvial floodplain of the Garonne, Iribar et al. (2015) showed that denitrification is the main process that produces N_2 and quantified the nosZ involved in heterotrophic denitrification. Besides, many studies consider denitrification as a combined consumption of NO_3^- and carbon (Scofield et al., 2016; Dodla et al., 2008; Goldman et al., 2017). Taking into consideration the above statements, the denitrification rate is expressed as

$$R_{\text{NO}_3} = -0.8 \cdot \alpha \cdot \left(\rho \cdot \frac{1 - \phi}{\phi} \cdot k_{\text{POC}} \cdot [\text{POC}] \cdot \frac{10^6}{M_{\text{C}}} + k_{\text{DOC}} \cdot [\text{DOC}] \right) \cdot \frac{[\text{NO}_3^-]}{[k_{\text{NO}_3} + \text{NO}_3^-]}, \quad (1)$$

where R_{NO_3} is the denitrification rate ($\mu\text{mol L}^{-1} \text{d}^{-1}$), $0.8 \cdot \alpha$ represents the stoichiometric proportion of NO_3^- consumed in denitrification compared to the organic matter used with $\alpha = 5$ as mentioned in Peyrard et al. (2010), ρ is the dry sediment density (kg dm^{-3}), ϕ is the sediment porosity, k_{POC} is the mineralization rate constant of POC (d^{-1}), POC refers to the POC in the soil and the aquifer sediment (%), M_{C} is the carbon molar mass (g mol^{-1}), DOC refers to the DOC in the aquifer water ($\mu\text{mol L}^{-1}$), k_{DOC} is the mineralization rate constant of DOC (d^{-1}), k_{NO_3} is the half-saturation constant for NO_3^- limitation ($\mu\text{mol L}^{-1}$), and NO_3^- is the nitrate concentration in the aquifer ($\mu\text{mol L}^{-1}$).

The estimation of CO_2 emissions is based on the denitrification equation where gaseous CO_2 is formed. We consider that neither NO_3^- nor organic matter is a limiting factor for the reaction which is considered total (Reaction R1; de Freitas et al., 2001). Abril and Frankignoulle (2001) showed that denitrification tends to raise the alkalinity. In order to take this phenomenon into account, the formation of HCO_3^- from dissolved CO_2 (Reaction R2) was coupled to the denitrification (Reaction R1).



Overall, in this study, denitrification was modelled using



The equation of the chemical reaction of denitrification (Reaction R3) is used to determine the generated amount of CO_2 by relating it to the amount of NO_3^- denitrified. Finally, N_2O production is indirectly estimated as a result of N_2 formation. Production of N_2O from N_2 during denitrification commonly ranges from a factor of 0.05 to 0.2 (Pérez et al., 2000). Nevertheless, with no precise field measurements an average $\text{N}_2\text{O}/\text{N}_2$ ratio of 0.1 (Weier et al., 1992) was applied in the study.

2.3.2 Parametrization of dissolved and particulate organic carbon and nitrate concentrations

The model's parameters for the denitrification are taken from reference studies and in situ measurements. The sediment porosity ϕ was set to 25%. It is computed based on the soil texture from the Food and Agriculture Organization (FAO) database at 11 km resolution. The porosity is averaged over the computation nodes ($25 \text{ km} \times 25 \text{ km}$) using a bilinear interpolation. k_{POC} , k_{DOC} and k_{NO_3} were set to $1.6 \times 10^{-7} \text{ d}^{-1}$, $8.0 \times 10^{-3} \text{ d}^{-1}$ and $30 \mu\text{mol L}^{-1}$ respectively. They are adapted from Sun et al. (2017), who performed a study of denitrification over the Garonne catchment (temperate anthropogenic watershed). To our knowledge, these parameters were never measured over the Amazon basin and the values we used are the only published estimates that we have. According to the studies performed by Moreira-Turcq et al. (2013), the POC concentration was considered constant over the whole watershed and for the entire period of the simulation (2011–2015) at 10%.

The daily discharge was extracted from the gauging stations used in the study (Fig. 3) from the HYBAM database (1983–2012). For each station, we calculated the mean monthly discharge from the daily observations. In terms of discharge, the marked seasonality of the Amazonian streams was demonstrated by prior studies (Paiva et al., 2013). For the DOC concentrations, we extracted the monthly measurements for the same stations over the same period. As the SWAF's period (2011–2015) and the DOC measurements are not concomitant, we calculated a mean average monthly DOC concentration for each station. When the information of DOC concentration was not available, our dataset was gap-filled using a linear relationship between DOC concentration and discharge (Ludwig et al., 1996), based on the discharge marked seasonality of the Amazonian streams. Finally, we extended the calculated values to the associated main sub-basin of the gauging station.

NO_3^- concentrations were calculated for every type of soil given by the FAO's classification in the upper 30 cm layer (Fig. 3). Batjes and Dijkshoorn (1999) drew a complete description of the total nitrogen content of the soils of the Amazon region. Evaluating NO_3^- in the upper layer of the soils was executed adapting the mineralization rate which is based on the average temperature of the region and the proportion of both clay and limestone. For the most biologically active

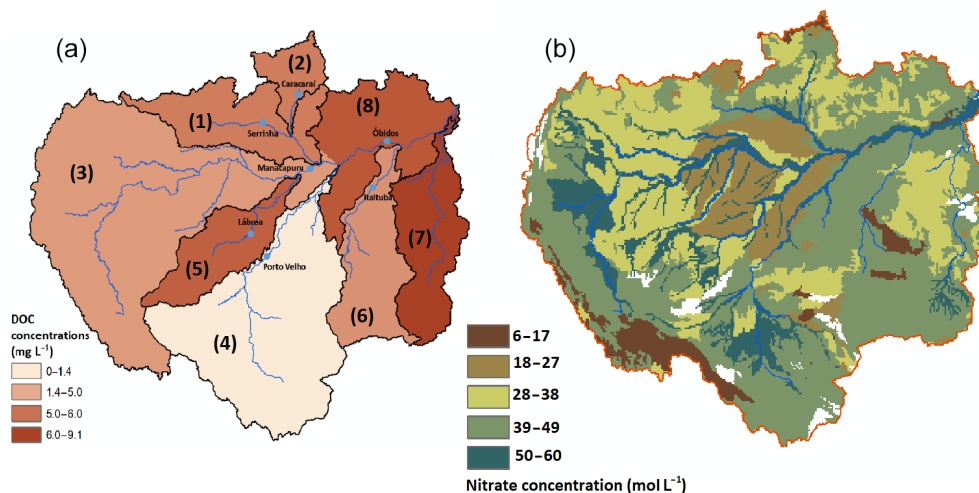


Figure 3. Map of the spatial inputs of the denitrification model. DOC contents (mg L^{-1}) mapped over each sub-basin of the main streams (January) with local observation gauging stations in blue circles (a). The Amazon watershed is divided into eight major sub-basins: (1) the Negro basin, (2) the Branco basin, (3) the Solimões River and its tributaries, (4) the Madeira basin, (5) the Purus basin, (6) the Tapajós basin, (7) the Xingu basin and (8) the section between Manaus and the mouth of the Amazon River. NO_3^- contents (mol L^{-1}) of the watershed over FAO's types of soil (b).

soils, such as Gleysols and Fluvisols, the mineralization rate was set at up to 7% of the organic nitrogen amount, which is the maximum observed value in the region. On the contrary, Regosols are biologically less active soils with mineralization rates hardly reaching 2% (Legros, 2007; Sumner, 1999). Finally, we determined the NO_3^- concentrations by combining the NO_3^- content in each type of soil with the water storage capacity for each type of soil, retrieved from the FAO soil database. NO_3^- concentrations were considered constant over the period. On the one hand, as the Amazon is one of the most active regions of the world (Legros, 2007) in terms of the microbial soil dynamic, during non-flooding periods, mineralization of nitrogen was sufficient to compensate for NO_3^- loss by plant assimilation and leaching. On the other hand, Sánchez-Pérez et al. (1999) showed that when denitrification is active during flood events, the NO_3^- pool of wetlands is provided and sustained by NO_3^- content coming from streams, in the case of the forested Rhine floodplain.

2.3.3 Denitrification computation

The methodology focuses on modelling the denitrification process that occurs in the first 30 cm of water-saturated soils in wetlands. Thereby, only the NO_3^- included in that layer were considered to undergo denitrification. NO_3^- brought by streams is supposed not to modify significantly the amount of NO_3^- contained in the soil solution. Indeed, the concentration of NO_3^- in the river is negligible compared to the concentration in riverine aquifers (Sánchez-Pérez et al., 2003). We consider that the DOC in the soil is directly brought by streams, so the amount of DOC included in soils is set up to the values of the streams. Most of the organic carbon is trans-

ported from alluvial sediments or brought by streams during flooding events (Peter et al., 2012). Because of the supersaturation of $p\text{CO}_2$ in groundwater (Davidson et al., 2010), we consider that the gases produced during denitrification are entirely emitted to the atmosphere. Overall, denitrification was calculated as

$$D_{\text{NO}_3} = R_{\text{NO}_3} \cdot \text{SWAF} \cdot Q_{\text{wa}}, \quad (2)$$

where D_{NO_3} is the net denitrification in moles per month, R_{NO_3} is the denitrification rate in moles per month per litre, SWAF is the fraction of land covered with open waters and Q_{wa} is the water storage capacity for each type of soil (L) retrieved from the FAO soil database. In summary, the model requires the inputs and parameters for (1) the NO_3^- concentration for each type of soil (mol L^{-1}); (2) the DOC concentrations of the streams that overflow, extended to the associated sub-basin; and (3) the extent of inundated surfaces. The model simulations were applied over the Equal-Area Scalable Earth Grid version 2 (EASEv2) nodes at daily scale from 1 January 2011 to 31 December 2015, and monthly maps were then generated. Note that in order to assess the denitrification only occurring in wetlands, the minimum SWAF value recorded during the period (2011–2015) is subtracted to each month simulation, as it accounts as a residual artefact of streams.

3 Results

3.1 Spatial and temporal patterns of denitrification over the Amazon basin

Denitrification and emissions of CO₂ and N₂O are simulated for each month from 2011 to 2015. Figure 4 shows the yearly average maps of denitrification and CO₂ and N₂O emissions over the Amazon basin. The three major hot spots which correspond to the major floodplains of the Amazon basin are identified.

Denitrification time series over the entire Amazon basin (Fig. 5) show that the denitrification process leads to similar temporal patterns of CO₂ and N₂O emissions at the basin scale. From November to March the denitrification and the emissions become active with the increase in NO₃⁻ denitrified in the basin. During the first months, until December, the activation is slow and mild. It then increases in the following months and peaks in March at 1.16×10^9 kg of N-NO₃⁻ denitrified, 2.15×10^8 kg of C-CO₂ and 1.00×10^8 kg of N-N₂O. Between March and June, the denitrification and the emissions are steady and fluctuate respectively around 9.51×10^8 kg of N-NO₃⁻ denitrified, 2.04×10^8 kg of C-CO₂ and 9.51×10^7 kg of N-N₂O. Finally, it is observed from June to October that the processes inactivate at a slower rate (−33 %) than activation. Subsequently, the decreasing trend shifts and tops in August. Values registered in September are lower than in August, and yet in the years 2011, 2012 and 2015, these were similar. The decreasing trend eventually reaches a minimum peak in November at 1.96×10^8 kg of N-NO₃⁻ denitrified, 4.20×10^7 kg of C-CO₂ and 1.96×10^7 kg of N-N₂O.

The same pattern of denitrification repeats every year during the period of the study (2011–2015). We find that the denitrification process can be separated into three phases: first, an activation phase that is triggered by the increase in the flooded areas and the increase in the microbiological activities; second, a stabilization phase which corresponds to a maximum denitrification rate and a peak in microbiological activities; and third, a deactivation phase which corresponds to the retreat of the inundation which also reduced the microbiological processes of denitrification. Note that this conclusion is not independent of the selected model implementation and associated assumptions. Additionally, it shows more precisely three hot moments in March, June and August of each year. The first two hot moments, in March and June, are maximum area peaks. During these months, despite observing a low activity over the watershed (below 8.70×10^5 kg of N-NO₃⁻ denitrified per pixel), the extent of surfaces undergoing denitrification is the highest. On the contrary, the August hot moment is mainly due to a particularly strong denitrification between Óbidos and Manaus with peaks of 6.16 and 7.20×10^6 kg of N-NO₃⁻ denitrified. CO₂ emissions average 1.75×10^8 kg of C-CO₂ per month over the basin. N₂O emis-

sions fluctuate around 6.52×10^7 kg of N-N₂O per month from the watershed.

3.2 Denitrification and CO₂ and N₂O emissions – focus on the three main Amazon floodplains

The temporal patterns of the processes over the entire basin and throughout the whole period are unique in each floodplain. In fact, the three floodplains do not become active or inactive at the same time and do not reach their maximum potential activity at the same moment either. Figure 6 shows the monthly behaviour of N₂O emissions over the basin and for each floodplain together. The denitrification and the CO₂ and N₂O emissions follow the same patterns but in different proportions. The results of the model provide the following inferences:

- The O–M FP follows the same pattern as the watershed trend and is mainly active between March and June, but it never becomes totally inactive during the October–December period. It undergoes an average denitrification of 2.20×10^8 kg of N-NO₃⁻ and emissions of 4.78×10^7 kg of C-CO₂ and 2.23×10^7 kg of N-N₂O.
- The Madeira FP follows the same pattern as the O–M FP. However, it becomes active in October and reaches on average its maximum emissions in March with 2.93×10^8 kg of N-NO₃⁻ denitrified, 6.28×10^7 kg of C-CO₂ and 2.93×10^7 kg of N-N₂O. The intensity of the processes decreases rapidly afterwards. A maximum peak is usually observed afterwards in June with 3.03×10^8 kg of NO₃⁻ denitrified, 6.49×10^7 kg of C-CO₂ and 3.03×10^7 kg of N-N₂O. The Madeira FP denitrification is almost inactive between July and October with emissions below 5.17×10^7 kg of N-NO₃⁻ denitrified, 1.11×10^7 kg of C-CO₂ and 5.17×10^6 kg of N-N₂O.
- The Branco FP emissions are the least constant of the three floodplains even though a general pattern can be observed. The floodplain becomes active in January, but the activation is slow and the denitrification is low until April (less than 1.70×10^8 kg of N-NO₃⁻) as are the emissions (4.00×10^7 kg of C-CO₂ and 1.70×10^7 kg of N-N₂O). Afterwards, the processes' intensity increases and peaks in May (2011, 2012, 2013), June (2014 and 2015) and September 2013 at 4.06×10^8 kg of N-NO₃⁻, 8.71×10^7 kg of C-CO₂ and 4.06×10^7 kg of N-N₂O. The floodplain is the least active from October to February–March with denitrification and emissions barely reaching 1.20×10^8 kg of N-NO₃⁻ and 2.50×10^7 kg of C-CO₂ and 1.20×10^7 kg of N-N₂O respectively.

The detailed functioning of each floodplain explains the general pattern observed for the processes. The O–M FP drives the general trends of the total denitrification, CO₂

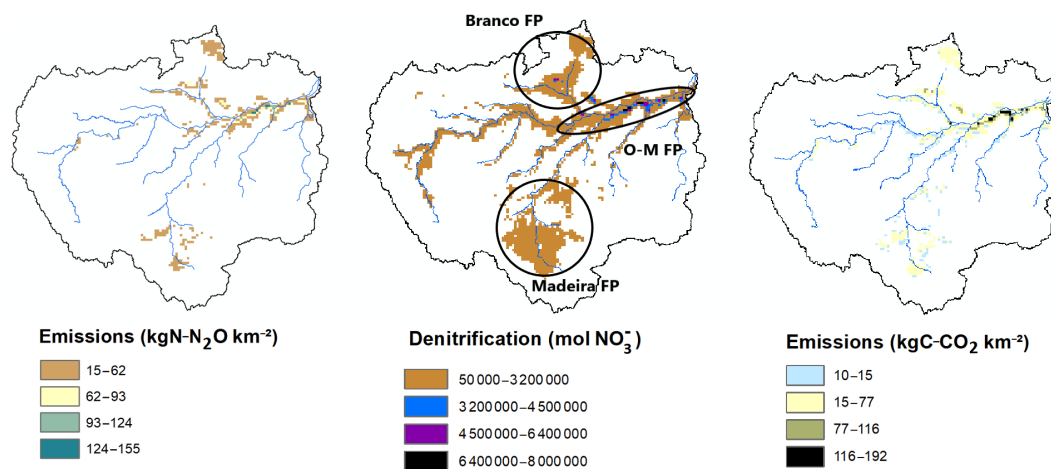


Figure 4. Spatial representation of N₂O emissions (kgN-N₂O km⁻²), denitrification (molNO₃⁻) and CO₂ emissions (kgC-CO₂ km⁻²) summed over the year 2013. The locations of the main floodplains (hot spots) are outlined in the denitrification map.

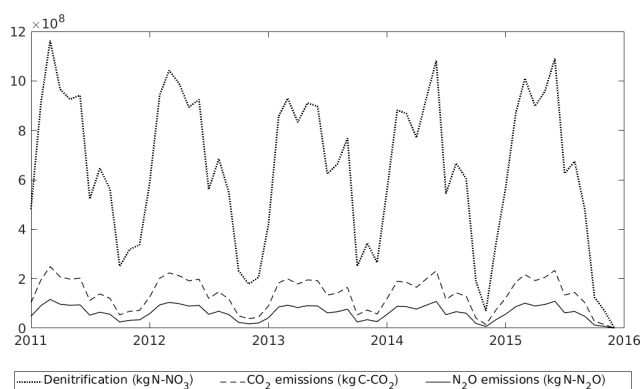


Figure 5. Monthly denitrification (kgN-NO₃) and CO₂ (kgC-CO₂) and N₂O (kgN-N₂O) emissions over the entire Amazon watershed for the period 2011–2015.

and N₂O emissions of the watershed, and the three different phases: activation, stabilization and deactivation. The March peak is mainly due to the Madeira FP reaching a maximum of activity. The June peak is also attributed to the Madeira floodplain for the years 2011, 2012 and 2013. The peak in 2014 is due to the combined contributions of the Branco FP and the Madeira FP topping activities, whereas in 2015 only the Branco FP contributes. The August peak is again due to the rising of the O–M FP and the Branco FP activity.

Figure 7 shows the monthly contribution of each floodplain to the total denitrification as well as the average monthly denitrification over the basin for the period 2011–2015. Overall, the three floodplains contribute to 80 % of the basin denitrification. From January to March it is mainly supported by the O–M FP and the Madeira FP, whereas from July to November it is due to the O–M FP and the Branco FP activity. In April, May, June and December the involvement of the floodplains is similar. We ran an analysis of variance

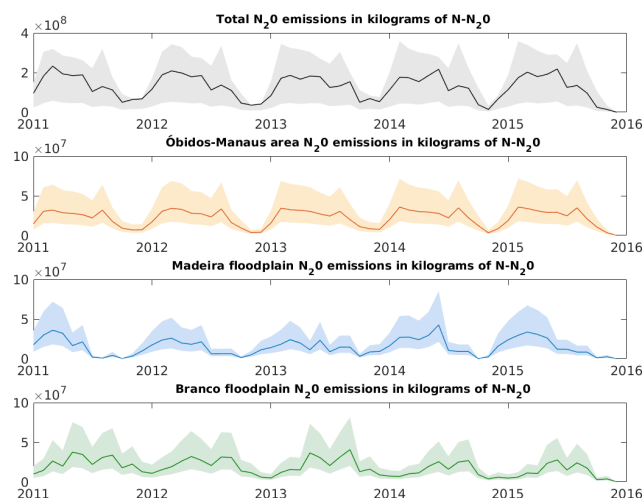


Figure 6. Monthly time series of N₂O emissions over the basin (black), for the O–M FP (orange), for the Madeira FP (blue) and for the Branco FP (green) over the period (2011–2015). The lines represent the emissions for a N₂O/N₂ ratio of 0.1, whereas the coloured areas refer to the potential range of the ratio (0.05–0.2). Denitrification and CO₂ emissions follow the same patterns but with a scale factor of times 10 for denitrification and times 2 for CO₂.

(ANOVA) and a post hoc analysis to determine the contribution of each floodplain to the basin denitrification. The results showed two different groups (p value = 1.35×10^{-8} , $\alpha = 5\%$). The first group is constituted by the O–M FP which is the main source of denitrification for the basin and provides 38 % of the processes on average. The second group is constituted by the Branco FP and the Madeira FP. They contribute similarly to the processes (on average 25 % and 21 % respectively). The same conclusions can be made for the CO₂ and N₂O emissions.

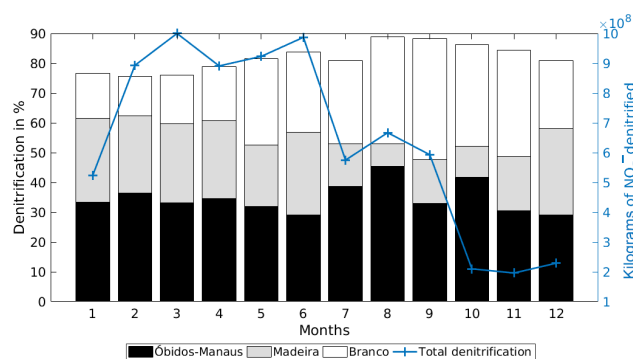


Figure 7. Average monthly contribution of each floodplain – the O–M FP (black), the Madeira FP (grey) and Branco FP (white) – to the Amazon total denitrification. The residual contribution to make up 100 % is associated with the other wetlands in the basin. The blue line represents the average monthly denitrification for the period of the study, and it shows the main trend observed over the Amazonian watershed.

3.3 Greenhouse gases emissions from the Amazonian wetlands

Table 1 depicts the yearly emissions of CO₂ and N₂O over the Amazon basin and the three main floodplains. Emissions of CO₂ from denitrification are twice as high as N₂O emissions over the basin. The yearly emissions of CO₂ from 2011 to 2015 over the Amazon basin show significant low inter-annual differences (Kruskal–Wallis p value = 0.9929). The same conclusion is drawn for the yearly N₂O emissions. On average, flooded areas emit 2.20×10^9 kgC-CO₂ per year and 1.03×10^9 kgN-N₂O per year by denitrification from the natural NO₃⁻ pool of the watershed.

During that period, the O–M FP is the floodplain which contributes the most to the emissions for the two gases. The dynamics of the Madeira FP and the Branco FP changed in 2014. Indeed from 2011 to 2013, the Branco FP roughly emitted twice as many gases as the Madeira FP. This trend shifted in 2014 with the involvement of the Madeira FP becoming more important in terms of emissions than the Branco FP. On a yearly basis, the whole Amazon basin undergoes a denitrification of about 1.03×10^{10} kgN ha⁻¹ yr⁻¹.

3.4 Denitrification and trace gas emissions anomalies

During the period of the study, major meteorological events were recorded over the Amazon basin. On the one hand, the year 2011 was a year influenced by La Niña (Moura et al., 2019). La Niña periods lead to wetter weather conditions in South America. From October 2013 to March 2014, heavy rainfall was documented in the Madeira region and caused extreme flooding in this region and nearby Óbidos. On the other hand, September 2015 marked the beginning of an El Niño episode. In South America and the Amazon, El Niño produces drier weather conditions.

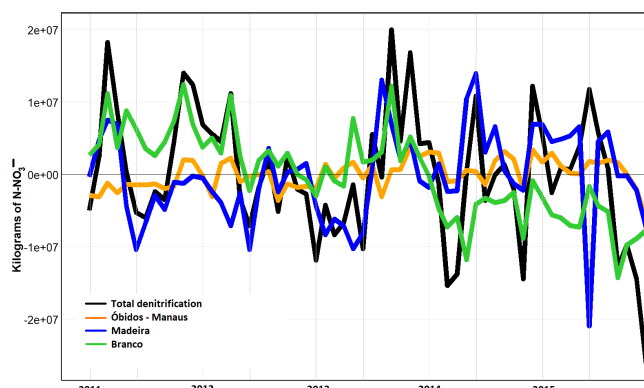


Figure 8. Monthly anomalies at the basin and main floodplains scale for denitrification throughout the period (2011–2015).

Figure 8 shows the monthly anomalies of denitrification observed over the Amazon watershed from 2011 to 2015. Anomalies were determined by first calculating the mean value for each month across the period 2011–2015. This mean value was then subtracted from each corresponding month in the series. Positive anomalies show an intense denitrification, whereas negative anomalies show a denitrification lower than the average. Examining the anomalies of the watershed and the floodplains show that during the La Niña year and the heavy precipitation period, most of the anomalies are positive especially for the first months (66 % and 66 % for the basin denitrification, 16 % and 83 % for the O–M FP, 25 % and 33 % for the Madeira FP, and 100 % and 50 % for the Branco FP respectively). During the El Niño episode, all the anomalies are negative. Nevertheless, El Niño is the only meteorological event that has a significant effect on the processes (p value = 4.40×10^{-3}). Moreover it impacts the three floodplains (p value = 3.43×10^{-4}). Months undergoing the El Niño episode show a reduction of 27.7 % from the average values.

Extreme events do not have a consistent impact on the whole basin. Table 2 sums up the spatial denitrification for the Amazon basin and the three floodplains at a yearly scale. Extreme meteorological events do not impact the denitrification and trace gas emissions at the basin scale. The average yearly denitrification rates for the whole basin, the O–M FP and the Madeira FP show no clear trend between 2011 and 2015. For the Branco FP, a decreasing trend was identified during the study period. From 2011 to 2015 the simulated average yearly denitrification for the Branco FP drops by a factor of 2.

4 Discussion

4.1 Determining key factors of the denitrification

A sensitivity analysis of the parameters of the denitrification Eq. (1) was performed. k_{POC} can range from 0.15×10^{-6}

Table 1. Average yearly CO₂ emissions (kgC-CO₂), N₂O emissions (kgN-N₂O) and N₂ emissions (kgN) for the Amazon basin and the three main floodplains. The values are calculated for a N₂O/N₂ ratio of 0.1.

Wetland	Area (ha)	CO ₂ (kgC)	N ₂ O (kgN)	N ₂ (kgN)
Amazon basin	5.7 × 10 ⁸	2.20 × 10 ⁹ ± 2.75 × 10 ⁸	1.03 × 10 ⁹ ± 2.57 × 10 ⁷	9.26 × 10 ⁹ ± 2.57 × 10 ⁸
Óbidos–Manaus FP	2.5 × 10 ⁷	7.63 × 10 ⁸ ± 9.94 × 10 ⁷	3.56 × 10 ⁸ ± 9.28 × 10 ⁶	3.21 × 10 ⁹ ± 9.28 × 10 ⁷
Madeira FP	3.7 × 10 ⁷	4.79 × 10 ⁸ ± 2.65 × 10 ⁸	2.24 × 10 ⁸ ± 2.47 × 10 ⁷	2.01 × 10 ⁹ ± 2.47 × 10 ⁸
Branco FP	6.78 × 10 ⁷	5.57 × 10 ⁸ ± 6.17 × 10 ⁸	2.6 × 10 ⁸ ± 5.75 × 10 ⁷	2.34 × 10 ⁹ ± 5.75 × 10 ⁸

Table 2. Yearly denitrification (kgN ha⁻¹ yr⁻¹) for the whole basin and the three major floodplains from 2011 to 2015.

Denitrification (kgN ha ⁻¹ yr ⁻¹)	2011	2012	2013	2014	2015
Basin	18.4	18.0	17.9	17.5	17.2
O–M FP	137.3	140.6	144.9	146.9	142.7
Madeira FP	57.4	56.3	53.3	67.4	67.7
Branco FP	48.5	43.0	43.0	31.4	28.3

to 1.10×10^{-4} which leads to a yearly denitrification 46 % lower and 18 % higher than the initial values respectively. k_{DOC} range from 1.00×10^{-4} to 1.22 which leads to values of denitrification 94 % lower and 130 000 % higher respectively. It follows that for the Amazon basin k_{DOC} is evaluated as being more sensitive than k_{POC} . Also, the NO₃⁻ related part of the denitrification equation was analysed. NO₃⁻ is relatively abundant in the watershed’s soils, and it is noticeable that k_{NO_3} is negligible compared to NO₃⁻ though $\lim_{NO_3^- \rightarrow \infty} \frac{[NO_3^-]}{[k_{NO_3} + NO_3^-]} = 1$. NO₃⁻ is a non-limiting factor of denitrification for the Amazon basin. Overall, the denitrification equation currently depends on four variables: POC, DOC, NO₃⁻ and SWAF. Overall, the main driving variables of the denitrification model are SWAF and DOC.

Table 3 depicts for the O–M FP, the Madeira FP and the Branco FP the effective denitrification over the 2011–2015 period in kilograms of nitrogen per hectare per year as well as the average and standard deviation values of DOC concentration in milligrams per litre and the SWAF index. The denitrification values show that all three floodplains are particularly active systems in terms of processing organic matter and NO₃⁻. The O–M FP is an active floodplain in terms of denitrification potential with an average annual intensity of 142.5 kgN ha⁻¹ yr⁻¹. The DOC shows that the Branco FP is the highest floodplain in terms of DOC concentration with an average of 8.93 ± 2.87 mg L⁻¹, followed by the O–M FP with 5.65 ± 2.45 mg L⁻¹ and the Madeira FP with 2.26 ± 2.45 mg L⁻¹. Similarly to the DOC, the average and standard deviation of the SWAF values were extracted from the daily observations over the 2011–2015 period. The ranked order of the floodplains for the SWAF component is similar to the denitrification one. This result strengthens the

importance of Earth-observation-based (EO-based) monitoring of water bodies for determining inundated-surface patterns and intensities and their impact on biochemical processes. Ultimately, the differences in denitrification intensity observed for the three floodplains are the combined effect of the variations in the DOC concentrations and the SWAF. As a matter of fact, DOC determines the average maximum denitrification rate of a floodplain, whereas the SWAF value is the main driving factor of the model which reveals the actual denitrification. Overall, the denitrification rate (Eq. 1) should be considered as a combination of a potential rate function (provided by DOC and POC) and limitation functions provided by the peculiar environmental conditions.

4.2 Comparing to physically based models

The N₂O emissions at a large scale were compared to results of the N₂O Model Inter-comparison Project (NMIP) project (Tian et al., 2018) model, more particularly the Dynamic Land Ecosystem Model (DLEM; Xu et al., 2017), the Vegetation Integrative Simulator for Trace gases (VISIT) model (Ito and Inatomi, 2012) and the Organising Carbon and Hydrology In Dynamic Ecosystems – Carbon Nitrogen (ORCHIDEE-CN) model (Zaehle and Friend, 2010). These models consider the N₂O emissions from nitrification and denitrification, while in our case only denitrification during flooding is considered. In our case, k_{POC} and k_{DOC} are the mineralization rate parameters. They describe the kinetic processing of organic matter into POC and DOC respectively. The organic matter processing is performed by microbial communities. Therefore, environmental conditions such as temperature and soil pH have a direct influence on bacterial activity and turnover. The cumulated impact of temperature, soil pH and microorganism activity is accounted for indirectly in our approach through the parameters k_{POC} and k_{DOC} described in Eq. (1) (Peyrard et al., 2010; Sun et al., 2017).

During the period 2011–2015 those models evaluated emissions of N₂O from the Amazon basin at about 0.14 gN m⁻² yr⁻¹. Our model simulates emissions of N₂O at roughly $0.18 \pm 4.4 \times 10^{-3}$ gN m⁻² yr⁻¹ over the basin. The peculiar emission of the 1.3×10^{11} m² wetlands system represents 0.81 ± 0.02 gN m⁻² yr⁻¹. We can observe that our model obtains a total higher estimation of the emissions of

Table 3. Overall denitrification ($\text{kgN ha}^{-1} \text{yr}^{-1}$) and mean and standard deviation of the SWAF and DOC (mg L^{-1}) values for the three floodplains.

Floodplain	Denitrification	DOC		SWAF	
		Mean	Standard deviation	Mean	Standard deviation
O–M FP	$142.5 \text{ kgN ha}^{-1} \text{yr}^{-1}$	5.65 mg L^{-1}	2.45 mg L^{-1}	3.3 %	0.12 %
Branco FP	$38.8 \text{ kgN ha}^{-1} \text{yr}^{-1}$	8.93 mg L^{-1}	2.87 mg L^{-1}	1.4 %	0.27 %
Madeira FP	$60.4 \text{ kgN ha}^{-1} \text{yr}^{-1}$	2.26 mg L^{-1}	2.45 mg L^{-1}	1.7 %	0.17 %

N_2O at a rate of 28 % than the other models with 80 % of these emissions ($0.14 \text{ gN m}^{-2} \text{yr}^{-1}$) originating from the three main floodplains: the O–M FP, the Madeira FP and the Branco FP. In terms of input data, our model as well as DLEM, VISIT and O-CN uses climate data, soil types and inundated fractions or surfaces. A divergent point is how the nitrogen pool is calculated. We consider it as being produced by the organic matter mineralization and a maximum nitrification, whereas the other models compute it from nitrogen deposition. Moreover, they also take natural vegetation, swamps delineation (O-CN) and land cover as input data, while we only focus on wetland types. These models assess N_2O emissions based on the processes of the nitrogen cycle such as denitrification. Our model apprehends denitrification as a function of carbon and nitrate contents (DOC, POC and NO_3^-) and inundated surfaces (SWAF). As a result, these models do not fully distinguish the alluvial floodplain from other lands (Xu et al., 2017) and underestimate its effects (Ito and Inatomi, 2012). Thus our results bring us to conclude that current physically based N_2O emissions models are likely to slightly underestimate the contribution of wetlands in the global budget.

4.3 Wetlands and integrated-ecosystem emissions

In this section, our model outputs for wetlands emissions are compared to local in situ measurements of the N_2O and CO_2 ecosystem emissions. Table 4 summarizes the different results from in situ measurements for N_2O and CO_2 and the closest simulation node from our simulation. We extracted the average simulated value of the period from the simulation node. When comparing the N_2O with in situ campaigns performed by Koschorreck (2005), Keller et al. (2005) and Liengaard et al. (2014) at the different locations, the wetlands emissions from our study are roughly lower by a factor of 10^2 than the integrated-ecosystem-observed emissions. This difference comes from different spatial and temporal scales for both the in situ measurements and our model. To decrease the variability, we extracted the maximal pixel value simulated during the period of the study. On average, in situ measurements return emissions of about $4.9 \times 10^7 \text{ gN km}^{-2} \text{yr}^{-1}$, while our highest simulation value estimated an emission of about $2.6 \pm 1.3 \times 10^7 \text{ gN km}^{-2} \text{yr}^{-1}$.

CO_2 emissions of local in situ measurements (Keller et al., 2005) as well as of broader measurements (Richey et al., 2002) are compared to our model's outputs. Our wetlands estimations are considerably lower (10^4) than the integrated-ecosystem observations. As expected, even though CO_2 emissions from wetland denitrification are about $2.16 \times 10^9 \text{ kgC-CO}_2 \text{yr}^{-1}$ over the Amazon basin, these emissions are negligible when compared to the full ecosystem carbon emissions (Cole et al., 2007; Davidson et al., 2010). Overall, CO_2 emissions from denitrification over the whole Amazon basin contribute with 0.01 % of the carbon emissions of the watershed. Most of the CO_2 emissions over the Amazon are attributed to processes such as organic matter respiration from biomass and a few contributions from wetlands denitrification. Vicari et al. (2011) showed that the change from wetlands into forested area can increase the carbon emissions drastically. In this context and in the light of the results obtained in this paper one can conclude that in the case of very dry natural events or intense anthropogenic changes in the land cover, the carbon budget of the once wetland areas and now non-inundated surfaces will greatly increase.

4.4 The Amazonian wetlands emissions versus tropical and temperate wetlands

We put in perspective the Amazonian wetlands emissions to a variety of wetland ecosystems such as the Congo basin, rice paddies of south-eastern Asia, and the Garonne (France) and the Rhine (Europe) rivers with each possessing peculiar features. The Congo basin can be considered, like the Amazon, a pristine ecosystem regarding agricultural nitrogen inputs. On the contrary, rice paddy regions are territories with intensive agricultural activities and high NO_3^- fertilization and undergo several flood events per year. Both the Congo basin and the rice paddy regions are part of the tropical region, like the Amazon basin. The N_2O emissions from the Amazon and the Congo basins are comparable. Our results for the Amazon and the ones exposed in Tian et al. (2018) for the Congo show emissions of $0.18 \text{ gN m}^{-2} \text{yr}^{-1}$. The two watersheds are pristine for agricultural nitrogen inputs and located toward the same latitudes, so relatively similar emissions of N_2O are expected. On the contrary, rice paddies shoot up with emissions of about $0.28 \text{ gN m}^{-2} \text{yr}^{-1}$.

Table 4. Comparison of the values estimated by our study and the literature for emissions of CO₂ (gC km⁻² yr⁻¹) and N₂O (gN km⁻² yr⁻¹).

Paper	Gas measured	Site	Ecosystem in situ obs.	Modelled wetlands
Koschorreck (2005)	N ₂ O	Manaus plateau	$5 \pm 7.5 \times 10^6$	$2.4 \pm 1.1 \times 10^4$
Keller et al. (2005)	N ₂ O	Santarém	$8.6 \pm 0.7 \times 10^6$	$5.2 \pm 0.9 \times 10^4$
Lienggaard et al. (2014)	N ₂ O	Solimões River	4.4×10^7	$5.7 \pm 2.8 \times 10^5$
Lienggaard et al. (2014)	N ₂ O	Rio Cupeá	8.3×10^7	$5.7 \pm 2.8 \times 10^5$
Lienggaard et al. (2014)	N ₂ O	Amazon River	–	$9.3 \pm 4.6 \times 10^5$
Lienggaard et al. (2014)	N ₂ O	Iagarapé de Paracuba	1.9×10^7	$1.1 \pm 0.6 \times 10^5$
Lienggaard et al. (2014)	N ₂ O	Tapajós	1.9×10^7	$1.5 \pm 0.7 \times 10^6$
Lienggaard et al. (2014)	N ₂ O	Mucajaí River	7.8×10^7	$2.1 \pm 1.1 \times 10^5$
Richey et al. (2002)	CO ₂	Amazon River wetlands	$6 \pm 0.3 \times 10^7$	$4.4 \pm 2.5 \times 10^3$
Keller et al. (2005)	CO ₂	Santarém	$5.7 \pm 0.6 \times 10^7$	$1.6 \pm 0.9 \times 10^3$

This is explained by the impacts of agricultural inputs and successive flooding on wetland ecosystems that increase the amount of greenhouse gas emitted. The Garonne and the Rhine catchments are in temperate regions under high agricultural pressures. The Garonne, one of the main fluvial systems in France, is 525 km long, draining a 55 000 km² area into the Atlantic Ocean. The large range of altitudes and slopes within the watershed leads to a diversity of hydrological behaviours. The typical alluvial plain starts from its middle section and is about 4 km wide. The riparian forest and poplar plantations cover the first 50–200 m from the riverbank, beyond which lies agricultural land that accounts for 75 % of the total area. The Rhine, one of the main fluvial systems in Germany, is 1233 km long, draining a 198 000 km² area from Switzerland to the North Sea. The average denitrification reaches $132.52 \pm 3.9 \text{ kgN ha}^{-1} \text{ yr}^{-1}$ (Sun et al., 2017) and $653 \text{ kgN ha}^{-1} \text{ yr}^{-1}$ (Sánchez-Perez et al., 1999) for the Garonne's and Rhine's floodplains respectively. The average rate of denitrification for the Amazon basin is $17.8 \pm 0.4 \text{ kgN ha}^{-1} \text{ yr}^{-1}$ which is far less than values observed in European catchments. As a comparison, the Ôbidos–Manaus floodplain (Table 2) denitrification potential is equivalent to the Garonne. Overall, the Amazon wetland ecosystem can be regarded as a not very active greenhouse-gas-emitting system compared to other ecosystems of the tropical region. Moreover, our results show that the O–M FP possesses the same denitrification potential as a NO₃⁻-polluted temperate ecosystem.

4.5 Limitations of the current approach

The findings of this study have to be seen in the light of some limitations. First, the sampling resolution of the input data can induce bias. The SWAF product tends to underestimate water surface extent variability and land cover identification due to the coarse resolution of 25 km × 25 km. Second, the use of uniform k_{POC} and k_{DOC} values limits the capabilities of the model to fully consider the impact of the spatial variability in both geophysical and biological variables. Third, an

average N₂O/N₂ ratio of 0.1 was set up for the study. It varies depending on several conditions such as soil properties, land cover and temperature. Thus a precise and spatial estimation of the ratio was not relevant due to the low resolution of our input data and the lack of in-field measurements. Fourth, as highlighted by the present study, the lack of in situ measurements of N₂O emissions over tropical wetlands specifically increases the uncertainties and equifinalities for the calibration of model parameters and validation. Fifth, considering the dynamics of the activation–stabilization–deactivation of the denitrification, they can be more precisely assessed if variables like water surface temperatures and water depth are added in the future. These variables can inform the speed at which the activation and deactivation of the microbiological process of denitrification are triggered. Future studies should concentrate on adding more remotely sensed geophysical variables at the adapted spatial resolution (Parrens et al., 2019), taking into account the fact that flooding actually sustains the different processes. Sixth, denitrification and dissimilatory nitrate reduction to ammonium (DNRA) are two natural processes for NO₃⁻ reduction. In their review, Rütting et al. (2011) stated that DNRA competition for NO₃⁻ should be considered for some ecosystems which do not include aquatic ecosystems. They added that more studies are needed for terrestrial aquatic ecosystems based on Burgin and Hamilton (2007). Tiedje et al. (1982) showed that under NO₃⁻-limiting and NO₃⁻ strongly reducing conditions, DNRA has the advantage over denitrification: Sotta et al. (2008) estimated the reduction of NO₃⁻ from DNRA at 12 %–50 % in lowland Brazilian forest but in non-flooded periods. In our case, NO₃⁻ is non-limiting, thus we do not need to take into account the impact of NO₃⁻ loss from DNRA. Moreover, since estimates of the DNRA direct contribution to N₂O emissions is about 1 % (Cole, 1988) and considering the uncertainty and errors linked to the modelling of denitrification in the wetlands of the whole Amazon basin the DNRA processes were not considered. Finally, in our study we focused solely on denitrification. In order to provide a complete nitrogen budget for the whole Amazon basin, future studies

will need to complexify the proposed methodology by integrating additional biogeochemical processes (DNRA, nitrification, etc.) and physically relative datasets (soil temperature, soil moisture, etc.) in order to extend the approach to non-flooded periods and other ecosystems.

5 Conclusions

The main objective of the study is to quantify and assess CO₂ and N₂O emissions over the Amazonian wetlands during flooding periods. To achieve these goals we design a data-based methodology that relies on modelling and remote-sensing products. It aims to estimate emissions linked to denitrification at a large scale. The model parametrization was justified by results from several published papers. It appears that denitrification mainly relies on DOC contents in the watershed. The study also contributes to better understanding of the functioning of the major floodplains of the Amazon basin and their respective involvement in the Amazon carbon and nitrogen budget. It transpires that the most active floodplain is the Óbidos–Manaus, which is responsible for the majority of the processes. Each floodplain possesses its own functioning that depends on rainfall and the hydrology of the floodplain's river. Overall, the results appear quite like those of other large-scale models, especially for N₂O emissions. CO₂ emissions from denitrification account for 0.01 % of the Amazon carbon budget and represent a fraction of 3.5×10^{-6} of the global CO₂ emissions (natural and anthropogenic). When we compare our simulated N₂O emissions from Amazonian wetlands to other estimations over the Amazon basin, we find that our estimations are higher (+28 %). For that reason, we emphasize the importance of distinguishing wetlands in nitrogen models as those areas are significant sources of N₂O emissions. Key factors of the denitrification for the Amazon basin were identified in the study. From our model design perspective, we find that the denitrification for the Amazon wetlands is driven first by the extent of the flooded areas, which constrain the process, and second by the DOC content in the soil solution, which determines the maximum denitrification potential. Future studies will concentrate on extending the current approach to other tropical basins – it is needless to say that local observations will be essential for the validation of such exercises – preferably over the same period of analysis. Data from future missions like Surface Water and Ocean Topography (SWOT) will deliver water heights over 21 d of global coverage, which will improve the results of such studies through the integration of surfaces and volume information.

Data availability. Data are available upon request to the corresponding author.

Author contributions. AAB, SS, MP, JMSP and JG conceived and designed the methodology and the algorithms. JG performed the analysis. JMM, GA and PMT provided the scientific expertise and corrections to the manuscript. JG and AAB wrote the first draft. MP made all the graphs. All authors wrote the final manuscript.

Competing interests. The authors declare that they have no conflict of interest.

Acknowledgements. The SWAF product was developed in the framework of the TOSCA SOLE and SWOT downstream programmes from CNES. We thank the HYBAM Observatory network for providing the data needed for this study. We thank the FUI (Fonds Unique Interministériel) HydroSIM project (2018–2021). We thank the reviewers for their comments and their help in improving our manuscript.

Financial support. This work was funded by l'Observatoire Midi-Pyrénées (Axe transversal cycle du Carbone, de l'Azote et gaz à effet de serre).

Review statement. This paper was edited by Carolin Löscher and reviewed by two anonymous referees.

References

- Abril, G. and Borges, A. V.: Ideas and perspectives: Carbon leaks from flooded land: do we need to replumb the inland water active pipe?, *Biogeosciences*, 16, 769–784, <https://doi.org/10.5194/bg-16-769-2019>, 2019.
- Abril, G. and Frankignoulle, M.: Nitrogen–alkalinity interactions in the highly polluted scheldt basin (belgium), *Water Res.*, 35, 844–850, [https://doi.org/10.1016/S0043-1354\(00\)00310-9](https://doi.org/10.1016/S0043-1354(00)00310-9), 2001.
- Abril, G., Martinez, J.-M., Artigas, L. F., Moreira-Turcq, P., Benedetti, M. F., Vidal, L., Meziane, T., Kim, J.-H., Bernardes, M. C., Savoye, N., Deborde, J., Souza, E. L., Alboric, P., Landim de Souza, M. F., and Roland, F.: Amazon River carbon dioxide outgassing fuelled by wetlands, *Nature*, 505, 395–398, <https://doi.org/10.1038/nature12797>, 2014.
- Al Bitar, A., Mialon, A., Kerr, Y. H., Cabot, F., Richaume, P., Jacqueline, E., Quesney, A., Mahmoodi, A., Tarot, S., Parrens, M., Al-Yaari, A., Pellarin, T., Rodriguez-Fernandez, N., and Wigneron, J.-P.: The global SMOS Level 3 daily soil moisture and brightness temperature maps, *Earth Syst. Sci. Data*, 9, 293–315, <https://doi.org/10.5194/essd-9-293-2017>, 2017.
- Batjes, N. H. and Dijkshoorn, J. A.: Carbon and nitrogen stocks in the soils of the Amazon Region, *Geoderma*, 89, 273–286, [https://doi.org/10.1016/S0016-7061\(98\)00086-X](https://doi.org/10.1016/S0016-7061(98)00086-X), 1999.
- Birkett, C. M., Mertes, L., Dunne, T., Costa, M., and Jasinski, M.: Surface water dynamics in the Amazon Basin: Application of satellite radar altimetry, *J. Geophys. Res.-Atmos.*, 107, LBA 26-1–LBA 26-21, <https://doi.org/10.1029/2001JD000609>, 2002.

- Borges, A. V., Abril, G., Darchambeau, F., Teodoru, C. R., Deborde, J., Vidal, L. O., Lambert, T., and Bouillon, S.: Divergent biophysical controls of aquatic CO₂ and CH₄ in the World's two largest rivers, *Sci. Rep.-UK*, 5, 15614, <https://doi.org/10.1038/srep15614>, 2015.
- Bréon, F.-M. and Ciais, P.: Spaceborne remote sensing of greenhouse gas concentrations, *C.R. Geosci.*, 342, 412–424, <https://doi.org/10.1016/j.crte.2009.09.012>, 2010.
- Burgin, A. J. and Hamilton, S. K.: Have we overemphasized the role of denitrification in aquatic ecosystems? A review of nitrate removal pathways, *Front. Ecol. Environ.*, 5, 89–96, [https://doi.org/10.1890/1540-9295\(2007\)5\[89:HWOTRO\]2.0.CO;2](https://doi.org/10.1890/1540-9295(2007)5[89:HWOTRO]2.0.CO;2), 2007.
- Callode, J., Cochonneau, G., Alves, F., Guyot, J.-L., Guimarães, V., and De Oliveira, E.: Les apports en eau de l'Amazonie o l'Océan Atlantique, *Revue des sciences de l'eau, Revue des sciences de l'eau*, 23, 247–273, <https://doi.org/10.7202/044688ar>, 2010.
- Ciais, P., Sabine, C., Bala, G., Bopp, L., Brovkin, V., Canadell, J., Chhabra, A., DeFries, R., Galloway, J., Heimann, M., Jones, C., Le Quéré, C., Myneni, R. B., Piao, S., and Thornton, P.: Carbon and Other Biogeochemical Cycles, in: *Climate Change 2013: The Physical Science Basis. Contribution of Working Group I to the Fifth Assessment Report of the Intergovernmental Panel on Climate Change*, edited by: Stocker, T. F., Qin, D., Plattner, G.-K., Tignor, M., Allen, S. K., Boschung, J., Nauels, A., Xia, Y., Bex, V., and Midgley, P. M., Cambridge University Press, Cambridge, United Kingdom and New York, NY, USA, 2013.
- Cole, J. A.: Assimilatory and dissimilatory reduction of nitrate to ammonia, in: *The Nitrogen and Sulphur Cycles*, edited by: Cole, J. A. and Ferguson, S. J., Cambridge University Press, Cambridge, 281–329, 1988.
- Cole, J. J., Prairie, Y. T., Caraco, N. F., McDowell, W. H., Tranvik, L. J., Striegl, R. G., Duarte, C. M., Kortelainen, P., Downing, J. A., Middelburg, J. J., and Melack, J.: Plumbing the Global Carbon Cycle: Integrating Inland Waters into the Terrestrial Carbon Budget, *Ecosystems*, 10, 172–185, <https://doi.org/10.1007/s10021-006-9013-8>, 2007.
- Davidson, E. A., Figueiredo, R. O., Markewitz, D., and Aufdenkampe, A. K.: Dissolved CO₂ in small catchment streams of eastern Amazonia: A minor pathway of terrestrial carbon loss, *J. Geophys. Res.-Biogeo.*, 115, G04005, <https://doi.org/10.1029/2009JG001202>, 2010.
- de Freitas, H. A., Pessenda, L. C. R., Aravena, R., Gouveia, S. E. M., de Souza Ribeiro, A., and Boulet, R.: Late Quaternary Vegetation Dynamics in the Southern Amazon Basin Inferred from Carbon Isotopes in Soil Organic Matter, *Quaternary Res.*, 55, 39–46, <https://doi.org/10.1006/qres.2000.2192>, 2001.
- Devol, A. H., Forsberg, B. R., Richey, J. E., and Pimentel, T. P.: Seasonal variation in chemical distributions in the Amazon (Solimoes) River: A multiyear time series, *Global Biogeochem. Cy.*, 9, 307–328, <https://doi.org/10.1029/95GB01145>, 1995.
- Dodla, S. K., Wang, J. J., DeLaune, R. D., and Cook, R. L.: Denitrification potential and its relation to organic carbon quality in three coastal wetland soils, *Sci. Total Environ.*, 407, 471–480, <https://doi.org/10.1016/j.scitotenv.2008.08.022>, 2008.
- Engelen, R. J., Serrar, S., and Chevallier, F.: Four-dimensional data assimilation of atmospheric CO₂ using AIRS observations, *J. Geophys. Res.-Atmos.*, 114, D03303, <https://doi.org/10.1029/2008JD010739>, 2009.
- Goldman, A. E., Graham, E. B., Crump, A. R., Kennedy, D. W., Romero, E. B., Anderson, C. G., Dana, K. L., Resch, C. T., Fredrickson, J. K., and Stegen, J. C.: Biogeochemical cycling at the aquatic–terrestrial interface is linked to parafluvial hyporheic zone inundation history, *Biogeosciences*, 14, 4229–4241, <https://doi.org/10.5194/bg-14-4229-2017>, 2017.
- Iribar, A., Hallin, S., Pérez, J. M. S., Enwall, K., Poulet, N., and Garabétian, F.: Potential denitrification rates are spatially linked to colonization patterns of nosZ genotypes in an alluvial wetland, *Ecol. Eng.*, 80, 191–197, <https://doi.org/10.1016/j.ecoleng.2015.02.002>, 2015.
- Ito, A. and Inatomi, M.: Use of a process-based model for assessing the methane budgets of global terrestrial ecosystems and evaluation of uncertainty, *Biogeosciences*, 9, 759–773, <https://doi.org/10.5194/bg-9-759-2012>, 2012.
- Johnson, K., Riser, S., and Ravichandran, M.: Oxygen Variability Controls Denitrification in the Bay of Bengal Oxygen Minimum Zone, *Geophys. Res. Lett.*, 46, 804–811, <https://doi.org/10.1029/2018GL079881>, 2019.
- Keller, M., Varner, R., Dias, J. D., Silva, H., Crill, P., de Oliveira, R. C., and Asner, G. P.: Soil-Atmosphere Exchange of Nitrous Oxide, Nitric Oxide, Methane, and Carbon Dioxide in Logged and Undisturbed Forest in the Tapajos National Forest, Brazil, *Earth Interact.*, 9, 1–28, <https://doi.org/10.1175/EI125.1>, 2005.
- Kerr, Y. H., Waldteufel, P., Wigneron, J. P., Delwart, S., Cabot, F., Boutin, J., Escorihuela, M. J., Font, J., Reul, N., Gruhier, C., Juglea, S. E., Drinkwater, M. R., Hahne, A., Martin-Neira, M., and Mecklenburg, S.: The SMOS Mission: New Tool for Monitoring Key Elements of the Global Water Cycle, *P. IEEE*, 98, 666–687, <https://doi.org/10.1109/JPROC.2010.2043032>, 2010.
- Korol, A., Noe, G., and Ahn, C.: Controls of the spatial variability of denitrification potential in nontidal floodplains of the Chesapeake Bay watershed, USA, *Geoderma*, 338, <https://doi.org/10.1016/j.geoderma.2018.11.015>, 2019.
- Koschorreck, M.: Nitrogen Turnover in Drying Sediments of an Amazon Floodplain Lake, *Microb. Ecol.*, 49, 567–577, <https://doi.org/10.1007/s00248-004-0087-6>, 2005.
- Koschorreck, M. and Darwich, A.: Nitrogen dynamics in seasonally flooded soils in the Amazon floodplain, *Wetl. Ecol. Manag.*, 11, 317–330, <https://doi.org/10.1023/B:WETL.0000005536.39074.72>, 2003.
- Lauerwald, R., Regnier, P., Camino-Serrano, M., Guenet, B., Guimberteau, M., Ducharne, A., Polcher, J., and Ciais, P.: ORCHILEAK (revision 3875): a new model branch to simulate carbon transfers along the terrestrial–aquatic continuum of the Amazon basin, *Geosci. Model Dev.*, 10, 3821–3859, <https://doi.org/10.5194/gmd-10-3821-2017>, 2017.
- Legros, J.-P.: *Les grands sols du monde*, PPUR presses polytechniques, France, ISBN 978-2-88074-723-7, 2007.
- Liengard, L., Figueiredo Souza, V., Markfoged, R., Revsbech, N., Nielsen, L. P., Enrich-Prast, A., and Kühl, M.: Hot moments of N₂O transformation and emission in tropical soils from the Pantanal and the Amazon (Brazil), *Soil Biol. Biochem.*, 75, 26–36, <https://doi.org/10.1016/j.soilbio.2014.03.015>, 2014.
- Lloyd, J., Kolle, O., Fritsch, H., de Freitas, S. R., Silva Dias, M. A. F., Artaxo, P., Nobre, A. D., de Araújo, A. C., Kruijt, B., Sogacheva, L., Fisch, G., Thielmann, A., Kuhn, U., and Andreae, M. O.: An airborne regional carbon balance for Central Ama-

- zonía, *Biogeosciences*, 4, 759–768, <https://doi.org/10.5194/bg-4-759-2007>, 2007.
- Ludwig, W., Probst, J.-L., and Kempe, S.: Predicting the oceanic input of organic carbon by continental erosion, *Global Biogeochem. Cy.*, 10, 23–41, <https://doi.org/10.1029/95GB02925>, 1996.
- Martínez, J.-M. and Le Toan, T.: Mapping of flood dynamics and spatial distribution of vegetation in the Amazon floodplain using multitemporal SAR data, *Remote Sens. Environ.*, 108, 209–223, 2007.
- McClain, M. E., Boyer, E. W., Dent, C. L., Gergel, S. E., Grimm, N. B., Groffman, P. M., Hart, S. C., Harvey, J. W., Johnston, C. A., Mayorga, E., McDowell, W. H., and Pinay, G.: Biogeochemical Hot Spots and Hot Moments at the Interface of Terrestrial and Aquatic Ecosystems, *Ecosystems*, 6, 301–312, 2003.
- Moreira-Turcq, P., Bonnet, M.-P., Amorim, M., Bernardes, M., Lagane, C., Maurice, L., Perez, M., and Seyler, P.: Seasonal variability in concentration, composition, age, and fluxes of particulate organic carbon exchanged between the floodplain and Amazon River, *Global Biogeochem. Cy.*, 27, 119–130, <https://doi.org/10.1002/gbc.20022>, 2013.
- Moura, M., Rosa dos Santos, A., Pezzopane, J., Alexandre, R., Ferreira da Silva, S., Marques Pimentel, S., Santos de Andrade, M., Gimenes Rodrigues Silva, F., Figueira Branco, E., Rizzo Moreira, T., Gomes da Silva, R., and de Carvalho, J.: Relation of El Niño and La Niña phenomena to precipitation, evapotranspiration and temperature in the Amazon basin, *Sci. Total Environ.*, 651, 1693–1651, <https://doi.org/10.1016/j.scitotenv.2018.09.242>, 2019.
- Paiva, R. C. D., Collischonn, W., and Buarque, D. C.: Validation of a full hydrodynamic model for large-scale hydrologic modelling in the Amazon, *Hydrol. Process.*, 27, 333–346, <https://doi.org/10.1002/hyp.8425>, 2013.
- Parrens, M., Al Bitar, A., Frappart, F., Papa, F., Calmant, S., Crotaux, J.-F., Wigneron, J.-P., and Kerr, Y.: Mapping Dynamic Water Fraction under the Tropical Rain Forests of the Amazonian Basin from SMOS Brightness Temperatures, *Water*, 9, 350, <https://doi.org/10.3390/w9050350>, 2017.
- Parrens, M., Al Bitar, A., Frappart, F., Paiva, R., Wongchuig, S., Papa, F., Yamasaki, D., and Kerr, Y.: High resolution mapping of inundation area in the Amazon basin from a combination of L-band passive microwave, optical and radar datasets, *Int. J. Appl. Earth Obs.*, 81, 58–71, <https://doi.org/10.1016/j.jag.2019.04.011>, 2019.
- Pekel, J.-F., Cottam, A., Gorelick, N., and Belward, A. S.: High-resolution mapping of global surface water and its long-term changes, *Nature*, 540, 418–422, <https://doi.org/10.1038/nature20584>, 2016.
- Pérez, T., Trumbore, S. E., Tyler, S. C., Davidson, E. A., Keller, M., and de Camargo, P. B.: Isotopic variability of N₂O emissions from tropical forest soils, *Global Biogeochem. Cy.*, 14, 525–535, <https://doi.org/10.1029/1999GB001181>, 2000.
- Peter, S., Koetzsch, S., Traber, J., Bernasconi, S., Wehrli, B., and Durisch-Kaiser, E.: Intensified organic carbon dynamics in the ground water of a restored riparian zone, *Freshwater Biol.*, 57, 1603–1616, <https://doi.org/10.1111/j.1365-2427.2012.02821.x>, 2012.
- Peyrard, D., Delmotte, S., Sauvage, S., Namour, P., Gorino, M., Vervier, P., and Sanchez-Perez, J.-M.: Longitudinal transformation of nitrogen and carbon in the hyporheic zone of an N-rich stream: A combined modelling and field study, *Phys. Chem. Earth*, 36, 599–611, <https://doi.org/10.1016/j.pce.2011.05.003>, 2010.
- Rasera, M. d. F. F. L., Ballester, M. V. R., Krusche, A. V., Salimon, C., Montebelo, L. A., Alin, S. R., Victoria, R. L., and Richey, J. E.: Estimating the Surface Area of Small Rivers in the Southwestern Amazon and Their Role in CO₂ Outgassing, *Earth Interact.*, 12, 1–16, <https://doi.org/10.1175/2008EI257.1>, 2008.
- Richey, J. E., Hedges, J. I., Devol, A. H., Quay, P. D., Victoria, R., Martinelli, L., and Forsberg, B. R.: Biogeochemistry of carbon in the Amazon River, *Limnol. Oceanogr.*, 35, 352–371, <https://doi.org/10.4319/lo.1990.35.2.0352>, 1990.
- Richey, J. E., Melack, J. M., Aufdenkampe, A. K., Ballester, V. M., and Hess, L. L.: Outgassing from Amazonian rivers and wetlands as a large tropical source of atmospheric CO₂, *Nature*, 416, 617–620, <https://doi.org/10.1038/416617a>, 2002.
- Russell, M., Fulford, R., Murphy, K., Lane, C., Harvey, J., Dantin, D., Alvarez, F., Nestlerode, J., Teague, A., Harwell, M., and Almarino, A.: Relative Importance of Landscape Versus Local Wetland Characteristics for Estimating Wetland Denitrification Potential, *Wetlands*, 39, 127–137, <https://doi.org/10.1007/s13157-018-1078-6>, 2019.
- Rütting, T., Boeckx, P., Müller, C., and Klemetsson, L.: Assessment of the importance of dissimilatory nitrate reduction to ammonium for the terrestrial nitrogen cycle, *Biogeosciences*, 8, 1779–1791, <https://doi.org/10.5194/bg-8-1779-2011>, 2011.
- Sánchez-Pérez, J. and Trémolières, M.: Change in groundwater chemistry as a consequence of suppression of floods: the case of the Rhine floodplain, *J. Hydrol.*, 270, 89–104, [https://doi.org/10.1016/S0022-1694\(02\)00293-7](https://doi.org/10.1016/S0022-1694(02)00293-7), 2003.
- Sánchez-Pérez, J., Trémolières, M., Takatert, N., Ackerer, P., Eichhorn, A., and Maire, G.: Quantification of nitrate removal by a flooded alluvial zone in the Ill floodplain (Eastern France), *Hydrobiologia*, 410, 185–193, <https://doi.org/10.1023/A:1003834014908>, 1999.
- Sánchez-Pérez, J. M., Vervier, P., Garabétian, F., Sauvage, S., Loubet, M., Rols, J. L., Bariac, T., and Weng, P.: Nitrogen dynamics in the shallow groundwater of a riparian wetland zone of the Garonne, SW France: nitrate inputs, bacterial densities, organic matter supply and denitrification measurements, *Hydrol. Earth Syst. Sci.*, 7, 97–107, <https://doi.org/10.5194/hess-7-97-2003>, 2003.
- Scofield, V., Melack, J. M., Barbosa, P. M., Amaral, J. H. F., Forsberg, B. R., and Farjalla, V. F.: Carbon dioxide outgassing from Amazonian aquatic ecosystems in the Negro River basin, *Biogeochemistry*, 129, 77–91, <https://doi.org/10.1007/s10533-016-0220-x>, 2016.
- Sotta, E. D., Corre, M. D., and Veldkamp, E.: Differing N status and N retention processes of soils under old-growth lowland forest in Eastern Amazonia, Caxiuanã, Brazil, *Soil Biol. Biochem.*, 40, 740–750, <https://doi.org/10.1016/j.soilbio.2007.10.009>, 2008.
- Sumner, M. E.: *Handbook of Soil Science*, CRC Press, ISBN 13 978-1439803059, 1999.
- Sun, X., Bernard-Jannin, L., Sauvage, S., Garneau, C., Arnold, J., Srinivasan, R., and Sánchez-Pérez, J.: Assessment of the denitrification process in alluvial wetlands at floodplain scale using the SWAT model, *Ecol. Eng.*, 103, 344–358, <https://doi.org/10.1016/j.ecoleng.2016.06.098>, 2017.

- Tian, H., Yang, J., Lu, C., Xu, R., Canadell, J., Jackson, R., Arneeth, A., Chen, J., Chen, G., Ciais, P., Gerber, S., Ito, A., Huang, Y., Joos, F., Lienert, S., Messina, P., Olin, S., Pan, S., Peng, C., Saikawa, E., Thompson, R., Vuivhard, N., Winiwarter, W., Zaehle, S., Zhang, B., Zhang, K., and Zhu, Q.: The global N₂O Model Intercomparison Project (NMIP): Objectives, Simulation Protocol and Expected Products, *B. Am. Meteorol. Soc.*, 99, 1231–1251, <https://doi.org/10.1175/BAMS-D-17-0212.1>, 2018.
- Tiedje, J., Sexstone, A., Myrold, D., and Robinson, J.: Denitrification: ecological niches, competition and survival, *Antonie van Leeuwenhoek*, 48, 569–583, <https://doi.org/10.1007/BF00399542>, 1982.
- Vicari, R., Kandus, P., Pratalongo, P., and Burghi, M.: Carbon budget alteration due to landcover-landuse change in wetlands: the case of afforestation in the Lower Delta of the Parana River marshes (Argentina), *Water Environ. J.*, 25, 378–386, <https://doi.org/10.1111/j.1747-6593.2010.00233.x>, 2011.
- Weier, K. L., Doran, J. W., Power, J. F., and Walters, D. T.: Denitrification and the Dinitrogen/Nitrous Oxide Ratio as Affected by Soil Water, Available Carbon, and Nitrate, *Soil Sci. Soc. Am. J.*, 57, 66–72, <https://doi.org/10.2136/sssaj1993.03615995005700010013x>, 1992.
- Wu, J., Zhang, J. and, J. W., Xie, H., Gu, R., Li, C., and Gao, B.: Impact of COD/N ratio on nitrous oxide emission from microcosm wetlands and their performance in removing nitrogen from wastewater, *Bioresource Technol.*, 100, 2910–2917, <https://doi.org/10.1016/j.biortech.2009.01.056>, 2009.
- Xu, R., Tian, H., Lu, C., Pan, S., Chen, J., Yang, J., and Zhang, B.: Preindustrial nitrous oxide emissions from the land biosphere estimated by using a global biogeochemistry model, *Clim. Past*, 13, 977–990, <https://doi.org/10.5194/cp-13-977-2017>, 2017.
- Zaehle, S. and Friend, A.: Carbon and nitrogen cycle dynamics in the O-CN land surface model: 1. Model description, site-scale evaluation, and sensitivity to parameter estimates, *Global Biogeochem. Cy.*, 24, GB1005, <https://doi.org/10.1029/2009GB003521>, 2010.