



HAL
open science

Historical land-use-induced evapotranspiration changes estimated from present-day observations and reconstructed land-cover maps

J. Boisier, N. de Noblet-Ducoudré, Philippe Ciais

► **To cite this version:**

J. Boisier, N. de Noblet-Ducoudré, Philippe Ciais. Historical land-use-induced evapotranspiration changes estimated from present-day observations and reconstructed land-cover maps. *Hydrology and Earth System Sciences*, 2014, 18 (9), pp.3571-3590. 10.5194/hess-18-3571-2014. hal-02929656

HAL Id: hal-02929656

<https://hal.science/hal-02929656>

Submitted on 27 Oct 2020

HAL is a multi-disciplinary open access archive for the deposit and dissemination of scientific research documents, whether they are published or not. The documents may come from teaching and research institutions in France or abroad, or from public or private research centers.

L'archive ouverte pluridisciplinaire **HAL**, est destinée au dépôt et à la diffusion de documents scientifiques de niveau recherche, publiés ou non, émanant des établissements d'enseignement et de recherche français ou étrangers, des laboratoires publics ou privés.



Historical land-use-induced evapotranspiration changes estimated from present-day observations and reconstructed land-cover maps

J. P. Boisier^{1,*}, N. de Noblet-Ducoudré¹, and P. Ciais¹

¹Laboratoire des Sciences du Climat et de l'Environnement, Institut Pierre Simon Laplace, UMR8212, Gif-sur-Yvette, France

* now at: Institut Pierre Simon Laplace, Université Pierre et Marie Curie, Paris, France

Correspondence to: J. P. Boisier (jpboisier@ipsl.jussieu.fr)

Received: 11 December 2013 – Published in Hydrol. Earth Syst. Sci. Discuss.: 12 February 2014

Revised: 19 June 2014 – Accepted: 24 July 2014 – Published: 11 September 2014

Abstract. Recent results from the LUCID model intercomparison project have revealed large discrepancies in the simulated evapotranspiration (ET) response to the historical land-use change. Distinct land-surface parameterizations are behind those discrepancies, but understanding those differences rely on evaluations using still very limited measurements. Model benchmarking studies with observed ET are required in order to reduce the current uncertainties in the impacts of land use in terrestrial water flows. Here we present new estimates of historical land-use-induced ET changes based on three observation-driven products of ET. These products are used to derive empirical models of ET as a function of land-cover properties and environmental variables. An ensemble of reconstructions of past ET changes are derived with the same set of land-cover maps used in LUCID, with which we obtain an average decrease in global terrestrial ET of $1260 \pm 850 \text{ km}^3 \text{ yr}^{-1}$ between the preindustrial period and the present-day. This estimate is larger in magnitude than the mean ET change simulated within LUCID with process-based models, and substantially weaker than other estimates based on observations. Although decreases in annual ET dominate in deforested regions, large summertime increases in ET are diagnosed over areas of large cropland expansion. The multiple ET reconstructions carried out here show a large spread that we attribute principally to the different land-cover maps adopted and to the crops' ET rates deduced from the various products assessed. We therefore conclude that the current uncertainties of past ET changes could be reduced efficiently with improved historical land-cover reconstructions and better estimates of cropland ET.

1 Introduction

Land-use-induced land-cover change (LULCC) has been one of the major environmental changes driven by human activities. During the last 300 years, the large-scale deforestation that occurred in the northern temperate regions has significantly contributed to the rise in concentration of atmospheric carbon dioxide and to the underlying global temperature increase (e.g., Pongratz and Caldeira, 2012; Ciais et al., 2013).

In addition to the biogeochemical impact of LULCC on climate, more direct and regionally important perturbations are driven by changes in the physical properties of the surface (biogeophysical effects). These changes are often difficult to characterize because of the multiple mechanisms involved (Davin and de Noblet-Ducoudré, 2010). Local cooling driven by an increase in surface albedo, and warming, due to reduced evaporative cooling, are two possible effects of deforestation of opposite sign (Bonan, 2008). The latter effect may dominate in the tropics, as several modelling (e.g., Nobre et al., 1991; Costa and Foley, 2000; Sampaio et al., 2007; Brovkin et al., 2009; Davin and de Noblet-Ducoudré, 2010) and observational (Gash and Nobre, 1997; Von Randow et al., 2004; Da Rocha et al., 2009; Loarie et al., 2011) studies have shown. In contrast, because of the strong snow masking effect exerted by the forest canopy, the radiative (albedo) impact of forest clearing has likely led to surface cooling at high latitudes (e.g., Betts, 2001; Govindasamy et al., 2001; Bounoua et al., 2002; Brovkin et al., 2009).

The climate impact of past LULCC is particularly uncertain in temperate regions, in part because of the unknown net effect of the above-mentioned radiative and non-radiative effects of deforestation, but also because the direction of change in evapotranspiration is clearly not one-sided (Sterling et al., 2013).

Evapotranspiration (ET) is a key variable of the climate system, as it affects both the energy and the water balance of the surface. Changes in ET due to LULCC or other land-use practices, such as irrigation, have received special attention over the past decade because of their potential effects on climate and water resources. Although most studies suggest that historical LULCC has led to a decrease in global ET (e.g., Gordon et al., 2005; Findell et al., 2007; Sterling et al., 2013) and consequent increase in runoff (Piao et al., 2007), the large-scale changes in ET remain quite uncertain, as do the geographical and seasonal variations of such changes (Pitman et al., 2009; Pielke et al., 2011).

Studies at regional scales have shown that ET increases resulting from widespread irrigation have induced surface cooling and other impacts on climate in India (Douglas et al., 2006; Roy et al., 2007; Guimberteau et al., 2012), in the Middle East and Asia (Lee et al., 2011), in the North American Great Plains (Adegoke et al., 2007; Mahmood et al., 2006) and in California (Lobell and Bonfils, 2008), among others. Puma and Cook (2010) have suggested that large-scale ET increases and cooling induced by irrigation may have been as large in magnitude as the opposite effect driven by deforestation, a finding consistent with the results of Gordon et al. (2005) and Haddeland et al. (2007). Observation-based studies have also shown that well-watered cropland can evaporate more than temperate forest (Baldocchi et al., 1997; Teuling et al., 2010; Sterling et al., 2013).

The LUCID project ("Land Use and Climate: Identification of Robust Impacts") has compared outputs from different climate models, each forced with the same historical change in crop and pasture area. Recent results have revealed very large uncertainties in the simulated ET responses to LULCC (Pitman et al., 2009; Boisier et al., 2012; de Noblet-Ducoudré et al., 2012). The simulated changes in ET were found to vary in both magnitude and sign across the various models, and from season to season, despite the fact that none of the models included irrigation or detailed cropland management. About one-third of this inter-model dispersion was explained by differences in the land-cover maps prescribed in each model, and the remaining two-thirds by their distinct land surface parameterizations and resultant model sensitivities to LULCC (Boisier et al., 2012).

Most impacts of historical LULCC on continental water budgets reported in the literature have been addressed through modelling studies. Few studies have estimated the historical large-scale ET changes based on observations. Gordon et al. (2005) calculated global ET change induced by deforestation and irrigation separately. They estimated a moderate decrease in total land ET of $400 \text{ km}^3 \text{ yr}^{-1}$, resulting

from the opposing effects of deforestation ($-3000 \text{ km}^3 \text{ yr}^{-1}$) and irrigation ($+2600 \text{ km}^3 \text{ yr}^{-1}$). Sterling et al. (2013) estimated the changes in terrestrial ET between potential and actual land cover based on a large and diverse record of ET measurements, including values from irrigated crops. They calculate an annual mean global ET decrease of $3500 \text{ km}^3 \text{ yr}^{-1}$, i.e., a value substantially larger in amplitude than the Gordon et al. (2005) estimate.

The short period covered by ET observations and the limited number of measuring sites, explain the scarcity of studies addressing large-scale changes in ET based on observations. Nevertheless, several global gridded ET products have been recently produced, some of them being outputs of land surface models (LSMs) forced with atmospheric observations or reanalysis. Other products use simpler (semi-empirical) models to diagnose ET from surface and satellite observations of key drivers of ET. A number of them also use available ET measurements for calibration (e.g., Jung et al., 2010; Zhang et al., 2010). Many of these gridded products of ET have been evaluated in the context of the LandFlux-EVAL initiative (Jiménez et al., 2011; Mueller et al., 2011, 2013).

The aim of the present study is to provide new data-driven estimates of the past ET changes caused by LULCC (i.e., other factors such as climate and CO_2 changes being constant), and compare them with results from the LUCID climate models. We also explore the seasonal and geographical distribution of the inferred ET changes, as well as quantifying the uncertainties related both to the nature of the observation-based ET data set used and to the land-cover maps adopted. To address these objectives we start with three global products of present-day ET, each of them derived with a different approach. A multivariate regression technique is used to construct empirical models of ET as a function of key environmental drivers and land-cover properties (vegetation partitioning and leaf area index – LAI). These models, along with a set of land-cover maps constructed within the LUCID project for 1870 and 1992, are used to diagnose multiple present-day and preindustrial ET climatologies.

This paper is organized as follows: data sets and methodologies are described in Sect. 2. The LULCC derived from the LUCID land-cover maps, as well as the inferred LAI used in the ET reconstructions, are presented in Sect. 3. Section 4 describes the diagnosed and simulated changes in ET, while Sect. 5 investigates the ET sensitivity of our reconstructions to specific land-use transitions. Discussion and conclusions are presented in Sect. 6.

Table 1. Data set used in this study.

Variables ^a	Source	Period	Description/references
ET	GLEAM	1984–2007	Priestley–Taylor based ET model. Forcing: SRB (rad.), GPCP/CMORPH (meteorol.), LPRM (soil moist., temp, veget. optical depth), ISCCP (temp.) and NSIDC (SWE) (Miralles et al., 2011).
ET	MPI	1982–2008	ET upscaling from eddy-covariance obs. (FLUXNET). Use AVHRR NDVI and CRU/GPCC for climatic vars. (Jung et al., 2010).
ET	NTSG	1983–2006	Penman–Monteith and Priestley–Taylor (open water) models. Use AVHRR (NDVI), SRB (radiation), NCEP/NCAR rea. (meteor.). FLUXNET obs. for calibration of canopy conductance (Zhang et al., 2010).
P	GPCC	1901–2010	Gauge-based monthly gridded precipitation product release 5 (Rudolf et al., 2010).
S_D, L_D	SRB	1984–2007	NASA/GEWEX SRB project release-3.0 remote sensed radiation data.
SWE	NSIDC	1979–2006	Satellite monthly EASE-Grid Snow Water Equivalent (Armstrong et al., 2007).
F_v	MODIS	2001–2010	Land-cover product MCDQ1 release 5. PFT classification (Friedl et al., 2010).
LAI	MODIS-BNU	2001–2009	Reprocessed MODIS leaf area index (Yuan et al., 2011).
F_v, LAI, ET	LUCID	1970–1999	Simulations from six AGCM/LSMs ^b . Prescribed SST/SICs from 1970 to 1999, [CO ₂] set to 370 ppm and two land-cover maps of 1870 and 1992 (Pitman et al., 2009; de Noblet-Ducoudré et al., 2012).

^a Except land-cover fraction (F_v), the data set corresponds to monthly fields of evapotranspiration (ET), surface downward solar (S_D) and longwave (L_D) radiation, snow water equivalent (SWE) and precipitation (P). ^b ARPEGE/ISBA, CCSM/CLM, EC-Earth/TESSSEL, LMDZ/ORCHIDEE, ECHAM5/JSBACH and SPEEDY/LPJmL (see de Noblet-Ducoudré et al., 2012, and references therein).

2 Material and methods

2.1 Observation-based data sets

Several gridded data sets are used in this paper (summarized in Table 1). Three products of ET are used in a multivariate analysis to derive, respectively, three different empirical models of ET (described in Sect. 2.3).

The “Global Land surface Evaporation: the Amsterdam Methodology” ET (hereafter GLEAM) uses a semi-empirical approach to derive total ET from both the soil–vegetation ET and the evaporation of rainfall intercepted by the canopy (Miralles et al., 2011). A modified Priestley–Taylor ET model is nurtured with meteorological data and a computed soil moisture stress factor. The input data set used to derive gridded ET includes information of land-cover (short versus tall canopy, vegetation optical depth), soil moisture and other meteorological variables.

The Max Planck Institute ET product (MPI) is based on the analysis of ET data from 253 eddy-covariance measurement sites (Jung et al., 2010). In situ observations of ET and of a large set of explanatory variables, including land surface properties (vegetation type and optical properties) and climatic variables, are analysed with a model tree ensemble (MTE) approach. The resultant MTE models are used to create gridded maps of monthly ET from 1982 to 2008, based on global data sets of the associated predictors (surface analyses and remote sensing data).

As with GLEAM, the Numerical Terradynamic Simulation Group ET product (NTSG) is based on a semi-empirical model of ET (Zhang et al., 2010). In this case, a modified Penman–Monteith approach is adopted to explicitly calcu-

late the soil evaporation and the canopy ET components. A Priestley–Taylor model is also used for evaporation over water bodies. Global fields of ET from 1983 to 2006 are derived using remotely sensed land-cover data, NDVI and radiation, as well as meteorological data from reanalysis. Local measurements of ET from 34 FLUXNET sites are also used in NTSG to calibrate canopy conductance as a biome-specific parameter.

A short evaluation of the three ET products is presented in Appendix A. Despite the different procedures used to derive these data sets, there is a reasonably large agreement on the climatological mean distribution of ET. However, significant differences from one product to another are found in the amplitude of the interannual ET variability (Appendix Fig. A1).

Gridded data sets of surface incoming solar (S_D) and longwave (L_D) radiation, precipitation (P) and snow water equivalent (SWE) are used as environmental constraints in our empirical models of ET. The satellite products of the Surface Radiation Budget (SRB) project and of the National Snow and Ice Data Center (NSIDC) are used for radiation fluxes and SWE, respectively. The observation-based gridded product of the Global Precipitation Climatology Centre (GPCC) is adopted for P .

Other variables, such as the net radiation or the near-surface temperature, although suitable predictors for ET, were deliberately omitted because of their large dependencies on the type of land cover. Including them could thus have produced misleading results when evaluating the changes in ET due to LULCC. In our approach, the surface albedo and the resultant net radiation are implicitly accounted for through the land-cover partitioning. Hence, the radiative

effect of LULCC in the diagnosed ET is included since the albedo-induced change in net radiation will follow the prescribed change in land cover.

Land-cover for the purposes of this study has been simplified and grouped within five classes: evergreen trees, deciduous trees, grasses, crops and bare soil. Our choice to use only those main groups is intended to simplify the analysis and give consistent land-cover partitioning in different data sets, notably within the various plant functional types (PFTs) used in LUCID LSMs (Sect. 2.2). This simplified land-cover partitioning allows capturing the spatial ET variability induced by differences in plant properties, such as canopy conductance, root depth, surface roughness or albedo.

In addition to the grid areal fraction occupied by the five classes of land cover (F_v), the spatial and seasonal LAI distribution for each land-cover class is also used to characterize the global distribution of vegetation. LAI is not used independently from F_v . Instead, we make use of the Beer's law to combine the two variables and define an effective land-cover fraction per vegetation class (F_v^*):

$$F_v^* = F_v (1 - e^{-kL_v}), \quad (1)$$

where L_v is the specific LAI of the vegetation group v . The light extinction coefficient k is set to the commonly used value of 0.5. The effective area occupied by the vegetation in a grid cell is then defined as the total fraction derived from the four classes of vegetation, and the effective bare soil area as

$$F_{\text{soil}}^* = 1 - \sum_v F_v^*. \quad (2)$$

We use the MODIS land-cover product MCD12Q1 (Friedl et al., 2010) and the reprocessed MODIS LAI of Yuan et al. (2011) to derive monthly mean (2001–2009) maps of F_v and L_v , respectively. Based on the PFT classification of the MODIS land cover, we aggregated the areal fractions of the different PFTs into the main classes used here. The maps of L_v were derived from both the LAI and land-cover data from MODIS, following a methodology adapted from Boisier et al. (2013). The application of this method to create biome-dependent LAI maps, as well as its evaluation, is described in Appendix B.

2.2 LUCID simulations

Global climate simulations performed in the context of the LUCID project (Pitman et al., 2009) are intended for two purposes. We want first to estimate the past LULCC-induced ET changes together with the associated uncertainties arising from historical land-cover reconstructions. Results from LUCID have indeed demonstrated that current climate models implement the historical crop and pasture data sets in different ways, increasing the spread in the simulated impacts of LULCC, notably on ET (de Noblet-Ducoudré et al., 2012). To account for this uncertainty, we use the same vegetation

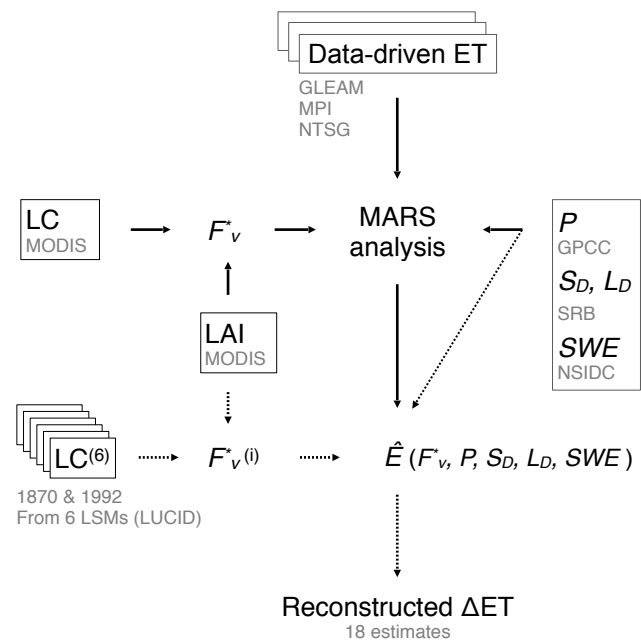


Figure 1. Methodology followed to estimate the LULCC-induced evapotranspiration (ET) changes between the preindustrial period and the present. The data set used (boxes) includes gridded maps of present-day ET, land cover (LC), leaf area index (LAI), radiation (S_D , L_D), precipitation (P) and snow cover (SWE) (see Table 1). Solid arrows indicate the input data set used to compute the MARS-based ET models (\hat{E}). Dotted arrows indicate the data used as forcing in the computation of the ET reconstructions.

maps of 1870 and 1992 prescribed in each LUCID land surface model (LSM) to force the observation-based empirical models of ET derived here (Sect. 2.3) and, with them, to perform several reconstructions of past and present-day ET (Fig. 1).

Secondly, we use the data simulated within LUCID to contrast the modelled historical changes in ET with the ones diagnosed here.

The set of LUCID simulations used here were carried out by six atmospheric global circulation models (AGCMs) coupled to LSMs (Table 1). The modelling experiment includes two types of simulations, each with the same prescribed present-day sea-surface temperature/sea-ice coverage (from 1970 to 1999) and atmospheric CO_2 concentration (set to 375 ppm). The types of simulation differ only in the land cover prescribed in the corresponding LSMs, respectively representing the vegetation distribution of 1870 and 1992. The land-cover distribution results from the combination of the “background” map of vegetation of the host model (potential or observed, depending on the LSM) with the historical cropland and pasture distribution of the SAGE (Ramanakutty and Foley, 1999) and HYDE (Goldewijk, 2001) data sets. Hence, the historical LULCC that is finally prescribed varies from model to model due to differences in the

background land-cover maps and in the strategies adopted to include the agricultural data.

Further details of the LUCID simulations are given by de Noblet-Ducoudré et al. (2012). All the LUCID data were interpolated and analysed in a common rectangular grid of 2.0° .

2.3 Multivariate analysis and evapotranspiration reconstructions

The goal of this study is to calculate LULCC-induced changes in ET. This implies that we develop a method that calculates ET given a specific land-cover map, at the global scale. The methodology we developed to achieve such calculations is presented in this section and summarized in Fig. 1.

We use an implementation of Multivariate Adaptive Regression Splines (MARS) for Python (py-earth) to construct empirical models of ET based on the present-day data described in Sect. 2.1. This technique builds an additive model of piecewise linear (hinge) functions of the predictor basis, capturing non-linear dependencies of a given variable to multiple explanatory variables (Friedman, 1991). The coefficients of the basis are calculated in a two-step iterative computation that uses a least squares method to minimize the error between partial predictions and observations. The first step (forward phase) adds a large number of basis functions, while the second step (pruning phase) selects the best basis sample, leading to a simpler model with a high predictive performance.

Some advantages of MARS, compared to other multivariate methods that could have been used here (e.g., regression trees or neural networks), are the high predictive capabilities, transparency and continuous character of the model constructed (Hastie et al., 2009).

The global ET products presented in Sect. 2.1 are used to derive three different MARS-based ET models as a function of a unique set of explanatory variables (Fig. 1). In the computation of these models we account for both the spatial and temporal variability of the input variables. The effective fraction of the five land-cover classes used (F_v^*) are not included as independent predictors in the ET models, but are used to weigh the environmental predictors. Further details on the MARS analysis and an evaluation of the predictive skill of the resulted ET models are described in Appendix C.

Preindustrial (PI) and present-day (PD) reconstructions of ET are then computed by forcing each MARS-based ET model with the land-cover maps of 1870 and 1992 used by six LSMs in the LUCID simulations (Sect. 2.2). Hence, we derive 18 different pairs of reconstructed ET that only differ in the choice of the F_v values used in Eq. (1) and the ET information deduced from each product.

It should be noted that all reconstructions are carried out with the same environmental data used in the MARS computations (Sect. 2.1) and the MODIS-based LAI of each land-cover class (L_v). Therefore, the diagnosed ET changes

between PI and PD represent instantaneous responses to LULCC, and do not include any biogeophysical feedback involving a perturbation in downward radiation, precipitation or snow cover, nor in a biome-dependent LAI.

3 Changes in land cover and in leaf area index between 1870 and 1992

Figure 2a–c show the change between 1870 and 1992 in the fraction of crops, grasses and forest as deduced from the LUCID land-cover maps (the mean changes deduced from the various LSM PFT maps are shown). The expansion of cropland, notably in North America and in western Eurasia, is a main feature of LULCC between 1870 and 1992. The change in crop area prescribed in LUCID LSMs reflects this pattern, in line with the historical land-use change deduced from SAGE (Ramankutty and Foley, 1999). In most LSMs, such change mainly occurs at the expense of forest. Given that pastures are considered as natural grasses in most LUCID LSMs, the prescribed change in grass area from 1870 to 1992 results from the balance between the positive change when natural biomes are converted to managed pastureland, and the negative change when natural grasses are converted to croplands.

The rules defining how forest and natural grassland are decreased when crops and pasture expand are thus crucial in drawing up the final figure for deforestation, as discussed by de Noblet-Ducoudré et al. (2012). For the LSMs assessed here, the global deforested area between 1870 and 1992 varies strongly, ranging from ~ 4 to 10 million km^2 for JSBACH and TESSEL, respectively. These two examples illustrate the discrepancy in the LULCC reconstructions that result from different protocols. When the agricultural units (crops and pastures in this case) are allocated over natural grasslands as priority, the resulting change in forest area is comparatively low (as in the JSBACH case). The opposite case (favoured deforestation) occurred in the case of TESSEL.

Foliage density is a key parameter in both the simulated and diagnosed ET. As described in Sect. 2.1, the present-day LAI as well as the changes in LAI from 1870 to 1992 are implicitly accounted for in the diagnosed ET through Eq. (1). Yet, the change in LAI as diagnosed with our MODIS-based reconstructions is in itself an interesting result. Such an estimate is also important if we are to correctly interpret the diagnosed LULCC-induced changes in ET. Hence, based on the LUCID land-cover maps and the seasonally and geographically varying LAI values we derived from MODIS data for each of the four classes of vegetation (L_v , see Appendix B), we computed the monthly distribution of LAI for 1870 and 1992 as

$$L(\text{yr}) = \sum_v F_v(\text{yr}) L_v. \quad (3)$$

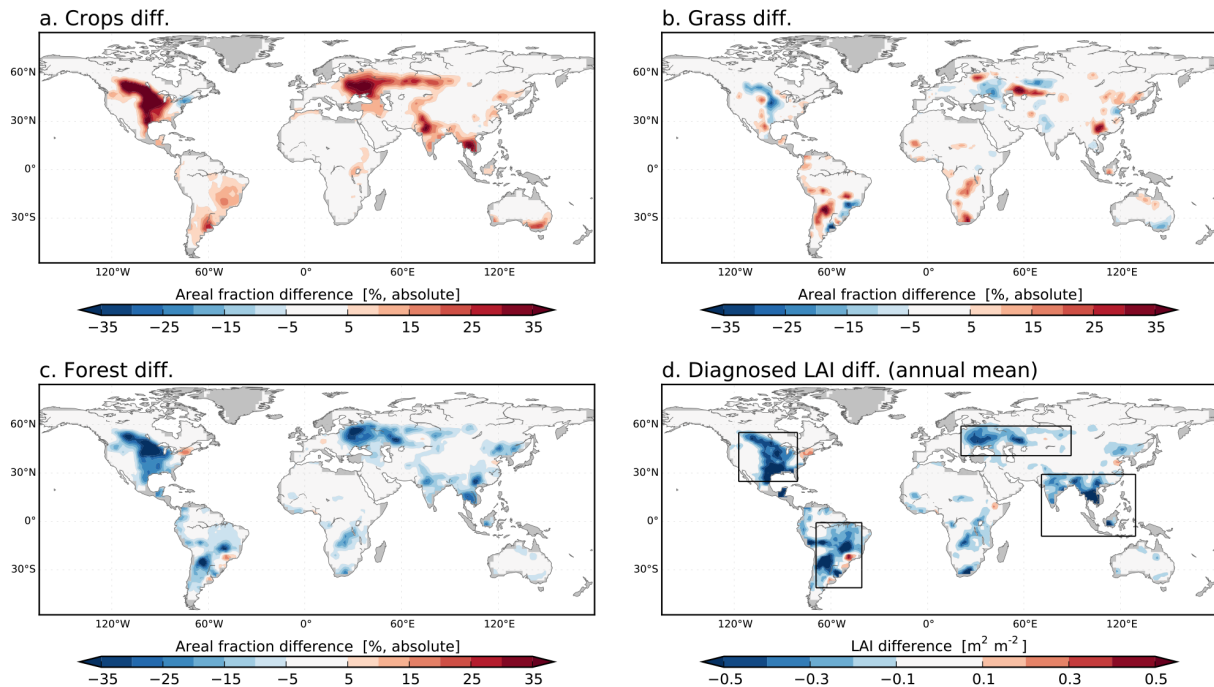


Figure 2. Differences between 1992 and 1870 in the fractional area (% , absolute) covered by (a) crops, (b) grass and (c) forest. Maps of land-cover change correspond to those prescribed in LUCID LSMs (model mean). (d) MODIS-based reconstructed change in annual mean leaf area index from 1870 to 1992. Contour lines indicate the four regions used later for specific analysis.

Figure 2d shows the change in annual mean LAI [$\Delta L = L(1992) - L(1870)$] computed with the six LUCID LULCC data sets (the average from the six reconstructions is shown). Since deforestation is the dominating perturbation between 1870 and 1992, and given that forest LAI is usually larger than that of short vegetation (see Appendix Fig. B1), most areas of the globe show decreases in LAI, and the spatial pattern of such changes is similar to that of deforestation. Increases in LAI between 1870 and 1992 are also diagnosed, notably in summer and over regions where LULCC is dominated by transitions from natural grasses to crops with a higher LAI (the occurrence and amplitude of such transitions depends on the land-cover data set chosen; not shown).

Looking at Fig. 2d in detail, the distribution of ΔL highlights some regions that could be particularly sensitive to LULCC in terms of ET, such as the southern part of North America or southeastern Amazonia. These regions show comparatively large decreases in LAI, despite moderate deforestation between 1870 and 1992. As described next, the impact of LULCC on the mean annual LAI in temperate and boreal regions results mainly from the changes in summer, when canopies are fully developed.

Figure 3 shows the monthly mean LAI reconstructed for 1992 and ΔL averaged over four regions we are particularly interested in because of their strong historical LULCC. These regions, as indicated in Fig. 2d, correspond to the land areas within defined domains in Eurasia (hereafter EA), in North America (NA), in South America (SA) and in South-

east Asia (SEA). The reconstructed mean LAI depicted in Fig. 3a (solid lines) is plotted along with the ones simulated (prescribed in some cases; de Noblet-Ducoudré et al., 2012) by the LUCID LSMs (dashed lines). In both cases, the mean obtained from the six LSMs ± 1.0 inter-model mean absolute deviation (MD) are shown. The MODIS-based reconstructed LAI shows a clear seasonal cycle in the northern temperate regions (EA and NA), with a winter minimum of near null LAI and a maximum in summer of around $2.0 \text{ m}^2 \text{ m}^{-2}$. In these two regions there are large differences between the present-day reconstructed and simulated LAI. The latter overestimates the former by nearly $1.0 \text{ m}^2 \text{ m}^{-2}$ throughout the year. The mean LAI in SA and in SEA are larger than those observed in EA and NA both in the models and reconstructions, and without clear seasonal cycles, indicating a large contribution of tropical and subtropical evergreen forest in these regions.

A large spread between the LUCID models LAI compared to the reconstructions is also noticeable in Fig. 3a. Given that the reconstructed LAI accounts for the various LUCID LSMs' maps of land cover, the spread in the simulated LAI highlights intrinsic model dependencies (parameterizations). Although remarkable, this spread is not surprising, given the very different treatments of the vegetation phenology included in the LUCID LSMs assessed here. For instance, three of them compute LAI (JSBACH, LPJmL and ORCHIDEE) while the other three models prescribe it. Further, those models prescribing LAI have used different data sets as reference,

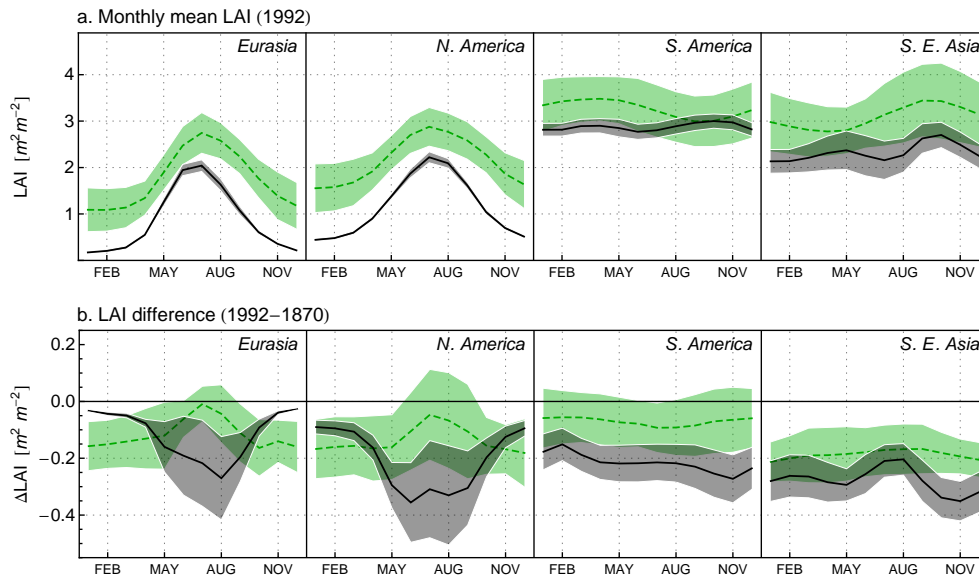


Figure 3. (a) Monthly mean LAI in 1992 and (b) LAI change from 1870 to 1992 averaged over four regions of study (indicated Fig. 2d). Reconstructed (MODIS-based) and simulated (LUCID) LAI are shown as solid-black and dashed-green lines, respectively. Mean LAI is plotted along with a range of ± 1.0 mean absolute deviation, resulting from individual reconstructions (based on the different LULCC data; grey shading), and from the individual model results (green shading).

and one of them (TESSEL) does not prescribe a seasonally varying LAI (de Noblet-Ducoudré et al., 2012).

These results echo recent model inter-comparison studies reporting large uncertainties and a systematic overestimation in modelled LAI when compared to satellite data (e.g., Anav et al., 2013). Besides the known uncertainties in the observation-based LAI data sets (e.g., Garrigues et al., 2008; Fang et al., 2013), Anav et al. (2013) suggest that the model LAI biases could in part be attributed to missing land-surface parameterizations accounting for nutrient (Nitrogen) limitation or ozone effects on gross primary production; both of these processes would increase the simulated plant carbon allocation and LAI.

The reconstructions show clear decreases ($\sim 10\%$) in LAI from 1870 to 1992 in the four regions assessed as having intense LULCC (solid lines in Fig. 3b). In EA and NA, the amplitude of ΔL is maximized in the corresponding summer, while in SA and SEA there is a substantial year-round decrease. The effect of using different LULCC data is particularly important in the reconstructed ΔL over NA and EA. The MD between the individual results (around $0.15 m^2 m^{-2}$ in summer; grey shaded area in Fig. 3b) is as large as the mean ΔL .

Also noticeable is how different the reconstructed ΔL are compared to the simulated ones (dashed lines in Fig. 3b). This is particularly clear in EA and NA, where the simulated mean ΔL shows an opposite seasonal pattern with respect to the one reconstructed. In the other two regions the models underestimate ΔL in all seasons when compared to the reconstructions.

The contrasting diagnosed versus modelled LAI responses to LULCC are in part explained by an overestimation of the model cropland LAI during the growing season compared to the values derived from MODIS – a feature that is particularly marked in those LSMs that simulate LAI (de Noblet-Ducoudré et al., 2012). However, it should also be noted that the simulated LAI responds to changes in both land cover and climate (accounting for interactions/feedbacks between land surfaces and the atmosphere), while the latter is not accounted for in the MODIS-based reconstructions derived in this study.

4 Diagnosed changes in evapotranspiration

Mean annual changes in ET (ΔET) between the preindustrial period (PI) and present-day (PD) were calculated based on each of the three ET products, and using the six pairs of land-cover maps from the LUCID LSMs (Fig. 1). Those 18 reconstructed ET climatologies were averaged to produce the mean annual ΔET displayed in Fig. 4. This multi-product mean highlights the main patterns of LULCC-induced ΔET . A decrease in annual ET is observed in most areas with land-cover perturbations; this is true for South America, Africa, India and Oceania. However, in the northern temperate regions the signal is not as strong, except in the southernmost regions of change in North America. The annual mean ΔET is moderate in most cases, and only the regions mentioned above show relative anomalies above 5%. The spread obtained from the various estimates is quite large and of an order of magnitude similar to the diagnosed mean annual ΔET

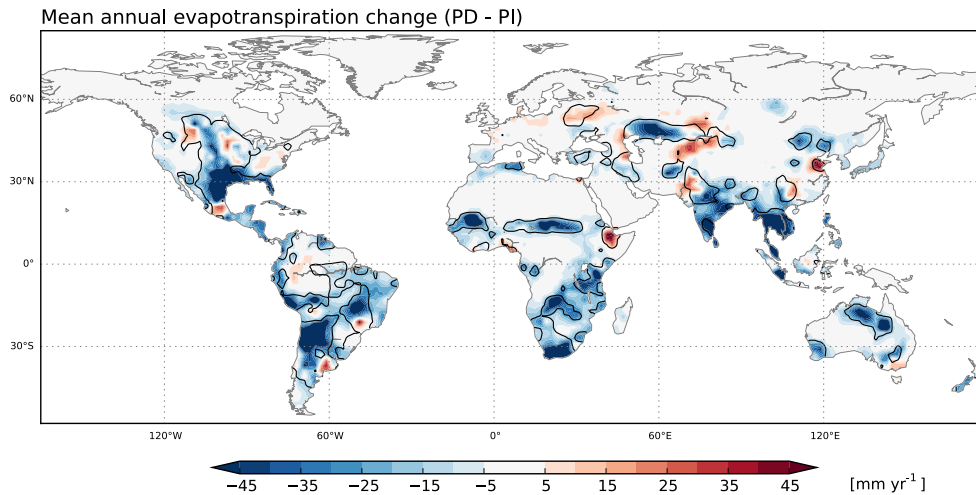


Figure 4. Land-use-induced change (PD–PI) in annual evapotranspiration (ΔET) estimated from multiple products of ET and LULCC maps (the average ΔET is shown). Contour line encloses the areas where the mean absolute deviation of ΔET , computed within the various estimates, exceeds 20 mm yr^{-1} .

Table 2. Change in global terrestrial evapotranspiration (PD–PI).

Estimate	$\Delta\text{ET} (\text{km}^3 \text{ yr}^{-1})$	LULCC	Irrigation
This study			
Diagnosed	$-1260 \pm 850^{\text{a}} (\pm 780^{\text{b}}; \pm 470^{\text{c}})$	1870–1992 (LUCID)	No/Implicit
Simulated	$-760 \pm 720^{\text{d}}$	1870–1992 (LUCID)	No
Gordon et al. (2005)	-3000 -400	potential – actual potential – actual	No Yes
Sterling et al. (2013)	-3500	potential – actual	Yes

^a Mean deviation (MD) between all reconstructed ΔET (3 products \times 6 LULCC forcings). ^b Uncertainty associated with the LULCC forcing (MD computed across the various LULCC and then averaged). ^c Uncertainty associated with the ET products (MD computed across the various products and then averaged). ^d MD between the individual LUCID AGCM/LSM results.

(see contour line in Fig. 4). As described next, the nature of the LULCC data adopted represents the main source of uncertainty in our estimates.

Table 2 summarizes the global changes in annual ET in terms of volume of terrestrial water vapour. We diagnosed from the reconstructions an average decrease in global ET of around $1250 \text{ km}^3 \text{ yr}^{-1}$ between PI and PD. Relative to this value, we obtain a large uncertainty between individual reconstructions (MD of $850 \text{ km}^3 \text{ yr}^{-1}$), arising both from the ET product used (MD of $470 \text{ km}^3 \text{ yr}^{-1}$) and from the LULCC data set adopted (MD of $780 \text{ km}^3 \text{ yr}^{-1}$).

For comparison, Table 2 also indicates the global ΔET simulated by the LUCID AGCM/LSMs, as well as the ones diagnosed in previous studies based on observations. LUCID simulations show a model-mean ΔET of $-760 \text{ km}^3 \text{ yr}^{-1}$, with a large inter-model dispersion (MD of $720 \text{ km}^3 \text{ yr}^{-1}$). Both the diagnosed and simulated global ΔET are substantially weaker in amplitude than the recent estimate of Sterling et al. (2013).

Although irrigation is not explicitly considered in our diagnosed ET, it should be partially accounted for in an implicit way given that two ET products (MPI and NTSG) have used in situ ET observations for calibration, including irrigated crops. Considering irrigation, our diagnosed ΔET fall within the estimates of Gordon et al. (2005, $-400 \text{ km}^3 \text{ yr}^{-1}$) and Sterling et al. (2013, $-3500 \text{ km}^3 \text{ yr}^{-1}$). However, in view of the large uncertainties associated with the LULCC data sets, comparisons between independent estimates might be misleading. Further, the two references mentioned above have computed past ET climatologies with potential (pre-agricultural) vegetation maps and, in consequence, their prescribed land-cover perturbations between the past and the present are likely to be larger in amplitude than the ones used in this study.

As can be seen in Fig. 4, areas with strong LULCC such as in North America or Eurasia do not show clear annual ET responses to LULCC. The weak annual ΔET over these

regions results from contrasting ΔET from season to season, and between the various ET product-based estimates.

Figure 5 illustrates the monthly mean ΔET diagnosed with the three ET products on average over the four regions of study. Clear differences are observed between the various estimates. There are, however, some patterns that distinguish the results from MPI and NTSG on the one hand, and that from GLEAM on the other. The reconstructed ΔET based on MPI and NTSG, although with biases between them, show similar seasonal patterns in EA, NA and SA. In EA, ΔET is characterized by positive values during the early boreal summer and a minimum (a decrease in ET in the case of MPI) during the autumn. In NA, the seasonal pattern of ΔET is even clearer: the results from these two products show a decrease and an increase in ET in spring and in summer, respectively. In SA, the MPI and NTSG-based ΔET also show a clear seasonal pattern, characterized by negative values during most of the year, particularly large ET decreases in the austral winter, and increases in late summer.

The ET reconstructions based on GLEAM show year-round decreases of ET between PI and PD in all four regions assessed. Although ΔET derived with this product is clearly different from those based on MPI and NTSG, the seasonality shows some similarities with the other products in EA and NA. By contrast, the result from GLEAM in SA shows a year-round decrease in ET that clearly differentiates it from the other two products.

For comparison, the multi-product mean ΔET is also plotted in Fig. 5, as well as mean ΔET resulting from the LUCID climate model simulations. The uncertainties are large and of the same order of magnitude in both cases. Nevertheless, some consistent signals of ΔET can be determined, such as the year-round decreases in SA and SEA. The distinct seasonal pattern of ΔET in EA is suggested in both the reconstructed and the simulated results. By contrast, the simulated mean ΔET does not show a clear pattern in NA, as compared to the one shown by the reconstructions.

The regional means ΔET depicted in Fig. 5 suggest some robust seasonal features, but they still mask some contrasting ET responses to LULCC within the regions assessed, notably across the areas affected by strong LULCC in northern temperate latitudes. This can be observed in Fig. 6, which presents the spatial distribution of the seasonal (2-monthly) mean ΔET in North America and Eurasia. The ET differences between PI and PD derived from the three assessed ET products show positive and negative anomalies of large amplitudes during the late spring and summer. The North American Great Plains are particularly affected by large ΔET values in all the three reconstructions, with anomalies exceeding 10 % in many areas (the relative changes are not shown). Clear differences can be observed between the various estimates. Those based on GLEAM (Fig. 6a) and NTSG (Fig. 6c) are at both extremes, respectively showing the strongest negative and positive ΔET values. Meanwhile, the reconstruction based on MPI (Fig. 6b) shows clear simi-

larities in the seasonal and spatial patterns of ΔET with that based on NTSG, in accordance with the regional mean ΔET shown in Fig. 5. Both cases present a clear late summer maximum in ΔET over the North American area of large cropland expansion (Fig. 2).

The distribution of ΔET shown in Fig. 6 reveals spatially coherent signals compared to specific land-use transitions between 1870 and 1992. As mentioned above, increases in ET are obtained in the MPI and NTSG reconstructions in regions where crops were partially allocated in place of grass, such as in northern North America (Fig. 2). On the other hand, regions with an increase in grass and decrease in forest, such as in southern North America or in the mid-Eurasian area north of the Caspian Sea (areas of large expansion in pasture), show systematic decreases in ET in all the three reconstructions. To better understand the different ET sensitivities to LULCC estimated from the three data sets assessed, in the section that follows we try to quantify the ET response associated with three different types of land-cover transitions.

5 Sensitivity of evapotranspiration to specific land-cover transitions

Although the ET products assessed show a general agreement in the global distribution of ET (Appendix Fig. A1), specific biome-dependent ET should explain the differences between the three diagnosed ET responses to LULCC. These differences arise when the long-term mean ET rates of the various products are compared over dominant types of land cover. Figure 7 illustrates this comparison for three major groups of vegetation: crops, grasses and forest. Regions with dominant land cover are defined as the grid cells (at 1.0° of resolution) showing at least 75 % of their area covered by the corresponding class.

Averaged over the northern extratropical regions (above 20° N), the monthly mean ET of the three products shows similar rates and seasonal patterns over grasslands and forest (Fig. 7). However, a larger contrast is observed over croplands, where the ET from GLEAM clearly underestimates those from the other two products. This difference is consistent with the diagnosed ET response to LULCC in areas of large cropland expansion, larger (with positive anomalies in some cases) in the cases of MPI and NTSG with respect to that of GLEAM (Fig. 6). However, this analysis does not allow direct comparisons of ET across the various land-cover classes, because they were obtained from different regions and therefore from different climate regimes.

In order to quantify the response of ET to specific changes in land cover under equivalent environmental conditions, we have examined at each grid cell the transition between 1870 and 1992 from a given land-cover type (A) to another (B) using the following rule:

$$\delta_{A \rightarrow B} = \frac{\Delta F_B - \Delta F_A}{2}, \quad (4)$$

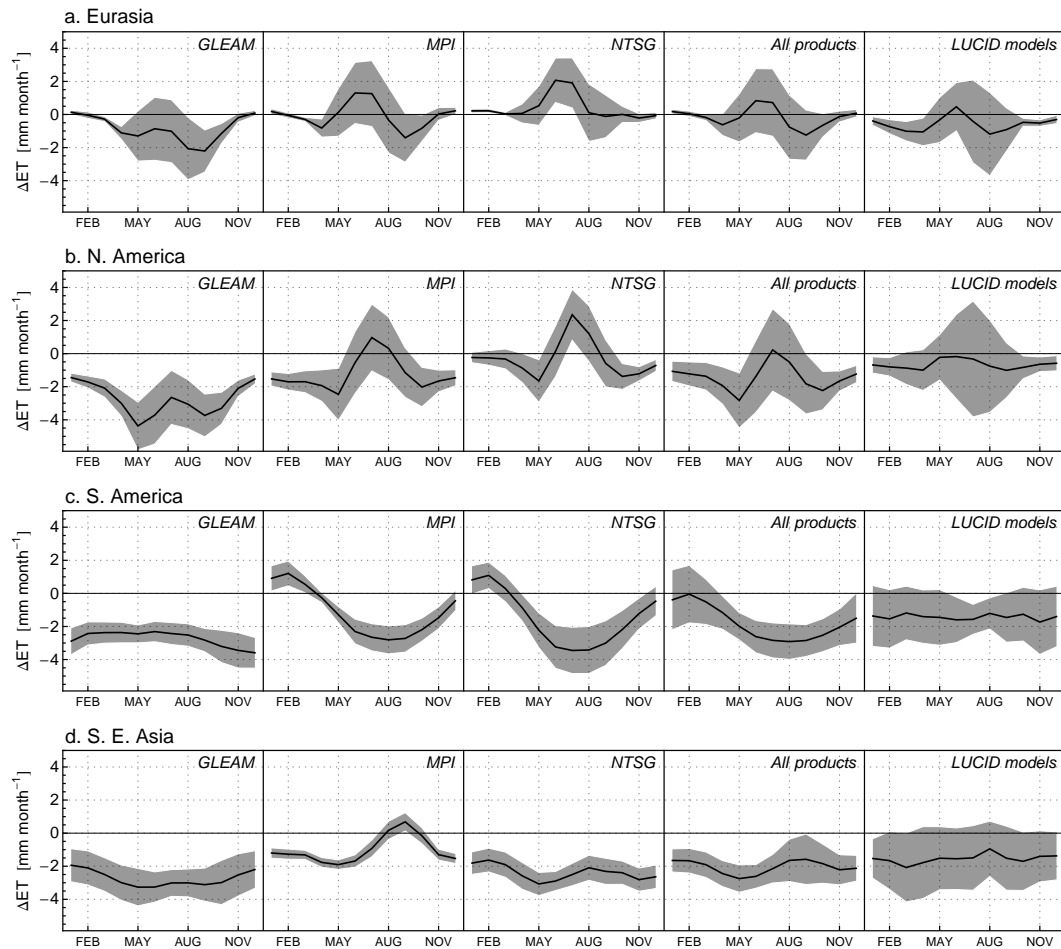


Figure 5. Monthly mean evapotranspiration (ET) change (PD-PI) averaged over the four regions of study: (a) Eurasia, (b) North America, (c) South America and (d) Southeast Asia. Product-based estimates and the simulated changes in ET are illustrated. Shaded areas indicate the mean ± 1.0 mean absolute deviation from the individual estimates or model data.

where ΔF_v is the change in the areal fraction of a generic land-cover type v . Hence, if A is totally converted to B, then $\delta_{A \rightarrow B}$ equals 1.0. If A is partially converted to B, and no other transition occurs simultaneously in a given grid cell, the change in ET as a response to a total transition from A to B can be estimated as the ratio between the actual ΔET and $\delta_{A \rightarrow B}$. Figure 8 illustrates how the diagnosed ΔET in the northern extratropics relates to the three major land-use transitions we are particularly interested in: forest-to-grass, forest-to-crops and grass-to-crops.

Figure 8a shows, as an example, the local (grid cells) ΔET deduced from the MPI product in July, plotted as function of each type of transition. In order to avoid misleading results from mixing simultaneous transitions, the only grid cells retained are those for which the selected transition is, as a minimum, four times larger in amplitude than the fractional area change of all other (not involved) land-cover units (this factor was defined by inspection with the criteria of retaining a significant number of grid cells for the analysis). This example

illustrates the dominant ET response to the specific transition selected. That is, a decrease in ET when forests are replaced with grasses, an increase in ET when cropland is allocated at the expense of grasses, and a no clear signal to the forest-to-crops transition. The normalized mean ET responses to each transition (sensitivity) may then be quantified as the slope of the linear fit between ΔET and $\delta_{A \rightarrow B}$. This analysis is illustrated as dashed lines for the particular case shown in Fig. 8a, and generalized for all seasons and product-based ΔET reconstructions in Fig. 8b.

For the northern extratropical regions, a similar behaviour is observed for the three ET products for a transition from forest to grassland, which is characterized by decreases of ET throughout the year but maximized in the boreal summer, when the mean anomalies reach $\sim -35 \text{ mm month}^{-1}$. This preferred ET response to deforestation is consistent with what is expected from reduced LAI and the underlying decrease in transpiration and in evaporation from intercepted rainfall.

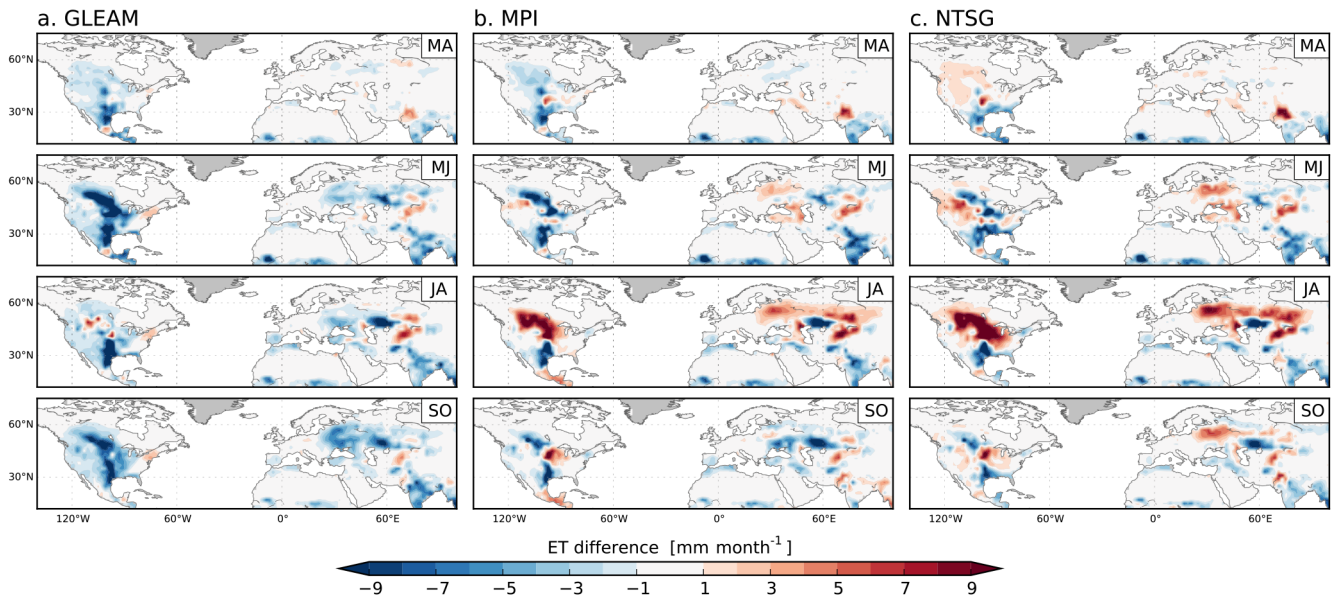


Figure 6. Change (PD-PI) in seasonal evapotranspiration reconstructed from (a) GLEAM, (b) MPI and (c) NTSG. The 2-monthly means correspond to March–April (MA), May–June (MJ), July–August (JA) and September–October (SO).

By contrast, when a land-cover transition involves changes in the area under crops, the ET sensitivity shown by the three products disagrees both in sign and magnitude. The results based on NTSG and GLEAM respectively show a summertime increase and decrease in ET for a transition from forest to crops, while MPI produces a weak ET response. When grasses are converted to crops, NTSG and MPI show clear increases in ET, while GLEAM-based anomalies are weak compared with the other products. These patterns highlight then different estimates of crops' ET rates across the various products assessed, in line with the results shown in Fig. 7.

The results shown in Fig. 8b help to interpret seasonal patterns of ΔET derived with the reconstructions. The distinct ET response to LULCC derived with the MPI and the NTSG products, which is characterized by summer ET increases in areas of large expansion of cropland, agrees with their ET sensitivities to transitions from forest or grassland to cropland. Hence, the results based on NTSG show large positive ET anomalies, particularly when cropland replaces grassland (Fig. 6). The reconstruction based on MPI shows a similar ET response to these types of land-cover transitions but of lower amplitude. In turn, the ET sensitivity based on GLEAM reveals weak to negative ET anomalies for the three major land-cover transitions from 1870 to 1992, explaining the dominant ET decreases between the PI and PD diagnosed with this product. In summary, the analysis described in this section suggests that the disagreement between the changes in ET deduced with the different products is principally a result of their specific cropland ET estimates.

6 Discussion and conclusions

This study presents novel observation-based estimates of LULCC-induced changes in evapotranspiration (ET) between the preindustrial period and present-day, together with associated error bars based on (a) uncertainties in the historical reconstruction of global land-cover distribution, and (b) uncertainties on the data-driven global ET products.

Moreover, our study provides seasonal and spatial details of large-scale ET changes that have not been discussed in any earlier work based on observations. Our results have demonstrated that while most parts of the globe show annual mean ET decreases, extensive areas in the Northern Hemisphere extratropics have experienced ET increases, specifically during the growing season in regions of large historical cropland expansion. In those regions the impact of past LULCC on annual ET masks strong seasonally varying changes in ET and points to the necessity of having access to observation-based reconstructions at the seasonal timescale.

Previous results from the LUCID intercomparison project have revealed very large uncertainties in modelled ET response to LULCC between the preindustrial period and the present, and an important fraction of these uncertainties was attributed to the reconstructed historical scenarios of LULCC (Boisier et al., 2012). To account for this uncertainty, the past changes in ET were estimated here using six different historical scenarios of LULCC previously used in LUCID.

We have diagnosed a global land annual ET change of around $-1250 \text{ km}^3 \text{ yr}^{-1}$ between the preindustrial period and present-day. This value is larger in amplitude than the simulated mean response to LULCC obtained from the LUCID climate models, and is placed between the data-driven

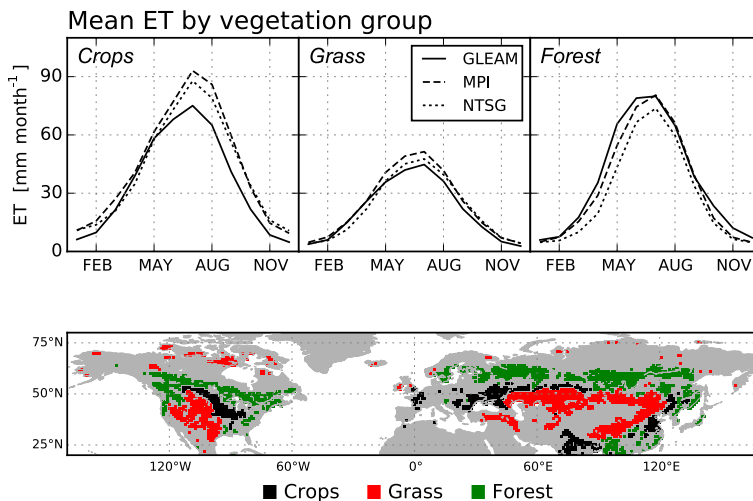


Figure 7. Monthly mean ET associated with dominant classes of vegetation in the Northern Hemisphere extratropics (> 20° N). Results from GLEAM, MPI and NTSG illustrated as solid, dashed and dotted lines, respectively. Regions with dominant vegetation (areal fraction > 75 % in 1.0° grid) are shown in the bottom panel.

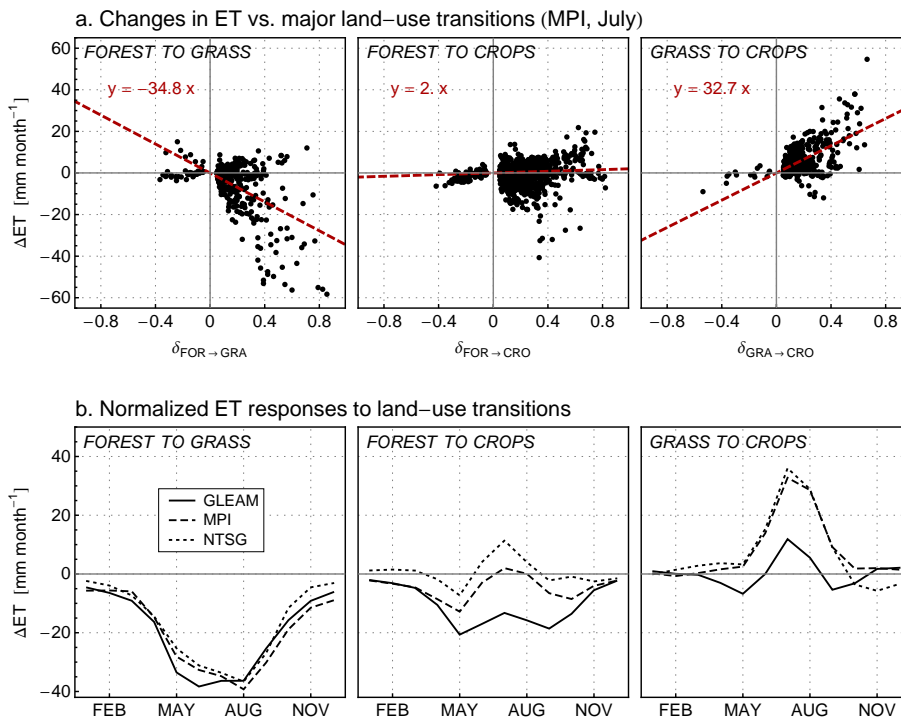


Figure 8. (a) Evapotranspiration (ET) change (PD-PI) diagnosed with the MPI ET product in July, plotted against three land-use transitions: forest-to-grass, forest-to-crops and grass-to-crops (see text). (b) Normalized monthly mean ET response to specific land-use transitions. Results based on the GLEAM, MPI and NTSG ET reconstructions are shown as solid, dashed and dotted lines, respectively. Analysis constrained to northern extratropical areas (> 20° N).

estimates of Gordon et al. (2005) and Sterling et al. (2013). However, our reconstructed past changes in ET show a very large dependency on the land-use maps adopted, as previous results from LUCID have also shown. Hence, no straight-

forward comparisons can be made between independent estimates that prescribe different LULCC. Constraining the current protocols used to reconstruct maps of land cover and deriving realistic historical scenarios of land-use change

therefore represent a major challenge for reducing the actual uncertainties on past changes in the terrestrial water budget.

In addition to the land-cover reconstructions, another source of uncertainty in the diagnosed ET change arises from intrinsic sensitivities to LULCC deduced from the various ET data sets adopted here. Our results show that these sensitivities are mainly related to the products' present-day crop ET estimates; we therefore highlight the necessity of revisiting how data sets treat crops.

The large differences in LAI shown by the LUCID models, and the associated uncertainties in simulated ET, reiterate previous findings and point out the need for in-depth evaluations of the vegetation phenology simulated in LSMs (e.g., Richardson et al., 2012; Anav et al., 2013).

Including irrigation is crucial to proper assessments of past land-use-induced ET changes (Gordon et al., 2005). Although not explicitly accounted for in this study, irrigation should be partially included in our ET reconstructions based on the MPI and NTSG products, given their FLUXNET data calibration. Regarding this aspect, it is noteworthy that the diagnosed ET based on these two products, despite the very different procedures used to derive them, show similar sensitivities to LULCC and, therefore, consistent spatial and seasonal patterns of ET change between the preindustrial period and the present.

Given that the preindustrial ET reconstructions were calculated using present-day data of the environmental drivers (precipitation, radiation and snow cover) and, implicitly, with current atmospheric CO₂ concentrations, the estimated ET changes do not consider any feedback that involves these drivers. This assumption could be particularly important for precipitation. Previous results from LUCID have shown that precipitation responds to LULCC synchronously with the changes in ET, hence amplifying the impacts on ET when atmospheric feedbacks are accounted for (Boisier et al., 2012).

The set of diagnosed ET presented here were derived with empirical multivariate models of ET. It is important to recall that the ET products used to derive these models were themselves obtained with empirical or semi-empirical methods. Although a number of site-level ET measurements were used to calibrate two products, these remain very limited in a global-scale context. Considering this, our results should be carefully interpreted since they involve uncertainties inherent both in the multivariate analysis carried out here and in the nature of the ET product used. Accounting for the specific product-based ET sensitivities to LULCC is therefore crucial. This is why we apply the same methodology to three ET products originally derived in quite different ways.

The increasing numbers of ground-based observations and satellite data, combined with statistical tools, allow accurate estimates of the current large-scale ET to be derived (e.g., Jung et al., 2010). Here, we have demonstrated that similar methods are also suitable for constraining uncertainties in the historical changes in ET, bringing a new class of estimates independent of global climate model simulations. Similar methods could also be applied to evaluate the historical impact on other key variables of the climate system (e.g., Boisier et al., 2013), driven by LULCC or by another climate forcing, as well as to perform future projections.

Appendix A: Evaluation of gridded products of evapotranspiration

A comparison of the ET products used in this study is presented in Appendix Fig. A1. The three data sets agree fairly well on the spatial distribution of climatological (1984–2006) annual ET, characterized by values above 1000 mm yr^{-1} in some tropical areas and very low rates in dry regions (Appendix Fig. A1a). The zonal mean of annual ET, depicted in the right-hand panels of Appendix Fig. A1a (solid lines), show similar patterns for the three products, with values below 500 mm yr^{-1} in the extratropics and a maximum of around 1000 mm yr^{-1} near the Equator.

In contrast to the climatological ET, large discrepancies between the products can be seen in the year-to-year variability of ET. The standard deviation (SD) of annual ET time series (1984–2006) were calculated locally and averaged zonally (dashed lines on the right panels of Appendix Fig. A1a), revealing large differences in the magnitude of the interannual variability shown by the products. Near the Equator, the mean SD ranges from around 25 mm yr^{-1} (MPI) to around 100 mm yr^{-1} (GLEAM). The spatial distribution of SD is not homogeneous between the products either (not shown).

Given the differences in the temporal variability of ET shown by the three data sets, we considered it pertinent-regarding the use of these products in this study- to evaluate how ET relates at interannual timescales with some key drivers of ET. In particular, we studied the role of precipitation (P) and downward radiation (R_D). The correlation coefficient between annual time series of ET and P ($\rho_{E,P}$) and between ET and R_D ($\rho_{E,R}$) tend to oppose each other when compared geographically, that is, in areas where one pair are positively correlated, the other pair are negatively correlated, and vice versa. In a similar approach to that adopted by Teuling et al. (2009), the spatial distribution of $\rho_{E,P}$ and of $\rho_{E,R}$ may be used to define the boundaries between water-limited (typically when $\rho_{E,P} > 0$ and $\rho_{E,R} < 0$) and energy-limited ($\rho_{E,P} < 0$ and $\rho_{E,R} > 0$) regions for ET.

To quantify the regime which dominates in different regions, we calculated $\rho_{E,P}$ minus $\rho_{E,R}$ (see Sect. 2.1 and Table 1 for details on the data sets used for P and R_D). The resultant geographical distribution of this metric is illustrated for each product in Appendix Fig. A1b.

In spite of the differences in the temporal ET variability, the three data sets show a general (large-scale) agreement in the ET regimes defined by $\rho_{E,P} - \rho_{E,R}$. However, some discrepancies are also apparent, such as in boreal regions, where ET is clearly energy-limited in the case of MPI and NTSG ($\rho_{E,P} < \rho_{E,R}$); whereas, $\rho_{E,P} - \rho_{E,R}$ does not show a dominant sign in the case of GLEAM.

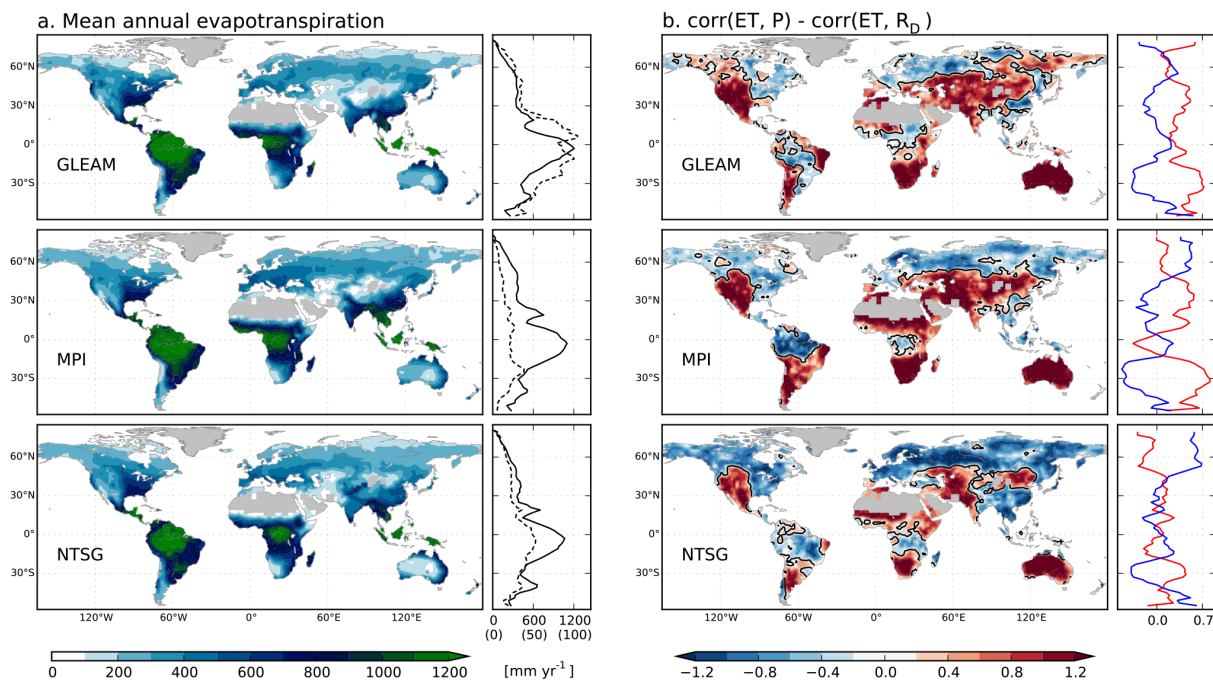


Figure A1. (a) Mean annual (1984–2006) evapotranspiration (ET) from GLEAM (top), MPI (middle) and NTSG (bottom). Right panels indicate the zonal mean of annual ET (solid line), and of interannual ET standard deviation (dashed line; x axis values in brackets). (b) Difference between the interannual correlation of ET and precipitation ($\rho_{E,P}$, red line) and that of ET and downward radiation ($\rho_{E,R}$, blue line). Right panels indicated the zonal mean of $\rho_{E,P}$ (red line) and $\rho_{E,R}$ (blue line).

Appendix B: Construction of biome-dependent LAI

Remotely sensed LAI data is used to characterize the spatial and seasonal foliage density distribution of each of the four classes of vegetation assessed (evergreen trees, deciduous trees, grasses and crops). In order to create biome-dependent maps of LAI (L_v), we adapted the methodology described by Boisier et al. (2013), used in a similar analysis but with surface albedo data.

The method basically extracts local monthly LAI values for each vegetation type, based on grid cells with dominant land cover. In this case, the input data sets are the MODIS land cover (MCD12Q1; Friedl et al., 2010) and the Beijing Normal University (BNU) reprocessed MODIS LAI (Yuan et al., 2011). Both products were initially processed at $1/40^\circ$ of resolution. The first step extracts LAI values in grid cells with dominant land cover, defined as the ones showing more than 95 % of its surface area covered by one of the four classes of vegetation used in this study (i.e., $F_v > 0.95$; see Sect. 2.1).

In a second step, the available LAI values per dominant land cover computed in the initial grid are averaged onto a 1.0° grid. For a given vegetation class, at least 5 % of the 1.0° pixel must contain LAI values (i.e., more than 80 sub-pixels should be dominant in the vegetation type assessed). Otherwise, a backup method is applied, which estimates L_v as the coefficients of a simple linear regression. The regression model has the same form as Eq. (3), but is computed with the MODIS LAI and F_v values observed in the sub-pixels (i.e., 40×40 observations). The resultant L_v obtained with the backup method is retained only if the corresponding regression confidence interval (at the 95 % confidence level) is lower than $0.5 \text{ m}^2 \text{ m}^{-2}$. Finally, those 1.0° grid cells for which L_v could not be obtained with one of the two methods were filled with the value of the nearest available neighbour.

Through Eq. (3), the spatially and seasonally varying L_v can be used to reconstruct global maps of LAI for different land-cover conditions, as was done with the LUCID set of land-cover maps to diagnose the LULCC-induced LAI changes between 1870 and 1992 (Sect. 3). To evaluate the method described above, we also reconstructed LAI maps using the same land-cover data set used to derive L_v . The resultant monthly LAI values match the observed ones very well ($R^2 = 0.99$), with a mean absolute error (MAE) of $0.02 \text{ m}^2 \text{ m}^{-2}$.

Appendix Fig. B1 shows the reconstructed LAI map in July as well as the monthly LAI averaged over the four regions assessed in this study. As the foliage density in the Northern Hemisphere is fully developed in July, the LAI distribution depicted in Appendix Fig. B1a closely follows the spatial distribution of forest. That is, LAI is maximized in the northern temperate and boreal forest areas, as well as in tropical rainforest, the latter with values above $5.0 \text{ m}^2 \text{ m}^{-2}$. The reconstructed regional mean LAI values are almost identical to the ones observed (solid lines and red dots in Appendix Fig. B1b, respectively), characterized by marked seasonal cycles in northern temperate regions (EA and NA) and roughly constant values in SA and SEA.

Appendix Fig. B1c illustrates the regional monthly mean L_v obtained for each of the four classes of vegetation assessed. The deciduous forest shows large summer LAI compared to the other groups in EA and NA, and a strong seasonal cycle. In these two regions, evergreen trees show moderate LAI, comparable to that of short vegetation. Crops' LAI show a slightly larger annual maximum than grasses ($\sim 2.0 \text{ m}^2 \text{ m}^{-2}$), and an earlier growing season in EA compared to NA. The LAI difference between forest and short vegetation is more clearly manifested in SA and SEA, with both kinds of tree showing nearly constant LAI of around $4.0 \text{ m}^2 \text{ m}^{-2}$. Crops' LAI in SA show a marked seasonal cycle compared to the other groups of vegetation.

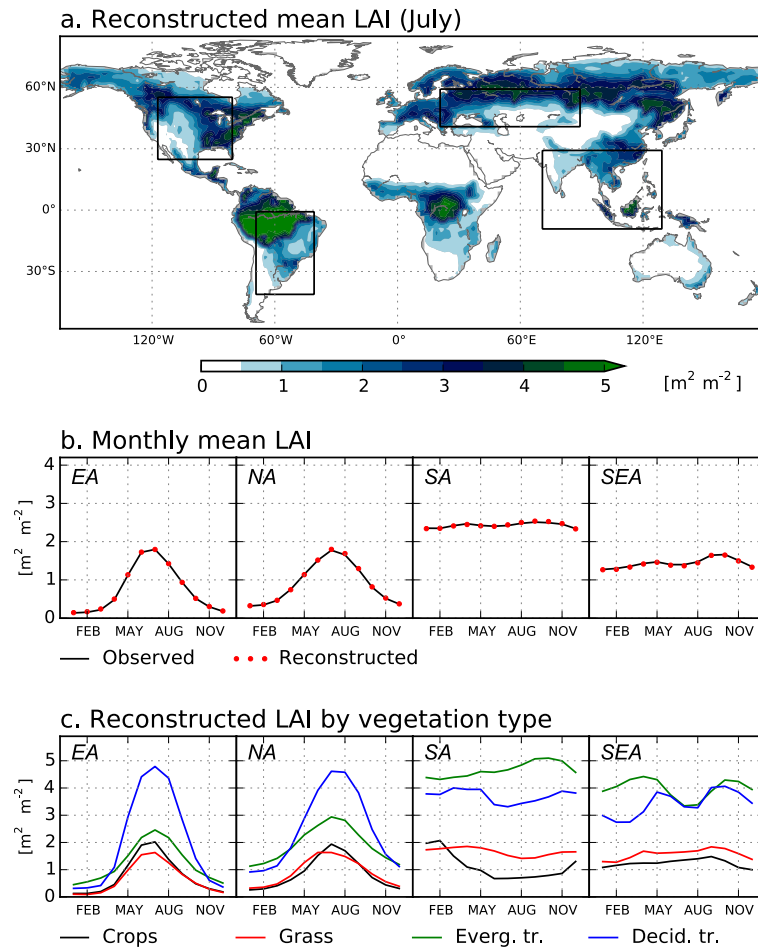


Figure B1. (a) Reconstructed global distribution of leaf area index (LAI) in July based on MODIS data. (b) Monthly mean LAI averaged over the four regions of study: Eurasia (EA), North America (NA), South America (SA) and southeast Asia (SEA). Reconstructed and observed values indicated as solid line and red dots, respectively. (c) Regional and monthly mean LAI per land-cover class: crops (black line), grasses (red), evergreen trees (green) and deciduous trees (blue).

Appendix C: Multivariate ET models

As described in Sect. 2.3, three empirical ET models were constructed using a multivariate regression tool based on Multivariate Adaptive Regression Splines (MARS). Each of them resulted from the analysis of each ET product assessed here (Table 1). To construct those models, we first considered the mean ET in a grid cell (E_g) as the linear combination of the components associated with each land-cover class (E_v). That is,

$$E_g = \sum_v F_v^* E_v(x), \quad (\text{C1})$$

where x represents an array of the environmental predictors, including the monthly mean, the long-term monthly mean and the long-term annual mean of P , L_D , S_D and SWE.

If E_v is an additive model of the basis defined by the elements of x (as the hinge functions used in MARS), we can

rewrite E_g as

$$E_g = \alpha_0 + \sum_{v,i,K} \alpha_K^{v,i} H_K(F_v^* x_i), \quad (\text{C2})$$

with α_0 and $\alpha_K^{v,i}$, the parameters of the MARS model computed for each of the 60 basis, resulting from the 5 land-cover classes [$N(v)$] by 12 environmental predictors [$N(i)$]. H_K represents the hinge functions obtained for a given basis. The knots position and number [$N(K)$] are automatically selected in the MARS routine.

The MARS analysis is performed with the monthly data of ET and the explanatory variables from 1984 to 2006, the overlapping period between all data, except for F_v^* , for which we have used the mean (2001–2009) monthly values derived from MODIS as present-day data (Table 1). The complete data set was previously regridded (averaged) onto a 1.0° rectangular projection, since all data are available at equal or higher resolutions (Table 1).

The full data set comprises more than 3×10^6 observations (number of pixel-months). In order to increase the computational efficiency, we use a random subset of the full record (about 9 %) as input during the training process. Preliminary tests showed that the predictive performance of the constructed models is not improved by using larger samples in the training data.

In order to evaluate the predictive skill of the MARS-based ET models, we reconstructed ET with each model and the complete predictor data set, and we compared them to the actual ET. Appendix Fig. C1 shows the scatter diagrams between the observed ET (product) and the reconstructed ones. Considering the full record (i.e., collecting together all the pixel-month values from 1984 to 2006), the reconstructed ET explains about 90, 91 and 95 % of the observed ET variance in the case of GLEAM, NTSG and MPI, respectively. The typical errors (MAE) are, in the same order, 8.2, 6.9 and $5.3 \text{ mm month}^{-1}$. These errors are reduced by a factor ~ 2 , when the climatological monthly values are considered, indicating that an important fraction of the errors occurs at the interannual timescale. This is somehow expected since the input data set record is much larger in space (about 11 000 pixels) than in time (276 months).

The skill of MARS models to predict the spatial and seasonal distribution of ET is reasonably good despite the relative simplicity of the set of explanatory variables used and their independence with respect to the ET data sets. The environmental data adopted here are in most cases different to those originally used to derive the ET products (Table 1). Yet, the typical error of the reconstructed ET climatologies, ranging from $\sim 2.9 \text{ mm month}^{-1}$ (MPI) to $\sim 4.1 \text{ mm month}^{-1}$ (GLEAM), remains lower but of the same order than the diagnosed changes in ET in regions of important land-cover perturbations (see Fig. 6).

Besides the predictive skills of the MARS ET models derived here, an important fraction of the resulting errors in the ET reconstructions should be attributable to the omission of key drivers of ET originally accounted for in a given product, such as the soil moisture in the case of GLEAM. In contrast, we consider that the contribution of the land-cover partitioning to the spatial ET variability of the products is fairly well captured by the reconstructions and, therefore, the MARS models are able to estimate changes in ET driven by LULCC.

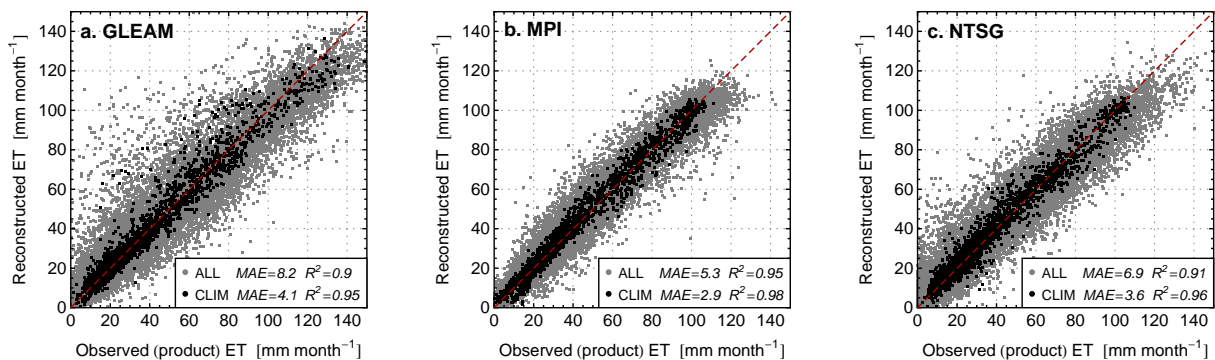


Figure C1. Reconstructed vs. observed monthly evapotranspiration (ET) based on the (a) GLEAM, (b) MPI and (c) NTSG ET products. The full data set (pixel-months) and the long-term monthly mean values are illustrated as grey and black dots, respectively. The mean absolute error (MAE) and coefficient of determination (R^2) between the reconstructions and the observations are indicated.

Acknowledgements. We thank the LUCID community for providing the model data and support. We also thank Sonia Seneviratne and two anonymous reviewers for their fruitful comments and suggestions. We acknowledge NTSG (University of Montana), Diego Miralles and Martin Jung for making available the ET products used here. The MODIS MCD12Q1 product was obtained through the online Data Pool at the NASA Land Processes Distributed Active Archive Center (LP DAAC), USGS/Earth Resources Observation and Science (EROS) Center, Sioux Falls, South Dakota (https://lpdaac.usgs.gov/data_access). The reprocessed LAI data was obtained from the Beijing Normal University College of Global Change and Earth System Science. Surface radiation data were obtained from the NASA Langley Research Center Atmospheric Sciences Data Center NASA/GEWEX SRB Project. The AVHRR/SMMR/SSM/I SWE product (NSIDC-0271) was obtained from the National Snow and Ice Data Center (NSIDC) Distributed Active Archive Center (DAAC). Precipitation data are available at the GPCP Homepage: <http://gpcc.dwd.de>. This study was partially funded by the EU-FP7 project AMAZALERT and the Chilean National Commission for Scientific and Technological Research (CONICYT).

Edited by: K. Stahl

References

- Adegoke, J. O., Pielke Sr., R., and Carleton, A. M.: Observational and modeling studies of the impacts of agriculture-related land use change on planetary boundary layer processes in the central US, *Agr. Forest Meteorol.*, 142, 203–215, doi:10.1016/j.agrformet.2006.07.013, 2007.
- Anav, A., Friedlingstein, P., Kidston, M., Bopp, L., Ciais, P., Cox, P., Jones, C., Jung, M., Myneni, R., and Zhu, Z.: Evaluating the land and ocean components of the global carbon cycle in the CMIP5 Earth system models, *J. Climate*, 26, 6801–6843, doi:10.1175/JCLI-D-12-00417.1, 2013.
- Armstrong, R. L., Brodzik, M., Knowles, J. K., and Savoie, M.: Global monthly EASE-Grid snow water equivalent climatology, Digital Media, National Snow and Ice Data Center, Boulder, CO, 2007.
- Baldocchi, D. D., Vogel, C. A., and Hall, B.: Seasonal variation of energy and water vapor exchange rates above and below a boreal jack pine forest canopy, *J. Geophys. Res.*, 102, 28939–28951, doi:10.1029/96JD03325, 1997.
- Betts, R. A.: Biogeophysical impacts of land use on present-day climate: near-surface temperature change and radiative forcing, *Atmos. Sci. Lett.*, 2, 39–51, doi:10.1006/asle.2001.0037, 2001.
- Boisier, J. P., de Noblet-Ducoudré, N., Pitman, A. J., Cruz, F. T., Delire, C., van den Hurk, B. J. J. M., van der Molen, M. K., Müller, C., and Voldoire, A.: Attributing the impacts of land-cover changes in temperate regions on surface temperature and heat fluxes to specific causes: results from the first LUCID set of simulations, *J. Geophys. Res.*, 117, D12116, doi:10.1029/2011JD017106, 2012.
- Boisier, J. P., de Noblet-Ducoudré, N., and Ciais, P.: Inferring past land use-induced changes in surface albedo from satellite observations: a useful tool to evaluate model simulations, *Biogeosciences*, 10, 1501–1516, doi:10.5194/bg-10-1501-2013, 2013.
- Bonan, G. B.: Forests and Climate Change: Forcings, Feedbacks, and the Climate Benefits of Forests, *Science*, 320, 1444–1449, doi:10.1126/science.1155121, 2008.
- Bounoua, L., DeFries, R., Collatz, G. J., Sellers, P., and Khan, H.: Effects of land cover conversion on surface climate, *Climatic Change*, 52, 29–64, doi:10.1023/A:1013051420309, 2002.
- Brovkin, V., Raddatz, T., Reick, C. H., Claussen, M., and Gayler, V.: Global biogeophysical interactions between forest and climate, *Geophys. Res. Lett.*, 36, L0740, doi:10.1029/2009GL037543, 2009.
- Ciais, P., Gasser, T., Paris, J. D., Caldeira, K., Raupach, M. R., Canadell, J. G., Patwardhan, A., Friedlingstein, P., Piao, S. L., and Gitz, V.: Attributing the increase in atmospheric CO₂ to emitters and absorbers, *Nat. Clim. Change*, 3, 926–930, doi:10.1038/nclimate1942, 2013.
- Costa, M. H. and Foley, J. A.: Combined effects of deforestation and doubled atmospheric CO₂ concentrations on the climate of Amazonia, *J. Climate*, 13, 18–34, doi:10.1175/1520-0442(2000)013<0018:CEODAD>2.0.CO;2, 2000.
- Da Rocha, H. R., Manzi, A. O., Cabral, O. M., Miller, S. D., Goulden, M. L., Saleska, S. R., R-Coupe, N., Wofsy, S. C., Borma, L. S., Artaxo, P., Vourlitis, G., Nogueira, J. S., Cardoso, F. L., Nobre, A. D., Kruijt, B., Freitas, H. C., von Randow, C., Aguiar, R. G., and Maia, J. F.: Patterns of water and heat flux across a biome gradient from tropical forest to savanna in Brazil, *J. Geophys. Res.*, 114, G00B12, doi:10.1029/2007JG000640, 2009.
- Davin, E. L. and de Noblet-Ducoudré, N.: Climatic impact of global-scale deforestation: radiative versus nonradiative processes, *J. Climate*, 23, 97–112, doi:10.1175/2009JCLI3102.1, 2010.
- De Noblet-Ducoudré, N., Boisier, J.-P., Pitman, A., Bonan, G. B., Brovkin, V., Cruz, F., Delire, C., Gayler, V., van den Hurk, B. J. J. M., Lawrence, P. J., van der Molen, M. K., Müller, C., Reick, C. H., Strengers, B. J., and Voldoire, A.: Determining robust impacts of land-use-induced land cover changes on surface climate over North America and Eurasia: results from the first set of LUCID experiments, *J. Climate*, 25, 3261–3281, doi:10.1175/JCLI-D-11-00338.1, 2012.
- Douglas, E. M., Niyogi, D., Frolking, S., Yeluripati, J. B., Pielke, R. A., Niyogi, N., Vörösmarty, C. J., and Mohanty, U. C.: Changes in moisture and energy fluxes due to agricultural land use and irrigation in the Indian Monsoon Belt, *Geophys. Res. Lett.*, 33, L14403, doi:10.1029/2006GL026550, 2006.
- Fang, H., Jiang, C., Li, W., Wei, S., Baret, F., Chen, J. M., Garcia-Haro, J., Liang, S., Liu, R., Myneni, R. B., Pinty, B., Xiao, Z., and Zhu, Z.: Characterization and intercomparison of global moderate resolution leaf area index (LAI) products: analysis of climatologies and theoretical uncertainties, *J. Geophys. Res.*, 118, 529–548, doi:10.1002/jgrg.20051, 2013.
- Findell, K. L., Shevliakova, E., Milly, P. C. D., and Stouffer, R. J.: Modeled impact of anthropogenic land cover change on climate, *J. Climate*, 20, 3621–3634, doi:10.1175/JCLI4185.1, 2007.
- Friedl, M. A., Sulla-Menashe, D., Tan, B., Schneider, A., Ramankutty, N., Sibley, A., and Huang, X.: MODIS Collection 5 global land cover: algorithm refinements and characterization of new datasets, *Remote Sens. Environ.*, 114, 168–182, 2010.
- Friedman, J. H.: Multivariate adaptive regression splines, *Ann. Stat.*, 19, 1–67, doi:10.1214/aos/1176347963, 1991.

- Garrigues, S., Lacaze, R., Baret, F., Morisette, J. T., Weiss, M., Nickeson, J. E., Fernandes, R., Plummer, S., Shabanov, N. V., Myneni, R. B., Knyazikhin, Y., and Yang, W.: Validation and intercomparison of global Leaf Area Index products derived from remote sensing data, *J. Geophys. Res.*, 113, G02028, doi:10.1029/2007JG000635, 2008.
- Gash, J. H. C. and Nobre, C. A.: Climatic effects of Amazonian deforestation: some results from ABRACOS, *B. Am. Meteorol. Soc.*, 78, 823–830, doi:10.1175/1520-0477(1997)078<0823:CEOADS>2.0.CO;2, 1997.
- Goldewijk, K. K.: Estimating global land use change over the past 300 years: the HYDE database, *Global Biogeochem. Cy.*, 15, 417–433, doi:10.1029/1999GB001232, 2001.
- Gordon, L. J., Steffen, W., Jönsson, B. F., Folke, C., Falkenmark, M., and Johannessen, Å.: Human modification of global water vapor flows from the land surface, *P. Natl. Acad. Sci. USA*, 102, 7612–7617, doi:10.1073/pnas.0500208102, 2005.
- Govindasamy, B., Duffy, P. B., and Caldeira, K.: Land use changes and northern hemisphere cooling, *Geophys. Res. Lett.*, 28, 291–294, doi:10.1029/2000GL006121, 2001.
- Guimberteau, M., Laval, K., Perrier, A., and Polcher, J.: Global effect of irrigation and its impact on the onset of the Indian summer monsoon, *Clim. Dyn.*, 39, 1329–1348, 2012.
- Haddeland, I., Skaugen, T., and Lettenmaier, D. P.: Hydrologic effects of land and water management in North America and Asia: 1700–1992, *Hydrol. Earth Syst. Sci.*, 11, 1035–1045, doi:10.5194/hess-11-1035-2007, 2007.
- Hastie, T., Tibshirani, R., and Friedman, J.: *The Elements of Statistical Learning: Data Mining, Inference, and Prediction*, 2nd Edn., Springer Science+Business Media, LLC 2009, doi:10.1007/b94608, 2009.
- Jiménez, C., Prigent, C., Mueller, B., Seneviratne, S. I., McCabe, M. F., Wood, E. F., Rossow, W. B., Balsamo, G., Betts, A. K., Dirmeyer, P. A., Fisher, J. B., Jung, M., Kanamitsu, M., Reichle, R. H., Reichstein, M., Rodell, M., Sheffield, J., Tu, K., and Wang, K.: Global intercomparison of 12 land surface heat flux estimates, *J. Geophys. Res.*, 116, D02102, doi:10.1029/2010JD014545, 2011.
- Jung, M., Reichstein, M., Ciais, P., Seneviratne, S. I., Sheffield, J., Goulden, M. L., Bonan, G., Cescatti, A., Chen, J., de Jeu, R., Dolman, A. J., Eugster, W., Gerten, D., Gianelle, D., Gobron, N., Heinke, J., Kimball, J., Law, B. E., Montagnani, L., Mu, Q., Mueller, B., Oleson, K., Papale, D., Richardson, A. D., Rouspard, O., Running, S., Tomelleri, E., Viovy, N., Weber, U., Williams, C., Wood, E., Zaehle, S., and Zhang, K.: Recent decline in the global land evapotranspiration trend due to limited moisture supply, *Nature*, 467, 951–954, doi:10.1038/nature09396, 2010.
- Lee, E., Sacks, W. J., Chase, T. N., and Foley, J. A.: Simulated impacts of irrigation on the atmospheric circulation over Asia, *J. Geophys. Res.*, 116, D08114, doi:10.1029/2010JD014740, 2011.
- Loarie, S. R., Lobell, D. B., Asner, G. P., Mu, Q., and Field, C. B.: Direct impacts on local climate of sugarcane expansion in Brazil, *Nature Clim. Change*, 1, 105–109, doi:10.1038/nclimate1067, 2011.
- Lobell, D. B. and Bonfils, C.: The effect of irrigation on regional temperatures: a spatial and temporal analysis of trends in California, 1934–2002, *J. Climate*, 21, 2063–2071, doi:10.1175/2007JCLI1755.1, 2008.
- Mahmood, R., Foster, S. A., Keeling, T., Hubbard, K. G., Carlson, C., and Leeper, R.: Impacts of irrigation on 20th century temperature in the northern Great Plains, *Global Planet. Change*, 54, 1–18, doi:10.1016/j.gloplacha.2005.10.004, 2006.
- Miralles, D. G., Holmes, T. R. H., De Jeu, R. A. M., Gash, J. H., Meesters, A. G. C. A., and Dolman, A. J.: Global land-surface evaporation estimated from satellite-based observations, *Hydrol. Earth Syst. Sci.*, 15, 453–469, doi:10.5194/hess-15-453-2011, 2011.
- Mueller, B., Seneviratne, S. I., Jiménez, C., Corti, T., Hirschi, M., Balsamo, G., Ciais, P., Dirmeyer, P., Fisher, J. B., Guo, Z., Jung, M., Maignan, F., McCabe, M. F., Reichle, R., Reichstein, M., Rodell, M., Sheffield, J., Teuling, A. J., Wang, K., Wood, E. F., and Zhang, Y.: Evaluation of global observations-based evapotranspiration datasets and IPCC AR4 simulations, *Geophys. Res. Lett.*, 38, L06402, doi:10.1029/2010GL046230, 2011.
- Mueller, B., Hirschi, M., Jiménez, C., Ciais, P., Dirmeyer, P. A., Dolman, A. J., Fisher, J. B., Jung, M., Ludwig, F., Maignan, F., Miralles, D. G., McCabe, M. F., Reichstein, M., Sheffield, J., Wang, K., Wood, E. F., Zhang, Y., and Seneviratne, S. I.: Benchmark products for land evapotranspiration: LandFlux-EVAL multi-data set synthesis, *Hydrol. Earth Syst. Sci.*, 17, 3707–3720, doi:10.5194/hess-17-3707-2013, 2013.
- Nobre, C. A., Sellers, P. J., and Shukla, J.: Amazonian deforestation and regional climate change, *J. Climate*, 4, 957–988, doi:10.1175/1520-0442(1991)004<0957:ADARCC>2.0.CO;2, 1991.
- Piao, S., Friedlingstein, P., Ciais, P., Noblet-Ducoudré, N. de, Labat, D., and Zaehle, S.: Changes in climate and land use have a larger direct impact than rising CO₂ on global river runoff trends, *P. Natl. Acad. Sci. USA*, 104, 15242–15247, doi:10.1073/pnas.0707213104, 2007.
- Pielke, R. A., Pitman, A., Niyogi, D., Mahmood, R., McAlpine, C., Hossain, F., Goldewijk, K. K., Nair, U., Betts, R., Fall, S., Reichstein, M., Kabat, P., and de Noblet, N.: Land use/land cover changes and climate: modeling analysis and observational evidence, *Wiley Interdisciplinary Reviews: Climate Change*, 2, 828–850, doi:10.1002/wcc.144, 2011.
- Pitman, A. J., de Noblet-Ducoudré, N., Cruz, F. T., Davin, E. L., Bonan, G. B., Brovkin, V., Claussen, M., Delire, C., Ganzeveld, L., Gayler, V., van den Hurk, B. J. J. M., Lawrence, P. J., van der Molen, M. K., Müller, C., Reick, C. H., Seneviratne, S. I., Strengers, B. J., and Voltaire, A.: Uncertainties in climate responses to past land cover change: first results from the LU-CID intercomparison study, *Geophys. Res. Lett.*, 36, L14814, doi:10.1029/2009GL039076, 2009.
- Pongratz, J. and Caldeira, K.: Attribution of atmospheric CO₂ and temperature increases to regions: importance of preindustrial land use change, *Environ. Res. Lett.*, 7, 034001, doi:10.1088/1748-9326/7/3/034001, 2012.
- Puma, M. J. and Cook, B. I.: Effects of irrigation on global climate during the 20th century, *J. Geophys. Res.*, 115, D16120, doi:10.1029/2010JD014122, 2010.
- Ramankutty, N. and Foley, J. A.: Estimating historical changes in global land cover: croplands from 1700 to 1992, *Global Biogeochem. Cy.*, 13, 997–1027, doi:10.1029/1999GB900046, 1999.
- Richardson, A. D., Anderson, R. S., Arain, M. A., Barr, A. G., Bohrer, G., Chen, G., Chen, J. M., Ciais, P., Davis, K. J., De-

- sai, A. R., Dietze, M. C., Dragoni, D., Garrity, S. R., Gough, C. M., Grant, R., Hollinger, D. Y., Margolis, H. A., McCaughey, H., Migliavacca, M., Monson, R. K., Munger, J. W., Poulter, B., Raczka, B. M., Ricciuto, D. M., Sahoo, A. K., Schaefer, K., Tian, H., Vargas, R., Verbeeck, H., Xiao, J., and Xue, Y.: Terrestrial biosphere models need better representation of vegetation phenology: results from the North American Carbon Program Site Synthesis, *Glob. Change Biol.*, 18, 566–584, doi:10.1111/j.1365-2486.2011.02562.x, 2012.
- Roy, S. S., Mahmood, R., Niyogi, D., Lei, M., Foster, S. A., Hubbard, K. G., Douglas, E., and Pielke, R.: Impacts of the agricultural Green Revolution – induced land use changes on air temperatures in India, *J. Geophys. Res.*, 112, D21108, doi:10.1029/2007JD008834, 2007.
- Rudolf, B., Becker, A., Schneider, U., Meyer-Christoffer, A., and Ziese, M.: GPCP Status Report December 2010, Global Precipitation Climatology Centre – GPCP, Offenbach, Germany, 7 pp., 2010.
- Sampaio, G., Nobre, C., Costa, M. H., Satyamurty, P., Soares-Filho, B. S., and Cardoso, M.: Regional climate change over eastern Amazonia caused by pasture and soybean cropland expansion, *Geophys. Res. Lett.*, 34, L17709, doi:10.1029/2007GL030612, 2007.
- Sterling, S. M., Ducharme, A., and Polcher, J.: The impact of global land-cover change on the terrestrial water cycle, *Nature Clim. Change*, 3, 385–390, doi:10.1038/nclimate1690, 2013.
- Teuling, A. J., Hirschi, M., Ohmura, A., Wild, M., Reichstein, M., Ciais, P., Buchmann, N., Ammann, C., Montagnani, L., Richardson, A. D., Wohlfahrt, G., and Seneviratne, S. I.: A regional perspective on trends in continental evaporation, *Geophys. Res. Lett.*, 36, L02404, doi:10.1029/2008GL036584, 2009.
- Teuling, A. J., Seneviratne, S. I., Stöckli, R., Reichstein, M., Moors, E., Ciais, P., Luysaert, S., van den Hurk, B., Ammann, C., Bernhofer, C., Dellwik, E., Gianelle, D., Gielen, B., Grünwald, T., Klumpp, K., Montagnani, L., Moureaux, C., Sottocornola, M., and Wohlfahrt, G.: Contrasting response of European forest and grassland energy exchange to heatwaves, *Nat. Geosci.*, 3, 722–727, doi:10.1038/ngeo950, 2010.
- Von Randow, C., Manzi, A. O., Kruijt, B., Oliveira, P. J. de, Zanchi, F. B., Silva, R. L., Hodnett, M. G., Gash, J. H. C., Elbers, J. A., Waterloo, M. J., Cardoso, F. L., and Kabat, P.: Comparative measurements and seasonal variations in energy and carbon exchange over forest and pasture in South West Amazonia, *Theor. Appl. Climatol.*, 78, 5–26, doi:10.1007/s00704-004-0041-z, 2004.
- Yuan, H., Dai, Y., Xiao, Z., Ji, D., and Shanguan, W.: Reprocessing the MODIS Leaf Area Index products for land surface and climate modelling, *Remote Sens. Environ.*, 115, 1171–1187, doi:10.1016/j.rse.2011.01.001, 2011.
- Zhang, K., Kimball, J. S., Nemani, R. R., and Running, S. W.: A continuous satellite-derived global record of land surface evapotranspiration from 1983 to 2006, *Water Resour. Res.*, 46, W09522, doi:10.1029/2009WR008800, 2010.