



**HAL**  
open science

## Experiments on growth series of braid groups

Jean Fromentin

► **To cite this version:**

| Jean Fromentin. Experiments on growth series of braid groups. 2020. hal-02929264v1

**HAL Id: hal-02929264**

**<https://hal.science/hal-02929264v1>**

Preprint submitted on 3 Sep 2020 (v1), last revised 14 Apr 2021 (v3)

**HAL** is a multi-disciplinary open access archive for the deposit and dissemination of scientific research documents, whether they are published or not. The documents may come from teaching and research institutions in France or abroad, or from public or private research centers.

L'archive ouverte pluridisciplinaire **HAL**, est destinée au dépôt et à la diffusion de documents scientifiques de niveau recherche, publiés ou non, émanant des établissements d'enseignement et de recherche français ou étrangers, des laboratoires publics ou privés.

# EXPERIMENTS ON GROWTH SERIES OF BRAID GROUPS

JEAN FROMENTIN

ABSTRACT. We introduce an algorithmic framework to investigate spherical and geodesic growth series of braid groups relatively to the Artin's or Birman–Ko–Lee's generators. We present our experimentations in the case of three and four strands and conjecture rational expressions for the spherical growth series with respect to the Birman–Ko–Lee's generators.

## 1. INTRODUCTION

Originally introduced as the group of isotopy classes of  $n$ -strands geometric braids, the braid group  $B_n$  admits many finite presentations by generators and relations. From each finite semigroup generating set  $S$  of  $B_n$  we can define at least two growth series. The spherical growth series counts elements of  $B_n$  by their distance from the identity in the Cayley graph  $\text{Cay}(B_n, S)$  of  $B_n$  with respect to  $S$ . The geodesic growth series counts geodesic paths starting from the identity by length in  $\text{Cay}(B_n, S)$ .

In case of Artin's generators  $\Sigma_n = \{\sigma_1^{\pm 1}, \dots, \sigma_{n-1}^{\pm 1}\}$  of  $B_n$  the only known significant results are for  $n \leq 3$ . L. Sabalka determines [24] both the spherical and geodesic growth series of  $B_3$ . To this end, he constructs an explicit deterministic finite automaton recognizing the language of geodesic  $\Sigma_3$ -words. In particular he obtains the rationality of both series. Similar results were obtained by J. Mairesse and F. Mathéus in case of Artin–Tits groups of dihedral type [23]. In page 57 of her PhD thesis [2], M. Albenque gives the first 13 terms of the spherical series of  $B_4$  relatively to  $\Sigma_4$ .

Here we introduce a new algorithmic framework to compute the first terms of the spherical and geodesic growth series of  $B_n$  relatively to both Artin's or Birman–Ko–Lee's generators. Experimentations allow us to conjecture rational expressions for the spherical growth series of  $B_3$  and  $B_4$  and geodesic growth series of  $B_3$  relatively to the Birman–Ko–Lee's generators. We also obtain the first 26 terms of the spherical and geodesic growth series of  $B_4$  with respect to  $\Sigma_4$  but this is not enough to formulate any conjecture in this case. Experiments presented in this paper were carried out using the CALCULCO computing platform [25].

The paper is organized as follows. Section 2 recalls basic definitions and presents already known result on the subject. In section 3 we describe a first algorithm to explore spherical and geodesic combinatorics of braids relatively to Artin's or Birman–Ko–Lee generators. Section 4 is devoted to the notion of braid template which allows us to parallelize the algorithms obtained in the previous section. In section 5 we show how to reduce the exploration space by introducing reduced braid templates. Experimentation results are detailed in the last section.

---

2010 *Mathematics Subject Classification.* Primary 20F36, 20F10; Secondary 20F69, 68R15.

*Key words and phrases.* Braid group, spherical growth series, geodesic growth series, algorithm.

## 2. CONTEXT

**2.1. Growth series.** Let  $S$  be a finite generating set of a semigroup  $M$ . We denote by  $S^*$  the set of all words on the alphabet  $S$ , which are called  $S$ -words. The empty word is denoted by  $\varepsilon$ . For every  $S$ -word  $u$ , we denote by  $|u|$  its length and by  $\bar{u}$  the element of  $M$  it represents. We say that two  $S$ -words  $u$  and  $v$  are equivalent, denoted  $u \equiv v$ , if they represent the same element in  $M$ .

**Definition 2.1.** The  $S$ -length of an element  $x \in M$ , denoted  $|x|_S$ , is the length of a shortest  $S$ -word representing  $x$ . An  $S$ -word  $u$  satisfying  $|u| = |\bar{u}|_S$  is *geodesic*.

The  $S$ -length of an element  $x \in M$  corresponds to the distance between  $x$  and the identity in the Cayley graph of  $M$  with respect to the finite generating set  $S$ .

**Definition 2.2.** For any  $\ell \in \mathbb{N}$ , we denote by  $g(M, S; \ell)$  the number of geodesic  $S$ -words of length  $\ell$ . The *geodesic* growth series of  $M$  with respect to  $S$  is

$$\mathcal{G}(M, S) = \sum_{\ell \in \mathbb{N}} g(M, S; \ell) t^\ell.$$

If the language of geodesic  $S$ -words is regular then the series  $\mathcal{G}(M, S)$  is rational.

**Definition 2.3.** For any  $\ell \in \mathbb{N}$ , we denote by  $s(M, S; \ell)$  the number of elements in  $M$  of length  $\ell$ . The *spherical* growth series of  $M$  with respect to  $S$  is

$$\mathcal{S}(M, S) = \sum_{x \in M} t^{|x|_S} = \sum_{\ell \in \mathbb{N}} s(M, S; \ell) t^\ell.$$

If there exists a regular language composed of geodesic  $S$ -words in bijection with  $M$  then the series  $\mathcal{S}(M, S)$  is rational.

**2.2. Artin's braid presentation.** The first presentation of the braid group  $B_n$  was given by E. Artin in [4] :

$$B_n \simeq \left\langle \sigma_1, \dots, \sigma_{n-1} \mid \begin{array}{l} \sigma_i \sigma_j = \sigma_j \sigma_i \quad \text{for } |i-j| \geq 2 \\ \sigma_i \sigma_j \sigma_i = \sigma_j \sigma_i \sigma_j \quad \text{for } |i-j| = 1 \end{array} \right\rangle. \quad (1)$$

**Definition 2.4.** For all  $n \geq 2$ , we denote by  $\Sigma_n^+$  the set  $\{\sigma_1, \dots, \sigma_{n-1}\}$  and by  $\Sigma_n$  the set  $\Sigma_n^+ \sqcup (\Sigma_n^+)^{-1}$ .

Artin's presentation of  $B_n$  implies that  $\Sigma_n^+$  is a set of group generators of  $B_n$ . However the braid  $\sigma_1^{-1}$  cannot be represented by any  $\Sigma_n^+$ -word. For our purpose, it is fundamental to view a monoid (or a group) as a quotient of a finitely generated free monoid. As a monoid, the braid group  $B_n$  is presented by generators  $\Sigma_n$  and presentation of (1) plus relations

$$\sigma_i \sigma_i^{-1} = \sigma_i^{-1} \sigma_i = \varepsilon \quad \text{for all } 1 \leq i \leq n-1. \quad (2)$$

In [24], L. Sabalka constructed an explicit deterministic finite states automaton recognizing the language of geodesic  $\Sigma_3$ -words. He obtains the following rational value for the geodesic growth series of  $B_3$  relatively to the Artin's generators  $\Sigma_3$  :

$$\mathcal{G}(B_3, \Sigma_3) = \frac{t^4 + 3t^3 + t + 1}{(t^2 + 2t - 1)(t^2 + t - 1)}. \quad (3)$$

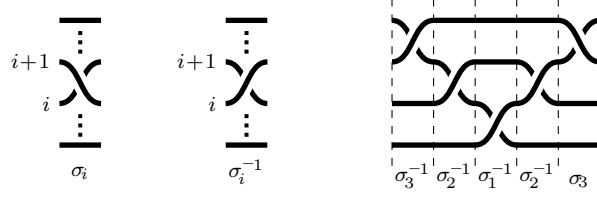


FIGURE 1. Geometric interpretation of Artin's generators and representation of a 4-strands braid as a  $\Sigma_4$ -word.

Moreover, using the finite state automaton recognizing the language of short-lex normal form of  $B_3$  [17] he obtains :

$$\mathcal{S}(B_3, \Sigma_3) = \frac{(t+1)(2t^3 - t^2 + t - 1)}{(t-1)(2t-1)(t^2 + t - 1)}. \quad (4)$$

The positive braid monoid  $B_n^+$  is the submonoid of  $B_n$  generated by  $\Sigma_n^+$ . Since every  $\Sigma_n^+$ -word is geodesic, the geodesic growth series  $\mathcal{G}(B_n^+, \Sigma_n^+)$  is irrelevant. An explicit rational formula for the spherical growth series  $\mathcal{S}(B_n^+, \Sigma_n^+)$  was obtained by A. Bronfman in [8] and later by M. Albenque in [1]. These results were extended to positive braid monoids of type B and D in [3] and for each Artin-Tits monoids of spherical type in [18].

**2.3. Dual's braid presentation.** In [7], J. Birman, K.H. Ko and S.J. Lee introduced a new generator family of  $B_n$ , called Birman-Ko-Lee's or dual generators.

**Definition 2.5.** For  $1 \leq p \leq q$  we define  $a_{p,q}$  to be the braid

$$a_{p,q} = \sigma_p \cdots \sigma_{q-2} \sigma_{q-1}^{-1} \sigma_{q-2}^{-1} \cdots \sigma_p^{-1}. \quad (5)$$

For all  $n \geq 2$ , we put  $\Sigma_n^{+*} = \{a_{p,q} \mid 1 \leq p < q \leq n\}$  and  $\Sigma_n^* = \Sigma_n^{+*} \sqcup (\Sigma_n^{+*})^{-1}$ .

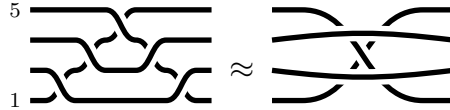


FIGURE 2. The letter  $a_{1,4}$  codes for the braid in which strands 1 and 4 cross under strands 2 and 3.

We write  $[p, q]$  for the interval  $\{p, \dots, q\}$  of  $\mathbb{N}$ , and we say that  $[p, q]$  is nested in  $[r, s]$  if we have  $r < p < q < s$ .

**Lemma 2.6.** [7] *In terms of  $\Sigma_n^{+*}$ , the group  $B_n$  is presented by the relations*

$$a_{p,q} a_{r,s} = a_{r,s} a_{p,q} \quad \text{for } [p, q] \text{ and } [r, s] \text{ disjoint or nested,} \quad (6)$$

$$a_{p,q} a_{q,r} = a_{q,r} a_{p,q} = a_{p,r} a_{p,q} \quad \text{for } 1 \leq p < q < r \leq n. \quad (7)$$

Note that the definition of  $a_{p,q}$  given here is not exactly that of [7] but it is coherent with previous papers of the author.

As for Artin's generators, the braid group  $B_n$  admits a monoid presentation with generators  $\Sigma_n^*$ , relations (6) and (7) together with

$$a_{p,q} a_{p,q}^{-1} = a_{q,p}^{-1} a_{p,q} = \varepsilon \quad \text{for all } 1 \leq p < q \leq n. \quad (8)$$

Except in the case  $n = 2$ , which is trivial, there are no results in the literature on the growth series of  $B_n$  with respect to  $\Sigma_n^*$ .

The Birman–Ko–Lee monoid  $B_n^{+*}$ , also called dual braid monoid in [5] is the submonoid of  $B_n$  generated by  $\Sigma_n^{+*}$ . The term *dual* was used by D. Bessis since the Garside structure of  $B_n^+$  and  $B_n^{+*}$  share symmetric combinatorial values. In [3], M. Albenque and P. Nadeau give a rational expression for the spherical growth series  $\mathcal{S}(B_n^{+*}, \Sigma_n^{+*})$ ; they also treat the case of dual braid monoids of type **B**.

**2.4. Some words about Garside presentations.** The two monoids  $B_n^+$  and  $B_n^{+*}$  equip the braid group  $B_n$  with two Garside structures : the classical one [21] and the dual one [7, 5]. The reader can consult [14] and [13] for a general introduction to Garside theory. Here it is sufficient to know that each Garside structure provides *simple* elements which generate the corresponding Garside monoid. Let us denote by  $C_n$  and  $D_n$  the simple elements of the Garside monoid  $B_n^+$  and  $B_n^{+*}$  respectively.

In [11], P. Dehornoy starts the study of the spherical combinatorics of  $B_n^+$  relatively to  $C_n$ . In particular he formulates a divisibility conjecture which has been proven by F. Hivert, J.-C. Novelli and J.-Y. Thibon in [22]. A similar result was obtained for braid monoids of type **B** in [19]. The spherical combinatorics of  $B_n^{+*}$  relatively to  $D_n$  was also considered by P. Biane and P. Dehornoy in [6] : they reduce the computation of  $s(B_n^{+*}, D_n; 2)$  to that of free cumulants for a product of independent variables.

R. Charney establishes in [9] that the spherical growth series of Artin–Tits groups of spherical type with respect to their standard simple elements are rationals. In particular she obtains the rationality of  $\mathcal{S}(B_n, C_n)$ . This result was generalized for all Garside groups by P. Dehornoy in [10]. This implies in particular the rationality of  $\mathcal{S}(B_n, D_n)$ .

### 3. COUNTING BRAIDS

We fix an integer  $n \geq 2$  and  $S_n$  denotes either  $\Sigma_n$  (Artin’s generators of  $B_n$ ) or  $\Sigma_n^*$  (dual generators of  $B_n$ ).

**Definition 3.1.** For  $n \geq 2$  and  $\ell \in \mathbb{N}$  we denote by  $B_n(S_n, \ell)$  the set of braids of  $B_n$  whose  $S_n$ -length is  $\ell$ .

Since the equality  $s(B_n, S_n; \ell) = \text{card}(B_n(S_n, \ell))$  holds, we compute  $s(B_n, S_n; \ell)$  by constructing the set  $B_n(S_n, \ell)$ . Each braid of  $B_n$  with  $S_n$ -length  $\ell$  is the product of a braid of  $S_n$ -length  $\ell - 1$  and a generator  $x \in S_n$ . In particular we have

$$B_n(S_n, \ell + 1) \subseteq \{\beta \cdot x \text{ for } (\beta, x) \in (B_n(S_n, \ell) \times S_n)\}, \quad (9)$$

and so we can construct  $B_n(S_n, \ell)$  by induction on  $\ell$ .

**3.1. Representative sets.** From an algorithmic point of view, braids are naturally represented by a word. We extend this notion to any subset of  $B_n(S_n, \ell)$ .

**Definition 3.2.** We say that a set  $W$  of  $S_n$ -words represents a subset  $X$  of  $B_n$  whenever

- *i*) words occurring in  $W$  are geodesics;
- *ii*) each braid of  $X$  has a unique representative in  $W$ .

**Example 3.3.** For all  $n \geq 2$ , the set  $\{\varepsilon\}$  represents  $B_n(S_n, 0)$ . Since relations (1), (2), together with relations (6)-(8) of Artin and dual semigroup presentation of  $B_n$  preserve parity of word length we have the following property :

$$\text{two } S_n\text{-words } u \text{ and } v \text{ are equivalent only if } |u| \equiv |v| \pmod{2}. \quad (10)$$

In particular any  $S_n$ -word of length  $\leq 1$  is geodesic. As two different letters of  $S_n$  represent different braids of  $B_n$  the set  $S_n$  represents  $B_n(S_n, 1)$ .

The previous example gives a representative set of  $B_n(S_n, \ell)$  for  $\ell \leq 1$ . We now tackle the construction of a representative set  $W_\ell$  of  $B_n(S_n, \ell)$  for  $\ell \geq 2$ . Using an inductive argument we can assume we already have obtained a set  $W_{\ell-1}$  representing  $B_n(S_n, \ell-1)$  and then consider the set

$$W' = \{wx \text{ for } (w, x) \in W_{\ell-1} \times S_n\}. \quad (11)$$

A first step to obtain  $W_\ell$  consists in removing all non-geodesic words from  $W'$ . For this we have to test if a given word of  $W'$  is geodesic or not. A naive general solution consists in testing if a word  $u \in W'$  is equivalent to a  $S_n$ -word of length at most  $\ell-1$ . However, as words of  $W'$  are obtained by appending a letter to a geodesic word, we can restrict the search space:

**Lemma 3.4.** *For  $\ell \geq 2$ , let  $u$  be a geodesic  $S_n$ -word of length  $\ell-1$  and  $x$  a letter of  $S_n$ . If the  $S_n$ -word  $v = ux$  is not geodesic then there exists a geodesic  $S_n$ -word  $w$  of length  $\ell-2$  which is equivalent to  $v$ .*

*Proof.* Assume  $v$  is not geodesic. There exists a  $S_n$ -geodesic word  $w$  equivalent to  $v$  and satisfying  $|w| < |v|$ . By (10) we must have  $|w| \leq |v| - 2 = \ell - 2$ . From the equality  $v = ux$  we obtain  $u \equiv vx^{-1}$  and so  $u \equiv wx^{-1}$ . Since  $u$  is geodesic we must have  $|wx^{-1}| \geq \ell - 1$ , implying  $|w| \geq \ell - 2$  and so  $|w| = \ell - 2$ .  $\square$

**3.2. Geodesic words.** For all  $\ell \in \mathbb{N}$  the number  $g(B_n, S_n; \ell)$  can be obtained at no cost during the construction of a representative set of  $B_n(S_n, \ell)$ .

**Definition 3.5.** For a braid  $\beta \in B_n$  we denote by  $\omega_{S_n}(\beta)$  the number of geodesic  $S_n$ -words representing  $\beta$ .

**Proposition 3.6.** *For  $\beta \in B_n$  a braid with  $\ell = |\beta|_{S_n} \geq 1$ , we have*

$$\omega_{S_n}(\beta) = \sum_{\substack{x \in S_n \\ |\beta x^{-1}|_{S_n} = \ell - 1}} \omega_{S_n}(\beta x^{-1}).$$

*Proof.* Let  $W$  be the set of geodesic  $S_n$ -words representing  $\beta$ . The cardinality of  $W$  is then  $\omega_{S_n}(\beta)$ . For all  $x \in S_n$  we denote by  $W_x$  the words of  $W$  ending with  $x$ . Since all words of  $W$  has length  $\ell \geq 1$  we must have

$$W = \bigsqcup_{x \in S_n} W_x.$$

Let us fix an element  $y \in S_n$ . By construction, any word of  $W_y$  has length  $\ell-1$ , represents the braid  $\beta y^{-1}$  and is geodesic. Hence  $W_y$  is not empty if and only if the  $S_n$ -length of  $\beta y^{-1}$  is  $\ell-1$ , which gives

$$\omega_{S_n}(\beta) = \text{card}(W) = \sum_{x \in S_n} \text{card}(W_x) = \sum_{\substack{x \in S_n \\ |\beta x^{-1}|_{S_n} = \ell - 1}} \text{card}(W_x).$$

Assume  $\beta y^{-1}$  has  $S_n$ -length  $\ell-1$ . Since for any geodesic  $S_n$ -word  $v$  representing  $\beta y^{-1}$ , the word  $vy$  is a geodesic representative of  $\beta$ , the braid  $\beta y^{-1}$  has exactly  $\omega_{S_n}(\beta y^{-1})$  geodesic representatives in  $W_y$ . Therefore  $\text{card}(W_y)$  is  $\omega_{S_n}(\beta y^{-1})$  and the result follows.  $\square$

**3.3. A first algorithm.** We can now give a first algorithm returning a representative set  $W_\ell$  of  $B_n(S_n, \ell)$  for  $\ell \geq 2$ . In order to determine  $g(B_n, S_n; \ell)$  we also compute the value of  $\omega_{S_n}$  for all words in  $W_\ell$ .

The following definition will be useful to check condition *ii*) of Definition 3.2.

**Definition 3.7.** For a set  $W$  of  $S_n$ -words we say that a  $S_n$ -word  $u$  *appears* in  $W$ , denoted by  $u \triangleleft W$ , if  $u$  is equivalent to a word  $v$  of  $W$ .

In an algorithmic context a  $S_n$ -word is represented as an array of integers plus another integer  $\omega$  which eventually correspond to  $\omega_{S_n}(\bar{u})$ . Whenever two variables  $u$  and  $v$  stand for the  $S_n$ -words  $u$  and  $v$  we use:

- $u \cdot \omega$  to design the integer  $\omega$  associated to the word  $u$ ;
- $uv$  to design the product  $uv$ .

---

**Algorithm 1** – REPSET : For  $\ell \geq 2$ , returns a set  $W_\ell$  representing  $B_n(S_n, \ell)$  from two sets  $W_{\ell-1}$  and  $W_{\ell-2}$  representing  $B_n(S_n, \ell-1)$  and  $B_n(S_n, \ell-2)$  respectively. For each word  $u \in W_{\ell-1}$ , the value of  $u \cdot \omega$  is assumed to be  $\omega_{S_n}(\bar{u})$ .

---

```

1: function REPSET( $W_{\ell-1}, W_{\ell-2}$ )
2:    $W_\ell \leftarrow \emptyset$ 
3:   for  $x \in S_n$  do
4:     for  $u \in W_{\ell-1}$  do
5:        $v \leftarrow ux$ 
6:       if  $v \not\triangleleft W_{\ell-2}$  then
7:         if  $v \not\triangleleft W_\ell$  then                                 $\triangleright$  a new braid  $\bar{v}$  of  $S_n$ -length  $\ell$  is found
8:            $W_\ell \leftarrow W_\ell \sqcup \{v\}$ 
9:            $v \cdot \omega \leftarrow u \cdot \omega$ 
10:        else                                              $\triangleright v$  is another geodesic word representing  $\bar{v}$ 
11:           $v \cdot \omega \leftarrow v \cdot \omega + u \cdot \omega$ 
12:        end if
13:      end if
14:    end for
15:  end for
16:  return  $W_\ell$ 
17: end function

```

---

**Proposition 3.8.** *Let  $\ell \geq 2$  be an integer. Running on sets  $W_{\ell-1}$  and  $W_{\ell-2}$  representing  $B_n(S_n, \ell-1)$  and  $B_n(S_n, \ell-2)$  respectively, algorithm REPSET returns a representing set  $W_\ell$  of  $B_n(S_n, \ell)$ . Moreover for all  $u \in W_\ell$ , the value of  $u \cdot \omega$  is the integer  $\omega_{S_n}(\bar{u})$ .*

*Proof.* Let  $W'$  be the set of (11) and  $W_\ell$  be the set returning by REPSET. The two “for loops” on line 3 and 4 guarantee  $W_\ell \subseteq W'$ . By lemma 3.4 and hypotheses on  $W_{\ell-1}$  and  $W_{\ell-2}$ , condition  $v \not\triangleleft W_{\ell-2}$  of line 6 tests if the word  $v = ux$  is geodesic and so condition *i*) of Definition 3.2 is satisfied. The second if statement line 7 guarantee we append a word  $v$  in  $W_\ell$  if and only if  $v$  does not appear in  $W_\ell$ , which establishes *ii*) of Definition 3.2. The result about  $\omega_{S_n}$  is a direct consequence of Proposition 3.6.  $\square$

To be complete we must explain how to test if a  $S_n$ -word  $u$  appears in a set of  $S_n$ -words. The usual solution consisting in using a normal form (like the Garside's normal form) is not suitable here since these normal forms don't provide geodesic representatives.

**3.4. Dynnikov's coordinates.** Originally defined in [16] from the geometric interpretation of the braid group  $B_n$  as the mapping class group of the  $n$ -punctured disk of  $\mathbb{R}^2$ , the Dynnikov's coordinates admit a purely algebraic definition from the action of  $B_n$  on  $\mathbb{Z}^{2n}$ .

For  $x \in \mathbb{Z}$ , we denote by  $x^+$  the non-negative integer  $\max(x, 0)$  and by  $x^-$  the non-positive integer  $\min(x, 0)$ . We first define an action of Artin's generators on  $\mathbb{Z}^4$ .

**Definition 3.9.** For all  $i \in [1, n-1]$  and all  $(x_1, y_1, x_2, y_2) \in \mathbb{Z}^4$  we put

$$(x_1, y_1, x_2, y_2) \cdot \sigma_i = (x'_1, y'_1, x'_2, y'_2) \quad \text{and} \quad (x_1, y_1, x_2, y_2) \cdot \sigma_i^{-1} = (x''_1, y''_1, x''_2, y''_2)$$

where

$$\begin{aligned} x'_1 &= x_1 + y_1^+ + (y_2^+ - t_1)^+ & x''_1 &= x_1 - y_1^+ - (y_2^+ + t_2)^+ \\ y'_1 &= y_2 - t_1^+ & y''_1 &= y_2 + t_2^- \\ x'_2 &= x_2 + y_2^- + (y_1^- + t_1)^- & x''_2 &= x_2 - y_2^- - (y_1^- - t_2)^- \\ y'_2 &= y_1 + t_1^+ & y''_2 &= y_1 - t_2^- \end{aligned}$$

with  $t_1 = x_1 - y_1^- - x_2 + y_2^+$  and  $t_2 = x_1 + y_1^- - x_2 - y_2^+$ .

We can now define an action of  $\Sigma_n$ -words on  $\mathbb{Z}^{2n}$ .

**Definition 3.10.** For all  $i \in [1, n-1]$  and all  $(a_1, b_1, \dots, a_n, b_n) \in \mathbb{Z}^{2n}$  we put

$$(a_1, b_1, \dots, a_n, b_n) \cdot \sigma_i^e = (a'_1, b'_1, \dots, a'_n, b'_n)$$

where  $(a'_i, b'_i, a'_{i+1}, b'_{i+1}) = (a_i, b_i, a_{i+1}, b_{i+1}) \cdot \sigma_i^e$  and  $a'_k = a_k, b'_k = b_k$  for  $k$  different from  $\{i, i+1\}$ .

**Definition 3.11.** For an  $\Sigma_n$ -word  $u$  we define  $\text{Dyn}(u)$  to be  $(0, 1, \dots, 0, 1) \cdot u$ . Similarly for an  $\Sigma_n^*$ -word  $v$  we define  $\text{Dyn}(v)$  to be  $\text{Dyn}(u)$  where  $u$  is the  $\Sigma_n$ -word obtained from  $v$  using relation (5) of Definition 2.5.

Naturally defined on braid words, Dynnikov's coordinates is a braid invariant.

**Proposition 3.12.** *For all  $S_n$ -words  $u$  and  $v$  we have  $\text{Dyn}(u) = \text{Dyn}(v)$  if and only if  $u \equiv v$ .*

*Proof.* Direct consequence of Corollary 2.24 page 225 of [15].  $\square$

We now go back to the problem of testing if a given  $S_n$ -word appears in a set  $W$  of  $S_n$ -words. A solution consists in representing the set  $W$  in machine by an array. To test if the word  $u$  appears in  $W$  we can compute  $\text{Dyn}(u)$  and compare it to all the values of  $\text{Dyn}(v)$  whenever  $v$  go through  $W$ . This method needs  $1 + \text{card}(W)$  computations of Dynnikov's coordinates. If words in  $W$  are sorted by their Dynnikov's coordinates we can test if  $u$  appear in  $W$  using at most  $\log_2(\text{card}(W))$  computations of Dynnikov's coordinates. A more efficient solution is obtained using an `unordered_set` [26] based on a hash function. The insertion and lookup complexity is then constant in average on a RAM machine depending of the hash function.



As the objective of the current paper is to deepen our knowledge on combinatorics of  $B_4$ , we define a hash function for four strand braids. Assume  $\beta$  is a braid of  $B_4$  given by a  $S_4$ -word  $u$ . The hash of  $\beta$  is

$$\text{hash}(\beta) = \sum_{i=1}^4 (\text{rem}(a_i, 256) \times 256^{2i-2} + \text{rem}(b_i, 256) \times 256^{2i-1}),$$

where  $(a_1, b_1, \dots, a_4, b_4) = \text{Dyn}(u)$  and  $\text{rem}(k, 256)$  is the positive remainder of  $k$  modulo 256. By construction,  $\text{hash}(\beta)$  is an integer lying in  $[0, 2^{64} - 1]$  and so our hash function is very well suited for 64 bits computers.

**3.5. Space complexity.** Here again we focus on the case  $n = 4$ . The smallest addressable unit of memory on common computers is the byte which can have 256 different values. As the set  $\Sigma_4$  has 6 elements we can store three  $\Sigma_4$ -letters using one byte ( $6^3 = 216$ ). Hence a  $\Sigma_4$ -word of length  $\ell$  requires  $\lceil \frac{\ell}{3} \rceil$  bytes to be stored. Since there are 12 elements in  $\Sigma_4^*$ , a  $\Sigma_4^*$ -word of length  $\ell$  requires  $\lceil \frac{\ell}{2} \rceil$  bytes to be stored.

Assume we want to determine a  $(\Sigma_4, 21)$ -set. The memory needed by the algorithm REPSET is at least the space needed to store  $\Sigma_4$ -words of  $W_{21}$ . By Table 2 of Section 6 there are approximately  $60 \cdot 10^9$  elements in this set. With the above storage method of a  $\Sigma_4$ -word, the algorithm needs  $7 \cdot 60 \cdot 10^9$  bytes, *i.e.*, 391Go of memory to run, which is too much. To reduce the memory requirement we can split the sets  $B_n(S_n, \ell)$  in many subsets depending of the values of certain braid invariants.

In the case we want to determine  $g(B_n, S_n; \ell)$  we also store the value of  $\omega_{S_n}(\bar{u})$  for all words in obtained representative sets.

#### 4. BRAID TEMPLATE

Here again  $n$  is an integer  $\geq 2$  and  $S_n$  denotes either  $\Sigma_n$  or  $\Sigma_n^*$ . Each braid invariant  $\iota$  corresponds to a map from  $B_n$  to a set  $X$ .

**Definition 4.1.** A set of braid invariants  $\iota_1, \dots, \iota_m$  is said to be *inductively stable* if for every braid  $\beta \in B_n(S_n, \ell)$  and every  $x \in S_n$ , the value of  $\iota_k(\beta \cdot x)$  depends only on  $\iota_1(\beta), \dots, \iota_m(\beta)$  and  $x$  but not on  $\beta$  itself.

The aim of this section is to determine an inductively stable set of braid invariants in order to split in many pieces the determination of a representative set of  $B_n(S_n, \ell)$ .

**4.1. Permutation.** For  $n \geq 2$  we denote by  $\mathfrak{S}_n$  the set of all bijections of  $\{1, \dots, n\}$  into itself. The transposition  $(i \ i+1)$  of  $\mathfrak{S}_n$  exchanging  $i$  and  $i+1$  is denoted  $s_i$ .

**Definition 4.2.** We denote by  $\pi : B_n \rightarrow \mathfrak{S}_n$  the unique surjective homomorphism of  $(B_n, \cdot)$  to  $(\mathfrak{S}_n, \circ)$  defined by  $\pi(\sigma_i) = s_i$ .

If  $\beta$  is a braid of  $B_n$  then  $\pi(\beta)$  is the permutation of  $\mathfrak{S}_n$  such that the strand ending at position  $i$  starts at position  $\pi(\beta)(i)$ .

**Example 4.3.** For  $\beta = \sigma_1 \sigma_2^{-1} \sigma_1 \sigma_2$  we have  $\pi(\beta) = s_1 s_2 s_1 s_2 = \begin{pmatrix} 1 & 2 & 3 \\ 3 & 1 & 2 \end{pmatrix}$ , as illustrated on the following diagram :



As  $\pi$  is an homomorphism, for all  $\beta \in B_n$  and  $x \in S_n$  we have  $\pi(\beta \cdot x) = \pi(\beta) \circ \pi(x)$  and so the singleton  $\{\pi\}$  is inductively stable.

**Lemma 4.4.** For  $1 \leq i < j \leq n$  we have  $\pi(a_{p,q}) = (p \ q)$ .

*Proof.* As  $\pi$  is an homomorphism, Definition 2.5 gives

$$\begin{aligned} \pi(a_{p,q}) &= \pi(\sigma_p) \circ \dots \circ \pi(\sigma_{q-1}) \circ \pi(\sigma_{q-2})^{-1} \circ \dots \circ \pi(\sigma_p)^{-1} \\ &= (p \ p+1) \circ \dots \circ (q-1 \ q) \circ (q-2 \ q-1) \circ \dots \circ (p \ p+1) \\ &= (p \ q). \end{aligned} \quad \square$$

**4.2. Linking numbers.** Assume  $\beta$  is a braid of  $B_n$  and let  $i$  and  $j$  be two different integers of  $[1, n]$ . The linking number of the two strands  $i$  and  $j$  in  $\beta$  is the algebraic number of crossings in  $\beta$  involving the strands  $i$  and  $j$ . A positive crossing ( $\sigma_k$ ) counts for  $+1$  whereas a negative one ( $\sigma_k^{-1}$ ) counts for  $-1$ :

$$\begin{array}{ccc} \text{X} & \rightarrow +1 & \text{X} & \rightarrow -1 \end{array}$$

**Definition 4.5.** For  $\beta \in B_n$  and  $i, j$  two different integers of  $[1, n]$  we denote by  $\ell_{i,j}(\beta)$  the linking number of strands  $i$  and  $j$  in  $\beta$ . The map  $\ell_{i,j} : B_n \rightarrow \mathbb{N}$  is then a braid invariant.

A priori, our definition of linking numbers depends of a diagram coding the braid and not on the braid itself. An immediate argument using relations (1) and (2) guarantees this is not the case. The reader can consult [12] page 29 for a more formal definition of linking number<sup>1</sup> based of an integral definition and a geometric realization of  $\beta$  in  $\mathbb{R}^3$ .

**Lemma 4.6.** Let  $i, j$  be two integers satisfying  $1 \leq i < j \leq n$  and  $e = \pm 1$ .

- For all  $k \in [1, n-1]$  we have

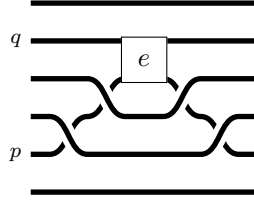
$$\ell_{i,j}(\sigma_k^e) = \begin{cases} e & \text{if } i = k \text{ and } j = k+1, \\ 0 & \text{otherwise.} \end{cases}$$

- For all  $1 \leq p < q \leq n$  we have

$$\ell_{i,j}(a_{p,q}^e) = \begin{cases} e & \text{if } i = p \text{ and } j = q, \\ 1 & \text{if } i = p \text{ and } j < q, \\ -1 & \text{if } p < i \text{ and } j = q, \\ 0 & \text{otherwise.} \end{cases}$$

*Proof.* The case of  $\sigma_k^e$  is immediate. The different values of  $\ell_{i,j}(a_{p,q}^e)$  can be obtained from the following diagram of  $a_{p,q}^e = \sigma_p \dots \sigma_{q-2} \sigma_{q-1}^{-1} \sigma_{q-2} \dots \sigma_p^{-1}$ :

<sup>1</sup>In fact, the two definitions are slightly different but we have  $\ell_{i,j}(\beta) = 2\lambda_{i,j}(\beta)$ .



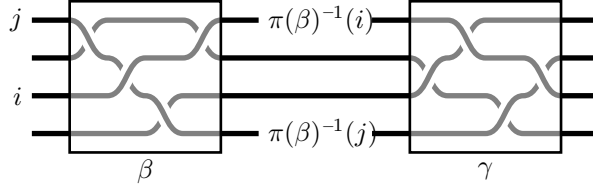
□

**Lemma 4.7.** For  $\beta$  and  $\gamma$  two braids of  $B_n$  and  $1 \leq i < j \leq n$  we have

$$\ell_{i,j}(\beta \cdot \gamma) = \ell_{i,j}(\beta) + \ell_{\pi(\beta)^{-1}(i), \pi(\beta)^{-1}(j)}(\gamma),$$

with the convention  $\ell_{p,q} = \ell_{q,p}$  for  $p > q$ .

*Proof.* Immediate as soon as we consider the following diagram :



□

**Corollary 4.8.** The set of invariants  $\{\pi\} \cup \{\ell_{i,j}, 1 \leq i < j \leq n\}$  is inductively stable.

*Proof.* A direct consequence of Lemma 4.7 together with the fact that  $\pi$  is an homomorphism. □

**4.3. Template.** We now introduce the notion of template of a braid which will be used to parallelize the determination of a representative set of  $B_n(S_n, \ell)$ .

**Definition 4.9.** The *template* of a braid  $\beta \in B_n$  is the tuple

$$\tau(\beta) = (\pi(\beta), \ell_{1,2}(\beta), \ell_{1,3}(\beta), \ell_{2,3}(\beta), \dots, \ell_{n-1,n}(\beta)) \in \mathfrak{S}_n \times \mathbb{N}^{\frac{n(n+1)}{2}}.$$

For a braid template  $t$  we denote by  $t[\pi]$ , resp.  $t[\ell_{i,j}]$  the corresponding component.

For  $\ell \in \mathbb{N}$  we denote by  $T_n(S_n, \ell)$  the set  $\{\tau(\beta), \beta \in B_n(S_n, \ell)\}$  and by  $T_n$  the set  $\{\tau(\beta), \beta \in B_n\}$  of all templates on  $B_n$ .

**Lemma 4.10.** For all  $\beta \in B_n$  and all  $x \in S_n$ , the template  $\tau(\beta) * x = \tau(\beta \cdot x)$  depends only of  $\tau(\beta)$  and  $x$ .

*Proof.* A direct consequence of Corollary 4.8 and Definition 4.9. □

**Example 4.11.** Let  $t$  be a template of  $T_3$  with  $t[\pi]$  the cycle  $(1 \ 3 \ 2)$ . Let us compute the template  $t * a_{1,3}^{-1}$ . We write  $t = (\pi, \ell_{1,2}, \ell_{1,3}, \ell_{2,3})$ . The inverse of  $\pi$  is the cycle  $(1 \ 2 \ 3)$  and so we obtain  $\pi^{-1}(\{1, 2\}) = \{2, 3\}$ ,  $\pi^{-1}(\{1, 3\}) = \{1, 2\}$  and  $\pi^{-1}(\{2, 3\}) = \{1, 3\}$ . Eventually, from  $\ell_{1,2}(a_{1,3}^{-1}) = 1$ ,  $\ell_{1,3}(a_{1,3}^{-1}) = -1$  and  $\ell_{2,3}(a_{1,3}^{-1}) = -1$  we obtain

$$\begin{aligned} t * a_{1,3}^{-1} &= ((1 \ 3 \ 2) \circ (1 \ 3), \ell_{1,2} + \ell_{2,3}(a_{1,3}^{-1}), \ell_{1,3} + \ell_{1,2}(a_{1,3}^{-1}), \ell_{2,3} + \ell_{1,3}(a_{1,3}^{-1})) \\ &= ((1 \ 2), \ell_{1,2} - 1, \ell_{1,3} + 1, \ell_{2,3} - 1). \end{aligned}$$

**Definition 4.12.** For  $\ell \in \mathbb{N}$  and  $t \in T_n$  we denote by  $B_n(S_n, \ell, t)$  the set of all braids of  $B_n$  with  $S_n$ -length  $\ell$  and template  $t$ .

By very definitions we have

$$B_n(S_n, \ell) = \bigsqcup_{t \in T_n(S_n, \ell)} B_n(S_n, \ell, t). \quad (12)$$

Algorithm 2 – TEMPREPSET is a “template” version of Algorithm 1 – REPSET for which we assume we dispose of a function  $\text{LOAD}(n, \ell, t)$  loading a representative set of  $B_n(S_n, \ell, t)$  from a storage memory like a hard disk. We also assume we have a function  $\text{SAVE}(W, n, \ell, t)$  saving a representative set of  $B_n(S_n, \ell, t)$  to that storage memory.

---

**Algorithm 2** – TEMPREPSET : For an integer  $\ell \geq 1$  and a template  $t$  of  $T_n$ , saves a representative set  $W_\ell$  of  $B_n(S_n, \ell, t)$  and returns the pair  $(\text{card}(W_\ell), \sum_{u \in W_\ell} \omega_{S_n}(\bar{u}))$

---

```

1: function TEMPREPSET( $\ell, t$ )
2:    $W_\ell \leftarrow \emptyset$ 
3:    $W_{\ell-2} \leftarrow \text{LOAD}(n, \ell-2, t)$  ▷  $W_{\ell-2}$  is empty whenever  $\ell = 1$ .
4:    $n_g \leftarrow 0$ 
5:   for  $x \in S_n$  do
6:      $t_x \leftarrow t * x^{-1}$ 
7:      $W_{\ell-1, x} \leftarrow \text{LOAD}(n, \ell-1, t_x)$ 
8:     for  $u \in W_{\ell-1, x}$  do
9:        $v \leftarrow u x$ 
10:      if  $v \notin W_{\ell-2}$  then
11:        if  $v \notin W_\ell$  then
12:           $W_\ell \leftarrow W_\ell \sqcup \{v\}$ 
13:           $v \cdot \omega \leftarrow u \cdot \omega$ 
14:        else
15:           $v \cdot \omega \leftarrow v \cdot \omega + u \cdot \omega$ 
16:        end if
17:         $n_g \leftarrow n_g + u \cdot \omega$ 
18:      end if
19:    end for
20:  end for
21:   $\text{SAVE}(W_\ell)$ 
22:  return  $(\text{card}(W_\ell), n_g)$ 
23: end function

```

---

In order to compute a representative set of  $B_n(S_n, \ell)$  using Algorithm TEMPREPSET we must first compute the template set  $T_n(S_n, \ell)$ . From inclusion (9) we obtain

$$T_n(S_n, \ell+1) \subseteq \{t * x \text{ for } (t, x) \in T_n(S_n, \ell) \times S_n\}. \quad (13)$$

A template  $t$  of the right-hand sets of (13) belongs to  $T_n(S_n, \ell+1)$  if and only if there exists a braid  $\beta \in B_n(S_n, \ell)$  such that  $\tau(\beta) = t$ . Hence a full run consists in calling the function TEMPREPSET for each template  $t$  of the right-hand set of (13). We then decide if a so tested template  $t$  belongs to  $T_n(S_n, \ell+1)$  if and only if the returned value is different from  $(0, 0)$ . Putting all pieces together we obtain Algorithm 3 – COMBI.

## 5. REDUCED BRAID TEMPLATES

Here again  $n$  is an integer  $\geq 2$  and  $S_n$  denotes either  $\Sigma_n$  or  $\Sigma_n^*$ . Experiments using Algorithm 2 – TEMPREPSET suggest that some sets  $B_n(S_n, \ell, t)$  are in bijection for

---

**Algorithm 3** – COMBI : Returns a pair of arrays of number  $(n_s, n_g)$  satisfying  $n_s[\ell] = s(B_n, S_n; \ell)$  and  $n_g[\ell] = g(B_n, S_n; \ell)$  for all  $\ell \leq \ell_{\max}$ .

---

```

1: function COMBI( $\ell_{\max}$ )
2:    $n_s[0] \leftarrow 1$ 
3:    $n_g[0] \leftarrow 1$ 
4:    $T \leftarrow \{(1_{\mathfrak{S}_n}, 0, \dots, 0)\}$  ▷ template set  $T_n(S_n, 0)$ 
5:   for  $\ell$  from 1 to  $\ell_{\max}$  do
6:      $T' \leftarrow \emptyset$ 
7:      $n_s[\ell] \leftarrow 0$ ;  $n_g[\ell] \leftarrow 0$ 
8:     for  $t \in T$  do
9:       for  $\mathbf{x} \in S_n$  do
10:         $t_x \leftarrow t * \mathbf{x}$ 
11:         $(n'_s, n'_g) \leftarrow \text{TEMPREPSET}(\ell, t_x)$ 
12:        if  $(n'_s, n'_g) \neq (0, 0)$  then
13:           $T' \leftarrow T' \cup \{t'\}$ 
14:           $n_s[\ell] \leftarrow n_s[\ell] + n'_s$ 
15:           $n_g[\ell] \leftarrow n_g[\ell] + n'_g$ 
16:        end if
17:      end for
18:    end for
19:     $T \leftarrow T'$  ▷ template set  $T_n(S_n, \ell)$ 
20:  end for
21:  return  $(n_s, n_g)$ 
22: end function

```

---

a given  $\ell$ . We can use this fact to improve the efficiency of Algorithm 3 – COMBI and reduce the needed storage space.

### 5.1. Stable word maps.

**Definition 5.1.** A bijection  $\mu$  of  $S_n$ -words is  $S_n$ -stable if

- *i*) for all  $S_n$ -word  $w$  we have  $|\mu(w)| = |w|$ ;
- *ii*) for all  $S_n$ -words  $u$  and  $v$  we have  $\mu(u) \equiv \mu(v) \Leftrightarrow u \equiv v$ ;
- *iii*) for all  $S_n$ -word  $u$  the template  $\tau(\overline{\mu(u)})$  depends only on  $\tau(\overline{u})$ .

For such a  $S_n$ -stable map  $\mu$  we denote by  $\mu^T$  the map of  $T_n$  defined by

$$\mu^T(t) = \tau(\overline{\mu(u)})$$

where  $u$  is any  $S_n$ -word satisfying  $\tau(\overline{u}) = t$ . We also define a bijection  $\bar{\mu}$  of  $B_n$  by

$$\bar{\mu}(\beta) = \overline{\mu(u)},$$

where  $u$  is any  $S_n$ -word satisfying  $\overline{u} = \beta$ .

Whenever  $\mu$  is  $S_n$ -stable, Condition *iii*) of Definition 5.1 guarantees that the template of the image by  $\mu$  of a braid  $\beta$  does not depend on  $\beta$  but on its template  $t$  and so  $\mu^T$  is well defined.

**Lemma 5.2.** For all  $S_n$ -stable bijection  $\mu$ , we have

- *i*)  $\mu^T$  is a bijection of  $T_n$ ,
- *ii*) an  $S_n$ -word  $u$  is geodesic if and only if  $\mu(u)$  is.

*Proof.* We start proving *i*). Let  $t$  and  $t'$  be two templates of  $T_n$  satisfying  $\mu^T(t) = \mu^T(t')$ . By definition of  $\mu^T$  there exist  $u$  and  $u'$  such that  $\tau(\overline{\mu(u)}) = \tau(\overline{\mu(u')})$

together with  $\tau(\bar{u}) = t$  and  $\tau(\bar{u}') = t'$ . By Condition *iii*) of Definition 5.1 we have necessarily  $\tau(\bar{u}) = \tau(\bar{u}')$  and so  $t = t'$ , implying  $\mu^T$  is injective. Assume now  $t$  is any template of  $T_n$ . By construction of  $T_n$  there exists a braid  $\beta \in B_n$  with template  $t$ . Let  $v$  be a representative  $S_n$ -word of  $\beta$ . As  $\mu$  is a bijection we put  $u = \mu^{-1}(v)$ . We obtain

$$\mu^T(\tau(\bar{u})) = \tau(\overline{\mu(u)}) = \tau(\bar{v}) = \tau(\beta) = t$$

and so  $\mu^T$  is surjective.

Let us now prove *ii*). Let  $u$  be a  $S_n$ -word. If the word  $v = \mu(u)$  is not geodesic then there exists a strictly shorter  $S_n$ -word  $v'$  equivalent to  $v$ . As  $\mu$  is a bijection we put  $u' = \mu^{-1}(v')$ . We obtain  $\mu(u) = v \equiv v' = \mu(u')$ . From conditions *ii*) and *i*) of 5.1 we have  $u \equiv u'$  together with  $|u| = |v| > |v'| = |u'|$  and so  $u$  is not geodesic. A similar argument establishes the converse implication.  $\square$

**5.2. Examples.** Let us now introduce some useful examples of  $S_n$ -stable bijections.

**Proposition 5.3.** *The maps  $\text{inv}_{S_n}$  of  $S_n$ -words defined by*

$$\text{inv}_{S_n}(x_1 \cdots x_t) = x_t^{-1} \cdots x_1^{-1}$$

*is  $S_n$ -stable. Moreover for all template  $t \in T_n$  we have*

$$\text{inv}_{S_n}^T(t)[\pi] = t[\pi]^{-1} \quad \text{and} \quad \text{inv}_{S_n}^T(t)[\ell_{i,j}] = -t[\ell_{t[\pi](i), t[\pi](j)}] \quad \text{for } 1 \leq i < j \leq n.$$

*Proof.* Condition *i*) of Definition 5.1 is immediate. For two  $S_n$ -words  $u$  and  $v$ , the relation  $u \equiv v$  is equivalent to  $v^{-1}u \equiv \varepsilon$  which is itself equivalent to  $v^{-1} \equiv u^{-1}$ , hence Condition *ii*) is established. Let  $u$  be an  $S_n$ -word and  $v$  be  $\text{inv}_{S_n}(u)$ . By definition, we have  $\bar{v} = \bar{u}^{-1}$ . Since  $\pi$  is an homomorphism we have  $\pi(\bar{v}) = \pi(\bar{u})^{-1}$ . Let  $1 \leq i < j \leq n$  be two integers. From  $1 = \bar{v}\bar{u}$ , Lemma 4.7 implies

$$0 = \ell_{i,j}(1) = \ell_{i,j}(\bar{v}) + \ell_{\pi(\bar{v})(i), \pi(\bar{v})(j)}(\bar{u})$$

and so  $\ell_{i,j}(\bar{v}) = -\ell_{\pi(\bar{v})(i), \pi(\bar{v})(j)}(\bar{u})$ . Therefore Condition *iii*) is also satisfied.  $\square$

We now point out a divergence between the Artin and dual presentations of the braid group  $B_n$ .

**Proposition 5.4.** *For  $n \geq 3$ , the map of  $S_n$ -words  $\theta_{S_n}$  defined by*

$$\theta_{S_n}(x_1 \cdots x_t) = x_1^{-1} \cdots x_t^{-1}$$

*is  $S_n$ -stable if and only if  $S_n = \Sigma_n$ . Moreover for all template  $t \in T_n$  we have*

$$\theta_{\Sigma_n}^T[\pi] = t[\pi]^{-1} \quad \text{and} \quad \theta_{\Sigma_n}^T[\ell_{i,j}] = -t[\ell_{i,j}] \quad \text{for } 1 \leq i < j \leq n.$$

*Proof.* By construction, Condition *i*) of Definition 5.1 is satisfied. Let us establish Condition *ii*) for  $\theta_{\Sigma_n}$ . It is sufficient to prove  $\theta(u) \equiv \theta(v)$  whenever  $u = v$  is a relation of the Artin's semigroup presentation of  $B_n$ . Let  $i \in [1, n-1]$ . We have  $\theta(\sigma_i \sigma_i^{-1}) = \sigma_i^{-1} \sigma_i \equiv \varepsilon$ ,  $\theta(\sigma_i^{-1} \sigma_i) = \sigma_i \sigma_i^{-1} \equiv \varepsilon$  and so we get

$$\theta(\sigma_i \sigma_i^{-1}) = \theta(\sigma_i^{-1} \sigma_i) = \theta(\varepsilon).$$

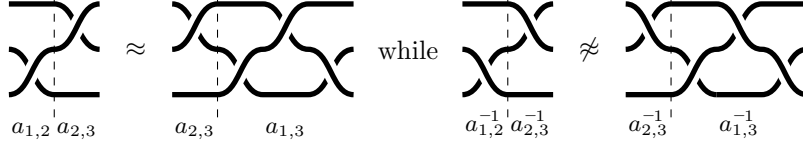
Assume now  $i$  and  $j$  are integers of  $[1, n-1]$  satisfying  $|i - j| \geq 2$ . From  $\sigma_i \sigma_j \equiv \sigma_j \sigma_i$  we obtain successively

$$\sigma_j^{-1} \sigma_i \sigma_j \equiv \sigma_i, \quad \sigma_j^{-1} \sigma_i \equiv \sigma_i \sigma_j^{-1}, \quad \sigma_i^{-1} \sigma_j^{-1} \sigma_i \equiv \sigma_j^{-1}, \quad \sigma_i^{-1} \sigma_j^{-1} \equiv \sigma_j^{-1} \sigma_i^{-1},$$

and so  $\theta(\sigma_i \sigma_j) = \sigma_i^{-1} \sigma_j^{-1} \equiv \sigma_j^{-1} \sigma_i^{-1} = \theta(\sigma_j \sigma_i)$ . A similar sequence of equivalences implies  $\theta(\sigma_i \sigma_j \sigma_i) \equiv \theta(\sigma_j \sigma_i \sigma_j)$  for  $i, j$  in  $[1, n-1]$  with  $|i - j| \leq 1$ .

Let  $u$  be an  $\Sigma_n$ -word. For  $x \in \Sigma_n$ , the permutation  $\pi(\bar{x})$  is a transposition and so the relation  $\pi(\bar{x}) = \pi(\overline{x^{-1}})$  holds. Hence we obtain  $\pi(\theta_{\Sigma_n}(u)) = \pi(\bar{u})$ . We denote by  $u_k$  the prefix of  $u$  of length  $k$ . An immediate induction on  $k$ , together with  $\pi(\theta_{\Sigma_n}(u_k)) = \pi(\bar{u}_k)$  and Lemma 4.7 establish  $\ell_{i,j}(\theta_{\Sigma_n}(u)) = -\ell_{i,j}(\bar{u})$ . Condition *iii*) is then satisfied by  $\theta_{\Sigma_n}$ .

Let us focus now on the map  $\theta_{\Sigma_n^*}$ . In  $B_4$  we have the relation  $a_{1,2}a_{2,3} \equiv a_{2,3}a_{1,3}$  while  $a_{1,2}^{-1}a_{2,3}^{-1}$  is not equivalent to  $a_{2,3}^{-1}a_{1,3}^{-1}$  as shown by the following diagrams.



The non isotopy of the two right-most diagrams can be established evaluating  $\ell_{1,3}$  for example. Indeed we have  $\ell_{1,3}(a_{1,2}^{-1}a_{2,3}^{-1}) = -1$  and  $\ell_{1,3}(a_{2,3}^{-1}a_{1,3}^{-1}) = 1$ .  $\square$

**5.3. Garside homomorphisms.** We now consider the “word version” of the classical and dual Garside automorphisms of  $B_n$ .

**Definition 5.5.** The Garside automorphism of  $B_n$  is  $\bar{\Phi}_n(\beta) = \Delta_n \beta \Delta_n^{-1}$  where  $\Delta_n$  is given by  $\Delta_2 = \sigma_1$  and  $\Delta_k = \sigma_1 \cdots \sigma_{k-1} \Delta_{k-1}$  for  $k \geq 3$ .

For example we have  $\Delta_4 = \sigma_1 \sigma_2 \sigma_3 \cdot \Delta_3 = \sigma_1 \sigma_2 \sigma_3 \cdot \sigma_1 \sigma_2 \cdot \Delta_1 = \sigma_1 \sigma_2 \sigma_3 \cdot \sigma_1 \sigma_2 \cdot \sigma_1$ , which corresponds to the following diagram:



For all  $k \in [1, n]$  we have:

$$\pi(\Delta_n)(k) = n+1 - k. \quad (14)$$

As we can remark in the previous diagram, the braid  $\Delta_n$  can be represented by a diagram in which each pair of strands cross exactly once implying

$$\ell_{i,j}(\Delta_n) = 1 \quad \text{and} \quad \ell_{i,j}(\Delta_n^{-1}) = -1. \quad (15)$$

The result involving  $\Delta_n^{-1}$  is a direct consequence of this of  $\Delta_n$  together with Proposition 5.3. The following Lemma is a well-known result about the Garside automorphism  $\bar{\Phi}_n$ .

**Lemma 5.6.** For  $n \geq 3$ , the automorphism  $\bar{\Phi}_n$  has order 2 and for all integer  $k$  in  $[1, n-1]$  we have  $\bar{\Phi}_n(\sigma_k) = \sigma_{n-k}$ .

*Proof.* Let  $k \in [1, n-1]$ . Relation  $\bar{\Phi}_n(\sigma_k) = \sigma_{n-k}$  is an easy verification from the Artin presentation of  $B_n$  (see Lemma I.3.6 of [12]). We conclude with  $\bar{\Phi}_n^2(\sigma_k) = \bar{\Phi}_n(\sigma_{n-k}) = \sigma_{n-(n-k)} = \sigma_k$ .  $\square$

**Definition 5.7.** We denote by  $\Phi_n$  the homomorphism of  $\Sigma_n$ -words defined for all integer  $k$  in  $[1, n]$  by  $\Phi_n(\sigma_k) = \sigma_{n-k}$ .

By Lemma 5.6, for all  $\Sigma_n$ -word  $u$  we have

$$\overline{\Phi_n(u)} = \bar{\Phi}_n(\bar{u}) = \Delta_n \bar{u} \Delta_n^{-1}. \quad (16)$$

**Proposition 5.8.** *The map  $\Phi_n$  is  $\Sigma_n$ -acceptable. Moreover for all template  $t \in T_n$  we have:*

$$\begin{aligned} (\Phi_n^T(t)[\pi]) (k) &= n + 1 - t[\pi](n + 1 - k) \quad \text{for all } k \in [1, n], \\ \Phi_n^T(t)[\ell_{i,j}] &= t[\ell_{n+1-i, n+1-j}] \quad \text{for all } 1 \leq i < j \leq n. \end{aligned}$$

*Proof.* Condition *i*) of Definition 5.1 is immediate. For Condition *ii*) it suffices to establish the relation  $\Phi_n(u) \equiv \Phi_n(v)$  whenever  $u = v$  is one of the relations of (1) or (2). The case of relation (2) is immediate. For the other two relations it suffices to consider the equality  $|(n-i) - (n-j)| = |i-j|$  for all integers  $i$  and  $j$  of  $[1, n-1]$ .

We now prove Condition *iii*) of Definition 5.1. Let  $u$  be a  $\Sigma_n$ -word. By (16) we have  $\pi(\overline{\Phi_n(u)}) = \pi(\Delta_n) \circ \pi(\bar{u}) \circ \pi(\Delta_n)^{-1} = \pi(\Delta_n) \circ \pi(\bar{u}) \circ \pi(\Delta_n)$ . Relation (14) implies that for all integer  $k \in [1, n]$  we have

$$\pi(\overline{\Phi_n(u)})(k) = n+1 - \pi(\bar{u})(n+1 - k). \quad (17)$$

Let  $1 \leq i < j \leq n$  be two integers. Lemma 4.7 together with (15) give

$$\begin{aligned} \ell_{i,j}(\overline{\phi_n(u)}) &= \ell_{i,j}(\Delta_n \bar{u} \Delta_n^{-1}) = \ell_{i,j}(\Delta_n \bar{u}) + \ell_{\pi(\Delta_n \bar{u})^{-1}(i), \pi(\Delta_n \bar{u})^{-1}(j)}(\Delta_n^{-1}) \\ &= \ell_{i,j}(\Delta_n \bar{u}) - 1 \\ &= \ell_{i,j}(\Delta_n) + \ell_{\pi(\Delta_n)^{-1}(i), \pi(\Delta_n)^{-1}(j)}(\bar{u}) - 1 \\ &= \ell_{\pi(\Delta_n)^{-1}(i), \pi(\Delta_n)^{-1}(j)}(\bar{u}) \\ &= \ell_{n+1-i, n+1-j}(\bar{u}). \quad \square \end{aligned}$$

**Definition 5.9.** The dual Garside automorphism of  $B_n$  is  $\bar{\phi}_n(\beta) = \delta_n \beta \delta_n^{-1}$  where  $\delta_n$  is given by  $\delta_n = a_{1,2} \cdots a_{n-1,n} = \sigma_1 \cdots \sigma_{n-1}$ .

For example we have  $\delta_4 = \sigma_1 \sigma_2 \sigma_3$  and  $\delta_4^{-1} = \sigma_3^{-1} \sigma_2^{-1} \sigma_1^{-1}$  which correspond to the following diagrams:

$$\delta_4 \simeq \begin{array}{c} \text{---} \\ \text{---} \\ \text{---} \\ \text{---} \end{array} \quad \delta_4^{-1} \simeq \begin{array}{c} \text{---} \\ \text{---} \\ \text{---} \\ \text{---} \end{array} \quad (18)$$

**Notation 5.10.** For all  $n \in \mathbb{N}$  and  $k \in [1, n+1]$  we put

$$[k]_n = \begin{cases} 1 & \text{if } k = n+1, \\ n & \text{if } k = 0, \\ k & \text{otherwise.} \end{cases}$$

Moreover for all integers  $i$  and  $j$  the symbol  $\mathbf{1}_{i=j}$  equals 1 if the relation  $i = j$  holds and 0 otherwise.

As we can directly see on diagrams of (18), for all  $k \in [1, n]$  we have

$$\pi(\delta_n)(k) = [k+1]_n, \quad (19)$$

moreover for all  $1 \leq i < j \leq n$  we have

$$\ell_{i,j}(\delta_n) = \mathbf{1}_{i=1} \quad \text{and} \quad \ell_{i,j}(\delta_n^{-1}) = -\mathbf{1}_{j=n}. \quad (20)$$

**Lemma 5.11.** *The automorphism  $\bar{\phi}_n$  has order  $n$  and for all  $k \in [1, n-1]$  we have*

$$\bar{\phi}_n(a_{p,q}) = a_{[p+1]_n, [q+1]_n}$$

*with the convention  $a_{i,j} = a_{j,i}$  whenever  $j > i$  holds.*



*Proof.* Computation of  $\overline{\phi}_n(a_{p,q})$  is an easy verification from Birman–Ko–Lees’s presentation of  $B_n$ . The result on the order of  $\overline{\phi}_n$  is then an immediate consequence.  $\square$

**Definition 5.12.** We denote by  $\phi_n$  the homomorphism of  $\Sigma_n^*$ -words defined for all integers  $p$  and  $q$  with  $1 \leq p < q \leq n$  by

$$\phi_n(a_{p,q}) = a_{[p+1]_n, [q+1]_n}$$

**Proposition 5.13.** *The map  $\phi_n$  is  $\Sigma_n^*$ -stable. Moreover for all template  $t \in T_n$  we have*

$$\begin{aligned} (\phi_n^T(t)[\pi]) (k) &= [1 + t[\pi]([k-1]_n)]_n \quad \text{for all } k \in [1, n], \\ \phi_n^T(t)[\ell_{i,j}] &= t[\ell_{[i-1]_n, [j-1]_n}] + \mathbf{1}_{i=1} - \mathbf{1}_{[1+t[\pi](n)]_n=j} \quad \text{for all } 1 \leq i < j \leq n. \end{aligned}$$

*Proof.* The proof is similar to that of Proposition 5.8. We detail only the case of Condition *iii*). Let  $u$  be an  $\Sigma_n^*$ -word and  $k$  be in  $[1, n]$ . From (19) we obtain

$$\begin{aligned} \pi(\overline{\phi_n(u)})(k) &= \pi(\delta_n)(\pi(\overline{u})(\pi(\delta_n)^{-1}(k))) \\ &= \pi(\delta_n)(\pi(\overline{u})([k-1]_n)) \\ &= [1 + \pi(\overline{u})([k-1]_n)]_n. \end{aligned}$$

Let  $1 \leq i < j \leq n$  be two integers. Lemma 4.7 implies

$$\ell_{i,j}(\overline{\phi_n(u)}) = \ell_{i,j}(\delta_n \cdot \overline{u} \cdot \delta_n^{-1}) = \ell_{i,j}(\delta_n \cdot \overline{u}) + \ell_{\pi(\delta_n \cdot \overline{u})^{-1}(i), \pi(\delta_n \cdot \overline{u})^{-1}(j)}(\delta_n^{-1}).$$

From (20) we get that  $\ell_{\pi(\delta_n \cdot \overline{u})^{-1}(i), \pi(\delta_n \cdot \overline{u})^{-1}(j)}(\delta_n^{-1})$  is non zero iff  $\pi(\delta_n \cdot \overline{u})^{-1}(j) = n$ , *i.e.*, iff  $\pi(\delta_n \cdot \overline{u})(n) = j$  which is equivalent to  $[1 + \pi(\overline{u})(n)]_n = j$ . We then obtain

$$\begin{aligned} \ell_{i,j}(\overline{\phi_n(u)}) &= \ell_{i,j}(\delta_n \cdot \overline{u}) + \begin{cases} -1 & \text{if } [1 + \pi(\overline{u})(n)]_n = j, \\ 0 & \text{otherwise,} \end{cases} \\ &= \ell_{i,j}(\delta_n \cdot \overline{u}) - \mathbf{1}_{[1+\pi(\overline{u})(n)]_n=j}. \end{aligned}$$

Moreover, always by (20) we have

$$\begin{aligned} \ell_{i,j}(\delta_n \cdot \overline{u}) &= \ell_{i,j}(\delta_n) + \ell_{\pi(\delta_n)^{-1}(i), \pi(\delta_n)^{-1}(j)} \\ &= \mathbf{1}_{i=1} + \ell_{[i-1]_n, [j-1]_n}(\overline{u}), \end{aligned}$$

with the convention  $\ell_{p,q} = \ell_{q,p}$  for  $p > q$ . Eventually we obtain

$$\ell_{i,j}(\overline{\phi_n(u)}) = \ell_{[i-1]_n, [j-1]_n}(\overline{u}) + \mathbf{1}_{i=1} - \mathbf{1}_{[1+\pi(\overline{u})(n)]_n=j}. \quad \square$$

**5.4. Action on templates.** We now describe an action of a subgroup of bijections of  $T_n$  on  $T_n$  itself. Eventually, for any template  $t \in T_n$ , braids of  $B_n(S_n, \ell, t)$  shall be in bijections with  $B_n(S_n, \ell, t')$  whenever  $t'$  belongs in the orbit of  $t$ .

**Definition 5.14.** We define  $G_{\Sigma_n}$ , *resp.*  $G_{\Sigma_n^*}$ , to be the subgroup of bijection of  $T_n$  generated by  $\{\text{inv}_{\Sigma_n}^T, \theta_{\Sigma_n}^T, \Phi_n^T\}$ , *resp.* by  $\{\text{inv}_{\Sigma_n^*}^T, \phi_n^T\}$ . For  $t \in T_n$ , we denote

$$G_{\Sigma_n} \cdot t = \{g(t), g \in G_{\Sigma_n}\} \quad \text{and} \quad G_{\Sigma_n^*} \cdot t = \{g(t), g \in G(\Sigma_n^*)t\}$$

the orbits of  $t$  under the action of  $G_{\Sigma_n}$ , *resp.*  $G_{\Sigma_n^*}$ .

**Lemma 5.15.** *We have  $G_{\Sigma_n} \simeq (\mathbb{Z}/2\mathbb{Z})^3$  and  $G_{\Sigma_n^*} \simeq \mathbb{Z}/2\mathbb{Z} \times \mathbb{Z}/n\mathbb{Z}$ .*

*Proof.* Let  $u = \sigma_{i_1}^{e_1} \cdots \sigma_{i_m}^{e_m}$  be a  $\Sigma_n$ -word with  $e_1, \dots, e_m \in \{-1, +1\}$ . From

$$\begin{aligned} \text{inv}_{\Sigma_n}(\theta_{\Sigma_n}(u)) &= \text{inv}_{\Sigma_n}(\sigma_{i_1}^{-e_1} \cdots \sigma_{i_m}^{-e_m}) = \sigma_{i_m}^{e_m} \cdots \sigma_{i_1}^{e_1}, \\ \theta_{\Sigma_n}(\text{inv}_{\Sigma_n}(u)) &= \theta_{\Sigma_n}(\sigma_{i_m}^{-e_m} \cdots \sigma_{i_1}^{-e_1}) = \sigma_{i_m}^{e_m} \cdots \sigma_{i_1}^{e_1}, \end{aligned}$$

we obtain that the maps  $\text{inv}_{\Sigma_n}$  and  $\theta_{\Sigma_n}$  commute on  $\Sigma_n$ -words. Let  $t$  be a template of  $T_n$  and  $v$  be a  $\Sigma_n$ -word representing a braid of template  $t$ . We have

$$(\text{inv}_{\Sigma_n}^T \circ \theta_{\Sigma_n}^T)(t) = \tau \left( \overline{(\text{inv}_{\Sigma_n} \circ \theta_{\Sigma_n})(v)} \right) = \tau \left( \overline{(\theta_{\Sigma_n} \circ \text{inv}_{\Sigma_n})(v)} \right) = (\theta_{\Sigma_n}^T \circ \text{inv}_{\Sigma_n}^T)(t)$$

and so  $\text{inv}_{\Sigma_n}^T$  and  $\theta_{\Sigma_n}^T$  commute. Similar arguments establish the commutation of  $\theta_{\Sigma_n}$  and  $\Phi_n$ ,  $\text{inv}_{\Sigma_n}$  and  $\Phi_n$ ,  $\text{inv}_{\Sigma_n^*}$  and  $\phi_n$ . Hence we have

$$G_{\Sigma_n} = \langle \text{inv}_{\Sigma_n}^T \rangle \times \langle \theta_{\Sigma_n}^T \rangle \times \langle \Phi_n \rangle \quad \text{and} \quad G(\Sigma_n^*) = \langle \text{inv}_{\Sigma_n^*}^T \rangle \times \langle \phi_n \rangle.$$

The maps  $\theta_{\Sigma_n}^T$  and  $\text{inv}_{\Sigma_n}^T$  have order 2 since it is the case for  $\theta_{\Sigma_n}$  and  $\text{inv}_{\Sigma_n}$  by construction. From Lemma 5.6 and Lemma 5.11 the map  $\Phi_n$  and  $\phi_n$  have order 2 and  $n$  respectively. The results follow.  $\square$

**Example 5.16.** For  $n = 4$ , the template of  $\sigma_1\sigma_2^{-1}$  is  $t = ((123), 1, -1, 0, 0, 0)$ . Using Propositions 5.3, 5.4 and 5.13 we obtain

$$\begin{aligned} \text{inv}_{\Sigma_4}^T(t) &= ((132), 0, -1, 1, 0, 0, 0), \\ \theta_{\Sigma_4}^T(t) &= ((123), -1, 1, 0, 0, 0, 0), \\ \phi_4^T(t) &= ((243), 0, 0, 0, 0, -1, 1), \\ (\text{inv}_{\Sigma_4}^T \circ \theta_{\Sigma_4}^T)(t) &= ((132), 0, 1, -1, 0, 0, 0), \\ (\text{inv}_{\Sigma_4}^T \circ \phi_4^T)(t) &= ((234), 0, 0, 1, 0, -1, 0), \\ (\theta_{\Sigma_4}^T \circ \phi_4^T)(t) &= ((243), 0, 0, 0, 0, 1, -1), \\ (\text{inv}_{\Sigma_4}^T \circ \theta_{\Sigma_4}^T \circ \phi_4^T)(t) &= ((234), 0, 0, -1, 0, 1, 0), \end{aligned}$$

and so the set  $G \cdot t$  has exactly 8 elements.

**5.5. Template reduction.** Now we define a total ordering on  $T_n$ . We start with permutations of  $\mathfrak{S}_n$ .

**Definition 5.17.** For  $\sigma$  and  $\sigma'$  two permutations of  $\mathfrak{S}_n$  we write  $\sigma < \sigma'$  whenever

$$(\sigma(n), \dots, \sigma(1)) <_{\text{LEX}} (\sigma'(n), \dots, \sigma'(1)),$$

*i.e.*, whenever there exists  $k \in [1, n]$  such that  $\sigma(n) = \sigma'(n), \dots, \sigma(k+1) = \sigma'(k+1)$  and  $\sigma(k) < \sigma'(k)$ .

For example, the ordering of permutations occurring in Example 5.16 is

$$(234) < (243) < (132) < (123). \quad (21)$$

**Definition 5.18.** For two templates  $t = (\sigma, (\ell_{i,j})_{1 \leq i < j \leq n})$  and  $t' = (\sigma', (\ell'_{i,j})_{1 \leq i < j \leq n})$  we write  $t < t'$  whenever

$$(\sigma, \ell_{1,2}, \dots, \ell_{1,n}, \dots, \ell_{n-1,n}) <_{\text{LEX}} (\sigma', \ell'_{1,2}, \dots, \ell'_{1,n}, \dots, \ell'_{n-1,n}).$$

For a template  $t$  we denote by  $\text{red}_{S_n}(t)$  the minimal element of  $G_{S_n} \cdot t$ . We say a template  $t \in T_n$  is  $S_n$ -reduced if  $\text{red}_{S_n}(t) = t$ . For an integer  $\ell \in \mathbb{N}$  we denote by  $R_n(S_n, \ell)$  the set of reduced templates lying in  $T_n(S_n, \ell)$ .

**Example 5.19.** We reconsider template  $t$  of Example 5.16. By (21) we obtain

$$\text{red}(t) = ((234), 0, 0, 0, 0, 1, -1).$$

which is equal to  $(\theta_{\Sigma_4^T} \circ \phi_4^T)(t)$ .

**Proposition 5.20.** For  $\mu$  a  $S_n$ -stable map of  $S_n$ -words,  $\ell$  an integer  $\geq 0$  and  $t$  a template of  $T_n$  we have

$$\bar{\mu}(B_n(S_n, \ell, t)) = B_n(S_n, \ell, \mu^T(t))$$

and  $\text{card}(B_n(S_n, \ell, t)) = \text{card}(B_n(S_n, \ell, \mu^T(t)))$ .

*Proof.* Let  $\beta$  be a braid of  $B_n(S_n, \ell, t)$  and  $u$  be a geodesic  $S_n$ -word of length  $\ell$  representing  $\beta$ . By definitions of  $\bar{\mu}$  and  $\mu^T$ , we have

$$\tau(\bar{\mu}(\beta)) = \tau(\overline{\mu(u)}) = \mu^T(\tau(u)) = \mu^T(t).$$

Lemma 5.2 *ii*) and Condition *i*) of Definition 5.1 imply the word  $\mu(u)$  is geodesic of length  $\ell$  and that the  $S_n$ -length of  $\bar{\mu}(\beta) = \overline{\mu(u)}$  is  $\ell$ . Therefore  $\bar{\mu}(\beta)$  belongs to  $B_n(S_n, \ell, \mu^T(t))$  which implies  $\bar{\mu}(B_n(S_n, \ell, t)) \subseteq B_n(S_n, \ell, \mu^T(t))$ .

We now prove the converse inclusion. Let  $\gamma$  be a braid of  $B_n(S_n, \ell, \mu^T(t))$  and  $v$  be a geodesic  $S_n$ -word of length  $\ell$  representing  $\gamma$ . As  $\mu$  is bijective there exists a  $S_n$ -word  $u$  satisfying  $\mu(u) = v$ . Always by Lemma 5.2 *ii*) and Condition *i*) of Definition 5.1 the word  $u$  is geodesic and has length  $\ell$ . From  $v = \mu(u)$  we obtain  $\bar{v} = \overline{\mu(u)}$  which after applying  $\tau$  gives  $\tau(\bar{v}) = \tau(\overline{\mu(u)})$ . By definition of  $\mu^T$  we have  $\tau(\overline{\mu(u)}) = \mu^T(\tau(u))$  and so

$$\mu^T(t) = \tau(\gamma) = \tau(\bar{v}) = \tau(\overline{\mu(u)}) = \mu^T(\tau(u)).$$

Since, by Lemma 5.2 *ii*),  $\mu^T$  is bijective, we obtain  $\tau(u) = t$  and so

$$\gamma = \bar{v} = \overline{\mu(u)} = \bar{\mu}(u)$$

with  $\beta = u$  in  $B_n(S_n, \ell, t)$ . Therefore  $B_n(S_n, \ell, \mu^T(t)) \subseteq \bar{\mu}(B_n(S_n, \ell, t))$  and the equality is established.  $\square$

**Corollary 5.21.** Let  $\ell$  be an integer. We have

$$s(B_n, S_n, \ell) = \sum_{t \in R_n} \text{card}(B_n(S_n, \ell)) \times \text{card}(G_{S_n} \cdot t).$$

*Proof.* We have

$$B_n(S_n, \ell) = \bigsqcup_{t \in T_n(S_n, \ell)} B_n(S_n, \ell, t) = \bigsqcup_{t_r \in R_n(S_n, \ell)} \bigsqcup_{t \in G_{S_n} \cdot t_r} B_n(S_n, \ell, t)$$

Assume  $r$  is a template of  $R_n(S_n, \ell)$  and  $t$  lies in  $G_{S_n} \cdot t_r$ . Then there exists a  $S_n$ -acceptable bijection  $\mu \in G_{S_n}$  satisfying  $t = \mu(t_r)$ . It follows from Proposition 5.20 that the set  $B_n(S_n, \ell, t)$  has the same cardinality as  $B_n(S_n, \ell, t_r)$ . So we obtain

$$\begin{aligned} s(B_n, S_n, \ell) &= \text{card}(B_n(S_n, \ell)) = \sum_{t_r \in R_n(S_n, \ell)} \sum_{t \in G_{S_n} \cdot t_r} \text{card}(B_n(S_n, \ell, t)) \\ &= \sum_{t_r \in R_n(S_n, \ell)} \text{card}(B_n(S_n, \ell, t_r)) \times \text{card}(G_{S_n} \cdot t_r). \end{aligned} \quad \square$$

**5.6. Algorithmic improvement.** We now give an improvement of the algorithms of Section 4 using Corollary 5.21. From Corollary 5.21 we know how to obtain  $s(B_n, S_n, \ell)$  from an enumeration of braids associated to a reduced template. As in Section 4 we assume we have a function  $\text{LOADRED}(n, \ell, t)$  loading from the storage memory a representative set of  $B_n(S_n, \ell, t)$  where  $t$  is a reduced template. We also assume we have a function  $\text{SAVERED}(W, n, \ell, t)$  which saves a representative set  $W$  of  $B_n(S_n, \ell, t)$  whenever  $t$  is a reduced template.

Enumerating only braids with a reduced template reduces the requirements of storage space. But there is a little difficulty. The template  $t_x$  used in the call of  $\text{LOAD}$  line 6 of Algorithm 2 –  $\text{TEMPREPSET}$  is not necessarily reduced. However, thanks to Proposition 5.20 we have

$$B_n(S_n, \ell, t) = \bar{g}^{-1}(B_n(S_n, \ell, \text{red}(t))),$$

where  $g^T(t) = \text{red}(t)$ . Hence if  $W_r$  is a representative set of  $B_n(S_n, \ell, \text{red}(t))$  then  $W = g^{-1}(W_r)$  is a representative set of  $B_n(S_n, \ell, t)$ . We then obtain Algorithm 4 –  $\text{LOADFROMRED}$  that can return any representative set of  $B_n(S_n, \ell, t)$  from the storage of braids of  $S_n$ -length  $\ell$  with a reduced template.

---

**Algorithm 4** –  $\text{LOADFROMRED}$  : Returns a representative set  $W$  of  $B_n(S_n, \ell, t)$  from the storage of representative sets of braids of length  $\ell$  having a reduced template.

---

```

1: function  $\text{LOADFROMRED}(n, \ell, t)$ 
2:    $t_r \leftarrow \text{red}(t)$ 
3:   determine  $g \in G_{S_n}$  such that  $t = g^T(t_r)$ 
4:    $W_r \leftarrow \text{LOADRED}(n, \ell, t_r)$ 
5:    $W \leftarrow \emptyset$ 
6:   for  $w \in W_r$  do
7:      $W \leftarrow W \sqcup \{g^{-1}(w)\}$ 
8:   end for
9:   return  $W$ 
10: end function

```

---

The improved version  $\text{REDTEMPREPSET}$  of Algorithm 2 –  $\text{TEMPREPSET}$  is obtained replacing calls of  $\text{LOAD}$  by  $\text{LOADRED}$  and call of  $\text{SAVE}$  by  $\text{SAVERED}$ .

By Corollary 5.21 the number  $s(B_n, S_n; \ell)$  can be determined by running Algorithm  $\text{REDTEMPREPSET}$  on all reduced templates of  $T_n(S_n, \ell)$ . As for braids we can't determine reduced templates of  $T_n(S_n, \ell)$  considering only reduced templates of  $T_n(S_n, \ell-1)$ . Assume we dispose of the set  $R_n(S_n, \ell-1)$  of reduced templates of  $T_n(S_n, \ell-1)$ . First we reconstruct the set  $T_n(S_n, \ell-1)$  using

$$T_n(S_n, \ell-1) = \{g(t) \text{ for } (g, t) \in G_{S_n} \times R_n(S_n, \ell-1)\}.$$

As a second step we use (13) to obtain a supset  $T'_\ell$  of  $T_n(S_n, \ell)$ . Then we filter element of  $T'_\ell$  keeping only reduced templates. Eventually we obtain the set  $R_n(S_n, \ell)$  of reduced templates containing the reduced templates of  $T_n(S_n, \ell)$ . Moreover a template of  $R_n(S_n, \ell)$  is a reduced template of  $T_n(S_n, \ell)$  if and only if there exists a braid  $\beta \in B_n(S_n, \ell)$  having this precise template. These lead to Algorithm 5 –  $\text{REDCOMBI}$ , which is an improved version of Algorithm 3 –  $\text{COMBI}$ .

## 6. RESULTS

For our experimentations we have coded a distributed version of Algorithm 5 –  $\text{REDCOMBI}$  following a client / server model. Roughly speaking the server runs

---

**Algorithm 5** – REDCOMBI : Returns a pair of arrays of number  $(n_s, n_g)$  satisfying  $n_s[\ell] = s(B_n, S_n; \ell)$  and  $n_g[\ell] = g(B_n, S_n; \ell)$  for all  $\ell \leq \ell_{\max}$

---

```

1: function REDCOMBI( $\ell_{\max}$ )
2:    $n_s[0] \leftarrow 1; n_g[0] \leftarrow 1$ 
3:    $R \leftarrow \{(1_{\mathfrak{S}_n}, 0, \dots, 0)\}$  ▷ reduced templates of  $T_n(S_n, 0)$ 
4:   for  $\ell$  from 1 to  $\ell_{\max}$  do
5:      $R' \leftarrow \emptyset$ 
6:      $n_s[\ell] \leftarrow 0; n_g[\ell] \leftarrow 0$ 
7:     for  $t_r \in R$  do
8:       for  $t \in G_{S_n} \cdot t_r$  do
9:         for  $x \in S_n$  do
10:           $t' \leftarrow t * x$ 
11:          if  $t'$  is reduced then
12:             $(n'_s, n'_g) \leftarrow \text{REDTEMPREPSET}(\ell, t')$ 
13:            if  $n'_s \neq 0$  then
14:               $R' \leftarrow R' \cup \{t'\}$ 
15:               $n_s[\ell] \leftarrow n_s[\ell] + n'_s \times \text{card}(G_{S_n} \cdot t')$ 
16:               $n_g[\ell] \leftarrow n_g[\ell] + n'_g \times \text{card}(G_{S_n} \cdot t')$ 
17:            end if
18:          end if
19:        end for
20:      end for
21:    end for
22:     $R \leftarrow R'$  ▷ reduced templates of  $T_n(S_n, \ell)$ 
23:  end for
24:  return  $(n_s, n_g)$ 
25: end function

```

---

the core of Algorithm 5 while clients run Algorithm 4 – REDTEMPREPSET in parallel. Technical details are voluntarily omitted. The source code of our program is available on the author’s homepage [20].

These programs were executed on a single computational node<sup>2</sup> of the computing platform CALCULCO [25]. This node is equipped with 256 Go of RAM together with two processors AMD Epyc 7702 with 64 cores each for a total of 128 cores. In addition of this computational node we have used a distributed storage space of 30 To storing files containing representative sets.

**6.1. Three strands.** As values of  $\mathcal{S}(B_3, \Sigma_3)$  and  $\mathcal{G}(B_3, \Sigma_3)$  are already known since the work of L. Sabalka [24] we have started our experimentation on the dual presentation of  $B_3$  (see Table 1).

Using Padé approximant on obtained values we can conjecture rational expression for the spherical and geodesic growth series of  $B_3$  relatively to dual generators.

**Conjecture 6.1.** *The spherical and geodesic growth series of  $B_2$  relatively to dual generators are*

$$\mathcal{S}(B_3, \Sigma_3^*) = \frac{(t+1)(2t^2-1)}{(t-1)(2t-1)^2}, \quad \mathcal{G}(B_3, \Sigma_3^*) = \frac{12t^3-2t^2+3t-1}{(2t-1)(3t-1)(4t-1)}.$$

If the previous conjecture is true the growth rate of  $s(B_3, \Sigma_3^*; \ell)$  is 2 while that of  $g(B_3, \Sigma_3^*; \ell)$  is 4.

---

<sup>2</sup>Financed by the project BQR CIMPA 2020 and the laboratory LMPA.

$\ell$	$s(B_3, \Sigma_3^*; \ell)$	$g(B_3, \Sigma_3^*; \ell)$	$\ell$	$s(B_3, \Sigma_3^*; \ell)$	$g(B_3, \Sigma_3^*; \ell)$
0	1	1	11	38 910	6 639 606
1	6	6	12	83 966	26 216 418
2	20	30	13	180 222	103 827 366
3	54	126	14	385 022	412 169 970
4	134	498	15	819 198	1 639 212 246
5	318	1 926	16	1 736 702	6 528 347 778
6	734	7 410	17	3 670 014	26 027 690 886
7	1 662	28 566	18	7 733 246	103 853 269 650
8	3 710	110 658	19	16 252 926	414 639 810 486
9	8 190	431 046	20	34 078 718	1 656 237 864 738
10	17 918	1 687 890	21	71 303 166	6 617 984 181 606

TABLE 1. Combinatorics of  $B_3$  relatively to dual generators  $\Sigma_3^*$ .

$\ell$	$s(B_4, \Sigma_4; \ell)$	$g(B_4, \Sigma_4; \ell)$	$\ell$	$s(B_4, \Sigma_4; \ell)$	$g(B_4, \Sigma_4; \ell)$
0	1	1	13	9 007 466	281 799 158
1	6	6	14	27 218 486	1 153 638 466
2	26	30	15	82 133 734	4 710 108 514
3	98	142	16	247 557 852	19 186 676 438
4	338	646	17	745 421 660	78 004 083 510
5	1 110	2 870	18	2 242 595 598	316 591 341 866
6	3 542	12 558	19	6 741 618 346	1 283 041 428 650
7	11 098	54 026	20	20 252 254 058	5 193 053 664 554
8	34 362	229 338	21	60 800 088 680	20 994 893 965 398
9	105 546	963 570	22	182 422 321 452	84 795 261 908 498
10	322 400	4 016 674	23	547 032 036 564	342 173 680 884 002
11	980 904	16 641 454	24	1 639 548 505 920	1 379 691 672 165 334
12	2 975 728	68 614 150	25	4 911 638 066 620	5 559 241 797 216 166

TABLE 2. Combinatorics of  $B_4$  relatively to Artin's generators  $\Sigma_4$ .

**6.2. Four strands.** In her thesis [2], M. Albenque computes the value  $s(B_4, \Sigma_4; \ell)$  up to  $\ell \leq 12$ . Running our algorithm on the 128-cores node of the CALCULCO platform we determine the spherical and geodesic combinatorics of  $B_4$  relatively to Artin's generators up to length 25 (see Table 2). Unfortunately the obtained values do not allow us to guess a rational expression of  $\mathcal{S}(B_4, \Sigma_4)$  or of  $\mathcal{G}(B_4, \Sigma_4)$ . For information the storage of all braids of  $B_4$  with geodesic  $\Sigma_4$ -length  $\leq 25$  and reduced templates requires 26 To of disk space.

In case of dual generators we have reach length 17 (see Table 3). Using Padé approximant on our values we can conjecture value of the spherical growth series of  $B_4$  relatively to dual generators.

**Conjecture 6.2.** *The spherical growth series of  $B_4$  relatively to dual generators is*

$$\mathcal{S}(B_4, \Sigma_4^*) = -\frac{(t+1)(10t^6 - 10t^5 - 3t^4 + 11t^3 - 4t^2 - 3t + 1)}{(t-1)(5t^2 - 5t + 1)(10t^4 - 20t^3 + 19t^2 - 8t + 1)} \quad (22)$$

If the previous conjecture is true, the growth rate of  $s(B_4, \Sigma_4^*; \ell)$  is given by the inverse of the maximal root of the denominator of (22), which is approximately 4.8. Unfortunately we are not able to such a conjecture for the geodesic growth series of  $B_4$  relatively to dual generators.

$\ell$	$s(B_4, \Sigma_4^*; \ell)$	$g(B_4, \Sigma_4^*; \ell)$	$\ell$	$S(B_4, \Sigma_4^*; \ell)$	$g(B_4, \Sigma_4^*; \ell)$
0	1	1	9	7 348 366	708 368 540
1	12	12	10	35 773 324	6 128 211 364
2	84	132	11	173 885 572	52 826 999 612
3	478	1 340	12	844 277 874	454 136 092 148
4	2 500	12 788	13	4 095 929 948	3 895 624 824 092
5	12 612	117 452	14	19 858 981 932	33 359 143 410 468
6	62 570	1 053 604	15	96 242 356 958	285 259 736 104 444
7	303 356	9 311 420	16	466 262 144 180	2 436 488 694 821 748
8	1 506 212	81 488 628	17	2 258 320 991 652	20 790 986 096 580 060

TABLE 3. Combinatorics of  $B_4$  relatively to dual generators  $\Sigma_4^*$ .

## REFERENCES

- [1] M. Albenque. Bijective combinatorics of positive braids. *Electronic Notes in Discrete Mathematics*, 29:225–229, 2007.
- [2] M. Albenque. *Tresses, animaux, cartes : à l'interaction entre combinatoire et probabilité*. PhD thesis, Université Paris Diderot, 2008.
- [3] M. Albenque and P. Nadeau. Growth function for a class of monoids. In *21st International Conference on Formal Power Series and Algebraic Combinatorics (FPSAC 2009)*, Discrete Math. Theor. Comput. Sci. Proc., AK, pages 25–38. Assoc. Discrete Math. Theor. Comput. Sci., Nancy, 2009.
- [4] E. Artin. Theory of braids. *Ann. of Math. (2)*, 48:101–126, 1947.
- [5] D. Bessis. The dual braid monoid. *Ann. Sci. École Norm. Sup. (4)*, 36(5):647–683, 2003.
- [6] P. Biane and P. Dehornoy. Dual Garside structure of braids and free cumulants of products. *Sém. Lothar. Combin.*, 72:Art. B72b, 15, 2014/15.
- [7] J. Birman, K. H. Ko, and S. J. Lee. A new approach to the word and conjugacy problems in the braid groups. *Adv. Math.*, 139(2):322–353, 1998.
- [8] A. Bronfman. Growth function of a class of monoids (preprint), 2001.
- [9] R. Charney. Geodesic automation and growth functions for Artin groups of finite type. *Math. Ann.*, 301(2):307–324, 1995.
- [10] P. Dehornoy. Groupes de Garside. *Ann. Sci. École Norm. Sup. (4)*, 35(2):267–306, 2002.
- [11] P. Dehornoy. Combinatorics of normal sequences of braids. *J. Combin. Theory Ser. A*, 114(3):389–409, 2007.
- [12] P. Dehornoy. *Le calcul des tresses*. Nano. Calvage & Mounet, 2019.
- [13] P. Dehornoy, F. Digne, E. Godelle, D. Krammer, and J. Michel. *Foundations of Garside theory*, volume 22 of *EMS Tracts in Mathematics*. European Mathematical Society (EMS), Zürich, 2015. Author name on title page: Daan Kramer.
- [14] P. Dehornoy and L. Paris. Gaussian groups and Garside groups, two generalisations of Artin groups. *Proc. London Math. Soc. (3)*, 79(3):569–604, 1999.
- [15] Patrick Dehornoy, Ivan Dynnikov, Dale Rolfsen, and Bert Wiest. *Ordering braids*, volume 148 of *Mathematical Surveys and Monographs*. American Mathematical Society, Providence, RI, 2008.
- [16] I. A. Dynnikov. On a Yang-Baxter mapping and the Dehornoy ordering. *Uspekhi Mat. Nauk*, 57(3(345)):151–152, 2002.
- [17] D. B. A. Epstein, D. F. Holt, and S. E. Rees. The use of Knuth-Bendix methods to solve the word problem in automatic groups. volume 12, pages 397–414. 1991. Computational group theory, Part 2.
- [18] R. Flores and J. González-Meneses. On the growth of Artin–Tits monoids and the partial theta function. arXiv:1808.03066, 2018.
- [19] L. Foissy and J. Fromentin. A divisibility result in combinatorics of generalized braids. *J. Combin. Theory Ser. A*, 152:190–224, 2017.
- [20] J. Fromentin. Homepage. <http://www.lmpa.univ-littoral.fr/~fromentin/index.php?page=rech-gen-braids>, 2020.
- [21] F. A. Garside. The braid group and other groups. *Quart. J. Math. Oxford Ser. (2)*, 20:235–254, 1969.

- [22] F. Hivert, J.-C. Novelli, and J.-Y. Thibon. Sur une conjecture de Dehornoy. *C. R. Math. Acad. Sci. Paris*, 346(7-8):375–378, 2008.
- [23] J. Mairesse and F. Mathéus. Growth series for Artin groups of dihedral type. *Internat. J. Algebra Comput.*, 16(6):1087–1107, 2006.
- [24] L. Sabalka. Geodesics in the braid group on three strands. In *Group theory, statistics, and cryptography*, volume 360 of *Contemp. Math.*, pages 133–150. Amer. Math. Soc., Providence, RI, 2004.
- [25] Calculco platform. <https://www-calculco.univ-littoral.fr>, 2020.
- [26] Wikipedia. Standard template library. [https://en.wikipedia.org/wiki/Standard\\_Template\\_Library](https://en.wikipedia.org/wiki/Standard_Template_Library), 2020.

UNIV. LITTORAL CÔTE D’OPALE, UR 2597, LMPA, LABORATOIRE DE MATHÉMATIQUES PURES  
ET APPLIQUÉES JOSEPH LIOUVILLE, F-62100 CALAIS, FRANCE  
*Email address:* `fromentin@math.cnrs.fr`