



HAL
open science

Optimizing signal patterns for MR vascular fingerprinting

Aurélien Delphin, Fabien Boux, Clément Brossard, Jan Warnking, Benjamin Lemasson, Emmanuel Luc Barbier, Thomas Christen

► **To cite this version:**

Aurélien Delphin, Fabien Boux, Clément Brossard, Jan Warnking, Benjamin Lemasson, et al.. Optimizing signal patterns for MR vascular fingerprinting. ISMRM & SMRT 2020 - Virtual Conference & Exhibition, Aug 2020, Sidney, Australia. pp.1-3. hal-02926840

HAL Id: hal-02926840

<https://hal.science/hal-02926840>

Submitted on 1 Sep 2020

HAL is a multi-disciplinary open access archive for the deposit and dissemination of scientific research documents, whether they are published or not. The documents may come from teaching and research institutions in France or abroad, or from public or private research centers.

L'archive ouverte pluridisciplinaire **HAL**, est destinée au dépôt et à la diffusion de documents scientifiques de niveau recherche, publiés ou non, émanant des établissements d'enseignement et de recherche français ou étrangers, des laboratoires publics ou privés.

Optimizing signal patterns for MR vascular fingerprinting

Aurelien Delphin¹, Fabien Boux^{1,2}, Clément Brossard¹, Jan M Warnking¹, Benjamin Lemasson¹, Emmanuel Luc Barbier¹, and Thomas Christen¹

¹Univ. Grenoble Alpes, Inserm, U1216, Grenoble Institut Neurosciences, GIN, 38000, Grenoble, France, ²Univ. Grenoble Alpes, Inria, CNRS, G-INP, 38000, Grenoble, France

Synopsis

MR vascular fingerprinting proposes to map vascular properties such as blood volume fraction, average vessel radius or blood oxygenation saturation (SO₂). The fingerprint pattern used in previous studies provides low sensitivity on SO₂. We optimised signal patterns built from pre and post USPIO acquisitions. Concatenation of different echoes associated with higher dimensional dictionaries led to better estimates in both healthy and tumoral tissues.

Introduction

MR fingerprinting¹ is an efficient tool to acquire multiple quantitative maps simultaneously. MR vascular fingerprinting (MRvF) proposes to use this framework to extract vascular properties with fast acquisition times². The initial implementation of MRvF used the GESFIDSE sequence (Gradient Echo Sampling of the FID and Spin Echo) that was known to be sensitive to blood oxygenation saturation (SO₂) and microvascular geometry (blood volume fraction (BF) and vessel averaged radius (R)). More precisely, the ratio of signals acquired pre and post injection of iron-based contrast agent (USPIO) was used to remove B₀ inhomogeneities and T₂ effects. However it has been suggested³ that this MRvF pattern provides low sensitivity on SO₂. In this study, we propose to reorganize the signal patterns to design more efficient fingerprints. Dictionaries were built with additional dimensions to take into account effects that were eliminated before. Our fingerprints were tested on 9 healthy and 9 tumor implanted rats. The results were compared against each other and against conventional steady-state perfusion measurements.

Materials and Methods

- 9L tumors were implanted in 9 rats (Fischer) and imaging was performed between 14 and 16 days later. 9 healthy rats (Fischer) were also imaged⁴.
- A 45 minutes MRI protocol including ADC, T₂ and T₂* maps was acquired on a 4.7T Bruker system. A GESFIDSE sequence (32 echoes, SE=60ms, see fig. 1) was acquired pre and post injection of USPIO (P904, Guerbet, France, 200μmol Fe/kg).
- Steady state analysis was performed on the 45 min protocol to obtain vessel size index (VSI), BVf⁵ and SO₂⁶ maps with home-made software⁷.
- Fingerprint analysis was performed on the two GESFIDSE acquisitions only (8 min protocol).
 - The dictionary was generated using "MRVox"⁸, a Matlab (The MathWorks Inc., Natick, Ma, USA) based home-made software. Up to 5 dimensions were considered: R=[1:10] μm, BVf=[0.34:10.18] %, SO₂=[0.35:0.9] %, T₂=[45:130] ms and ADC=[600:1300] μm²/s. A total of 12,545,280 signals were generated.
 - Three fingerprints patterns were used, based on different combinations of GESFIDSE signals acquired pre and post USPIO injection. The ratio post over pre (32 echoes, fig. 2c), the concatenation of the pre and post (64 echoes, fig. 2d) signals and a "hybrid" pattern. The latter is the concatenation of the 9 pre and post echoes before the 180° pulse and the 23 echoes from the ratio after the 180° pulse, yielding a fingerprint of 41 echoes (fig. 2e). The concatenation and hybrid patterns were designed to increase signals variations across the dictionary dimensions, as shown for simulated SO₂ on fig. 2. Simulation studies on other dimensions are not shown here.

Results

The 5D dictionary generated for this study was first compared to a reduced 3D version without T₂ effects and for ADC=810μm²/s (33188 signals). Results for BVf are presented in fig. 3, along with steady-state measurements. Increasing the number of parameters brought little change with the ratio pattern. However, maps obtained with the concatenation pattern using the 5D dictionary had better contrast and lower values than the ones obtained with the 3D dictionary (BVf=4.2±0.5% vs. 4.8±0.4 N=9). The concatenation pattern provided much sharper contrasts than the ratio pattern in the lower parts of the brain, where SNR is degraded. It also produced the closest output to the steady-state measurements (BVf=3.5±0.6%, N=9). Results from the three MRvF patterns combined with the 5D dictionary are presented for one tumor animal on fig. 4. All methods showed a BVf increase in the tumor. The concatenation and hybrid patterns showed an increased VSI in the tumor, similar to that of the steady-state measurement and previous histological findings⁴. On the opposite, the ratio displayed a decreased VSI in the tumor. SO₂ values found with the steady-state approach were similar in the tumor and healthy tissues. However the mathematical model in this approach might not be adapted to this type of vascular environment². Conversely, all three MRvF patterns found reduced SO₂ estimates in the tumor. Only the hybrid pattern produced SO₂ values in the contralateral hemisphere that were in line with the steady-state approach and expected values in healthy tissue. The hybrid pattern showed expected contrasts on the three metrics, with values in line with what is expected in healthy tissue but produced noisier maps than the concatenation pattern. Fig. 5 presents SO₂ results obtained after averaging pre and post signals (3 NEX) and two slices. The higher SNR led to smoother maps while keeping contralateral values in the expected range of healthy tissues and low-oxygenated tumors.

Conclusions

Among the different MRvF signal patterns derived from pre and post USPIO GESFIDSE acquisitions, the hybrid concatenation of different echoes associated with higher dimensional dictionaries led to the best estimates in both healthy and tumoral tissues. Comparisons with other tumor models and histological measurements should be performed in order to conclude on the most efficient patterns. Dictionary learning using interpretable regression methods⁹ could also give more insight on which parts of the signals should be used for optimal fingerprint design and the required SNR level for accurate estimates. These encouraging results could lead to a reduction of acquisition time from 45 min to a few minutes only.

Acknowledgements

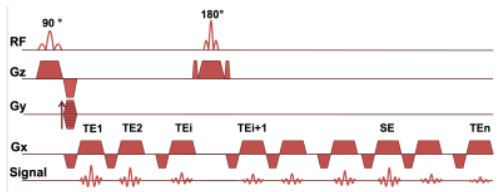
The MRI facility IRMaGe is partly funded by the French program "Investissements d'Avenir" run by the French National Research Agency, grant "Infrastructure d'avenir en Biologie Santé" [ANR-11-INBS-0006]

References

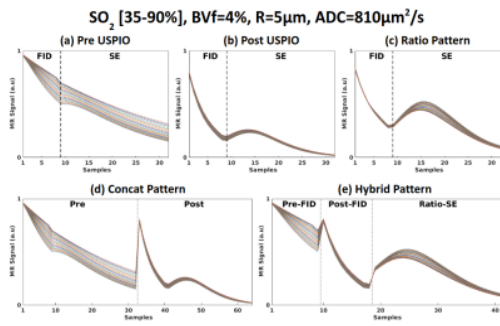
1. Ma D, Gulani V, Seiberlich N, Liu K, Sunshine JL, Duerk JL, et al. Magnetic resonance fingerprinting. *Nature*. 2013 Mar;495(7440):187–92.
2. Christen T, Pannetier NA, Ni WW, Qiu D, Moseley ME, Schuff N, et al. MR vascular fingerprinting: A new approach to compute cerebral blood volume, mean vessel radius, and oxygenation maps in the human brain. *NeuroImage*. 2014 Apr 1;89:262–70.

- Christen T, Ni WW, Guo J, Fan A, Moseley M and Zaharchuk G: MR Vascular Fingerprinting during Gas Challenges. (Proceedings of Joint Annual Meeting ISMRM-ESMRMB 2018)
- Lemasson B, Pannetier N, Coquery N, Boisserand LSB, Collomb N, Schuff N, et al. MR Vascular Fingerprinting in Stroke and Brain Tumors Models. Scientific Reports. 2016 Nov 24;6:37071.
- Tropès I, Grimault S, Vaeth A, Grillon E, Julien C, Payen J-F, et al. Vessel size imaging. Magnetic Resonance in Medicine. 2001;45(3):397–408.
- Christen T, Lemasson B, Pannetier N, Farion R, Segebarth C, Rémy C, et al. Evaluation of a quantitative blood oxygenation level-dependent (qBOLD) approach to map local blood oxygen saturation. NMR in Biomedicine. 2011;24(4):393–403.
- nifm-gin/MP3 [Internet]. nifm-gin; 2019 [cited 2019 Nov 5]. Available from: <https://github.com/nifm-gin/MP3>
- Pannetier NA, Debacker C, Mauconduit F, Christen T, Barbier EL. A Simulation Tool for Dynamic Contrast Enhanced MRI [Internet]. 2013 [cited 2019 Oct 10]. Available from: <https://journals.plos.org/plosone/article?id=10.1371/journal.pone.0057636>
- Boux F, Forbes F, Arbel J, Barbier EL. Dictionary-Free MR Fingerprinting Parameter Estimation Via Inverse Regression. In: Joint Annual Meeting ISMRM-ESMRMB 2018 [Internet]. Paris, France; 2018 [cited 2019 Oct 28]. p. 1–2. (Proceedings of Joint Annual Meeting ISMRM-ESMRMB 2018). Available from: <https://hal.archives-ouvertes.fr/hal-01941630>

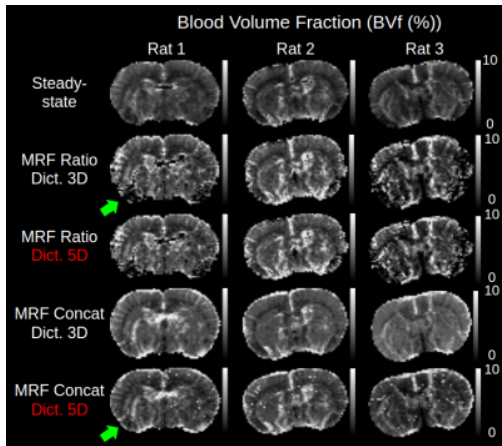
Figures



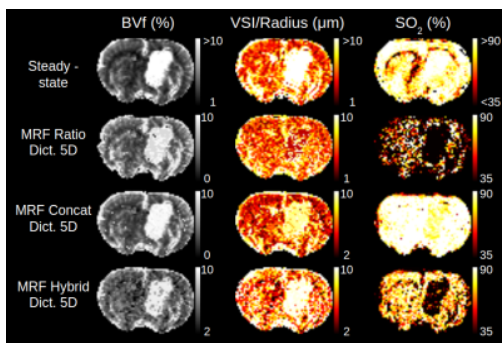
Gradient Echo Sampling of the FID and Spin Echo (GESFIDSE) sequence.



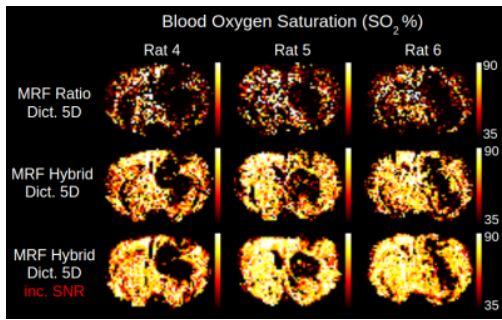
Simulated signals, each curve corresponds to one value of SO₂. (a) GESFIDSE Signal pre USPIO injection, (b) GESFIDSE signal post USPIO injection, (c) ratio of Post over Pre pattern, (d) concatenation of Pre and Post pattern, (e) hybrid pattern.



3D vs. 5D dictionary results for ratio and concatenation pattern



Comparison of maps obtained with different fingerprint patterns in one rat



SO_2 maps obtained with the ratio and hybrid pattern with 1NEX compared to results from hybrid pattern with 3NEX