



HAL
open science

New mitochondrial genomes of 39 soil dwelling Coleoptera from metagenome sequencing

Carmelo Andujar, Paula Arribas, Michal Motyka, Mathew Bocek, Ladislav Bocak, Benjamin Linard, Alfried Vogler

► **To cite this version:**

Carmelo Andujar, Paula Arribas, Michal Motyka, Mathew Bocek, Ladislav Bocak, et al.. New mitochondrial genomes of 39 soil dwelling Coleoptera from metagenome sequencing. *Mitochondrial DNA Part B Resources*, 2019, 4 (2), pp.2447-2450. 10.1080/23802359.2019.1637289 . hal-02922399

HAL Id: hal-02922399

<https://hal.science/hal-02922399>

Submitted on 26 Aug 2020

HAL is a multi-disciplinary open access archive for the deposit and dissemination of scientific research documents, whether they are published or not. The documents may come from teaching and research institutions in France or abroad, or from public or private research centers.

L'archive ouverte pluridisciplinaire **HAL**, est destinée au dépôt et à la diffusion de documents scientifiques de niveau recherche, publiés ou non, émanant des établissements d'enseignement et de recherche français ou étrangers, des laboratoires publics ou privés.

New mitochondrial genomes of 39 soil dwelling Coleoptera from metagenome sequencing

Carmelo Andújar^{a,b,c}, Paula Arribas^{a,b,c}, Michal Motyka^d, Mathew Bocek^d, Ladislav Bocak^d, Benjamin Linard^{b,e} and Alfred P. Vogler^{b,c}

^aGrupo de Ecología y Evolución en Islas, Instituto de Productos Naturales y Agrobiología (IPNA-CSIC), San Cristóbal de la Laguna, Spain;

^bDepartment of Life Sciences, Natural History Museum, London, UK; ^cDepartment of Life Sciences, Imperial College London, Ascot, UK;

^dDepartment of Zoology, Faculty of Science, Palacky University, Olomouc, Czech Republic; ^eLIRMM (Laboratoire d'Informatique de Robotique et de Microelectronique de Montpellier), CNRS University of Montpellier, Montpellier, France

ABSTRACT

High-throughput DNA methods hold great promise for the study of the hyperdiverse arthropod fauna of the soil. We used the mitochondrial metagenomic approach to generate 39 mitochondrial genomes from adult and larval specimens of Coleoptera collected from soil samples. The mitogenomes correspond to species from the families Carabidae (6), Chrysomelidae (1), Curculionidae (9), Dermestidae (1), Elateridae (1), Latridiidae (1), Scarabaeidae (3), Silvanidae (1), Staphylinidae (12), and Tenebrionidae (4). All the mitogenomes followed the putative ancestral gene order for Coleoptera. We provide the first available mitogenome for 30 genera of Coleoptera, including endogean representatives of the genera *Torneuma*, *Coiffaitiella*, *Otiorhynchus*, *Oligotyphlopsis*, and *Typhlocharis*.

ARTICLE HISTORY

Received 17 April 2019

Accepted 22 June 2019

KEYWORDS



Coleoptera; endogean; soil; mitochondrial metagenomics; next-generation sequencing

The mitochondrial metagenomics approach (MMG) provides a cost-effective method for sequencing mitochondrial genomes from numerous species (Andújar et al. 2015; Crampton-Platt et al. 2015). Total genomic DNA from multiple specimens, either extracted individually or in bulk, is shotgun sequenced in a metagenomics mixture, followed by assembly with standard genomic assemblers, from which whole mitochondrial genomes emerge preferentially due to their high copy number relative to most of the nuclear genome. This 'genome skimming' approach was used to sequence the mitogenomes of beetle specimens collected from soil samples of the southern Iberian Peninsula at Sierra de Grazalema (36.7N, -5.4W), Sierra de Cabra (37.4N, -4.3W) and Sierra Madrona (38.4N, -4.3W) (see Andújar et al. 2015) by following the 'Floatation-Berlese-Floatation' (FBF) protocol (Arribas et al. 2016). Briefly, aliquots of the DNA extracts from 1494 specimens (vouchered at the Natural History Museum London) were pooled to generate 3 pools with roughly equimolar DNA concentration per specimen, after the dsDNA concentration of extracts was measured (Qubit 2.0 Fluorometer, Life Technologies Corp., Carlsbad, CA). Further, TruSeq DNA libraries were constructed and sequenced in the Illumina MiSeq platform (Illumina Inc., San Diego, CA) (2 × 300 bp; 800–950 bp insert size).

The output was processed and assembled in three assemblers as indicated in Andújar et al. (2017). The resulting contigs were subjected to super-assembly in Geneious 7.1.9

(<http://www.geneious.com>) using the *de novo assembly* function and showed wide overlap. The procedure resulted in more than 200 mitogenomes longer than 5000 bp, of which 39 were selected for further annotation and identification to species or genus level. Thirty-four of these include the full set of protein-coding, rRNA and tRNA genes (>15,000 bp), of which 17 were complete circular mitogenomes. The remaining 17 were not circularized due to difficulties with the assembly of the control region. Five additional mitogenomes were incomplete by the lack of one or two genes (sequence length between 12,221 and 14,453 bp).

The mitogenomes were annotated using gene predictions with MITOS (Bernt et al. 2013) and manually refined in Geneious. All mitogenomes were structured following the putatively ancestral gene order for the Coleoptera. Mitogenomes assembled from the shotgun mixture were linked to particular specimens using the *cox1* barcode sequences obtained from the same specimens with PCR-Sanger sequencing. For those cases where Sanger sequencing failed (5/39), validation was performed by unambiguous match to the species level on BOLD Public Data Portal (Ratnasingham and Hebert 2007, accessed on 20th March 2019). The mitogenomes correspond to 39 different species from the families Carabidae (6), Chrysomelidae (1), Curculionidae (9), Dermestidae (1), Elateridae (1), Latridiidae (1), Scarabaeidae (3), Silvanidae (1), Staphylinidae (12) and Tenebrionidae (4), and include representatives from 37

CONTACT Carmelo Andújar  candujar@ipna.csic.es  Grupo de Ecología y Evolución en Islas, Instituto de Productos Naturales y Agrobiología (IPNA-CSIC), San Cristóbal de la Laguna 38206, Spain

© 2019 The Author(s). Published by Informa UK Limited, trading as Taylor & Francis Group.

This is an Open Access article distributed under the terms of the Creative Commons Attribution-NonCommercial License (<http://creativecommons.org/licenses/by-nc/4.0/>), which permits unrestricted non-commercial use, distribution, and reproduction in any medium, provided the original work is properly cited.

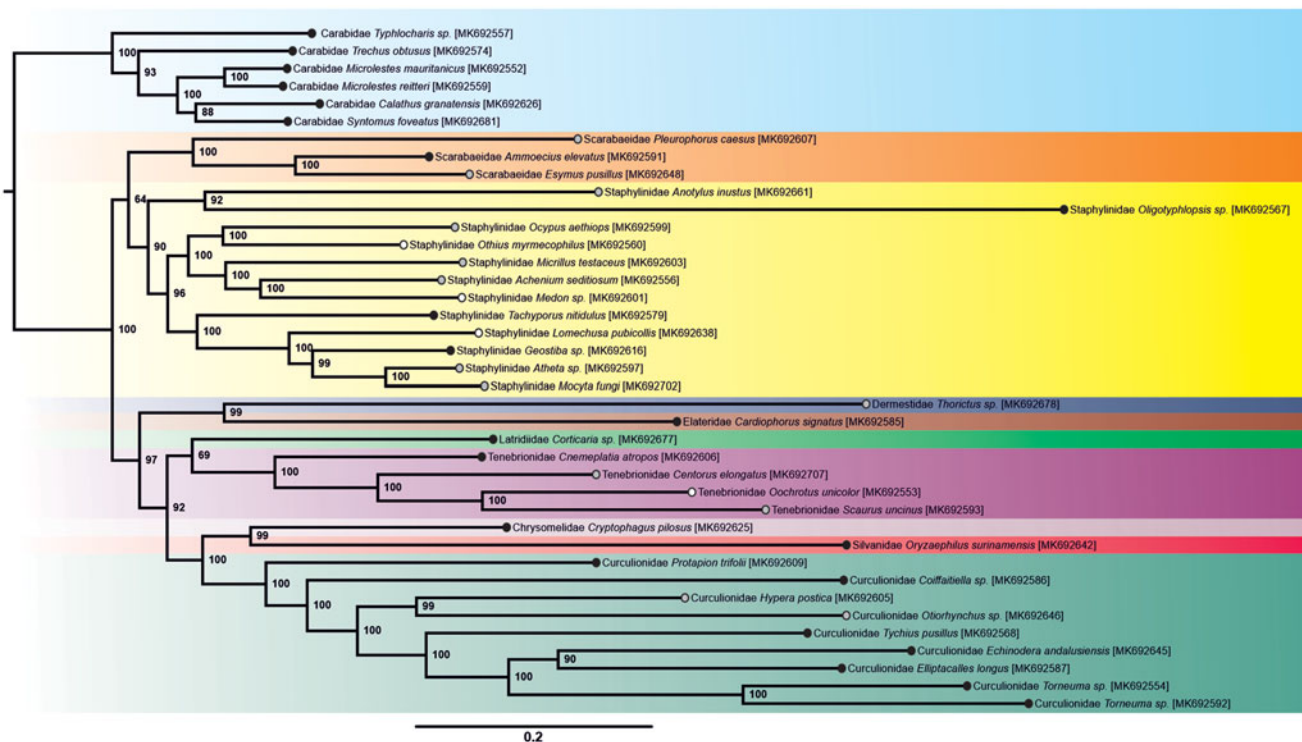


Figure 1. Phylogenetic tree from maximum-likelihood analysis showing the relationships of the 39 newly generated mitogenomes. Circles in branch tips indicate the locality where each specimen was collected (Sierra de Grazelema: black; Sierra de Cabra: grey and Sierra Madrona: white). Shaded frames according with beetle families. GenBank accession numbers are in brackets.

Table 1. Additional data for the 39 mitogenomes of Coleoptera in this study.

GB accession	Voucher code*	Family	Species	FG**	FSP***	Life stage	Identification
MK692552	BMNH 1041149	Carabidae	<i>Microlestes mauritanicus</i>	x	x	Adult	J.L. Lencina det.
MK692553	BMNH 1042258	Tenebrionidae	<i>Oochrotus unicolor</i>	x	x	Adult	J.L. Lencina det.
MK692554	BMNH 1041892	Curculionidae	<i>Torneuma sp.</i>	x	x	Adult	C. Hernando det.
MK692556	BMNH 1044019	Staphylinidae	<i>Achenium seditiosum</i>	x	x	Adult	V. Assing det.
MK692557	BMNH 1041971	Carabidae	<i>Typhlocharis sp.</i>	x	x	Adult	C. Andújar det.
MK692559	BMNH 1041157	Carabidae	<i>Microlestes reitteri</i>	x	x	Adult	J.L. Lencina det.
MK692560	BMNH 1042672	Staphylinidae	<i>Othius myrmecophilus</i>	x	x	Larva	BOLD match > 99%
MK692567	BMNH 1042021	Staphylinidae	<i>Oligotyphlopsis sp.</i>	x	x	Adult	C. Hernando det.
MK692568	BMNH 1042062	Curculionidae	<i>Tychius pusillus</i>	x	x	Adult	BOLD match > 99%
MK692574	BMNH 1042482	Carabidae	<i>Trechus Obtusus</i>	x	x	Larva	BOLD match > 99%
MK692579	BMNH 1041943	Staphylinidae	<i>Tachyporus nitidulus</i>	x	x	Adult	V. Assing det.
MK692585	BMNH 1041967	Elateridae	<i>Cardiophorus signatus</i>	x	x	Adult	J.L. Lencina det.
MK692586	BMNH 1041911	Curculionidae	<i>Coiffaitiella sp.</i>	x	x	Adult	C. Hernando det.
MK692587	BMNH 1043732	Curculionidae	<i>Ellipticalles longus</i>	x	x	Adult	BOLD match > 99%
MK692591	BMNH 1041150	Scarabaeidae	<i>Ammoecius elevatus</i>	x	x	Adult	J.L. Lencina det.
MK692592	BMNH 1041990	Curculionidae	<i>Torneuma sp.</i>	x	x	Adult	C. Hernando det.
MK692593	BMNH 1042238	Tenebrionidae	<i>Scaurus uncinus</i>	x	x	Adult	J.L. Lencina det.
MK692597	BMNH 1043977	Staphylinidae	<i>Atheta sp.</i>	x	x	Adult	V. Assing det.
MK692599	NA	Staphylinidae	<i>Ocybus aethiops</i>	x	x	NA	BOLD match > 99%
MK692601	BMNH 1042249	Staphylinidae	<i>Medon sp.</i>	x	x	Adult	V. Assing det.
MK692603	BMNH 1042190	Staphylinidae	<i>Micrillus testaceus</i>	x	x	Adult	V. Assing det.
MK692605	BMNH 1042074	Curculionidae	<i>Hypera postica</i>	x	x	Adult	BOLD match > 99%
MK692606	BMNH 1042031	Tenebrionidae	<i>Cnemeplatia atropos</i>	x	x	Adult	J.L. Lencina det.
MK692607	BMNH 1042209	Scarabaeidae	<i>Pleurophorus caesus</i>	x	x	Adult	J.L. Lencina det.
MK692609	BMNH 1041982	Curculionidae	<i>Protapion trifolii</i>	x	x	Adult	BOLD match > 99%
MK692616	BMNH 1041162	Staphylinidae	<i>Geostiba sp.</i>	x	x	Adult	V. Assing det.
MK692625	NA	Chrysomelidae	<i>Cryptophagus pilosus</i>	x	x	NA	BOLD match > 99%
MK692626	BMNH 1042569	Carabidae	<i>Calathus granatensis</i>	x	x	Larva	BOLD match > 99%
MK692638	NA	Staphylinidae	<i>Lomechusa pubicollis</i>	x	x	NA	BOLD match > 99%
MK692642	BMNH 1041893	Silvanidae	<i>Oryzaephilus surinamensis</i>	x	x	Adult	J.L. Lencina det.
MK692645	NA	Curculionidae	<i>Echinodera andalusiensis</i>	x	x	NA	BOLD match > 99%
MK692646	BMNH 1042067	Curculionidae	<i>Otiorynchus sp.</i>	x	x	Adult	C. Hernando det.
MK692648	BMNH 1042068	Scarabaeidae	<i>Esymus pusillus</i>	x	x	Adult	J.L. Lencina det.
MK692661	BMNH 1042524	Staphylinidae	<i>Anotylus inustus</i>	x	x	Larva	BOLD match > 99%
MK692677	BMNH 1041924	Latridiidae	<i>Corticaria sp.</i>	x	x	Adult	J.L. Lencina det.
MK692678	BMNH 1042175	Dermestidae	<i>Thorictus sp.</i>	x	x	Adult	J.L. Lencina det.
MK692681	NA	Carabidae	<i>Syntomus foveatus</i>	x	x	NA	BOLD match > 99%
MK692702	BMNH 1042255	Staphylinidae	<i>Mocyta fungi</i>	x	x	Adult	BOLD match > 99%
MK692707	BMNH 1042182	Tenebrionidae	<i>Centurus elongatus</i>	x	x	Adult	J.L. Lencina det.

Genbank Accession Numbers, voucher codes, taxonomic identification, life stage, and information on whether the provided mitogenomes are the first available for the genus (FG column) and for the species (FSP column).

* All mitogenomes were obtained by bulk sequencing of a mix of specimens. Voucher code refers to the specimen with PCR-Sanger sequencing that matches (100% similarity) the obtained mitogenomes. Vouchers are not available for mitogenomes if PCR-Sanger sequencing failed for a particular specimen.

**FG: Marked with 'x' if the mitogenome is the first available for the genus.

***FSP: Marked with 'x' if the mitogenome is the first available for the species.

Table 2. Sampling localities for the 39 mitogenomes of Coleoptera in this study.

GB accession	Locality*	Latitude (N)	Longitude (W)	Altitude (Meters)	Habitat
MK692552	La Dehesilla, Benaocaz, Cádiz, Spain	36.7074	−5.4570	480	<i>Olea europaea</i> field
MK692553	N-420 km 105, Fuencaliente, Ciudad Real, Spain	38.4445	−4.3247	730	Grassland-riverside
MK692554	Arroyo del Espino, El Bosque, Cádiz, Spain	36.7613	−5.5069	275	Riverside
MK692556	Nava de Cabra, Cabra, Córdoba, Spain	37.4856	−4.3634	995	Grassland
MK692557	La Dehesilla, Benaocaz, Cádiz, Spain	36.7074	−5.4567	470	Grassland
MK692559	La Dehesilla, Benaocaz, Cádiz, Spain	36.7074	−5.4570	480	<i>Olea europaea</i> field
MK692560	Robledo de las Hoyas, Fuencaliente, Ciudad Real, Spain	38.4371	−4.3413	950	<i>Quercus faginea</i> forest
MK692567	Arroyo del Bosque, El Bosque, Cádiz, Spain	36.7667	−5.5011	290	Riverside
MK692568	Llanos del Republicano, Villaluenga del Rosario, Cádiz, Spain	36.6817	−5.3574	810	Grassland
MK692574	Llanos del Republicano, Villaluenga del Rosario, Cádiz, Spain	36.6907	−5.3639	925	<i>Quercus suber</i> forest
MK692579	Huerta Hedionda, Tavizna, Benaocaz, Cádiz, Spain	36.7192	−5.4850	360	<i>Olea europaea</i> field
MK692585	Colada de la Breña, Benaocaz, Cádiz, Spain	36.7070	−5.4704	430	<i>Quercus suber</i> forest
MK692586	El Pinsapar, Puerto del Pinar, Grazalema, Cádiz, Spain	36.7726	−5.4240	1115	<i>Abies pinsapo</i> forest
MK692587	Puerto del Boyar, Grazalema, Cádiz, Spain	36.7536	−5.3939	1120	Grassland
MK692591	La Dehesilla, Benaocaz, Cádiz, Spain	36.7074	−5.4570	480	<i>Olea europaea</i> field
MK692592	Arroyo del Bosque, El Bosque, Cádiz, Spain	36.7667	−5.5011	290	Riverside
MK692593	Cortijo del Navazuelo, Carcabuey, Córdoba, Spain	37.4852	−4.3412	1035	Grassland
MK692597	Ermita Nta. Sra. de la Sierra, Cabra, Córdoba, Spain	37.4905	−4.3813	1145	<i>Pinus halepensis</i>
MK692599	Sierra de Cabra, Córdoba, Spain	NA	NA	NA	NA
MK692601	Ladera de la Casa de Cipriano, Fuencaliente, Ciudad Real, Spain	38.4190	−4.3138	765	<i>Quercus suber</i> forest
MK692603	Nava de Cabra, Cortijo de los Benítez, Cabra, Córdoba, Spain	37.4856	−4.3634	995	Grassland
MK692605	Casa de la Viñuela, Cabra, Córdoba, Spain	37.4852	−4.3861	1020	<i>Quercus faginea</i> forest
MK692606	Llanos del Republicano, Villaluenga del Rosario, Cádiz, Spain	36.6857	−5.3648	910	<i>Quercus ilex</i> forest
MK692607	Arroyo del Palancar, Carcabuey, Córdoba, Spain	37.4628	−4.2676	525	Riverside
MK692609	Arroyo del Bosque, El Bosque, Cádiz, Spain	36.7667	−5.5011	290	Riverside
MK692616	Llanos del Campo, Benamahoma, Cádiz, Spain	36.7556	−5.4556	642	<i>Quercus ilex</i> forest
MK692625	Sierra de Grazalema, Cádiz, Spain	NA	NA	NA	NA
MK692626	Llanos del Republicano, Villaluenga del Rosario, Cádiz, Spain	36.6907	−5.3639	925	<i>Quercus suber</i> forest
MK692638	Sierra Madrona, Ciudad Real, Spain	N.A.	N.A.	N.A.	N.A.
MK692642	El Boyar, Cortijo del Santo, Grazalema, Cádiz, Spain	36.7549	−5.4194	920	<i>Quercus ilex</i> forest
MK692645	Sierra de Grazalema, Cádiz, Spain	NA	NA	NA	NA
MK692646	Ermita Nta. Sra. de la Sierra, Cabra, Córdoba, Spain	37.4905	−4.3813	1145	<i>Pinus halepensis</i>
MK692648	Nava de Cabra, Cabra, Córdoba, Spain	37.5067	−4.3671	968	<i>Quercus ilex</i> forest
MK692661	Camino Viejo a la Ermita, Cabra, Córdoba, Spain	37.4811	−4.3885	970	Grassland
MK692677	Arroyo del Espino, El Bosque, Cádiz, Spain	36.7613	−5.5069	275	Riverside
MK692678	Cortijo del Navazuelo, Carcabuey, Córdoba, Spain	37.4852	−4.3412	1035	Grassland
MK692681	Sierra de Grazalema, Cádiz, Spain	NA	NA	NA	NA
MK692702	Collado del Navazuelo, Carcabuey, Córdoba, Spain	37.4801	−4.3347	995	<i>Olea europaea</i> field
MK692707	Nava de Cabra, Cortijo de los Benítez, Cabra, Córdoba, Spain	37.4856	−4.3634	995	Grassland

* All mitogenomes were obtained by bulk sequencing of a mix of specimens, and voucher codes to particular specimens assigned by the PCR-Sanger sequencing that matches (100% similarity) the obtained mitogenomes (see Table 1). Metagenomes not linked to a particular vouchered specimen are assigned to a locality but lack detailed information (precise coordinates, altitude, and habitat).

genera. For 30 of these genera, we provide the first available mitogenome and only two species (*Oryzaephilus surinamensis* and *Hypera postica*) have an available mitogenome. The new mitogenomes include endogean representatives of the genera *Torneuma*, *Coiffaitiella*, *Otiorhynchus*, *Oligotyphlopsis*, and *Typhlocharis*. For further details on specimens and mitogenomes see Figure 1, Tables 1 and 2, and GenBank Accession Numbers.

For the 39 newly generated mitogenomes, the 13 protein-coding genes (PCGs) were extracted using Geneious and individually aligned using the FFT-NS-i-x2 algorithm of MAFFT (Kato et al. 2002). Individual gene alignments were trimmed and concatenated to get a final dataset of 39 taxa and 12,940 bp. This alignment was used for phylogenetic inference using Maximum-likelihood in IQ-TREE (Nguyen et al. 2015), performed through the IQ-TREE web server (Trifinopoulos et al. 2016) without data partitioning, allowing the software to determine the best-fit substitution model and estimating an ultrafast bootstrap approximation with 10,000 replicates. The obtained tree showed the expected relationships among the families within Coleoptera, including the monophyly of the suborders Adephaga and Polyphaga

and the monophyly of all families (with more than one mitogenome) (Figure 1).

Disclosure statement

No potential conflict of interest was reported by the authors.

Funding

The study was funded by the NHM Biodiversity Initiative (UK) and the Spanish Ministry of Economy and Competitiveness (Ministerio de Economía y Competitividad) under a project with the number CGL2015-74178-JIN.

References

- Andújar C, Arribas P, Linard B, Kundrata R, Bocak L, Vogler AP. 2017. The mitochondrial genome of Iberobaenia (Coleoptera: Iberobaeniidae): first rearrangement of protein-coding genes in the beetles. *Mitochondrial DNA Part A*. 28:156–158.
- Andújar C, Arribas P, Ruzicka F, Platt AC, Timmermans MJTN, Vogler AP. 2015. Phylogenetic community ecology of soil biodiversity using mitochondrial metagenomics. *Mol Ecol*. 24:3603–3617.

- Arribas P, Andújar C, Hopkins K, Shepherd M, Vogler APAP, Andújar C, Hopkins K, Shepherd M, Vogler APAP. 2016. Metabarcoding and mitochondrial metagenomics of endogean arthropods to unveil the mesofauna of the soil. *Methods Ecol Evol.* 7:1071–1081.
- Bernt M, Donath A, Jühling F, Externbrink F, Florentz C, Fritzsche G, Pütz J, Middendorf M, Stadler PF. 2013. MITOS: Improved de novo metazoan mitochondrial genome annotation. *Mol Phylogenet Evol.* 69:313–319.
- Crampton-Platt A, Timmermans MJTN, Gimmel ML, Kutty SN, Cockerill TD, Vun Khen C, Vogler AP. 2015. Soup to tree: The phylogeny of beetles inferred by mitochondrial metagenomics of a Bornean Rainforest sample. *Mol Biol Evol.* 32:2302–2316.
- Katoh K, Misawa K, Kuma K, Miyata T. 2002. MAFFT: a novel method for rapid multiple sequence alignment based on fast Fourier transform. *Nucl Acids Res.* 30:3059–3066.
- Nguyen LT, Schmidt HA, Von Haeseler A, Minh BQ. 2015. IQ-TREE: a fast and effective stochastic algorithm for estimating maximum-likelihood phylogenies. *Mol Biol Evol.* 32:268–274.
- Ratnasingham S, Hebert PDN. 2007. BARCODING, BOLD: The Barcode of Life Data System (<http://www.barcodinglife.org>). *Mol Ecol Notes.* 7:355–364.
- Trifinopoulos J, Nguyen LT, von Haeseler A, Minh BQ. 2016. W-IQ-TREE: a fast online phylogenetic tool for maximum likelihood analysis. *Nucleic Acids Res.* 44:W232–W235.