



Characteristics and clinical outcomes after treatment of a national cohort of PCR-positive Lyme arthritis.

Antoine Grillon, Marc Scherlinger, Pierre-Hugues Boyer, Sylvie de Martino, Aleth Perdriger, Amandine Blasquez, Julien Wipff, Anne-Sophie Korganow, Christian Bonnard, Alain Cantagrel, et al.

► To cite this version:

Antoine Grillon, Marc Scherlinger, Pierre-Hugues Boyer, Sylvie de Martino, Aleth Perdriger, et al.. Characteristics and clinical outcomes after treatment of a national cohort of PCR-positive Lyme arthritis.. *Seminars in Arthritis and Rheumatism*, 2019, 48 (6), pp.1105-1112. 10.1016/j.semarthrit.2018.09.007 . hal-02921189

HAL Id: hal-02921189

<https://hal.science/hal-02921189>

Submitted on 25 Oct 2021

HAL is a multi-disciplinary open access archive for the deposit and dissemination of scientific research documents, whether they are published or not. The documents may come from teaching and research institutions in France or abroad, or from public or private research centers.

L'archive ouverte pluridisciplinaire **HAL**, est destinée au dépôt et à la diffusion de documents scientifiques de niveau recherche, publiés ou non, émanant des établissements d'enseignement et de recherche français ou étrangers, des laboratoires publics ou privés.



Distributed under a Creative Commons Attribution - NonCommercial 4.0 International License

Characteristics and clinical outcomes after treatment of a national cohort of PCR-positive Lyme arthritis

Antoine Grillon^{1*}, Marc Scherlinger^{2*}, Pierre-Hugues Boyer¹, Sylvie De Martino^{1,22}, Aleth Perdriger³, Amandine Blasquez⁴, Julien Wipff⁴, Anne-Sophie Korganow⁵, Christian Bonnard⁶, Alain Cantagrel⁷, Didier Eyer⁸, François Guérin⁹, Irène Monteiro¹⁰, Jean-Marie Woehl¹¹, Paul Moreau¹¹, Jean-Loup Pennaforte¹², Joel Lechevallier¹³, Frédéric Bastides¹⁴, Antoine Colombey¹⁵, Isabelle Imbert¹⁶, Yves Maugars¹⁷, Philippe Gicquel¹⁸, François Cuchet¹⁹, Michel Brax²⁰, Jean Sibilis²¹, Laurence Zilliox²², Cathy Barthel¹, Laurent Arnaud²¹ and Benoit Jaulhac^{1,22}

¹ EA 7290-Virulence bactérienne précoce, groupe borréliose de Lyme, Université de Strasbourg, CHRU de Strasbourg, Fédération de Médecine Translationnelle de Strasbourg, Strasbourg, France. ² Service de Rhumatologie, CHU de Bordeaux, France.³ Service de Rhumatologie, CHU de Rennes, France.⁴ Service de Rhumatologie, CH de Libourne, France.⁵ Service de Médecine Interne, CHRU Strasbourg, France.⁶ Service de Chirurgie orthopédique, CHRU Tours, France.⁷ Service de Rhumatologie, CHU Toulouse, France.⁸ Service de Pédiatrie, CH Haguenau, France.⁹ Service de Rhumatologie, CH Niort, France.¹⁰ Service de Rhumatologie, CH Annecy, France.¹¹ Service de Rhumatologie, CH Colmar, France.¹² Service de Rhumatologie, CHU Reims, France.¹³ Service de Chirurgie infantile, CHRU Rouen, France.¹⁴ Service de Rhumatologie, CHRU Tours, France.¹⁵ Service de Rhumatologie, CH Saint Nazaire, France.¹⁶ Service de Rhumatologie, Hôpital d'instruction des armées, Saint-Mandé, France.¹⁷ Service de Rhumatologie, CHU Nantes, France.¹⁸ Service de Chirurgie pédiatrique, CHRU Strasbourg, France.¹⁹ Service de Maladies infectieuses, CH Chambéry, France.²⁰ Service d'Orthopédie, CH Haguenau, France.²¹ Service de

26 Rhumatologie, CHRU Strasbourg, France.²² Centre National de Référence des *Borrelia*,
27 CHRU Strasbourg, France.

28 *Antoine Grillon and Marc Scherlinger contributed equally to this work

29

30 Corresponding author: Dr Antoine Grillon, PharmD., PhD.
31 Centre National de Référence des *Borrelia*
32 Hôpitaux Universitaires de Strasbourg, 3 rue Koeberlé, 67000 Strasbourg
33 E-mail: antoine.grillon@chru-strasbourg.fr
34 Phone: +33 3 69 55 15 82

35

36 Keywords: Lyme arthritis; *Borrelia*; Polymerase Chain Reaction; rheumatic disease

37

38 Conflict of interest: none to declare related to this work.

39 Funding Statement: none to declare.

40

41

42

43

44

45

46

47

48

49

50

51

52

53

54 **Abstract**

55 Objectives: To describe the clinical and microbiological characteristics and outcomes after
56 antibiotic treatment of a national cohort of patients with Lyme arthritis confirmed by PCR
57 testing on synovial fluid and by serology, when available.

58 Methods: Using the French National Reference Center for *Borrelia* database, patients with a
59 positive PCR on synovial fluid for *Borrelia* were identified. Patient clinical and biological
60 characteristics were reviewed from patient records. Long-term outcomes after treatment were
61 studied through a questionnaire and with follow-up data.

62 Results: Among 357 synovial fluid testing by PCR between 2010 and 2016, 37 (10.4%) were
63 positive for *Borrelia*. Patients' median age was 36 years (range 6-78) with 61% of men and
64 28% patients under 18. The presentation was monoarticular in 92% and the knee was
65 involved in 97%. Contrary to the *Borrelia* species repartition in European ticks,
66 *B. burgdorferi* sensu stricto was the most prevalent species found in synovial fluid (54%)
67 followed by *B. azfeli* (29%) and *B. garinii* (17%). Antibiotic treatments were mainly
68 composed of doxycycline (n=24), ceftriaxone (n=10) and amoxicillin (n=6), for a median
69 duration of 4 weeks (range 3-12). Despite a properly conducted treatment, 34% of patients
70 (n=12) developed persistent synovitis for at least 2 months (median duration 3 months, range
71 2-16). Among those, 3 developed systemic inflammatory oligo- or polyarthritis in previously
72 unaffected joints with no signs of persistent infection (repeated PCR testing negative), which
73 mandated Disease-Modifying Antirheumatic Drugs (DMARD) introduction, leading to
74 remission.

75 Conclusion: In France and contrary to ticks ecology, Lyme arthritis is mainly caused by
76 *B. burgdorferi* sensu stricto. Despite proper antibiotic therapy, roughly one third of patients
77 may present persistent inflammatory synovitis and a small proportion may develop systemic
78 arthritis. In such cases, complete remission can be reached using DMARD.

Key messages :

- Contrary to tick ecology (with *B. afzelii* being the most frequent species) , *B. burgdorferi* sensu stricto is the most common species involved in Lyme arthritis in France.
- After one run of proper antibiotic therapy, roughly one third of patient develop persistent inflammatory synovitis.
- Nearly 10% of patients developed systemic arthritis with negative repeat PCR test and good DMARD response.

Introduction

Lyme borreliosis (LB) is the most common vector-borne disease in the Northern Hemisphere.(1) The spirochete bacteria causing LB, *Borrelia burgdorferi* sensu lato complex, are transmitted by hard ticks belonging to the genus *Ixodes*.(2) In Europe, the most three frequent species responsible for human infections are *B. afzelii*, *B. garinii* and *B. burgdorferi* sensu stricto, whereas *B. burgdorferi* sensu stricto is almost the only species causing LB in North America.(3) In Europe, neuroborreliosis is the most frequent disseminated clinical manifestation of LB, followed by Lyme arthritis, acrodermatitis chronica atrophicans, and, more rarely, borrelial lymphocytoma, and Lyme carditis.(4–6) These different clinical pictures are linked to the great species diversity found in Europe. Conversely, in the US, Lyme arthritis (LA) is the most common feature of disseminated LB, and as *B. burgdorferi* sensu stricto is the main species found in the US it has been hypothesized that it is the main etiologic agent for LA in the US and in Europe.

The clinical manifestations of LA, include synovitis, usually in one or a few large joints, especially the knee.(7) For untreated cases, recurrent joint-swelling episodes may

persist for months or even years. The diagnosis of LA can be challenging, especially in high endemic areas, and cannot be based on a single clinical or biological characteristic. High levels of IgG antibodies against *Borrelia* are found in serum from patients with LA, but although serological testing shows excellent sensitivity and specificity in LA, a positive result alone is not sufficient to make the diagnosis.(8) The bacterial culture in LA is ineffective, because of its weak sensitivity.(8) Molecular diagnosis on the synovial fluid using PCR detecting *Borrelia* DNA is an attractive add-on test in LA diagnostic algorithm, providing a 100% specificity and a 42-96% sensitivity.(8–10)

The treatment of LA is based on antibiotics, generally for 3 to 4 weeks, and the vast majority of patients recover completely.(5,11) In the US, roughly 10% of patients develop persistent synovitis lasting ≥ 2 months, called slowly resolving or antibiotic-refractory LA.(7) Although slowly resolving LA pathophysiology remains obscure, there is strong evidence for an autoimmune or inflammatory mechanism,(12–15) and little to none for persistent infection.

Since few data about clinical and microbiological features and outcome of patients with LA are available in Europe, we conducted a retrospective observational study to describe the clinical and biological characteristics and treatment outcomes of a national cohort of patients with LA confirmed with synovial fluid PCR.

Patients and Methods

Patients

We conducted a retrospective observational study using the French National Reference Centre (NRC) for *Borrelia* database. Among its missions, the French NRC for *Borrelia* contributes to the epidemiological surveillance of LB. Between 2010 and 2016 all the patients referred to the NRC for *Borrelia* PCR testing and who had a positive *Borrelia* PCR (n=37) in their synovial fluids were included. Patients' medical history and laboratory findings, when available, were reviewed from medical records (Figure 1). Time to diagnosis was calculated as the time between the first reported articular symptoms (retrieved from the medical report) and the PCR testing. The duration and route of antibiotic therapy were retrieved from medical records. In order to study treatment outcome, patients were submitted a standardized questionnaire by their referent physician. This questionnaire included reported articular or other sequelae, asthenia or reported invalidity. Follow-up clinical data were also retrieved from their referent physician.

Borrelia ELISA and western-blot

Borrelia ELISA were realized using different commercial kits done by the considered hospital taking care of the patients (Euroimmun Lyme ELISA IgG IgM, Diasorin Liaison XL® *Borrelia* IgG IgM, Biomérieux Vidas® Lyme panel, Siemens Enzygnost® IgG IgM, Mikrogen recomwell® *Borrelia* IgG IgM).

Serum *Borrelia* western-blot using different commercial kits (Biosynex LYMECHECK® Optima IgG IgM, Mikrogen *recomLine*® *Borrelia* IgG IgM, Euroimmun Euroline® *Borrelia*-RN-AT-Adv) or an in-house test as previously described.(17)

***Borrelia* polymerase chain reaction testing**

Borrelia PCR in synovial fluid were conducted as previously described.(18). Briefly, presence or absence of *Borrelia* DNA was assessed by a specific real-time PCR assay targeting a 230 bp DNA fragment from the conserved region of the flagellin (*fla*) gene of the *Borrelia burgdorferi sensu lato* complex and a Taqman® probe (11 bp). Then *Borrelia* species identification was realized by a second real-time DNA amplification using hybridization probes targeting species-specific regions of the *fla* gene for *B. afzelii*, *B. garinii*/*B. bavariensis*, *B. burgdorferi* ss, *B. bissettii*, *B. valaisiana* and *B. lusitaniae*. All PCR tests were performed in the same laboratory (*Borrelia* NRC located in Strasbourg, France).

Statistical analyses

Data were analysed using GraphPad Prism Version 6.03. Non-parametric Kruskal-Wallis test followed by a Dunn's correction for multiple testing was used to compare the distribution of numerical variables. Mann-Whitney test was used when Kruskal-Wallis test was not applicable. Unadjusted associations between serum CRP levels and synovial fluid leucocytes count were estimated with Spearman correlation coefficient. Fisher's exact tests were used to compare categorical variables. P values (bilateral) <0.05 were considered statistically significant.

Ethical considerations

This study was approved by the Ethic Committee of the Faculty of Medicine and Strasbourg University Hospital, with the reference number 2018-4.

Results

Patient characteristics

Between 2010 and 2016, 357 synovial fluids (SF) were tested by the French National reference centre. *Borrelia* DNA was detected in 37 (10.4%) of them (Figure 1). Positive samples came from many regions of France where LB has been previously reported (Figure 2)(19). Patient characteristics are summarized in Table 1. Median time to diagnosis was 3 months (range 1-112 months) after clinical symptoms onset, and was significantly longer in adults than children (4 vs 1.5 months, respectively, $p=0.03$). On a seasonal point of view, date of the first clinical signs was observed during winter for 11 patients, spring for 6 patients, summer for 10 patients and fall for 8 patients (without significant difference). No significant differences were observed between diagnosis delay and *Borrelia* species, or between patients' age and *Borrelia* species.

Clinical presentation at diagnosis

The presentation was monoarticular in 92% (34/37) cases, and oligoarticular in the other cases. The knee was involved in 97% (36/37) patients, other involved joints were the ankle ($n = 1$) and the elbow ($n = 1$). Fever ($>38^{\circ}\text{C}$) was reported in 22% (8/37) patients and was significantly more frequent in patients under 18 years old (45.5% vs 11.5%, $p = 0.035$). Erythema migrans was reported by 14% (6/33) of patients. Other manifestations included headaches ($n = 2$), cervico-brachial neuralgia ($n = 1$), leukocytoclastic vasculitis ($n = 1$). None of the patients was diagnosed with concomitant cardiac Lyme disease manifestation. The characteristics are detailed in Table 1.

Laboratory Findings

Lyme borreliosis serology was available for 33 patients, who all had IgG antibodies against *Borrelia* with the ELISA assay (Table 1). Western-blot results were positive with the presence of at least 5 specific bands in 97% (32/33) of our cohort. One patient had a non-significant western-blot result with only 3 bands detected (41, 50 and 83 kDa bands). This patient had a 6-month diagnosis delay. Forty percent (12/30) of patients had detectable IgM antibodies against *Borrelia*. No association was observed between IgM positivity and *Borrelia* species, patients' age, or diagnosis delay or resolution of symptoms (data not shown).

Among available synovial fluid counts (n = 18), the median SF count was 25000 (range 1400 – 300000) with a median neutrophil percentage of 90% (range 65-99). C-reactive protein (CRP) level was high (> 5mg/L) in 91% of patients, with a median value of 45 mg/L (range 3-182). CRP level was associated with leucocytes count in synovial fluids (r^2 : 0.423; p = 0.003).

Among the 37 patients with a positive *Borrelia* PCR in SF, PCR detected *B. burgdorferi* sensu stricto DNA in 19 patients (54%), *B. afzelii* DNA in 10 patients (29%), and *B. garinii* DNA in 6 patients (17%) (Figure 3). No statistical difference was observed in the annual species repartition or in the annual ratio of positive samples on total samples tested. Most of the molecular analyses were performed on synovial fluids obtained from patients who hailed from the North of France.

Treatment

Antibiotic treatments used were oral doxycycline (n = 24), intravenous ceftriaxone (n = 10), oral amoxicillin (n = 6), oral tetracycline (n = 1) and oral cefaclor (n = 1). Five patients received a combination therapy (doxycycline and ceftriaxone). Three of them received ceftriaxone after doxycycline, one received doxycycline after 4 days of ceftriaxone

and one received both at the same time. Ceftriaxone therapy was added when inadequate response to oral therapy was observed. Median antibiotic treatment duration was 4 weeks (range 3 to 12). After the diagnosis, 9 patients received intra-articular glucocorticoids including 8 patients who had antibiotic-resistant LA. Seven received triamcinolone hexacetonide synoviorthesis, as initial treatment for the arthritis (n = 1) or as adjunctive treatment for persistent synovitis (n = 6). One patient received isotopic synoviorthesis (detailed in next paragraph). None of them had to undergo surgical synovectomy.

Clinical outcome after treatment

Follow-up data after treatment were available for 35 (95%) patients with a median follow-up time of 17 (range 1-73) months (Figure 1). Sixty-six percent of patients (n = 23) had a rapid resolution of the arthritis whereas 34% (n = 12) presented residual synovitis lasting ≥ 2 months after oral antibiotic or 1 month after IV antibiotic (also called antibiotic refractory LA).

Among the 23 patients with rapid resolution of the arthritis, 78% (n = 18) presented a full recovery and 22% (n = 5) reported long-lasting residual mechanical pain in the affected joint. The residual mechanical pain was moderate and did not significantly limit the patients' activities.

Among the 12 patients with residual clinical synovitis lasting ≥ 2 months (median duration 3 months, range 2-16) after one course of oral antibiotic treatment or for at least 1 month after IV treatment, *Borrelia* PCR testing in SF was repeated in 9 patients, and all tests were negative. Three of them received combination treatment with doxycycline and IV ceftriaxone. The initial treatment of the residual synovitis consisted of non-steroidal anti-inflammatory drugs and intra-articular glucocorticoid injections were used in 75% cases. Half (n = 6) of these patients with residual synovitis presented a full recovery, 17% (n = 2)

reported long-lasting residual mechanical pain in the affected joint, 25% (n=3) developed systemic inflammatory arthritis in initially non-affected joints (Figure 1). One patient with persistent knee synovitis despite doxycycline (4 weeks) and IV ceftriaxone (3 weeks) underwent isotopic synoviorthesis (intra-articular injection of a radioactive isotope (i.e. ⁹⁰Yttrium) to decrease synovial inflammation). The isotopic synoviorthesis was performed after persistent *Borrelia* infection was ruled out by repeat synovial fluid PCR and after a relapse despite triamcinolone hexacetonide synoviorthesis and 3 months treatment with oral methotrexate (15mg/week). He did not present subsequent articular flare-up. One patient with negative repeat synovial fluid PCR developed symptoms suggestive of chronic pain syndrome without inflammatory joint disease. Characteristics of patients with or without slowly resolving synovitis are presented in Table 2.

The characteristics of the 3 patients who developed diffuse inflammatory arthritis are detailed in Table 3. Briefly, the 3 patients presented oligo- or polyarthritis involving previously non-affected joints. One patient developed dactylitis, no patient developed axial or extra-articular involvement. *Borrelia* PCR testing on SF was repeated for all these 3 patients, with negative results. Laboratory testing for autoimmunity (including at least antinuclear antibody and ACPA) was negative for all the 3 patients. None of these 3 patients had HLA-DR locus typed. All these 3 patients were started on methotrexate at an oral dose of 15 to 20mg/week leading to sustained remission in 2 patients. Adalimumab was added to the third patient's treatment regimen, leading to sustained remission.

Discussion

To determine clinical and biological characteristics and treatment outcome of patients with proven Lyme arthritis, we examined data from 37 patients with a positive *Borrelia* PCR on synovial fluid.

The diagnosis of LA is currently based on the presence of specific symptoms, combined with laboratory evidence for infection. Serology is the cornerstone of Lyme disease laboratory diagnosis, and serological tests that are most often used are enzyme-linked immuno-sorbent assays (ELISAs) followed by immunoblots. In our cohort, all patients with available serological data (33/33) showed a positive ELISA IgG result. It is noteworthy that all *Borrelia* serology were sampled at the same time or after the synovial fluid and that PCR was performed independently of the serology. Therefore no bias of inclusion criteria related to the *Borrelia* serological result was possible in our cohort. In LA, serological tests such as ELISAs IgG are known to show a great sensitivity (93-100%) and specificity (91-97%) (20). ELISAs IgM are known to be less sensitive than IgG in LA, and their presence was found in only 40% cases of our cohort. Thus, positive *Borrelia* IgG with negative IgM should not be considered as a “serological scar” and discard the diagnosis.

In our study, the diagnosis of LA was always confirmed by a positive SF PCR for *Borrelia*. Molecular diagnosis on the synovial fluid using PCR detecting *Borrelia* DNA is an interesting add-on diagnostic tool in LA diagnosis. In Europe, its sensibility is roughly 60-70% (8–10) and a PCR positivity in synovial fluid, in case of positive serology allows diagnosis certainty (100% specificity), which is not the case with serology alone. In a practical point of view, molecular diagnosis must be realized when serological tests are positive. Several points support this conception: On the one hand, some patients with LA will have a negative *Borrelia* PCR test in their synovial fluid, which can be due to low spirochaetal load, technical

failure of the PCR or DNA degradation due to incorrect pre-analytic sample handling. On the second hand, since virtually all patients described in the literature as having LA have a positive serology, serology should be realized first considering its lower cost and that a false positive results due to external contamination is at least theoretically always possible. If PCR testing is negative (and serology is positive), differential diagnoses should be considered, but LA diagnosis remains still possible.

In comparison with serology, repeat PCR test turns negative after antibiotic treatment, sometime with a few months delay.(16) In one American study, spirochaetal DNA could be found in some patients after antibiotic therapy, however, amplification of mRNA (marker of spirochaetal viability) was negative in all patients, suggesting dead bacteria remnants rather than persistent infection. (16) In our study, all synovial fluid PCR repeated after antibiotic treatment among whom 9 had antibiotic refractory LA, were negative (n =14).

In Europe, the most frequent species responsible for human LB are *B. afzelii*, *B. garinii* and *B. burgdorferi* sensu stricto, whereas the most frequent species that causes LB in North America is mainly *B. burgdorferi* sensu stricto.(3) In France and all over Europe, *B. burgdorferi* sensu stricto is the least frequent species found in the *Ixodes ricinus*, the main vector of LB in Europe. In a recent meta-analysis, the major *Borrelia* species found in European *I. ricinus* ticks was *B. afzelii* (46.6%), followed by *B. garinii* (23.8%), then *B. burgdorferi* sensu stricto, found in only 10.2% of ticks.(21) In European patients with LB, EM is the most frequent clinical manifestation, and is mainly associated with *B. afzelii*;(22–24) the second most frequent clinical picture is neuroborreliosis and is mainly associated with *B. garinii*.(25) Interestingly, the most frequent *Borrelia* species found in synovial fluids from our patients was *B. burgdorferi* sensu stricto (54%). A potential bias could be that PCR technique may have different sensibility, meaning that some organisms are more likely to be identified than others. But our PCR technique is routinely used and sensitivity is the same for

all *Borrelia* strains. For example, in erythema migrans biopsies, *B. afzelii* is found in more than 90% of cases (personal communication). Our observations are concordant with some other previous studies, in which *B. burgdorferi* sensu stricto was found to be more frequent than the other species in European LA.(26,27) However, some studies did not observe this correlation.(28,29) In Europe, *Borrelia* strains causing Lyme arthritis are greatly heterogeneous, and our study, based on French data, might not be extrapolated to other European countries. Although our study provides the largest cohort of European LA patient with *Borrelia* species determination, a global survey involving other European countries may help to elucidate this question.

Initial clinical presentations in our LA cohort were classical, with joint swelling of a large articulation (especially the knee, in 97%), as previously reported in a cohort of 65 US patients with LA.(30) Fever was rarely reported but significantly associated with children borreliosis which are known to experience a more acute presentation.(31) These observations occurred from weeks to months after a tick bite, although only 40% of patients remembered this bite. In a European case series, the period from tick bites or EM to the onset of LA ranged from 10 days to 16 months.(32) Because of this great variability of the latency period, there is no seasonal peak in the occurrence of LA.(30) We also observed this characteristic in our cohort, since the date of the first clinical signs was observed all over the year. History of a prior EM to LA is a rare phenomenon. Herein, only 6 (16.2%) of our 37 patients remembered an EM before LA presentation. Based on European studies, history of EM in case of LA is ranged between 10 to 32%.(33–35)

Diagnosis delay was usually short, with 18/35 patients diagnosed between 1 and 3 months after clinical signs appearance ; 4/35 patients were diagnosed after 12 months, with one patient after 112 months. This shows that LA is sometimes a difficult diagnosis, and

should be systematically investigated for in the presence of a monoarticular or oligoarticular arthritis with negative culture and crystal observation, especially in case of knee involvement.

Antibiotic course mostly included doxycycline, ceftriaxone or amoxicillin for a median time of 4 weeks. All these treatment regimen have a proven efficacy in LA (35,36). In our study, one third of patients presented persistent synovitis lasting at least 2 months after a well-conducted oral antibiotic treatment or 1 month after IV treatment. This condition is called slowly resolving or antibiotic-refractory Lyme arthritis in the literature and is usually reported in roughly 10% of patients in US cohorts and thought to be even rarer in Europe (38,39). Although its pathophysiology remains unclear, the current preferred paradigm is an autoimmune reaction against *Borrelia* antigens or a loss of tolerance against an unidentified autoantigen rather than persistent *Borrelia* infection (38). In line with this paradigm, all 9 repeated synovial fluid PCR testing in our patients with antibiotic-refractory LA were negative. Interestingly, matrix metalloprotease 10, an auto-antigen targeted by B and T lymphocytes, have been identified in some patients with antibiotic-refractory LA, reinforcing the autoimmune hypothesis.(40) Association between antibiotic-refractory LA and certain HLA-DR haplotype has been reported.(12) Unfortunately, HLA-phenotyping could not be performed in our study. Our data suggest that slowly resolving LA is not uncommon in Western Europe or at least in France. Clinical outcomes were favourable for 67% with symptomatic treatments (NSAID or intra-articular glucocorticoids). One patient with slowly resolving LA with negative follow-up PCR testing later developed symptoms suggestive of chronic pain syndrome. Finally, 3 patients (25% of patients with persistent synovitis and 9% from our follow-up cohort) developed systemic arthritis after antibiotic treatment. Systemic arthritis is a poorly identified complication of LA which incidence and pathogenesis are largely unknown. Infection-induced rheumatic disease (eg, rheumatoid arthritis) or post-spirochaetal reactive polyarthritis are two viable hypothesis but further fundamental work is

needed. A recent report described 30 rheumatoid arthritis-like and psoriatic arthritis-like cases following LA diagnosis in the US.(41) One critic voiced by Tuttle was that LA diagnosis was based on serology alone and that testing to investigate for persistent *Borrelia* infection in these patients was not reported. (42) However, in the 5 patients in whom synovial fluid was available, testing for *Borrelia* DNA was negative, which supports the conclusion that these patients did not have persistent *Borrelia* infection. In our study, the facts that all 3 patients developing systemic arthritis had negative repeated SF *Borrelia* PCR testing and an excellent response to DMARD treatment strongly argue against persistent infection.

One of the strengths of our study is the direct involvement of the French national reference centre for *Borrelia*. The French national reference centre for *Borrelia* based in Strasbourg since 2012 provides diagnosis testing for all regions of France thus allowing a representative capture of French PCR-positive LA cases. Besides, since patients' inclusion was based on synovial fluid PCR positivity, the LA diagnosis was proven in all cases. The main limit of our study is that due to the retrospective analysis, some data were not available for analysis. Two patients (5% of the cohort) could not be contacted in order to study the after treatment outcome. Another limitation is that due to the multicentre origin of our cohort, we were not able to reunite a cohort of LA with a negative PCR for use as a control group. However, the main aims of our study were to describe clinical characteristics and treatment outcome of PCR-proven LA, for which a control group was deemed unnecessary. Besides, as a positive serological test alone does not mean that a patient necessarily has active Lyme borreliosis, the additive value of this type of control group may be not relevant.

In conclusion we report 37 cases of synovial fluid PCR-positive Lyme arthritis in French patients. We identify *B. burgdorferi* sensu stricto as the main species involved in LA, in spite of its low prevalence in European ticks. After antibiotic treatment, follow-up

identified 34% (12/35) patients with slowly resolving arthritis among whom 25% (3 patients, 9% of the follow-up cohort) developed systemic inflammatory arthritis without any sign of persistent infection (negative repeat PCR testing). Our study suggests that European patients with LA may present post-infectious inflammatory manifestation in a significant proportion of cases.

Acknowledgments

We thank Lionel Spielmann and Emmanuel Chatelus for help with identifying patients with Lyme arthritis, and Marie-Christine Michellet for English revision.

References

1. Stanek G, Wormser GP, Gray J, Strle F. Lyme borreliosis. *Lancet*. 2012;379(9814):461–73.
2. Radolf JD, Caimano MJ, Stevenson B, Hu LT. Of ticks, mice and men: understanding the dual-host lifestyle of Lyme disease spirochaetes. *Nat Rev Microbiol*. 2012;10(2):87–99.
3. Pritt BS, Mead PS, Johnson DKH, Neitzel DF, Respicio-Kingry LB, Davis JP, et al. Identification of a novel pathogenic *Borrelia* species causing Lyme borreliosis with unusually high spirochaetaemia: A descriptive study. *Lancet Infect Dis*. 2016;16(5):556–64.
4. Stanek G, Fingerle V, Hunfeld KP, Jaulhac B, Kaiser R, Krause A, et al. Lyme borreliosis: Clinical case definitions for diagnosis and management in Europe. *Clin Microbiol Infect*. 2011;17(1):69–79.

- 427 5. Arvikar SL, Steere AC. Diagnosis and treatment of Lyme arthritis. Infect Dis Clin
428 North Am. 2015;29(2):269–80.
- 429 6. Herzer P. Joint manifestations of Lyme Borreliosis. In: Acta Dermatovenereologica
430 Alpina, Panonica et Adriatica. 1996. p. 143–6.
- 431 7. Steere AC, Schoen RT, Taylor E. The clinical evolution of lyme arthritis. Ann Intern
432 Med. 1987;107(5):725–31.
- 433 8. Dessau RB, van Dam AP, Fingerle V, Gray J, Hovius JW, Hunfeld KP, et al. To test or
434 not to test? Laboratory support for the diagnosis of Lyme borreliosis: a position paper
435 of ESGBOR, the ESCMID study group for Lyme borreliosis. Vol. 24, Clinical
436 Microbiology and Infection. 2018. p. 171–4.
- 437 9. Jaulhac B, Chary-Valckenaere I, Sibilia J, Javier RM, Piémont Y, Kuntz JL, et al.
438 Detection of *Borrelia burgdorferi* by DNA amplification in synovial tissue samples
439 from patients with Lyme arthritis. Arthritis Rheum. 1996;39(5):736–45.
- 440 10. Nocton JJ, Dressler F, Rutledge BJ, Rys PN, Persing DH, Steere AC. Detection of
441 *Borrelia burgdorferi* DNA by polymerase chain reaction in synovial fluid from patients
442 with Lyme arthritis. N Engl J Med. 1994;330(4):229–34.
- 443 11. Strle F, Stanek G. Clinical manifestations and diagnosis of lyme borreliosis. Vol. 37,
444 Current Problems in Dermatology. 2009. p. 51–110.
- 445 12. Steere AC, Klitz W, Drouin EE, Falk B a, Kwok WW, Nepom GT, et al. Antibiotic-
446 refractory Lyme arthritis is associated with HLA-DR molecules that bind a *Borrelia*
447 *burgdorferi* peptide. J Exp Med. 2006;203(4):961–71.
- 448 13. Shen S, Shin JJ, Strle K, McHugh G, Li X, Glickstein LJ, et al. Treg cell numbers and
449 function in patients with antibiotic-refractory or antibiotic-responsive lyme arthritis.
450 Arthritis Rheum. 2010;62(7):2127–37.
- 451 14. Strle K, Shin JJ, Glickstein LJ, Steere AC. Association of a toll-like receptor 1

polymorphism with heightened Th1 inflammatory responses and antibiotic-refractory Lyme arthritis. *Arthritis Rheum.* 2012;64(5):1497–507.

15. Vudattu NK, Strle K, Steere AC, Drouin EE. Dysregulation of CD4+CD25high T cells in the synovial fluid of patients with antibiotic-refractory lyme arthritis. *Arthritis Rheum.* 2013;65(6):1643–53.

16. Li X, McHugh GA, Damle N, Sikand VK, Glickstein L, Steere AC. Burden and viability of *Borrelia burgdorferi* in skin and joints of patients with erythema migrans or lyme arthritis. *Arthritis Rheum.* 2011;63(8):2238–47.

17. N’Guyen Y, Lesaffre F, Metz D, de Martino S, Jaulhac B, Andréoletti L. No serological evidence for *Borrelia burgdorferi* sensu lato infection in patients with dilated cardiomyopathy in Northern France. Vol. 48, *Infectious Diseases*. 2016. p. 763–4.

18. Hidri N, Barraud O, de Martino S, Garnier F, Paraf F, Martin C, et al. Lyme endocarditis. *Clin Microbiol Infect.* 2012;18(12):E531-2.

19. Vandenesch A, Turbelin C, Couturier E, Arena C, Jaulhac B, Ferquel E, et al. Incidence and Hospitalisation rates of lyme borreliosis, France, 2004 to 2012. *Eurosurveillance.* 2014;19(34).

20. Leeflang MMG, Ang CW, Berkhout J, Bijlmer HA, Van Bortel W, Brandenburg AH, et al. The diagnostic accuracy of serological tests for Lyme borreliosis in Europe: a systematic review and meta-analysis. *BMC Infect Dis.* 2016;16(1):140.

21. Strnad M, Hönig V, Růžek D, Grubhoffer L, Rego ROM. Europe-wide meta-analysis of *Borrelia burgdorferi* sensu lato prevalence in questing *Ixodes ricinus* ticks. *Appl Environ Microbiol.* 2014;83(15).

22. Kuiper H, Cairo I, Van Dam A, De Jongh B, Ramselaar T, Spanjaard L, et al. Solitary erythema migrans: a clinical, laboratory and epidemiological study of 77 Dutch

- 477 patients. Br J Dermatol. 1994;130(4):466–72.
- 478 23. Cerar T, Ružić-Sabljić E, Glinšek U, Zore A, Strle F. Comparison of PCR methods and
479 culture for the detection of *Borrelia* spp. in patients with erythema migrans. Clin
480 Microbiol Infect. 2008;14(7):653–8.
- 481 24. Ornstein K, Berglund J, Nilsson I, Norrby R, Bergström S. Characterization of Lyme
482 borreliosis isolates from patients with erythema migrans and neuroborreliosis in
483 Southern Sweden. J Clin Microbiol. 2001;39(4):1294–8.
- 484 25. Strle F, Ružić-Sabljić E, Cimperman J, Lotric-Furlan S, Maraspin V. Comparison of
485 findings for patients with *Borrelia garinii* and *Borrelia afzelii* isolated from
486 cerebrospinal fluid. Clin Infect Dis. 2006;43(6):704–10.
- 487 26. Jaulhac B, Heller R, Limbach F, Hansmann Y, Lipsker D, Monteil H, et al. Direct
488 molecular typing of *Borrelia burgdorferi* sensu lato species in synovial samples from
489 patients with lyme arthritis. J Clin Microbiol. 2000;38(5):1895–900.
- 490 27. Van Der Heijden IM, Wilbrink B, Rijpkema SGT, Schouls LM, Heymans PHM, Van
491 Embden JDA, et al. Detection of *Borrelia burgdorferi* sensu stricto by reverse line blot
492 in the joints of Dutch patients with Lyme arthritis. Arthritis Rheum. 1999;42(7):1473–
493 80.
- 494 28. Vasiliu V, Herzer P, Rössler D, Lehnert G, Wilske B. Heterogeneity of *Borrelia*
495 *burgdorferi* sensu lato demonstrated by an ospA-type-specific PCR in synovial fluid
496 from patients with Lyme arthritis. Med Microbiol Immunol. 1998;187(2):97–102.
- 497 29. Eiffert H, Karsten A, Thomssen R, Christen HJ. Characterization of *Borrelia*
498 *burgdorferi* strains in Lyme arthritis. Scand J Infect Dis. 1998;30(3):265–8.
- 499 30. Herzer P. Joint manifestations. In: Weber K, Burgdorfer W, editors. Aspects of Lyme
500 borreliosis. Heidelberg: Springer; 1993. p. 168–84.
- 501 31. Daikh BE, Emerson FE, Smith RP, Lucas FL, McCarthy C a. Lyme arthritis: a

502 comparison of presentation, synovial fluid analysis, and treatment course in children
503 and adults. *Arthritis Care Res (Hoboken)*. 2013;65(12):1986–90.

504 32. Herzer P. Joint manifestations of Lyme borreliosis in Europe. *Scand J Infect Dis Suppl*.
505 1991;77:55–63.

506 33. Haugeberg G, Hansen IJW, Skarpaas T, Noraas S, Kjelland V. Lyme arthritis in
507 Southern Norway--an endemic area for Lyme borreliosis. *BMC Infect Dis*.
508 2014;14:185.

509 34. Priem S, Munkelt K, Franz JK, Schneider U, Werner T, Burmester GR, et al.
510 [Epidemiology and therapy of Lyme arthritis and other manifestations of Lyme
511 borreliosis in Germany: results of a nation-wide survey]. *Z Rheumatol*.
512 2003;62(5):450–8.

513 35. Berglund J, Eitrem R, Ornstein K, Lindberg a, Ringér a, Elmrud H, et al. An
514 epidemiologic study of Lyme disease in southern Sweden. *N Engl J Med*.
515 1995;333(20):1319–27.

516 36. Steere A, Levin R, Molloy P, Kalish R, Abraham J 3rd, Liu N, et al. Treatment of
517 Lyme arthritis. *Arthritis Rheum*. 1994;37(6):878–88.

518 37. Dattwyler RJ, Volkman DJ, Halperin JJ, Luft BJ. Treatment of late Lyme borreliosis-
519 randomised comparison of ceftriaxone and penicillin. *Lancet*. 1988;331(8596):1191–4.

520 38. Steere AC, Angelis SM. Therapy for lyme arthritis: Strategies for the treatment of
521 antibiotic-refractory arthritis. Vol. 54, *Arthritis and Rheumatism*. 2006. p. 3079–86.

522 39. Akin E, Aversa J, Steere AC. Expression of adhesion molecules in synovia of patients
523 with treatment-resistant lyme arthritis. *Infect Immun*. 2001;69(3):1774–80.

524 40. Crowley JT, Strle K, Drouin EE, Pianta A, Arvikar SL, Wang Q, et al. Matrix
525 metalloproteinase-10 is a target of T and B cell responses that correlate with synovial
526 pathology in patients with antibiotic-refractory Lyme arthritis. *J Autoimmun*.

527 2016;69:24–37.

528 41. Arvikar SL, Crowley JT, Sulka KB, Steere AC. Autoimmune Arthritides, Rheumatoid
529 Arthritis, Psoriatic Arthritis, or Peripheral Spondyloarthritis Following Lyme Disease.
530 Arthritis Rheumatol. 2017;69(1):194–202.

531 42. Tuttle C. Post-Lyme Arthritis May Be More Than Lyme: Comment on the Article by
532 Arvikar et al. Vol. 69, Arthritis and Rheumatology. 2017. p. 684.

533

534

535

536

537

538

539

540

541

542

543

544

545

546

547

548

549

550

551

Figures

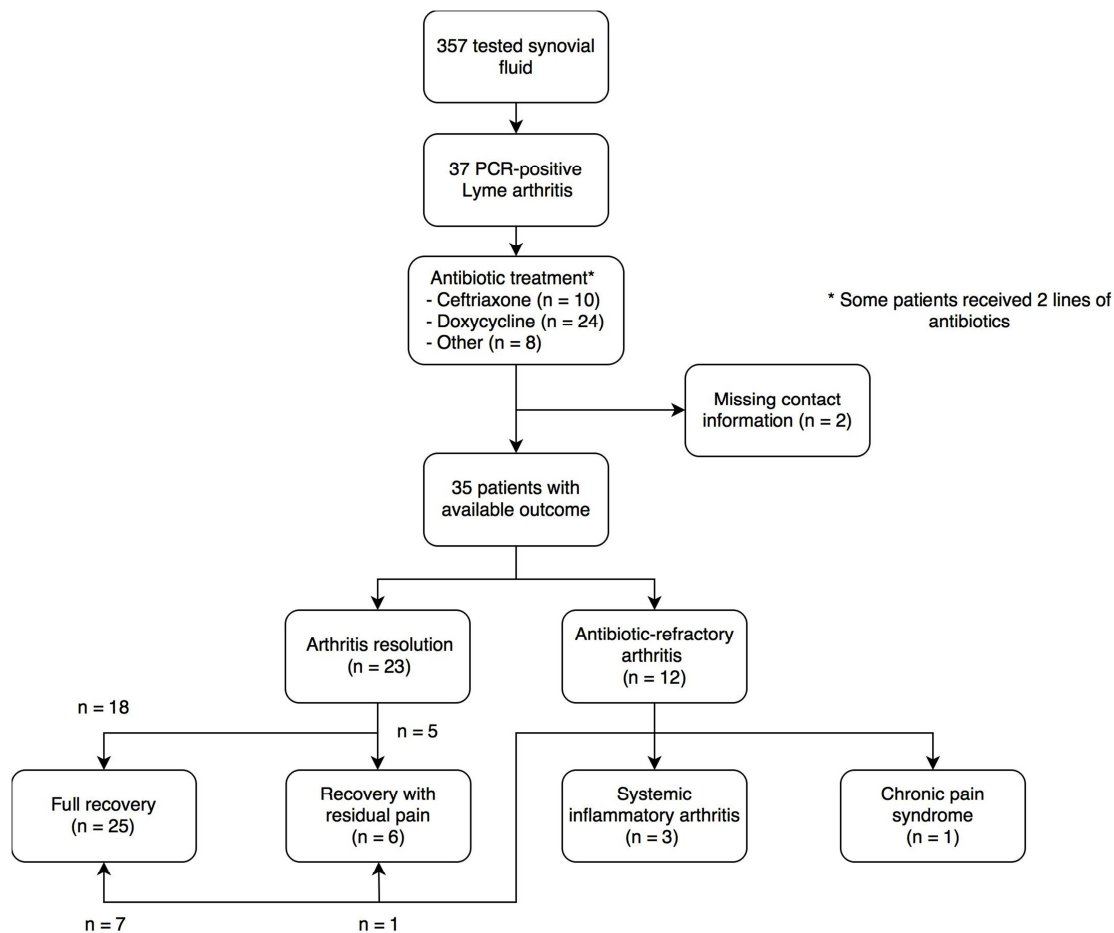


Figure 1. Included patients' flowchart through the study. From our database of 357 tested synovial fluids from 2010 to 2016, 37 were positive for *Borrelia* DNA. Of these 37 patients, 35 had available follow-up data after treatment. Twenty-three patients had rapid resolution of the arthritis whereas 12 presented residual synovitis lasting ≥ 2 months. Among the 23 patients with rapid resolution of the arthritis, 18 presented a full recovery and 5 reported residual mechanical pain in the affected joint. Among the 12 patients with residual synovitis, 6 patients presented a full recovery, 2 reported residual mechanical pain in the affected joint, 3 developed systemic inflammatory arthritis in initially non-affected joints and 1 showed symptoms suggesting chronic pain syndrome.

Geographical repartition of the PCR tested/PCR positive SF during the 2010-2016 period
by the NRC for Borrelia

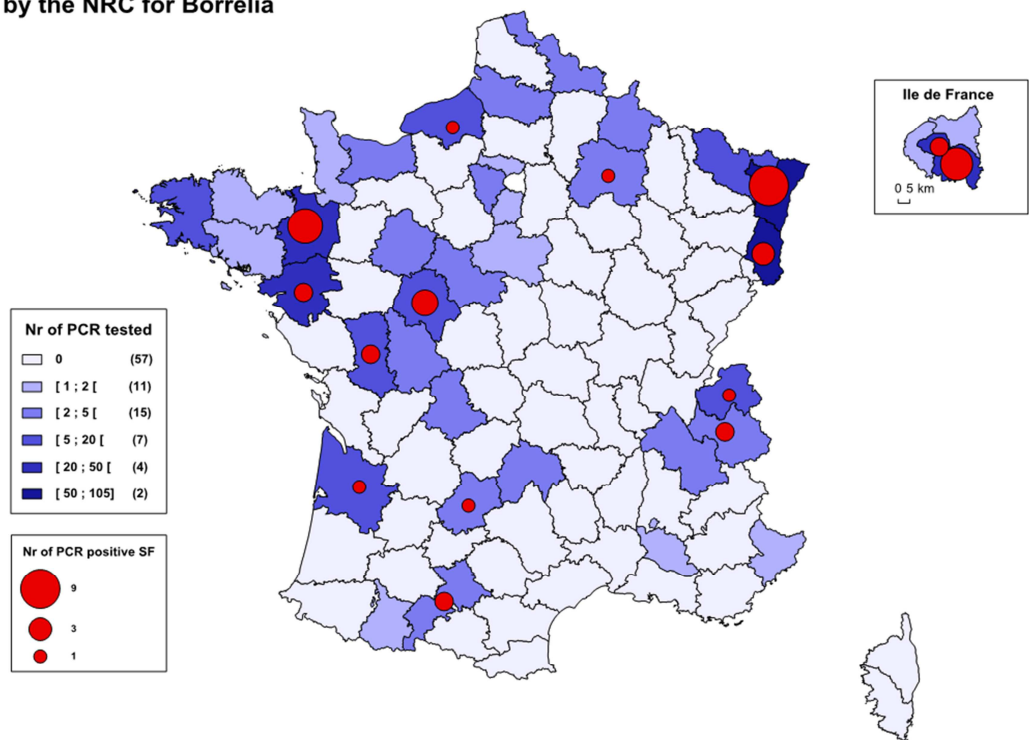


Figure 2. Geographical distribution of synovial fluids tested by PCR and positive results for
Borrelia DNA in the French National Reference Centre for *Borrelia* from 2010 to 2016.

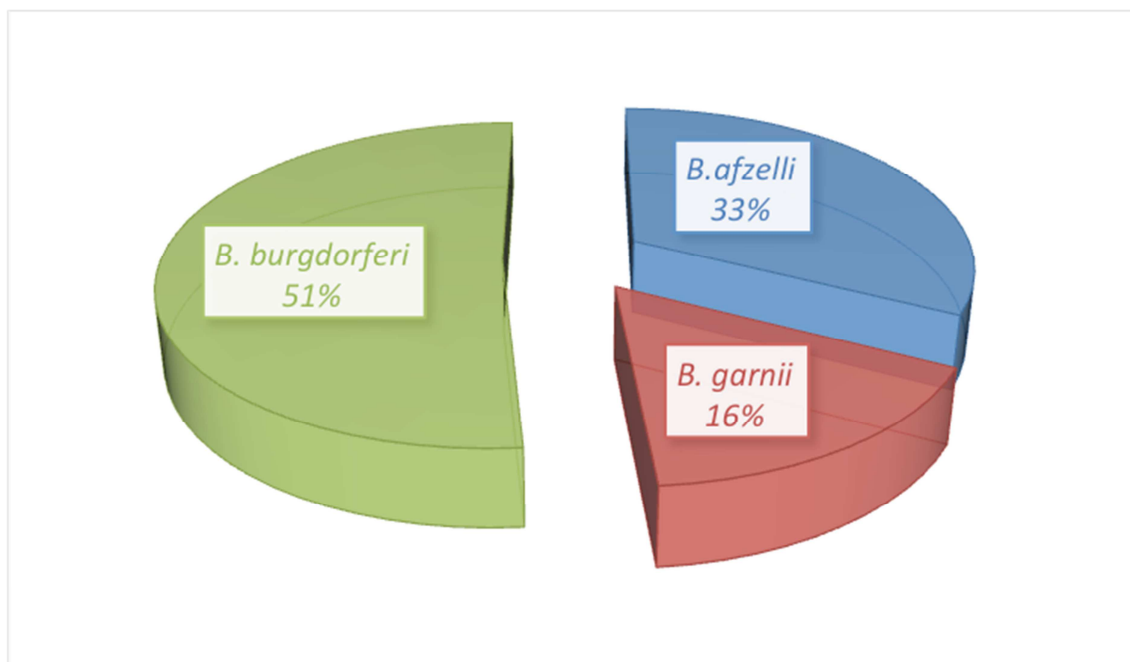


Figure 3. Repartition of *Borrelia* species found in synovial fluids from 2010 to 2016.

Table 1: Patient, disease and treatment characteristics at diagnosis

Characteristics at diagnosis	PCR-positive Lyme Arthritis (n = 37)
Patient characteristics	
Age, median (range), years	36 (6 – 78)
Minor < 18 years	28% (11/37)
Male Sex	61% (23/37)
Tick exposure	91% (29/32)
History of tick bite	45% (15/33)
Diagnostic delay, median (range), months	3 (1 – 112)
Clinical presentation	
Previous erythema migrans	19% (6/32)
Monoarthritis	92% (34/37)
Oligoarthritis	8% (3/37)
Knee involvement	97% (36/37)
Fever (>38°C)	22% (8/37)
Laboratory findings	
C-reactive protein, median (range), mg/L	45 (3-182)
Positive <i>Borrelia</i> serology (ELISA)	100% (37/37)
Positive <i>Borrelia</i> western-blot	97% (36/37)
Negative <i>Borrelia</i> western-blot	3% (1/37)
Joint fluid aspiration	
leukocyte count > 2000/mm ³	95% (18/19)
Leukocyte count, median (range)	25000 (1400 – 300 000)
% of neutrophils, mean (SD)	85% (±10%)
Antibiotic regimen	
Treatment duration, median (range), weeks	4 (3 – 12)
Doxycycline	65% (24/37)
Ceftriaxone	27% (10/37)
Amoxicillin	16% (6/37)
Other	5% (2/37)

603 Table 2: Characteristics of patients with or without persistent arthritis

Characteristics at diagnosis	Arthritis resolution (n = 23)	Persistent arthritis (n = 12)	P-value
Patient characteristics			
Age, median (range), years	33 (6-75)	41 (12-78)	0.48
Minor < 18 years	39% (9)	17% (2)	0.26
Male Sex	65% (15)	28% (7)	0.73
Diagnostic delay, median (range), months	3 (1-112)	5 (1-24)	0.27
Clinical presentation			
Monoarthritis	96% (22)	83% (10)	0.27
Oligoarthritis	4% (1)	17% (2)	0.27
Fever	26% (6)	17% (2)	0.69
Laboratory findings			
C-reactive protein, median (range), mg/L	37 (3-182)	61 (6-136)	0.46
Synovial fluid aspiration			
Leukocyte count, median (range)	17000 (1400-300000)	27000 (2700-60000)	0.31
<i>Borrelia</i> species			0.64
<i>B. burgdorferi</i> sensu stricto	48% (11)	67% (8)	
<i>B. afzelii</i>	30% (7)	25% (3)	
<i>B. garinii</i>	22% (5)	8% (1)	
Antibiotic regimen			
Treatment duration, median (range), weeks	4 (3-12)	6 (3-12)	0.09
Doxycycline	57% (13)	83% (10)	0.15
Ceftriaxone	22% (5)	33% (4)	0.69
Amoxicillin	22% (5)	8% (1)	0.64
Other	9% (2)	0%	0.53

614 **Table 3. Characteristic of patients developing chronic systemic arthritis.**

Characteristics at diagnosis	Patient 1	Patient 2	Patient 3
Age	24 years	28 years	14 years
Sex	Female	Male	Male
Initial clinical presentation	Acute knee monoarthritis No fever no EM	Acute right knee arthritis Left knee arthritis 4 weeks earlier No fever no EM	Acute left knee arthritis Right knee arthritis 6 weeks earlier Leukocytoclastic purpura No fever no EM
CRP level	3 mg/L	8mg/L	84mg/L
SF leukocyte count	2400/mm ³ 75% neutrophils	17600/mm ³ neutrophil count NA	25000/mm ³ 90% neutrophils
Borrelia species	<i>B. garinii</i>	<i>B. burgdorferi</i> sensu stricto	<i>B. azfeli</i>
Initial treatments	Tetracyclin 600mg/day 4 weeks Naproxen	Before diagnosis : Oral MTX 15mg/week Hexatrione acetone At diagnosis : Doxycycline 200mg/day 12 weeks MTX discontinuation	Doxycycline 200mg/day 8 weeks Naproxen
Inflammatory disease presentation	Asymmetric oligoarthritis: right knee and hip, left ankle	Knee bi-arthritis and dactylitis	Asymmetric polyarthritis: left wrist and elbow, right wrist and 2 nd MCP
New SF PCR	Negative	Negative	Negative
Immune panel	ANA and ACPA negative	ANA and RF and ACPA negative	ANA and ACPA negative
B27 status	Negative	NA	Negative
Treatments	MTX 15 mg/week	MTX 15mg/week Hexatrione acetone Adalimumab 40mg/2weeks	MTX 15mg/week
Outcome	Rapid remission MTX discontinuation after 24 months No recurrence at 3 months	Flare-up with MTX alone Remission with MTX+ADA Treatment still ongoing	Rapid remission MTX discontinuation after 18 months No recurrence at 1 year of follow-up

	Lost of follow-up	
--	-------------------	--

615

616 Abbreviations : ACPA, anti-citrulinated protein antibody; ANA, anti-nuclear antibody; CRP,
617 C-reactive protein; ECM, erythema migrans; MTX, methotrexate; RF, rheumatoid factor; SF,
618 synovial fluid; NA, not available

619

620